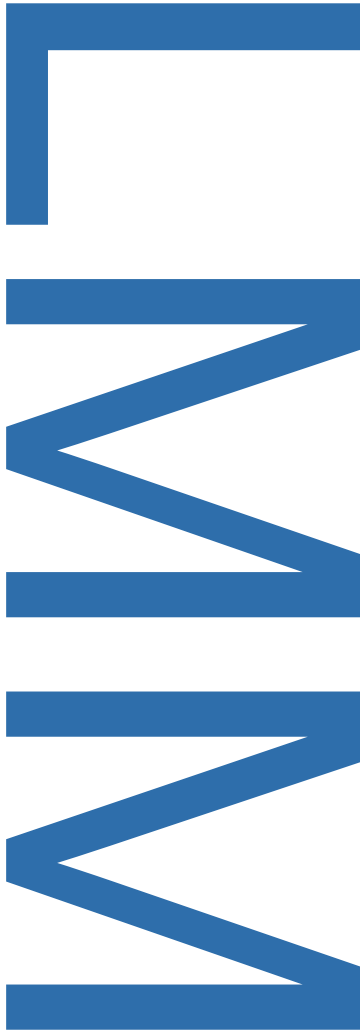
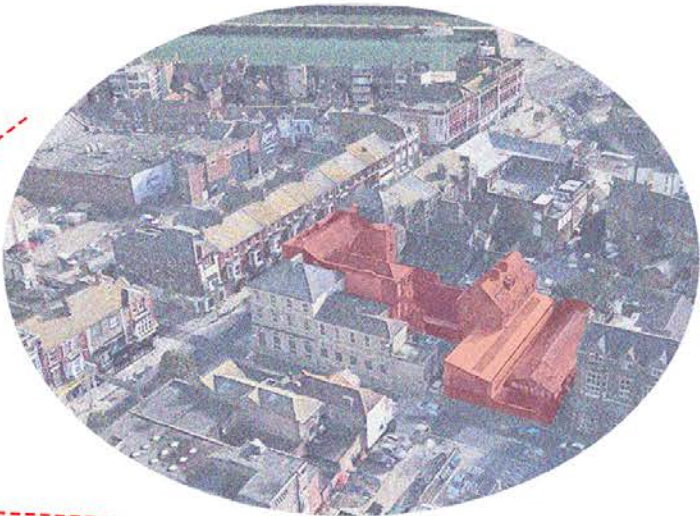




LOWESTOFT
MARITIME
MUSEUM



SITE



lowestoft post office

CONTEXT

Lowestoft is the UK's most easterly town. It is the second largest town in Suffolk, with a population of approximately 70,000 people. Like many coastal towns and cities it faces challenges with regards to its environment, both built and natural, the retention and growth of its population and the numerous infrastructures required to sustain and grow the future of the town.

The old post office is a grade II-Listed building in lowestoft, and has been abandoned for years. This year our role is to reuse the building imaginatively and thoughtfully in order to drive the future aspirations of the town.

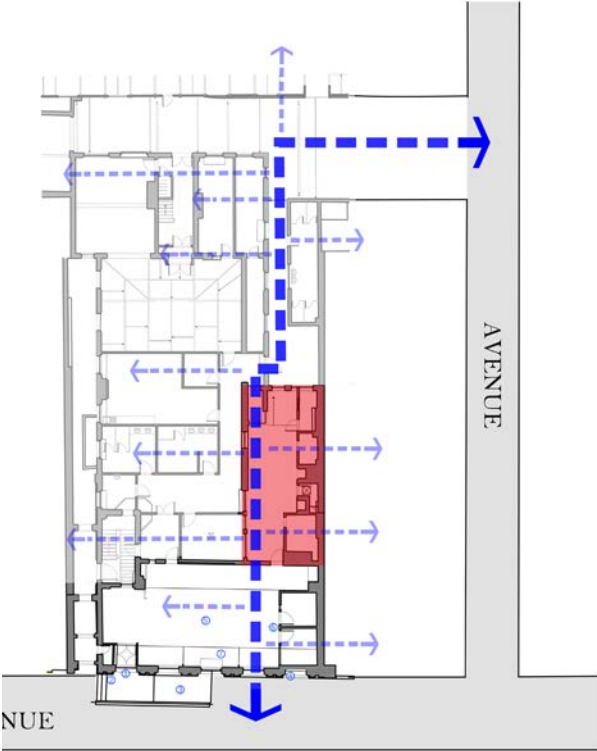
RECESSED/HIDDEN SPACE

- a secret, secluded, remote place
- they are easily ignored or overlooked



RECESSED AREA
MAIN AREA

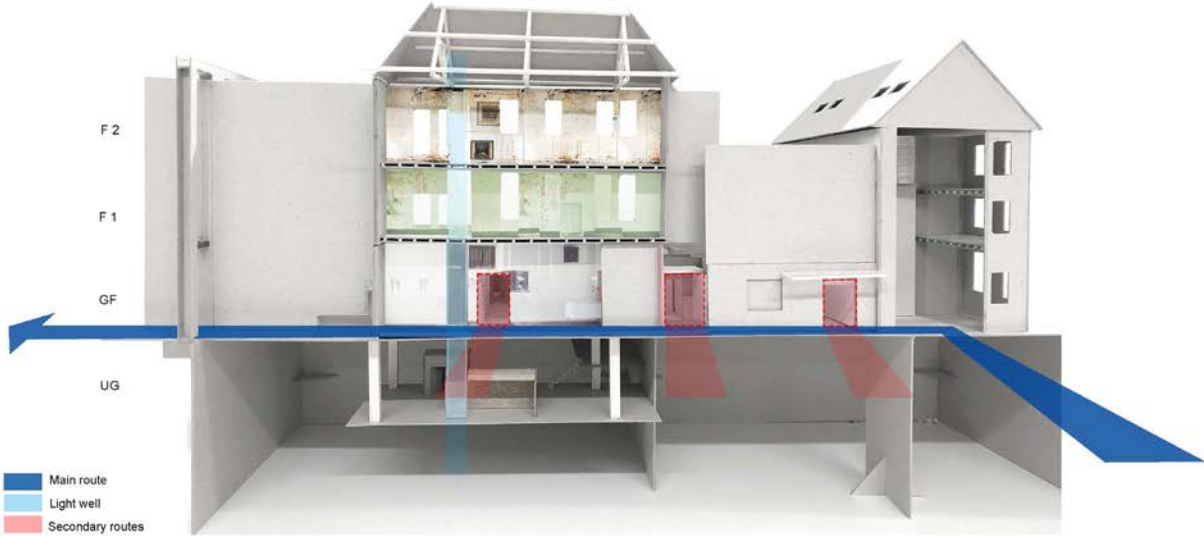
DOCUMENT/SUPPLEMENT



STRATEGY

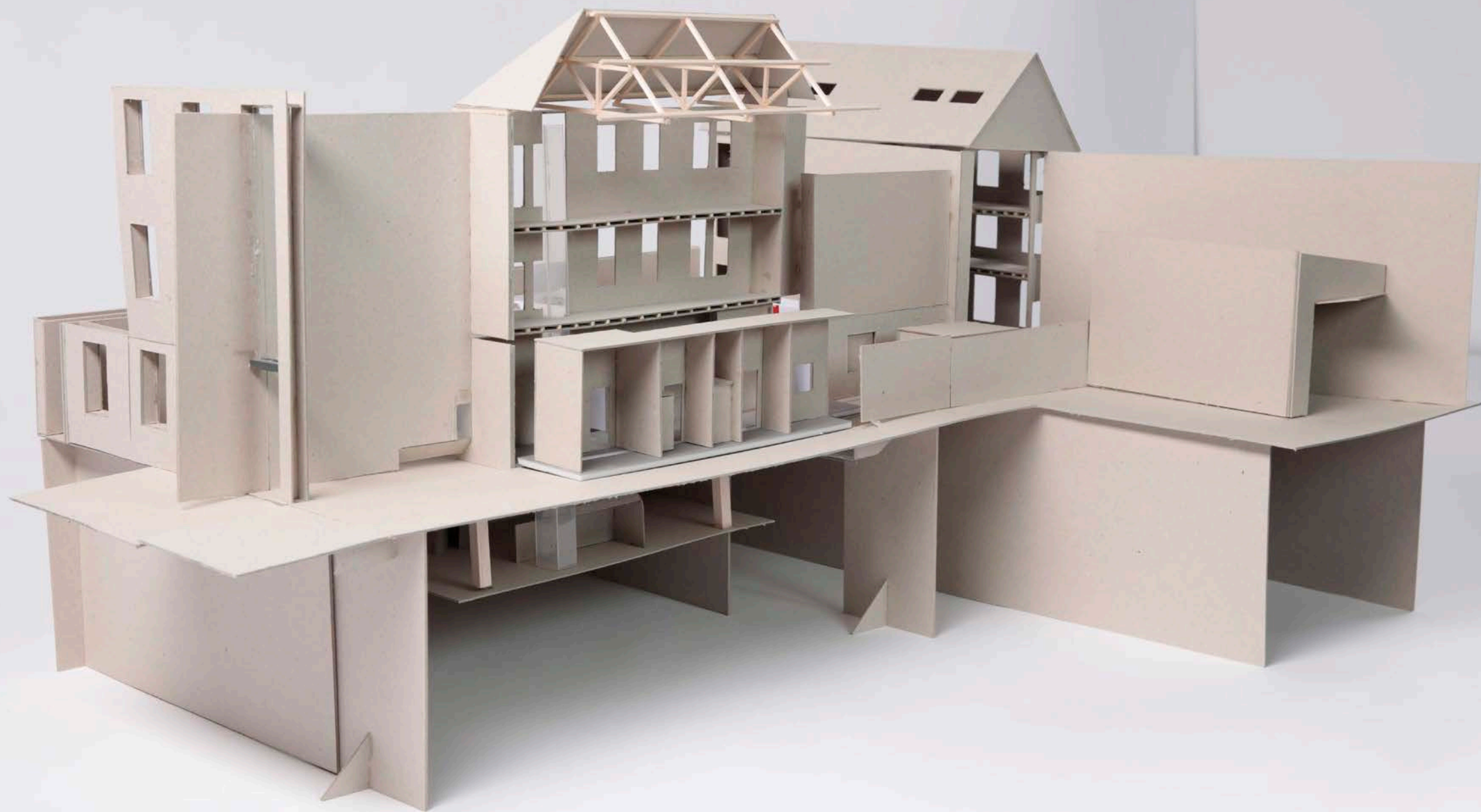
- Creating a shortcut of the post office wing, making it become a part of the whole city.
- Reveal the hidden space to the public
- Through the route, invite the public to experience and explore the history of this building.

The Most Hidden → *Open To the Public*
Invisible → *Visible*

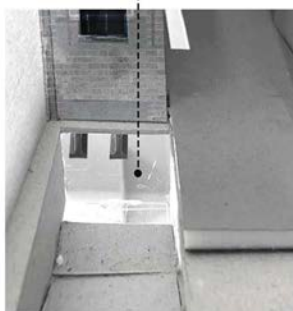


The slice through the building

In order to reveal the hidden space of this building, I created an incredible slice through the building, to let it be used as a shortcut, so the post office becomes part of the city. Through the route, I invite the public to experience and explore the history of this building.







Through the transparent glass, people can peer into what is hidden underground. They can also see the exposed structure of the post office.



Through the diagonal openings, people can see the lattice that were used to sort and store mail.



main route (face the post
office wing)



secondary route (first en-
trance)



secondary route (middle en-
trance)

Why a maritime museum?

1 The learning result from the “supplement” approach: the visiting route



2 Rich Marine history

In the Middle Ages, Lowestoft became an important fishing town. The trade, particularly for herring, continued as the town's main identity into the 20th century. The port also was a major naval base during the war, including for armed trawlers such as Nelson



3 The original one : Cramped and narrow Spaces



“The history of English in one town”

*“Lowestoft grumbled as Romans tramped through
endured Viking invasions,*

muddled through the Dark Ages,

embraced the Enlightenment,

flourished as a part of the Empire,

holidayed with the Edwardians,

suffered in the World Wars,

*protested and prospered in equal measures though
post-war changes in society and technology.*

*Every social, historical and industrial movement that
has swept over England is embedded in the sand
and bricks of Lowestoft.”*

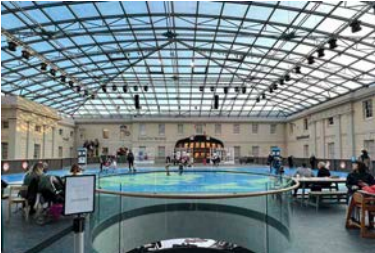
PORTSMOUTH DOCKYARD



MUSEUM OF LONDON DOCKYARDS



GREENWICH NATIONAL MARITIME MUSEUM



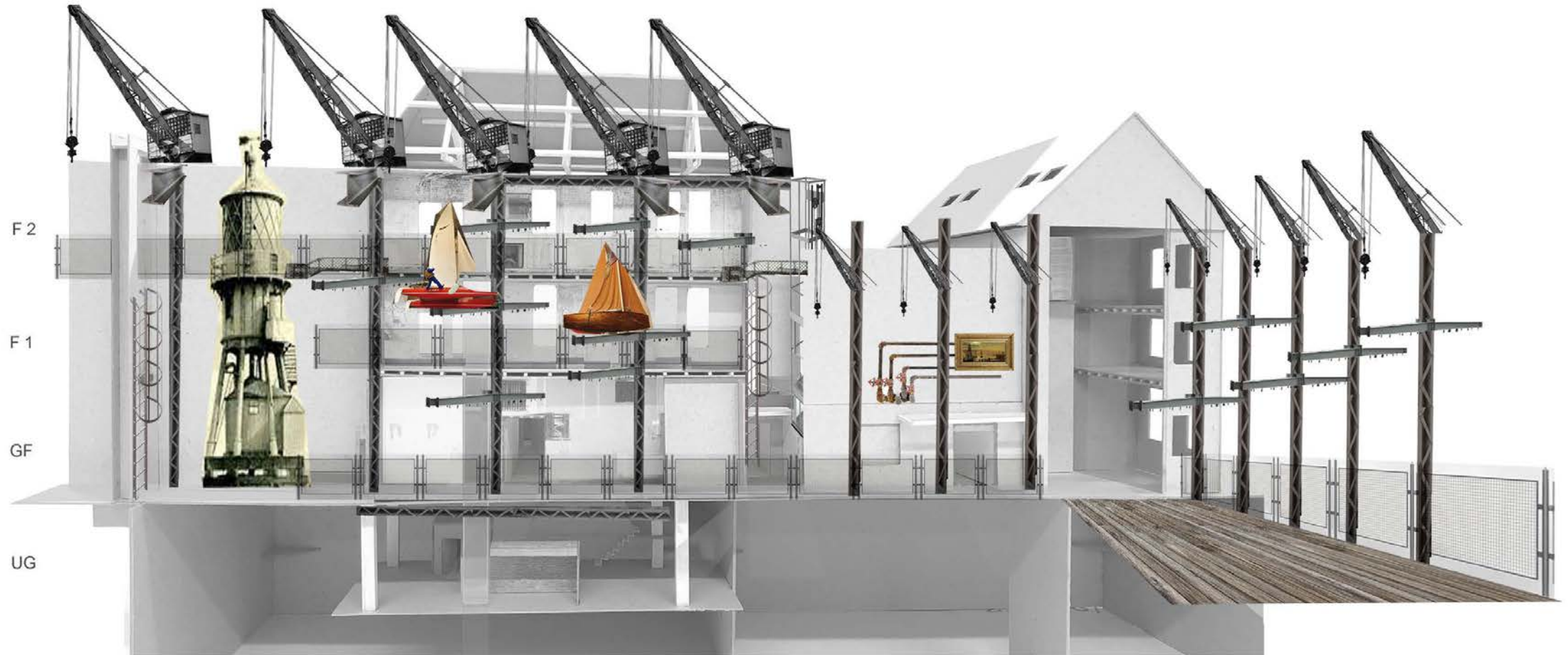
CHATHAM DOCKYARD



NATIONAL MARITIME MUSEUM CORNWALL



INITIAL CONCEPTS

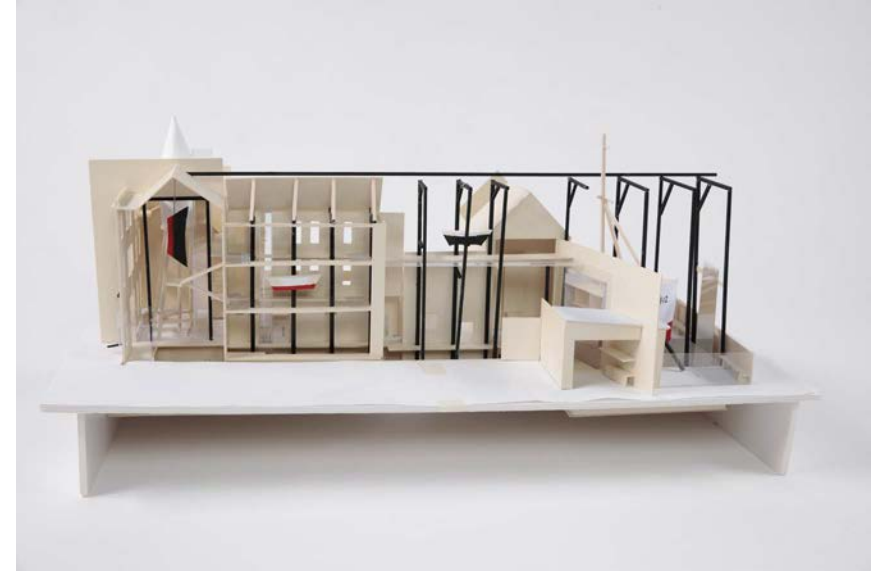


SKETCH MODELS

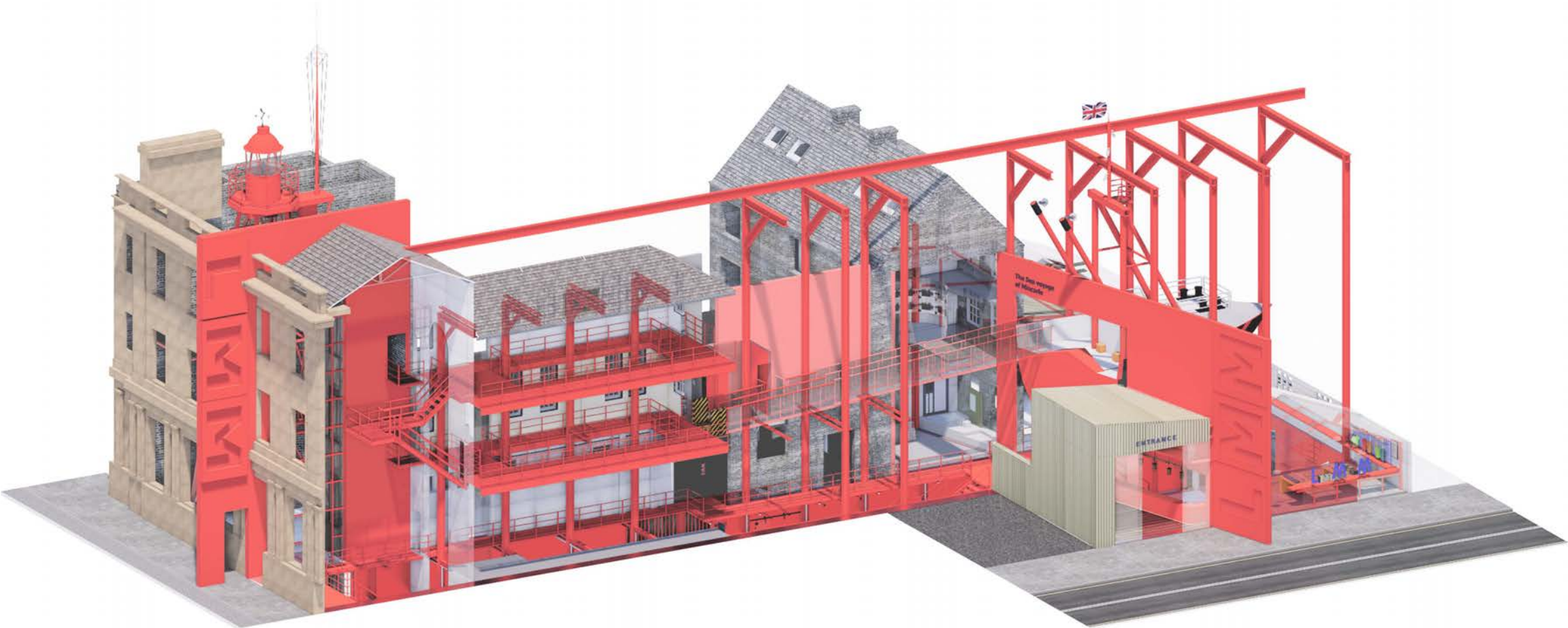
2022.03



2022.04

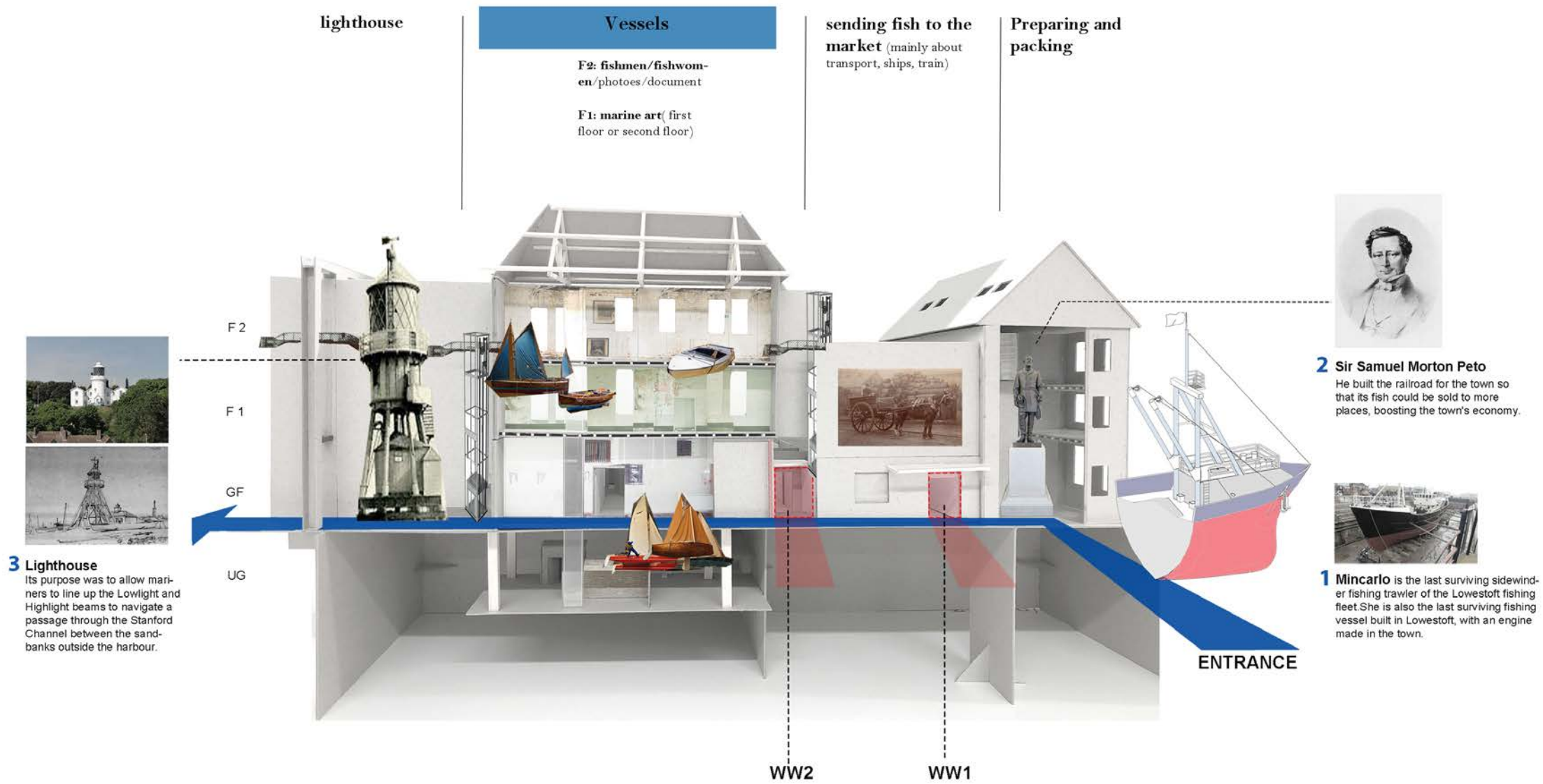


INTERVENTION IN THE ORIGINAL BUILDING



- Intervention
- The existing building

ORGANIZATION

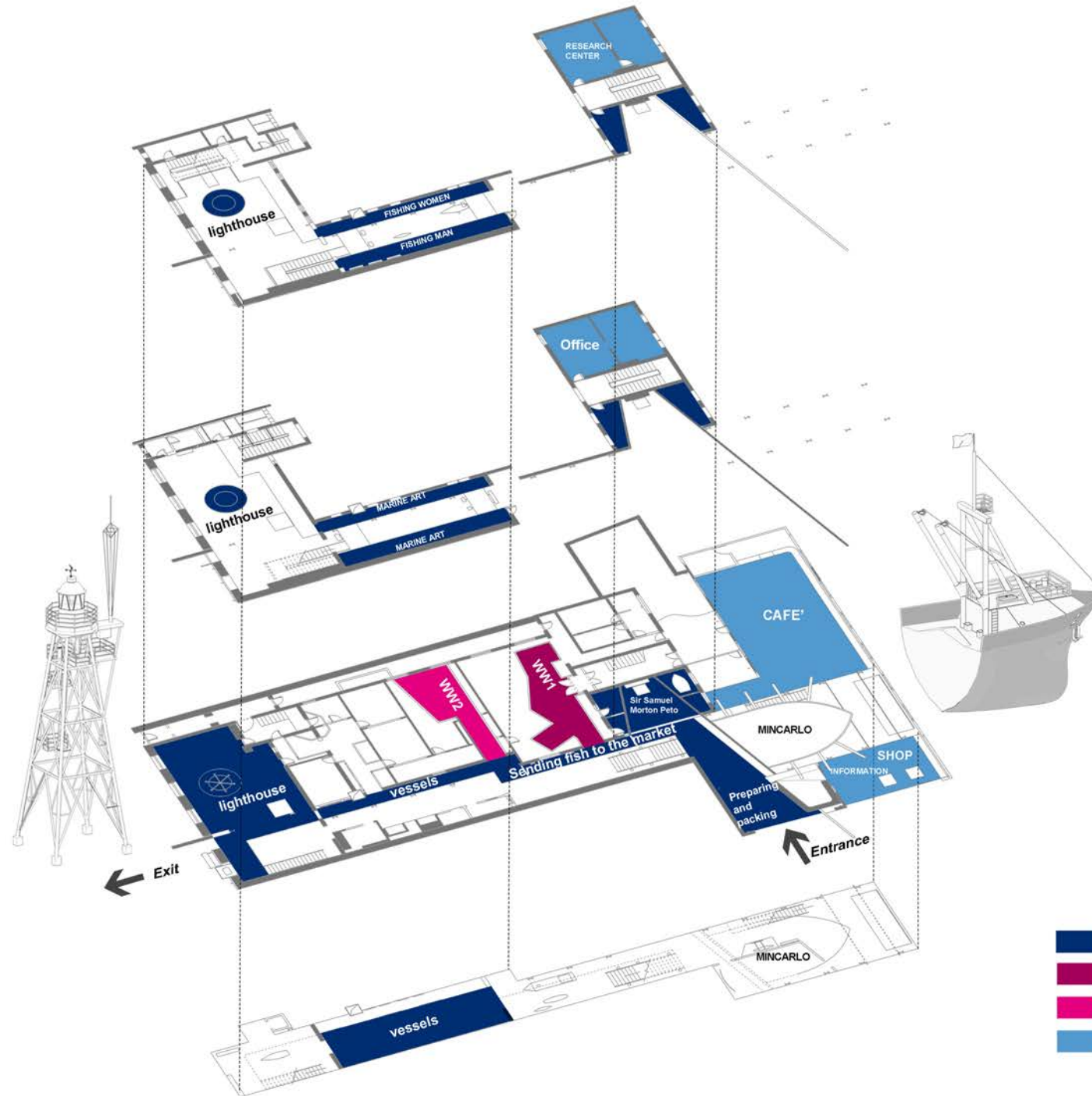


F2

F1

GF

UG



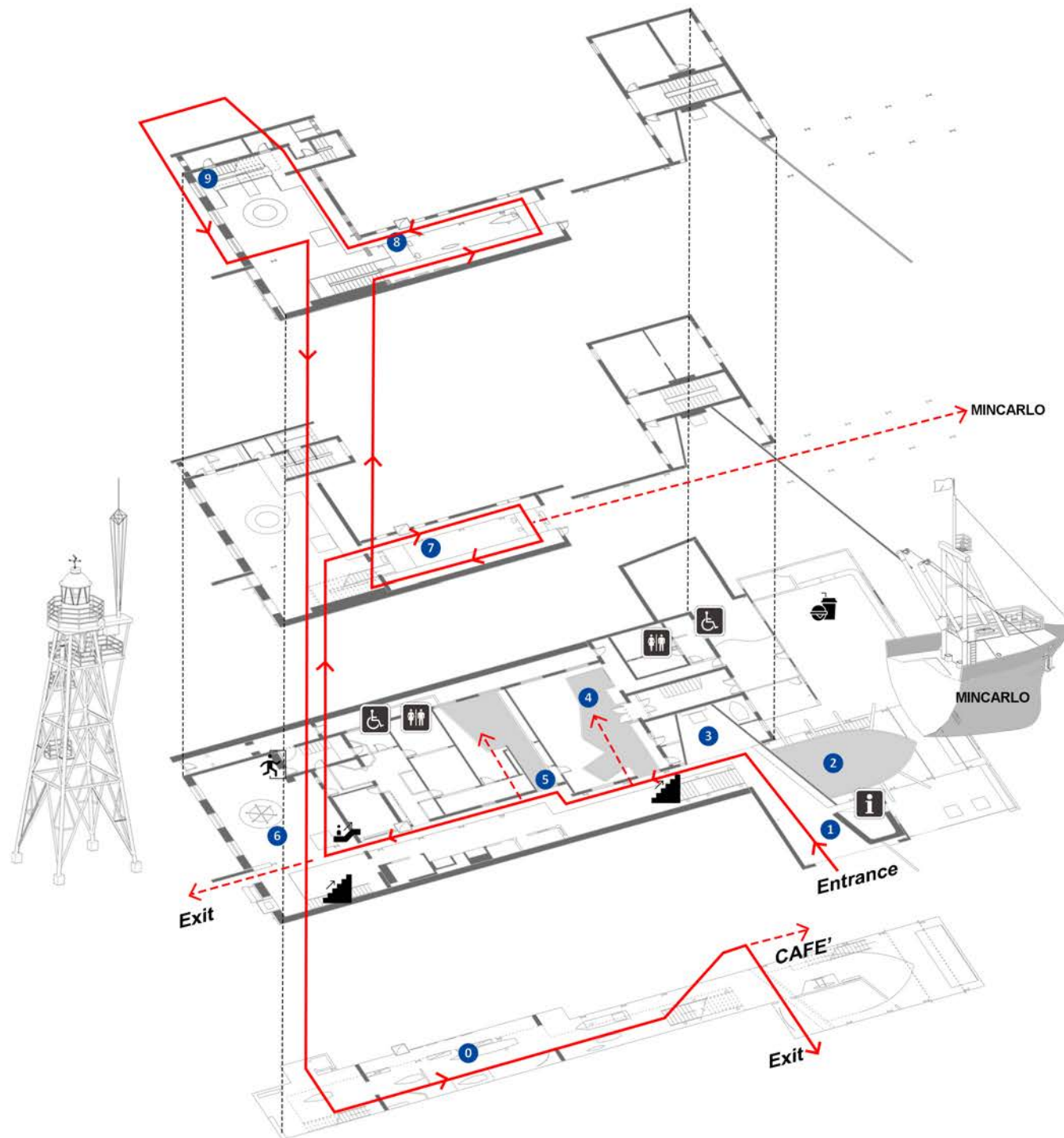
- FISHING INDUSTRY
- WW 1
- WW 2
- SERVICE

F2

F1

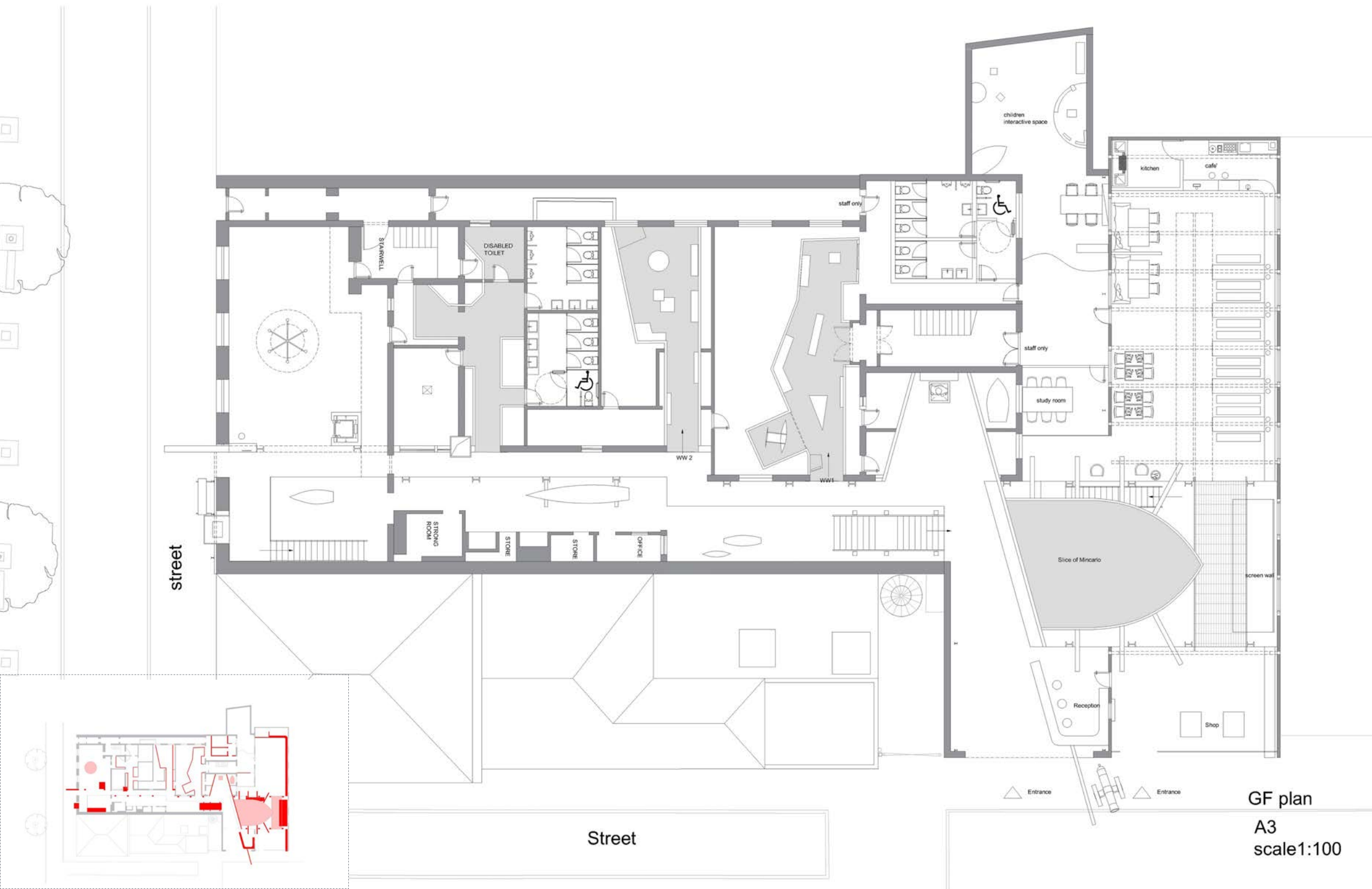
GF

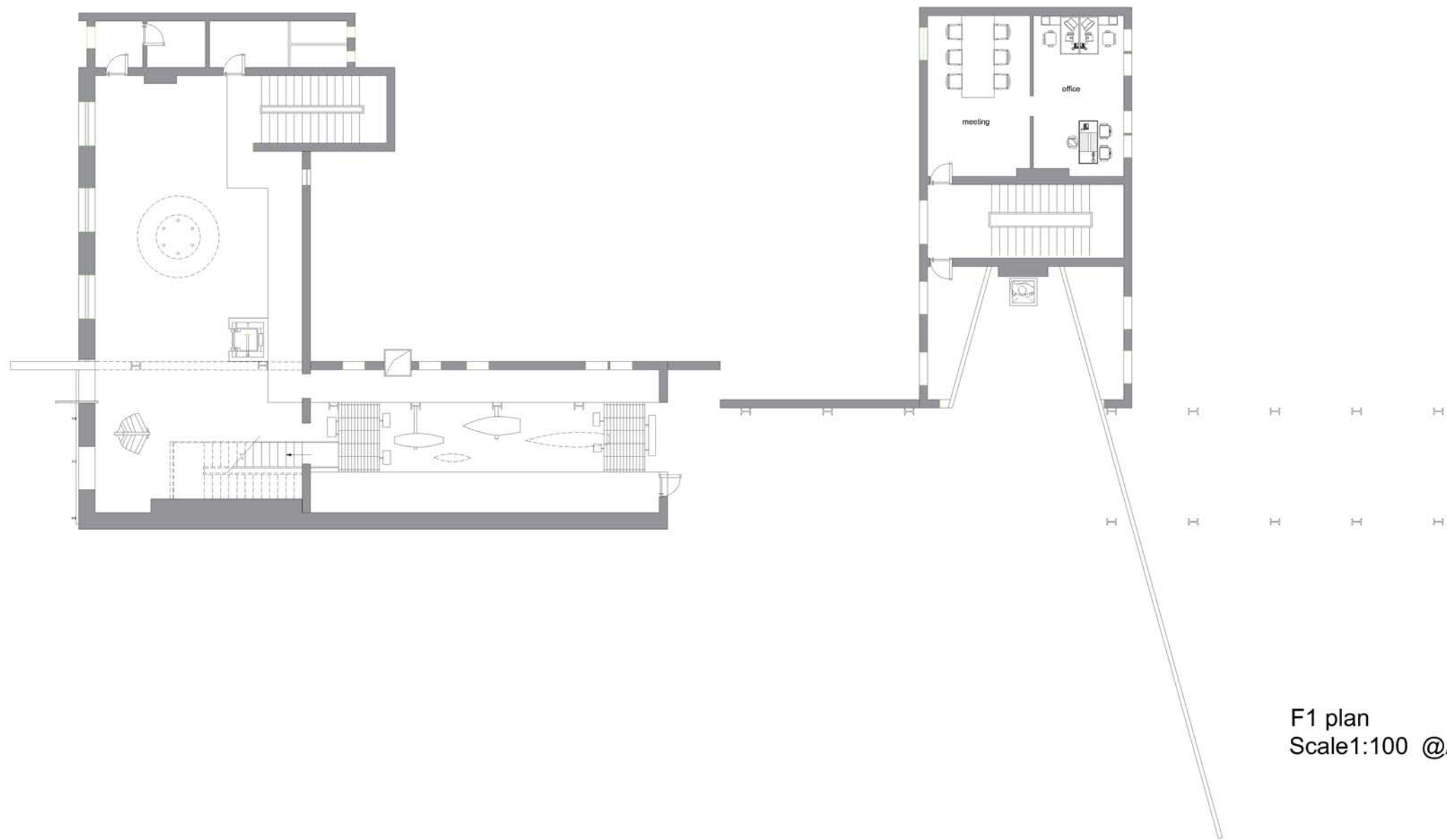
UG



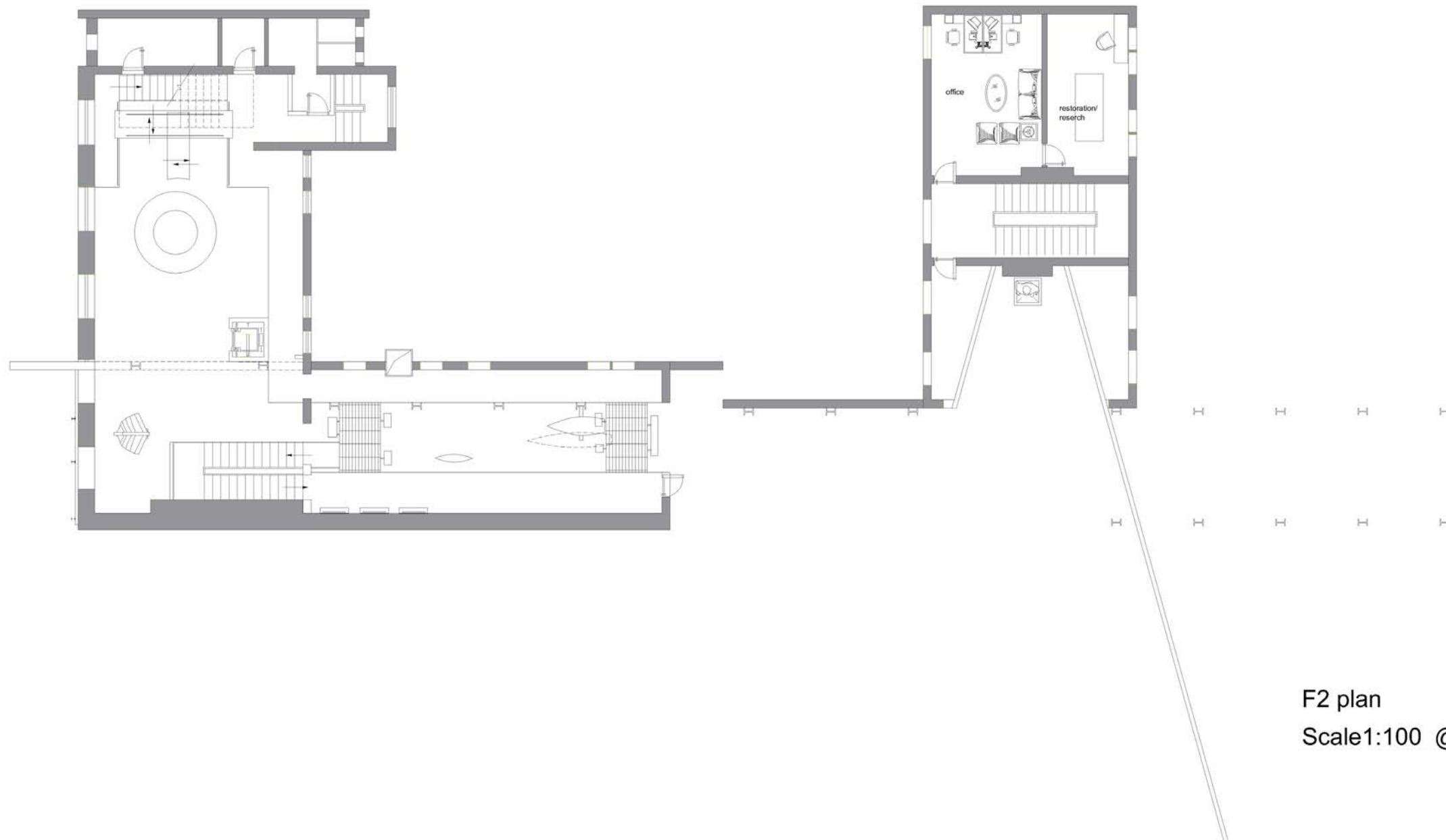
- 1 Entrance
- 2 The slice of Mincarlo
- 3 The statue of Peto
- 4 WW 1
- 5 WW 2
- 6 Lighthouse
- 7 Marine art
- 8 Fishmen & fishwomen
- 9 Roof balcony
- 0 Vessles

- i Information desk
- 🚻 Toilet
- ☕ Cafe'
- 🏠 Stairs
- 🚶 Escape way
- 🚗 Elevators
- ♿ Disabled toilet

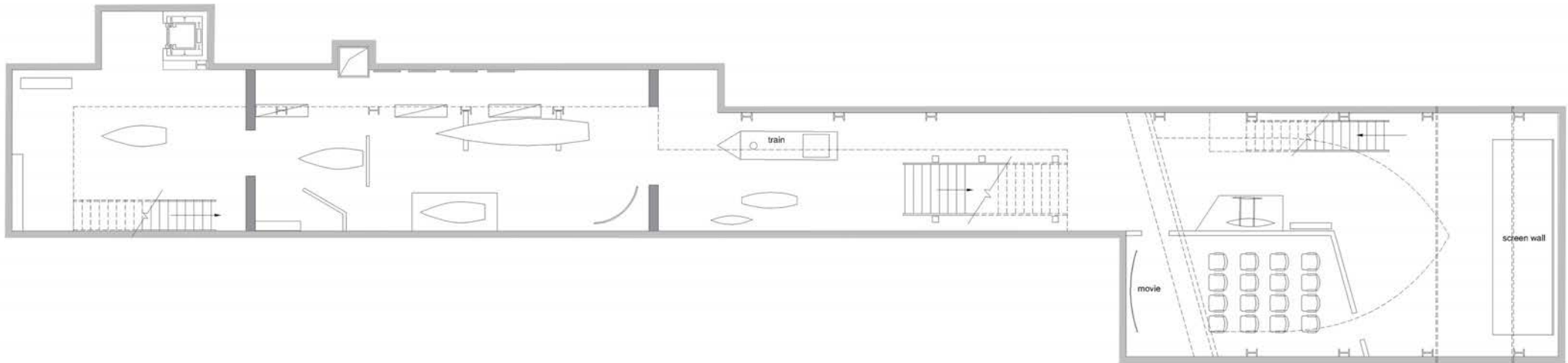




F1 plan
Scale 1:100 @A3

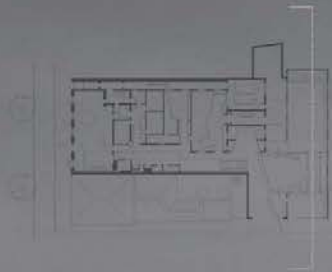


F2 plan
Scale 1:100 @A3



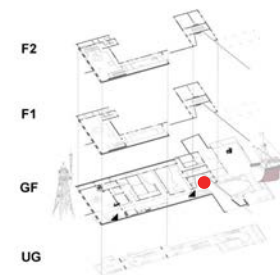
Basement plan
Scale 1:100 @A3



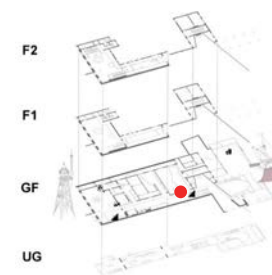
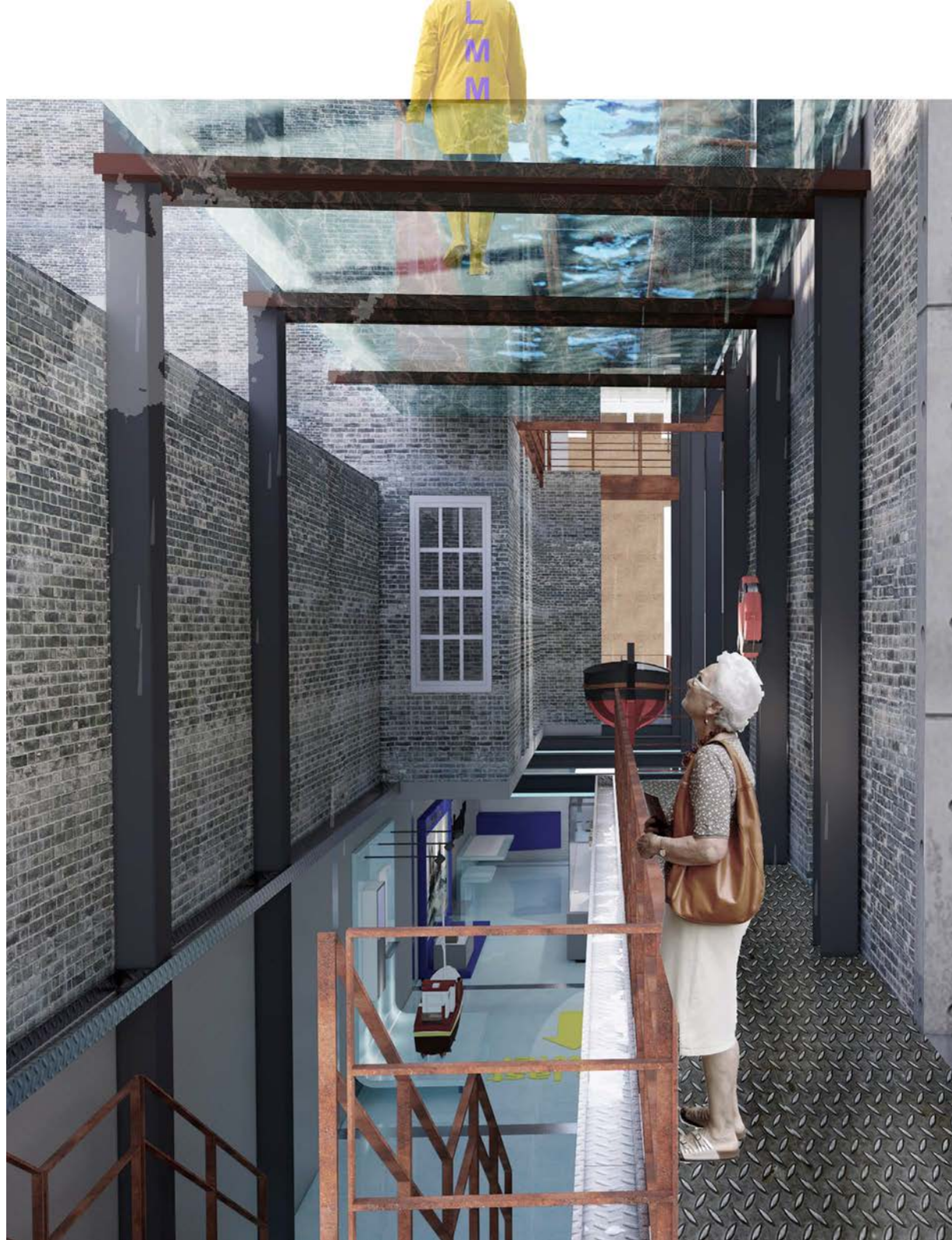


KEY SPACES





LEFT:
the statue of
Sir Samuel Morton Peto



LEFT:

The corridor before entering the post office WING. There will be rain dripping from above.

WW1



F2

F1

GF

UG

WW1



WW2

The red dot on the ground shows the area being bombed by the German

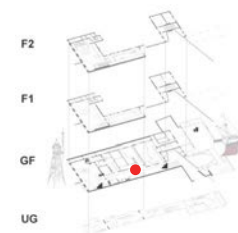
the UK's most heavily bombed towns
per head of population.



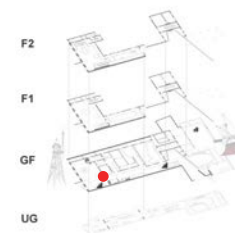
WW2

The man is watching the
document film about that war





Post office Wing





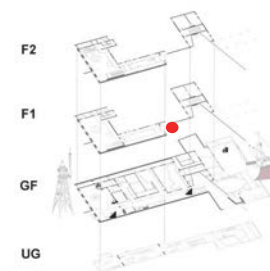


The long section of the post office
WING, when we're looking back



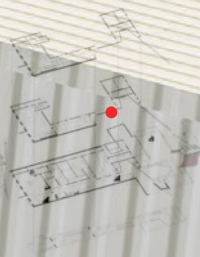
F2
F1
GF
UG

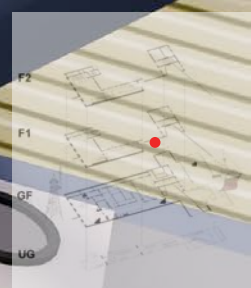




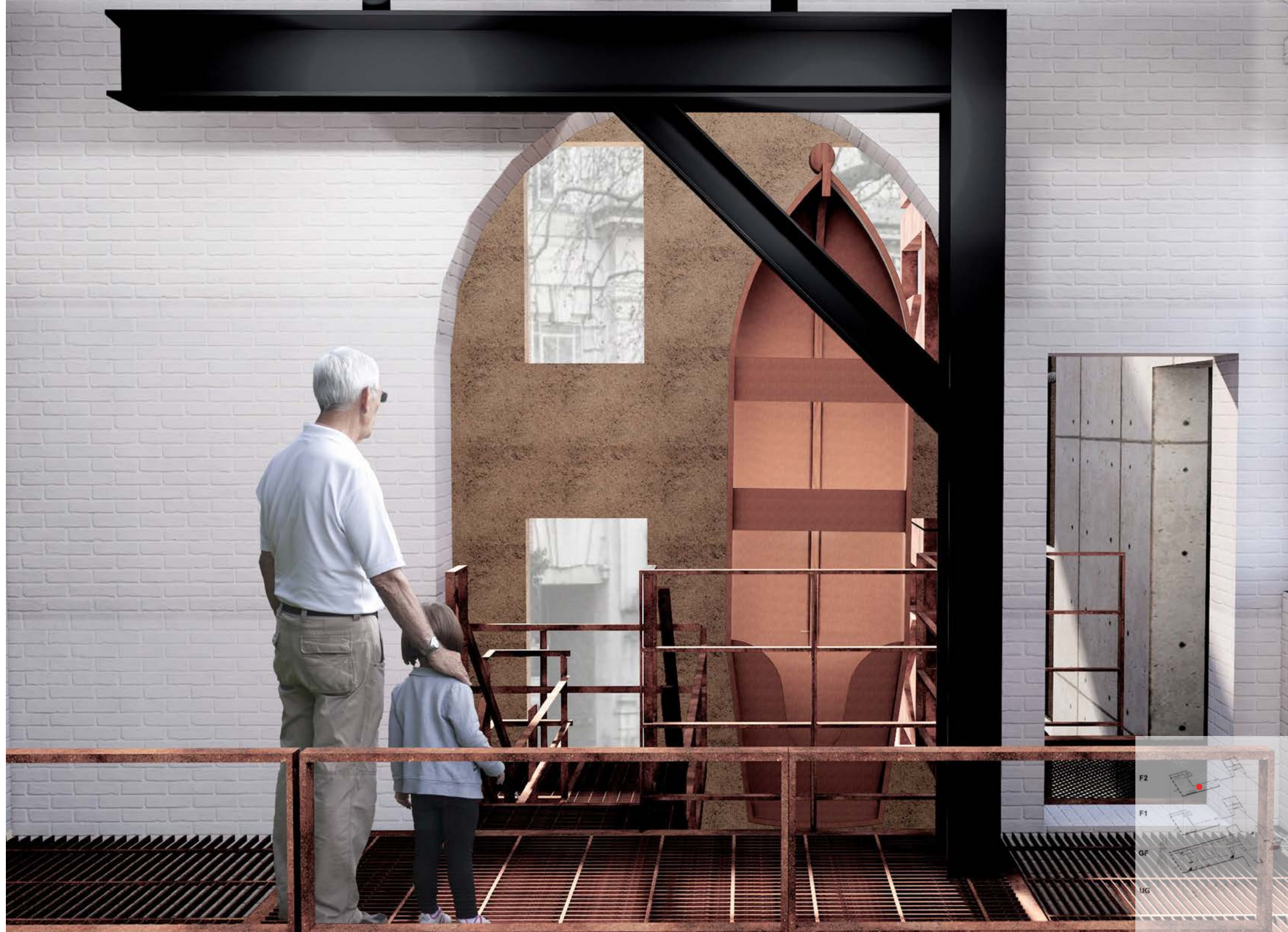
The Sea voyage of Mincarlo

F2
F1
GF
UG











F2

F1

GF

UG



The Sea voyage
of Miniciclo

museamix

F2

F1

GF

UG

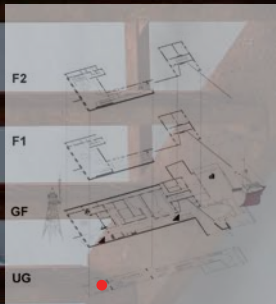






F2
F1
GF
UG





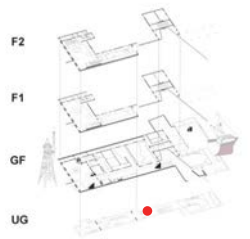
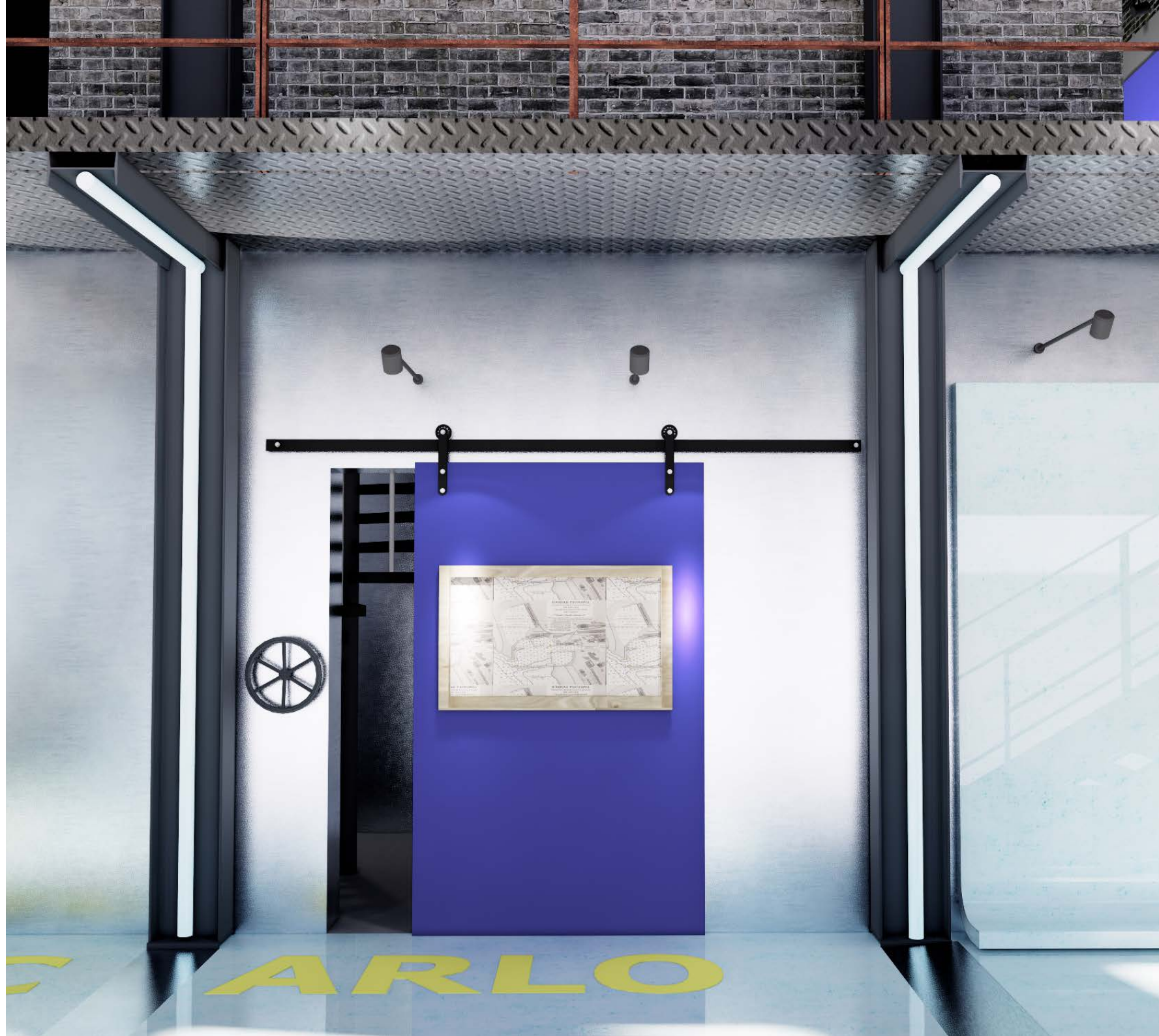


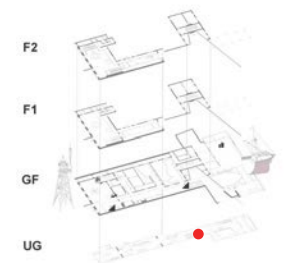
The New York Times
PAROLE GRANTED SOON AFTER MURDER BY CAPTAIN

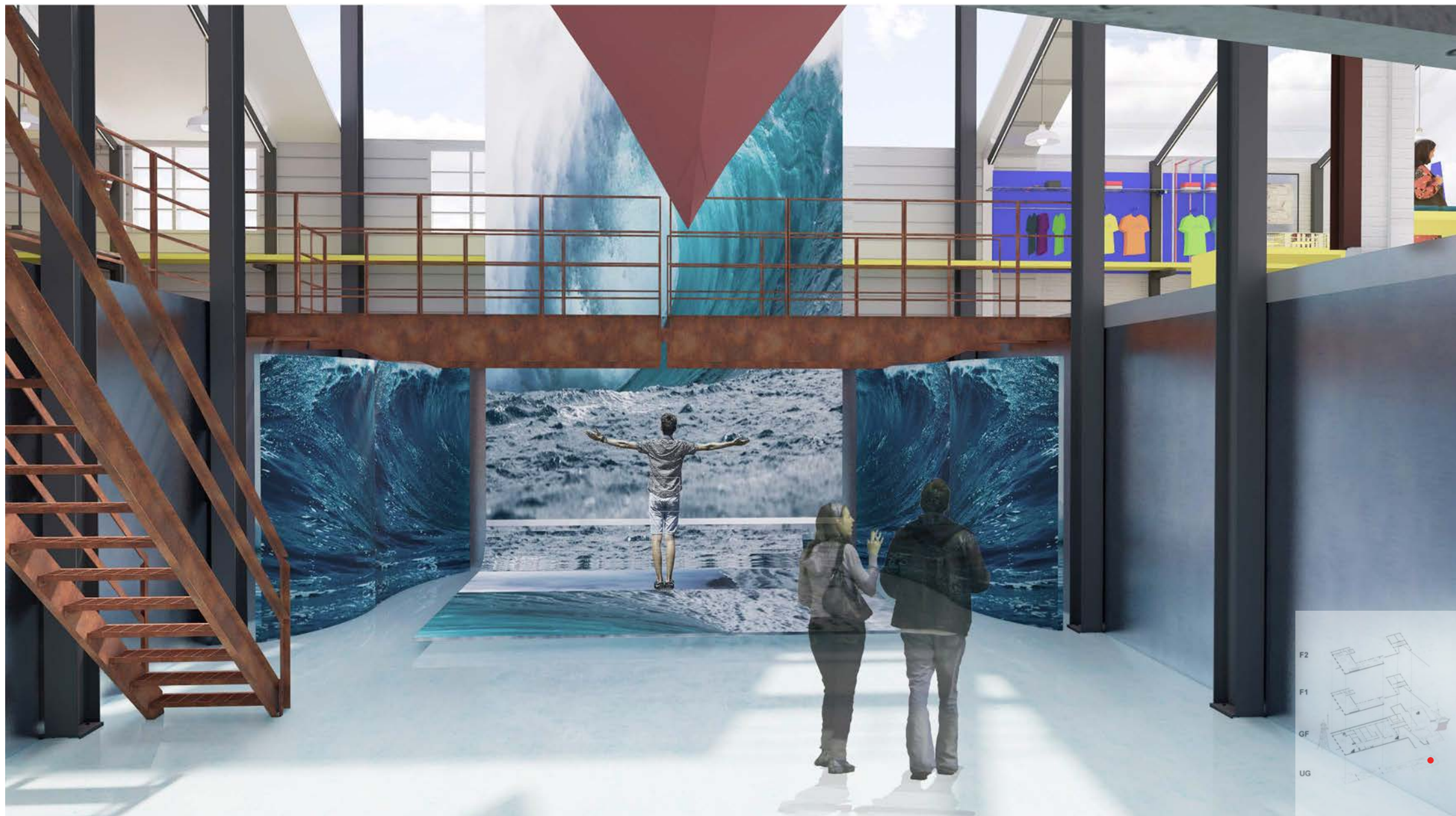
Y9

Following the last out-crowler

From a fishing village to a thriving port









F2
F1
GF
UG









CAFE



Children learning area
Study room
Toile

Material palette



crane



pine



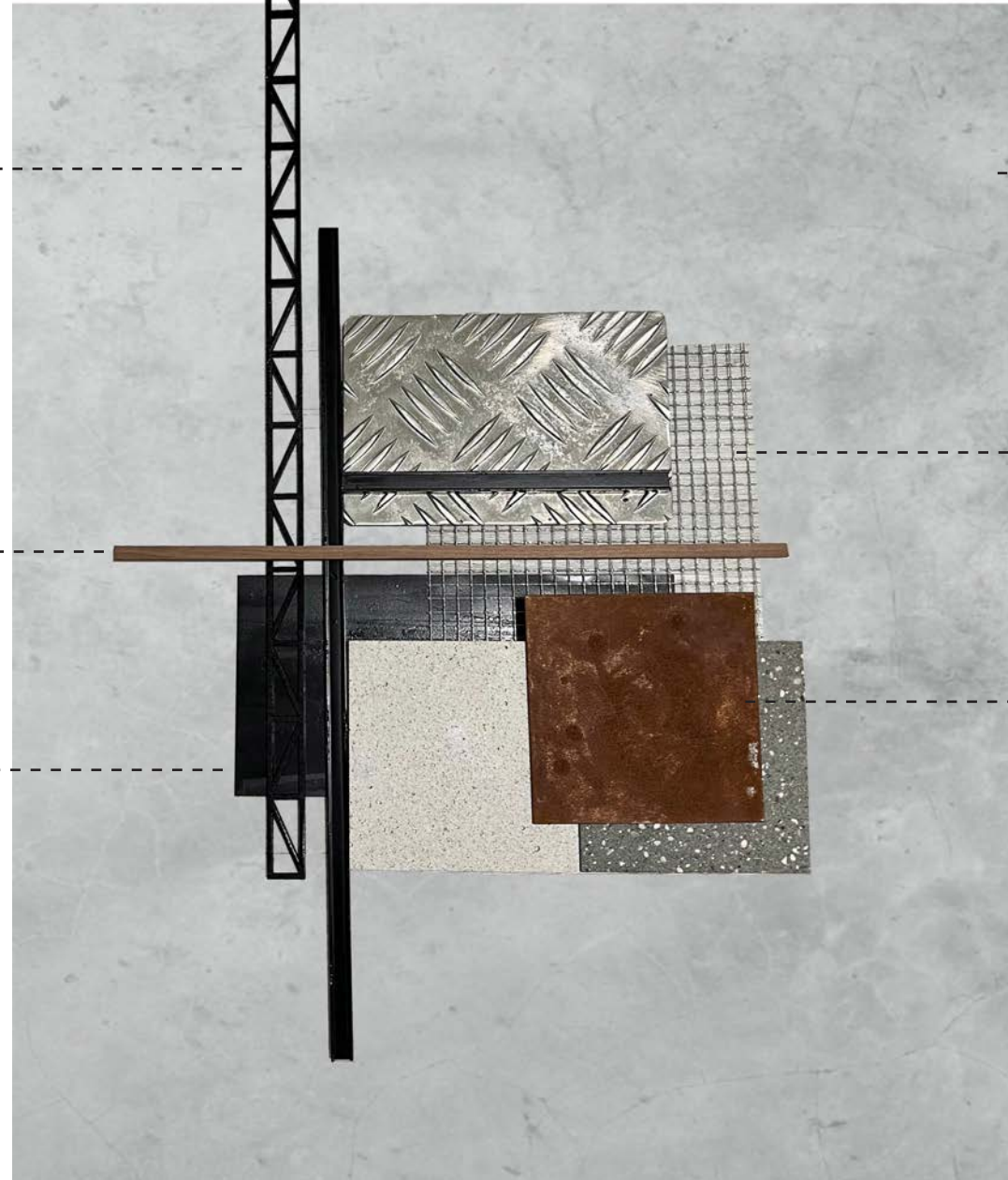
concrete



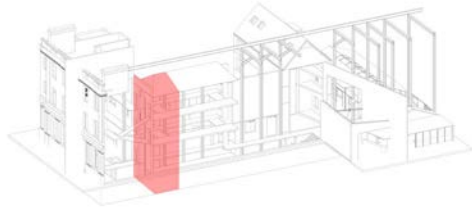
mesh



corten steel



DETAILS



LMM





「MM

GUANGYAN LUO
YEAR 2 FINAL EXAM