

**TRAVELLING
QUEER
CLOSET**

YIRAN CHU



CONTENT

1. RESEARCH

P04 - P15

Site Context

Photographic Site Survey

Site Analysis

Local Intelligence

Narrative Storyboard



2. CONCEPT

P16 - P19

Site Survey

Participatory Event: Interview

Concept Collage



3. DESIGN DEVELOPMENT

P20 - P34

Precedent Studies

Program Sketch Diagrams

Schematic Development: Functionality

Schematic Development: Closet

Schematic Development: Transformation

Schematic Development: Model Testing



4. DESIGN COMMUNICATION

P35 - P52

Profile Drawings

Animation

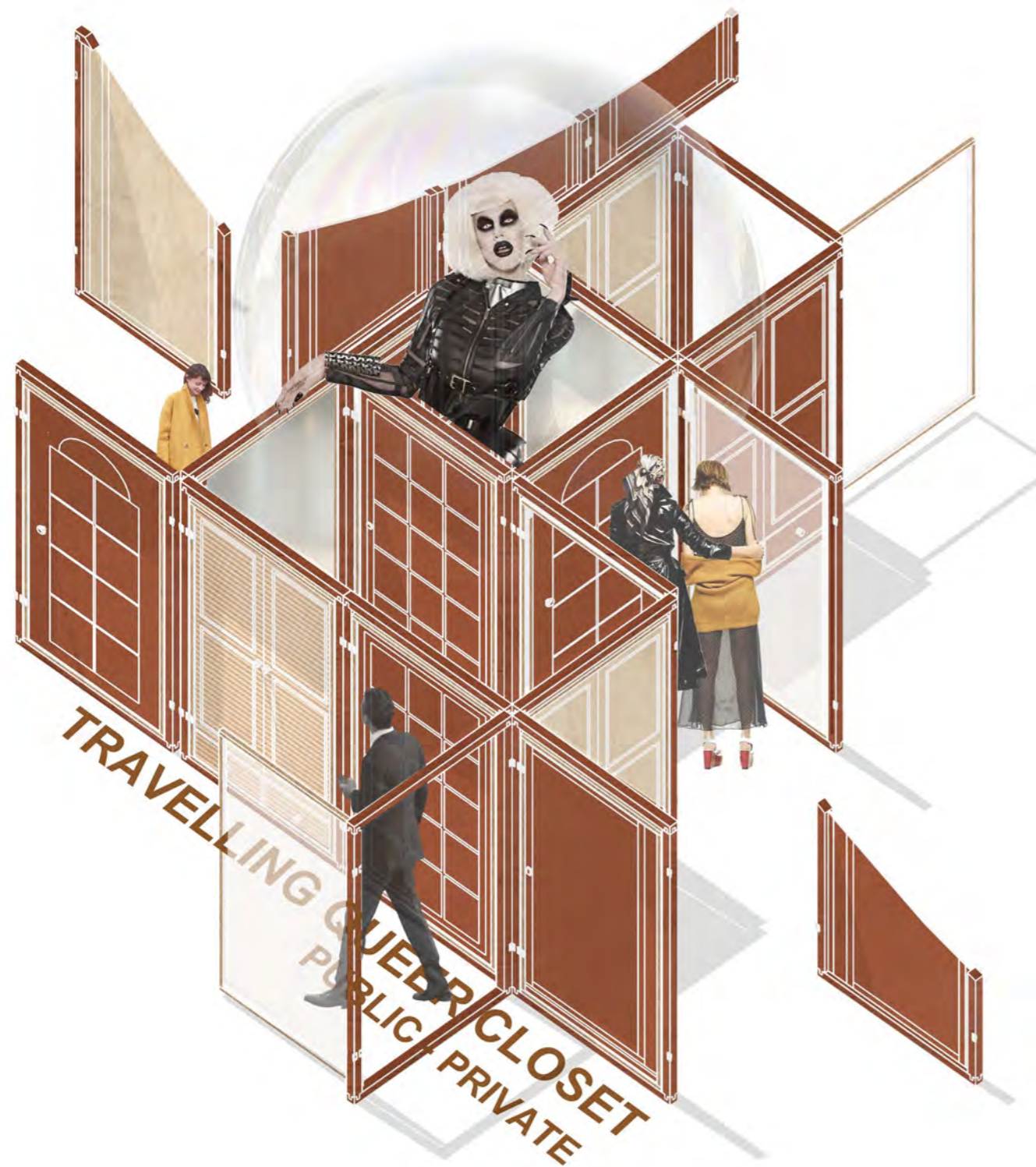
User Experience

Material Composition

Persuasion Poster

Creative Asset





How do we create queer spaces with social qualities as well as provide a sense of safety in public place?

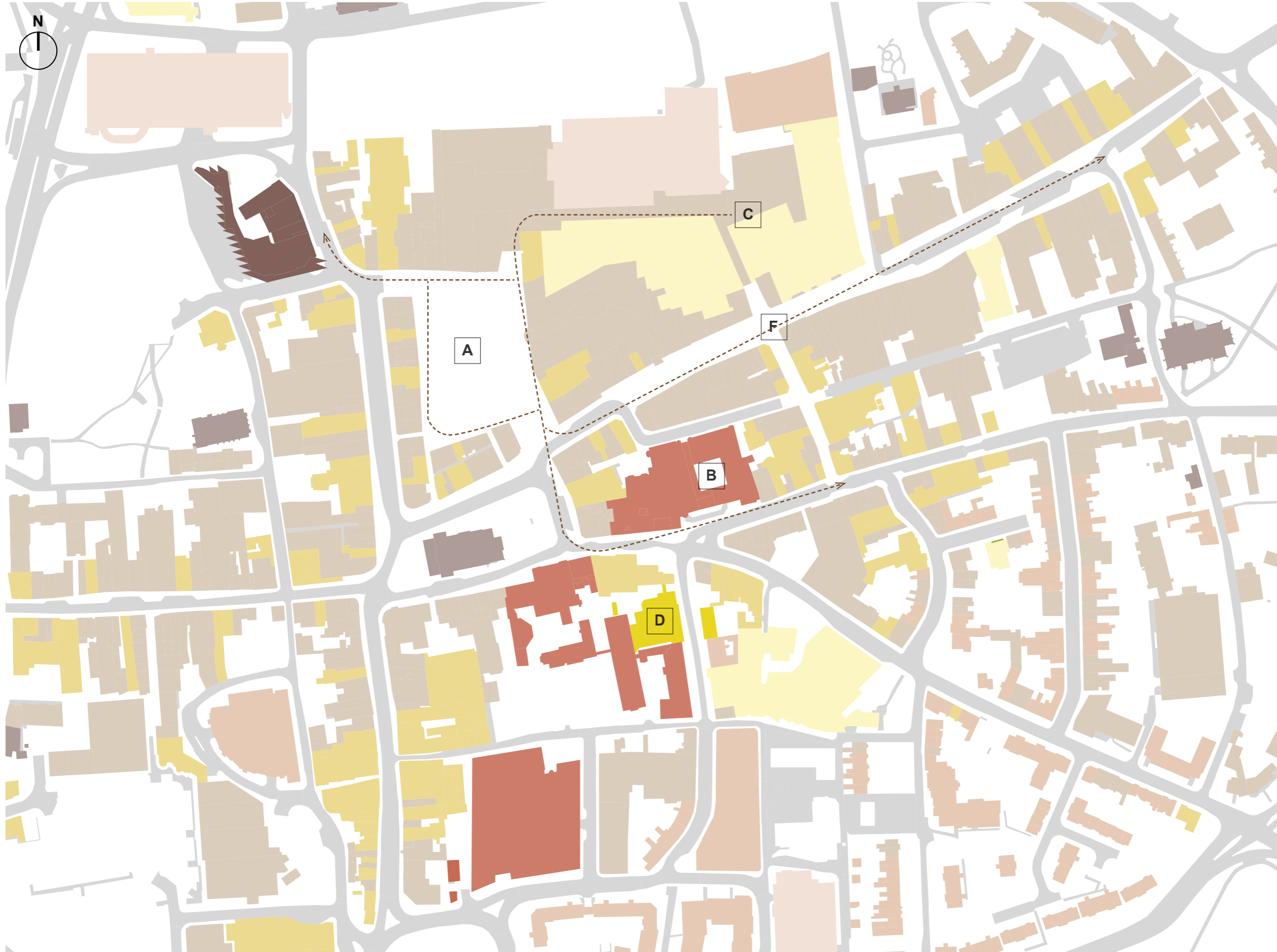
For LGBTQ community, what is the balance between public and private in Northampton to make sanctuary?

In response to the epidemic closure of queer venues and the issue of rising homophobic hate crimes across Northampton during Covid-19, the proposal aims to create a travelling queer venue to provide the LGBTQ community a place of sanctuary.

By appropriating the foldable closet and maze to transform redundant public spaces in Northampton into opportunities for socialisation.

The structure itself will provide areas for entertainment, as well as providing social support and private, safe spaces for intimate discussion.

SITE CONTEXT
NORTHAMPTON TOWN CENTRE

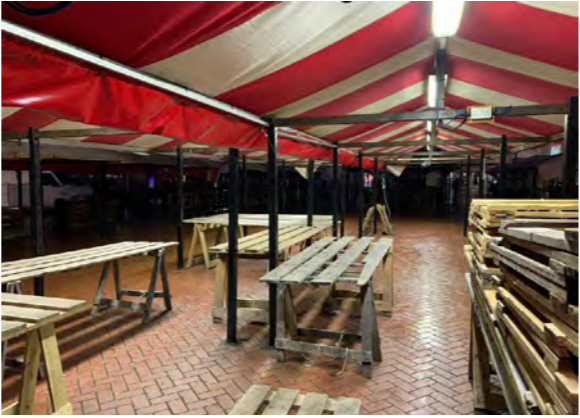


- KEY**
- Retail
 - Leisure
 - Residential
 - Civic Service
 - Office
 - Church
 - Car Park
 - Bus Stop
 - Museum/Gallery
 - Main Circulation
 - Potential Sites

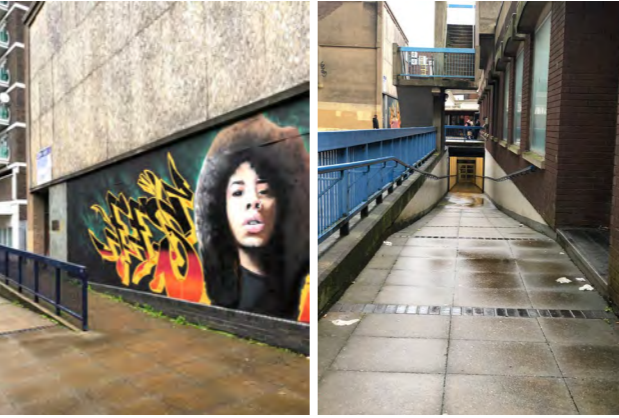
PHOTOGRAPHIC SITE SURVEY
 NORTHAMPTON REDUNDANT PUBLIC SPACES



A Market Square Empty Stalls



B Back Entrance of Shopping Mall



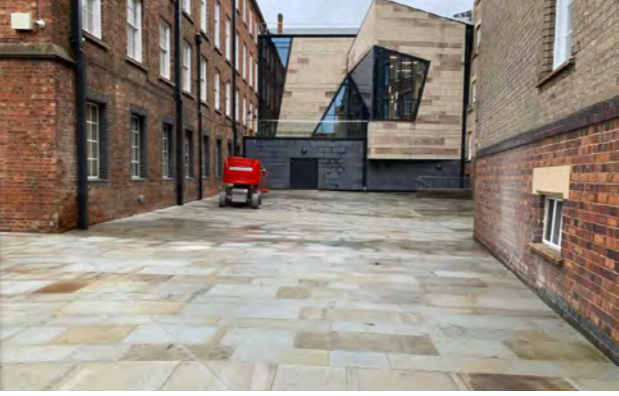
C Emporium Way



D Guildhall Borough Council Courtyard



E Museum and Art Gallery Backyard



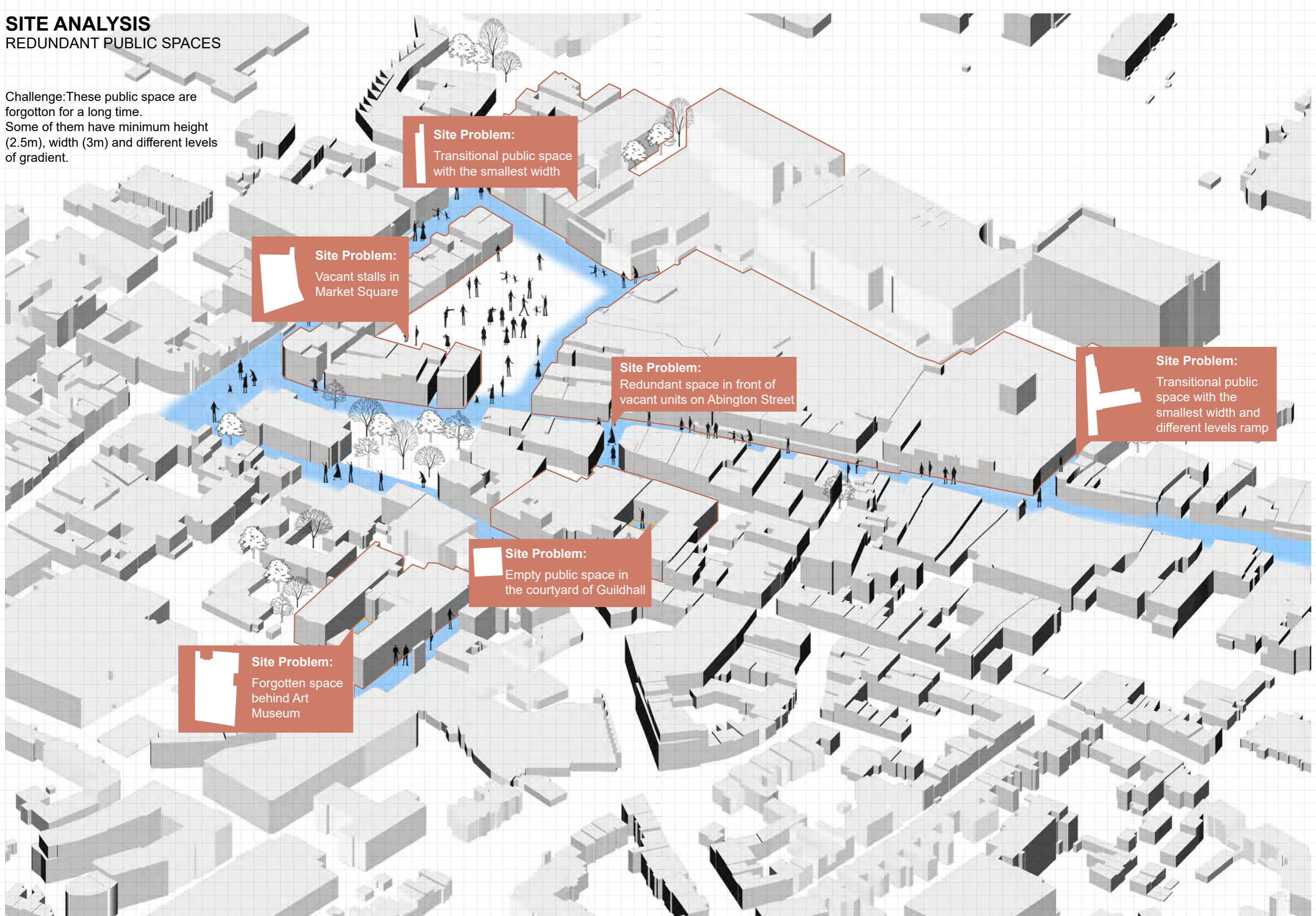
F Abington High Street



SITE ANALYSIS

REDUNDANT PUBLIC SPACES

Challenge: These public spaces are forgotten for a long time. Some of them have minimum height (2.5m), width (3m) and different levels of gradient.



Site Problem:
Transitional public space with the smallest width

Site Problem:
Vacant stalls in Market Square

Site Problem:
Redundant space in front of vacant units on Abington Street

Site Problem:
Transitional public space with the smallest width and different levels ramp

Site Problem:
Empty public space in the courtyard of Guildhall

Site Problem:
Forgotten space behind Art Museum



(Northampton Chronicle & ECHO: Dozens of homophobic hate crimes are being reported to Northampton Police every year - but campaign charity Stonewall says these are just the 'tip of the iceberg'. 2018)

LOCAL INTELLIGENCE
MEASURES TO TACKLE HOMOPHOBIA

Report Hate Crimes to:
Police / Borough Council / Local Support Charity



(Northampton Chronicle & ECHO, 2020)

Public Events:
Education / Temporary Events / Festival



(PinkNews: "This Concert Event not only stimulate an awareness of the situation facing many gay people all over the country, throw into relief this evil in our midst but also a moving example of how the gay community can pull together." 2016)

LOCAL INTELLIGENCE

CLOSURE OF NIGHTLIFE



The Black Cat Jazz Bar

Northampton is experiencing an epidemic of nightlife venues **CLOSURES**, which particularly affects the LGBTQ community who depend on these spaces for socialising.



K2 Nightclub



The Princess Royal Club



The Boston

Northampton LGBT celebrations go virtual and the only remaining gay bar was **CLOSED** due to covid, people have nowhere to go.



The Black Boy Bar




The Jolly Anchor Club



LGBTQ Alliance


PARTICIPATORY EVENT
INSPIRATIONS FROM INTERVIEWS

 Qspace northants:

#Mental health Service, Northampton



" I'm a volunteer at Northampton Q-Space LGBT+. This role is **personally rewarding** in so many ways; socializing new friendships, expanding my network, getting new knowledge. "

 Dannii:




" I'm strongly of the belief that LGBTQ safe spaces are **necessary**. I've actually made a number of friends in gay bars and got incredible **emotional support**. "

 Sean:



" When I was surrounded by people with similar experiences to me. I **felt so relaxed and understood** in a way that even my closest friends could not offer me."

 Timmyluo_nanjue:

#Digital Creator

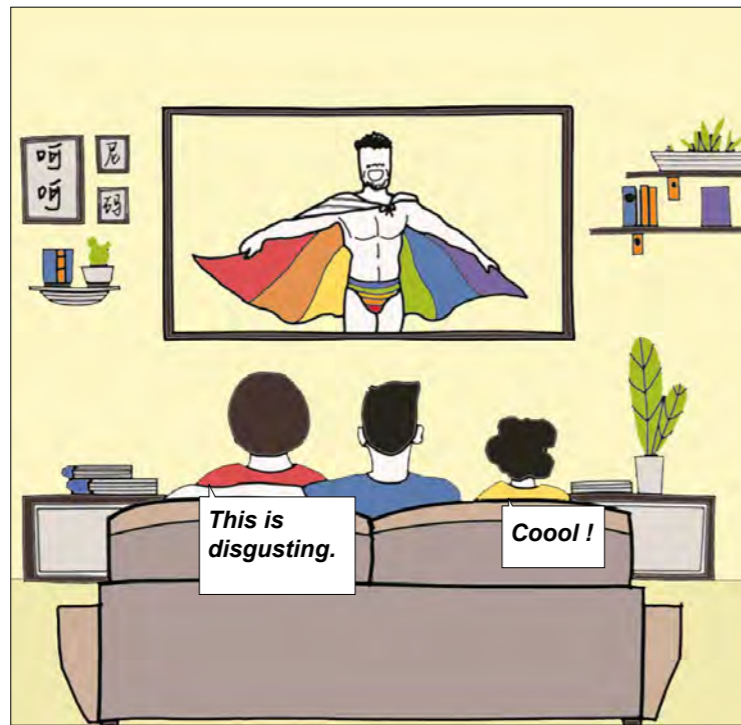


" I love going to gay bar than others, because I had a wonderful community here to give me all space and time to to **explore my sexuality and 'find myself'**. "

THE TRAVELLING QUEER CLOSET



Hi everyone! I am Adam, and I am gay.



This is disgusting.

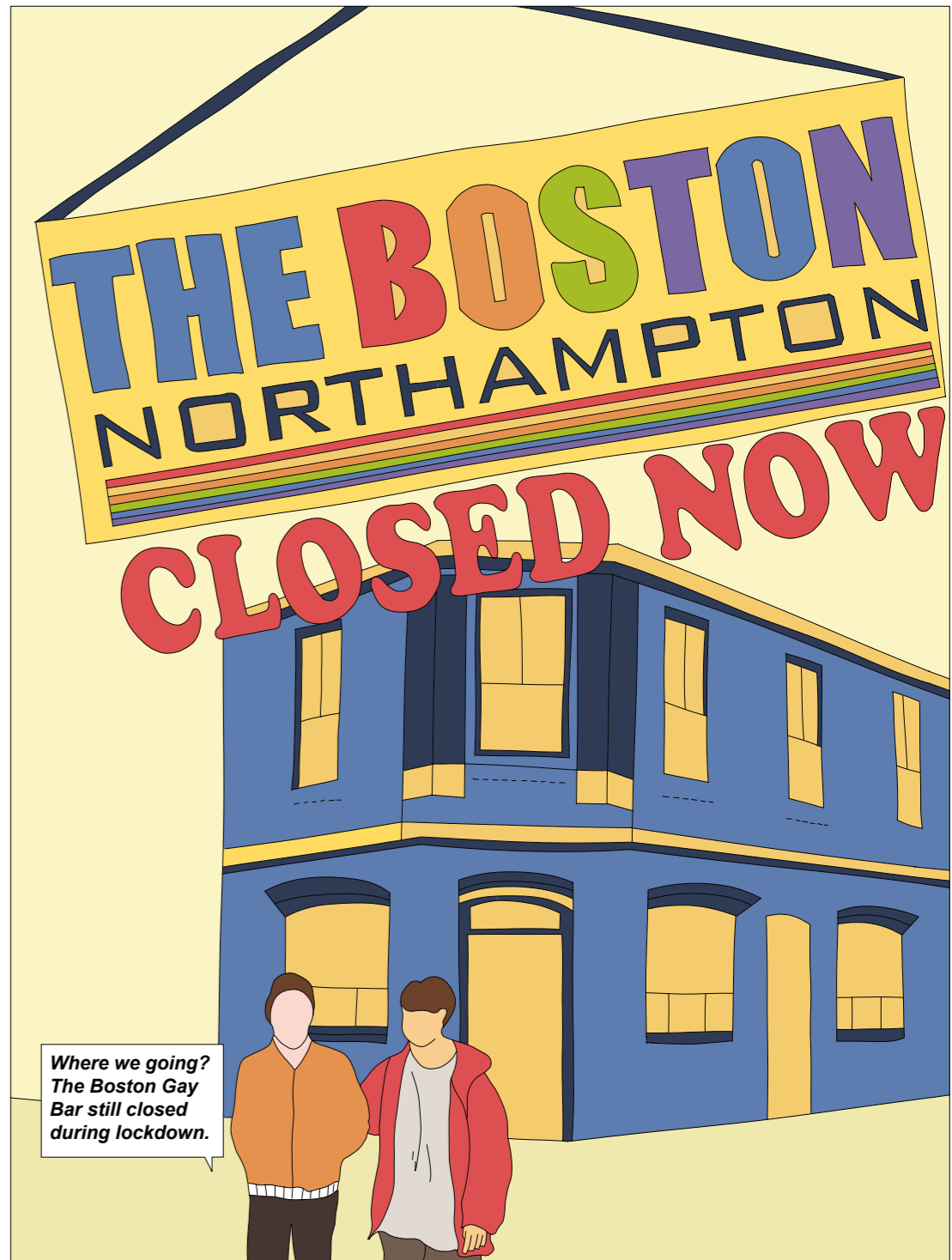
Cool!



I was told homosexuality is a sin when I going on Facebook.



Someone called me a faggot on the street. He offered to replace my cigarette with his genitals?



Where we going? The Boston Gay Bar still closed during lockdown.



I experienced homophobic abuse when I passing a basketball court.



What disease is your medical marijuana relieving?

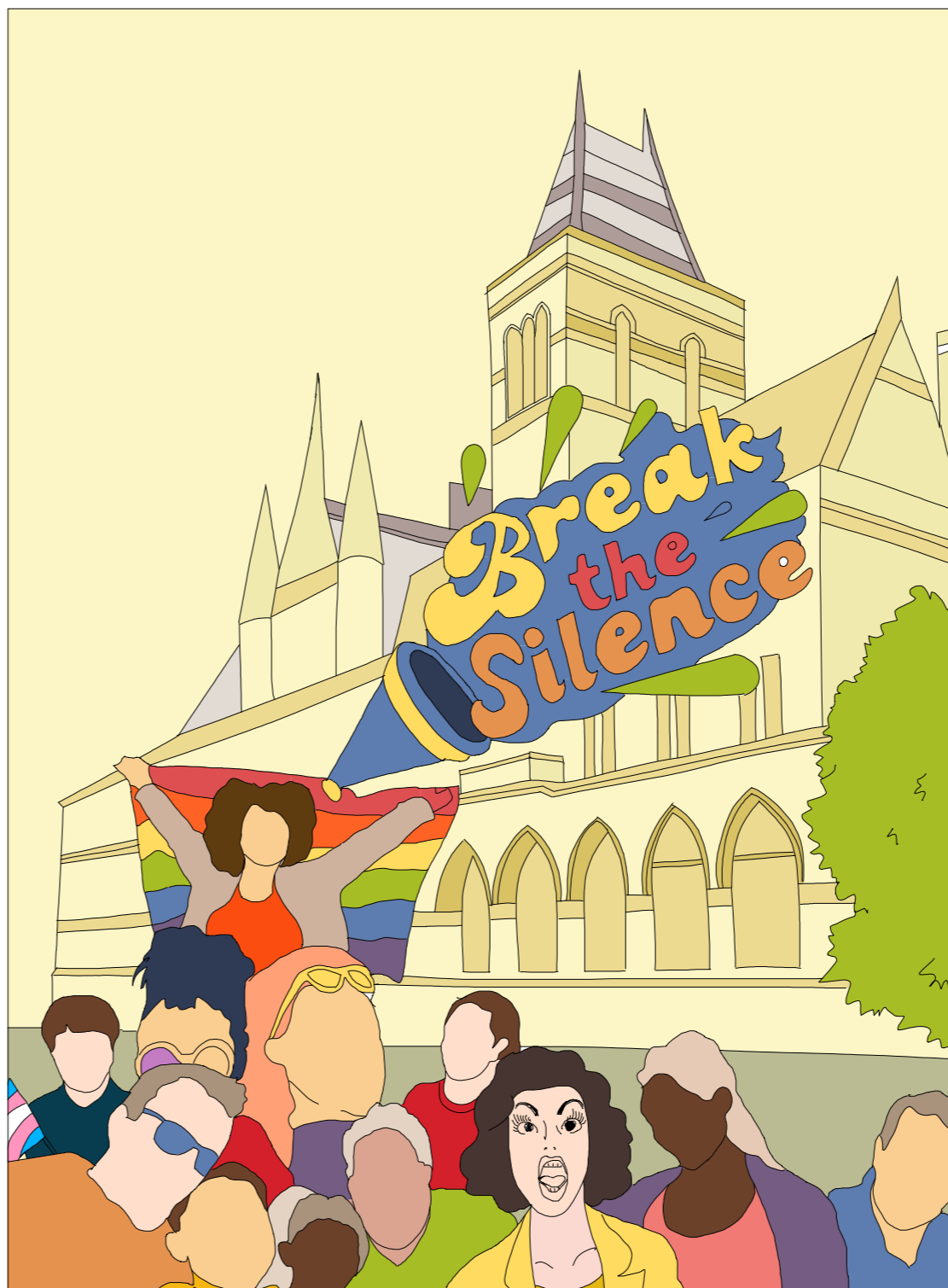
What's wrong with being gay?



What terrible the homophobiza murder case is... What can we do?

KISS HATE GOODBYE!

Northampton gives "Kiss Goodbye to Homophobia" -celebrity Concert -Sunday 17th September -The Boston by Hannah



LGBT people 'still suffering' during lockdown
Homophobic hate crimes increase in Northampton

By Ben Hurrie
LGBT correspondent
09 October

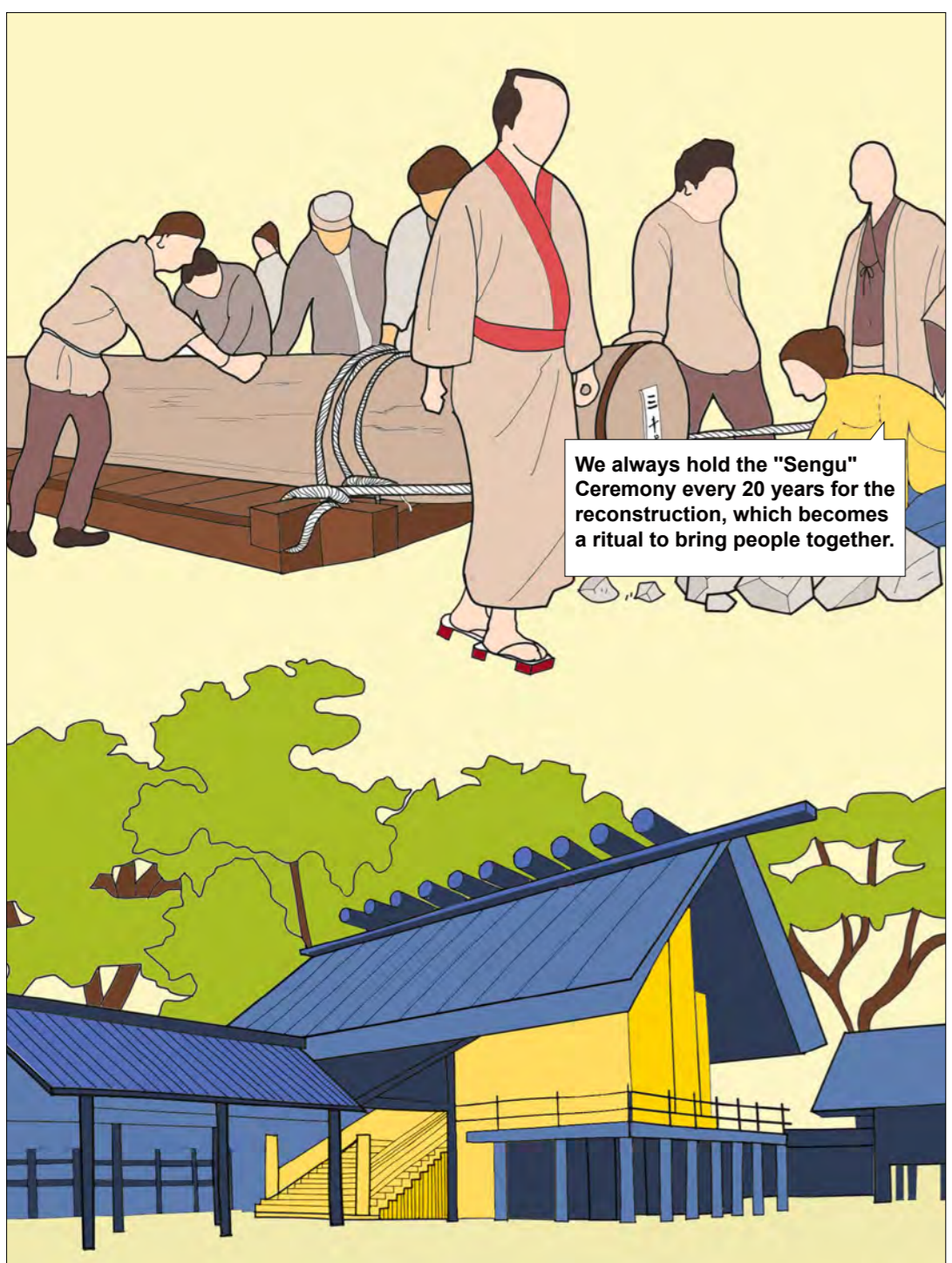


This homophobic assault - an attack based on prejudice against LGBT people - was part of a surge in such cases over the past five years.

- LGBT people
- Homophobia

What's effect of these temporary event?

New figures from all 45 police forces in the UK reveal that the number of homophobic hate crimes almost trebled - from 1,000 in 2015 to 2,800 in 2019. This became legal in England, to 17% in 2019. In a 20% rise in reports to police of homophobic hate crimes, data which was obtained through Freedom of



We always hold the "Sengu" Ceremony every 20 years for the reconstruction, which becomes a ritual to bring people together.



This Mobile Town Square turned empty spaces into public space and give people a sense of community.

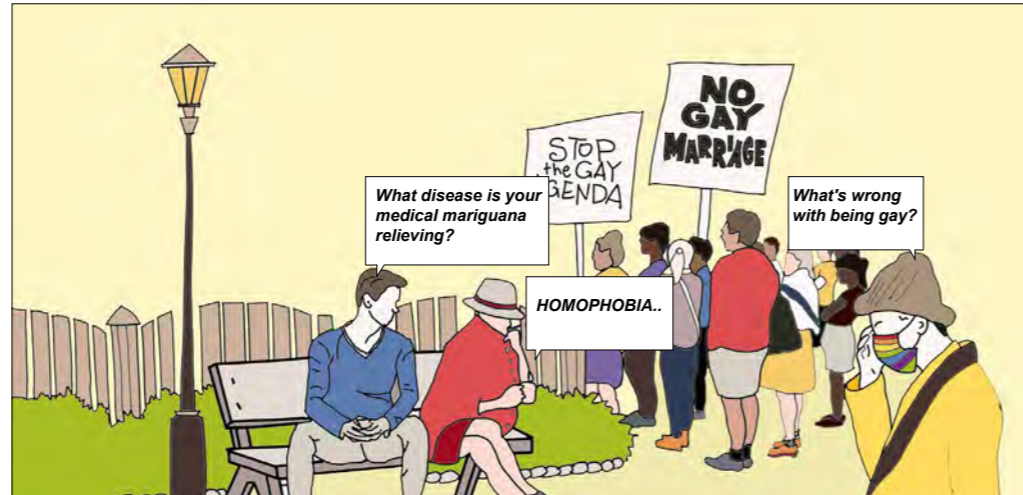
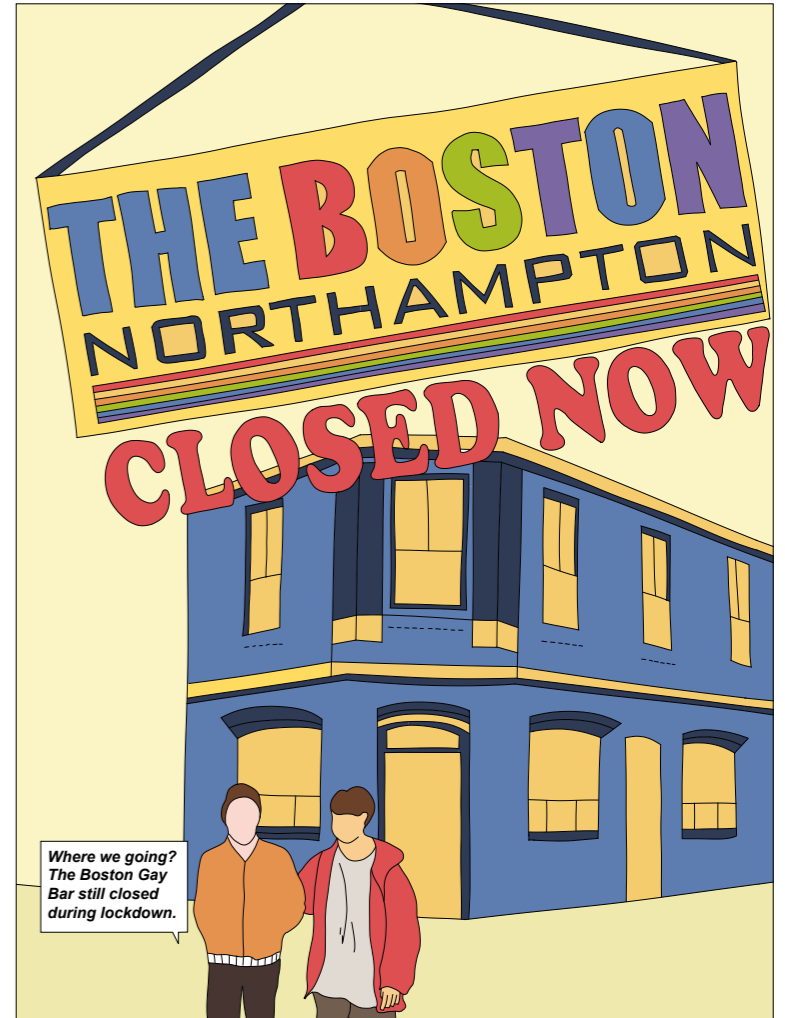


Haha so ridiculous rainbow crossing, everyone have to walk otherwise including homophobia people, otherwise you are potentially die.

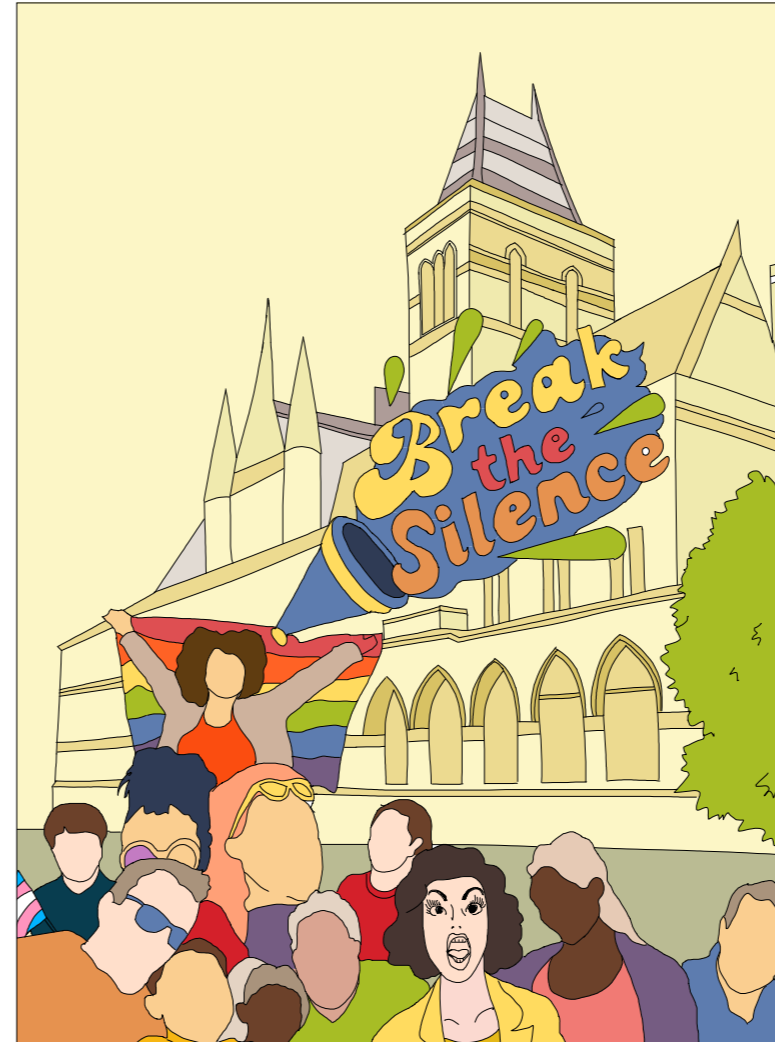


STAY PROUD

PART1: ISSUES OF HOMOPHOBIA AND THE EPIDEMIC CLOSURE OF QUEER VENUES IN NORTHAMPTON



PART2: MEASURES TO TACKLE HOMOPHOBIA



BBC Sign in Home News Sport Weather Player Sounds CBBC CBeebies

NEWS

LGBT people 'still suffering' during lockdown
 Homophobic hate crimes increase in Northampton

By Ben Hurte
 LGBT correspondent
 9 October

This homophobic assault - an attack based on prejudice against LGBT people - was part of a surge in such cases over the past five years.

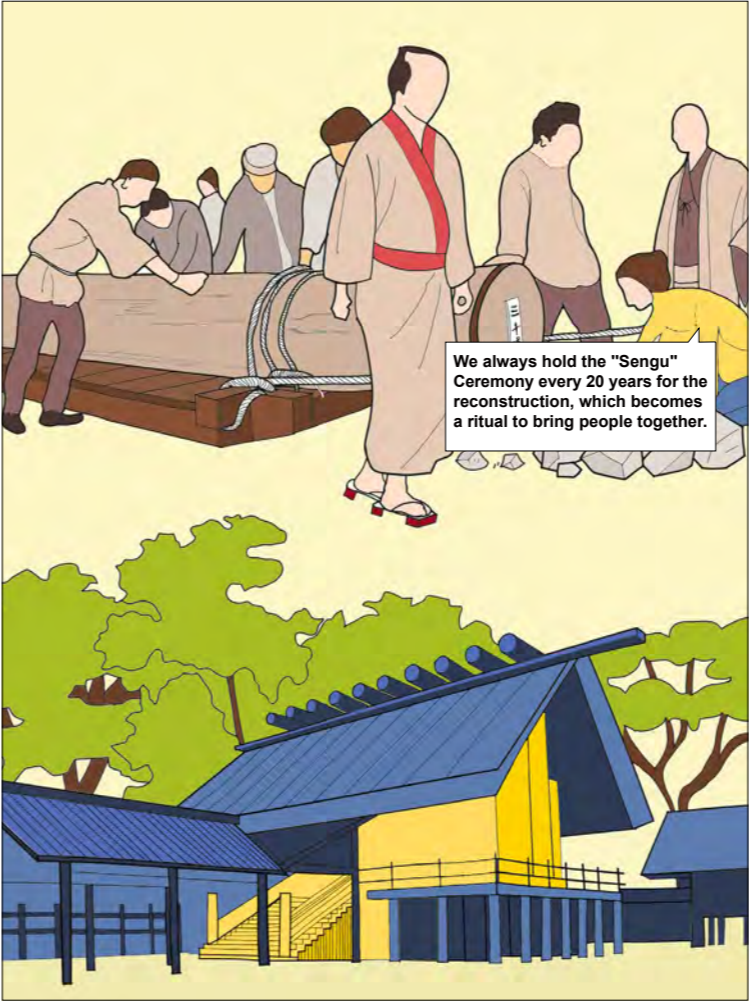
- LGBT people still suffering during lockdown
- Homophobic hate crimes increase in Northampton

What's effect of these temporary event?

New figures from BBC from all 45 police forces in the UK reveal that the number of homophobic hate crimes almost trebled - from 1,000 in 2015 to 2,900 in 2019. The cases became legal in England, in 2010. There was a 20% rise in reports to police of homophobic hate crimes in 2019, data which was obtained through Freedom of Information.

How to deal with the divide problem?

PART3: PRECEDENT STUDIES TO ACTIVATE REDUNDANT PUBLIC SPACE AND GATHER PEOPLE TOGETHER

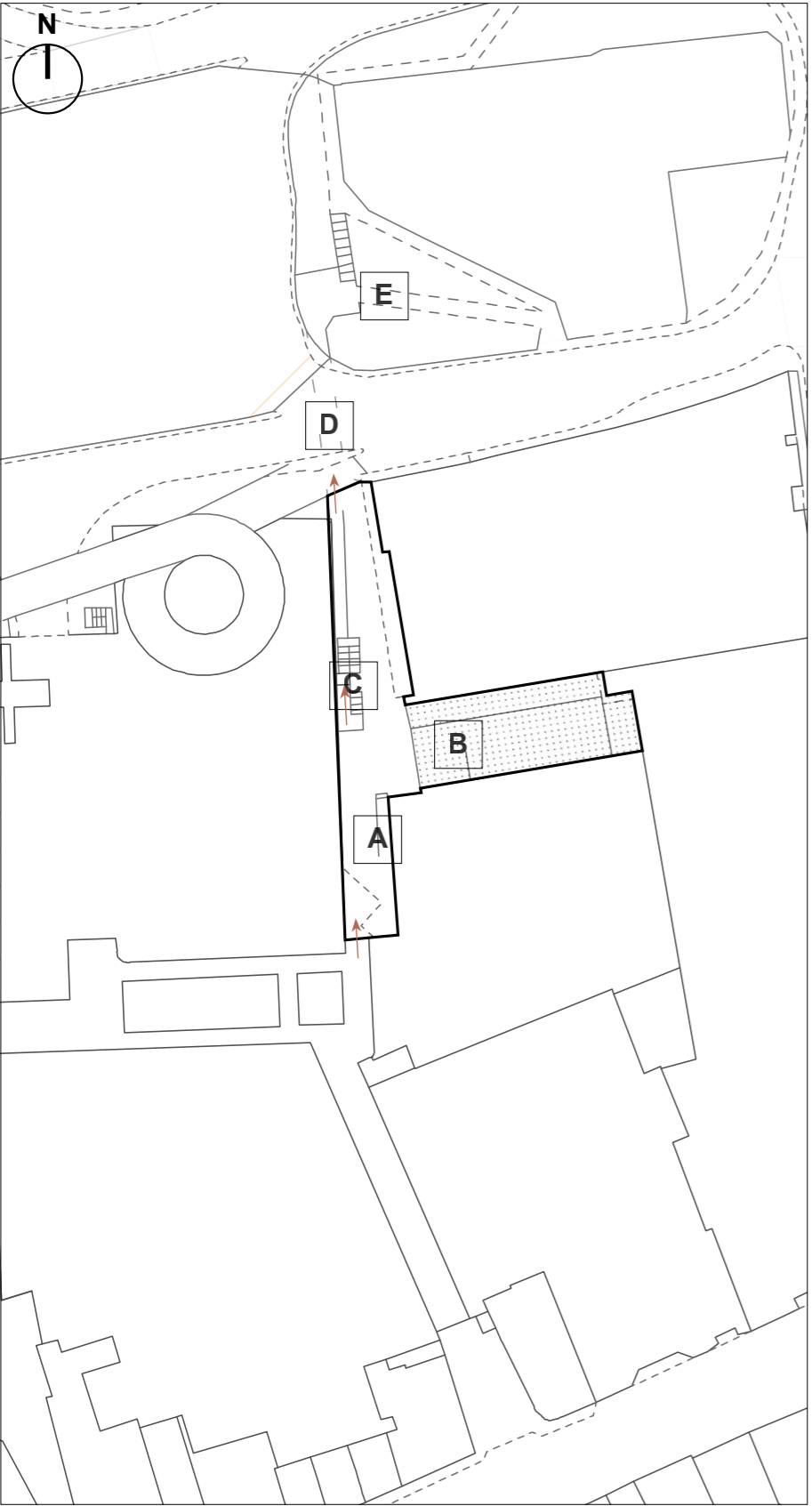


PART4: USING A TRAVELLING BOOT AS A TOOL TO CELEBRATE QUEER EXPRESSIONS OF IDENTITY

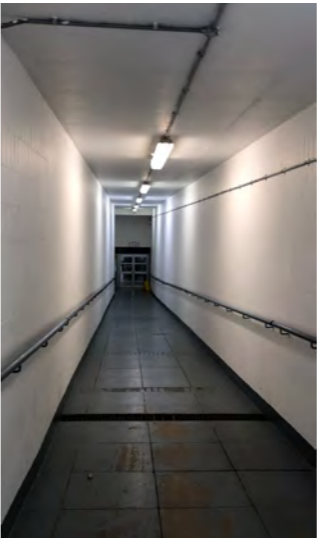
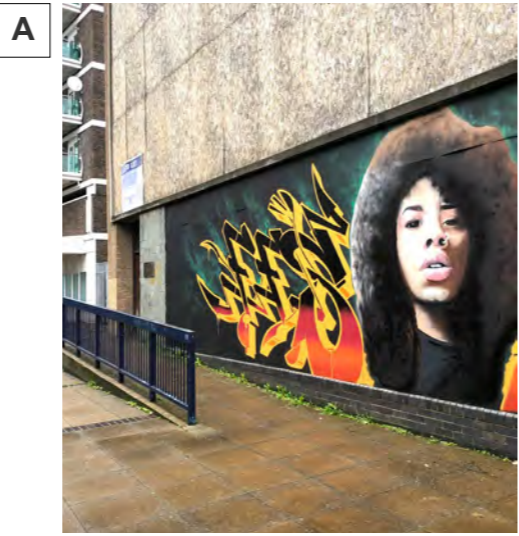


LOCATION PLAN

BACK ENTRANCE TO GROSVENOR CENTER

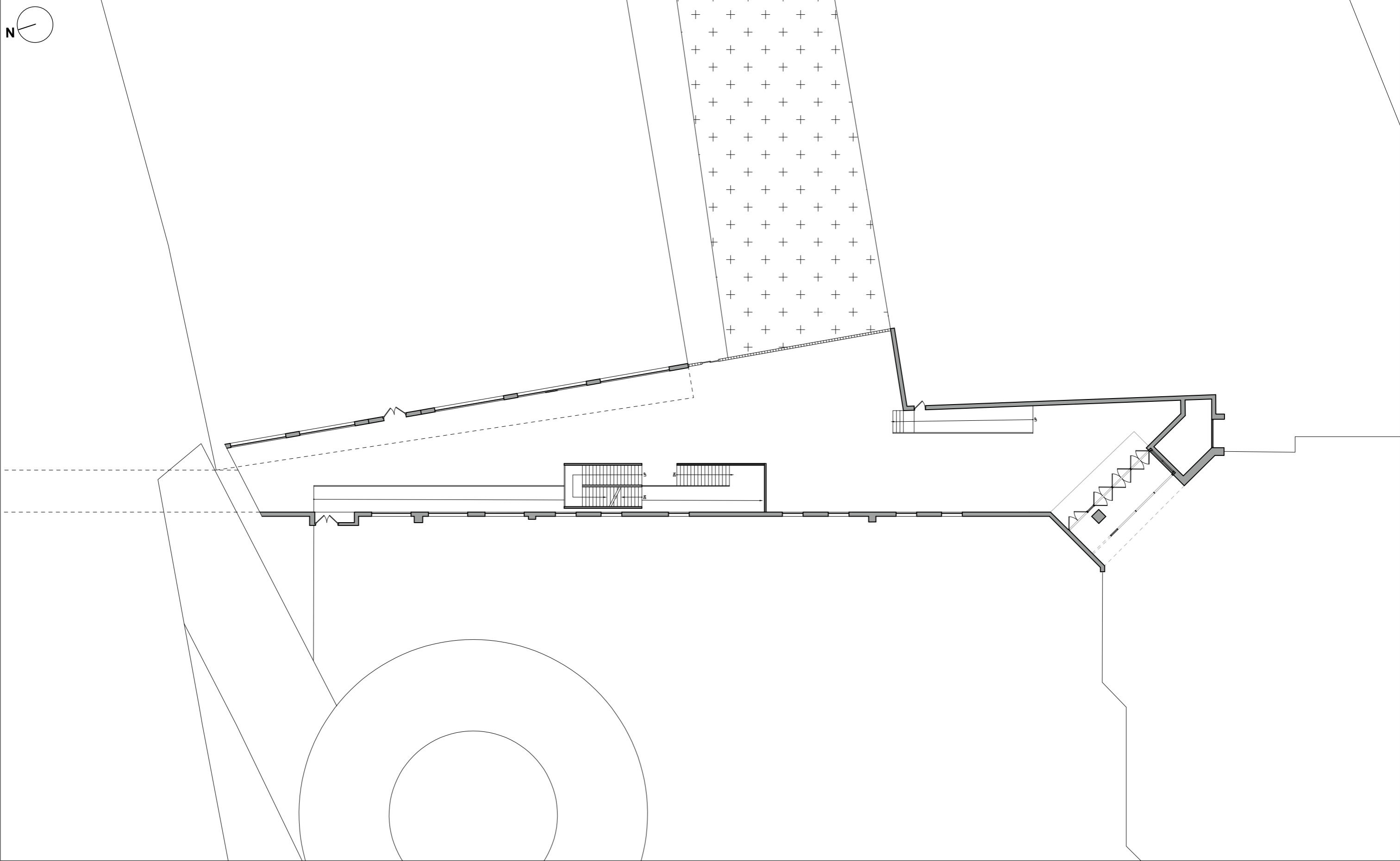


← Exit to Street

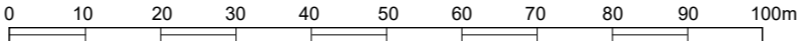


SITE SURVEY

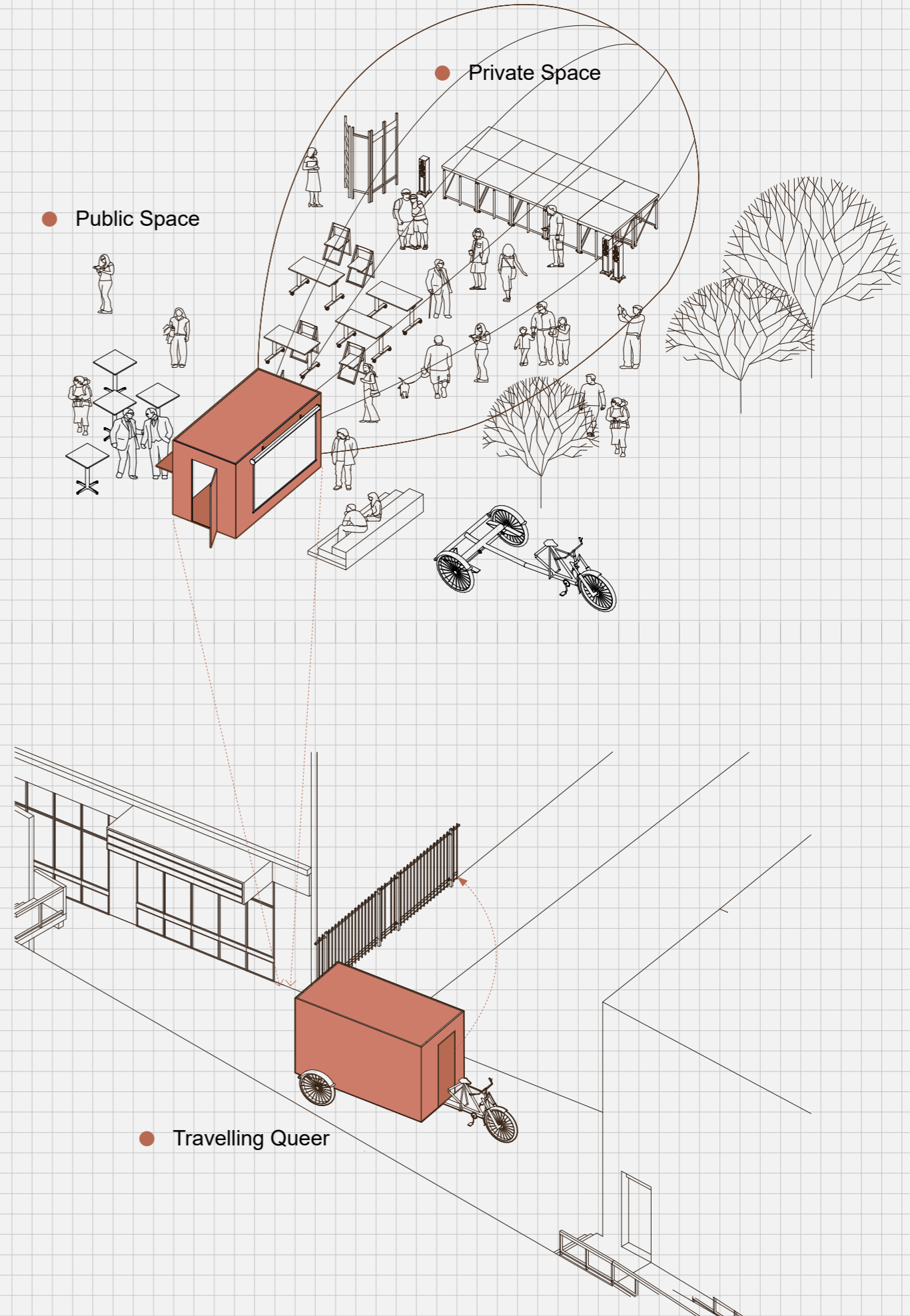
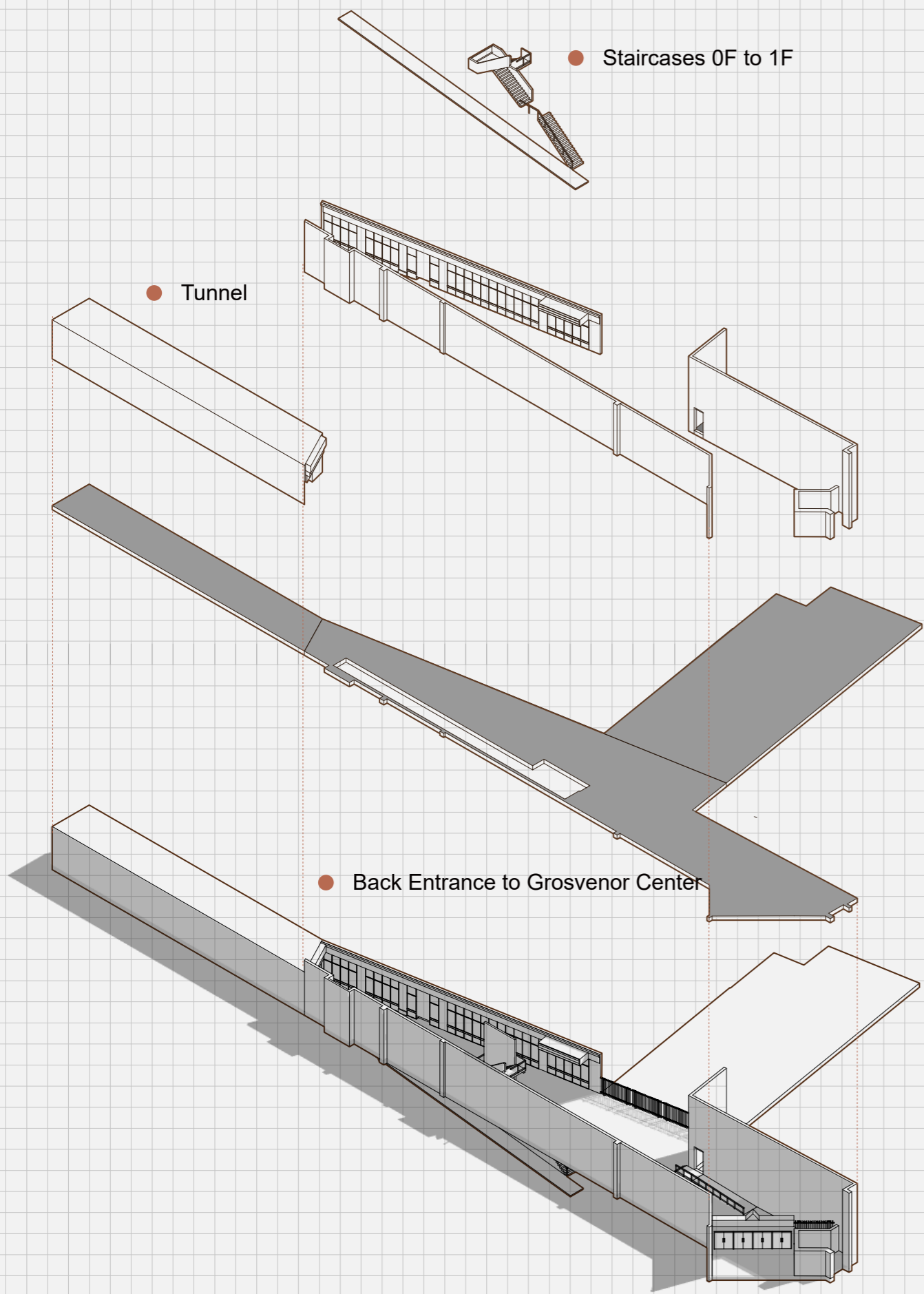
BACK ENTRANCE TO GROSVENOR CENTER



Scale: 1 - 250



SITE SURVEY
POTENTIAL IDEAS



PRECEDENT STUDY
PECKHAM CAMP-ER-VAN QUEER



(The Camp-er-Van in London: " The desire to build my own queer space was a response to the epidemic of sweeping closures when it comes to nightlife venues (a phenomenon that particularly affects the LGBTQ community who depend on these spaces for socialisation)...Queer spaces are not merely sites for entertainment, they also provide vital social support..The CAMP-er-VAN becomes a safe nurturing site for local communities. " Samuel Douek said, 2016)

PRECEDENT STUDY
ELEMENTS EXTRACTION

By appropriating the awning to divide social space into two different types.



Spoken Word Rap and Sing Dancing Burlesque performance



Film Screenings Intimate Discussion Workshops

PRECEDENT STUDY
MOBILE TOWN SQUARE



(The Cricklewood Mobile Town Square: "Cricklewood is a community with no public space: no town hall, no library, no square, not even a single bench," explained the designers. "The mobile town square will take the form of a civic folly on the back of a rickshaw bicycle, housing everything necessary to create a bona fide town square, including benches, stools, a clock tower, games and signage."
By Studio Hato and Studio Kieren Jones, 2013)

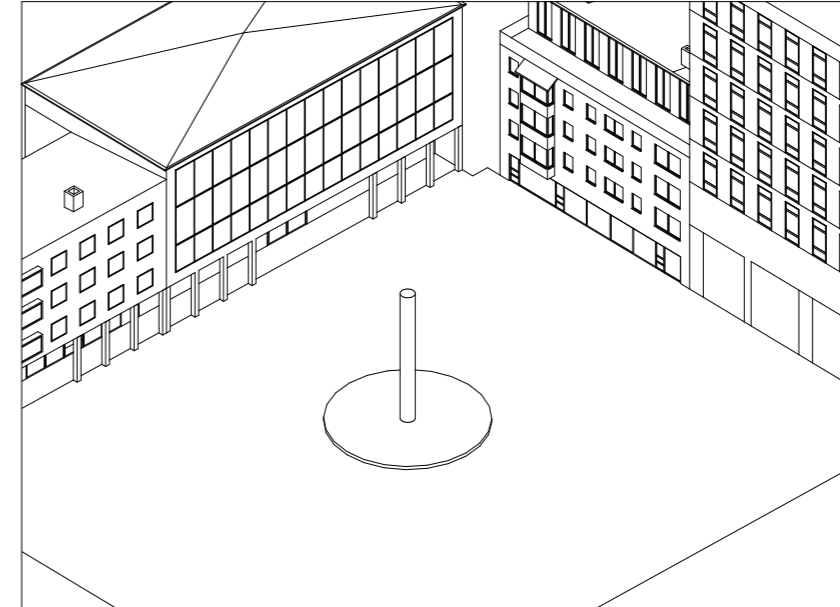
PRECEDENT STUDY

ELEMENTS EXTRACTION

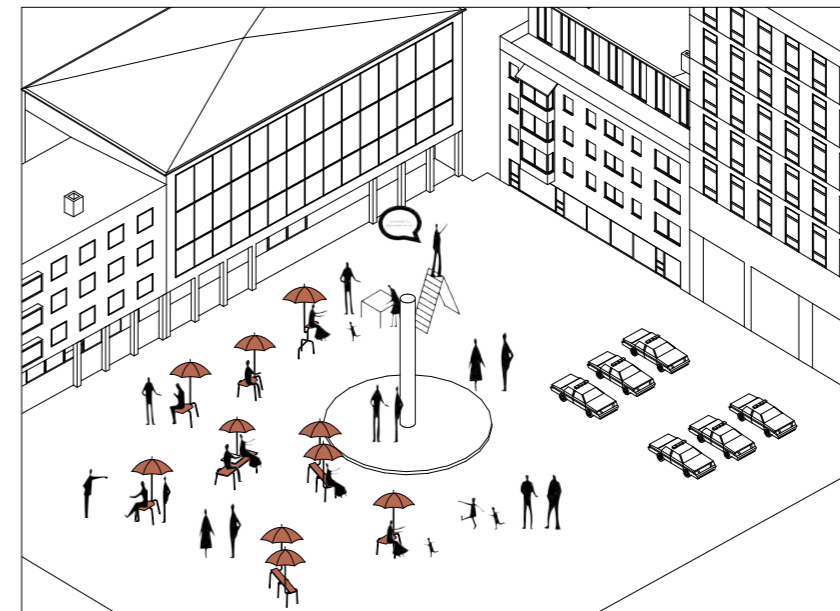
By appropriating the mobile to turn the forgotten area into the social space and give people a sense of community.



Before the mobile town square arrived:



After the mobile town square arrived:



PRECEDENT STUDY
CRUISING PAVILION



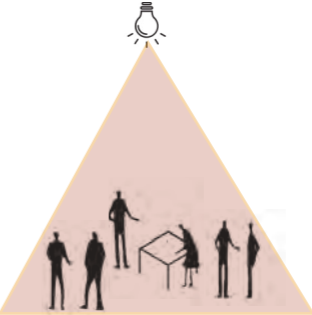
(Cruising Pavilion: "The maze-like layout of the exhibition space reflects the labyrinth as both an architectural tool and a metaphor for the hidden nature of the activities that take place inside them...And for me, the labyrinth is a device that can be protective and an escape from heteronormativity. "said Perrault, 2018)

PRECEDENT STUDY
ELEMENTS EXTRACTION

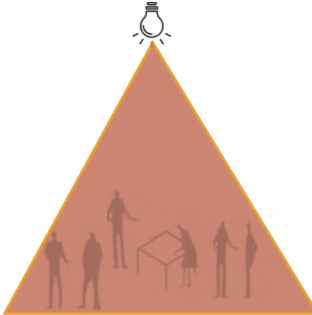
Using maze with nooks and corners to create privacy and a sense of safety.



Add more confusion in the space
Mirror



High level of light



Low level of light

Low Levels of Light

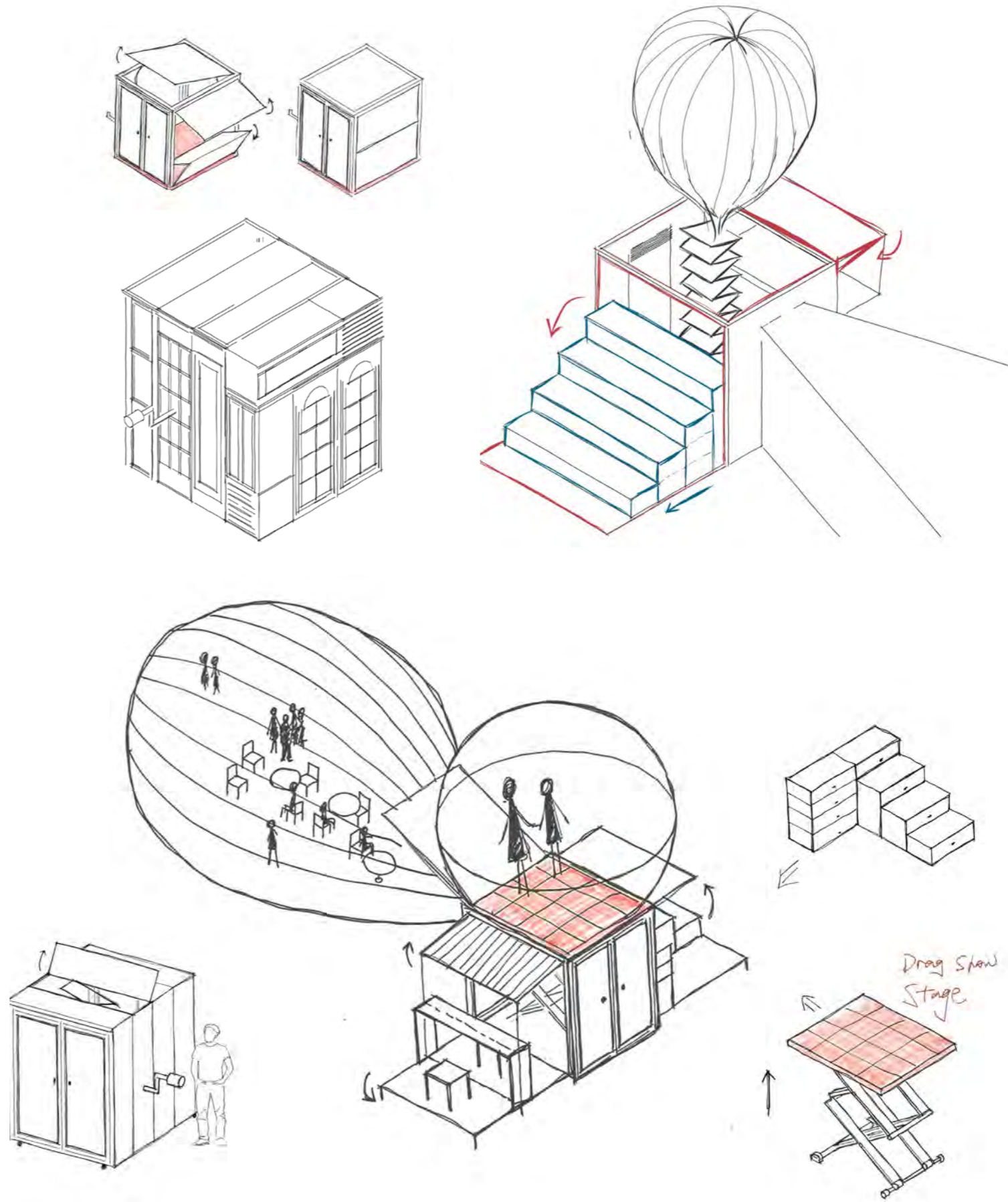


Maze / Corner
Private Space

PROGRAM STUDY DIAGRAM
DESIGN SKETCH



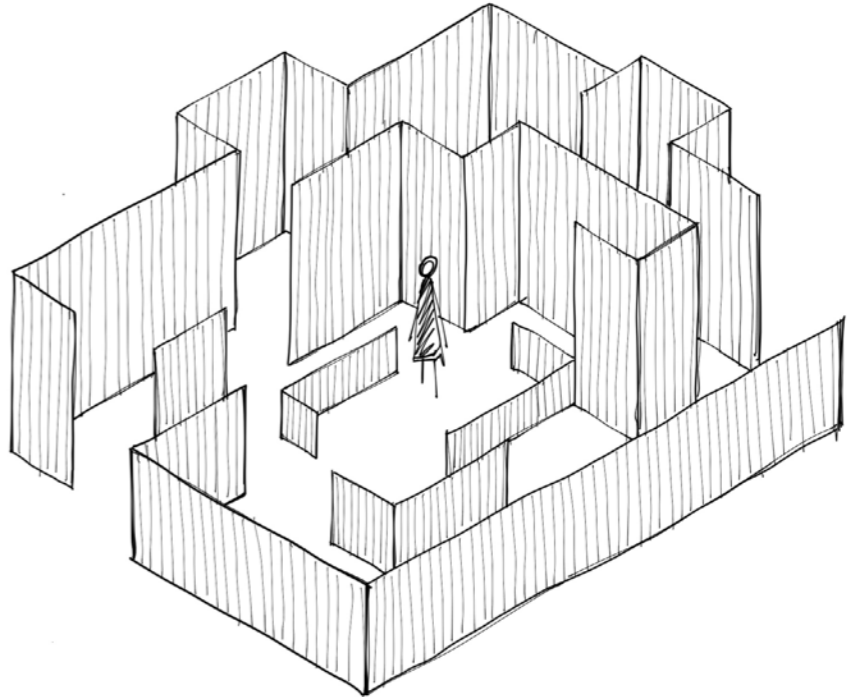
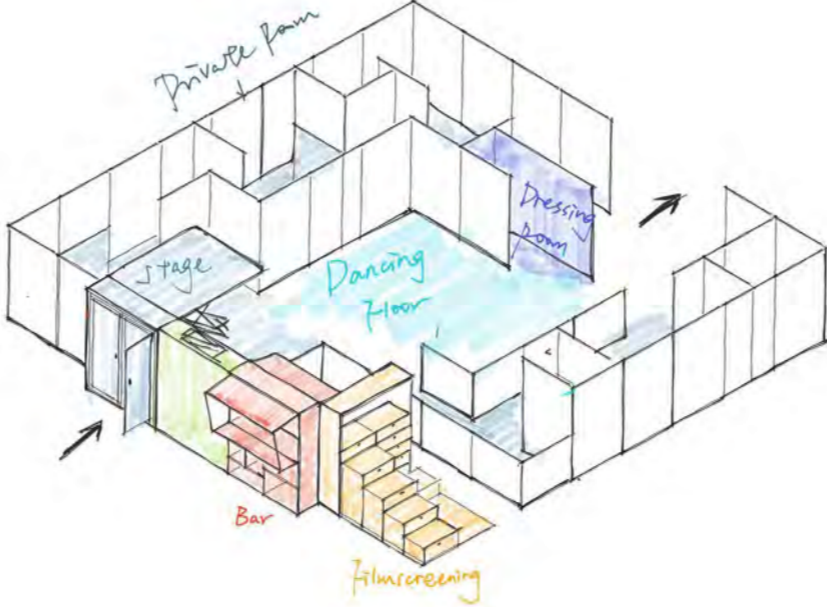
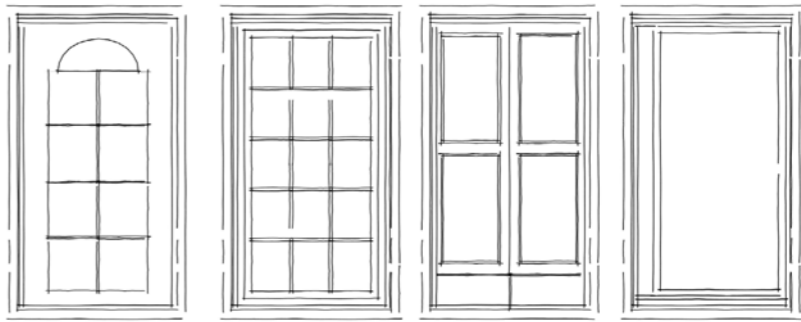
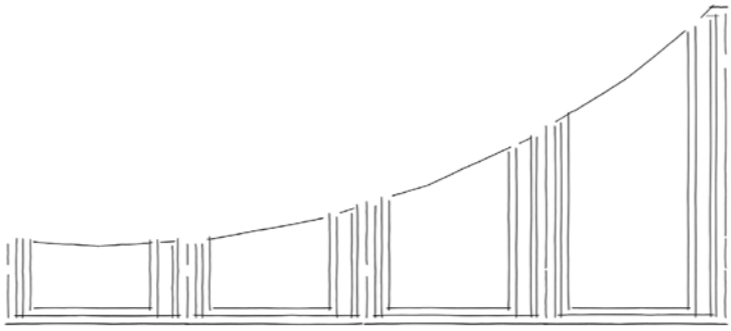
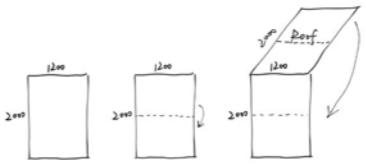
(Y Studios: Droogs Gallery Amsterdam, 2011)



PROGRAM STUDY DIAGRAM
DESIGN SKETCH



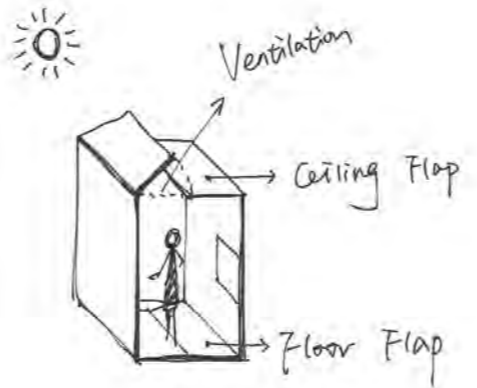
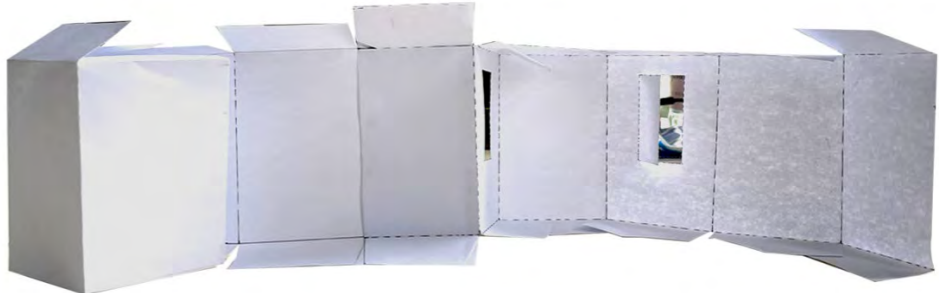
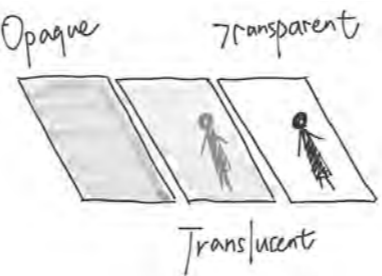
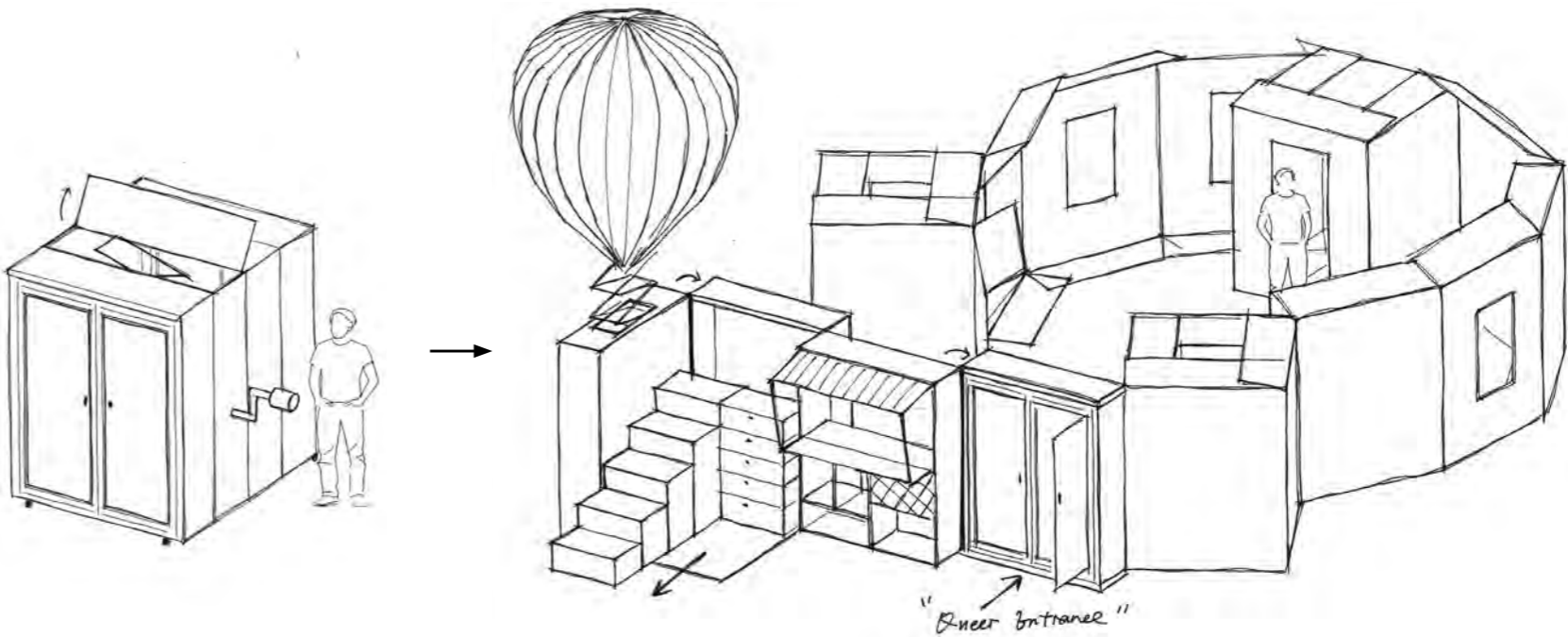
(Dezeen: Steel Maze by Gijs Van Vaerenbergh, 2005)



PROGRAM STUDY DIAGRAM
DESIGN SKETCH



(ArchDaily: Box Mobile Gallery by WISE Architecture, 2011)



CONCEPT COLLAGE
SPATIAL IDEAS



CONCEPT COLLAGE
CLOSET IDEAS



PUBLIC

TENSION

PRIVATE

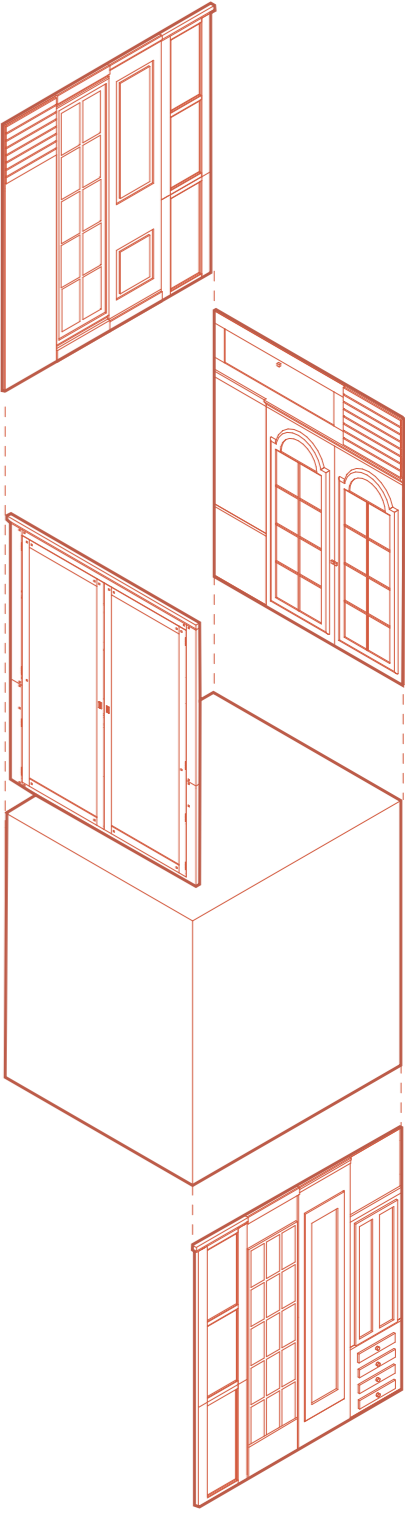
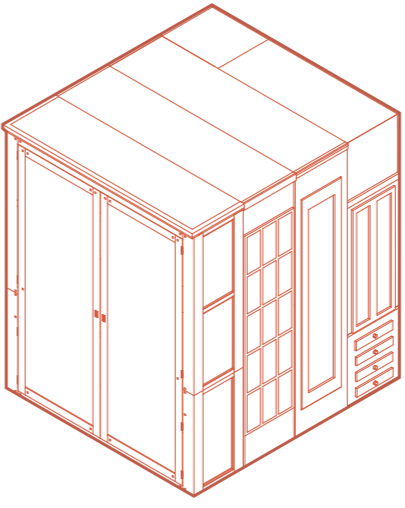
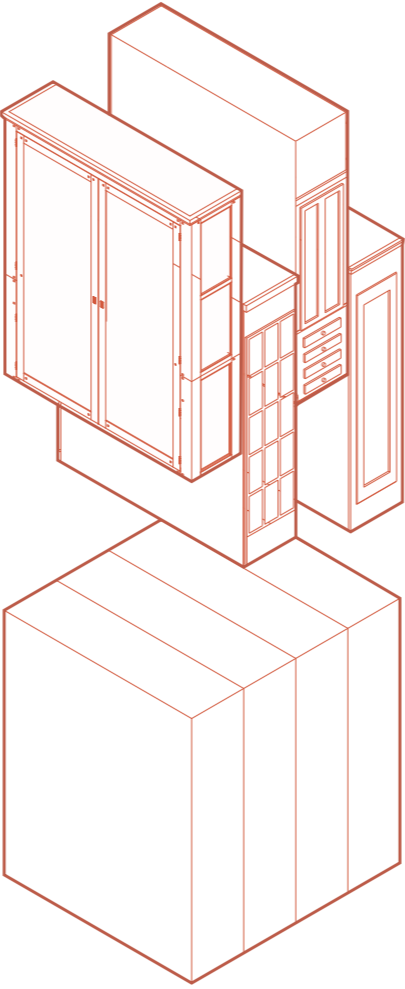
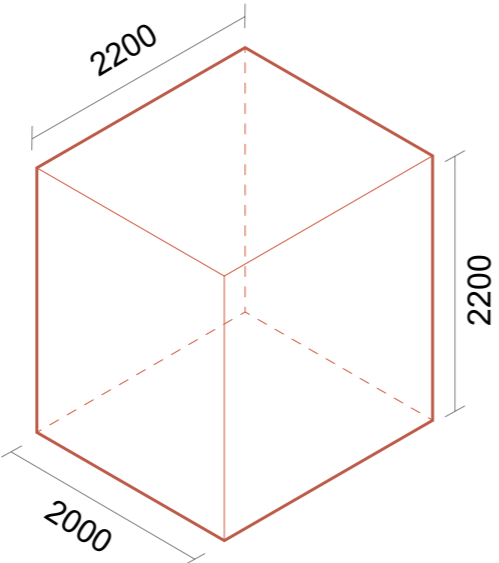
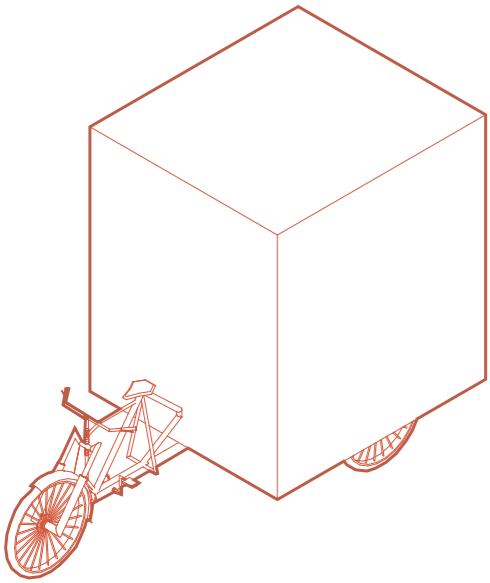
By changing materials to
create a various spatial
dynamic quality



CREATIVE ASSET
STOP MOTION

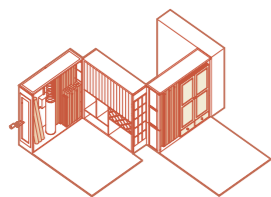
<https://youtu.be/d0UtK6DpLYs>

SCHEMATIC DEVELOPMENT
FULLY CLOSED

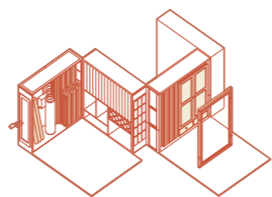


SCHEMATIC DEVELOPMENT

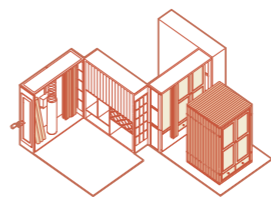
PROCESS OF UNFOLDING



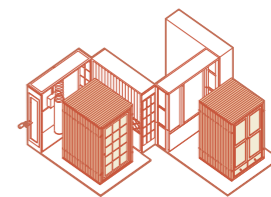
STEP 1



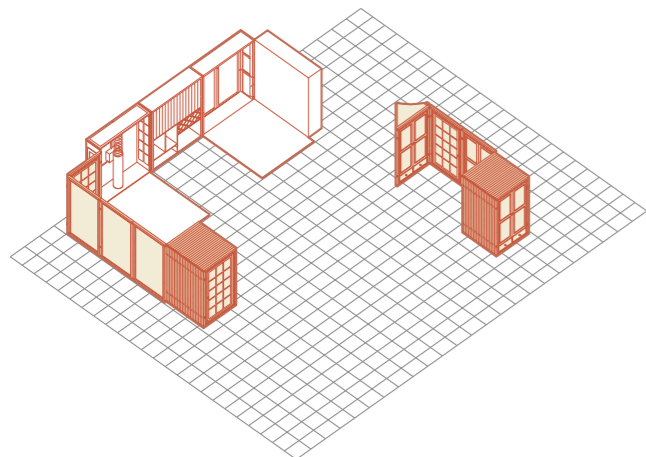
STEP 2



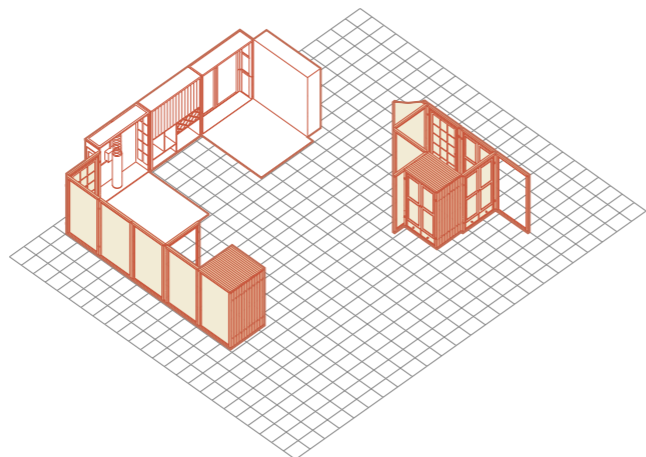
STEP 3



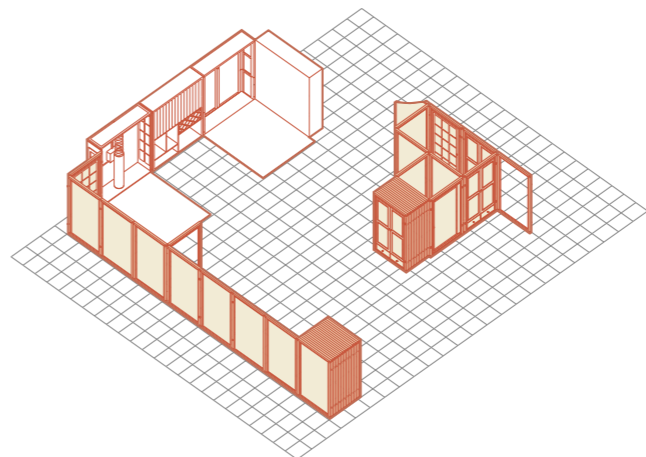
STEP 4



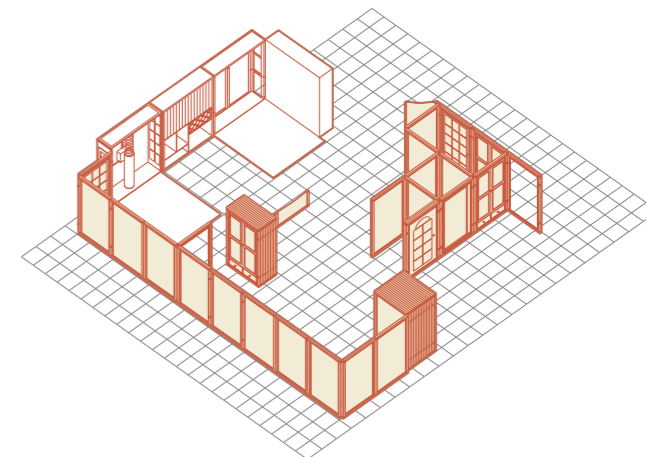
STEP 5



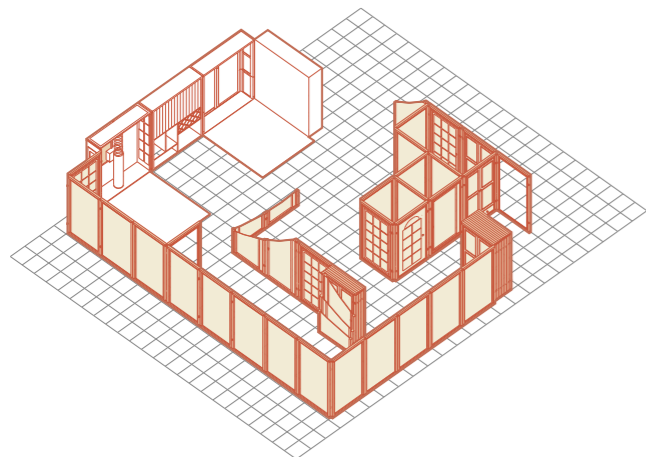
STEP 6



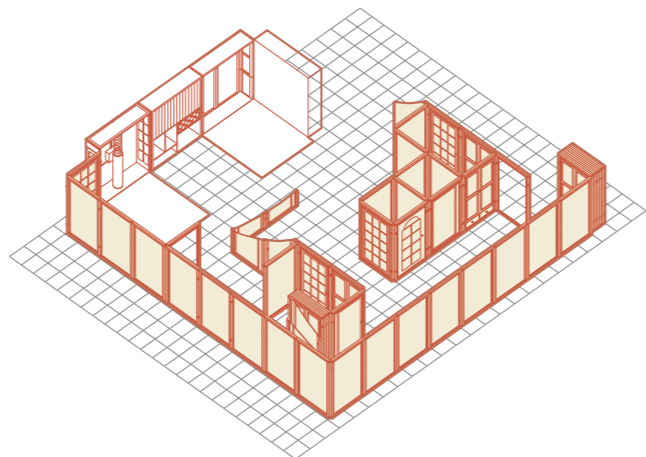
STEP 7



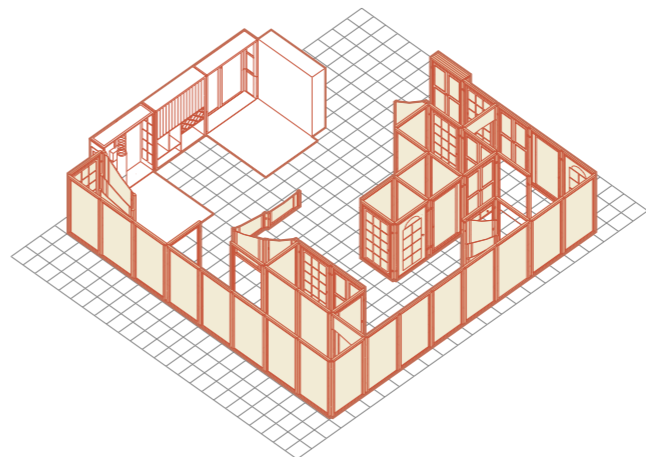
STEP 8



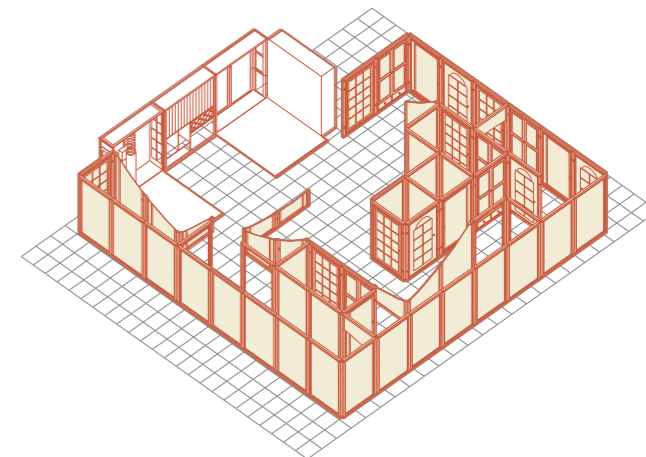
STEP 9



STEP 10

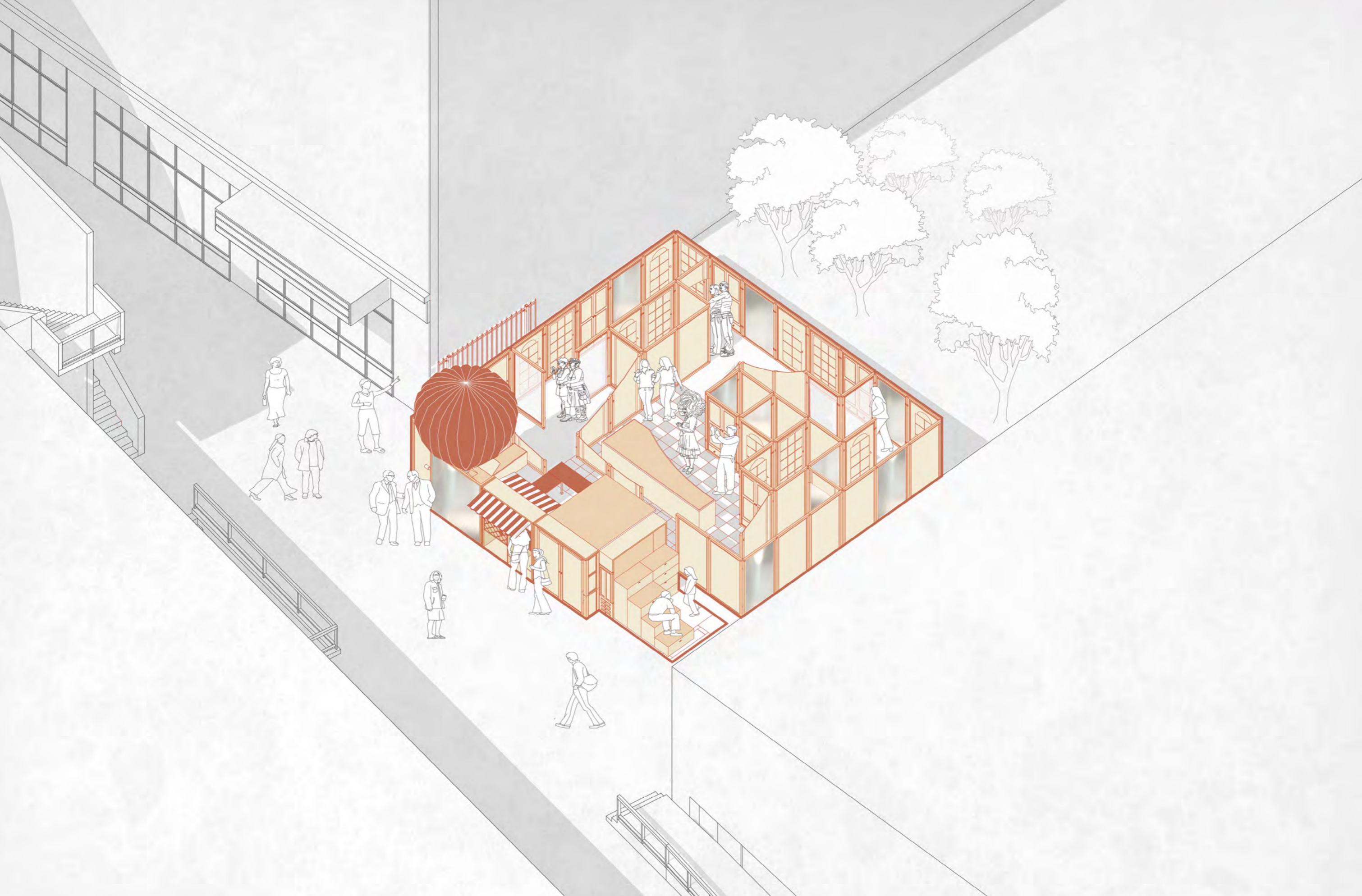


STEP 11



STEP 12

SCHEMATIC DEVELOPMENT
PROCESS OF UNFOLDING & FULLY OPEN



SCHEMATIC DEVELOPMENT
MAZE PANELS COMPOSITION



3mm nails



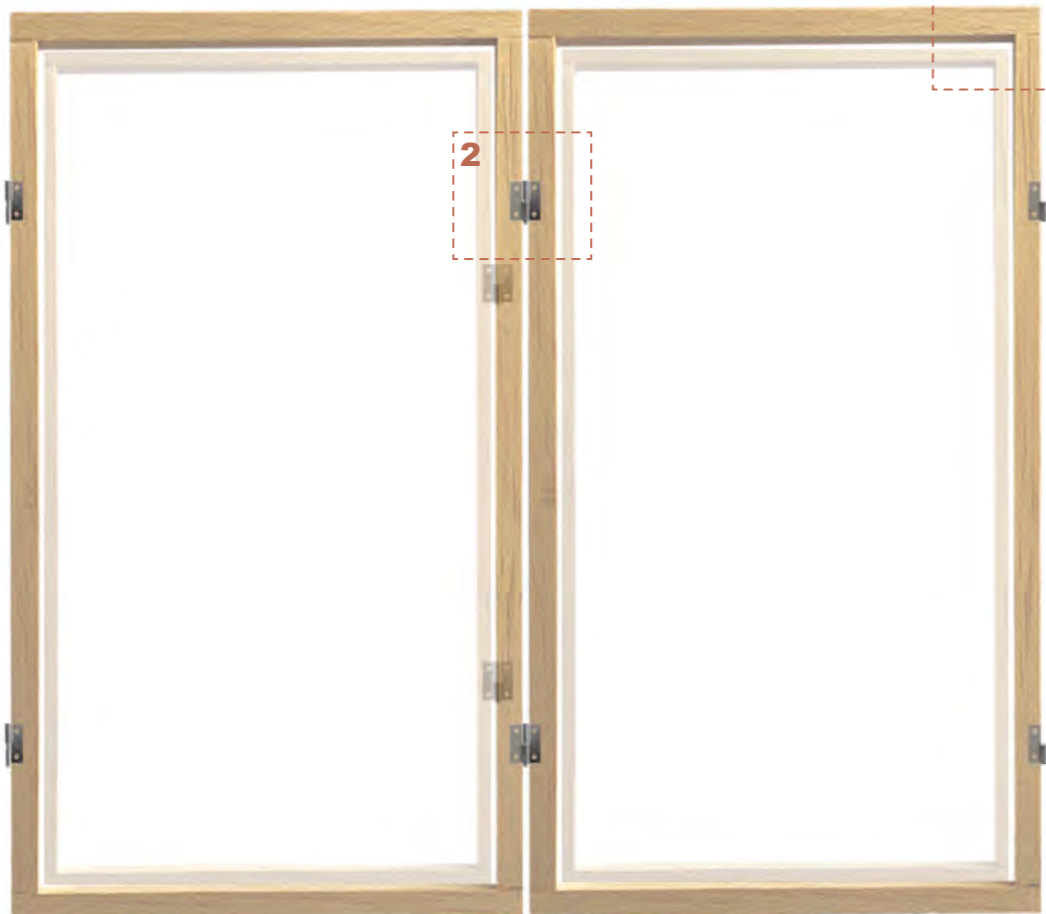
Slip Hinges
1.5mm Steel



30*1050mm wood stripes
30*1900mm wood stripes

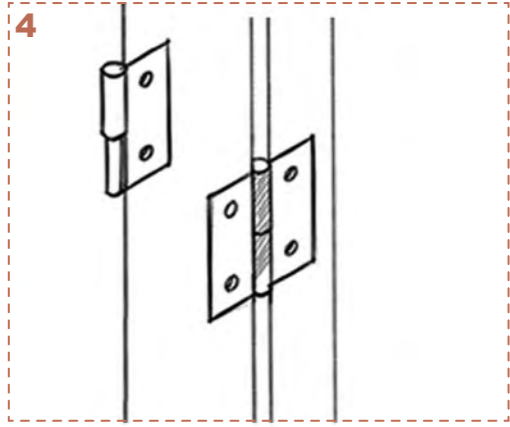
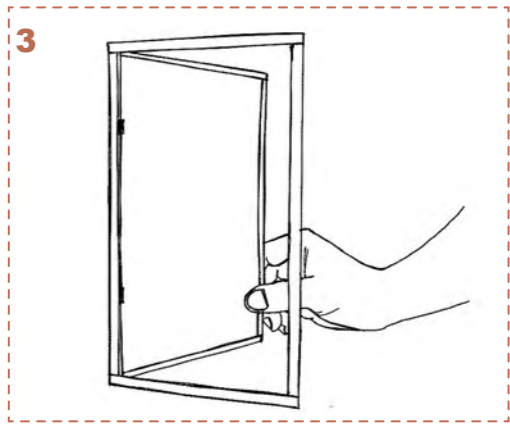
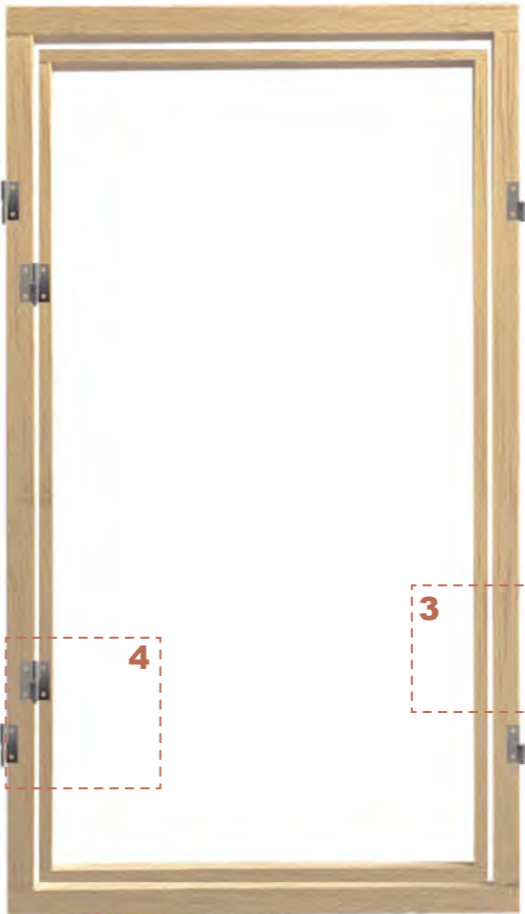
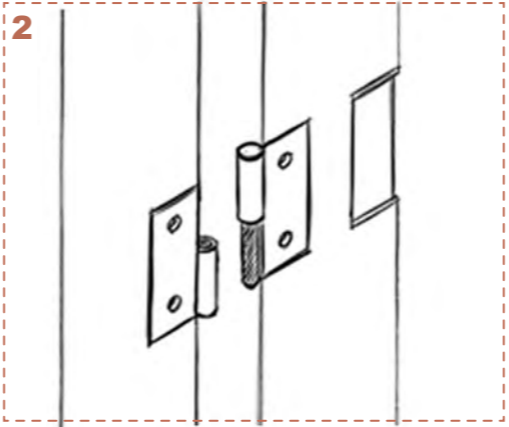
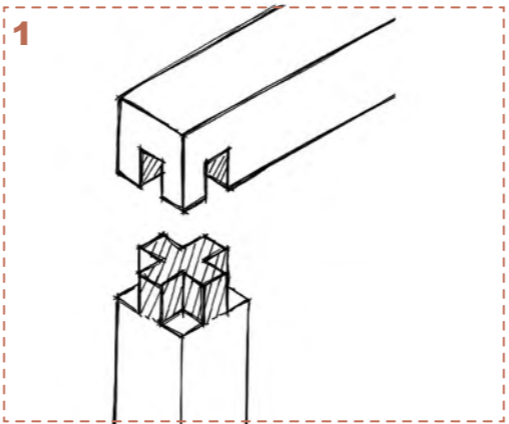


60*1200mm wood stripes
60*1980mm wood stripes



1

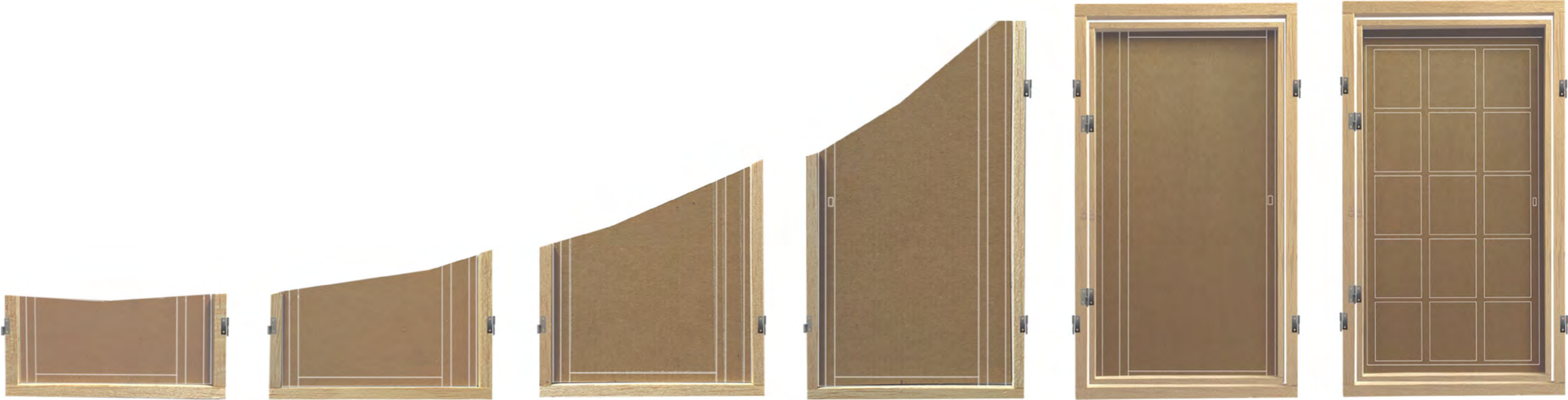
2



3

4

SCHEMATIC DEVELOPMENT
MAZE PANEL TYPES



A

B

C

D

E

1200*2100mm
Cardboard + Wood Frame
F

← OPEN

PRIVATE →

SCHEMATIC DEVELOPMENT
MAZE PANELS TYPES



1200*2100mm
Wood Frame

G



1200*2100mm
Rice Paper + Wood Frame

H



1200*2100mm
Iridescent Paper + Wood Frame

I



1200*2100mm
Mirror + Wood Frame

J



1200*2100mm
Cardboard + Wood Frame

K



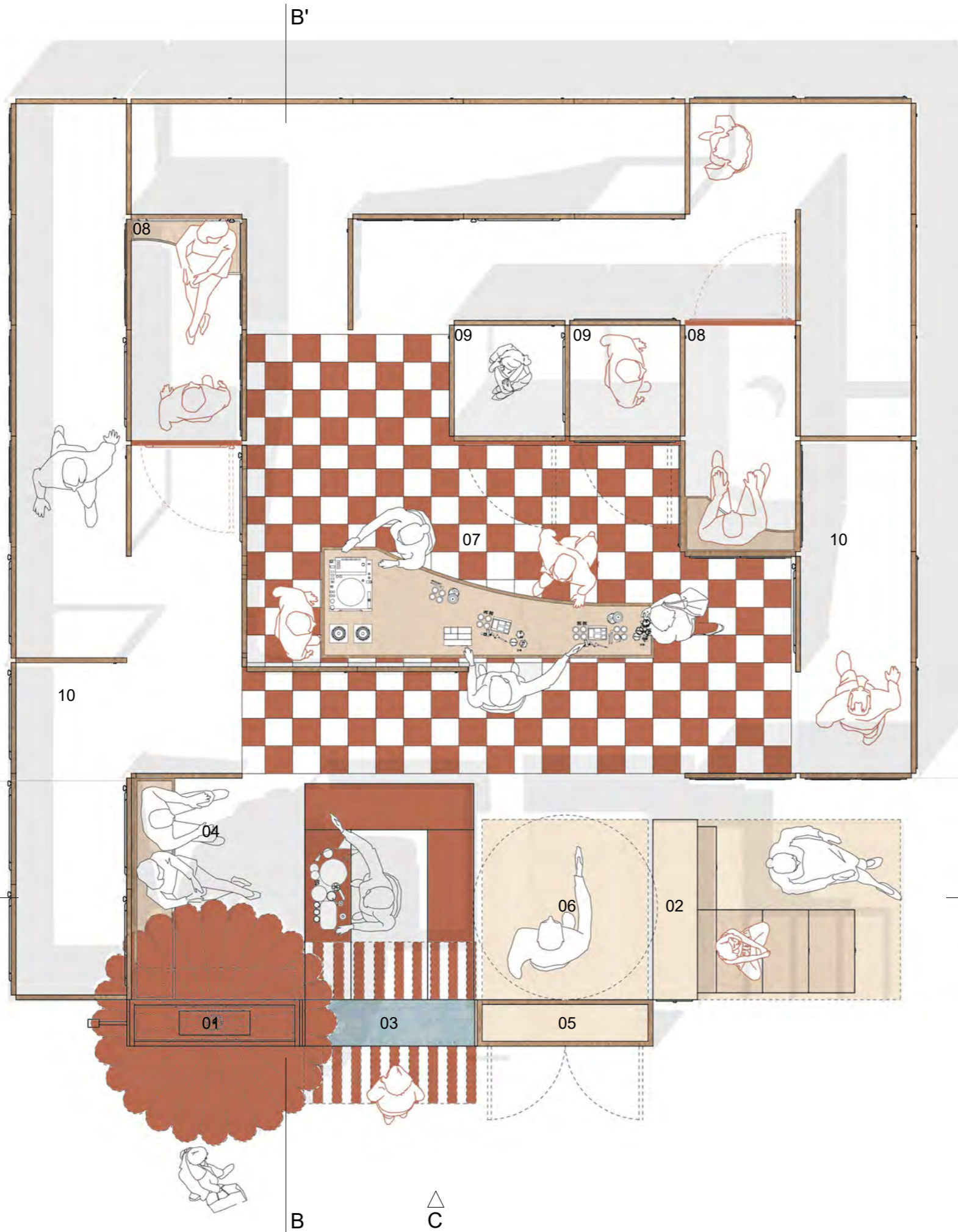
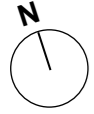
1200*2100mm
Cardboard + Wood Frame

L

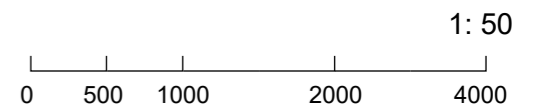
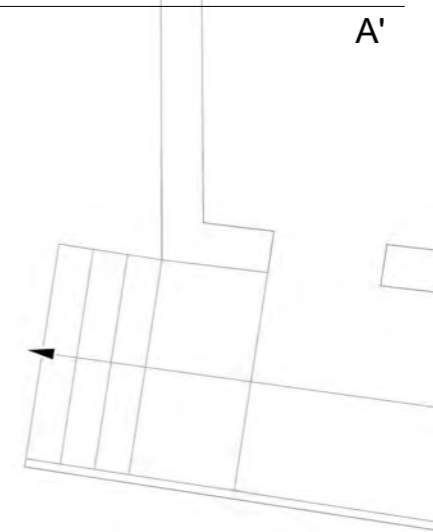
← OPEN

PRIVATE →

PROPOSAL PLAN
FULLY OPEN



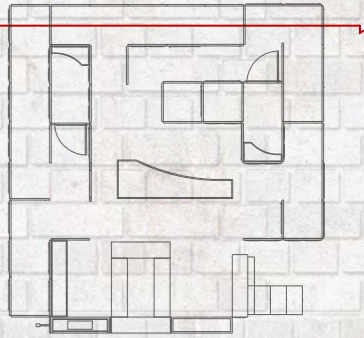
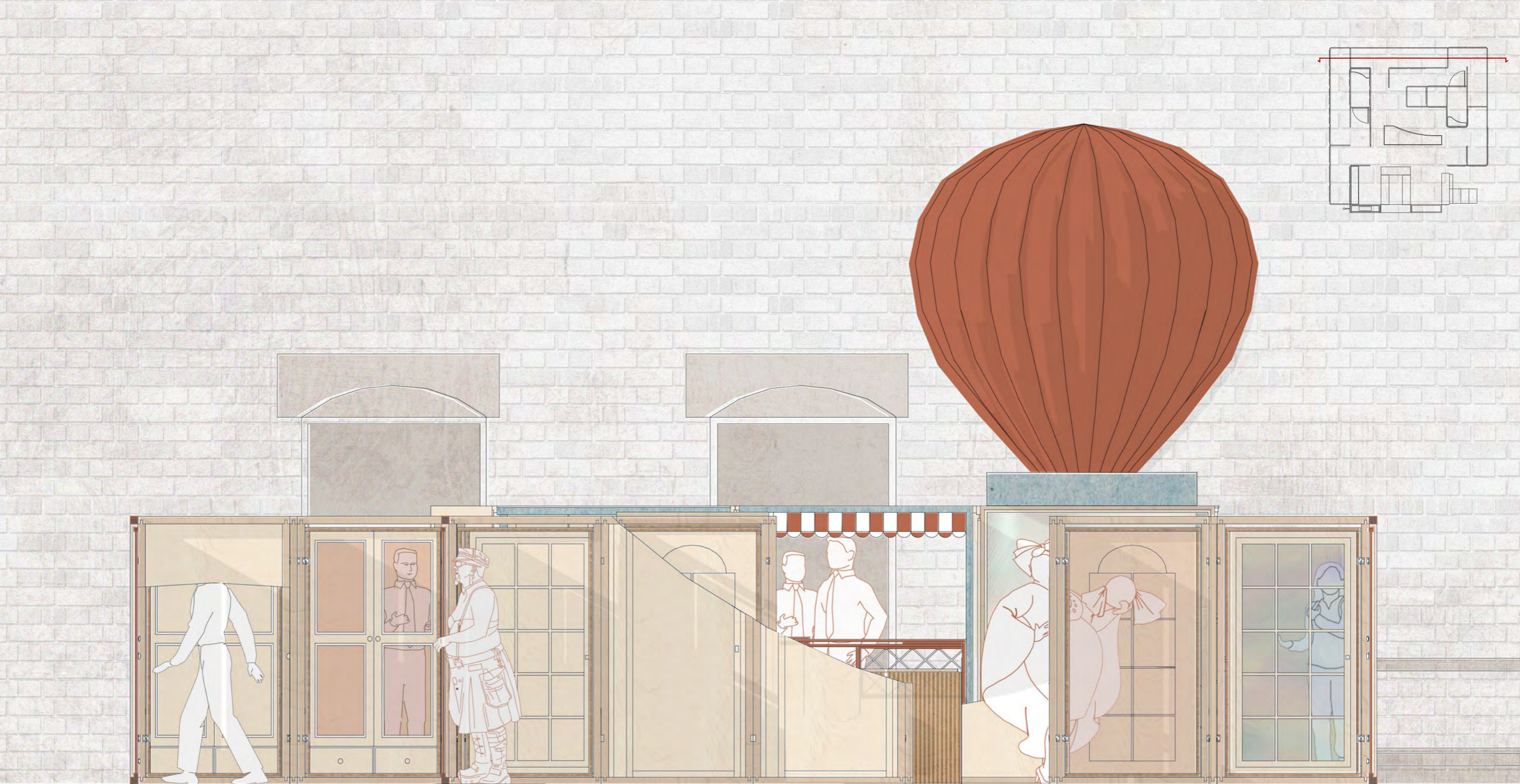
- 01. Balloon Sign
- 02. Filmscreening
- 03. Bar
- 04. Seating Area
- 05. Entrance
- 06. Drag Stage
- 07. Drag Workshop(daytime)
/ Dancing Floor(nighttime)
- 08. Intimate Discussion Space
- 09. Dressing Room
- 10. Social Space



PROPOSAL ELEVATION
FULLY OPEN



PROPOSAL SECTION
FULLY OPEN



Section AA' 1:30

0 500 1000 2000 4000

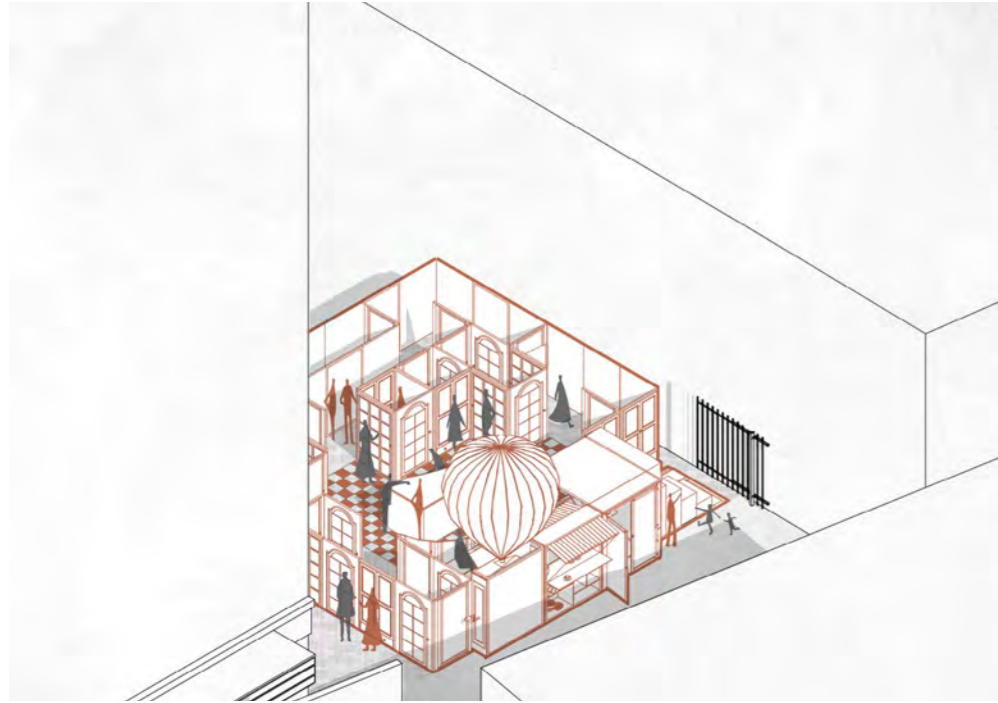
PROPOSAL SECTION
FULLY OPEN



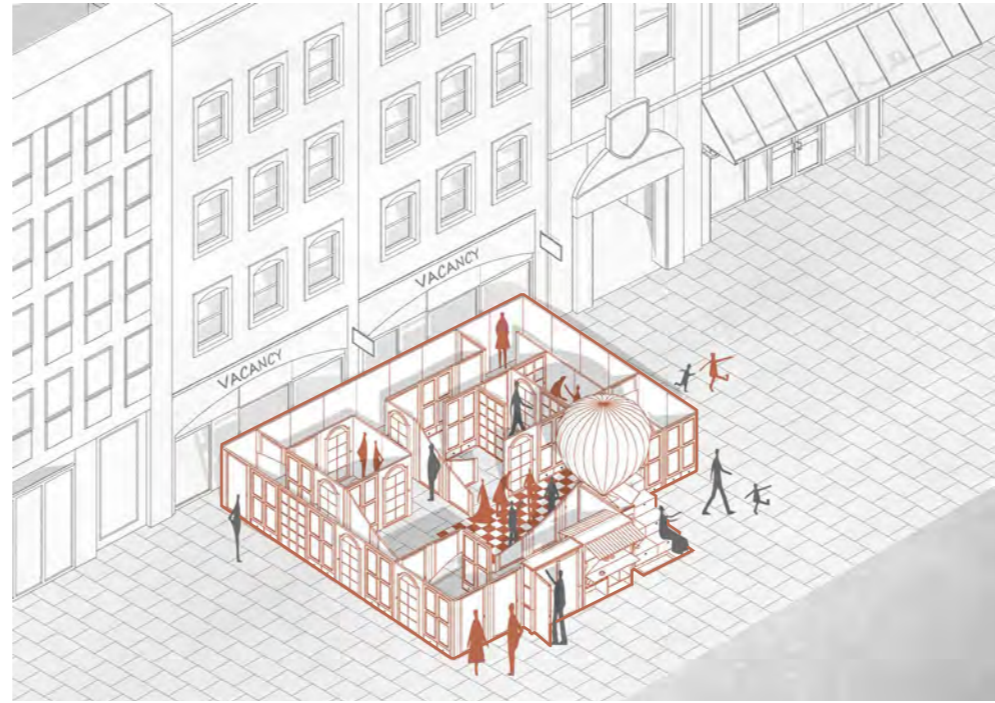
Section BB' 1:30

0 500 1000 2000 4000

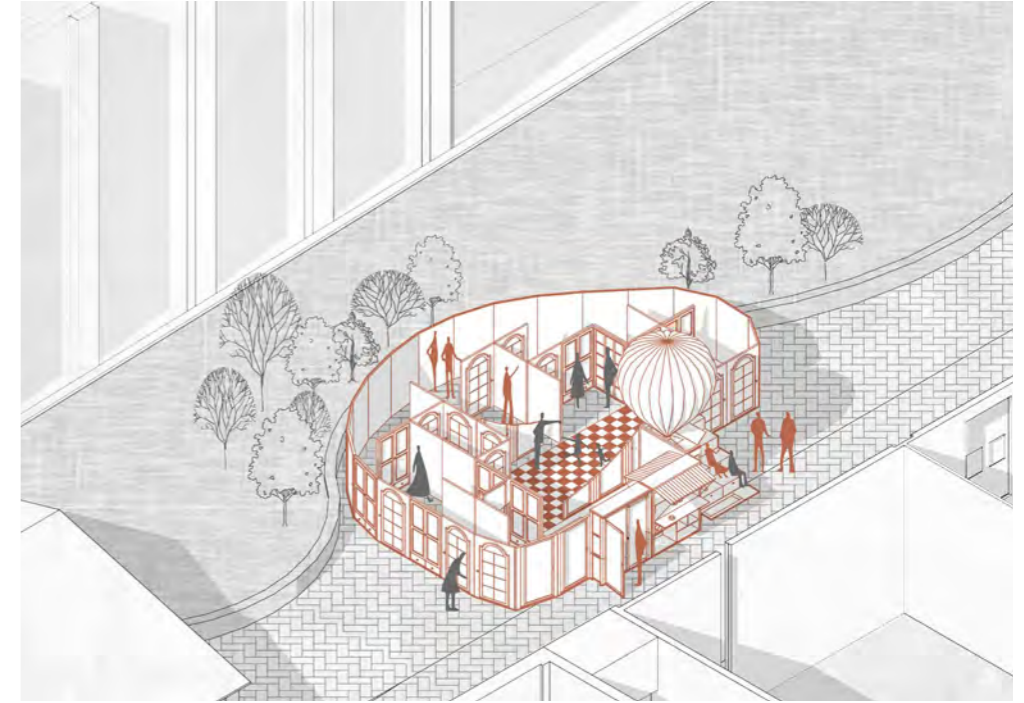
SCALES CHANGING
FIT IN DIFFERENT TYPE OF SITES



01. Grosvenor Shopping Center Back Entrance



02. Market Square North Side



03. Emporium Way Green Space

USER EXPERIENCE



USER EXPERIENCE



USER EXPERIENCE



USER EXPERIENCE

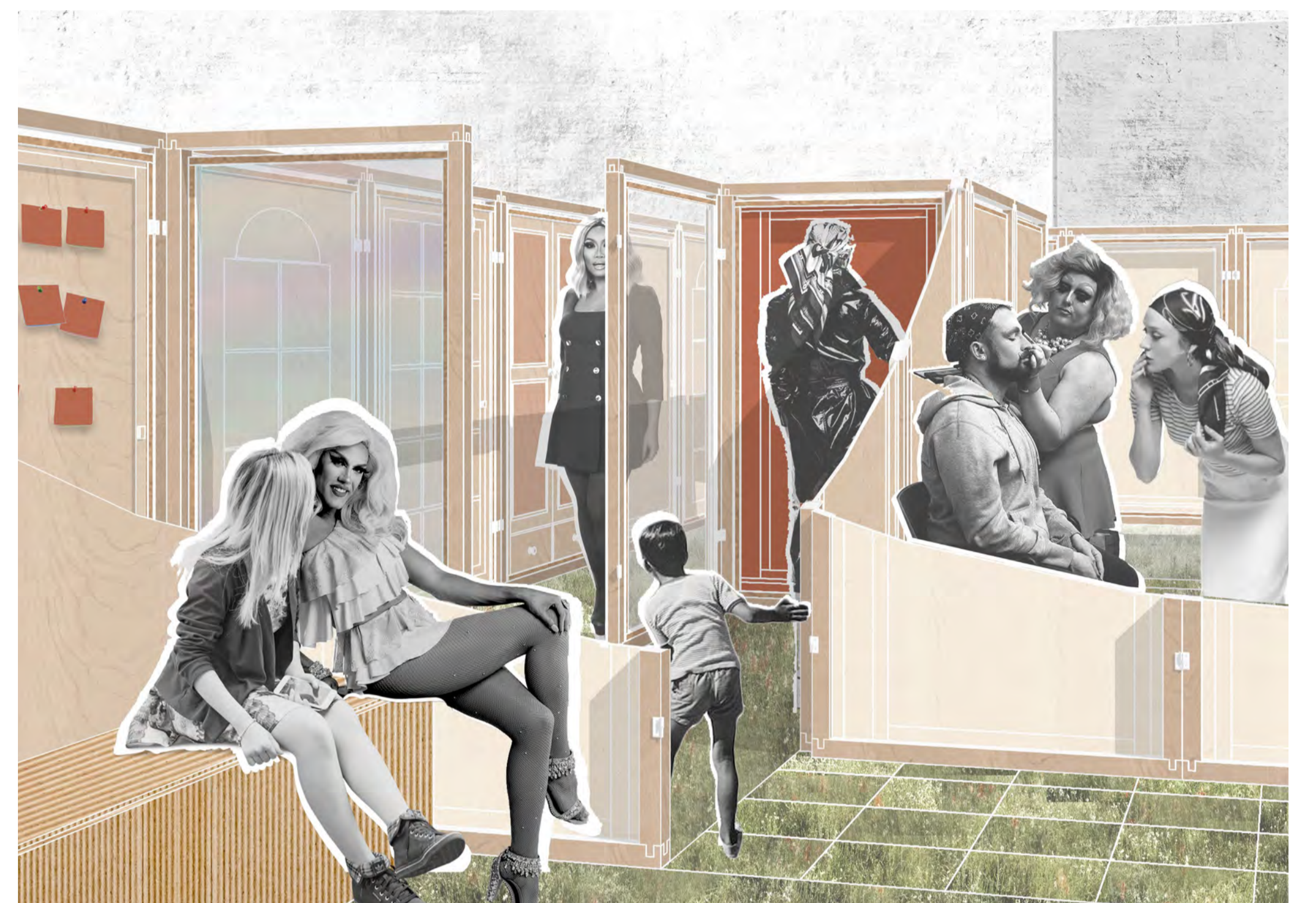
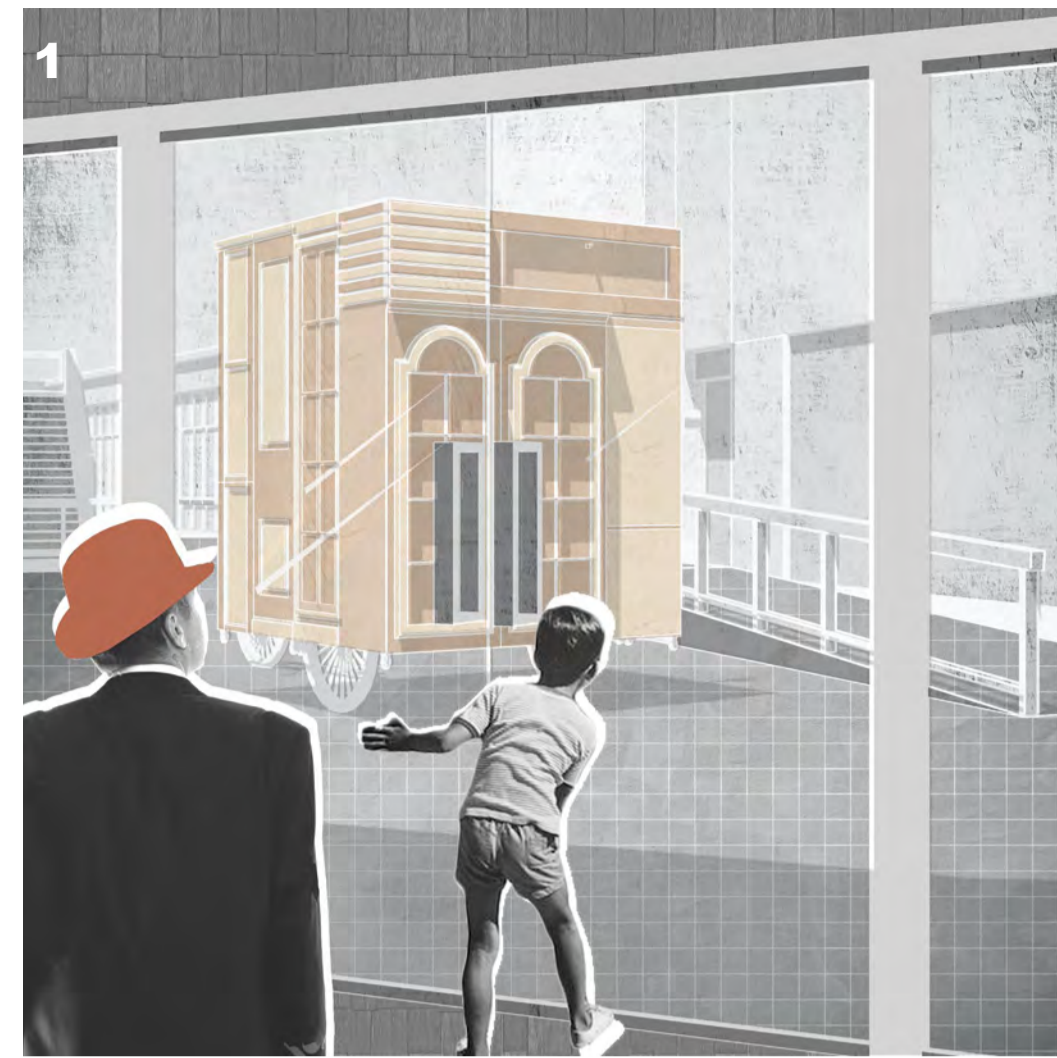


USER EXPERIENCE



USER EXPERIENCE





STORY SCRIPT:

His name is Eric and he had been out and proud for two years. Seeing as he was an Au Pair, he didn't have much opportunity to make friends let alone meet other queer people. This changed when he found the "travelling queer" in Northampton.

One day, when he was shopping, he noticed the large closet moving from the window, which driven his curiosity. He decide to go and check what happened. When he arrived, the red balloon came out and four parts of this structure was unfolded. He was surprised by the sight behind the bar when he was grabbing the coffee. It was the space composed by maze and many people dressed in drag. He felt a sense of belonging.

6. BE THEMSELVES

When he coming to the central area, it was the ongoing drag workshop and intimate consultation space. You could joining the workshop to be who you are, like doing the makeup workshop or getting drag dressed.

7. FIND SUPPORT

or talk to older members of the community, everything here was encouraging and motivated him to keep pushing.

8. FEEL SAFE:

When he went further, he saw two young men were talking in the corner, protected by dozens of layers. He felt a sense of safety.

9. INTEGRATION TO PUBLIC

Gradually, night was coming, the central area was changed into a dancing floor. By lifting the bubble stage, drag show party begins. Everyone was excited and naturally mixed with each other.

Although he was just staying about two hours, he felt understood in a way that even his family could not offer him. The community space allows him to be themselves outside of the judging eyes of peers, and to feel a certain pride in being out and proud.

Find Support

Feel Safe

9



Integration to Public

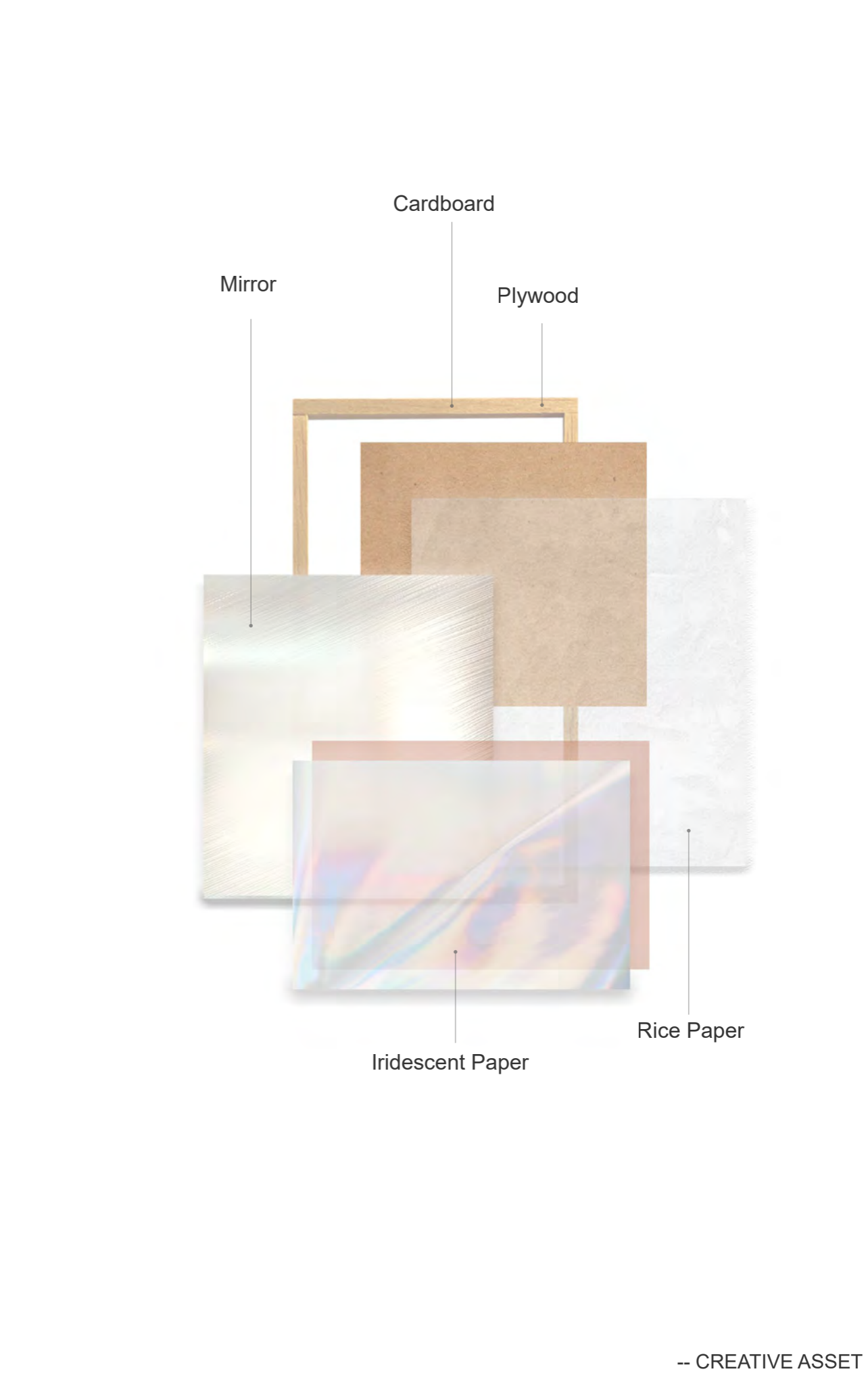
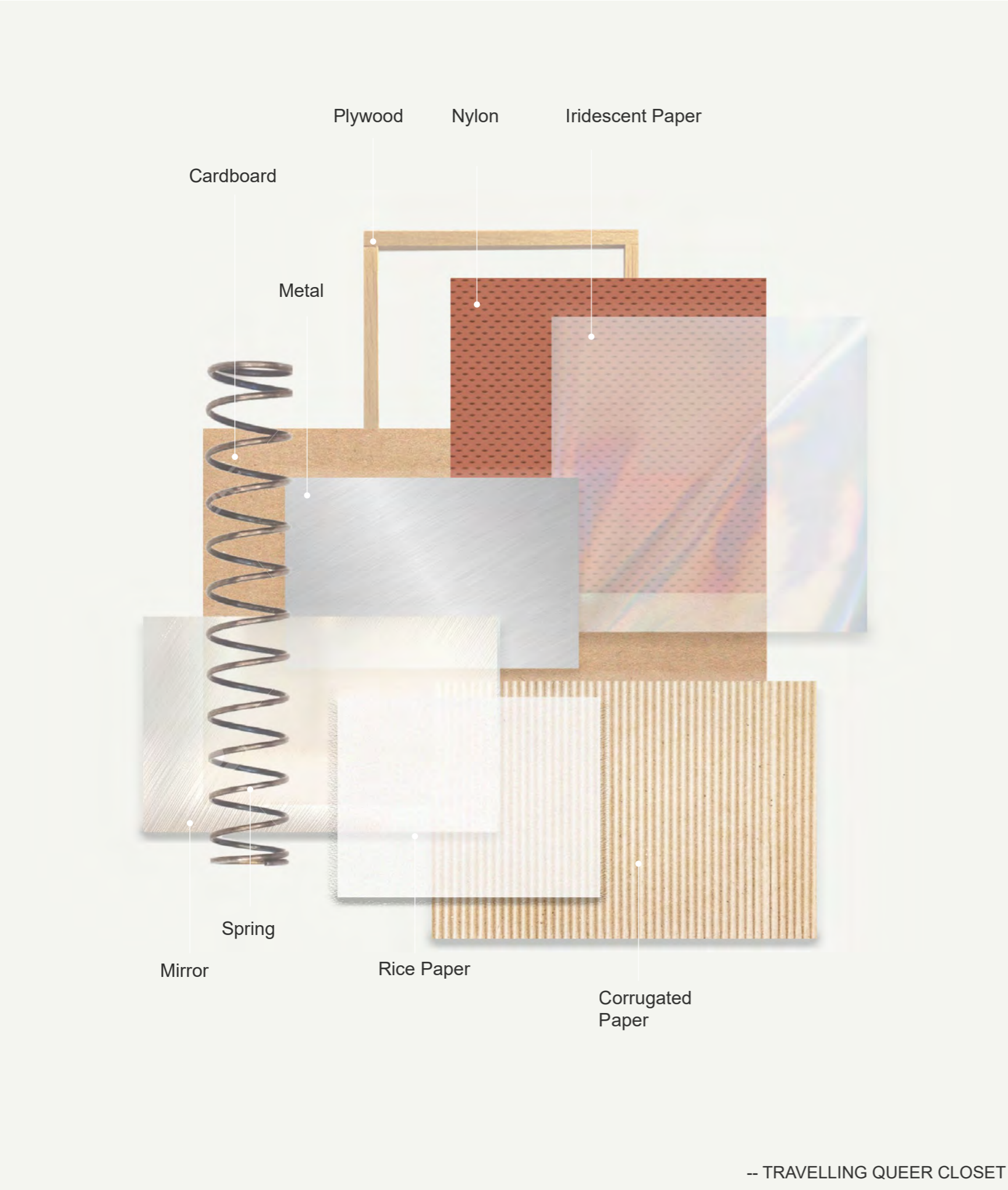
10



11



MATERIAL PALETTE



HANDDRAWING STOP MOTION

<https://youtu.be/25rQ9vZLQNs>

CORE MESSAGES



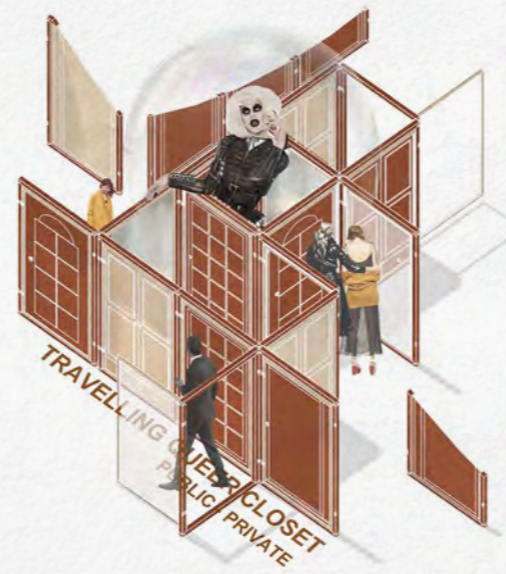
SAFE SANTUARY



SOCIAL QUALITY



MATERIAL BALANCE BETWEEN PUBLIC AND PRIVATE



THANK YOU :)