

# WATERPOINT PARK

INTERIOR DETAIL  
QIAN WANG





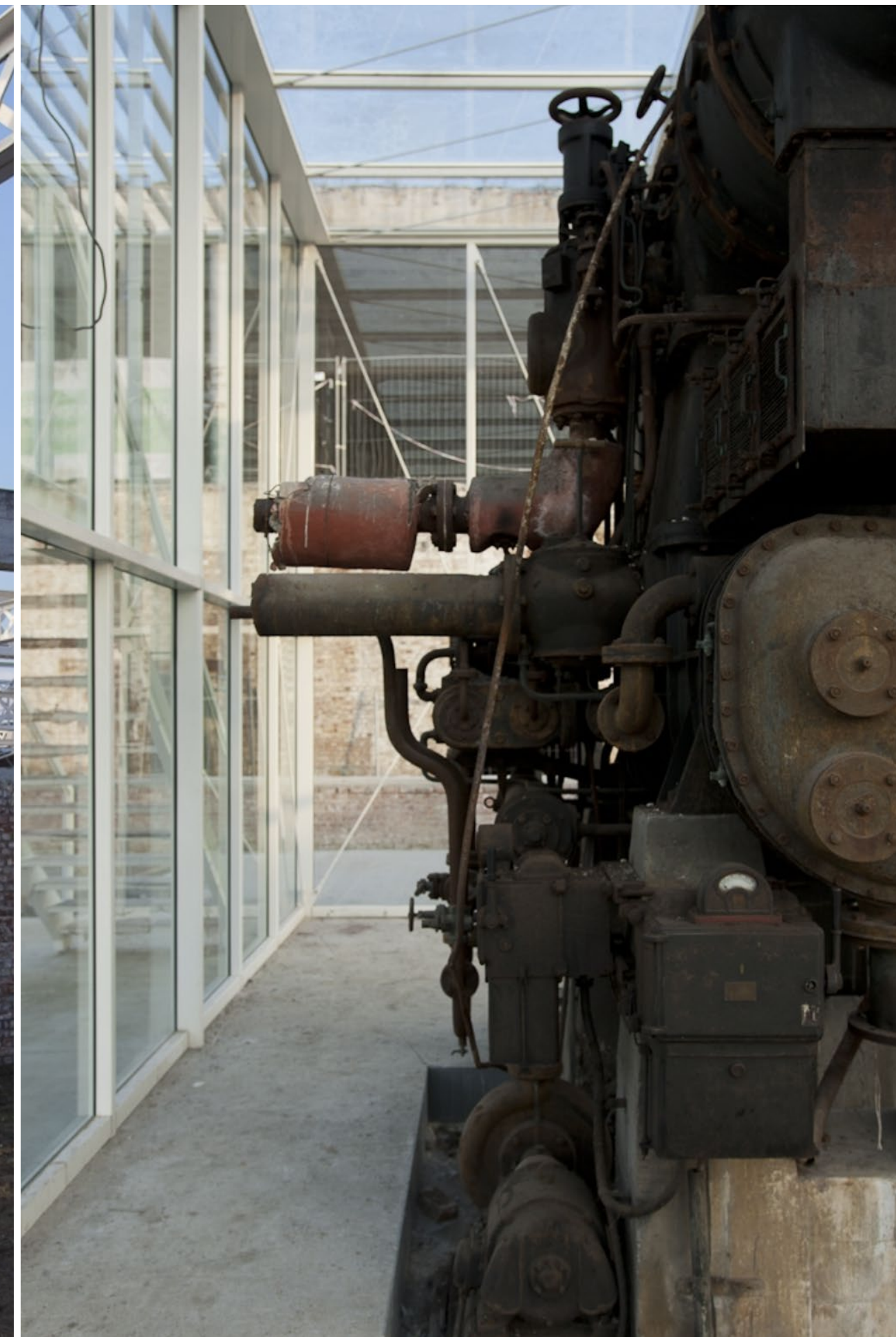




# HOW DO WE TREAT INDUSTRIAL HERITAGE ?

INDUSTRIAL HERITAGE PARK

▼ *Reference image*  
*Renovation of old factory / Gentcement*  
*Belgium / 2013*





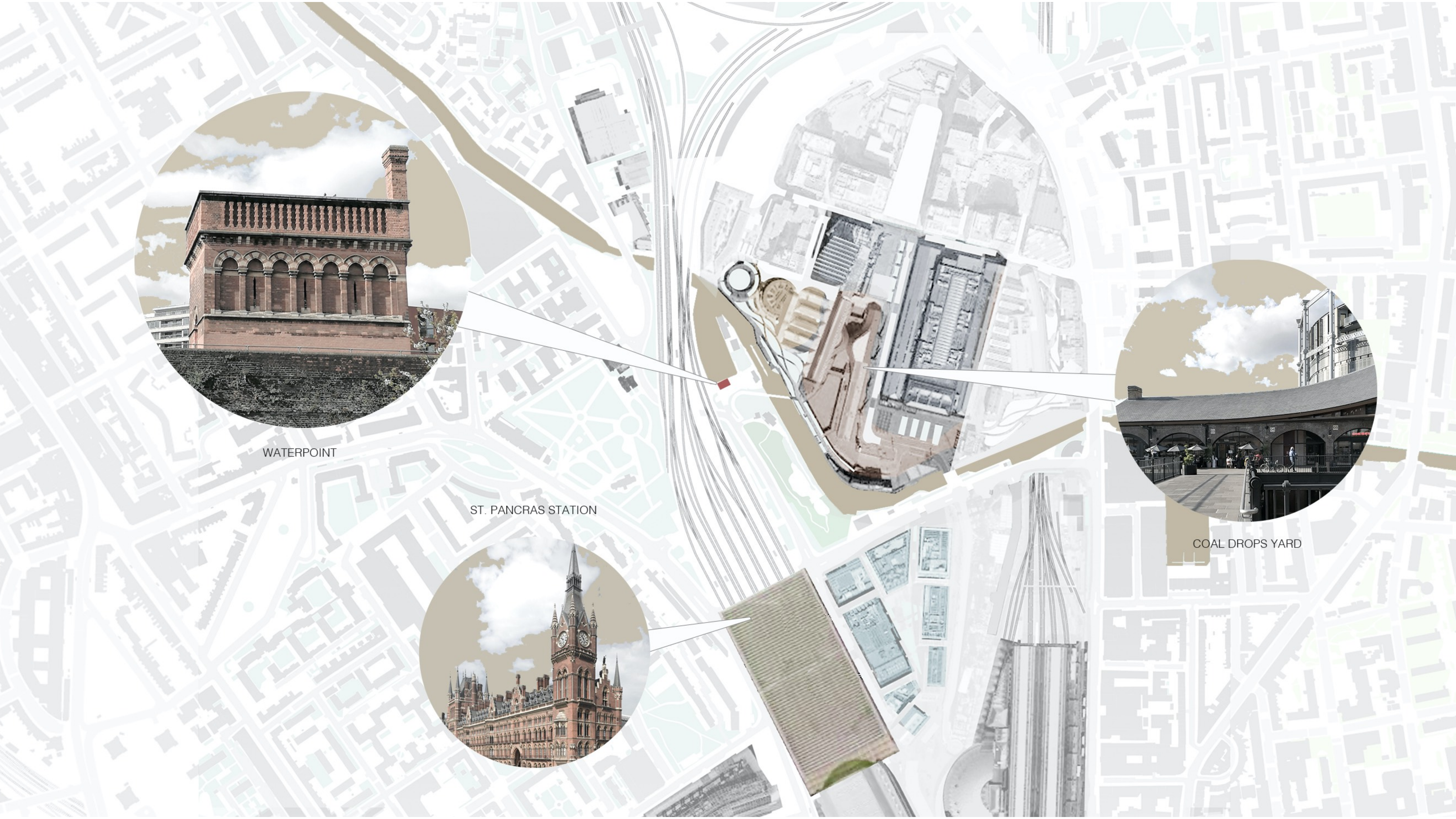
WATERPOINT

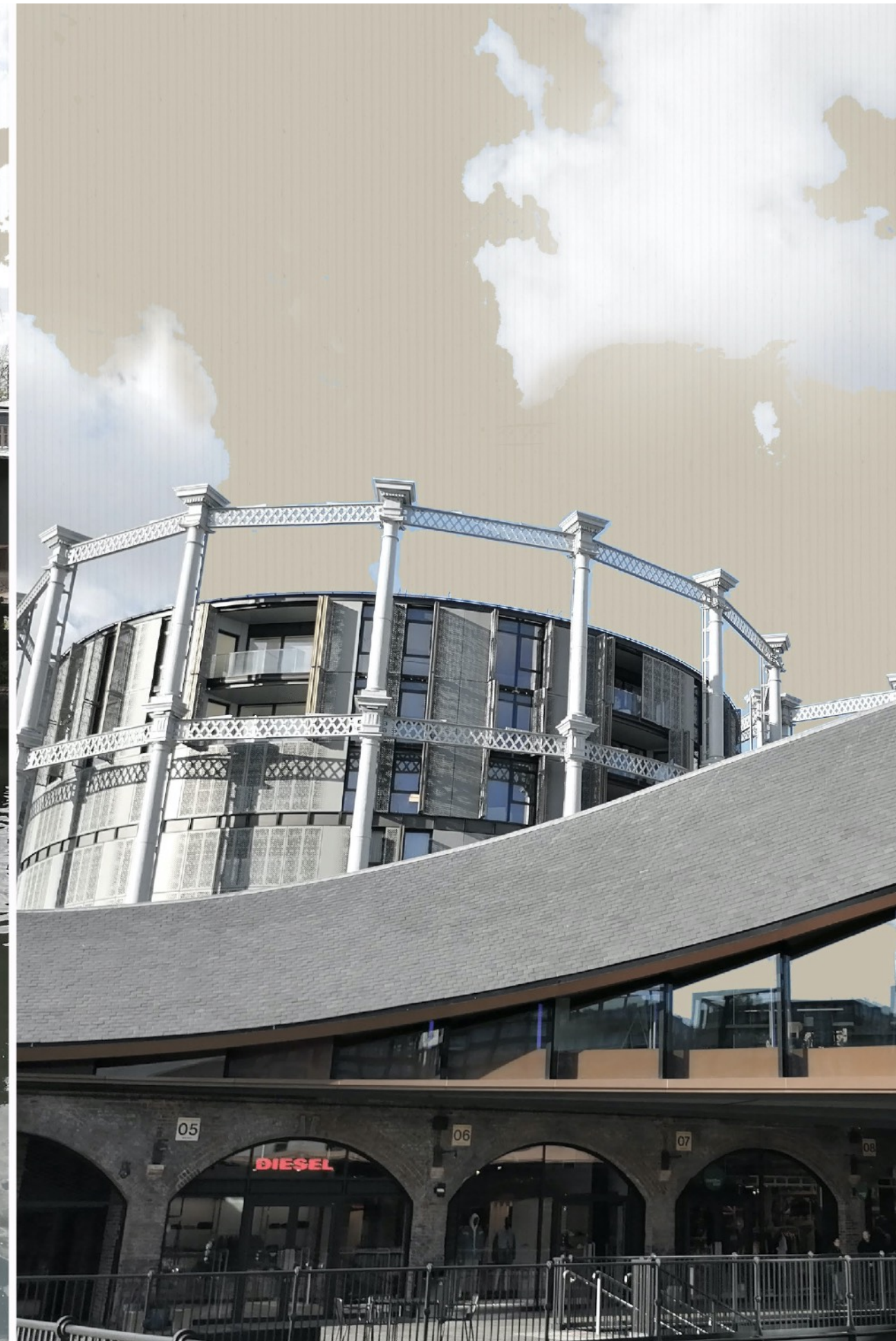


ST. PANCRAS STATION



COAL DROPS YARD

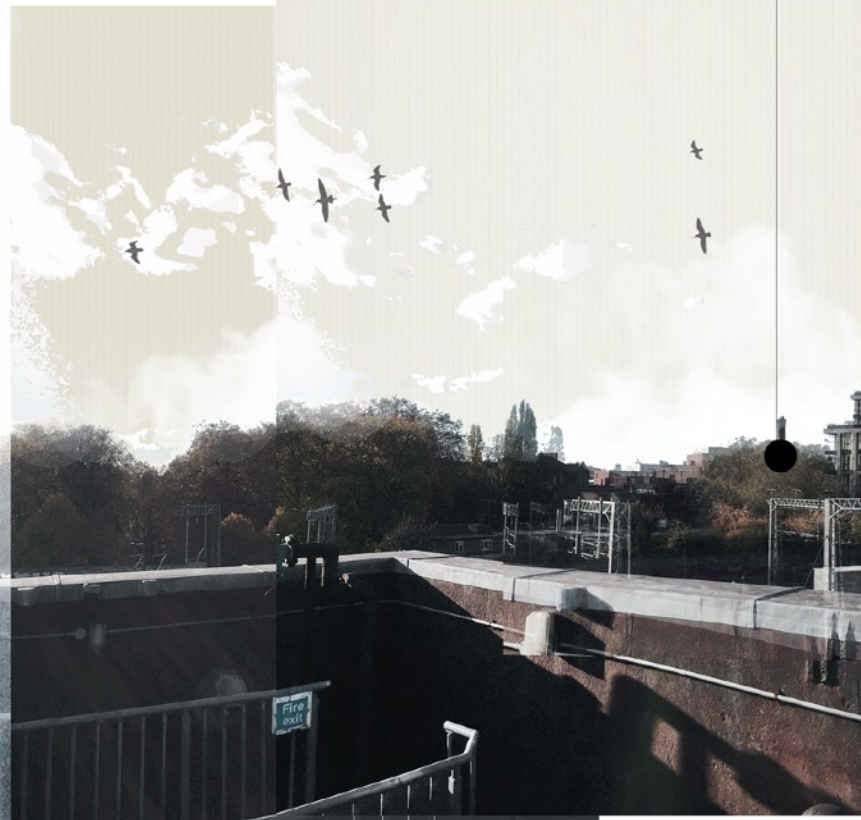




ST. PANCRAS STATION



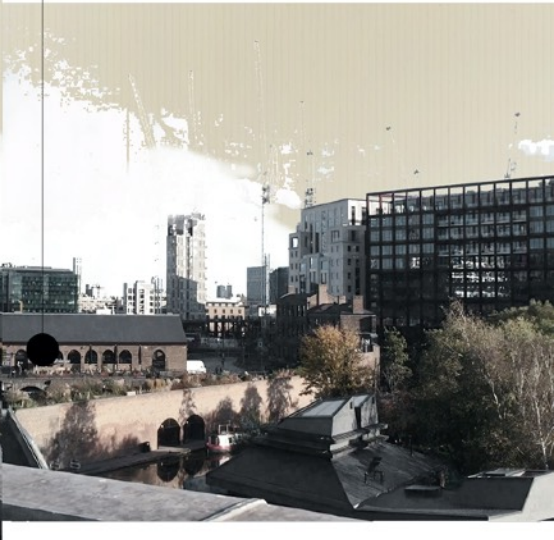
RAILWAY



GASHOLDER



COAL DROPS YARD



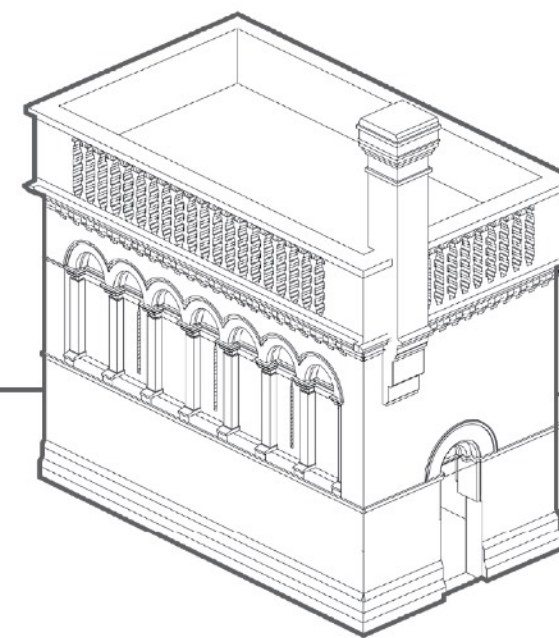


MOVED FROM ST. PANCRAS STATION

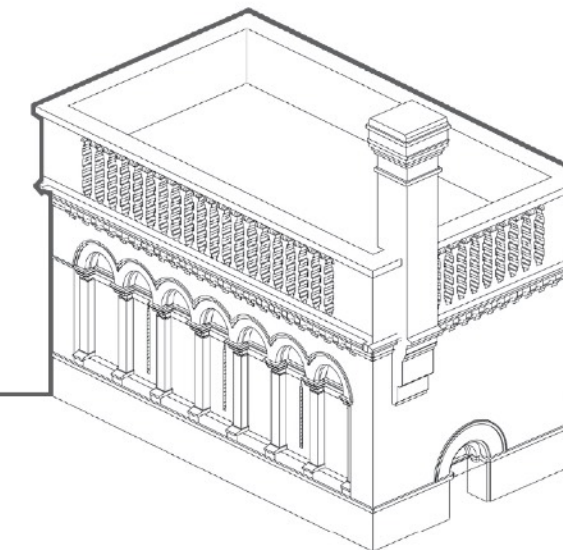




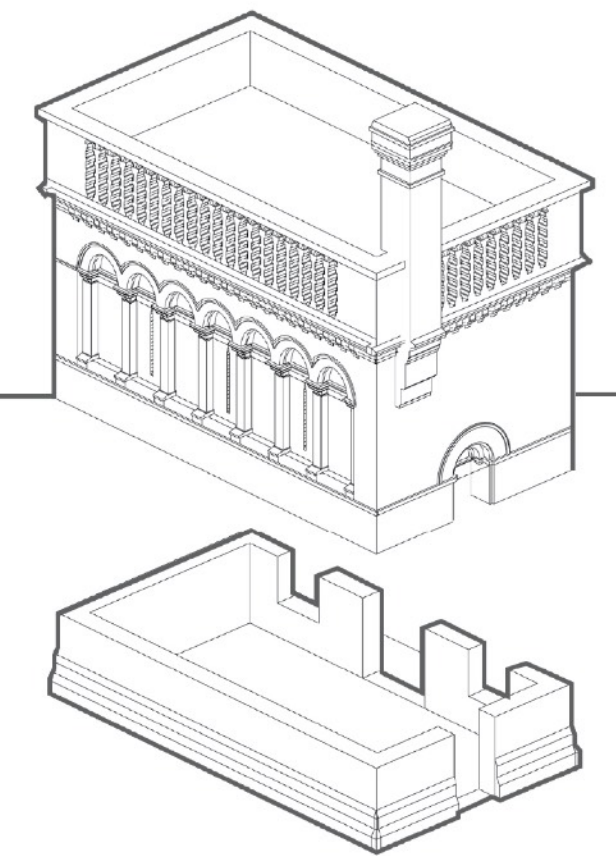
ORIGINAL



BASE REMOVED

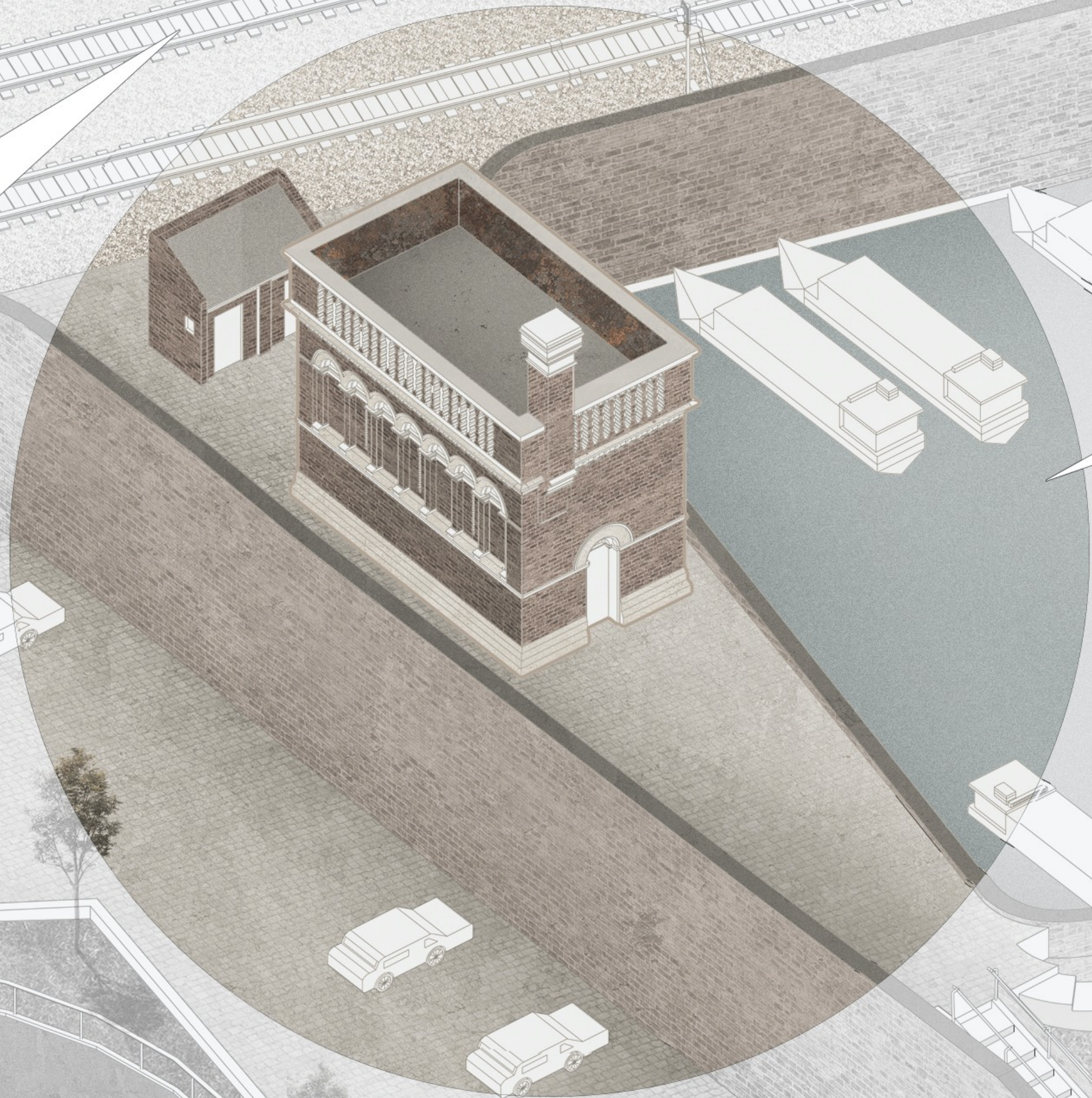


NEW BASE FORMED





RAILWAY



WATERPOINT



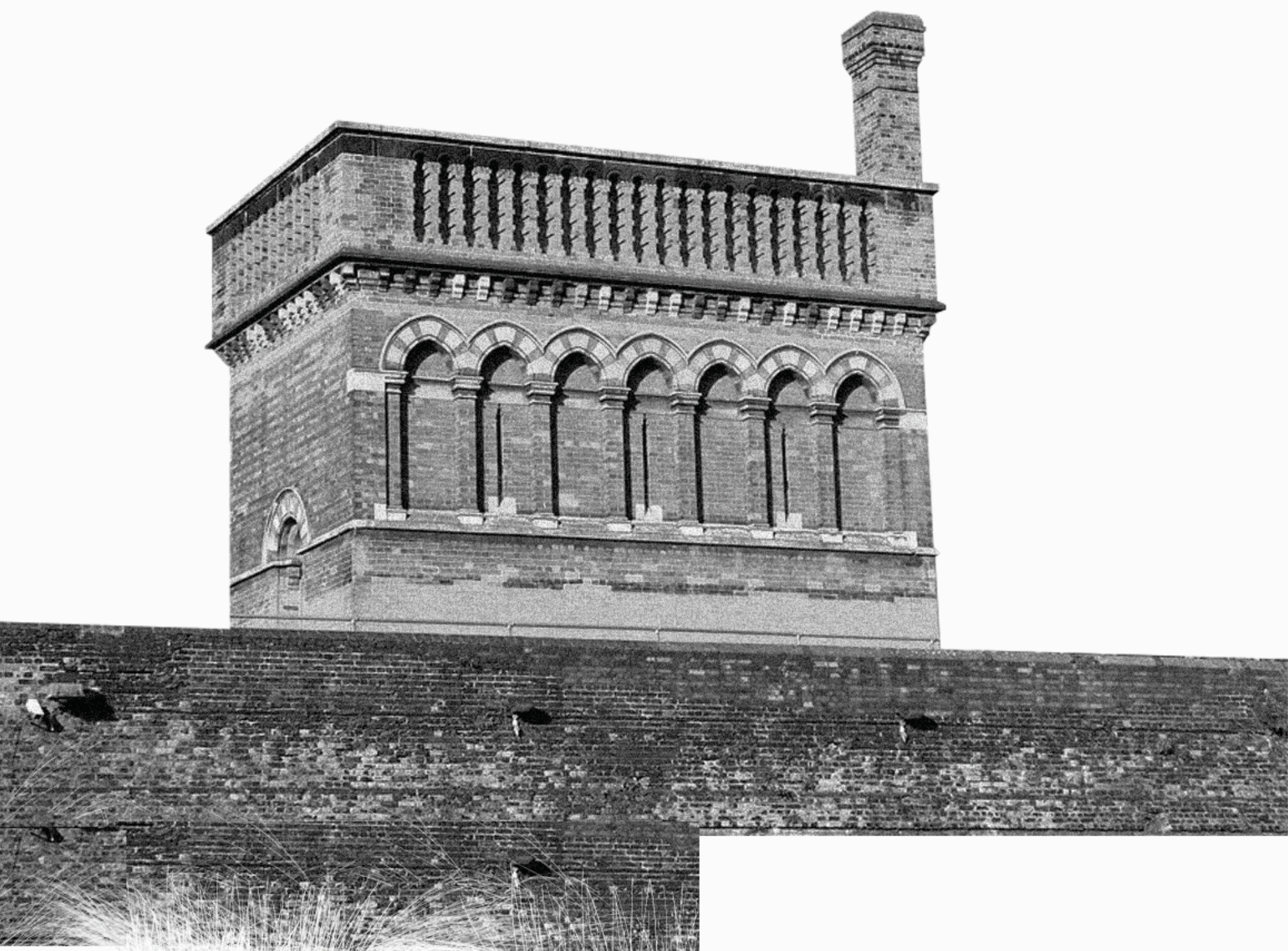
ST.PANCRAS BASIN



REGENT'S CANAL

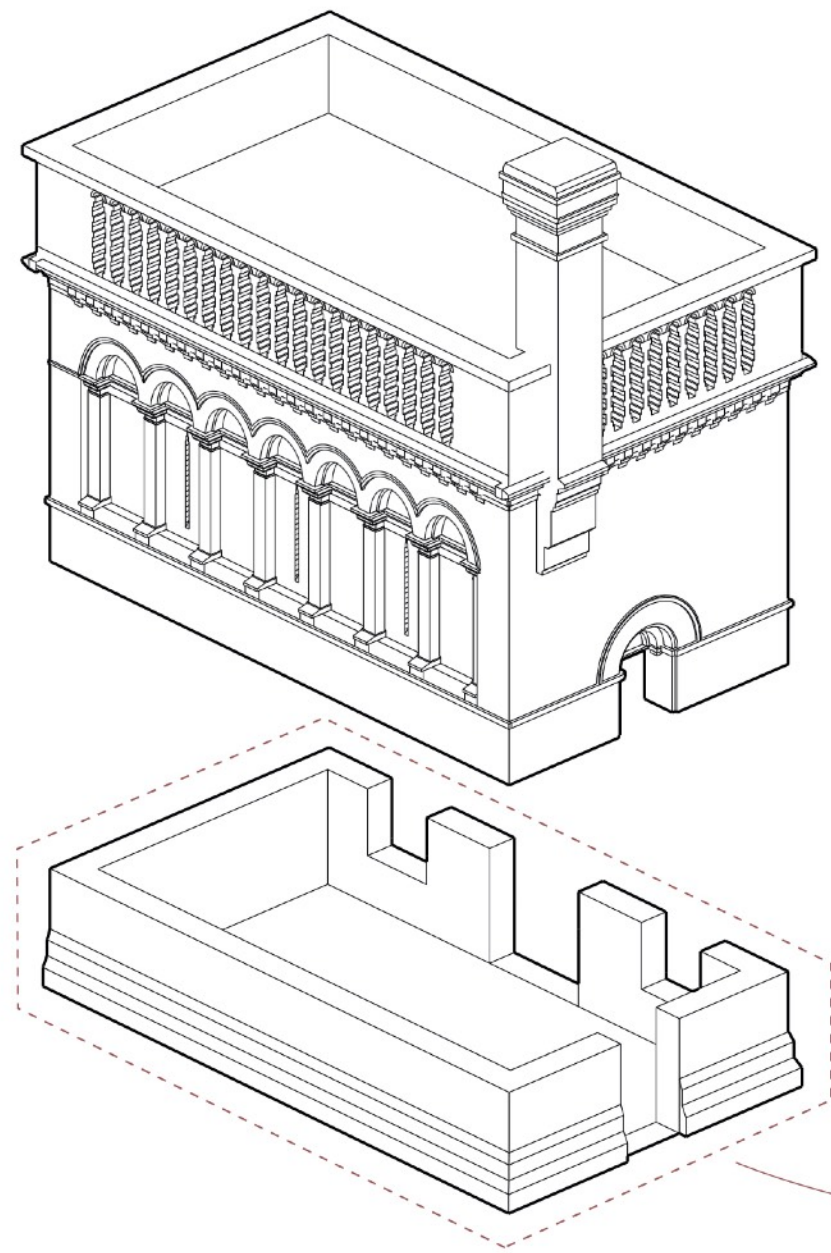


ISOLATED ON A RAISED LEVEL

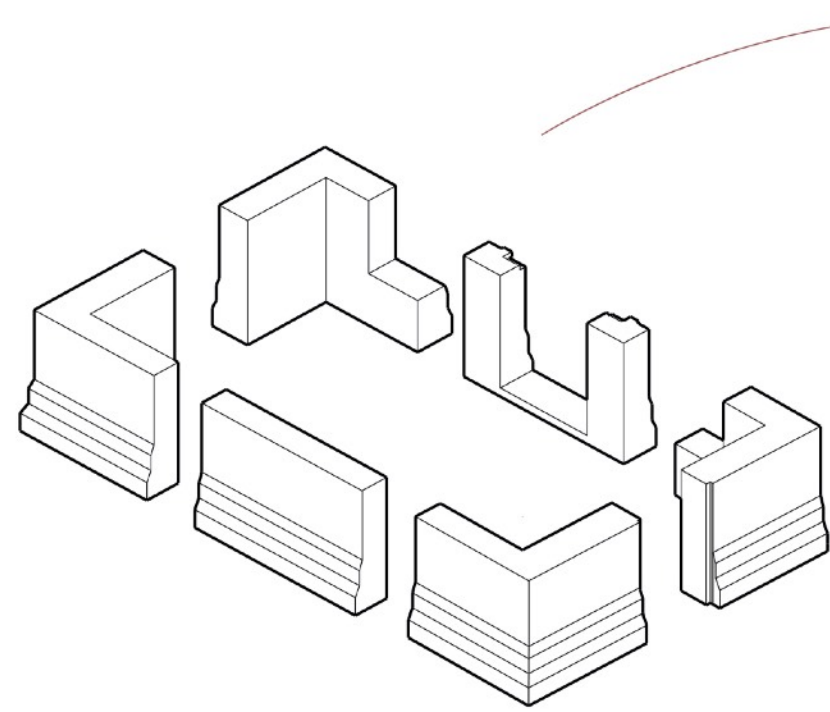


# CONCEPT

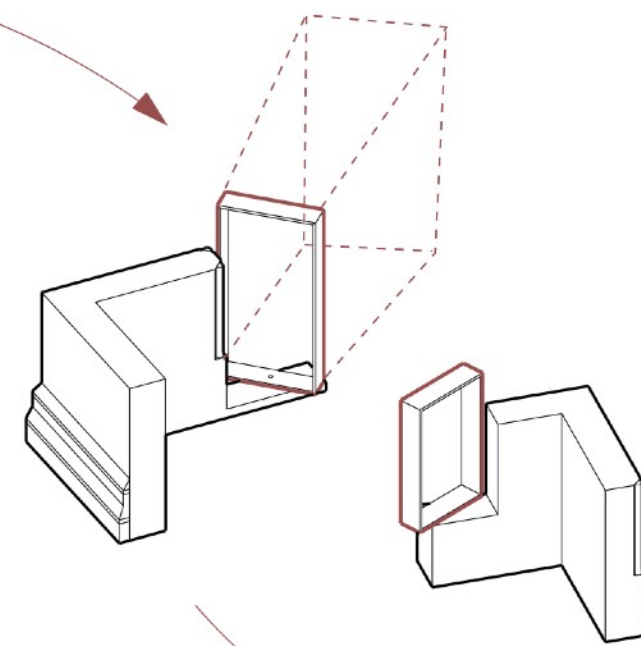
REMOVE THE BASE



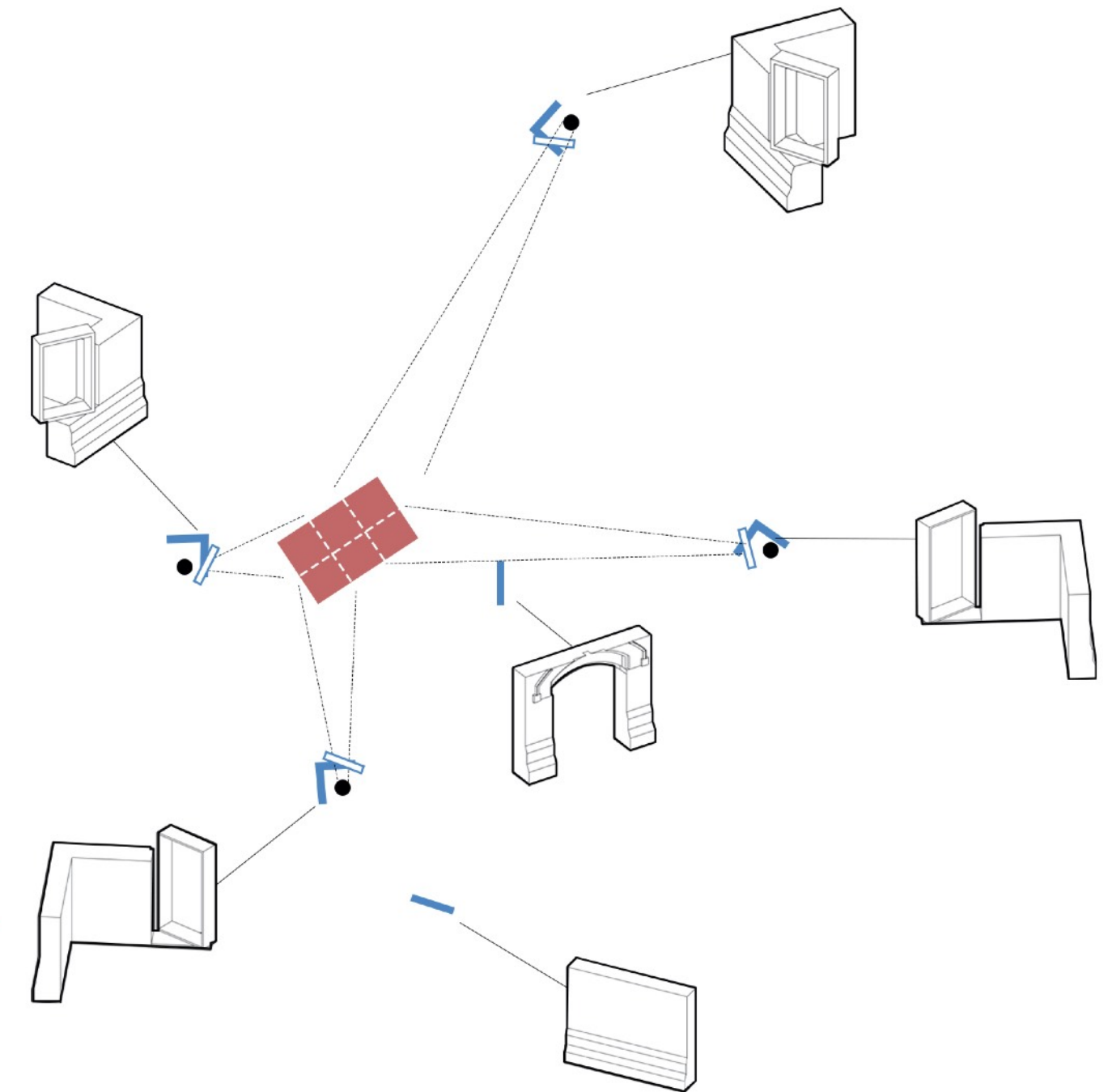
EXPLODE THE BASE



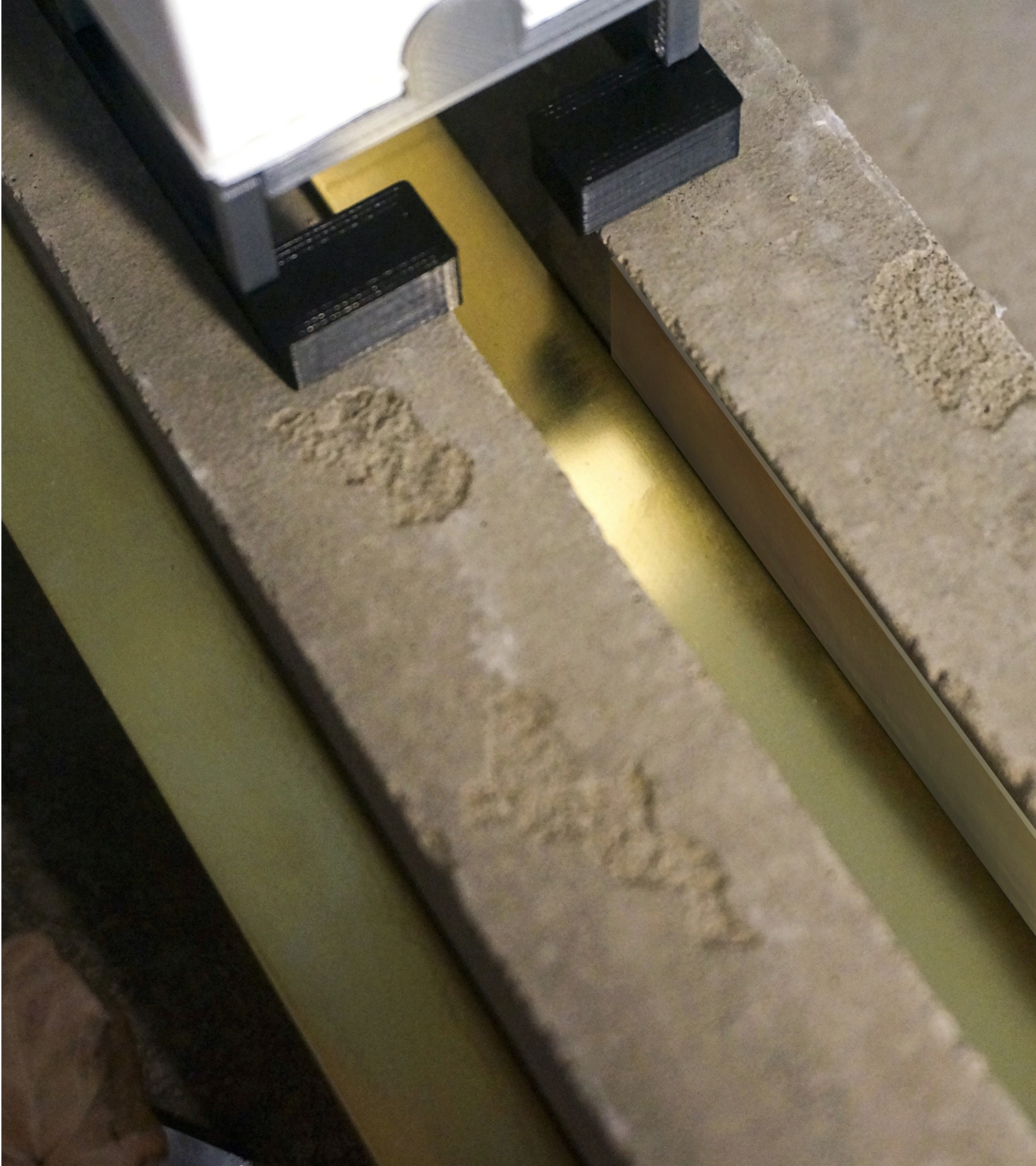
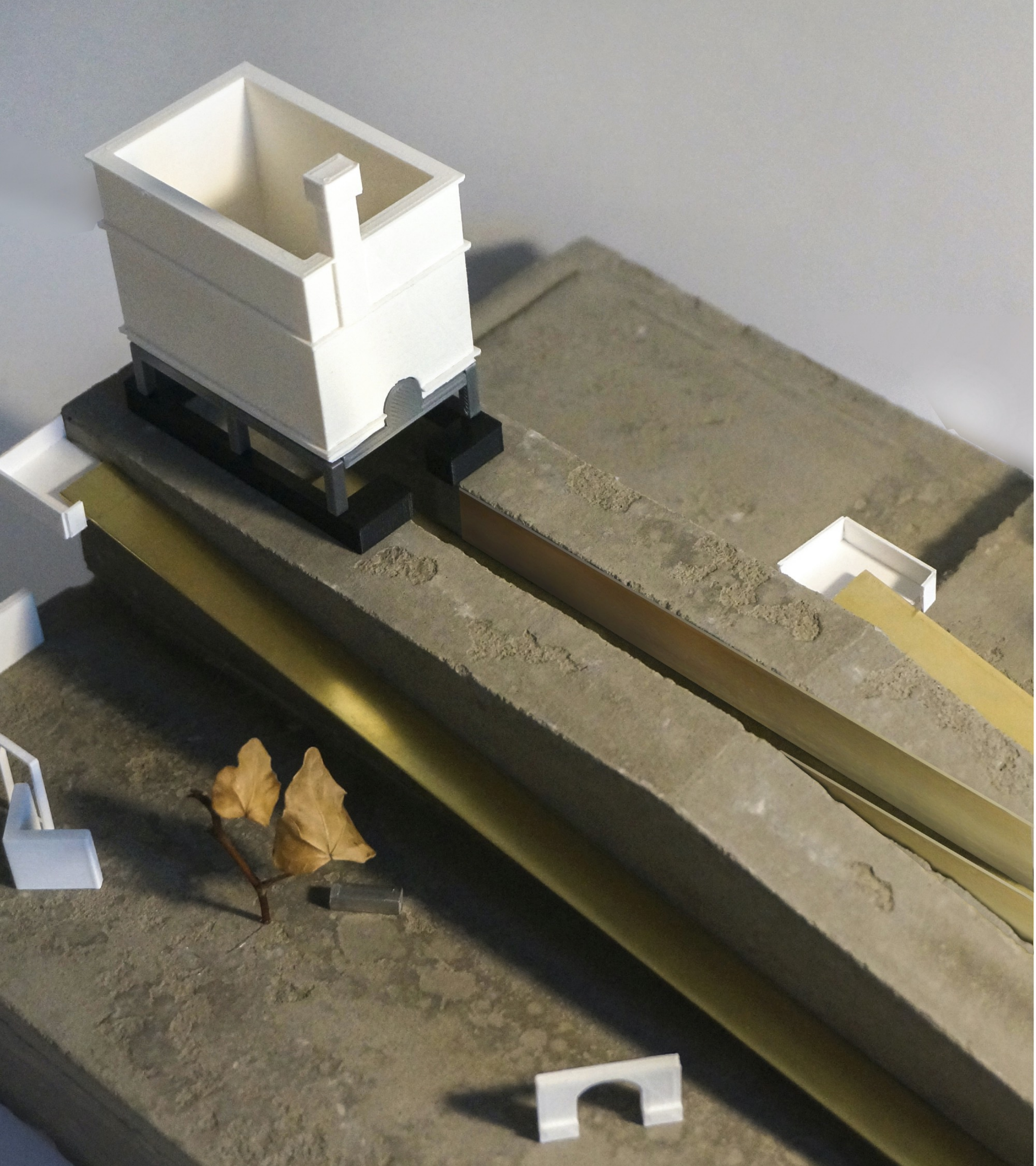
ADD FRAMES



SEE THE WATERPOINT THROUGH FRAMES

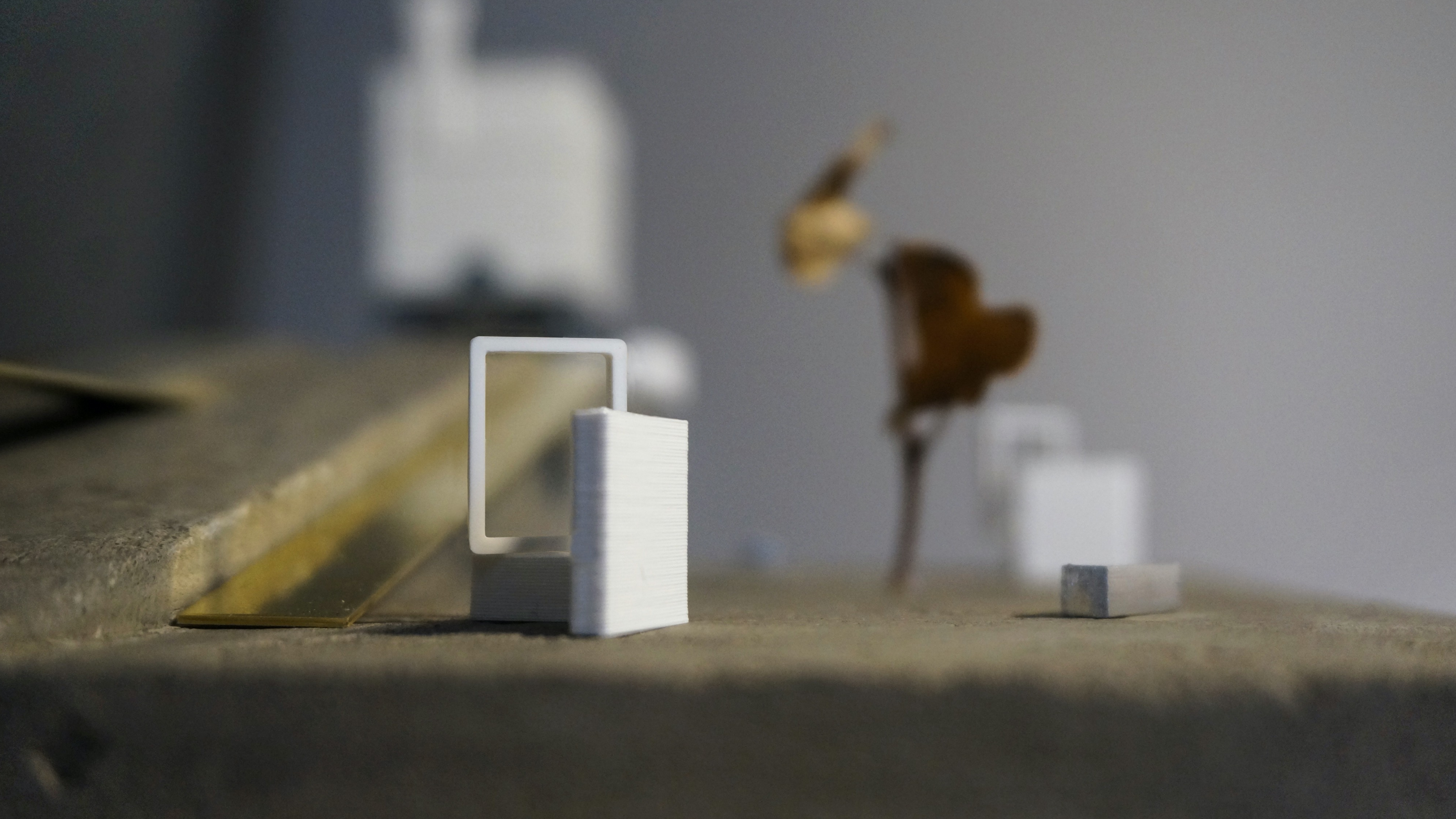


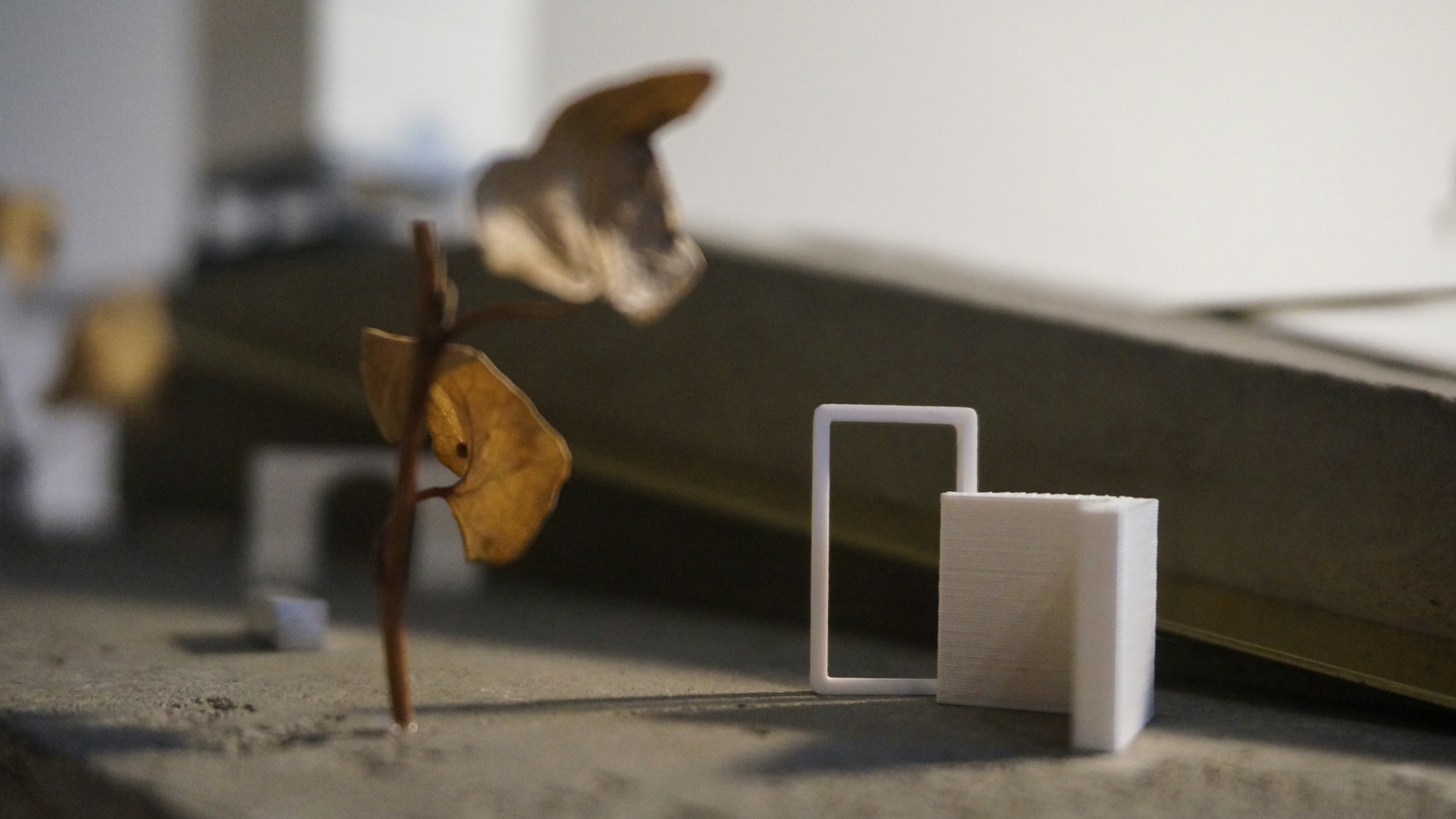














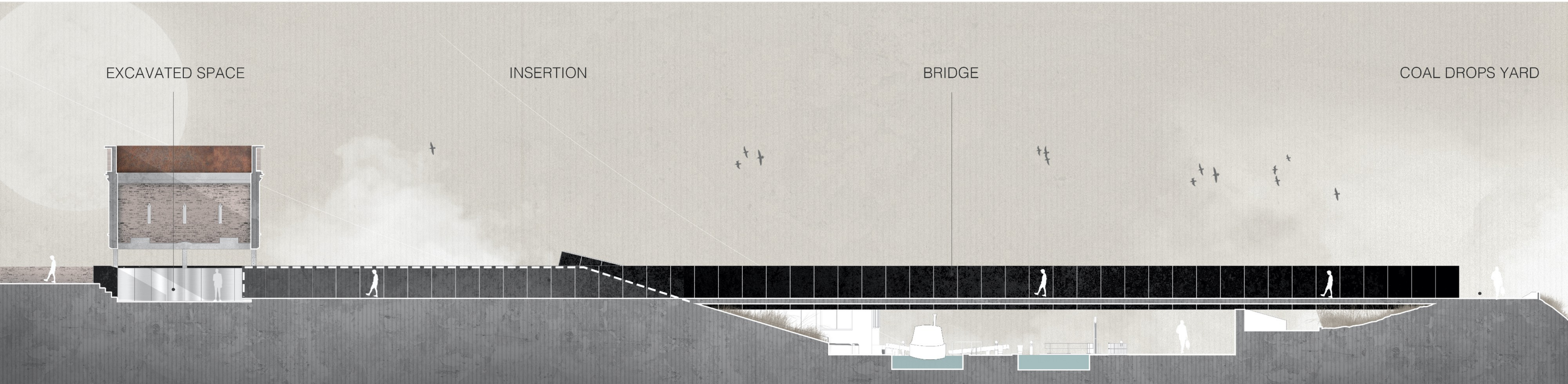


EXCAVATED SPACE

INSERTION

BRIDGE

COAL DROPS YARD



SOMERSTOWN BRIDGE

RAMP

RAILWAY

ST. PANCRAS BASIN

