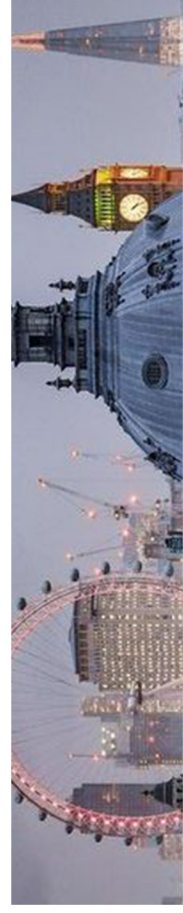


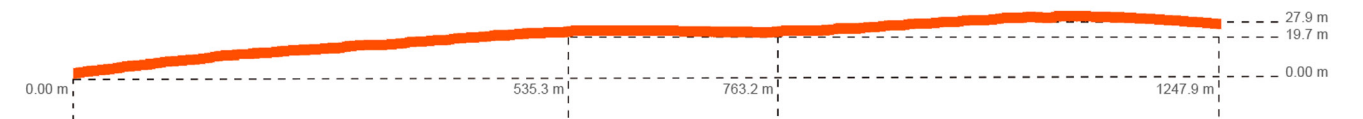
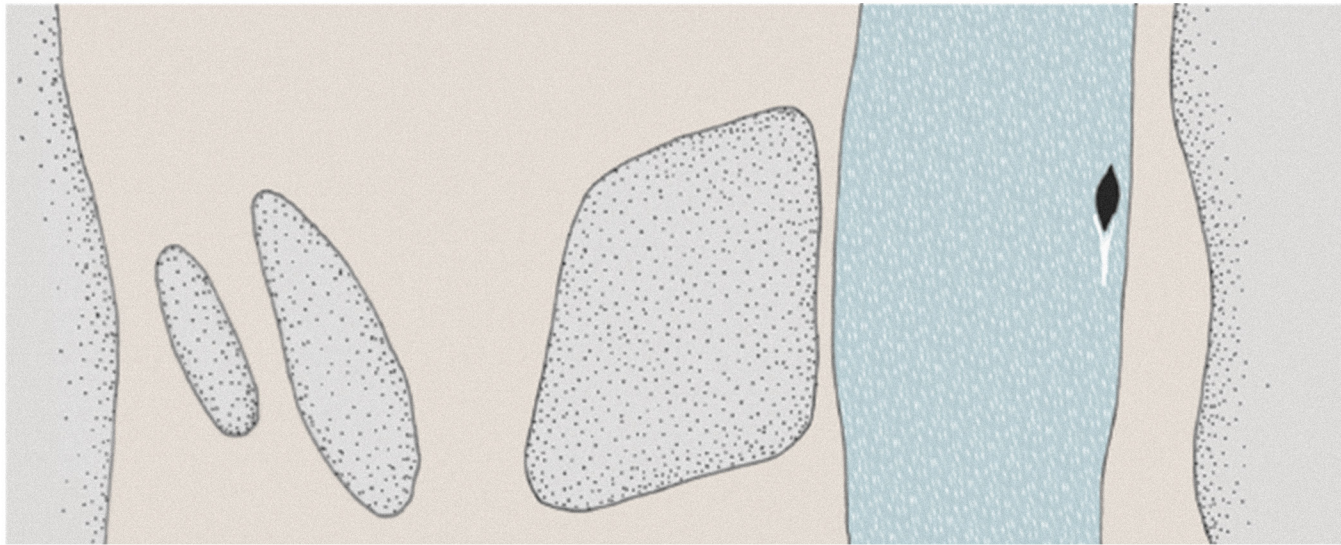
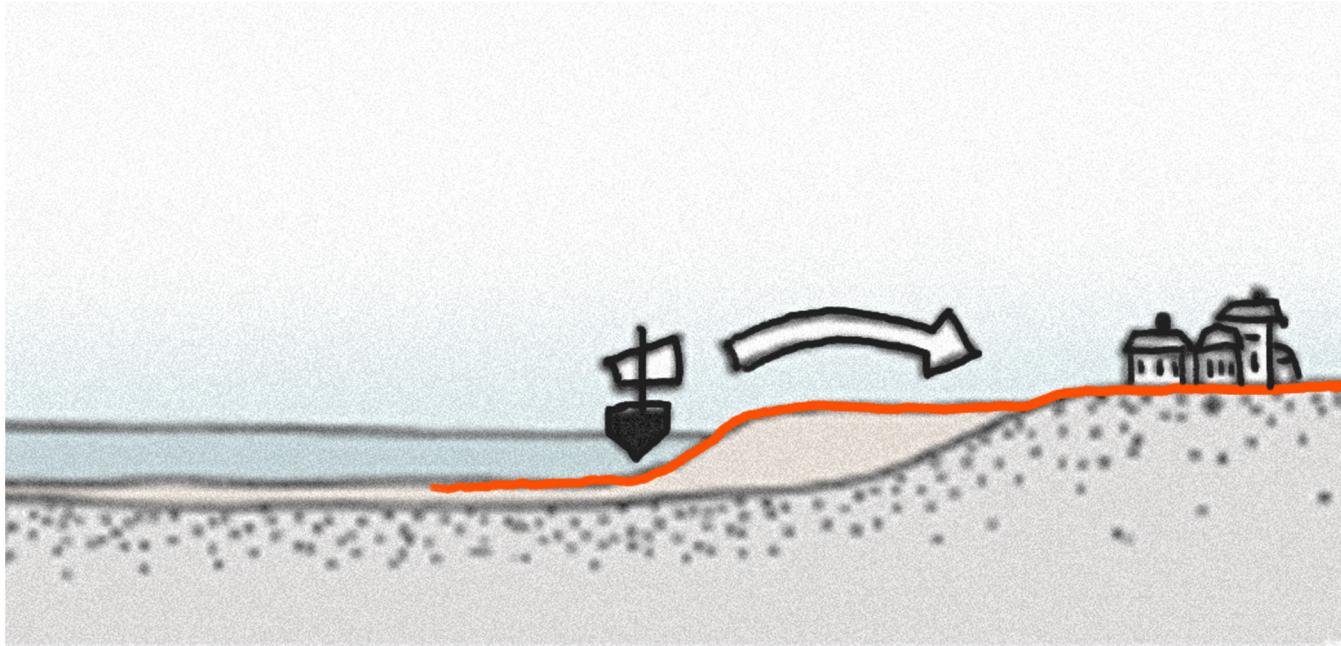
# **The Mud Bank**

Public Space & Center for Mudlarking













1 People walking on  
on the Ice  
 2 A ship to be roasted  
whole  
**A View on the RIVER THAMES** between London and Blackfriars Bridges in the hard FROST 1814  
 taken on the Spot at bankside February 4. 1814  
 Published Feb 7 1814 by G. Thompson, N<sup>o</sup> 43 Long Lane, Smithfield.  
 3 Printing  
 4 Playing  
at Skittles

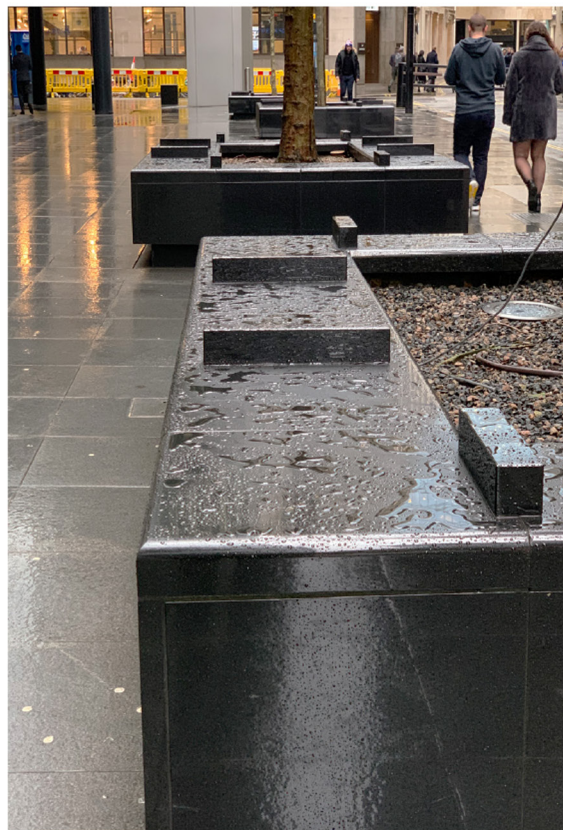
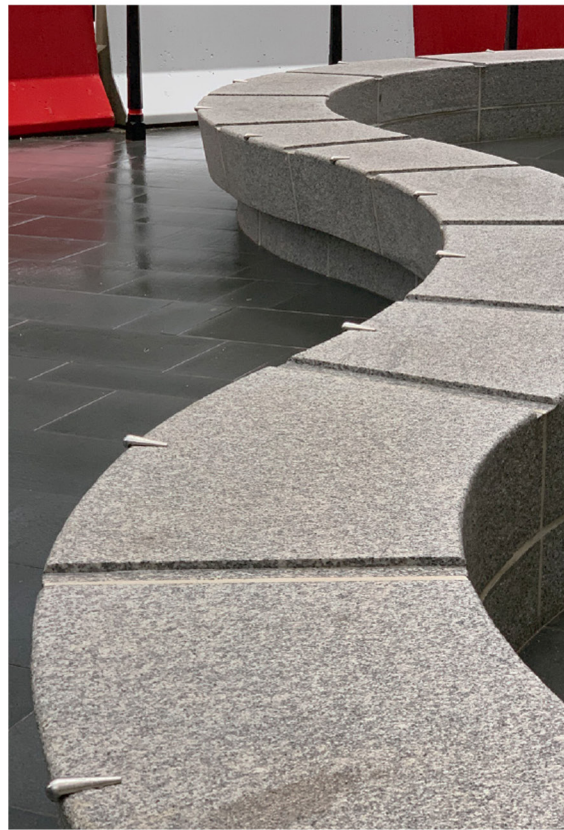
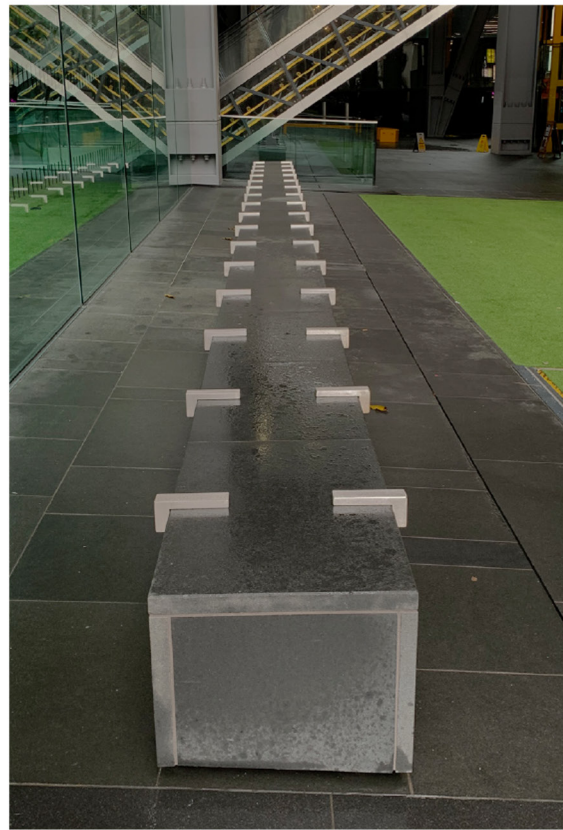




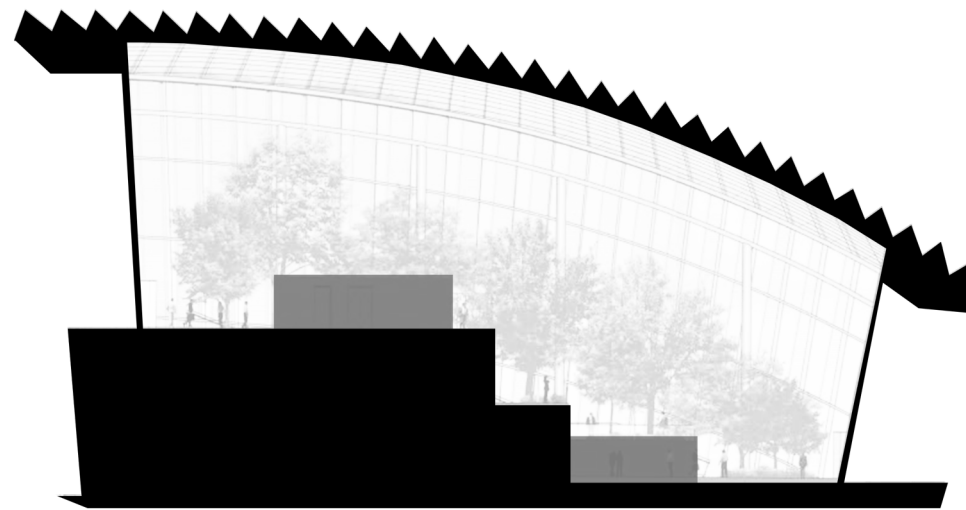




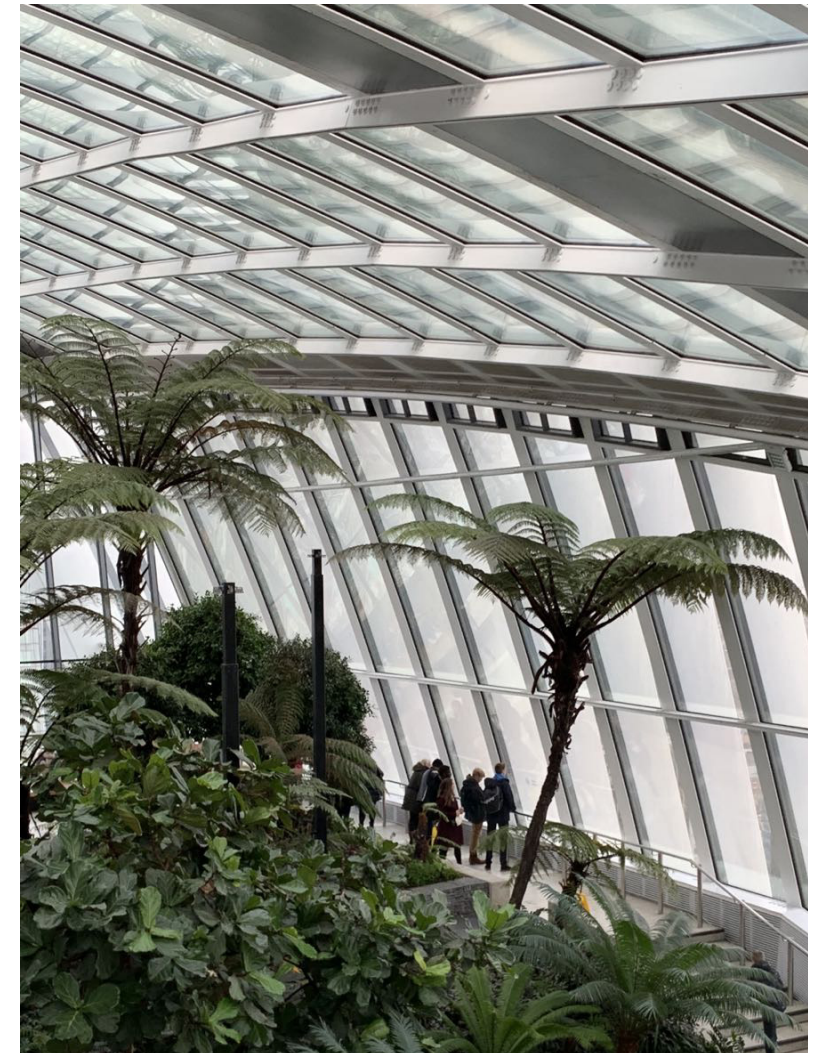
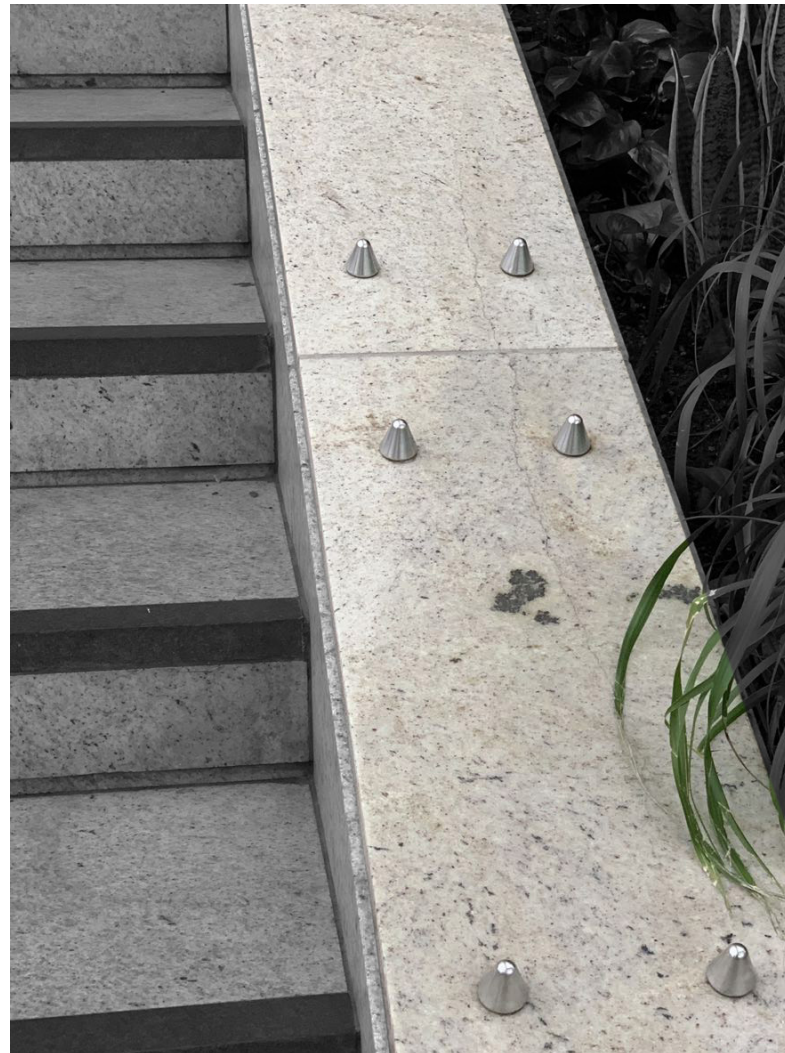
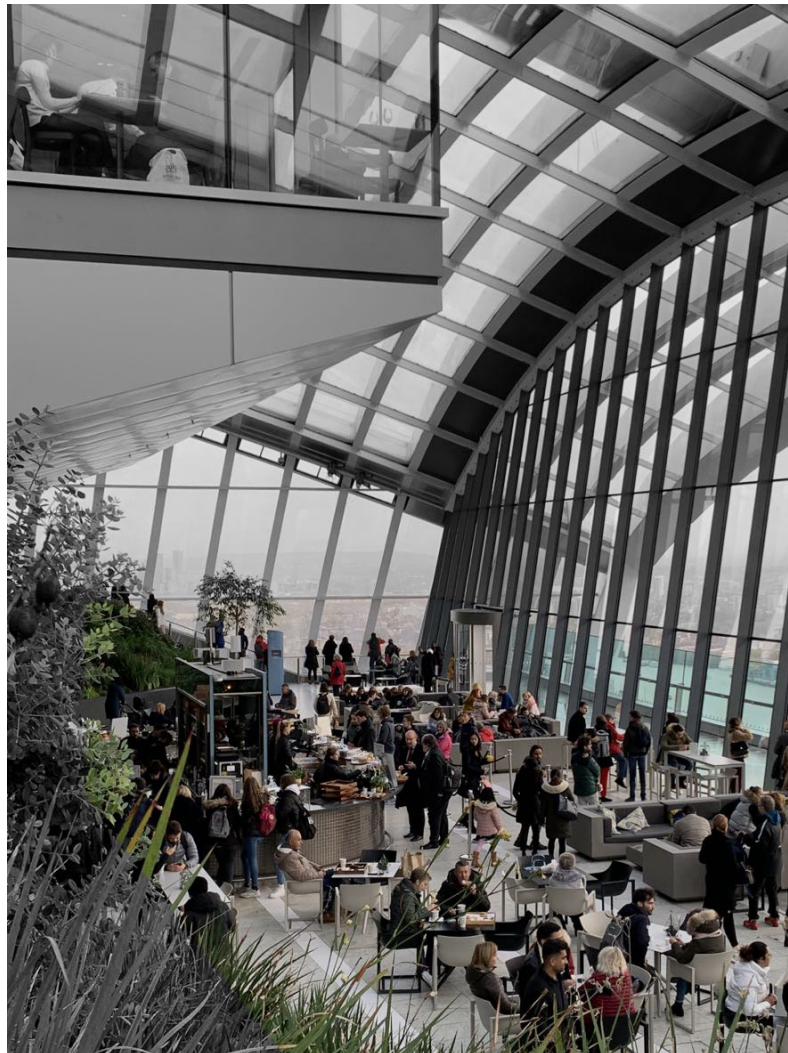




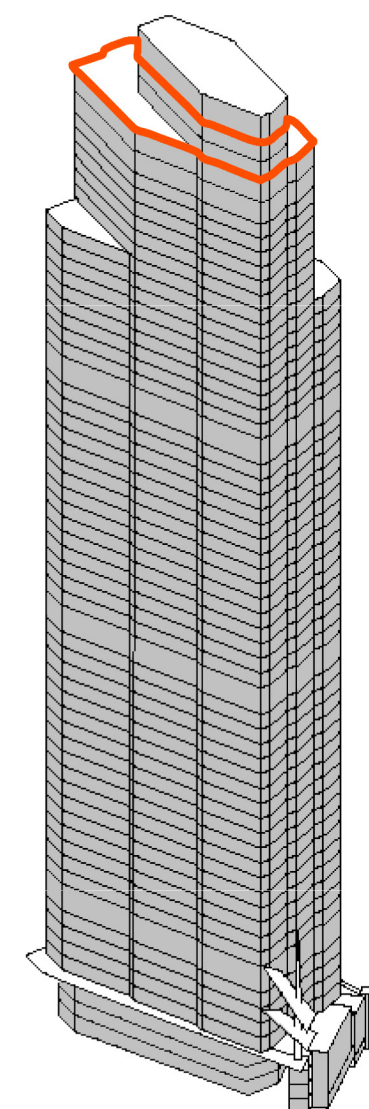




The Sky Garden

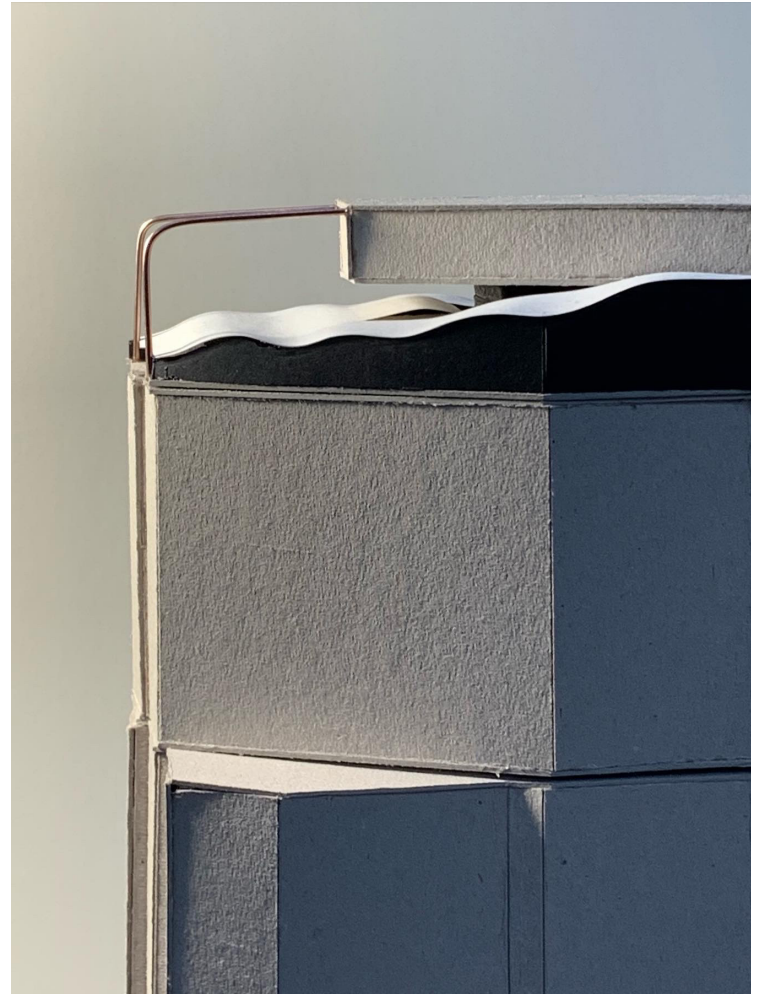




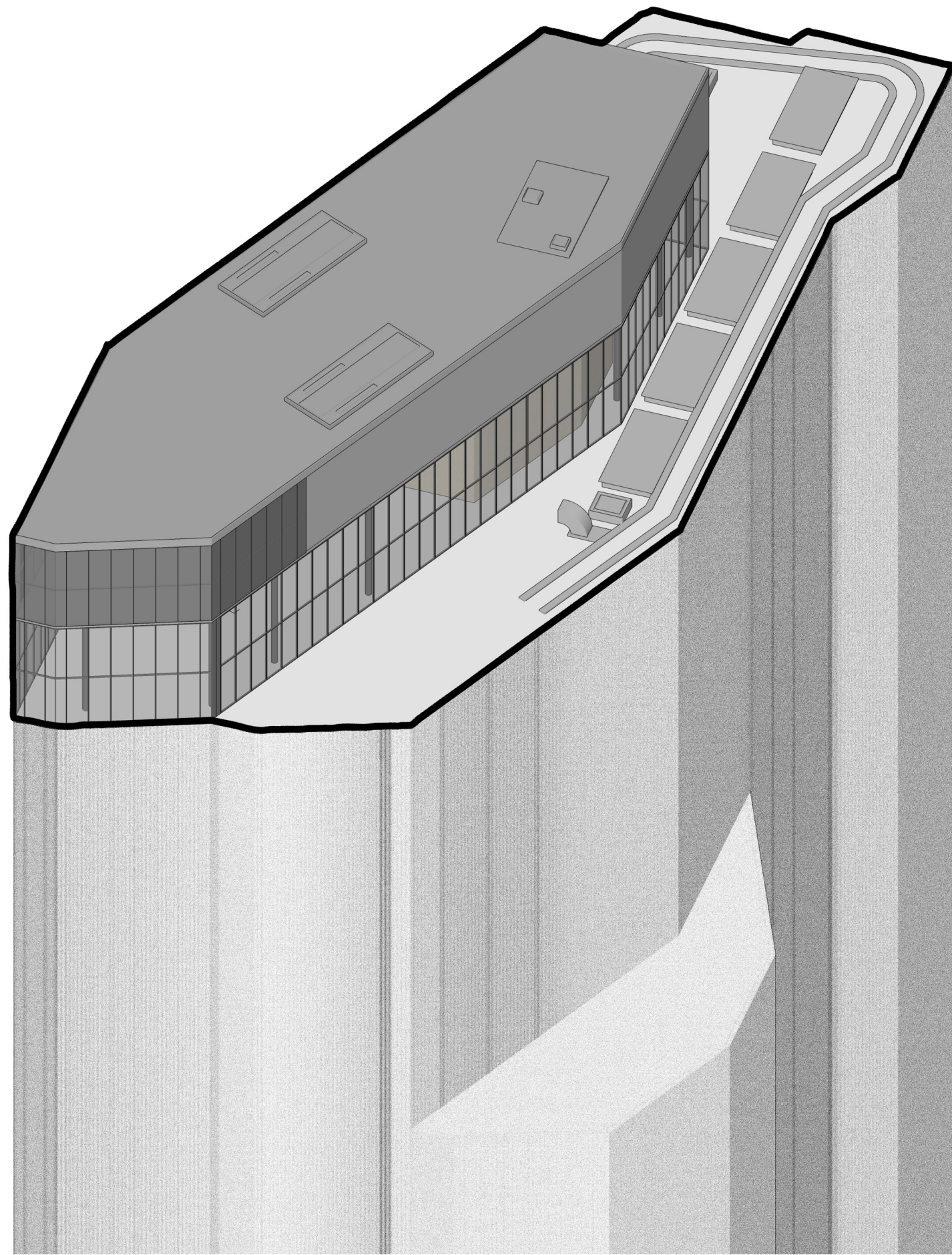


22 Bishopsgate

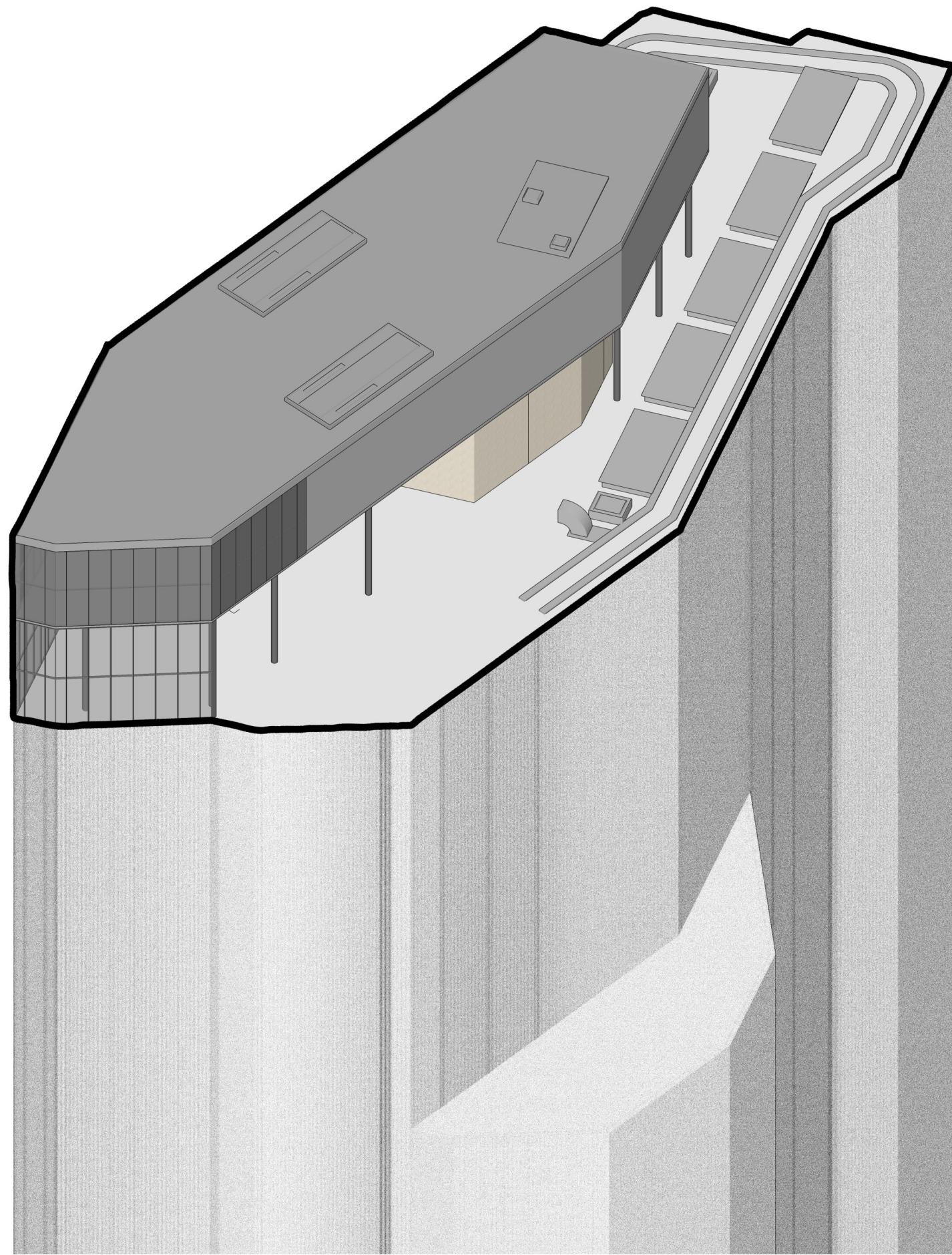




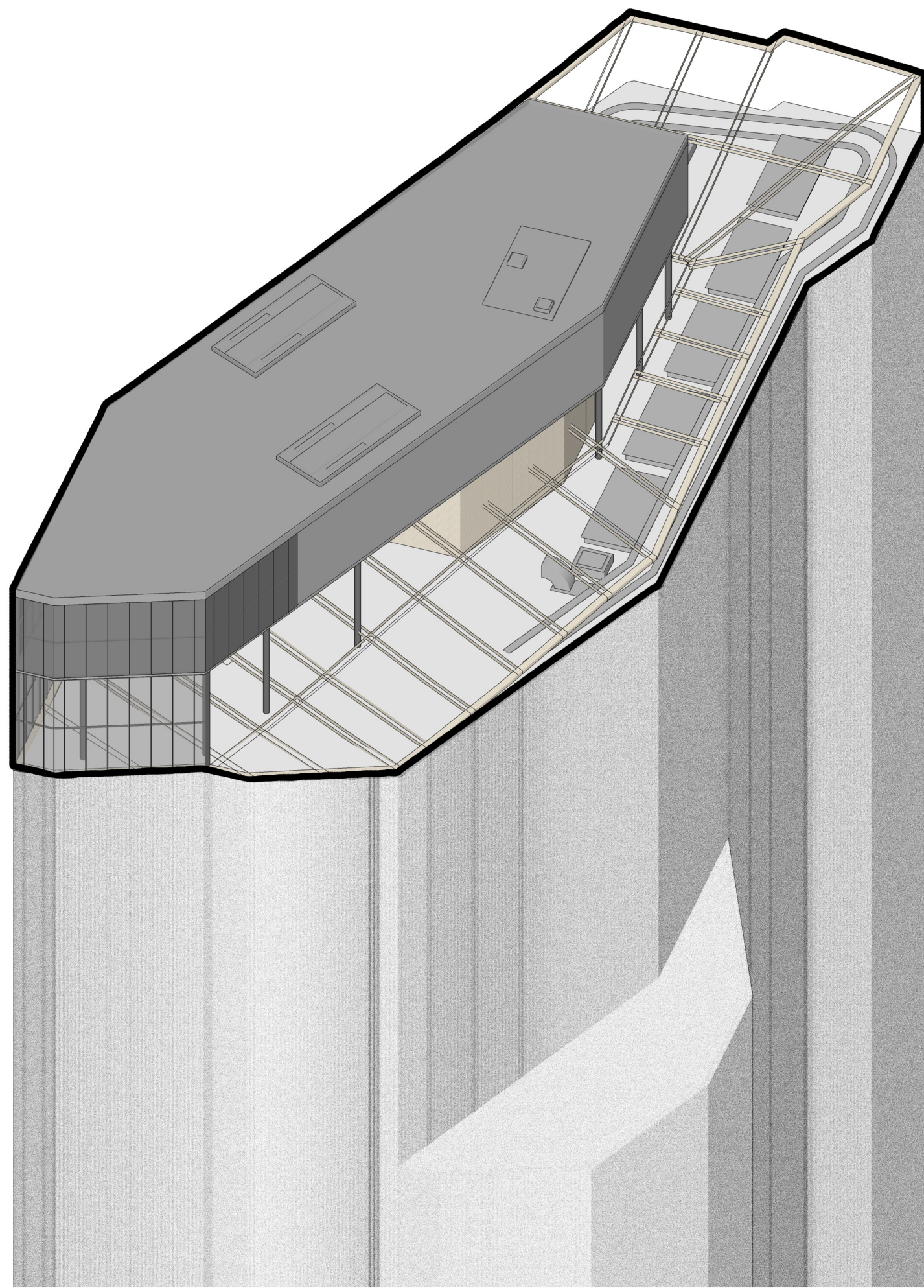




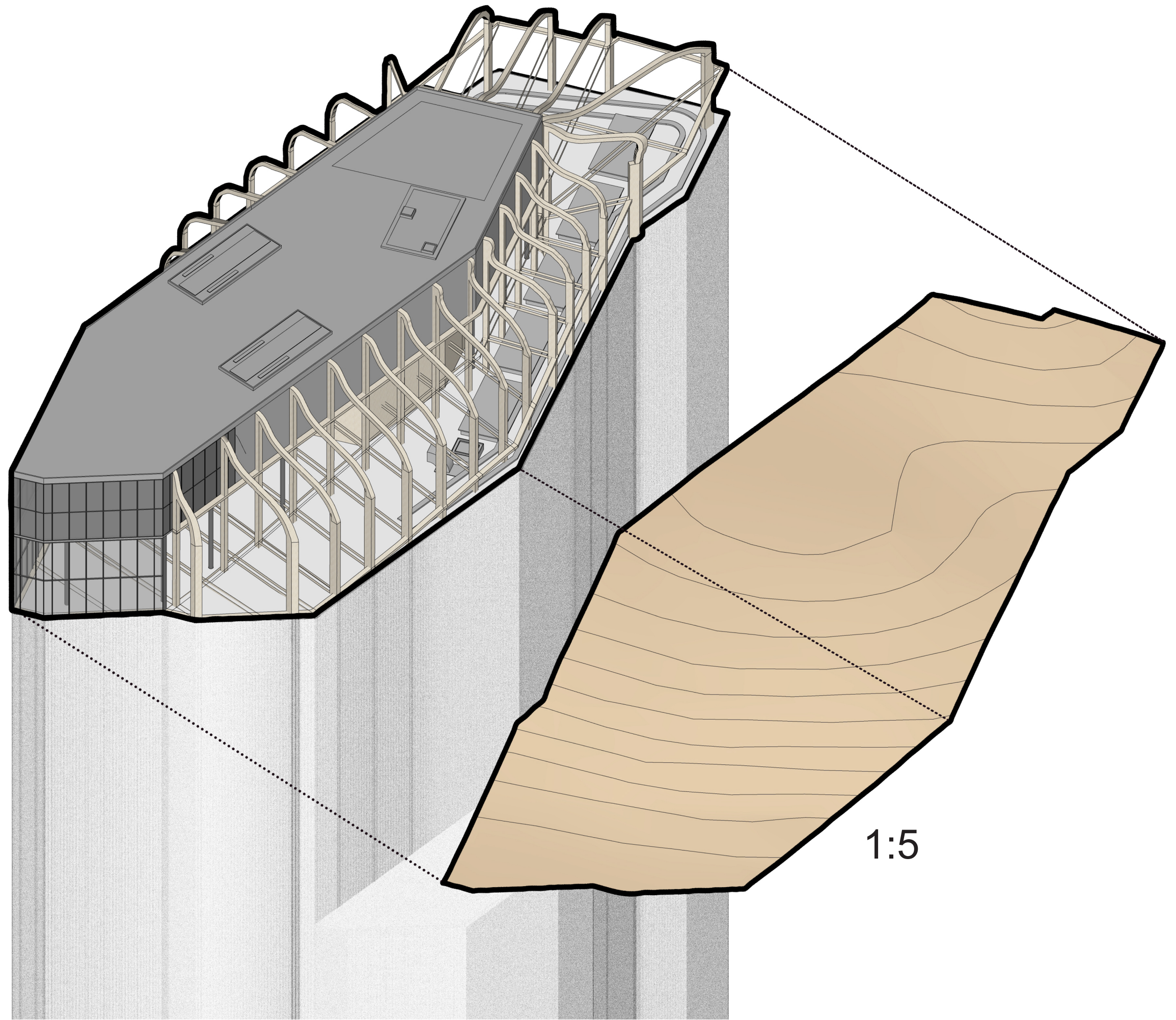






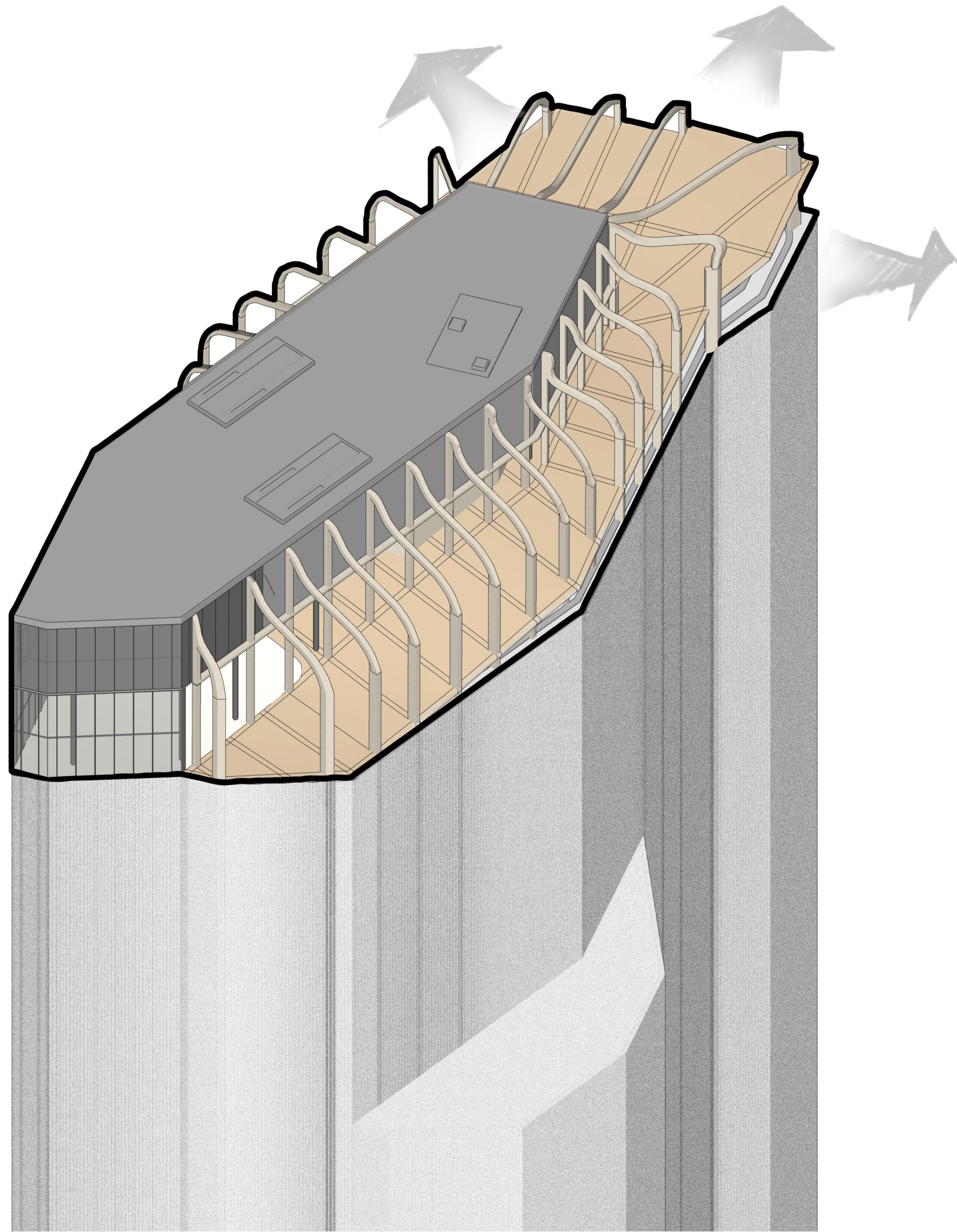




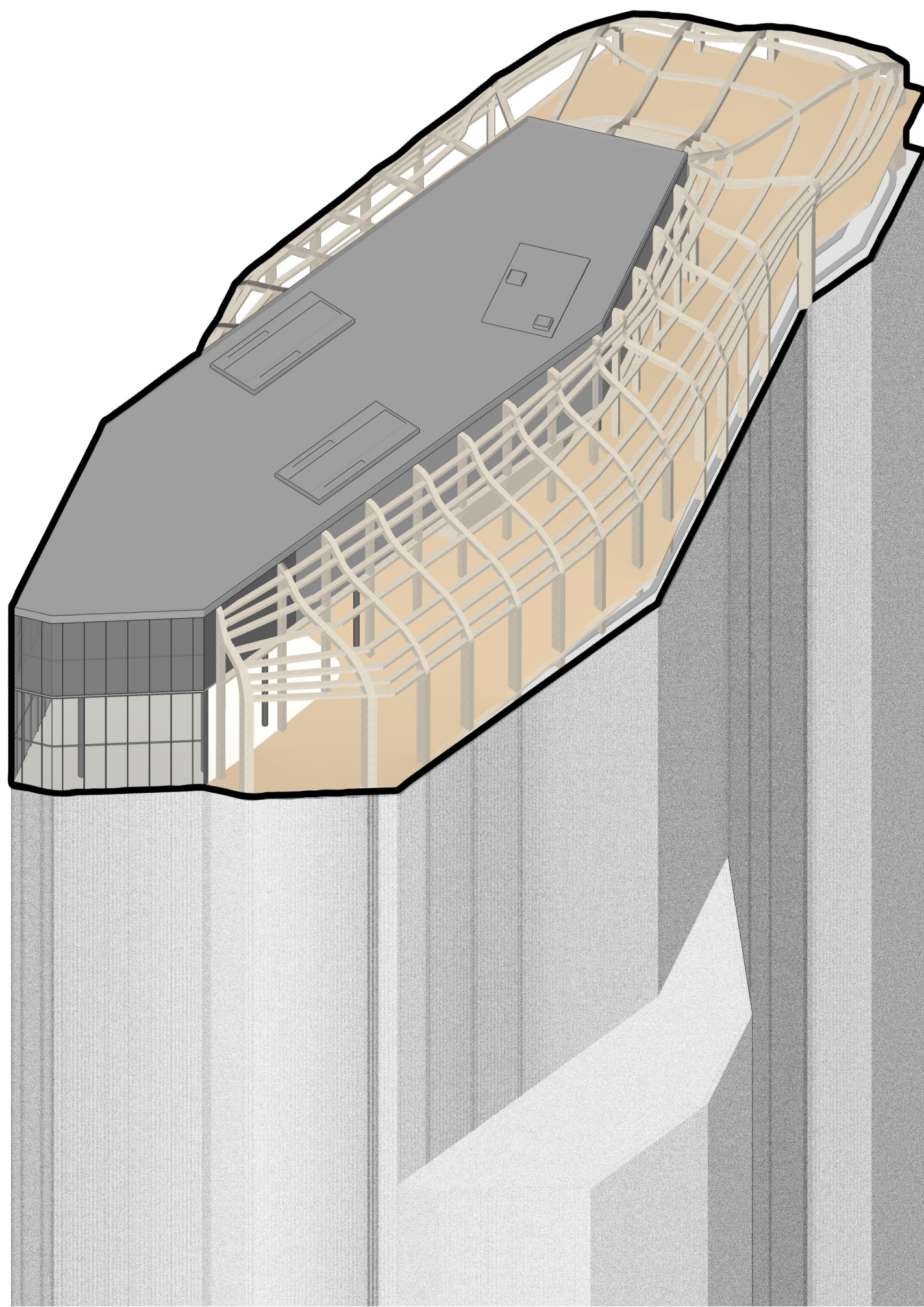


1:5

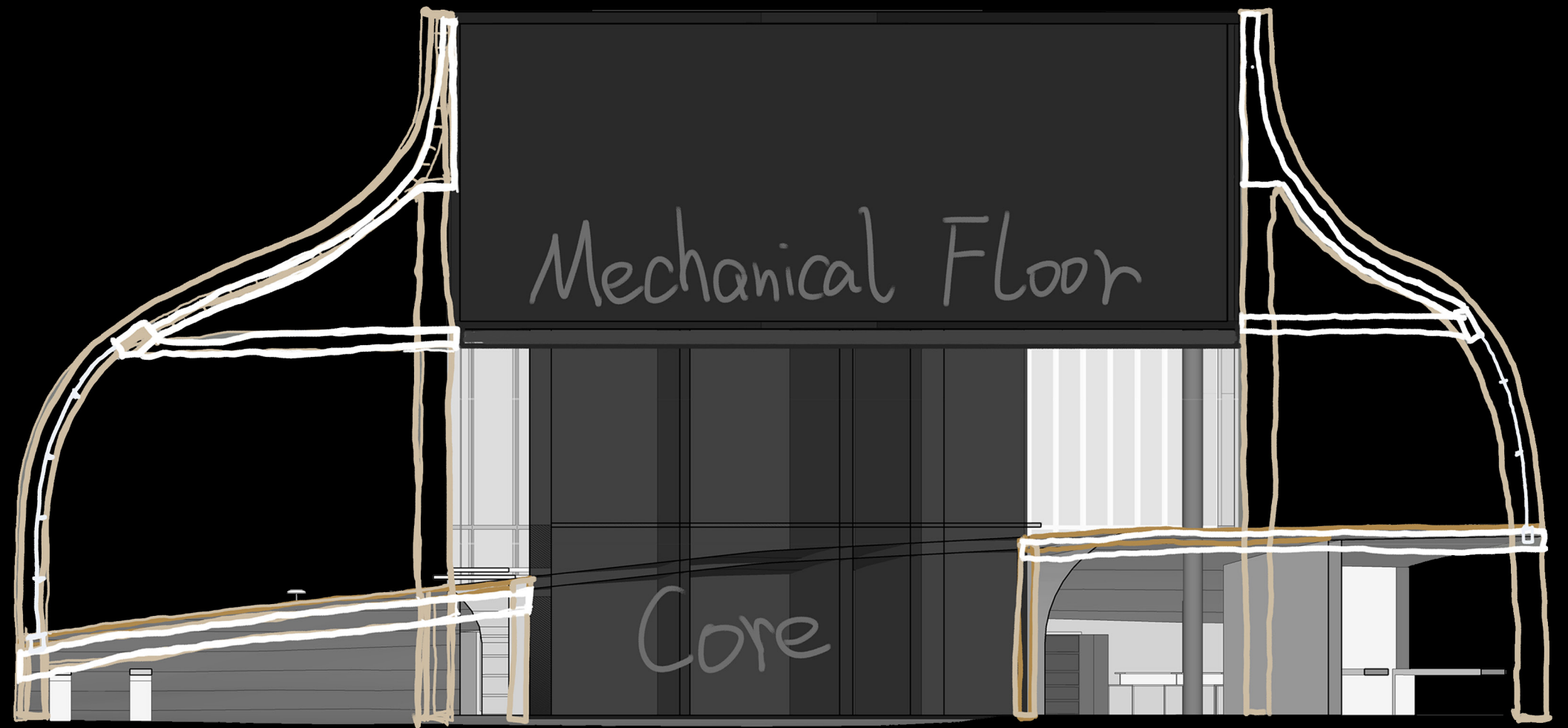
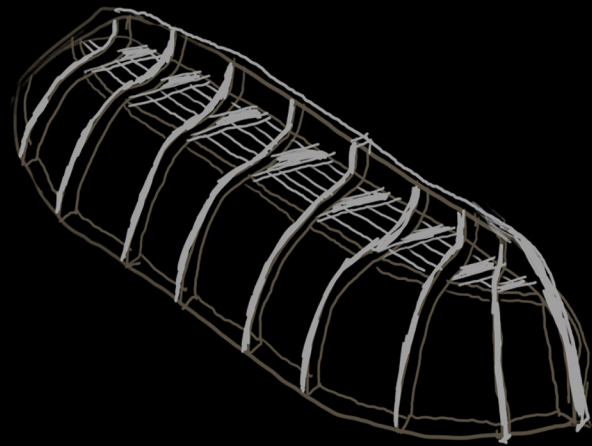




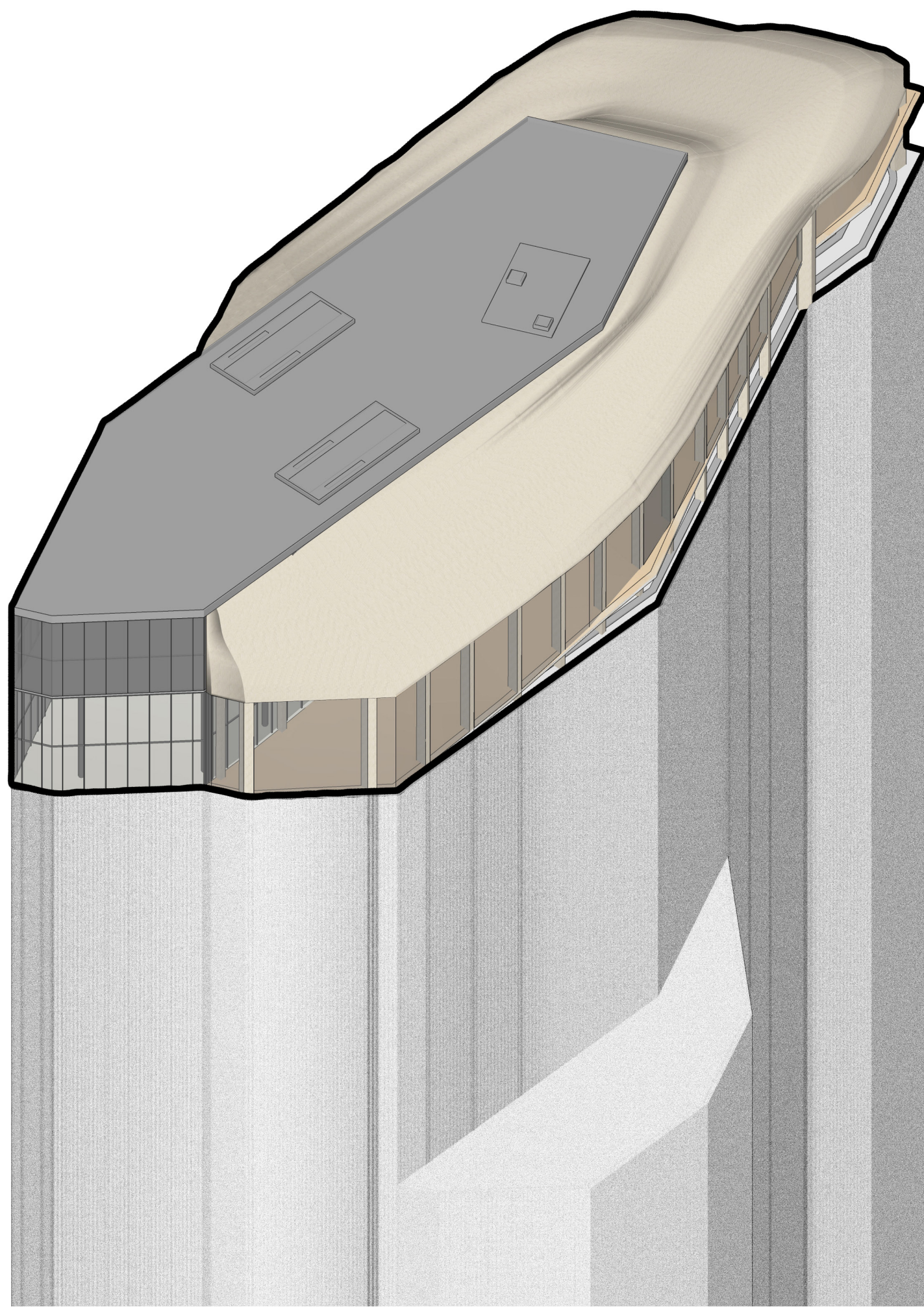








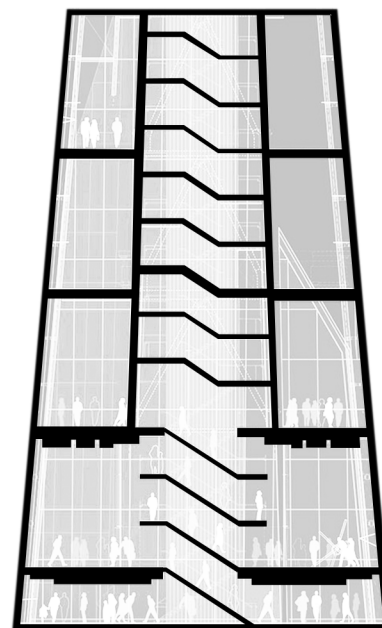




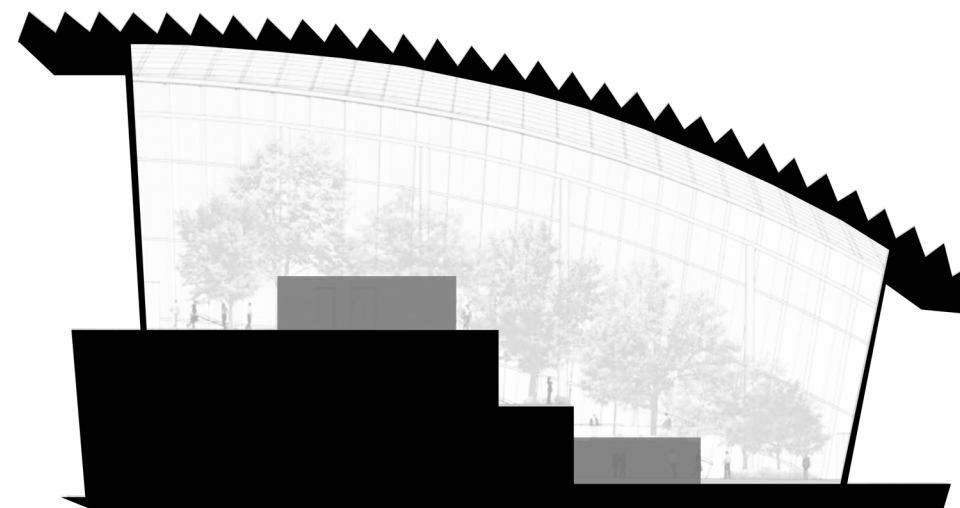




The Mud Bank

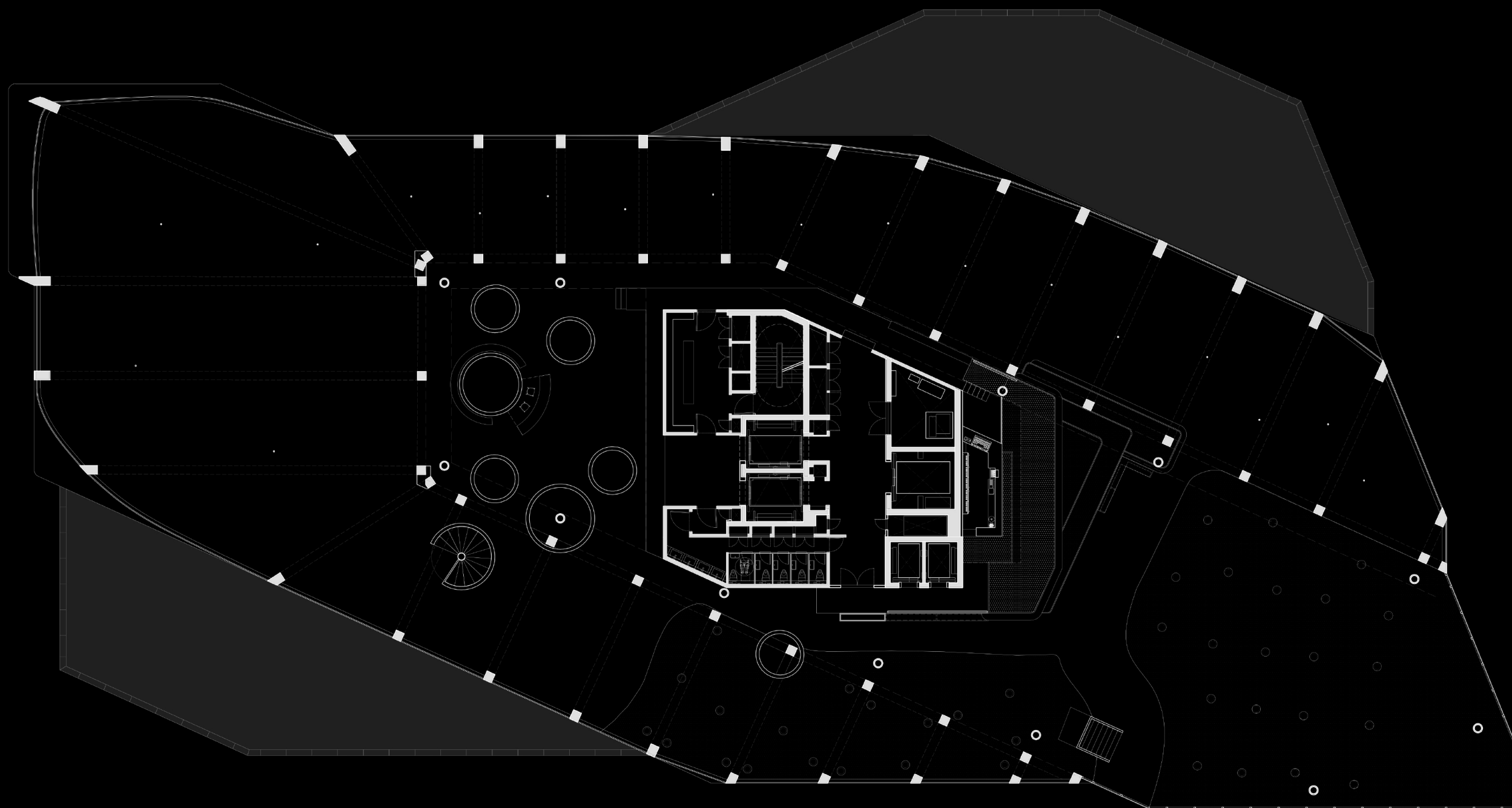


The Shard



The Sky Garden





Upper Floor Plan (60)

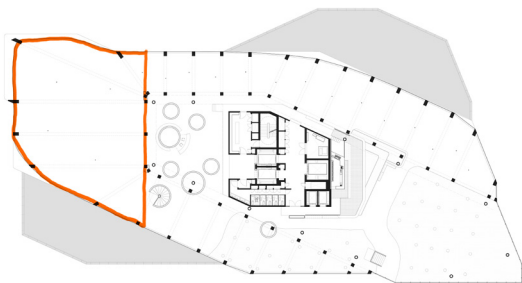
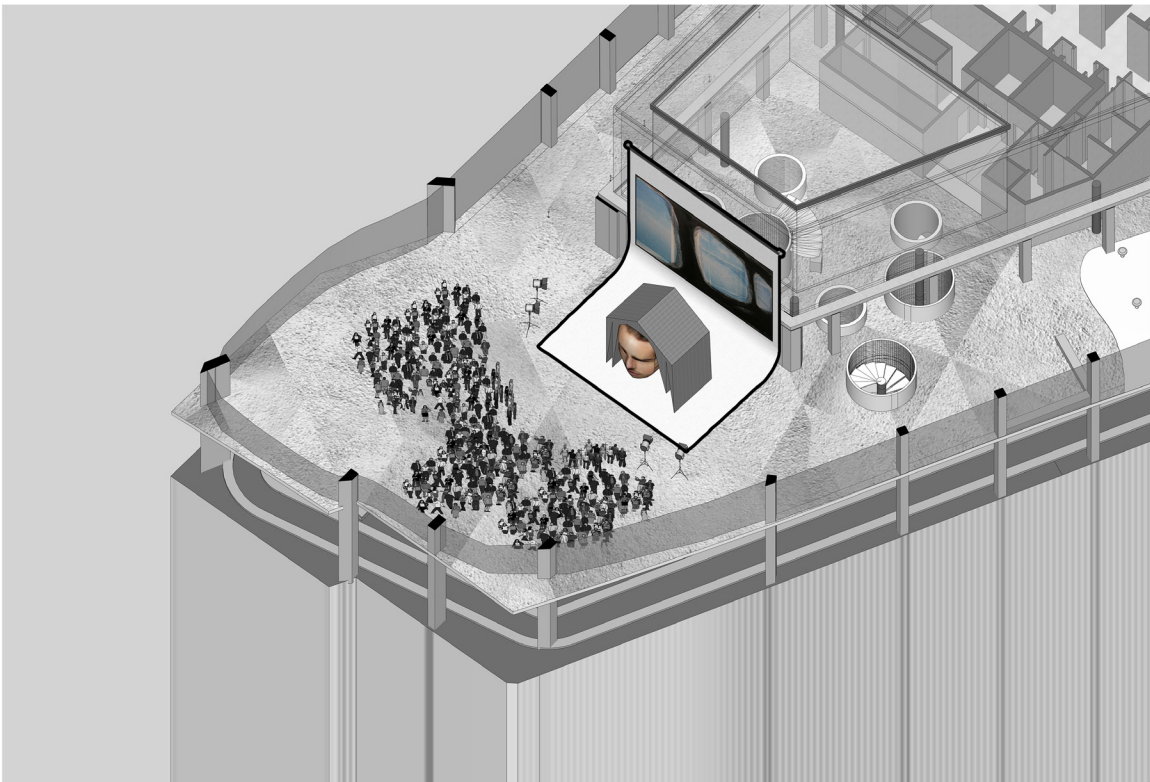
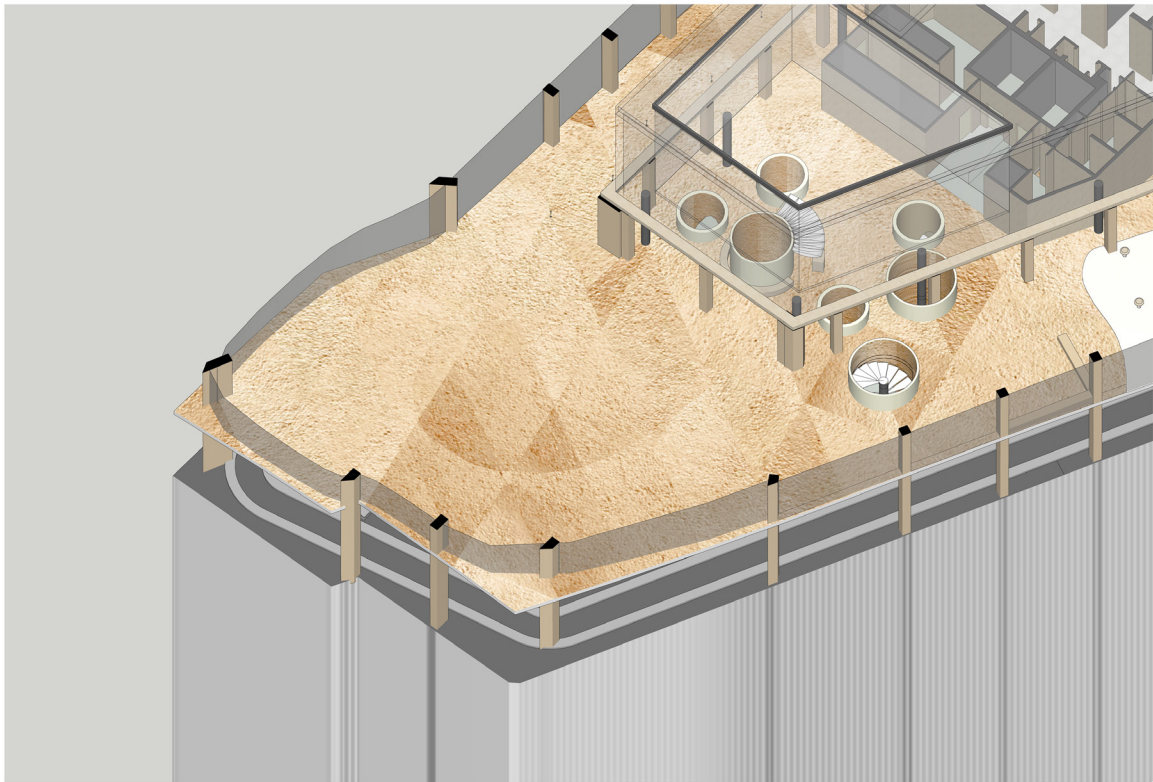




West Side View











Wool Felt

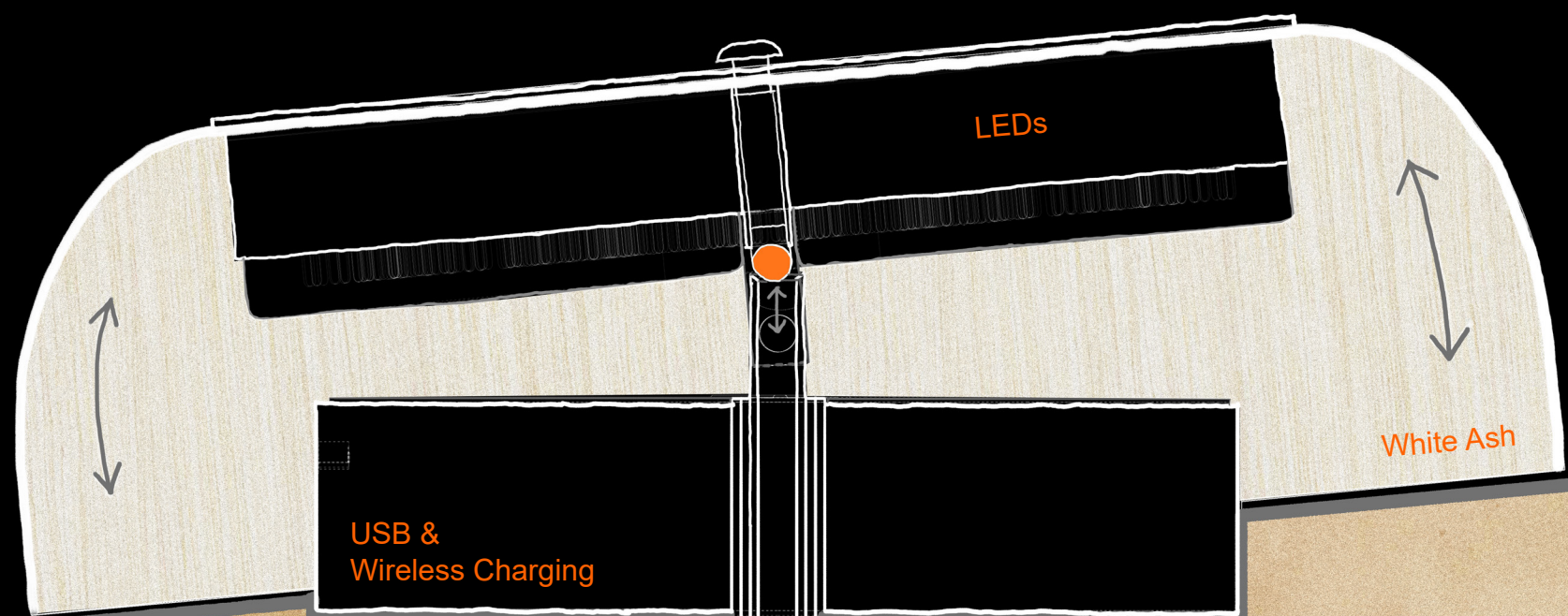
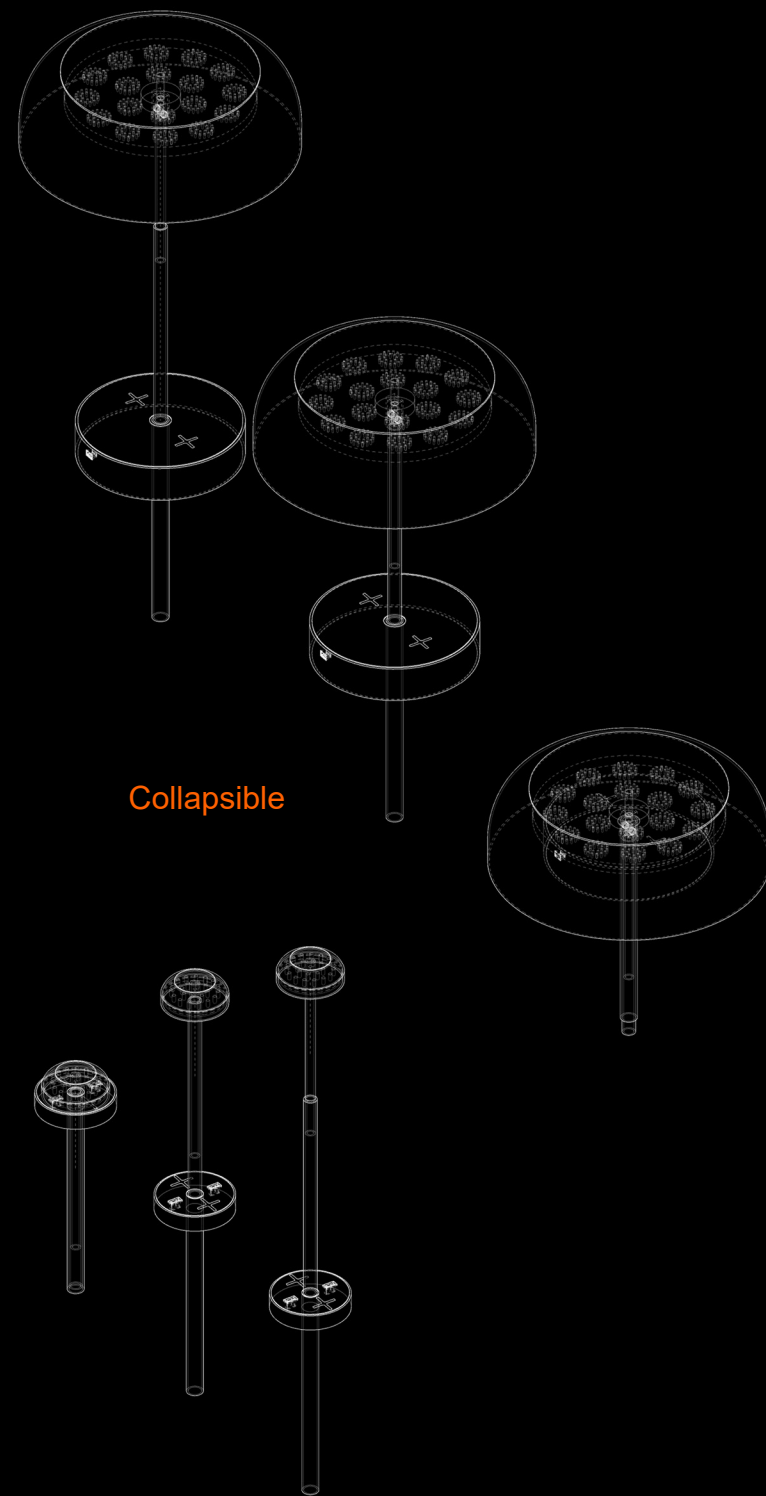


Clay Plaster













London Clay



Clay Plaster





## Mudlarking

At 18th centruy, poor or young scavengers often looked for items of value on the muddy banks of Thames, called Mudlarks. Today mudlarking is a hobby pursued by enthusiastic amateurs who feel connected to history through the objects they find beneath mud.











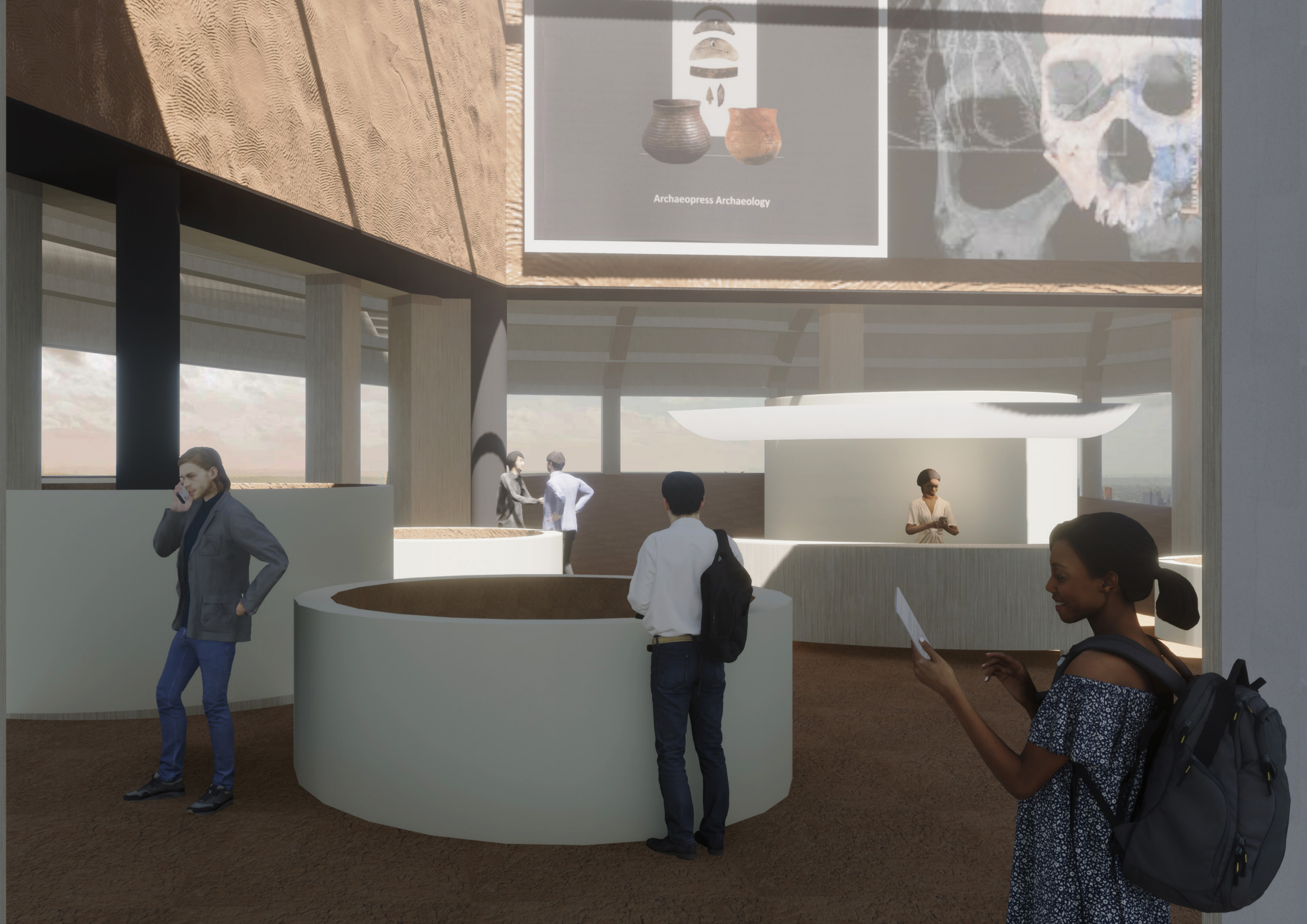




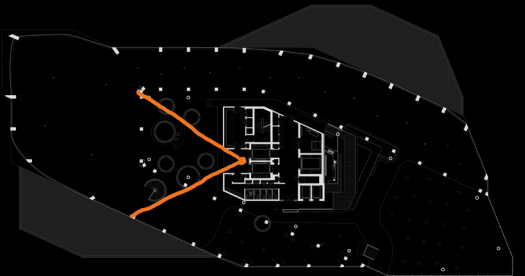


Section

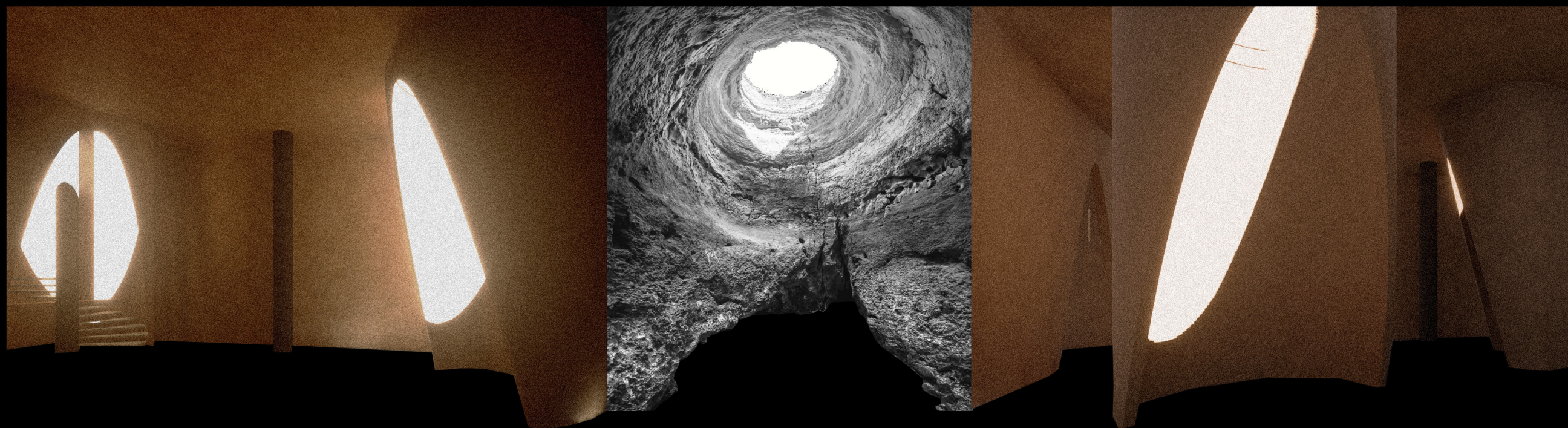




Entrance Hall



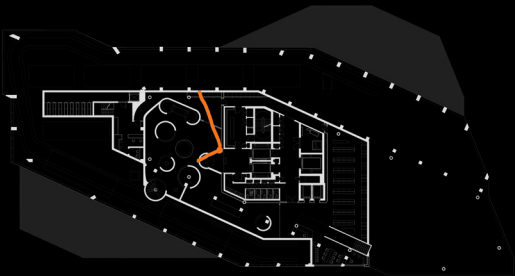




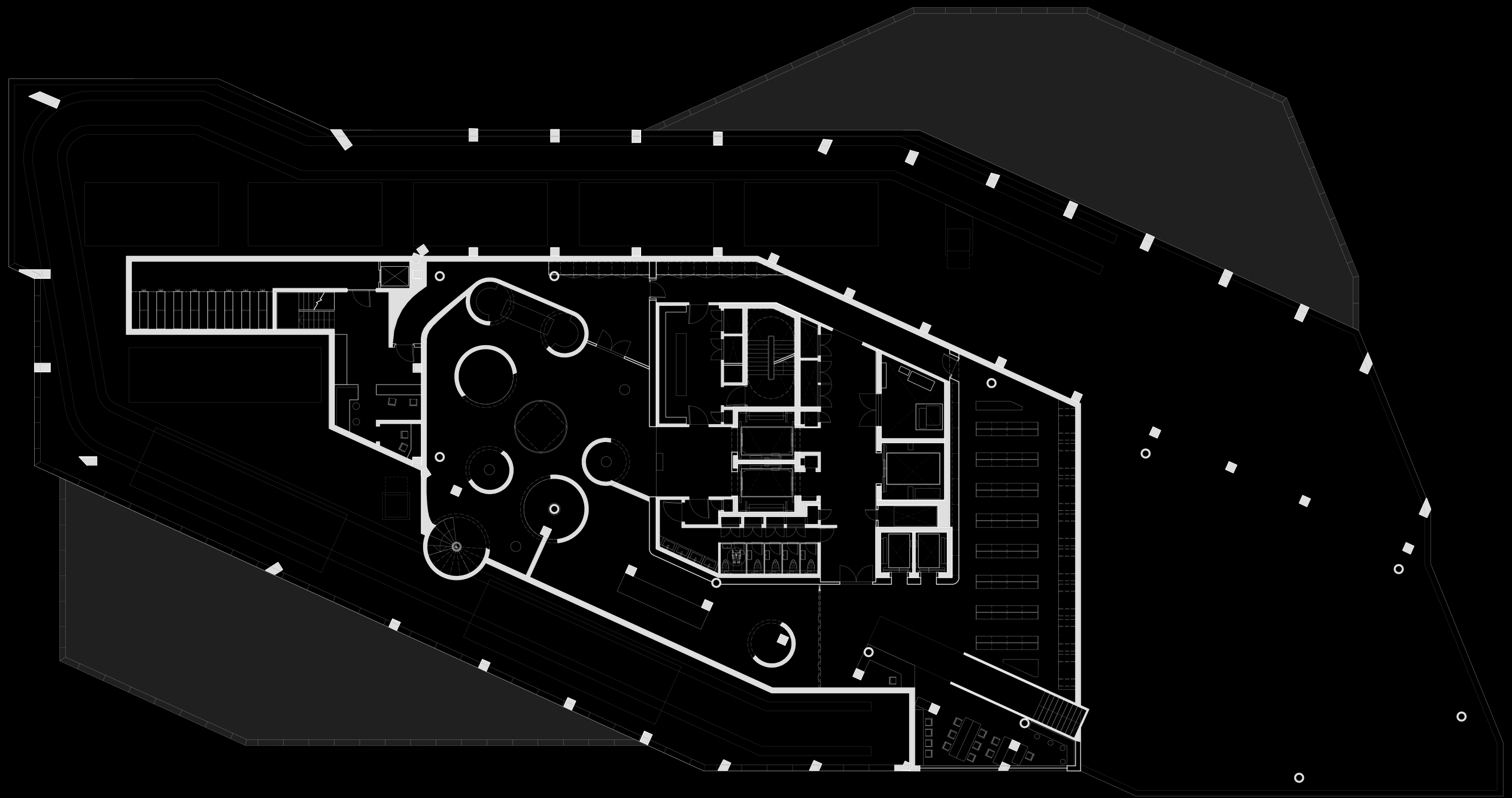




Mudlarking Gallery





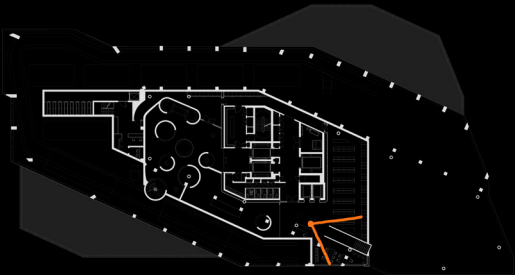


Lower Floor Plan (59)

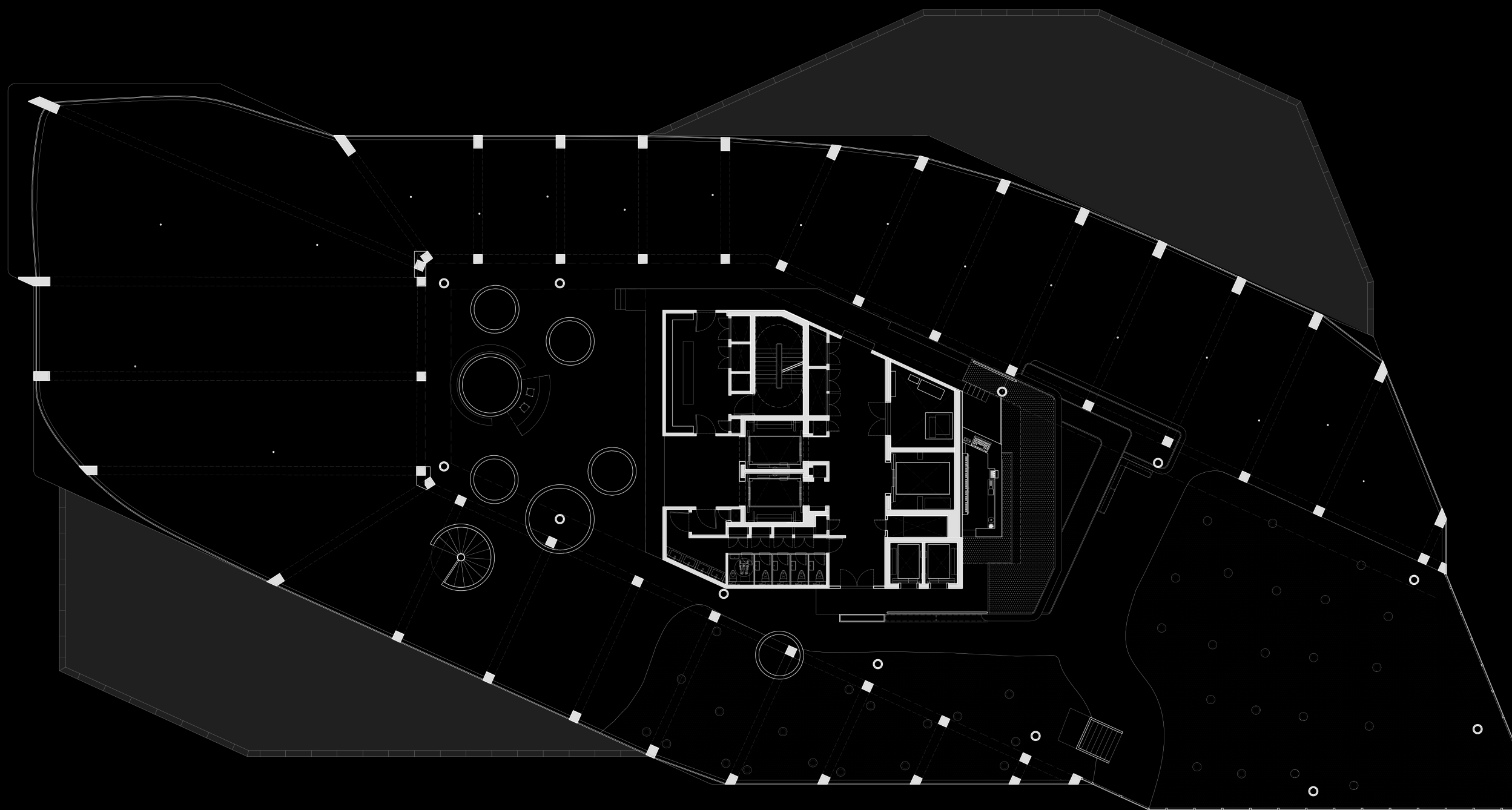




Library Zone





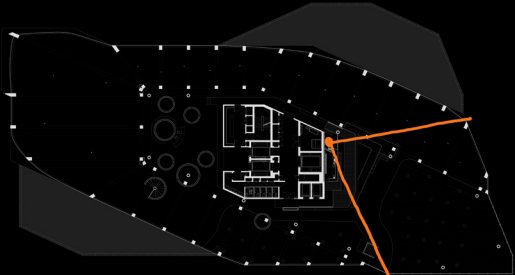


Upper Floor Plan (60)





South Side View







Night Skyline