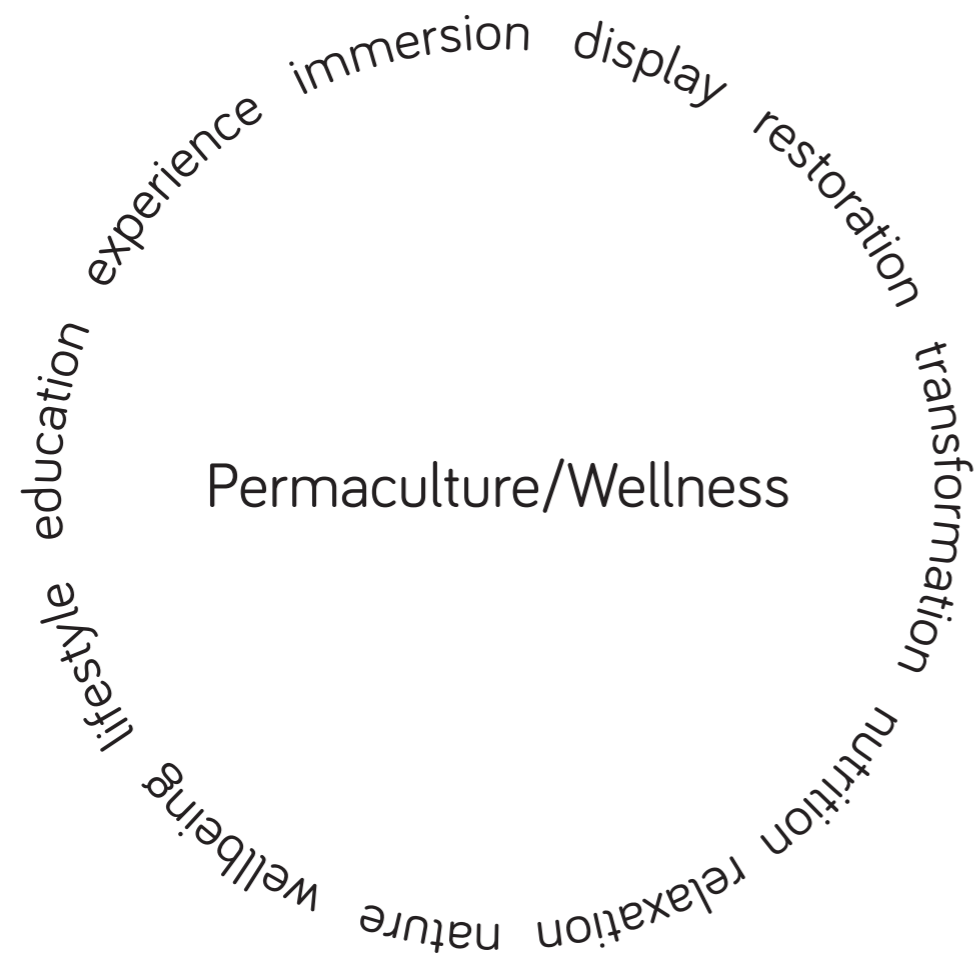


# THE GARDEN OF HEALTH

Explorations in Permaculture  
Through Responsible Design



Project Definition // Permaculture and Wellness



Permaculture is about living lightly on the planet, and making sure that we can sustain human activities in harmony with nature for many generations to come. It combines three key aspects: an ethical framework, understandings of how nature works, a design approach. This project aims to find wellness through the lens of permaculture.



**Mission:** How can permaculture provide a foundation for a new design approach that address some of the challenges around well being and responsible design?

**Purpose:** Exposing people to new ideas, philosophies and experiences brought to life through design in order to surprise, delight, educate, and ultimately transform people’s mindset and behaviors.

Site Selection

## Chelsea Physic Garden



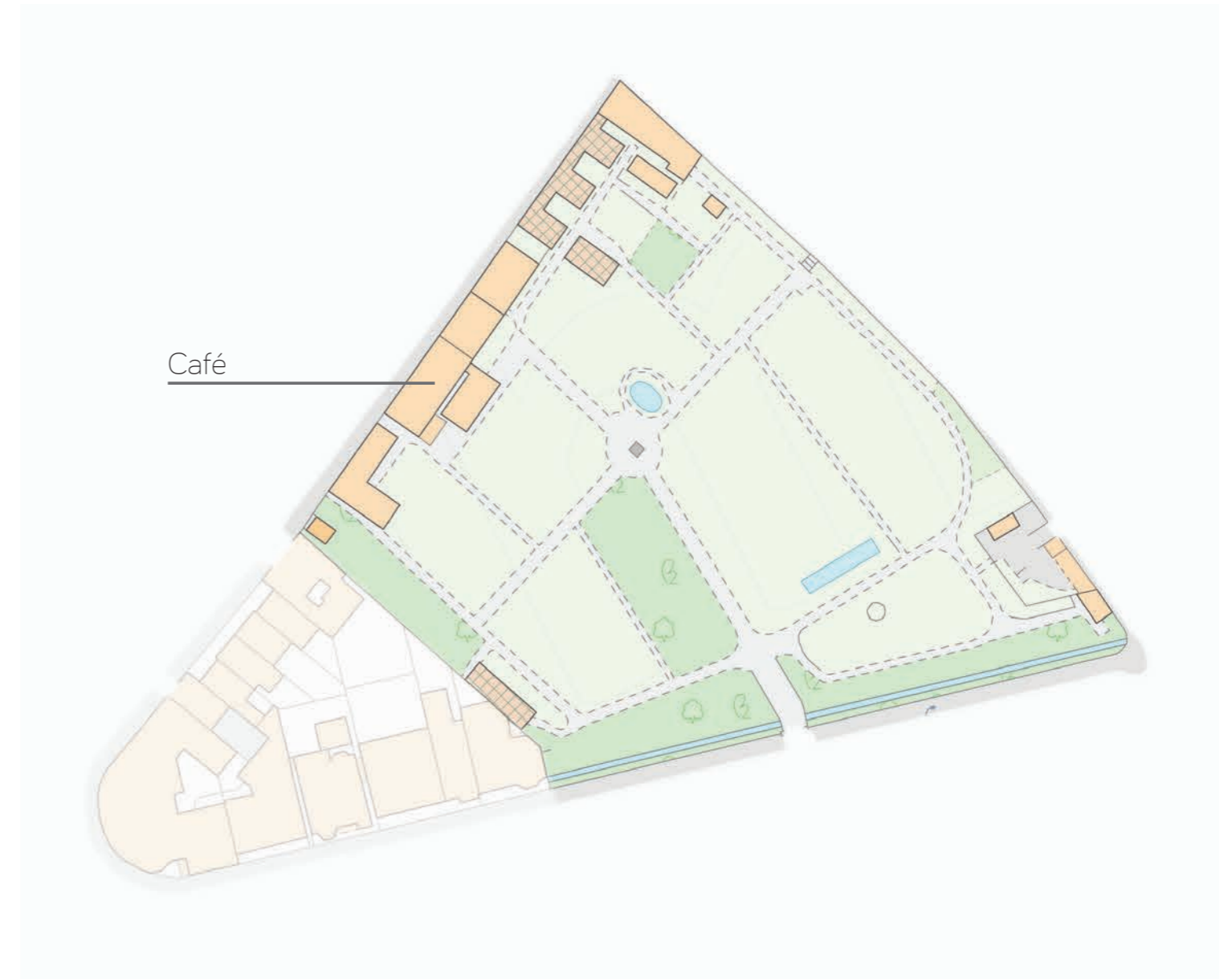
The Chelsea Physic Garden is London's oldest botanic garden and contains a unique living collection of around 5,000 different edible, useful and medicinal plants.

Since 1673 the garden has occupied 4 acres of land on the edge of the River Thames. First established by the apothecaries in order to grow medicinal plants, the Chelsea Physic Garden has had wide reaching impact around the world.

The site comprises various gardens, glasshouses, an education room, café and store. All of these components make this the ideal location for achieving the project objectives.



The Physic Garden Café offers a selection of cakes, organic local ingredients and a superb location. Ultimately the café fails to connect with its surroundings and seems to be more of an afterthought than an integrated part of the garden.



Physic Garden Cafe



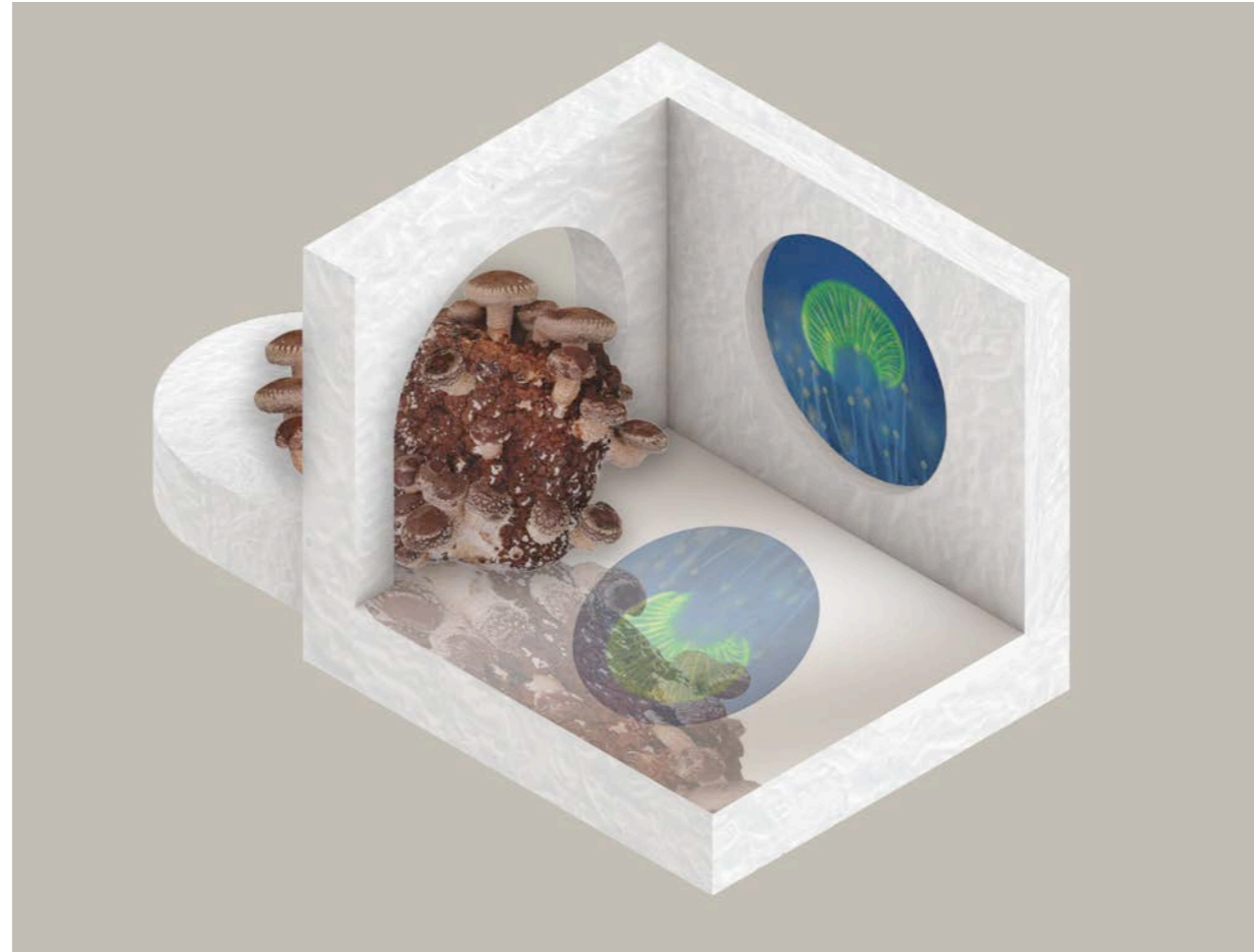
The Physic Garden offers a range of talks, activity days, community projects and educational courses which are held throughout the year. The gardens themselves are educational being rooted in a history of medicine making and plant propagation. There is also a small gift shop.



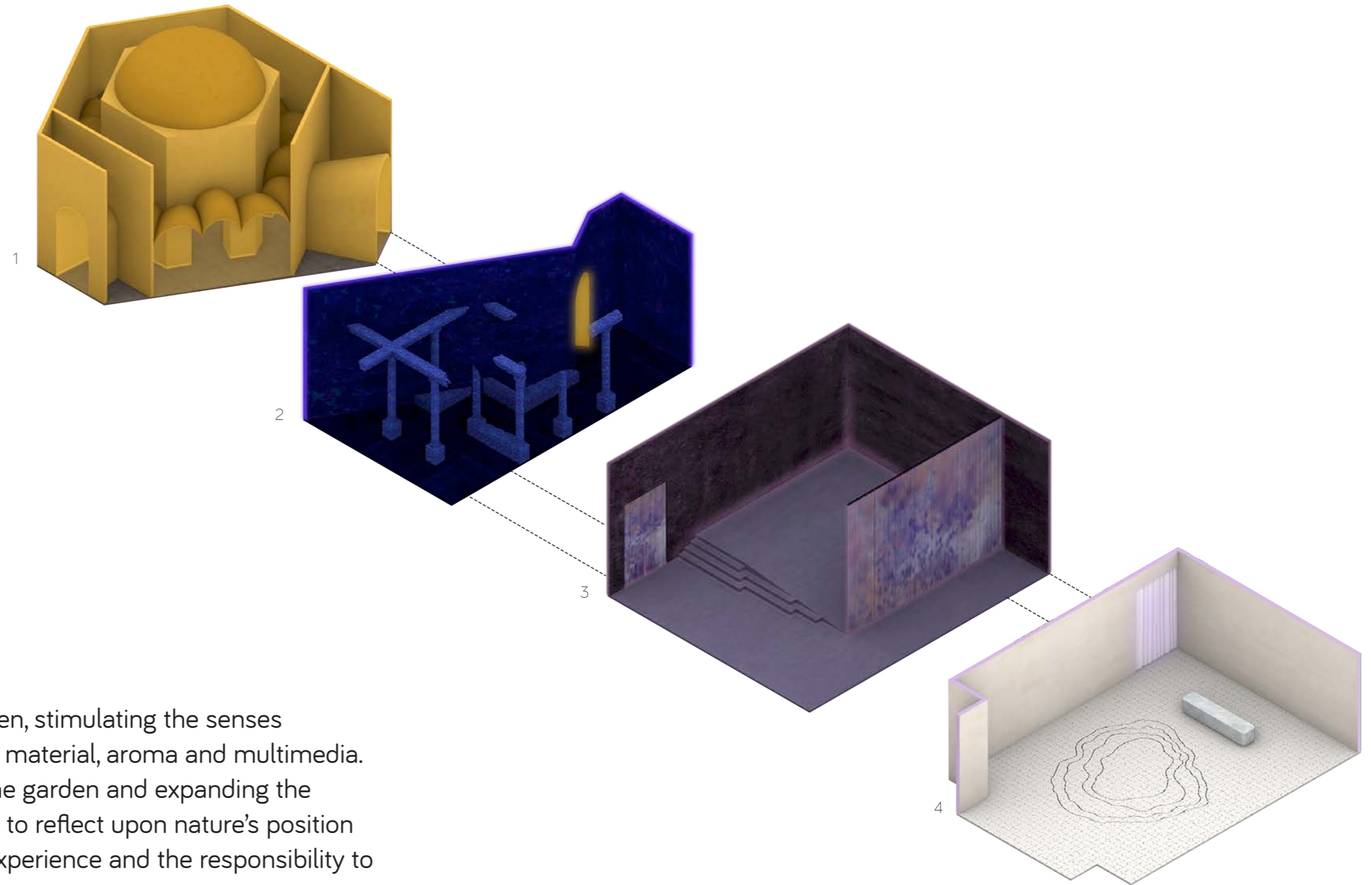
Physic Garden Educational Rooms and Shop





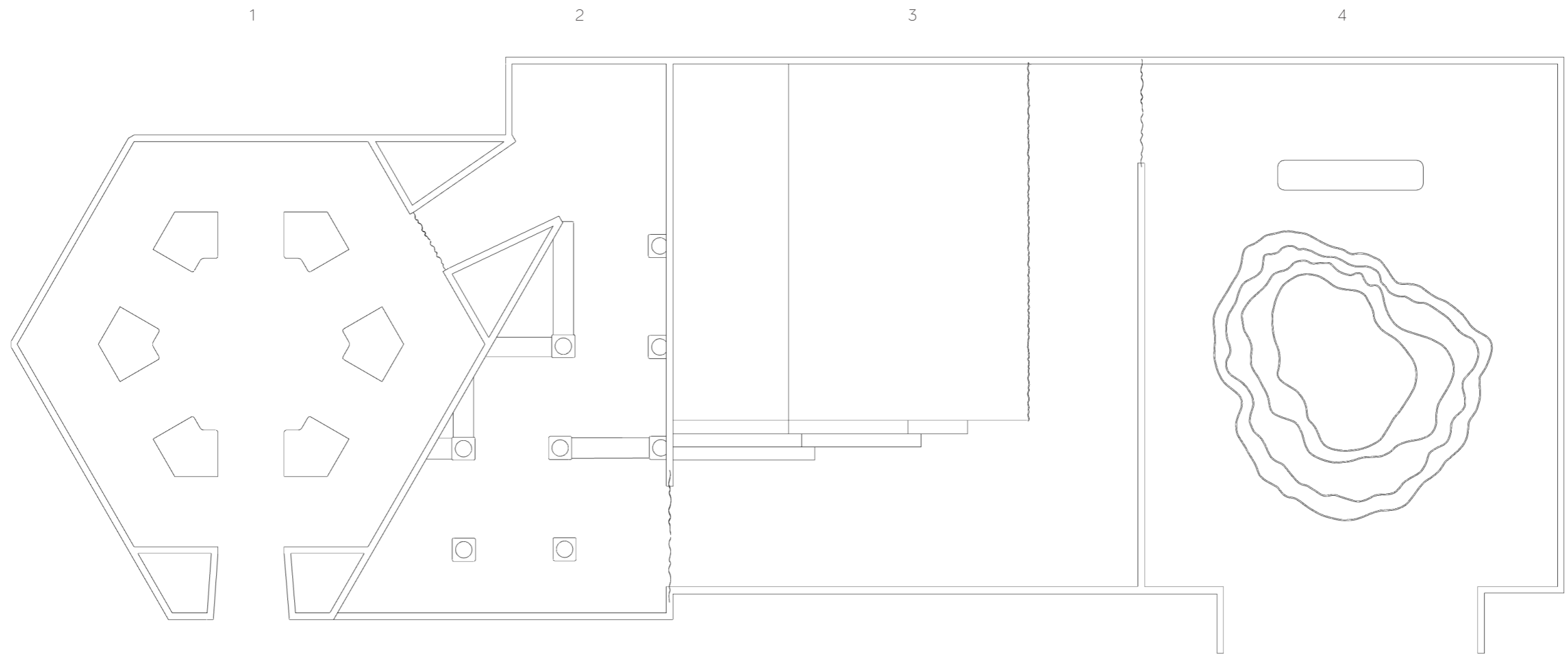


Site Renewal // The Garden Of Health Exhibition



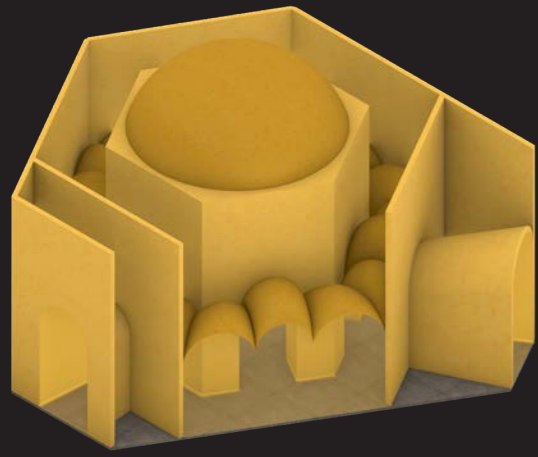
The exhibition makes visible the unseen, stimulating the senses through a mind opening use of space, material, aroma and multimedia. Unearthing the hidden mysteries of the garden and expanding the microscopic hidden world, it is a place to reflect upon nature's position at the heart of our everyday human experience and the responsibility to live lightly on the planet.

1. Beeswax Temple
2. Mycelium Ruins
3. Binocularous
4. Wonder Well



- 1. Beeswax Temple
- 2. Mycelium Ruins
- 3. Binocularous
- 4. Wonder Well

Moodboards



Aroma



Material



Atmosphere



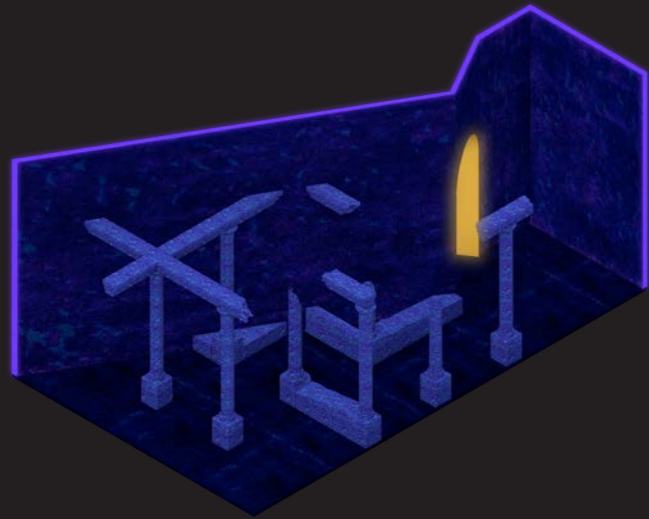
Light



Color

## Beeswax Temple

Glowing amber light fills the interior reminiscent of the warmth inside a beehive. The temple interior is coated with beeswax which has a distinctive aroma and texture. Evocative of the smoke used to calm bees in a hive when harvesting honey, a subtle incense flows throughout the chambers.



Lighting



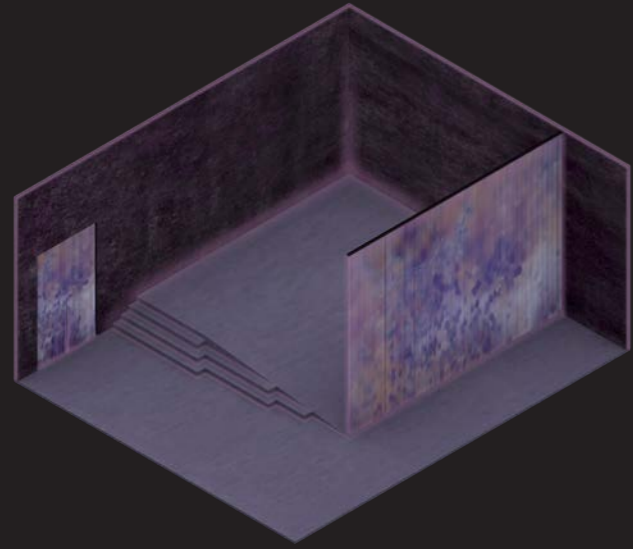
Material



Form

## Mycelium Ruins

The cyclical nature of growth and decay is expressed as living ruins, grown with mycelium and hemp fibres and illuminated with a subterranean ultraviolet glow.



Media



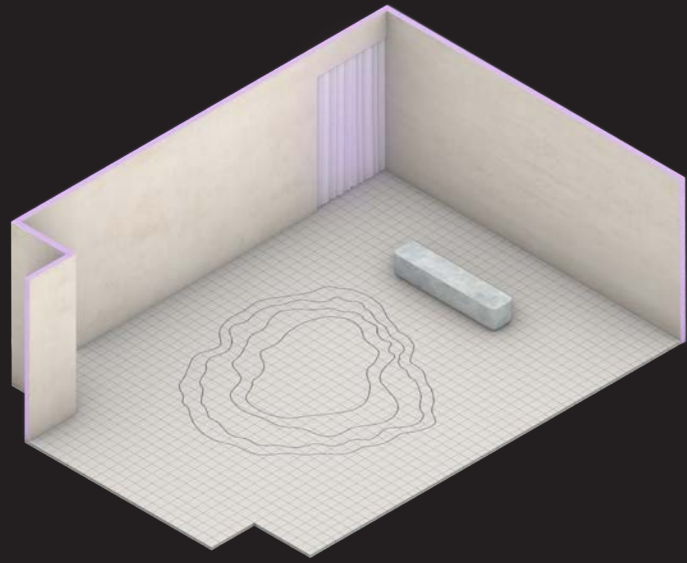
Projection



Material

## Binocularous: Projection Room

Intimate conceptual portraits of nature are projected onto a screen made of biomaterial strings which double as the exit to the final space. Please see attached video clips.



Mist



Contemplation



Tranquility

## Wonder Well

A scented mist subtly fills the room from grooves in the floor, creating a moment of contemplation before returning to the garden outside.



Visuals

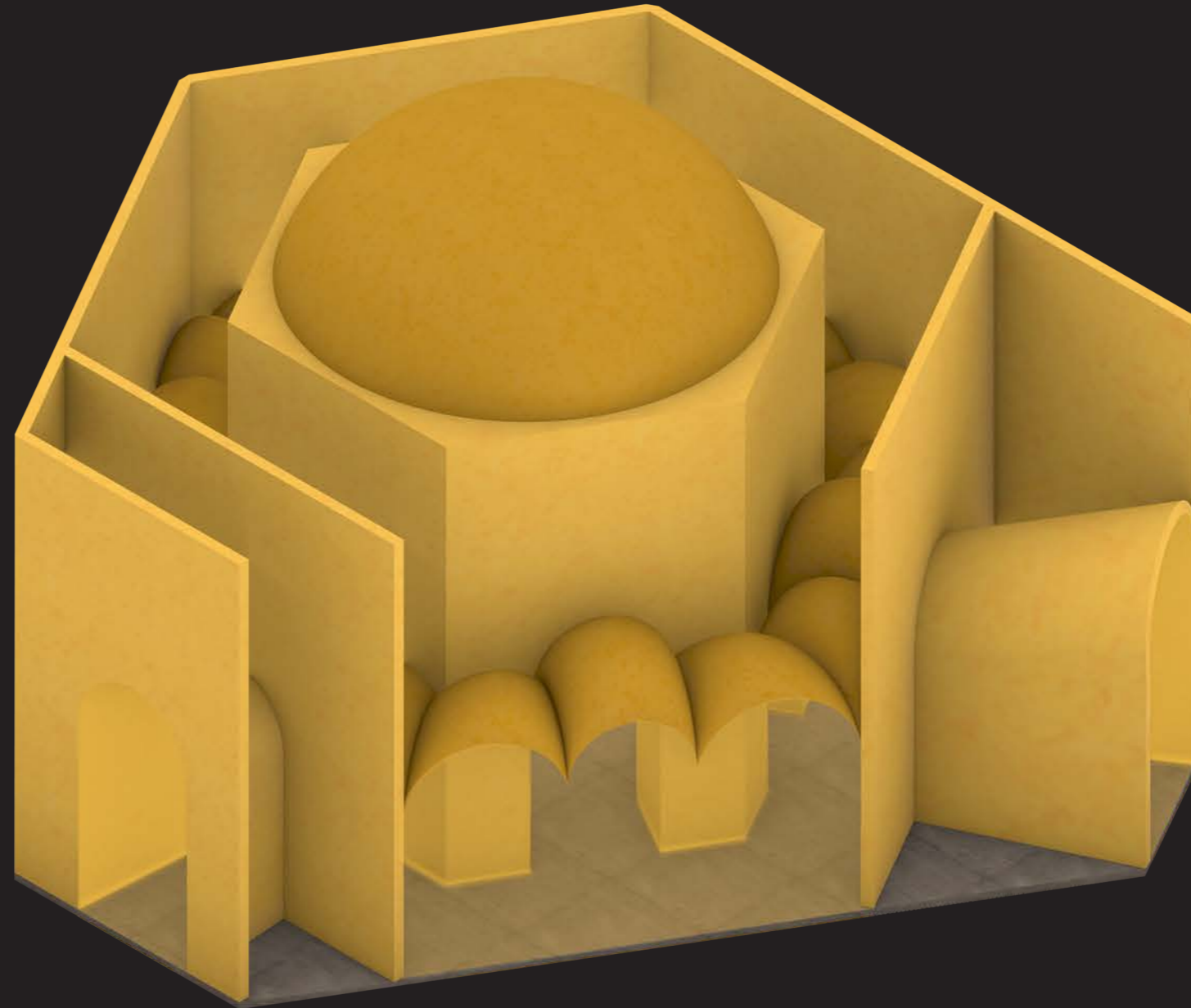




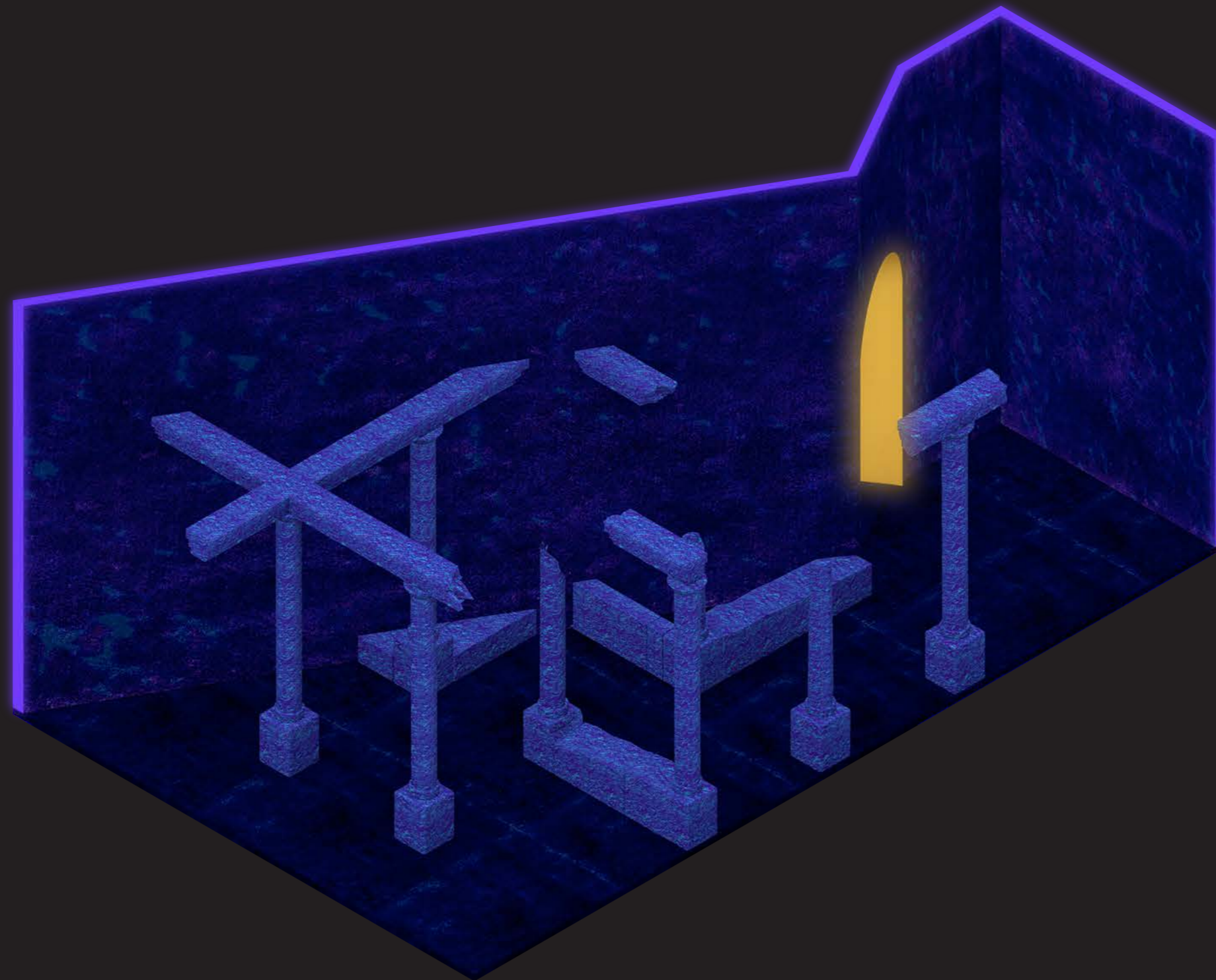




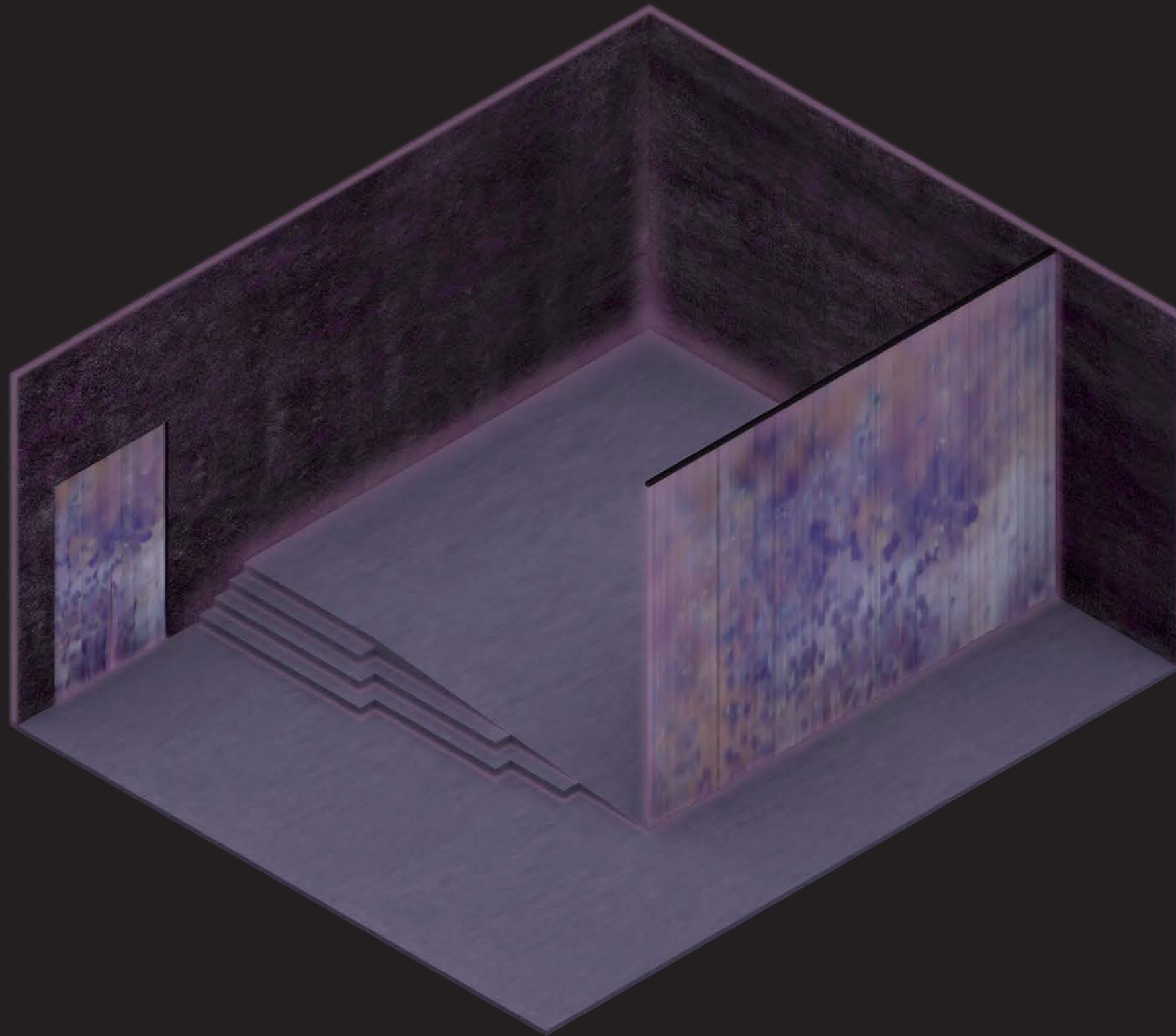
# Beeswax Temple



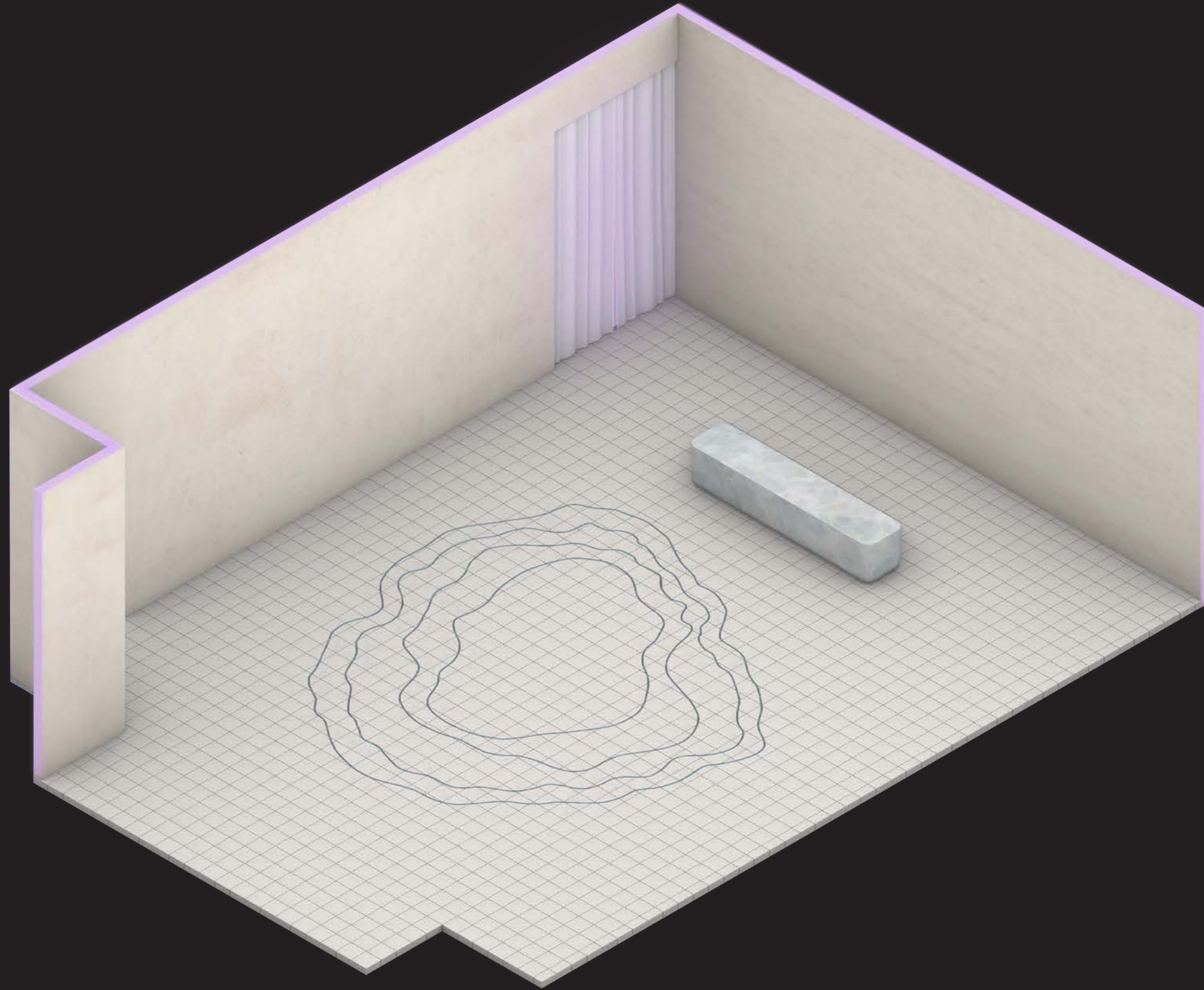
Mycelium Ruins



Binocular: Projection Room







Site Renewal // Restaurant



### **Philosophy:**

Permaculture is expressed through the menu and interior (herbalism, fermentation, crockery, surfaces, fixtures).

Bringing garden ingredients into the menu, the programming of the restaurant is that you see what you're eating, inside and out.

The cuisine itself reflects back the discoveries made during the journey through the garden.



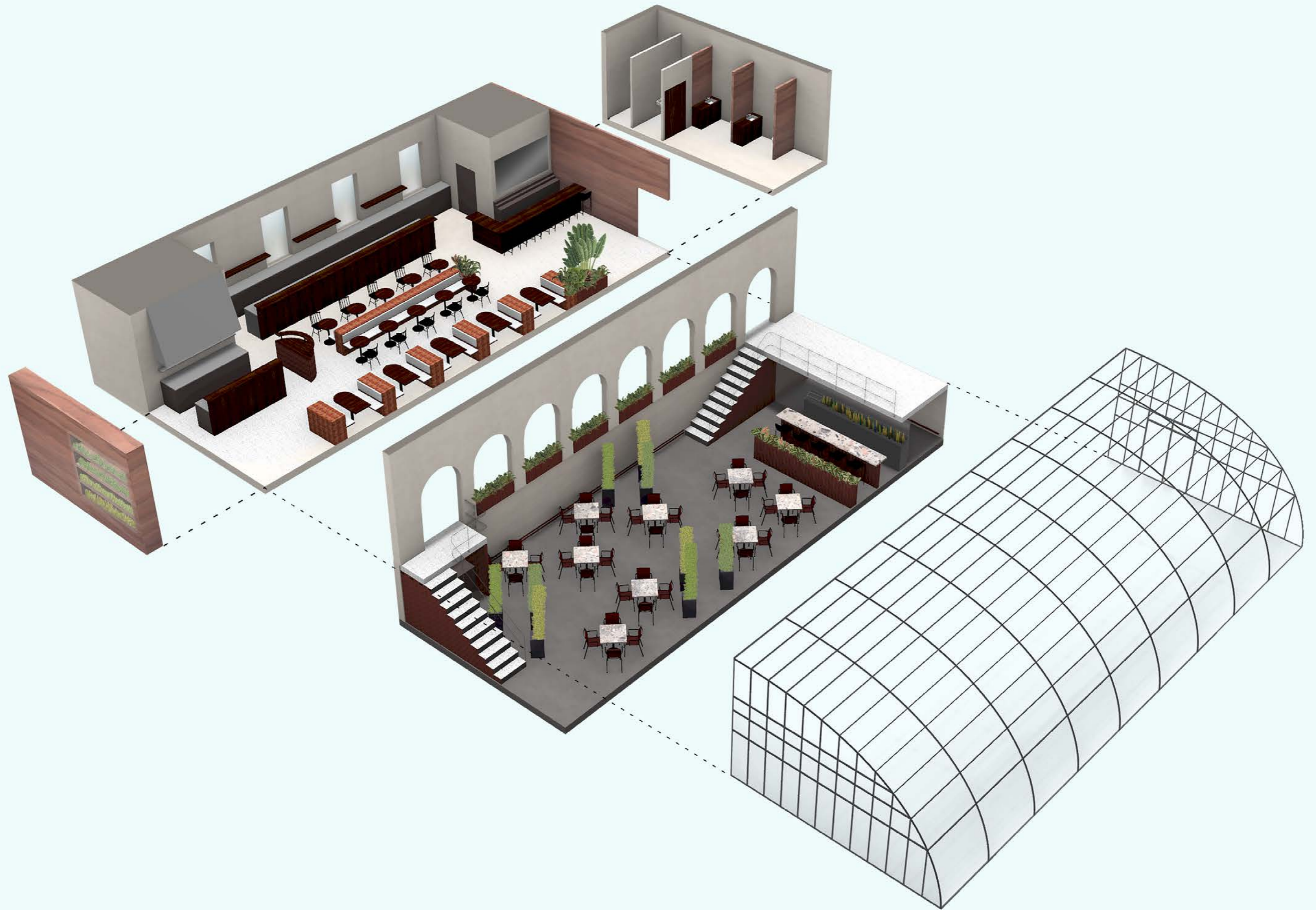
### **Design:**

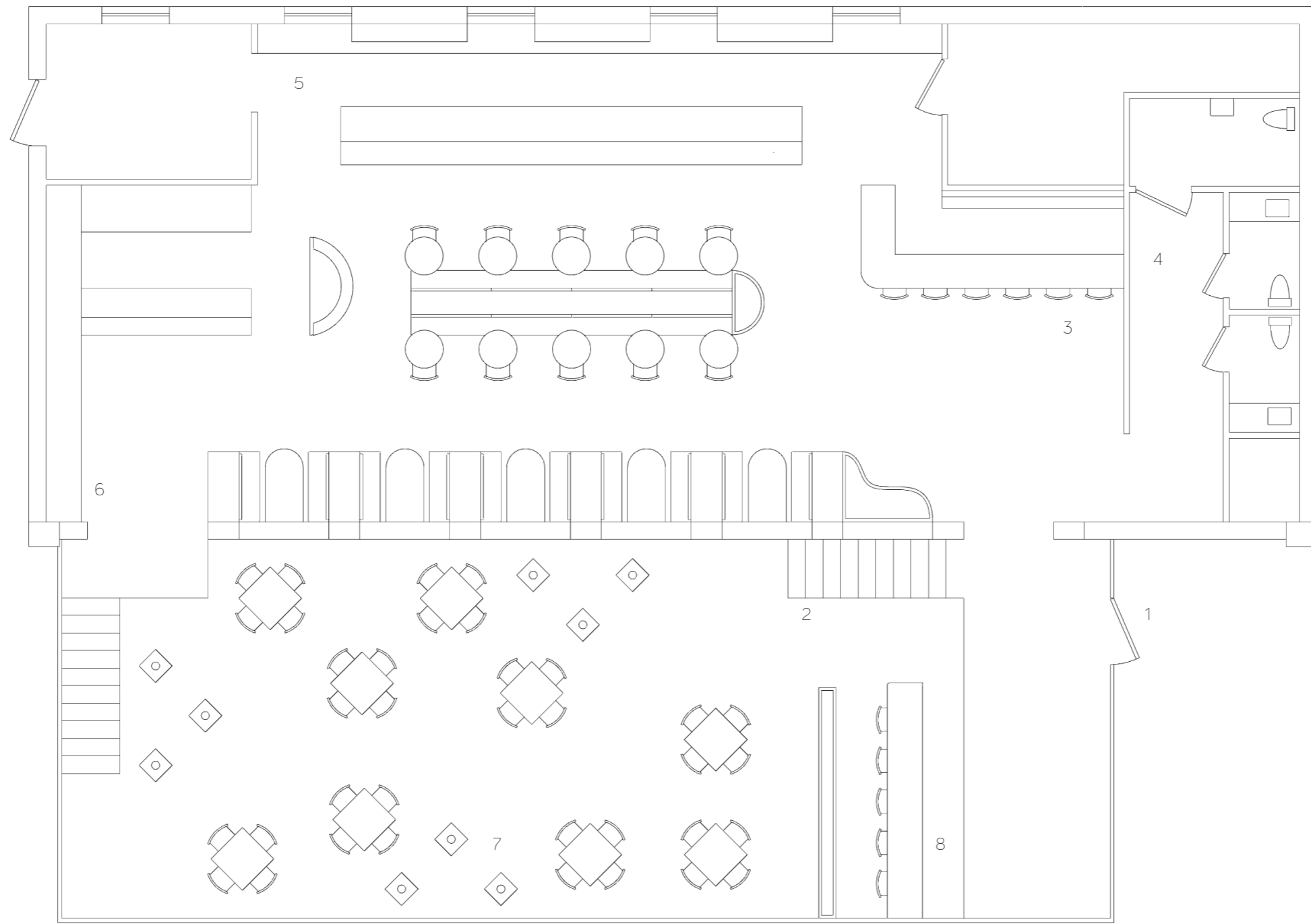
The design draws visitors' attention to the quality of the materials in a way that causes them to observe at a greater level of detail, to question and understand what it is. A space that is not obvious from the outset is playfully and provocatively signposted.

### **Re-creation:**

Eco-centred materials create special moments for the café guests. Subtle actions throughout the space surprise and delight by reimagining ordinary things into the extraordinary through interior design.

The café is the culmination of the journey through the garden and offers visitors a place to digest and synthesise their full experience.

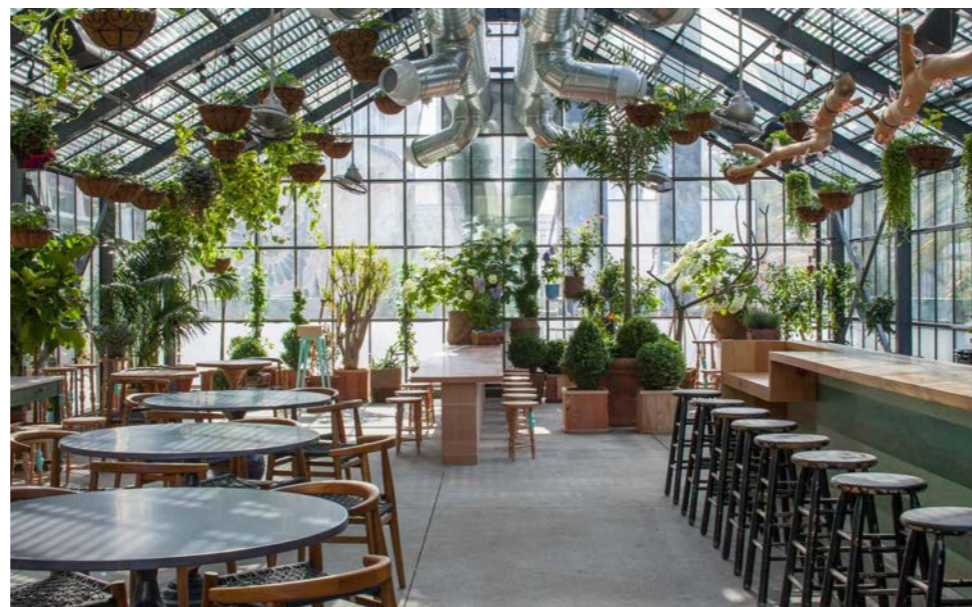




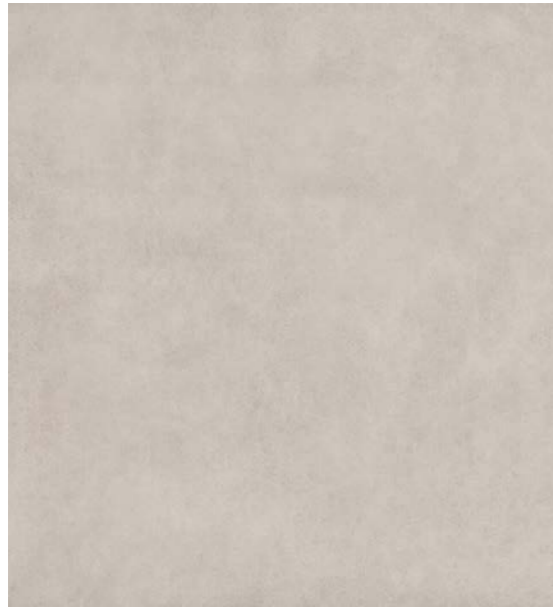
- 1. Entrance
- 2. Sunken Glasshouse
- 3. Main Bar
- 4. Bathrooms
- 5. Kitchen
- 6. Hydroponic Display
- 7. Aeroponic Display
- 8. Fermentation Cellar/Bar

Moodboard // Restaurant

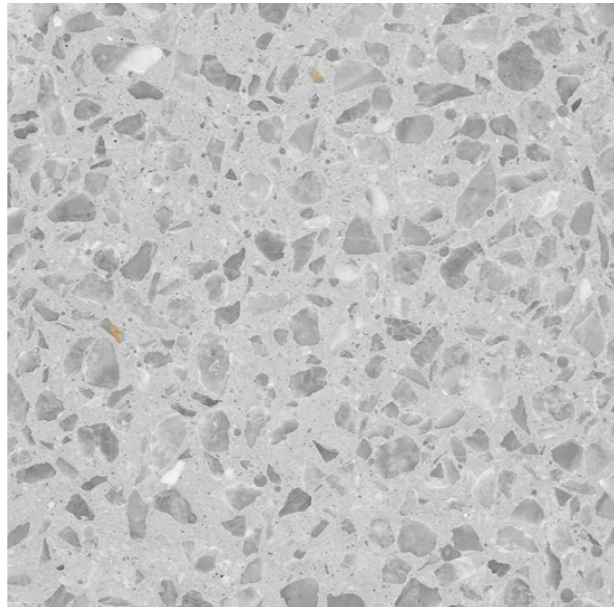
Dining spaces



Main Dining Room Materials



Walls



Floor



Surfaces / Seating

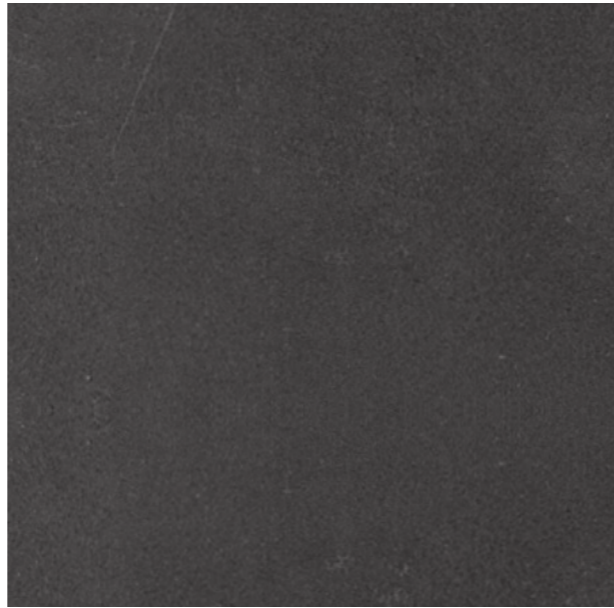




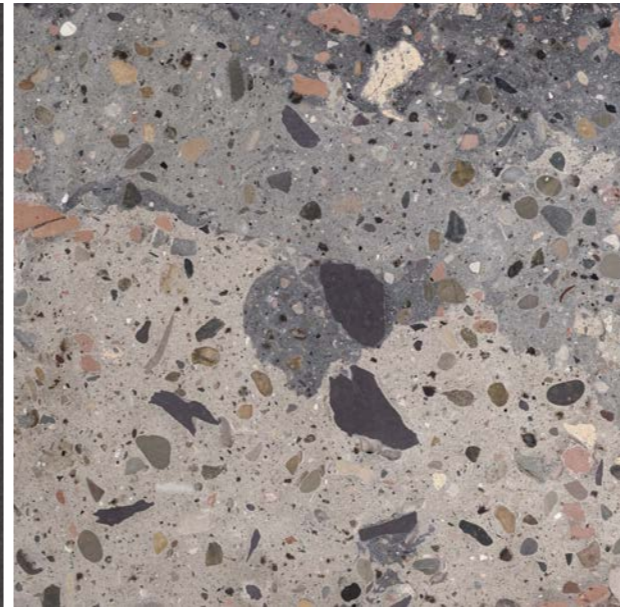
Glasshouse Dining Room Materials



Walls



Floor



Surfaces



Detail

Restaurant Decor



Furniture



Lighting

## Restaurant Details



Guests are served using a selection of new materials created from the waste stream, such as plates and bowls made from recycled building materials, egg cups made from egg shells and lobster shell glasses among many others.

Space // Restaurant







Thank You