

# Lowestoft Post Hotel

Thesis Project of Jieling Hu  
Interior Design . Re-Use Platform  
Royal College of Art  
2021-2022

I. CONTEXT

II. DOCUMENT and SUPPLEMENT

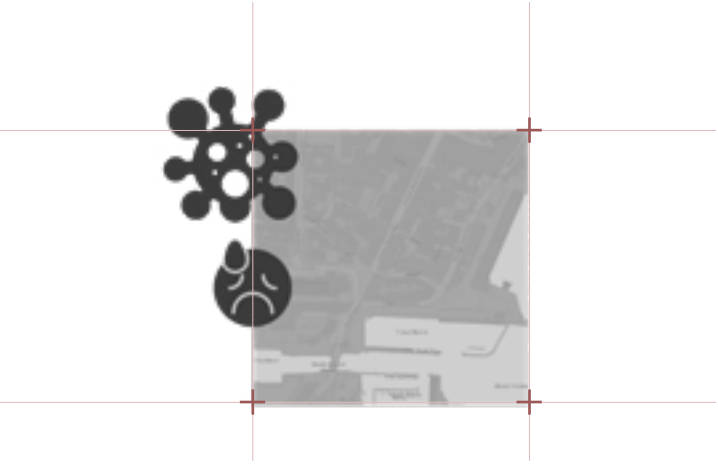
III. PROGRAMME

# I. CONTEXT

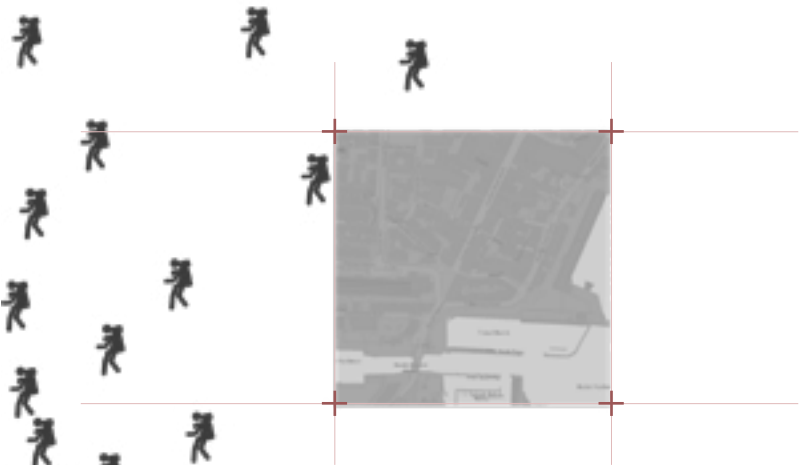
The post-pandemic costal town in the UK

II. DOCUMENT and SUPPLEMENT

III. PROGRAMME



Health Pressure



Seasonal Tourism



RESOURCES FROM THE OCEAN

SEAWATER

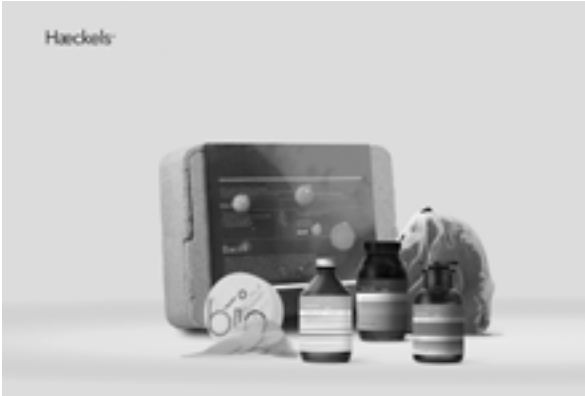


Lowestoft as a health resort  
Lowestoft indoor sea-water baths



BY-PRODUCTS

blue algae drink



sea salt



<https://www.seaweedandco.com/seaweed-benefits-aging-with-seaweed/>  
<https://haeckels.co.uk/product/walpole-bay-candle-mycelium/>  
<https://haeckels.co.uk/product/bacili-gift-set/>

II. DOCUMENT and SUPPLEMENT



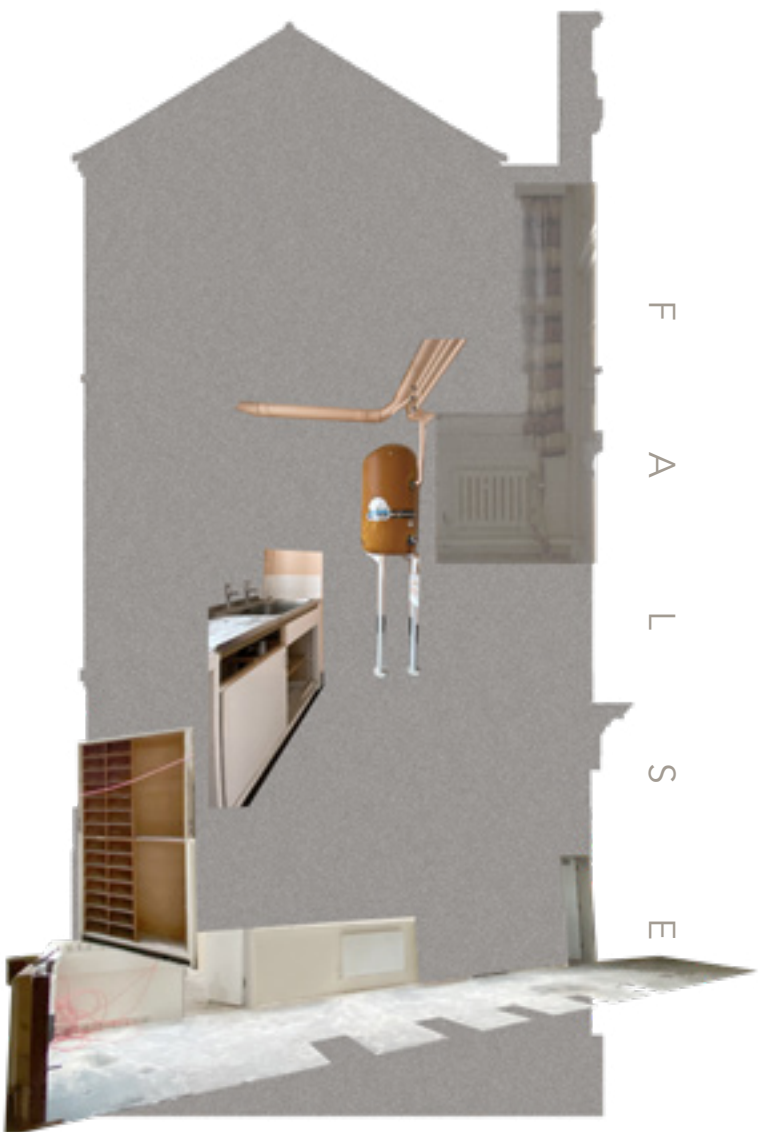
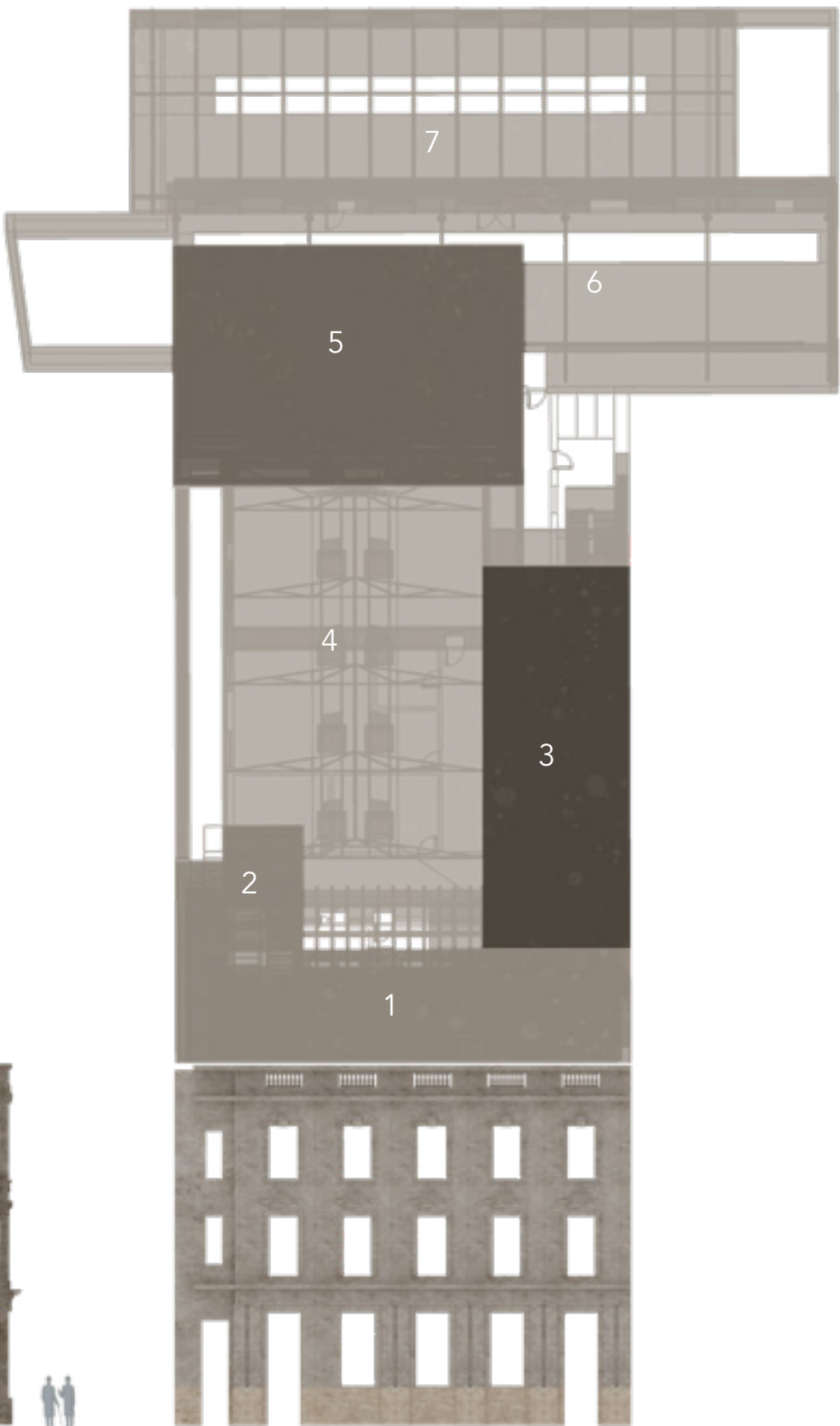
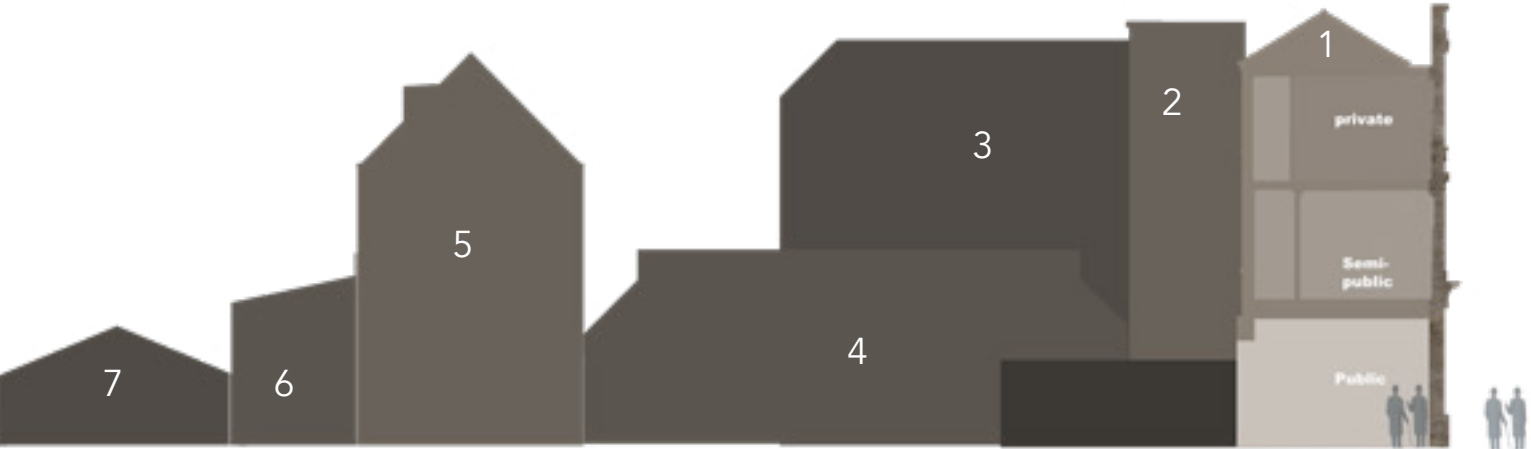
II. DOCUMENT and SUPPLEMENT  
1. Site Building Complex





1.Site Building Complex

- 1.Post Office Proper
- 2.Added Staircase Box
- 3.Post Office Wing
- 4. Shed
- 5. pigeon house
- 6. Lean-to
- 7. Glass Roof



F  
A  
L  
S  
E

1880s



The original Post Office  
Top single storey range fronting the residential property that first served  
as Post Office.

1909



First floor added in the Edwardian Period

Nov 2021



Closed Post Office

‘Document and supplement are mutually constitu-  
tive. But the supplement, by definition, needs to  
appear supplementary to the document, even if  
without it the document cannot function as such’  
Monumentaries. Jorge Oteiro-Pailos. P23.

Model 1/25





2. SUPPLEMENT Development

Facadism is the architectural and construction practice where the facade of a building is designed or constructed separately from the rest of a building, or when only the facade of a building is preserved with new buildings erected behind or around it.



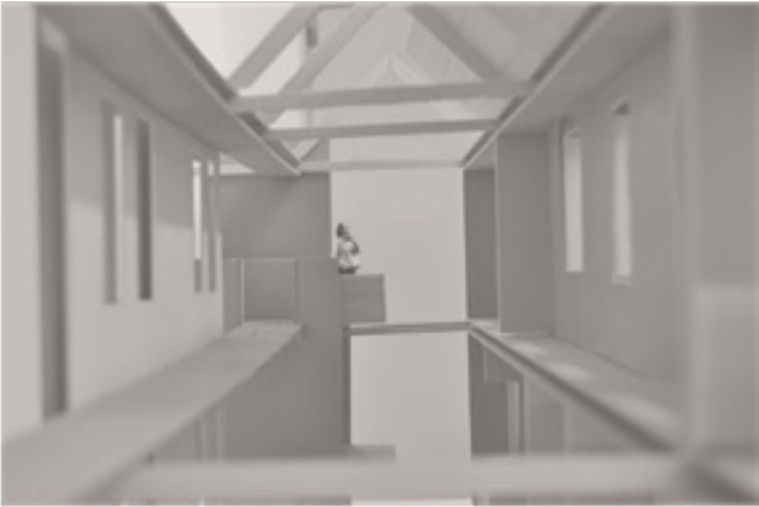
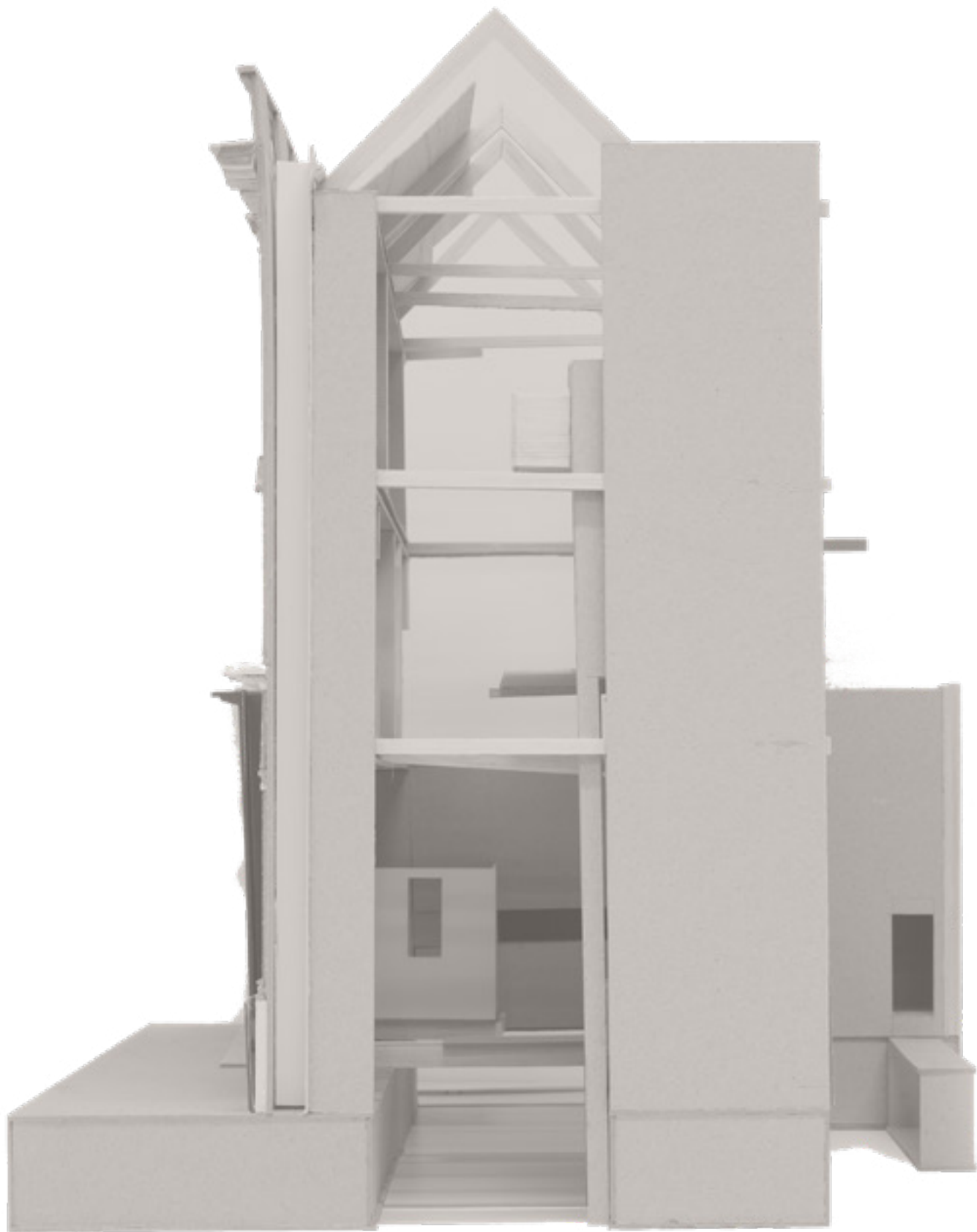
Architect's model showing the new 'egg theatre' at the Theatre Royal Bath  
[https://www.buildingconservation.com/articles/facadism/facadism.htm?utm\\_medium=website&utm\\_source=archdaily.com](https://www.buildingconservation.com/articles/facadism/facadism.htm?utm_medium=website&utm_source=archdaily.com)  
<https://www.historycolorado.org/false-front-commercial>



Model 1/25



TACTICS  
Destruct

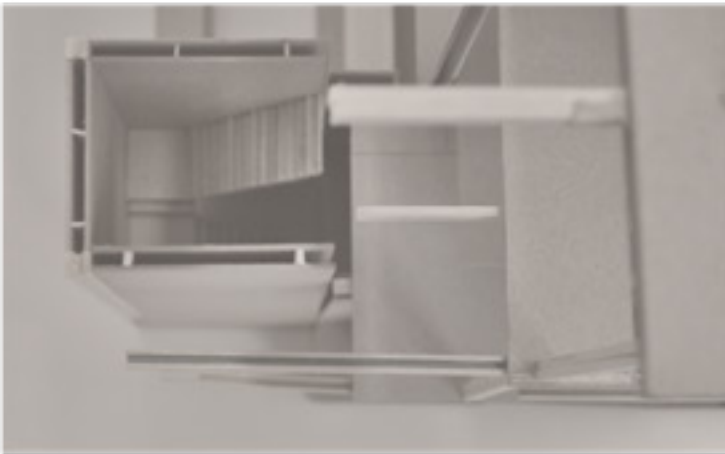
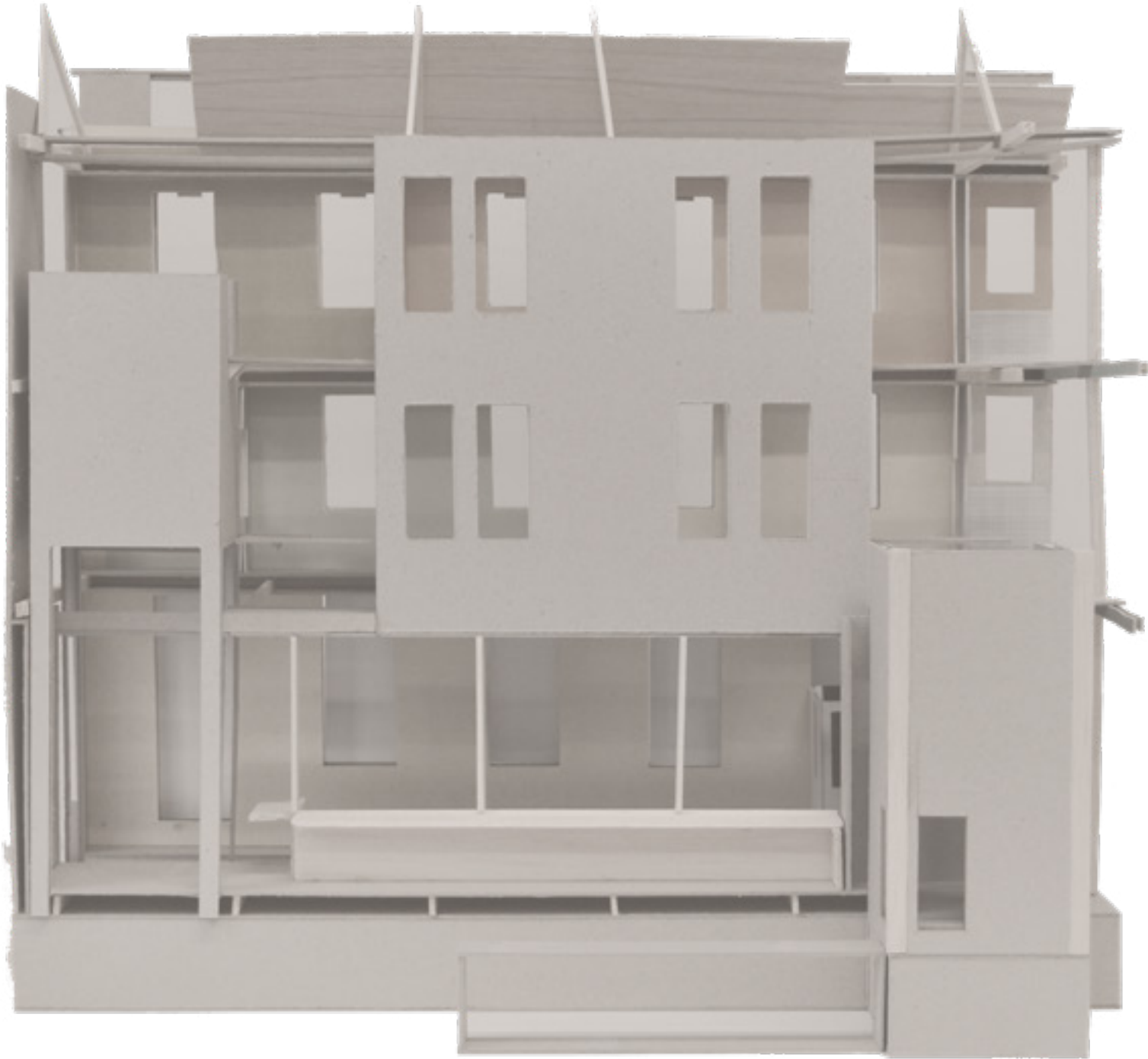


II. DOCUMENT and SUPPLEMENT

2. SUPPLEMENT Analysis

TACTICS

Divert



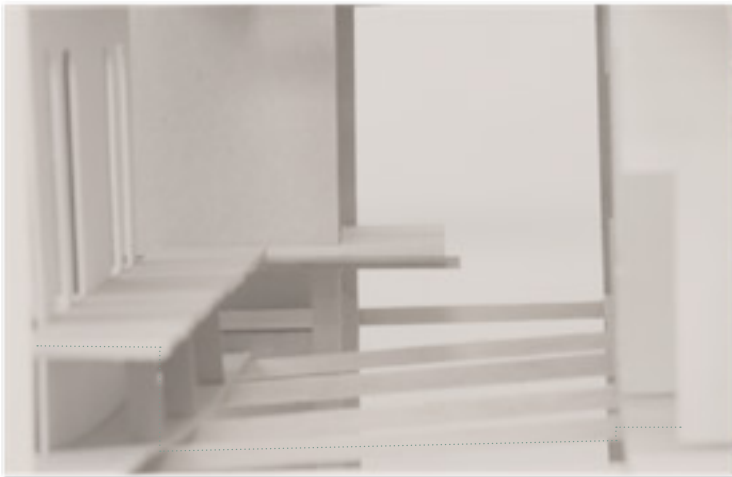
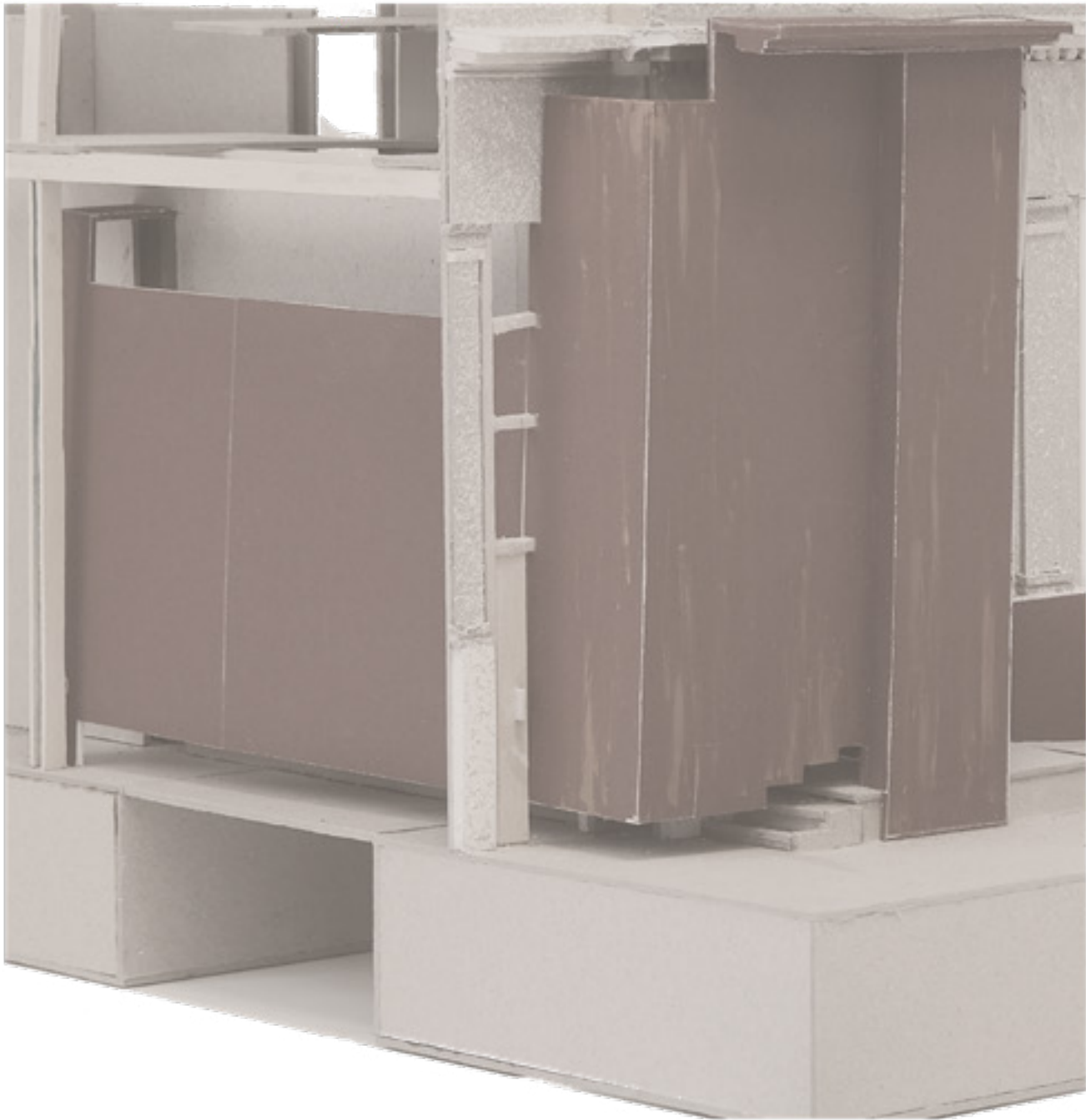


II. DOCUMENT and SUPPLEMENT

2. SUPPLEMENT Analysis

TACTICS

Break Order



I. CONTEXT

II. DOCUMENT and SUPPLEMENT

## III. PROGRAMME

Lowestoft Post Hotel

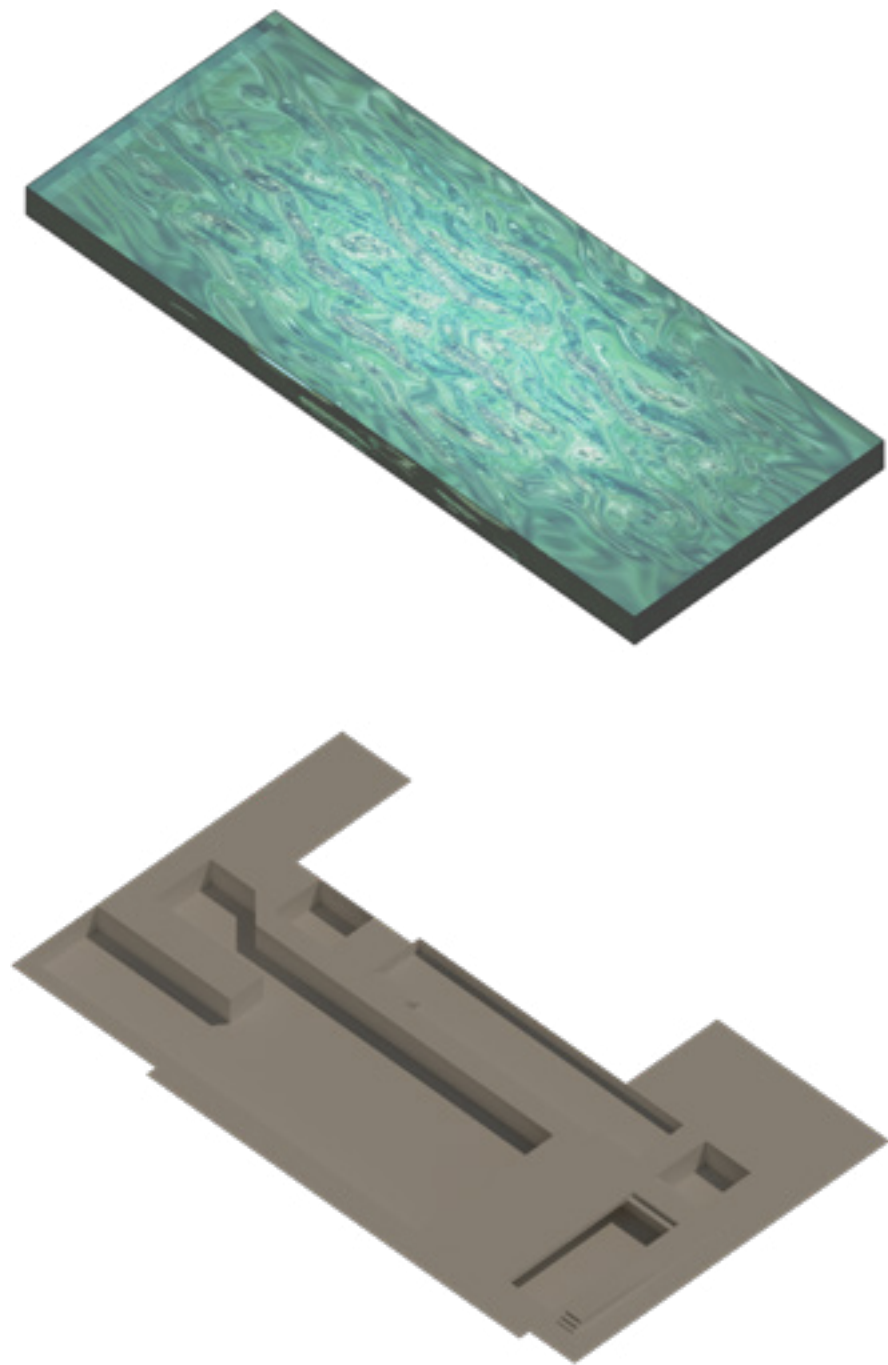
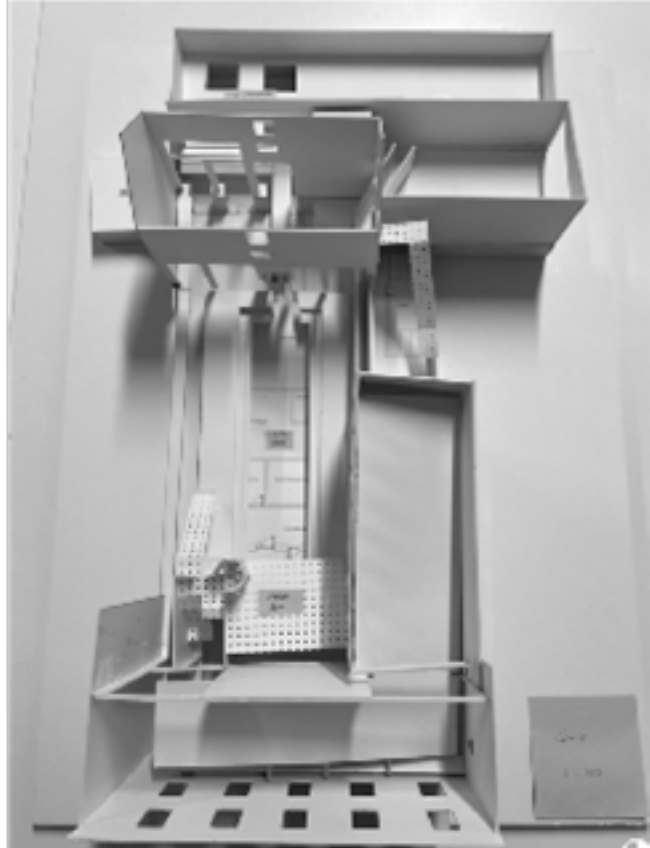




Bring back tourists

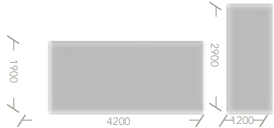
- 1.A Public Swimming pool
- 2.Sea Products Shops
- 3.Hotel Rooms





Design Process 2

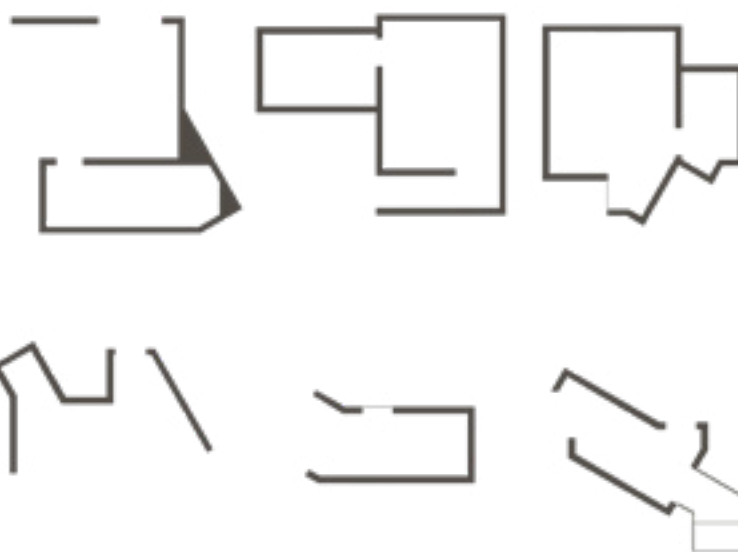
1. Two primitive blocks that meet the basic dimensions of habitation



2. Reorganization



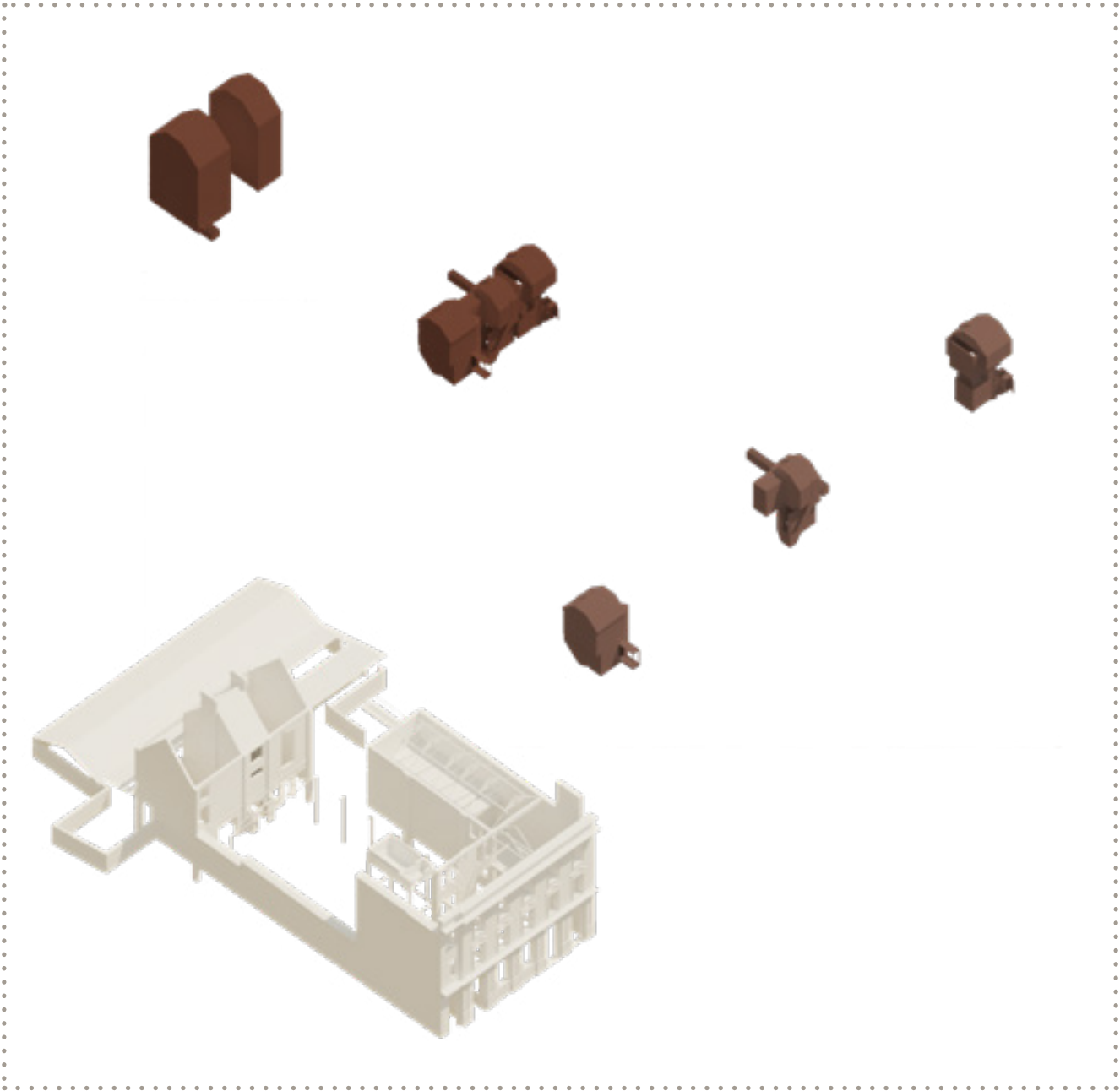
Two-storey Layout



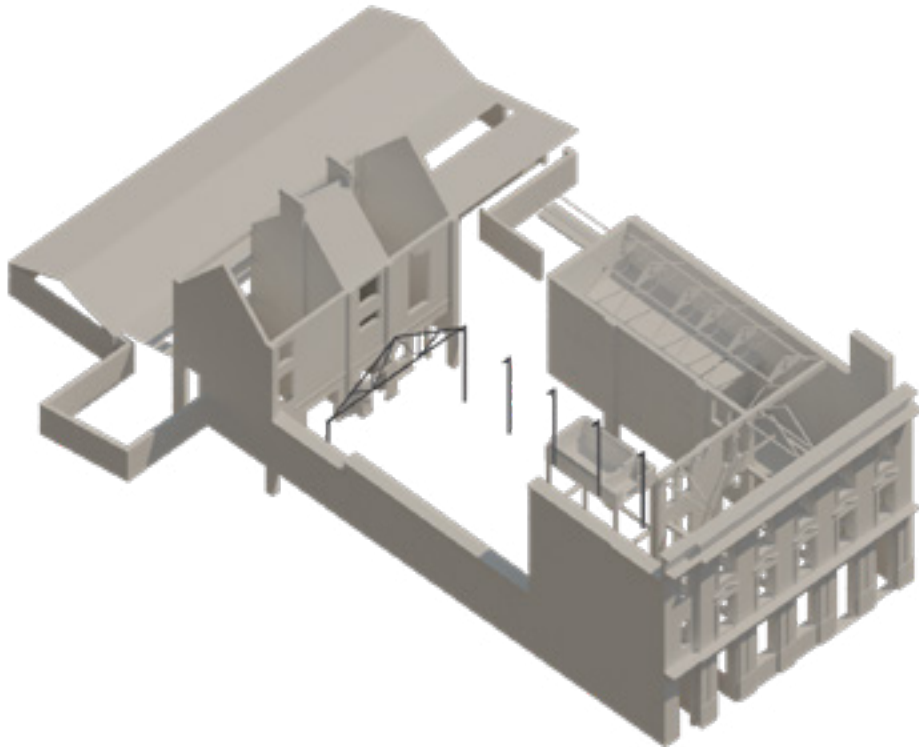
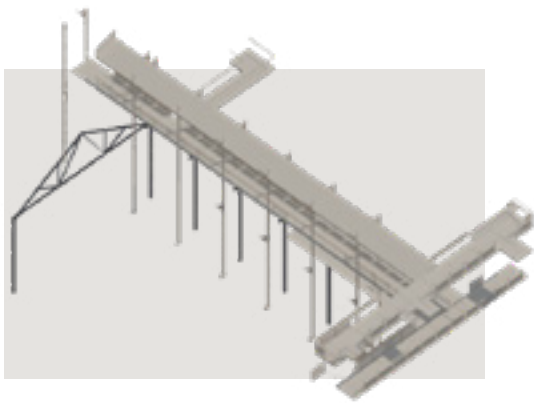
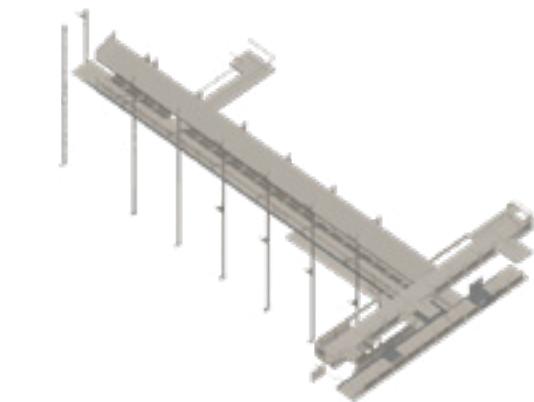
Free-standing Structure Model

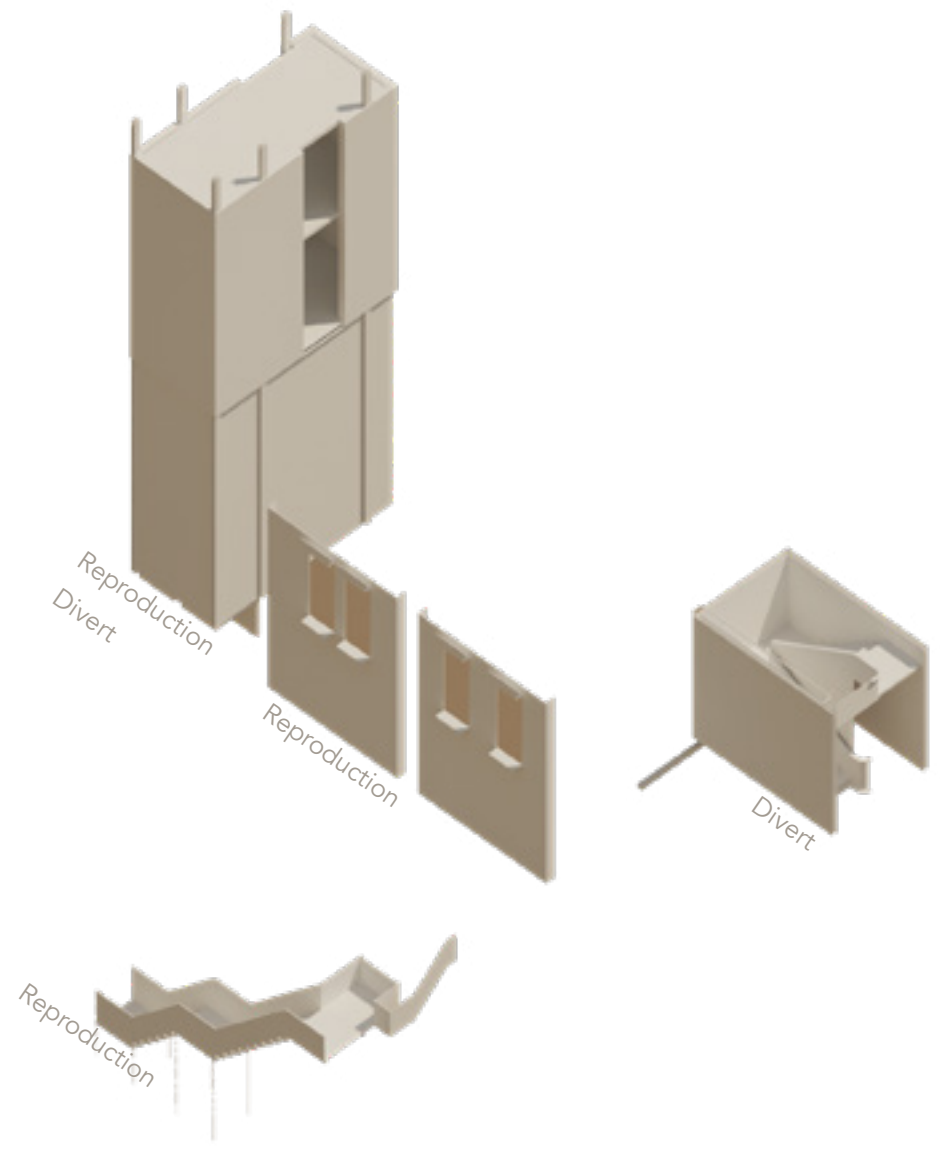


1/50 Model

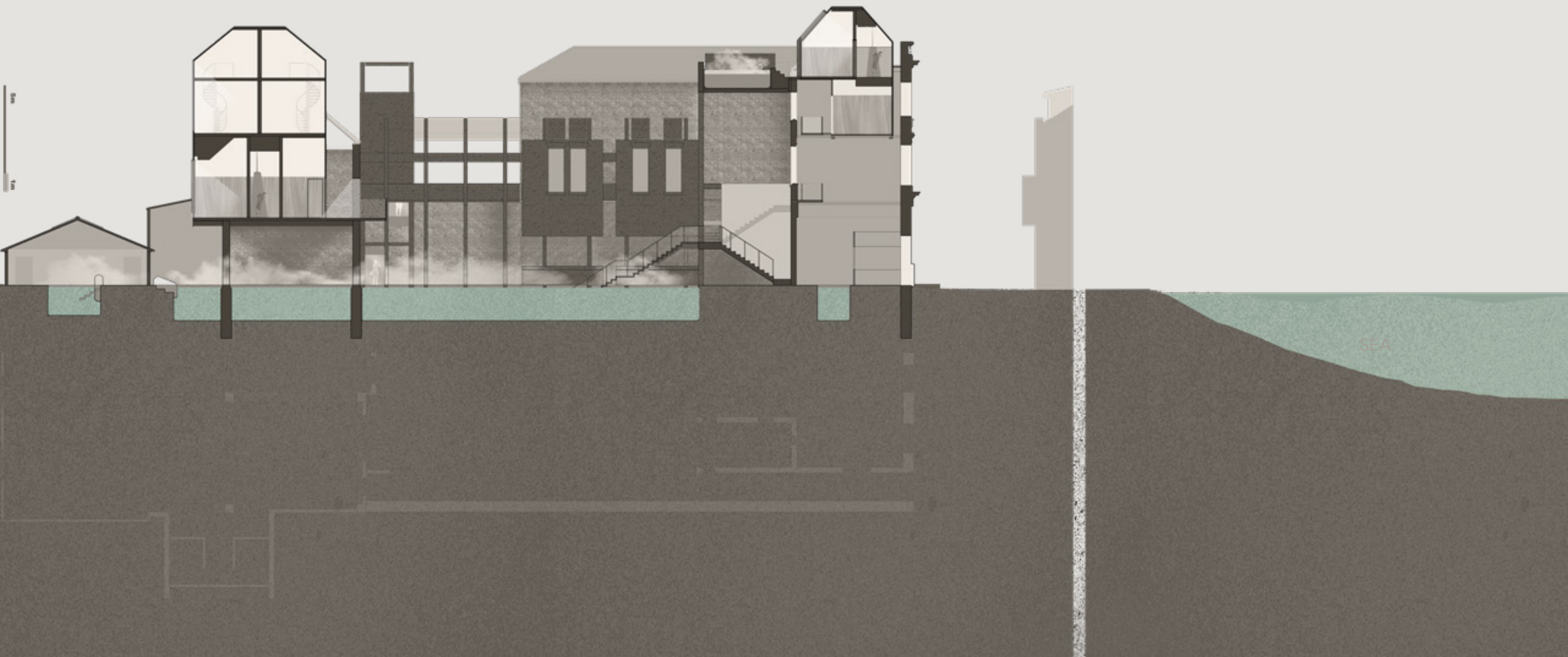




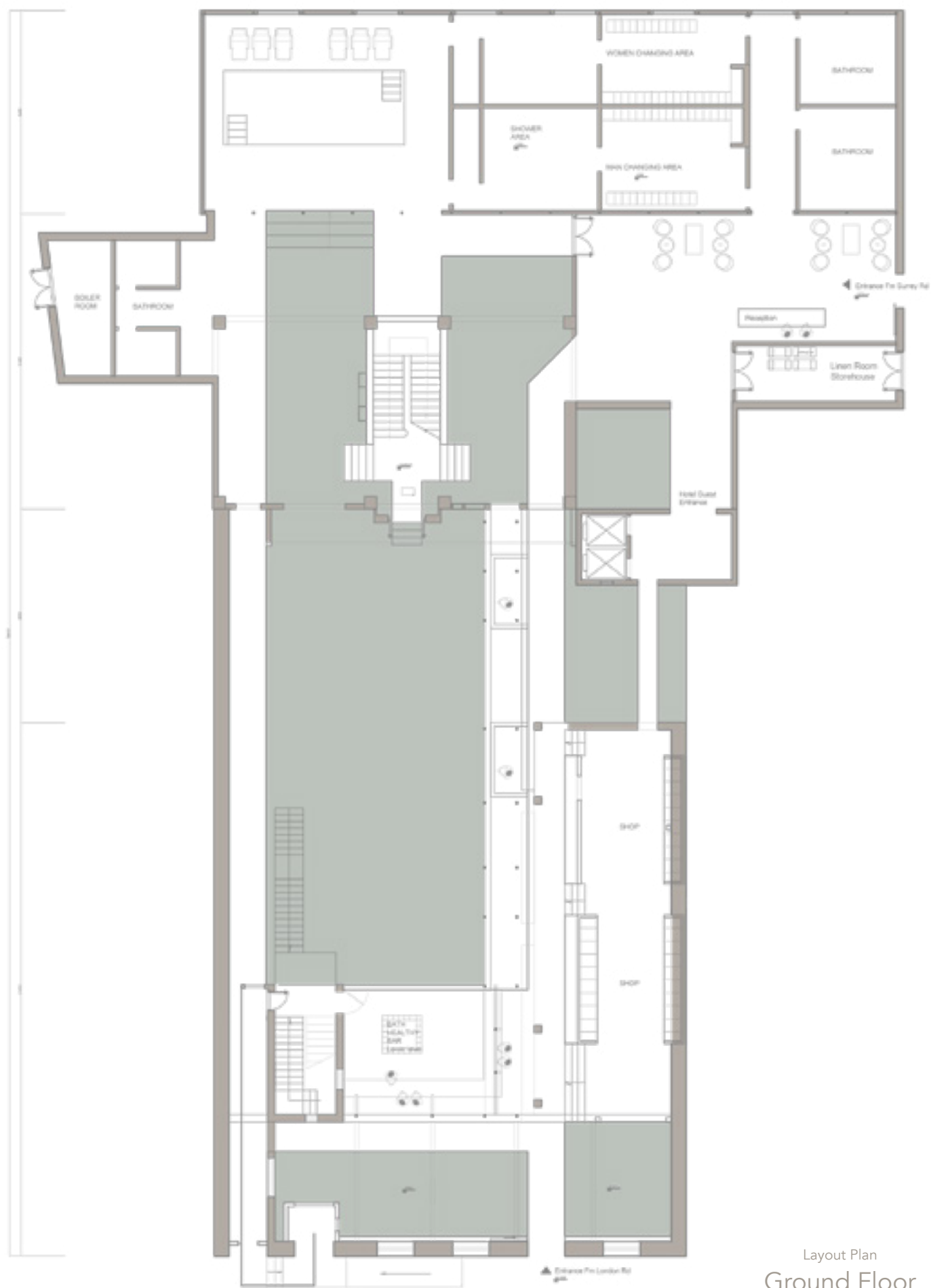




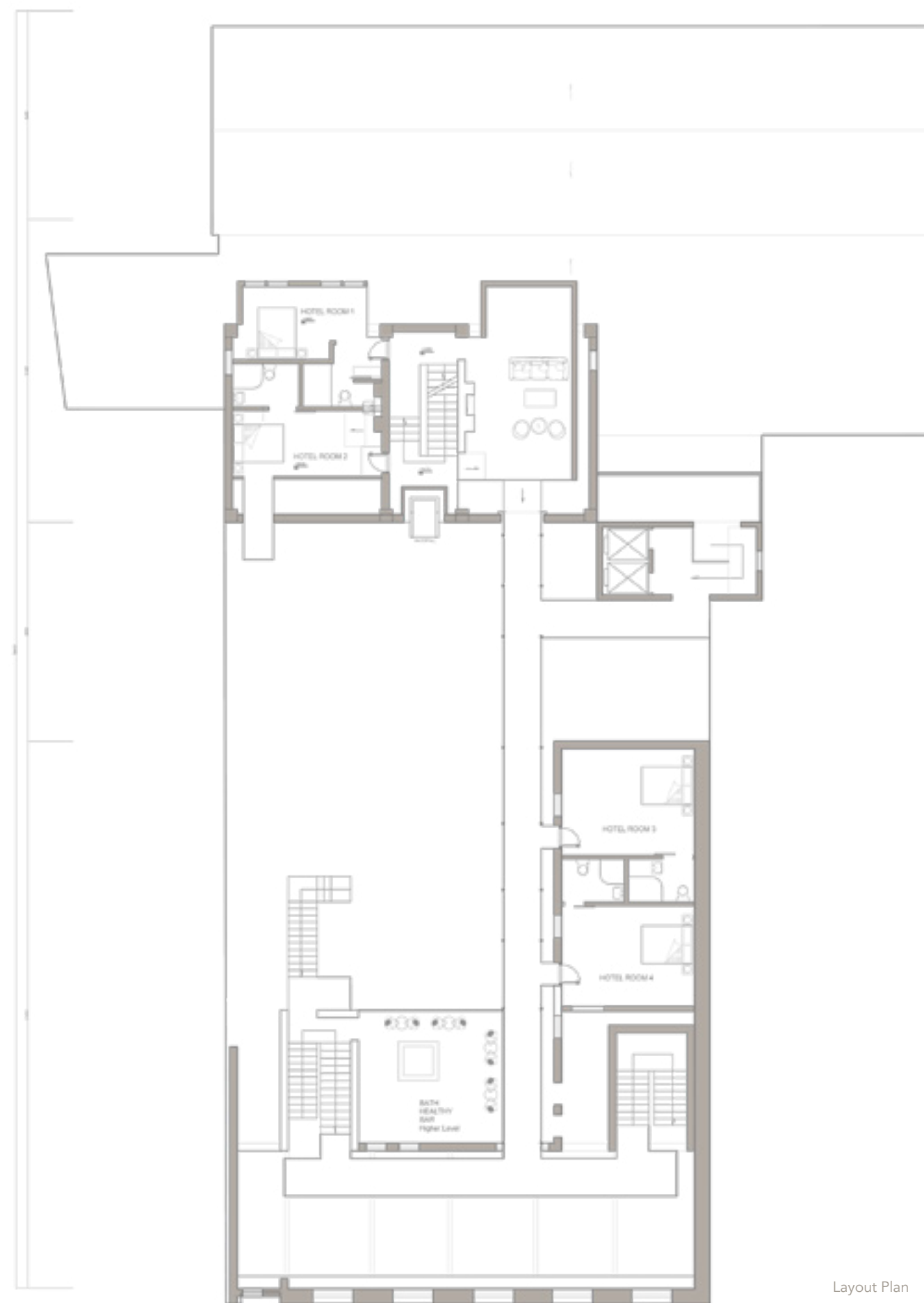
Section



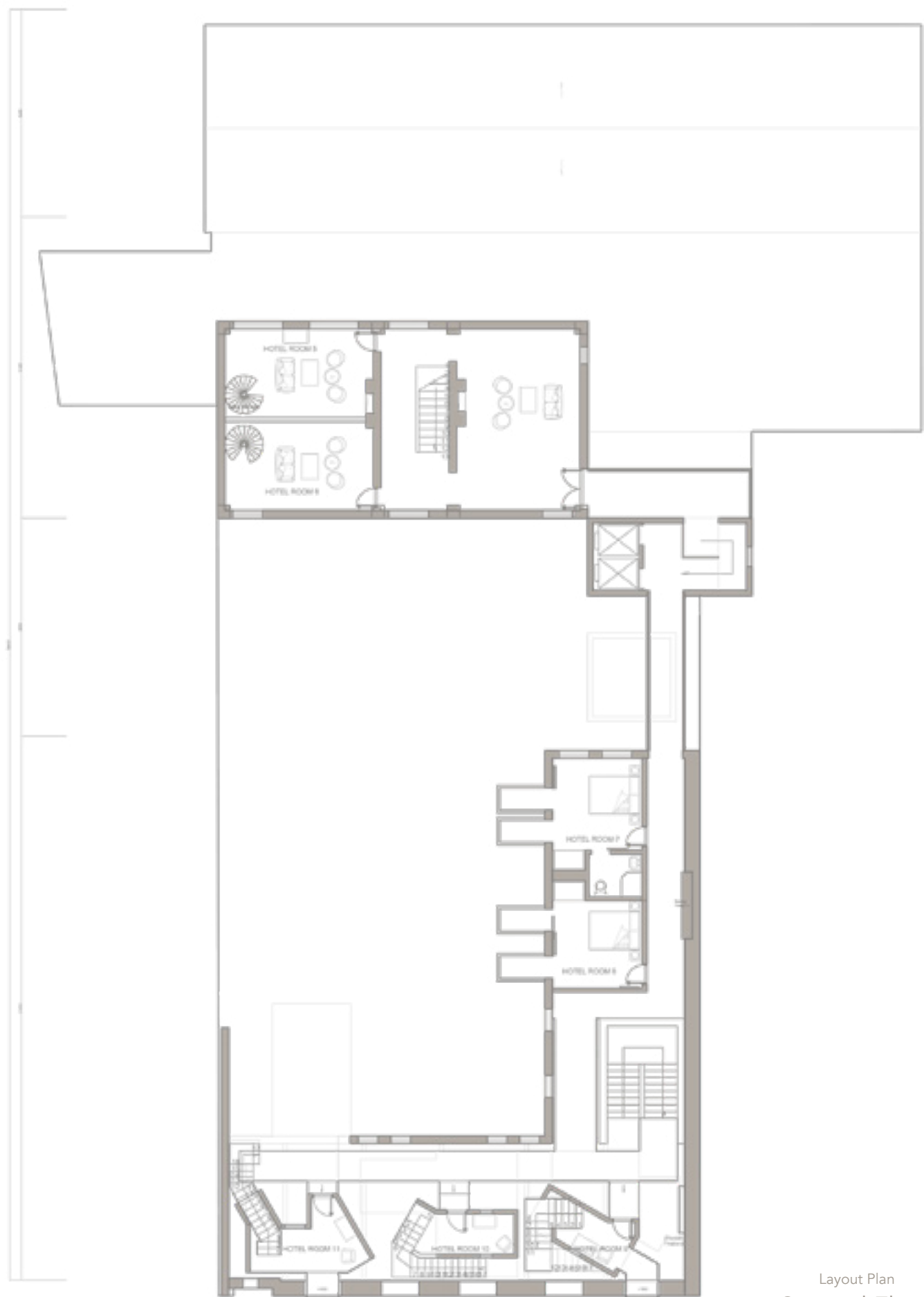




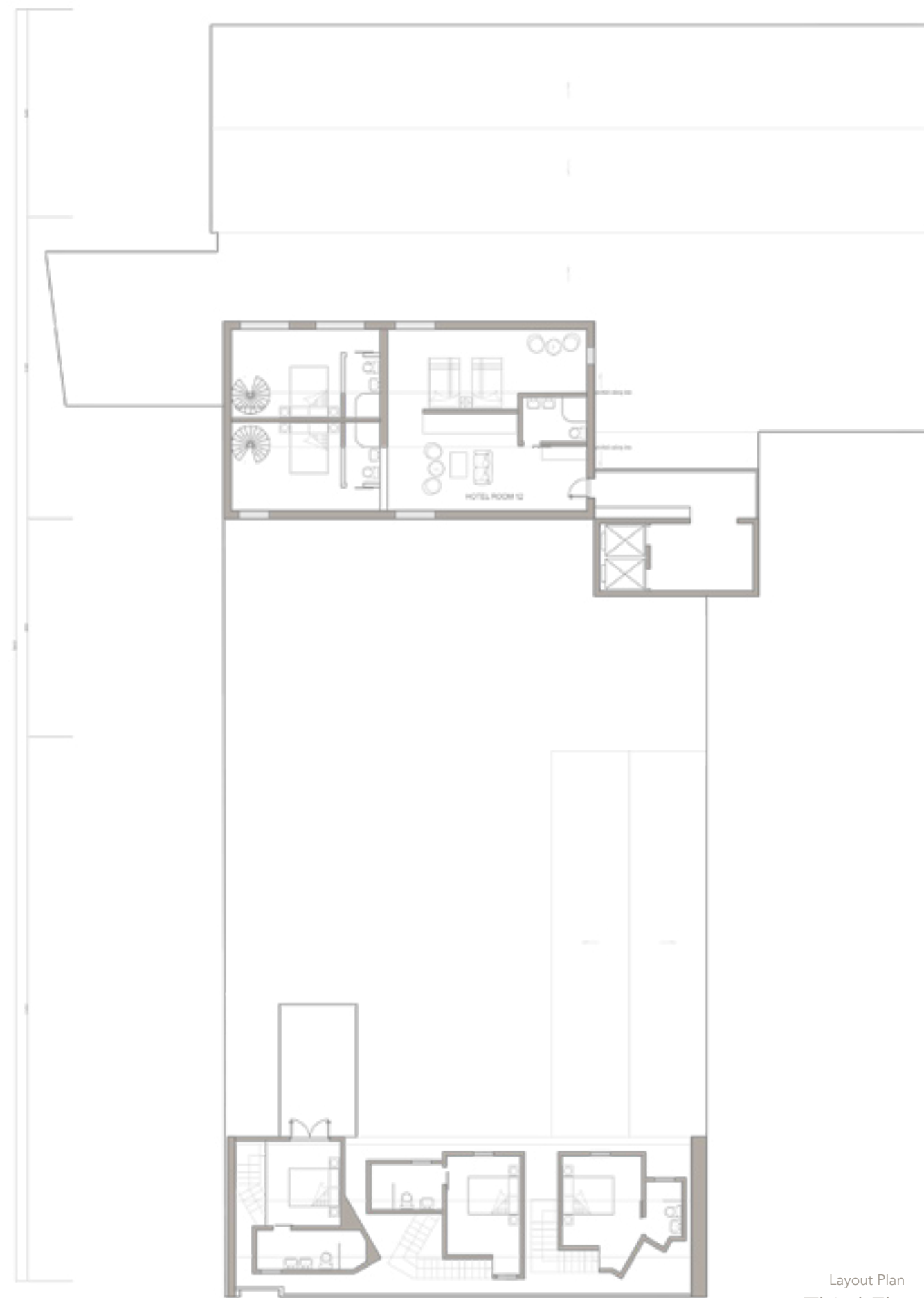
Layout Plan  
Ground Floor



Layout Plan  
First Floor



Layout Plan  
Second Floor



Layout Plan  
Third Floor





Entrance View

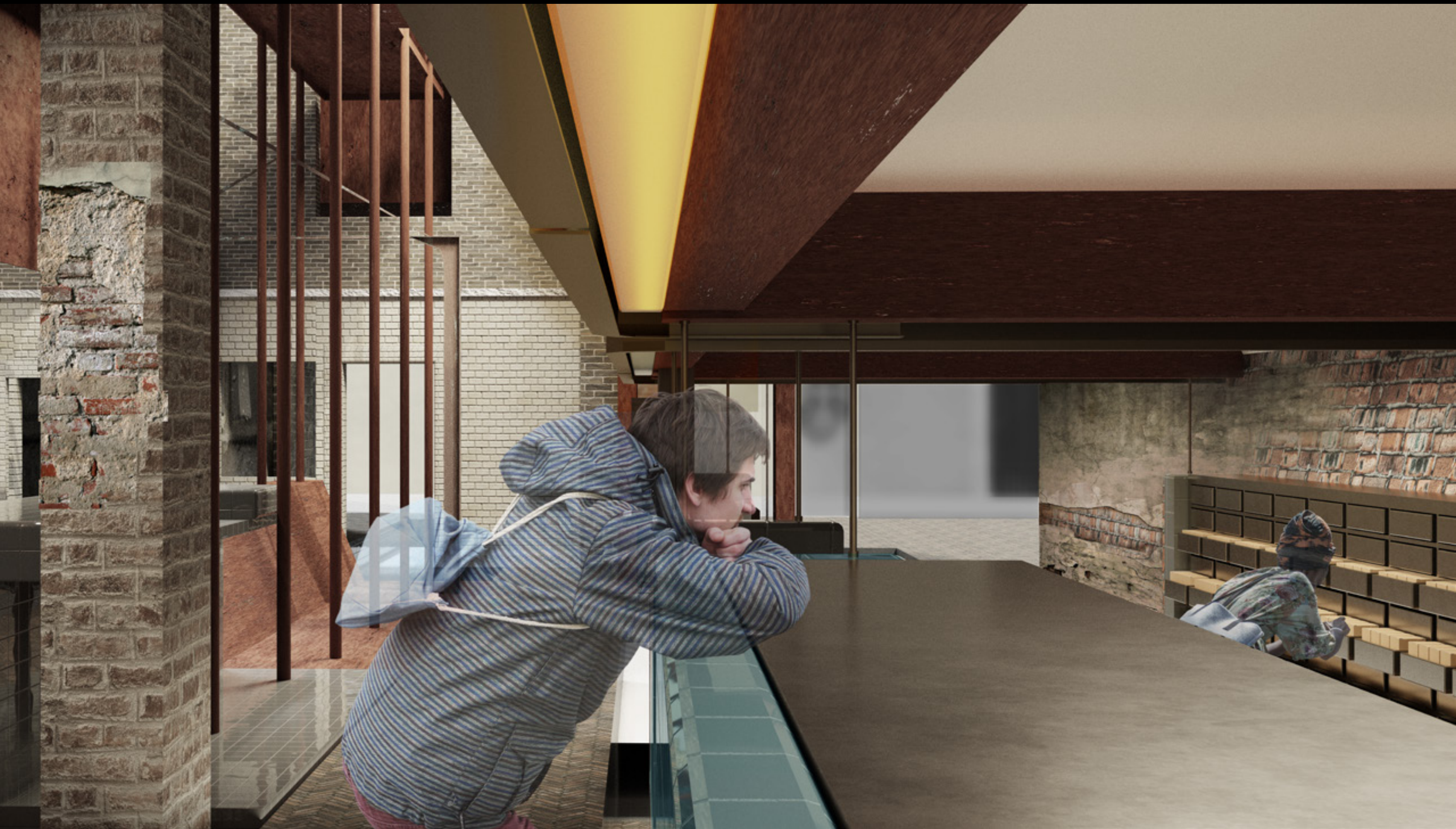




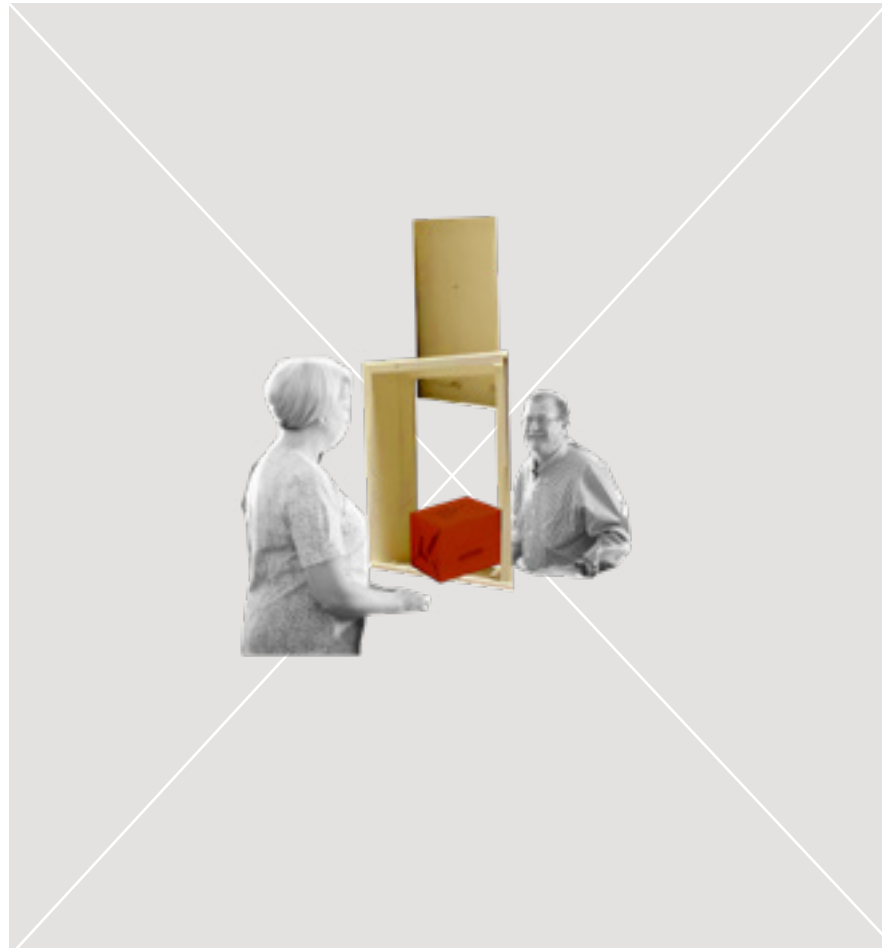












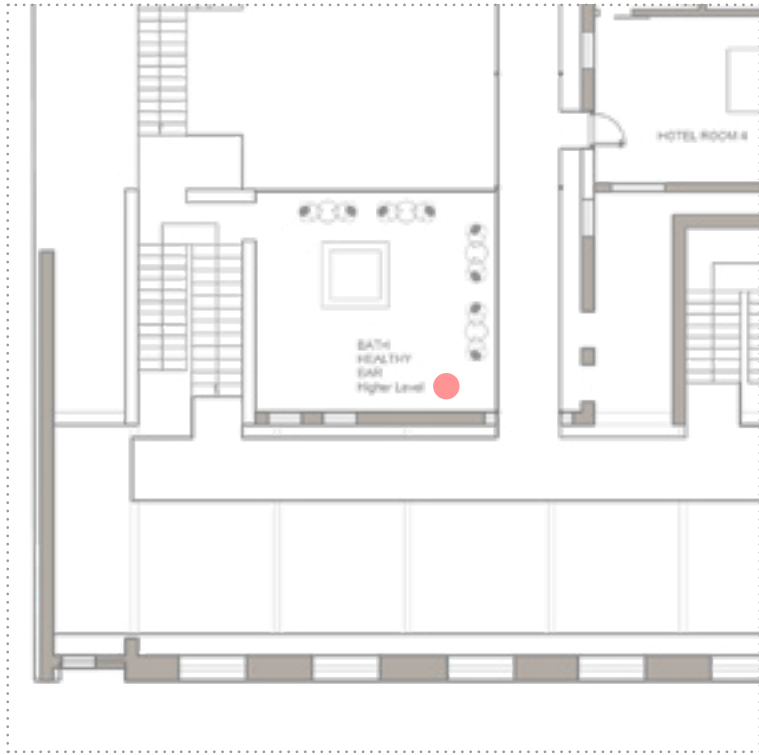
Previous Post office wooden window



Previous Vault Area



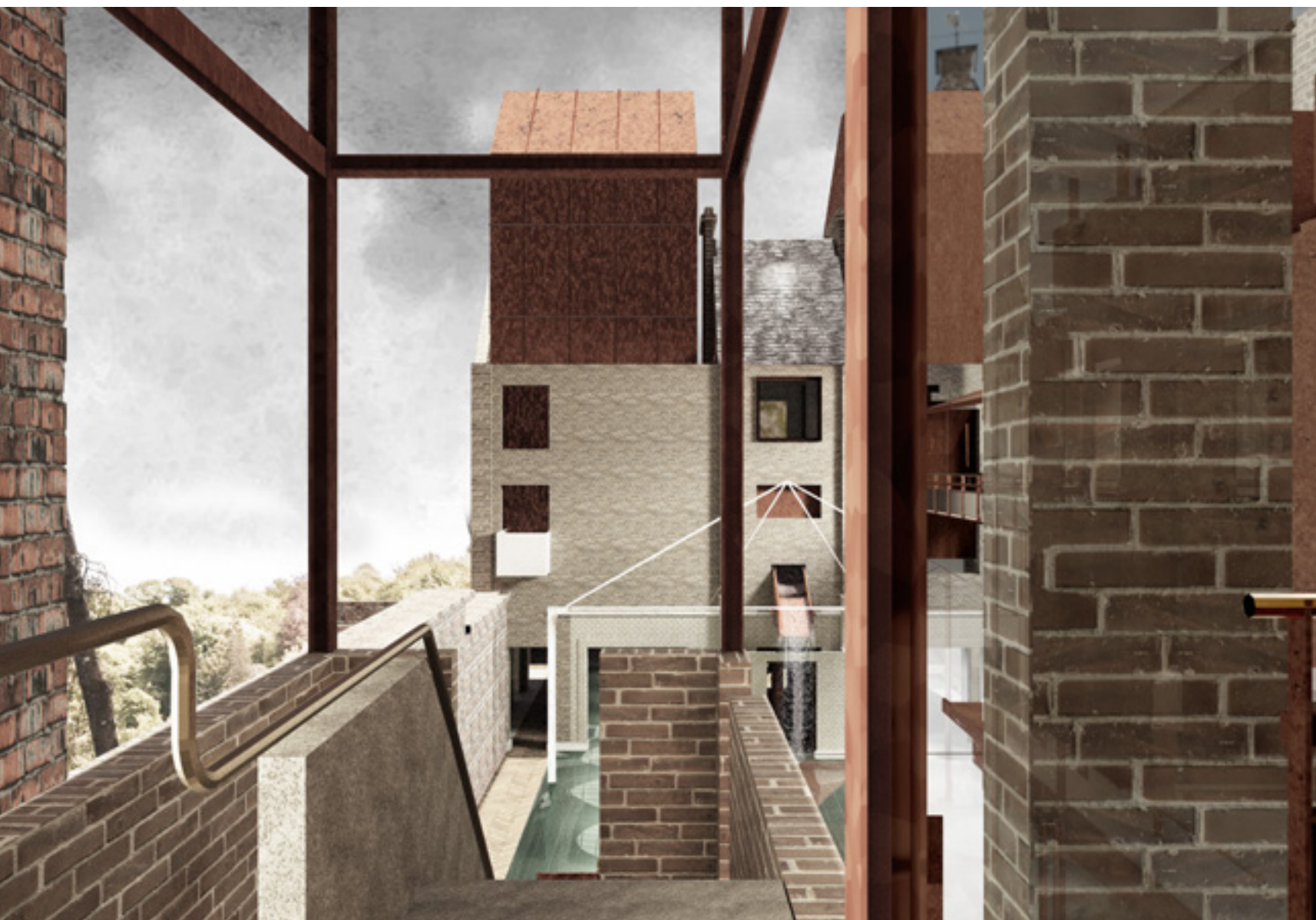




Bar

















Main Pool



Previous Shed



axo





December



March

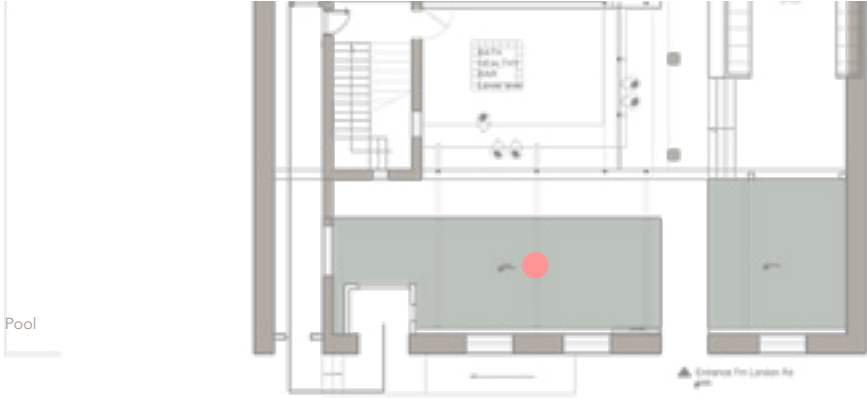


July





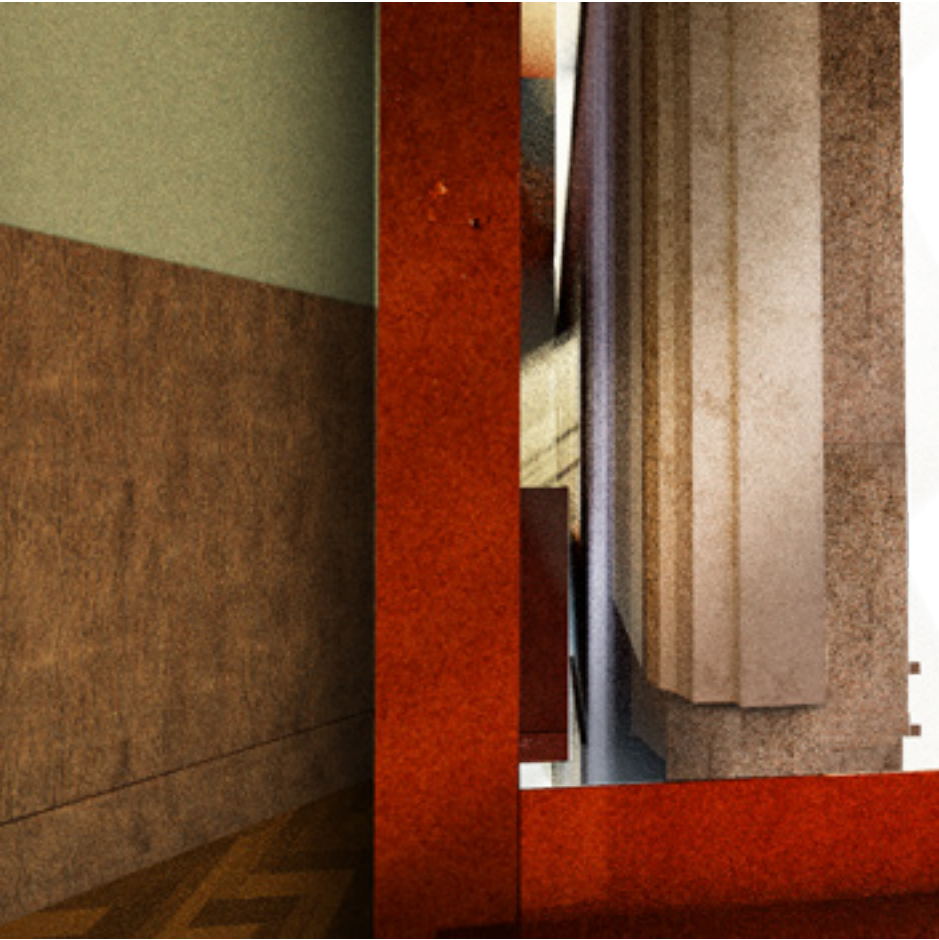
Post Office Pool





After enjoy the seawater pool,  
Welcome to Post Hotel.



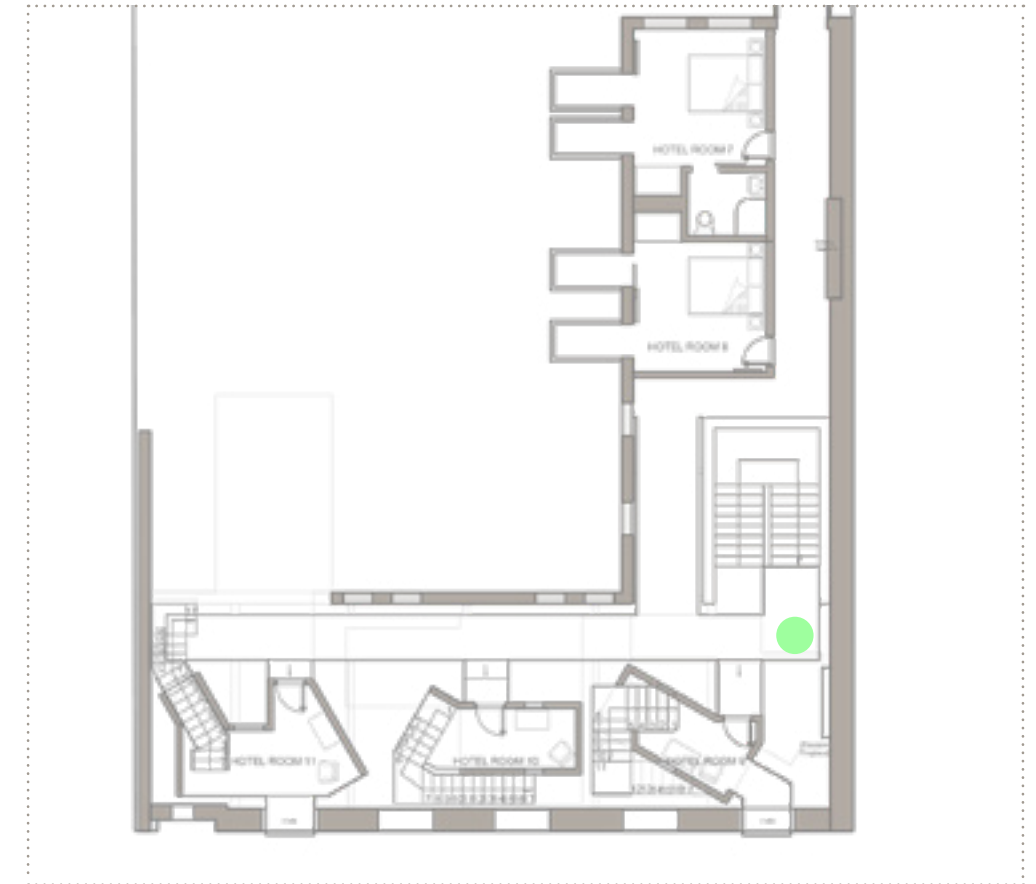


Hotel Room at Morning

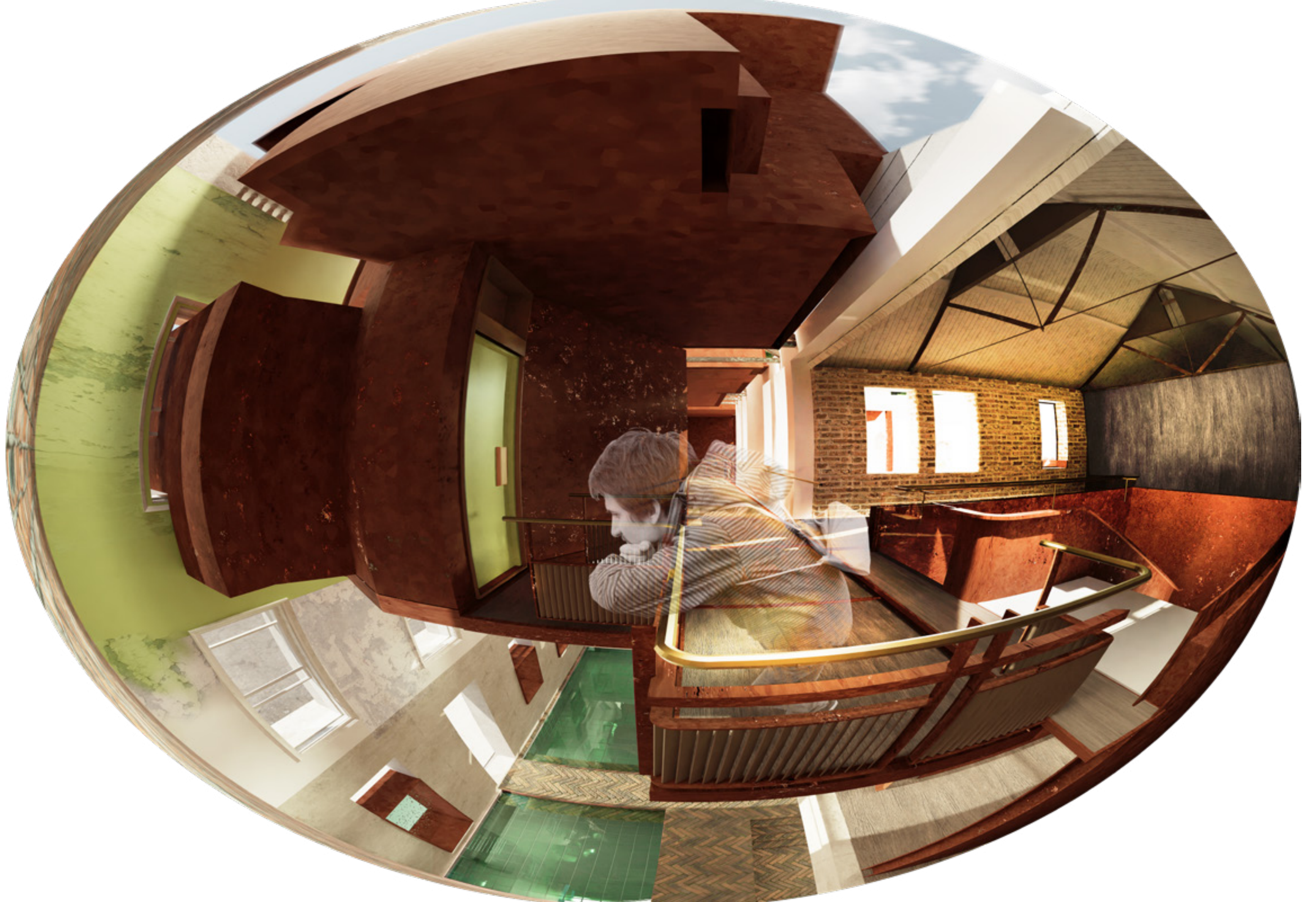




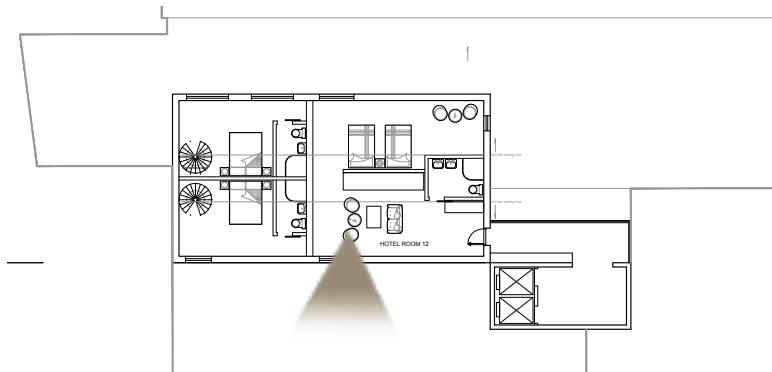
















THANK YOU