

YINAN ZHU

STAYING VERTICAL

INTERIOR DESIGN - NONTERIOR

ABOUT 'STAYING VERTICAL'...

This project is the exploration of Tyler Court, a unique somewhat narrow opening between two buildings in Soho. A space that also operates as a "short cut" facilitating through access from one street to another. This unique "gap" further demonstrates a diversity of spaces, textures, dimensions and perspectives in an area of London already packed with considerable differences.

As public spaces become more popular, it is required to accommodate different users throughout the day. Solutions must be found for everyone, not just the dominant group. As Soho becomes more crowded, public space equality becomes a growing issue. Then the growth of POPS - privately owned public space - has raised real concerns regarding negative and restrictive use. Soho needs different types of spaces, identikit POPS with grey seats, puny birch or sad espaliered trees or long rows of wooden benches, cannot become the dominant model.

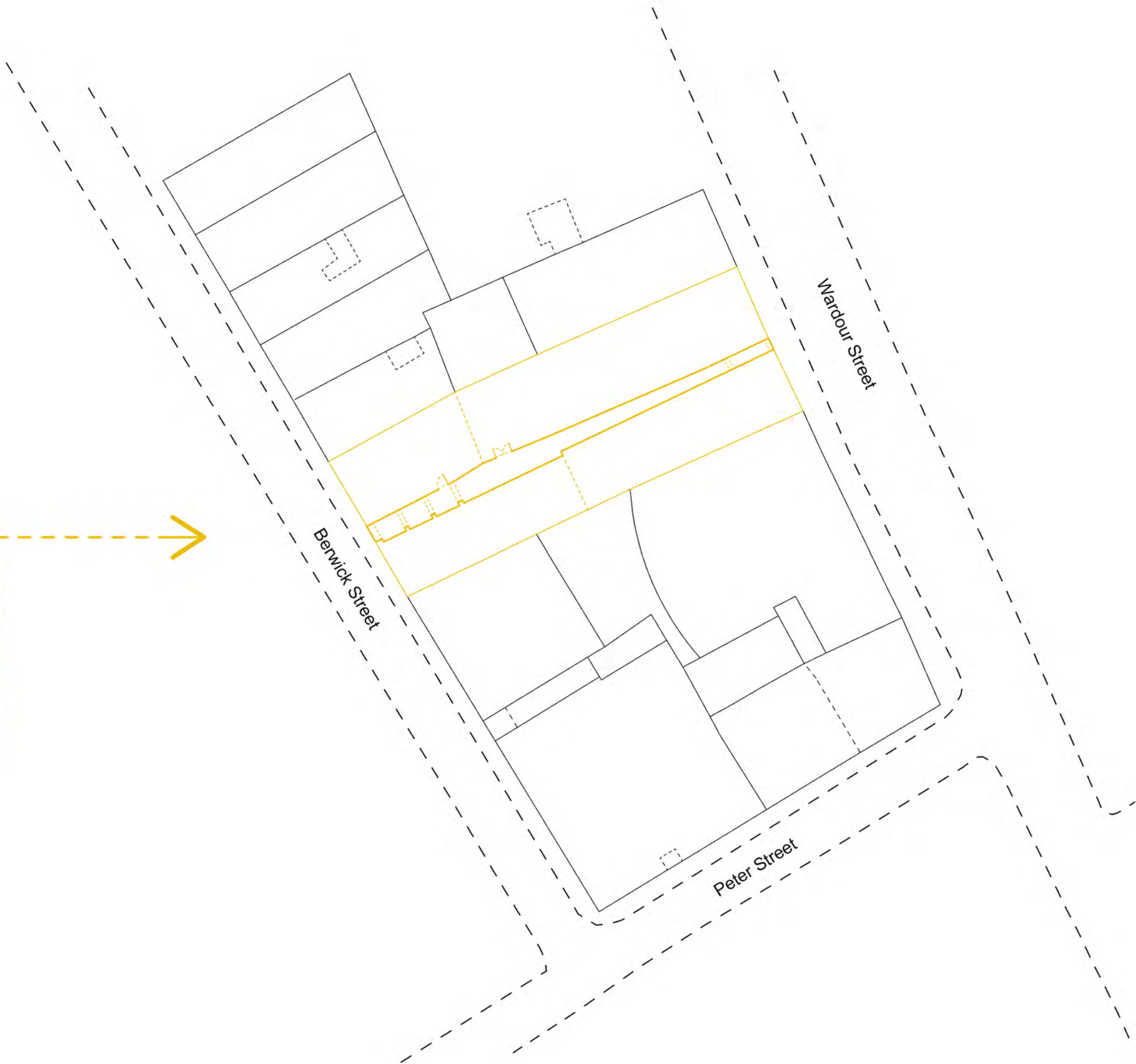
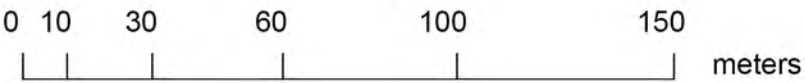
The diversity of this space however is more closely associated with a relatively closed group of local users who use the space mainly in response to their work needs.

Given the need for personal space in Soho and the lack of it for those working in the area thought was given to how this space may be adapted to fit such a need. Principally this would be done by it being more closely considered for the personal need of this relatively closed group of people, who spend most of the working day in relatively close proximity of each other and in this space. So, this project aims to offer more quirkier, less corporate, greener and more distinctive uses for office workers.

According to the research and outcome of workshops in Tyler's Court, focus on office worker's specific needs, eleven different type of furniture were added to in this space: outdoor dining and dancing hall, kinetic social space, social staircase, slide, bridges of game, vertical herb garden, theatrical coffee shop, standing area with pivoted window, bridge, bird's nest, performance window, setting 'connection' between office workers who work for different companies and invariably come from different countries.

SITE PLAN

Tyler's Court



PHOTOGRAPHIC SITE SURVEY

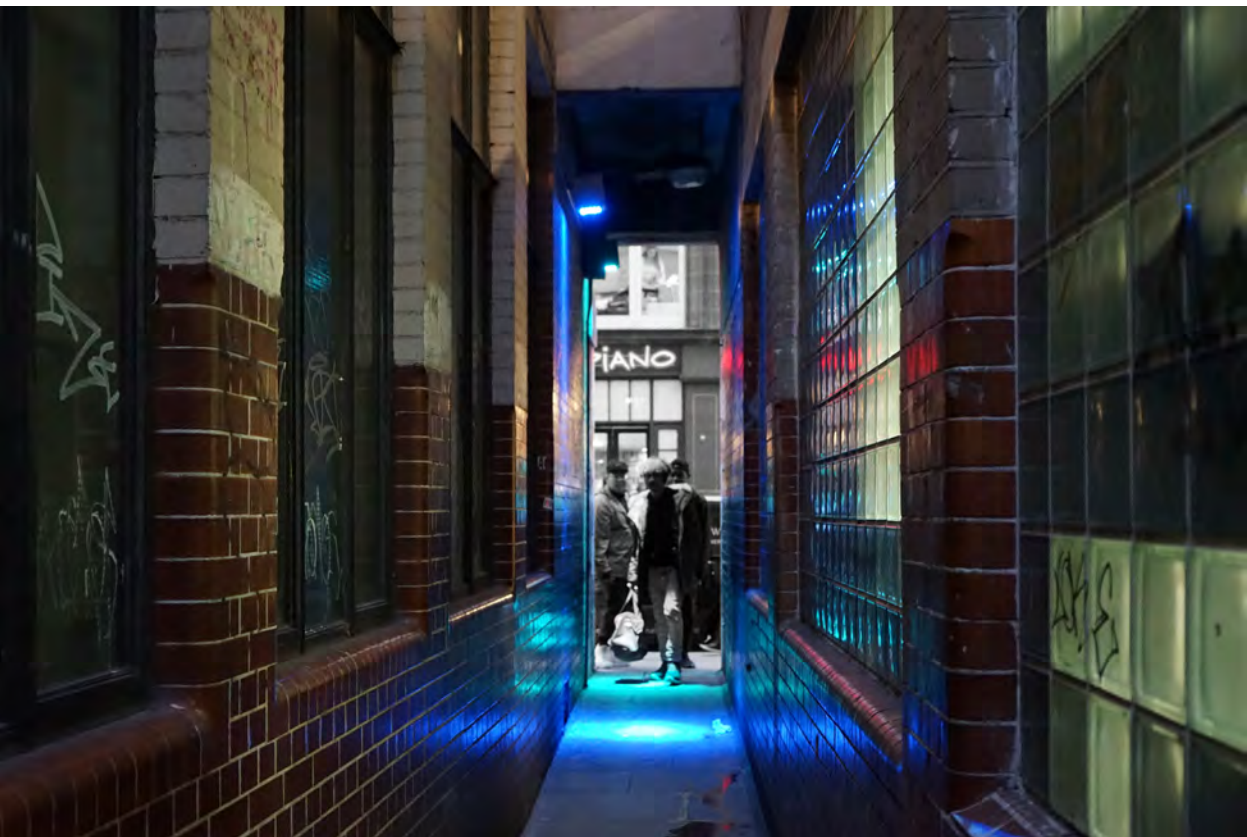
Tyler's Court



1



2



3



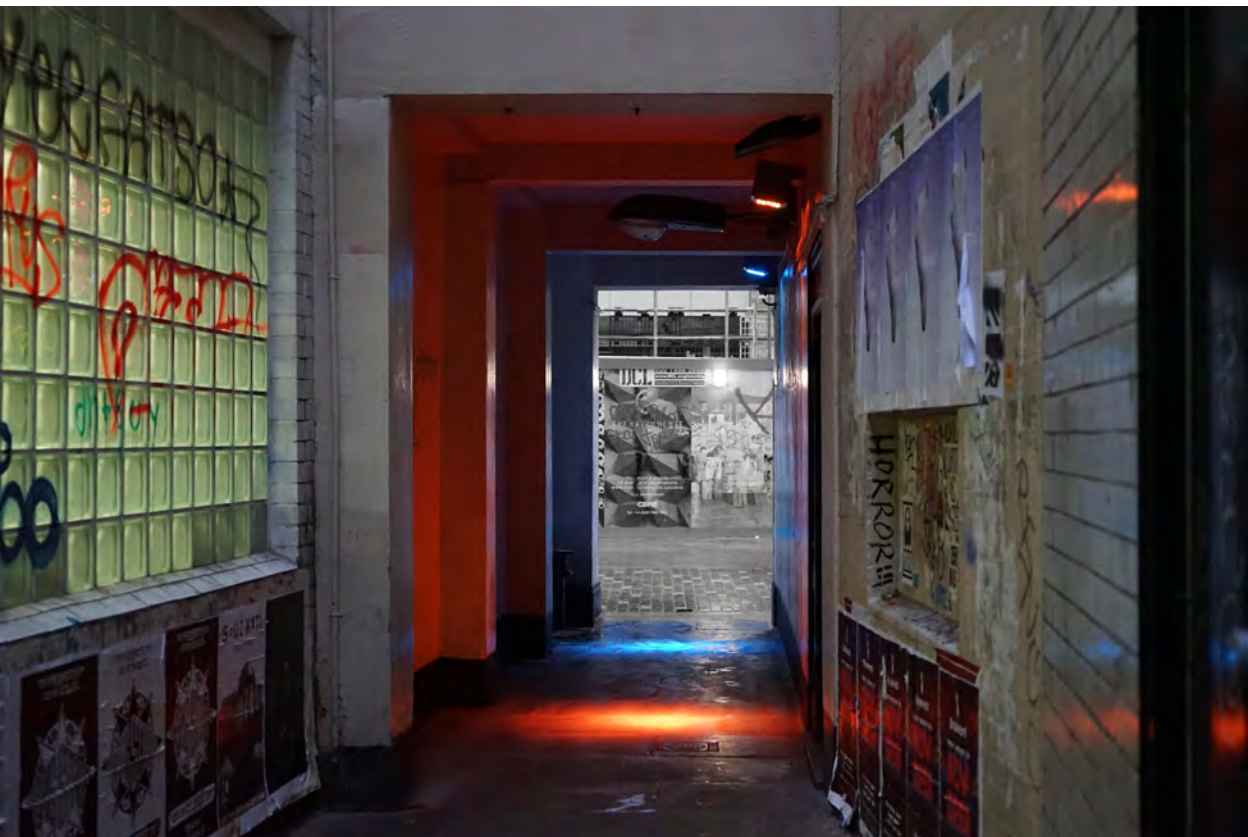
7



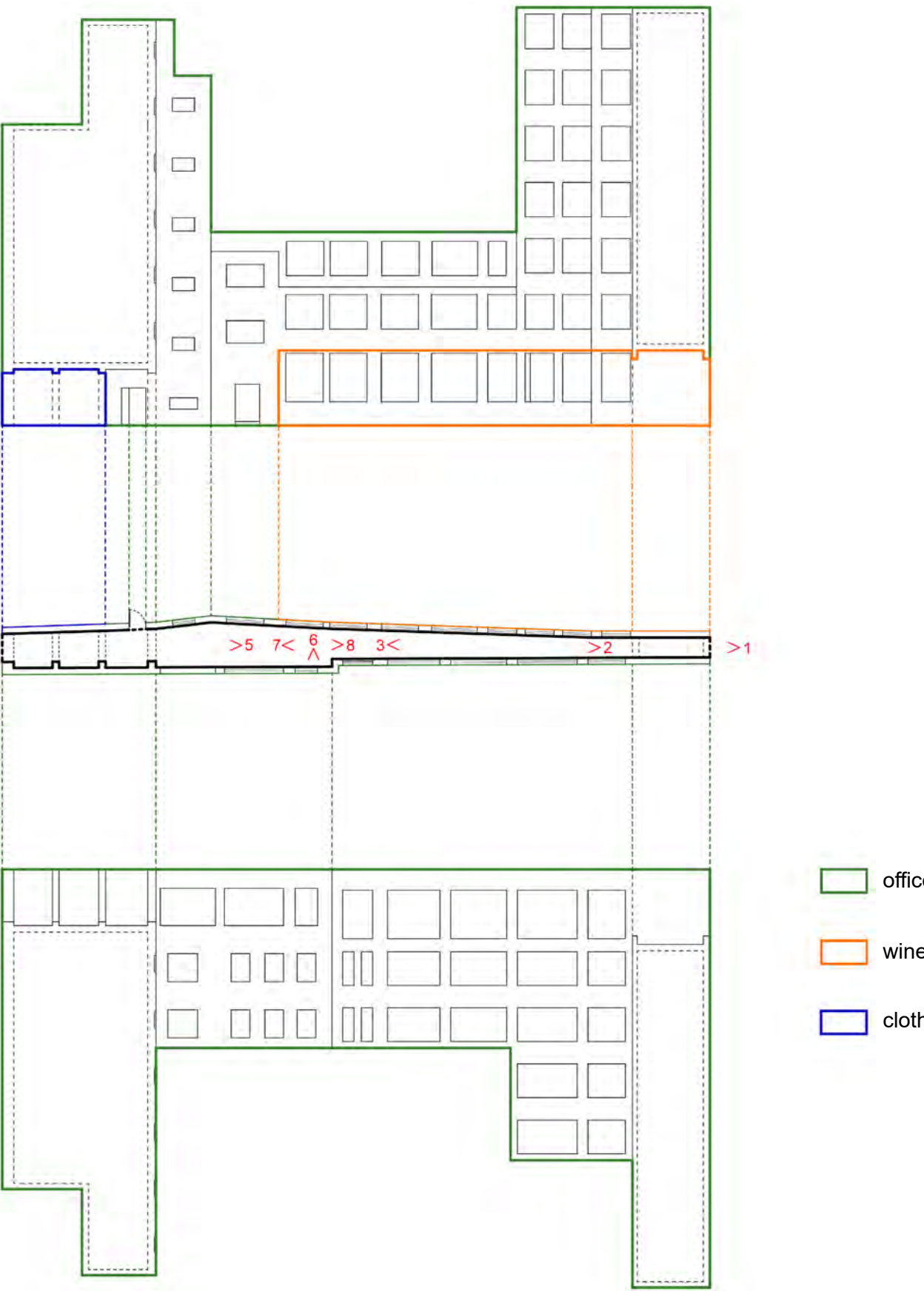
4



8



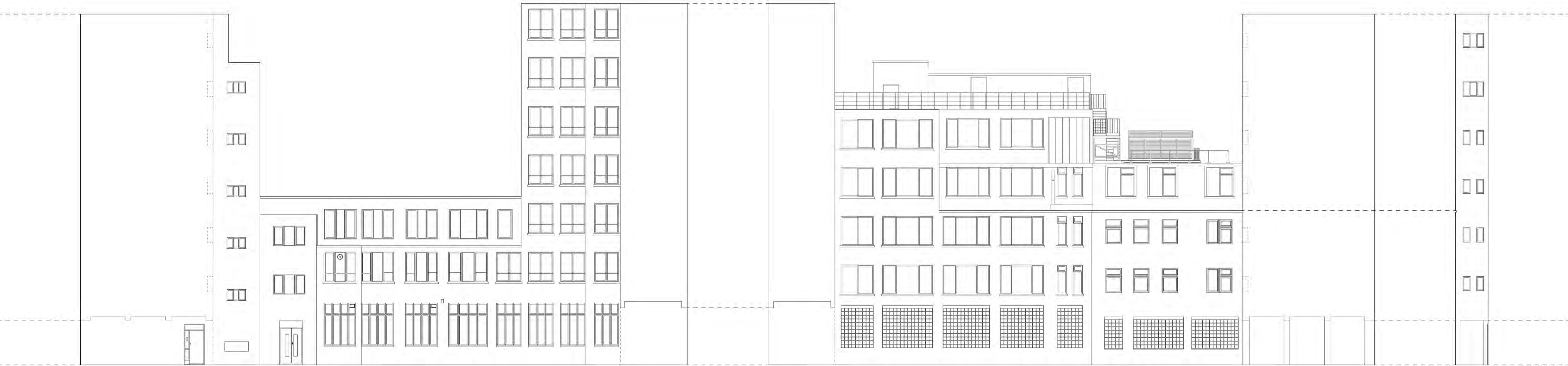
5



6

SITE SURVEY

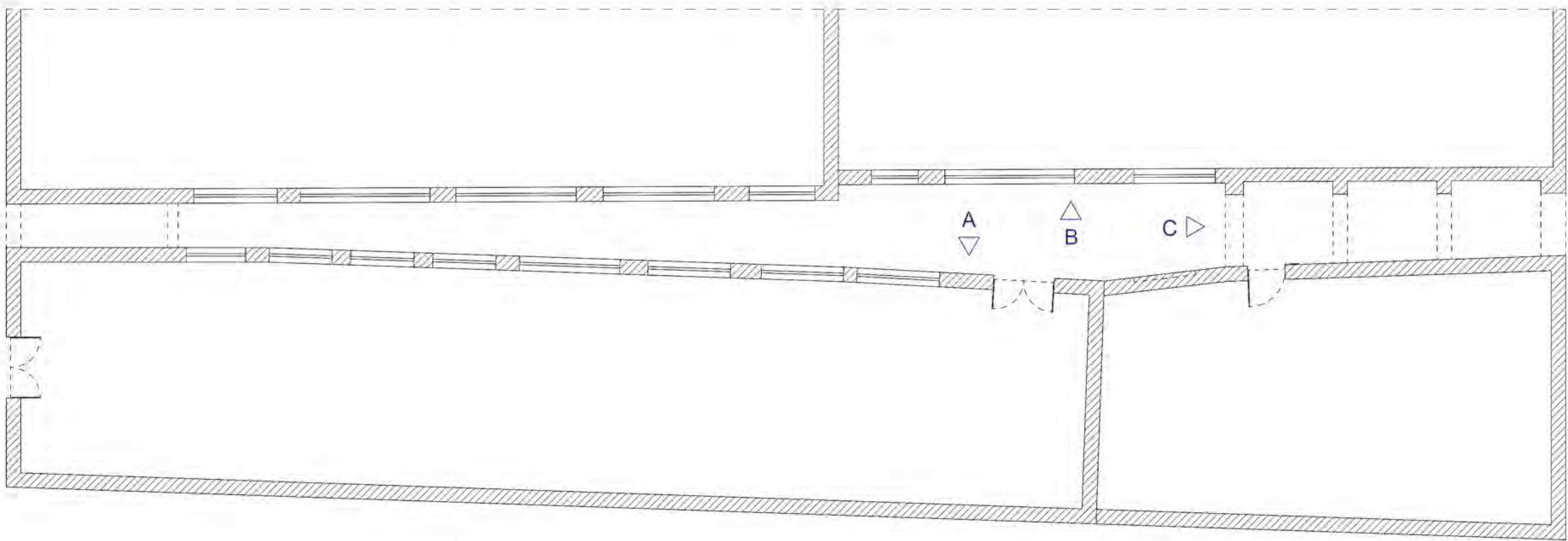
Existing Plans & Elevations



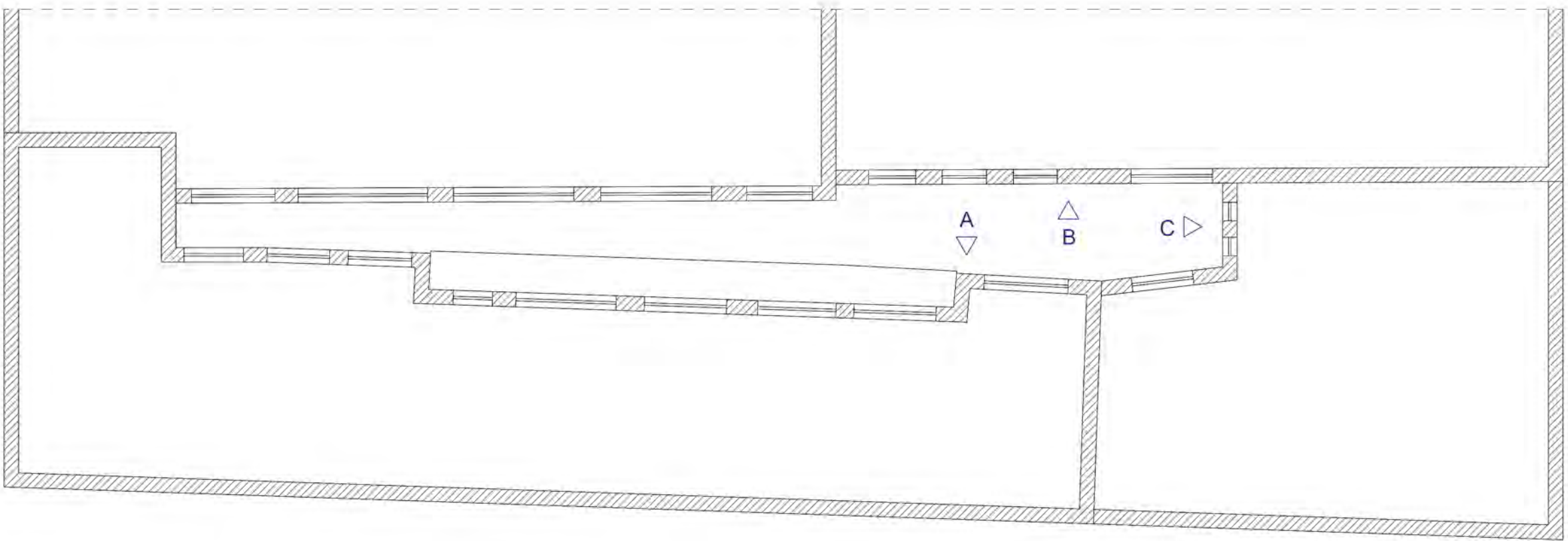
Existing Elevation A

Existing Elevation B

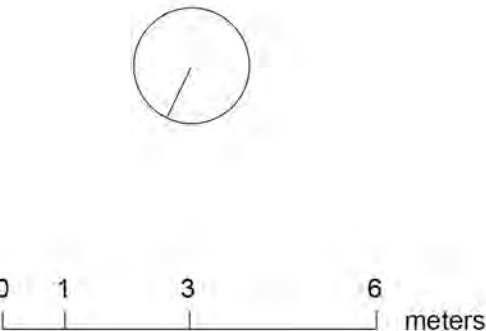
Existing Elevation C



Existing Plan - ground floor



Existing Elevation B



SITE ANALYSIS

Occupation & Use



eating lunch



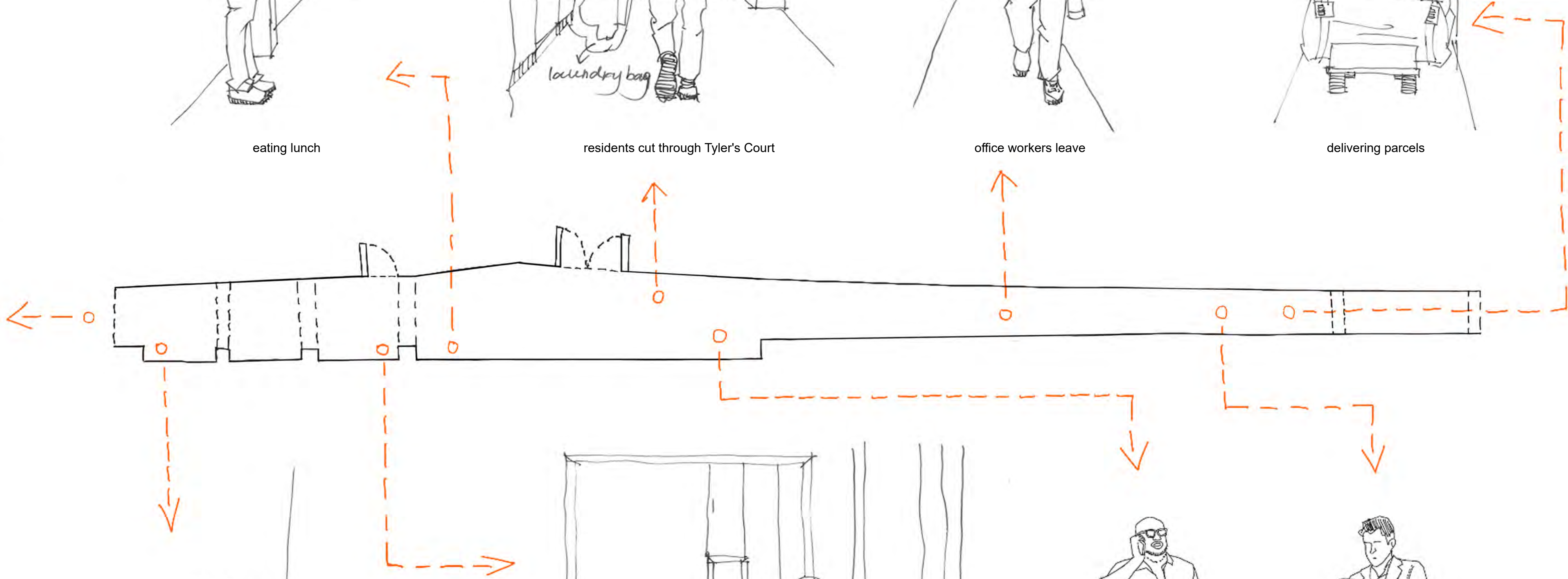
residents cut through Tyler's Court



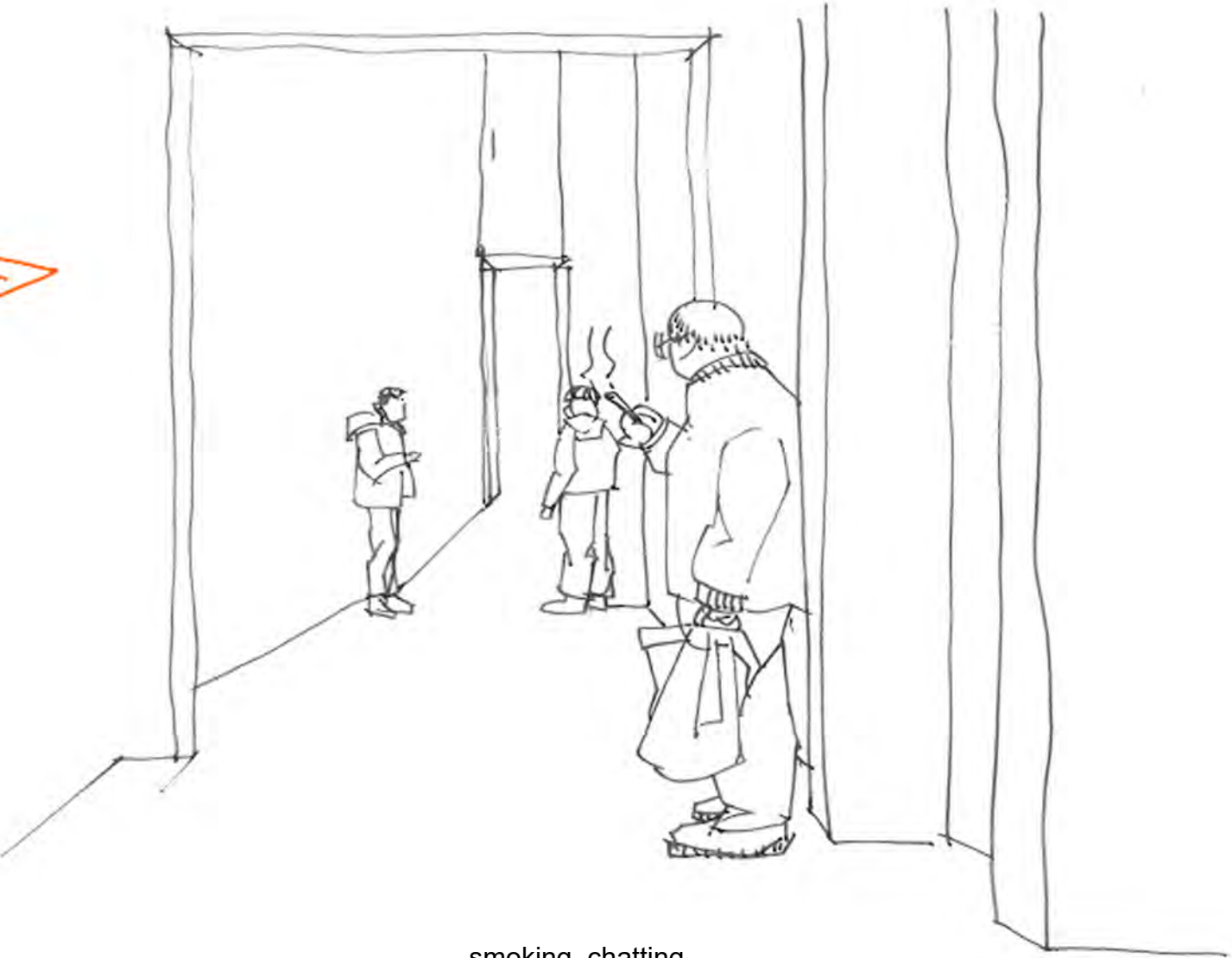
office workers leave



delivering parcels



maeket traders get tap water



smoking, chatting



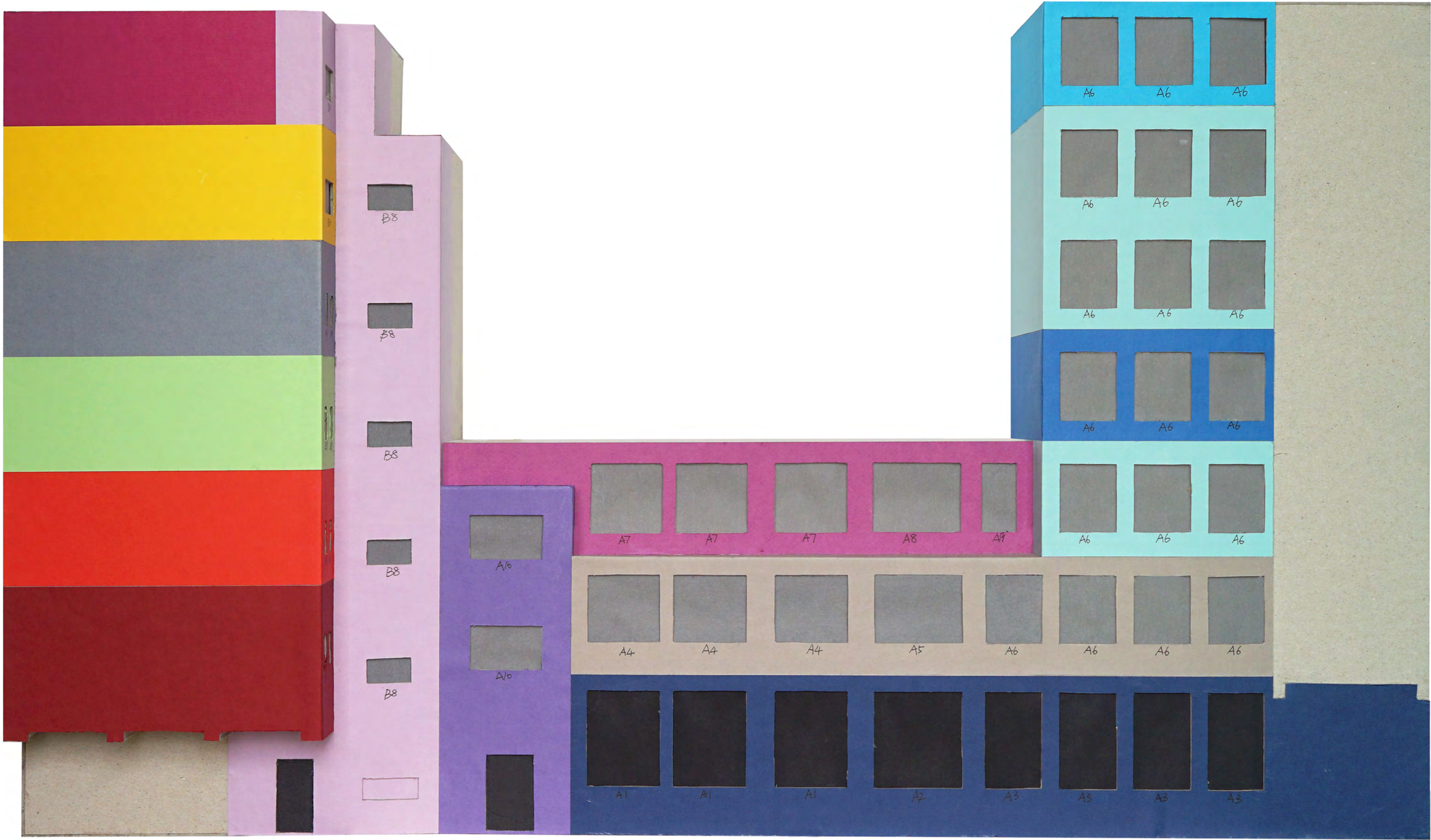
calling



buying coffee

SITE MODEL PHOTOGRAPH

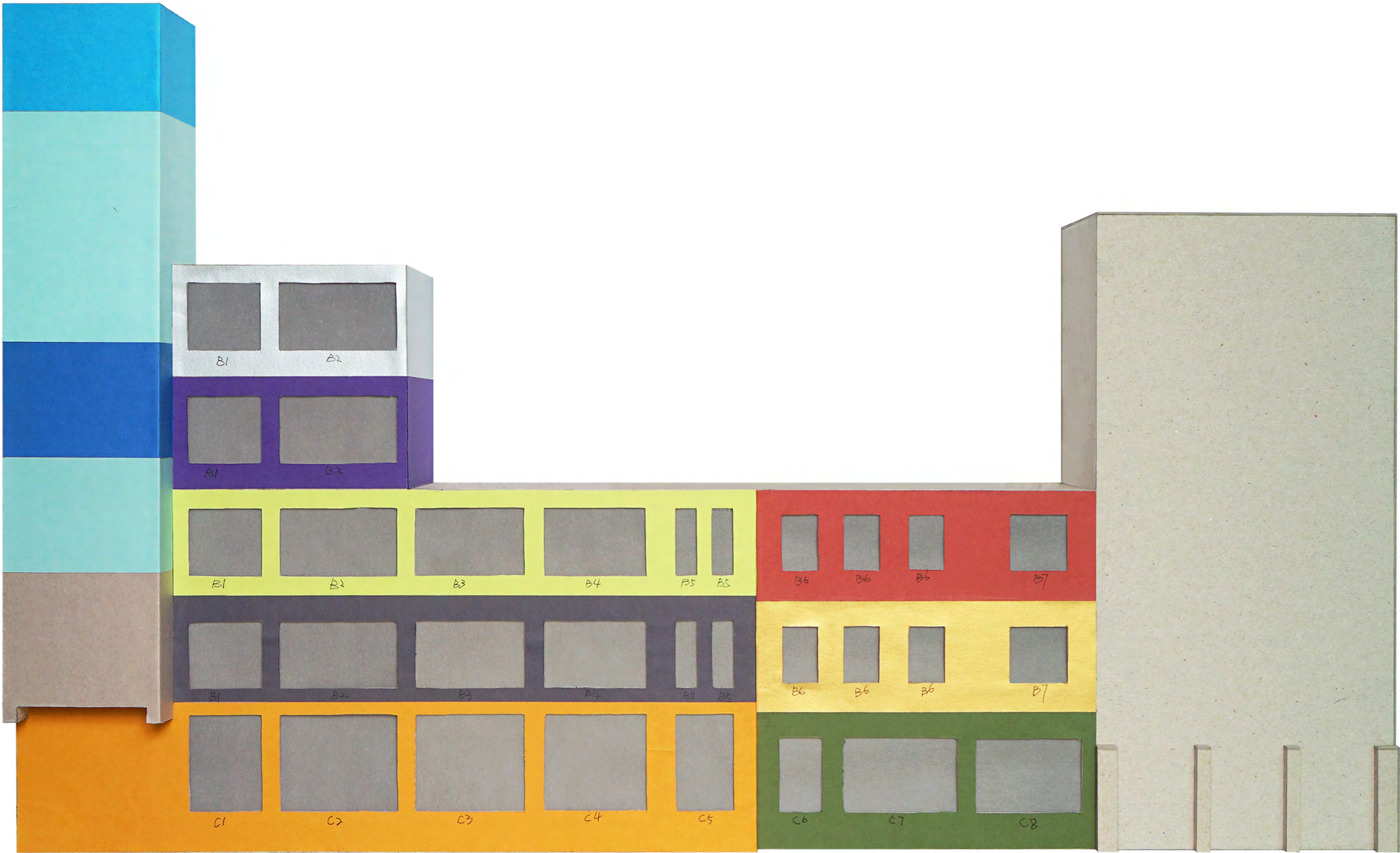
Tyler's Court - Elevation A



- Staircase
- Maestro Film
- RUMBLEN VFX
- Embargo Films
- Mirrorball Films
- Myhill Newman
- Staircase
- Hoo Ha Ltd
- The PHA Group
- Open Mike Productions
- Lookout Point
- Pure Soho
- Amathus Soho Wine Ship

SITE MODEL PHOTOGRAPH

Tyler's Court - Elevation B



- Hoo Ha Ltd
- The PHA Group
- Open Mike Productions
- Lookout Point
- D&D London Ltd - 100 Wardour St Ltd
- Heavy Entertainment Limited
- Keysports
- Edrington-Beam Suntory UK
- Orrsum
- SOHOst
- New Sparta Productions
- Wardour Street Studio

SITE ANALYSIS

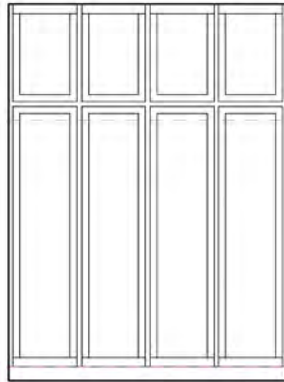
Existing Window Typologies

Type A

Material : Aluminum
Color : Black
Quantity : 38



2573

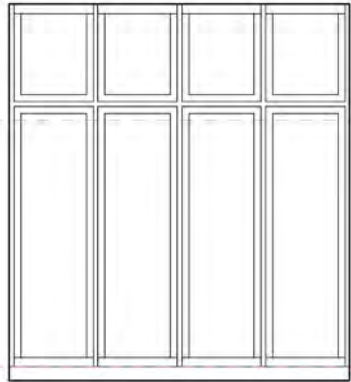


1980

A1 : 3

Blocked : Wine shop

Sloop

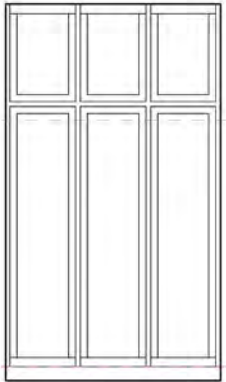


2415

A2 : 1

Blocked : Wine shop

Sloop



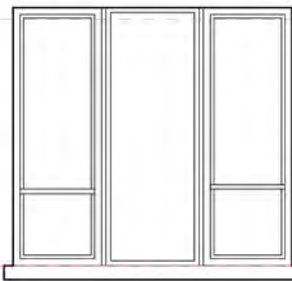
1524

A3 : 4

Blocked : Wine shop

Sloop

1831

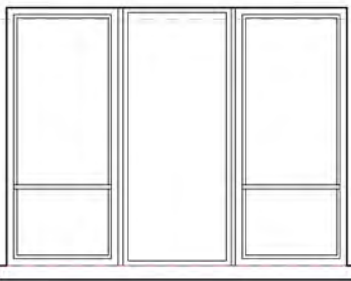


1980

A4 : 3

Office

Bridge
Balcony
Window box

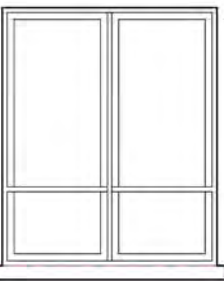


2415

A5 : 1

Office

Bridge
Balcony
Window box

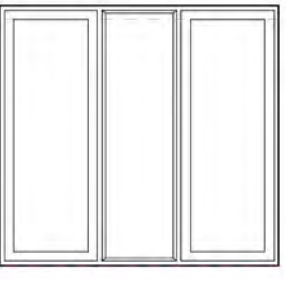


1524

A6 : 19

Office

A6-1 : (1-4) : 13
Bridge, Balcony, Window box
A6-2 : (5-6) : 6
Balcony, Window box

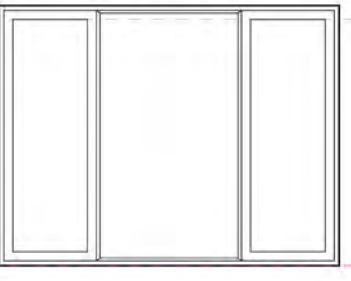


1980

A7 : 3

Office

Bridge
Balcony
Window box

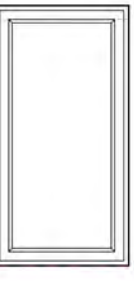


2415

A8 : 1

Office

Bridge
Balcony
Window box

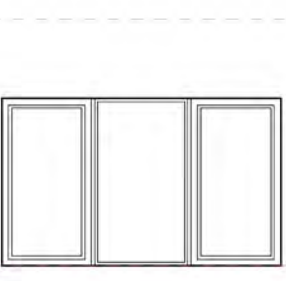


949

A9 : 1

Office

Bridge
Balcony
Window box



1981

A10 : 2

Office

Window box

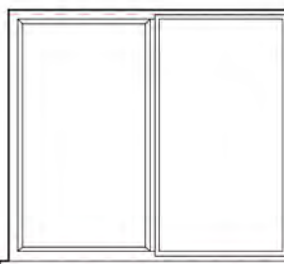
1187

Type B

Material : Ployvinyl Chloride
Color : White
Quantity : 39



1781

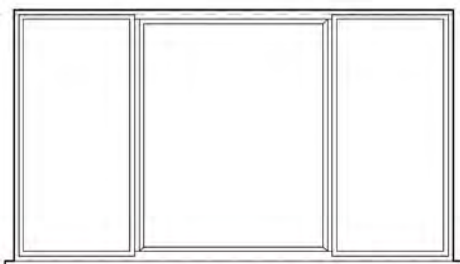


2013

B1 : 4

Office

Bridge
Balcony
Window box

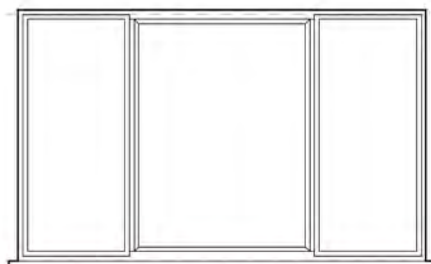


3118

B2 : 4

Office

Bridge
Balcony
Window box

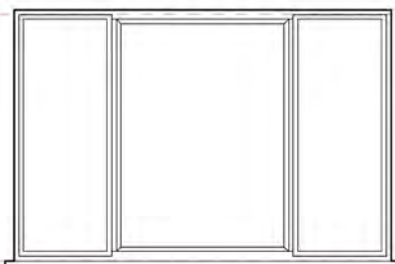


2897

B3 : 2

Office

Bridge
Balcony
Window box

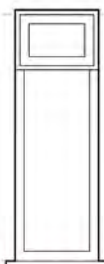


2676

B4 : 2

Office

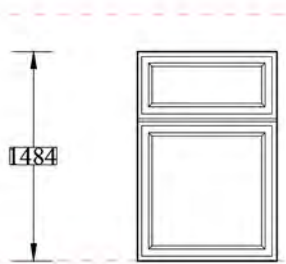
Bridge
Balcony
Window box



594

B5 : 4

Blocked : Toilet

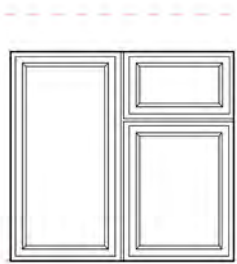


990

B6 : 6

Office

Window box

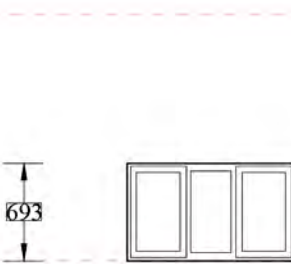


1583

B7 : 2

Office

Window box



1192

B8 : 5

Office

Window box



557

B9 : 8

Office

Window box



1608

B10 : 2

Office

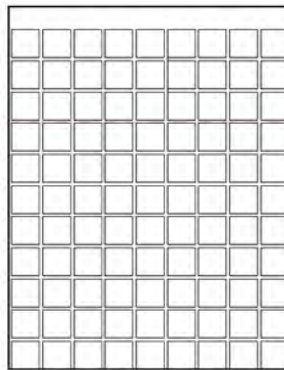
Window box

Type C

Material : Glass Brick
Color : Transparency
Quantity : 8



2573

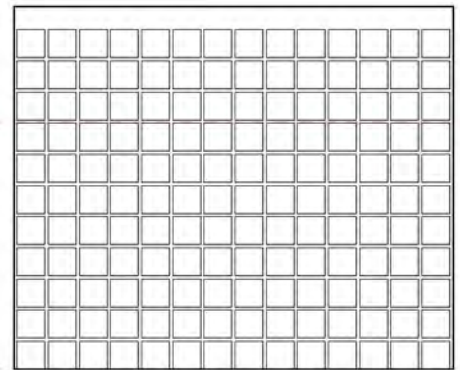


2012

C1 : 1

Toilet Corridor

Sloop

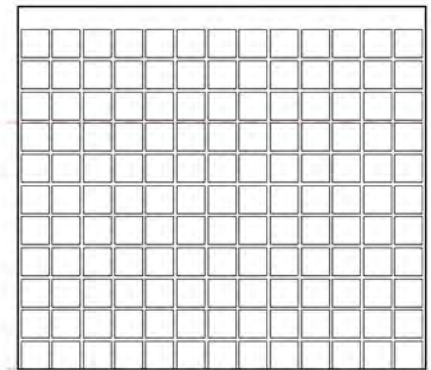


3117

C2 : 1

Blocked : Office Office

Sloop

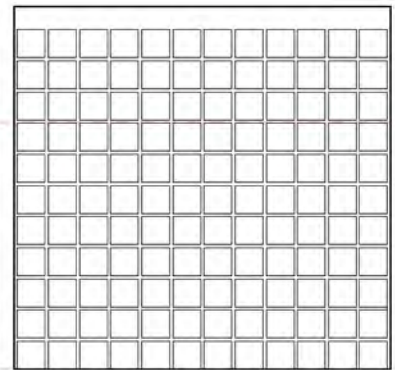


2896

C3 : 1

Office

Sloop

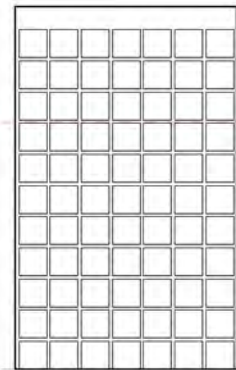


2675

C4 : 1

Office

Sloop

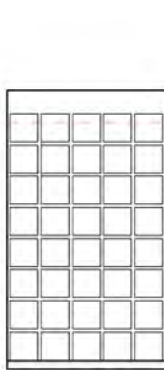


1577

C5 : 1

Office

Sloop

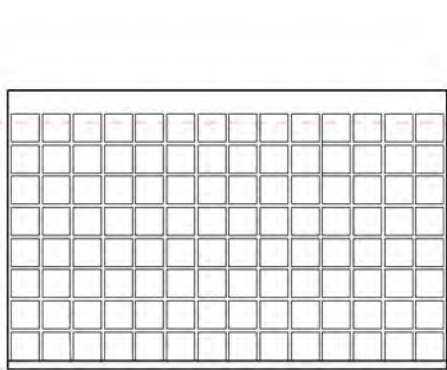


1128

C6 : 1

Office

Sloop

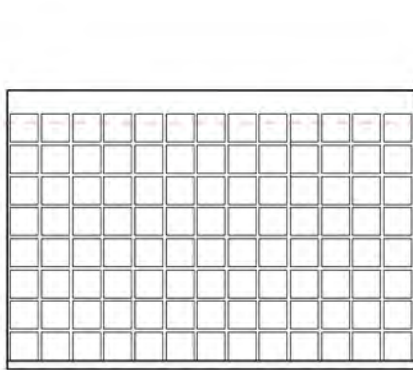


3116

C7 : 1

Office

Sloop



2895

C8 : 1

Office

Sloop

1978

0.2 0.5 1 2 meters

PARTICIPATORY EVENTS PHOTOGRAPHS

Exploring Ideas for Tyler's Court With Passersby



Set up display of workshop materials and sandwich shop in Tyler's Court



Show office workers my drawing and other students' drawings to inspire them



Present and introduce myself and my idea.



In return they are offered a free sandwich or salad



Ask office workers to vote or comment on ideas of others



Explain and present the Drawing Sheet so as to then ask office workers to draw their ideas or personal demands for a unique or unusual public space in Tyler's Court

PARTICIPATORY EVENT OUTCOMES

Key Findings from Participatory Event



CONCEPT ILLUSTRATION & BRIEF

A Vertical Public Space for Connection

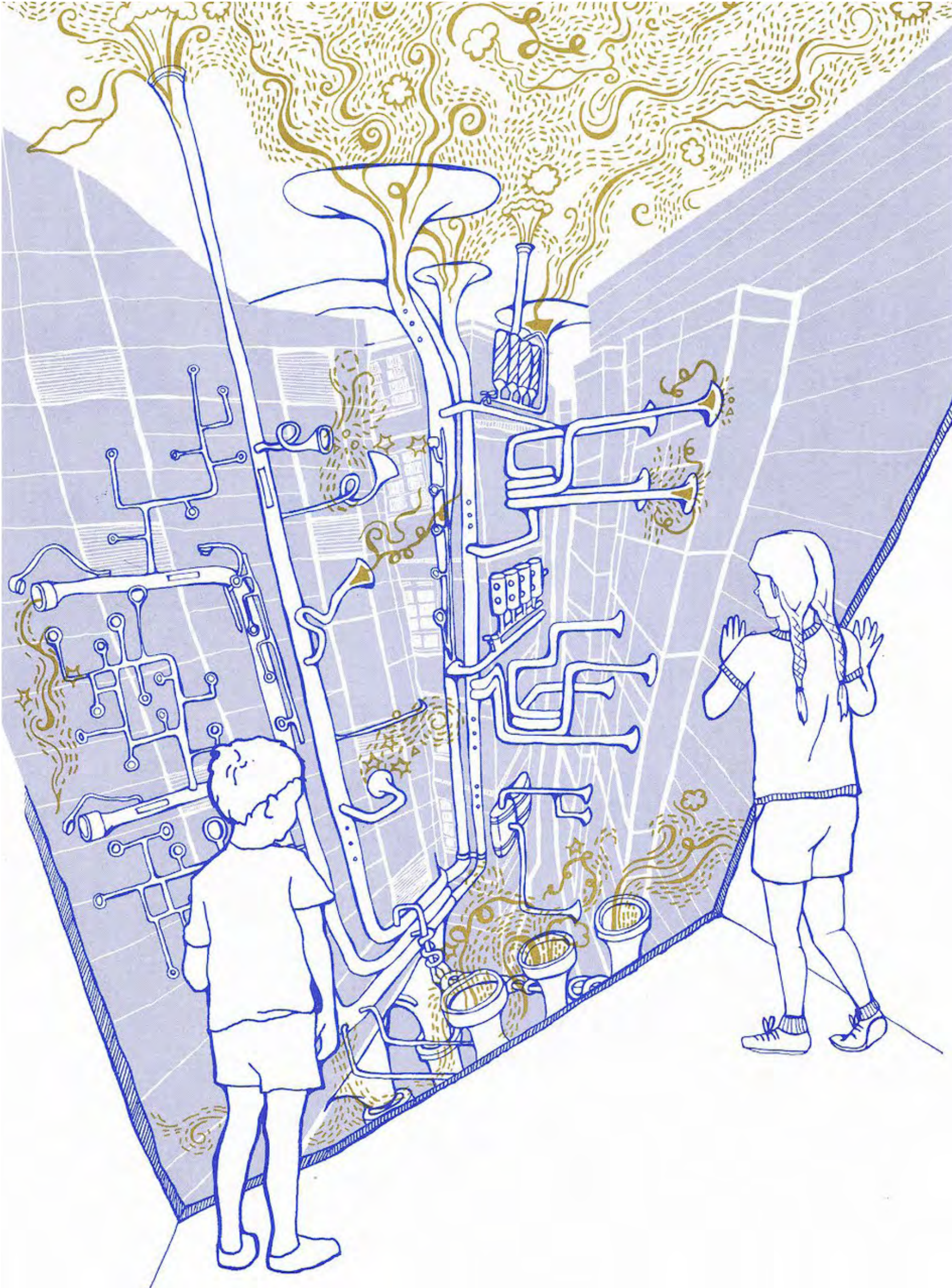


PRECEDENT STUDIES

Level Up Street Pavilion & Lullaby Factory & Illustration Of W. Heath Robinson



Level Up Street Pavilion
provide multi-level hang-out space and turn a previously disused rooftop area into a terrace



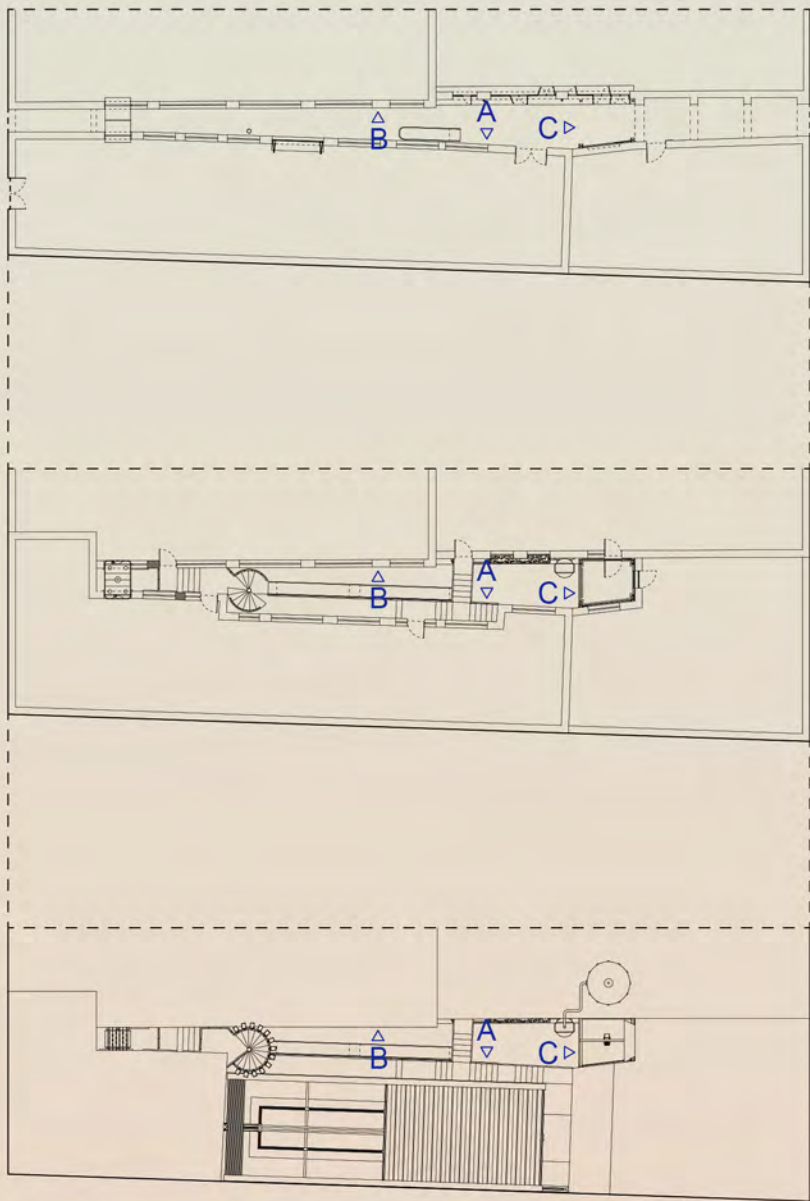
Lullaby Factory
establish connection between interior and exterior



Illustration -W. Heath Robinson
explore fun and games between buildings

PROPOSAL ELEVATION

Elevation A

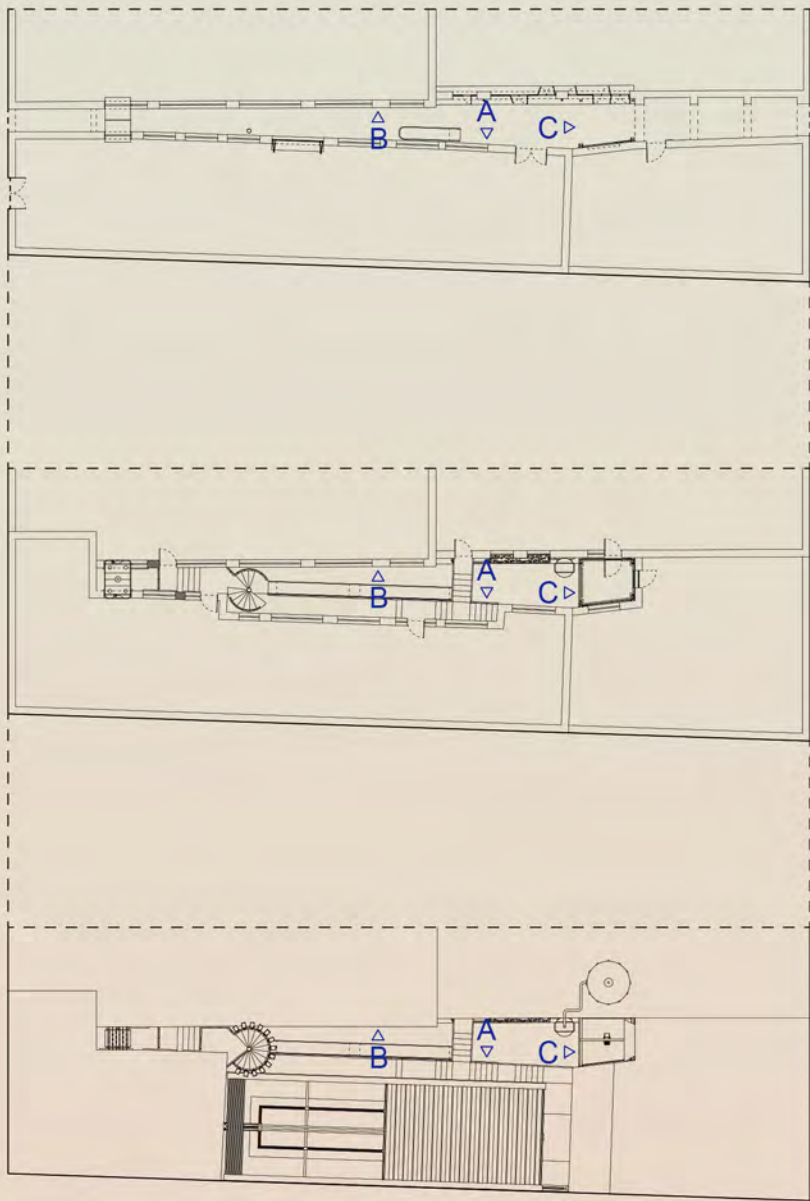


- 01 Performance window
- 02 The kinetic social space
- 03 DJ table
- 04 The outdoor dining & dancing hall
- 05 Bridge
- 06 Corridor
- 07 The social staircase
- 08 Slide
- 09 Wine shop window
- 10 Bird's nest
- 11 The bridge of game



PROPOSAL ELEVATION

Elevation B

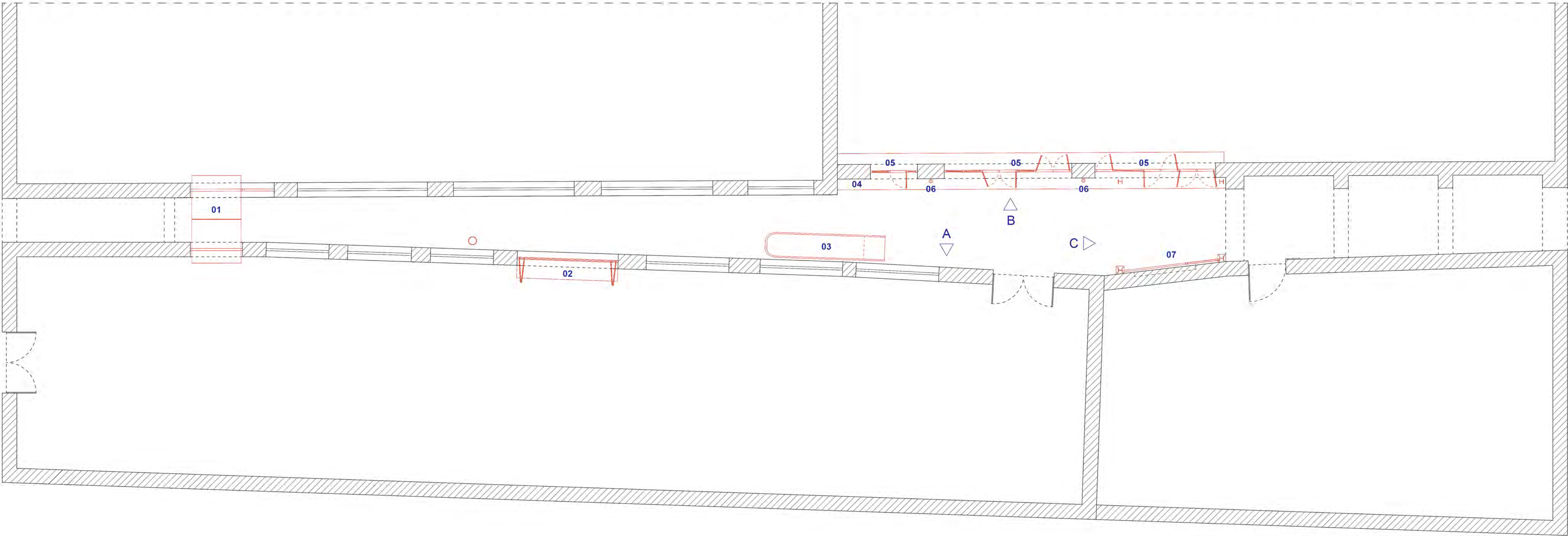


- 01 The bridge of game
- 02 The social staircase
- 03 Slide
- 04 Bridge
- 05 Vertical herb garden
- 06 The theatrical coffee Shop
- 07 Pivoted window
- 08 Standing area
- 09 The kinetic social space
- 10 Performance window

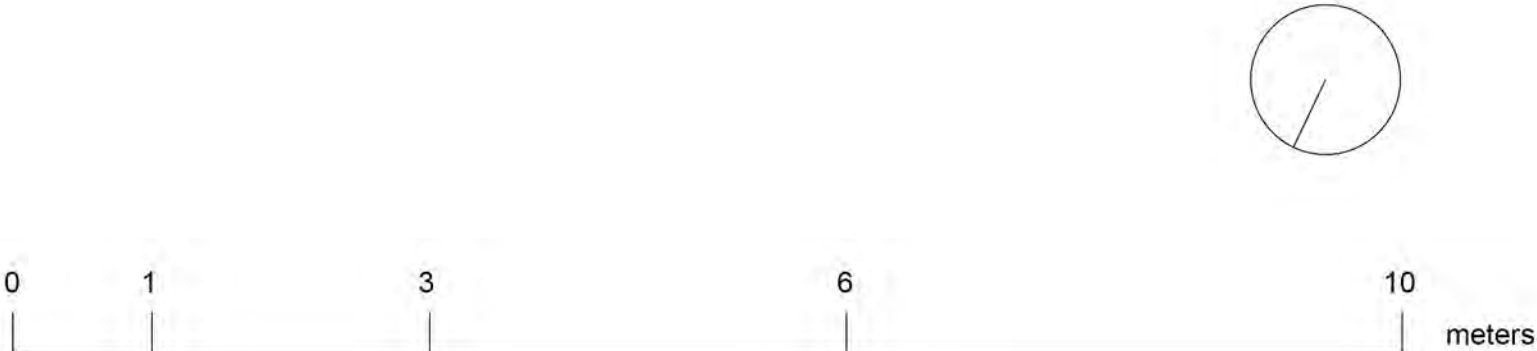


PROPOSAL PLAN

Ground Floor Plan

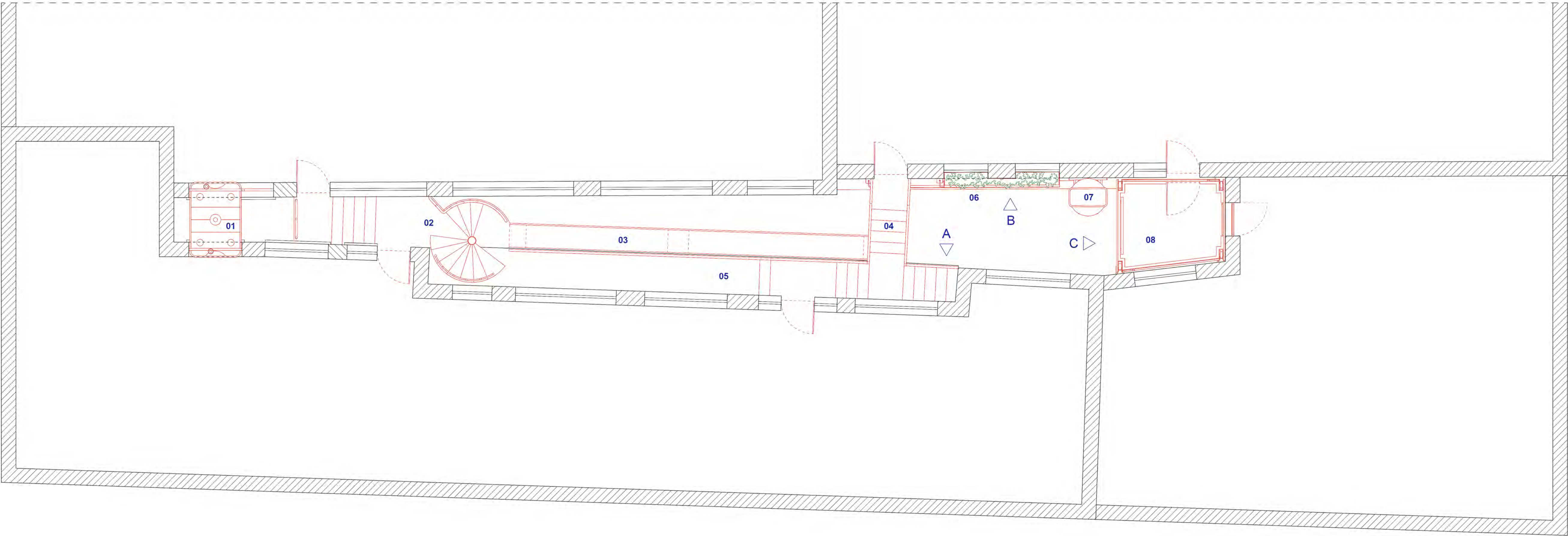


- 01 The bridge of game - Table tennis
- 02 Wine shop window
- 03 Slide
- 04 Standing area
- 05 Pivoted window
- 06 The theatrical coffee shop
- 07 The kinetic social space



PROPOSAL PLAN

Second Floor Plan



- 01 The bridge of game - Table hockey

02 The social staircase

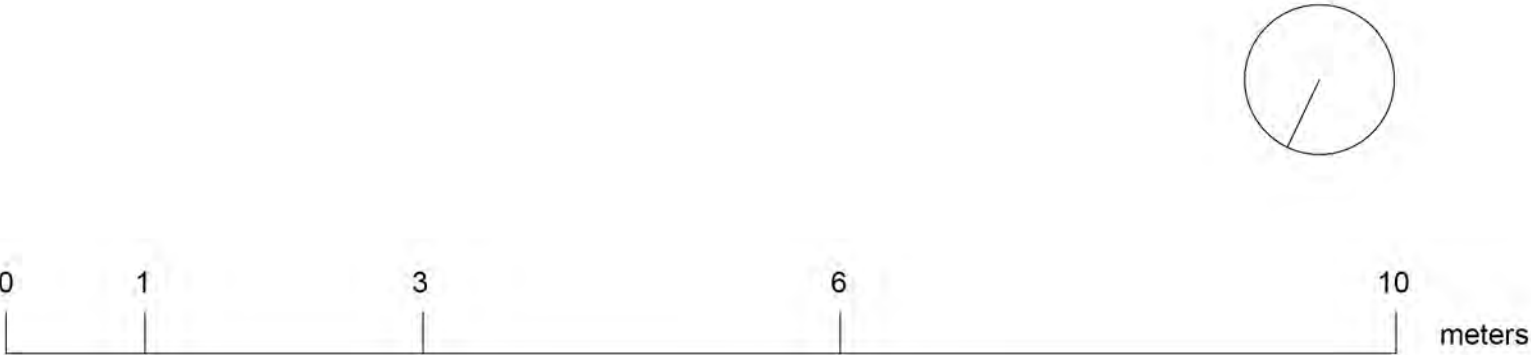
03 Slide

04 Bridge
- 05 Corridor

06 Vertical herb Garden

07 The theatrical coffee Shop

08 The Kinetic Social Space



PROPOSAL PLAN

Sixth Floor Plan



- 01 The bridge of game - Table football

02 The social staircase

03 Slide

04 Bridge

05 Corridor

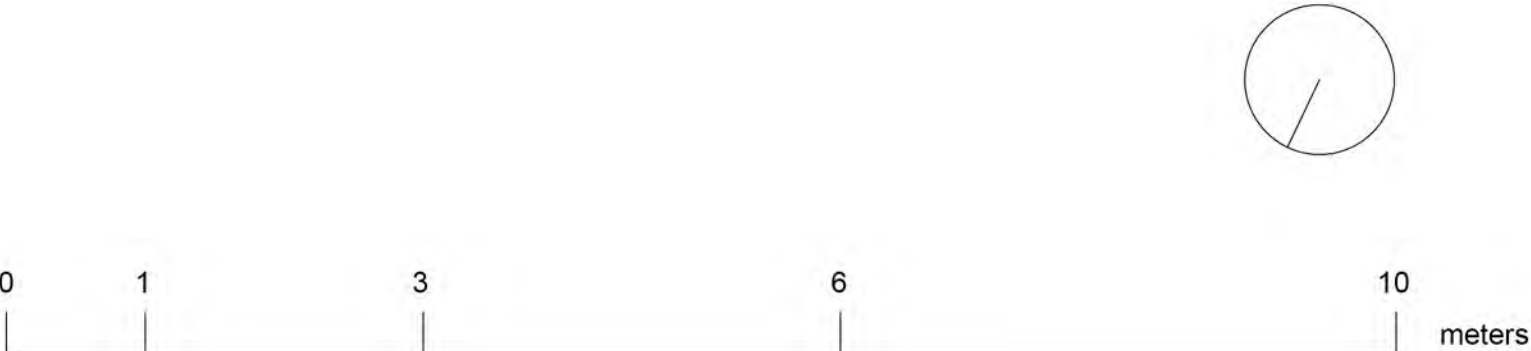
06 Vertical herb garden
- 07 The theatrical coffee Shop

08 The kinetic social space

09 Performance window

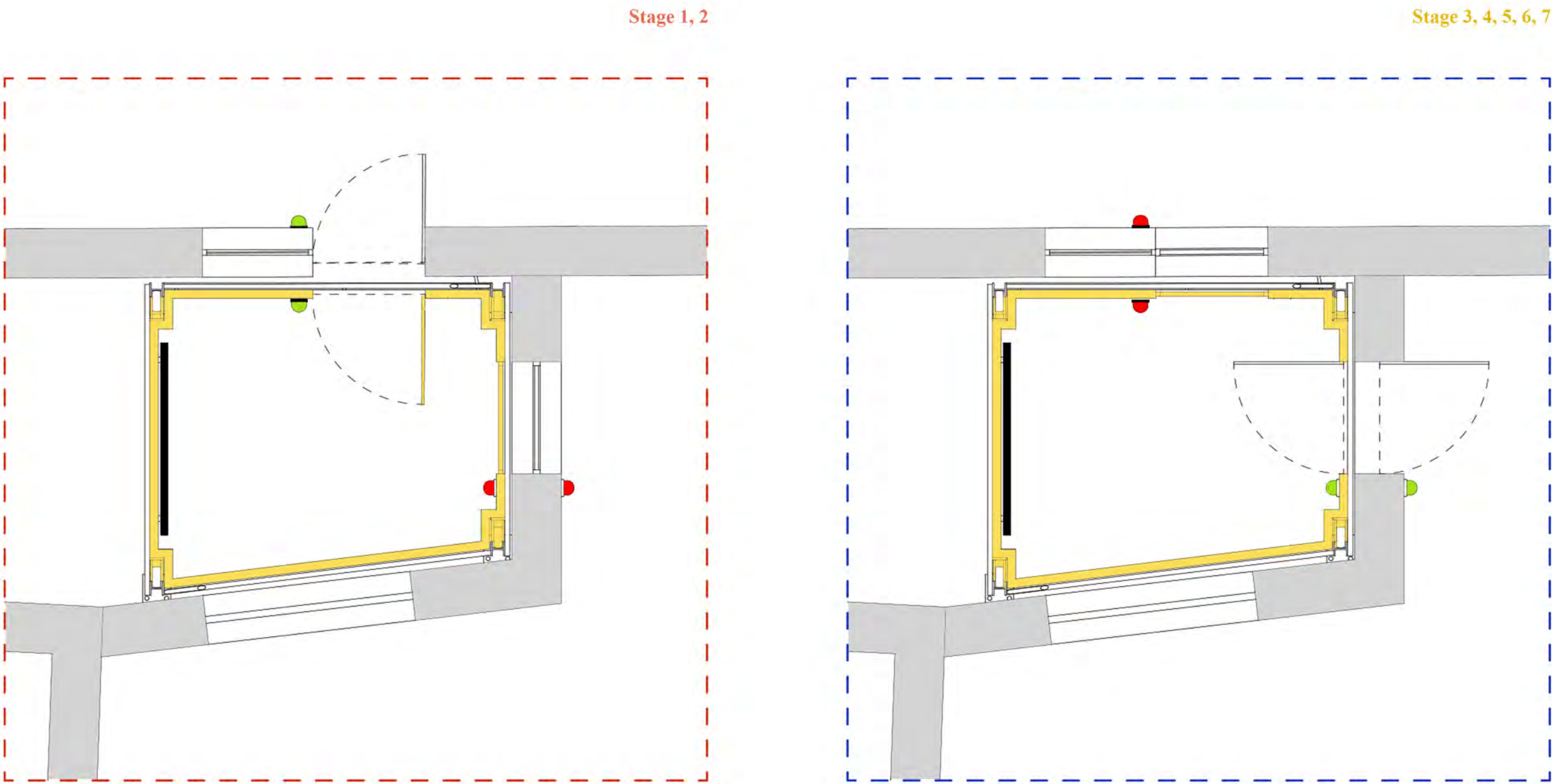
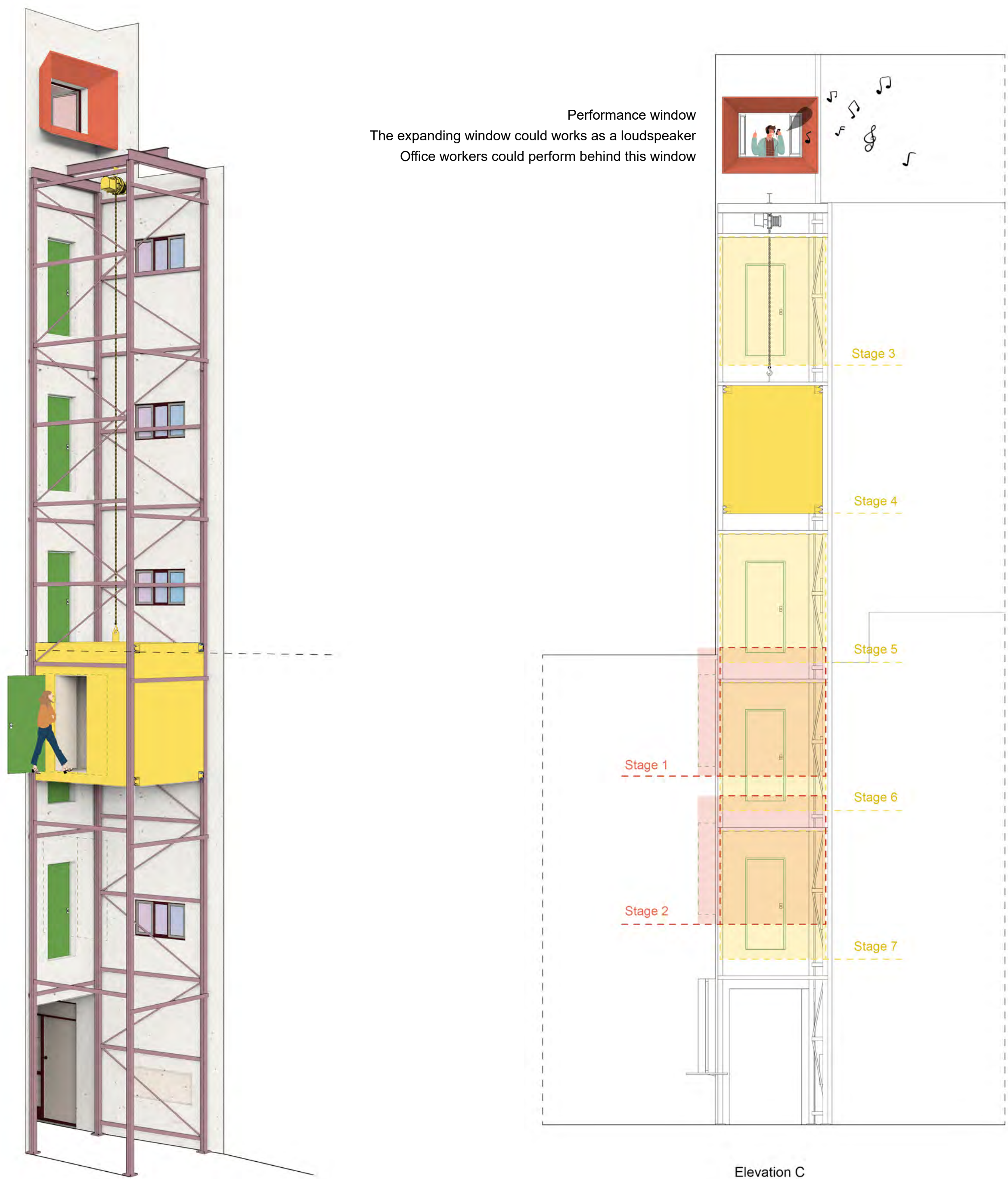
10 The outdoor dining & dancing hall

11 DJ table

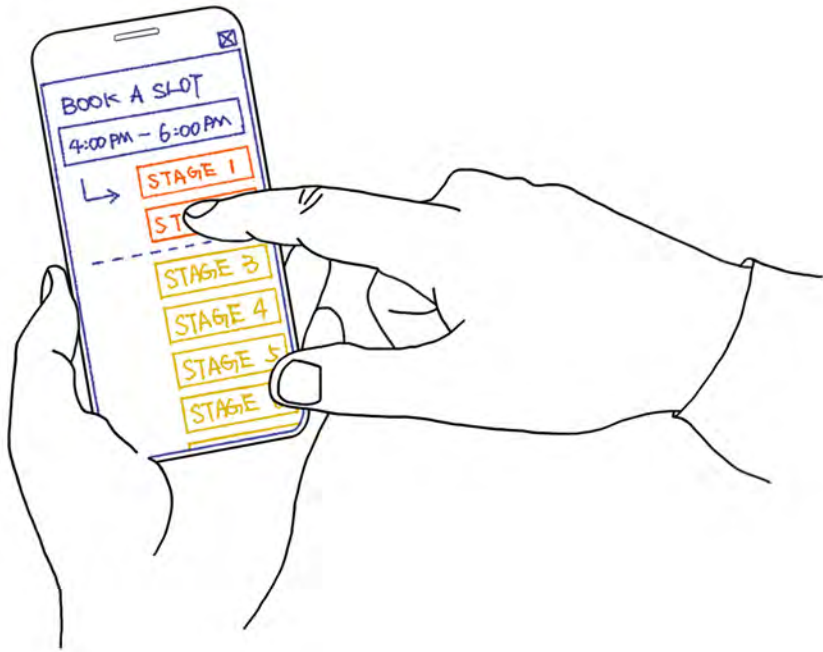


PROPOSAL DETAIL

The Kinetic Social Space & Performance Window



Green light : the door can be opened
Red light : the door cannot be opened



The Kinetic Social Space is a movabel extra space for seven different company.
When you need it, you can book a slot on the cellphone.



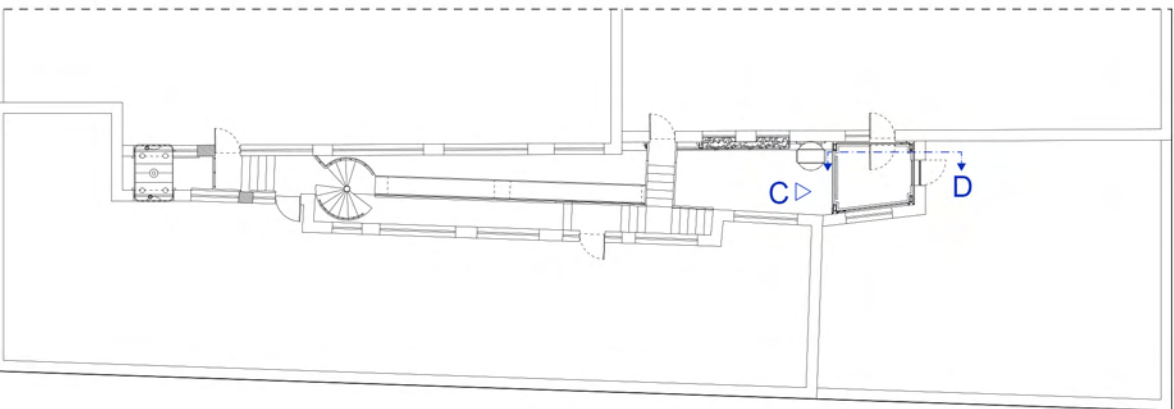
PROPOSAL DETAIL

The Kinetic Social Space - Section DD



It's 5 square meters.

There is a large screen in the kinetic social space. Office workers could use it as a meeting room or a cinema.



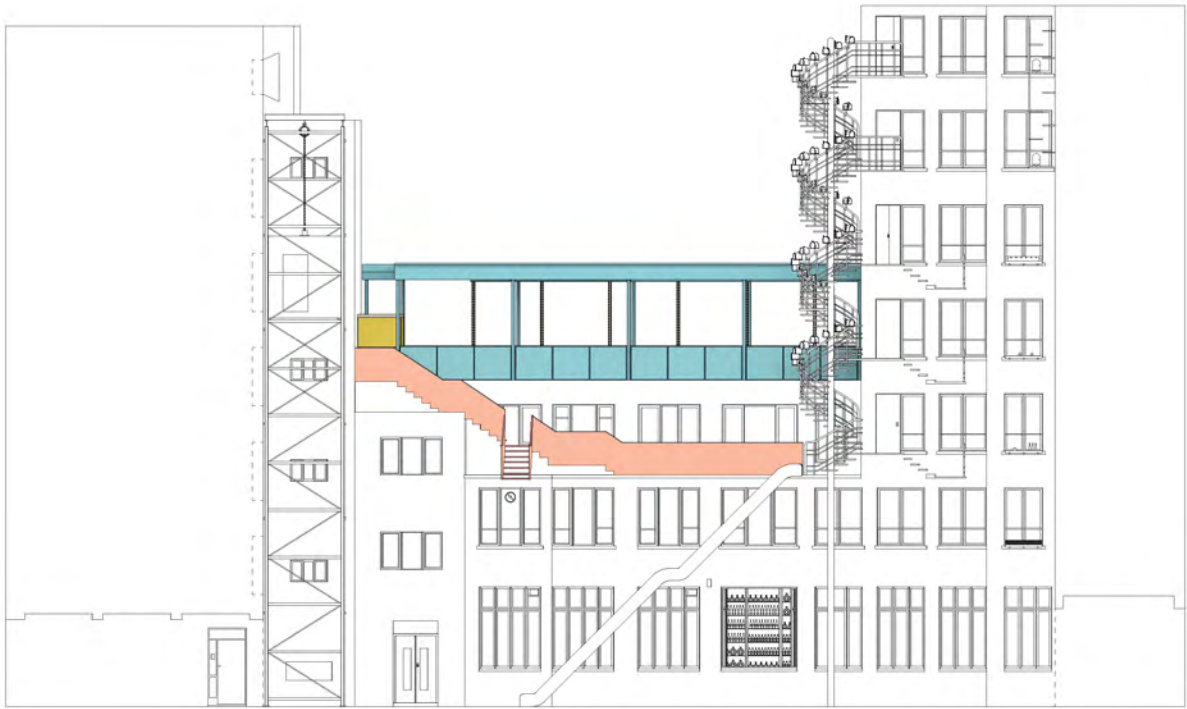
PROPOSAL DETAIL

The Outdoor Dining & Dancing Hall



Turn a previously disused rooftop area into an outdoor dining hall for seating and enjoying sun :

- 01 Retractable roof - closing roof in the rainy day
- 02 Liftable large table - gathering office workers
- 03 DJ room - used at party time
- 04 handle of raising & dropping table
- 05 Bridge
- 06 corridor
- 07 Entrance from the social staircase



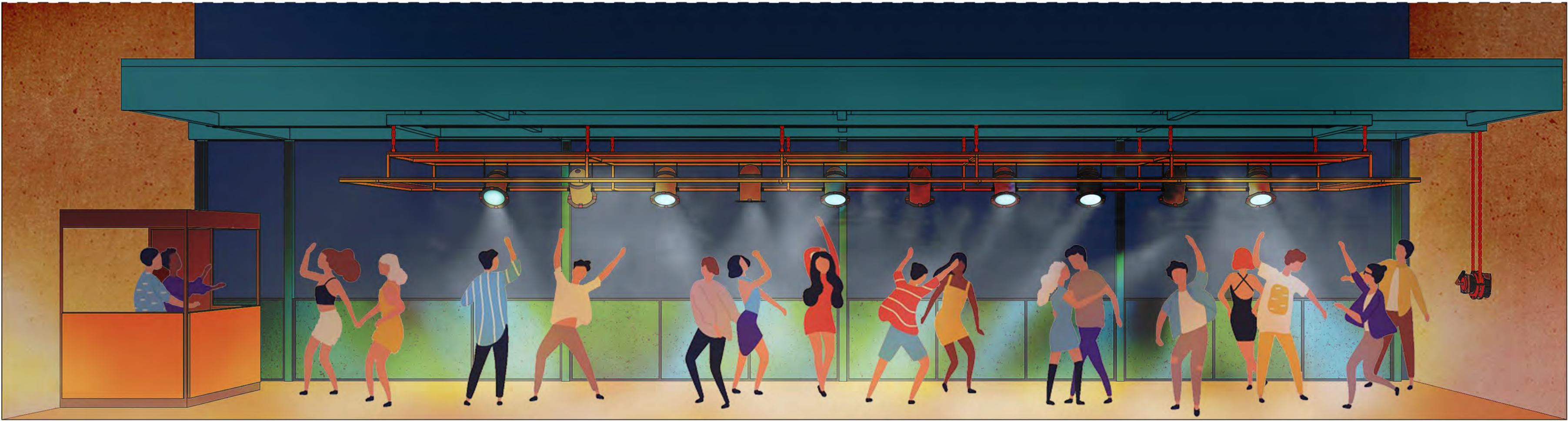
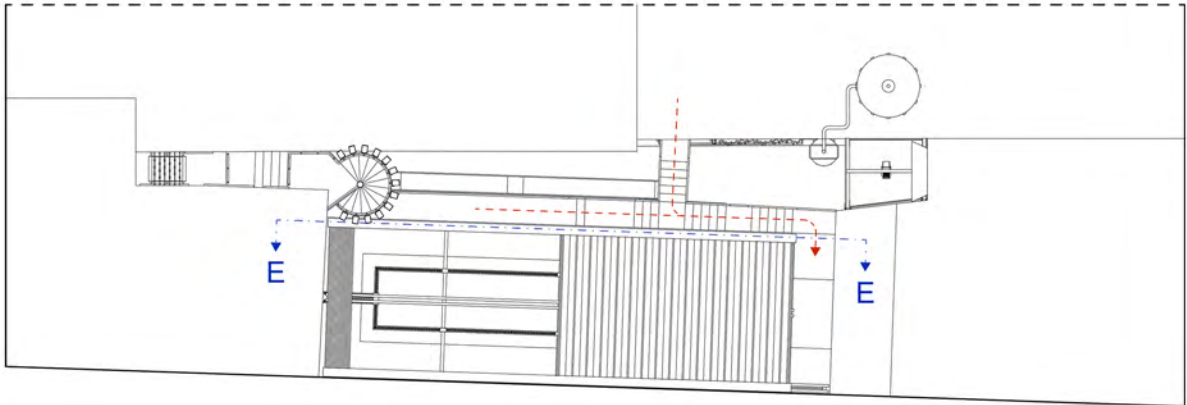
PROPOSAL DETAIL

The Outdoor Dining & Dancing Hall - Section EE

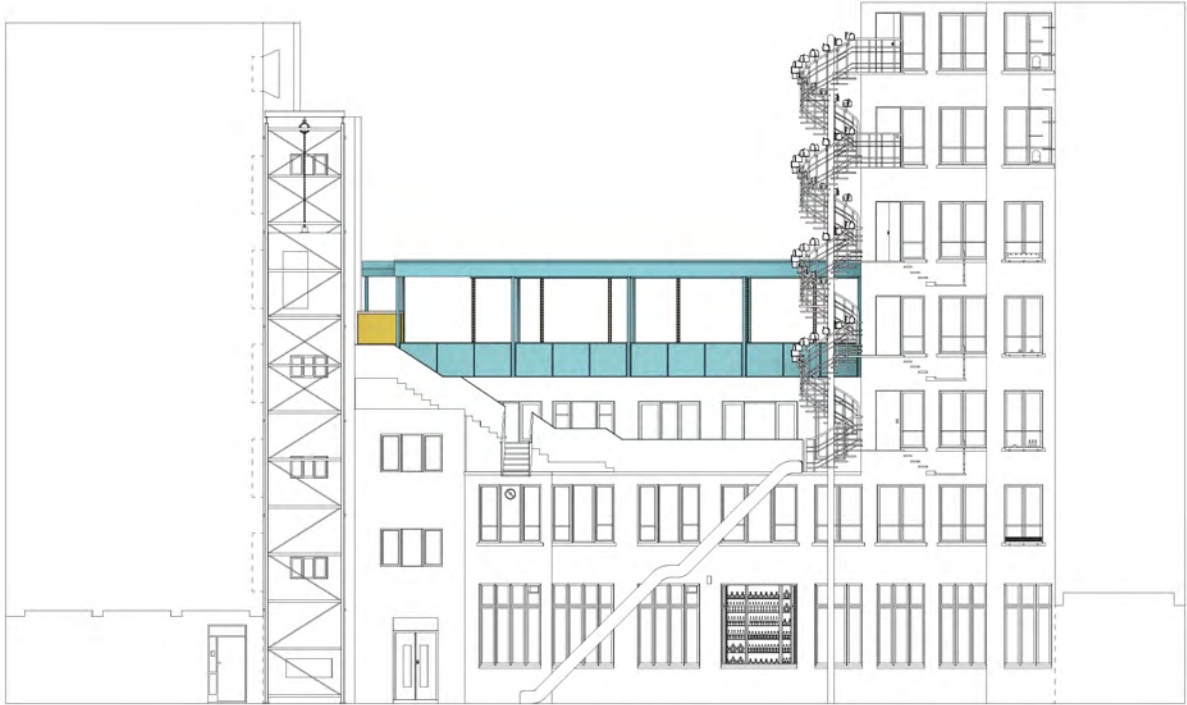


Daytime : Dining hall

Party time : Open the DJ room, raise the large table - using the light cone under the table, turn the dining hall into a dancing hall.



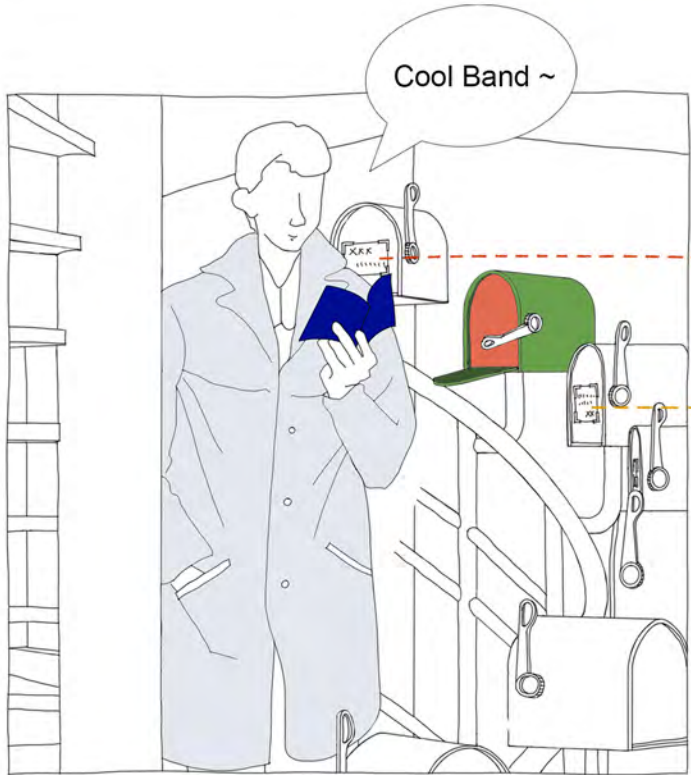
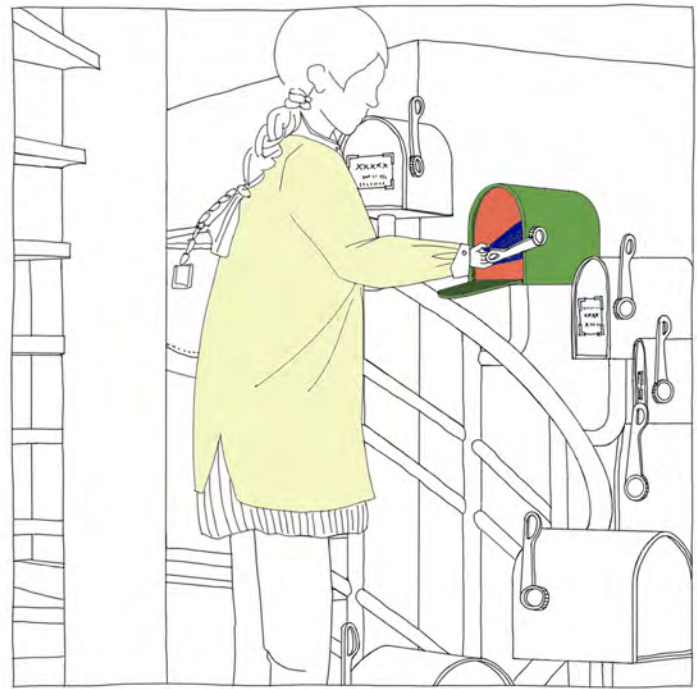
Special event : Dancing hall



PROPOSAL DETAIL

The Social Staircase & Slide

How to use the sharing mailboxes?



Amazing Photos from Roma
Where is the best breakfast?
Please Tell ME!!!

Spiral social staircase can be used by office workers in different office buildings, this staircase leads to the outdoor dining hall and slide. office workers can escape from office quickly through the slide.

Sharing mailboxes provide a chance for office workers who work for different companies and come from different countries to communicate with each others.

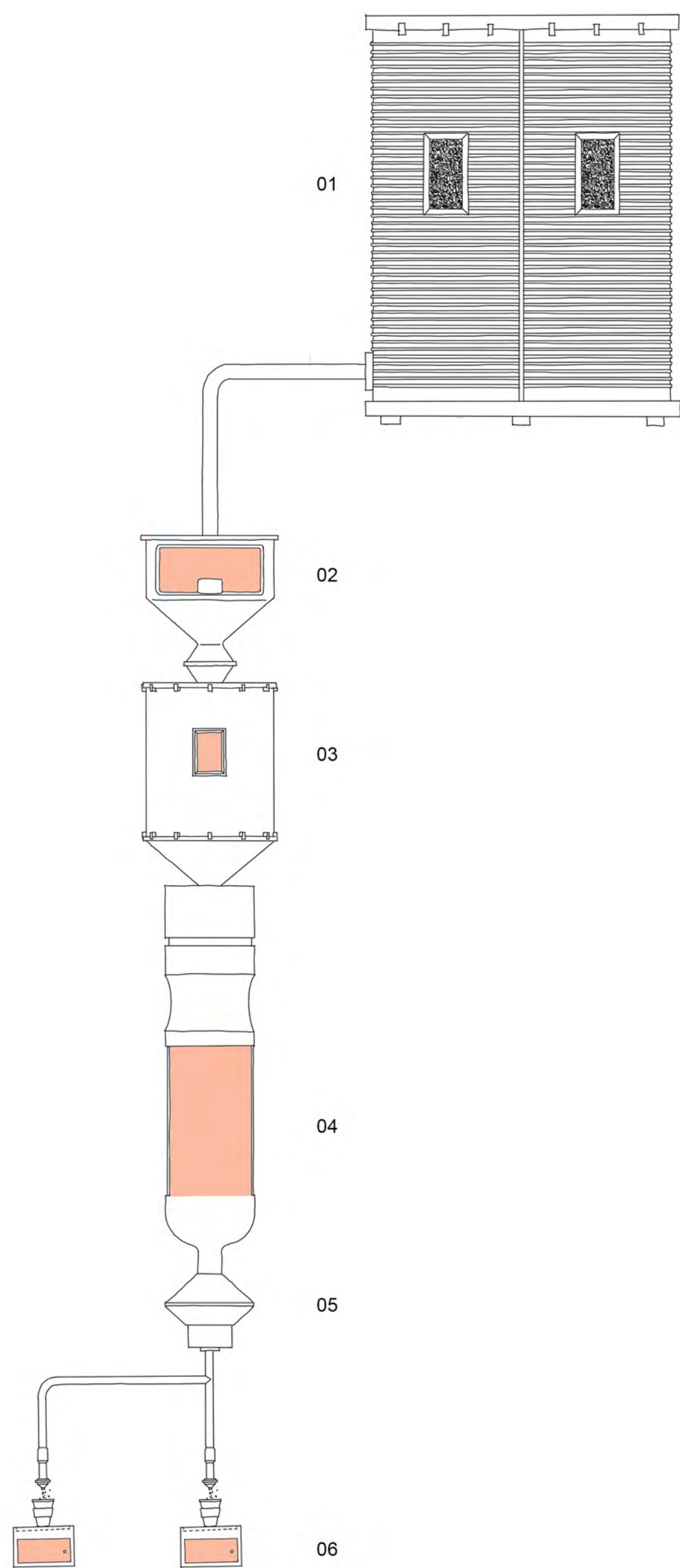


PROPOSAL DETAIL

The Theatrical Coffee Shop & Vertical Herb Garden

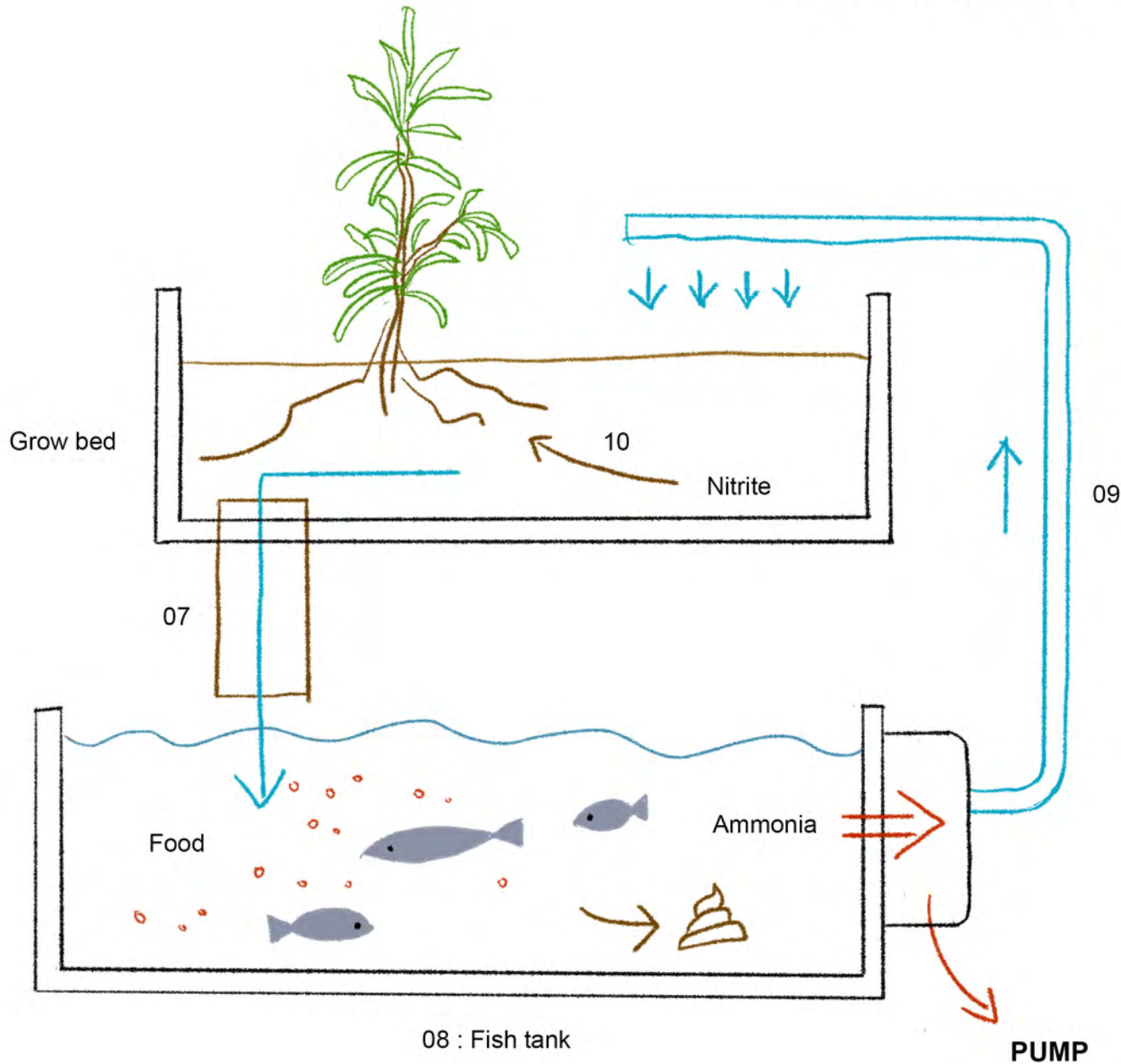


COFFEE SHOP FLOW CHAT



- 01 Coffee beans storage
- 02 Milling coffee
- 03 Roasting coffee
- 04 Grinding coffee
- 05 Brewing coffee
- 06 Coffee waste clooction box

AQUAPONIC SYSTEM

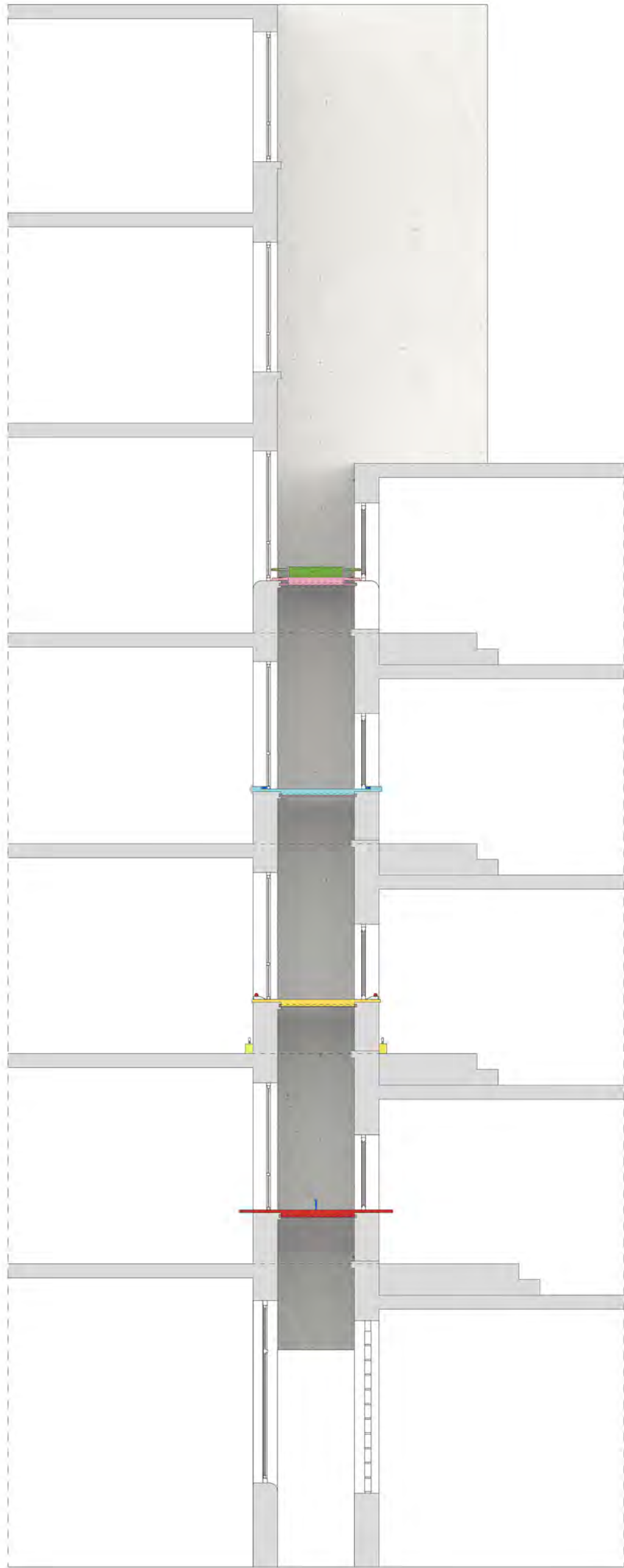


- 07 Water is returned with ammonia removed
- 08 Fish waste and uneated food turns into ammonia
- 09 Bacteria turns ammonia into nitrie
- 10 Nitrite is absorbed by the plants along with other nutrients



PROPOSAL DETAIL

The Bridge of Games - Section FF



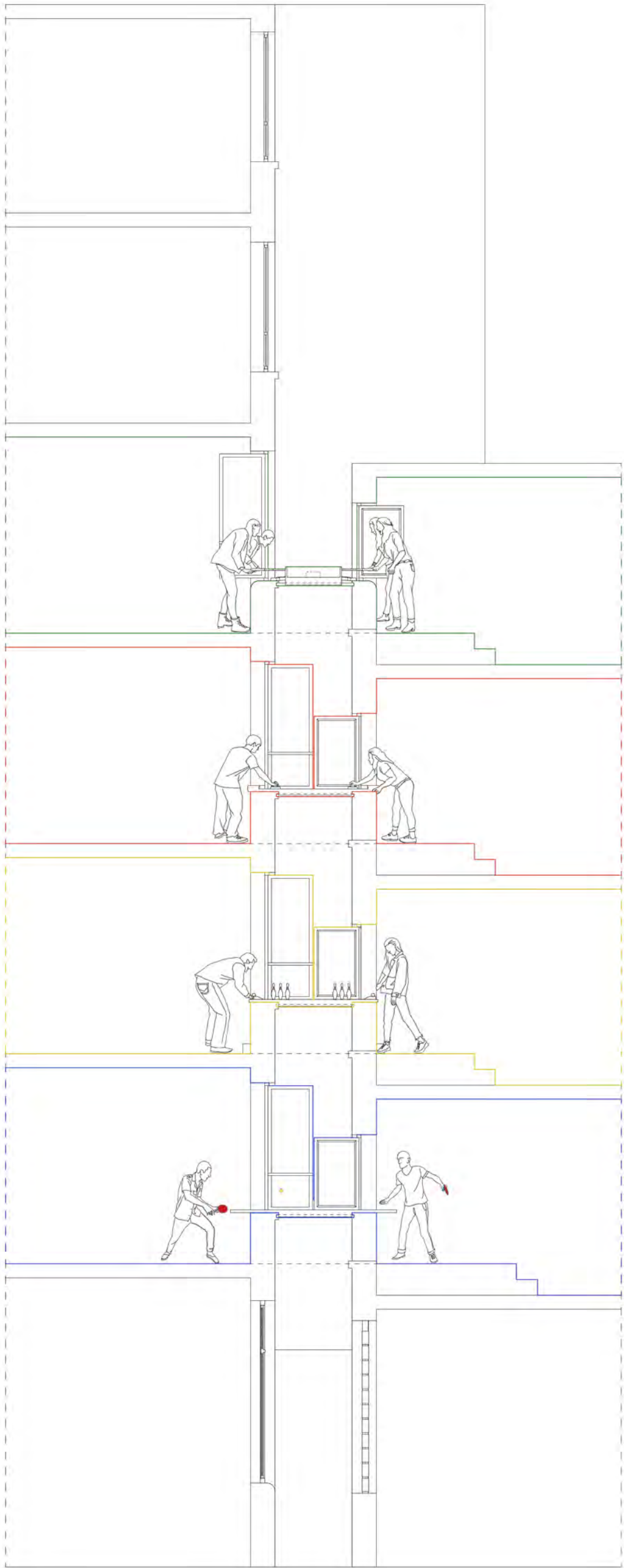
Fourth floor : Table football

Third floor : Table hockey

Second floor : Table bowling

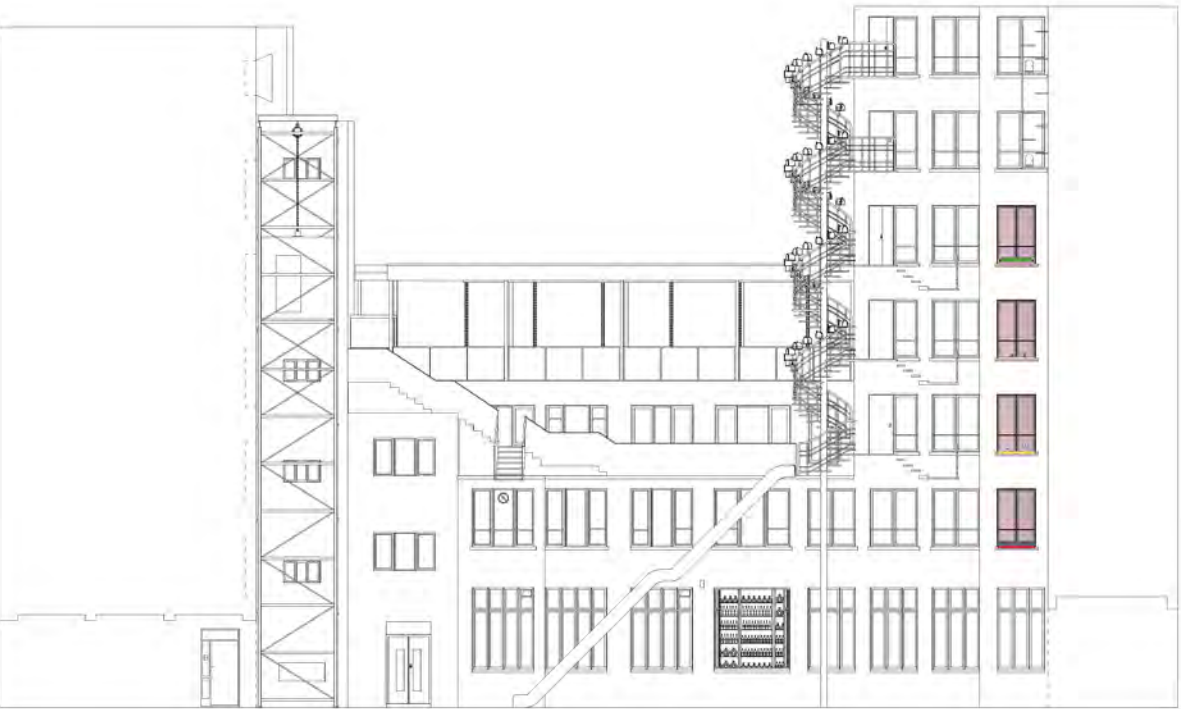
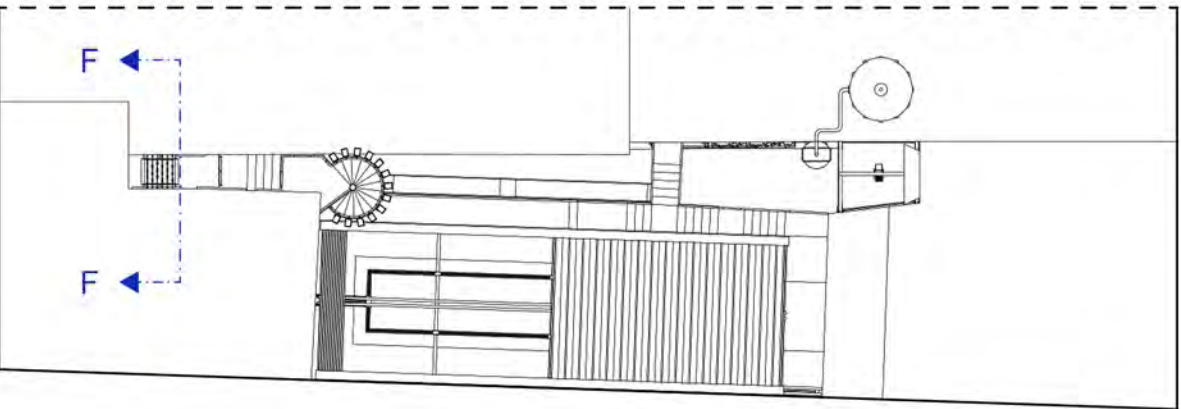
First floor : Table tennis

WINDOW CLOSED : NOT IN USE



WINDOW OPENED : IN USE

The bridge of game utilize outdoor space, offering four different games for office workers to choose, connecting office workers in two different building.



PROPOSAL DETAIL

The Bridge of Games

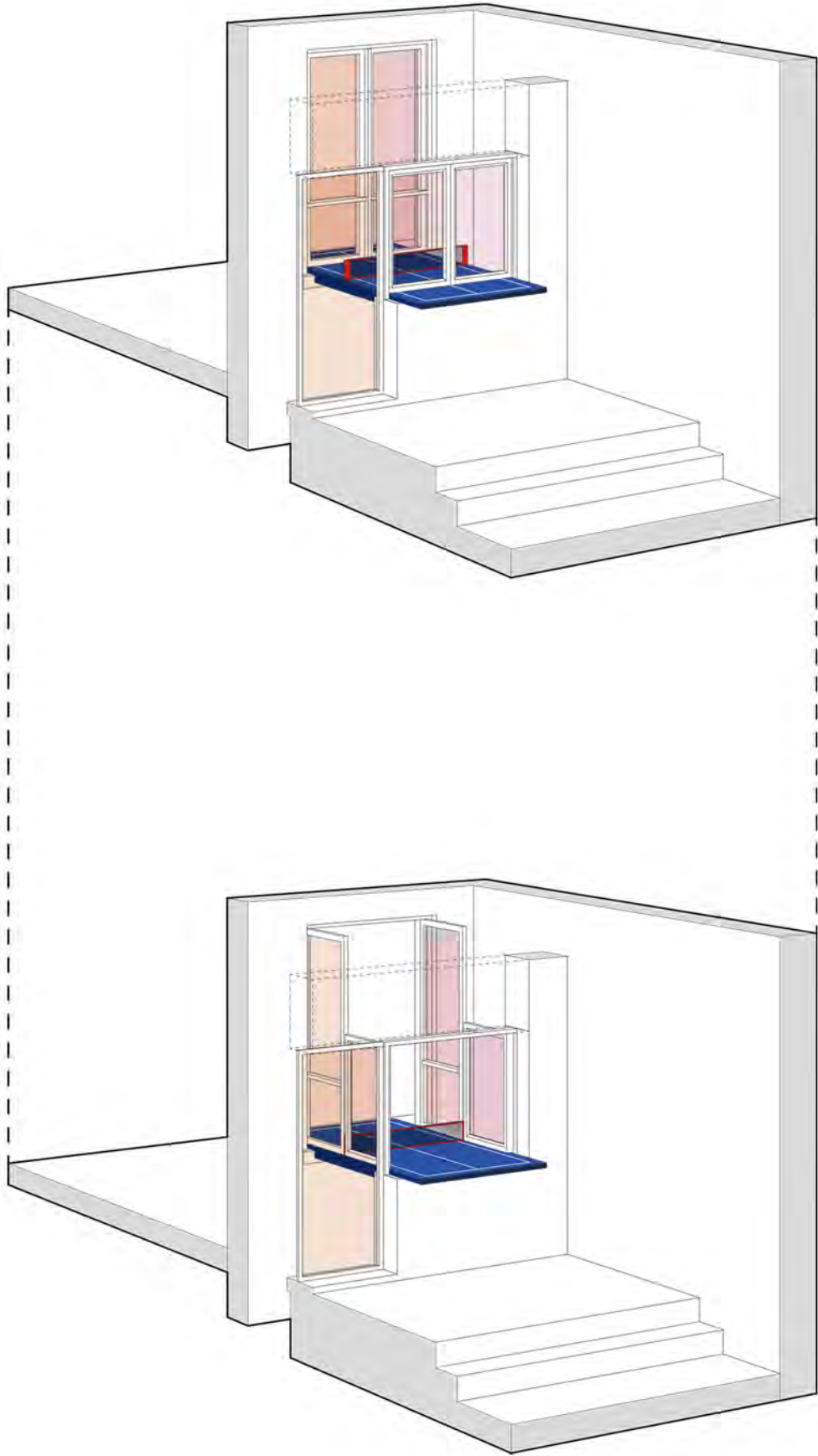


Table Tennis

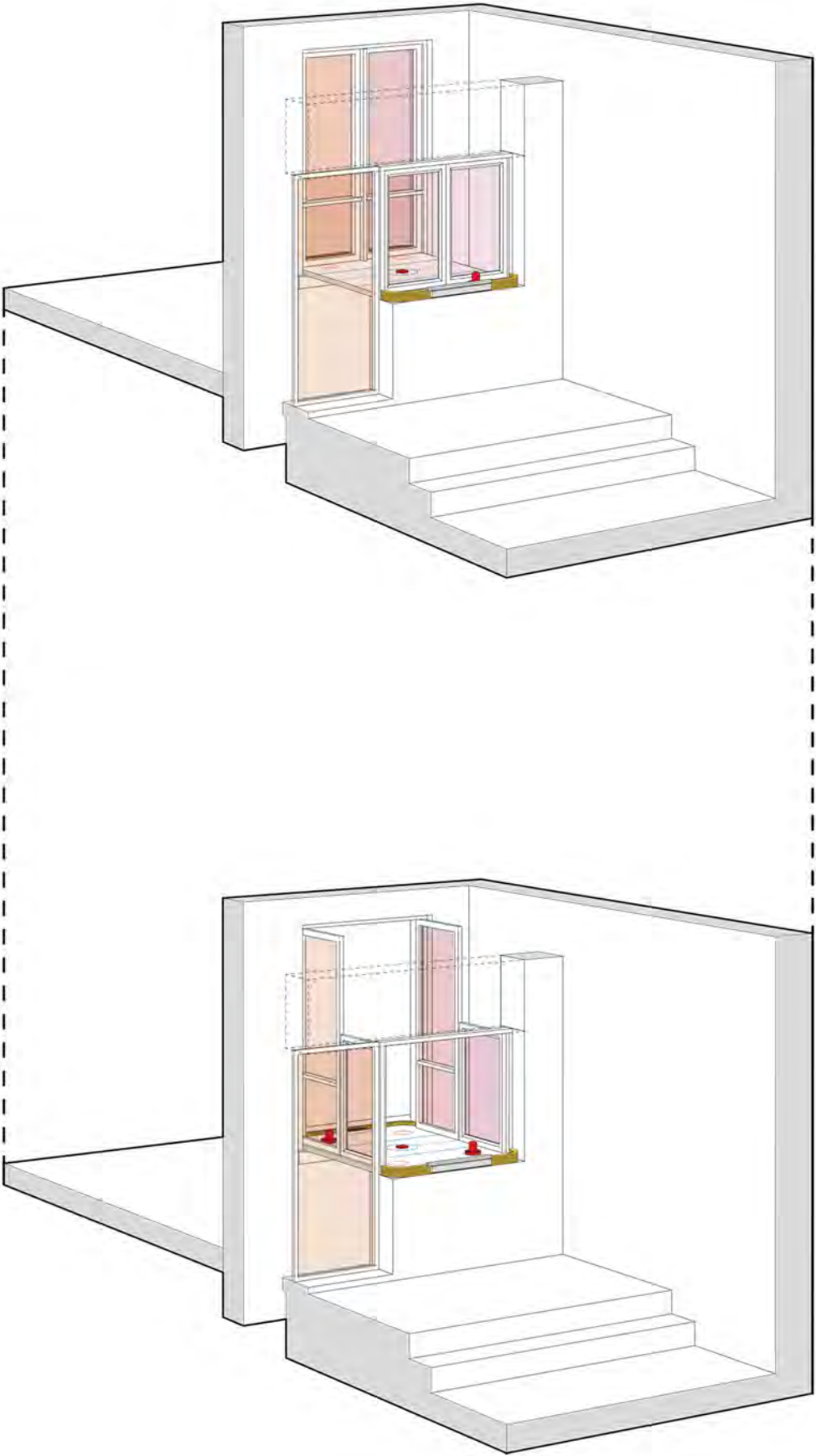


Table Hockey

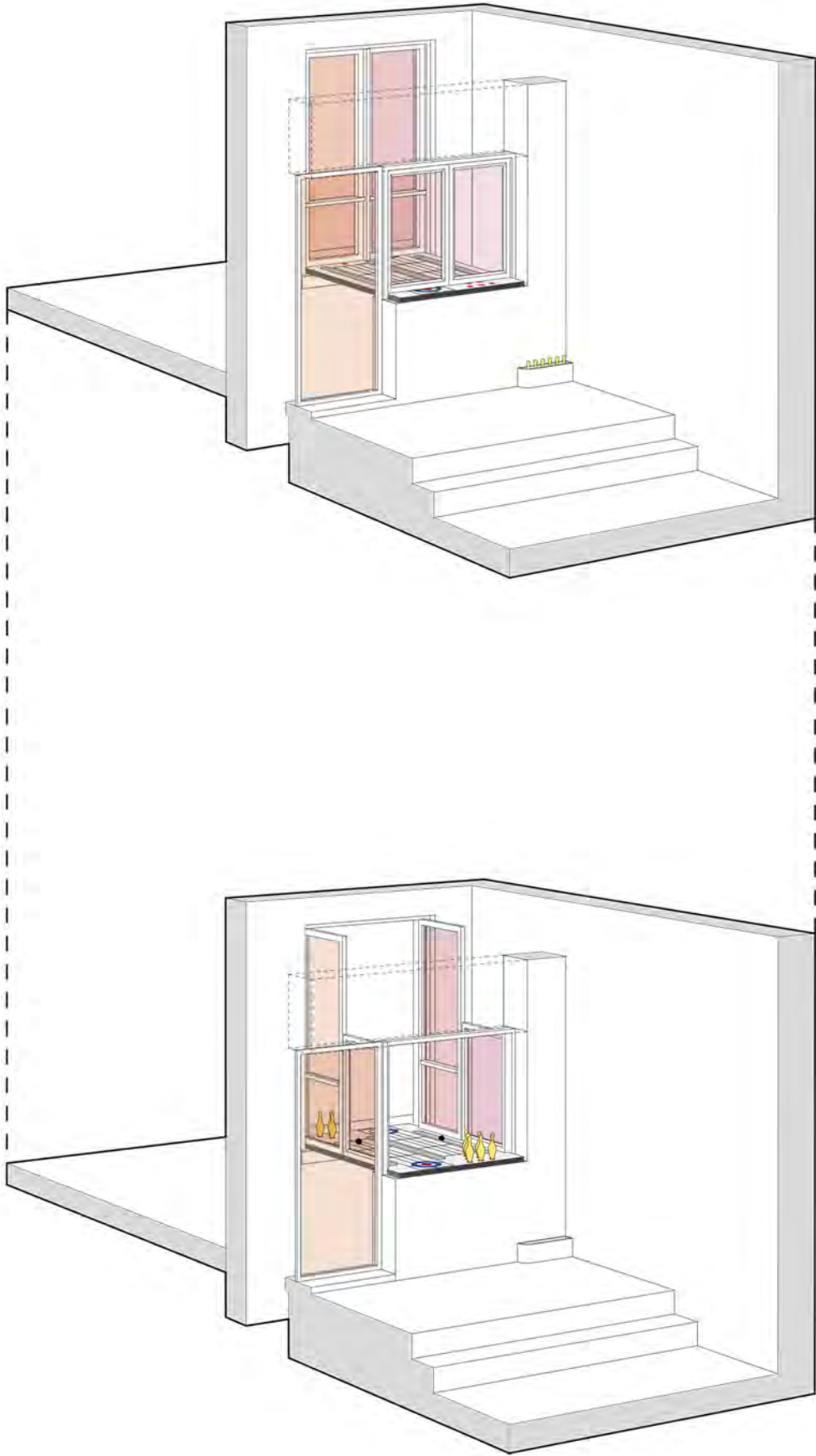


Table Bowling

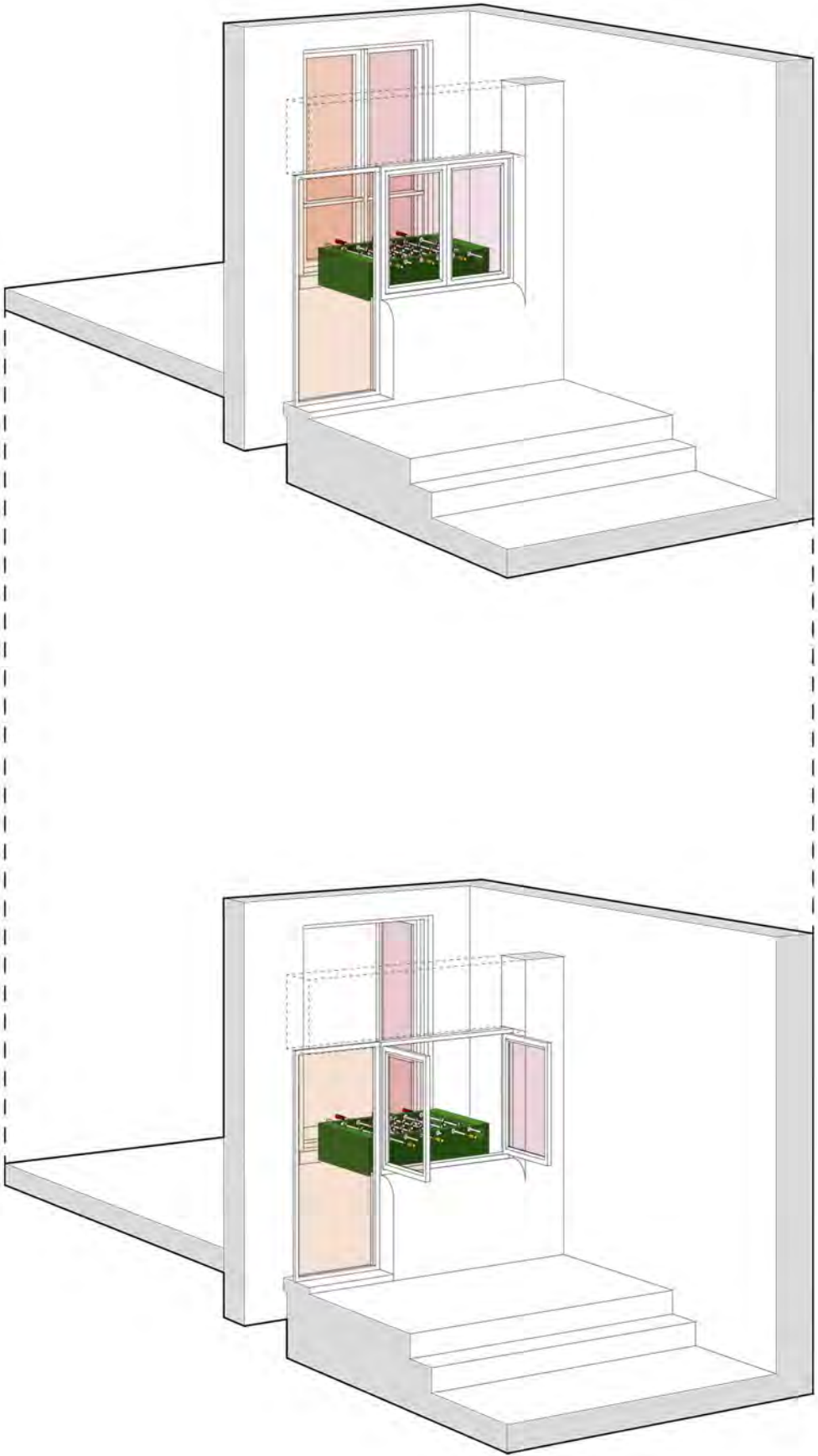
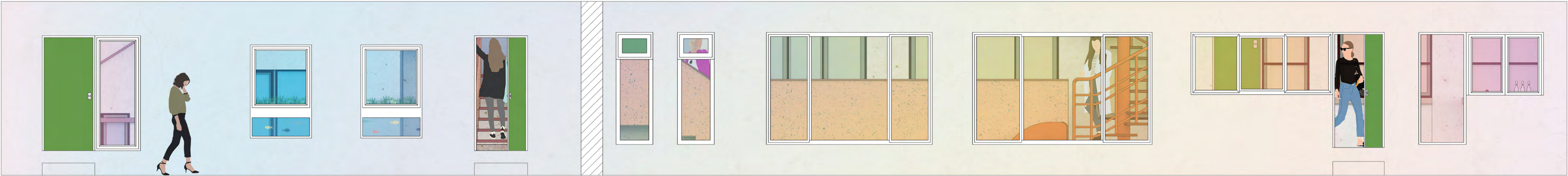


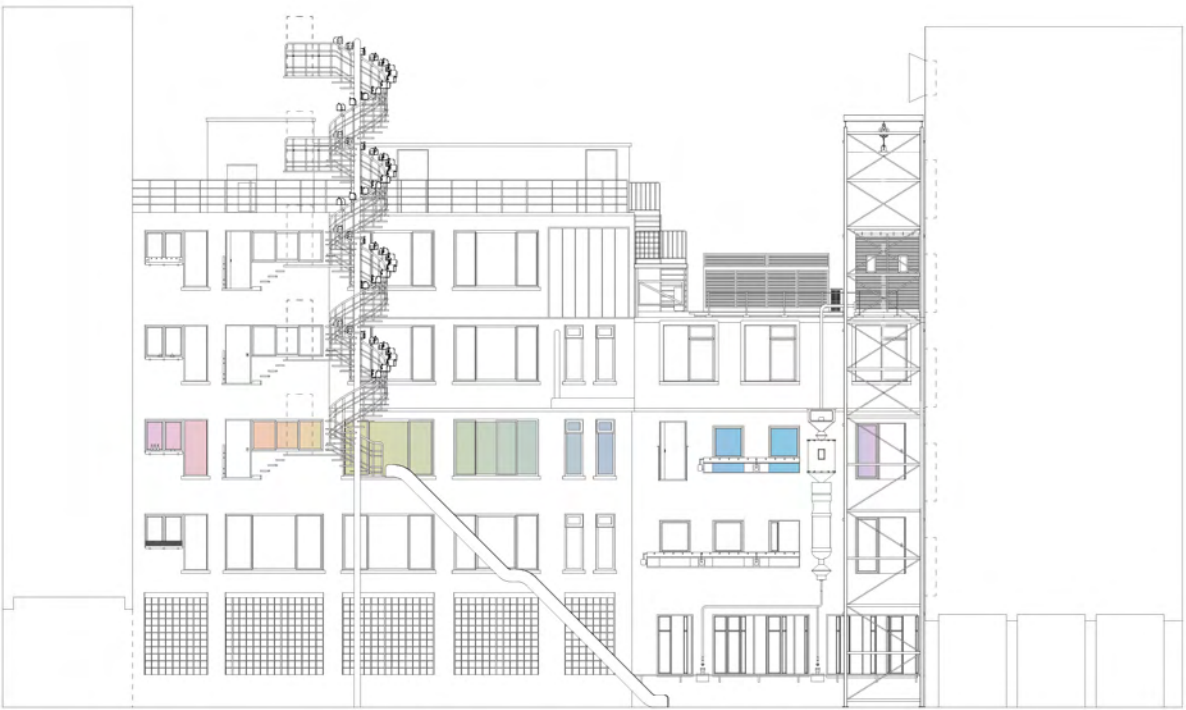
Table Footable

PROPOSAL DETAIL

Rainbow Window



According to the outcome of workshops - 'change the light', rainbow window let office workers experience different ambiance in the office.



PROPOSAL PERSPECTIVES

Tyler's Court

