

S O H O · D I A R Y

- RESEARCH BOOK

YINAN ZHU



2019.10.31. 16:00-18:00



people who work in soho



political



red - light district



2019. 11. 1. 17:00-21:00



never fade factory

the owner and designer: tea ins: @baseteamuk
multifuntion: retail, costume making, fashion designing, bar..
this shop haven't been finished.
tea's aim is to promote his shop like dover street market.









gosh! comics



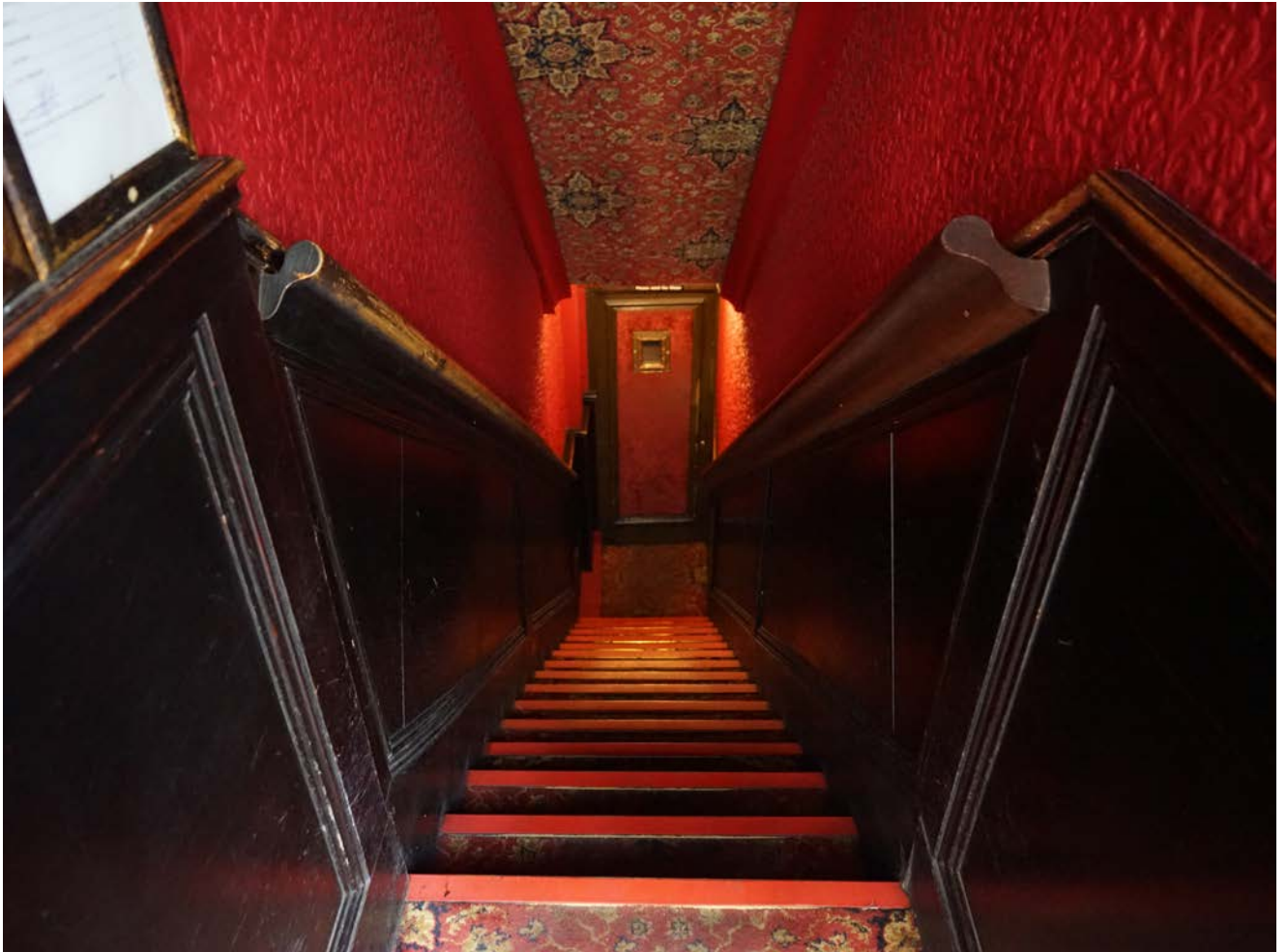


sounds of the universe
there is a sharing party with dj tonight





shortcut - dark places



2019. 11. 2. 11:00-13:00



theater pub





chapel in the house of chairty

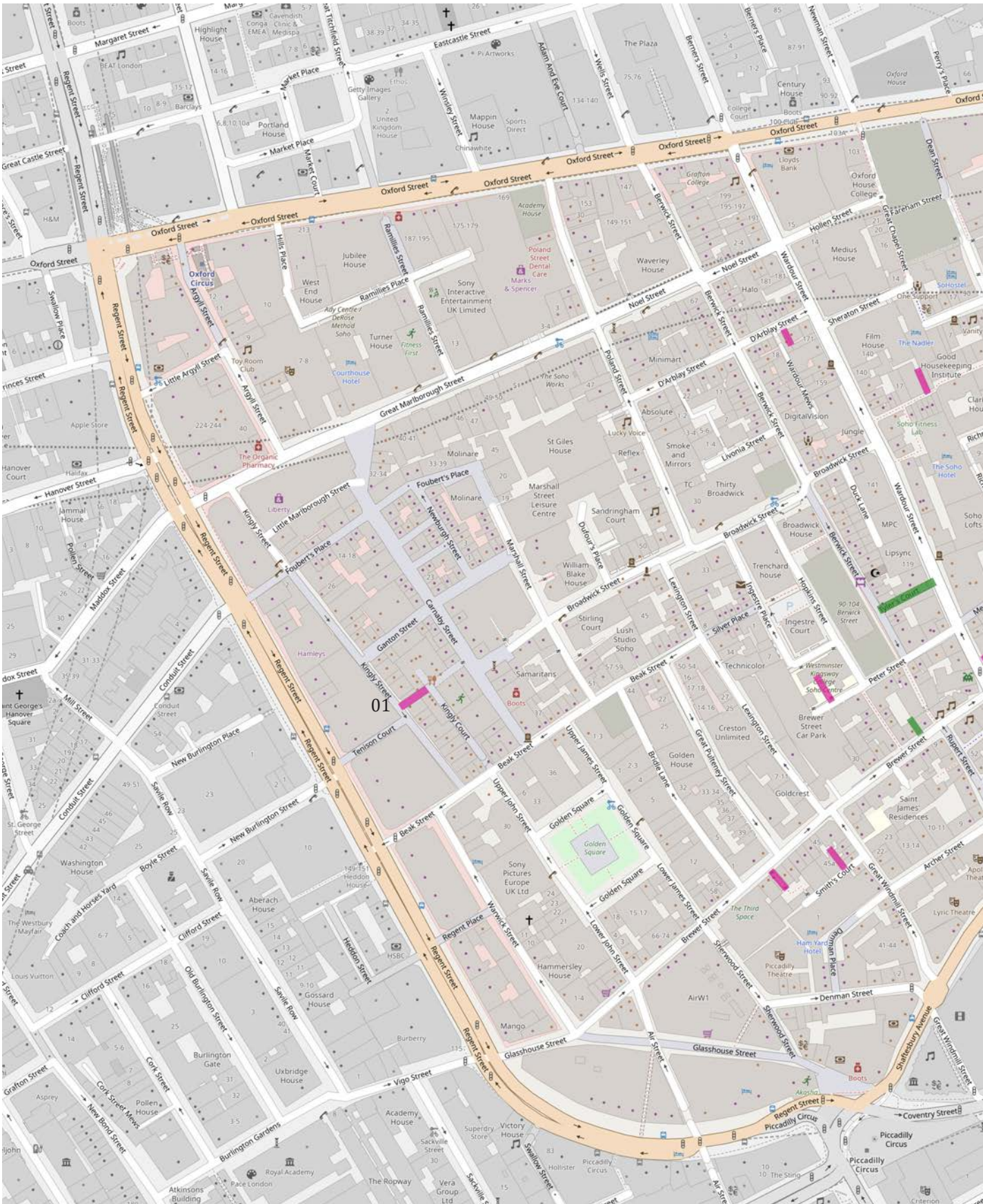
how do they operate the house of charity?
what kind of homeless could live in the house of charity?
why are still so many homeless in the soho area?





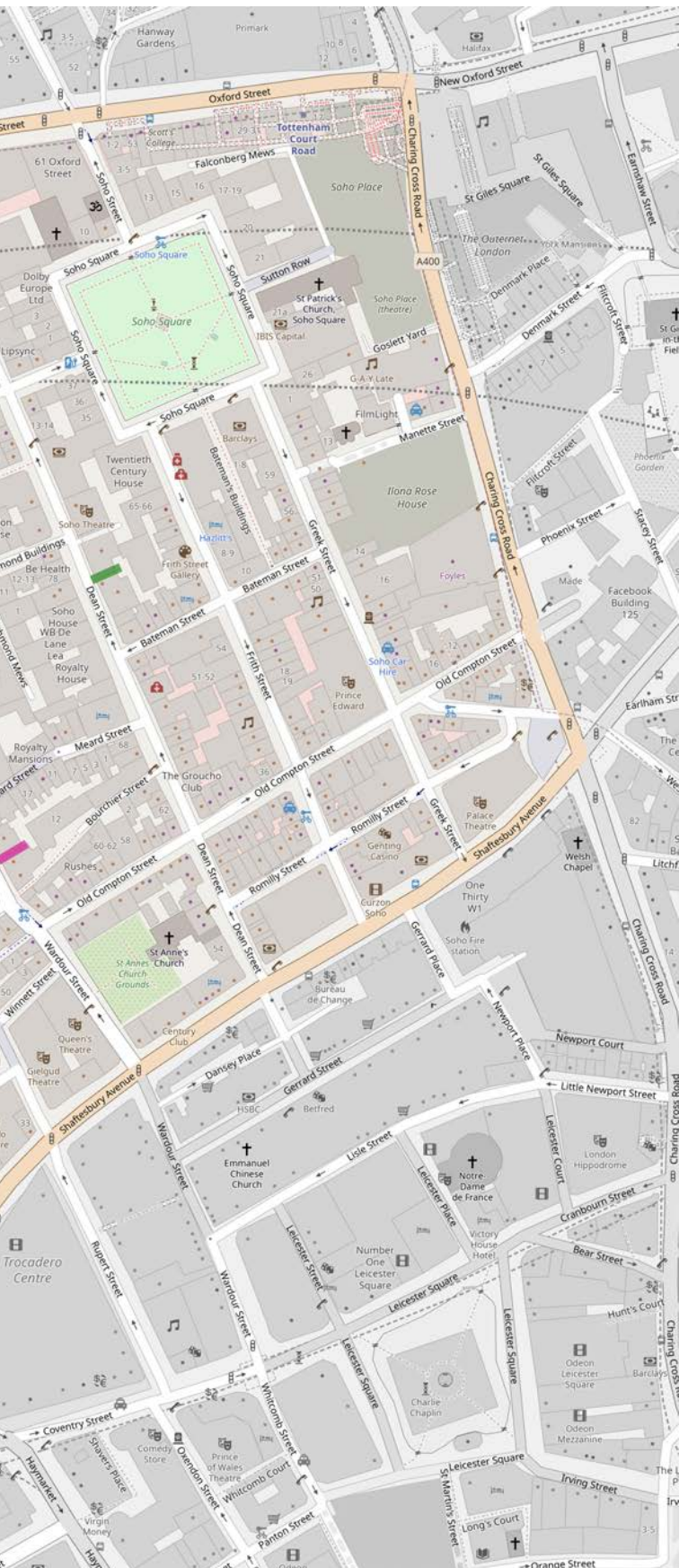
unnamed shop

all clothes are made and designed by their own studio.
this shop has been in soho for 14 years.
the building will be rebuilt next year.



2019. 11. 7. 00:00-10:00

mark shortcuts



- Motorway
- Main road
- Track
- Bridleway
- Cycleway
- Footway
- Railway
- Subway
- Light rail and tram
- Cable car and chairlift
- Airport Runway and taxiway
- Airport apron and terminal
- Administrative boundary
- Forest
- Wood
- Golf course
- Park
- Residential area
- Common and meadow
- Retail area
- Industrial area
- Commercial area
- Heathland
- Lake and reservoir
- Farm
- Brownfield site
- Cemetery
- Allotments
- Sports pitch
- Sports centre
- Nature reserve
- Military area
- School and university
- Significant building
- Railway station
- Summit and peak
- Dashed casing = tunnel
- Black casing = bridge
- Private access
- Destination access
- Roads under construction

GRIMS

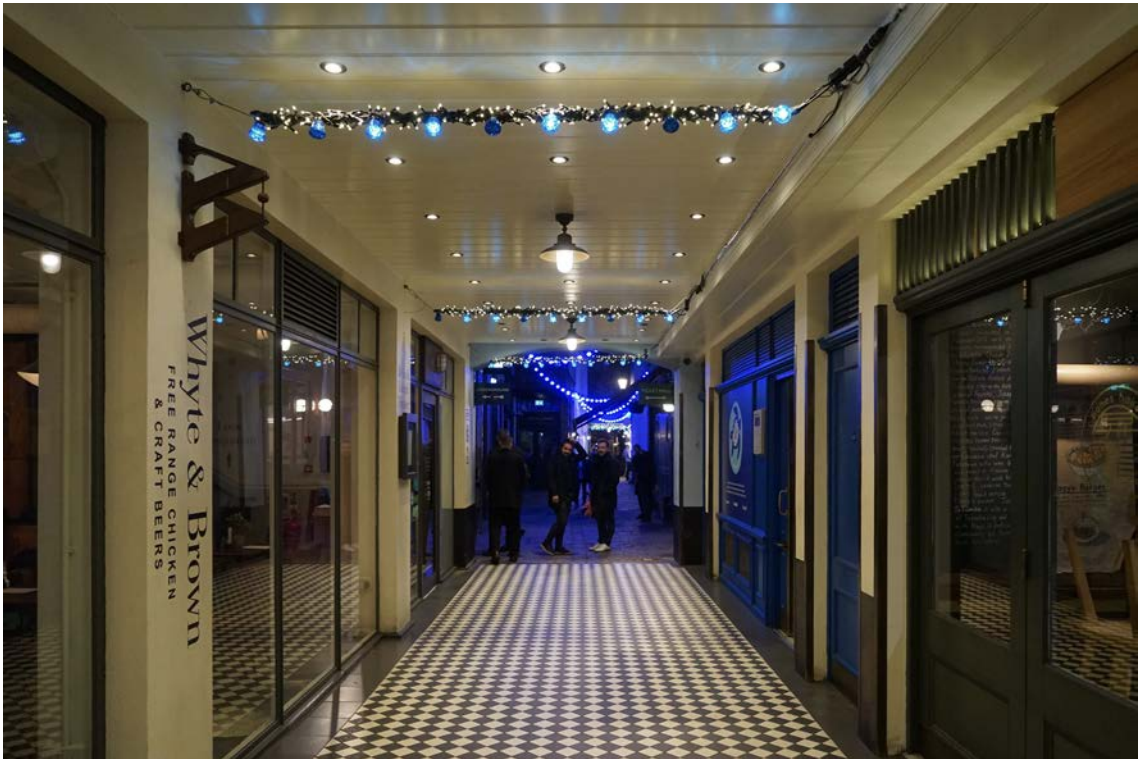
NEAPOLITAN PIZZERIA

K I N G S L Y
C O O U R T

detox kitchen

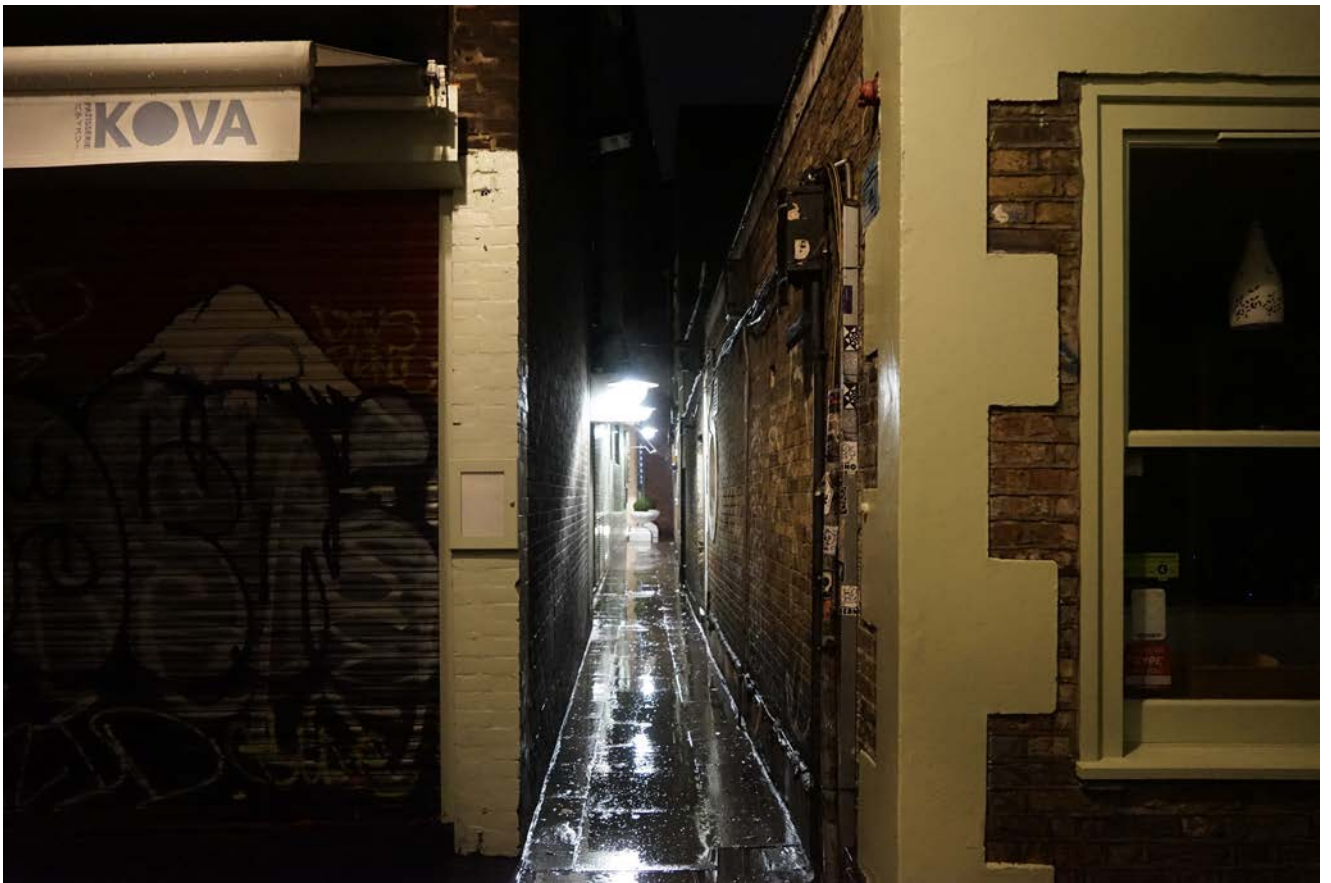


KINGSLY





coner - dark place



KOVA -- the SOHO Hotel



2019. 11. 8. 15:00-20:00

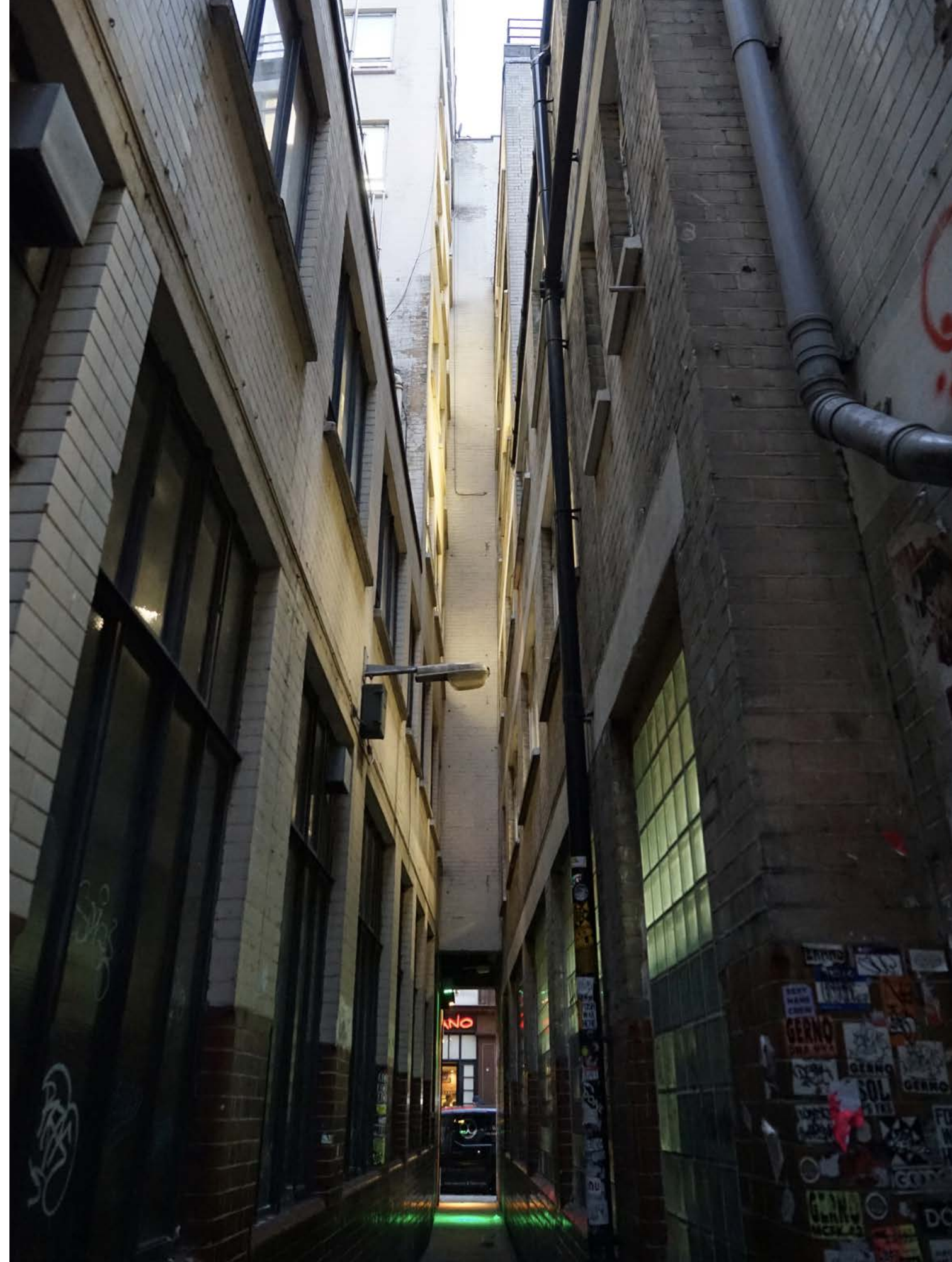


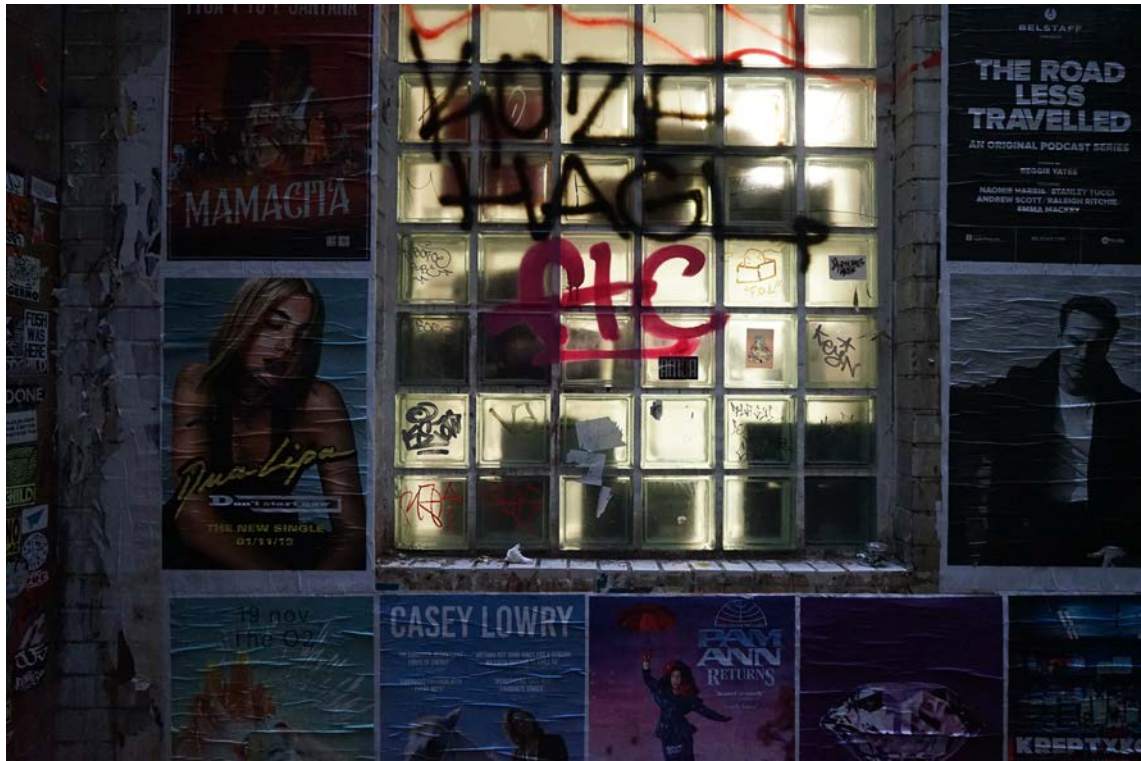






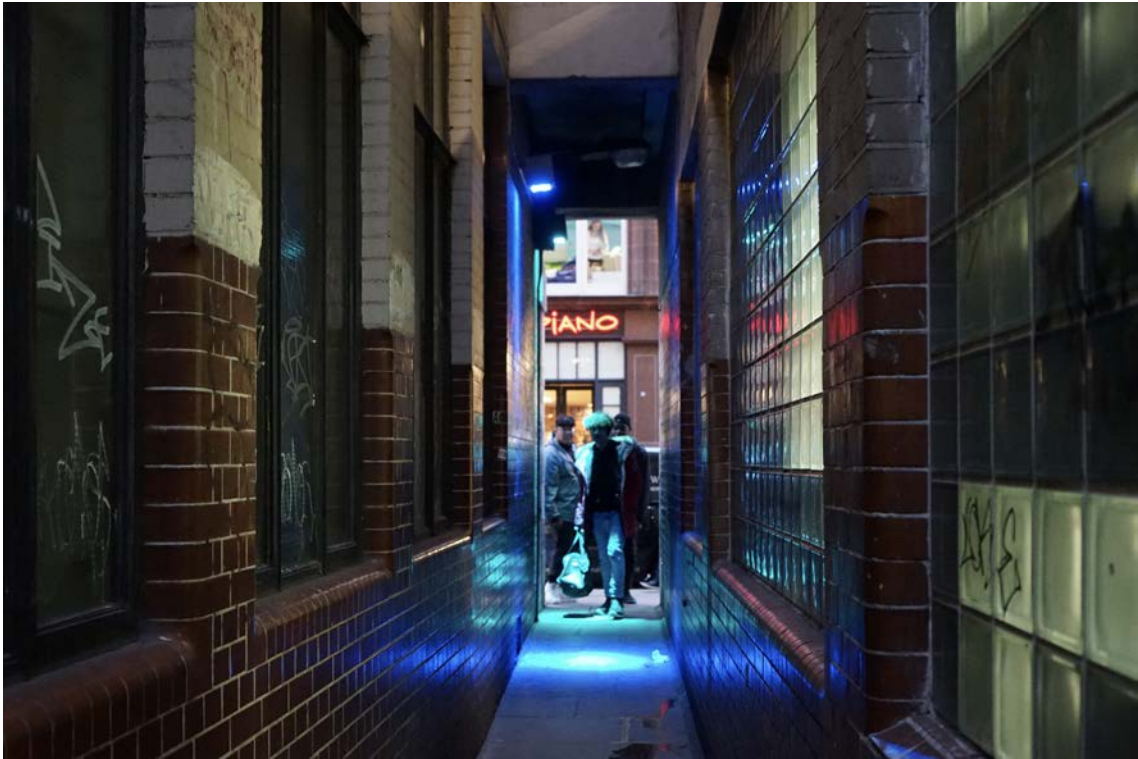








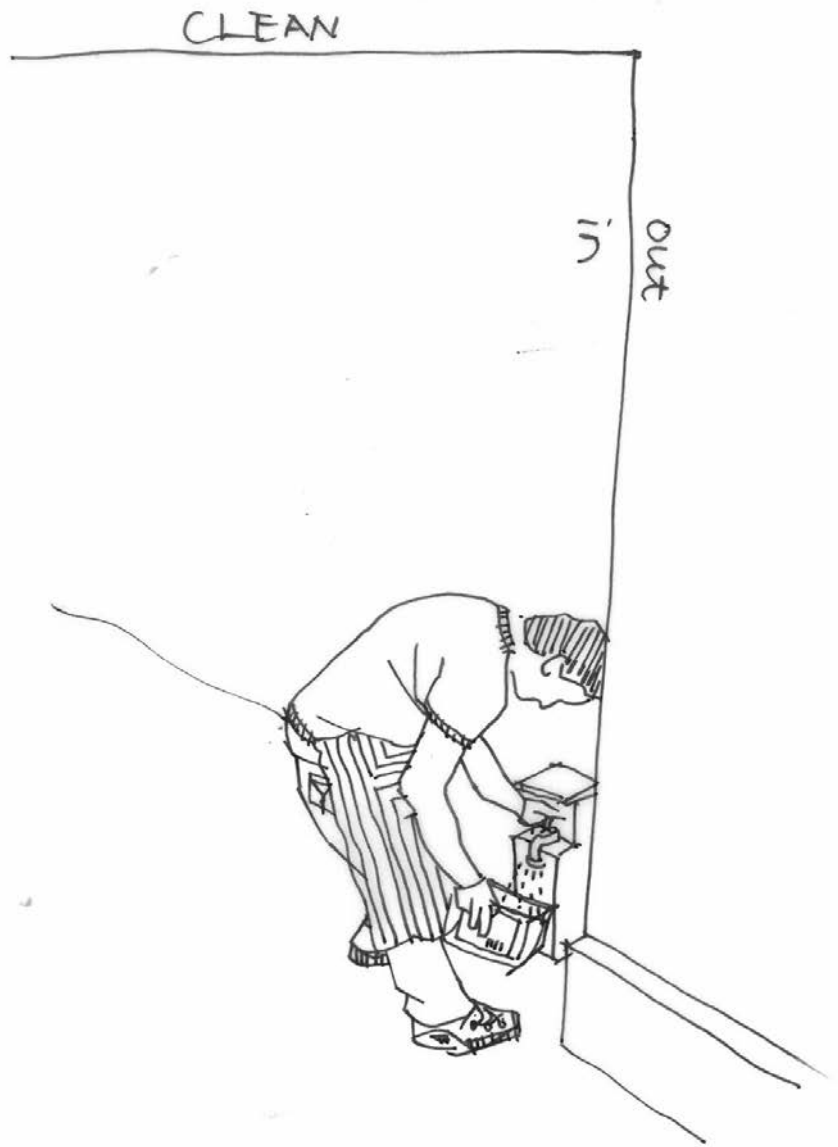






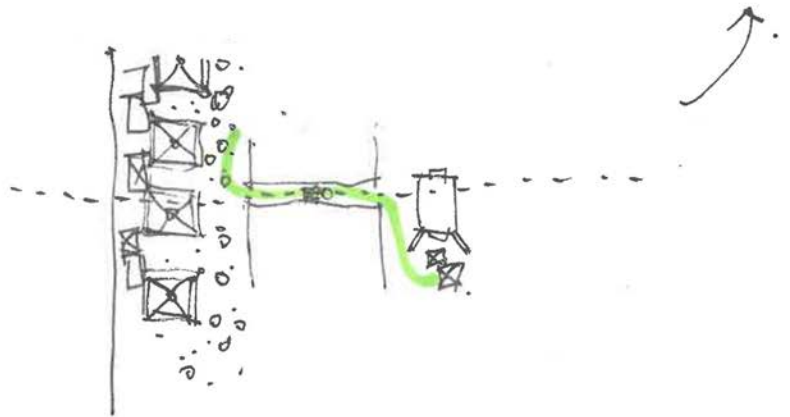
Surrounding Situation



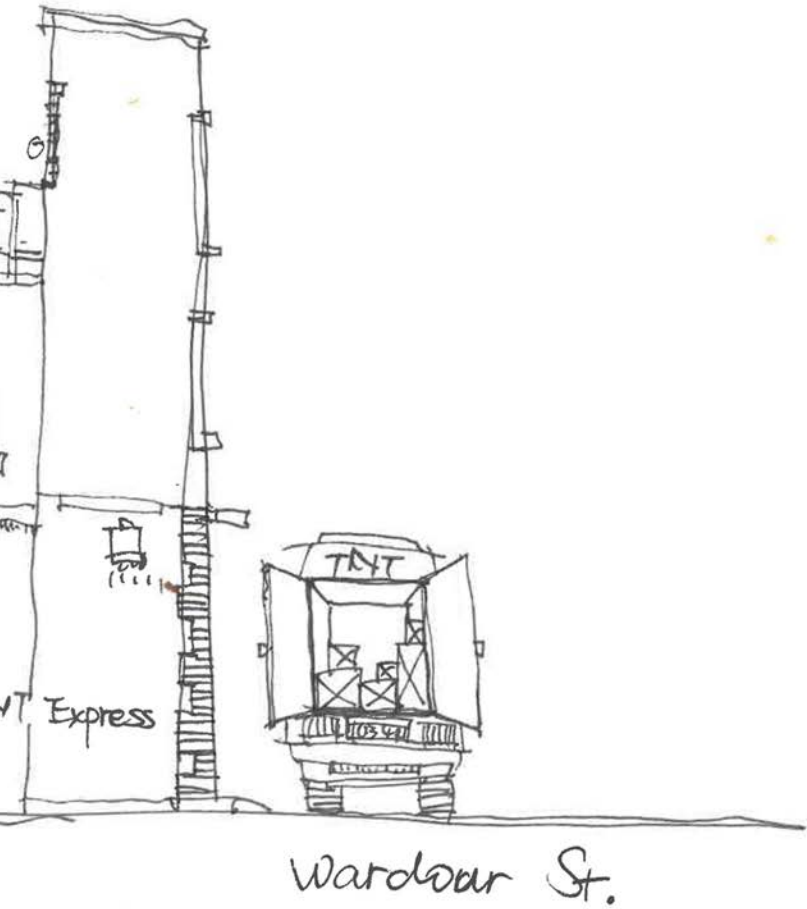


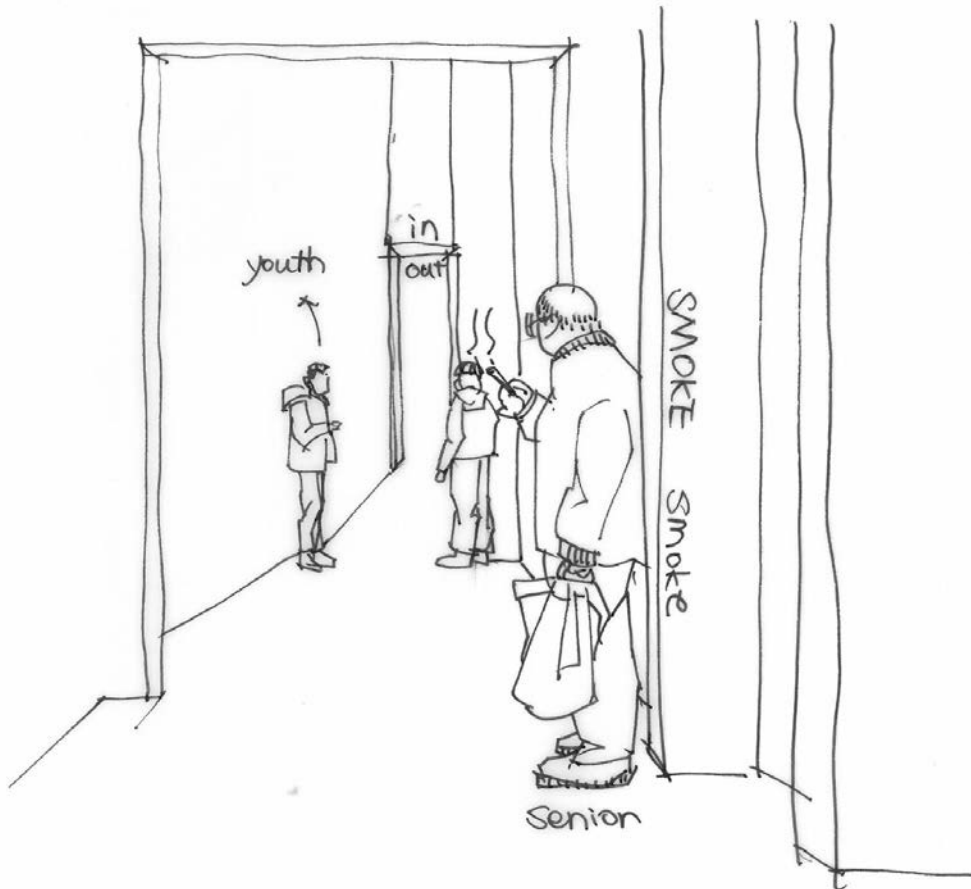
- Berwick St. is occupied
by MARKET.

No space for car parking!

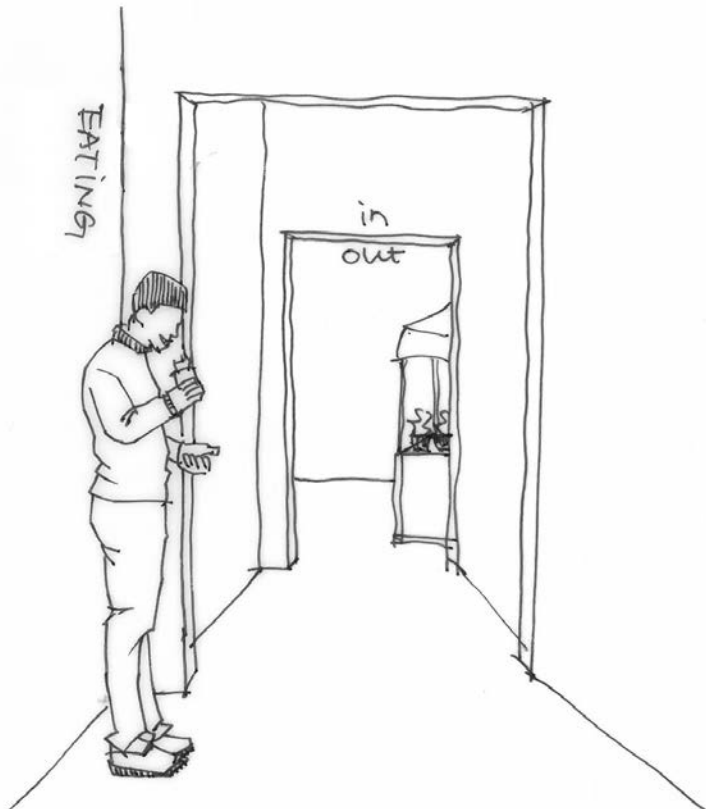


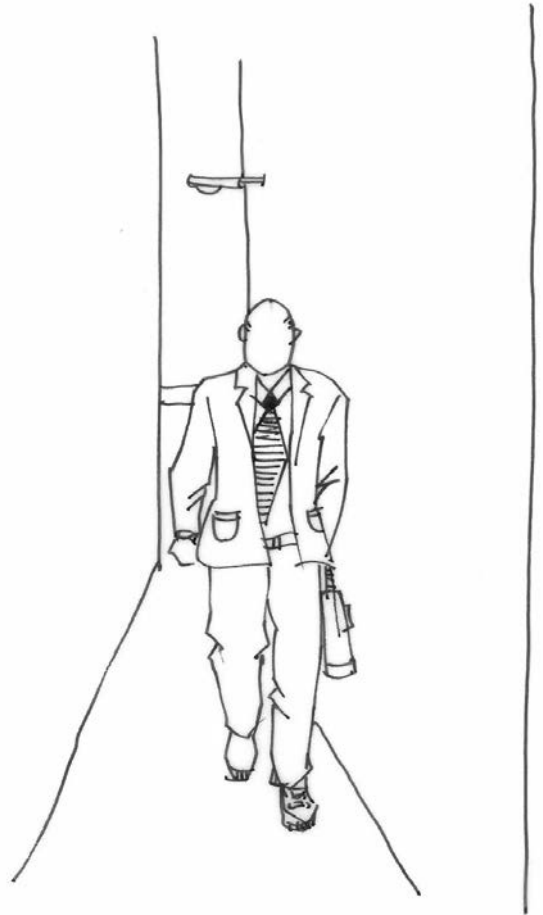
- DELIVERY.











11.13 Wed. 18:00



office worker

11.13 Wed. 16:00

House with City

Tokyo, Japan

Shingo Masuda + Katsuhisa Otsubo Architects

"House with City" designed for a couple and their child, is located on a narrow lot adjacent to a lively shopping street in central Tokyo. Suggesting something inserted into the residual space between two buildings, the residence, measuring 2.6m x 11.88m, expands its boundaries and interfaces with its neighborhood through an open ground floor.

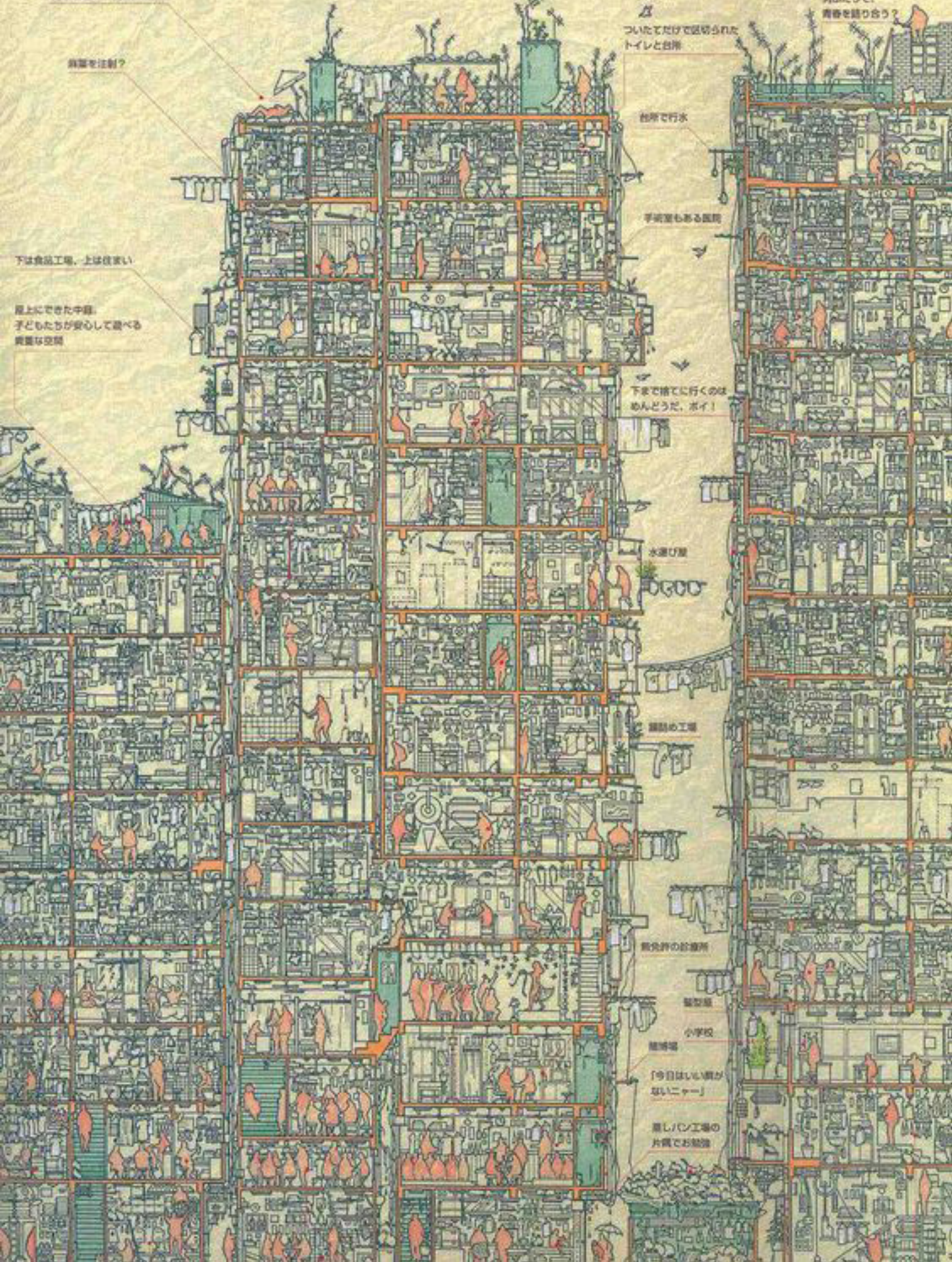




食事
都賀

FC東京





真面目な住み?

下は食品工場、上は住まい

屋上にできた中庭、
子どもたちが安心して遊べる
貴重な空間

ついでにだけ区切られた
トイレと台所

真面目な住み?

台所で排水

平屋室もある階段

下まで捨てて行くのは
めんどうだ、ボイ!

水汲み場

真面目な工場

真面目な住み?

小学校

真面目な住み?

「今日はいい朝が
ないニャー」

真し/心/工場
の片側でお勉強



Film: Ghost in the Shell

Kowloon, Hongkong

“The Kowloon Walled City in Hong Kong was once the most densely populated place on earth. And without a single architect or any oversight whatsoever, the ungoverned hive of interlinking buildings became a haven for drugs, crime and prostitution. This is perhaps why the surreal, M.C. Escher-like structure, where one couldn’t even begin to imagine what life was like, captured the interest of the Japanese.”

T
30

TUTUCU
TAKIMLARI
KESICI
TAKIMLARI
OLCU
ALETleri
KESME
SIVILARI
C.N.C
KATERLERI
SERT
MADEN
UCLARI
SERT
MADEN
FIREZELERI





1550 Chairs Stacked Between Two City Buildings

Istanbul Biennial, Turkey

Doris Salcedo

In 2002, Salcedo placed 280 chairs at the Palace of Justice in Bogot “to pay homage to those killed here in a failed guerrilla coup seventeen years earlier.” In 2003, she filled the Istanbul Biennial space between two buildings with 1,550 chairs “evoking the masses of faceless migrants who underpin our globalised economy.”





Level Up street pavilion provides multi-level hang-out space

Rijeka, Croatia





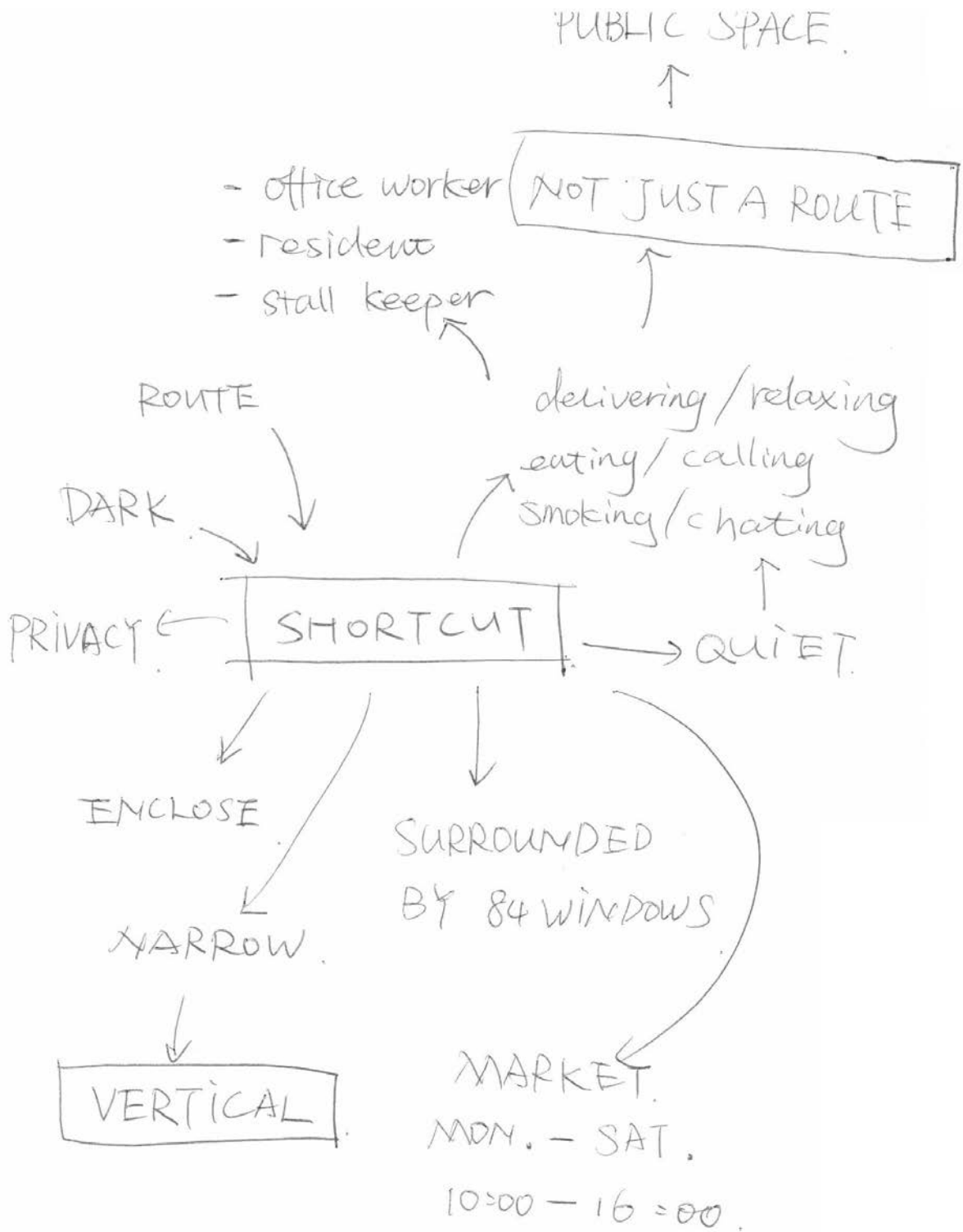








Antony Gormley



diagram

HOW CAN TILY'S COURT BECOME A NEW TYPE OF VERTICAL PUBLIC SPACE
FOR RESIDENTS AND OFFICE WORKERS OF SOHO?

12.5 review

reflection:

- secret garden
- vertical: extend of office building
- recycling system for eating area
- artefact should be an object, not just a model



action:

- develop artefact
- update pitch

reference: rachel whiteread



artefact: cast shortcut space by resin, and keep traces (like graffiti, poster, empty winebottle...) left by pedestrian in the resin.

12.9 tutorial

reflection: artefact does not reflect design, and not meaningful enough.

action:

- find out more references about nature
- redesign artefact

reference:

outside-in



the sense we trust the most is the sense which exposes us the least. the sense that will bring us into direct contact with life is used the least. the first is to see. what we see, we believe, but it is what we don't see that holds the truth of what is because then it remains undistorted by our interpretation.

the eccentric cabinets of curiosity that captivated renaissance europe



unicorn horns, mermaid skeletons, preserved plants, clocks, scientific instruments, celestial globes: these were the contents of the wunderkammer. today, we use the term loosely to describe any fascinating or idiosyncratic accumulation of objects secreted

away in boxes or behind closed doors.

my artefact could be an installation like an eccentric cabinet, or like the scene in 'alice in wonderland', in which alice peers through the keyhole of a tiny door onto a beautiful garden only to realize that she is unable to enter. *this inverted experience of peeking inside to actually look outside, is meant to be both engrossing and frustrating.*

12.12 tutorial

artefact: cast hollow model for shortcut space by jesmonite, and put green plants in the model. the visitors could see inside landscape through the small holes on the model surface.

action:

- record the detail of shortcut
- laser cut mdf, make the casting mould
- cast hollow model
- buy the appropriate plants and light
- complete the installation

2020.1.13 tutorial

- Survey gardens in soho, comparing with other areas in London
- who use the garden in soho?
- what people do in greenspace in soho?

Action:

- update pitch
- artefact sketch



2020.1.16 tutorial

- Draw all facades with detail
- Design how your model will show the occupants of the buildings, existing public space activities, new public space activities
- Mock up a model in card or paper to test
- Go to Soho & talk to people (locals & office workers) what things would they like in a public space?

2020.2.6 tutorial

Record: discussed updated pitch, drawing and the development of project

Discussed in detail:

1: Public spaces: Public spaces are usually owned by corporation (like Granary Square owned by Ardon), council or government. The owners always tends to play by the rules, on public spaces on how people are supposed to behavior. But public spaces are perhaps best served where people have freedom and expression and not enforced or organized to behave in certain ways

The project could be designed to encourage people to break the rules, take back initial begin.

2: research on who uses the short cut and their idea /need for a secret garden or alternative use

Reflection:

- Pitch is unconvincing: lack of supporting argument
- Pitch ~~is~~ does not read as a logical story
- Simplify the argument; eg '*A public space is a place that is generally open and accessible to people.*'

Why design a secret garden? –Clarify /substantiate your argument

References to research : Priest Holes /gardens/secret gardens

Need to be clearer on who might want what in the shortcut and who might then finance such a project .ie who the customer might be

Action:

- do more research and update pitch eg meaning of ardens in England. Secret garden mythology in English literature
- visit Priest Holes

Begin process of Design of a secret public space hidden from the owner, Westminster Council City.

Research:

- from Westminster city council re their criteria for garden development.
- If users /occupiers on either side the shortcut may have an interest and how they might finance such a project

2020.2.10 tutorial

Option 1

What? Urban Forest

Where? Tyler's Court

Who? office workers

Why? rise both awareness on the importance of nature in urban environments and on the dramatic effects of climate change.

Notes:

- There is lack of green spaces in Soho.
- Excessive carbon emission from Market and High-density population in Soho

Option 2

What? Outdoor Furnishings

Where? Tyler's Court

Who? market visitors

Why? activate and animate Tyler's Court, employs public installations and cultural events to revitalize neglected areas of the borough

Notes:

This shortcut ignored by visitors.

Few people go to this shortcut, which is different from vitality and bustle on Berwick St.

Study on 'what the surrounding people envision using this shortcut?' ... Seating, eating or reading...?

Option 3

What? A series of installation

Where? Tyler's Court

Who? all the people who inhabit public spaces

Why? remind people of limitation are imposed on free expression and certain actions in public spaces.

Notes:

Privatization (from article '*Privately owned public space*')

A privately owned public space, also known as a privately owned public open space (POPOS), is a public space that is open to the public, but owned by a private entity, typically a commercial property developer.

Beginning roughly in the 1960s, the privatization of public space (especially in urban centers) has faced criticism from citizen groups such as the Open Spaces Society. Private-public partnerships have taken significant control of public parks and playgrounds through conservancy groups set up to manage what is considered unmanageable by public agencies. Corporate sponsorship of public leisure areas is ubiquitous, giving open space to the public in exchange for higher air rights. This facilitates the construction of taller buildings with private parks.

Free expression: In the United States the right of the people to engage in speech and assembly in public places may not be unreasonably restricted by the federal or state government. The government cannot usually limit one's speech beyond what is reasonable in a public space, which is considered to be a public forum (that is, screaming epithets at passers-by can be stopped; proselytizing one's religion probably cannot). In a private—that is, non-public—forum, the government can control one's speech to a much greater degree; for instance, protesting one's objection to medicare reform will not be tolerated in the gallery of the United States Senate. This is not to say that the government can control what one says in their own home or to others; it can only control government property in this way.

A public space is a place that is generally open and accessible to people. But the limitations are imposed in the space to prevent certain actions from occurring public behavior that is considered obnoxious or out of character

What kind of behaviors may be limited in public space?

Sex, urinating, alcohol consumption, indecent exposure, homeless, indecent exposure...

Do you think there are urban models –or even specific architectural types– that are more favorable in allowing free expression and appropriation of all the people who inhabit public spaces?

'I may seem nostalgic, but the urban squares of the 19th century are ideal for mixing people of all types. They have the attraction in their partially fractal structure.'

Asif Khan and MINI create "forests" in see-through boxes across east London

London Design Festival 2016: architect Asif Khan has created three temporary pavilions thick with plants to give the harried London public space to relax, work and socialise (+ slideshow).

Khan's Forest installation for MINI Living features three box-like structures, including one on stilts that visitors must climb into from its base.



Located within walking distance of each other in Shoreditch, the spaces are designed to encourage local residents, workers and visitors to cross paths.

"There are nowadays many communities in Shoreditch that are overlapping each other," Khan told Dezeen.

"You've got the tech startups, you've got Friday-night traffic of people coming out to party, you've got an established residential community, and it's an incredibly busy thoroughfare for cars and pedestrians."

"Those communities don't cross positively. They don't help each other or learn from each other," he continued. "What we tried to do here is create a space that the different communities can all use."

The plant-filled spaces – named Connect, Create and Relax – are underpinned by the Japanese idea of shinrin-yoku, which translates as forest bathing.



The Relax room, located on the junction of Old Street and Pitfield Street, is elevated from the ground. Visitors have to walk up a small hill made from rubber mulch to crawl into it through its base.

The Create structure is located in Charles Square in the middle of a residential estate. It features bleacher-style seating and power outlets for visitors' phones and laptops.

The final room, Connect, is a corridor-like space installed in the square next to Shoreditch Fire Station. Inside this space is a long communal table intended to encourage passersby to meet and interact.

Each of three rooms is made from layers of corrugated plastic sheeting. At night, LEDs trapped within the plastic walls illuminate the space, giving off a soft glow.

The rooms have been filled with plants specially picked out by horticulturalist Jin Ahn. Visitors are encouraged to take away plants, and can also donate plants that they cannot look after anymore.

"It's nice to see the city changing around us, but on the other hand we feel we're losing things that we grew up with that the new generation can't access anymore," said Khan at the unveiling.

He believes we are living with fewer civic spaces, like libraries. "The idea that you take the plants away from here is from the library model," he said. "People will take the plants, and people can bring things here that they've out grown".

Into the Forest / Openfabric



Text description provided by the architects. Openfabric has been selected to design the public spaces of Mantova city center in occasion of the first World Forum on Urban Forest (WFUF 2018) by FAO. The aim of the design is to engage with the two different levels of the forum: the academic one and the broad public. The project wants to critically represent a number of forest typologies rising both awareness on the importance of nature in urban environments and on the dramatic effects of climate change.

Through the tools of ambiguity, juxtaposition, aesthetics and discomfort, Into the Forest aims to challenge the perception of nature and aspires to be adopted by cities, globally.



Native Forest

The "Native Forest" recalls a fragment of the ancient forest formations widely covering the Po Valley (Pianura Padana) before the massive transformation to agriculture and urbanization. In-fact large part of Northern Italy was very likely covered by lowlands forests dominated by *Quercus* spp. and *Carpinus betulus*. The forests currently survive only in few, small patches, protected as nature reserves. Here, as in any other type of forest, dead and decaying wood (snag) is key to support a rich community of decomposers (saproxylic organisms) like bacteria and fungi, insects, and other invertebrates.

Mediterranean Forest

The Mediterranean sclerophyllous evergreen oak forest shapes the character of Mediterranean landscapes with a wide variety of formations and structures, according to climate, soil, and anthropogenic conditions. The dominant tree species are *Quercus ilex*, *Quercus rotundifolia*, *Quercus suber*, *Laurus nobilis* and *Arbutus unedo*, the latter two having rather often a shrub growth form. The evergreen oak woodlands have been a strategic resource along the history of human societies in the region, providing direct and

indirect goods and benefits to local communities, as fuelwood, cork, food and fodder, timber, shelter.

The Fallen Forest

“Fallen Forest” is a memorial for the millions of trees victims of the cyclone that hit the North-Eastern regions of Italy on November 2nd, 2018. The installation confronts the phenomena of climate tropicalisation and its catastrophic effects on the environment, by recreating a portion of post-apocalyptic landscape (using leftovers trunks of paper production-chain). Climate change is real, action is urgent.



Vibrant street furniture creates sociable square in south London

Central Saint Martins graduates Fiona Hartley and Ellie Fox Johnson created blocky, brightly-hued outdoor furnishings for a public square in Croydon, designed to foster interaction among locals.

The project titled College Square, was developed by Hartley and Johnson while completing the final year of their architecture degrees at Central Saint Martins (CSM), during their Spatial Practices programme.

They proposed creating a variety of reconfigurable outdoor furniture for an area of Croydon, south London, which could be used by members of the public as a spot for socialising and recreational activities.



"The main inspiration for the project came from the different groups of people we envisioned using the space," Hartley told Dezeen.

"We developed the project as a 'kit of parts' in a language that could be adapted and implemented into different sites, as a response to the increasing number of vacant spaces in the borough."



The pair, who were supported by fellow CSM graduates Mina Fouladi and Olivia Sutherill, were invited to fully realise their proposal as part of Meanwhile Croydon – a council run programme that employs public installations and cultural events to revitalise neglected areas of the borough.

Croydon Council's place making team undertook detailed design and installed the project in a small square in front of Croydon College.

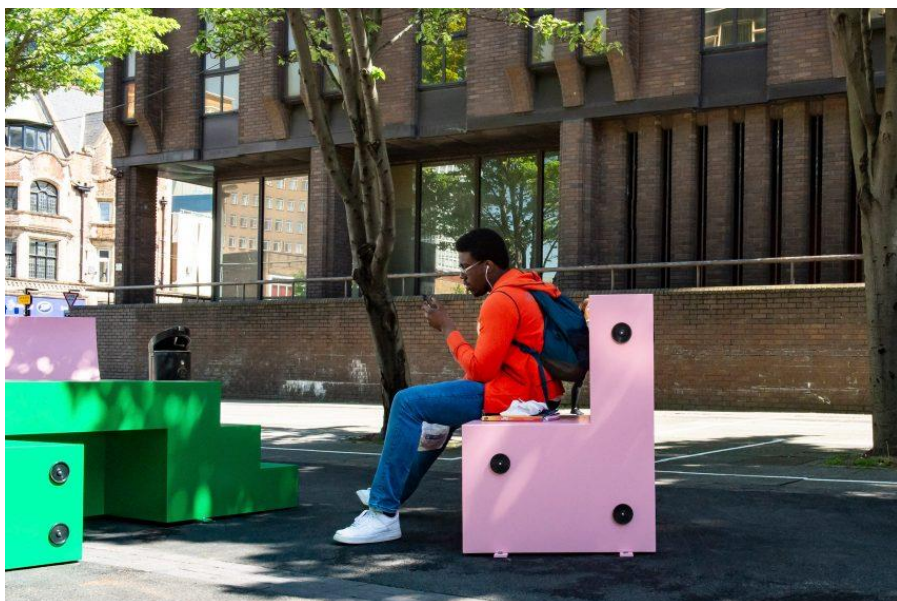


A couple of freestanding steel-frame archways bookend the site, which are topped by the project's name in red block lettering.

These were loosely informed by the shape of Arnhem gate, an old brutalist gateway near to the college where Hartley and Johnson initially considered situating their design.

The boxy volumes can be reconfigured to create performance stages or tiered blocks where visitors can sit and gather and have steep ramps that can be slid down by skateboarders.

"Each of the blocks can be configured and used in a multitude of ways, meaning the space can evolve and change along side the events that take place there," explained Hartley.



In 2017 design studio Raw Edges created a collection of oversized concrete armchairs

for London's Greenwich Peninsula. Coming as part of the area's redevelopment scheme, the seats can be rearranged so that passers-by can sit, lay down, or climb over them.

T Sakhi creates public spaces using Beirut's security infrastructure



Architecture and design studio T Sakhi has transformed security barriers into seating as part of a series of urban interventions aimed at creating social places for locals in Beirut.

The multidisciplinary studio founded by Lebanese-Polish sisters Tessa and Tara Sakhi wanted to introduce changes to Beirut's urban topography that make its public spaces more engaging.

This resulted in two interventions, *Lost in Translation* and *Holidays in the Sun*, that both provide places to sit down in the city.



Holidays in the Sun is an urban seating and greenery intervention in Beirut

Lebanon's current political instability has contributed to an abundance of unfinished construction projects and security infrastructure scattered across its urban environment.

As a consequence, there are few attractive places where people can gather and enjoy spending time outdoors, as Dezeen reported from Beirut Design Week last year.

"Most public spaces in Beirut are privatised, so the only real public spaces are the streets," claimed the sisters, who work out of Beirut and Milan.

"The city centre is filled with security and military barricades to control the area, so as a citizen and a pedestrian you don't feel the freedom, joy and happiness you generally experience in public spaces and gardens abroad."

The stool is made from repurposed security barricades known as Czech Hedghogs

The various security barriers are unsightly and have negative connotations, which T Sakhi aimed to reverse by giving them an alternative and more civic purpose.

Tessa and Tara describe the output of their studio as "hybrid works that are often playfully subversive and provoke new modes of human interaction".



The Nature Barrier reinterprets crowd control barriers by adding planters

The two experimental interventions they introduced in Beirut use objects that form part of the everyday landscape as the basis for hybrid structures that seek to enhance the streetscape.

The first intervention, called Holidays in the Sun, creates places for people to sit and introduces greenery into parts of the city where it is currently lacking.



The intervention provides a place to sit in a city with little public infrastructure

The sisters acquired a permit to remove damaged security barriers known as "Czech hedgehogs" from the streets and transform them into stools.

The designers repainted the structures, which are made from three interconnected steel beams, and added sling-like fabric seats so people can use them to sit down.

For the Nature Barrier that forms part of Holidays in the Sun, it was more cost effective to manufacture new pieces than repurposing existing ones.

The design reinterprets the metal crowd-control barriers found throughout the city by incorporating planters into upturned sections of tubing.

The products are designed to create spaces for conversation and rest that help the local community and visitors engage with each public space, as well as with each other.



Lost in Translation is an urban chair with an arched top and four seats

The studio also developed an urban chair, called Lost in Transition, that was installed in central Beirut at the Piazza of Saint Elias Church.

The piece was originally developed for and exhibited at the Alcova site during Milan Design Week 2019 and features several metal seats connected by a central arch.

It was first shown at the Alcova space during Milan Design Week

"The functional sculpture invites face-to-face interaction, while periphery stools offer solitary moments of rest and relaxation," the designers explained.

"The urban chair is versatile, and the numerous spatial configurations allow for multiple uses, whether it is eating lunch with colleagues or reading alone."

It is a versatile space suitable for solitary moments of reflection or eating with colleagues

The sisters are also working on another installation called "Incomplete Pillars for Incomplete Beings" that will be installed in Beirut later this year. It will comprise prefabricated concrete masonry blocks that will be repurposed as urban planters by filling their hollow cavities with soil.

WORKac revealed its design for Lebanon's Beirut Museum of Art at the beginning of this year, which includes mismatched balconies that will double as exhibition space.

Superkilen by BIG, Topotek1 and Superflex

Danish architecture firm BIG has scattered miscellaneous street furniture from 60 different nations across a brightly coloured carpet of grass and rubber at this park in Copenhagen (+ slideshow).



The architects worked alongside landscape architects Topotek1 and artists Superflex on the design of the Superkilen park, which stretches 750 metres through the Nørrebro neighbourhood in the north of the city.



Neon signs from Russia and Qatar, picnic benches from Armenia and ping-pong tables from Spain are just some of the different objects in the park, which are meant to represent the nationalities of every local resident.



"Rather than plastering the urban area with Danish designs we decided to gather the local intelligence and global experience to create a display of global urban best practice comprising the best that each of the 60 different cultures and countries have to offer when it comes to urban furniture," said BIG project leader Nanna Gyldholm Møller.



The park is split into three colour-coded zones and different objects can be found in each one.



A patchwork of pink rubber blankets the ground and covers the sides of buildings in the first zone, and the designers have planted maple trees with matching red leaves.



The local market is held here, beside benches from Brazil, cast iron litter bins from the UK and a Thai boxing ring. There's also a children's playground, containing a slide from Chernobyl, a climbing frame from India and a set of swings from Iraq.



Above: photograph is by Torben Eskerod

The second zone is conceived as an "urban living room" where locals play board games beneath the shelter of Japanese cherry trees and [Liberian](#) Lebanese cedar trees.

Painted white lines run north to south across the ground but curve around the outside of the street furniture, which includes Belgian benches, Brazilian bar chairs, a Norwegian bike rack and a Moroccan fountain.



Above: photograph is by Torben Eskerod

Grass plains and hills comprise the third zone, which contains areas for sports, sunbathing and picnics.



A Texan pavilion provides a venue for line-dancing, while a sports arena accommodates football and basketball.



"Rather than perpetuating a perception of Denmark as a mono-ethnic people, the park portrays a true sample of the cultural diversity of contemporary Copenhagen," said Topotek1's Martin-Rein Cano.



See the initial designs for Superkilen in our earlier story.

Other landscape architecture on Dezeen includes an undulating public square in Mexico and a plaza in Austria.



Photography is by Iwan Bann, apart from where otherwise stated.



Above: photograph is by Torben Eskerod

Here's a detailed project description from BIG:

Superkilen is a half a mile long urban space wedging through one of the most ethnically diverse and socially challenged neighborhoods in Denmark. It has one overarching idea that it is conceived as a giant exhibition of urban best practice – a sort of collection of global found objects that come from 60 different nationalities of the people inhabiting the area surrounding it. Ranging from exercise gear from muscle beach LA to sewage drains from Israel, palm trees from China and neon signs from Qatar and Russia. Each object is

accompanied by a small stainless plate inlaid in the ground describing the object, what it is and where it is from – in Danish and in the language(s) of its origin. A sort of surrealist collection of global urban diversity that in fact reflects the true nature of the local neighborhood – rather than perpetuating a petrified image of homogenous Denmark.

Superkilen is the result of the creative collaboration between BIG, Topotek1 and SUPERFLEX, which constitutes a rare fusion of architecture, landscape architecture and art - from early concept to construction stage.



Above: photograph is by Torben Eskerod

A World Exhibition at Nørrebro

Superkilen is a park that supports diversity. It is a world exhibition of furniture and everyday objects from all over the world, including benches, lampposts, trash cans and plants – requisites that every contemporary park should include and that the future visitors of the park have helped to select. Superkilen reattributes motifs from garden history. In the garden, the translocation of an ideal, the reproduction of another place, such as a far off landscape, is a common theme through time. As the Chinese reference the mountain ranges with the miniature rocks, the Japanese the ocean with their rippled gravel, or how the Greek ruins are showcased as replicas in the English gardens. Superkilen is a contemporary, urban version of a universal garden.



Above: photograph is by Torben Eskerod

Three Zones, Three Colors – One Neighborhood

The conceptual starting point is a division of Superkilen into three zones and colors – green, black and red. The different surfaces and colors are integrated to form new, dynamic surroundings for the everyday objects.

The desire for more nature is met through a significant increase of vegetation and plants throughout the whole neighborhood arranged as small islands of diverse tree sorts, blossom periods, colors - and origin matching the one of surrounding everyday objects.

Traffic Connections

To create better and more transparent infrastructure throughout the neighborhood, the current bike paths will be reorganized, new connections linking to the surrounding neighborhoods are created, with emphasis on the connection to Mimersgade, where citizens have expressed desire for a bus passage. This transition concerns the whole traffic in the area at outer Norrebro and is a part of a greater infrastructure plan. Alternatives to the bus passage include signals, an extended middle lane or speed bumps.



Market/Culture/Sport – The Red Square

As an extension of the sports and cultural activities at the Nørrebrohall, the Red Square is conceived as an urban extension of the internal life of the hall. A range of recreational offers and the large central square allows the local residents to meet each other through physical activity and games.

The colored surface is integrated both in terms of colors and material with the Nørrebrohall and its new main entrance, where the surface merges inside and outside in the new foyer.

Facades are incorporated visually in the project by following the color of the surface conceptually folding upwards and hereby creating a three-dimensional experience. By the large facade towards Nørrebrogade is an elevated open space, which almost like a tribune enables the visitors to enjoy the afternoon sun with a view.



In addition to the cultural and sports facilities, the Red Square creates the setting for an urban marketplace which attracts visitors every weekend from Copenhagen and the suburbs.

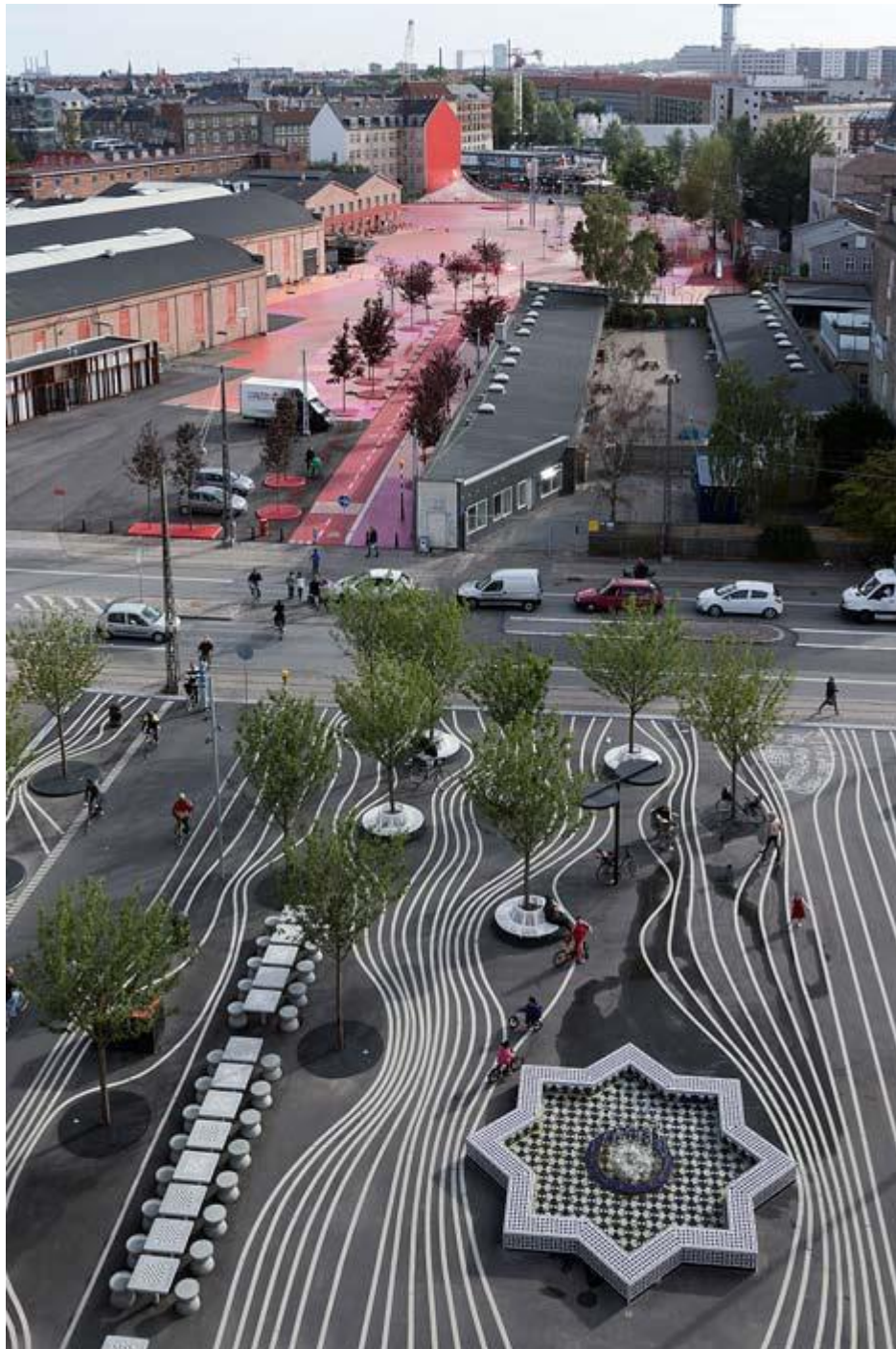
Superkilen's central marketplace is located in the area of the existing hockey field. A large area on the square is covered by a multifunctional rubber surface to enable ballgames, markets, parades, and skating rinks in winter etc. The mobile tribunes of Norrebrohallen can be moved there for open-air movie/sports presentations. The square towards East allows outdoor service from the café inside by the future main entrance. Towards North, the visitors will enjoy basketball courts, parking spaces and an outdoor fitness area.

» The red square is defined by a street in each end and building and fences along the sides. The edge is moving in and out - and we have tied the area together by connecting the surrounding given lines and edges in the big red pattern. A big red carpet stretched out between all sides of the square.

» Fitness area, Thai boxing, playground (slide from Chernobyl, Iraqi swings, Indian climbing playground), Sound system from Jamaica, a stencil of Salvador Allende, plenty of benches (from Brazil, classic UK cast Iron litter bins, Iran and Switzerland), bike stands and a parking area.

» Only red trees except the existing ones.

» Basketball next to parking.

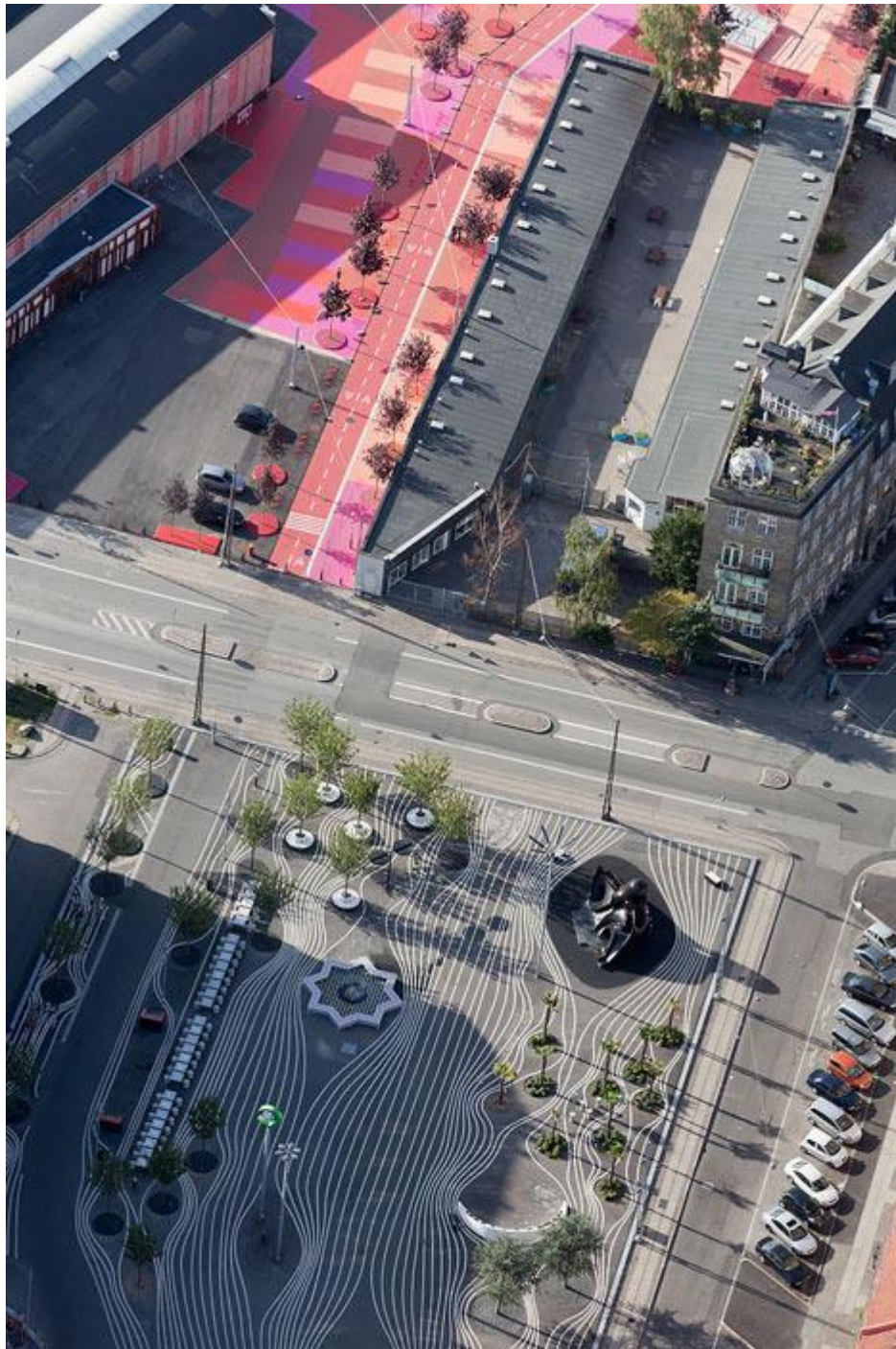


Urban Living Room – The Black Square

Mimers Plads is the heart of the Superkilen Masterplan. This is where the locals meet around the Moroccan fountain, the Turkish bench, under the Japanese cherry-trees as the extension of the area's patio. In weekdays, permanent tables, benches and grill facilities serve as an urban living room for backgammon, chess players etc.

The bike traffic is moved to the East side of the Square by partly solving the problem of height differences towards Midgaardsgade and enable a bike ramp between Hotherplads and the intersecting bike path connection. Towards North is a hill facing south with a view to the square and its activity.

- » The square can be spotted by the big, dentist neon sign from Doha, Qatar.
- » Brazilian bar chairs under the Chinese palm trees, Japanese octopus playground next to the long row of Bulgarian picnic tables and Argentinean BBQ's, Belgian benches around the cherry trees, UV (black light) light highlighting all white from the American shower lamp, Norwegian bike rack with a bike pump, Liberian cedar trees.
- » To protect from the street ending at the north east corner of the square and to meet the wishes from the neighbors, we have folded up a corner of the square creating a covered space.
- » Unlike the pattern on the red square, the white lines on Mimers Plads are all moving in straight lines from north to south, curving around the different furniture to avoid touching it. Here the pattern is highlighting the furniture instead of just being a caped under it.



Sport/Play – The Green Park

Bauman once said that “sport is one of the few institutions in society, where people can still agree on the rules”. No matter where you’re from, what you believe in and which language you speak, you can always play football together. This is why a number of sports facilities are moved to the Green Park, including the existing hockey field with an integrated basketball court as it will create a natural gathering spot for local young people from Mjolnerpark and the adjacent school.

The activities of the Green Park with its soft hills and surfaces appeals to children, young people and families. A green landscape and a playground where families with children

can meet for picnics, sunbathing and breaks in the grass, but also hockey tournaments, badminton games and workout between the hills.

» The neighbors asked for more green so we ended up making the green park completely green – not only keeping and exaggerating the curvy landscape, but also painting all bike- and pedestrian paths green.

» From Tagensvej at the very north, the park is welcoming with a big rotating neon sign from USA, a big Italian chandelier and a black Osborne Bull from Costa del Sol (a wish from a Danish couple living in the area!).

» Armenian picnic tables next to Mjølnerparken with South African BBQ's, a volcano shapes sports arena for basket ball and football, a line dance pavilion from Texas, muscle beach from LA with a high swing from Kabul, Spanish ping pong tables and a pavilion for the kids to hang out in.

The green park is turning into Mimers Plads on the top of the hill to the south. From the top of the hill you can almost overlook the entire Superkilen.



Site plan - click above for larger image

Kellenberger-White's multicoloured Alphabet chairs can be used to spell out words

All 26 letters of the alphabet are constructed out of folded metal in this colourful, interactive installation for London Design Festival 2018.

London-based graphic-design studio Kellenberger-White has created a human-scale typography in Finsbury Avenue Square, Broadgate, which encourages visitors to play as well as sit.



Each of the moveable Alphabet chairs is painted a different colour, transforming the square into an interactive rainbow-coloured playground.

"Alphabet is an experiment in construction and colour that tests and connects many things," said the designers. "It's a playground, but also an alphabet; it's public furniture, but it can talk."

The typographic form of each chair is based on the shapes that are possible to make from folded metal. There are also intended to reference the photos in Bruno Munari's 1944 series Seeking Comfort in an Uncomfortable Chair, which show a figure sitting in a number of unusual positions.

Visitors face the challenge of getting comfortable in each of the pieces, as well as the opportunity to spell out giant words.



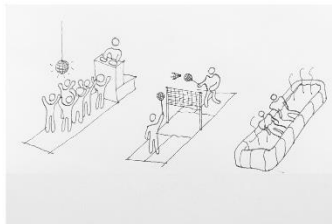
Each of the Alphabet chairs is painted a different colour with a specialist paint used for industrial metal work.

Chair colours include International Orange, used on San Francisco's Golden Gate Bridge and the Cornflower Blue colour of the Middlesbrough Transporter Bridge.

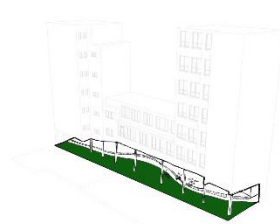
2020.2.14 tutorial

Workshop Plan:

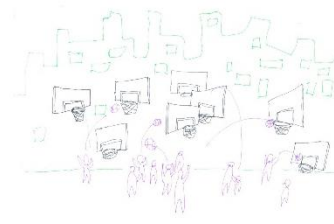
- Design and deliver a workshop to collect prospective office worker users drawn ideas on creative use of space in Tyler Court.
 - Set up display of workshop materials and sandwich shop in Tyler's Court
 - Show office workers my drawing and other students' drawings to inspire them
 - Show my research book (if someone would like to see...)
 - Present and introduce myself and my idea.
 - Explain and present the **Drawing Sheet** so as to then ask office workers to draw their ideas or personal demands for a unique or unusual public space in Tyler's Court
 - Ask office workers to vote or comment on ideas of others
 - In return they are offered a free sandwich or salad
-



Dance, play badminton, sauna
Muyang Tang



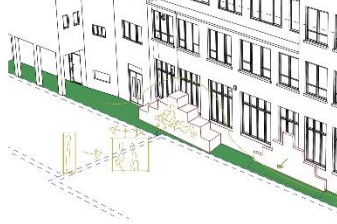
Skateboarding
Jiaxin Zhang



Play basketball
Xia Bi



Garden
Xiaofei Wu



Push-pull Bedroom
Yuntong Liu



Climbing
Muyang Tang

Poster Slogan:

PRESENT YOUR IDEAS

and

ENJOY a FREE LUNCH.

Presenting my ideas:

Hi. my name is Nan... I am a design student at the Royal College of art (show them your ID) and I would value your ideas to help me develop my project.

My project is about the possibility of redesigning the space of Tyler Court to better suit the needs of the people who use it... principally the office users on either side of the court.

I would appreciate a few minutes of your time to simply read my "Drawing sheet and spend a few minutes letting me know your response.

For this I would like to offer you a **starter** Free lunch

If you're Ok to consider this then please.

Drawing Sheet:

Would you like to tell us your name?

Would you mind leaving your email:

Would you like to receive our project update progress? Yes No

(if yes let us know how to contact you)

Drawing sheet task:

How could Tyler's Court become a new type of public space? One that could provide a quirkier, less corporate, greener area and for more distinctive uses?

Please show us (or tell us) your ideas! We may build it for you!

Could you please show us your UNUSUAL ideas of how Tyler's Court could be reimagined as a new type of public space (e.g. a cinema, a secret garden, a library, a beach, a museum...).

Could you please do so in the form of a drawing?

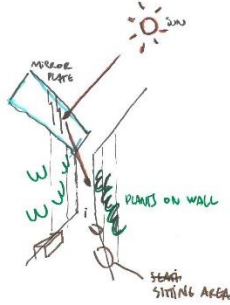
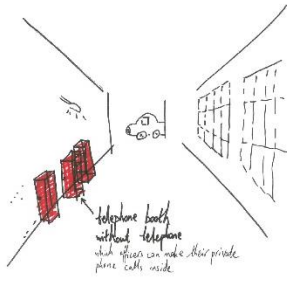
This drawing could be the public space that you are most excited about or your personal idea or wish for a public space, like the example on the wall.

Workshop in process:

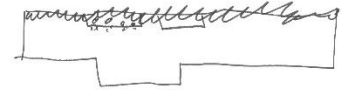
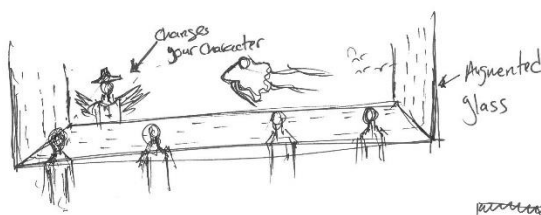
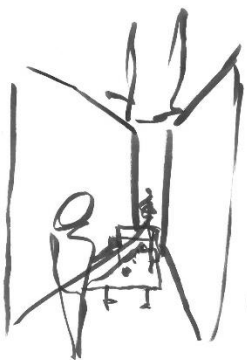


Get from workshop:

A GARDEN TO CHILL - BRING THE SUNLIGHT IN.



SUNLIGHT ALLEY !!



Outdoor free/jugled Library
 Interior/Exterior Coffee Shop
 which here's homeless people off the street... like the 'House of St. Bombers'

What I like is streets with clothing shops, with graffiti on the walls, some space for skate and I would love to see natural spots everywhere, like a mix of different places but all together, so everybody could enjoy it.

DIFFERENT COLOURED LIGHTS ALL ALONG THE COURTYARD THAT CHANGE COLOUR THROUGH OUT THE DAY.

- * Jentive London Art / Artists -> could be street art.
- * outdoor garden space -> community would contribute with plants / lights / seating so you enjoy the space. (good for people who work in this area so they can get some fresh air!)
- * create a community library -> add shelves / seating area / audio speakers / people can donate books.

Community Herb Garden

- Artwork on the walls
- Hopscootch on slabs - or 3D art on the floor
- Flowers or plants to make it greener
- Tables + chairs to sit down and eat food brought from market (as long as it doesn't disturb people)
- CCTV footings / camera
- More lighting
- Give the whole area an overarching theme (eg: London / Soho)

Small garden - something free!

Cleaning + getting rid of the graffiti, murals would be nice.

would promote conversations with strangers / games by + create a learning environment
 Would you like to tell us your name: Gaya Muehsatras
 Would you like to receive our project update progress? Yes No
 (if yes please leave your email: grungathai@hotmail.com)

Provide more activities / open spaces for residential
 community area, garden, play areas

2020.2.24 tutorial

Action:

- Design Brief Text (What, Where, Who (client & users), Why)
- Concept Sketch / illustration
- Participatory event / workshop with clients or users (Photographs of event & of outcomes)
- Site Photographs
- Site Survey Drawings (@ an appropriate scale)
- Site Model (@ an appropriate scale)
- Key Precedents
- x6 sketch models of your proposal (Place these in your site model & photograph)
- Diary

2020.2.27 review

Concept sketch:



Feedback:

- A slice of jungle in Soho is very proactive. A bit like the Barbican Conservatory.
- Not a literally Jungle but more the idea that it represents an eco-system. Semiotic relationships – one benefits the other.
- Perhaps think about your project as a new 3dimensional Public space. One that uses the vertical nature, activates the windows etc. Ten different businesses have a connection onto the public space with stoops that lead down to it. New front doors for them all. Bridges from one window to another. Herb gardens outside windows. How do those businesses claim the void? Claim the Vertical. Activate the windows. Change the windows if needed etc. Go wild.
- Use your workshops as a way of feeding ideas into the design of your space. How does the public space keep on adding to the design?
- Why are you making a lot of hidden spaces? It is already hidden.
- Look at Stoops in New York
- Look at fire escape stairs in Soho New York
- Look at window boxes.

2020.3.2 tutorial

Update brief:

- What? a quirker, less corporate and distinctive public space
- Where? Tyler's Court
- Who? Office workers
- Why? Activate and animate this shortcut ignored by visitors, respond to the specific needs of office workers, create a distinctive and less corporate public space, offer a comfortable public space friendly to office workers

Stoops in New York:



Window Box History: Where Do Window Boxes Come From?

The original window boxes were probably seen in ancient Rome. In this crowded city, many people lived in small homes, one on top of the other, much like we have apartments today. These lower-class citizens didn't have yards or a lot of money. So a window box was an economical way to grow some food with limited space.

Window box planters through the years have evolved from that Roman practicality to more decorative uses. Wealthier Romans and other people through history have used window boxes and planters to make their homes more attractive. Also, window boxes expanded into terrace and rooftop gardens to make the most of city spaces and sunlight.



If window boxes in Tyler's Court:



Fire escape stairs in Soho New York:



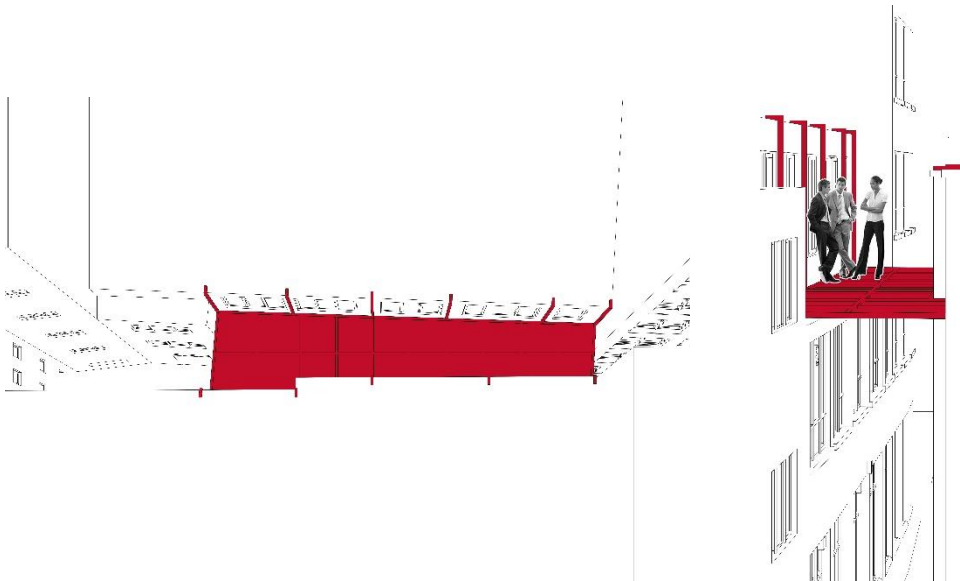
2020.3.5 tutorial

Design proposal:

Option1: Escape stair with roof platform



Option2: Red platform



Option3: community library with roof garden



2020.3.9 tutorial



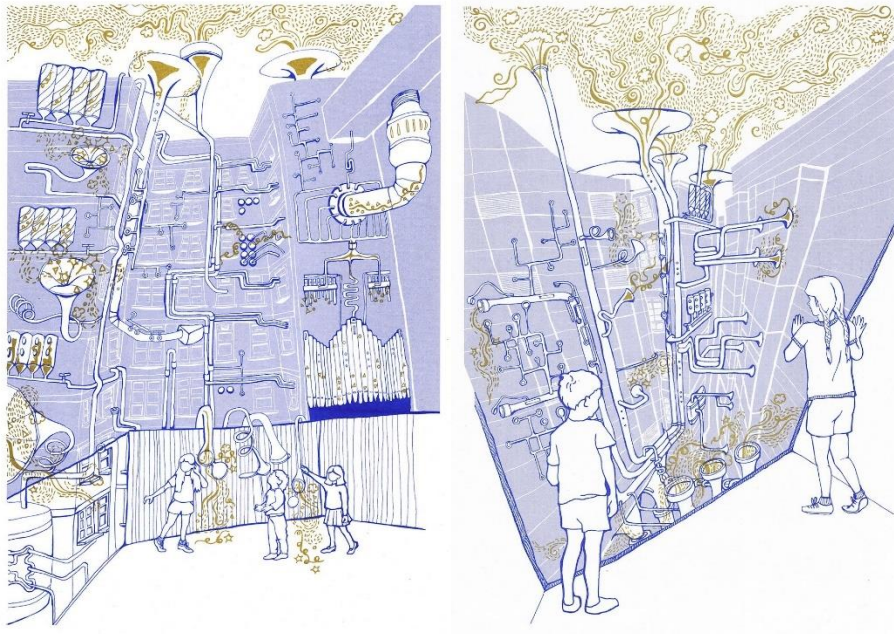
Record how many companies or stores in these two office buildings? And how to use it?
Like office, toilet, blocked...

Show the block on the site model by different color:



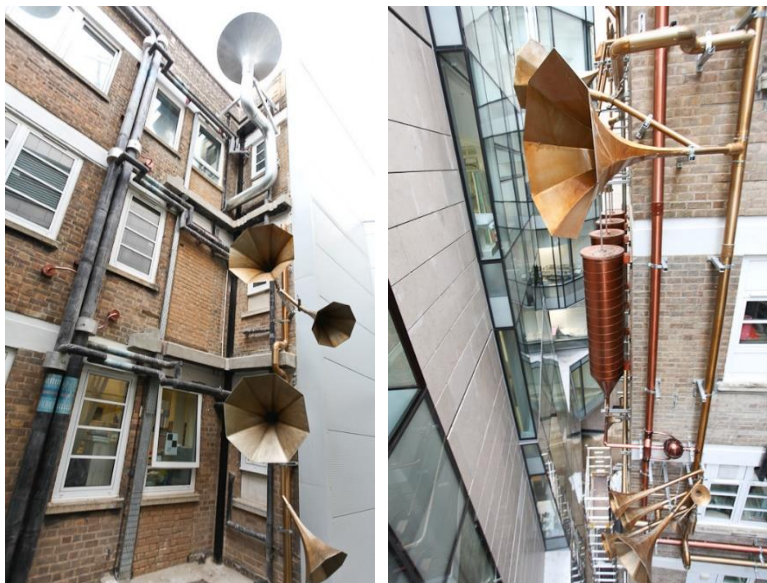
2020.3.19 tutorial

Eg.. Lullaby Factory by Studio Weave



The Lullaby Factory is an intervention by Studio Weave which makes the best of a bad situation: a recently designed building at Great Ormond Street Childrens' Hospital, the Morgan Stanley Clinical Building, was designed to look onto an open space - a view which, thanks to the hospital's phasing of developments, will be obstructed by the Southwood Building for another 15 years.

In the intervening time, something had to be done about the view onto the narrow alleyway and industrial facade of the Southwood Building. Studio Weave re-imagined the building, covered in pipework, as a fantastical factory, manufacturing lullabies for the children staying in the hospital.



This precedent shows the possibility of narrow space and how to connect two buildings by sound.

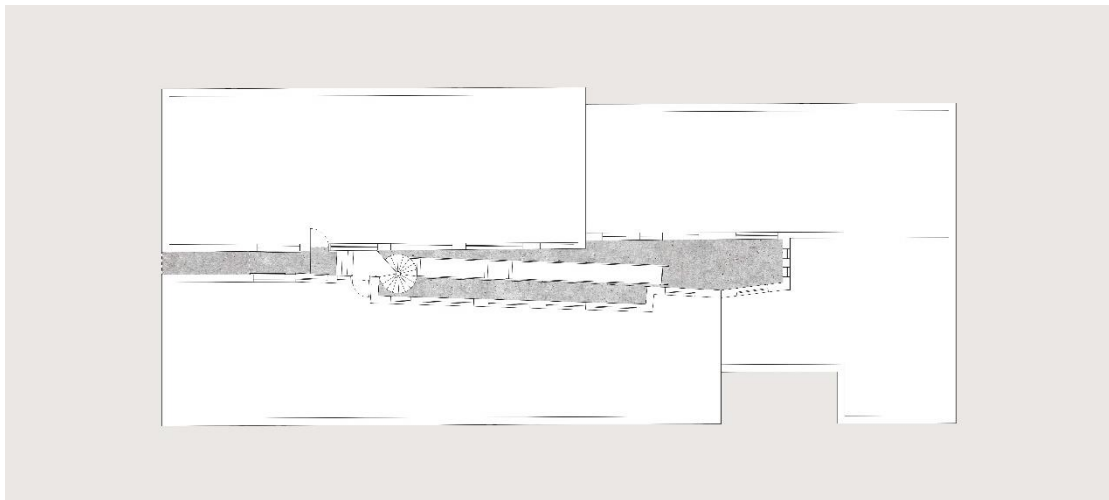
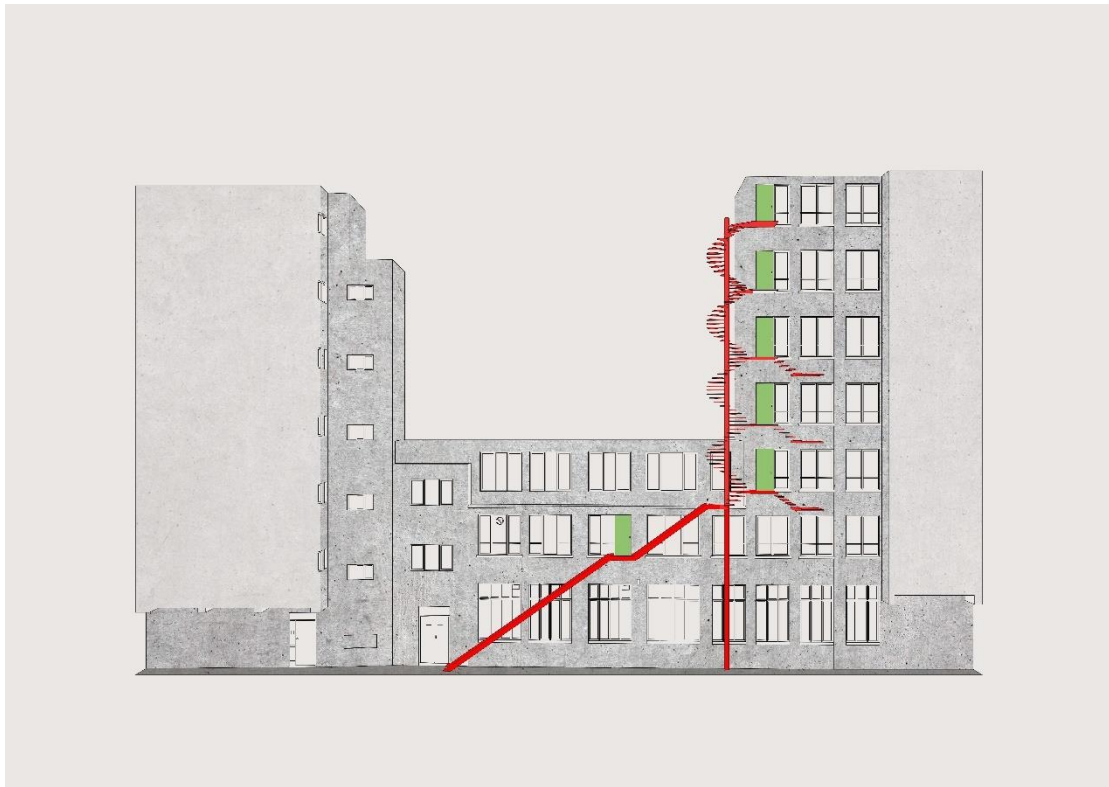
All the possibility of Tyler's Court:

- Escape stair
- Balcony
- Stoop
- Bridge
- Garden
- Film studio
- Gym
- Climbing wall
- Change light
- Slide:



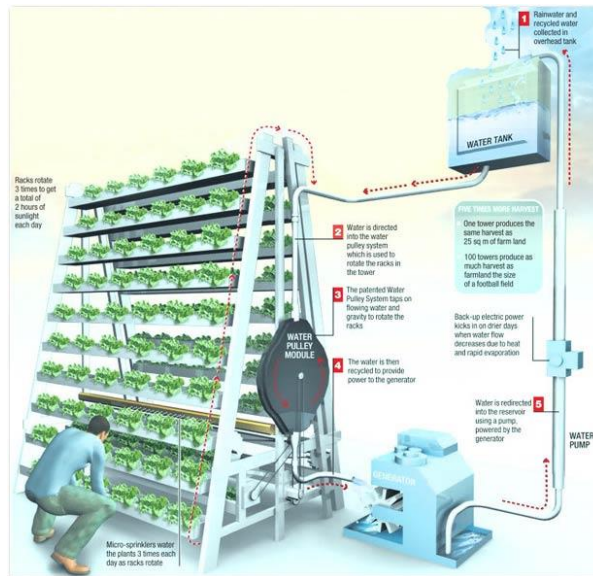
But the outdoor high ladder is not permitted.

2020.3.23 tutorial



'Escape from Office': change to spiral stair, connects different levels of two buildings outside, some windows are changed to doors. And there is slide at the end of the stair, which offers office workers a childish way to escape from office.

2020.3.26 tutorial



Plant Factory

A garden is almost every office worker's need, which I realized in workshop. So, adding a plant factory could not only let office worker have a more comfortable and healthier work environment, but also give them a chance to participate in plants care as they just need open the window to water plants.

