



DEPOT.

## Depot : An overview

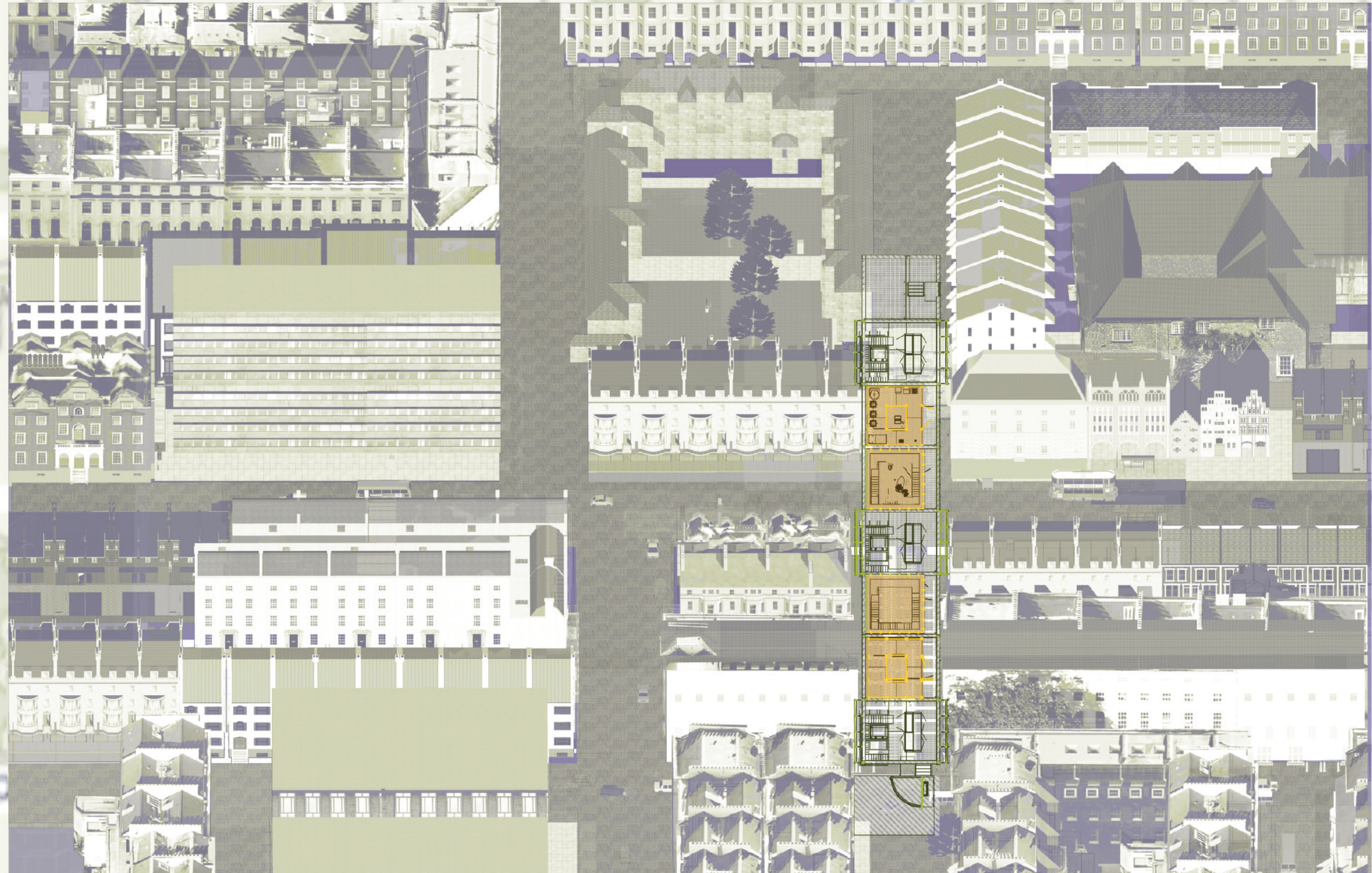
A place where possessions and memories can be deposited.

Depot — As this phrase suggested, a place where goods are kept until they are sent somewhere to be used, sold, etc. A depot is also a building that buses and trains leave from.

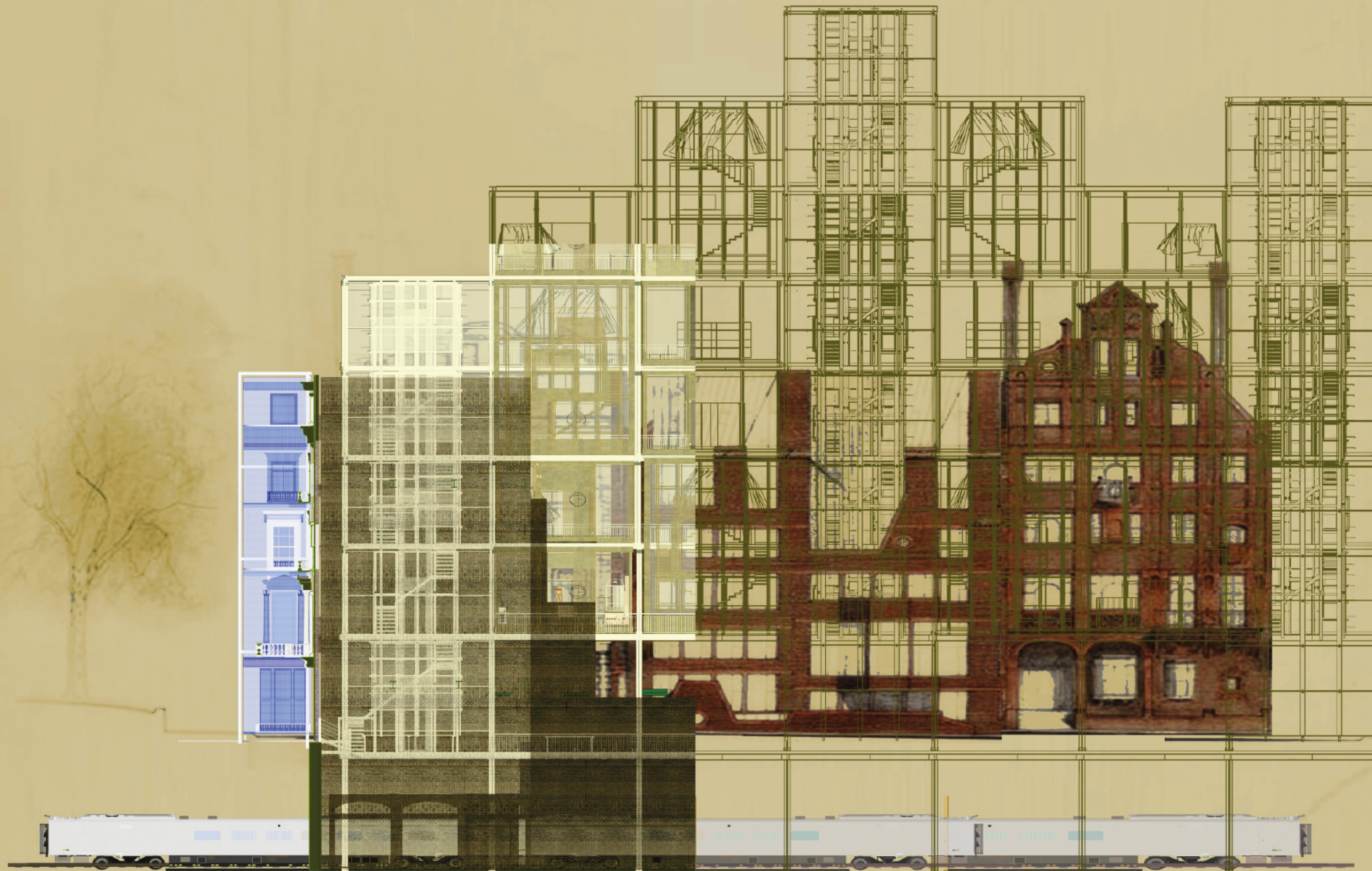
Although as an ordinary place in everyday life, depot has its own essential role of a building of transporting and restoring and provide people the assistance that existed like an umbrella in heavy rain, mulled wine in cold winter night.



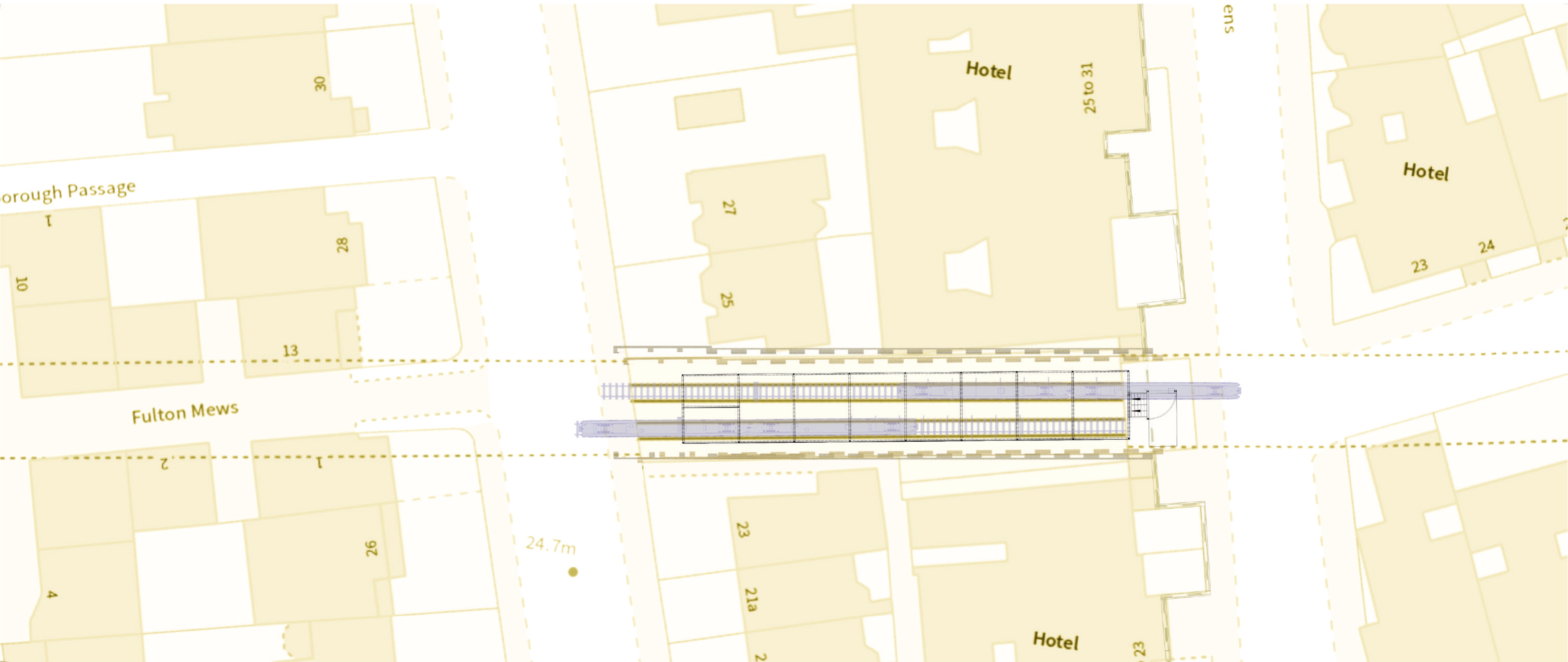
SECTION AND WAY FINDING SYSTEM — NORTH SIDE SECTION 1 : 100



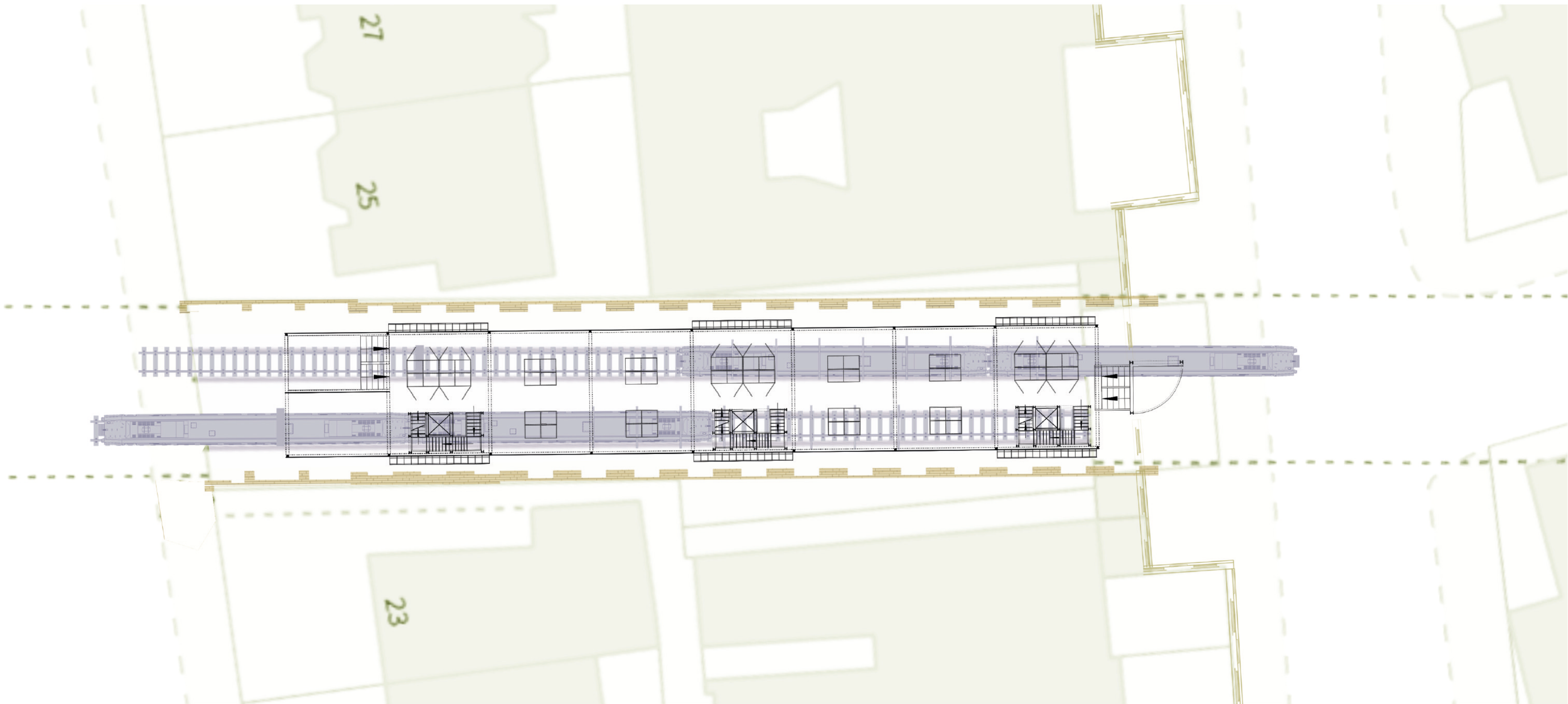
SITE PLAN  
1:1500  
DEPOT IS LOCATED ON NO.24 LEINSTER GARDEN ROAD IN LONDON.



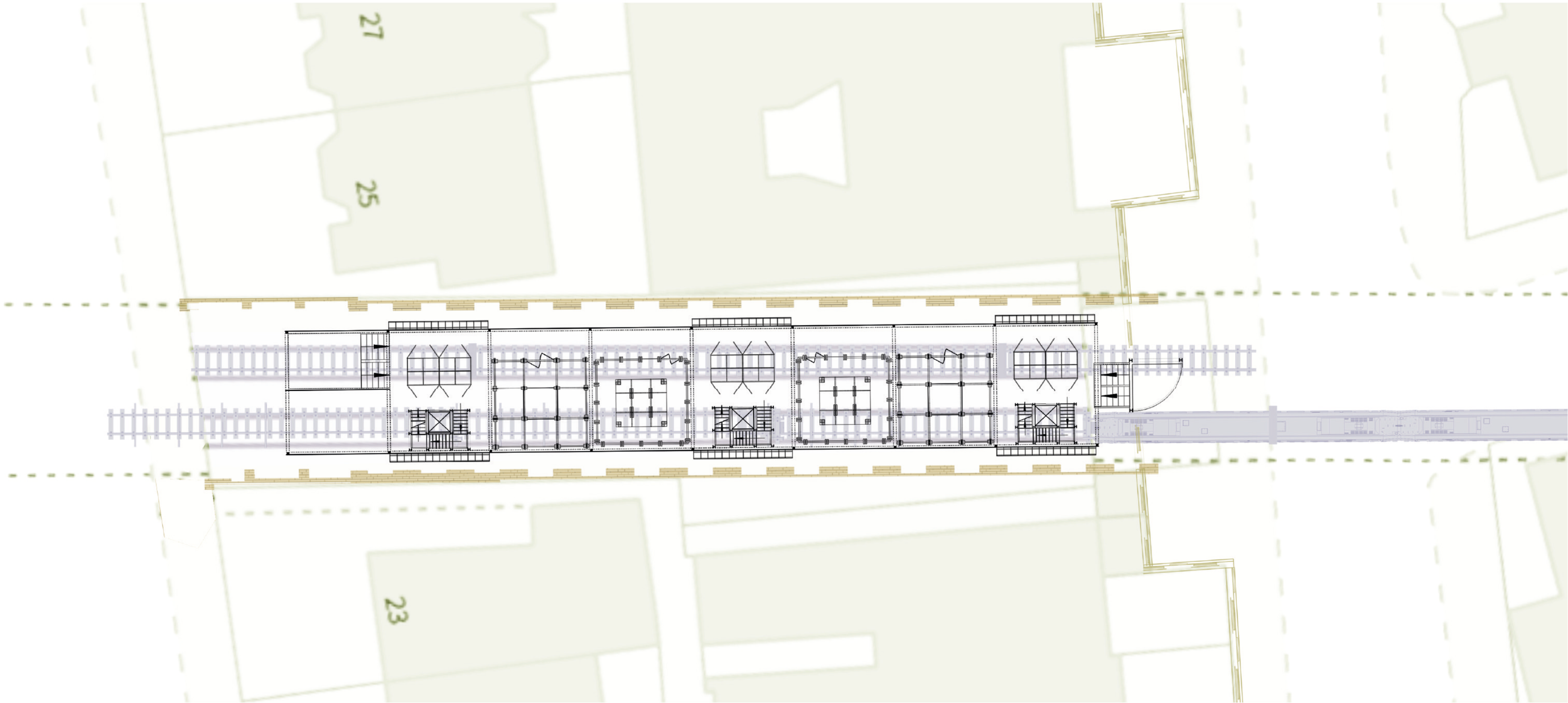
SITE FACADE  
1:150



SITE PLAN  
1:500  
BASEMENT



SITE PLAN  
1:150  
GROUND FLOOR : THE MARKET

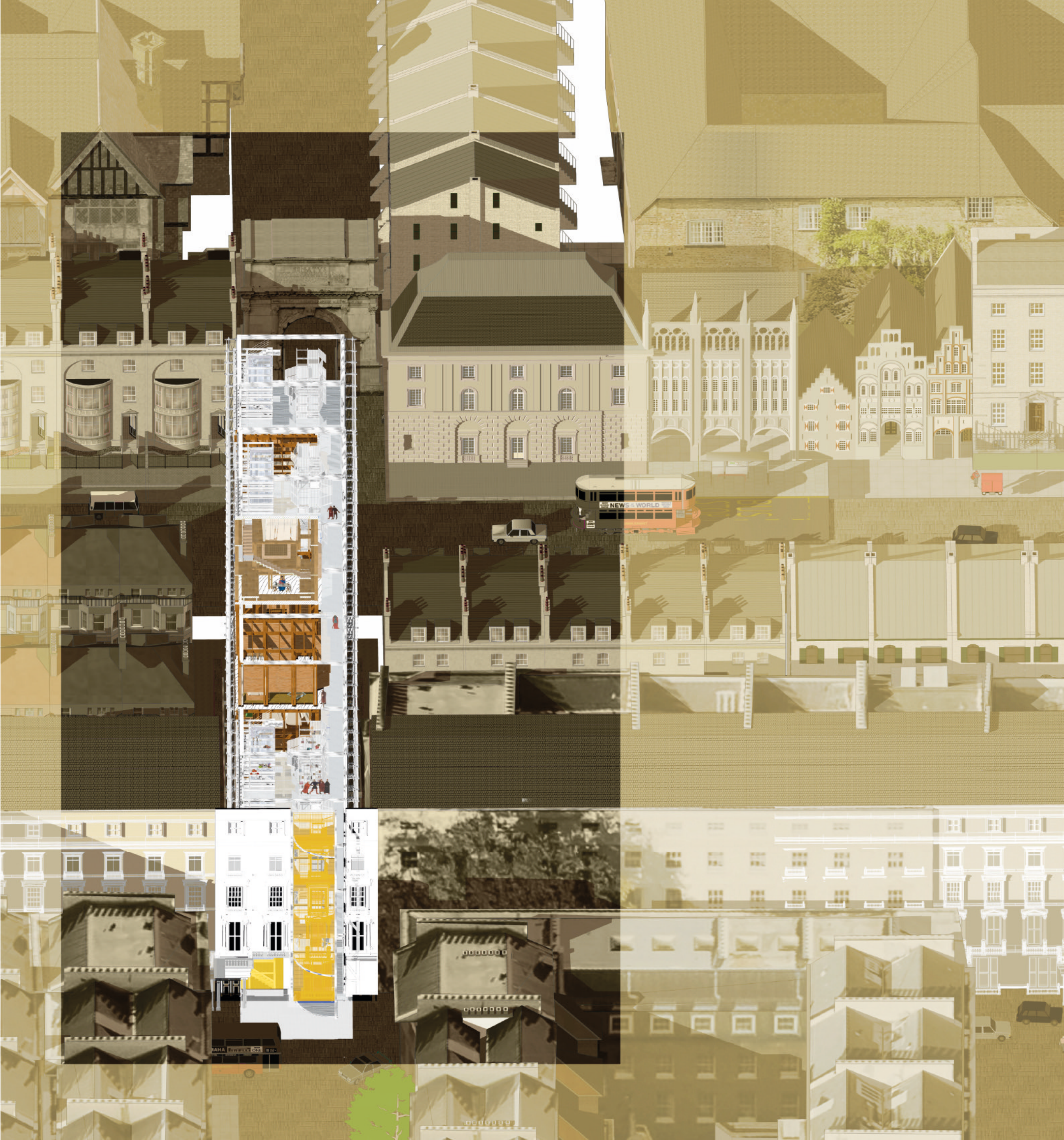


SITE PLAN  
1:150  
FIRST FLOOR - SIX FLOOR : POSSESSION CELLS AND POSSESSION TOWERS

## **Depot : Reuse/ What's behind the door**

What's behind the door — I associated with my collaged cupboard , where our memories and possessions are behind it.

Reuse strategy — My reuse strategy is to replace part of the windows and doors with new materials, acrylic, which could make this big new door possible to move, while maintain most existing ones.



NO. 22

NO. 23

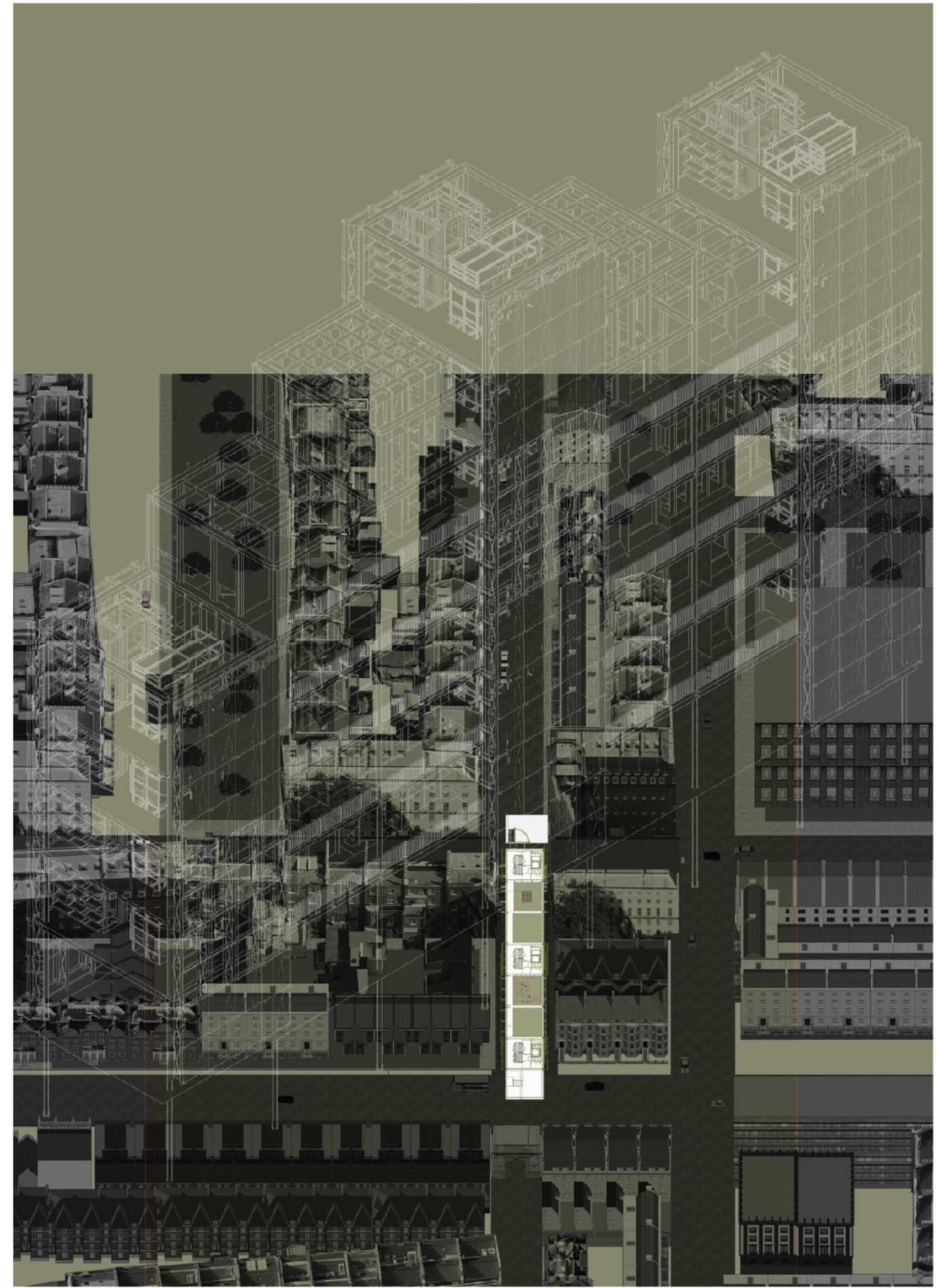
NO. 24

THE LEFT-HAND 1850S-BUILT PROPERTY  
(NO. 22) IS INHABITED. THE RIGHT-HAND  
ONE (NO. 23) IS ONLY A FACADE. THE "WINDOWS"  
ARE PAINTED GREY AND THE DOOR IS FALSE.



WHAT'S BEHIND THE DOOR





## Depot : Domestic imaginary/Possessions and Memories

I found that every single piece of “thing” had its own purpose and centrality to the rituals of everyday life, which made it a vessel for containing emotions. The home is one of the last repositories of a language symbol and memory. The home is one of the last repositories of a language symbol and memory.

Here are 3 homes which were collaged from 15 paintings. In terms of to create an ideal home; like what Bachelard says when built a dream house deep in the mind, dreamer would also inhabit in the house. Cupboards are one of the invisible containers to hold all the variety of objects and hidden memories. Home is protective shelter that consisted of all kinds of containers, including both the personal belongings or traveling memories of the world.

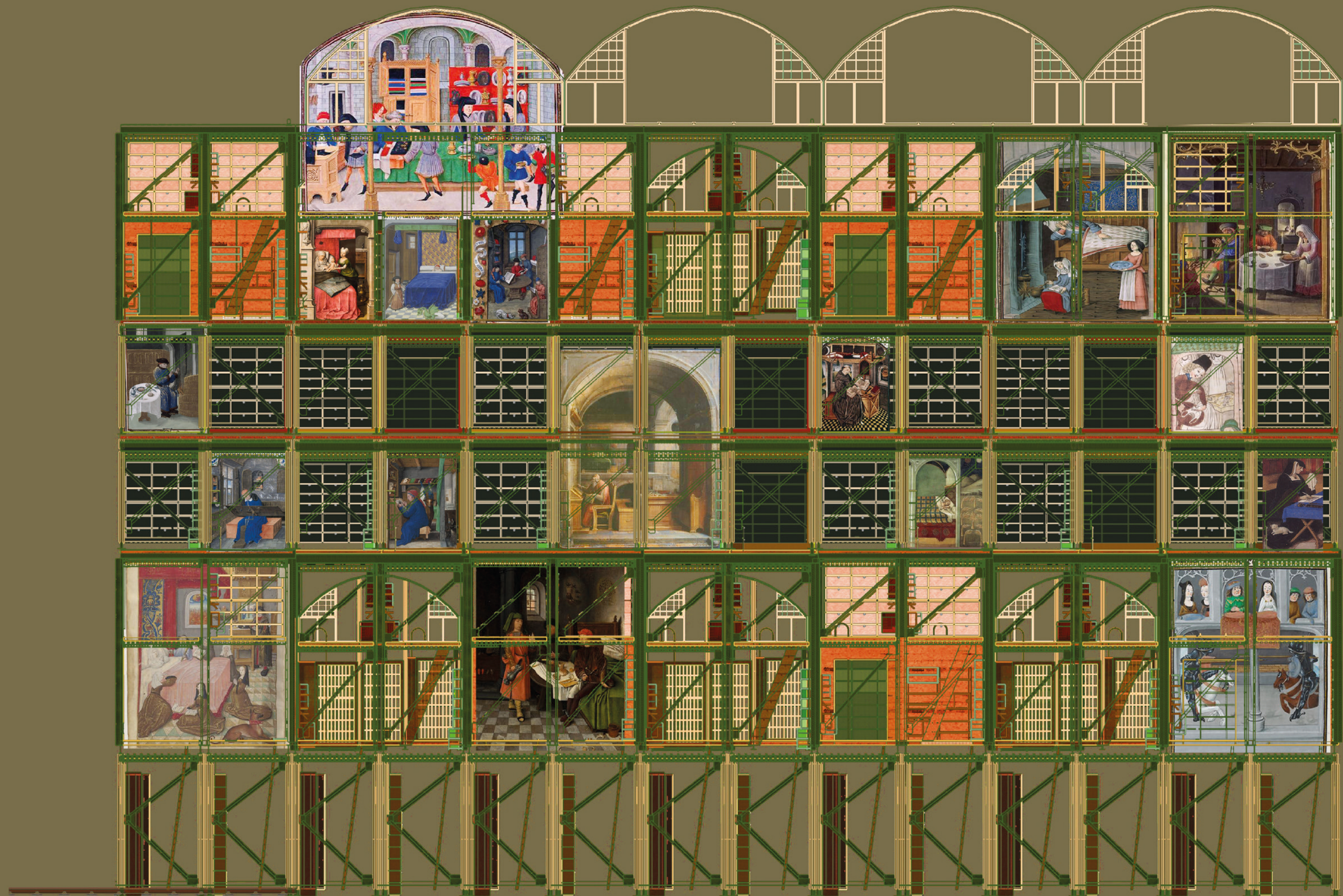




Illustration of a building facade for a museum.



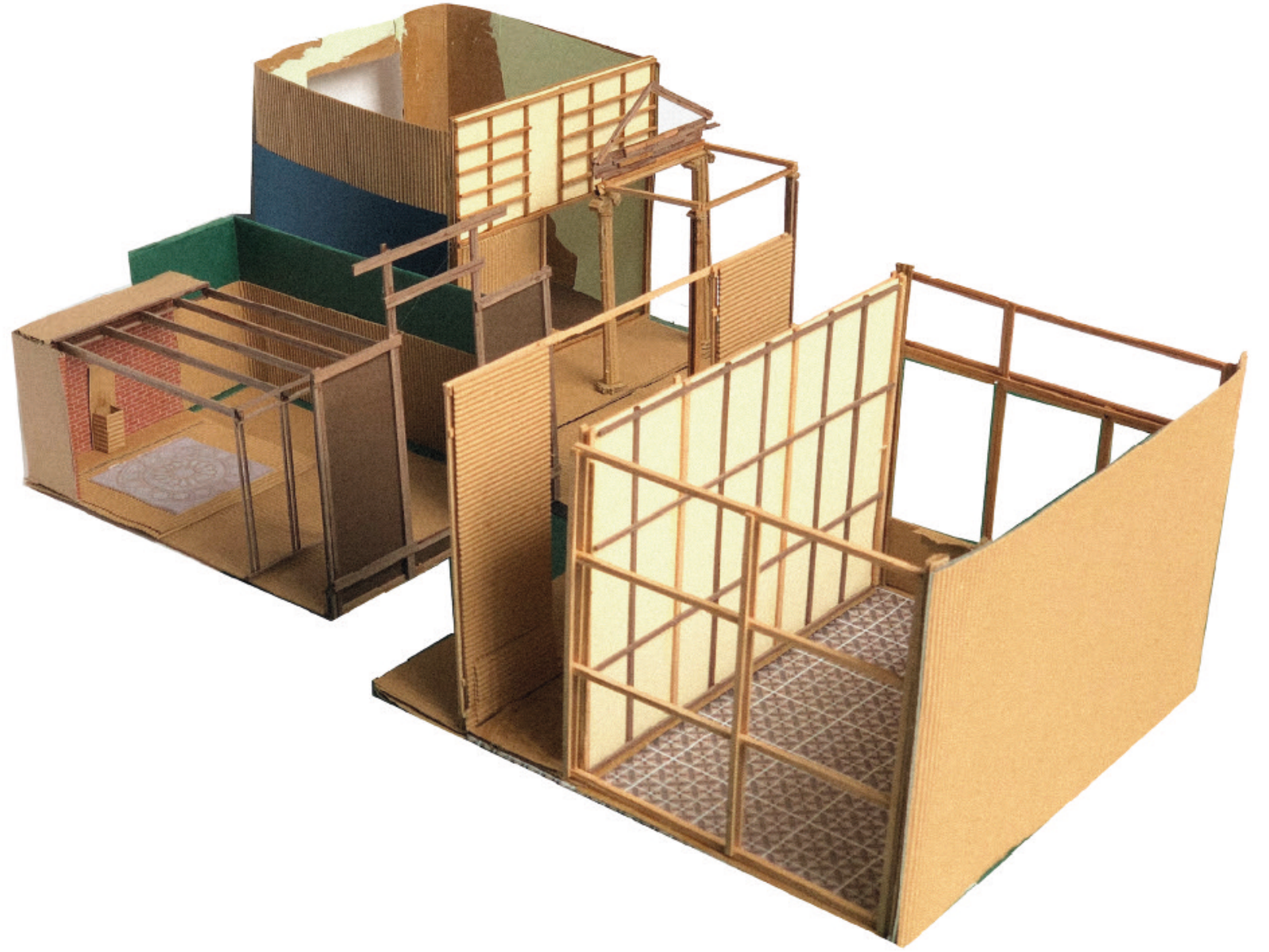
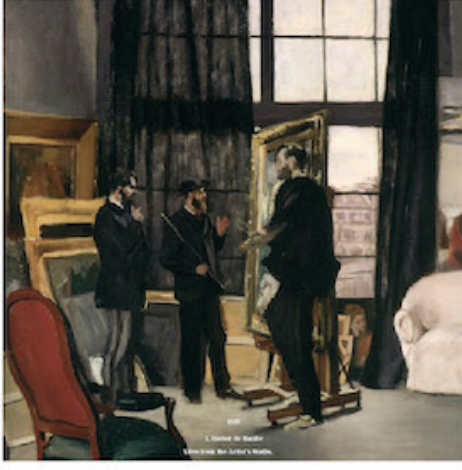
Figure showing a person in a room, possibly a study or library.



Figure showing a person in a room, possibly a study or library.



A person standing in a doorway, looking out at a street scene.







## Depot : Context/Can memories be deposited

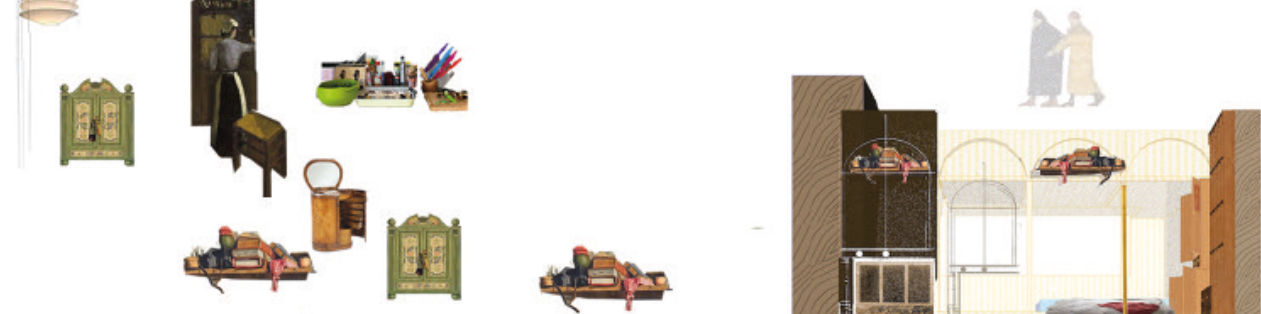
One day my friend who had gone back to China asked whether she could leave her stuff in my home for half year due to the extremely expensive storage fees in London. She was very pleased to share all her possessions including guitar, painting kits, green plant, books of Charles Dickens and so on.

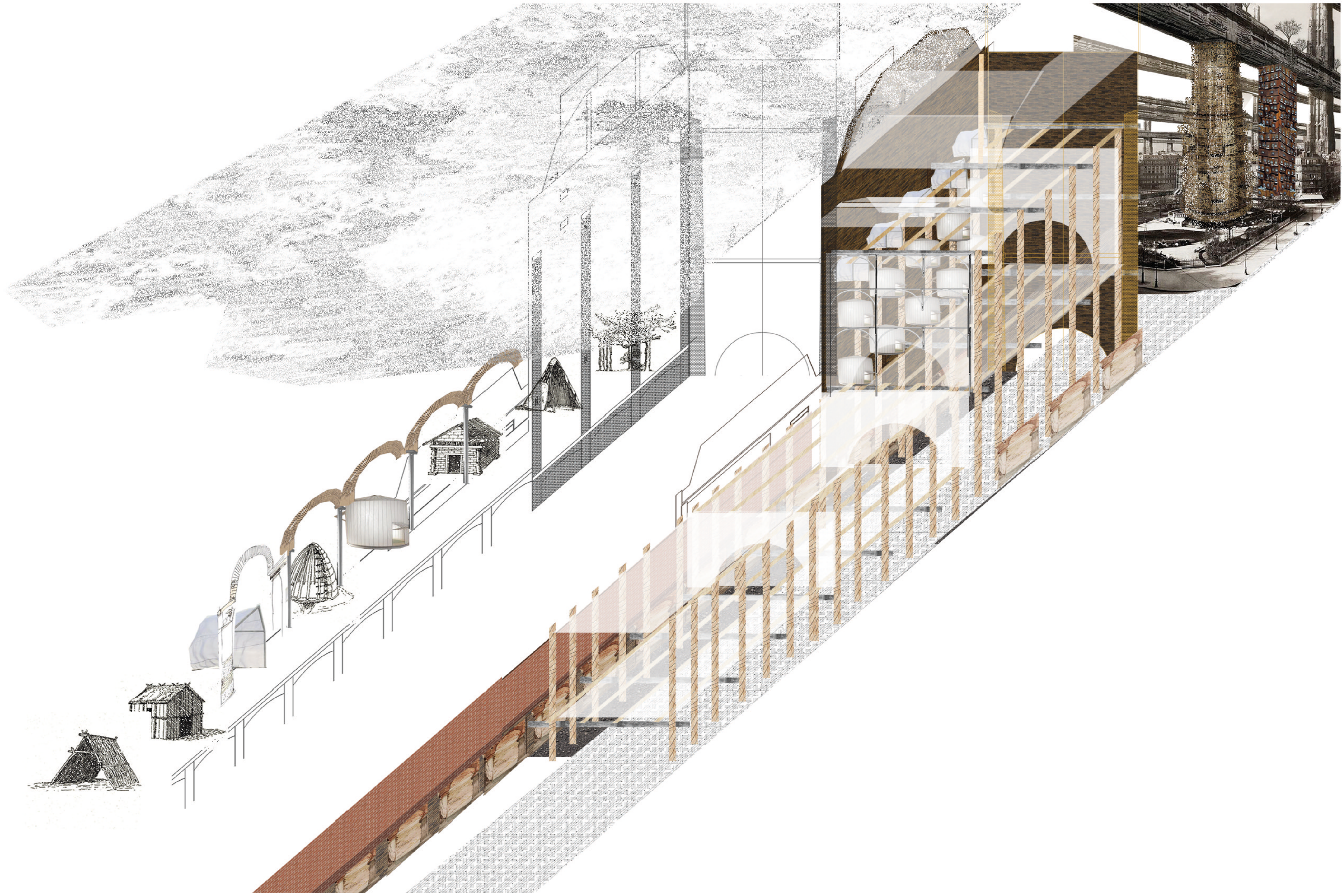
Thus, I wonder is there any alternative way for those nomad groups?

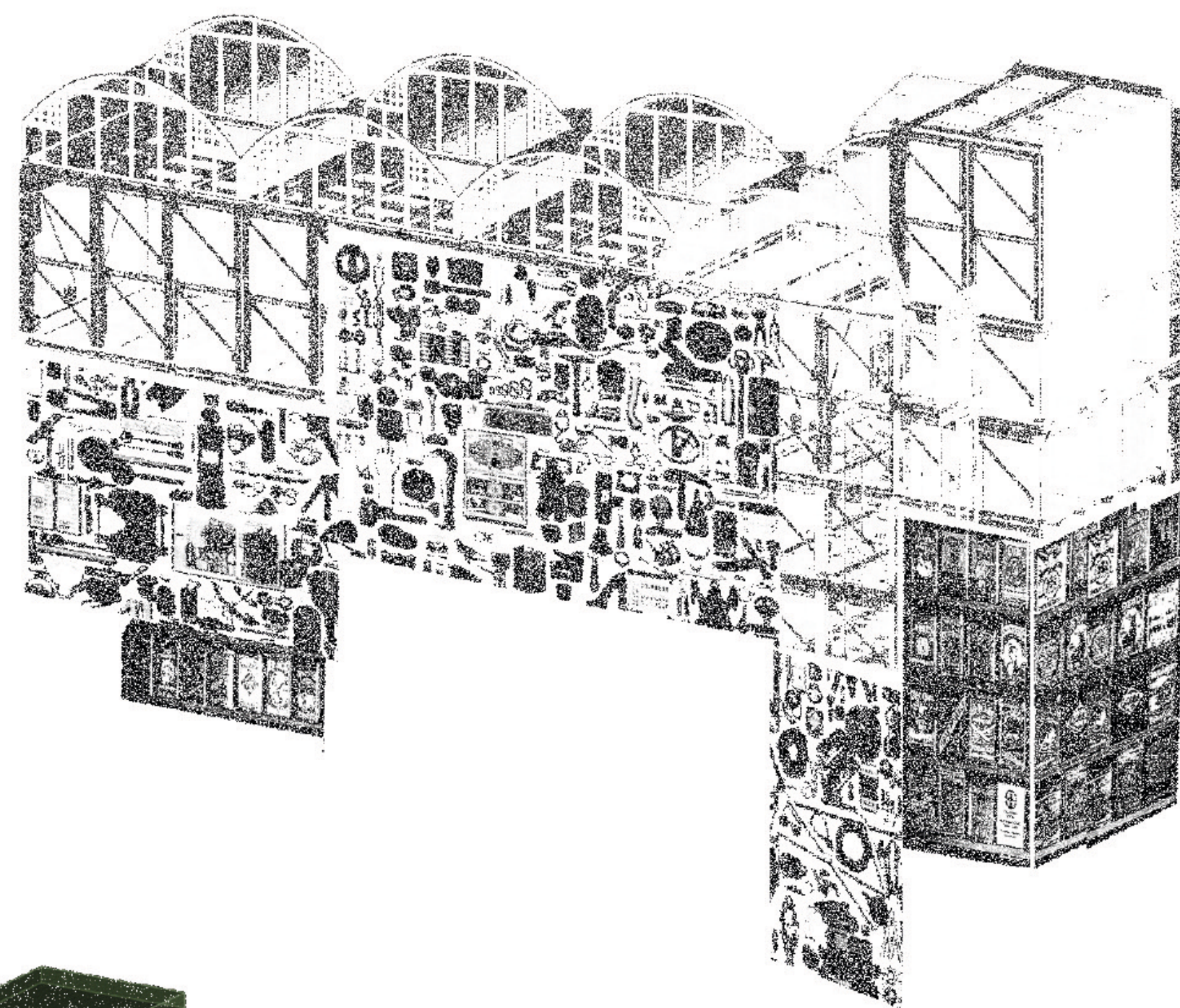
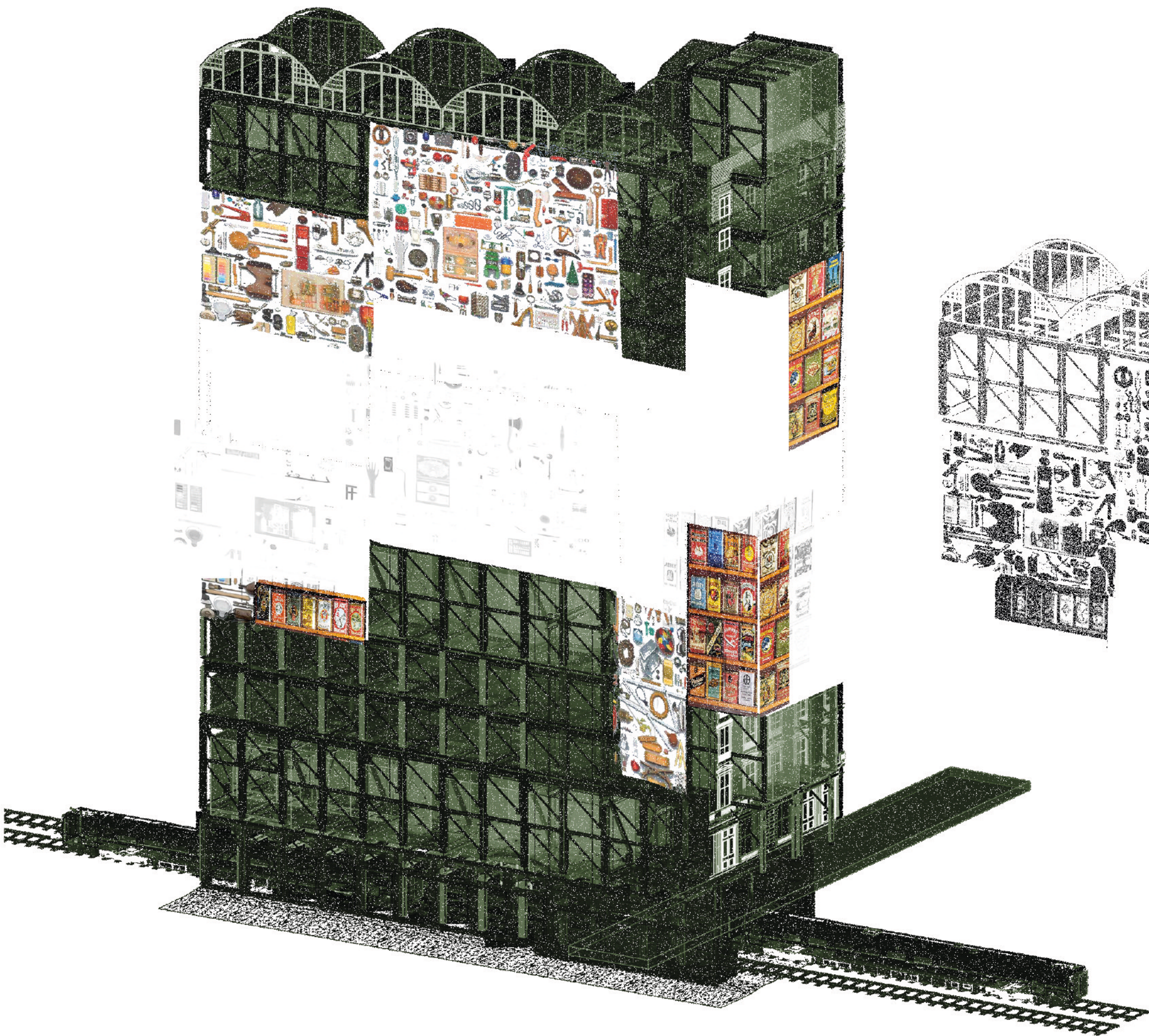
Can memory be deposited?

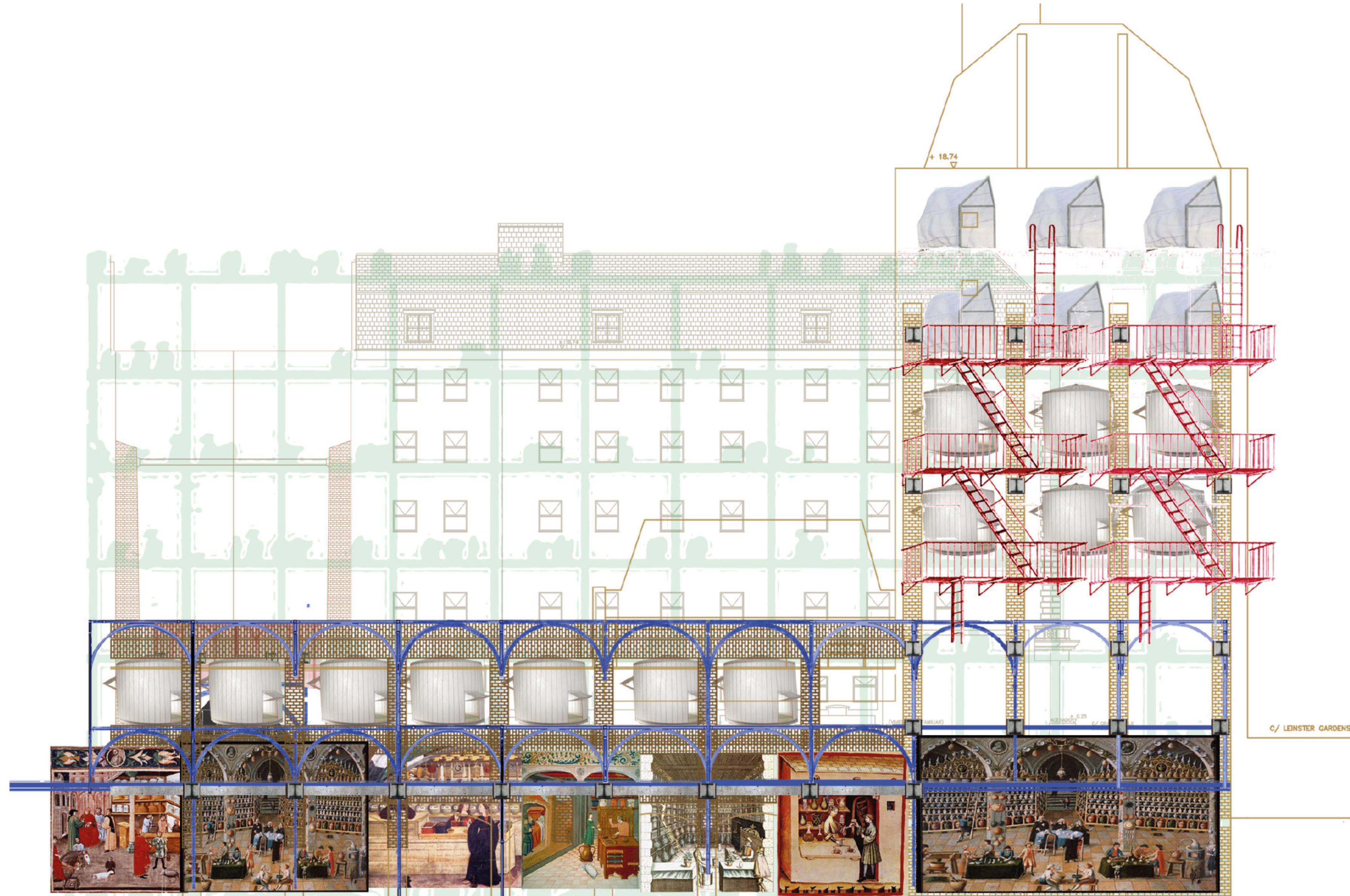
How possessions last their symbolic potency and become the visual symbol of a boundary or a transition?

As mentioned above, my project will explore the relationship between memory, possession, and mobility.

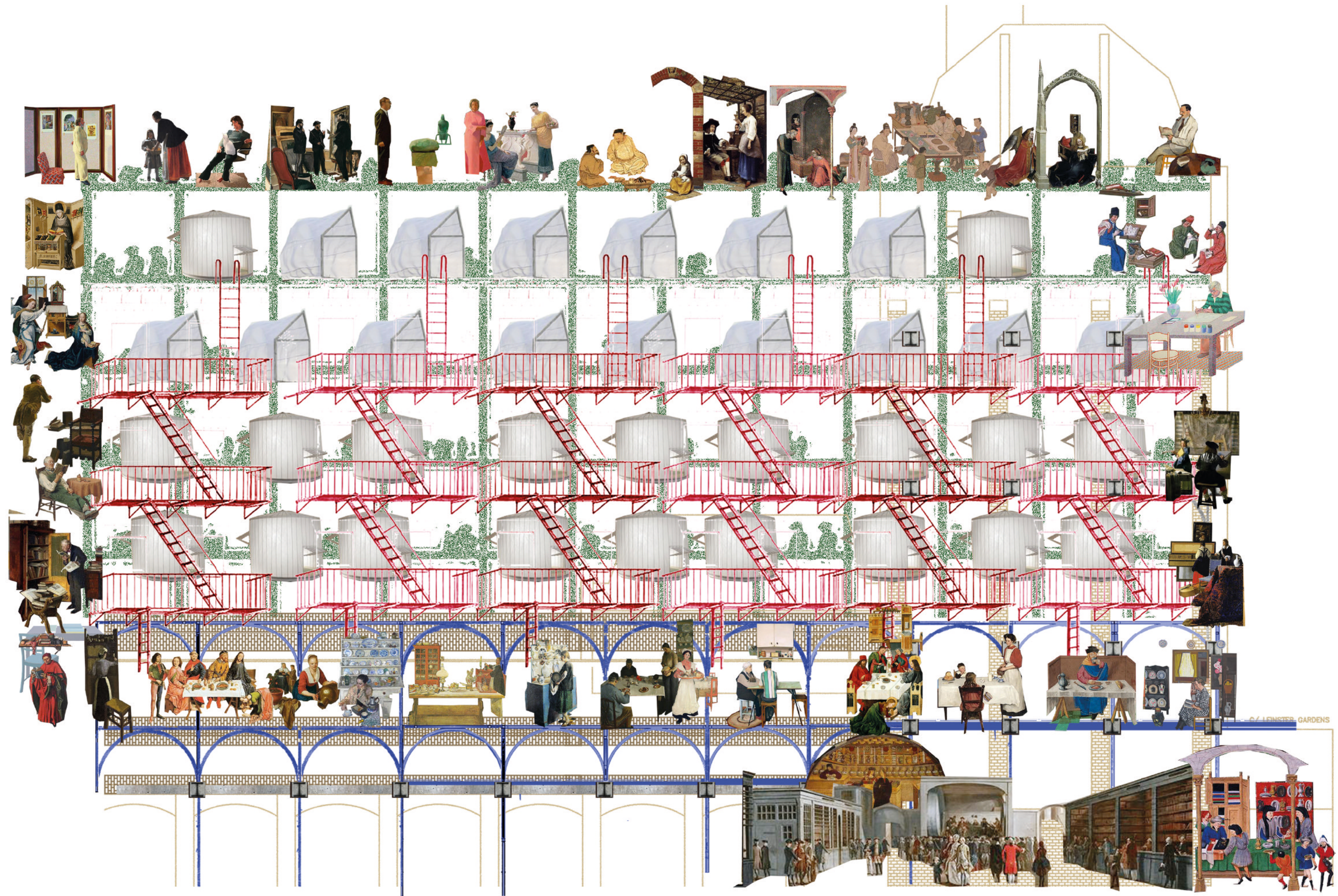












## Depot : A Journey

Depot has 3 possession towers, 16 possession cells (dwelling space ) and a open market which is also a new street, a front gate and back gate as well.

Tower is where inhabitants could share and exchange ,hold and display different types and sizes of possessions and memories.

possession cells are symbols of our identities, habits, daily practice, solitary pursuit of authorship, monkery, craftsmanship, etc.,.

A open street market is where people can exchange and share their possessions.

Each piece of possession and a uniqueness of a single memory will be appreciated. Each one will be in a special position.

How objects as symbols of a person's collective group help with the creation of a sheltering and nurturing environment. possessions embody memories and that memory is selective.It follows almost logically that sorting out of things becomes a metaphor for the sorting out of memories.

It follows almost logically that sorting out of things becomes a metaphor for the sorting out of memories.



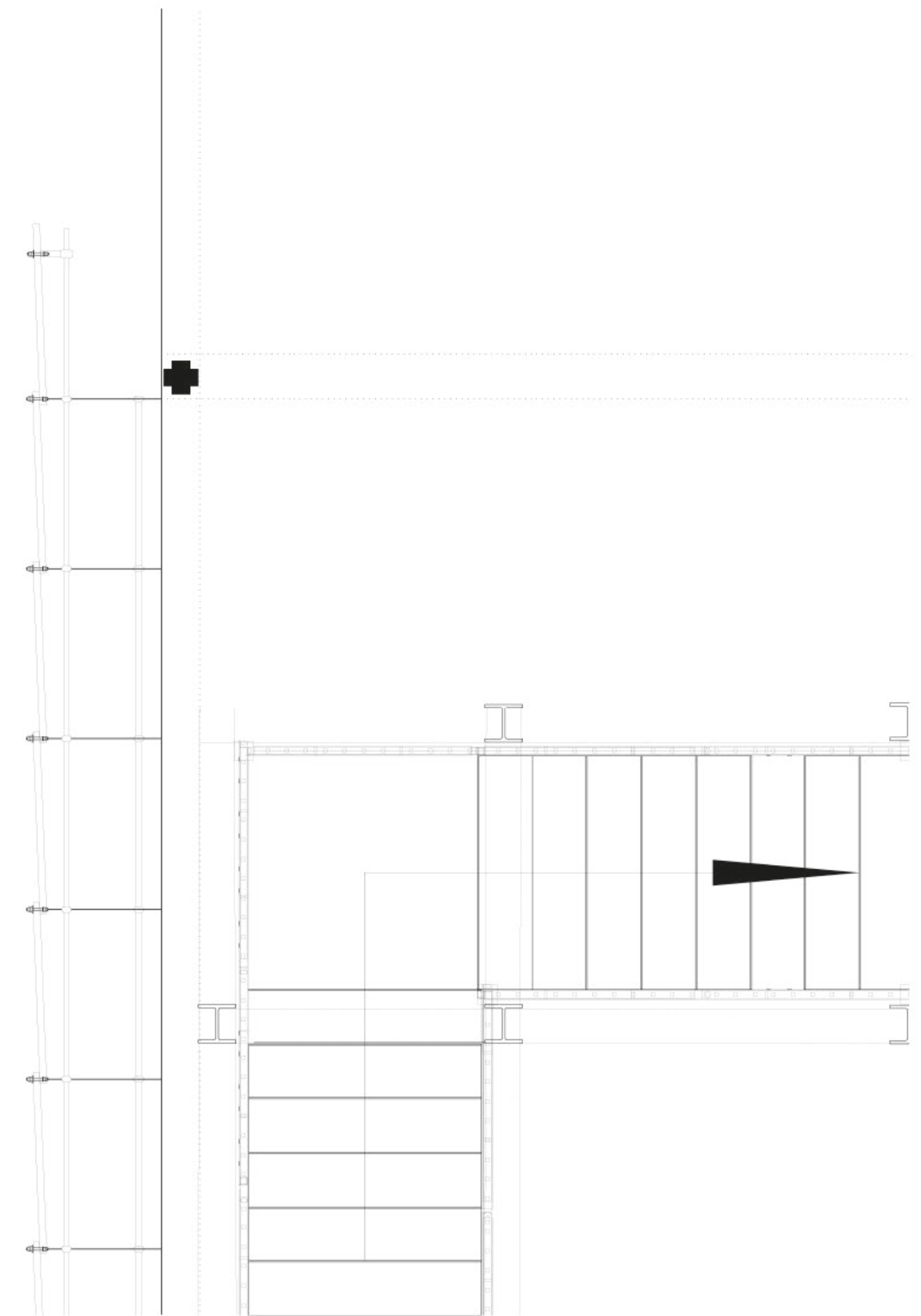
BACK  
GATE

3  
POSSESSION  
TOWERS

16  
POSSESSION CELLS  
( DWELLING SPACE )

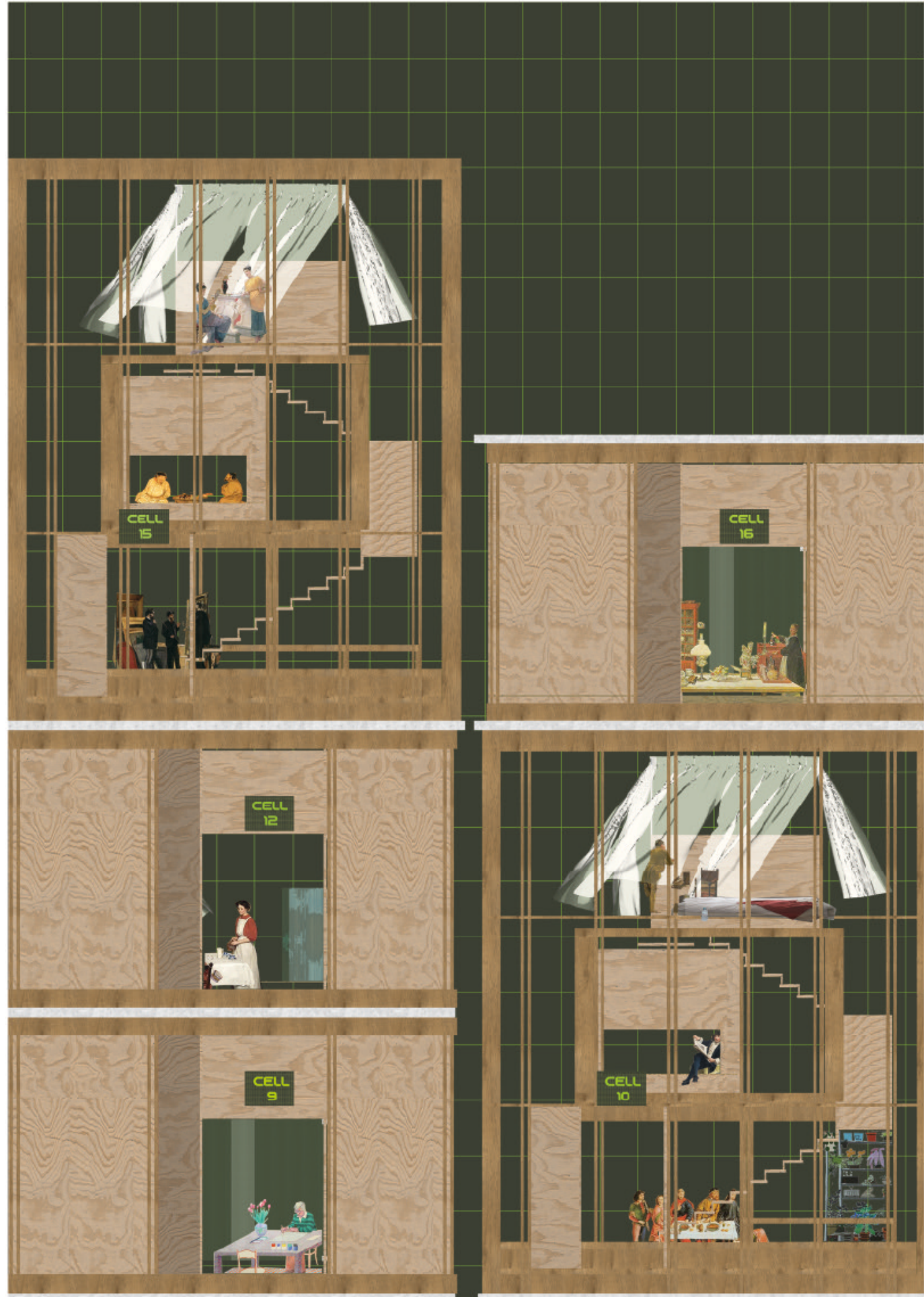
A MARKET ,  
WHICH IS LIKE  
A OPEN STREET

FRONT  
GATE

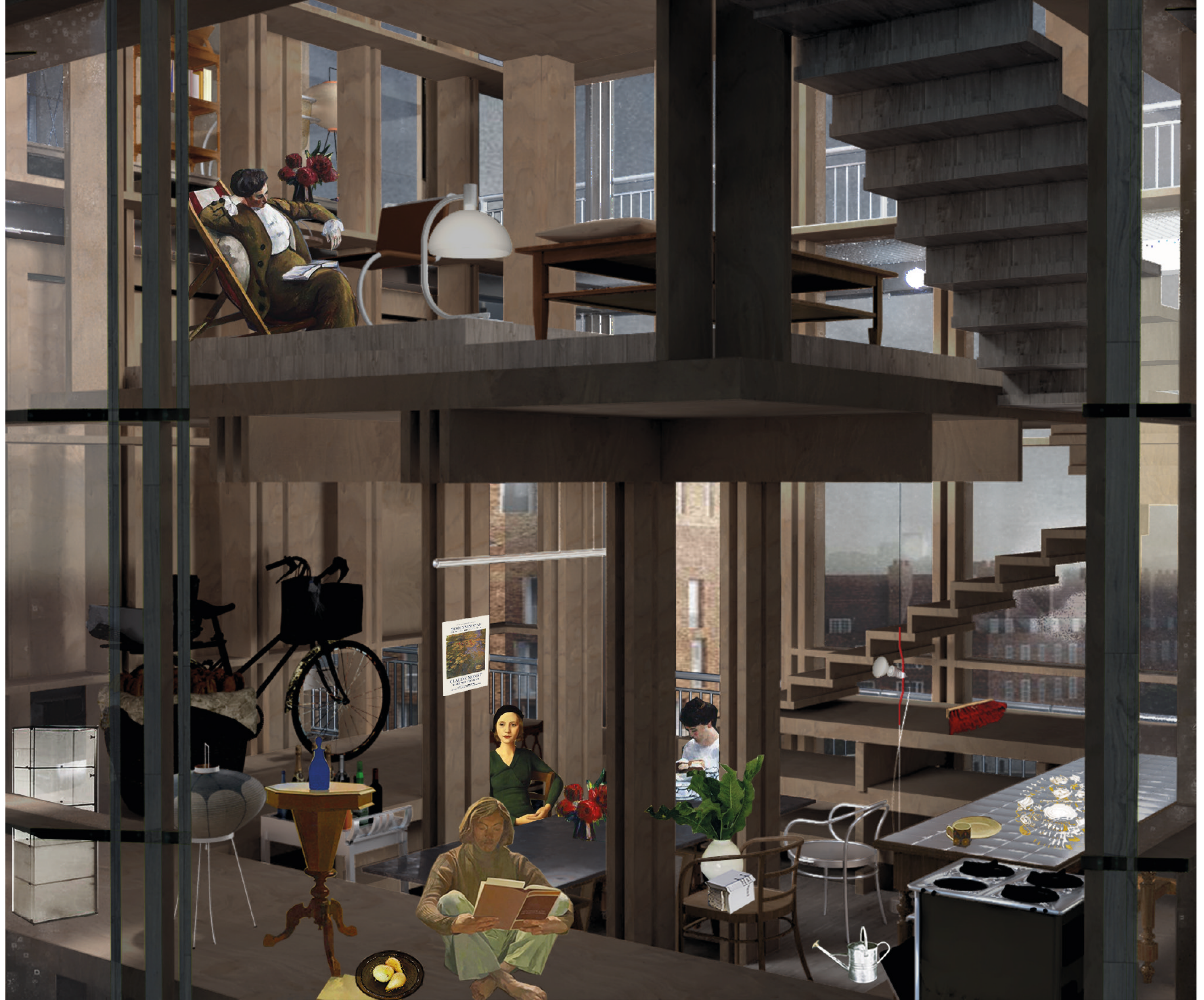


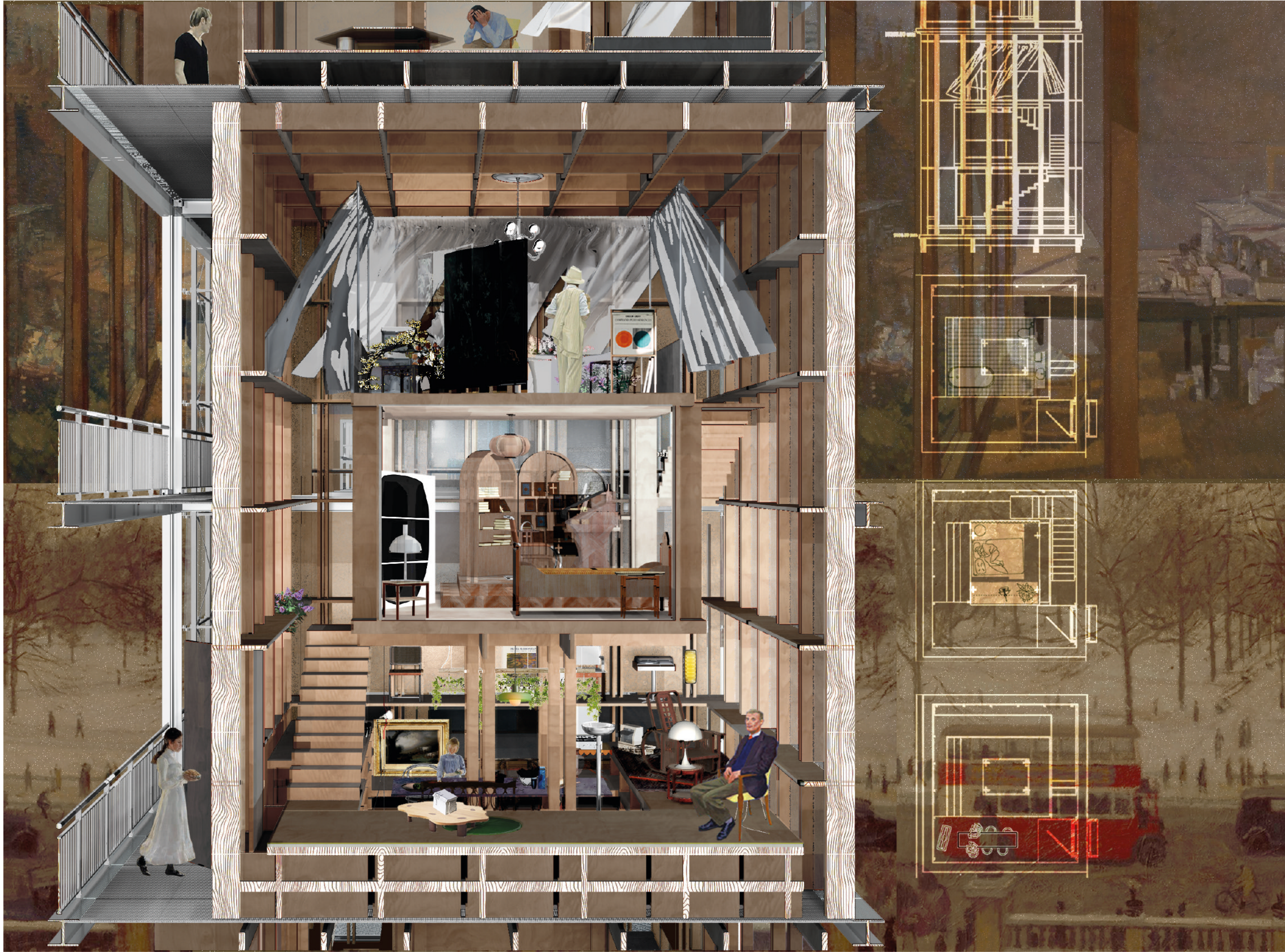
















## Depot : What happens here

What matters in a home is not its physical shapes, but events happens there. It is the action of moments, people involved in them and particular possessions and situations, which make the memory on lives. Cooking, resting,bathing ,loving, working ,playing... The rush of trains, the rusting of iron, the flowering of roses, the heat of summer day.

This is depot, It's all about possessions and memories . In depot, possessions and human lives will continue to overlap and shape one another.



6 CELL 14 15  
POSSESSION TOWER

5 CELL 12 14 15 16  
POSSESSION TOWER

4 CELL 7 10 11 12  
POSSESSION TOWER

3 CELL 7 8 9 10  
POSSESSION TOWER

2 CELL 2 3 5 6  
POSSESSION TOWER

1 CELL 1 2 3 4  
POSSESSION TOWER

MARKET  
POSSESSION TOWER

NORTH SIDE  
SECTION  
1:150









