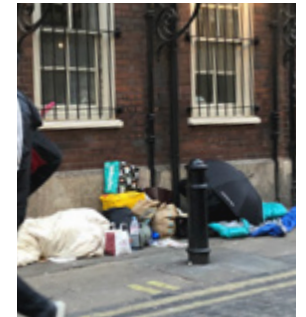


Night Watch

Yuntong Liu



The Story of Soho's Night time Workers.



Does soho ever stop?



- Chating 66
- Drinking 56
- Smoking 32
- Working 13
- Phone 13
- Others 09
- Rain 05
- Homelessness 04
- Coffee 01
- Eating 00

*one point = one persone

The map indicates the journey of simple walking observation doing once an hour for 24 times. Each map represents different hours and what people doing at that time.

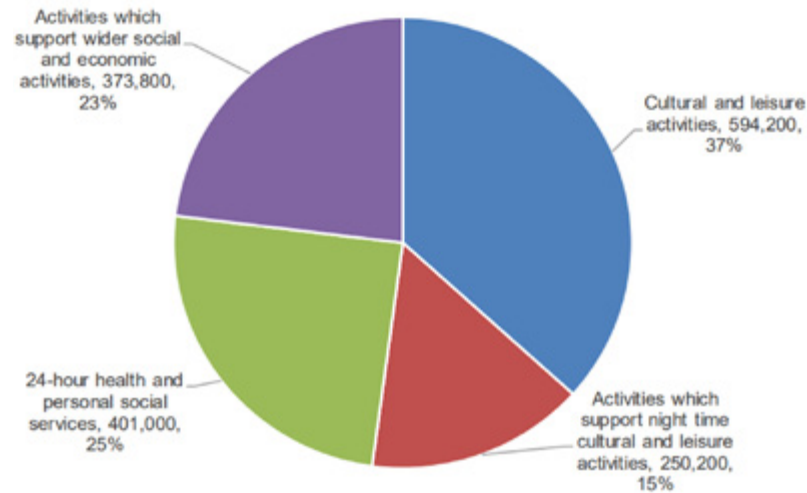


It doesn't. The streets are never empty.

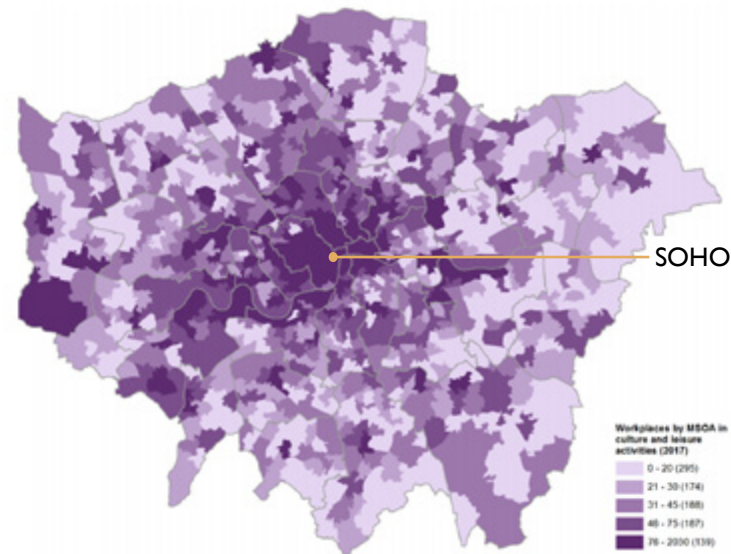


During a 24hr observation approximately more than 50% of people are night workers.

Employee jobs in night time industries in London, 2017.



London's Culture and leisure activities workplaces, by MSOA, 2017.



Night time cultural and leisure activities:

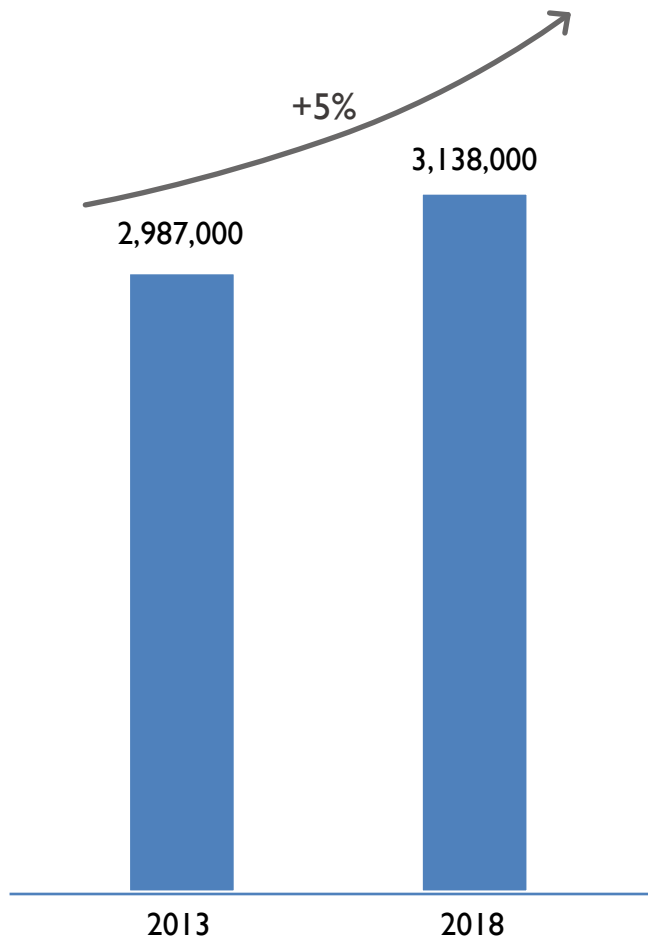
Industries Include:

- hotels / similar accommodation
- restaurant / mobile food service
- event catering / other food service
- beverage serving activities
- private security activities
- creative, arts entertainment activities
- libraries, archives, museums and culture
- gambling and betting activities
- sports activities
- amusement and recreation activities

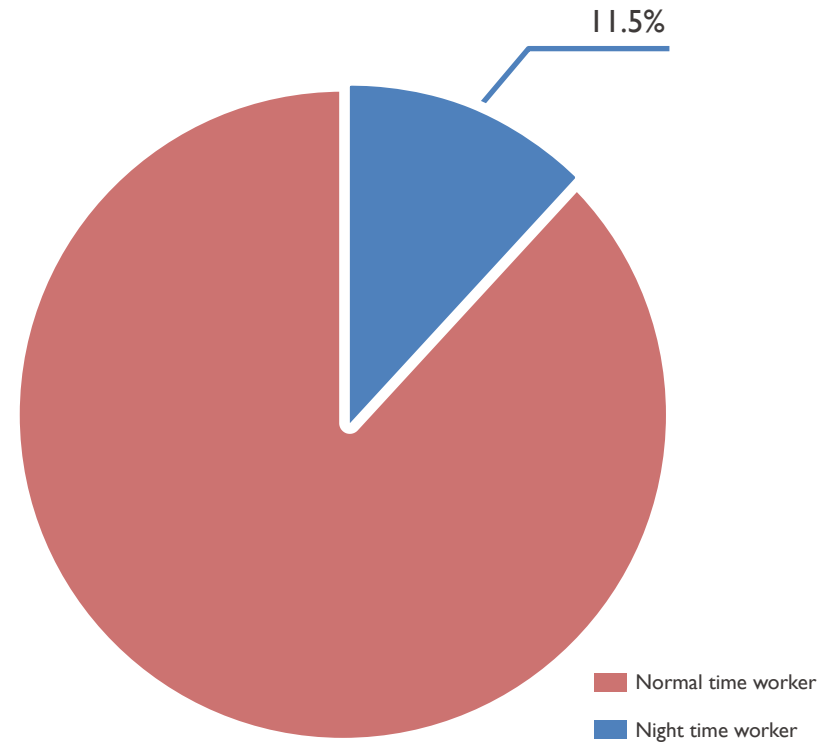
Occupations Include:

- managers, proprietors in leisure services
- artistic, literary and media occupations
- sports and fitness occupations
- food preparation and hospitality trades
- elementary security occupation
- other elementary services occupations (eg. catering assistants, waiters, bar staff)

The statistics also show Soho has the highest number of night-time industries in London.

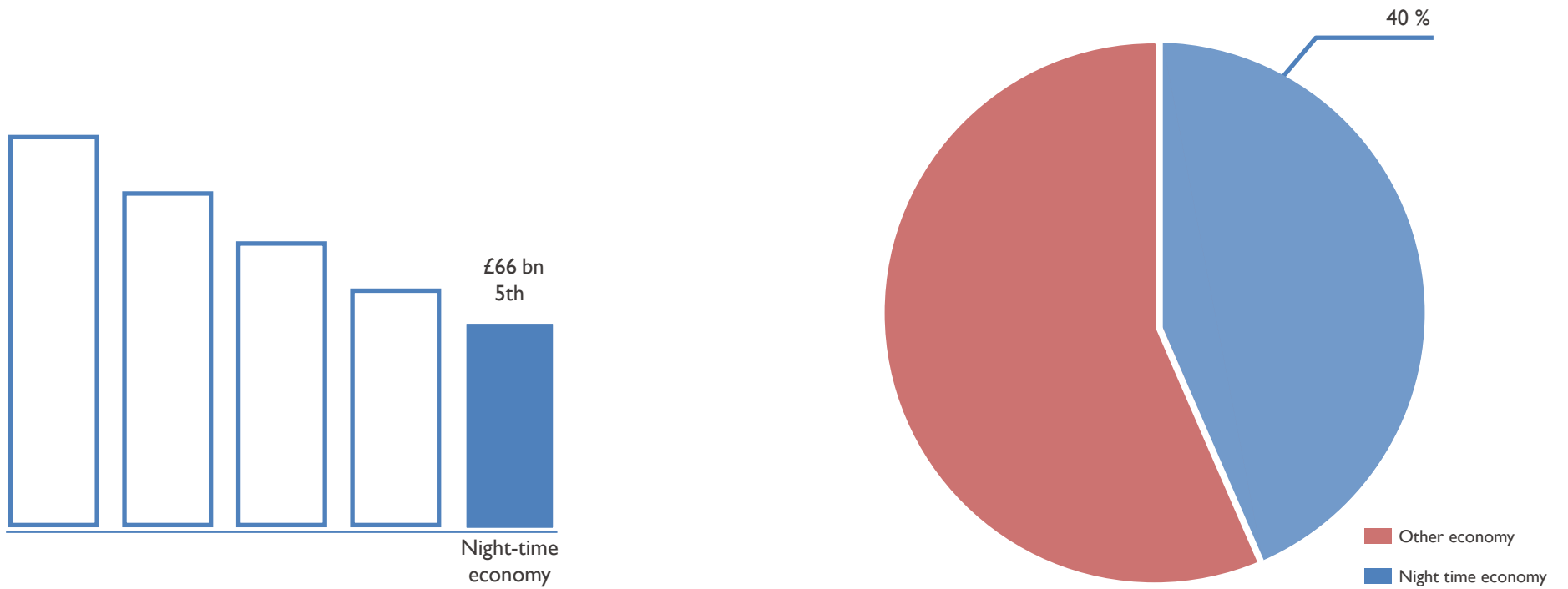


The number of people who work night times has increased by 151,000 (5%).

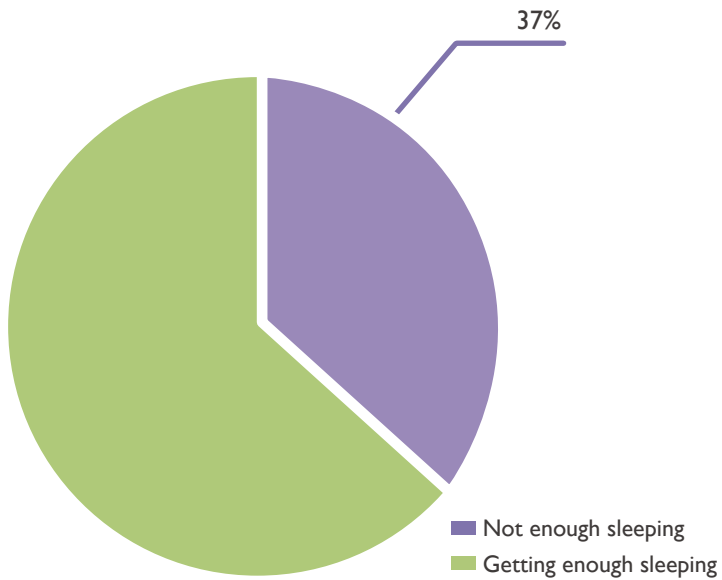


Britain's night workers account for one in nine (11.5%) employees in 2018.

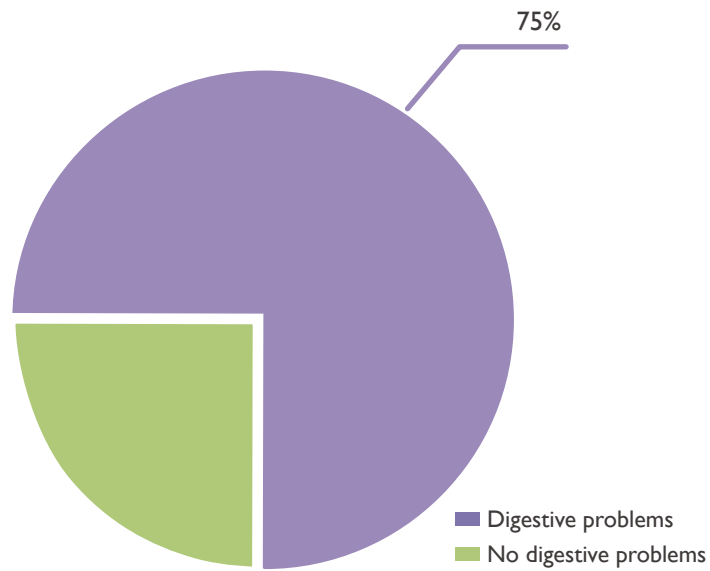
And the increasing number of night workers in the UK also demonstrates the phenomenon of 24hrs non-stop culture under the background hyper commercialization.



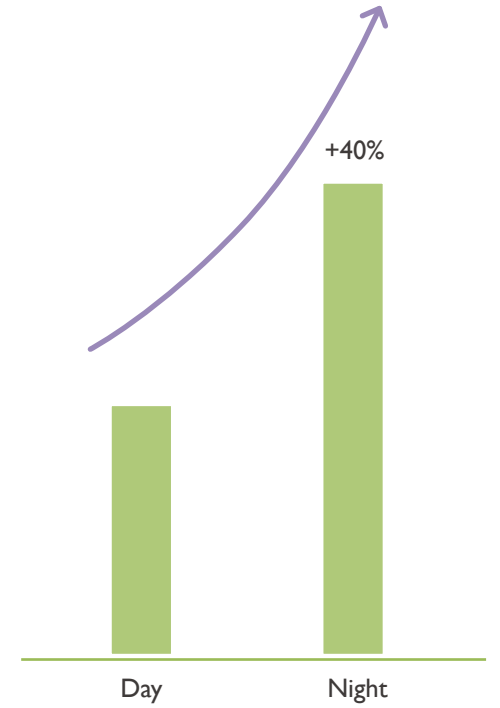
The night-time economy is continually growing to the UK's fifth-biggest industry, it contributes up to 40 per cent, around £66bn.



37% of night-time workers say they can't get enough sleep.



75% of night-time workers complain of digestive problems.

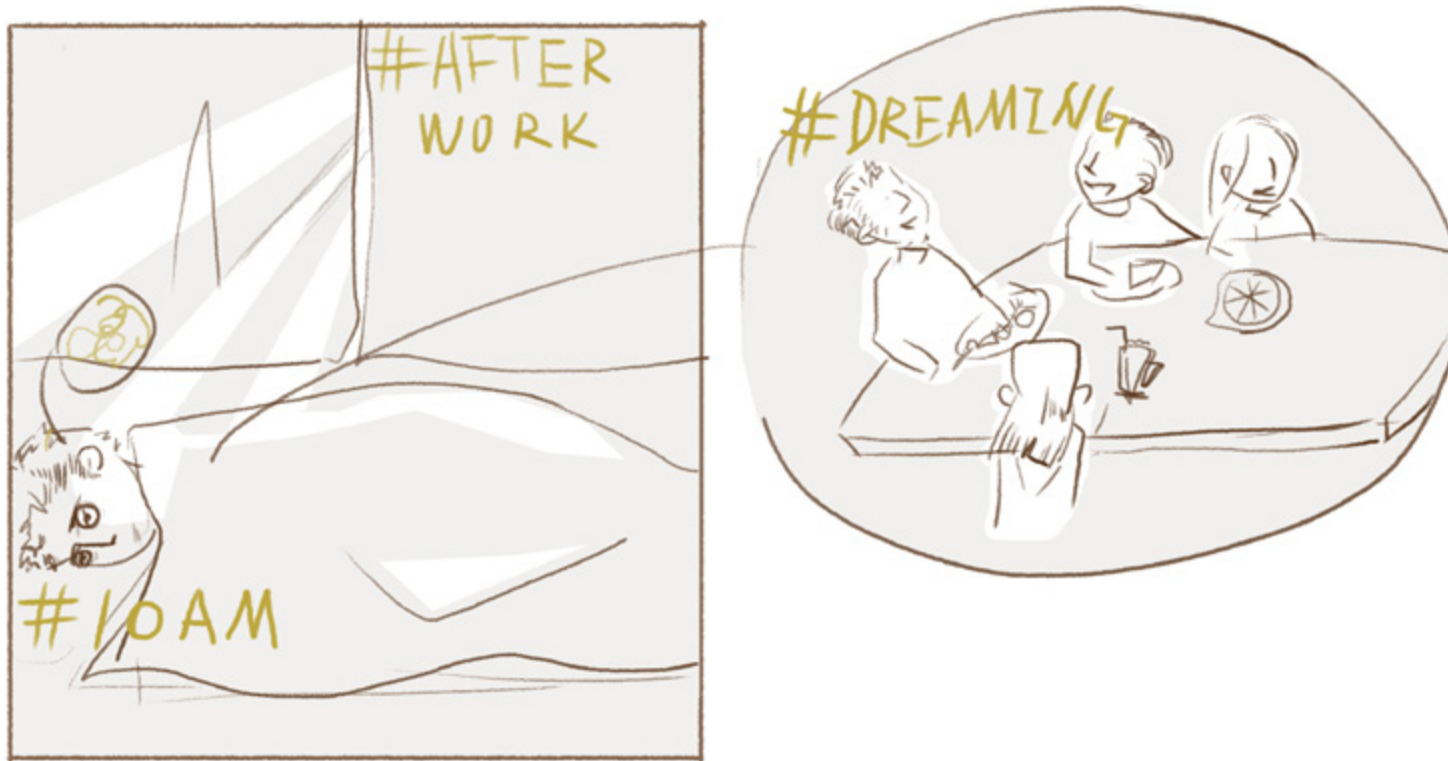


Night-time workers have a 40% higher risk for heart disease than day workers

Although 3.5 million workers in night-time industries are experiencing increased health problems.

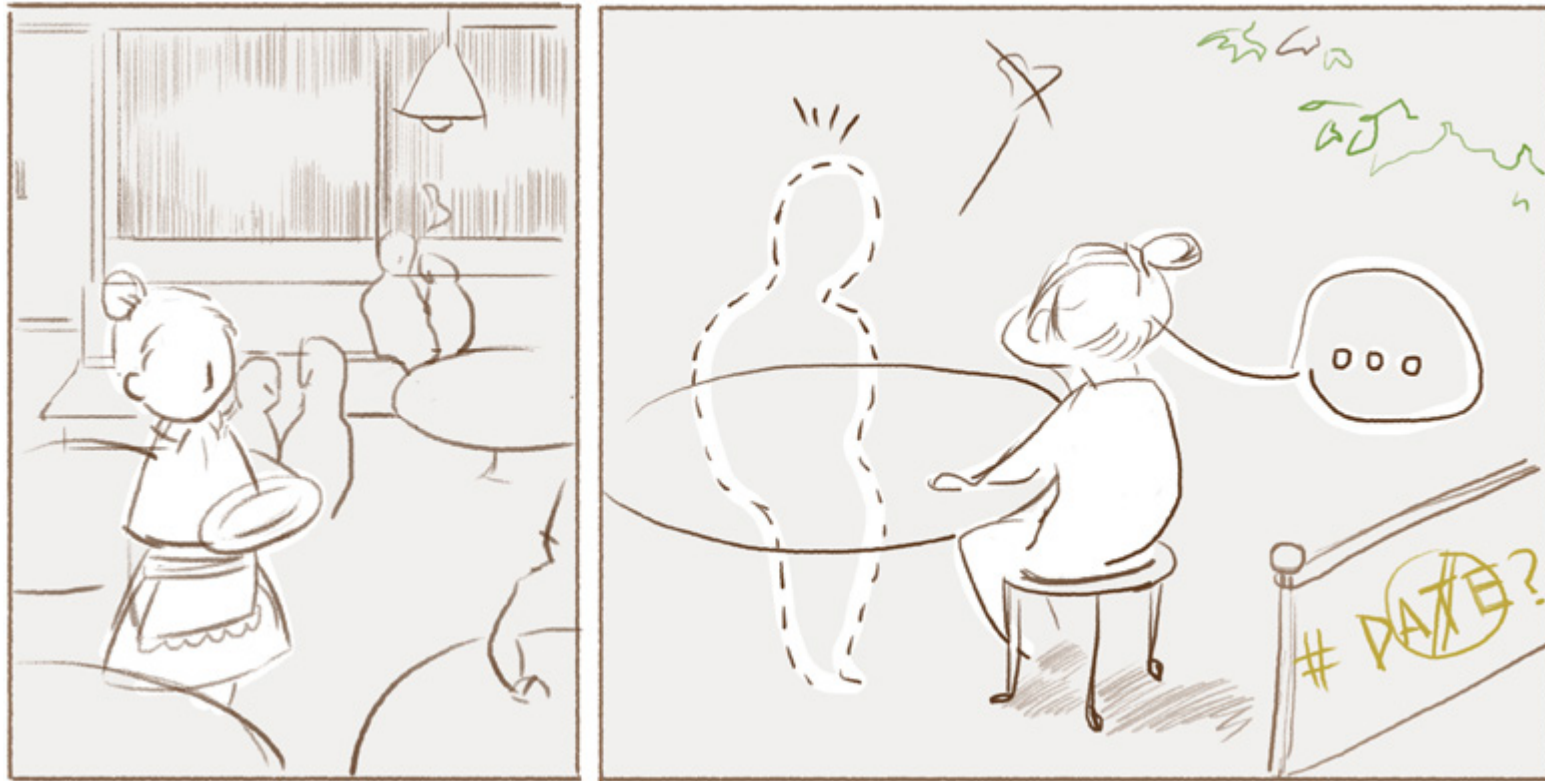
The real issues of night-time workers are more practical and specific than health problems.

Robert
Factory security guard



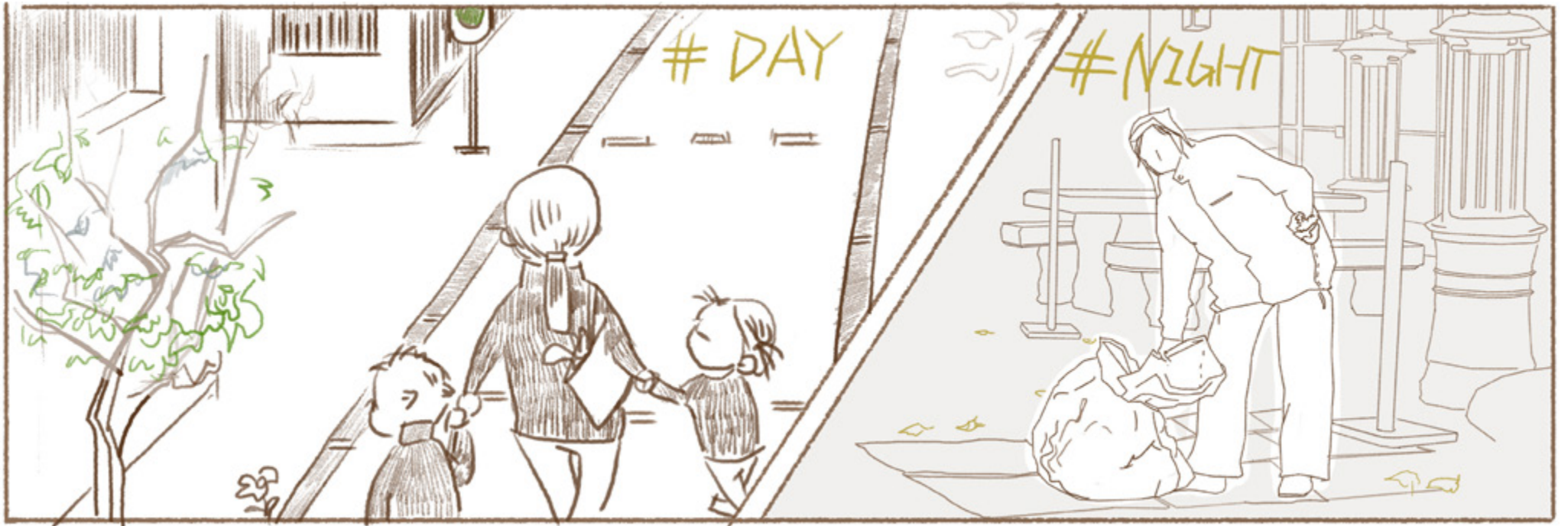
Robert can hardly get to sleep in the morning and dreams of having dinner with friends.

Elle
Waitress of a bar



Elle can't have a proper evening date, because she is only free at a weird time when most are not.

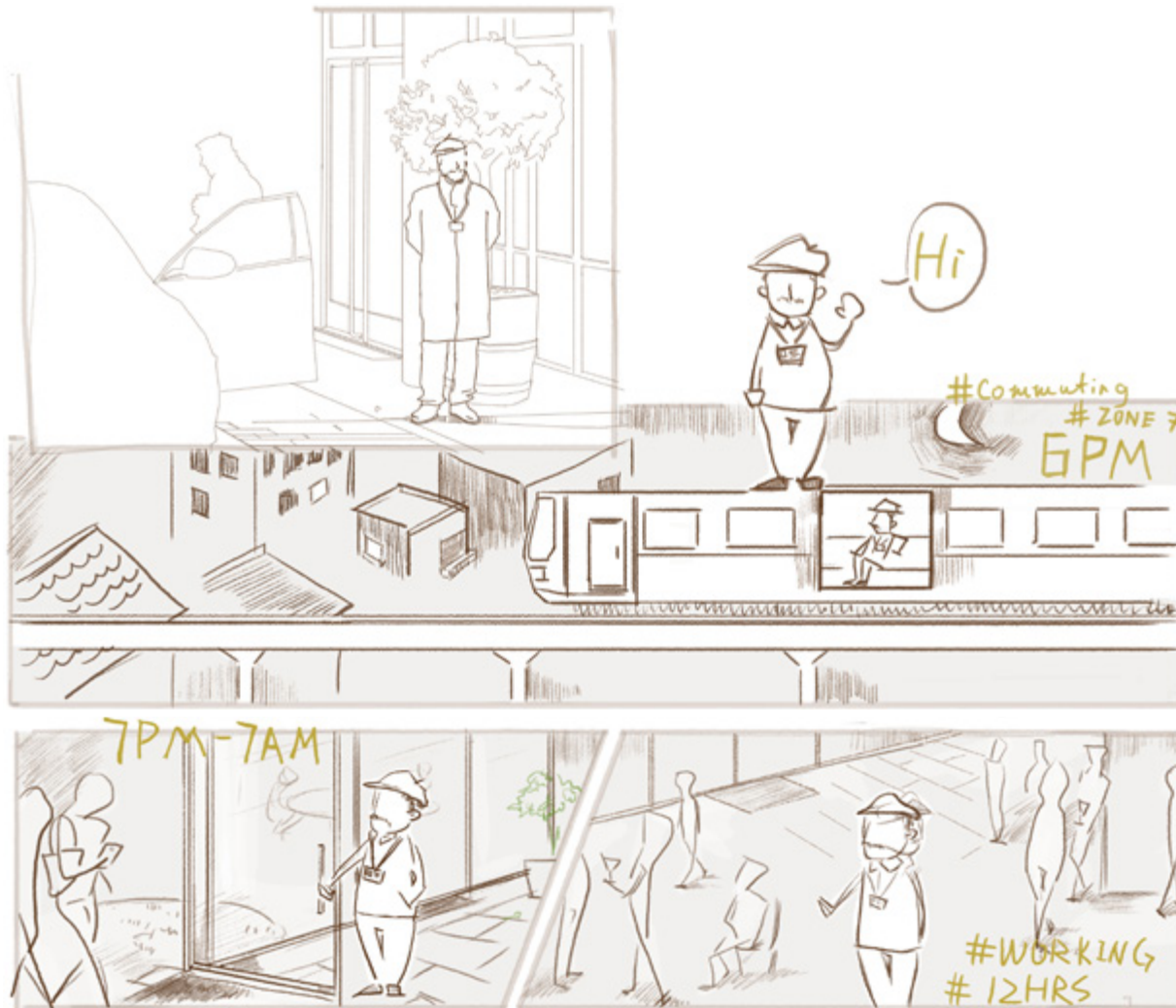
Elena
Back of the house



Elena doesn't have time for herself, after work she also needs to take care of her kids.

A day in the life of Mateo a security guard in Soho.

Mateo
Security of hotel and restaurant.



Mateo works constantly for 12 hrs a day, from 7 pm to 7 am.

CANTEEN
1HR BREAK

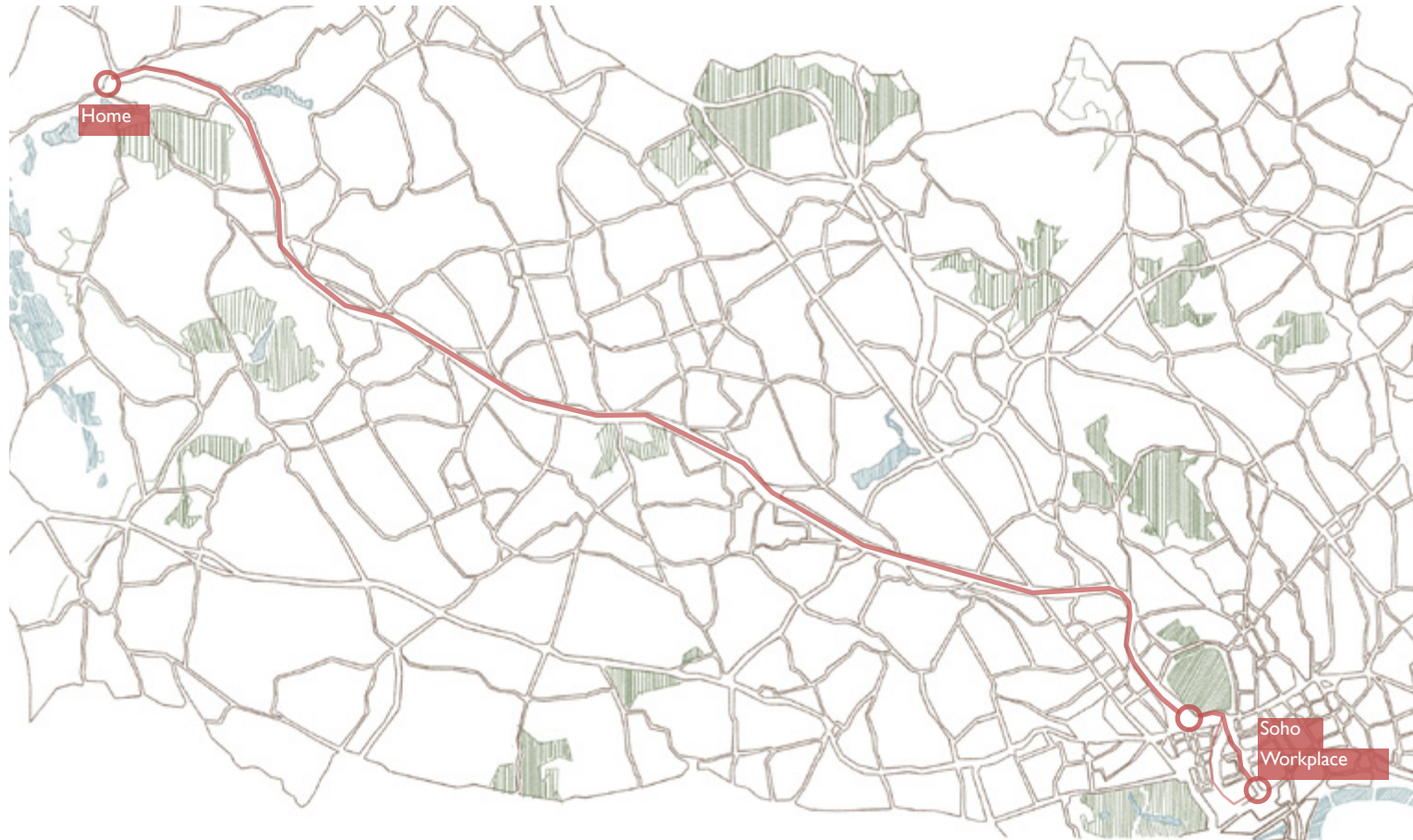


But he doesn't have an appropriate resting place during his break. And the company doesn't provide quality food for the staff.

Commuting 8-9 AM



And after work, he can't help to fall asleep on the train during his long-time commuting.



Mateo commutes from zone 7 to Soho.



Sistus commutes even farther, from Watford to Soho 3 days a week.
He is exhausted when he gets back home.

Zone 7 :



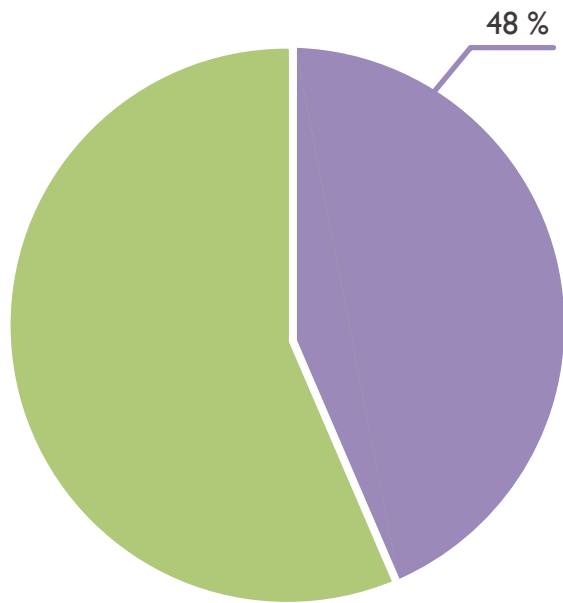
2 hrs and £8 a day

Soho:

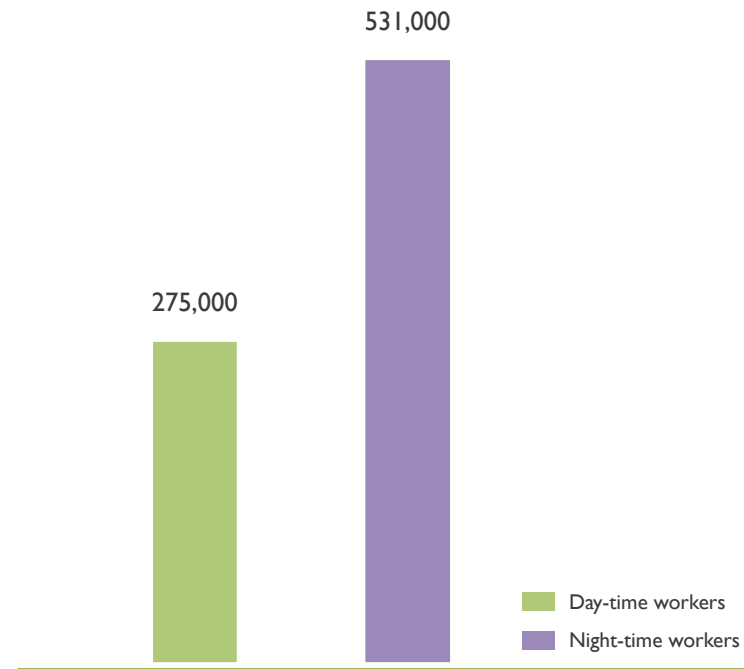


30 min walk and £0 a day

They spend more money, time and energy on commuting in an already exhausting situation.



48% of night-time workers need to travel from outer London to inner London



More night-time workers who working on low wages

Because of lower wages and different night transportation services, Night-time workers tend to spend a larger share of their income and more time on transport.

Average rent per
Square meter (PW)

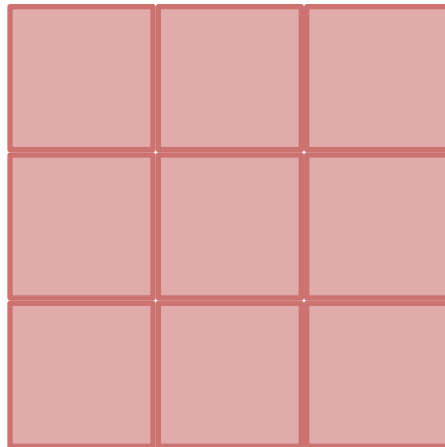
ZONE 7

£ 6.1

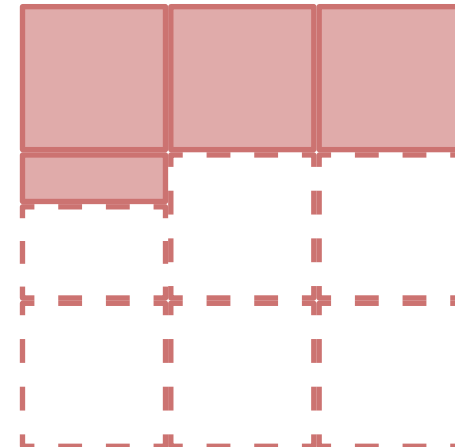
SOHO

£ 16.7

ZONE 7



SOHO



They cannot live near their workplace because of high rental costs in Soho.
Renting a 9 sqm bedroom in Zone 7 can only afford Mateo a 3.3 sqm place in the Soho.

Zone 7

Rent: £1118 PW



In Soho:

For Van: £27 PW

Insurance: £17.5 PW

Parking: £40 PW

Gyms: 6.8 PW

Subtotal: £ 91.3 PW



The only alternative strategy of living in Soho with the same price is kitting out the back of van and joining a gym.



Changing the world
of work for good

Search by Industry

Search by Job Role

Start typing your job title here and we'll show you jobs that might match it. We only have information on a limited number of job titles, so you may have to try a different wording for your job role if you don't find a more specialised title the first time.

Your Job Title

night

x

Prison night patrol

I can't find my job here

[Go back to the beginning](#)

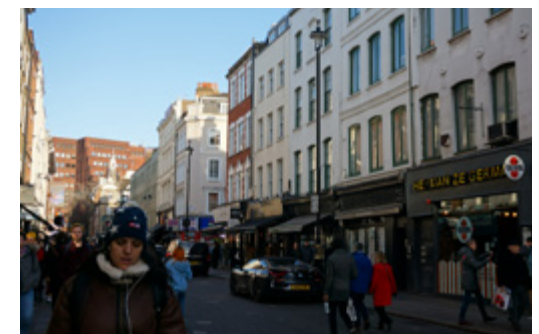
Night-time jobs have many effects on different aspects, but there are no specific unions to represent their rights.

	COMMUTING	DIET	SOCIAL LIFE	MENTAL HEALTH
ISSUES	Living far from Soho	No appropriate meal at late night.	No suitable time for social life	Psychological stress from working environment
WHY?	The gap between wages and high rent price	Lack of corresponding service for them And insufficiently understood.		Who are responsible for their mental health and safety?



By interviewing night-time workers in Soho, the research of the project mainly focuses on 4 main aspects: commuting, diet, social life and mental health

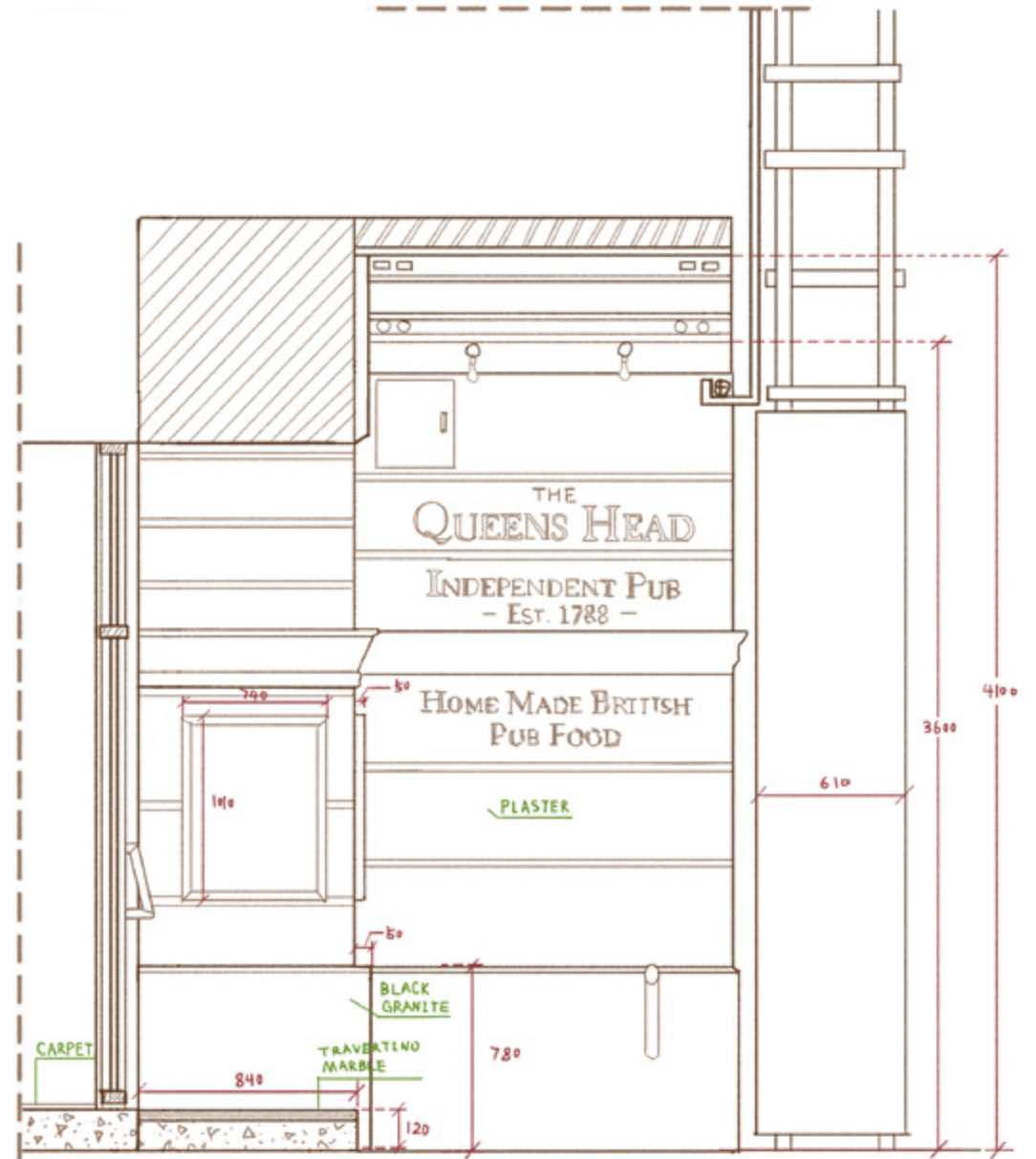
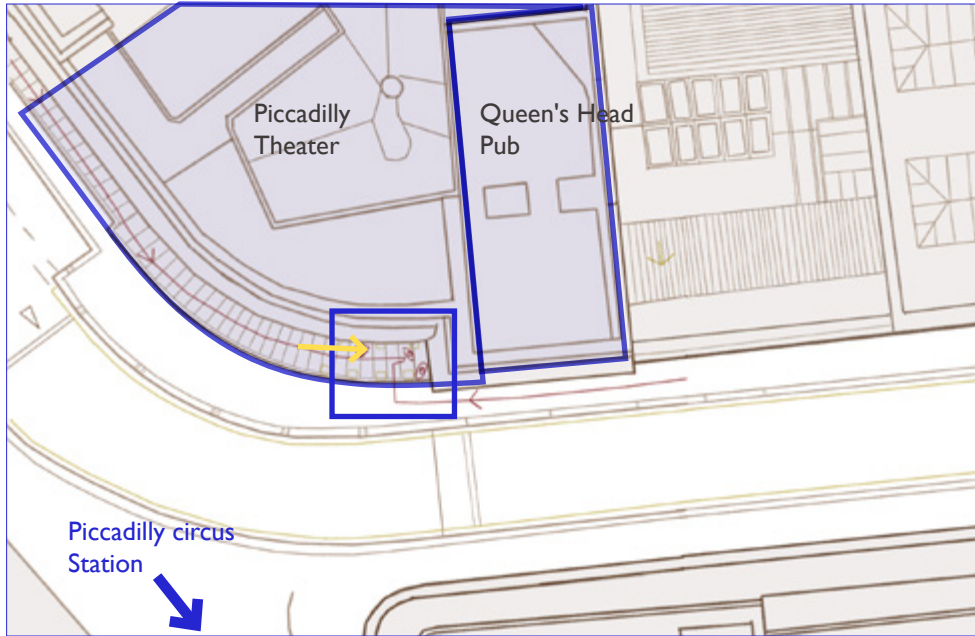
Night-time industries licensing map



The potential locations are in the southern part of Soho, where it is mostly occupied by night industries.



Related to the 4 main aspects, the potential sites are narrowed to 4 street corners in the southern part of Soho.

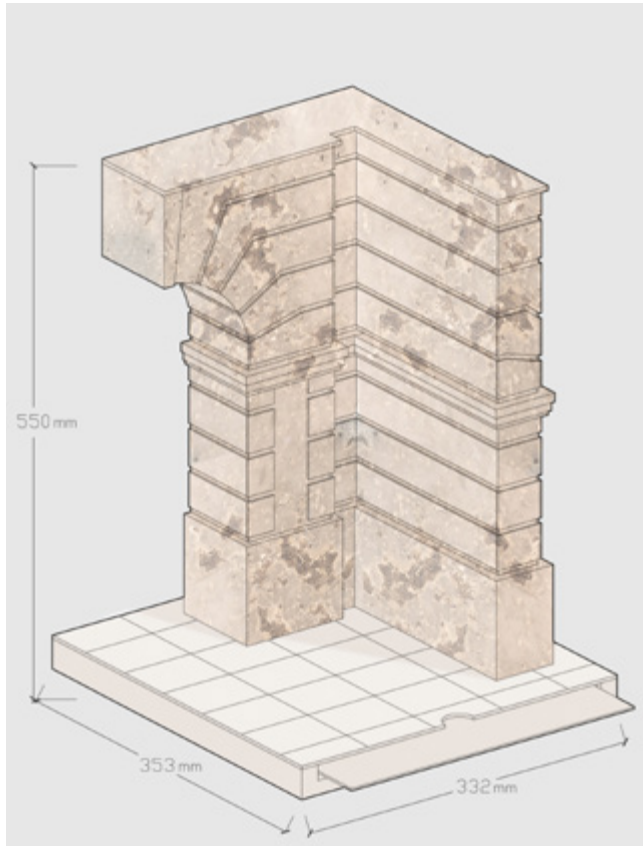


Corner A explores "commuting"

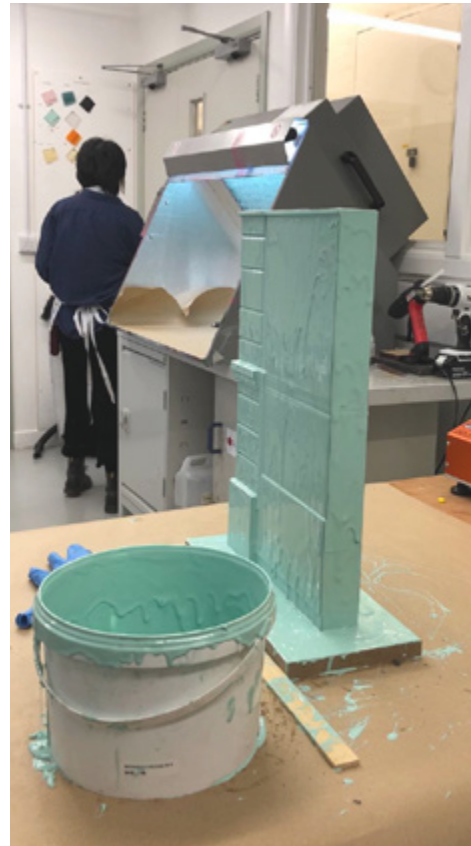


The model of this corner has been cast using elements of tobacco, ground coffee and other materials, that represent night-time workers' typical diet during their working time, to epitomise their identity.

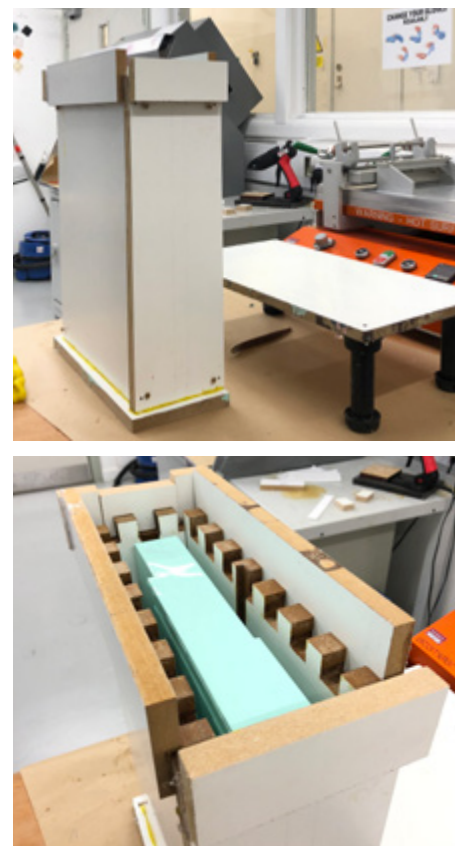
01. Final drawing of the Artifact



02. First layer of the female mold



03. Build the "jacket" of the mold

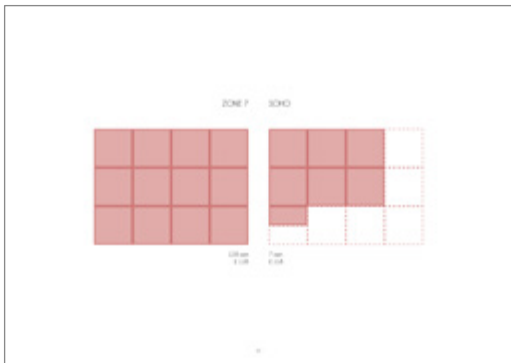


04. Finish the mold, cut it open



Making Process





	ZONE 7	SOHO
Average price of Bedroom + Bathroom	£28,800	£58,800
Average price per Square metre	£43	£167
Average price of Bedroom + Bathroom	£779	£314
Transportation fee (weekly)	£40	£0
Subtotal (weekly)	£118	£314

Strategy 01: House sharing + Public transport

Zone 7

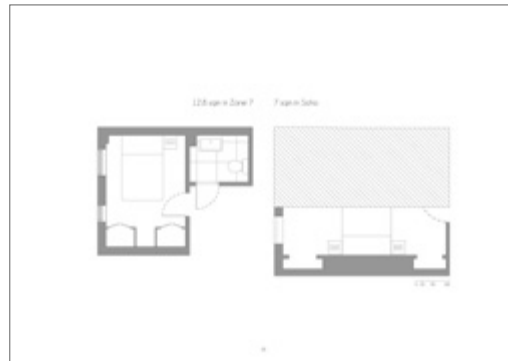
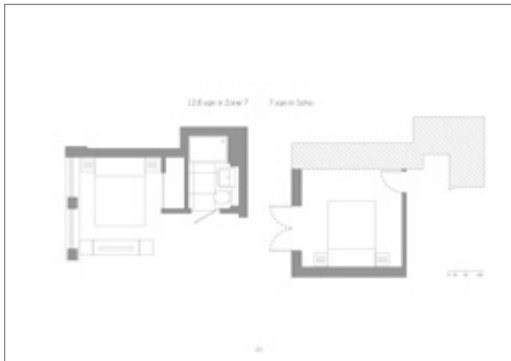
- 4 Beds (2 shared)
- Shared 2nd Bathroom
- Shared 1st Floor

Strategy 01: House sharing + Public transport

Zone 7

- 4 Beds (2 shared)
- Shared 2nd Bathroom
- Shared 1st Floor
- The bed prices include weekly £7 bus and insurance

This room hasn't appeared on Strava yet



Strategy 01: House sharing + Public transport

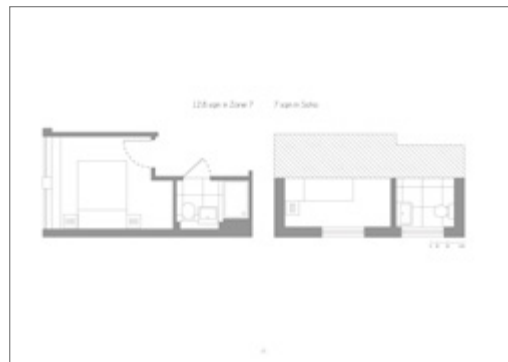
Zone 7

- 4 Beds (2 shared)
- Shared 2nd Bathroom
- Shared 1st Floor
- The bed prices include weekly £7 bus and insurance

Strategy 01: Room sharing + Public transport

Zone 7

- 4 Beds (2 shared)
- Shared 2nd Bathroom
- Shared 1st Floor



Strategy 01: Room sharing + Public transport

Zone 7

- 4 Beds (2 shared)
- Shared 2nd Bathroom
- Shared 1st Floor

Strategy 01: Van + Car

Zone 7

- 4 Beds (2 shared)
- Shared 2nd Bathroom
- Shared 1st Floor

The booklet compares living arrangements in Soho vs Zone 7





A series of real flat plans found on Zoopla decorating the base of the artifact is showing the remarkable contrast of living conditions between Zone 7 and Soho.

As Soho venue owners capitalise on a growing night time economy and as more money is directed to them by local authority schemes, how much of this is going back to support the challenging lifestyles of night-time workers, who play a huge role in generating this value?

night-time workers' real stories



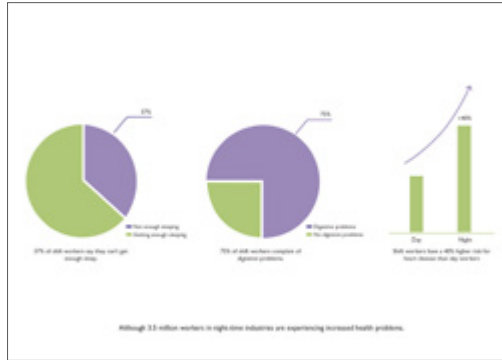
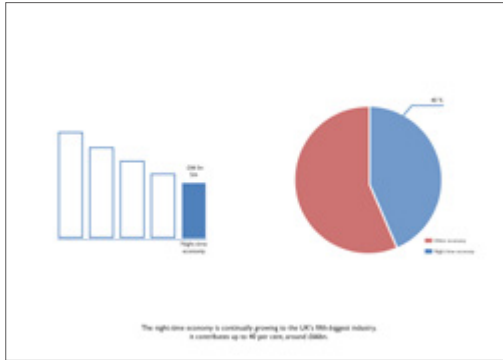
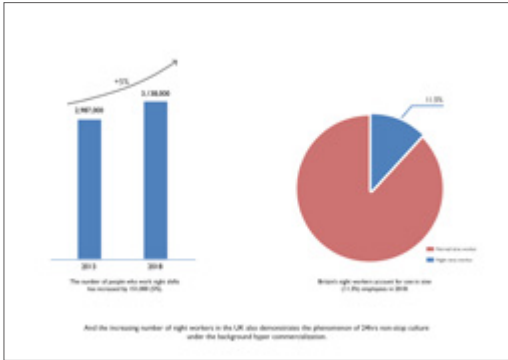
Close with our sleep!



It doesn't. The streets are never empty.



There are lots of night time workers on streets in Soho.



The real issues of night-shift workers are more practical and specific than health problems.



A day in the life of Masso's security guard in Soho.



Pheme works constantly for 12 hrs a day from 7 pm to 7 am.



But he doesn't have an appropriate meeting place during his break. And the company doesn't provide quality food for the staff.



And after work, he can't help to fall asleep on the train during his long time commuting.



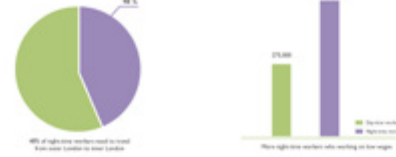
Pheme commutes from zone 7 to Soho.



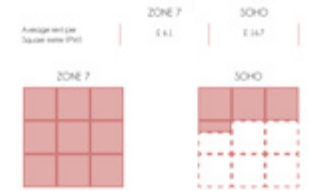
Soho commutes more far from Pheme's to Soho 7 days a week. He gets exhausted when he back to home.



They spend more money time and energy on commuting in an already exhausting situation.



Because of lower wages and efficient night transportation services, high-time workers need to spend a larger share of their income and more time on transport.



They can hardly live near to the workplace because of the high rent of Soho. Renting a 4 square bedroom in Zone 7 cost only about Pheme's £13 square place in the Soho.



The only alternative strategy of living in Soho with the same price is using rent and gym membership.



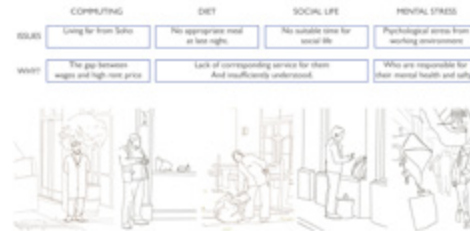
Start helping your job life here and we'll show you jobs that might match it. We only have information on a limited number of job sites, so you may have to try a different website for your job site. If you don't find a more specialized site for the job.

Your job title:

Location:

Salary:

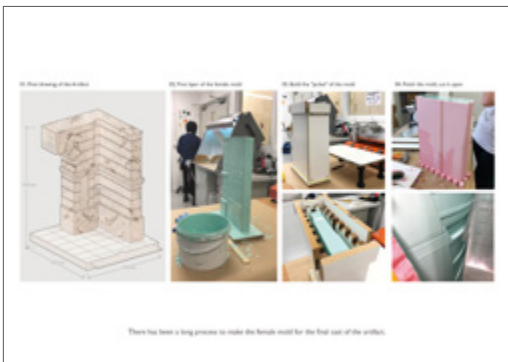
Night shift jobs have many effects on different aspects, but there are no specific actions to represent their rights.



By interviewing night shift workers in Soho, the research of the project really shows us 4 main aspects: commuting, diet, social life and mental stress.



The potential locations are in the southern part of Soho, where is more occupied by night industries.



As Soho venue owners capitalise on a growing night time economy and as more money is directed to them by local authority schemes, how much of this is going back to support the challenging lifestyles of night time workers, who play a huge role in generating this value?

night-shift workers' real stories