

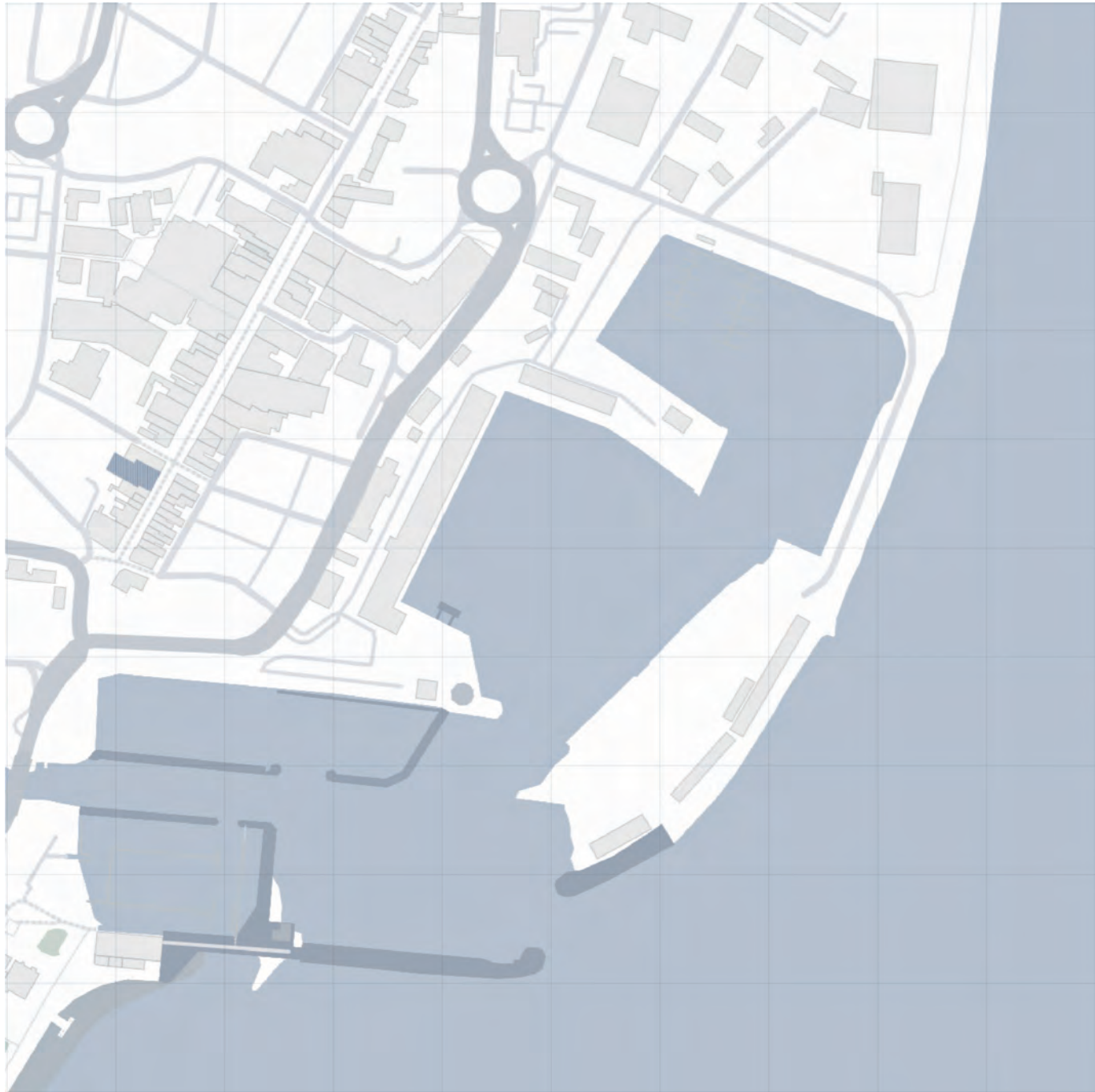
# The Prairie

Lowestoft Art House Cinema & Film Academy





# SITE



Post Office Proper-Facade

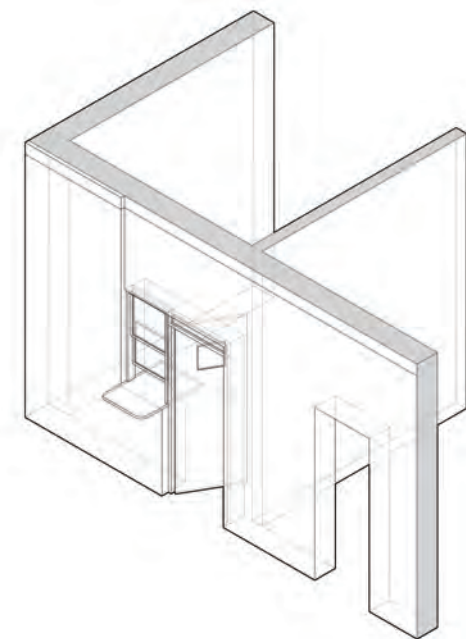
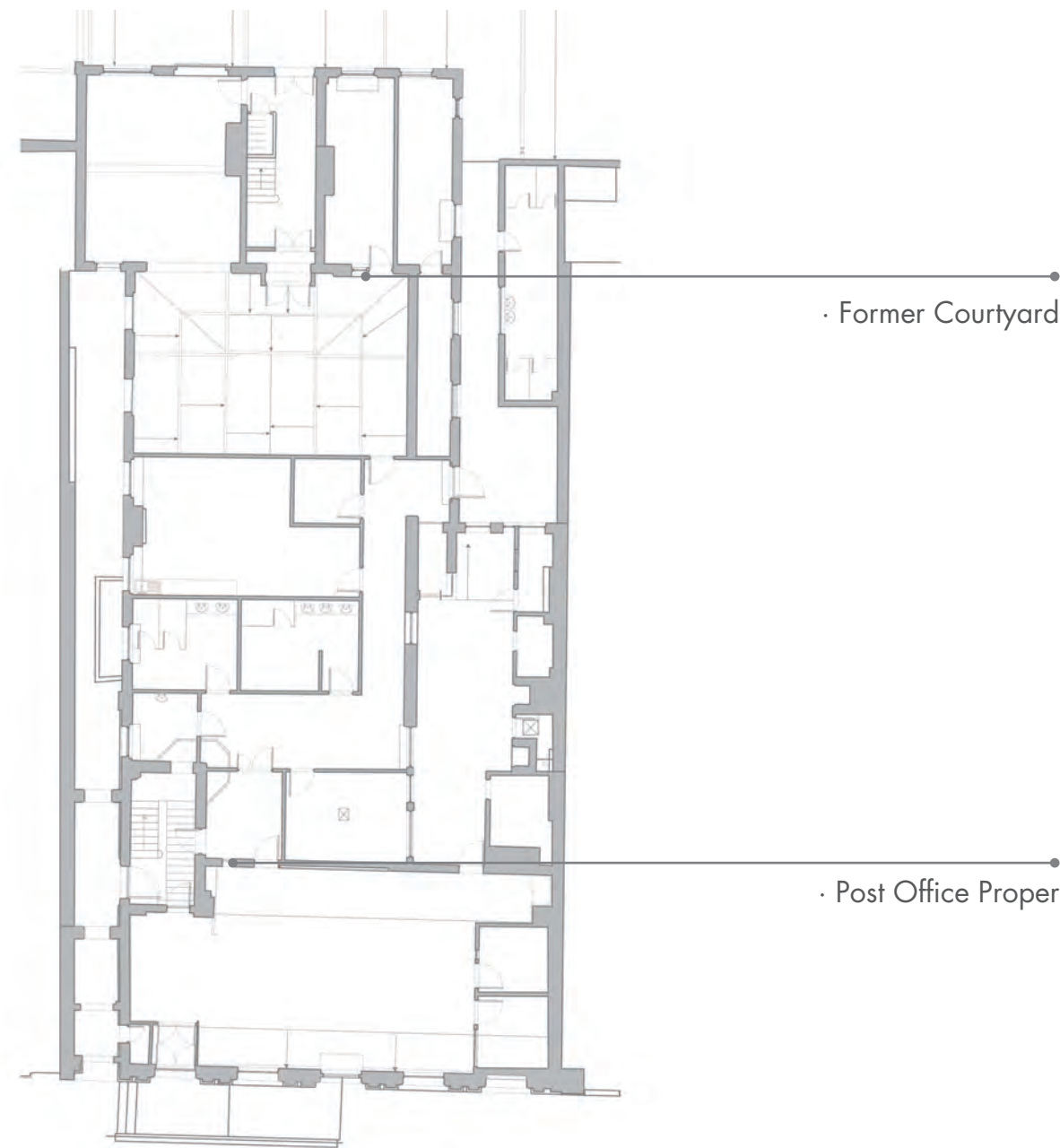


Glass Roof

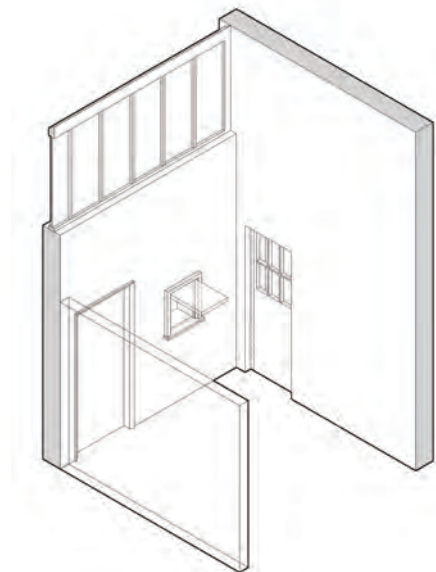


Ghost Tours

# DOCUMENT



- Hatch** *noun*
- an opening in a wall between **two rooms**, especially a kitchen and a dining room, through which food can be passed
  - an **opening** or a door in a floor or ceiling



- Way to open the Hatch
- Door way
- Visual and Auditory communication



DOCUMENT



- 1. Guard Room
- 2. Bank
- 3. Lobby

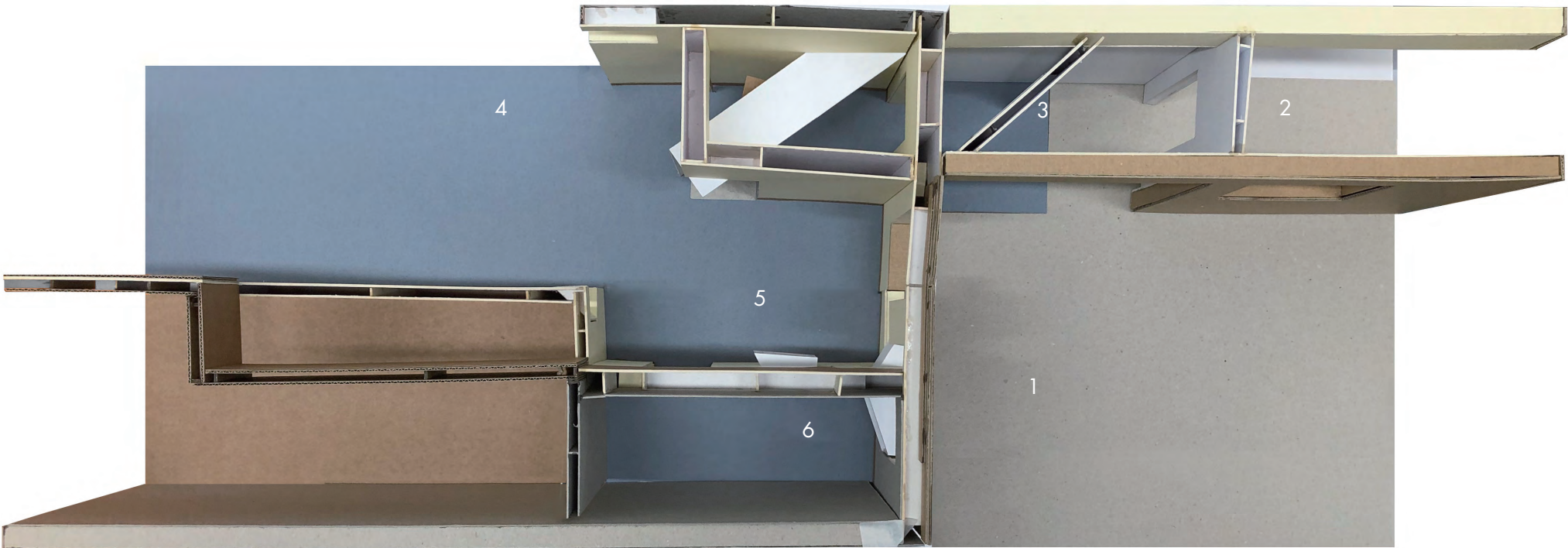
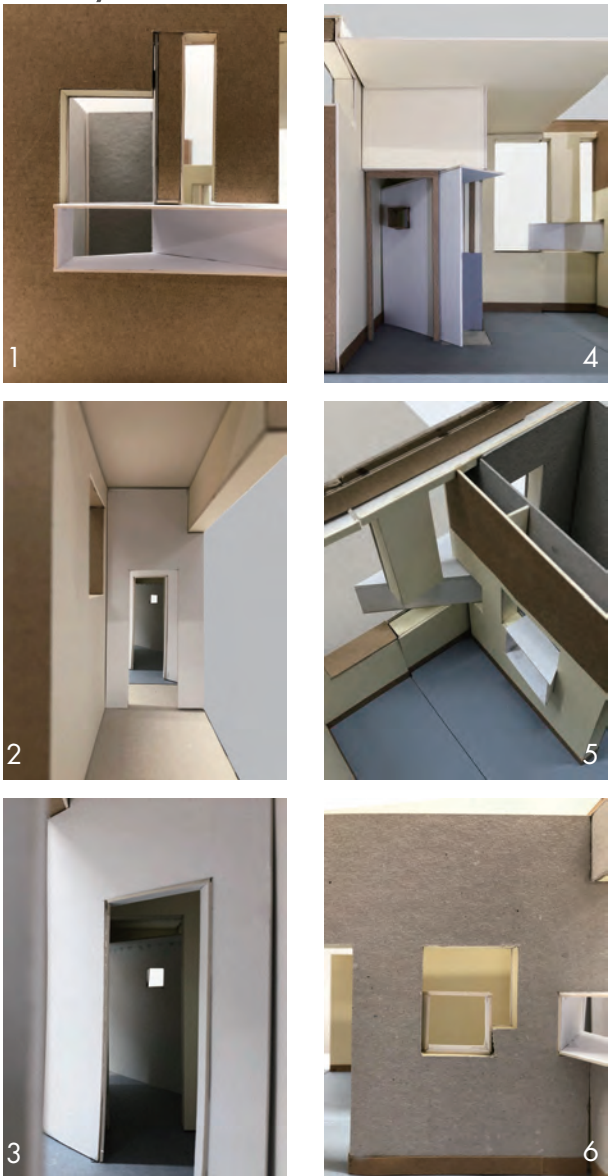
- Wall **thickness**
- The **direction** and **size** of the **wall** and the **door**
- Different heights of **ceiling**



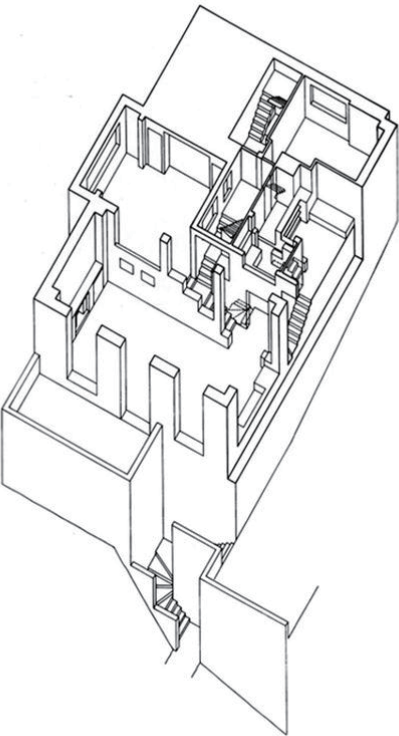
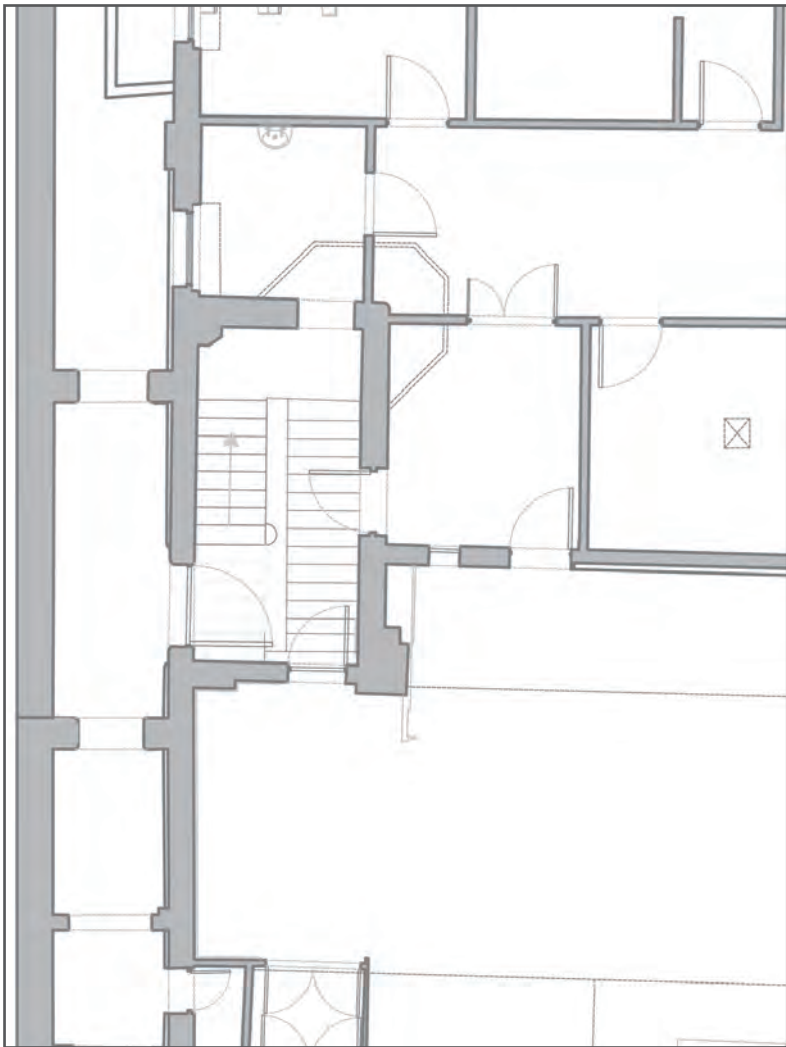


# SUPPLEMENT

Journey



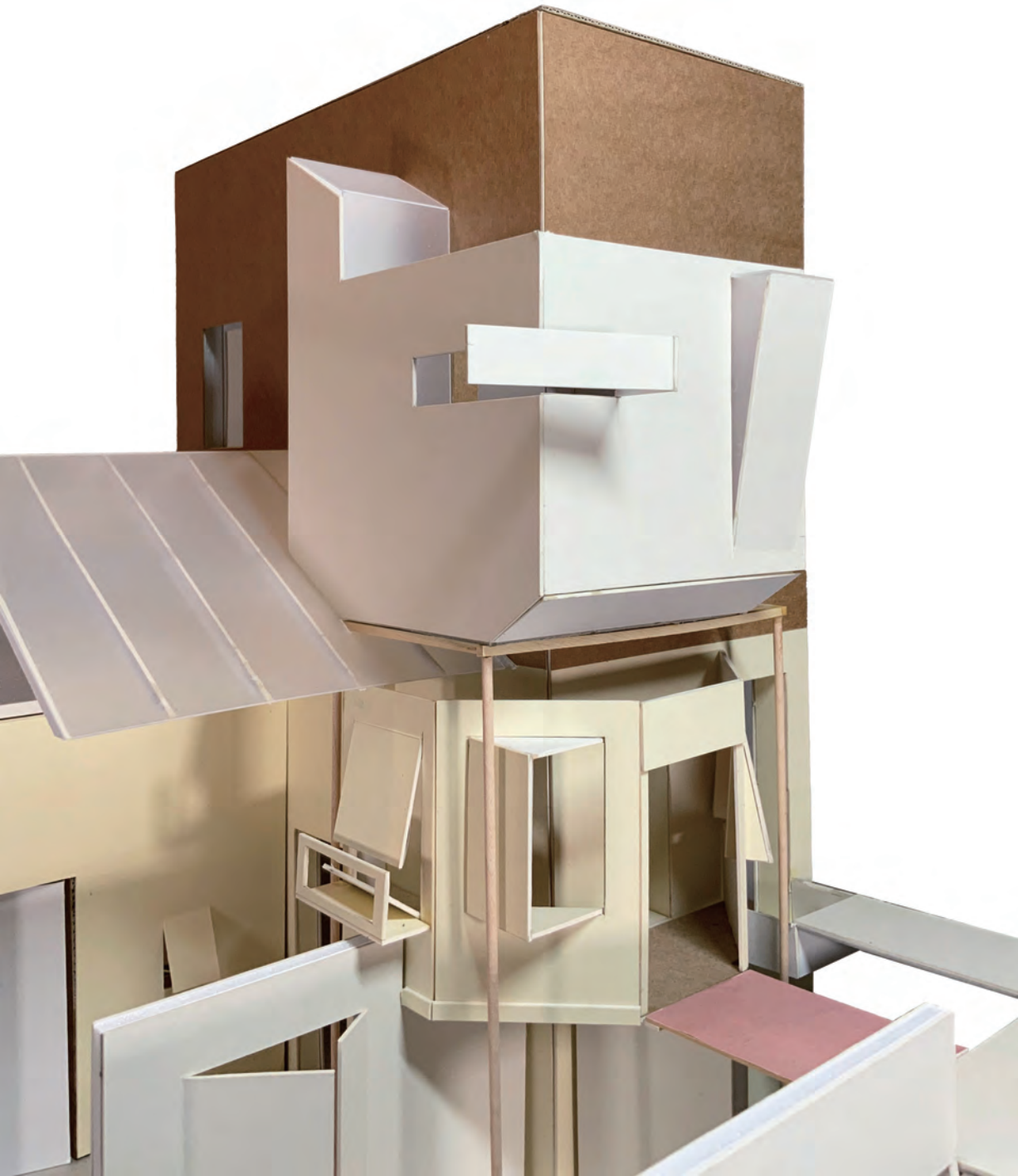
DOCUMENT



'RAUMPLAN' - Adolf Loos Villa Muller



SUPPLEMENT



# PROPOSAL

The 19th century cinema in Lowestoft



Existing Cinema



Lowestoft Film Festival





# PROJECT

## PUBLIC

### Restaurant

Coffee  
Bar  
Restroom  
Kitchen

### Cinema

Ticket office

### Public square

Bike restore  
Outdoor Cinema  
Indoor Cinema

### Shop

Library  
Reception  
Archive  
Storage

## ACADEMY

### Study Area

Library  
Archive  
Classroom  
Restroom

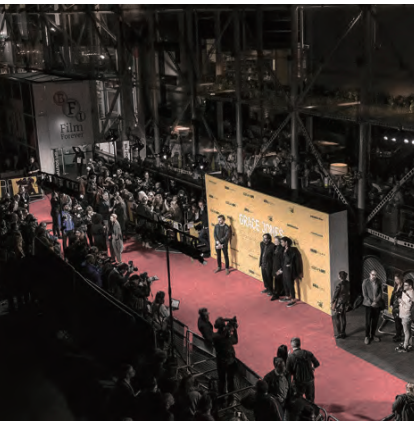
### Workshop

Costume Workshop

## STAFF

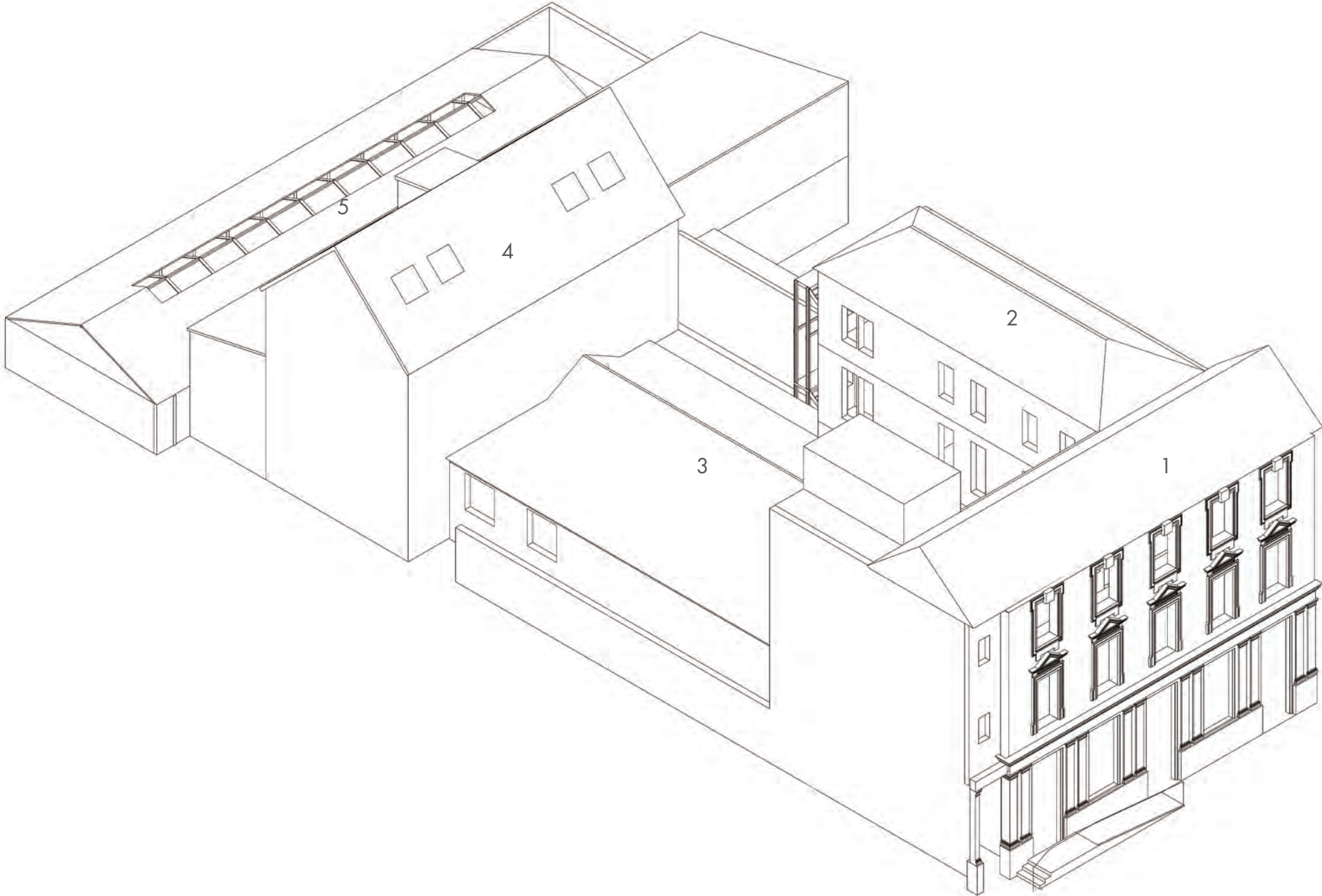
### Administration Office

Projection room  
Restroom



British Film Institute - Southbank

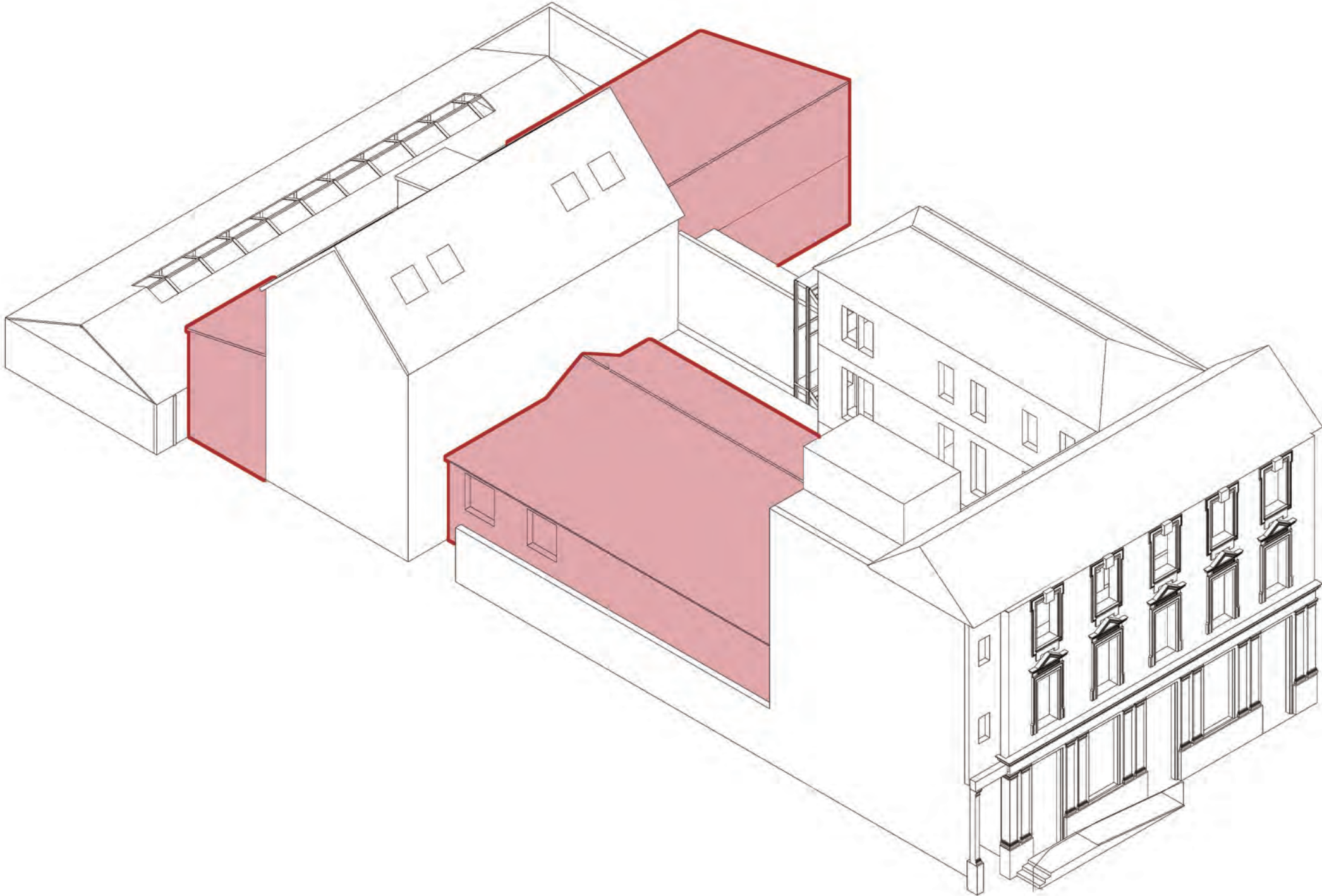
STRATEGIES



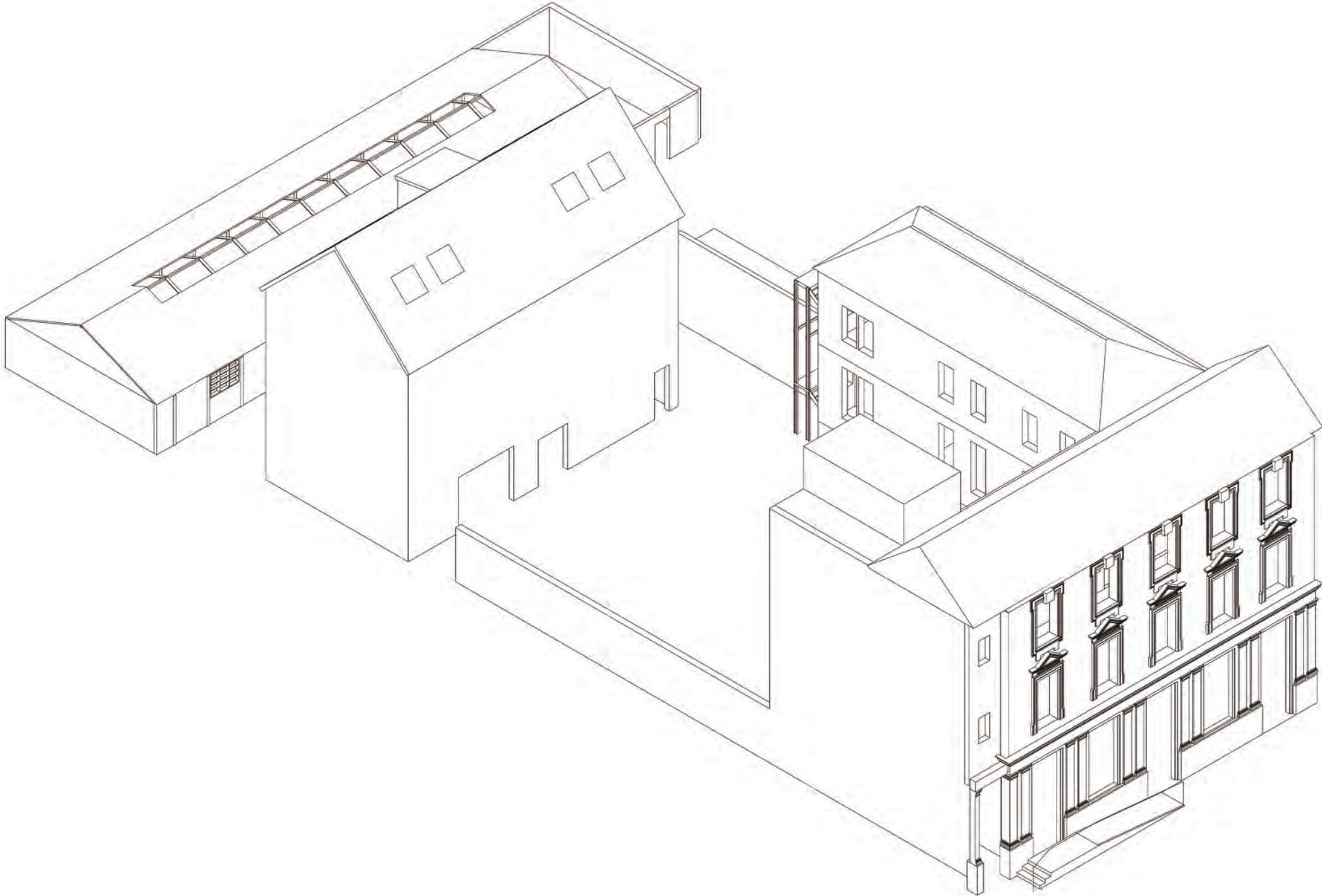
- 1. Proper Post Office
- 2. Post Office Wings
- 3. Former Courtyard
- 4. Ghost Tour
- 5. Glass Room



STRATEGIES

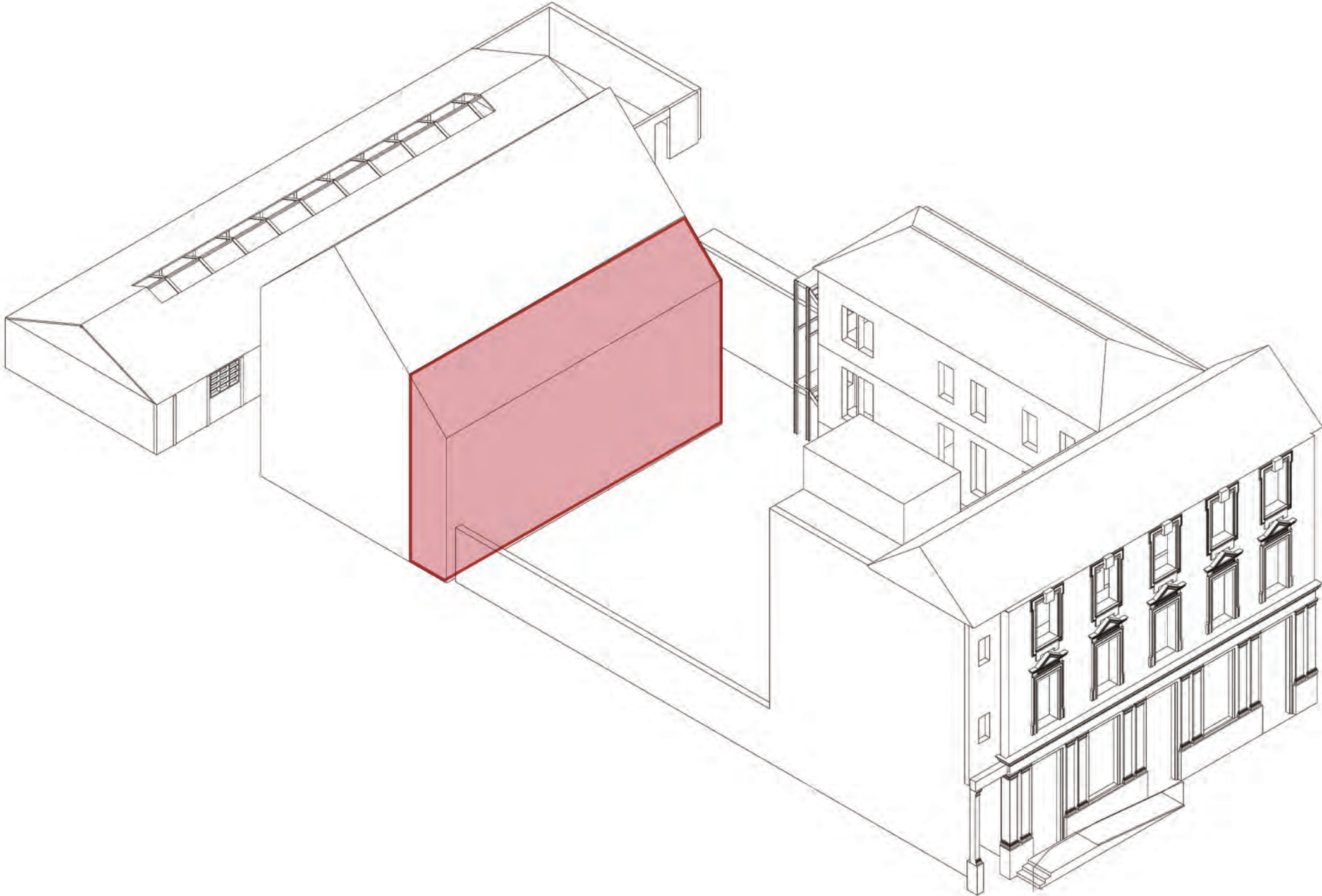


STRATEGIES

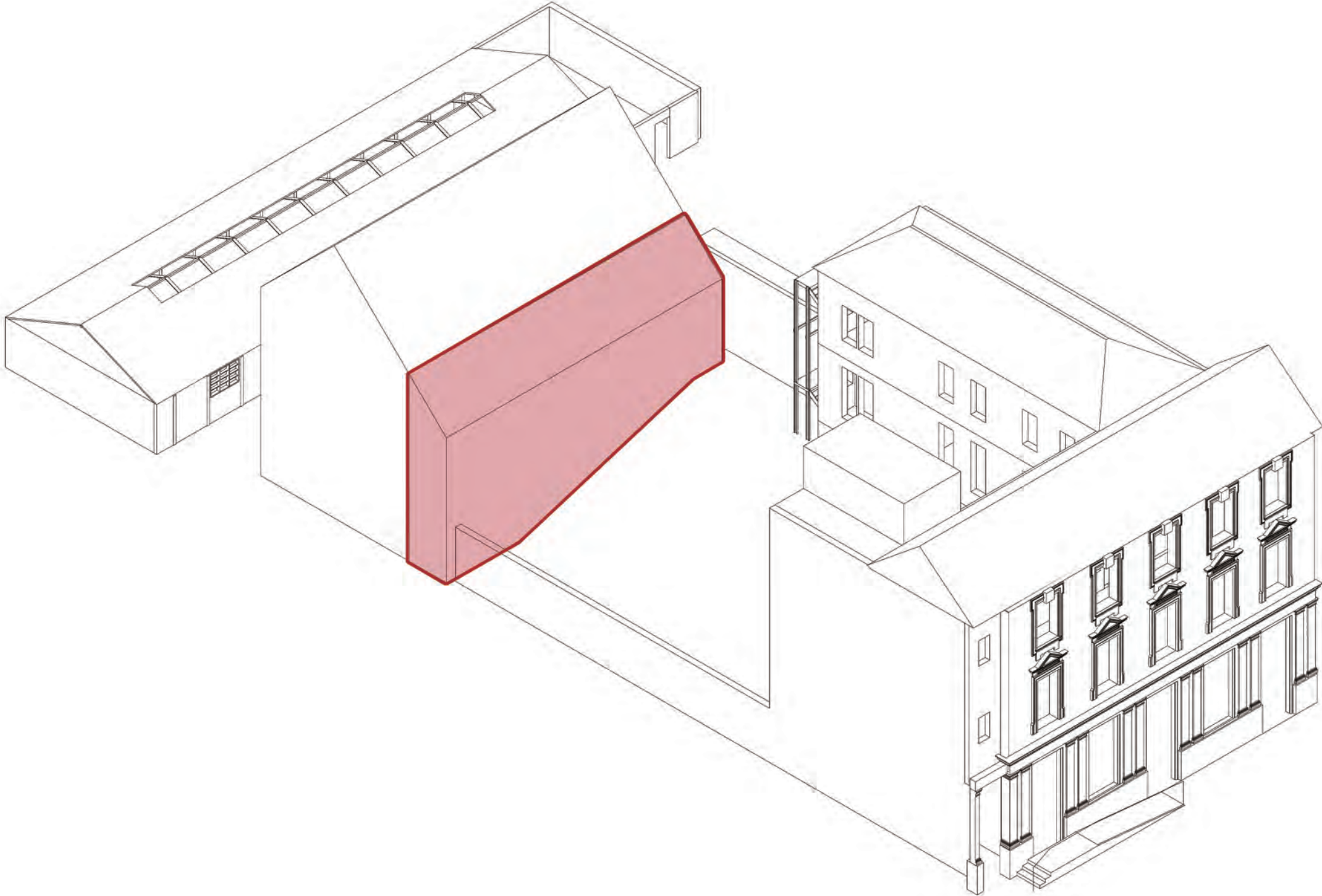




STRATEGIES



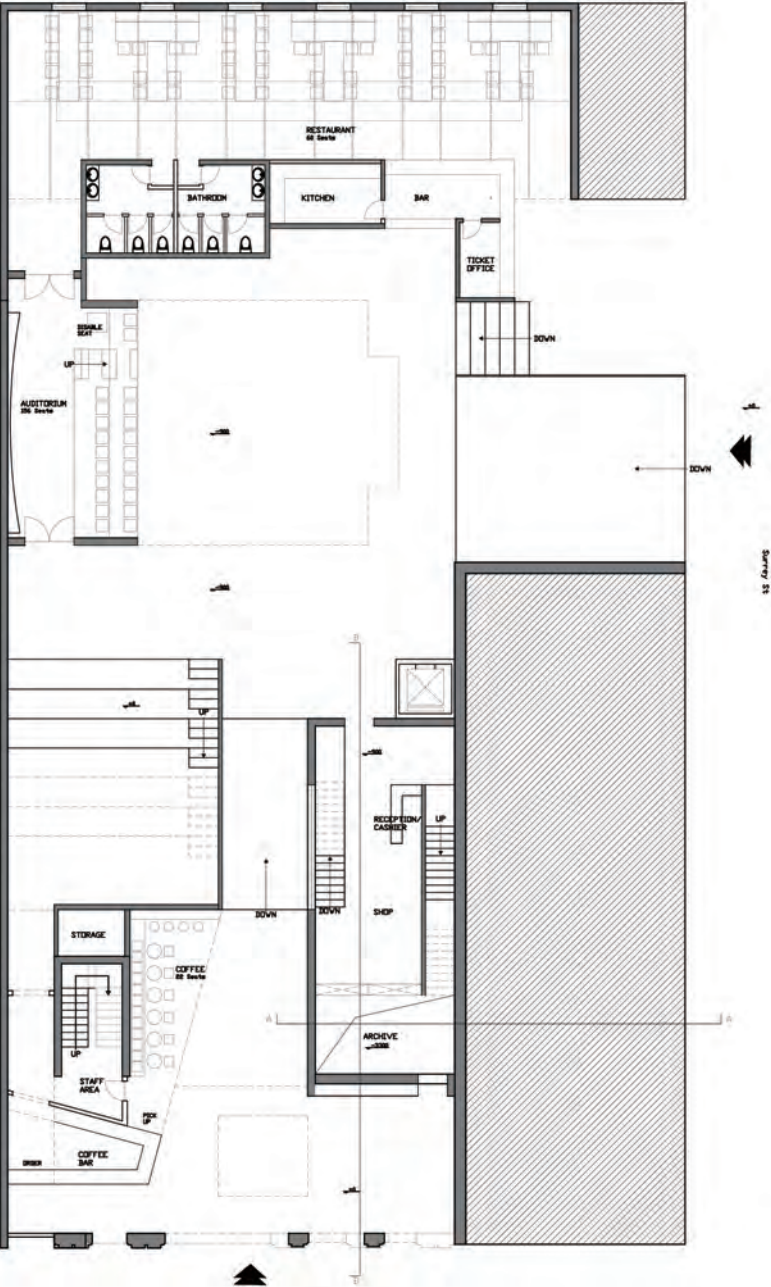
STRATEGIES



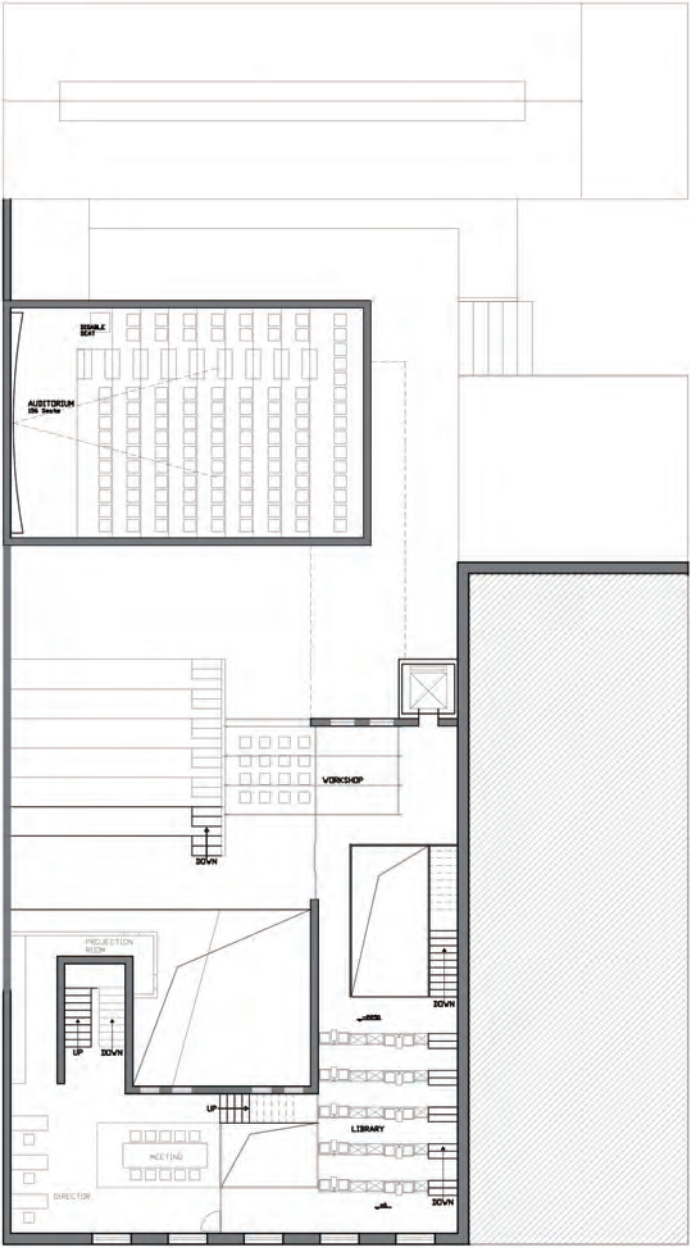


# ORGANISATION

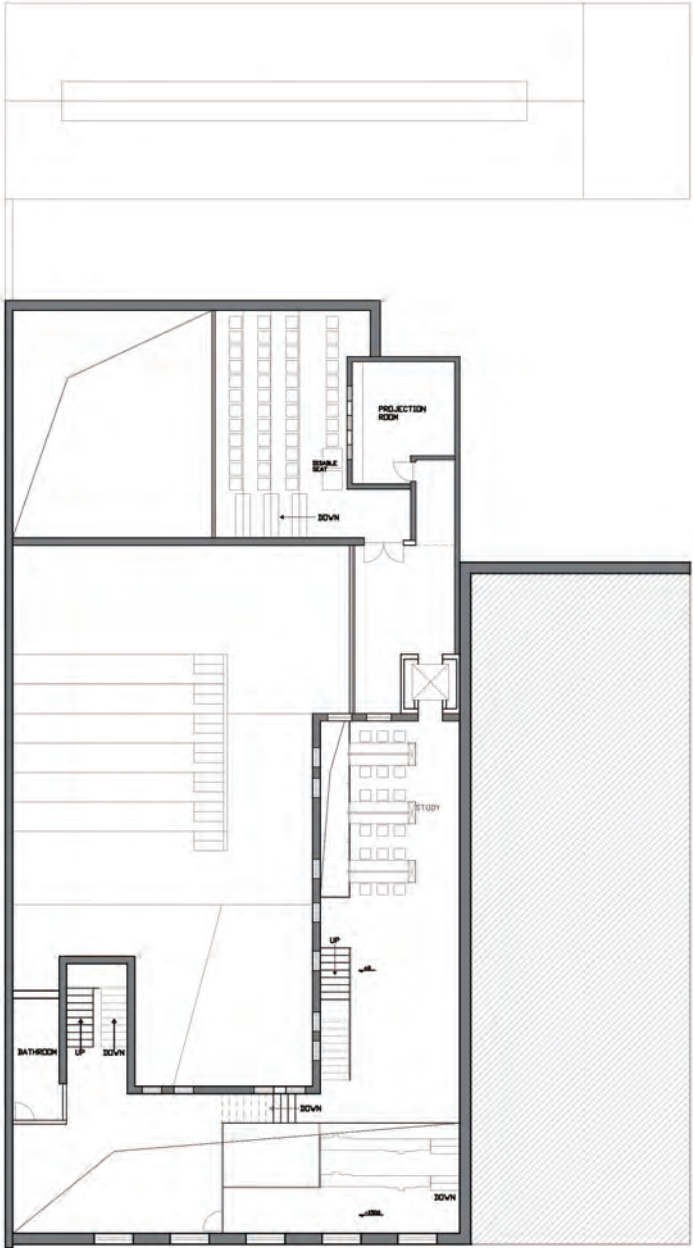
PLAN



G Floor Plan



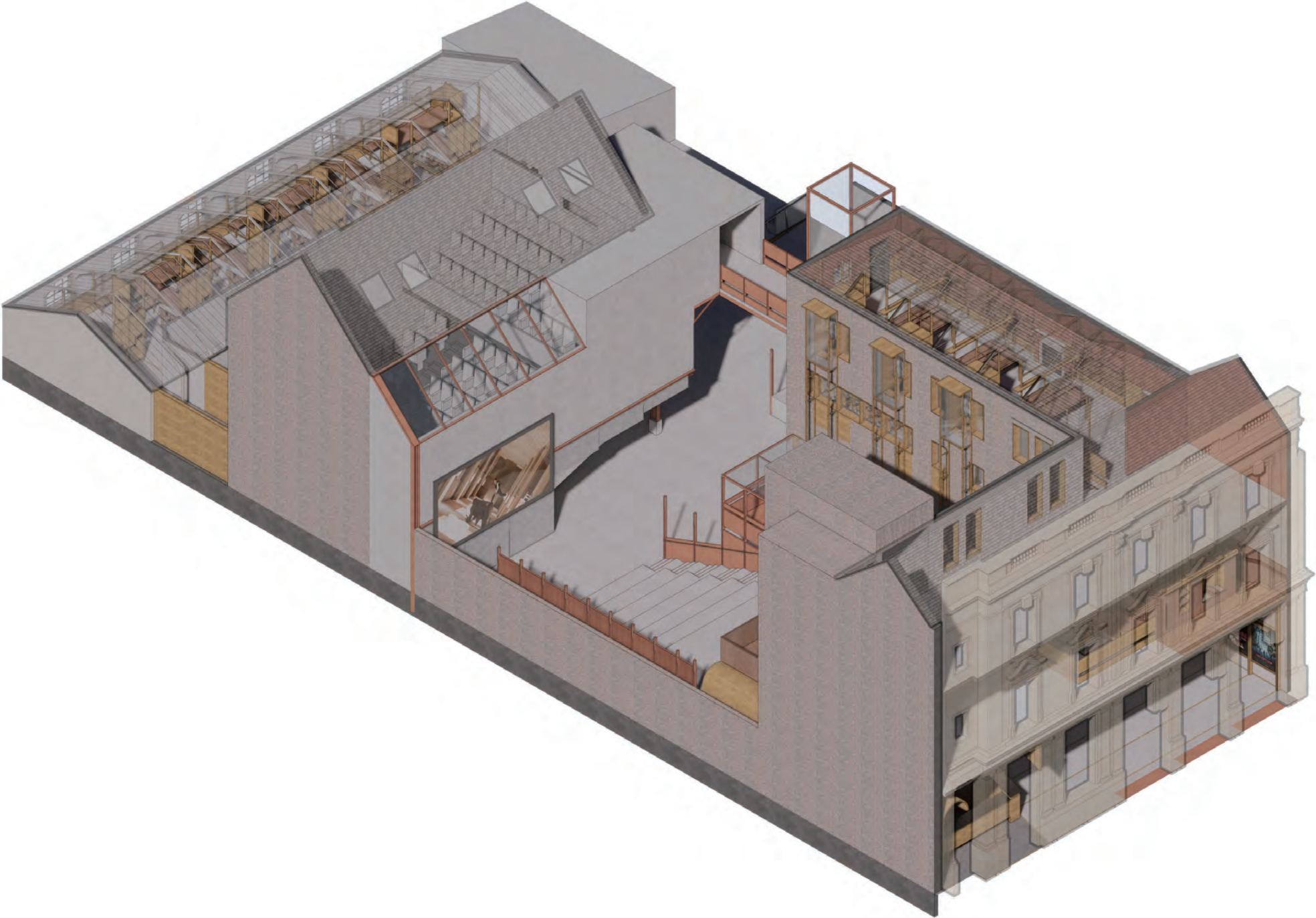
1 Floor Plan



2 Floor Plan  
1:100



ORGANISATION  
AXONOMETRIC DRAWING





ORGANISATION  
SECTION B-B





ORGANISATION  
SECTION A-A

















