



# 'Canalside Gin'

**Zhengxiao Wang**  
**Interior Urbanism**

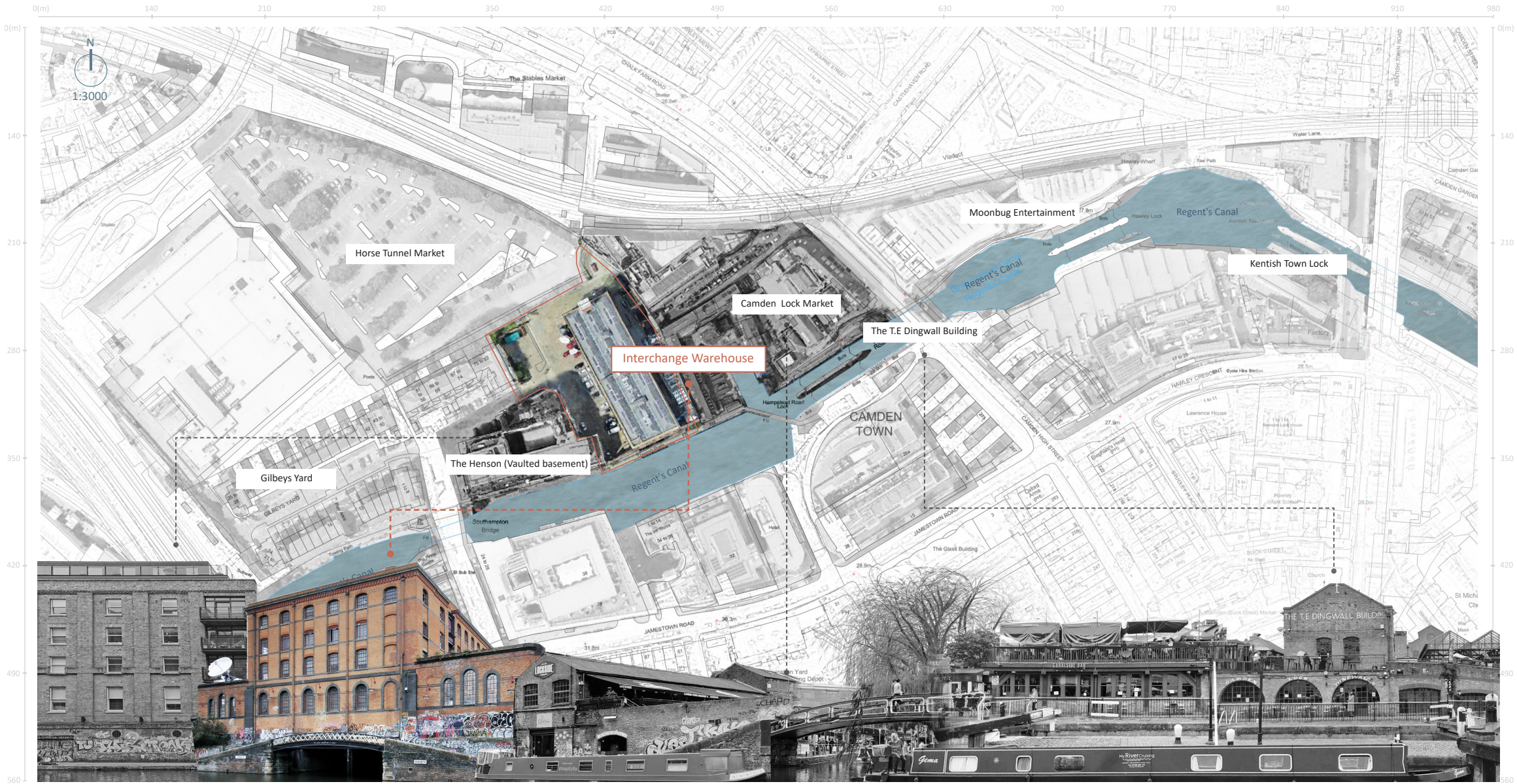
This project uses the production of Canalside Gin to connect people in the community, and bring industry and green public space to Camden.

The site is the historic Interchange warehouse alongside the Regent's Canal. The building will house a gin distillery, an interior garden and community seed exchange to create employment, educational experiences and entertainment.



# CONTEXT

- About site
- Who is in Camden Town
- Future direction



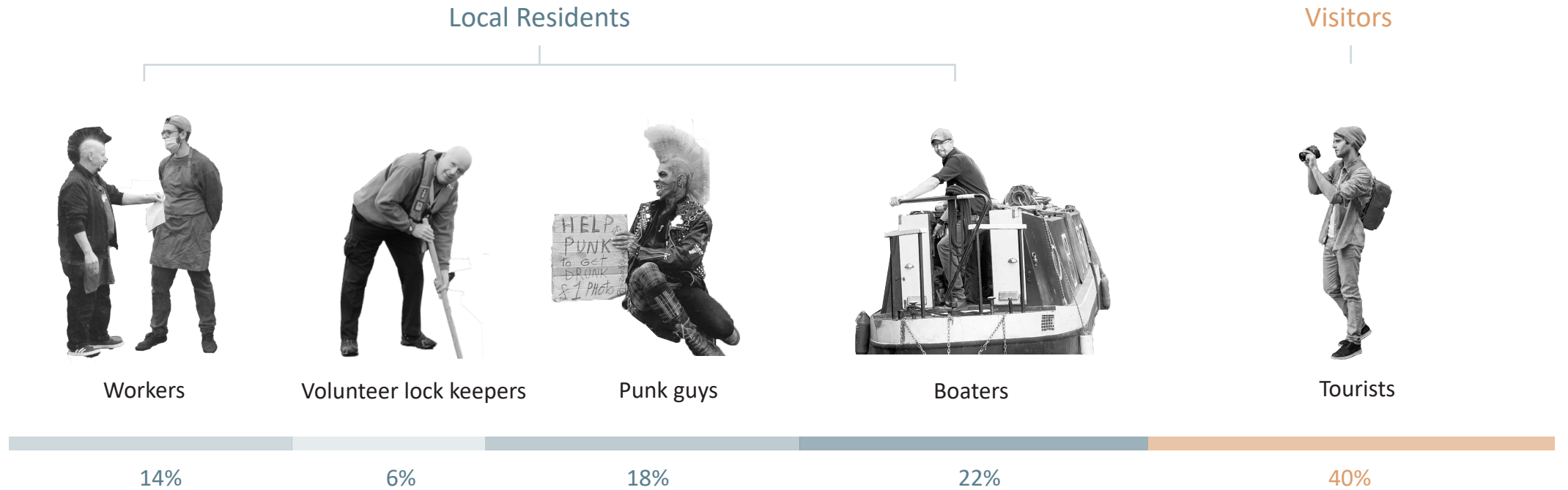
The Henson (Vaulted basement)

Interchange Warehouse

Camden Lock Market

The T.E Dingwall Building

# Who is in Camden Town





## Plants & Allotment

- Demand Exceeds Supply
- Floating Allotment



## Gardeners in Camden face 40-year waiting list for an allotment as Londoners flock to grab their own slice of the countryside

- There are 200 plots in trendy Camden but the
- At least 1,000 people are looking to get one o
- TV gardener Charlie Dimmock suggested allc

By TOM WYKE FOR MAILONLINE  
PUBLISHED: 19:06, 22 August 2015 | UPDATED: 23:50, 2



People have long flocked to live in the trendy bo attraction to the area is its much-sought after all

It appears with local rent prices rocketing out of wanting to grow their own vegetables on one of plots, costing £272 a year.

### Allotments Section (Camden Council)

The waiting lists for all Camden allotments (Antrim Grove, Branch Hill, Fitzroy Park and the Westcroft) are now closed.

#### Contact details

##### Contact Name

Telephone 020 7974 1693 (Call Centre)  
E-mail [allotments@camden.gov.uk](mailto:allotments@camden.gov.uk)  
Website [Camden allotments](#)

#### Address

Address c/o Parks and Open Spaces  
London Borough of Camden  
4th Floor, 5 Pancras Square  
c/o Town Hall, Judd Street  
London  
Postcode WC1H 9JE

#### Time / Date Details

When is it on Mon-Fri 9am-5pm.

#### Costs

Cost(s) Standard fee £78.00, Concessions £52.50.

#### Further details

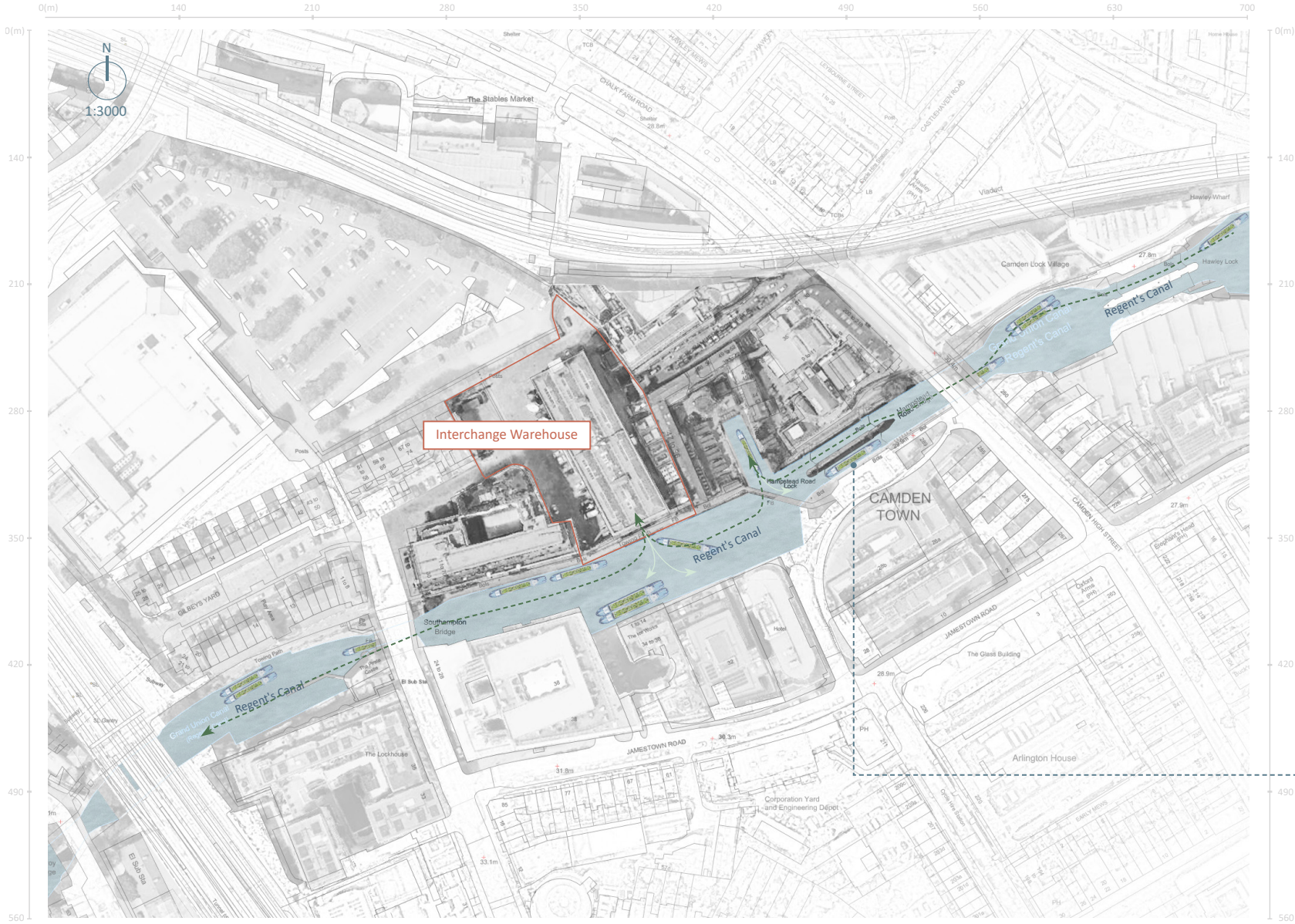
Parent Body Camden Council Supporting Communities Directorate  
Client Group Adults.  
Catchment Area Camden.  
Capacity or waiting list 195 plots, over 900 on waiting list.  
Last checked date 20/10/2020  
Record ID 3399

## Further details

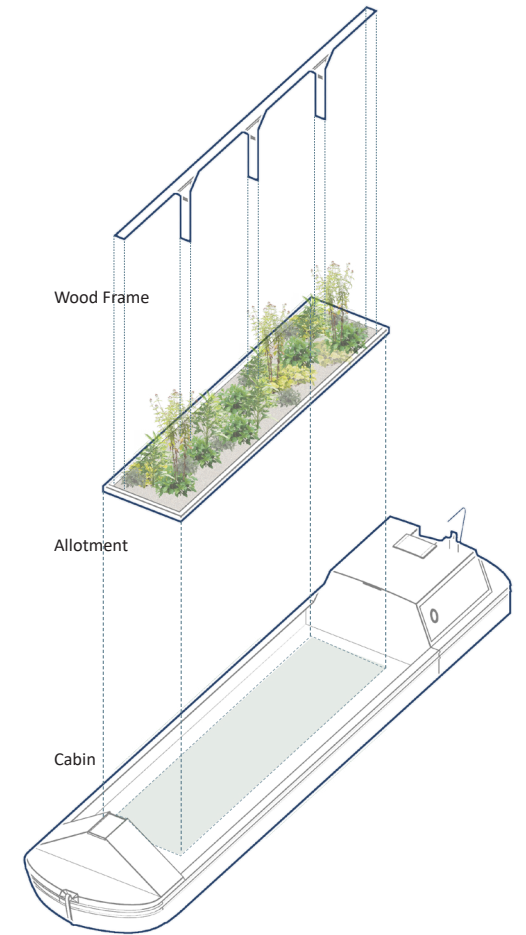
Parent Body	Camden Council Supporting Communities Directorate
Client Group	Adults.
Catchment Area	Camden.
Capacity or waiting list	<u>195 plots, over 900 on waiting list.</u>
Last checked date	20/10/2020
Record ID	3399

## Demand Exceeds Supply

The data shows that more than 900 people in Camden Town have applied for allotment, but the available space is limited, which leads to the situation that the demand exceeds the supply, which reflects the enthusiasm of residents in Camden Town for planting and gardening.



# Floating Allotment





Delivery

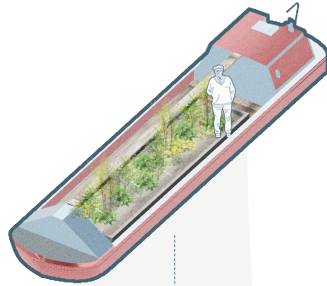


Planting

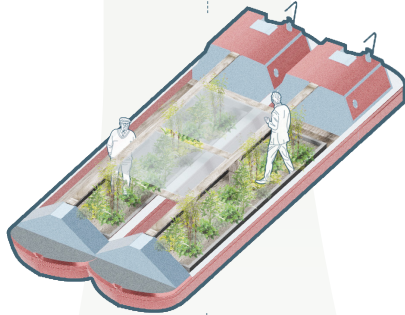


Group work

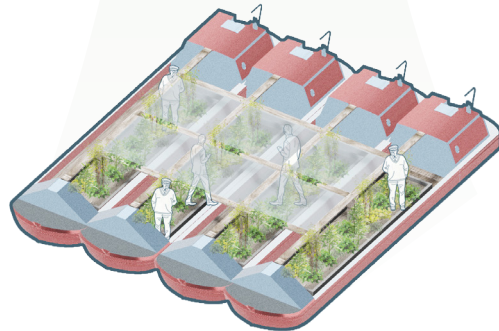
Single Boat



Double Boats



Joint Boats







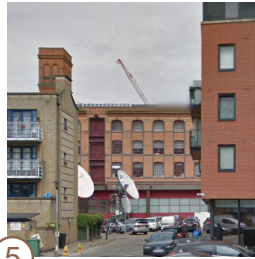
## Site & Building

- Site Views
- Historical Function
- Facade Research
- Structure Research
- Style & Details



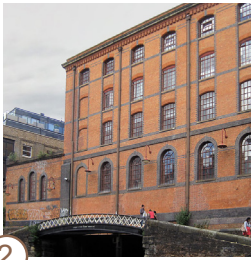
1

Foot Bridge



5

West Facade



2

South Facade



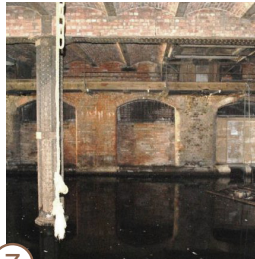
6

East Entrance



3

North facade



7

Dock



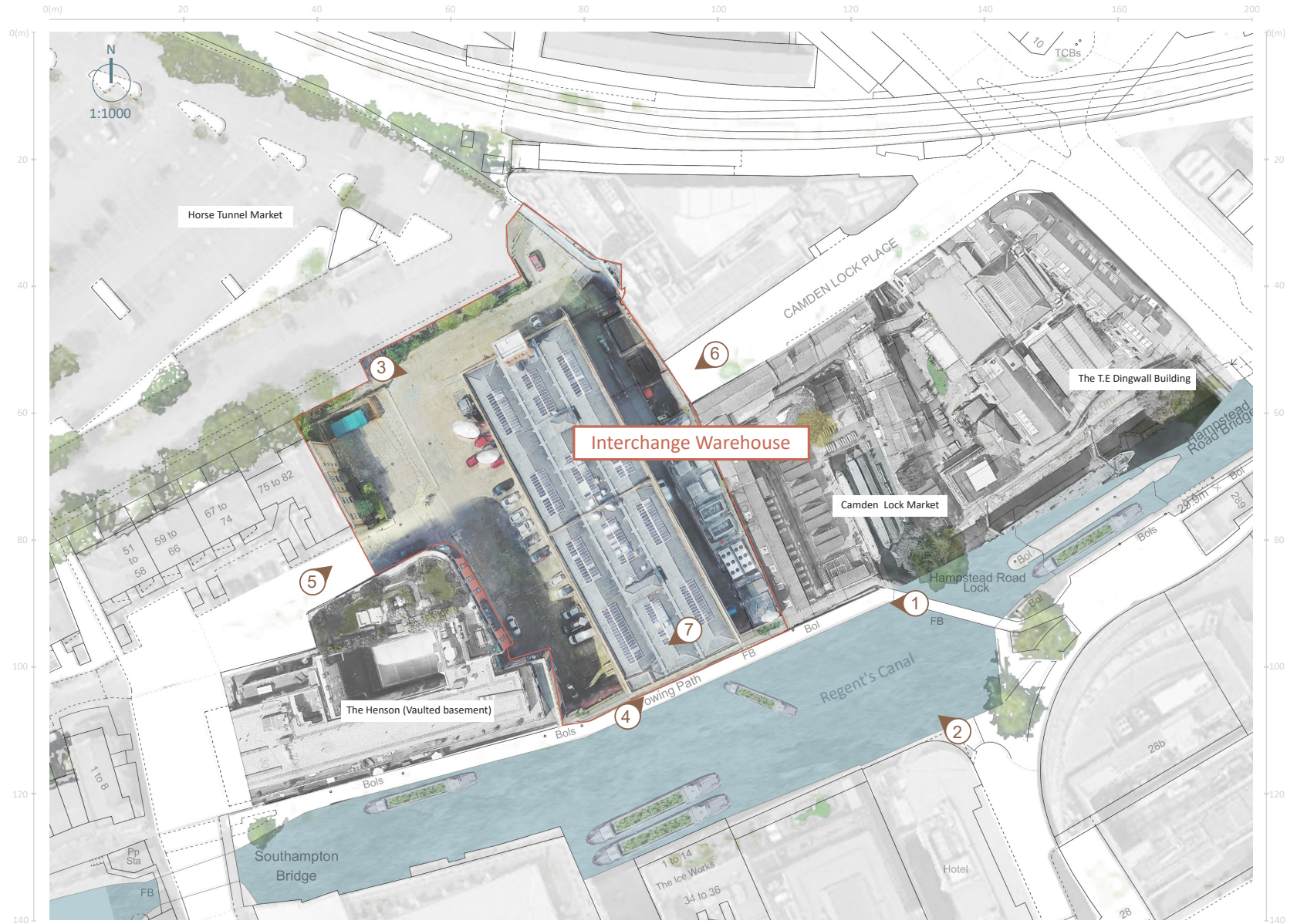
4

Towing Path



8

Dock Entrance



## SHIP TRANSPORT

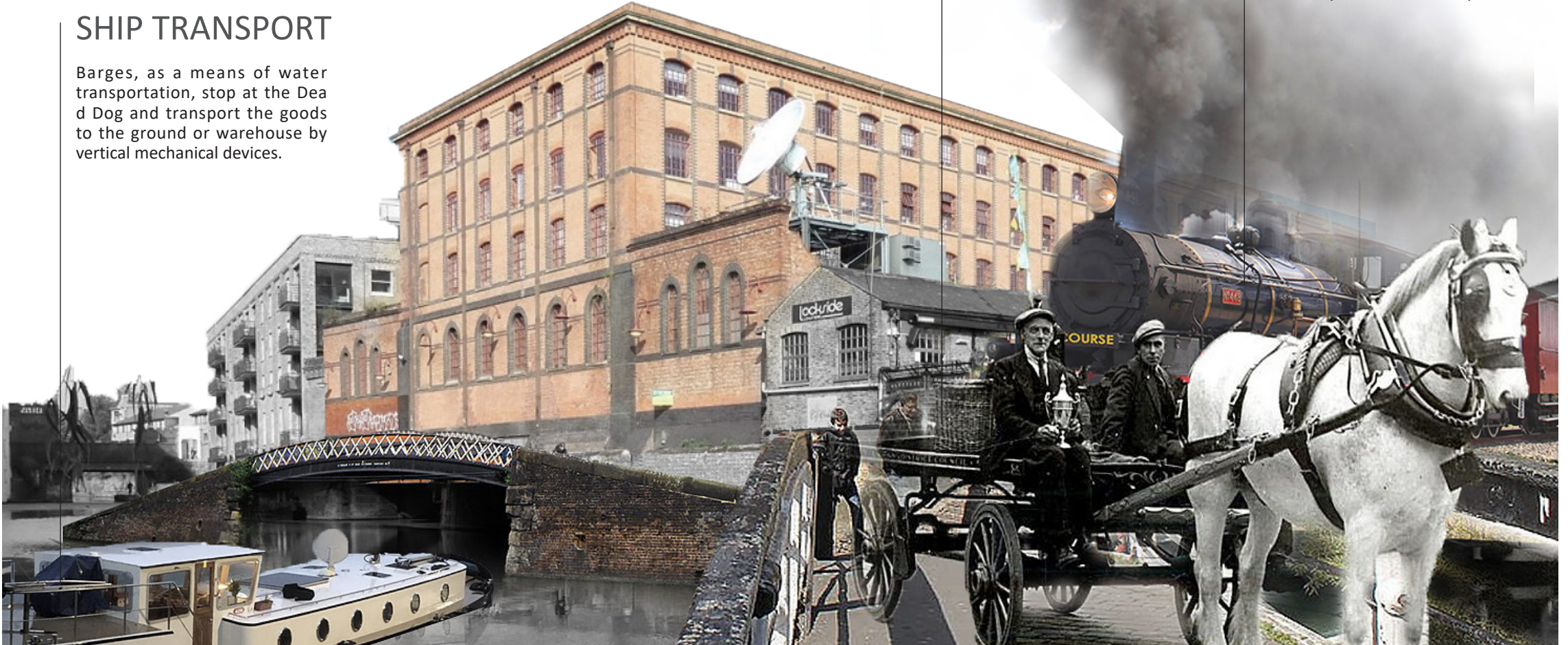
Barges, as a means of water transportation, stop at the Dead Dog and transport the goods to the ground or warehouse by vertical mechanical devices.

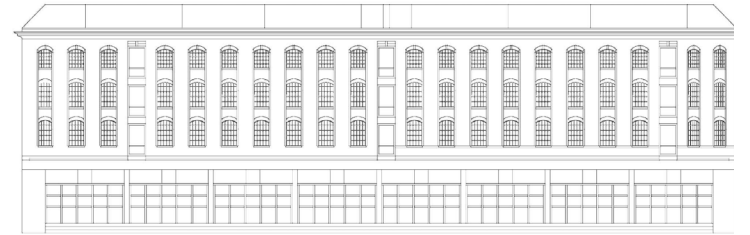
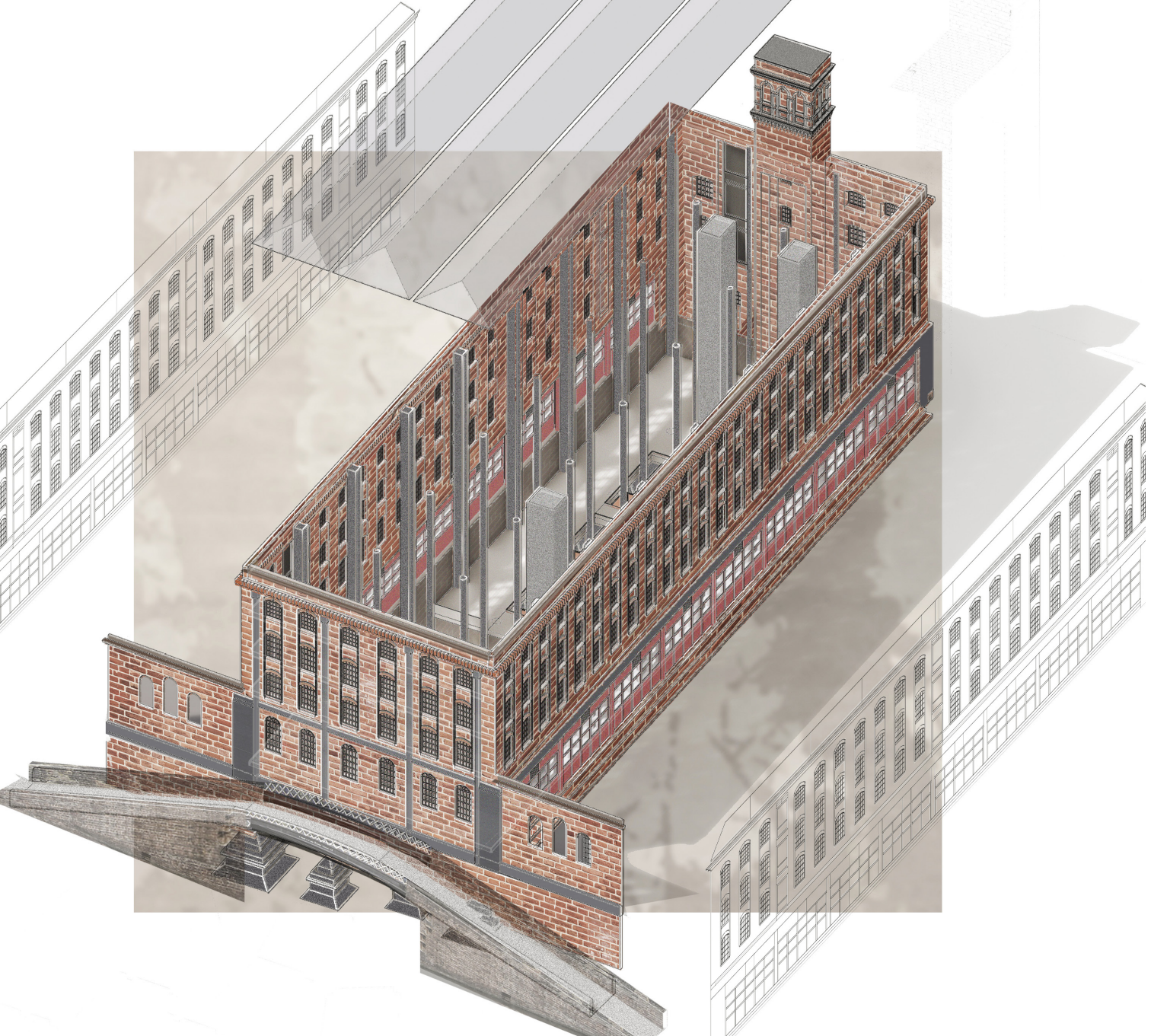
## LAND TRANSPORT

The ground transportation uses the carriage as the transportation tool.

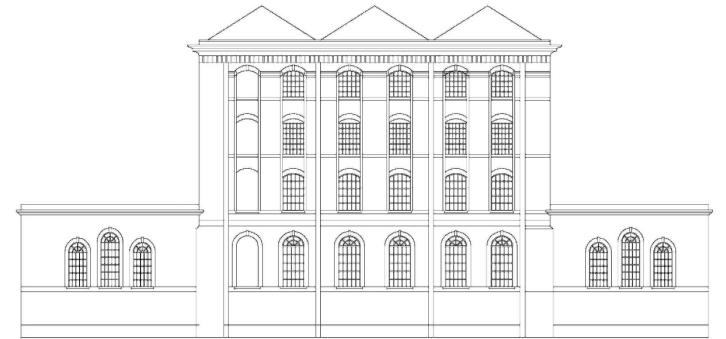
## TRAIN TRANSPORT

The train has special track and waiting hall in the building, which improves the transportation efficiency.

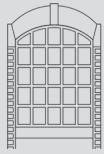




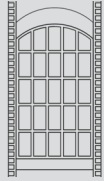
East Facade 1:1000



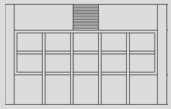
East Facade 1:1000



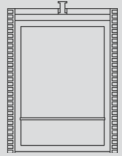
Cast Iron Window (Short)



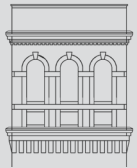
Cast Iron Window (Long)



Cast Iron Door



Cage

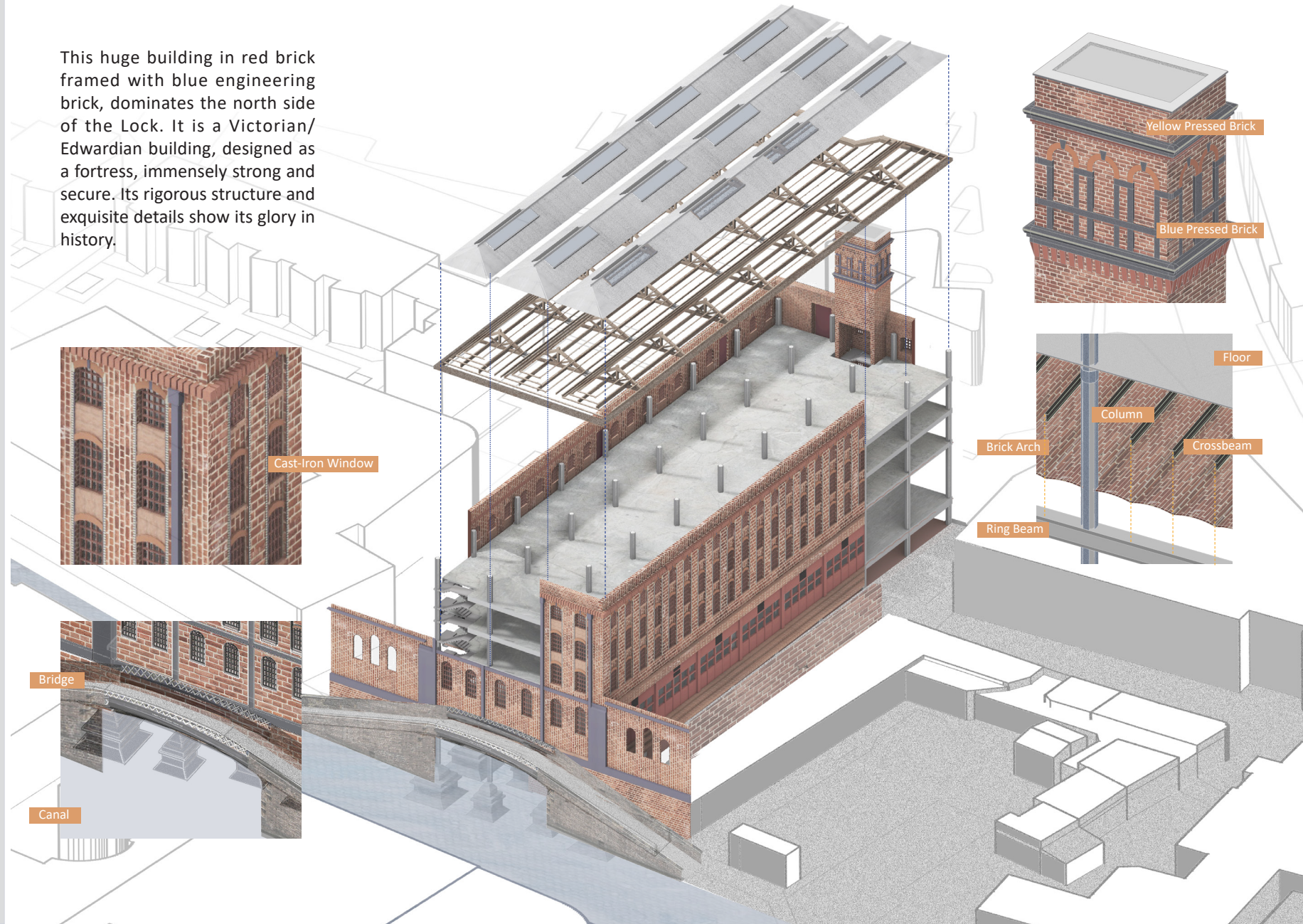


Water Tank Tower



Shed Entrance

This huge building in red brick framed with blue engineering brick, dominates the north side of the Lock. It is a Victorian/Edwardian building, designed as a fortress, immensely strong and secure. Its rigorous structure and exquisite details show its glory in history.

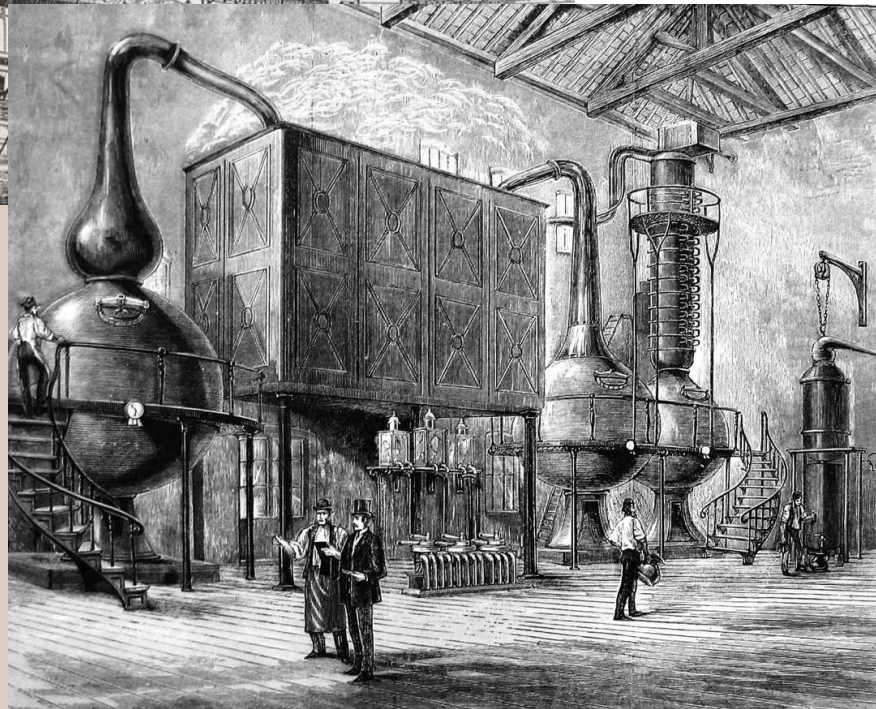
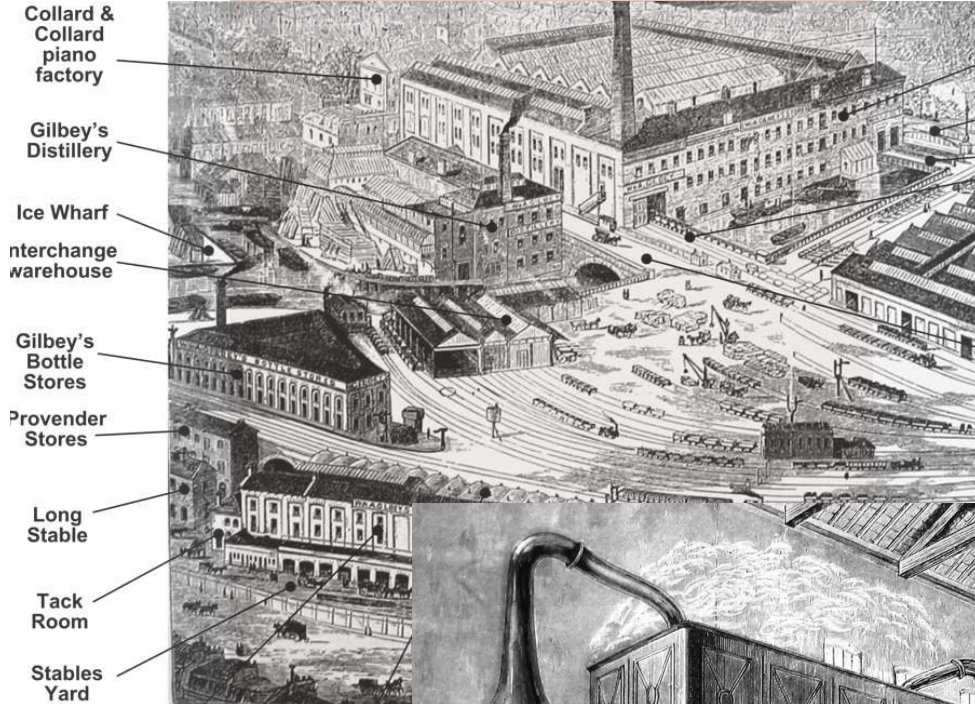




# GIN

- Long History Of Making Gin
- Negative Social Evaluation
  - How To Make Gin?

# Long History Of Making Gin



26 H&H Series, Thursday September 11, 2014

## SNAPSHOT OF THE WEEK

### Mark brings back gin making to Camden Town

It started with his daughter's trip down Camden Lock with her school geography class. Yet, gin-maker Mark Holdsworth's journey took him in a very different direction - one which led him back to 1869 and Camden's boom in gin distilling. On Monday he launched his new 'HalfHitch' gin, named after the mooring knot that tethered barges along the canal. Having been intrigued by the lucrative gin trade spearheaded by companies such as Gilbey's - which used a number of well-known buildings along the canal for distilling - Mr Holdsworth revived the process in one of the vaults of the old gin warehouses. Having worked in the spirits industry for 15 years, Mr Holdsworth was keen to bring hand-craft gin distilling back to its spiritual home. His HalfHitch gin will be available from his website [halfhitch.uk](http://halfhitch.uk) and bars in Camden.

■ Mark Holdsworth with his Half Hitch gin Picture: Polly Hancock



Camden Town has a deep relationship with gin. As early as 1871, Gilbeys established a gin factory on the oval Road, which had a brilliant history. After the suppression of the government, the development of gin fell into a downturn. It was not until 2014 that mark Holdsworth established his own gin brand:half hatch, in Camden Lock that Camden gin was once again brought into the public view.

# Gin Craze - Negative Social Evaluation

An Act for Granting to His Majesty ~  
an Additional Duty upon Spirituous Liquors and ~  
upon Licences for retailing the Same And for ~ ~  
repealing the Act of the twentieth year of his present  
Majestys Reign Intituled An Act for Granting a duty  
to His Majesty to be paid by Distillers upon Licences.  
and for the more effectually restraining the retailing  
of distilled Spirituous Liquors And for allowing a  
Drawback upon the Exportation of British made  
Spirits And that the Parish of Saint Mary Le Bon  
in the County of Middlesex shall be under the inspection  
of the Head Office of Excise.

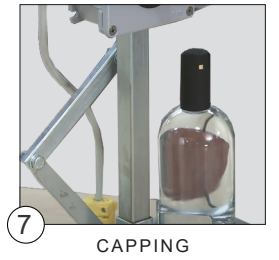
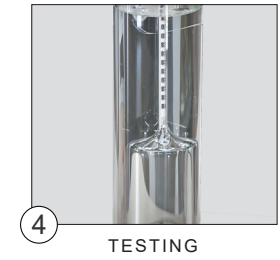
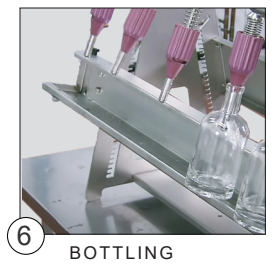
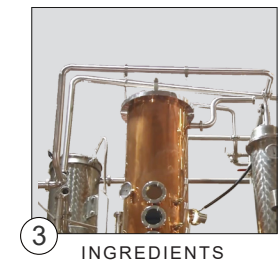
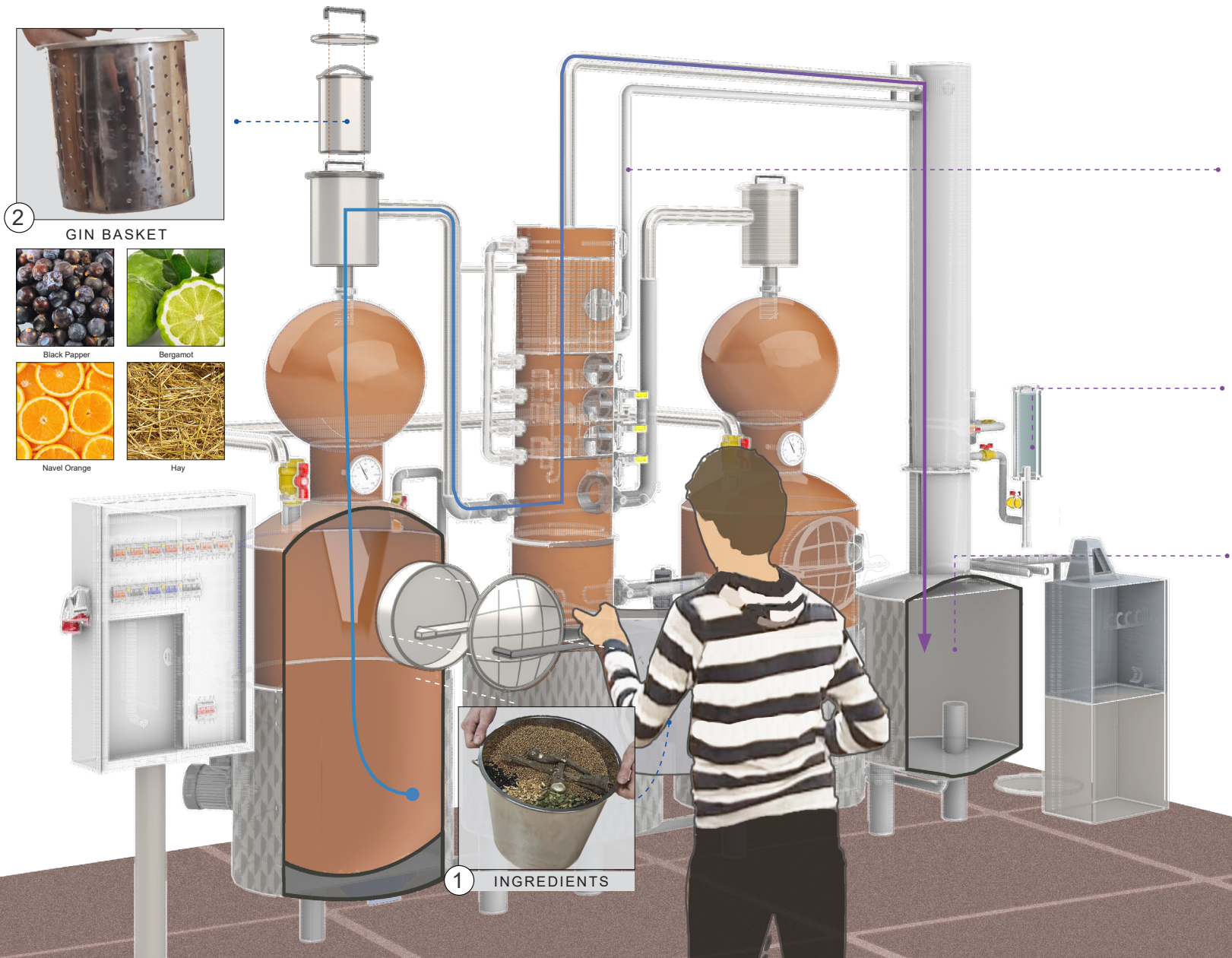
70. Anno 27<sup>th</sup> Geor<sup>gii</sup> 2.

There was a period of gin craze in London before the 18th century. The British painter William Hogarth published the print *Gin Lane* in 1751 to express his concern about the excessive drinking in society, which led to the negative evaluation of gin in society to a certain extent.

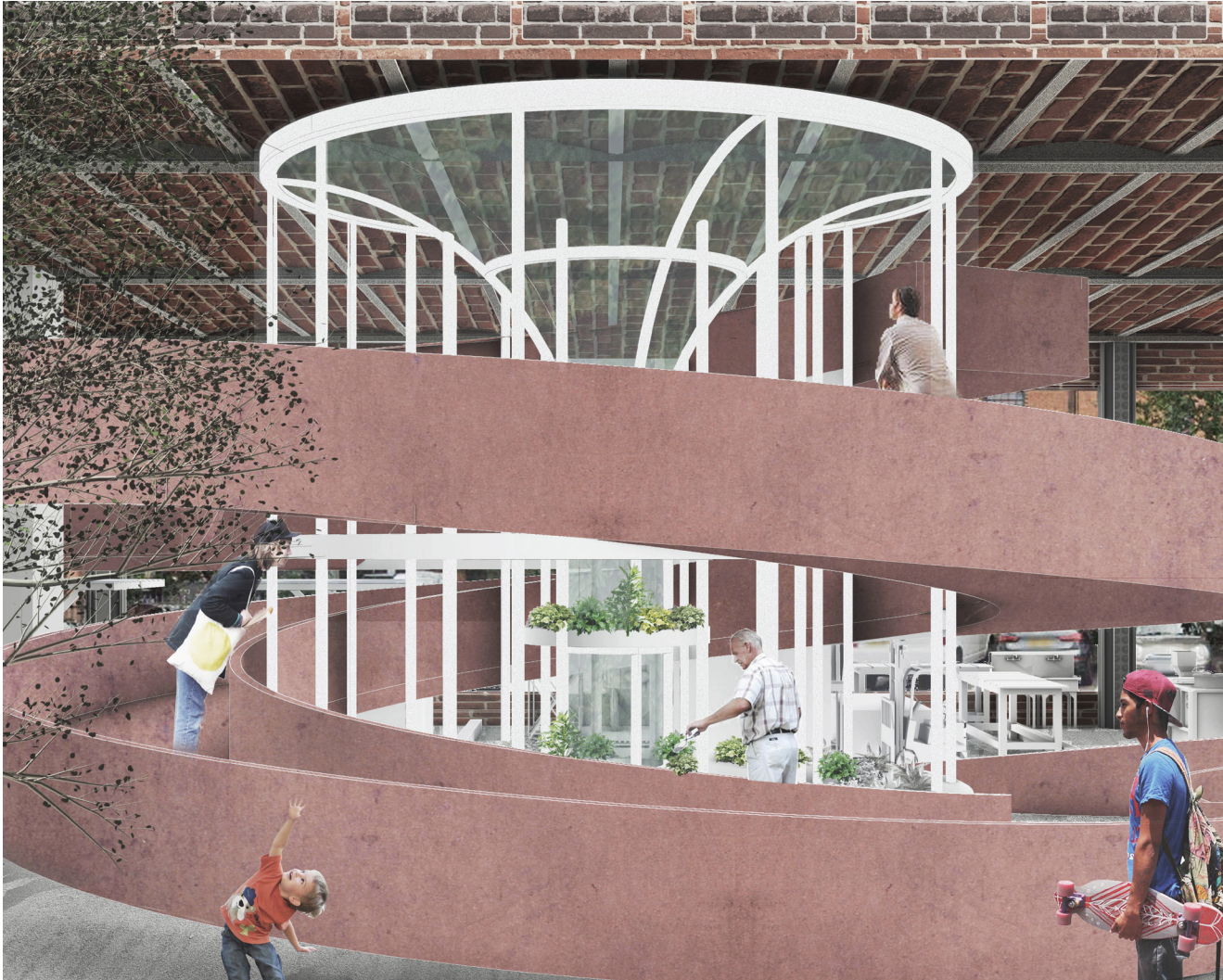




# How To Make Gin



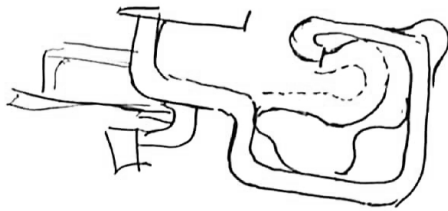
The process of making gin is very interesting. After heating, the mixed liquid of pre alcohol will form steam, move up and down in the pipe, and at the same time, it will contain the taste of plants in gin basket, and finally condense into a unique flavor gin.



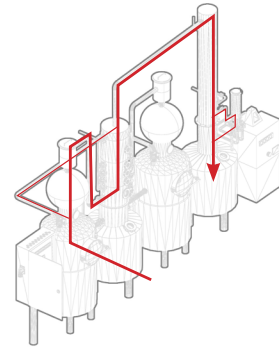
# Design Proposal

- Form development
  - Plan Design
  - Cross Section
- Axonometric analysis
  - Space analysis

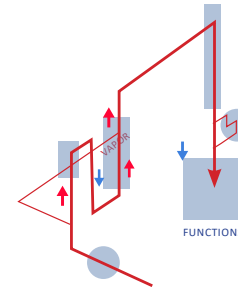
# Form Development



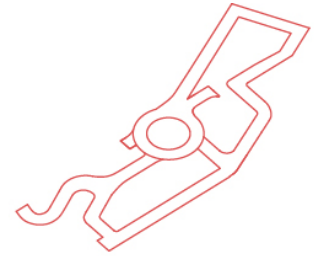
I was inspired by the way steam moves in the pipeline. I want to build a circular ramp, which regards people as alcohol steam and the ramp as pipeline. With the change of height, people will experience different spaces and finally get an impressive memory when they leave.



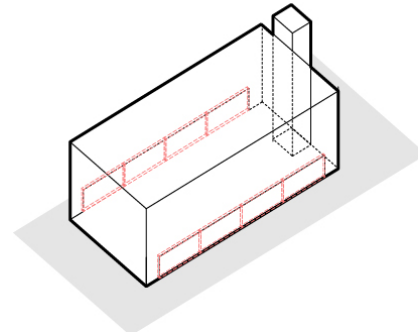
INSPIRATION



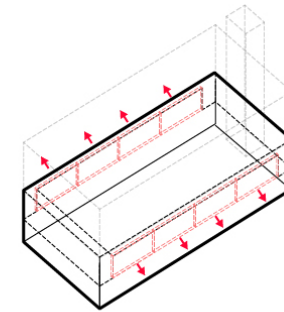
ELEMENTS



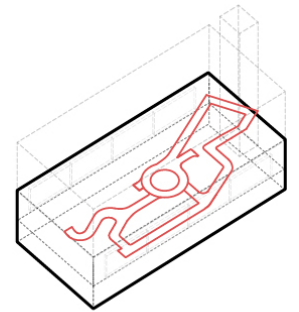
PLAN SKETCH



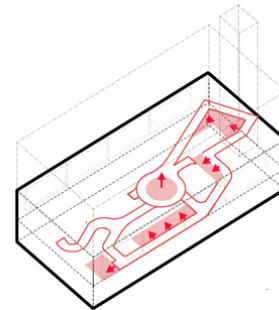
ORIGINAL SITE



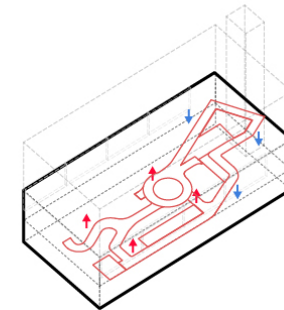
DESIGN SCOPE



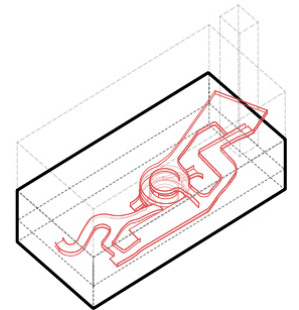
PLAN TEST



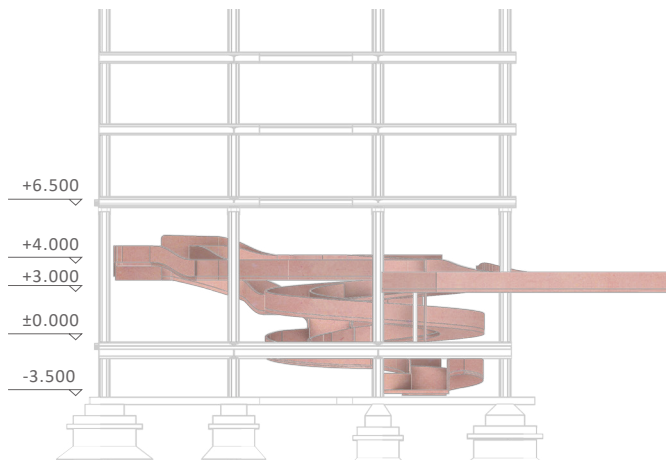
ADD PLATFORM



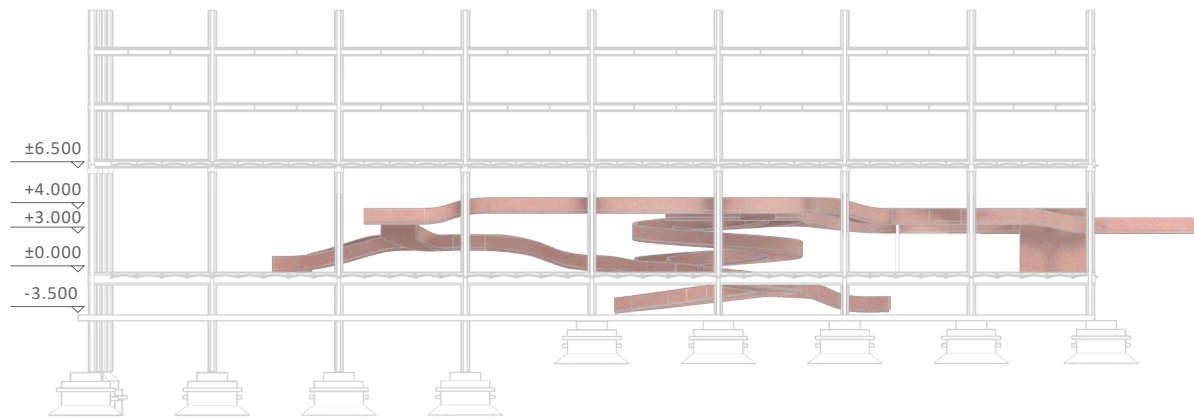
ALTITUDE CHANGE



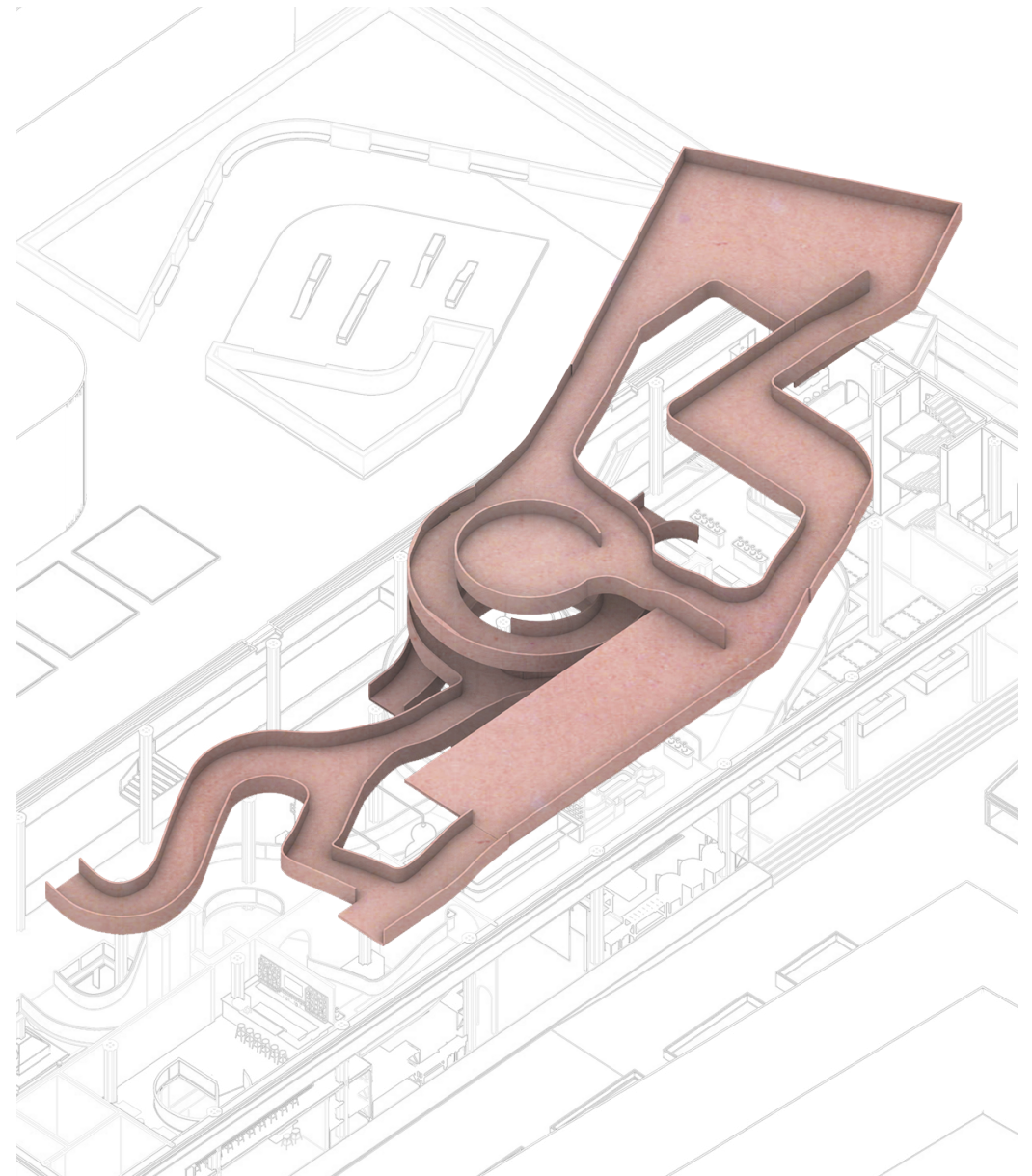
HANDRAIL

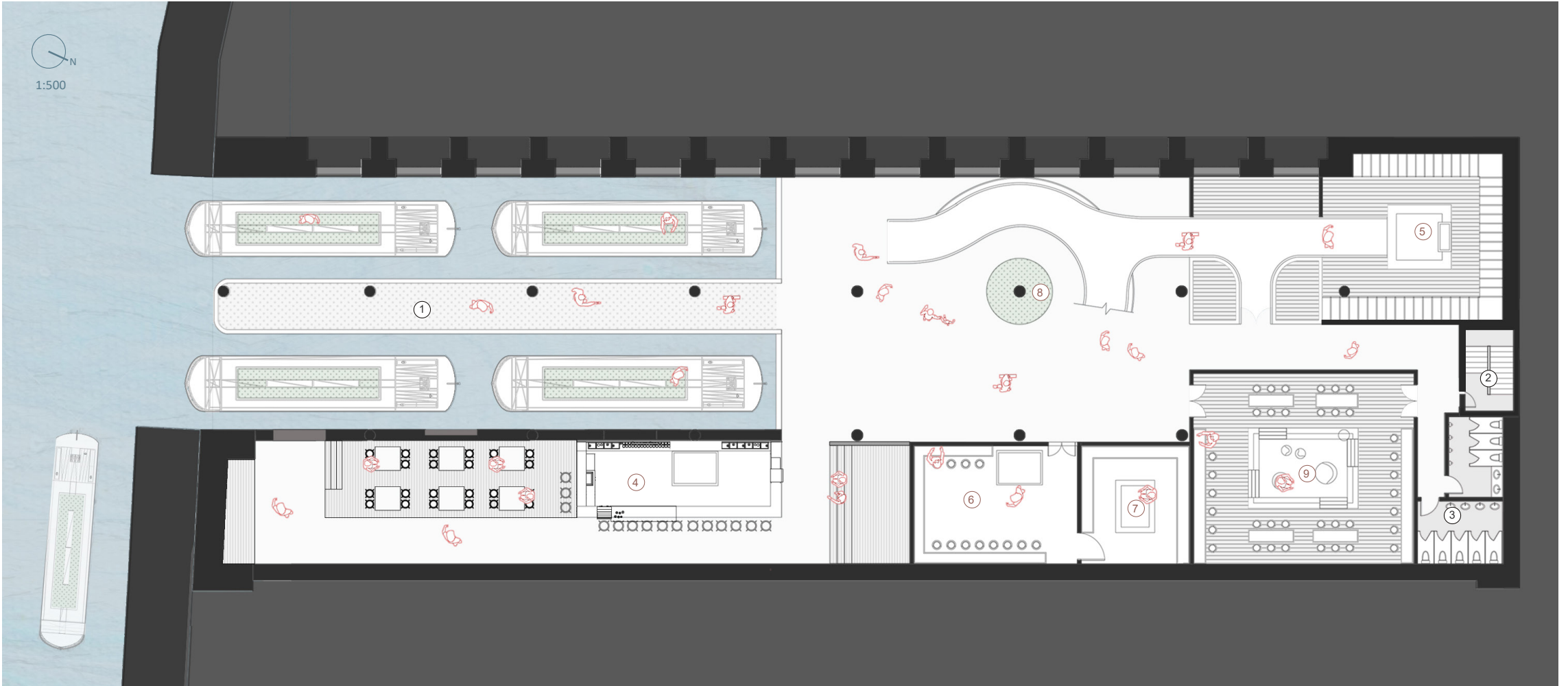


Cross Section 1:500



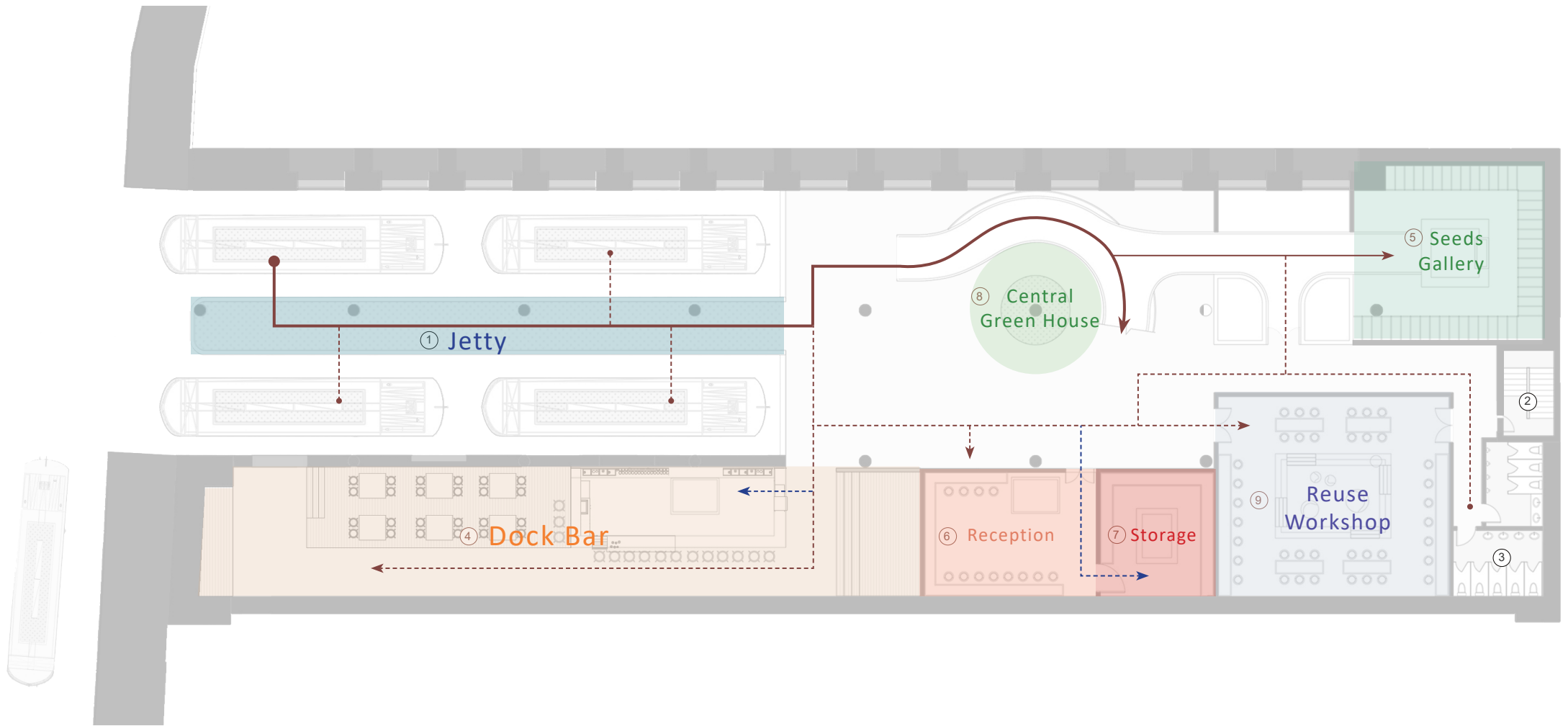
Longitudinal Section 1:500





- ① Jetty
- ② Staircase
- ③ Toilet
- ④ Dock Bar
- ⑤ Seed Gallery
- ⑥ Reception
- ⑦ Storage
- ⑧ Central Green House
- ⑨ Reuse Workshop

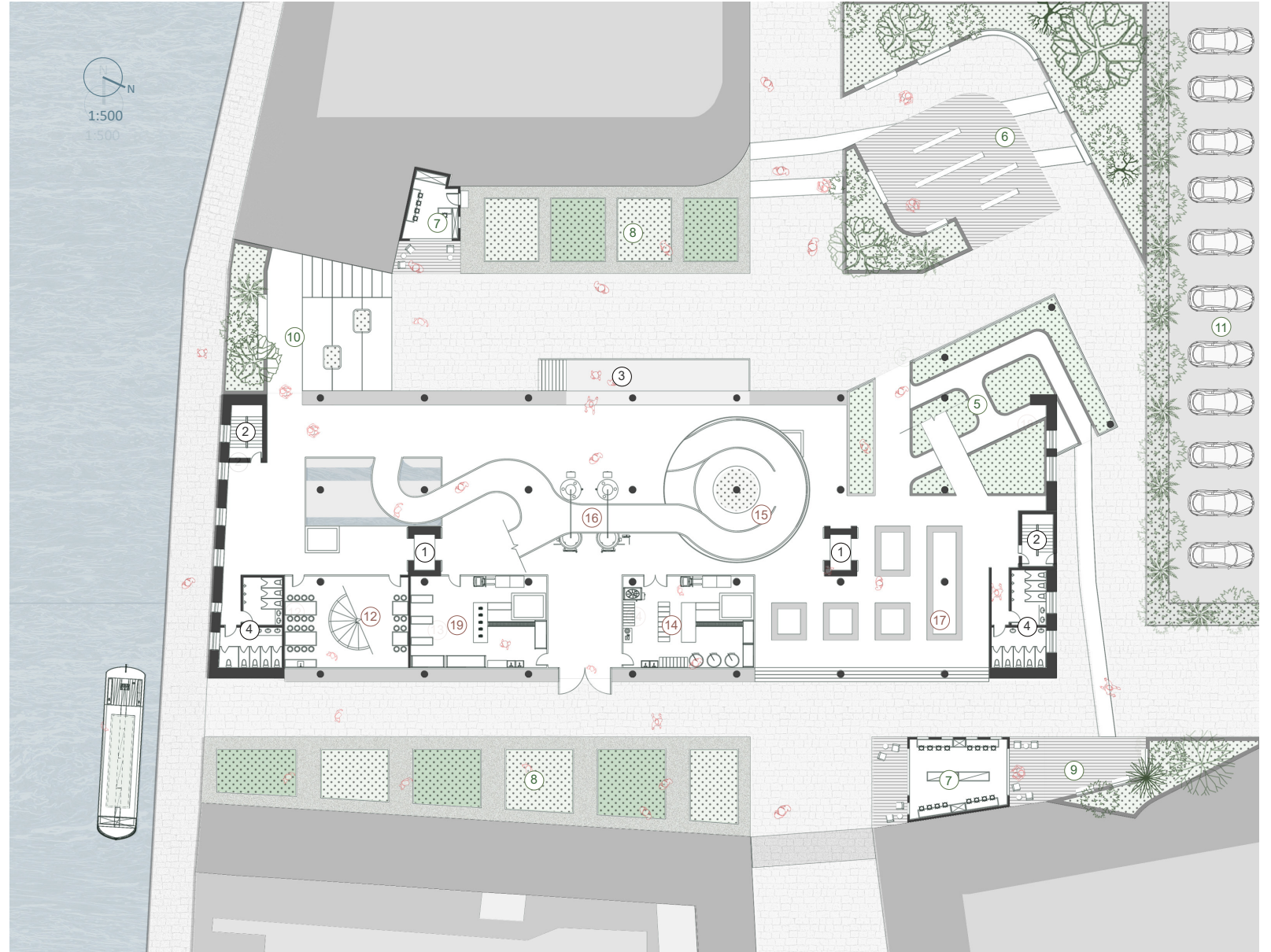
BASEMENT



- ① Jetty
- ② Staircase
- ③ Toilet
- ④ Dock Bar
- ⑤ Seed Gallery
- ⑥ Reception
- ⑦ Storage
- ⑧ Central Green House
- ⑨ Reuse Workshop
- Main Tourist Route
- - - - - Secondary Tourist Route
- - - - - Staff Route

BASEMENT

# Ground Floor



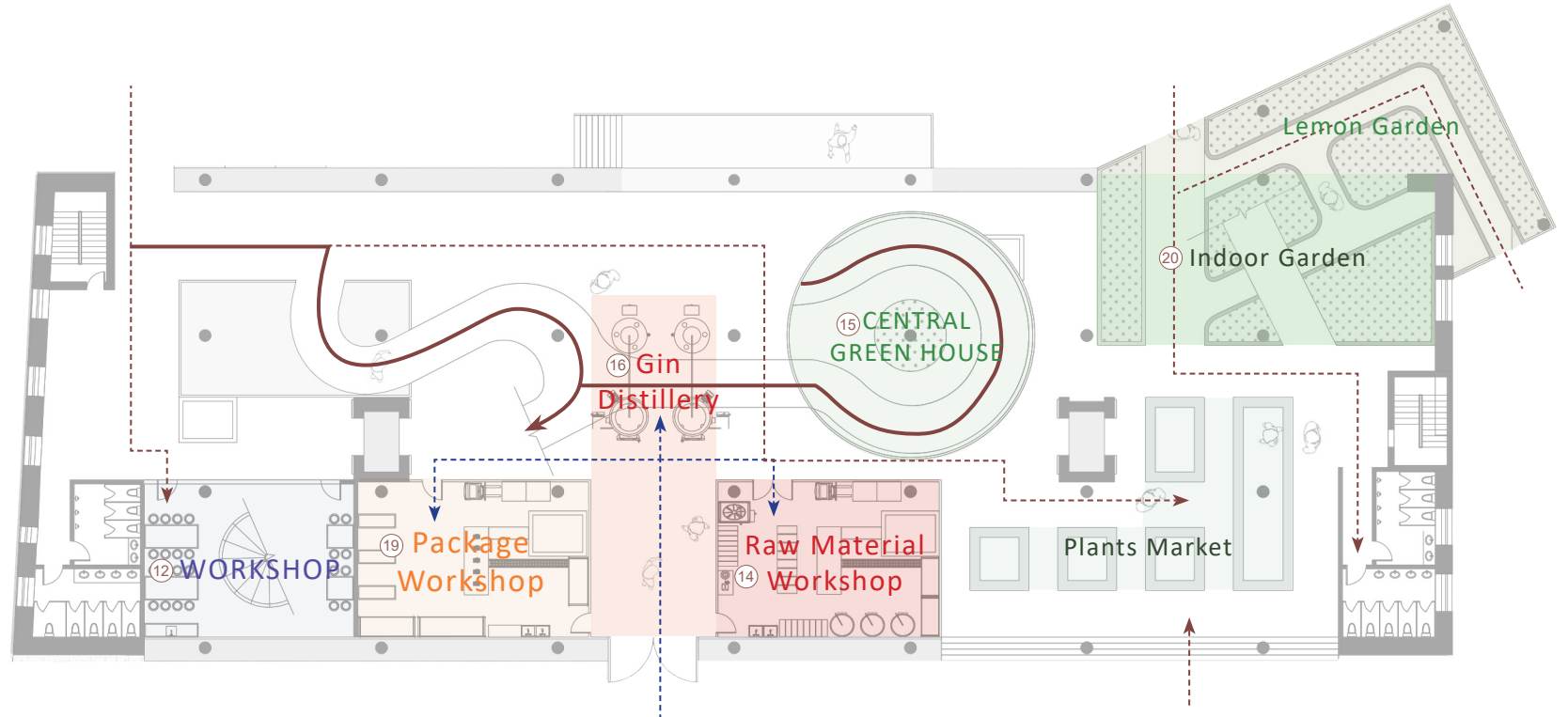
- ① Elevator
- ② Staircase
- ③ Original Entrance Stair
- ④ Toilet
- ⑤ Lemon Garden
- ⑥ Outdoor Garden
- ⑦ Allotment Tool Room
- ⑧ Allotment Area
- ⑨ Rest Platform
- ⑩ Staircase Park
- ⑪ Car Park
- ⑫ Workshop
- ⑬ Mezzanine Bar
- ⑭ Raw Material Workshop
- ⑮ Central Green House
- ⑯ Gin Distillery
- ⑰ Plants Market
- ⑱ Corner Bar
- ⑲ Package Workshop

# Ground Floor



1:300

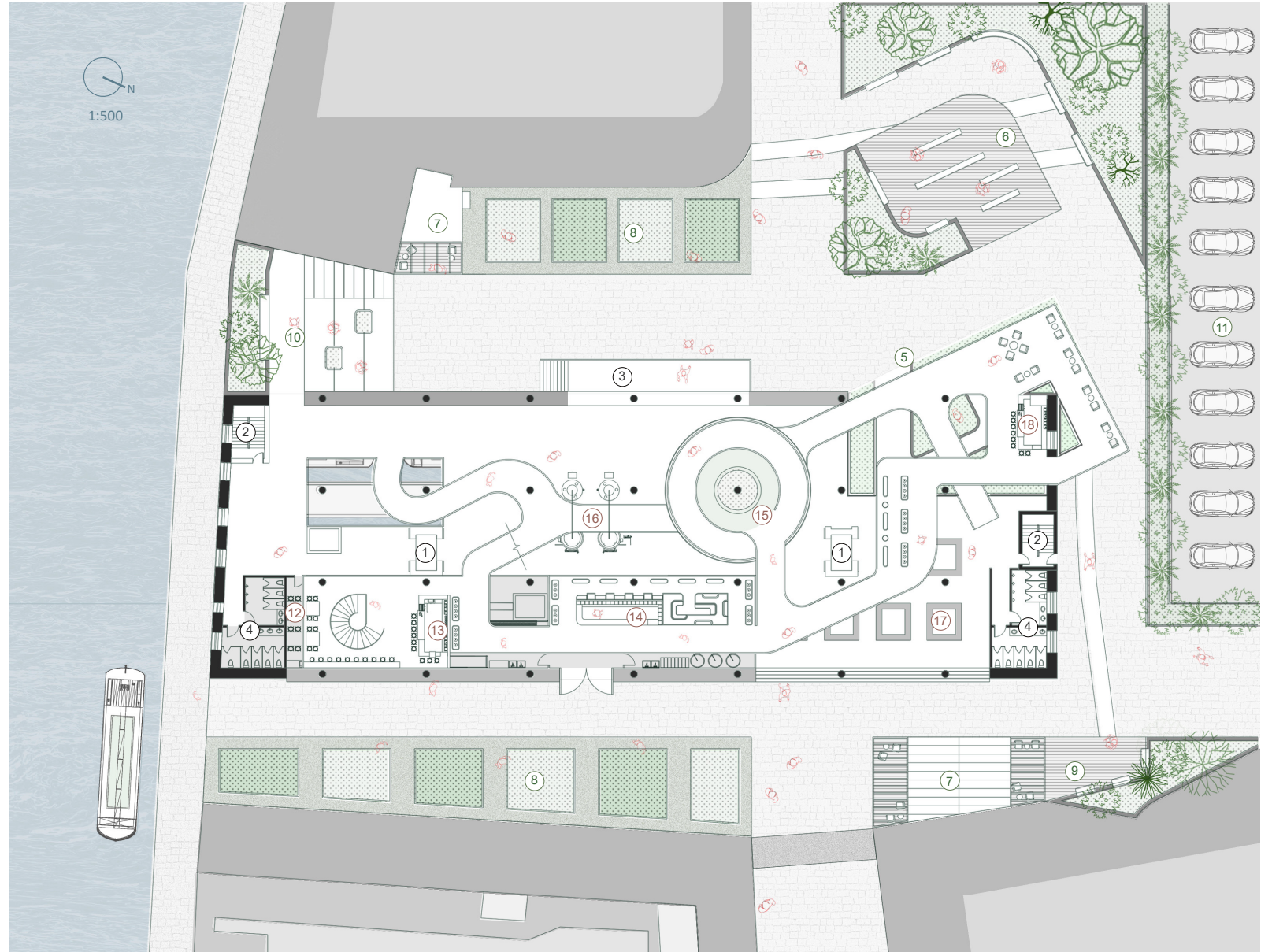
- ① Elevator
- ② Staircase
- ③ Original Entrance Stair
- ④ Toilet
  
- ⑤ Lemon Garden
- ⑥ Outdoor Garden
- ⑦ Allotment Tool Room
- ⑧ Allotment Area
- ⑨ Rest Platform
- ⑩ Staircase Park
- ⑪ Car Park
  
- ⑫ Workshop
- ⑬ Mezzanine Bar
- ⑭ Raw Material Workshop
- ⑮ Central Green House
- ⑯ Gin Distillery
- ⑰ Plants Market
- ⑱ Corner Bar
- ⑲ Package Workshop
- ⑳ Indoor Garden
- ㉑ lemon Garden



- Main Tourist Route
- Secondary Tourist Route
- Staff Route



# Mezzanine Floor

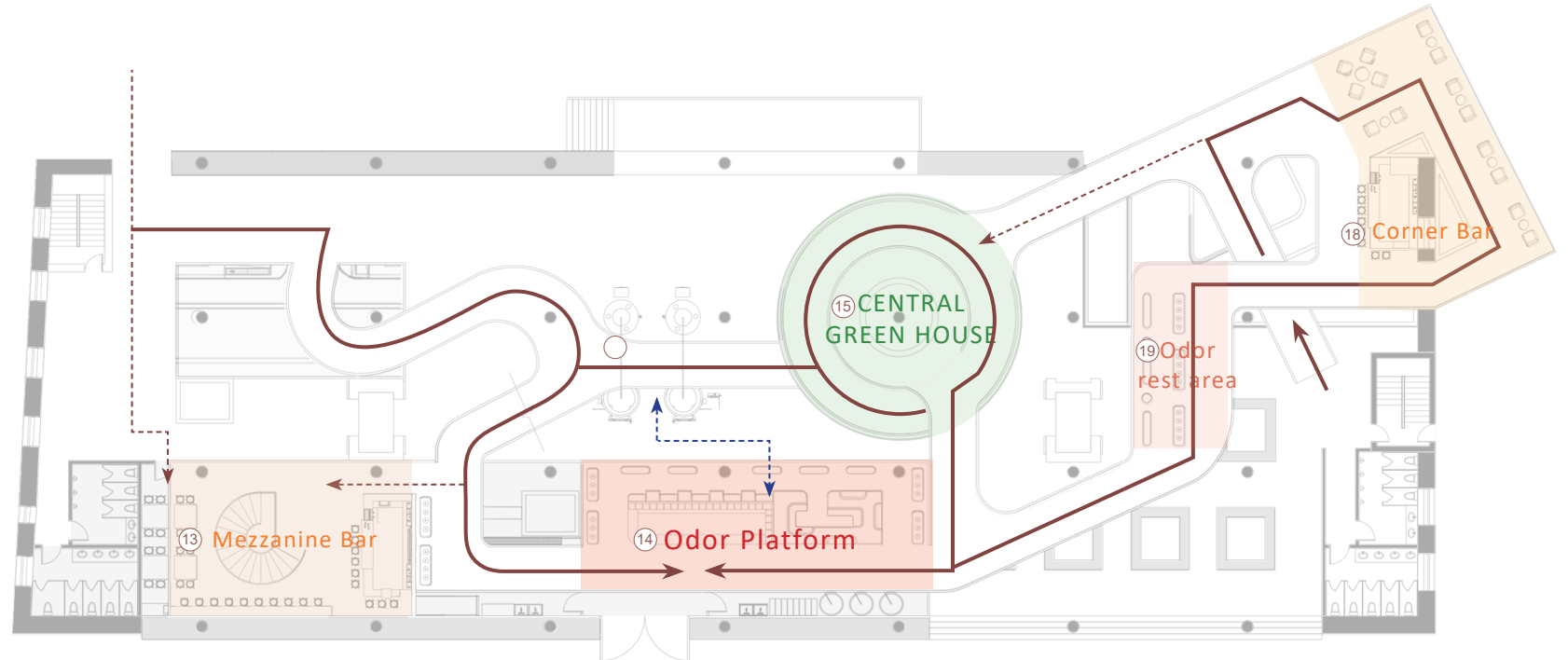


- ① Elevator
- ② Staircase
- ③ Original Entrance Stair
- ④ Toilet
- ⑤ Lemon Garden
- ⑥ Outdoor Garden
- ⑦ Allotment Tool Room
- ⑧ Allotment Area
- ⑨ Rest Platform
- ⑩ Staircase Park
- ⑪ Car Park
- ⑫ Workshop
- ⑬ Mezzanine Bar
- ⑭ Odor Platform
- ⑮ Central Green House
- ⑯ Gin Distillery
- ⑰ Plants Market
- ⑱ Corner Bar

# Mezzanine Floor



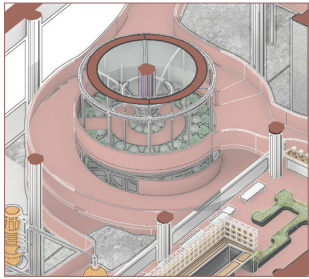
- ① Elevator
- ② Staircase
- ③ Original Entrance Stair
- ④ Toilet
- ⑤ Lemon Garden
- ⑥ Outdoor Garden
- ⑦ Allotment Tool Room
- ⑧ Allotment Area
- ⑨ Rest Platform
- ⑩ Staircase Park
- ⑪ Car Park
- ⑫ Workshop
- ⑬ Mezzanine Bar
- ⑭ Odor Platform
- ⑮ Central Green House
- ⑯ Gin Distillery
- ⑰ Plants Market
- ⑱ Corner Bar
- ⑲ Odor rest area



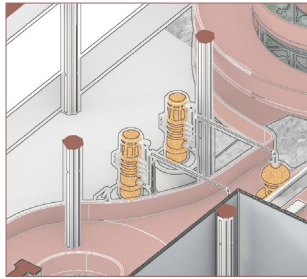
- ➔ Main Tourist Route
- - - ➔ Secondary Tourist Route
- - - ➔ Staff Route

Cross scetion

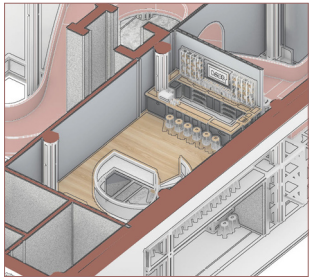




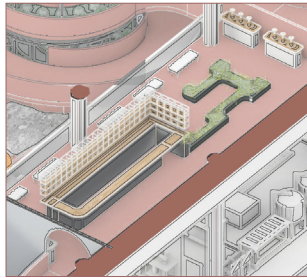
① CENTRAL GREEN HOUSE



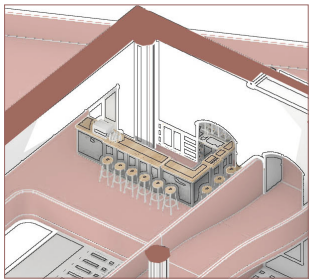
② GIN DISTILLERY



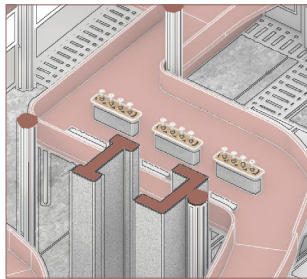
③ GROUND BAR



④ ODOUR PLATFORM

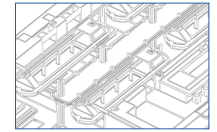
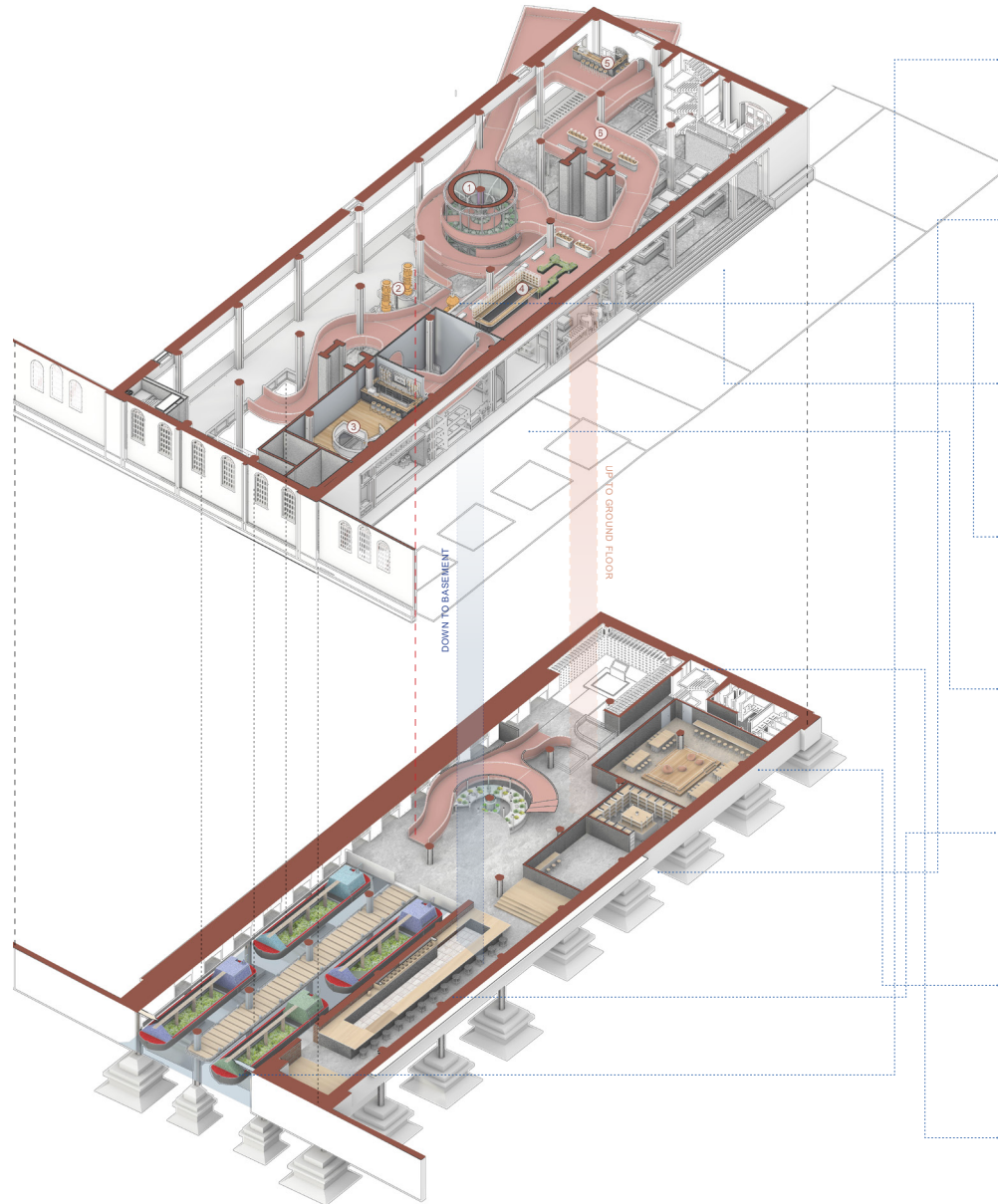


⑤ CORNER LEMON BAR

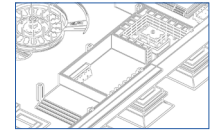


⑥ REST PLATFORM

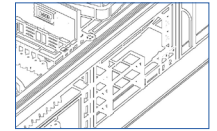
I designed two sets of activity experience schemes in the space. One is around the ramp, where visitors could have chance to learn the story between gin and plants, and the other shows the process of gin making.



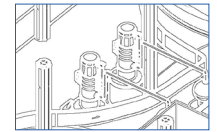
FLOATING GARDEN



RECEPTION / OFFICE



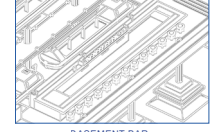
RAW MATERIAL WORKSHOP



DISTILLERY



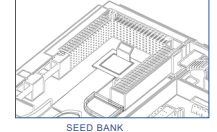
PACKAGE WORKSHOP



BASEMENT BAR



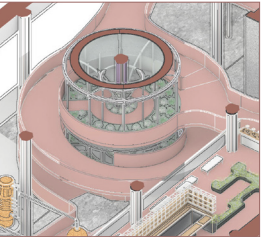
REUSE WORKSHOP



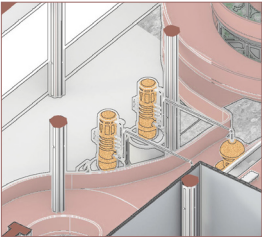
SEED BANK



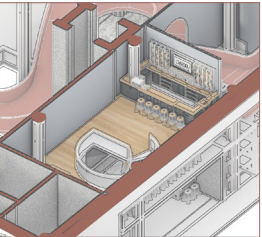
WHAT CAN WE DO ON THE RAMP?



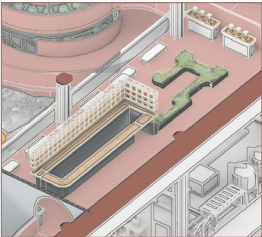
1 CENTRAL GREEN HOUSE



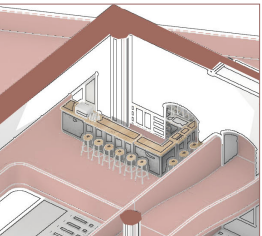
2 GIN DISTILLERY



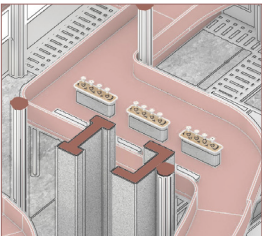
3 GROUND BAR



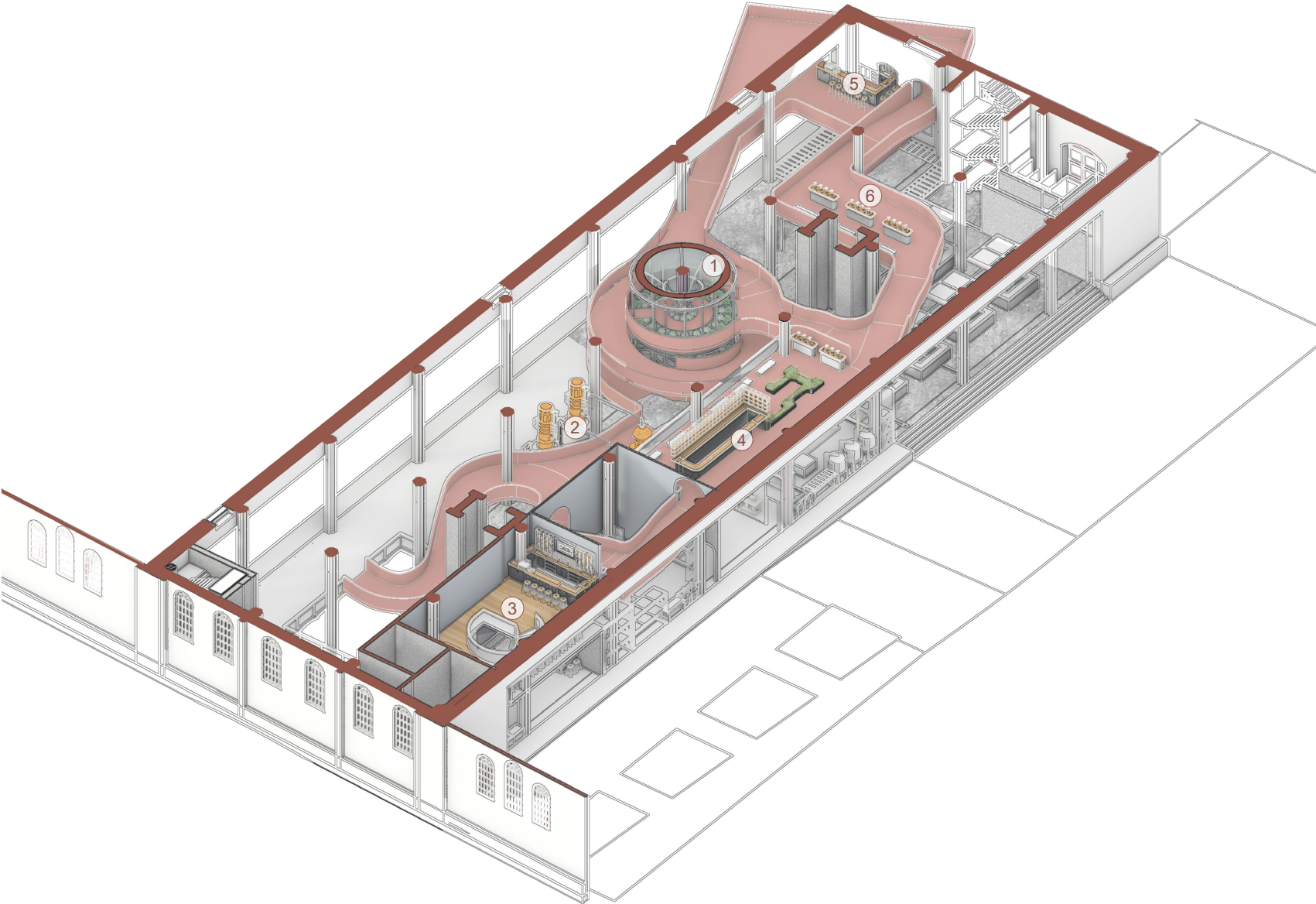
4 ODOUR PLATFORM



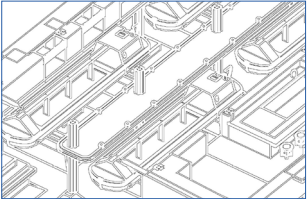
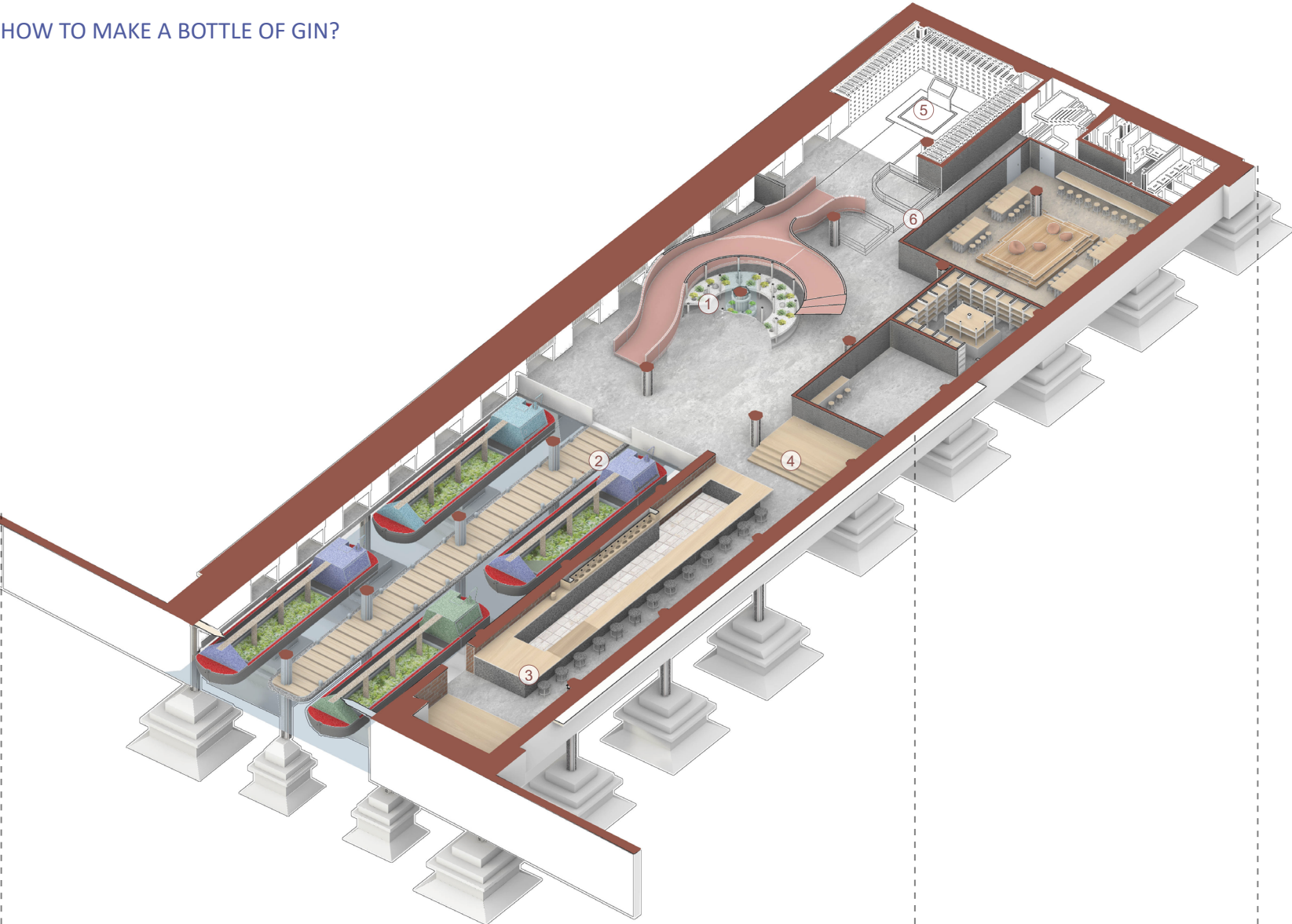
5 CORNER LEMON BAR



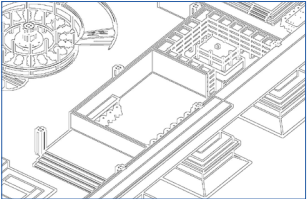
6 REST PLATFORM



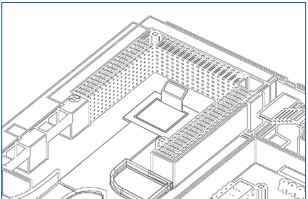
HOW TO MAKE A BOTTLE OF GIN?



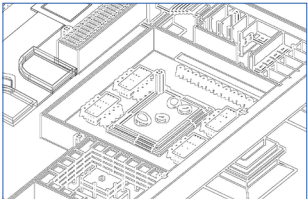
FLOATING GARDEN



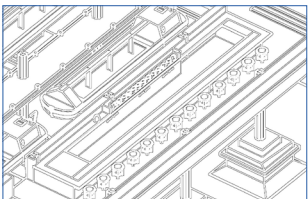
RECEPTION / OFFICE



SEED BANK

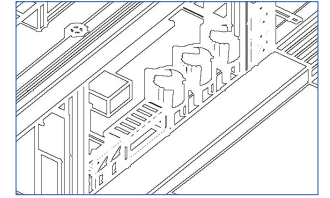
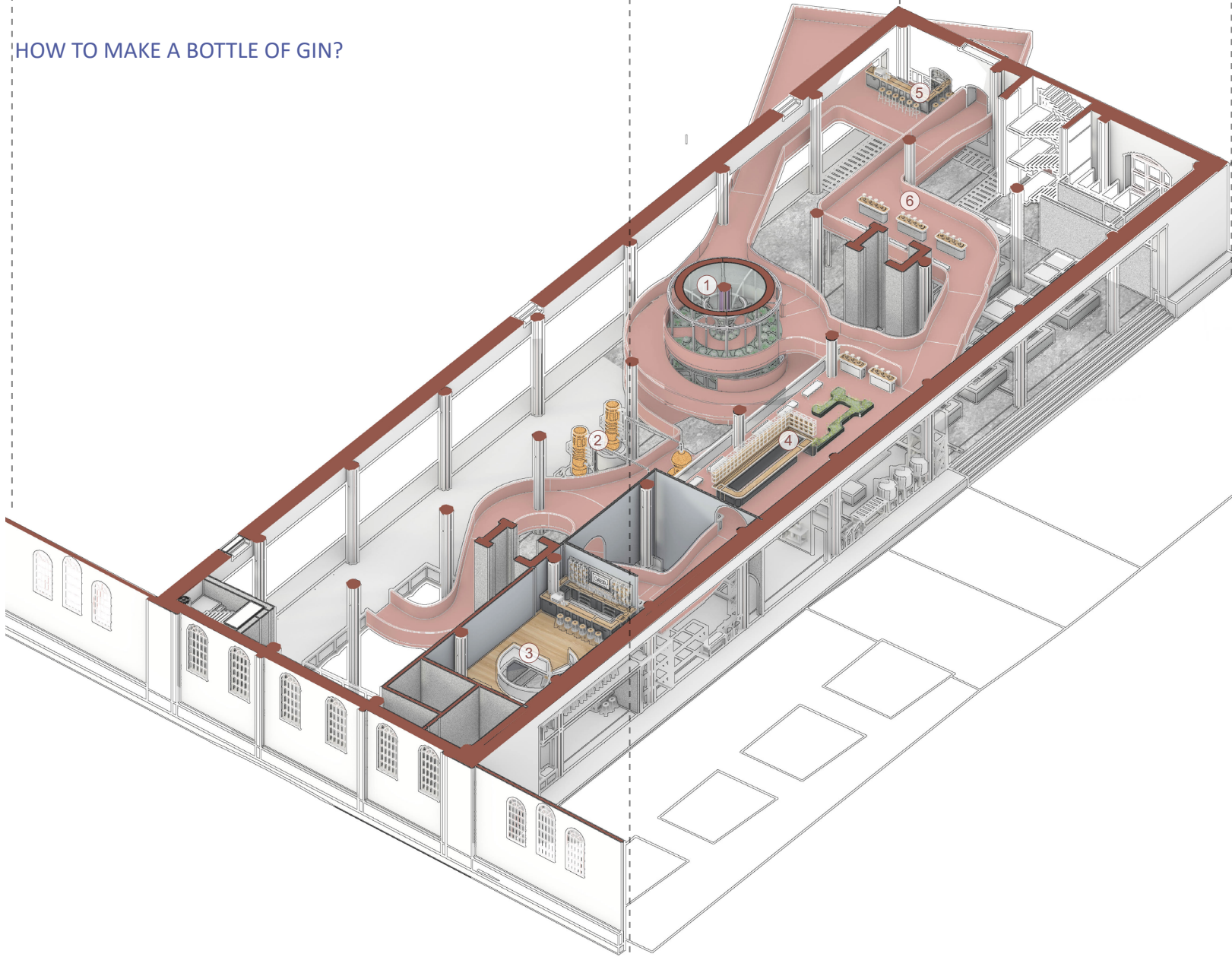


REUSE WORKSHOP

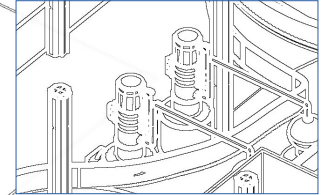


BASEMENT BAR

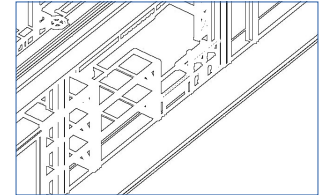
# HOW TO MAKE A BOTTLE OF GIN?



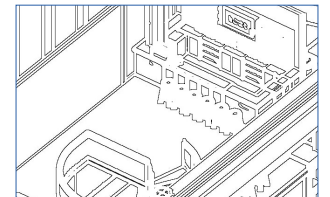
RAW MATERIAL WORKSHOP



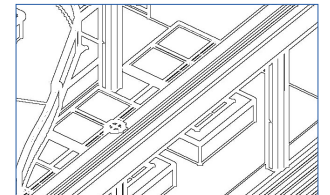
DISTILLERY



PACKAGE WORKSHOP

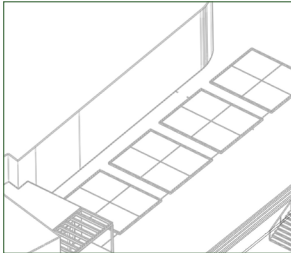
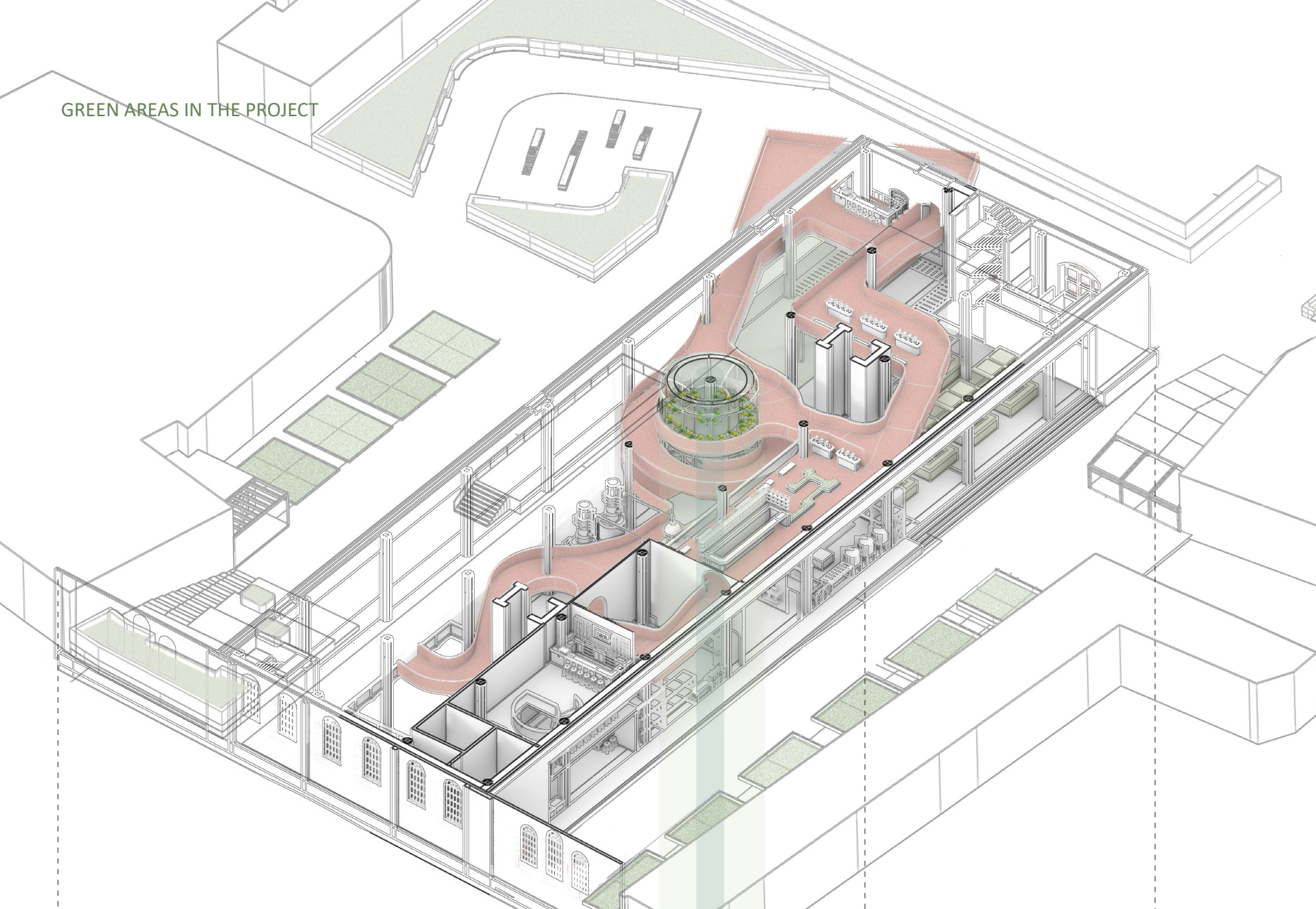


PACKAGE WORKSHOP

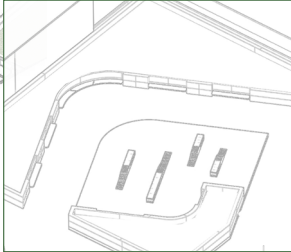


MARKET

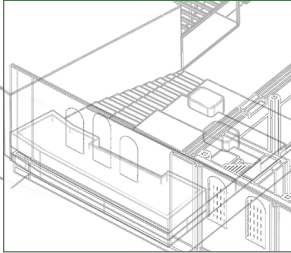
GREEN AREAS IN THE PROJECT



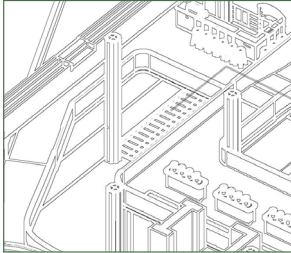
OUTDOOR ALLOTMENT



CORNER GARDEN



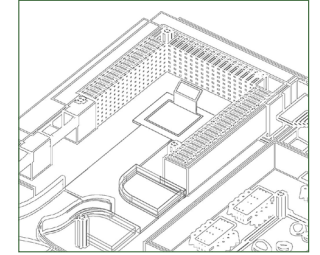
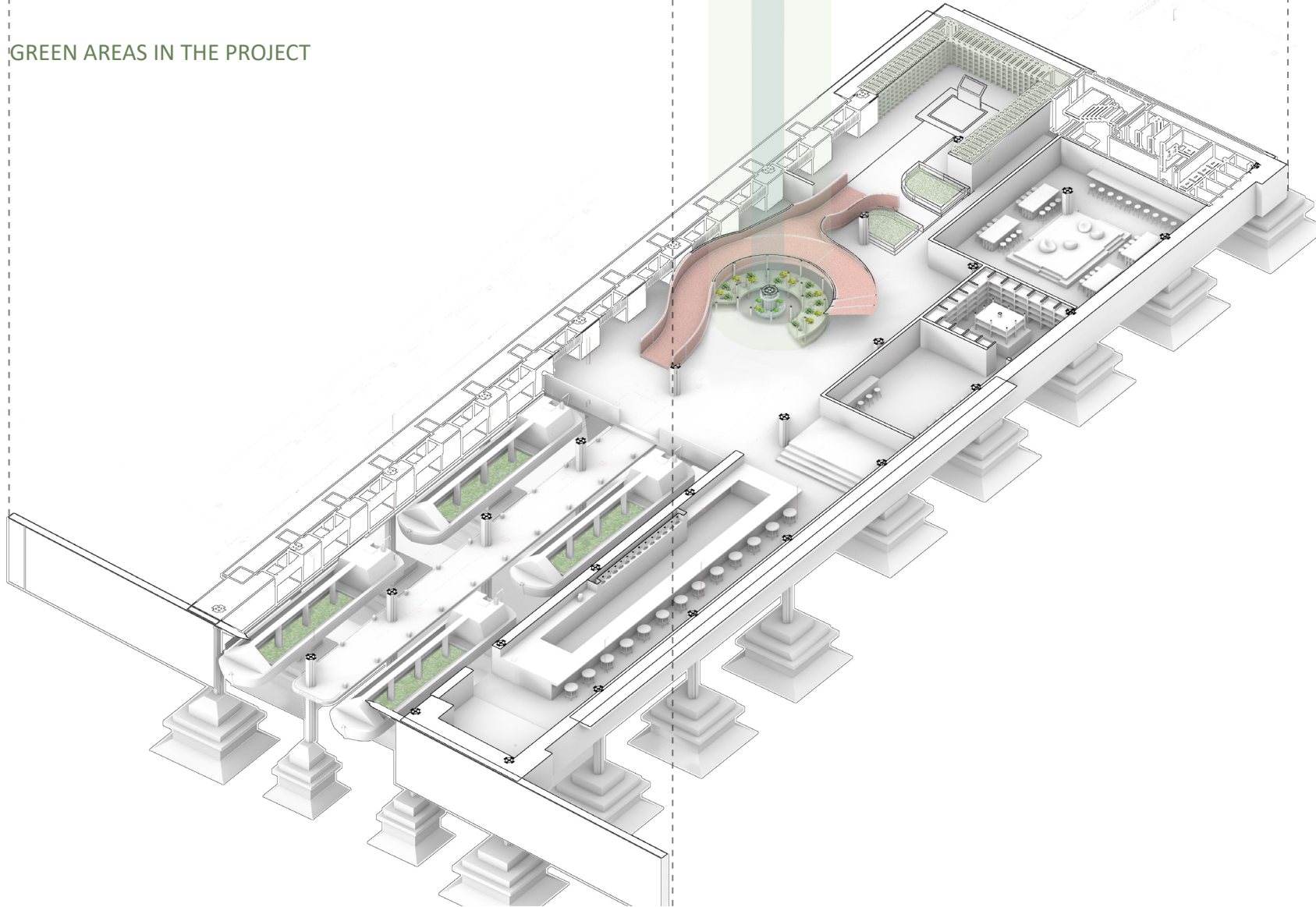
GREEN STAIRCASE



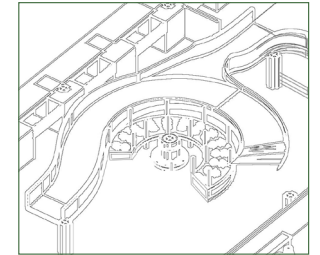
INTERIOR GARDEN



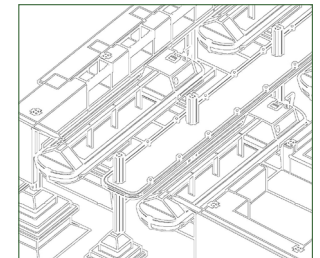
GREEN AREAS IN THE PROJECT



SEED BANK



CENTRAL GREEN HOUSE

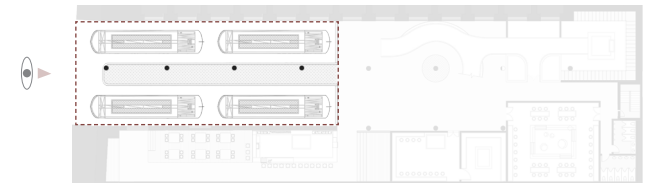


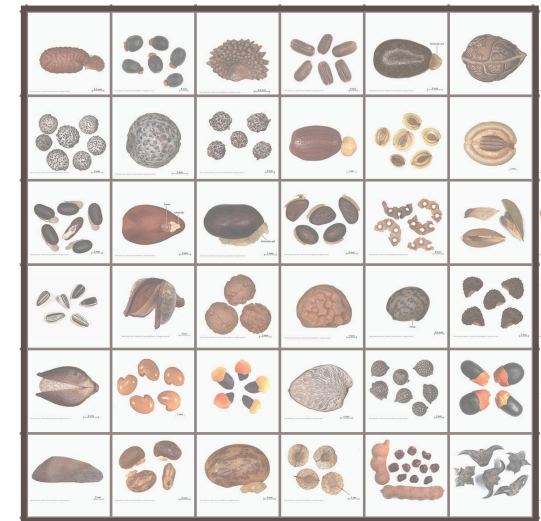
FOLATING GARDEN



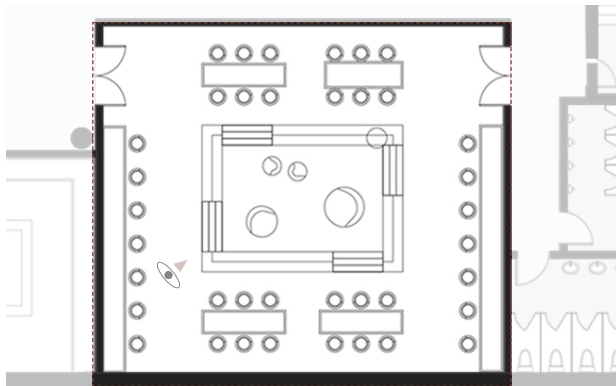
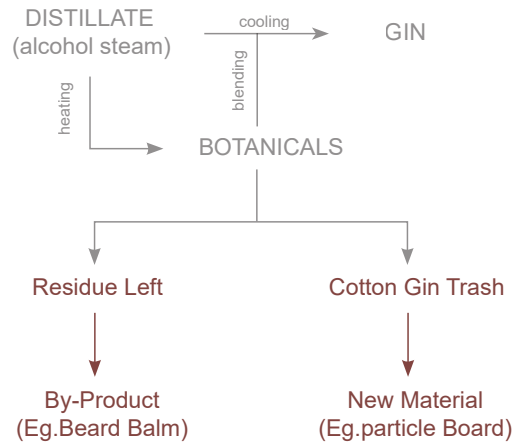
BASEMENT

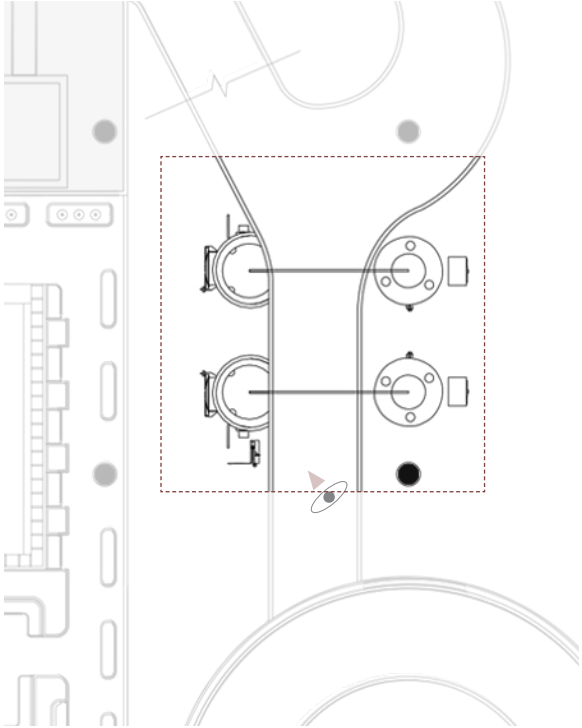
Jetty

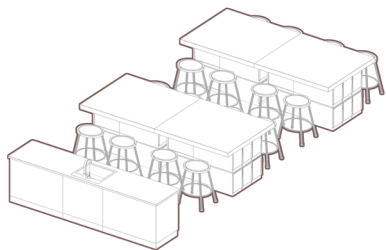




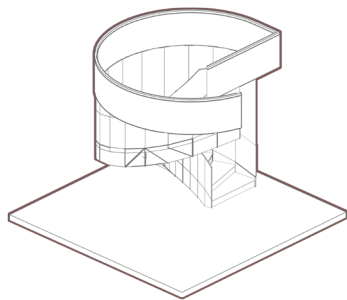
### Working System



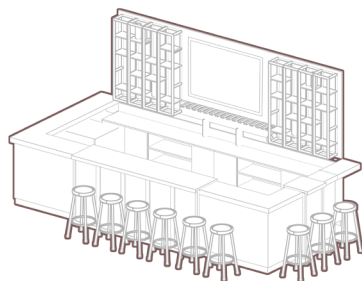




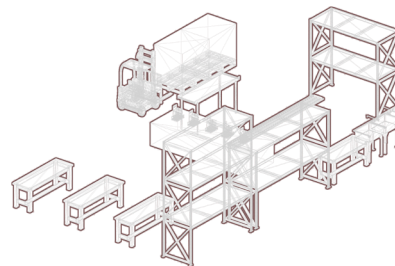
Work Area



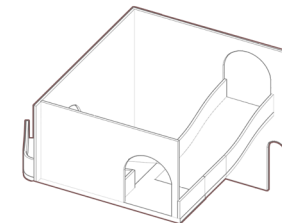
Spiral Staircase



Mezzanine bar

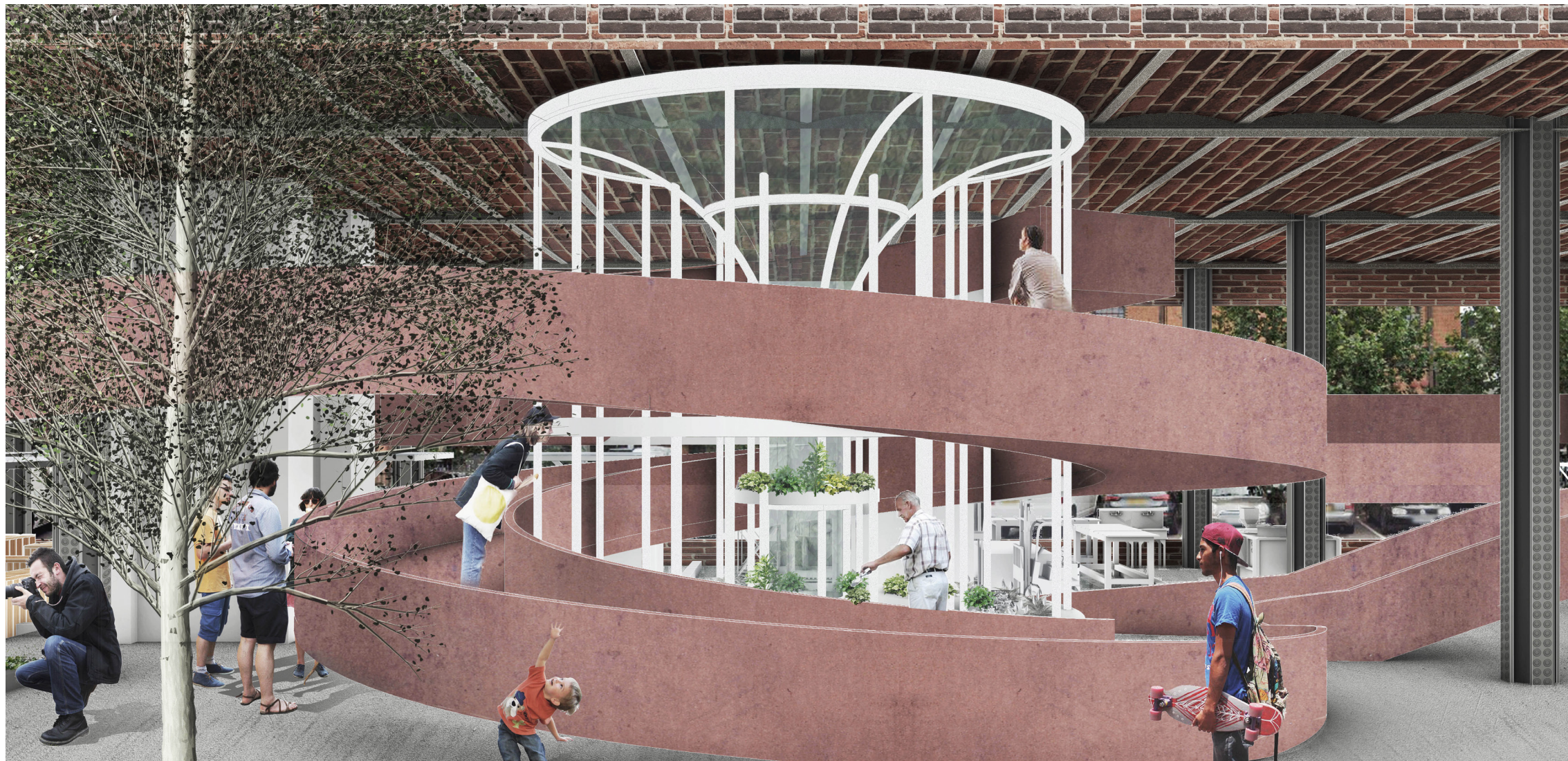


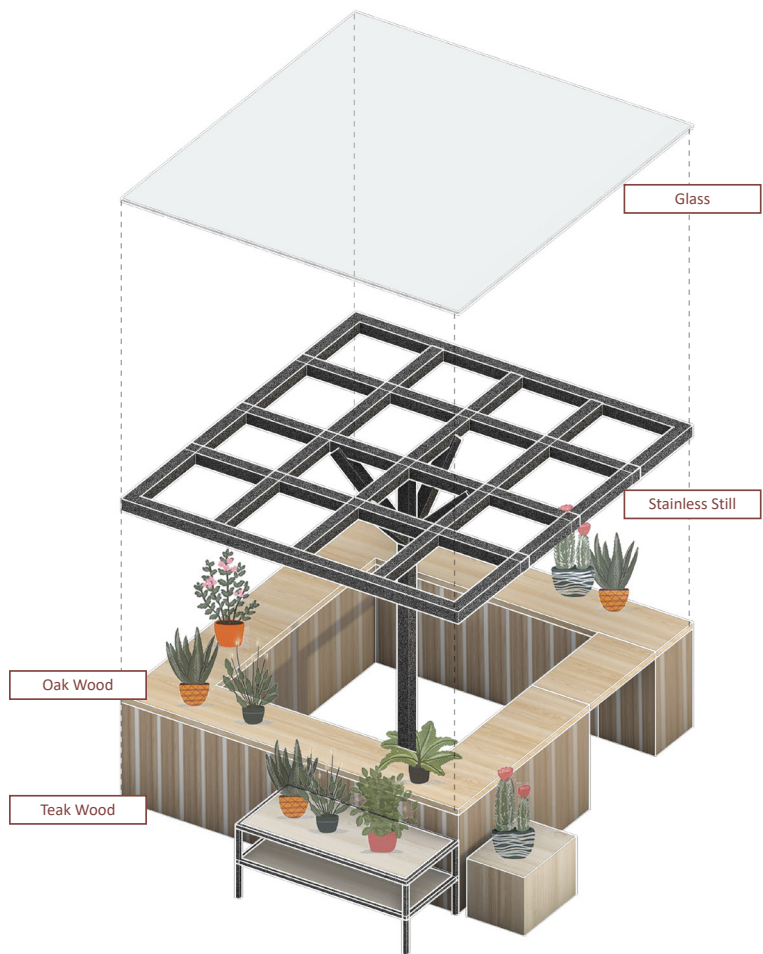
Package Room



Ramp





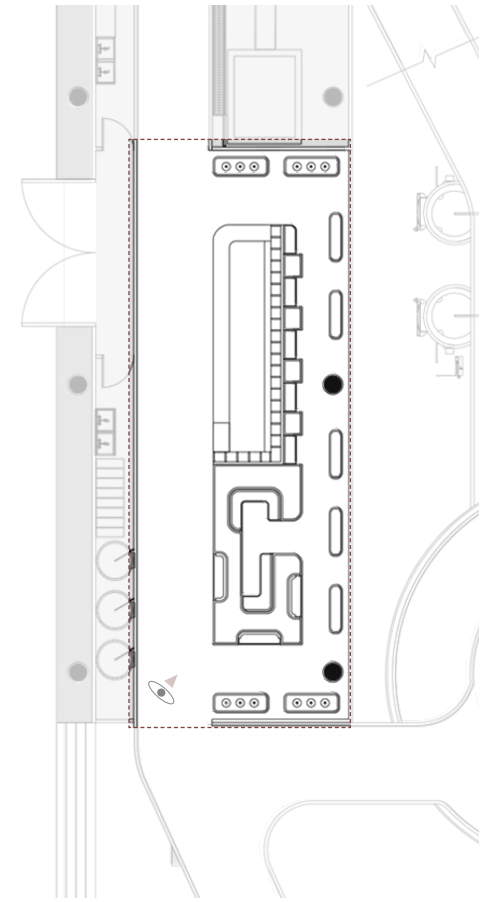


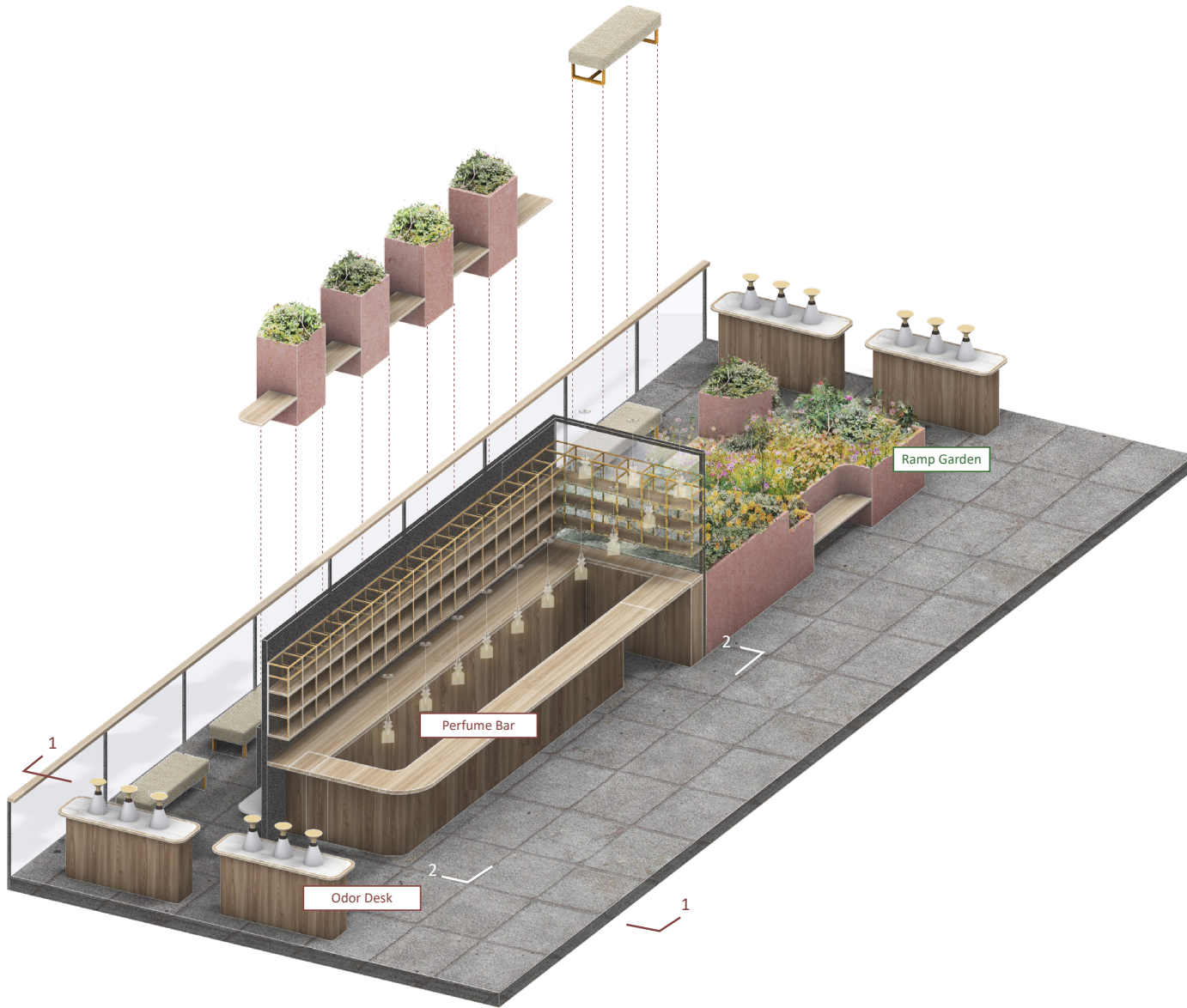




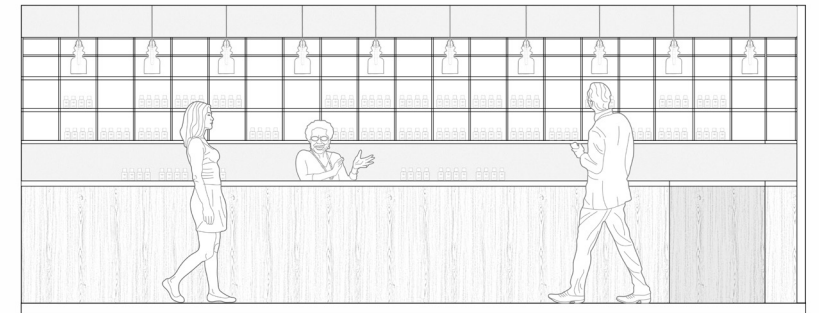
Odor Platform

MEZZANINE



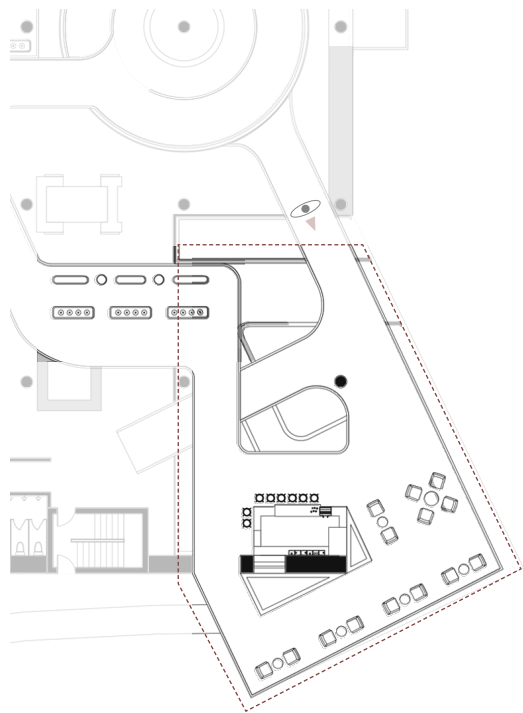


1-1 Section



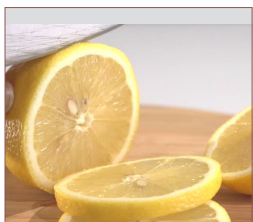
2-2 Section

MEZZANINE Corner Platform

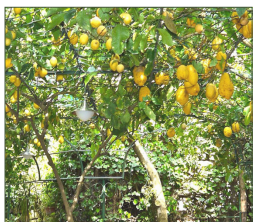




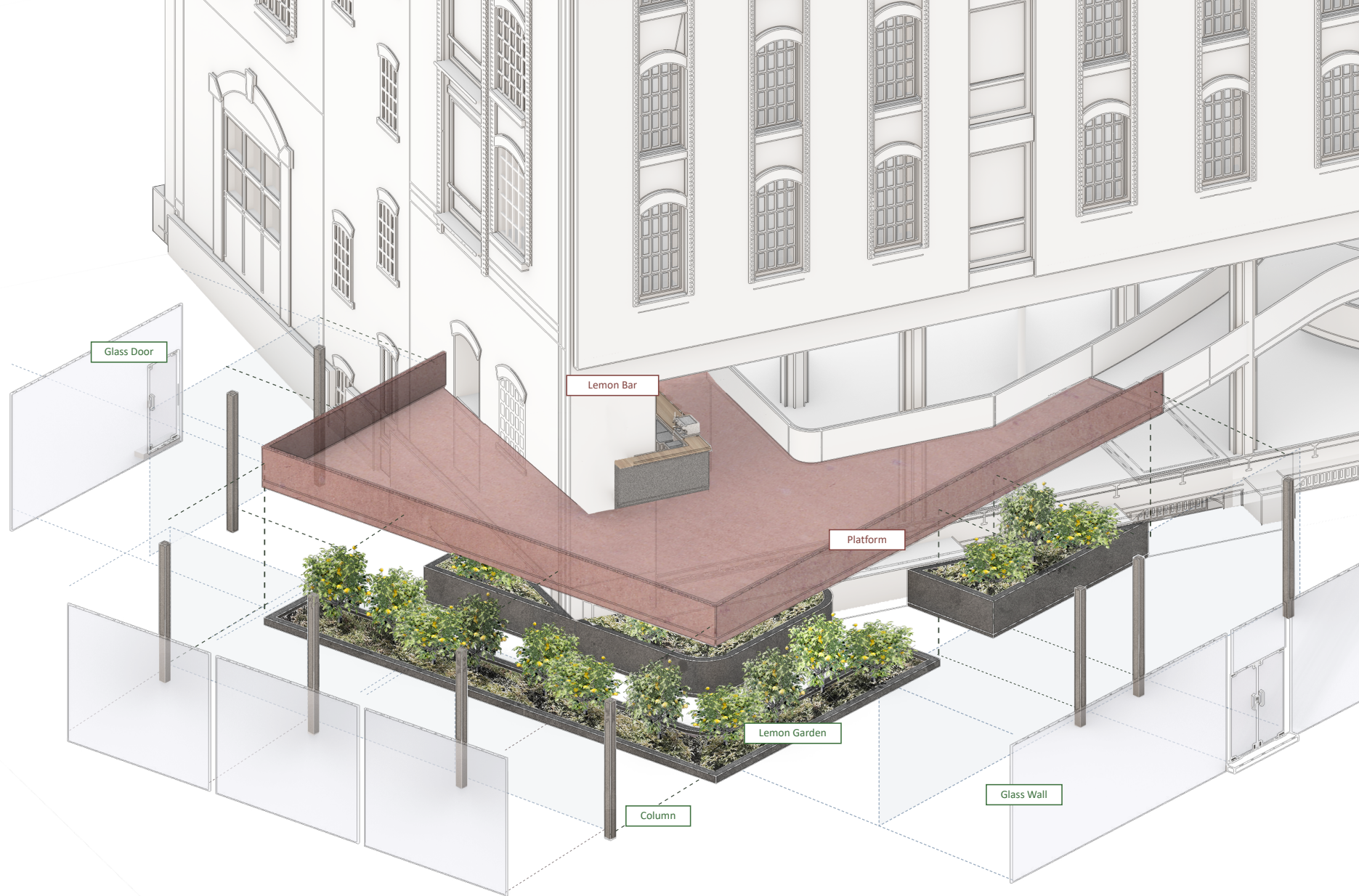
Cocktail



Sliced lemon



Plant lemon







Corten Steel Planter



European Oak

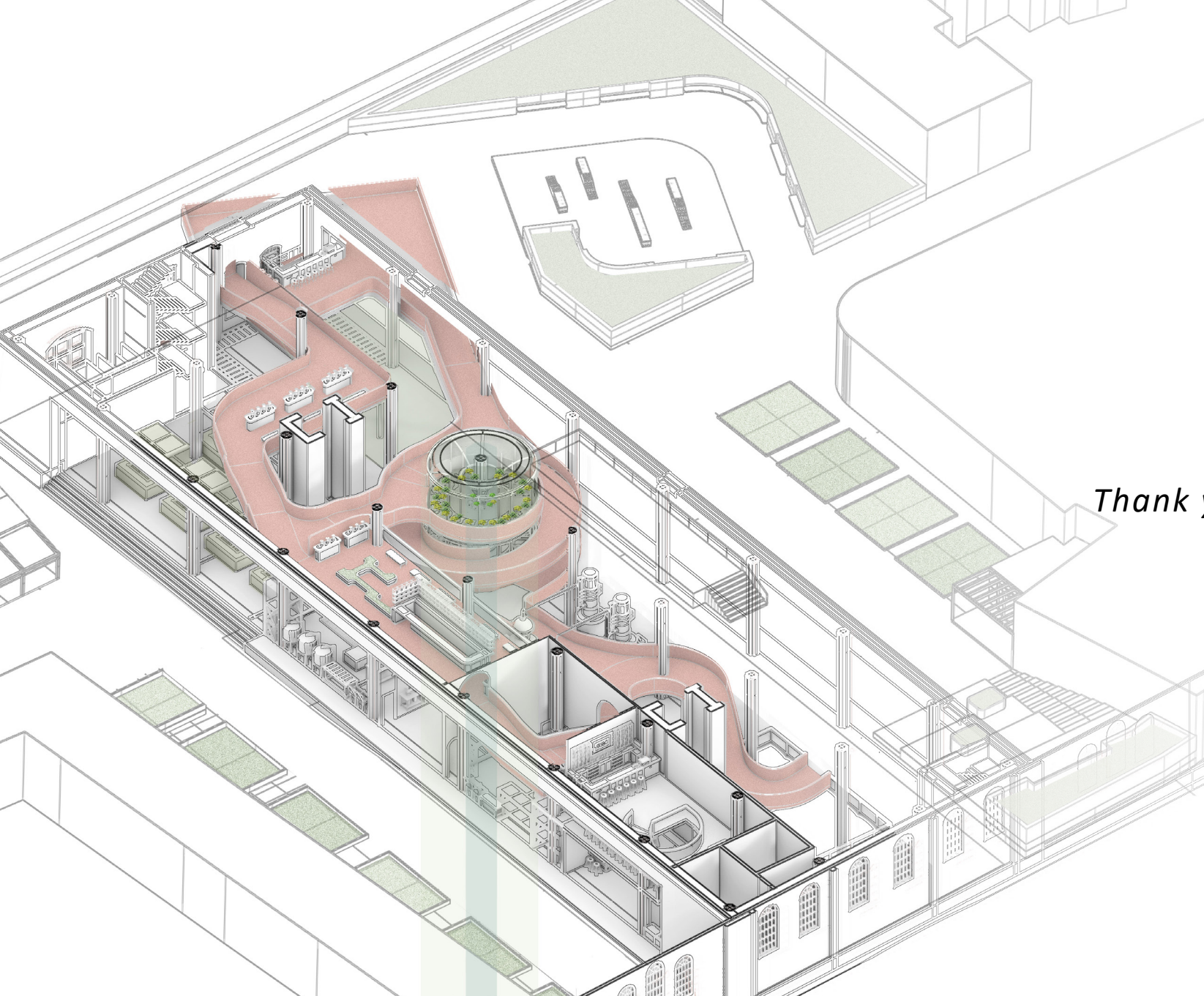


Teak Staircase



Stainless Steel





Thank you for watching, **CHEERS !!**