

WINDING VAULTS DARKSPACE

XIHE CHEN





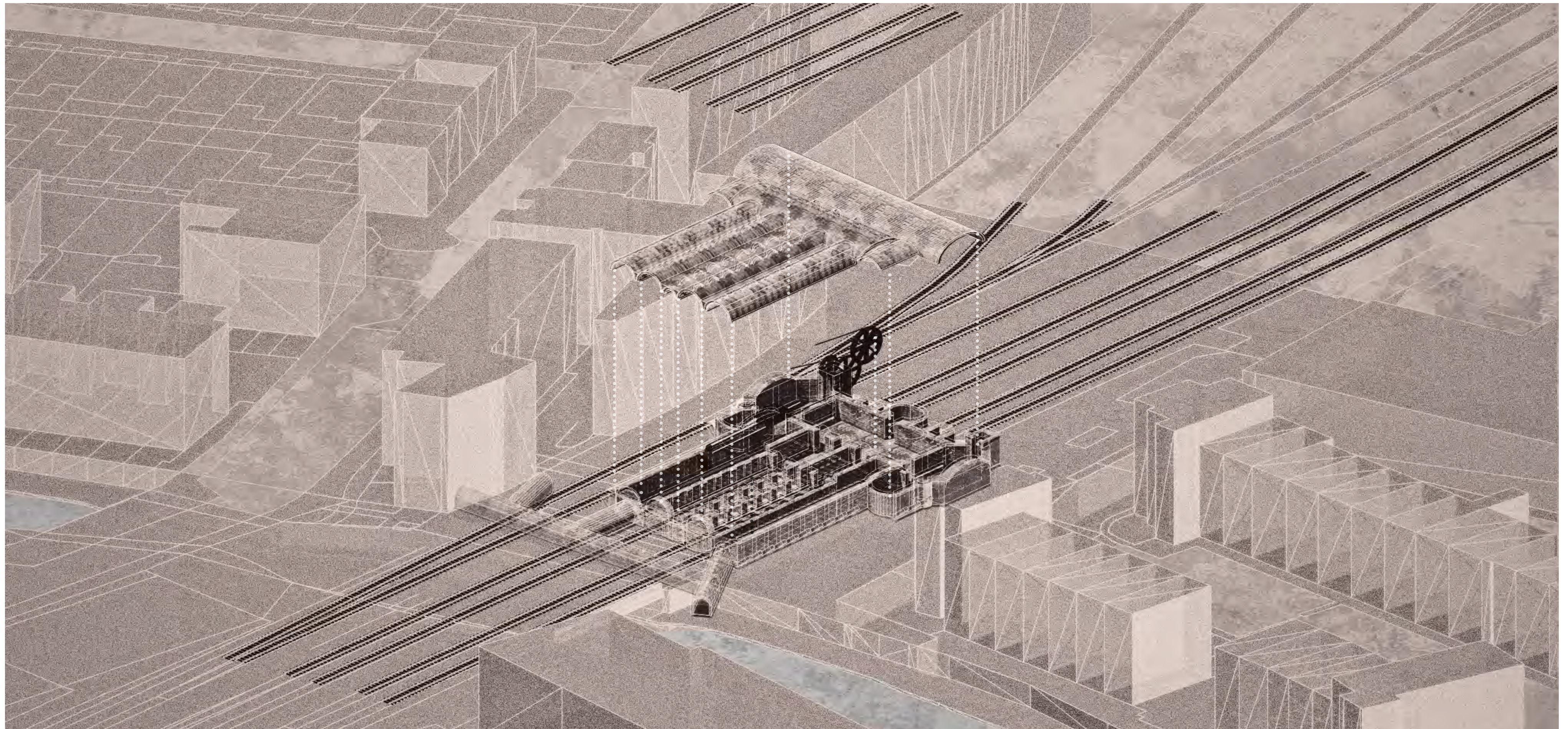
JOHN COOKE BOURNE
APRIL 1837

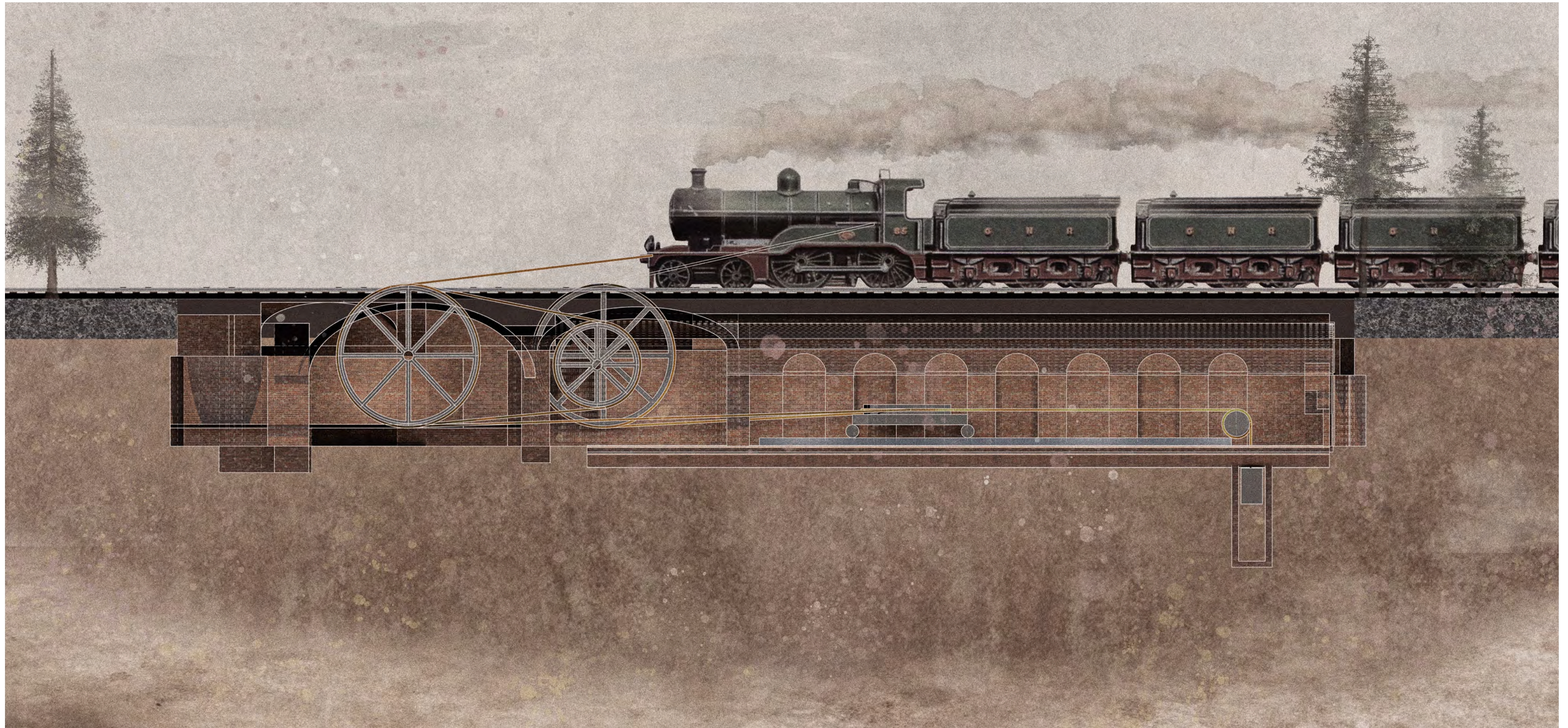
THE STATIONARY WINDING ENGINE VAULTS

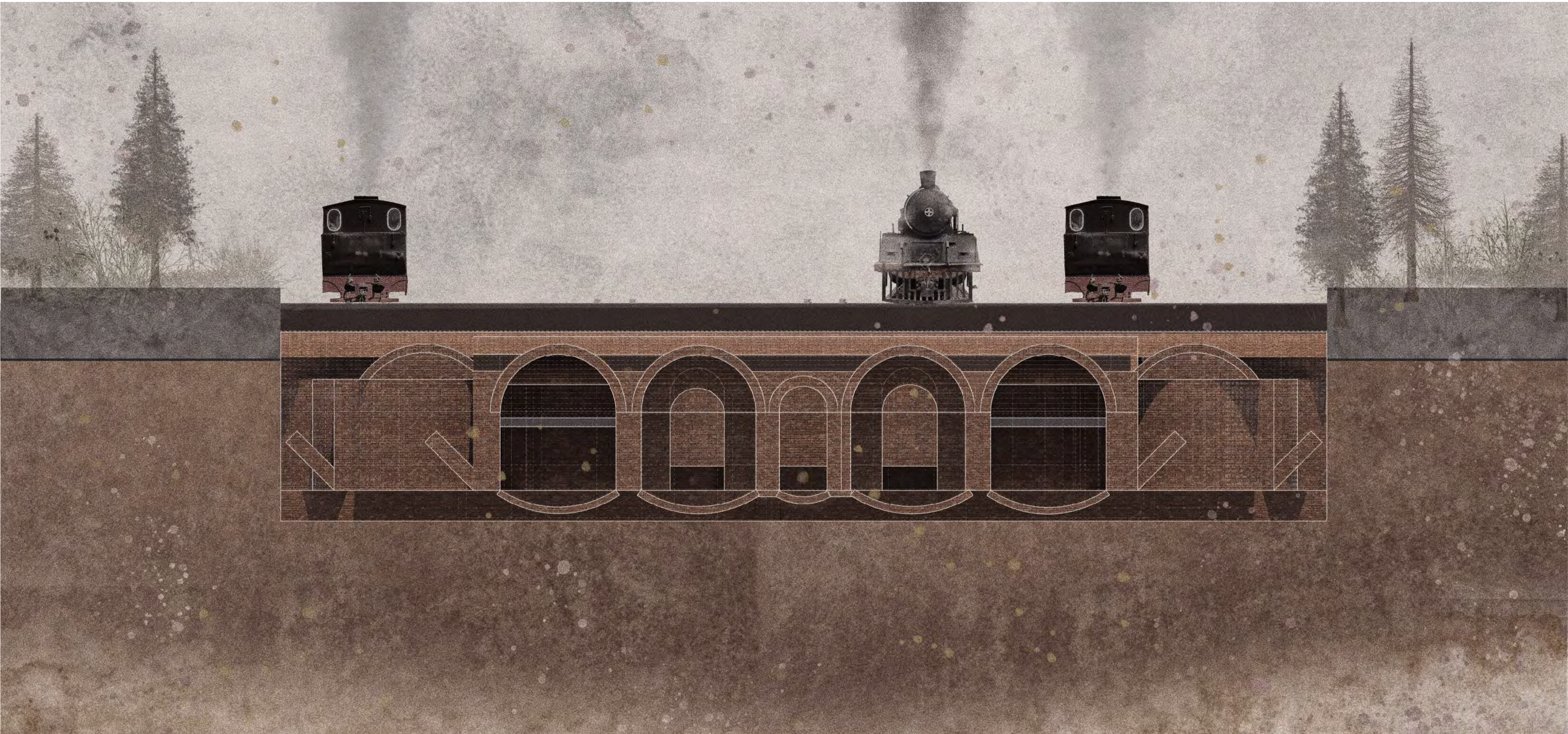


It located under the main line north of Fitzroy Bridge.











CONTEXT & OBSERVATION



CONTEXT

The stationary winding engine vaults is near the region canal, behind the wall illuminated by blue light.



CAMDEN TOWN

The roughness, scruffiness of camden makes young peopel feel more free.





2000



2020

MUSIC VENUES REDUCED



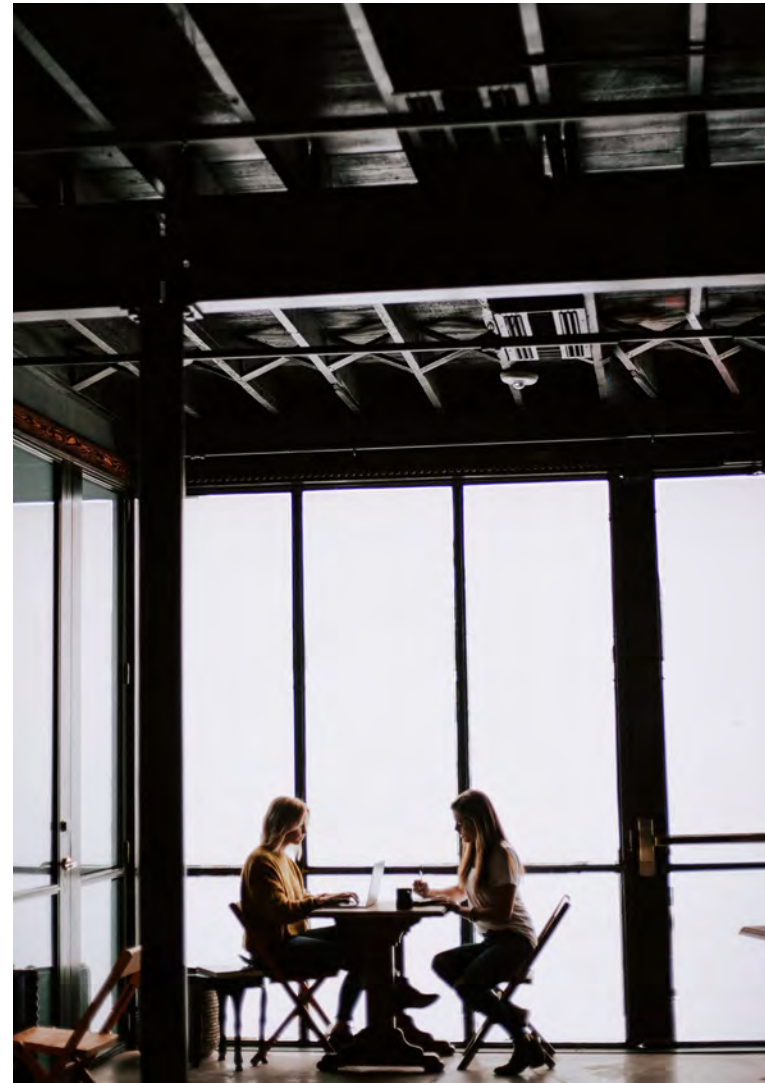
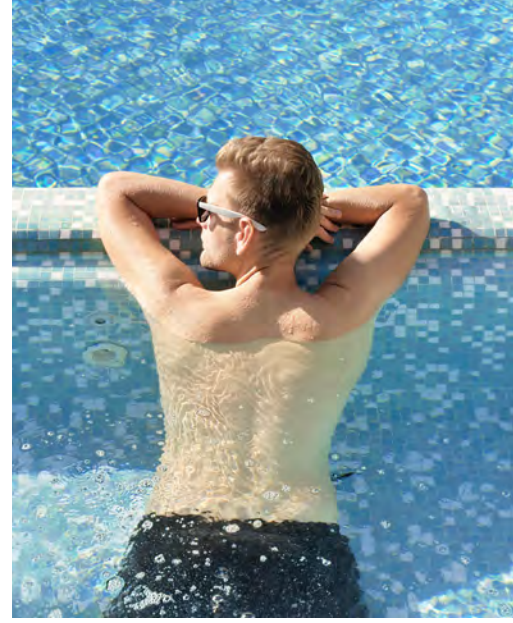
Between 2005 and 2020 the number of music venue in the Camden nearly halved.



DAY & NIGHT

Some public space like music venue bar and club only back to alive at night.

DAY & NIGHT





INTERIOR PHOTOS



The Stationary Winding Engine Vaults

The stationary winding engines started service on 1837 end in 1844.



The Stationary Winding Engine Vaults

However, after just 7 years, due to developments of the steam engine, effectively making the need for rope haulage redundant.



INSPIRATION

**The Stationary Winding
Engine Vaults**

6.30 — TUESDAY, 23rd MARCH — 8.45
TWO PERFORMANCES ONLY

NIGHT ONLY

XIHE CHEN PRESENTS

FOLLOW DARKNESS

FREEDOM

AT NIGHT

THE MUSIC
VENUE
FOR
YOUTH



THE LIFE

AT

NIGHT

IMPORTANCE
OF
FREEDOM AT NIGHT

LIVE LIVE LIVE LIVE LIVE
LIVE  LIVE LIVE LIVE
LIVE LIVE LIVE LIVE LIVE
LIVE LIVE LIVE LIVE LIVE
LIVE LIVE LIVE LIVE LIVE

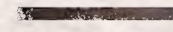
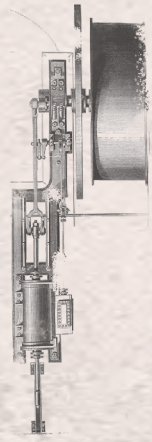
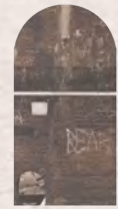
PUBLIC SPLACE IN NIGHT TIME
IN DAY TIME



The Music venue in Stationary Winding Engine Vaults

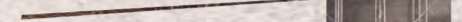
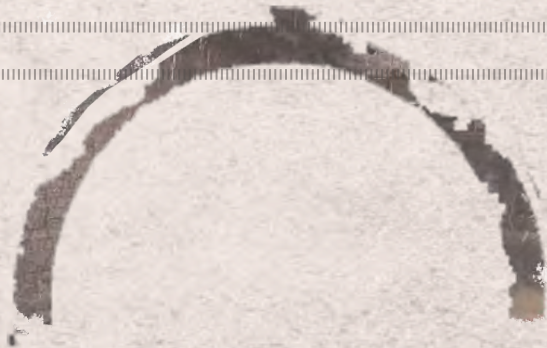
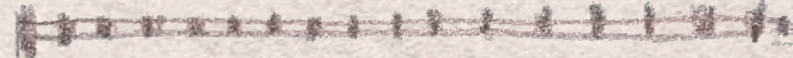
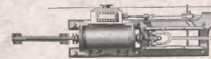
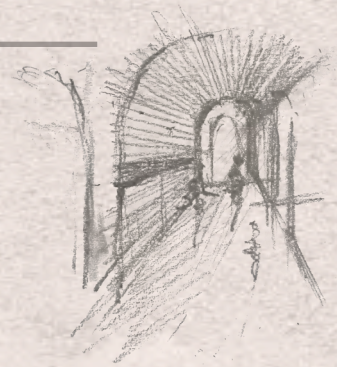
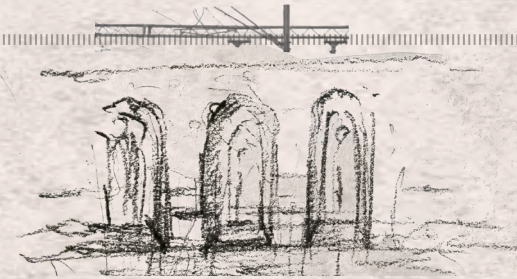
Address: Chalk Farm Rd, Camden Town, London NW1 8AA





252

THE ENGINEER

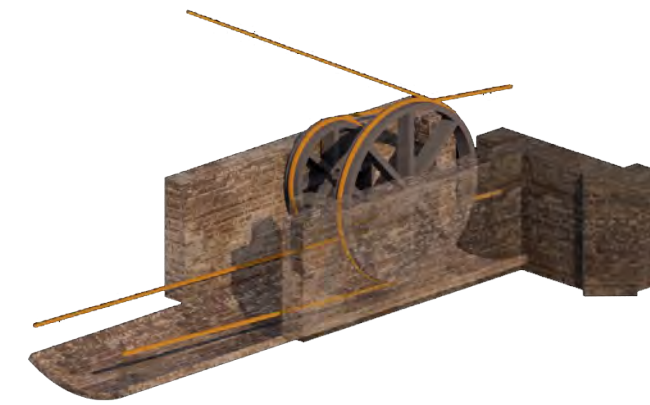
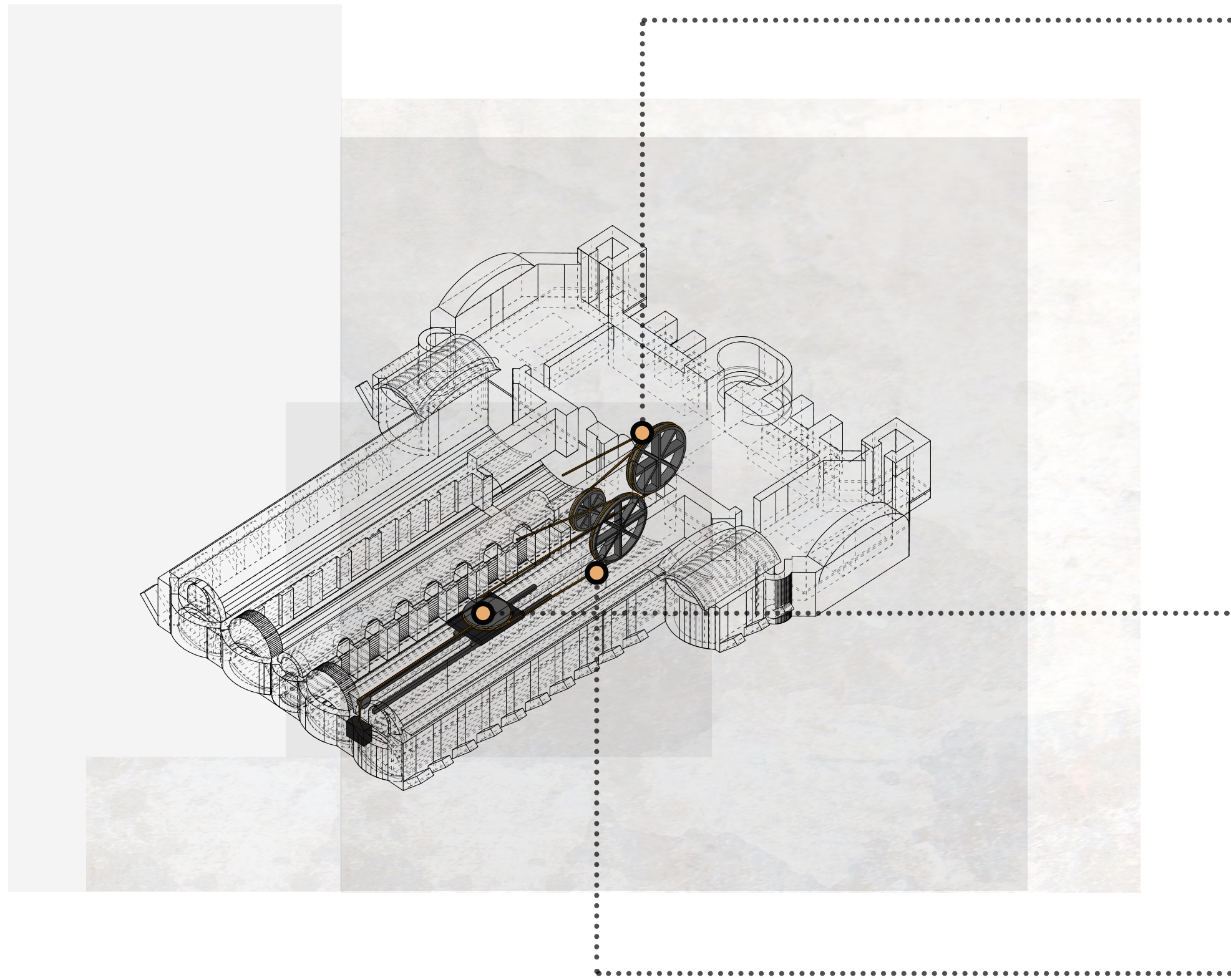


THE ENGINEER



CASTELVECCHIO MUSEUM

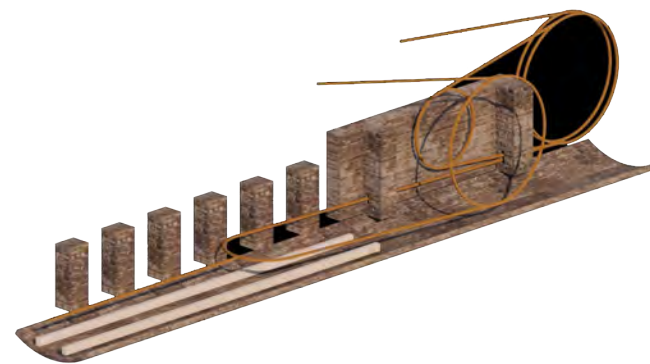
CARLO SCARPA



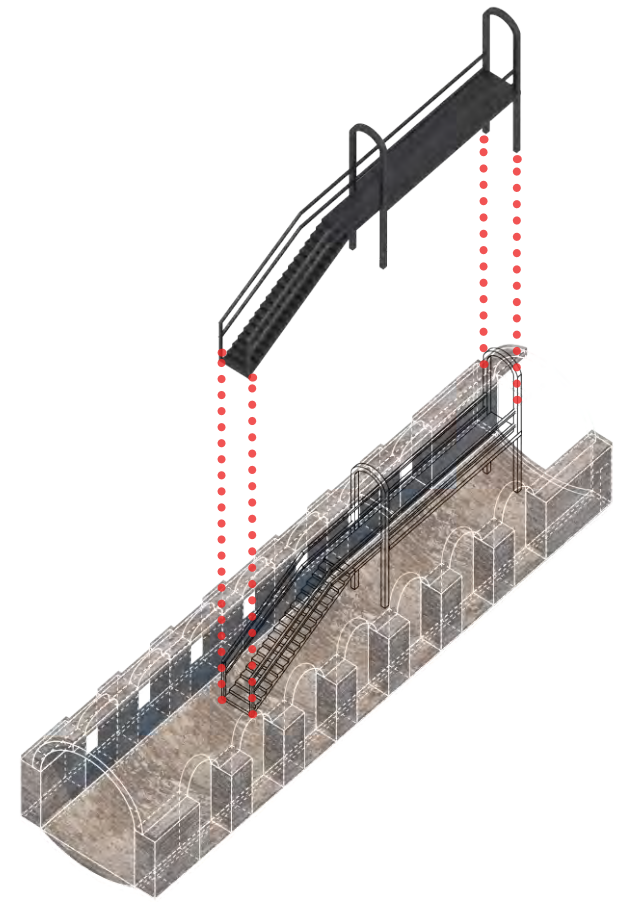
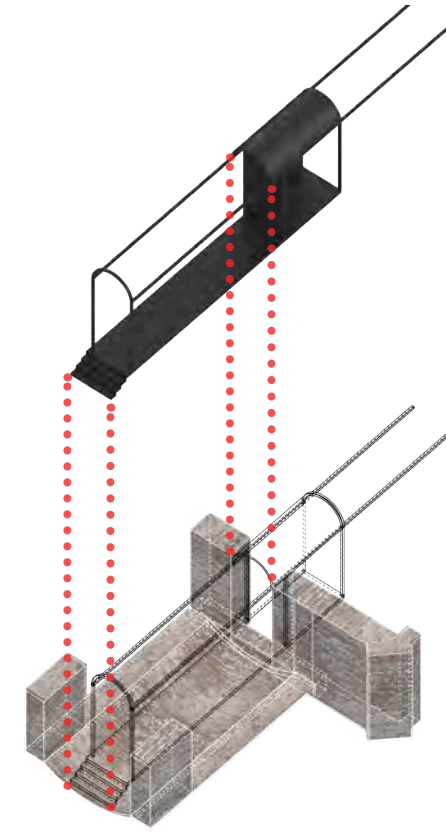
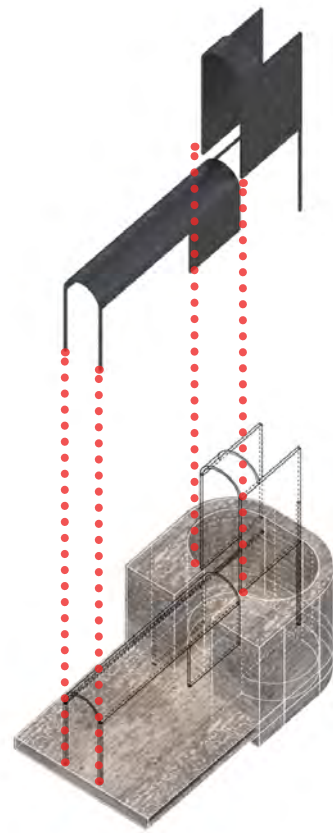
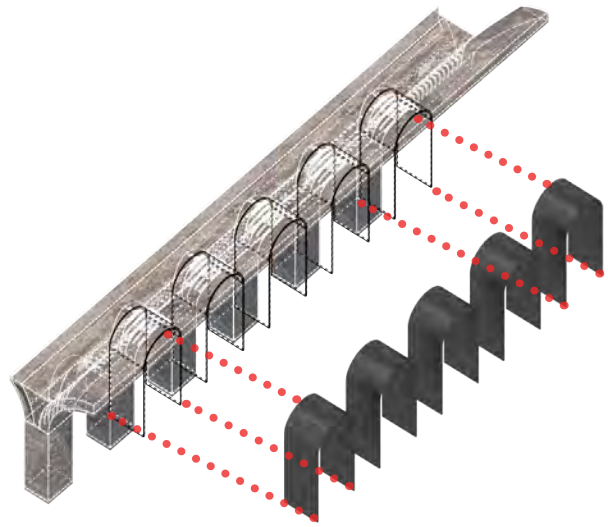
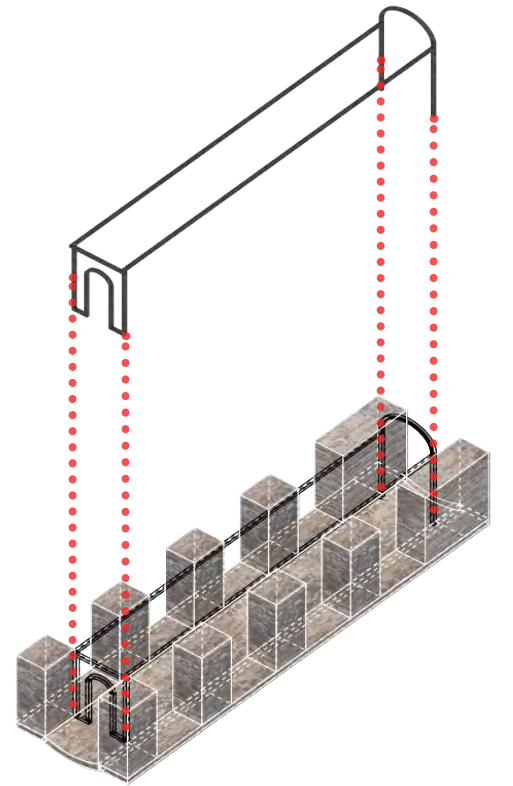
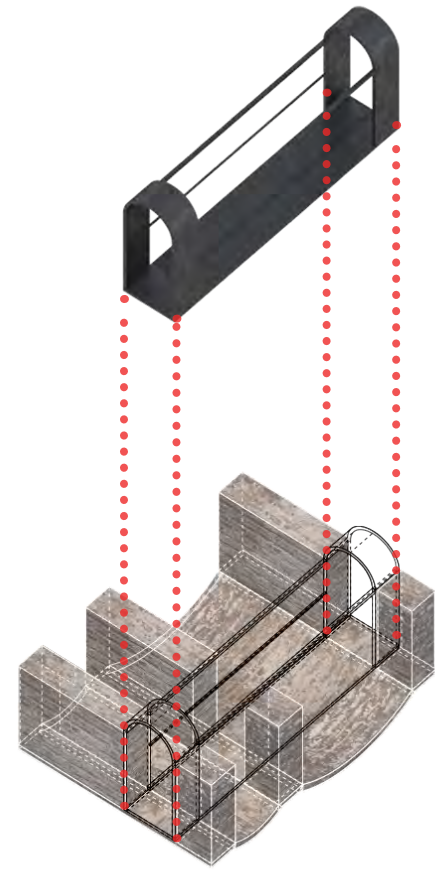
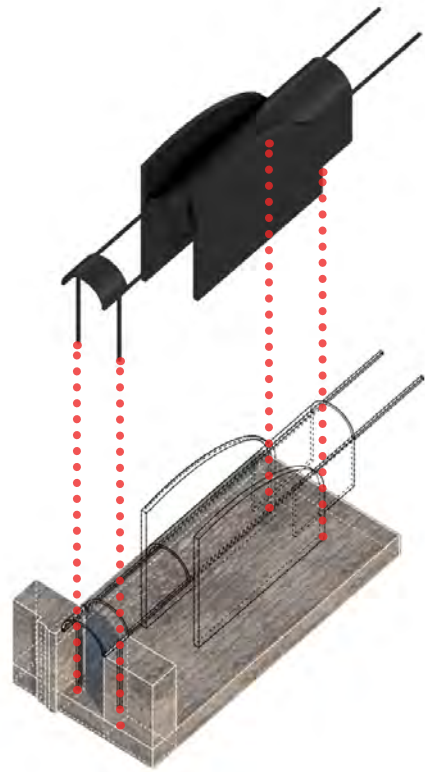
Wheels & pulley

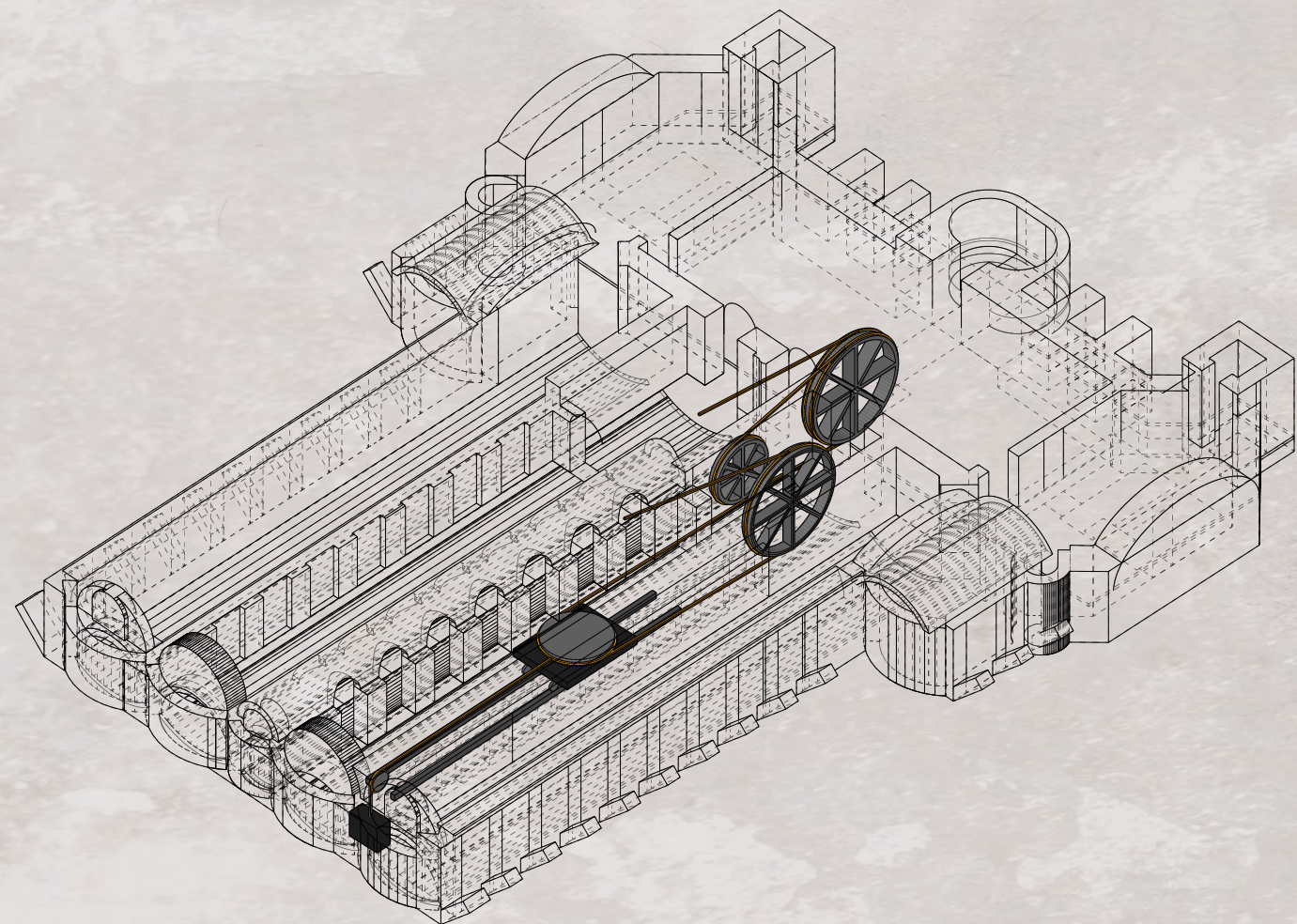


Transmission structure

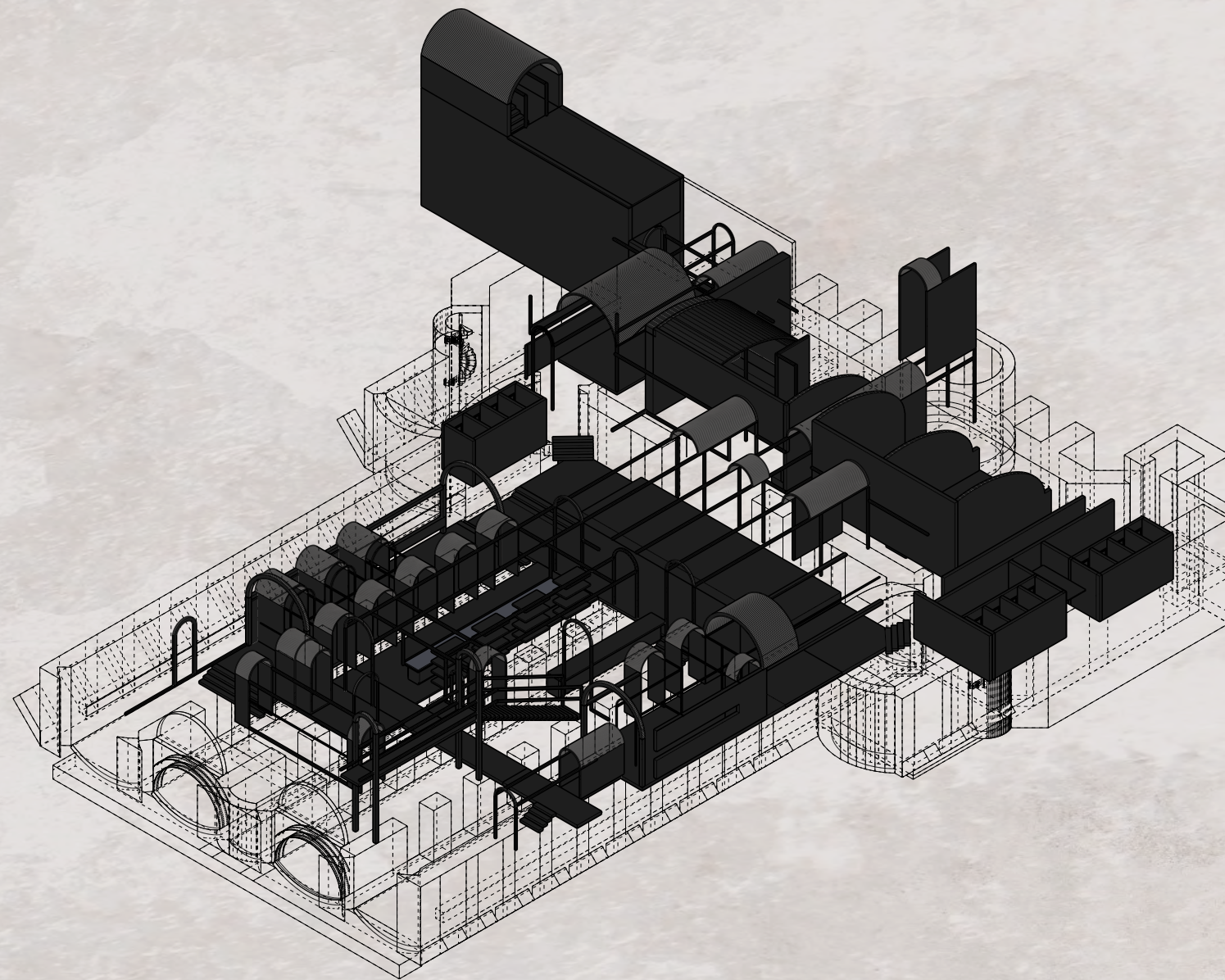


Rope

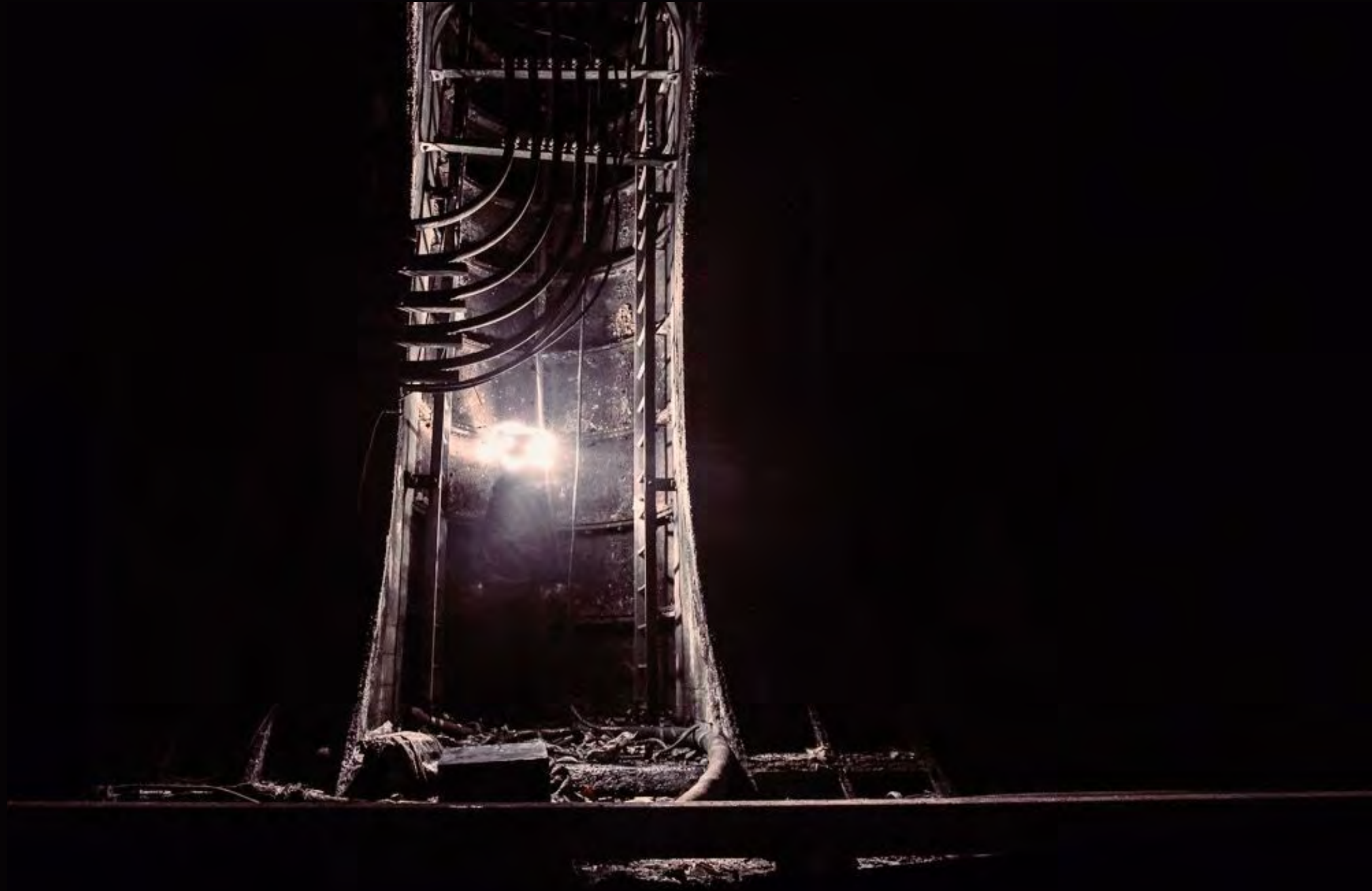




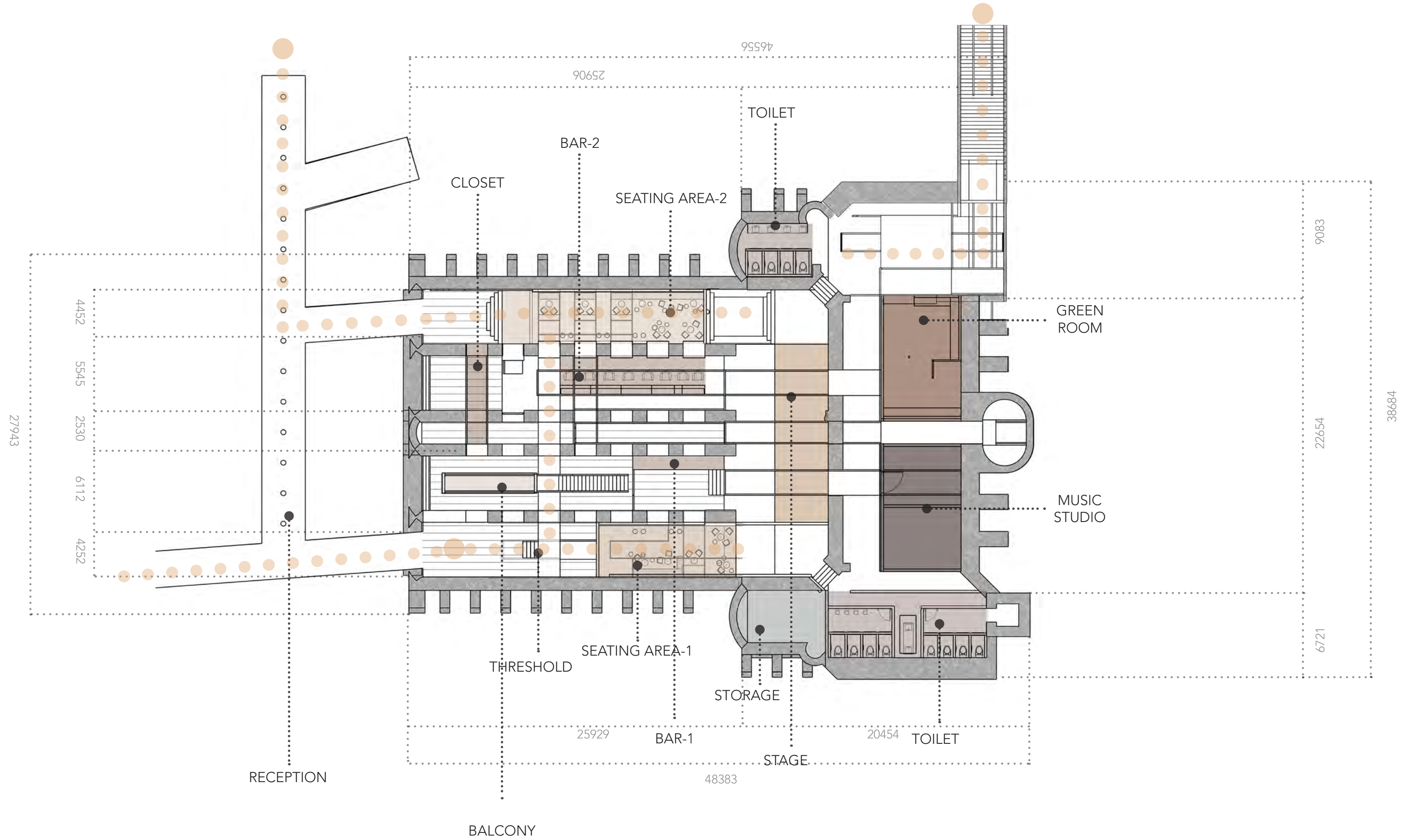
EXISTING

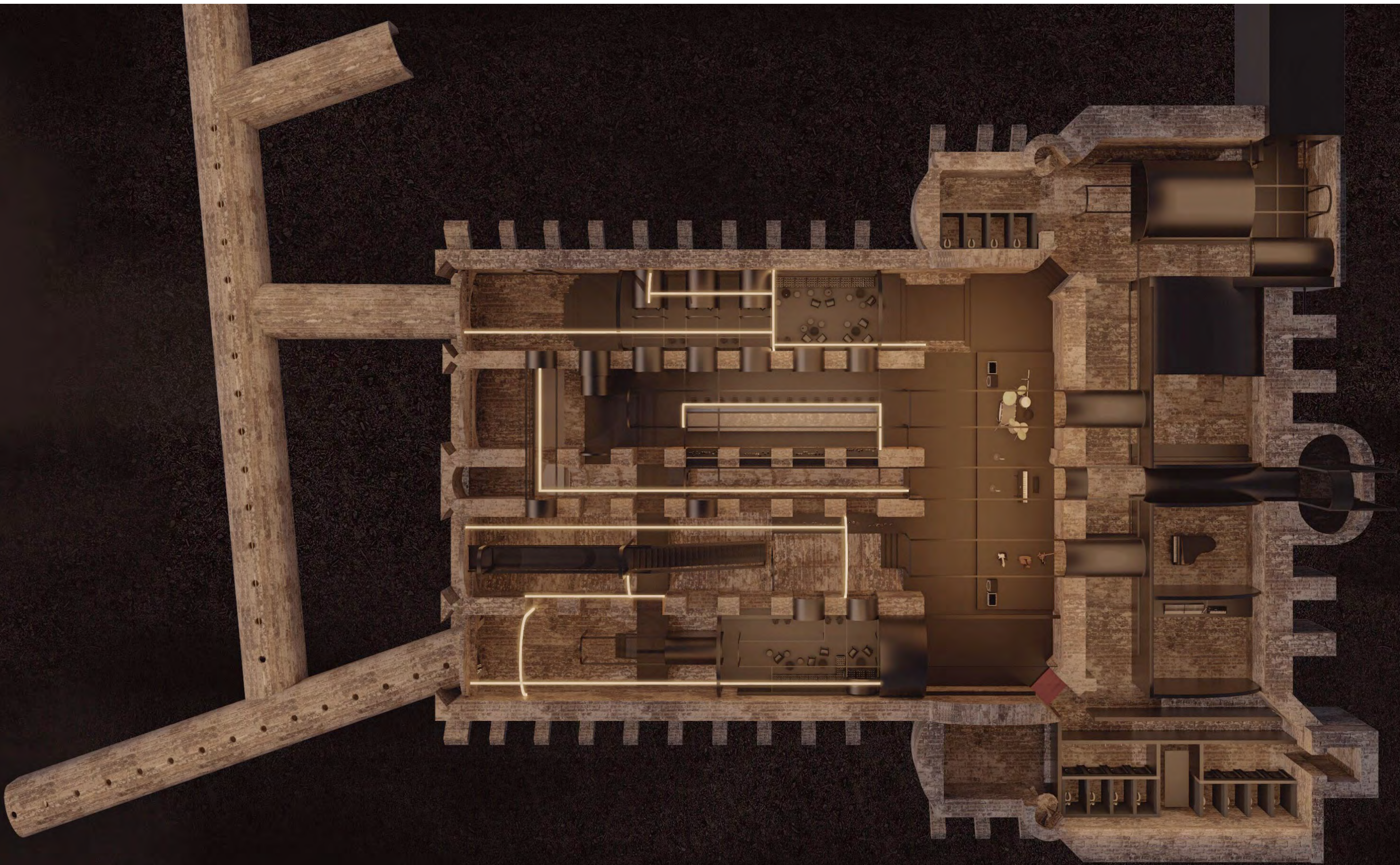


NEW



STRATEGY

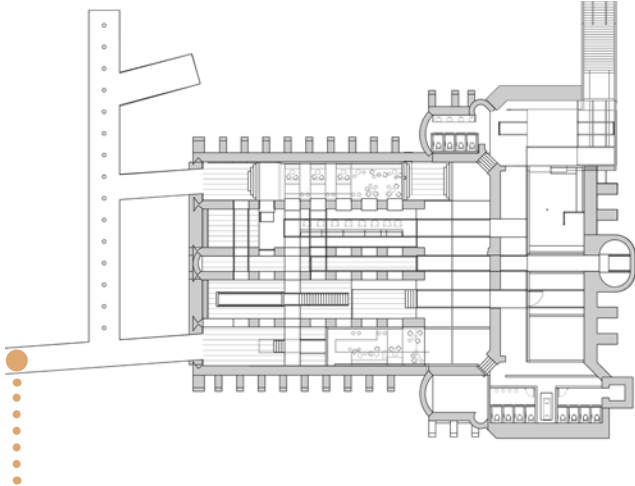






ENTRANCE

Coal Supply Tunnel

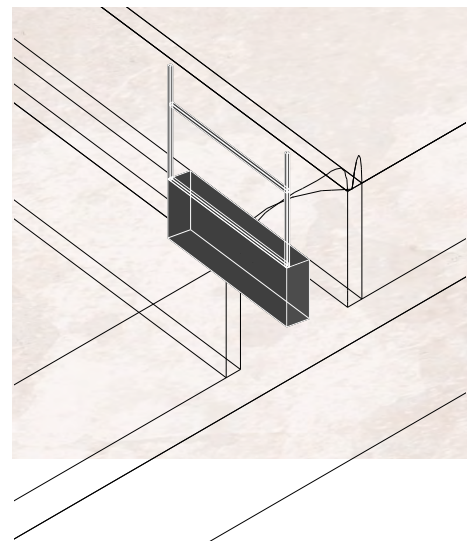


Existing entrance



ENTRANCE

Coal Supply Tunnel

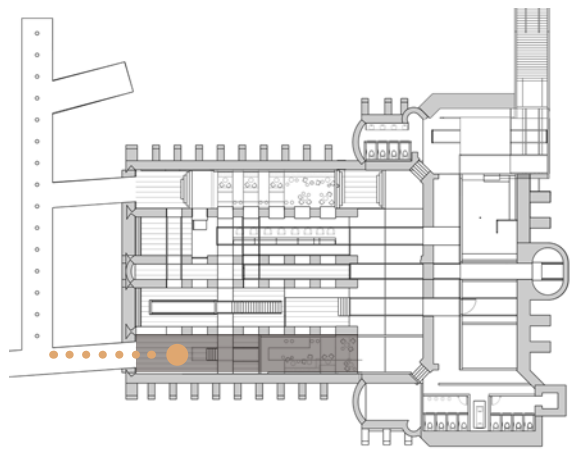


RECEPTION



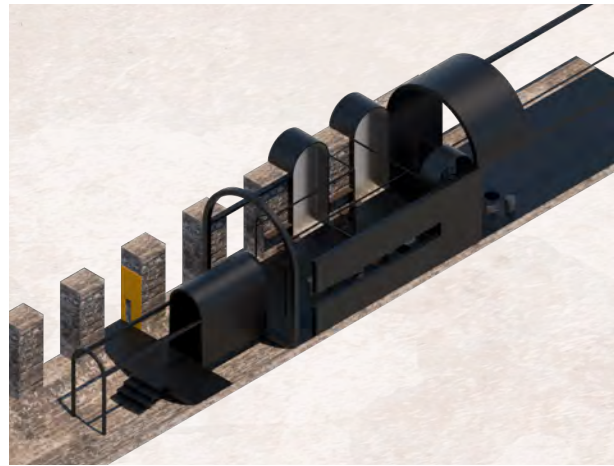
THRESHOLD

Coal Store Vault

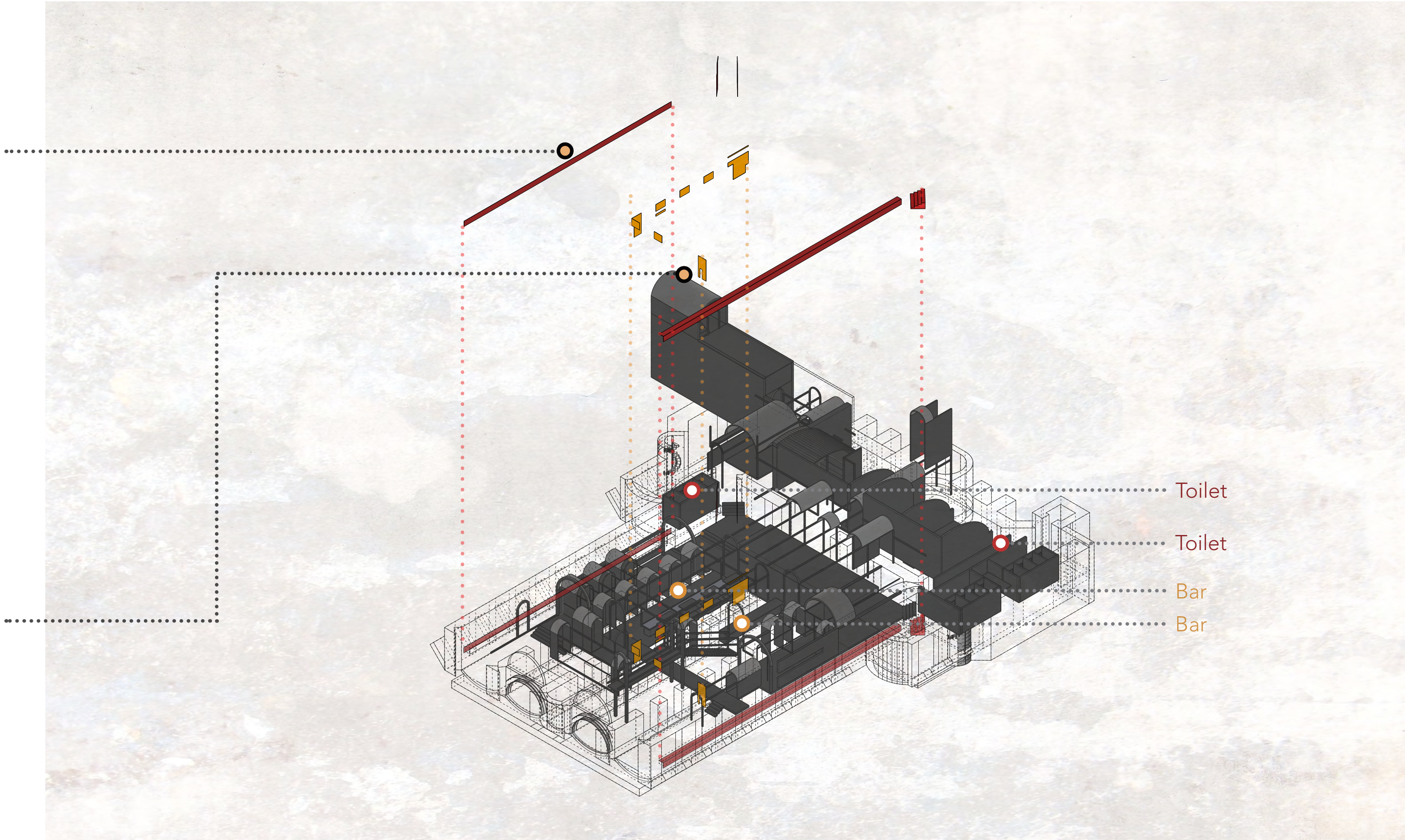


SEATING AREA 1

Coal Store Vault



COLOUR NAVIGATION



Toilet

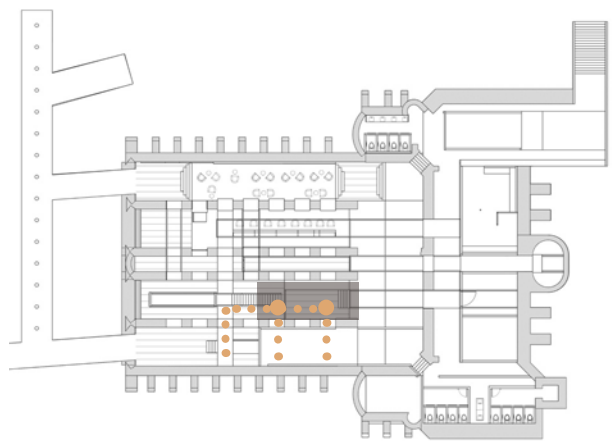
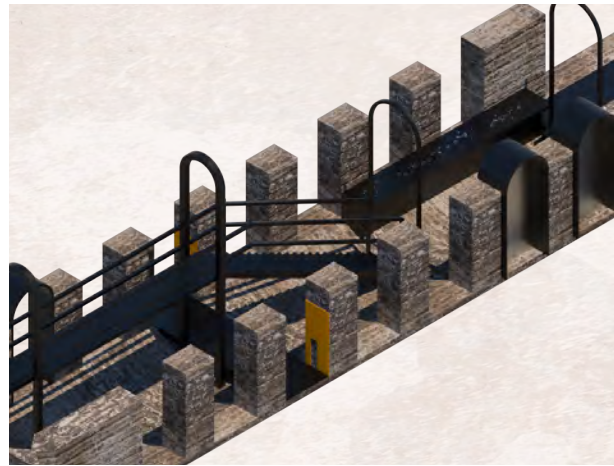
Toilet

Bar

Bar

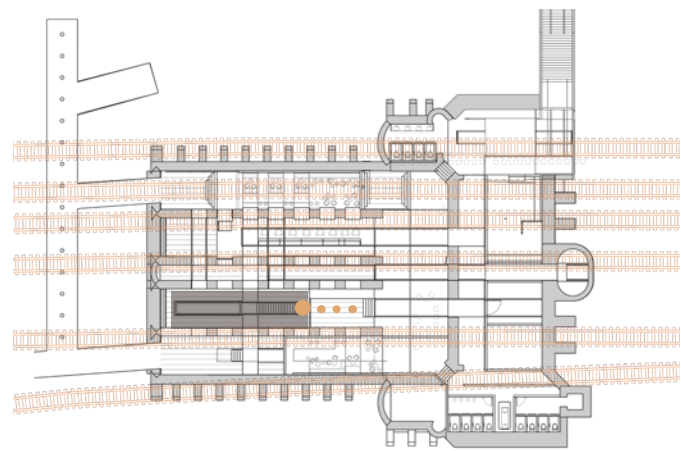
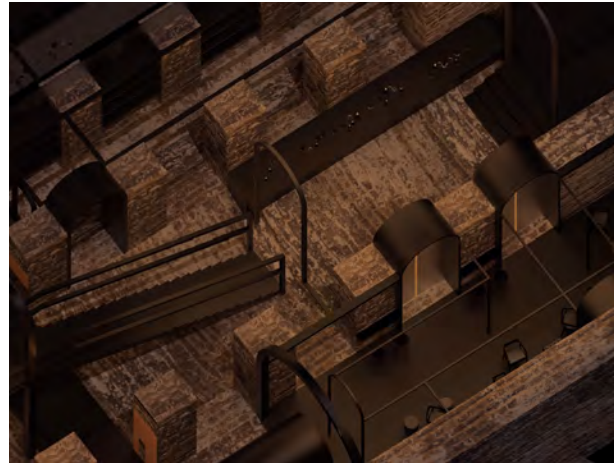
BAR 1

Rope Tensioning Vault



BALCONY

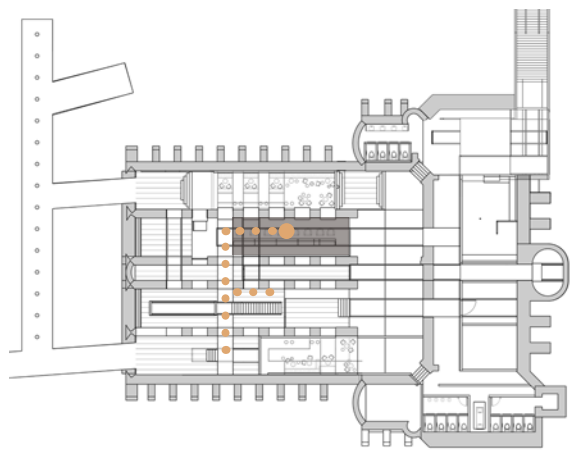
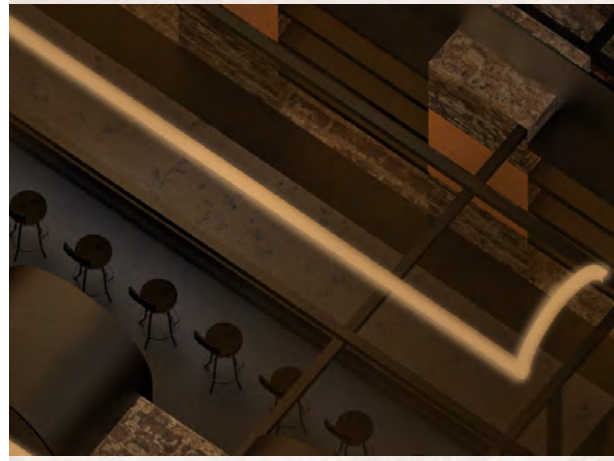
Rope Tensioning Vault





BAR 2

Rope Tensioning Vault



BAR 2

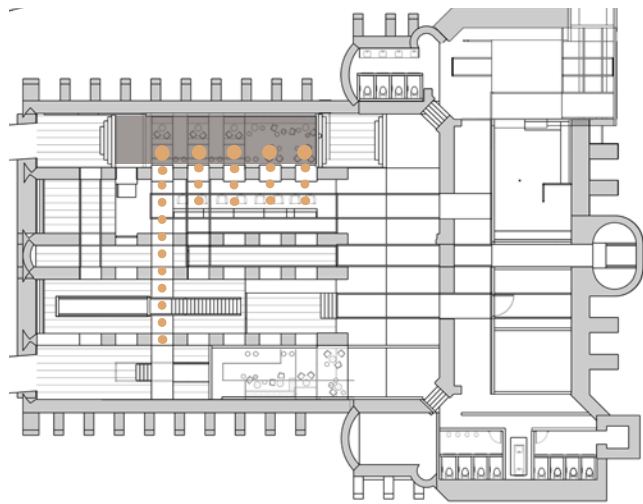
.

Rope Tensioning Vault



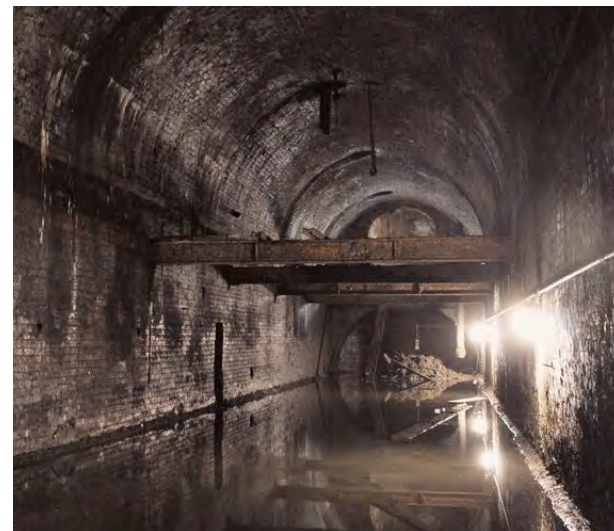
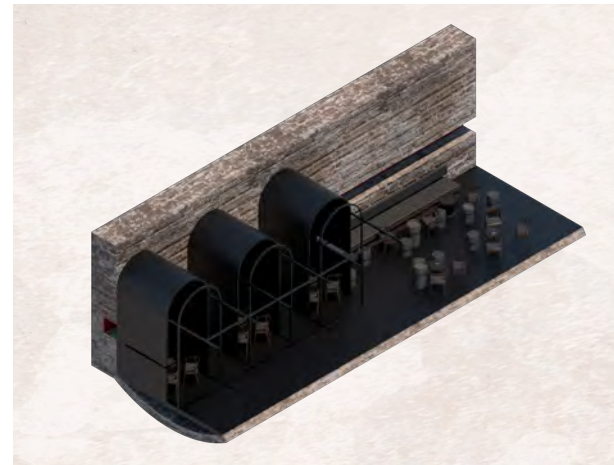
SEATING AREA 2

Coal Store Vault



SEATING AREA 2

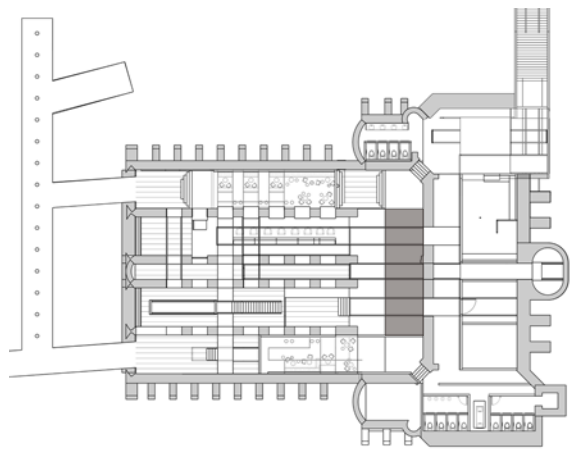
Coal Store Vault





STAGE

The Sheave Room







MUSIC CAMPS FOR KIDS
AGES 6-9



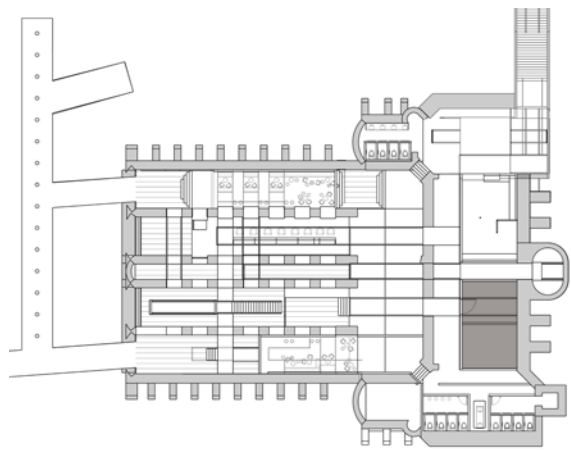
MUSIC CAMPS FOR TEENS
AGES 10-17



MUSIC CAMPS FOR ADULTS
AGES 18+

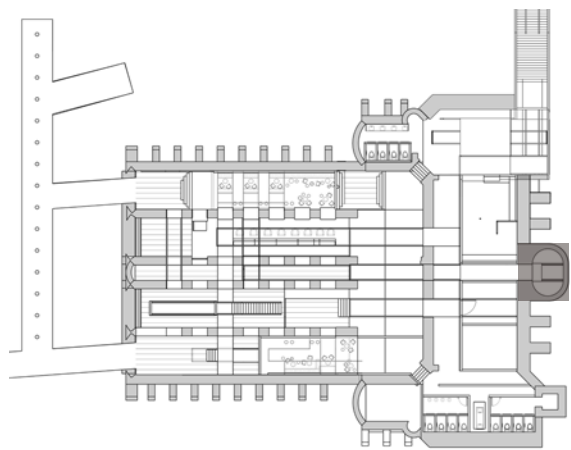
MUSIC STUDIO

Main Engine Room



SECRET CORNER

Main Engine Room



WINDING VAULTS DARKSPACE

XIHE CHEN

