

Where would you go when your cats or dogs passed away?

What is the visualization of your sadness?

Can a space cure your sorrow?

MELANCHOLY . SEASIDE

UP

- THE SEASIDE RESORT THAT NEVER TRIES TO CHEER YOU

CONTENT	
PROLOGUE	
TRAIN STATION OF TEARS	10%
GLUM ICES	30%
MELANCHOLY LOADING...	
DRIPS & DROPS	70%
HOTEL MELANCHOLY	100%
THE LITTLE OBSOLESCENCE HOUSE	50%



DUNGENESS

A place always raining

When I went to the Dungeness for the first time, listening to the sound of wind and rain standing alone on the pebbles, I suddenly felt sad for no reason. Then I realized that rain is always a calming and sad element in most of the cultures.



So sad, so beautiful!!!

👍 9 🗨️ 回复



I listen this song many times and remember the memories

👍 6 🗨️ 回复



History song ...
The true love in life ...
Sad ending 😞😞

👍 10 🗨️ 回复



oh my god my tears are falling!!
it makes me cry a lot.
like
a lot!

👍 19 🗨️ 回复

MOOD CONGRUENT EFFECT

PEOPLE INTEND TO LOOK FOR SYMAPATHEIC RESPONSES WHEN THEY ARE FEELING SAD.

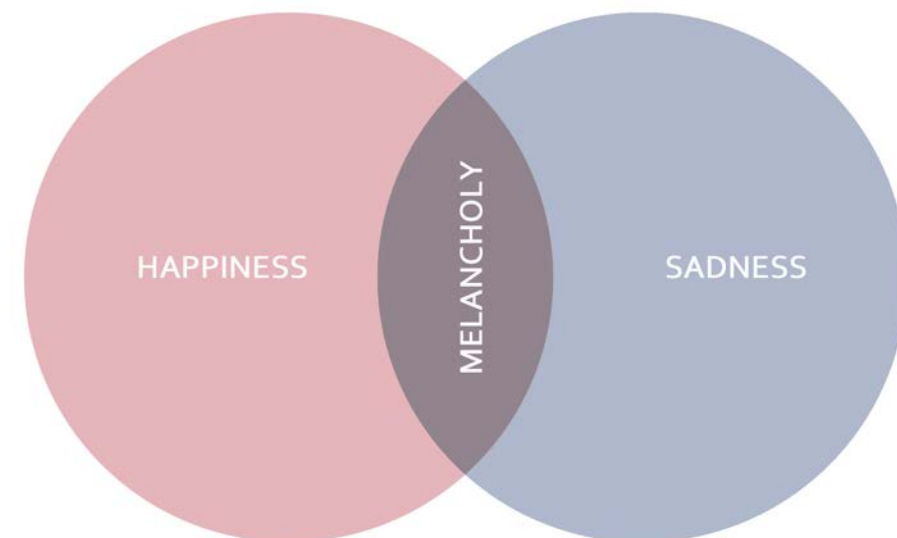
FOR EXAMPLE, THEY LOVE TO LISTEN TO SAD SONGS AFTER BREAKING UP.

SADNESS



CURE YOUR SADNESS BY
VENTING AND ACCEPT IT

MELANCHOLY



MOTIF

RAIN DRIPS



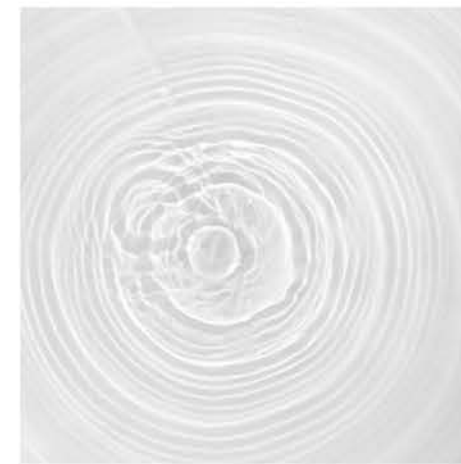
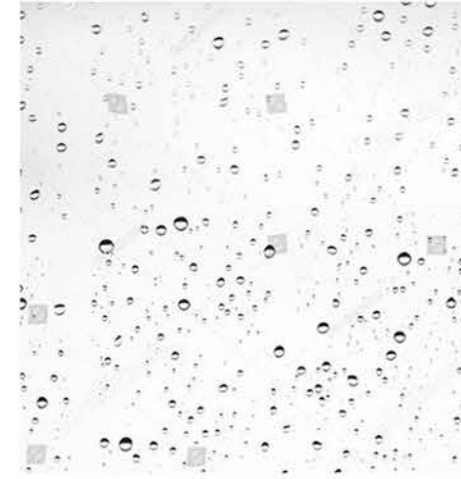
Dungeness is rainy throughout the year, which creates its special atmosphere and special conditions for using rainwater .This lonely trip is like a sad song for people who want to occasionally be relieved from the oppressive urban life.

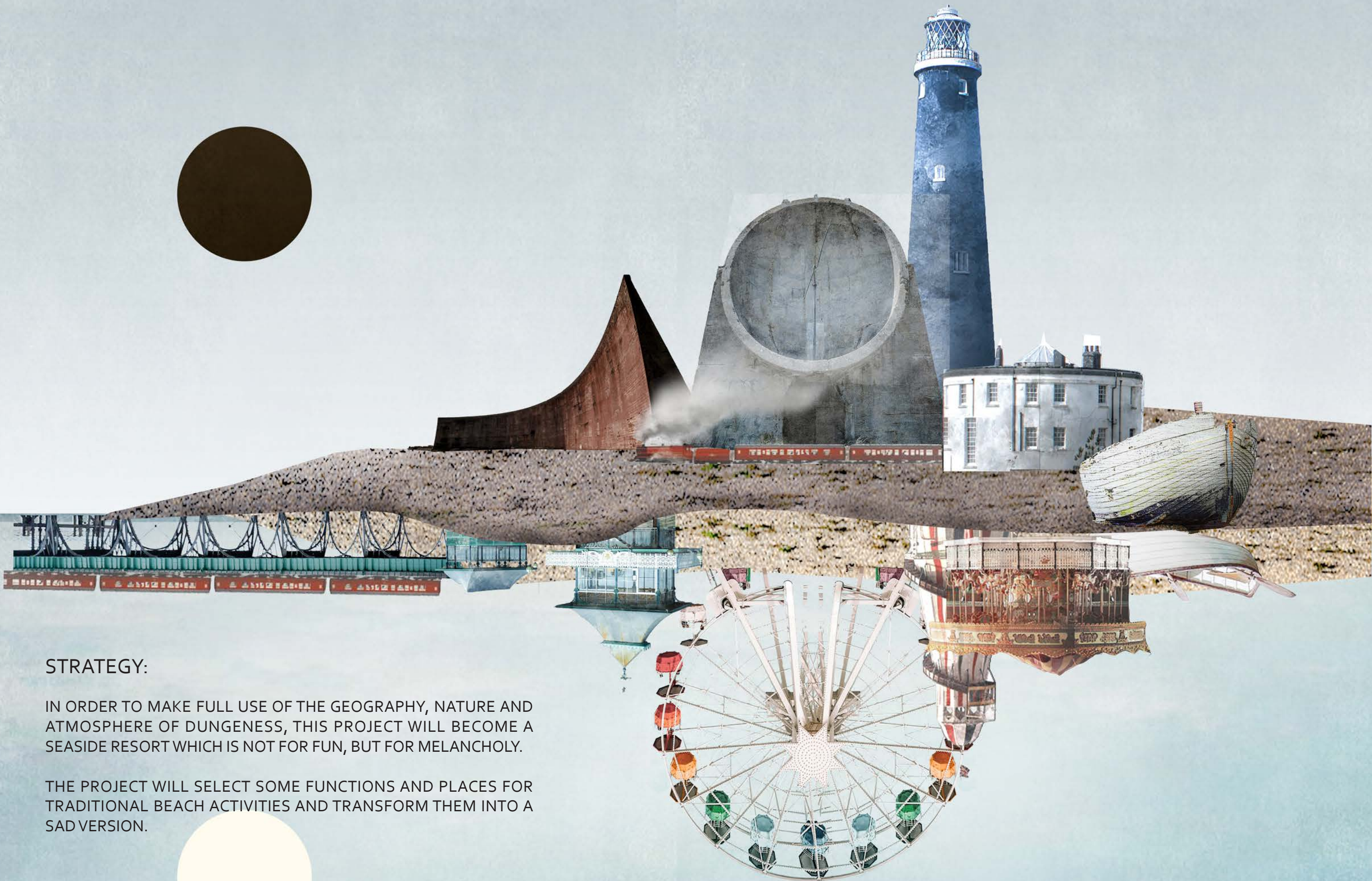
MELANCHOLY CAN BE SOMETHING BEAUTIFUL

SOUND



PATTERN

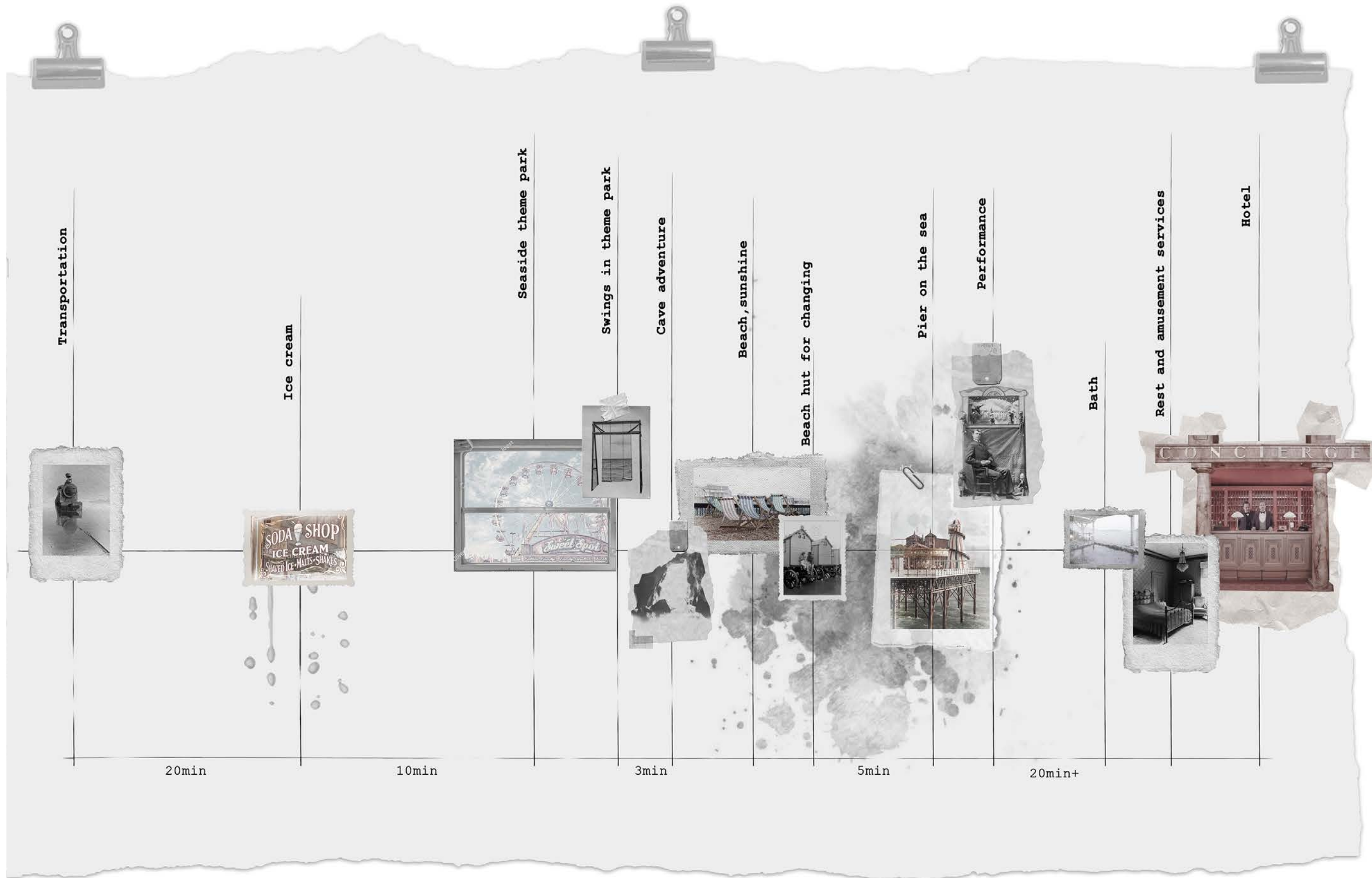




STRATEGY:

IN ORDER TO MAKE FULL USE OF THE GEOGRAPHY, NATURE AND ATMOSPHERE OF DUNGENESS, THIS PROJECT WILL BECOME A SEASIDE RESORT WHICH IS NOT FOR FUN, BUT FOR MELANCHOLY.

THE PROJECT WILL SELECT SOME FUNCTIONS AND PLACES FOR TRADITIONAL BEACH ACTIVITIES AND TRANSFORM THEM INTO A SAD VERSION.



CONCRETE TUNNEL 30% MELANCHOLY



TRAIN STATION
10% MELANCHOLY

CENTER OF TRANSPORTATION

BY TRAIN

REDUNDANT
RAIL

MAP OF THE MELANCHOLY RESORT

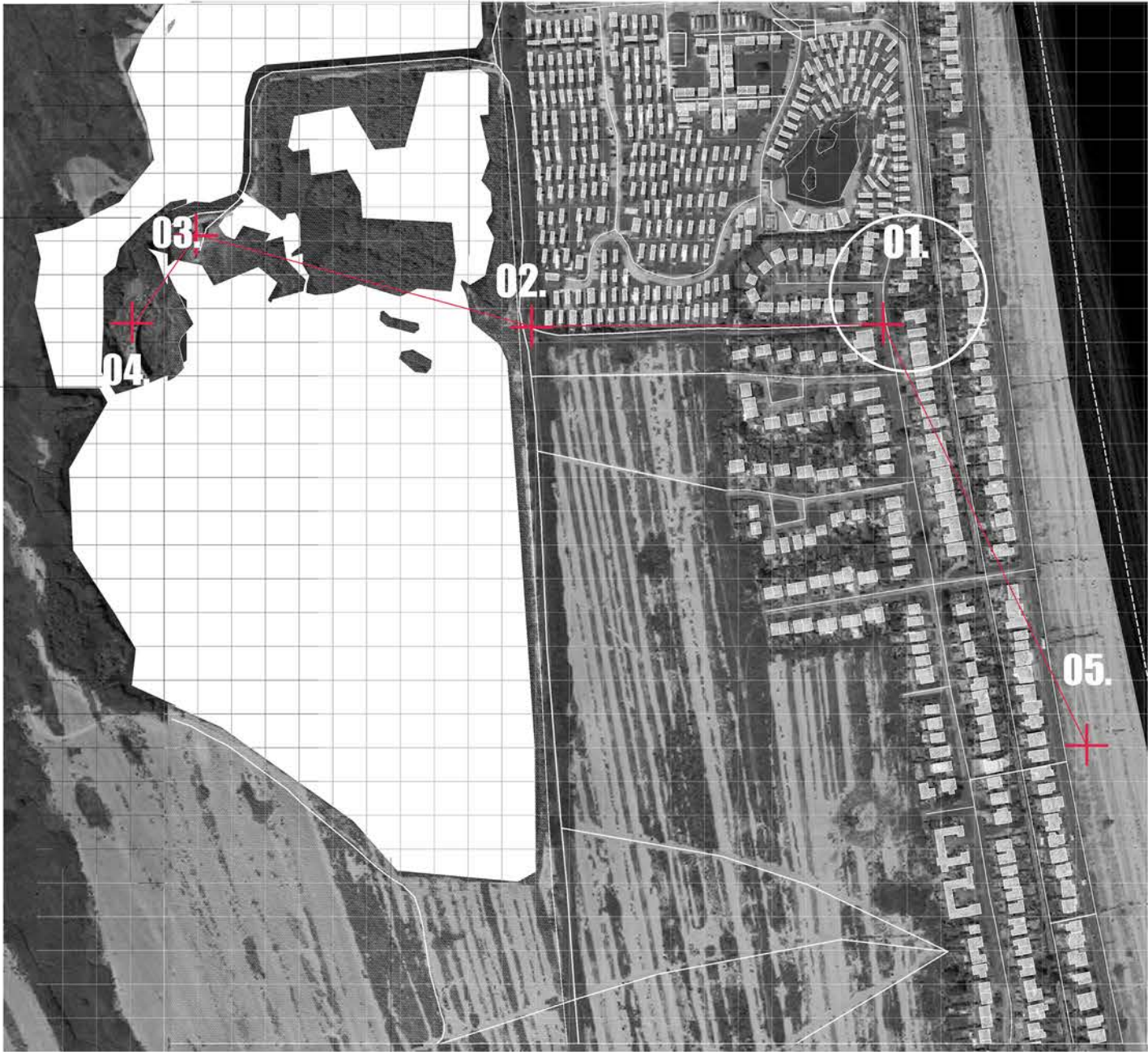


SOUND MIRROR A
70% MELANCHOLY

SOUND MIRROR B



100% MELANCHOLY



FROM LONDON TO

A SAD JOURNEY

DUNGENESS KENT



TRAIN STATION OF THE TEARS

-10%of melancholy, a new train station that start to use the rain



PLAN

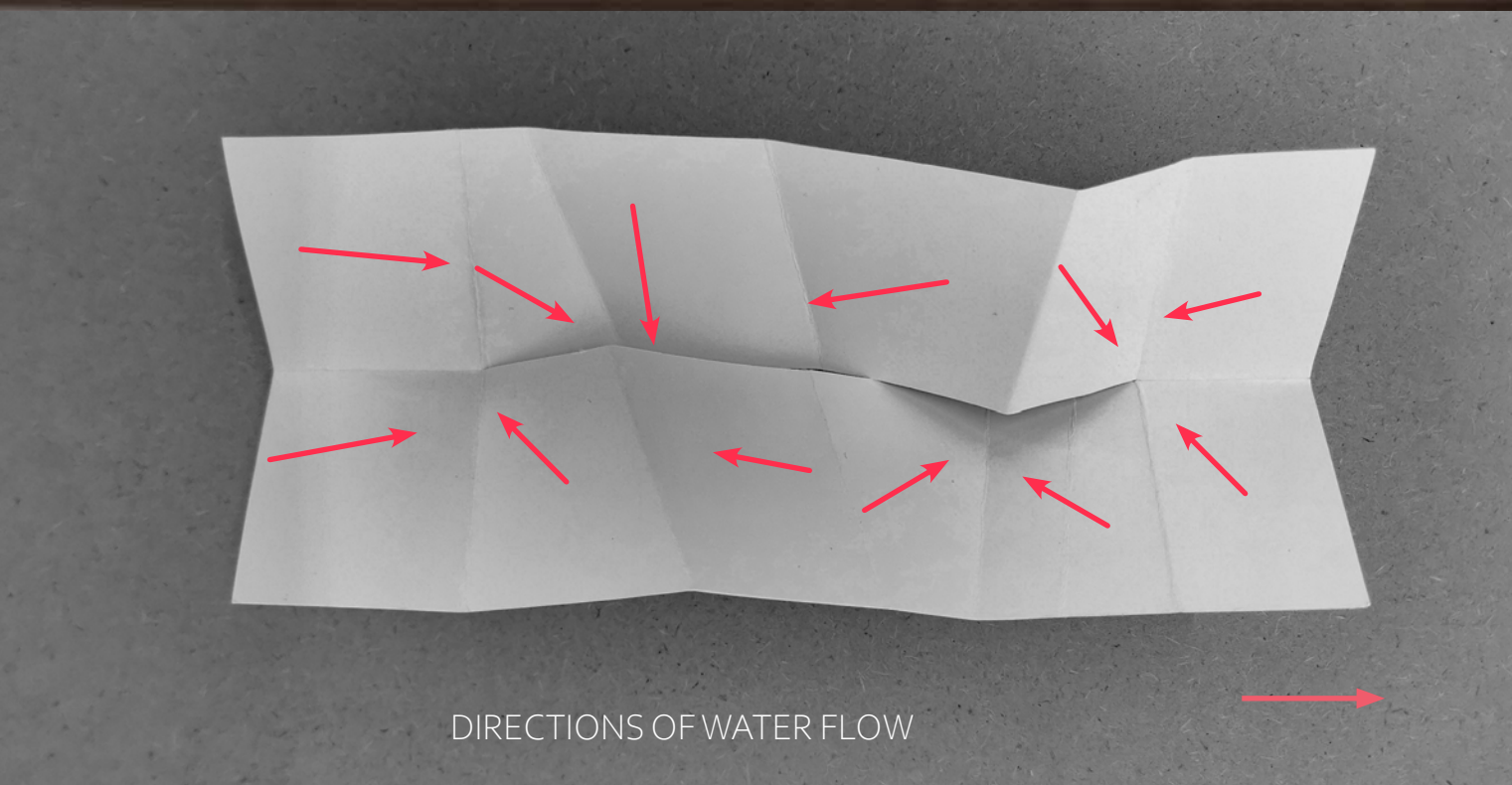


WITHOUT THE RAIN, IT IS A WHOLE PAVILLION WITH SUNSHINE MOVING

THE RAIN DIVIDE TWO DIRECTIONS OF TRAINS AND VIEWS



THIS SLOPE IS MORE GENTLE, SO THE WATERFALL IS LESS THAN THE OTHER ONE.



DIRECTIONS OF WATER FLOW

STRTAGY:

CHANGING THE GRADIENTS OF ROOF,
MAKING A WATERFALL THAT FORCE
PEOPLE GO TO DIFFERENT DIRECTIONS.

AN OPEN MODERN SPACE CAN
AROUSE PEOPLE'S CURIOSITY, AND
10% OF MELANCHOLY COMES FROM
LOCAL NATURAL SCENERY. (RAIN)

GLUM ICES

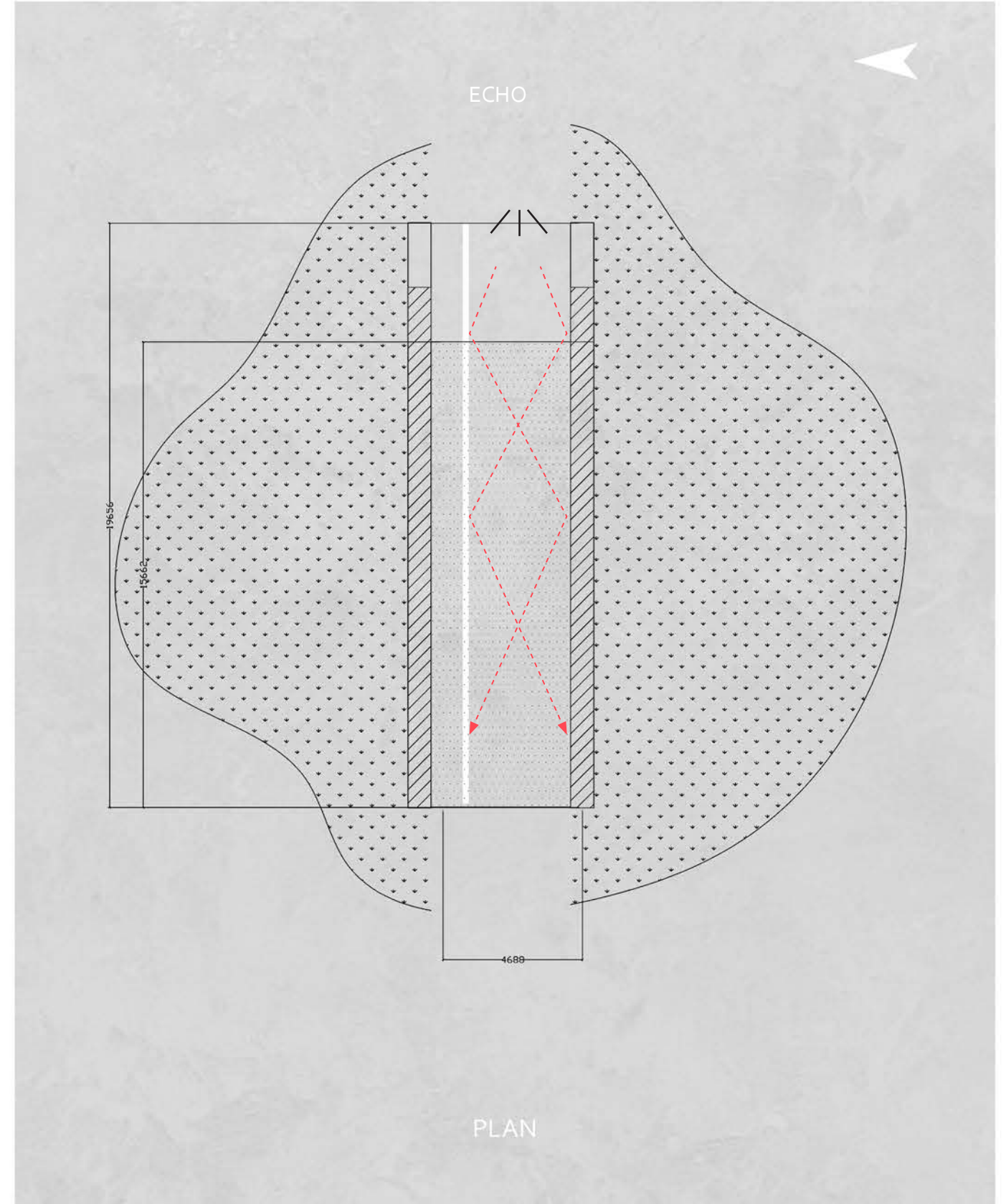


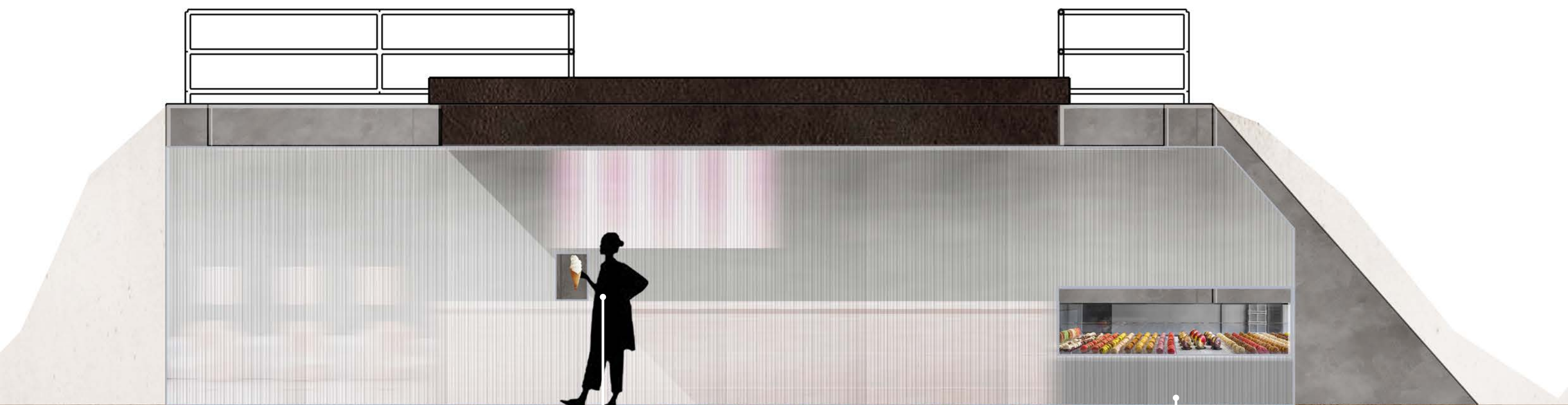
+



30%MELANCHOLY

OVERTURN PEOPLE'S IMPRESSION OF ICE CREAM, HOW
TO MAKE THE EXPERIENCE OF EATING ICE CREAM SAD?





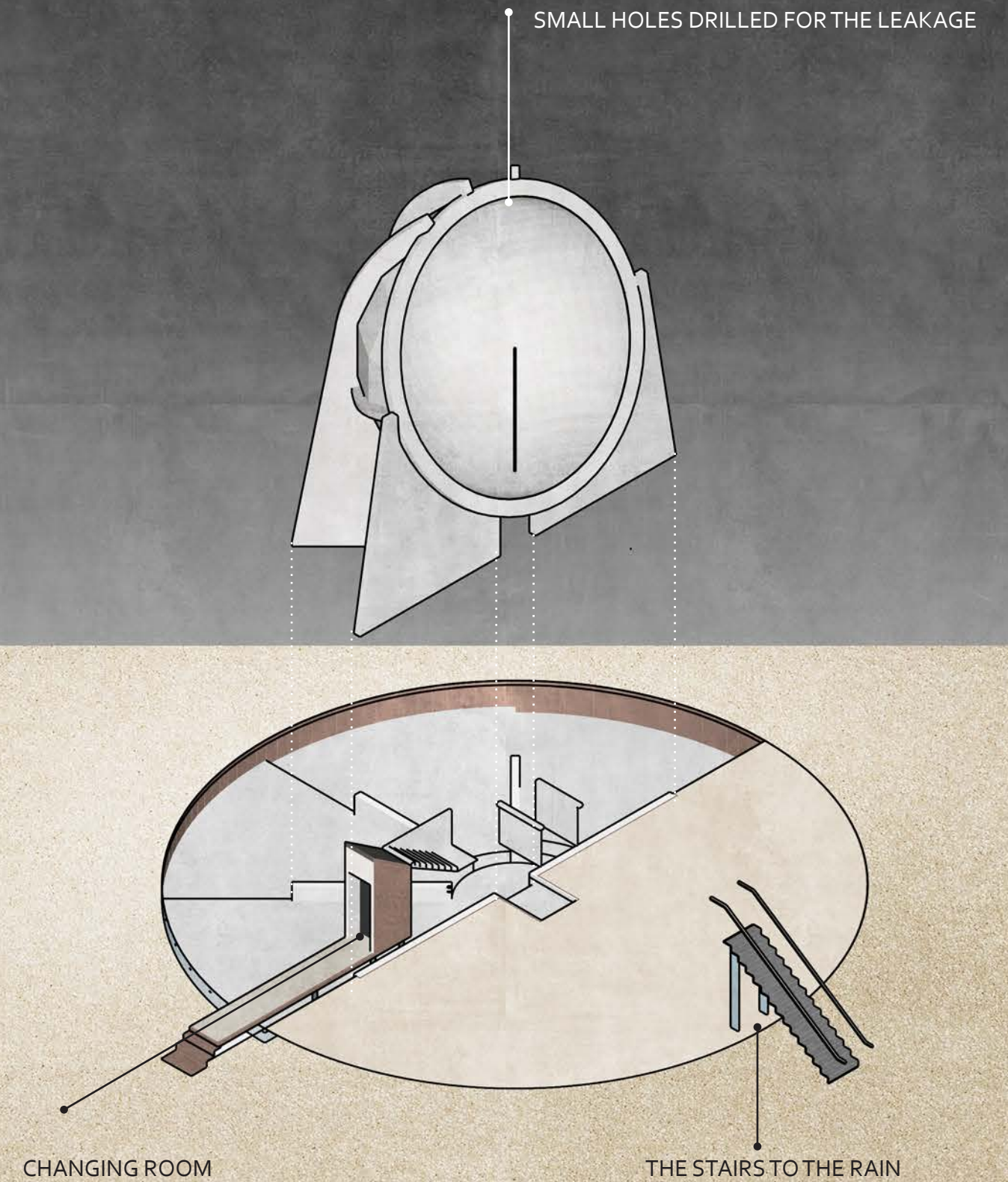
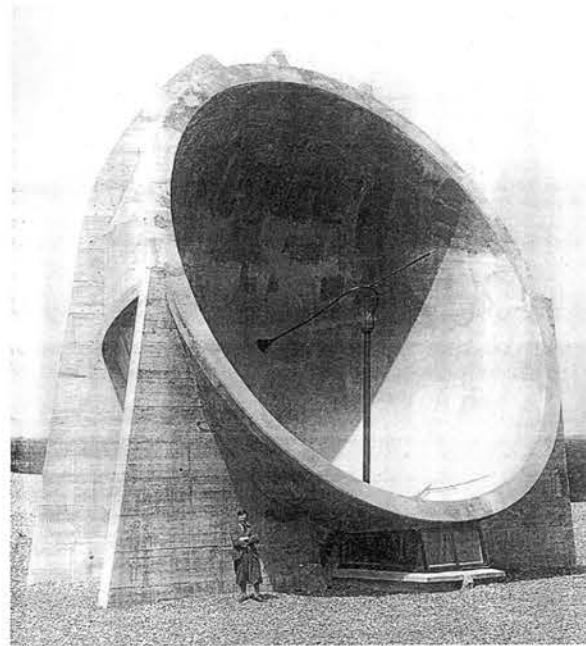
COLLECTING POINT

ORDER POINT

THE DRIPS AND DROPS

70%MELANCHOLY

SOLEMN FROM WW2 VS JOY FROM THE SWIMMING POOL





INSIDE THE HEMISPHEROID

UNDER THE HEMISPHEROID



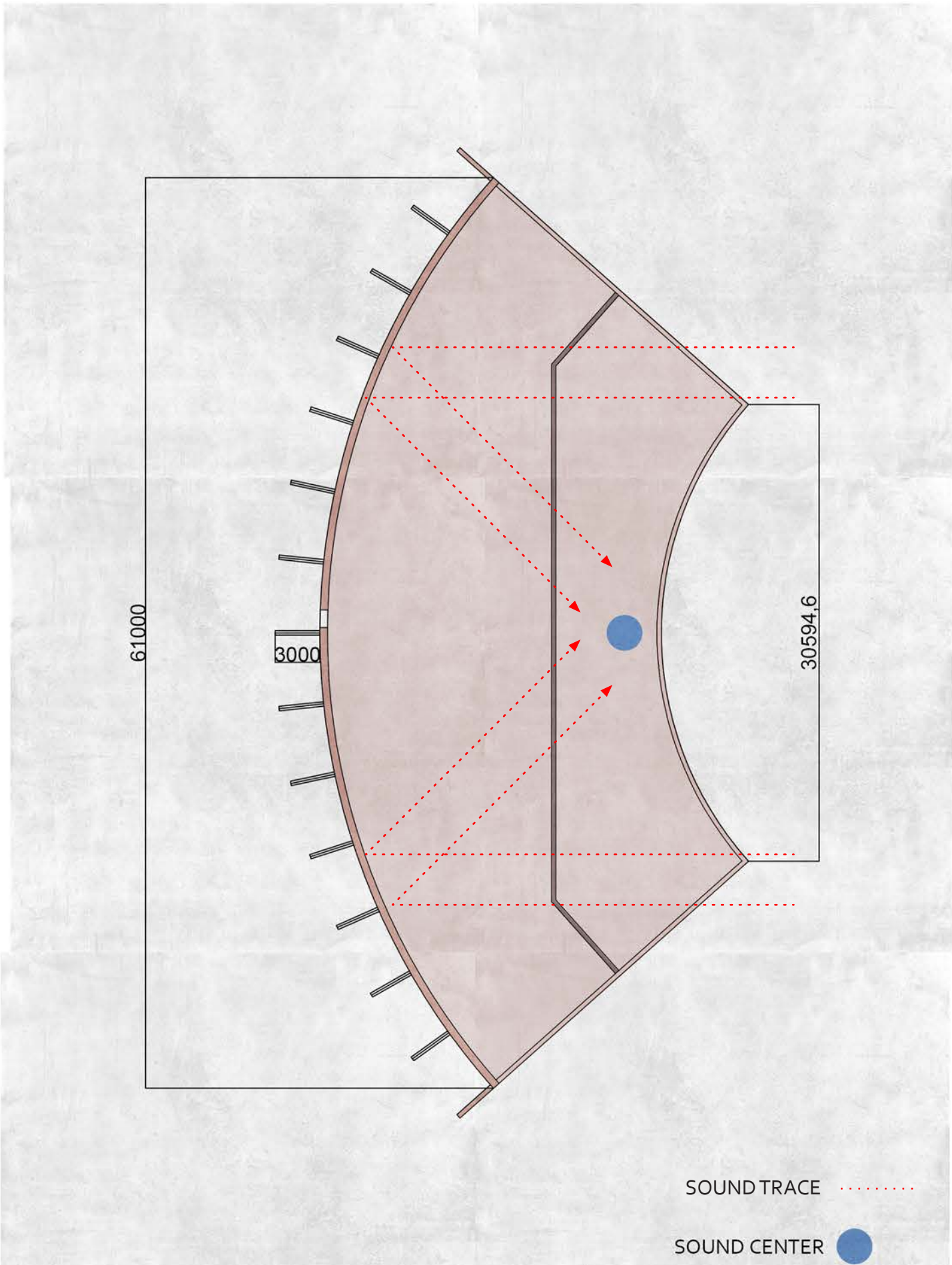
HOTEL MELANCHOLY

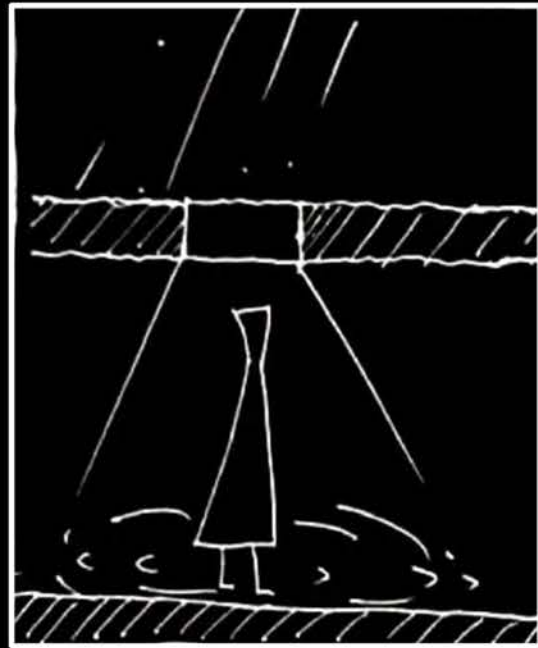
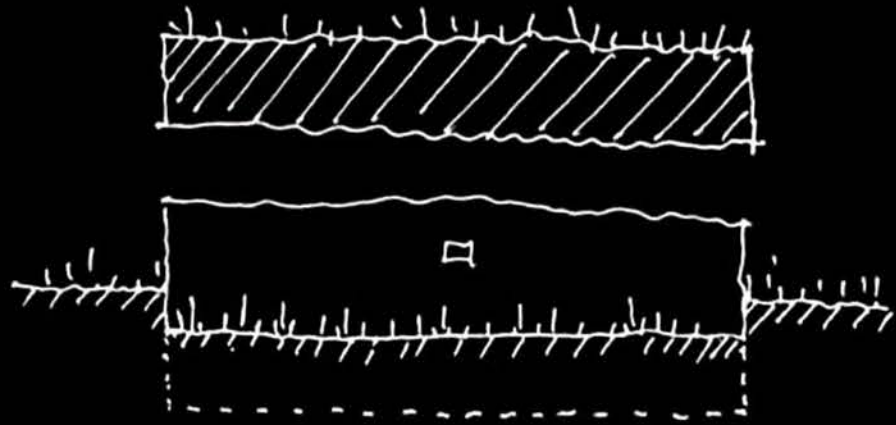
100%MELANCHOLY

A HOLIDAY IN SADNESS

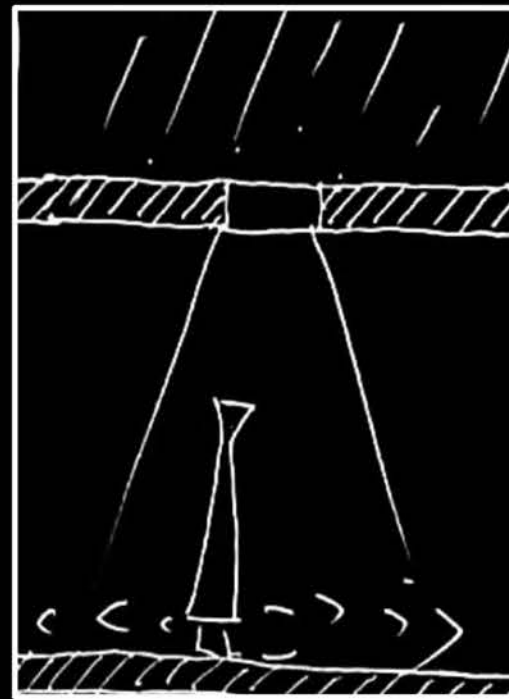


SOUND PRINCIPLE





LOW

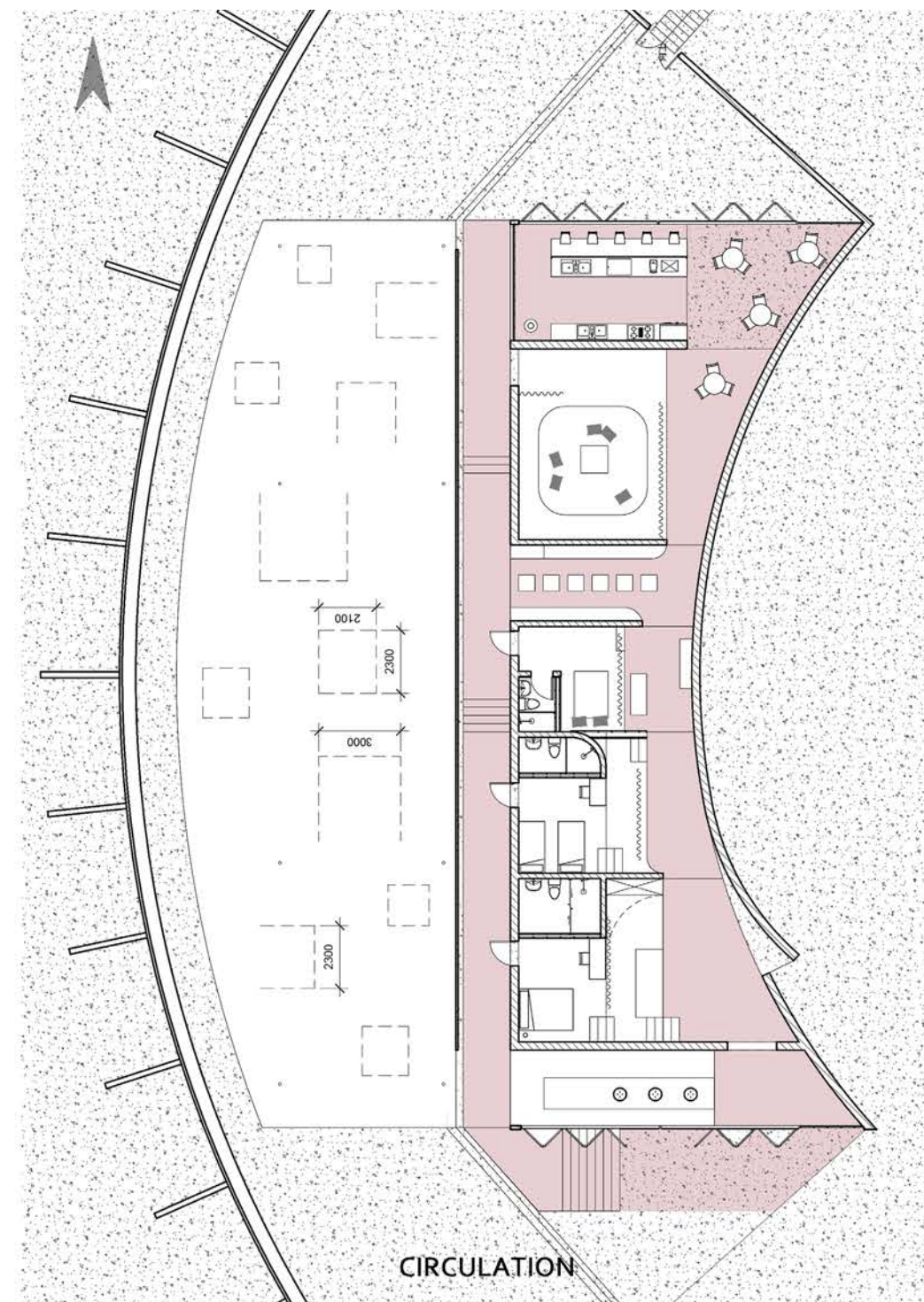
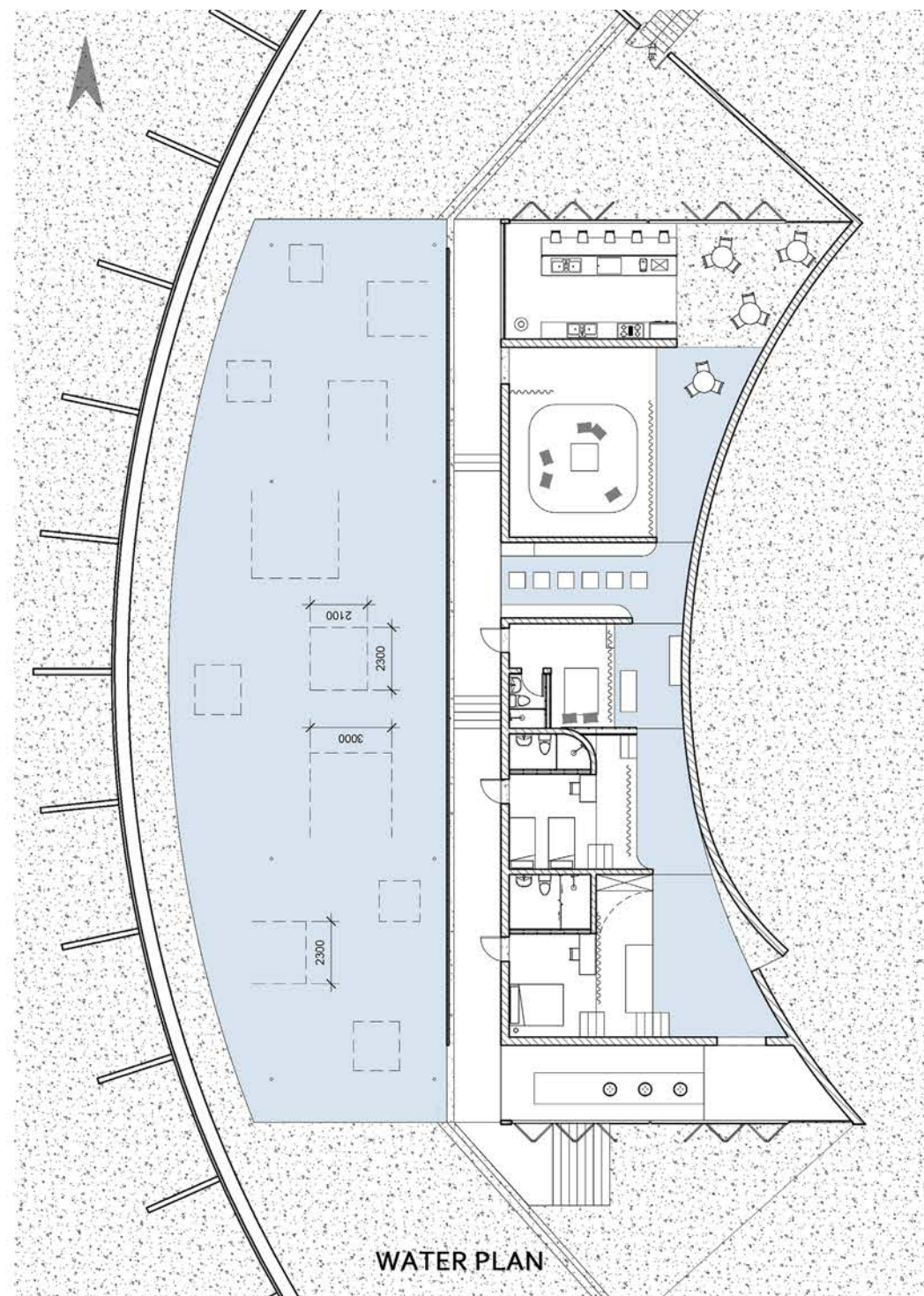
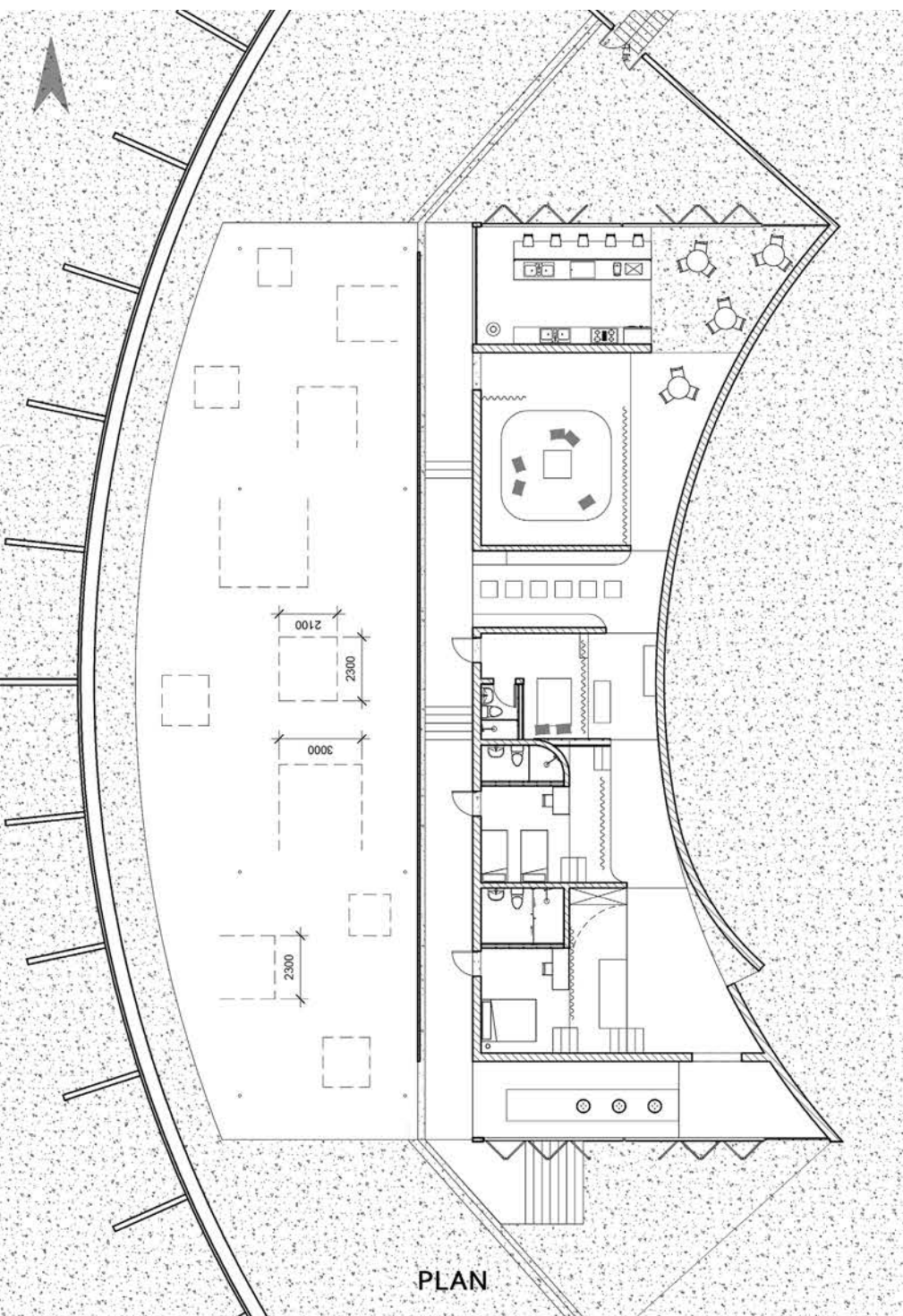


NORMAL

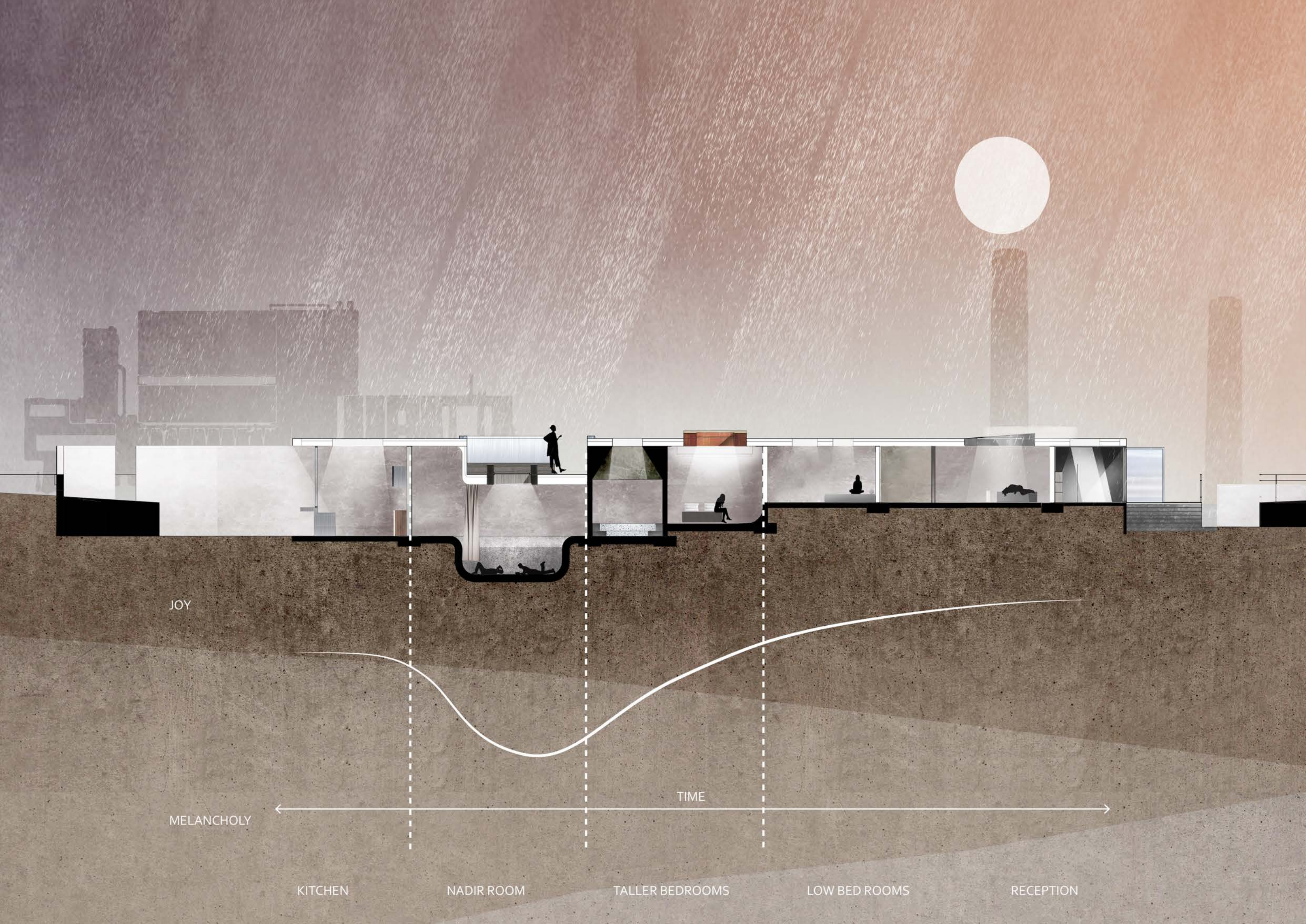


HIGH

STRATEGY



(PART OF THE HOTEL WILL BE FILLED WITH PONDING WHEN IT IS RAINING.)



JOY

MELANCHOLY

TIME

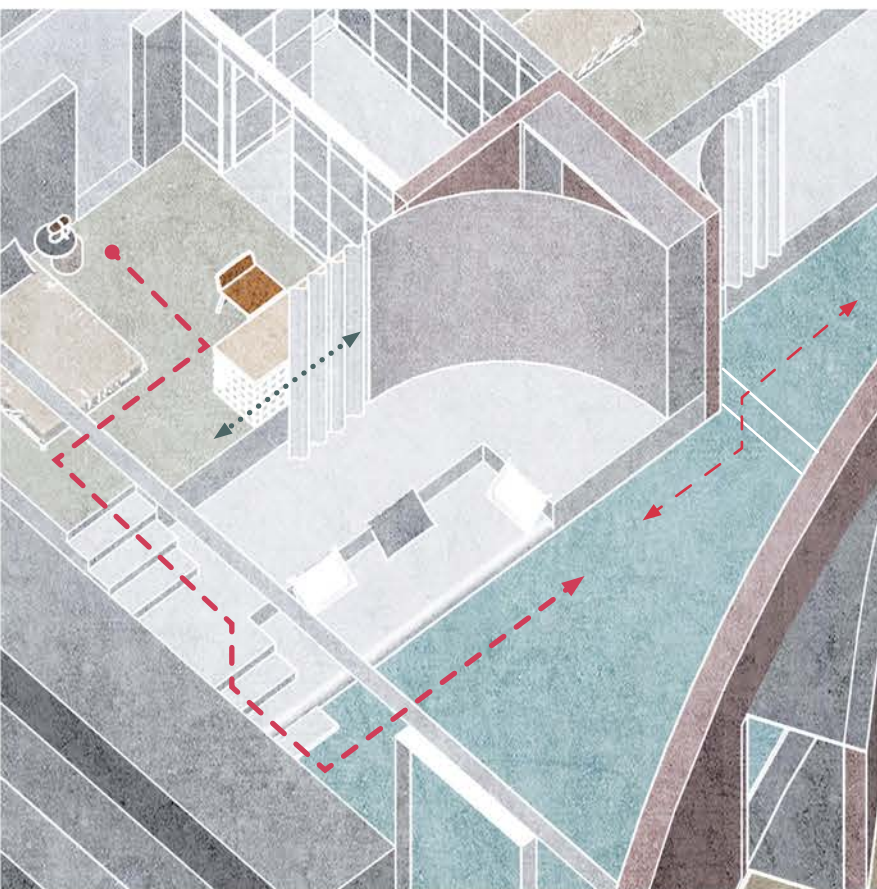
KITCHEN

NADIR ROOM

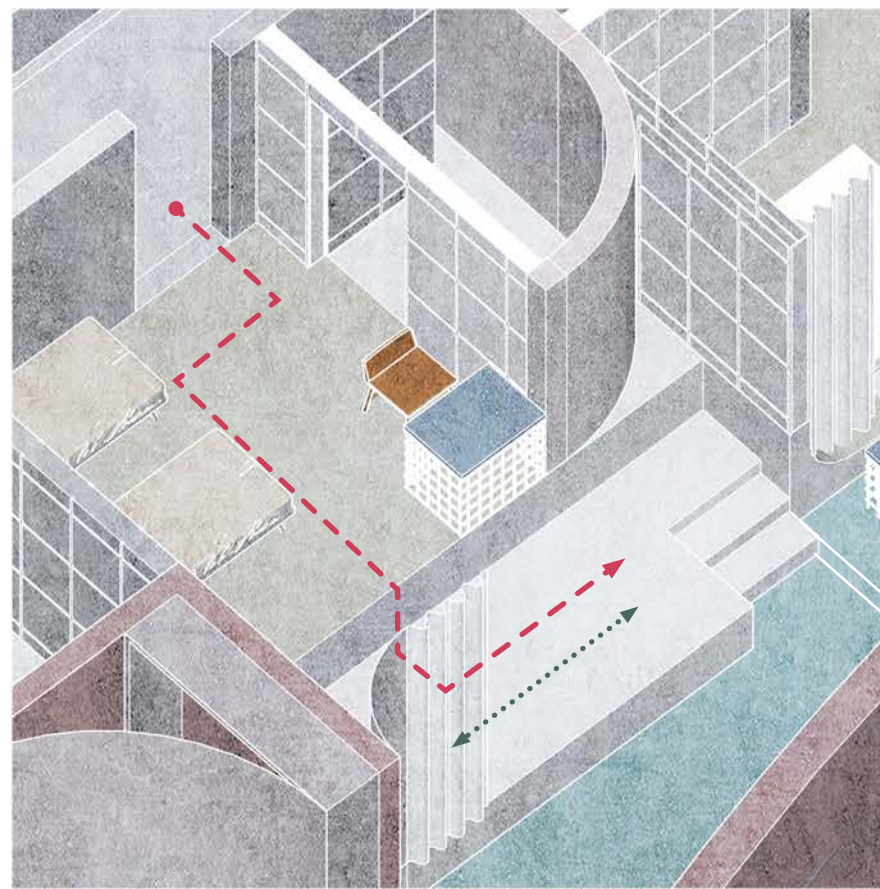
TALLER BEDROOMS

LOW BED ROOMS

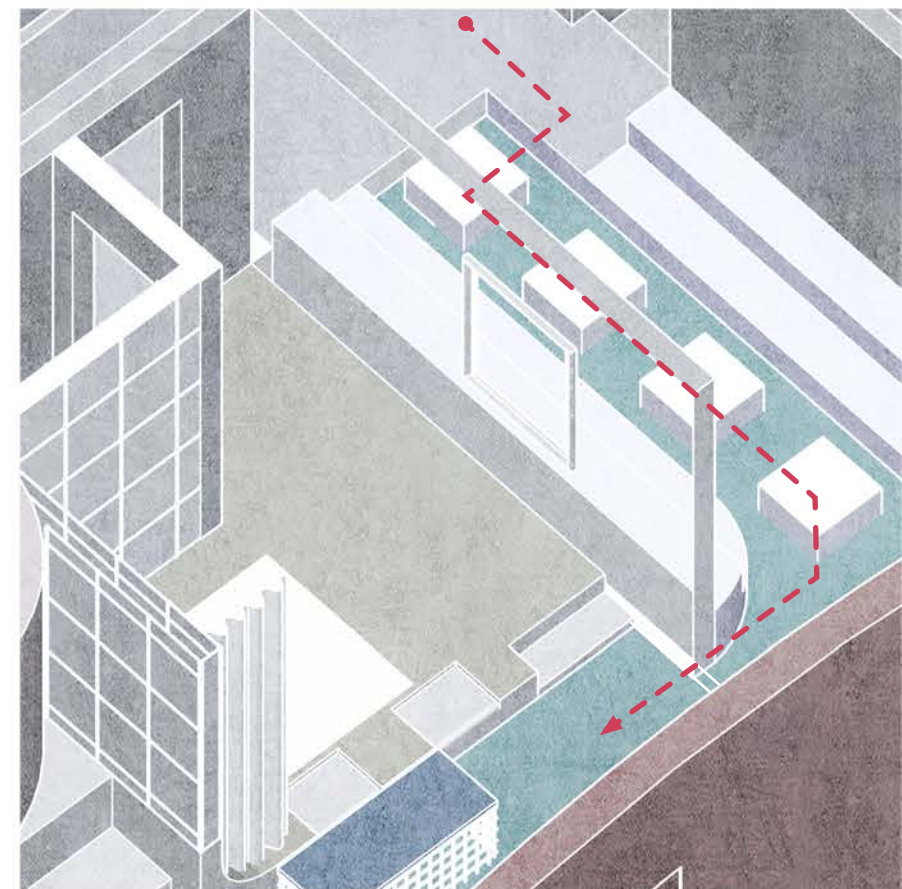
RECEPTION



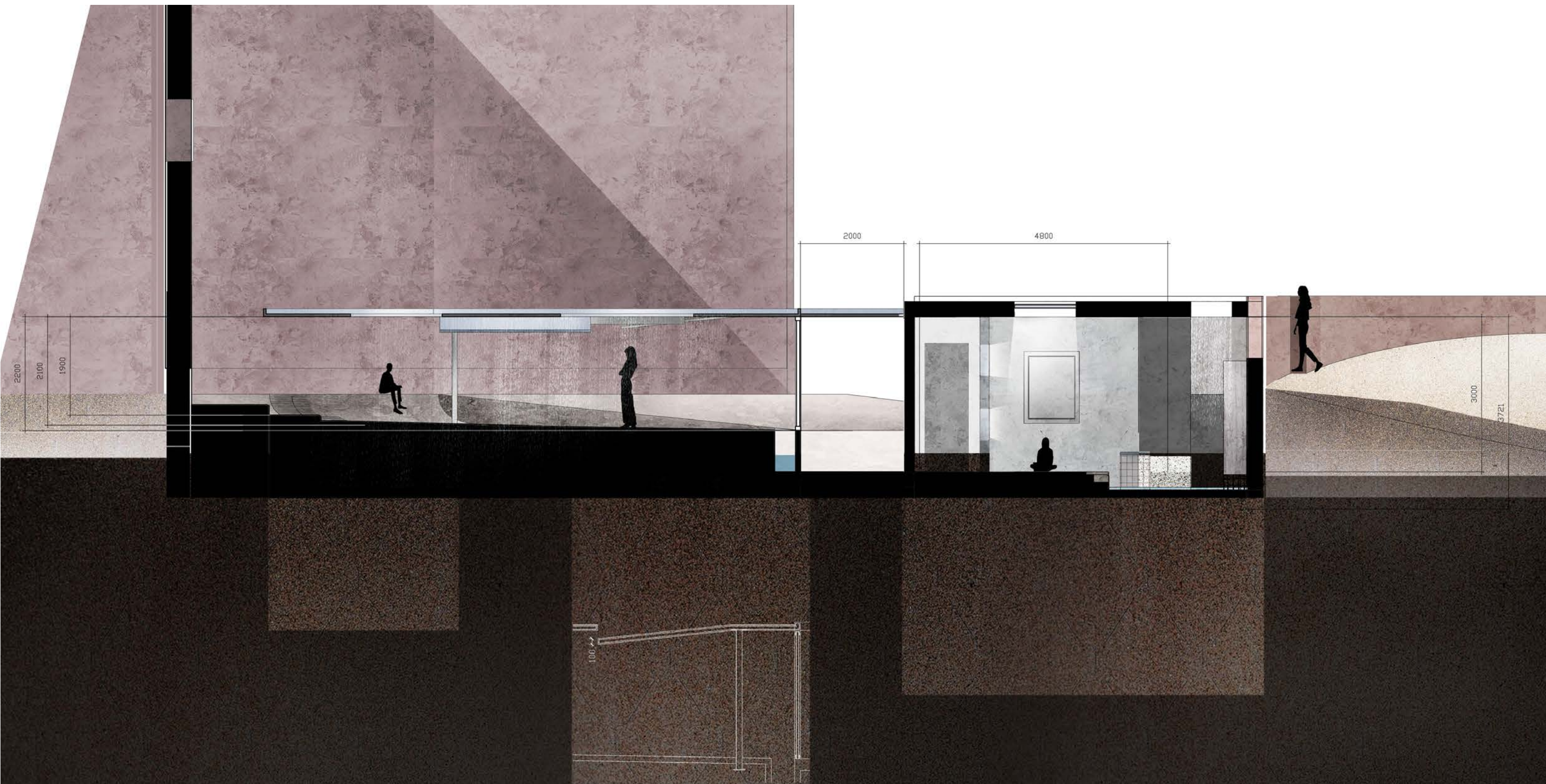
ROOM₁



ROOM₂



ROOM₃





BEDROOMS









AS A PUBLIC SPACE AND CORRIDOR, THIS PART CAN BE USED AS A TRANSITION BETWEEN DRY AND WET AREAS.

AT THE SAME TIME, THE USER'S WALKING ROUTE FORMS A CLOSED CIRCULATION, PROVIDING CONVENIENCE FOR THE LONG CORRIDOR.







THE DEEPTH OF WATER IN ROOMS ARE DIFFERENT.

THE WATER IN THE KITCHEN IS THE SHALLOWEST

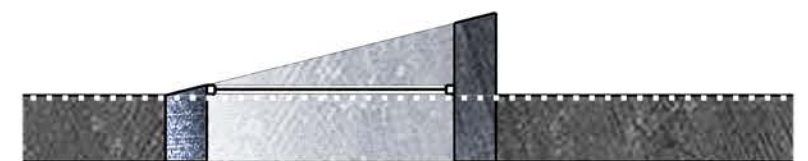


KITCHEN





RAINWATER
COURTYARD



DIFFERENT GRIDENT AND MATERIALS OF ROOFS

CONTROLLING THE SOUND WITH MATERIALS

RAINING ROOF

THE LITTLE OBSOLESCENCE HOUSE

50%MELANCHOLY

THE BEAUTY OF SADNESS



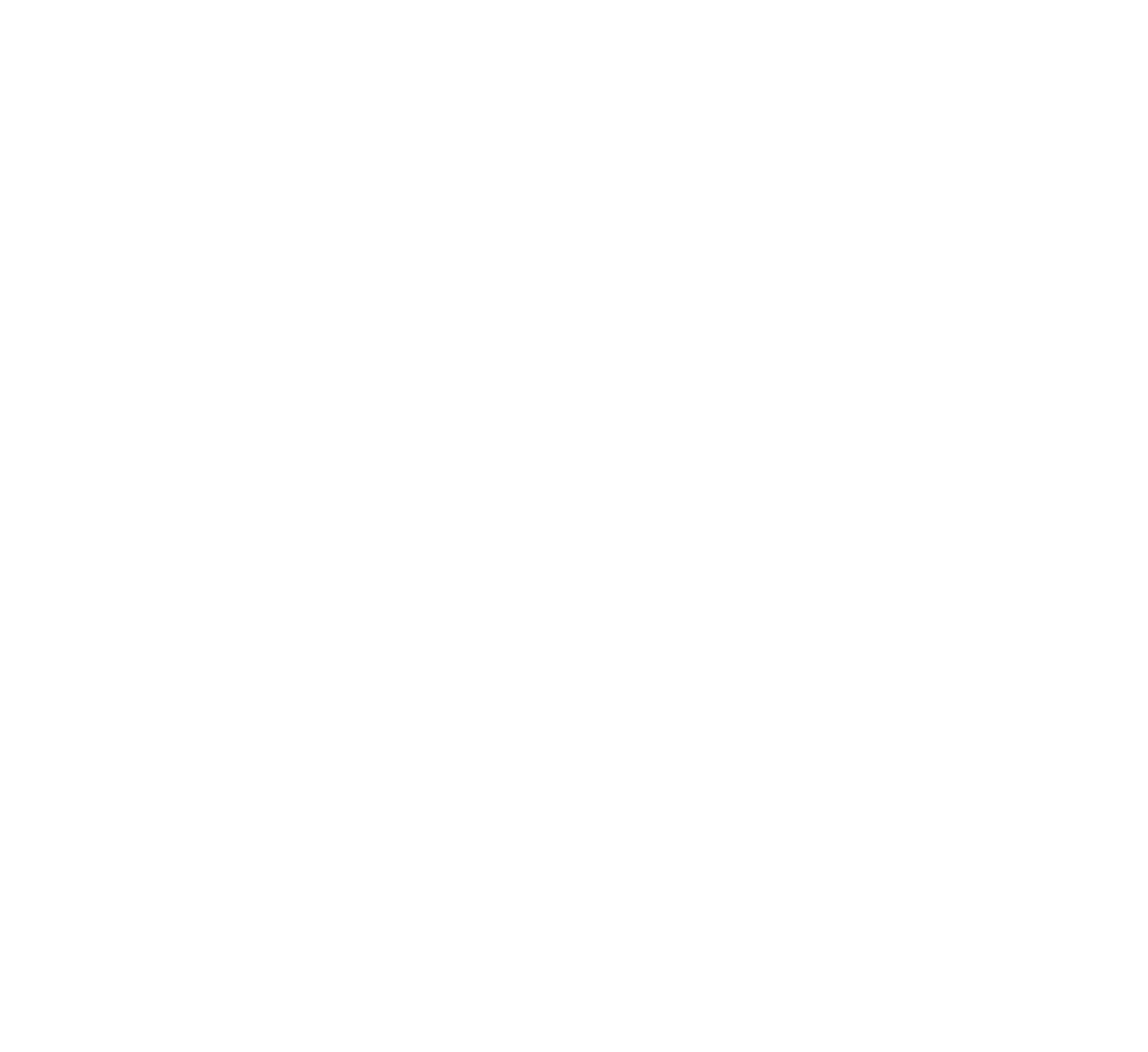
CONVEX
+
PINHOLE



BLUE PRINT USES CYANOTYPE TECHNOLOGY TO IMAGE WITH AN OPTICAL PHENOMENON, WHICH IS THE CASE WITH THE EXPOSURE PHOTO WASHING.

COMPARED WITH THE PREVIOUS PROJECT USING RAIN, THIS PROJECT MAINLY USES SUNLIGHT TO MAKE SURE THAT YOU CAN ALSO FEEL MELANCHOLY ON A SUNNY DAY.





THIS IS THE END OF THE JOURNEY

CHEER UP!