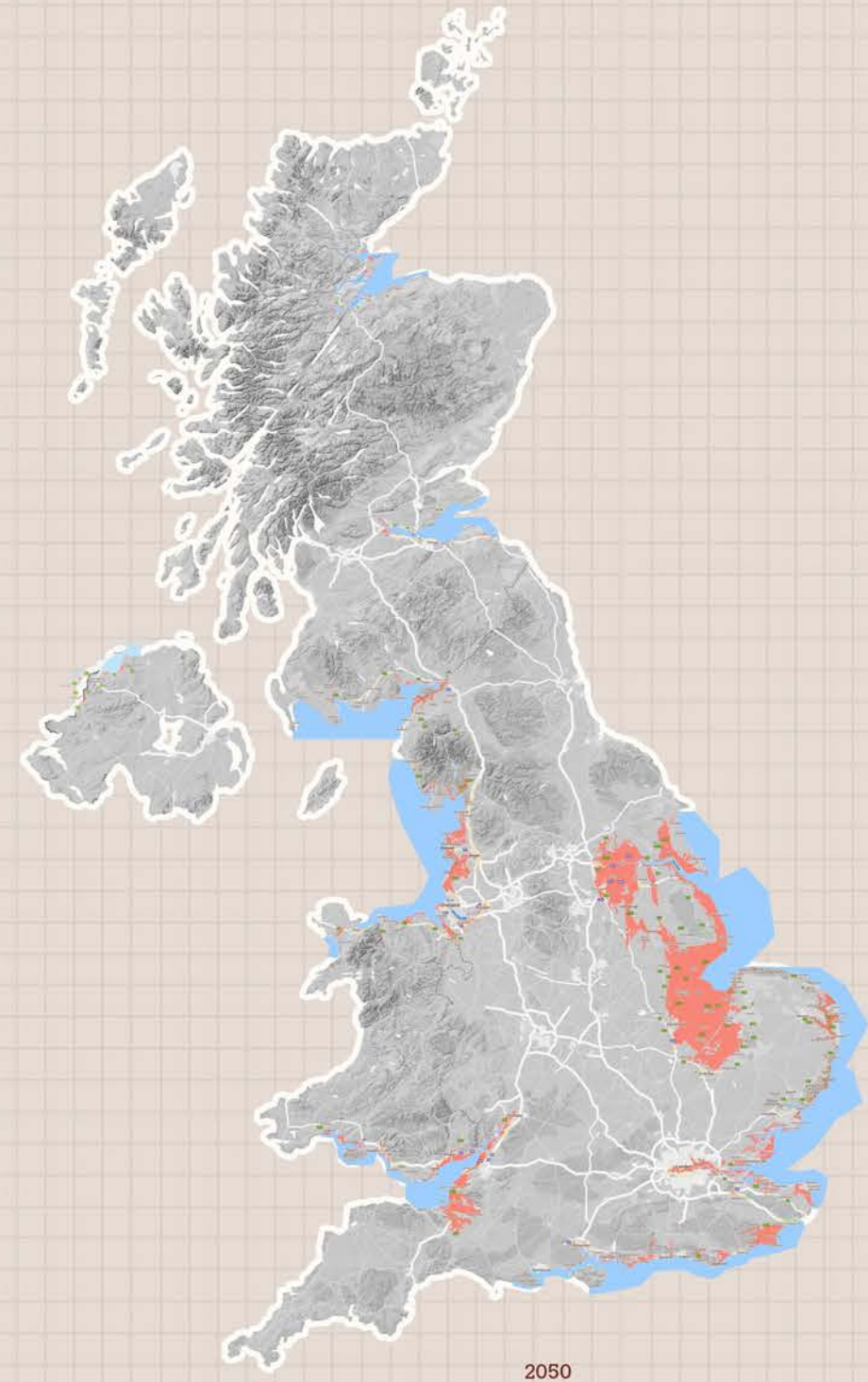


# **The Immersion Houses**

「2020-2050」



*'the sea level has risen 102mm since 1993'*

"Sea Level Rise And Coastal Flood Risk Maps -- A Global Screening Tool By Climate Central".  
Coastal.Climatecentral.Org, 2022,



Sea level rise and coastal flood risk maps -- Shoreham-by-sea  
a global screening tool by Climate Central (2022).



The toilet block -- Shoreham-by-sea  
Google map 24/05/2022



**Q:**

**The sea level has risen\_\_\_\_\_mm since 1993?**

**Two dimensional graphics are not enough!**



Hand-made ceramic tiles



<the floor of an RCA design studio>

#### color

- 1: (pink painting) dropped
- 2: (green painting) dropped
- 3: (black spray) sprayed
- 4: (painting) brushed
- 5: (blue painting) dropped
- 6: (mix painting) dropped

#### color + texture

- 7: (red painting) stamped
- 8: (plaster) dragged

#### 3d texture added

- 9: (black tape) stuck
- 10: (half tape) stuck

#### peeled off (decreased)

- 11: scratched by sharp tools
- 12: (taped) stuck off
- 13: kicked off



The floor of our design studio .

JESSICA

JESSICA

JESSICA

JESSICA.

JESSICA

Hand writing

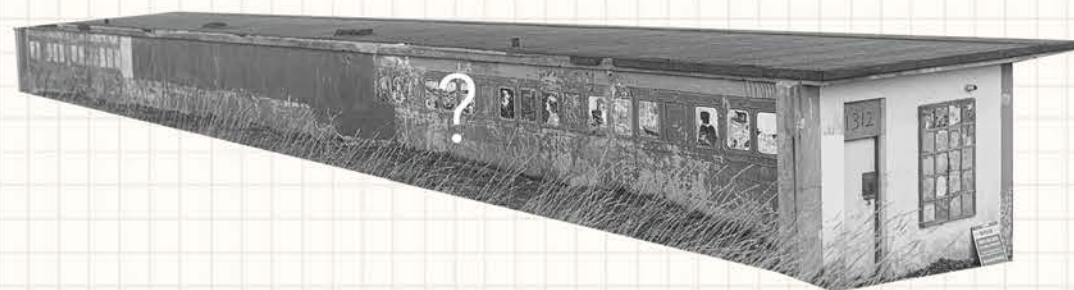


The toilet block -- Shoreham-by-sea  
Google map 24/05/2022









### The needs:

#### [General: ]

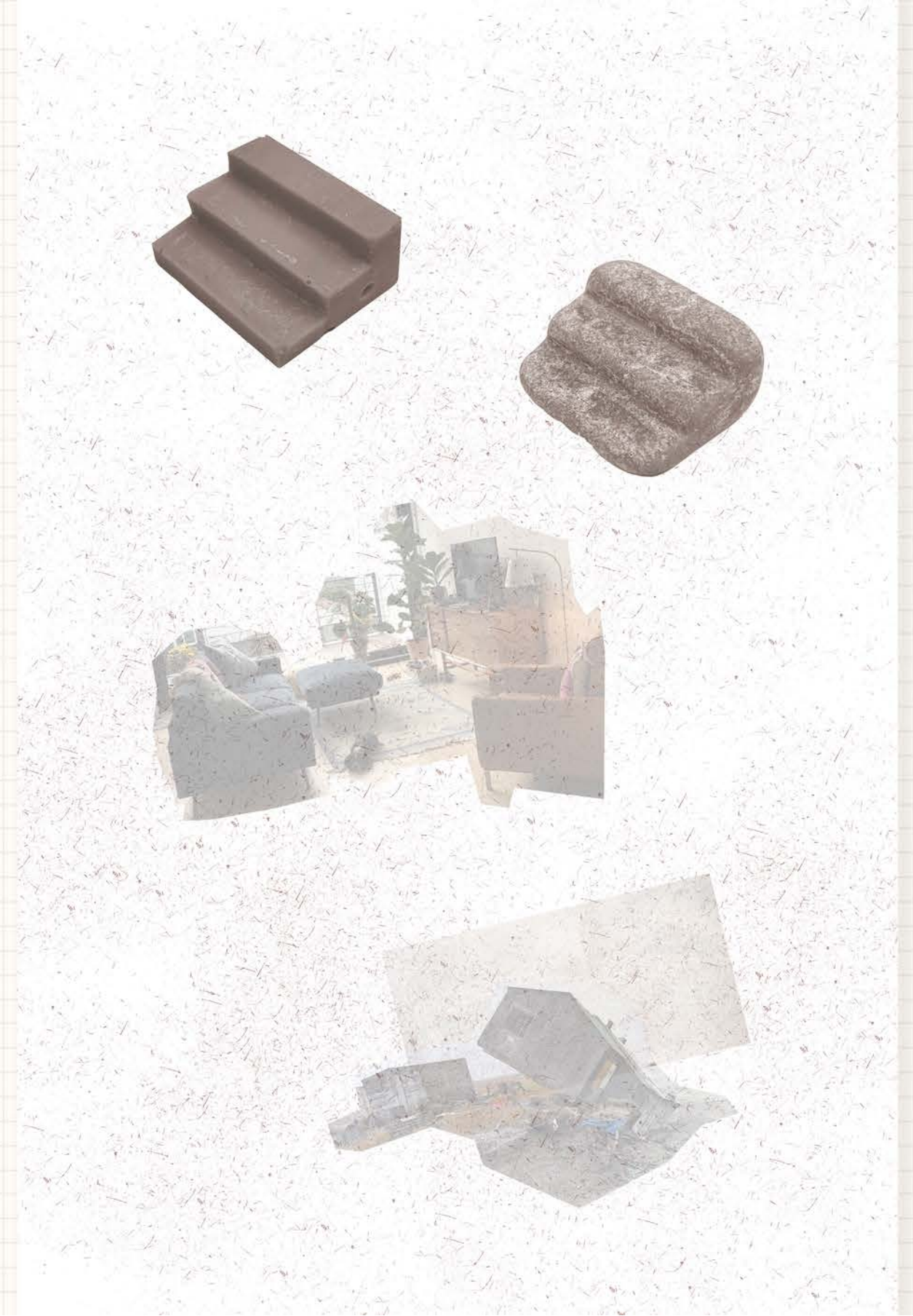
- 1- same houses which can show difference between 'before & after' at the same time
- 2- (meet the need of) a public space with an instinctive walking flow

#### [Spacial Experience - to strengthen the feeling of fear : ]

- 3- Set a homely environment (should be used instead of a monument-like structure)
- 4- Visualize the change of sea level at 1:1 scale
- 5- Provide close touch & observation
- 6- Let the sea play the main role in the project

#### [Material: ]

- 7- Can be used to cast solid objects
- 8- Being able to be eroded gradually



### The needs:

#### [General: ]

- 1- same houses which can show difference between 'before & after' at the same time
- 2- (meet the need of) a public space with an instinctive walking flow

#### [Spacial Experience - to strengthen the feeling of fear : ]

- 3- Set a homely environment (should be used instead of a monument-like structure)
- 4- Visualize the change of sea level at 1:1 scale
- 5- Provide close touch & observation
- 6- Let the sea play the main role in the project

#### [Material: ]

- 7- Can be used to cast solid objects
- 8- Being able to be eroded gradually



### **The needs:**

#### **[General: ]**

- 1- same houses which can show difference between 'before & after' at the same time
- 2- (meet the need of) a public space with an instinctive walking flow

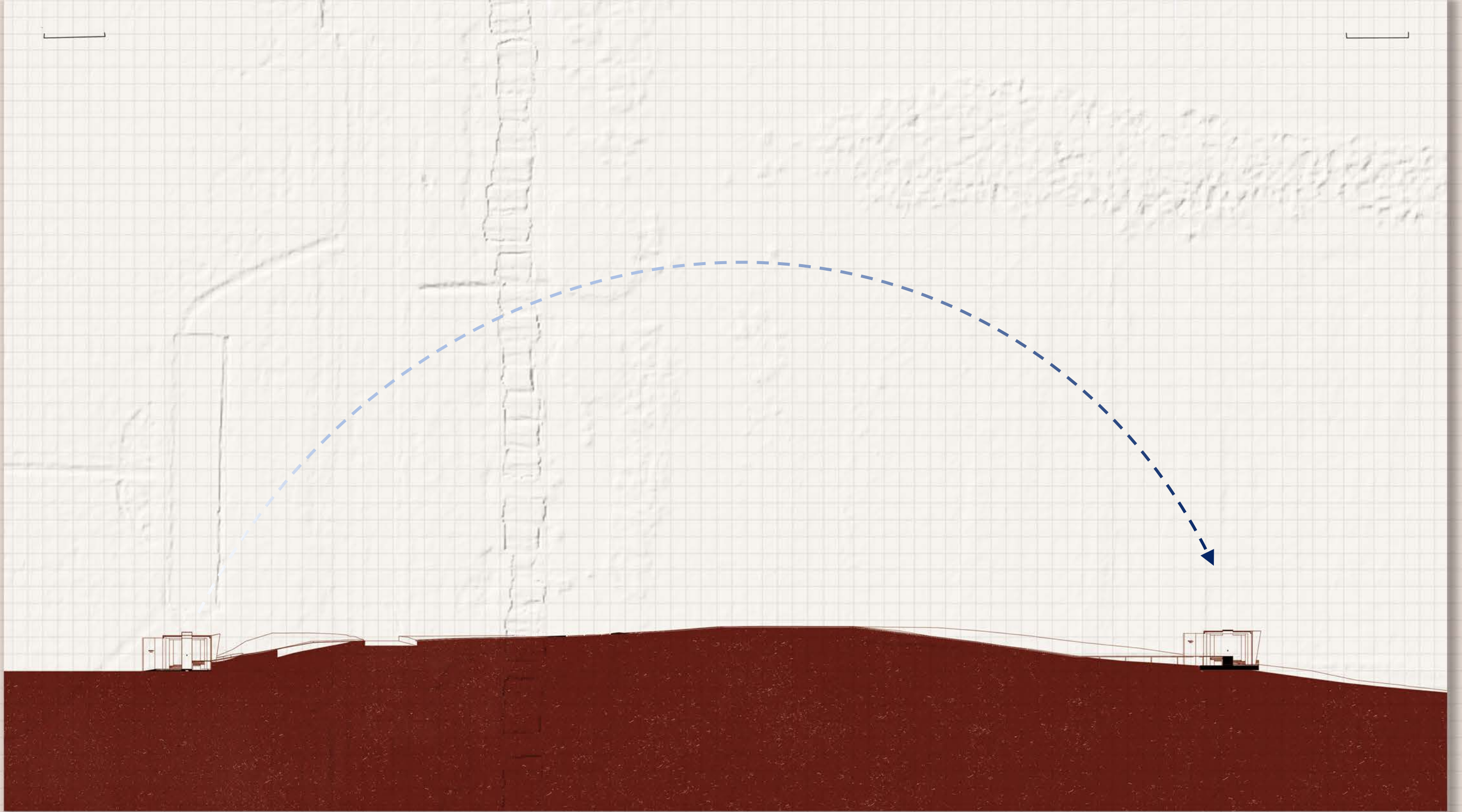
#### **[Spacial Experience - to strengthen the feeling of fear : ]**

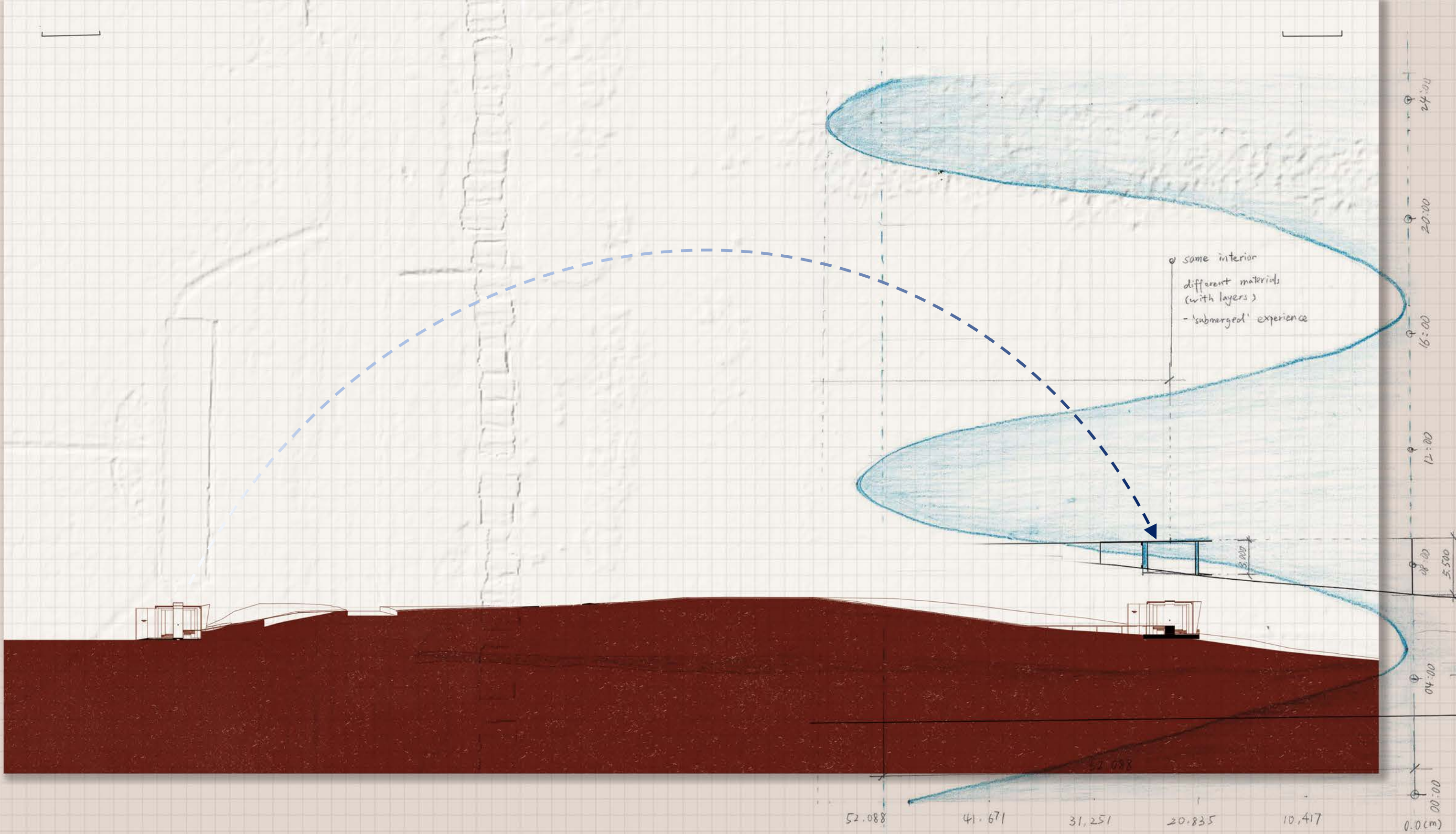
- 3- Set a homely environment (should be used instead of a monument-like structure)
- 4- Visualize the change of sea level at 1:1 scale
- 5- Provide close touch & observation
- 6- Let the sea play the main role in the project

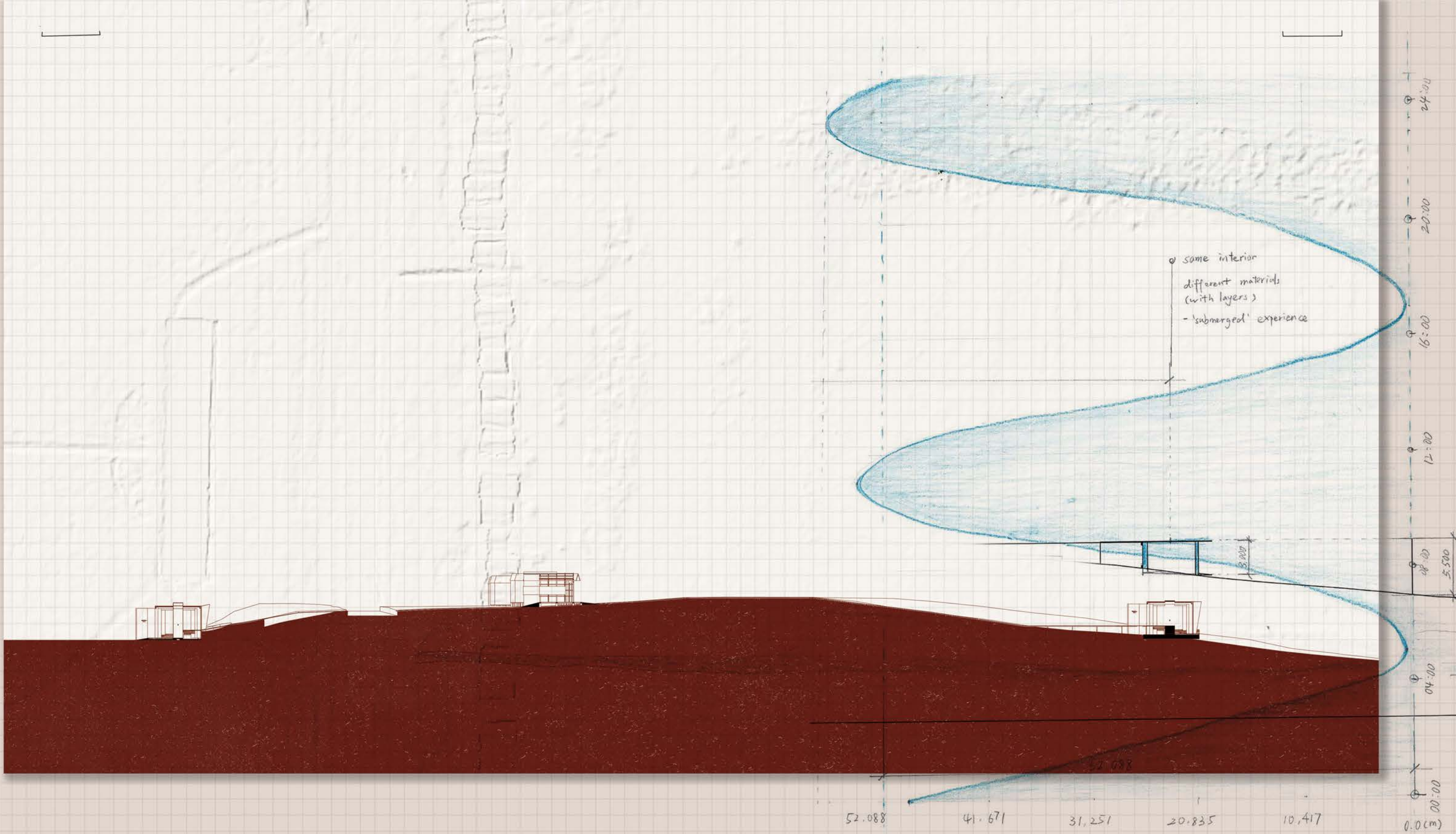
#### **[Material: ]**

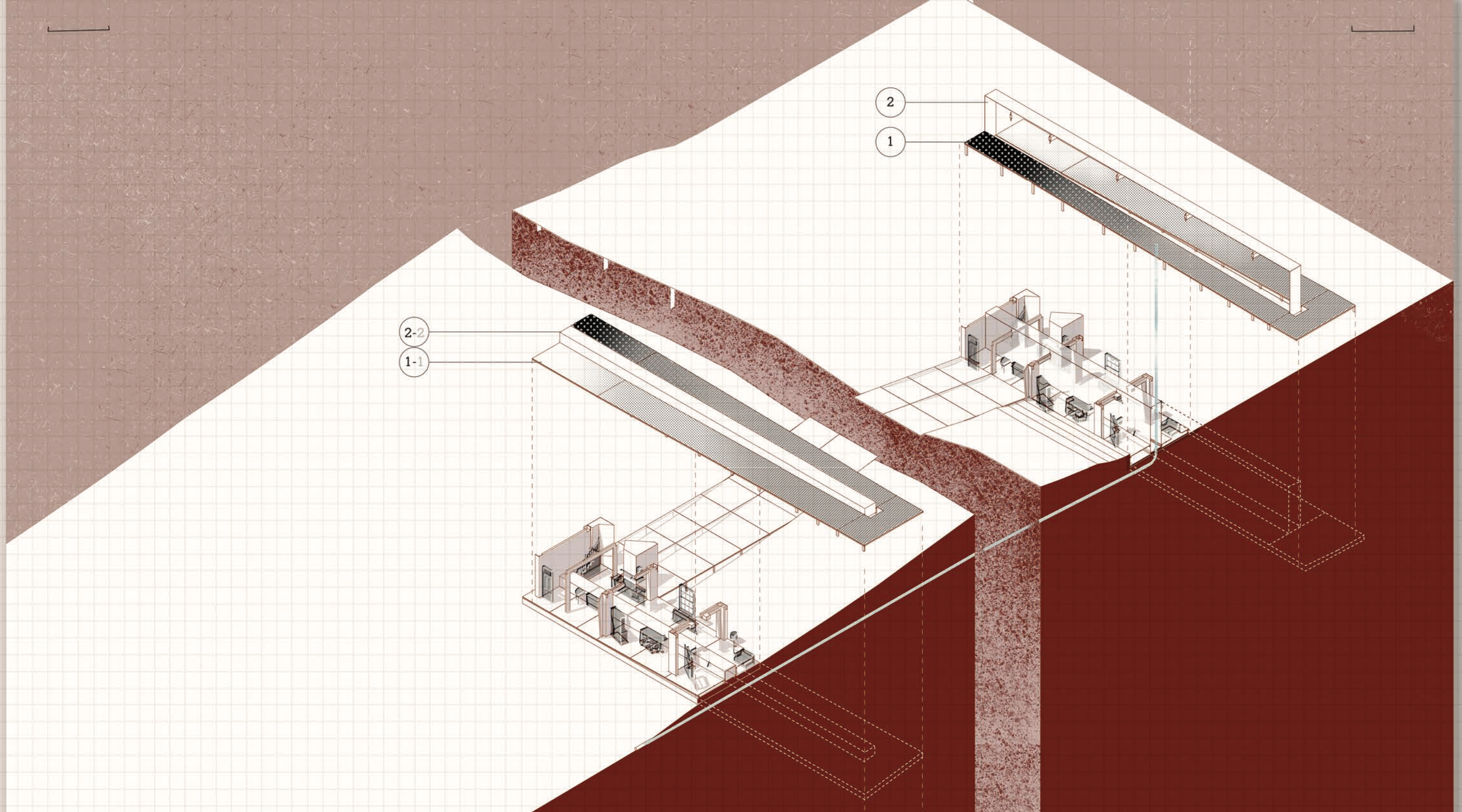
- 7- Can be used to cast solid objects
- 8- Being able to be eroded gradually







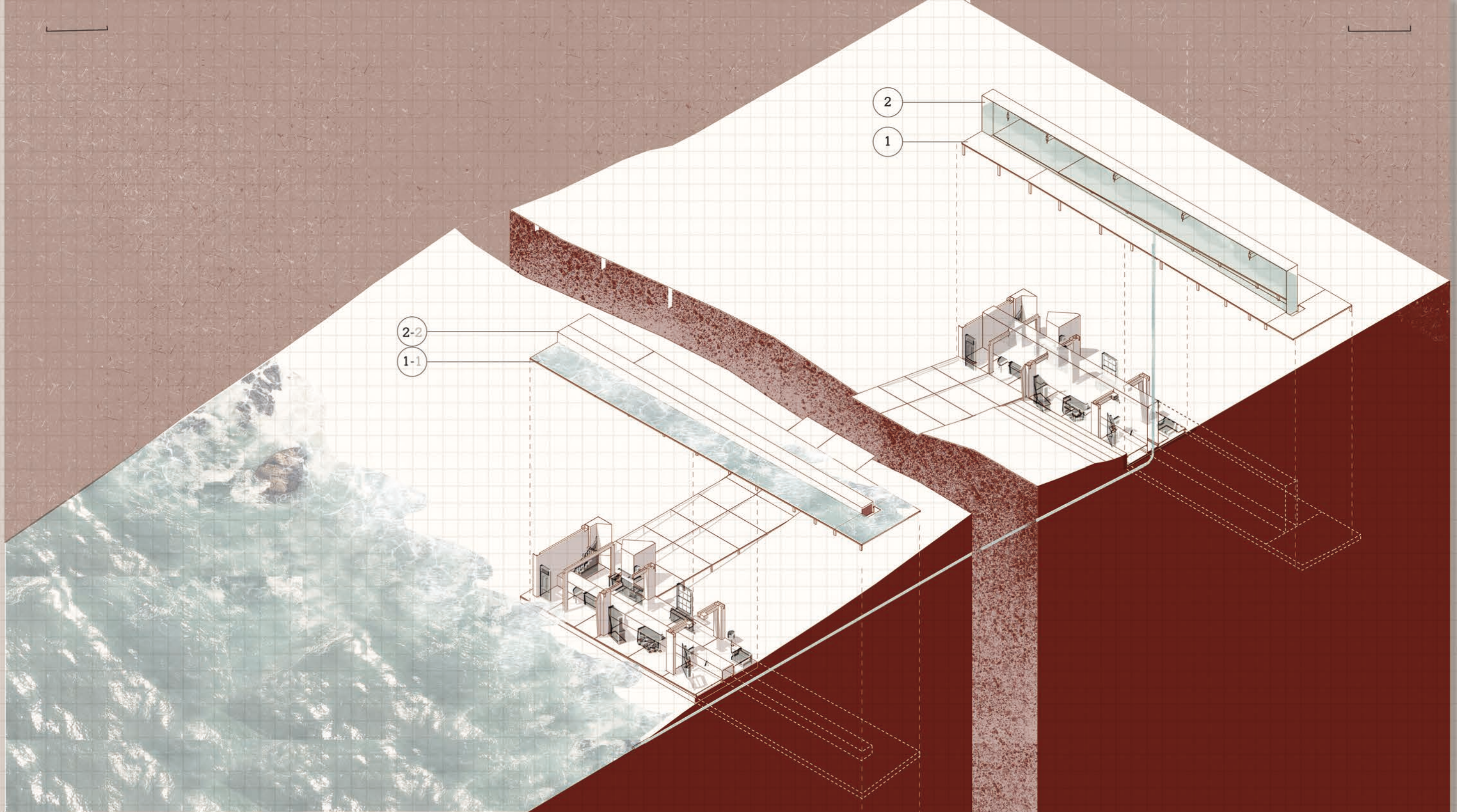




1- ramp : [House 2020]  
2- The water tank : [House 2020]  
1-1 - ramp : [House 2050]  
2-2 - The island walk path : [House 2050]

0 6 12 18 (m)



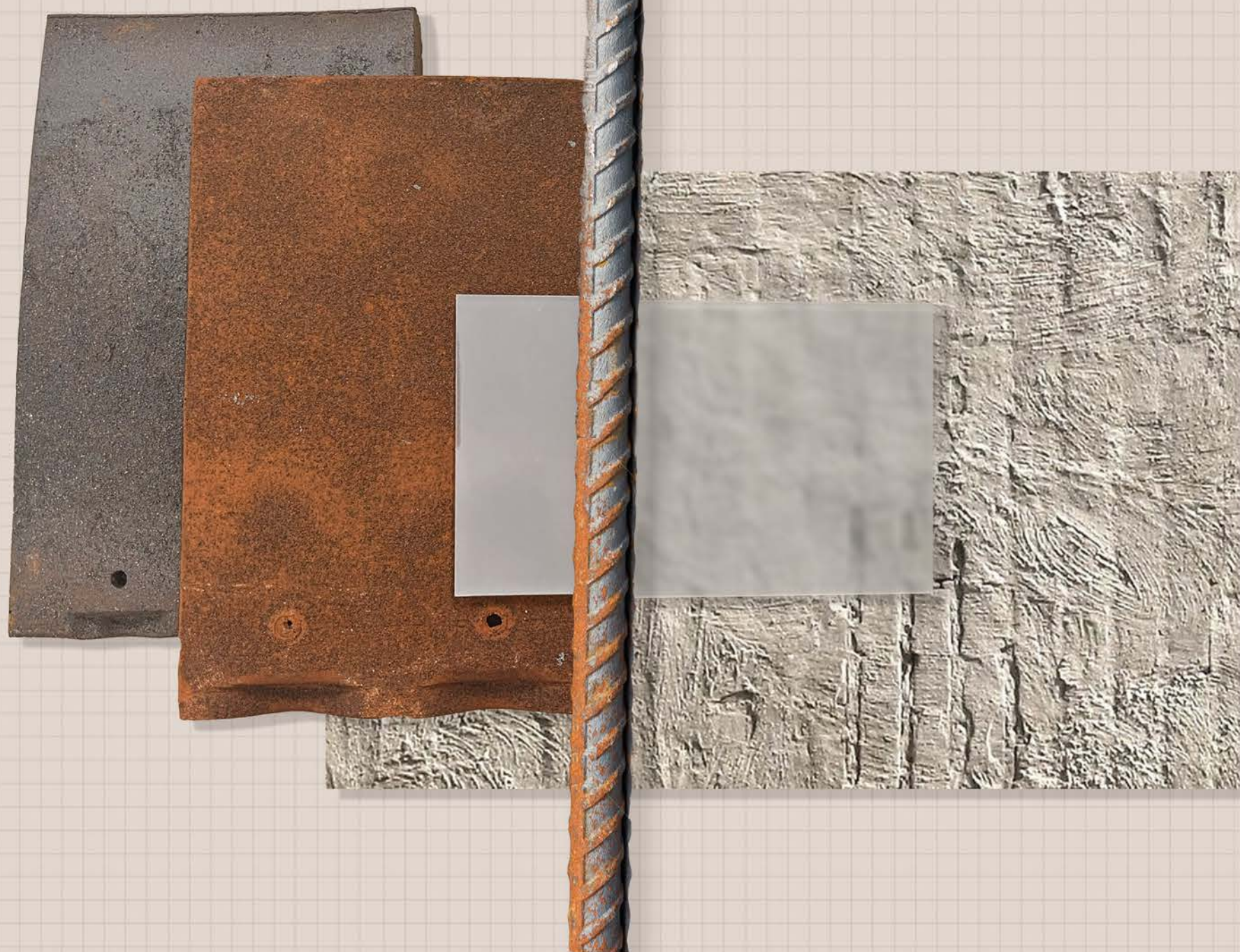


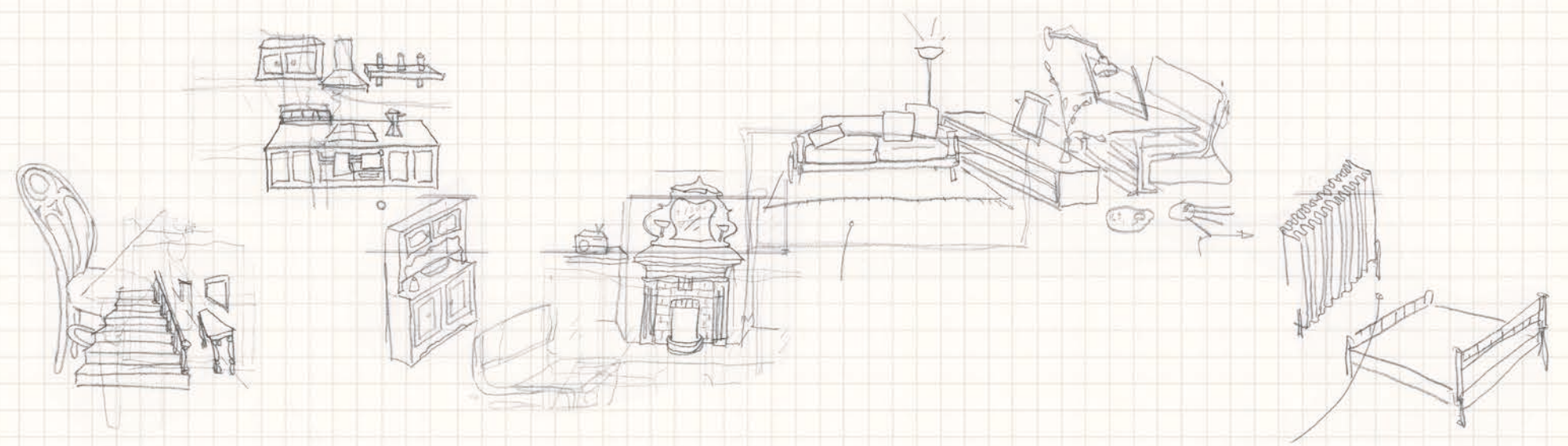
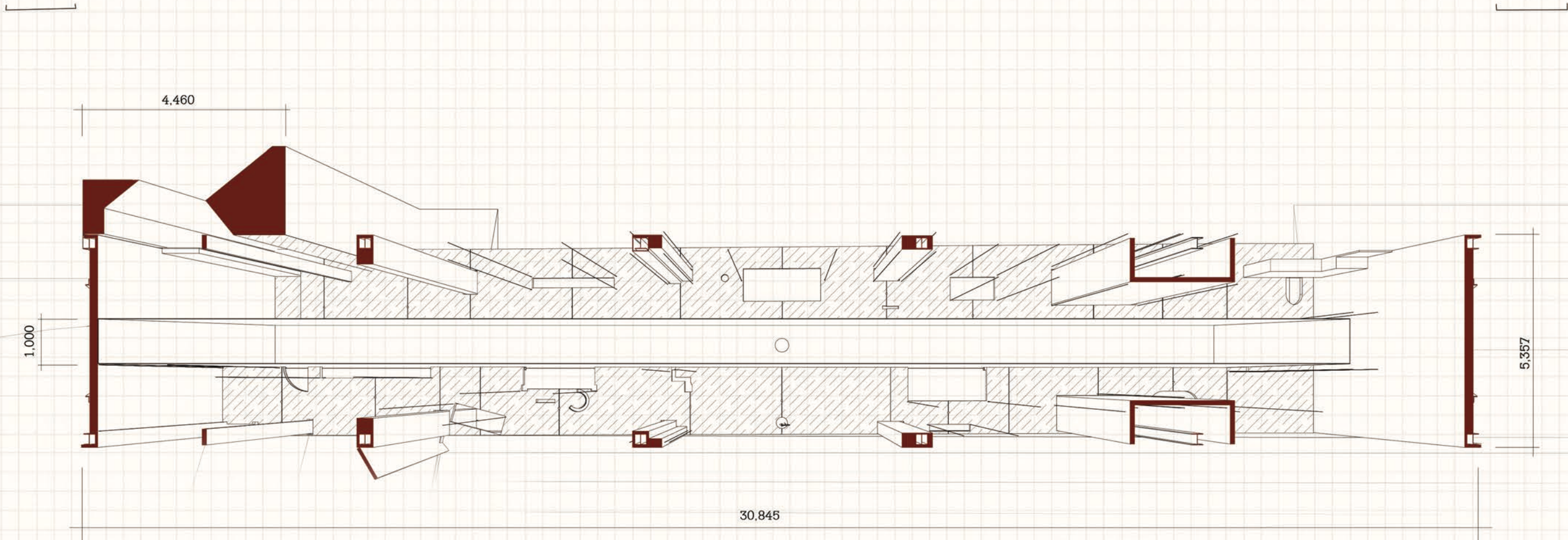
1- ramp : [House 2020]  
2- The water tank : [House 2020]  
1-1 - ramp : [House 2050]  
2-2 - The island walk path : [House 2050]

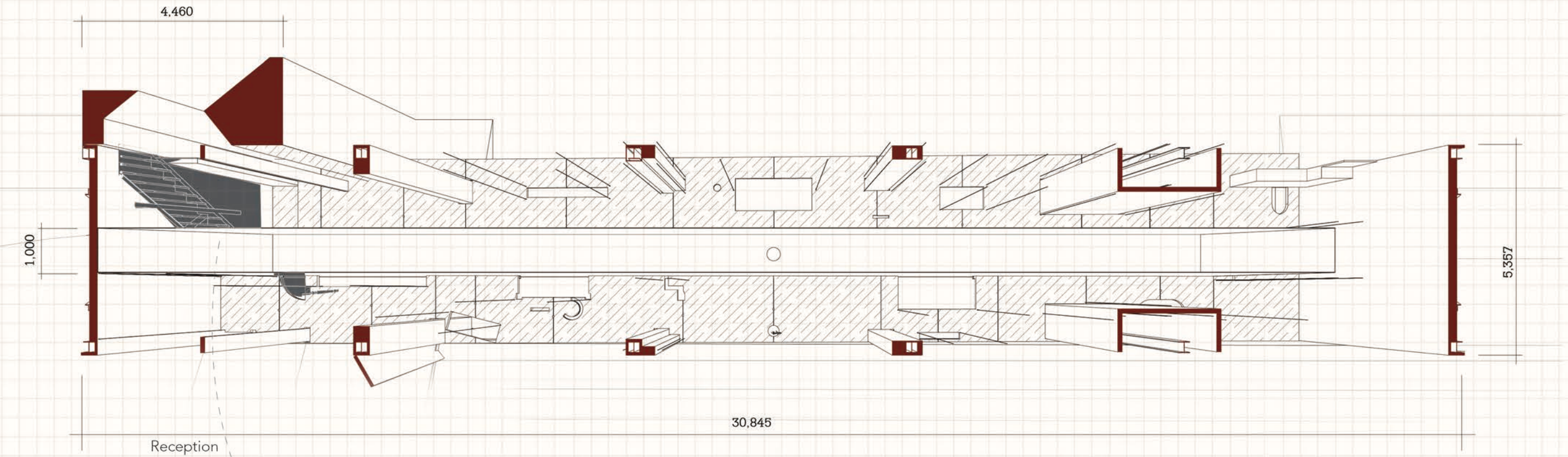
0      6      12      18 (m)



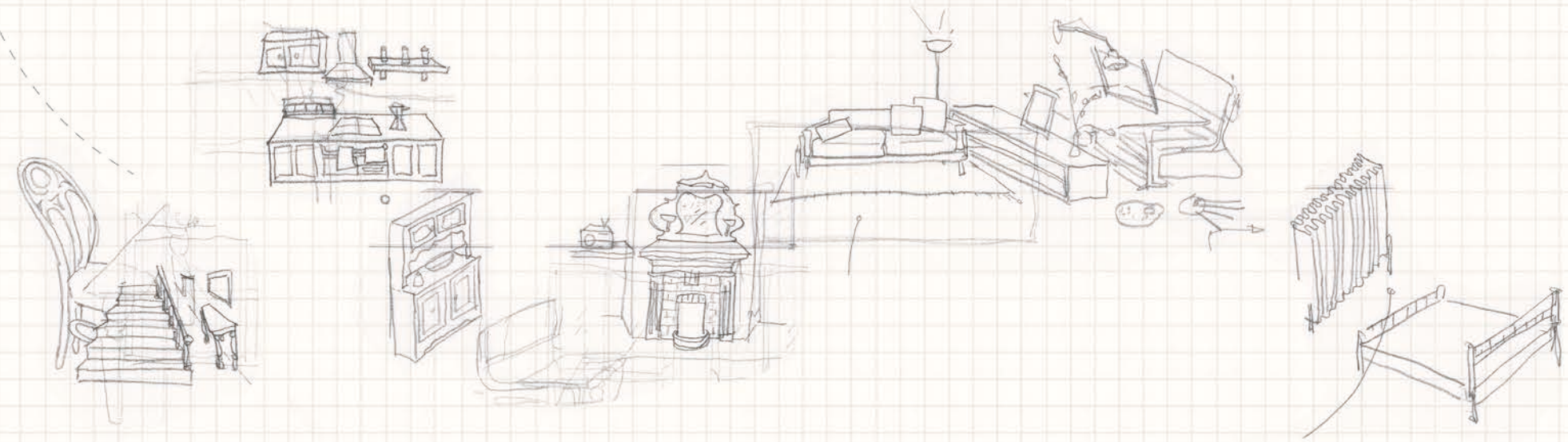


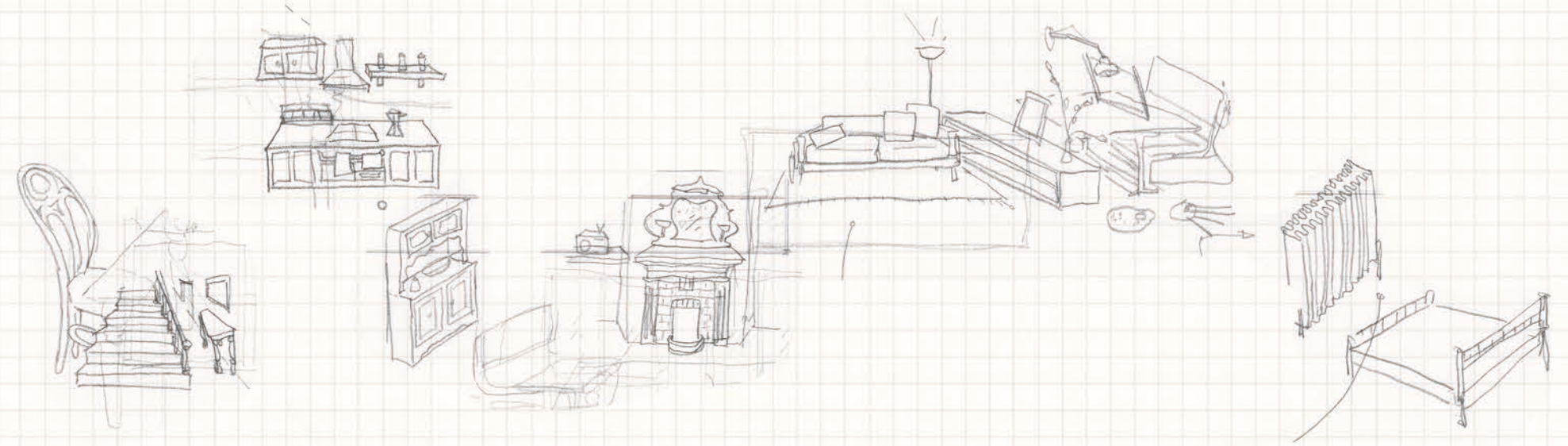
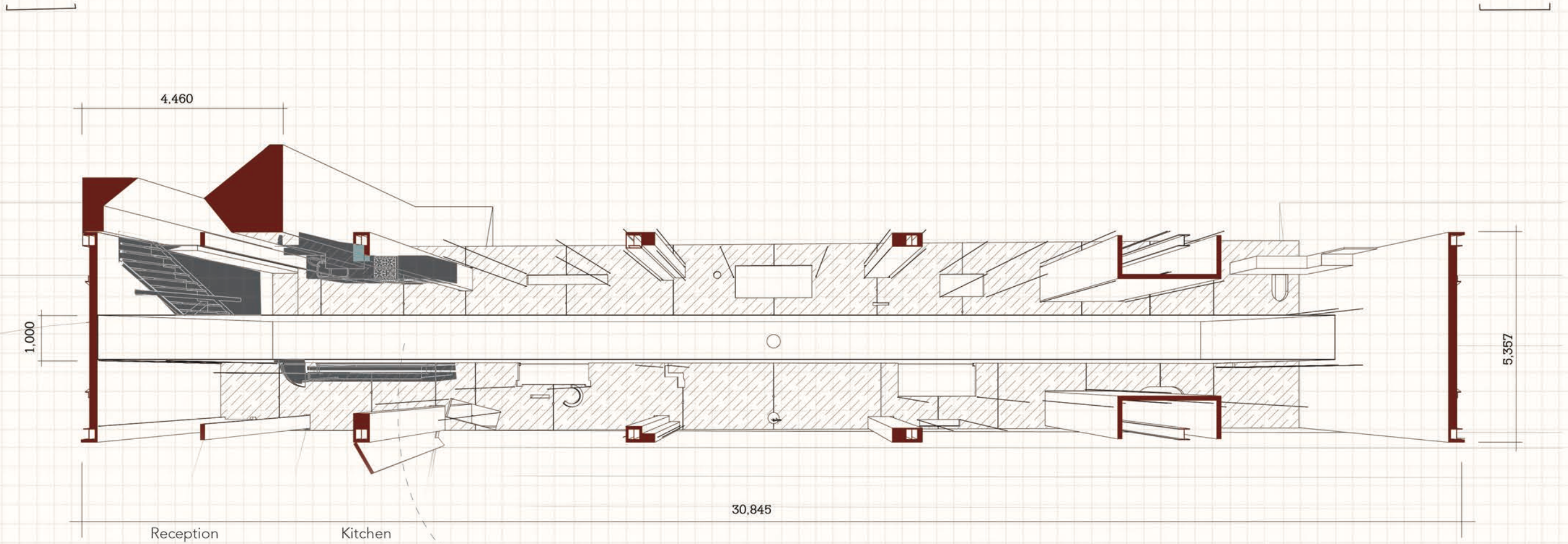


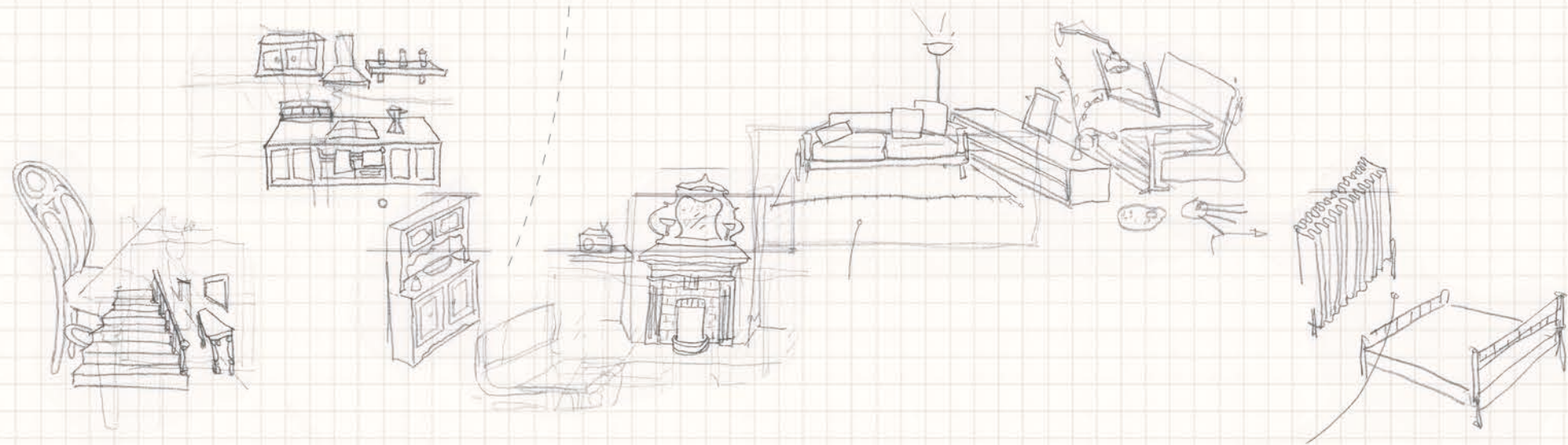
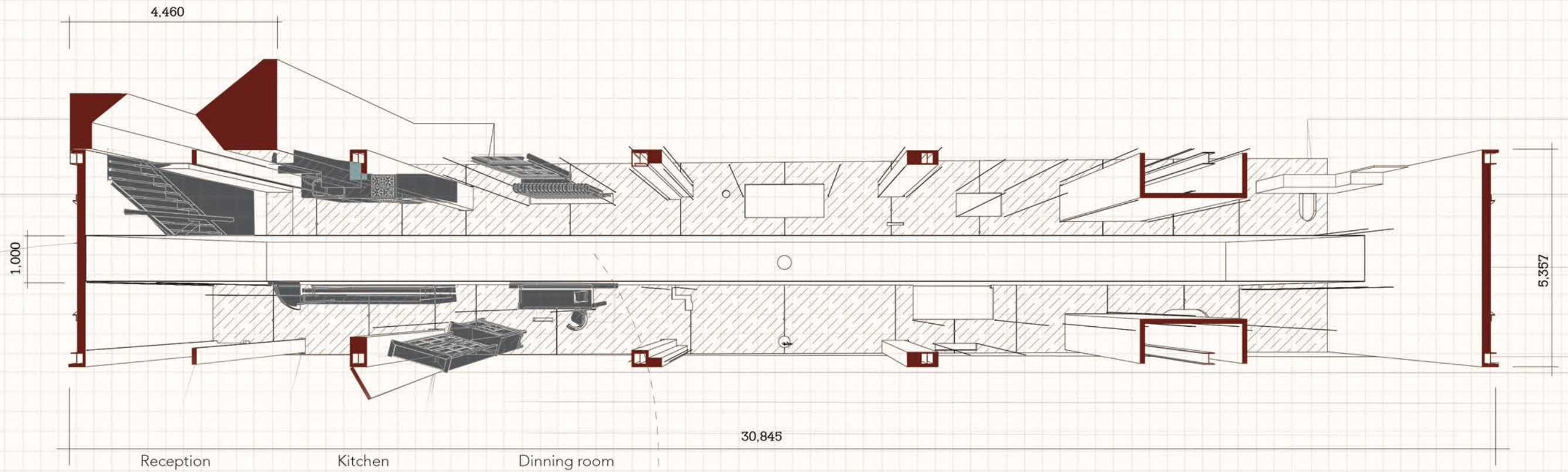


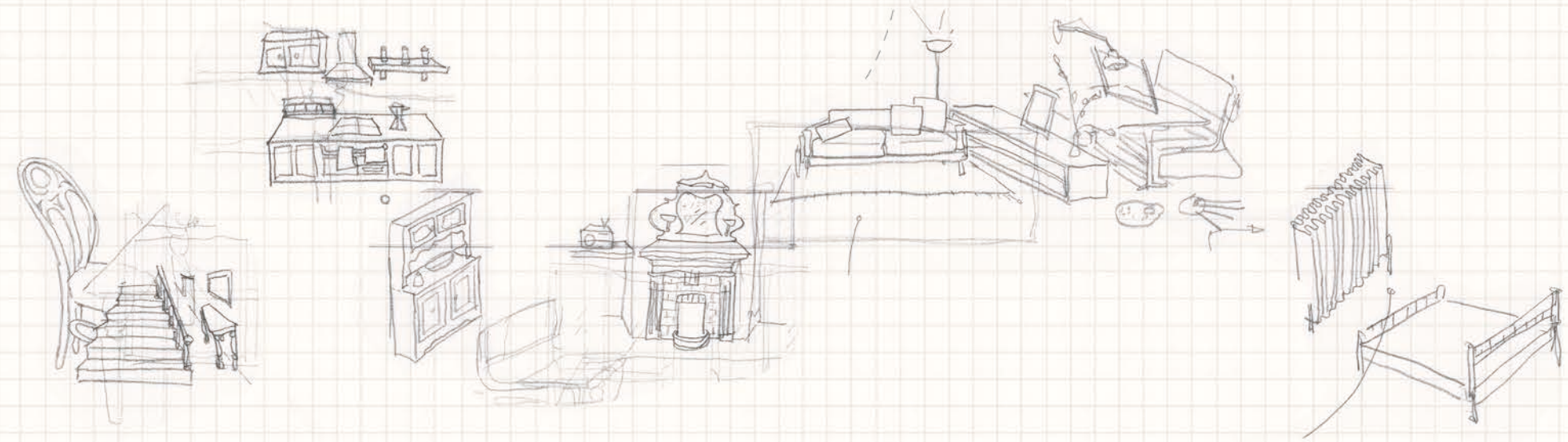
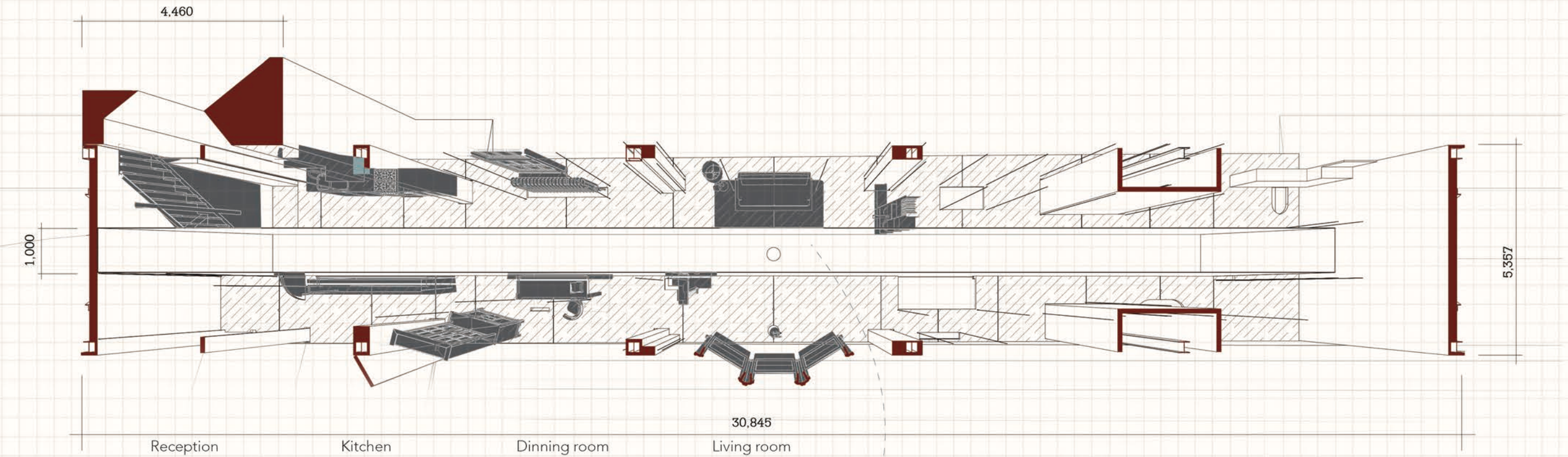


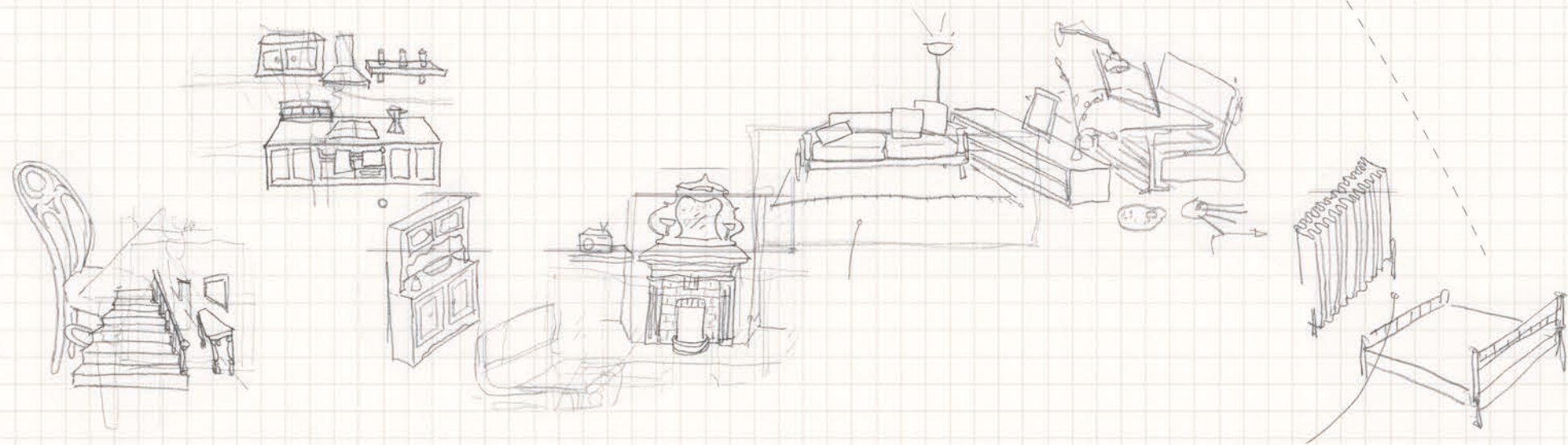
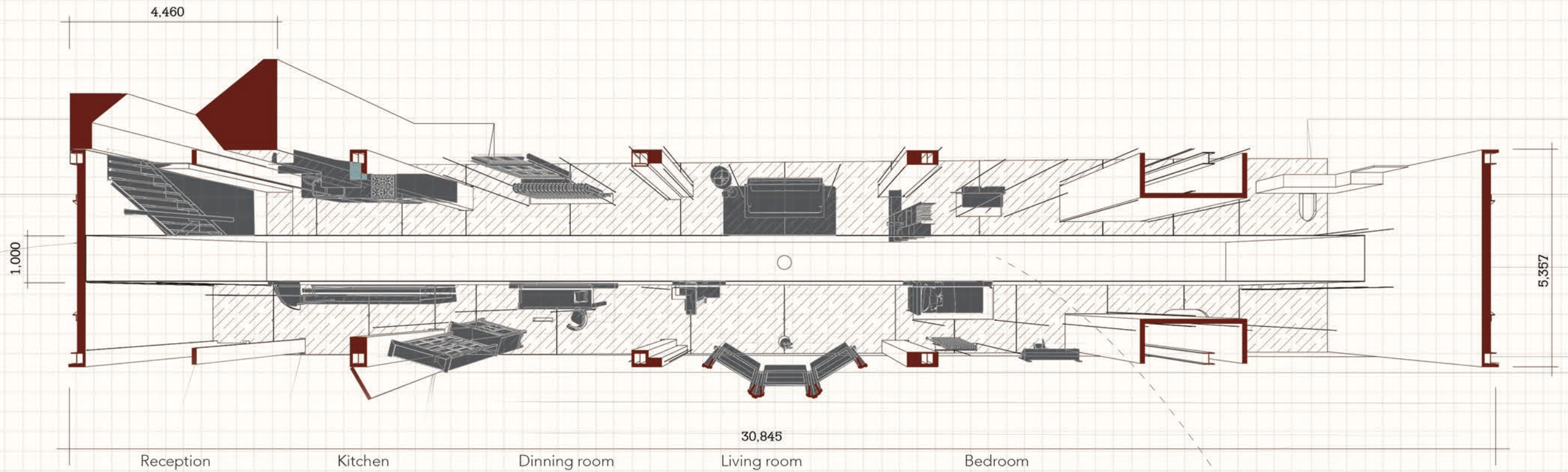
Reception

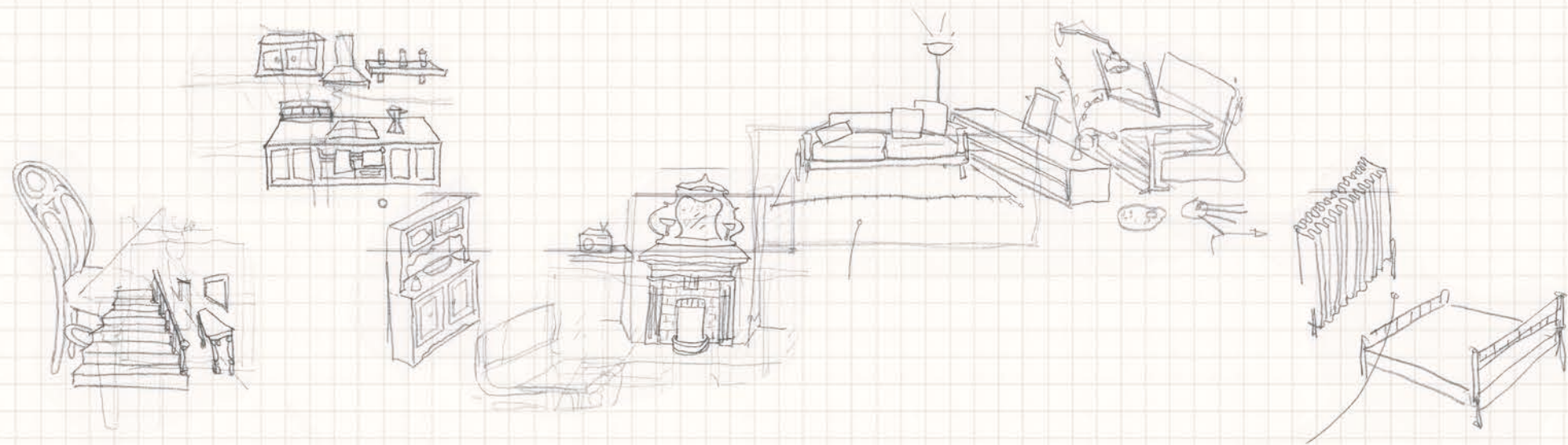
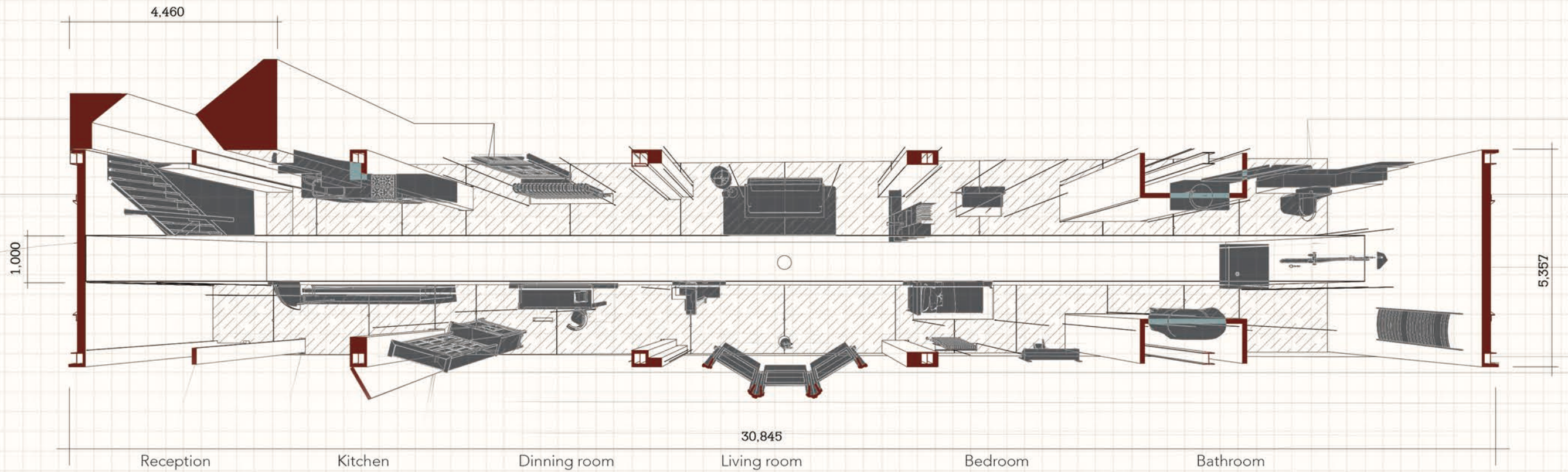




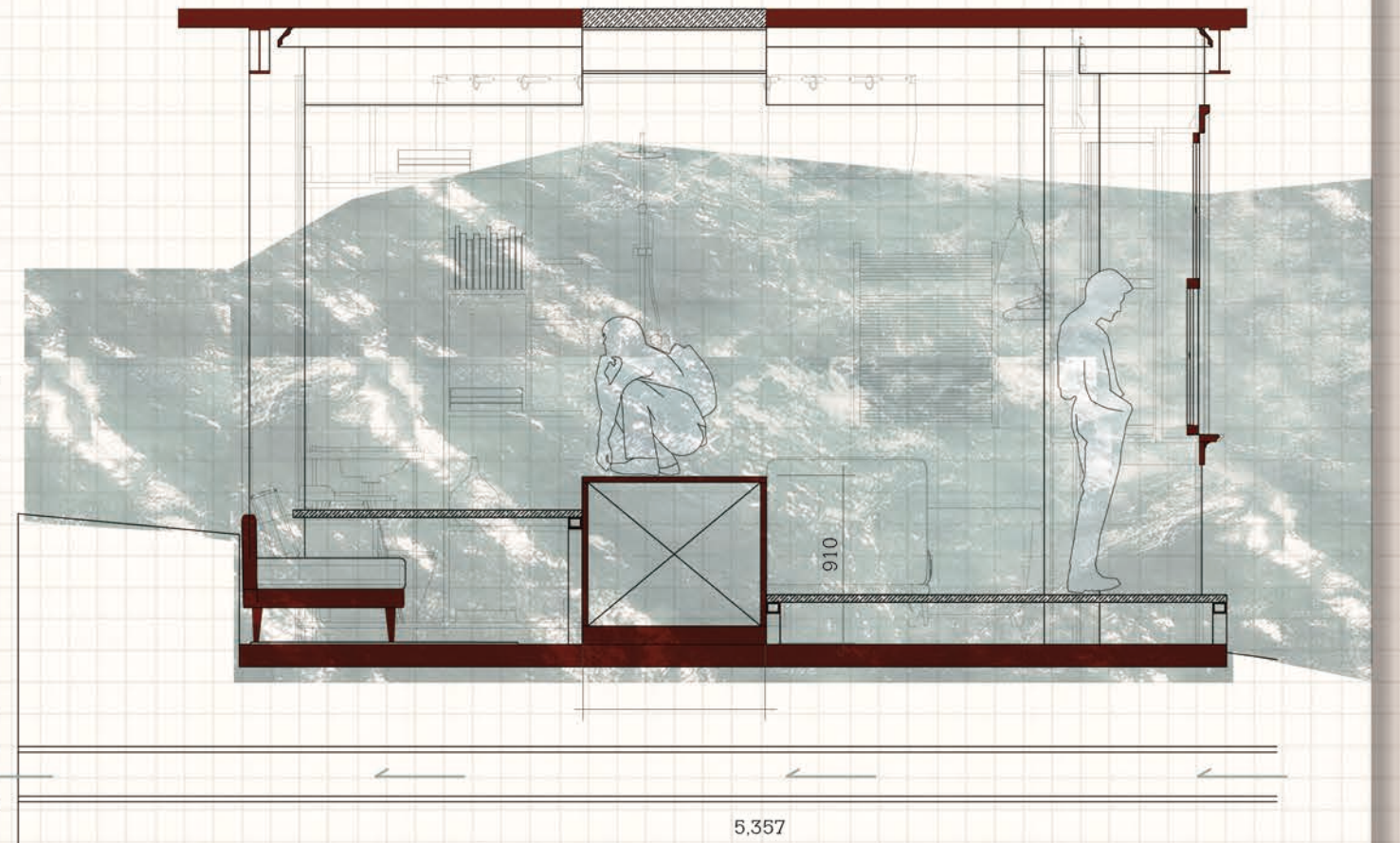
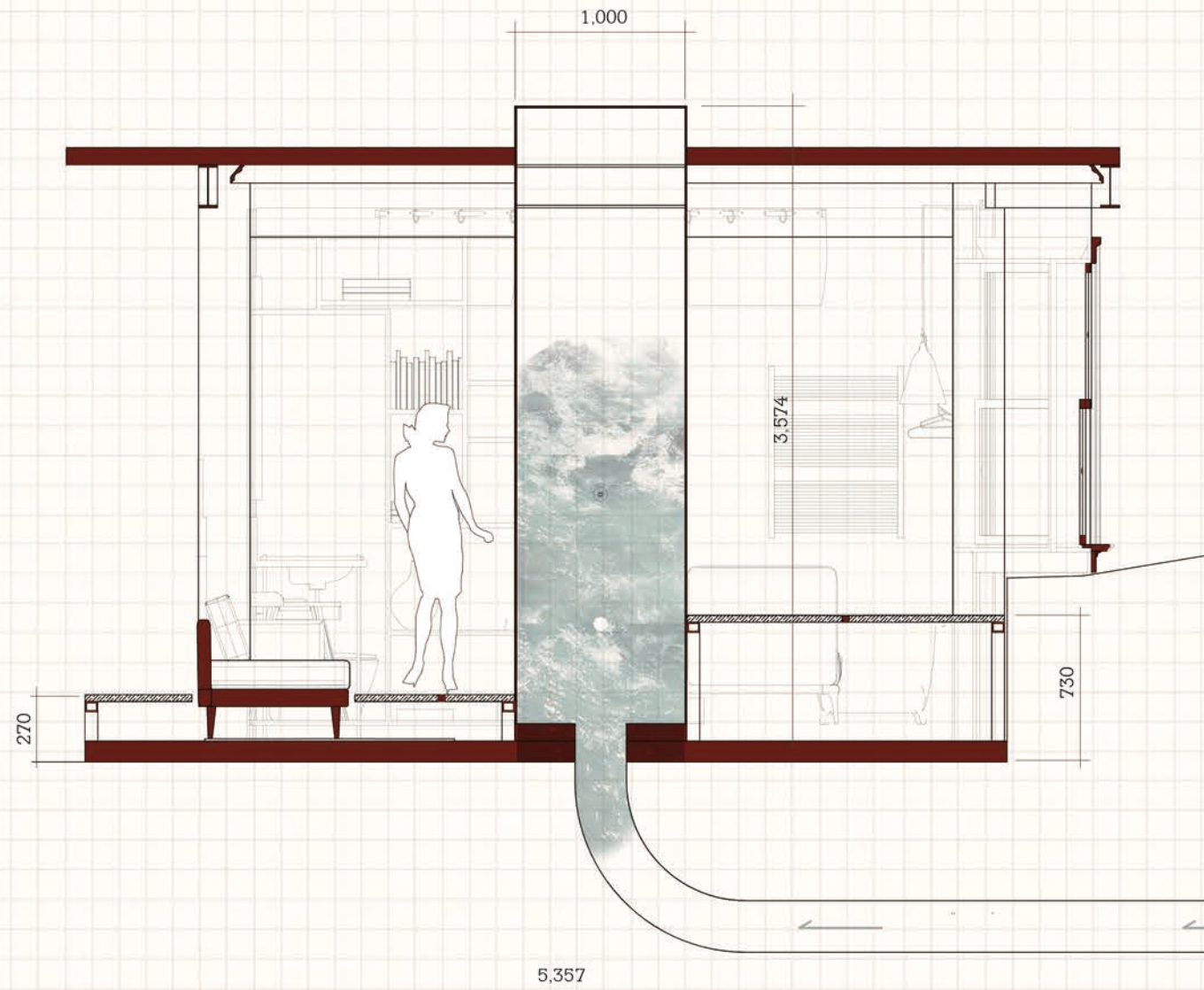






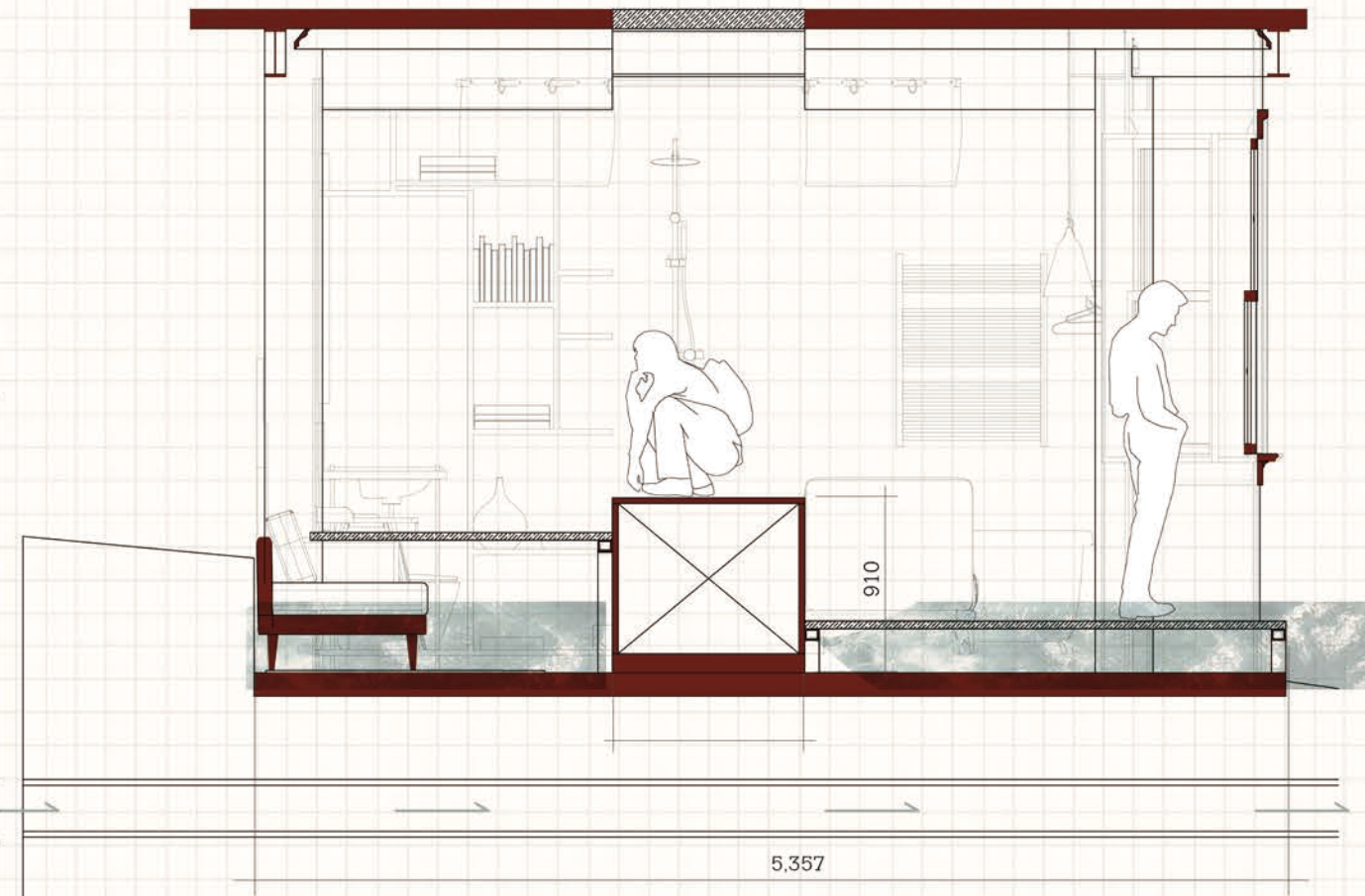
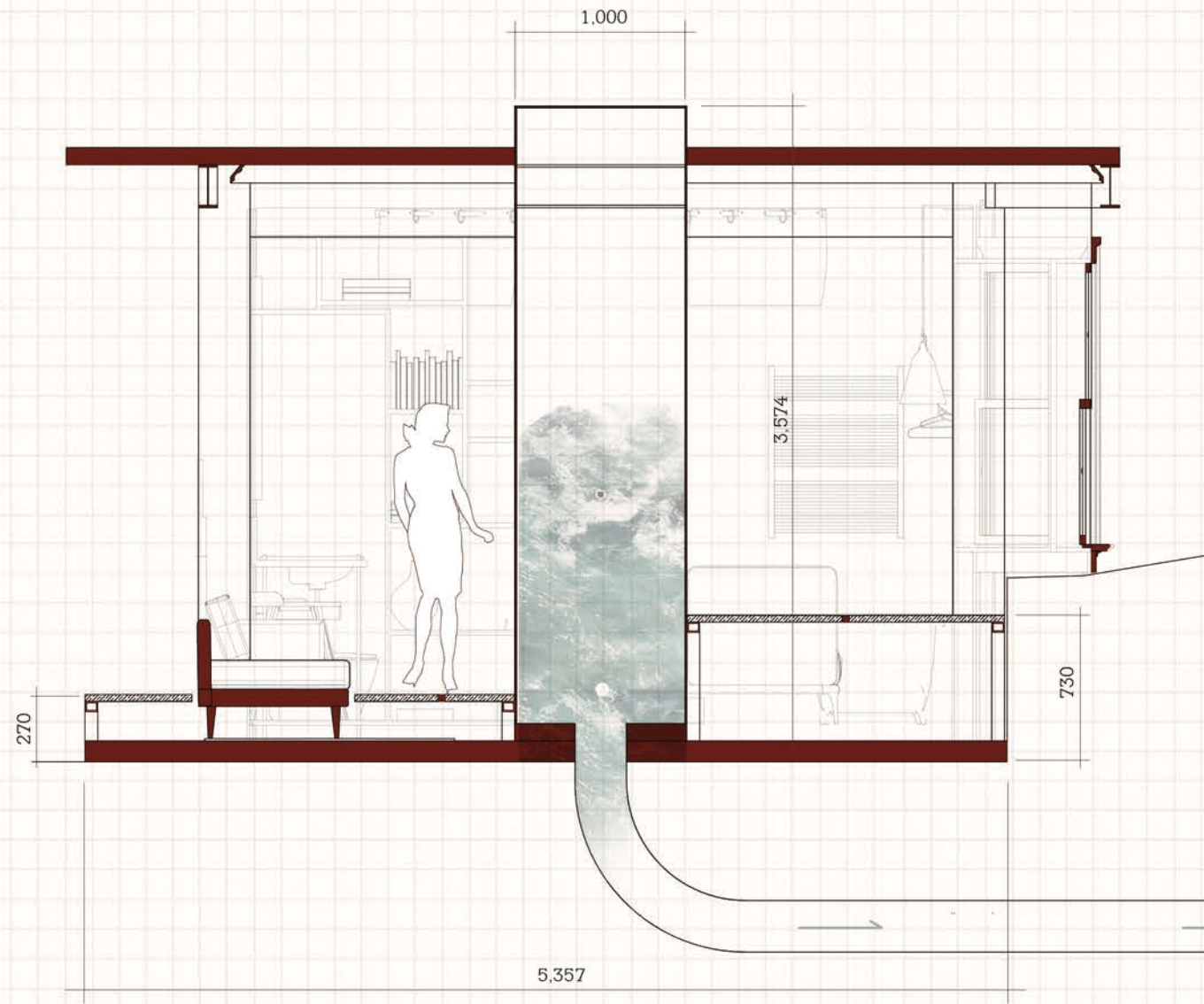






0 1 2 3 4(m)





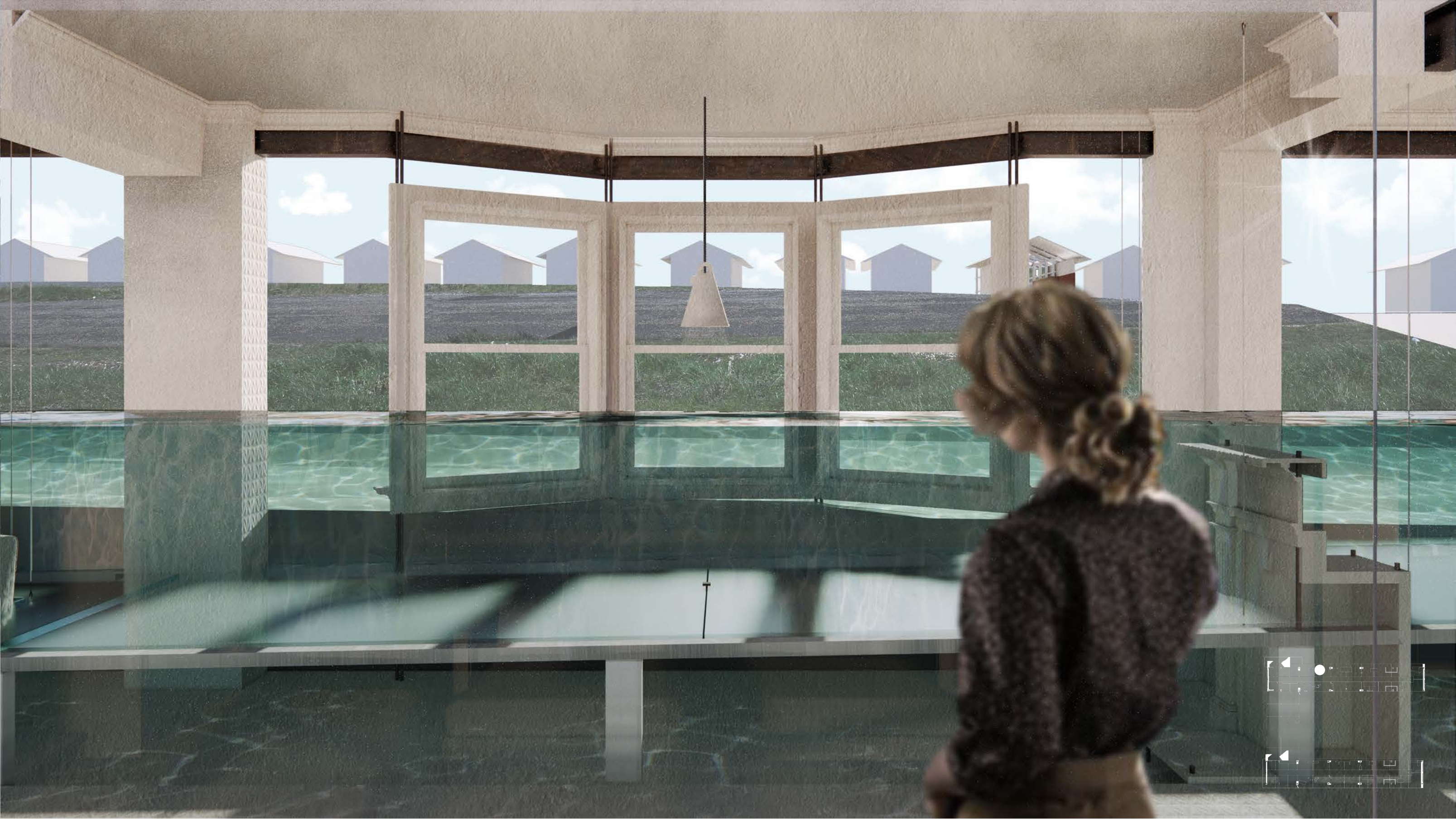
0 1 2 3 4(m)

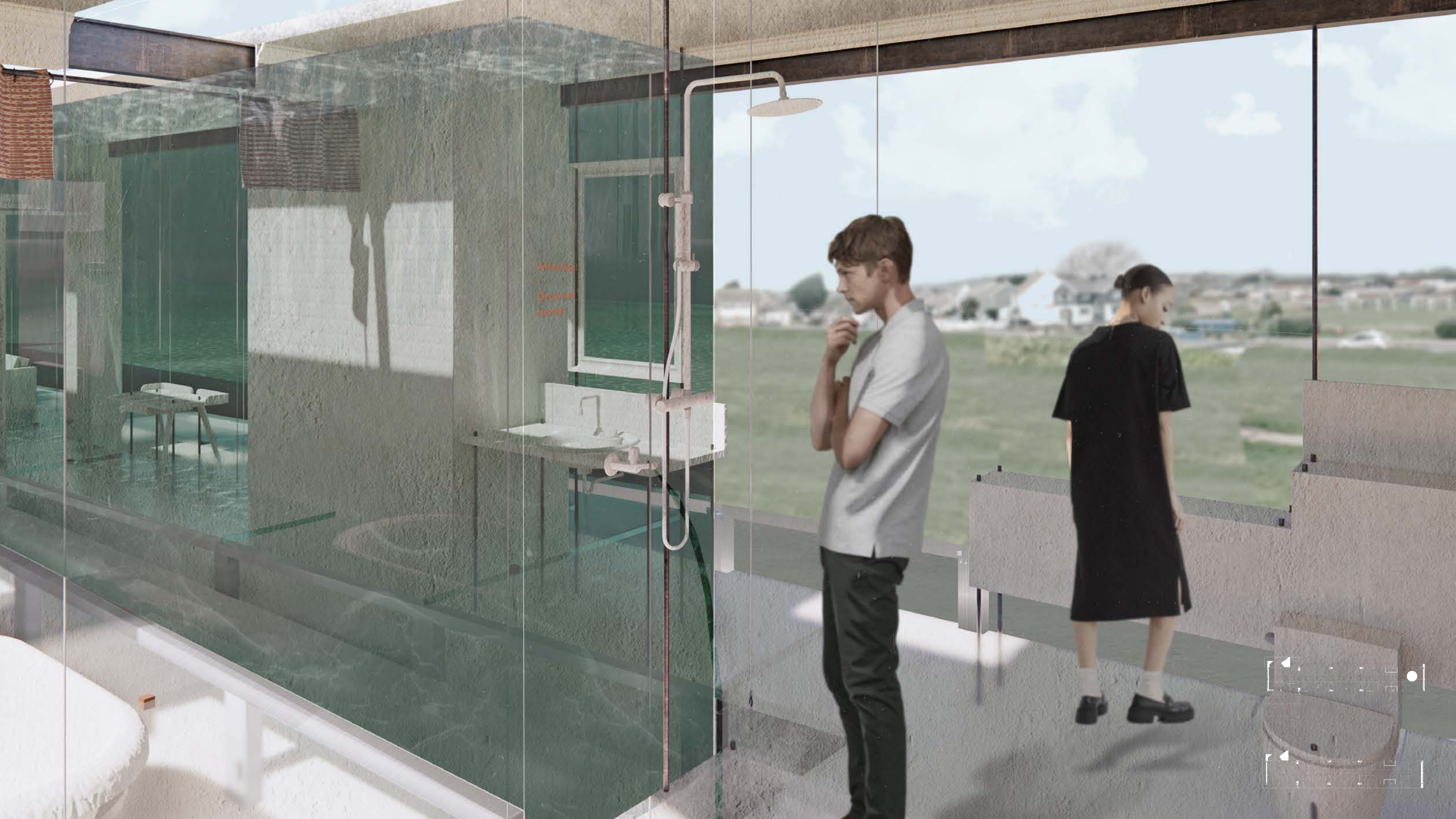


# The Erosion House

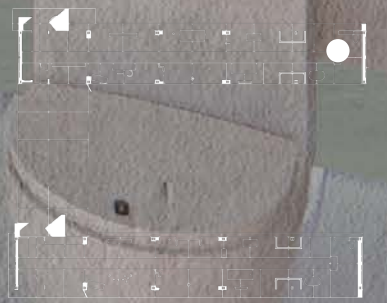
= 2020 =

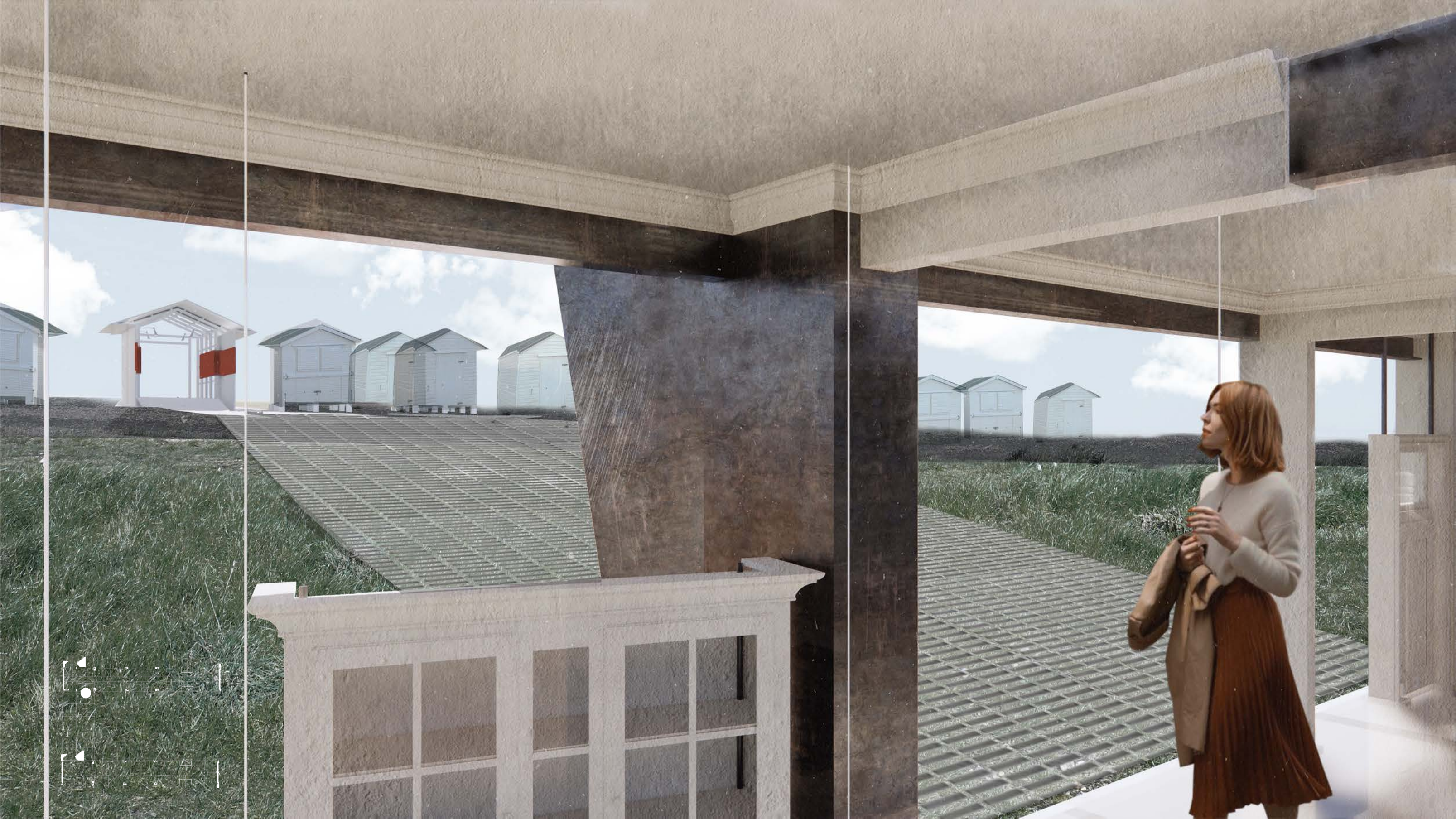






Atlanta  
Downtown  
Atlanta



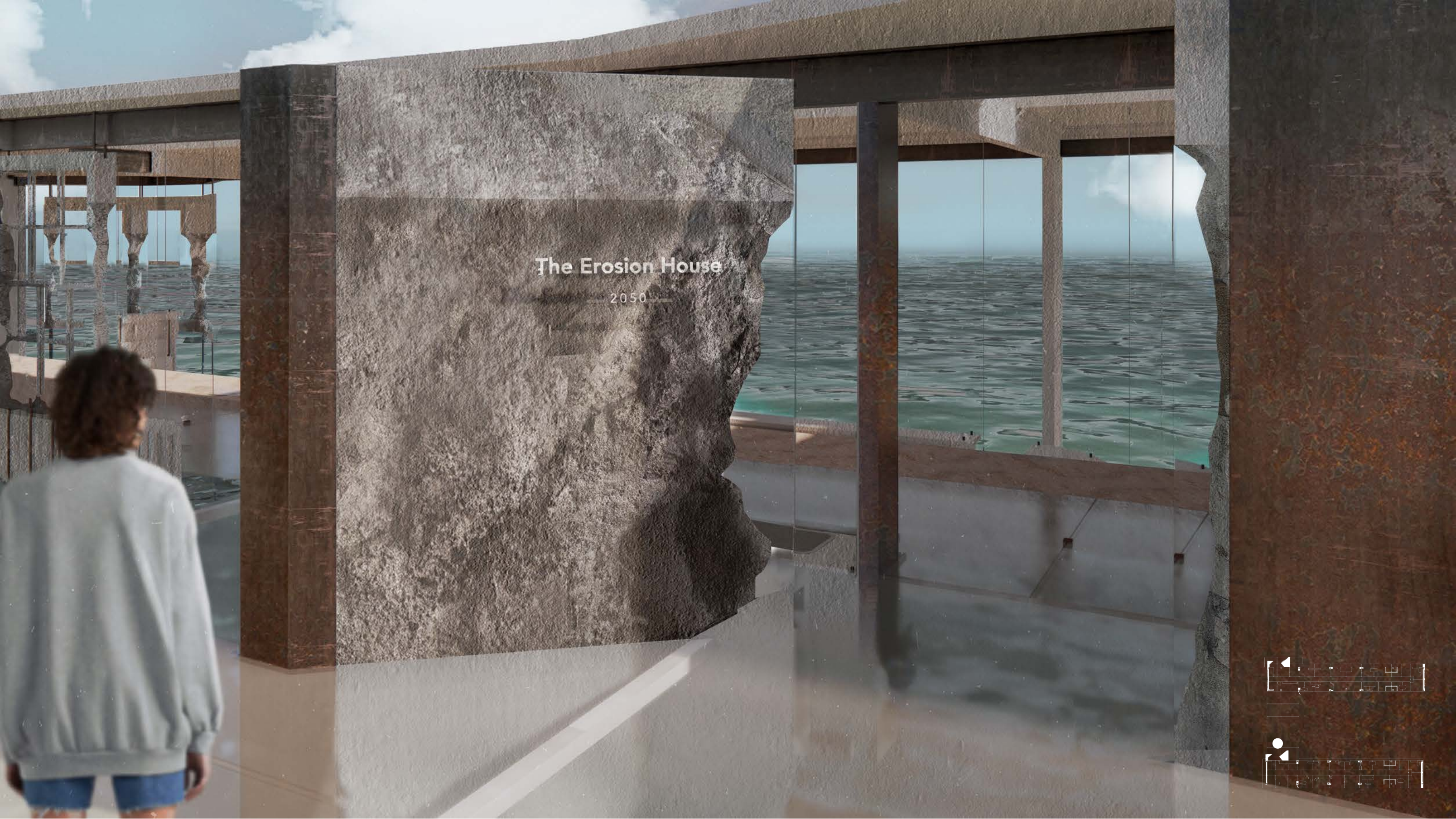




Global sea levels are rising as a result of human caused global warming, with recent rates being unprecedented over the past 2,500-plus years.

Sea level rise is caused primarily by two factors related to global warming: the added water from melting ice sheets and glaciers and the expansion of seawater as it warms. The first graph tracks the change in sea level since 1993 as observed by satellites.





# The Erosion House

2050

