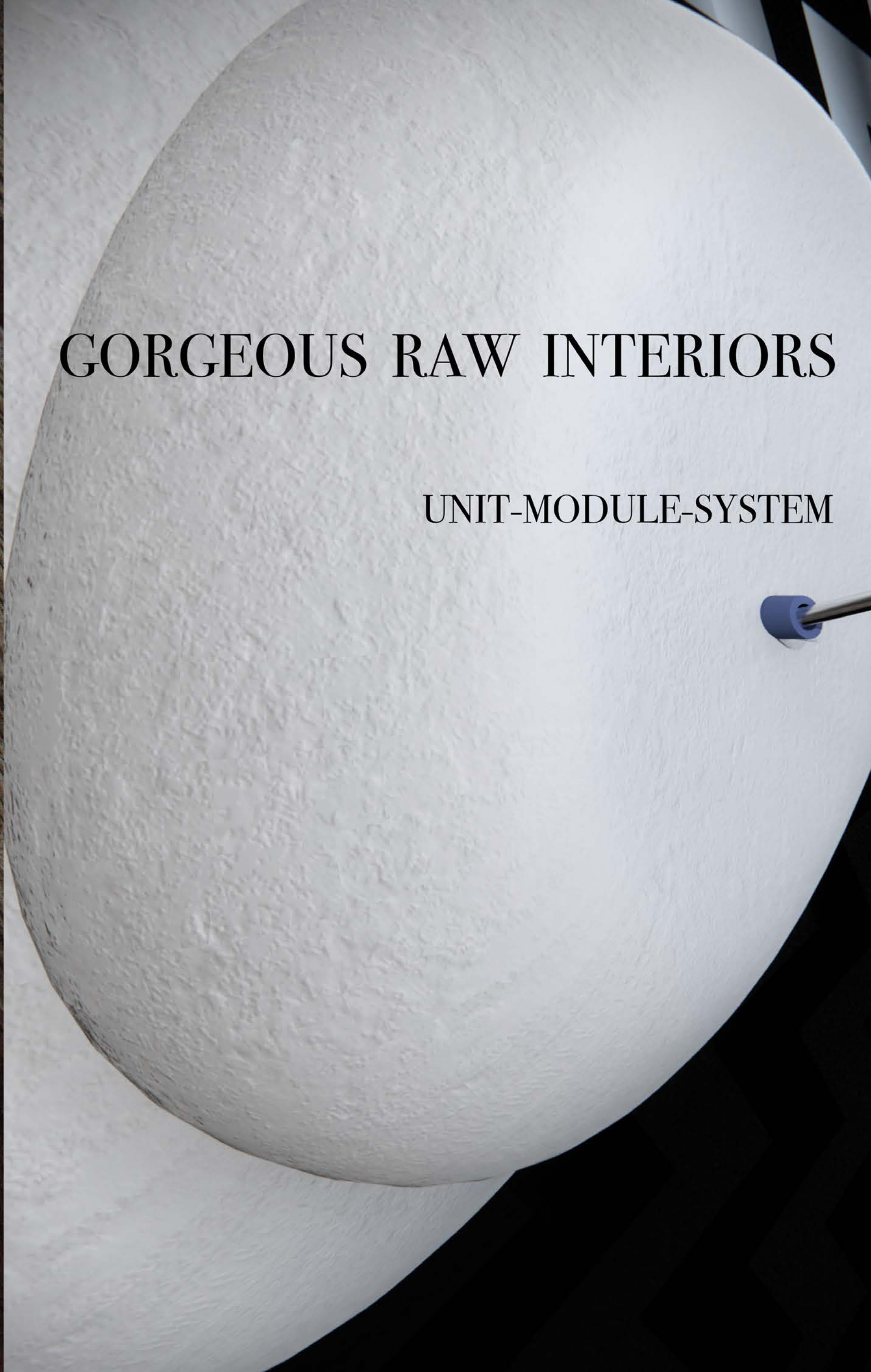




GORGEOUS RAW INTERIORS

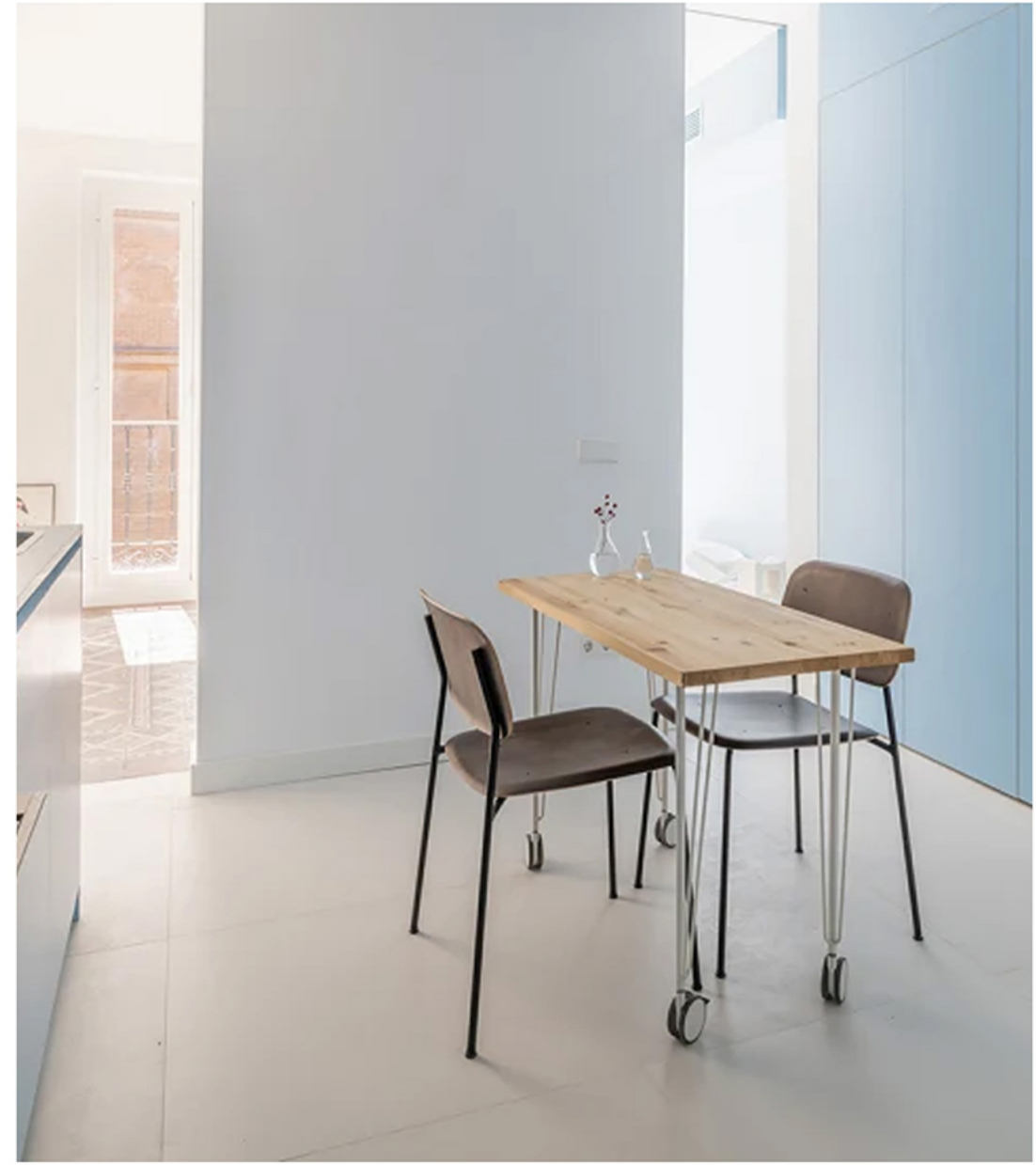
UNIT-MODULE-SYSTEM





How we treat these conventional materials in interior design?

Timber



PIHLMANN ARCHITECTS, OFFICE KIM LENSCHOW VILLA LANDLUFT. AARHUS
SANDEN+HODNEKVAM ARCHITECTS HOUSE
MARTÍN PELÁEZ BLUE GLASS. MADRID, SPAIN

Stone

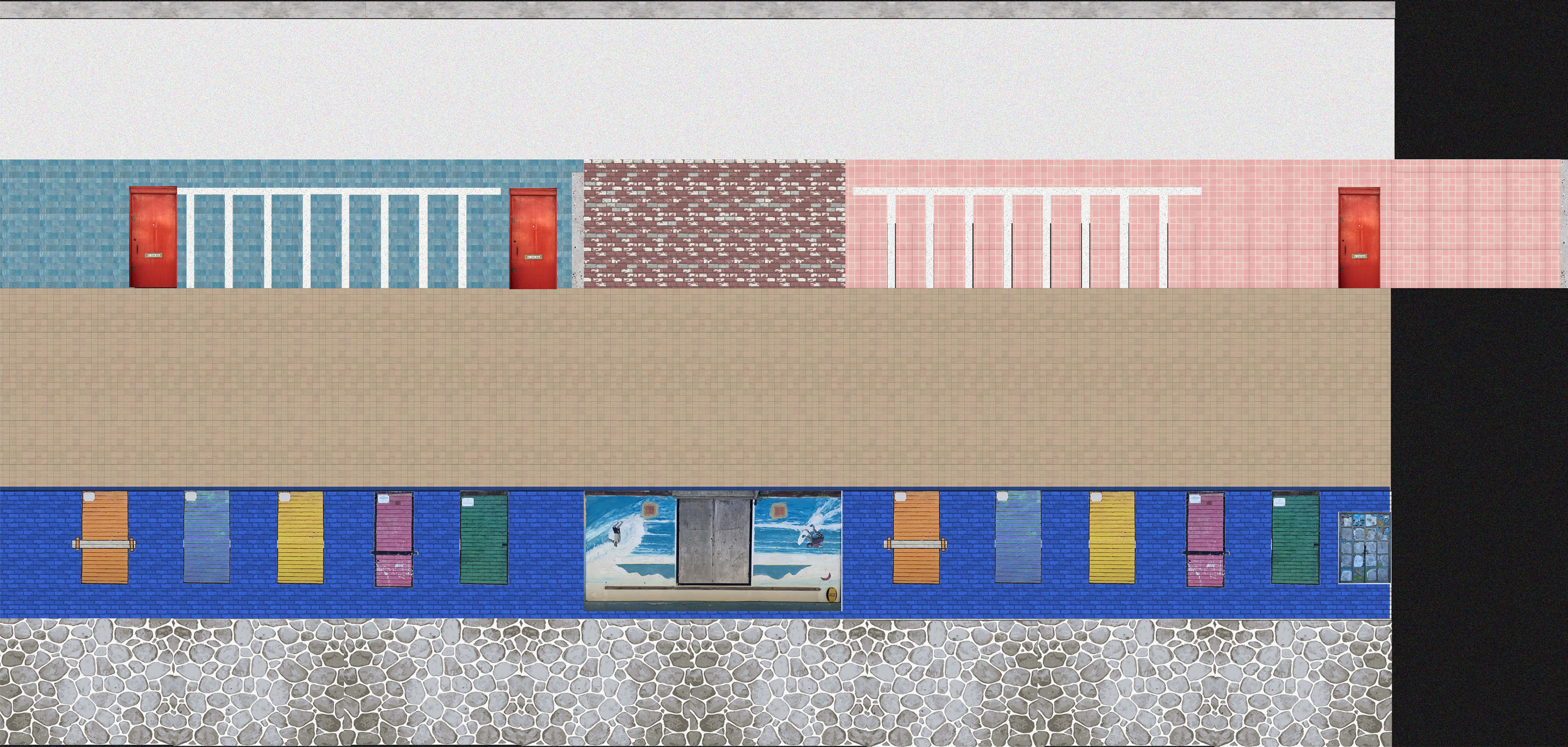


SMOKE & BRASS
HONED & STONED

Fabric



Material Palette of Site

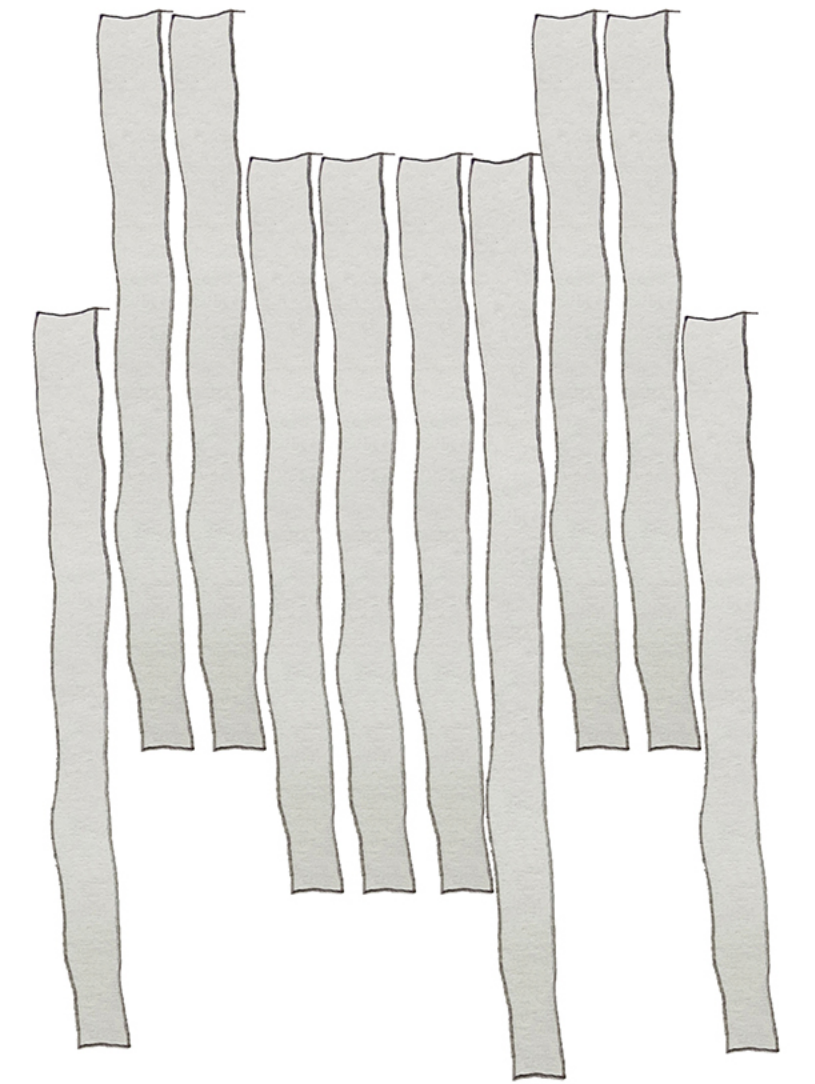
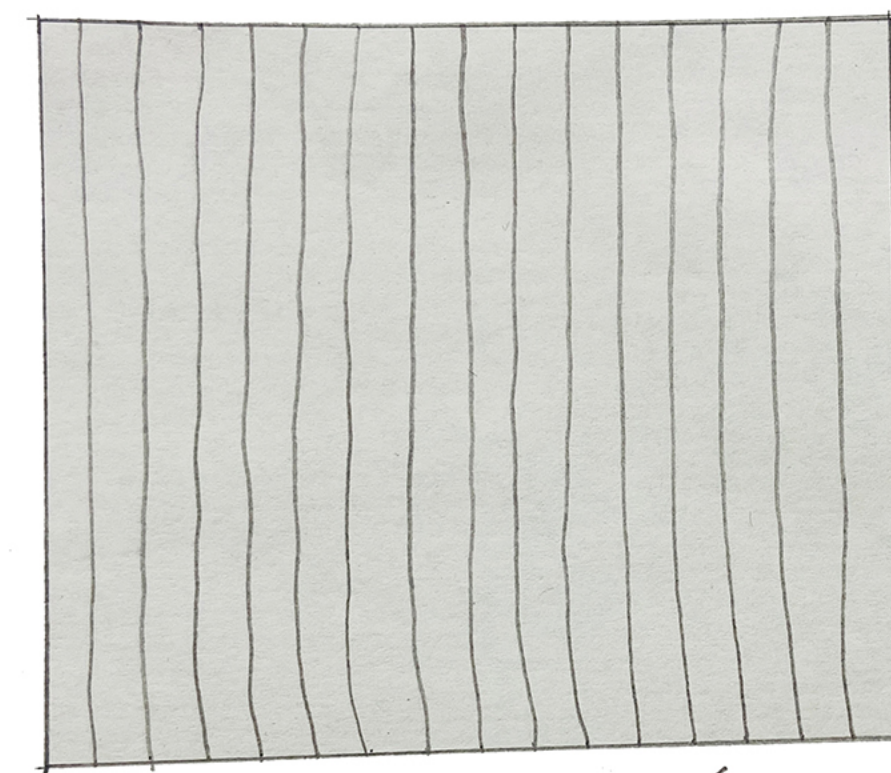


LET GO OF TRADITIONAL THINKING!

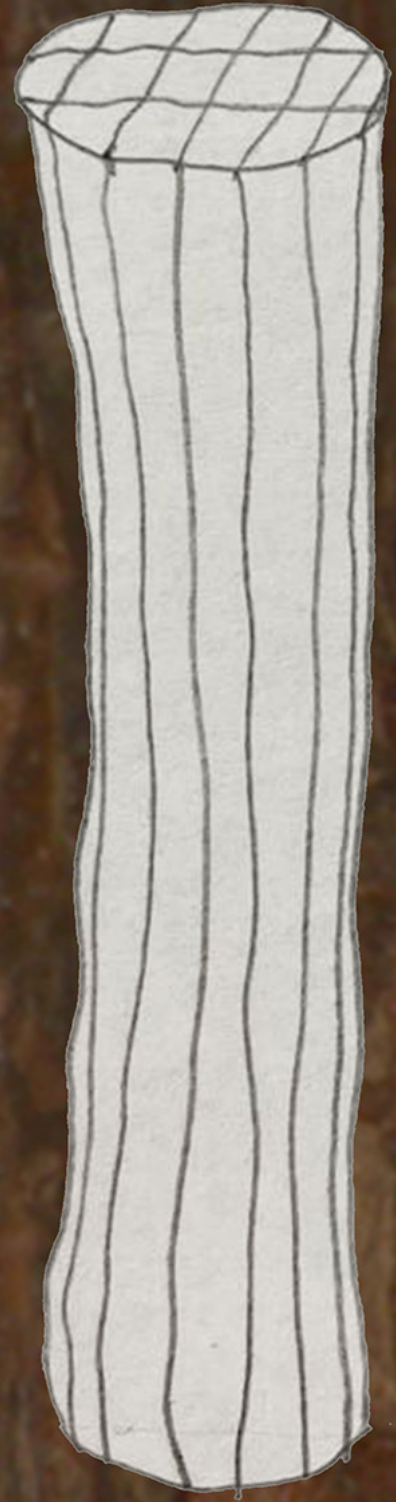


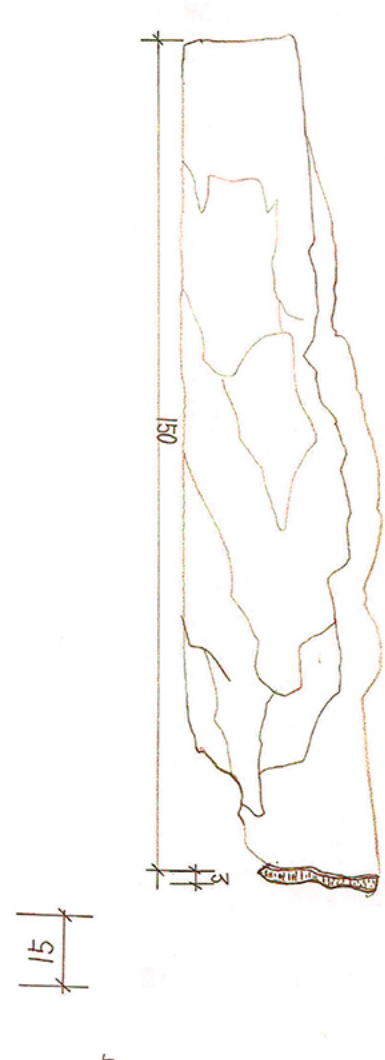
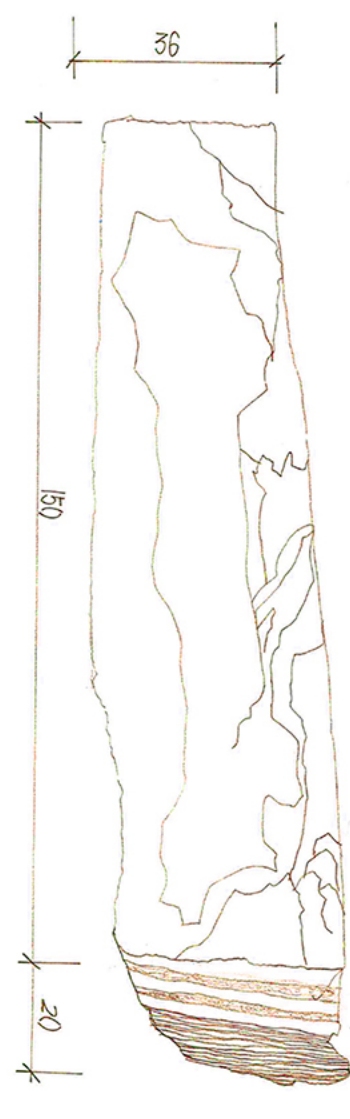
KEPLER LONDON

The process of making this vest







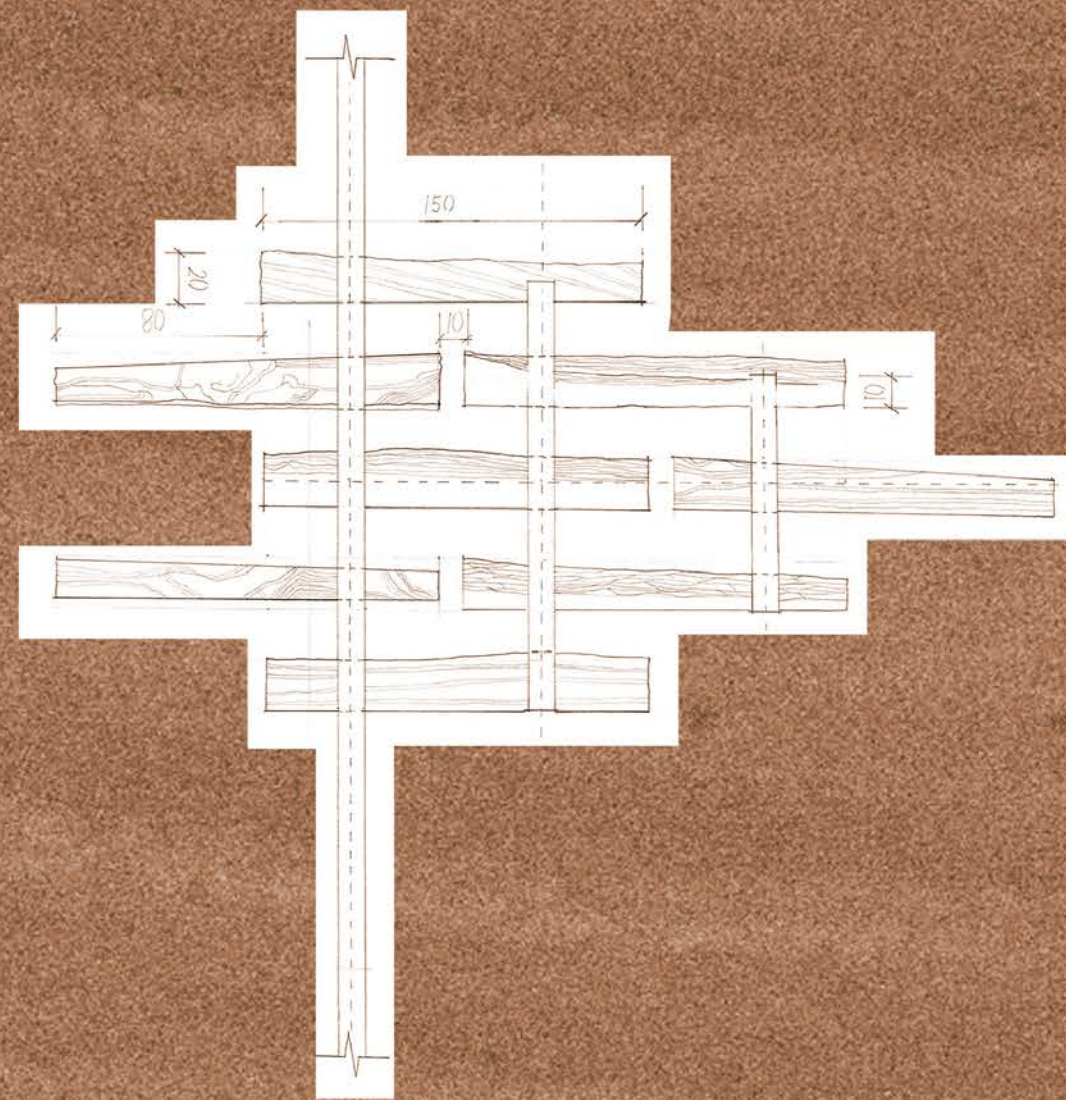


B

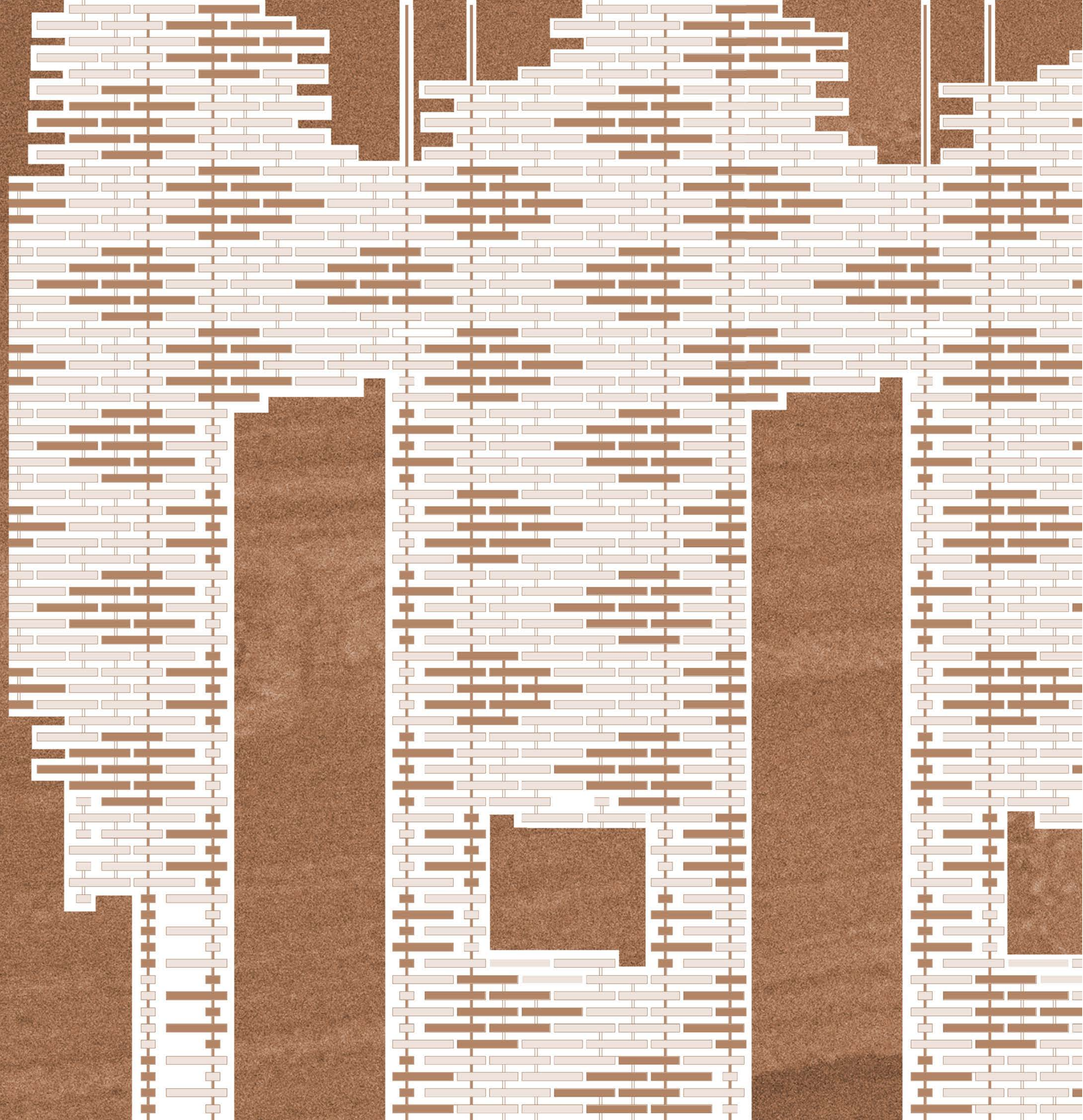
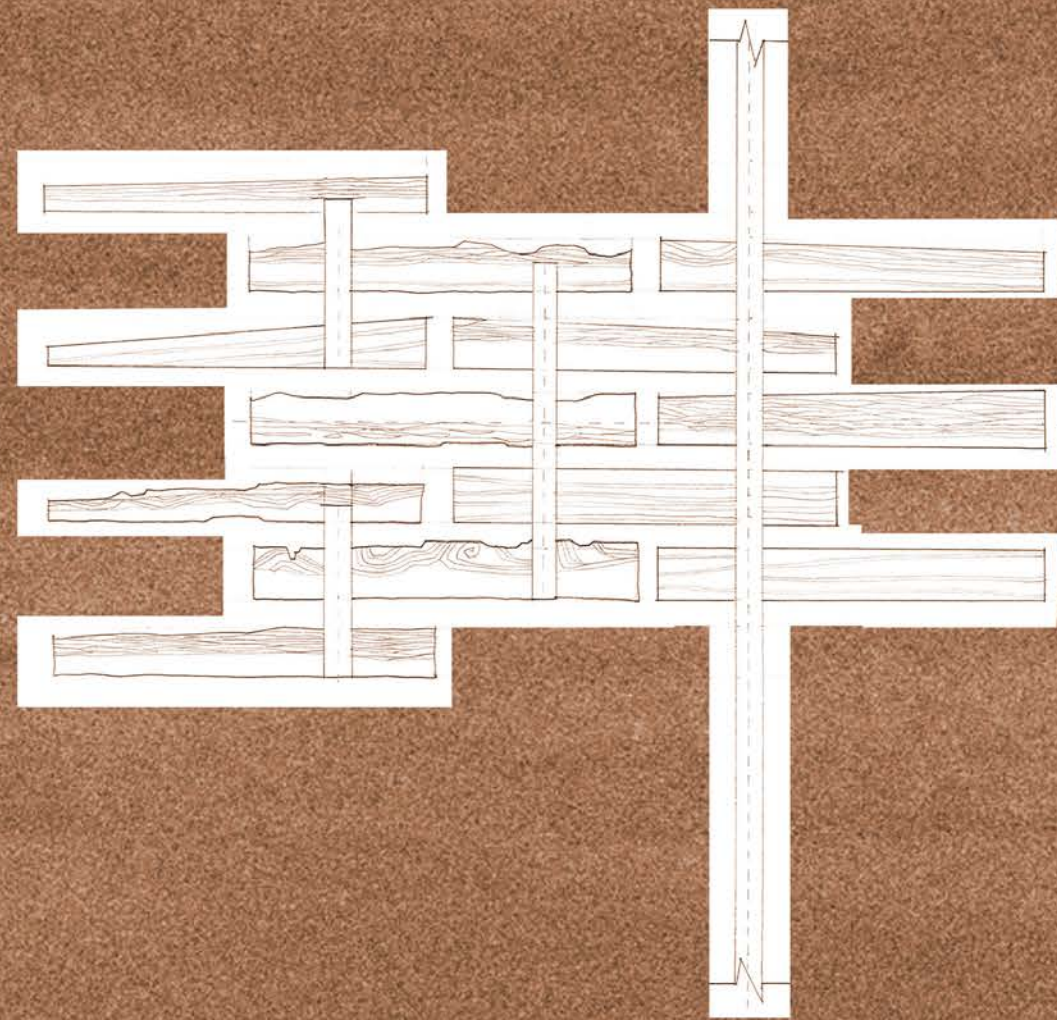


C

MODULE A



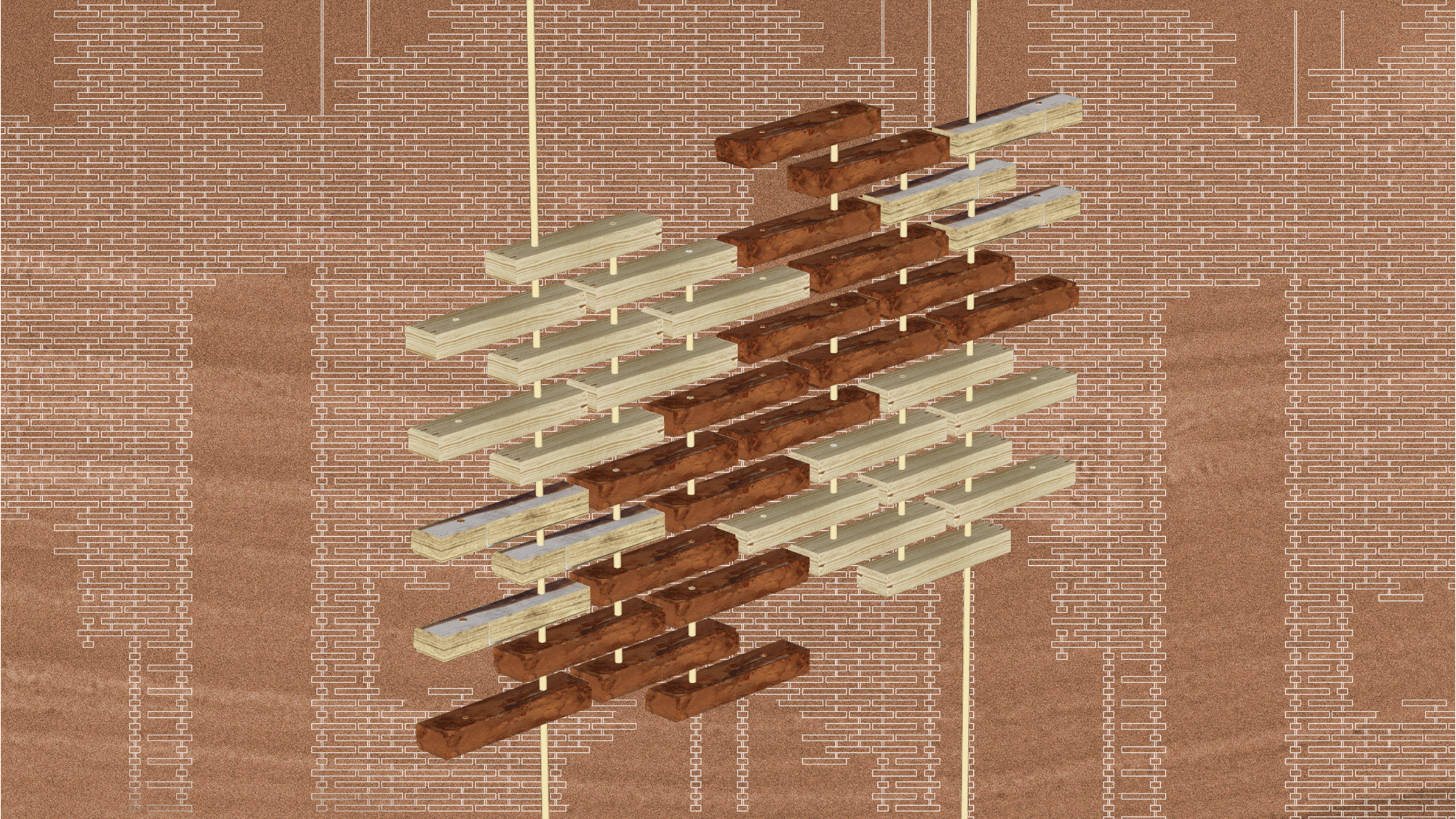
MODULE B



KNIT

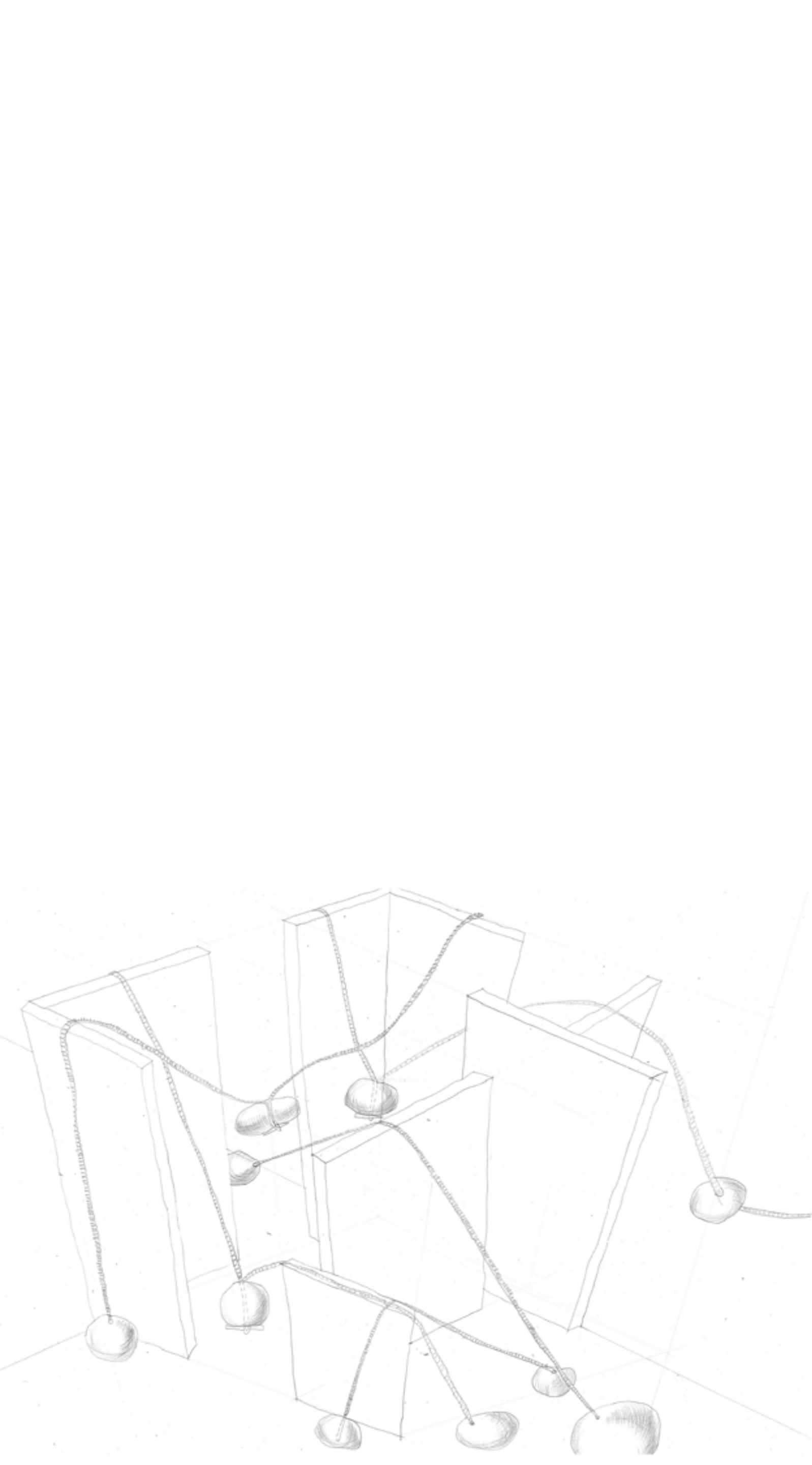
SOLE

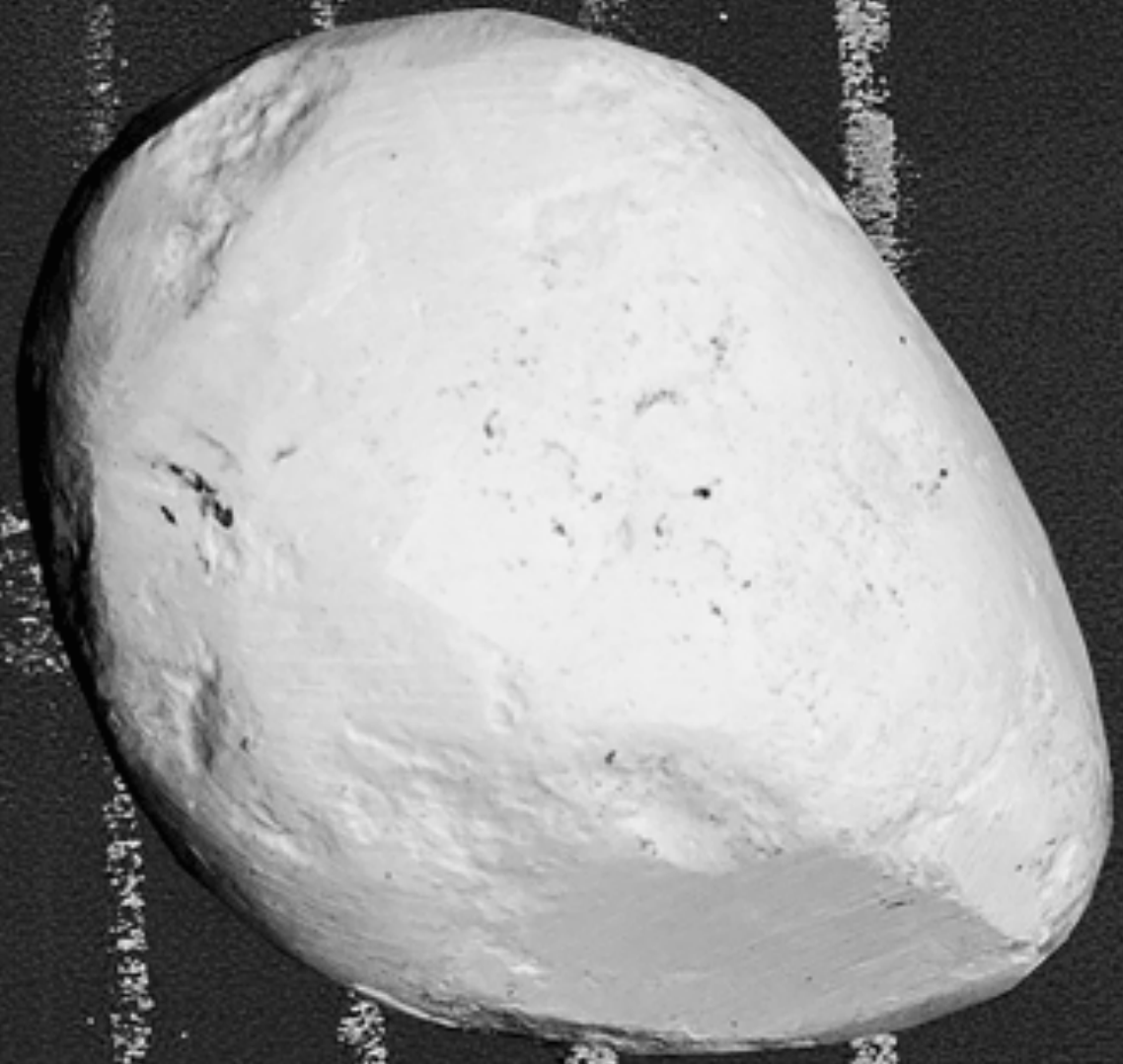
SOLE





Chalk



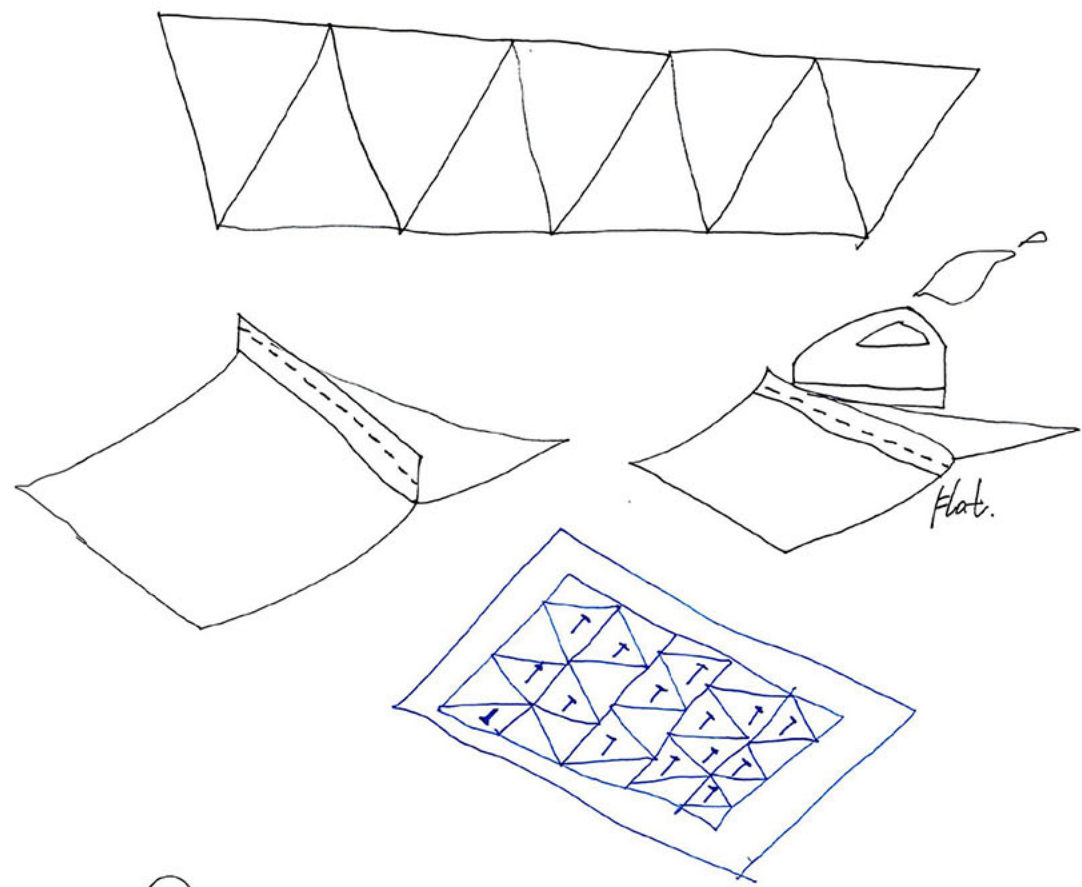




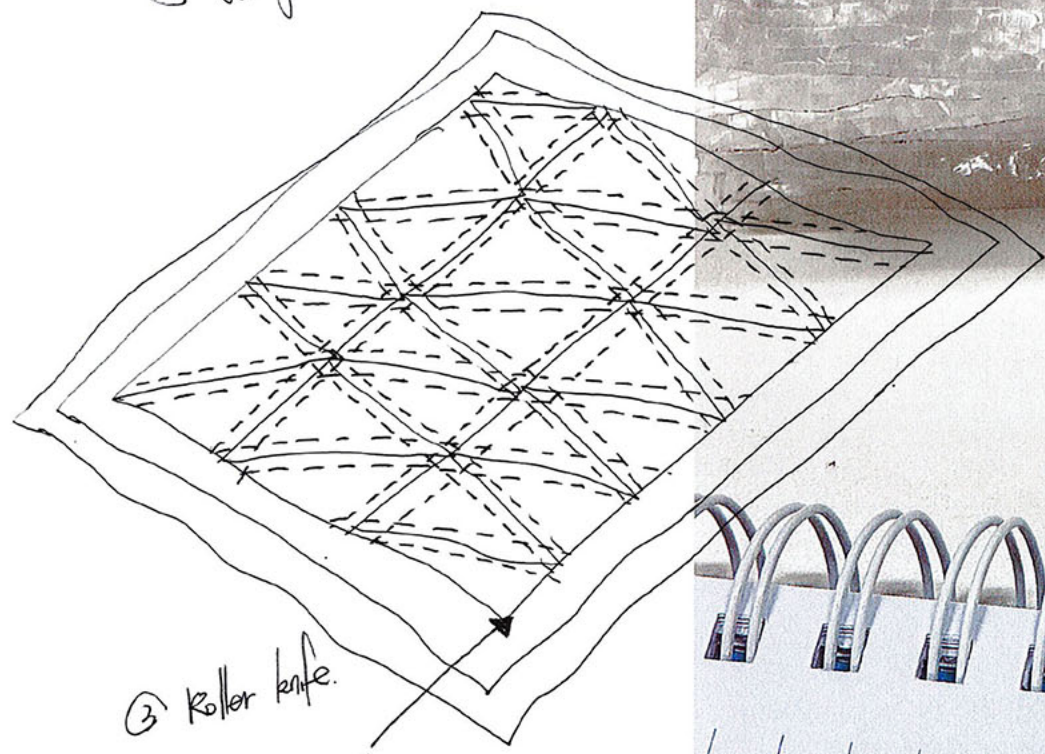


Garden Waste Bags

① Sewing Together.



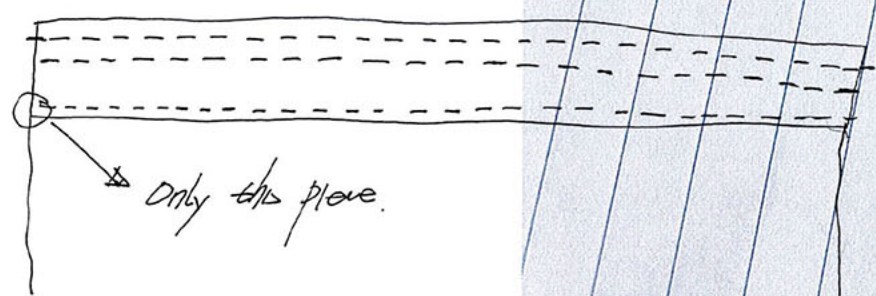
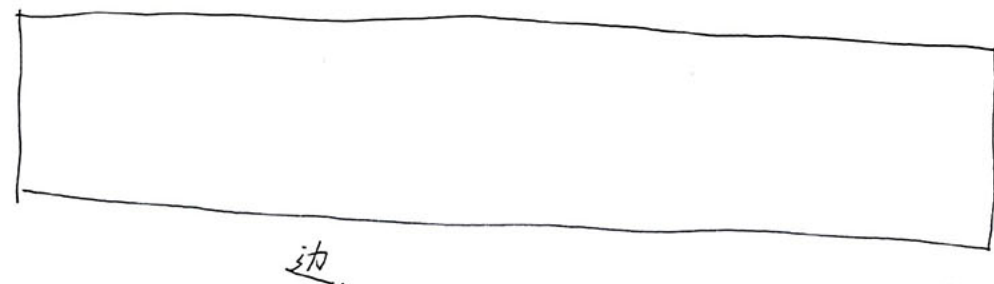
② Sewing Machine, add one by sheet.



③ Roller knife.

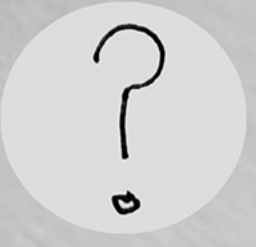
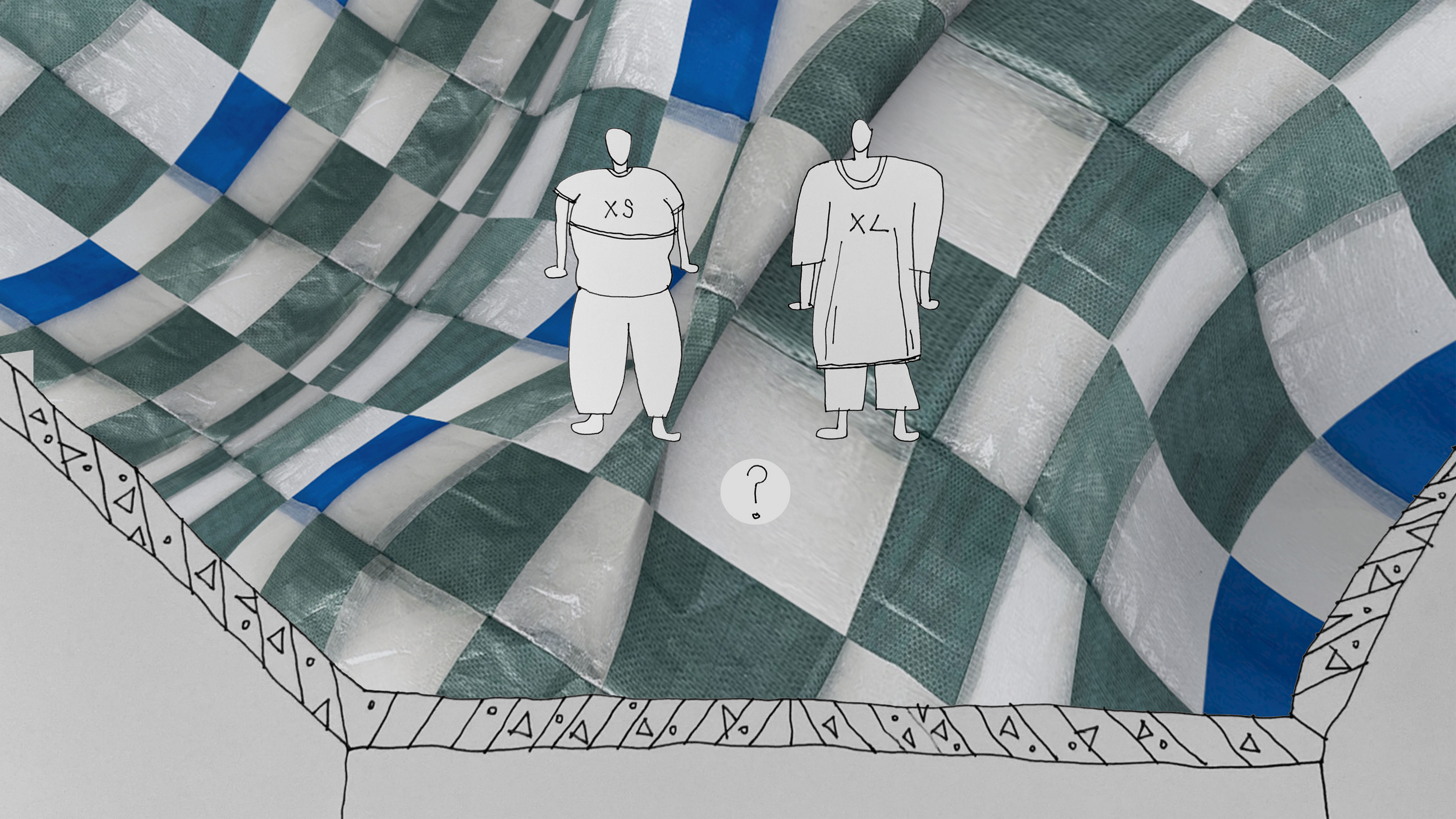


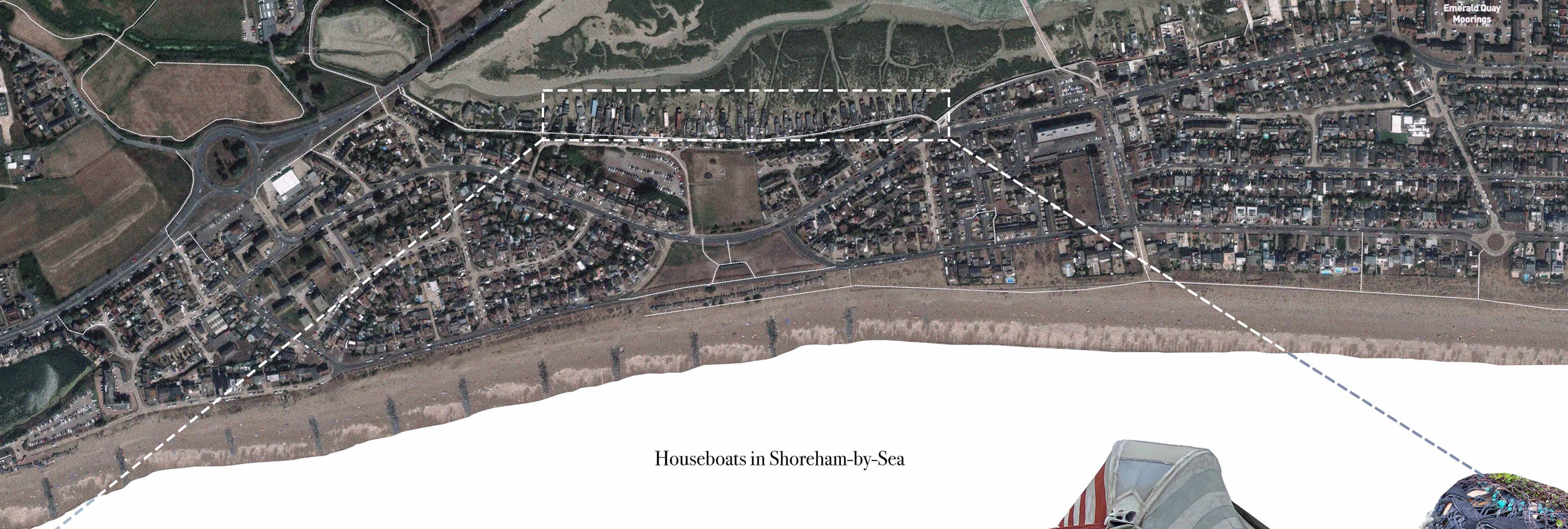
④



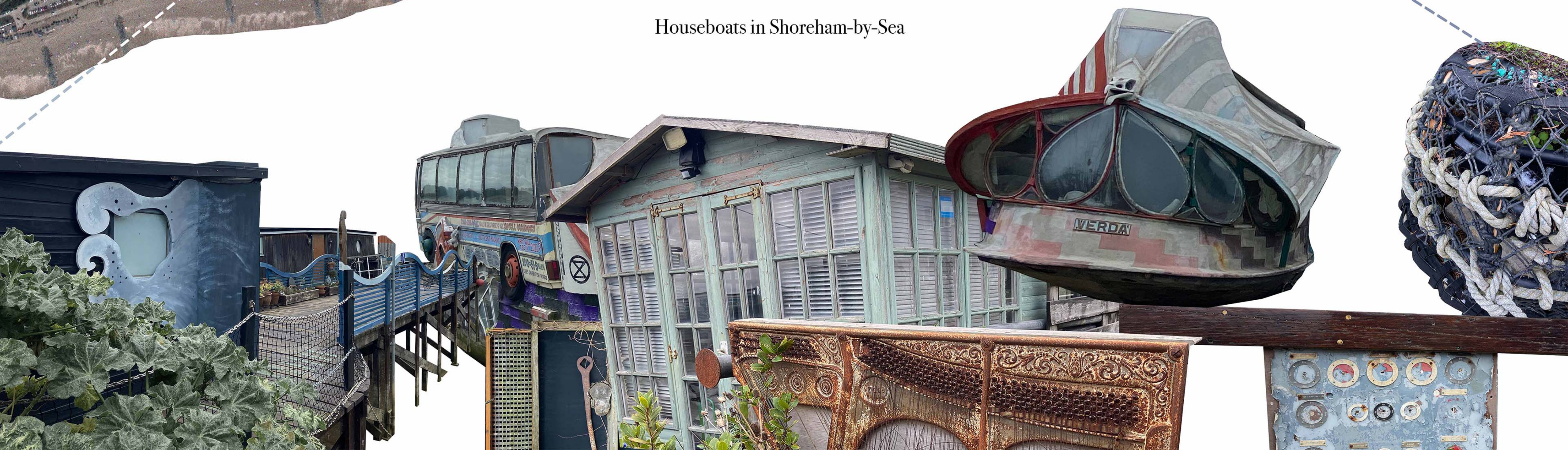
Quilting

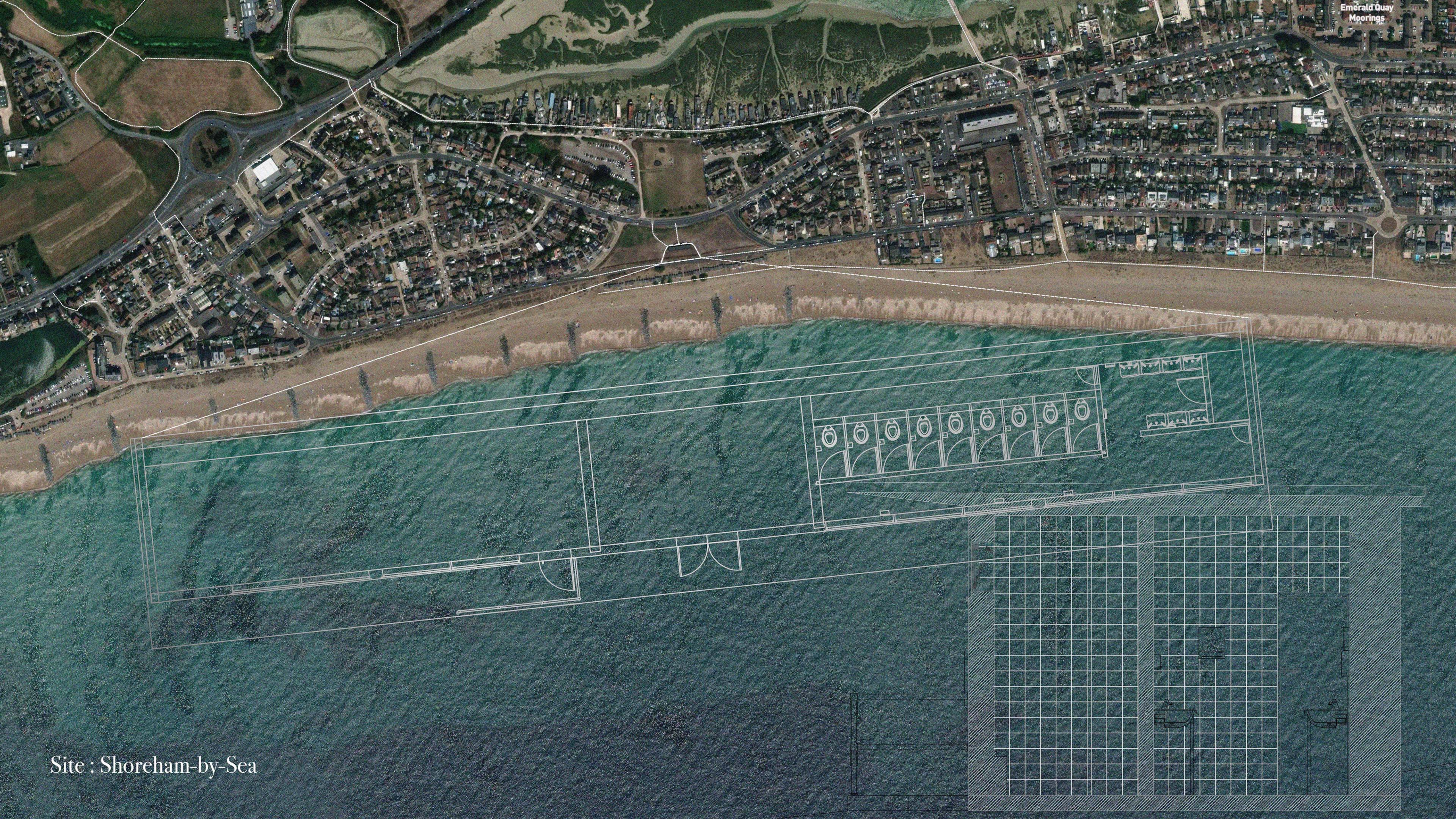






Houseboats in Shoreham-by-Sea





Emerald Quay
Moorings

Site : Shoreham-by-Sea

