

**Communal
Kitchen and Living**

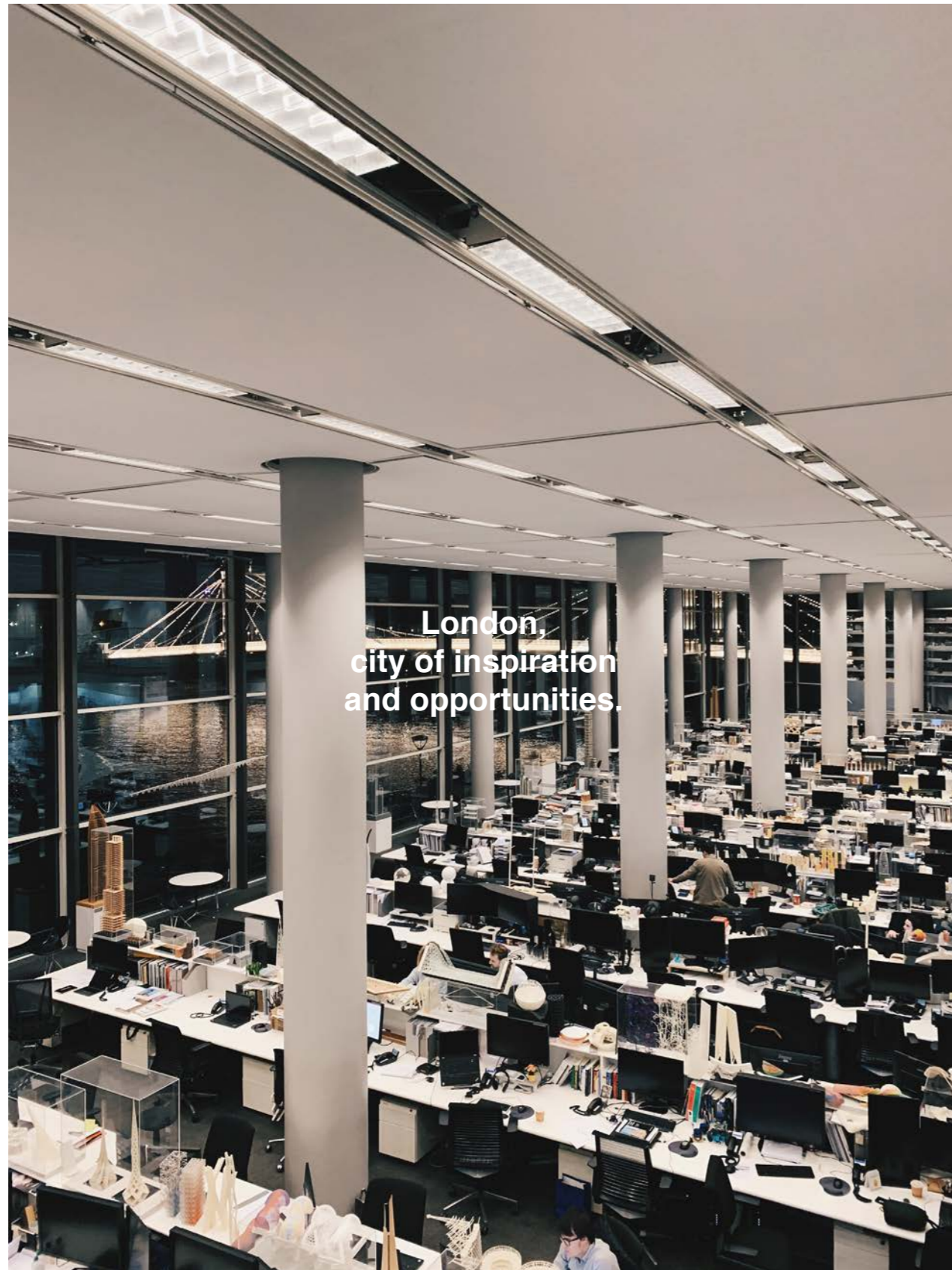
A place to be together.
A place to be yourself.
A place to belong.

Nichamon Dejprasert

#01 Move

35% of London population
are foreign-born.

Which means there are 3,115,000 people
away from their hometown.



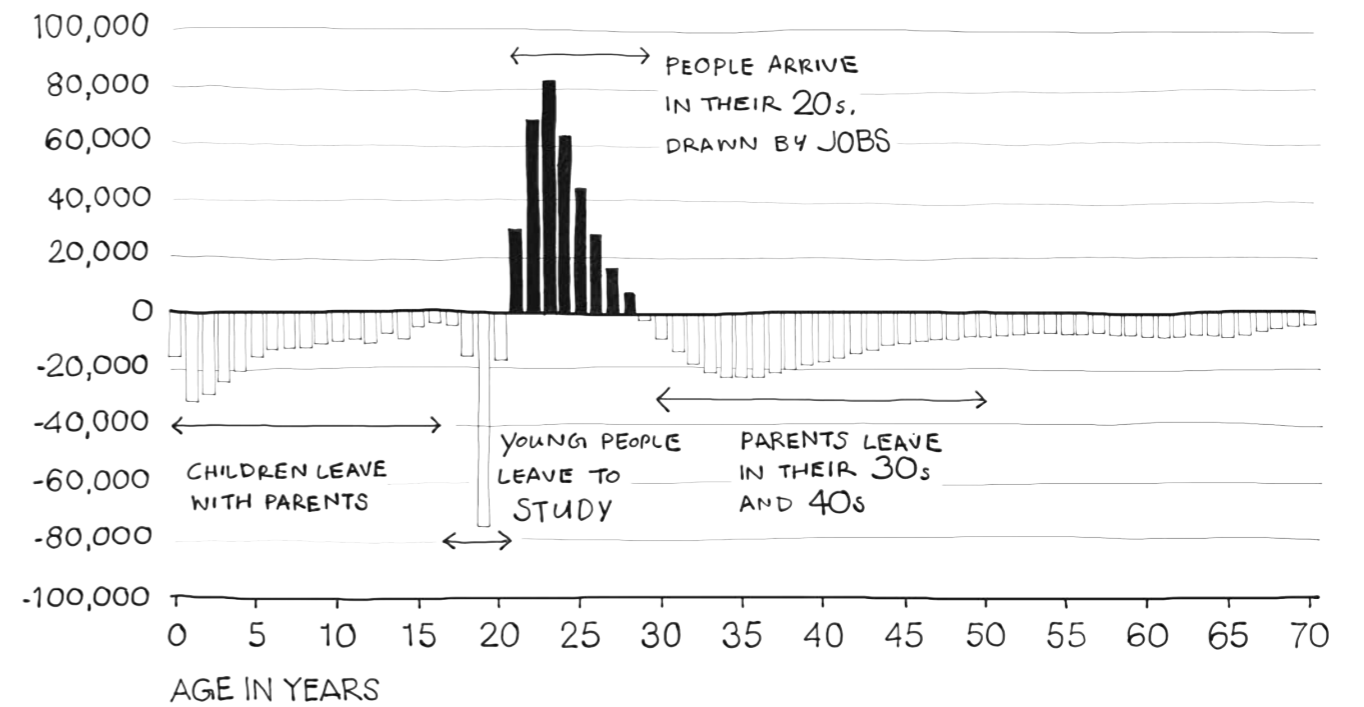
London,
city of inspiration
and opportunities.

Foster+Partners Office, Battersea

**People from UK, EU and the rest of the world,
move to London to seek for jobs,
opportunities, and education.**

125,035 international students are studying in London, 2018.
237,275 Domestic Immigration Number in 2017.

While British people in their 30s and 40s move out,
people in their 20s move to London.



Source: Centre for Cities



#02 Live

Finding a right flat is as hard as
finding the right one on dating apps.

If you're looking for a flat
in June, July or August,

you might end up in the shared flat
without living room or even dining table.

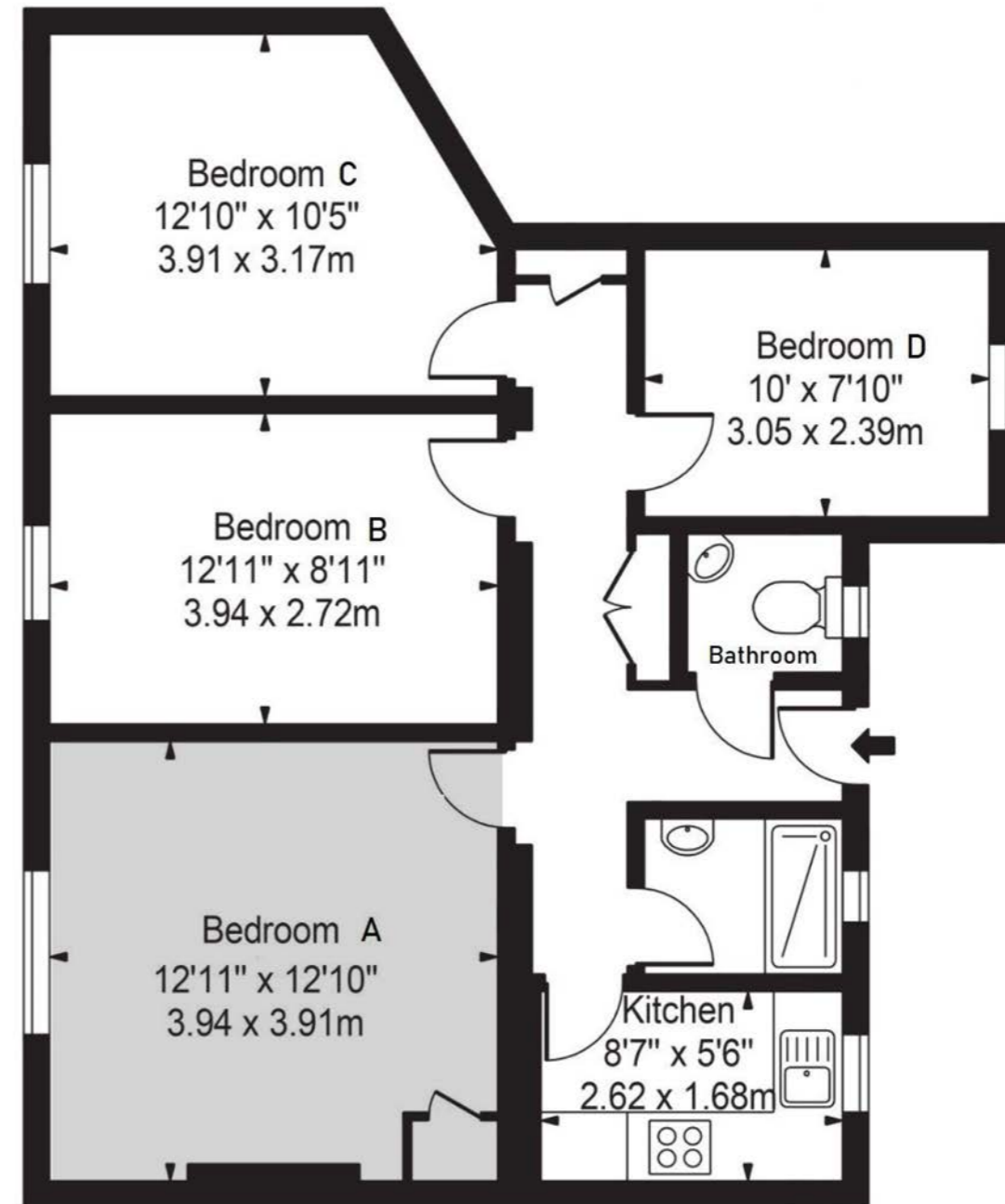
**9/10 London shared house ads online
have no living room. -The times**

Where do I eat?

Where do I relax?

Where do I do yoga?

Where can I invite friends over for dinner?

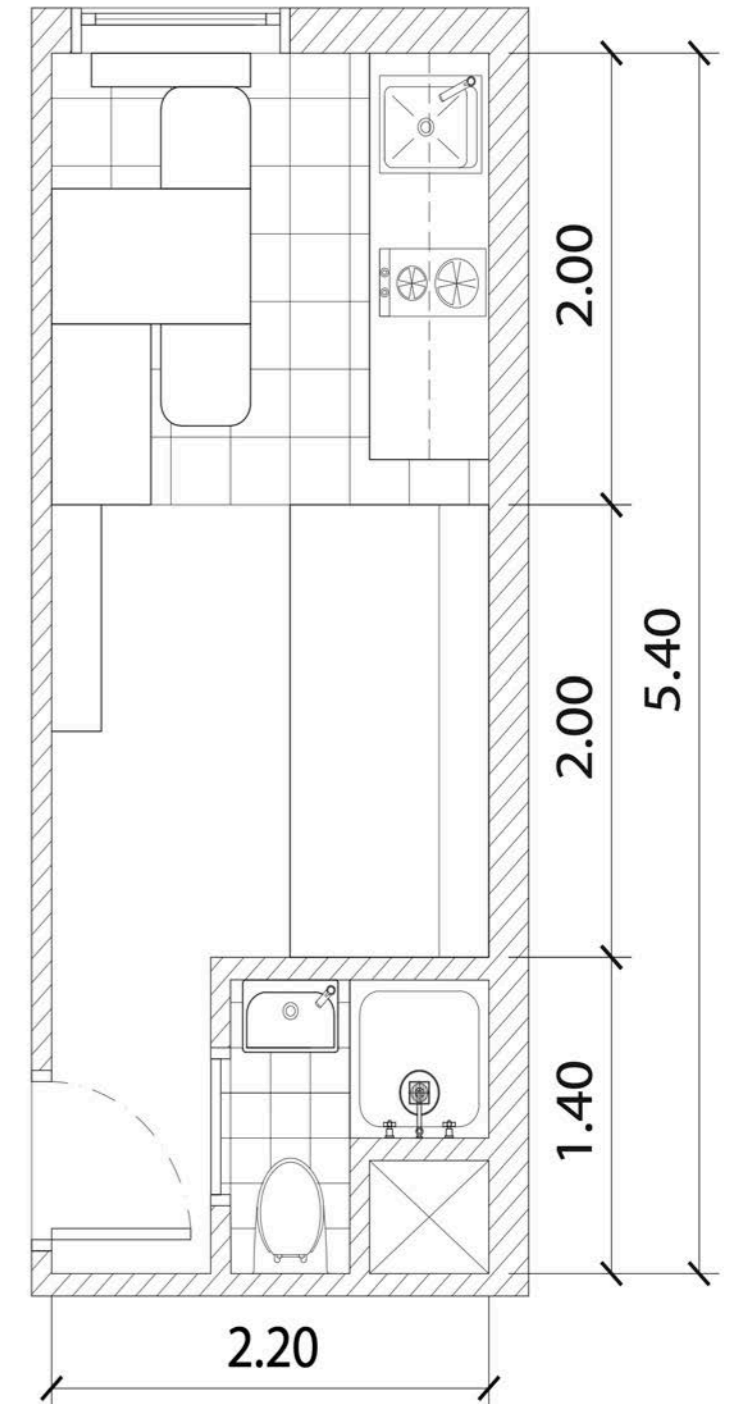
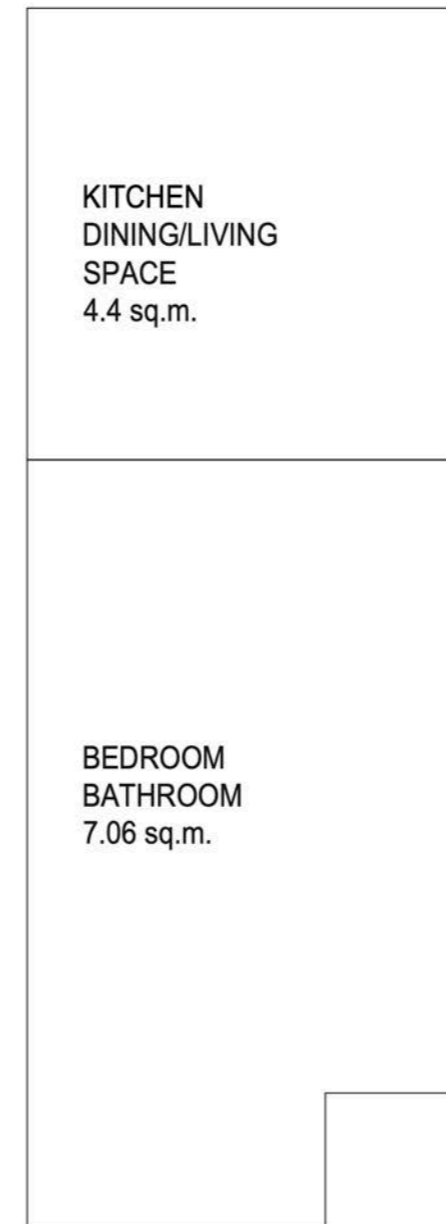


Ground Floor Flat in Hammersmith
Room size: 15.4 sq.m.
Rent: £230 per week (bills included)



A room for one

Or if you like to be more isolated,
here is where you can be truly you.



A Studio Flat in Earl's Court
Room size: 11.46 sq.m.
Rent: £285 per week (bills included)

#03 Home

How to feel like home
when you're away from home.

How to feel like home 01

Turn an empty flat into home with your self-expression.



How to feel like home 02

1. Facetime with your family.
2. Do a virtual cooking show.
3. Cook your national food or mom recipes.



How to feel like home 03

Let's invite friends over for dinner.
But the room could only fits one guest.

KITCHEN
DINING/LIVING
SPACE
4.4 sq.m.

Event: Christmas Dinner
Area: 2.2 sq.m. per person



When housing prices are rising,
the quality of life goes the other way round.

**Are people in these days more isolated or
are they just seperated by the living conditions?**



**Do we still need communal space
to live and to dine together?**



We may not overcome housing crisis,
but could we have the space for us
to 'feel like home' ?

Place where we can dine and socialise.
Place where we can make new friends
and integrate with the community.
Place where we can finally start a chat
with our neighbours from next doors.

Live alone but together.

#04 Second Home

Where could it be integrated
into the community?

From retail apocalypse to future high street transformation

How could the High street be changed?

“There needs to be a reduction in the amount of retail space and replaced with other mixed-use schemes and residential elements to encourage locals to engage in their local areas.

The high street of tomorrow will be easily accessible, safe, clean, and able to be enjoyed by all.

“The high street will become a physical manifestation of community, where people are able to live, work and play in one social arena.

Supported by local authorities and the retailers that work to create those places special for those that live there.”

- James Child, retail analyst at Estate Gazette.



#05 High Street Kensington

What's on Kensington High Street

Food Sources:

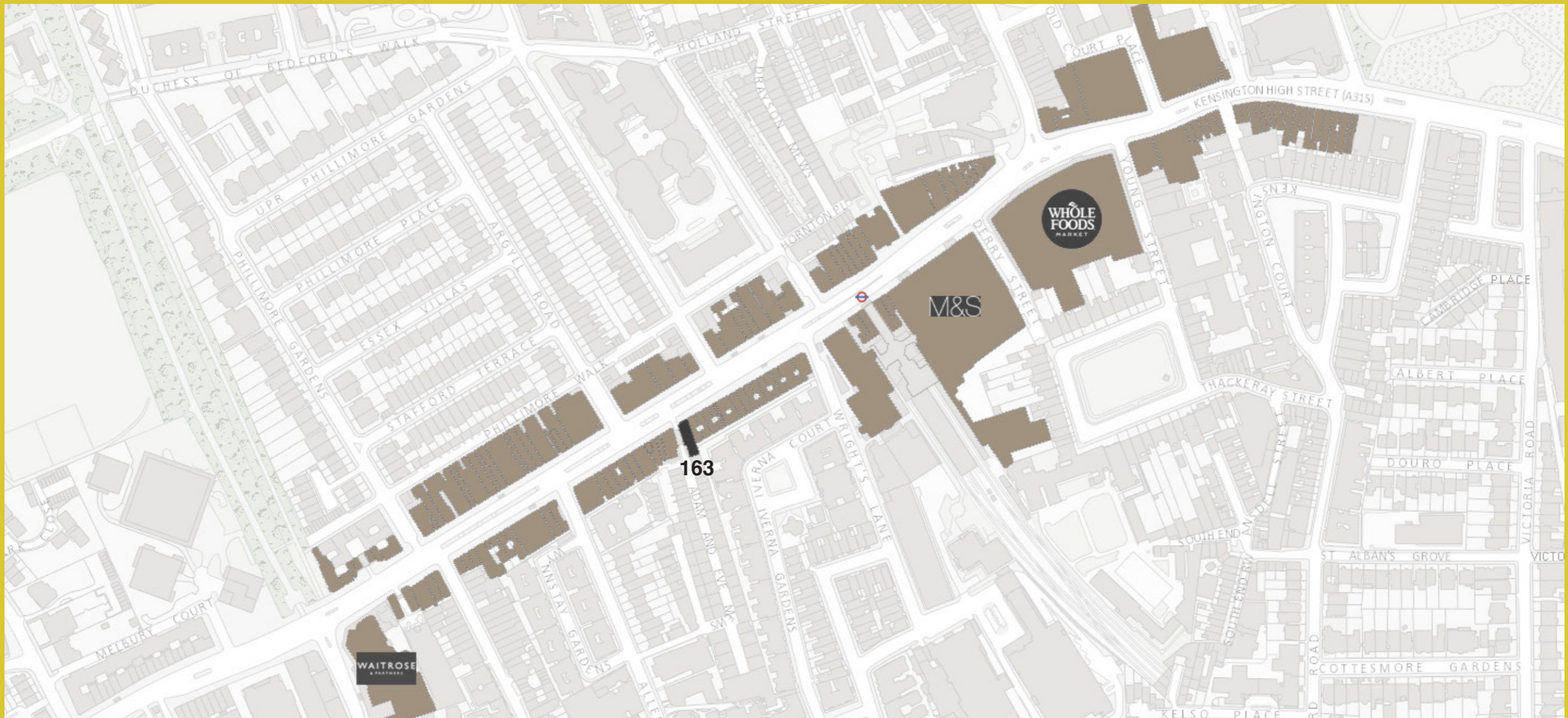
Whole Food Market
M&S Foodhall
Waitrose&Partners
Notting Hill Farmers Market
(Saturday)

Potential Users:

Imperial College
Royal College of Art
Royal College of Music
Foreign Embassies

Transportation Hub to Residential Area:

9,23 Kensington Olympia and Hammersmith
27 Queensway and Bayswater
28 West Kensington, Notting Hill and Westbourne Park
49 Shepherd's Bush and White City
328 Earl's Court, West Brompton and Chelsea



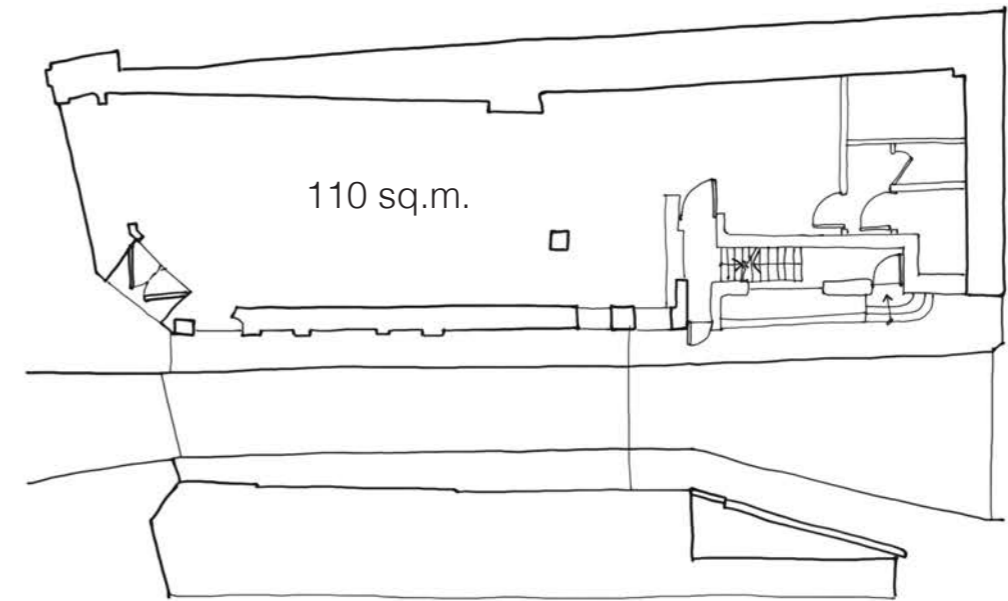
Site: 163 Kensington High Street, London W8 6SU

163

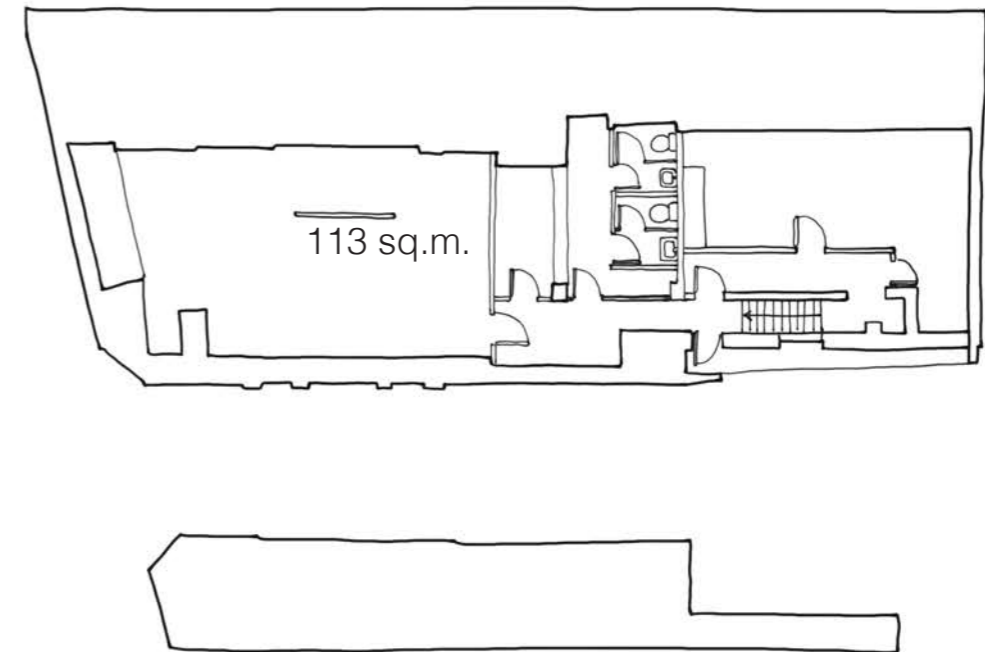
Kensington High Street, London W8 6SU



Currently, the building is being renovated on the upper floor residential units.



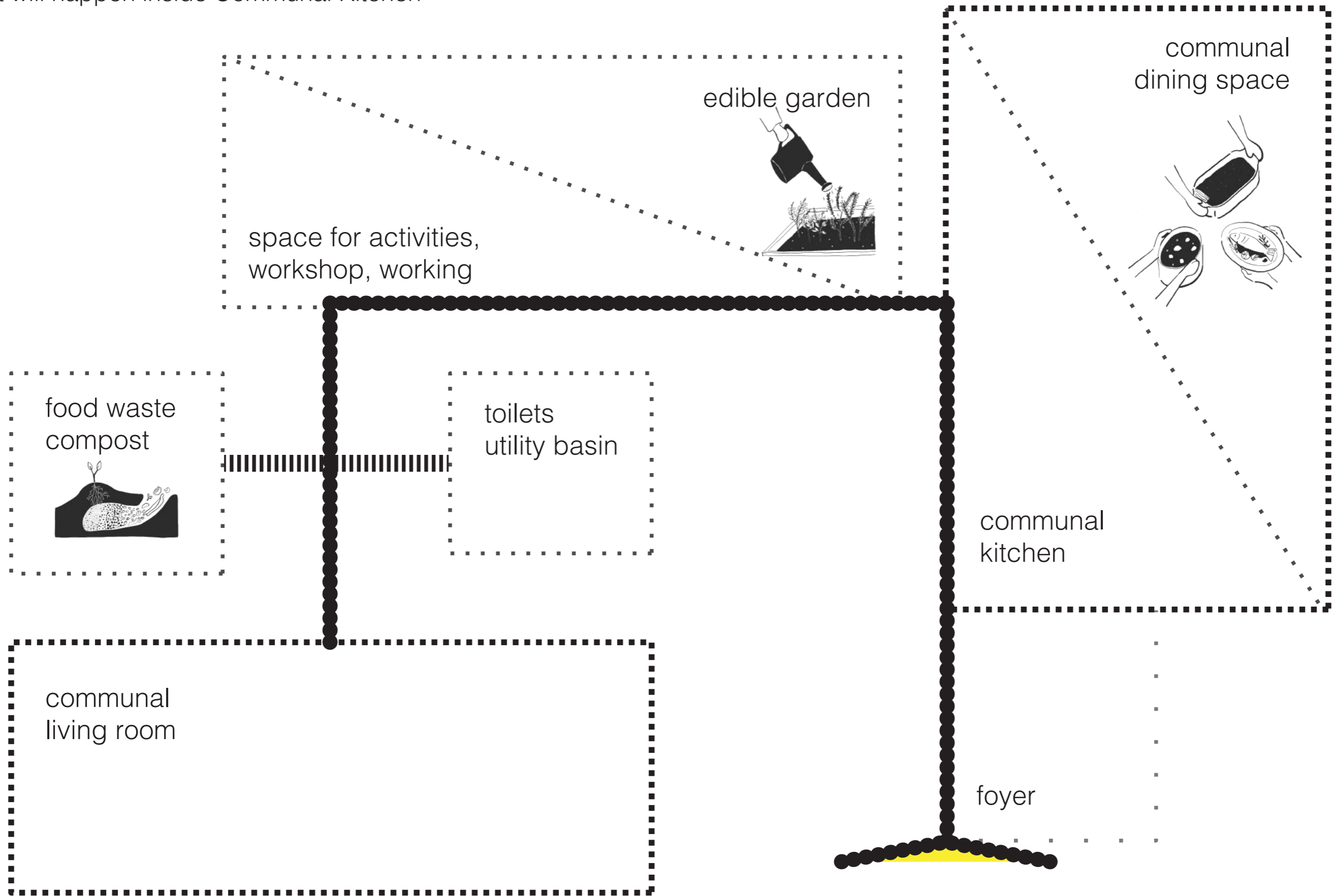
EXISTING GROUND FLOOR PLAN



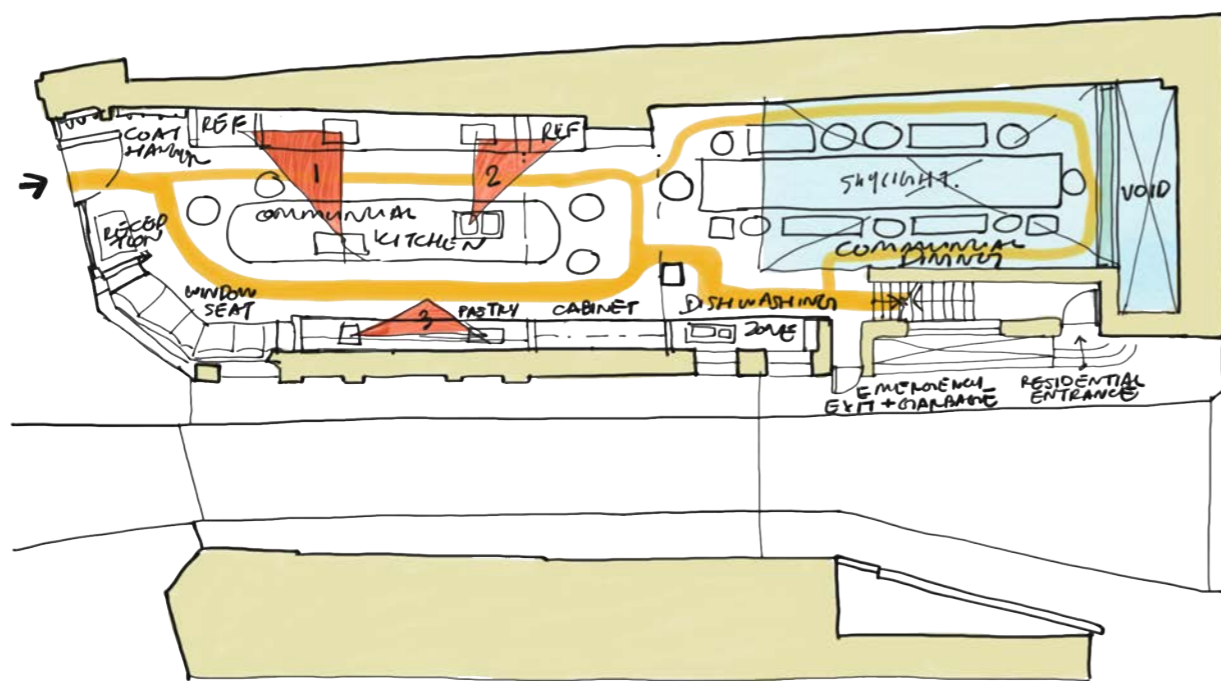
EXISTING BASEMENT PLAN

#06 Design Process

What will happen inside Communal Kitchen

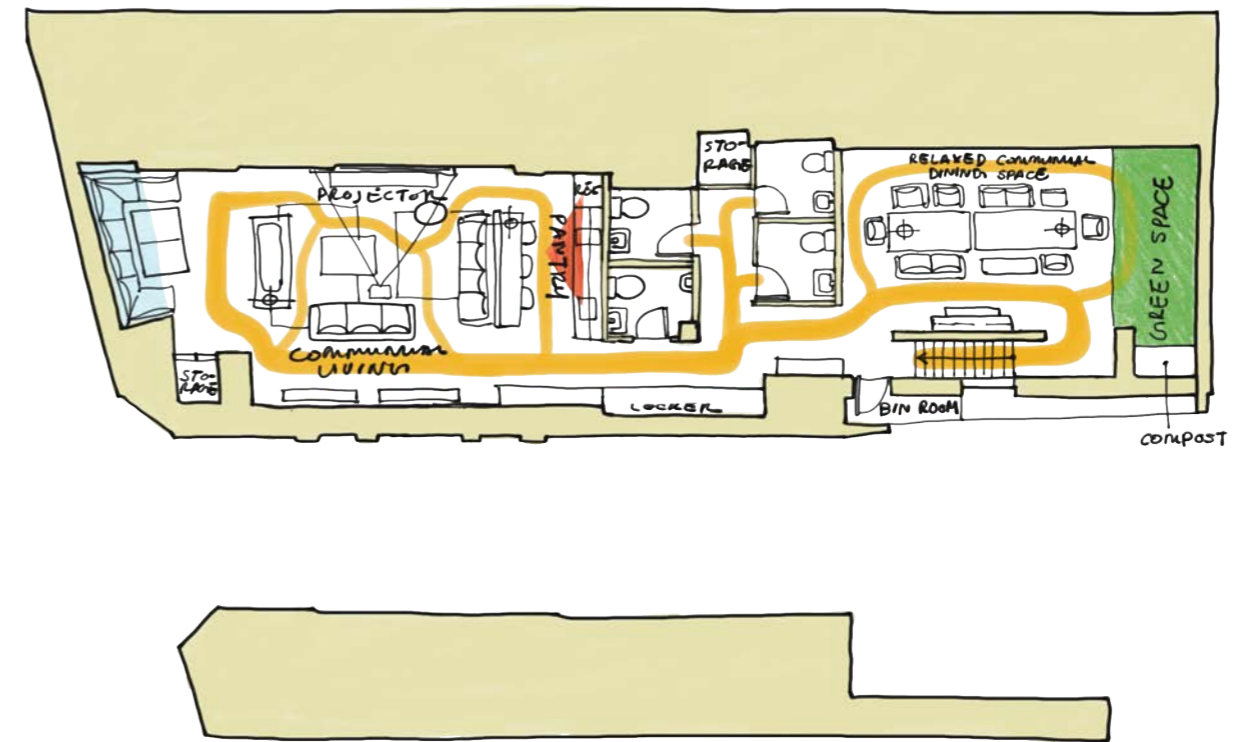


The proposed programmes are separated on different floors, from public exposure zone on the ground floor to members private zone on the lower ground floor.



Ground Floor

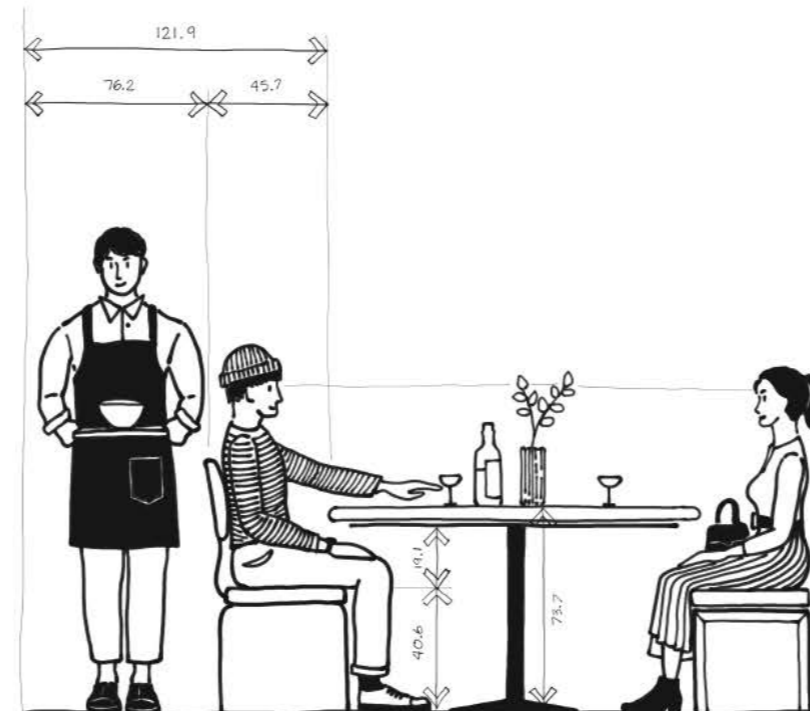
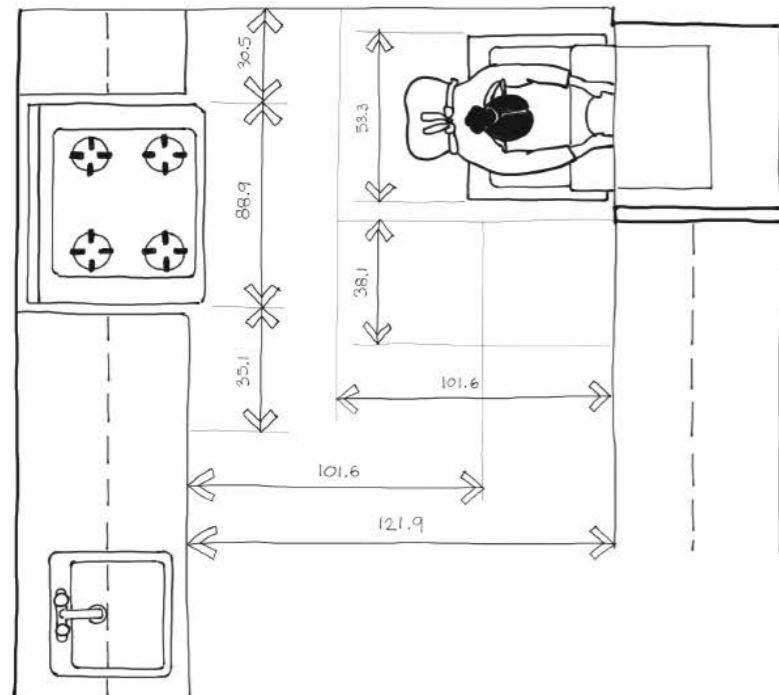
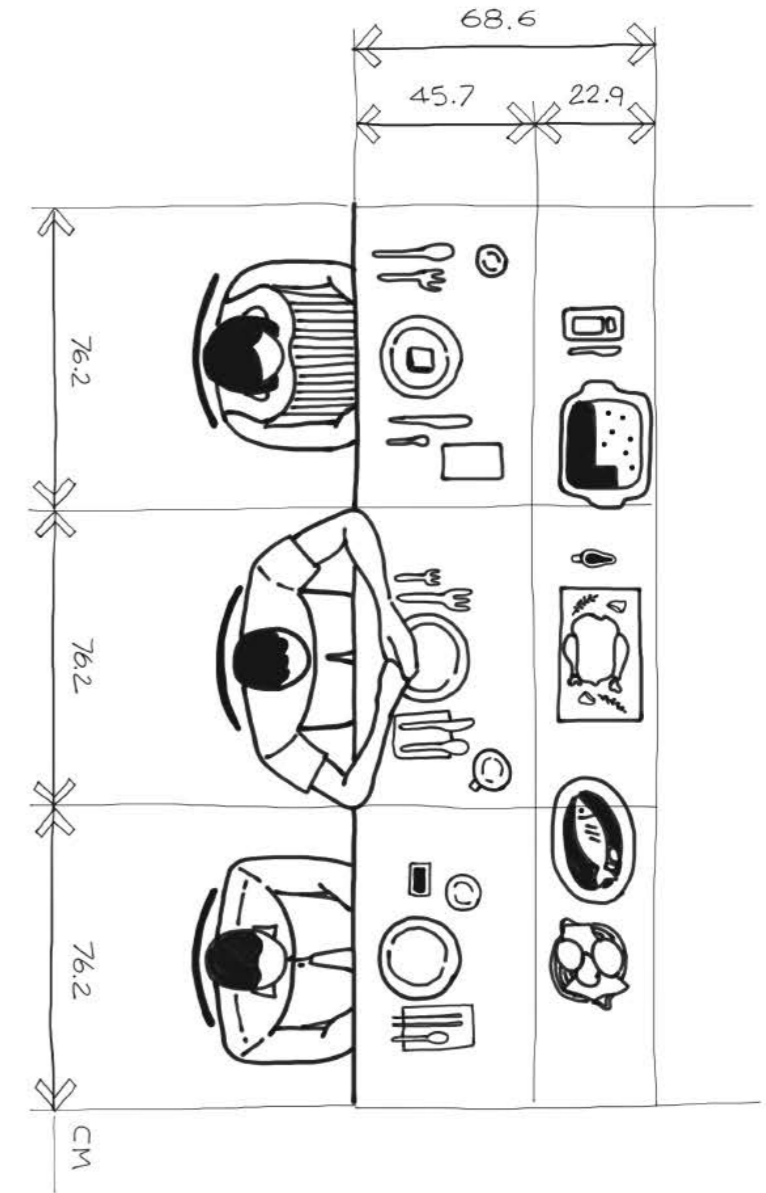
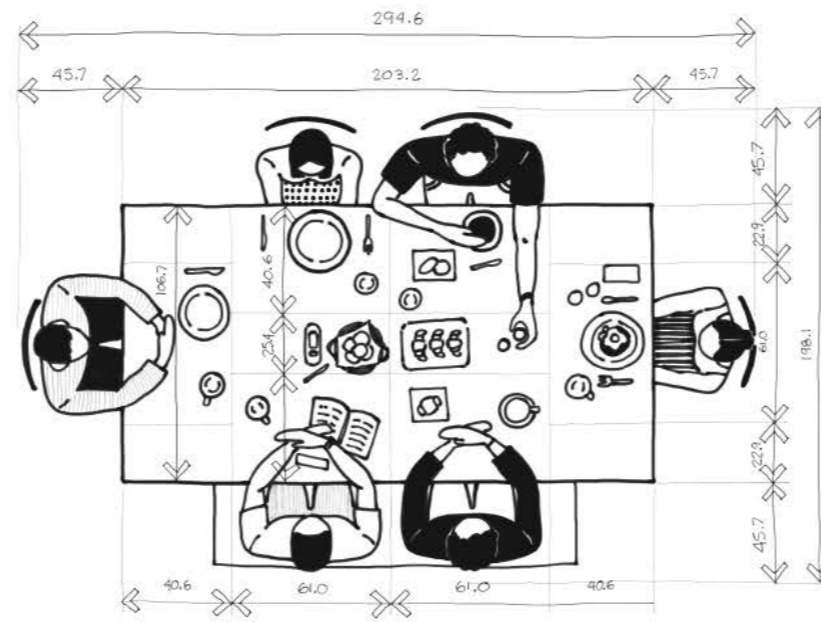
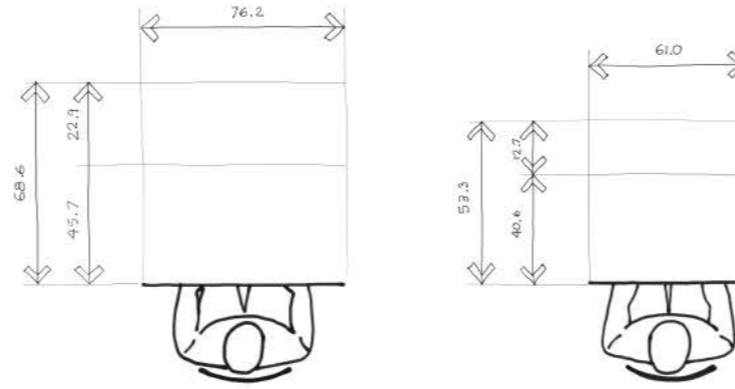
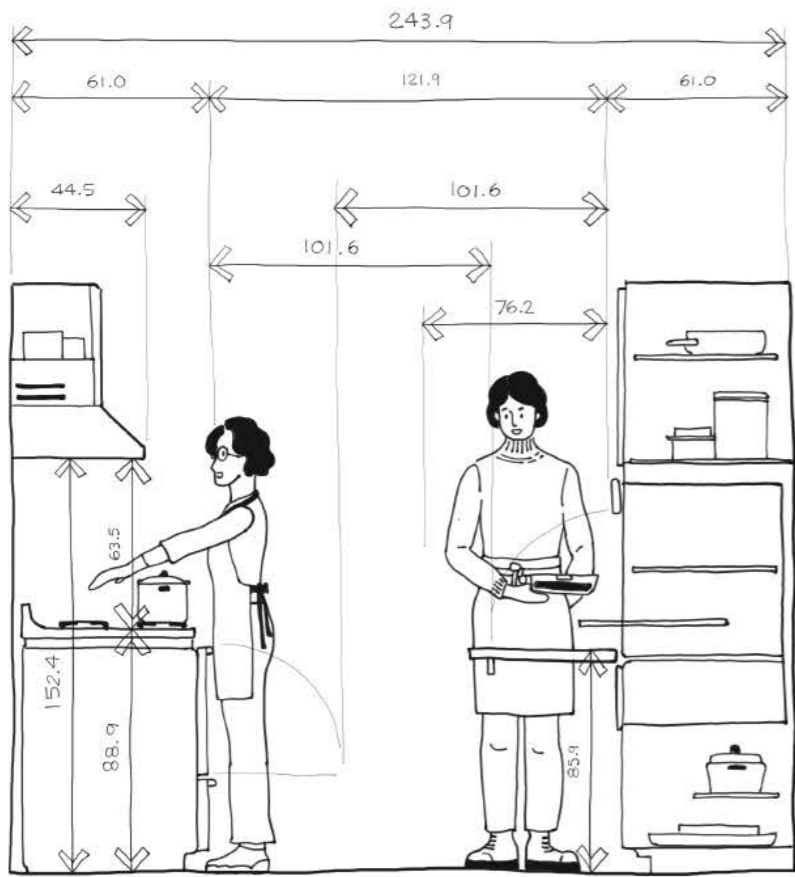
- Foyer**
- Lounge
- Kitchen**
- Dining Room**
- Void



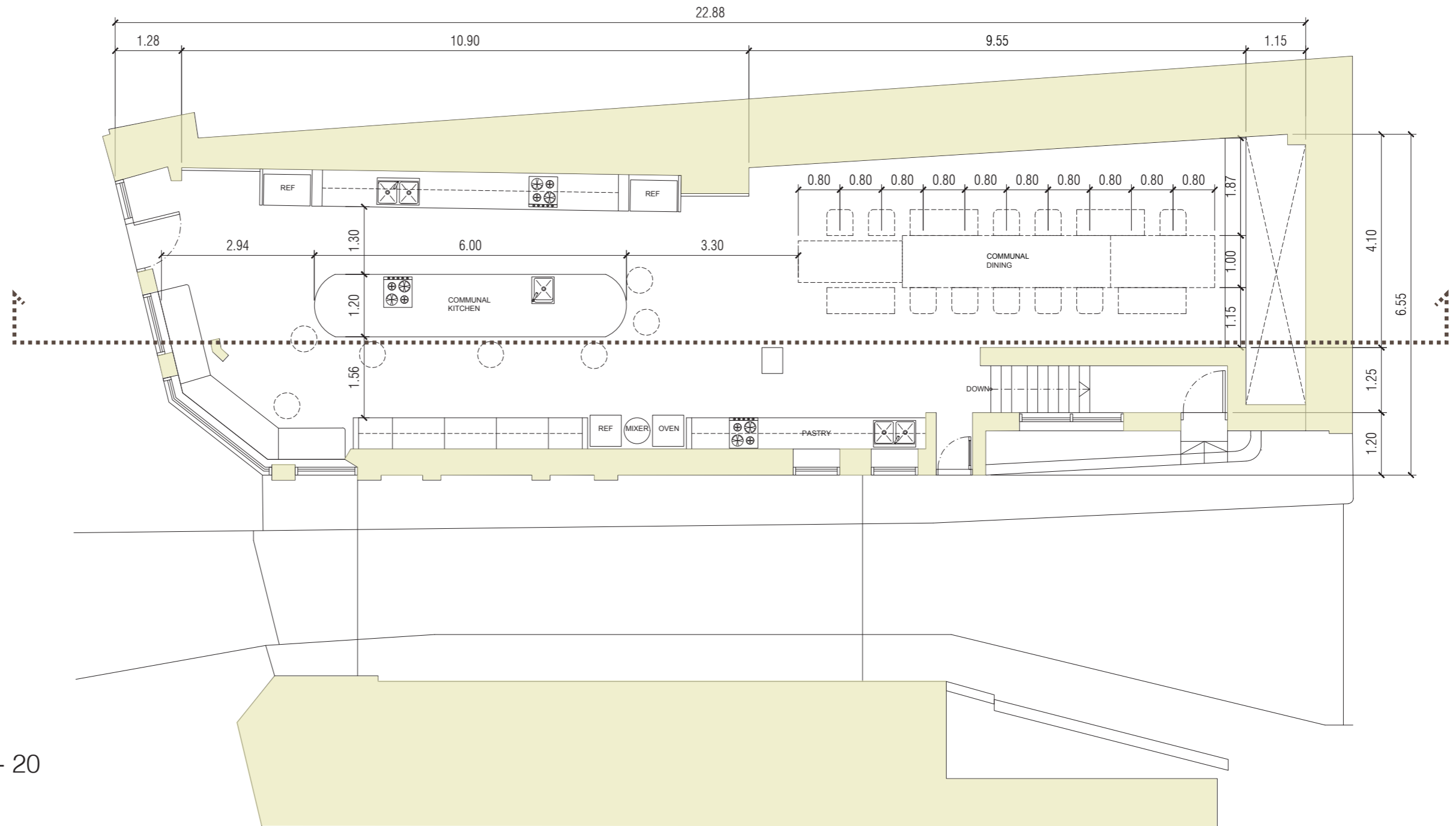
Lower Ground Floor

- Edible Garden**
- Workshop Space**
- Toilet**
- Bin Room / Compost Room**
- Storage
- Living Room**

Cooking and Dining Space Study



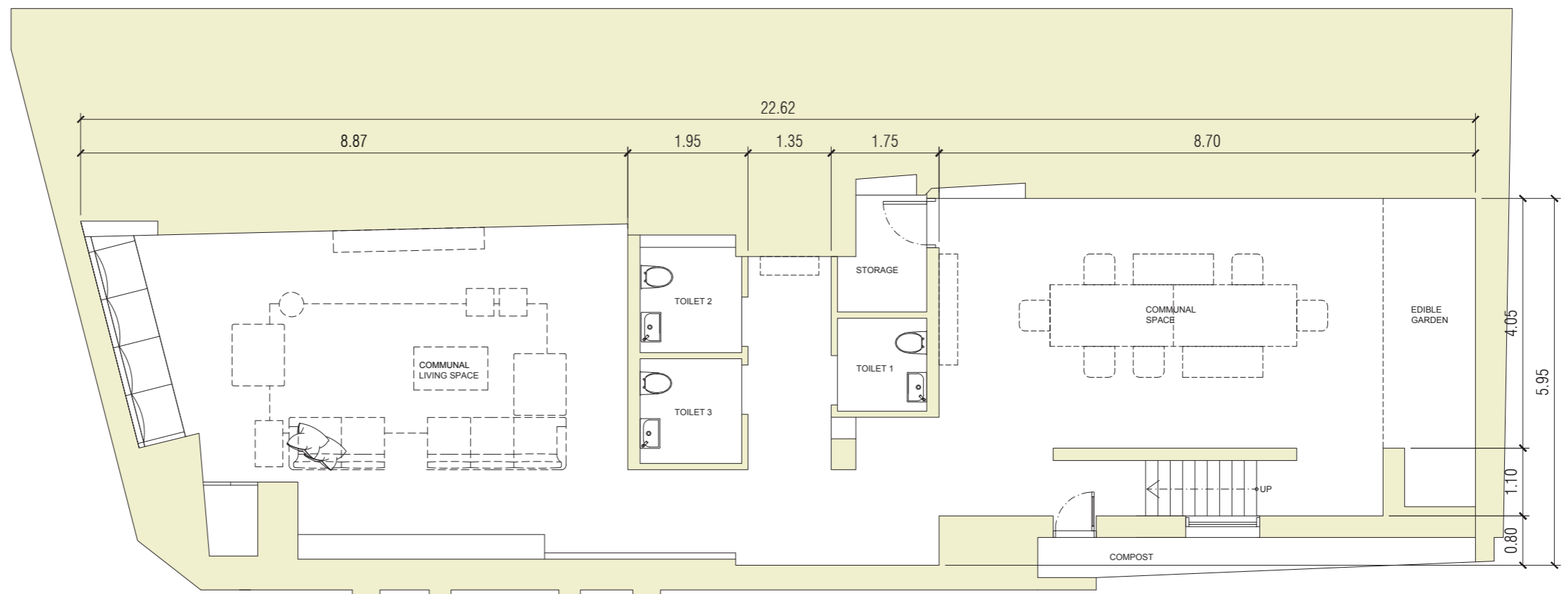
Ground Floor Plan



Ground Floor Facilities:

- Foyer**
- Lounge Seat: 6
- Kitchen**
- Cooking Station: 3
- Dining Room**
- Dining Seat: 18 - 20

Lower Ground Floor Plan



Lower Ground Floor Facilities:

Edible Garden

Workshop Space 12 - 14

Toilet 3

Bin Room / Compost Room

Storage 2

Living Room

Sofa seat: 16 - 20



Noise Level Analysis



“A Blender is louder than Diesel Truck.”

Decibel level analysis from possible events that may occur in the space, like uncontrolled ambience noise from the road or occasionally-made noise inside the space.

Performative Design Approach



The design approach to tackle noise problems is by applying acoustic absorption materials on specific locations. Medium absorption panels are applied in the kitchen area where surfaces have less porosity due to its waterproof properties. Higher absorption materials are added in socialising space like dining room.



#06 Materials Story

Materials Approach

Materials Criteria

Performance

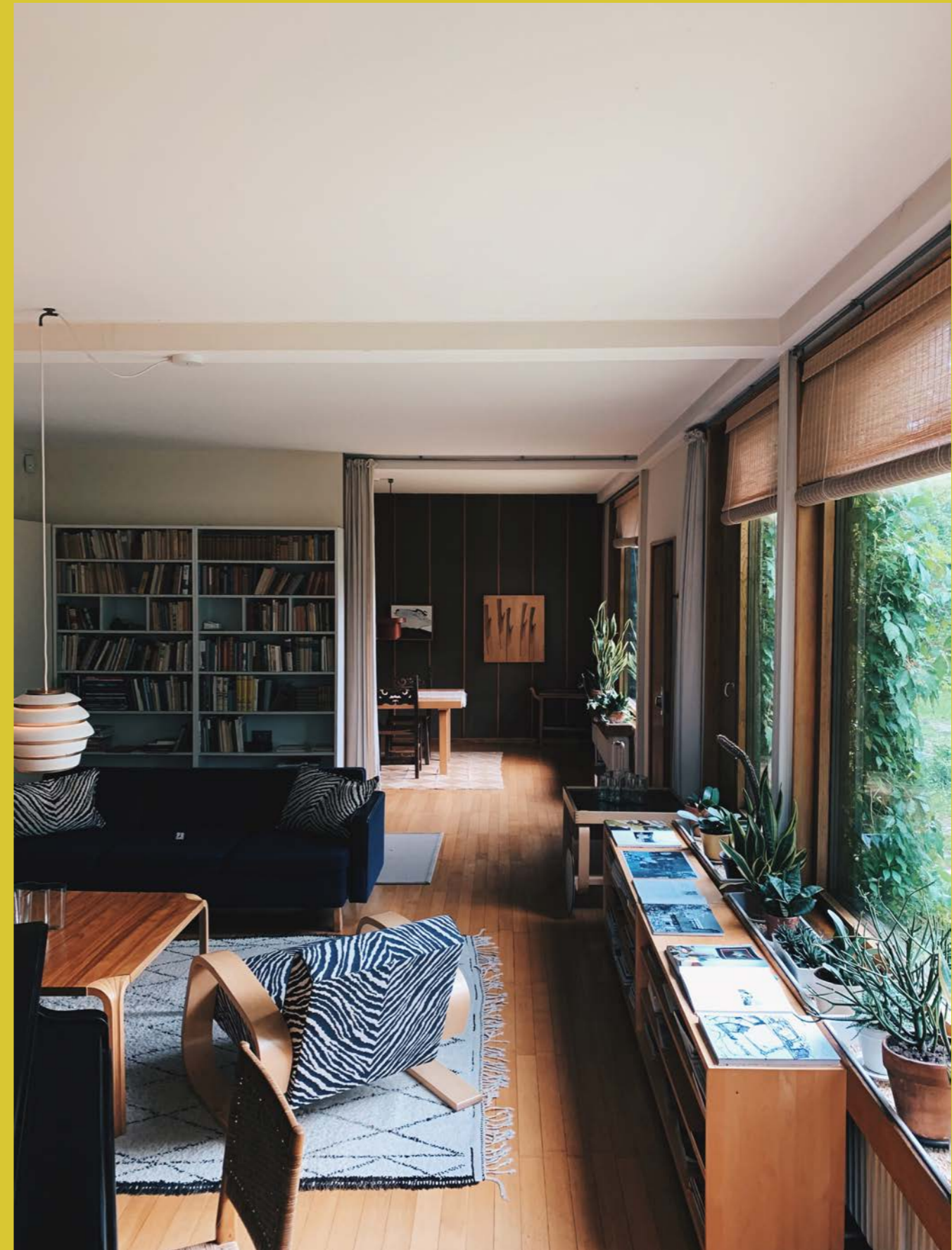
- acoustic absorbtion
- waterproof / water repellent
- scratch resisitance
- stain resistance
- slip resistance
- low maintenance

Sustainability

- local manufacturing
- recycled content
- renewable
- biodegradable
- low environmental impact
- recyclable

Atmospheric / Perceptive

- unique
- hand-crafted
- natural looking
- materials story
- home / warm



Alvar Aalto House, Helsinki

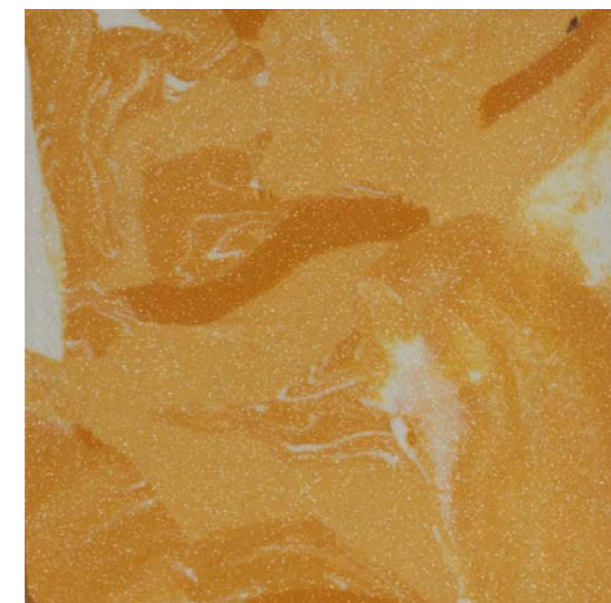
From Public House to Public Kitchen



163 Kensington High Street in 1890s as Adam & Eve Pub



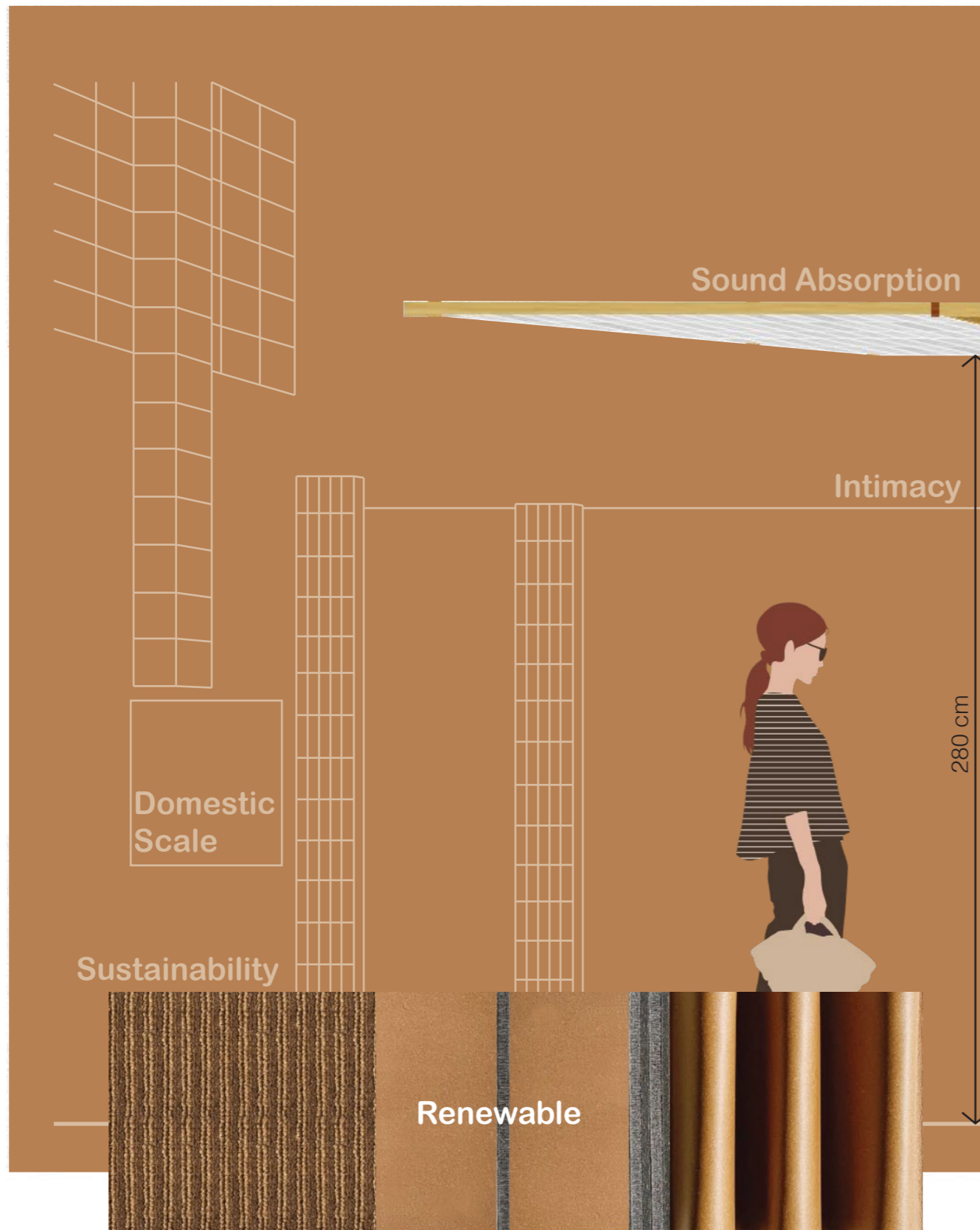
163 Kensington High Street in 2020s as Communal Kitchen & Living



Granby Workshop
Encaustic Tile
150 x 150 cm

Facade Materials Selection_Vitrified Ceramic Tiles
Glazed Ceramic Tiles were used in pub facade to identify which has in-house brewery for hygienic purpose and to make the shopfront stand out.

Foyer A Warm Welcome to Home



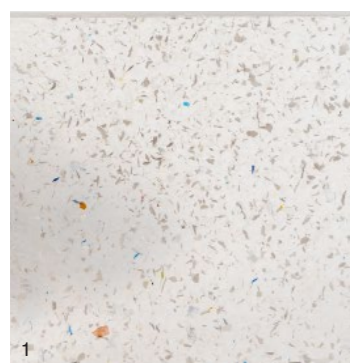
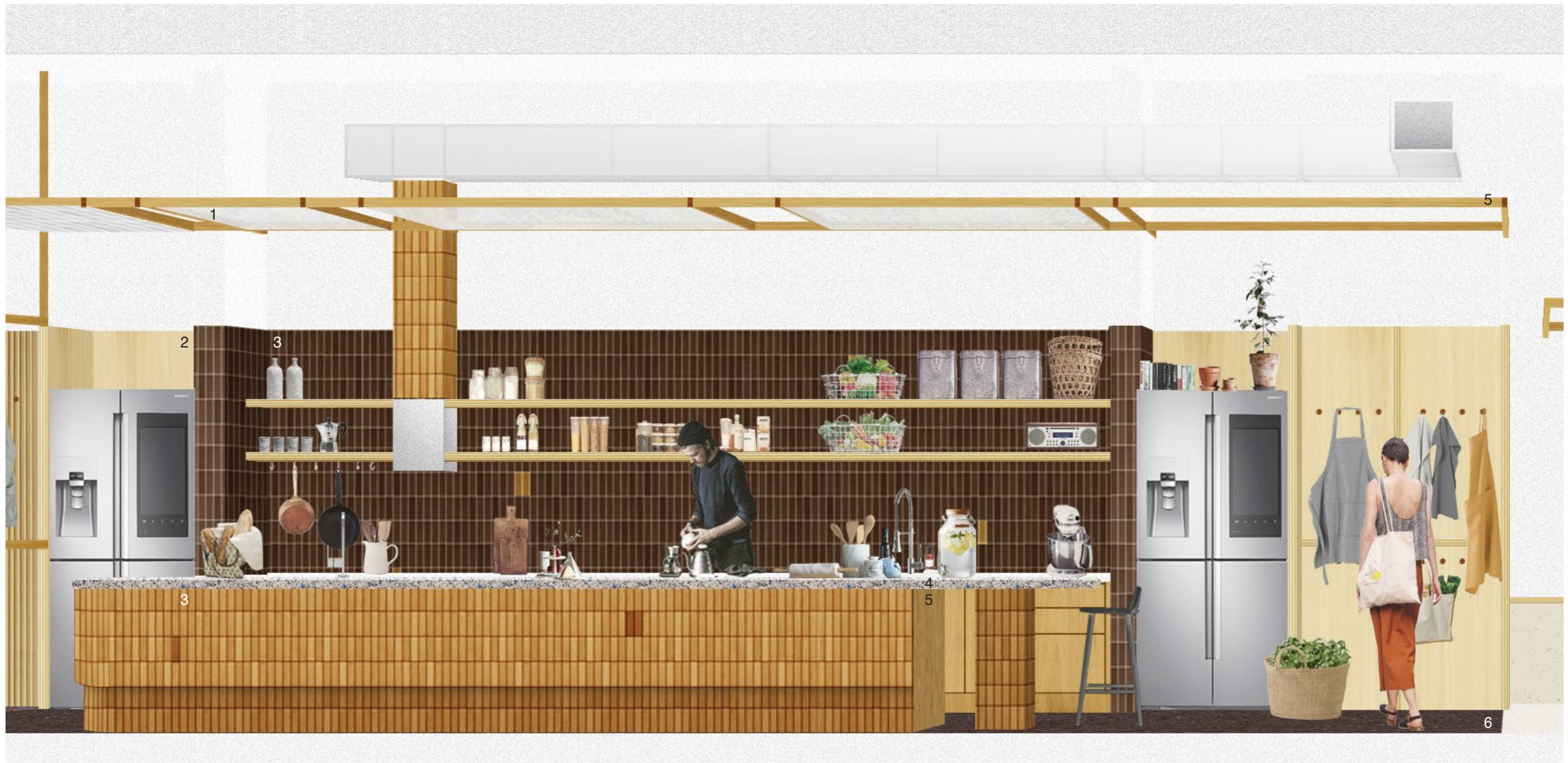
Contains Natural Fibres and Recycled Content





Kitchen
Commercial Kitchen + Domesticity

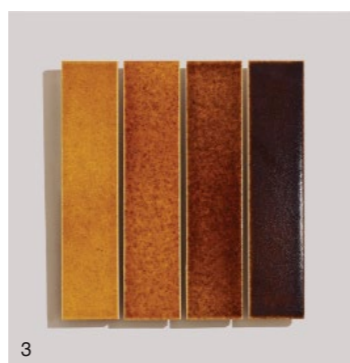




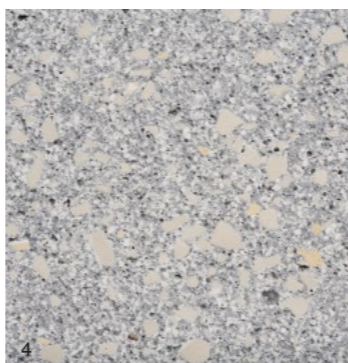
1



2



3



4



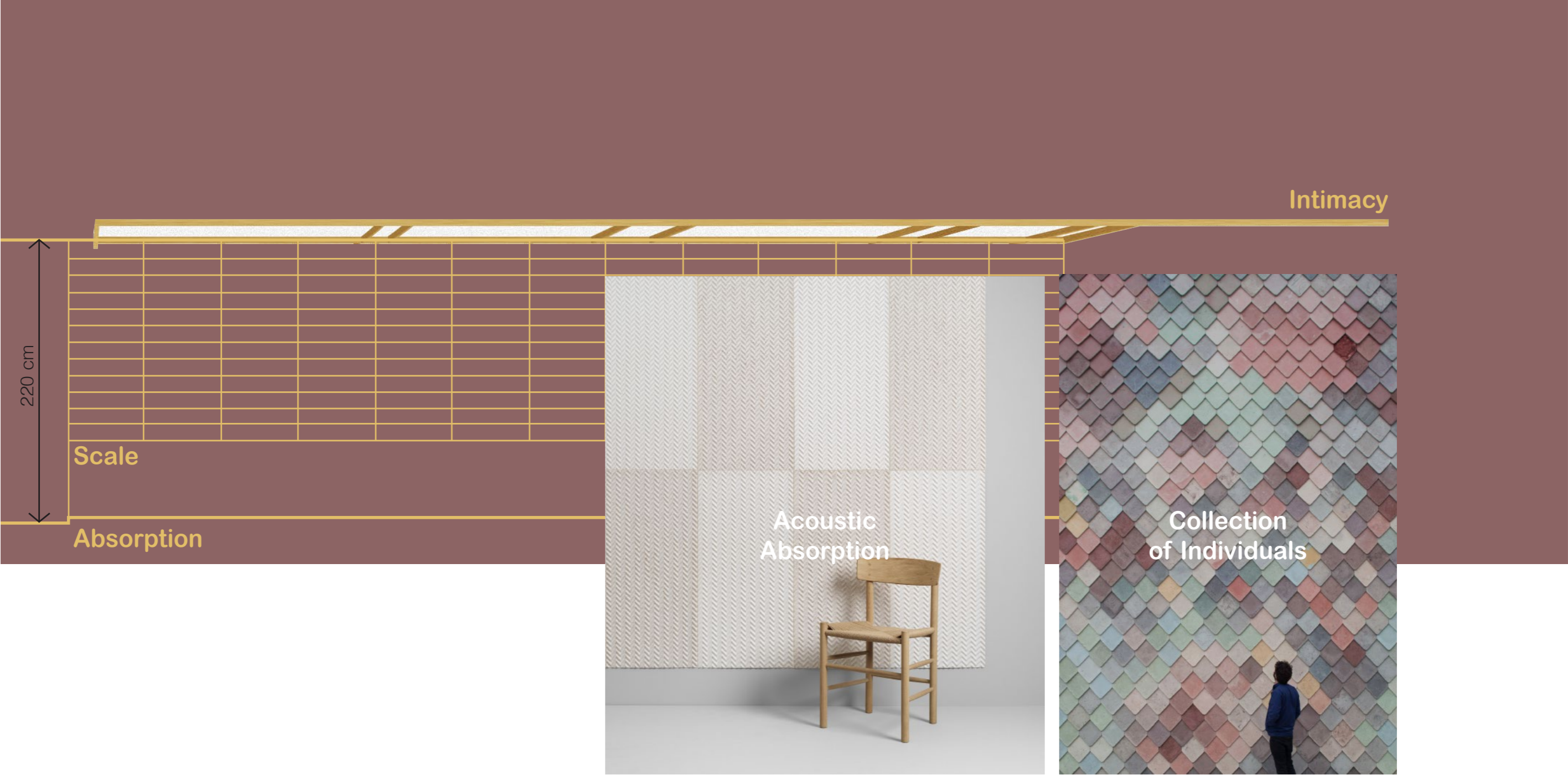
5



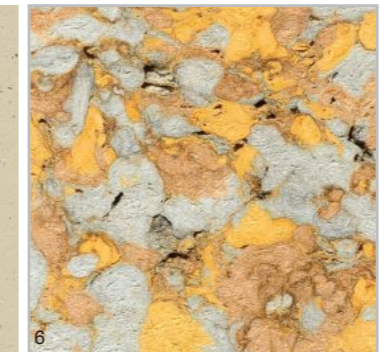
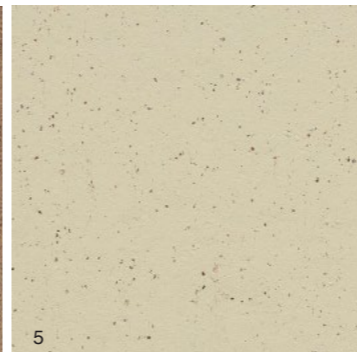
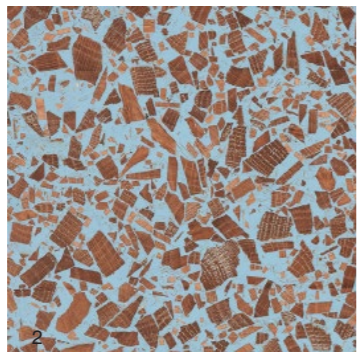
6

- 1.3Form_Flex_Pure_Recycled trimmed edge ecoresin panel with 75% recycled content
- 2.Birch Plywood
- 3.dzek_Exciner_Volcanic Ash Glazed Tiles
- 4.Alusid_SILICASTONE Terrazzo_Smoked Honed_98% recycled content
- 5.English Oak_Oil finish
- 6.Forbo_Marmoleum_Cocoa_Dark chocolate Recycled cocoa shells

**Dining Space
Made in Community**

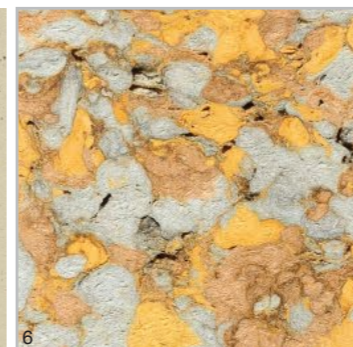
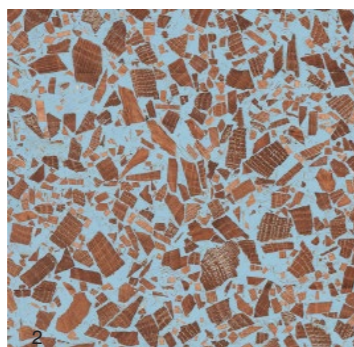
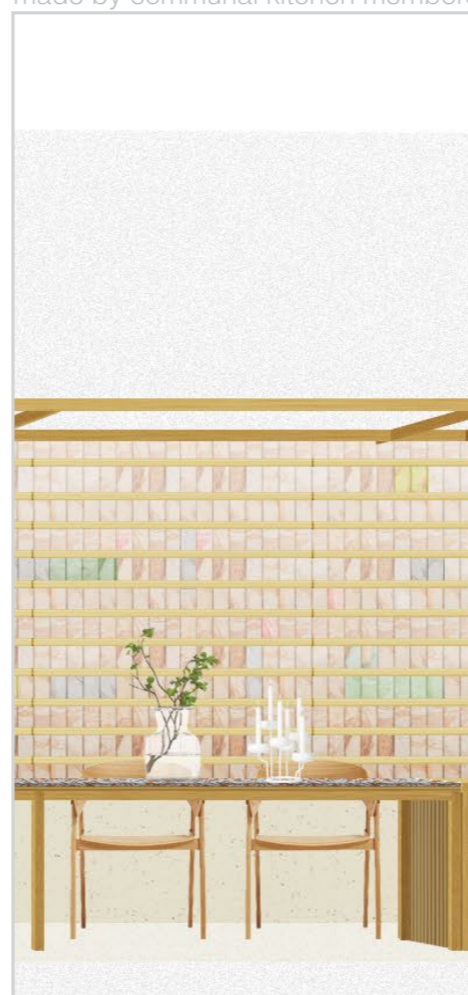


made by communal kitchen members



- 1. Smile Plastic_Alba_100% Recycled panel from yoghurt pods
- 2. Foresso_Azure_Recycled oak woodchip panel
- 3. English Oak_Oil finish
- 4. Plexwood_Eiken_End-grained wood veneer panel
- 5. Forbo_Marmoleum_Cocoa_White chocolate Recycled cocoa shells
- 6. Handmade paper tile from recycled egg cartons

made by communal kitchen members



1. Smile Plastic_Alba_100% Recycled panel from yoghurt pods
2. Foresso_Azure_Recycled oak woodchip panel
3. English Oak_Oil finish
4. Plexwood_Eiken_End-grained wood veneer panel
5. Forbo_Marmoleum_Cocoa_White chocolate Recycled cocoa shells
6. Handmade paper tile from recycled egg cartons



Ce3

Alusid : Silicestone Terrazzo

A new lease of life from unwanted manufacturing materials

Alusid products a celebrate hand-crafted quality and its beautiful imperfections found in natural stone. The recycled contents are bonded without resin or concrete but with heat at a considerably lower temperature compared to conventional ceramics and all of Alusid production waste is reintroduced into the manufacturing process.

Specification

Material: Recycled glass, ceramic and mineral waste
 Finish: Honed
 Colour: Smoked
 Size: Up to 1000 x 1500 mm
 Thickness: 30 mm
 Water absorption: 8%
 Classification: B111
 Tech. Specs: Breaking strength, 40,6 N/mm²
 Frost resistance
 Reaction to fire (CWT), A1
 Chemical resistance
 Require surface sealant
 Application area: Indoor and outdoor use

Performance

■□□□□ acoustic absorption
 ■■■□□ waterproof / water repellent
 ■■■□□ scratch resistance
 ■■■□□ stain resistance
 ■■■□□ slip resistance
 ■■■□□ low maintenance, wipe with sponge and mild cleaner

Sustainability

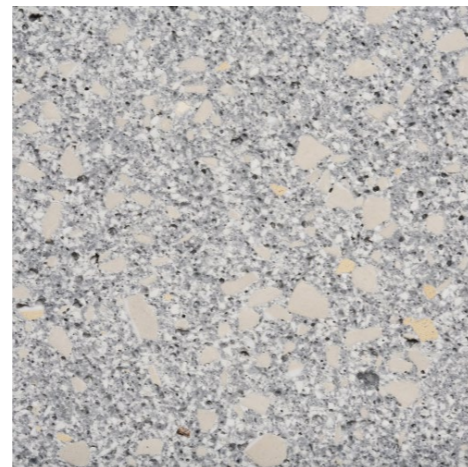
■■■■■ manufacturing in UK, Lancashire
 ■■■■■ recycled content, 98% ceramics and glass waste
 □□□□□ renewable
 □□□□□ biodegradable
 ■■■□□ low environmental impact
 ■■■■■ recyclable

Atmospheric / Perceptive

■■■■■ unique
 ■■■■■ hand-crafted
 ■■■■■ natural looking
 ■■■■■ materials story
 ■■■■■ home/warm

Life expectancy: Terrazzo 75 years

alusid.co.uk



Ceramic & Glass

Alusid_Silicestone Terrazzo

Nf1

Ruckstuhl : Porta cut-loop

Nature Becomes Culture

In 1878, on the way from South America to Switzerland, Moritz Ruckstuhl discovered coconut mats on the board ship that we used to provide a stable footing in wet weather, giving him the business idea to manufacture foot mats from coconut yarn. Ruckstuhl have been committed to the highest quality standards and aesthetic approach to materials, combined with great responsibility of the environment. Natural fibre like coir and sisal are used to create welcoming domestic atmospheres and contributing warmth and comfort. Coir from coconut and sisal are exceptionally resistant to wear and weather.

Specification

Collection: Cocos
 Material: 87% Coir (coconut fibre) and 13% Sisal
 Backing: Heavy coating
 Size: Width 200 cm, length 15 m
 Thickness: 20 mm
 Repeat: 3 cm
 Burning class: CFL-S1
 Application area: Entrance area

Performance

■■■■■ acoustic absorption
 ■■■□□ waterproof / water repellent
 ■■■□□ scratch resistance
 ■■■□□ stain resistance
 ■■■□□ slip resistance
 ■■■□□ low maintenance

Sustainability

■■■■■ manufacturing in EU, Switzerland
 □□□□□ recycled content
 ■■■■■ renewable
 ■■■■■ biodegradable
 ■■■■■ low environmental impact
 □□□□□ recyclable

Atmospheric / Perceptive

■■■■■ unique
 ■■■□□ hand-crafted
 ■■■■■ natural looking
 ■■■■■ materials story
 ■■■■■ home/warm

Life span: Coconut and sisal carpet 8 years

ruckstuhl.com



Natural Fibres

Ruckstuhl_Porta cut-loop

		Performance						Sustainability						Atmospheric / Perceptive					
ID	Material Name	Acoustic Absorption	Waterproof Water Repellent	Scratch Resistance	Stain Resistance	Slip Resistance	Low Maintenance	Local Manufacturing	Recycled content	Renewable	Biodegradable	Low Environmental Impact	Recyclable	Unique	Hand-crafted	Natural Looking	Materials Story	Home / Warm	Life Expectancy (years)
Ceramic & Glass																			
Ce1	Granby Workshop_Encaustic Tile Vitrified Ceramic	██████	██████ <1% Porosity	██████	██████	██████	██████	██████ Liverpool	██████	██████	██████	██████	██████	██████	██████	██████	██████	██████	70
Ce2	Dzek_Excinere Volcanic Ash Glazed Tile	██████	██████ 0.23% Absorbtion	██████	██████	██████	██████	██████ Italy	██████	██████	██████	██████	██████	██████	██████	██████	██████	██████	70
Ce3	Alusid_Silicastone Terrazzo Recycled Ceramic & Glass	██████	██████ 8% Absorbtion	██████	██████	██████	██████	██████ Lancashire	██████ 98%	██████	██████	██████	██████	██████	██████	██████	██████	██████	75
Natural Fibres																			
Nf1	RuckstuhI_Porta cut-loop Coconut Fibre and Sisal	██████	██████	██████	██████	██████	██████	██████ Switzerland	██████	100%	100%	██████	██████	██████	██████	██████	██████	██████	8
Nf2	Buxkin_Stripes_100% Wool Felt and Recycled Leather Stripes	██████	██████	██████	██████	██████	██████	██████ Netherlands	██████	██████	██████	██████	██████	██████	██████	██████	██████	██████	10
Leather																			
Le1	Buxkin_Stripes_Recycled Leather Dirt Repel and Recycled Felt Stripes	██████	██████	██████	██████	██████	██████	██████ Netherlands	██████ 60%	██████	██████	██████	██████	██████	██████	██████	██████	██████	5
Le2	Buxkin_Stripes_Recycled Leather Dirt Repel and 100% Wool Felt Stripes	██████	██████	██████	██████	██████	██████	██████ Netherlands	██████ 60%	██████	██████	██████	██████	██████	██████	██████	██████	██████	5
Le3	Buxkin_Ribbed 2.0_Recycled Leather	██████	██████	██████	██████	██████	██████	██████ Netherlands	██████ 60%	██████	██████	██████	██████	██████	██████	██████	██████	██████	5
Wood & Processed Wood																			
Wp1	English Solid Oak Clear Water-based Lacquer	██████	██████	██████	██████	██████	██████	██████ UK & EU	██████	150 years	██████	██████	██████	██████	██████	██████	██████	██████	25
Wp2	Birch Plywood Clear Water-based Lacquer	██████	██████	██████	██████	██████	██████	██████ EU	██████	20 years	██████	██████	██████	██████	██████	██████	██████	██████	20
Wp3	Plexwood_Eiken End-grained Wood Veneer Panel	██████	██████	██████	██████	██████	██████	██████ Netherlands	██████	20 years	██████	██████	██████	██████	██████	██████	██████	██████	20
Composite Materials																			
Co1	Foresso_Azure Recycled Oak Woodchip Panel	██████	██████	██████	██████	██████	██████	██████ Birmingham	██████ 85%	██████	██████	██████	██████	██████	██████	██████	██████	██████	20
Plastic & Resin																			
Pl1	Smile Plastic_Alba Recycled Yoghurt Pods Panel	██████	██████	██████	██████	██████	██████	██████ South Wales	██████ 100%	██████	██████	██████	██████	██████	██████	██████	██████	██████	450
Pl2	3Form_Flek Ecoresin Panel Recycled Trimmed Edge	██████	██████ 0.2% Absorbtion	██████	██████	██████	██████	██████ USA	██████ 75%	██████	██████	██████	██████	██████	██████	██████	██████	██████	20
Linoleum																			
Li1	Forbo_Marmoleum Cocoa	██████ -18 dB	██████	██████	██████	██████	██████	██████ Netherlands	██████ 5%	100%	100%	██████	██████	██████	██████	██████	██████	██████	25



#07 Acoustic Paper Tiles



Did you know? 13,093 millions eggs were consumed in the UK in 2019.

Which means around 3 millions of 12-pack egg cartons are discarded in a day.

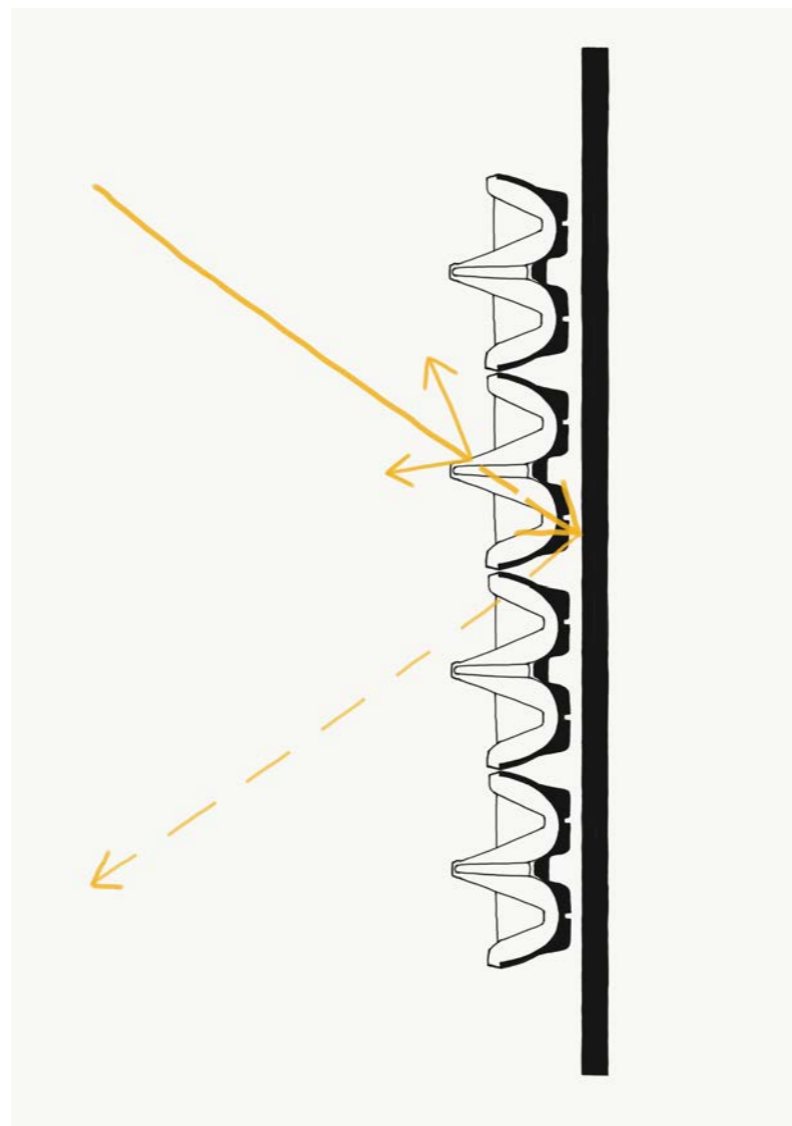


Acoustic Absorption Materials

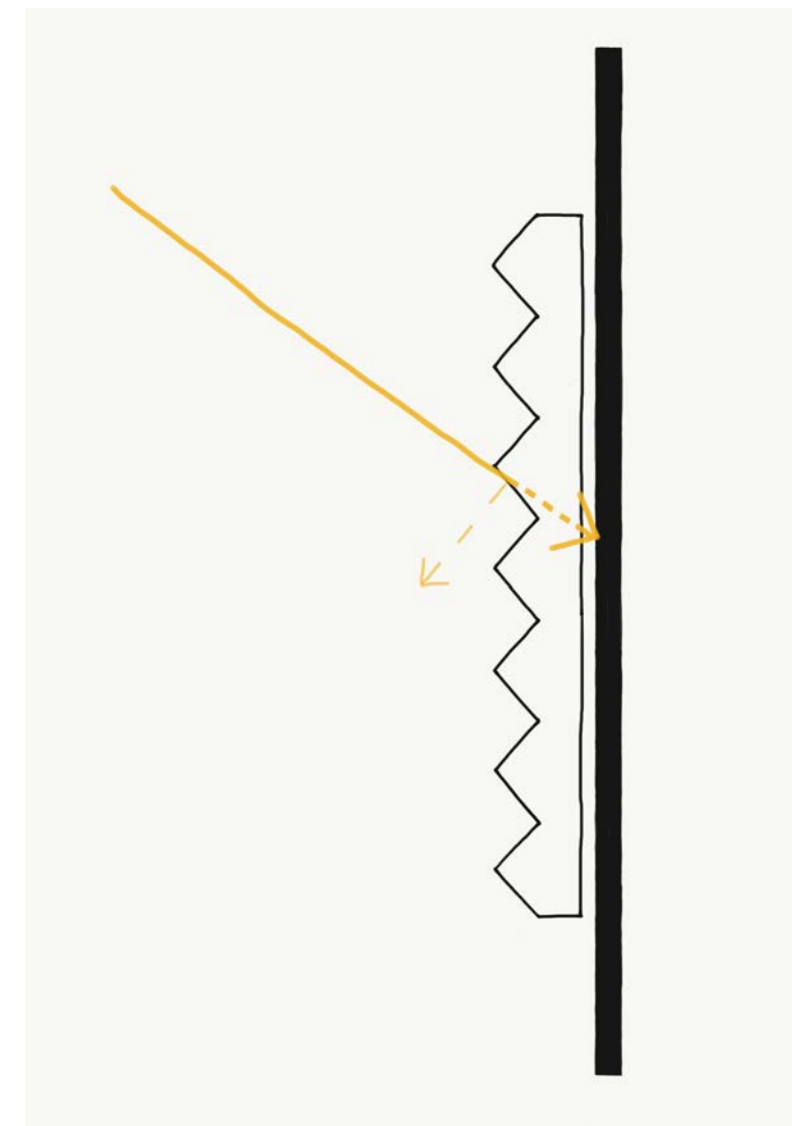
Then and Now



1981, Hawaii Public Radio



Egg Cartons



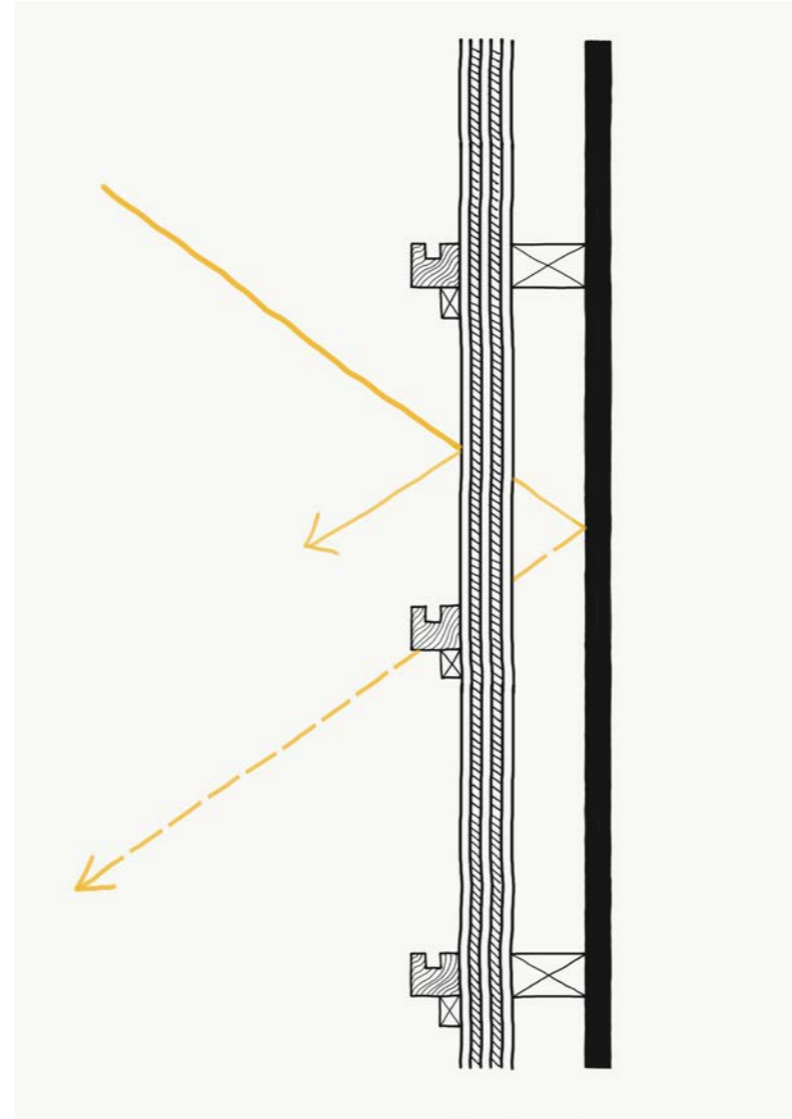
Acoustic Foam Panel

Acoustic Absorption Materials

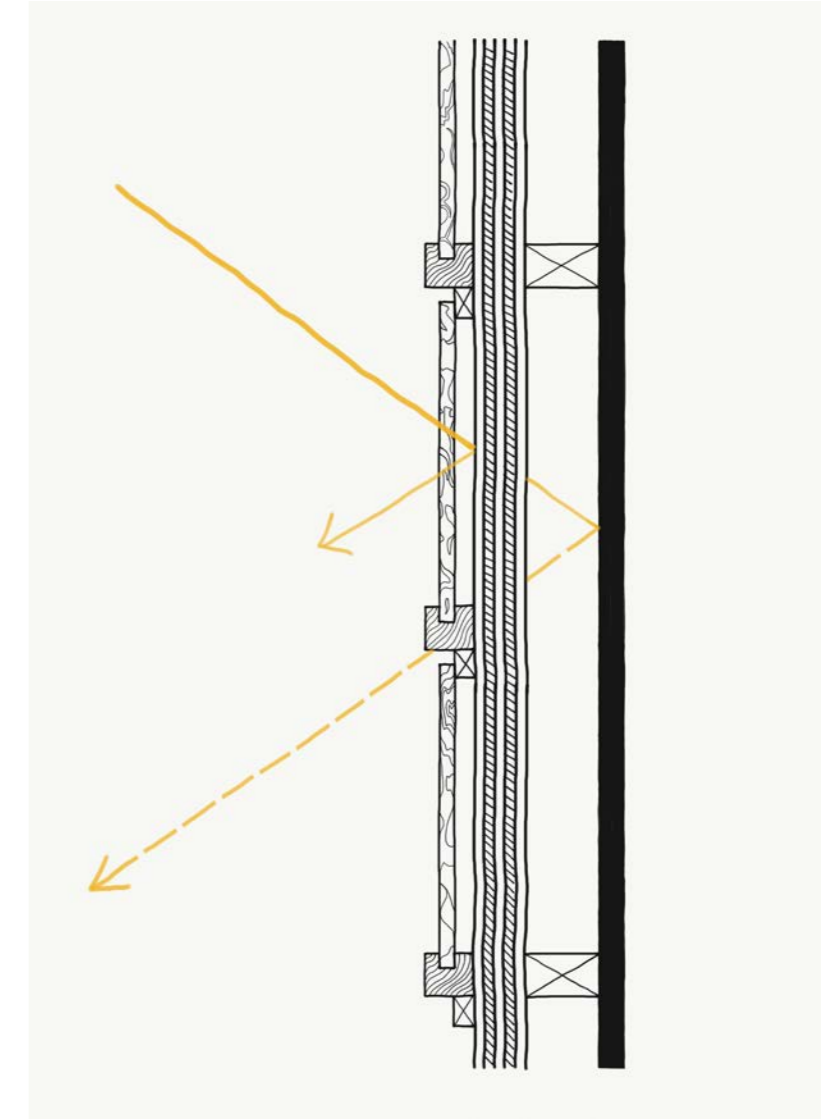
Reinvent materials of the past for contemporary usage



Kitchen-made Paper Tiles

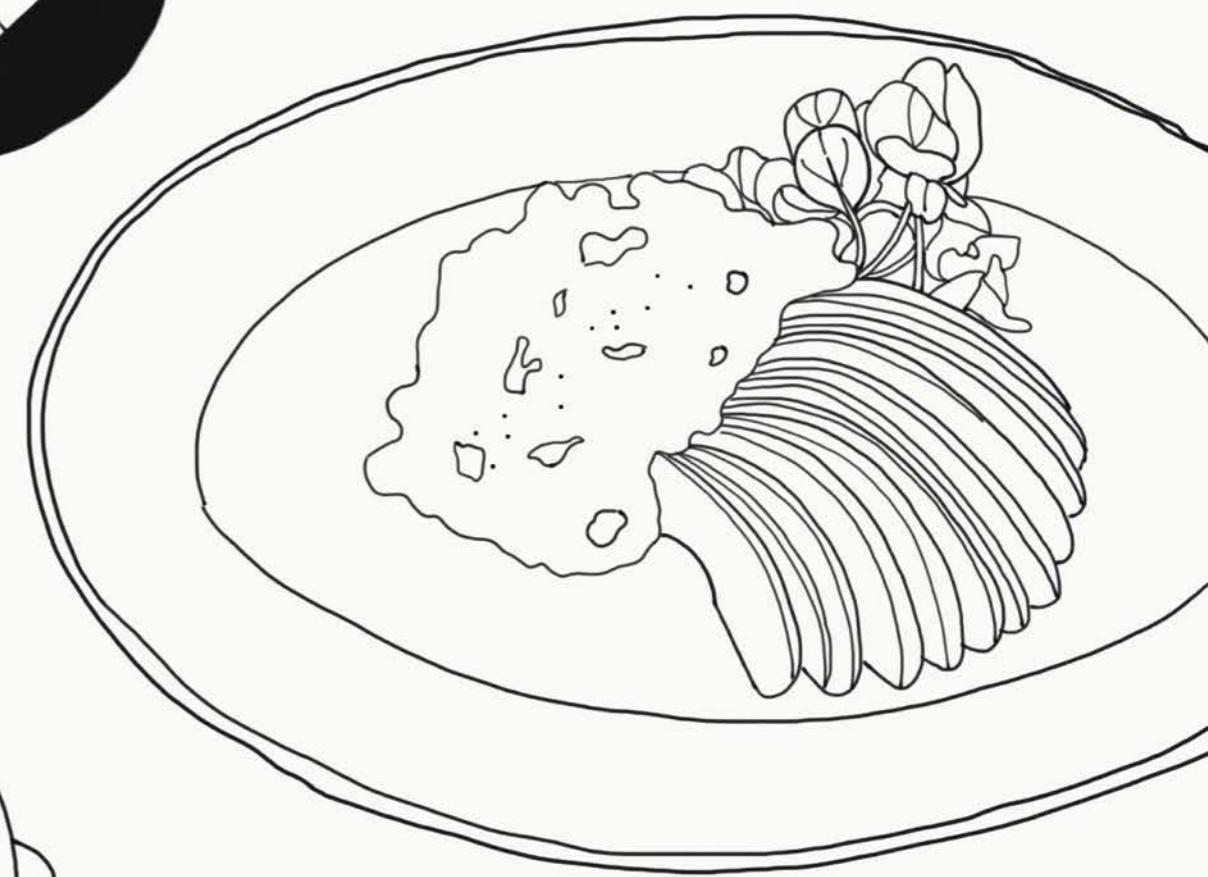
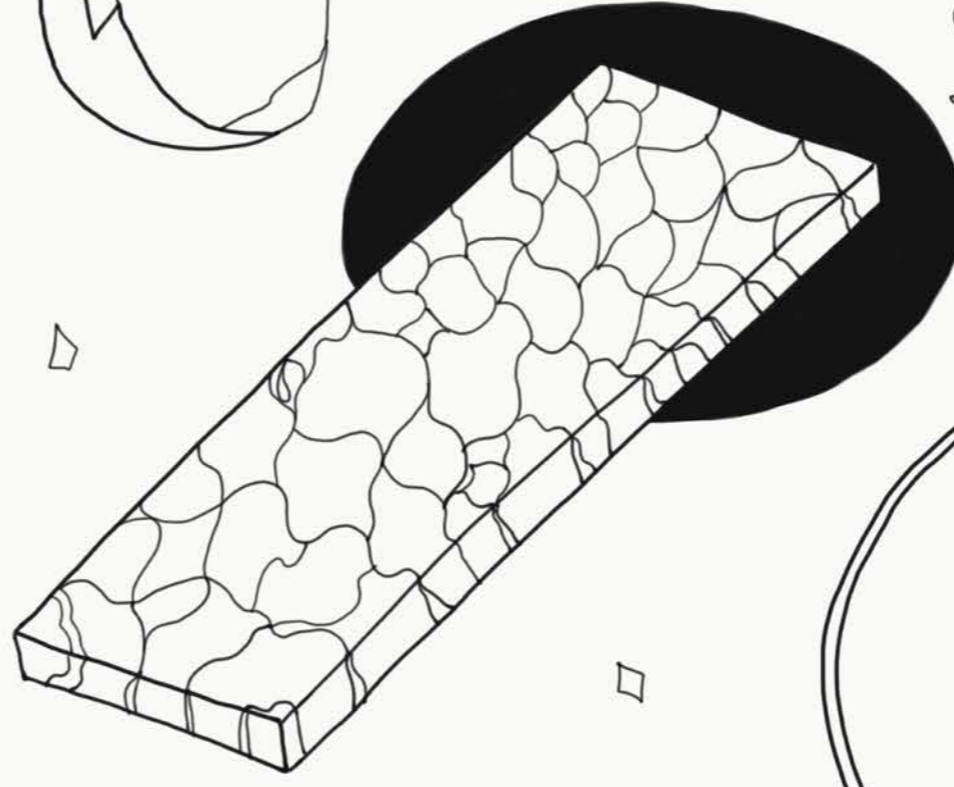
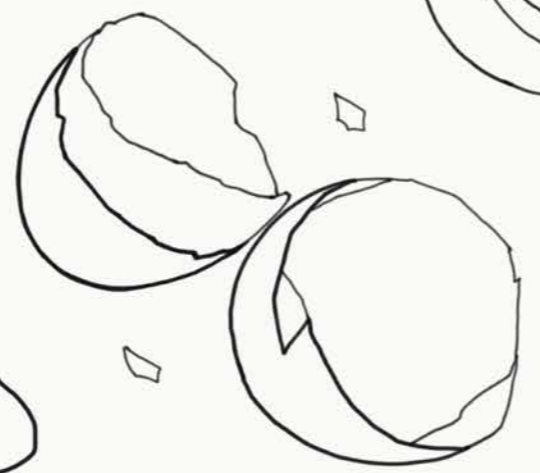
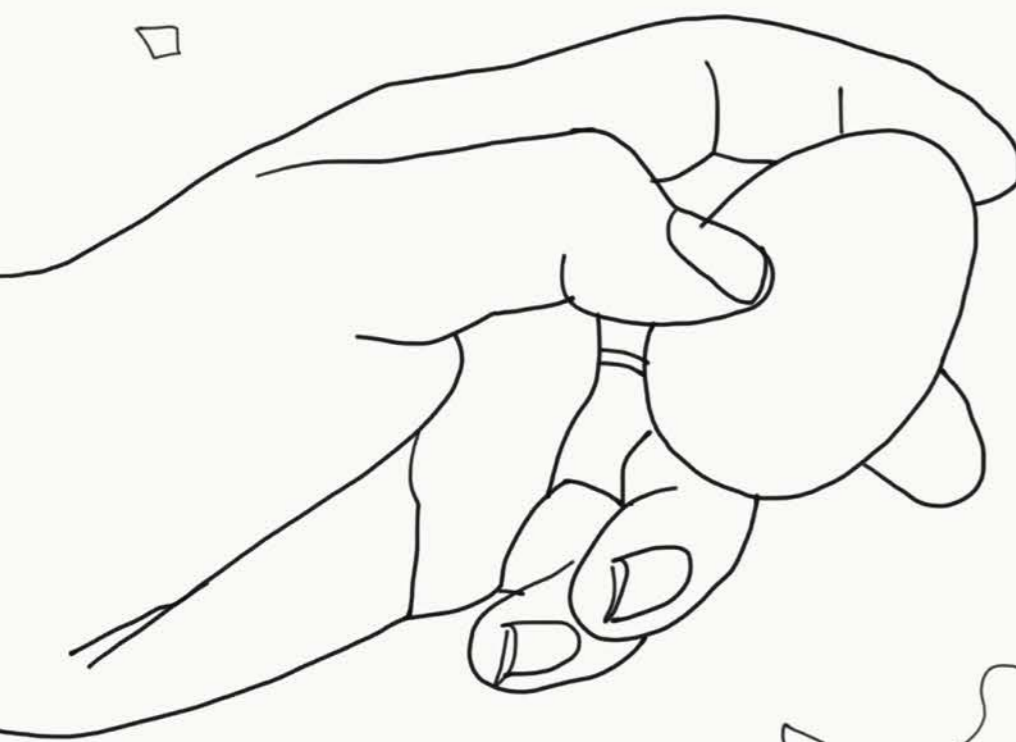
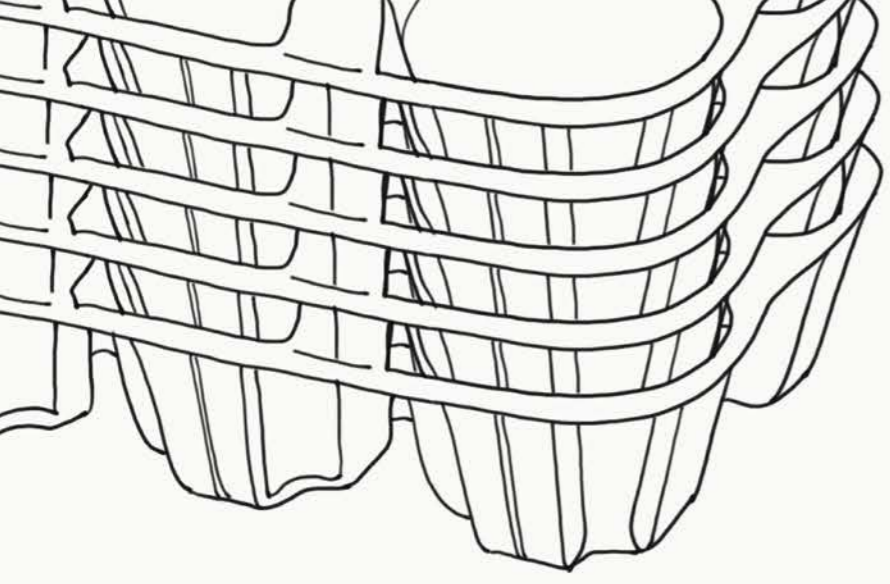


Plywood Panel



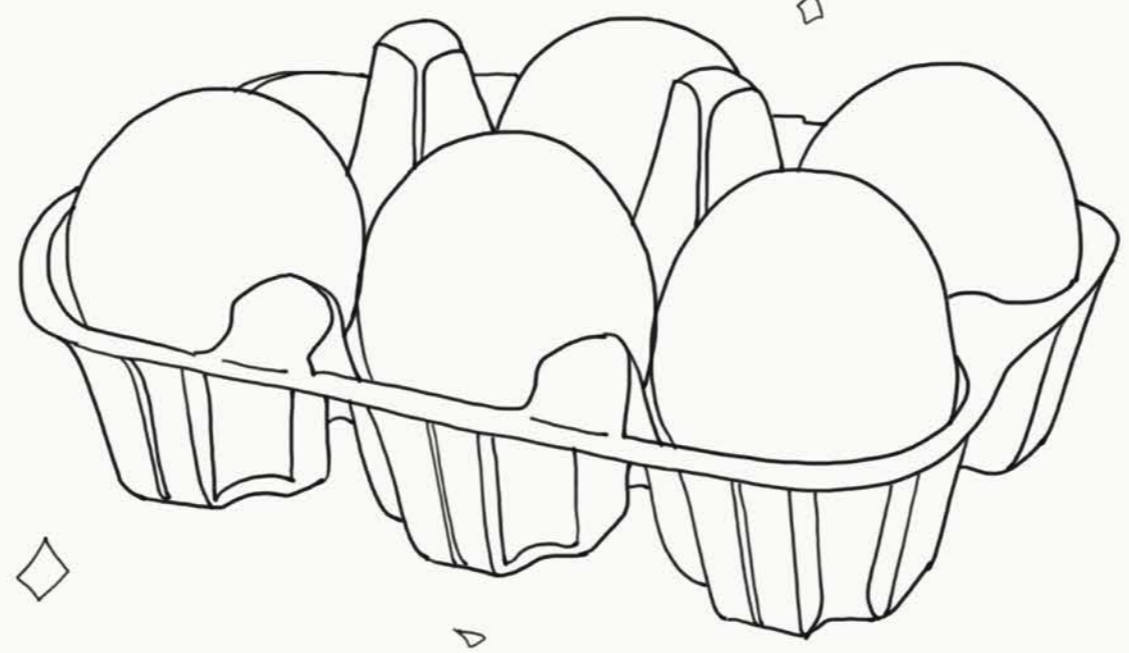
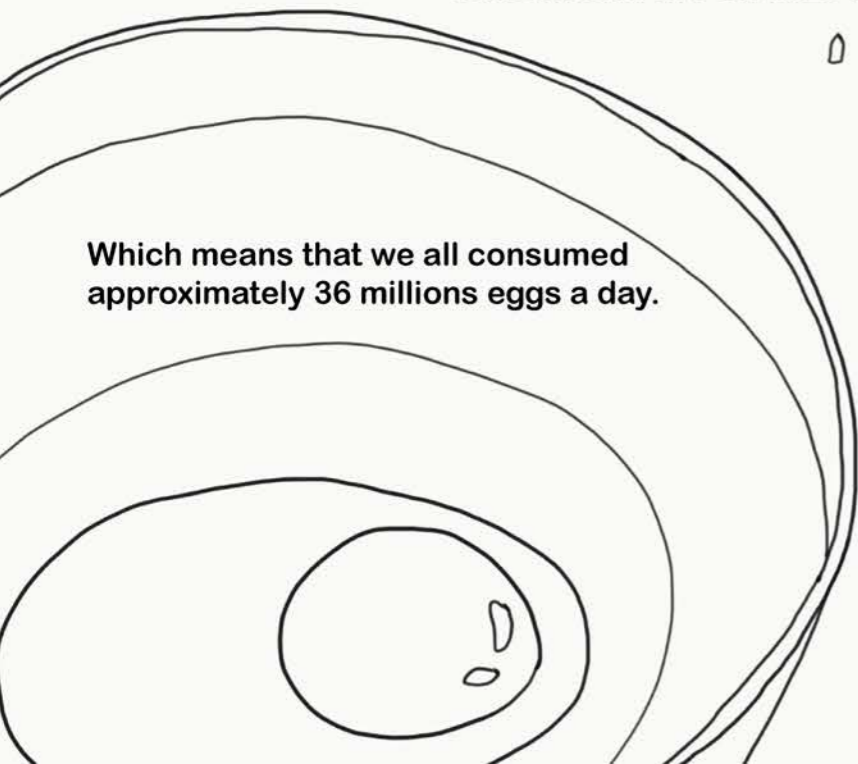
Plywood Panel with Paper Tile

Egg carton Paper tiles Recipe

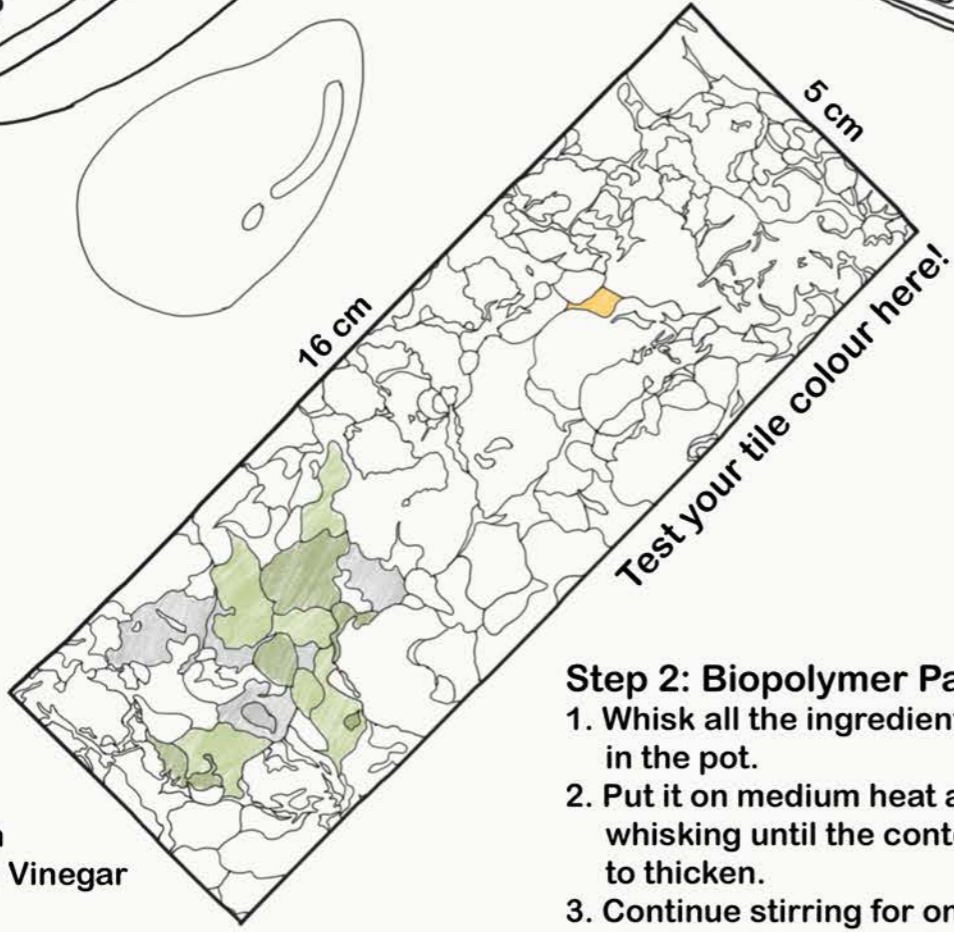


Do you know that
13,093 millions eggs were
consumed in the UK in 2019?

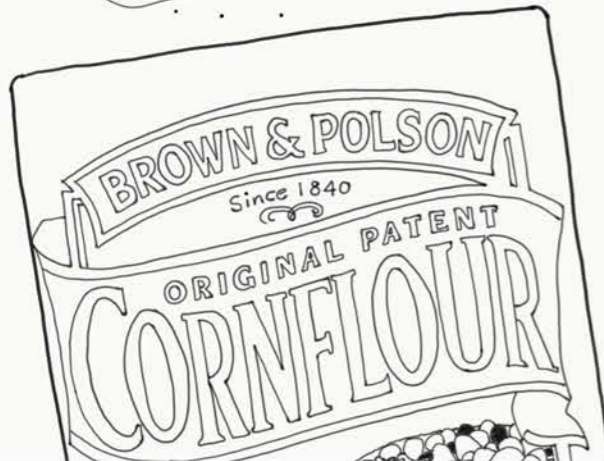
Which means that we all consumed
approximately 36 millions eggs a day.



You'll need a small pot and a whisk.



- Ingredients:**
- 10 ml Glycerin
 - 10 ml Distilled Vinegar
 - 120 ml Water
 - 30 g Cornflour
 - 24 g Gelatin Powder
 - A pinch of salt



Step 2: Biopolymer Paste

1. Whisk all the ingredients together in the pot.
2. Put it on medium heat and keep whisking until the content starts to thicken.
3. Continue stirring for one minute or two until it gets bubbling and turns translucent.
4. Your biopolymer paste is now ready to mix with paper pulp.

Let's Start!

2 of 12-pack Egg Cartons or a mixed portion of Cartons for 24 Eggs

Serving size: 5 tiles (16 x 5 cm)

Step 1: Paper Pulp

1. Choose the egg cartons based on chosen colours.
2. Break cartons into small pieces and soak them in water overnight.
3. Blend soaked paper bits in the blender with half cup of water until they turn into paper pulp.
4. Put cheesecloth on top of a glass, pour paper pulp in and squeeze out all the excess water.

Step 3: Tile Making

1. Mixed biopolymer paste with paper pulp in mixing bowl.
2. Place parchment paper underneath wooden frame, fill the frame with the mixture.
3. Put another sheet of paper on top of the mixture, press and roll with rolling pin until it leveled.
4. Dry the papertile sheet in sunlight for 2-3 days remember to sun-dry both sides and press it with heavy books at night.
5. Cut the sheet into 5 of 16 x 5 cm size tile.
6. Sand the tiles to resurface the paper texture.

Enjoy making materials the way you enjoy cooking food.



- Tools:**
- Blender
 - Cheesecloth
 - Mixing Bowl
 - Parchment Paper
 - Rolling Pin
 - Wooden Frame
 - Sandpaper P120 and P80

Alternatives: Wooden or solid materials with 6mm thickness to use as a guideline frame.

Always use biopolymer paste right after you cooked it.

an everyday life interiors magazine – issue #14

apartamento

Featuring: Christiaan Houtenbos, Peter Halley, Terry Ellis, Raymond Pettibon, Oiva Toikka, Heather Boo & Claudia Schwalb, Neoptolemos Michaelides, Lora Lamm, Andy Rementer & Margherita Urbani, Kenneth Perdigón, Michael Lindsay-Hogg, Jeremiah Goodman, Birgitta Homburger & Florian Lambl, Elena Quarestani, Koudlam
With a **portfolio** of interiors illustrated by Jeremiah Goodman
and a **short story** by Jocko Weyland



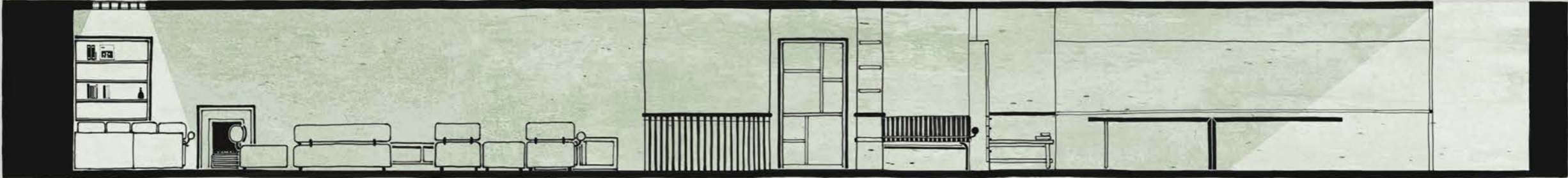
#08 Bricolage Story

**What in your home
reflects who you are.**

- Apartamento Magazine Issue #014 -

Lower Ground Floor Section

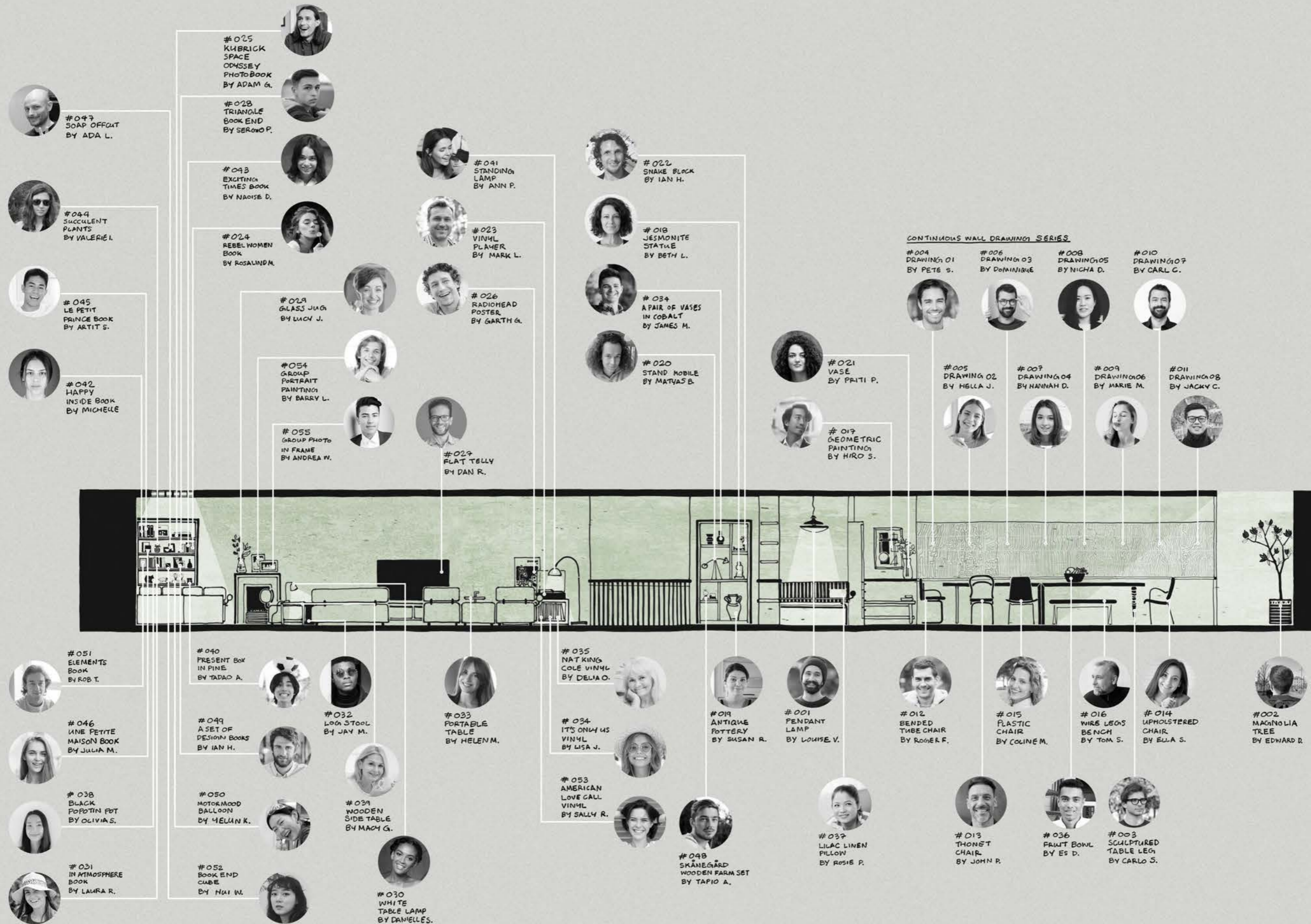
Let's redecorate our empty home with all of our self-expression.



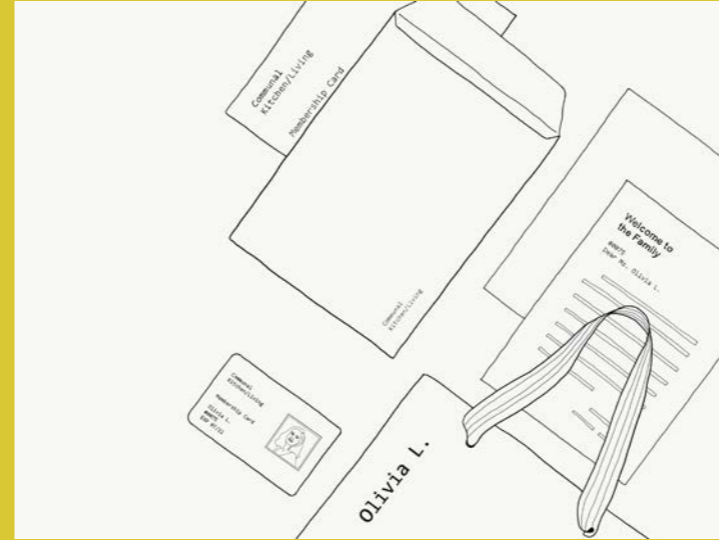
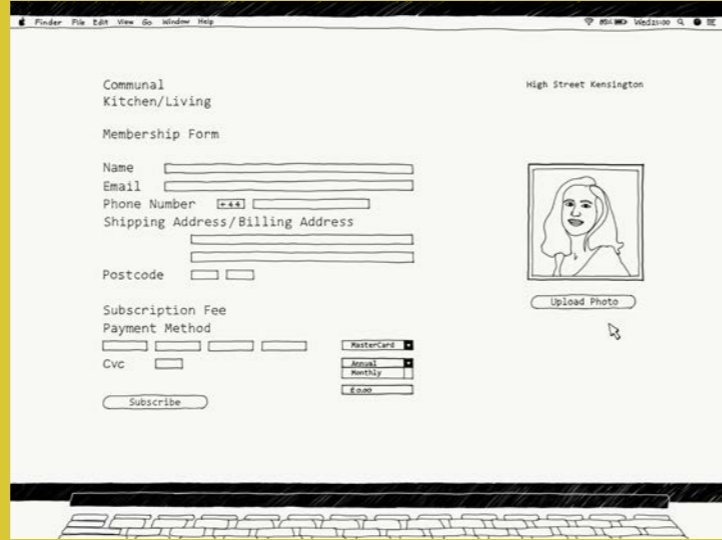
“Leave an item that reminds other members of you like you’re leaving a piece of you here.”

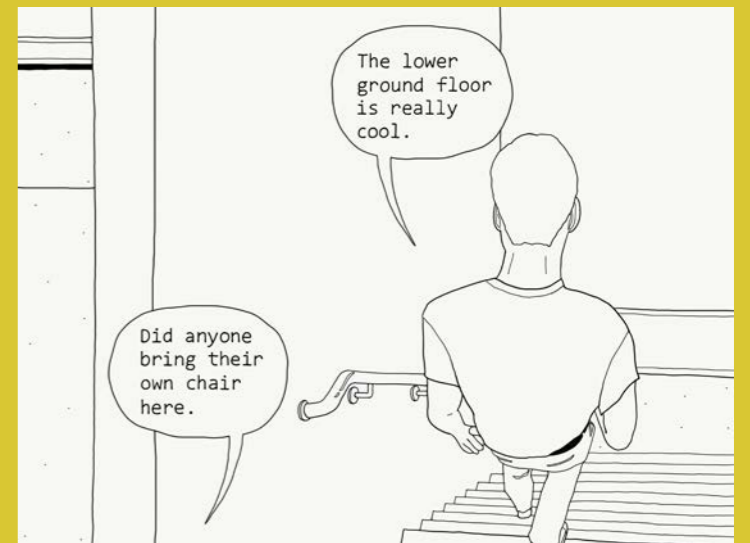
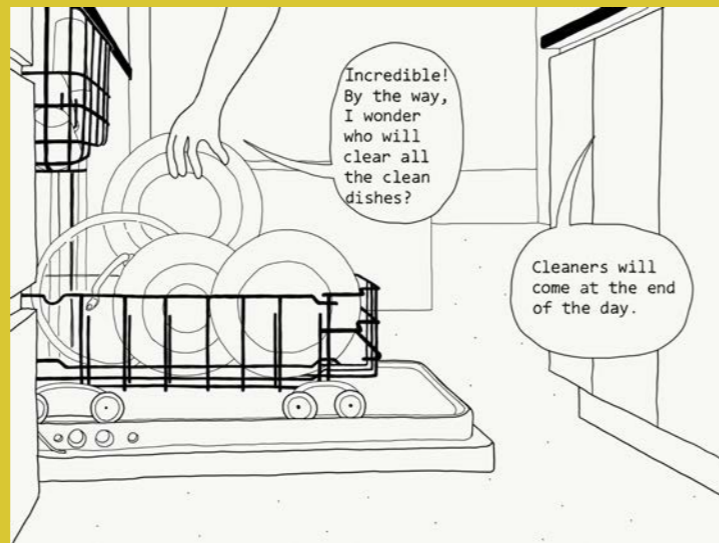
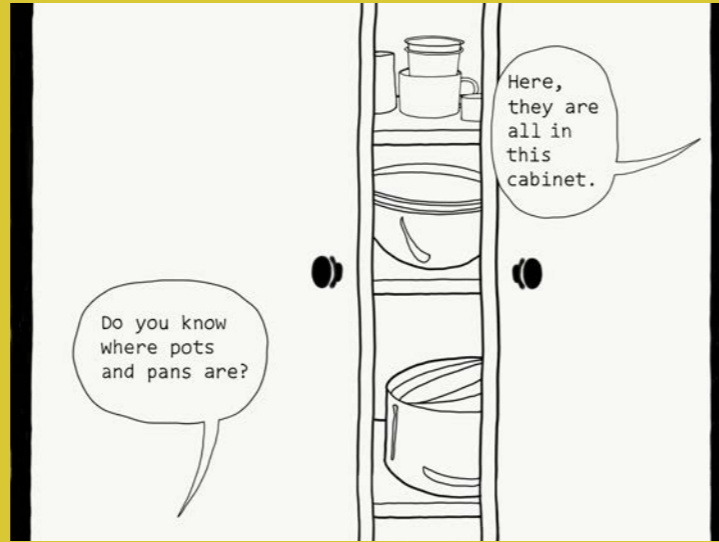
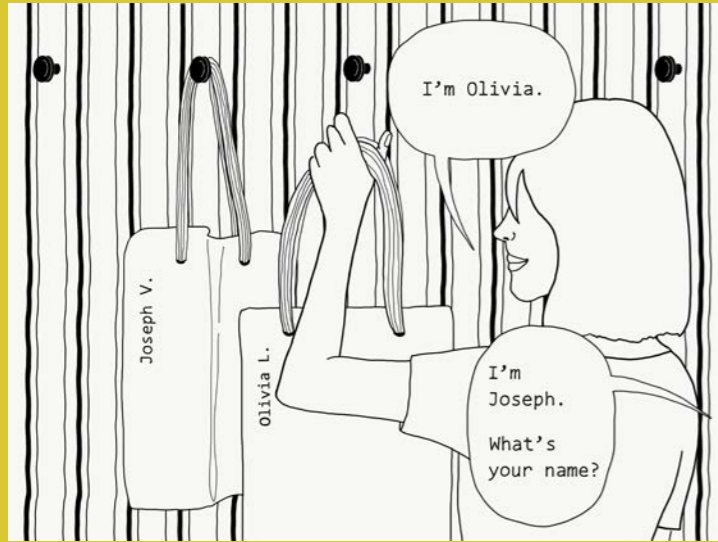
Lower Ground Floor Section

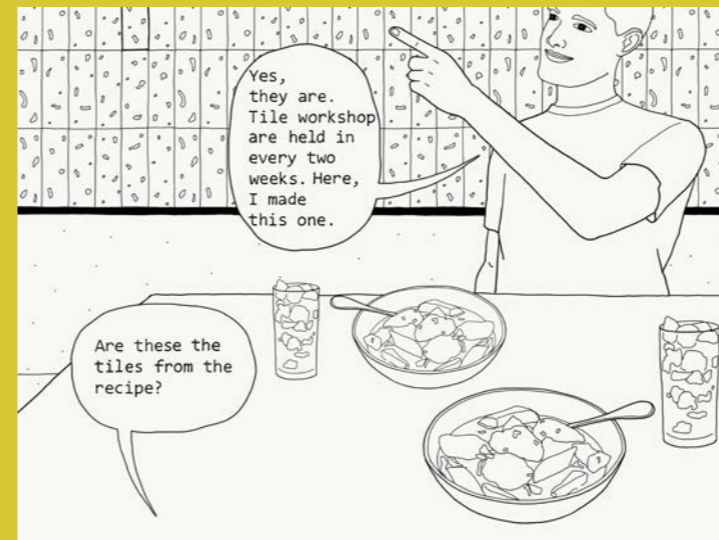
More items added,
the bigger family is.

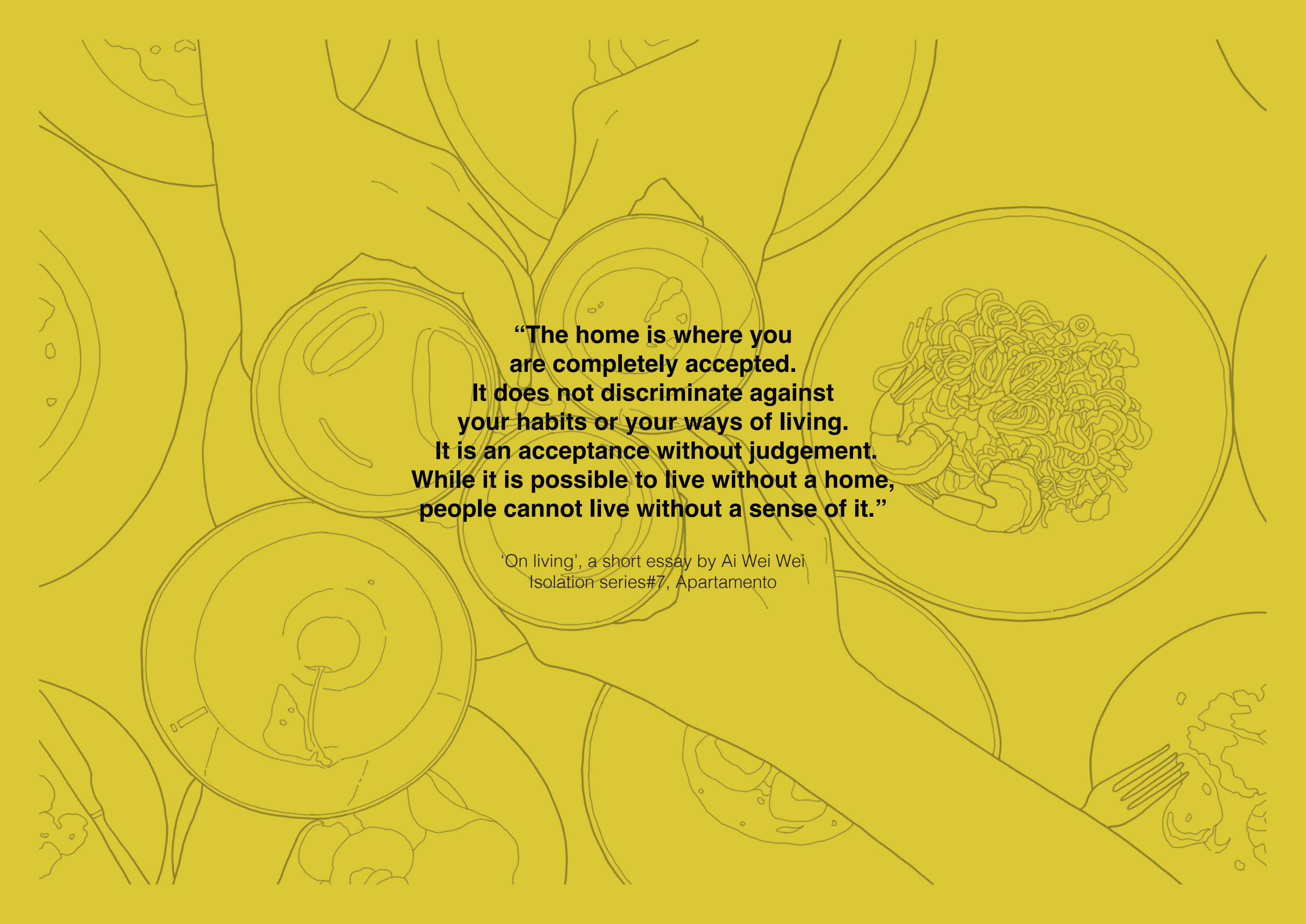


**#09 Story of Olivia, member number 75
at Communal Kitchen and Living Space**









**“The home is where you
are completely accepted.
It does not discriminate against
your habits or your ways of living.
It is an acceptance without judgement.
While it is possible to live without a home,
people cannot live without a sense of it.”**

‘On living’, a short essay by Ai Wei Wei
Isolation series#7, Apartamento