

GREEN FLEETING MOMENTS

A temporary meanwhile space connecting construction site workers to nature, helping them to breath cleaner fresher air and providing physical and mental refuge from the sounds and pollutants of the construction site.





SITE BOUNDARY - West Cromwell Road, Air and noise pollution

SITE AIR QUALITY: NO2 above 58ug/m3, the anual objective being 37ug/m3



SITE EXPERIENCE: Loud construction sounds, frequent moving train noise



SITE EXPERIENCE: Little greenery to enjoy on site

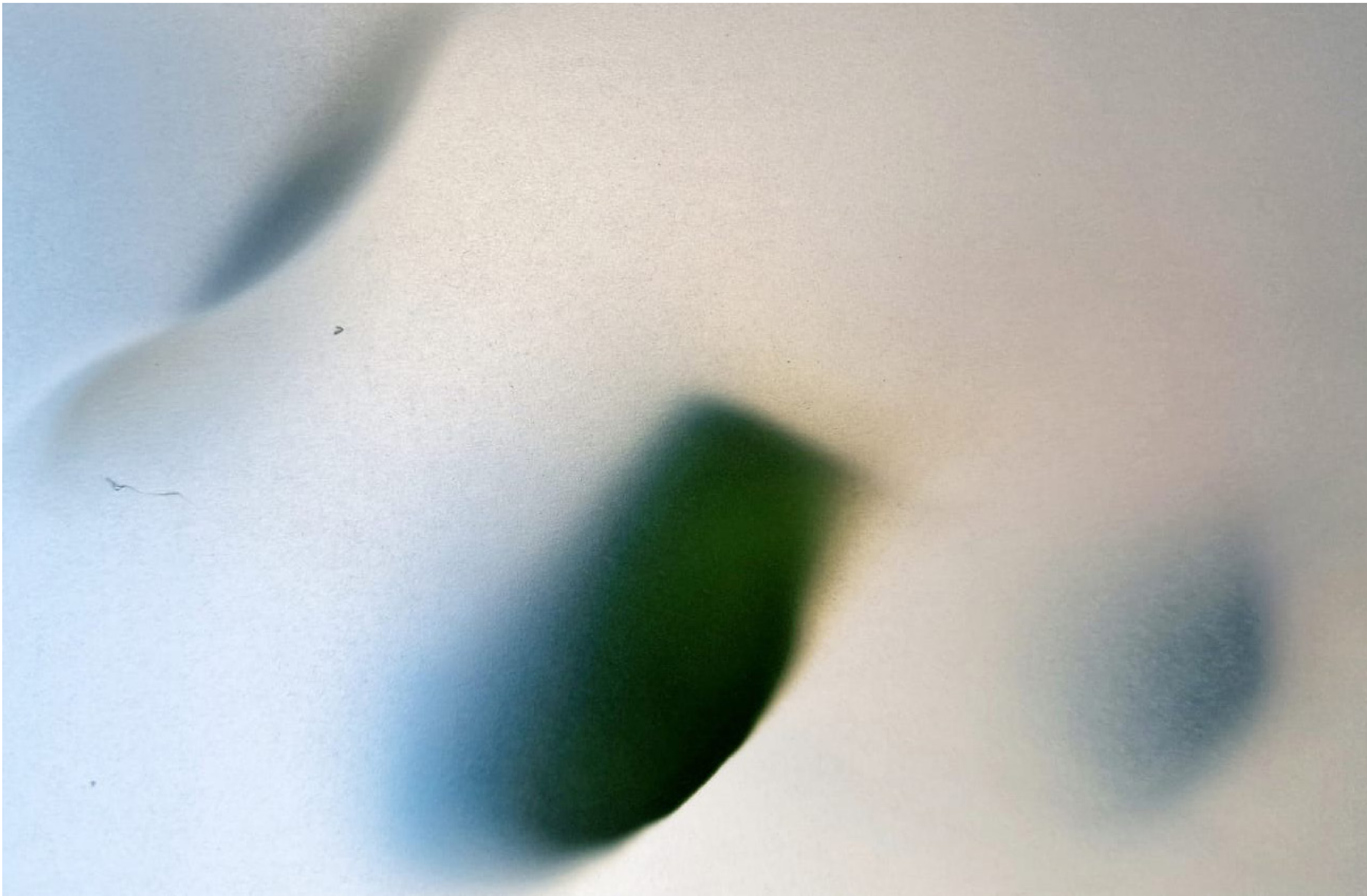




WORKING EXPERIENCE: 7/10 of construction workers suffer from mental health difficulties



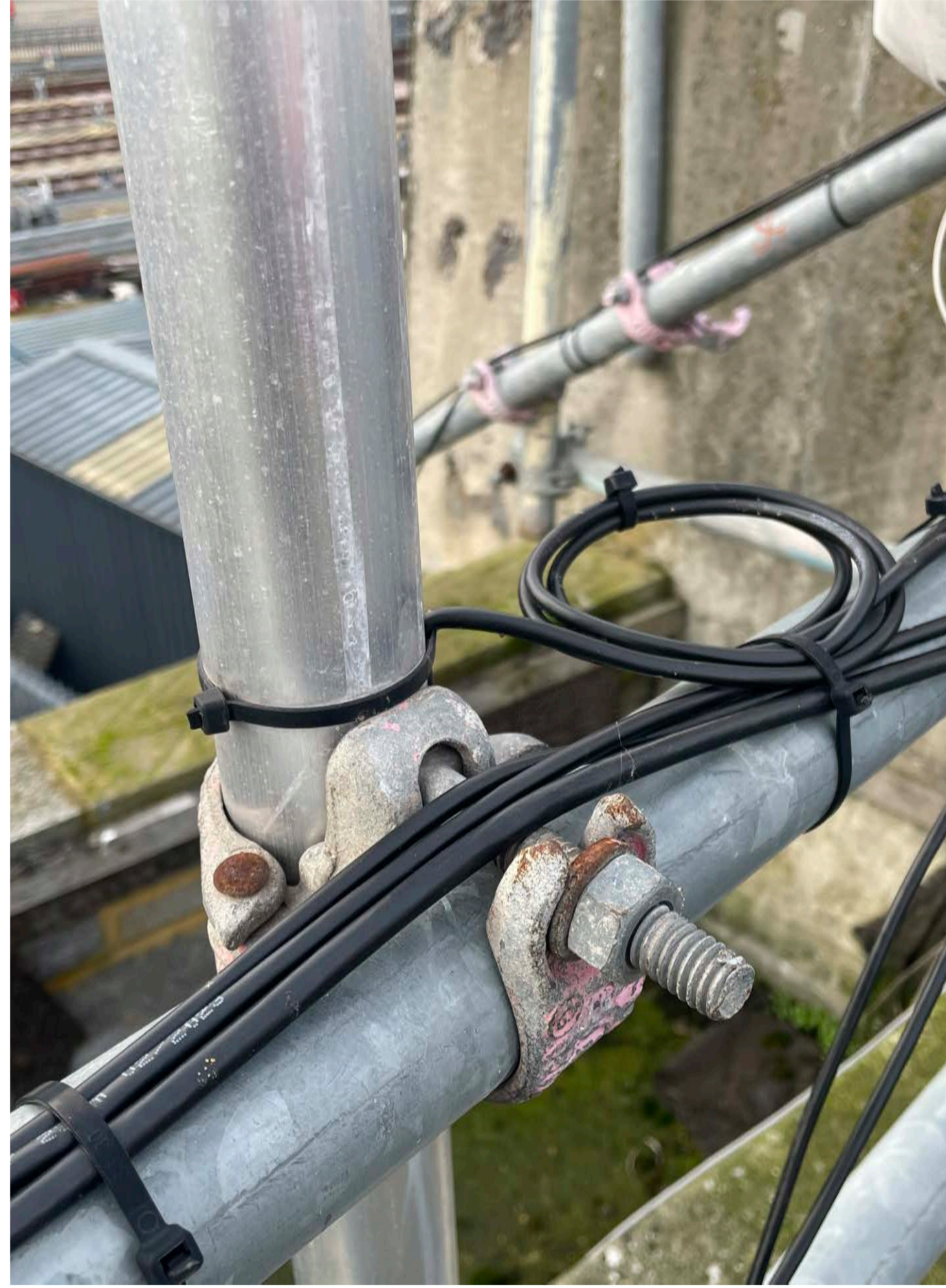
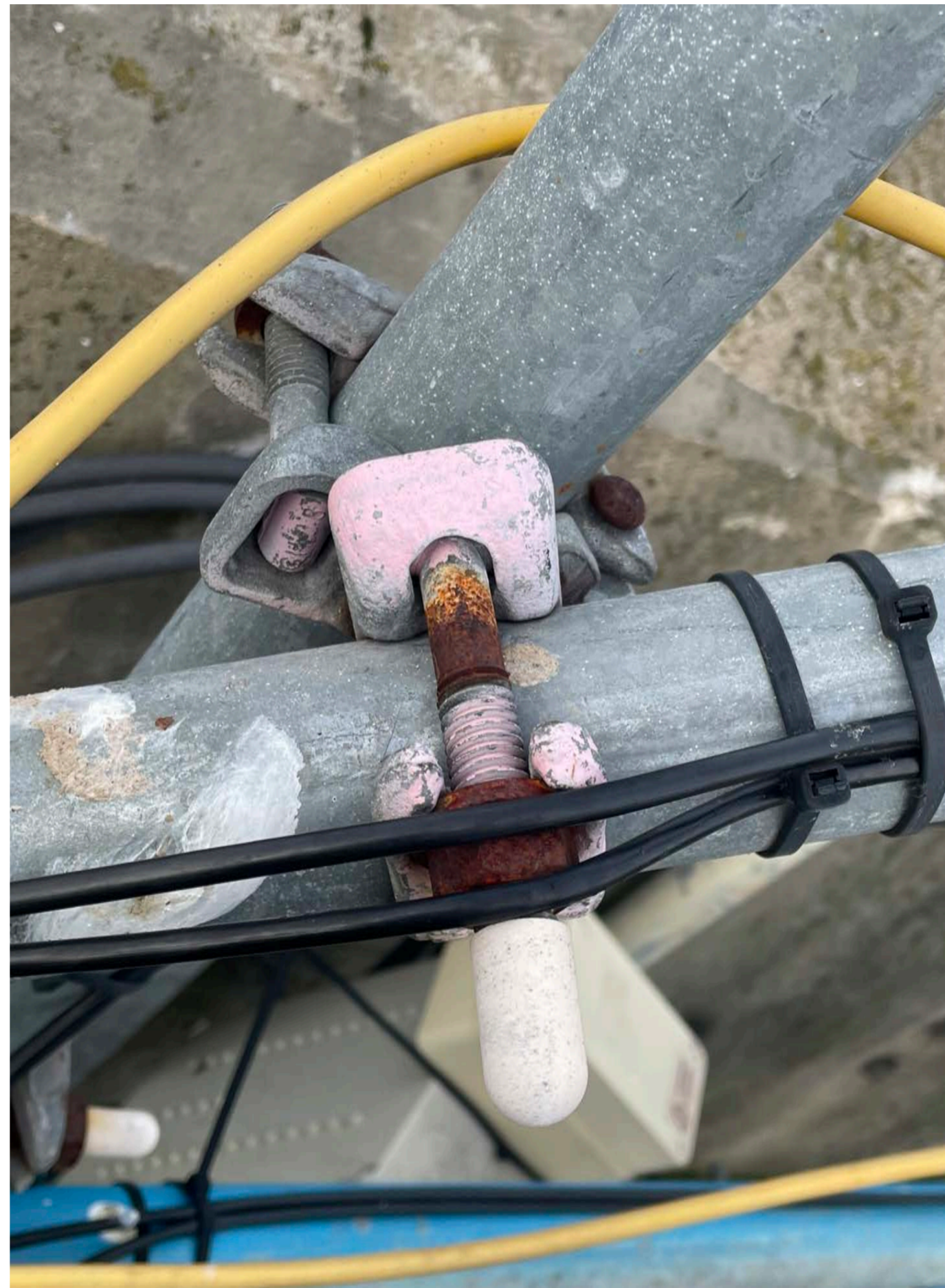
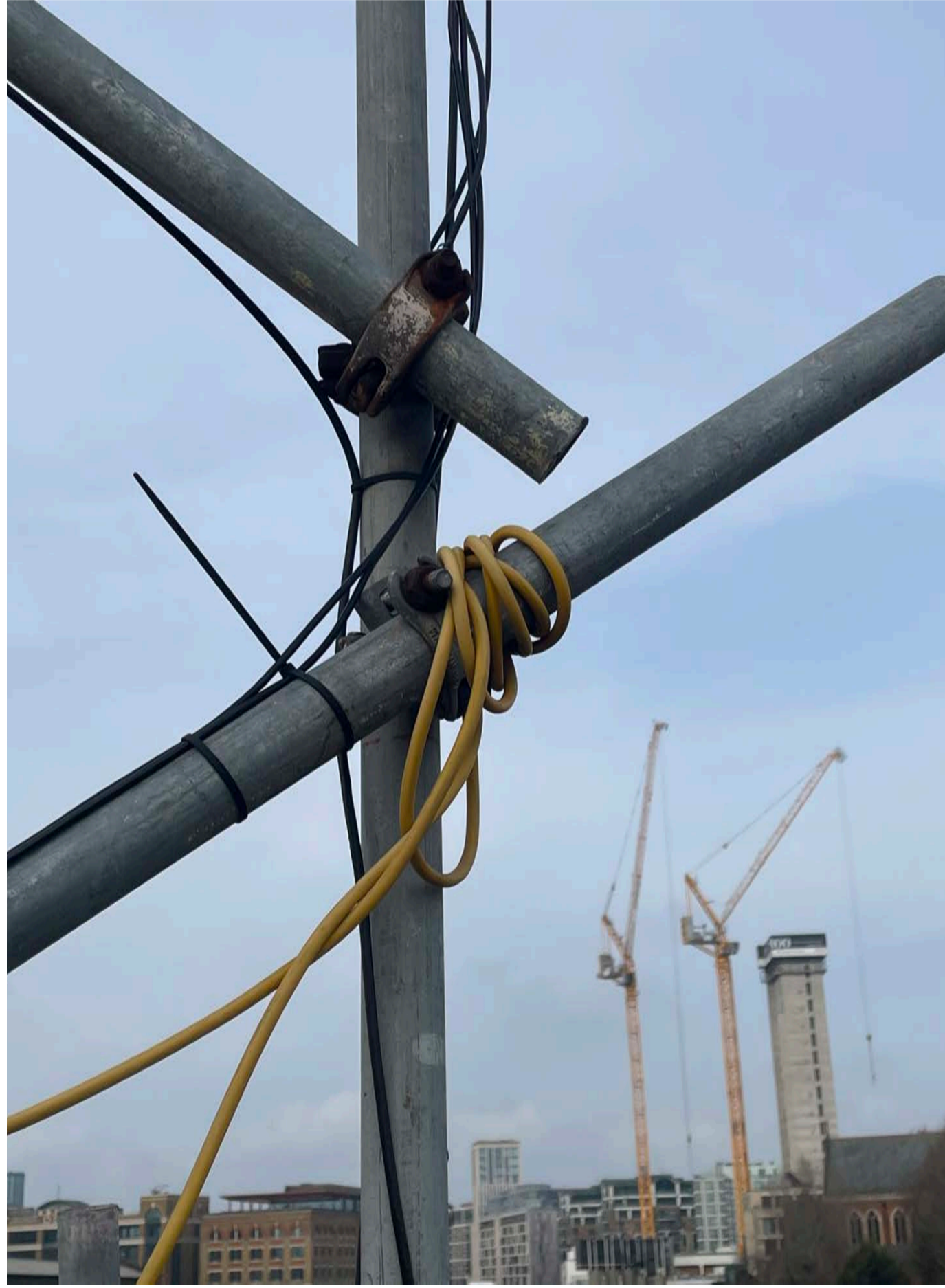
SMOKING: Ritual, to slow down and take a step away from work



FOREST BATHING: 2 hours of mindful exploration in a forest could reduce blood pressure, lower levels of cortisol and improve concentration and memory.

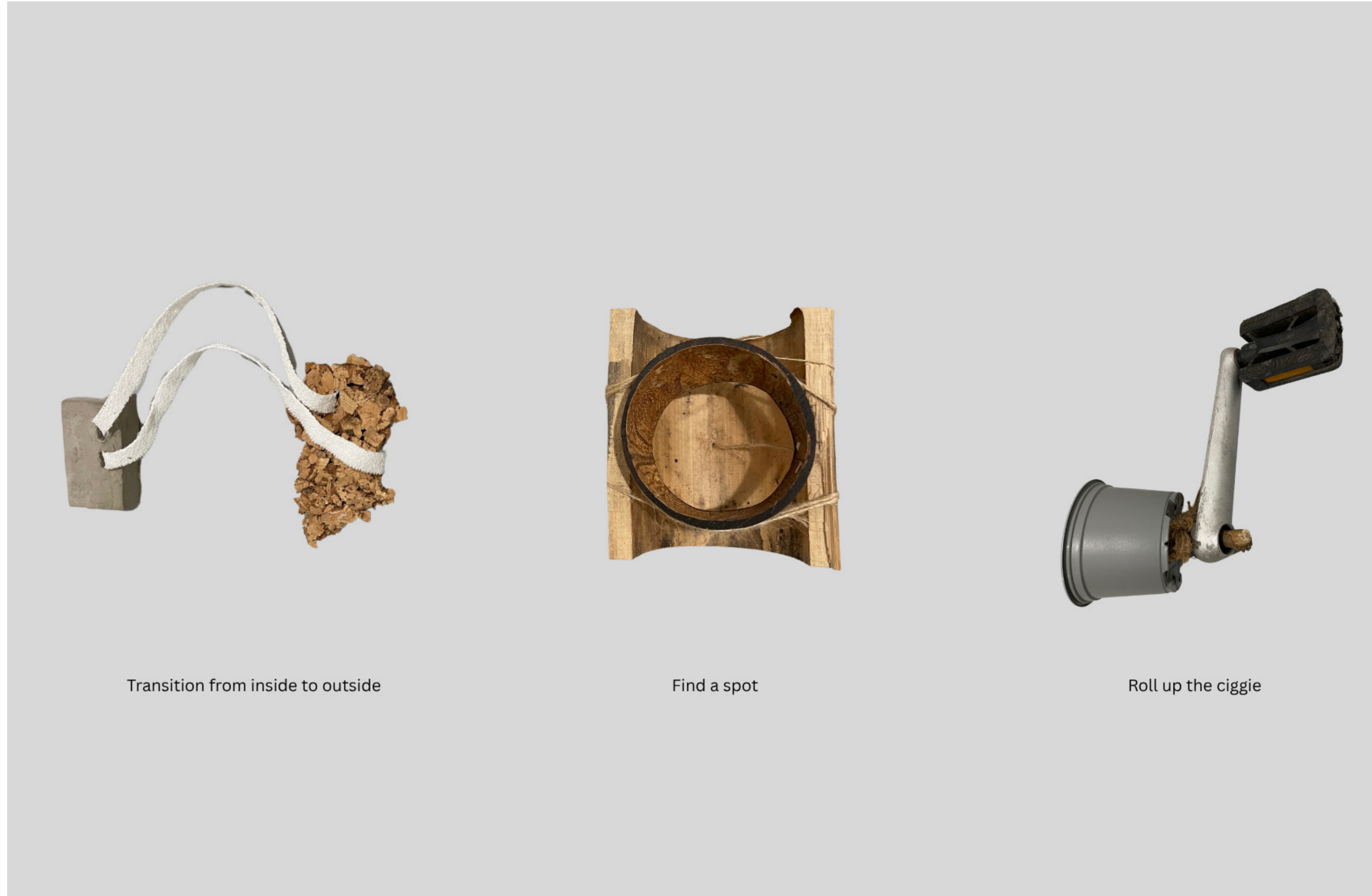


MANIFESTO PROPOSAL: Celebrating little moments using green therapy

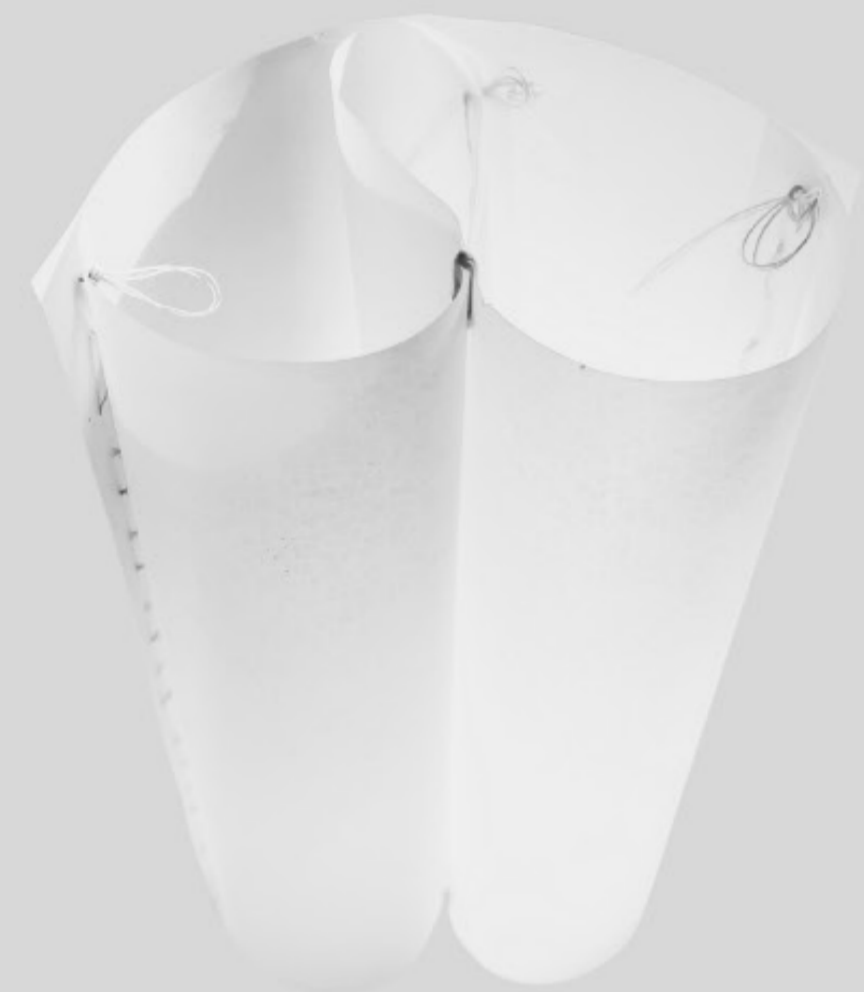


JOINTS AND JUNCTIONS: Little pleasant moments on site

JOINTS AND JUNCTIONS: Little pleasant moments on site



SMOKING PROCESS: Object explorations, smoking moments



Light up the ciggie



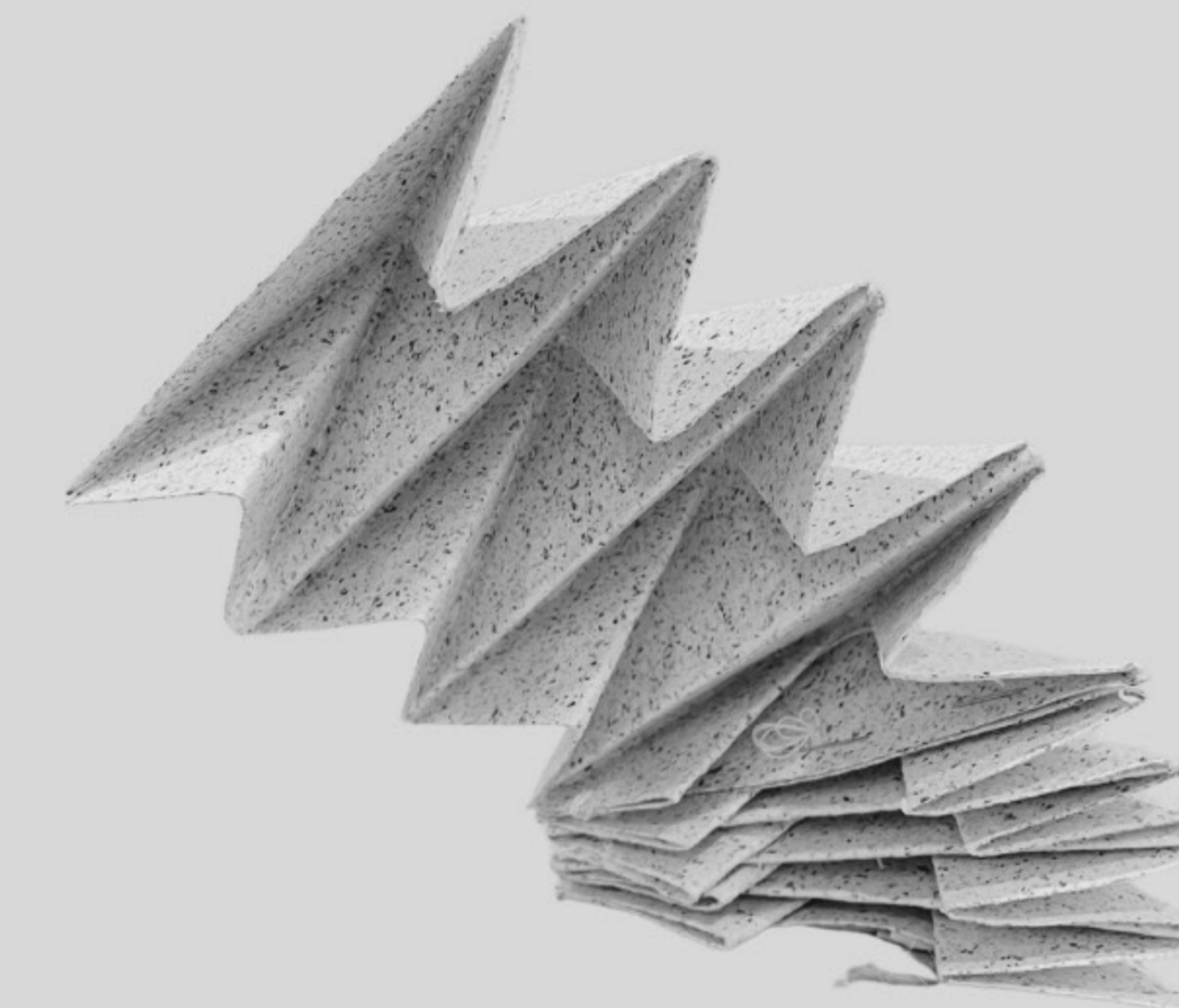
Smoke



Get rid of the ash



Share ciggie or lighter with a friend, sharing conversations



Stub it out

SMOKING PROCESS: Object explorations, smoking moments

SMOKING PROCESS: Object explorations, smoking moments

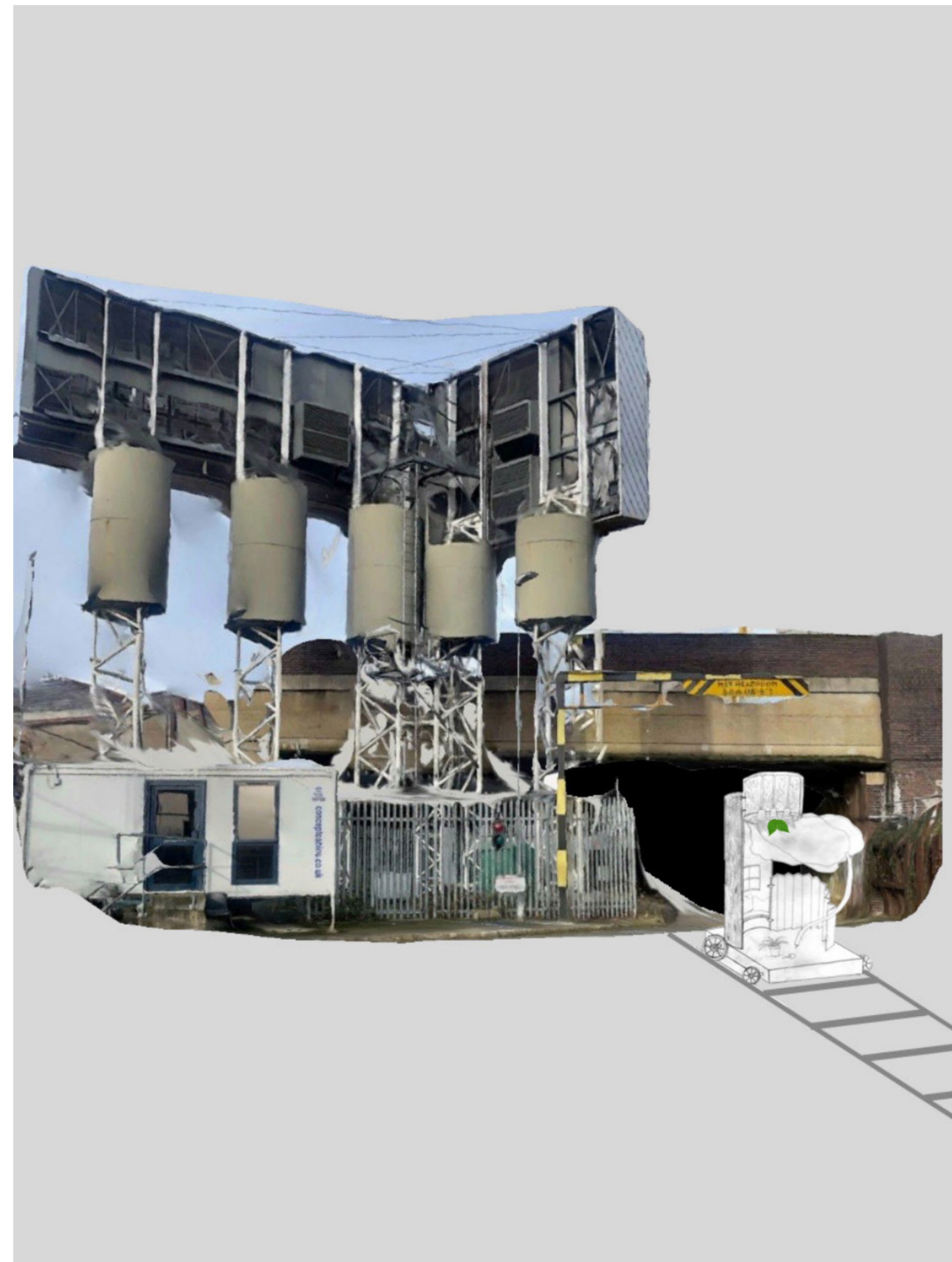


SITE OBSERVATIONS: Material moments



SITE OBSERVATIONS: Materials moments



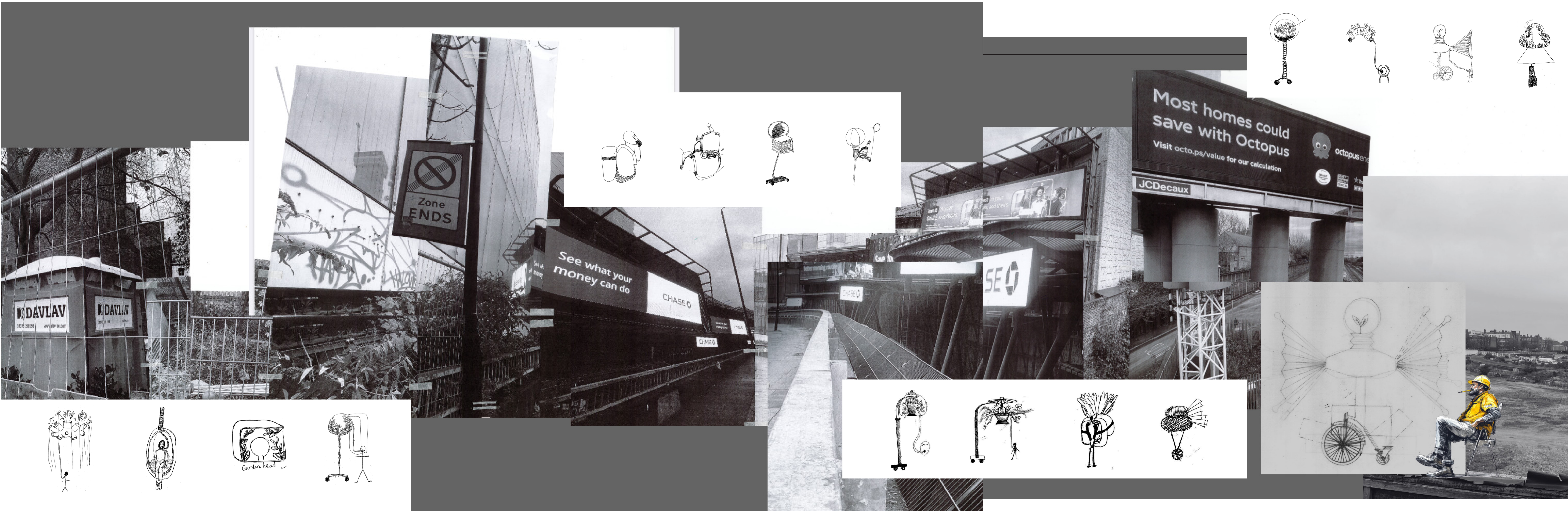


PREPOSTEROUS APPARATUS

-This apparatus took the idea of the smoke break to provide a preposterous alternative device to 'smoke clean air'

- Apparatus came from the ideology to provide a transportable nature escape to help construction workers breathe better air than the polluted construction site.

The better air to come from plants and moss giving off oxygen from the process of photosynthesis.



GREEN INTERVENTIONS: Form explorations

GREEN INTERVENTIONS: Form explorations



SITE: BILLBOARD - meanwhile space



THE HIGH LINE

Transformed abandoned railway line into a park and city experience



THE HIGH LINE

The Cineroleum reused on of the Uk's many petrol stations transforming it into a community cinema.



JAPANESE TEA HOUSE

Lightweight interior space created using bamboo and, string and washi paper.



LAVENDER

Relaxation, reducing anxiety



MINT

Relief from nausea and headaches, anti-inflammatory

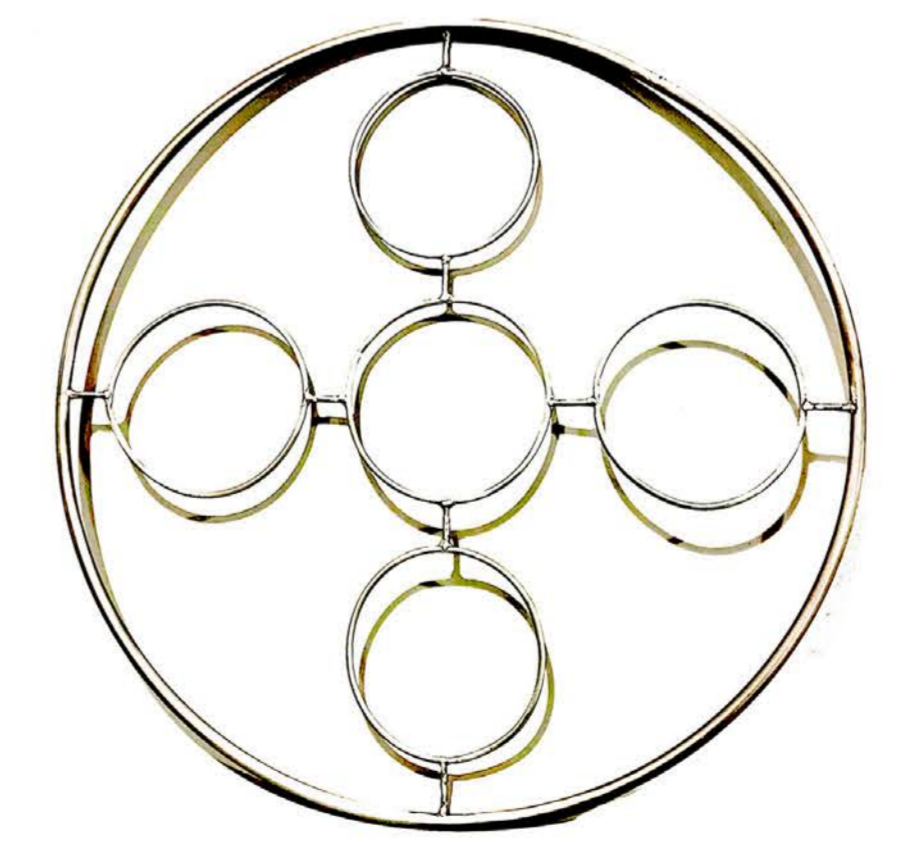
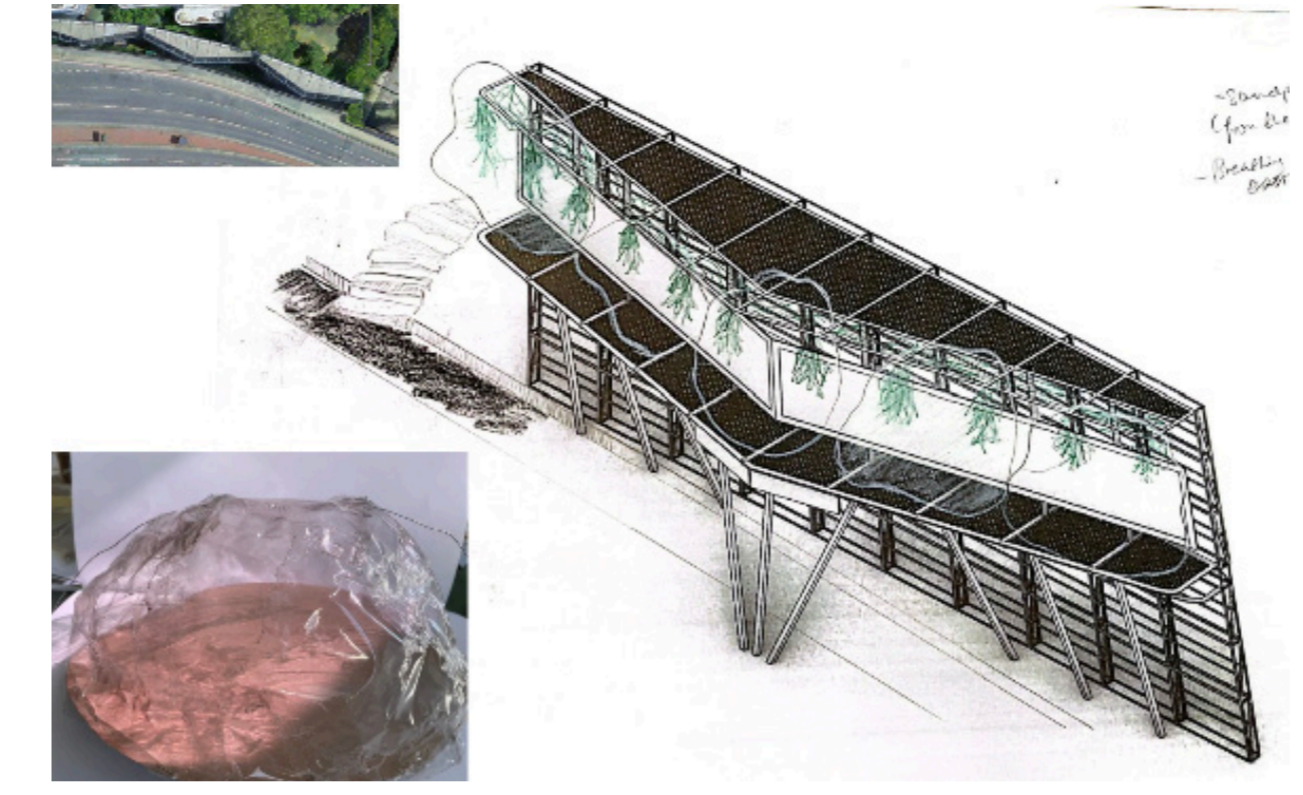
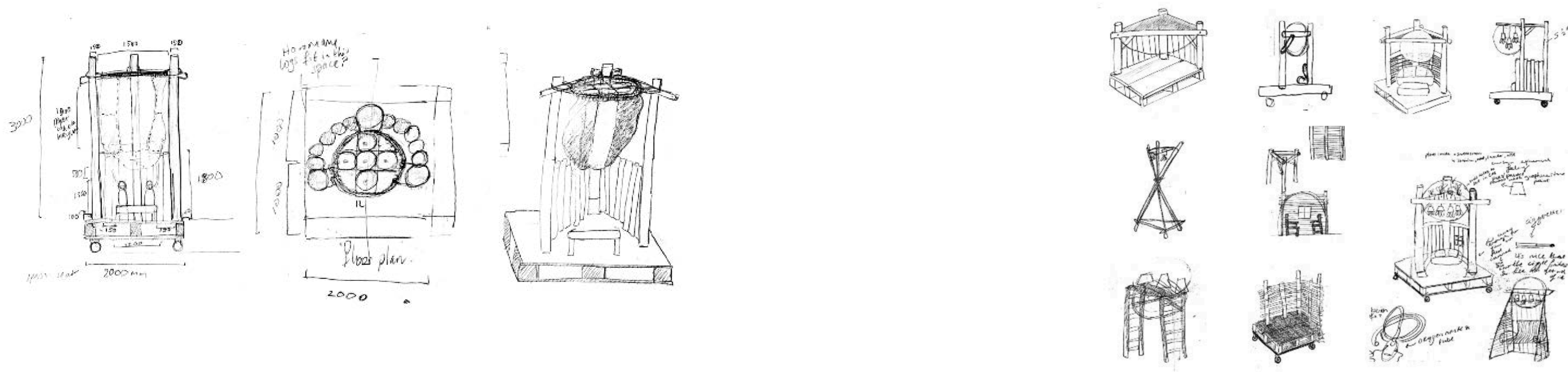


CHAMOMILE

Calming effects, anti-anxiety, better quality sleep

PRECEDENTS: Meanwhile spaces and temporary-ness

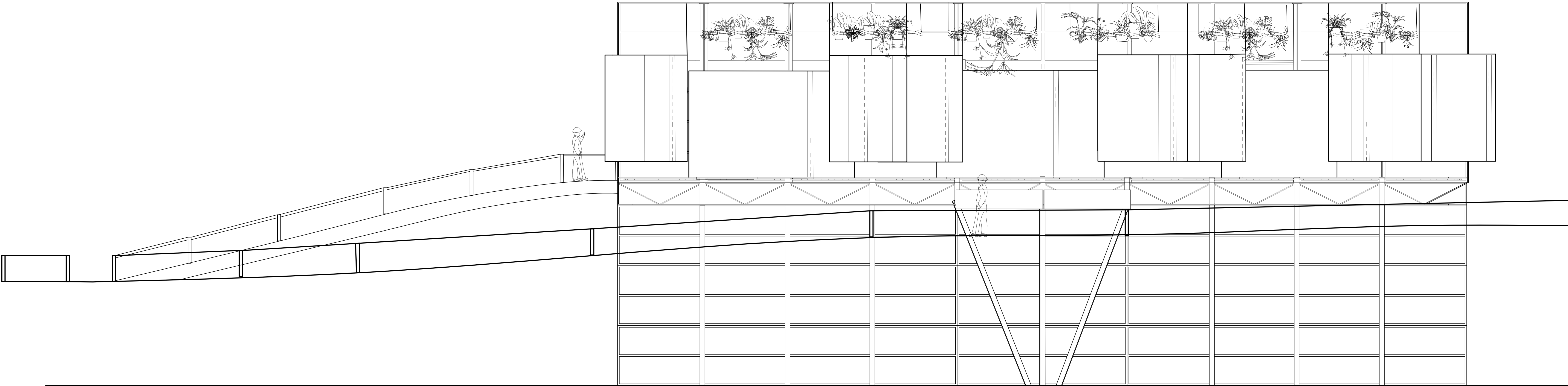
PLANTS FOR WELLBEING



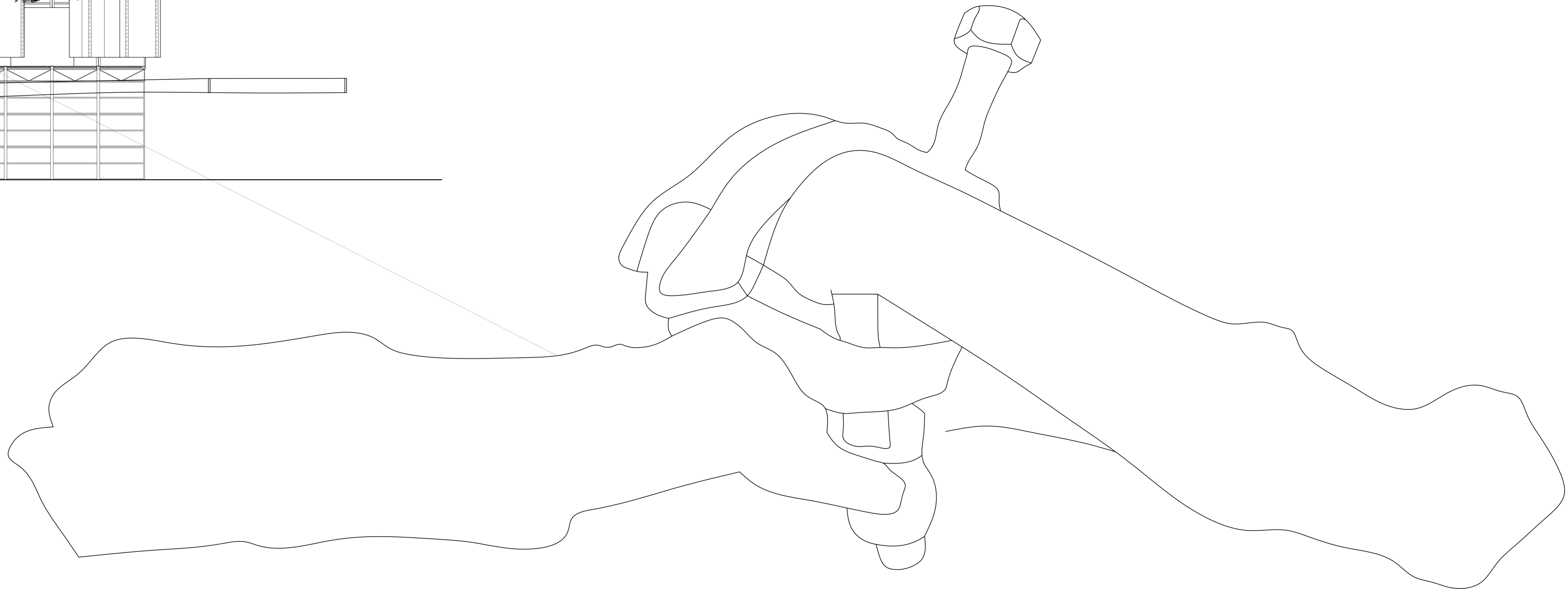
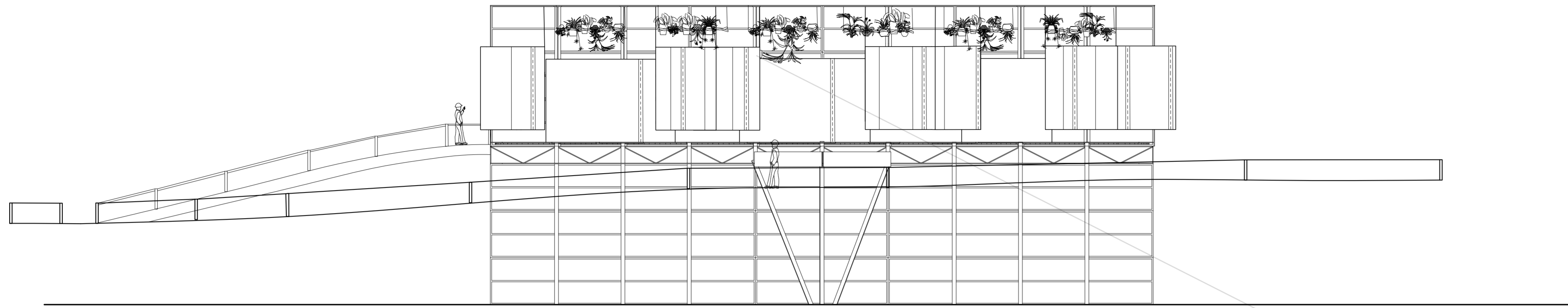
MATERIALS: Aparatus and structural/material explorations

MATERIALS: Aparatus and structural/material explorations

Air purifying outdoor plants: Acrea palm plants, spider plants, peace lily, aloe vera.



ELEVATION



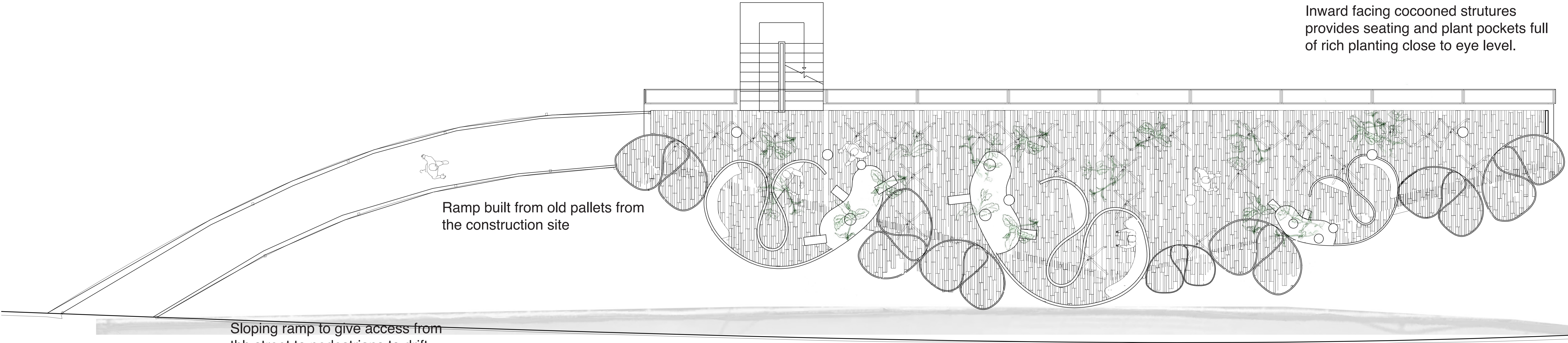
Joint details - Plant lattice structure

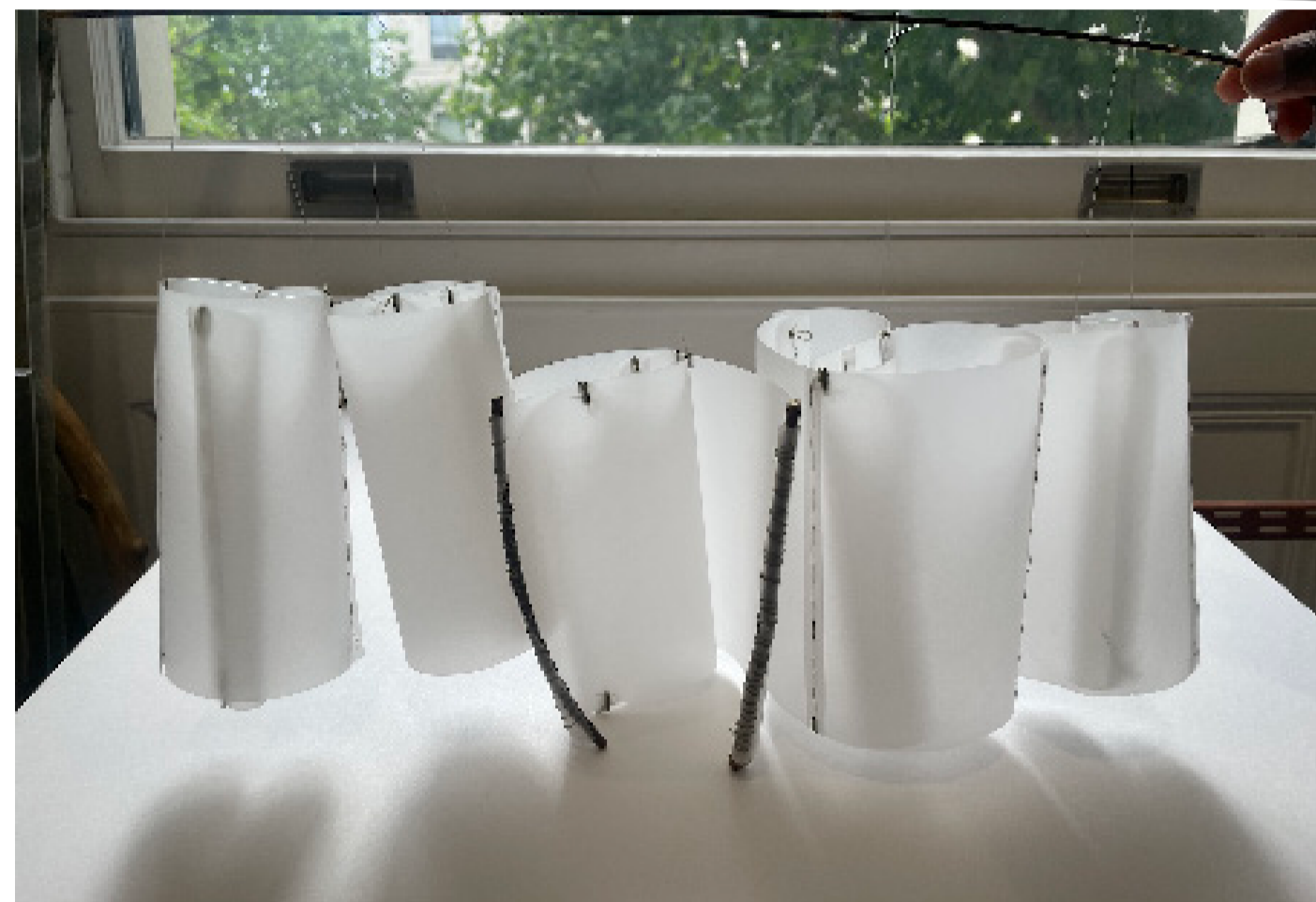
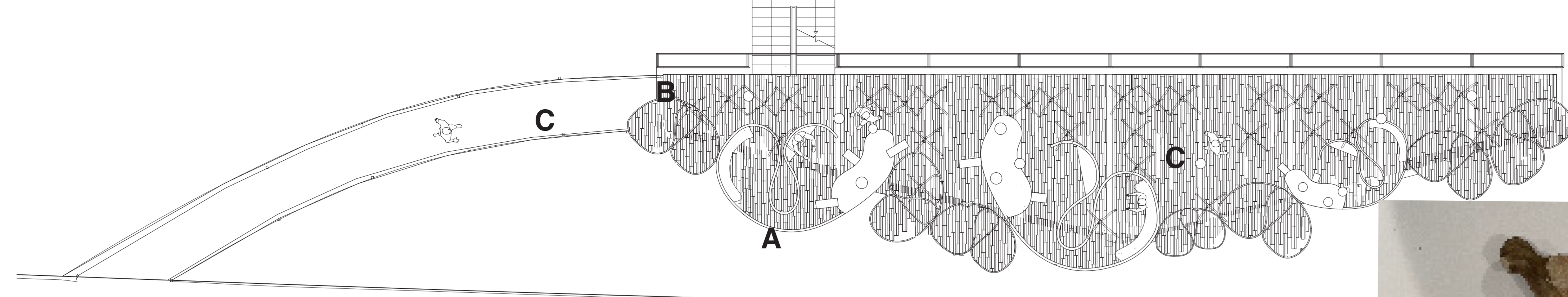
Staircase behind billboard to give extra access to construction workers without the need to visit the street.

Inward facing cocooned structures provides seating and plant pockets full of rich planting close to eye level.

Ramp built from old pallets from the construction site

Sloping ramp to give access from the street to pedestrians to drift into intervention.





Tyvek for thin lightweight cocoon structure, coated in activated carbon to help remove airborne pollutants through absorption.



Increased surface area to dampen noise pollution and trap dust from the inside cocoon.



Plant lattice at different heights to imitate canopy of trees, joint with construction clamps.



B



Floor made from recycled pallets, with bark and decomposing materials added to give effect of forest floor and the woody forest fragrance.

C

A

Water irrigation system flowing through and around the plant lattices, watering the plants and creating the sounds of water falling.



Construction workers have a space to unwind and play cards in a natural feeling environment.

Opportunities for chance encounters with site workers and members of the public.

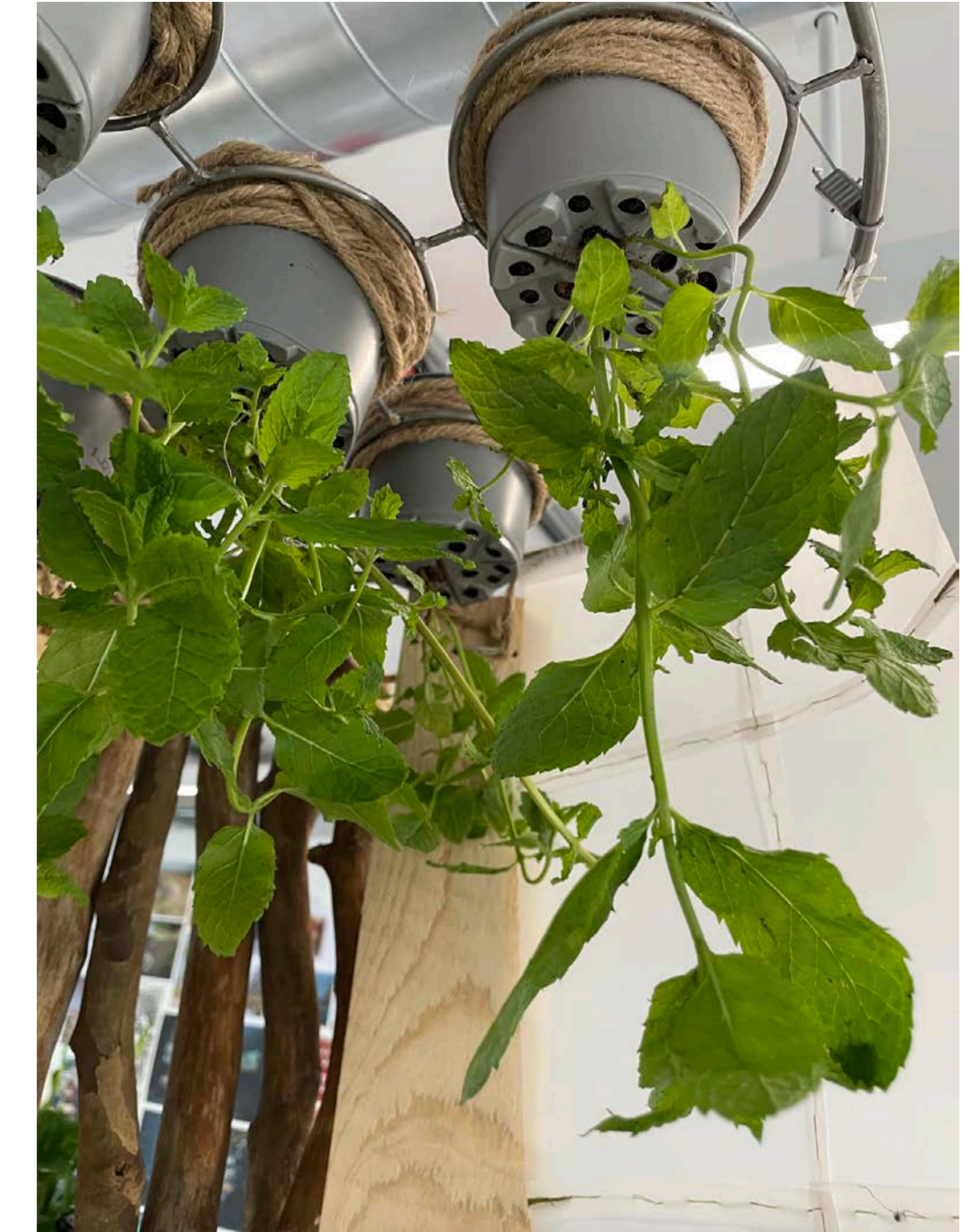
SPATIAL EXPERIENCE: Section showing curated pleasant moments

Hanging planters with air purifying plants to help create the effect of walking under a canopy of trees in a forest.

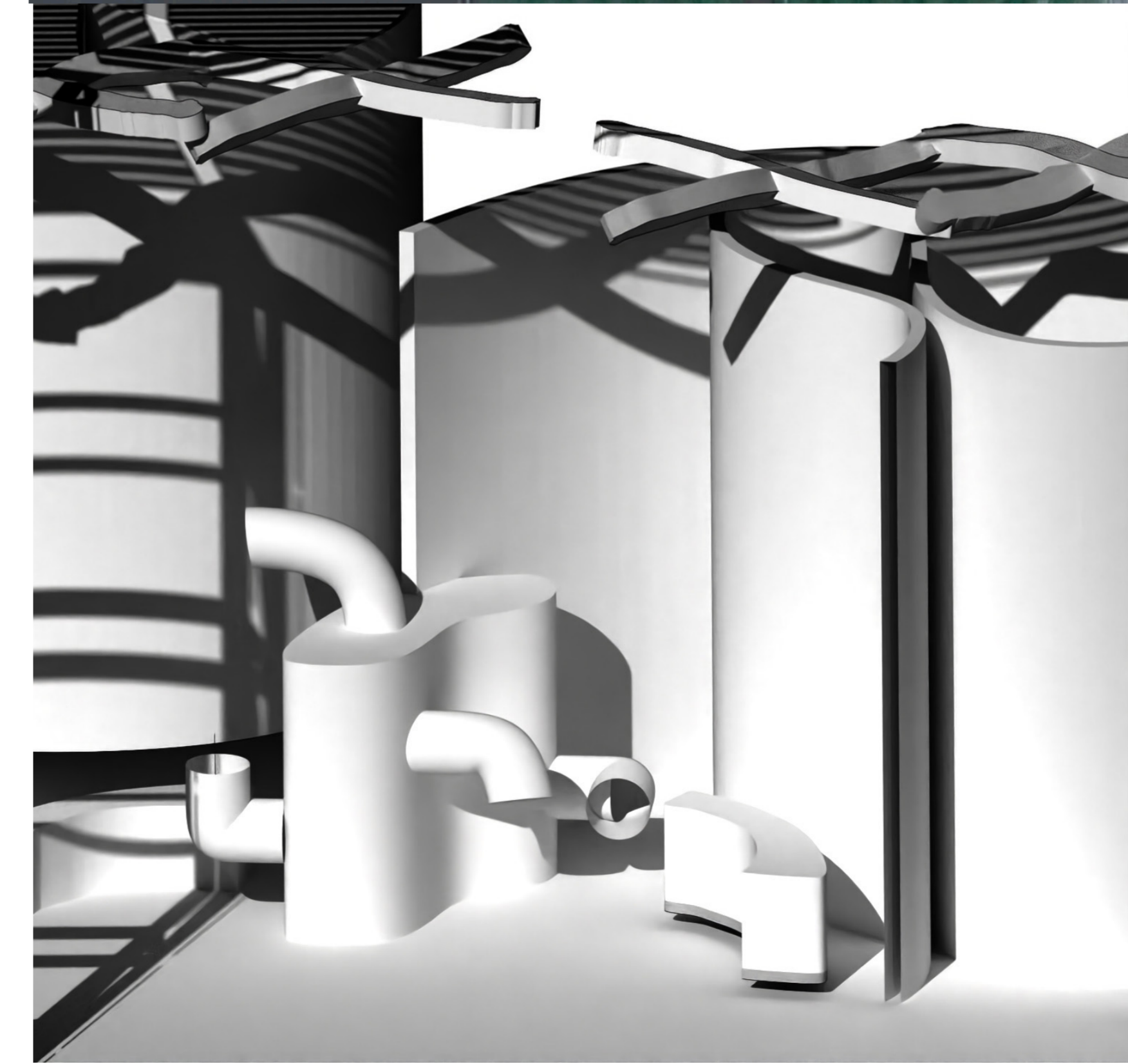
Opportunity to walk through 'curated' forest and interact with the public or fellow site workers.

Access: Ramp bridge to provide access from the street for construction workers and the local community.

SPATIAL EXPERIENCE: Interior perspective



Models showing plant lattice structure and hanging plants



3D model showing planter and seating inside intervention.