

EMBROIDERY

MEMORIES

ZIYI JIANG

10021261@NEWWORKRCAACUK

Site Reviews

Liberalcynic 21 Jul 2015 10:36 From The Guardian

It isn't so much the destruction of the specific buildings involved as the **change in the character of the area** that will result from the new development that is to be regretted. Central London is being blanded out by international finance capital, just as Manhattan was before it.

Network9 21 Jul 2015 10:36 From The Guardian

Only the very wealthy live in Norton Folgate today. The campaign is mainly run for the lucky few who bought the old Huguenot houses in the 70s and 80s. I don't blame them, but the area does **need regeneration.**

The parade of shops on Norton Folgate just before Shoreditch High Street are of little value (they're late Victorian, and in terrible repair). They're objecting to the size of the buildings despite being within a stone's throw of the City.

Peter Clark 1 April, 2015 From Spitalfieldslife

I am a descendant of several of the famous Spitalfields Silk Weavers, and I have recently discovered that one of them actually lived in Norton Folgate. About 20 years ago I was lucky enough to be able to visit the area, Fournier Street in particular, and savour some of **my Huguenot heritage.** I am appalled that any demolition is being contemplated at Norton Folgate, and support any moves to prevent this occurring.

Plastikman2010 21 Jul 2015 10:36 From The Guardian

Those streets look beautiful they should preserve them. I'm not against development but that development must **improve on what was there originally.** Nothing would improve those beautiful old buildings!!



Field Interview



Photographer

He photographed male models wearing suits. He thought using these old houses as the background would better **express the history and connotation** of the brand. The concept of the brand can't be conveyed if the photo is taken in a skyscraper on the other side of the street.



Tourist

An architect with conservation environmental comes to visit a museum with a friend. She loves history and wanted the history of the building to be preserved. She passes the shopping centre of Liverpool Street Station, and feel the different shops **look the same.**

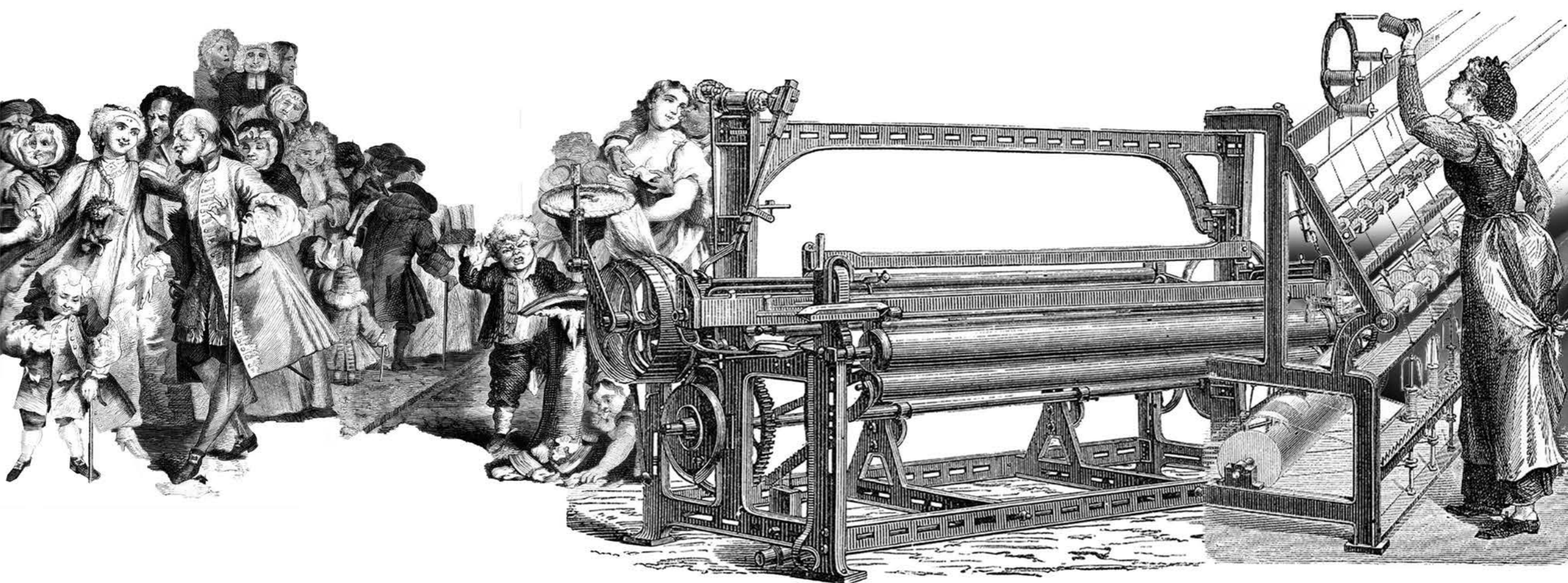


Tourist

She used to work a long time ago, about 30 years ago. At that time here was a slum. All fields was all derelict, and then people were buying up houses in poor condition to save it. It's interesting to her to come back now and see big development, but also see that the other **houses have been gentrified.** She thinks it's a good sign.

Site History

The region has a rich history of silk manufacturing and weaving, and the arrival of a large number of skilled French silk weavers and merchants greatly promoted the development of the silk industry in the region. Many homes, silk shops and offices were built.



Historic Silk Design and Production Techniques

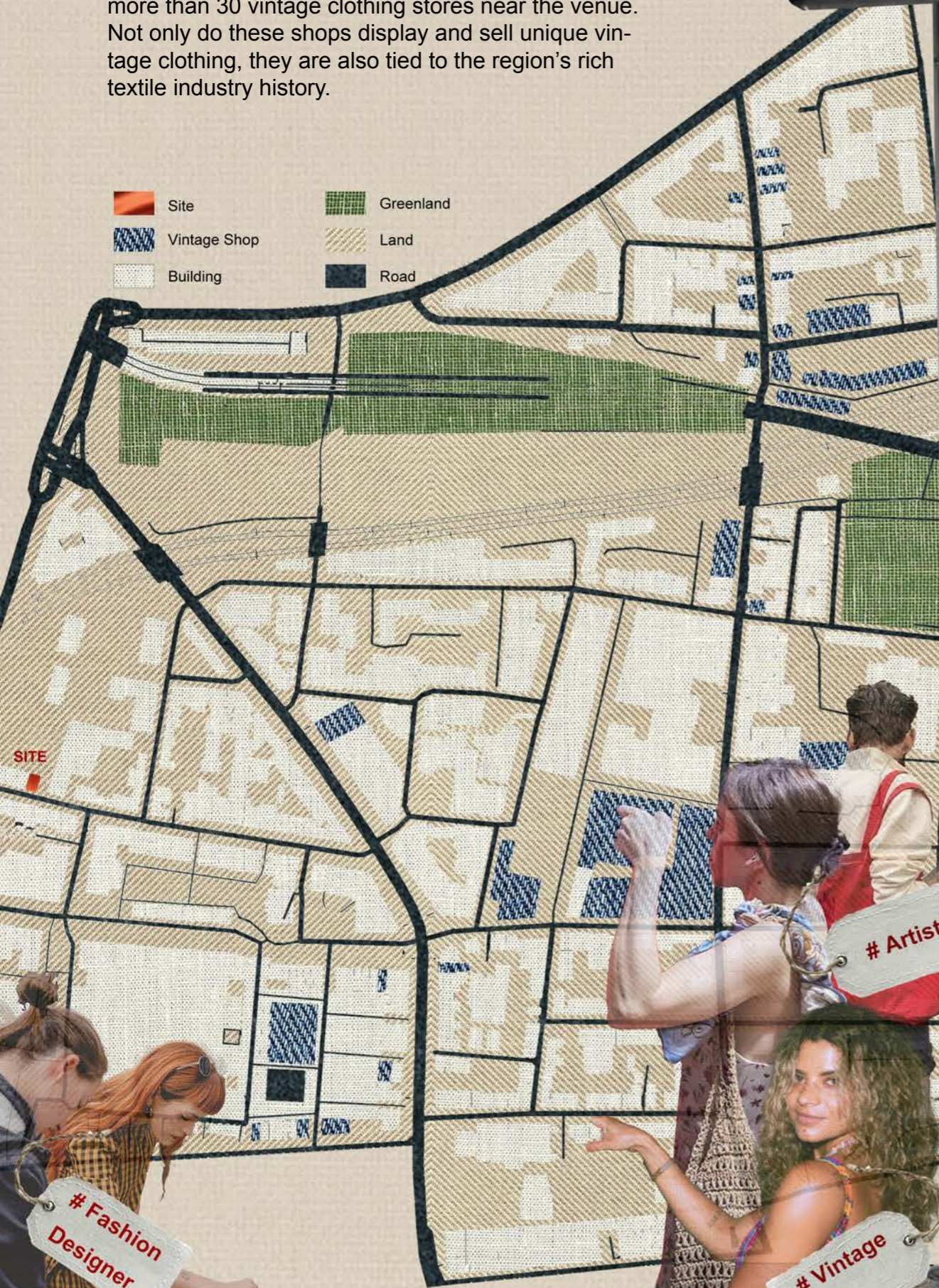
In the 18th century, silk designers drew designs and showed weavers the colors and decorative patterns to follow when producing silk on a loom. Jacquard and embroidery were used to enhance the beauty and ornamentation of the fabric.



Tracing the textile history

Trace the existing textile industry in the area. I found more than 30 vintage clothing stores near the venue. Not only do these shops display and sell unique vintage clothing, they are also tied to the region's rich textile industry history.

- Site
- Greenland
- Vintage Shop
- Land
- Building
- Road



HUGE
VINTAGE
CLOTHING
MARKET
DOWNSTAIRS
↓ TODAY!

@BrickLaneVintageMarket

Weaving History and Style

Vintage clothing is like a history book of the textile industry, documenting the craftsmanship and design of different eras, reflecting the region's deep textile heritage.

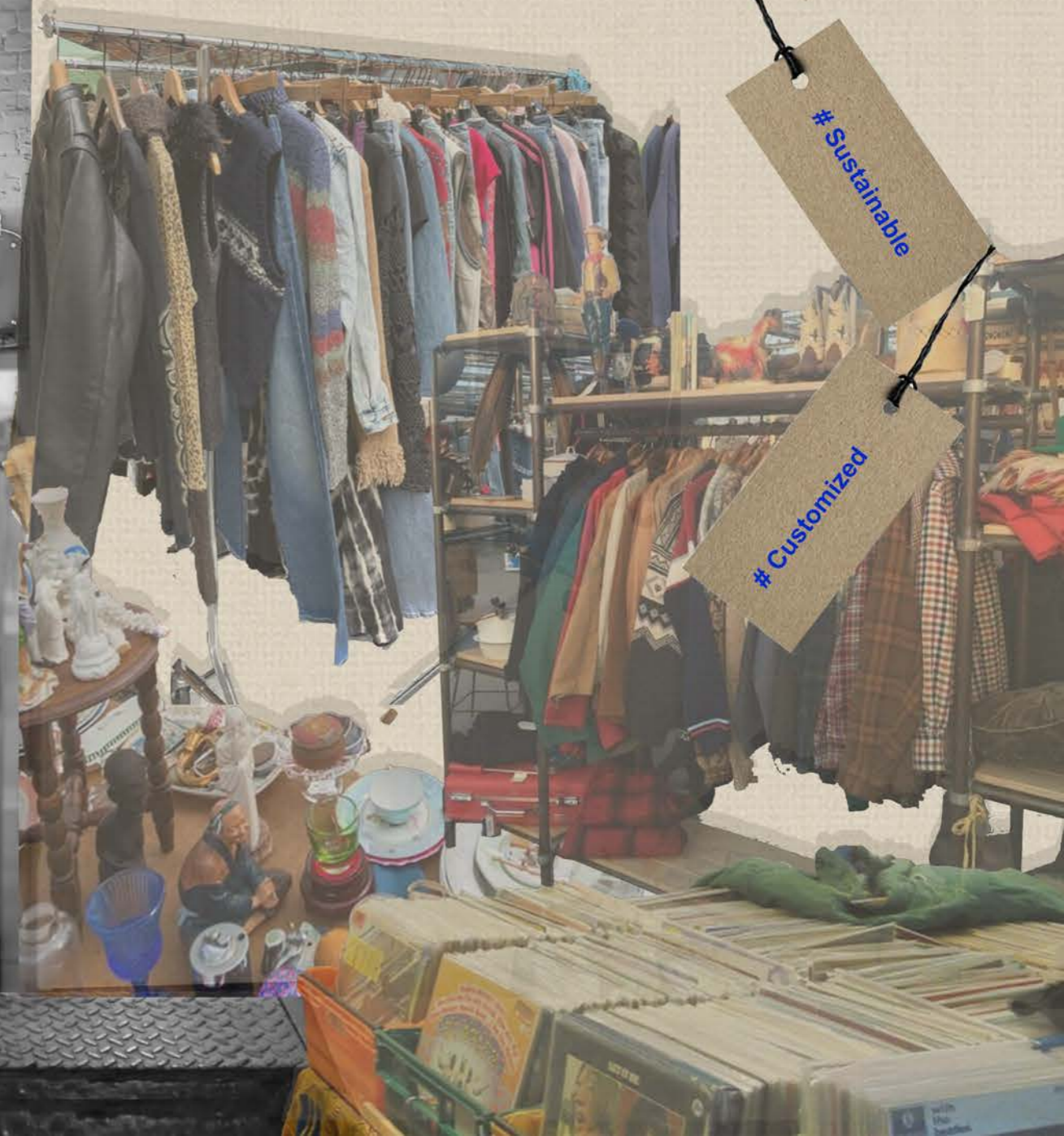
Because of its unique and customizable characteristics, it has attracted a large number of young people, artists, fashion designers and vintage clothing lovers. They seek inspiration and materials here, further enriching the artistic atmosphere and creative industries in the region.

Unique

Affordability

Sustainable

Customized



Fashion Designer

Artist

Vintage lover



Old Clothes In The Landfill

A large volume of used clothing is being sent to landfills, or ends up being dumped in other countries because they hold no value in the resale market or charity shops.

Common Types Of Discarded Clothes



Clothing from fast fashion brands: Usually cheaper, lower quality, and therefore more prone to damage, and quickly phased out as fashion trends change.



T-shirts and jeans: Very common in everyday life, consumers tend to buy more, and are more likely to be discarded after wearing out.



Seasonal clothing: such as summer shorts and bikinis have a shorter use cycle because of seasonal wear.



Children's clothing: Because children grow fast, they usually do not use for a long time, so the amount of waste is also large.

Denim Pollution

Approximately 2 billion pairs of jeans are produced globally each year, but the pollution emissions throughout the manufacturing process are alarmingly high. Producing a single pair of jeans requires about 3.78 tons of water, equivalent to the consumption of 7,000 bottles of mineral water. Additionally, around 2,500 different chemicals are used in the dyeing processes of various denim products, potentially causing significant environmental pollution.

1 pair of jeans



3.78 tons of water

||

7000 bottles of water



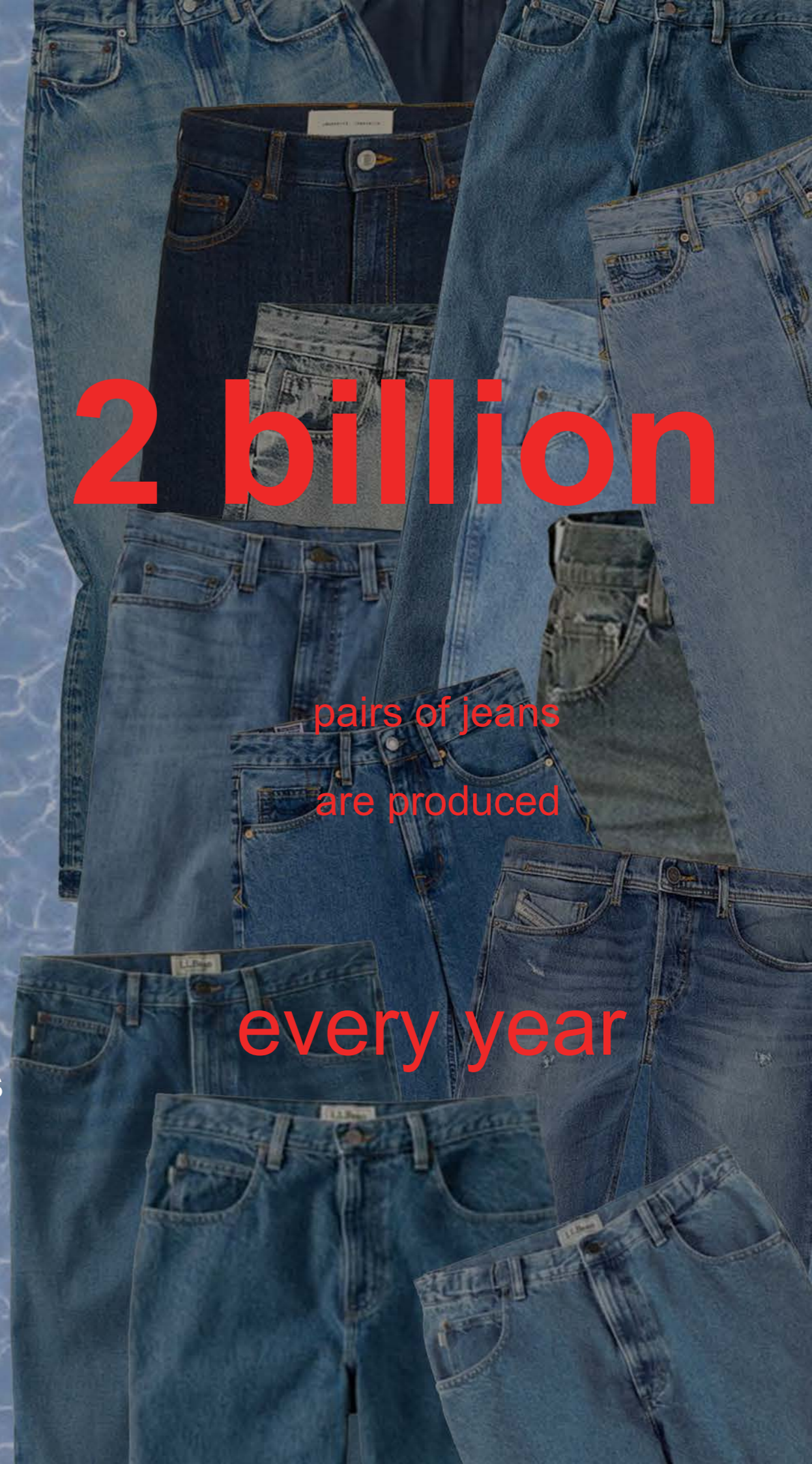
2500 different kinds of chemicals



2 billion

pairs of jeans
are produced

every year





”

How can we update old clothes and buildings with new materials and textiles, making fashion and architecture more unique and sustainable?

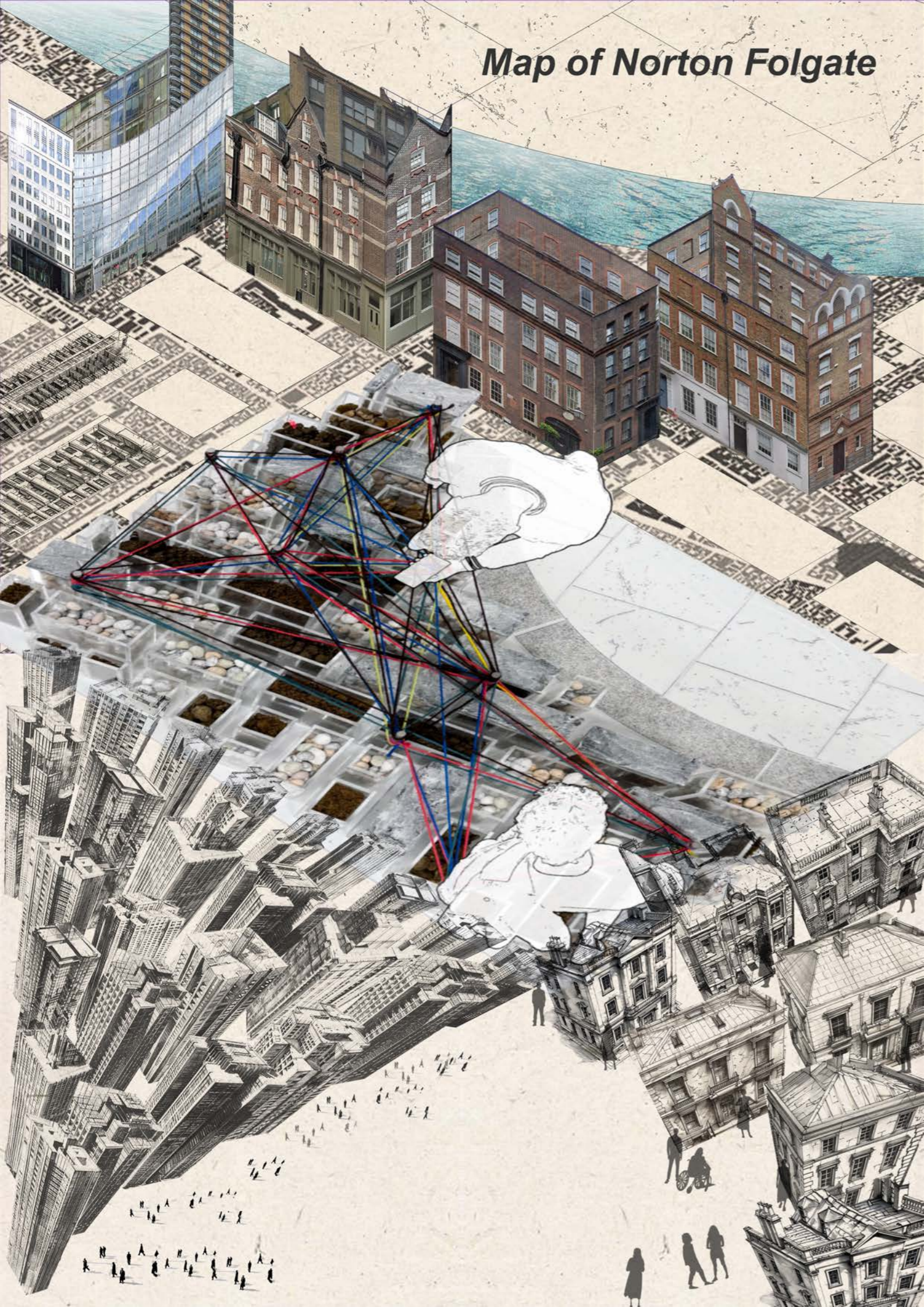
”



The Embroidery Trace of site

Diana organized an embroidery project named "Tapestry for the Millennium," inspired by the 1746 Roque map of East London. This project narrates the historical stories of the East End through sewing techniques and has engaged over 3,000 local residents. This collaborative artistic endeavor not only enhances cultural exchanges within the community but also fosters social integration, bringing participants closer together through their creative efforts.

Map of Norton Folgate

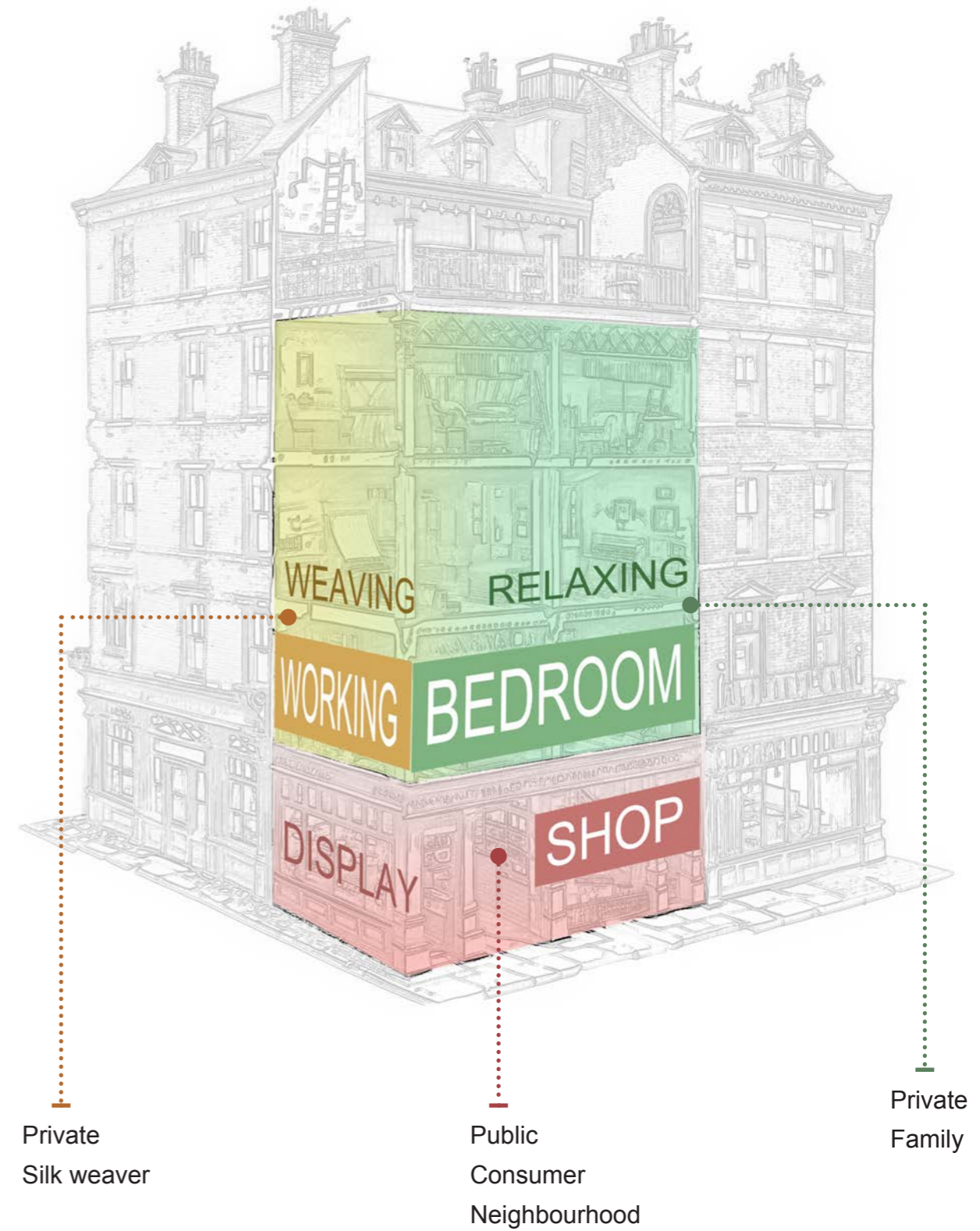
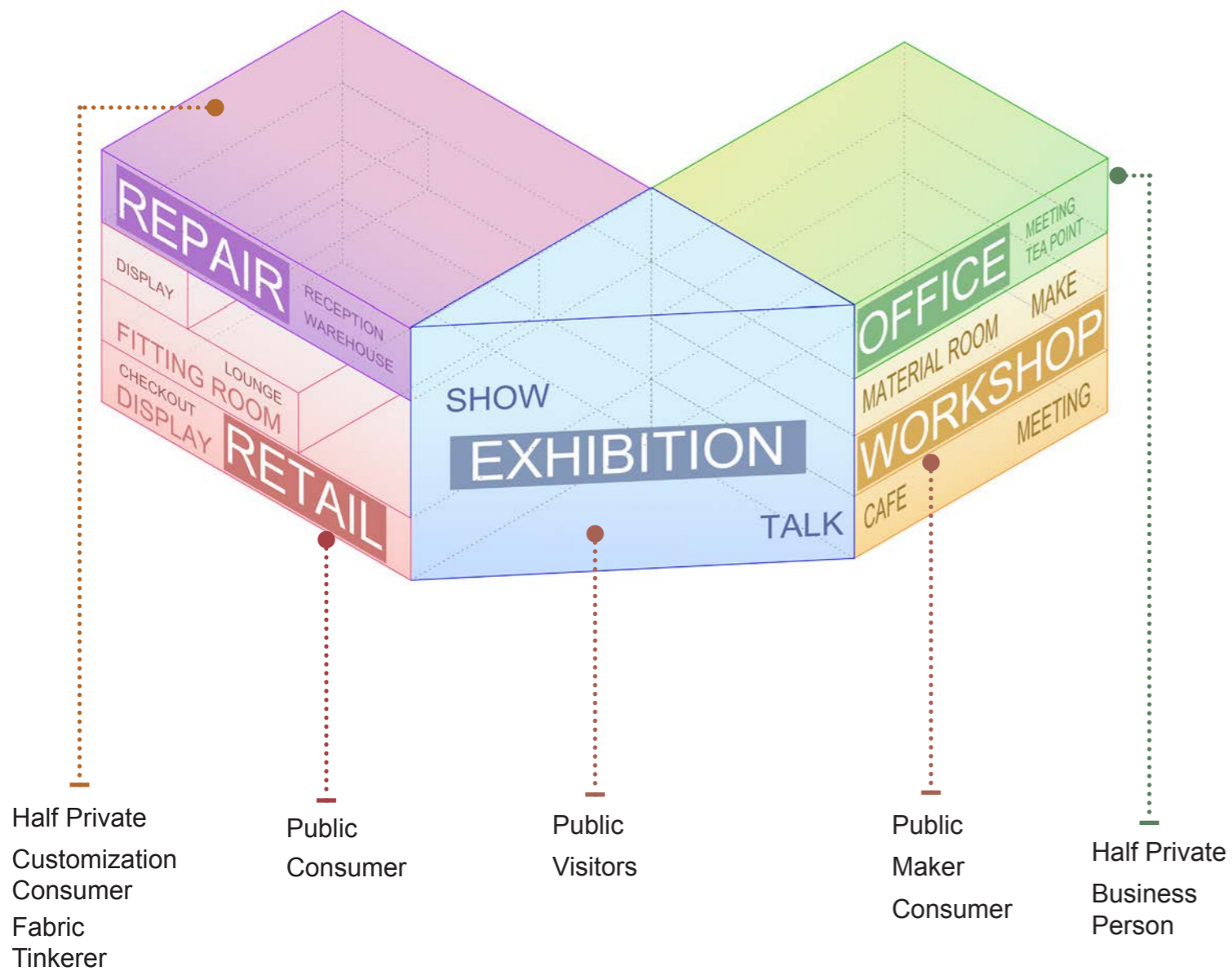


Weaving in Community

Combining the rich textile history of this area with the totem created last semester, I see the movement of people within the buildings as threads that stitch the area's architecture into a cohesive community. The interaction between people and space, much like the thread and fabric in embroidery, truly creates connections and bonds. Embroidery is used as a design concept to echo historical culture and refresh the site.

Spatial Function Analysis

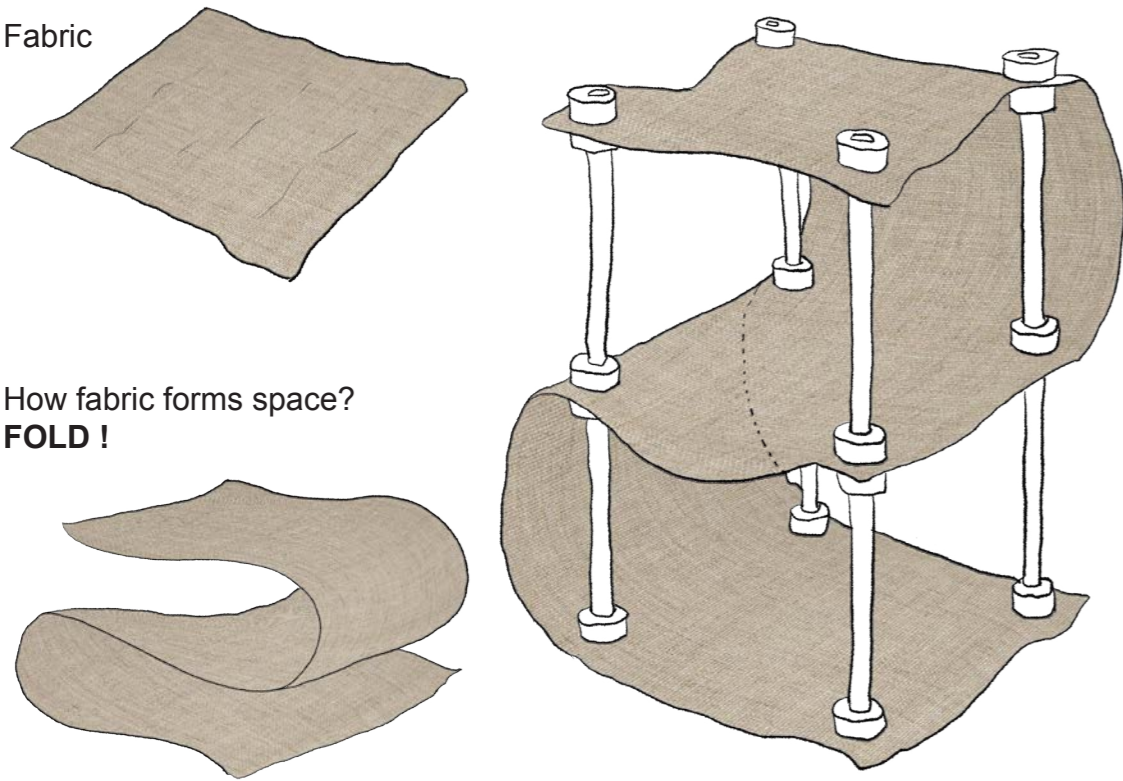
Most of the buildings in this area mix different functional spaces, these buildings include living space, office space and retail space, which are connected to each other, and this distribution of spaces is related to their mode of operation. I generated the functional blocks of the embroidery centre based on the previous spatial patterns of the site.



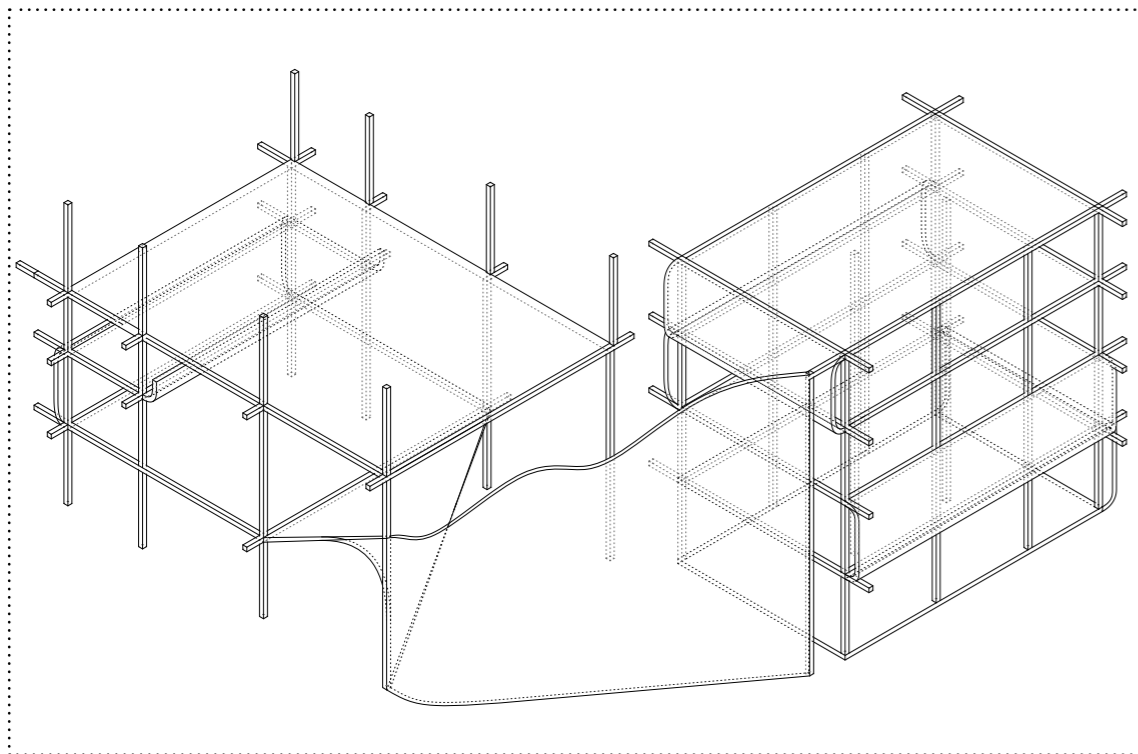
Fabric Translate

The fabric serves as my floor. When people embroidered they would use hoops to hold the cloth in place, so I extracted the structural frame of the building and let the floors be held in place in the structural frame like the fabric.

Fabric

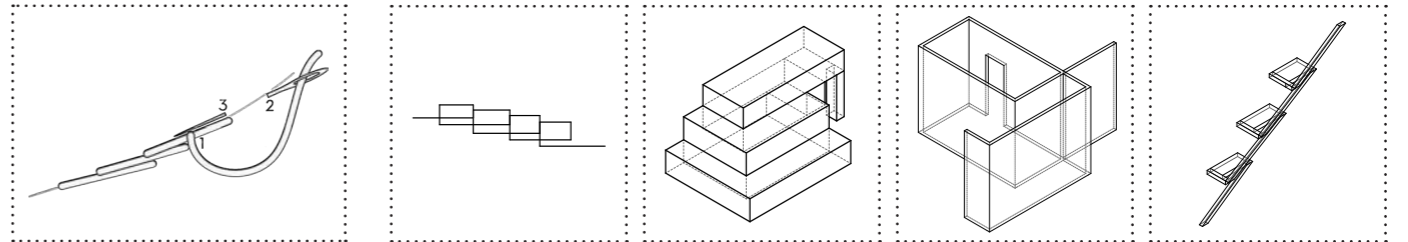


How fabric forms space?
FOLD !

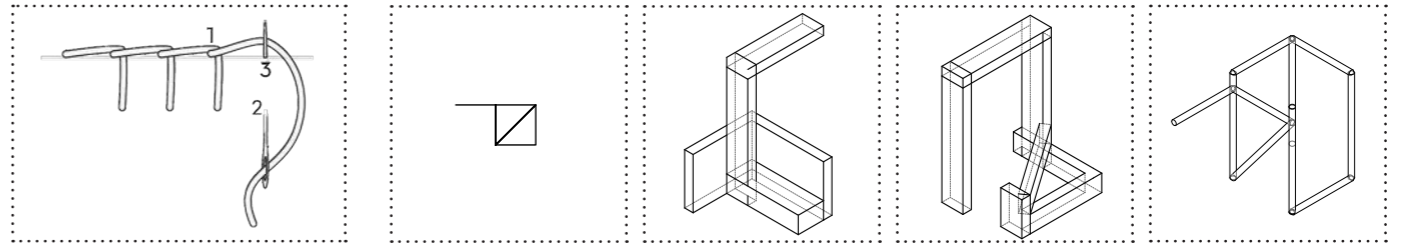


Embroidery Translate

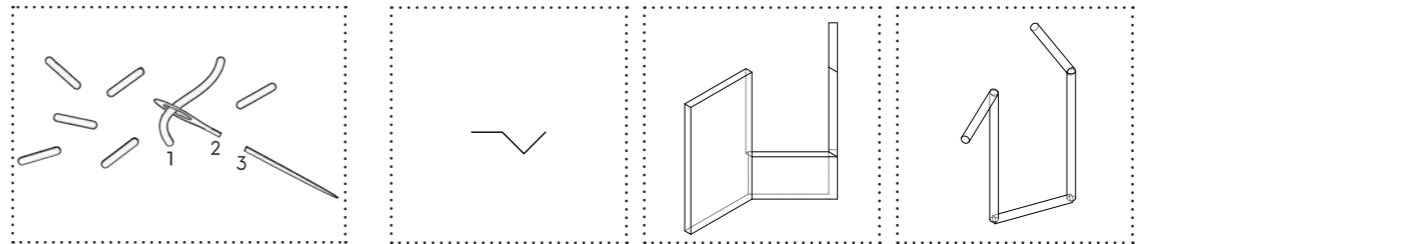
Stem
Stitch



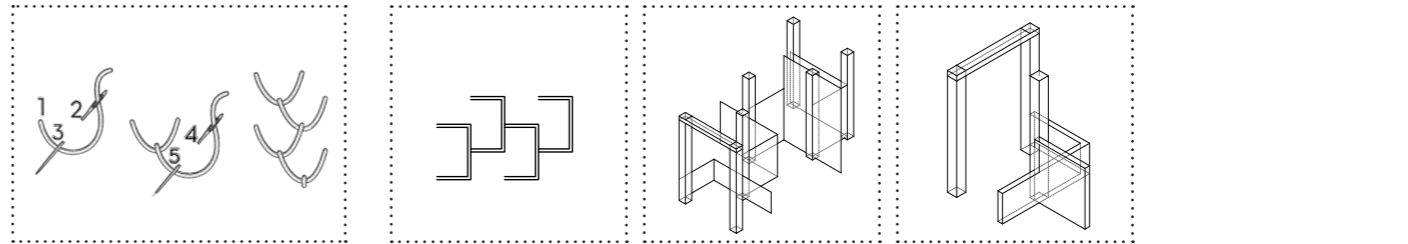
Blanket
Stitch



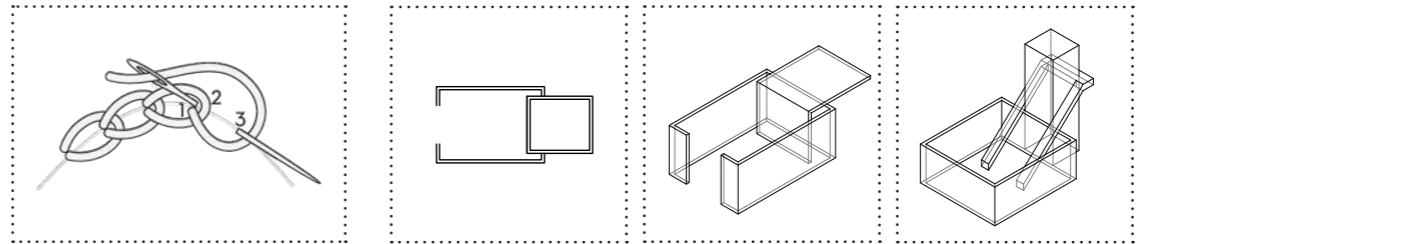
Seed
Stitch



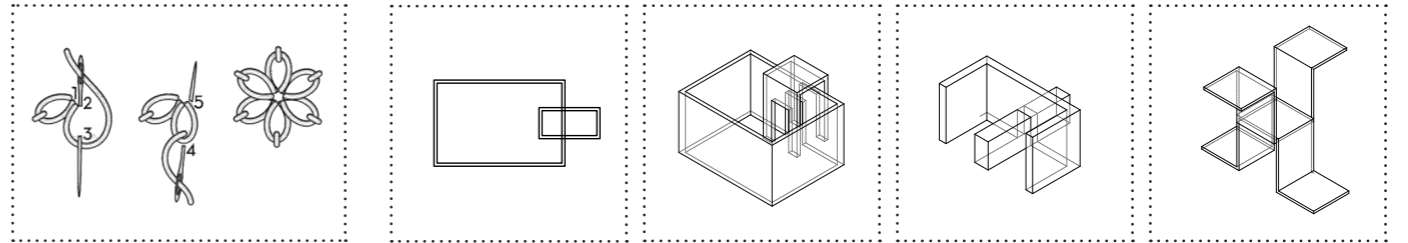
Feather
Stitch



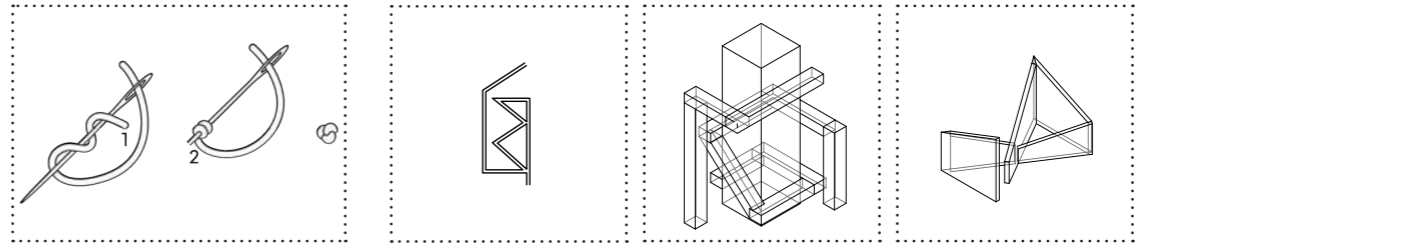
Chain
Stitch



Lazy Daisy
Stitch



French
Knot

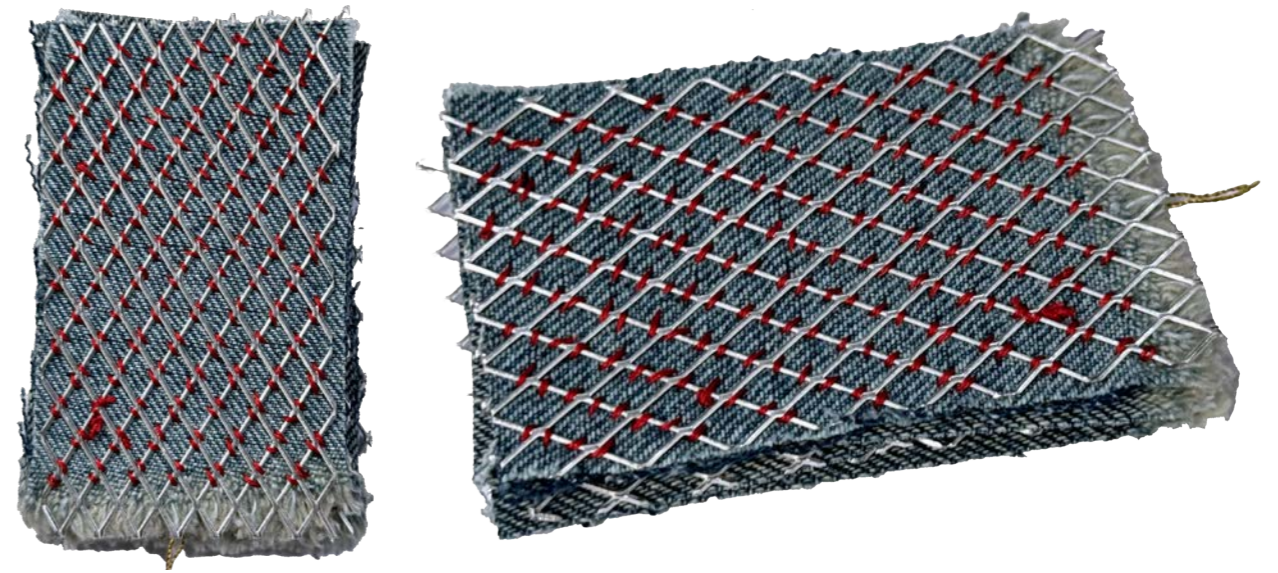


Concept Model



Material Palette

I tried the logic of fabric to build this architectural space. And through embroidery, I combine denim fabric and wire mesh, so that the soft fabric can have support and become a solid material.



Taking advantage of the fact that fabric can be folded, I sewed and stacked multiple layers of fabric together to resemble the spine of a book.



Material Palette

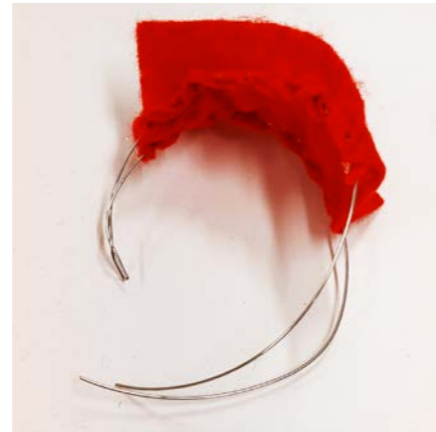
Inspiration: Joint & Junctions

In the Joint and junctions project, the shape and properties of the fabric are changed through different techniques. Sandwiches, for example, add a layered wooden structure. 'Bracelet' makes felt strong. Sew the folded fabric, linking it with struts to form a whole. The 'Carousel' uses a rotating structure that allows the rotating fabric to change its opening and closing state. 'Clothes' uses a zipper structure to stitch together different materials directly.



[PIPE] Sandwiches

Felt, Soft Wood
Stitch



[CURVE] Bracelet

Felt, Iron Wire
Stitch



[PIPE] Carousel

Felt, Soft Wood
Stitch, Notch

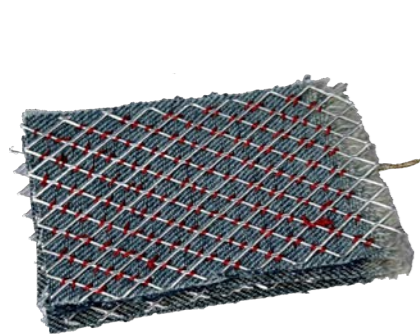


[SQUARE] Clothes

Felt, Soft Wood, Zip
Stitch, Zip

Iterate: Embroidery & Stitch

Based on the above model, I am experimenting with denim as the material and embroidery as the method of joining. I am testing the possibility of using denim as a 'wall' in spaces. For instance, layering and stitching denim fabric with metal wire mesh can transform the soft fabric into a rigid form. Stacking and folding denim, then stitching it to an external structure, forms a "denim book." Wrapping fabric around sticks, the fabric unfolds as the stick is extended, creating a surface. Reversing the fabric and connecting it in the middle forms a foldable surface.



[FOLD] Sandwiches

Denim, Aluminium Mesh
Stitch



[FOLD] Book

Denim
Stitch



[PIPE] Scroll

Denim, Soft Wood
Stitch

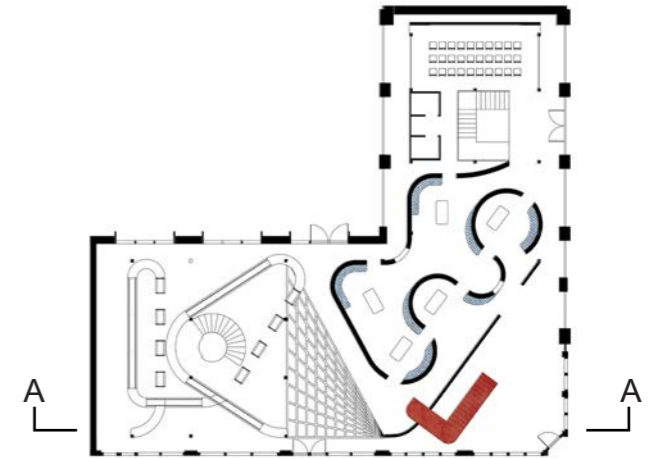


[SQUARE] Close

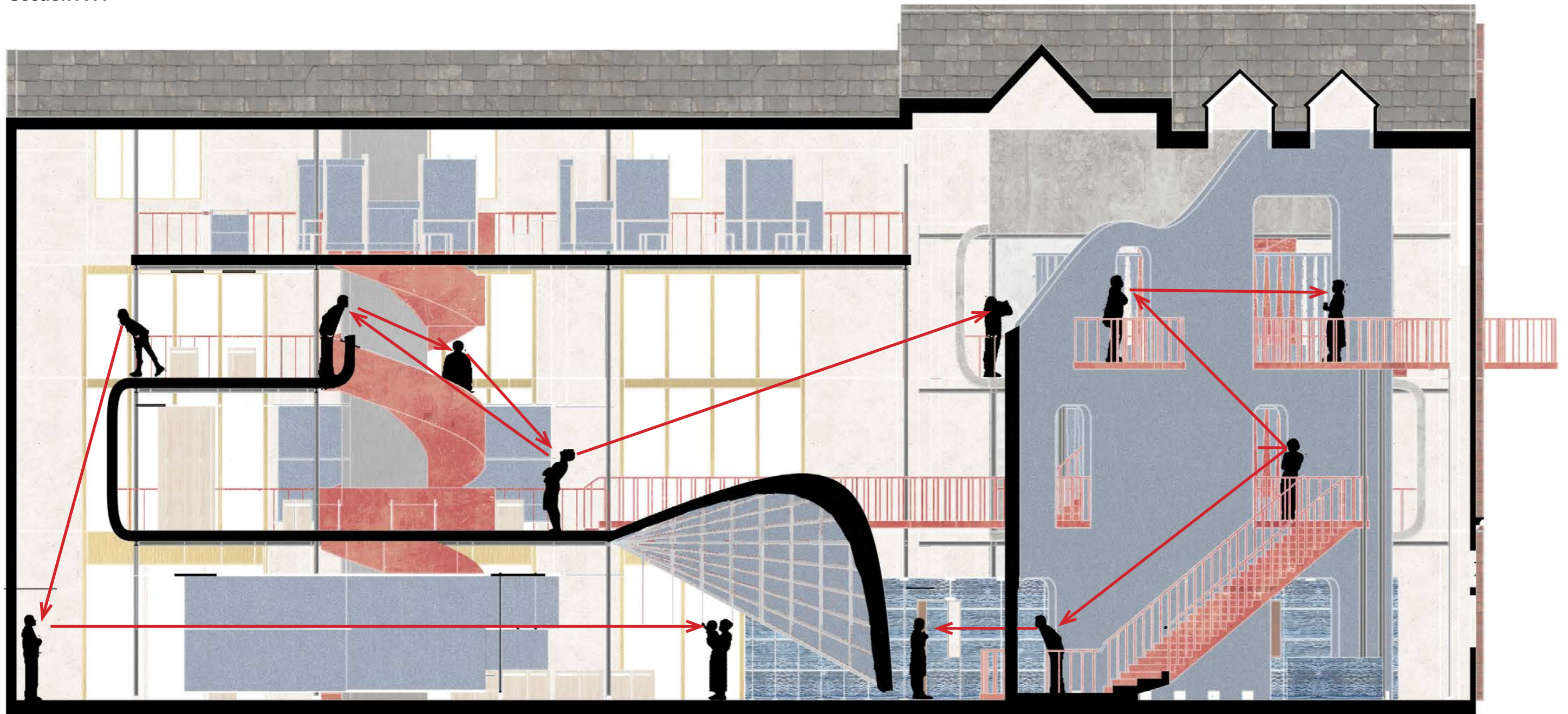
Denim
Stitch

Section

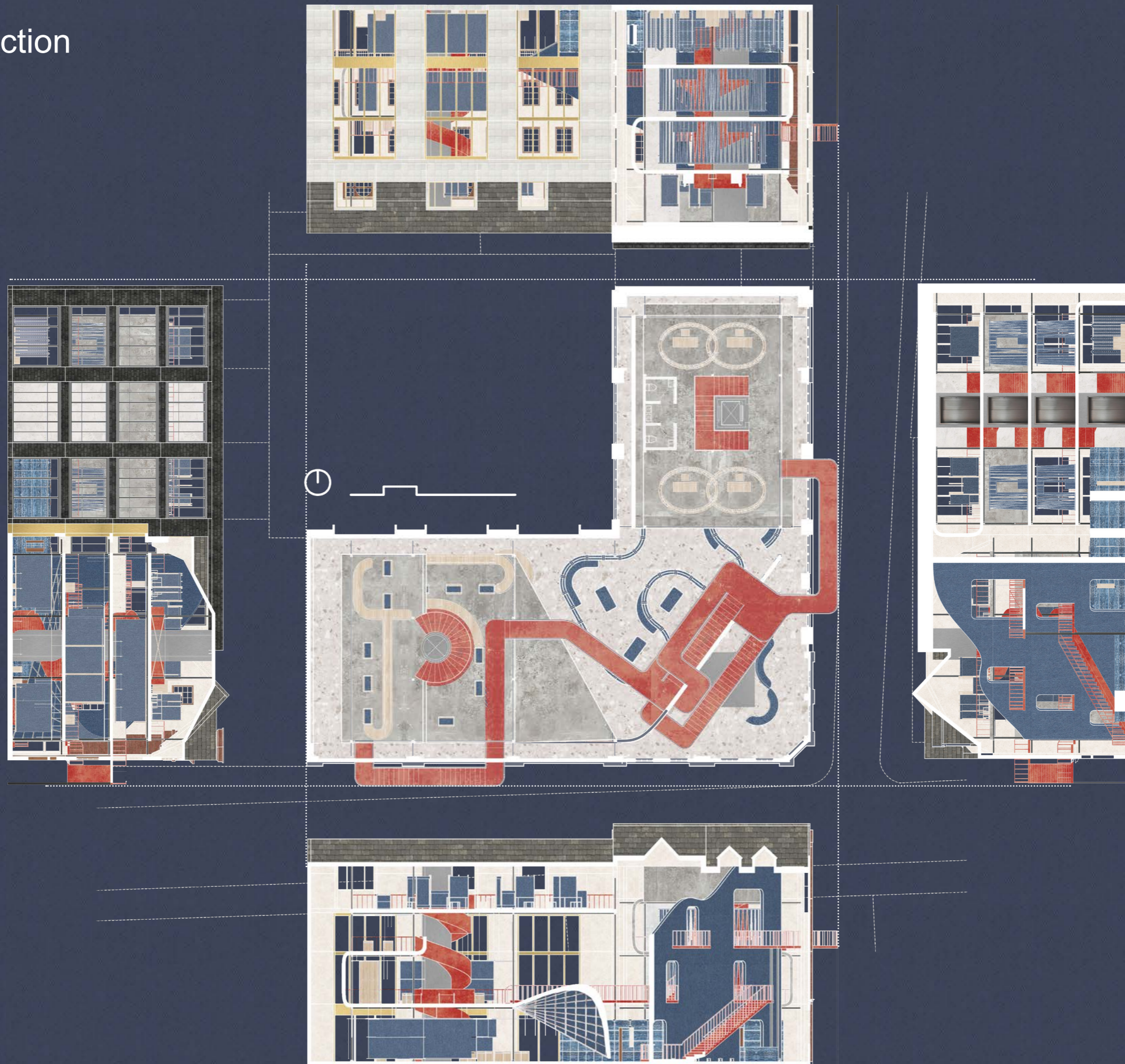
The whole space is as permeable as possible to allow more interaction with the viewer's eyes.



Section A-A

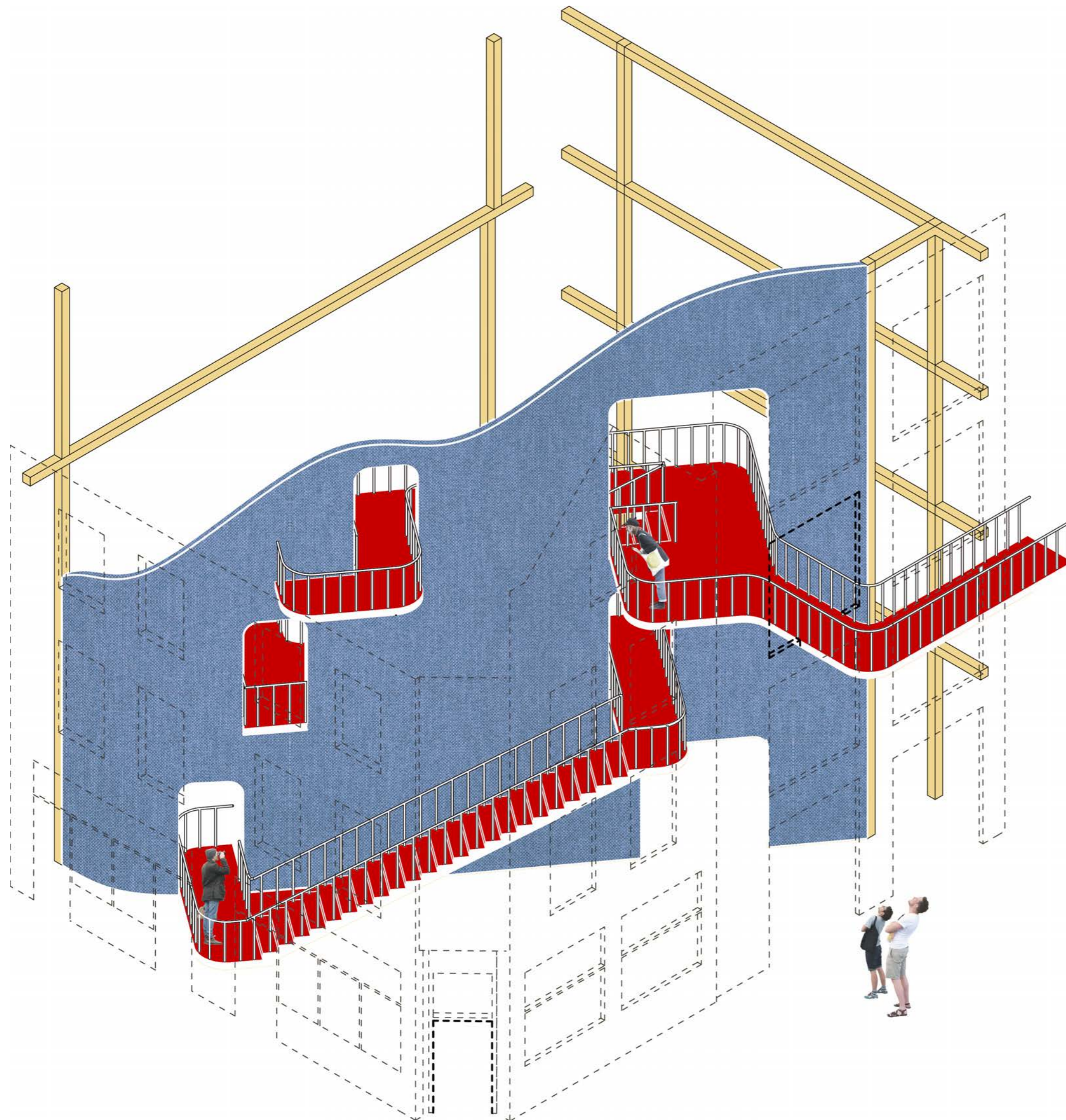


Plan and Section

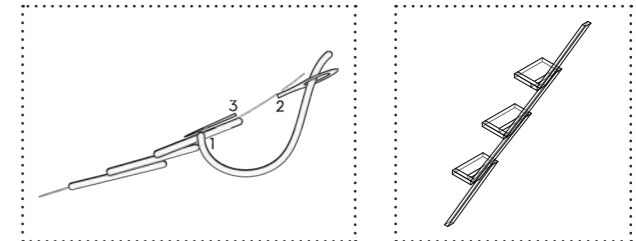


Reception Area

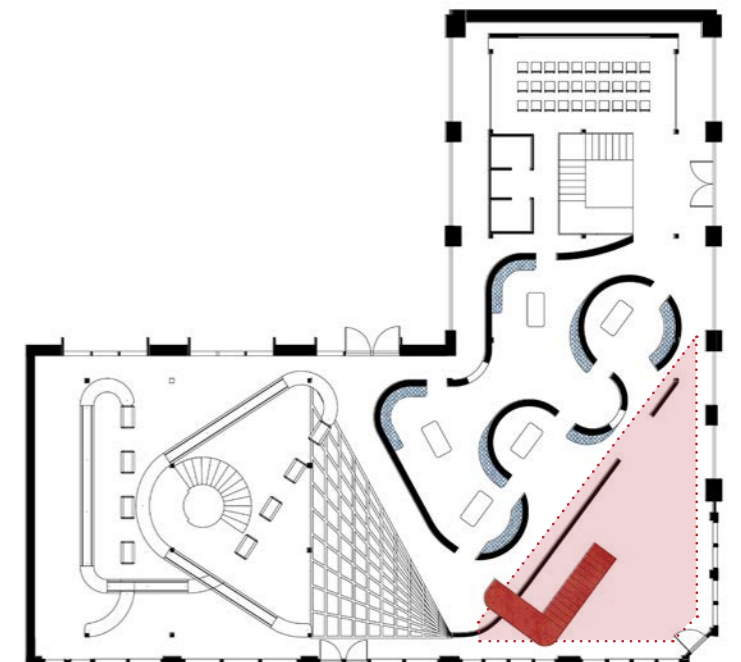
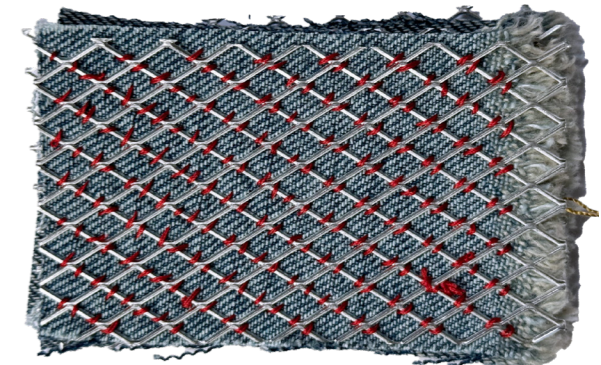
Embroidery techniques are used as a design strategy, and different embroidery techniques correspond to different functional spaces. In the reception area at the entrance, the denim mesh wall is used as the background wall to divide the space, and then the stem stitch is used as the design strategy for the staircase, so that the staircase passes through the front and back of the wall.



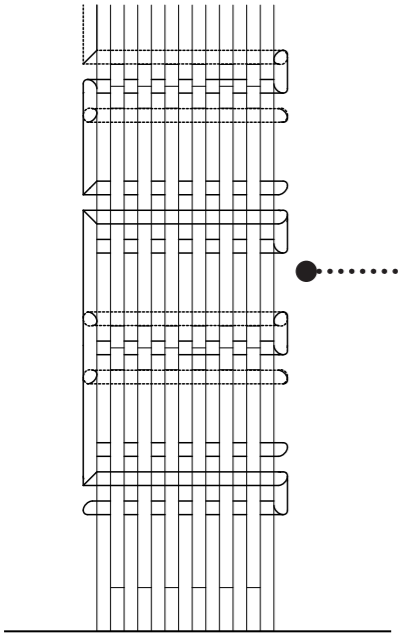
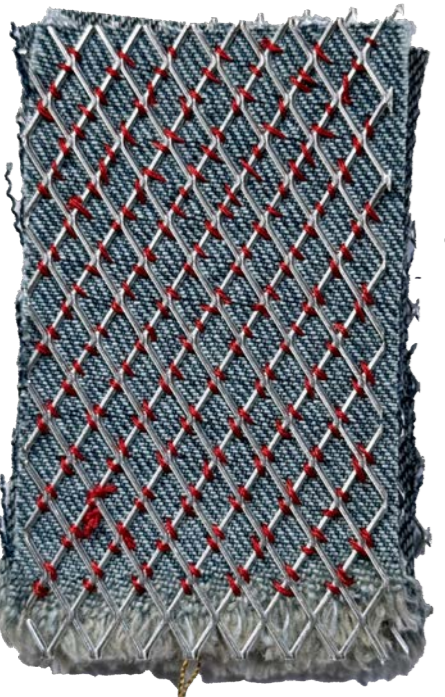
Stem Stitch



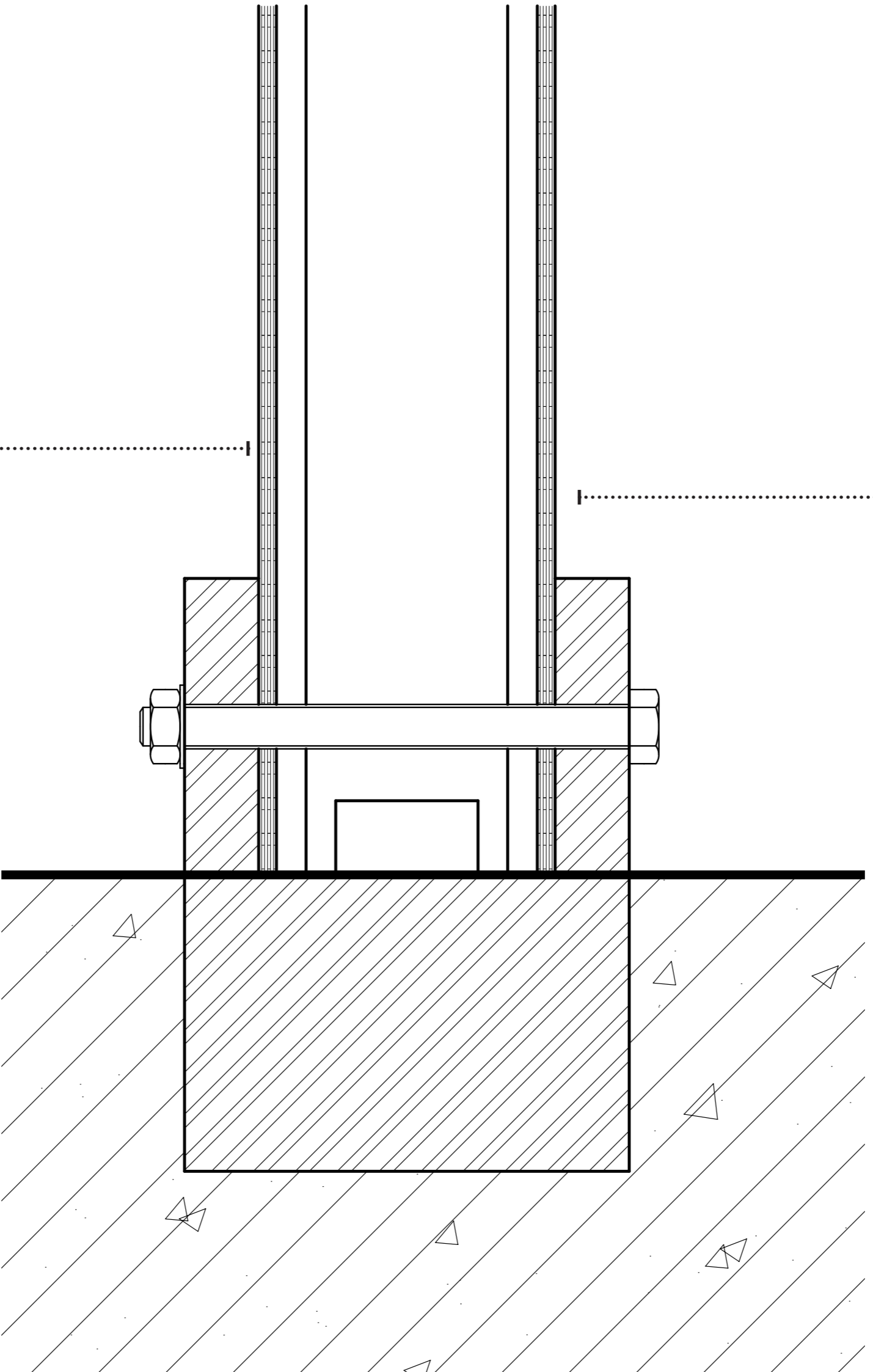
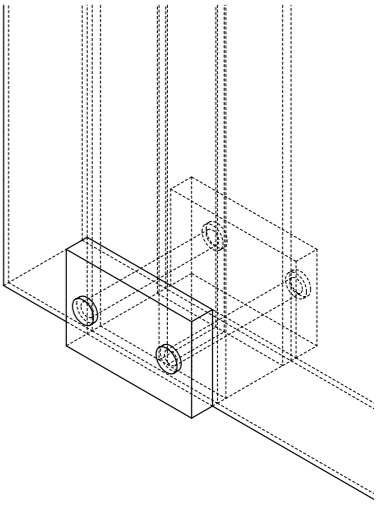
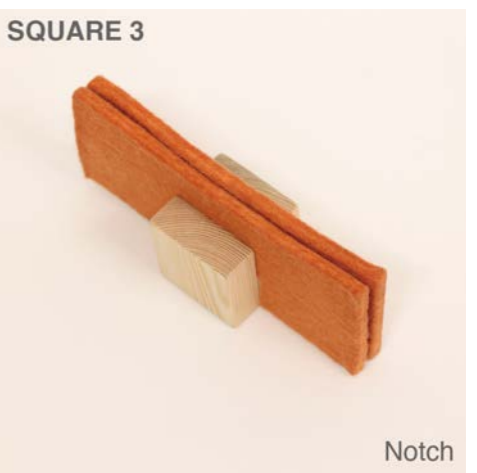
Embroidery Denim Wall



Material Sample

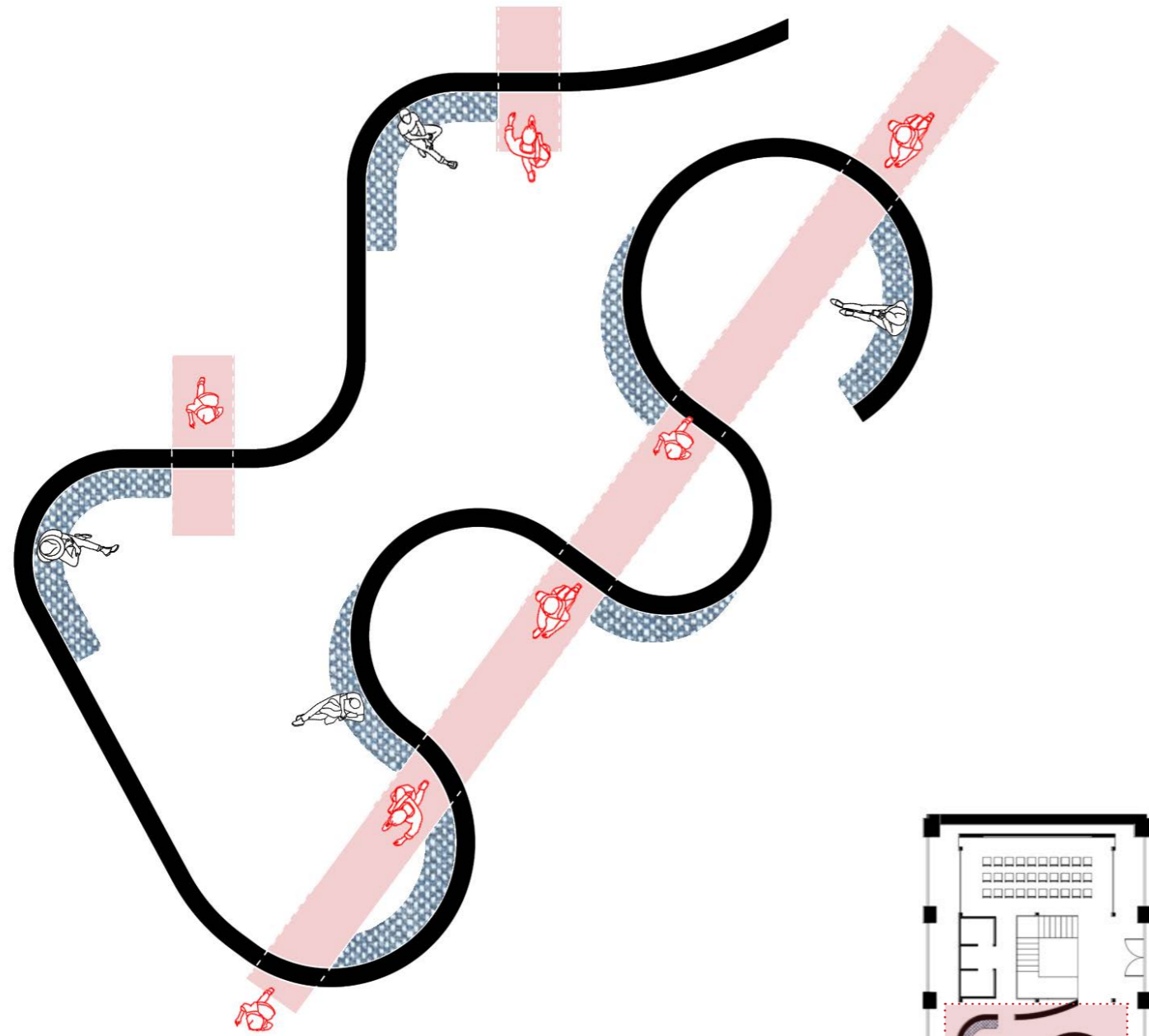


Joint Reference

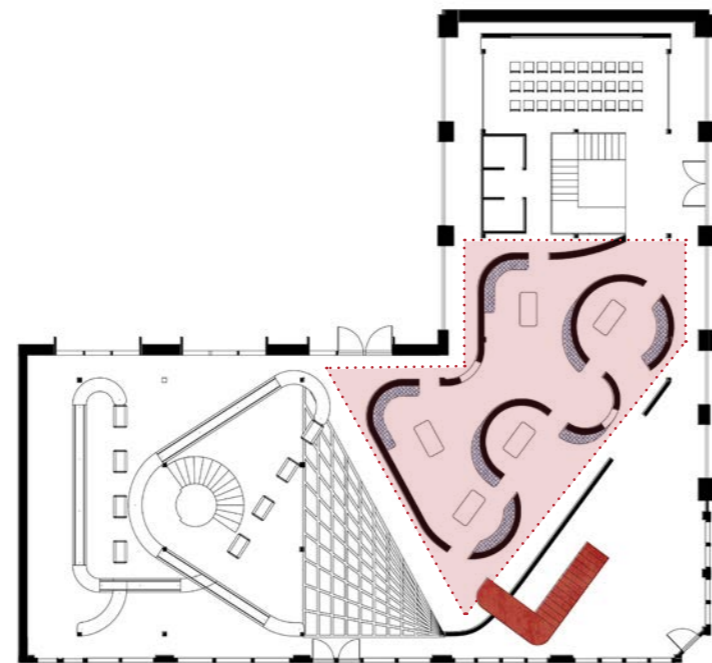
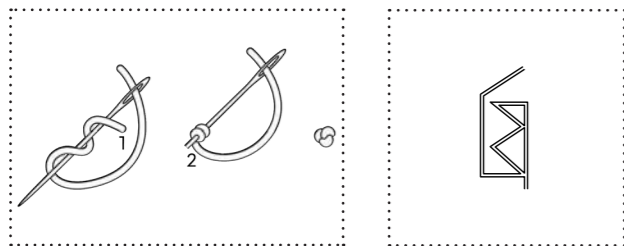


Exhibition Space

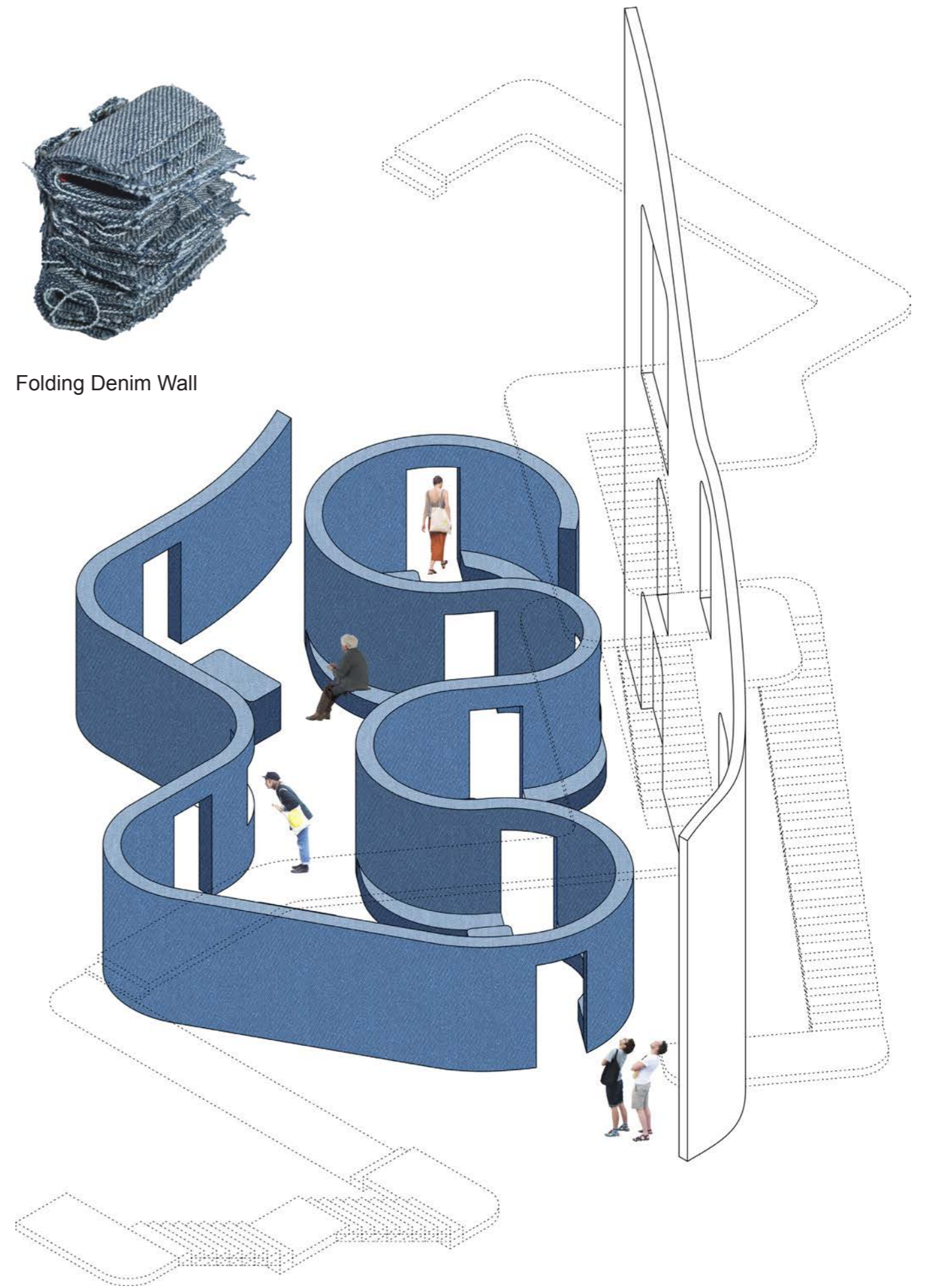
The embroidery of the French knot was used to generate the wall area of the exhibition space.



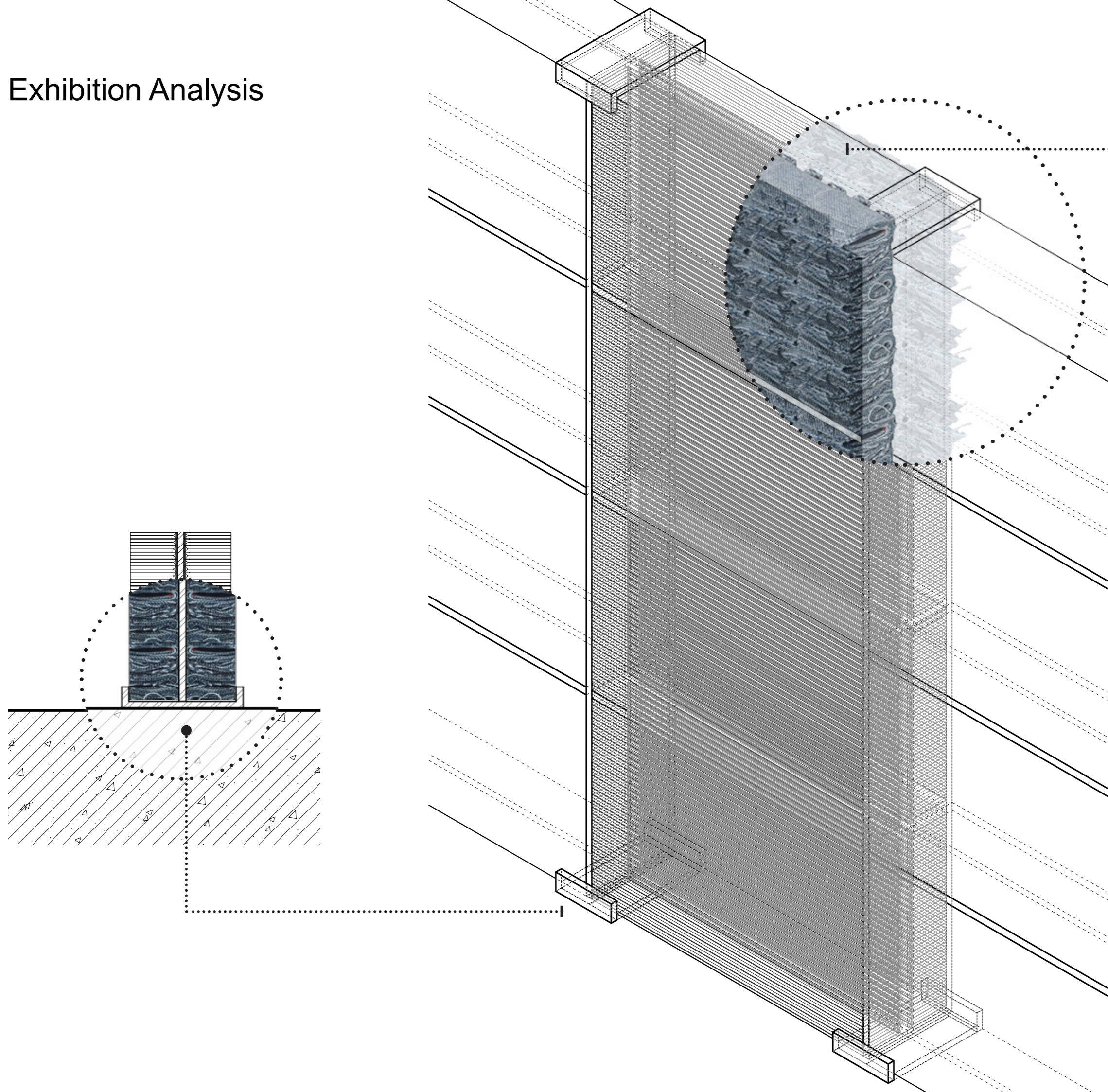
French Knot



Folding Denim Wall



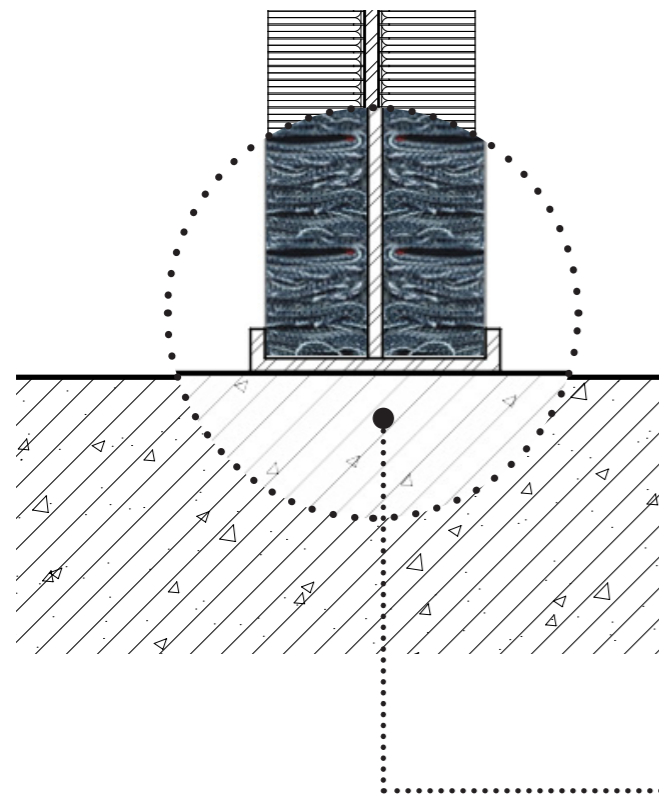
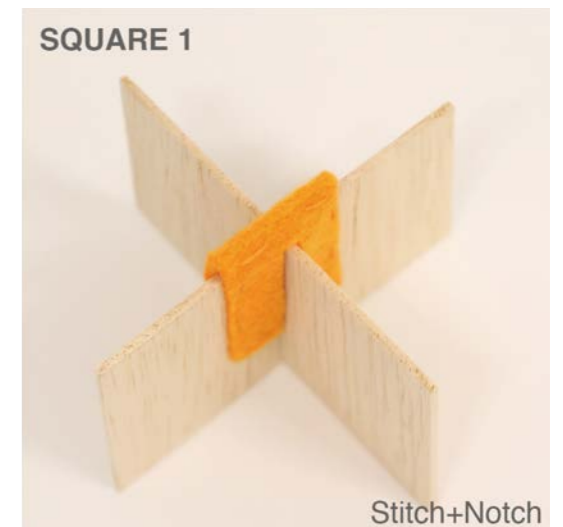
Exhibition Analysis



Material Sample



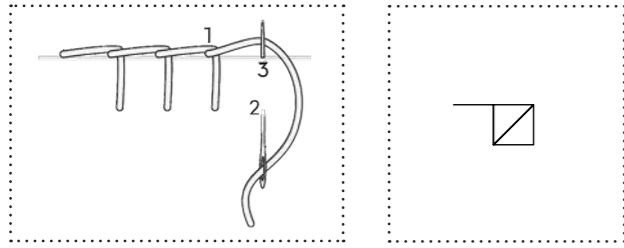
Joint Reference



Exhibition

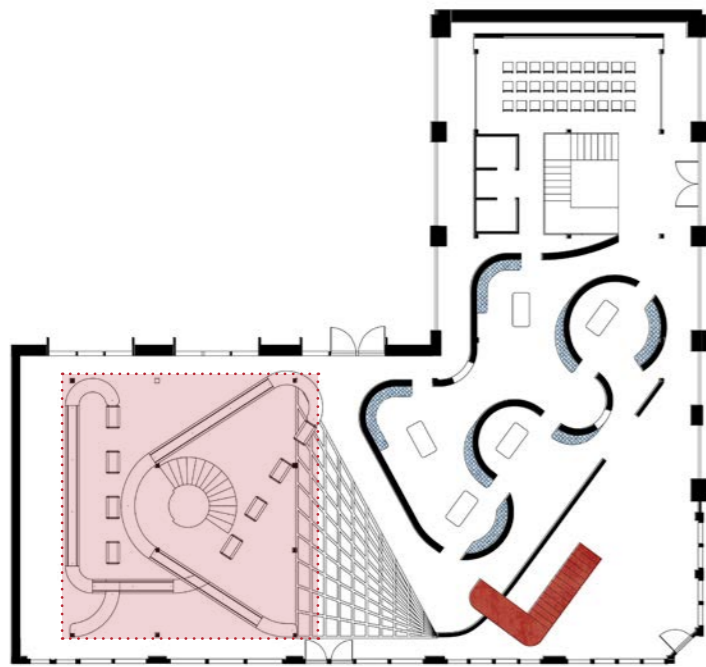
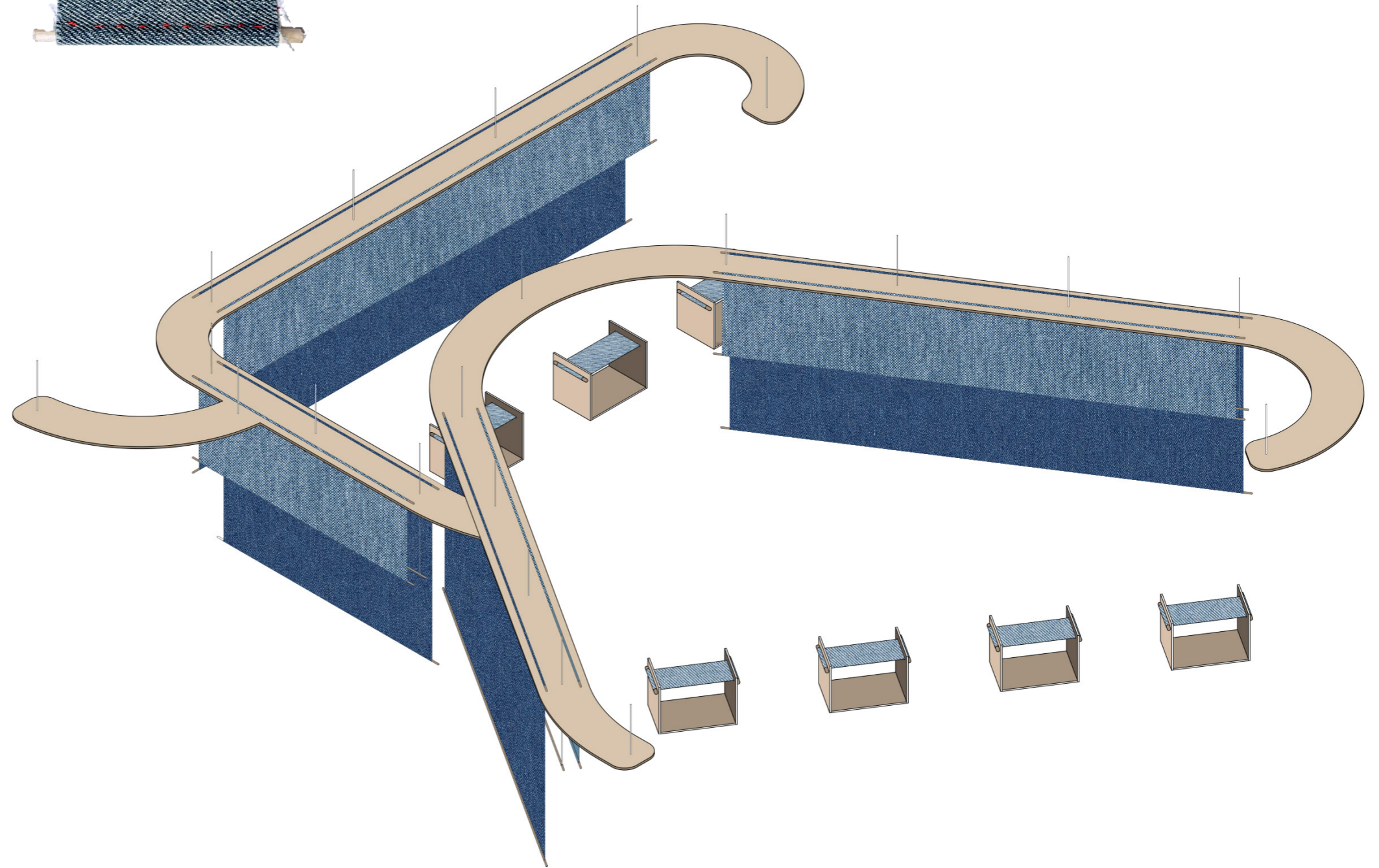
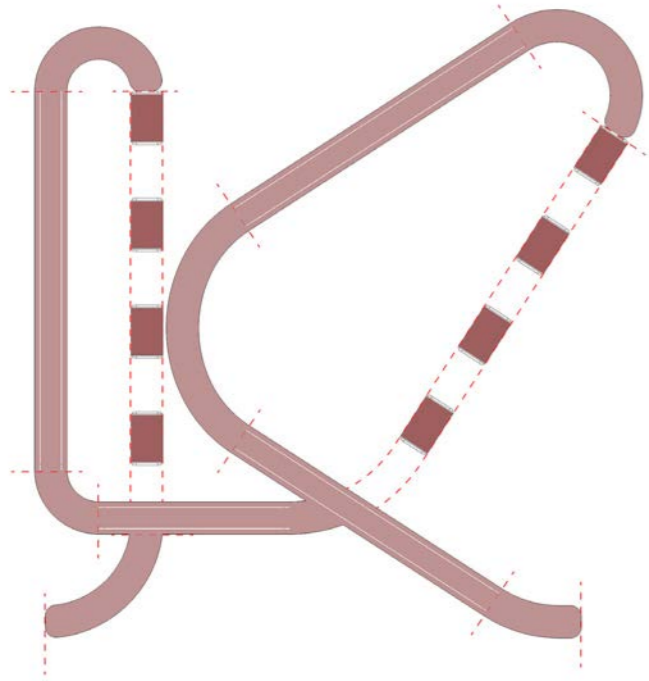


Blanket
Stitch



Retail Area

The use of fabric for spatial division and embroidery stitches generates the circulation of this retail area.



Retail

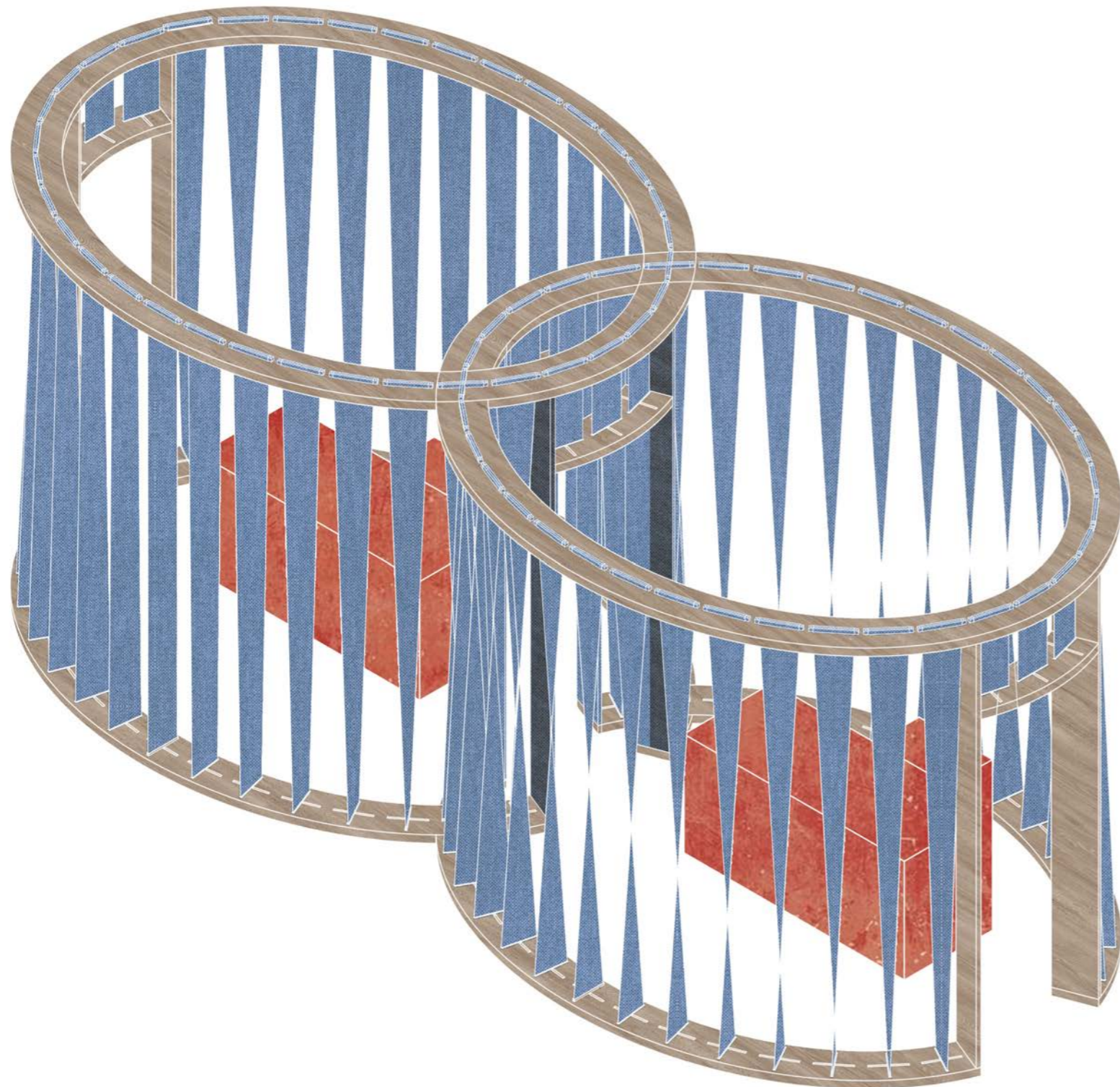


Retail

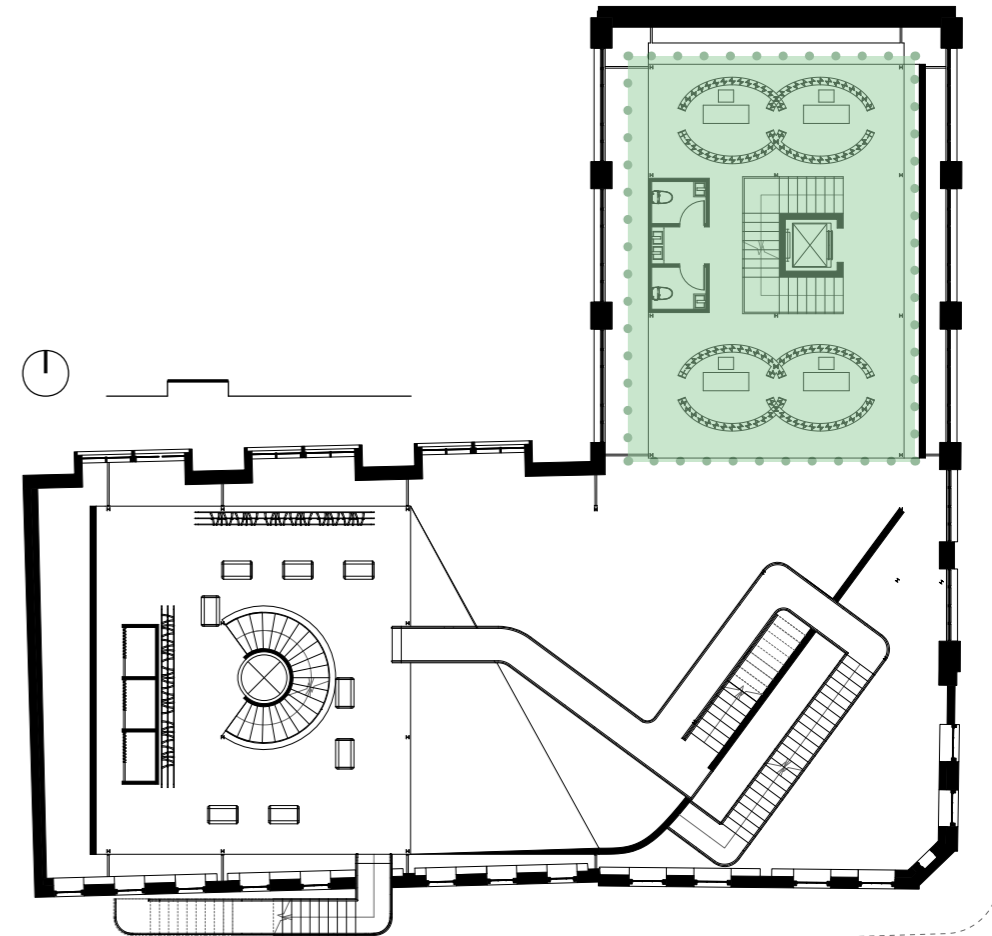
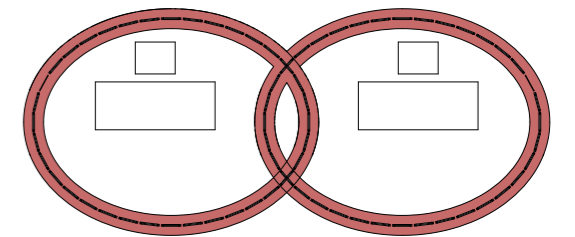
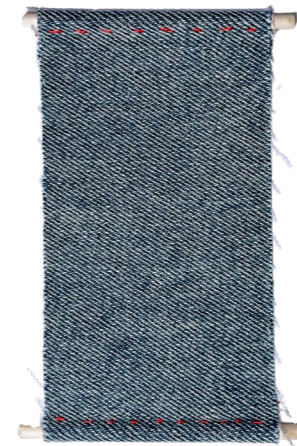
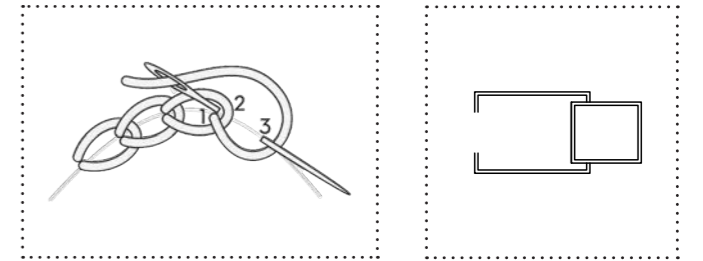


Workshop Analysis

The use of fabric for spatial division and embroidery stitches generates the circulation of this workshop area.



Chain
Stitch



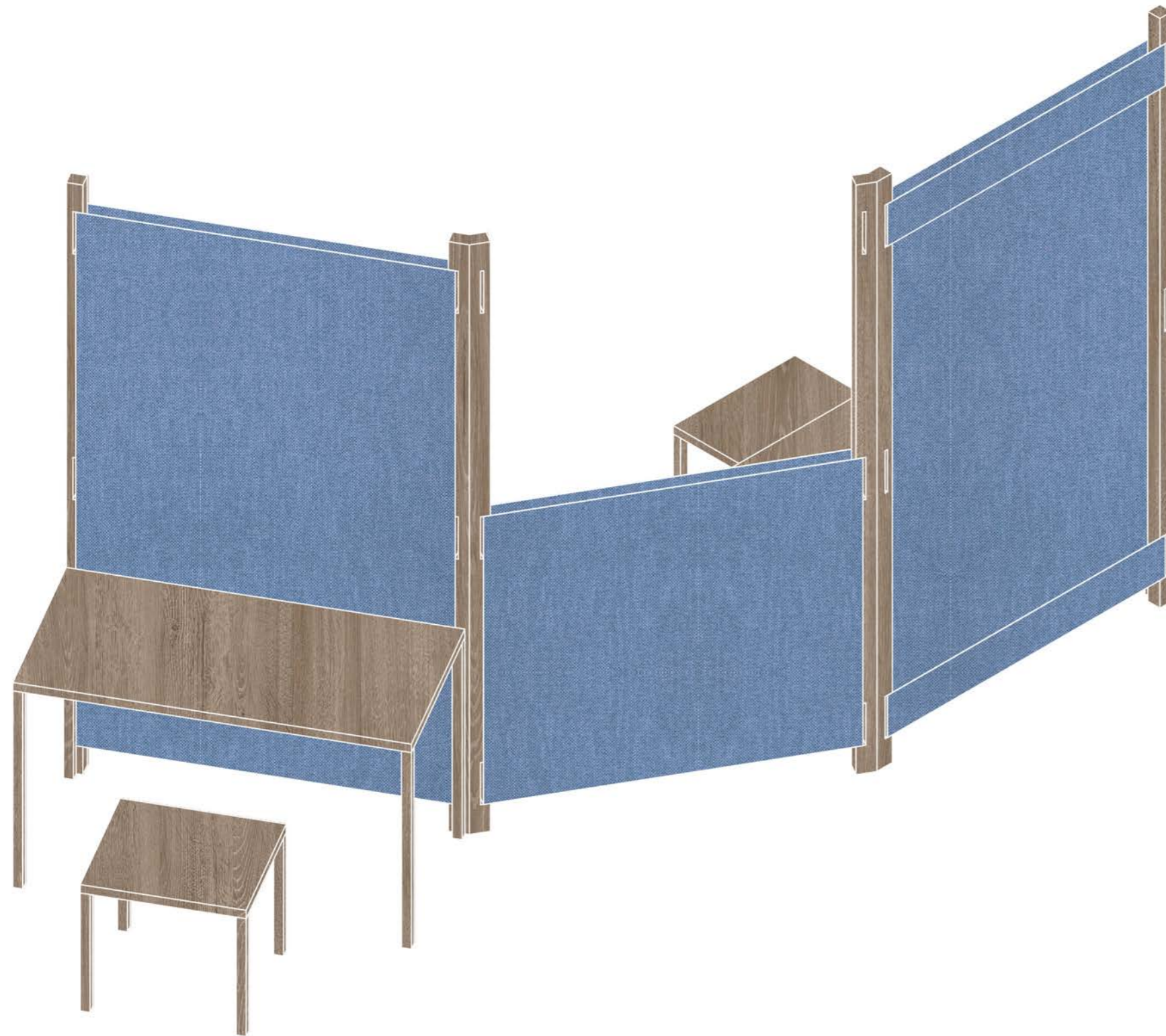


Workshop

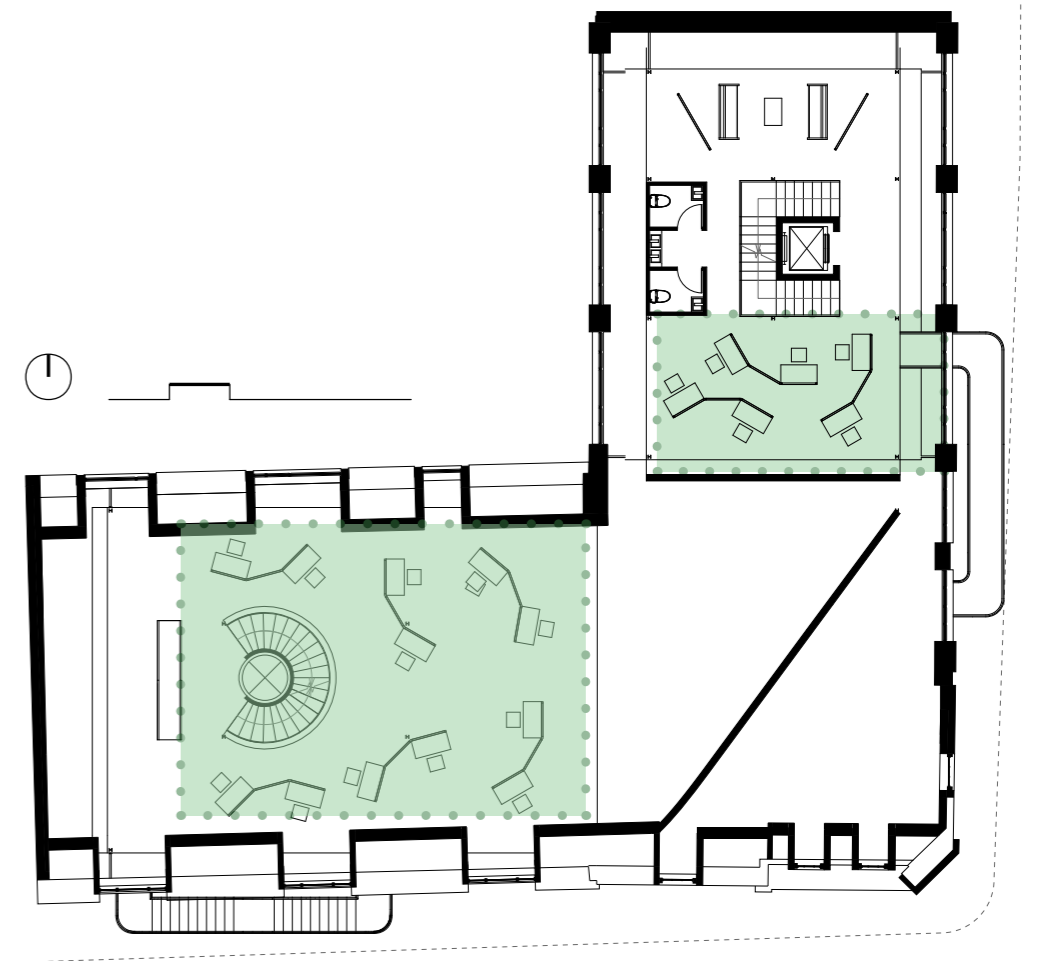
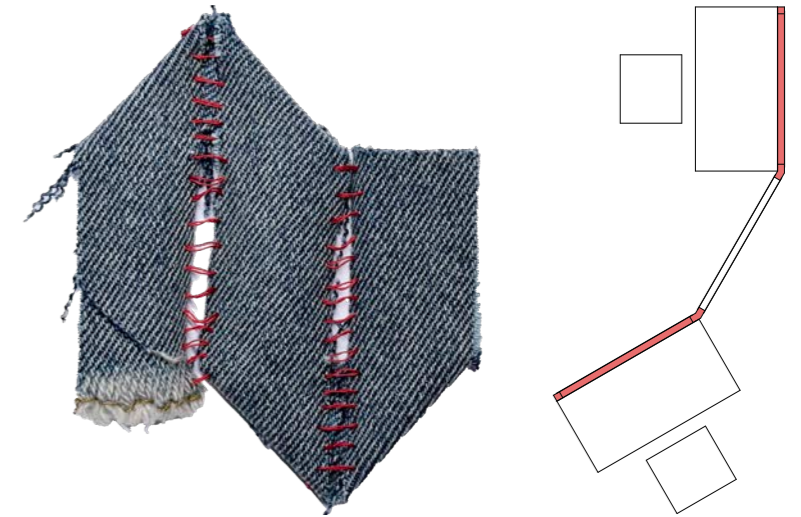
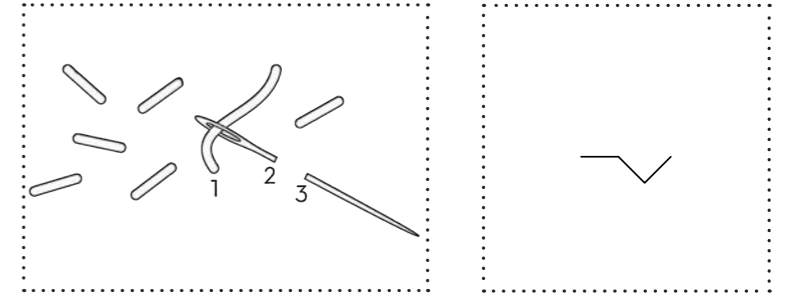


Office Analysis

The use of fabric for spatial division and embroidery stitches generates the circulation of this office area.



Seed
Stitch





Modeling

