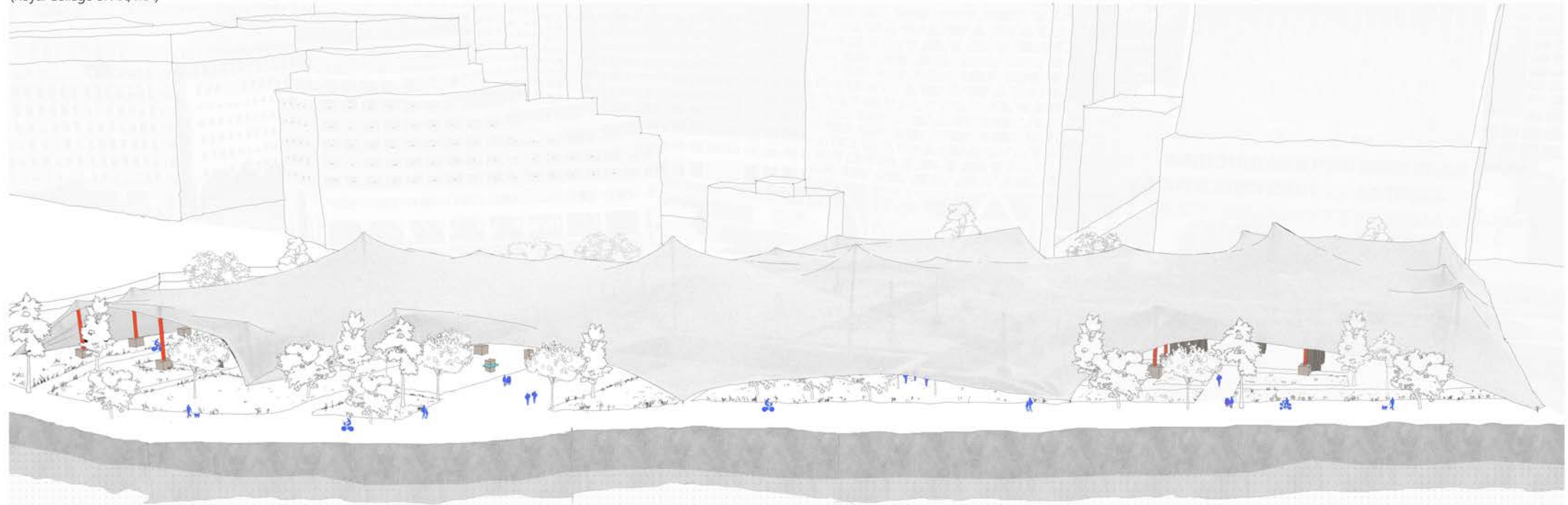


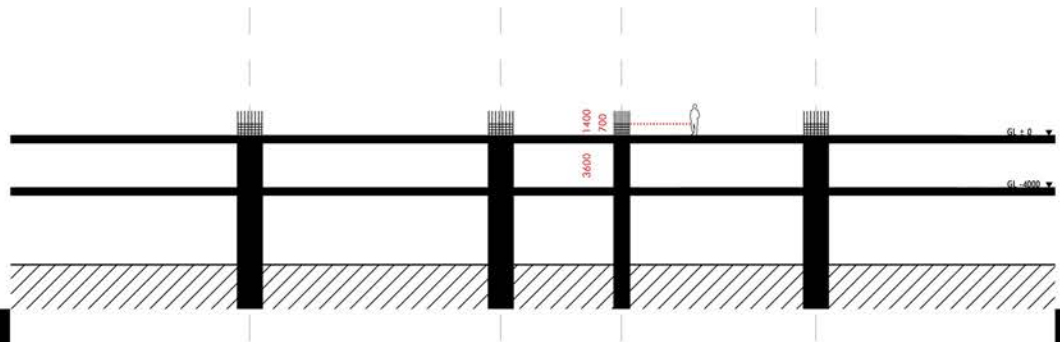
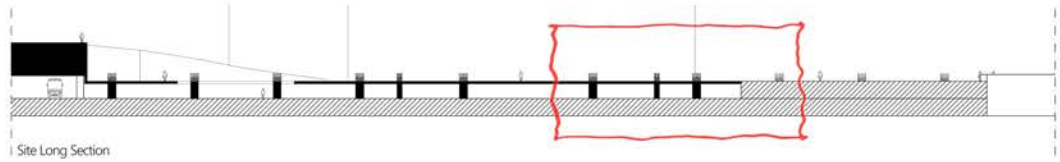
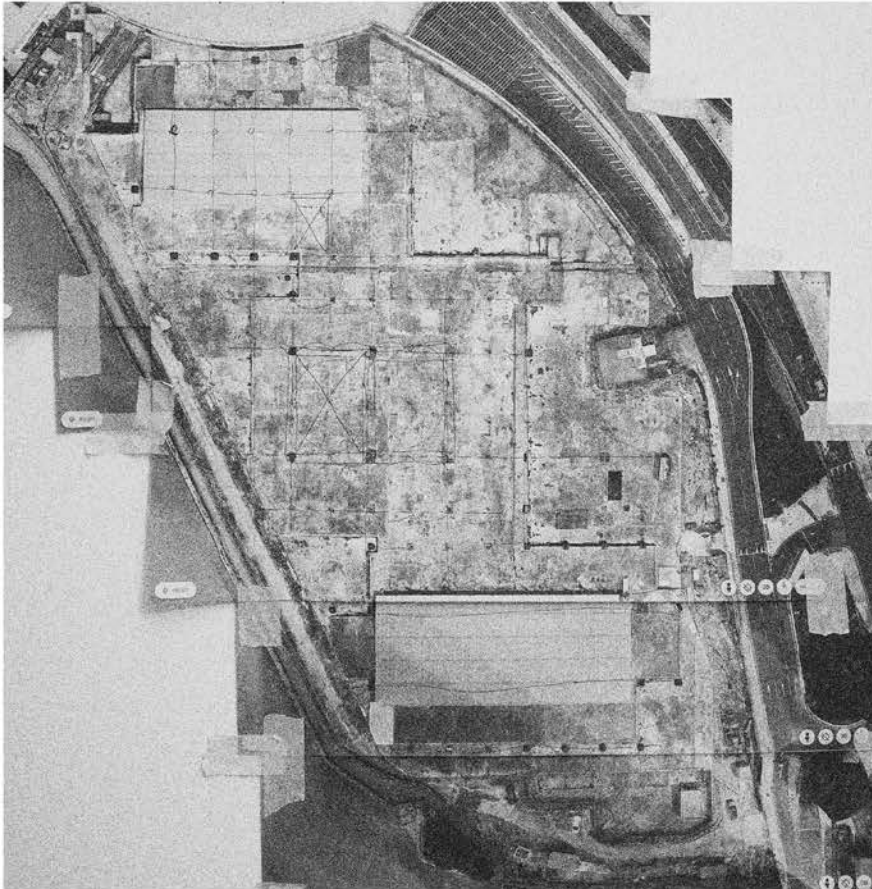
SECURED RETREAT

April — July 2025

SuperREUSE
Individual Project
(Royal College of Art, MA)



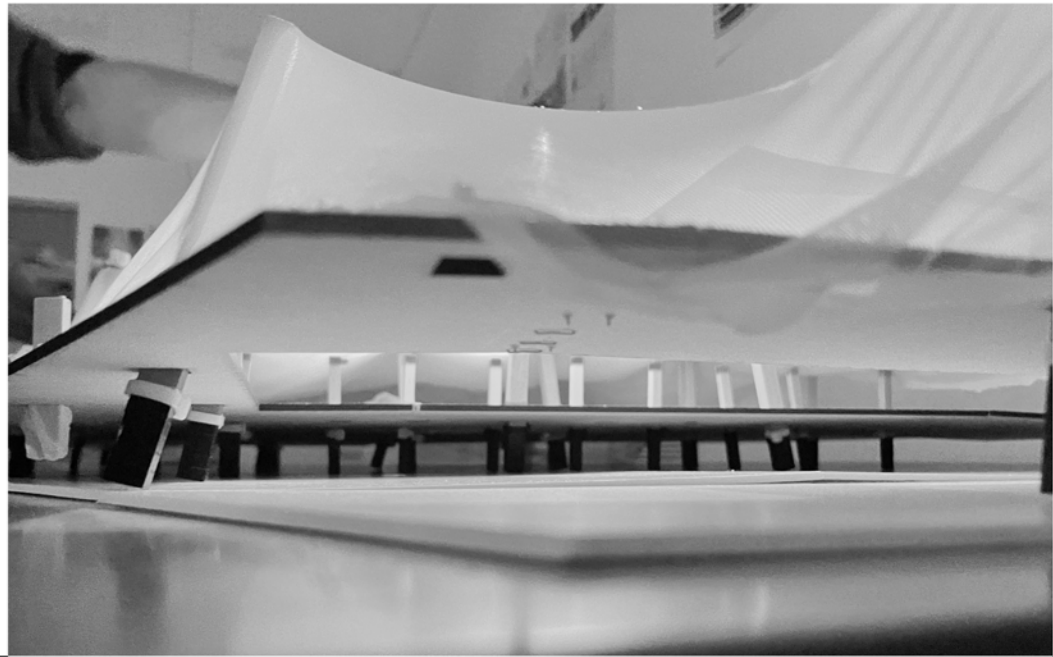
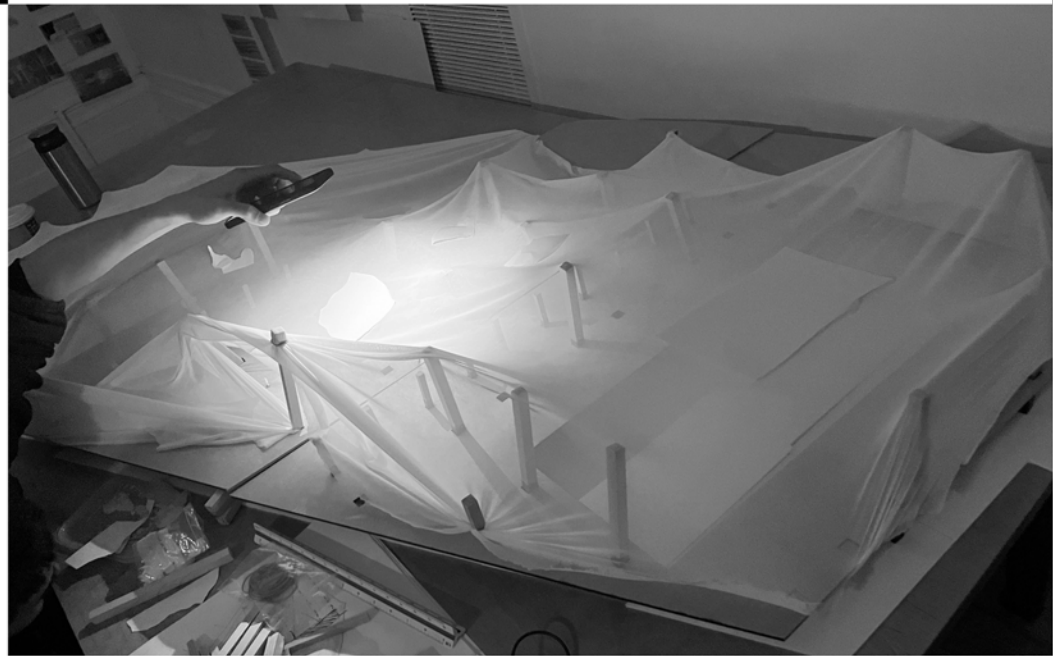
The SuperREUSE platform integrates academic research with applied design solutions, fostering a collaborative environment that redefines approaches to material reuse, sustainability, and cultural integration in urban settings. The platform encourages close looking at existing buildings, structures, and materials—recognizing them in their current state, tracing signs of change, and revealing embedded systems. Through an understanding of what remains, decisions are made about what to reuse, why, and how it can be reimagined.



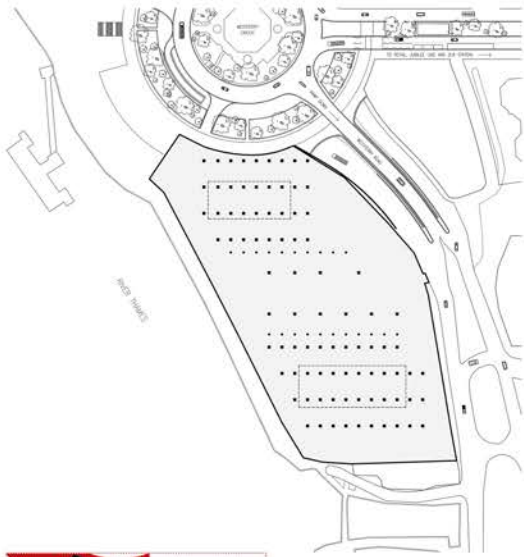


Once a bustling dockside, the site is located riverside at Westferry Circus, between Canary Wharf's business district and the Isle of Dogs' residential area. It has remained abandoned since 2009, frozen despite the daily flow of people around it.

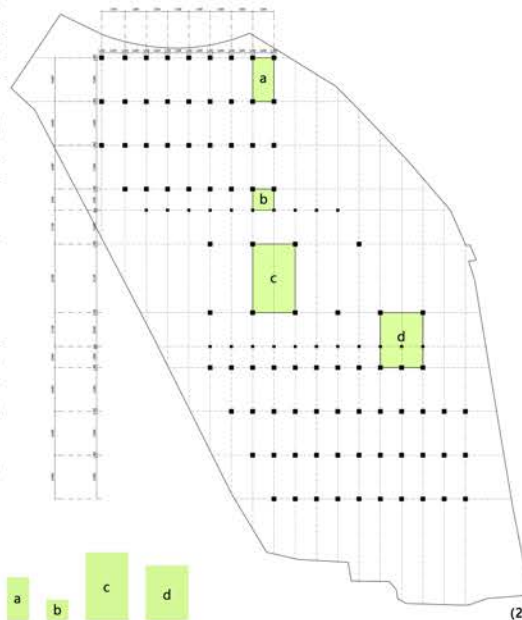
By studying the existing platform and pile foundation, the project proposes reusing the steel framework to install a lightweight tensile roof structure. In contrast to the surrounding high-rises, the roof creates a safe, public space that blends indoor and outdoor qualities.



Context



Platform / System



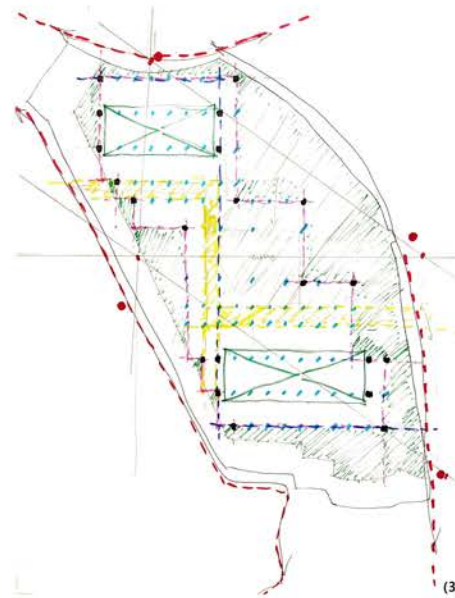
a	b	c	d
30	15	96	77
sqm			

(2)

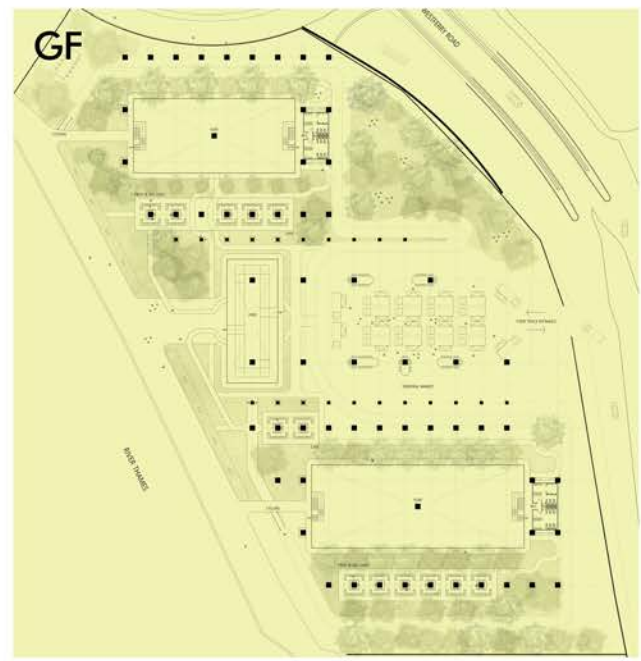
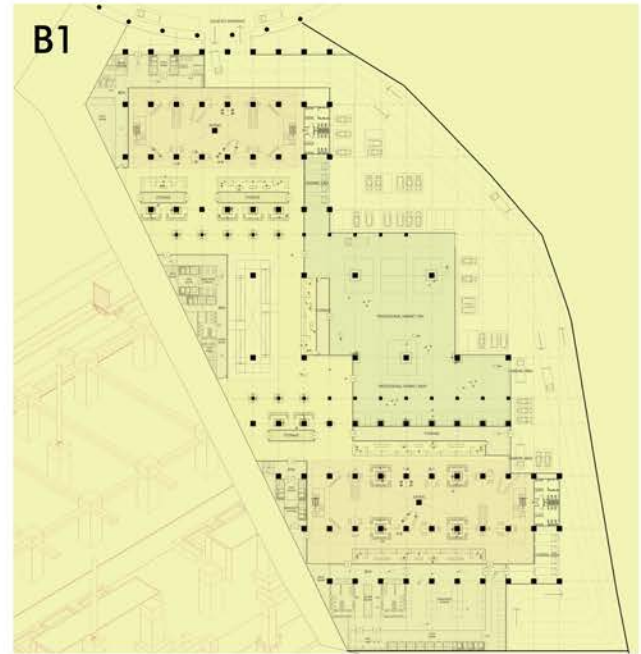


(1)

The Thames riverside promenade offers direct, continuous pedestrian access at ground level, contrasting with the stillness of the site. To the right, a major road connects to the Westfery Circus roundabout, providing easy vehicle access. To the south, a small pedestrian bridge links the site to the Isle of Dogs and is used daily by residents. The remaining steel structure and visible voids reveal access points, exposing the site's grid, system, modularity, and scale—suggesting an unfinished framework likely intended for a high-rise building.

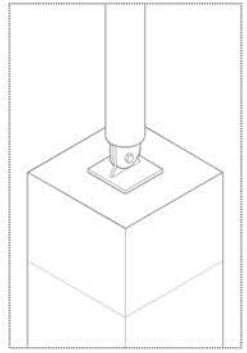
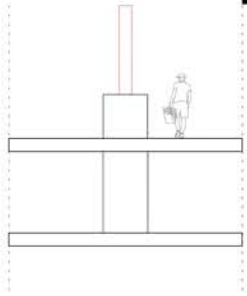


(3)



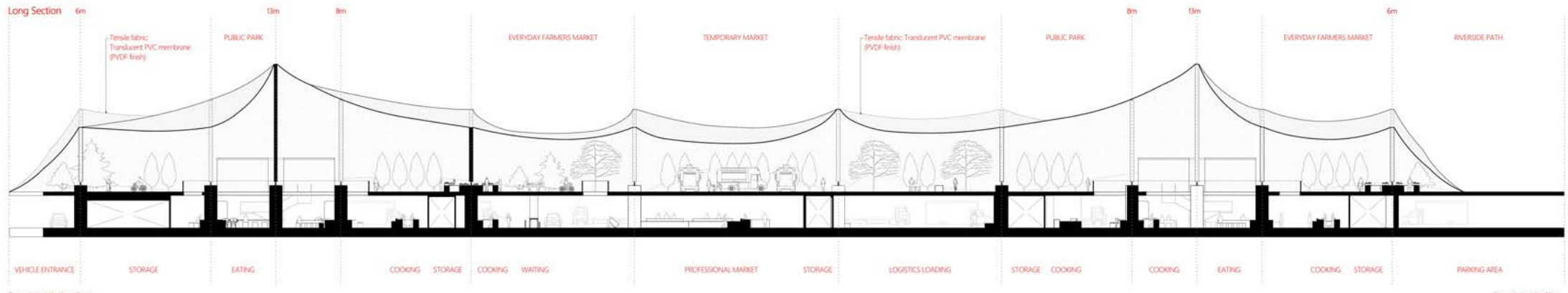
With Canary Wharf expected to become more residential in the future, the project envisions the site as a point of community connection, bridging old and new residents.

The existing columns divide spaces for markets of various sizes, seating, eating, cooking, and other activities, forming a framework that supports storage and a public park encouraging gathering and everyday use.





Physical Model 1:100



Towards the Westlerry Cross

Towards the Isle of Dogs

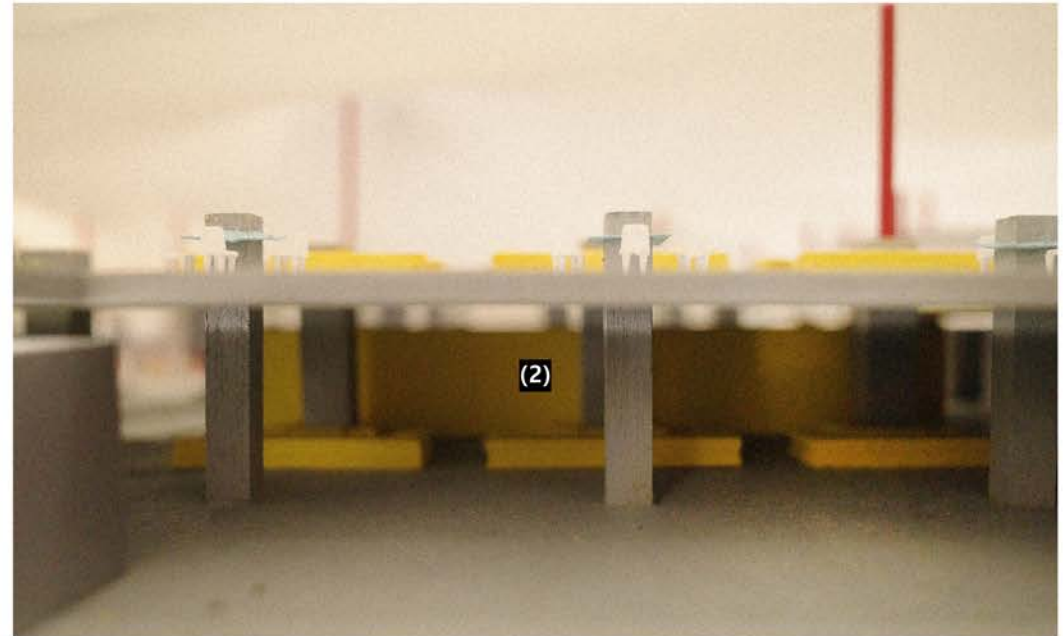
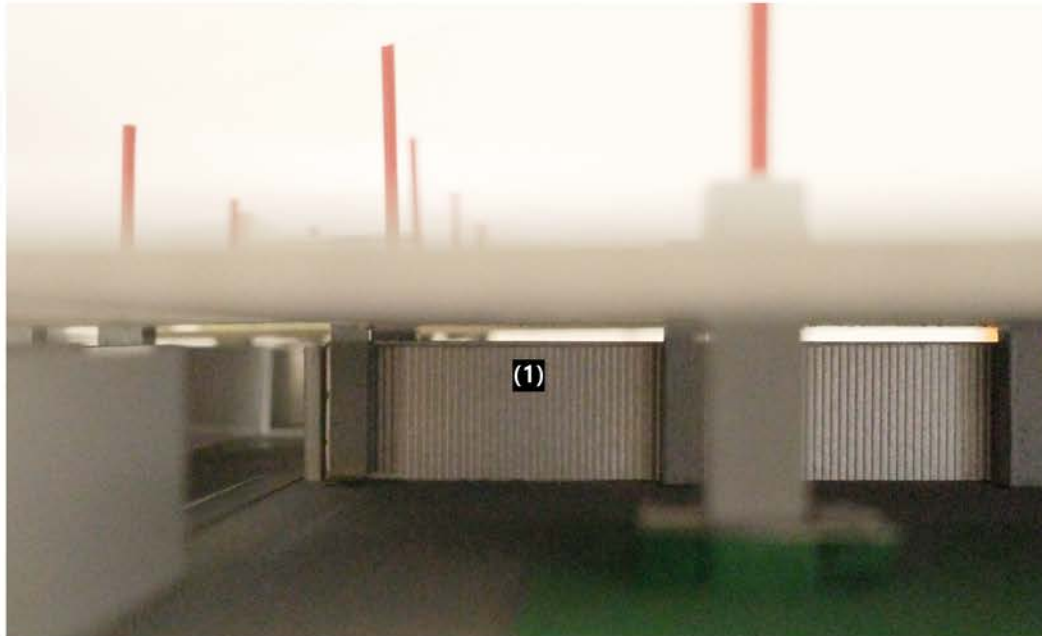
- (1) Eating
- (2) Cooking and preparation
- (3) Fresh food market
- (4) Daily farmers' market

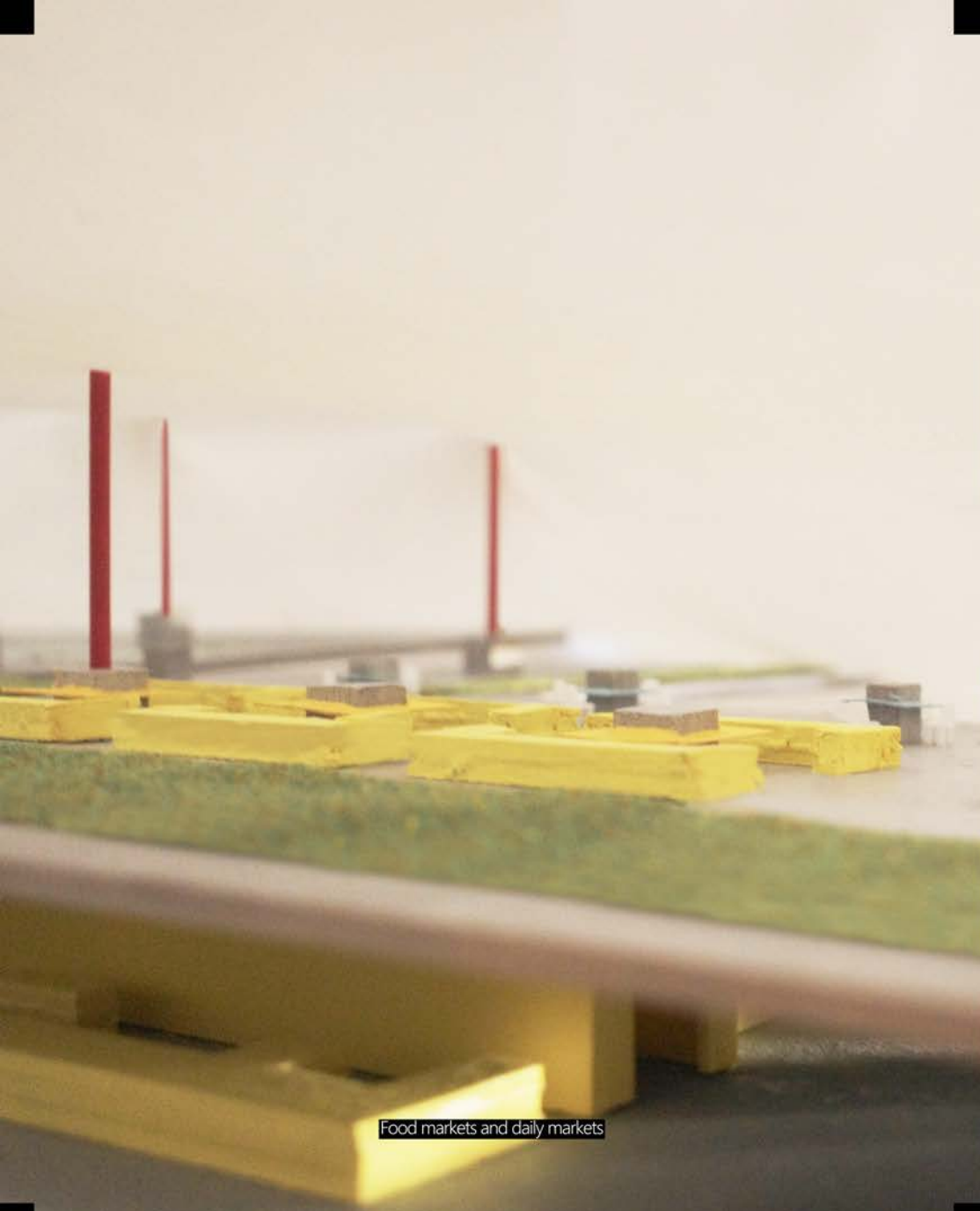
In this photo, the ground-level platform has been lifted for exhibition purposes and differs from its original height.



The existing steel structure, originally part of a pile foundation, is repurposed to support a roof that provides a public space for gathering and connection. It also helps define and organize the market layout according to appropriate scales, introducing order and system to the previously messy environment. Additionally, the structure functions at a human scale, offering opportunities for seating and eating. This idea seeks to transform the remaining framework into furniture elements.

- (1) Basement fish market and logistics access
- (2) Fresh food market through the void
- (3) Ground-level public park with daily markets

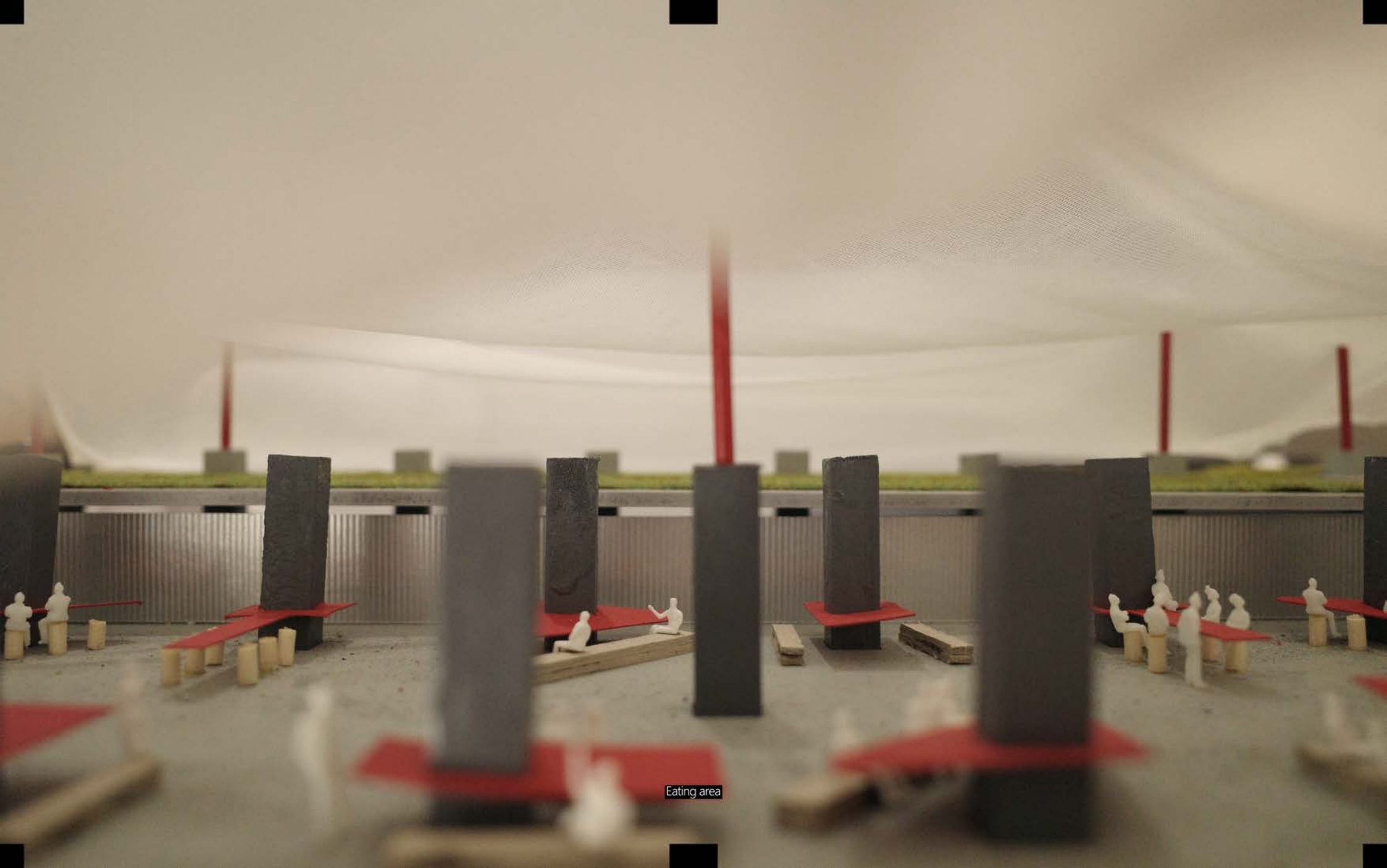




Food markets and daily markets



A public park with daily markets



Eating area

