

Thesis Project Portfolio

Ying Yu (Cindy)

June 2024

Royal College of Art | Interior Design | superMATTER

Design Strategy

Bridging Legacies

Thesis Question

Materiality

Material Pallet

AI Exploration

Space Matrix

Layout Plans

Perspective Section

Interactive Panoramic

Visuals

Models

Design Strategy

Bridging Legacies

Thesis Question

Materiality

Material Palette

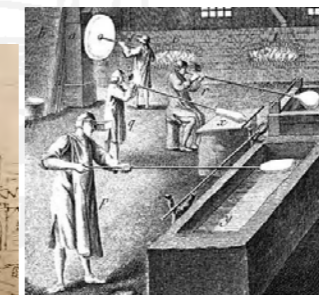
AI Exploration

Bridging Legacies

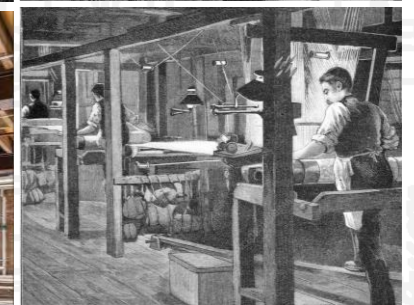
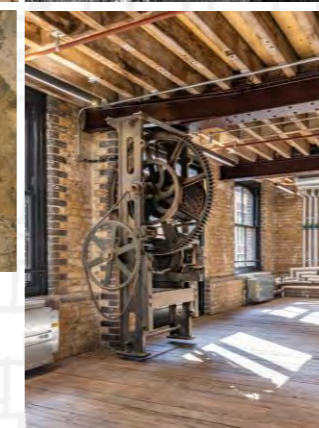
To celebrate
Local Heroes
who have contributed and served as *Bridges* in
history and culture
in Norton Folgate.



Sir Isaac Tillard



St Mary Spital cemetery, 1998



N & C Glass,
established in 1875

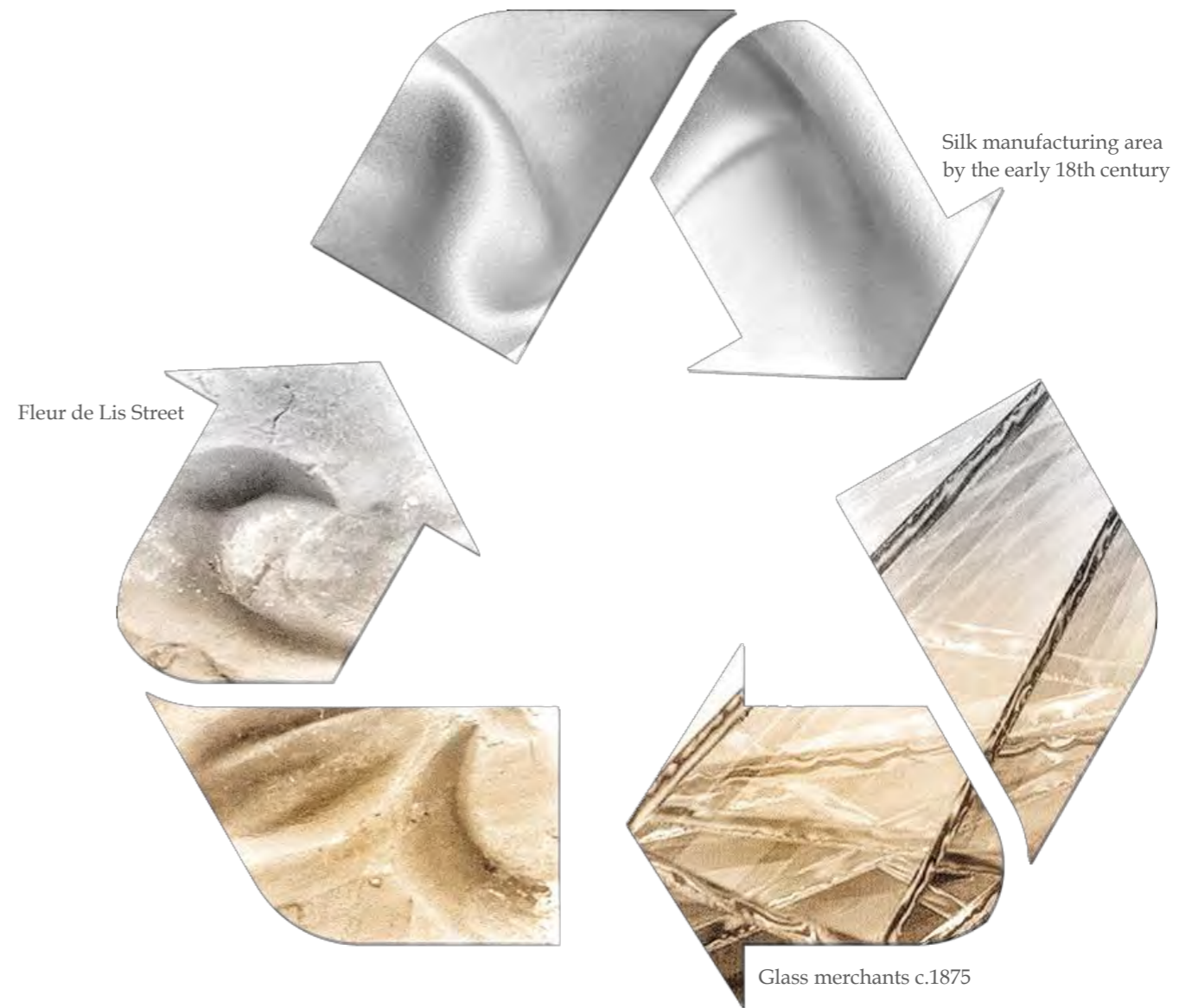


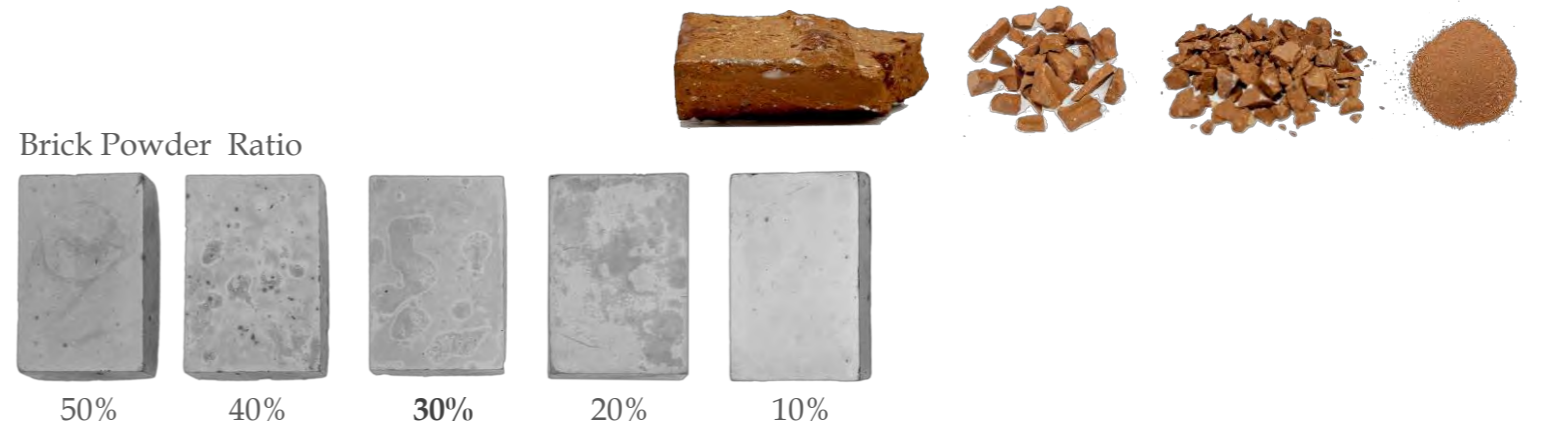
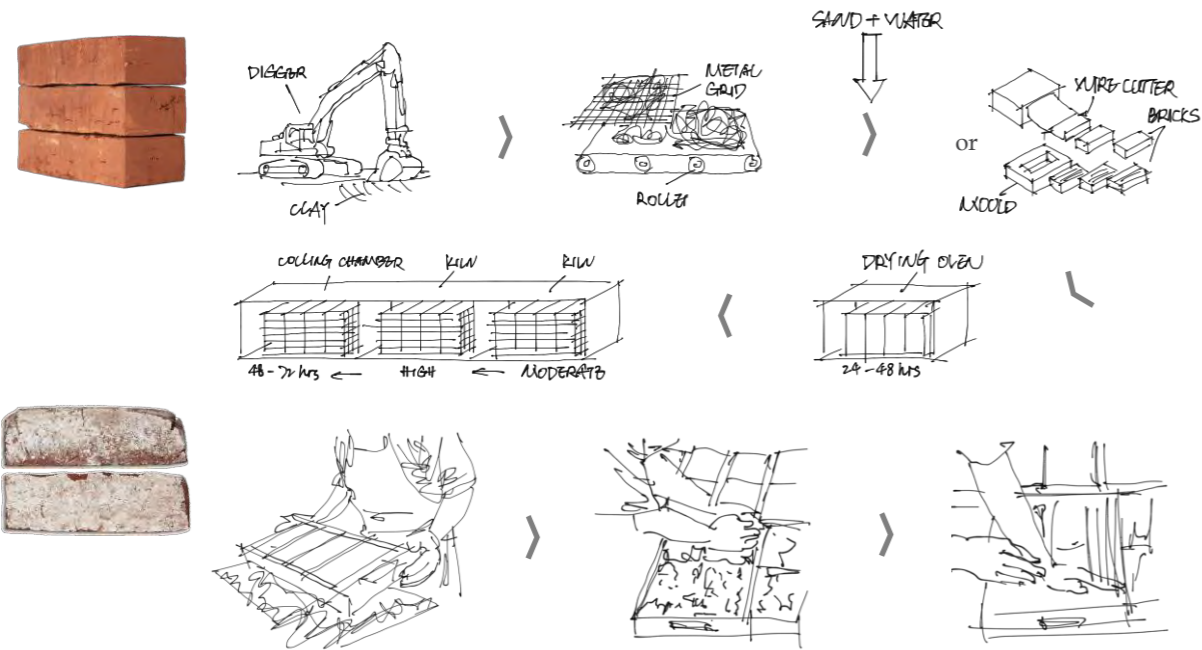
Anna Maria Garthwaite
(1688-1763)

How do materials in a museum
form the Boundary
between Life and Death?



*In my project,
materials in the museum define
the boundary between life and death
through
the mortality and recycle
of materials.*





Green Crete

Mixing cement with old materials - bricks, glass and textile to create a new material with an old second life material.

Prompts
Cycles of Materials
Lower Carbon
Circular Economy

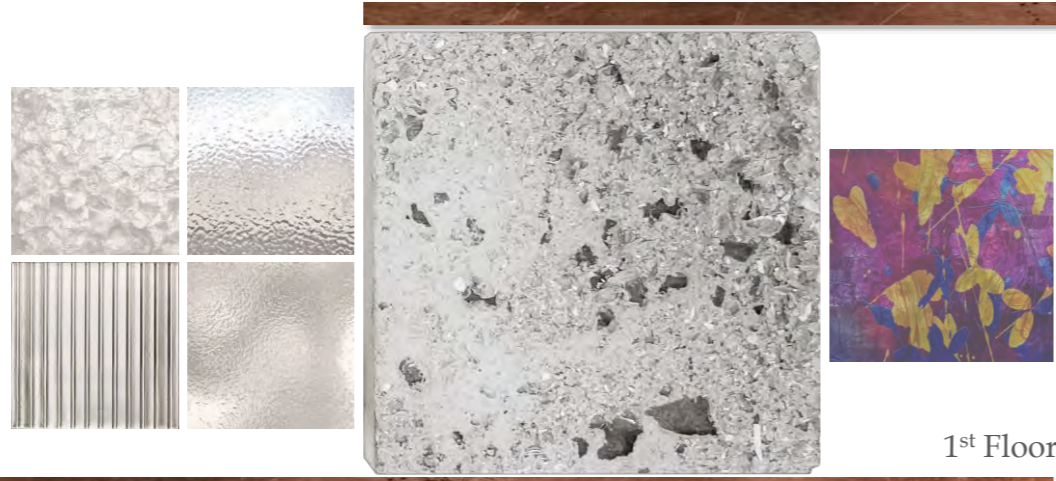


Totem

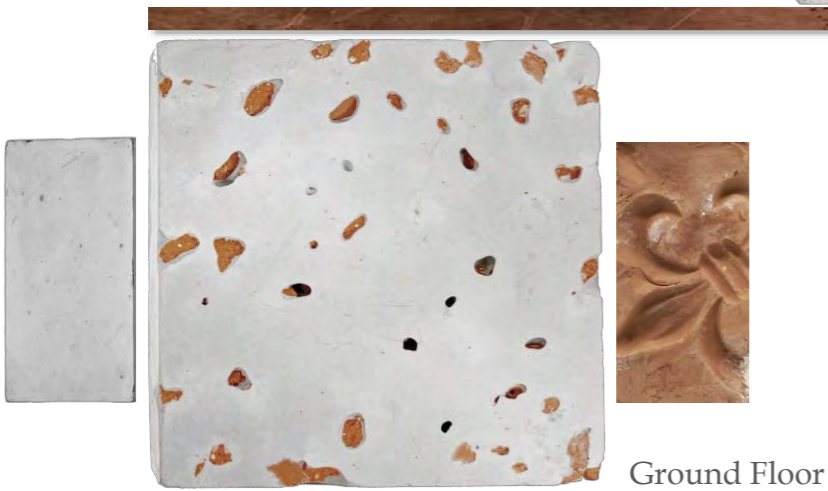
Cultural tribute was embedded into the design through the Fleur de Lis motif, imprinted on the clay brick as a nod to Sir Isaac Tillard's heritage.



2nd Floor



1st Floor



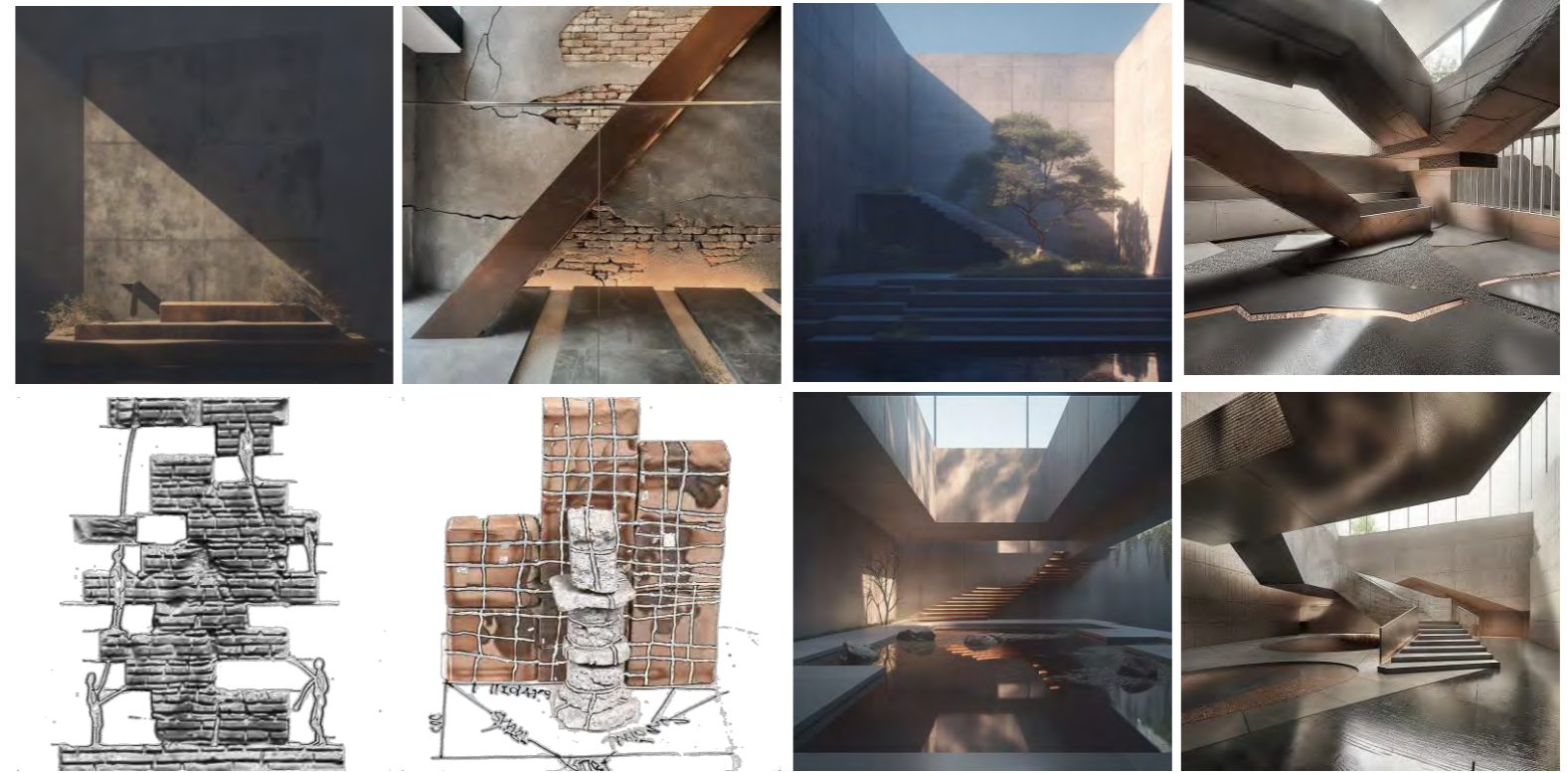
Ground Floor



Material Palette

Design Strategy

Panoramic shot of a contemporary memorial, with ceiling and nature light, bronze staircase, Staggered floor slabs, concrete wall, brick and bronze, large space, super detail, realistic



Space Matrix

Layout Plans

Perspective Section

Interactive Panoramic

Visuals

Models

Installation art and applied materials that resonate with the thematic materials of each floor, to reflect the area's legacy and industry, enriches the visitor experience and perception.

Display system design

- 1 Reception
- 2 Installation Art
- 3 Exhibition Hall / Stage
- 4 Lounge Area
- 5 Restroom
- 6 Cinema
- 7 Display Area
- 8 Installation Art
- 9 Display Area



Layout Plan - Ground Floor
Space Matrix

- 1 Lounge Area
- 2 Installation Art
- 3 Lounge Area
- 4 Library / Cabinets Area
- 5 Installation Art
- 6 Lounge Area



BLOSSOM STREET

FOLGATE STREET

Layout Plan – 1st Floor
Space Matrix

- 1 Installation Art
- 2 Lounge Area
- 3 Multipurpose Area
- 4 Installation Art
- 5 Lounge Area

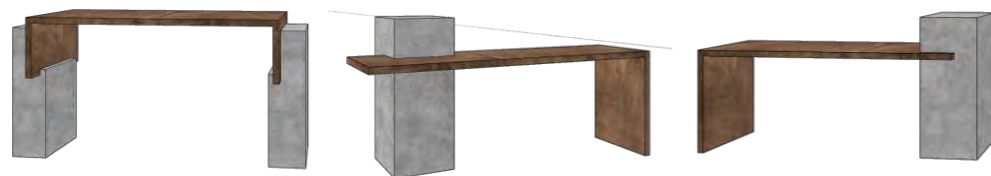
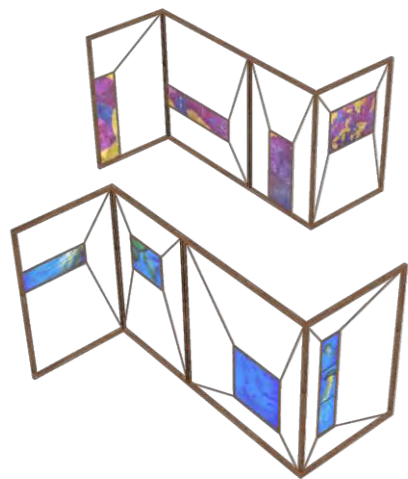


BLOSSOM STREET

FOLGATE STREET

Layout Plan - 2nd Floor
Space Matrix

Display System



Perspective Section
Space Matrix

<https://vr.justeasy.cn/view/u17e185v017315o0-1718551126.html>



Ground Floor

Reception
Lounge area
Exhibition Hall / Stage

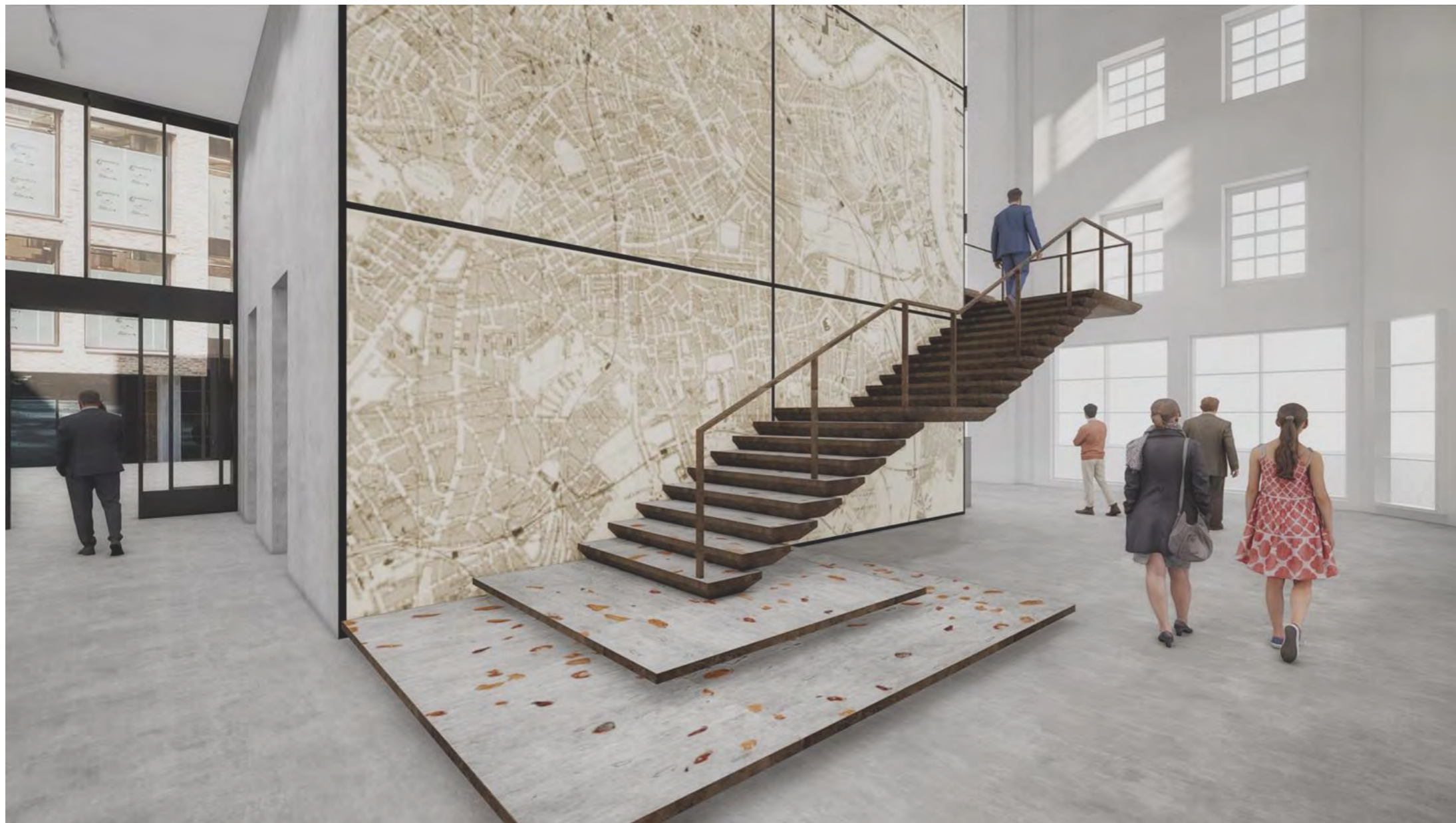




Ground Floor

- Reception
- Lounge area
- Exhibition Hall / Stage





Ground Floor

Core - Screen
Staircase



Visuals
Space Matrix

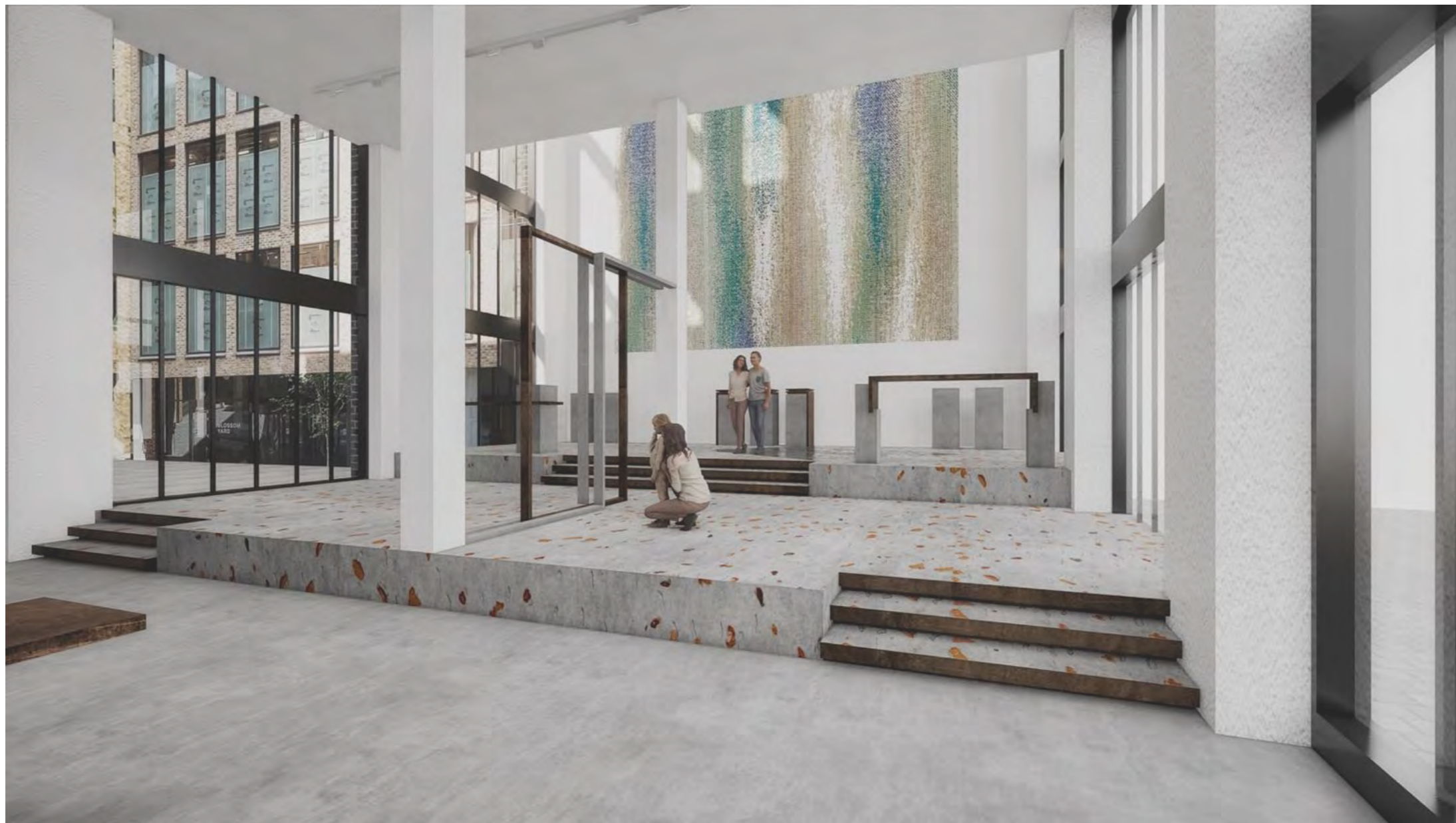


Ground Floor

Core - Screen & Yarns
Staircase



Visuals - Ground Floor
Space Matrix



Ground Floor

Display Area



Visuals
Space Matrix



1st Floor

Display Area



Visuals
Space Matrix



1st Floor

Display Area / Lounge Area



Visuals
Space Matrix



1st Floor

Display Area



Visuals
Space Matrix



1st Floor

Display Area

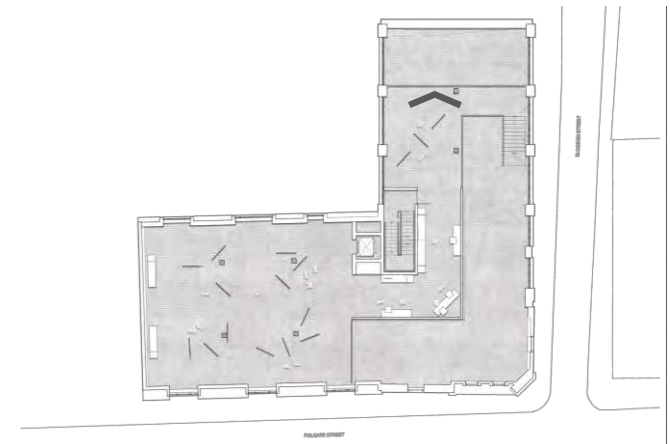


Visuals
Space Matrix



2nd Floor

Display Area



Visuals
Space Matrix



2nd Floor

Display Area / Lounge Acre

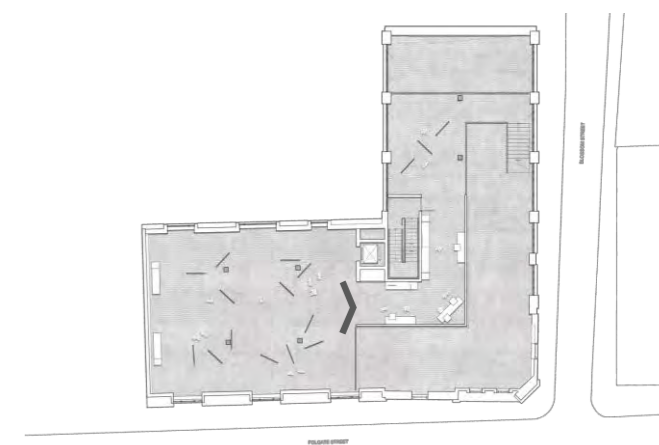


Visuals
Space Matrix



2nd Floor

Display Area



Visuals
Space Matrix

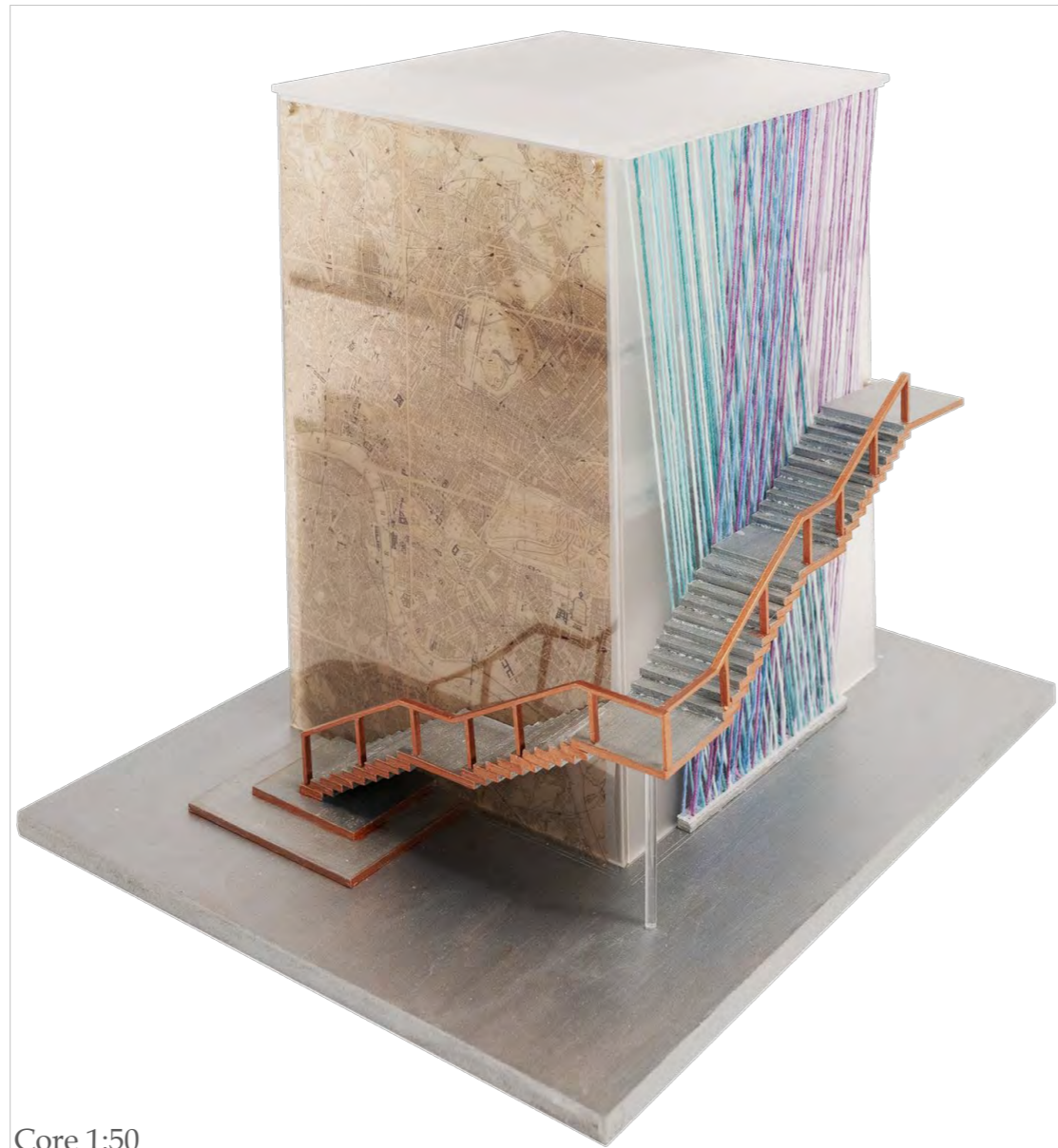
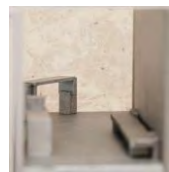


2nd Floor

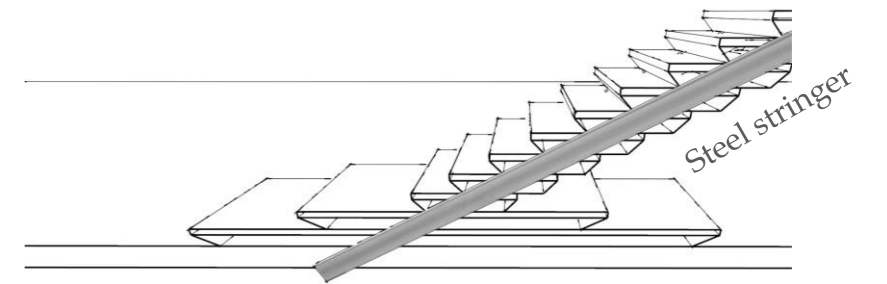
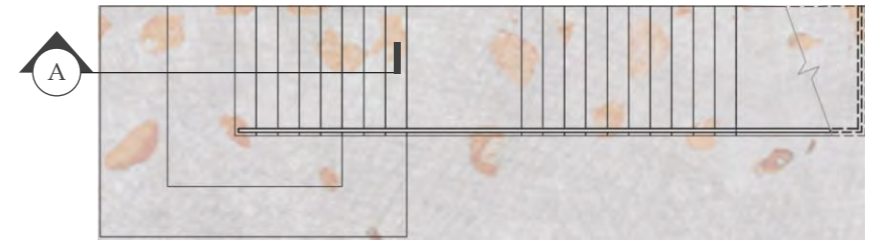
Display Area



Visuals
Space Matrix



Core 1:50



(A) Section



Steps 1:5

Thanks