

PORTFOLIO

PLATFORM_REUSE

Yadan Guo (Holiday)

This jounery is about

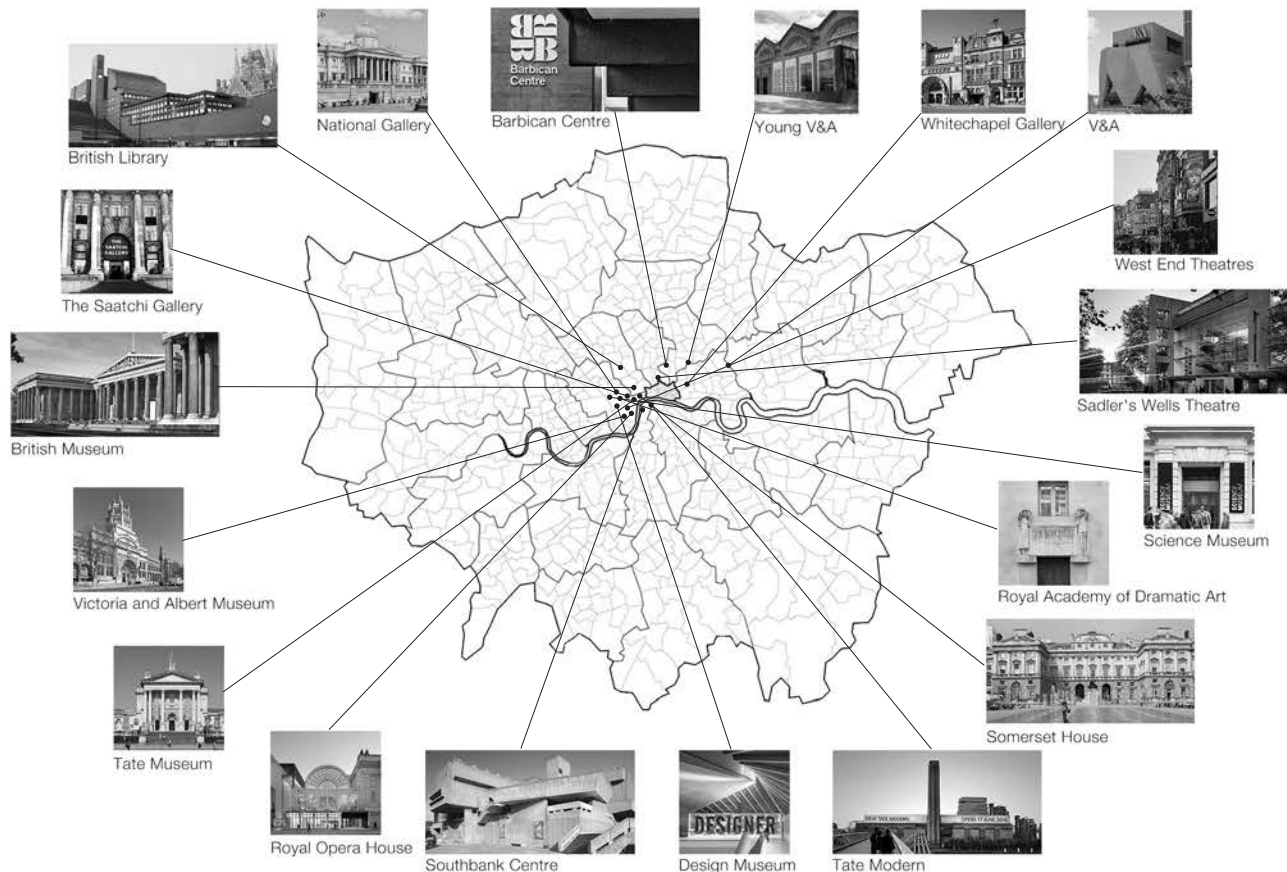
Art / Cultural / Creativity

An architectural wireframe drawing of a large, multi-story building. The drawing shows the structural elements, including the roof trusses, columns, and walls. The building has a classical facade with arched windows and a sign that reads "9 ARTS". The text "Welcome to 9 ARTS" is overlaid in the center of the image.

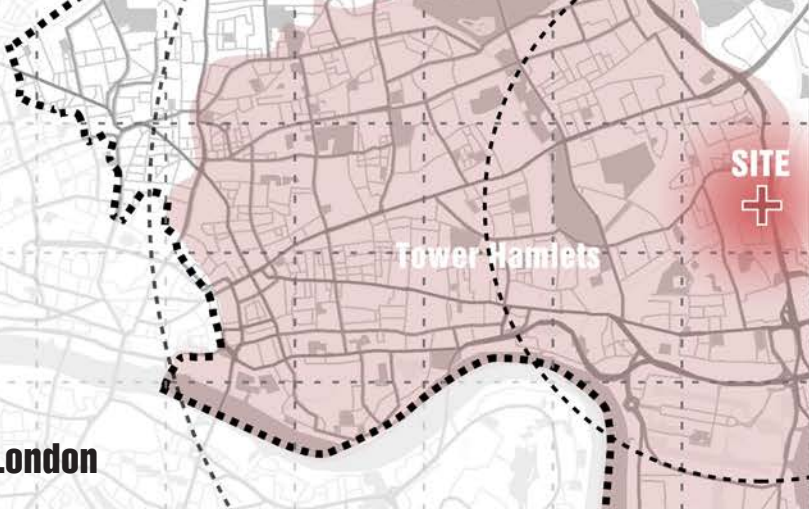
Welcome to 9 ARTS

Art center in London

London, as a global creative capital and one of the top five gaming markets worldwide, boasts a vast number of art and cultural centers that encompass nearly all fields of art.



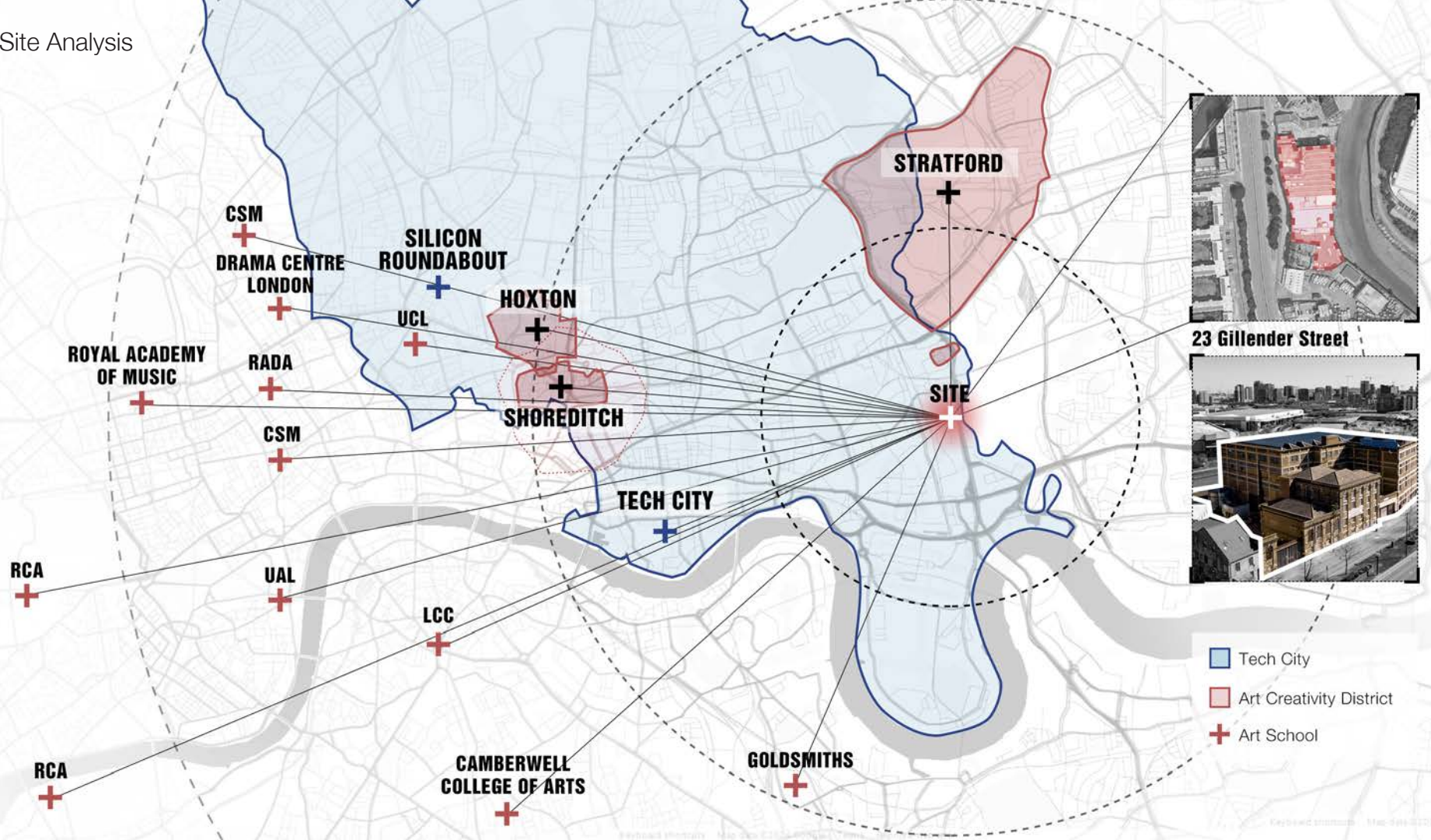
Site Analysis



Cultural Creations Born In East London

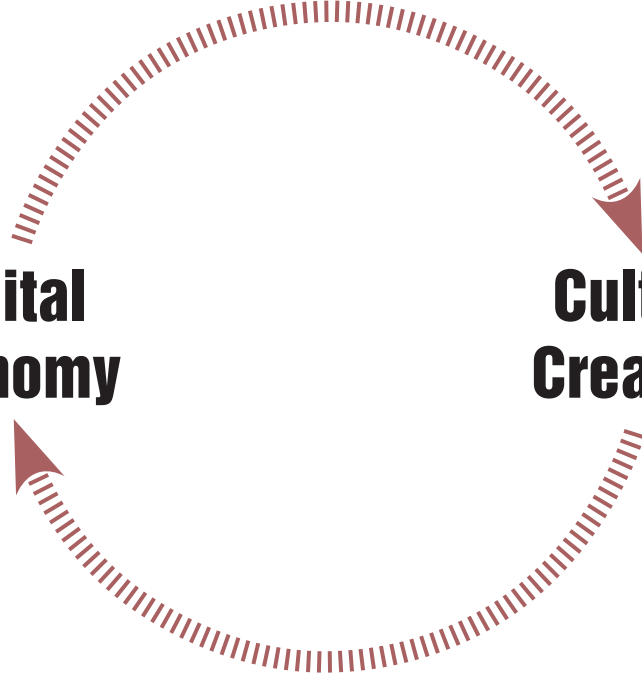
The diverse cultural environment of East London has provided many artists with abundant creative inspiration.

Site Analysis



**Digital
Economy**

**Cultural
Creativity**

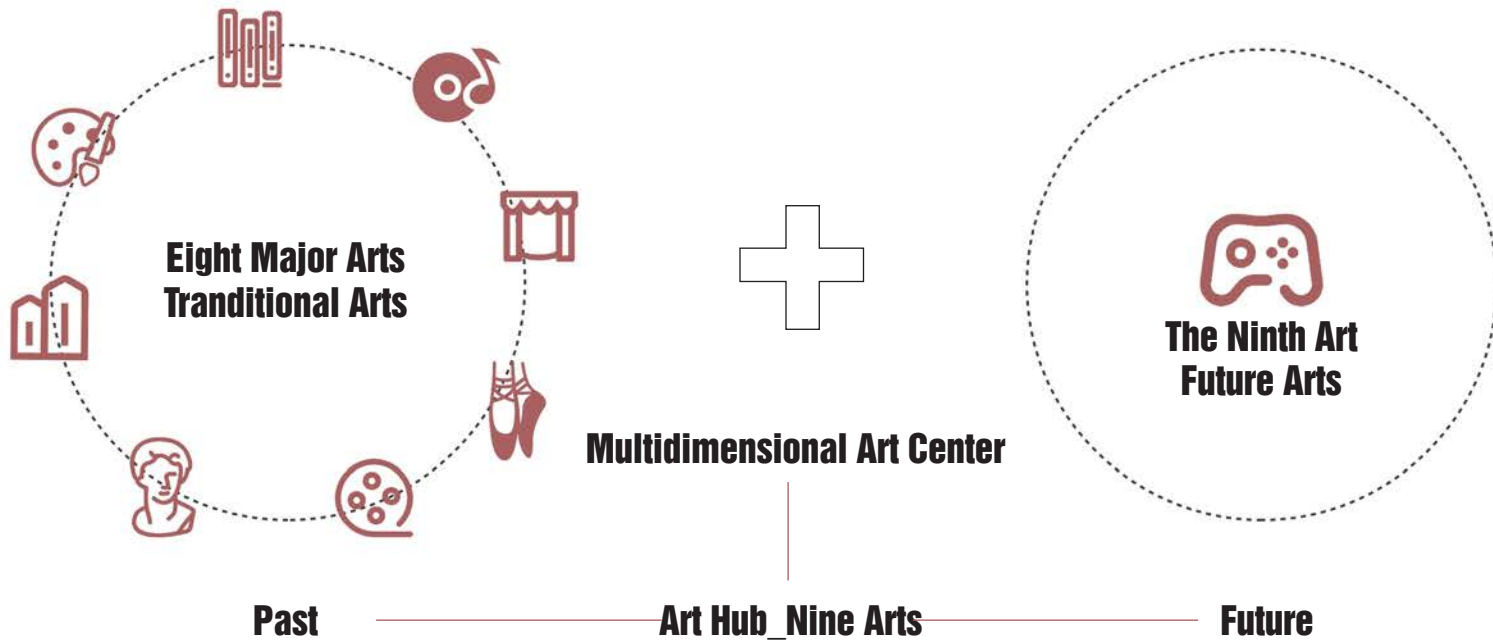


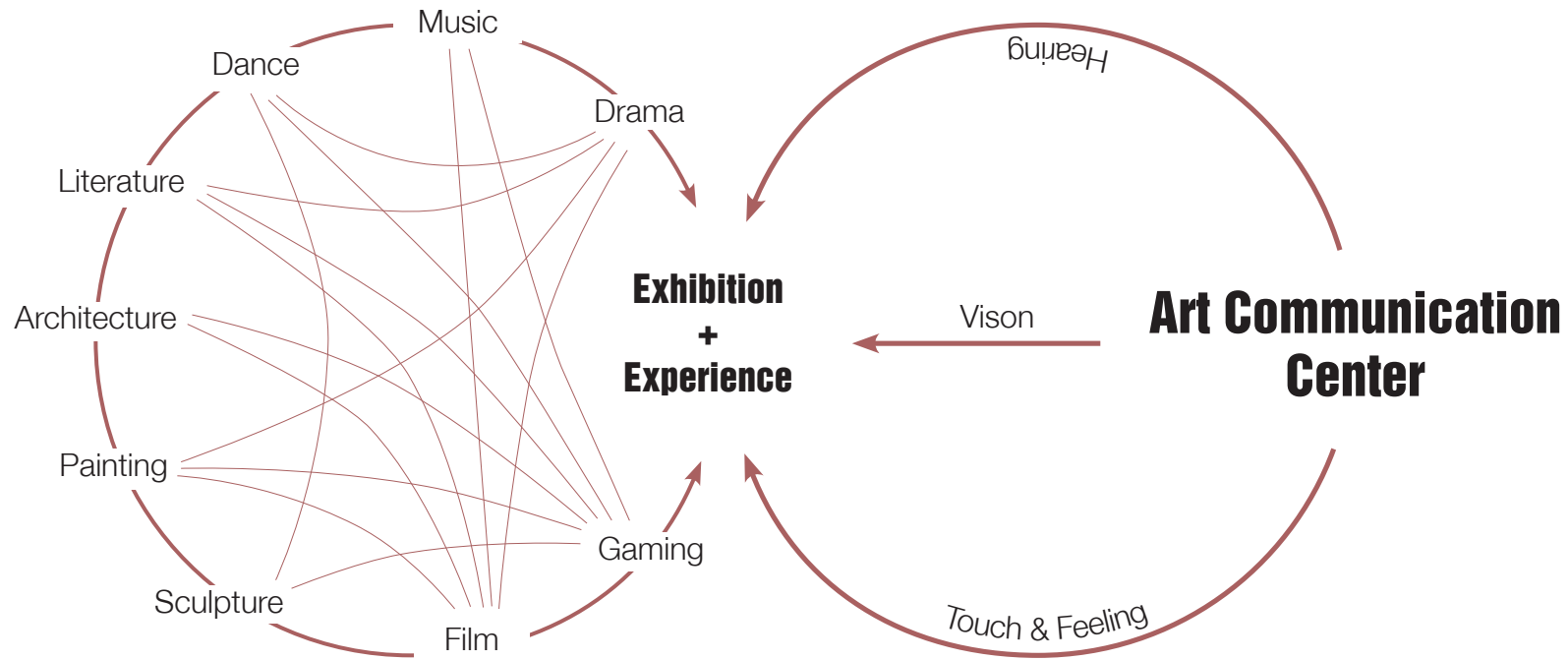
WHAT is 9 ARTS?

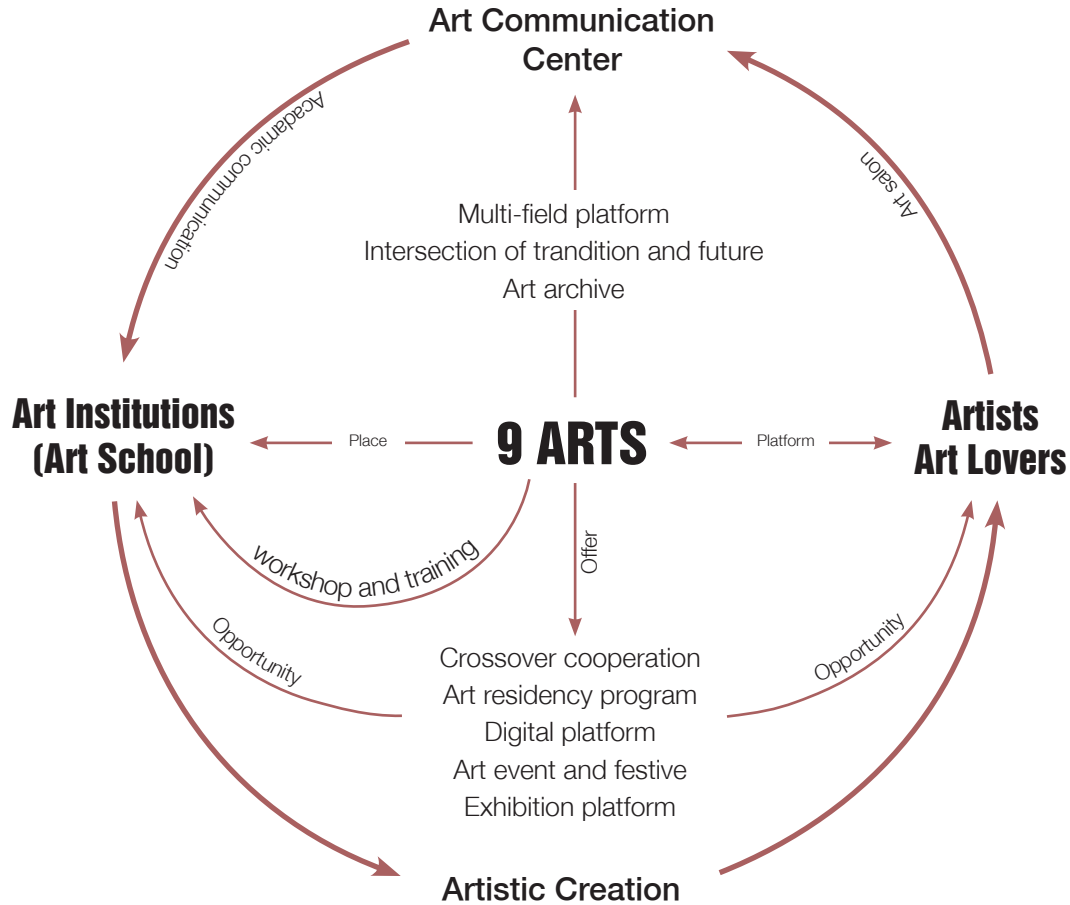
Human Events

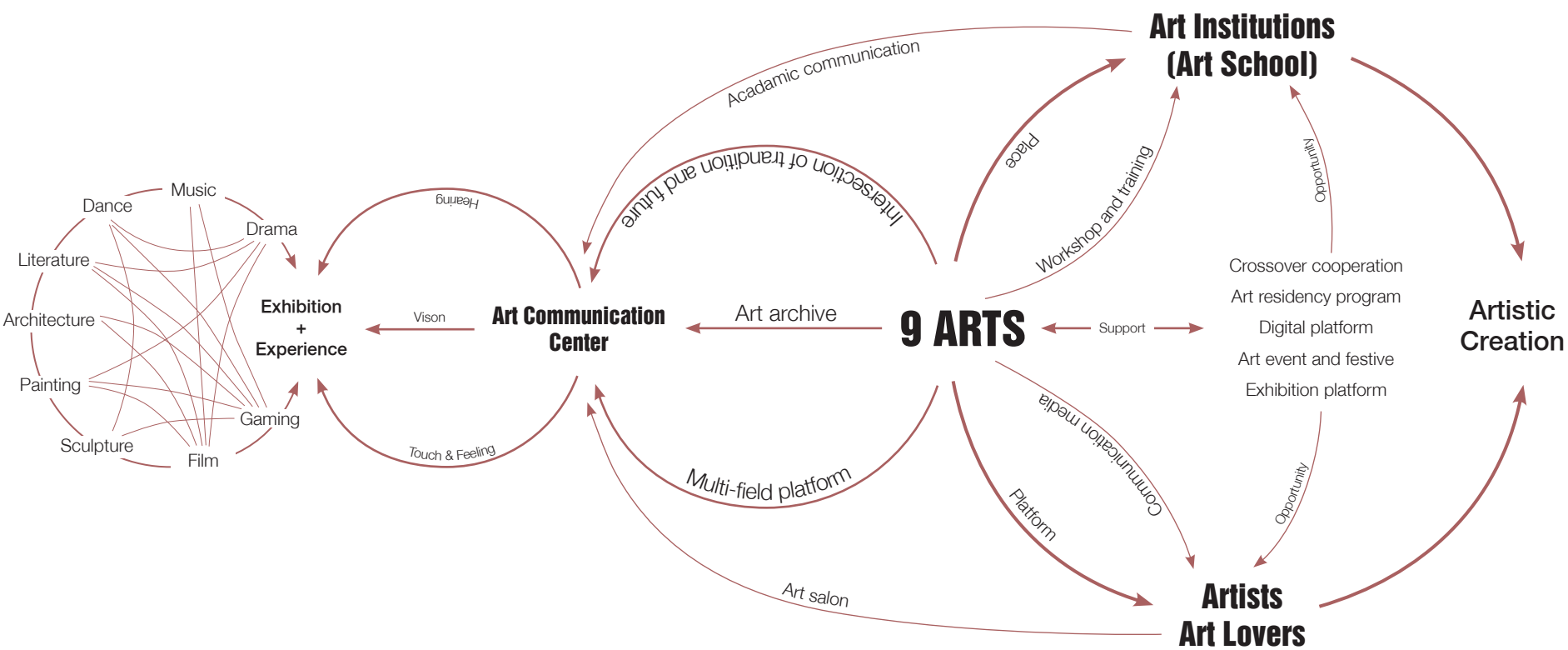


**Multicultural Arts
And Creativity Hub**



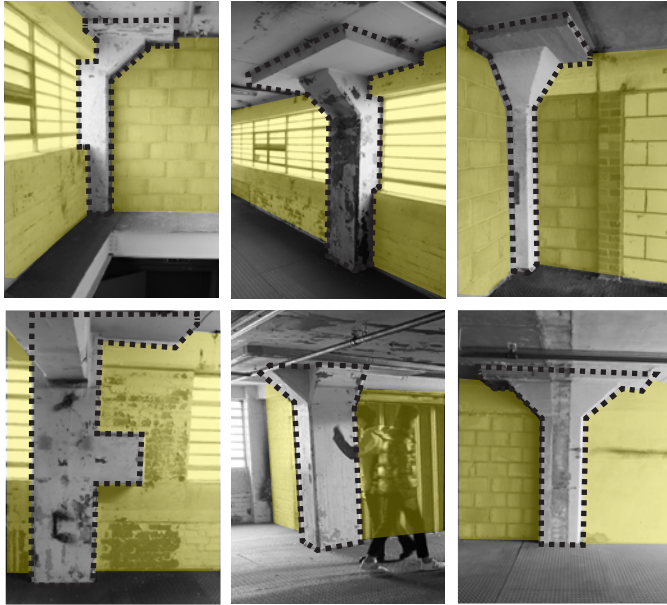






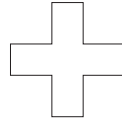
SITE insight

Site Considering



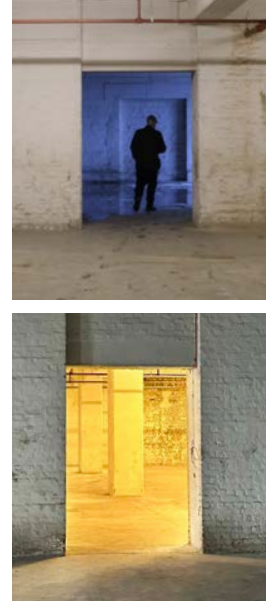
Column Forms

Relationship Between With Walls

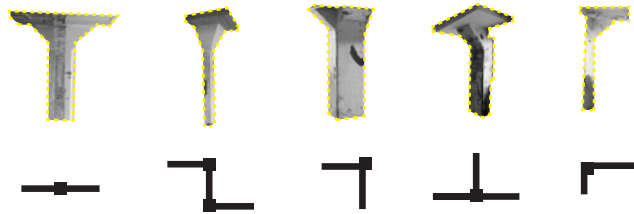
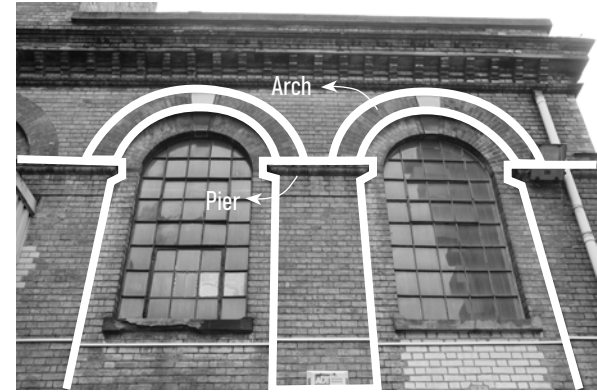
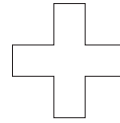
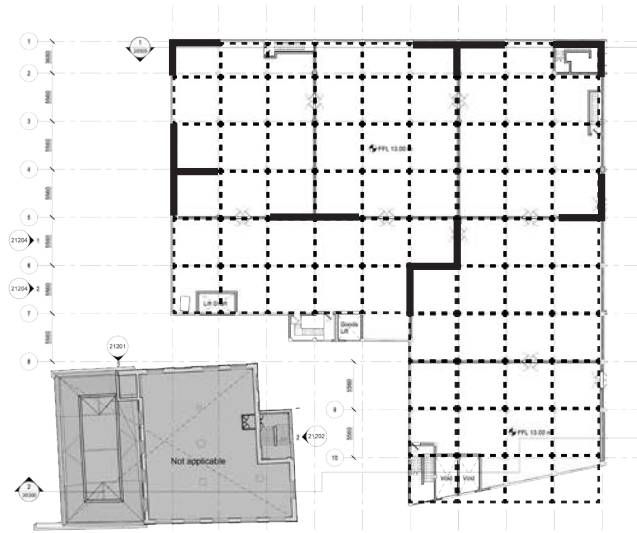


Windows

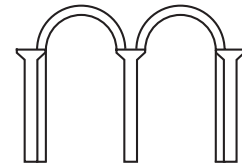
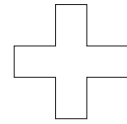
Light, Shadow Effect



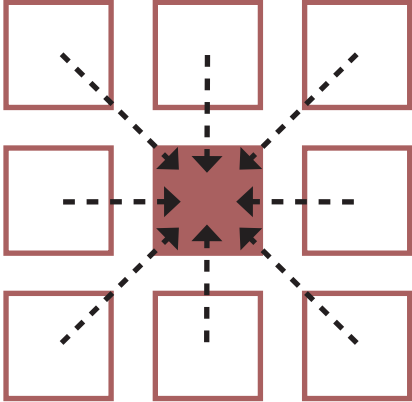
Site Considering



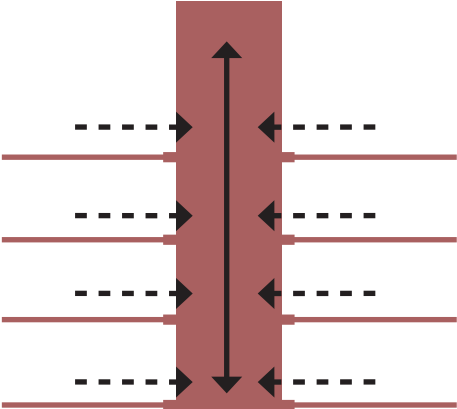
The form of the columns will change based on the position of the walls.



HOW to update?

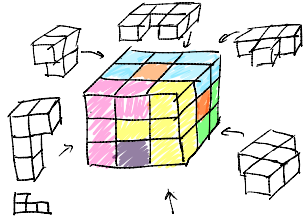
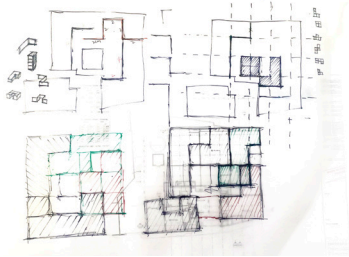


**Central Convergency
Art Communication**



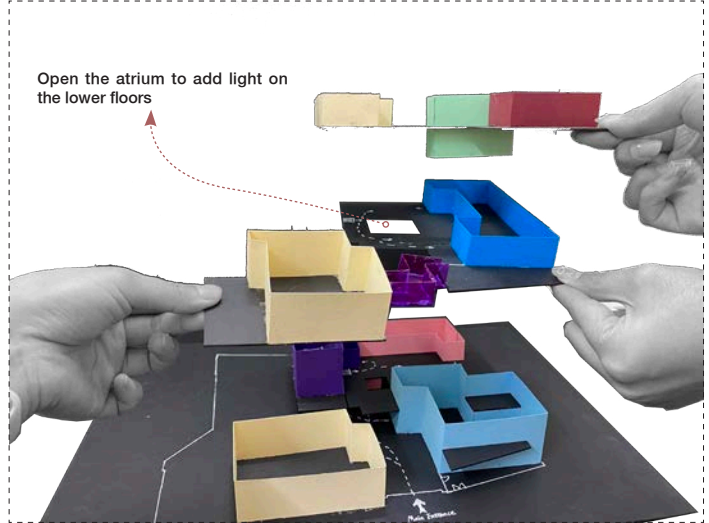
**Three-Dimensional Surround
Art Archive**

Strategy_Block study

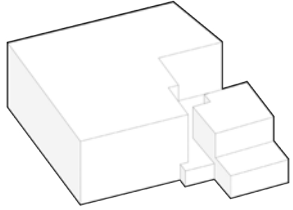


Colorful / Transparent material

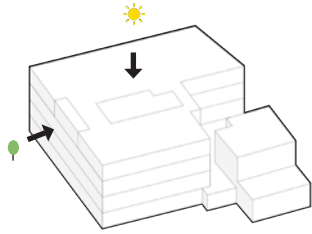
Block module



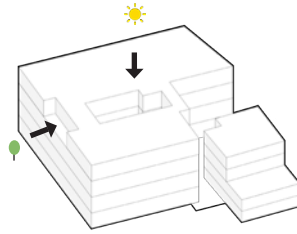
Strategy_Block study



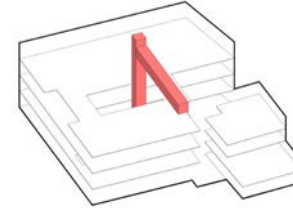
Original



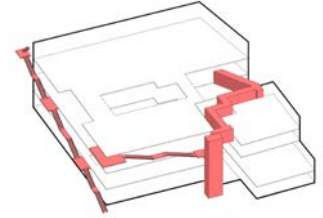
Deductive



Terrence & Atrium

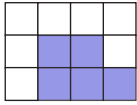
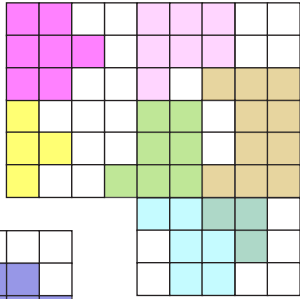


Vertical Circulation

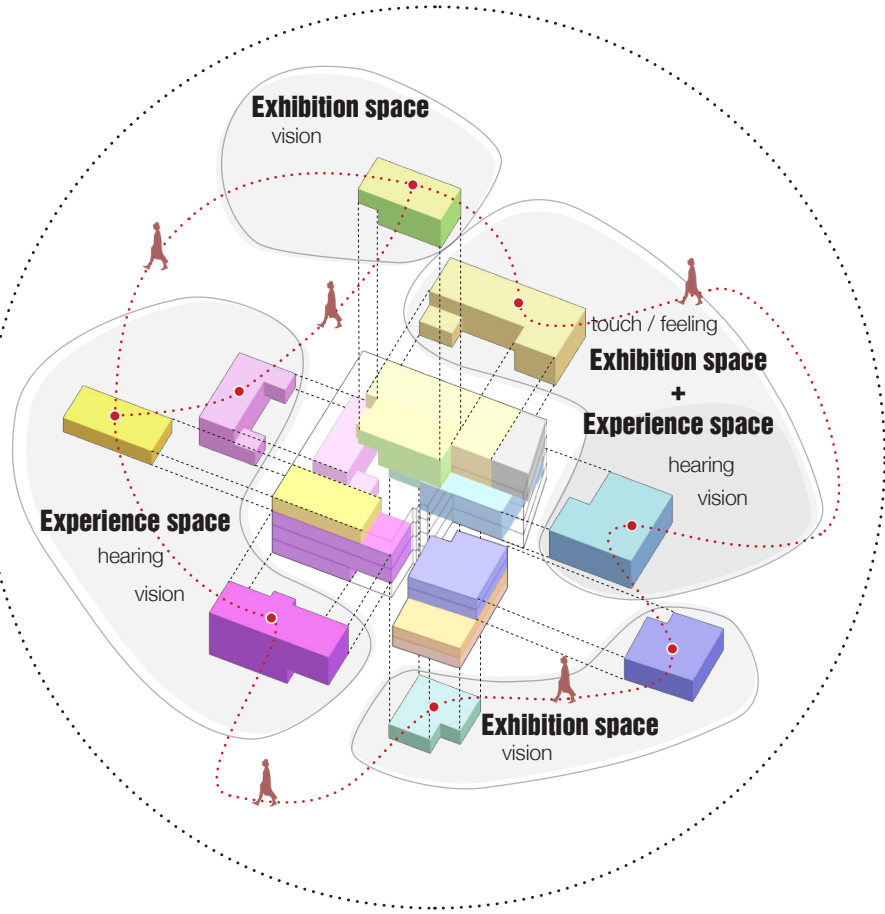
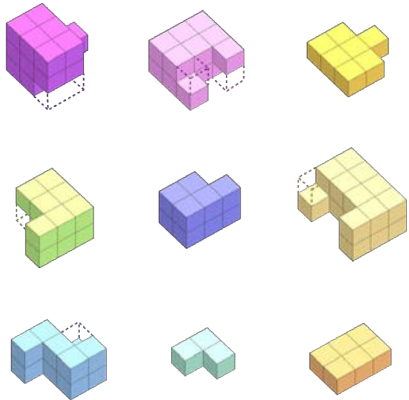


Connecting Indoors
And Outdoors

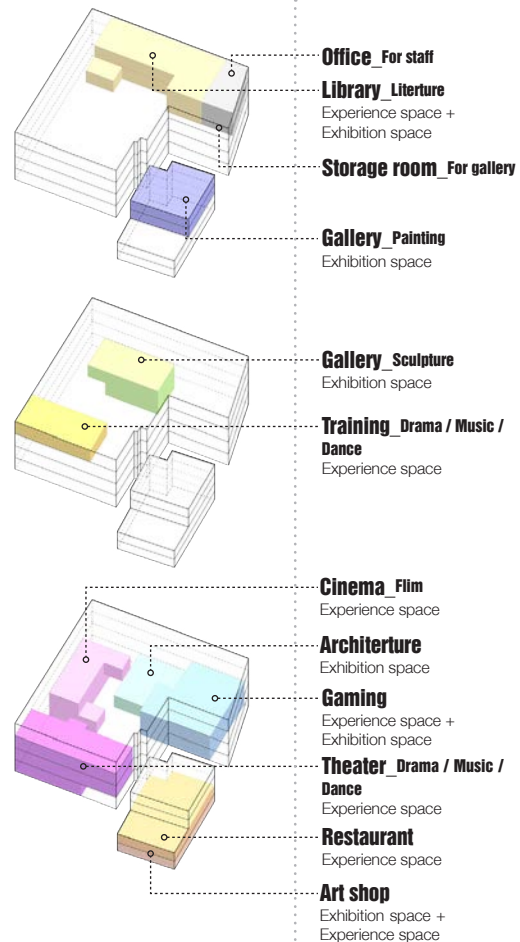
Strategy_Spatial Considering



Art Hub_Nine Arts



Static zoning



Dynamic zoning

Plan_LG

Scale_ 1:200

- 01 Reception
- 02 Art shop
- 03 Gaming space
- 04 Architecture exhibition
- 05 Caffe bar
- 06 Cinema
- 07 Clock room
- 08 Event space
- 09 Garden
- 10 Sunken square
- 11 Parking
- 12 Art achive



Plan_L1

Scale_ 1:200

- 01 Restaurant
- 02 Kitchen
- 03 Gaming space
- 04 Caffe bar
- 05 Cinema
- 06 Screening room
- 07 Theater
- 08 Fitting room
- 09 Toilet
- 10 Art archive



Plan_L2



Scale_ 1:200

- 01 Gallery
- 02 Storage (for gallery)
- 03 Garden
- 04 Library
- 05 E-book exhibition
- 06 Public exhibition
- 07 Theater
- 08 Fitting room
- 09 Terrace
- 10 Art archive



Plan_L3

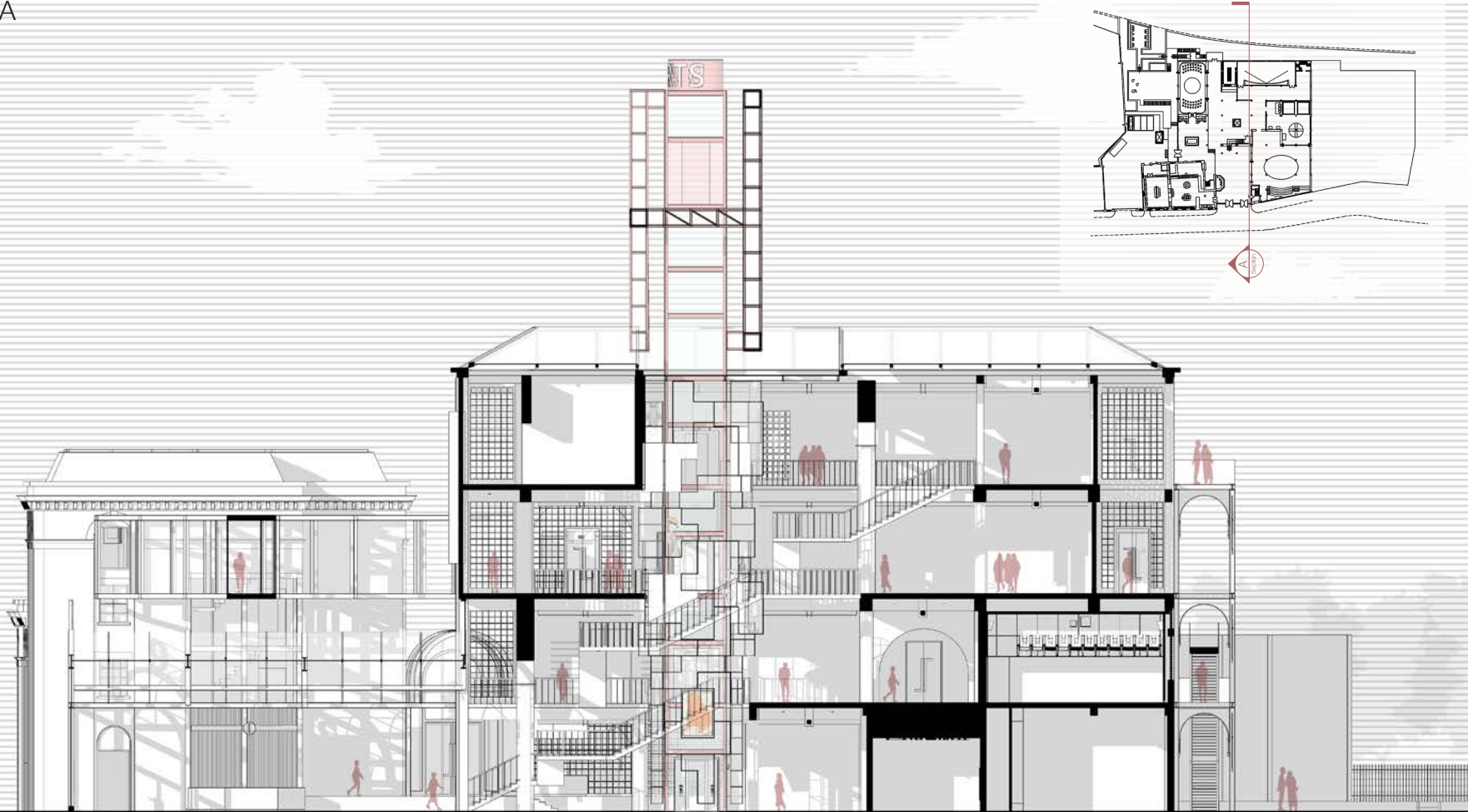


Scale_ 1:200

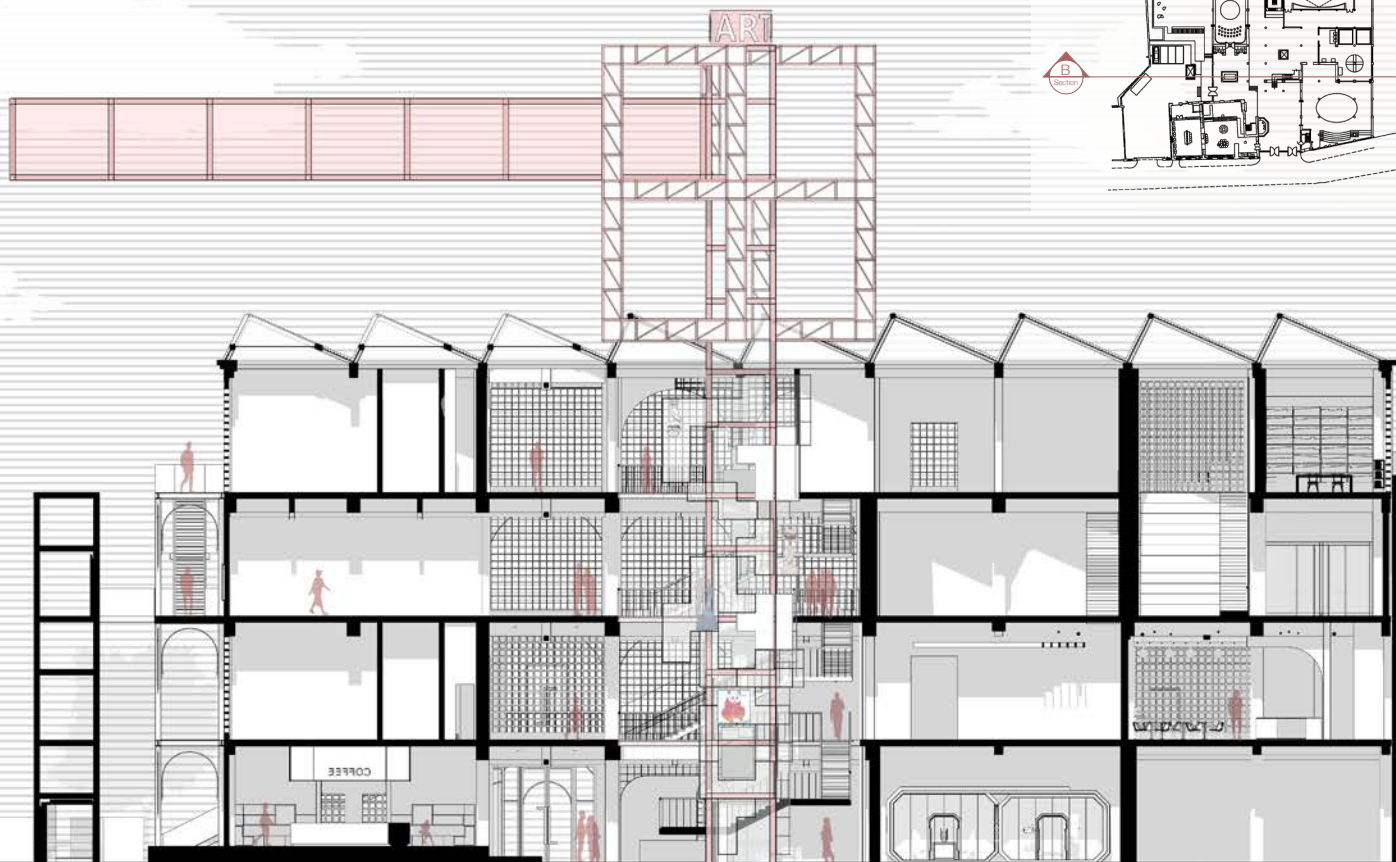
- 01 Gallery
- 02 Office (for staff)
- 03 Garden
- 04 Library
- 05 Sculpture exhibition
- 06 Terrace
- 07 Traing room
- 08 Toilet
- 09 Roof garden
- 10 Art archive



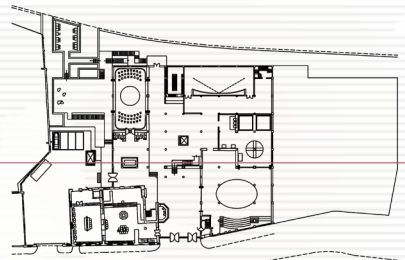
Section_A

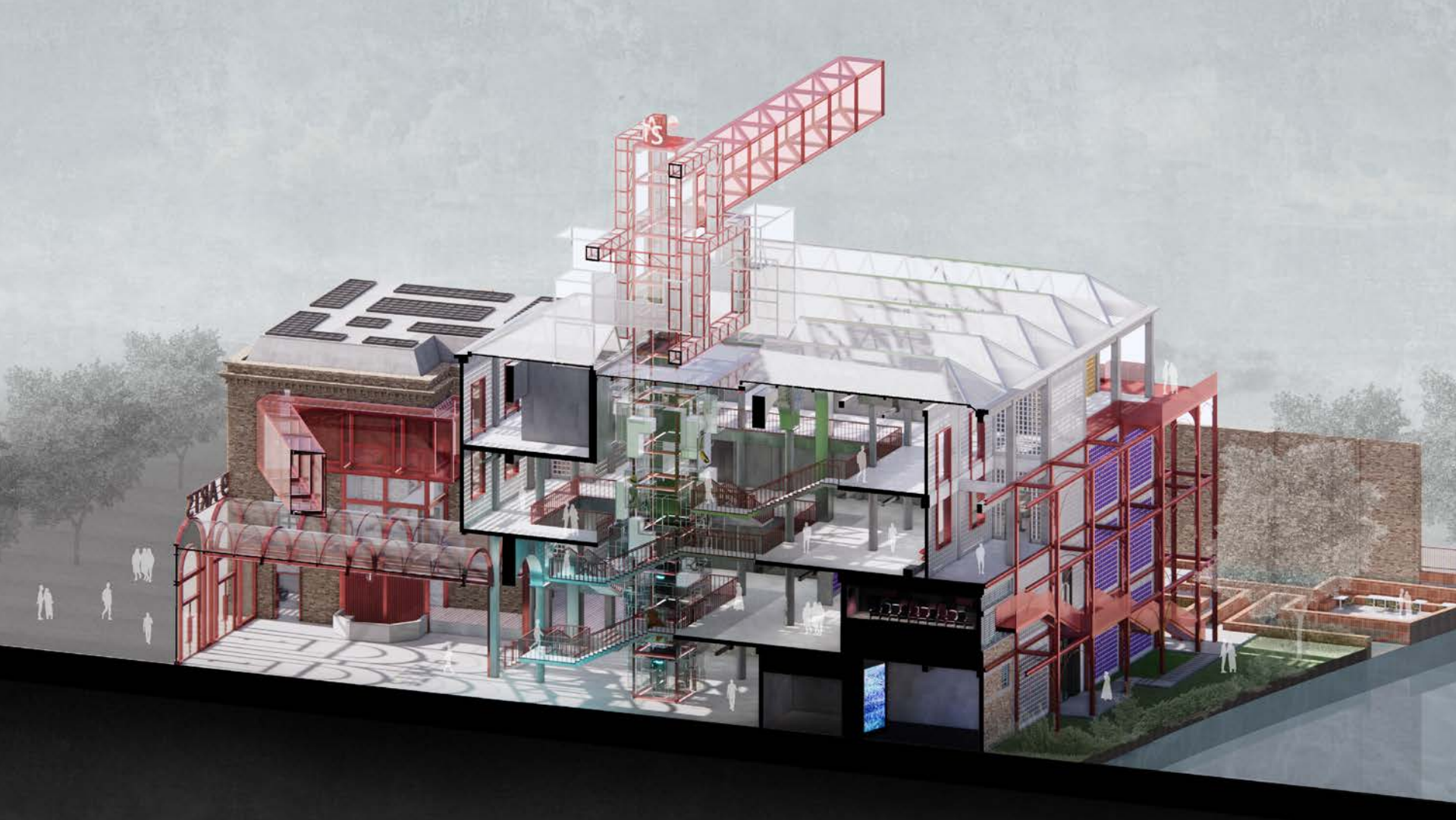


Section_B

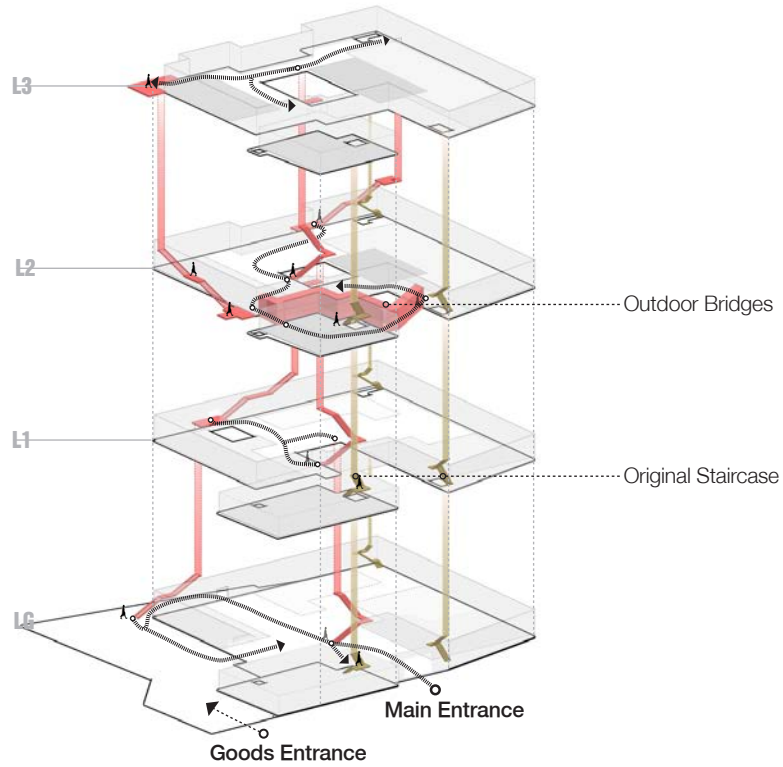


B
Section

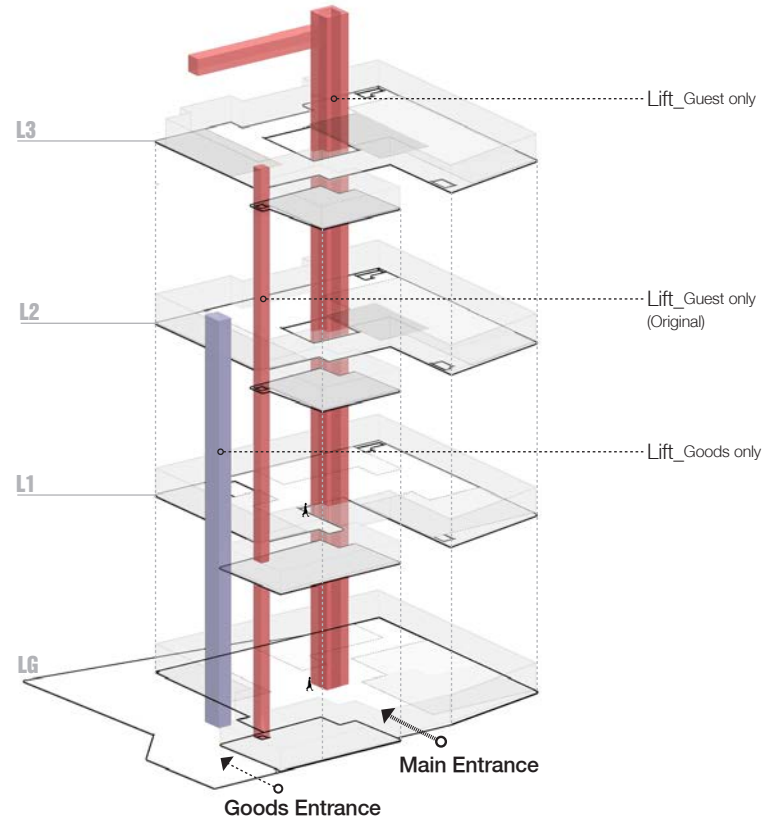




Circulation Analysis



Horizontal Circulation



Vertical Circulation

Tower Design Analysis



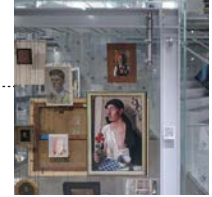
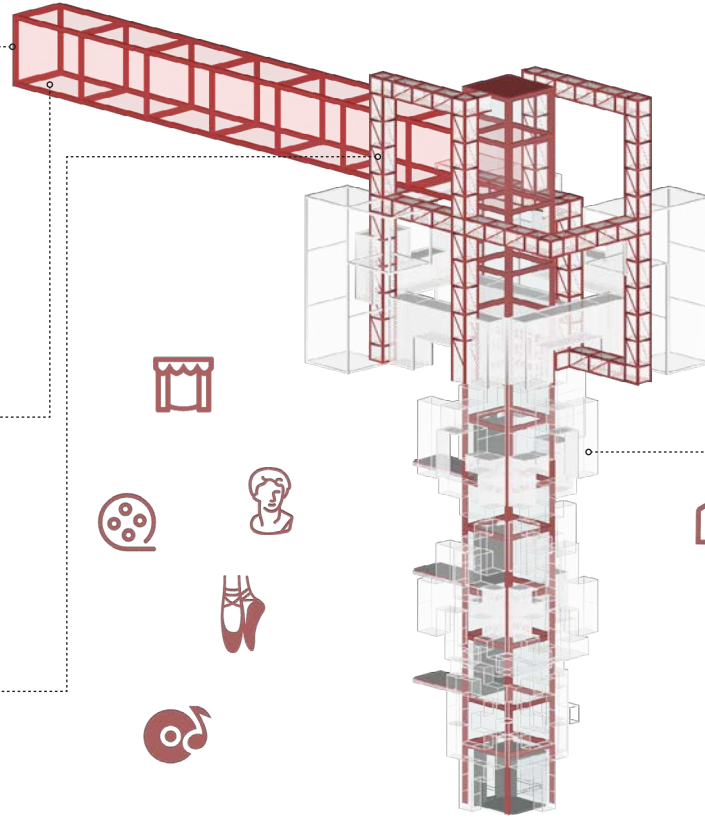
Observation Bridge



Solar Panel



Turbine

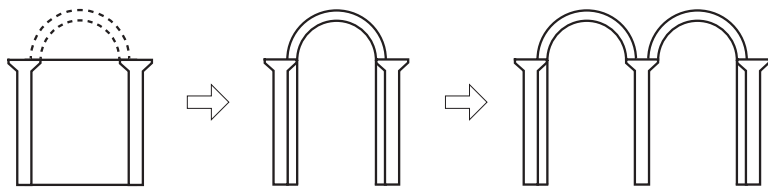
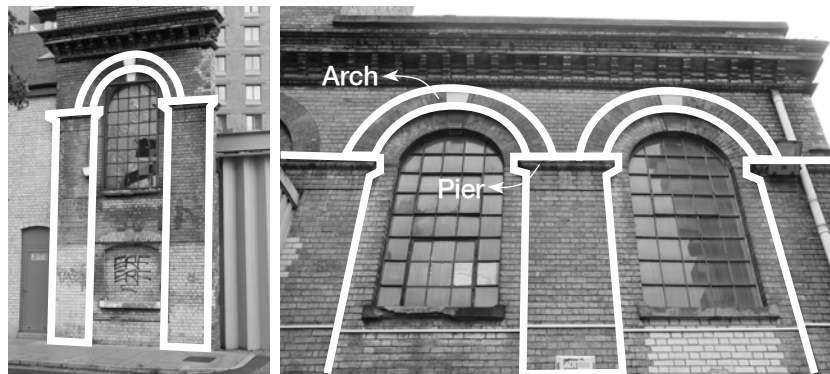


Artwork Display

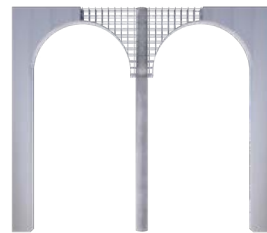
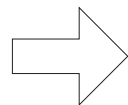
Arts Archive / Vertical Circulation / Energy Collection

Prototype & Material

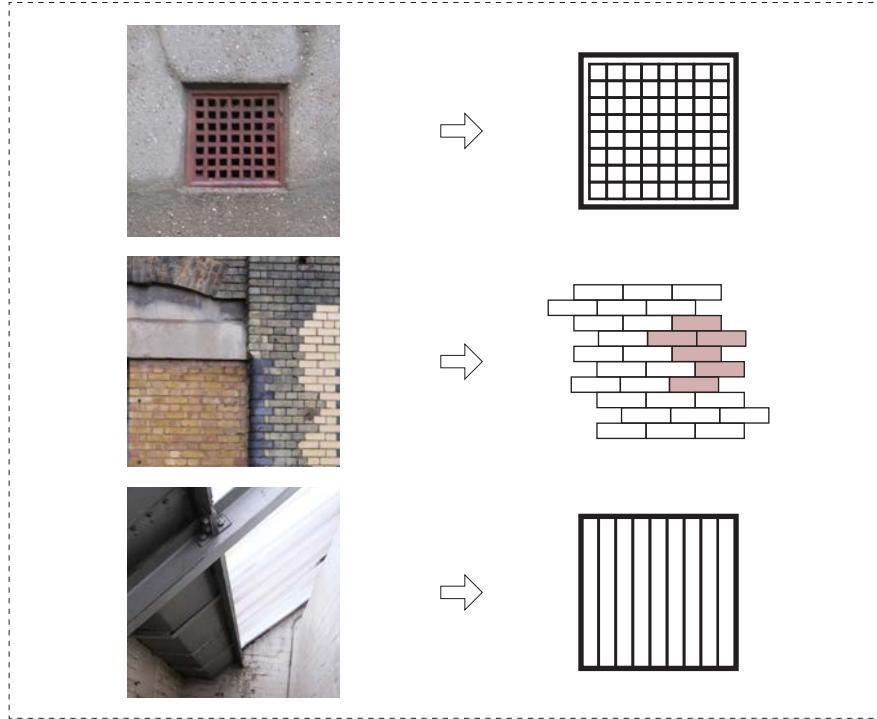
Prototyping & Material



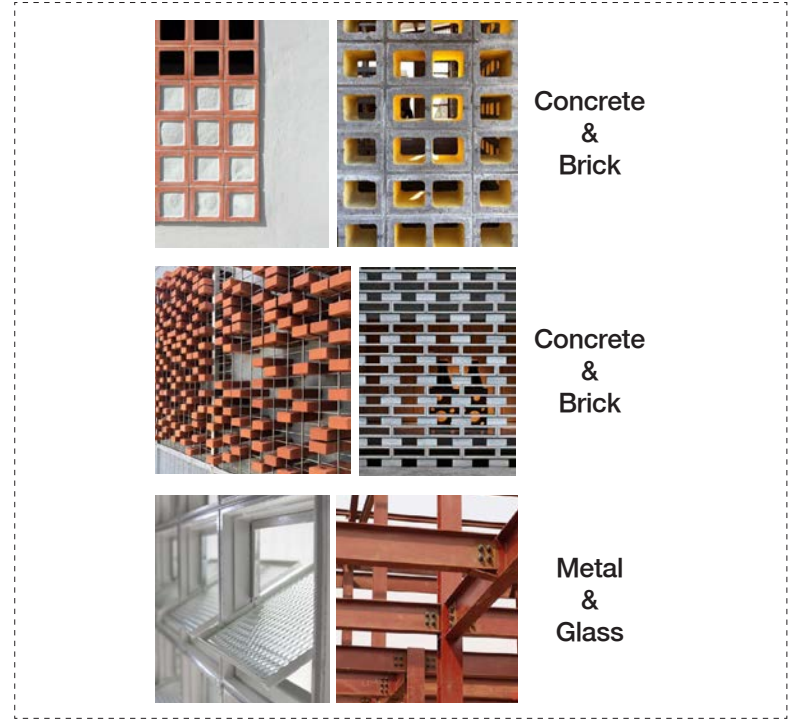
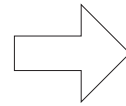
Prototype Extraction



Prototype Evolution



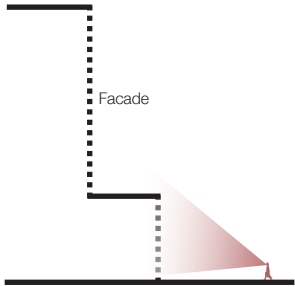
Material Extraction



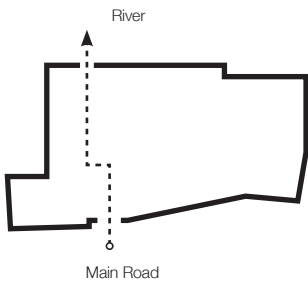
Material Sample

Reuse strategy

Reuse Strategy_Main Entrance



Open the entrance

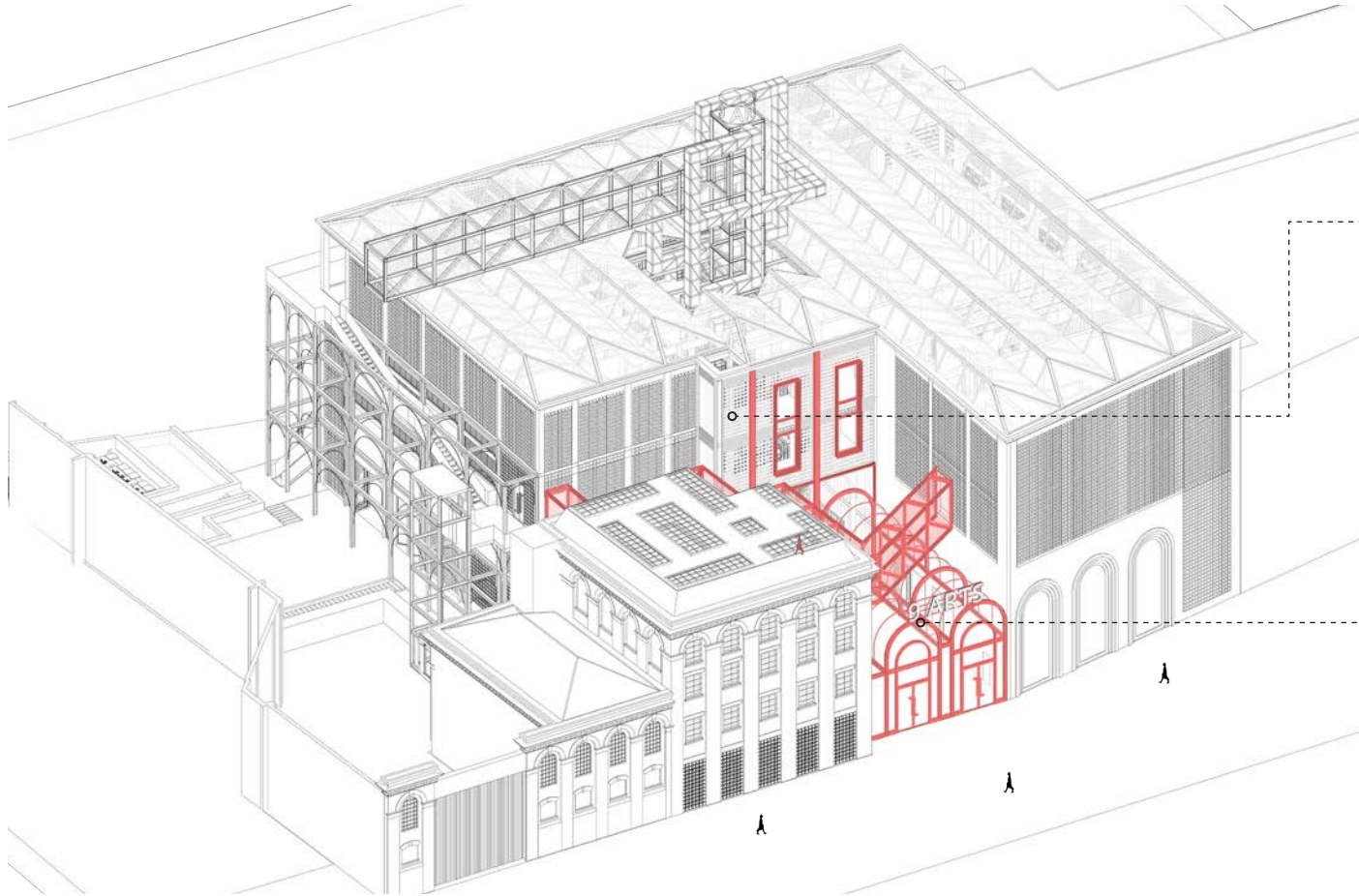


Connect inside and out

Open the original entrance:

- Emphasise the entrance for guide the flow of people in.
- Blending indoor and outdoor space, connecting with the natural river view outside.

Reuse Strategy_Main Entrance

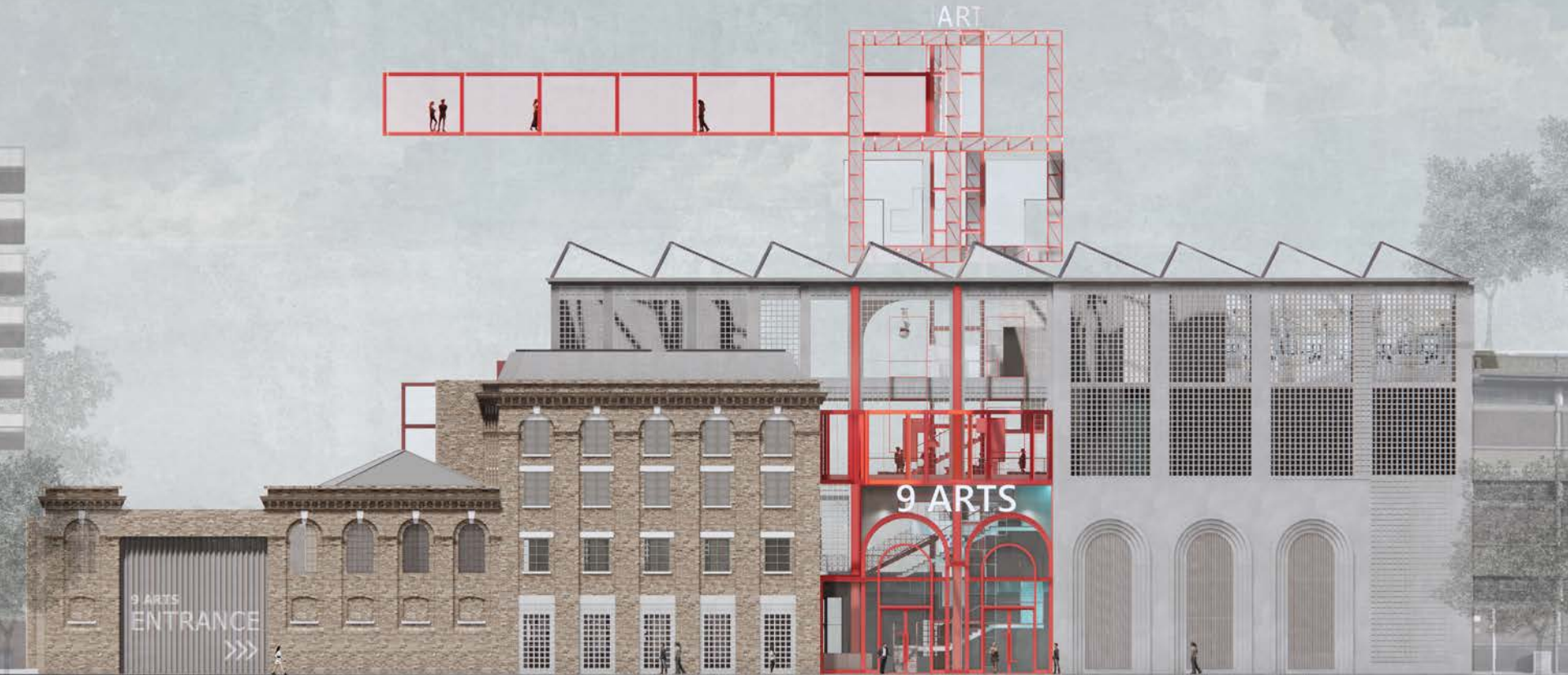


Glass brick

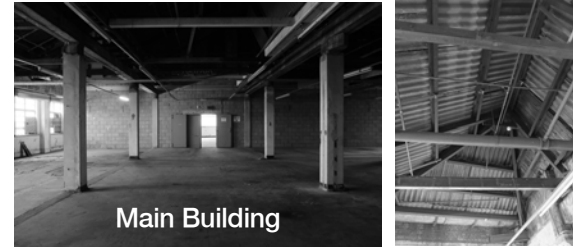
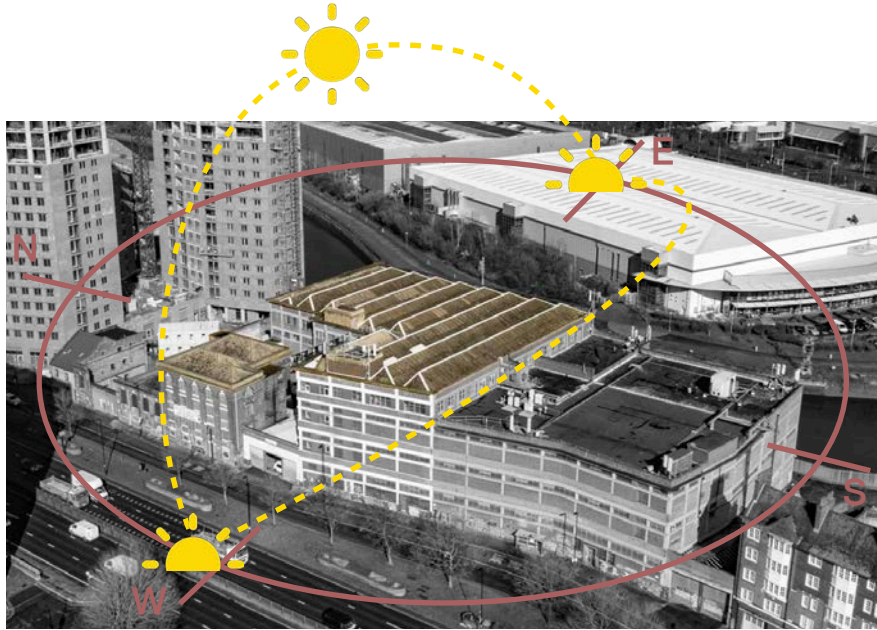


Steel structure

Reuse Strategy_Main Entrance

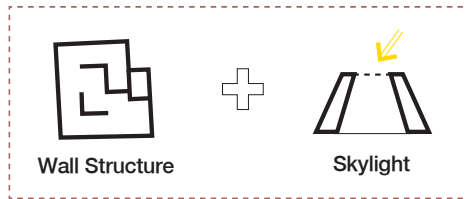
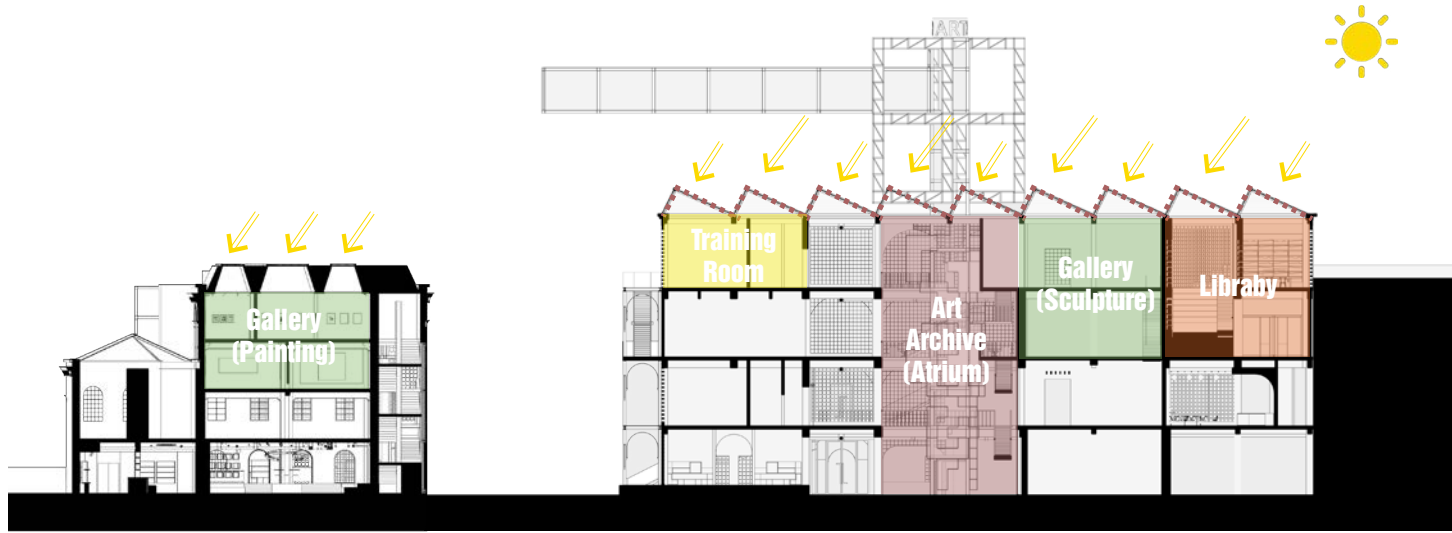


Reuse Strategy_Roof

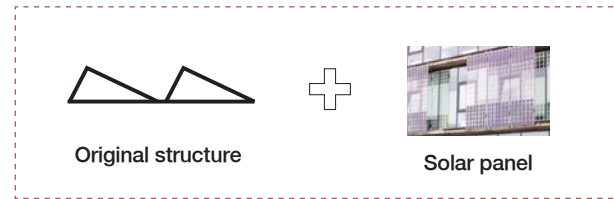


The original building is surrounded by an open view, with unobstructed daylight throughout the day. However, the lighting on the top floor is relatively dim.

Reuse Strategy_Roof

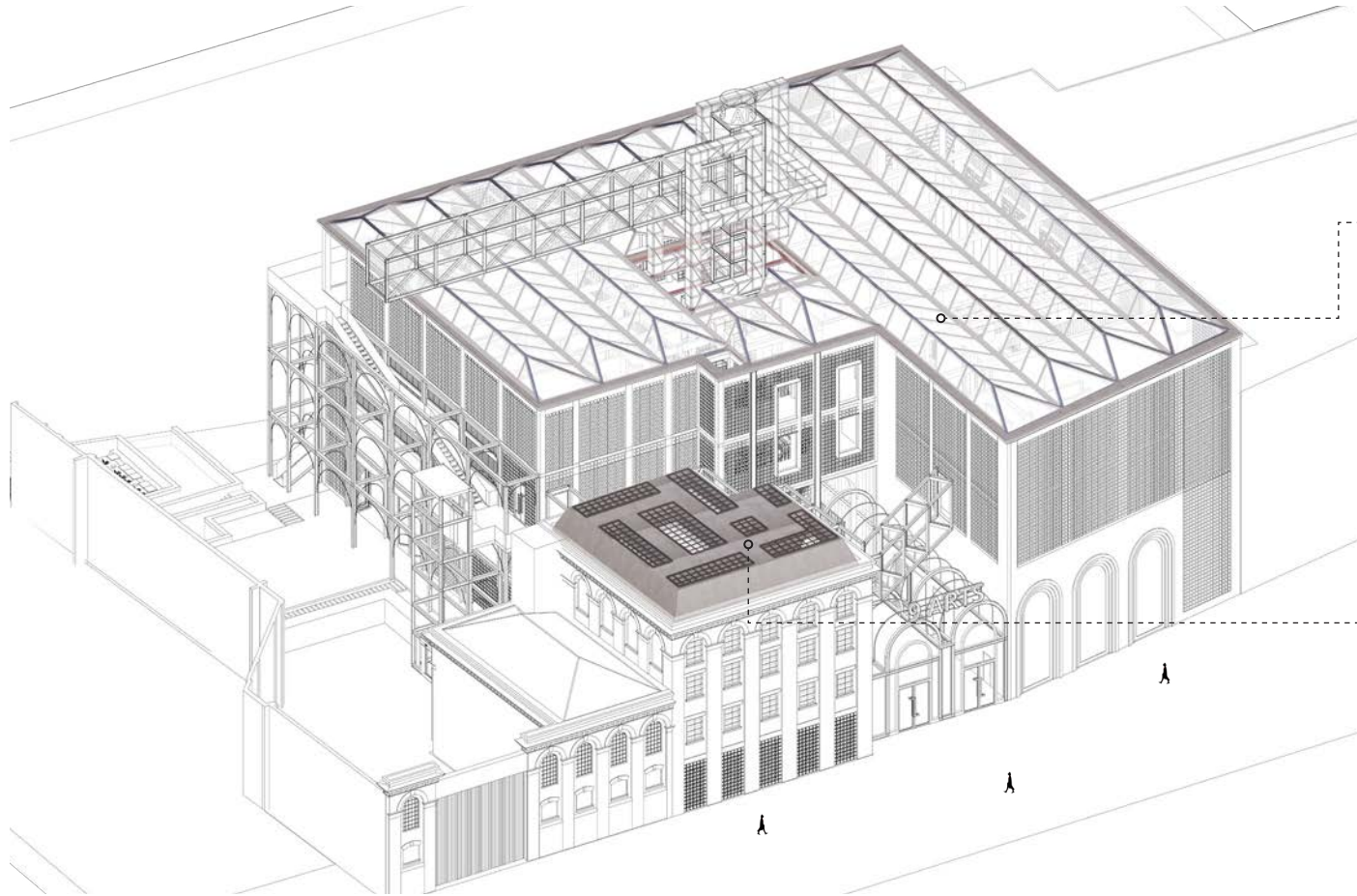


Victoria Building

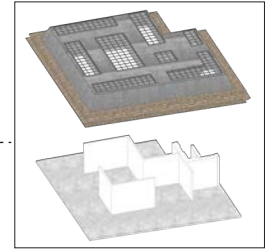


Main Building

Reuse Strategy_Roof

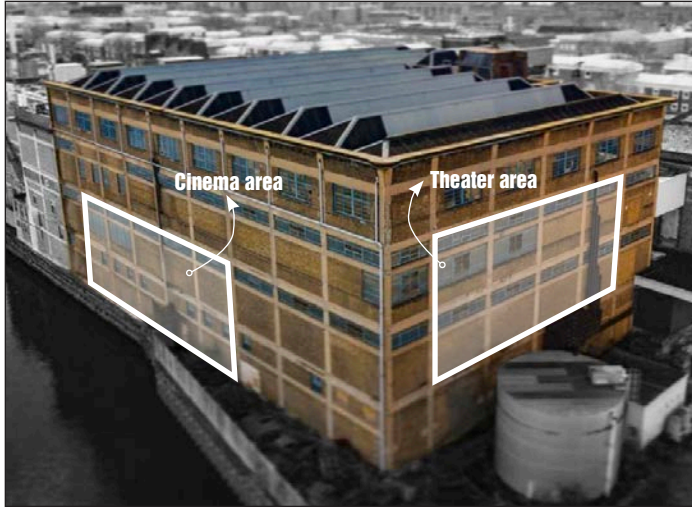


Solar panel



Skylight

Reuse Strategy_Facade

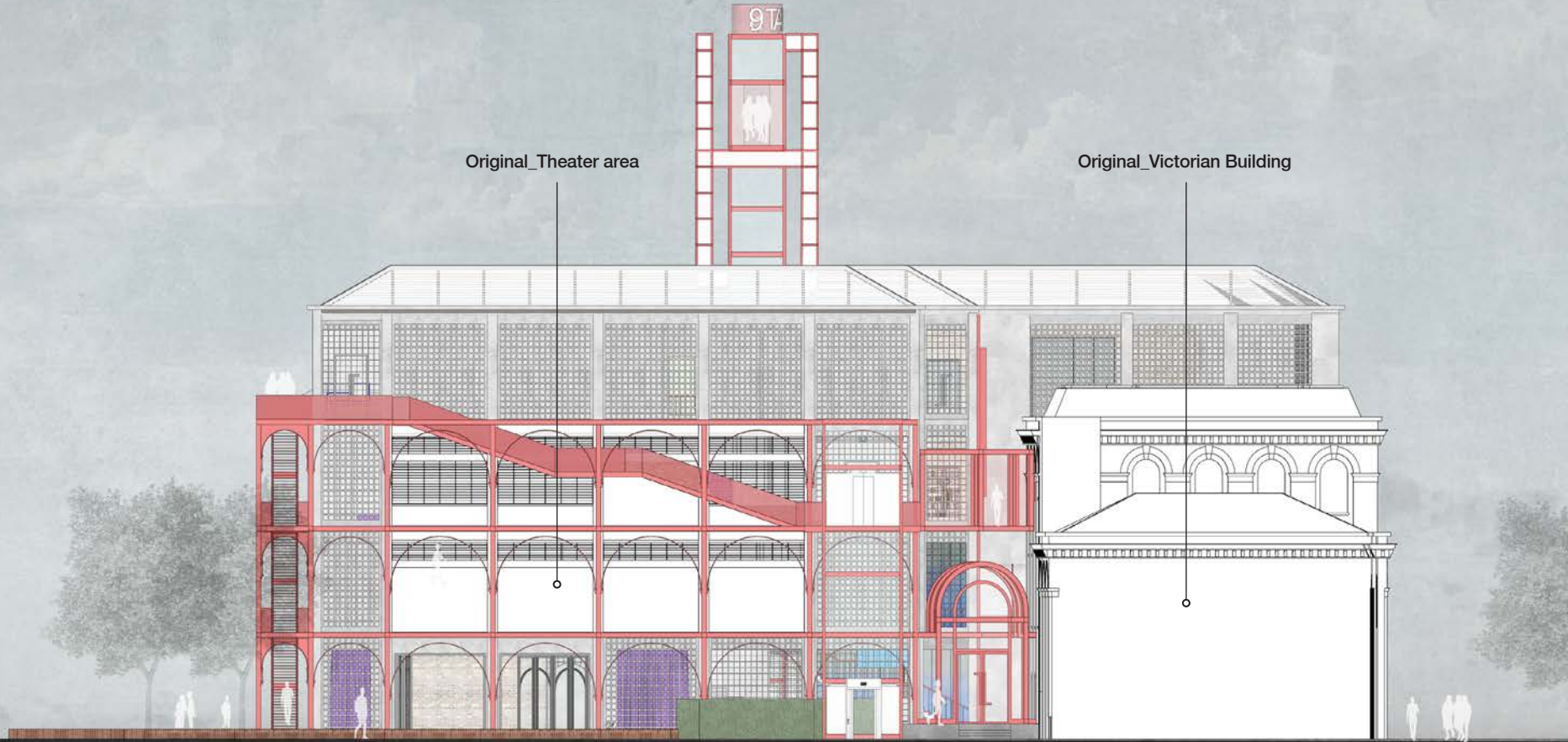


Original_Main building



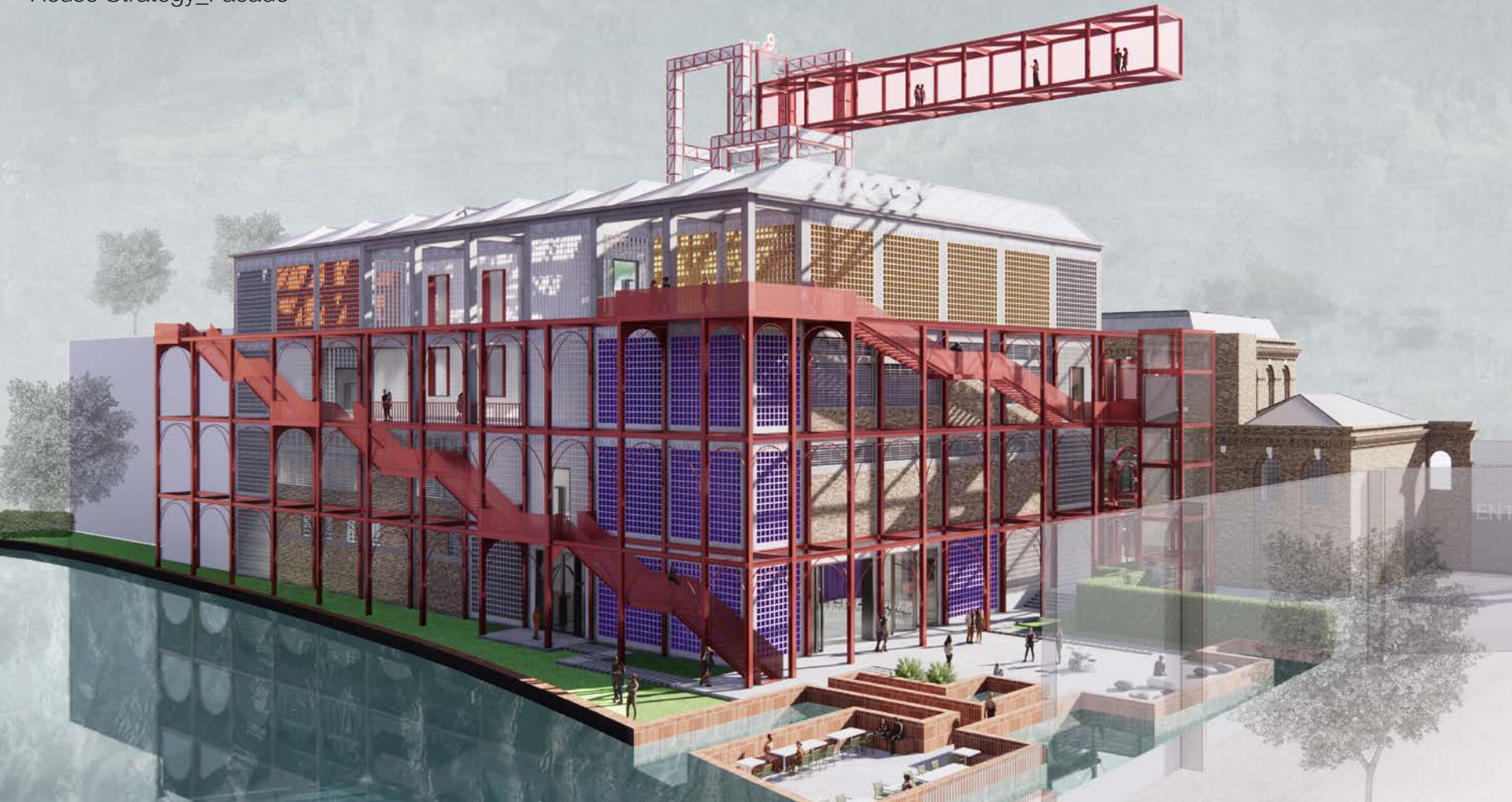
Original_Victorian Building

Reuse Strategy_Facade



Original_Theater area

Original_Victorian Building





Spatial Demonstration



Spatial Demonstration



Spatial Demonstration



Spatial Demonstration



Spatial Demonstration



Spatial Demonstration





Spatial Demonstration



Spatial Demonstration









