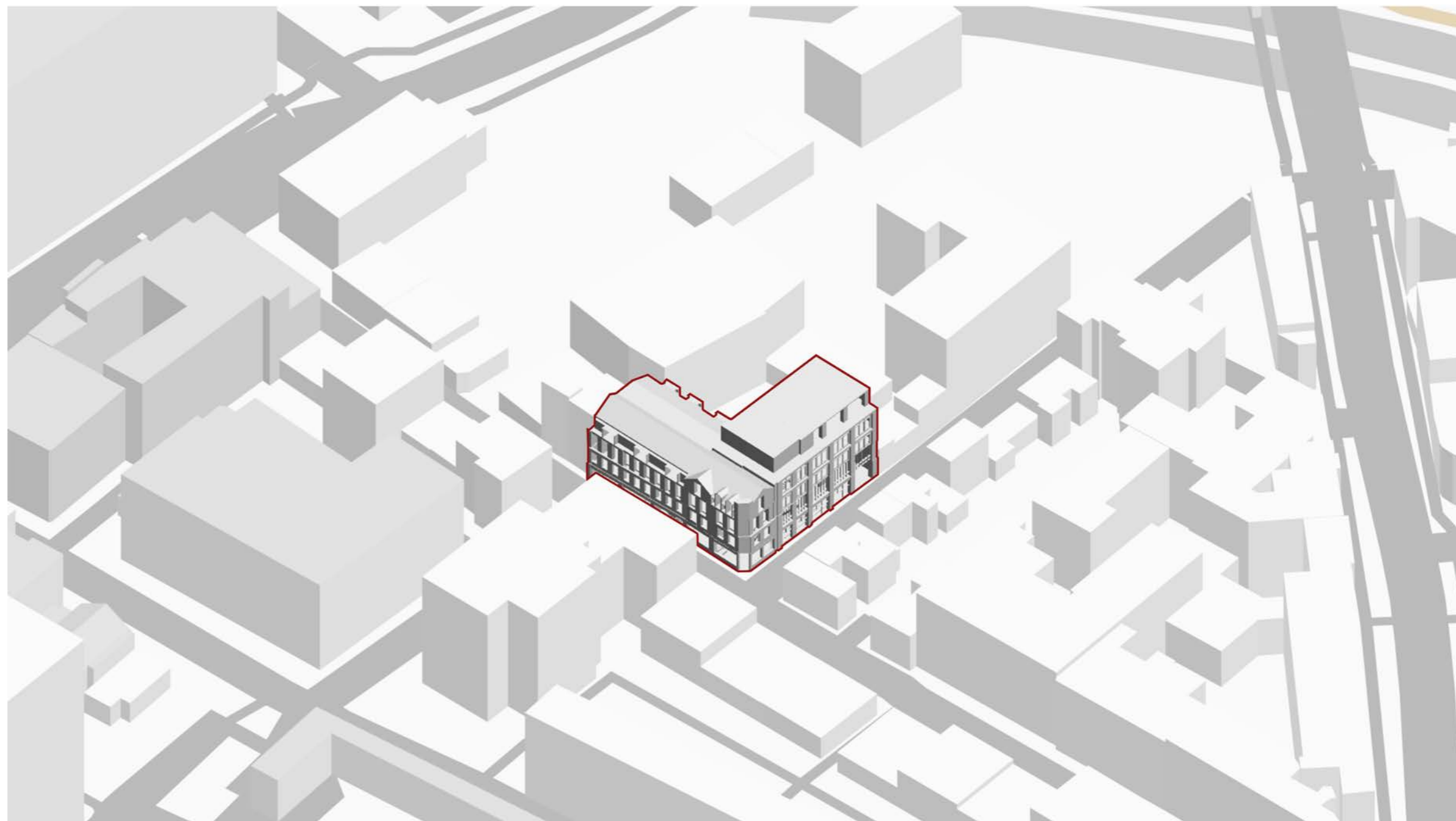


Portfolio

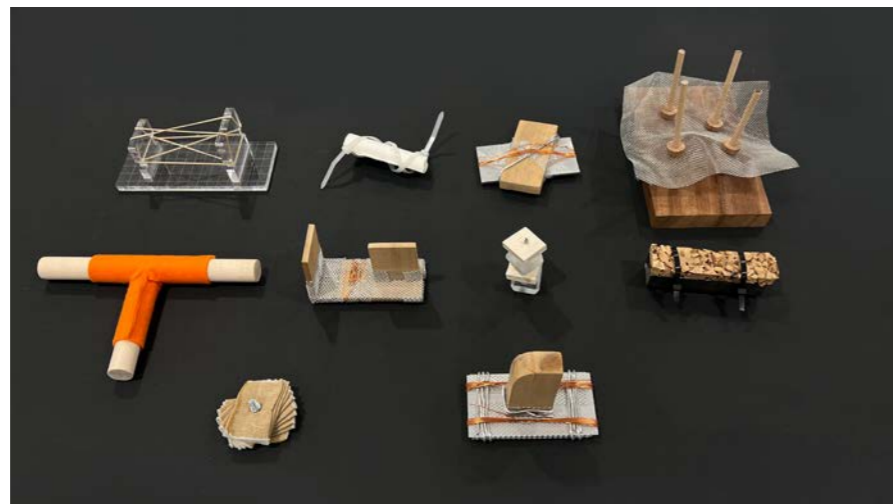
Xuhao Miao(Linck)
SUPERMATTER



TERM 1

RECREATE J+J

MATERIAL MODELS ACQUIRED



DISASSEMBLY OF MATERIAL MODELS



JOINT FORMS



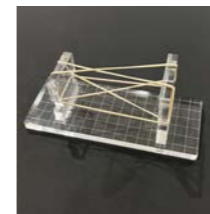
insert, tailor



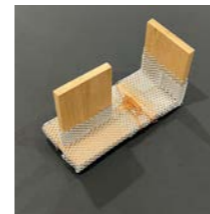
insert



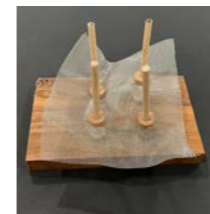
bundle



bundle, inlay



encircle



insert, inlay



bundle



insert



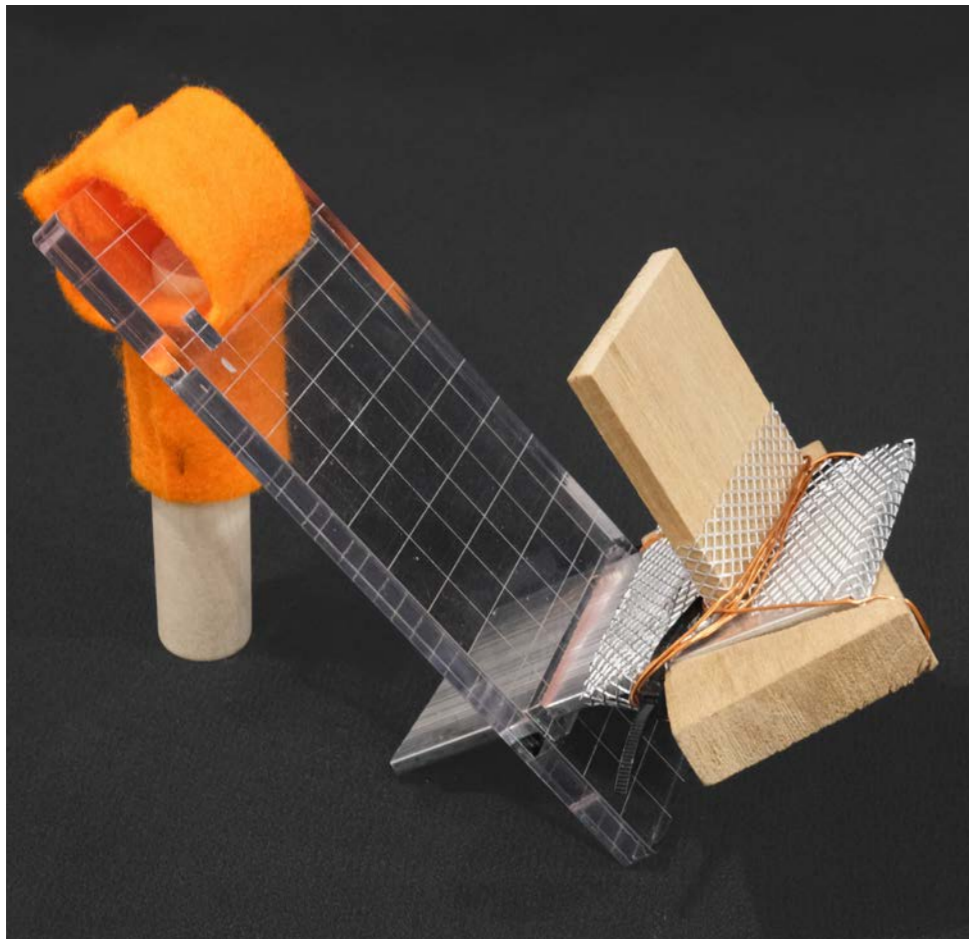
encircle
bundle



encircle
bundle

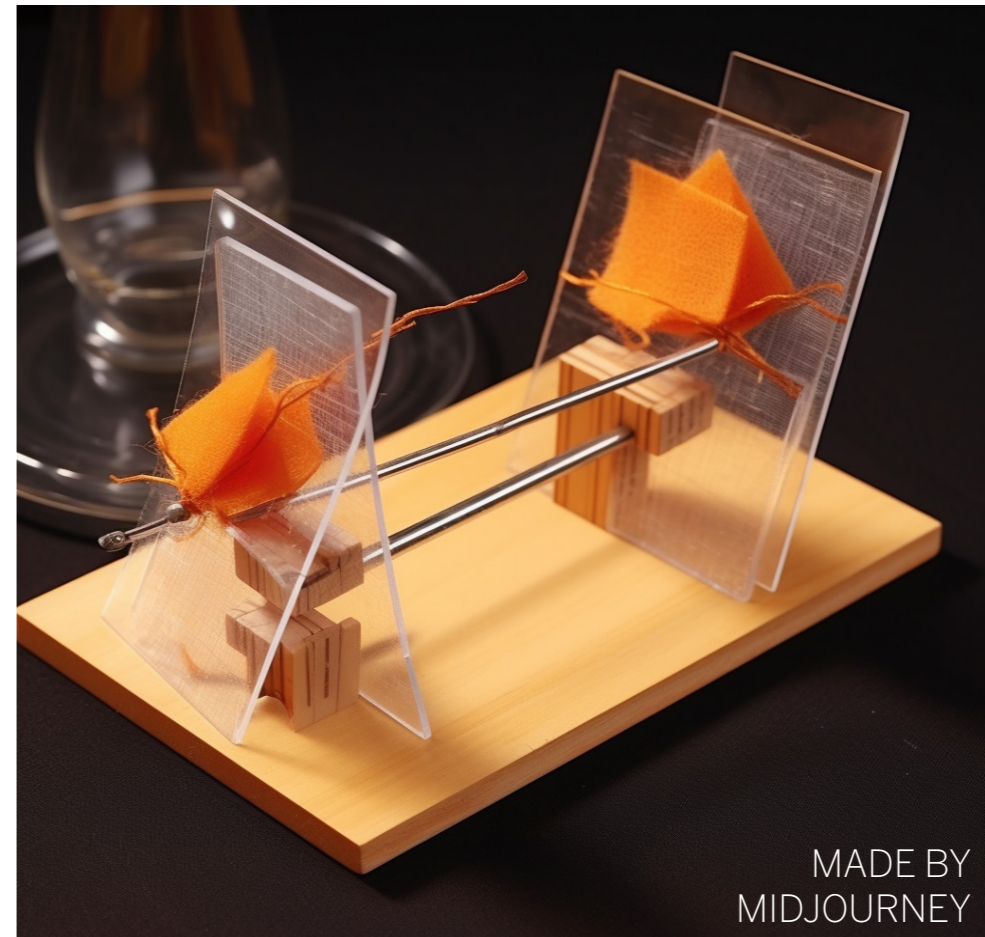
OUTPUTS





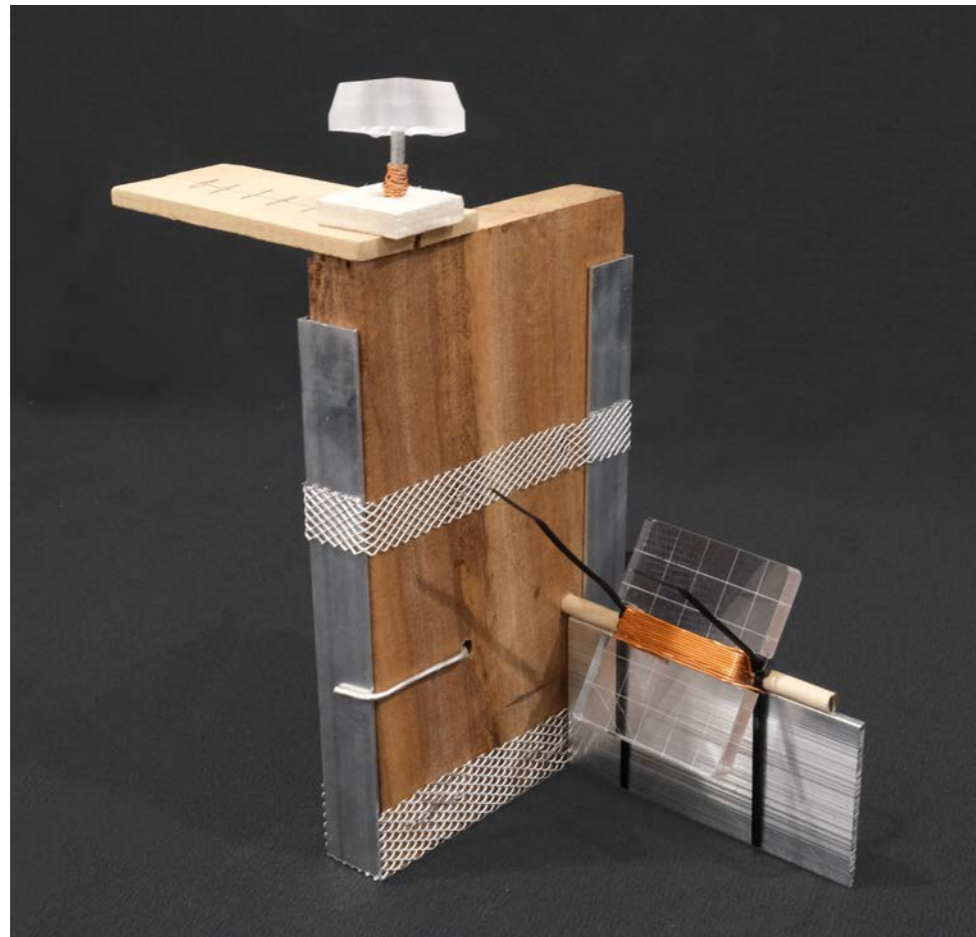
PROMPT

Summarise the prompt based on the model I made, put the prompt into mid-journey to test it over and over again, and modify the prompt based on the results.



PROMPT:

Create a compact model: Begin by using wooden sticks to provide support for a tilted rectangular clear acrylic block. Wrap a gentle, orange felt block around the area where the wooden sticks and the acrylic plate intersect. Introduce a steel plate that diagonally traverses through the acrylic block, securing two wooden pieces to the plate using thin wire.



PROMPT

Summarise the prompt based on the model I made, put the prompt into mid-journey to test it over and over again, and modify the prompt based on the results.



PROMPT:

An object with a wooden block as the main body, decorated with metal strips on both sides, and surrounded by wire mesh cut into thin strips. A thin wooden stick is inserted into the front of the main wooden block, and there is a metal piece under the thin wooden stick. Zip ties are attached to the stick, and a piece of acrylic with a mesh lattice wrapped with thin wire is tied to the stick. At the top there are two small pieces of wood fastened to the top of the big block with nails, and on top of the nails is a keycap shaped resin block.

BACKGROUND

SITE

The Blossom Street site is located in East London, close to the City of London. The street is situated in the Norton Folgate area, between Shoreditch and Liverpool Street Station, close to the famous Spitalfields Market.



LIVERPOOL ST STATION

Blossom Street Site



HISTORY

Sitting at the boundary of the City of London, Norton Folgate is a former medieval Liberty created when the Priory of St Mary Spittal was dissolved at the time of the Reformation.



Middle Ages

The neighbourhood has always been inhabited and from the earliest days of settlement was one of the most important Roman roads to north London.



18th century

By the beginning of the 18th century, Spitalfields was becoming an important silk manufacturing area.



1880s

Nicholls and Clark gradually acquired the adjoining Park Street property for use as a warehouse.

CAMPAIGN

The site has been subjected to two preservation campaigns, both of which have been successful.



2015

British Land made a comeback, and this time they got permission. Around 500 people gathered around the area during a protest.



1977

British Land had tried to demolish some of the buildings in this part of Noe, and a local group stopped the demolition.

Challenges in 2015

British Land's proposals for Norton Folgate would create a monoculture of the city's office plates. They want to increase the mass of the buildings by more than 50%

PRIMITIVE ARCHITECTURE



BRITISH LAND'S PLANS



ALTERNATIVE PROGRAMME



Rehabilitate historic buildings and retain historic inner city streets and courtyards. Also, expand buildings where appropriate (pink) and construct infill buildings on vacant lots (blue/green).

RESULTS OF THE CAMPAIGN

After a vigorous campaign, a viable alternative was put forward by representatives of the Spitalfields Trust that would meet local housing and employment needs while preserving heritage assets for future generations.

ANALYSIS

Much of the 18th century fabric of the area remains intact, with Folgate Street situated on the periphery of Bacchus Street. As can be seen from the panoramic views, the street frontages of the site are varied in nature. The buildings at 5-11a Folgate Street are well preserved in the Edwardian architectural style, particularly No. 11a.



👁️ 4 ELDER ST



👁️ 2 BLOSSOM ST



👁️ 3 BLOSSOM STREET



👁️ 1 PANORAMIC PHOTO LOOKING NORTH



TOTEM

The most representative and visible features of the 11a building were chosen for the production of the totem, which hangs in a distinctive blue fabric to symbolise the values of the campaign.

TERM 2



+



= Campaign
House

QUESTION

How to make activism or protesters a tool in the preservation of interior architecture?

What words prompt characterize activism and protesters?



RESEARCH

Based on the questions I asked, I did a deeper investigation, from which I found that the protesters at the time were local residents who came together for the protests solely because they wanted to protect the same area, and that the protests became one of the activities that increased cohesion.

process of protest

1. Preparatory phase: resources and funding
2. Mobilisation phase: rally points and routes
3. Activity implementation phase: marches and rallies
4. Follow-up: continuous mobilisation and dissemination of ideas

MANIFESTO

Learn from protesters to strengthen cohesion, further develop areas, and protect buildings.



1.

2.

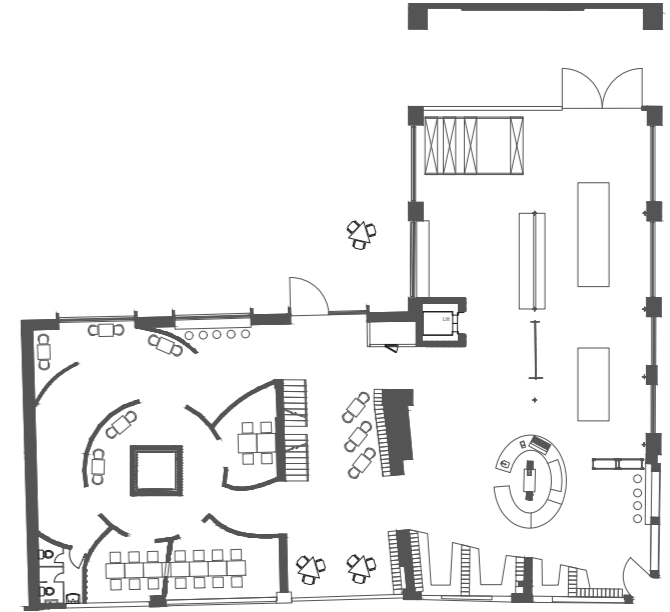
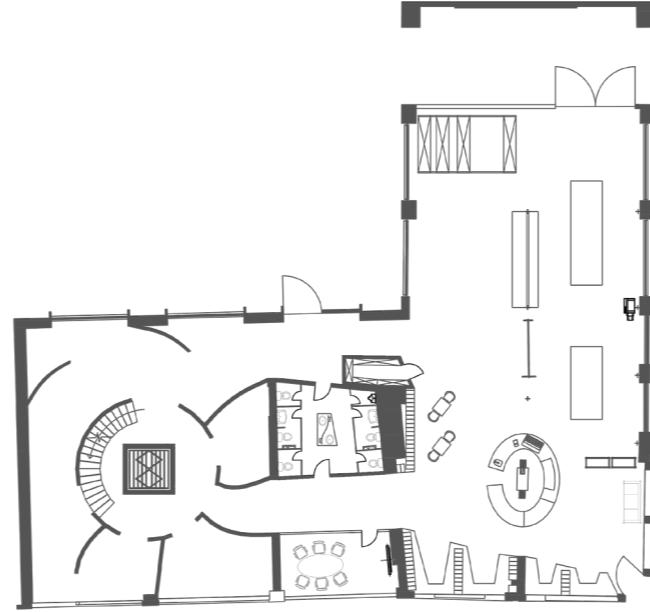
3.

4.

FUNCTIONAL PLANNING

Build cohesion and strengthen connections between people based on how activists go about it.

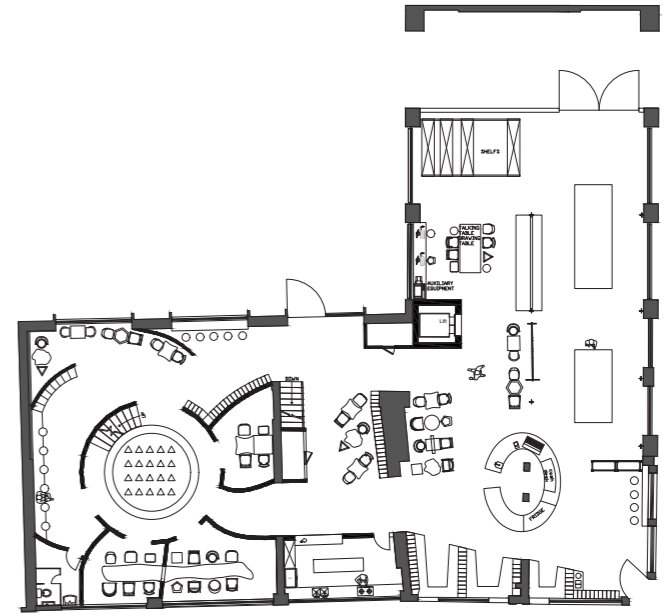
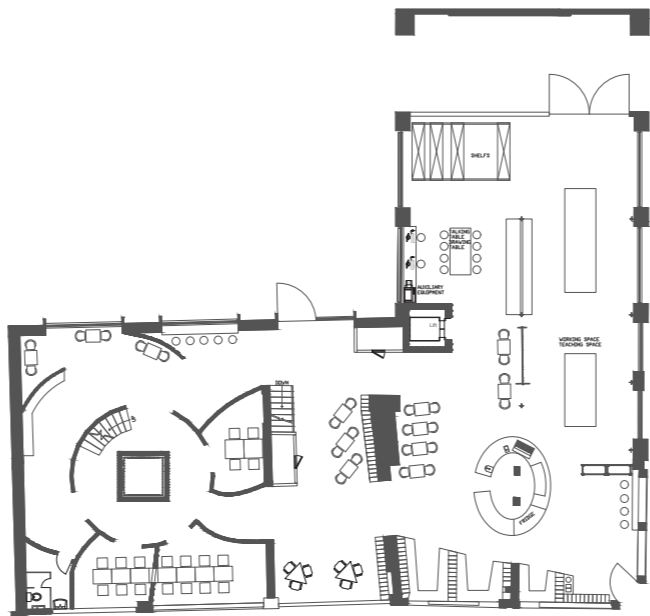


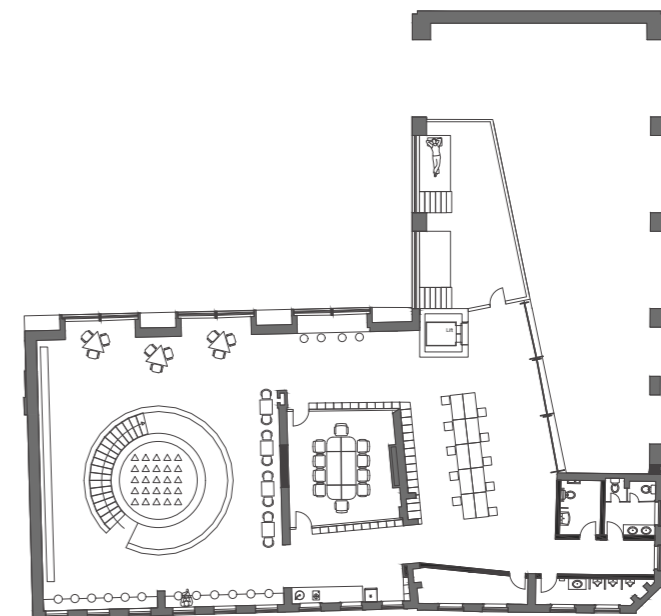
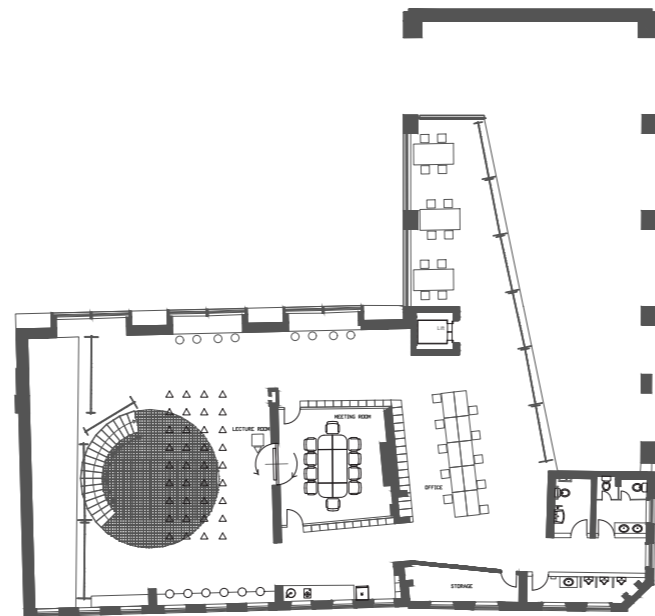
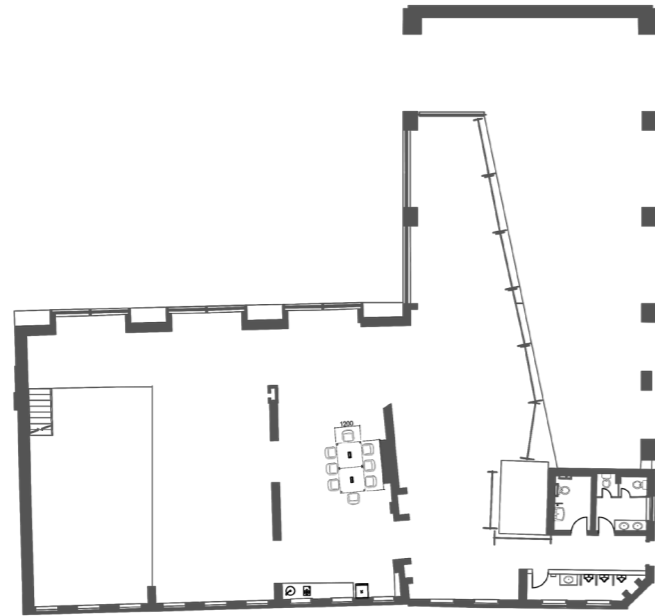


FLOORPLAN

Ground Floor

There is constant experimentation with floor plan layout design, trying to find the most suitable solution.

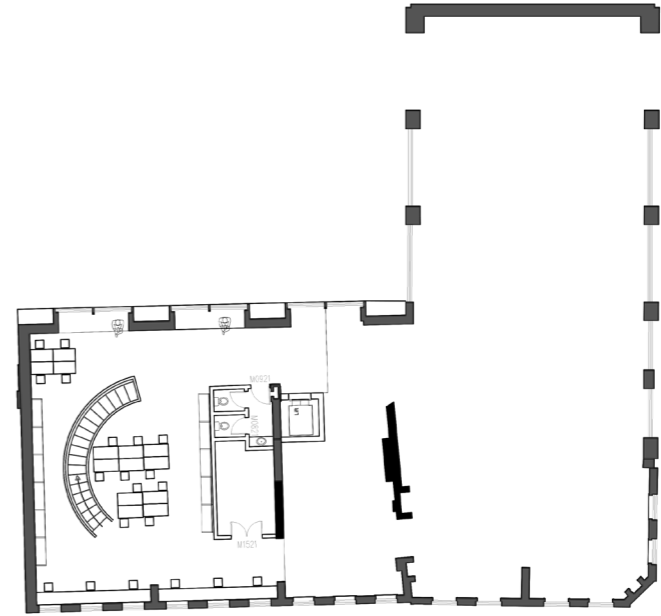
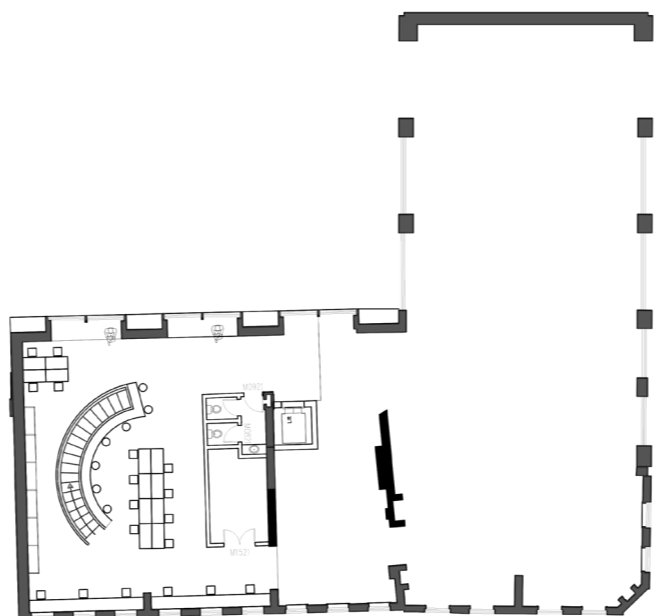




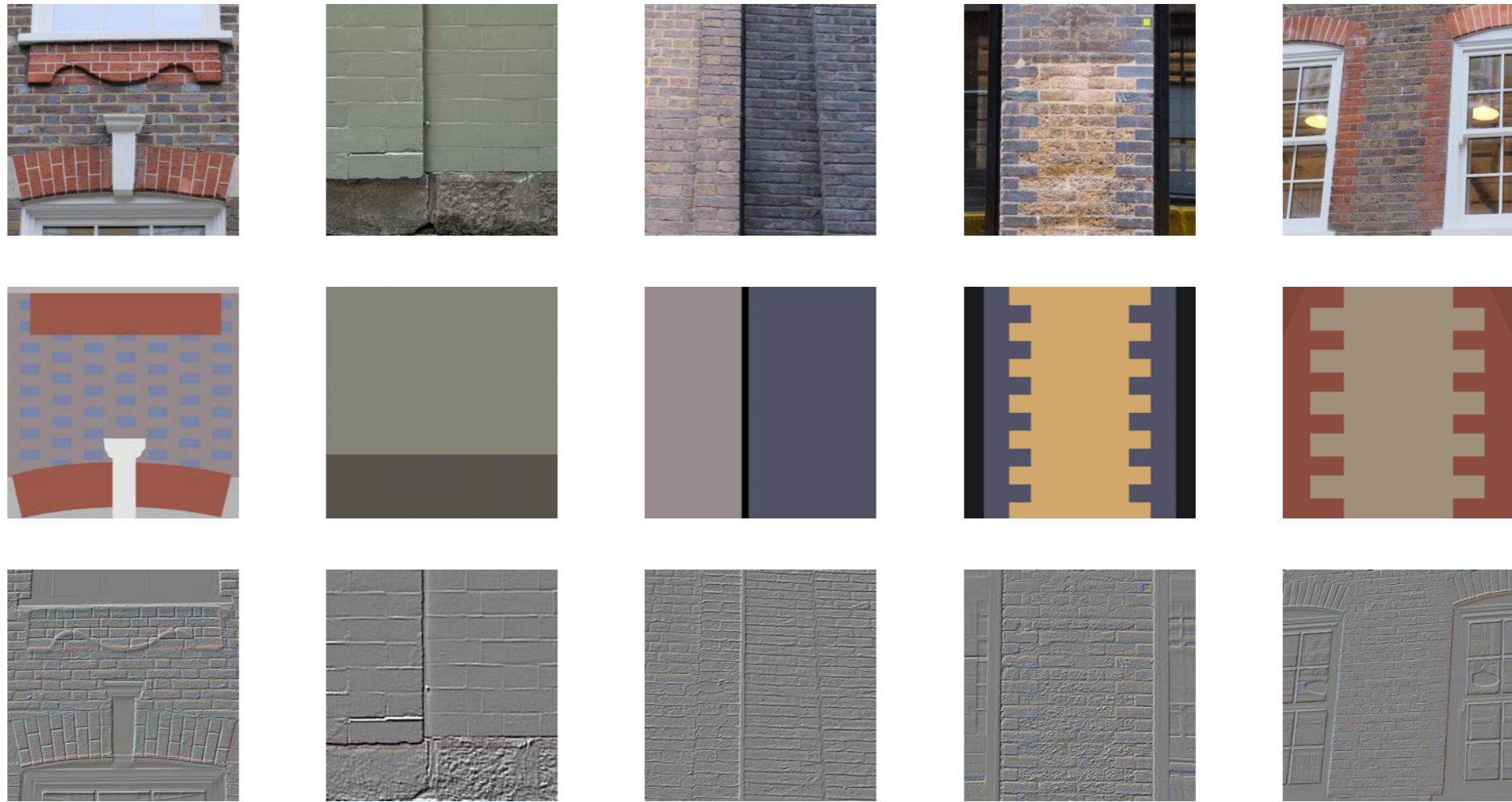
FLOORPLAN

First Floor

There is constant experimentation with floor plan layout design, trying to find the most suitable solution.



TERM 3



COLOR

Extraction of colour and texture from the local material samples.



COLOR

Based on my observations around the site, I tried to learn the existing elements and use colours and materials to make functional or spatial distinctions, and then fed my drawings into the AI with some keywords for interior categories to try to find some inspiration for the use of interior colours.



Same materials
Different colours



Change side
material only



All use different
materials



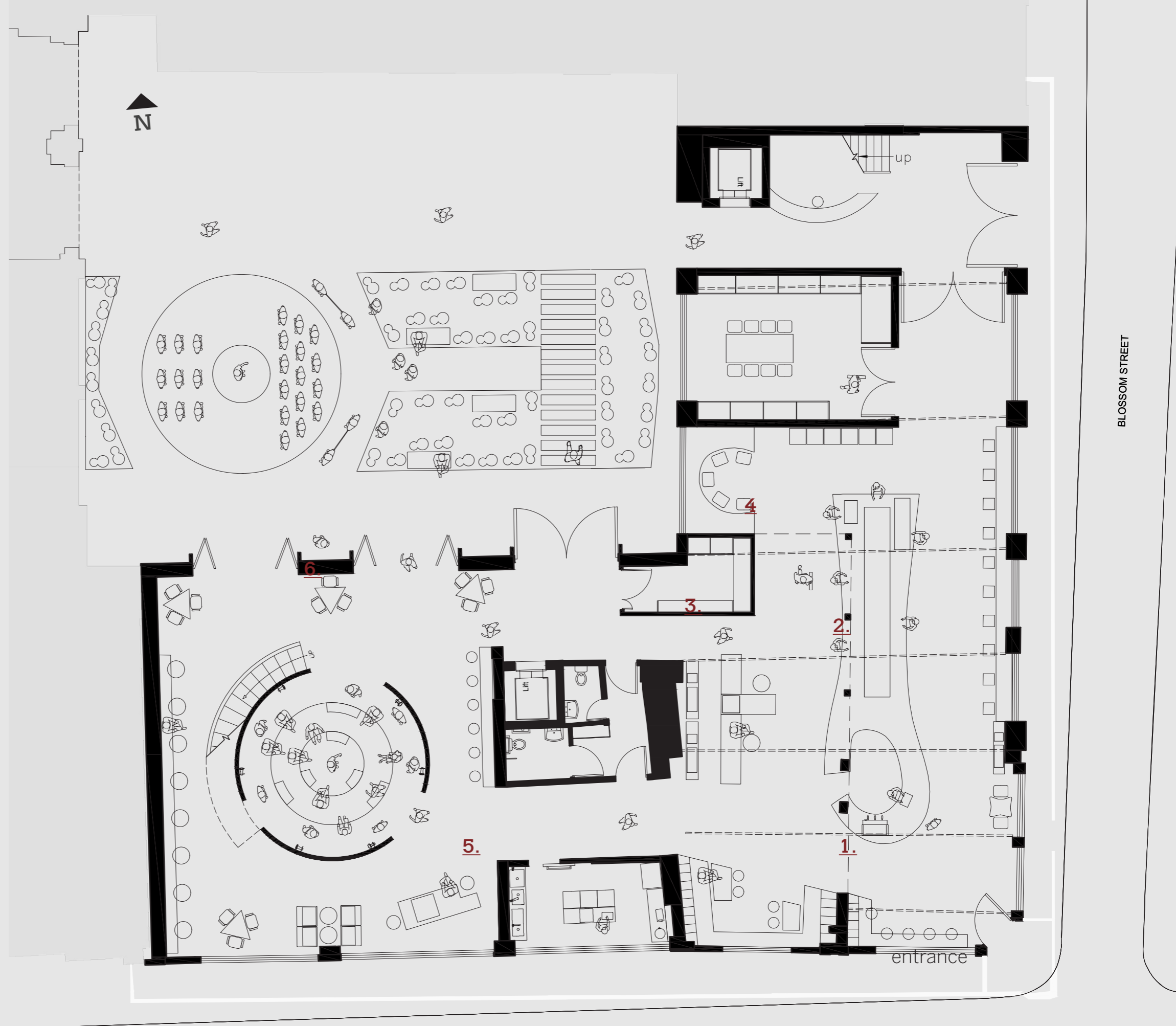
Adding ceilings



MATERIAL

Explore how I can better use colours and materials to delineate space through solid models.

- 1. COFFEE BAR
- 2. MAKING AREA
- 3. BRAINSTORM AREA
- 4. MEETING AND STOCK
- 5. LECTURE SPACE
- 6. MOKE UP STAGE



FLOORPLAN

Ground Floor

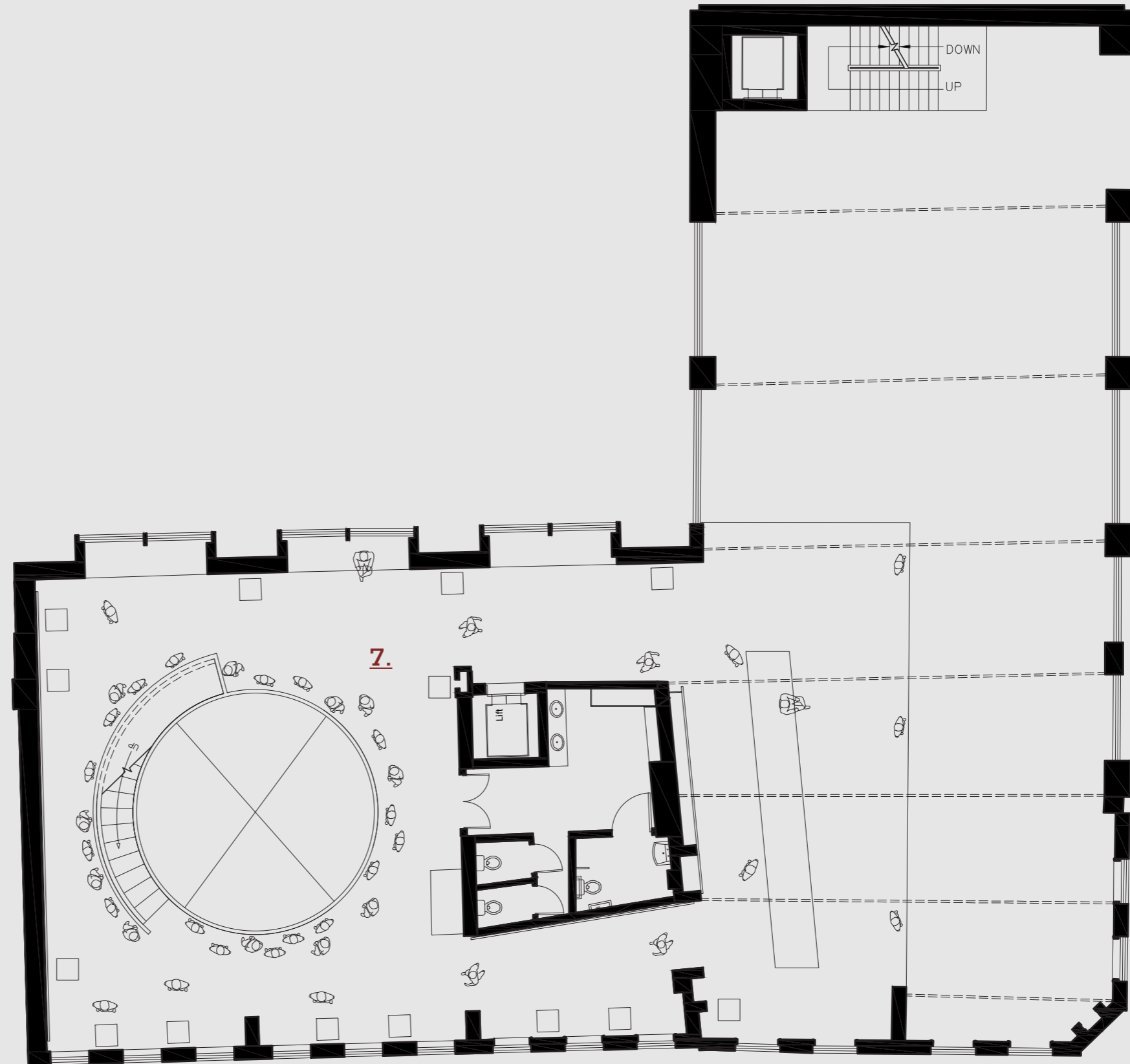
Rational allocation of space according to the plan, and the final floor plan is obtained in continuous trial and error

FOLGATE STREET

BLOSSOM STREET

1:100
Final

7. EXHIBITION



FLOORPLAN

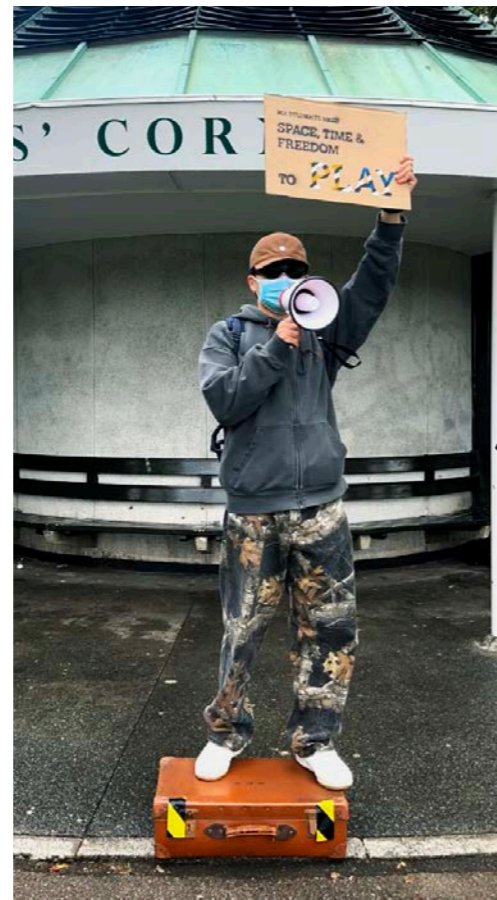
First Floor

Rational allocation of space according to the plan, and the final floor plan is obtained in continuous trial and error

1:100
Final

TOOLKIT

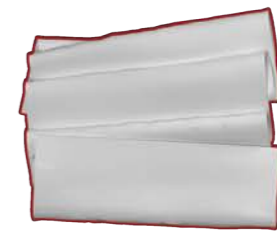
To participate in a protest, you need to prepare not only banners, but also something to protect your privacy.



cardboard



megaphone



fabric



marker pen



pen



laser pointer



cap



mask



adhesive tape



whistle



sunglasses



telescopic pole

330mm



1200mm

SECTION

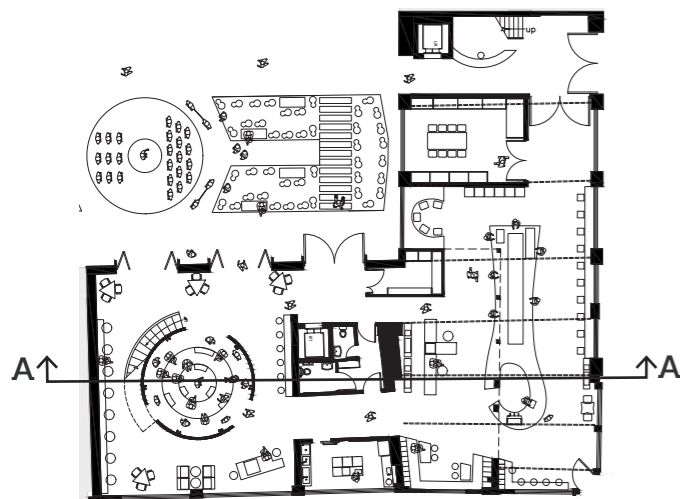
The sectional view focuses on the open lecture space and the busyness of the work area, but also shows the people upstairs involved in the presentation.

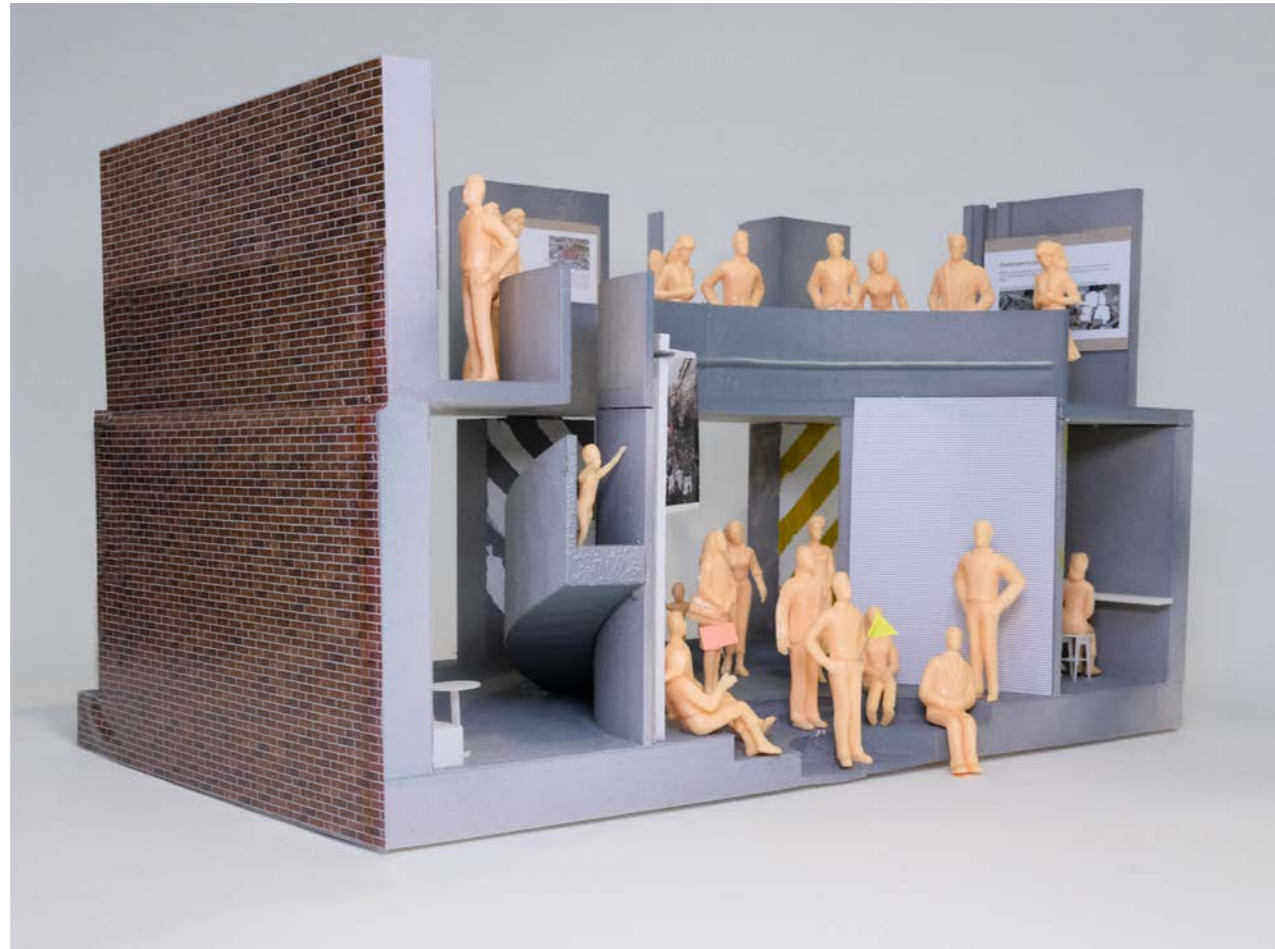


MODEL

1:30

Part of the model focuses on the use of lecture space, an open space where people watching, arguing and chatting interact with each other, creating a sense of chaos similar to that of a protest.





MODEL

1:30

A different perspective, and a partial detail.





MATERIAL PALETTE

Rough and hard materials were chosen in accordance with the theme, but there was also constant critical thinking about how best to attract attention, so the element of stripes was added, and there was also a great deal of exploration of materials and colours to emphasise the sense of contrast.



INTERIOR

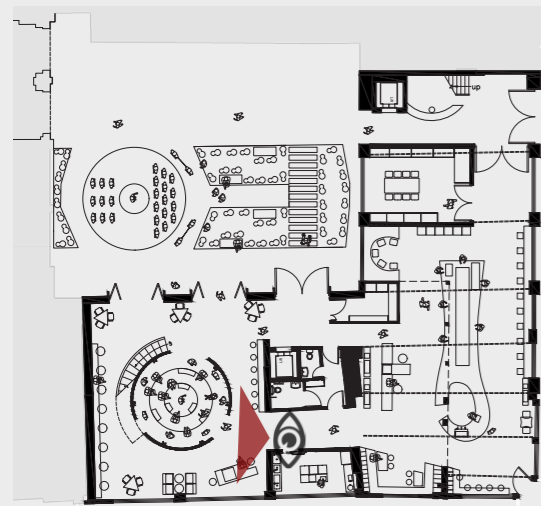
A huge workbench that facilitates communication and makes creating large banners easier. The banners hanging above and the projection of relevant videos are helping people to better understand the protests.



GROUND

INTERIOR

A sunken lecture space with megaphone, laser pointer and other tools that will also be used during the protests hanging on the wall, not only for decoration but also to make it easier for them to interact.

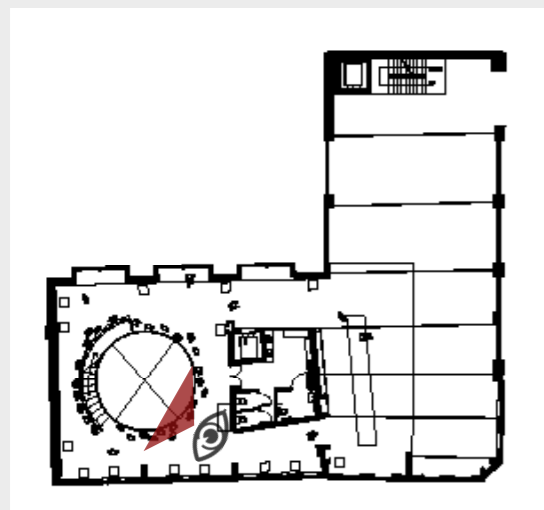


GROUND



INTERIOR

Standing above the lecture space, you can not only see an exhibition on the history of the protests, but also participate in the lecture. The whole space is an open space that interacts with each other to create a sense of chaos during the protests.



FIRST

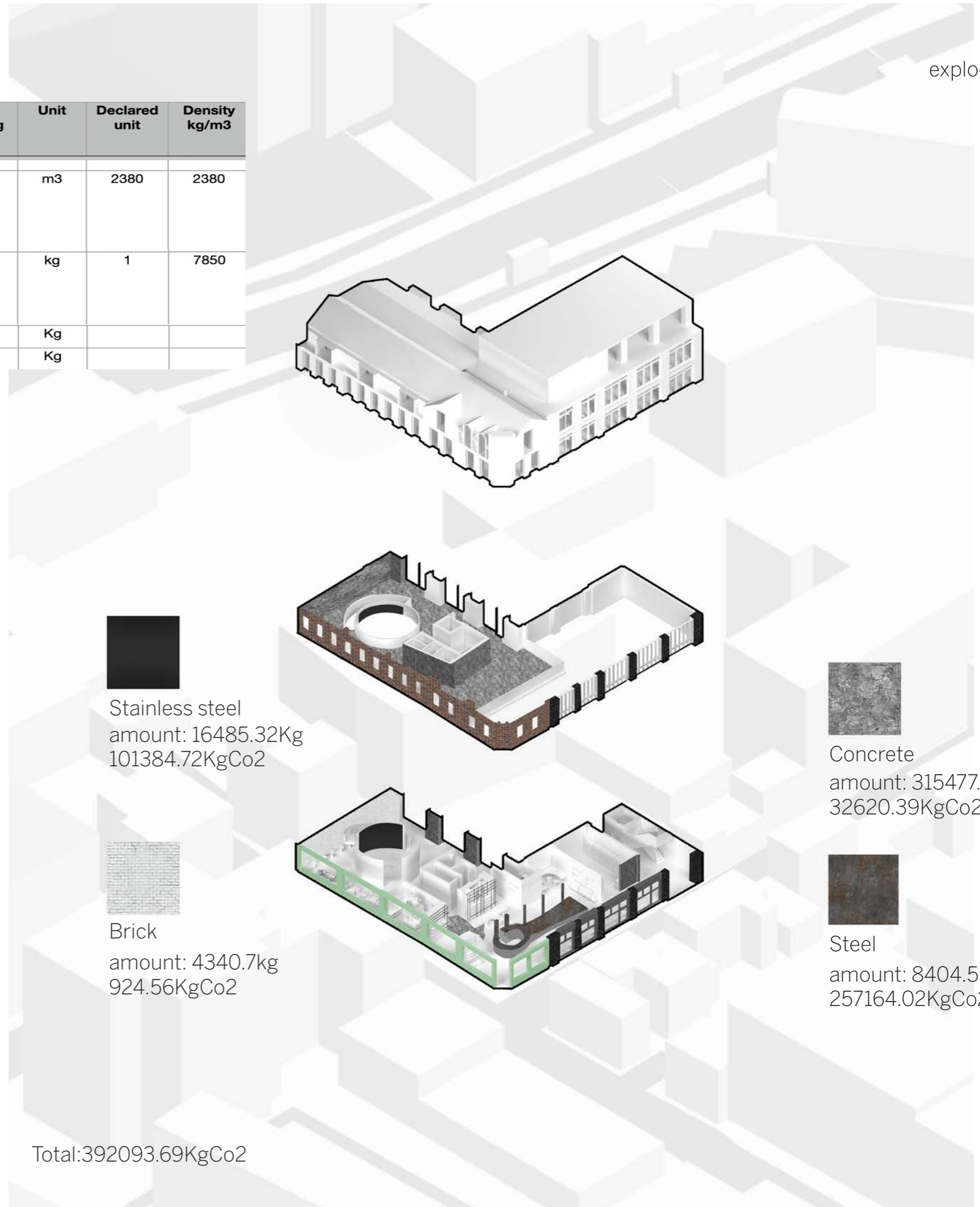
exploded view

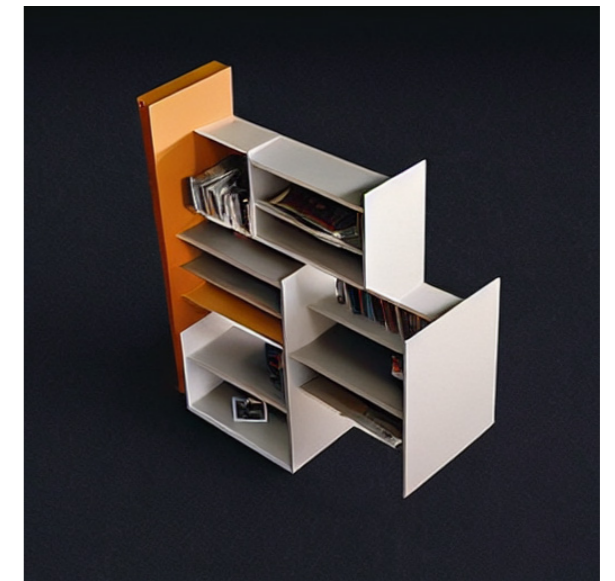
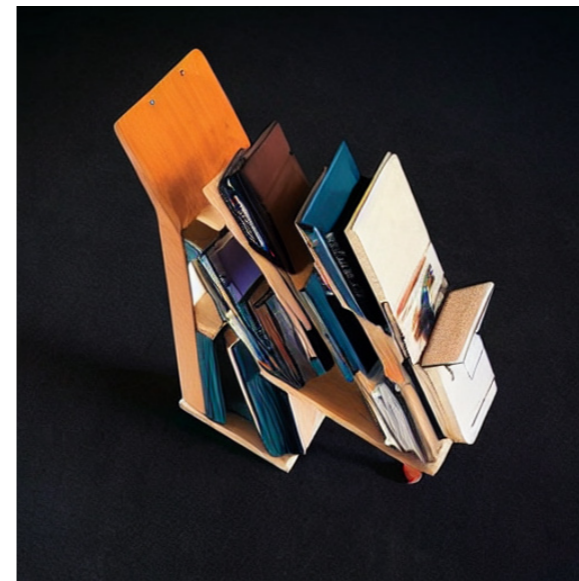
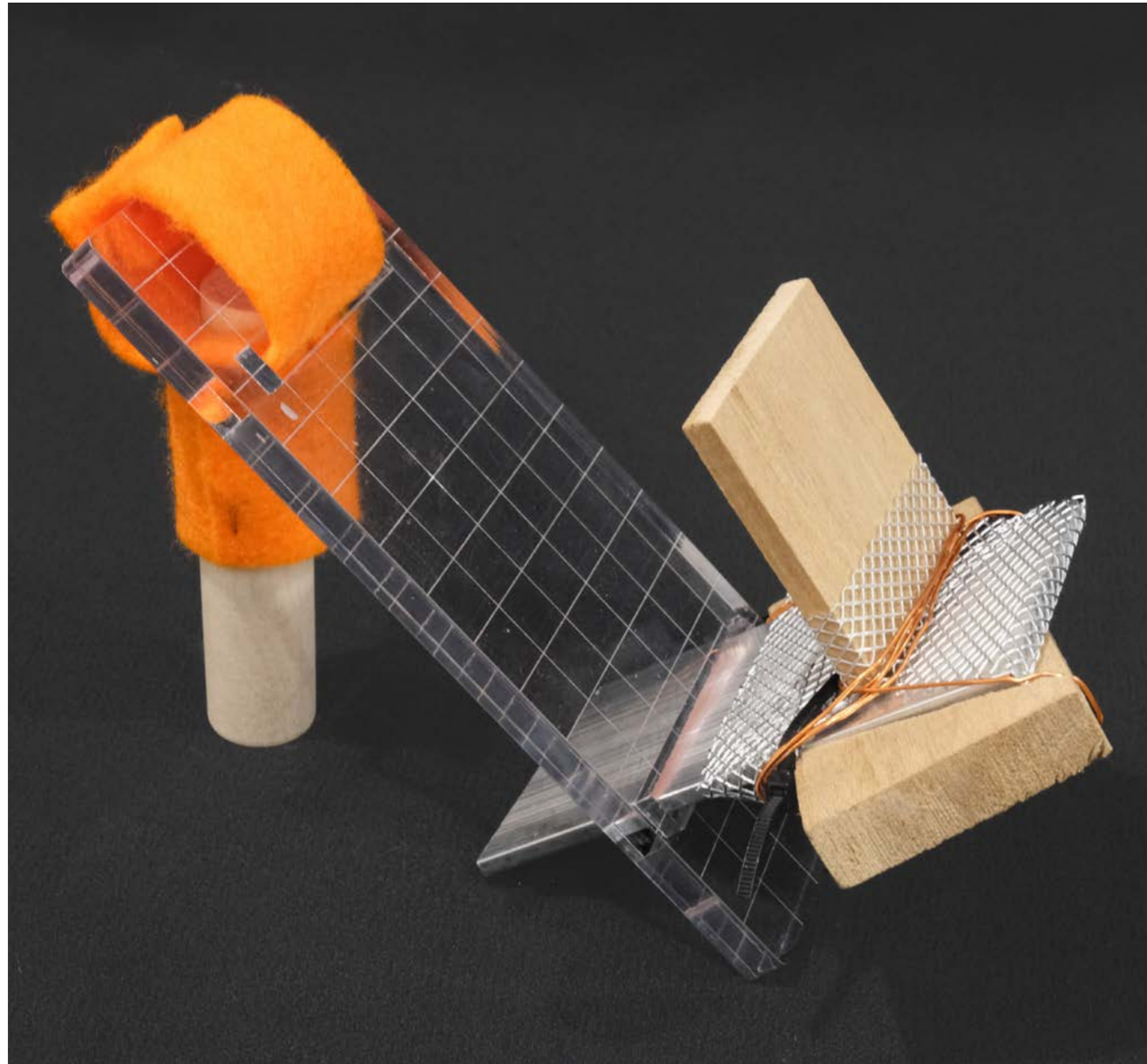
Material - Lv.1	Material - Lv.2	Material - Lv.3	Embodied carbon kgCO2e/declared unit	Embodied carbon per kg (kgCO2e/kg)	Unit	Declared unit	Density kg/m3
Concrete	Concrete, General	Concrete, average UK mix	246	0.1034	m3	2380	2380
Steel	Steel, Sheet	Steel, Organic coated sheet	3.06	3.06	kg	1	7850
Stainless steel			6.15		Kg		
BRICK			0.213		Kg		

Embodied Carbon X Material Weight
= Material Embodied Carbon

MATERIAL

Calculation of carbon emissions



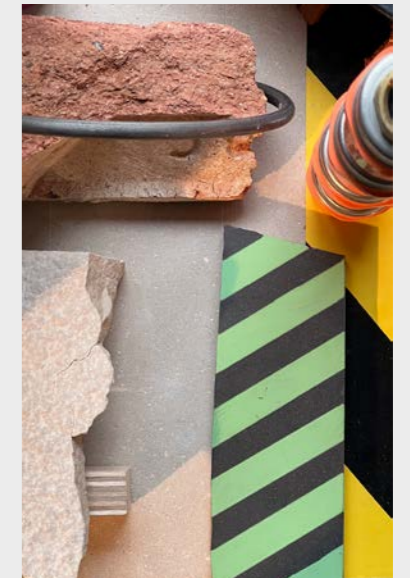
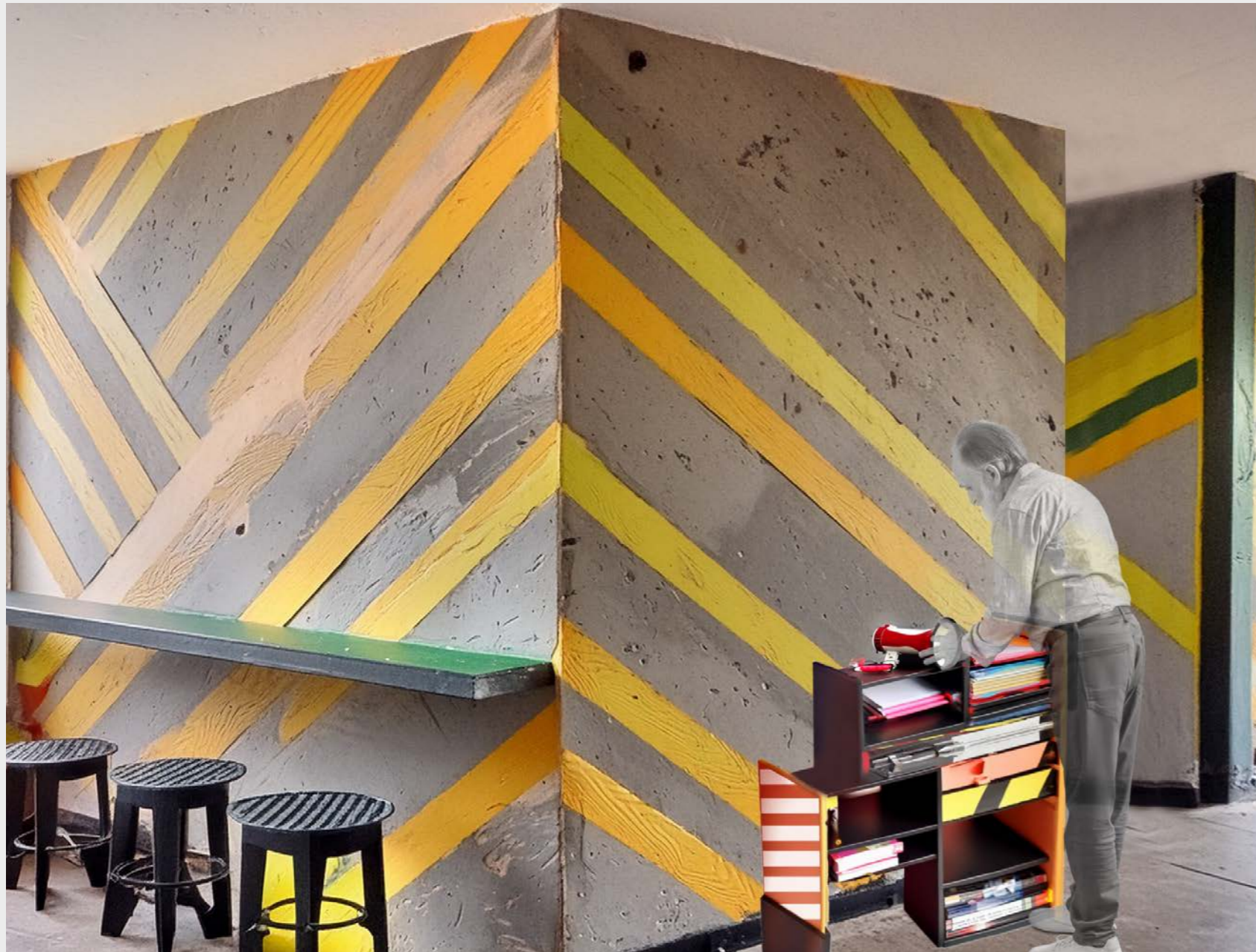


EXPLORATION OF AI

AI learning has greatly expanded my imagination and provided me with many opportunities in creating details.

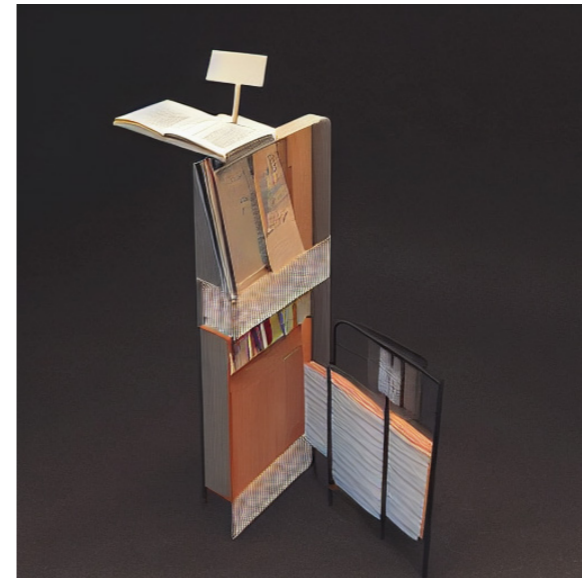
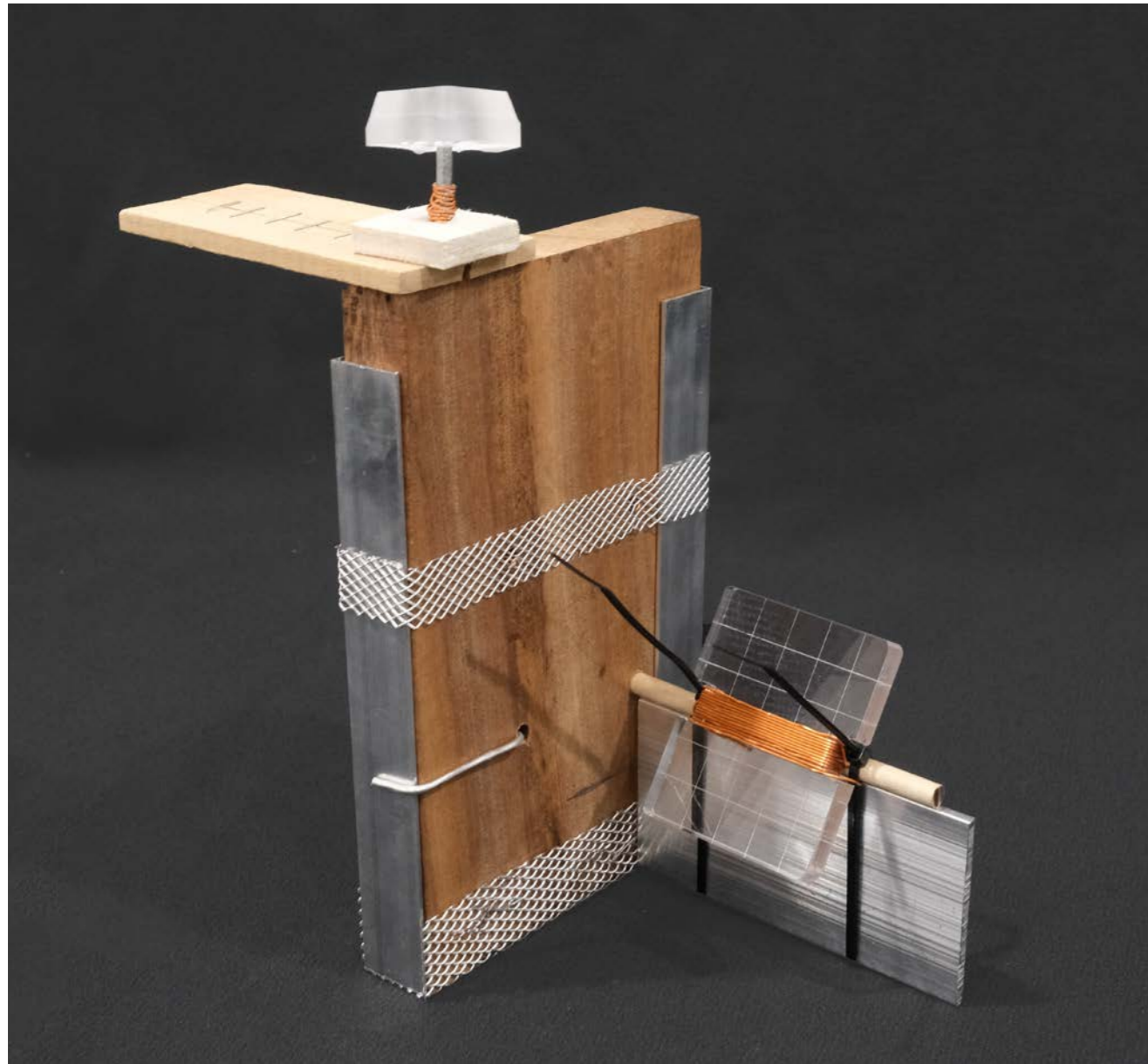
EXPLORATION OF AI

Blending AI-generated furniture models with material boards in an attempt to get AI to create more thematically relevant furniture.



prompt:

A bookshelf with books, super realistic, stripe elements decoration and some warning tape, photographic

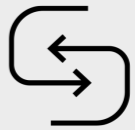
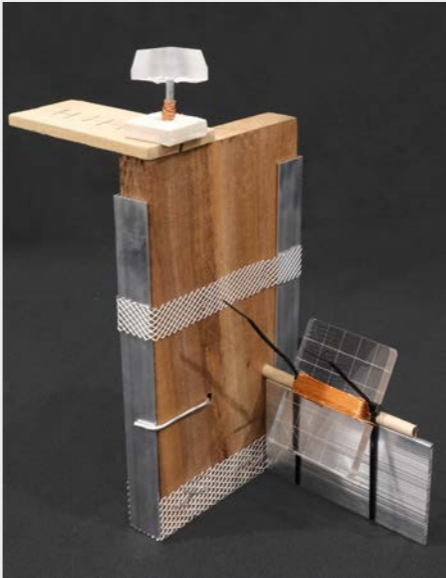


EXPLORATION OF AI

AI learning has greatly expanded my imagination and provided me with many opportunities in creating details.

EXPLORATION OF AI

After a careful review of the AI results, I still chose to blend my own handmade model with the material board, as none of the overall results were what I wanted, but the AI showed me a lot of possibilities.



prompt:
A furniture, A combination of table and chairs, put some books on it, super realistic, striped elements decoration and some warning tape, photographic



MODEL

1:5 furniture model of a foldable chair,
All material choices were sourced from
protesters' activities



SAVE
NORTON
FOLGATE

Expanding it presents a banner.



MODEL

A 1:1 model based on a 1:5 model, the material used is the most common cardboard for protests, because of the material itself, if you want to open the same way you have to increase the number of cardboard, but this will lead to too thick and not convenient to carry. After many attempts, we can only change the opening method to meet the functionality of the model.



THANK YOU