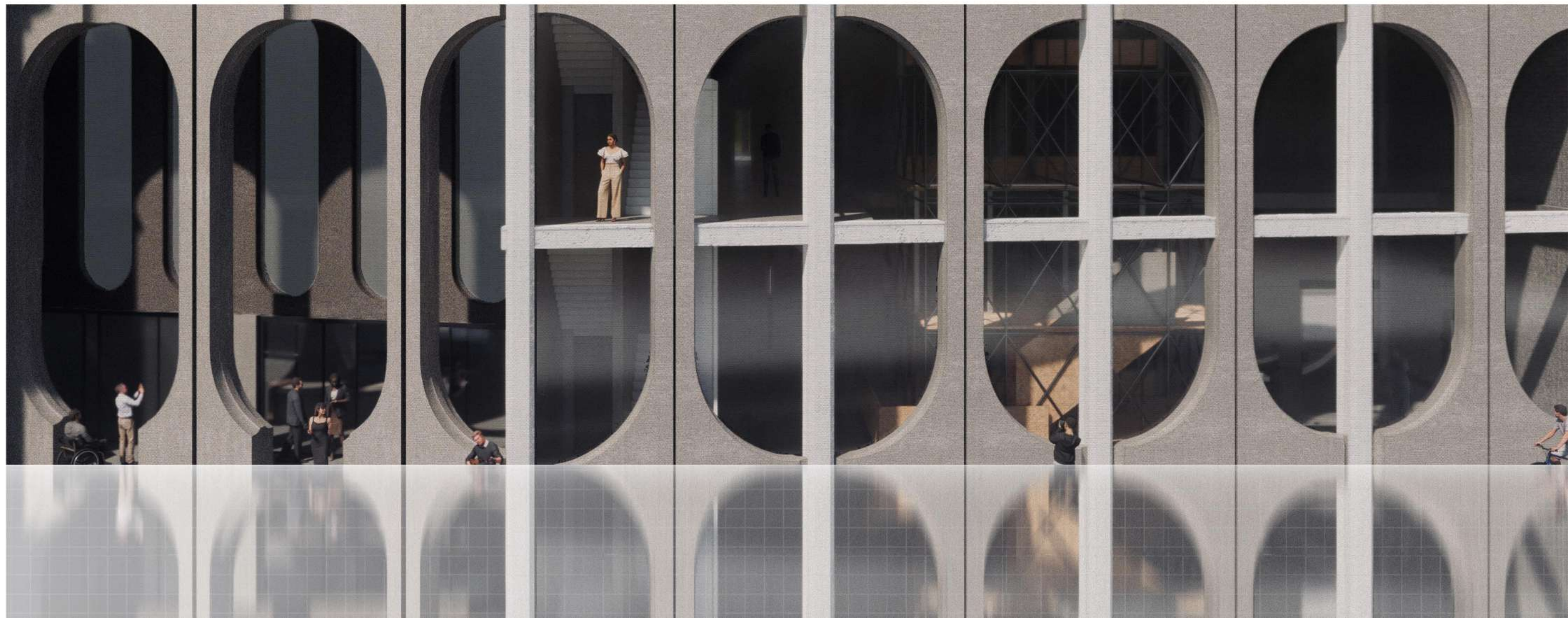


The project is inspired by the phenomenon of Moving east, which has brought about economic development in the area and the fusion of different cultures in the creation of the East London we see today. But this is also a challenge to the original culture of the region, as the old inhabitants of the area said "There will be no more community here", so the project is based on this phenomenon, to reflect on the identity challenges faced by old community cultures in the face of changing times.

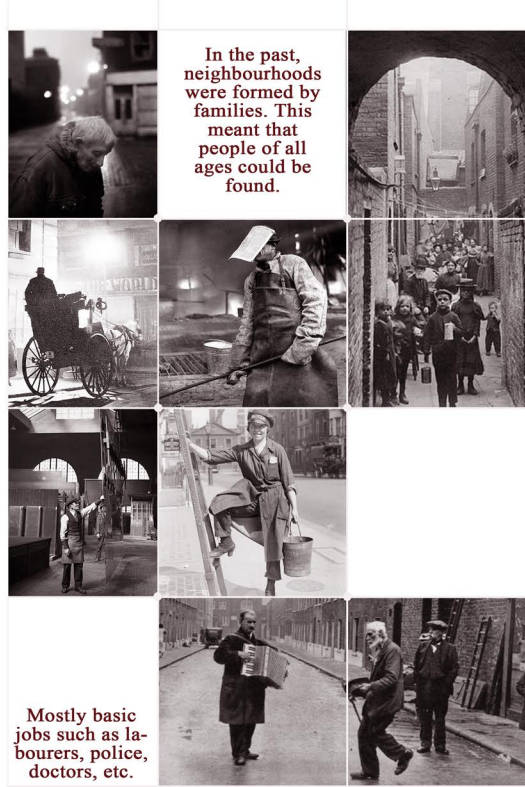
Type: archive depot
Site: Gillender Street E3
Student name: Wensheng Liu
Student number: 10033377



1. PROJECT BACKGROUND

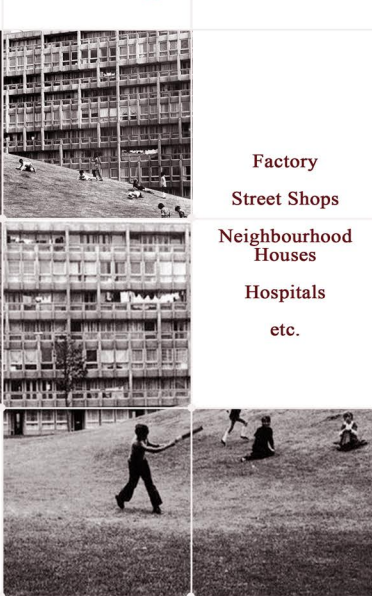
1.1 Research - East London in the past

People who used to live in East London



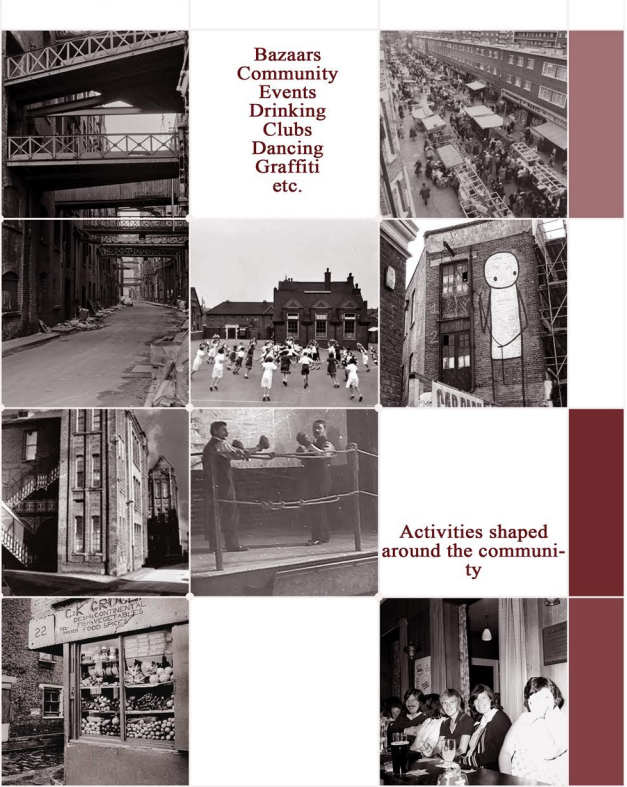
Mostly basic jobs such as labourers, police, doctors, etc.

Architecture type combinations



The combination of special building types creates a community environment that is unique to the industrial area.

Community Living



Activities shaped around the community

Summaries:
Surrounded by a complete set of industry-led facilities for the functioning of society, East London has developed a distinctive community culture in the past. Centred around a complete set of industry-led facilities for running society, East London has developed a distinctive community culture in the past. And such a community environment creates an environment of self-sufficiency, so that family and community cultures are connected and have a particular integrity.

1.2 Research - East London's Historic Line



The Second Industrial Revolution Late 18th to 19th centuries
London's East End grew rapidly during the Industrial Revolution and became London's major industrial and dockland area. This period developed a community culture centered on industry.

Second world war Early 20th century
The war destroyed industrial facilities and traditional industries began to decline.

Waves of immigration Mid-20th century
The East End began to become a gathering place for immigrants, predominantly Bengalis and African immigrants, bringing with them new cultures and religions.

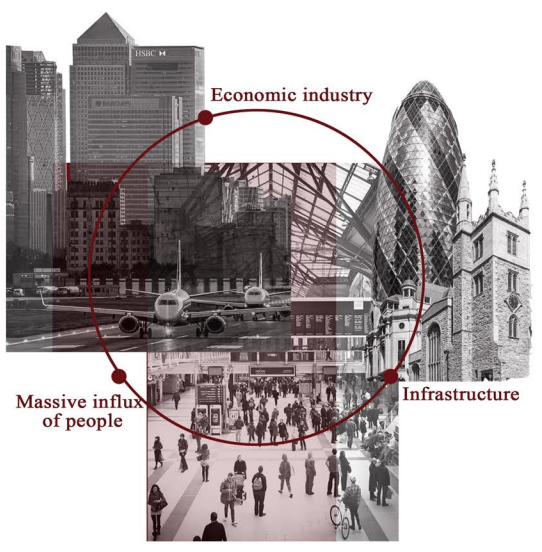
Community events and artistic development The second half of the 20th century
As industry declined and immigrants intervened, new cultural and community environments began to emerge, and the original industrial waste sites became a place of convergence for these activities. Art events such as Hoxton and Brick Lane.

Redevelopment and redevelopment of East London From the beginning of the 21st century to the present
With the development of the financial industry, as well as the development of the London Olympics. With a great deal of economic development, London's eastward move began to really bring about a climax.

Summaries:
The rise of industry brought a distinctive cultural scene to East London. But with the decline of industry, loss of jobs, waves of immigration and changing lifestyles, the traditional activities of the community lost their footing.

1.3 Perspectives on London Moving East

What has London's eastward shift brought to the East End?



But the story of East London itself is left elsewhere

For example V&A Museum or RIBA

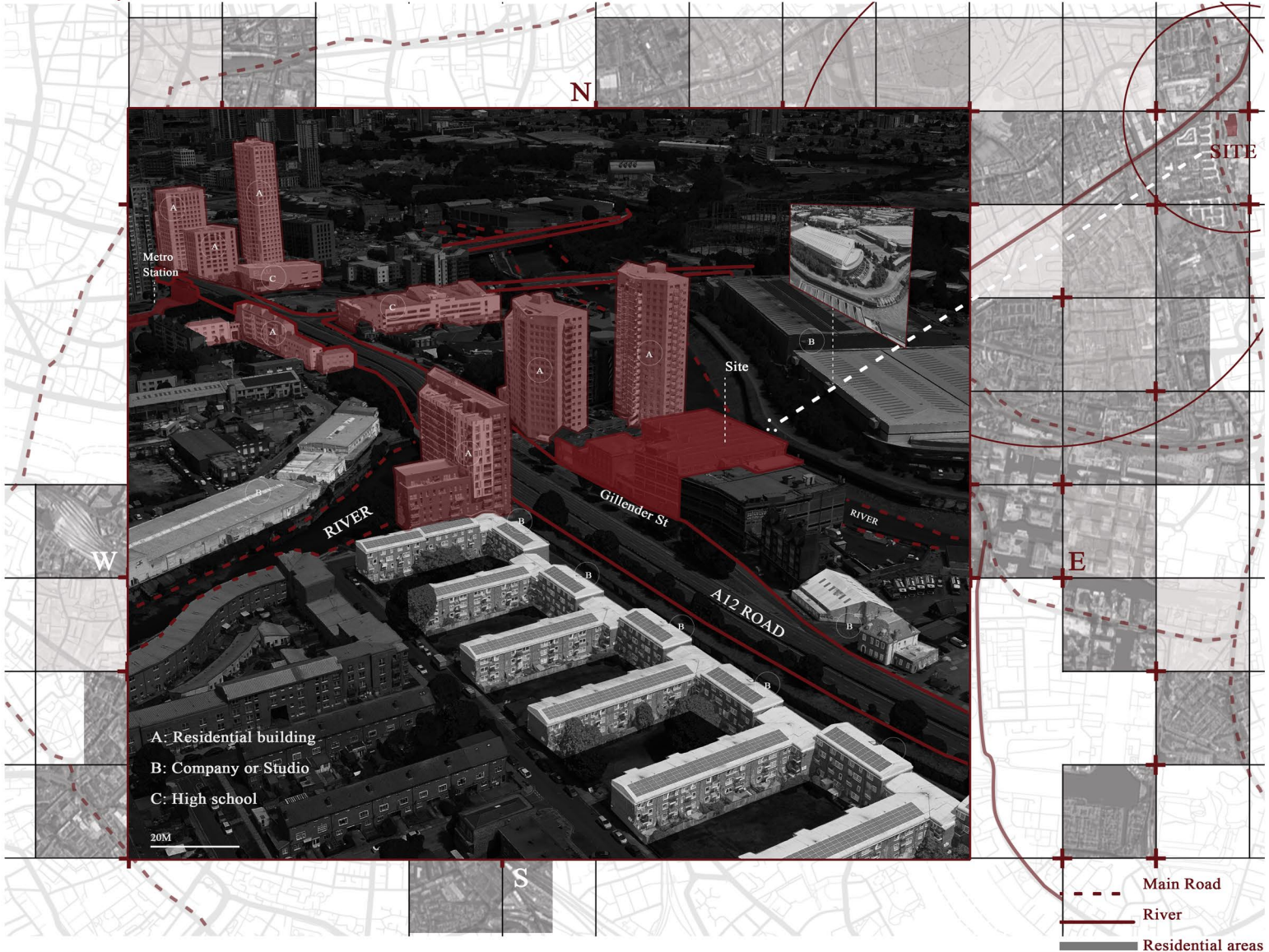
So move them back to East London, which brings the culture back.



Robin Hood Gardens, Poplar, London, by Alison and Peter Smithson
Building: 1970-1972
Height: 8000mm
Width: 6000mm
Length: 6000mm

Summaries:
Moving London East should not only move the economy and population, but also move the cultural record of the East End of London back from other museums and collections. In this way, the original culture of the area will be preserved and the cultural identity of its original community will be found and preserved.

1.4 Site analysis



Summaries:
The building is situated in a residential area, close to the traffic axis, east of the river and surrounded by completed flats. At the same time the neighbouring industrial sites are in a situation of renovation, now used as warehouses for temporary functions, but in the future the area will be dominated by residential areas.

2. DESIGN SECTION

2.1 Design concept

ARCHIVE:
London's eastward shift has spurred diverse cultural development, challenging the area's original identity.

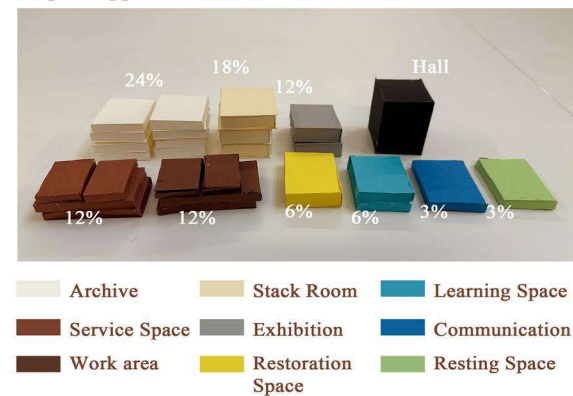
Converting a traditional factory into an archive center aims to preserve and showcase the region's working-class and community cultures.

It will also foster exchanges between original residents and other cultures, shaping a new East side identity.

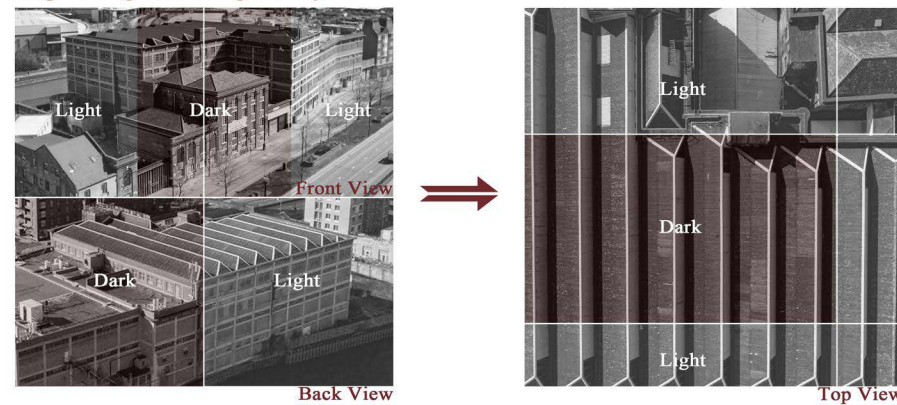


2.2 Arrangement Function

Step 1: Approximate distribution of functional areas

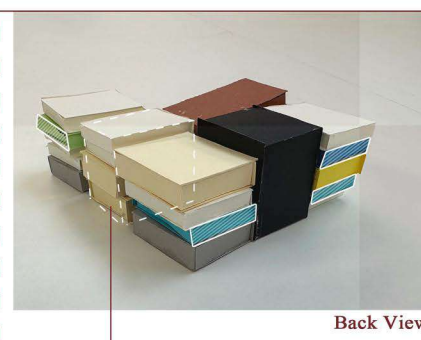
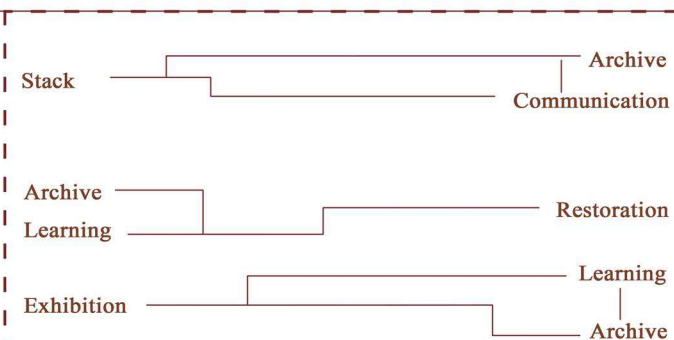
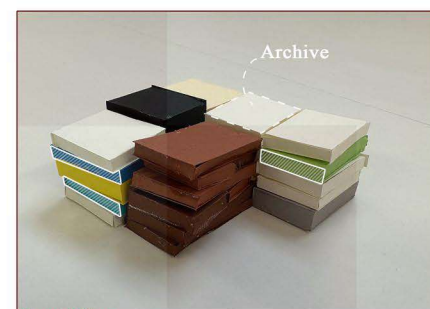


Step 2: Original site light analysis



Step 3: Layout Functions (interspersed)

Interpolation of archival storage with human activities



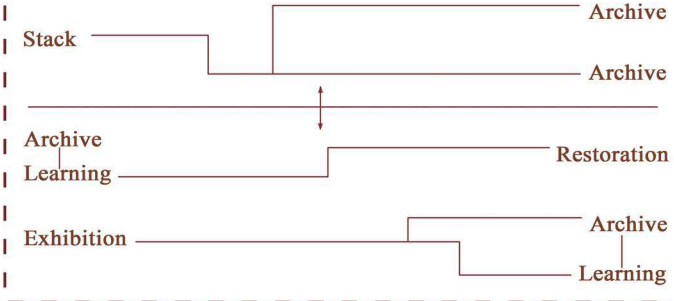
The intervention of the atrium provides a richer light environment for the interior environment and increases the stay area for human activities. It also increases the connectivity of the space.

Step 3.1: Layout Functions (separation)
Distinction between storage and human activity space



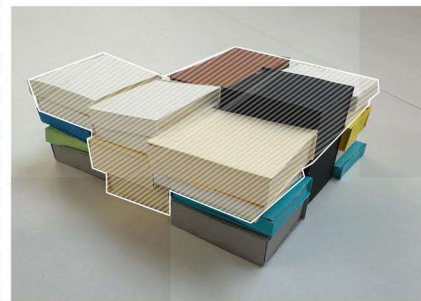
Summaries:
Archives, exhibition halls, and restoration areas are combined with learning spaces, while communication areas are integrated with exhibition halls. The functional space is interspersed with 'story of history' moments, gradually immersing visitors in the historical and cultural identity of the site.

Summaries:
Unlike the interspersed format, the separation allows the archive to be stored and managed more easily throughout the space, but still retains parts of the archive interspersed with activity areas to help visitors engage with the culture of East London.

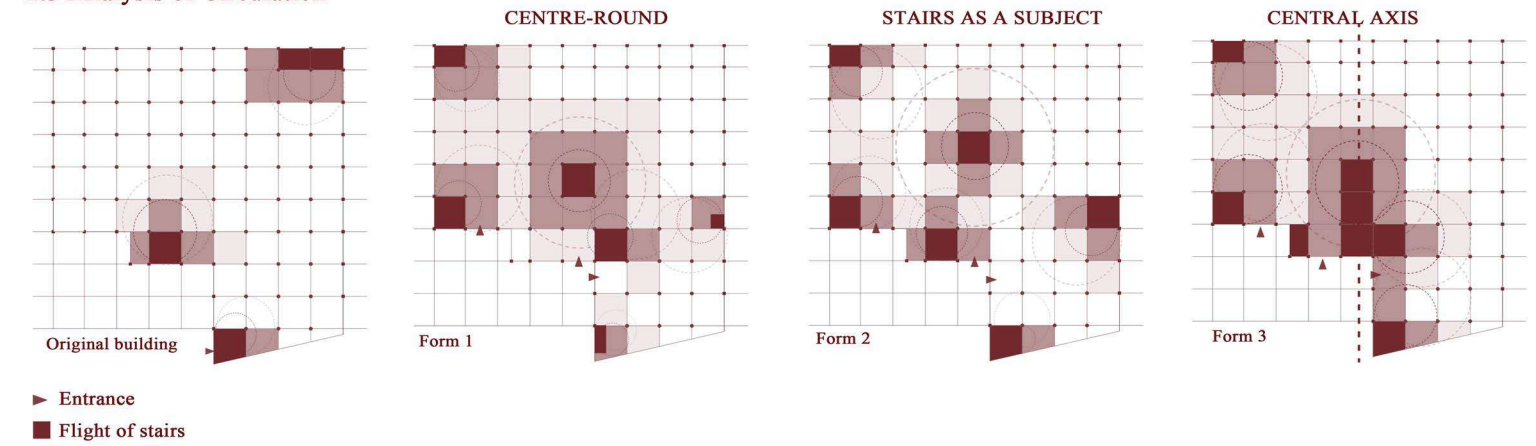


Based on regional light analysis

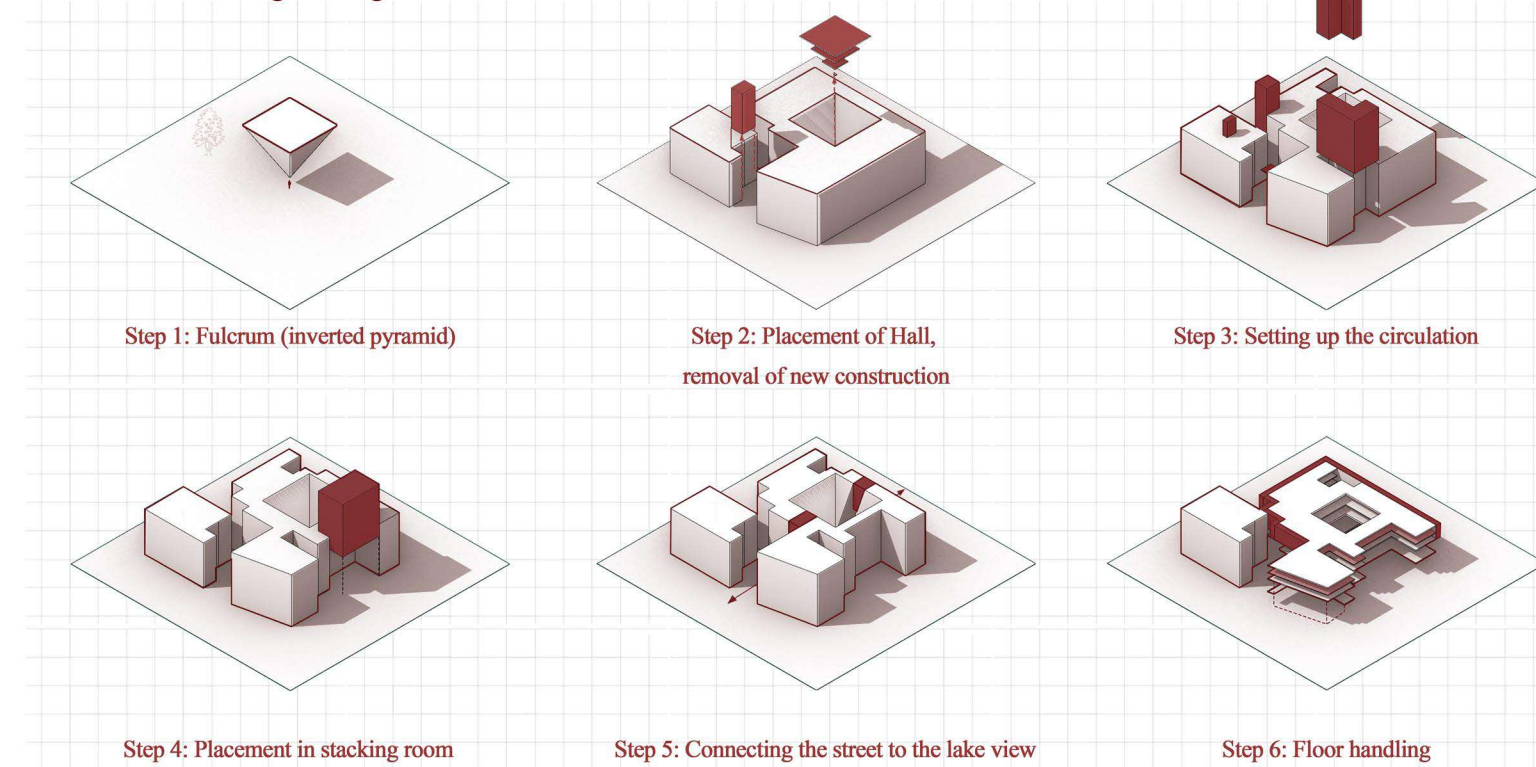
Most of the storage areas are located in a dark area in the centre, which facilitates the protection of the archives and connects the archives to the other areas, encouraging people to intervene in the archives.



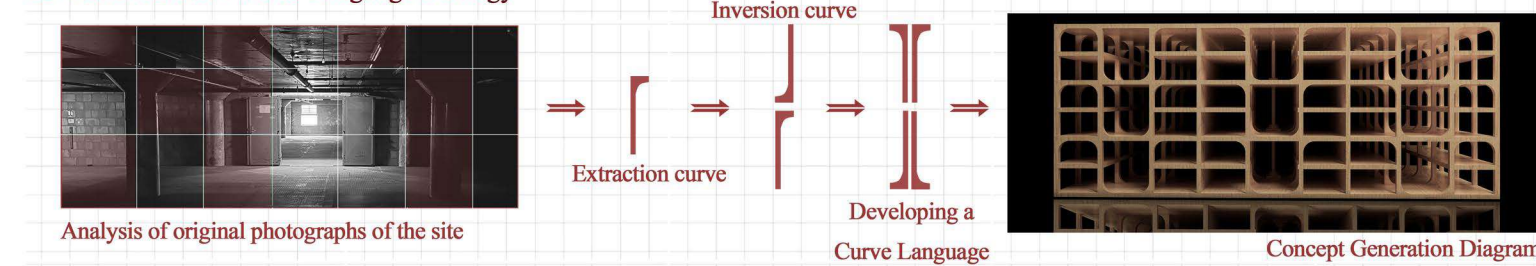
2.3 Analysis of Circulation



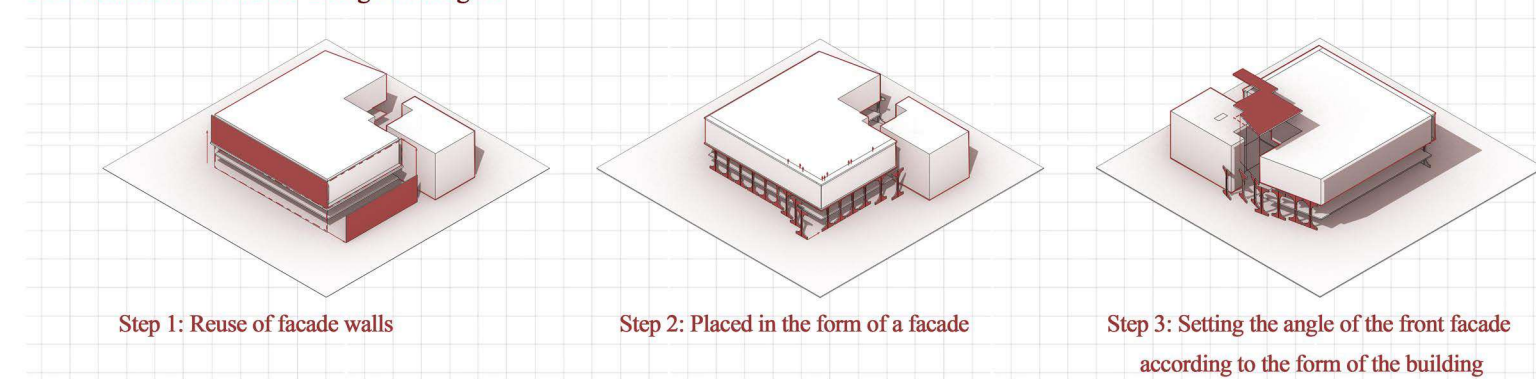
2.4 Architectural Design Strategies



2.5 Architectural Facade Language Strategy



2.6 Architectural Facade Design Strategies



BUILDING FACADE DISPLAY

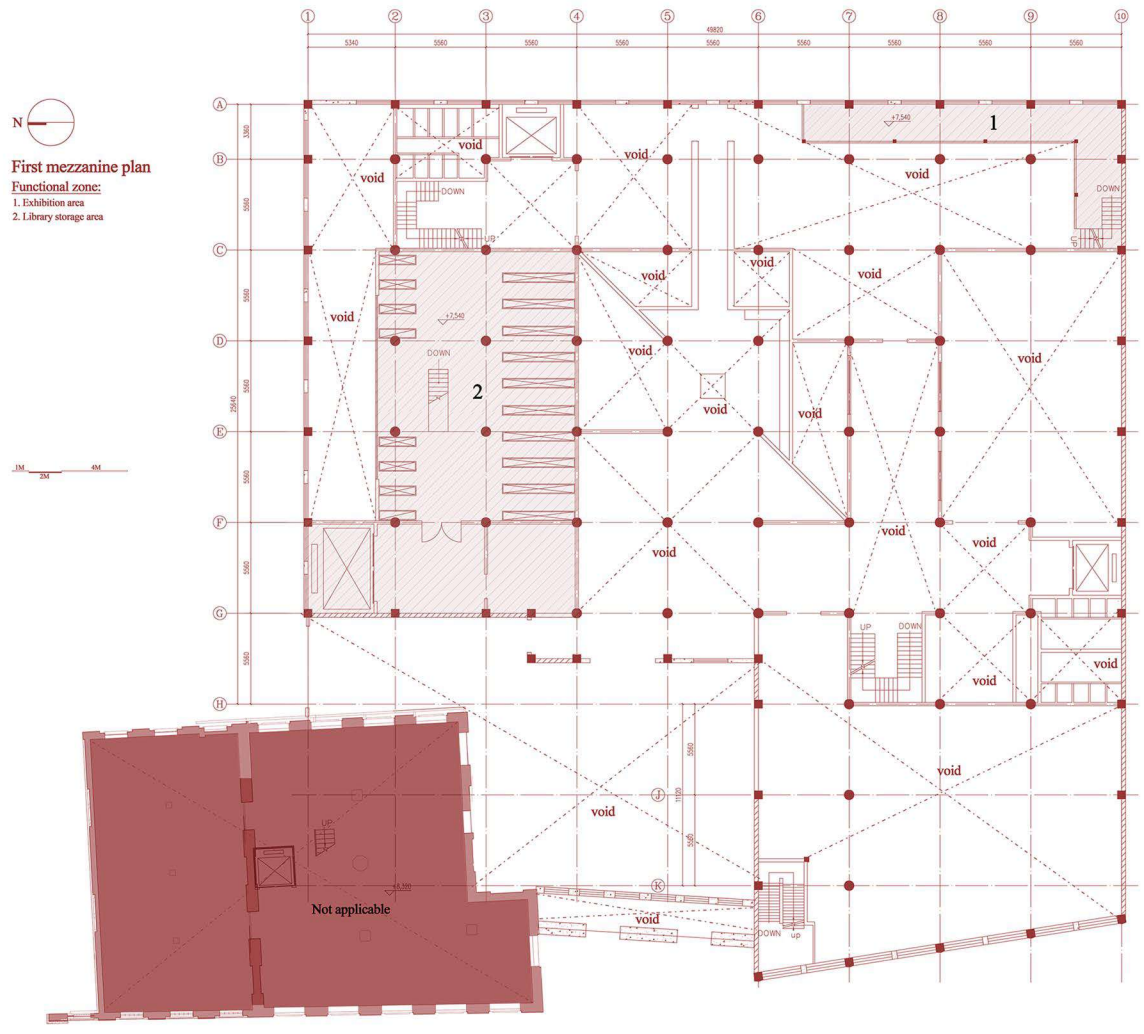
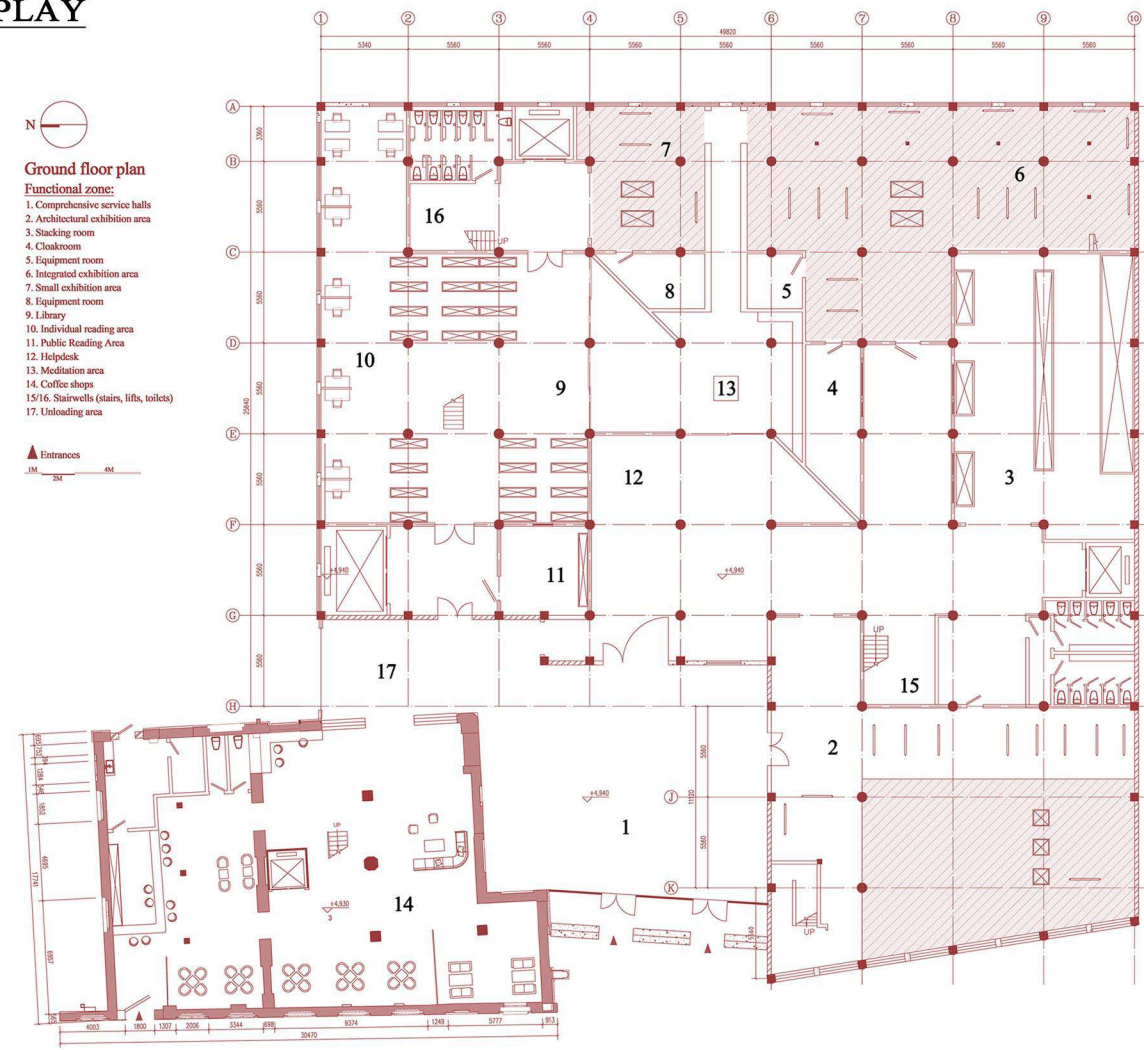


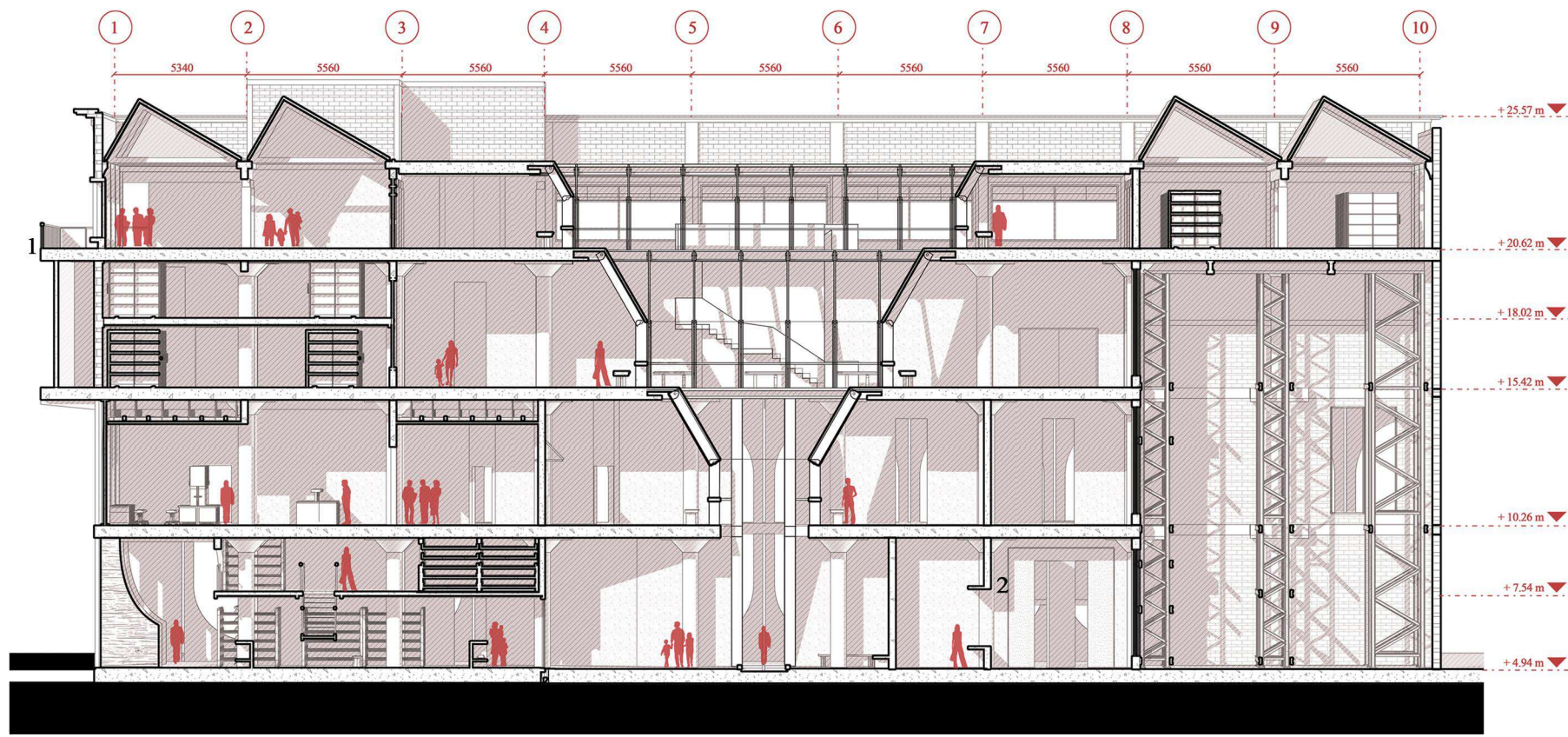
Street facade rendering



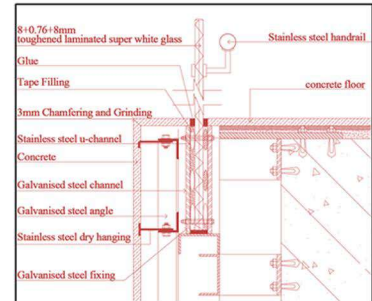
Hand-modelled drawing showing the east facade of the building

PLAN DISPLAY

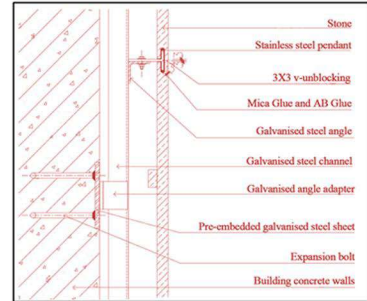




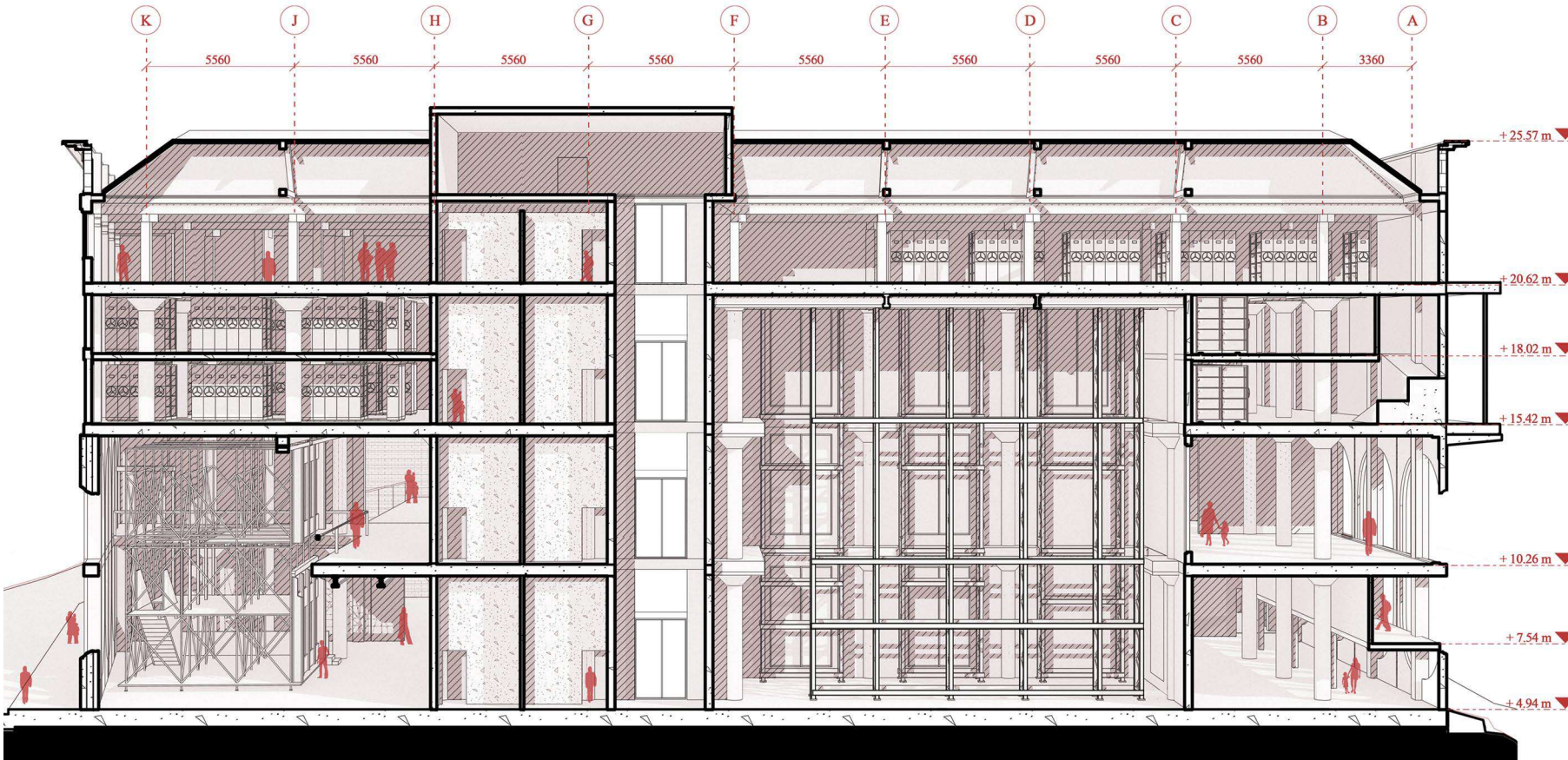
SECTION PLAN



1. Railing detail drawings

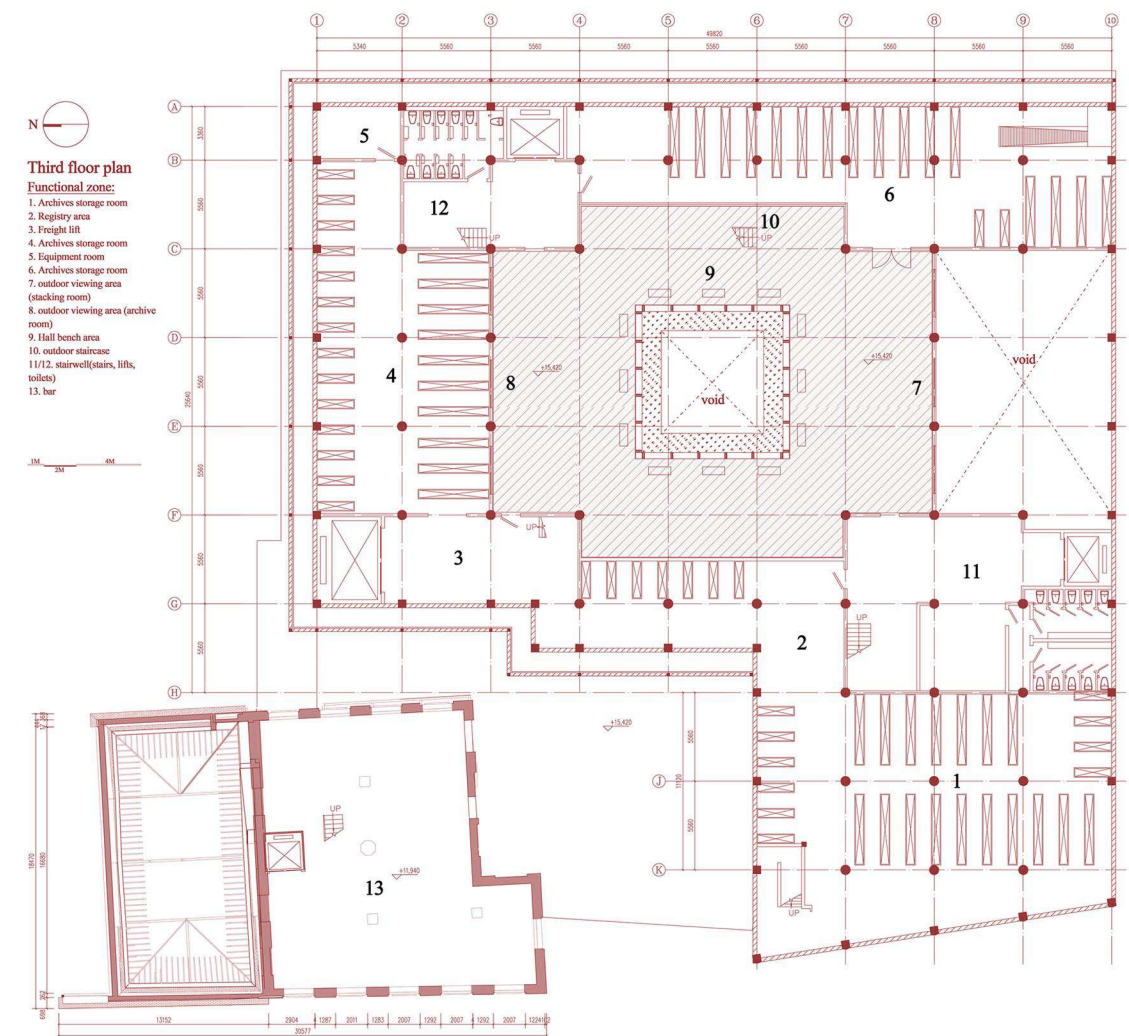
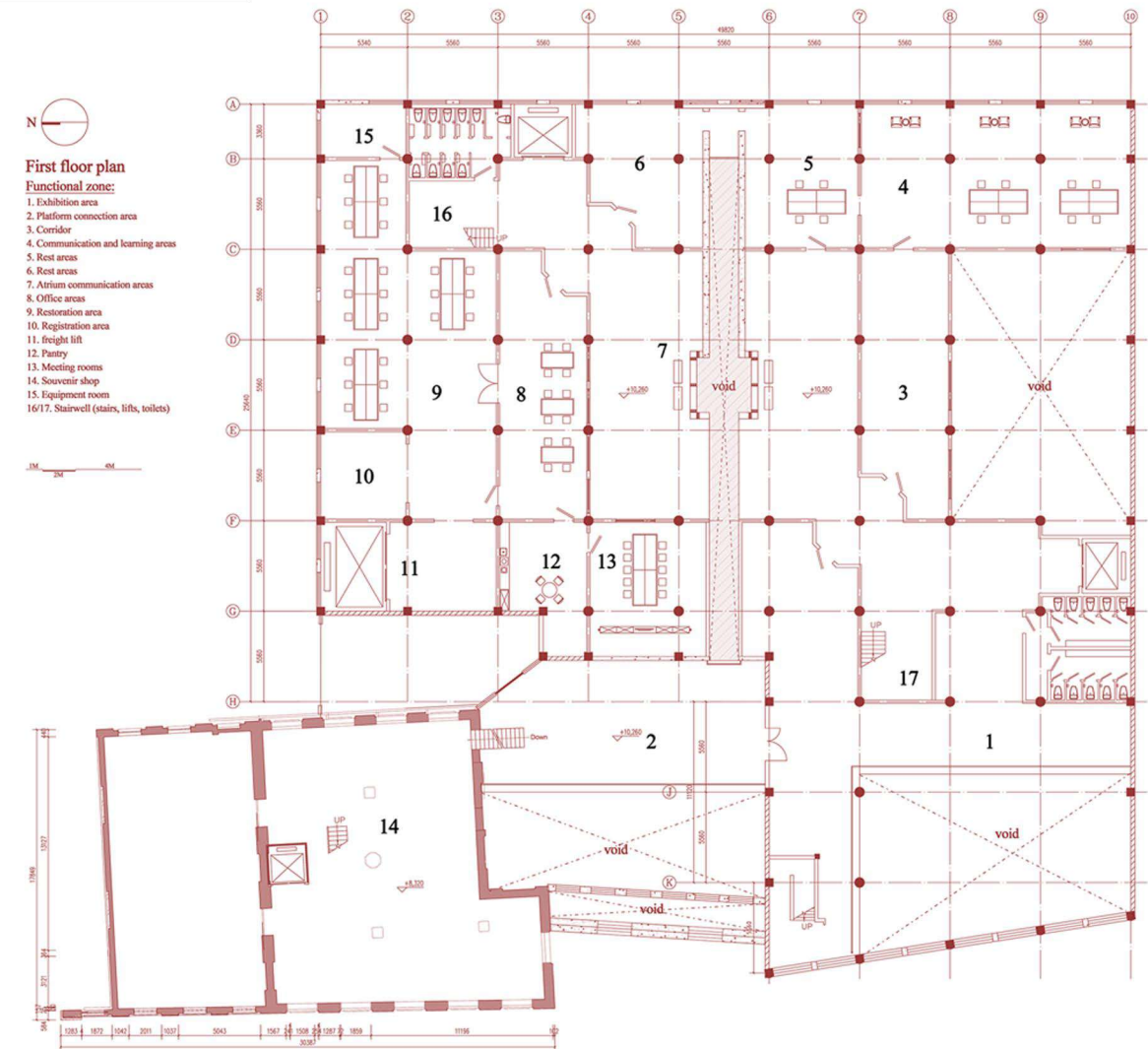


2. Wall detail drawings

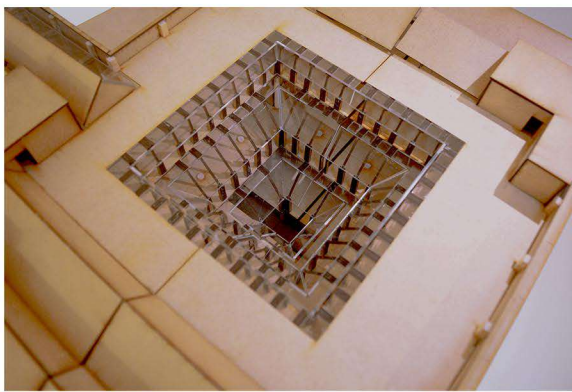
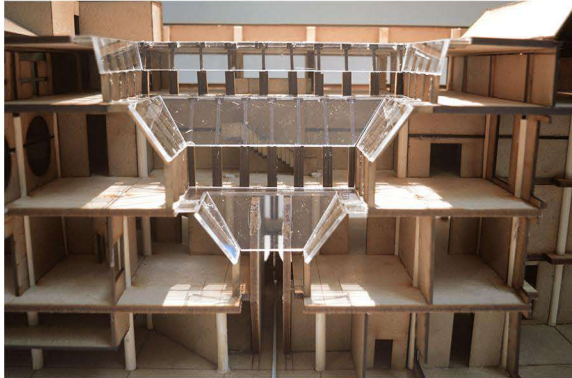
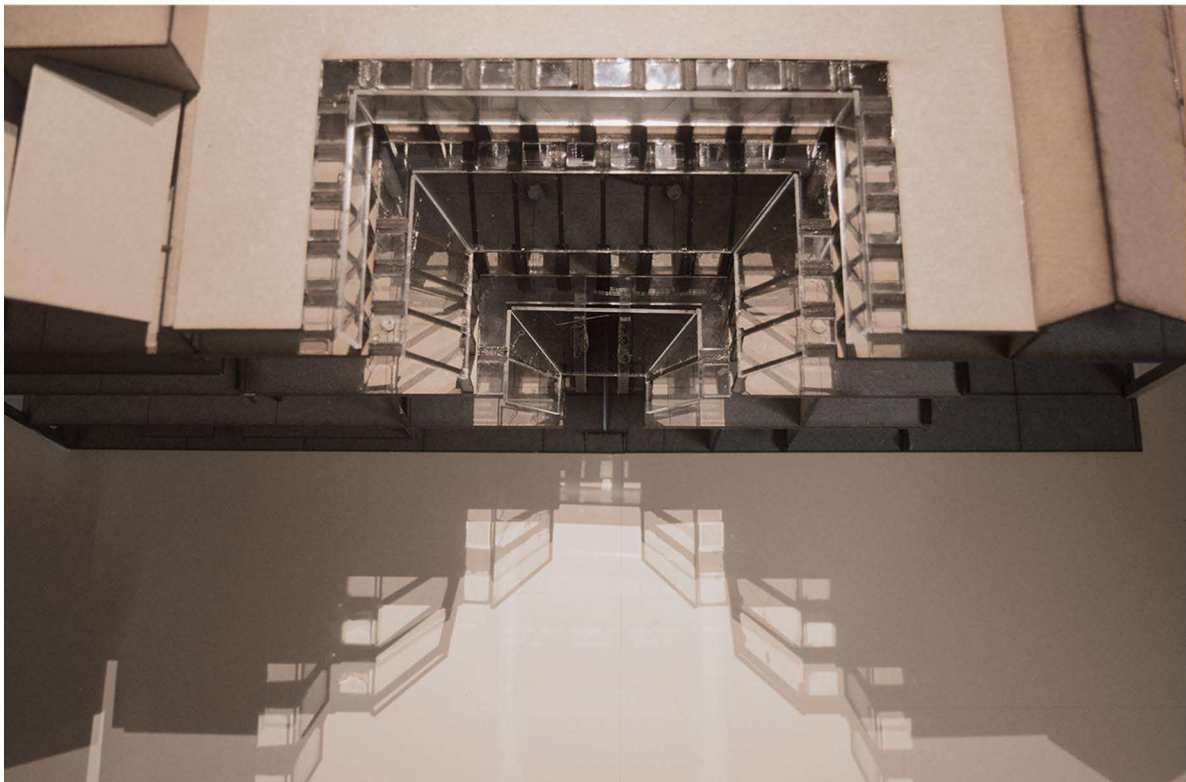
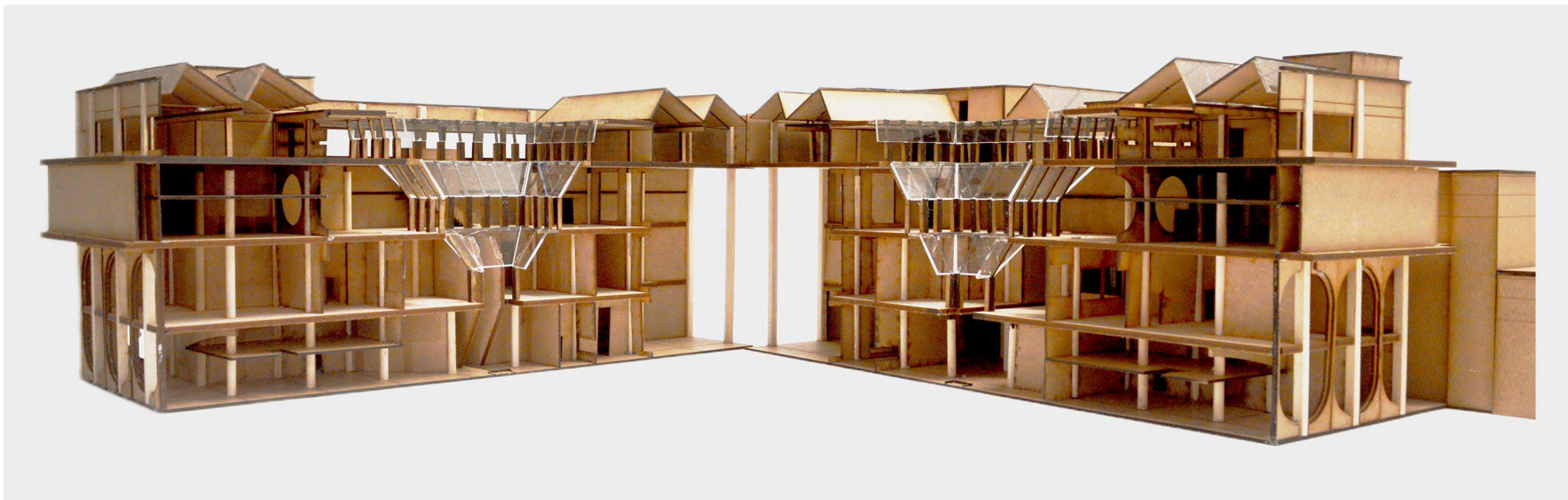
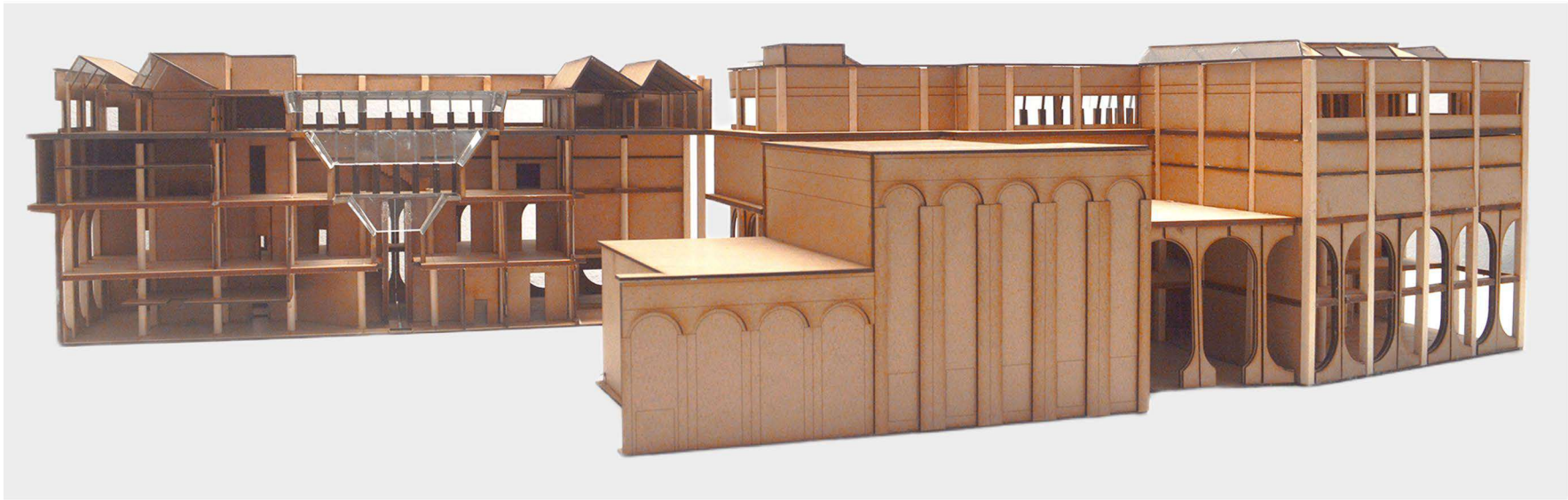


SECTION PLAN

PLAN DISPLAY



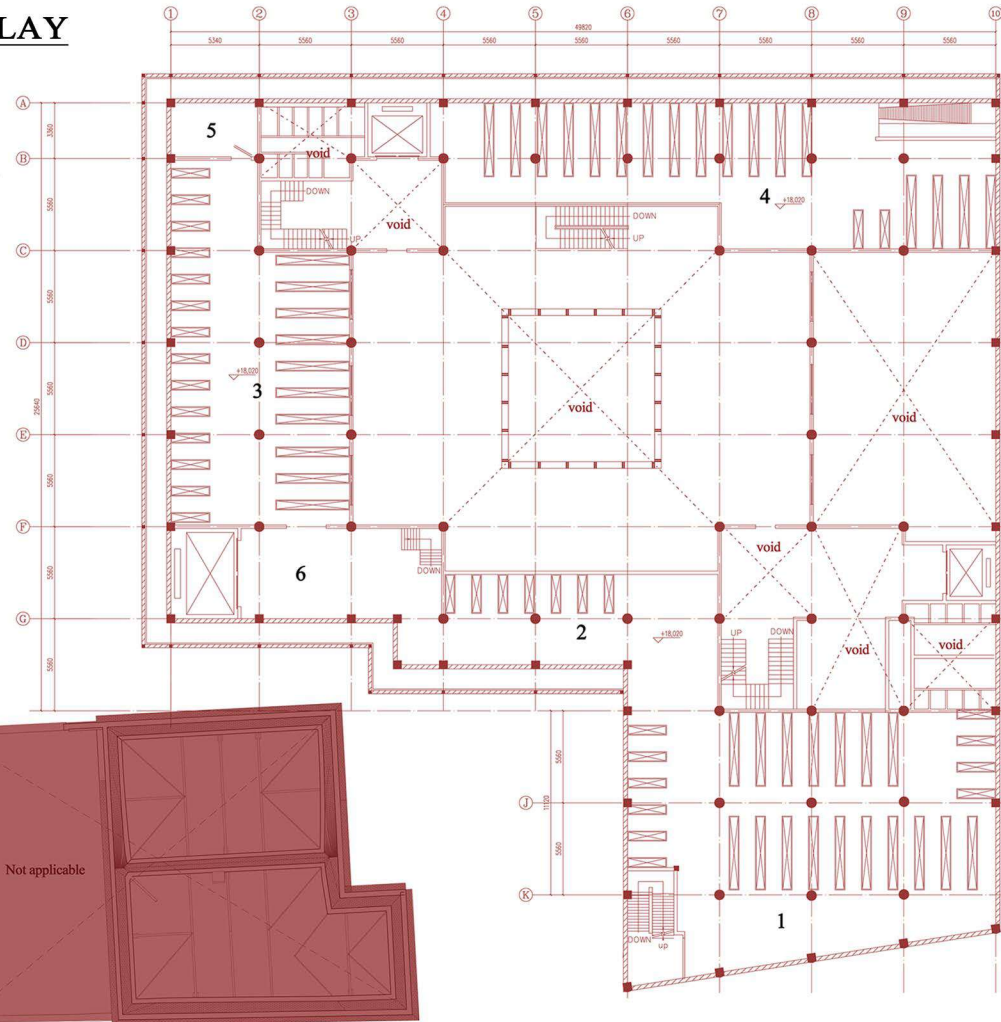
HANDMADE MODEL DRAWING DISPLAY



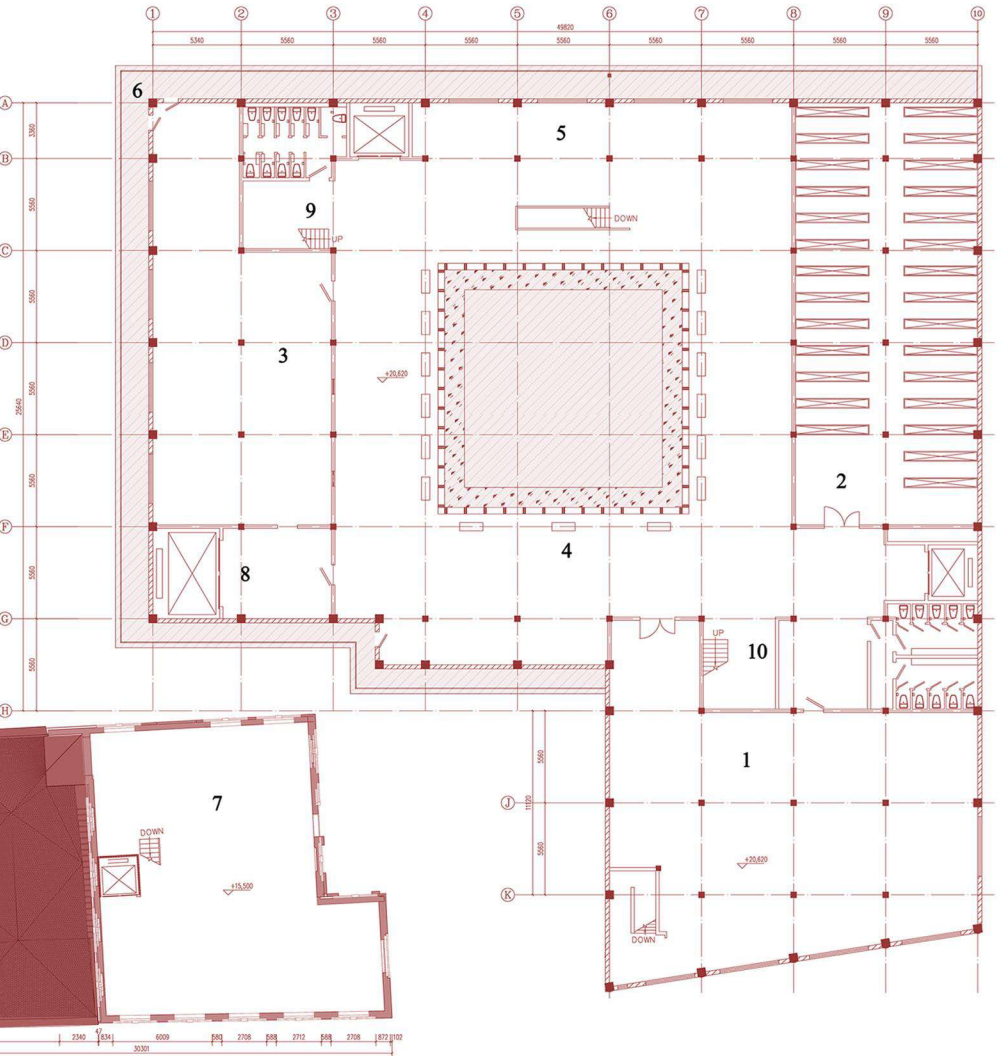
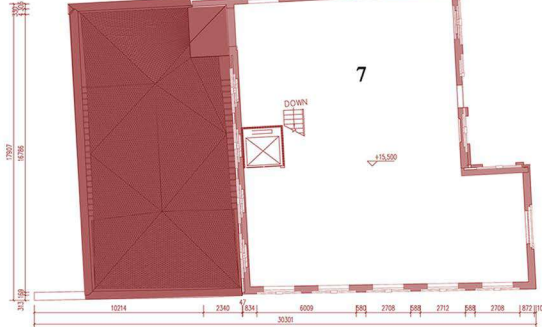
PLAN DISPLAY



Third mezzanine plan
 Functional zone:
 1/2/3/4: Archival storage area
 5: Equipment room
 6: Registration area



Fourth floor plan
 Functional zone:
 1: Work and study areas
 2: Archives area
 3: Study and exchange area
 4: Atrium rest area
 5: Landscape viewing area
 6: Terrace area
 7: Rest area
 8: freight lift
 9/10: stairwell(stairs, lifts, toilets)



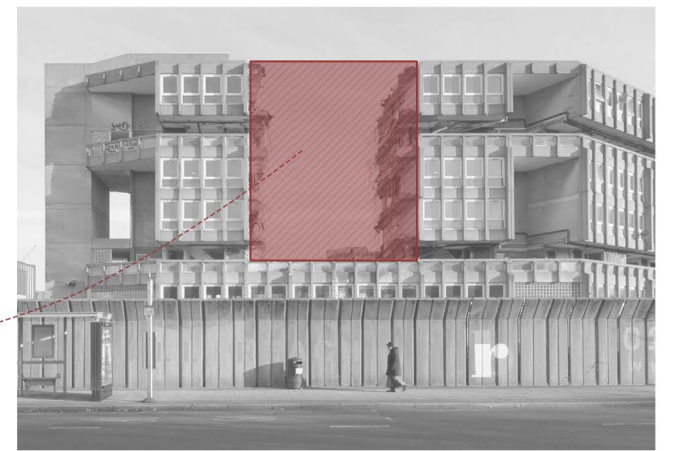


Rendering of building exhibition area and stacking room

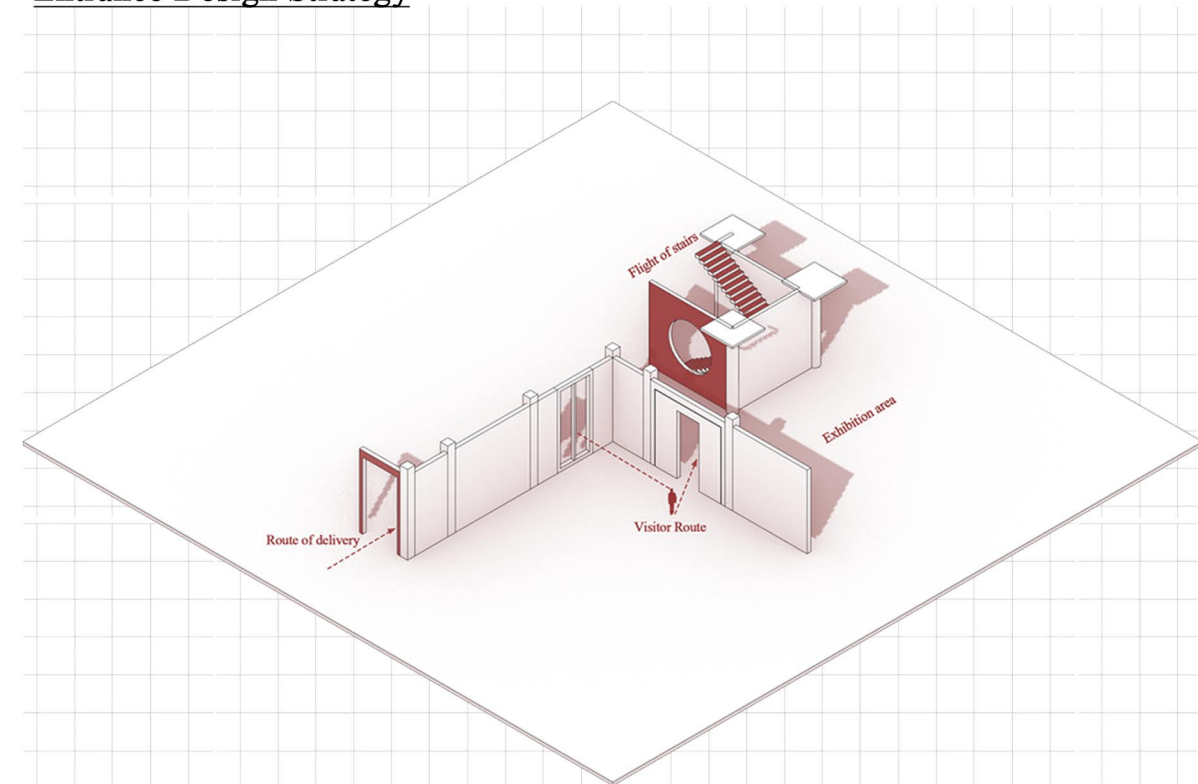


Collection Concept:

It is now being demolished by the V&A and this residual piece of architectural history will once again make its way back to the East End of London along the A12.



Entrance Design Strategy



The movement of people is distinguished from the movement of goods. At the same time, they are guided into the exhibition area.

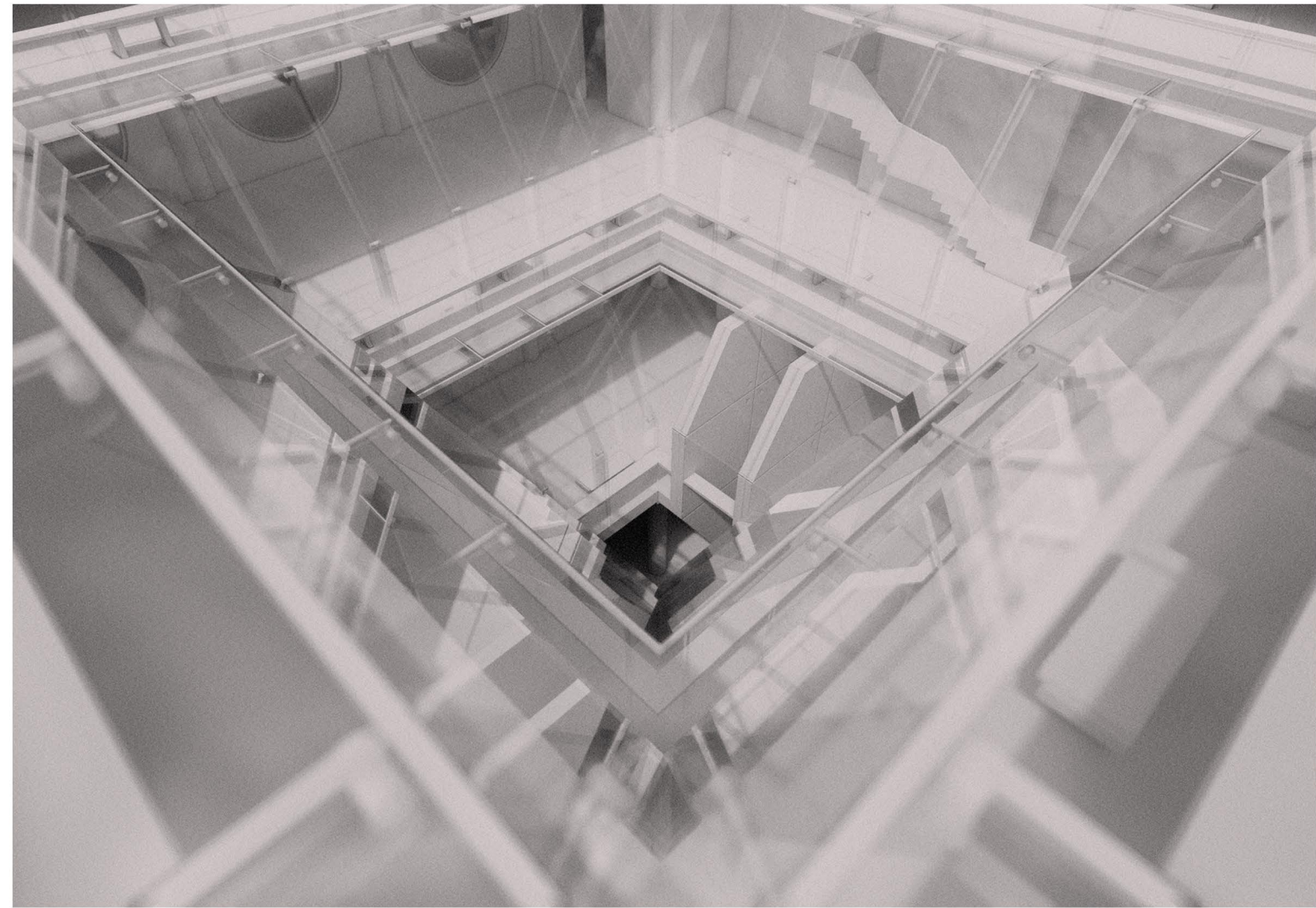


LIBRARY RENDERING

The library area has been levelled to provide more storage space, while the windowed reading area retains a floor height of 5 metres to provide more natural light and maintain an open feel. In addition, the shape of the facade was used for the library shelving to echo the interior and exterior of the building.

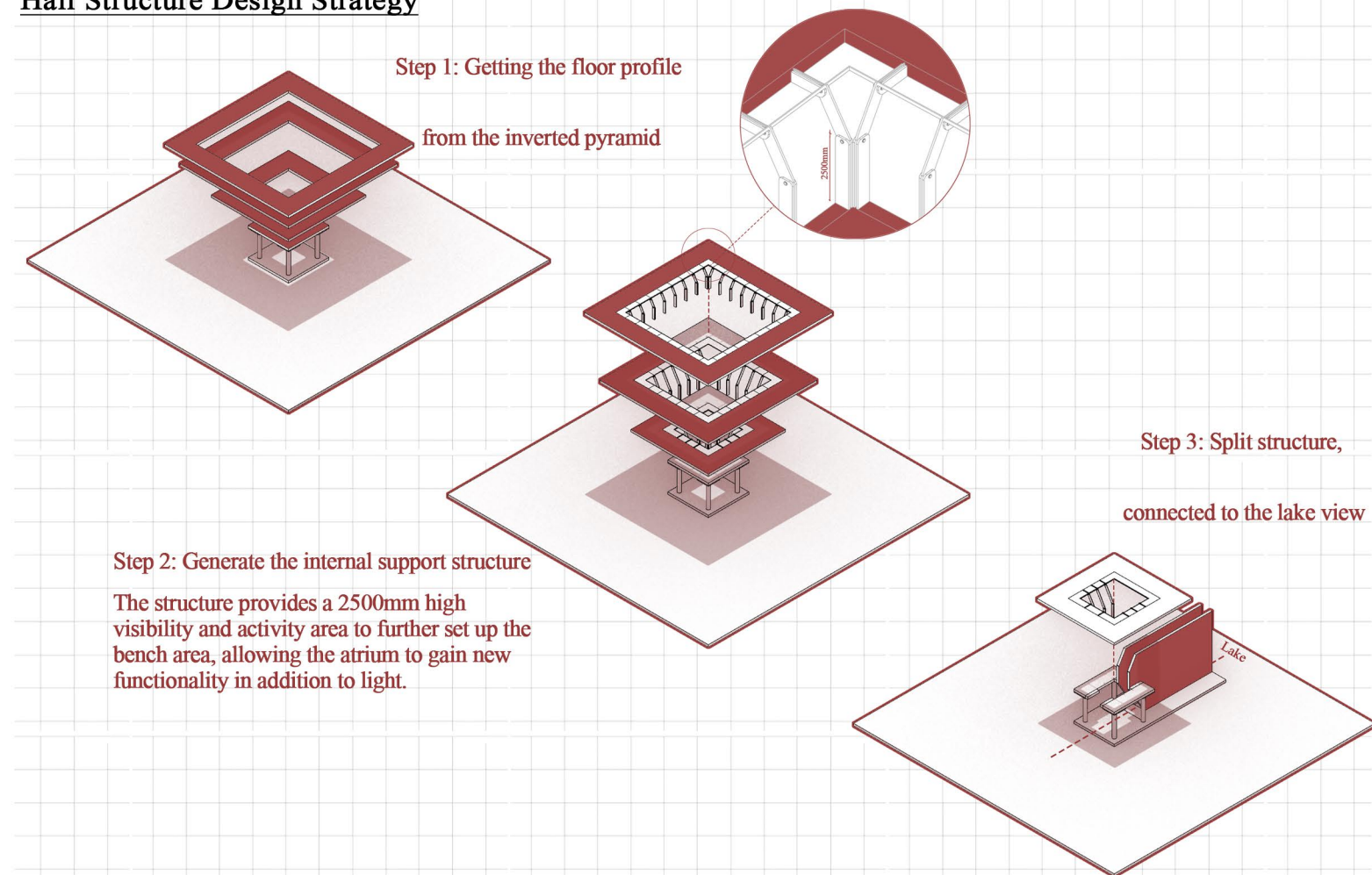


Rendering of Hall



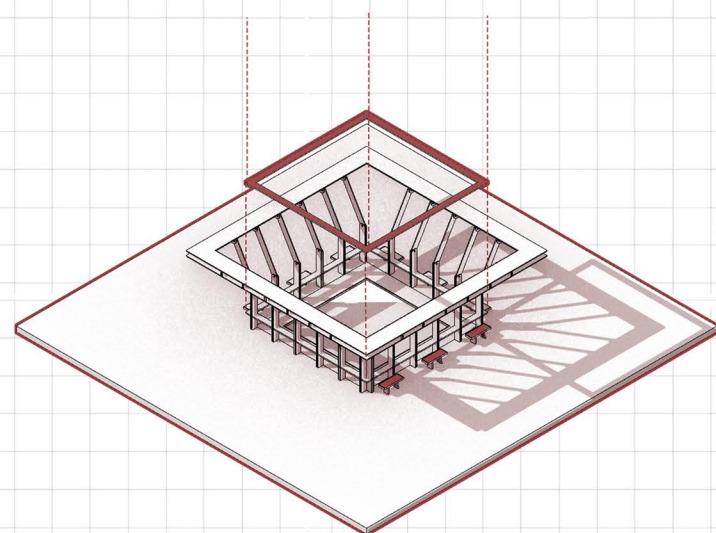
Rendering of Hall

Hall Structure Design Strategy

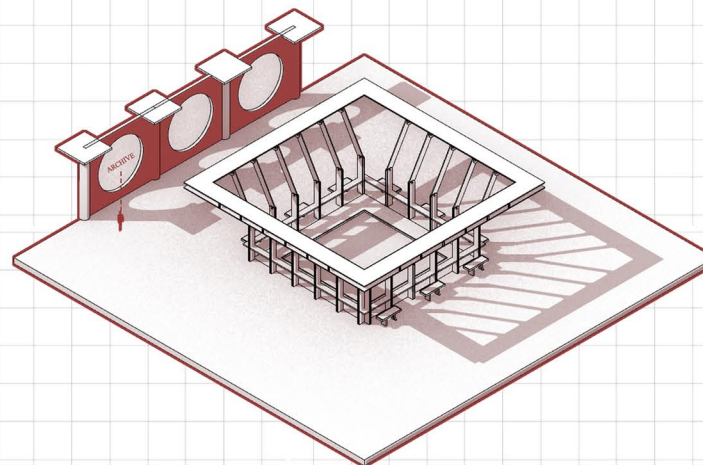




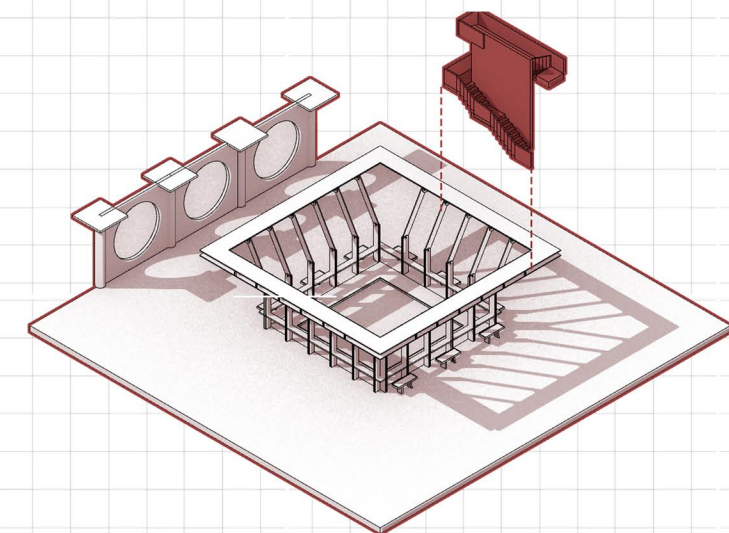
Rendering of 3rd floor public bench area



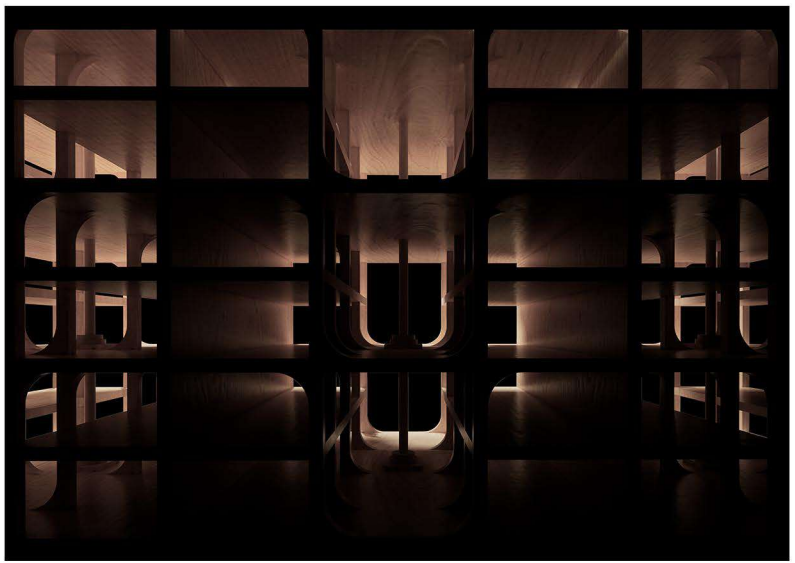
Step 1: Setting the bench area according to the structure



Step 2: Connecting people to archive storage areas



Step 3: Setting up outdoor stairs to connect floors



THE END