

# Sonic Urban Landscape

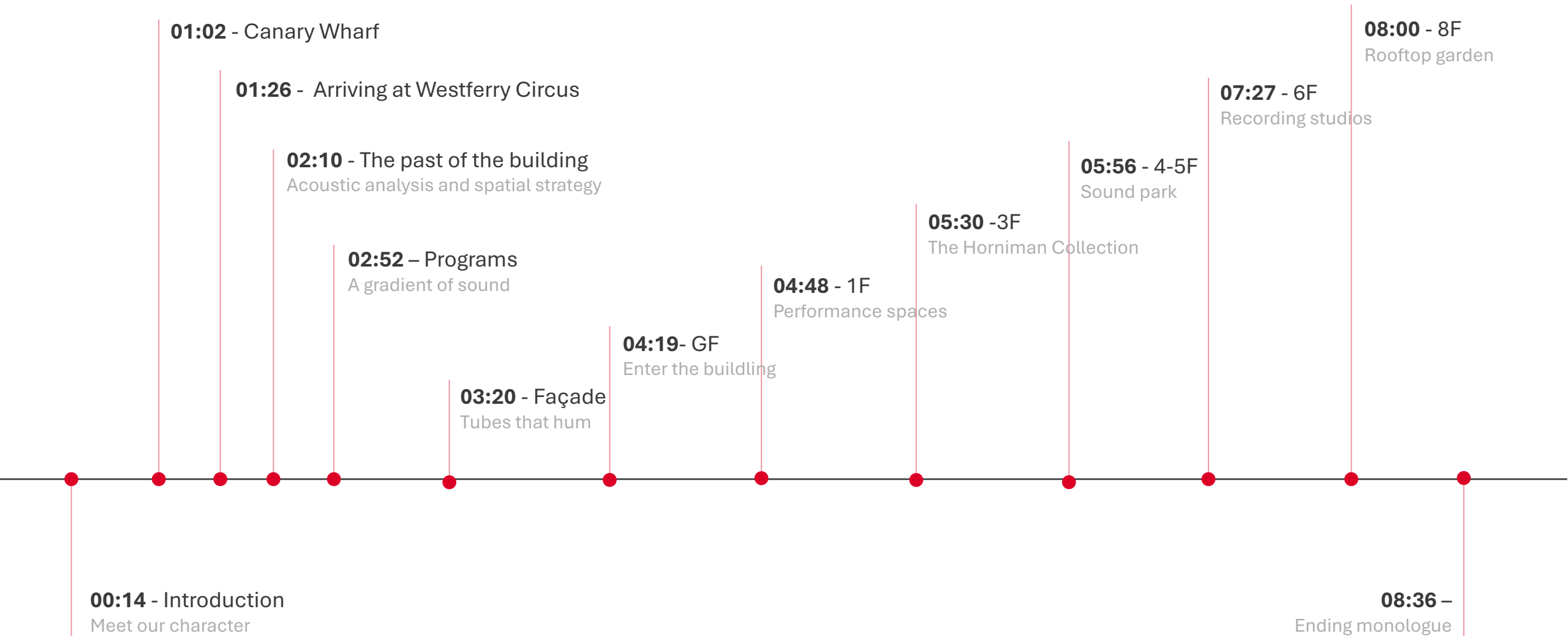
A project by Urara Hatano

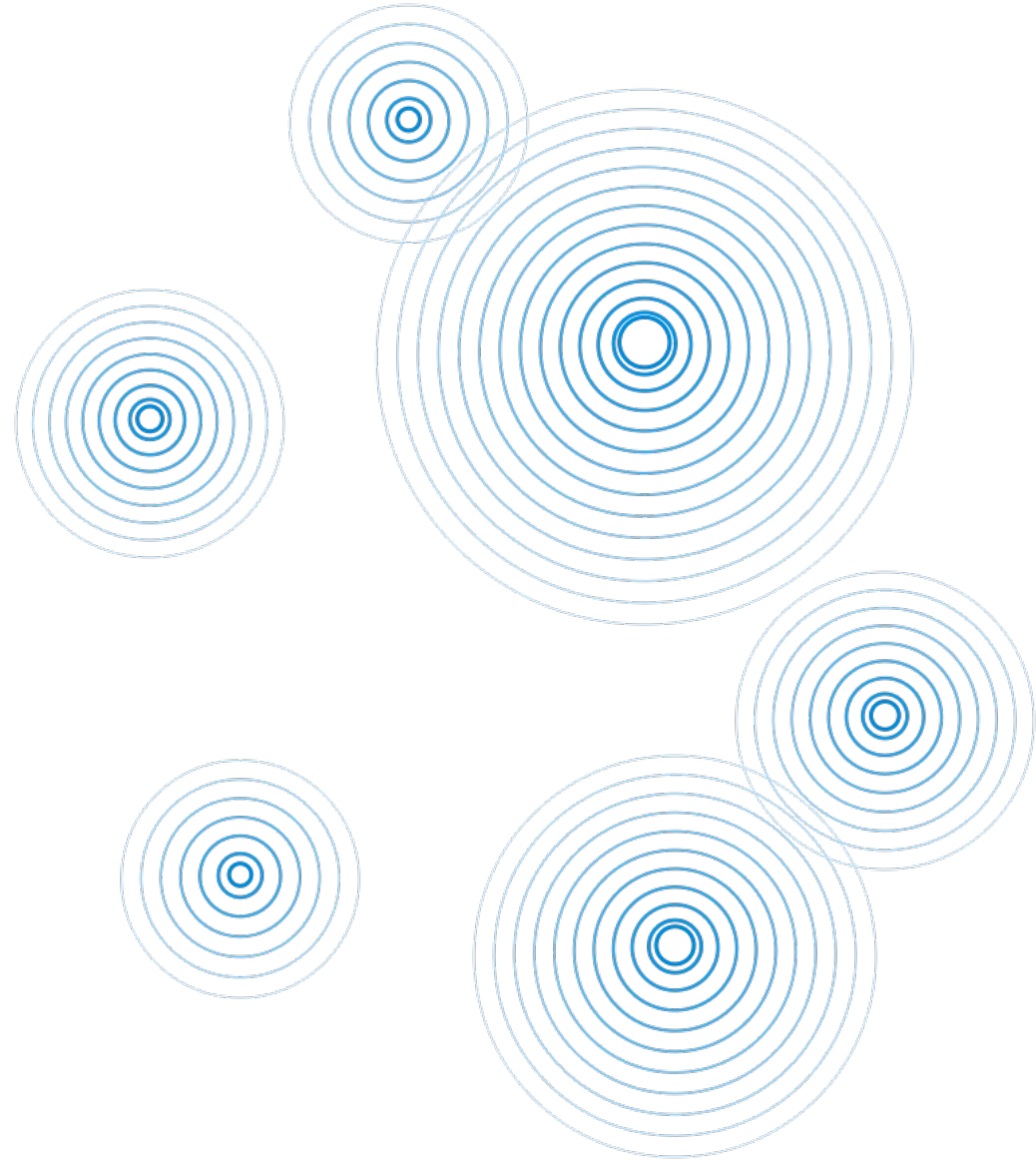
Please access the animation video via the link below.



[Click here](#)











Canary Wharf -  
Skyscrapers. Shiny glass windows.  
Systematic grid patterns.  
Never-ending repetition.

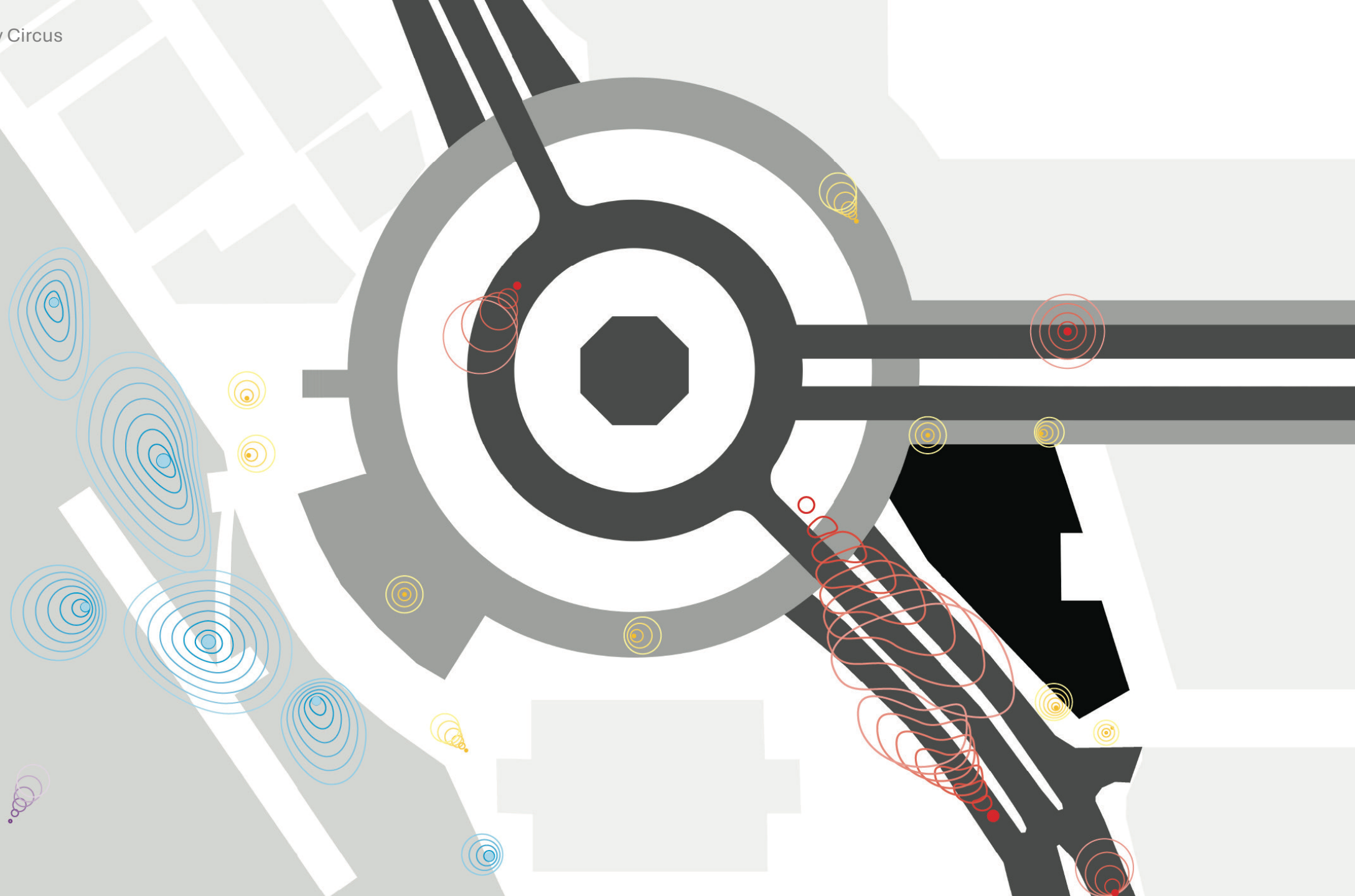
A financial center.  
Home to 120,000 workers each day.

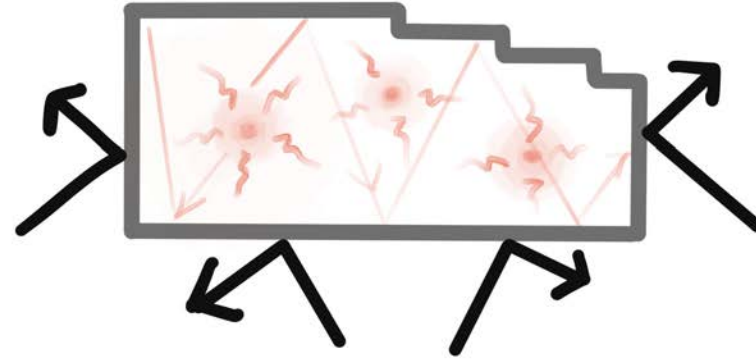




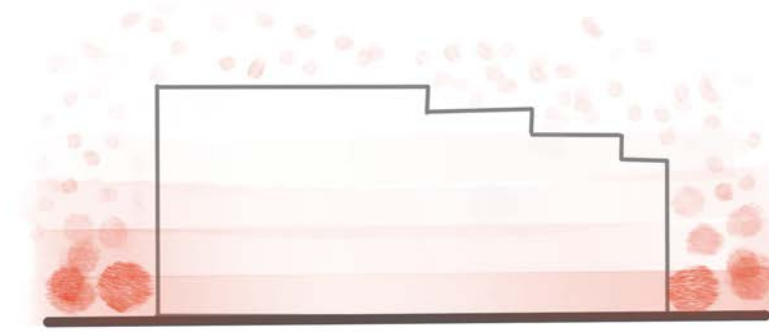
Sound map of Westferry Circus

- River
- People
- Traffic
- Seagulls

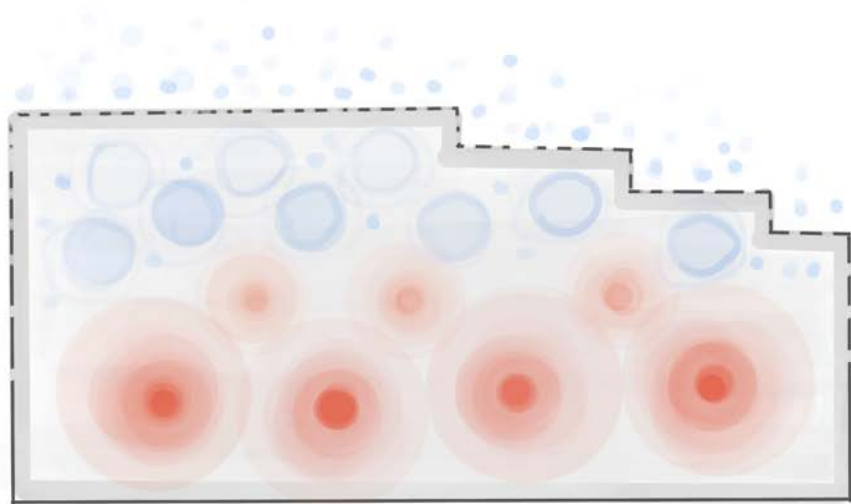




Reflection



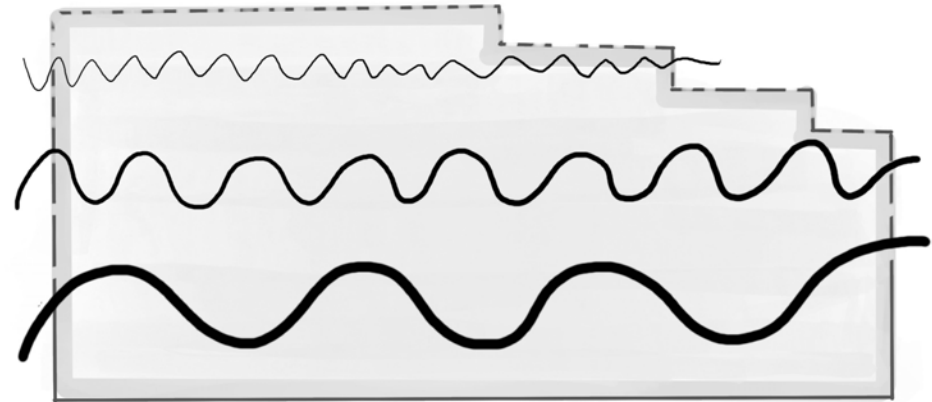
Verticality



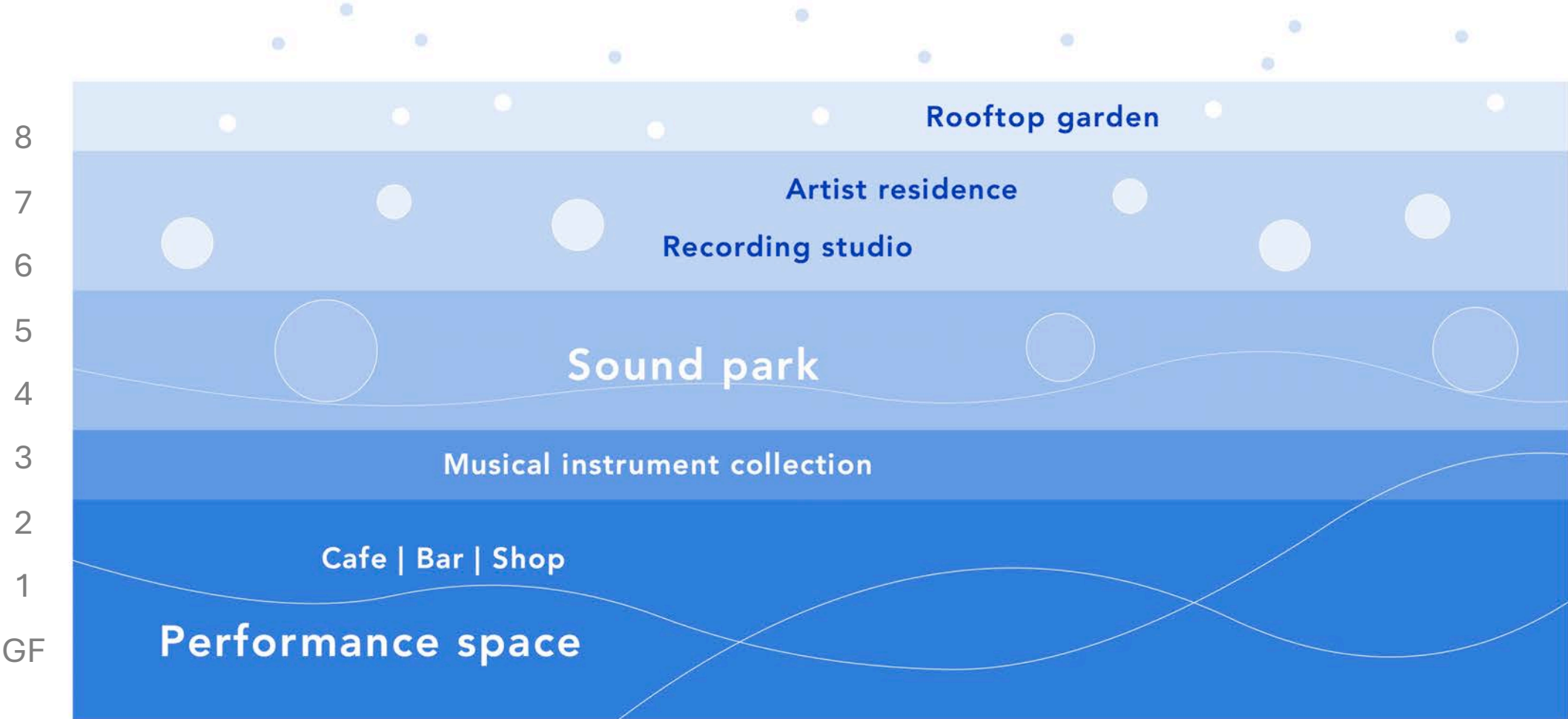
Quieter  
Contained  
Private

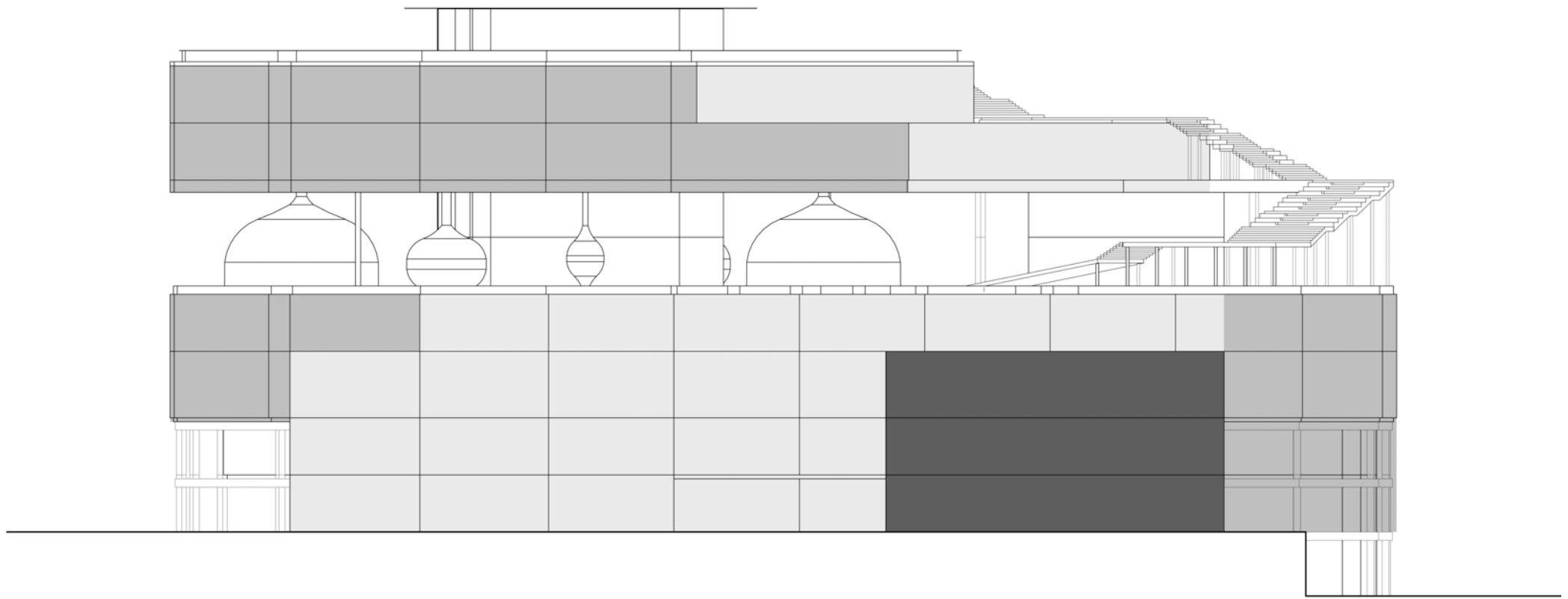


Loud  
Exposed  
Public



Program of the building





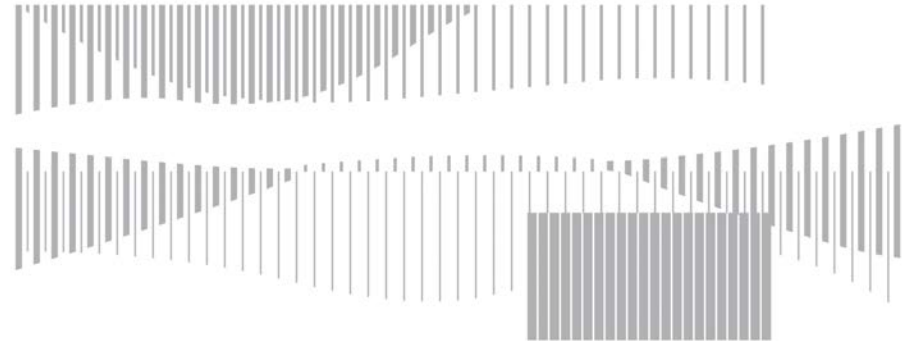
Exposed



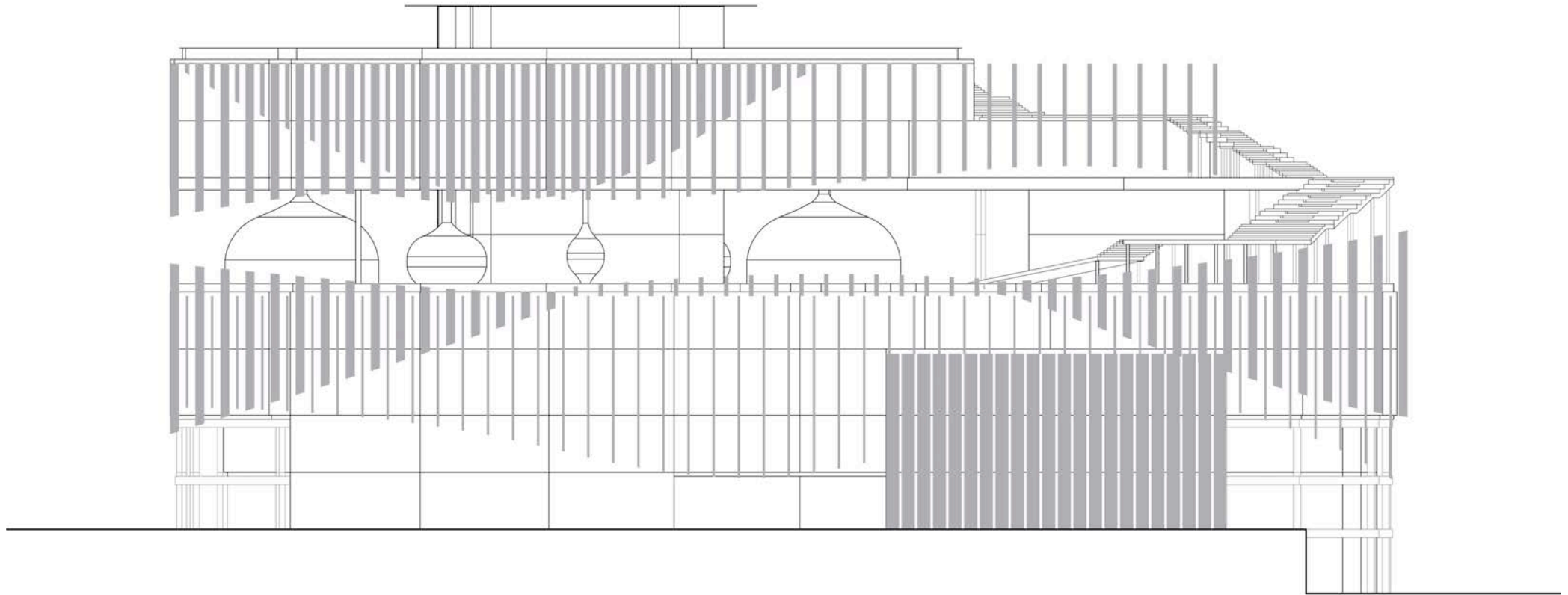
Protected

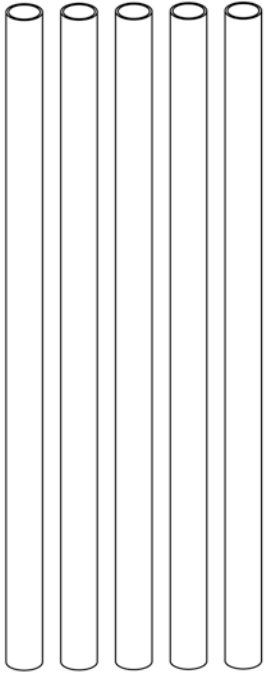


Grid

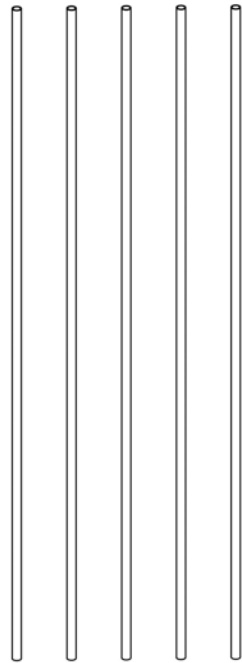


Undulation

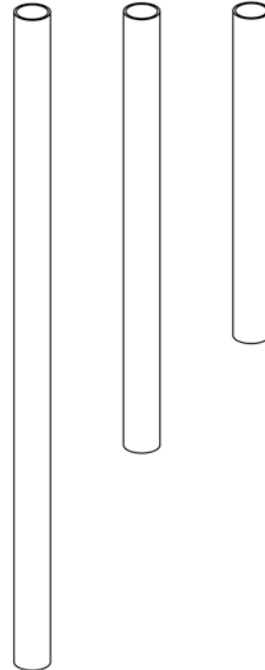




Higher insulation

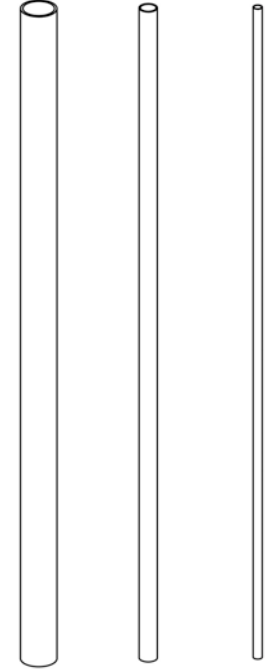


Lower insulation



Low pitch

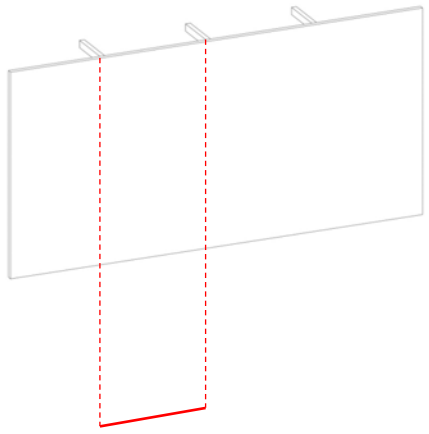
High pitch



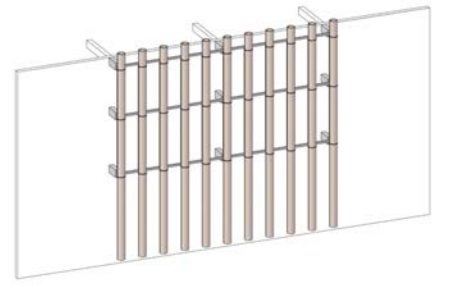
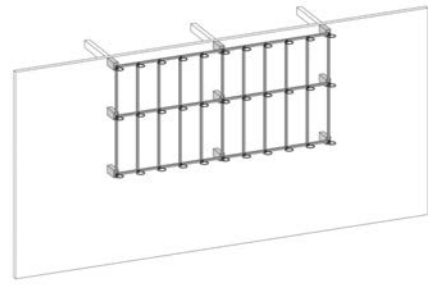
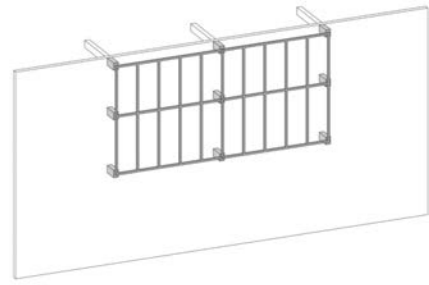
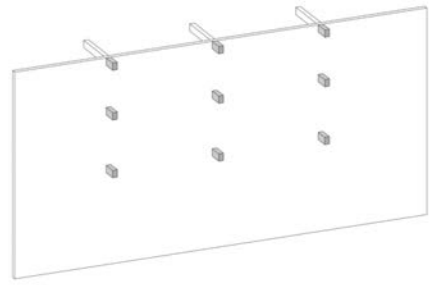
Full

Sharp

Façade – hanging structure



9000mm



Elevation

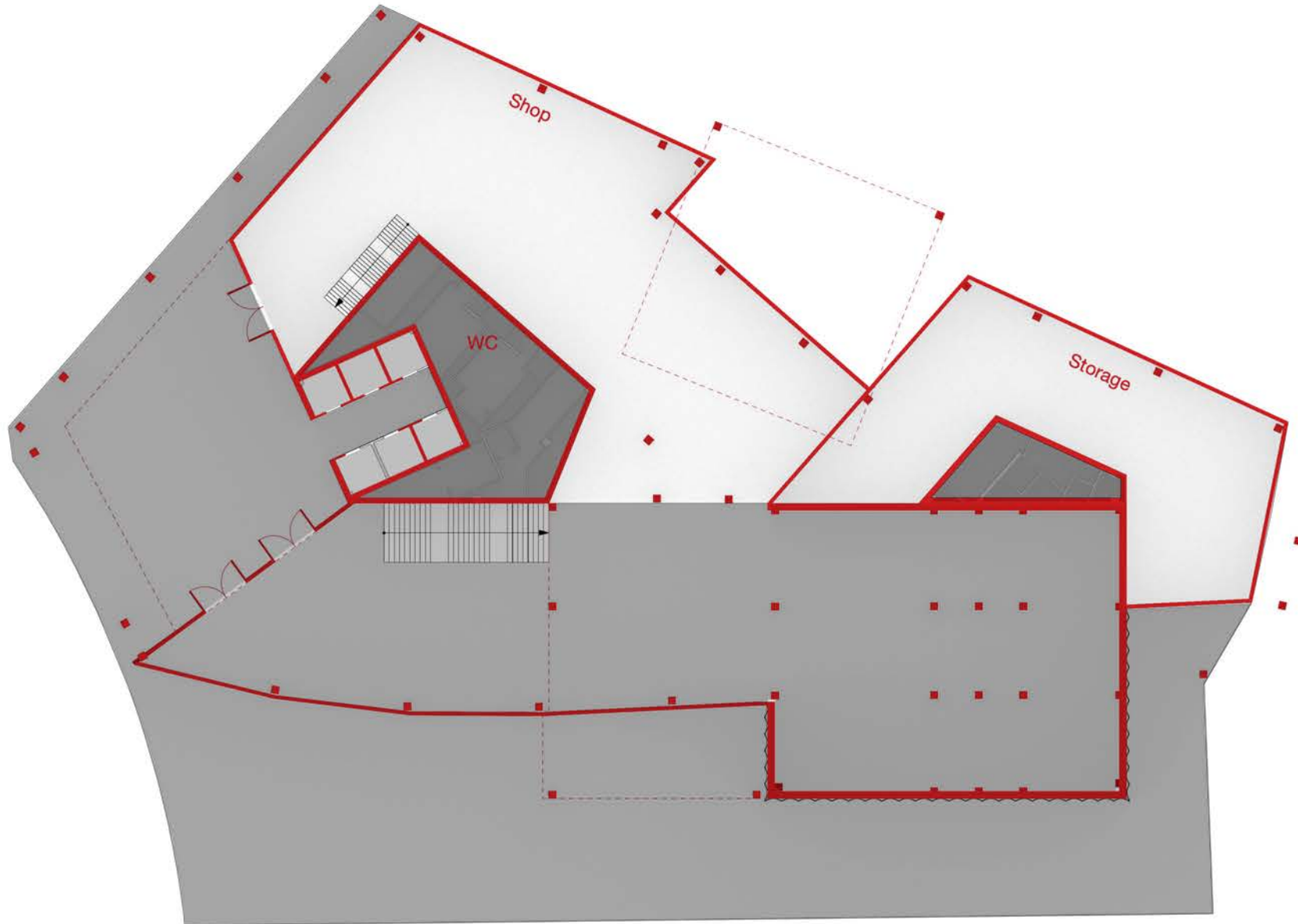


Section 01



Section 02



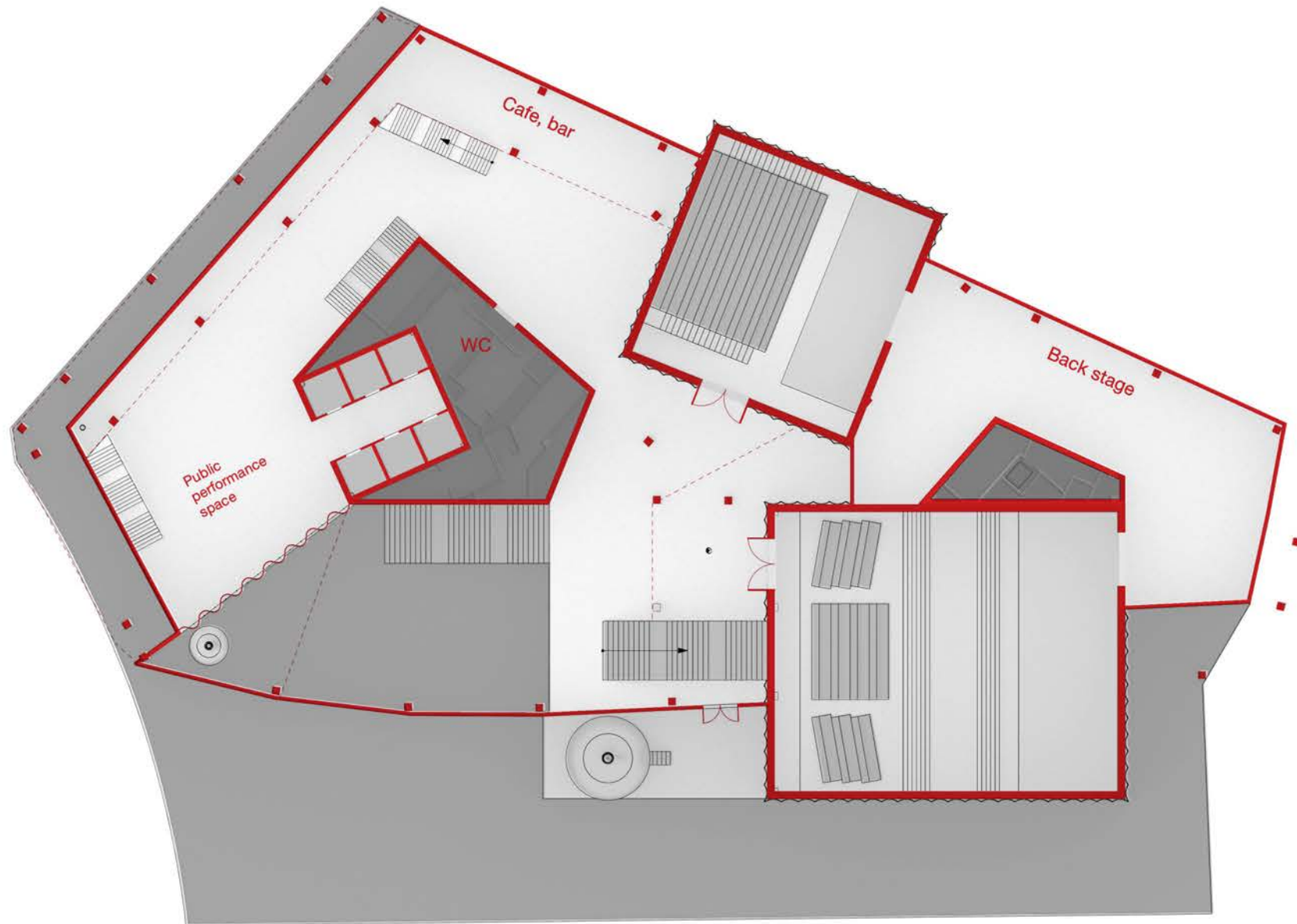


## Ground floor

Entrance, shop

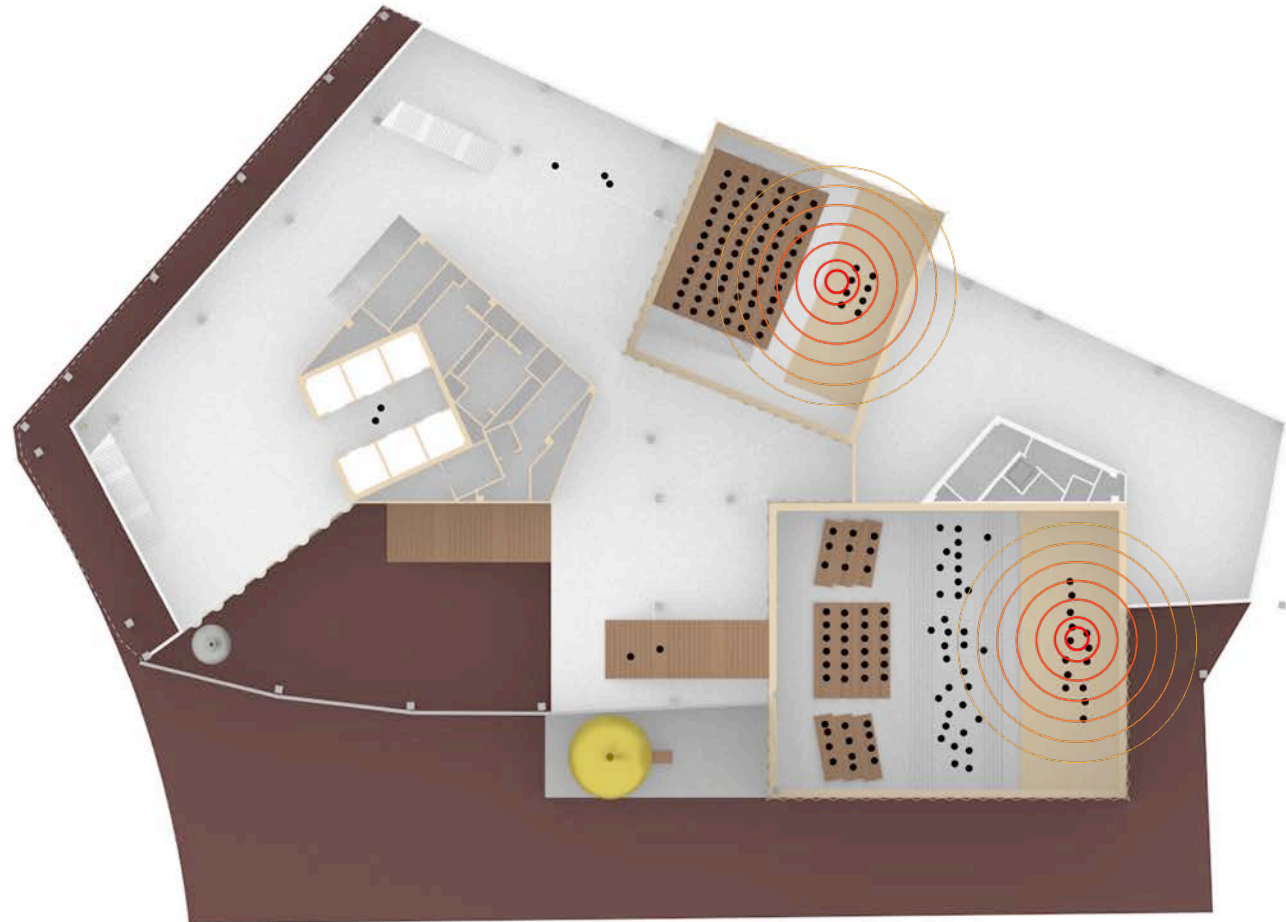


Grand staircase



## 1st floor

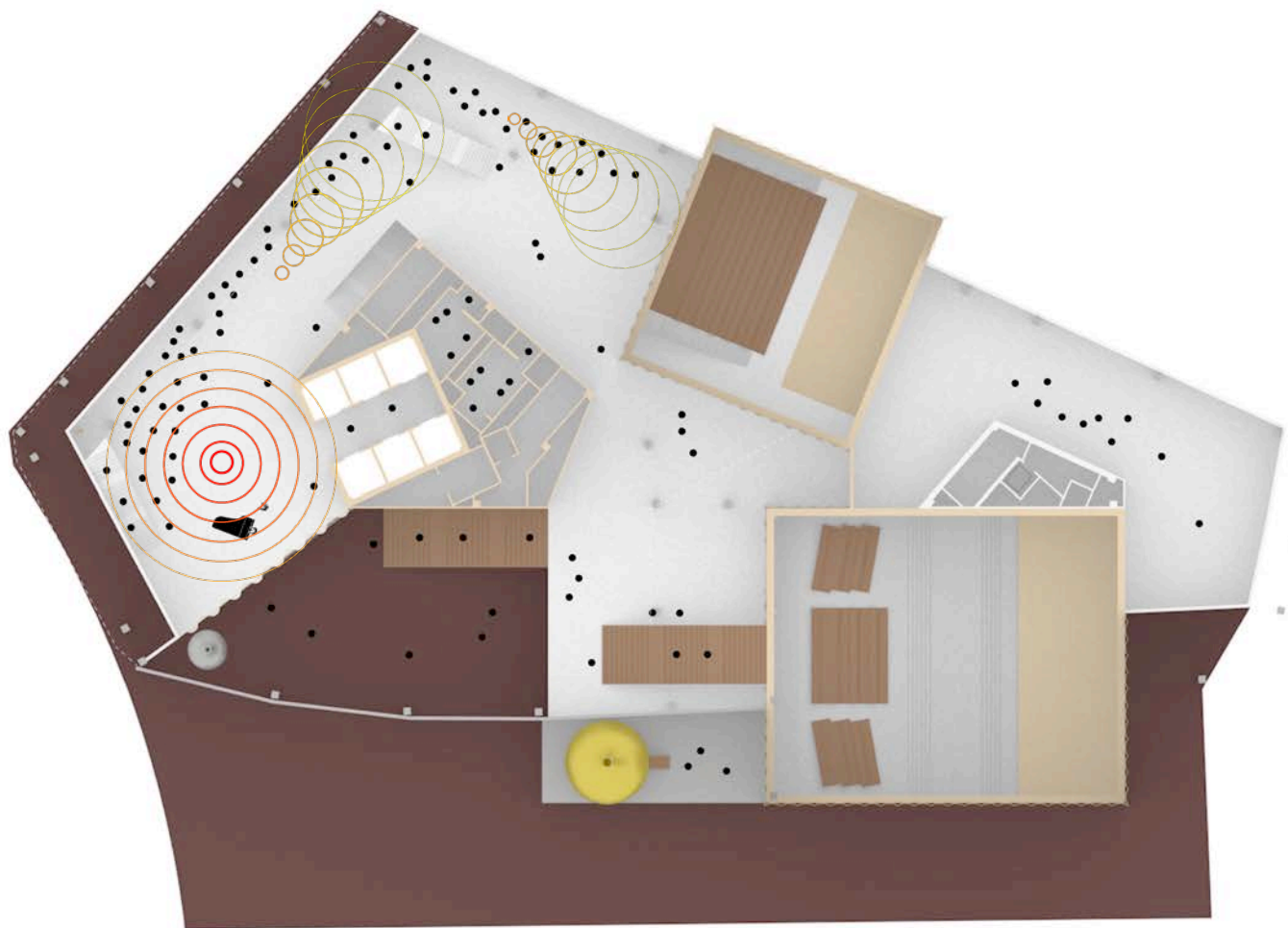
Performance space, cafe, bar



During performances in the auditorium



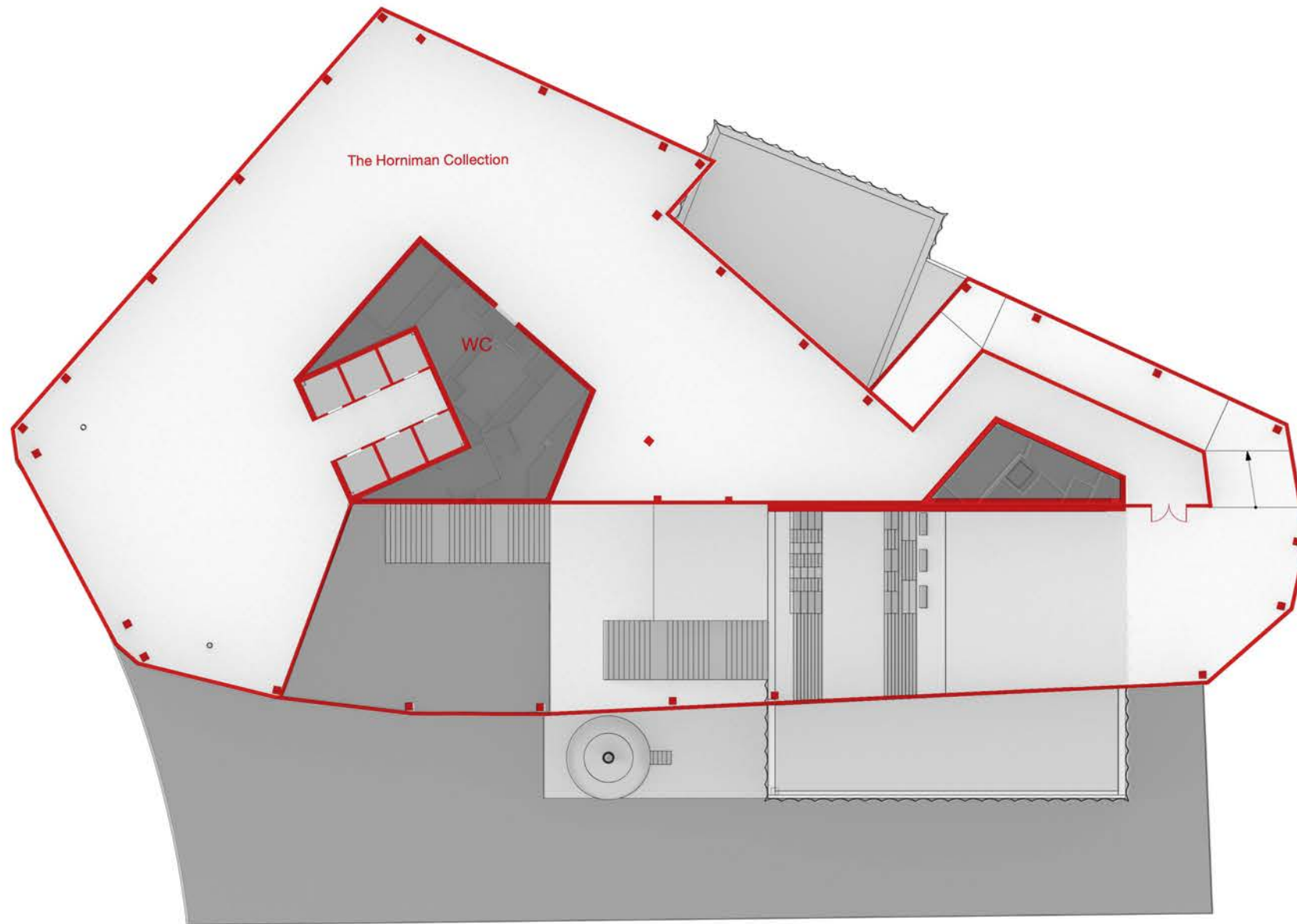
When the performances end



Intervals



Movable acoustic panels connecting the public music area and the central staircase

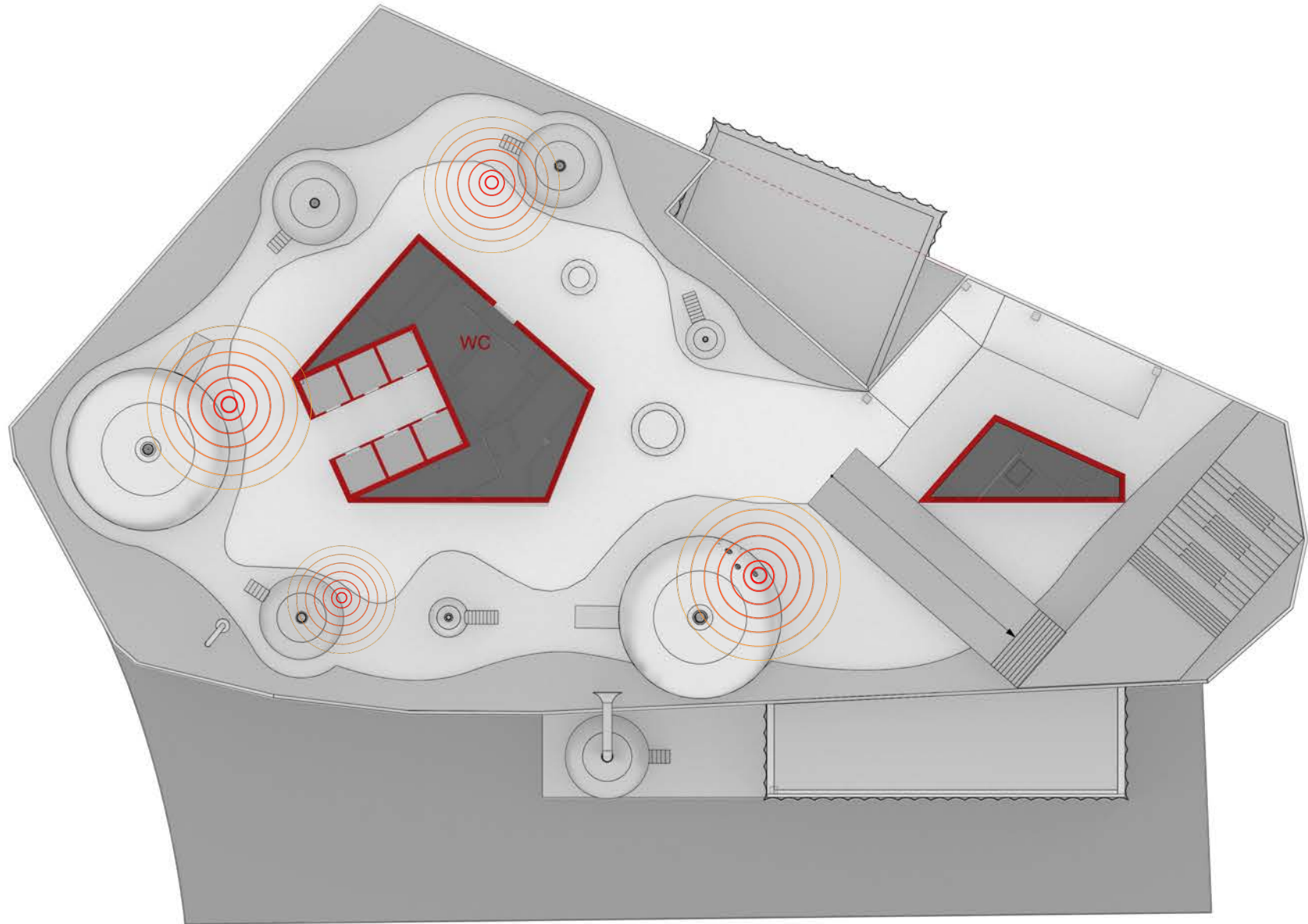


## 3rd floor

Musical instruments collection  
The Horniman



The Horniman Collection - A treasure trove of over 9,500 sound-making objects in the UK

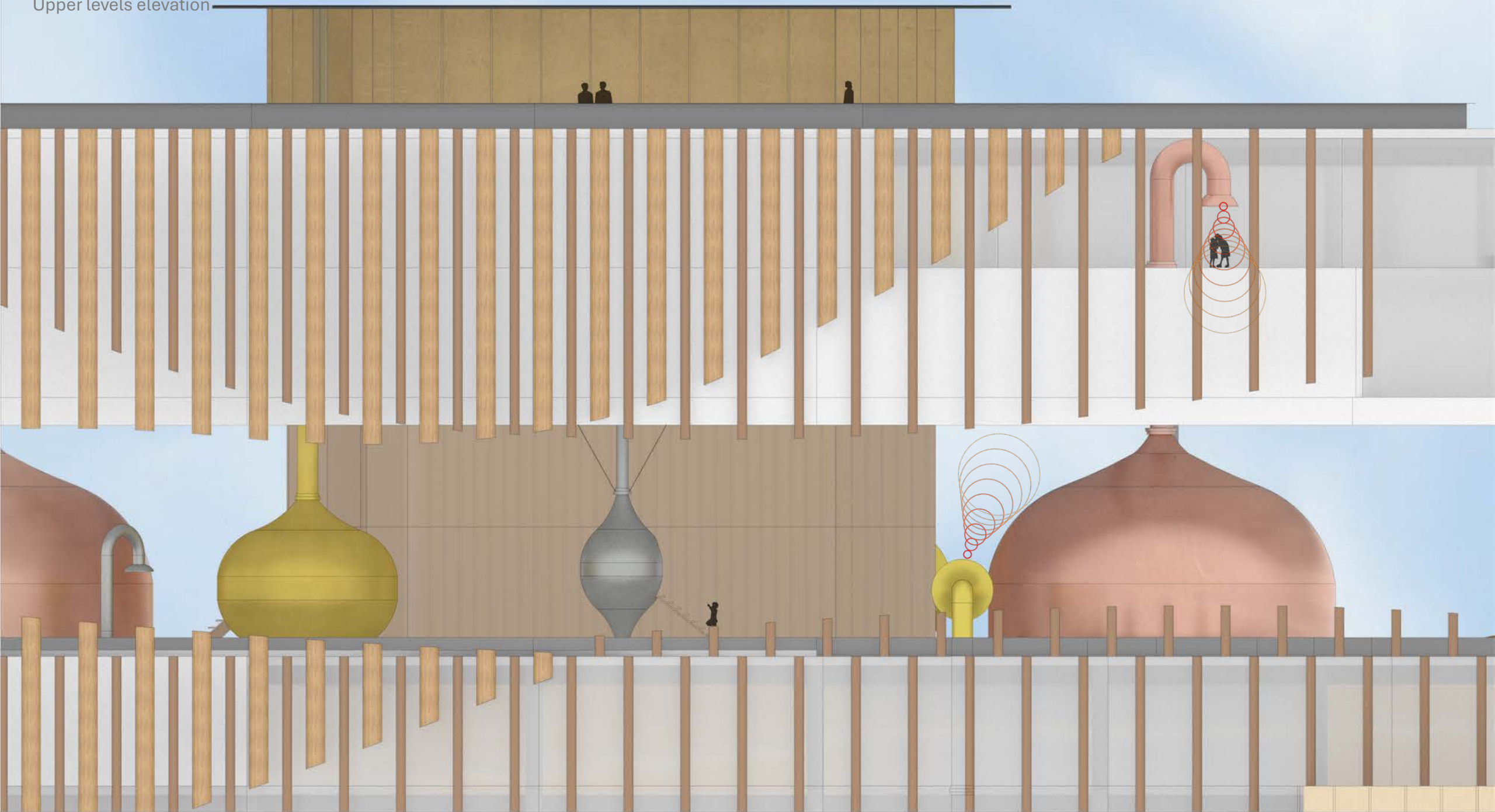


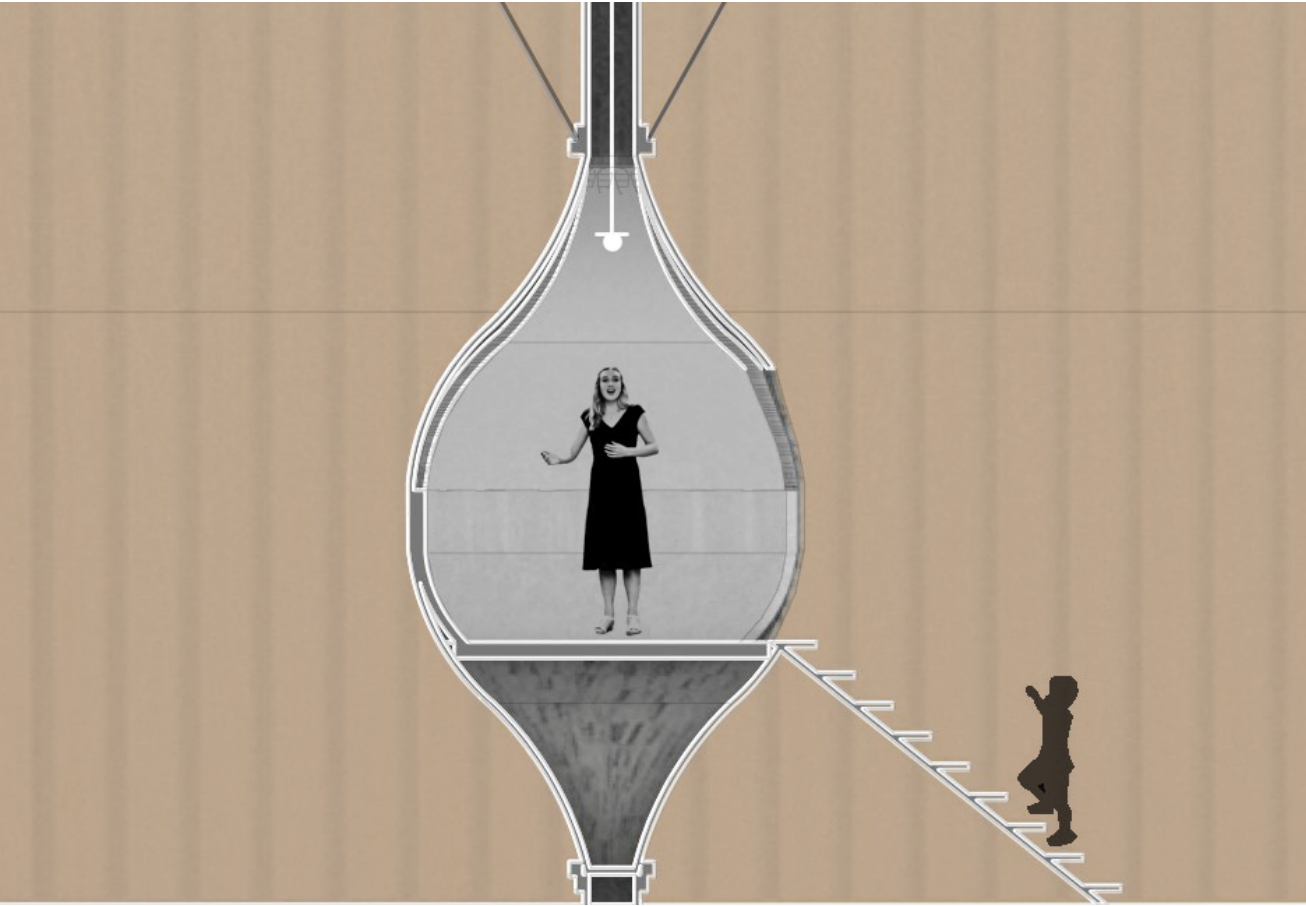
## 4th floor

Sound park

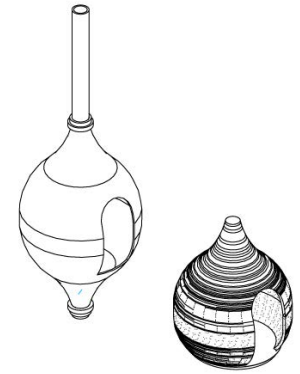
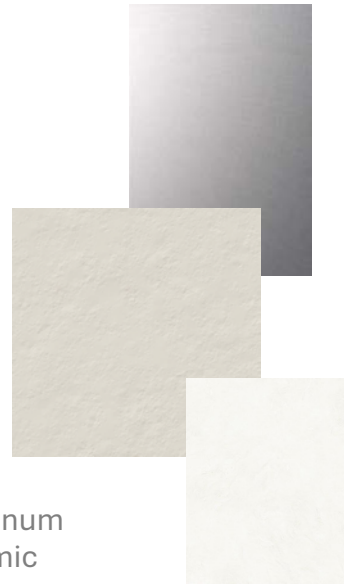


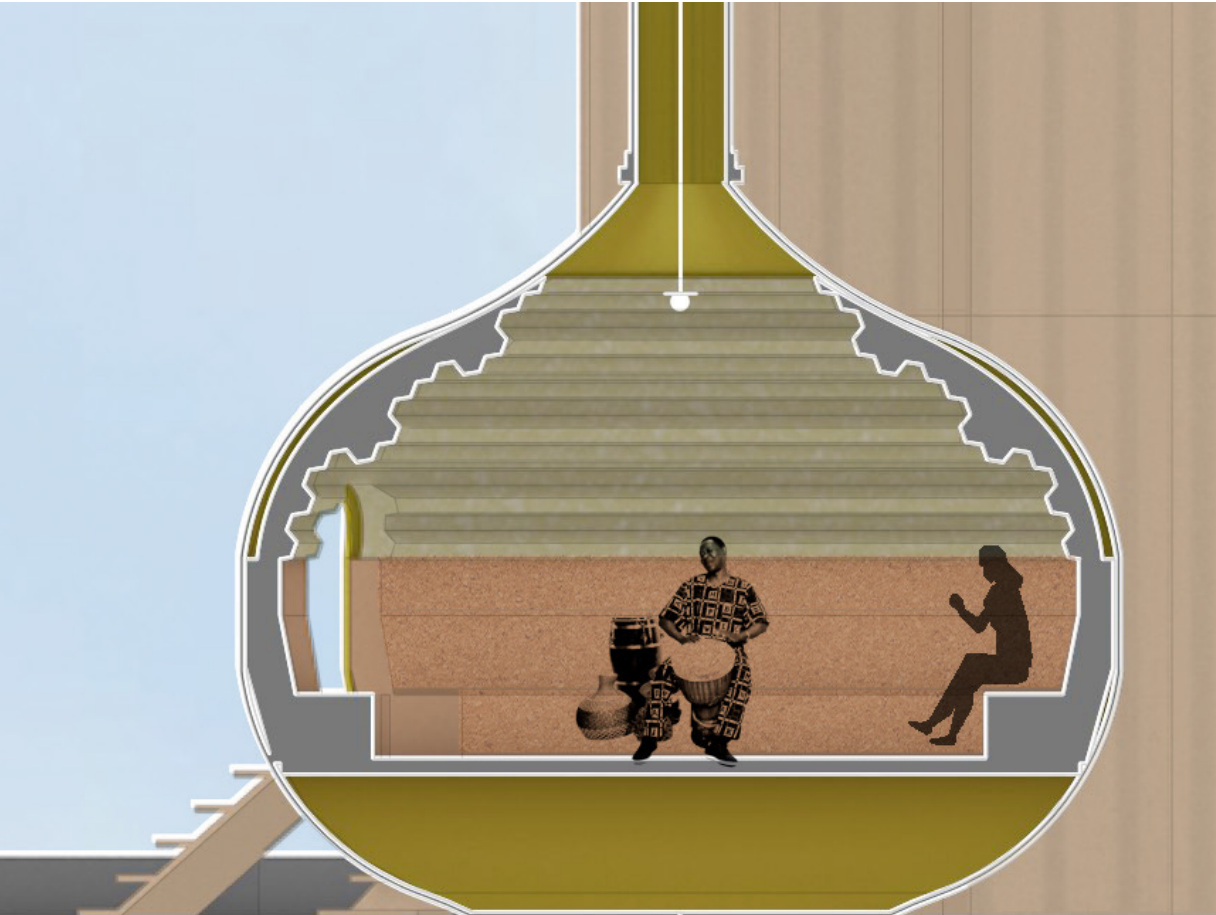
Upper levels elevation





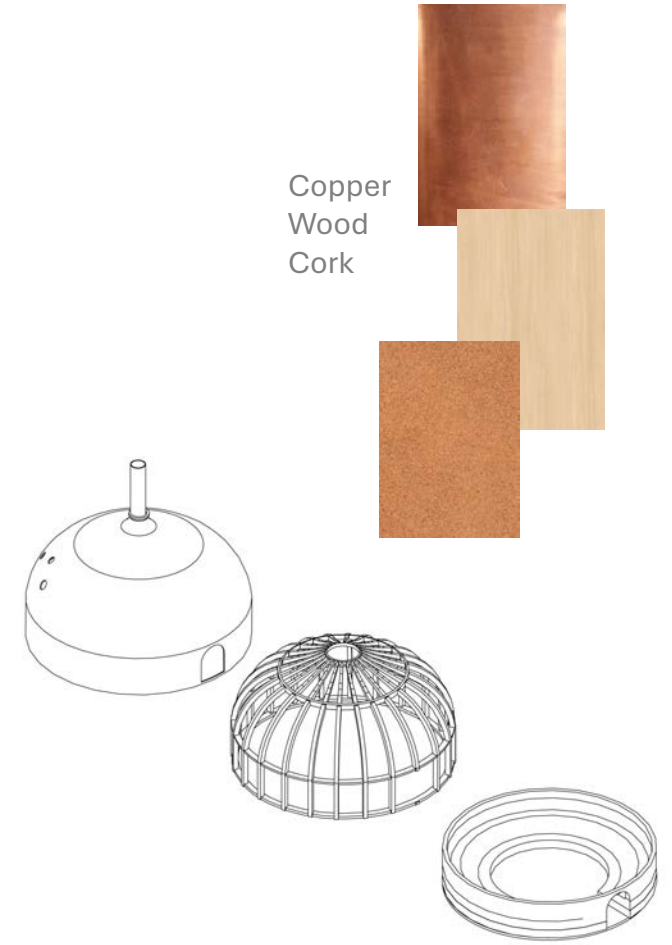
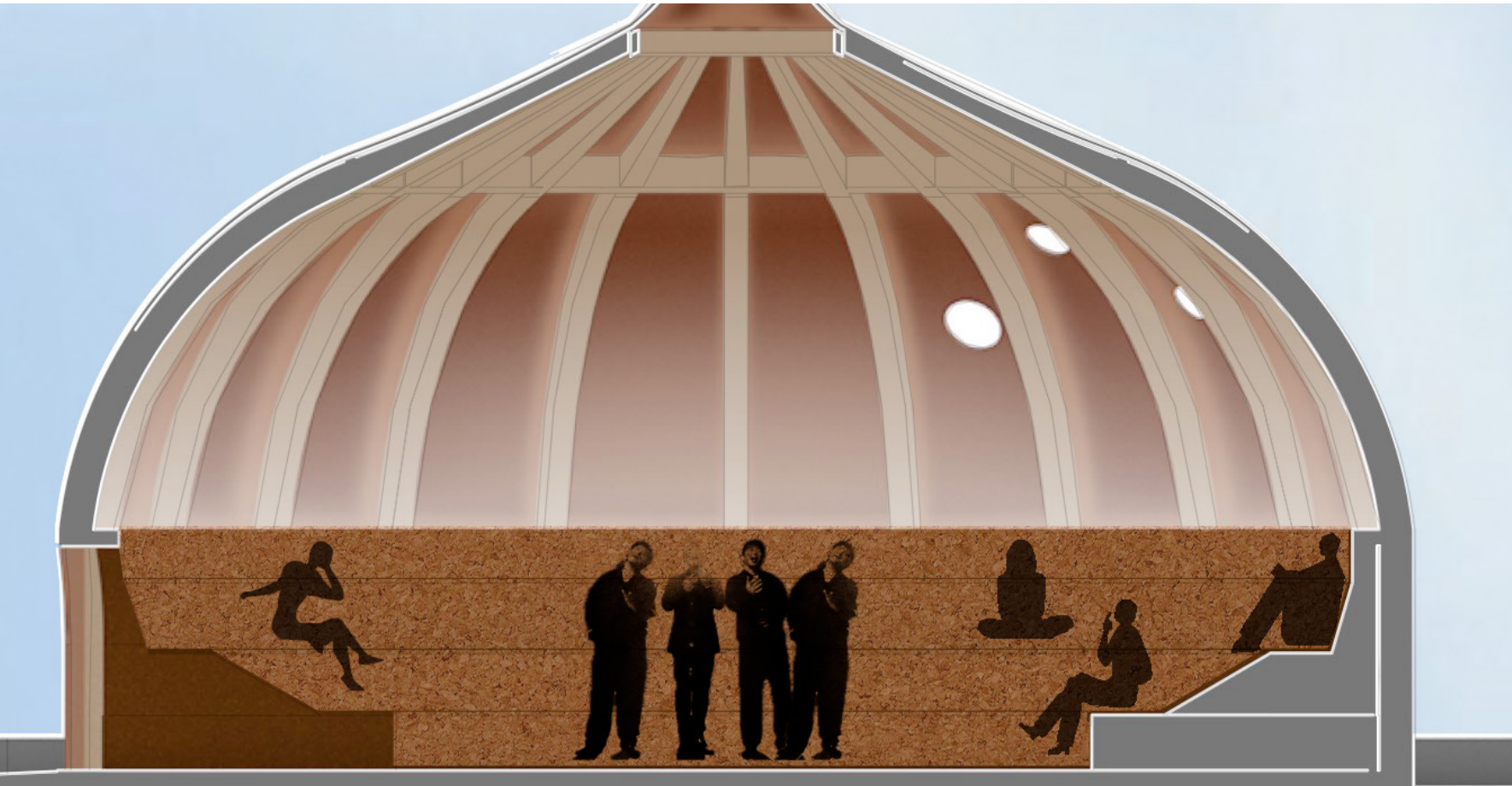
Aluminum  
Ceramic





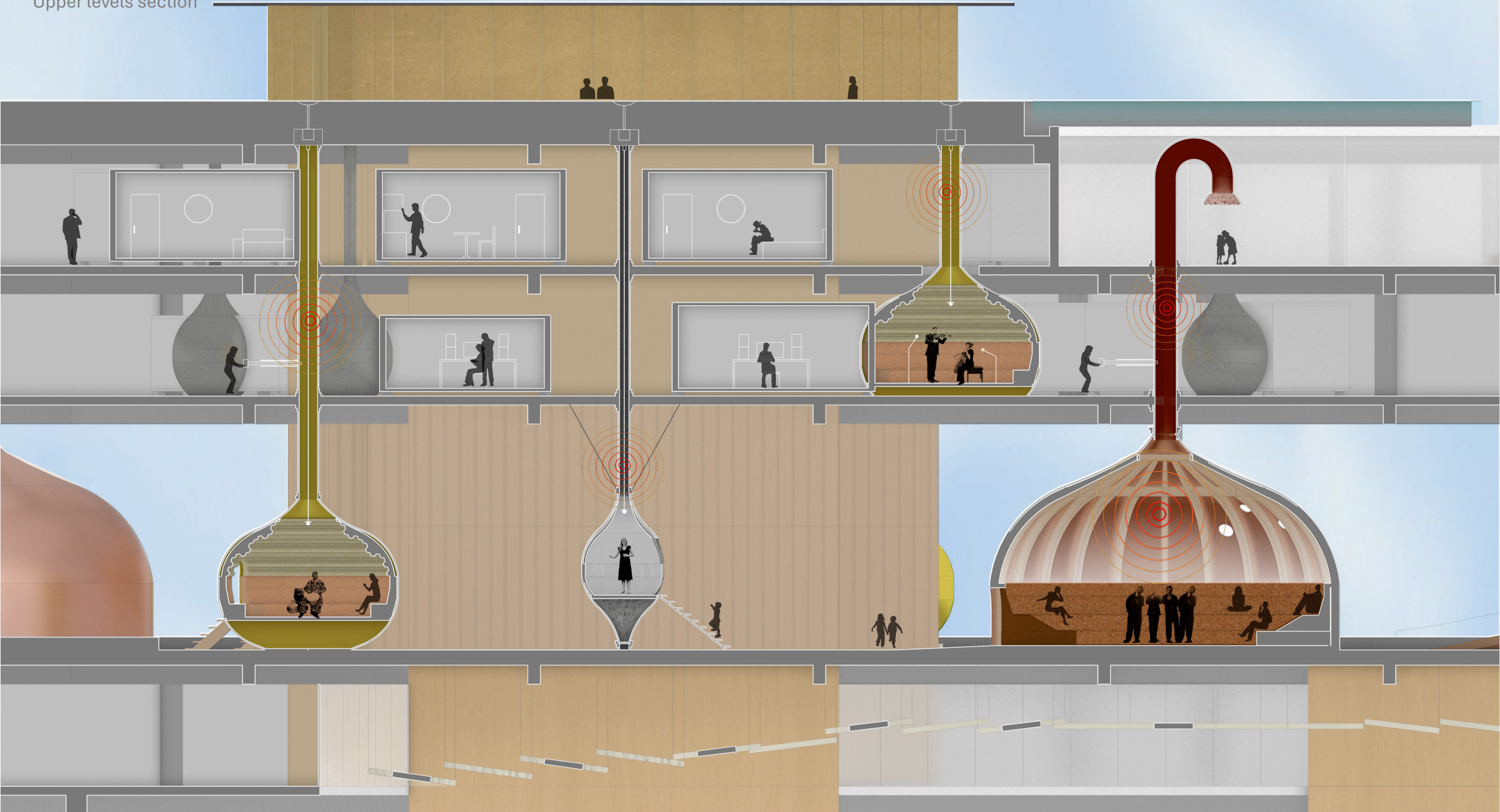
Brass  
Foam  
Cork

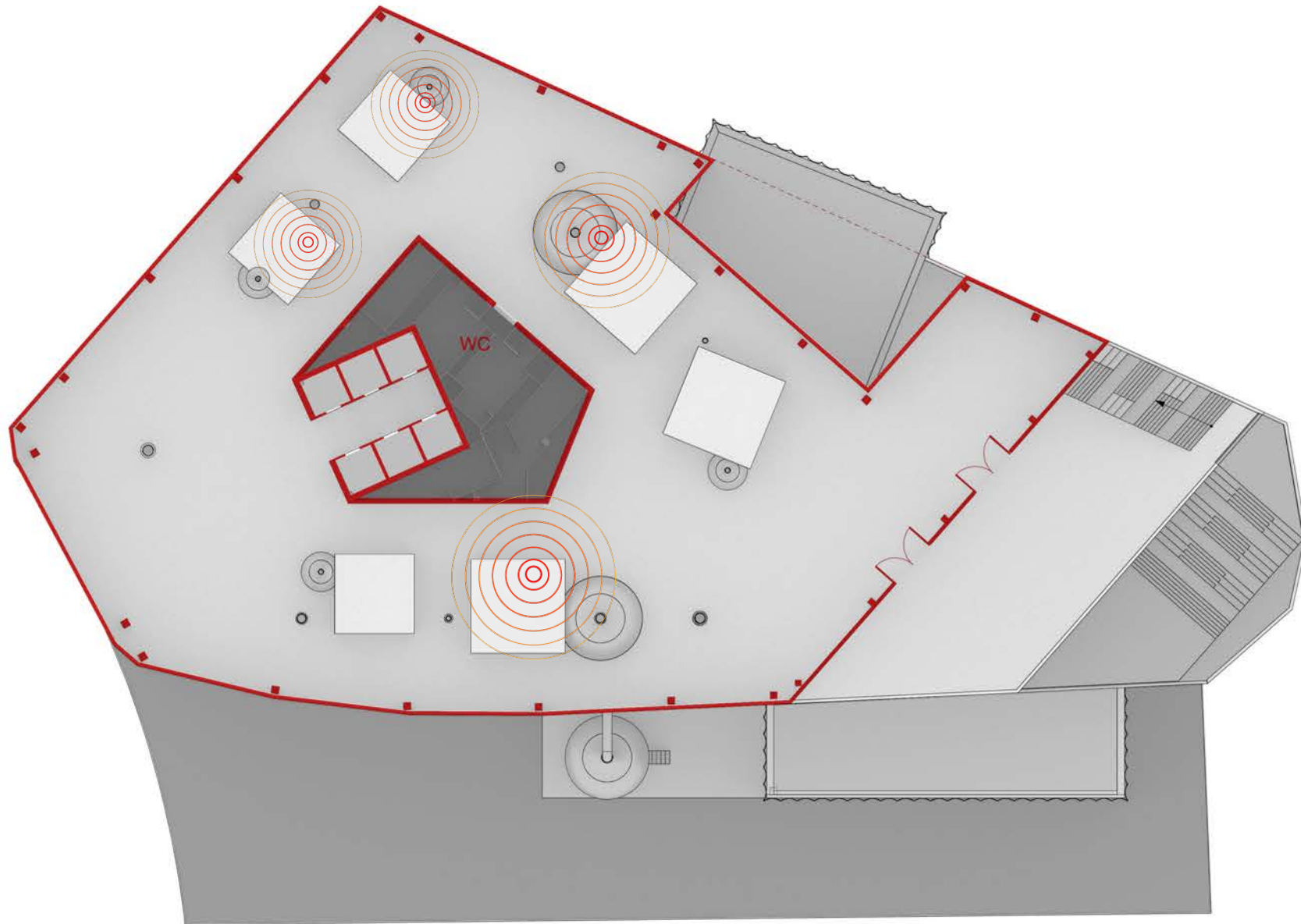




Copper  
Wood  
Cork

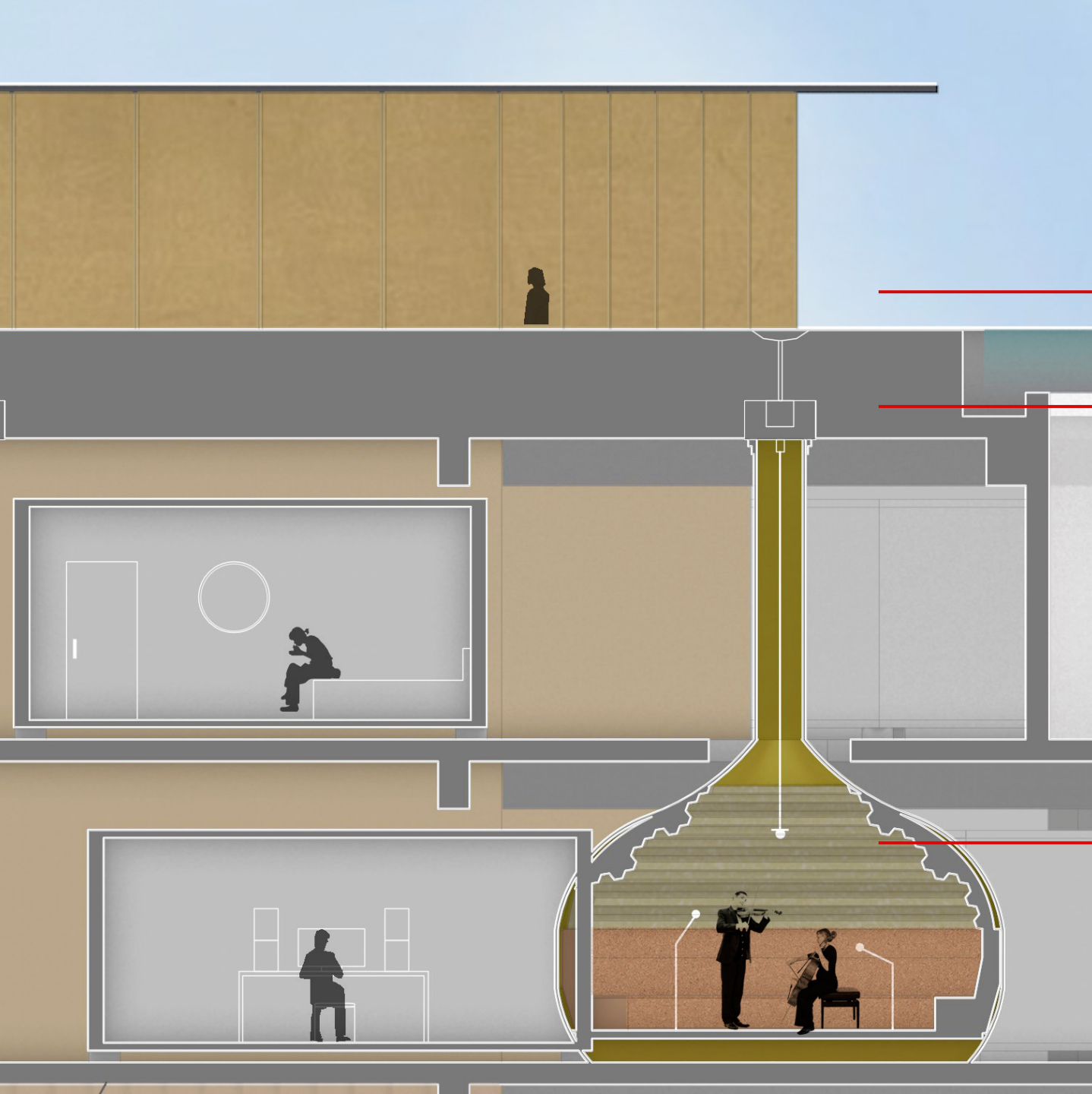
Upper levels section





## 6th floor

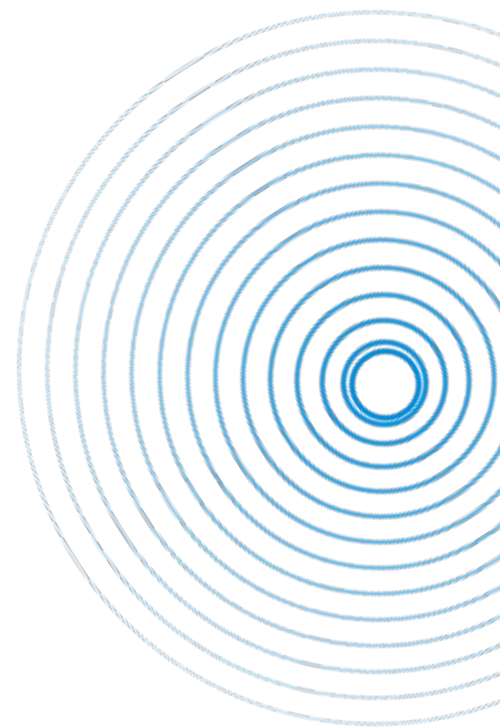
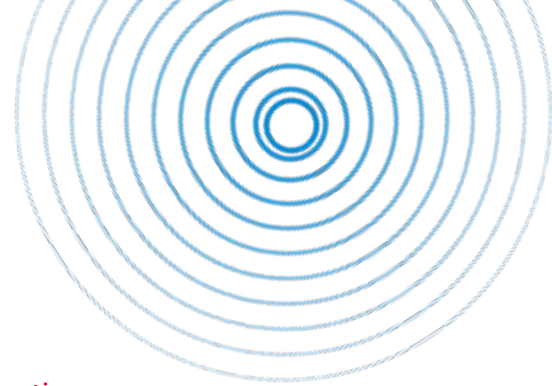
Recording studios

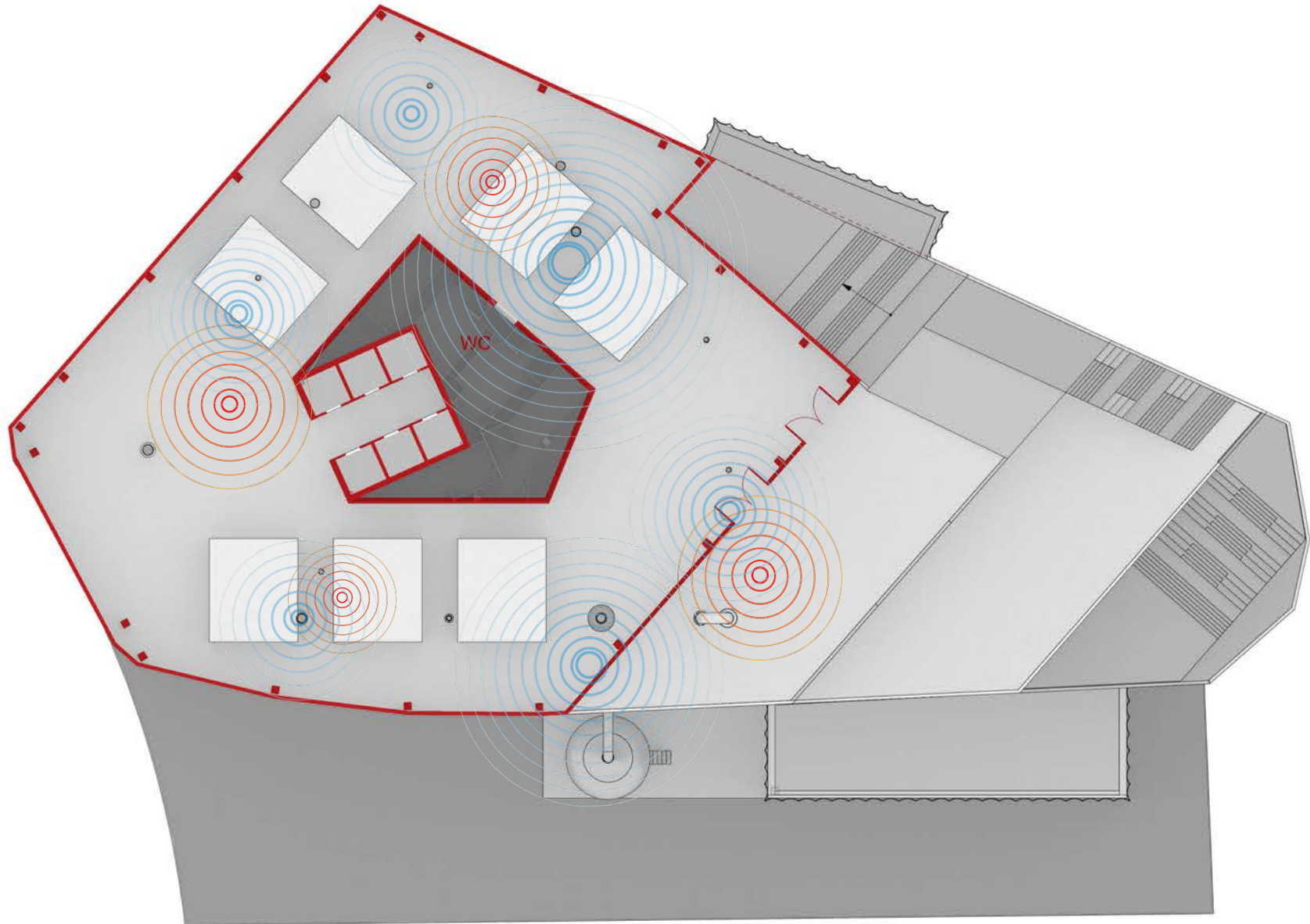


Water vibration

Speaker

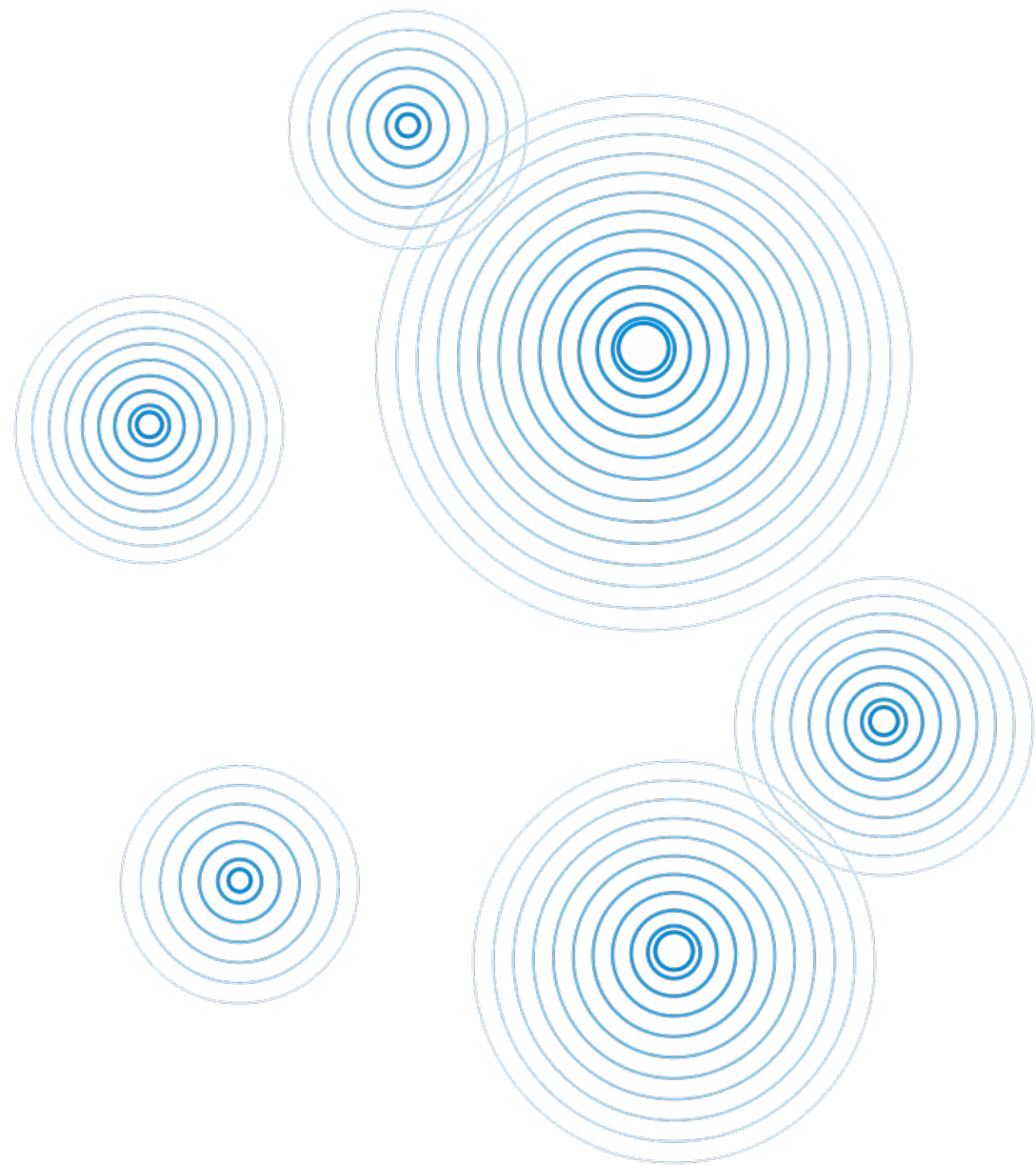
Microphone



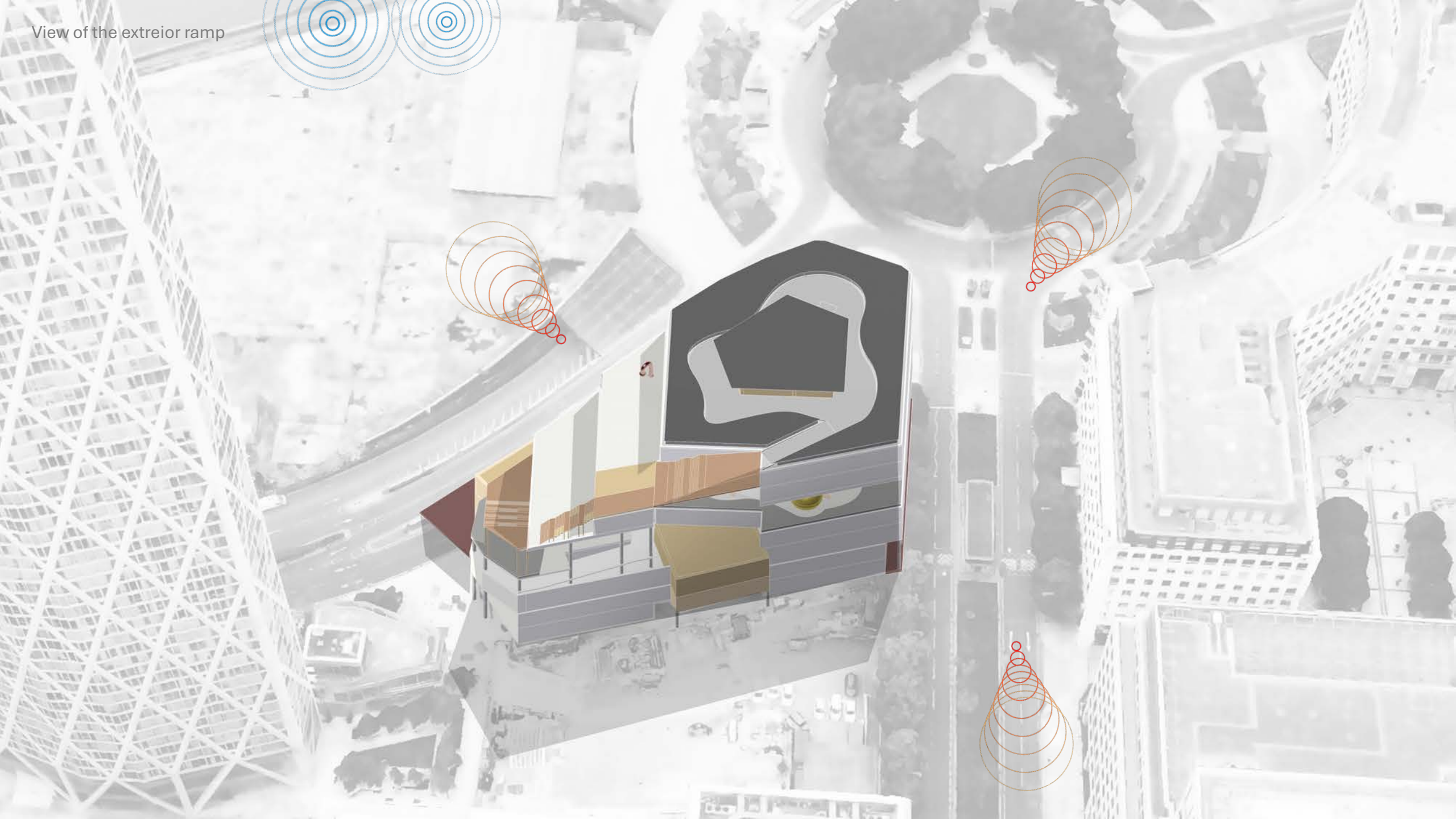


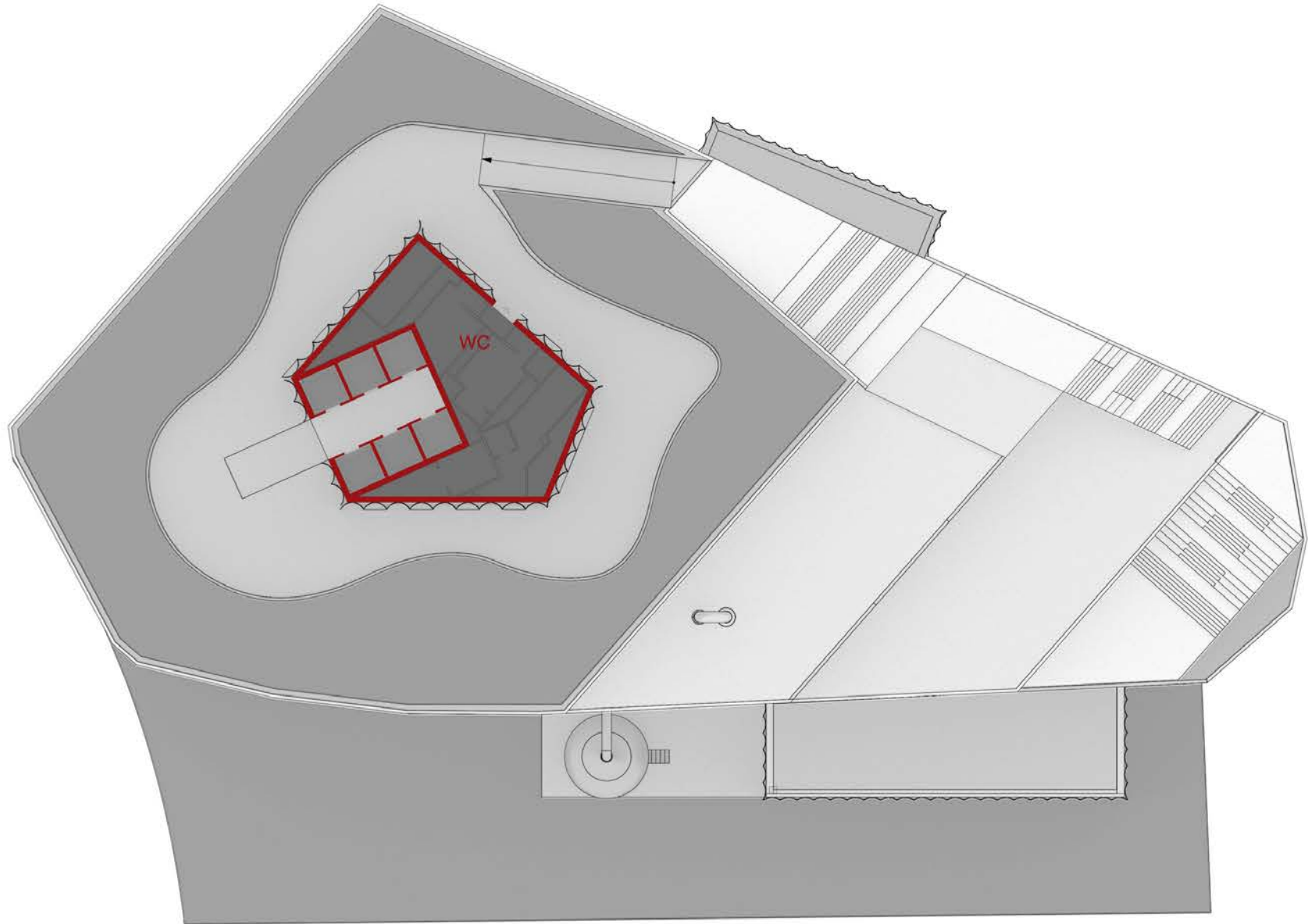
## 7th floor

Artist residencies



View of the extreior ramp

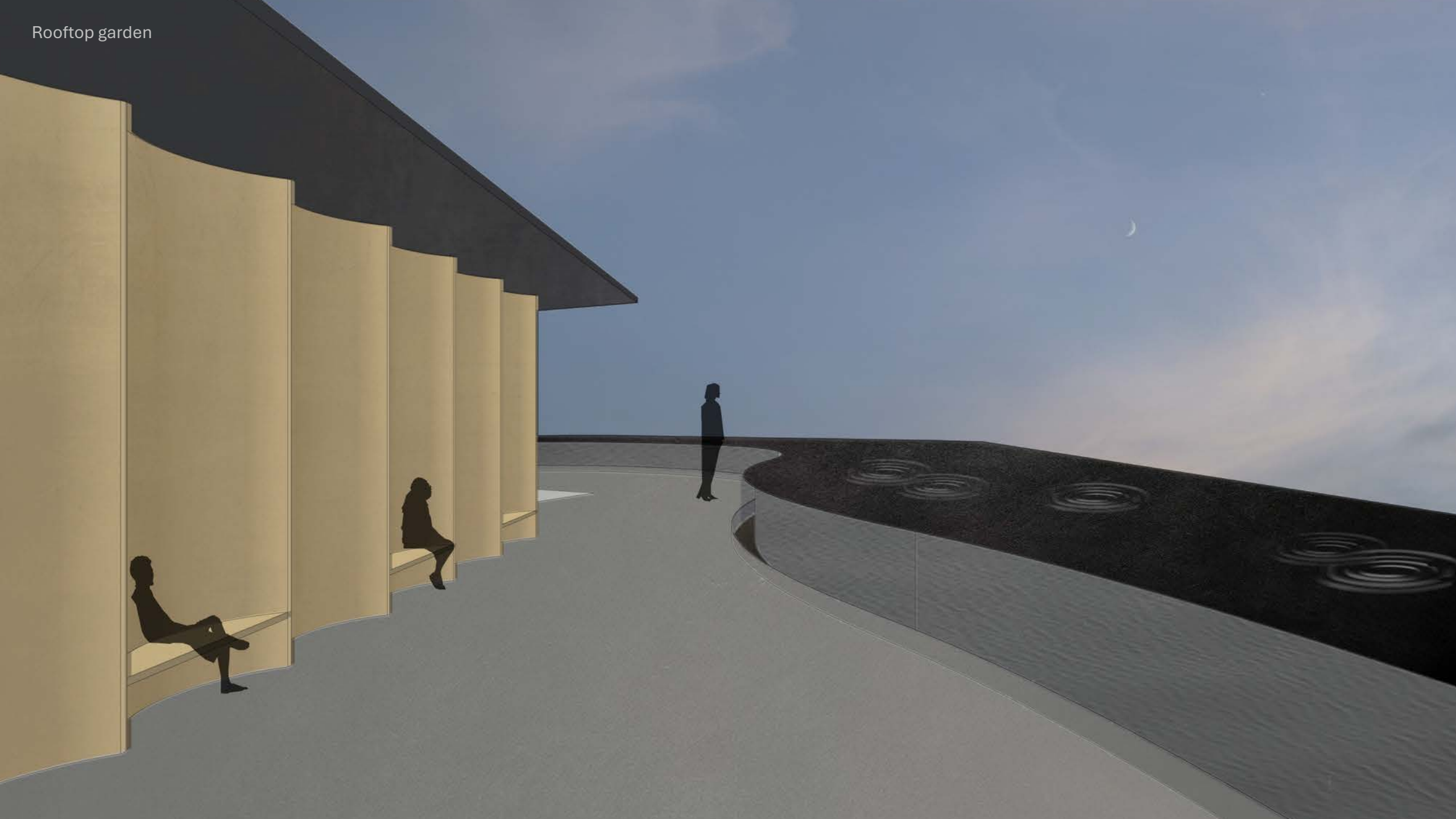




## 8th floor

Rooftop garden

Rooftop garden












**The project draws inspiration from musical instruments—**  
in particular, the pods are reminiscent of wind instruments.

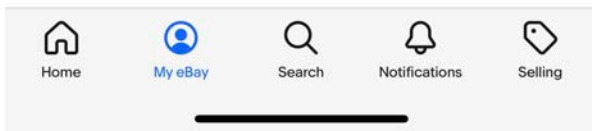
Does sound actually travel through the tubes?  
What does it sound like at the end of the tube?



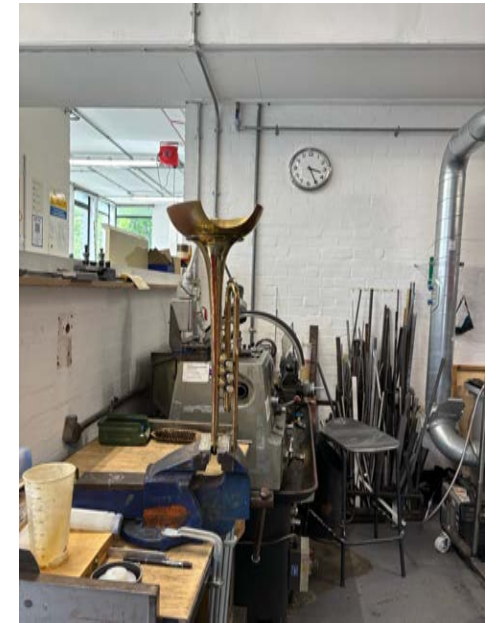
### Corton Trumpet in need of service And Love

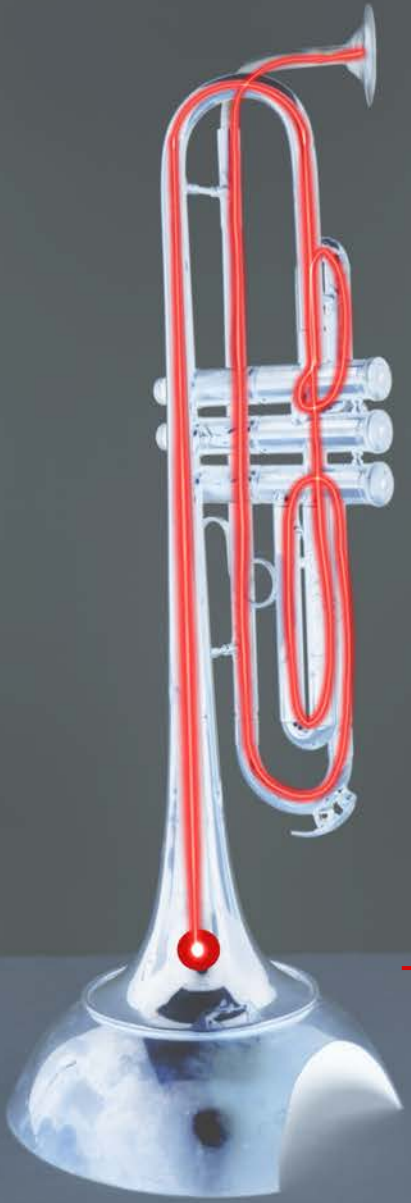
 **bournemouthclearance** (2062)  
99.7% positive Feedback

**£25.00**



To test my pod design from an acoustic perspective, I bought a broken trumpet.  
I brought it to the metal workshop, along with a vintage brass bowl.  
By slightly altering their shapes, I created a pod with the same structure as those in my project.





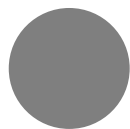
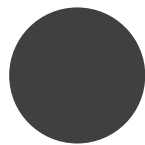
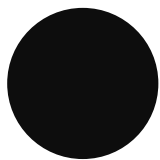
Listening point

Air control buttons

Speaker

The trumpet was transformed:  
from an instrument for **making sound**  
to one for **listening to sound**.





These improvisational compositions explore how shape and material affect acoustics. Depending on what you place beneath, inside, or around the pod, the texture of the sound at the end of the tube changes.

Model scale 1/200







Installation of RCA 2025: School of Architecture Postgraduate Show  
July 19- 23, 2025



**The pot - conceptual model**  
Basic concept, bridge over road, open  
The project shows integration with existing  
infrastructure in particular the park area  
conservation of road infrastructure  
How would it actually travel through the urban?  
What does it sound like at the end of the tube?

THANK YOU!