

AmbiSpace

AmbiSpace is derived from Ambiguity Space. Its design is based on boundary adjustment theory and work ecological psychology. It expresses a spatial system strategy of "adjustable boundary + behavioral streamline triggering", blurring the relationship between "office space" and "public space", making concentration and relaxation an adjustable and adaptable relationship.



The company here



15 Westferry Circus

At 15 Westferry Circus, People are far away from nature. While disconnection from nature raises a question:
Are offices for efficiency, creativity, or humanity?



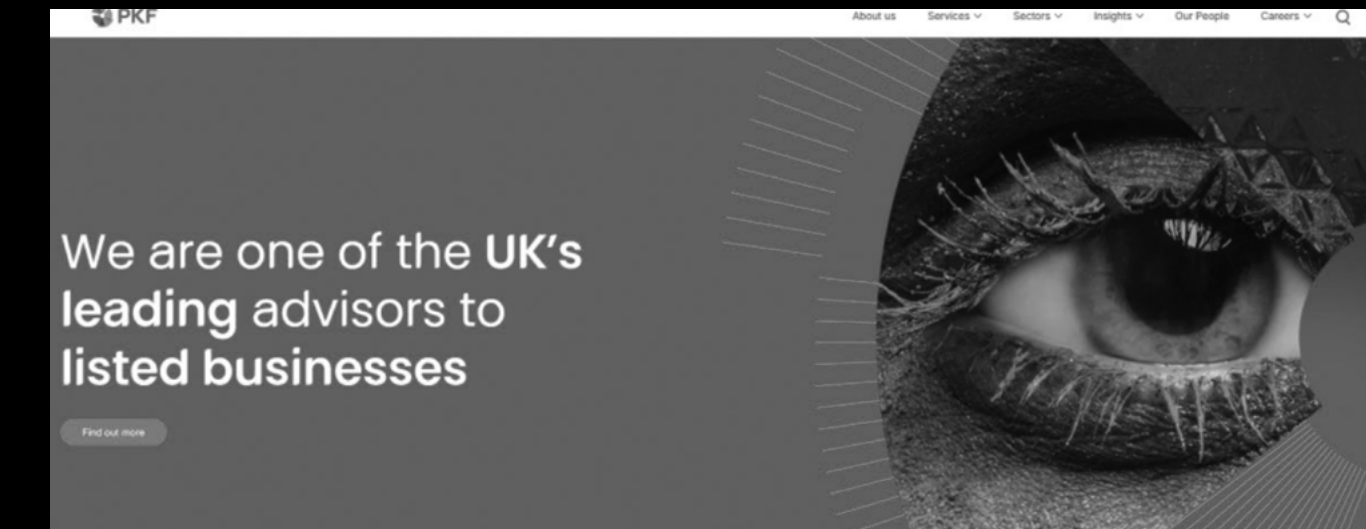
Morgan Stanley

Financial Company / Investment Company



Archtis

Information company/cybersecurity company

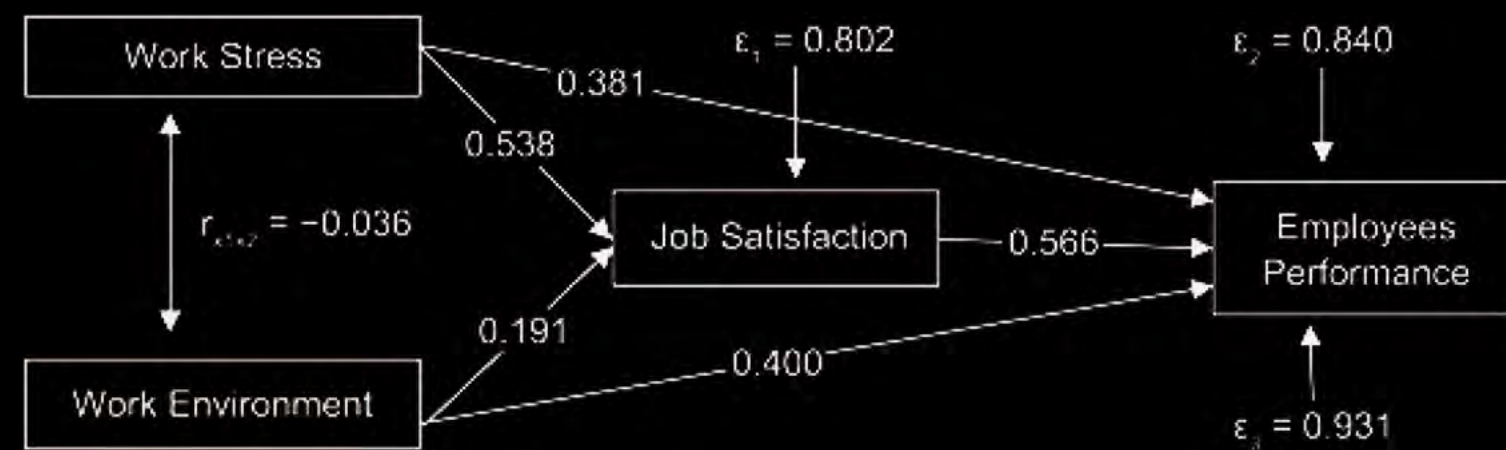
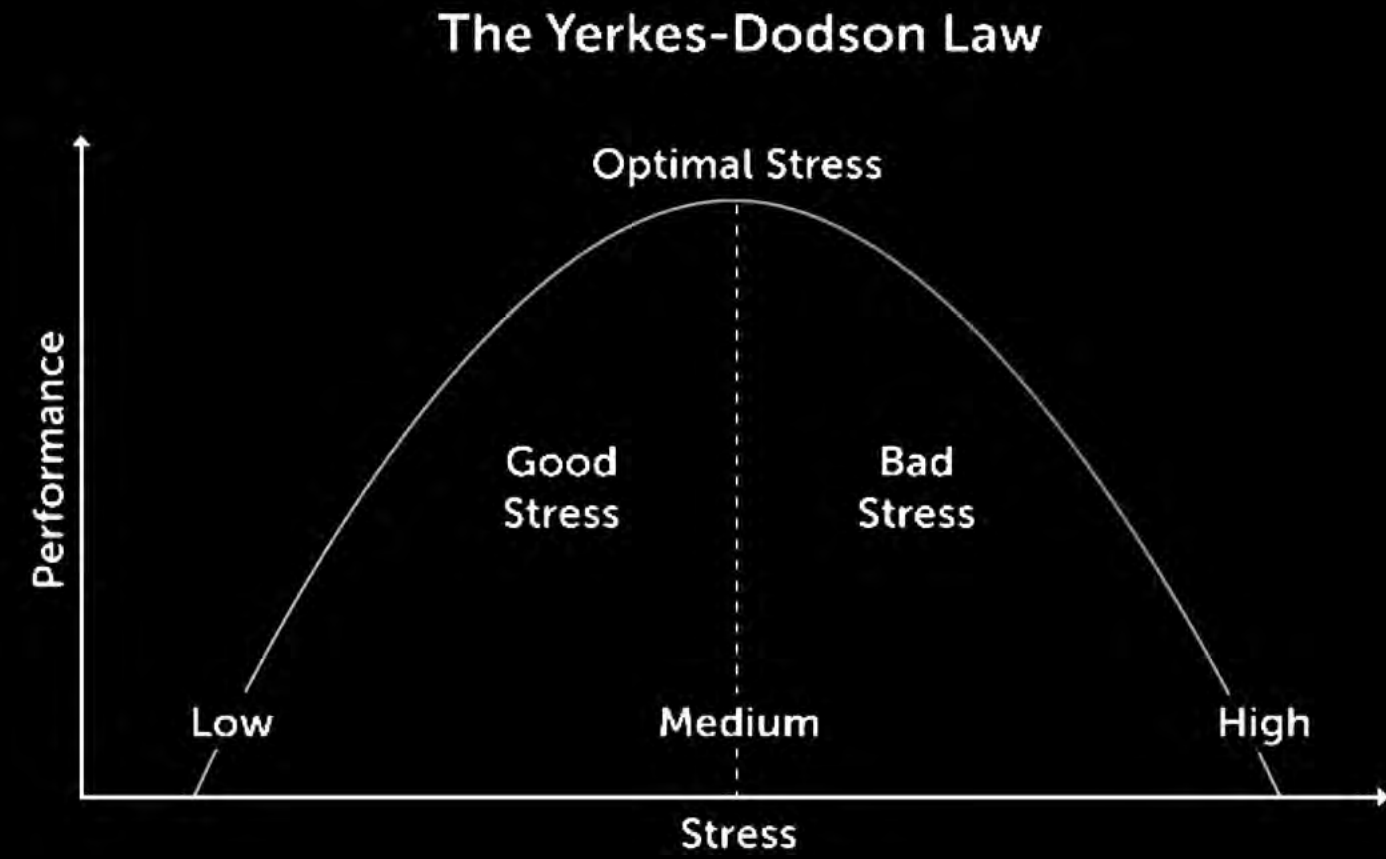


PKF Global

Consulting Firm / Insurance Company

Most of the companies located here work indoors, and employees need to concentrate on their desks, but they also face greater work pressure.

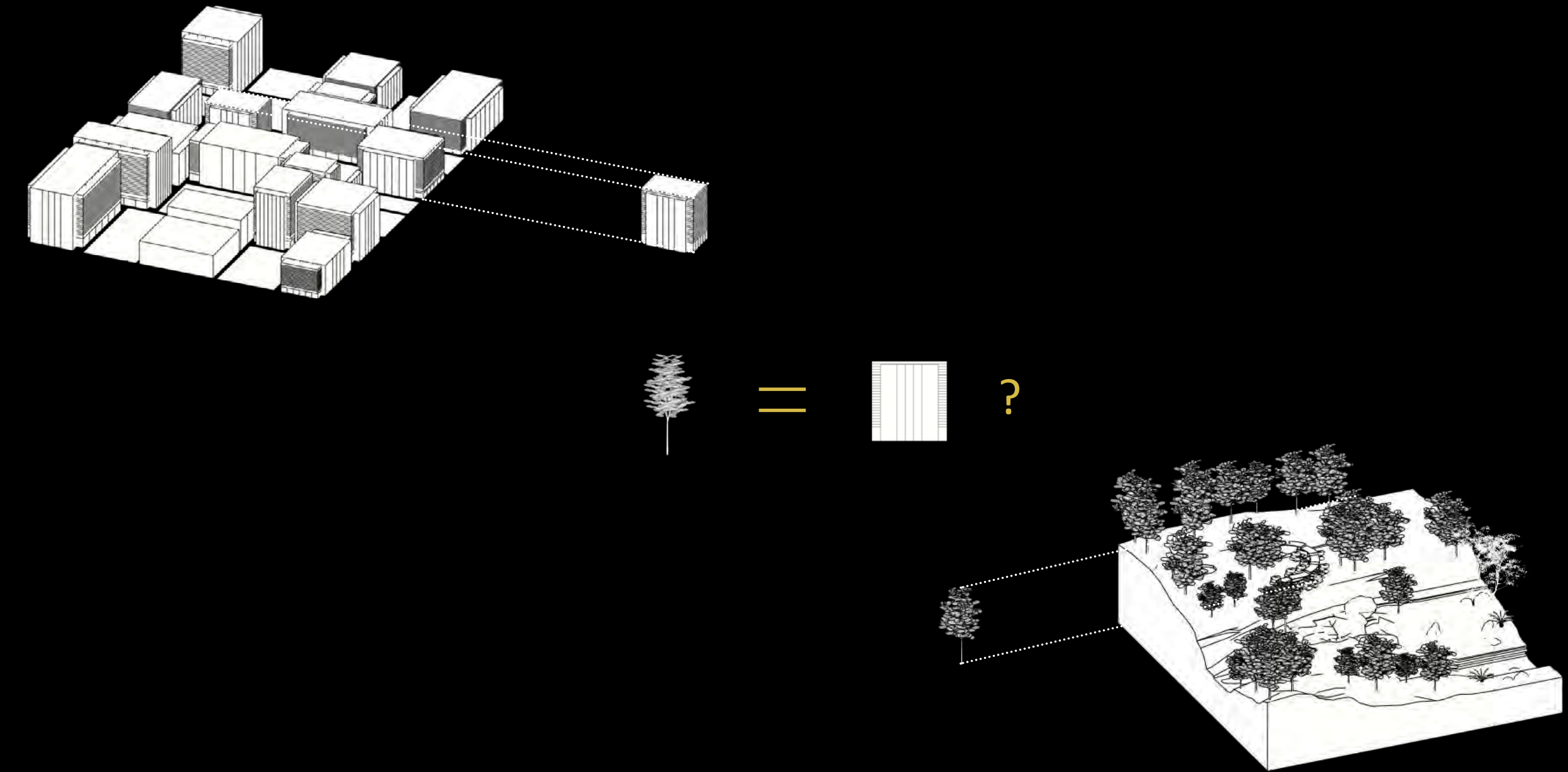
Problems faced by practitioners



Source: Journal of Engineering Science 12(3), 2021, 57-66, DOI: <https://doi.org/10.3329/jes.v12i3.57479> <IMPACT OF PHYSICAL FACTORS OF WORKPLACE ENVIRONMENT ON WORKERS PERFORMANCE IN INDUSTRY>
 Source: DOI: 10.4236/jhrss.2021.92021 <The Impact of Work Stress and the Work Environment in the Organization: How Job Satisfaction Affects Employee Performance?>

URBAN FOREST

How should we connect with nature?



Generally

reasonable stress can bring people **high work performance**

Then

These pressures come from **work pressure and work environment**

But

In the office spaces designed **in the past**, people have **lower emotional changes**, but **in the modern office space, the opposite is true.**

People's cortisol distribution does not reach normal levels.

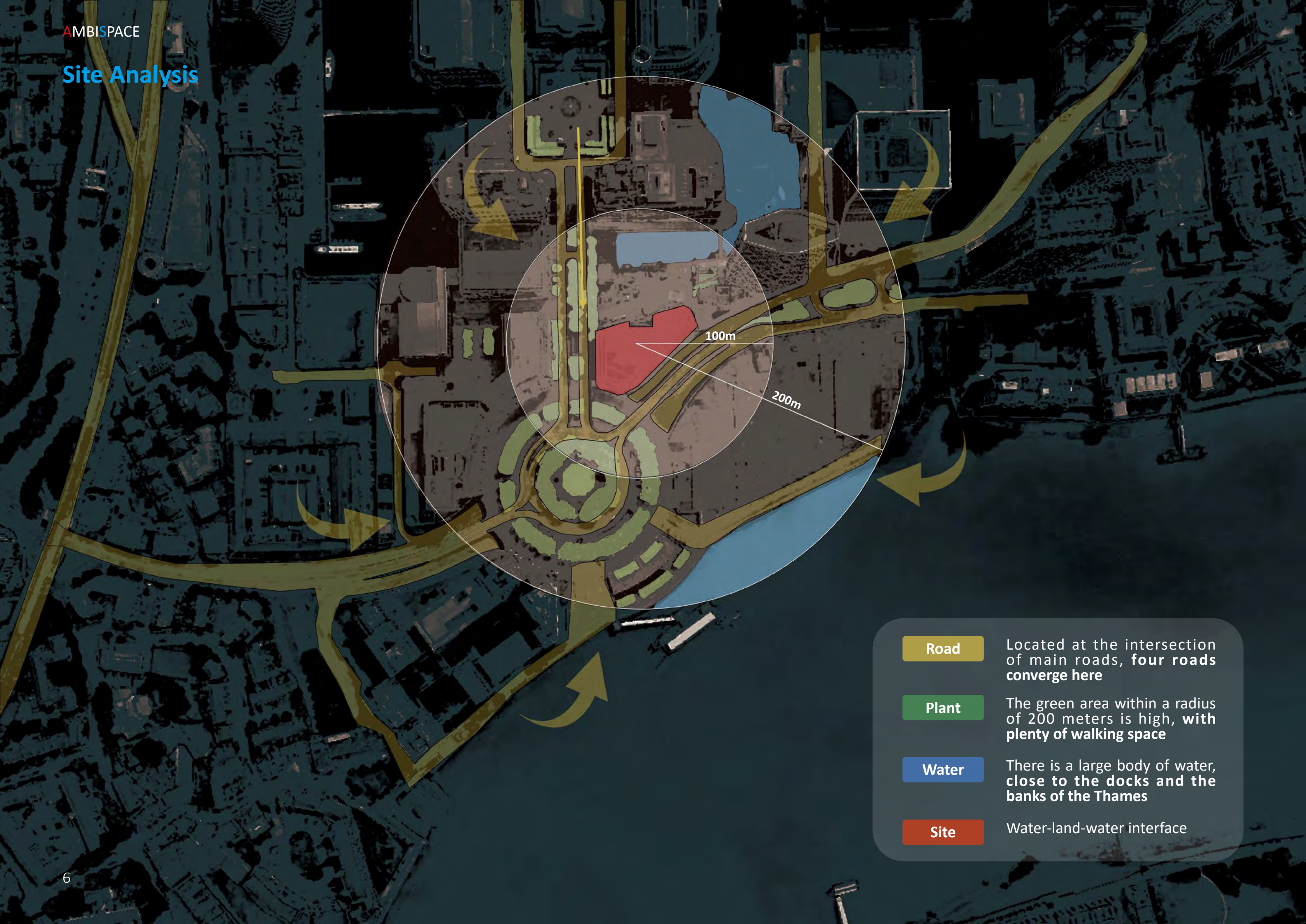
Conclusion

This shows that the **design of office space** is gradually becoming **unreasonable.**

So

when did this irrationality begin?

Forests and cities both have their own ecosystems. If a city is compared to a forest, an office building is compared to a tree in the forest, and **working is a part of life, just like a forest ranger taking care of trees.**



- Road** Located at the intersection of main roads, **four roads converge here**
- Plant** The green area within a radius of 200 meters is high, with **plenty of walking space**
- Water** There is a large body of water, **close to the docks and the banks of the Thames**
- Site** Water-land-water interface

Canary Wharf



Name: Canary Wharf
 Location: Isle of Dogs, Tower Hamlets, London, England
 Nature: Financial district
 Official definition: Part of London's Central Business District
 Collection: Central London

15Westferry Circus



Address: 15 Westferry Circus
 Current situation: Typical office area, large green area
 Supporting facilities: No convenient public facilities in the surrounding area
 Design decision: Plan it as an office community
 Special design: Some buildings are used as open public spaces

Google DeepMind



Based on the above location, Google DeepMind was introduced as the design prototype, aiming to **balance high-intensity artificial intelligence research and development with worker stress relief, investment in sustainable development and smart office solutions.**

KEY WORDS

Office

Functional – Office, meeting, collaboration, leisure areas.

Efficient – Ergonomic, optimized lighting, temperature, noise.

Flexible – Adjustable layout, smart devices, efficient network.

Brand-driven – Reflects corporate image, enhances team belonging.

Ecology

Nature – integrated – Harmonizes with the environment.

Sustainable – Uses eco-friendly materials and energy-saving designs.

Biodiverse – Supports plant and animal coexistence.

Healthy – Provides fresh air, natural light, and clean water.

Life

Comfortable – Designed for relaxation and well-being.

Functional – Includes bedroom, kitchen, living room, bathroom.

Private – Ensures security and personal space.

Aesthetic – Reflects personal style, creates a cozy ambiance.

Social

Interactive – Encourages communication and collaboration.

Open – Flexible and adaptable for various gatherings.

Inclusive – Welcomes diverse people and activities.

Multifunctional – Supports work, leisure, and entertainment.

DeepMind Departments and Relationship

A. Core research and product development system



Core Research
AI for Science
Language Model and Multimodal
Product & Infrastructure

B. AI safety and ethics supervision system



AI Safety
Ethics & Societal Impact

C. Strategy, business and support system



Strategy & Corporate Development
Legal & Compliance
Brand, Media & Public Relations
People & Culture

D. Operation and space management support system (logistics)



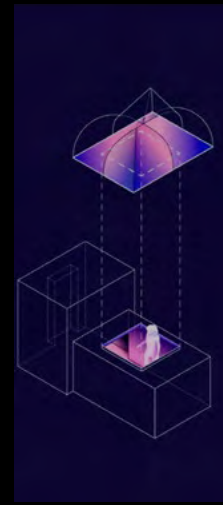
Facilities & Workplace Operations
IT & Internal Tools
Employee Experience & Hospitality

1 requirements
4 team needs

2 Safety ethics inspection
3 Check Feedback



Current status of office space



3. The office is no longer just where work happens — it's where people connect. In-person days should foster collaboration and revive the culture lost to remote work

Google DeepMind

deepmind.google

Google DeepMind

Artificial intelligence could be one of humanity's most useful inventions. We research and build safe artificial intelligence systems. We're committed to solving intelligence, to advance science...



1. Work-life balance isn't doing everything at the office — it's about flexibility and autonomy
2. The office needn't be large, but well-designed to feel meaningful and worth coming to



Google DeepMind

The next era of Gemini

Gemini 2.0 is our most capable AI model yet, built for the agentic era

Learn more | Chat with Gemini



4. Team gatherings enhance happiness, efficiency, and creativity — but focused work still requires private space



Core Position

In a highly complex knowledge-based office community, **the traditional binary division of "public/private"** can no longer support a flexible, efficient, and healthy office experience. I need to **enhance the dynamic interaction mechanism between the two**, optimize behavioral flow and spatial efficiency, and achieve the effect of stimulating a sense of belonging, collaborative potential, and creative culture.

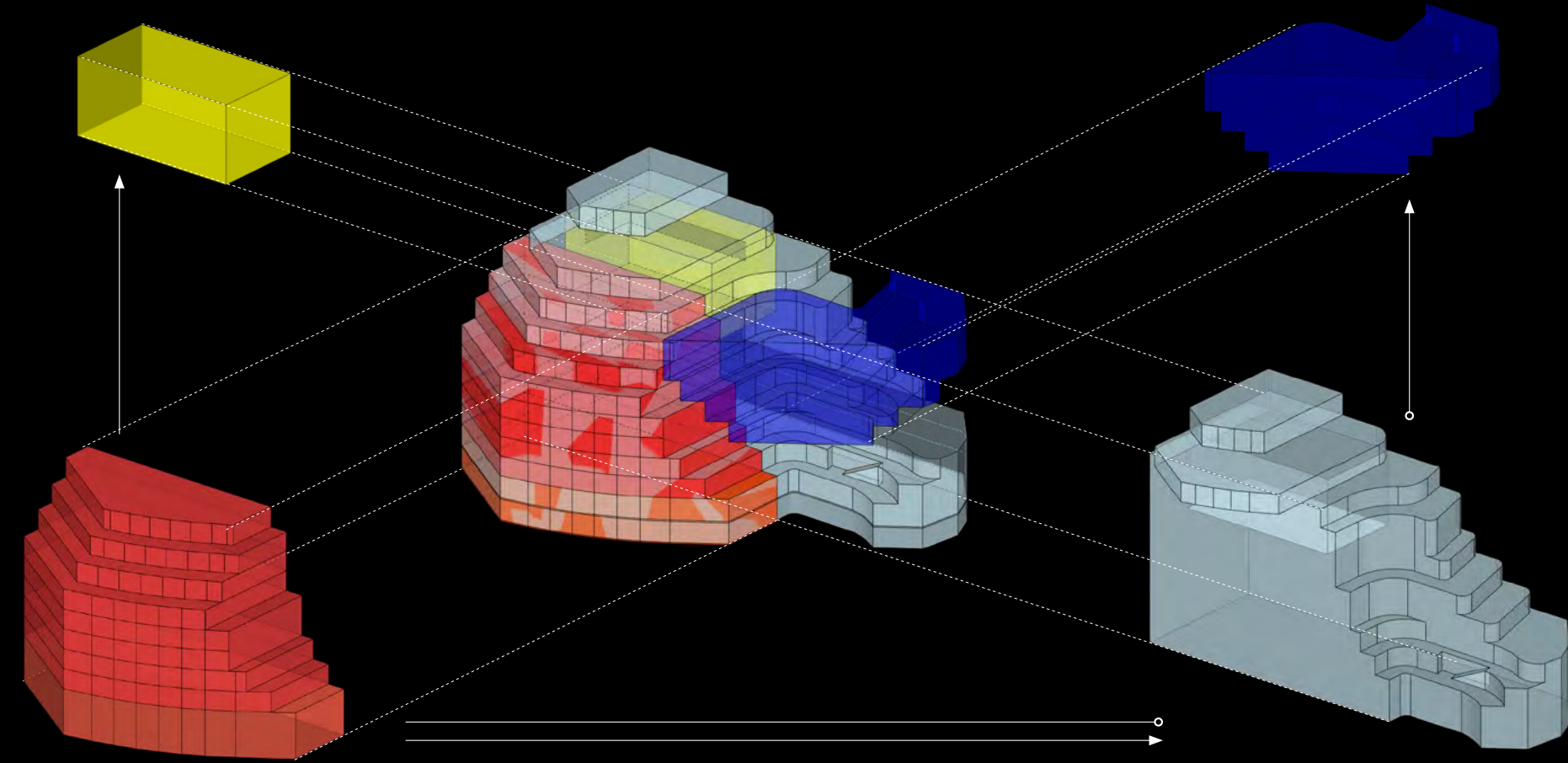
Spatial distribution

Yellow - C Gypsum partitions

Focused on management and coordination, this zone separates quiet business areas from open R&D spaces, providing a calm, independent environment for strategic work and decision-making.

Blue - B Electrochromic Glass

AI Lab & Innovation Hub for AI experiments, product incubation, and exhibitions, with safety and ethics teams on-site to deepen tech understanding and oversight.



Red - A, D Plexiglass

Core R&D zone combining open and private spaces for flexible work. Floors -1 and 0 handle logistics; levels 1-8 focus on AI development to drive efficiency and innovation.

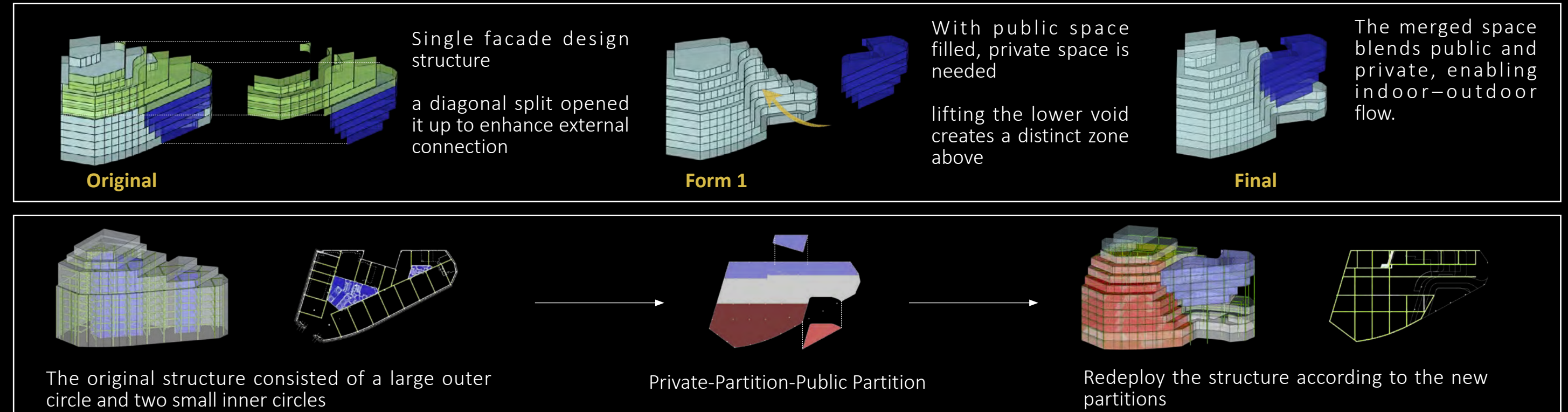
Transparent - Public Plexiglass

W

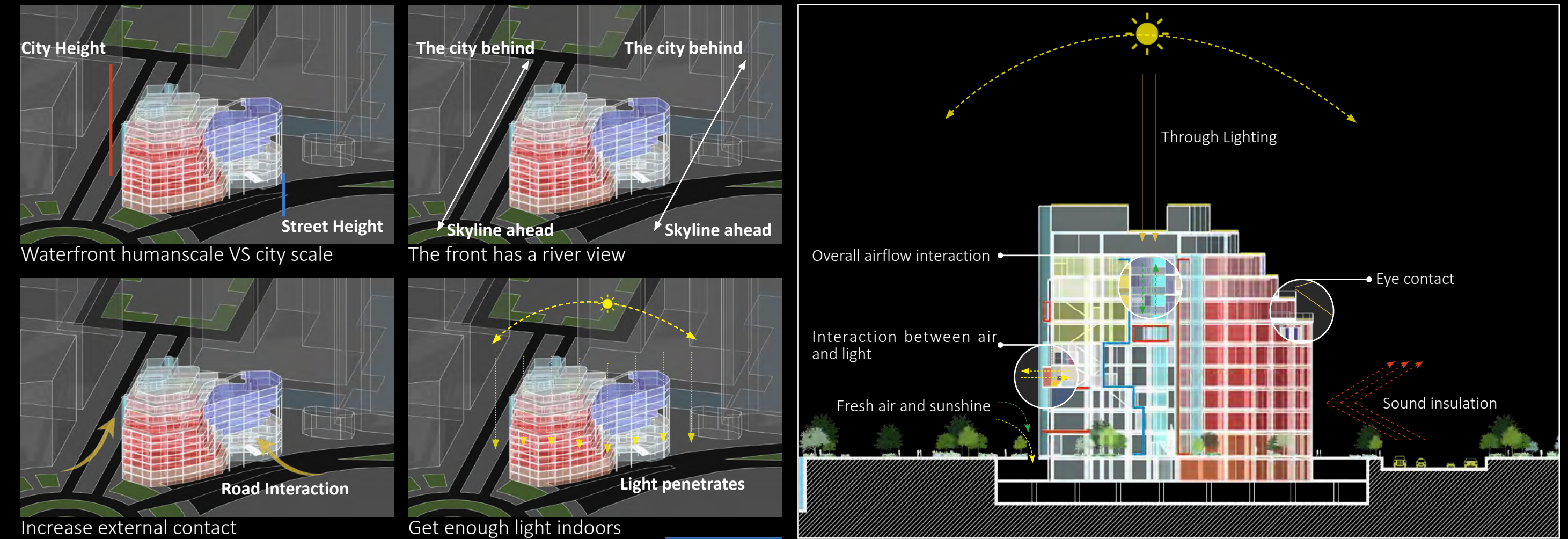


The design supports file sharing and communication via intranet and internet, with virtual meeting rooms and efficient internal data transfer as key features.

Morphological Reuse



Overall analysis



Bringing in organic space



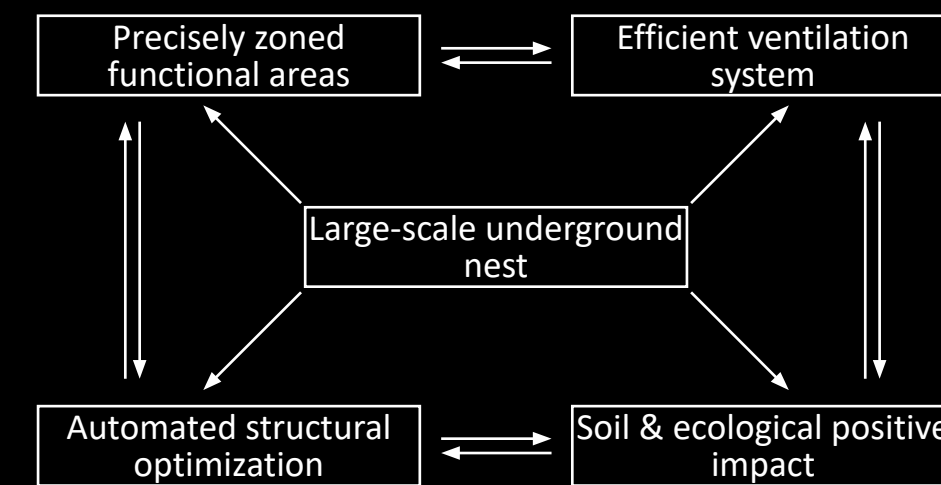
Relieving Artificial Stress Through Natural Forms

Organisms in nature align seamlessly with the Earth's natural rhythms. For most species, the natural environment functions as a shelter that reduces stress compared to artificial settings.

Based on this understanding, I incorporated the concept of organic space into the community design. My research led me to an intriguing biological spatial structure — the nest of the leafcutter ant, Orb-weaver spider web structure, Sky Island Concept.

In it, Leaf-cutter ants dominate the structure

Structural advantages of leaf-cutter ant nests



Combination of multiple ecological spaces



Leafcutter Ant Nest
 -Multi-layered, interconnected social structure
 -Adaptive, complex circulation
 -Branching paths for collaboration and sharing



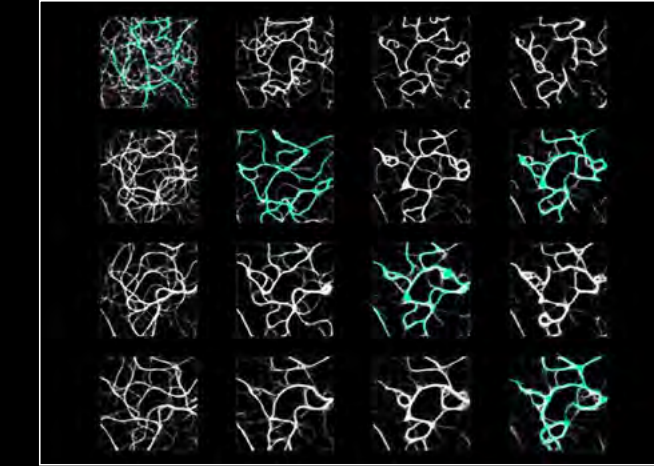
Orb-Weaver Spider Web Structure
 -Densely connected, network-based layout
 -All spaces organized around a central node



Floating Island Concept
 -Layered and highly independent
 -Separated zones reduce interference
 -Suited for focused work and privacy

Space Reuse

spider web structure



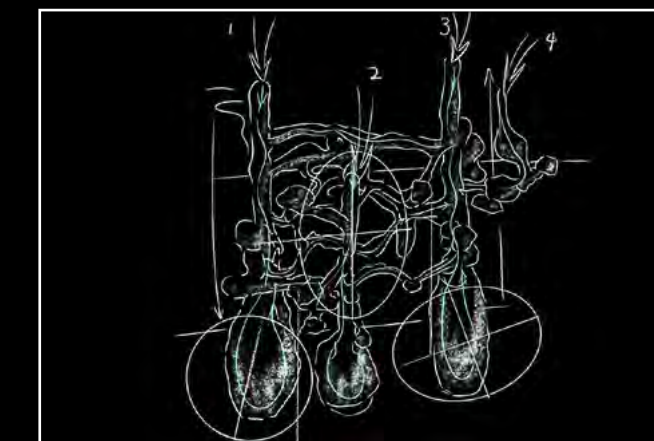
Spider web structure

Sky Island Concept



Sky Island Concept

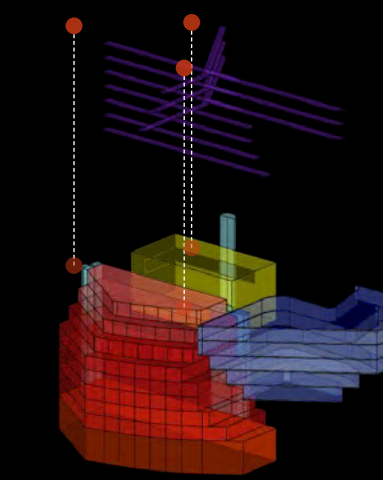
nest of the leafcutter ant



nest of the leafcutter ant

Four core transportation points

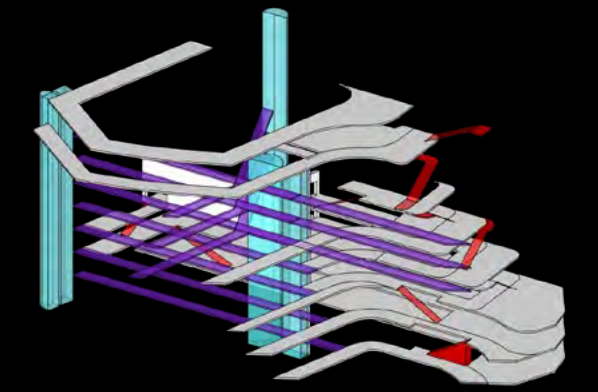
Three office spaces interact with each other



Main structure reuse

Three vertical elevators as the main access

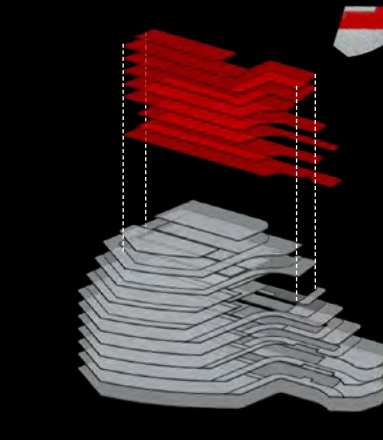
Red channel as recreational path



Path planning model

Take out the space in the middle

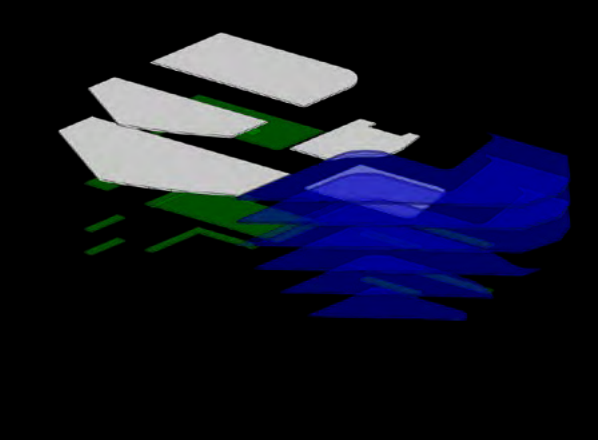
Private and public spaces begin to interact



Main structure reuse

Add different balconies inside and outside

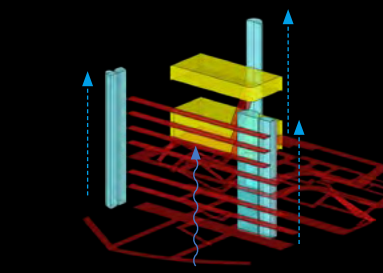
The blue part is like a lonely island



Interaction Model

Vertical direction as the main air circulation

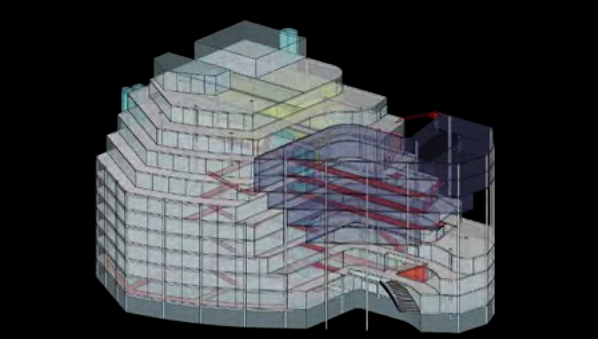
Increase the intersection of paths and more interactions



Path Interaction

Bringing Paths into Space

The basic structure of the space is generated



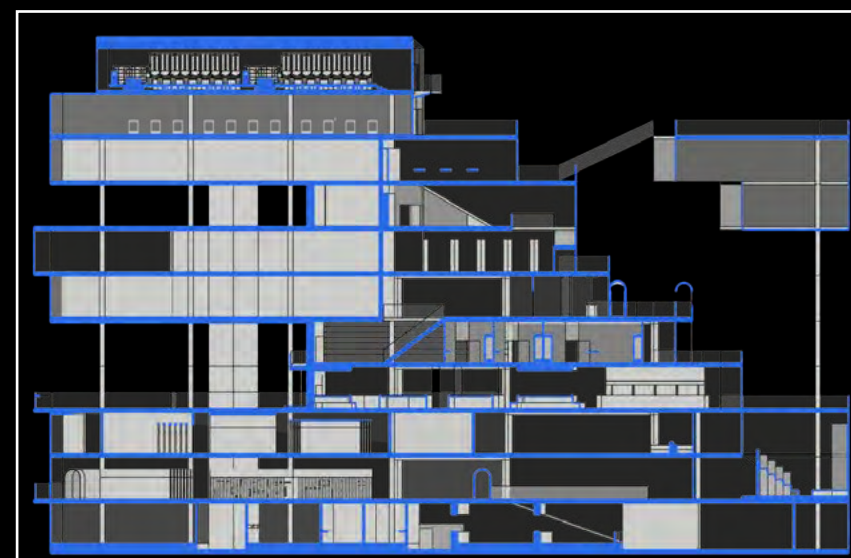
Structure Generation

Elevation Analysis



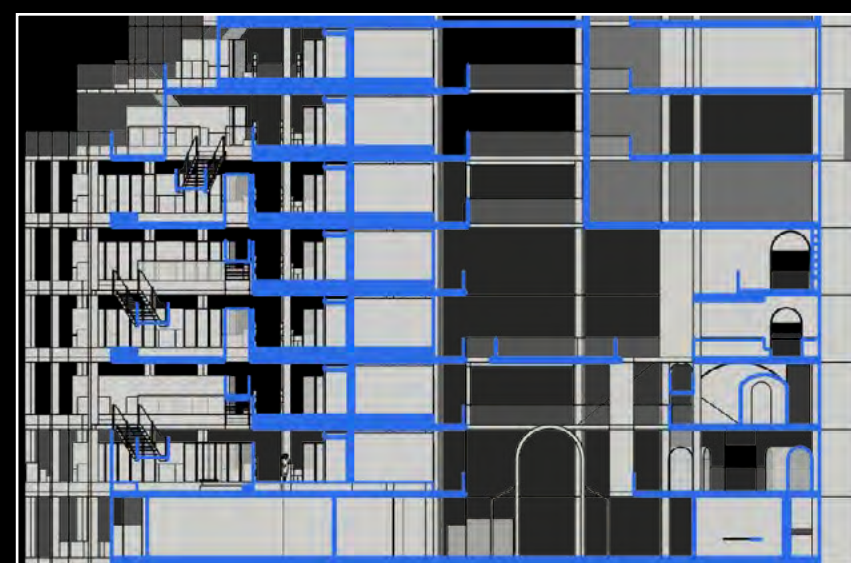
Elevation-Office

- No fixed walls; sliding track doors allow flexible layouts.
- Internal paths and outdoor links enable fluid movement.
- Upper floor serves as a hybrid meeting space for remote and in-person work.



Elevation-Public

- Public space supports ongoing private-public flow.
- Open and private zones allow idea capture anytime.
- Multi-path layout provides diverse viewpoints.



Elevation: Public-Private Interaction

- View shows private (left) and open (right) areas.
- Bridges and paths offer flexible circulation.
- Irregular facades encourage visual interaction.

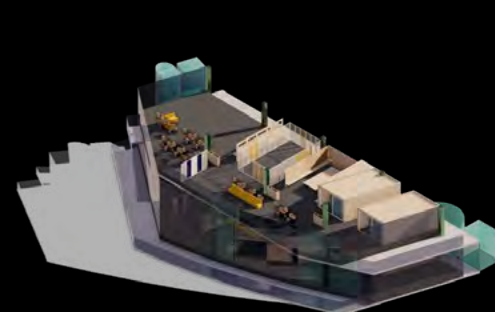
Exploded view

Office 1-7th Flexible Office



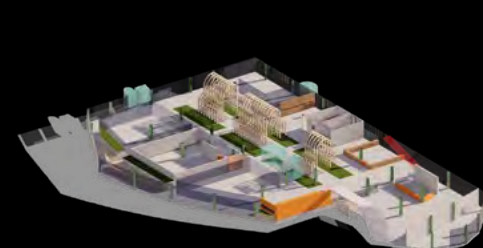
- Ground-mounted tracks allow flexible office space layout
- There are independent circulation lines in the office space

Office 8-9th Meeting Room



- Two-story meeting space with balcony
- Specially designed online and offline interactive rooms

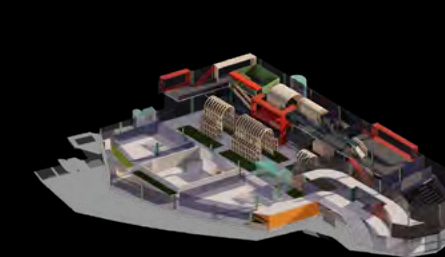
0th floor Interactive Hall



- Central park, shops, self-catering hall, possibility of increasing space
- There are independent circulation lines in the office space

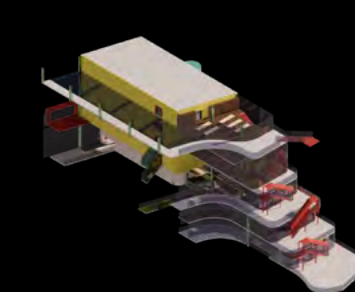


Public 2-3th - Exhibition space



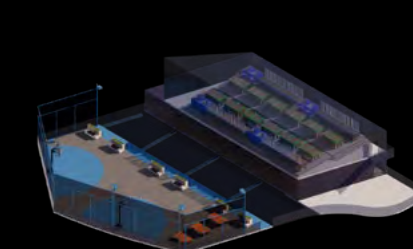
- Connected to the 0th floor, exhibiting AI-related items
- The upper and lower parts are positive and negative spaces, constantly switching between public and private.

Public 4-9th - Leisure Space



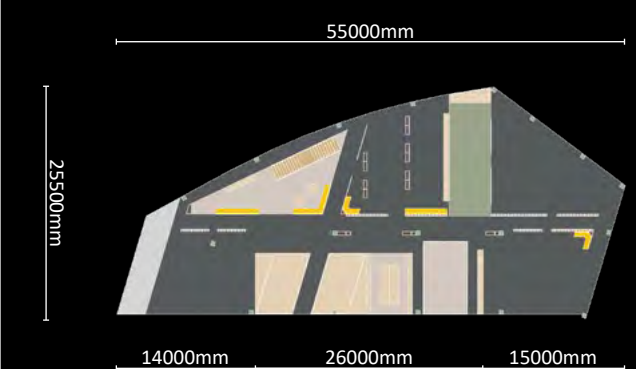
- Sky Garden, AI Experience Area, Reading Room
- Also composed of private-public interactions, flexible adjustment

Public 10-11th - Relaxation



- Indoor gym, outdoor court, greenhouse
- Transform the entire building into a community with multiple functions

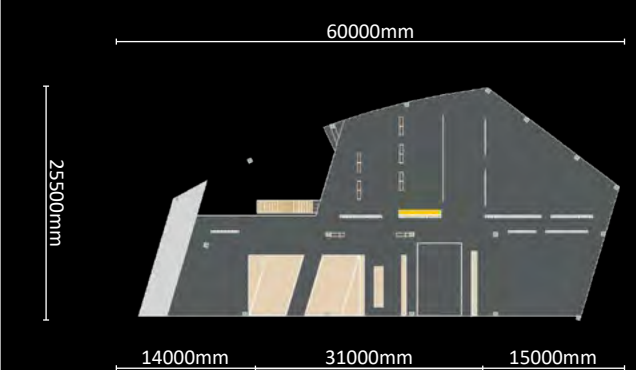
Plane analysis



F2

Plane A

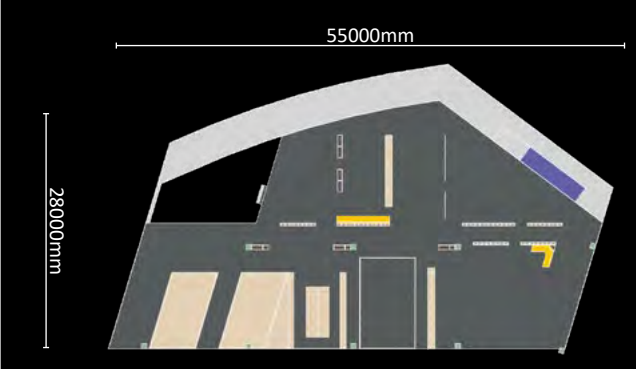
- Office spaces A and B form an interactive pair on the same level.
- Sliding tracks allow flexible use while providing enclosed zones.



F3

Plane B

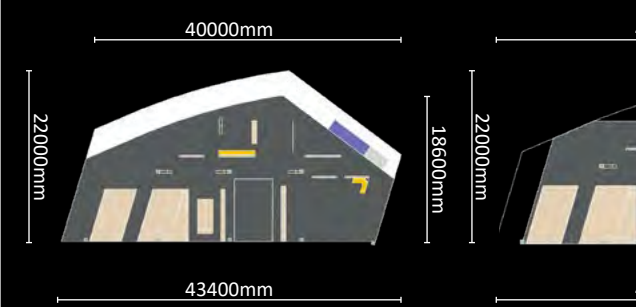
- Office B pairs with A, forming a functional unit.
- Connection to the upper level is more private
- Together, A and B support team-based work.



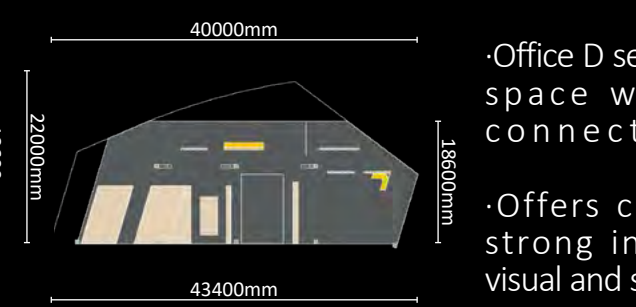
F5

Plane C

- Office C connects closely to public areas
- Includes a relaxing balcony for informal breaks.



F9



F10

Plane D

- Office D serves as a meeting space with vertically connected windows
- Offers clear views and strong indoor-outdoor visual and spatial interaction



Rendering

The building façade extensively employs glass curtain walls to enable flexible control of daylight and optimize natural light utilization. Simultaneously, the use of glass seamlessly connects interior spaces with the external environment, especially on the façade facing the Thames, offering an unobstructed and **unparalleled viewpoint of London's iconic skyline.**

I aim to create a relaxed and vibrant workplace atmosphere. In the rendered images, I employed pure, vivid colors to visually represent the dynamic interaction between public and private spaces. Warm colors indicate areas designed for social interaction, **while cool colors highlight spaces reserved for individual reflection and focused work.**



Office Space-Public Area F1-2

A little break



This is the public area within the office zone, with two key spatial features:

First, every two floors are connected vertically to form an open, double-height interactive space, encouraging both visual and behavioral interaction between levels and enhancing collaboration.

Second, the area utilizes modular, reconfigurable partitions, allowing the spatial form and functional elements to adapt fluidly to different work scenarios and team needs.

Public Space-Exhibition F1

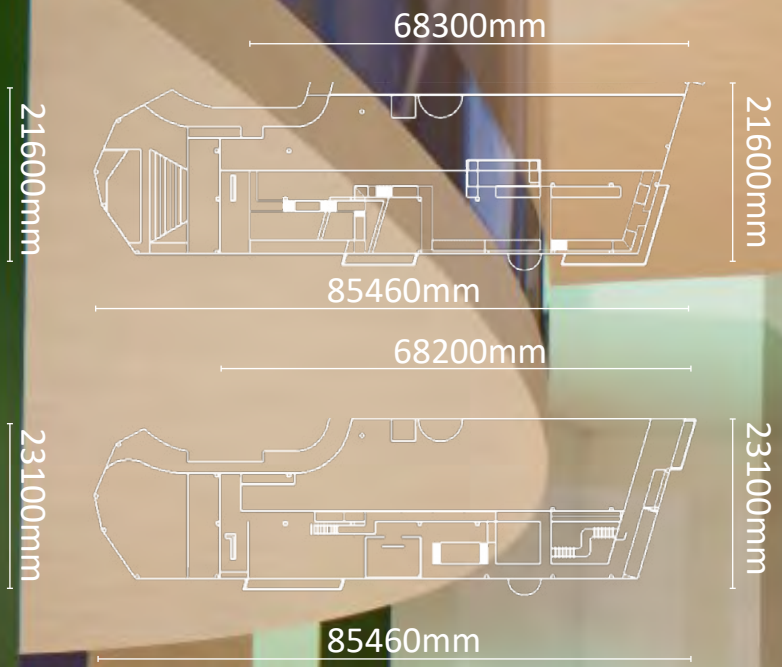
Stroll

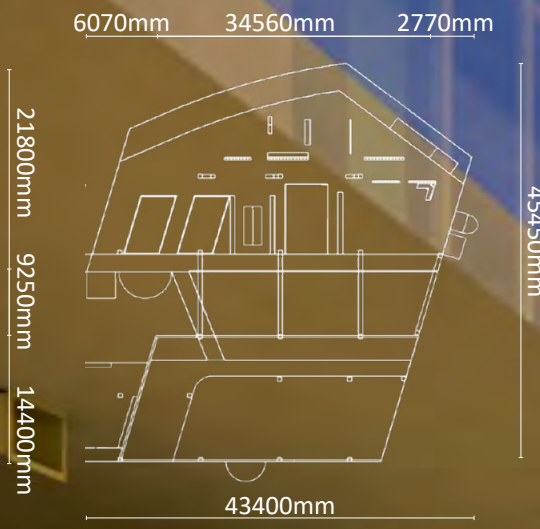


The two levels of the exhibition space are spatially interconnected, adopting a “positive-negative space” design strategy.

While both levels follow the same circulation logic, the lower floor emphasizes enclosed corridors and open exhibition halls, fostering an immersive and exploratory atmosphere. In contrast, the upper floor features more open walkways and selectively enclosed rooms, offering a lighter and more fluid experience.

This contrast not only extends the journey but also enriches the spatial rhythm and sensory experience for visitors.





Office space-Lounge F10

Communication between departments

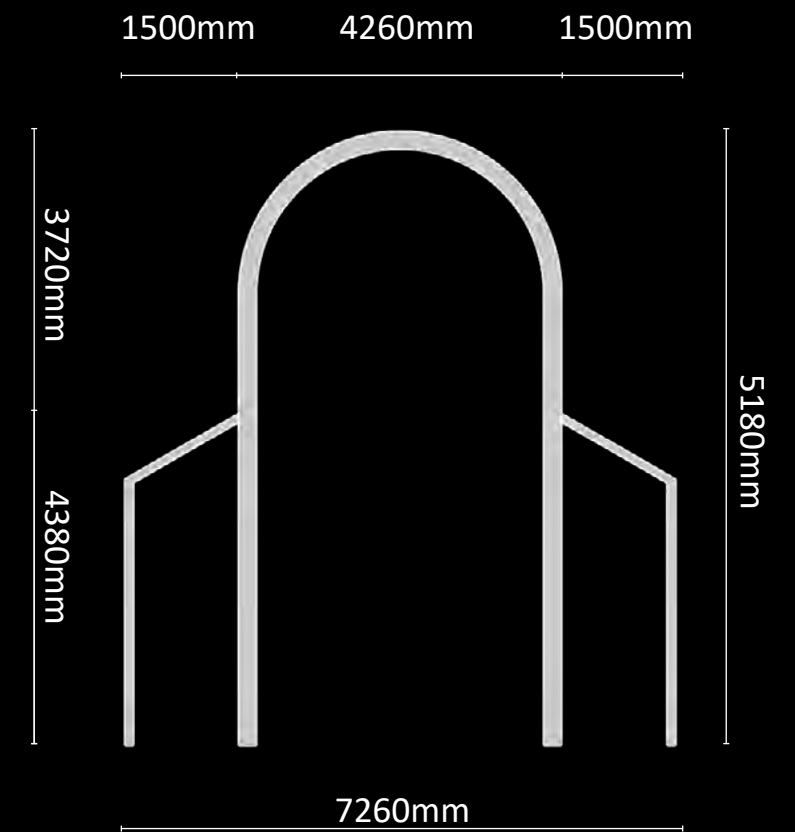
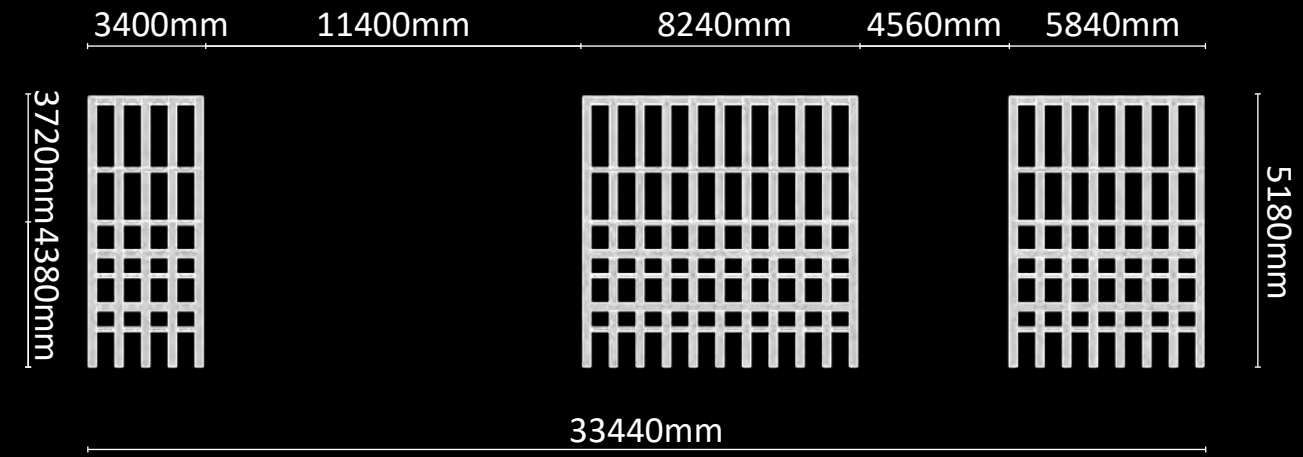


This floor integrates office and public functions, with a primary focus on meeting spaces, making it a highly dynamic and adaptable level.

The extensive use of glass flooring allows natural light to penetrate vertically, enhancing both illumination and the spatial openness throughout the entire building.

Public Space-Air Park F0

Meditation



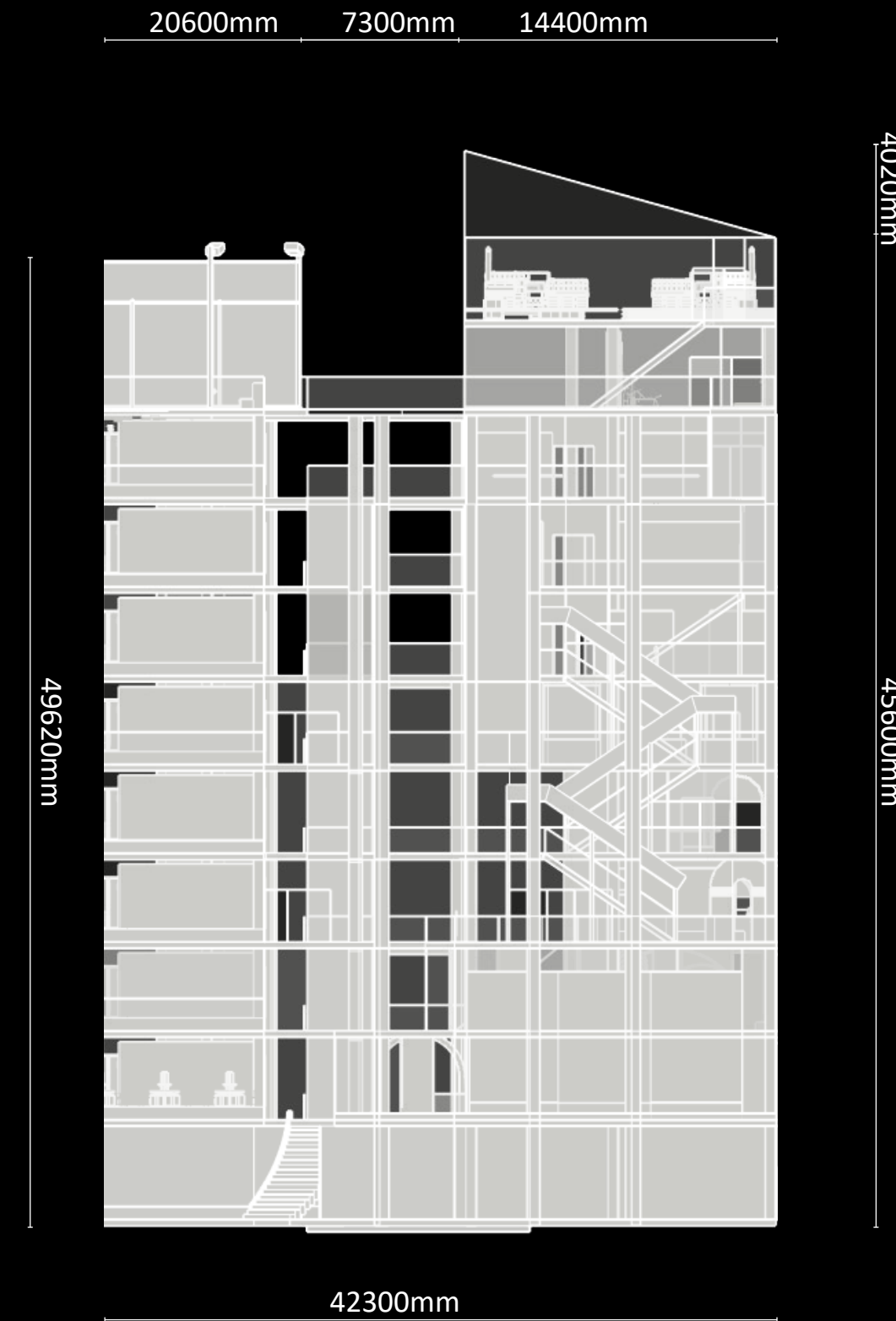
The installation was inspired by the church and was intended to create an indoor park.

Increase the interaction between the left and right areas while adding a lot of possibilities to space



Public Spaces - Overview

Public-Private





Floor plan

0th floor Interactive Hall

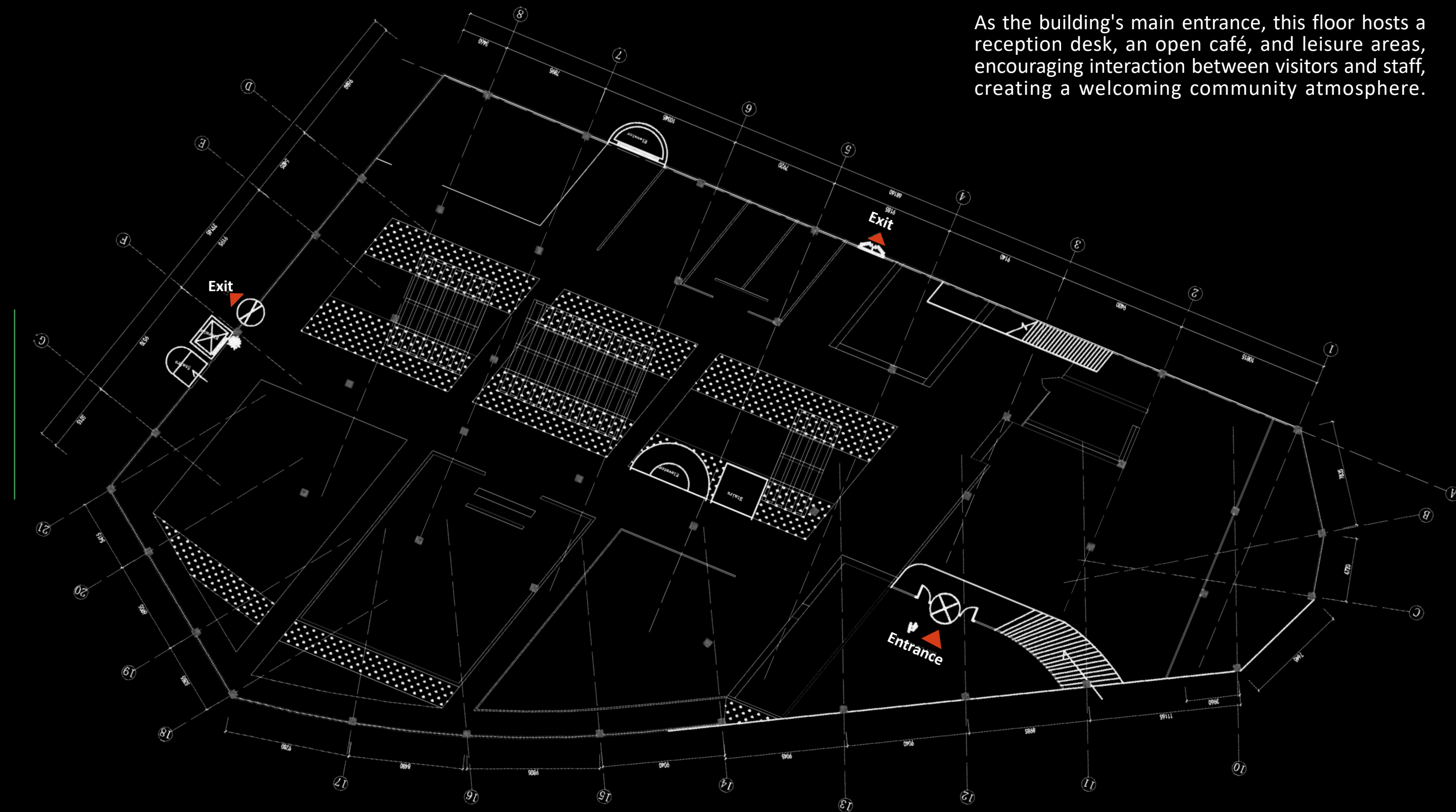
Office: 1-7th Flexible Office, 8-9th Meeting Room

Public 1-3th - Exhibition space, 4-9th - Leisure Space, 10-11th - Relaxation



Welcome & Public Interaction Zone

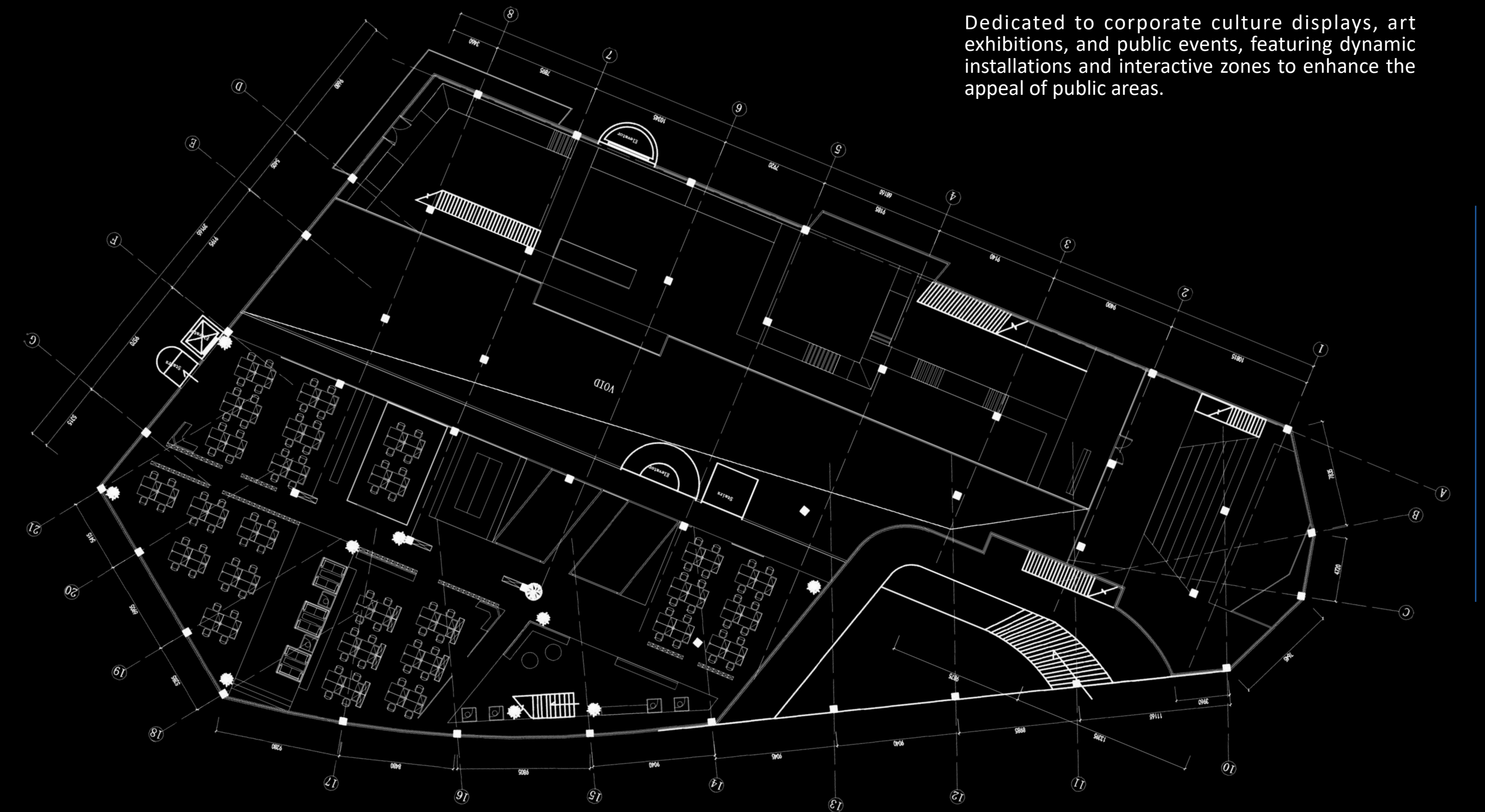
As the building's main entrance, this floor hosts a reception desk, an open café, and leisure areas, encouraging interaction between visitors and staff, creating a welcoming community atmosphere.



Floor plan G

Culture & Exhibition Space

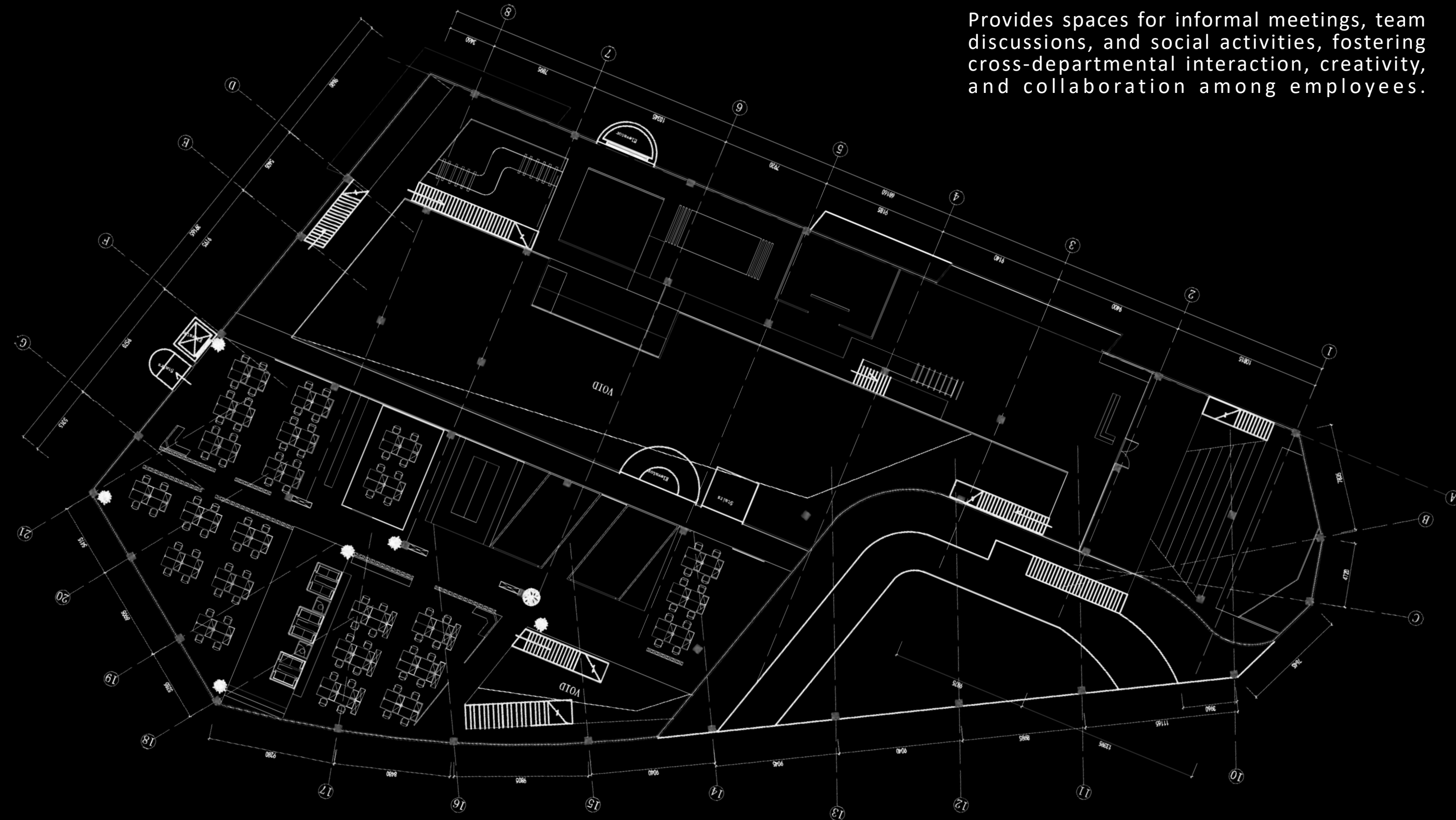
Dedicated to corporate culture displays, art exhibitions, and public events, featuring dynamic installations and interactive zones to enhance the appeal of public areas.



Floor plan 1

Social & Collaborative Zone

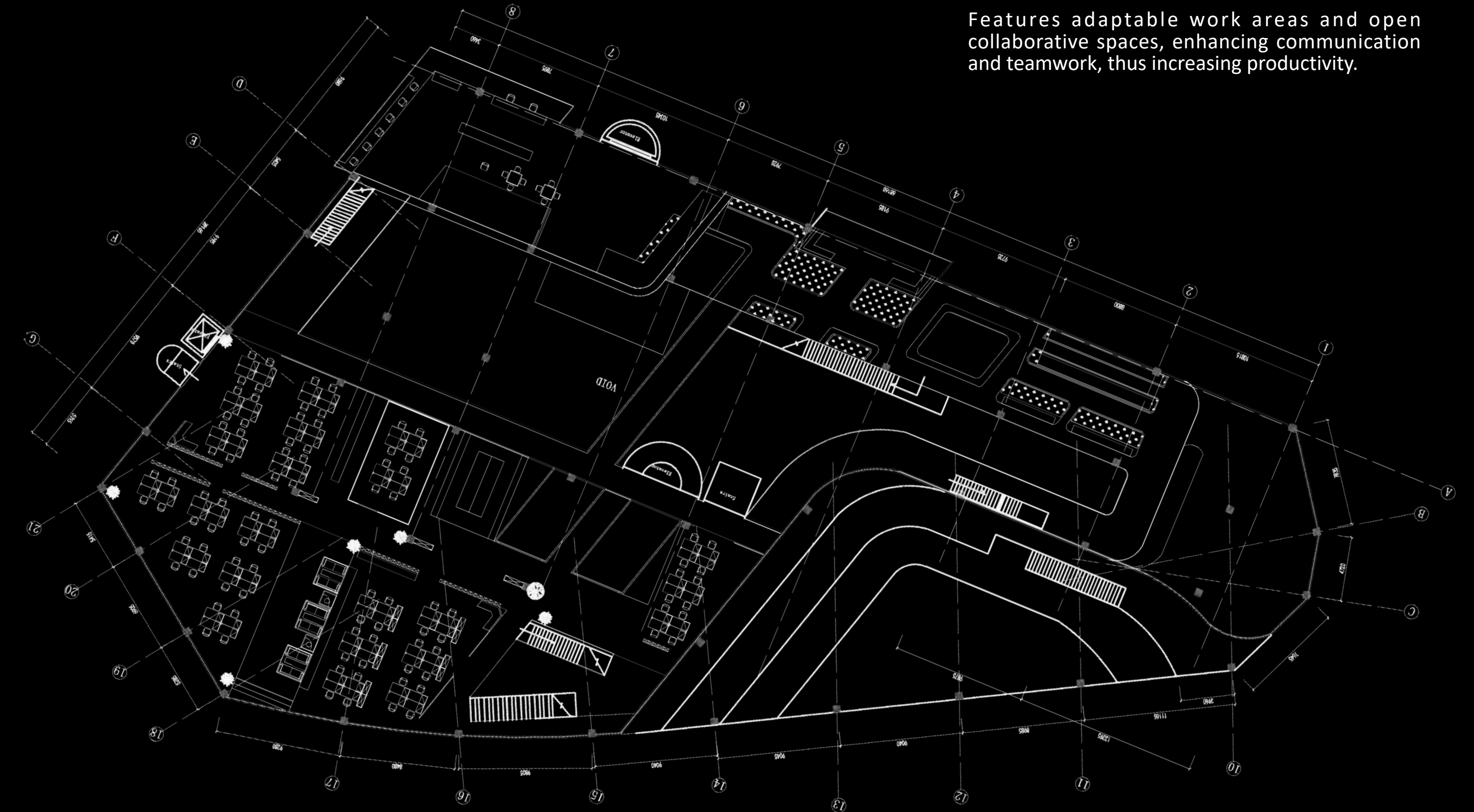
Provides spaces for informal meetings, team discussions, and social activities, fostering cross-departmental interaction, creativity, and collaboration among employees.



Floor plan 2

Flexible Office & Collaboration Zone

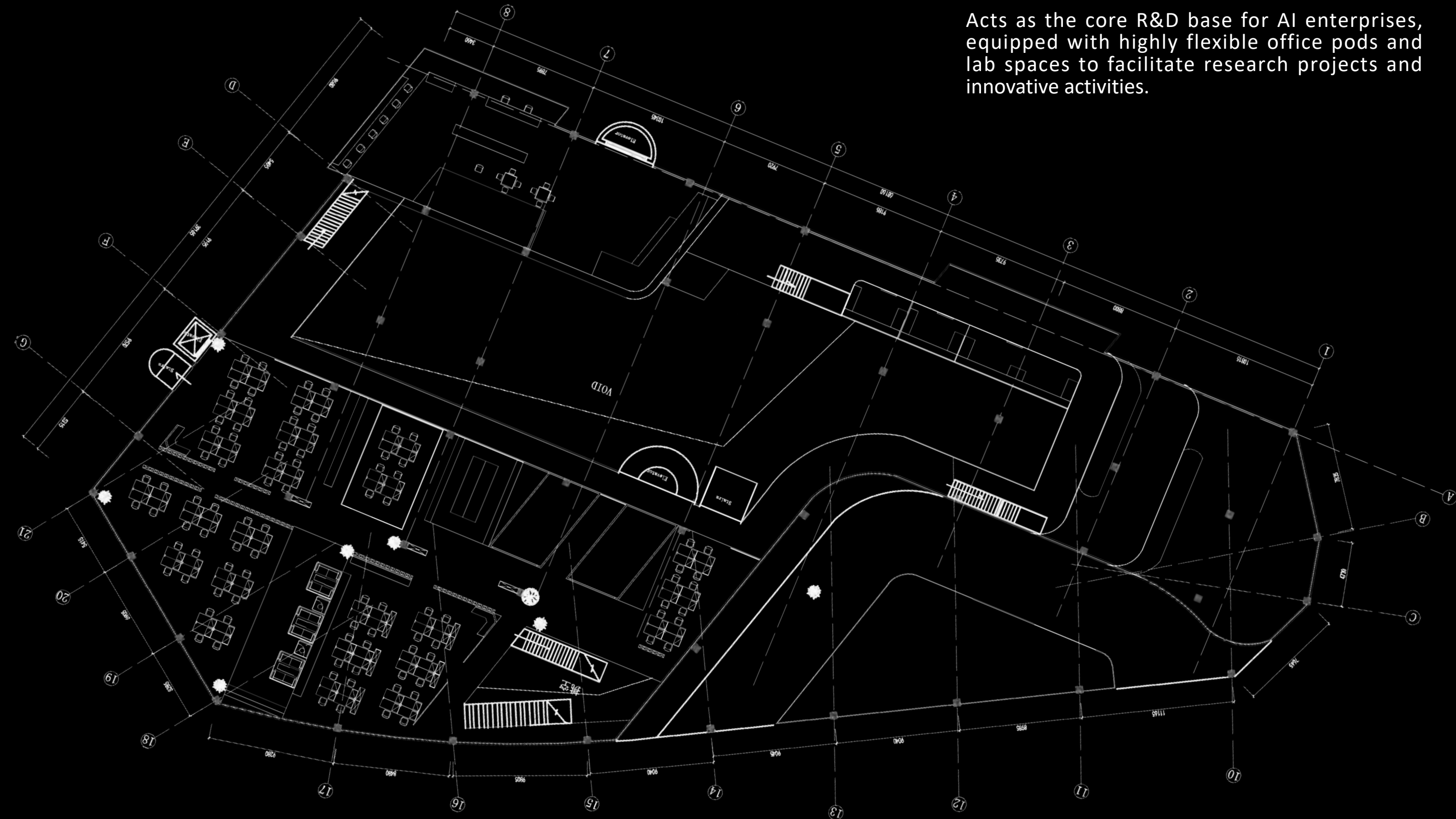
Features adaptable work areas and open collaborative spaces, enhancing communication and teamwork, thus increasing productivity.



Floor plan 3

Core R&D and Innovation Hub

Acts as the core R&D base for AI enterprises, equipped with highly flexible office pods and lab spaces to facilitate research projects and innovative activities.



Floor plan 4

Centralized Meeting & Interaction Platform

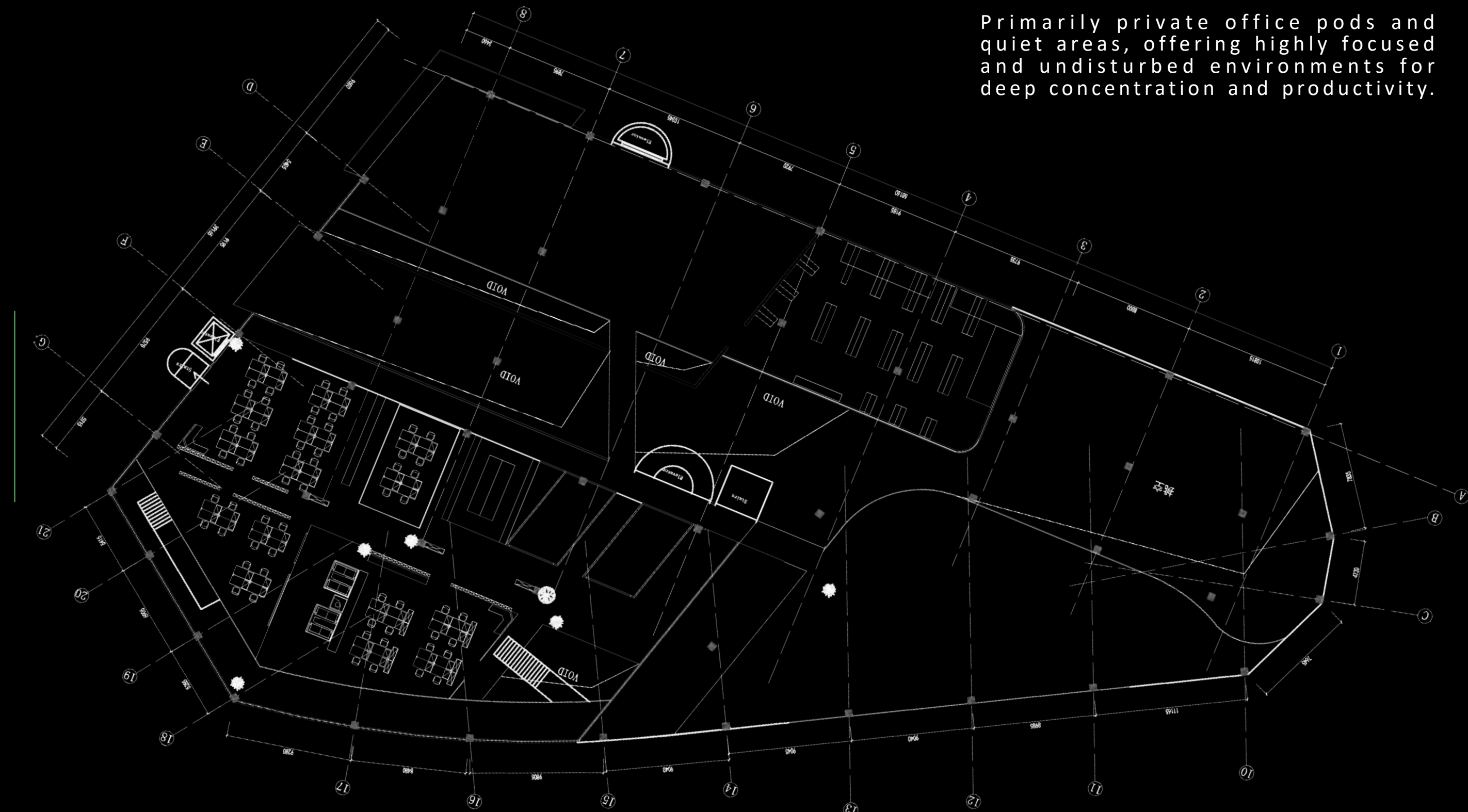
Includes various-sized meeting rooms and informal discussion areas, combined with indoor landscapes and flexible partitions to create comfortable interaction environments.



Floor plan 5

Focused Work & Quiet Zone

Primarily private office pods and quiet areas, offering highly focused and undisturbed environments for deep concentration and productivity.



Floor plan 6

Management & Strategic Decision-Making Floor

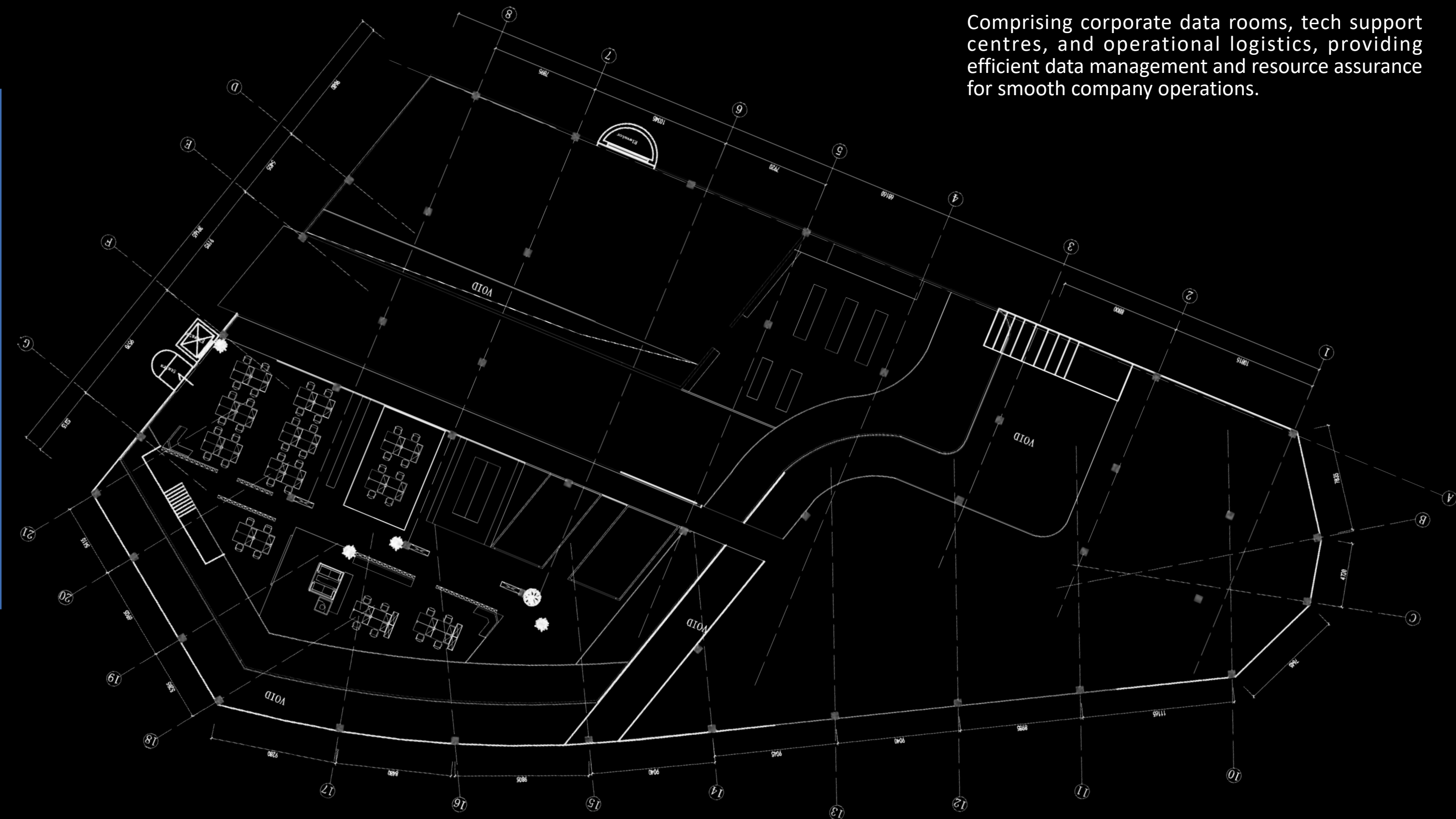
Designed specifically for executives, featuring private offices and high-level meeting rooms, emphasizing privacy and a formal atmosphere for strategic decision-making.



Floor plan 7

Corporate Resources & Data Centre

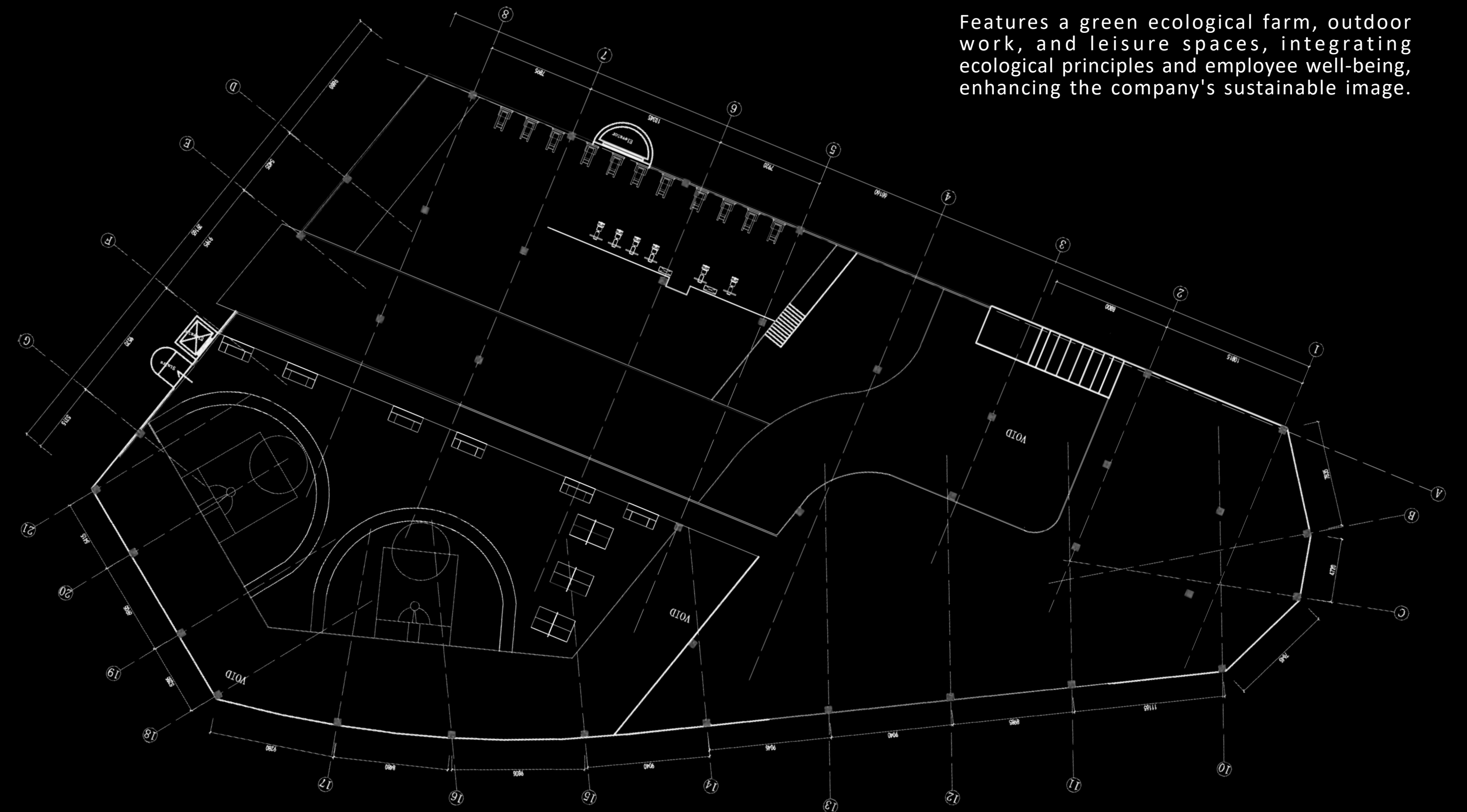
Comprising corporate data rooms, tech support centres, and operational logistics, providing efficient data management and resource assurance for smooth company operations.



Floor plan 8

Ecological & Leisure Platform

Features a green ecological farm, outdoor work, and leisure spaces, integrating ecological principles and employee well-being, enhancing the company's sustainable image.



Floor plan 9

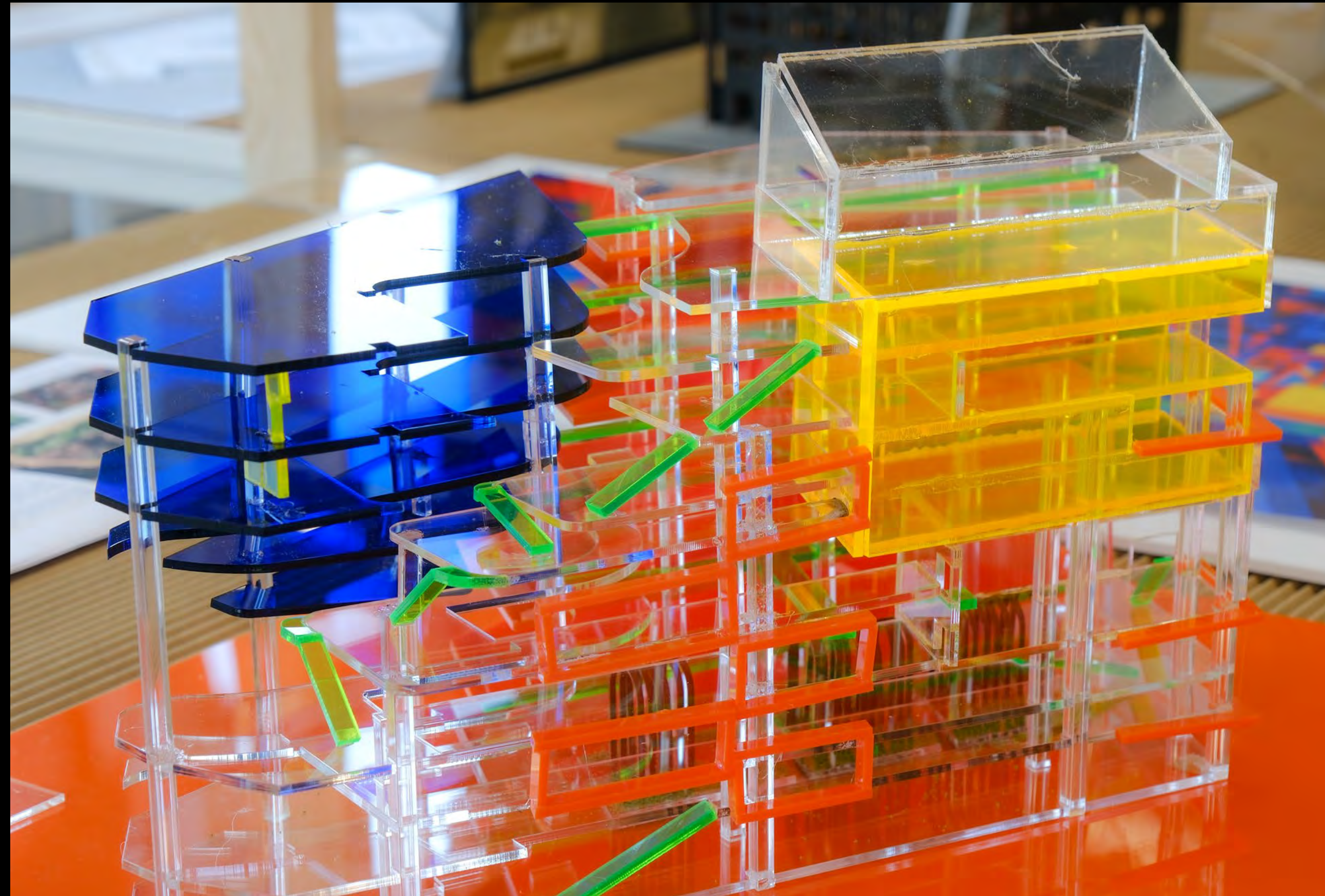
Artificial Concept Model

The work was eventually exhibited at the College

7.6-7.9 2025 RCA Interior Design

Ambispace

Artificial model/Site environment/Portfolio booklet/Poster/Business card



Artificial model side, Road, Partition



Artificial model front



Artificial model facade



Artificial model details



Overview

Acknowledgements

To Graeme and all my tutors —
Thank you for walking alongside me through the most difficult — yet also the most meaningful — period of my learning this year. When I was overwhelmed by illness, your understanding became a quiet shelter. Even a small word or gesture reminded me that I wasn't alone.

There were days when I doubted whether I could finish anything at all — but your patience gave me space to breathe, and your belief gave me the strength to keep going. Because of that, this project is not just a collection of design works, but also a reflection of my struggle with life.

Thank you — this has been an unforgettable journey. It changed me, and I will carry it with me always.

With gratitude,
Tianyi Huang



AmbiSpace

Tianyi Huang