

Fabric of Care



Design thesis submitted by
Senia Gomes

Student ID : 10049315
MA Interior Design 2024-25
School of Architecture
Royal College of Art, London

I am who I am today because of the boundless love and unwavering support that has always surrounded me. The 'Fabric of Care' is my expression, as a designer acknowledging every experience that has shaped me while embracing this vibrant new life I'm building, hundreds of kilometers from home.

My deepest gratitude goes to my principal tutors, Tania and Jim. Thank you for gently, yet firmly, pushing me towards the edges of my comfort zone, into those areas I struggled to grasp. It was in navigating those very challenges that I truly began to discover myself as a designer. I also want to extend my sincere thanks to Ella and Ian for your continuous mentorship and invaluable guidance.

To my wonderful superMATTER cohort, what an incredible year it has been – rich with learning, collaboration, and so much growth!

Zubin, Eloysha, Sham, and Eunice, thank you for your unwavering support through this exhilarating experience. And finally, to my parents and siblings, for believing in me unconditionally and for giving me the precious opportunity to spread my wings and fly.



Royal College of Art
Postgraduate Art & Design



Introduction



We are all capable of feeling things, which we understand.

We often **feel emotions** when interacting with people, or in relation to a situation.

This got me thinking, as human beings, we

experience space all the time. for different purposes, through different mindsets, as people from different age groups.

Do you feel anything when experiencing space?

Can we design spaces to convey emotions??

'The Fabric of Care' dives into this fascinating question and puts this inquiry to the test by creating a unique 'home' for two often-ignored, yet intrinsically similar, user groups: retired elders and children. By focusing on feelings of care and comfort through the lens of a community kitchen and a daycare, this work seeks to reveal the intimate connection between human experience and the powerful role of materials and conscious design in crafting spaces that are not just functional, but truly personal and resonant for those who inhabit them.

To further understand what care and comfort means, I delved deep into looking at what it could mean for different people. Looking back at the projects I worked on through the course, it revealed a common theme of care and comfort in various expressions



The comfort of working with a material that comes from a place I call 'Home'

Comfort in known





*The care that went into
crafting the J+Js // technique//
making*

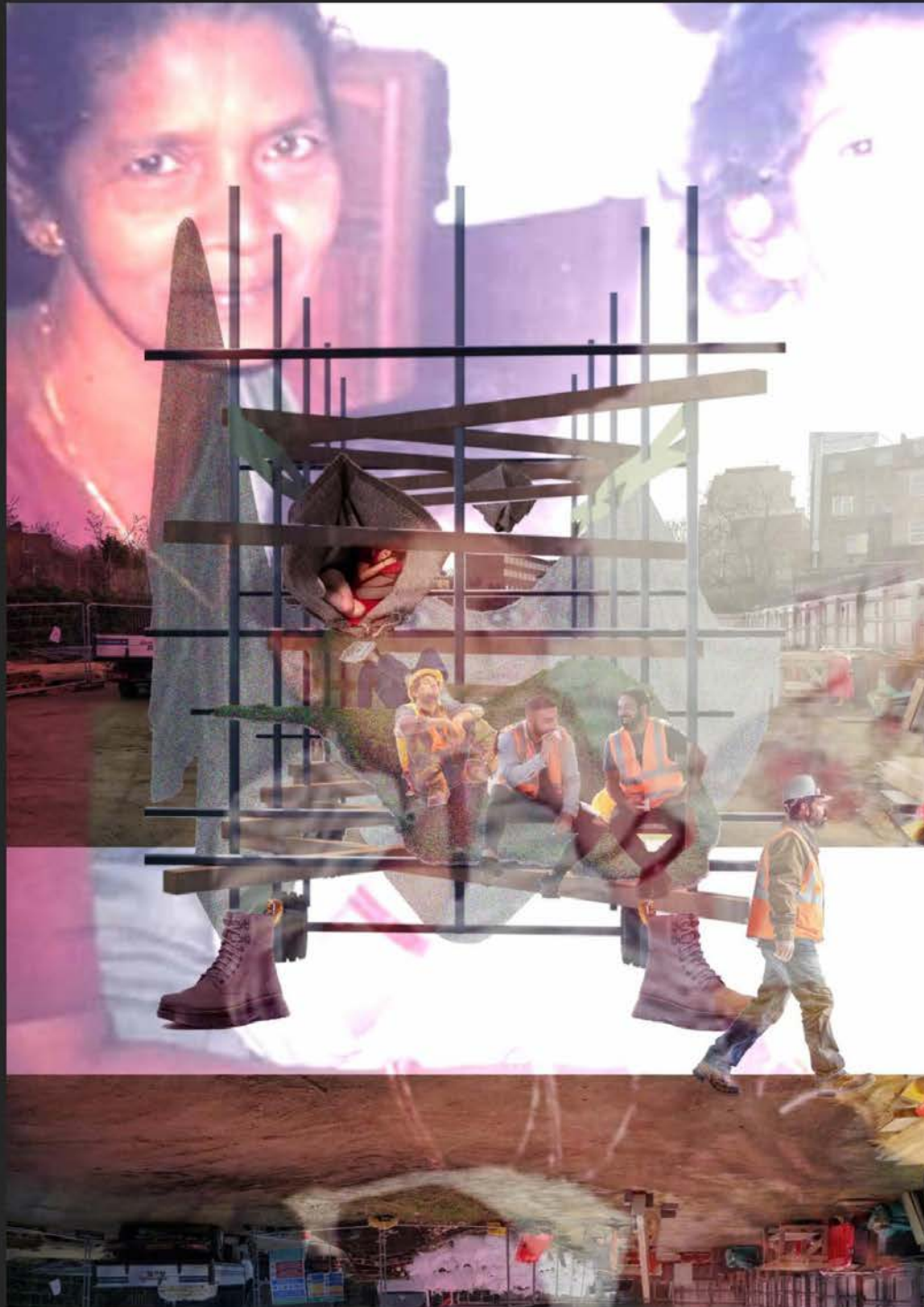
Care in the detail



*The physical act of caring for
the pedestrians and
designing a response*

Care as an action



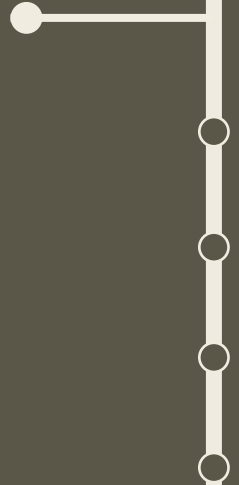


*The physical act of
caring for the
Construction
workers and a
response for that*

**Comfort in the
physical sense**

[Lillie + Nanny]

Elements of Care



The 'Fabric of Care' puts this inquiry to the test by creating a home for two very diverse yet similar user groups often ignored but who both require care and comfort the most

1. Older retired elders
2. Children



In order to understand how to speak to the user groups we need to identify the right response to the idea of care and comfort for each group

1 Understand the idea of care and comfort for each user groups

2 Identify elements that represent the idea of care and comfort

3 Extract the material palette associated with care and comfort

Community kitchen

familiar nostalgia, sense of
home, collective

It would be a space where people feel comfortable, supported, and empowered to connect with each other through the shared experience of food.





The material palette consists of material that show signs of being lived in, and age to provide a sense of feeling lived in.

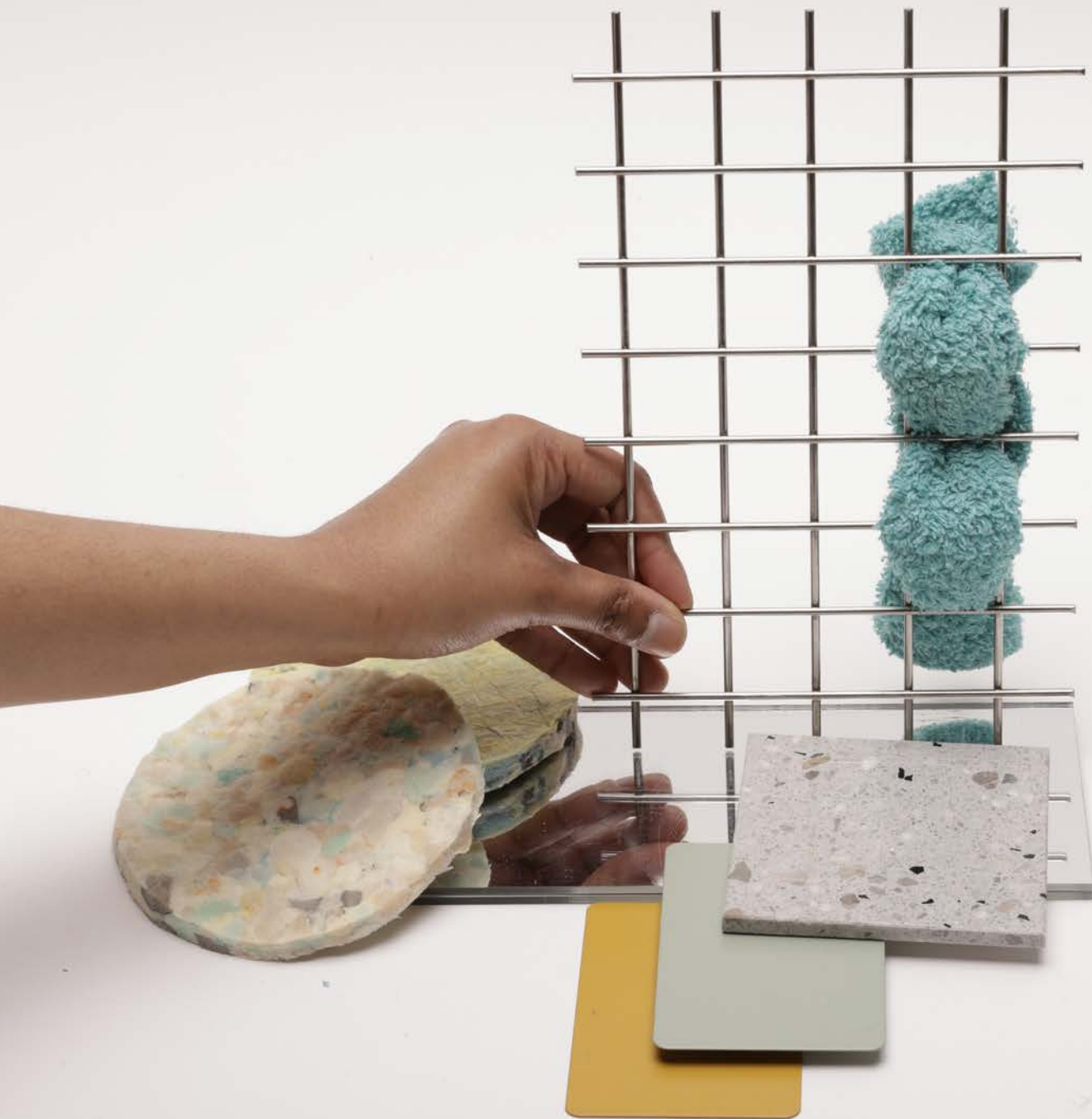
Elements extracted from the familiarity of the kitchen in a home, extending from the draping of curtains, to the ceramic surfaces onto which food was consumed to the dainty table cloth that donned the tables and the tiles that sat on the floor.



Daycare

Visual connection. nature of surfaces. exploration. play. curiosity

The main element of comfort lies from the ability to have a visual connection with the carer, a reminder that they has being looked after.



The material palette reflects elements that provide a sense of comfort for the children, particularly focussing on the aspect of feeling looked after.

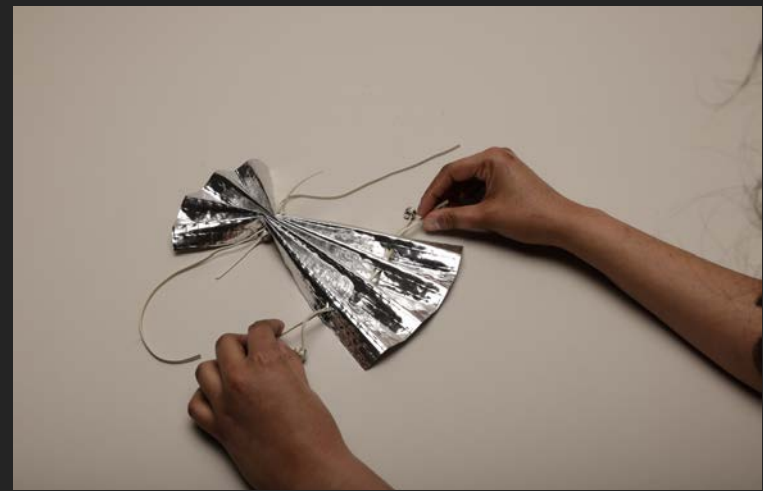
Materials that allow for reflection and visibility through transparent or translucent materials or even materials that reflect.

Children are curious and materials of tactile nature intrigue their curiosity. The palette also includes soft finishes to allow for easy fall so the children feel a sense of security.

material experiment 1:

Exploring the idea extracted from the idea of the curtain being draped and collected to all for the visual or to block it.

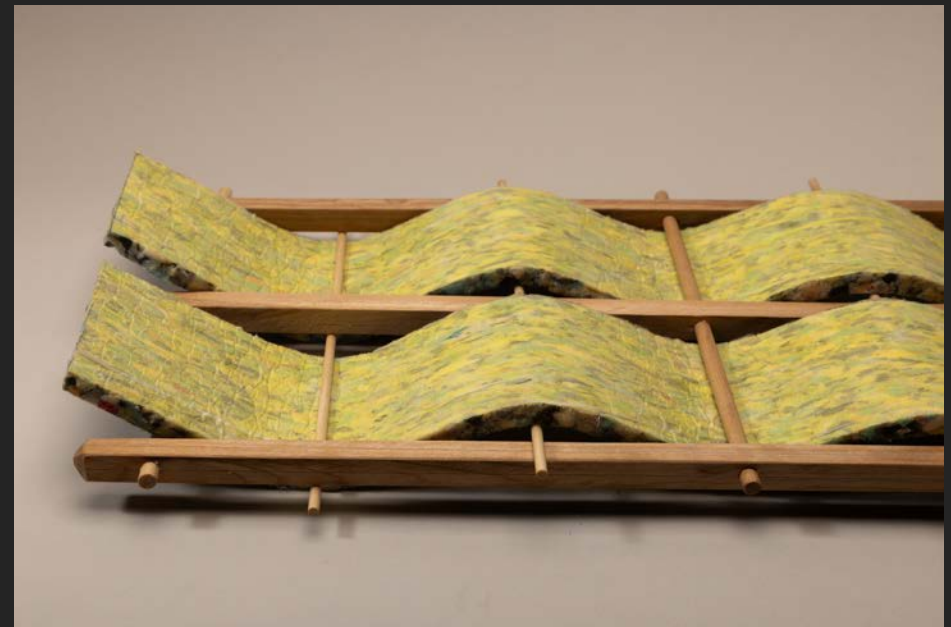
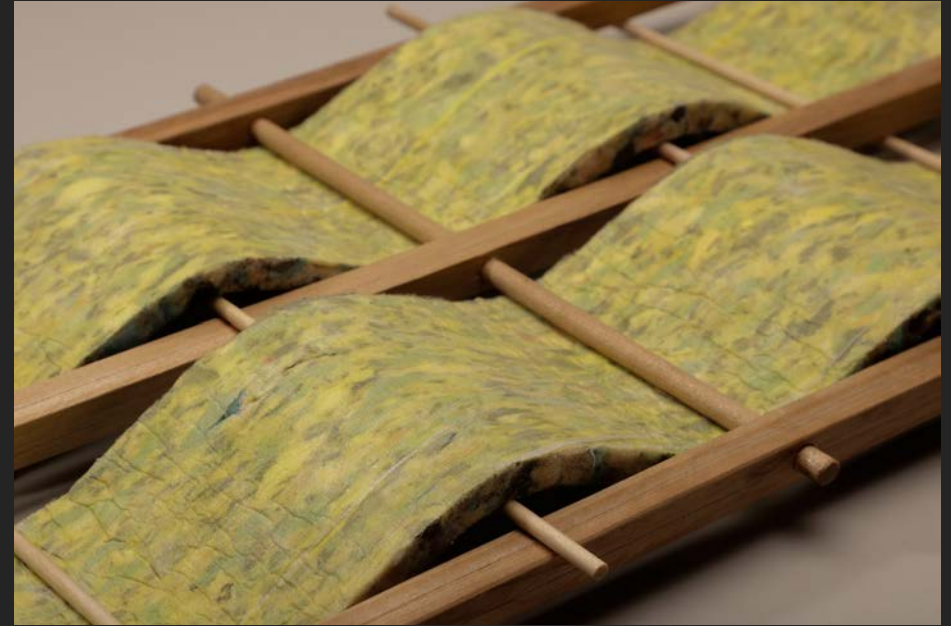
- Construction cloth
- Foam



material experiment 2:

Exploring the idea of temporary flexible surfaces

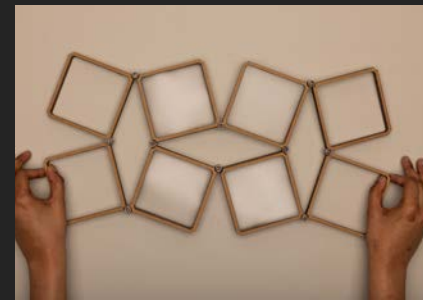
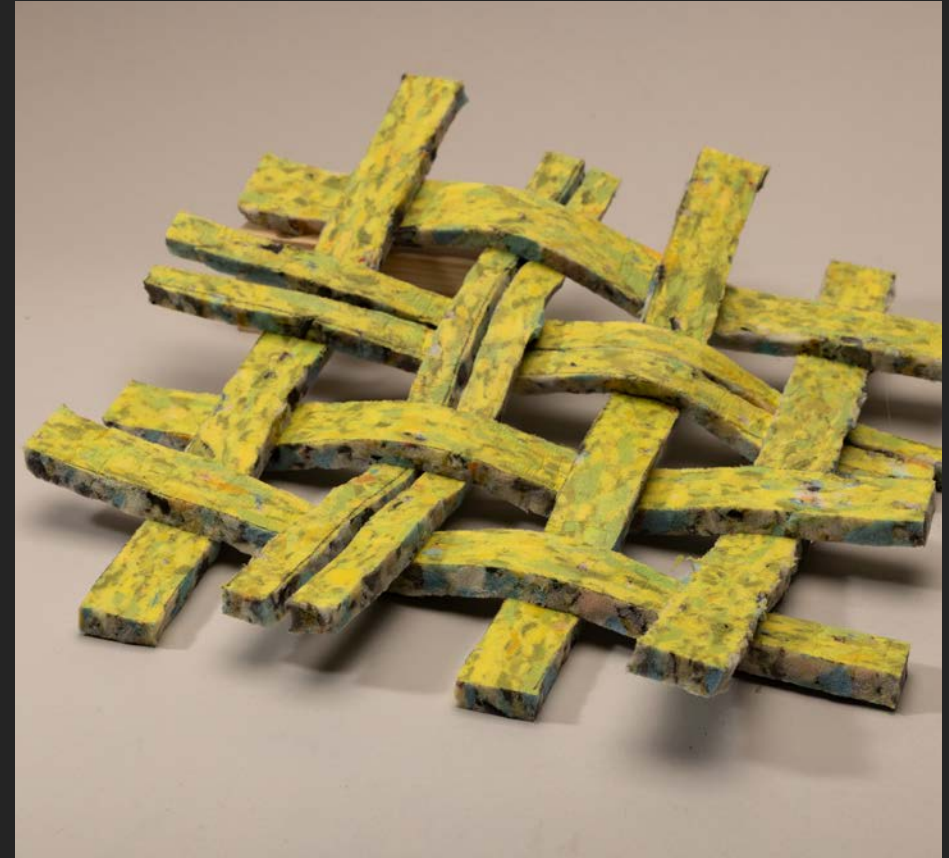
- Construction cloth
- Foam



material experiment 3:

Exploring the idea of play and exploration while maintaining the visual connection

- Construction cloth
- Foam



Urban invitation

Rest. care. space to express.
curiosity

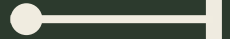
It would be a space where people can rest,
take a break , gather, and be inquisitive
about more than just oneself



The one common theme that came up while
ties the community kitchens and daycare is how
these spaces often act as

**“homes away from
home”**

Context



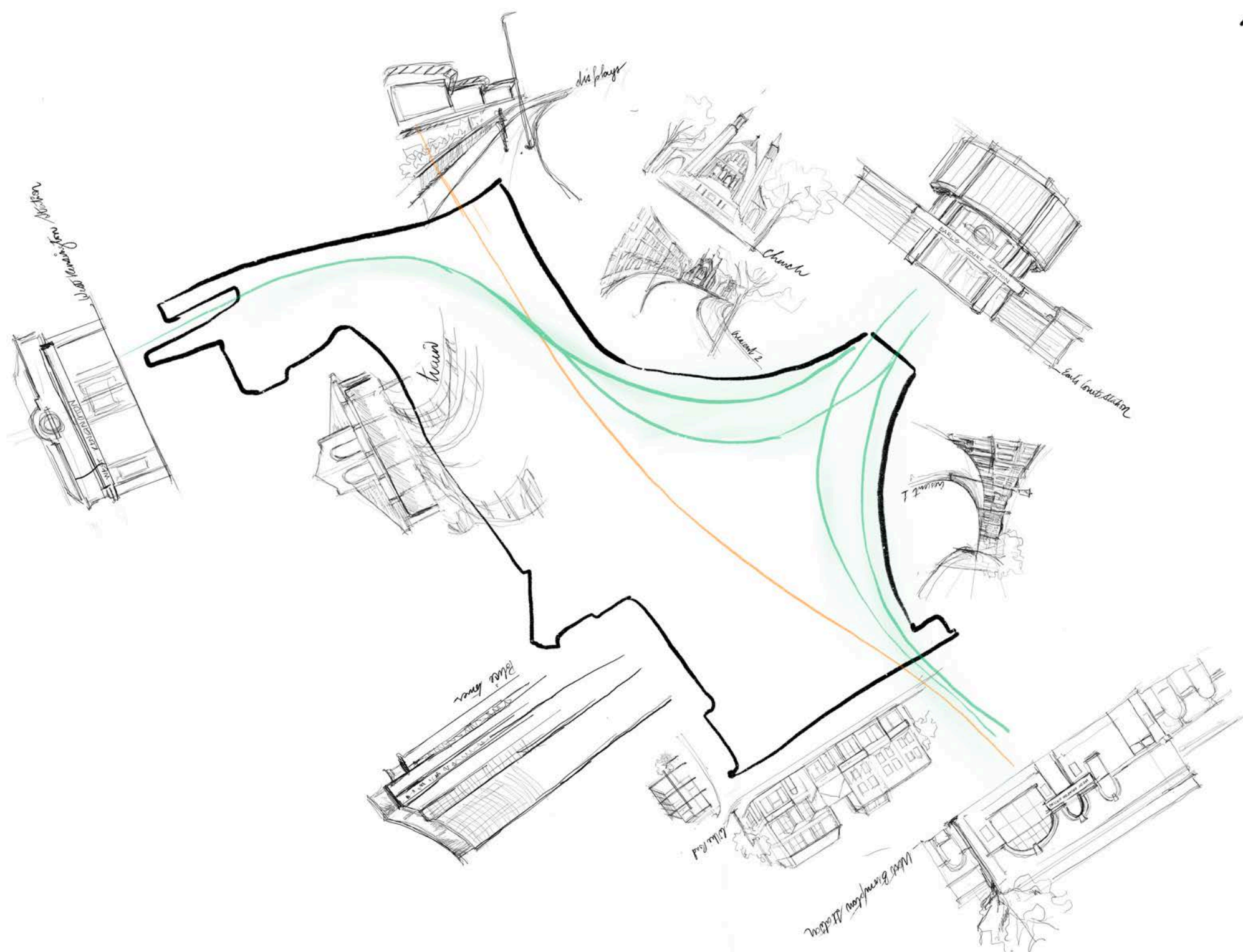


Earl's Court stands to be one of the most iconic location in the long standing history of London city. Built in 1937, it was an exhibition, conference and events

The venue straddles the boundary between the Royal Borough of Kensington and Chelsea and the Borough of Hammersmith and Fulham.

Earls Court was widely known for serving as London's and the country's premier exhibition venue for many decades, hosting events such as large scale opera productions and pop concerts in addition to hundreds of trade shows.

It was a place revered by all, and remained cherished memory for several people, local and from away. A cultural hotpot, it was a place that many people new to the city flocked towards to find a place they belonged in this vast city.



Following a decline in the popularity of the venue, the entire site was redesigned to create a new urban hub to give way to a large mixed use mega project.

It is astonishing to see a blank flattened site currently prepared to make way for the new history to be written, almost making it hard to imagine what did exist not too long ago.

The site assigned for this project was along the south border of this vast site along a stretch called 'Lillie Road'. A row of old Victorian houses which stand proudly at the border of the urban and architectural fabric of the past and the vast canvas of what is to come.





The first exploration of the site began with the 1:20 scale slice model.

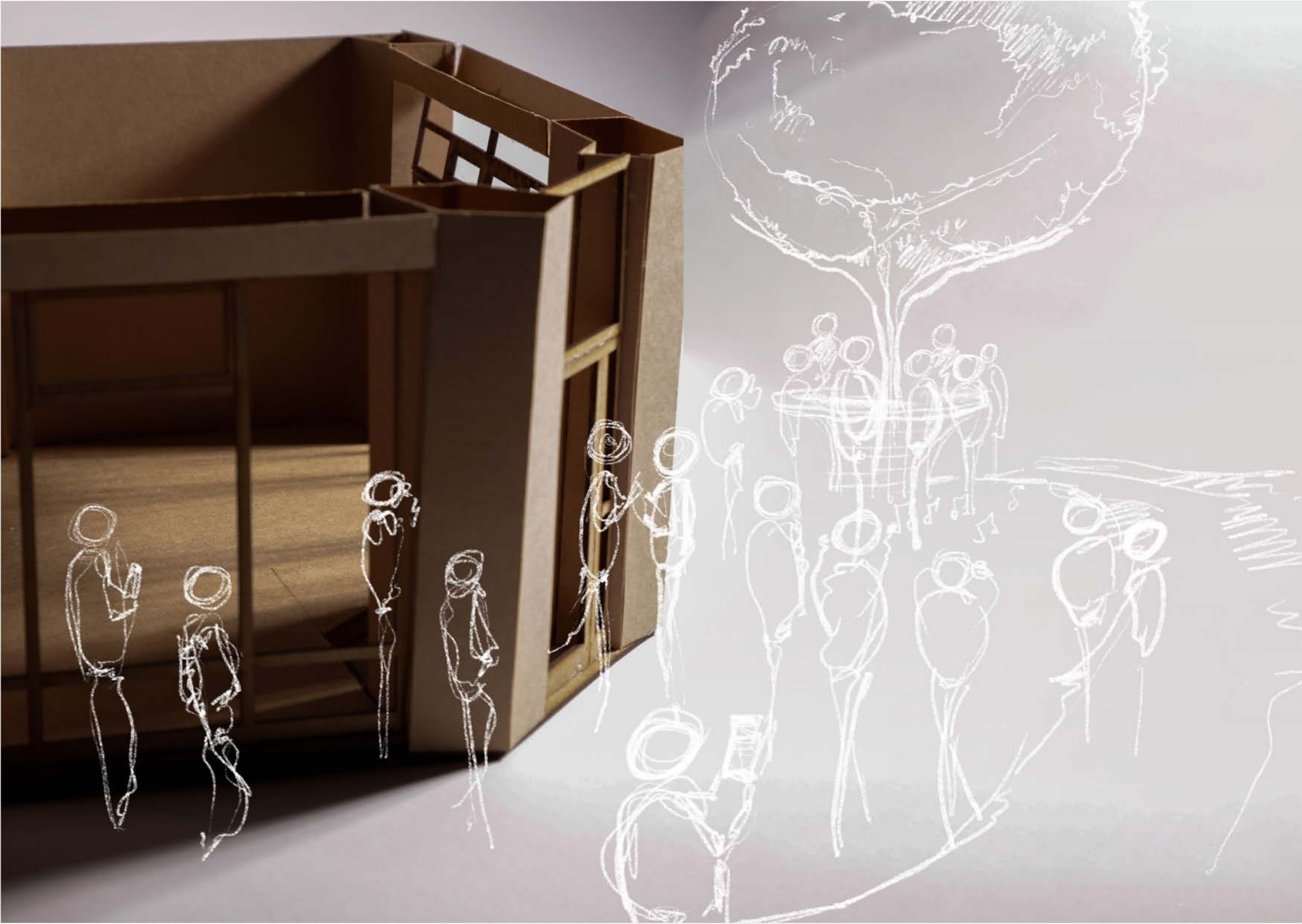
We were assigned the corner slice that exhibited the majesty of the old architecture while displaying elements that have come over the years to accommodate more modern expansions

The one distinct observation we made was regarding the circulation patterns exhibited by the people frequenting the corner coffee shop.

Owing to the fact that the space was opened up this allowed for the movement between the interior and exterior.

The presence of outdoor seating also lead to the creation of conversation pockets breaking the usual fast paced stream of pedestrian movement along the boundaries of the site on Lillie road





Taking this observation to the larger site I observed that all the building slices were boxed in, layered and DISCONNECTED from each other and even within the building.

On hovering a little bit through Google Earth, I also stumbled upon a huge expanse of untouched green space, completely kept away from the eyes and use of the public, as well as the tenants of the shops



'This year, in collaboration with The Earls Court Development Company, as a platform superMATTER looked at we explored Mary Douglas's 'Matter Out of Place'

We consider the temporary use by construction workers during the 20 years it will take to complete The Earls Court Development. The project foreground the often-invisible presence of construction workers—a demographic integral to spatial production yet frequently overlooked.

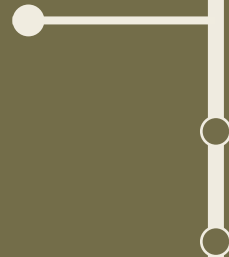
Materials serve as conduits for place making, through which we unveil the hidden narratives embedded in spatial production.'

(Ella Doran, superMATTER show reel 2025)

The materials we use, the building techniques we observe and the functions of the buildings itself all approach the dual function of serving a space for the future of the community, but for the duration of the construction, serves as a place where construction workers and their families become the primary stakeholders in the operation. In the process acknowledging their presence as human beings outside of the invisible workforce whose stories often get erased as soon as the construction scrim comes down and shiny new windows are up.



Spatial response



Basement level plan

illustrating the community kitchen and the connection with revived green space highlighting the idea of the collective





View of the community kitchen



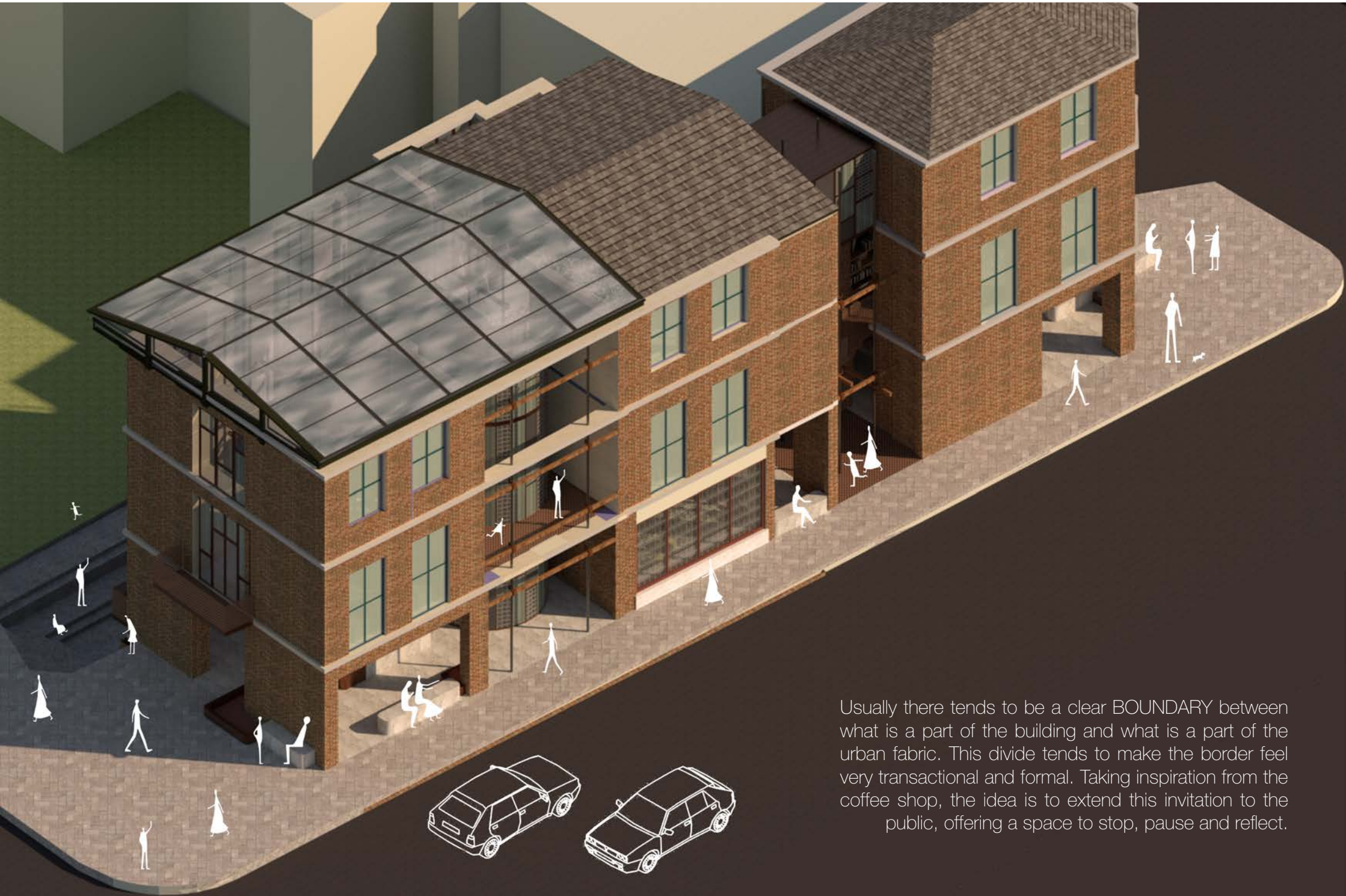
Road level plan

illustrating the segregation of space between the daycare and the urban invitation



View of the daycare drop off





Usually there tends to be a clear BOUNDARY between what is a part of the building and what is a part of the urban fabric. This divide tends to make the border feel very transactional and formal. Taking inspiration from the coffee shop, the idea is to extend this invitation to the public, offering a space to stop, pause and reflect.



View of the urban invitation

Level I plan

illustrating the daycare, highlighting the idea of play





View of the play area in the daycare

Level II plan

*illustrating the segregation of space within the daycare
to tend to children of various age groups*





View of the quiet zone in the daycare



View of the quiet zone in the daycare

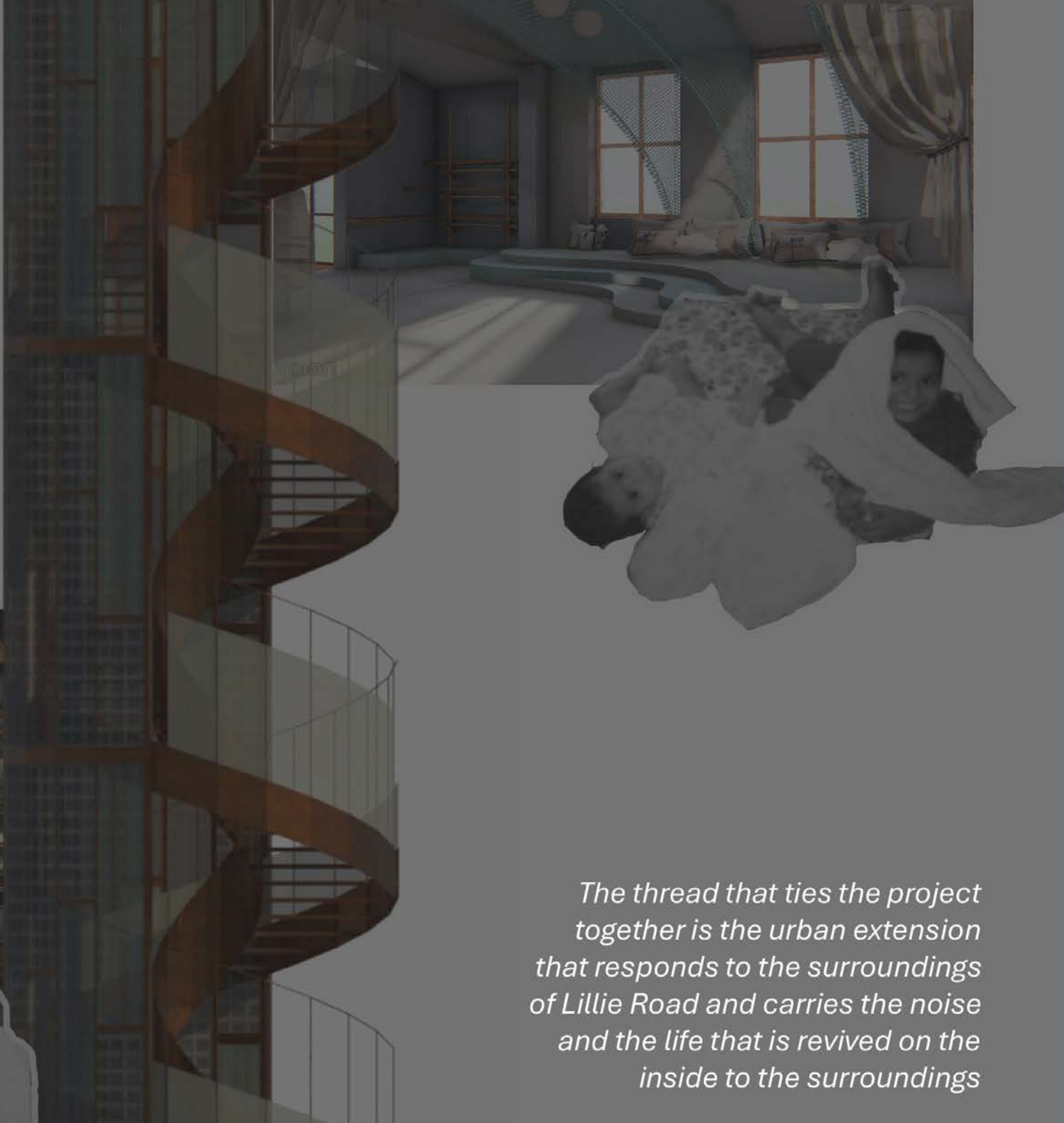
**Design strategy:
connections**



‘The Fabric of Care’

Set out to do just that: provide a comfortable setting to those in search of care and comfort

And one function cannot exist without having this close intimate relation with the other



The thread that ties the project together is the urban extension that responds to the surroundings of Lillie Road and carries the noise and the life that is revived on the inside to the surroundings

The strategy to approach the design was to

**create moments of interaction
and connections:**

1. Circulation
2. Visual connections
3. Blurring the boundaries between spaces
4. Material interactions

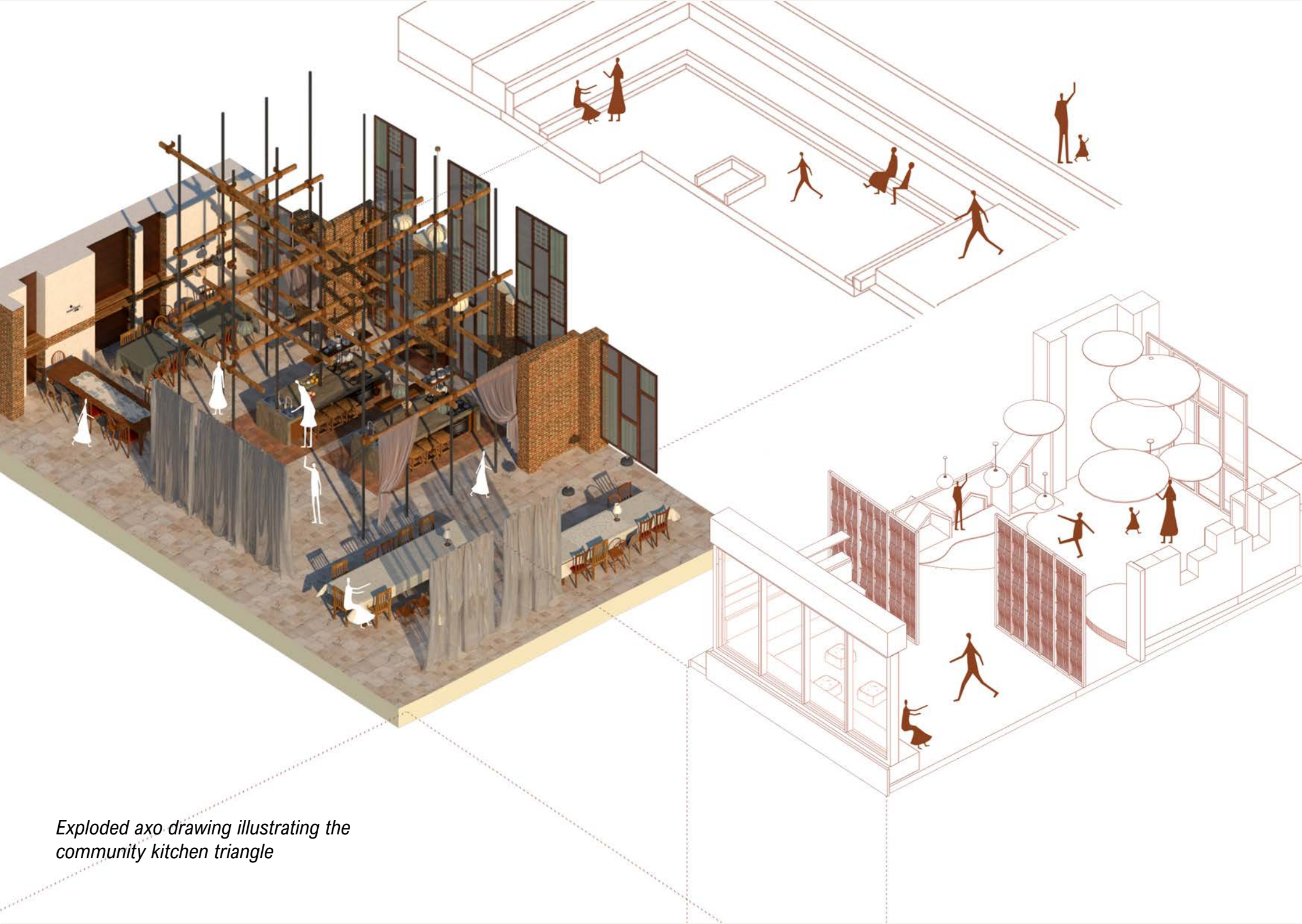




Section drawing illustrating the community kitchen triangle

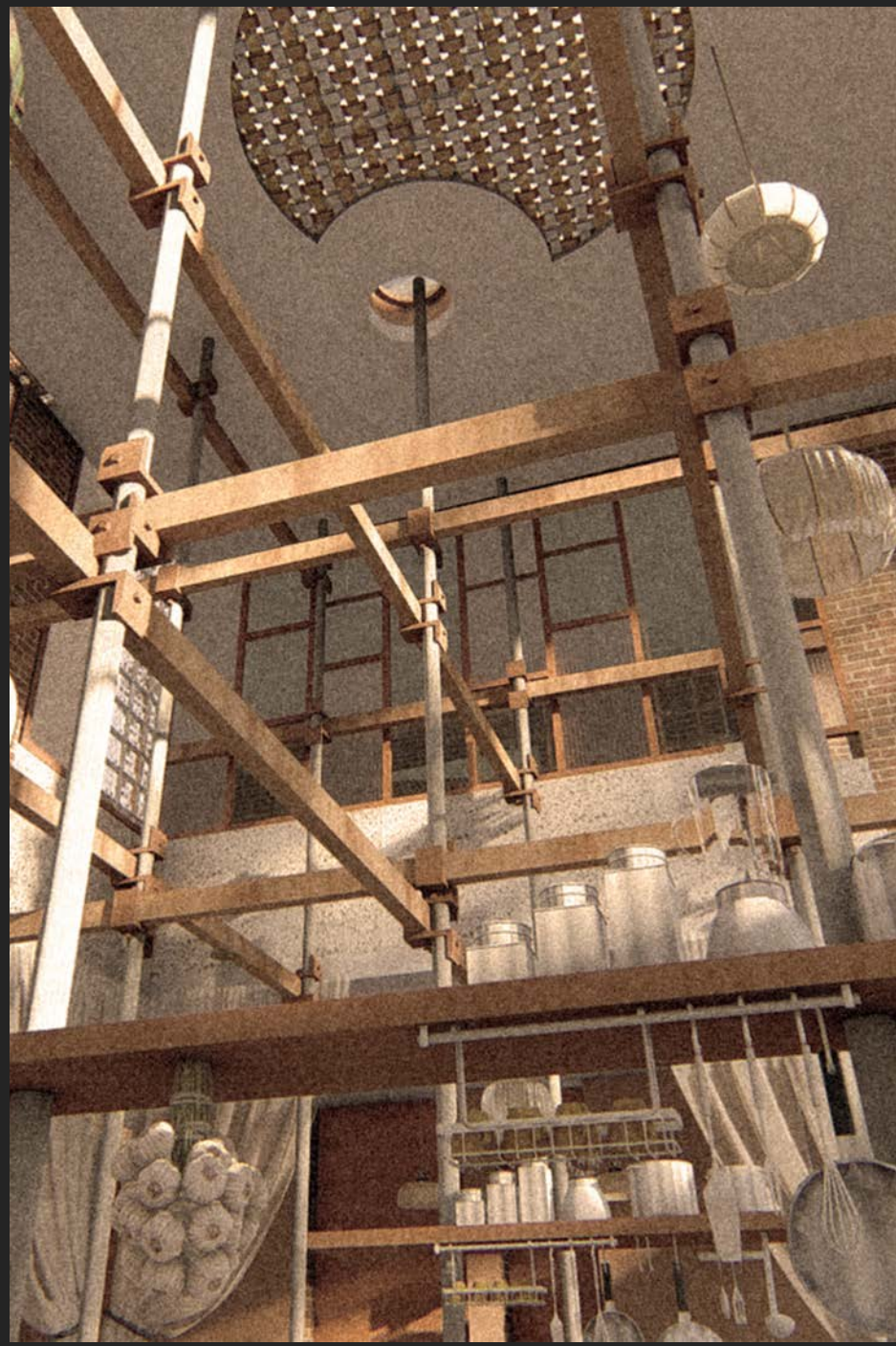
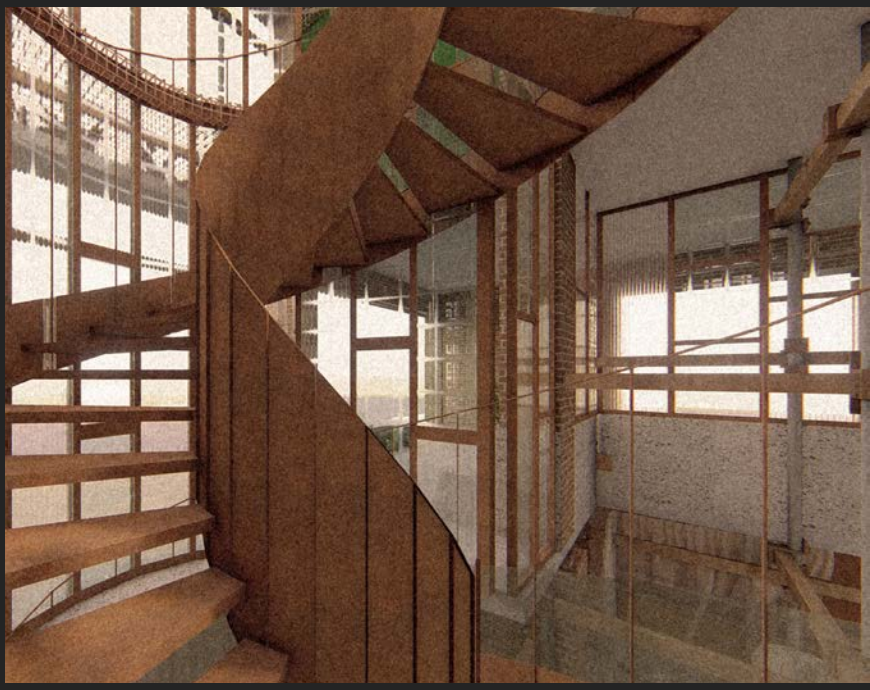
The community kitchen triangle

With the community kitchen at the heart of the space, it acts like the dining room that you remember at your grandparents home. This double height space acts as a funnel for interactions and conversations making it a multi sensory experience with sounds and smells completing the experience



Exploded axo drawing illustrating the community kitchen triangle

Views of the connection in the kitchen triangle



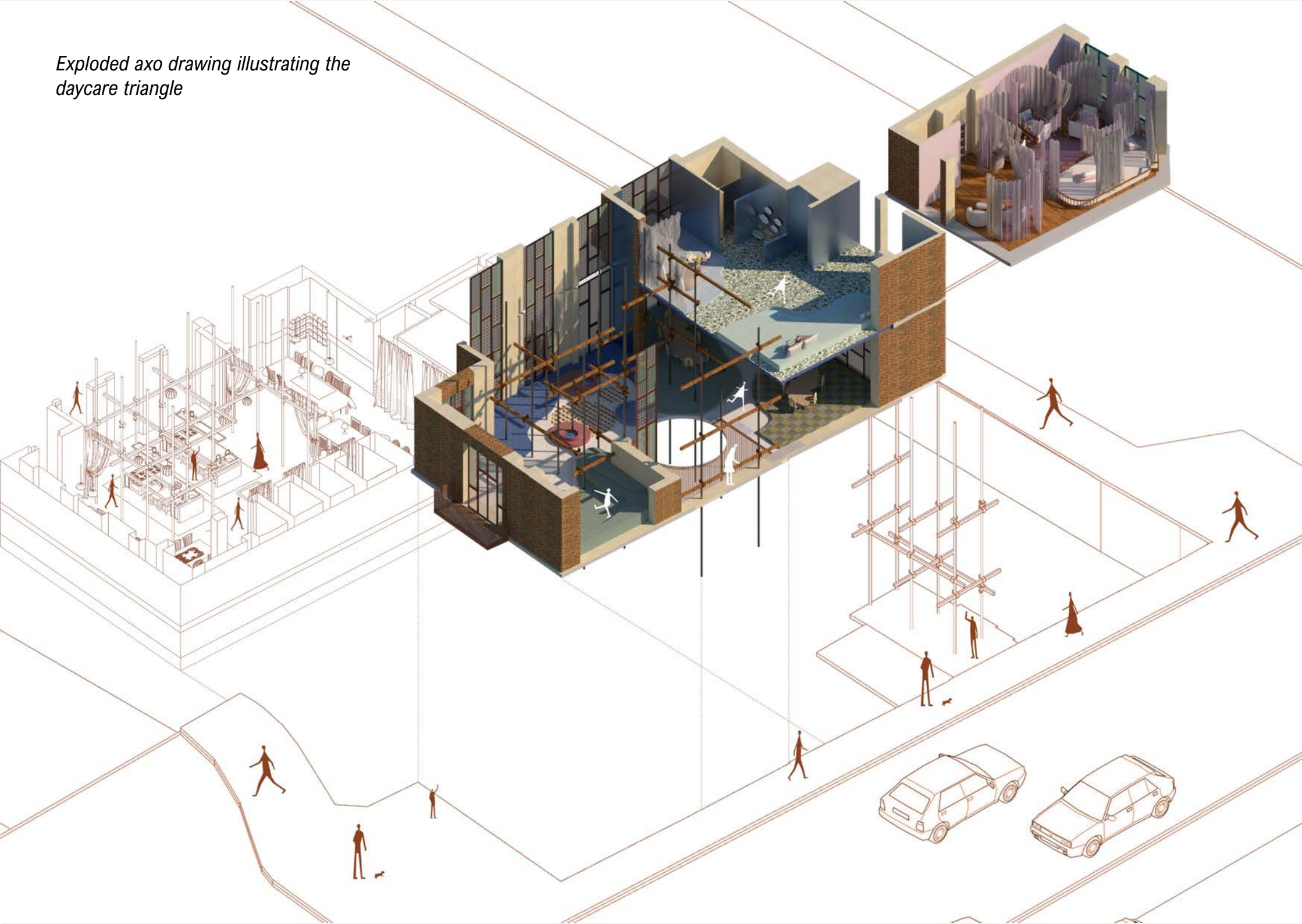


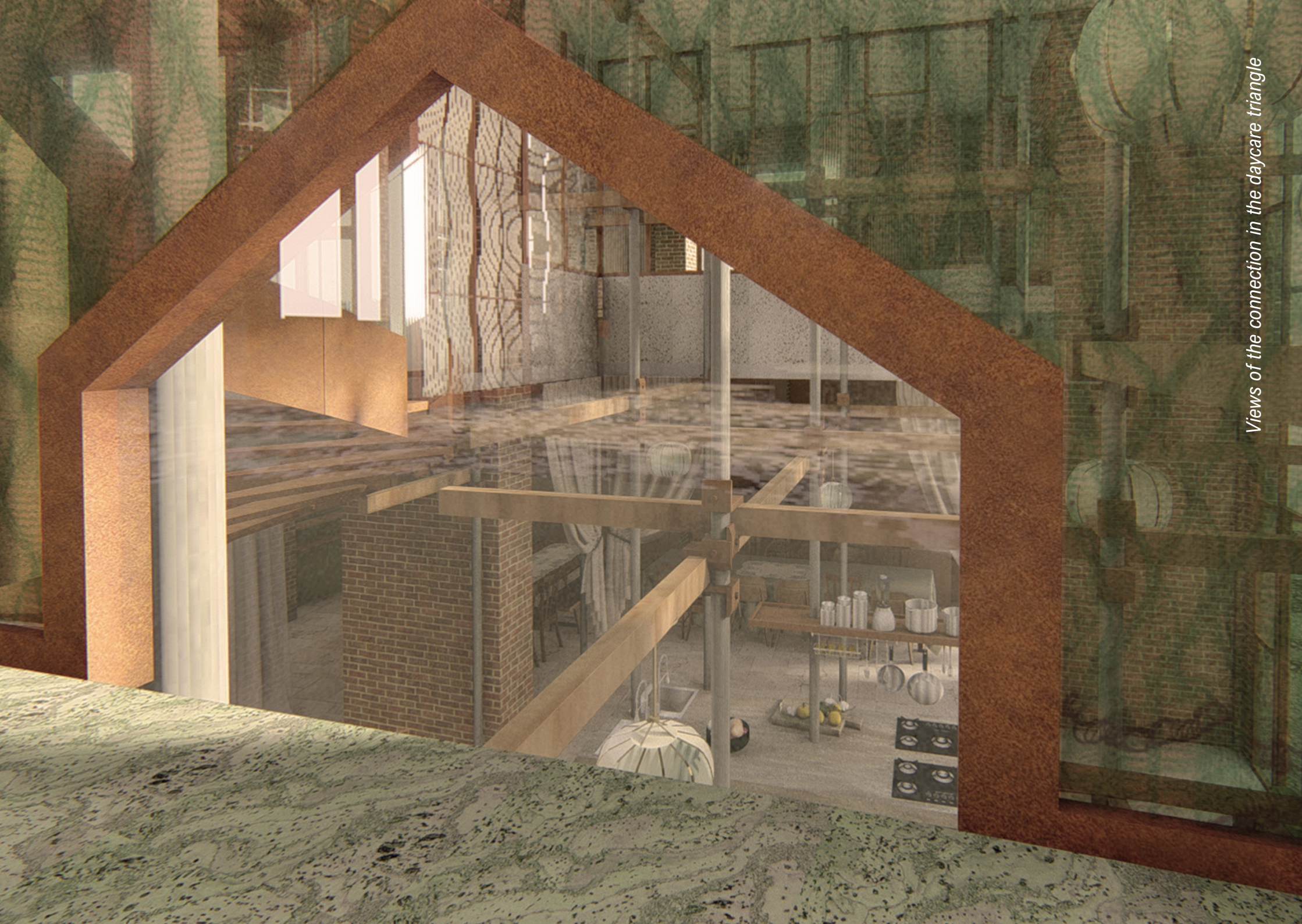
Section drawing illustrating the daycare triangle

The daycare triangle

The daycare holds the most sensitive user group of the space. Comfort and care is at the very heart of the operation. The position of the daycare on a higher floor in addition to the several moments of connections planned within the design, help the children be in charge of the communications they choose to have with the elders in the kitchen or passer-by on the road.

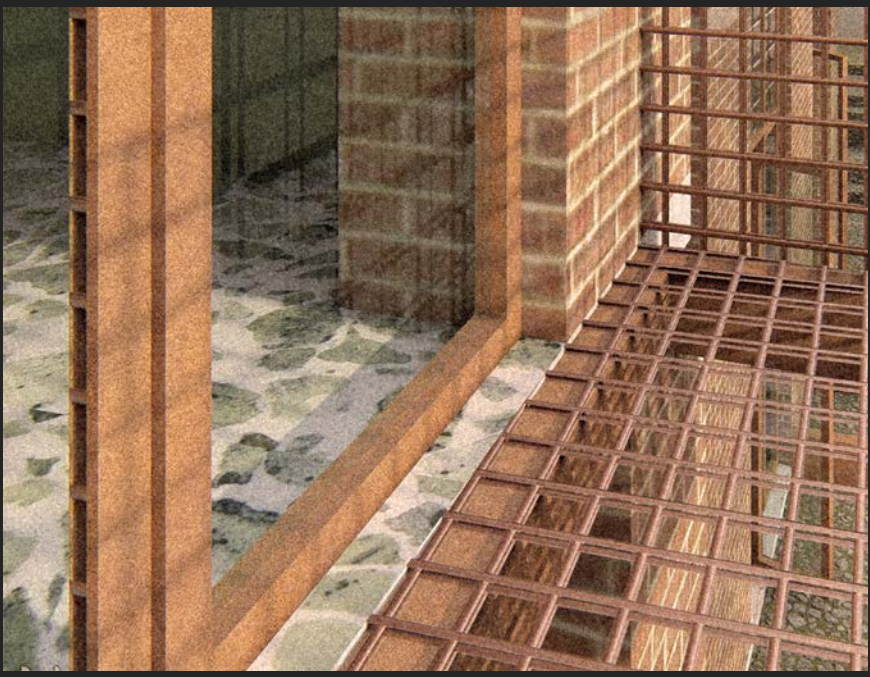
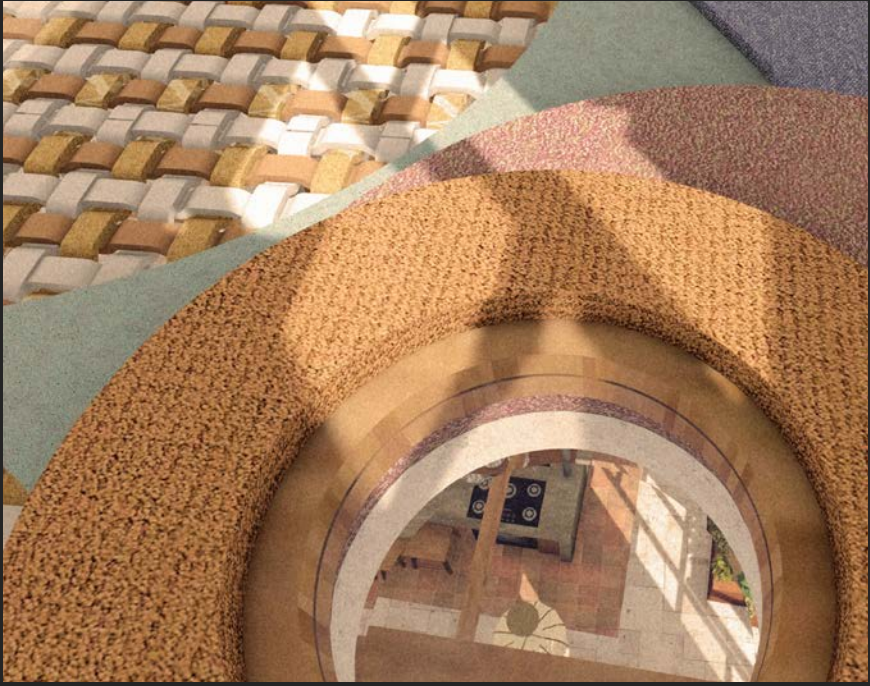
Exploded axo drawing illustrating the daycare triangle





Views of the connection in the daycare triangle

Views of the connection in the daycare triangle

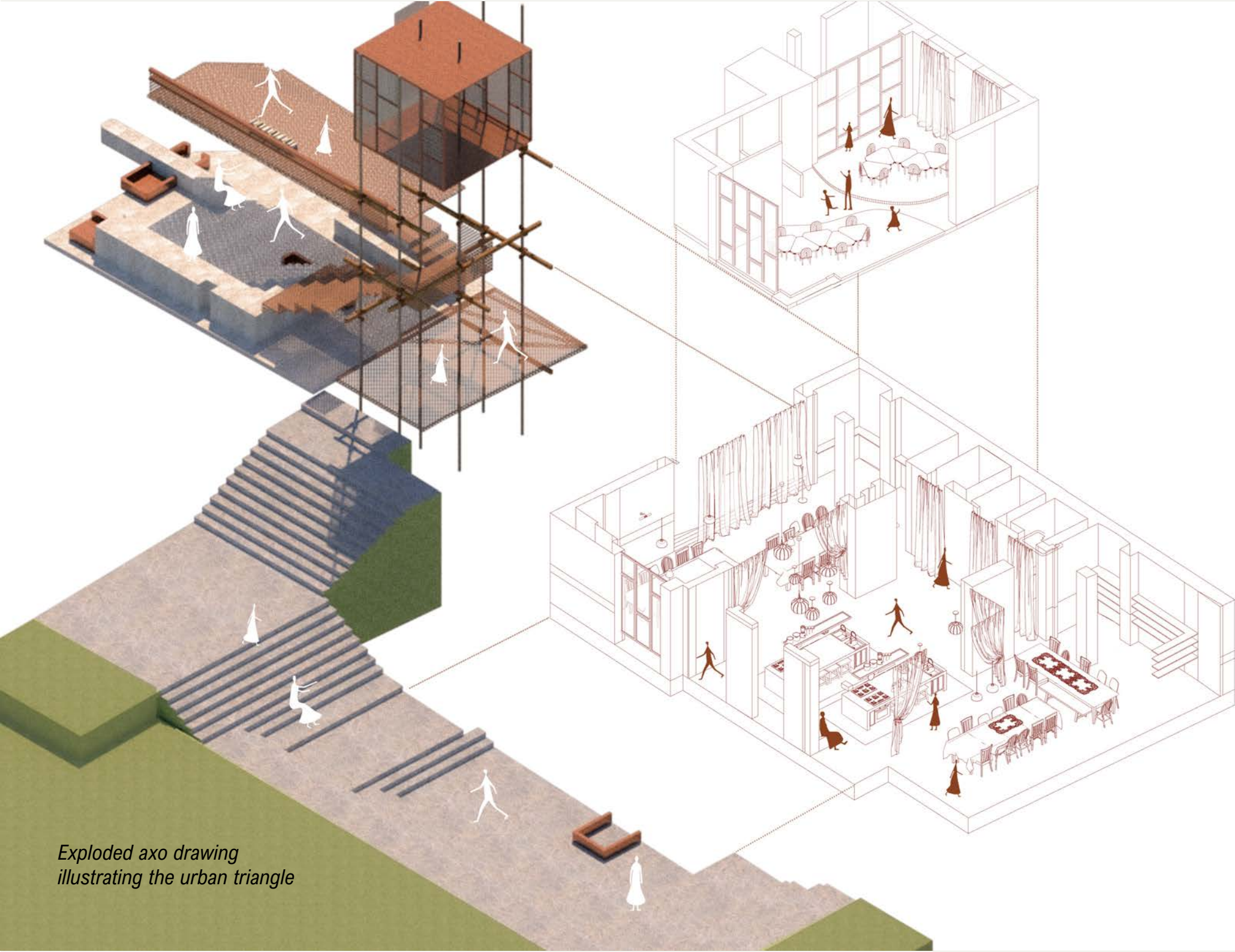




Section drawing illustrating the urban triangle

The urban triangle

The urban spaces have been carefully weaved through the building to allow the general public to have a n opportunity to experience the live inside the building without having to actually be a part of it. It almost acts as an invitation for them to feel comfortable with the space and function and in the process take responsibility for the building.



*Exploded axo drawing
illustrating the urban triangle*

Views of the connection in the urban triangle

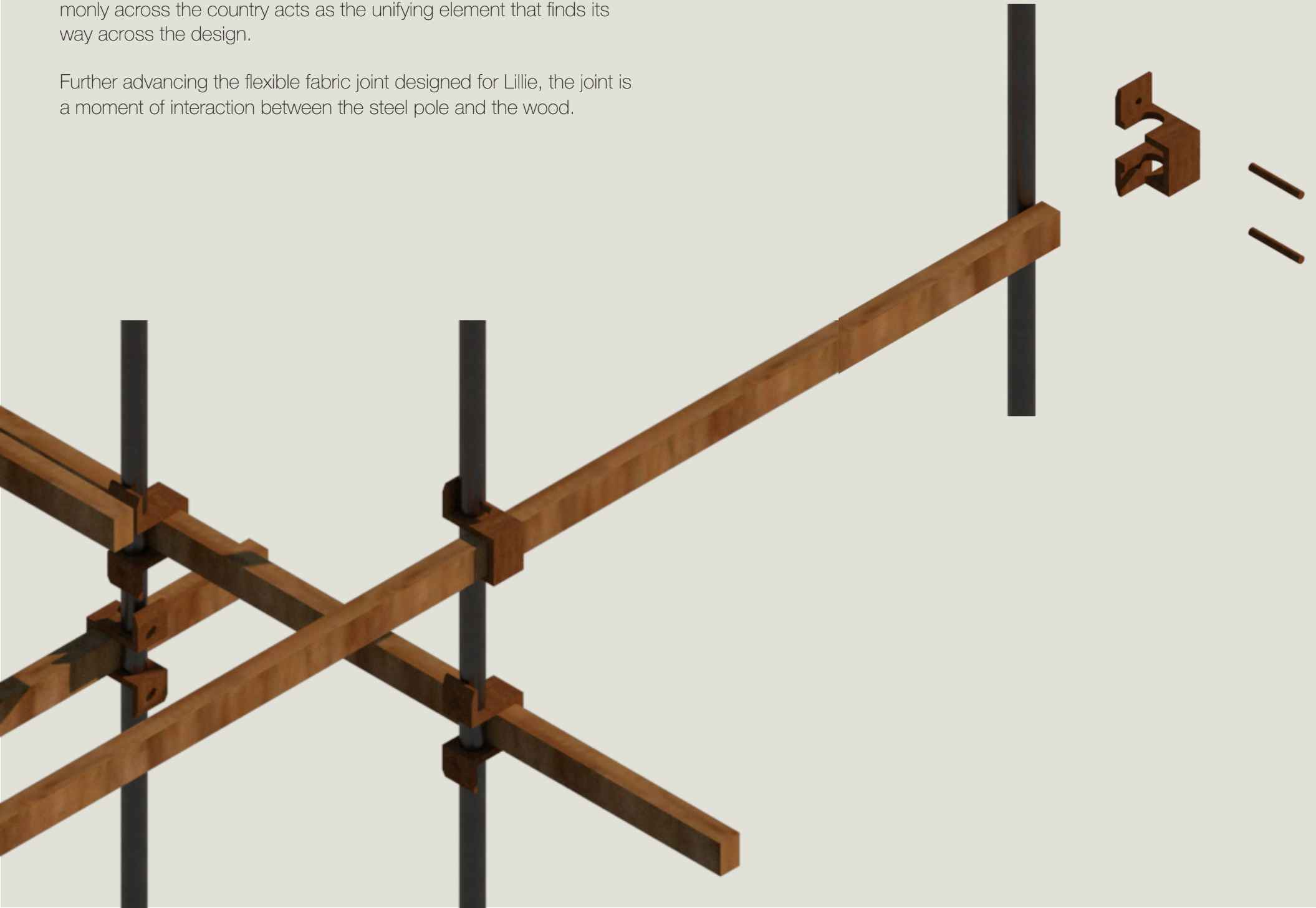




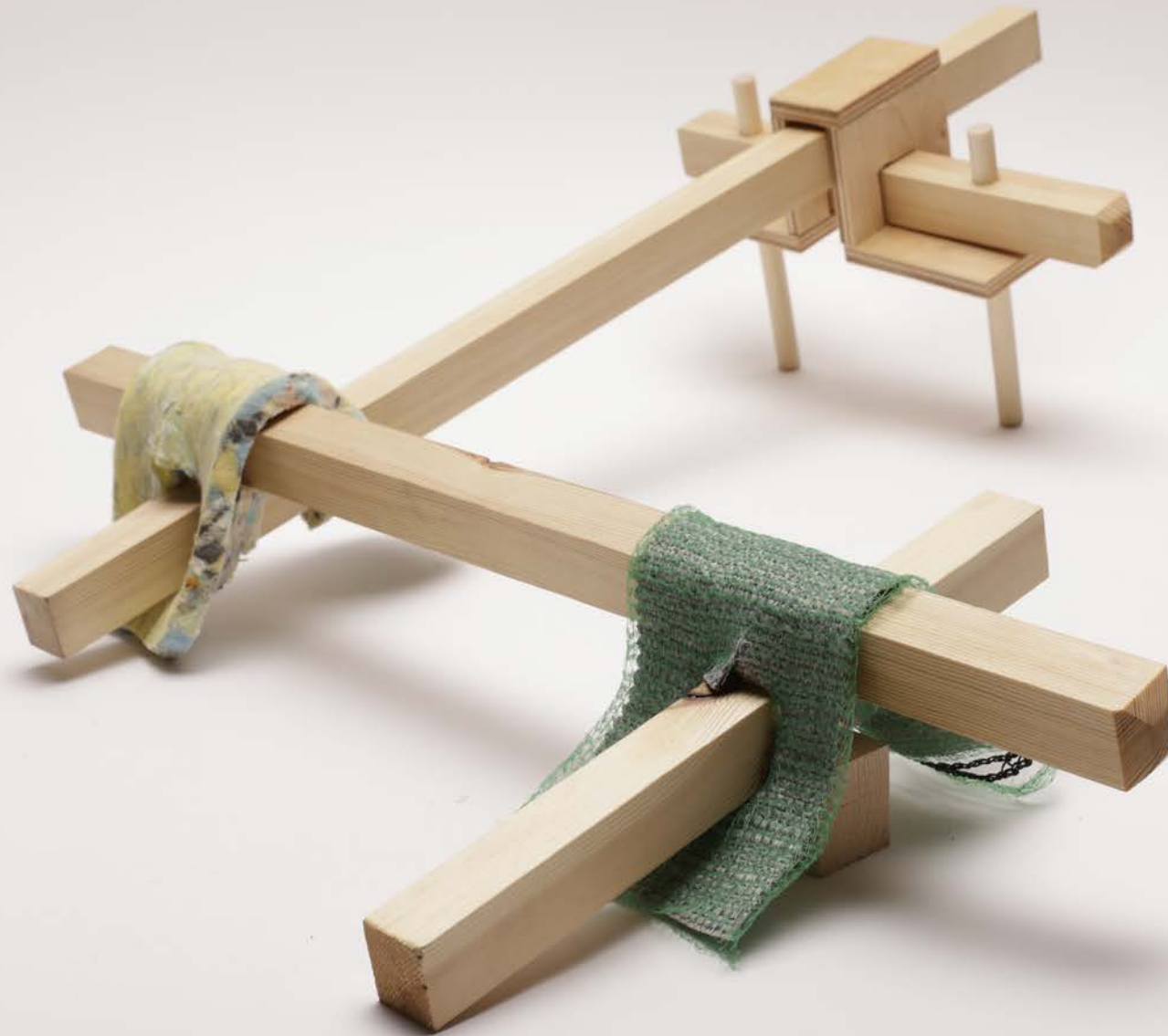
Details

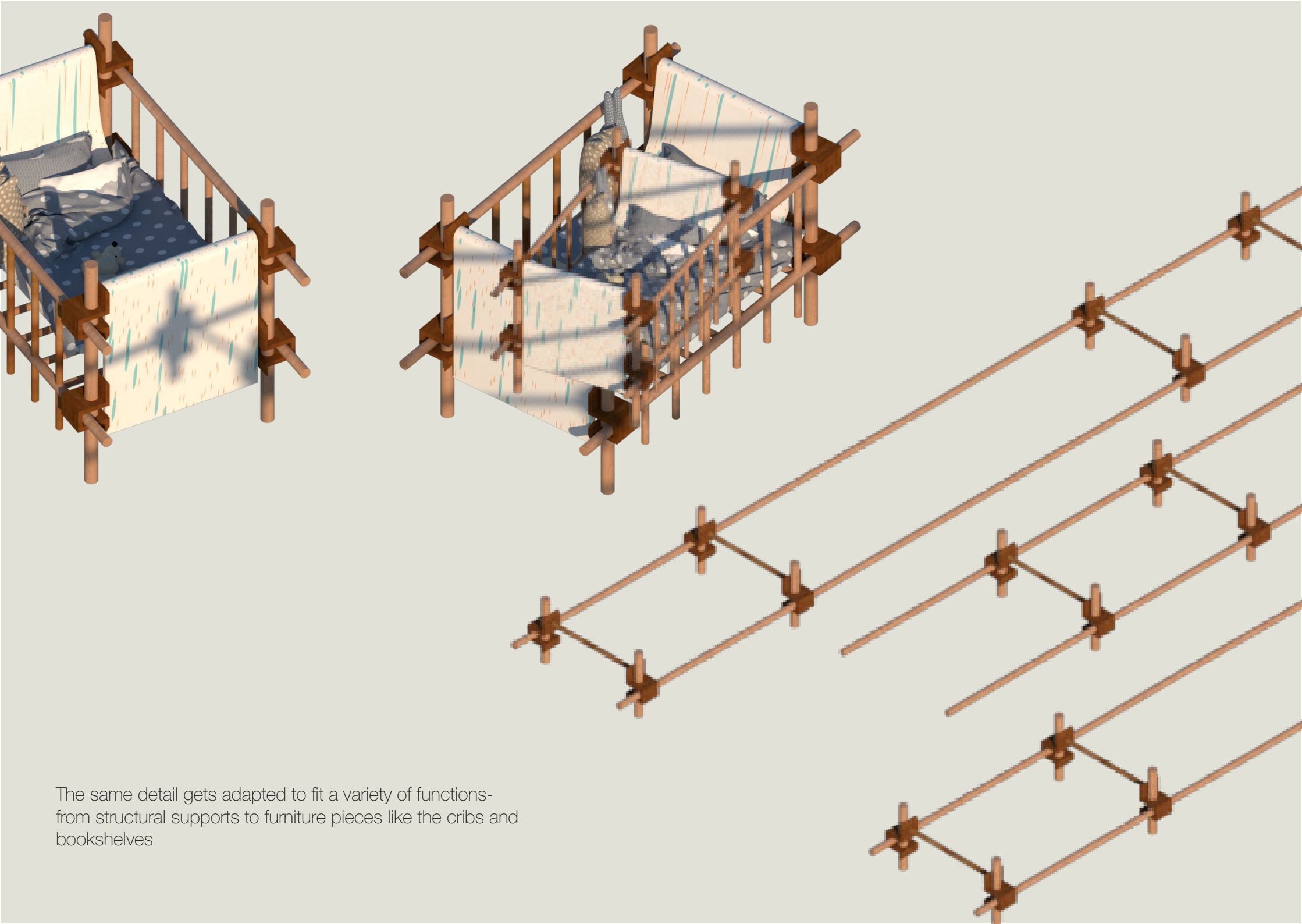
Inspired by the construction site, a scaffolding grid used very commonly across the country acts as the unifying element that finds its way across the design.

Further advancing the flexible fabric joint designed for Lillie, the joint is a moment of interaction between the steel pole and the wood.



The evolution of the detail focused on the construction of the joint, exploring ways to express the same joint through various mediums in different situations.





The same detail gets adapted to fit a variety of functions-
from structural supports to furniture pieces like the cribs and
bookshelves





Another detail that gets adapted from the construction site is the use of scrim. Typically used to screen and protect the site workers when working at a height, in this complex we borrow the material and function and use it as a part of the railings.

Although where the layer of care comes in when we treat the material. By manipulation the material we distort the origin and add a layer of comfort and care that gets felt by the users.

This delicate craft also in theory forms an activity taken up by the elders in collaboration with the children and the general public as well, adding fabrics and materials significant to different cultures and people.

To every soul who calls this vibrant city home, yet has known the quiet ache of loneliness, the chill of isolation, or the subtle unease of feeling out of place – this haven was crafted with you in mind.

It is a place to rediscover the warmth of home,
it is a place to find your chosen family,
a place where you belong.

Through the food we share, we find a chance to narrate the stories of where we've come from, the rich tapestry of experiences woven along our paths, the bonds we've forged, and the cherished memories that linger from our tender years.

It is an invitation to vulnerability, a gentle moment to pause from the hustle of life and be a part of something bigger.



