



THE URBAN VILLAGE

Community housing project for elderly women
aged 65+

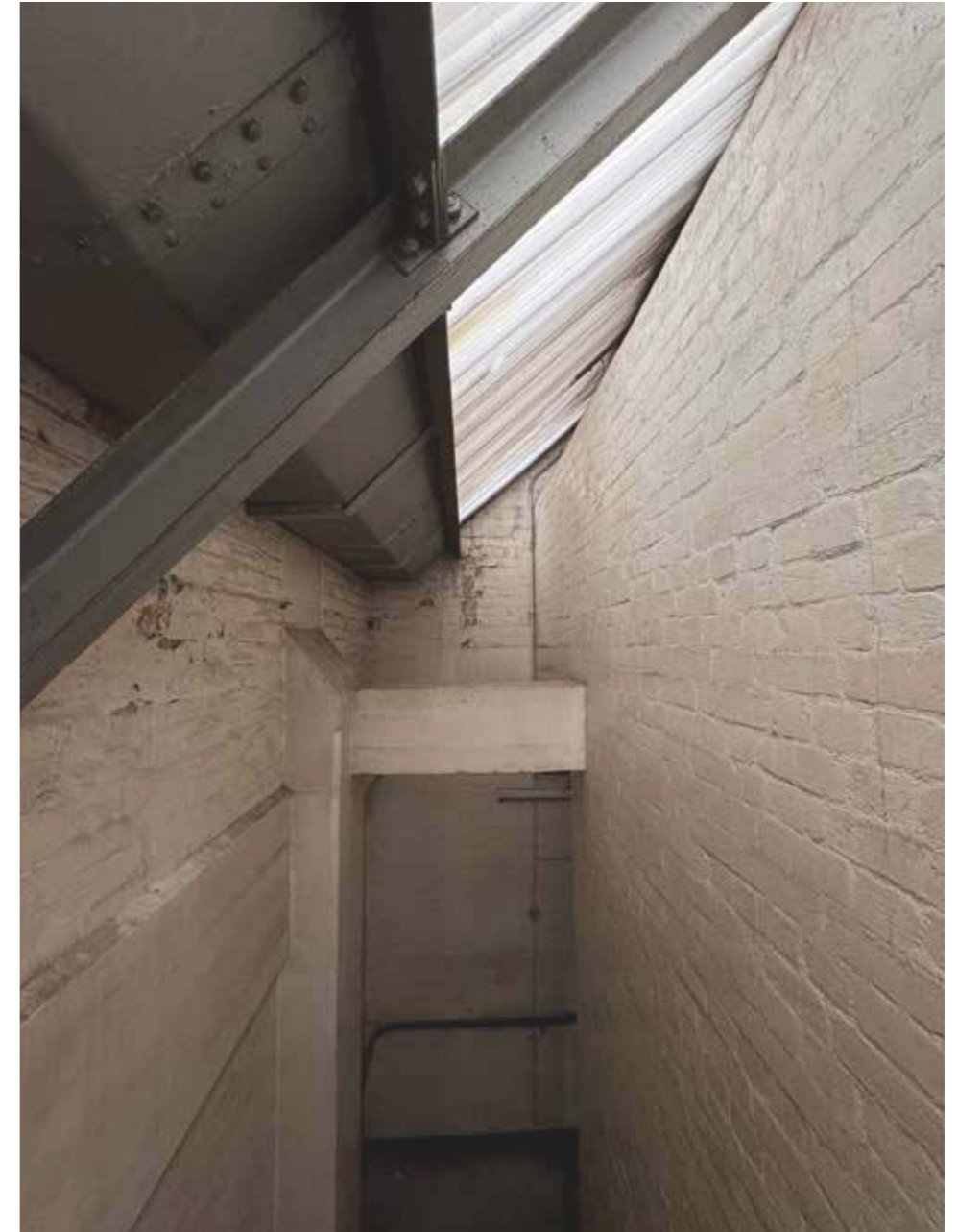
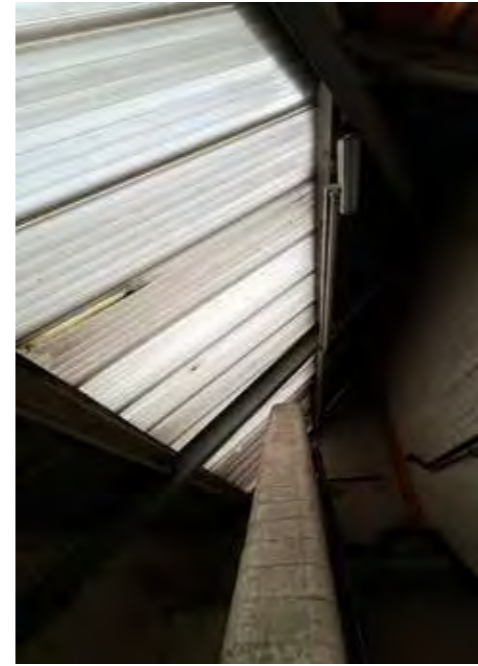
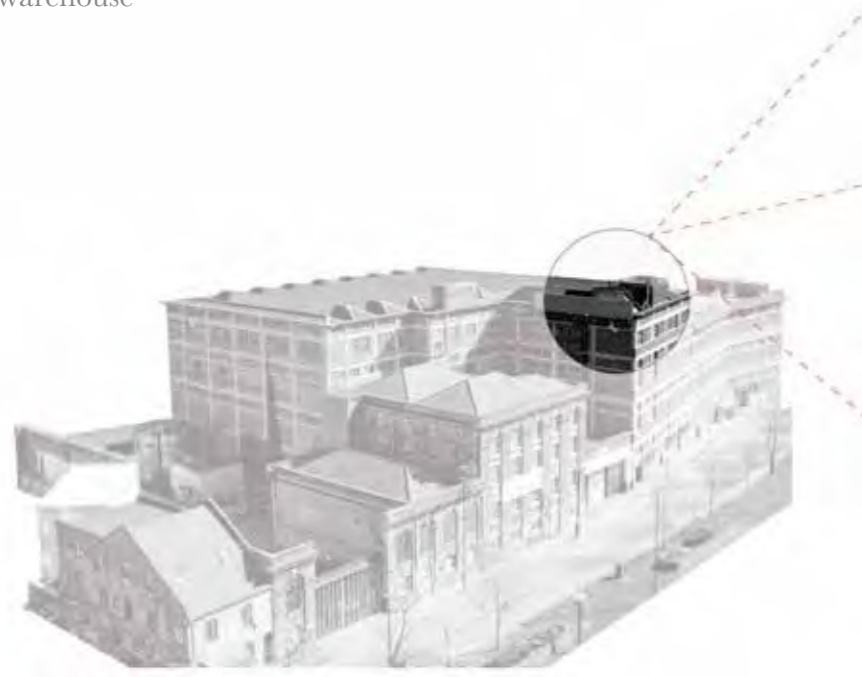
By Saida Kybartaitė

INSPIRATION

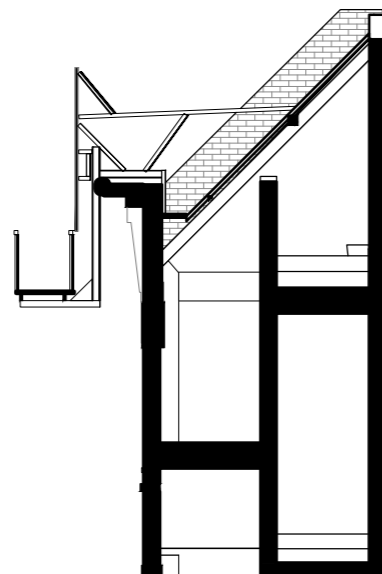
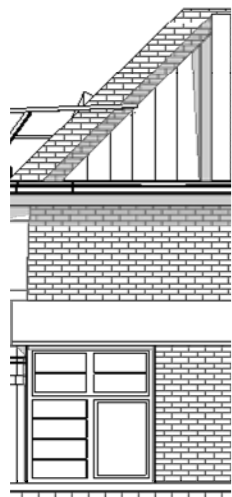
SITE: 23-24 GILLENDER STREET

Location: E3 3JX, London Borough of Tower Hamlets

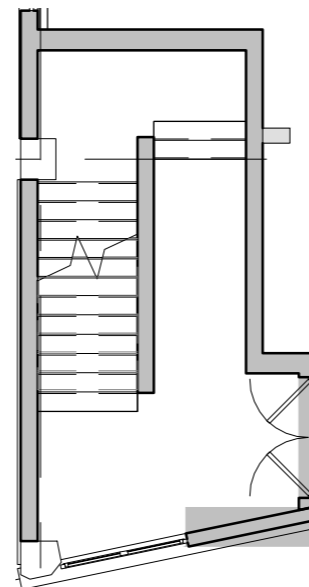
The building is 5182 m², part Victorian and part 1930's modernist warehouse



Elevation view (from Gillender street)
Scale 1/100

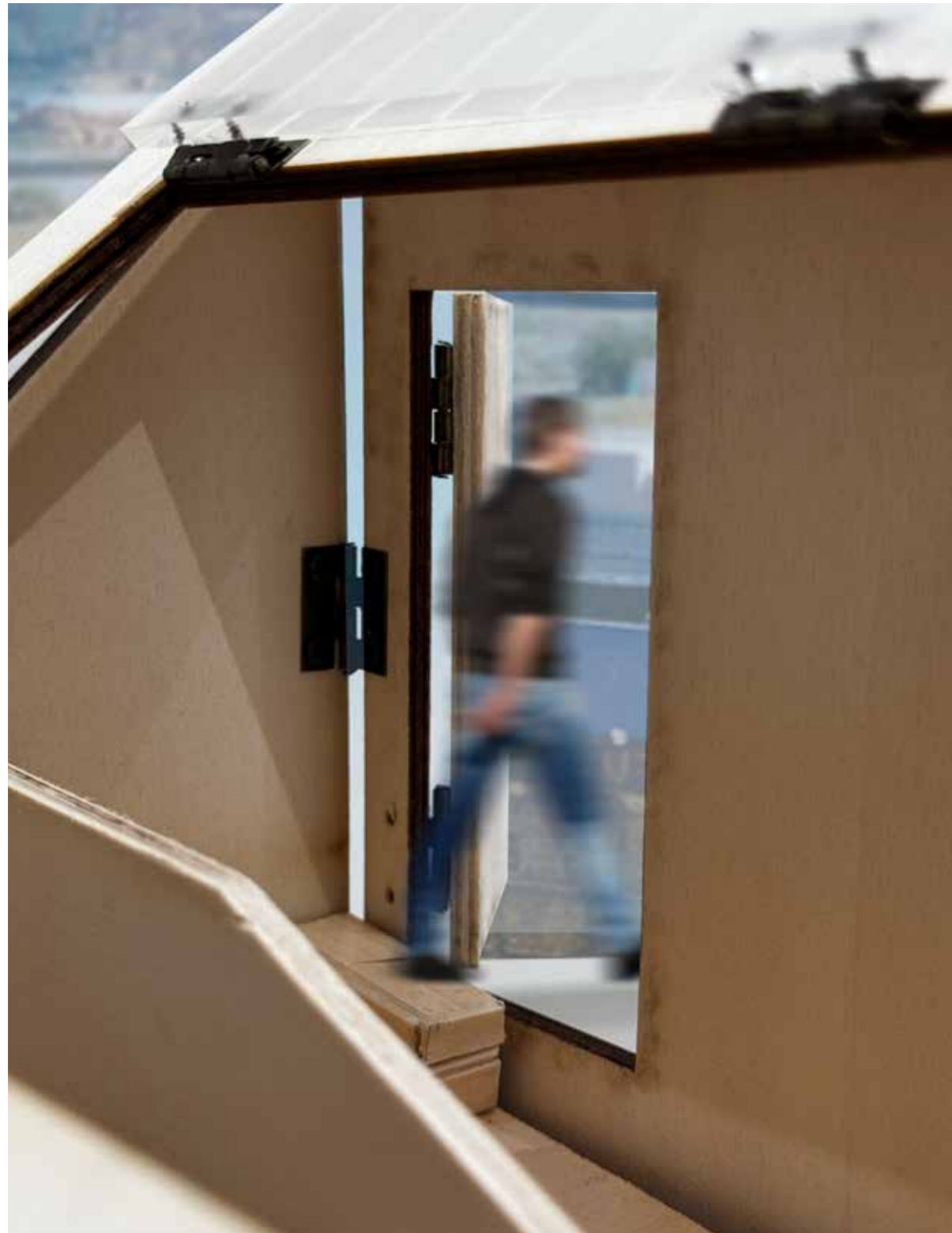


Floor plan view
Scale: 1/100



COMPRESSION ARTEFACT

Revealing and **opening up** closed spaces in the building introducing a sense of fluidity as the **inside** starts blending in with the **outside** environment.



Closed



Opened



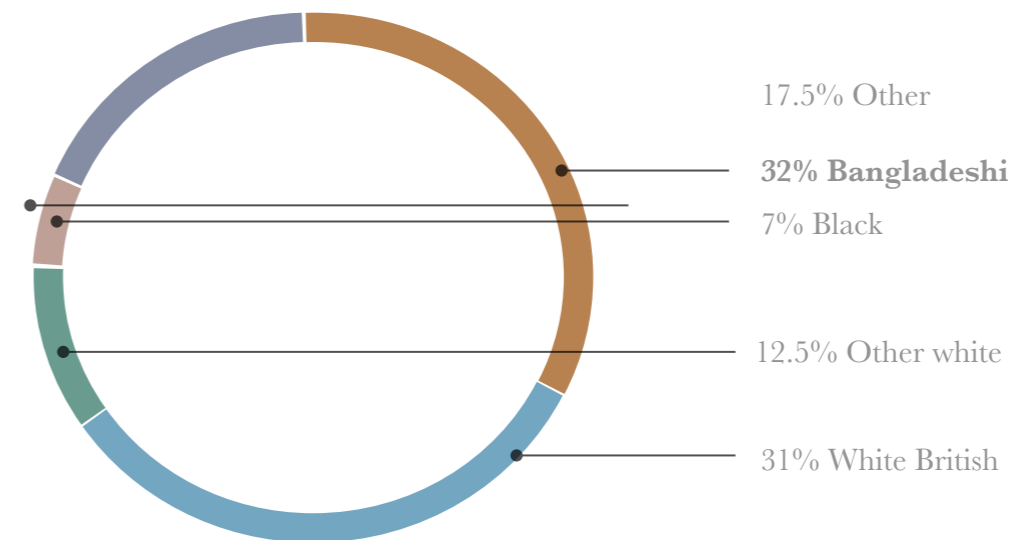
DEMOGRAPHIC RESEARCH AND ANALYSIS

Data about **elderly women** in the Tower Hamlets area

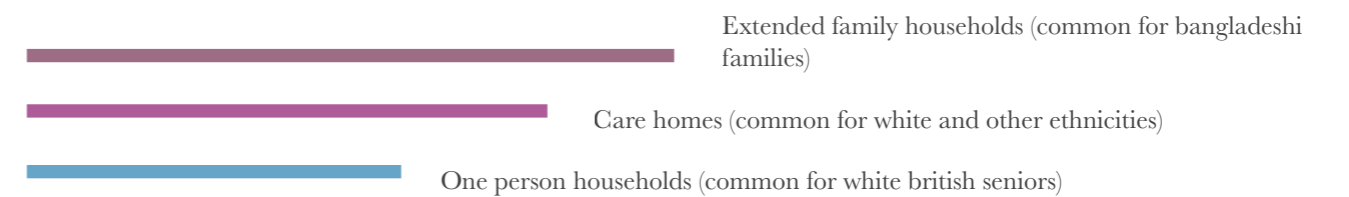


A map of E3 3JX- Tower Hamlets

Ethnicity data in Tower Hamlets



Common living arrangements amongst elderly people



Elderly people 60 and above

8.4% of the total population in the area



Median age 30 years old

Youngest median age in England and Wales

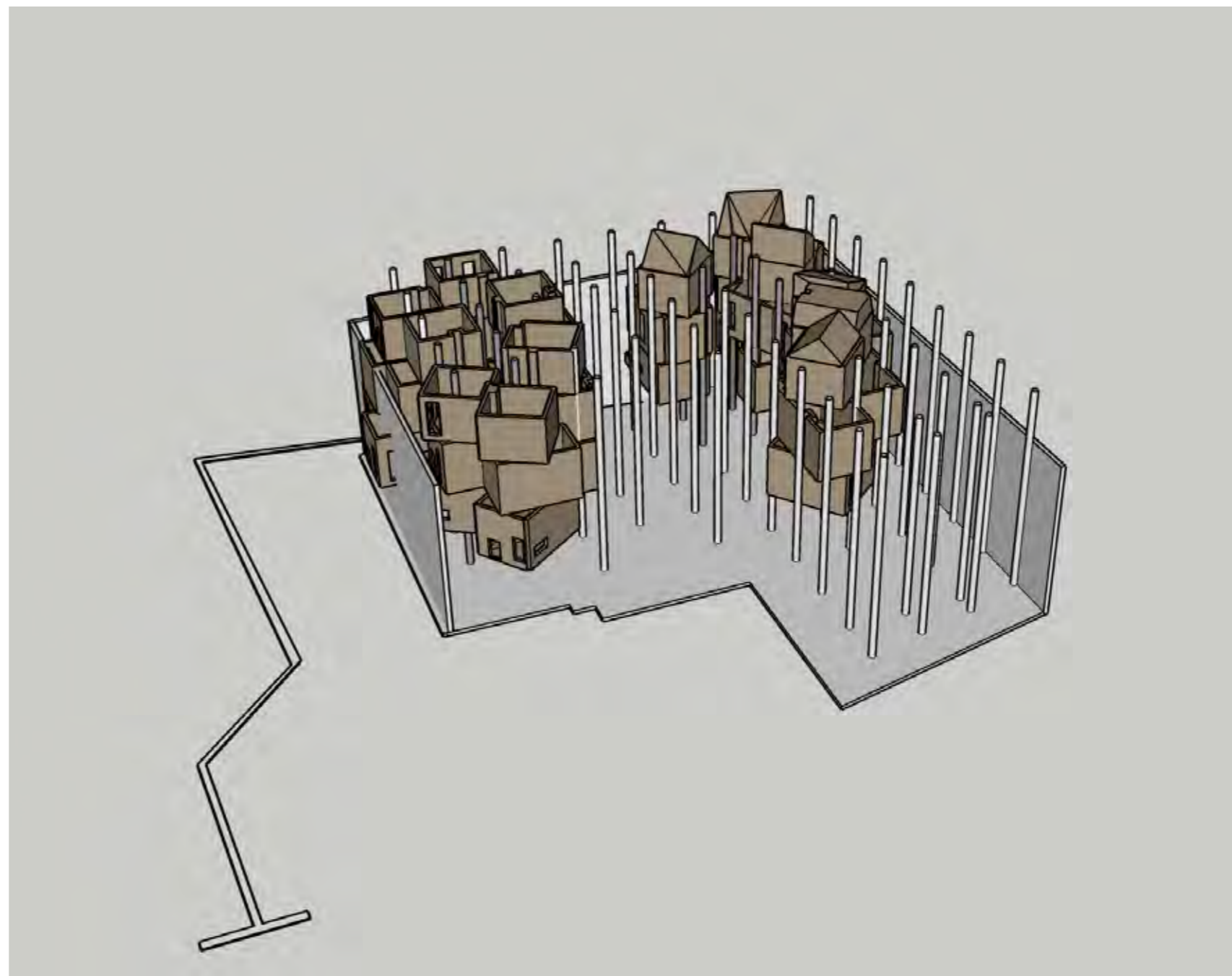
A community residential space in the Tower hamlets area would introduce a youthful and active environment for the elderly and help decrease large numbers of seniors from other parts of London. This would make the Tower hamlets area more diverse in terms of age population and would also introduce new jobs for the younger people in the proposed public spaces of the building.

HYBRID COLLAGE

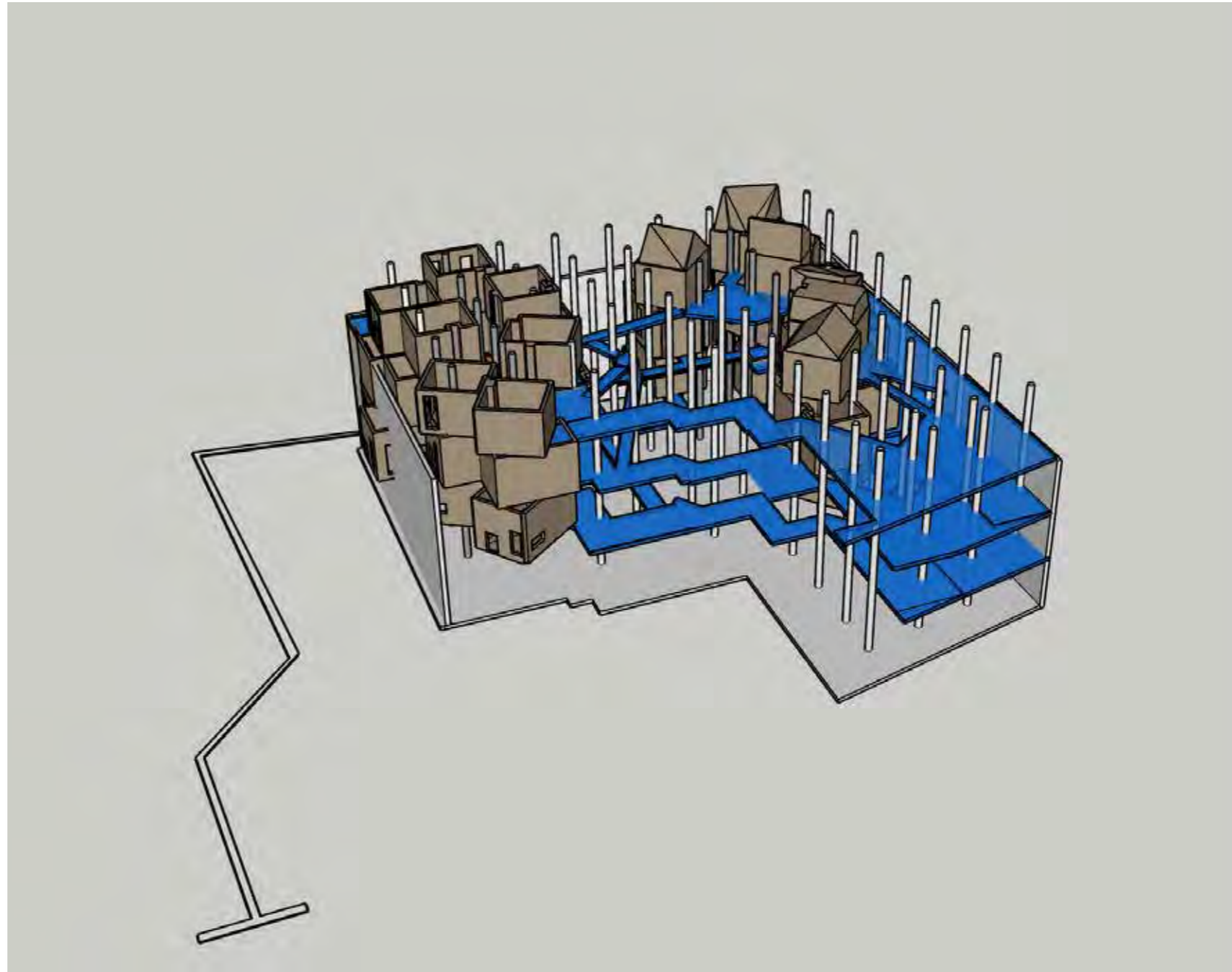
Introducing voids and courtyards into the space to enlighten the interior and create spaces for gathering and social interaction for senior residents.



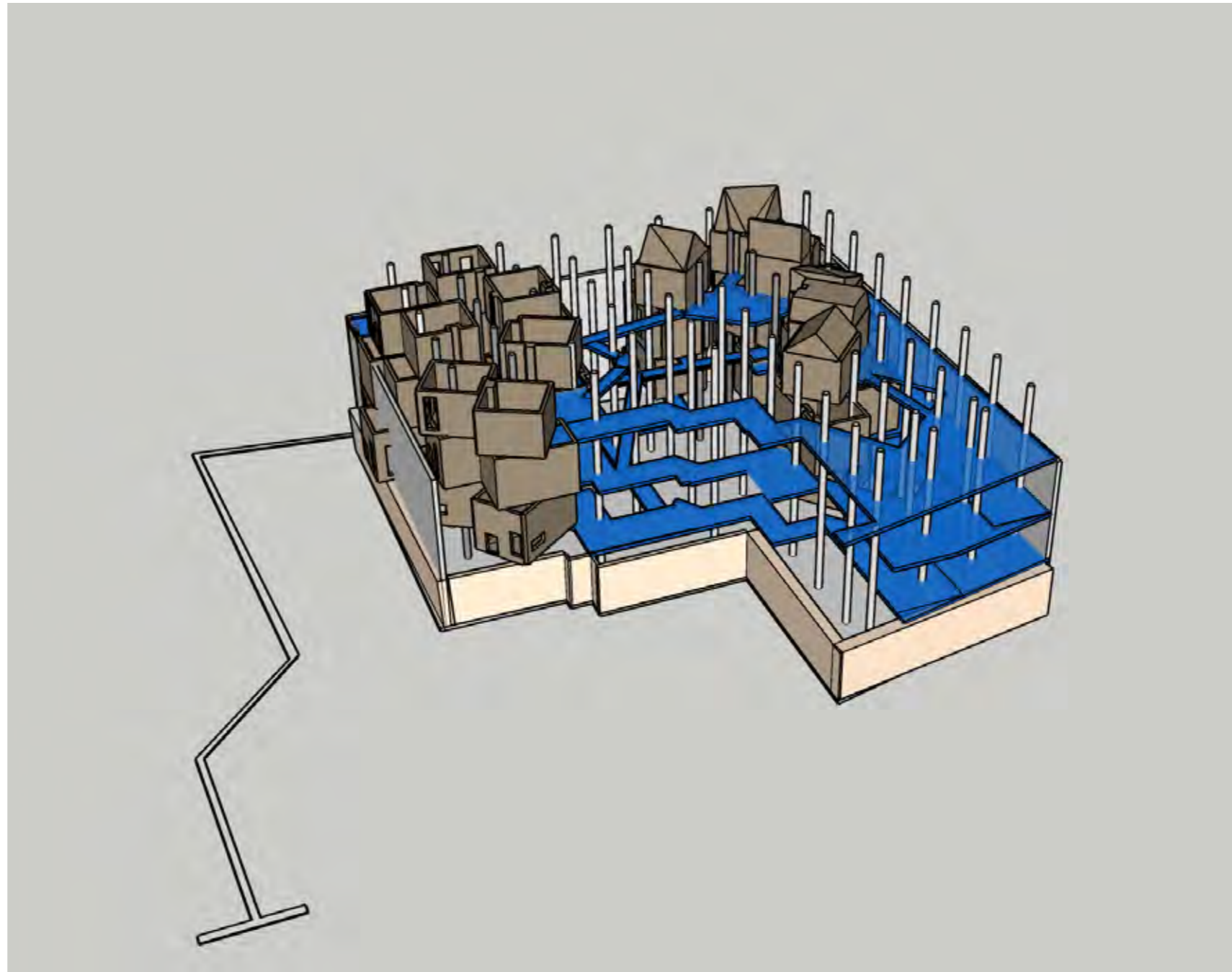
STRATEGY



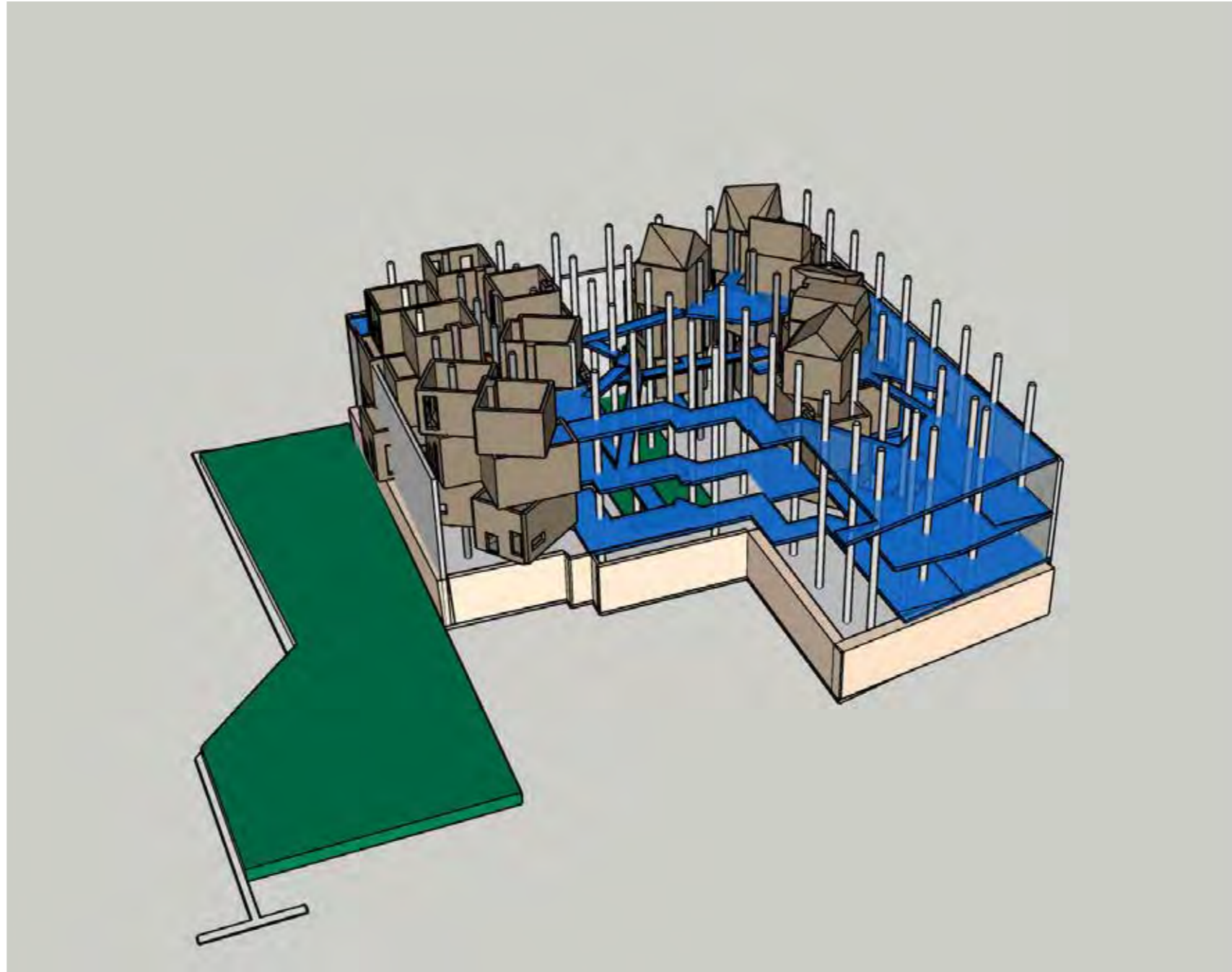
1. Vertical tower placement



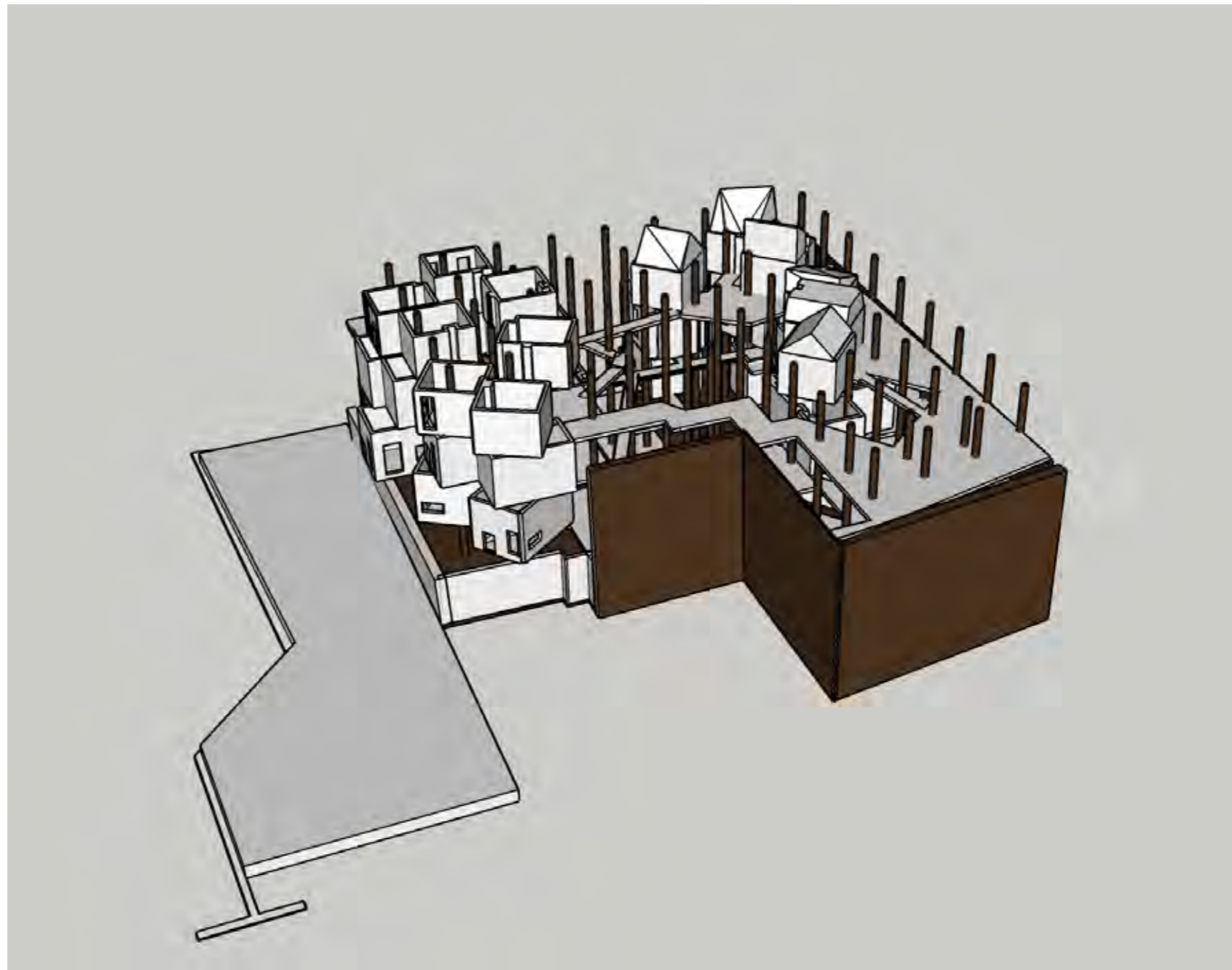
2. Floorspace and circulation bridges



3. Communal spaces

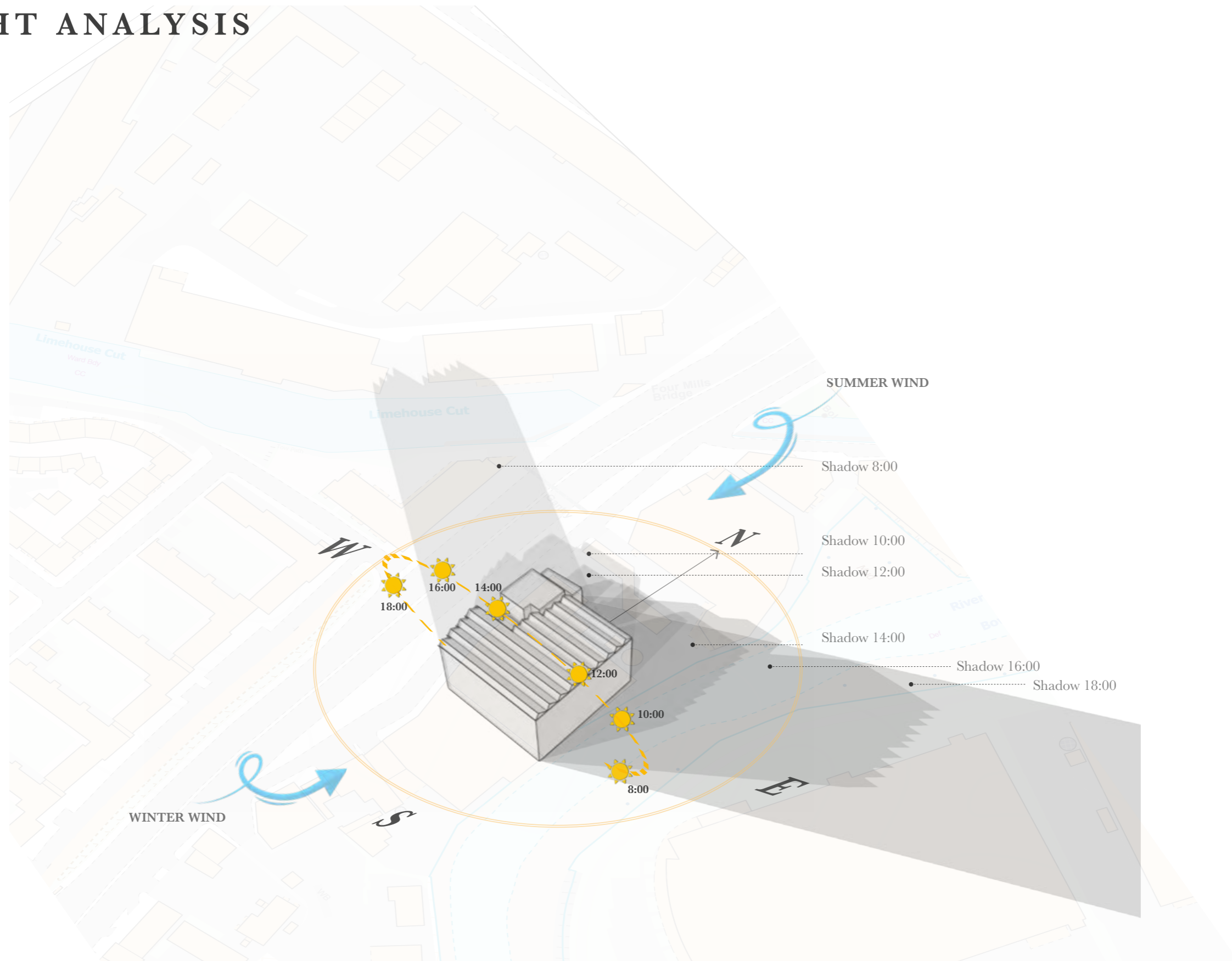


4. Green space and gardening



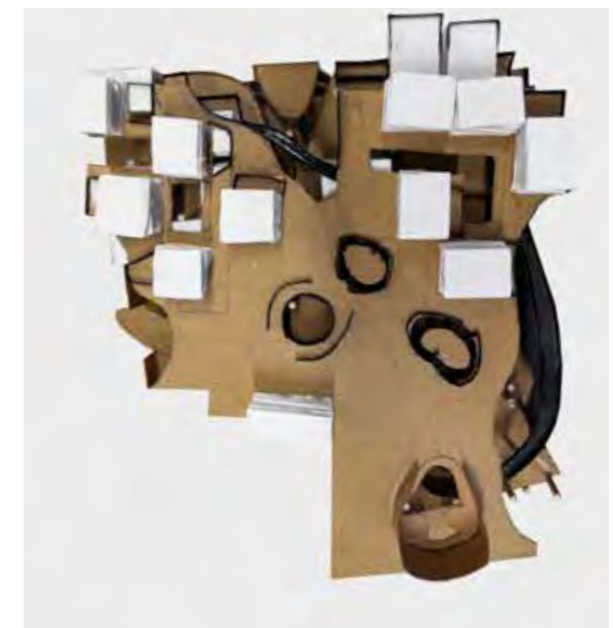
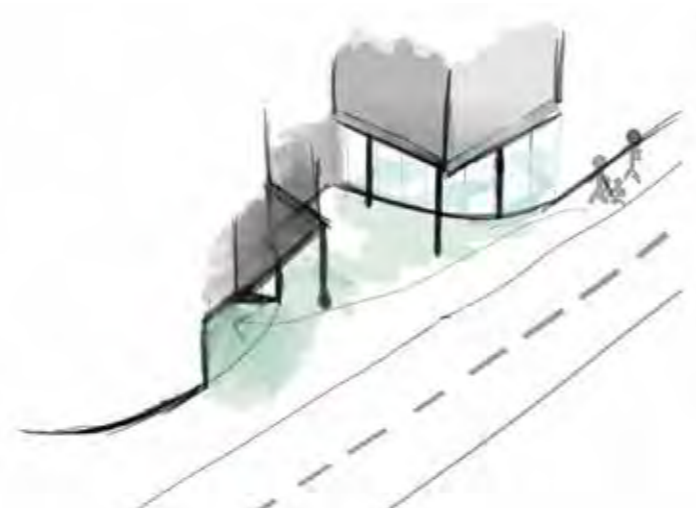
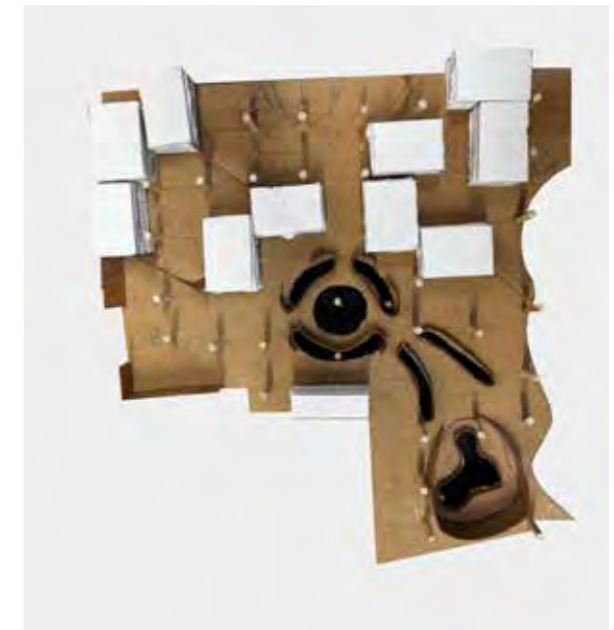
5. The old and the new

LIGHT ANALYSIS



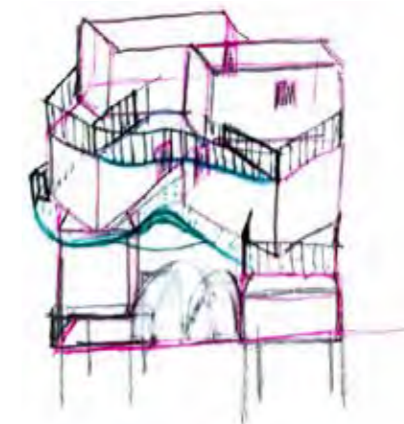
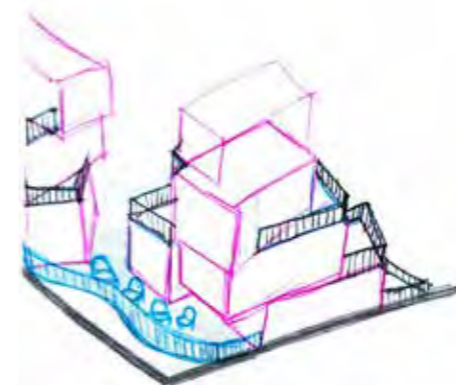
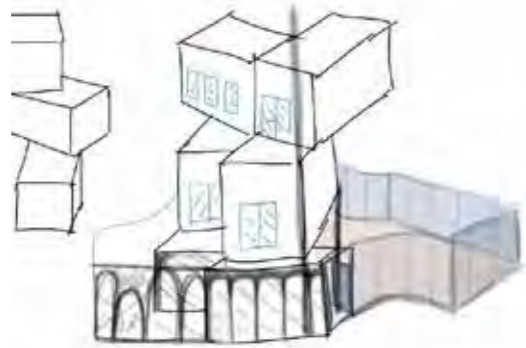
INITIAL RESPONSE

Working floor by floor



VERTICAL CONNECTION BETWEEN THE APARTMENTS

Working vertically

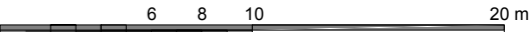
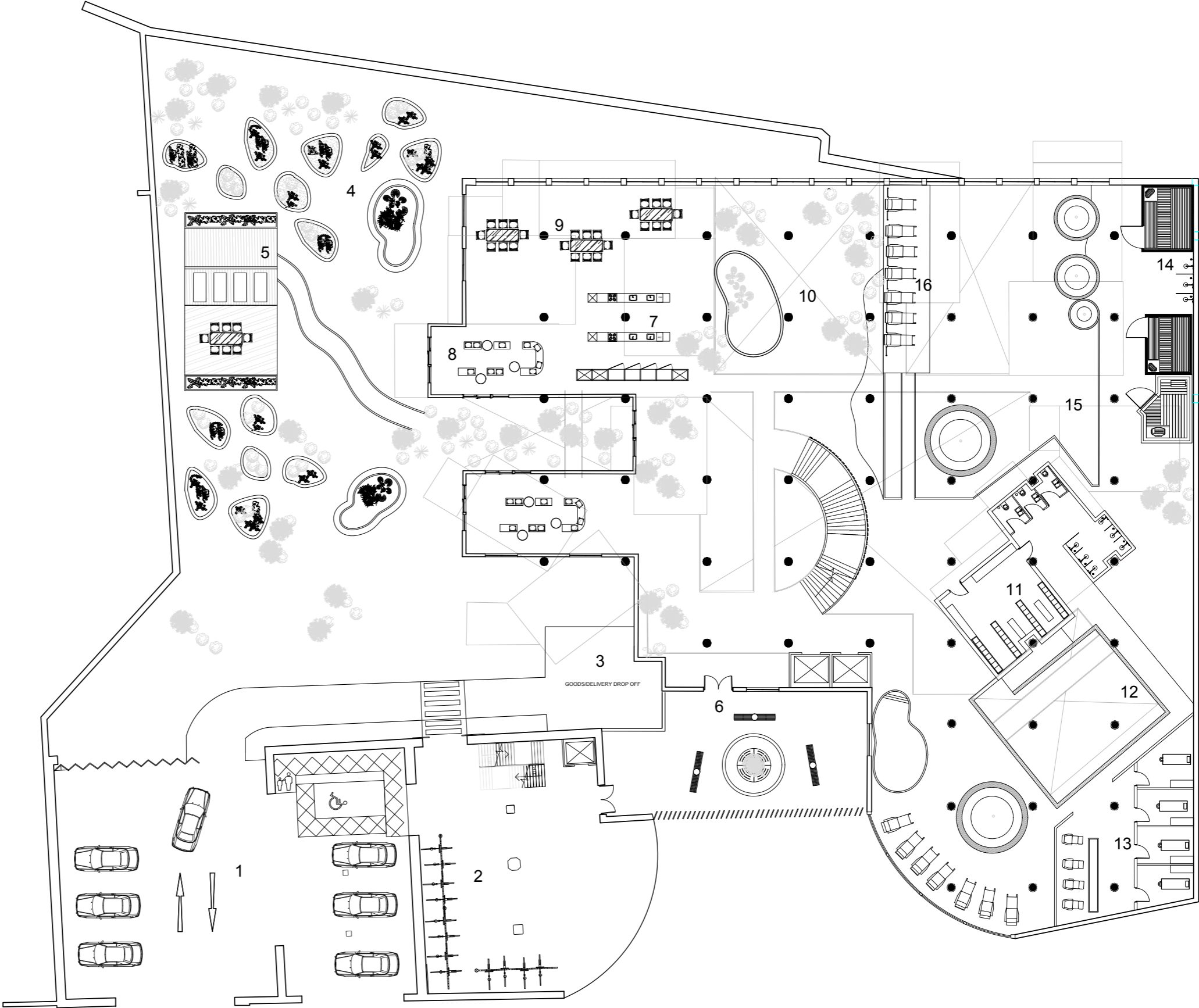


GROUND FLOOR

Community gathering and well being spaces

KEY

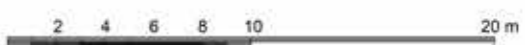
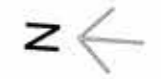
- 1- car park
- 2-bike/scooter storage
- 3- delivery drop off/pick up
- 4- gardening section
- 5-garden house/storage
- 6-main entrance
- 7- communal kitchen
- 8-seating with a view
- 9-dining tables
- 10-open space with a pond
- 11-locker space
- 12-exercise pool
- 13-massage rooms
- 14- saunas
- 15-big pool with jacuzzi
- 16-sunbeds with light treatment



FIRST FLOOR

Teachers' and librarian's
Communal library

- KEY
- 1- community space
 - 2- teacher's wing
 - 3- librarian's wing
 - 4- guest wing
 - 5- library
 - 6- open space for hanging out w view to the city



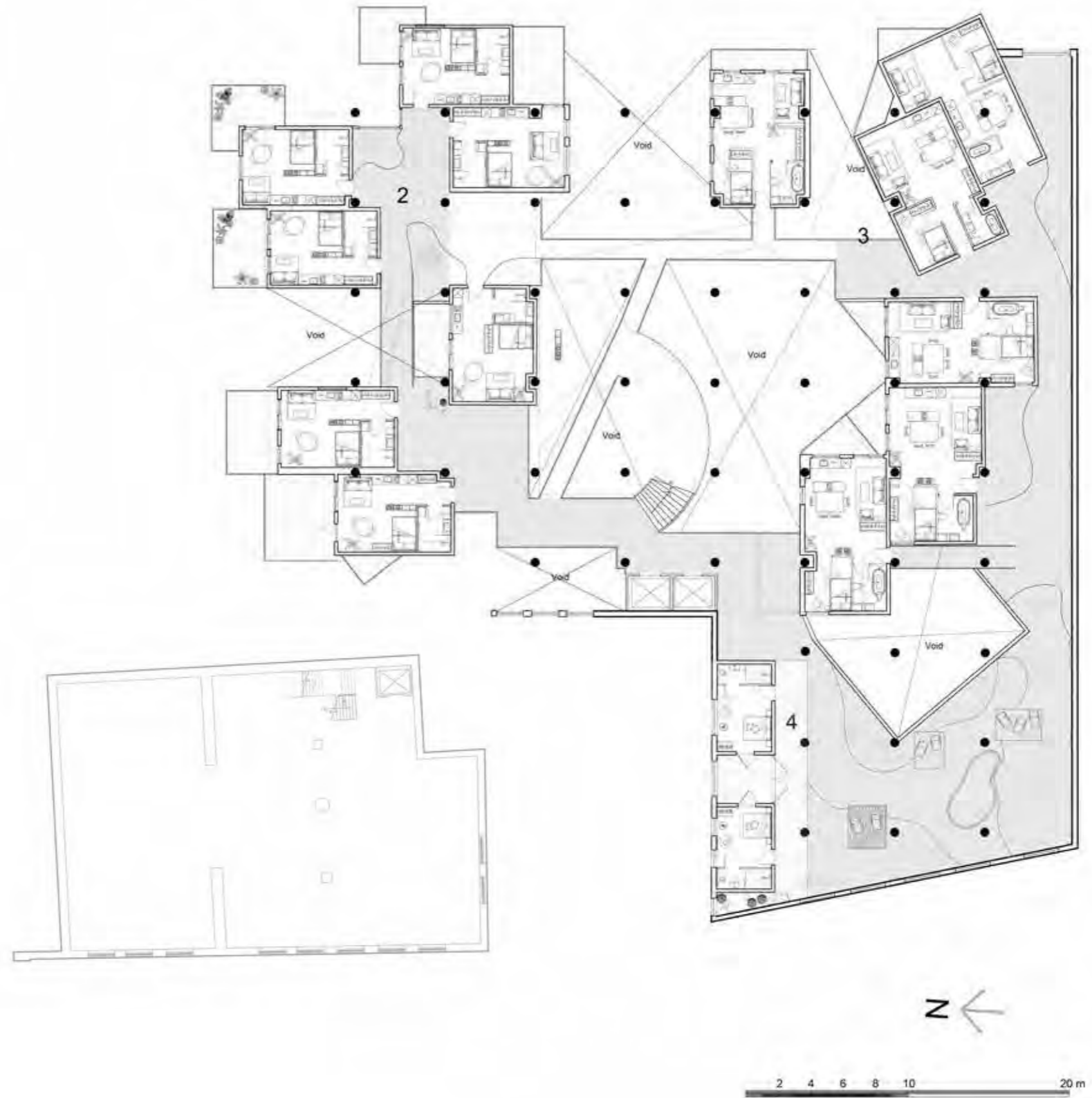
SECOND FLOOR

Gardeners' and cook's wings

Indoor community garden area

KEY

- 1- community space
- 2- gardener's wing
- 3- cook's wing
- 4- guest wing
- 5- green indoor area



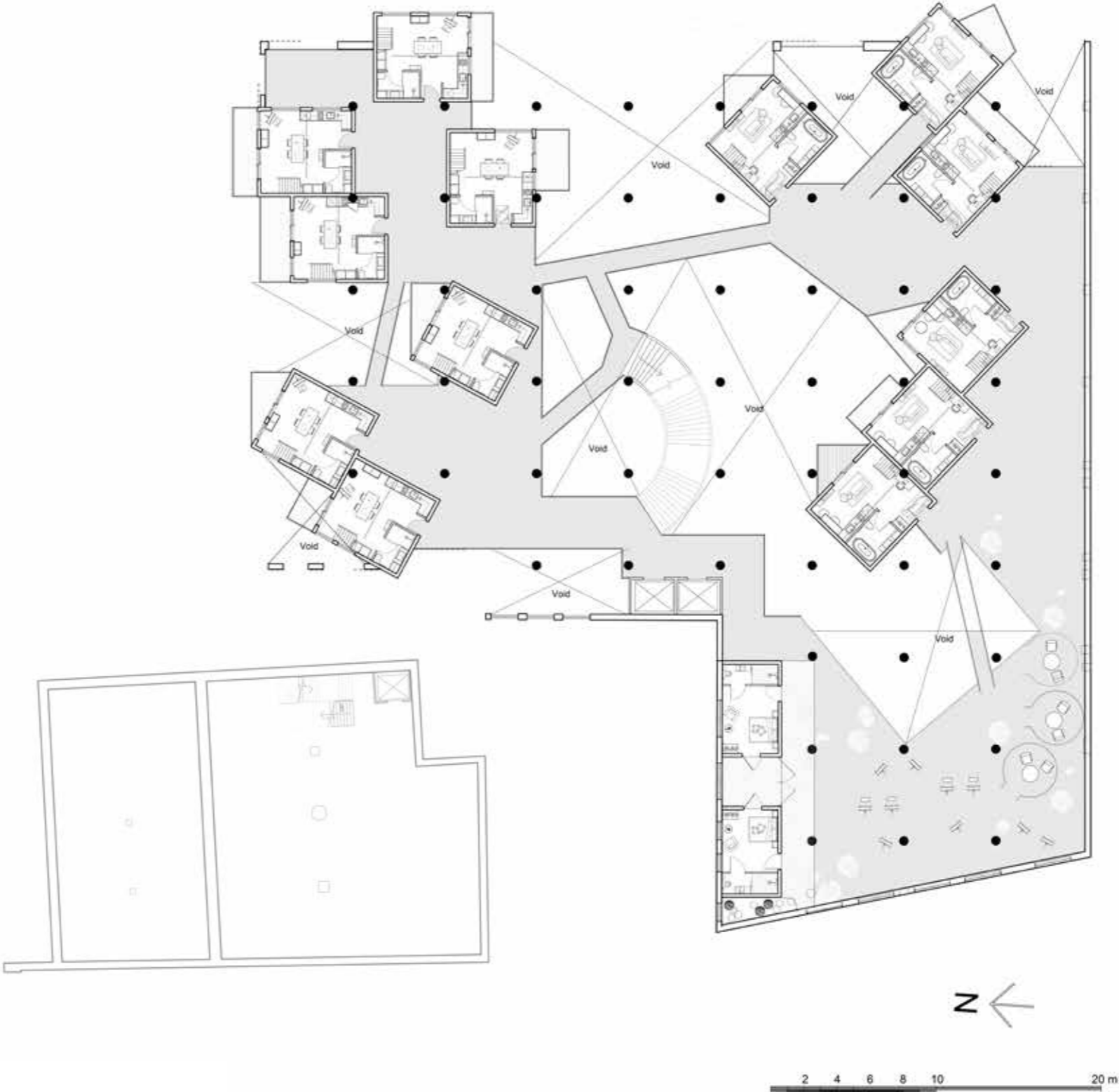
THIRD FLOOR

Artists' and writers' wings

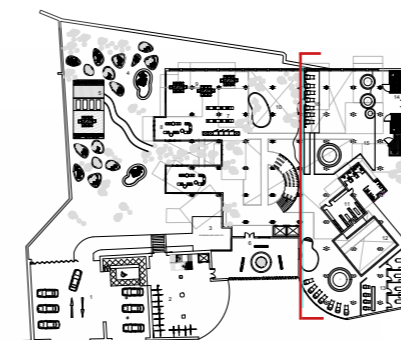
Communal art area

KEY

- 1- community space
- 2- artist's wing
- 3- writer's wing
- 4- guest wing
- 5- open art space

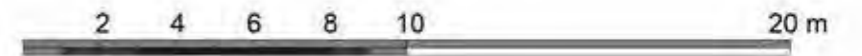
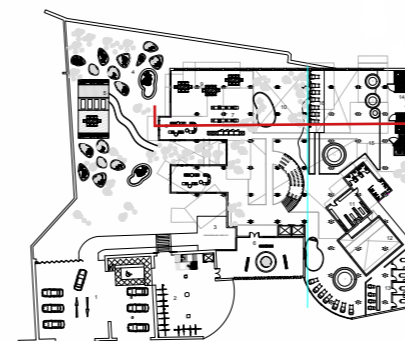


SECTION AA



2 4 6 8 10 20 m

SECTION
BB

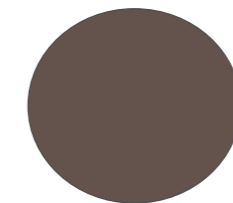
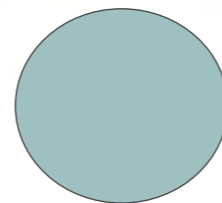
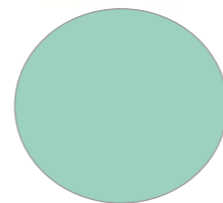
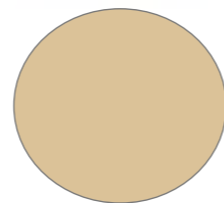
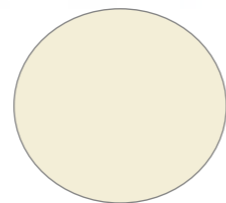


MATERIALITY

Spatial atmosphere



Colour palette





Steel sheet cladding

- can be made with recyclable materials
- extremely durable
- faster construction
- energy efficiency



Pine timber panels

- fast growing
- absorbs carbon dioxide
- durable
- faster construction

PROPOSED VISUALS

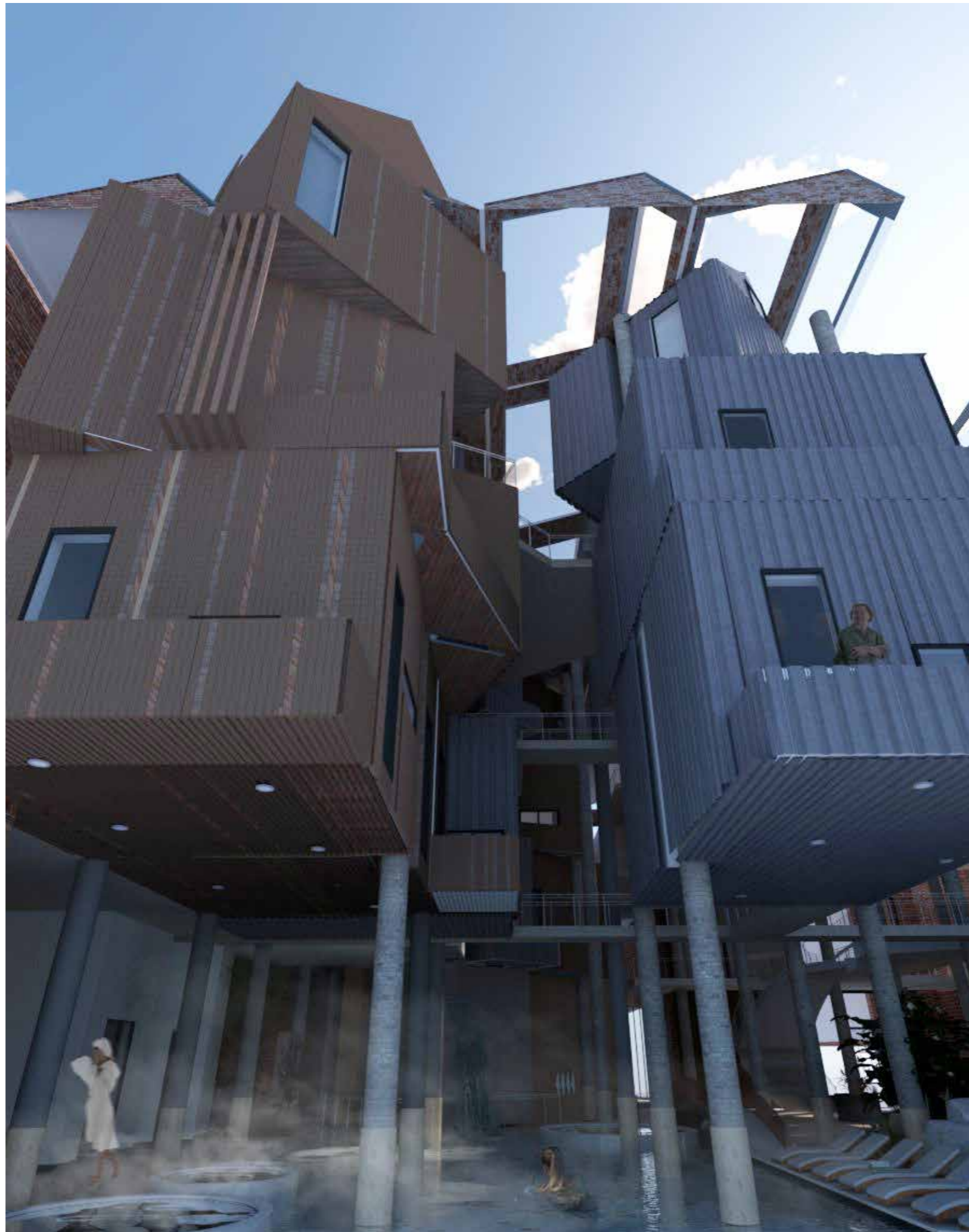


Entrance in to the building



Communal spaces









FIRST FLOOR

Librarian's and teacher's apartments

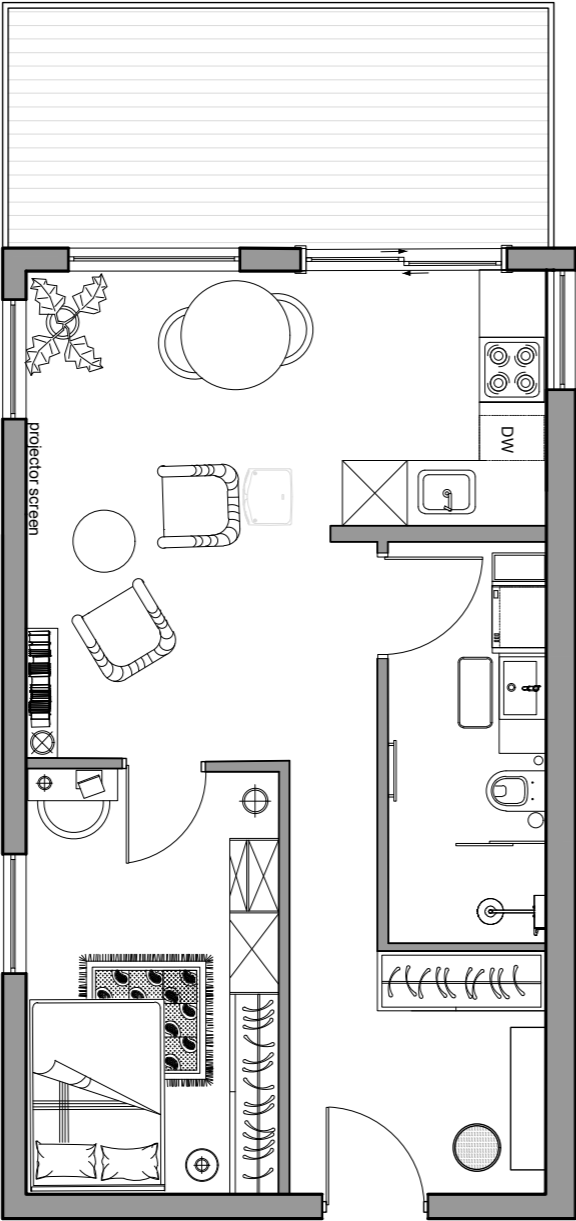




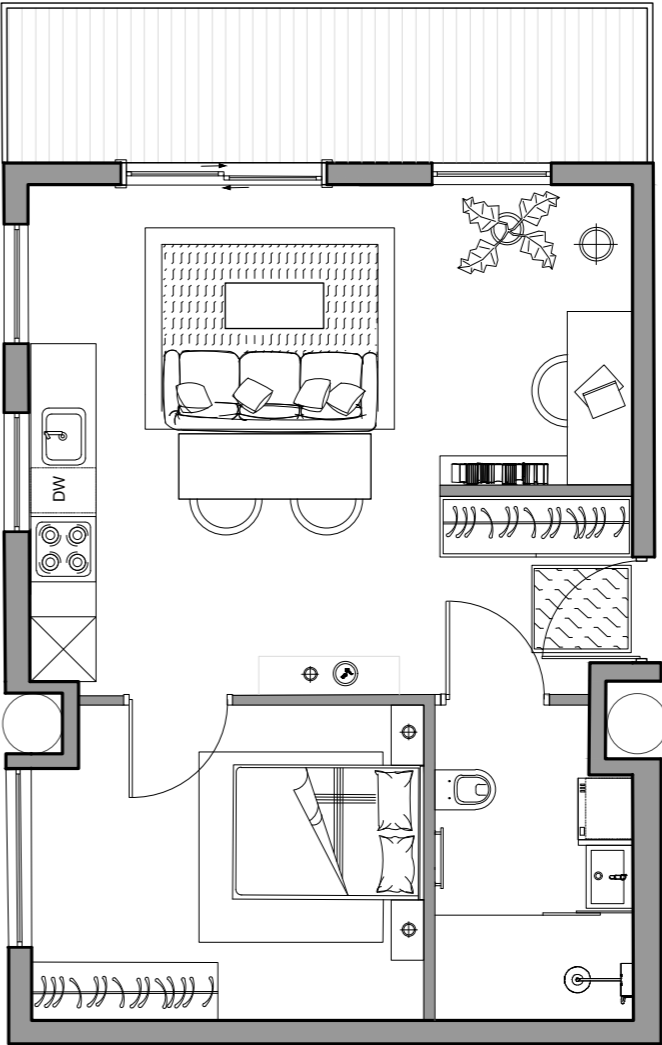
APARTMENT SIZE: 42m²

Key qualities:

- Floor to ceiling book shelves
- Desk spaces for reading
- Spacious balconies/terraces



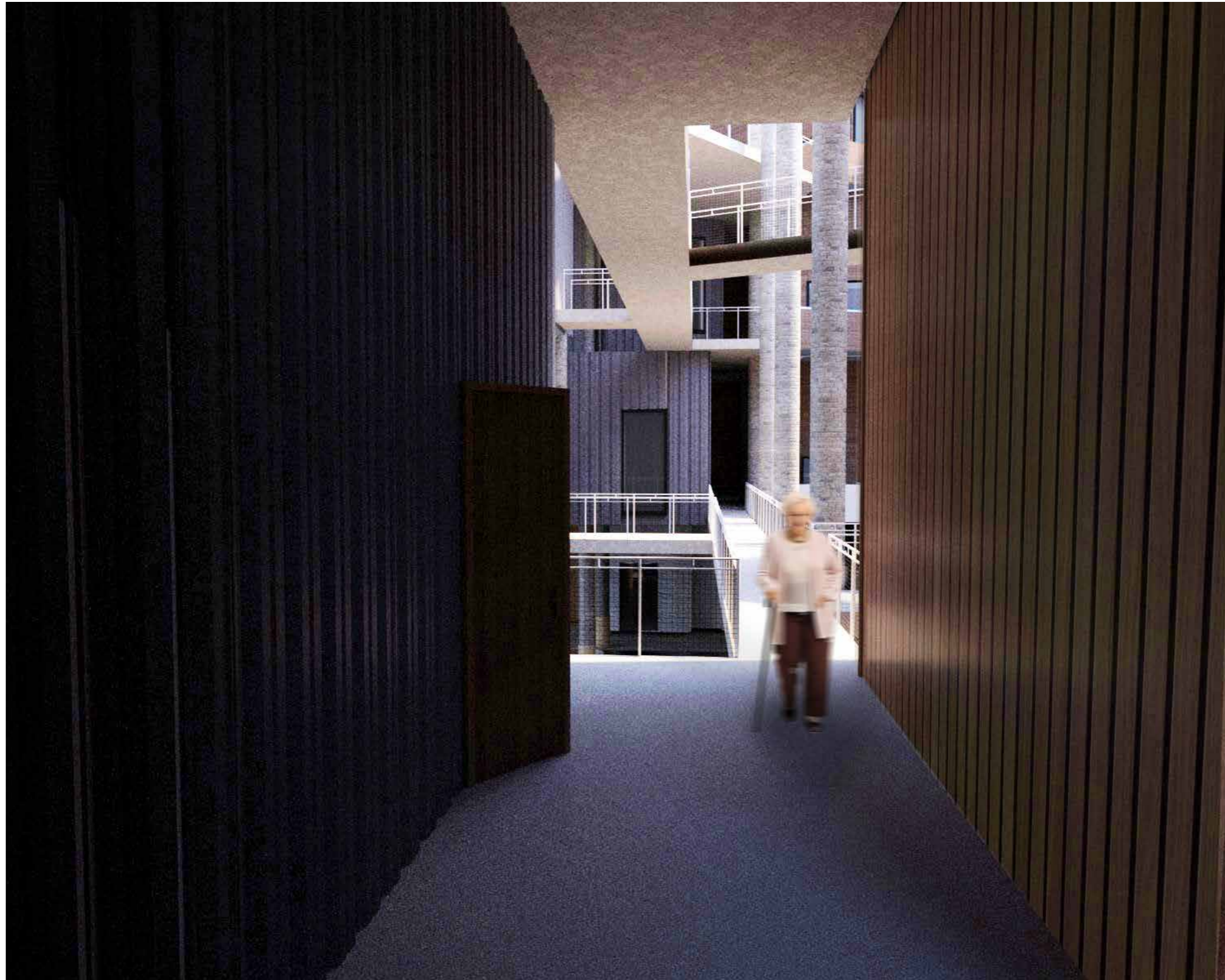
Teacher's apartment



Librarian's apartment

SECOND FLOOR

Gardener's and cook's apartments

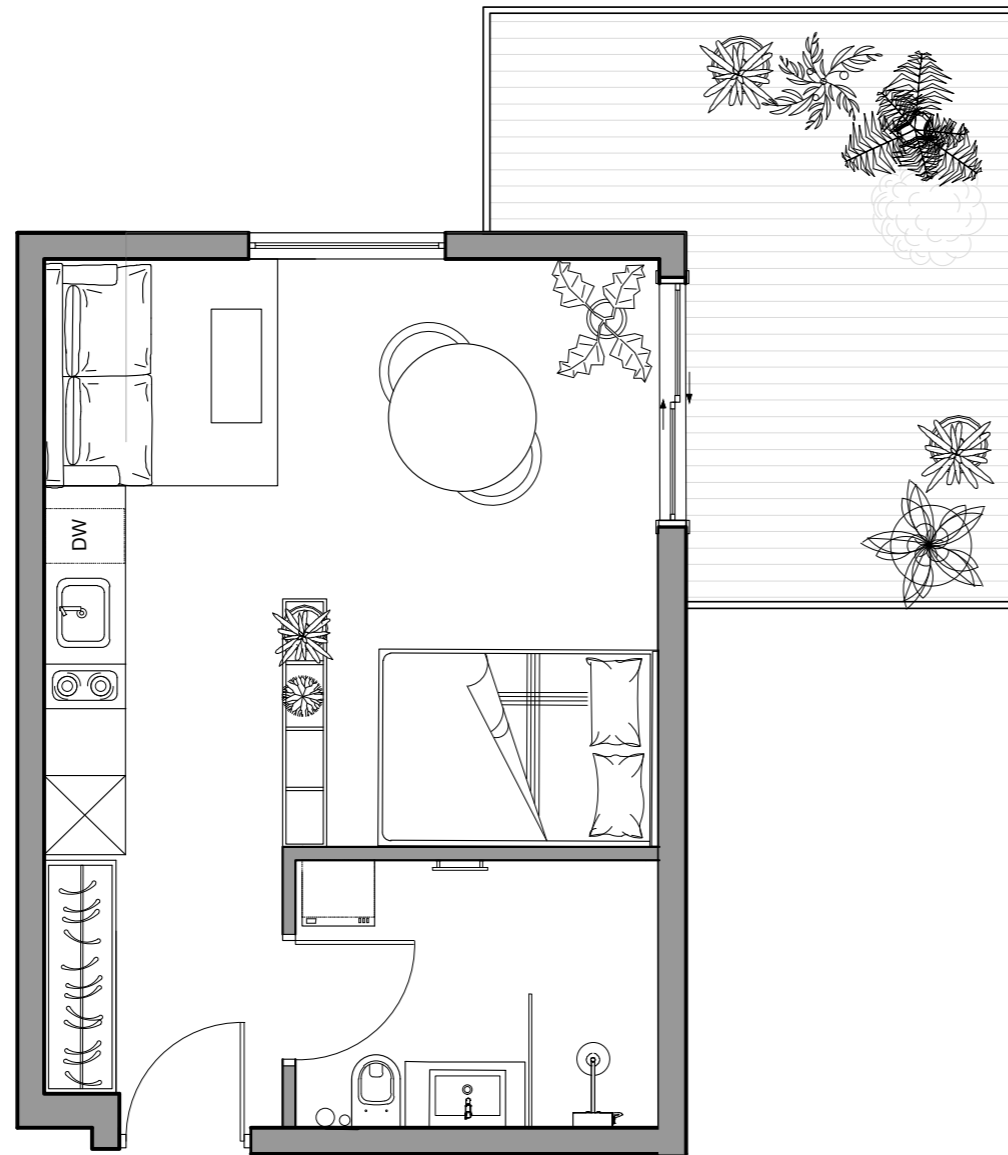




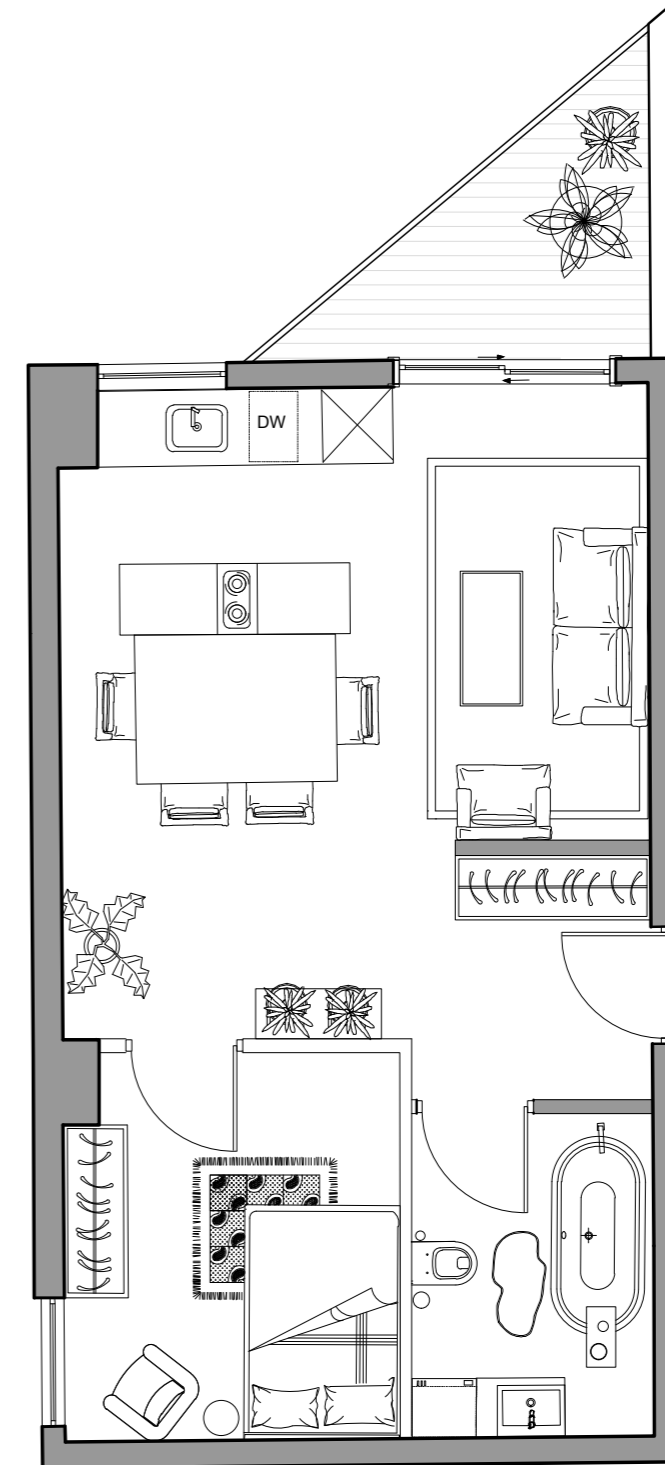
APARTMENT SIZE: 35-48m²

Key qualities:

- Large balcony for gardening
- Big table for cooking
- Space to grow indoor plants/herbs



Gardener's apartment



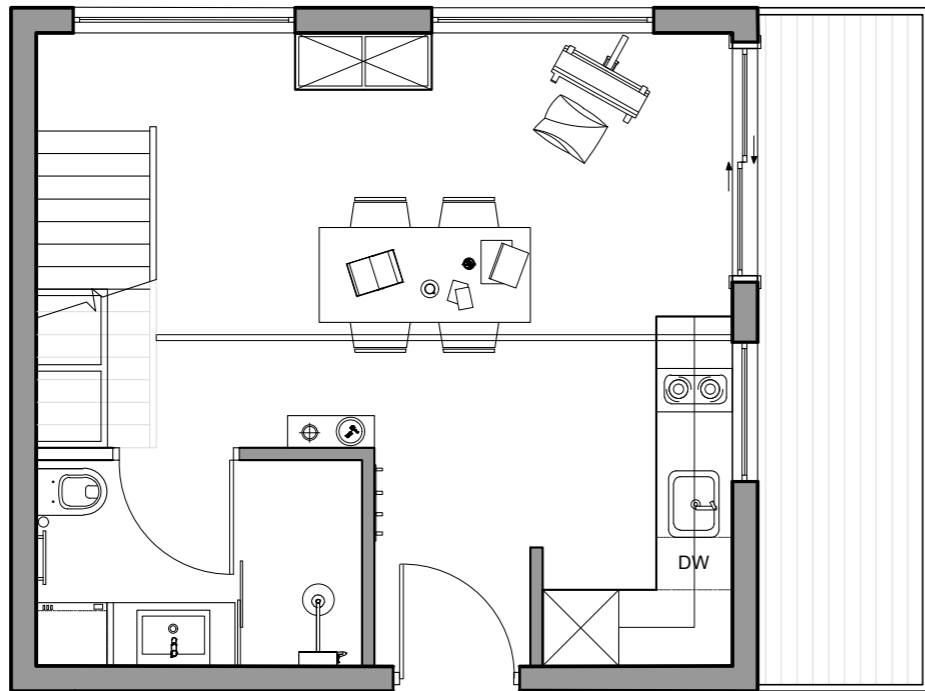
Cook's apartment

THIRD FLOOR

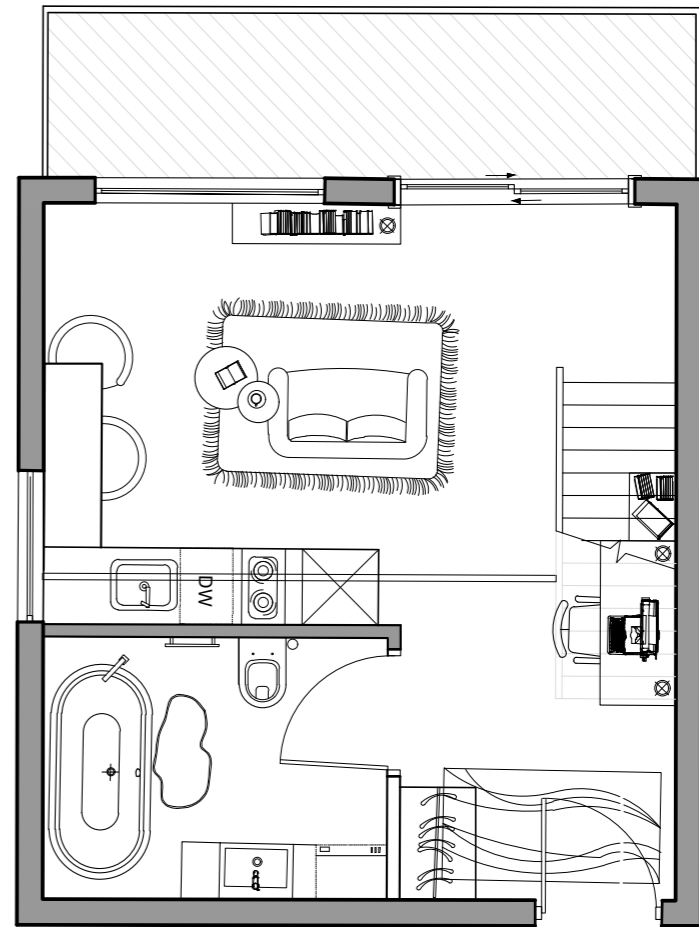
The artist's and writer's apartments







Artist's apartment



Writer's apartment