



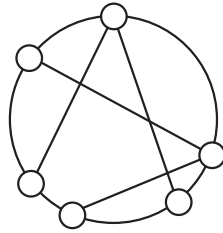
NEXUS

superREUSE | 2024-2025
INDIVIDUAL PROJECT

MA INTERIOR DESIGN
RONGBO FAN

CONTENTS

COMPRESSION ARTIFACT		3
DESIGN CONTEXT	<i>site analysis / issue / concept</i>	6
DRAWINGS	<i>plans / sections</i>	12
SPATIAL EXPERIENCE	<i>renderings / elevation</i>	18
PHYSICAL MODEL		24
END	<i>exhibition</i>	30



NEXUS

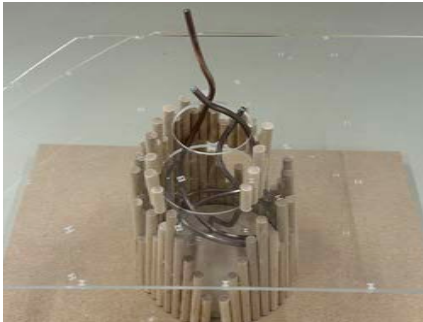
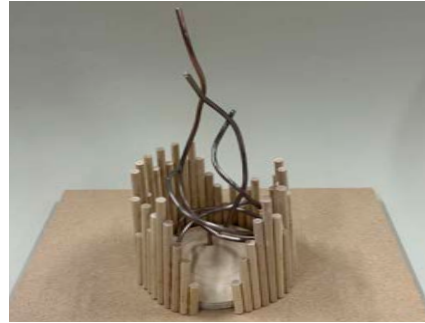
Derived from Latin *nectere* ('to bind, to weave'), evolved to signify a point of connection, belonging, a network, or an intersection of forces.

Compression Artifact



Phase 1 : Column Compression

The compression process began with a direct response to an existing load-bearing column on site—wrapped in fireproof foam and heavily worn by time. Rather than reproducing its exact form, I compressed its spatial logic, material condition, and symbolic role into a series of experimental constructs.



Phase 2 : Materializing History and Future

This phase explores how the column can evolve beyond structural support—through material experimentation, spatial reinterpretation, and vertical integration—into a social connector that links programs, people, and possibilities.

Phase 3 : Reflection on the Compression Artifact

This research journey exploring structural significance, material weight, and spatial rhythm into a single artifact. It became a connector linking floors, people and space. By rethinking the column's role, it becomes more than structure, generating opportunities for engagement, circulation, and collective experience.

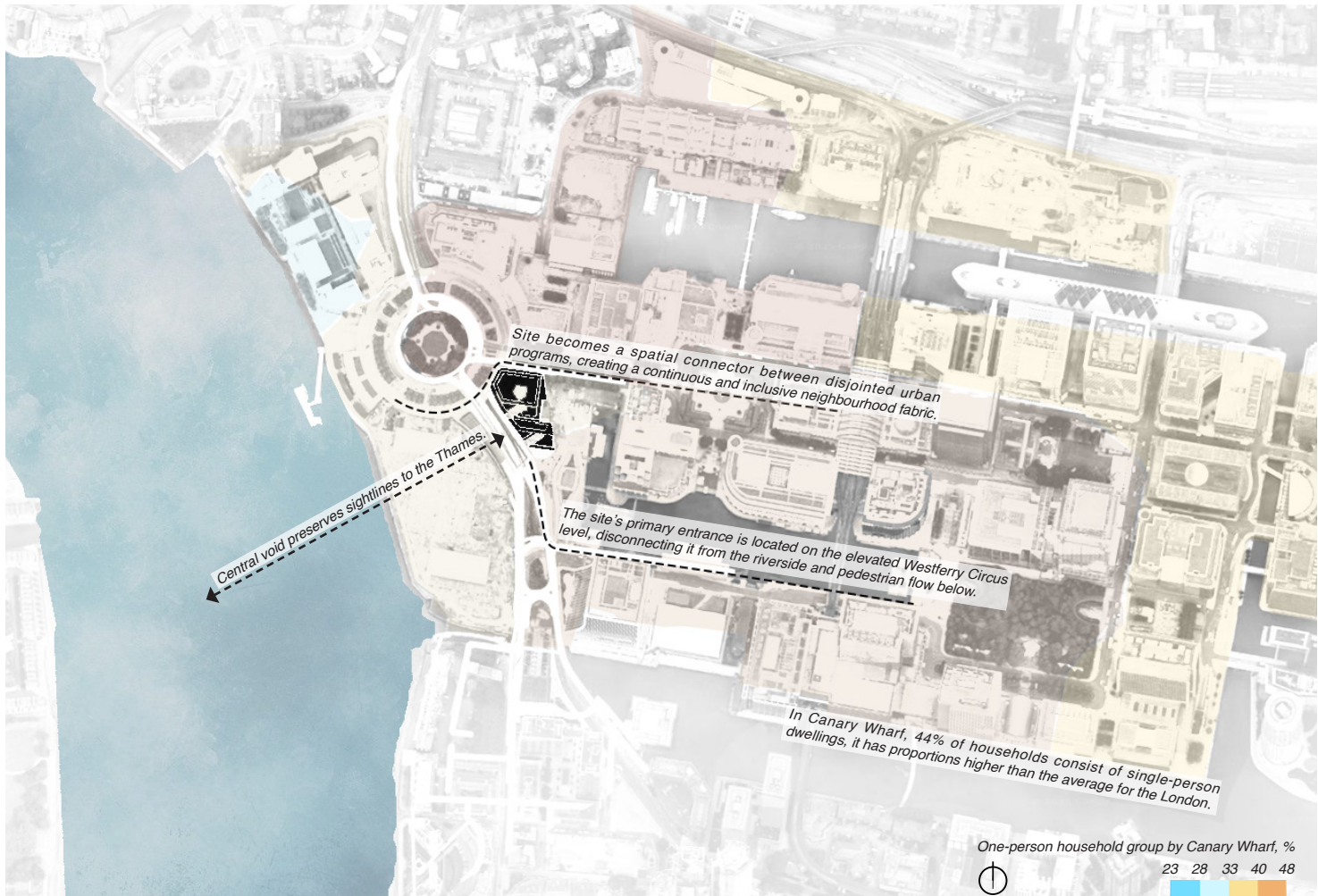
Design Context

The existing building is located at: 15 Westferry Circus, Canary Wharf, London, E14 4HD.

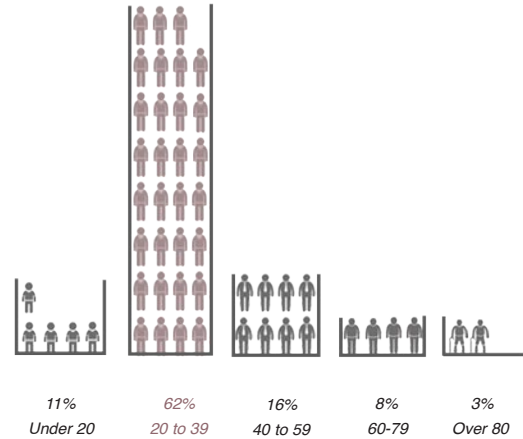
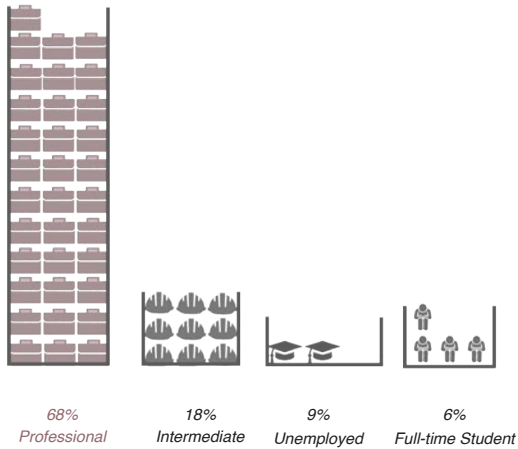
It was originally constructed in a postmodern style, with its primary purpose being to accommodate bank works and establish an office-centric environment.

It was originally constructed in a postmodern style, with its primary purpose being to accommodate bank works and establish an office-centric environment. However, as banks and other occupiers gradually leave Canary Wharf, building like Westferry Circus are now searching for new purposes.

My project aims to create a symbiotic living community that responds to the locality of Canary Wharf, enhancing quality of life and supporting the psychological wellbeing of those living in the city's economic core through thoughtful spatial design.



CANARY WHARF CHALLENGES

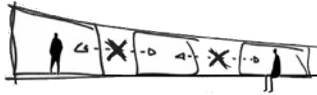


Data from Crystalroof shows that poor indoor environments and affordability barriers lead to low housing quality, high rents, and unaffordable mortgages.

The main users are young professionals—socially active and community-minded. Social spaces and coworking are key to fostering strong connections.

With low geographic deprivation, the site is highly accessible, ideal for creating vibrant, shared neighborhoods that connect residents with the wider city.

VIBRANT COMMUNITIES



URBAN ISOLATION

In Canary Wharf, 44% of households consist of single-person dwellings. This demographic trend is linked to increased social isolation and loneliness.

Current housing typologies often reinforce separation rather than connection.



SHARING ECONOMY

This project brings residents together through shared infrastructures and adaptable living models.

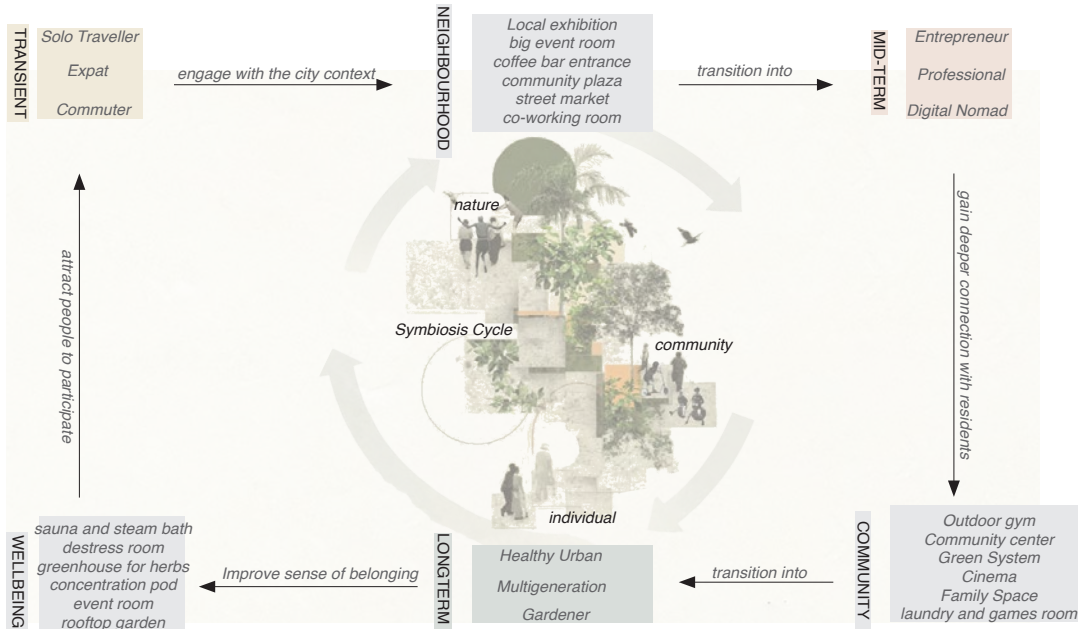
It aims to establish a new urban sharing economy, where connection and community are embedded in spatial design.



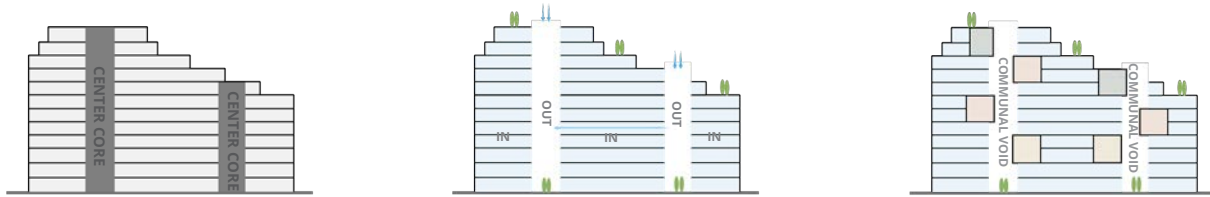
INTEGRATED LIVING

The proposal introduces a living system that integrates short- and long-term residents through communal spaces and programmatic overlap.

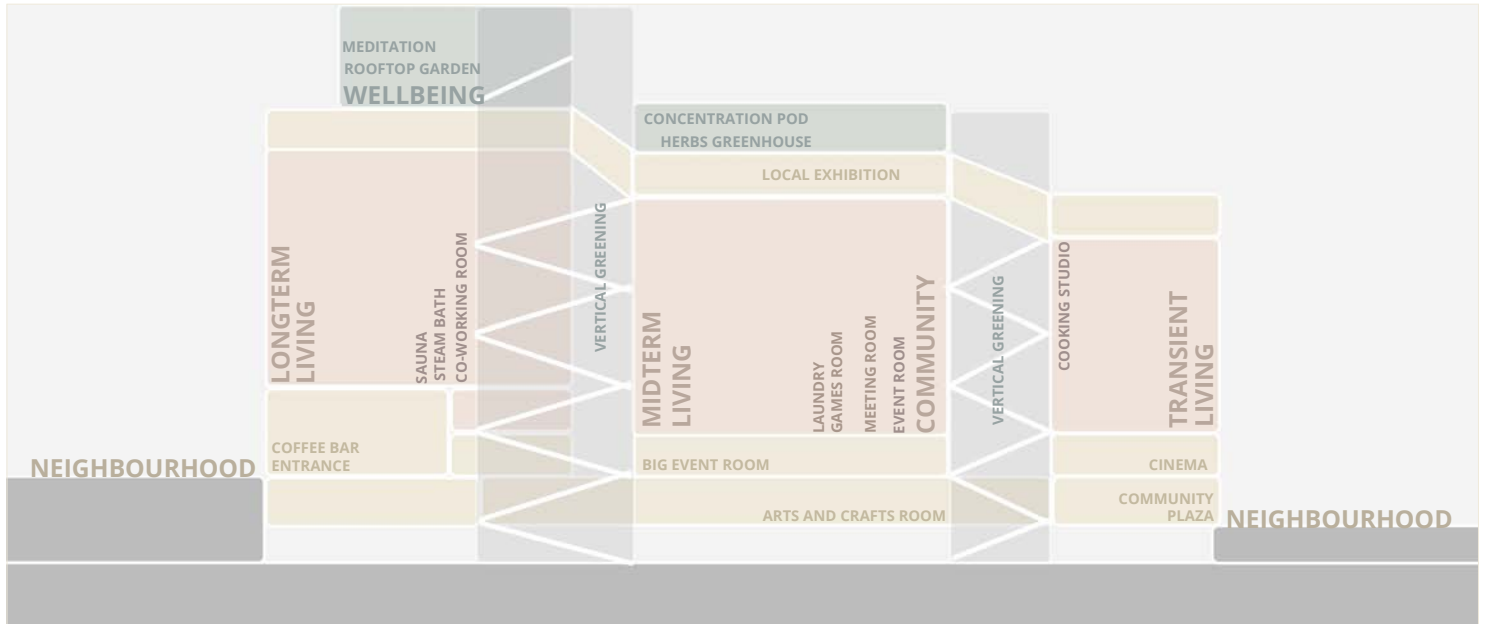
It strengthens bonds between people, nature, and the city, redefining what it means to live together in Canary Wharf.



SPATIAL SYSTEM



The site was originally a closed-off office building, disconnected from its surroundings. By carving a large central void, we introduced natural ventilation, daylight, and outdoor-like public spaces across multiple floors, transforming an isolated structure into a vertical, open community.



EXPERIMENTAL MODEL 1:150



The building is divided according to the sun's orientation into three separate buildings to ensure privacy, and then connected by bridges to increase interaction.

Connect the east opening and retain the west opening to maximize views and views of the Thames

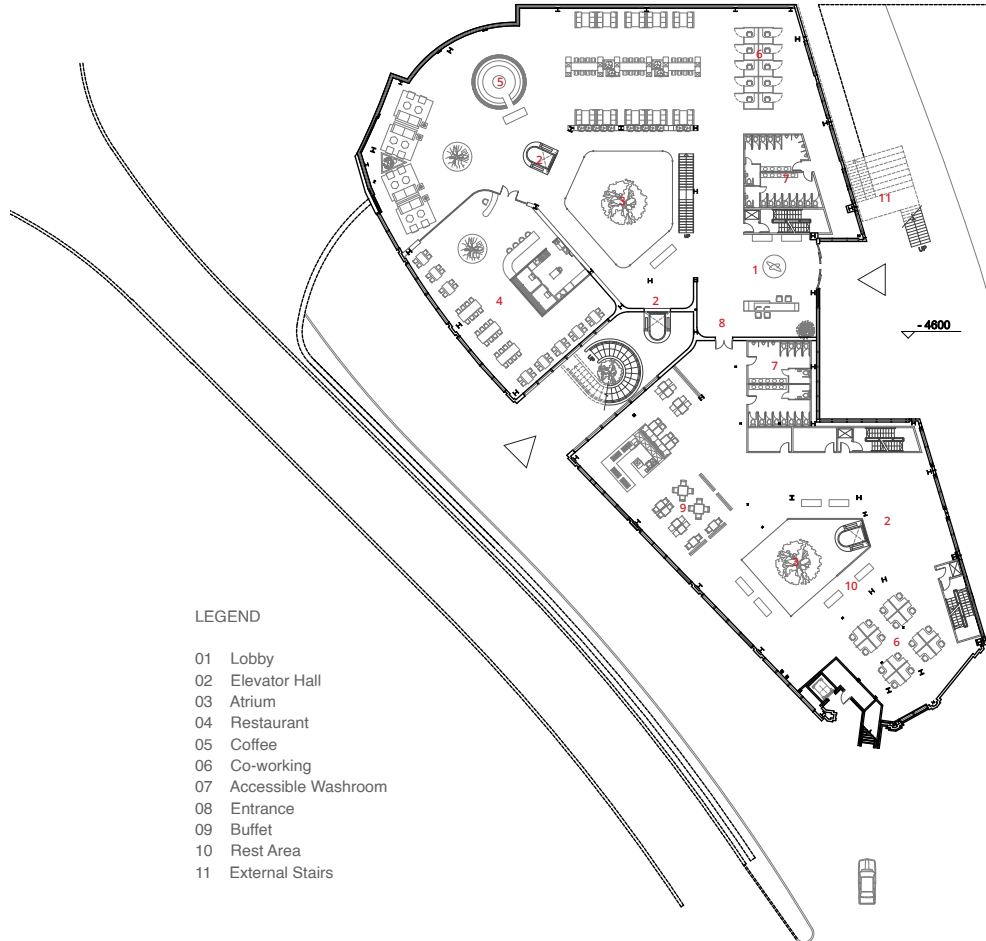
Drawings

NEXUS integrates short-term, mid-term, and long-term living through vertical layering and zoned spatial organization.

The design strategy focuses on multiple entrances, shared living atriums, and an activated waterfront interface.

Carefully planned circulation routes respect the varying lifestyles and rhythms of different residents, ensuring both privacy and opportunities for interaction.

±0.000



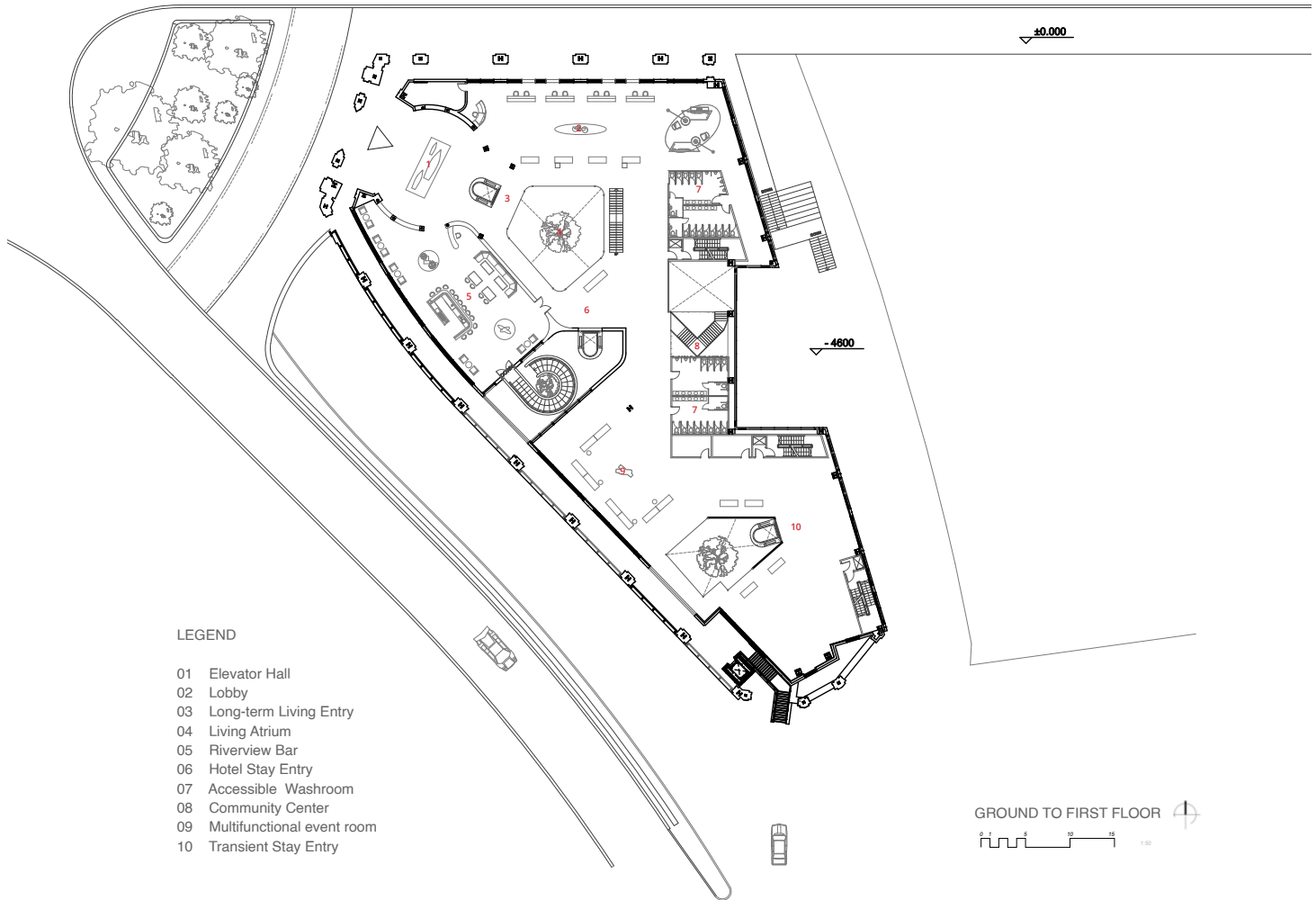
-4600

LEGEND

- 01 Lobby
- 02 Elevator Hall
- 03 Atrium
- 04 Restaurant
- 05 Coffee
- 06 Co-working
- 07 Accessible Washroom
- 08 Entrance
- 09 Buffet
- 10 Rest Area
- 11 External Stairs

LOWER GROUND FLOOR







LEGEND

- 01 LIVING ATRIUM
- 02 LONG-TERM HALL
- 03 ROTATING ROOM
- 04 SOCIAL CORRIDOR
- 05 COMMUNITY CENTRE
- 06 HOTEL ROOM
- 07 THE THAMESLIGHT
- 08 COOKING STUDIO
- 09 WASHROOM
- 10 VIEWING AREA
- 11 SANITATION LOUNGE/CHAT ZONE
- 12 TRANSIENT STAY

SECOND TO FOURTH FLOOR



THREE WINDOW TYPOLOGIES

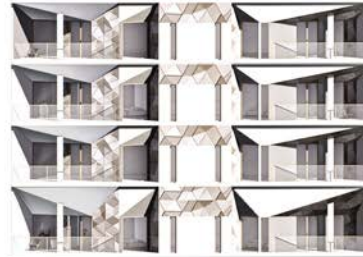
The facade of Nexus functions as a social filter and visual marker of living patterns. It enhances the connection between inside and outside, softens boundaries, and expresses an open, inclusive community.

Three distinct window types correspond to three dwelling modes, each reflecting different social behaviours and levels of permanence.



LONG-TERM LIVING

Fiber cement panels materialises the transitional layer, durable, stable, calm.



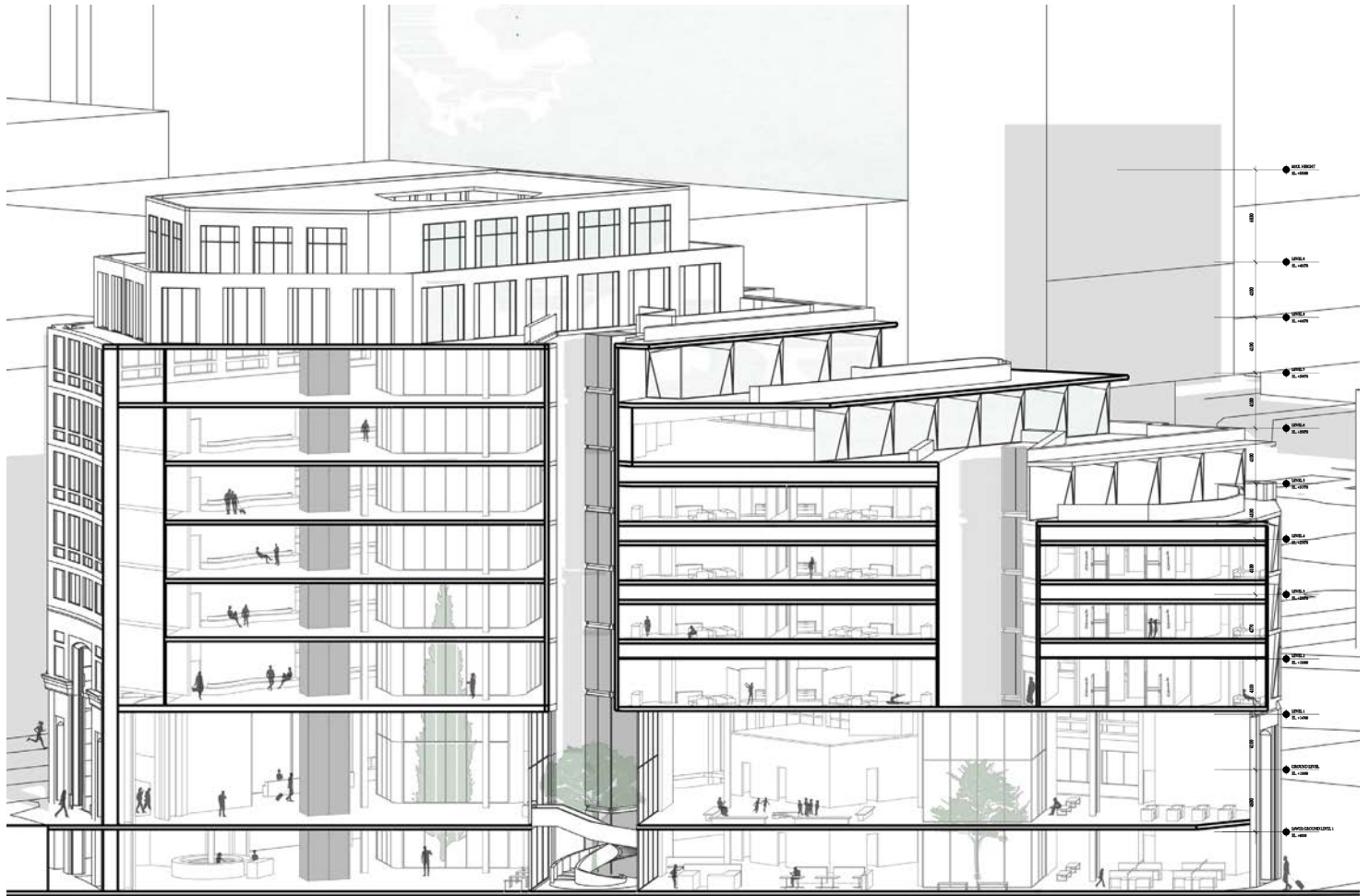
MID-TERM STAY

Glassfibre reinforced concrete materialises the transitional layer, its faceted geometry strengthens facade identity



TRANSIENT STAY

Brushed metal reflect the transient nature clean, minimal, and easily maintained.



WEST SIDE SECTION

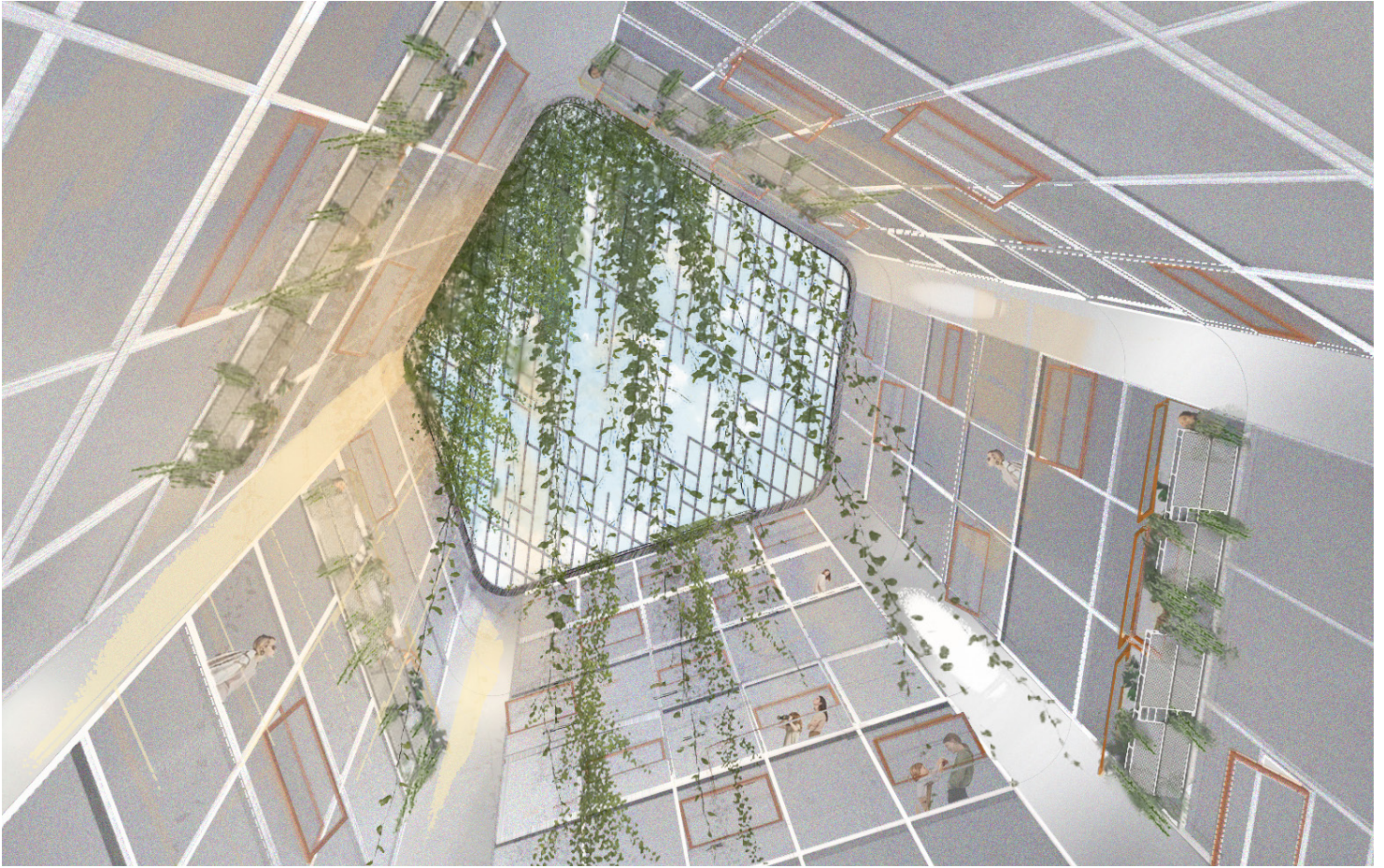
Spatial Experience



The Nexus exterior volumes of Transient Stay and Hotel Stay are suspended above an L-shaped podium that integrates Long-term Living and Commercial functions.



The London Marathon is in progress at the main entrance, with residents watching from their balconies and long-term residents participating as volunteers.

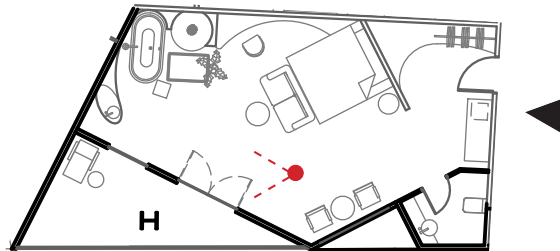


In this breathing atrium, inhabited with traces of life: air, light, moisture, and memory. Suspended vines respond to this rhythm, as time markers that grow, extend, and sway...

THE THAMESLIGHT ROOM

Digital nomad new to Canary Wharf, shifting from short-term stay to mid-term living, watching the Thames view after settling in.

A riverside room designed as a quiet ritual space where light, material, and habit come together. Whether seated at the desk in quiet reflection or stepping onto sunlit stone, the guest is surrounded by a sensory of belonging.





Physical Model

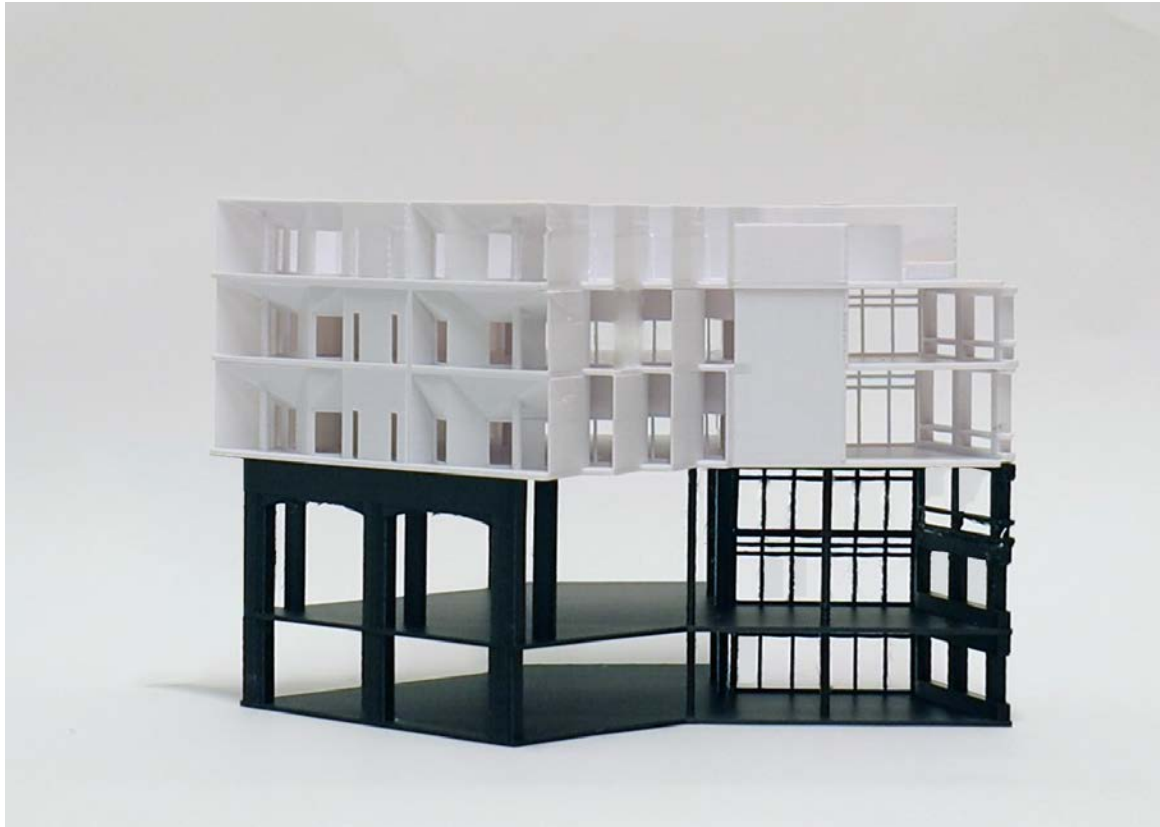
The contrast between black and white highlights the relationship the layered programmatic structure between public interaction and differentiated residential typologies.



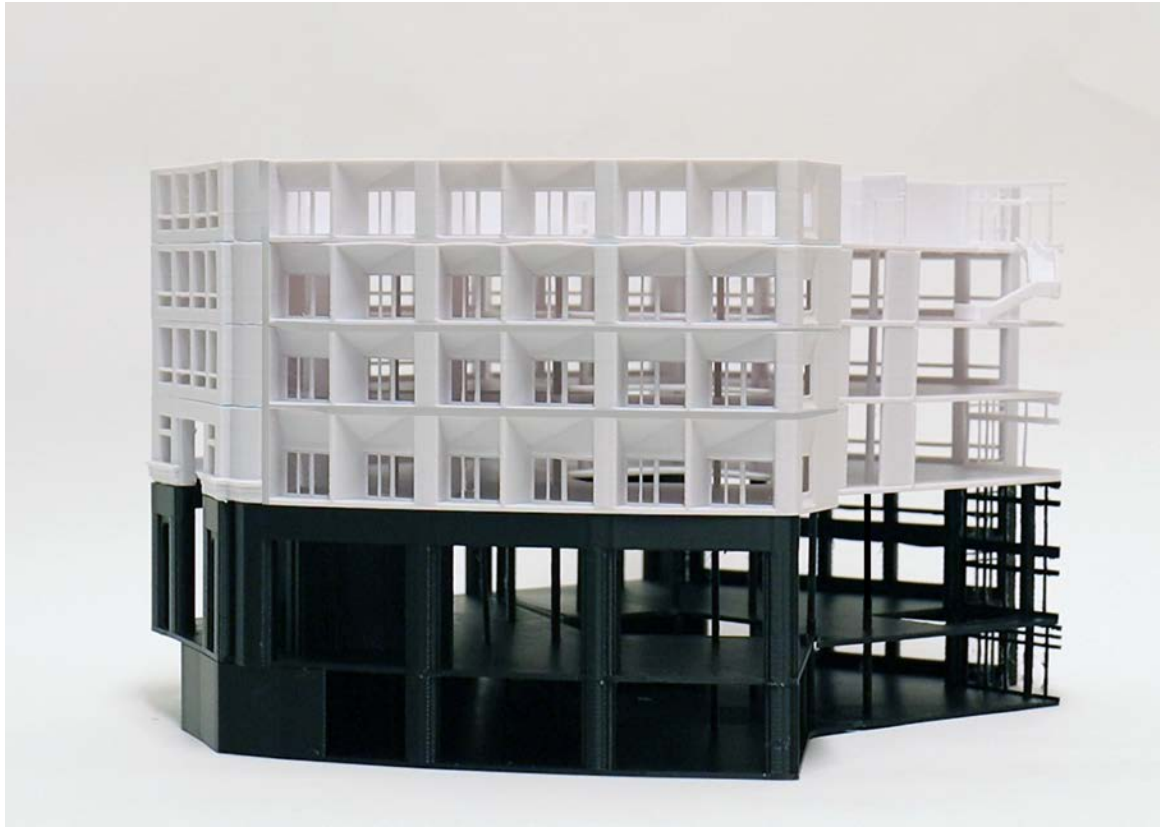
TRANSIENT DWELLINGS



MID-TERM DWELLINGS



MID-TERM STAY ANGULAR BALCONY



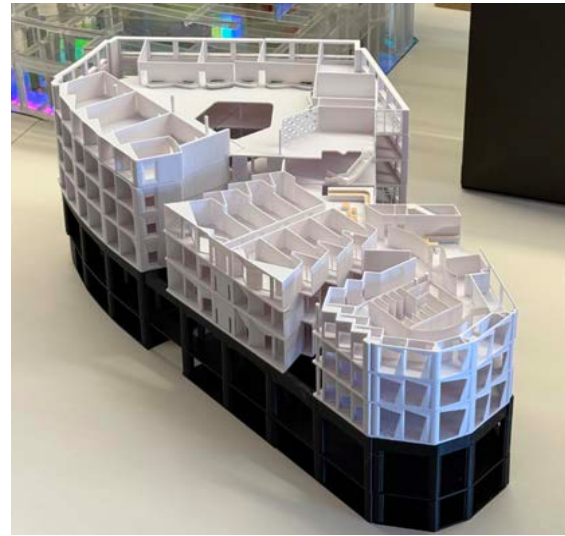
LONG-TERM DWELLINGS



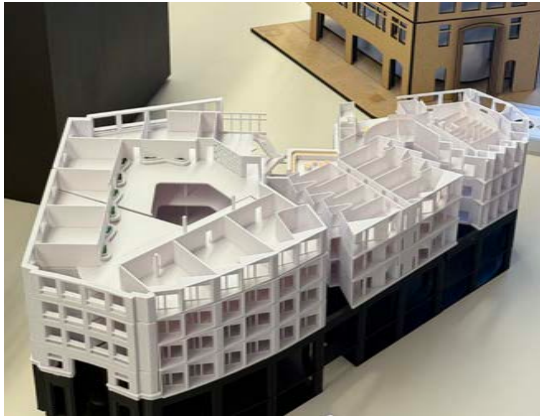
"NEXUS"



RCA2025 superREUSE Postgraduate Show



Nexus Model



Canary Wharf Show

END