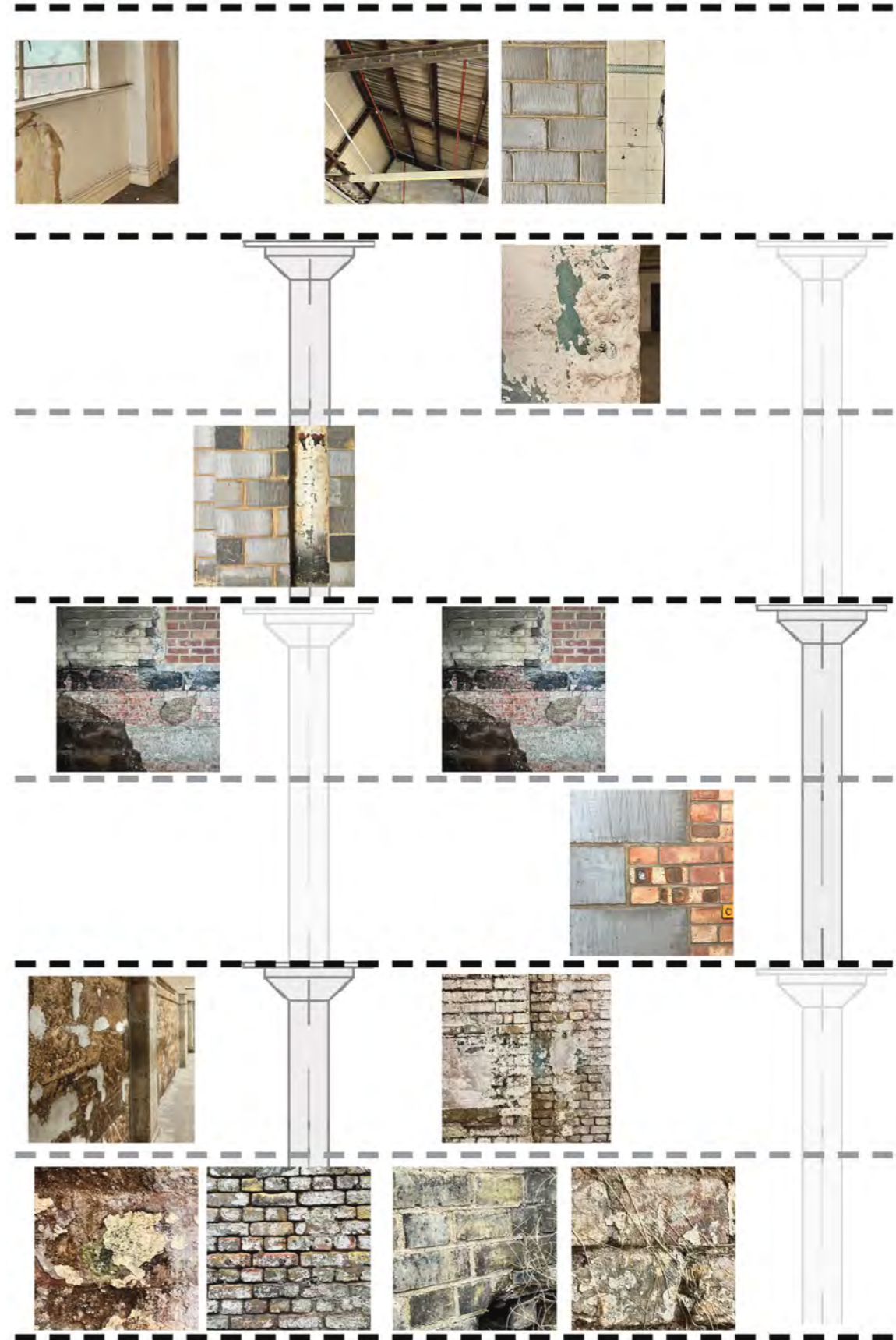


**P O R
I O T
L O F**



Exterior elevation made up of London stock brick infill walls looks almost modular with the RCC framing structure. Weathering effects due to rain and heat are seen along the facade creating a palette of ochre hues.

Through the Levels - Interior Wall Texture Mapping

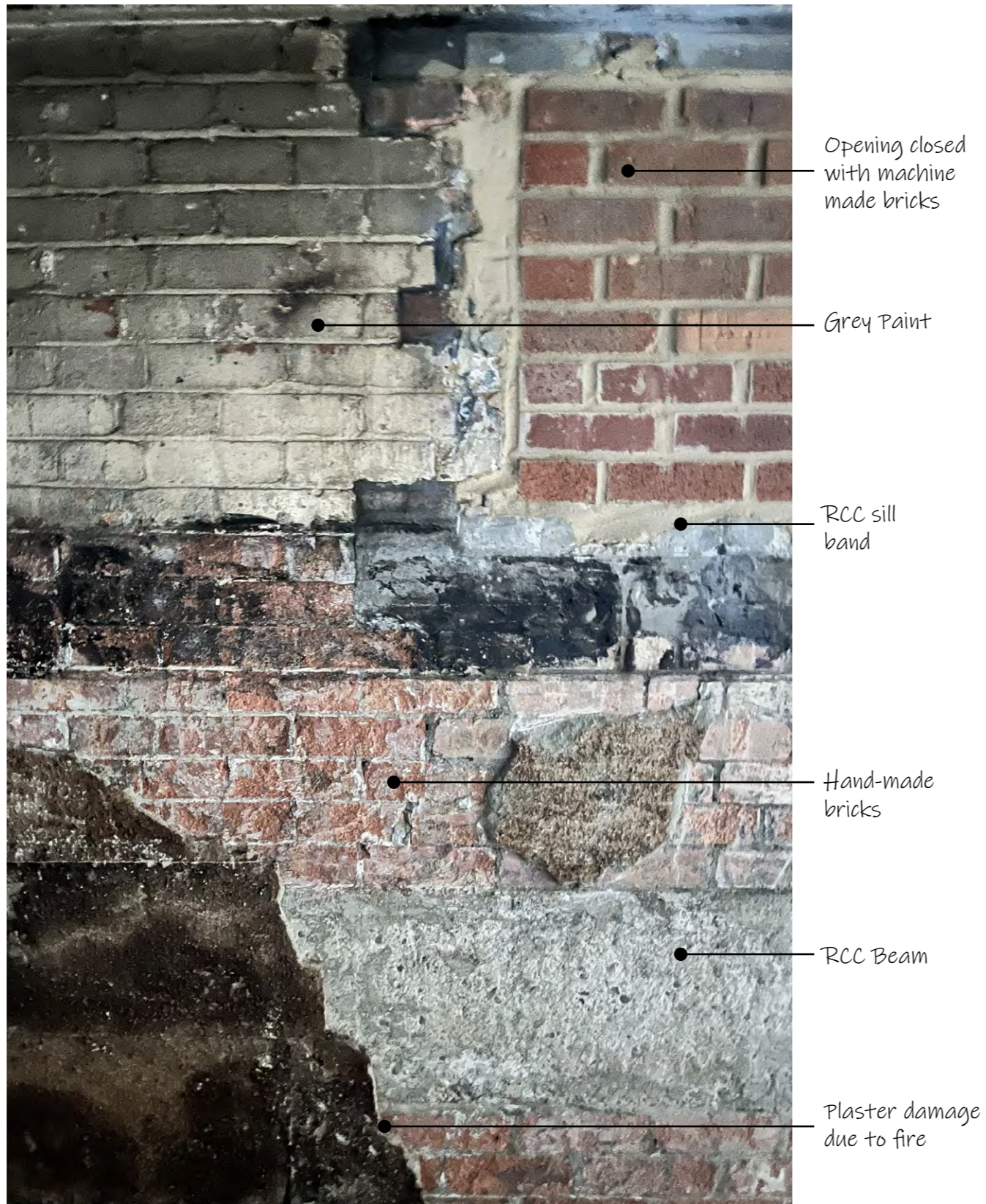




Exploring the effects of weathering by forming layers on different materials like metal, cork, plaster and moss by casting a cube.



Creating a 'space' using the photographic documentation of unintentional patterns and textures on the ceilings, vertical surfaces and flooring.



The different layers of materials from the handmade bricks to the machine made ones in the upper right corner with plaster and paint as a finishing material and the effects of the fire on them create a mesmerizing pattern on the walls of the factory building.



Analyzing the different layers of materials that tell a story of the **timeline** of the building.



Silent Narratives: The Living Archive of Textures

The compression artefact is a fusion of unintentional patterns interwoven with intentional ones, resulting in a mesmerizing tapestry of textures.

These textures and patterns are transposed onto the elevation of the seven-story factory building, creating a visual narrative that echoed the history and resilience of the structure.



Interior Elevation



Exterior Elevation



The elevations act as a palette to create intentional patchwork and patterns on the ground. This acts as an interactive element, offering the flexibility to be interchanged, **allowing for the continual creation of new narratives within the evolving tapestry of the site.** Thus, the artefact acts as an invitation to engage in the ongoing dialogue between history, nature, and intentional design.

The **mosaic of textures** within the compression artifact evokes the **rich tapestry of textiles**.

Recognizing East London's extensive textile heritage, 23-26 Gillender Street emerges as an apt site to celebrate this legacy, seamlessly connecting it to the present while envisioning future innovations.



Threadscapes

Textile & Industry Museum and Innovation Center



14th
century

Flemish artisans set up dye works on the River Lea

17th
century

Huguenots arrived in Spitalfields bringing their skills with silk-weaving, lace-making, fan-making

18th
century

Factories and workshops were established, marking a shift from traditional handloom weaving to more mechanized processes

19th
century

'Rag Trade' began in East End with arrival of Jewish families. Bangladeshi families set up small textile businesses and workshops

20th
century

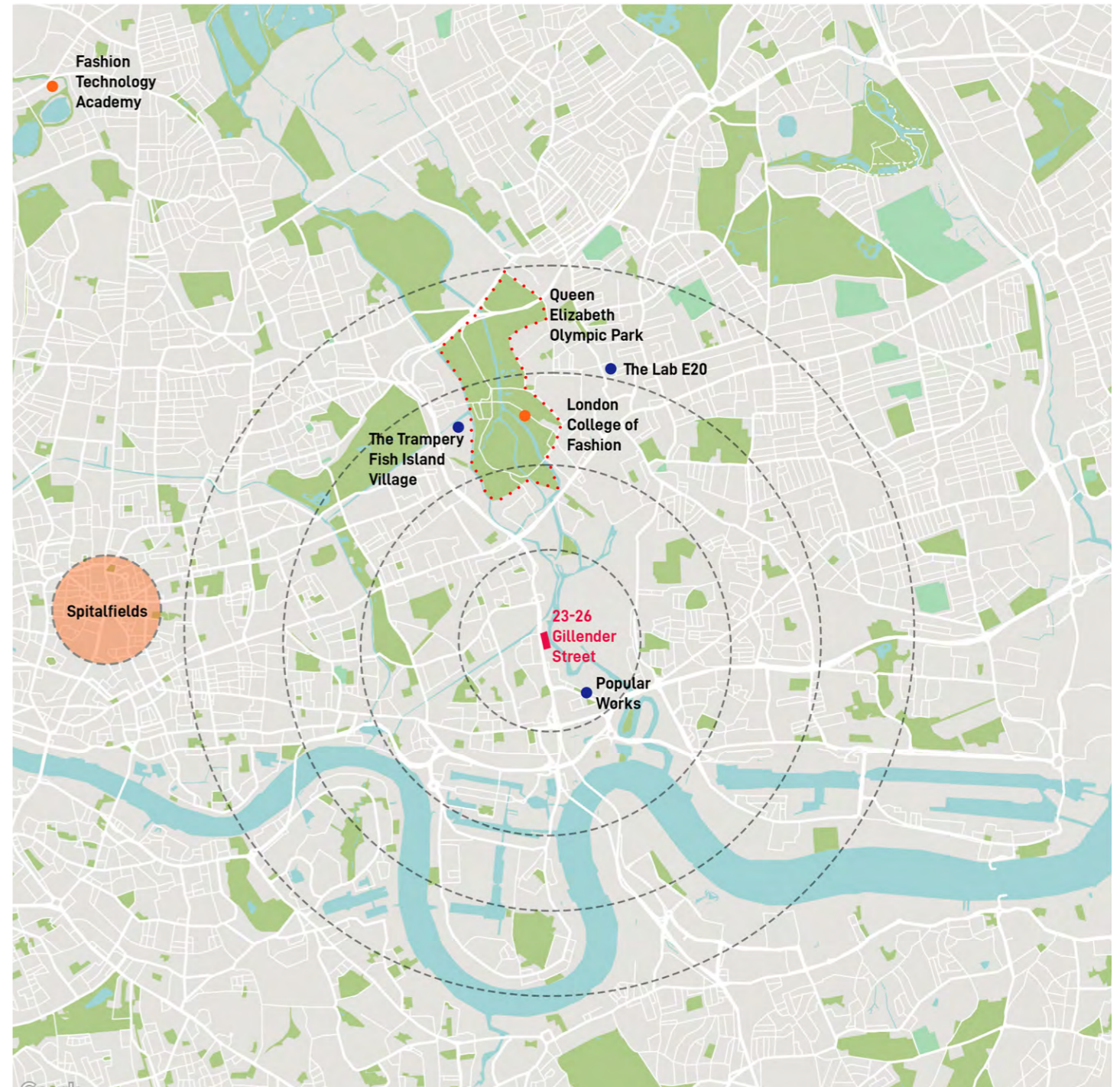
East End becoming a hub for tailoring and garment production. The area was characterized by a multitude of small workshops and sweatshops.

Post WW II, decline in traditional manufacturing due to global competition, changing consumer trends, and labor strikes

21st
century

Area became known for smaller, specialized producers and designers

East End becoming a hub for creative industries, with an emphasis on sustainability and locally-produced fashion



Mapping of Textile and Fashion Hubs

Spatial Program

LEARN



Textile Museum

COLLABORATE



Gallery & Exhibition

MAKE



Workshops

INNOVATE



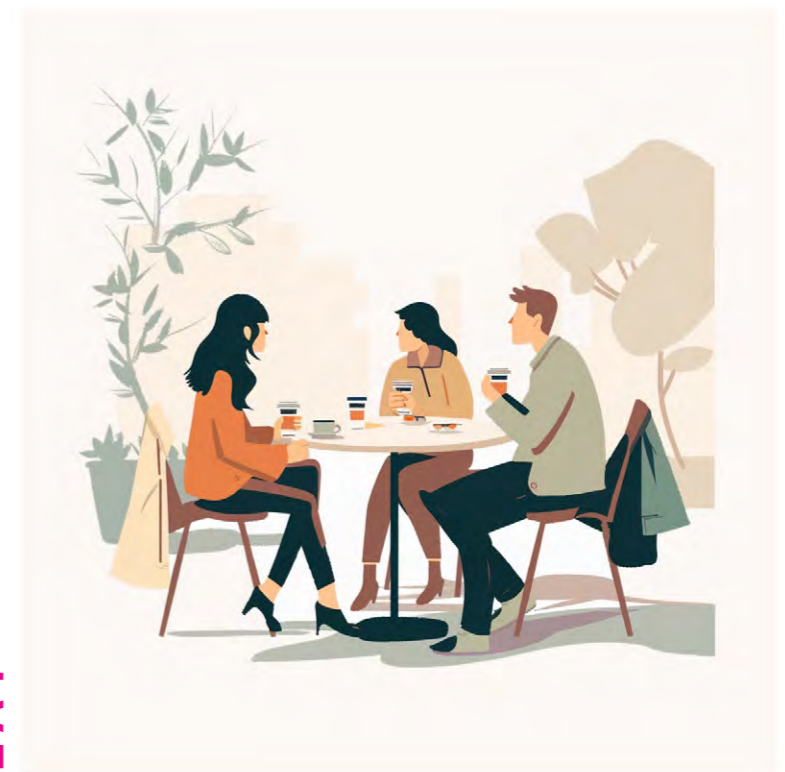
Textile Innovation Lab

RECYCLE



Recycling Center

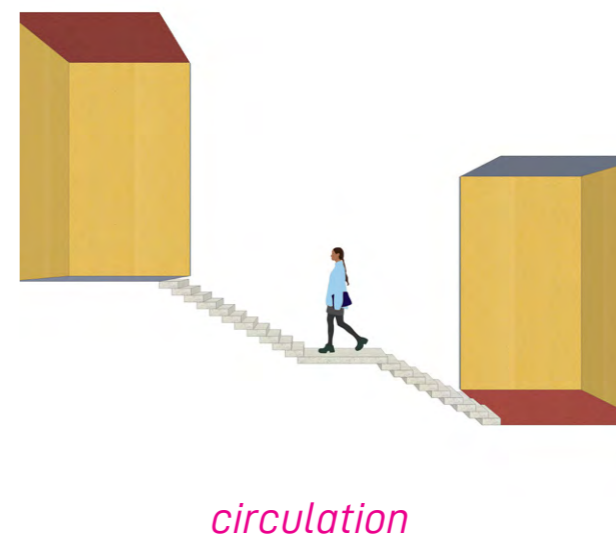
EAT



Outdoor Cafe

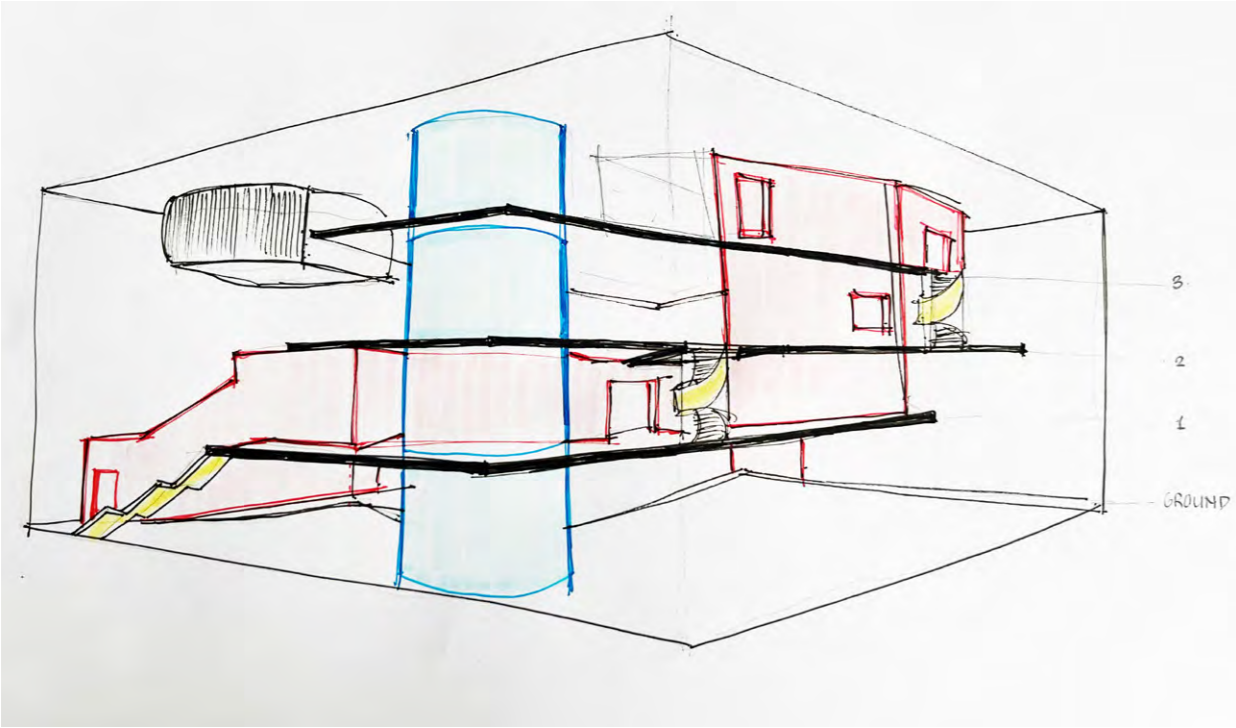
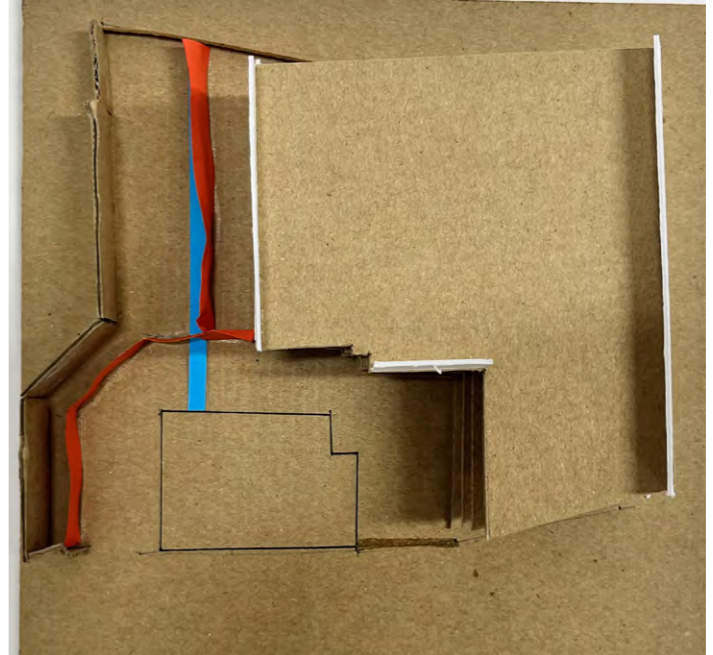
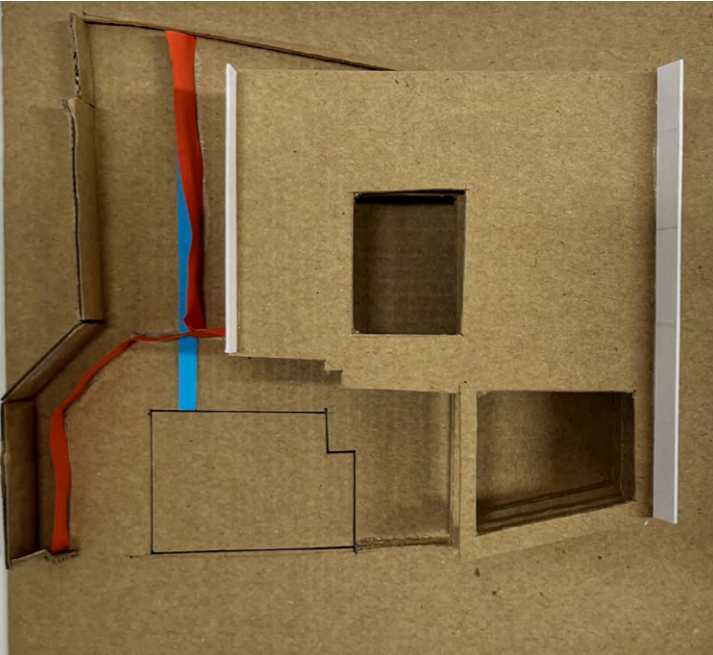
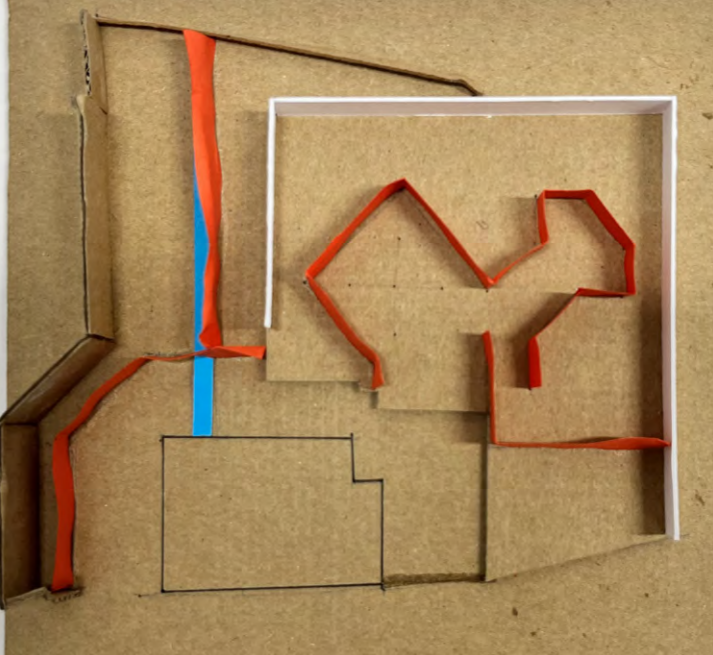
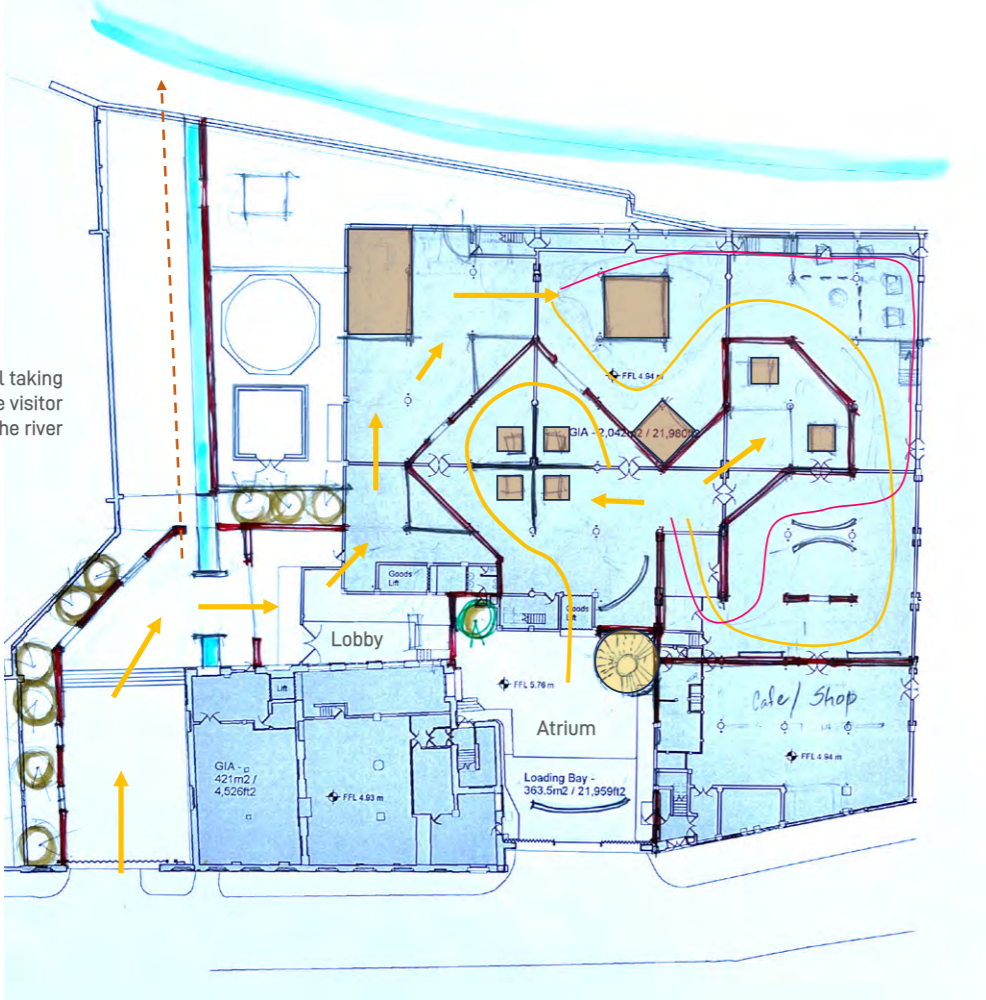
Design Concept

*a thread weaving along the
floors of the factory building*

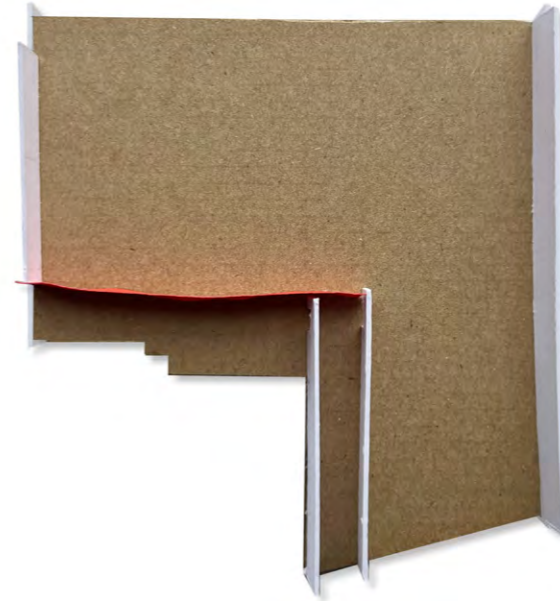


Design Development

Water channel taking the gaze of the visitor towards the river



Creating voids inside the Factory Building



Ground Floor



First Floor



Second Floor



Third Floor



Ground Floor



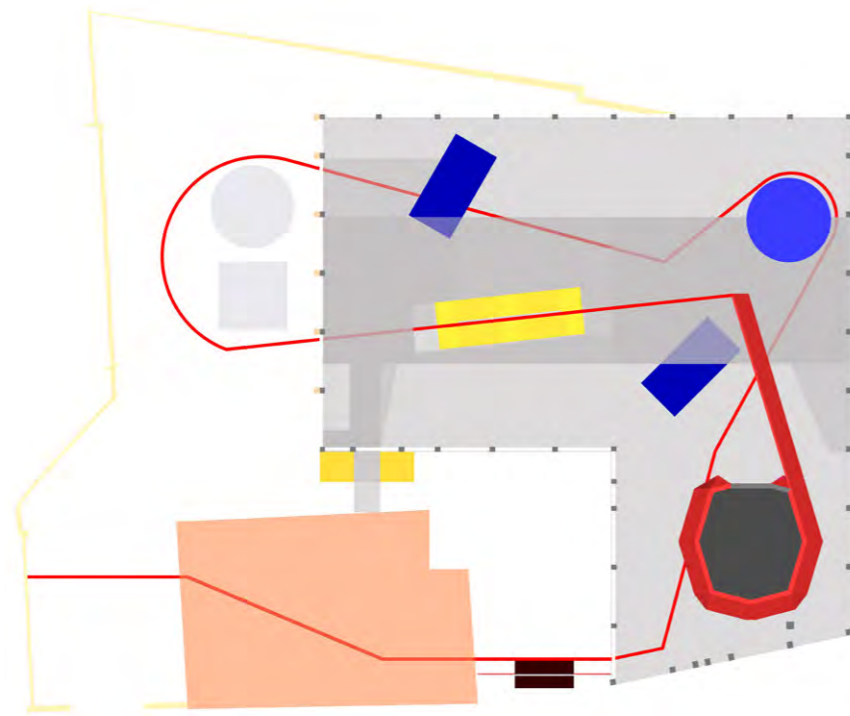
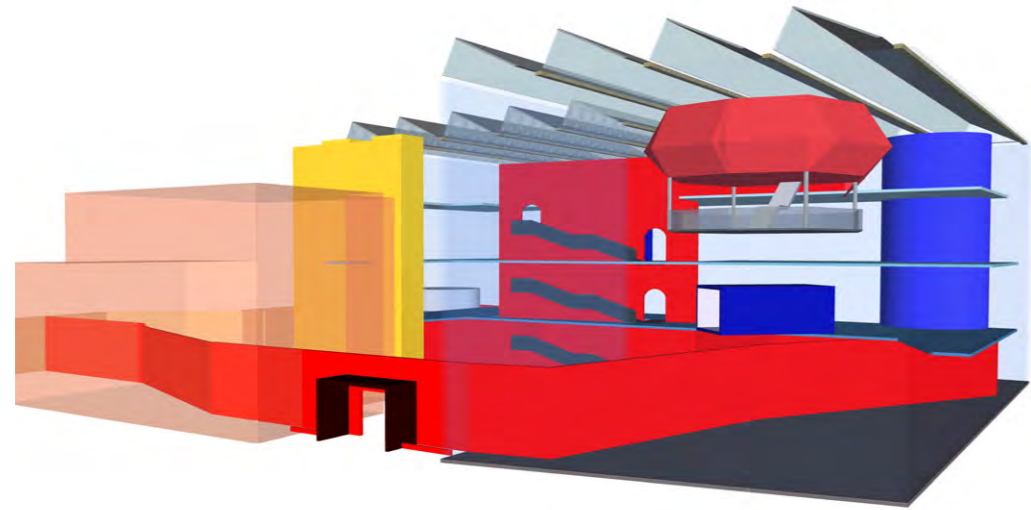
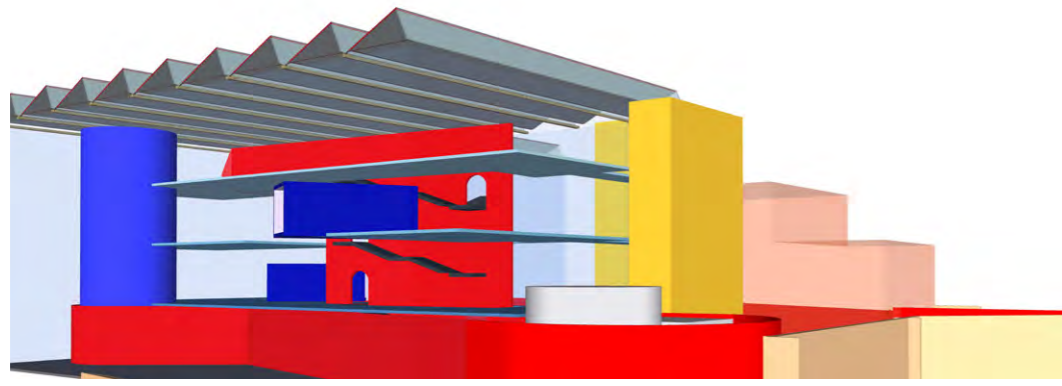
First Floor



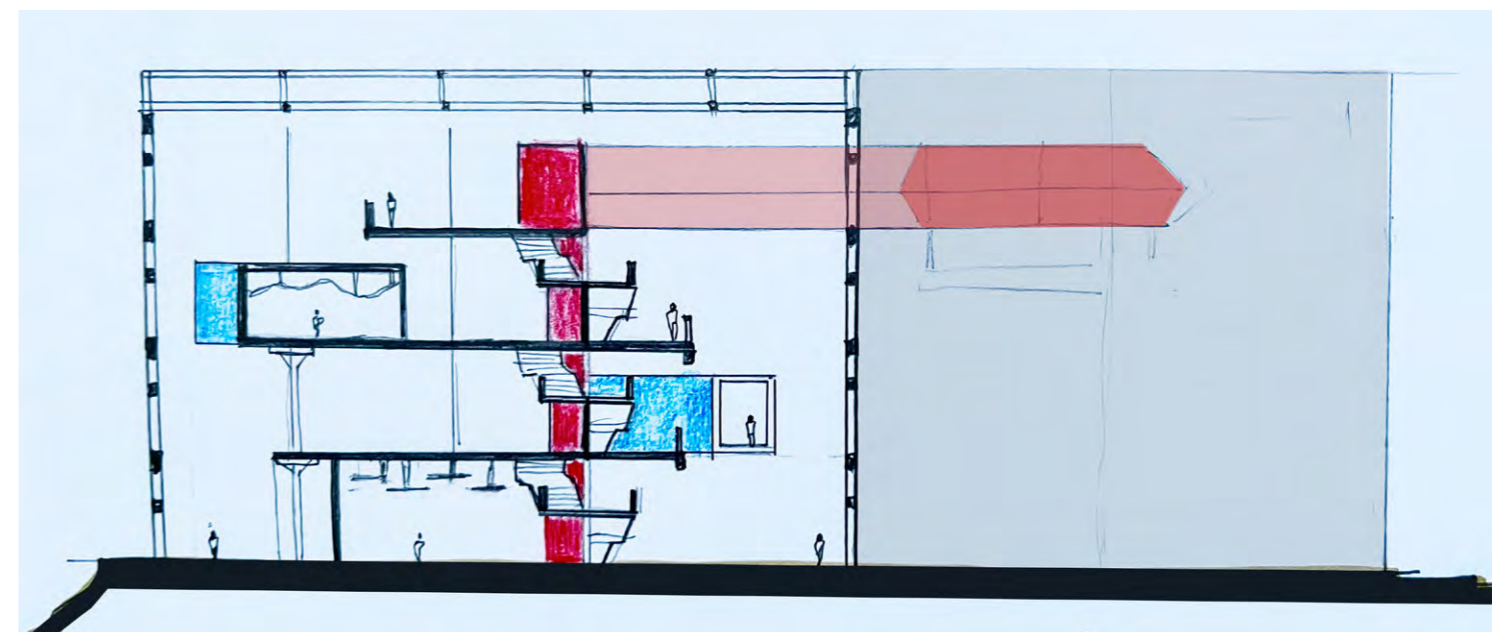
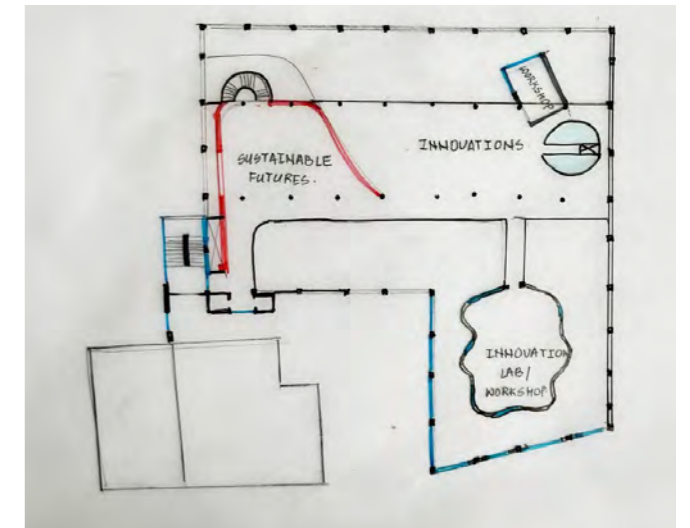
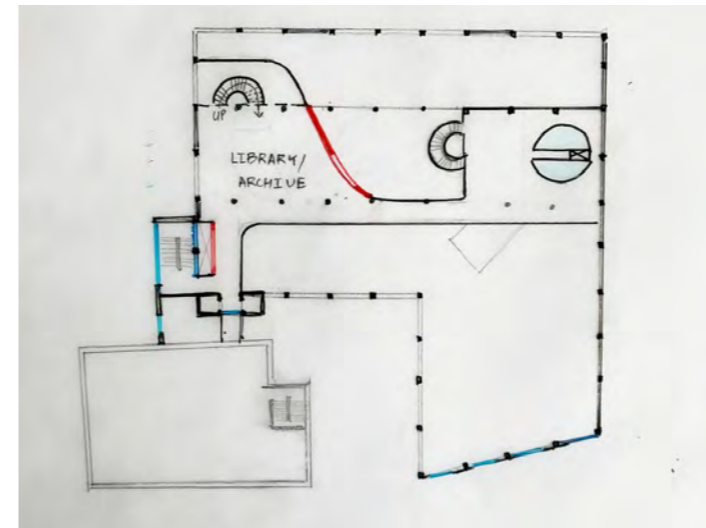
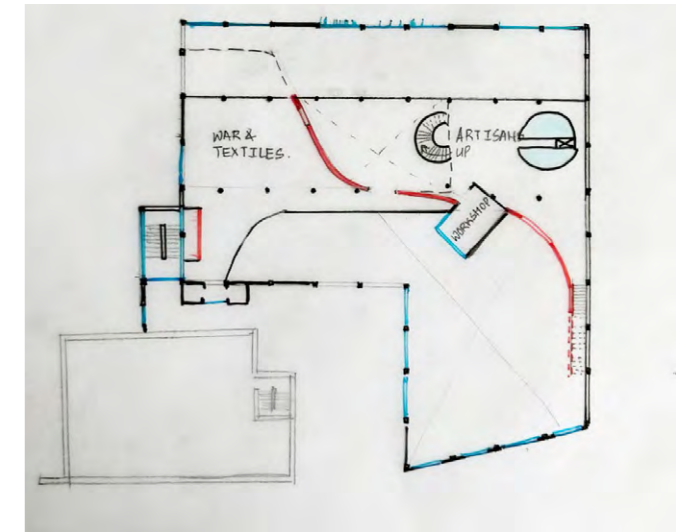
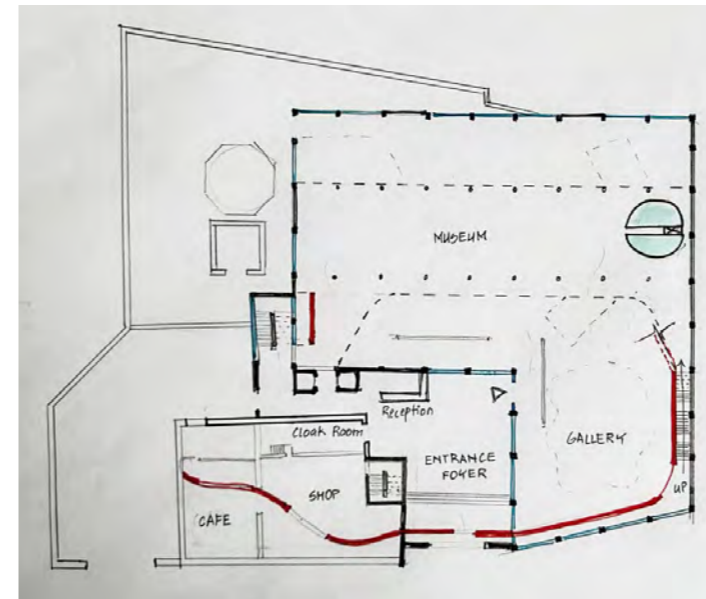
Second Floor

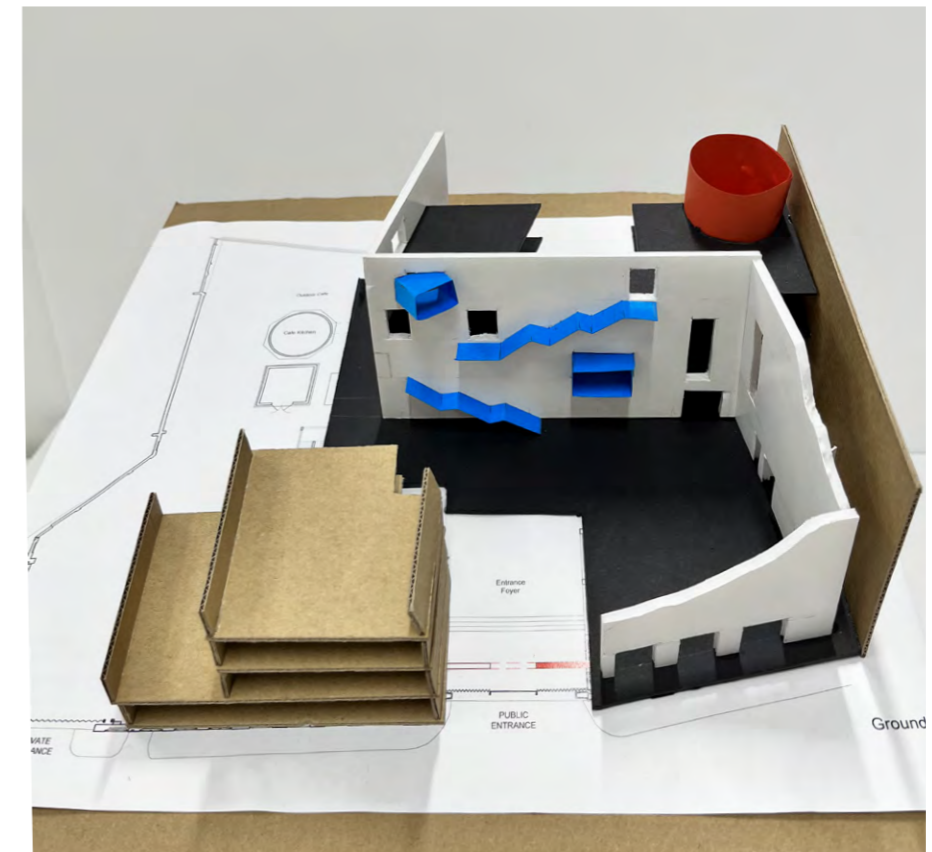
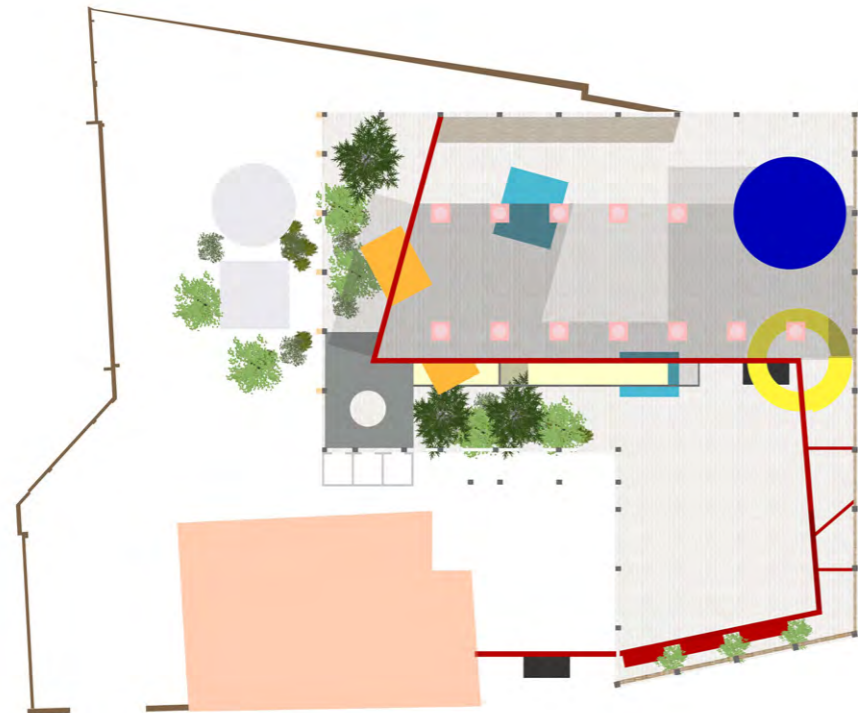
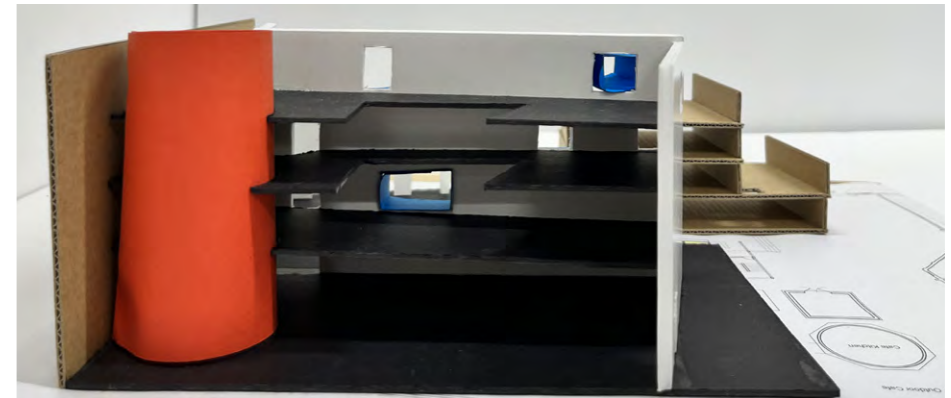
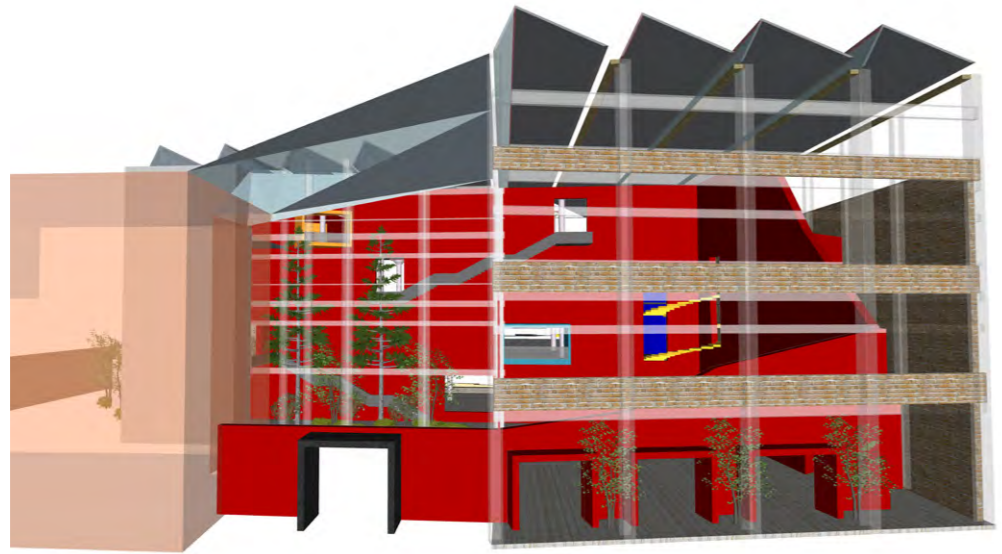
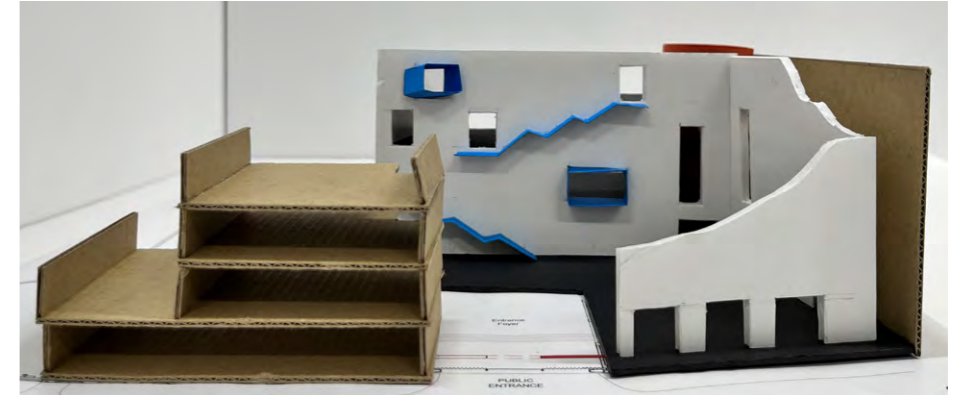
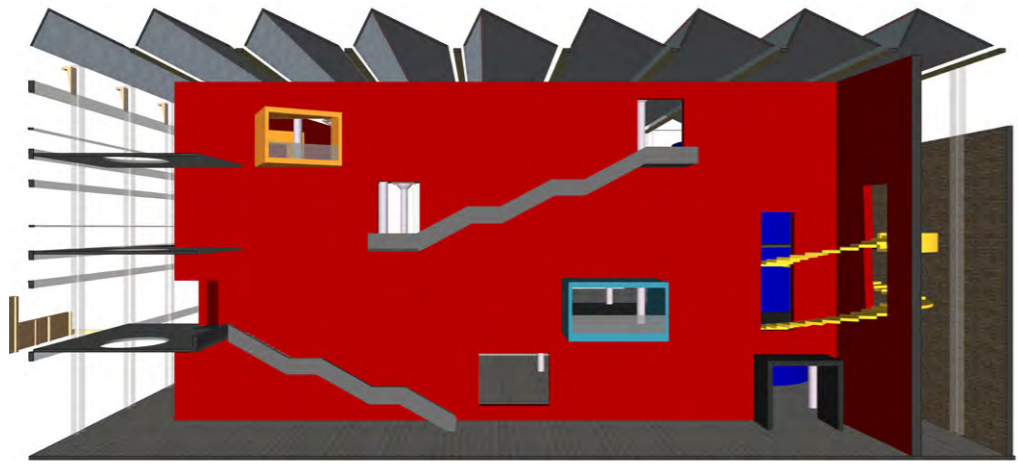


Third Floor



The Wall weaving through the floors



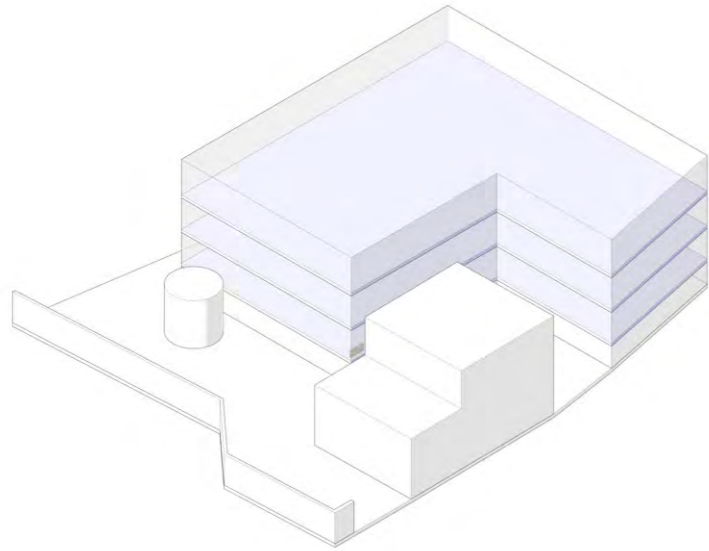


The Wall dividing public and semi-public zones

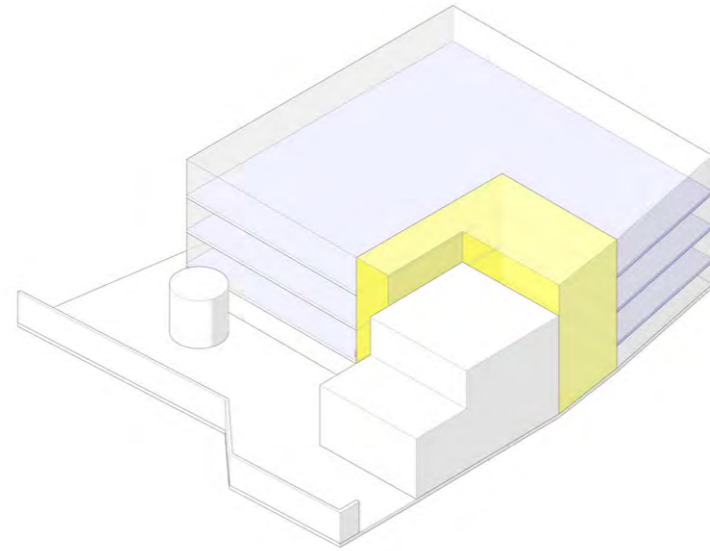
Interior Explorations with **MIDJOURNEY**



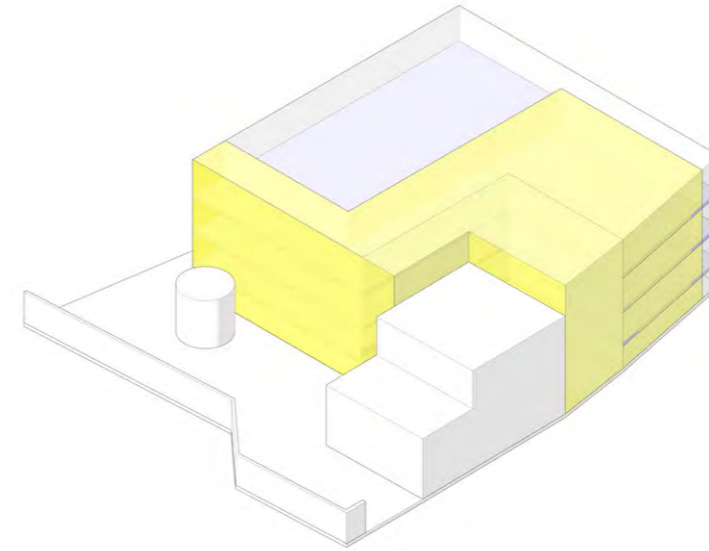
Design Strategy



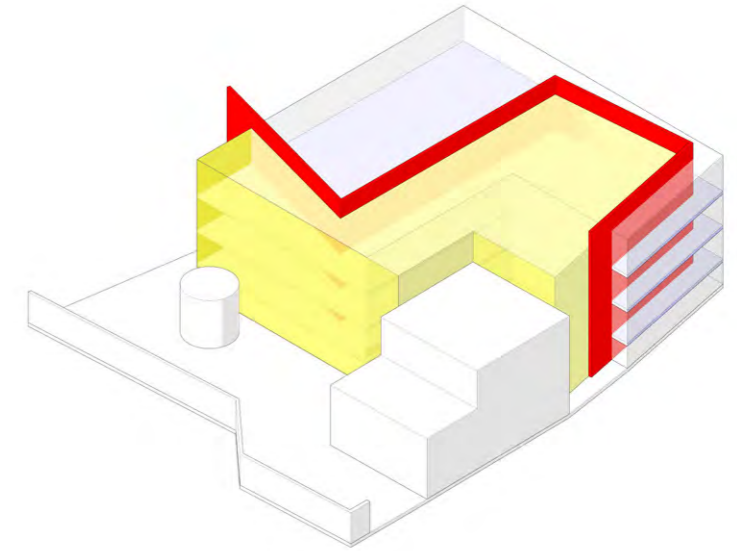
Existing site condition with floor plates



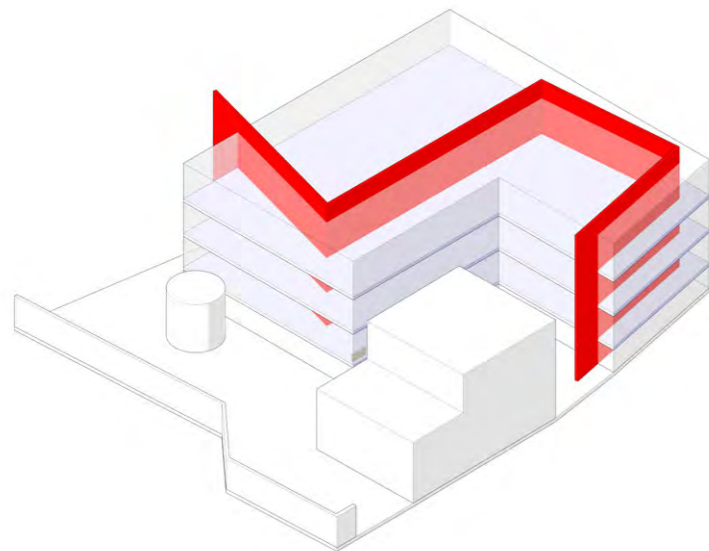
Existing public (transition) space



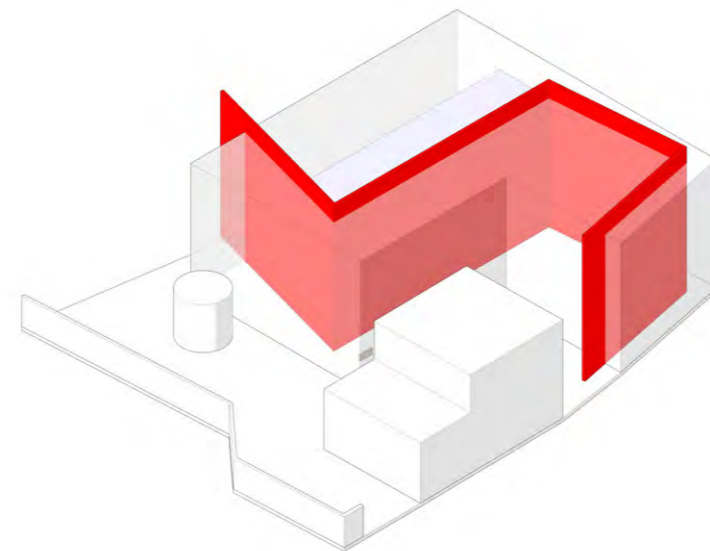
Extending the public space into the factory building



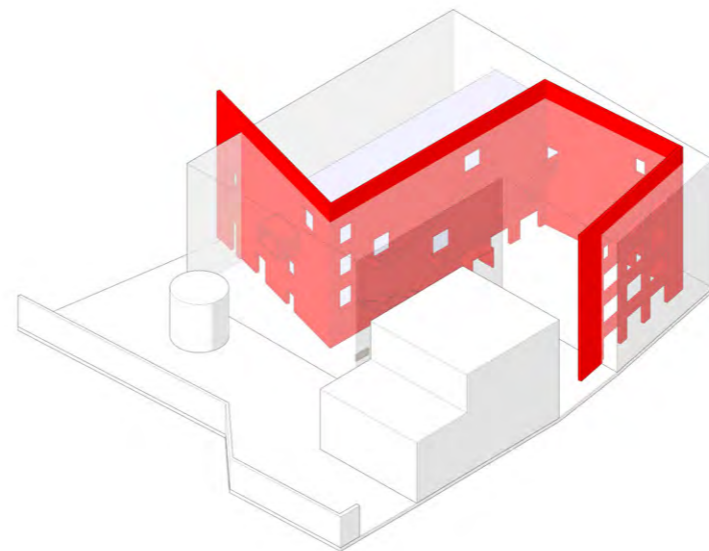
Segragating the public and semi public zone by creating a 'Spine Wall'



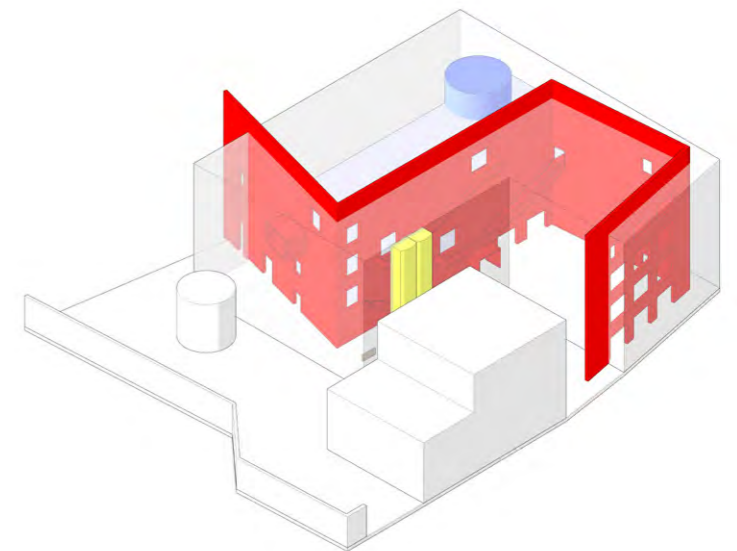
The Spine Wall overlapped with the existing floor plates



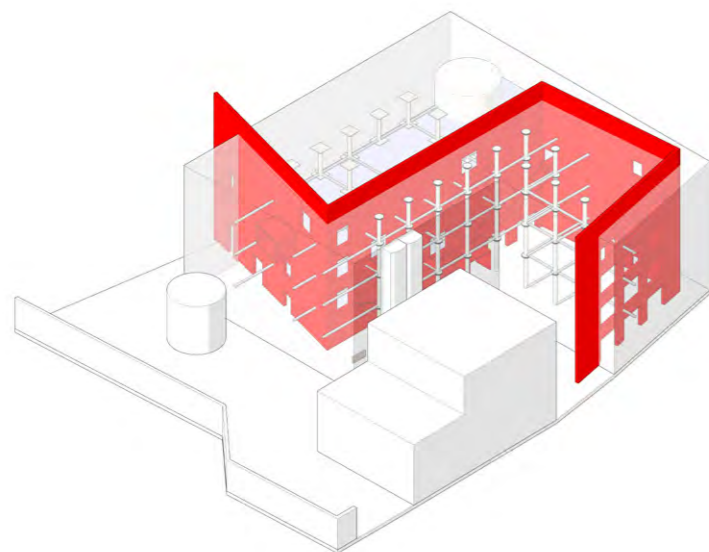
Creating voids in the interior of the factory building



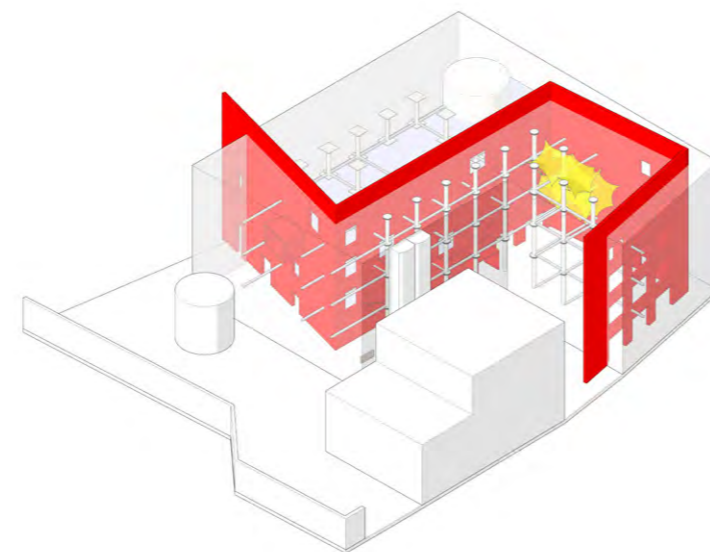
Spine Wall weaving people along the floor plates of the Museum



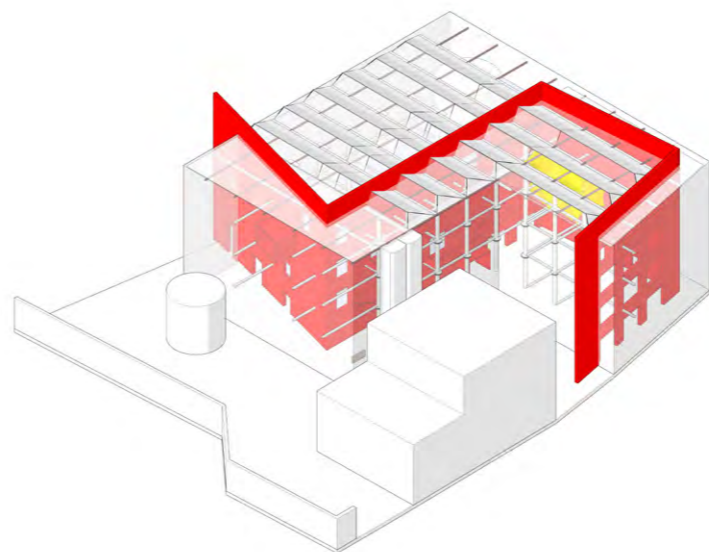
Adding the ciculation and service cores



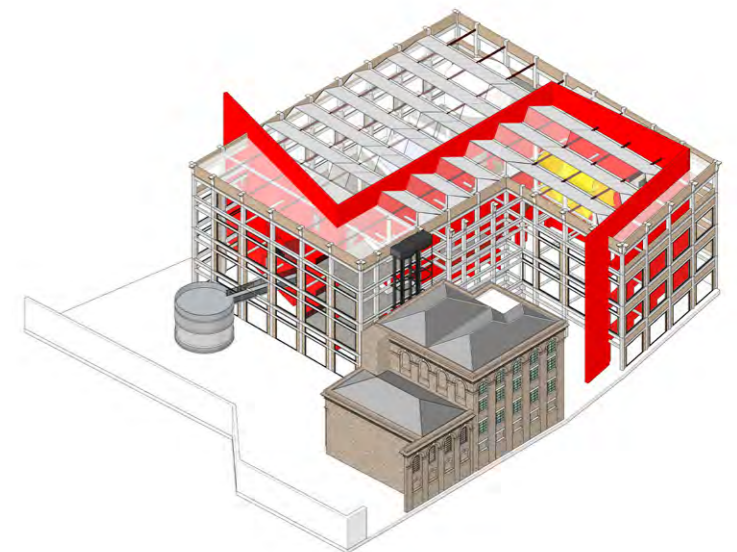
Overlapping the existing structural grid



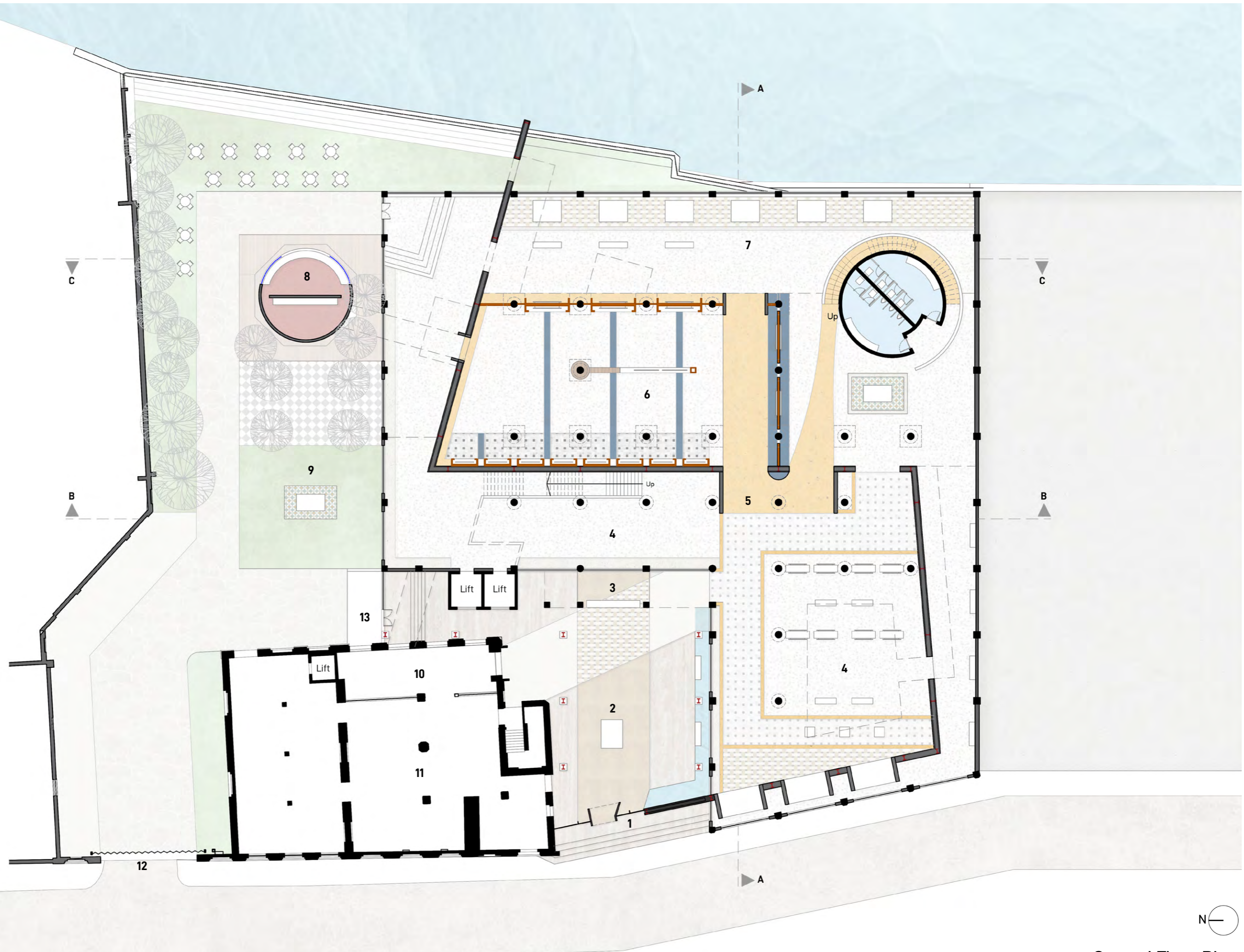
The hanging Innovation Center acting as a focal point in the gallery space



Overlapping the roofing system



Overall site development

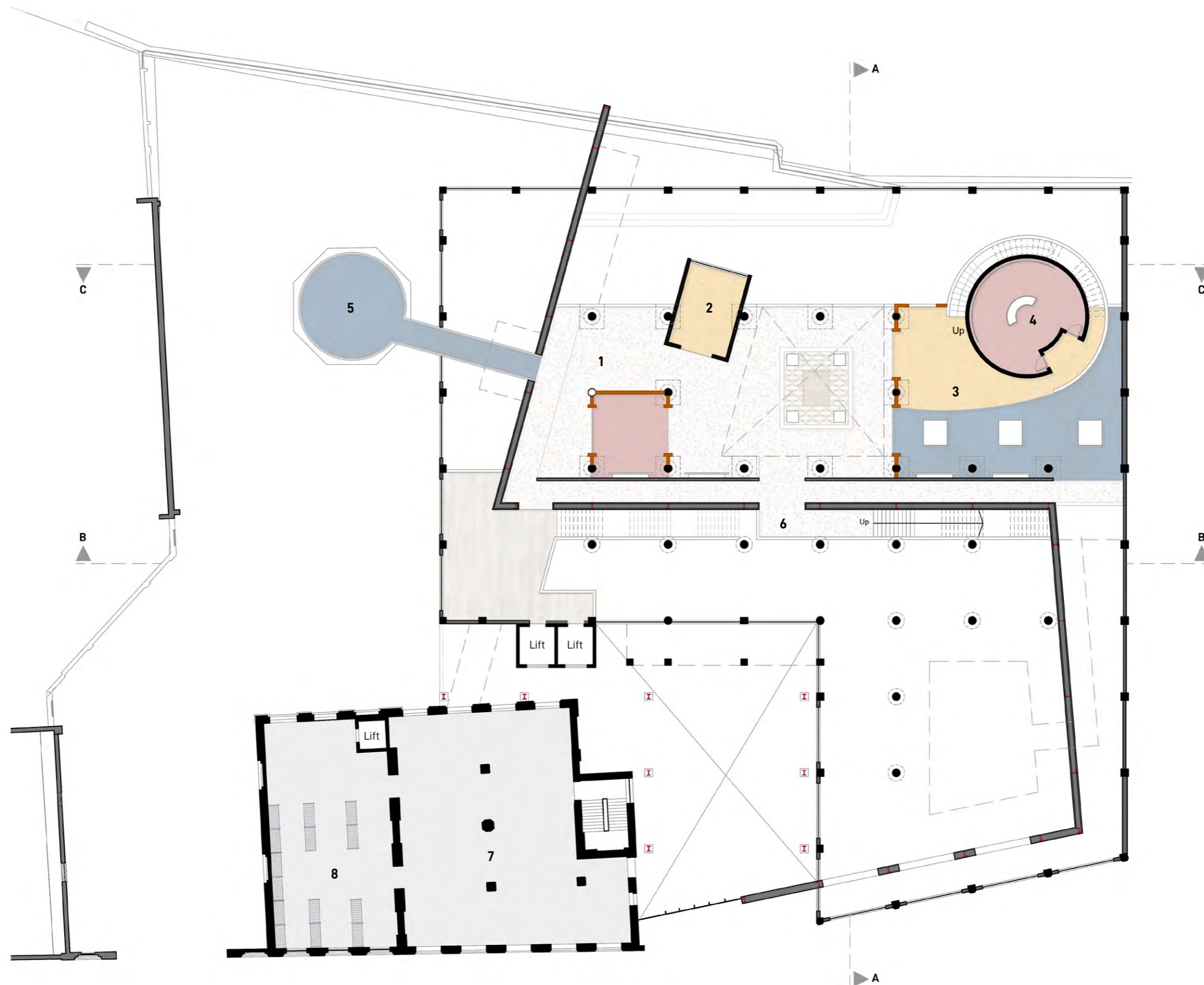


Legend

- 1. Public Entrance
- 2. Entrance Foyer
- 3. Reception / Help Desk
- 4. Gallery (changing displays)
- 5. Museum Entry
- 6. Handloom Era
- 7. Industrial Revolution
- 8. Outdoor Cafe
- 9. Outdoor Exhibits
- 10. Cloak Room
- 11. Shop
- 12. Private Entry
- 13. Private Entrance



Ground Floor Plan

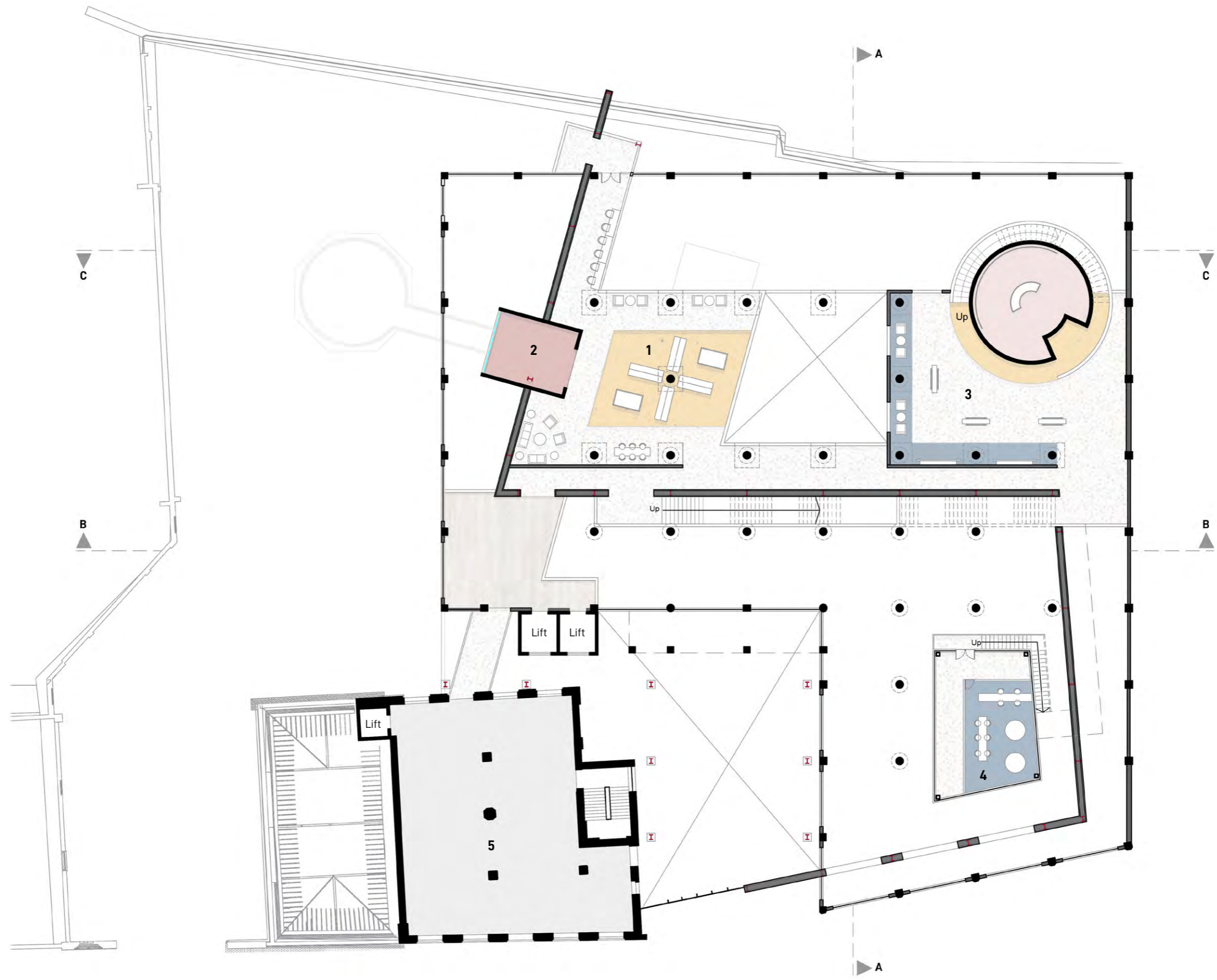


Legend

- 1. Artistry & Craftsmanship
- 2. Artistry Workshop
- 3. War & Textiles
- 4. Immersive Experience
- 5. Viewing Deck
- 6. Viewing Gallery
- 7. Textile Recycling
- 8. Storage



First Floor Plan

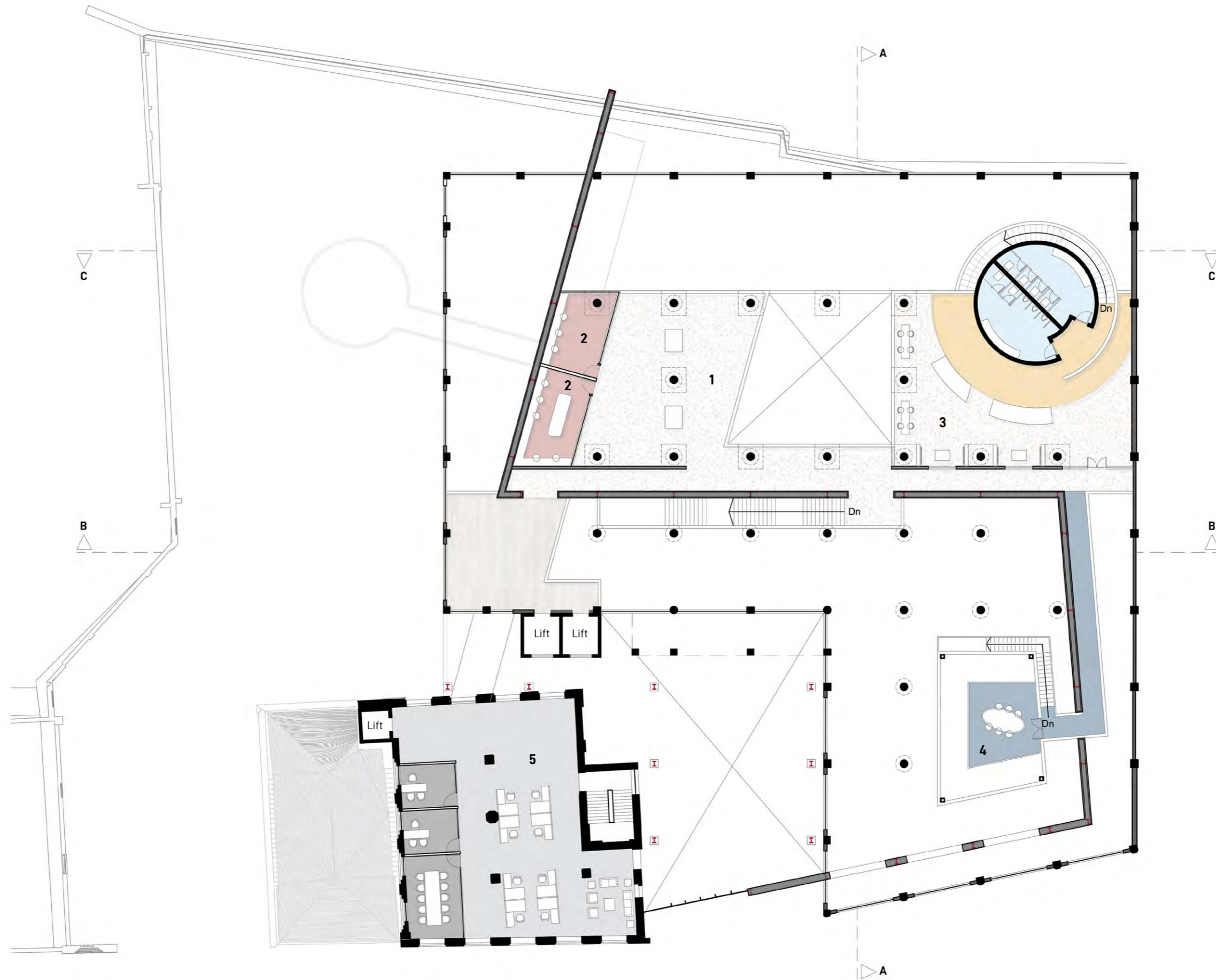


Legend

- 1. Textile Library & Archive
- 2. Workshop
- 3. Community Threads
- 4. Innovation Lab
- 5. Textile Recycling



Second Floor Plan



Legend

- 1. Sustainable Futures
- 2. SustainLAB
- 3. Technological Innovations
- 4. Innovation Lab
- 5. Administration Office

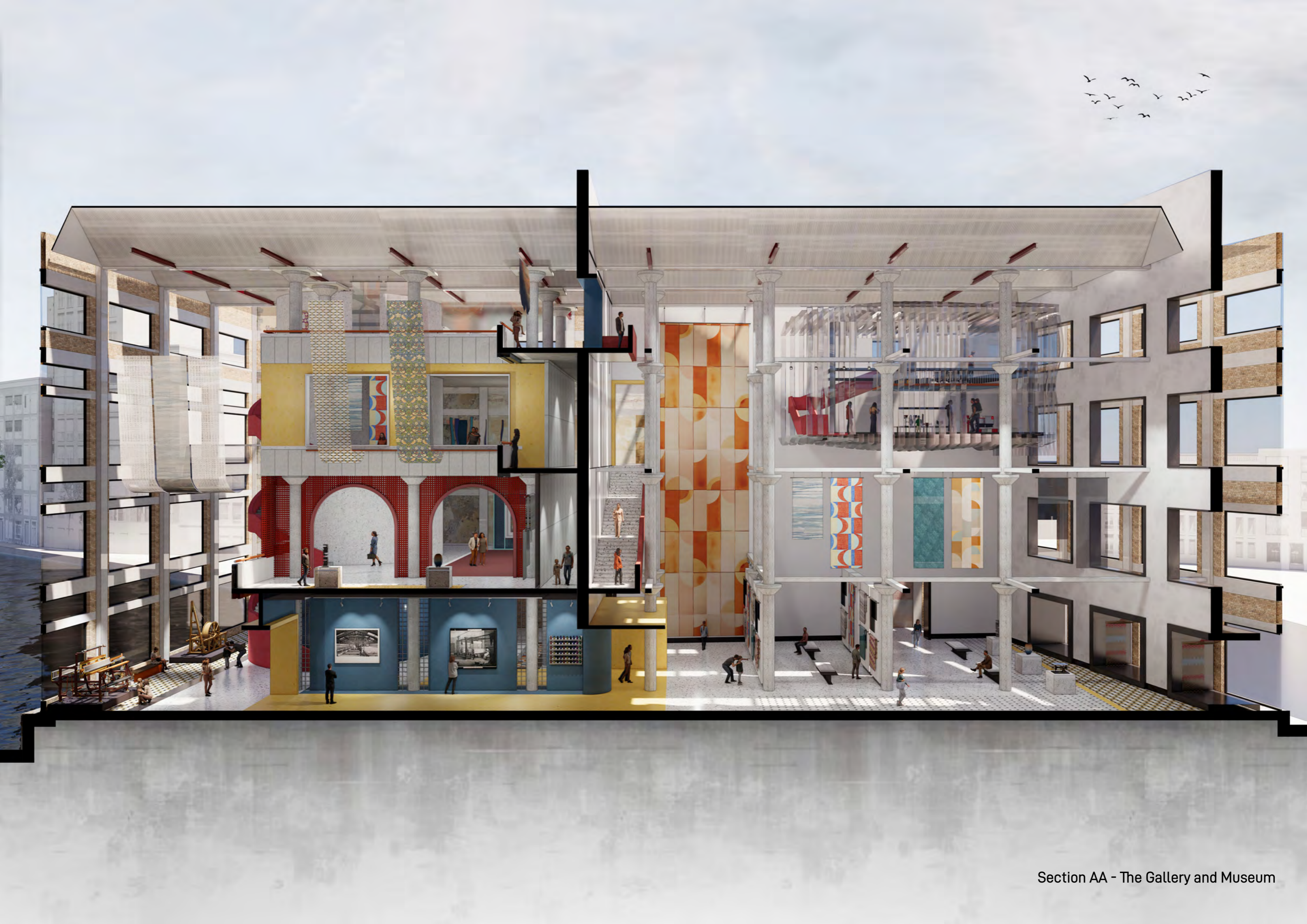


Threadscapes

Entrance Elevation



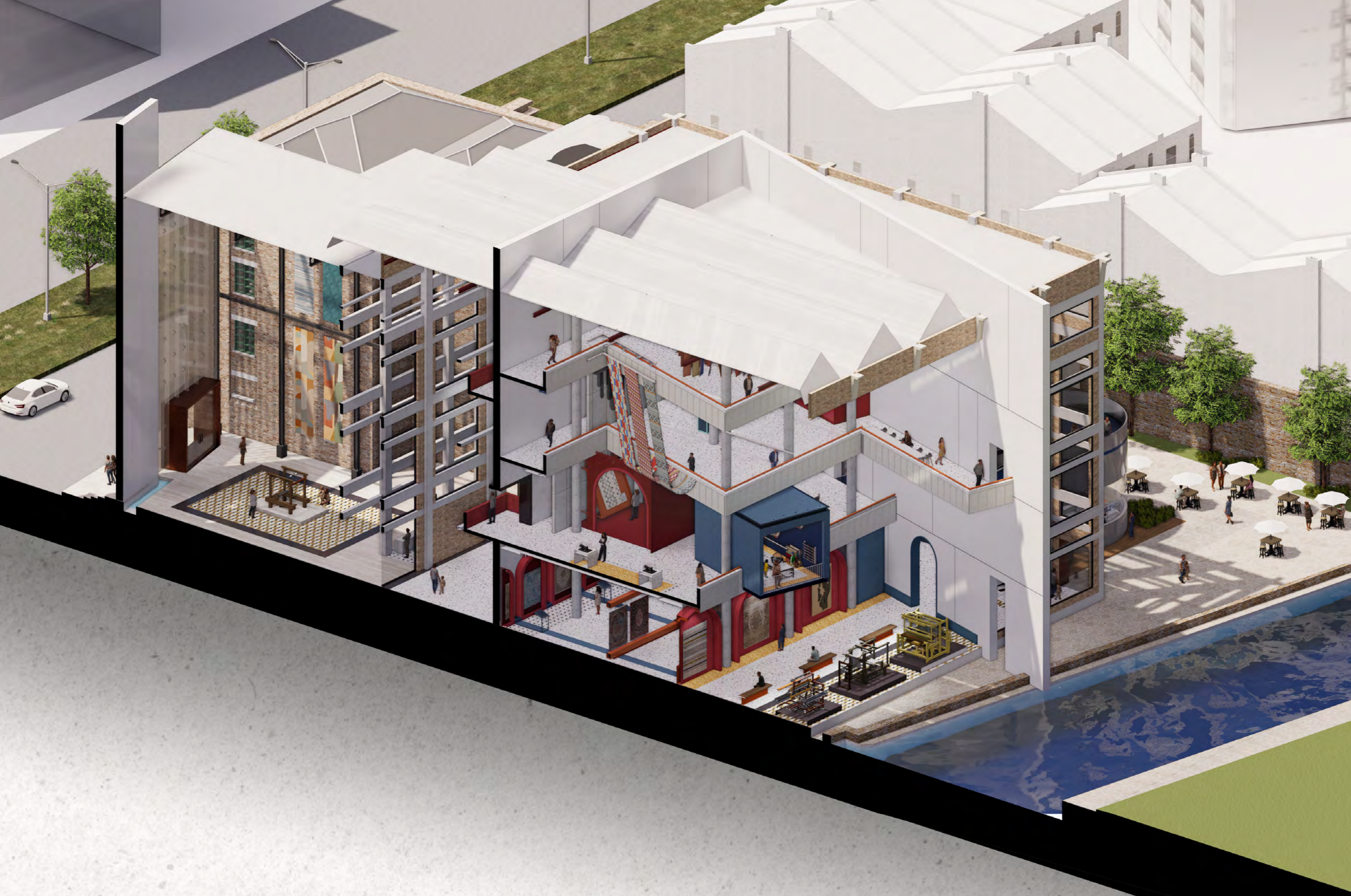
Section BB - The Spine Wall and Innovation Center



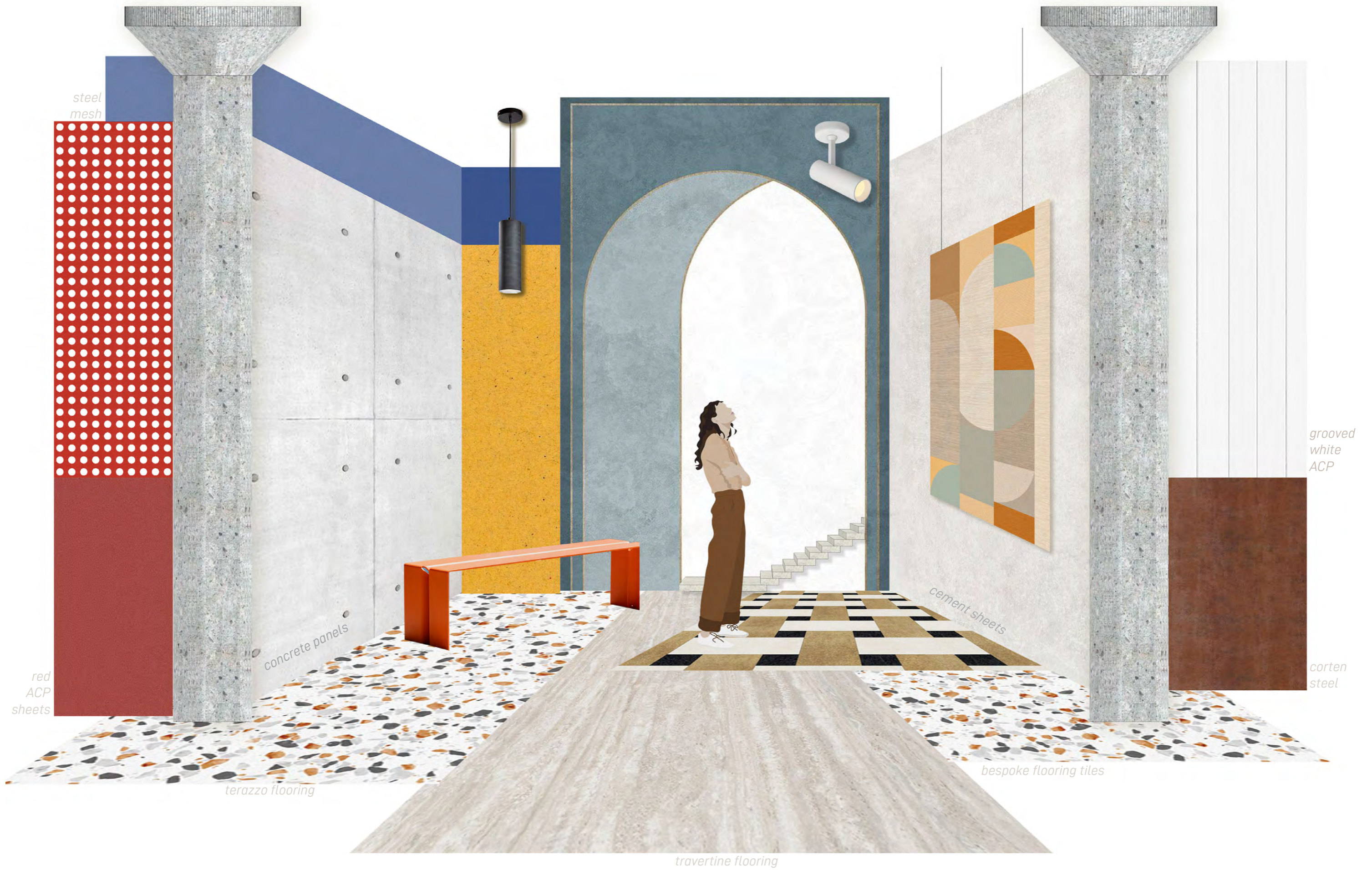
Section AA - The Gallery and Museum



Section CC - The Museum and Garden Cafe



Connecting with the River



steel mesh

red ACP sheets

concrete panels

terrazzo flooring

travertine flooring

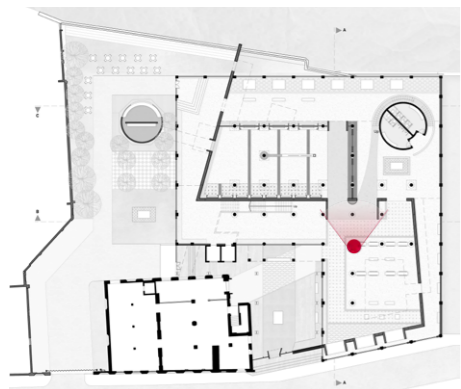
cement sheets

bespoke flooring tiles

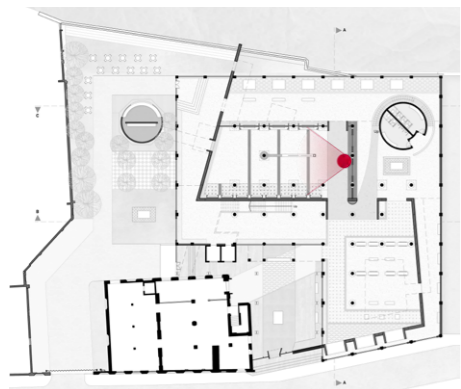
grooved white ACP

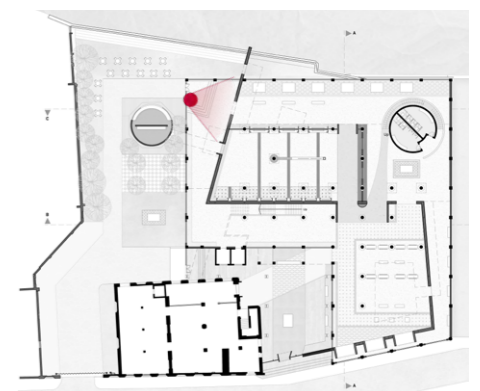
corten steel

Material Palette

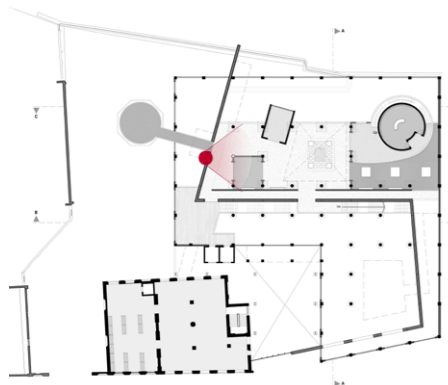


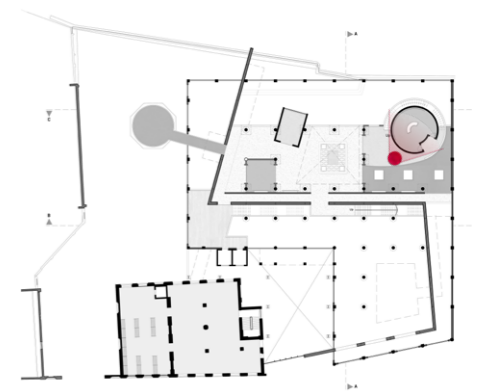
The **portal** into the Textile Museum





The **portal** into the Textile Museum





The **cylindrical** immersive experience room



The 'hanging' Innovation Center



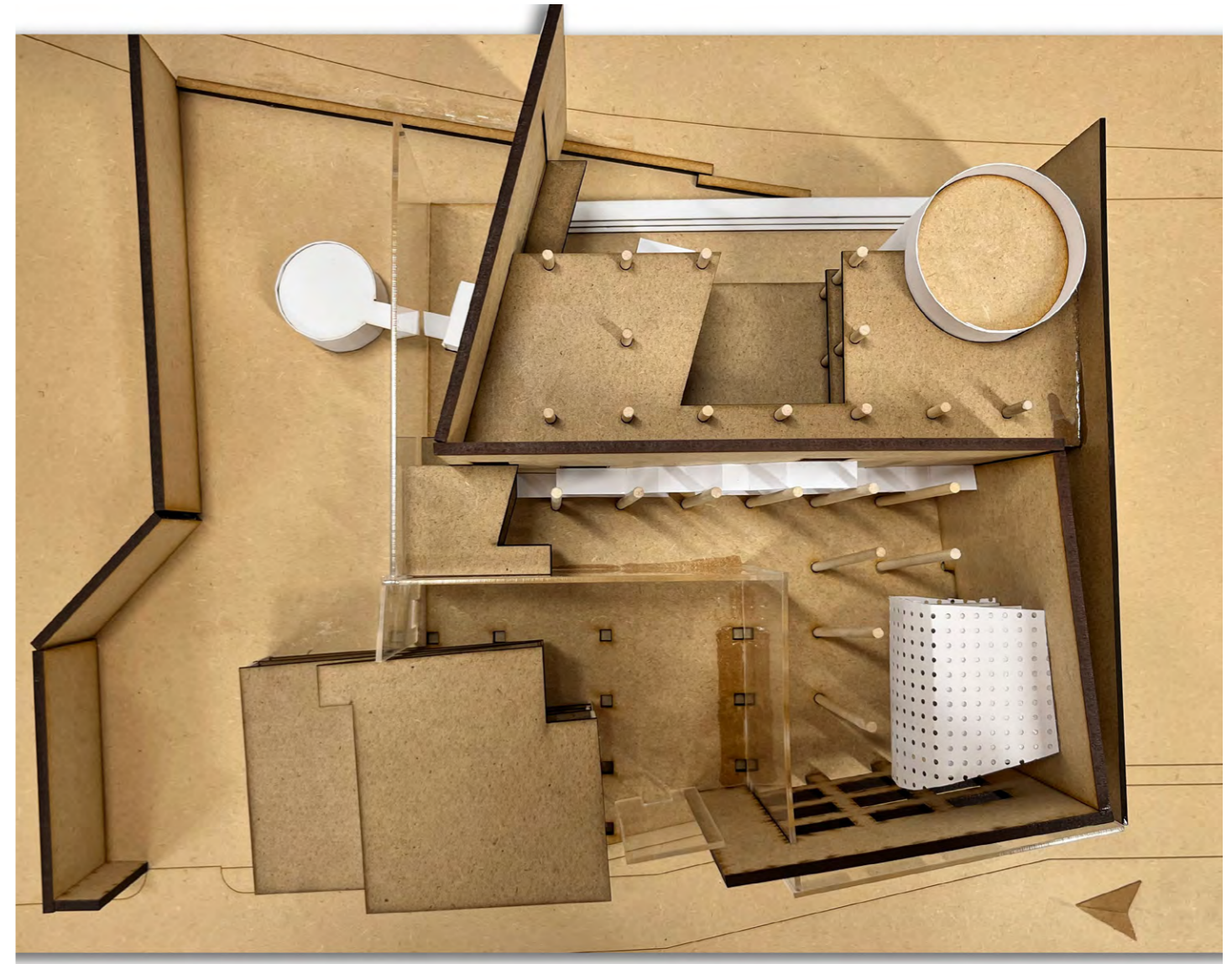
Physical Model



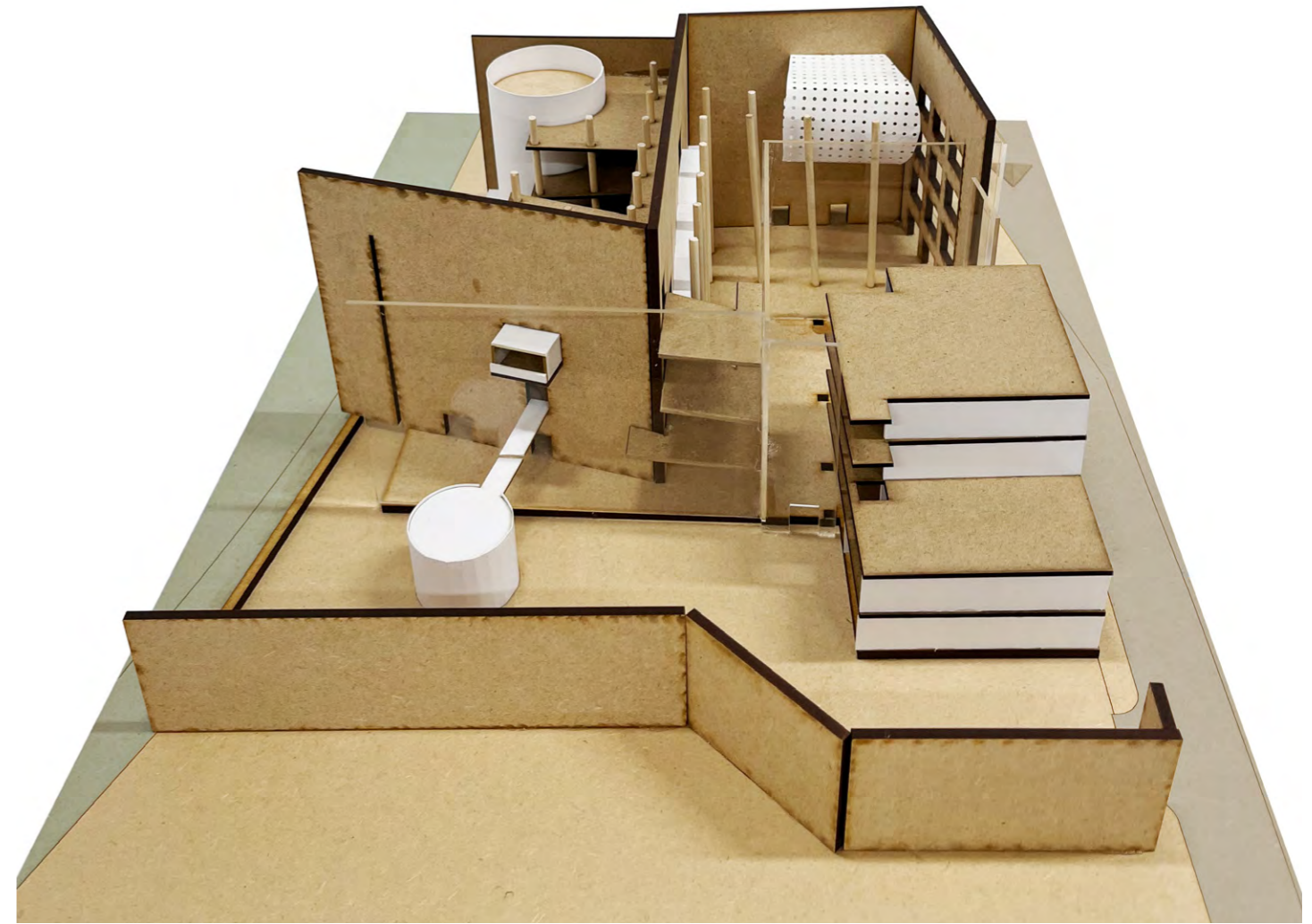
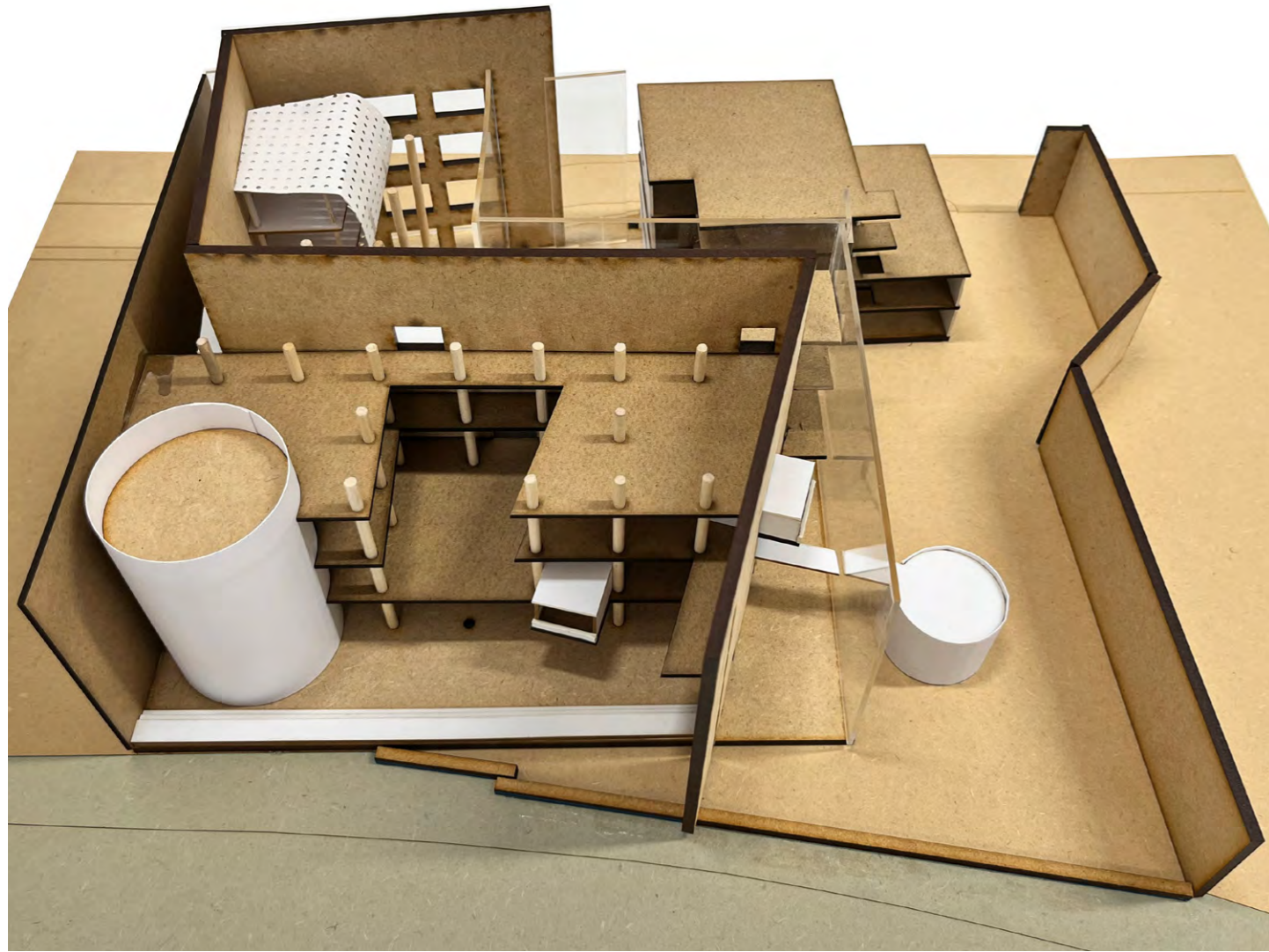
Entrance Elevation



Riverside Elevation



Physical Model



Thank You