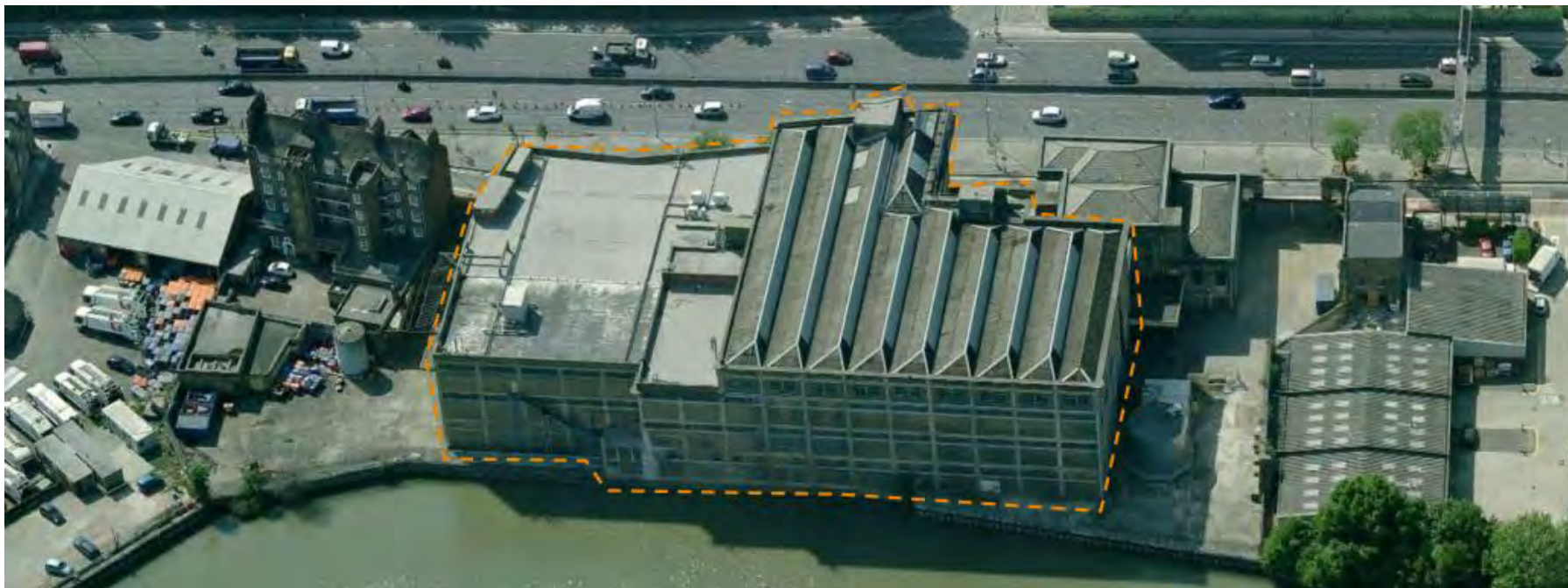
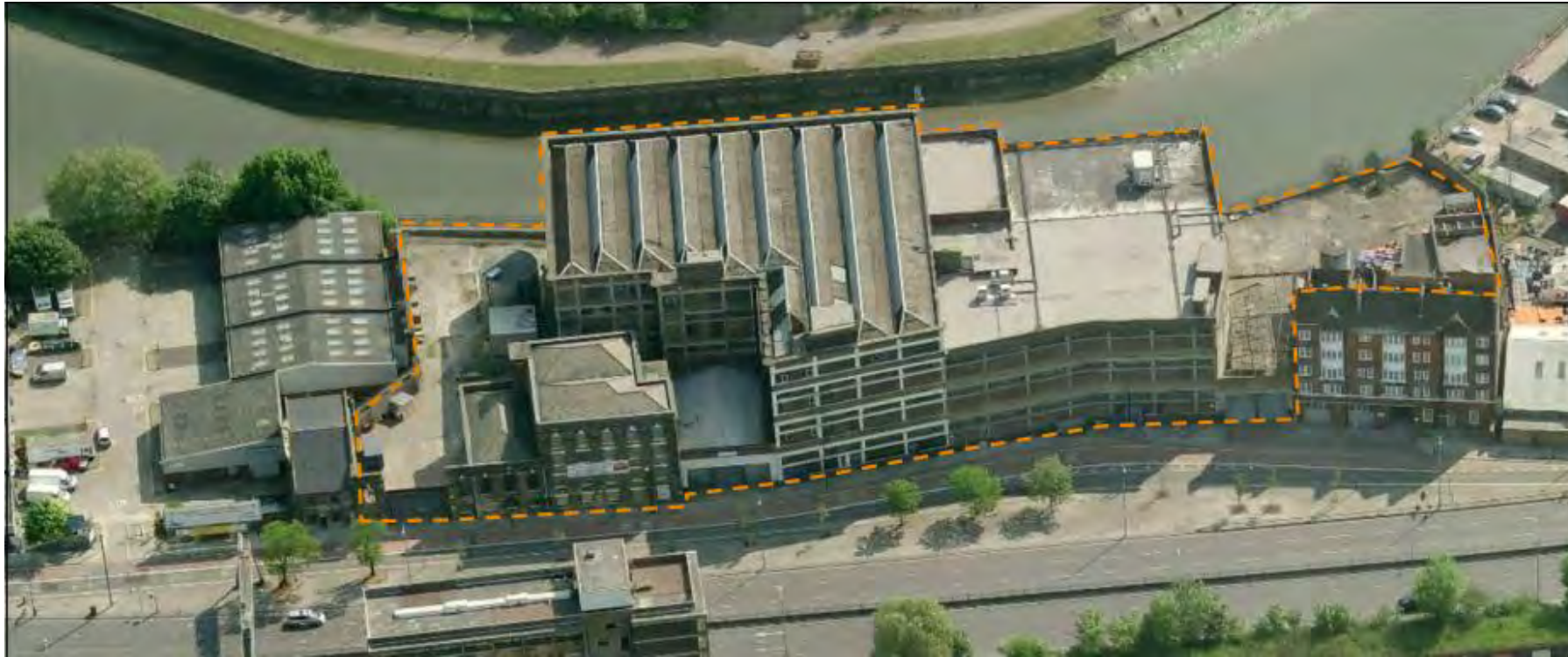




Factory Music Club

The aim of this project was to repurpose a disused, factory located in East London. The core idea of this case design is connection. Because through research and analysis, it was found that there was a strong sense of separation between the factory and the city. Due to the economic transformation of East London, a large number of industrial areas have become urban legacy. In addition, London is a city rich in music culture, so we hope to regenerate this factory through music culture and establish a connection with the city again.

The Factory



Site



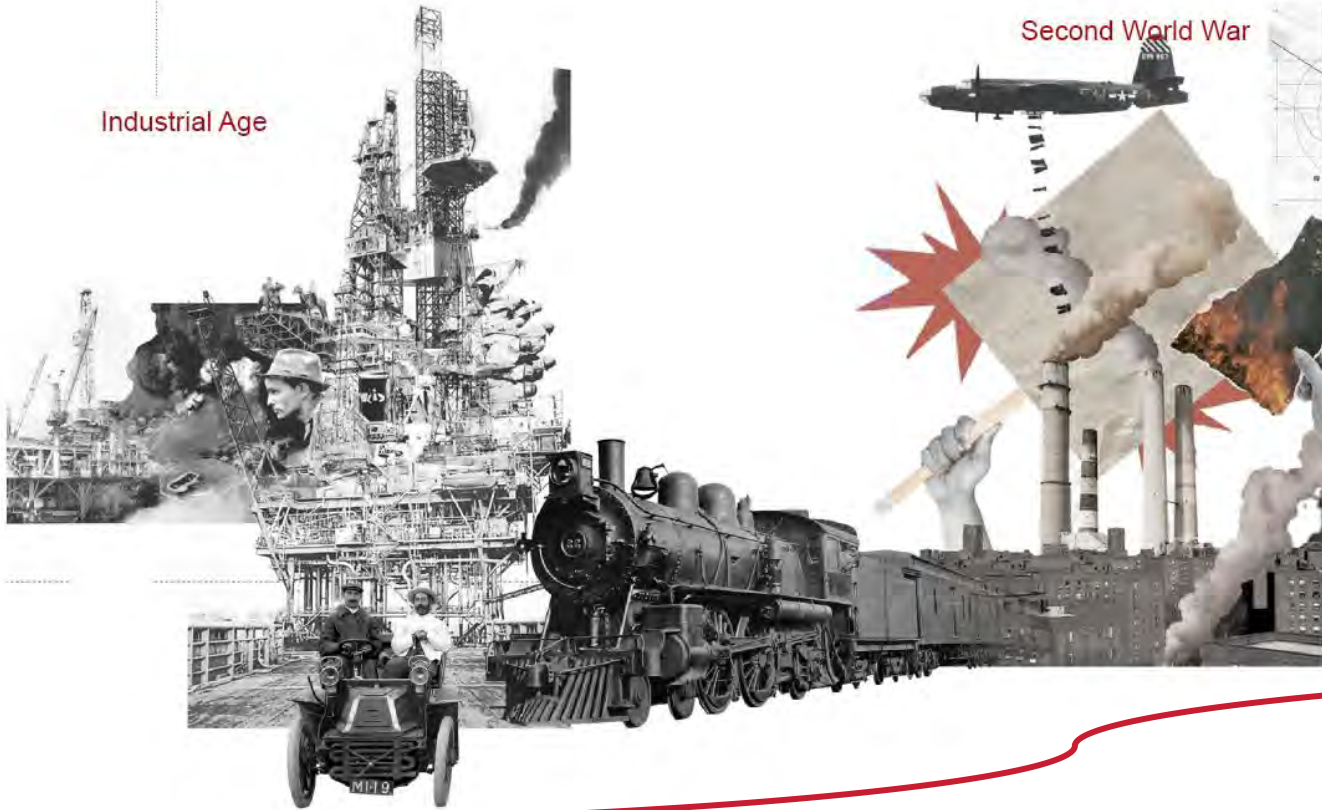
TIME LINE

The history of east London

1920s - 1960s

A large number of factories and industrial areas were established during this period, attracting a large number of laborers. During this period, East London experienced rapid growth in urbanization and industrialization.

Industrial Age



1939 - 1945

During World War II, East London was one of the bombing targets and suffered severe damage. Many factories and buildings were destroyed.

Second World War



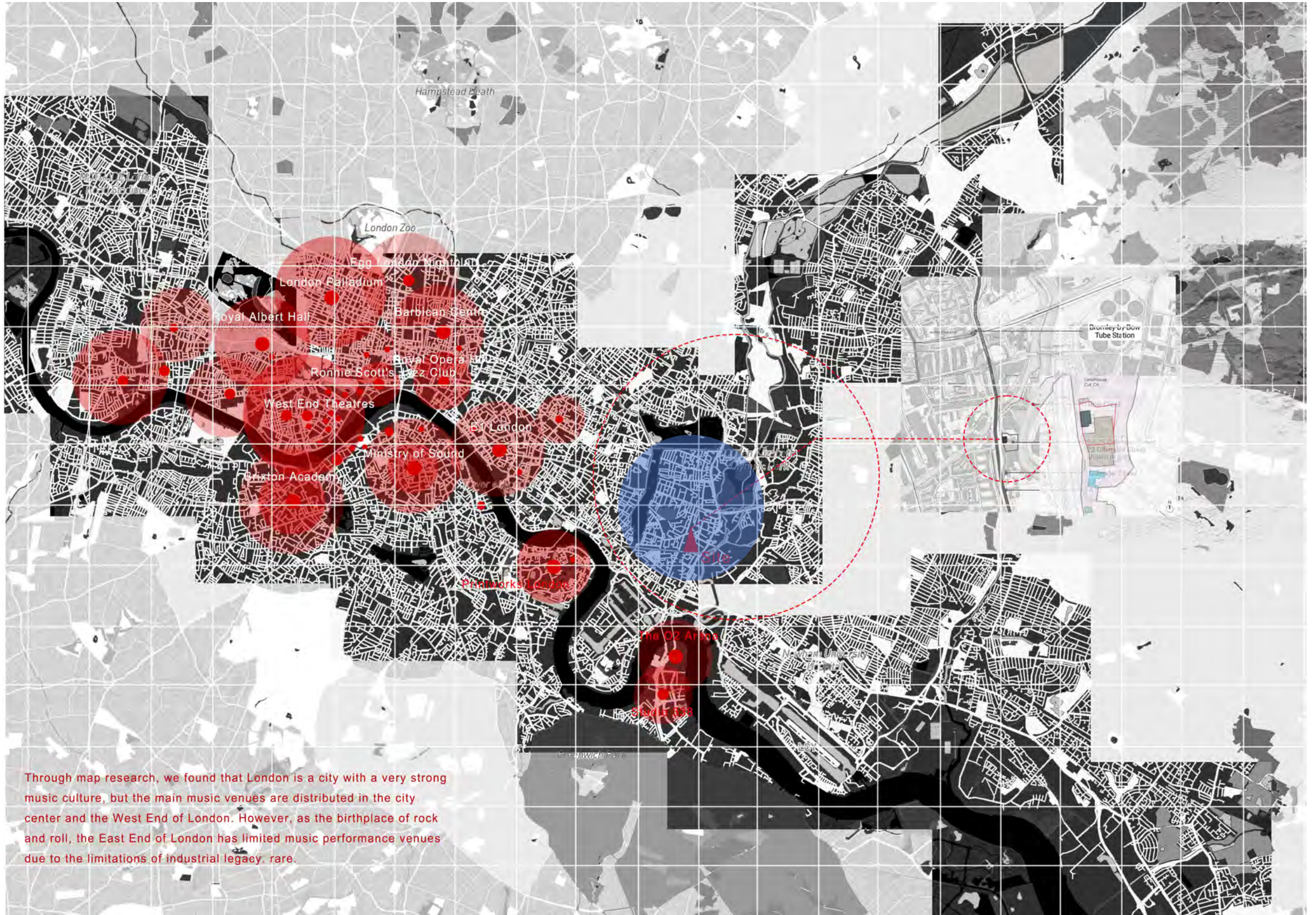
1945 - 1990s

After the Second World War, East London underwent a great deal of reconstruction and transformation. Gradually it became a center for art and creativity. Punk rock emerged in East London, creating a huge following of music lovers.

Urban Redevelopment and Economic Transformation

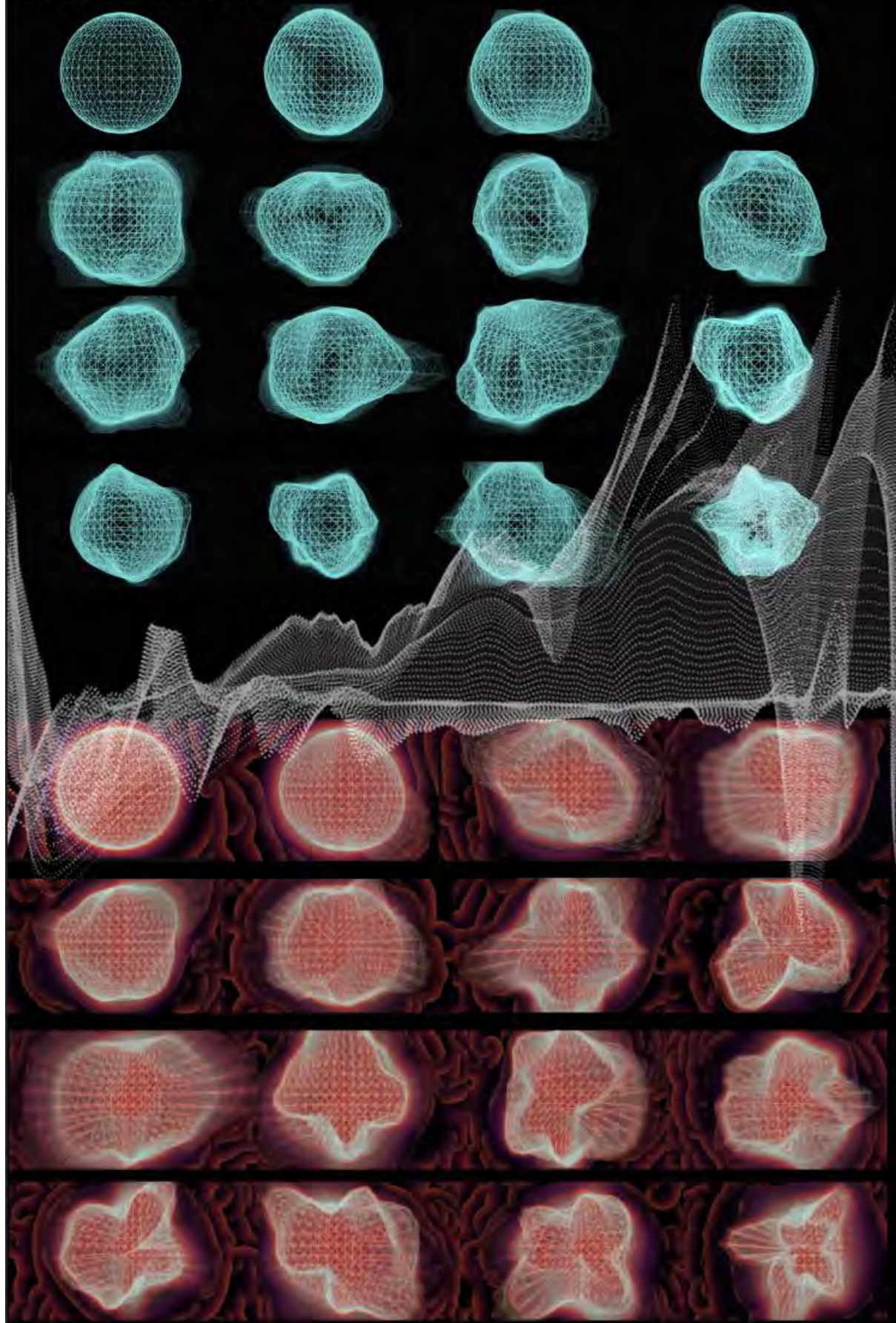


Mapping

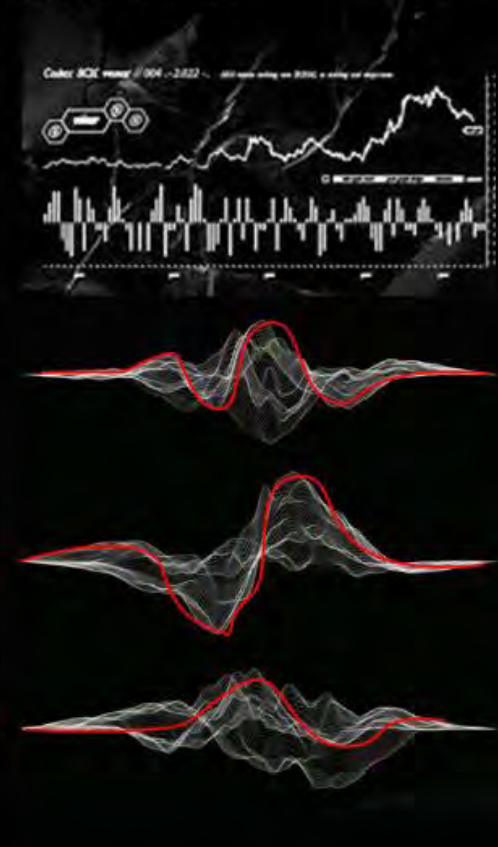


Through map research, we found that London is a city with a very strong music culture, but the main music venues are distributed in the city center and the West End of London. However, as the birthplace of rock and roll, the East End of London has limited music performance venues due to the limitations of industrial legacy. rare.

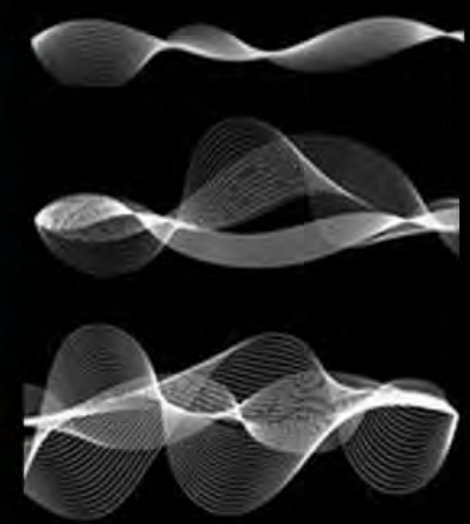
MUSIC VISUALIZATION



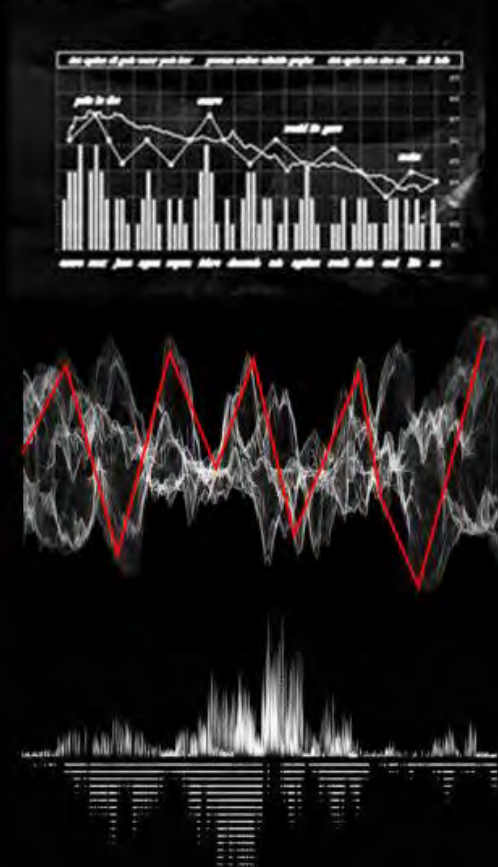
Classical Music



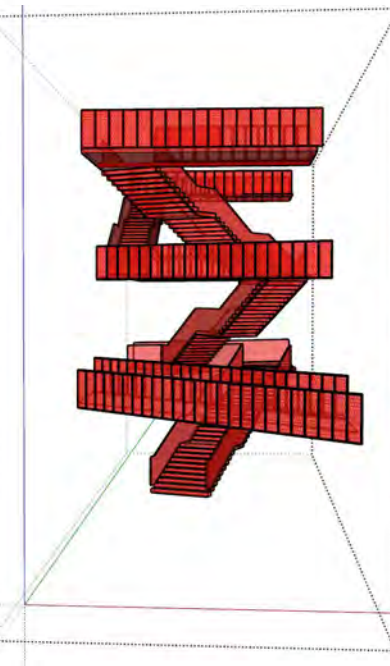
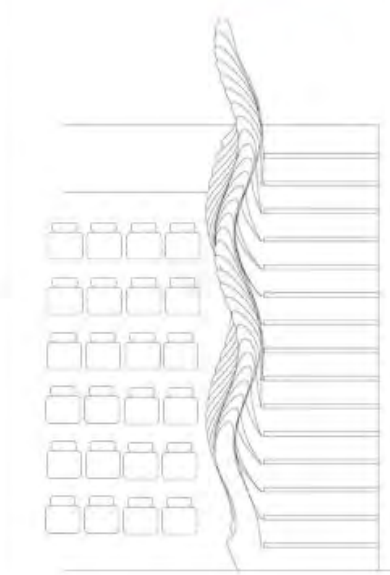
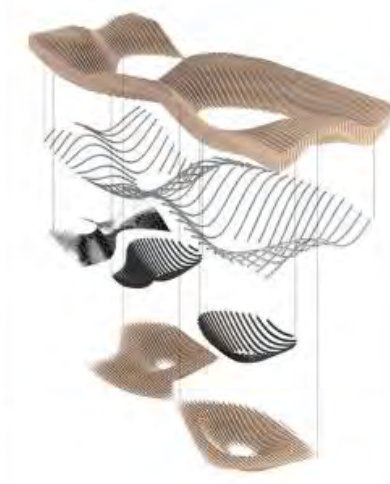
Classical music gives people the feeling of an elegant gentleman, and the sound is gentle and pleasant. Sound is presented in the form of curves through sound visualization.

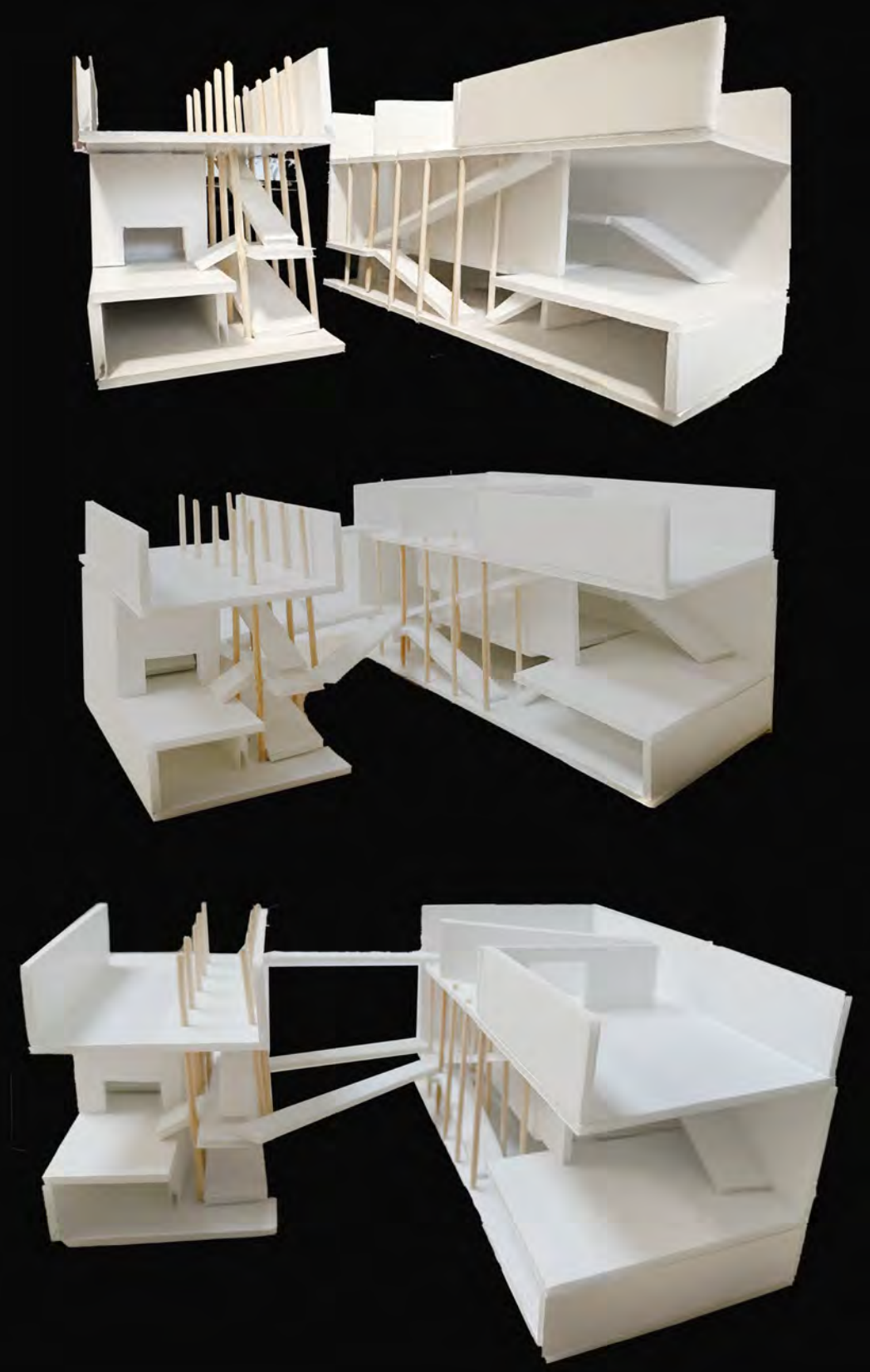
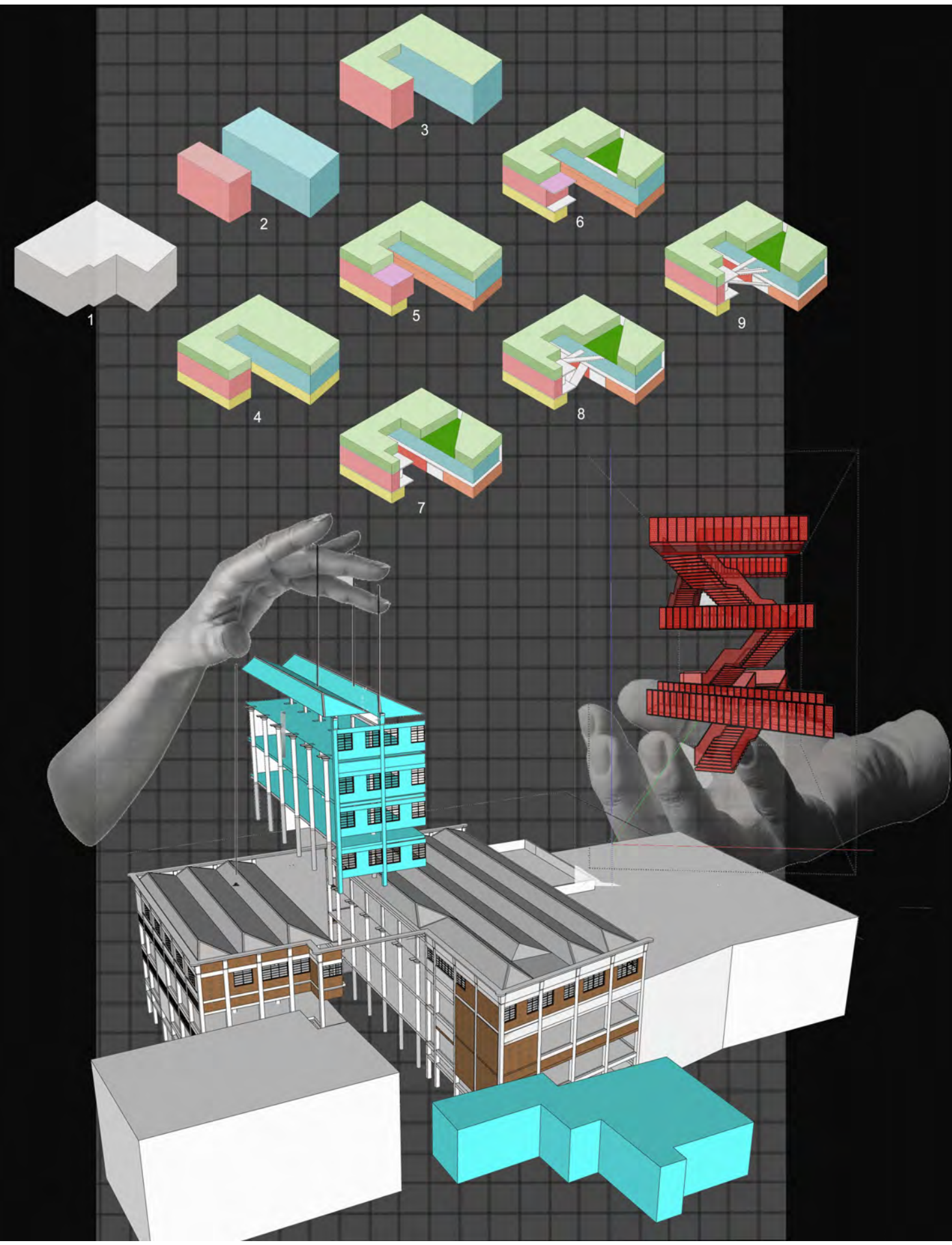


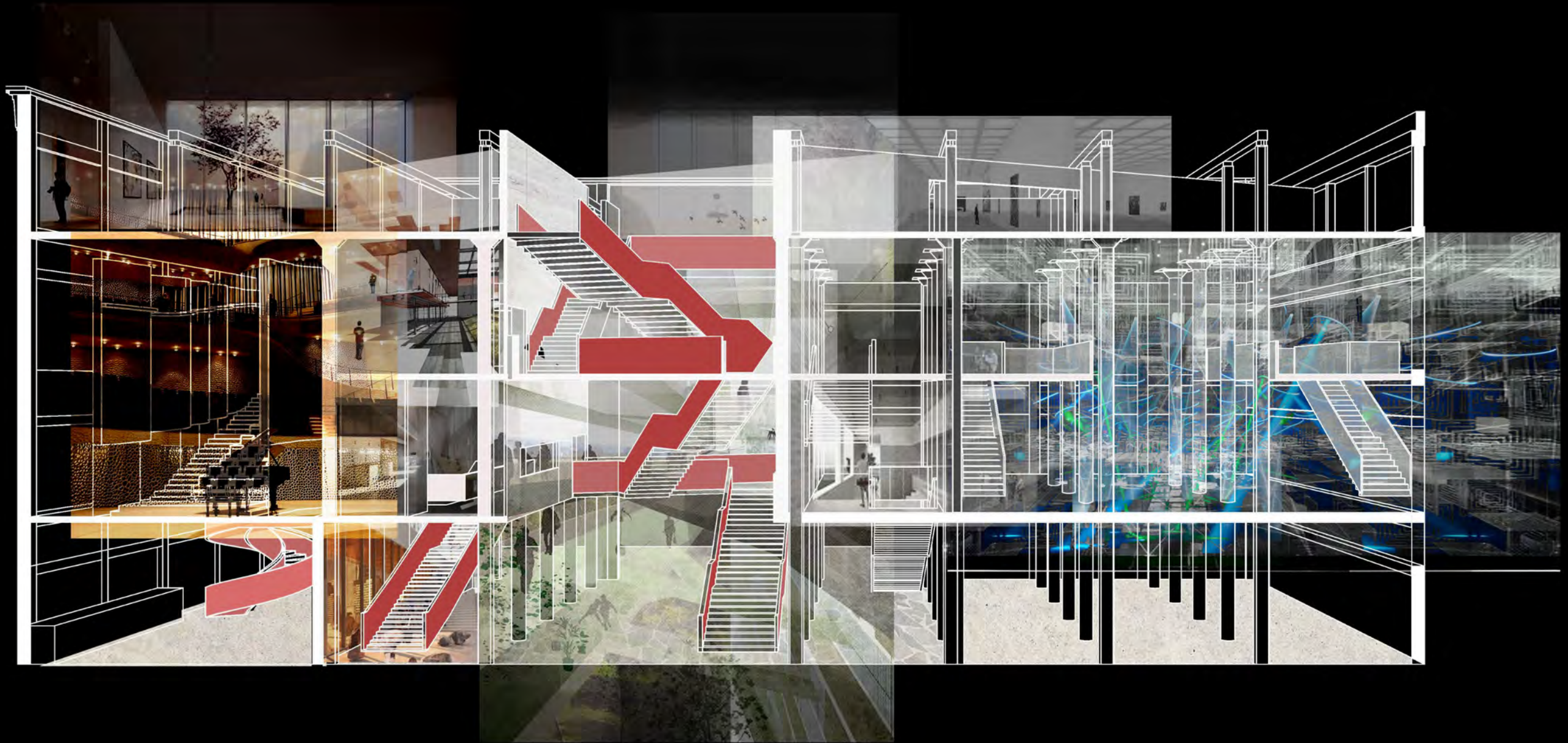
Electronic Music

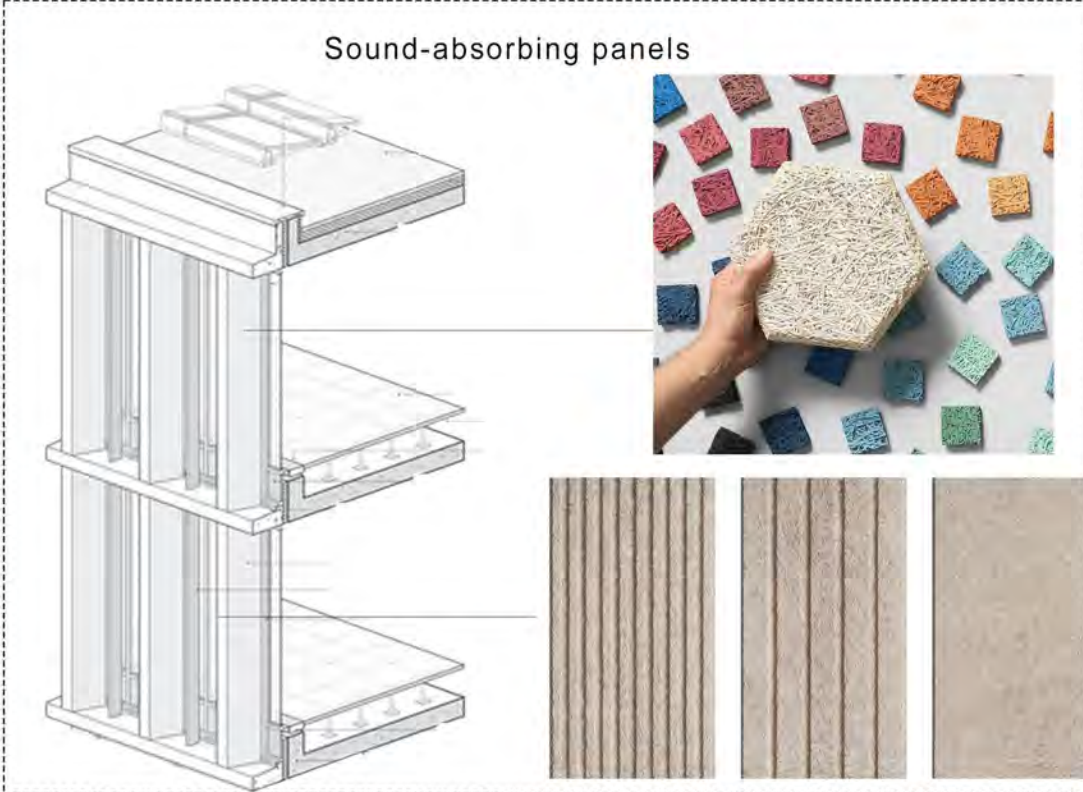
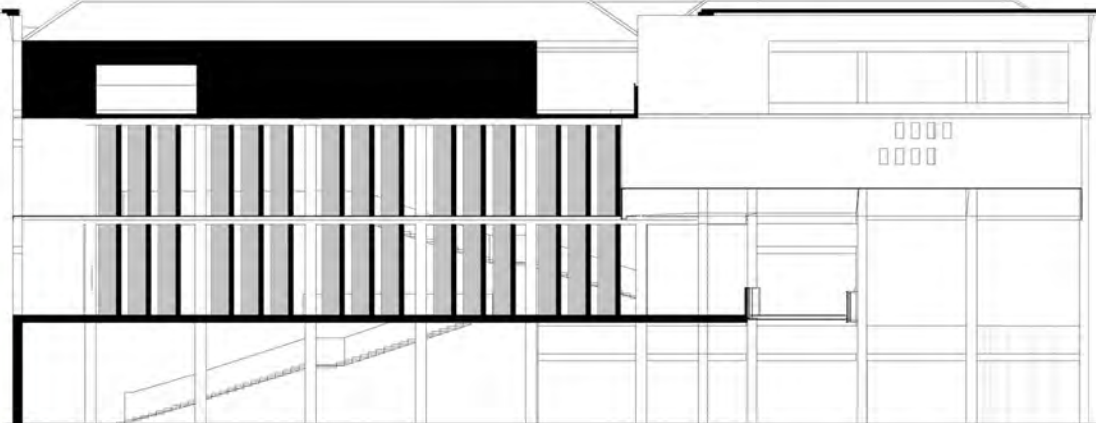
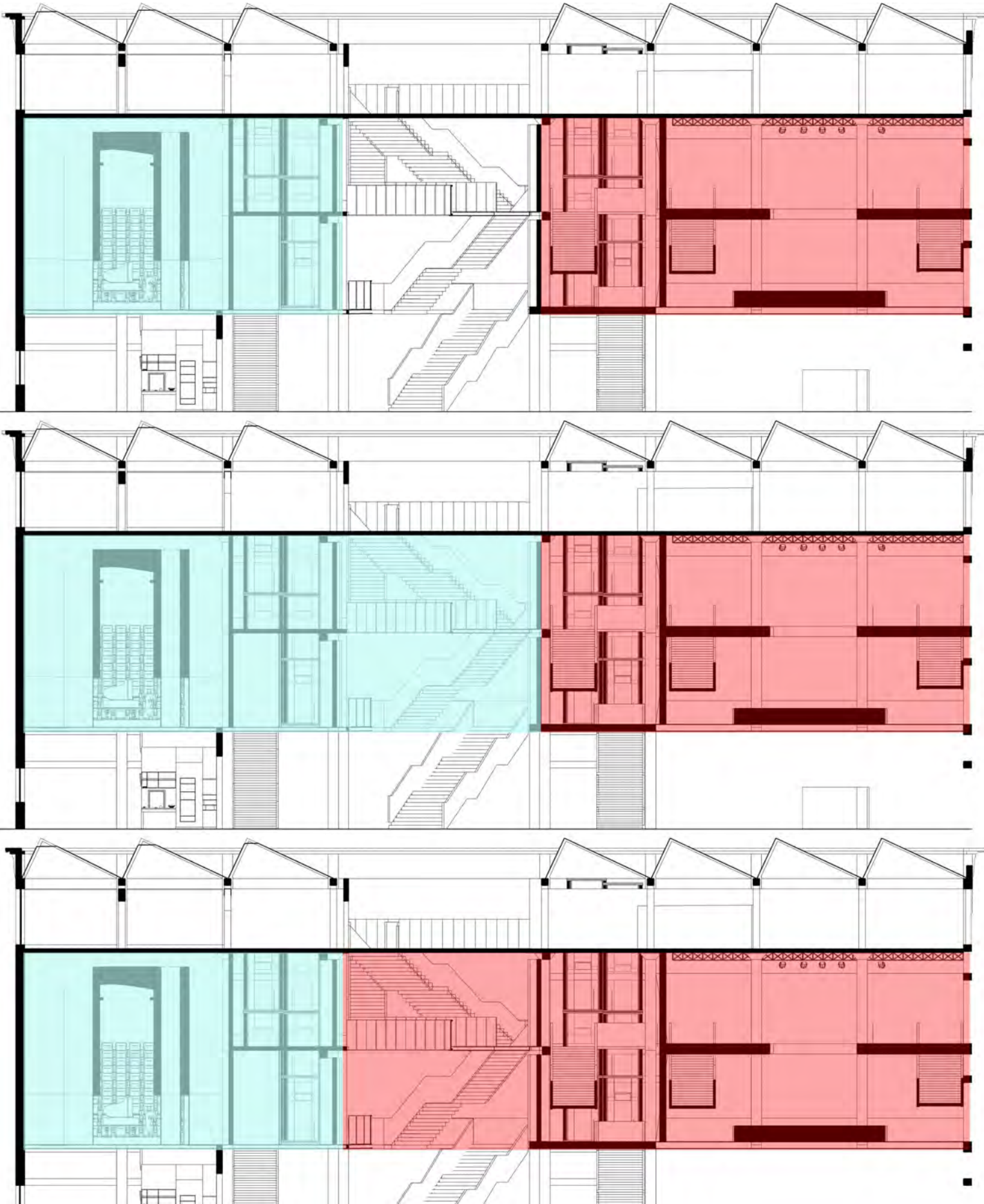


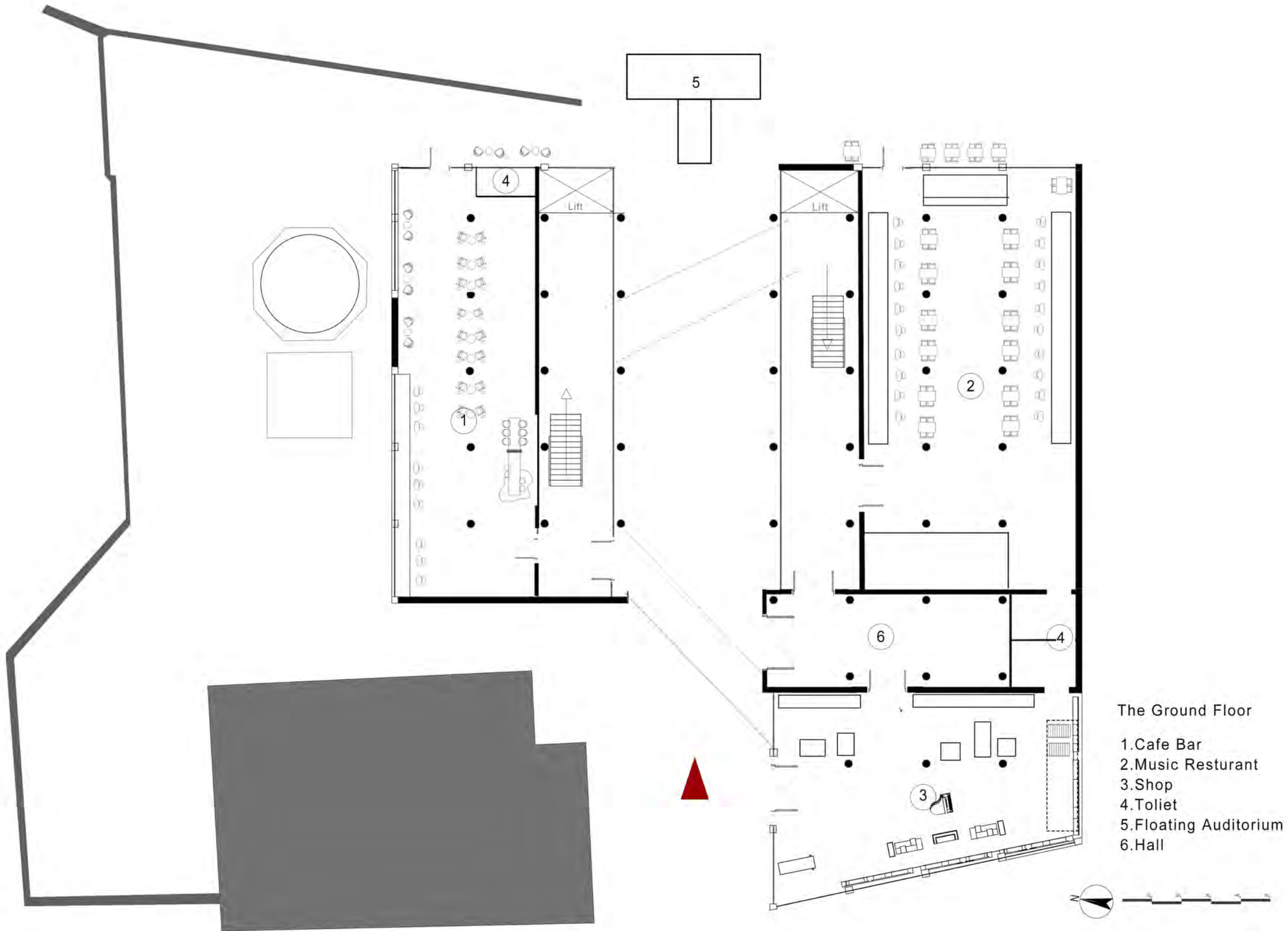
Electronic music gives people a strong sense of the future and a sense of percussion. The music is strong and powerful, driving people's heartbeats. Visualized through sound in the shape of an undulating polyline.







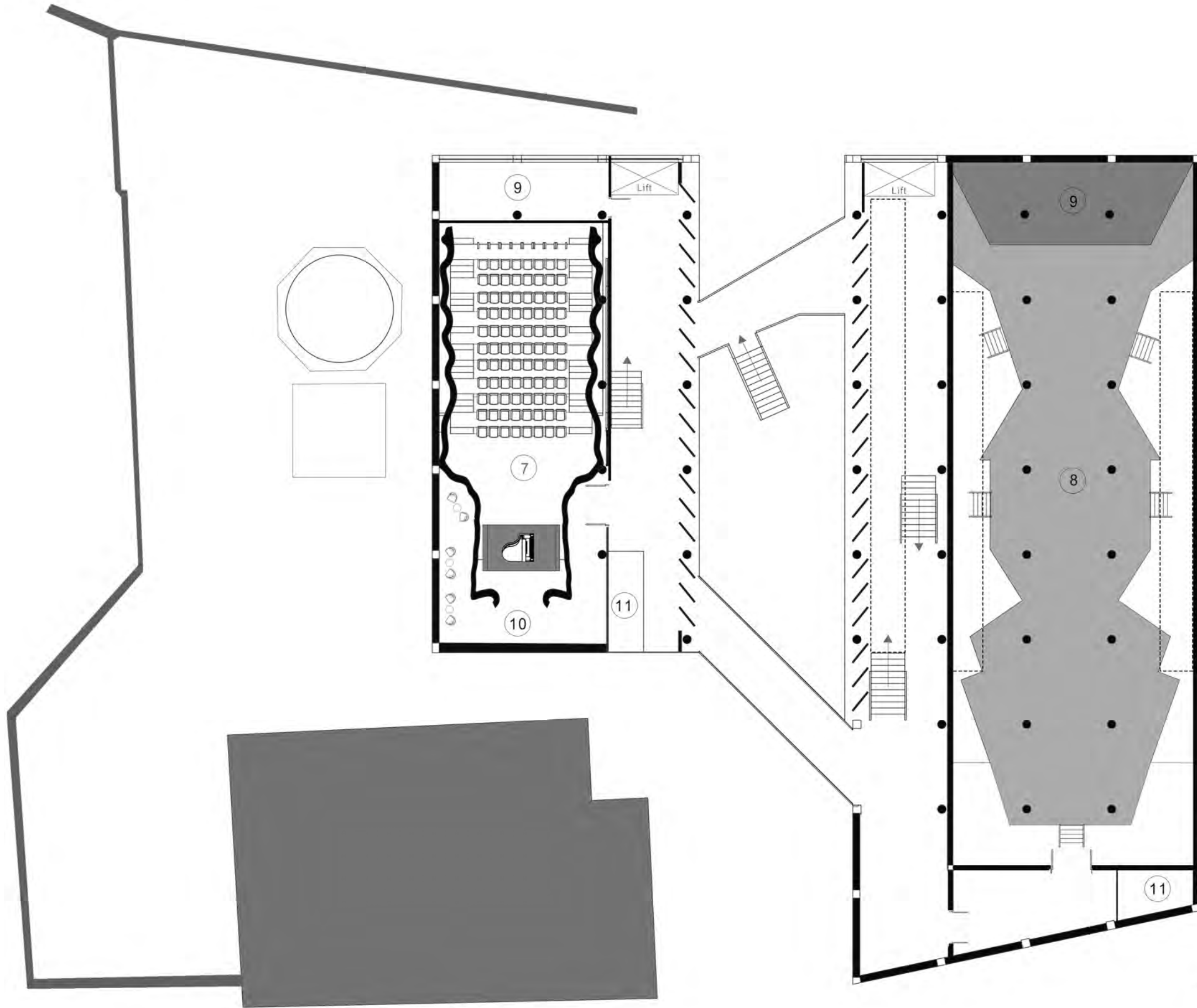




The Ground Floor

- 1. Cafe Bar
- 2. Music Restaurant
- 3. Shop
- 4. Toilet
- 5. Floating Auditorium
- 6. Hall

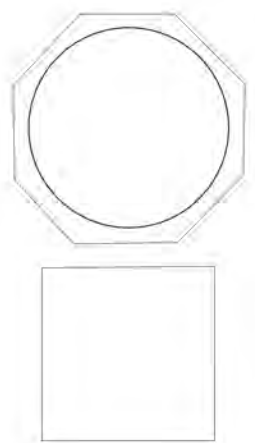
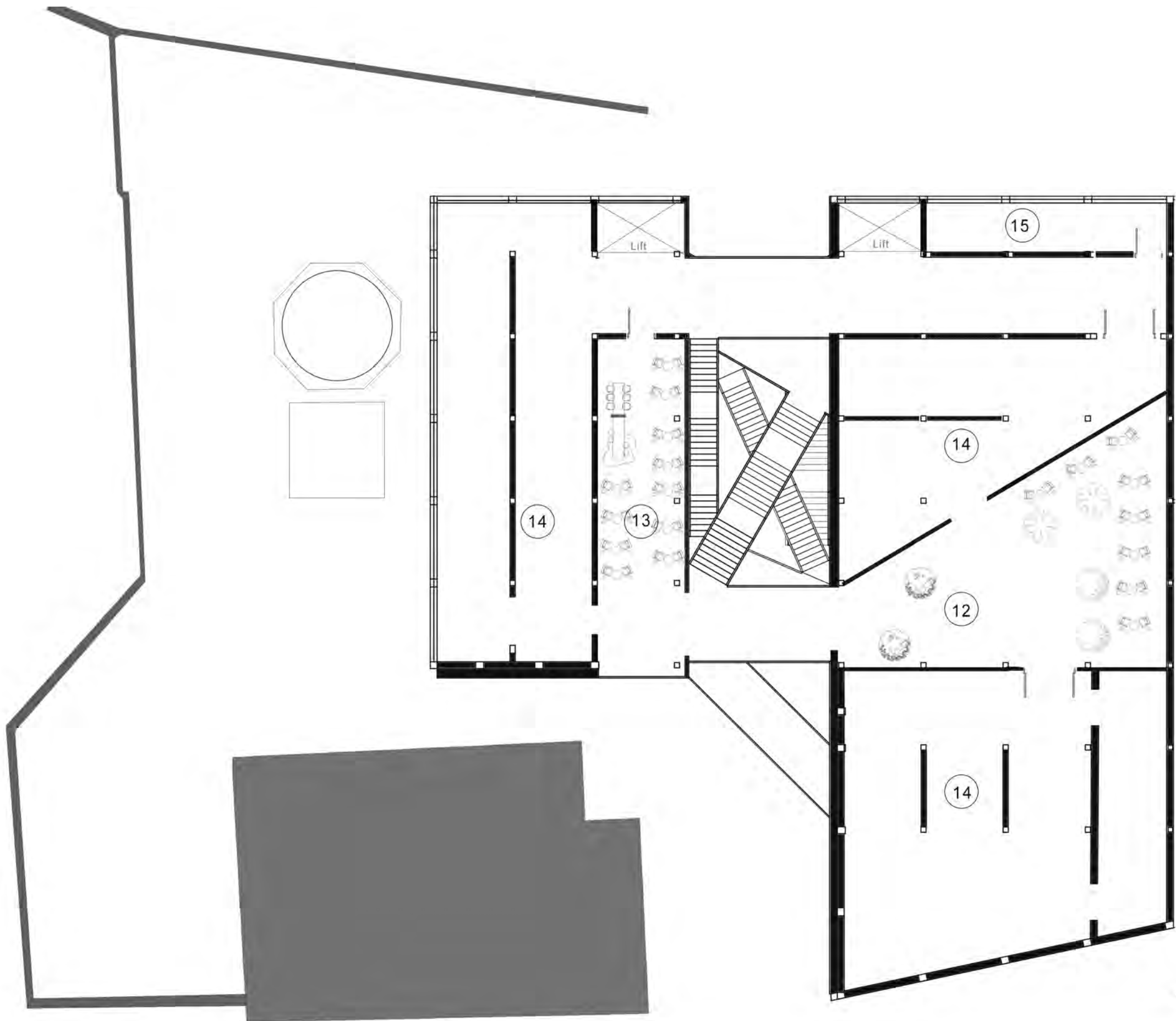




The First Floor

- 7.The Classical Music Space
- 8.The Electronic Music Space
- 9.The Control Room
- 10.The Green Room
- 11.Toliet

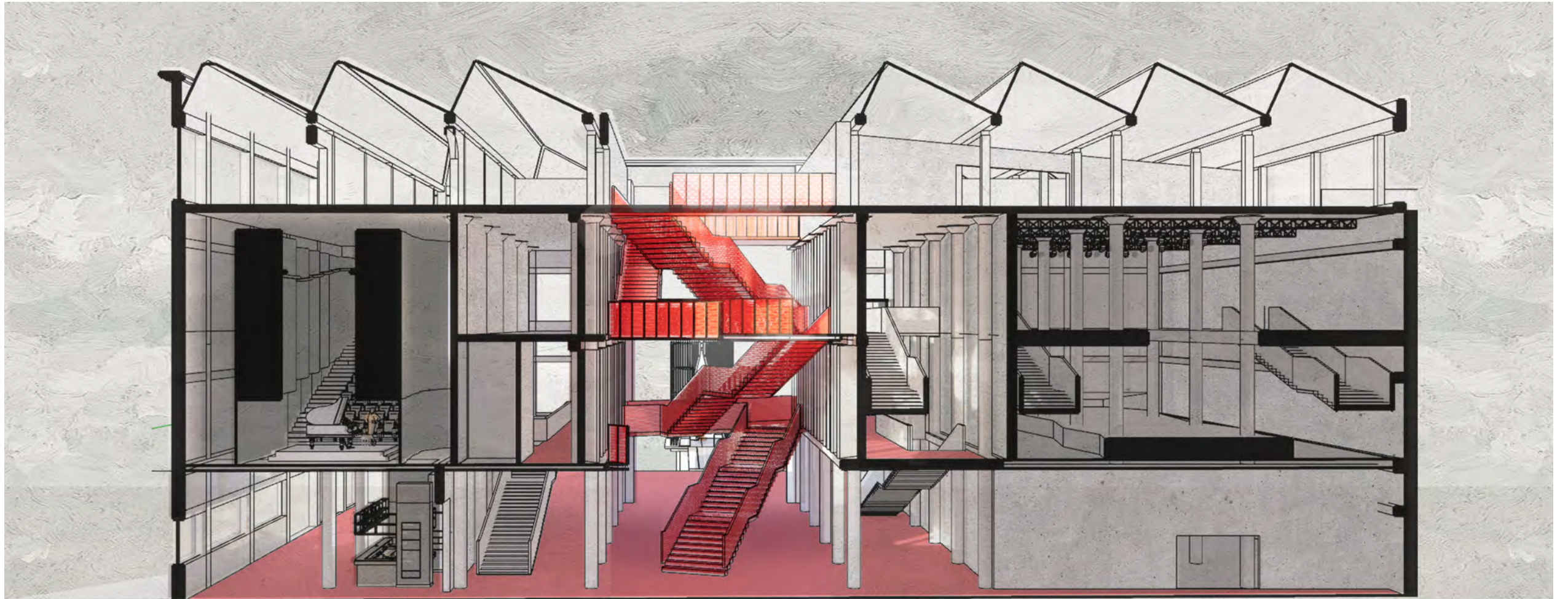




- The Top Floor
- 12. Rest Aera
 - 13. Bar
 - 14. Exhibition Space
 - 15. Toliet



Section

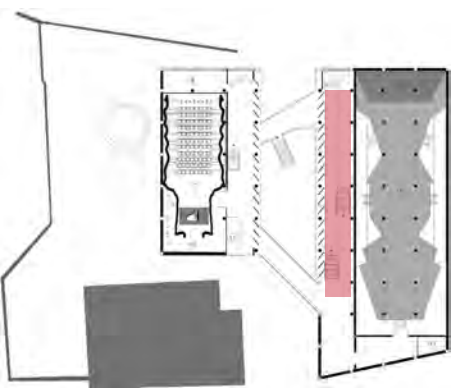


Courtyard

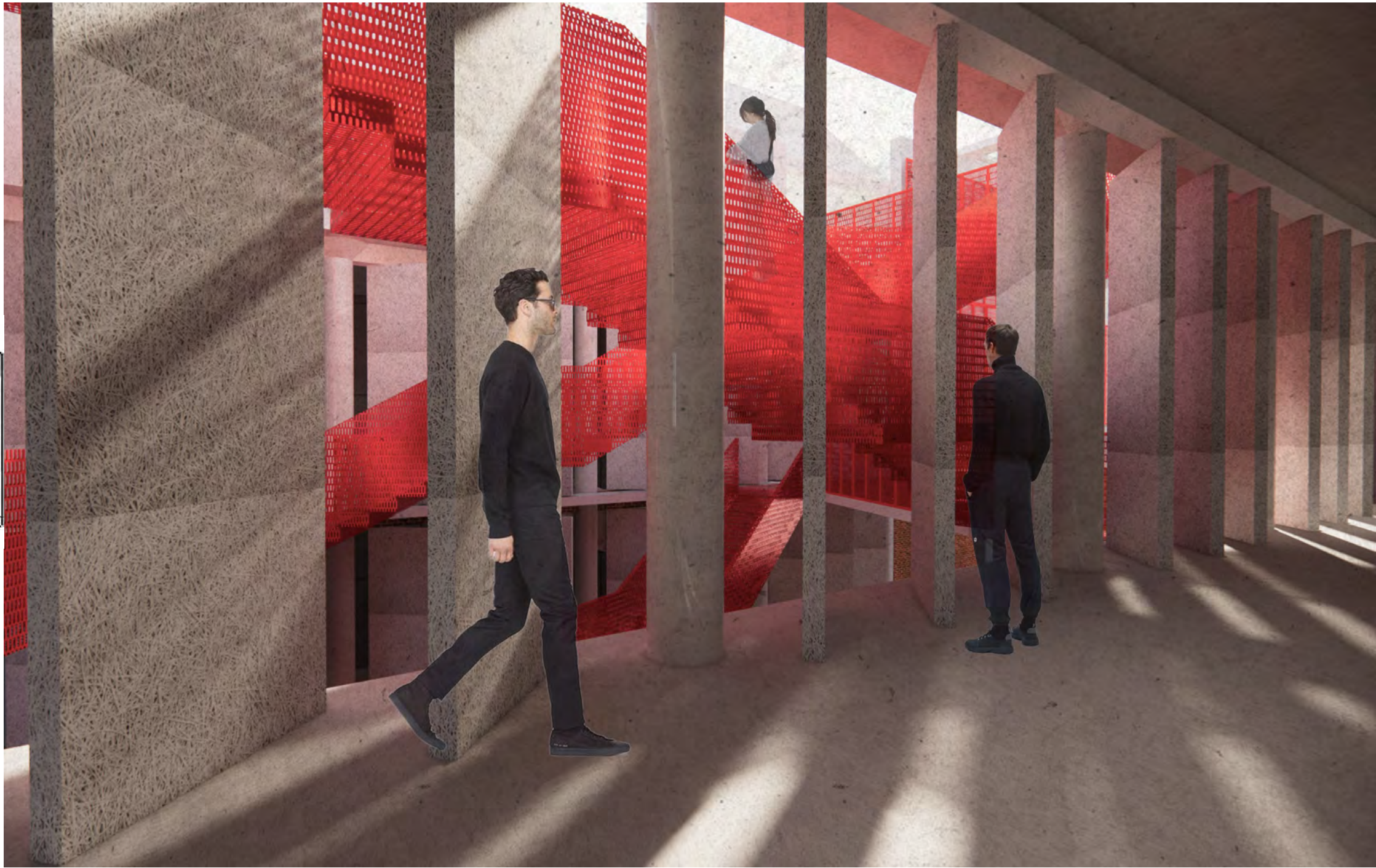
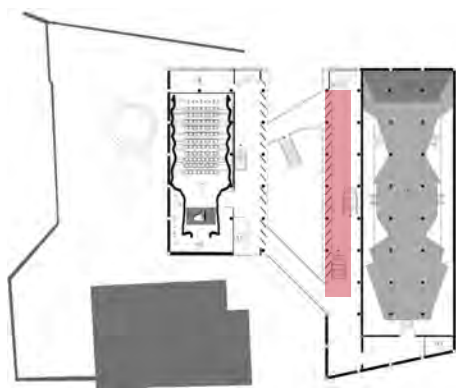




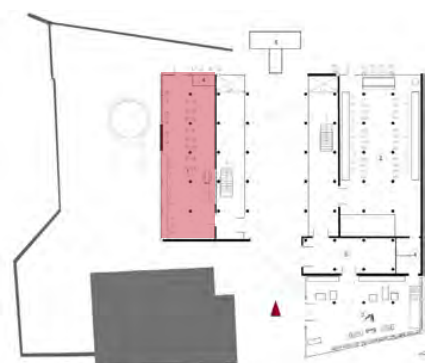
Corridor



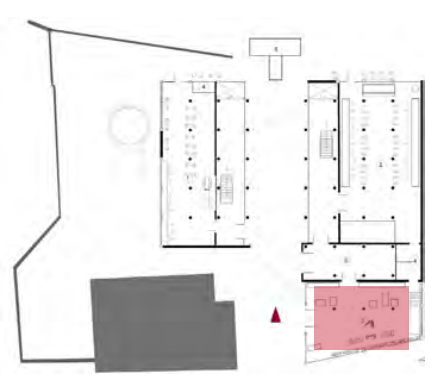
Corridor



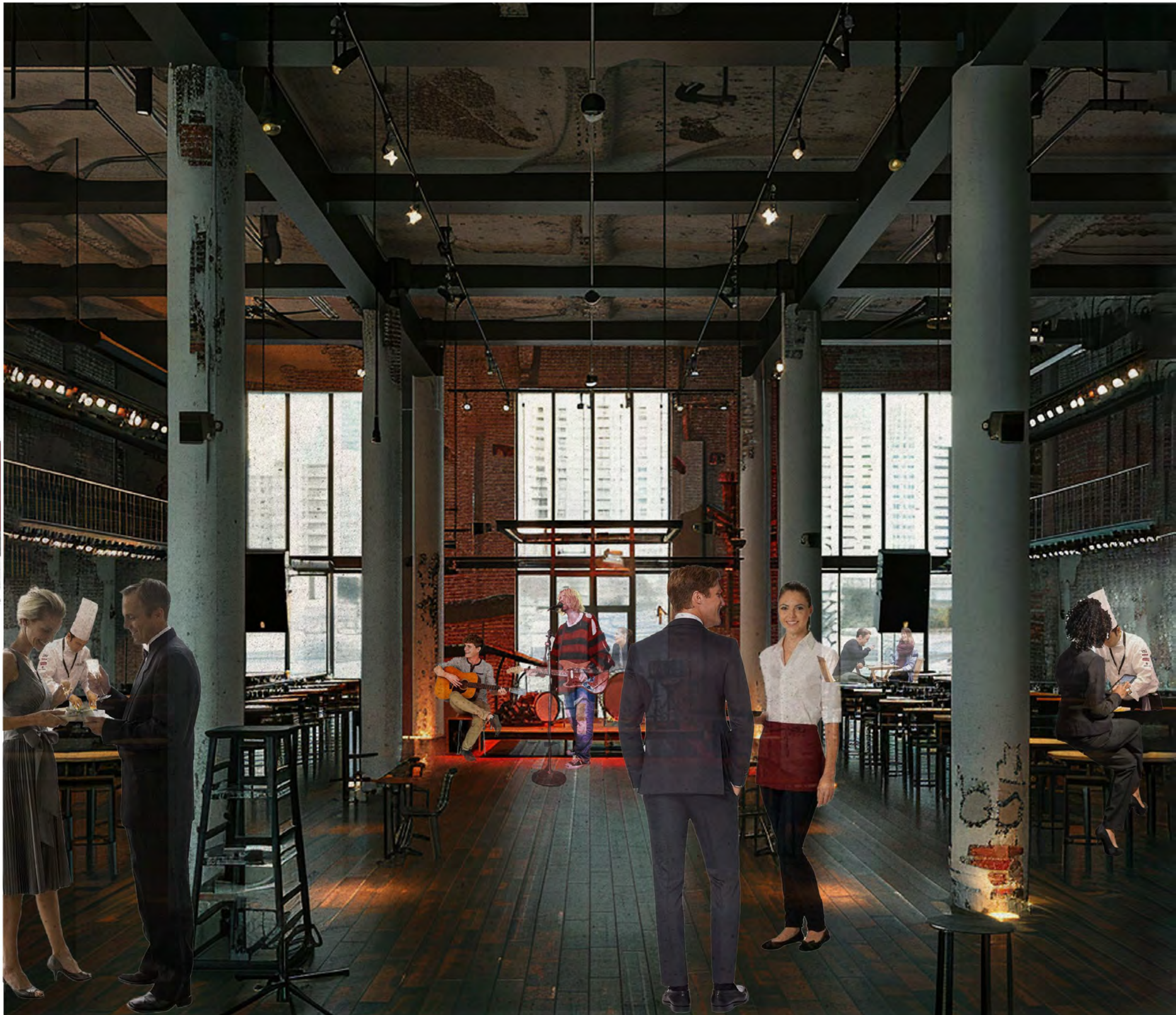
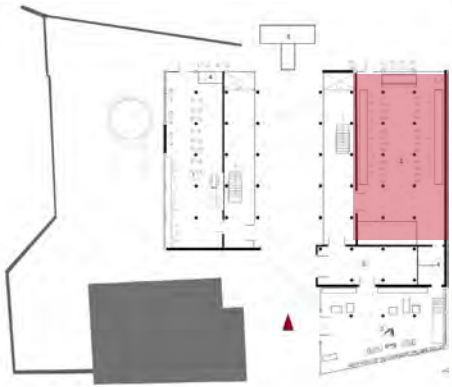
Cafe Bar



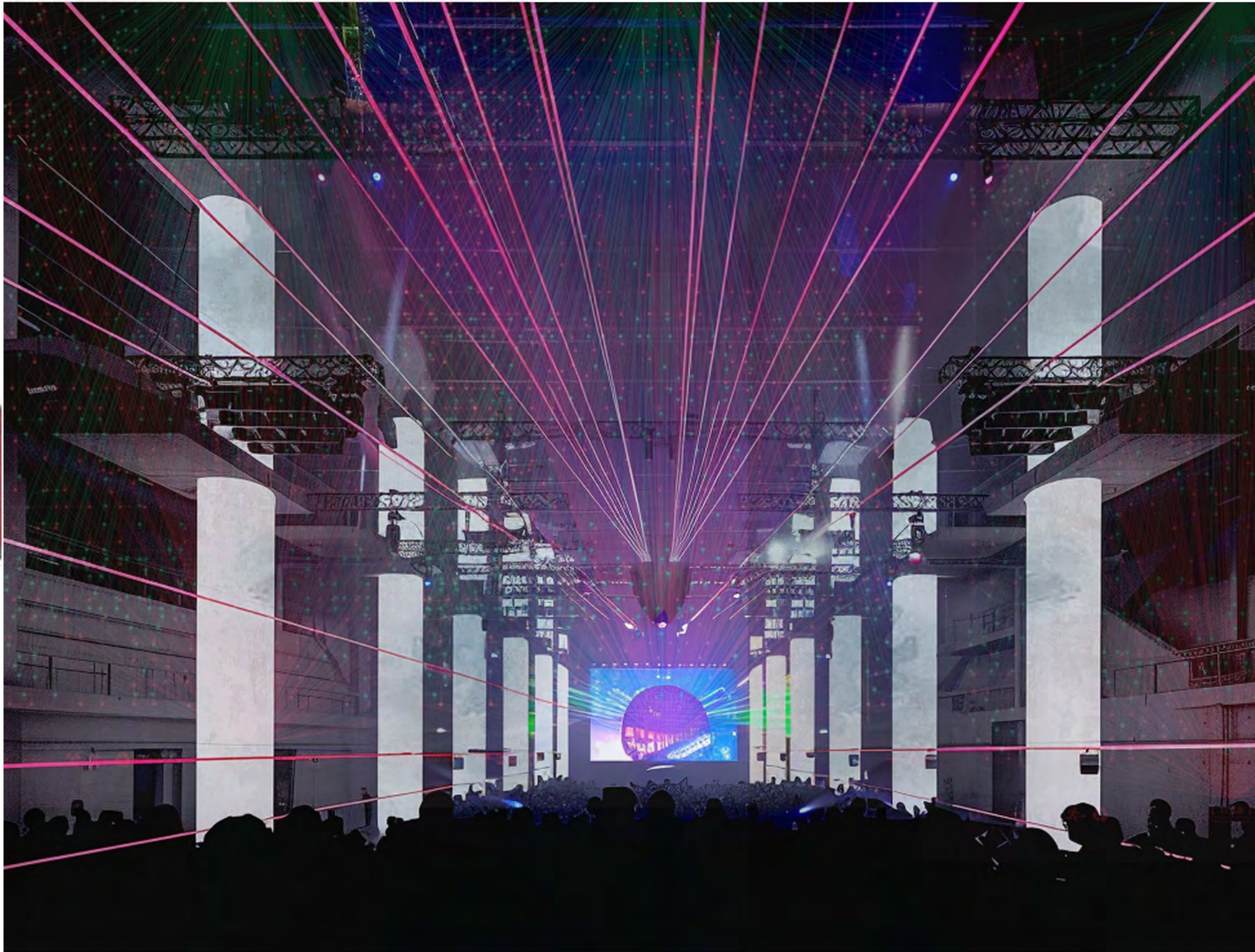
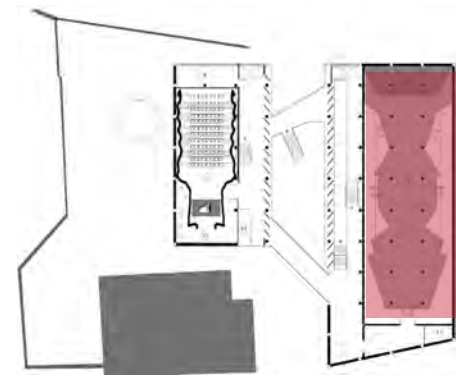
Music Shop



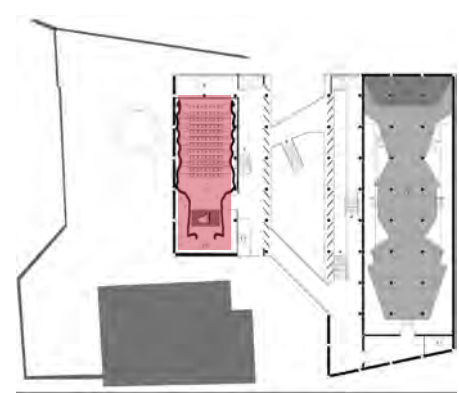
Music Canteen



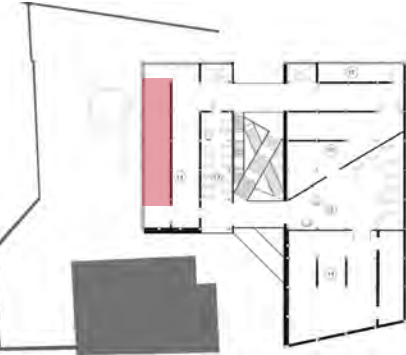
Electronic music



Classical Music



Exhibition Area



Model



