

PLAYSCAPES

The title 'PLAYSCAPES' is rendered in a light green, hand-drawn font. A dashed line path starts from the left, goes under the letters 'P', 'L', 'A', and 'Y', then curves upwards under 'S', 'C', 'A', 'P', and 'E', and finally goes under 'S'. Small, dark grey silhouettes of people are placed on the path: a person climbing a set of stairs next to the 'P', a person sitting on the 'Y', and a person climbing a vertical line next to the 'A'.

BY POOJA SAGI

MA INTERIOR DESIGN
ROYAL COLLEGE OF ARTS

A LOSS OF PLAY FOR CHILDREN
A LOSS OF ATTITUDE OF PLAY FOR
ADULTS

With gentrification looming in Spitalfields, for me it was crucial to consider the impact on children and families. These are the closest spaces for play near Norton Folgate.





HOW CAN DESIGN INTERVENE IN AN INDOOR SPACE TO
CREATE PLAY FOR CHILDREN AND AN ADULT?

GENERATED BY MIDJOURNEY IN MY DESIGNED SPACE

Children don't just **play** in spaces



they **immerse** themselves in worlds of their own creation,

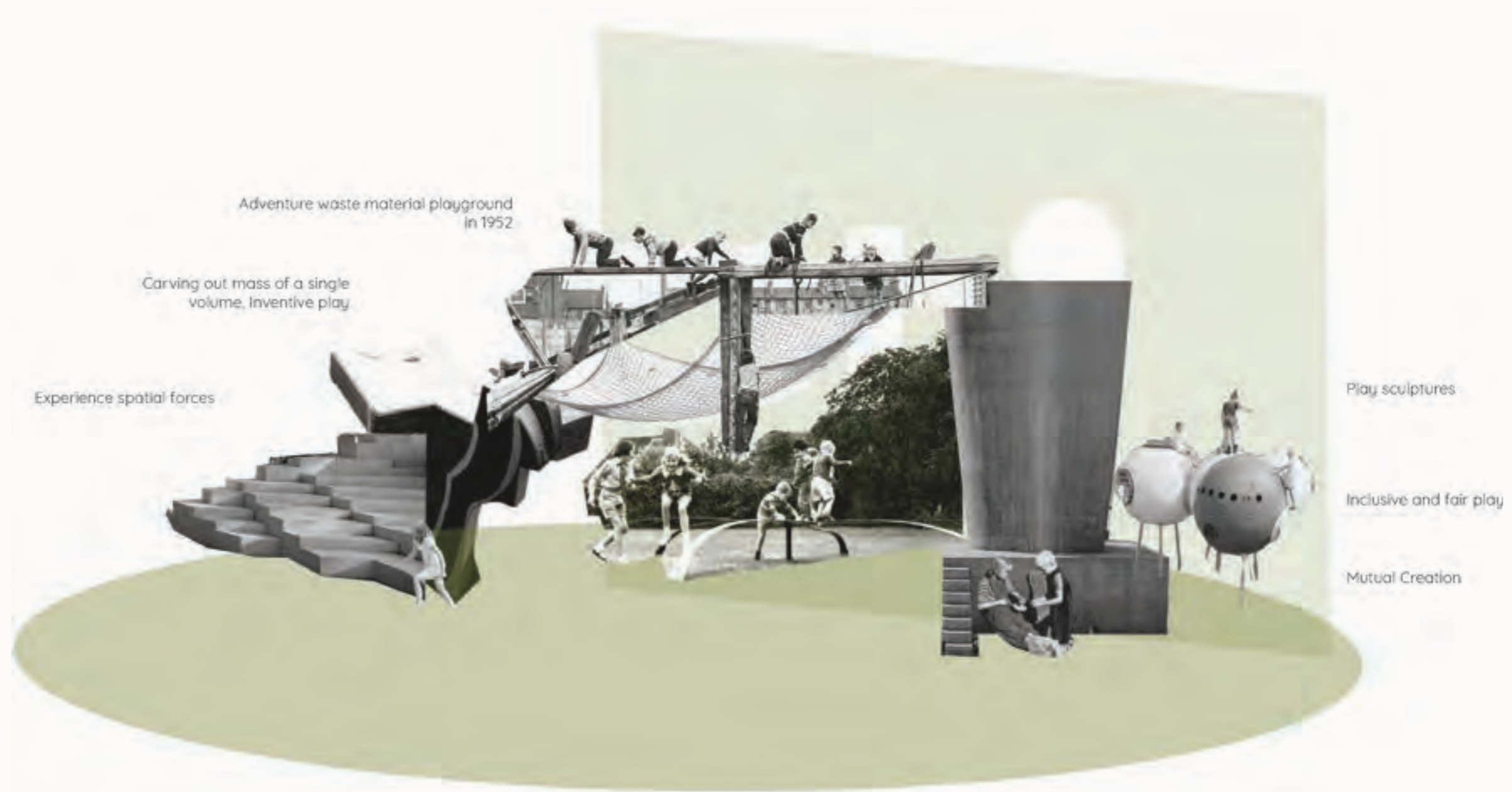


where every corner holds the promise of **adventure**,

every surface invites **exploration**,



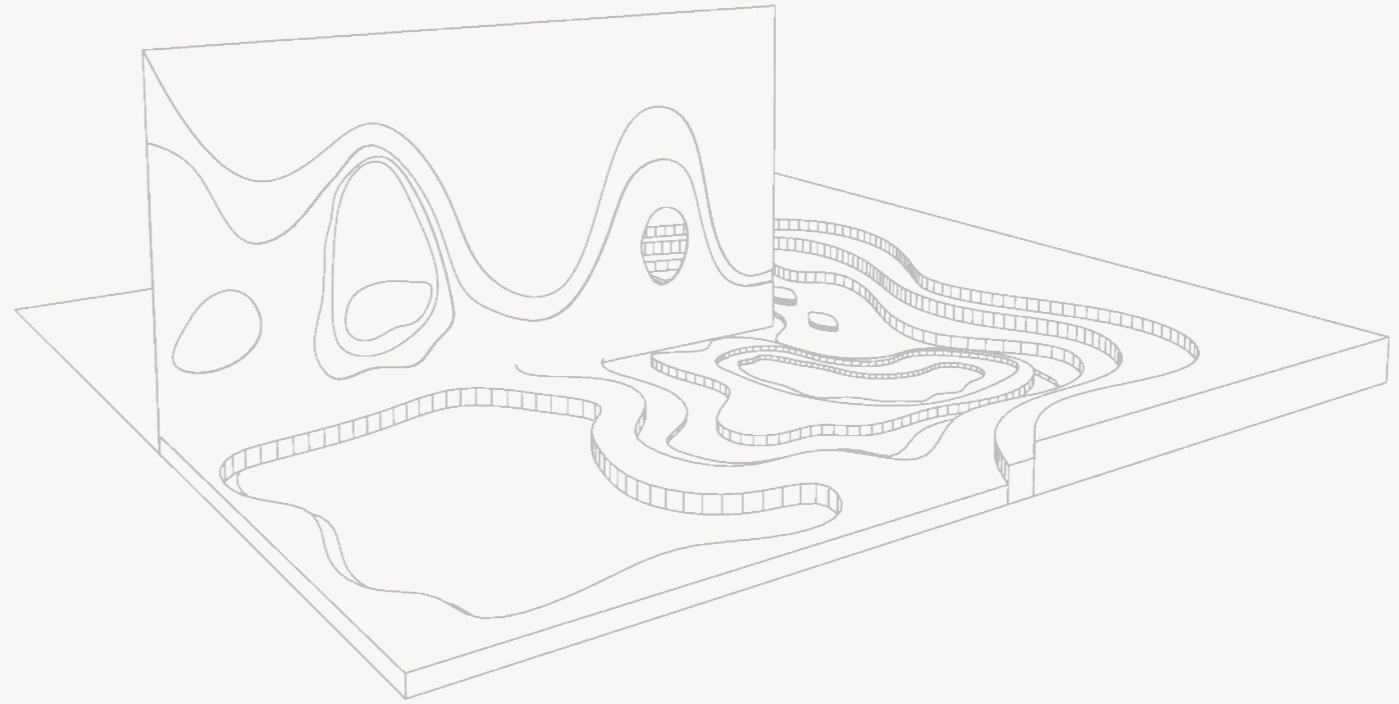
and every moment is filled with **wonder**.



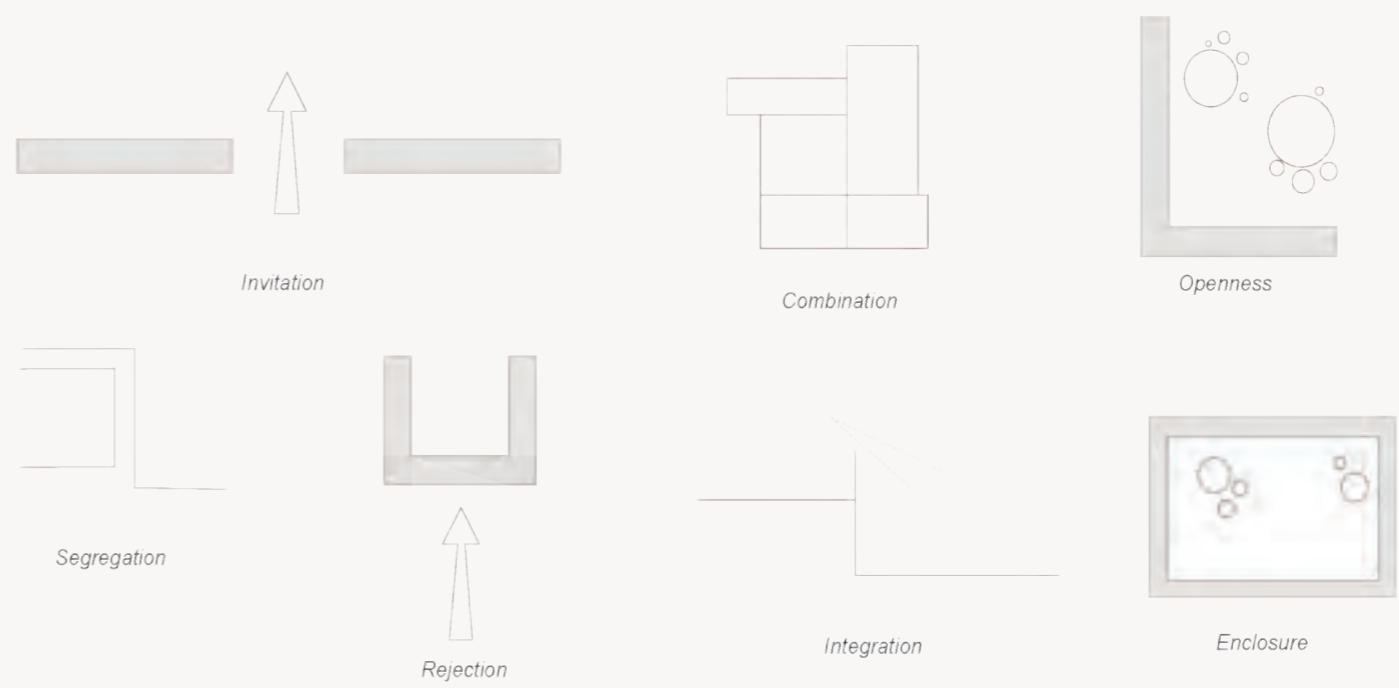
Collage made based on the research on playground design
Examined the design of playgrounds, focusing on how spatial
dynamics are experimented with in play spaces



Unravelling stories through playful explorations



Concept of Accomodation



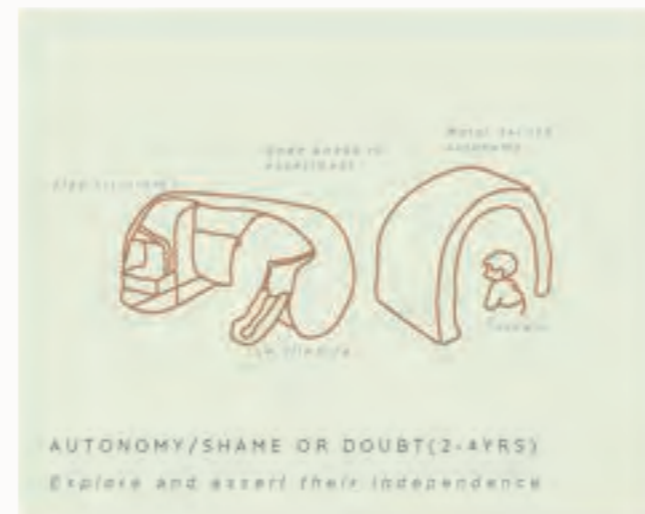


My exploration included creating maquettes and relating them to the prompts in Midjourney from which my forms were inspired. My journey through AI has been more for inspiration and provocation

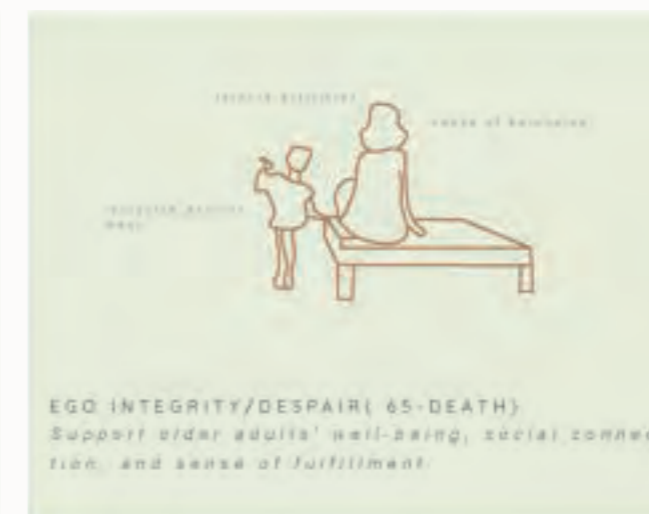




Exploring the spatial forms



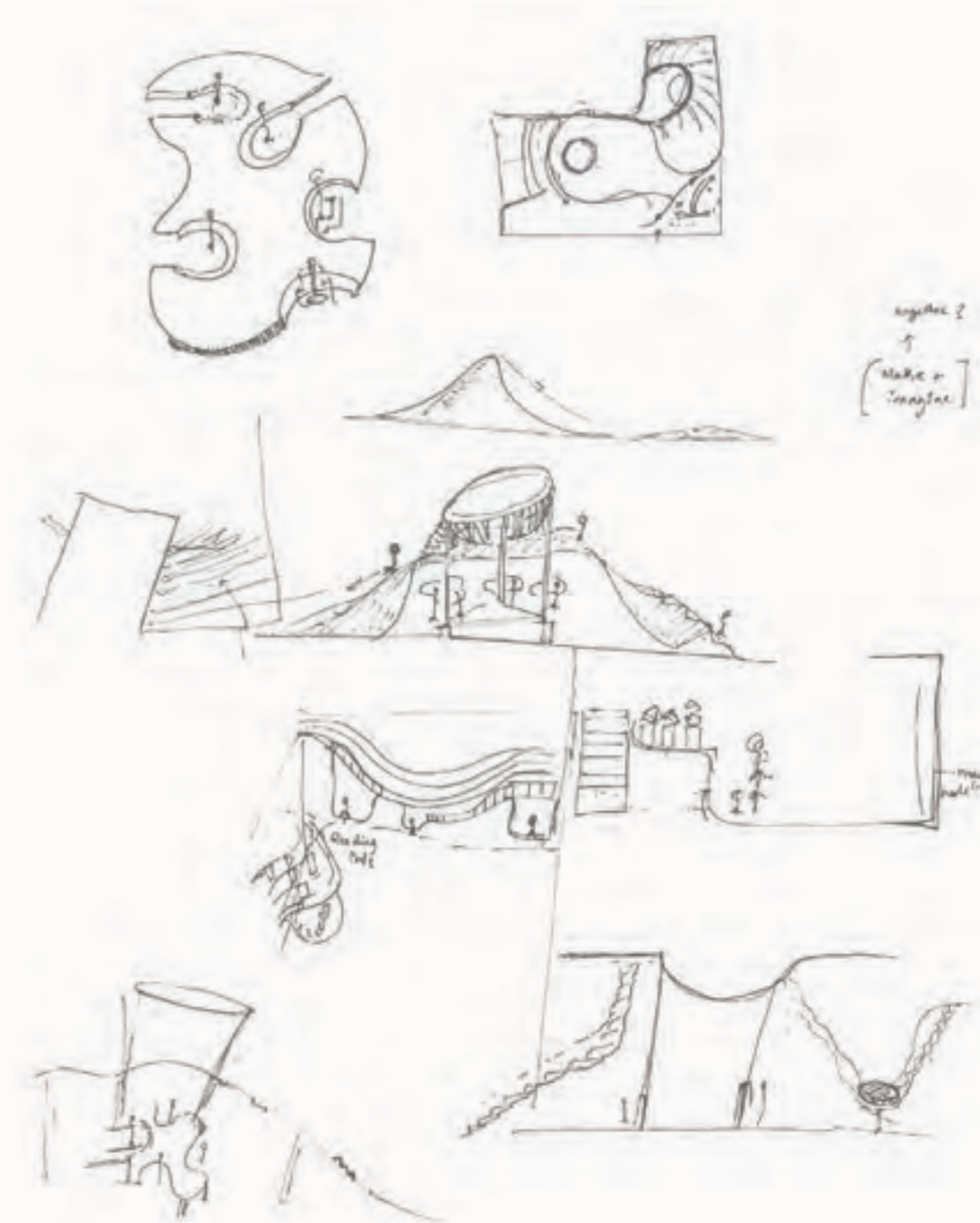
STUDY OF
**Erickson's theory
of Psycho social
development**
and developing design strategy

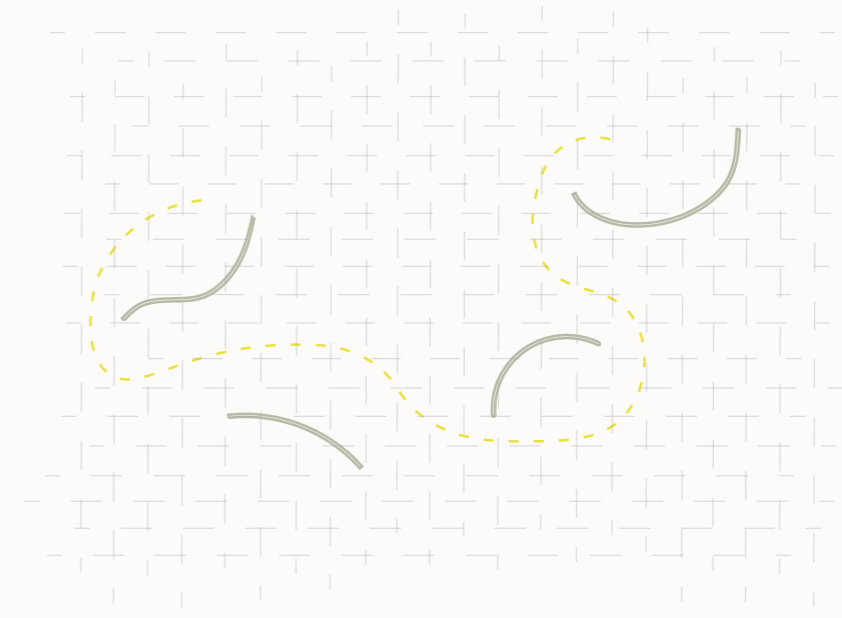
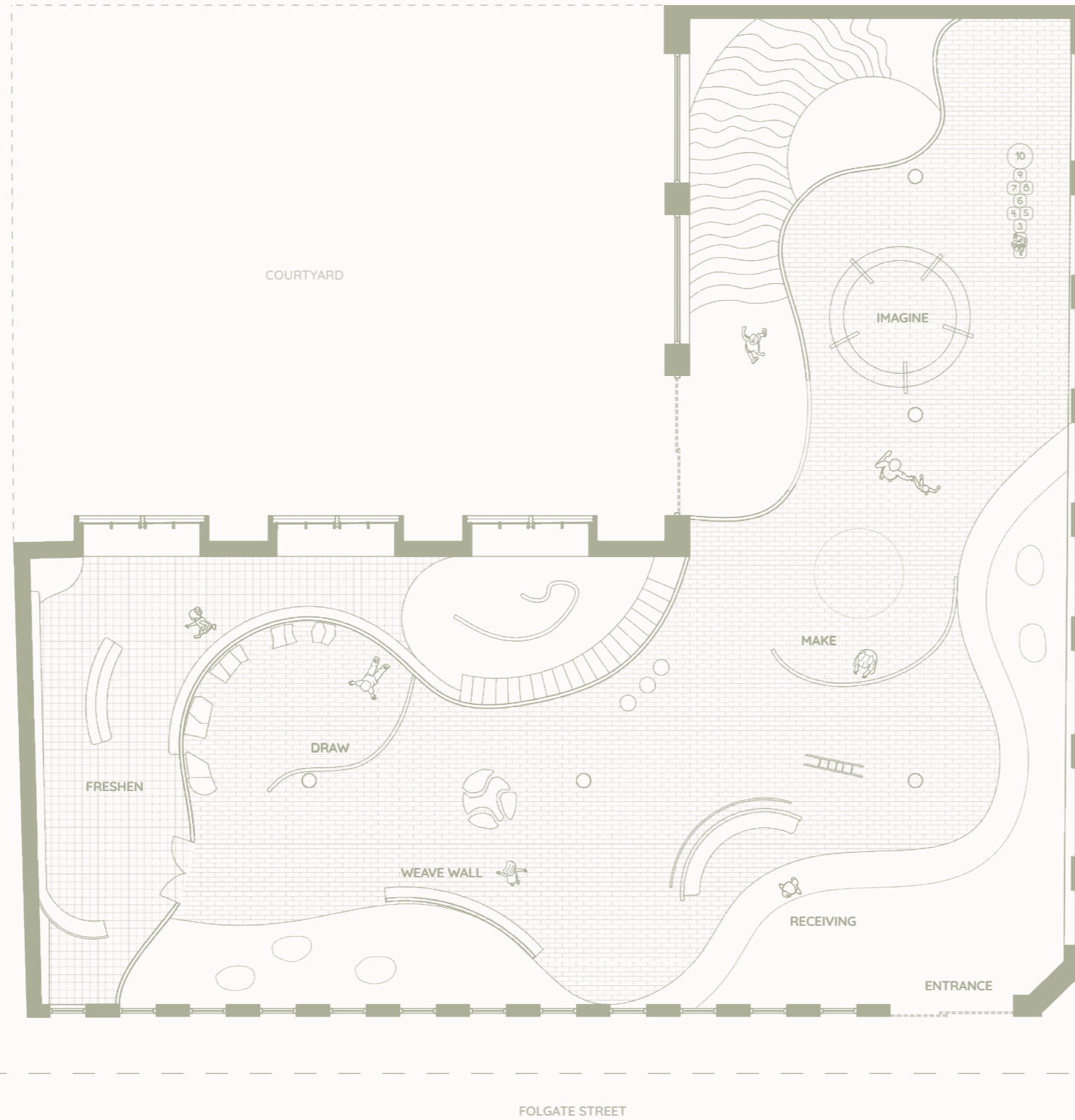


Erik Erikson, a renowned developmental psychologist known for his theory on psychosocial development, provided valuable insights through his theory. These insights were instrumental in designing my play space that supports children's and adults' emotional, social, and developmental needs.

**“PLAY IS NEVER FINISHED,
IT RATHER FUNCTIONS LIKE AN ORGANISM”**

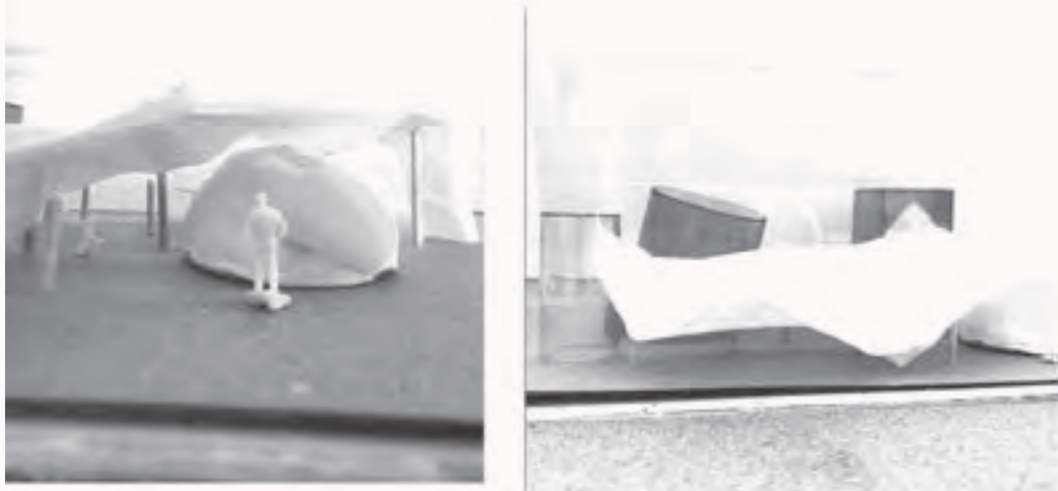
Combining my explorations of forms through the study of playgrounds and my explorations of moments through insights gained from studying Erikson’s theory, I started designing the space.





GROUND FLOOR PLAN

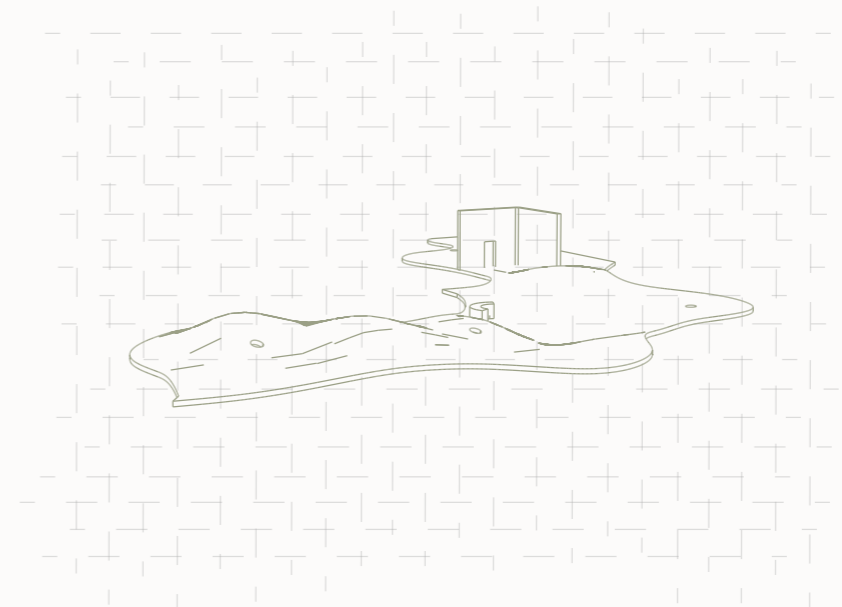
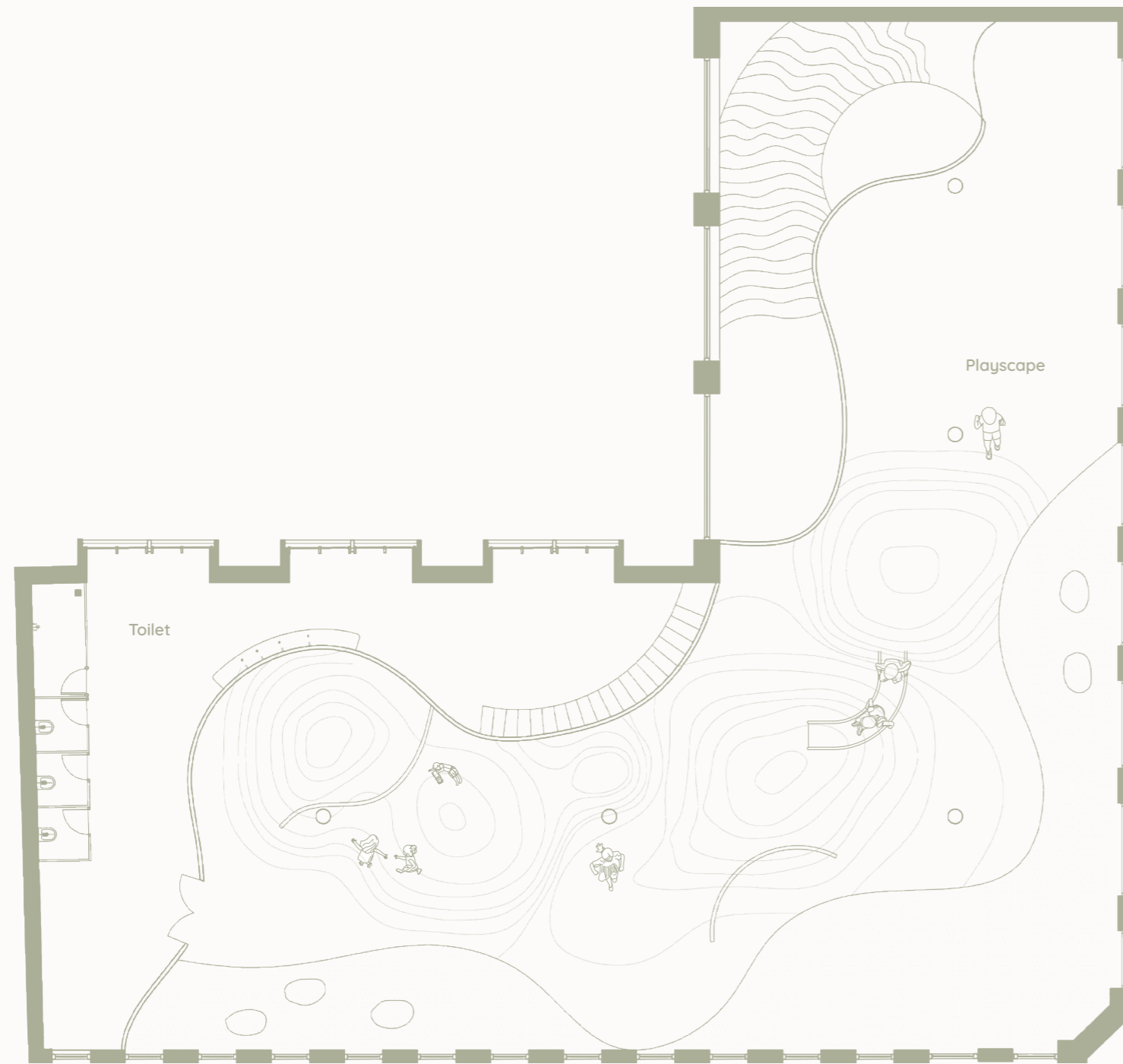
Hide & Seek Play Partitions
 Based on Erickson's theory, designed partitions in a way that encourages children to seek initiative and independence in making their choices, and to create excitement.



To get the shape of moments covered, I used a paper napkin to get the form of a playscape, illustrating how kids just play with anything and everything



This image showcases Isamu Noguchi's design, known for creating playscapes that encourage imaginative play and self-directed activity. It has inspired me by challenging traditional notions of defined play forms, making spaces inclusive for everyone through the use of organic shapes and muted colors.

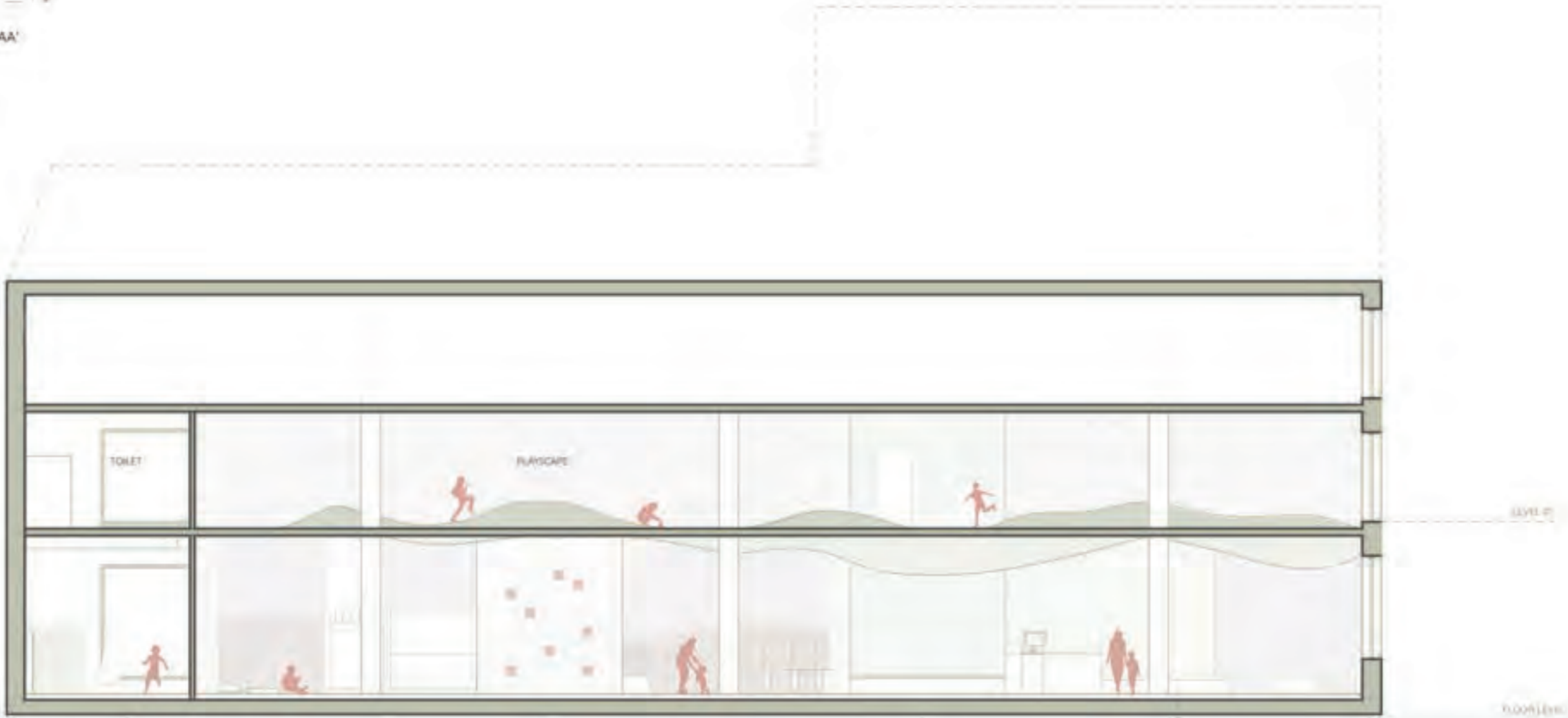


FIRST FLOOR PLAN

Dancing Scapes
Reflects the dynamic nature of the
playscape, inviting children to move, explore,
and play in a lively, dance-like manner.



SECTION AA'



FRESHEN

DRAW

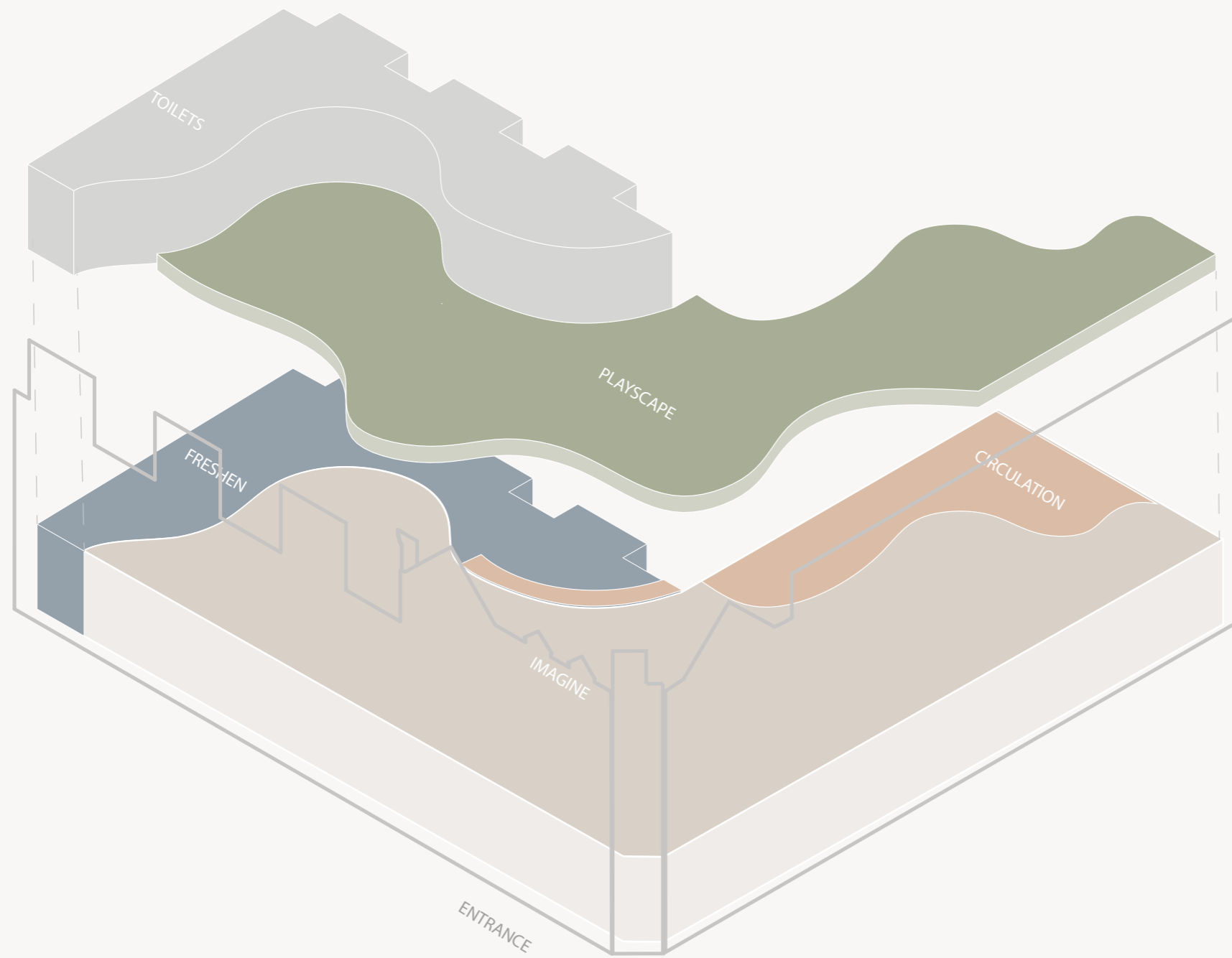
WEAVE WALL

RECEIVING AREA

LEGO WALL

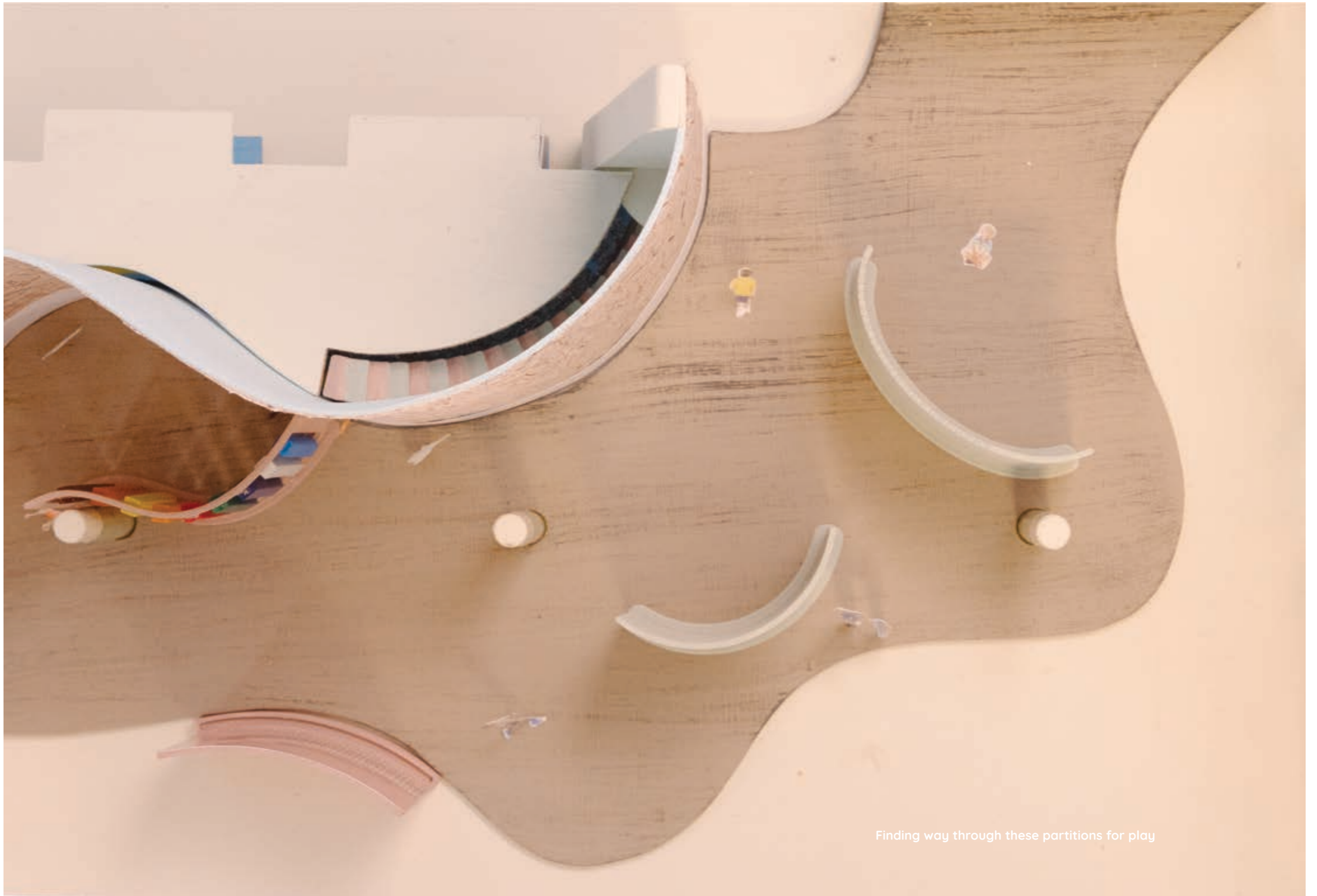
LEVEL 1

FLOOR 0

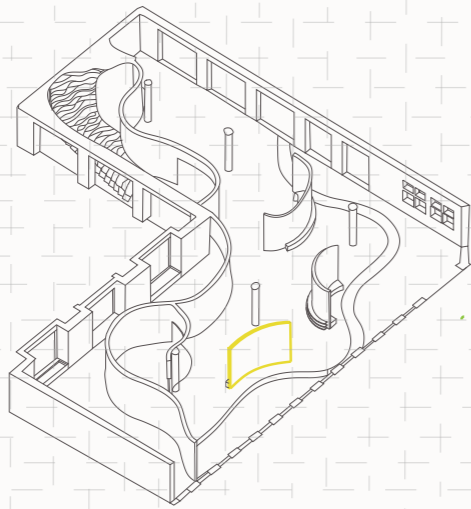


ZONING DIAGRAM





Finding way through these partitions for play

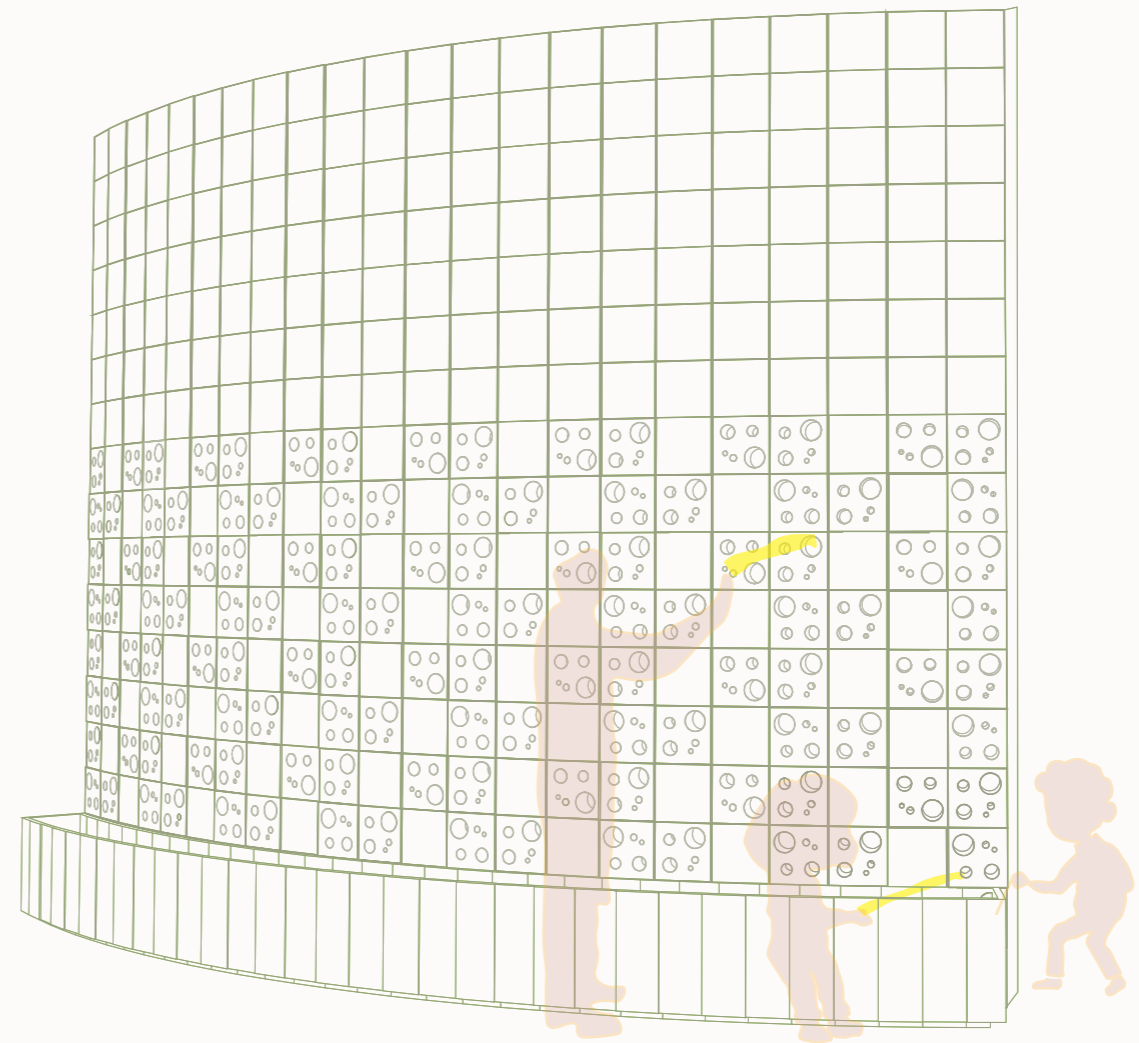


Weaving Play

This interactive wall invites collaborative weaving, where children and adults can engage together. By helping children reach higher sections, adults not only facilitate more intricate designs but also foster stronger social bonds. This activity nurtures teamwork, creativity, and connection among participants.

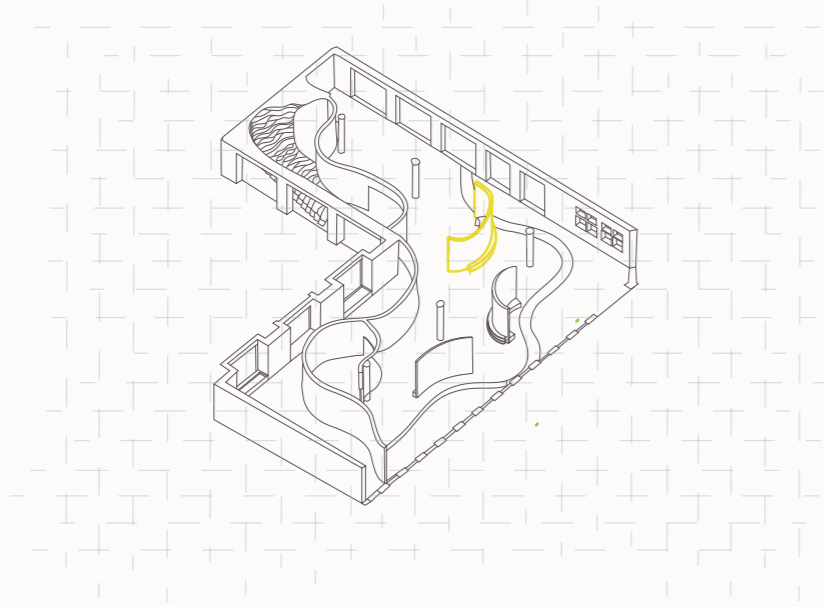


Customised clay bricks with felt lining



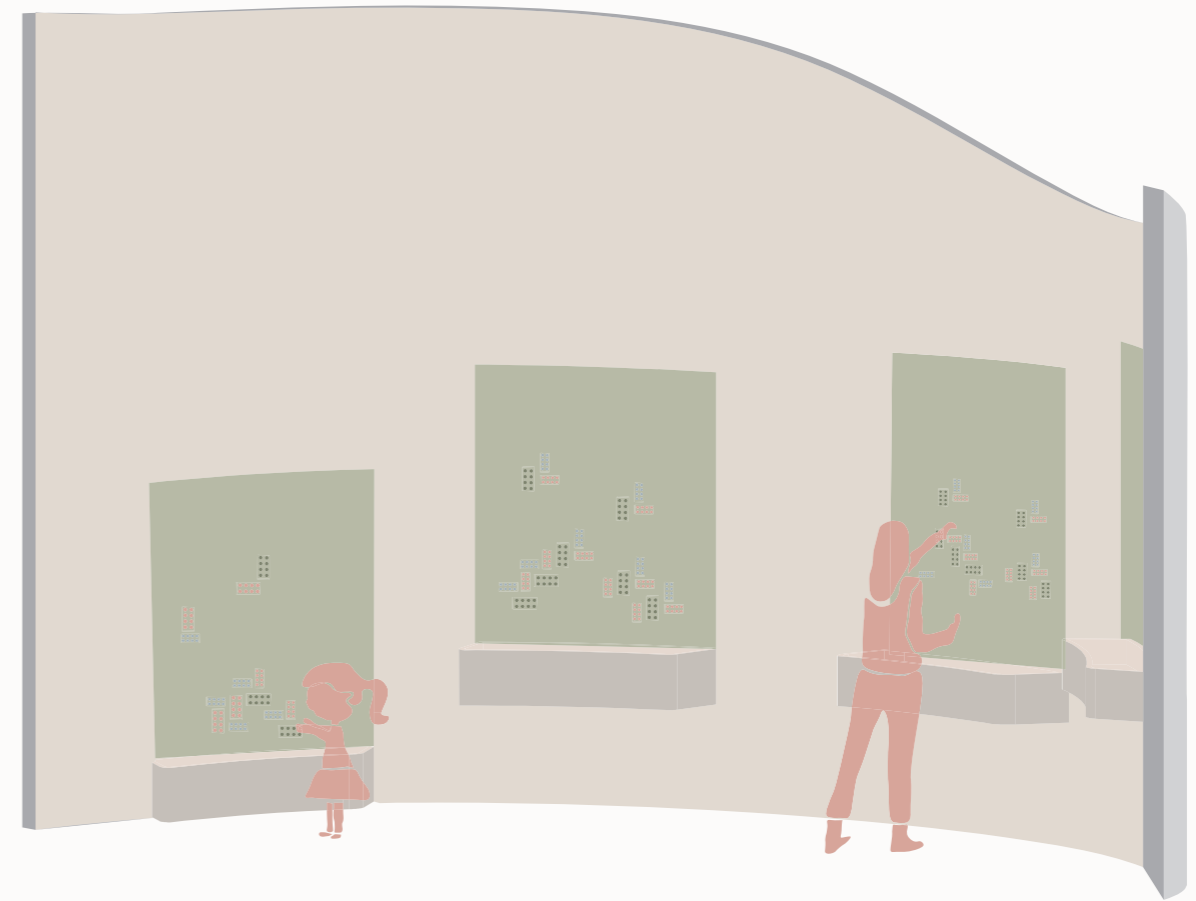


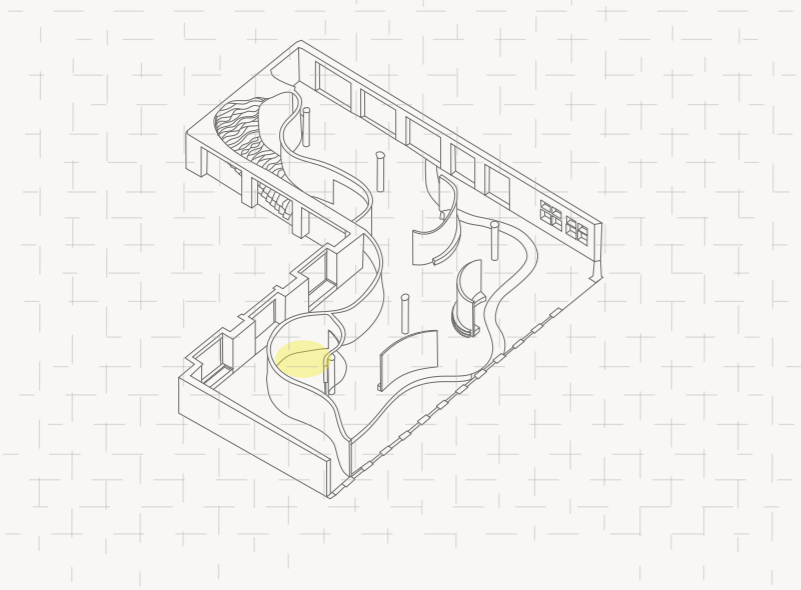
1:1 weave wall brick



Paint Your Frame with Lego

This wall is designed to allow children to create their own art with Lego and to make it challenging. Inspired by Erikson's theory of psychosocial development, this activity focuses on encouraging initiative and independence while providing guidance and support as needed.





Bio based PU Foam for furniture

Reclaimed solid beech flooring

High pressure laminates

Marmoleum

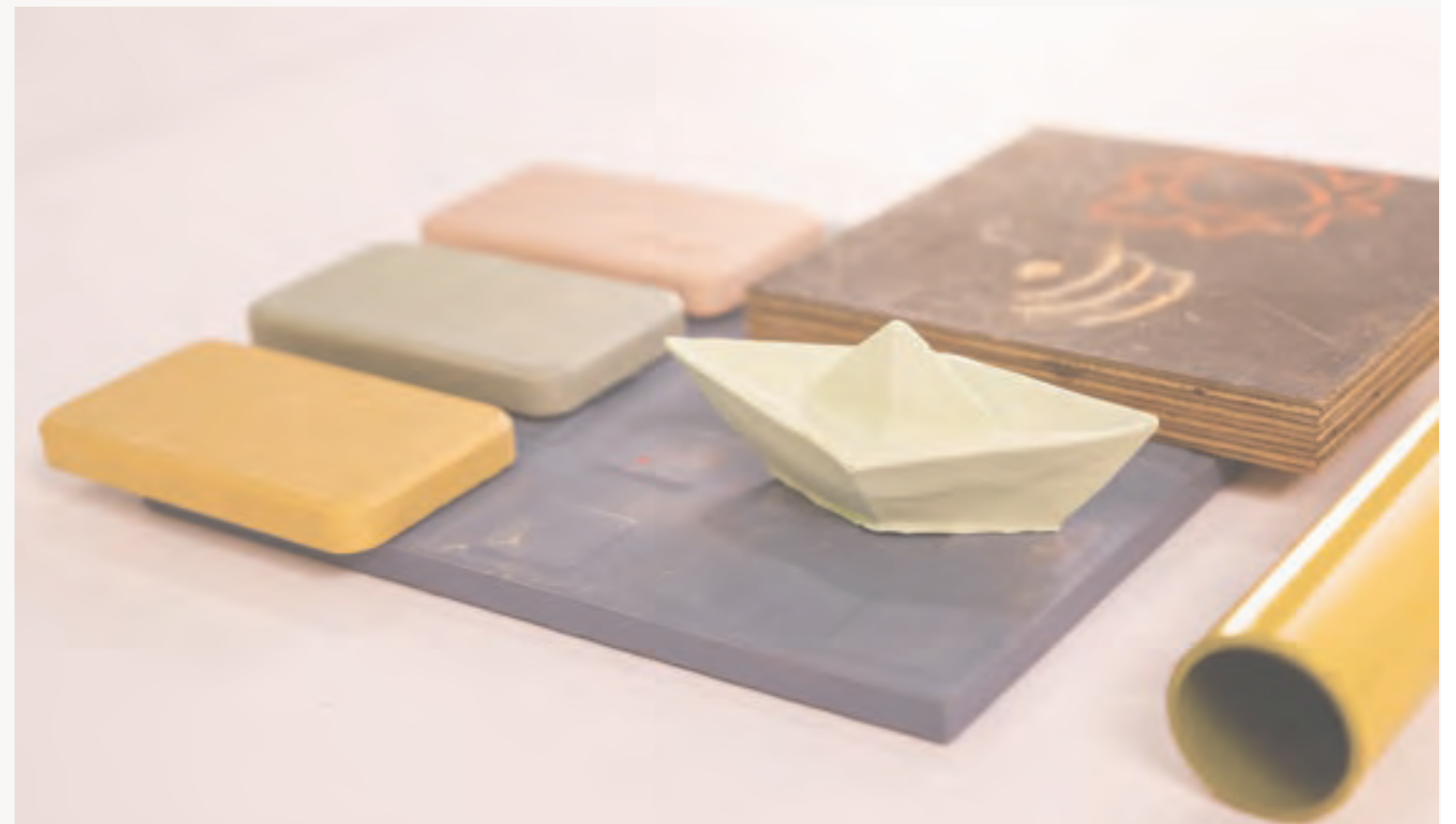
Draw Wall

The concept behind the Draw Wall is to rethink traditional drawing by fixing crayons vertically to rods. This allows for imaginative use of the paper surrounding the crayons while still providing space to draw on the walls in a traditional manner. The design encourages creativity and exploration in both conventional and unconventional drawing methods.



This space, called Freshen, rethinks the traditional bathroom experience. It transforms the use of toilets, showers, and basins into a playful and engaging process for both adults and children. Freshen envisions a bathroom where functionality meets fun, making it a space that caters to all ages.





Hydrochromic ink screen
Anti skid ceramic tiles
GGBS Concrete
Perforated drain





Creating a dance of surfaces, play embodies different mindsets, with both open and enclosed spaces.



1:50 scaled
physical model



“Imagination is our inner child and creativity, its playground”