

**Royal College of Art**

**SuperMATTER**

**Term 3**

**Po-Tsang Ho (Fred)**





**“How to Integrate  
Micro Homes into the  
Modern Office”**

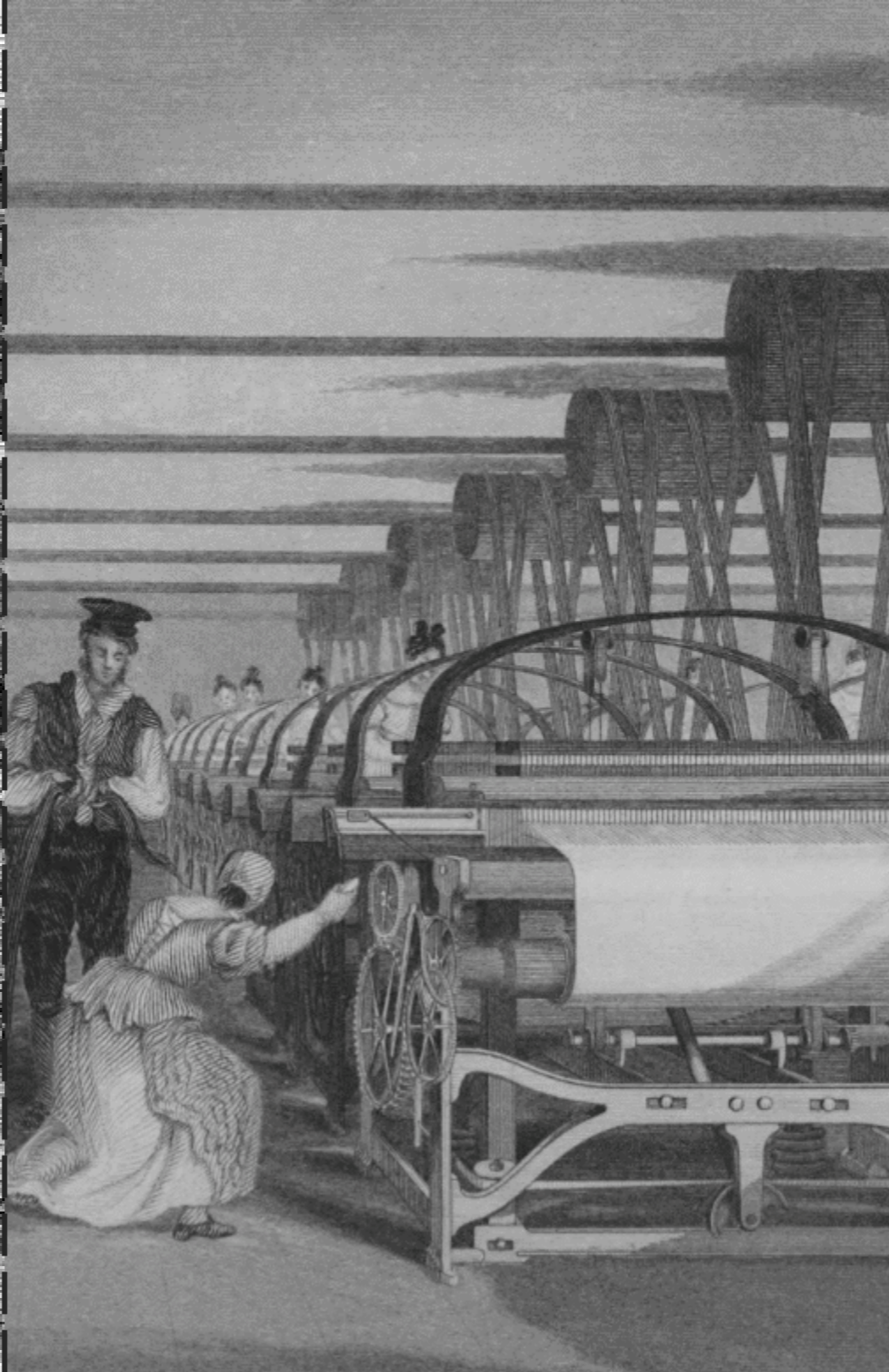


By the early 18th century, when Spitalfields was becoming an important **silk manufacturing** area, many houses were built in the 1720s.

What is the silk weaver ritual?  
Why people start to work from home?  
Why office need to change?



Before Industrial Revolution



Industrial Revolution



COVID-19 period

Work from the Office



Work from Home

NOWADAYS

~~Work from the~~ Office = Home ~~most show~~  
?

To some extent, the office can also be a home.

# Current Issues

centreforcities

Research City by city Data Blog Podcasts Events About

Current issues General election 2024 Metro mayors Levelling up Housing Productivity Net zero

« Blog

Productivity The Future of Work Transport

## Is the commute the reason why London workers are reluctant to return to the office?

From an economic perspective, returning to the office is important. But long and expensive commutes are making workers reluctant to do so.

Blog post published on 1 June 2023 by Valentine Quinio

More workers now want to work from home because of changing work types and economy (cost savings).

# Current Issues



www.bbc.co.uk

## City of London to convert offices into homes in post-Covid revamp

The City of London Corporation set out plans on Tuesday to create 1,500 new residential units by 2030.

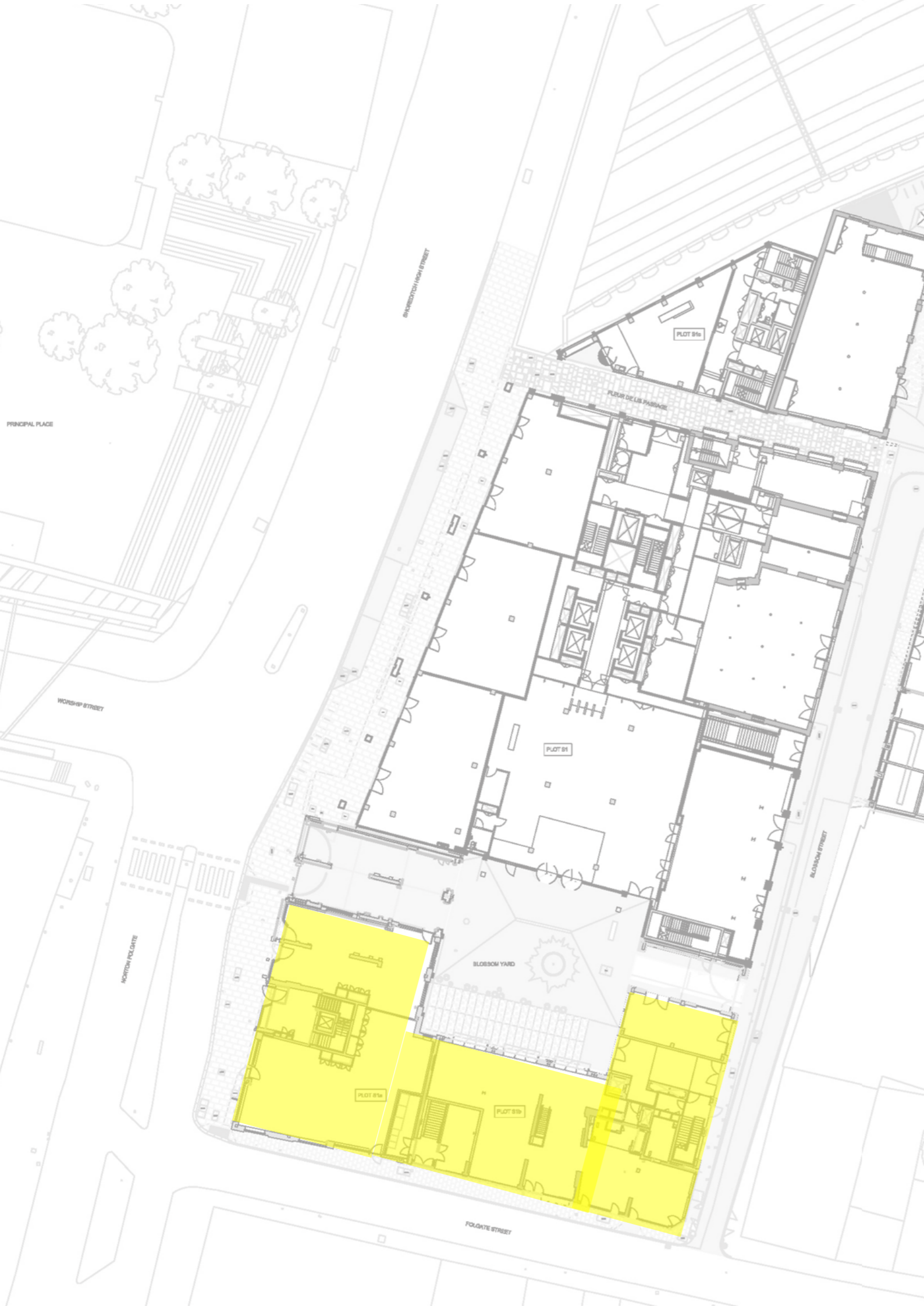
The proportion of housing in our site is too low and the proportion of affordable housing is disappointing.

# Surrounding Situation



Surrounded by the financial city, there are many skyscrapers and office buildings, and even our base is used as an office building.

“ Do we really need so much office space after the COVID? ”



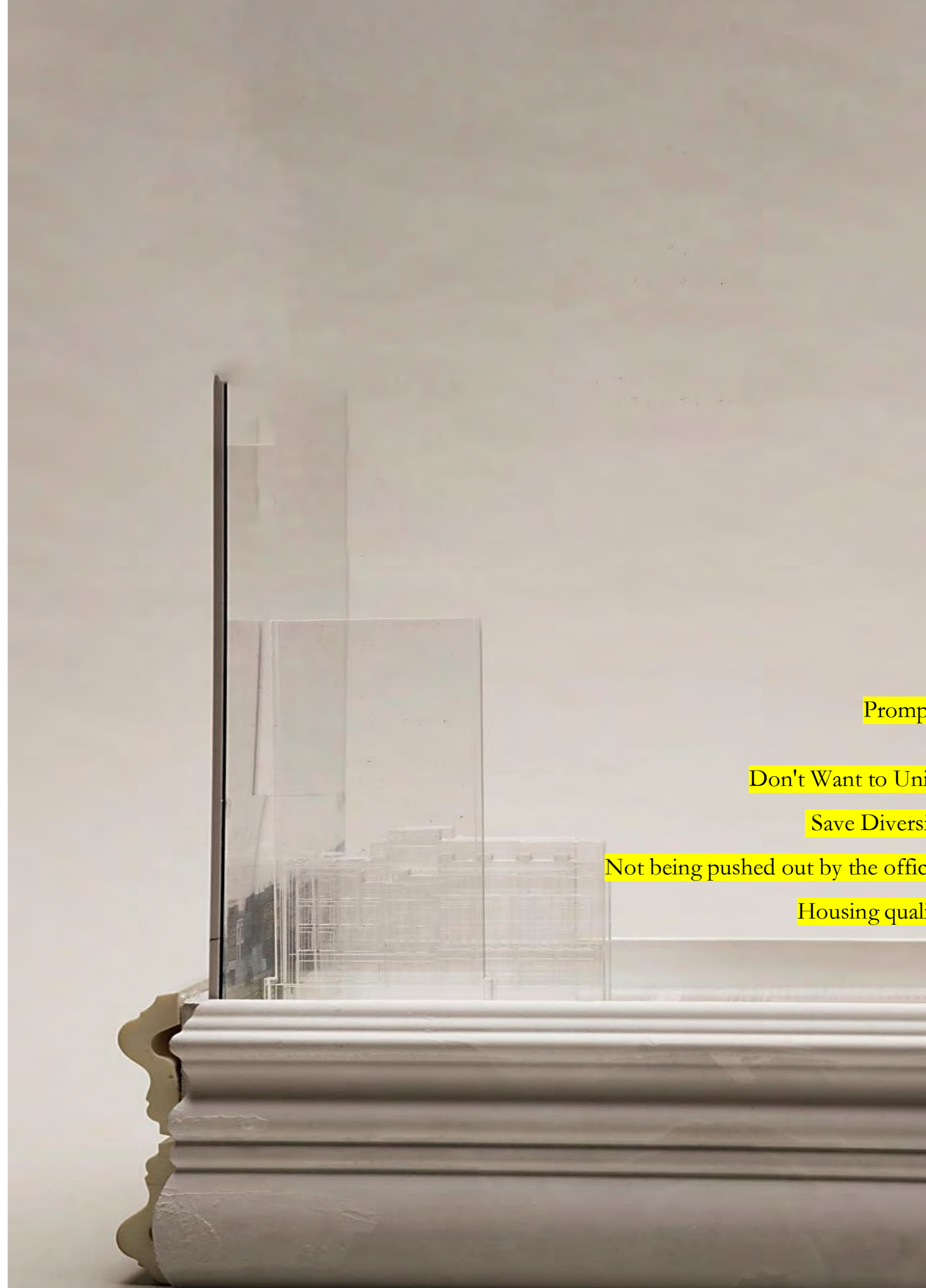
Prompt:  
interlock  
trace  
historical  
shape  
ritual  
manufacture



Prompt:  
moulding shape sign brick bond threshold



Prompt:  
blend moulding  
trace historical  
shape sign  
Victoria threshold



Prompt

Don't Want to Uni

Save Divers

Not being pushed out by the offic

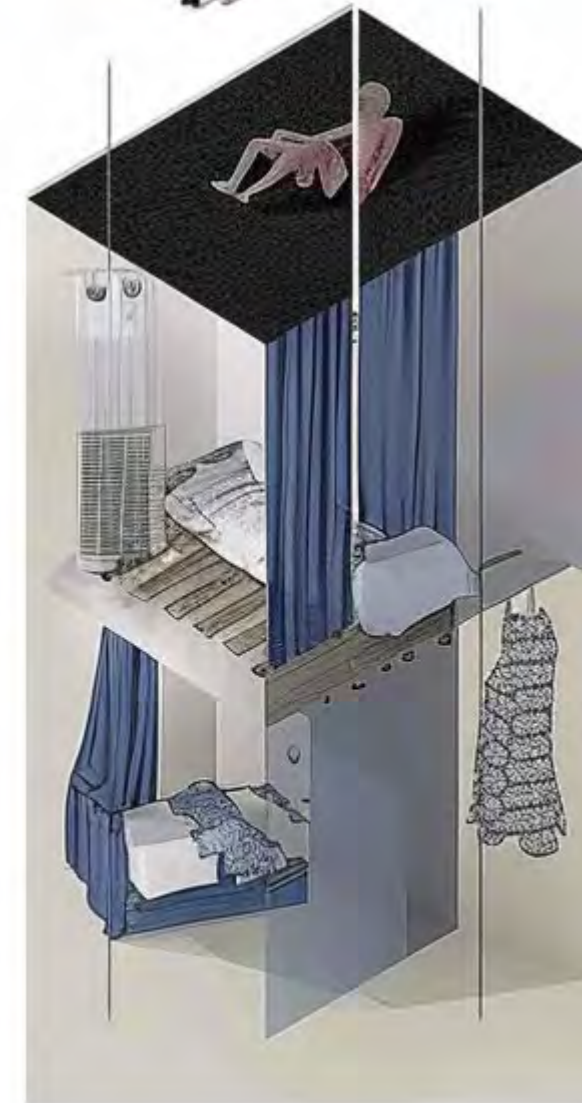
Housing qual

# Design Concept

Minimise the residential unit and  
integrate it into the office space,  
creating a form that can be shared or  
independent.



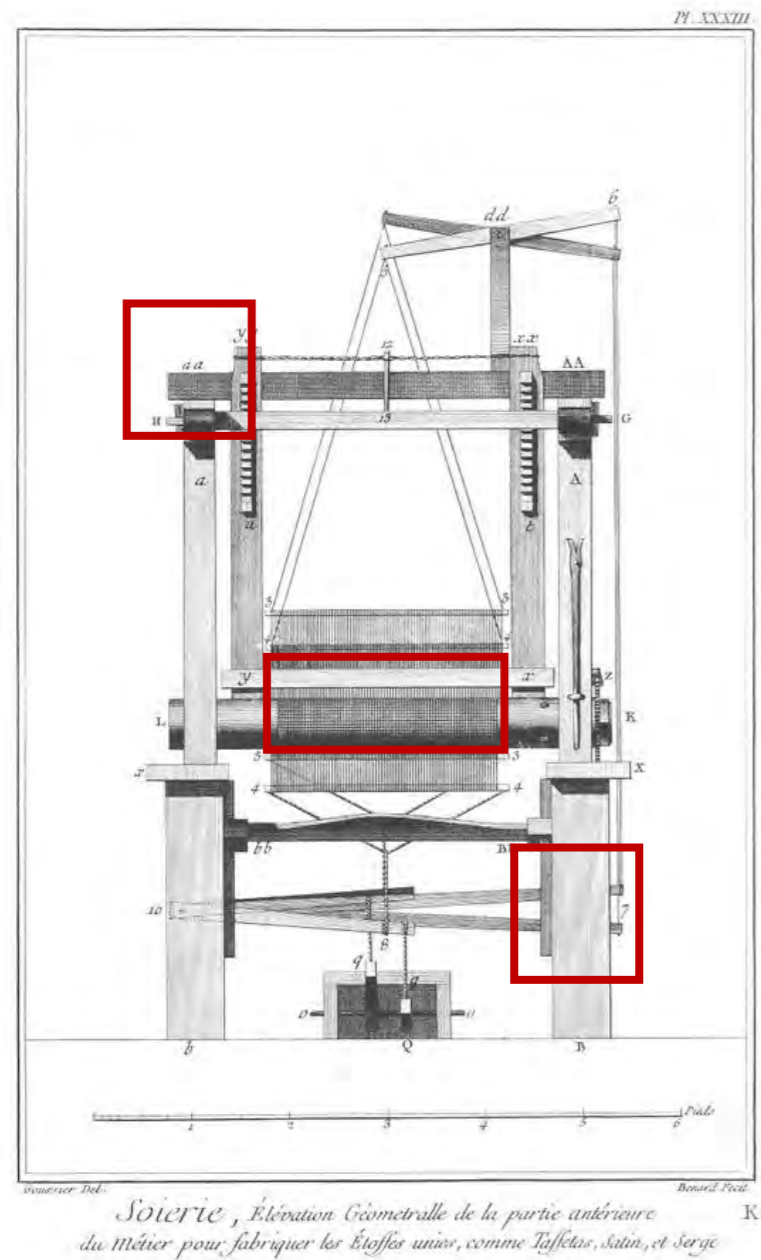
Prompt:  
Working and living in a building  
Modularise  
Share space  
intertwine



Prompt:  
Working and living space  
Modularise  
One unit  
Minimise

# Historical Extraction

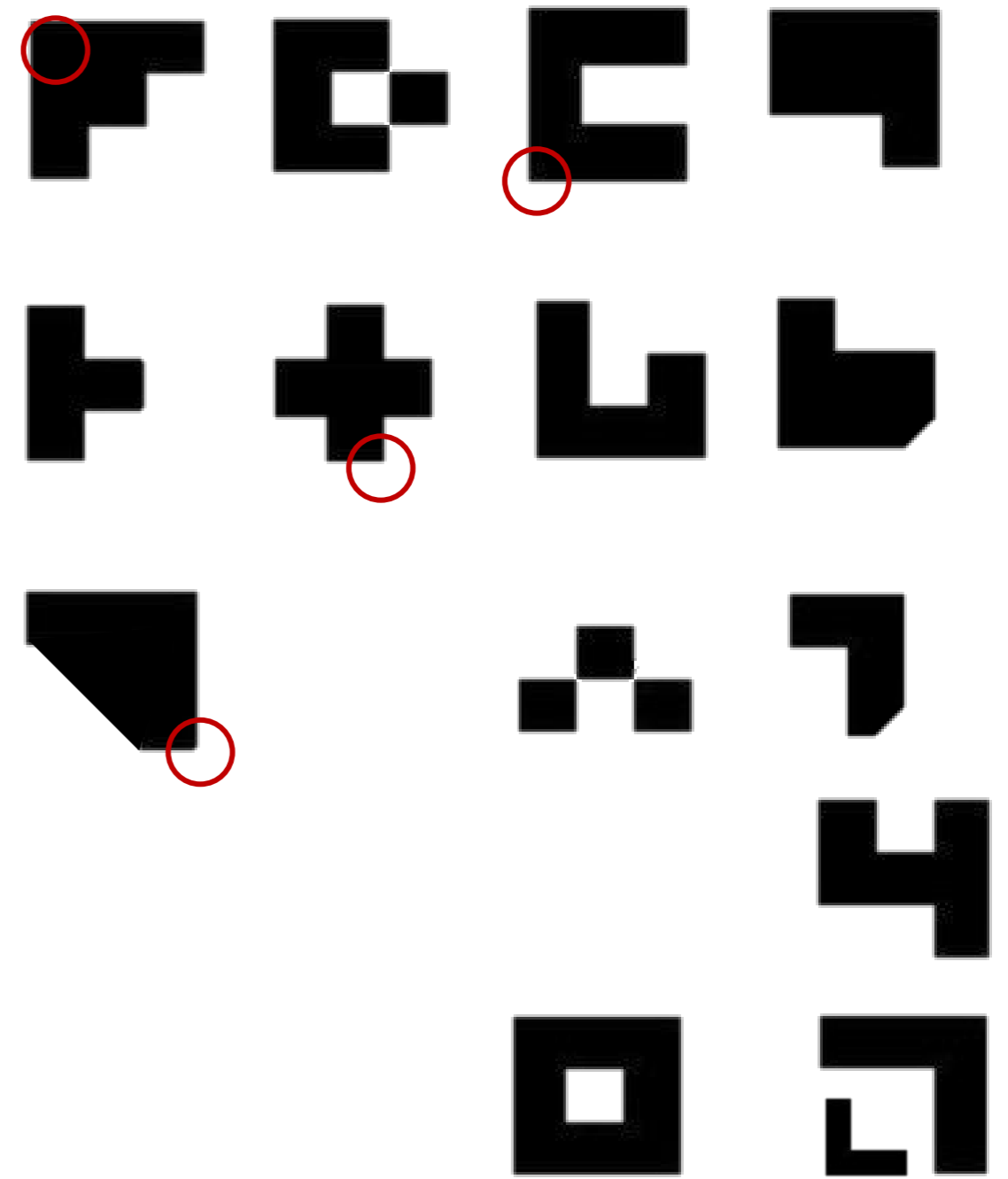
Trace the shape



Prompt:  
Wood Steel structure  
Silk Wall  
Spilt-level Curtain  
Homely  
Link each other

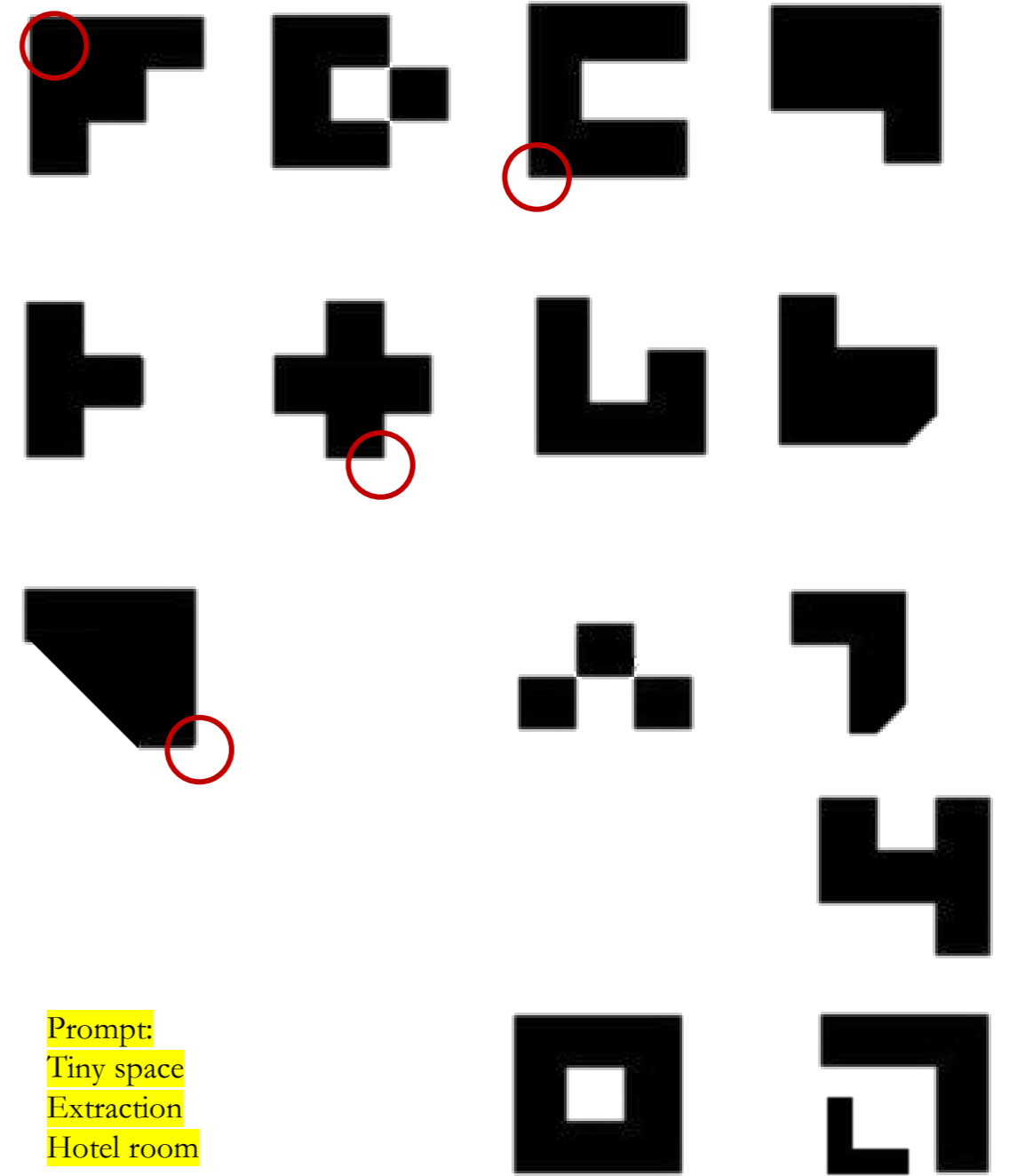
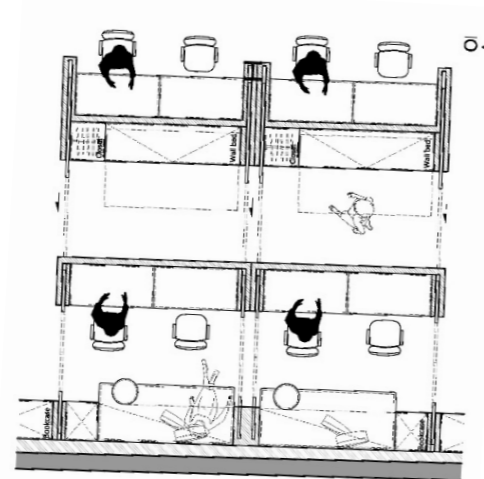
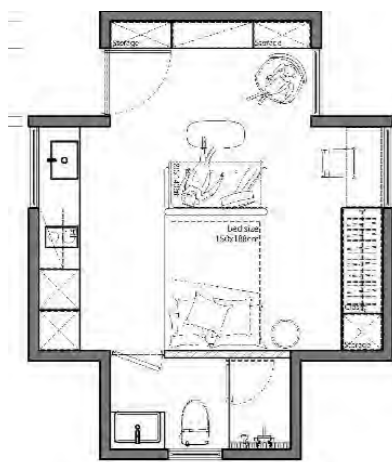
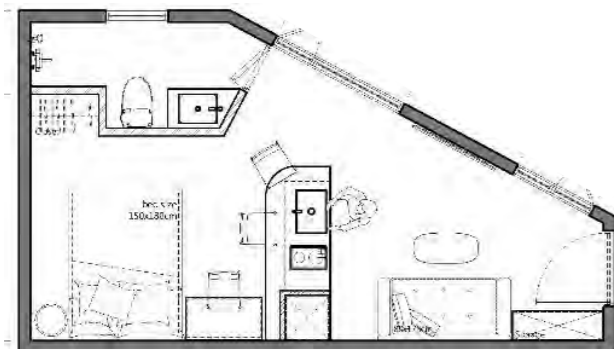
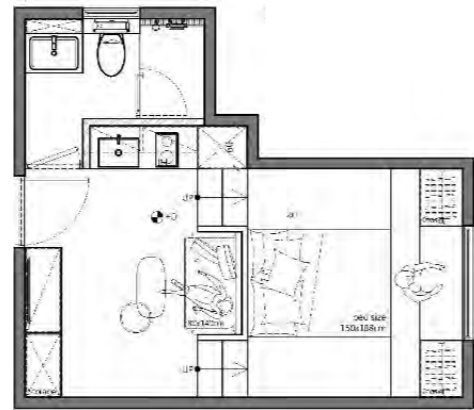
# Materiality Identity

Trace the pattern from the original wall



# Materiality Identity

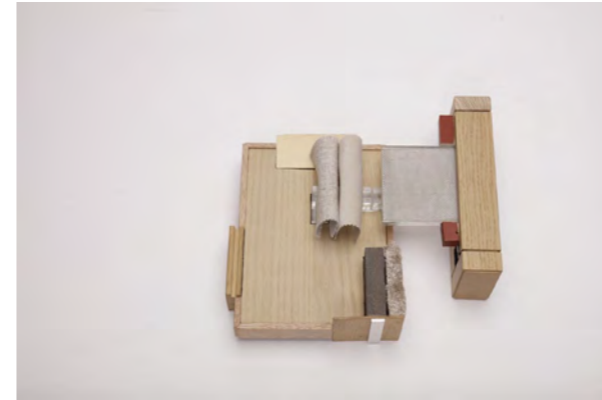
Iterating Plan Types-HI



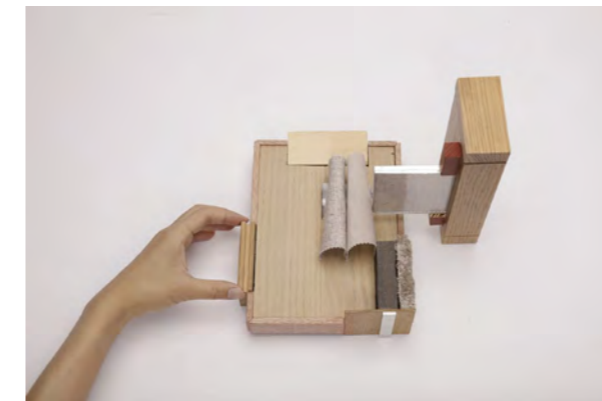
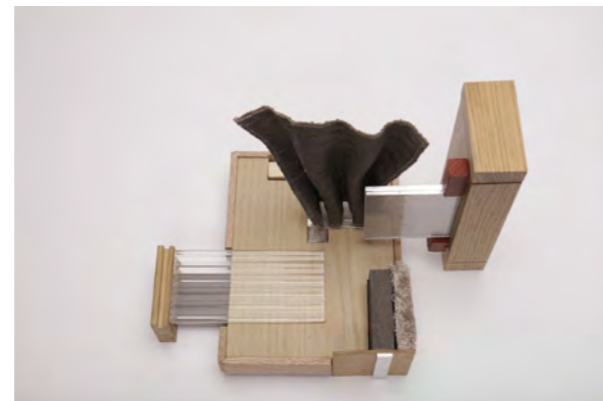
Prompt:  
Tiny space  
Extraction  
Hotel room

# Materiality Identity

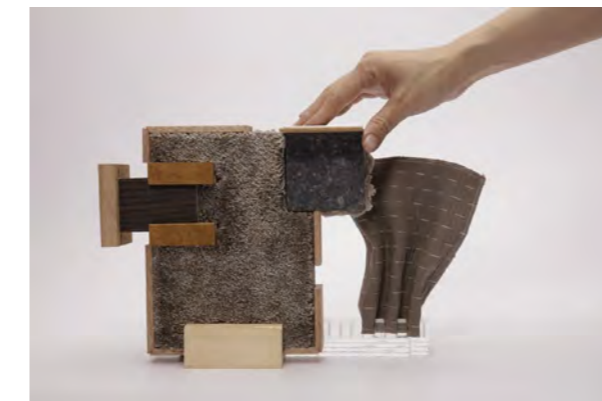
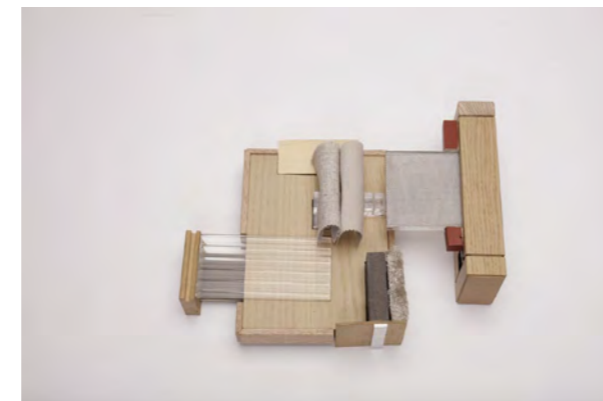
Material Palette Iteration -MI



Prompt:  
Wood warm  
Cozy fluffy  
Shape sign  
Pull it out



Prompt:  
Transparency  
Trace historical  
Insertion  
Double layer



Prompt:  
Latch  
Vertical horizontal  
Drawer  
Up-sit-down

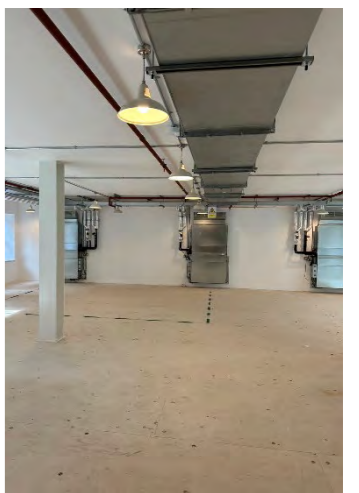
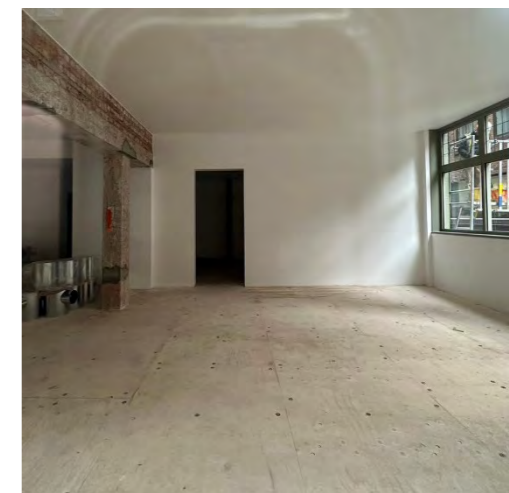
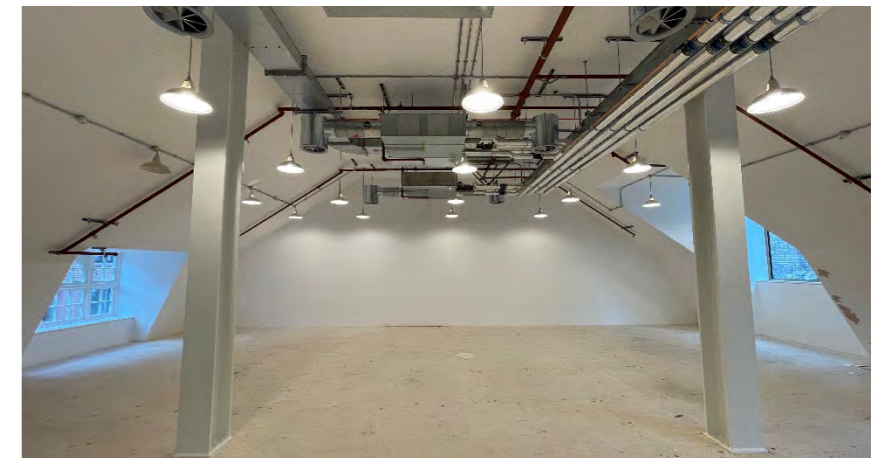
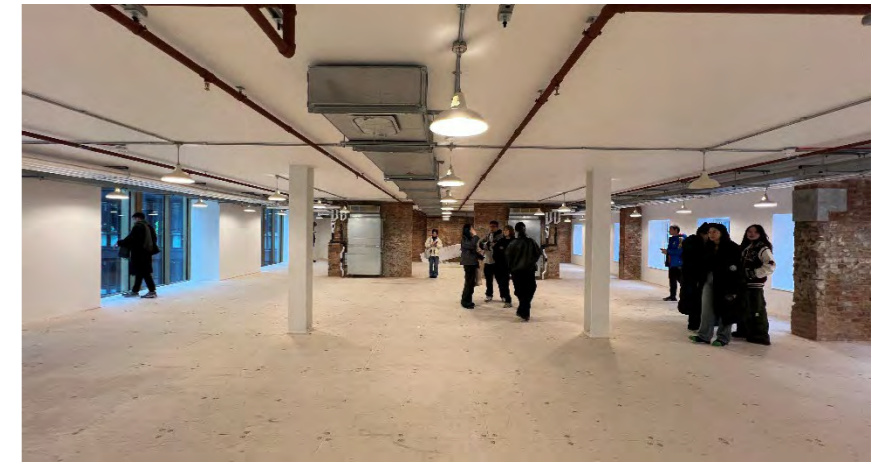
# Materiality Identity

MI to AI



Prompt:: :

Wood warm fluffy  
Shape sign Pull it out  
Transparency Trace  
historical Insertion  
Double layer Latch  
Vertical Horizontal  
Drawer Up-sit-down



# Materiality Identity

Material Palette Iteration -MI



Prompt::  
Wood warm  
Structure  
Pull it out  
Homely  
House  
Office space



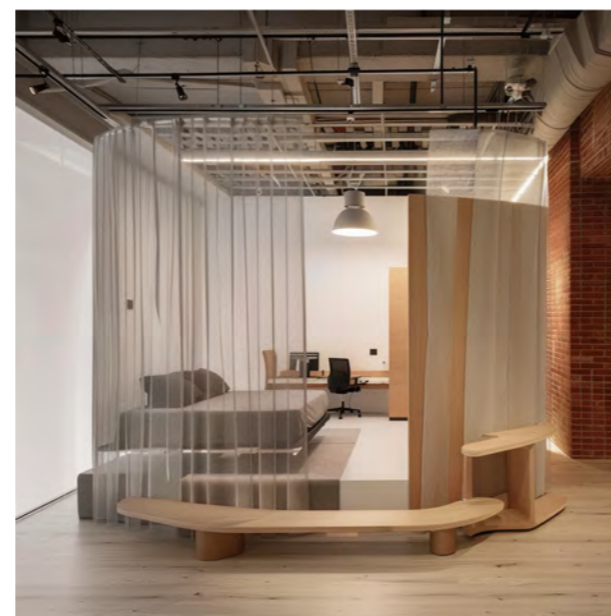
Prompt::  
Panel wall,  
curtain, wood,  
partition, bright,  
silk,furniture,  
half-partition,  
office furniture



Prompt::  
Panel wall,  
curtain, wood,  
partition, bright,  
silk,furniture,  
half-partition,  
office furniture  
warm vibe,office



Prompt::  
Curved wall,  
curtain, wood,  
warm vibe,  
bright, silk, silk  
laminated  
glazing, half-  
partition, office  
furniture



Prompt::  
Curved wall,  
curtain, wood,  
warm vibe,  
bright, silk, silk  
laminated  
glazing, office  
space on the  
wood step, half-  
partition, office  
furniture



Prompt::  
Curved  
wall,curtain,Double  
layer glass yarn,red  
brick, wood, warm  
vibe, bright, silk,  
silk laminated  
glazing, office space  
on the wood step,  
half-partition,  
office furniture,

# Materiality Identity Modularisation

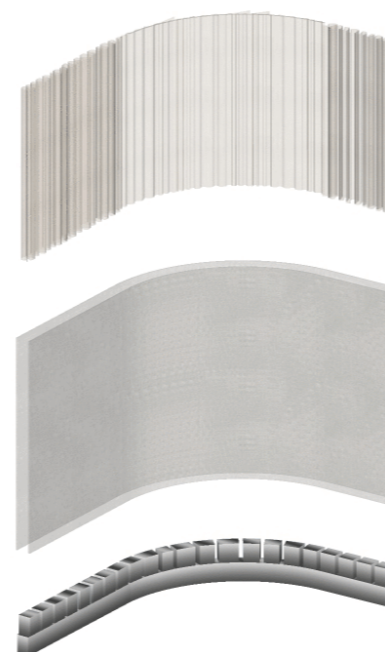
AI and HI to Design Strategy



Prompt:  
Pull it out  
Drawer  
Storage



Prompt:  
Put it down  
Soft  
Carpet  
Well bed



Prompt:  
Curtain  
Double layer  
Curtain wall



Prompt:  
Pull it out  
Drawer  
Laminated glazing

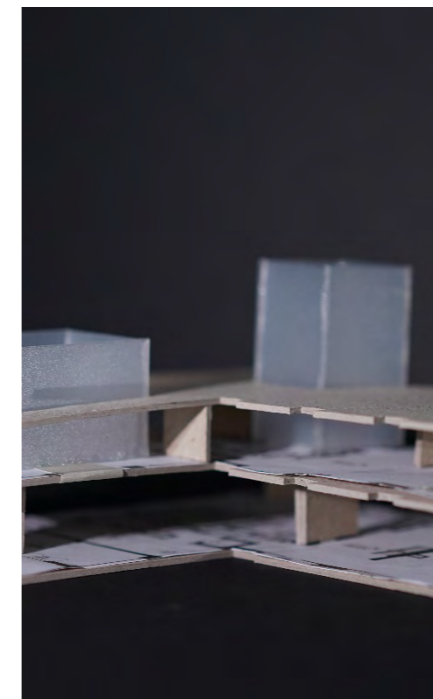


Prompt::

Möbius strip  
Split-level  
Niche  
25m2 room  
Circulation

Prompt::

Silk link  
Möbius strip  
Structure  
Ramp  
Manufacture



Prompt::

Break the floor  
Vertical of circulation  
Opening

Prompt::

Split-level Maximises the space Switchable



# Design Strategy

Target Audience-Testing form



**Clients**  
**Senior Executive**

Prompt::

- Independent Space
- Luxury Hotel Residence
- Grand staircase space
- Business Travel Accommodation
- Privacy



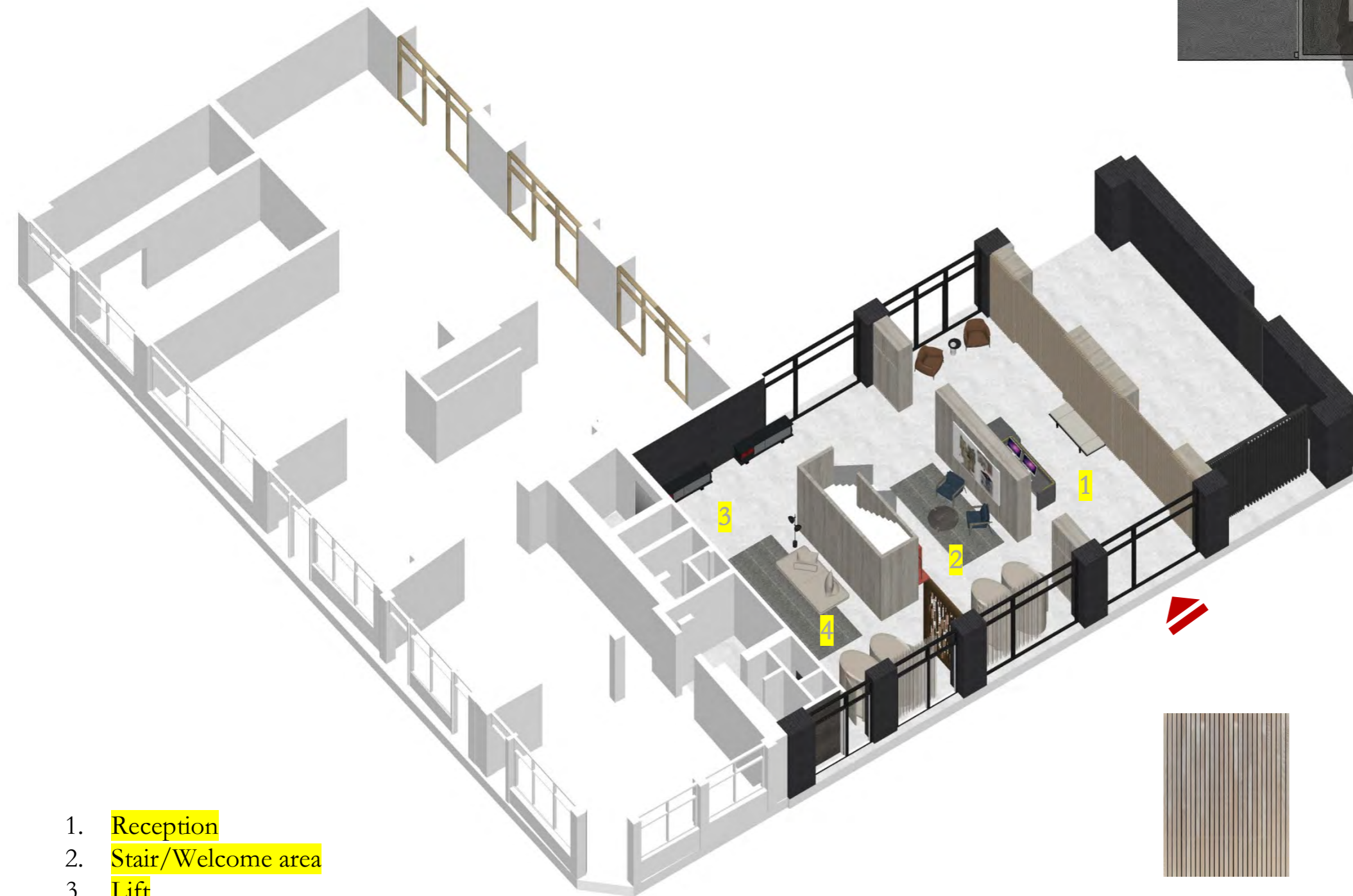
**Office worker**  
**(white collar class)**

Prompt::

- One single bed
- Commercial space
- Combination of residential and office

# Space layout

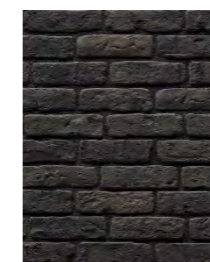
Ground Floor



- 1. Reception
- 2. Stair/Welcome area
- 3. Lift
- 4. Common area



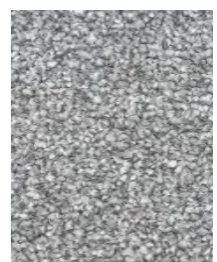
WoodGrille Walls



English brick



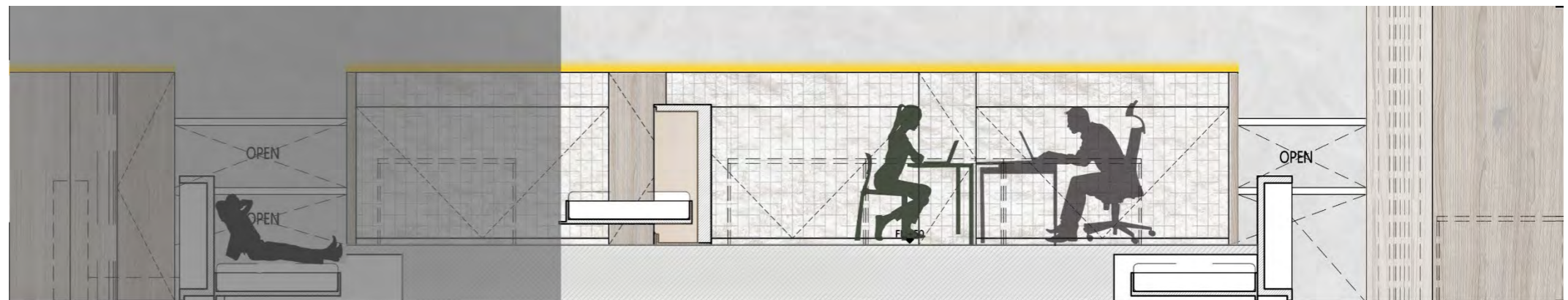
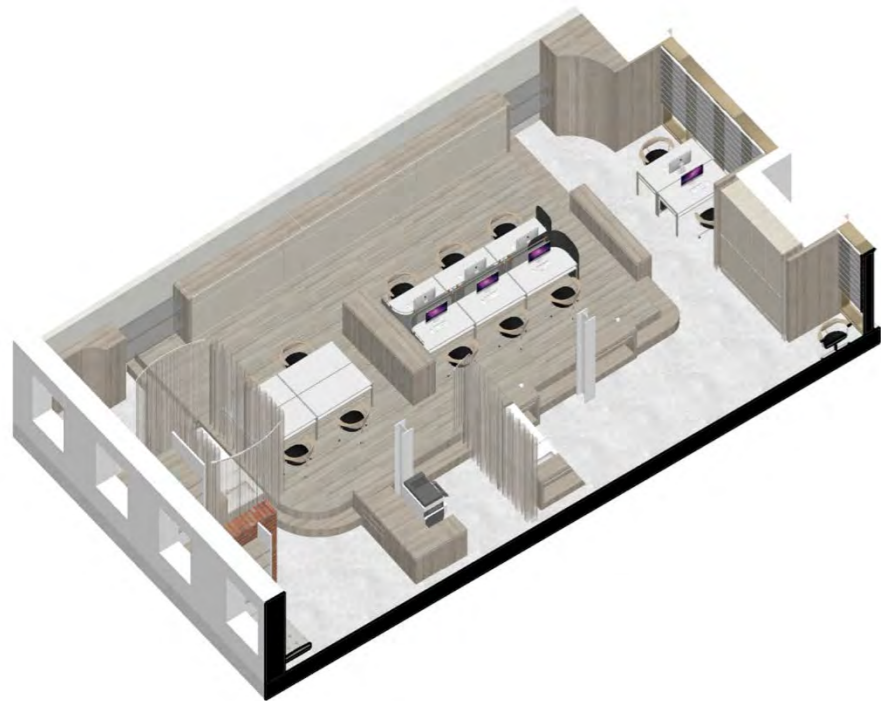
English Oak



Carpet

# Space layout

First Floor



Silk



English brick



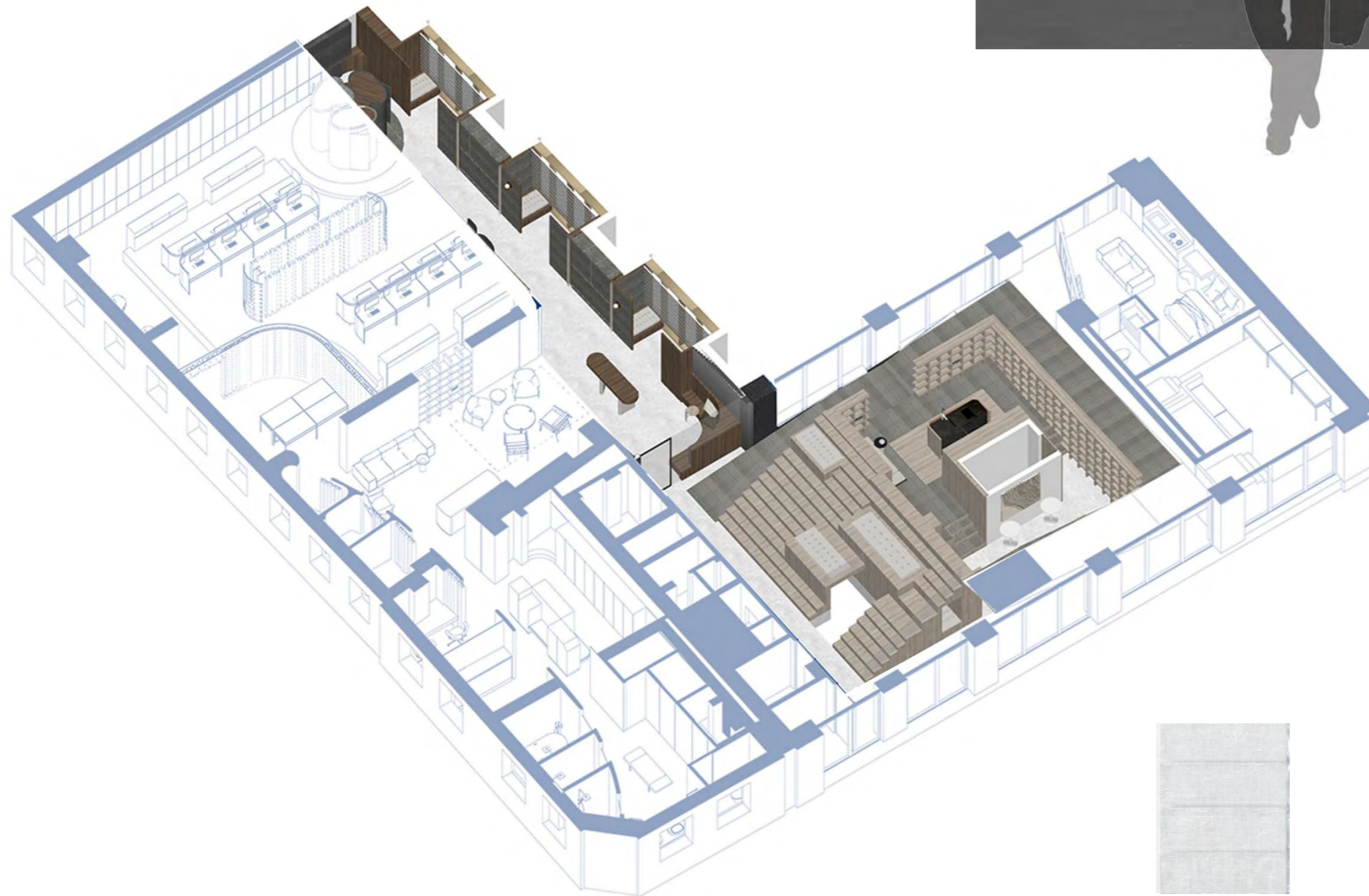
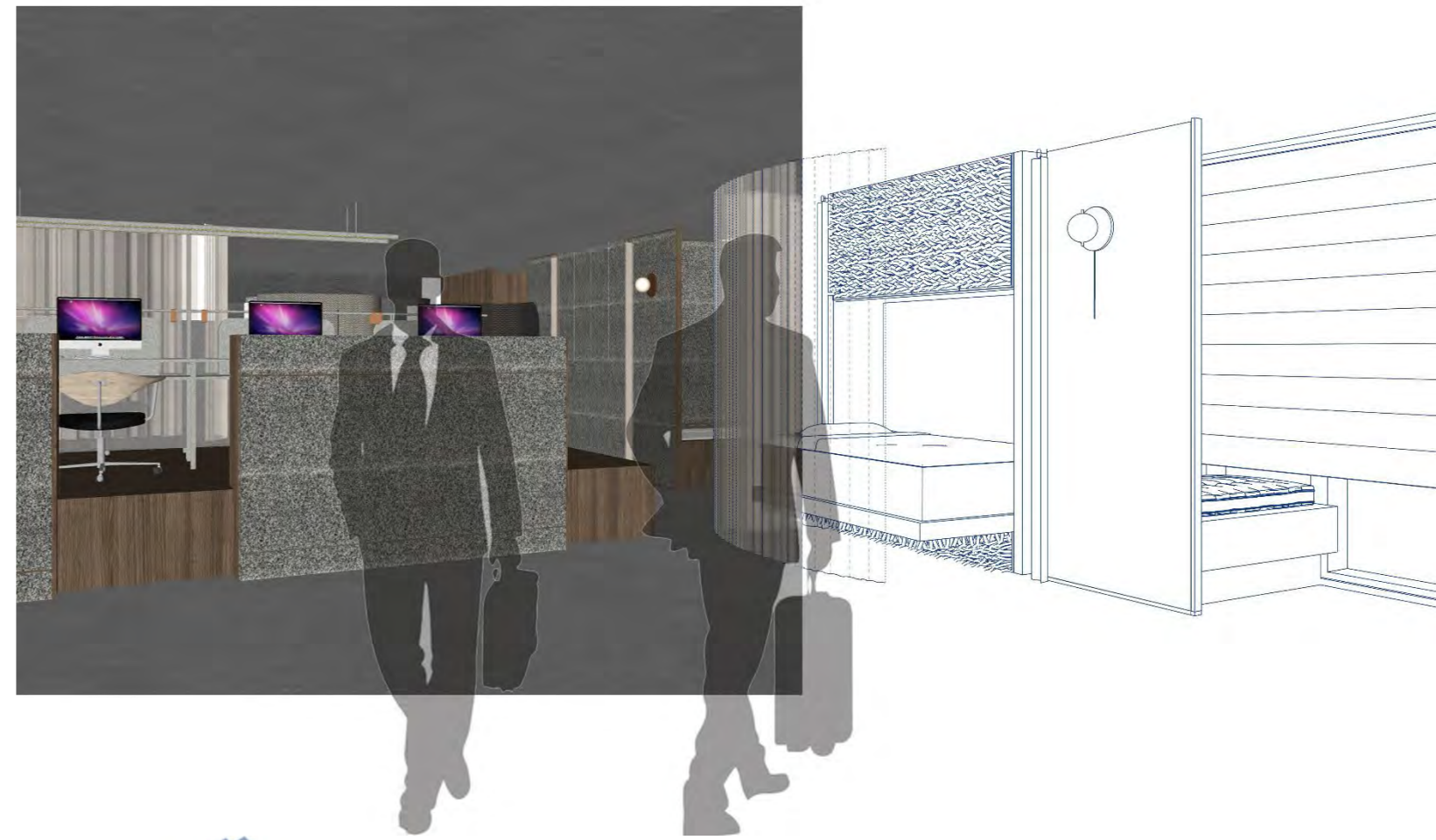
English Oak



Fabric

# Space layout

2nd Floor



Silk



English brick



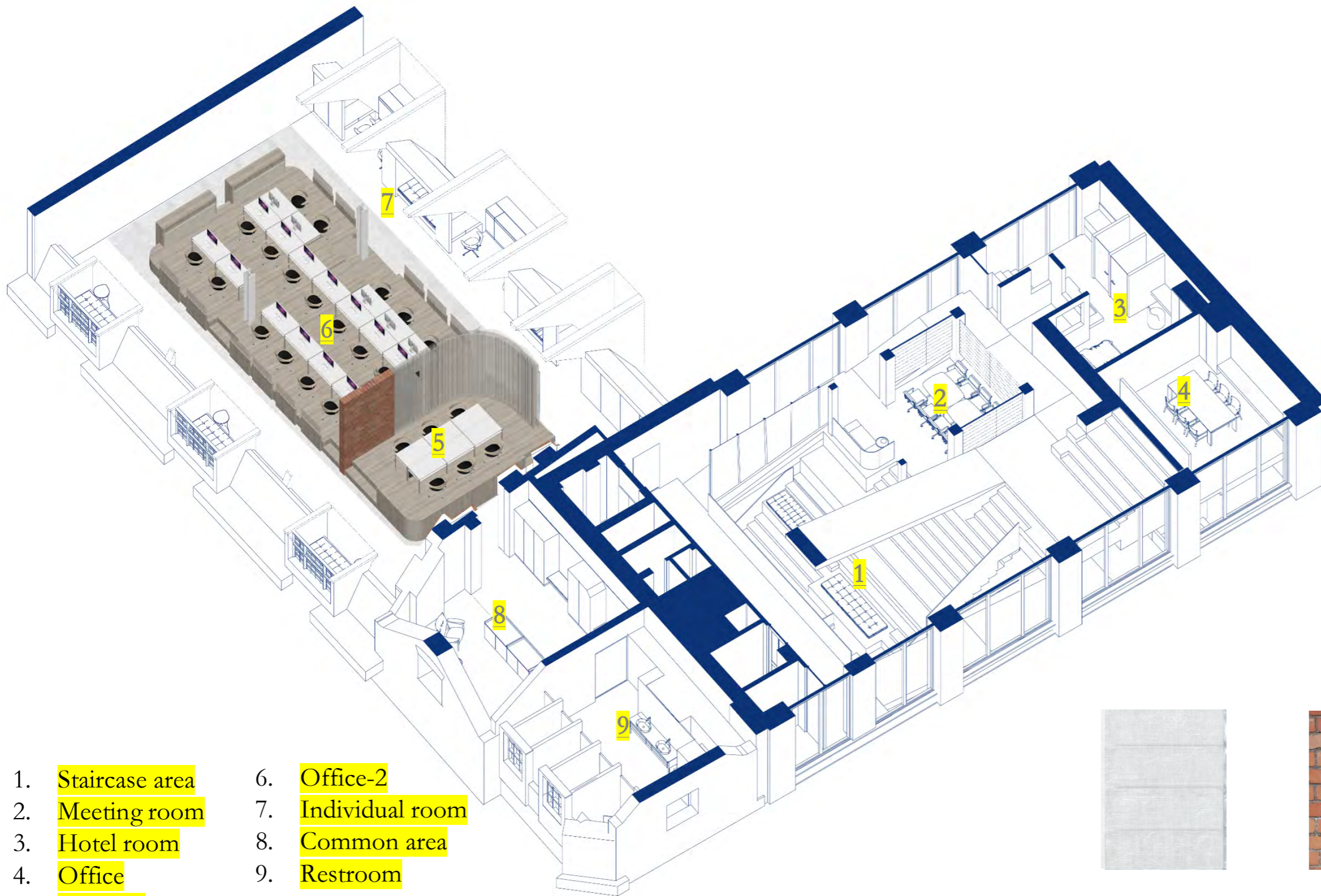
English Oak



Fabric

# Space layout

3rd Floor



- 1. Staircase area
- 2. Meeting room
- 3. Hotel room
- 4. Office
- 5. Office-2
- 6. Office-2
- 7. Individual room
- 8. Common area
- 9. Restroom



Silk



English brick



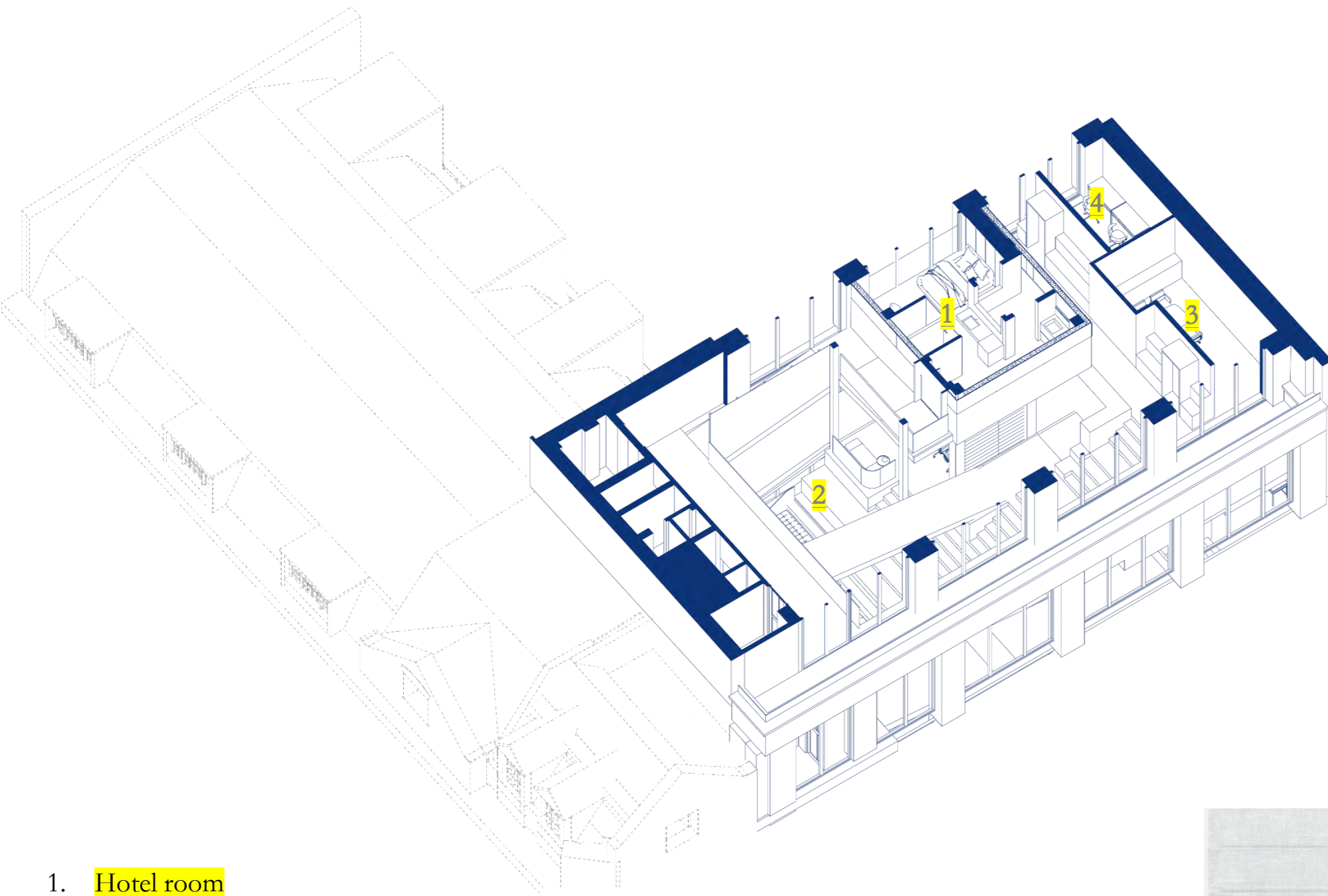
English Oak



Fabric

# Space layout

4th Floor



- 1. Hotel room
- 2. theatre
- 3. Meeting
- 4. Office



Silk



English brick



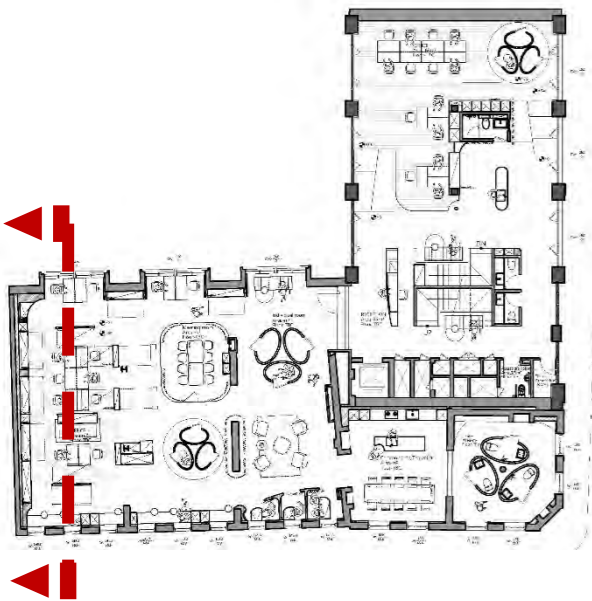
English Oak



Fabric

# Section

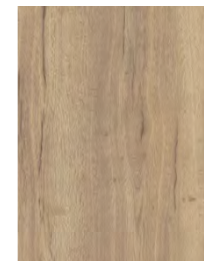
A-A'



**Carpet**



**English brick**



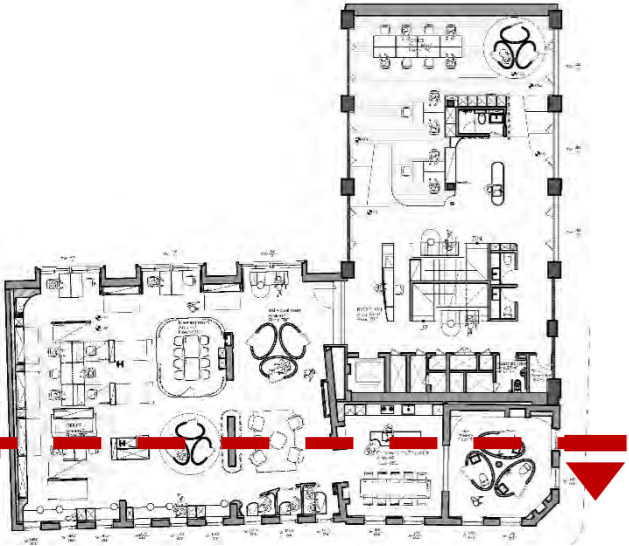
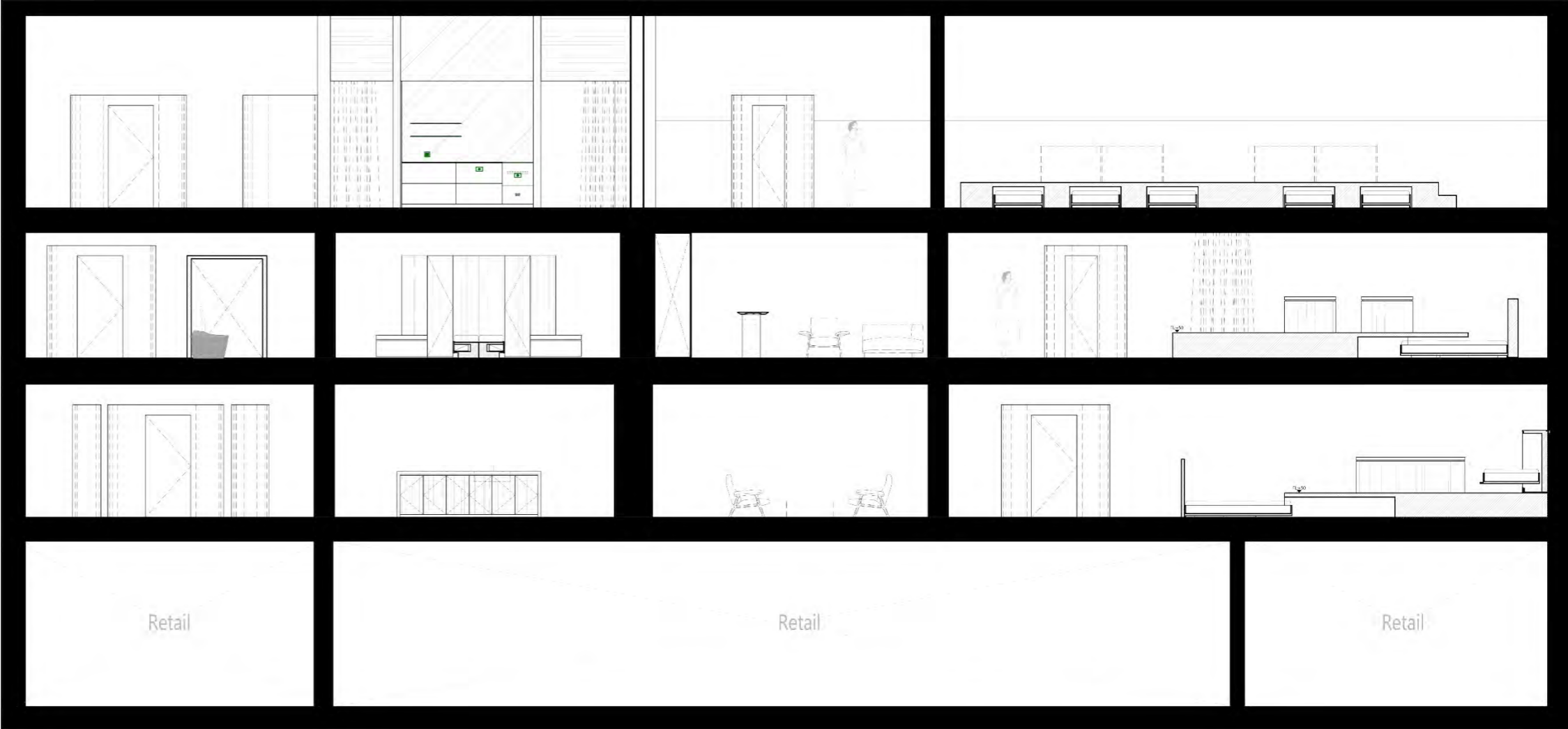
**English Oak**



**Curtain**

# Section

B-B'



Carpet



English brick



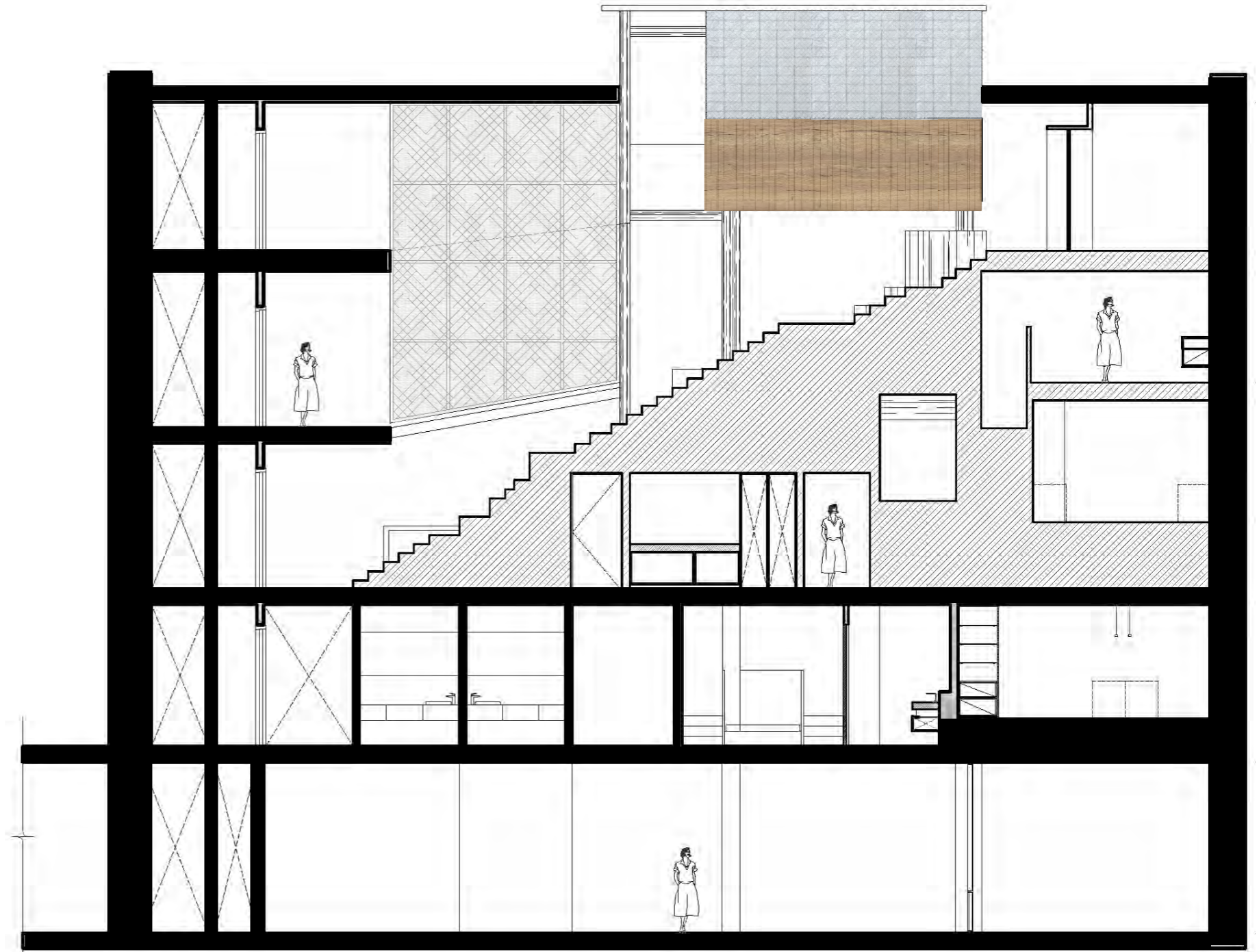
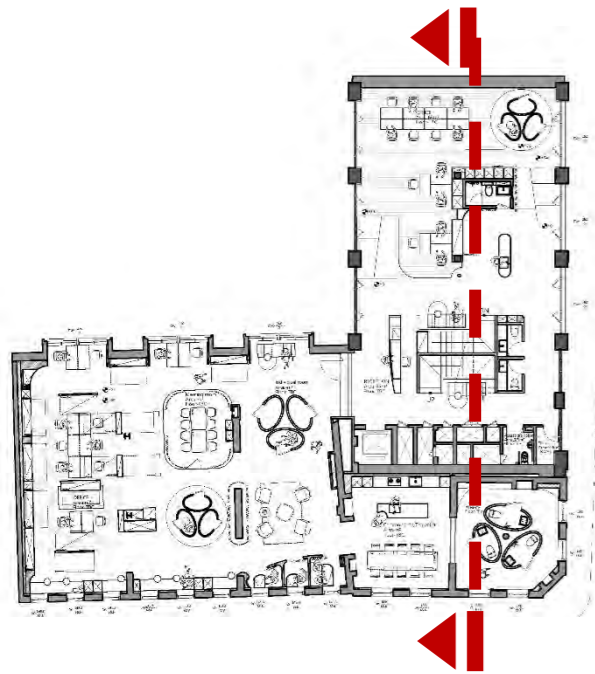
English Oak



Curtain

# Section

C-C'



Silk brick



English brick



English Oak



Fabric

Thank You



Royal College of Art

**SuperMATTER**