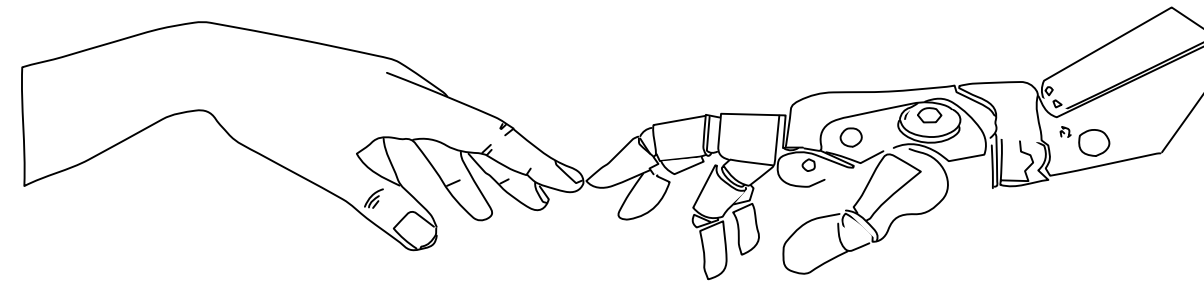


Interior Design | SuperMATTER

Touch Clay Art Centre

PAN HAN HO



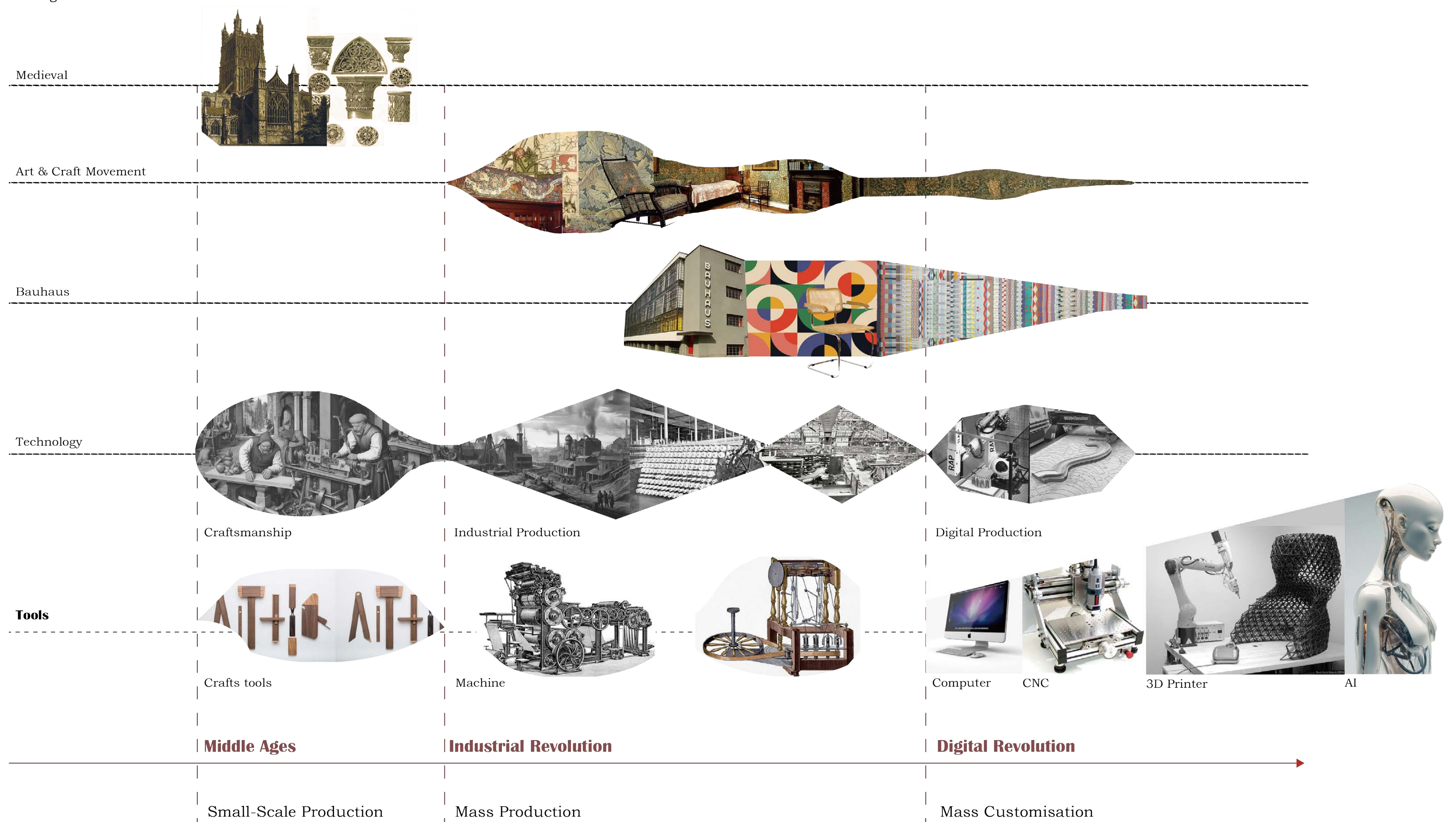


Research Question

In a world progressively enveloped by machines and artificial intelligence, how will craftsmen preserve the human touch in digital production?

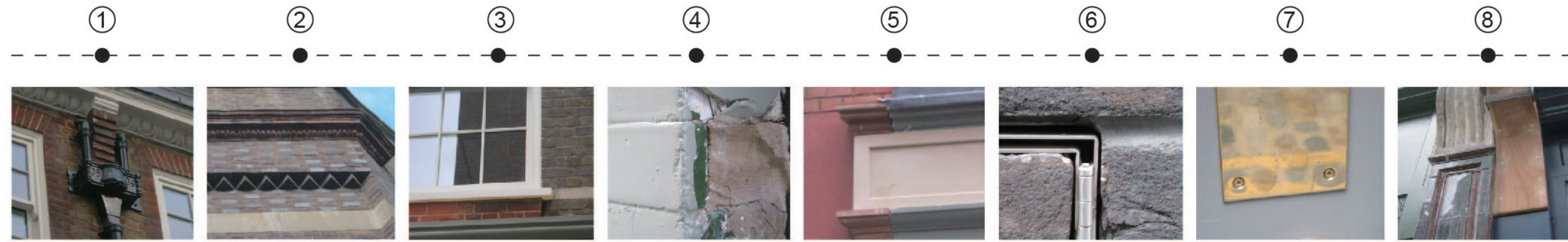
Crafts Historical Timeline

The link between technological advances and artistic movements



Data Base

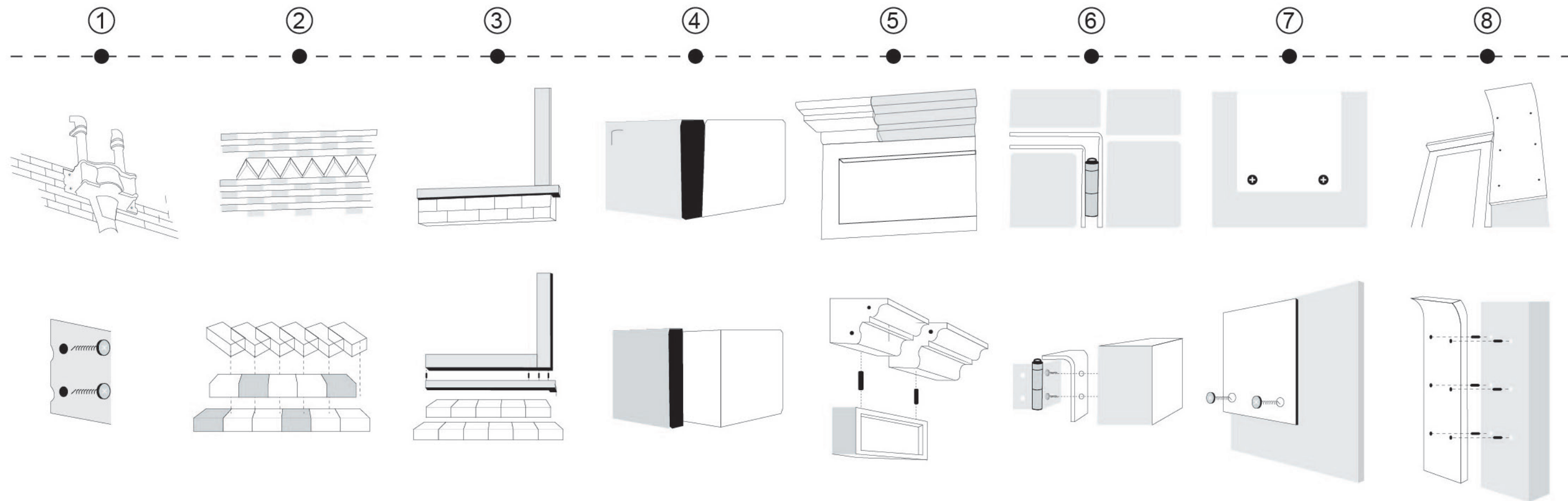
Learning crafting skill through making



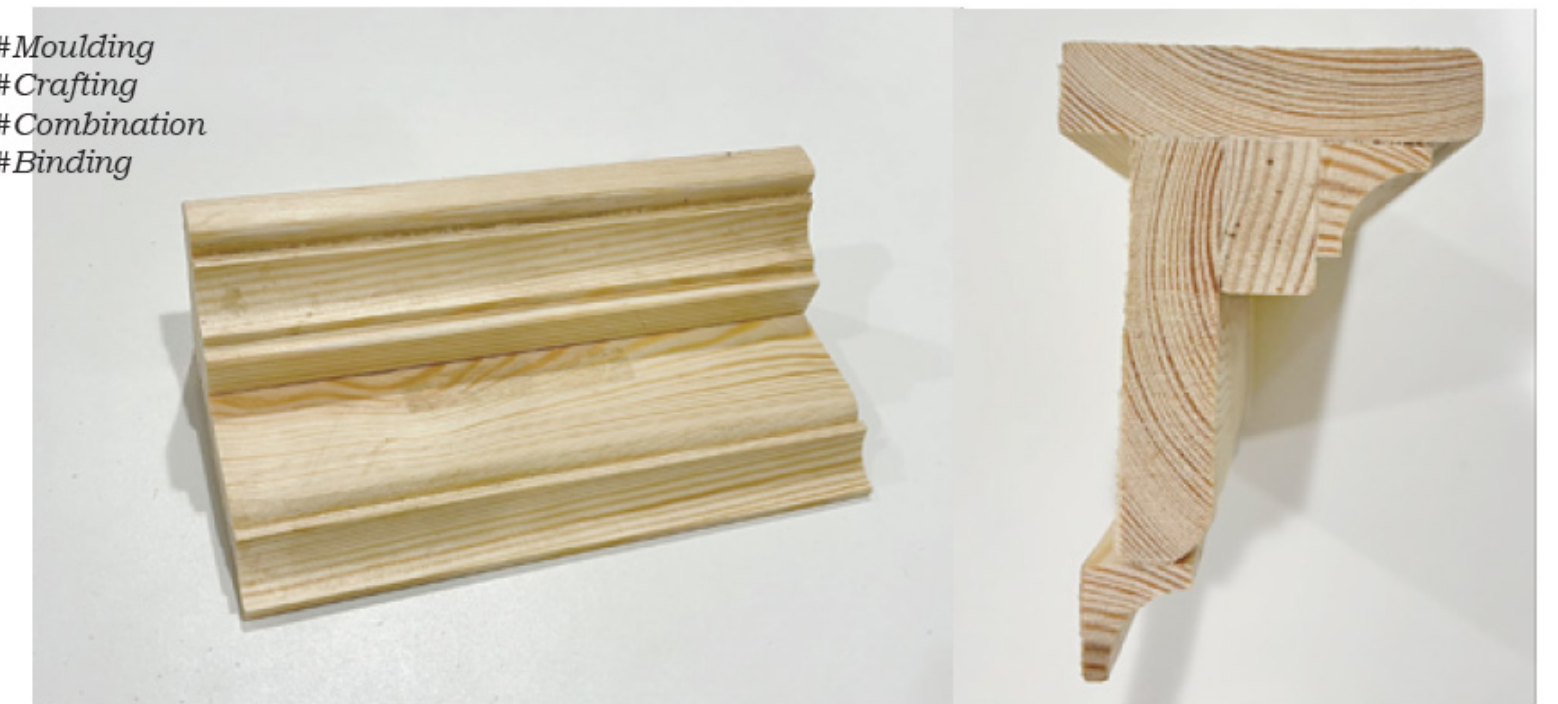
#Dog-tooth bricks laying
#Art & Craft
#Interlace



②



#Moulding
#Crafting
#Combination
#Binding



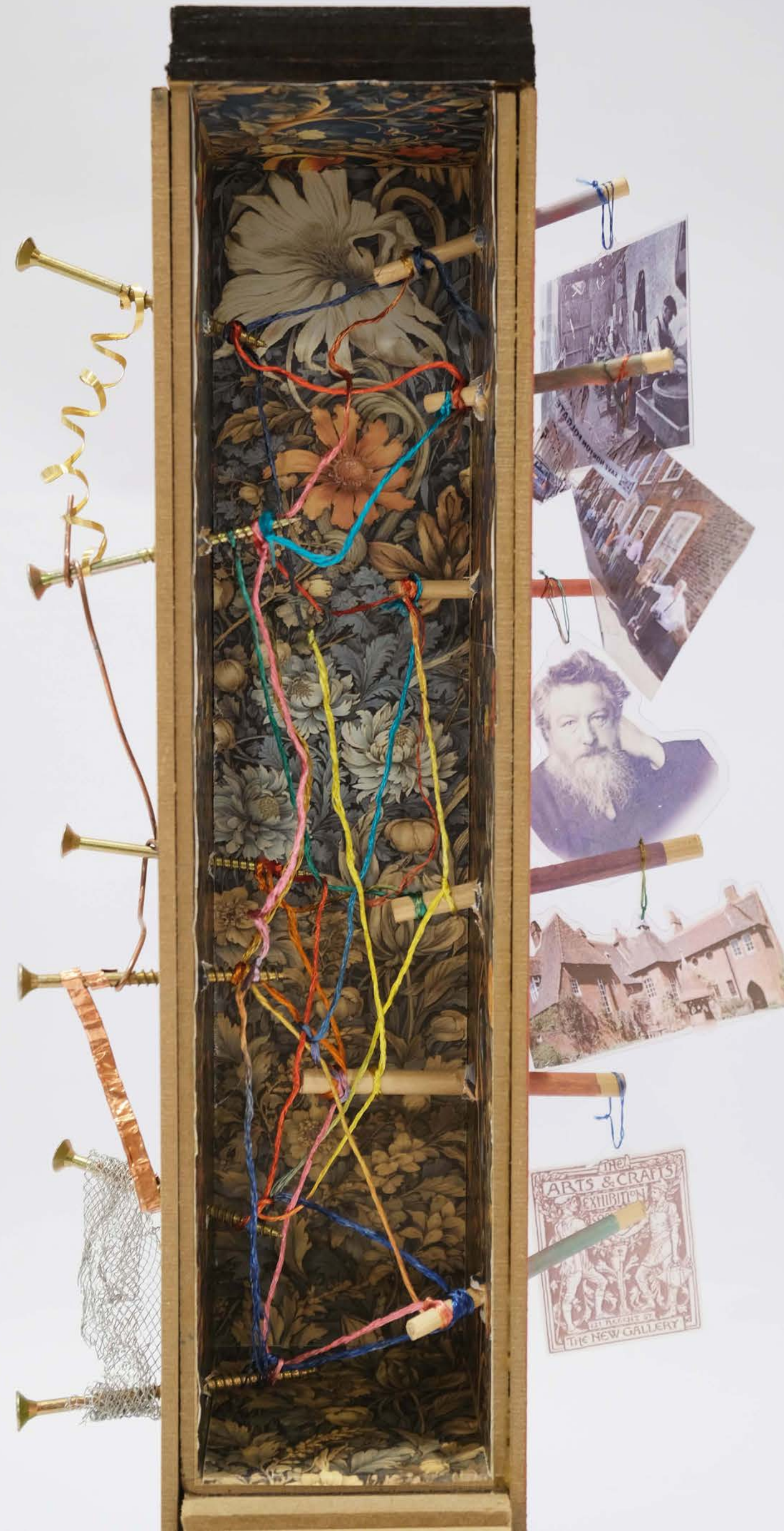
⑤

Totem

The contradiction and fusion of machine and crafts

The left-side of the totem

#Mechanisation #Development #Capitalism

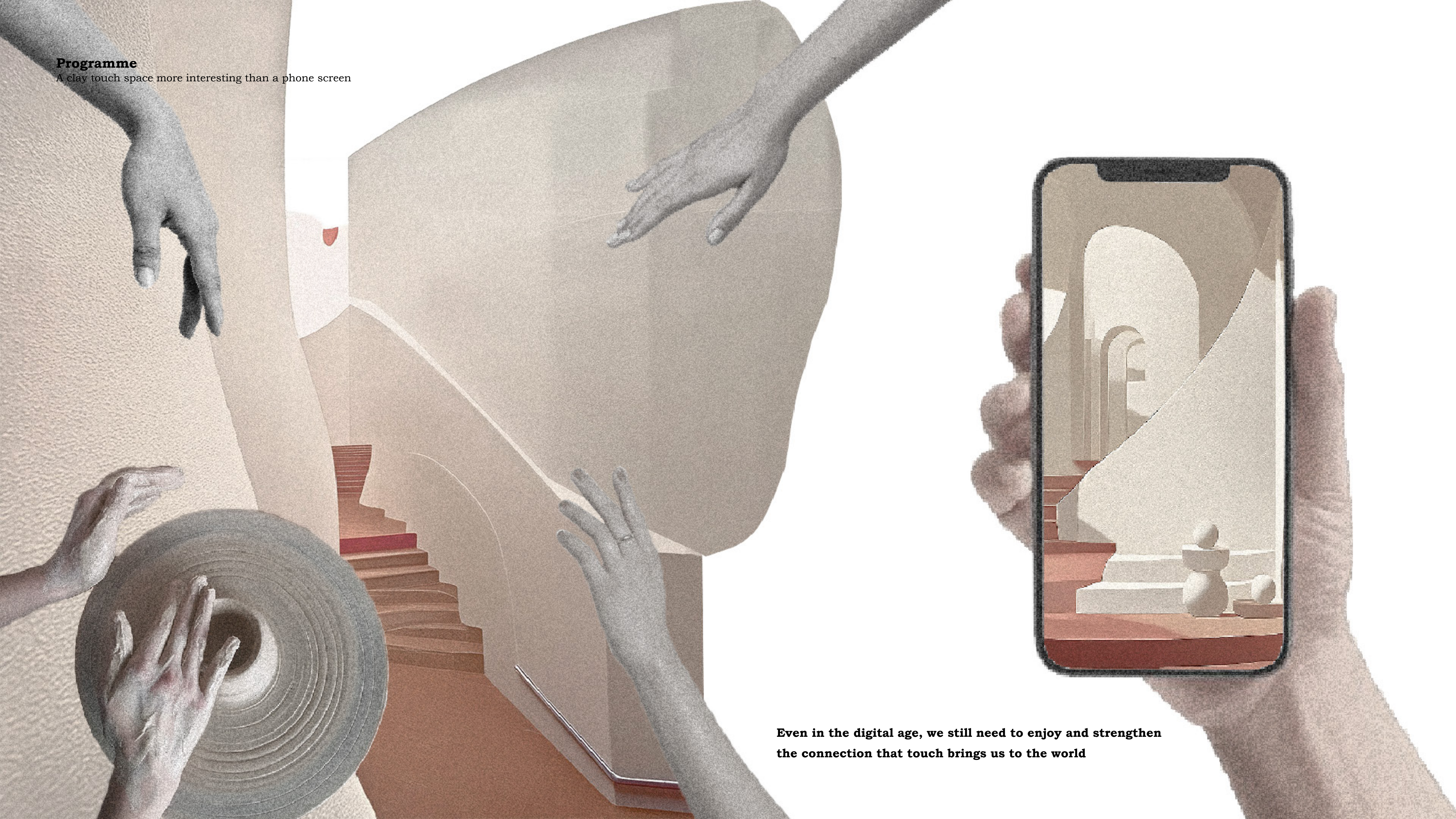


The right-side of the totem

#Art & Craft #Protect #Historical #Memory

Programme

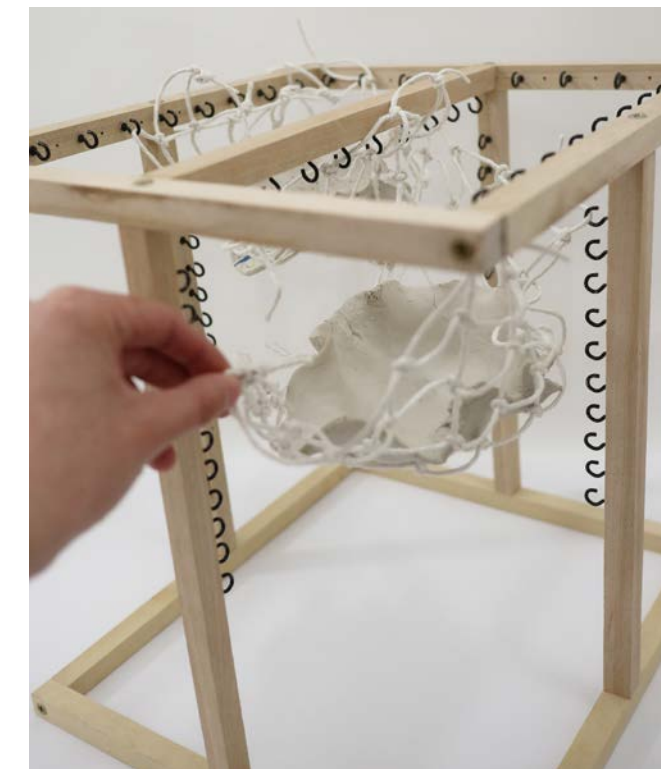
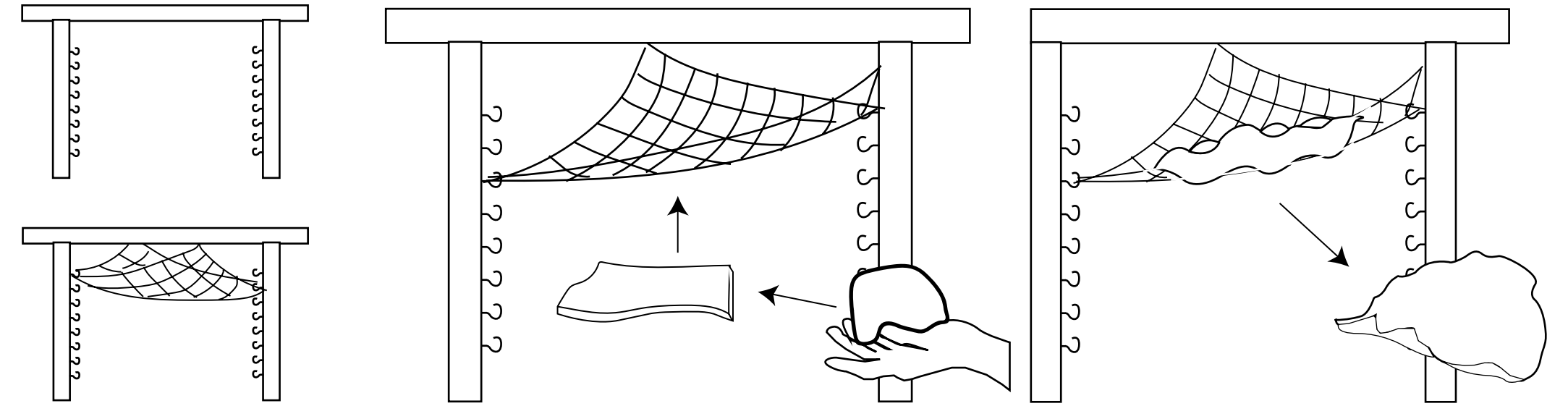
A clay touch space more interesting than a phone screen



Even in the digital age, we still need to enjoy and strengthen the connection that touch brings us to the world

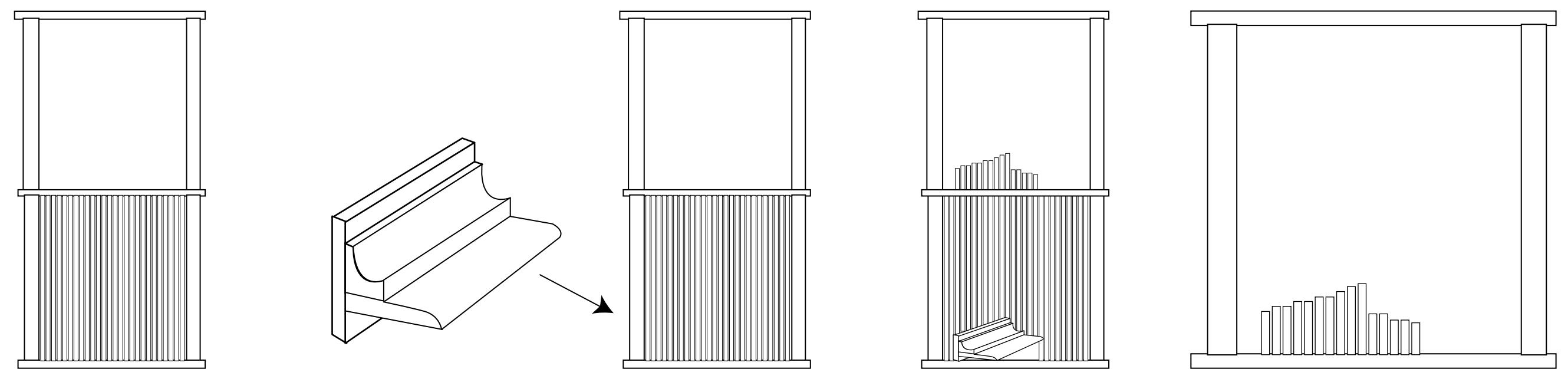
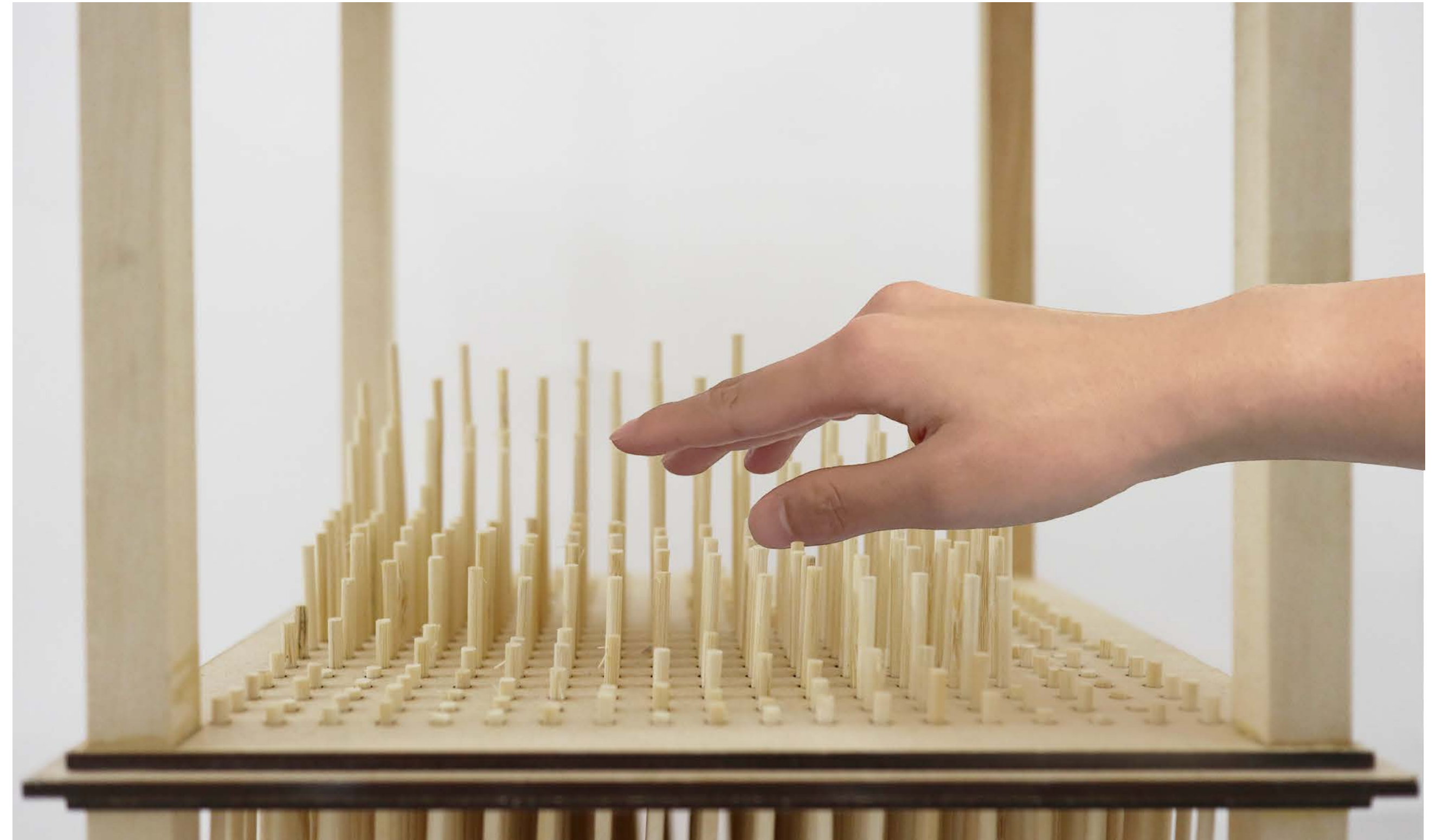
Exploration

Discussion on human touch and digital automatization: Clay 3D printer



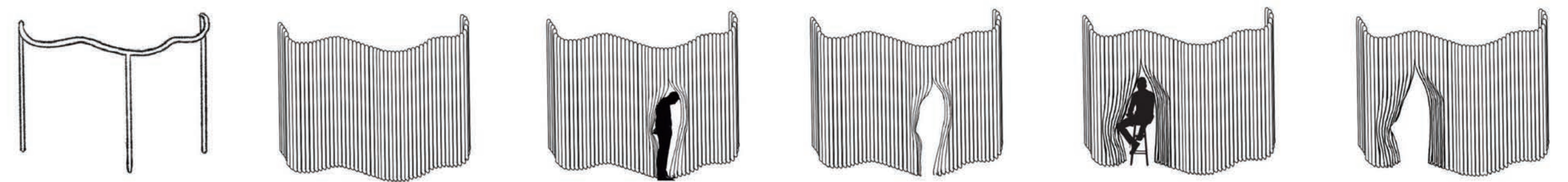
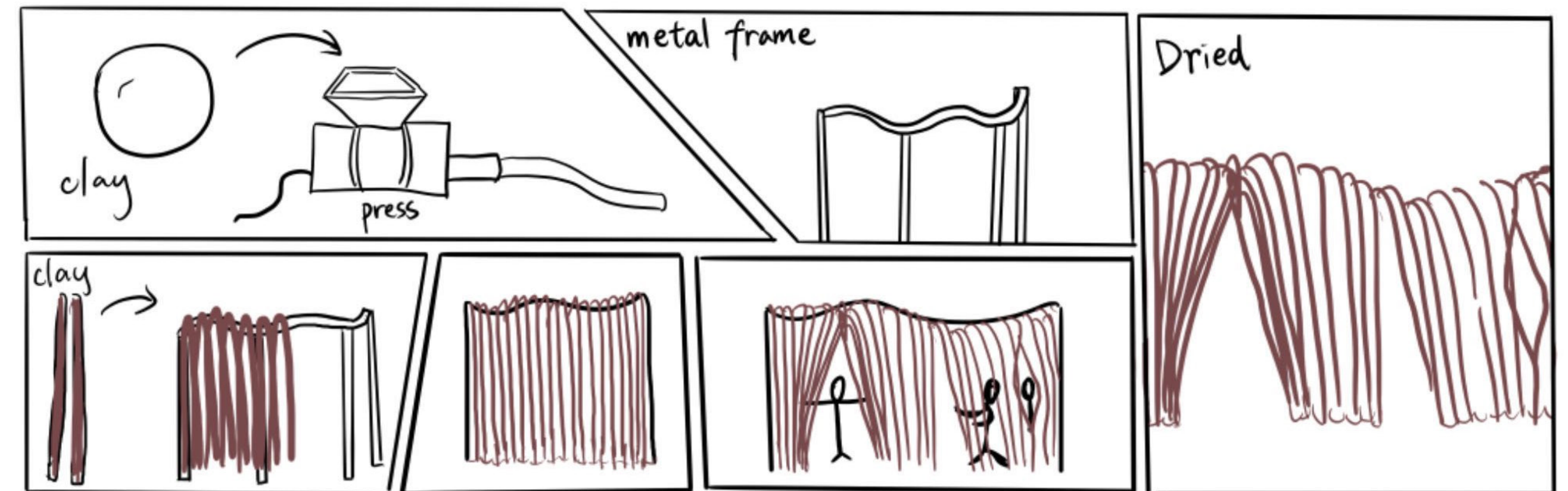
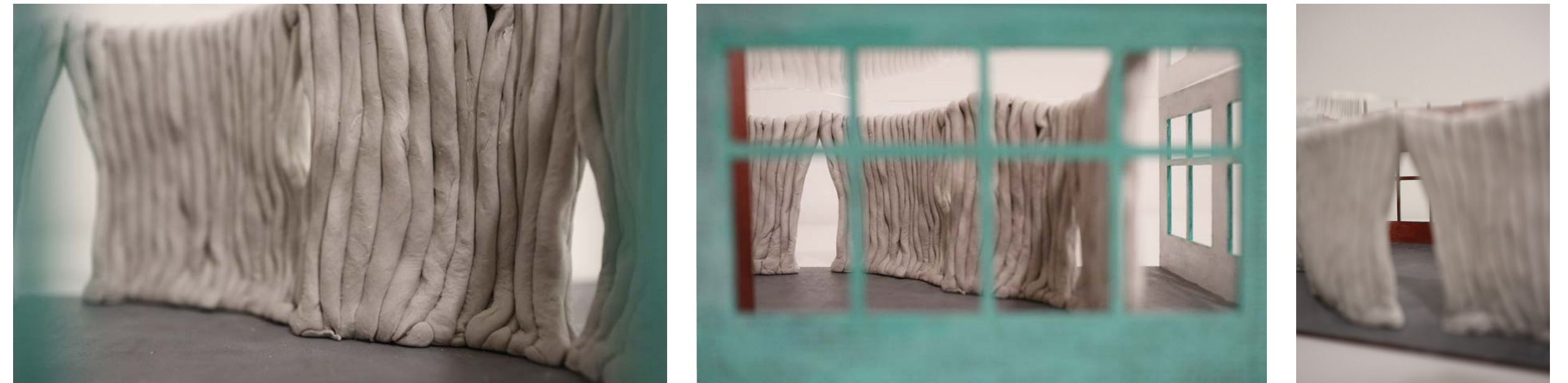
Exploration

Discussion on human touch and digital automatization: 3D scanner



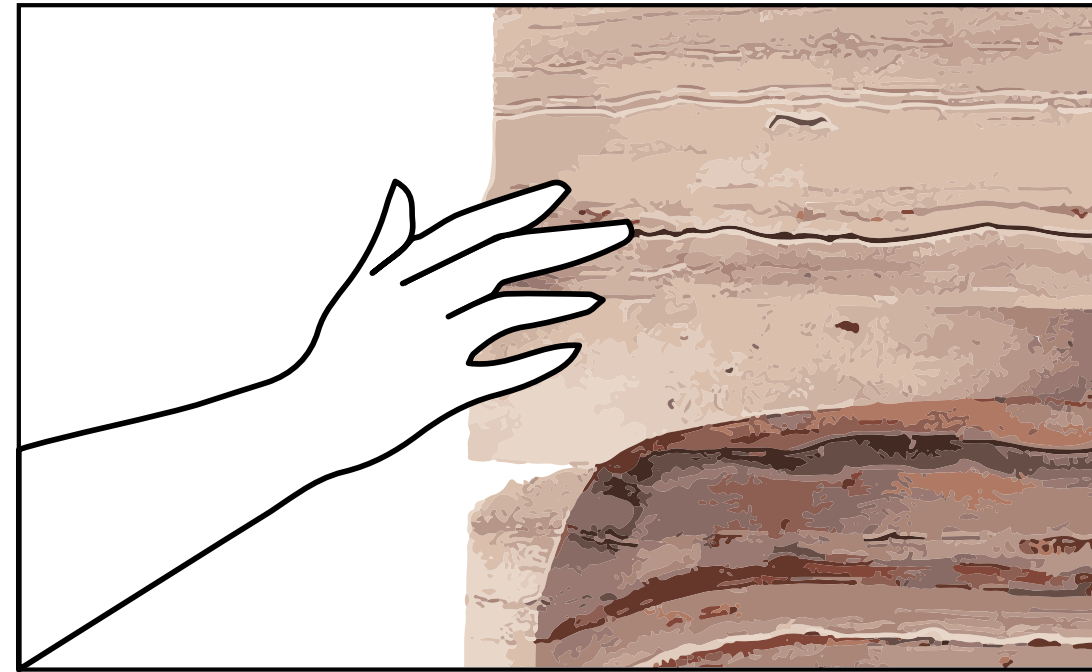
Exploration

Discussion on human touch and digital automatization: 3D printed clay wall



Spatial Strategy

AI exploration of printing clay space

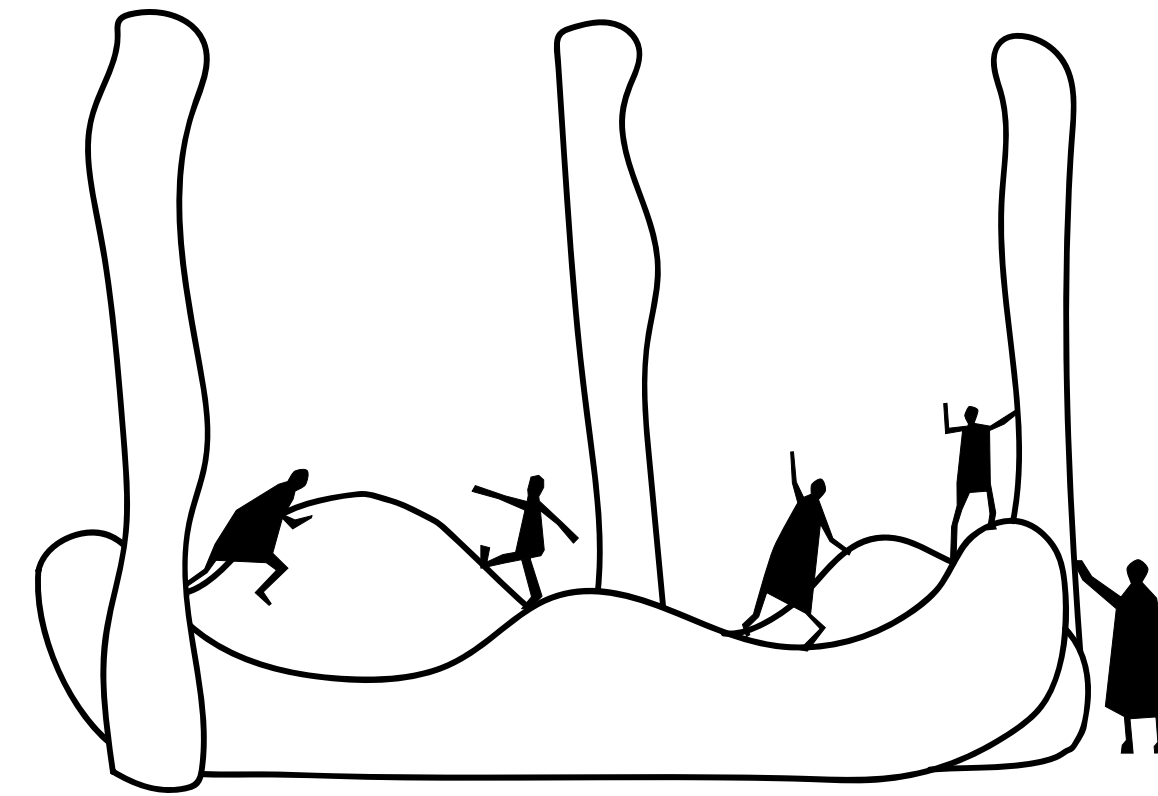
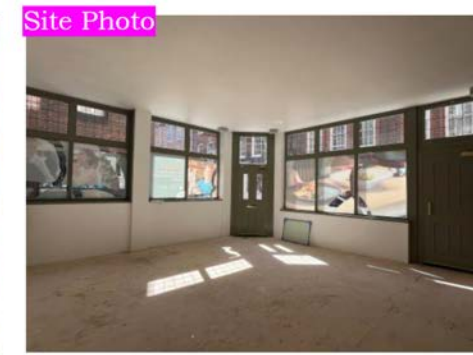


#A kid's playground, with colourful clay art, filled with different forms of clay, kids can seat on the clay, and lean on the clay curve walls



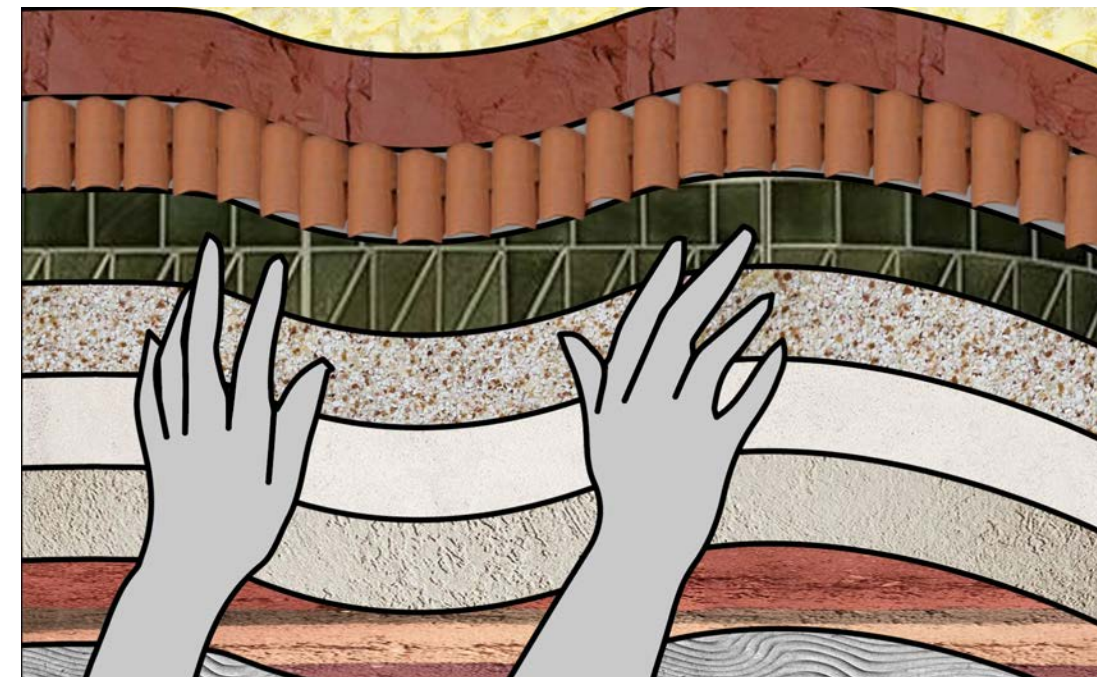
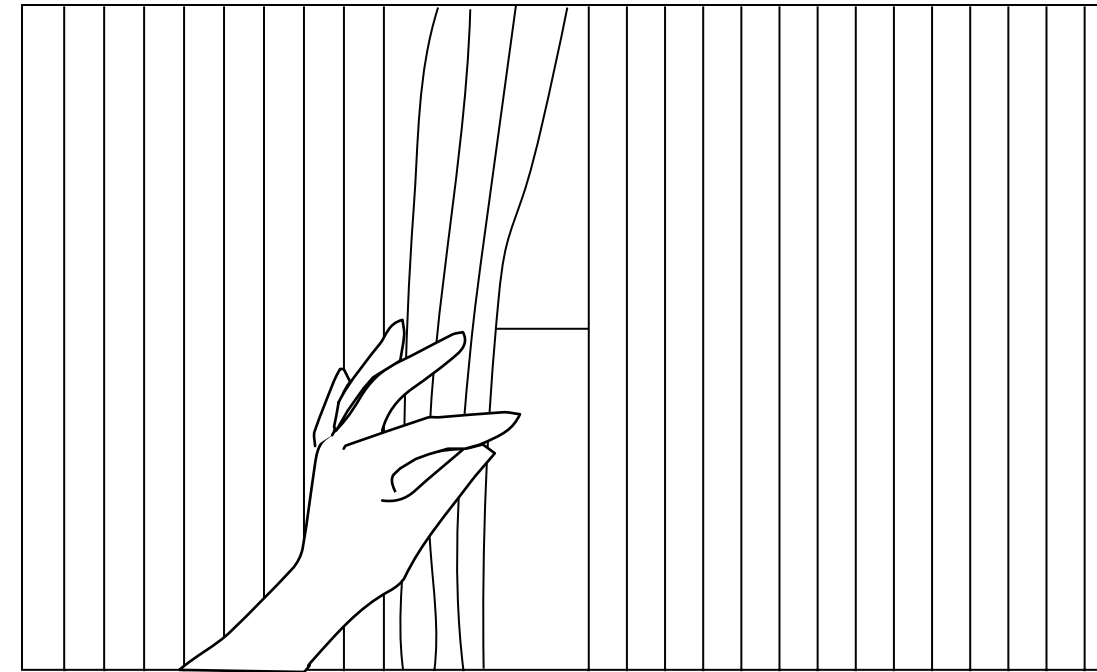
Spatial Strategy

A playful space for kids to touch the floor and columns

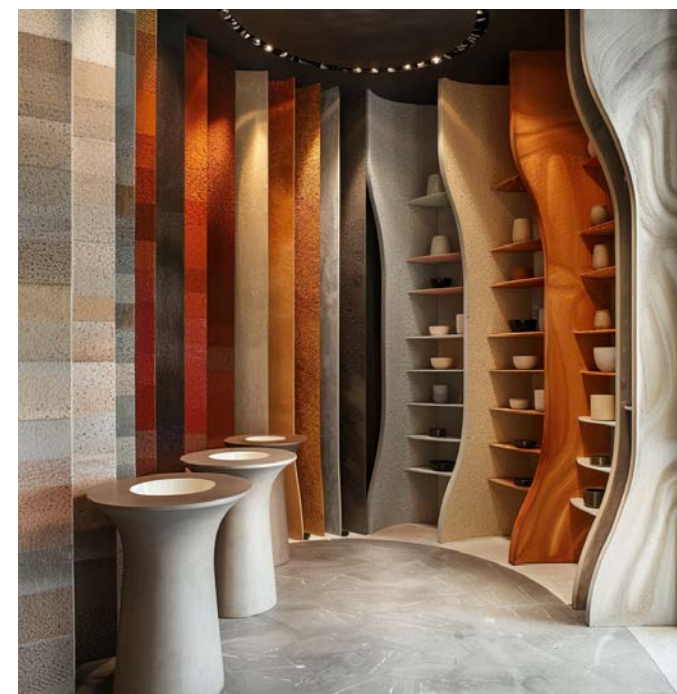
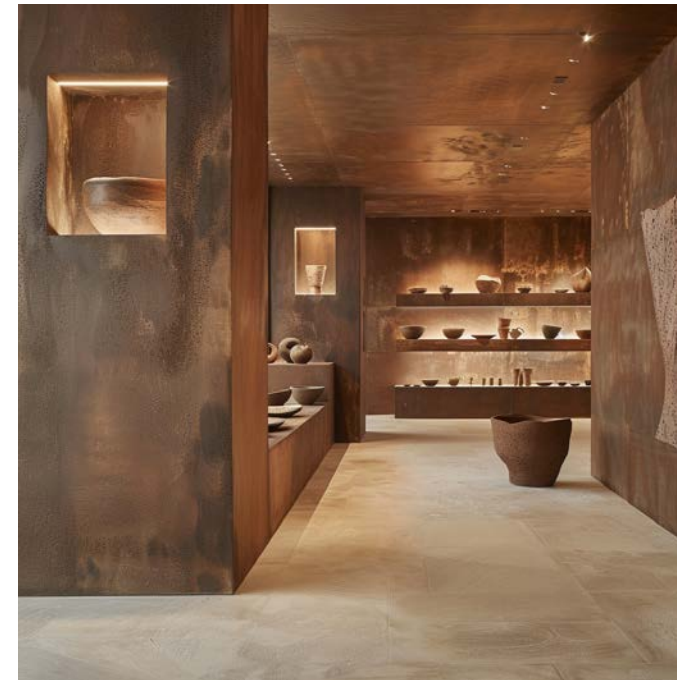


Spatial Strategy

AI exploration of want-to-touch clay walls



#Imagine stepping into a room dedicated to the art of clay, where every surface and object is an invitation to touch and create. The curve walls are made with different kind of clay finishes, each one showcasing different textures, -from the smooth, glossy finish of glazed ceramics to the rough, raw surface of unrefined clay



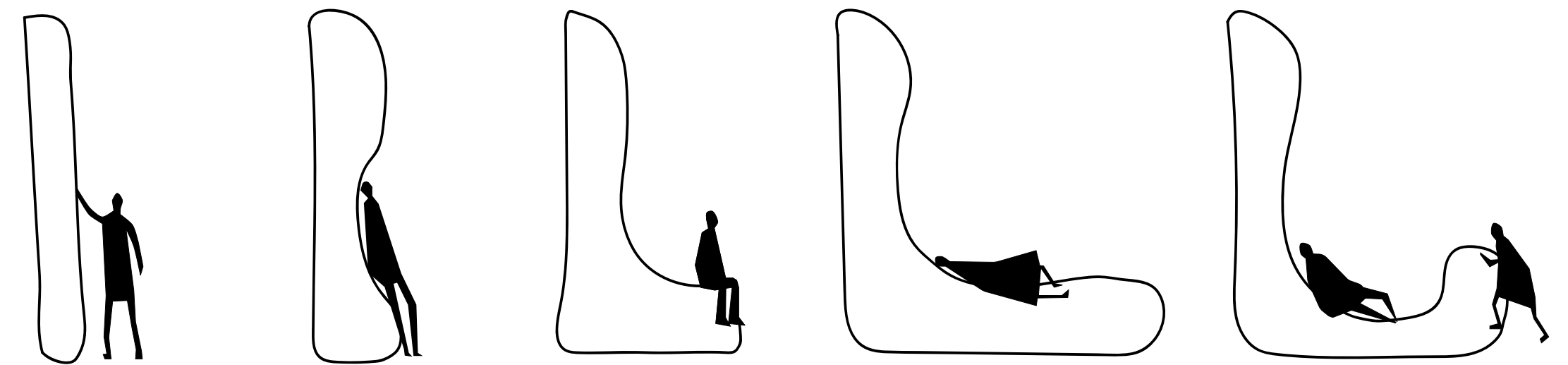
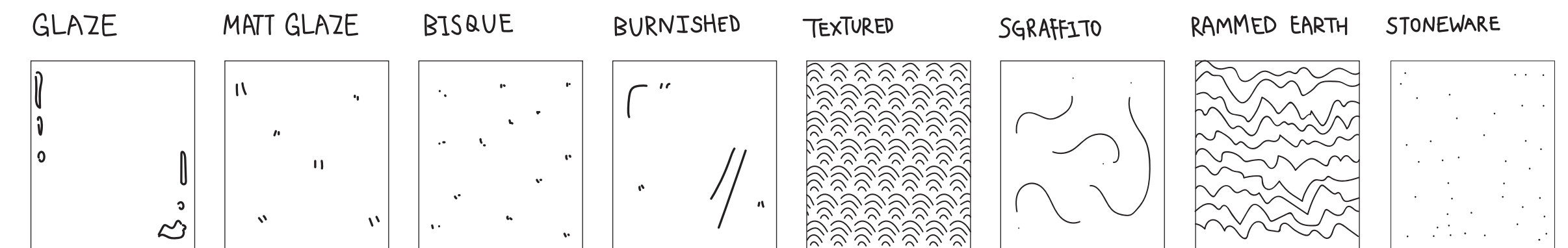
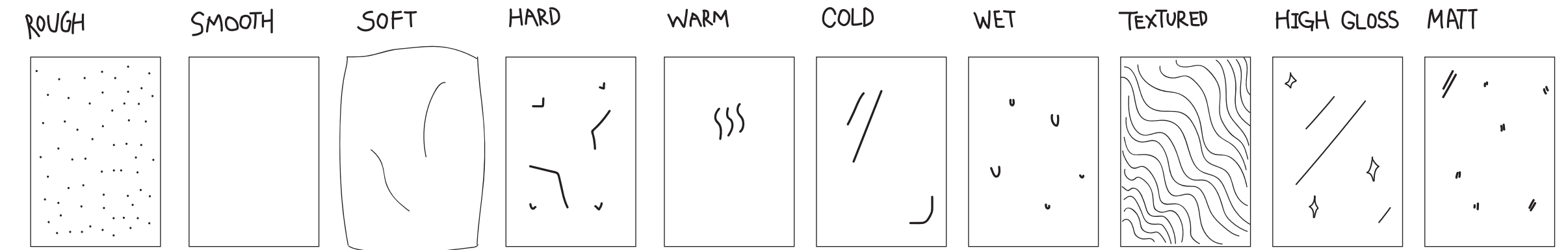
Spatial Strategy

Different clay finishes and forms of the walls to invite people touching

AI image

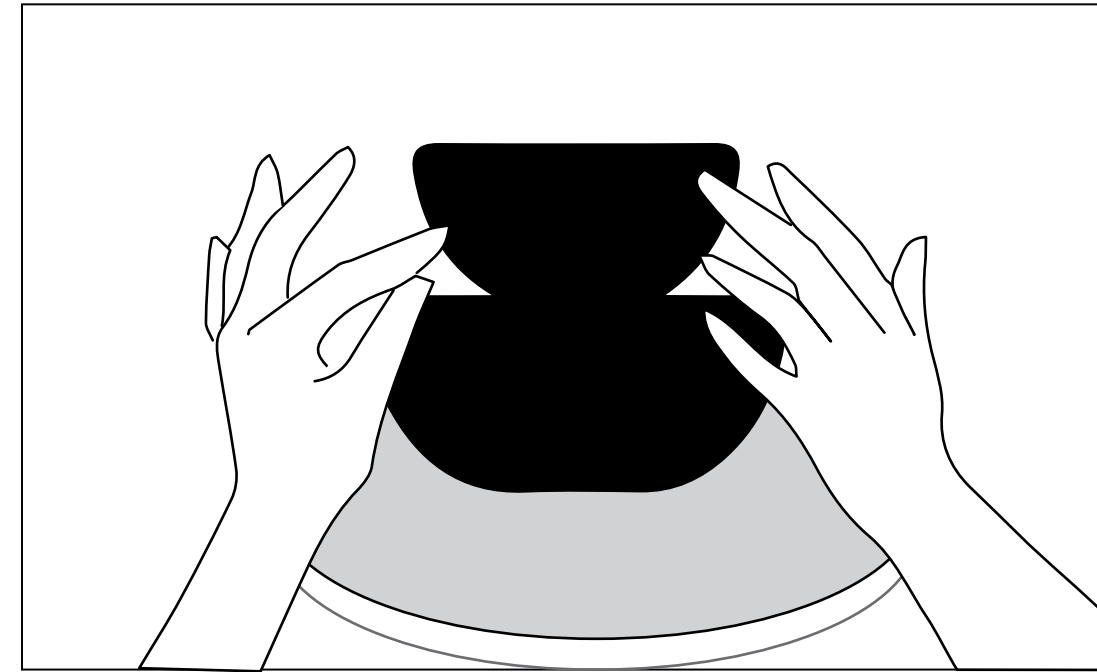


Site Photo



Spatial Strategy

AI exploration of robot and craftsmen working together



#robot arms and craftsmen together work with clay, messy and free workshop space



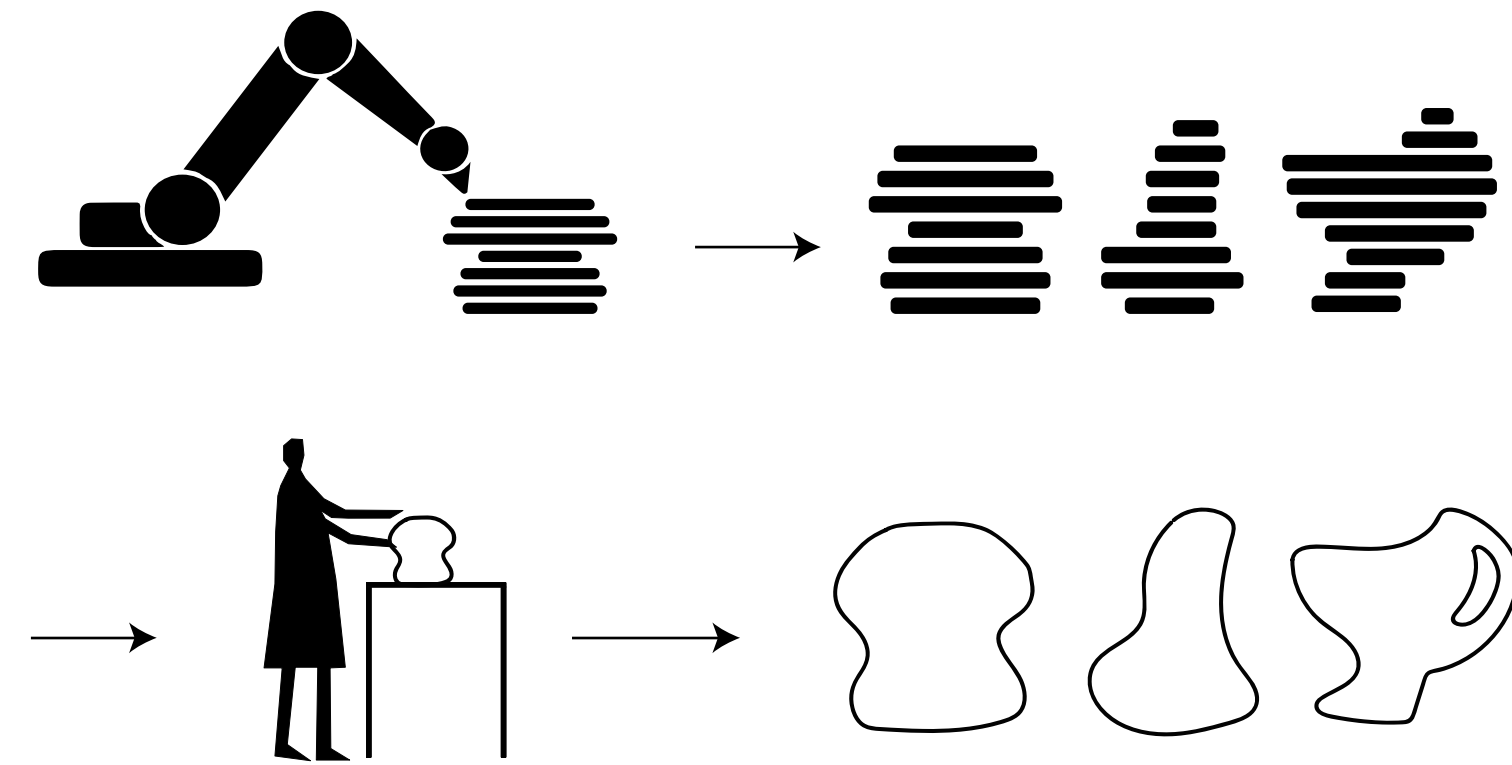
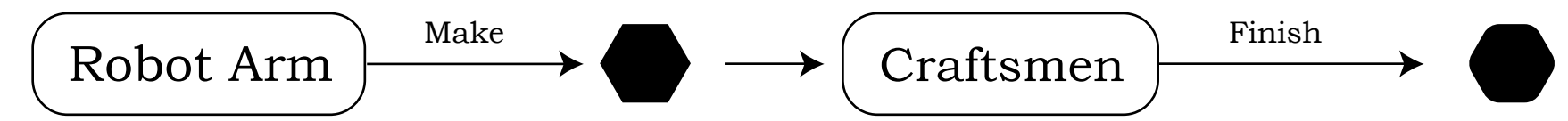
Spatial Strategy

A workshop space where robots and craftsmen work together

AI image



Site Photo



Material Palette

Experiments of different clay finishes texture and forms

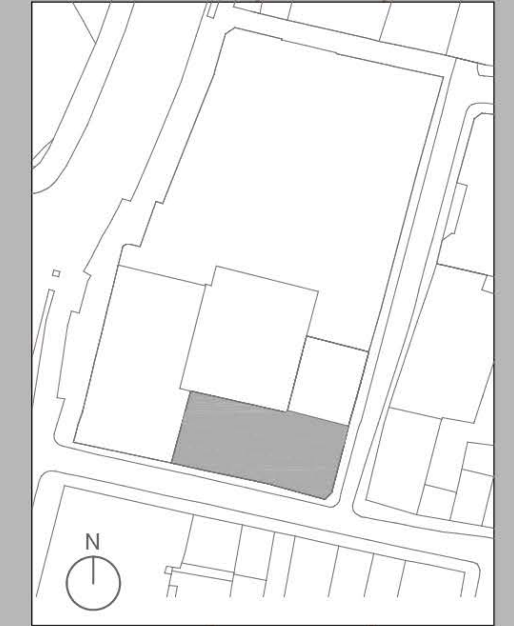
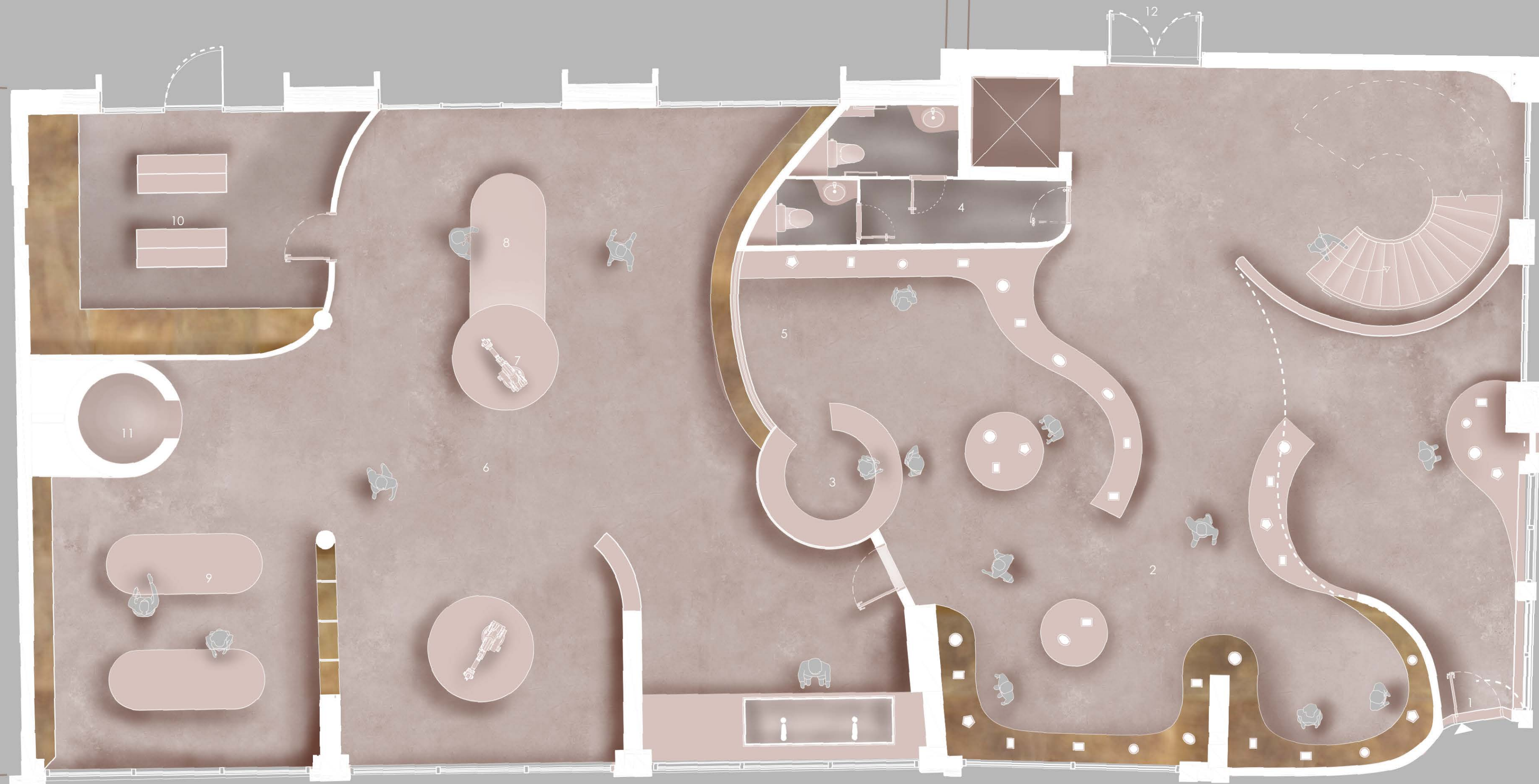


The New Facade

One of the wall of the facade becoming a clay curve wall to introduce people of our centre



Floorplan
Level 0



Floorplan Level 0

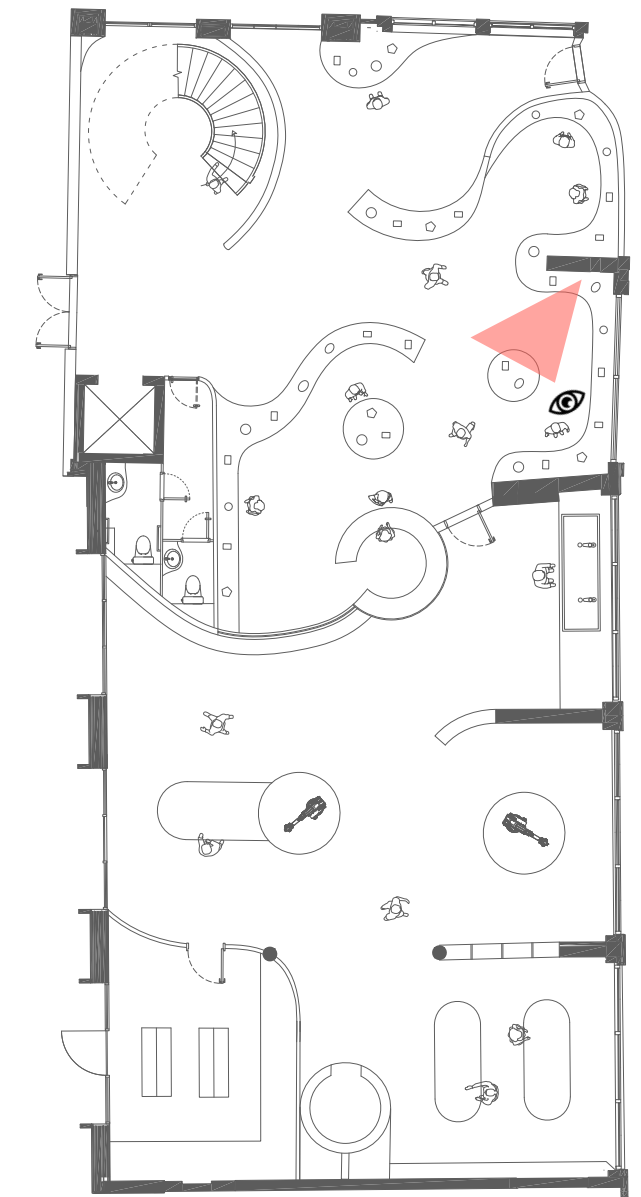
Space	
1 Main Entrance	7 3D Clay Printing
2 Ceramic Shop	8 Work Bench
3 Cashier	9 Glaze Table
4 Toilet	10 Store Room
5 Watching Area	11 Kiln
6 Workshop Space	12 Fire Exit

FOLGATE STREET



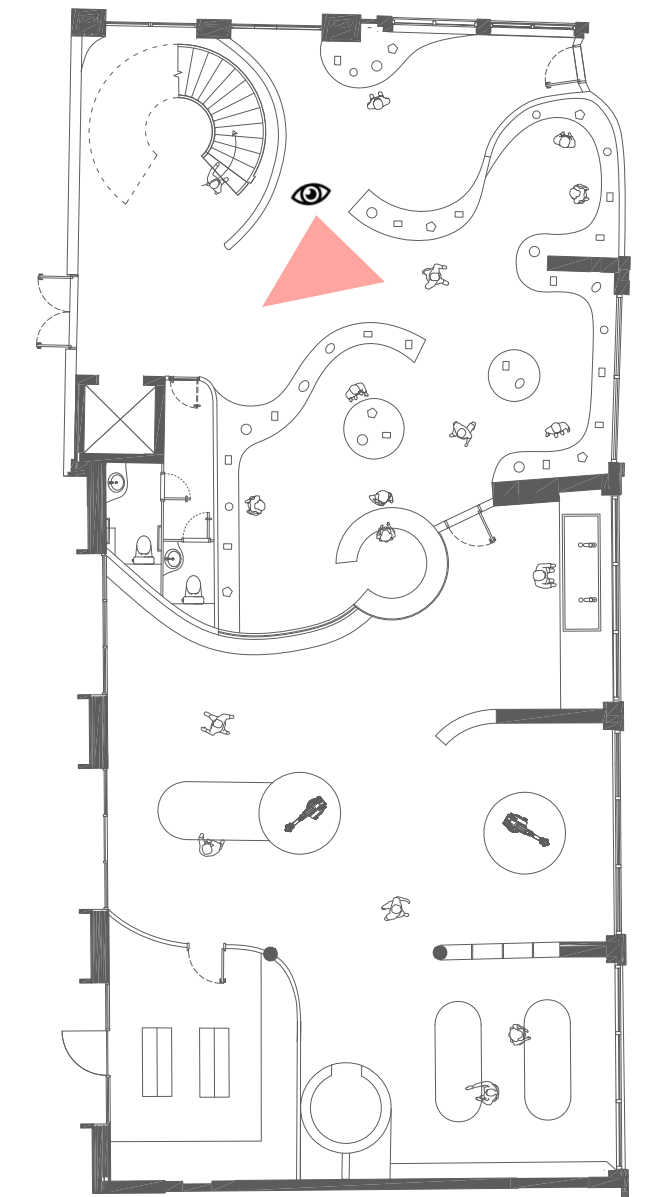
Clay Art Shop

Selling the products that made by robots and craftsmen together

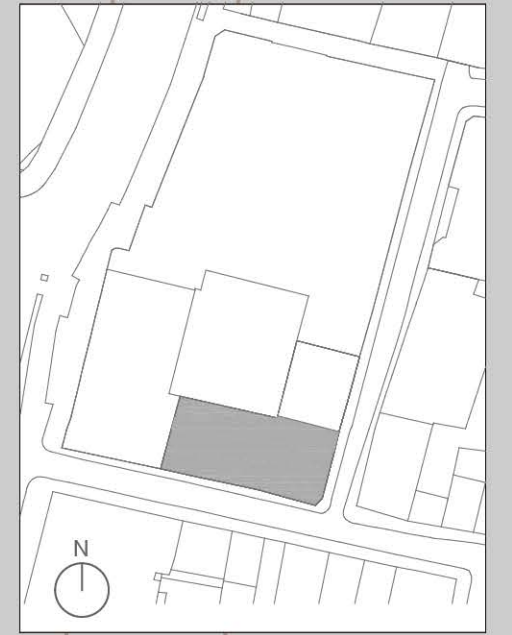


Robots-Craftsmen Workshop Space

Clay workshop that robots and craftsmen work together



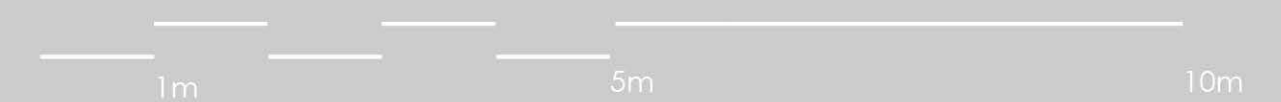
Floorplan
Level 1



Floorplan Level 1

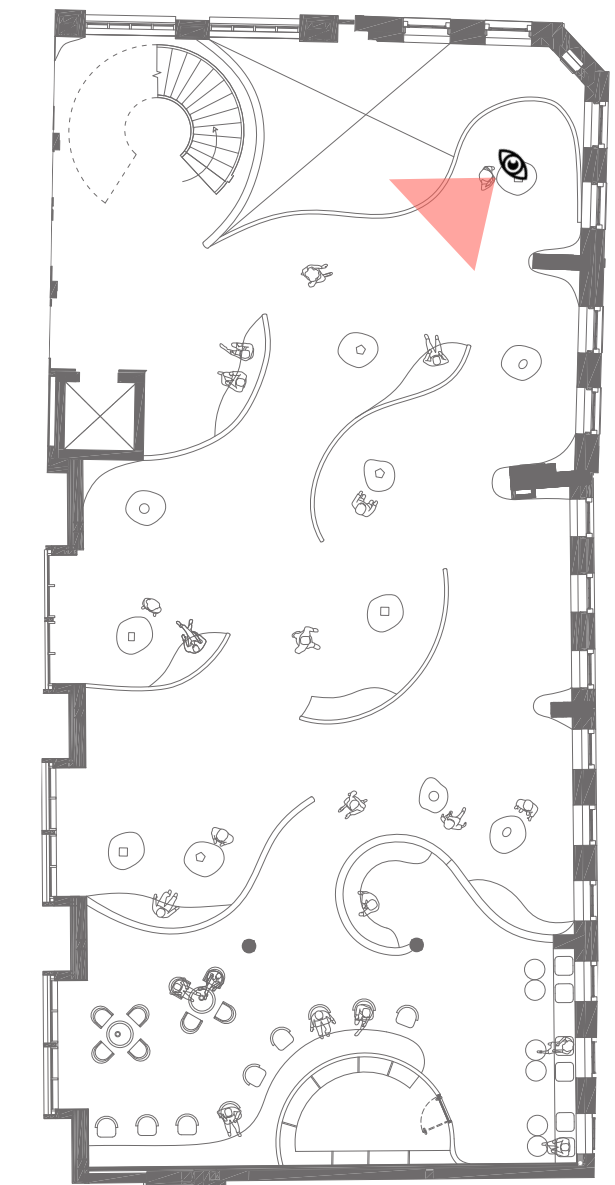
Space	Clay Finishes Wall	
1 Multipurpose Hall	(A) Rammed Earth	(F) Burnished
2 Cafe	(B) Glazed	(G) Stoneware
3 Order Counter	(C) Sgraffito	
4 Store Room	(D) Textured	
	(E) Slip Trailing	

FOLGATE STREET



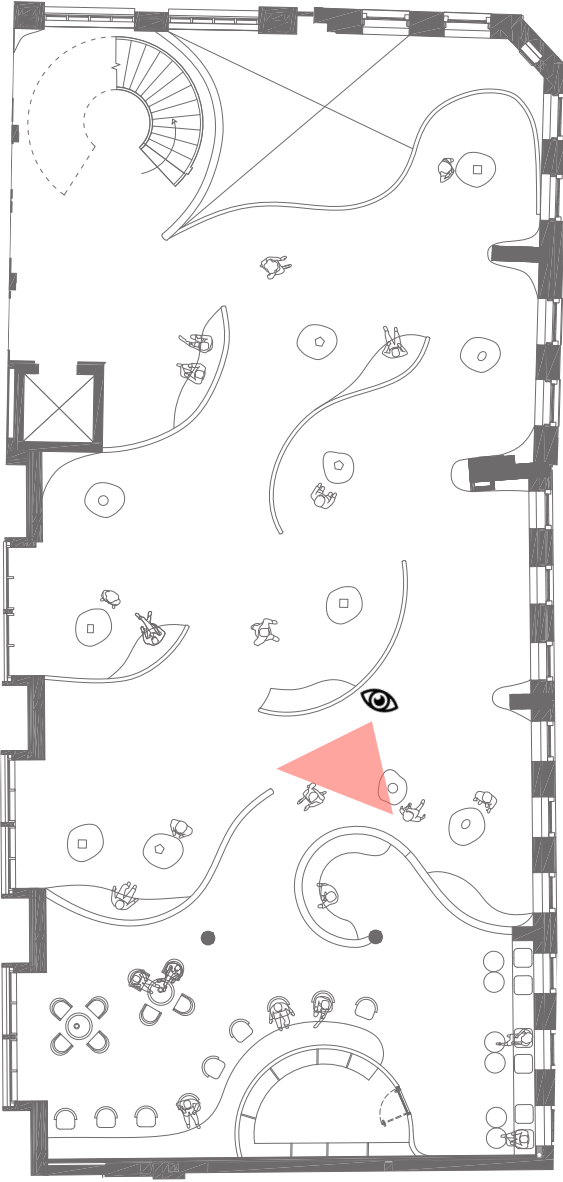
Clay Art Gallery

Different clay walls for people to touch and enjoy, also a space for artists to display their works

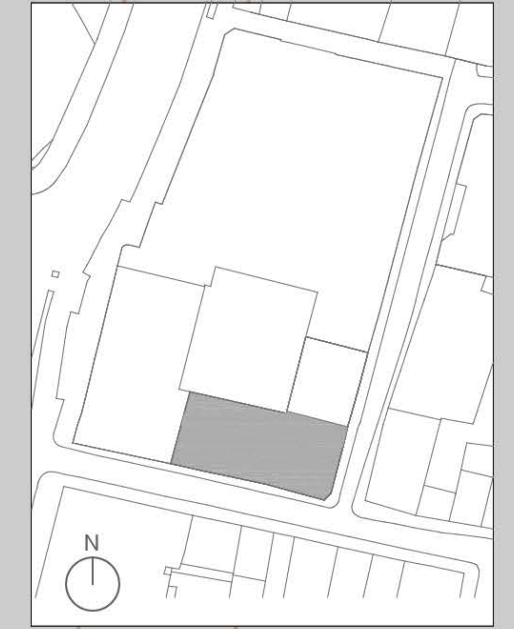
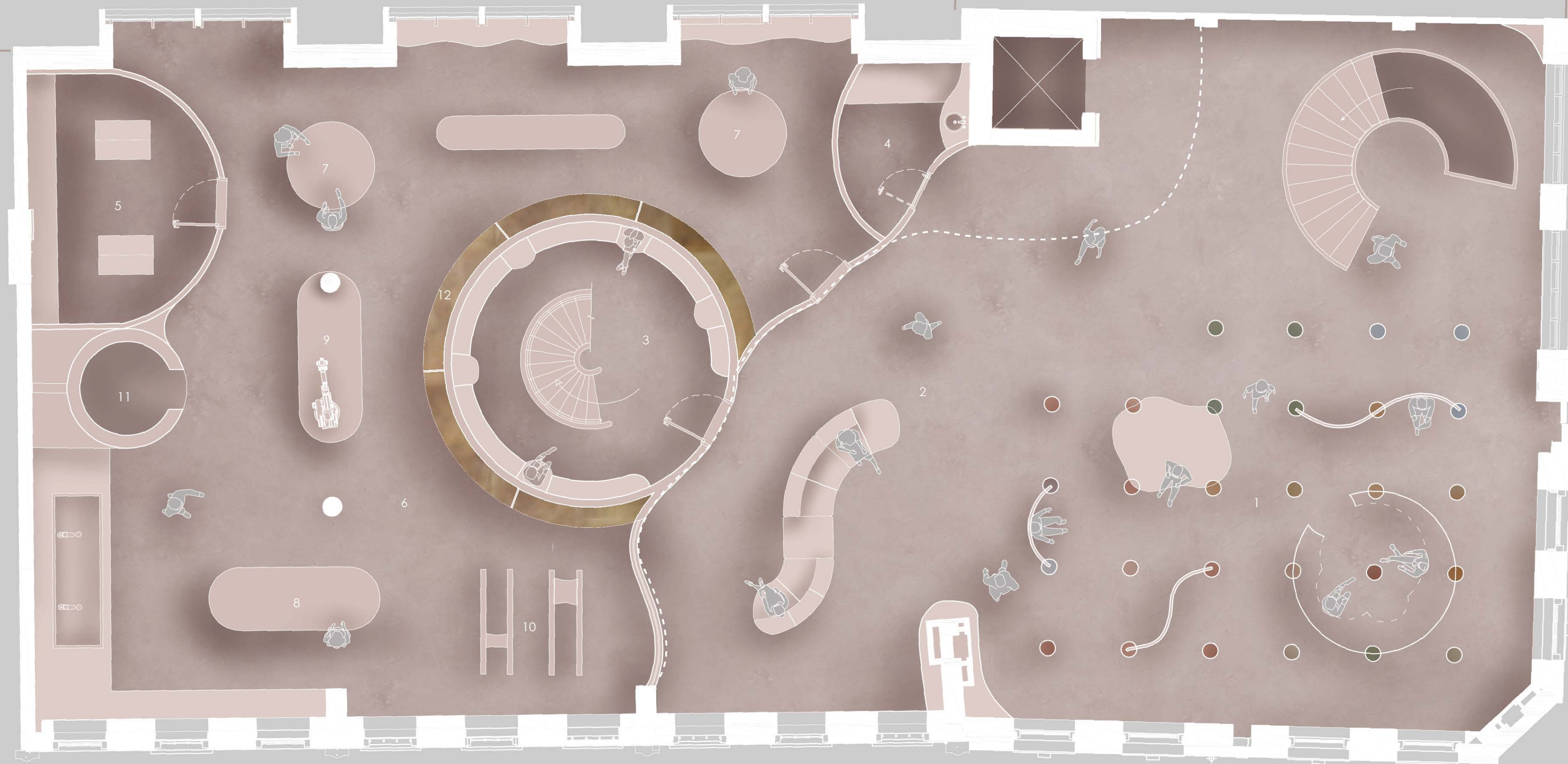


Cafe

Cafe space for people to take a rest



Floorplan
Level 2



Floorplan Level 2

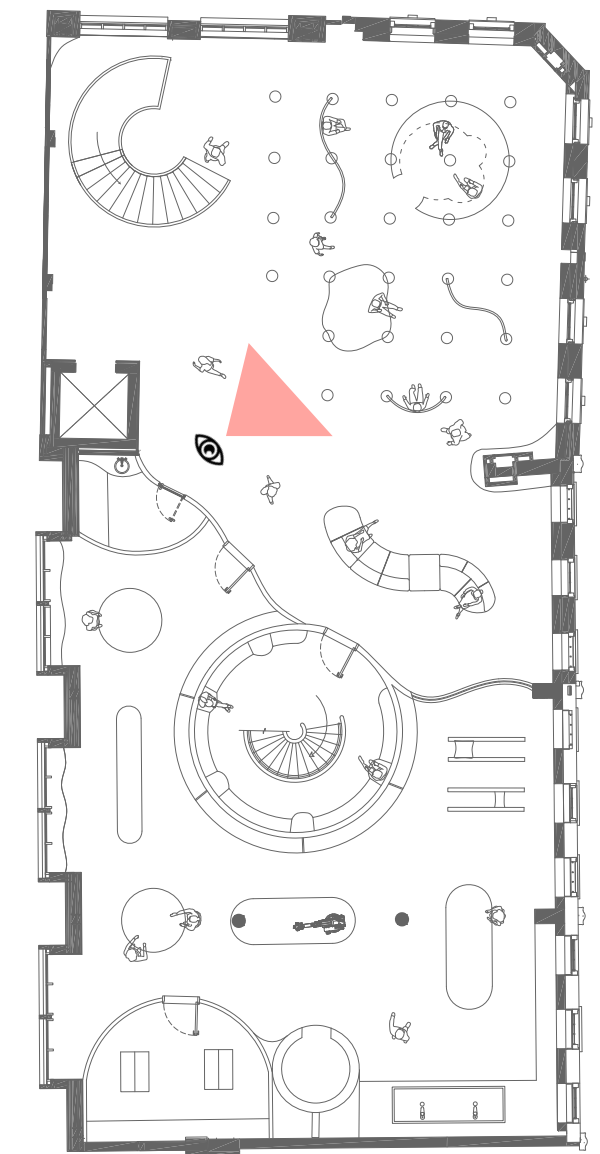
Space	
1	Clay Forms Playground
2	Waiting Area
3	Ceramic Library
4	Baby Changing Room
5	Store Room
6	Kids Ceramic Workshop
7	Work Bench
8	Glaze Table
9	3D Clay Printer
10	Clay Forming Machine
11	Kiln
12	Shelves

FOLGATE STREET

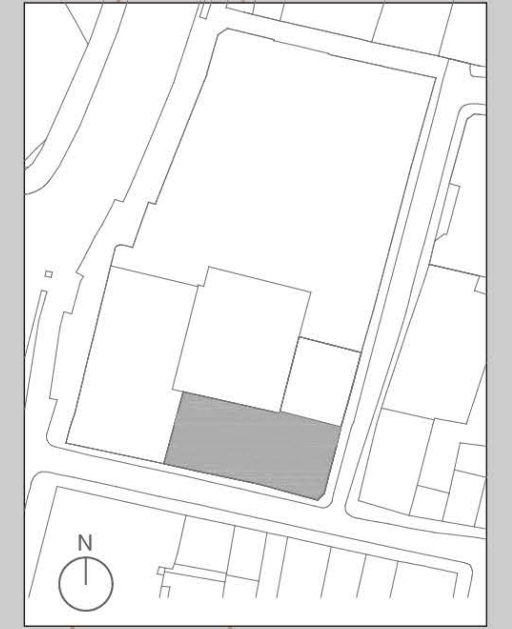


Kids Clay Playground

A space for kids to touch and play



Floorplan
Level 3



Floorplan Level 3

Space	
1	Staff Office
2	Sitting Area

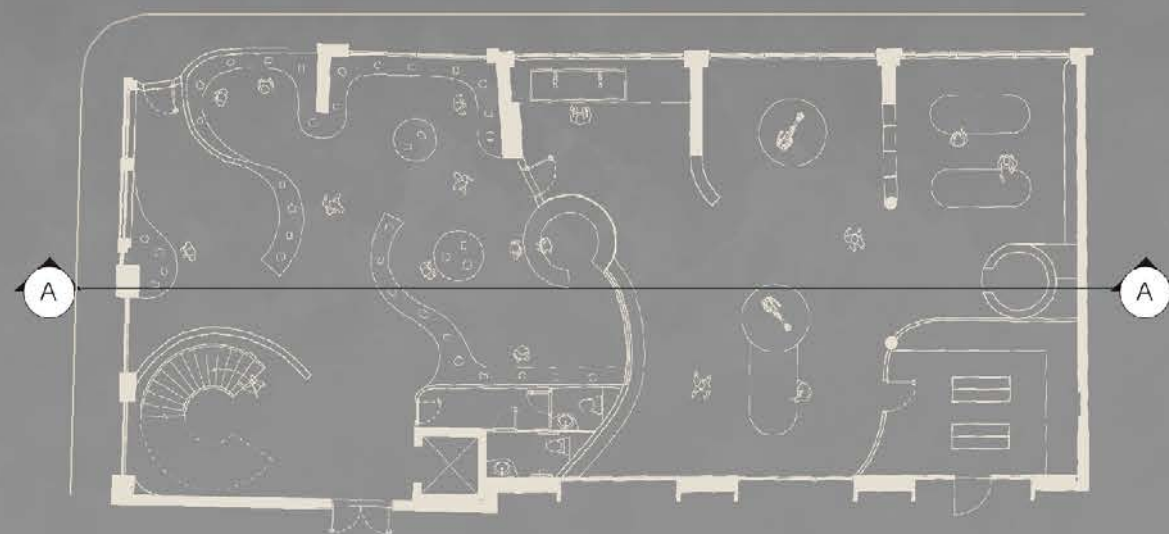
FOLGATE STREET



Section Plan

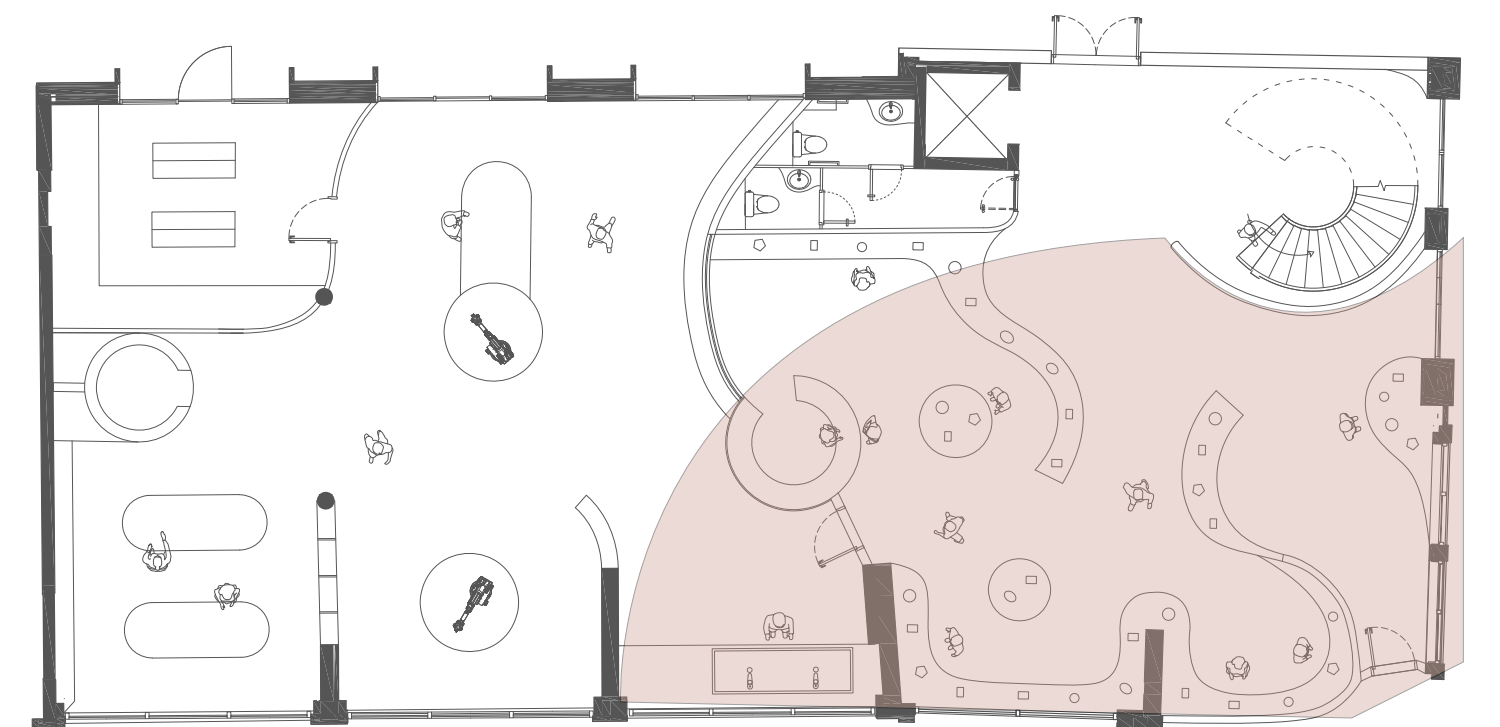


Folgate Street





Section Model
1:50 Spatial Model



Section Model
1:50 Spatial Model



Section Model

Level 0



Section Model

Level 1



Section Model

Level 2

