

KARIGARI: INDIAN FOLK ART MUSEUM

Navya Nagpal- 10054390



**WELCOME TO THE WORLD OF FOLK ART !**

# SUPER – REUSE

## Site

---

### Precap

---

During our first site visit at the redundant 15 Westferry Circus building located in Canary Wharf, London, the first thing that caught my attention was the big windows and the way the facade of the building played an important role in it and from there my interest and research towards the interaction between light and form began.



Illustration of 15 Westferry Circus

### Canary Wharf – Location of the site

---

Canary Wharf, an area of London, England, located near the Isle of Dogs in the London Borough of Tower Hamlets. Canary Wharf is defined by the Greater London Authority as being part of London's central business district, alongside Central London. Alongside the City of London, it constitutes one of the main financial centres in the United Kingdom and the world, containing many high rise buildings including the third-tallest in the UK, One Canada Square.

In addition to being a leading global financial district in the United Kingdom, Canary Wharf is famous for a cluster of the tallest modern commercial complexes and residential high-rise buildings.

### 15 Westferry Circus – Site

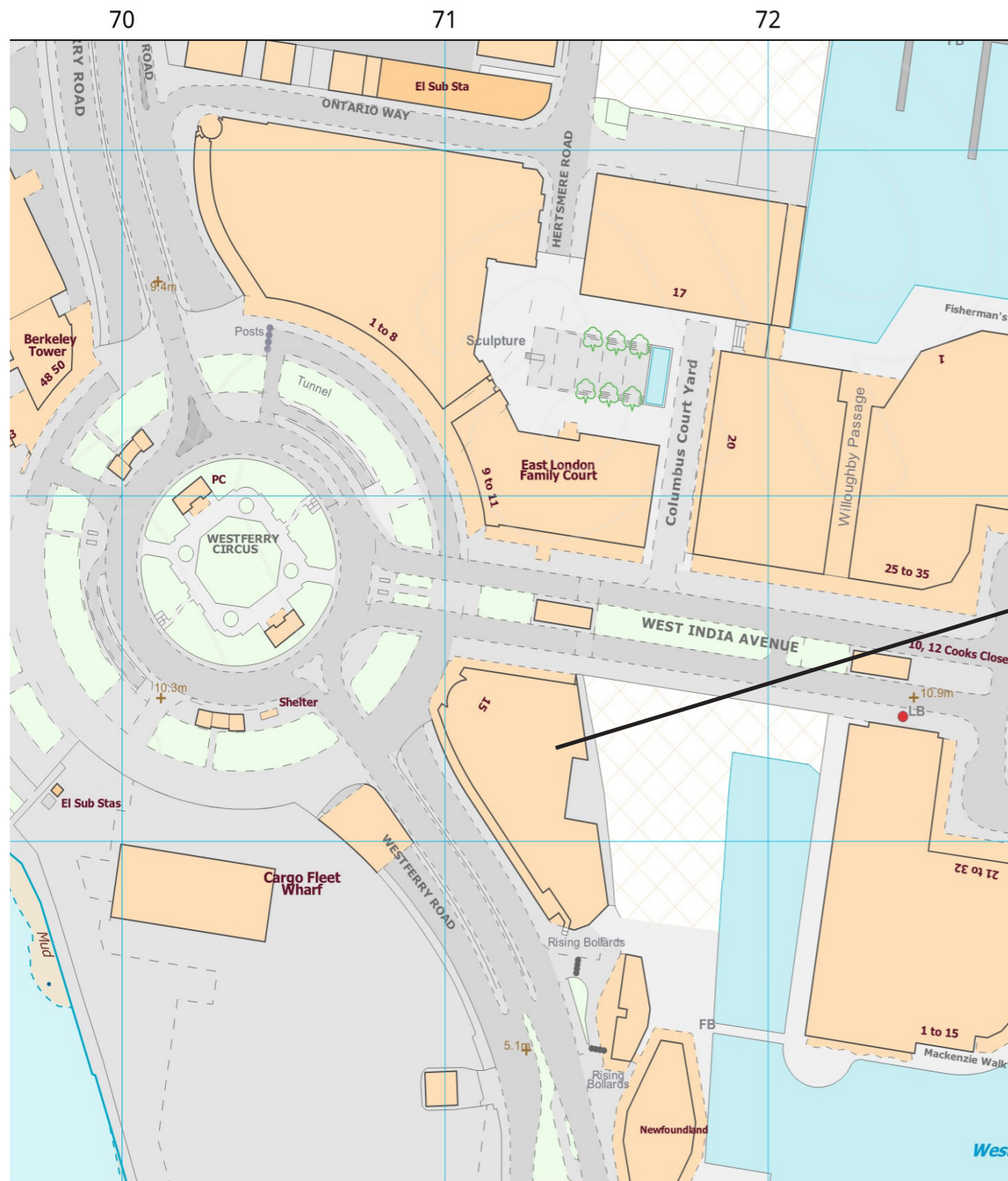
---

15 Westferry Circus, is a redundant office block which was designed in 1998 by Sir Terry Farrell. It is located on the North bank of the Thames on the apex of the river, looking west towards the city of London and then upstream towards Greenwich to the East.

Adjacent to 15 Westferry Circus, is a large abandoned partially constructed floor plate which connects 15 Westferry to the river, which is also a part of our considerations for this year.

# SUPER - REUSE

## Site

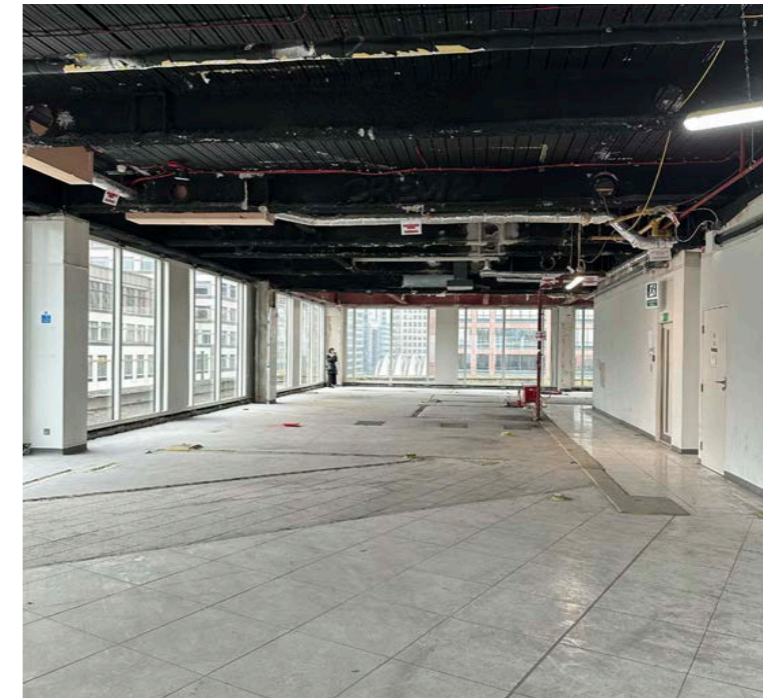
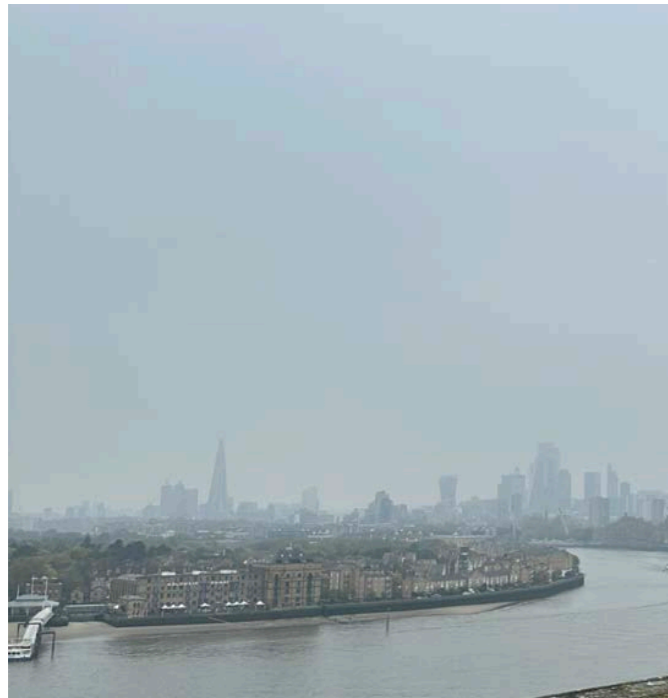


15 Westferry Circus

# SUPER – REUSE

## Site Visit

---



Site Visit

# SUPER – REUSE

## Canary Wharf: form & light

---



# SUPER – REUSE

## *Project proposal: inspiration*

---

From my compression artefact, my inspiration was immersive, light and spaces which conveys a story..



Louvre Abu Dhabi



The British Museum



Form and Light

# SUPER – REUSE

## *Project proposal: History of Canary Wharf*

---



Early 20s Canary Wharf

Earlier docks now Canary Wharf holds the history of how goods were imported in this country but nearing the 20th century, the use of ports to import goods from other countries declined resulting in the closure of them and now becoming the financial district with skyscrapers.

Today, Canary Wharf is a perfect example of successful urban regeneration, a leader in architectural innovation, and a highly desirable destination for city living. Its strategic location, exceptional transport links, and diverse offerings have solidified its position as a prime London district for property investment.

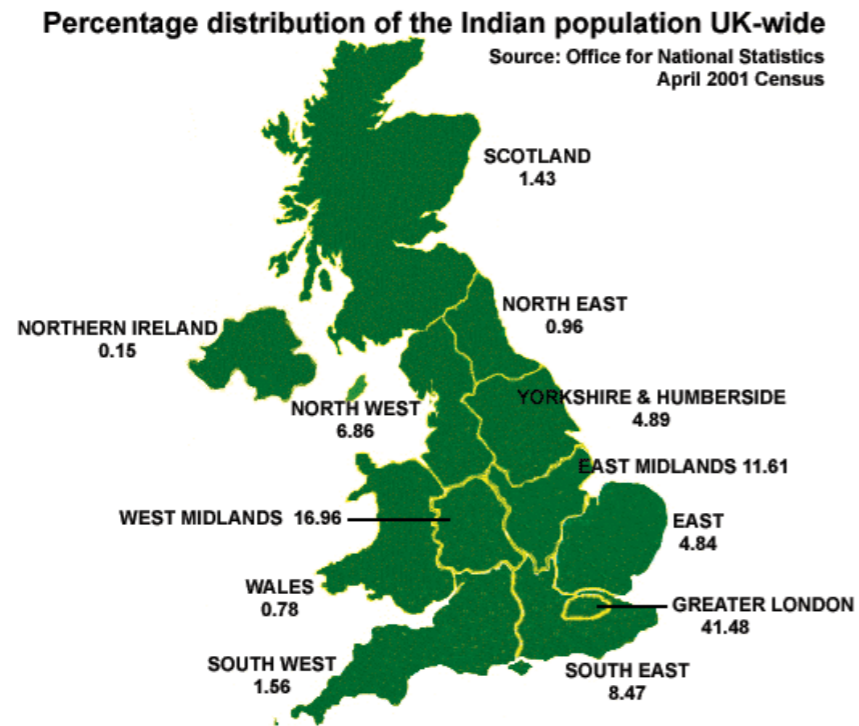


Today, Canary Wharf

# SUPER – REUSE

## *Project proposal: History & Culture*

---



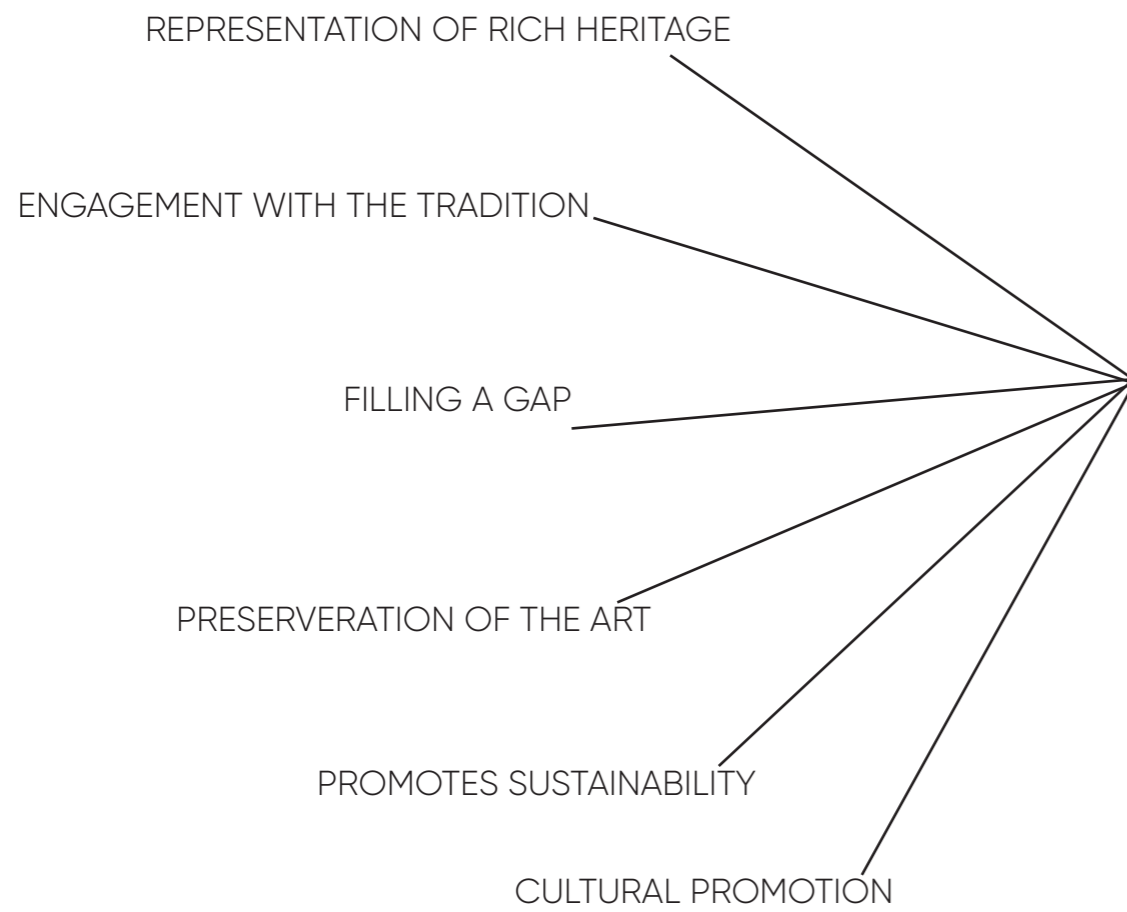
Diwali festival celebration at Trafalgar Square, London

Combining the rich history & culture from India, where I come from and its relation to the history of the United Kingdom and observing the interest and awareness about the Indian culture in the UK is increasing and the large community of Indians all over London made me decide to design a Museum based on the Indian Folk Art which exists from more than 1000 years and keeps evolving since there is no taught method of Folk art in different regions of India.

# SUPER – REUSE

WHY ?

---



# SUPER – REUSE

Project proposal: Spatial brief

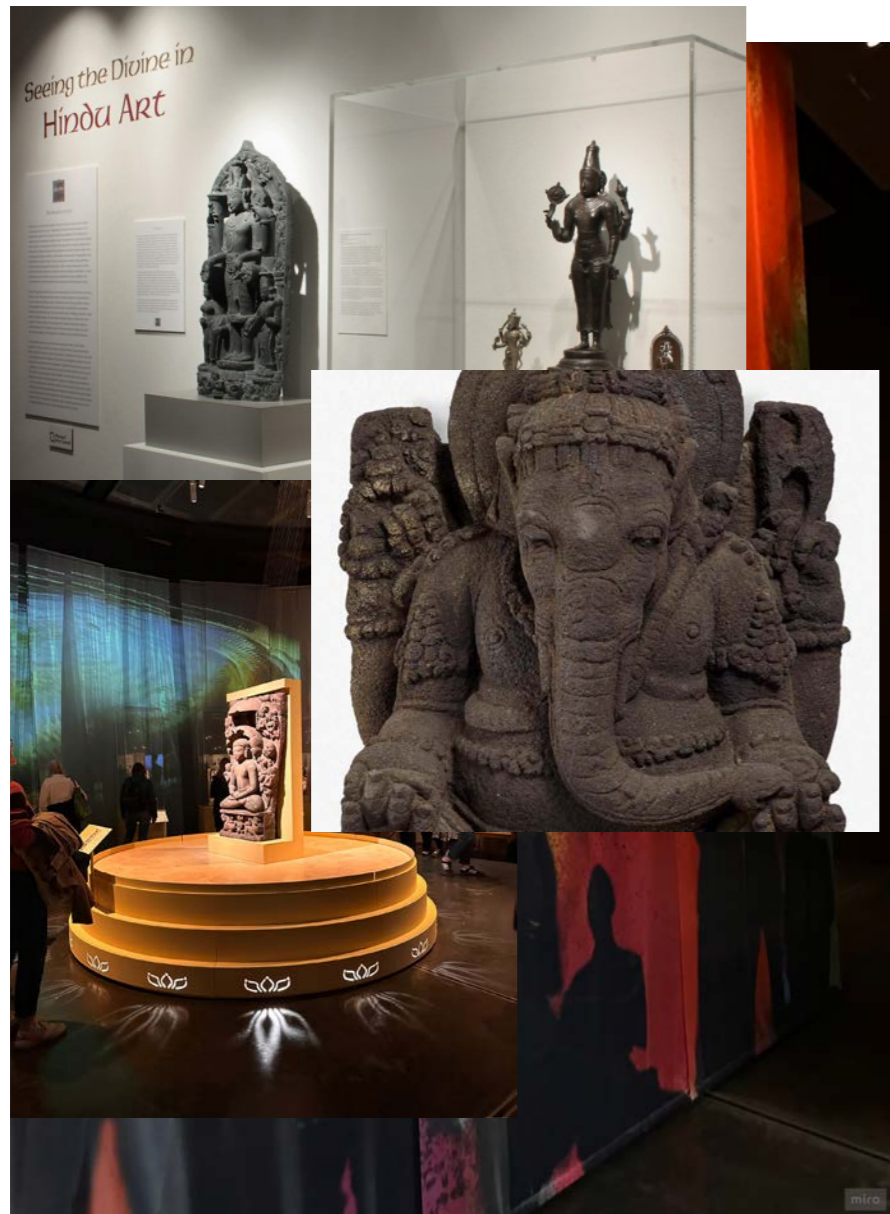
## KARIGARI: INDIAN FOLK ART MUSEUM & EXPERIENCE CENTRE

**PERMANENT EXHIBITION SPACE  
HINDUISM, BUDDHISM, JAINISM**

**+ TEMPORARY EXHIBITIONS**

**ARCHIVE : collection of rare  
paintings, digital albums,  
research books**

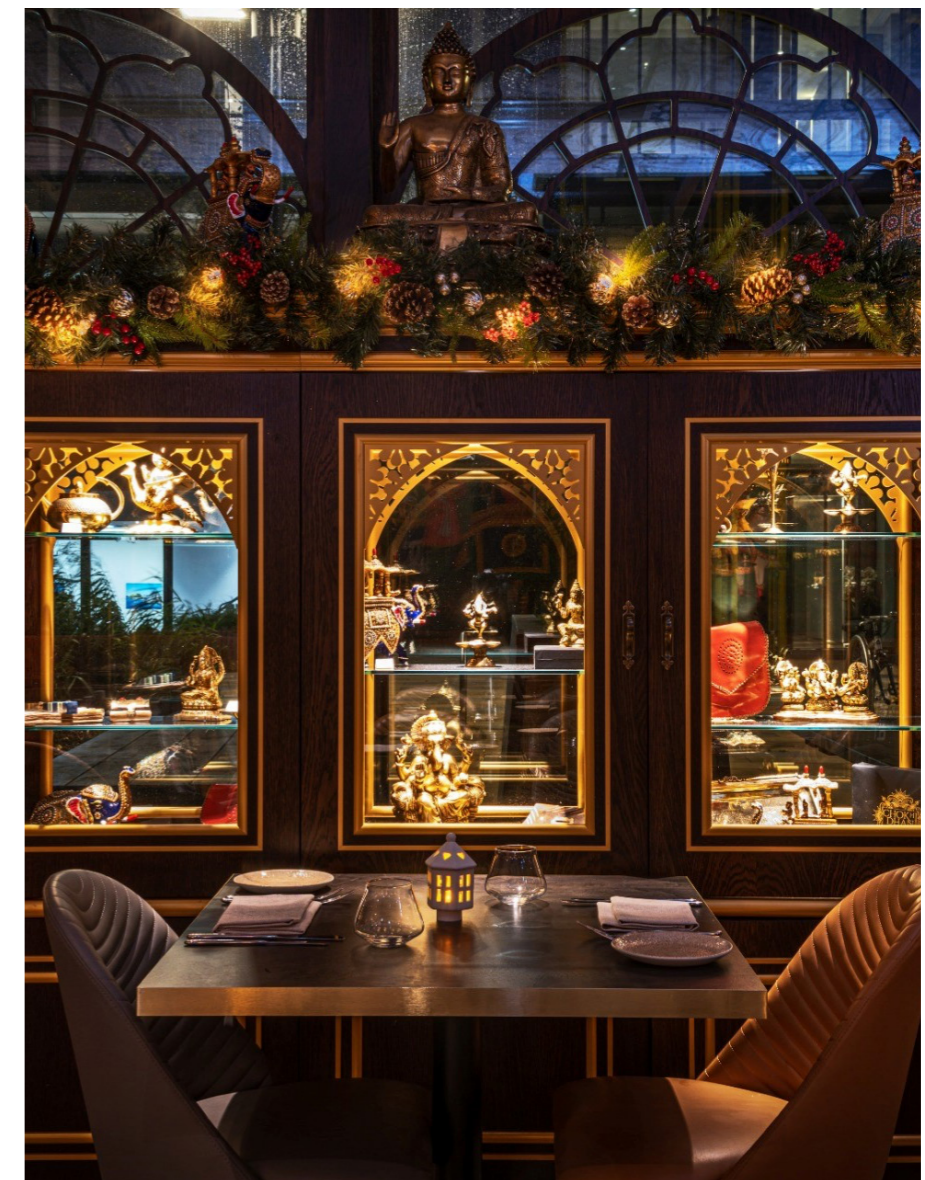
**RESTAURANT & CRAFT BAR  
(WORKSHOP) + SHOP**



Exhibition Concept



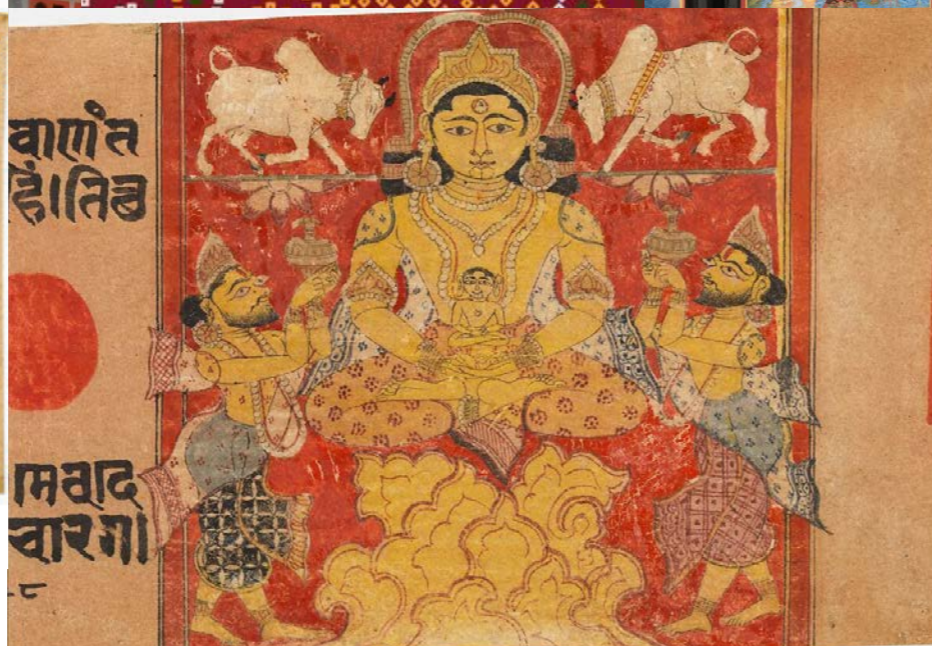
Ancient India exhibit at The British Museum



Chowki Dhani in UK

# SUPER - REUSE

## Project proposal: Visual Brief



SUPER – REUSE

*About the Cultures*

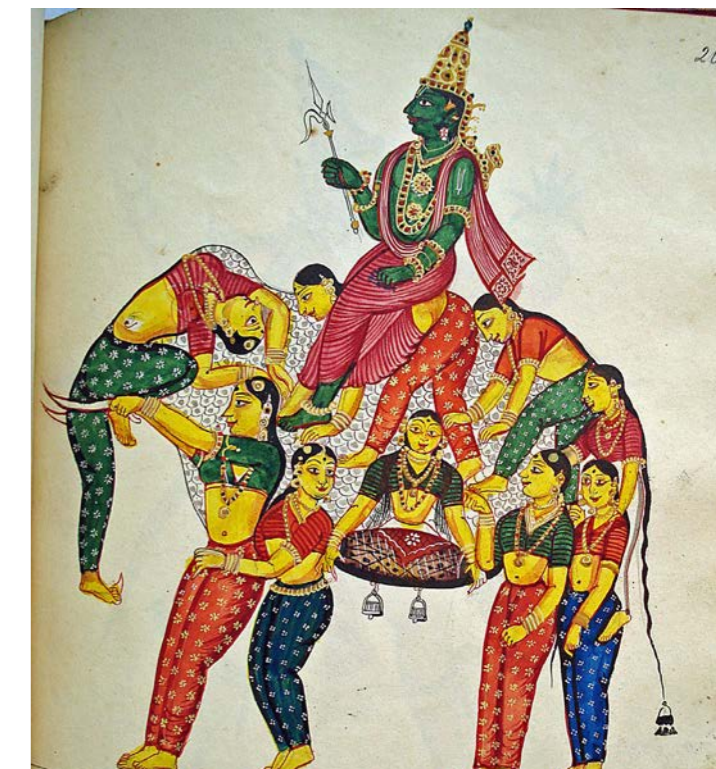
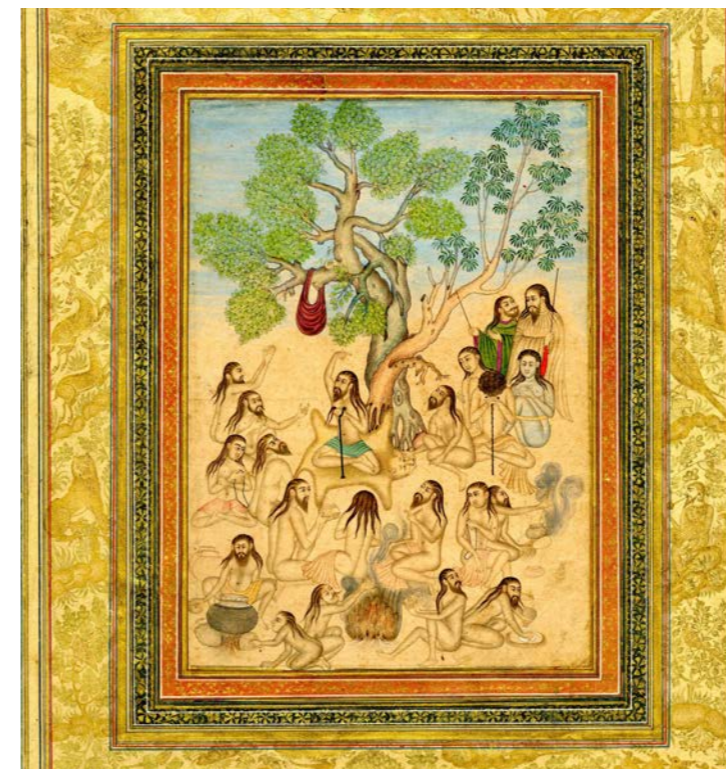
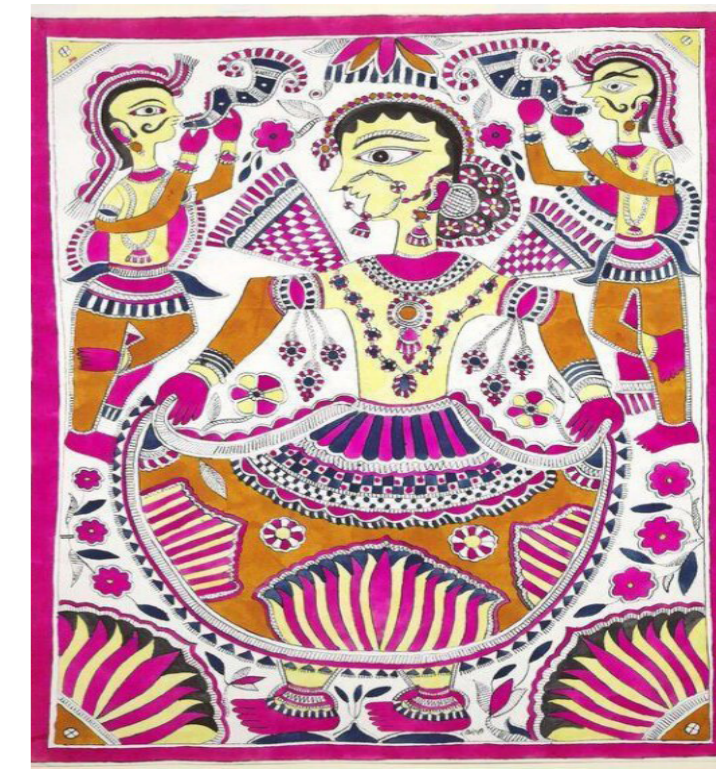
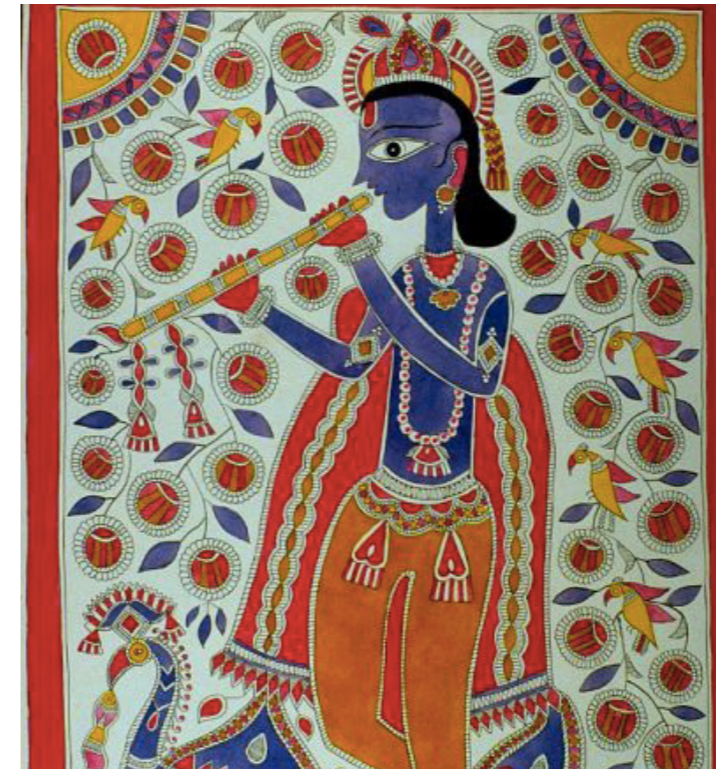
---

# HINDUISM

**DEVOTION**

**MYTHOLOGY**

**RITUAL**



SUPER – REUSE

*About the Cultures*

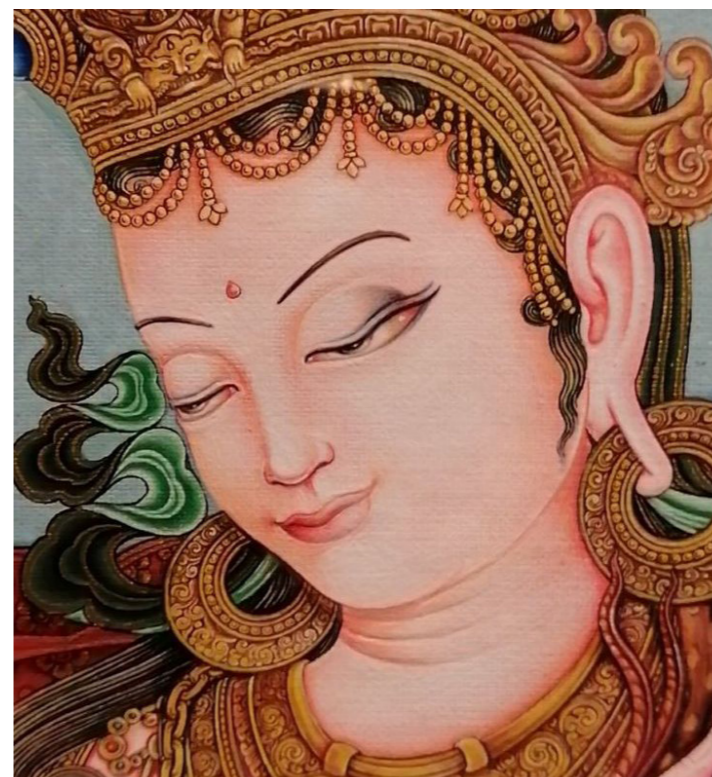
---

# BUDDHISM

**ENLIGHTENMENT**

**SYMBOLISM**

**MEDITATION**



SUPER – REUSE

*About the Cultures*

---

# JAINISM

**NON-VIOLENCE**

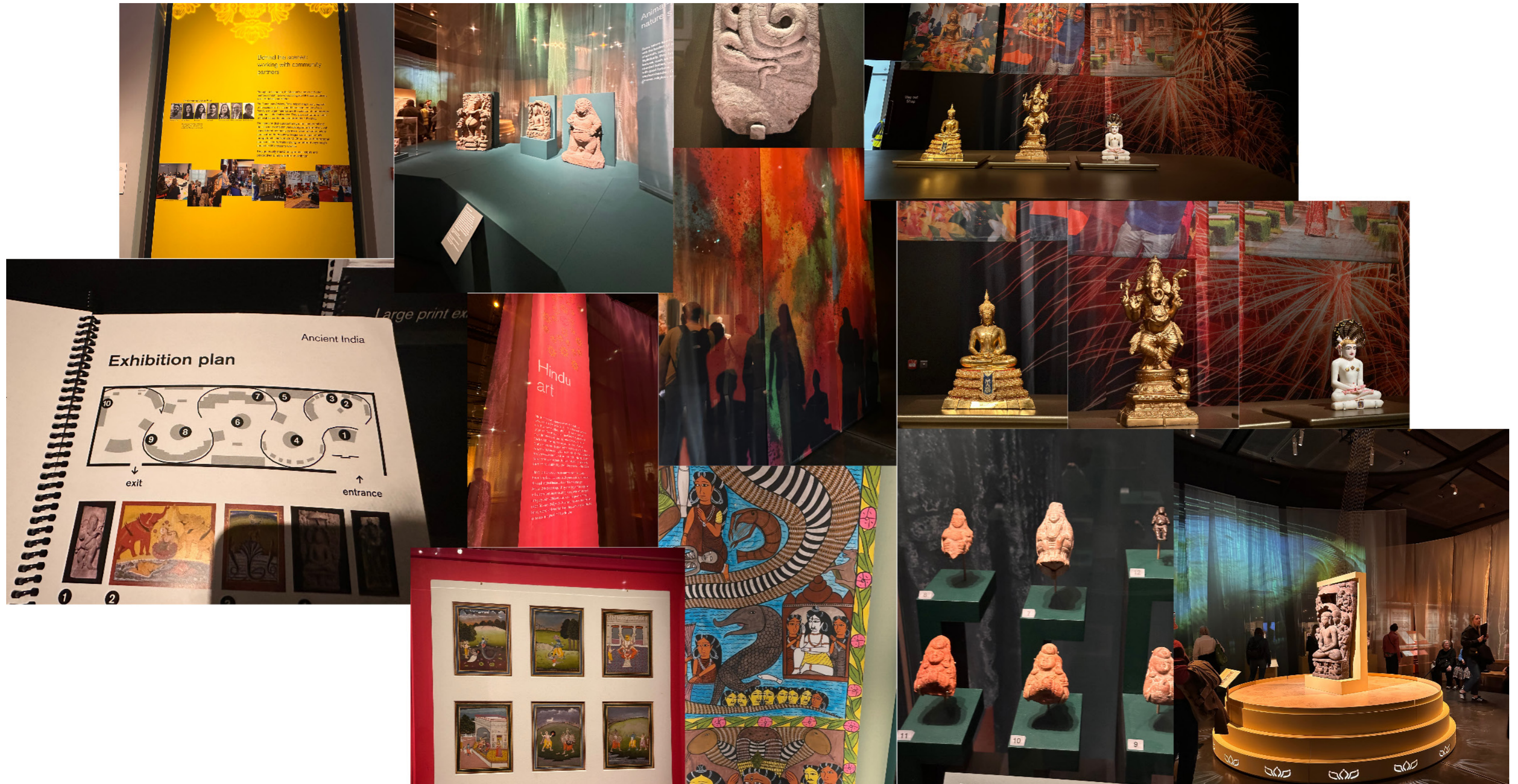
**LIBERATION**

**PRESERVATION**



# SUPER – REUSE

Precedent exhibition: Ancient India - Living traditions at The British Museum



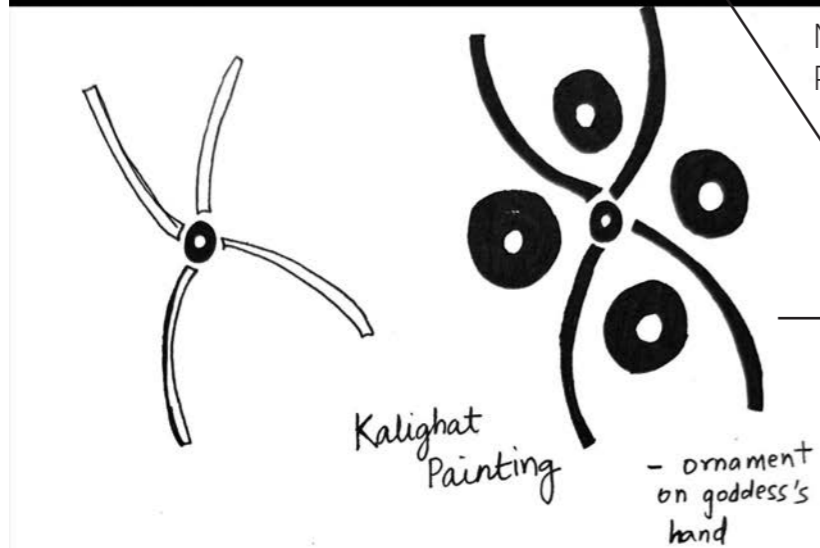
# SUPER - REUSE

## Design development : Indian Folk Art Study

KALIGHAT PAINTING

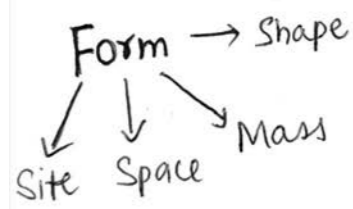
KERALA MURAL PAINTING

PICHWAI PAINTING



WARLI PAINTING

KALAMKARI PAINTING



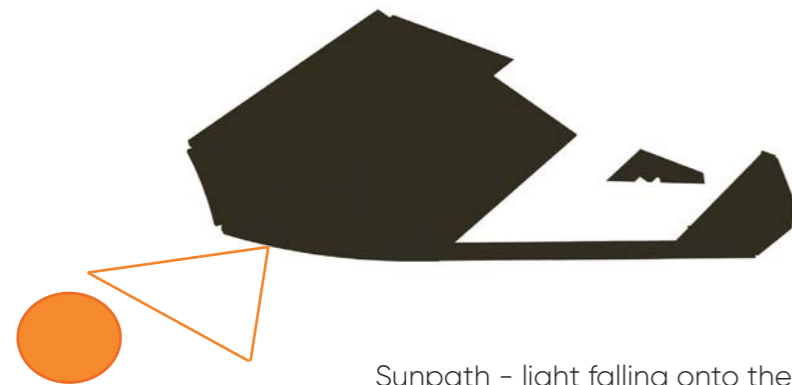
Patterns from Folk Art

Study of different types of Indian Folk Art

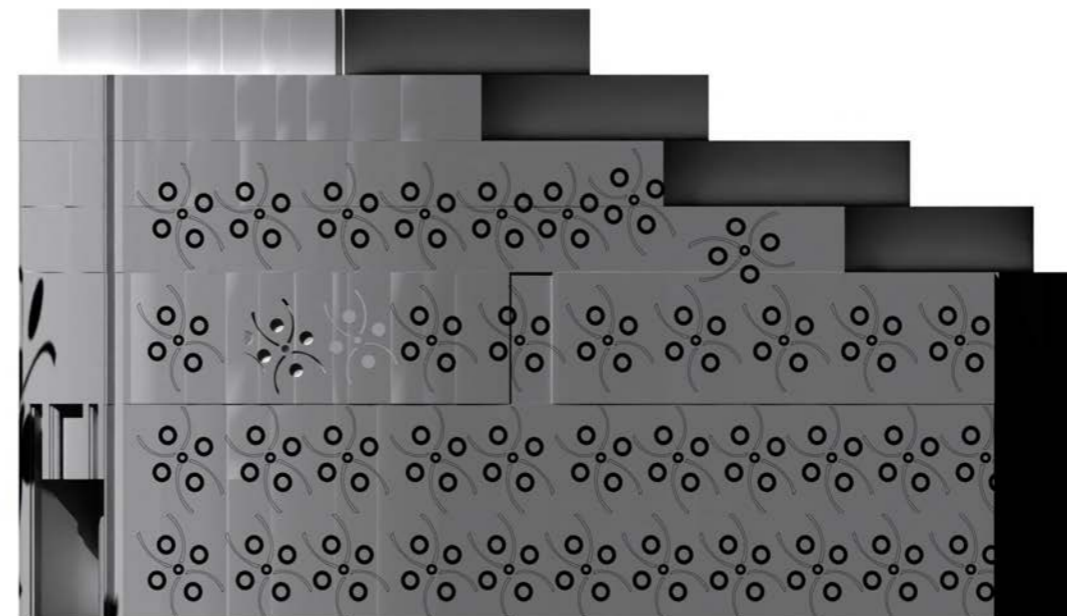
# SUPER - REUSE

*Design development : Indian Folk Art Study*

---



Sunpath - light falling onto the facade



Experimentation with the facade

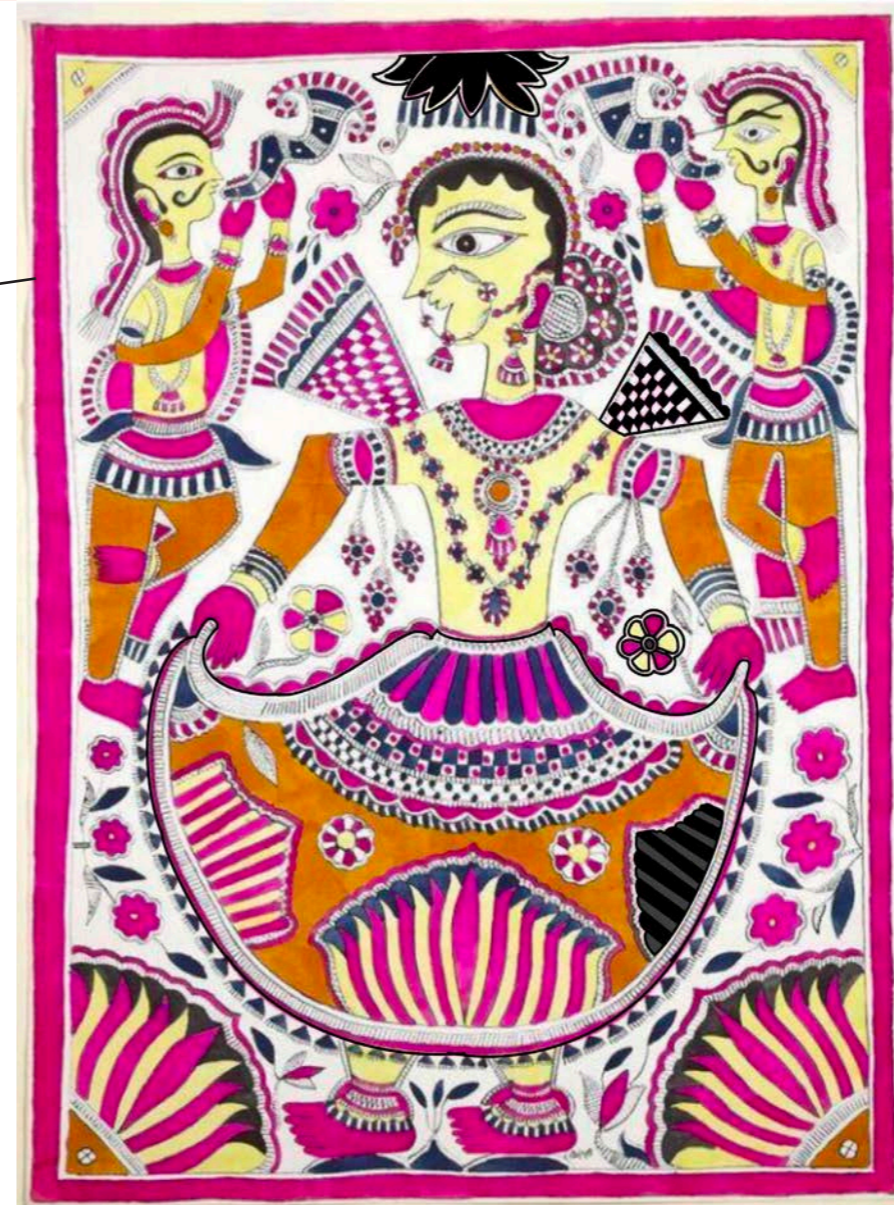
# SUPER - REUSE

*Design development : folk art study to spatial experimentation*

## TRANSLATING PATTERNS INTO SPATIAL EXPERIENCE



Collage of Folk art paintings and embroidery

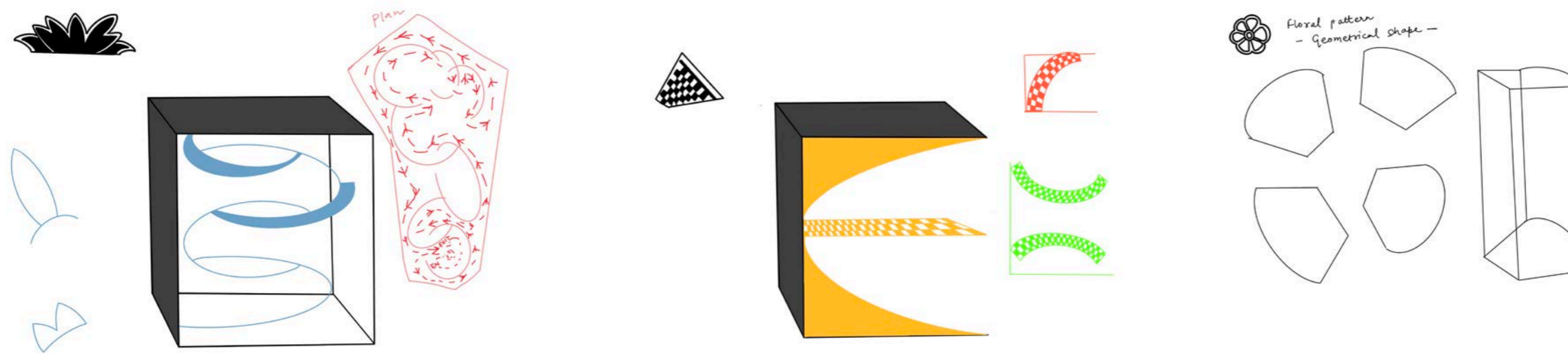


Patterns from Folk Art

# SUPER - REUSE

*Design development : spatial experimentation*

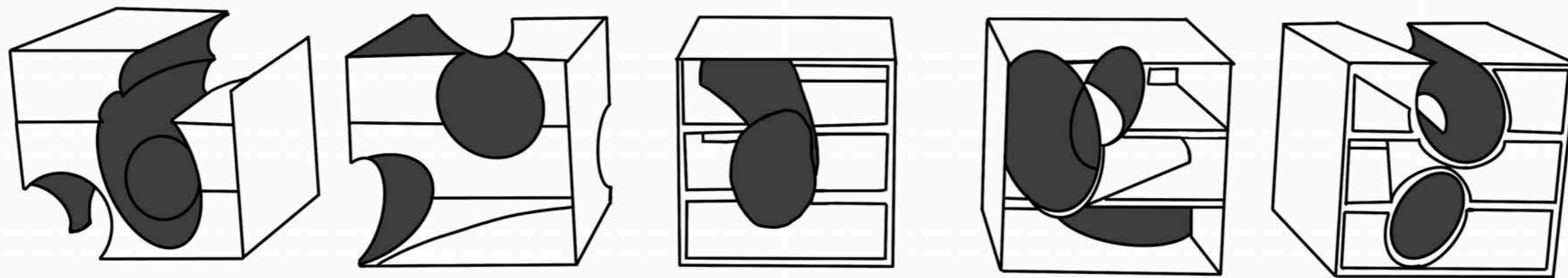
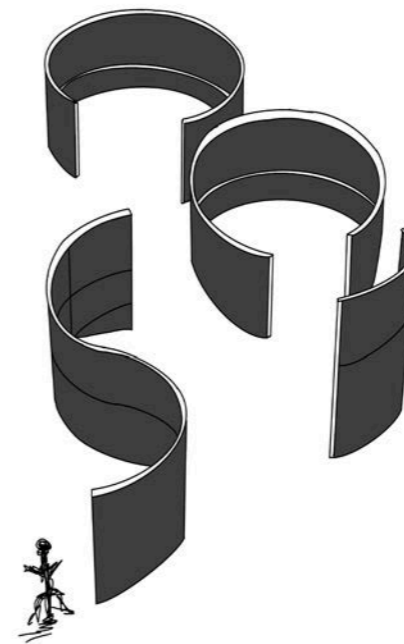
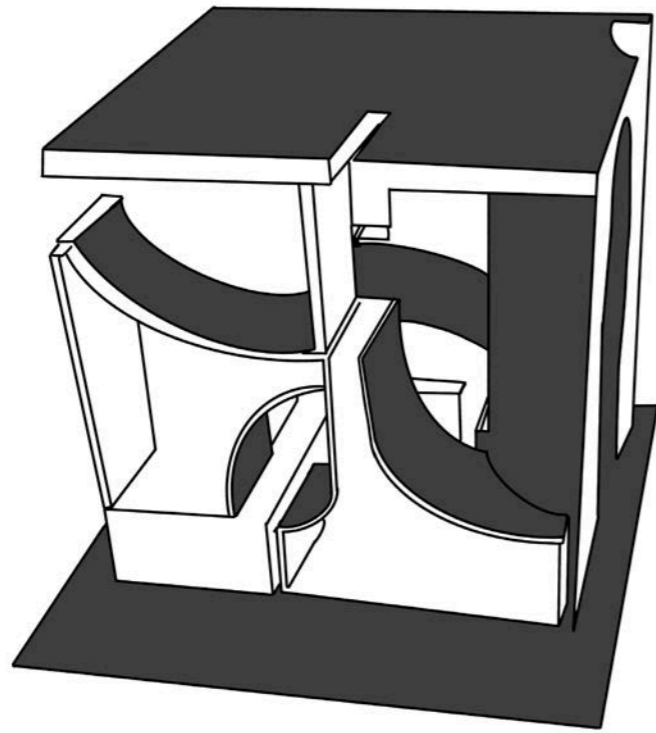
---



translating patterns into spatial elements

# SUPER - REUSE

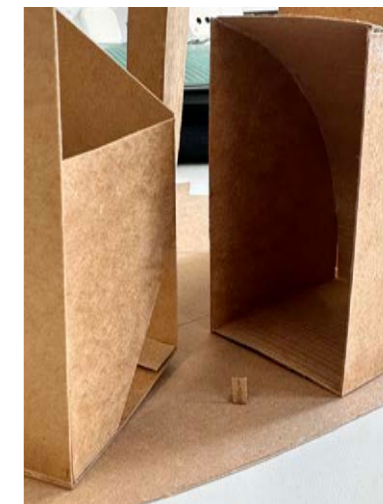
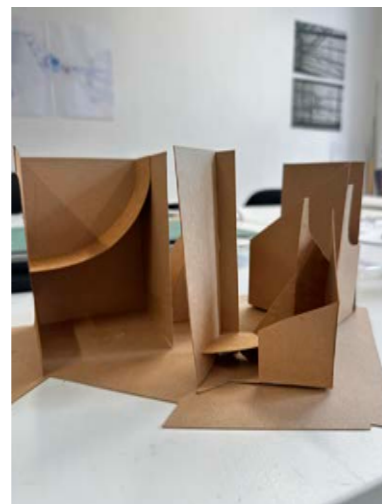
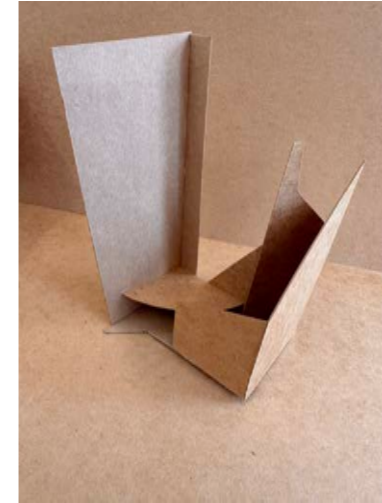
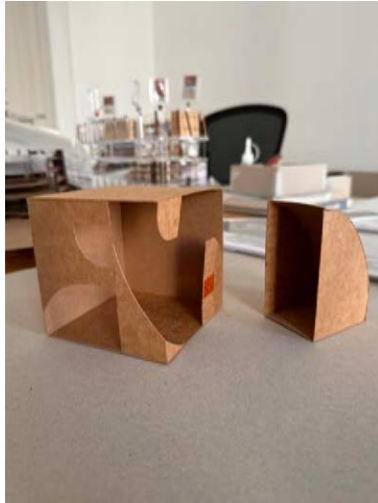
*Design development : spatial experimentation*



abstracting patterns into spatial arrangements

# SUPER - REUSE

*Design development: spatial experimentation*



3-d model making testing

# SUPER – REUSE

*Design development: spatial experimentation*

---



3-d model making testing

# SUPER – REUSE

*Design development: spatial experimentation*

---



3-d model making testing into the building to provide context

# SUPER - REUSE

*Design development: spatial experimentation*

---



3-d model making testing top view in the building

# SUPER - REUSE

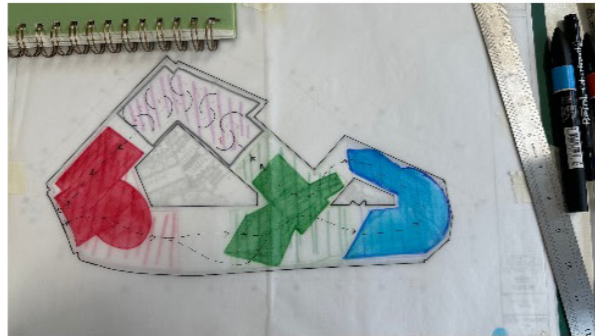
## Design development: spatial experimentation



After photographing the 3d models inside the building, I could not figure out the arrangement and I was not able to generate floor plans which had the geometrical representation from the folk art patterns. It rather felt like boxes cut out with shapes.

Thus, I started planning the space on 1 floor and would extrude this till the top and then further plan the exhibition within these 3 structures.

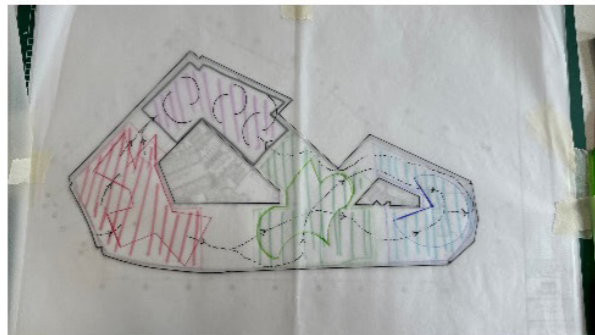
Test 1



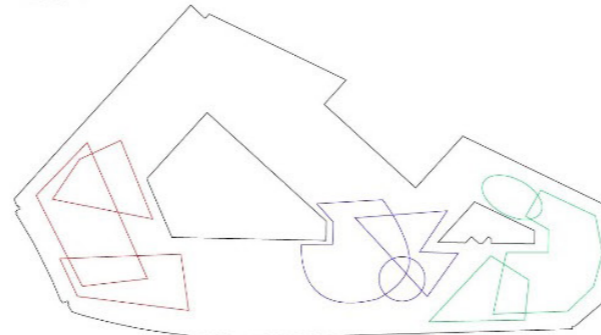
Test 2



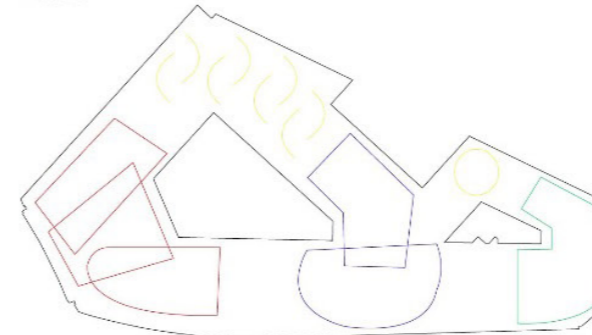
Test 3



Test 4



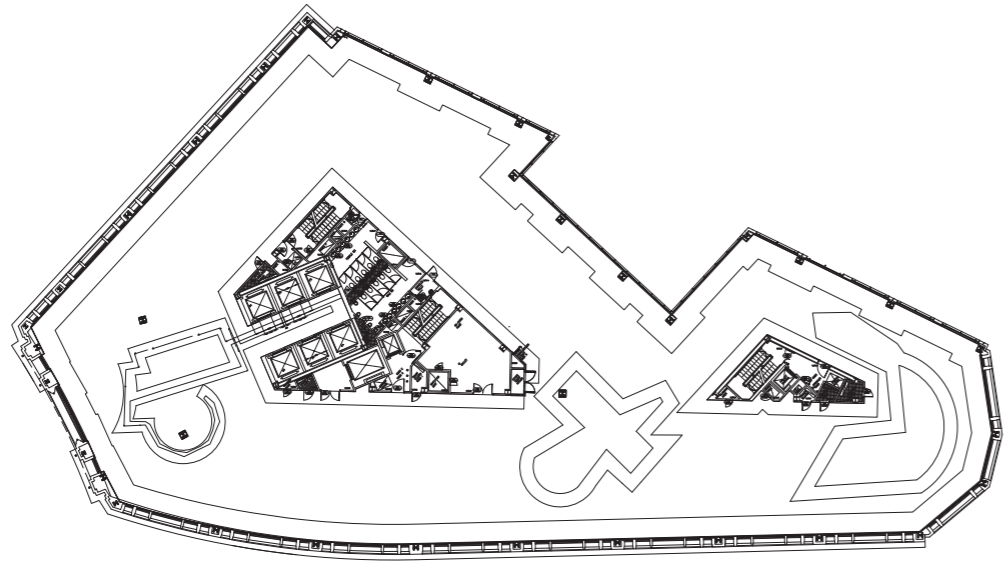
Test 5



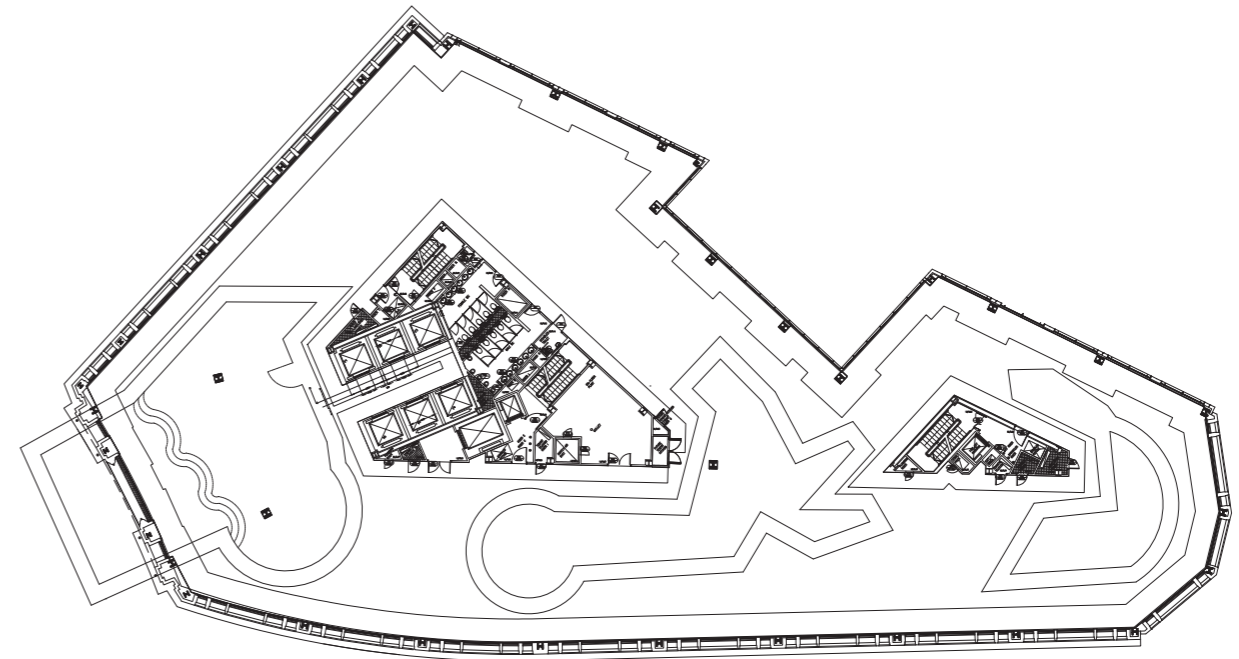
# SUPER – REUSE

*Design development: spatial experimentation*

---



Level 2

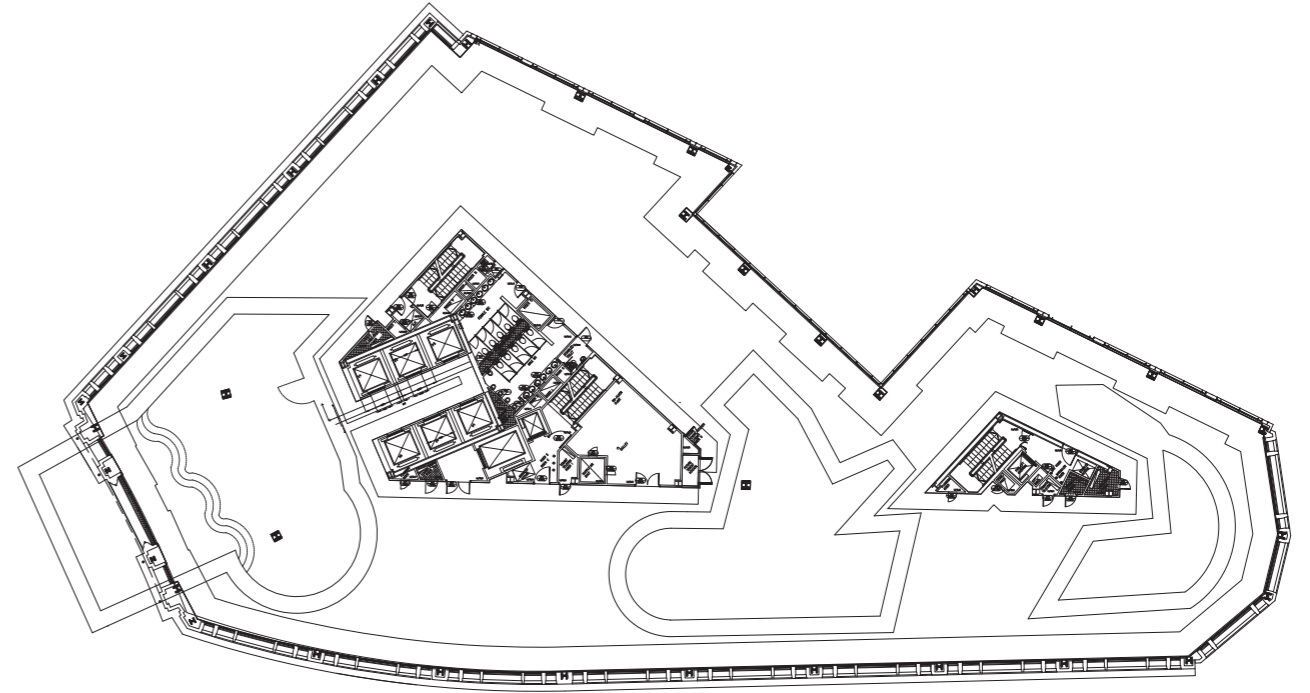
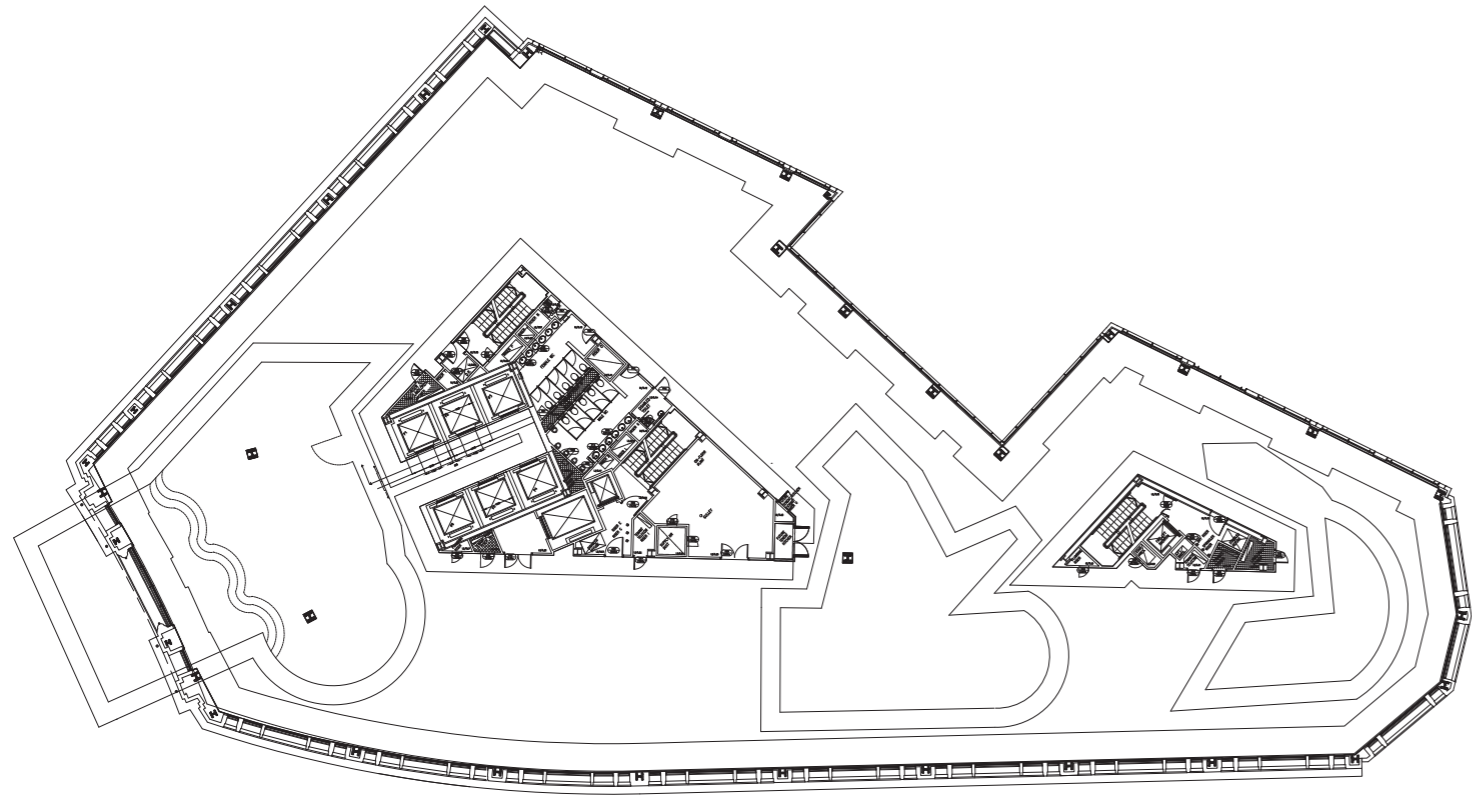


Floor planning experimentation for the exhibition towers

# SUPER - REUSE

*Design development: spatial experimentation*

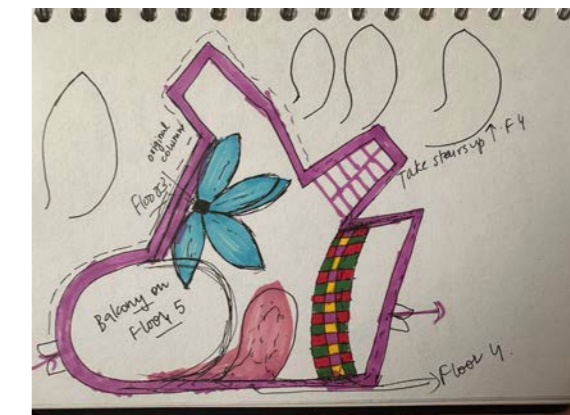
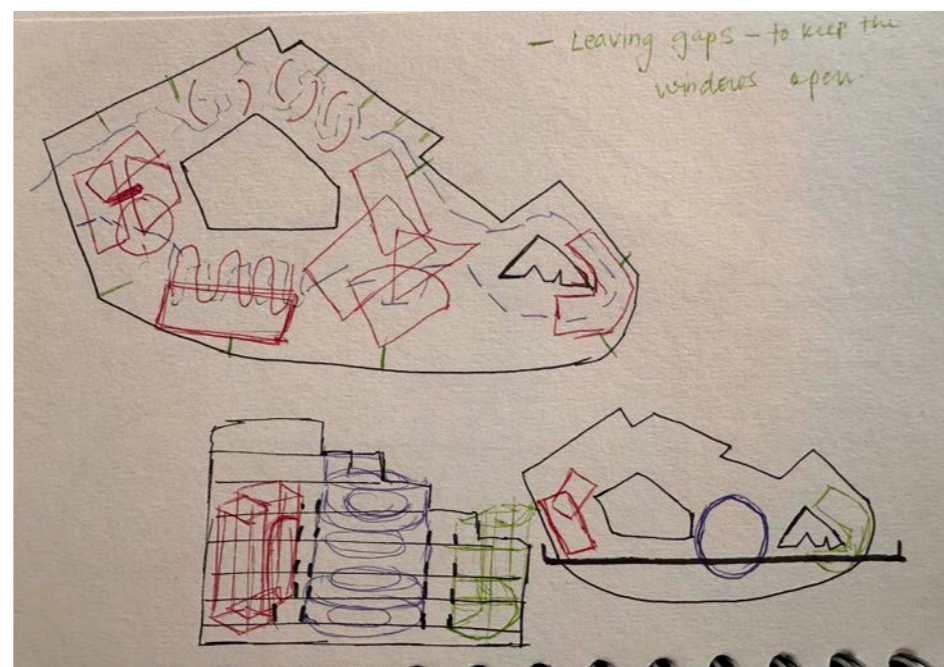
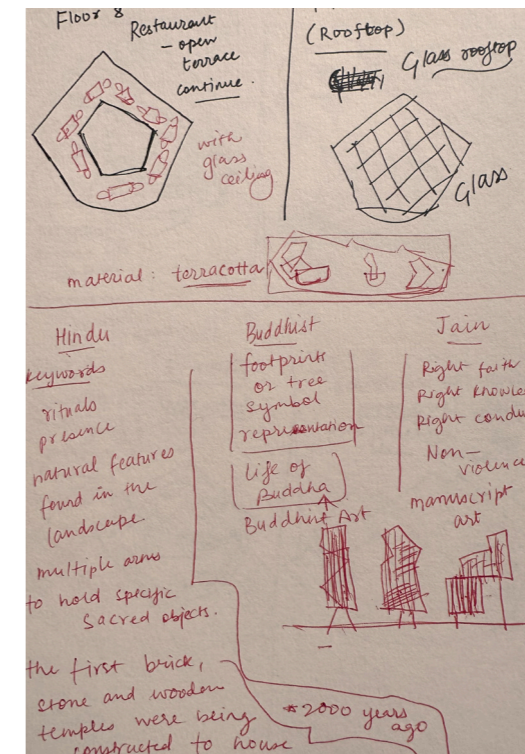
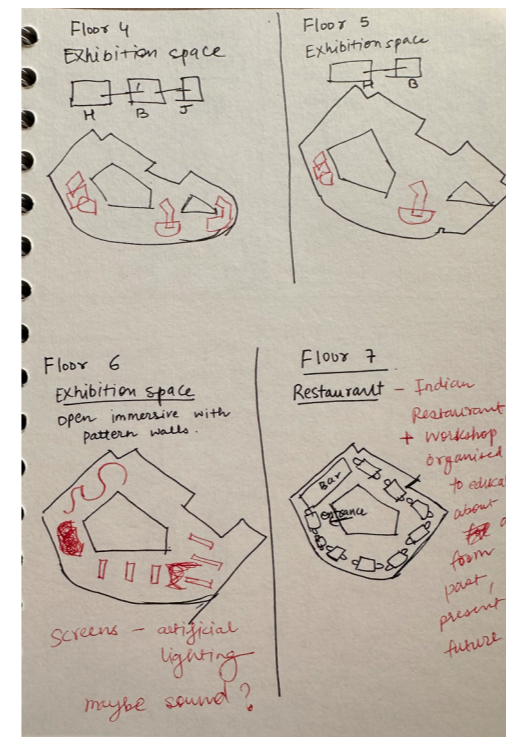
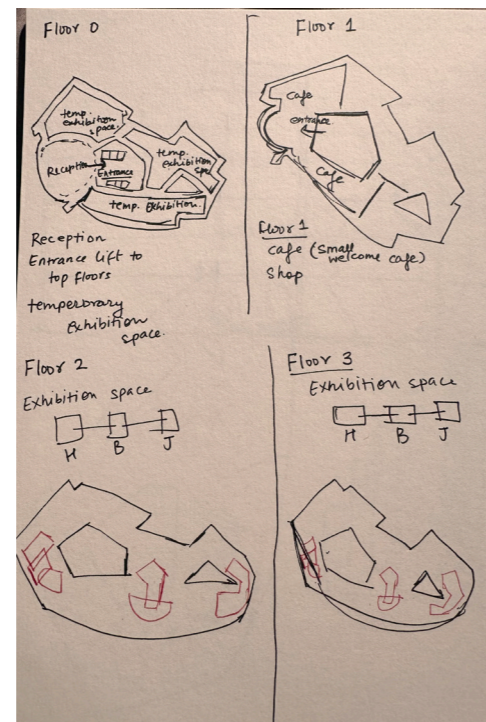
---



Floor planning experimentation for the exhibition towers

# SUPER - REUSE

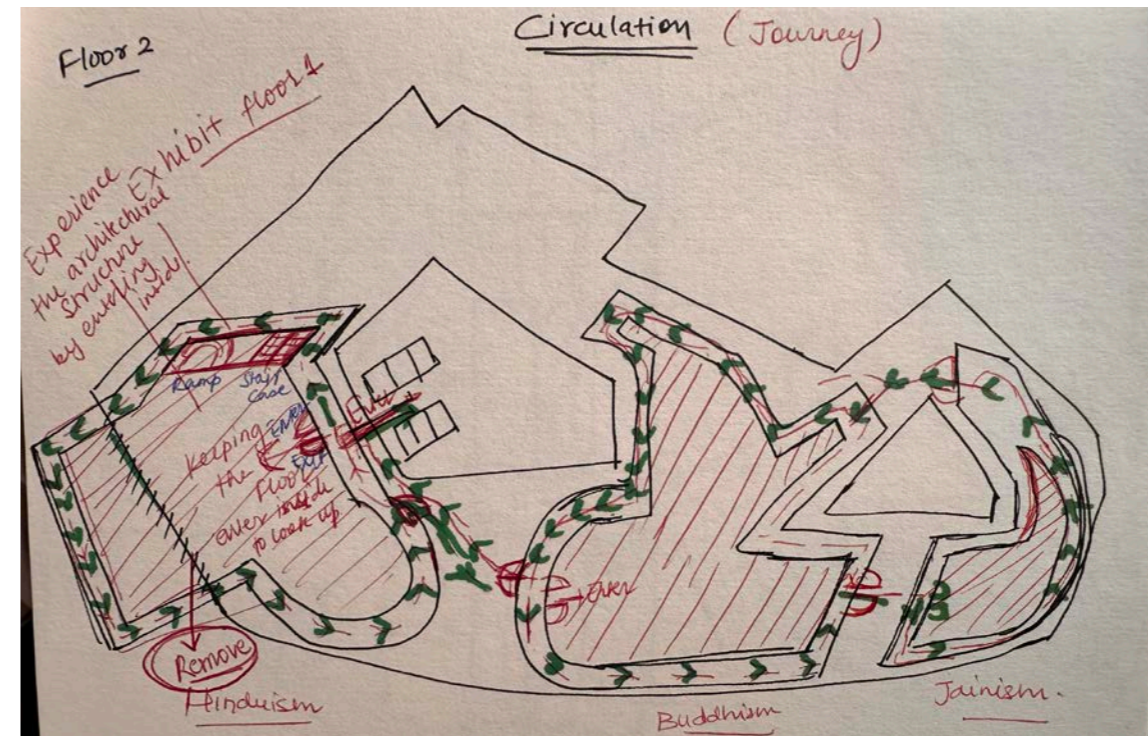
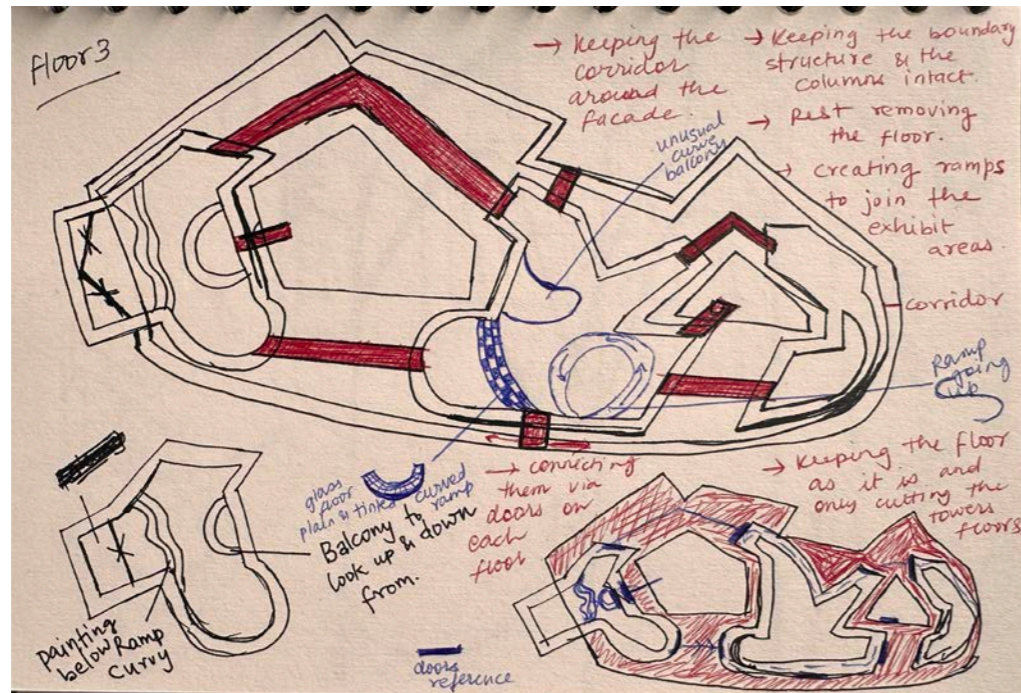
## Design development: spatial experimentation



Sketch layout - floor plans

# SUPER - REUSE

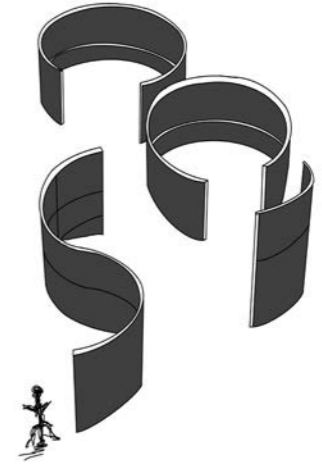
Design development: spatial experimentation



Circulation sketch plan through the exhibition towers

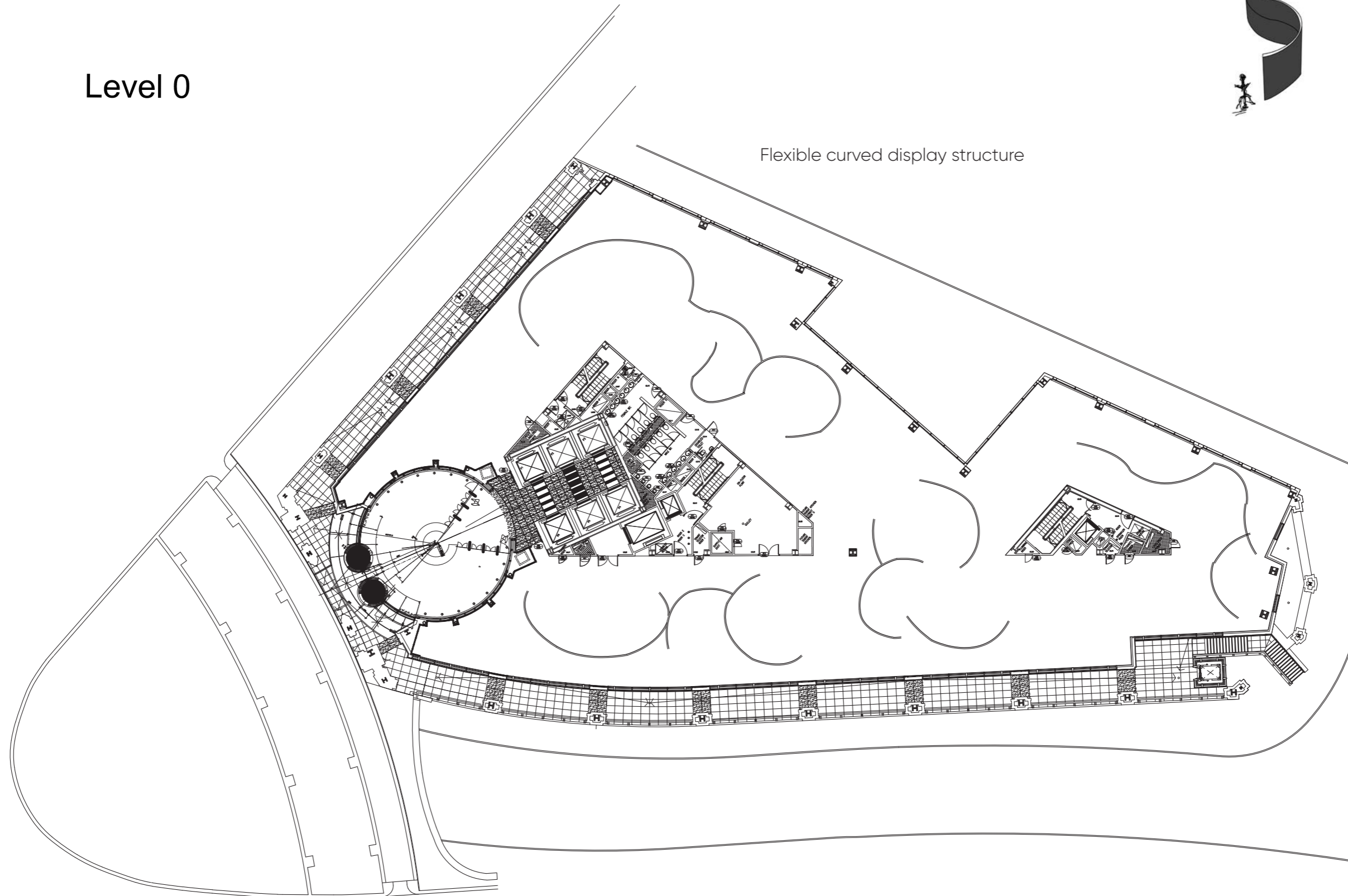
# SUPER - REUSE

*Design development: floor plan (1:200)*



Level 0

Flexible curved display structure

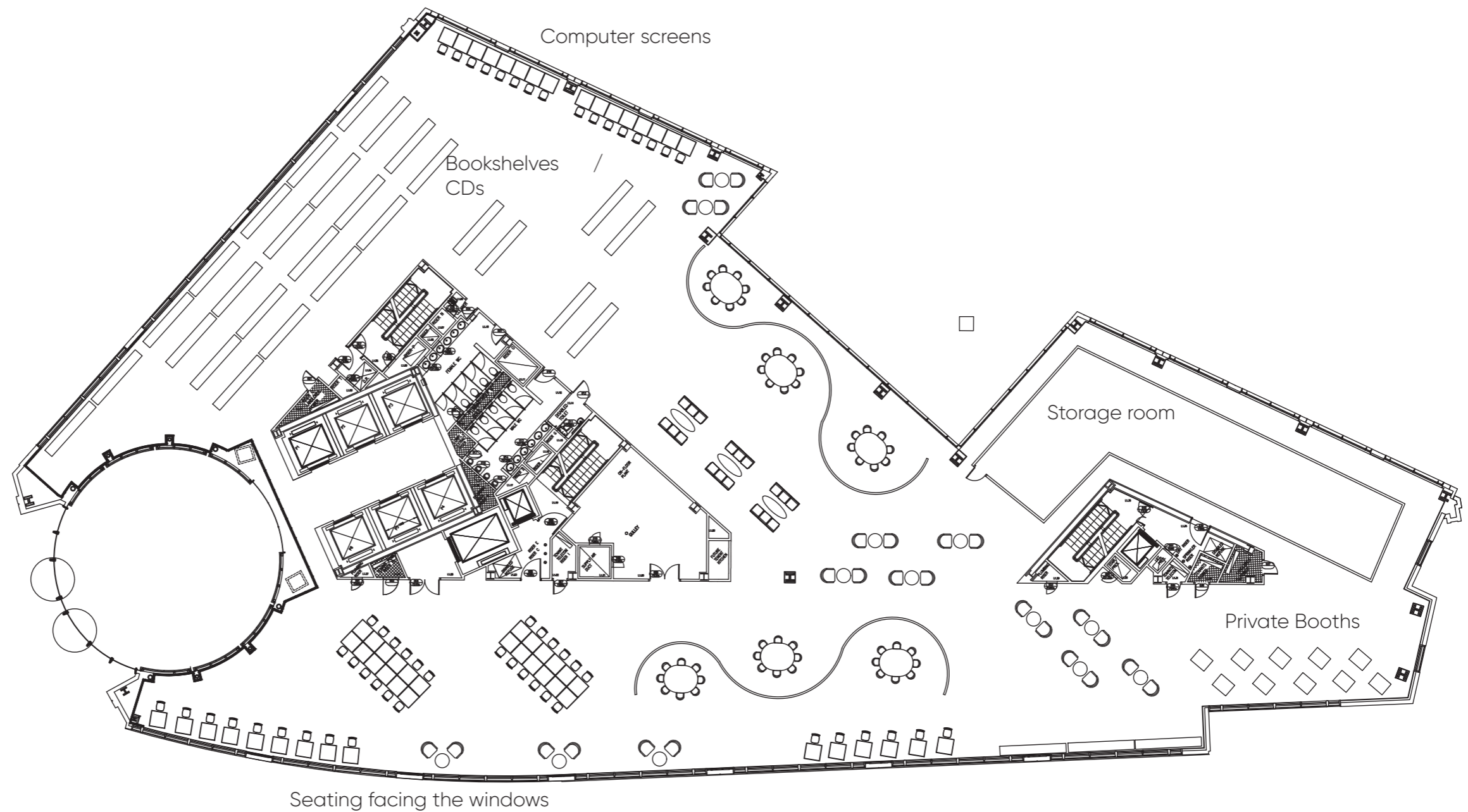


Temporary Exhibition Space - for residencies

# SUPER - REUSE

*Design development: floor plan (1:200)*

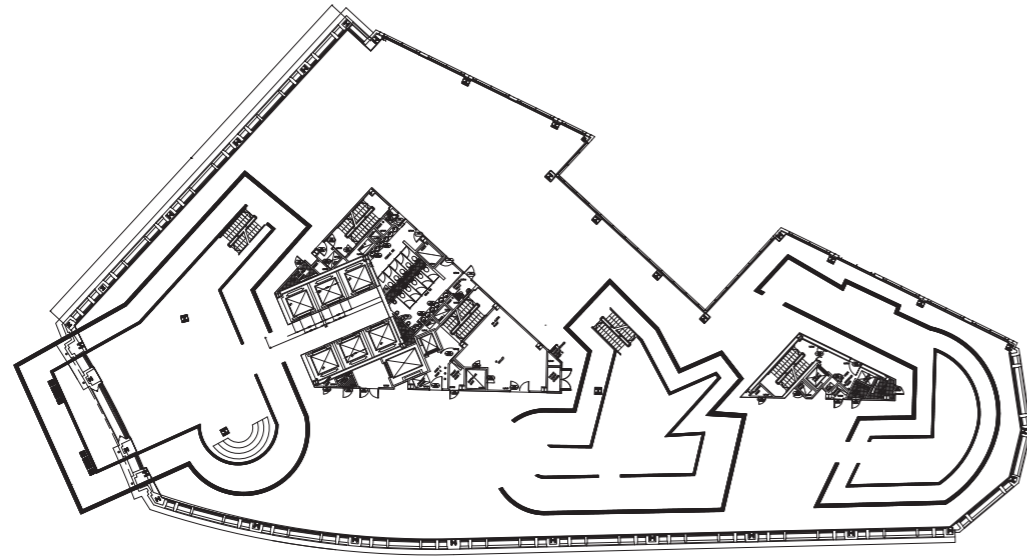
## Level 1



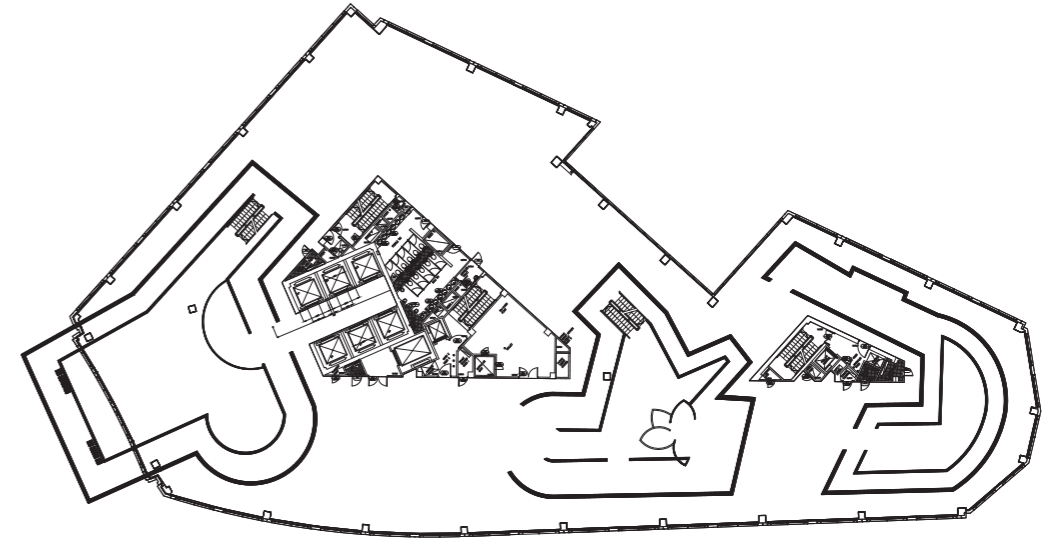
# SUPER - REUSE

*Design development: floor plan (1:200)*

Level 2

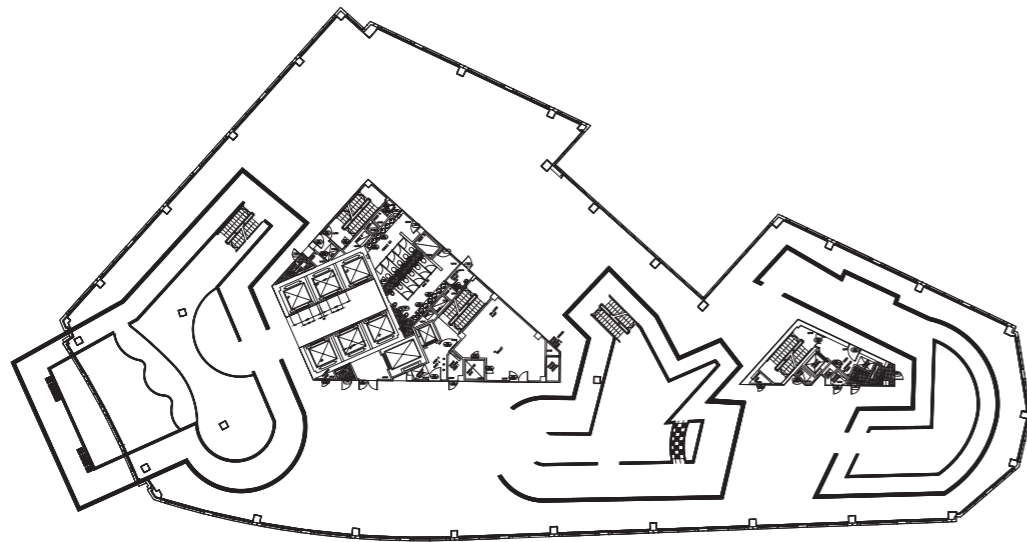


Level 3

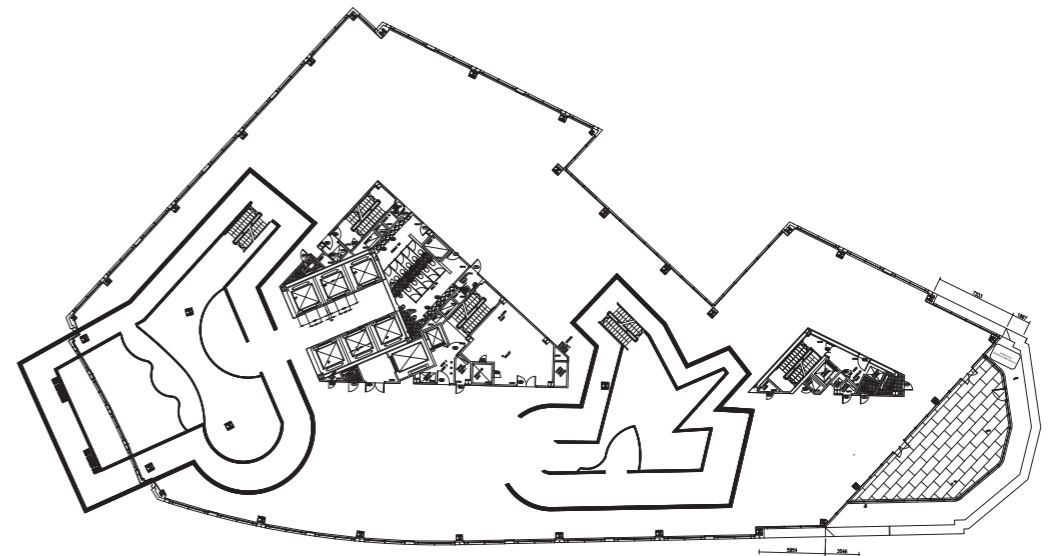


Hinduism - Buddhism - Jainism exhibition towers

Level 4

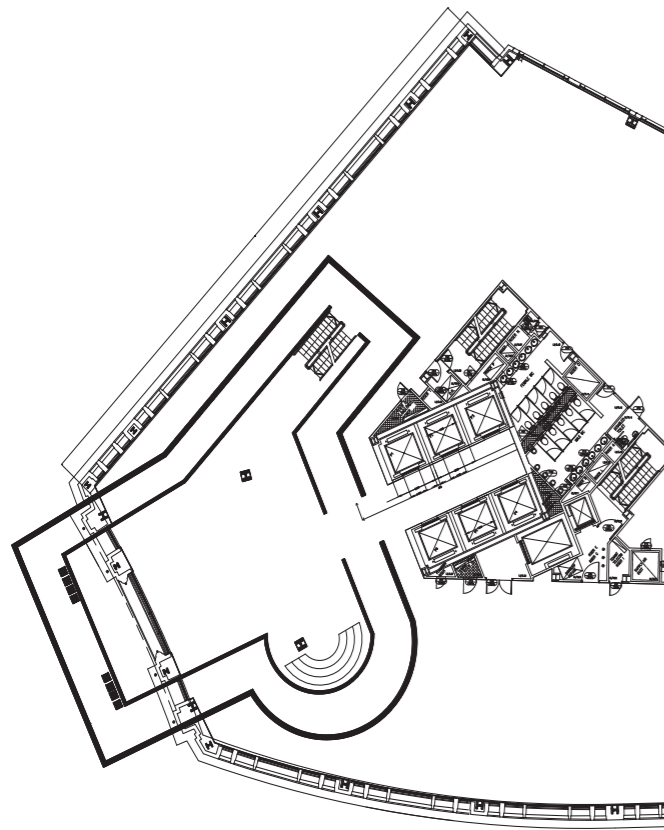


Level 5

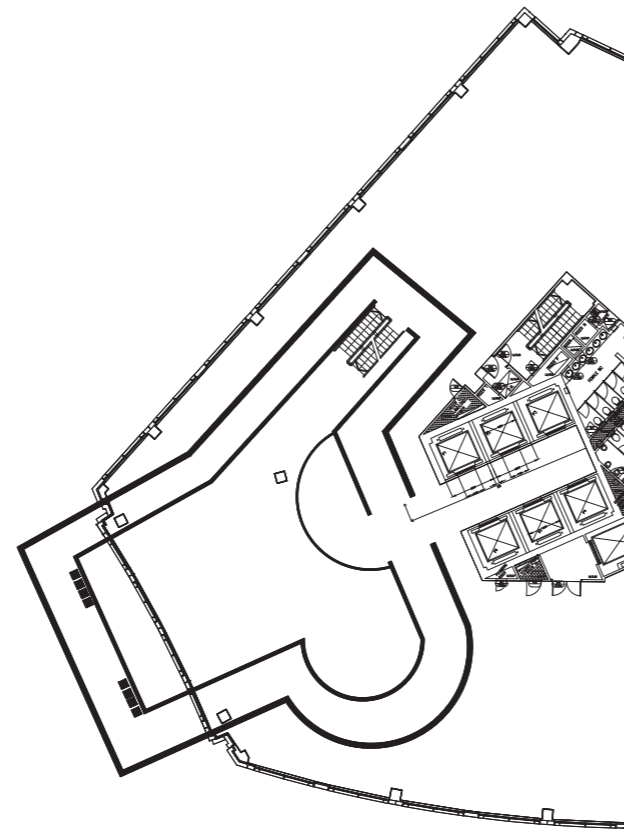


# SUPER – REUSE

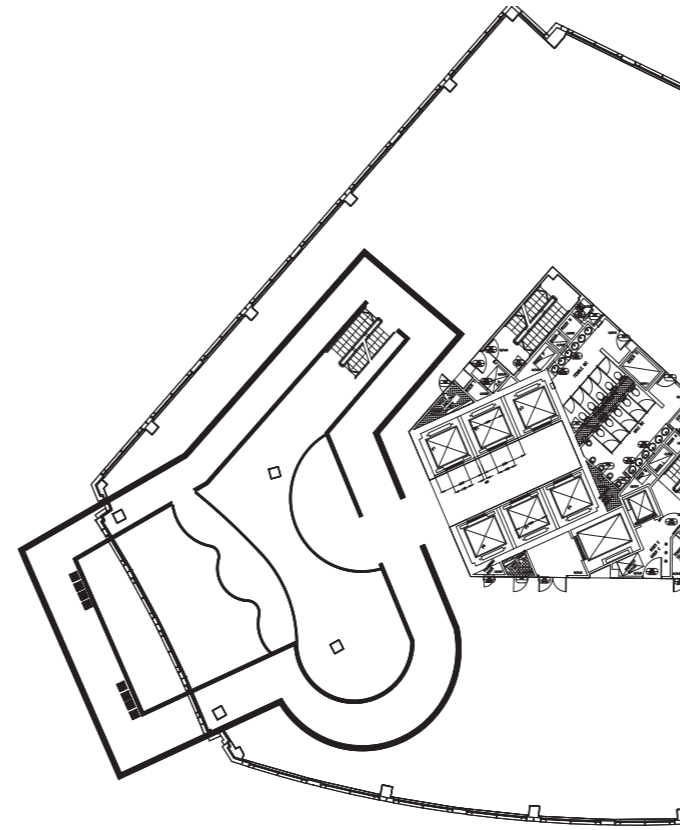
## *The Hinduism Exhibition Tower*



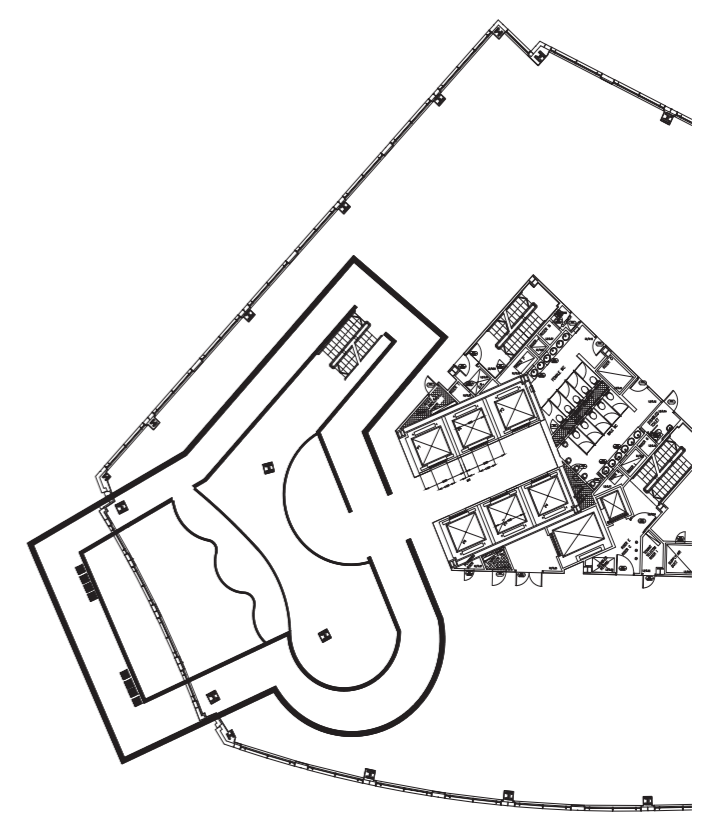
Floor 2



Floor 3



Floor 4



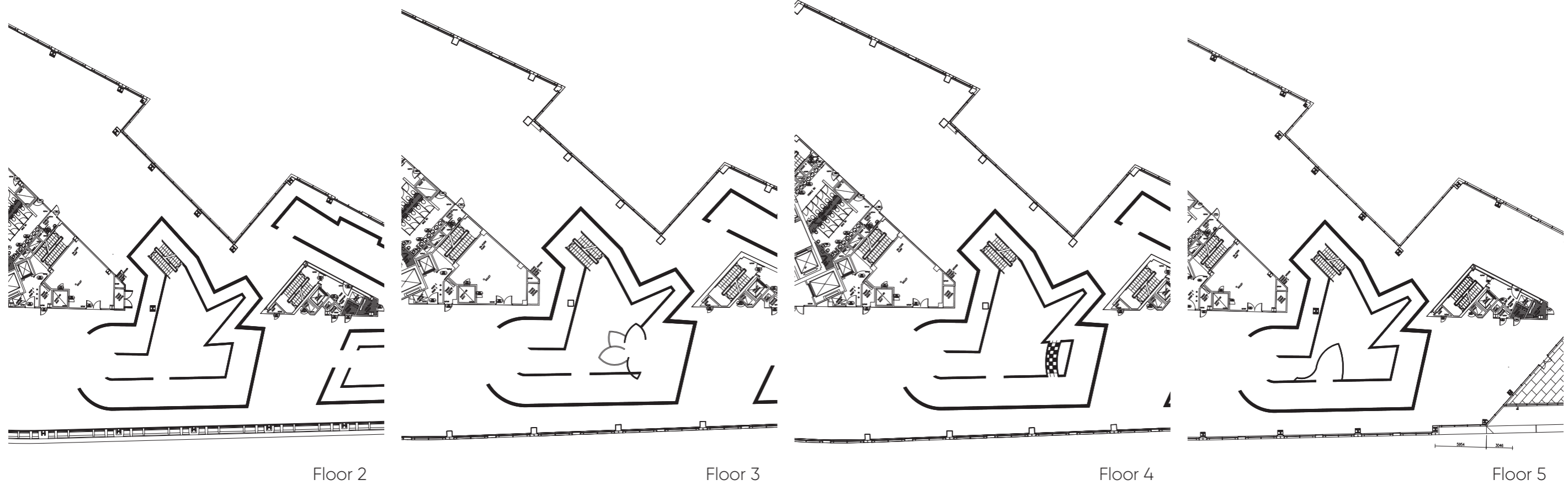
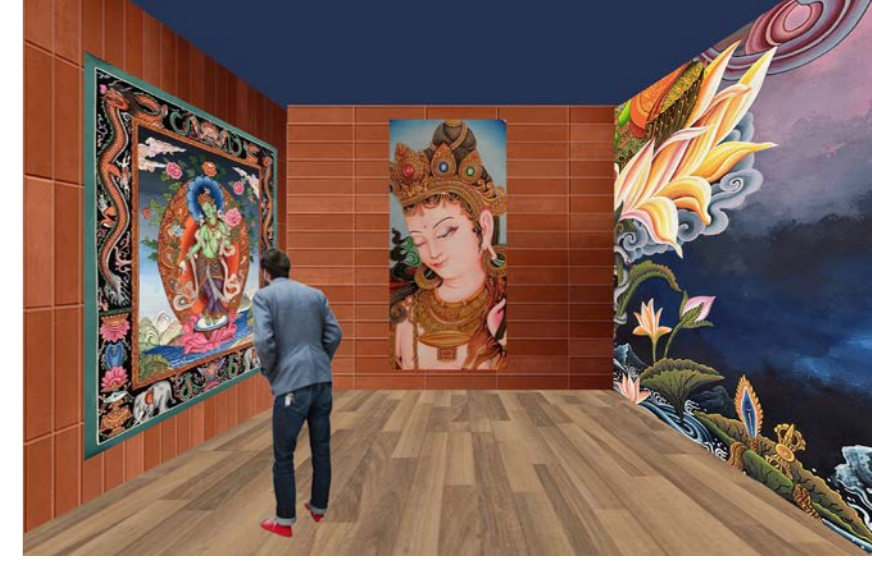
Floor 5

The Hindu Exhibition Tower right at the beginning of the tour, will take you through the different types of folk art and a display of the painting. To make it immersive the facade extension from the Hindu tower which will be carved out with lotus flower design to let the natural light in. Along with dome like opening at the top of the tower.

The shape of tower is abstracted from the folk art painting patterns which signifies many hands of the hindu goddess which join together to form this experience.

# SUPER - REUSE

## *The Buddhism Exhibition Tower*

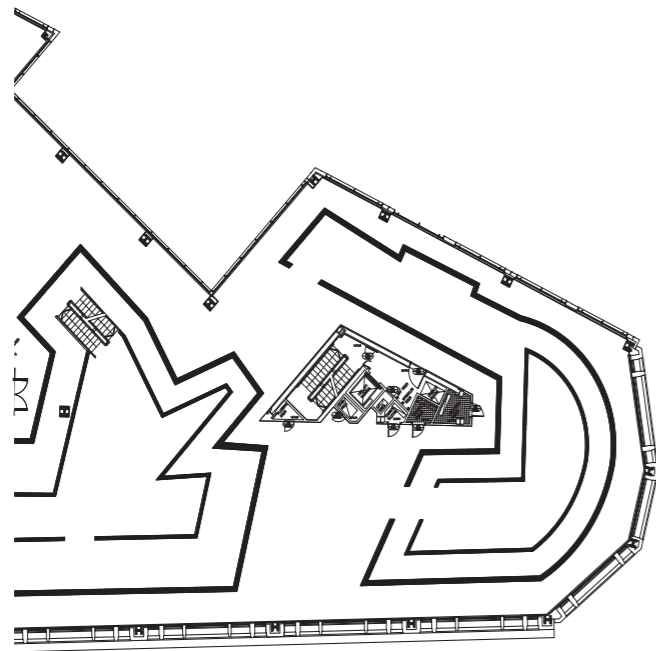


The Buddhism Exhibition tower takes you through a journey of the life cycle of the Lord Buddha through folk art and buddha temple inspired elements inside the towers. Similarly, dome like structure on top of the tower will be built and have opening to let natural light inside the space. There will be a tree in the middle of the tower representing the Bodhi tree under which Lord Buddha used to sit and meditate.

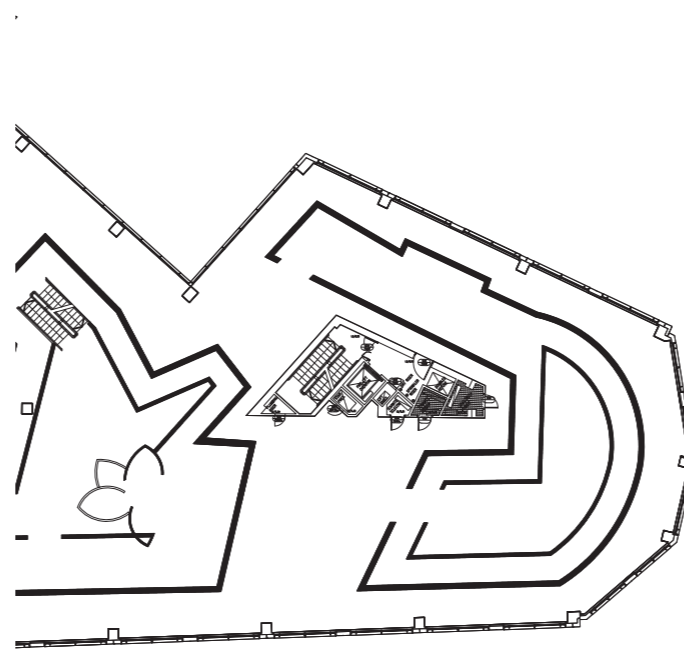
The shape of tower is abstracted from the folk art painting patterns which signifies a deconstructed bodhi tree under which Lord Buddha used to sit and meditate.

# SUPER - REUSE

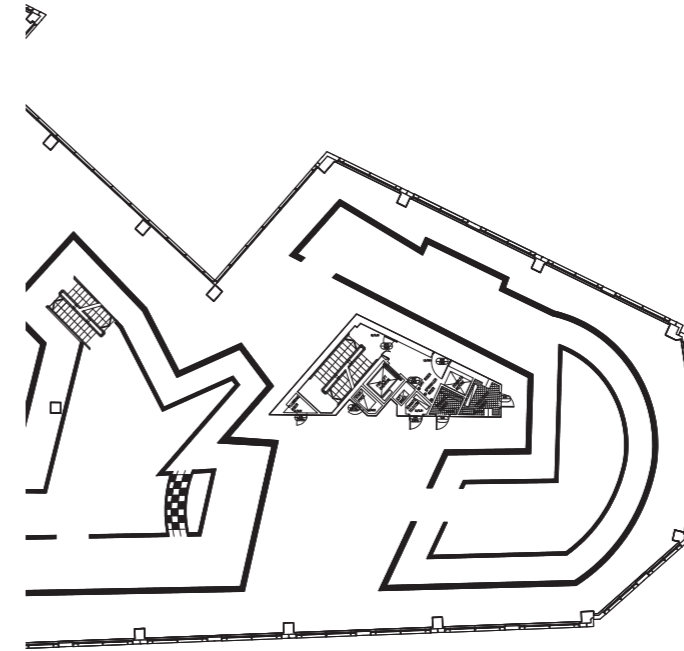
## *The Jainism Exhibition Tower*



Floor 2



Floor 3



Floor 4

The Jainism Exhibition tower takes you through a journey of the culture and the rituals of Jainism culture. The atmosphere inside the exhibit tower will be created as peaceful and dim lighting, again letting the natural light in from the canopy like structure from the top. The Jain folk art is created in the form of manuscripts which will be also exhibited inside the tower.

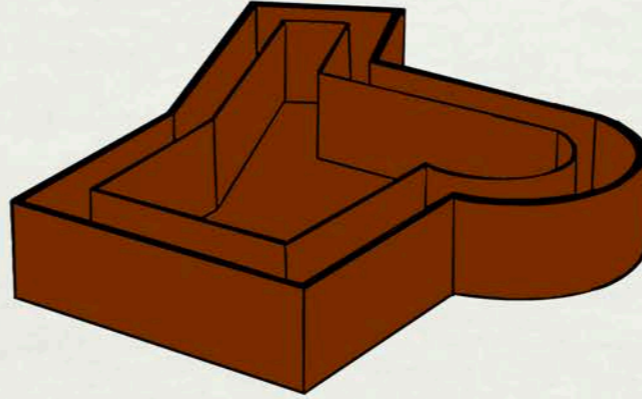
The shape of tower is abstracted from the shape of the long, curved manuscript which are the signature Jain Folk Art paintings.

# SUPER - REUSE

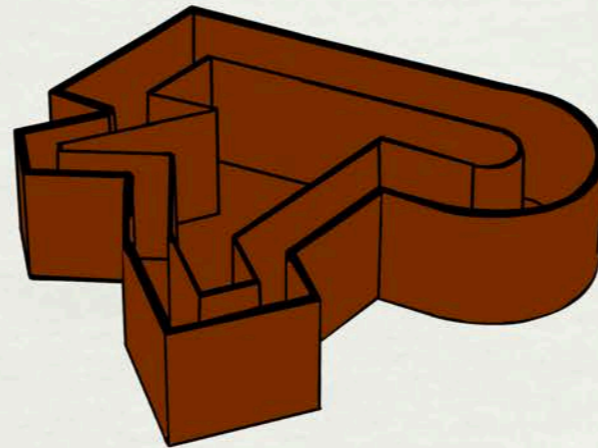
## *Axonometric Sketches*

---

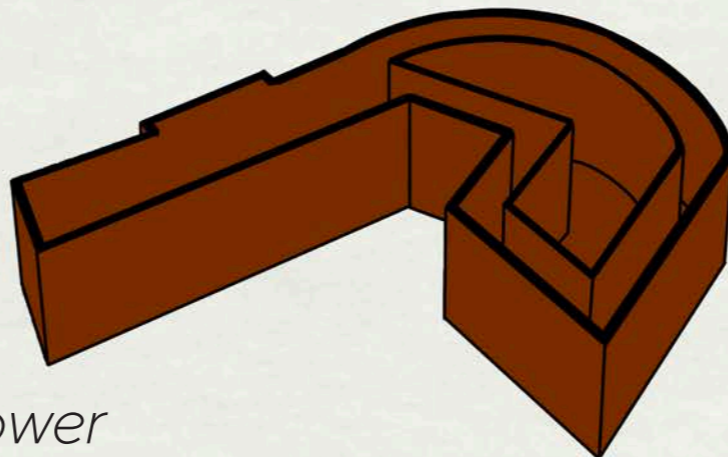
*Hindu Exhibit Tower*



*Buddhism Exhibit Tower*



*Jainism Exhibit Tower*





Interior render inside the hindu exhibit tower

# SUPER - REUSE

Design development: floor plan (1:200)

## Level 6



terracotta brick walls partitions to create a private yet open seating

Restaurant & Workshop Area

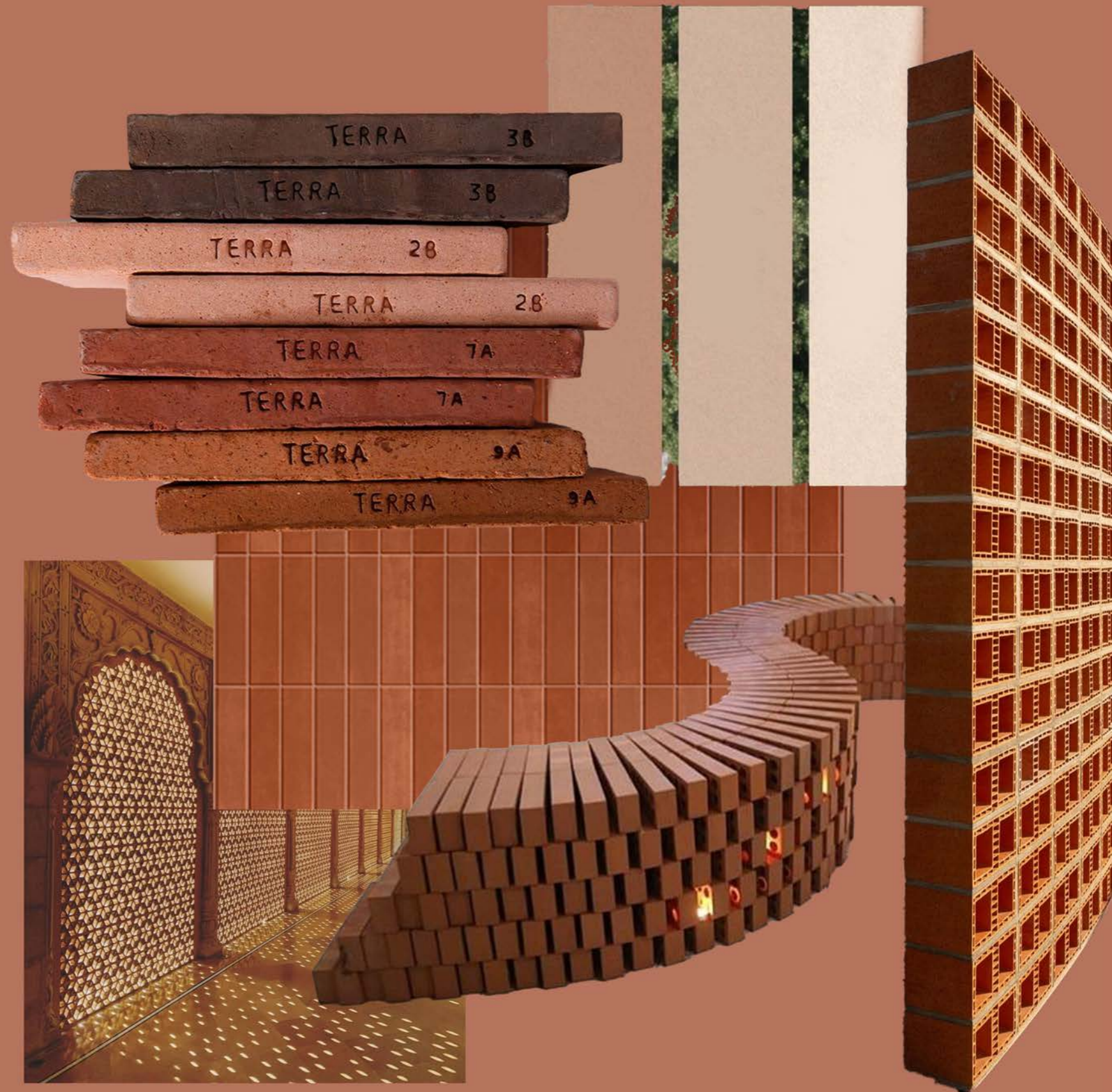
# SUPER – REUSE

*Design development: materiality*

---

Terracotta, with its warm, earthy character and deep cultural roots, is an ideal material for an Indian folk art museum. As one of the oldest building materials in the subcontinent, it echoes the handmade quality and vernacular spirit of the very art it houses. Its tactile surface, natural tones, and porous texture create a grounded, inviting atmosphere that resonates with traditional craftsmanship.

By using terracotta bricks and tiles, the redesign pays homage to India's artisanal legacy while offering a sustainable, contextually rich material palette that connects the architecture with the art it celebrates.



# SUPER - REUSE

*Design development: work in progress model*

---



# SUPER - REUSE

*Design development: work in progress model*



# SUPER - REUSE

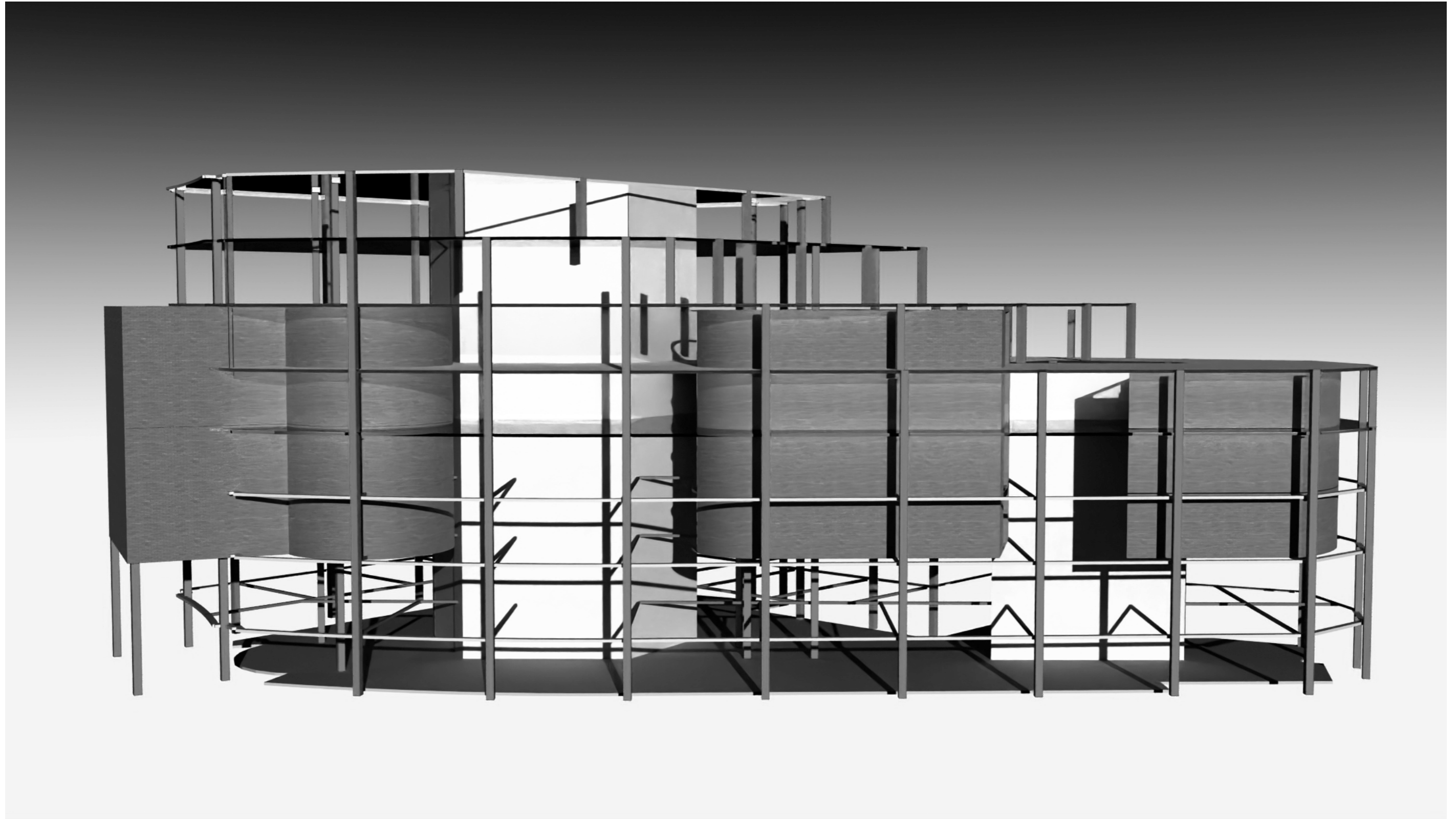
*Design development: final model*



# SUPER - REUSE

*Design development: visual representation digital*

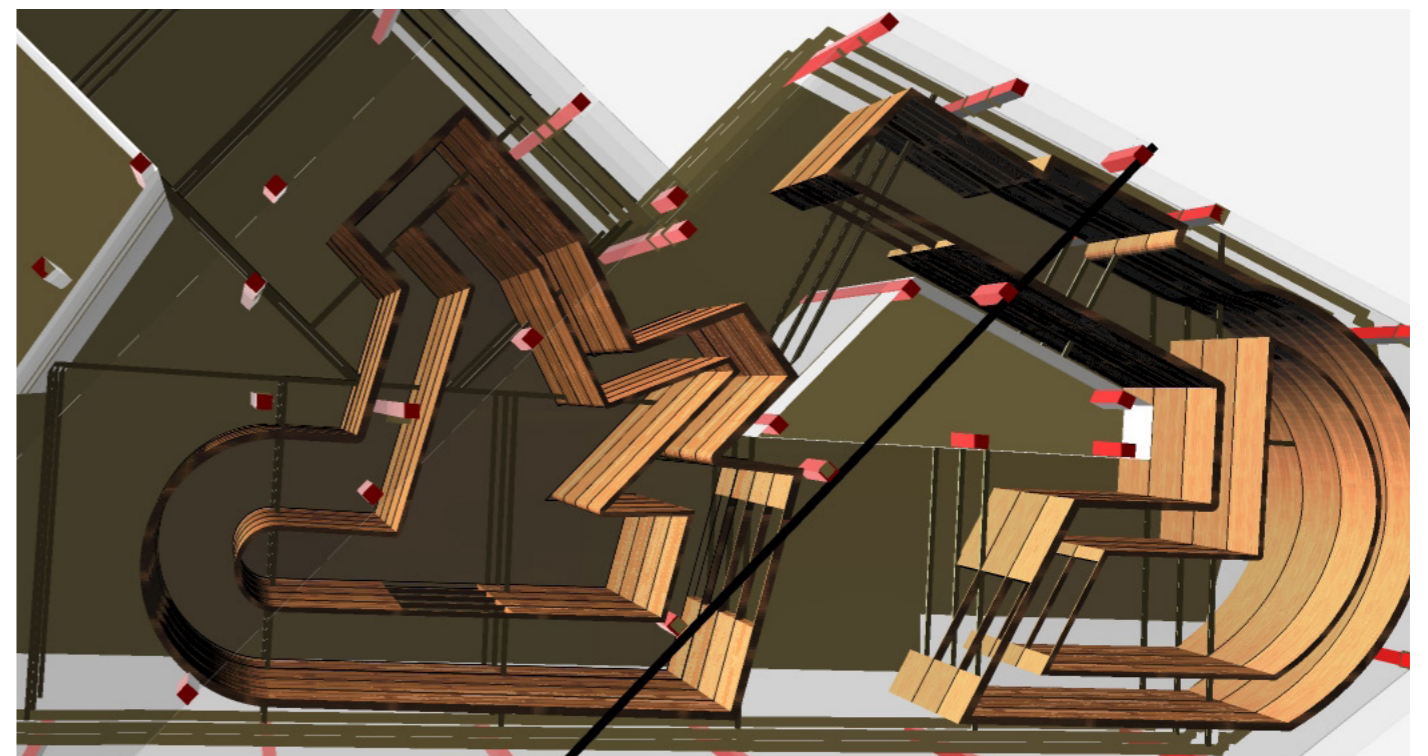
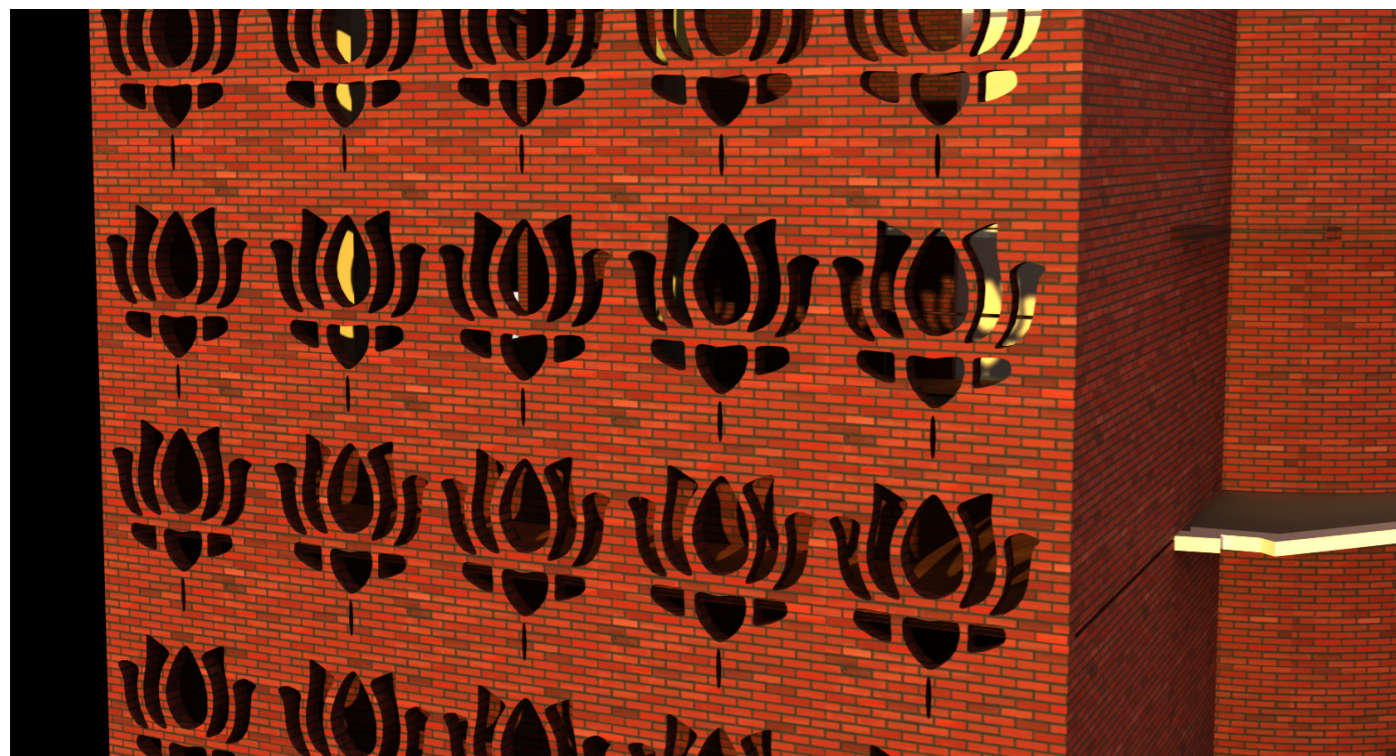
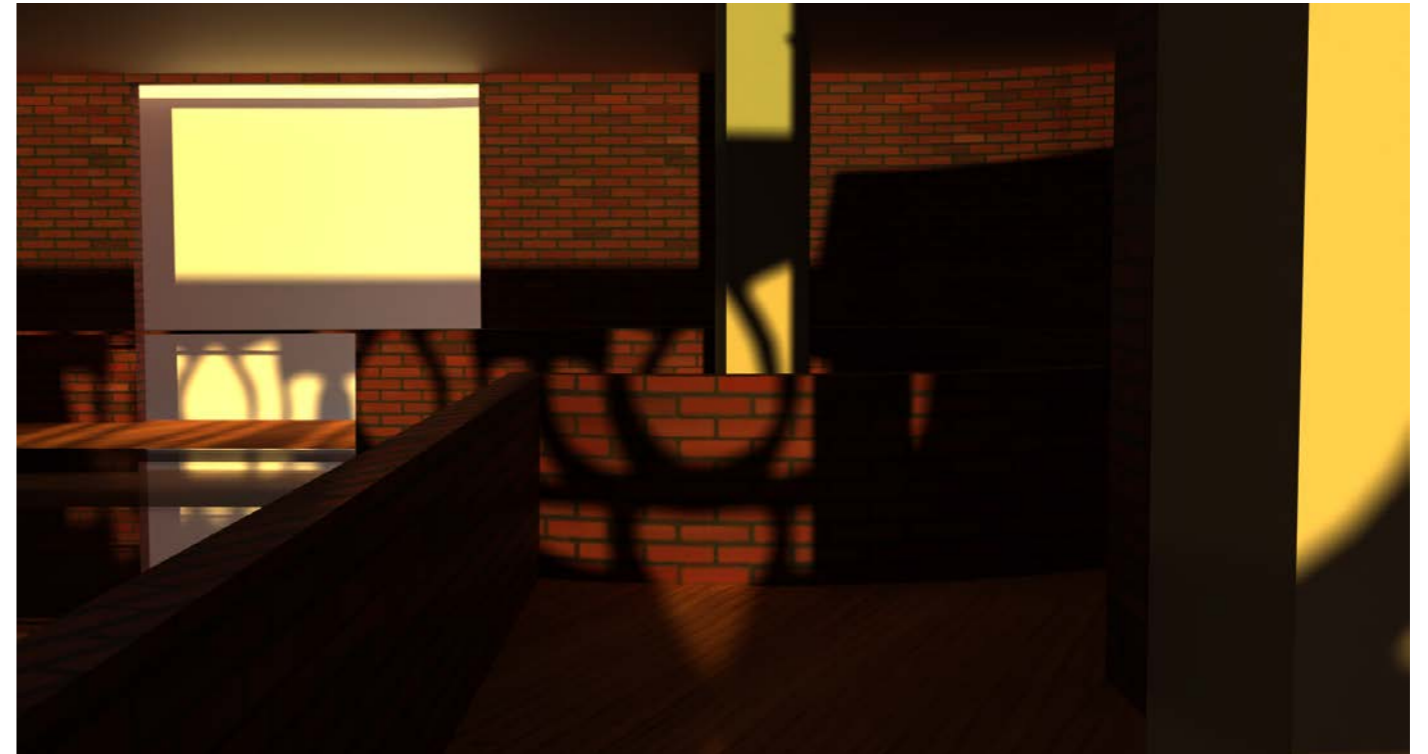
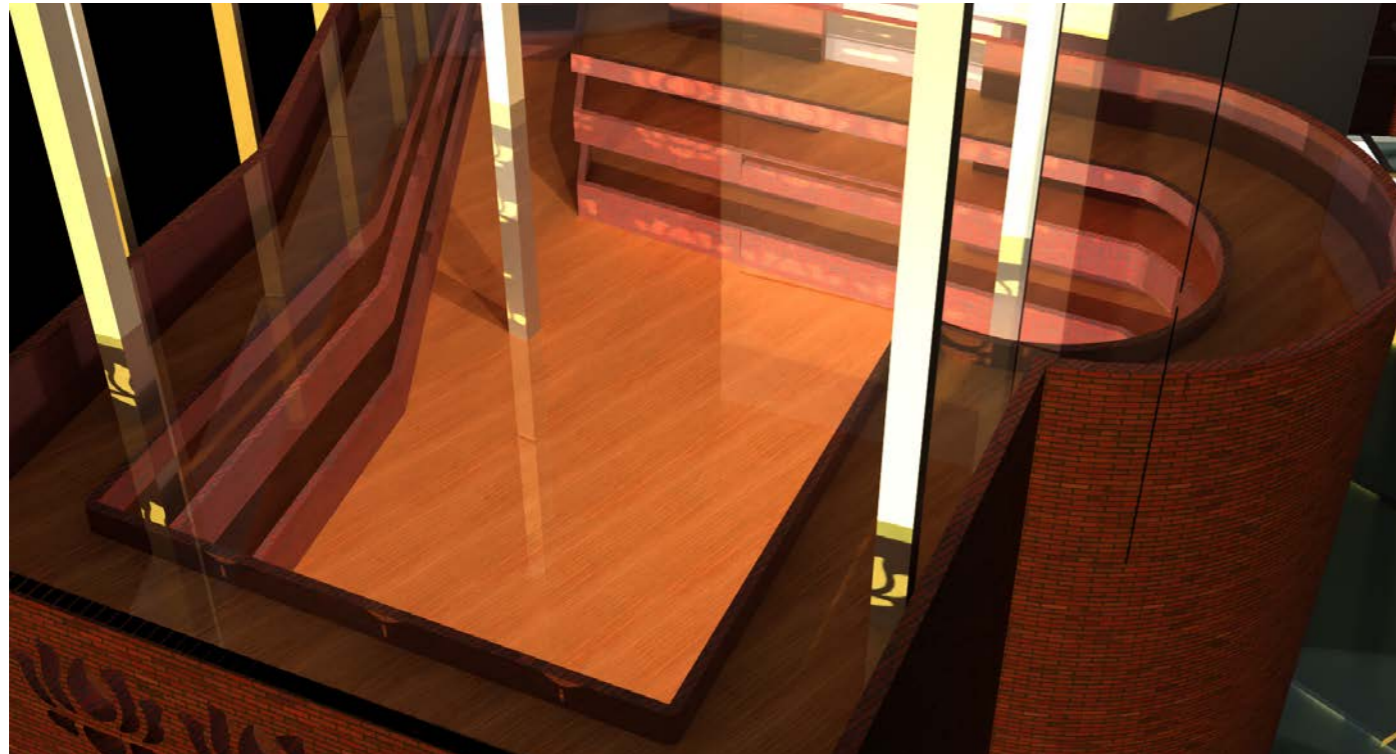
Hinduism - Buddhism - Jainism exhibition towers inside the building



# SUPER - REUSE

*Design development: visual representation of the exhibit towers inside the building - wip*

---

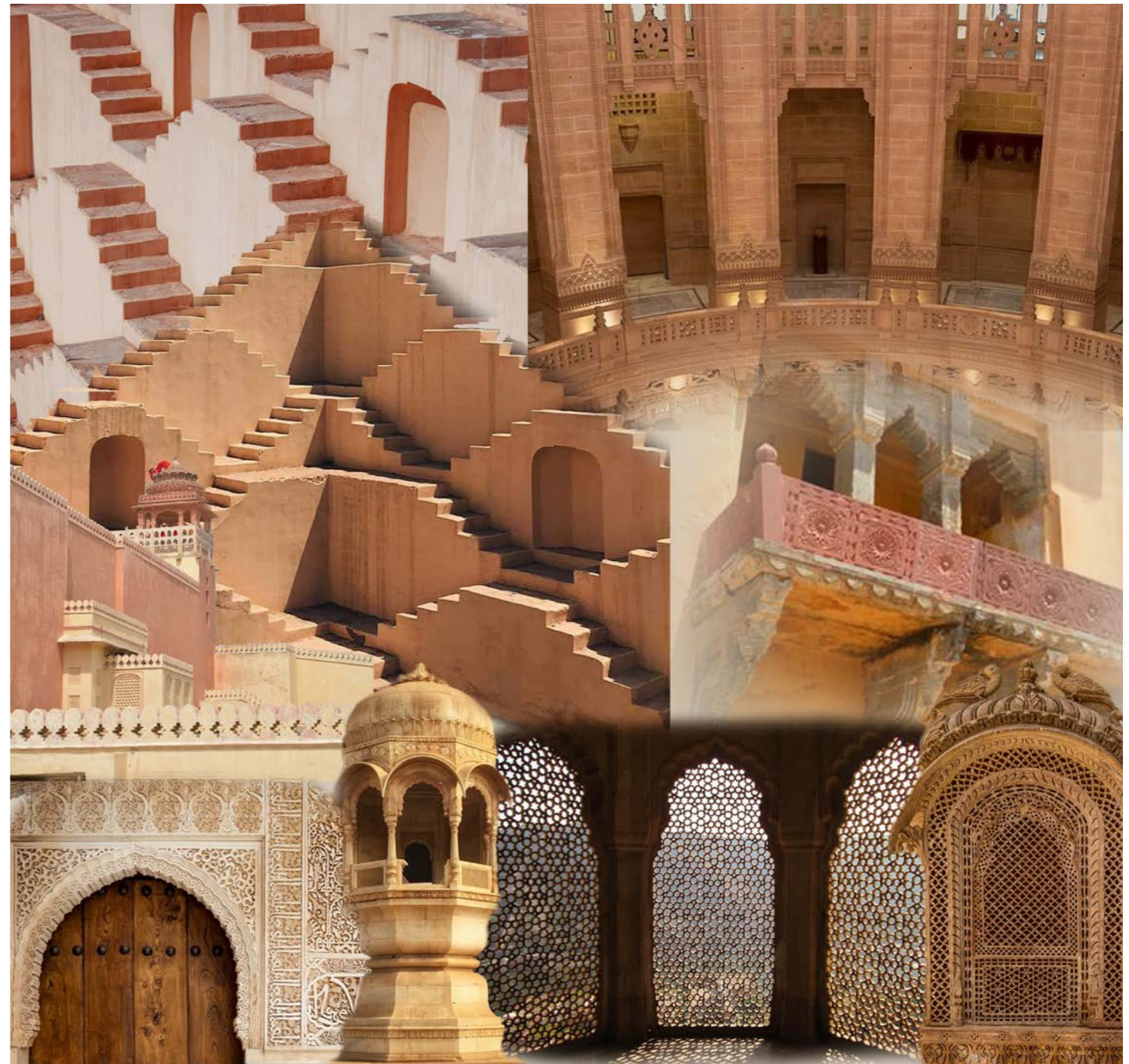


## SUPER – REUSE

*Design development: interior elements inspiration*

---

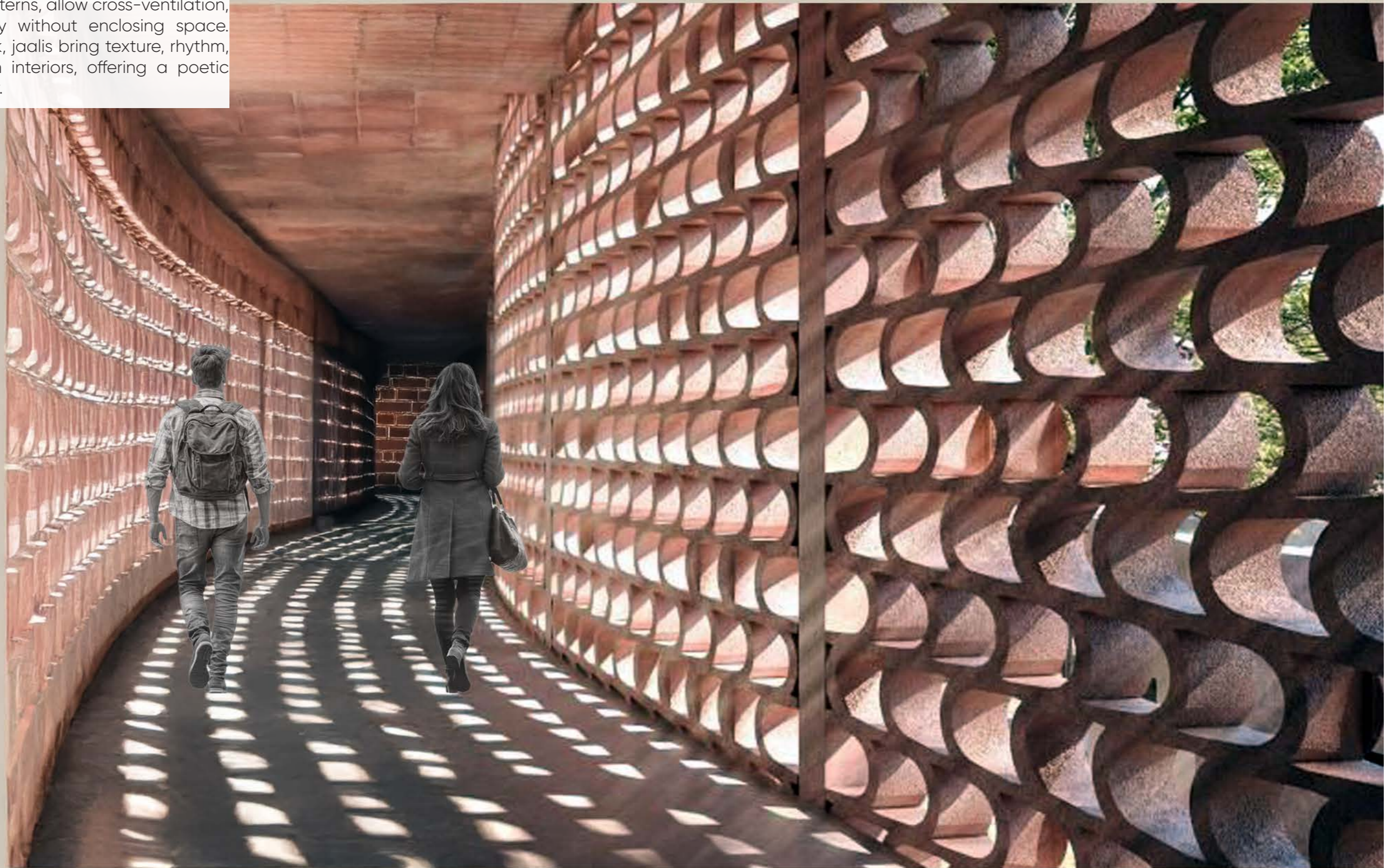
Drawing inspiration from Rajasthani architecture, this interior concept embraces the earthy warmth and artisanal charm of terracotta tiles and exposed brick. Traditional elements like jharokhas and jaali screens can be reimaged in brick or carved terracotta, allowing filtered light and shadow to animate the space. Arched niches and courtyards, often seen in Rajasthani havelis, lend a sense of openness and heritage. The natural textures and reddish tones of these materials echo the desert landscape, grounding the design in authenticity while offering a tactile, timeless aesthetic.





Interior concept design for the Hindu Exhibit tower

Jaali design walls—intricately perforated screens traditionally carved from stone or wood—are a hallmark of Indian architecture, especially in Rajasthan. These latticed patterns serve both aesthetic and functional purposes: they filter harsh sunlight into delicate, shifting patterns, allow cross-ventilation, and create a sense of privacy without enclosing space. Reimagined in terracotta or brick, jaalis bring texture, rhythm, and craftsmanship into modern interiors, offering a poetic interplay of light, shadow, and air.



Interior concept design for the Jainism Exhibit tower

## SUPER – REUSE

*Design development: interior elements inspiration*

---

Buddhist architecture brings a sense of serenity and spiritual grounding, which can be beautifully translated into interiors using terracotta tiles and exposed brick. The calm symmetry of stupas, the rhythmic repetition of columns, and the use of meditative spaces like cloisters or verandas inspire layouts that prioritize stillness and flow.

Soft curves, recessed niches for artifacts or lighting, and brick reliefs echo the simplicity and symbolism of ancient monasteries. When paired with the natural warmth of terracotta, these elements create interiors that feel contemplative, tactile, and timeless—spaces that invite quiet reflection.





Interior concept design for the Buddhism Exhibit tower

