

HAVEN OF HOPE

A SAFE SPACE FOR
SEXUAL ASSAULT
SURVIVORS



'Vile' serial rapist attacked lone women in Shoreditch over two years

It is thought Clement Omoregbee had used GHB to drug his victims



CLEMENT OMOREGБEE ATTACKED FOUR WOMEN

Shoreditch: Man arrested after three women sexually assaulted



RIPPER UNCOVERED Jack the Ripper was a heavy boozier who was in and out of mental asylums, bombshell book reveals

By [Name] | Updated: 0:22, 17 Jul 2023 | Updated: 0:22, 17 Jul 2023

UK NEWS WEBSITE OF THE YEAR

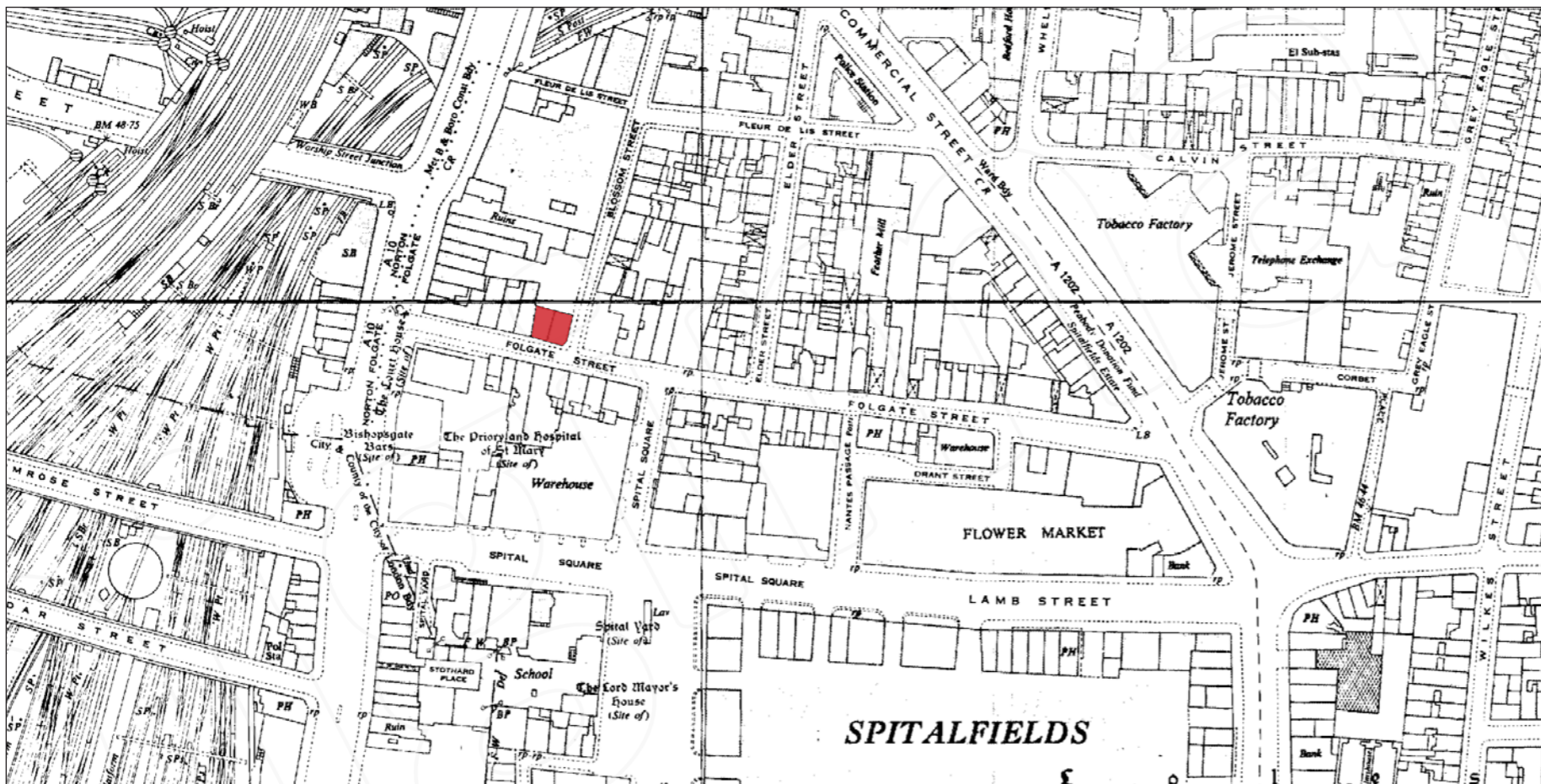
Jack the Ripper's identity 'revealed' by newly discovered medical records

Sarah Bax Horton, a relative of an officer in the original investigation, claims to have pinpointed the man behind the 19th-century killings

By Dalya Alberge | 16 July 2023 • 8:11am

Shoreditch prowler who drugged and raped women he targeted as they left trendy bars faces years in jail after being convicted of two-year spree

- Clement Omoregbee, 37, drugged and raped women leaving Shoreditch bars
- The 'vile predator' now faces years in jail after being convicted on 14 June

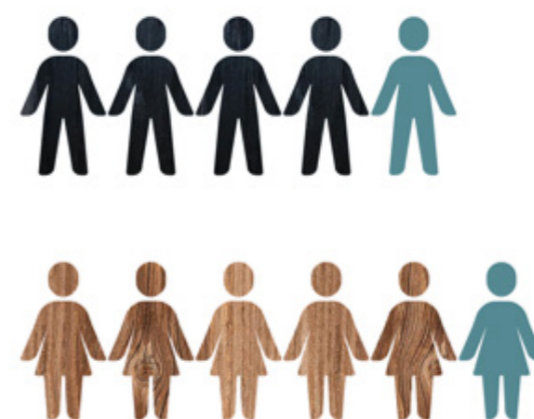


STATISTICS

VICTIMS OF SEXUAL ASSAULT



REPORTED ASSAULTS



A new report using figures from the Met Police has found that a total of 72 sexual offences are committed in Greater London every single day, with the stats also identifying some of the most dangerous areas in the city.

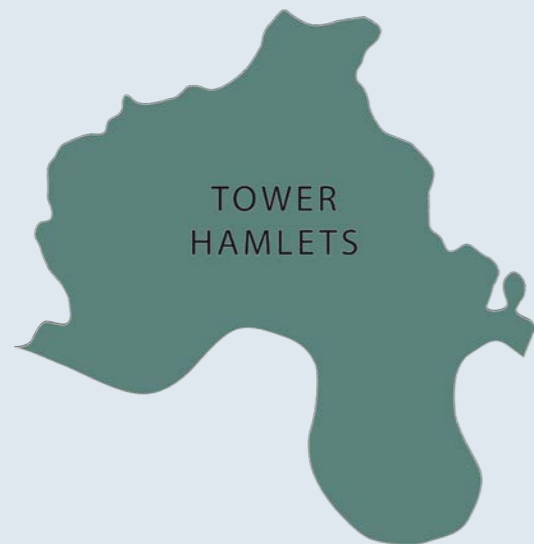
Data obtained from the Metropolitan Police by a Freedom of Information Act request by LegalExpert.co.uk revealed a total of 26,520 sex offences occurred in London between September 2022 to September 2023. The data was also broken down by borough showing the most and least dangerous areas in London based on where attacks happened throughout the year.

This revealed that Westminster with 1,715 sexual offences was the most dangerous borough for sexual assaults, accounting for 6.4 per cent of all incidents. This was followed by Croydon with 1,335 (5 per cent), Newham with 1,251 (4.7 per cent), Lambeth with 1,233 (4.6 per cent), and Tower Hamlets with 1,161 (4.3 per cent).

SEXUAL OFFENCES BY BOROUGH



- EXTREMELY HIGH ASSAULT RATE
- HIGH ASSAULT RATE
- AVERAGE ASSAULT RATE
- LOW ASSAULT RATE



How Can design
Contribute to the healing
of trauma in interior
architecture?



MATERIAL PALETTE

LAVENDER

- Lavender's calming scent contributes to a soothing environment.
- Smell plays a crucial role in trauma recovery, with lavender known for reducing stress.
- Calms the nervous system, beneficial for those experiencing anxiety or PTSD.
- Creates psychologically supportive spaces.
- Lavender color promotes tranquility, dignity, and peace affecting mood and emotional well-being.
- Incorporating lavender plants improves air quality and connects individuals to nature.

OAK WOOD

- Oak's durability provides a secure and reliable environment, crucial for healing.
- Oak's warm color and soothing grain support calmness and emotional regulation.
- Incorporating oak enhances biophilic design, fostering connections to nature and supporting mental health.

MOSS

- Connects individuals with nature, reducing stress and promoting relaxation.
- Provides a tactile experience, engaging multiple senses, which can be grounding for individuals who have experienced trauma.
- The natural green tones and soft texture of moss can create a calming and non-threatening environment.
- Absorbs sound, reducing noise levels and creating a peaceful atmosphere.
- Fosters a sense of safety and comfort, contributing to creating a healing environment by improving air quality and providing a sense of tranquility.

WOOL

- Provides a sense of comfort and security with an all-fleece interior.
- Cocoon-like environment is soothing and ideal for trauma recovery.
- Uniformly plush environment mitigates sensory overload.
- Conducive to calmness and emotional grounding.
- Soundproof nature creates a quiet haven for healing.
- Isolation from external noise aids in focus and recovery.
- Increase fire resistance and insulation

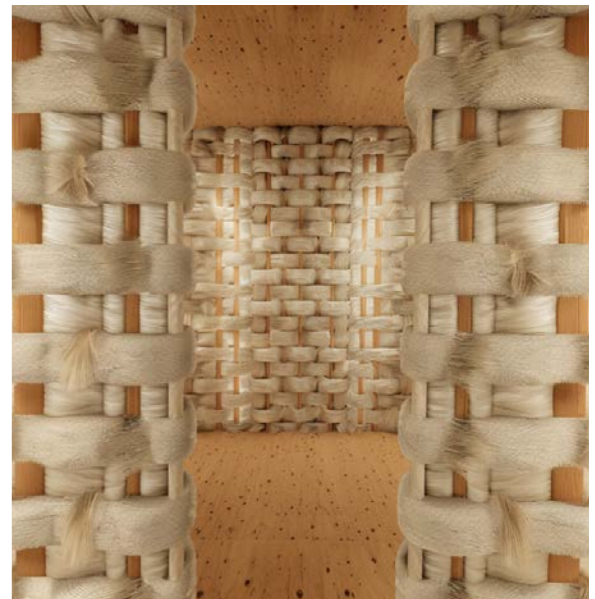


HOW I USED AI?



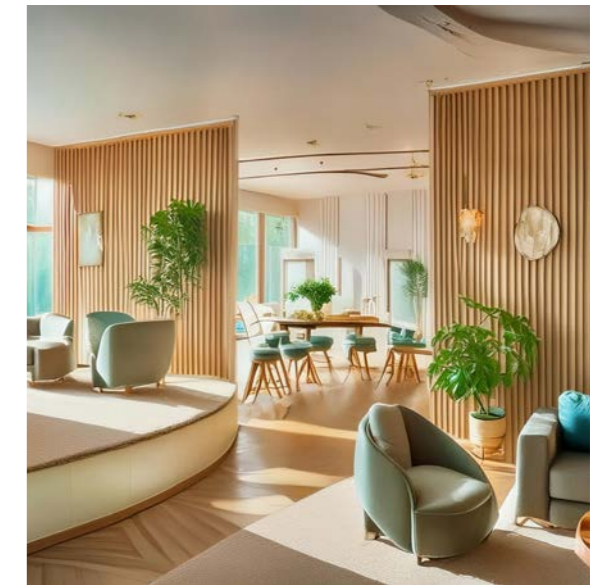
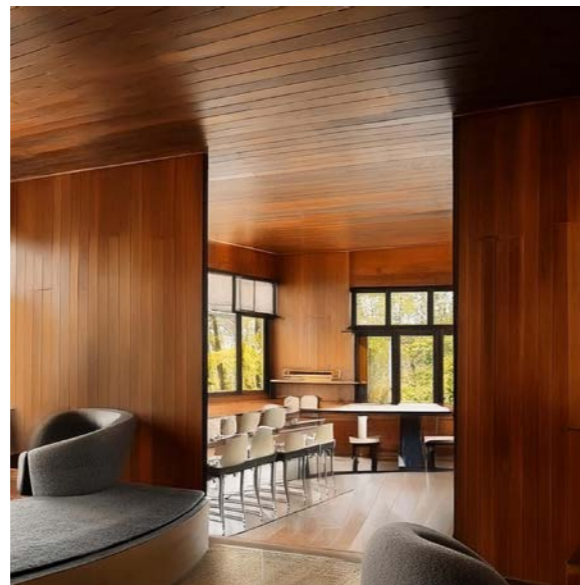
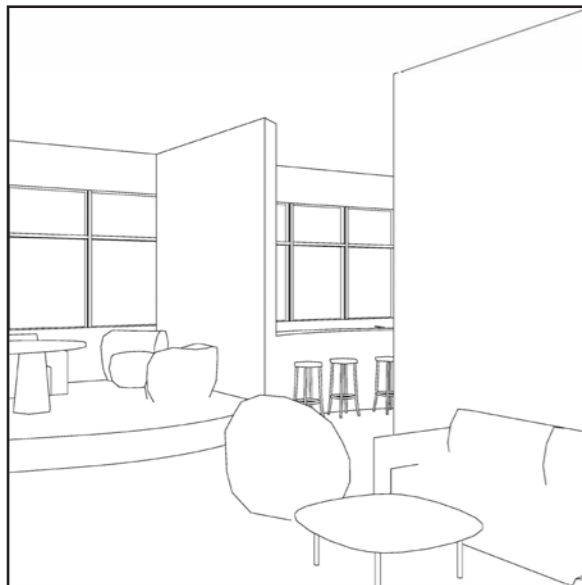
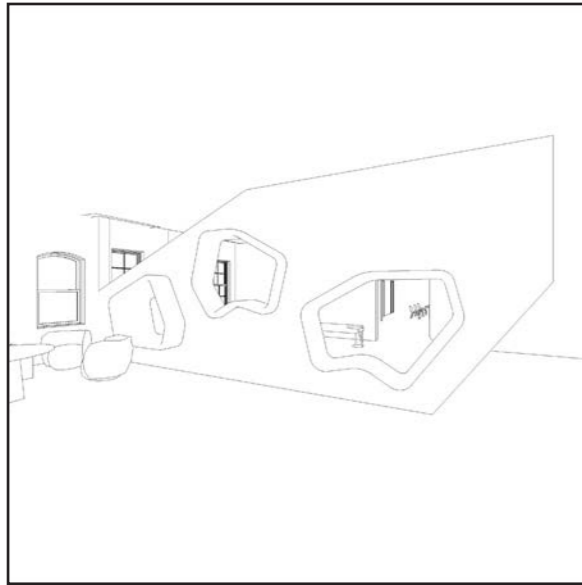
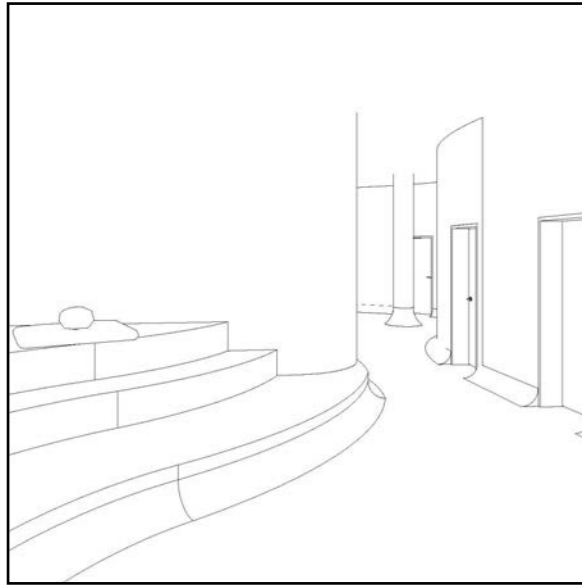
For my project, I utilized AI by sending it images of my material palettes and explorations. The AI generated furniture designs based on these inputs, which I then used as inspiration for my project. Additionally, I incorporated these AI-generated designs into my renders, enhancing the overall aesthetic and coherence of my work.

HOW I USED AI?



My first experience using AI was with MidJourney's "imagine" feature and "blend" mode to visualize the room. I provided detailed descriptions and combined the AI-generated images with actual site photos. However, the AI didn't consider the site's structural details, resulting in renders that weren't accurate or useful for my needs. This highlighted the challenge of integrating AI-generated visuals with specific architectural constraints.

HOW I USED AI?



In my second experience with AI, I used Adobe Firefly, which worked better for rendering and visualizing images. I provided an image for the structure and another for the style, allowing Firefly to create visuals that were more in line with my vision because it considered the structure of the 3D sketches. However, the renders still weren't exactly what I wanted. They served as a good starting point, and I used parts of the AI-generated images to help me complete the visuals myself, ultimately achieving the desired outcome through a combination of AI assistance and my own adjustments. The image on the left is the 3D shot I fed AI and the other images are the AI-generated renders.

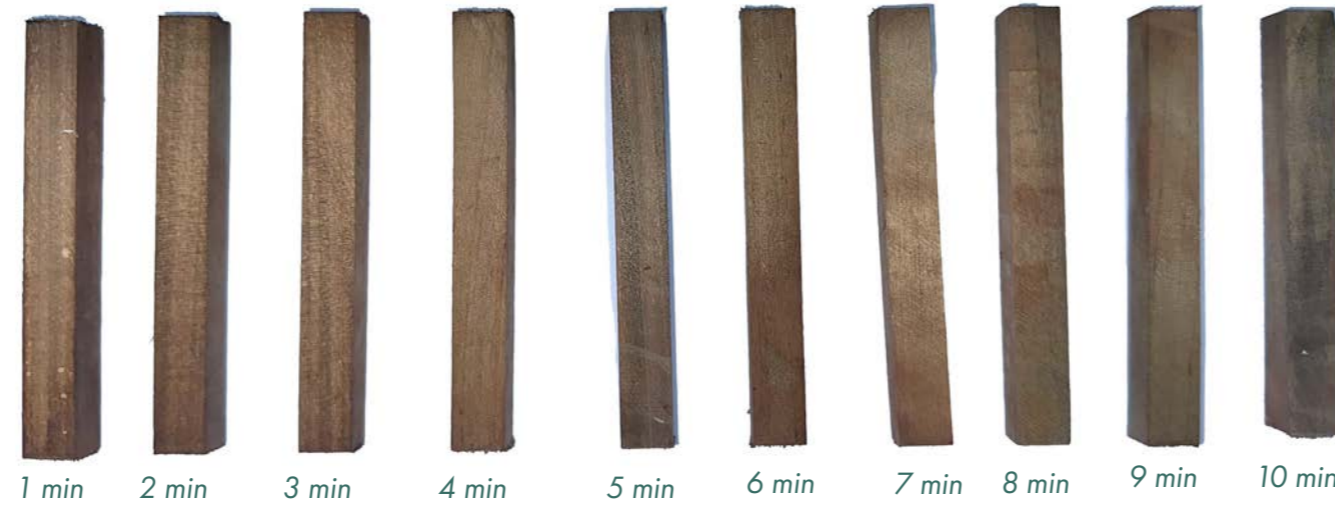
MATERIAL EXPLORATION

EBONISING WOOD



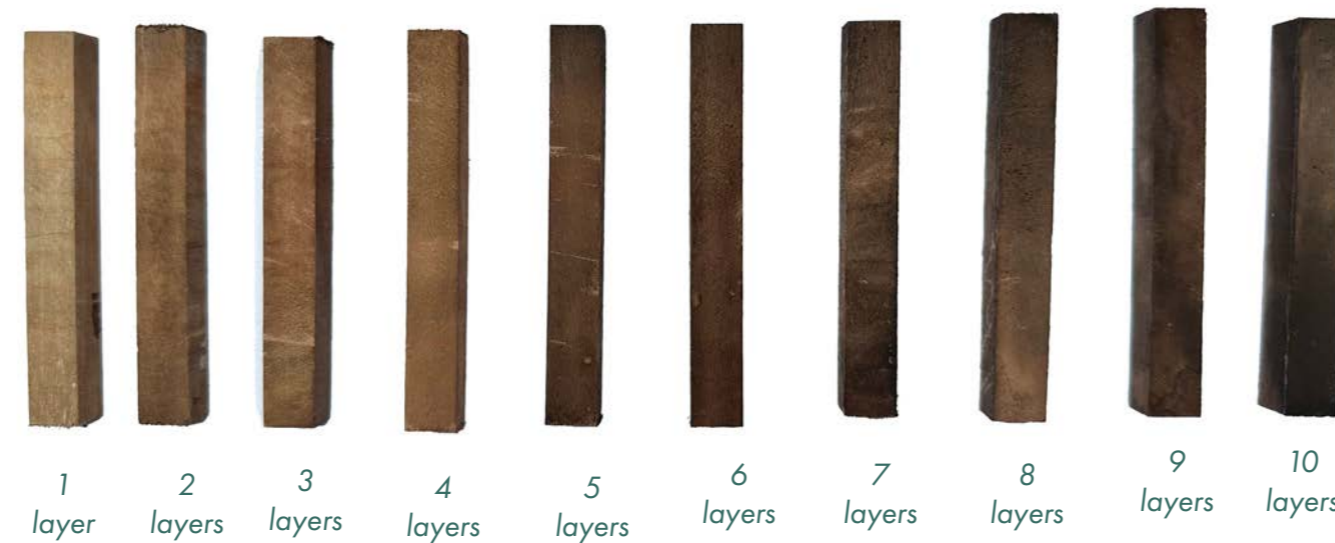
Ebonising wood is a finishing technique used to darken the wood to a deep, rich black color. The vinegar technique for ebonising wood involves soaking fine steel wool in white vinegar to create a solution that reacts with the tannins in the wood.

TIMED EXPERIMENT



I increased the immersion time of the wood in the ebonising solution by one minute for each trial, starting from 1 minute up to 10 minutes.

LAYERED EXPERIMENT



I applied the ebonising solution to the wood in successive layers, starting with 1 layer and increasing up to 10 layers.

MISSION STATEMENT

My mission is to create safe, nurturing, and empowering environment for survivors of sexual assault. By leveraging trauma-informed design principles. My design project aims on creating a rehabilitation program specifically designed to support survivors of sexual assault. The project aims to design counseling rooms that offer a safe, comfortable, and relaxing environment, promoting healing and recovery. Each room in the facility is designed to provide unique sensory experiences, such as a lavender-scented room, a moss-filled room, and a wool-enclosed room, leveraging the therapeutic benefits of these natural elements. The overall design approach emphasizes circular and rounded forms, aligning with trauma-informed design principles that focus on creating spaces that feel secure and non-threatening.

HOW DESIGN CONTRIBUTES TO HEALING

Designing spaces that cater to the therapeutic needs of sexual assault survivors can significantly enhance their healing process. Trauma-informed design principles emphasize creating environments that feel safe, welcoming, and soothing. Sensory rooms filled with natural elements like lavender, moss, and wool offer calming experiences that help reduce anxiety and promote relaxation. The use of circular and rounded architectural designs fosters a sense of inclusivity and continuous support, which are essential for trauma recovery. Initially segregating entry spaces by gender provides a secure environment, while eventual integration supports broader social healing.

SAFETY

HOPE

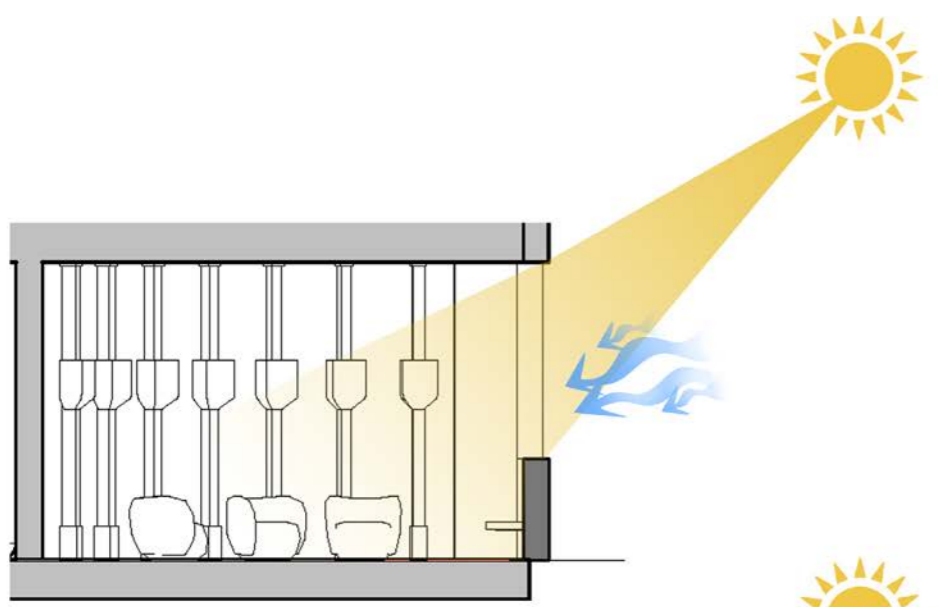
EMPOWERMENT

CONNECTION

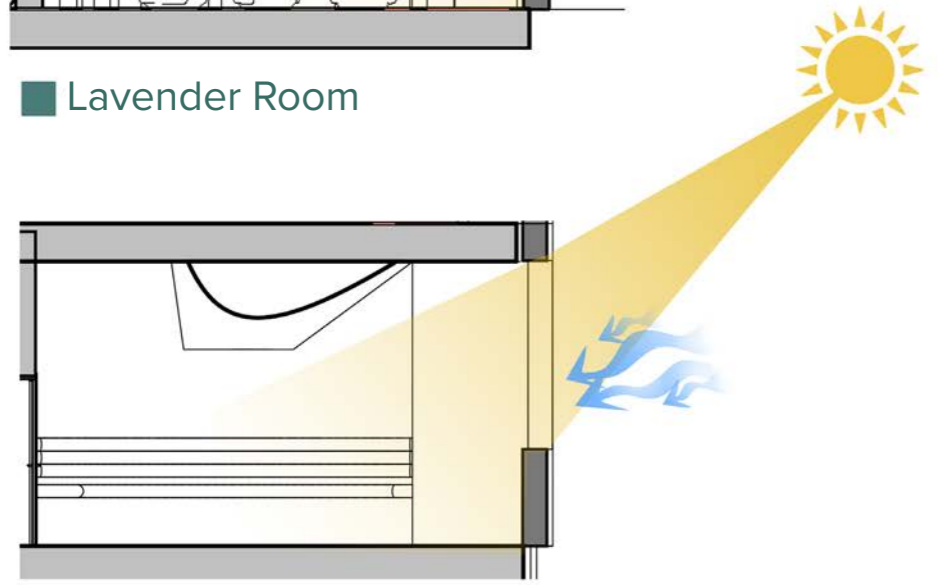
PEACE OF MIND

JOY

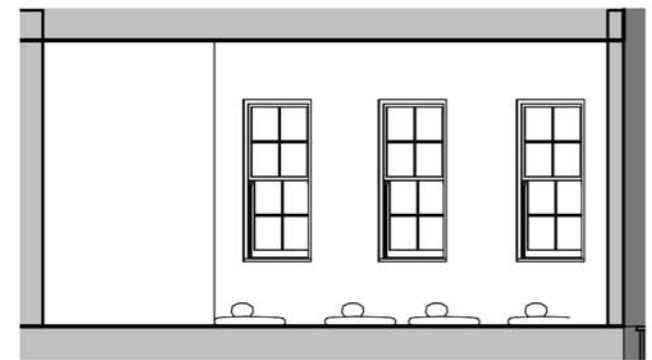
TRAUMA INFORMED DESIGN



■ Lavender Room

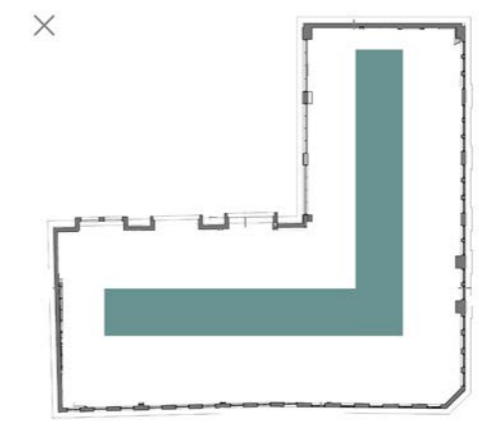


■ Moss Room

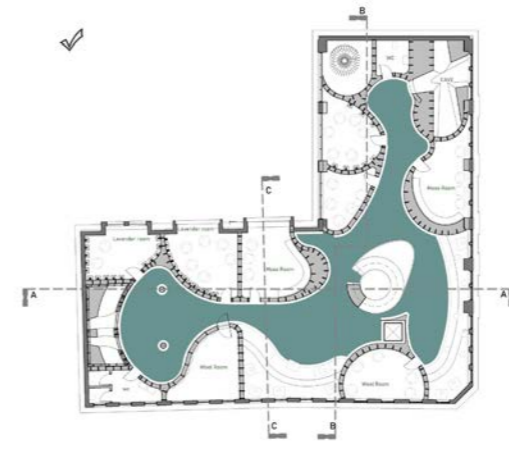


Wool Room

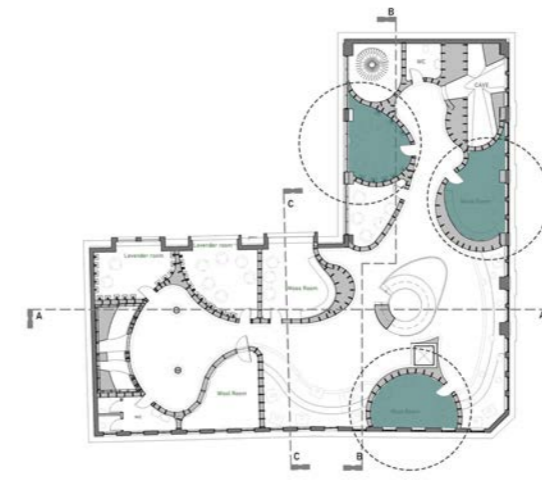
The open space in the counseling rooms ensures that the users encounter natural light and fresh air.



No dark walkways and corridors

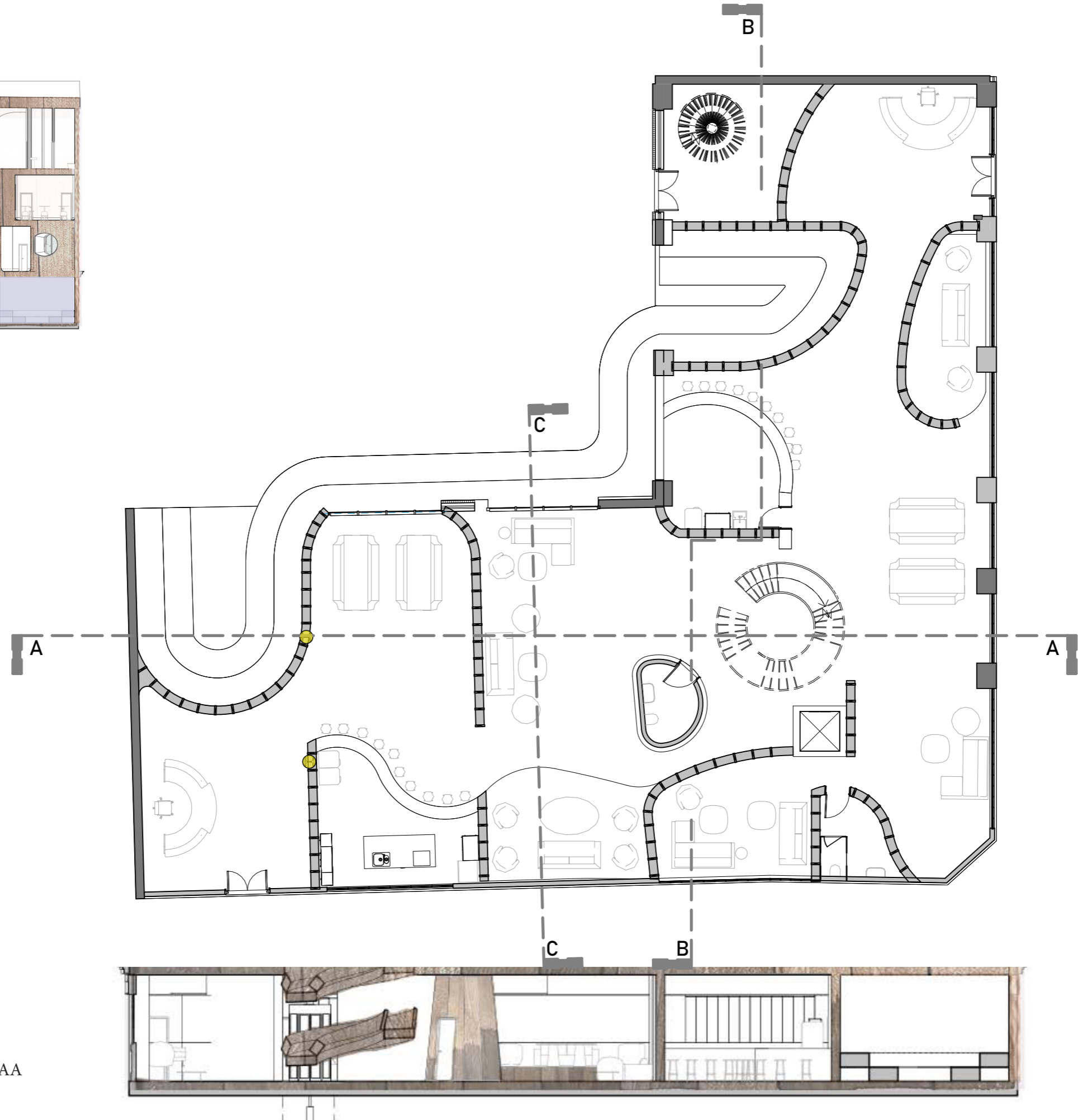


Circular and rounded walkways and corridors align with trauma informed design strategies



- circular rooms:
- enhances calmness and focus
 - promotes safety and security
 - fosters social connection and equality
 - improves acoustics
 - improves movement and accessibility

GROUND FLOOR PLAN

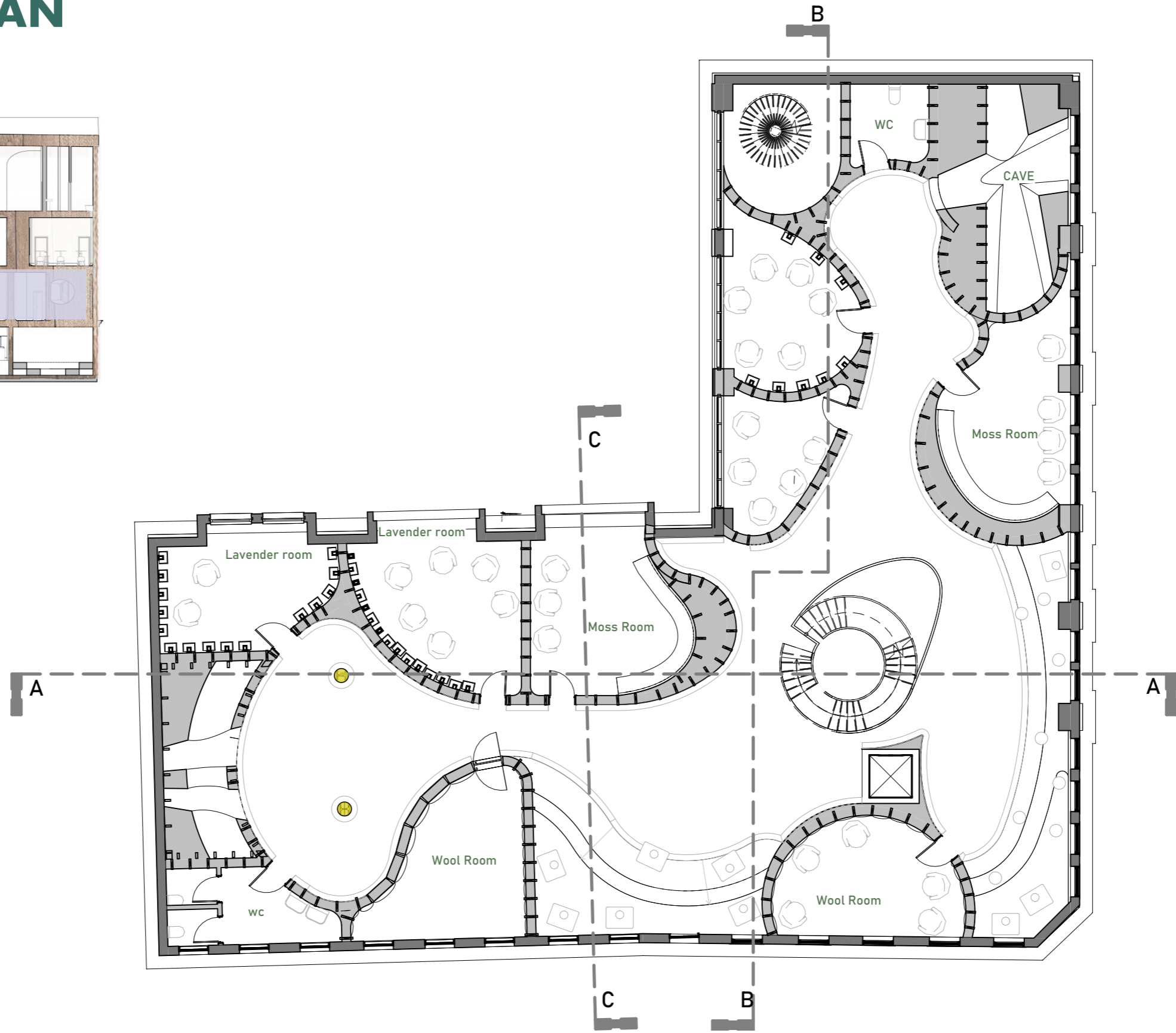


AA

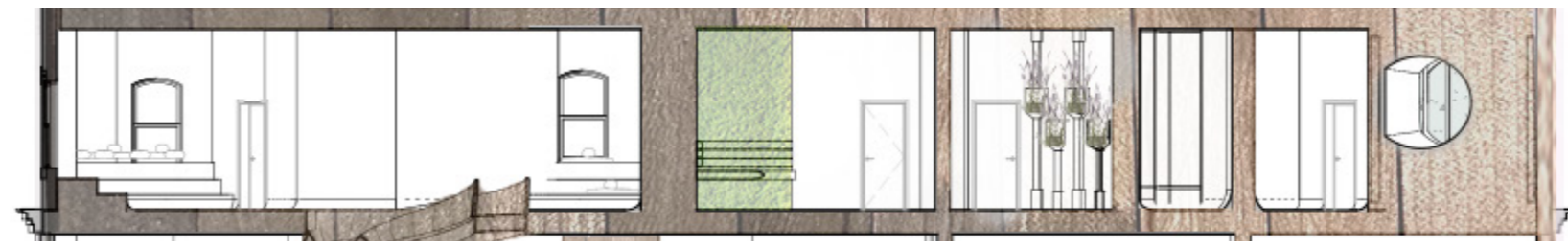
ENTRANCE RENDER



FIRST FLOOR PLAN



AA



HALLWAY RENDER



Experiences

- Calm
- Relaxed
- Serene
- Comfort
- Balanced
- Soothed
- Peaceful
- Refreshed
- Eased
- Content
- Tranquil
- Uplifted
- Rejuvenated
- Stress-free
- Centered



Mayfield Lavender Farm, 1 Carshalton Rd, Banstead SM7 3JA
17.1 miles from Norton Folgate



OPEN SPACE

- Grounded
- Peaceful
- Calm
- Centered
- Connected to nature
- Refreshed
- Tranquil
- Nostalgic
- Comforted
- Serene
- Soothing
- Balanced
- Rejuvenated
- Earthed
- Contemplative



RSPB Forsinard Flows, Forsinard KW13 6YT
650 miles from Norton Folgate



OPEN SPACE

- Comforted
- Warm
- Cozy
- Safe
- Nostalgic
- Soft
- Protected
- Relaxed
- Snug
- Homely
- Soothed
- Grounded
- Natural

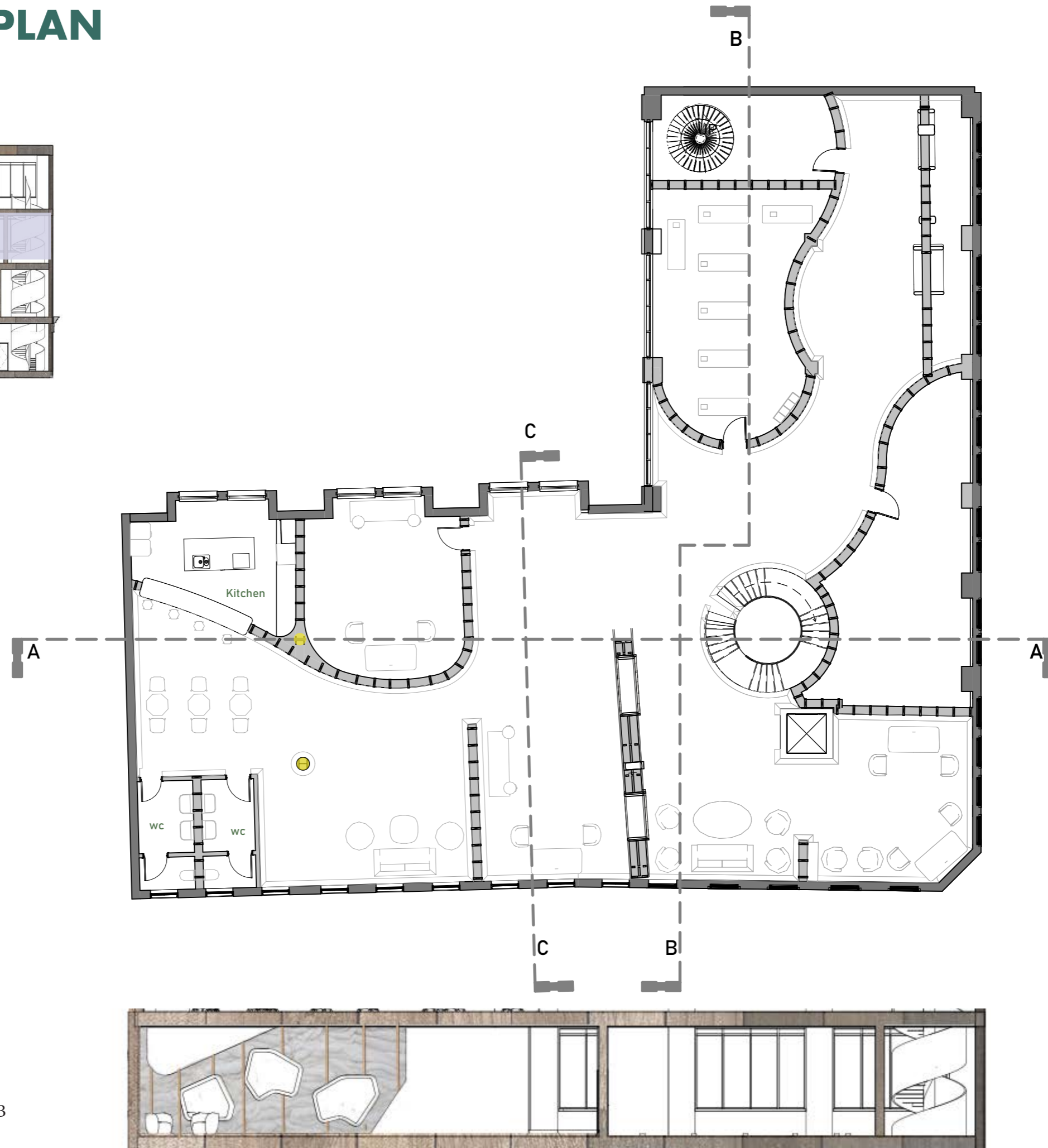
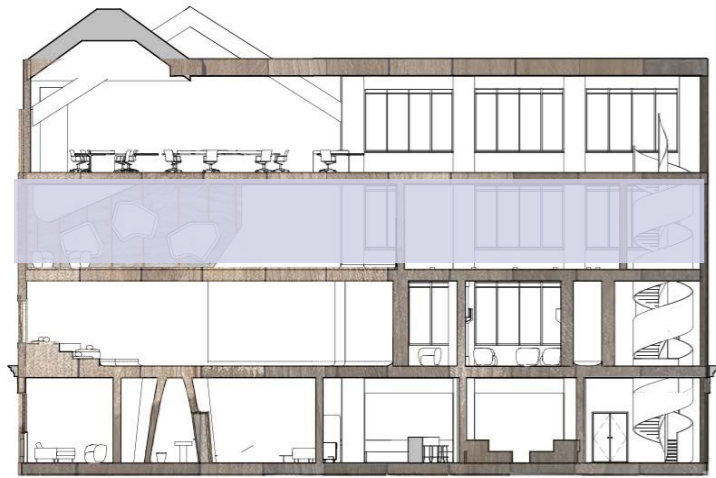


Sussex Prairie Garden, Morlands Farm, Wheatsheaf Rd, Henfield BN5 9AT
70 miles from Norton Folgate



COCOONED ENCLOSED SPACE

SECOND FLOOR PLAN



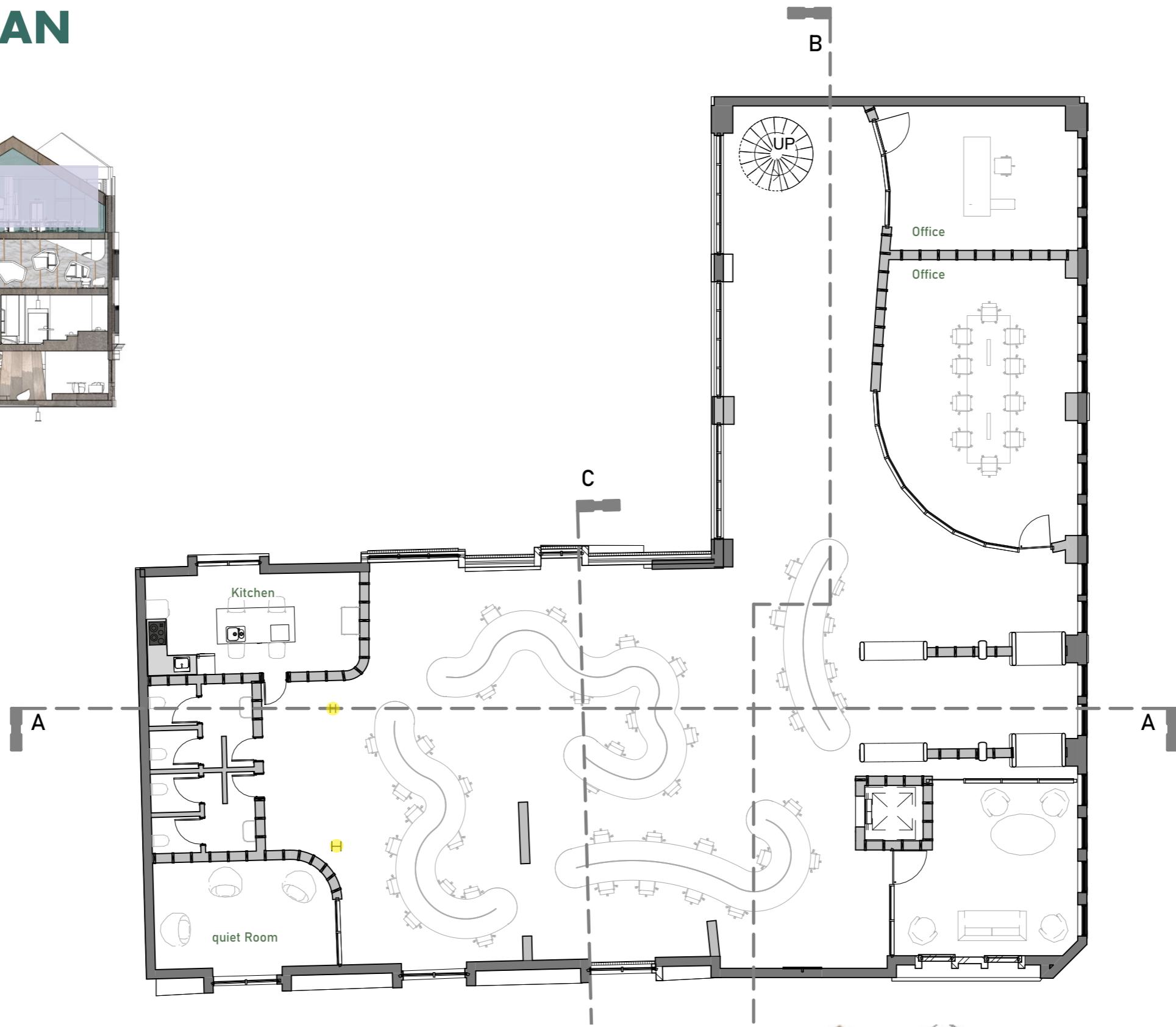
BB



SITTING RENDER



THIRD FLOOR PLAN



CC

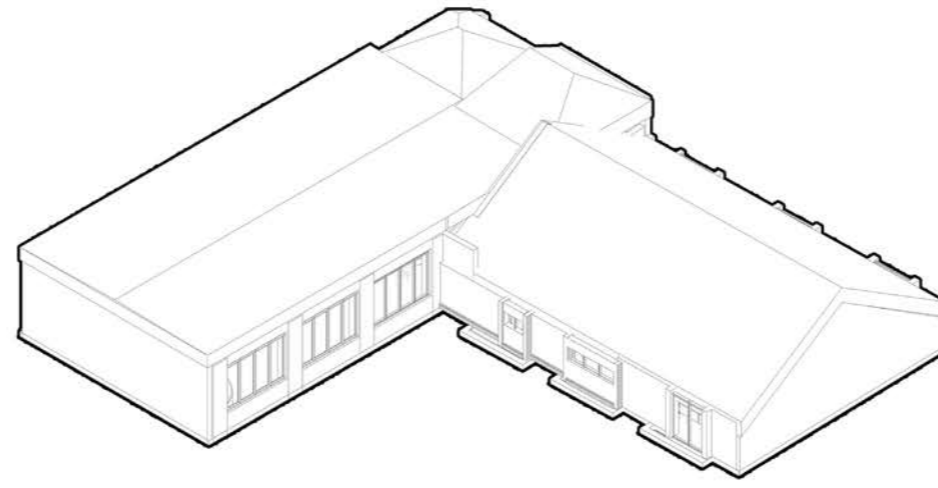


CALL CENTER RENDER

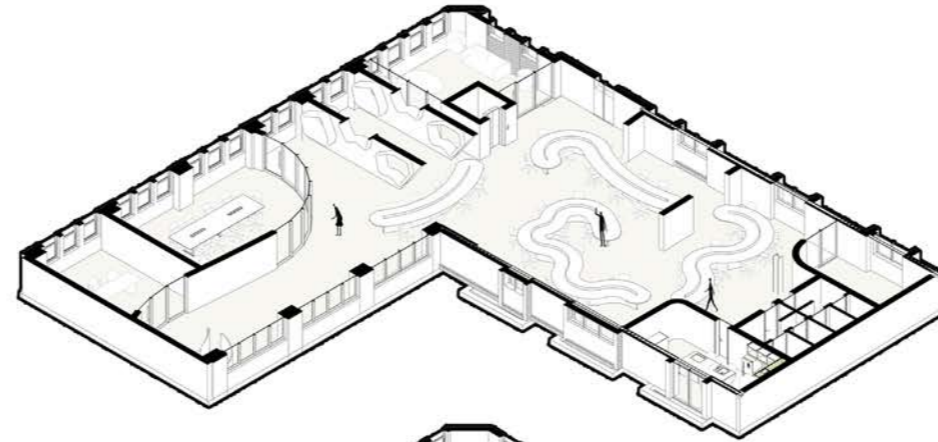


EXPLODED AXONOMETRIC

ROOF TOP



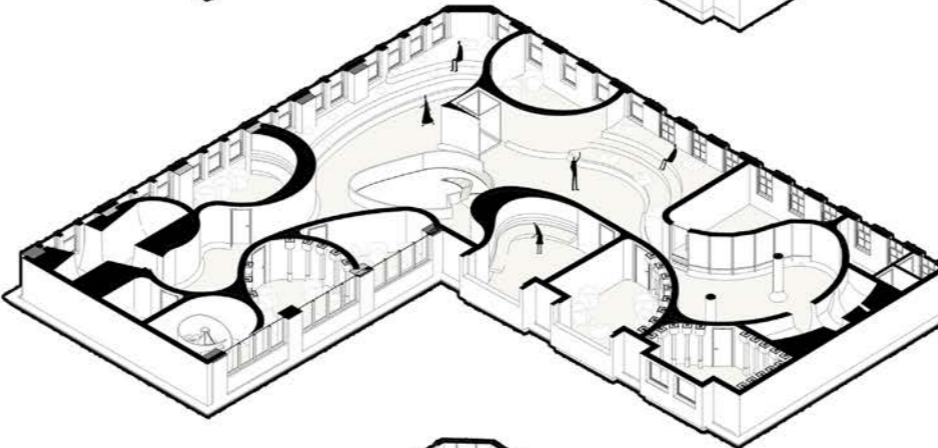
THIRD FLOOR



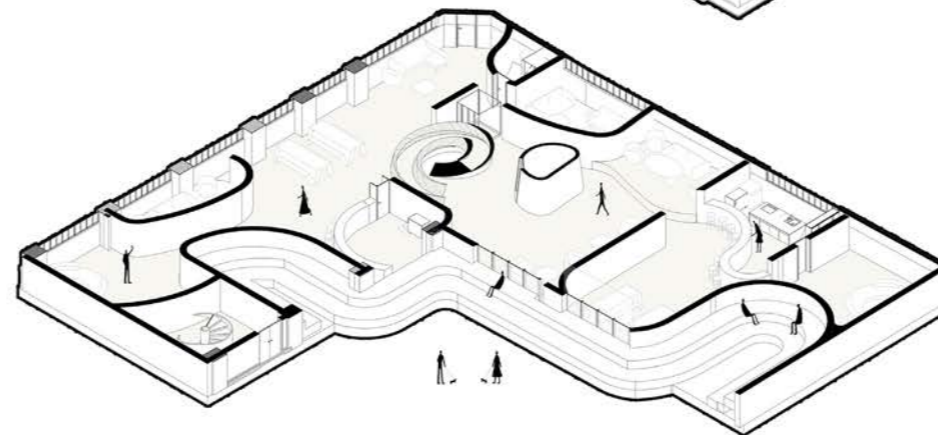
SECOND FLOOR



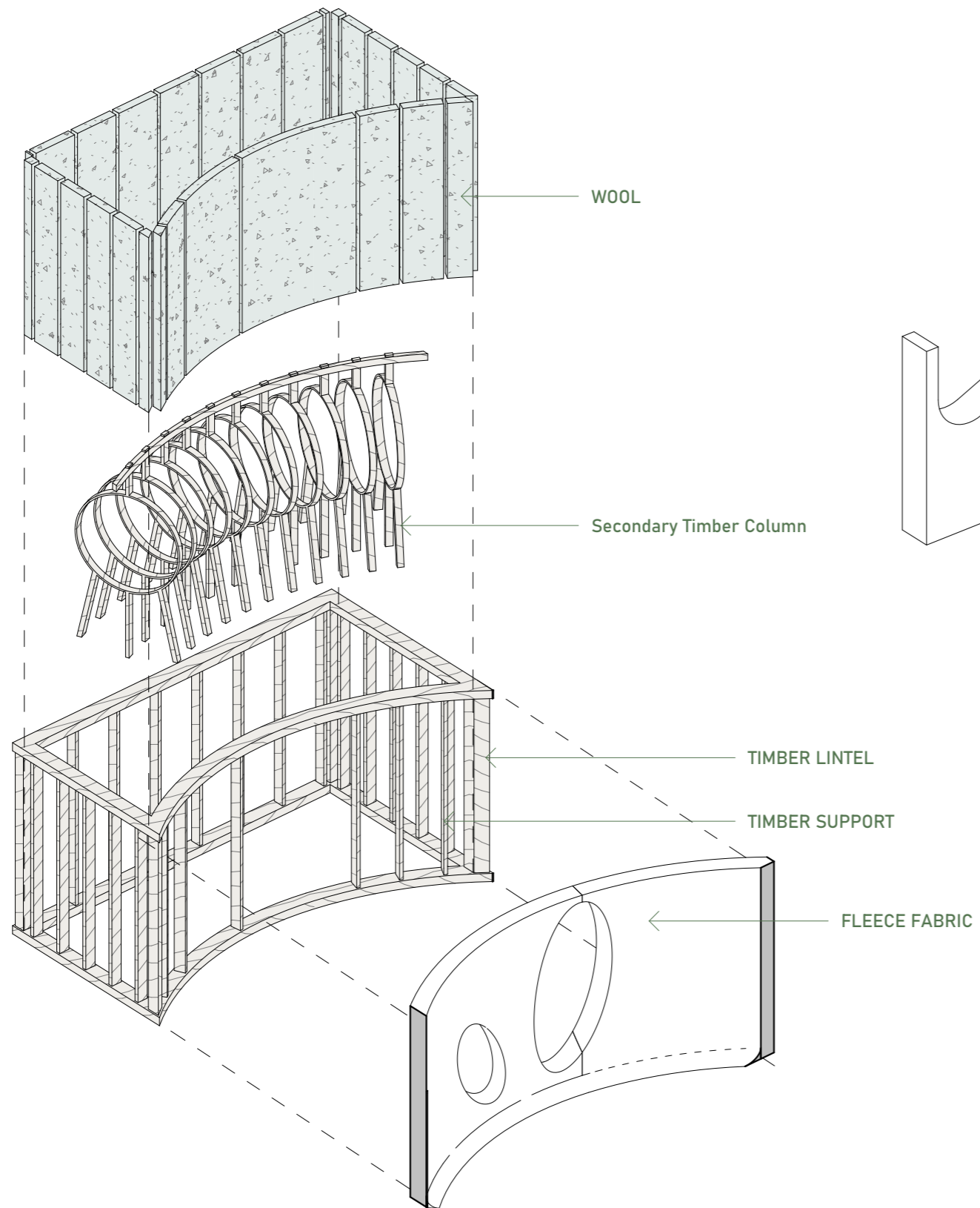
FIRST FLOOR



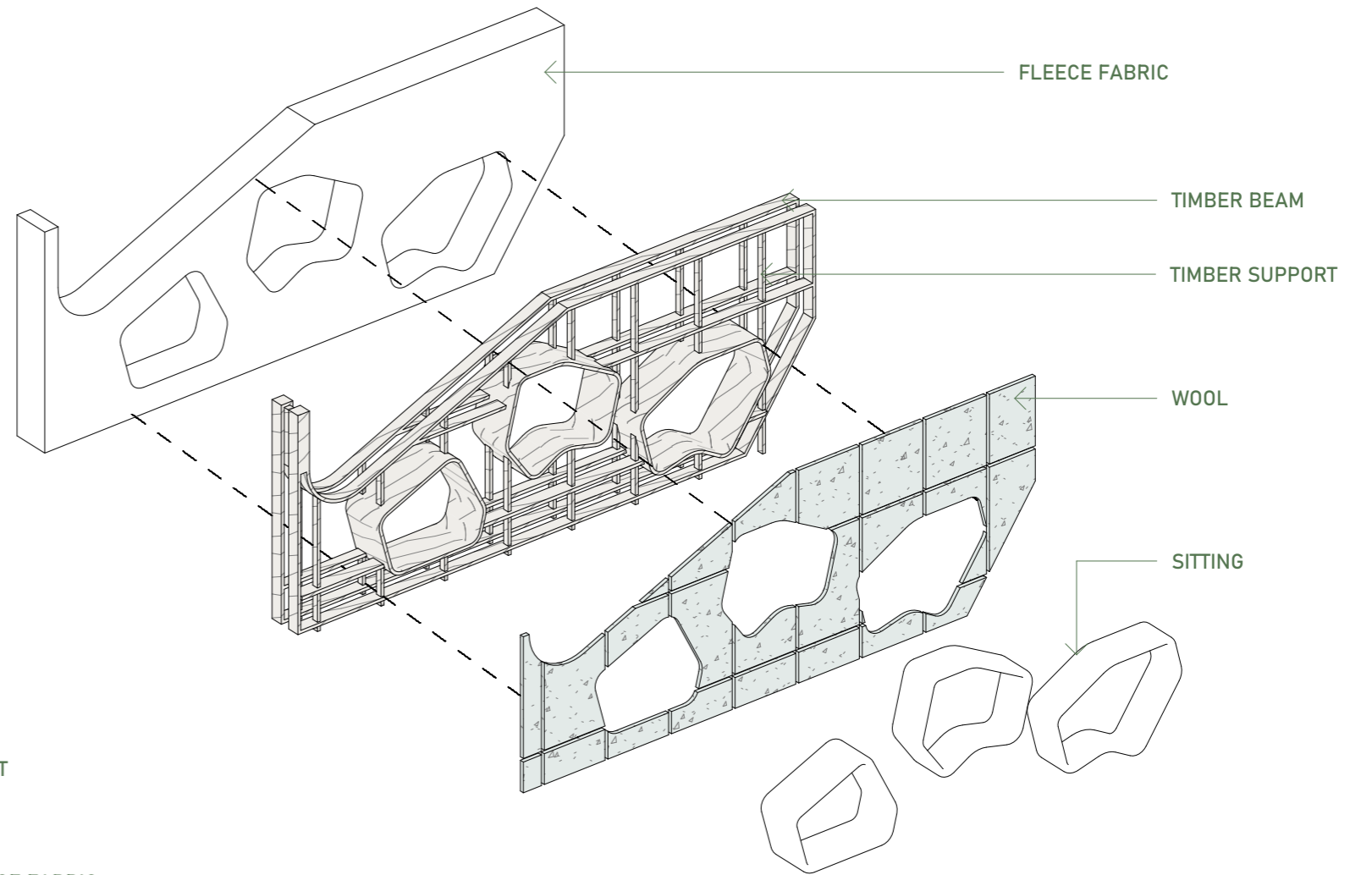
GROUND FLOOR



STRUCTURE DETAILS



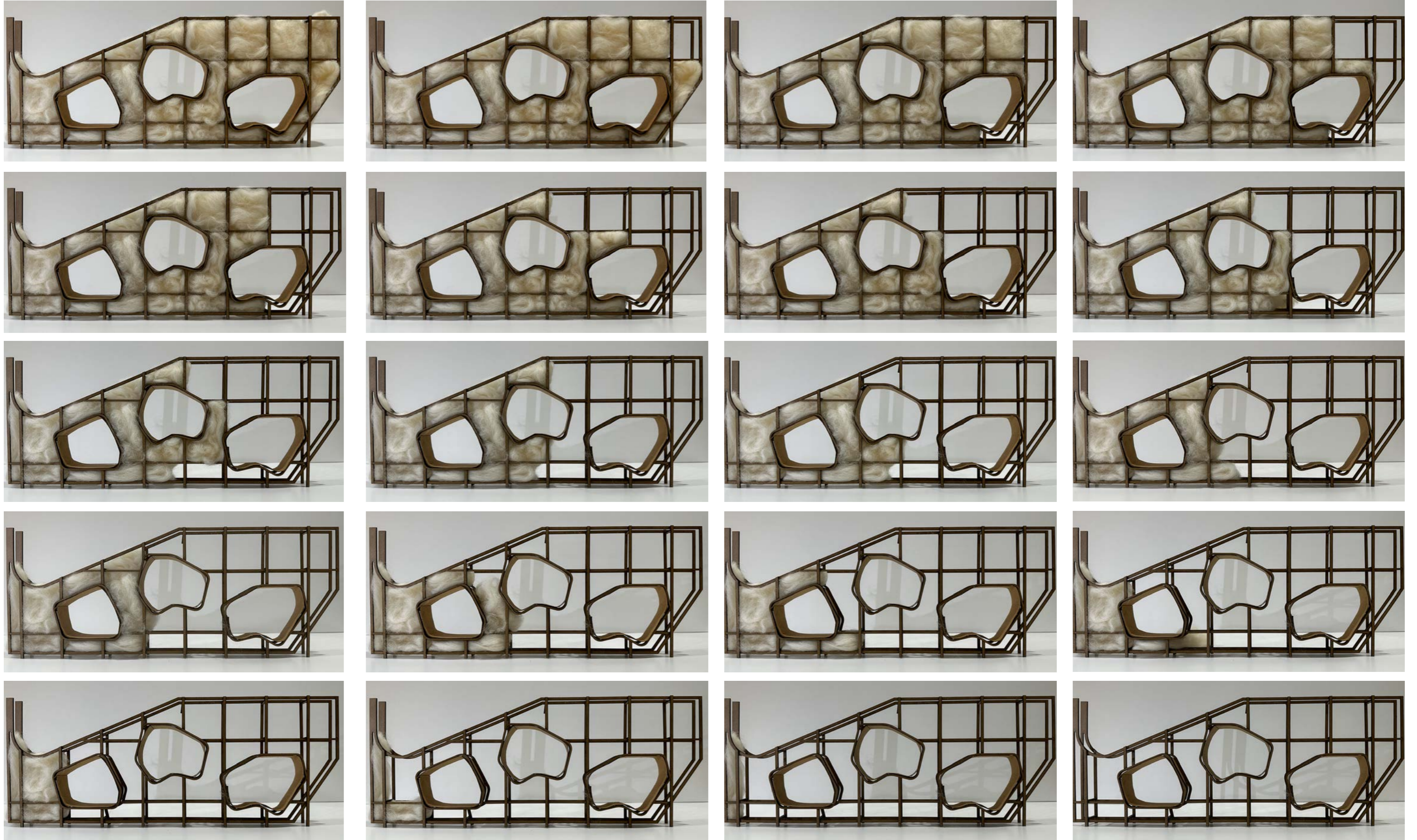
CAVE STRUCTURE



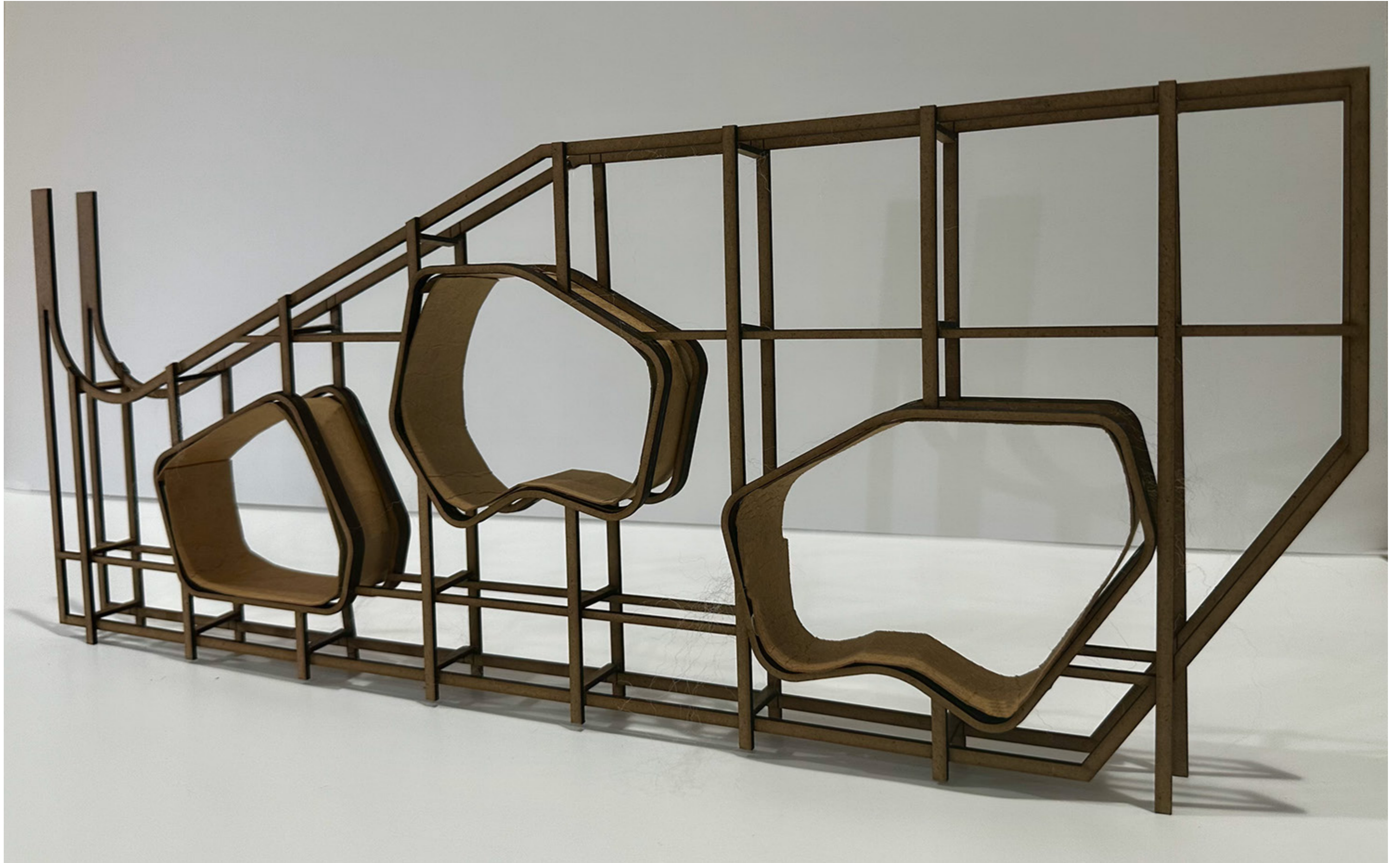
SITTING STRUCTURE

1:20 SITTING STRUCTURE MODEL GIF

GIF LINK: <https://www.nadaattar.com/>



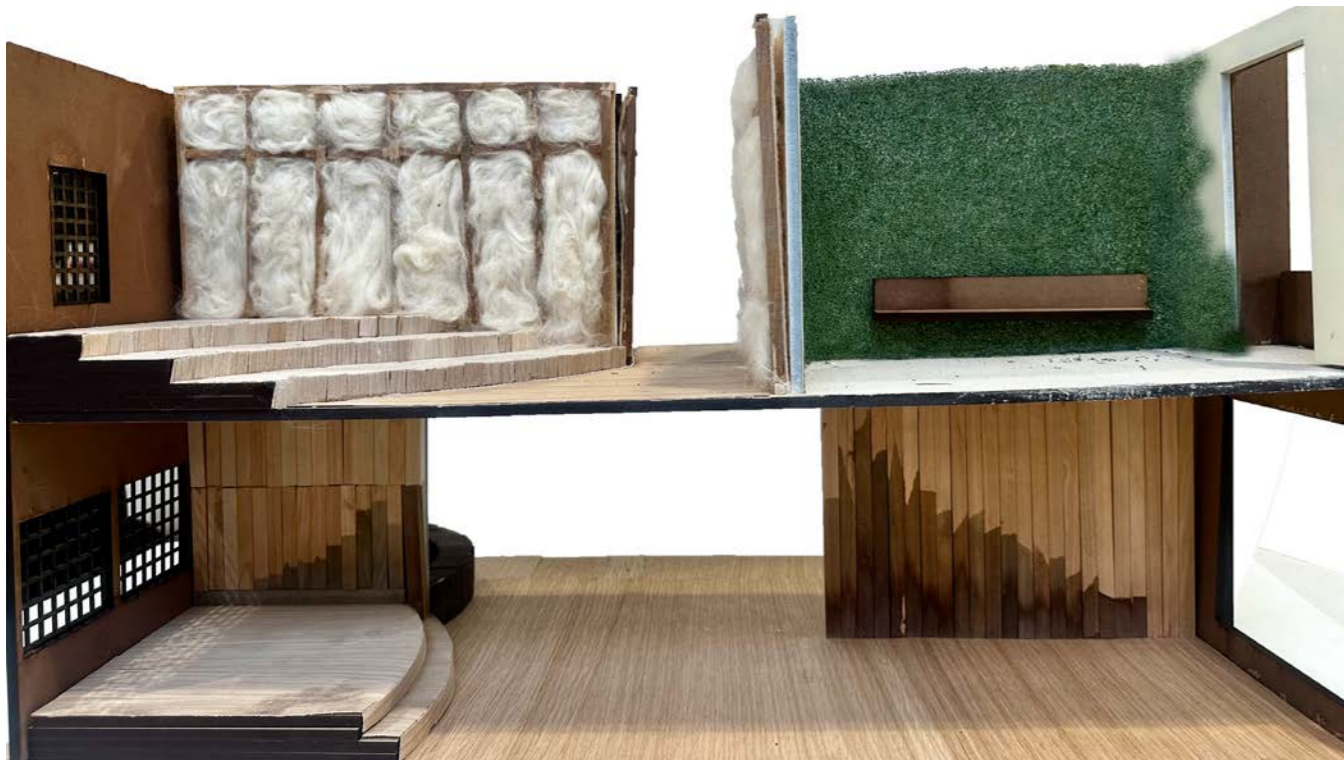
1:20 SITTING STRUCTURE MODEL



1:20 SITTING STRUCTURE MODEL COLLAGE



1:20 MODEL



EXTERIOR SITTING RENDER

