

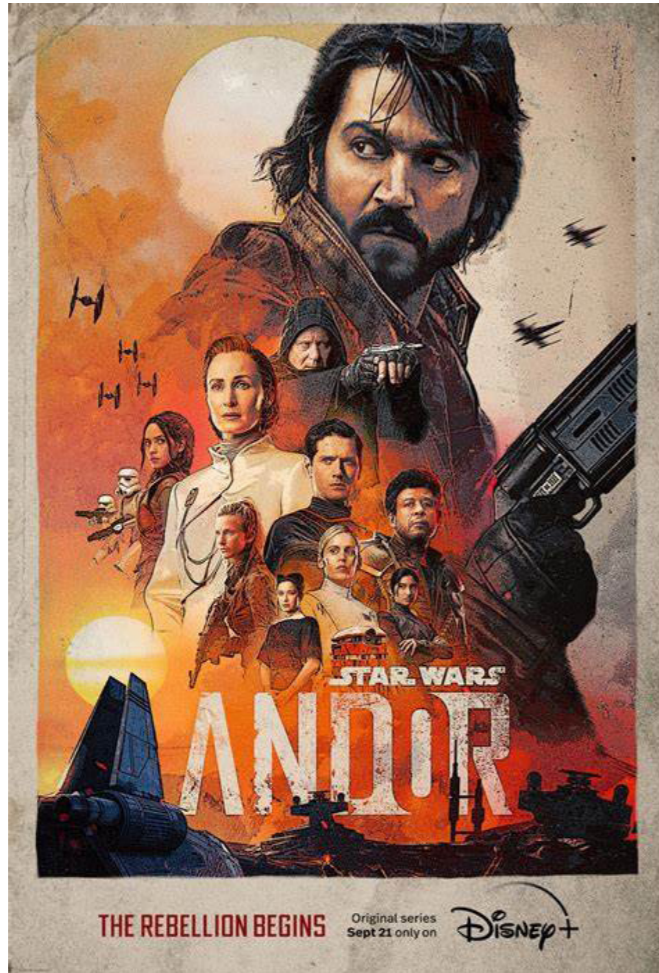
Term 3

UPPER Upper MANHATTAN

Contents

Research Question	3
Research: 50 Films	6
Research: Why MANHATTAN ?	8
Welcome to UPPER Upper Manhattan!	13
UPPER Upper Manhattan Timeline	15
Threee Pinctures took by Bill Capa	16
Tips	19
Film: UPPER MANHATTAN	20
Record MOMENTS by Architecture:	21
Back to Research Question:	31

Research Question: Came from:



Andor (2022)

Andor was filmed at the Barbican Arts Centre in London. The reason for choosing this location because it is a film that tells a story about the future and I wanted to research and explore the relationship between architecture and the future.

I focused on the difference between the architecture that already exists in our reality now and the architecture in science-fiction works, and what kind of architecture would give people a sense of the future.

Comparison of film and reality scenes

After comparison, it can be observed that in the film *Andor*, the creators have largely retained the original architecture of the Barbican Centre. This includes the building's form and details, but the surrounding backdrop has been altered. The background has been changed to feature structures with a floating sensation, giving the scene a sense of being elevated. This contrasts with the heavy buildings in the real-world surroundings.



Origin



Origin



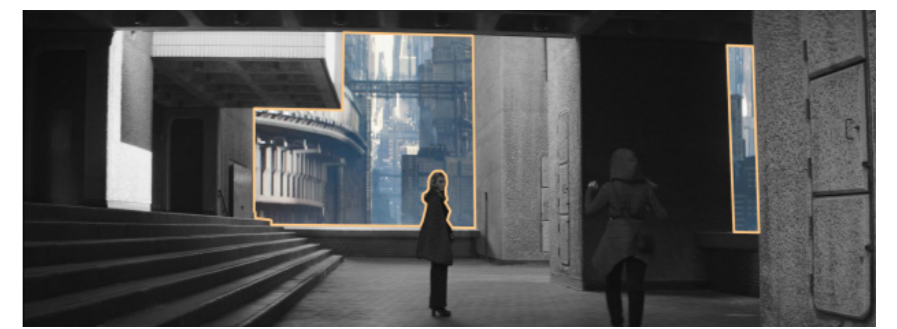
Origin



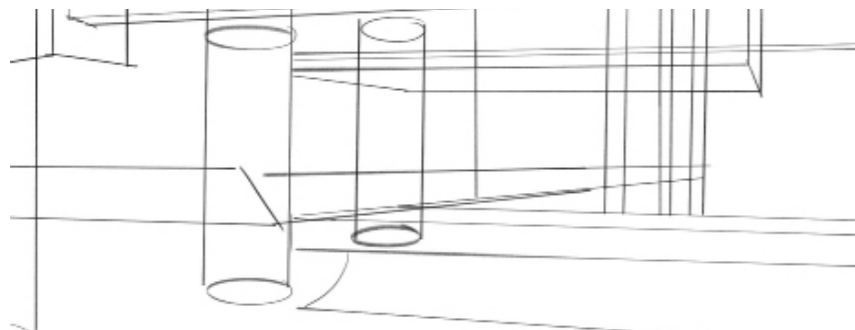
Andor



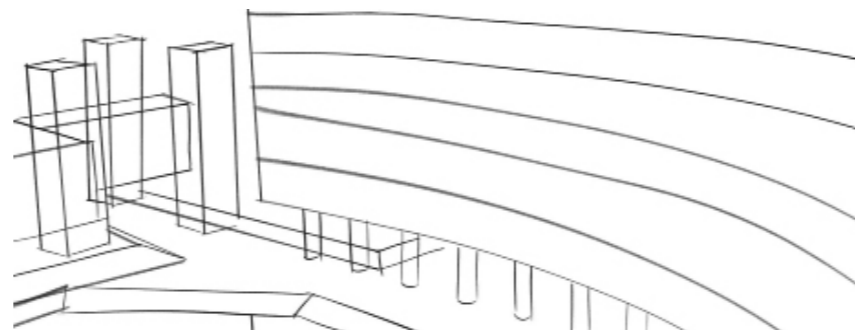
Andor



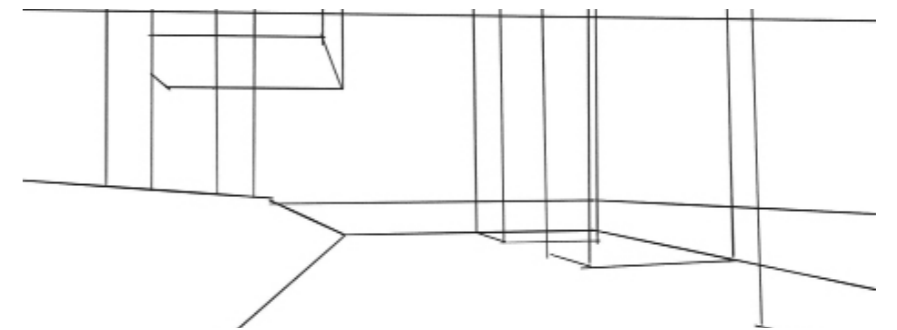
Andor



Shape Drawing



Shape Drawing



Shape Drawing

Remove:

- road signs on the wall
- staircase and entrance on the right side
- glass elevation on the left side
- origin background

Add:

- Futuristic background
- concrete elevation on the left side

Remove:

- facade of the building on the right
- the centre part of the square
- origin background

Add:

- facade of the building on the right
- hole on the centre of the square
- decoration on concrete columns
- Futuristic background

Remove:

- metal fence gate
- origin background

Add:

- Futuristic background

Research Question:

Why is there a cultural obsession with defying gravity in science-fiction film, and how does architecture enhance this?

Research:

50 science-fiction films with antigravity elements



Ghost in the Shell



2001: A Space Odyssey



Star Wars: Episode I – The Phantom Menace



Star Trek



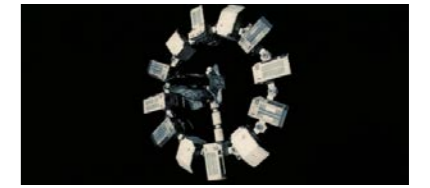
The Hitchhiker's Guide to the Galaxy



The Matrix



Ender's Game



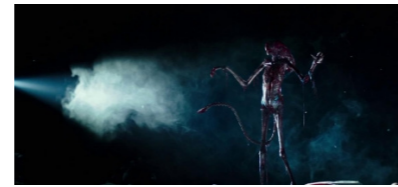
Interstellar



Alien



Gravity



Alien: Covenant



Star Wars: The Force Awakens



Blade Runner 2049



Space: Above and Beyond



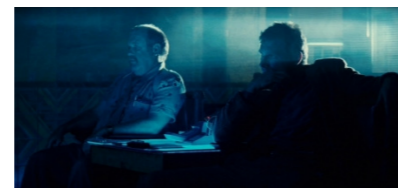
Battlestar Galactica



Star Wars: The Last Jedi



Alien: Resurrection



Blade Runner



Star Wars: The Clone Wars



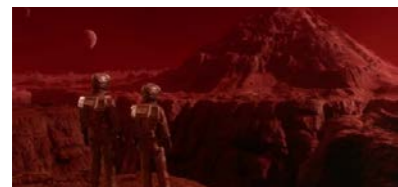
Alien 3



The Expanse



Avatar



Total Recall



Star Trek: Deep Space Nine



Babylon 5



Doctor Who



The Matrix Resurrections



ready player one



Dune: Part 2



The Martian



Back to the Future



Back to the Future II



Alien



District 9



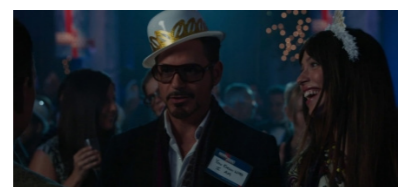
Dune



Batman V Superman: Dawn of Justice



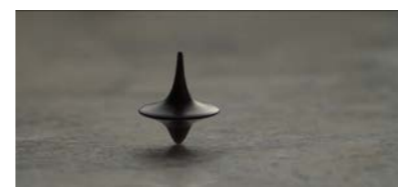
Arrival



Iron Man 3



Iron Man



Inception



The Dark Knight



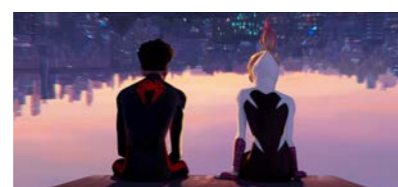
Justice League



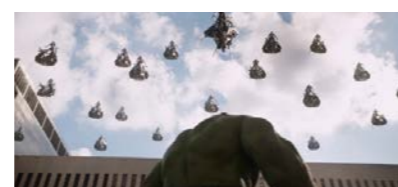
Tron



Harry Potter



Spider-Man: Across the Spider-Verse



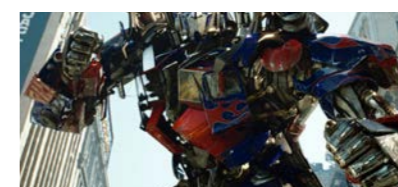
The Avengers



Guardians of the Galaxy



men in black



transformers



Oblivion

5 methods of anti-gravity in science fiction works

1. **Antigravity Technology**

Antigravity Technology Many science fiction stories feature advanced civilizations or futuristic societies that have mastered antigravity technology, allowing spacecraft, vehicles, and structures to defy gravity. Examples: anti-gravity technology by the Harkonnen and the antigravity sleds in Star Wars.

2. **Artificial Gravity**

Artificial Gravity In spacefaring science fiction, artificial gravity simulates Earth-like gravity within spacecraft and space stations, achieved through rotating habitats or centrifugal force. Examples include the spinning space station in 2001: A Space Odyssey and the gravity plating on starships in Star Trek.

3. **Telekinesis and Mind Powers**

Telekinesis and Mind Powers Some science fiction stories feature characters with psychic abilities like telekinesis, allowing them to manipulate objects or levitate themselves. Examples include Jean Grey from the X-Men comics and Eleven from Stranger Things.

4. **Exotic Physics and Extradimensional Forces**

Exotic Physics and Extradimensional Forces Speculative science fiction may introduce exotic physics or extradimensional forces enabling gravity manipulation through technologies or phenomena.

5. **Biological Adaptations**

Biological Adaptations Some stories feature characters with biological adaptations allowing them to defy gravity, such as genetically engineered organisms or alien species with innate antigravity capabilities. Examples include the Na'vi from Avatar and the Martian-born humans in Kim Stanley Robinson's Mars Trilogy.

Research: Why MANHATTAN ?

The past and present of Manhattan

Early History (17th - 18th Century)

- **Dutch and British Colonial Era:** Initially settled by the Dutch in the early 17th century, the southern tip of Manhattan (New Amsterdam) was the primary settlement area. Wealthy merchants and traders established themselves here, creating an early economic divide.
- **British Rule:** After the British took control in 1664, the island continued to grow as a trading hub. Wealthy landowners and merchants continued to dominate the southern parts, while the northern areas remained largely rural and undeveloped.



19th Century

- **Industrial Revolution:** The 19th century saw rapid industrialization and urbanization. Immigrants flocked to Manhattan, leading to overcrowded and unsanitary living conditions in areas like the Lower East Side. This area became a notorious slum, housing many poor working-class families.
- **Wealth Concentration:** During the same period, wealthy New Yorkers began to move uptown. The development of areas like the Upper East Side and Gramercy Park created enclaves of affluence, marked by luxurious brownstones and private parks.
- **Central Park:** Completed in the 1870s, Central Park was a significant urban development that attracted wealthy residents to its periphery, further establishing the Upper East and Upper West Sides as affluent neighborhoods.



20th Century

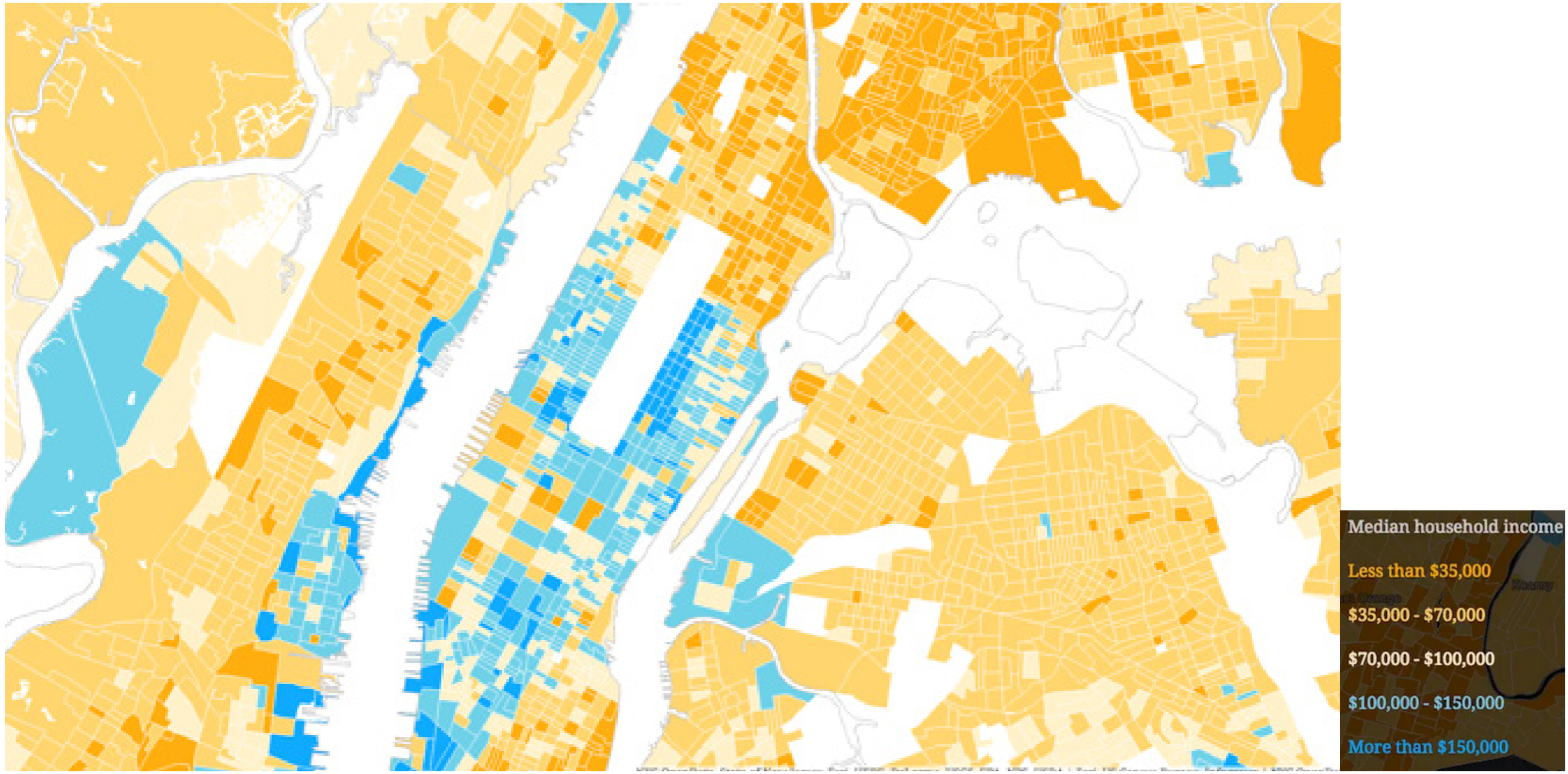
- **Post-War Boom:** The post-World War II era brought significant economic growth, but also stark contrasts. The construction of public housing projects in neighborhoods like the Lower East Side and Harlem aimed to address poverty but often led to further economic segregation.
- **Gentrification:** Starting in the 1980s and accelerating in the 1990s, gentrification began transforming historically poorer neighborhoods. Areas like SoHo, Tribeca, and the Lower East Side saw an influx of affluent residents and businesses, pushing out many lower-income families.



Where the Wealthy and Poor Live in Manhattan

Wealthy Areas: Upper East Side
Upper West Side
Tribeca
Chelsea

Poorer Areas: Harlem
Washington Heights
East Village
Lower East Side



Welcome to

UPPER Upper MANHATTAN!

UPPER Upper MANHATTAN

Background:

The embankments along the rivers of Manhattan, revealing the underside of the city, seek greater possibilities. People are no longer satisfied with just the ground and underground dimensions of the city; they begin to explore the potential of the sky for urban development. Simultaneously, due to Manhattan's development, buildings are crowded together, and every inch of ground space is highly valuable. Expanding into the sky could better alleviate the tension in Manhattan's urban space.



UPPER Upper MANHATTAN TIMELINE

**19
99**

As one of the world's most bustling cities, manhattan reached saturation in terms of land usage. Skyscrapers crowded together. In order to provide more space for residents, people began seeking solutions and attempting to construct cities underground.

**20
24**

The first batch of riverbed city buildings was completed and put into use.

**20
27**

The population of riverbed cities was almost saturated, and the government began seeking new solutions.

**20
44**

The upper east side began constructing the first cluster of aerial civilian buildings.

**20
10**

The first batch of underground city buildings was completed and put into use.

**20
19**

The population of underground cities was almost saturated, and the demand for land in new york continued to rise. More and more people flocked to new york for living and working. To alleviate this phenomenon, the government decided to build a dam to artificially dry up the east river, intending to use the riverbed to construct new buildings. Due to previous experience in building cities underground, the buildings on the riverbed still had ample lighting and conditions suitable for human habitation.

**20
31**

Gravitational technology made significant progress, and futuretech unveiled the gravitational neutralization device.

**20
50**

An increasing number of aerial building clusters began construction and were put into use.

**20
42**

The first building levitation project was completed and put into use.

Three Pictures took by Bill Capa*

<Shadow>

Introduction: A man stands on the ground in Manhattan, an ordinary man who works in an office every day. He stands in the shade of a tall building made of concrete.



* Bill Capa (2024 - present): A renowned documentary photographer who grew up in Manhattan

Three Pictures took by Bill Capa*

<Marble>

Introduction: This is the dock located in the upper Manhattan. Several workers are receiving marble from the surface quarry for delivery to the upper Manhattan.



* Bill Capa (1924 - 1958): A renowned documentary photographer who grew up in Manhattan

Three Pictures took by Bill Capa*

<Go up>

Introduction: This is the viewing area located on the upper Manhattan. The picture is a family who just moved into the upper level today and came to the viewing area together to enjoy the view of the sky. Here you can see the city at ground level as well as part of the foundation of the upper area.



* Bill Capa (2024 - present): A renowned documentary photographer who grew up in Manhattan

Tips:

Do you know the difference of umbrella between Upper and Lower Area?



an umbrella in upper level.

To cater to the living environment of the upper level, this umbrella features a reinforced structure made of titanium alloy to enhance its wind resistance and ensure durability in strong winds. Considering the stronger UV radiation at higher altitudes, the umbrella is equipped with a special UV-resistant coating to protect users from UV damage. Additionally, the umbrella has been enhanced with reflective insulation materials inside, which improve visibility and safety in areas with frequent fog or poor visibility. Furthermore, to address the lower temperatures in the upper level at high altitudes, the insulation material helps to keep users warm and provides additional comfort.



an umbrella in lower level.

In 2050, due to the presence of upper level buildings, sunlight is obstructed, resulting in dimmer living conditions in the lower levels. To adapt to the lower-level living environment, this umbrella's exterior has been enhanced with reflective materials, capable of reflecting light from lower-level areas or limited sunlight to increase illumination in the lower regions. This helps to improve visibility and safety for users.

Film: *UPPER MANHATTAN*

Please find the video in the attachment.

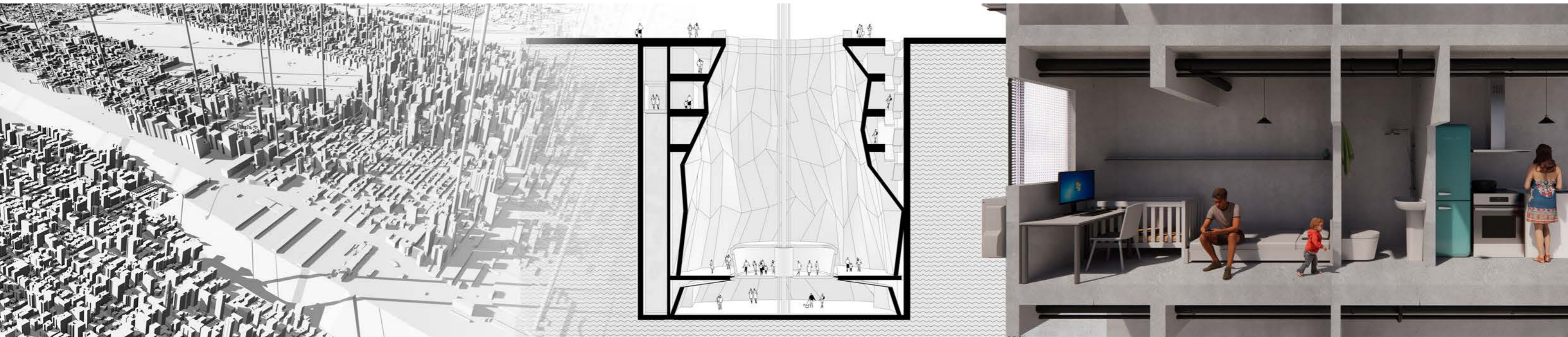


Record **MOMENTS** by Architecture:

Will the development of technology lead to inequality?

Architecture Moment

Lower Area



Architecture Moment

Lower Area - City View

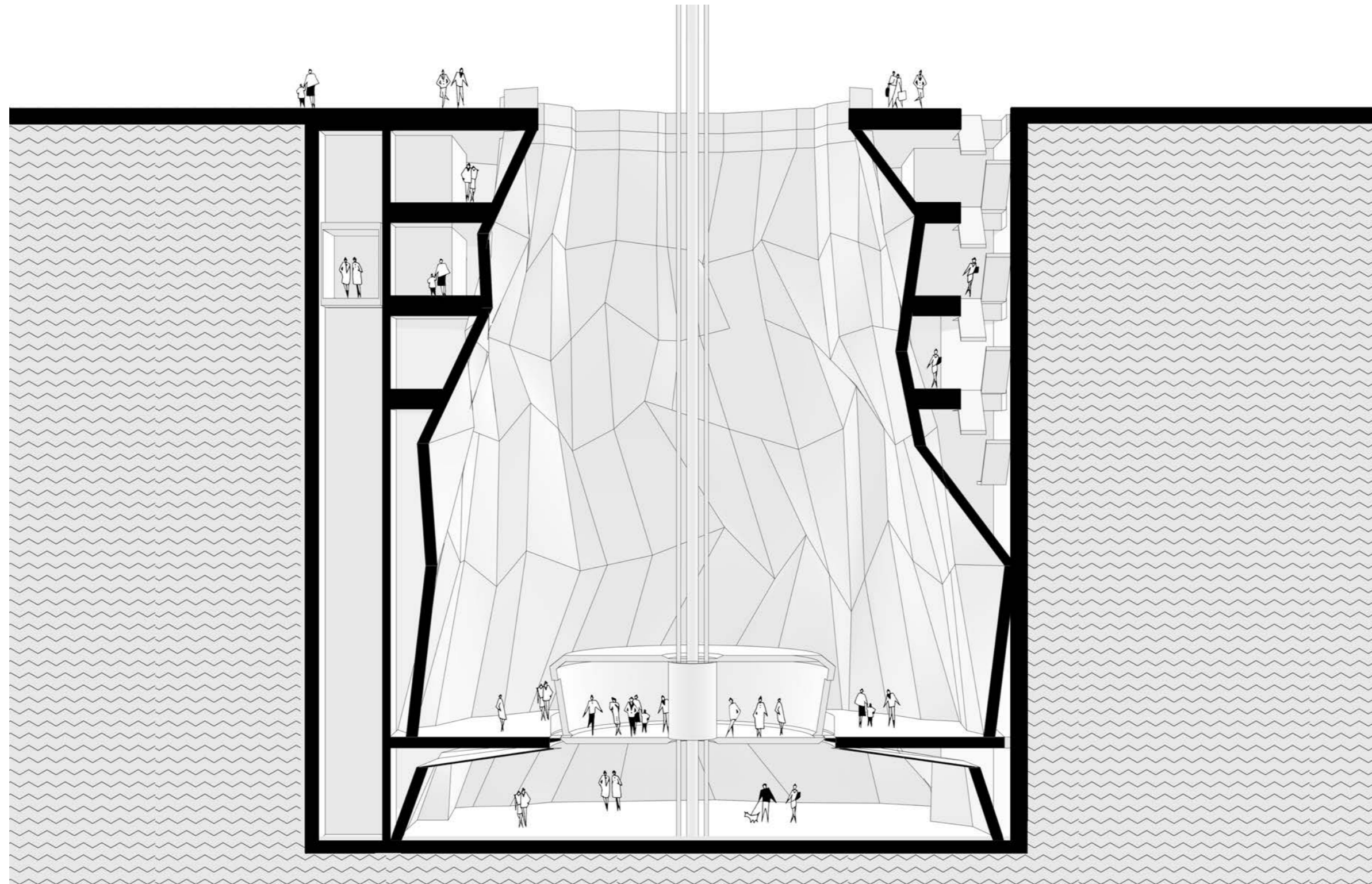
Observing Lower Manhattan on an urban scale, it is overshadowed by the Upper Area and shrouded in gloom. Many high-speed elevators connecting the upper and lower Areas are found in the buildings around Central Park. In the lower left corner of the image, the exposed riverbed, artificially dried, reveals the riverbed city constructed by the government.



Architecture Moment

Lower Area - Transport Center

Located in the Lower Area, the transport center is where people go to travel to the Upper Area. However, not everyone can enter freely. People need to pass security checks and hold a permit to travel to the Upper Area.



Architecture Moment

Lower Area - Resident's Home

A household in the Lower Area. Space in the Lower Area is very cramped, and each resident has limited living space. Additionally, most houses have exposed concrete walls to save on costs.



Architecture Moment

Upper Area



Architecture Moment

Upper Area - City View

The city view of the Upper Area, which is now Manhattan's wealthy area, is accessible only to a select few. This includes those who own property in the Upper Area and those who work there. The area boasts fresh air and open spaces.



Architecture Moment

Upper Area - Transport Center

The transport center located in the Upper Area. Positioned at the bottom of the upper city, the transport center facilitates the arrival of passengers from below. People use this center to access the upper area, where there is an observation deck at the base of the transport center for residents to enjoy the scenery.

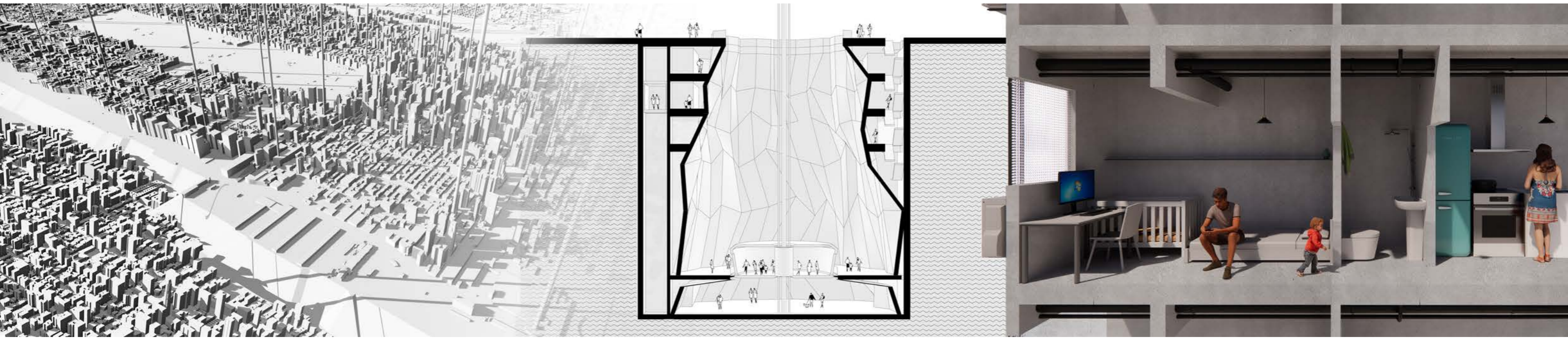


Architecture Moment

Upper Area - Resident's house

This is the home of a resident living in the Upper Area. Compared to the Lower Area, houses here are many times larger. The man stands by the floor-to-ceiling window, talking on the phone while gazing at the view outside. Behind him are some of his art collections and spacious rooms.





Back to Research Question:

Why is there a cultural obsession with defying gravity in science-fiction film, and how does architecture enhance this?