

PORTFOLIO

SUPPERmatter

Liangyu Chen



TABLE OF CONTENT

This research explores how a museum can interpret the history of Blossom Street through the innovative use of architectural materials and design techniques that evoke emotions. The project aims to create a museum experience that does not rely on traditional collections and exhibits, but instead uses the built environment to tell the story and engage visitors on an emotional level.

•	Project introduction	•	Extend interest from Totem
•	Research question	•	External channel design
•	Block historical development	•	Exhibition space 01 - 18th century
•	Theme selection	•	Exhibition space 02 - 19th century
•	Site analysis	•	Exhibition space 03 - 20th century
•	Site history	•	Exhibition space 04 - 21st century
•	Floor selection	•	Physical model display
•	Overall display - digital model		
•	Functional Division		
•	Floor plan + Circulation Chart		
•	Sectional Drawing		
•	Node Diagram		
•	Lighting Diagram		

PROJECT NAME: JOURNEY OF MEMORY: BLOSSOM STREET IMMERSIVE CITY MUSEUM

PROJECT OVERVIEW:

This project explores the potential of architecture and materials in expressing history and emotion. As an engineer, I have always focused on using traditional materials such as steel, concrete and cement to meet user needs through simple and practical designs. Now, I hope to explore whether interior spaces can convey information through materials and forms, and whether architecture can express itself without relying entirely on function.

PROJECT VISION:

This project will break the traditional museum design, without physical collections, but through materials and symbolic architecture to create an atmosphere that can deeply resonate with history, cultivate visitors' emotional and spiritual connection with the past, and allow visitors to experience history more immersively.

DESIGN LOGIC:

In this project, I will select the most representative events or scenes of Blossom Street in different centuries, and use time characteristics such as materials and architectural structures to create atmospheres of different time periods. Immerse the audience in an experience full of thinking and emotions, thereby stimulating their interest and thinking about history.

KEYWORDS:

Historical period; representative events; materials; architectural structure; atmosphere; immersive experience; fun

RESEARCH PROBLEM

- How can materials convey historical narratives?
- How can a museum be designed to evoke emotional responses in visitors without relying on traditional collections and exhibits?
- What are the essential elements of a museum experience, and can these be achieved without conventional collections?
- How can the design of a museum create an immersive storytelling experience without using physical exhibits?

• INSPIRATIONS AND REFERENCES - Jewish Museum Berlin



The Jewish Museum Berlin uses sharp angles, narrow corridors, and voids to evoke disorientation and loss. Exposed concrete and steel create a stark environment, while installations like the “Memory Void” and “Fallen Leaves” use empty space and symbolic sculptures to convey loss and remembrance, immersing visitors in an emotionally charged experience.



• KEYWORDS:

Atmosphere
Materials
Large installation
Lighting

• MAINSTREAM MUSEUMS ON THE MARKET



Many museums today rely solely on simple displays and presentations, and the content often appears monotonous, lacking interaction and emotional resonance with the audience. This approach makes it difficult for them to deeply understand and feel the stories and meanings behind the exhibits.



• KEYWORDS:

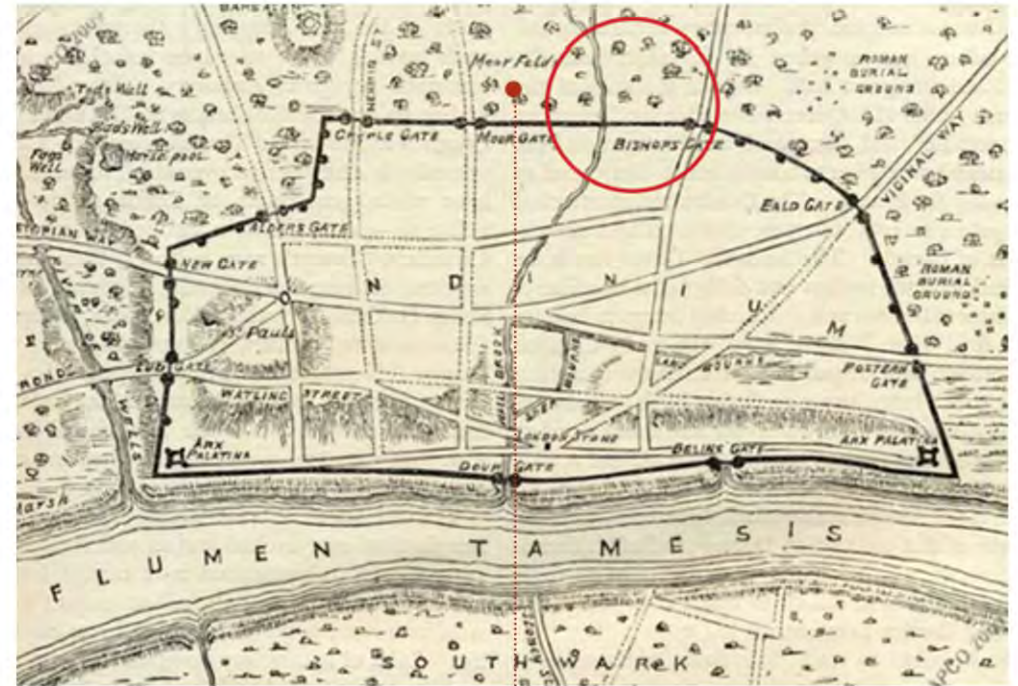
Display
Exhibition
Lack of communication
Lack of touch

0. THE ORIGIN OF BLOSSOM STREET (THE BEGINNING OF A WONDERFUL CHAPTER)

TIME NODE: BEFORE 17 CENTURIES

Before the 18th century, London's Blossom Street was part of the historically and geographically important area of Norton Folgate. Situated between Bishopsgate and Shoreditch, Norton Folgate is a diocesan free zone, meaning it is not under local diocesan control, giving it unique status and autonomy.

The area changed significantly during the late 17th and early 18th centuries. By the 16th century the area had become a well-known location, with Christopher Marlowe settling here in 1589. However, due to its location on the outskirts of the city, there was little development here before the 17th century. But a century later, the fate of Blossom Street has undergone a wonderful change.



Roman map (AD 43 to 410)



Medieval Map 1553 - 1667

• The red line frame is the current Blossom Street



Christopher Marlowe
26 February 1564 – 30 May 1593

Elizabethan English playwright,
poet, and translator

1. THE BEGINNING OF BLOSSM STREET (ARRIVAL OF THE HUGUENOTS)

TIME NODE: 1680-1760

After Henry IV's grandson Louis XIV promulgated the Edict of Fontainebleau and revoked the Edict of Nantes in 1685, 40,000 to 50,000 Huguenots immigrated to the British Isles.

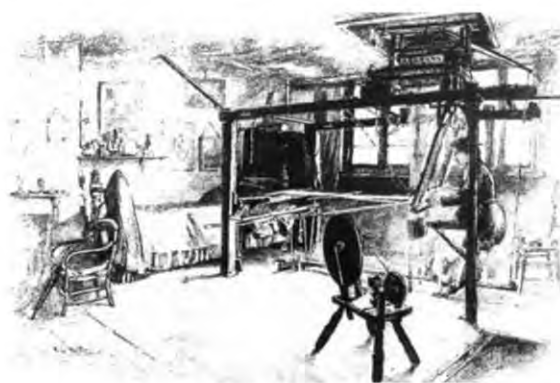
Spitalfields became one of the refuges for French Huguenots fleeing religious persecution. Many of these refugees were skilled silk weavers, and their entry established a prosperous silk handicraft industry in the area. These exquisite silk fabrics won the favor of upper-class ladies and gentlemen in the London area.

Although they did not directly participate in the construction of Blossom Street, their arrival promoted the development and prosperity of Blossom Street.

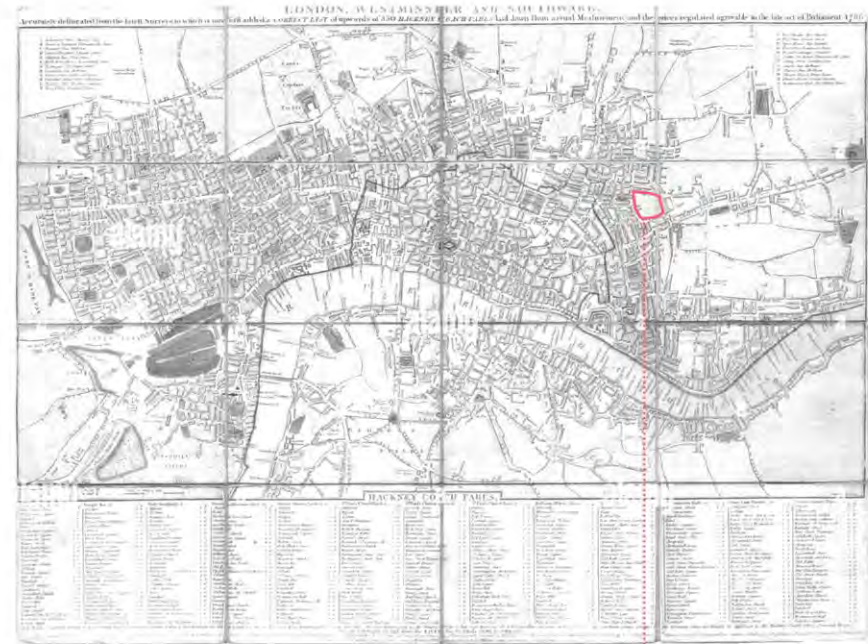
KEYWORDS: beginning, development, Huguenots, blossom street



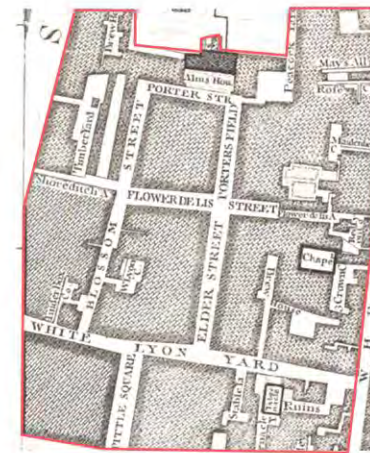
Edict of Fontainebleau



The working Huguenot weaver



18th century London map



Horwood's map of London, 1792-9

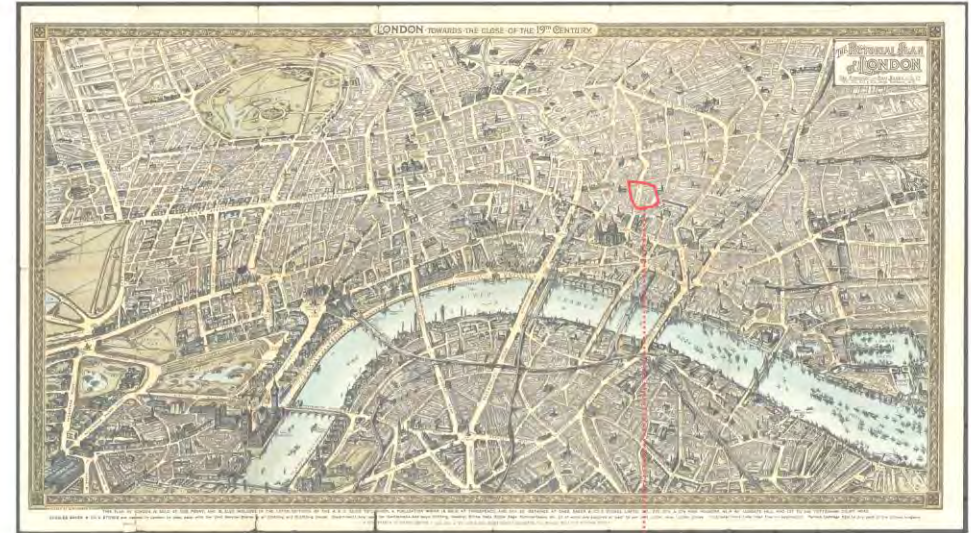
2. THE BLOOMING OF BLOSSM STREET (THE BOOM IN THE TEXTILE INDUSTRY AND THE RISE OF THE WAREHOUSE INDUSTRY)

TIME NODE: 1760-1900

Background and causes: With the rise of the industrial revolution, mechanized production and factory systems gradually replaced the handmade textile industry. But thanks to the industrious Huguenot weavers who provided the Blossom Street with a mature textile industry in the 17th century, textile factories producing large machines flourished in this land.

In 1861, The Times reported on the sale of a large tract of land between Blossom Street and High Street in Shoreditch, where a skein dyeing business had been operating for nearly a century.

Increased land development in the late 19th century led to the amalgamation of smaller lots to build large warehouses, particularly at Site 1. Large commercial buildings and warehouses replaced smaller shops and houses, particularly on the former Nicholls and Clarke site, which spanned much of the area. The block between Flower Street and Norton Folgate. Horwood's 1799 map and the first OS map of about 1873 show the street layout and the different lots.



19th century London map



Ordnance Survey map extract of 1873.

3. THE PERSISTENCE AND GROWTH OF BLOSSOM STREET (RE-CONSTRUCTION AND DEVELOPMENT)

TIME NODE: 1900 - 1990

EARLY 20TH CENTURY EXPANSION (1900-1930S)

THE NICHOLLS AND CLARKE COMPLEX EXPANDED AROUND BLOSSOM STREET, BECOMING A COMMERCIAL AND INDUSTRIAL CENTER.

THIS PERIOD WAS CHARACTERIZED BY OPTIMISM AND GROWTH, AND THE AREA BECAME A BUSTLING COMMERCIAL AND INDUSTRIAL CENTER.



WWII AND POST-WAR REBUILDING (1940S-1950S)

THE WAR DEVASTATED PARTS OF THE AREA, BUT COMMUNITIES BROUGHT ABOUT RECOVERY THROUGH RESILIENCE AND REBUILDING.

THIS ERA WAS CHARACTERIZED BY TENACITY AND DETERMINATION.



MID TO LATE 20TH CENTURY REDEVELOPMENT (1960S-1980S)

THE AREA HAS UNDERGONE EXTENSIVE DEMOLITION AND RECONSTRUCTION, ADAPTING TO CHANGING TIMES.

THIS PERIOD WAS CHARACTERIZED BY PROGRESS AND MODERNIZATION, AND THE REGION ADAPTED TO THE CHANGING TIMES.



LATE 20TH CENTURY DECLINE AND TRANSFORMATION (1980S-1990S)

THE RECESSION LED TO VACANCIES AND DEMOLITIONS, BUT THEN THE AREA TRANSFORMED INTO A TRENDY TECH HUB.

THIS PERIOD IS CHARACTERIZED BY NOSTALGIA FOR THE PAST AND EXCITEMENT FOR THE FUTURE AS THE AREA TRANSFORMS INTO A TRENDY, TECHNOLOGY-ORIENTED AREA.



4. PRESERVING NORTON FOLGATE'S HERITAGE: A BEACON IN A CHANGING CITY

TIME CODE: 2000 - 2015



BACK GROUND AND CAUSES: Residents and historic preservation groups such as the Spitalfields Trust launched the SAVE NORTON FOLGATE campaign to protect the historic character of the Norton Folgate area and fight against the urban redevelopment of British land.

Many local residents, history buffs and cultural preservation organizations are actively involved, expressing their determination to retain Spitalfields' unique historical character. They believe demolition will destroy the character of the local area, arguing for the restoration of existing buildings and the introduction of small businesses and homes rather than large office blocks.

The campaign eventually won in 2015, protecting the Norton Folgate area from large-scale demolition and redevelopment.

THE MAIN DEMANDS OF THE MOVEMENT:

Preserving historic buildings: ensuring that buildings of historical value are not demolished.

Maintain community character: Resist large-scale development projects that destroy a community's unique culture and architecture.

Promoting Sustainability: Support sustainable development options consistent with historic preservation principles.

Through this campaign, participants hope to preserve the essence of Spitalfields' history while modernizing it, so that future generations can continue to experience the area's cultural heritage.



The original appearance of blossom street



British land planned demolition plans

IMPORTANT HISTORICAL NODES OF BLOSSOM STREET (REPRESENTATIVE EVENTS)

1680-1760
ARRIVAL OF THE HUGUENOTS



Before 17 Centuries
THE BEGINNING OF A WONDERFUL CHAPTER



1760-1900
NICHOLLS & CLARKE WAREHOUSE

1900-1990
WATER POET BAR



2000-2024
OFFICE SPACE PERIOD



BLOSSOM STREET'S DEVELOPMENT TREND

Site analyze



Blossom St area location



The site of my project (11a Folgate St London E1 6BX)

Regional introduction

The site is located in Spitalfields, London, on Blossom Street. This area is a fascinating blend of old and new, with historic buildings juxtaposed against modern developments. Blossom Street itself is lined with a mix of traditional brickwork and contemporary architecture, creating a unique visual contrast. The street is surrounded by a vibrant community, filled with shops, cafes, and cultural landmarks, all contributing to the lively atmosphere. Despite the bustling environment, there are pockets of undeveloped land, hinting at future construction projects that will further transform the neighborhood.

THE HISTORY OF SITE



Project site diagram

- 01 Building
(New Building)



Date of construction:
Early 1960s.

Historic use:

Fur shop offices and warehouse. Originally located on the site of Nicholls & Clarke's warehouse (Middle 19 centuries).

- 02 Building
(Old Building)



Date of construction:

It was built in the early 20th century and expanded several times after World War II.

Historic use:

Furrier's shop and offices.
Water poet bar (Early 20 centuries to 2022)

- 03 Building
(Old Building)



Date of construction:

Edwardian commercial buildings with Arts and Crafts detailing. (dated 1904 on rainwater heads). The North side of Folgate Street was added in the 1970s.

Historic use:

Residential with shop and later part of a Furriers. Pub garden

Project Floor



The project is located on the 4th and 5th floors of this building.

Reason for selection:

- Compared to lower floors, higher levels offer a broader view, allowing one to see the entire layout of the neighborhood.
- Visitors can approach the windows in each exhibition space to compare the current neighborhood environment, prompting reflections on the area's historical changes.

4th-5th floor perspective

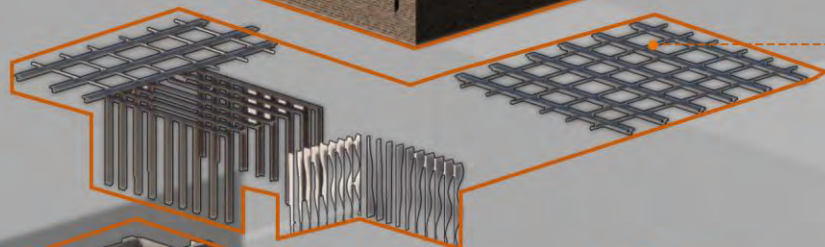


1-2 floor perspective

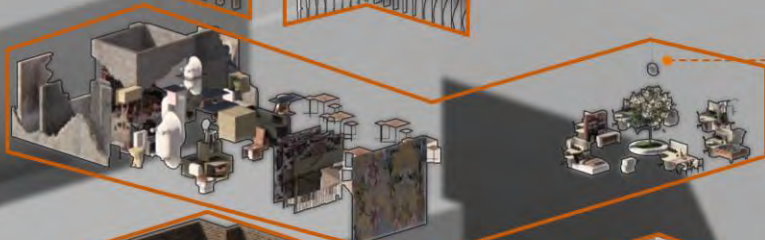




ROOF (UNCHANGED)



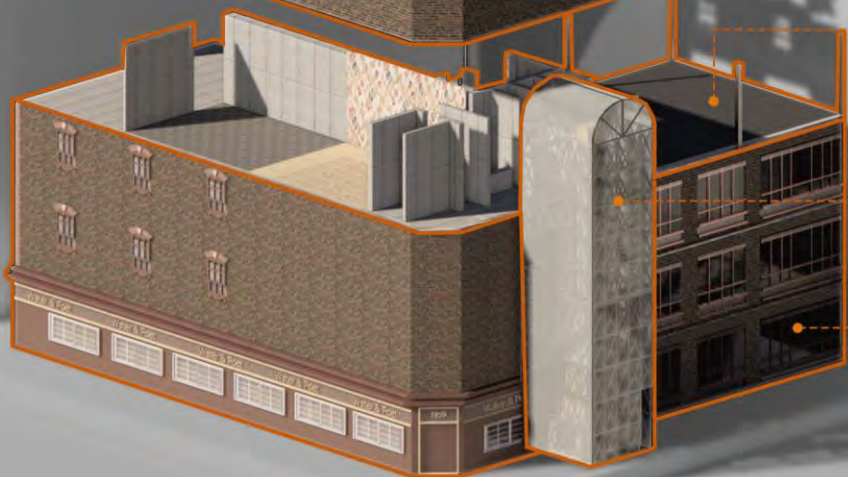
INTERIOR SPACE FRAME



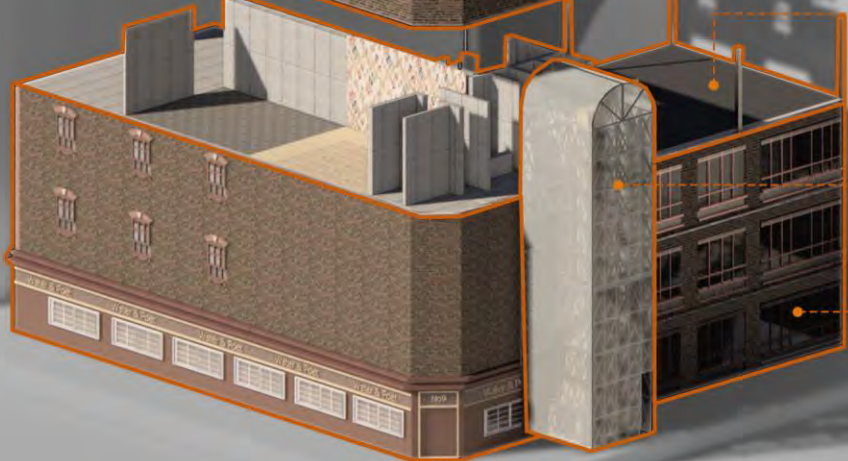
INDOOR FURNISHINGS AND LAYOUT



WALL STRUCTURE



INDOOR SPACE PARTITION



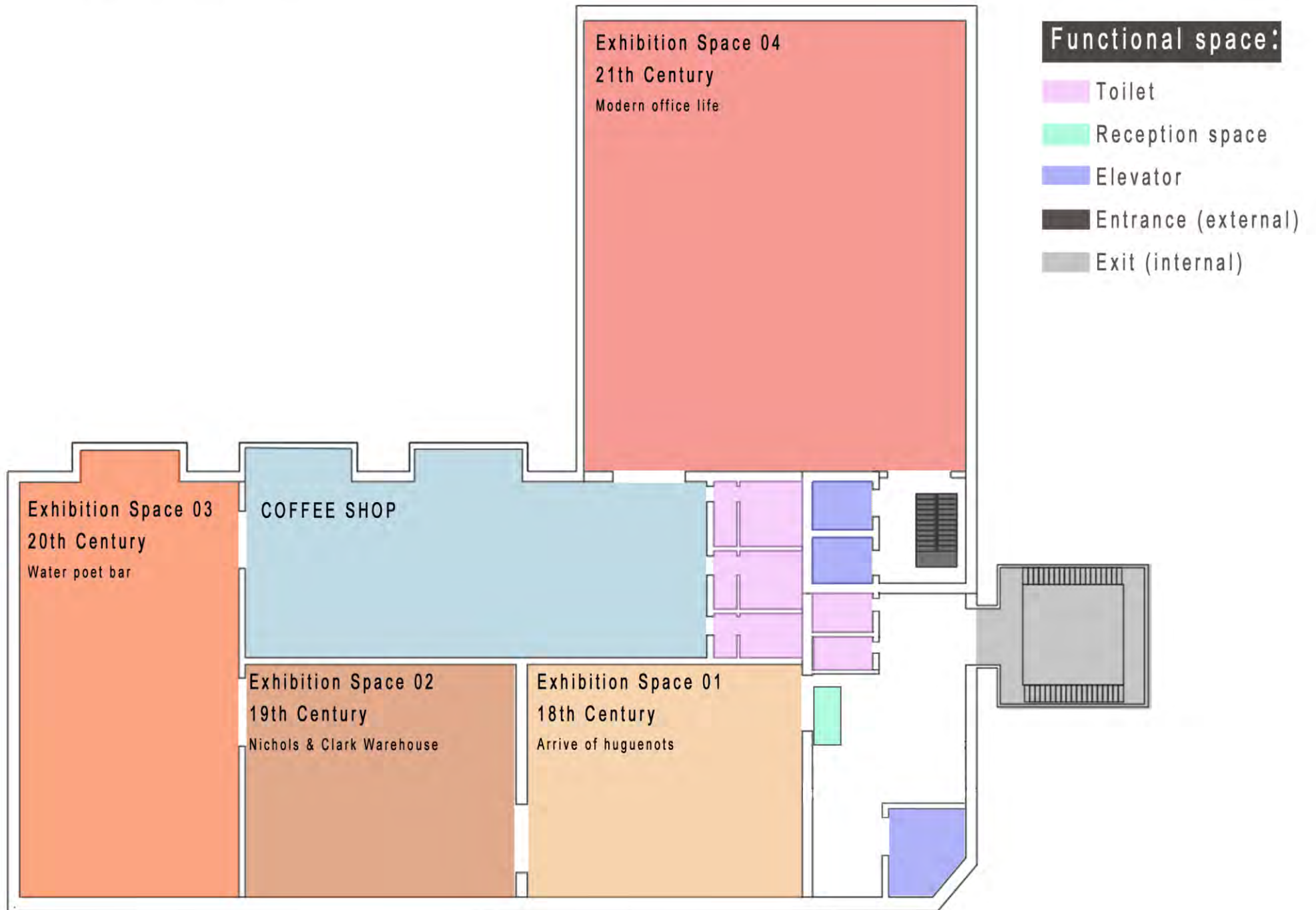
EXTERNAL CHANNELS



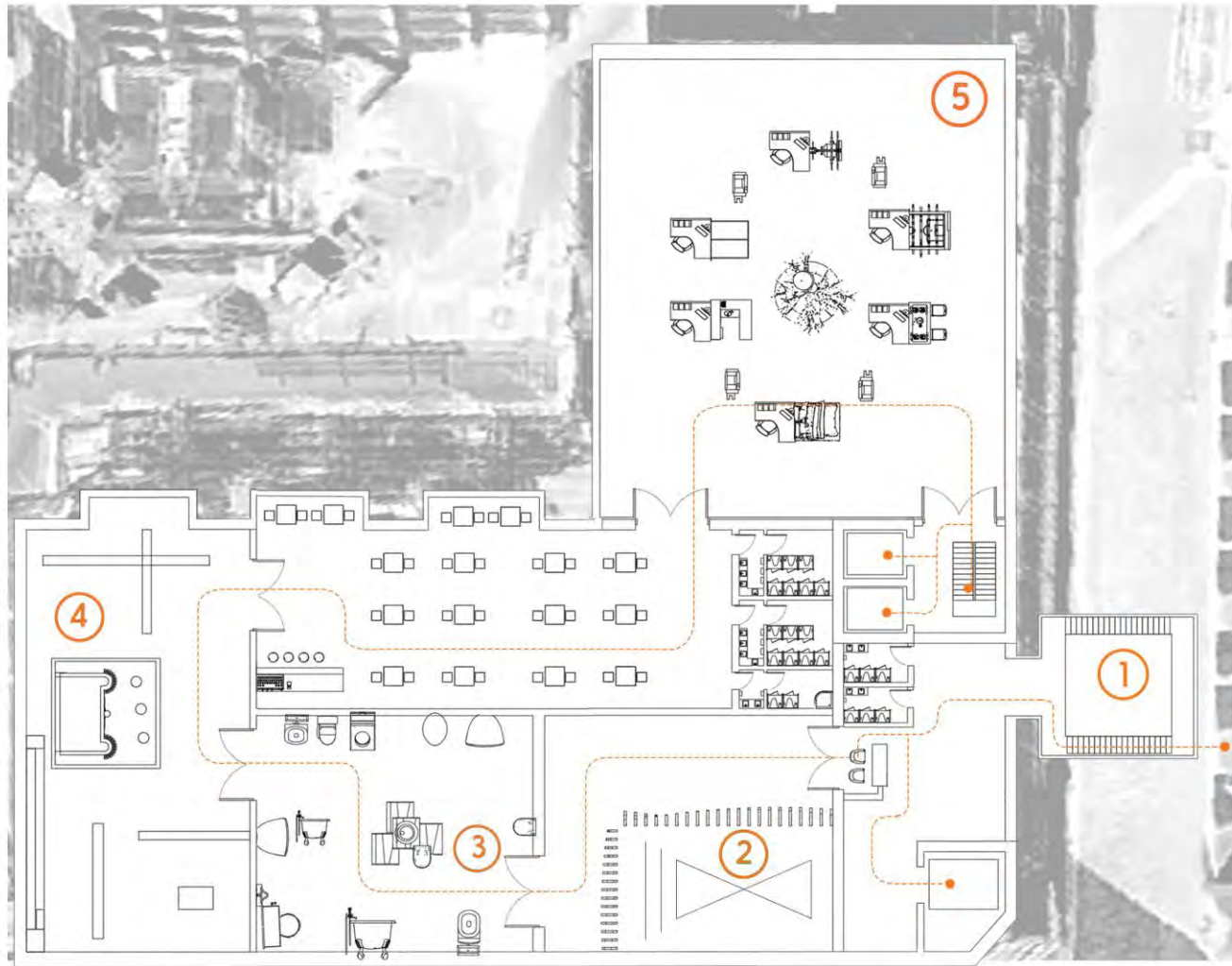
ORIGINAL BUILDING 1-3 FLOORS PART
(UNCHANGED)

OVERALL DISPLAY
- DIGITAL MODEL

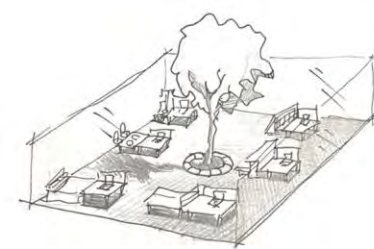
PLAN - FUNCTIONAL DIVISION



PLANS - FLOOR PLAN + INTERIOR CIRCULATION CHART

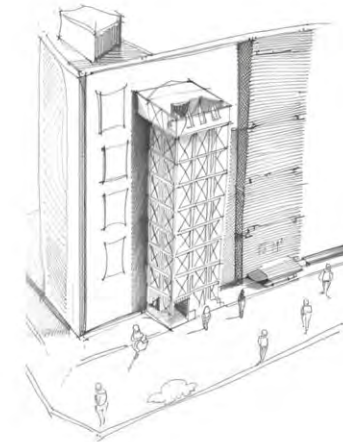


0 5 10 15 20
SCALE BAR 1:100



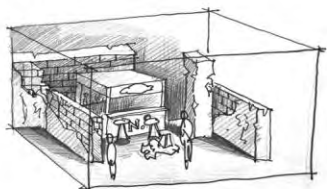
5

STEP 05
Exhibition04
21centuries



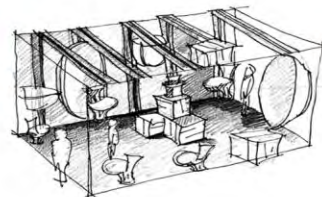
1

STEP 01
External Channel



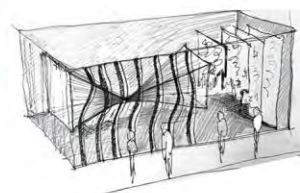
4

STEP 04
Exhibition03-20centuries



3

STEP 03
Exhibition02-19centuries



2

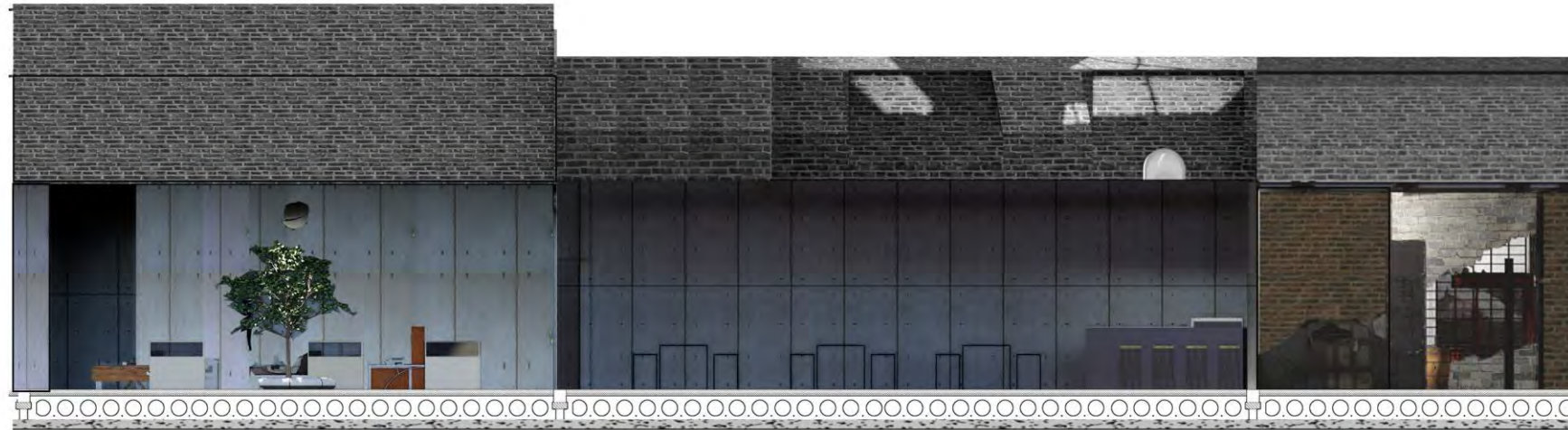
STEP 02
Exhibition01-18centuries

DESIGN CONCEPT:

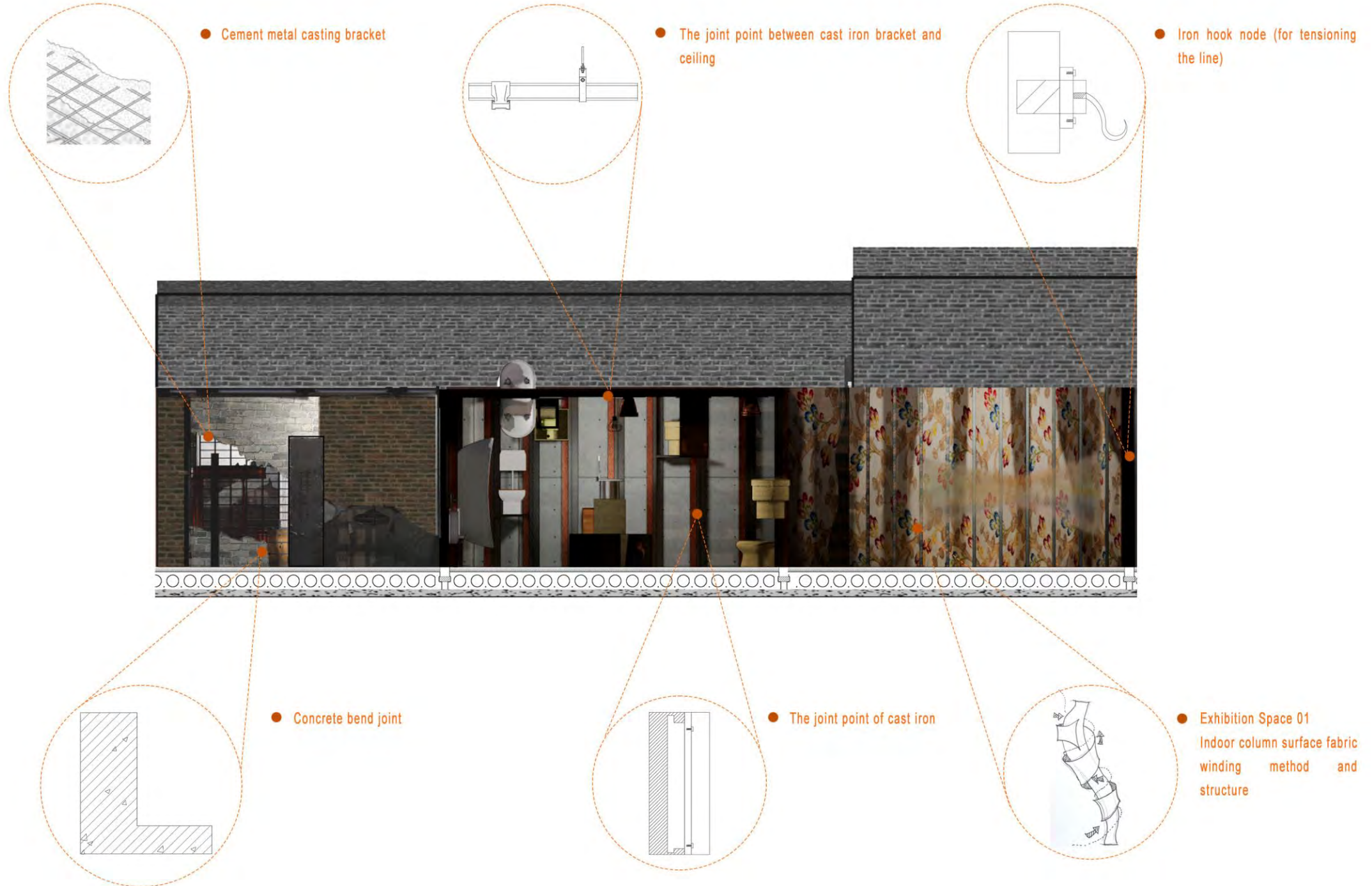
The project's circulation design is both simple and structured, guiding visitors through the interior space in a specific time-dependent sequence. This approach enables them to easily grasp key events in Blossom Street's history and intuitively absorb information about the interior scenes.

KEYWORDS: Structured Sequence, Time-Dependent

SECTIONAL DRAWING

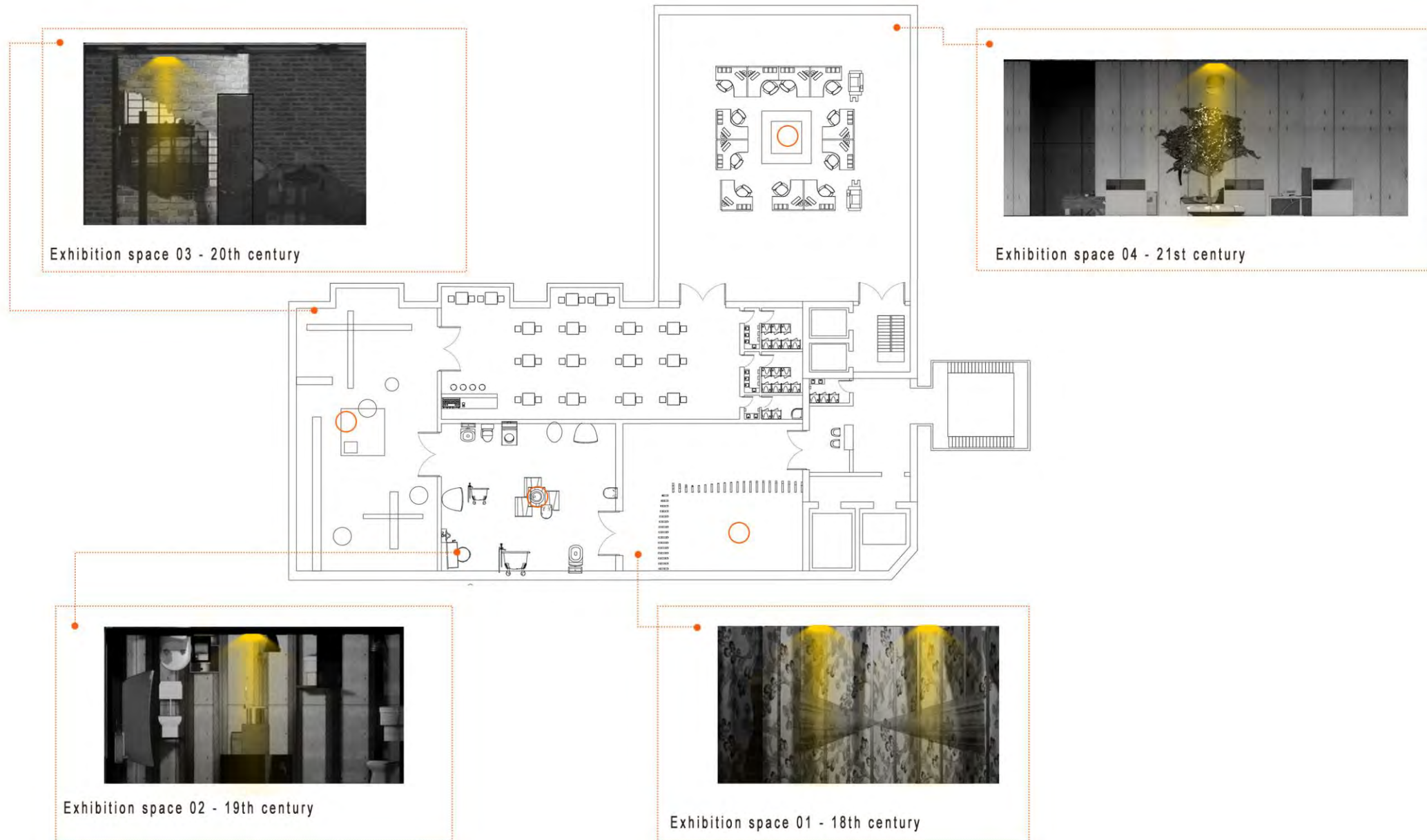


Node diagram - Exhibition space 01 & 02 & 03



PLANS - INTERIOR LIGHTING DIAGRAM

My design showcases important moments in Blossom Street's history through materials and large-scale art installations. Each exhibition space has a monument representing a different stage in the street's history, which is also the most important part of each space. I need to highlight its central location to attract visitors. To do this, I placed the main light source directly above the monument.



Extended interest from Totem



Other ordinary chimneys in Blossom street

Jacobean chimney



Traditional brick chimney



Jacobean chimney



Jacobean chimney

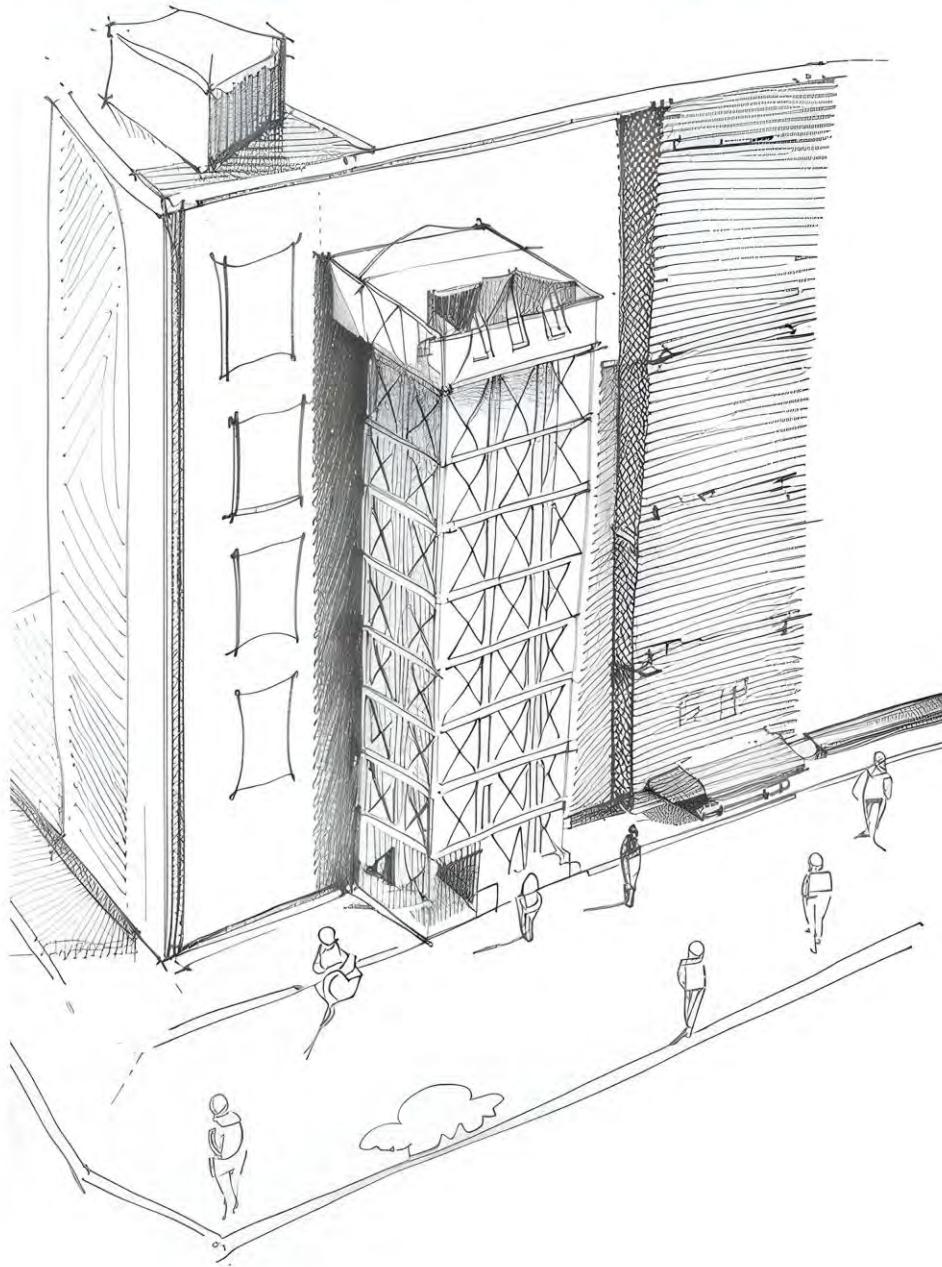


Keywords: Attraction, Unique, special, Distinct Style, Eye-catching Sign

Why is this chimney the most attractive thing to me in the site?

When I first arrived at the site, I was immediately drawn to the massive, unique chimney. Its size and style were distinct from all the other chimneys on the street. This inspired me to design an eye-catching, unconventional sign to attract people's attention.

EXTERNAL CHANNEL - EXTEND OF SITE'S CHIMNEY



Hand-painted effect display

FUNCTION: MAIN ENTRANCE TO THE MUSEUM

LOCATION:

Part of the design is a large exterior passage that extends from the fourth floor of the building to the sidewalk of the adjacent building.

DESIGN CONSIDERATIONS:

1. VISITOR GUIDANCE:

As the project is located on the fourth and fifth floors, it is easy to be overlooked. However, a striking and unusual external passage can attract the attention and curiosity of passers-by and lead them into the museum.

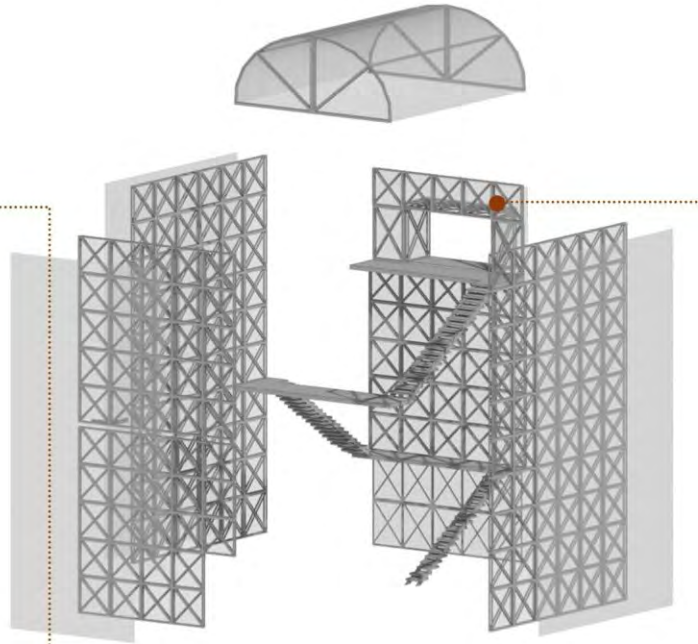
2. DESIGN CONCEPT:

This channel should not only be functional, but also reflect the characteristics of the project and highlight its historical attributes as a museum. I hope that when visitors pass through it, they can intuitively feel the passage of time and have a subtle connection with the project.

EXTERNAL CHANNEL - CAST IRON FRAME & STAIRCASE SYSTEM



● THE OLD BUILDING WAS BUILT IN THE LATE 19TH CENTURY



● SCHEMATIC DIAGRAM OF EXTERNAL CHANNEL FRAME AND STAIR SYSTEM.



THE CAST IRON OF LONDON SAINT PANCRAS INTERNATIONAL STATION 1886

THE CAST IRON OF GIANTCRYSTAL PALACE BY JOSEPH PAXTON 1851

● LATE 19TH CENTURY CAST IRON STRUCTURE

DESIGN IDEAS

The exterior access is adjacent to the site's historic building, which was originally an 19th-century warehouse with a rich cast-iron exterior. To harmonize with this style, I designed a frame and stair system that echoes the cast-iron structure of that period.

DESIGN REASON:

- It enhances the architectural cohesion with the surrounding area.
- It simplifies maintenance and disassembly.
- The internal wraparound staircase allows visitors to intuitively touch and feel the display item inside.

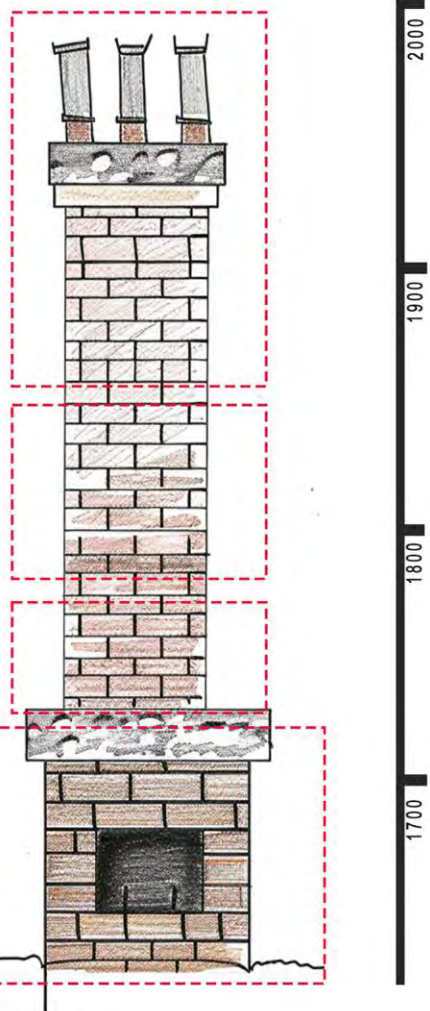
EXTERNAL CHANNEL - INSIDE DISPLY ITEM SECTION

DESIGN IDEAS

I hope that people can take a close look at the exhibits in the center around the stair system and feel the changes in different historical periods. Therefore, I chose materials representing the 18th, 19th, 20th and 21st centuries to build this part.

In terms of morphological design, I will use the morphology of traditional British brick chimneys as a basis and use AI image generation tools to assist in creation.

● Material selection ideas



New sustainable materials



Fletton Brick



Accrington Brick



Wire Cut / Engineer Bricks



London Stock Brick



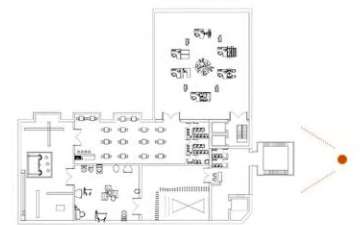
● AI-assisted design



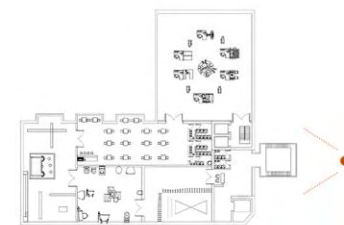
Selection results

SELECTION REASON :

- **Main body of brick structure:** bricks and stones from different periods are used from bottom to top, creating a strong sense of historical change.
- **Historical traces:** the bricks at the bottom are broken, and the bricks at the top are intact. Presenting a sense of historical change.



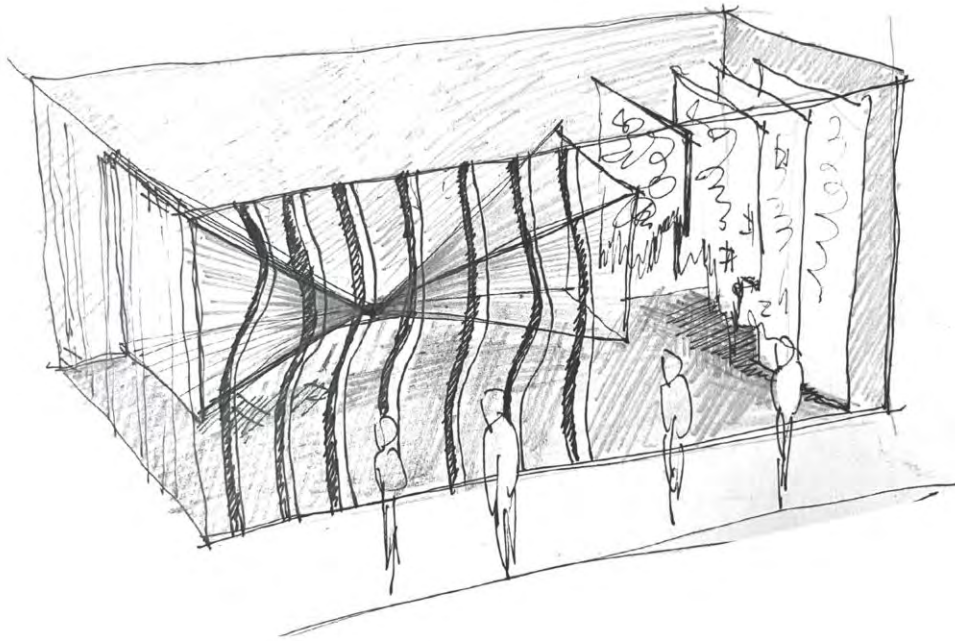
External channels (Interior)



External channels (Exterior)

EXHIBITION SPACE 01 - 18 CENTURIES - ARRIVAL OF THE HUGUENOTS

HAND-PAINTED EFFECT SIMULATION

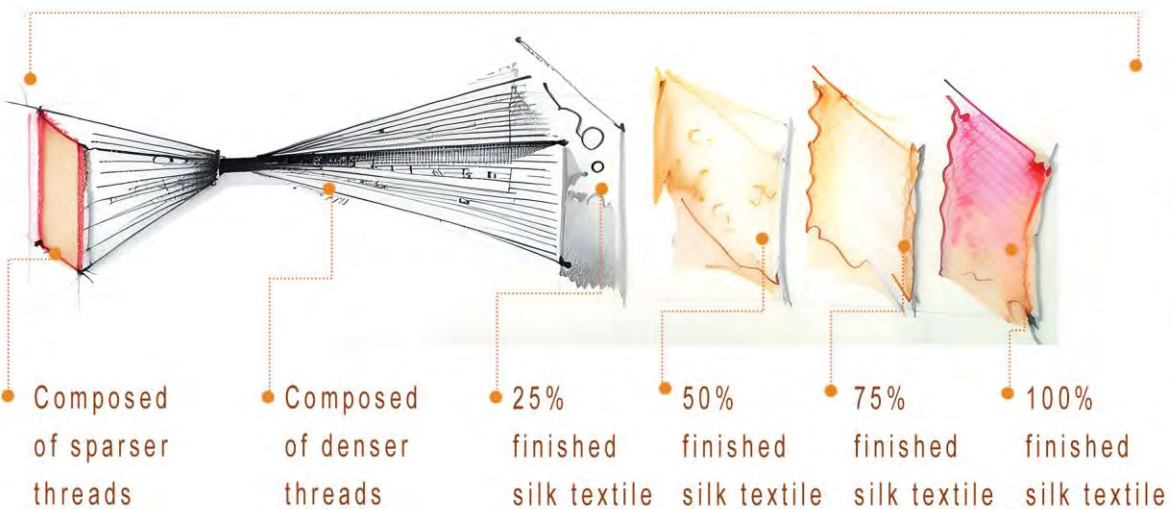


DESIGN IDEA:

Blossom Street began to flourish in the 18th century with the arrival of Huguenot weavers. Their fine silks were loved by the ladies and gentlemen of London. At this stage, the textile industry became the mainstay of Blossom Street.

EMOTIONS THAT THE AUDIENCE HOPES TO

- **Awe and admiration:**
Deep respect for the weavers' exquisite skills and works.
- **Appreciation and love:**
Inspire a love for textile art and understand the stories and craftsmanship behind it.



INSPIRATION:

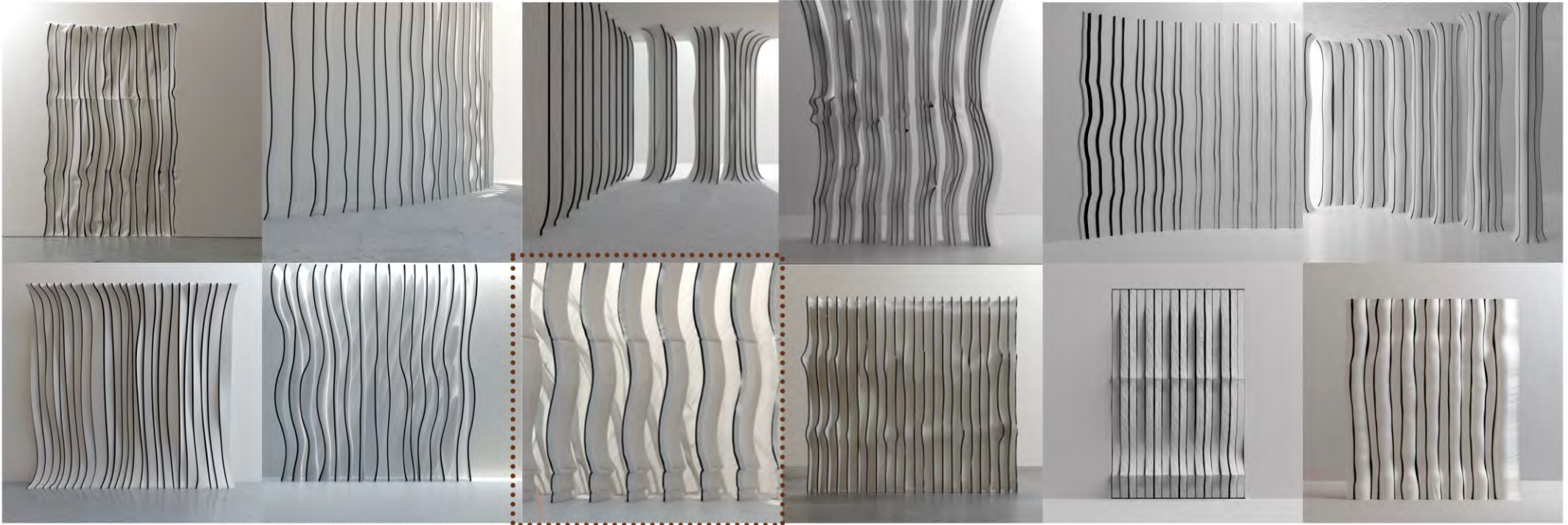
Mexican artist - Gabriel Dawe



AI-ASSISTED DESIGN - WALL PART

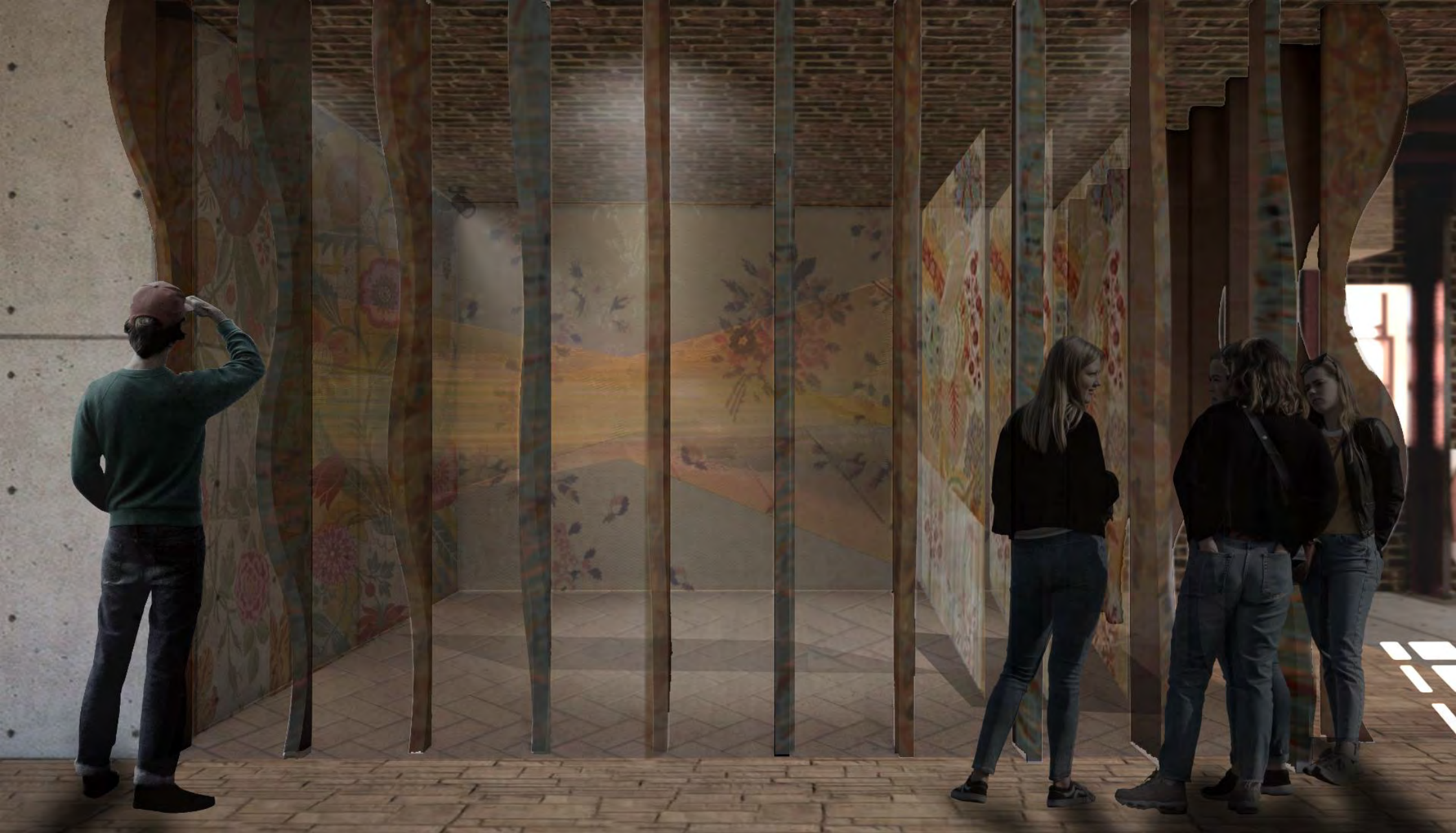
- To show the lightness and fluidity of silk, the wall design should mimic the wave effect of silk fluttering in the wind, creating a floating visual experience.
- The structure should be simple and independent to ensure support and stability.
- The wall also needs to have large gaps so that the audience can see the giant installation inside.

AI GENERATED RESULTS - MIDJOURNEY



SELECTION RESULTS:

- Fitting visual effect
- Simple and independent structure ensures the support and stability of the wall.
- There is a large gap in the wall.



Exhibition Space 01- huguenot weaver

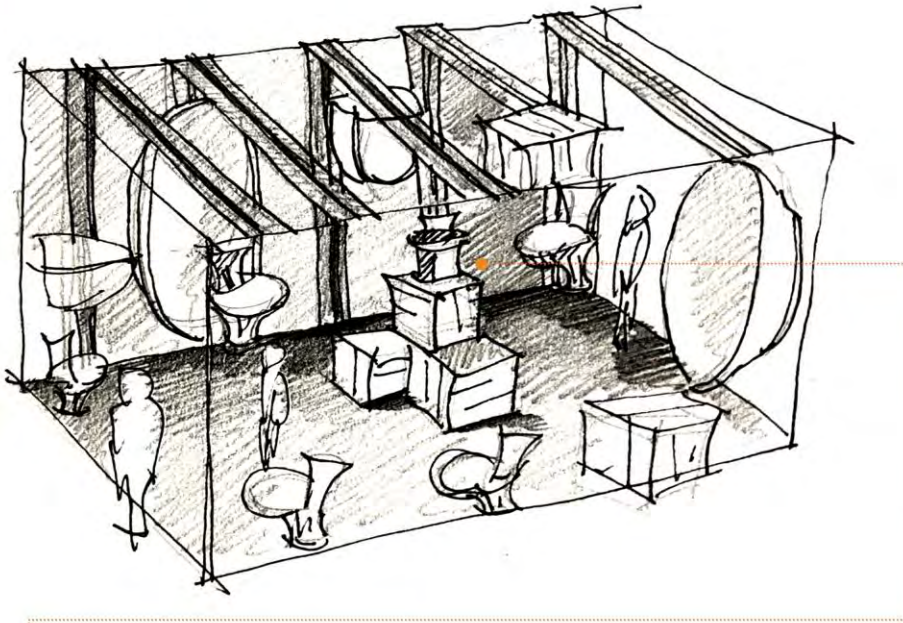


MATERIAL PANEL - EXHIBITION 01 - HUGUENOTS WEAVING HOUSE



EXHIBITION SPACE 02 - 19 CENTURIES - THE NICHOLLS AND CLARKE'S WAREHOUSE

HAND-PAINTED EFFECT SIMULATION



DESIGN IDEA:

This space celebrates the significant contribution Nicholls and Clarke made to Blossom Street in the 19th century. The walls and ceilings are decorated with products they produced in the 19th century. Centrally located are N & C's first generation products from the 19th century. The design reflects the style of the 19th century warehouse, retaining the original cast iron structure. Exposed T-beams and weathered concrete showcase the building's historic character.

EMOTIONS THAT THE AUDIENCE HOPES TO CREATE:

- CURIOSITY AND FASCINATION
- NOSTALGIA AND CHERISHMENT
- IMMERSION AND RESONANCE

INSPIRATION:



NICHOLLS & CLARKE'S FIRST TOILET (1880)

NICHOLLS & CLARKE 1880



'FOUNTAIN'
MARCELDUCHAMP
1917

AI-ASSISTED DESIGN - SPACE ATMOSPHERE & COLOR MATCHING

To capture the 19th-century warehouse ambiance and highlight Nicholls and Clarke's contributions, I will use Midjourney AI to visualize historical elements, simulate period lighting, and create interactive displays. This includes designing product displays, refining color schemes, and incorporating authentic decor for an immersive visitor experience.

AI GENERATED RESULTS - MIDJOURNEY



KEYWORDS

- 19th century warehouse
- atmosphere
- cast iron structure
- Nicholls and Clarke
- toilet
- historical element visualization
- product display
- color scheme

SELECTION RESULTS:



● ATMOSPHERE CREATION

The mottled, historically marked walls highlight the 19th-century identity of the space, immersing visitors in that era's unique atmosphere.



● DISPLAY PLAN:

The products of Nicholls and Clark are well displayed, bringing vitality to the space, attracting the attention of the audience, allowing them to feel fun and surprise while exploring history.

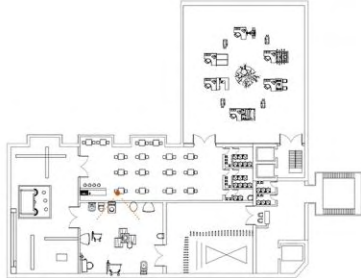


Exhibition space 02- Nicholls & Clarke warehouse





Exhibition space 02- Nicholls & Clarke warehouse

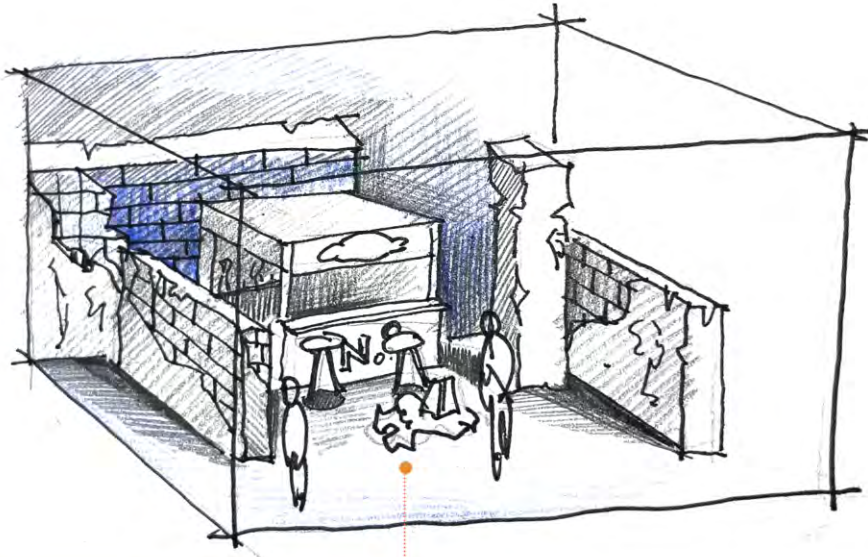


MATERIAL PANEL - EXHIBITION 02-N & C WAREHOUSE



EXHIBITION SPACE 03 - 20 CENTURIES - RE-CONSTRUCTION AND DEVELOPMENT - WATER POET BAR

HAND-PAINTED EFFECT SIMULATION



DESIGN IDEA:

The space commemorates the 20th century, a period marked by reconstruction and renaissance. Despite numerous difficulties and challenges, the steadfast perseverance of the local community ultimately led to the renaissance and development of the neighborhood.

EMOTIONS THAT THE AUDIENCE HOPES TO

- **RECONSTRUCTION AND HOPE:**
Showing the spirit of reconstruction and optimism.
- **PERSEVERANCE AND RESILIENCE:**
Celebrating the determination of local people.

WATER POET BAR: A SYMBOL OF REVIVAL

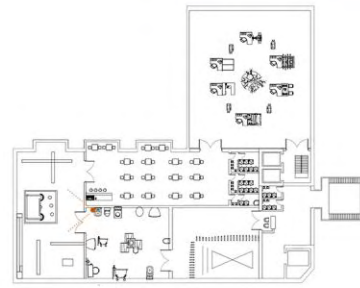
The Water Poet bar, originally built in the early 20th century, was located on the first floor of the site building. It closed during neighborhood reconstruction but reopened with the area's revitalization, quickly becoming popular among local residents. The bar has since been demolished.

The Water Poet was a complete witness to what Blossom St experienced during this period and ushered in a revival along with the neighborhood.



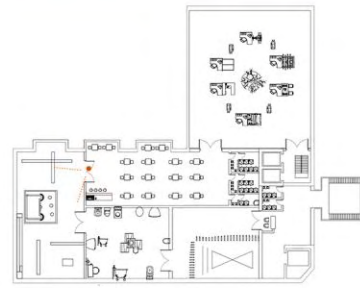


Exhibition space 03- Water poet bar





Exhibition space 03- Water poet bar

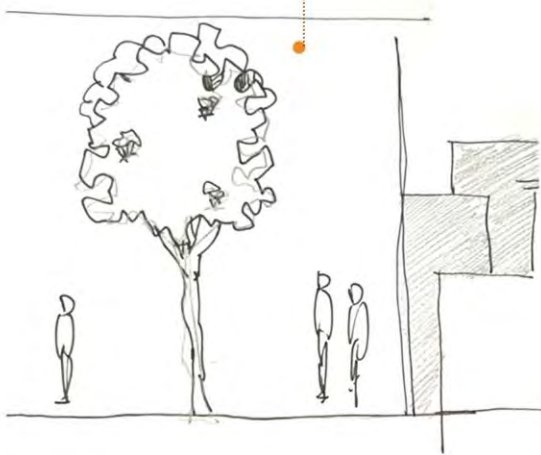
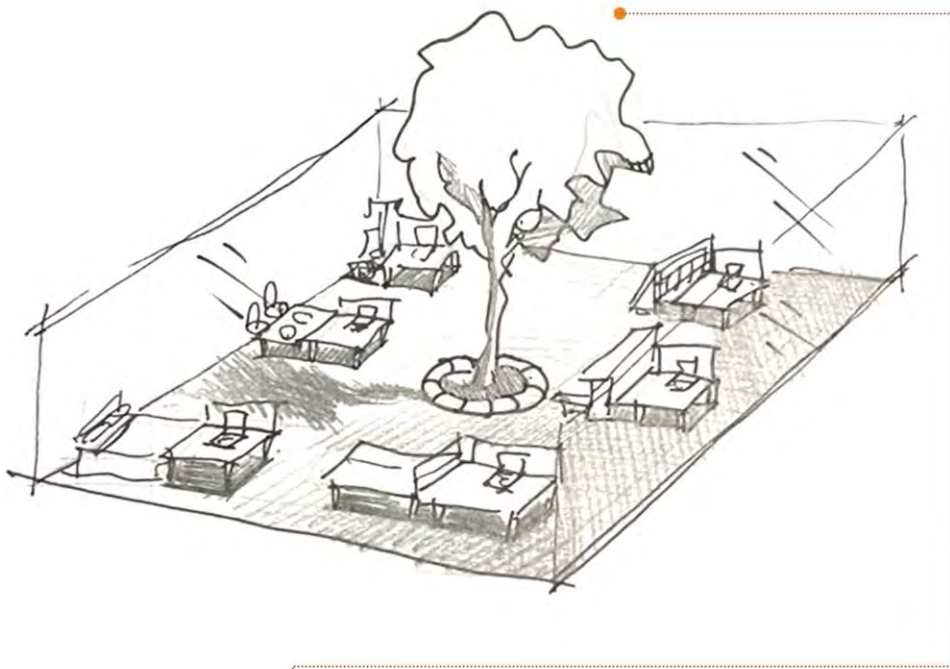


MATERIAL PANEL - EXHIBITION 03 - WATER POET BAR



EXHIBITION SPACE 04 - 21 CENTURIES - OFFICESPACE LIFE

HAND-PAINTED EFFECT SIMULATION



THE JOKE TREE

The tree grew in the office and died in the office.

Symbolizes that some people stay in the office almost from morning till night and seldom leave.

DESIGN IDEA:

Most of the buildings on Blossom Street have now been converted into office space, making it one of the most luxurious office areas in London. These office spaces have cafes and entertainment facilities. Many people stay in the office almost all day, and I hope to encourage everyone to find a balance between work and personal life. Look at this issue critically.

EMOTIONS THAT THE AUDIENCE HOPES TO

- IRONY
- REFLECTION
- WARNING
- AWAKENING

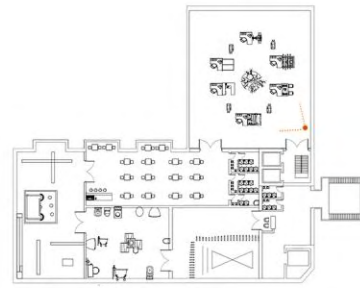
INSPIRATION:



Office Space - 1999
Comedy/Dark comedy



Exhibition space 04- officespace life



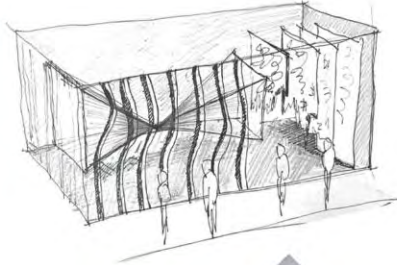
MATERIAL PANEL - EXHIBITION 04 - OFFICESPACE LIFE



PHYSICAL MODEL DISPLAY 1:50

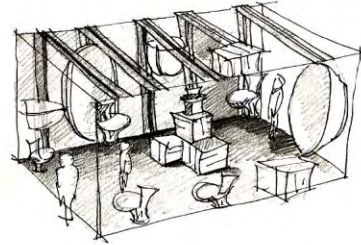
● Exhibition space 01
18 centuries

ARRIVAL OF THE HUGUENOTS



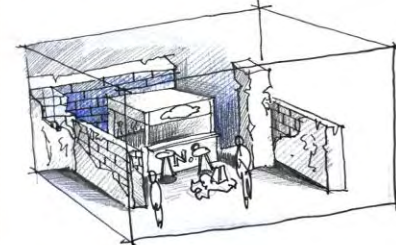
● Exhibition space 02
19 centuries

THE NICHOLLS AND CLARKE'S
WAREHOUSE



● Exhibition space 03
20 centuries

WATER POET BAR



Physical Model - Single Space Display



● Exhibition space 02 - 19 centuries - THE NICHOLLS AND CLARKE'S WAREHOUSE



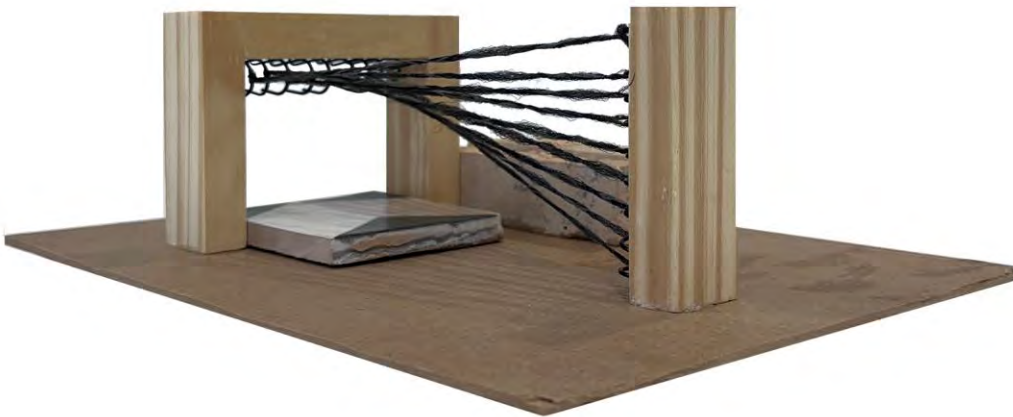
● Exhibition space 03 - 20 centuries - WATER POET BAR



Physical Model - Single Space Display



- Exhibition space 01 - 18 centuries - ARRIVAL OF THE HUGUENOTS



- Art installation sample

