

A Library .....  
of the mind

*Leesha Chaurasia*  
*superReuse*

# Overview

A Labyrinth like library which promotes deep contemplative reading and instigates social connections through serendipitous encounters.

The refurbished factory aspires to be a space that can slow down our pace, making us more aware of our surroundings and our thoughts. By exploring themes of slow reading, serendipity, and mystery the library will be a space that enables richer understanding and thoughtful reflection of knowledge as well as spontaneous gatherings and social connections.



# Contents

1. Site Analysis
2. Spatial Analysis
3. Design Process
4. Design Strategy
5. Design Proposal
- 5.3D Model



*23-24 Gillender Street    A12 Blackwall Tunnel    River Lea*

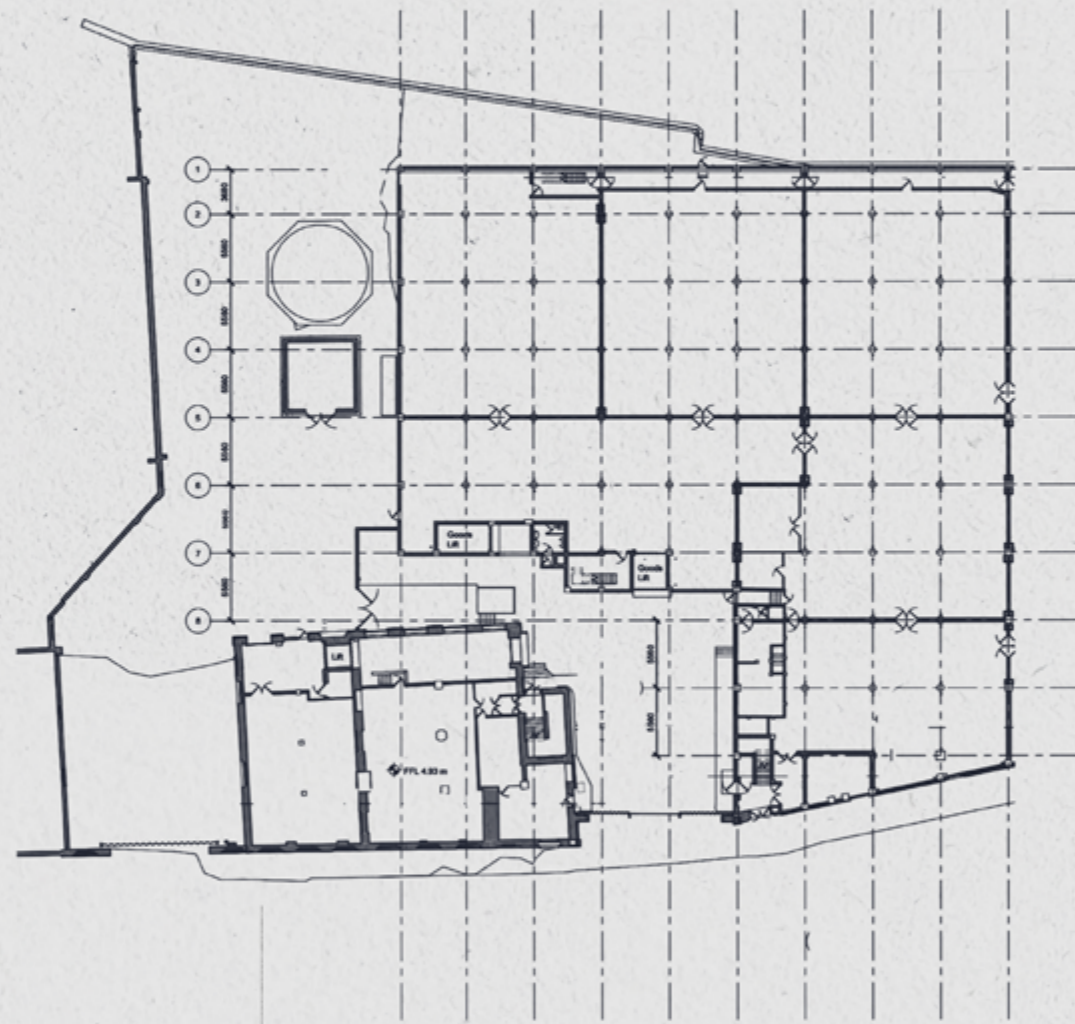
23-24 Gillender Street is a 170,000 square foot warehouse in Tower Hamlets, London, featuring both Victorian and 1930s modernist architecture. Spread across four floors with ceilings reaching up to five meters high, it sits within the Limehouse Cut conservation and archaeological priority areas. Bounded by the River Lea to the east, Gillender Street to the west, and the A12 Blackwall Tunnel Northern Approach beyond, it offers moderate access to public transport, with Bromley-By-Bow London Underground Station about 300 meters north on the opposite side of the A12.

*Limehouse Cut    River Lea    Bromley by Bow (Hammersmith Line)    A12 Blackwall Tunnel    23-24 Gillender Street*

# Site Analysis

# Spatial Analysis

# Floor plan analysis



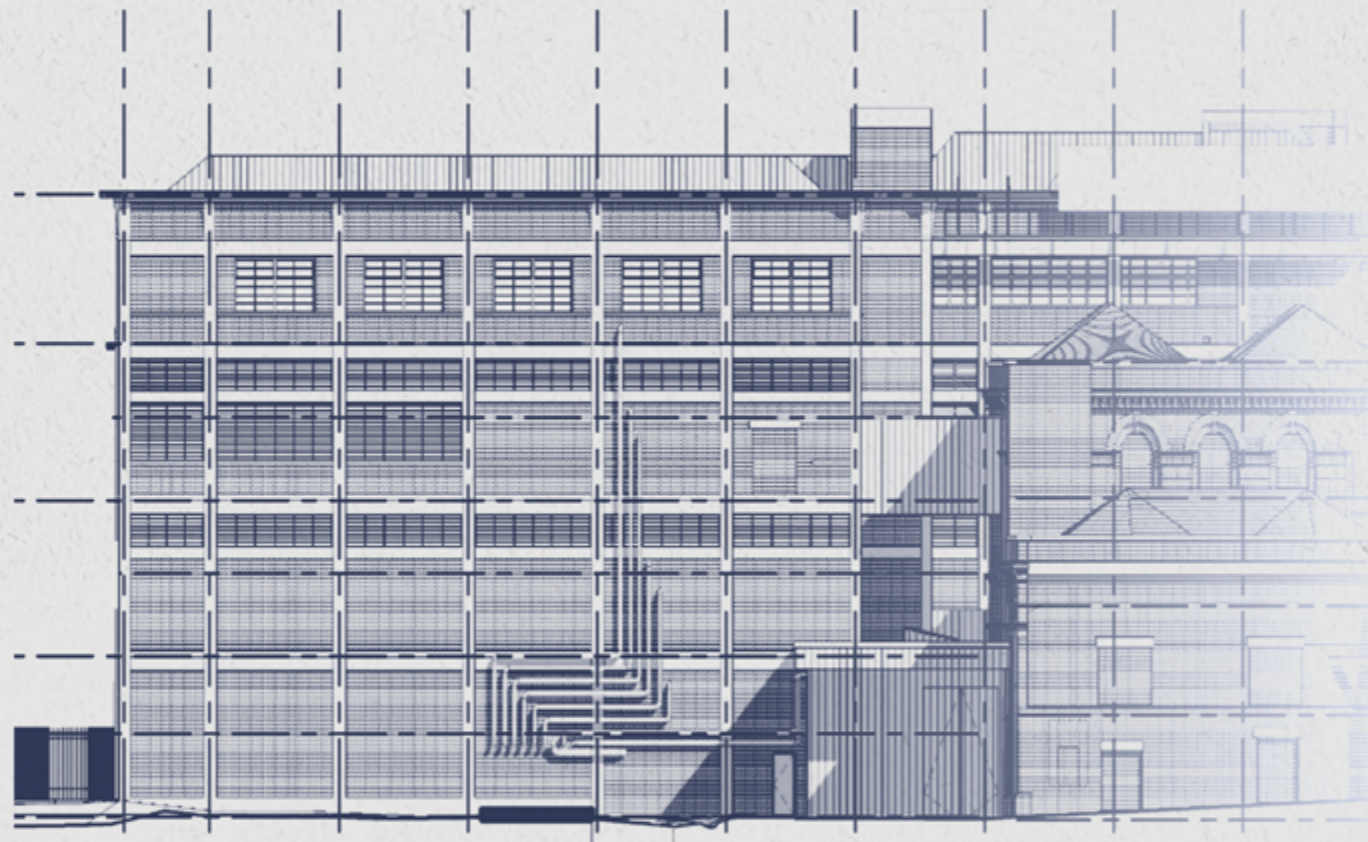
*Grid framework*



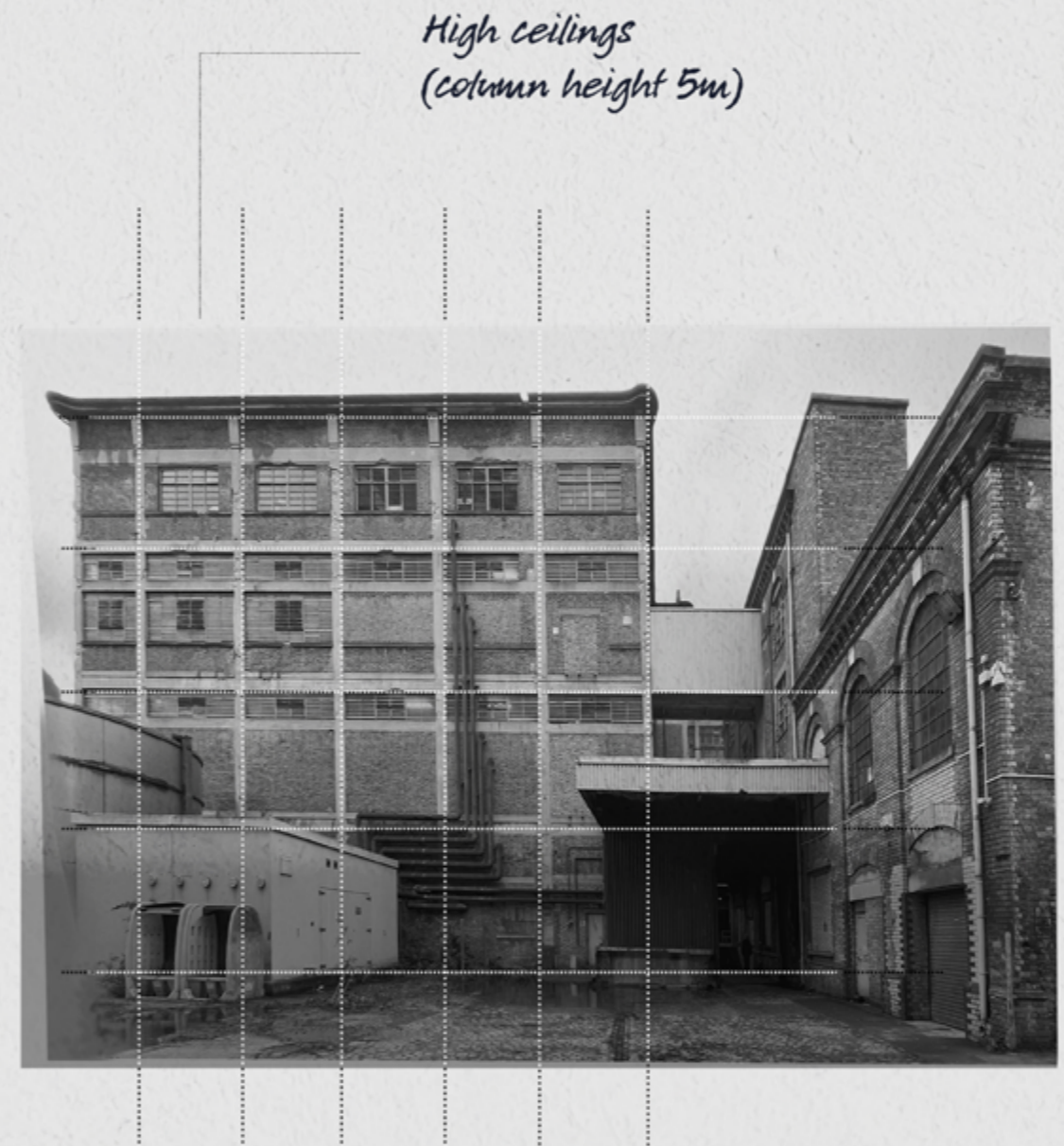
*No structural walls  
(Spatial and Visual Continuity)*

*Free circulation*

# Elevation analysis

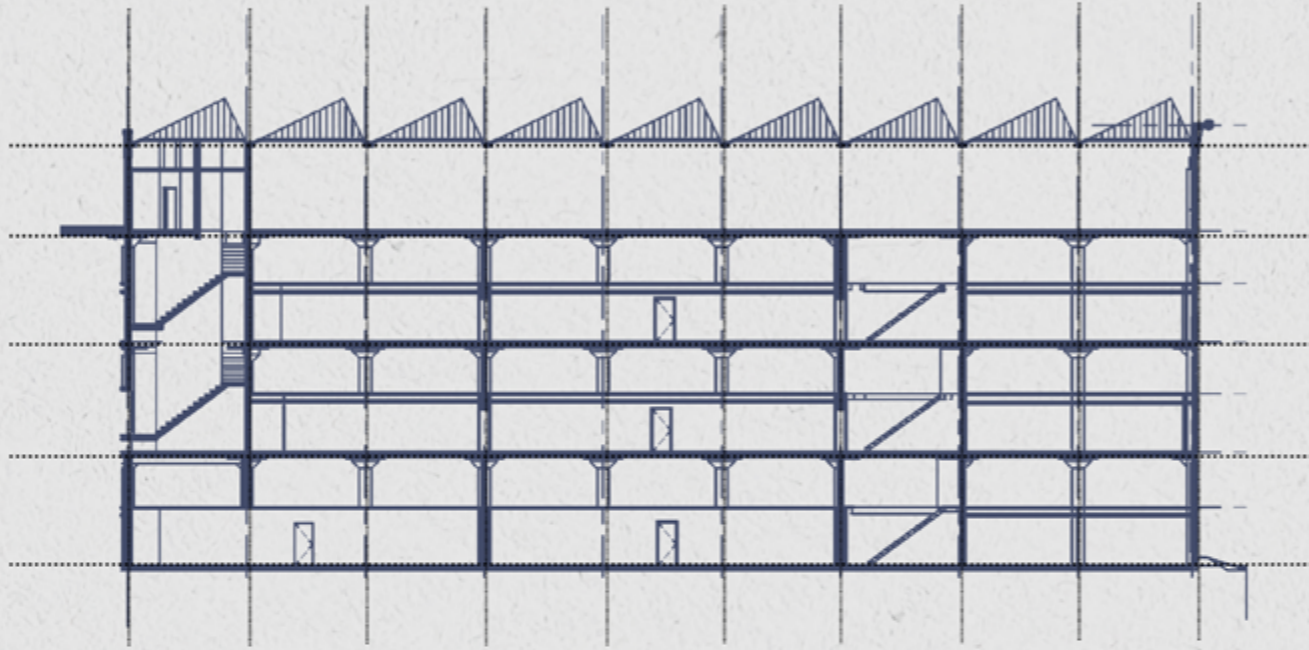


*Grid structural framework*



*High ceilings  
(column height 5m)*

# Section analysis



*No structural walls  
(Spatial and Visual Continuity)*

*High ceilings  
(column height 5m)*



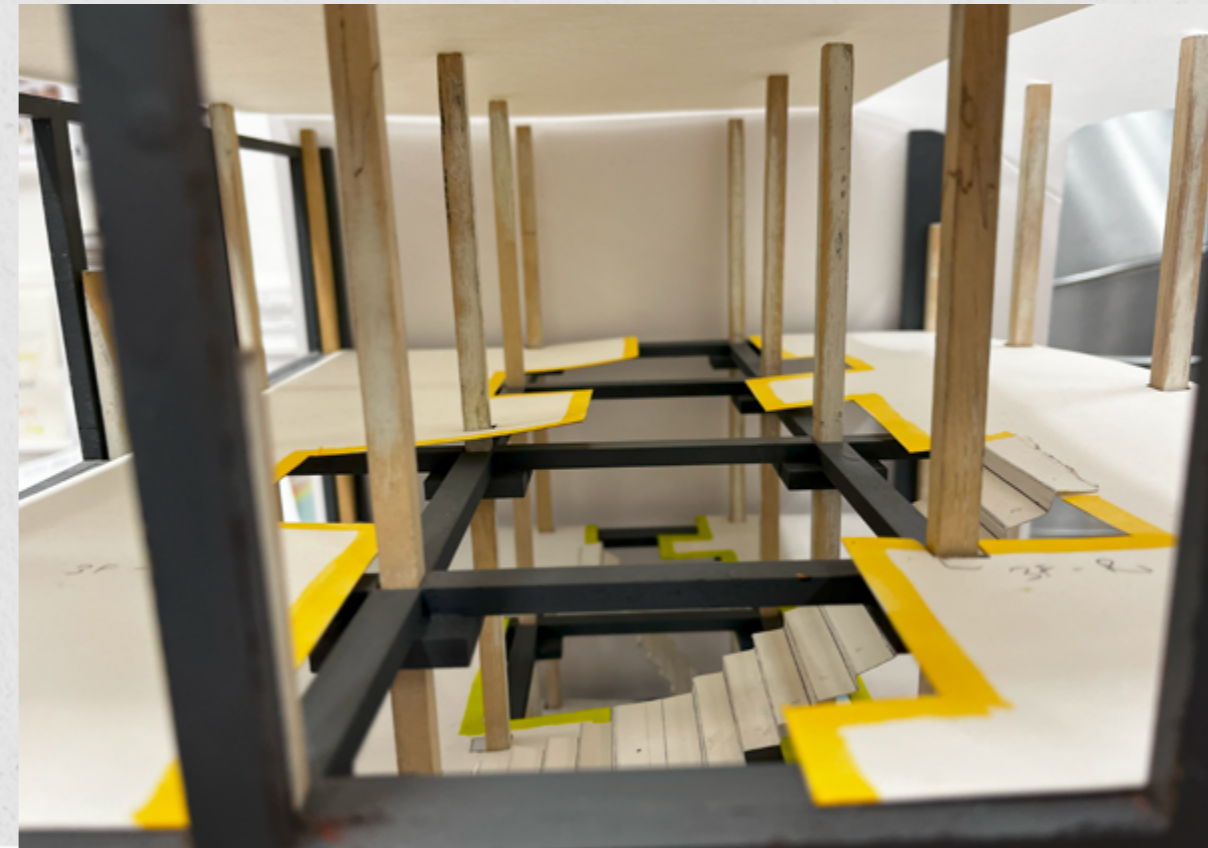
# Compression Artefact

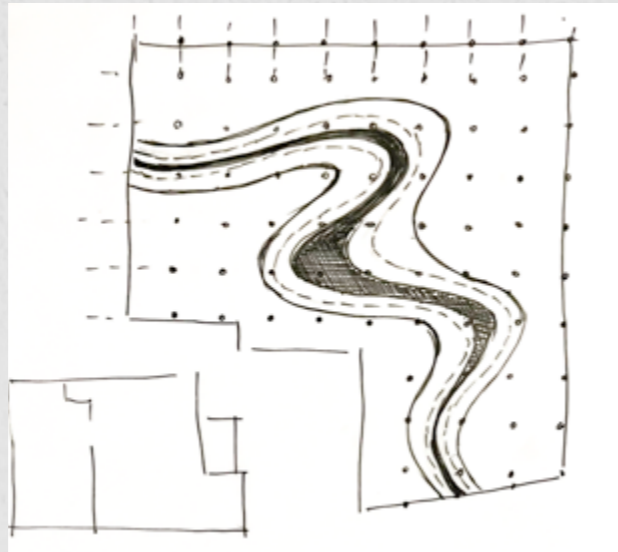


# Design Process

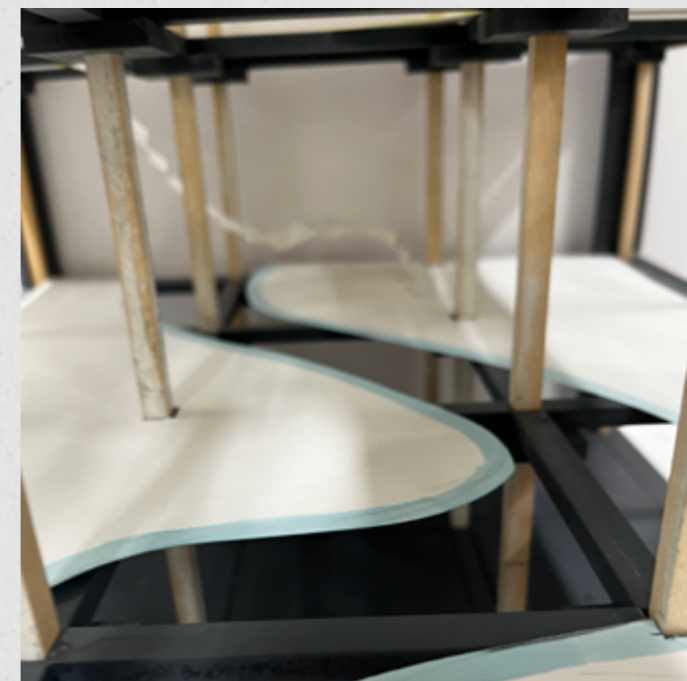
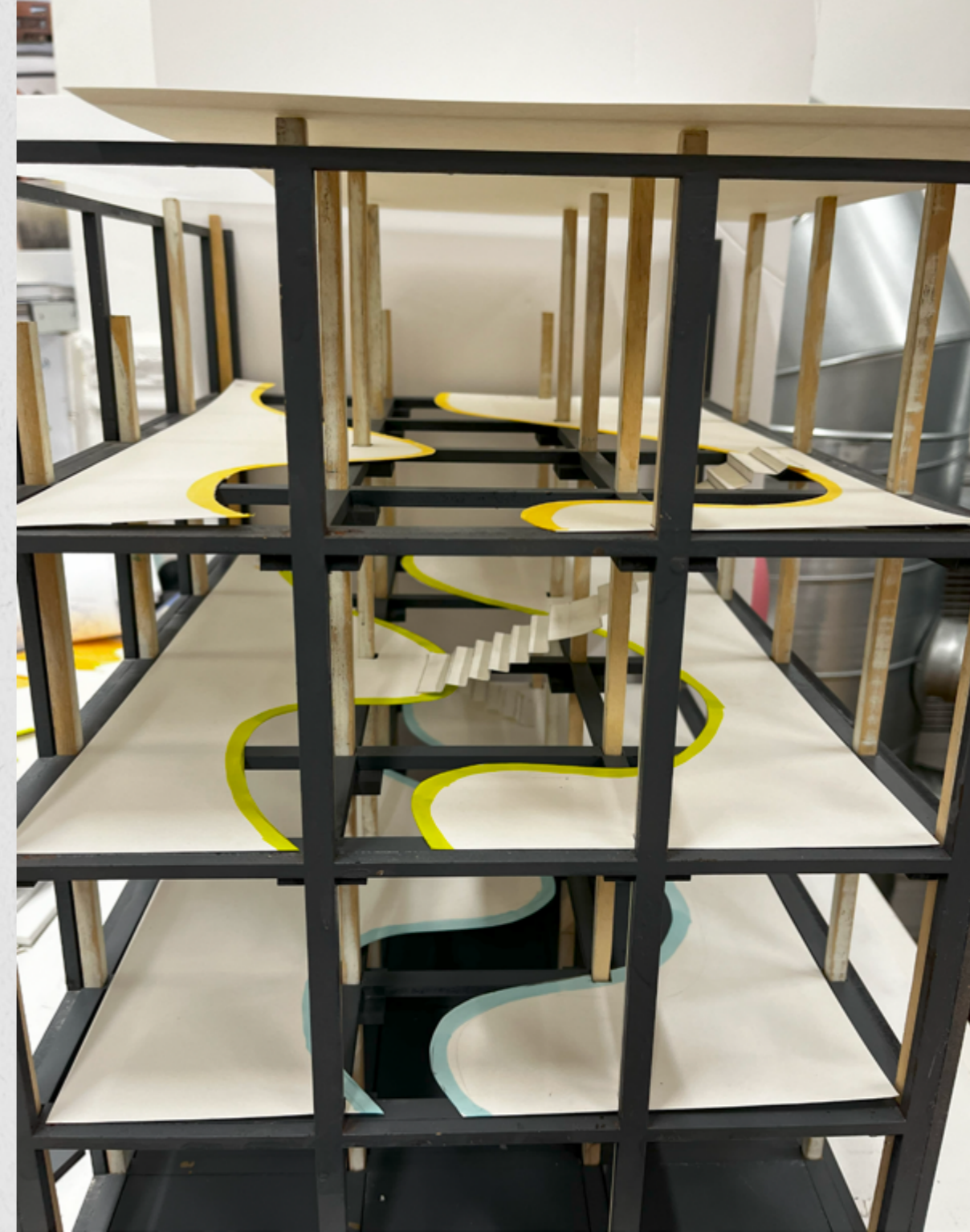
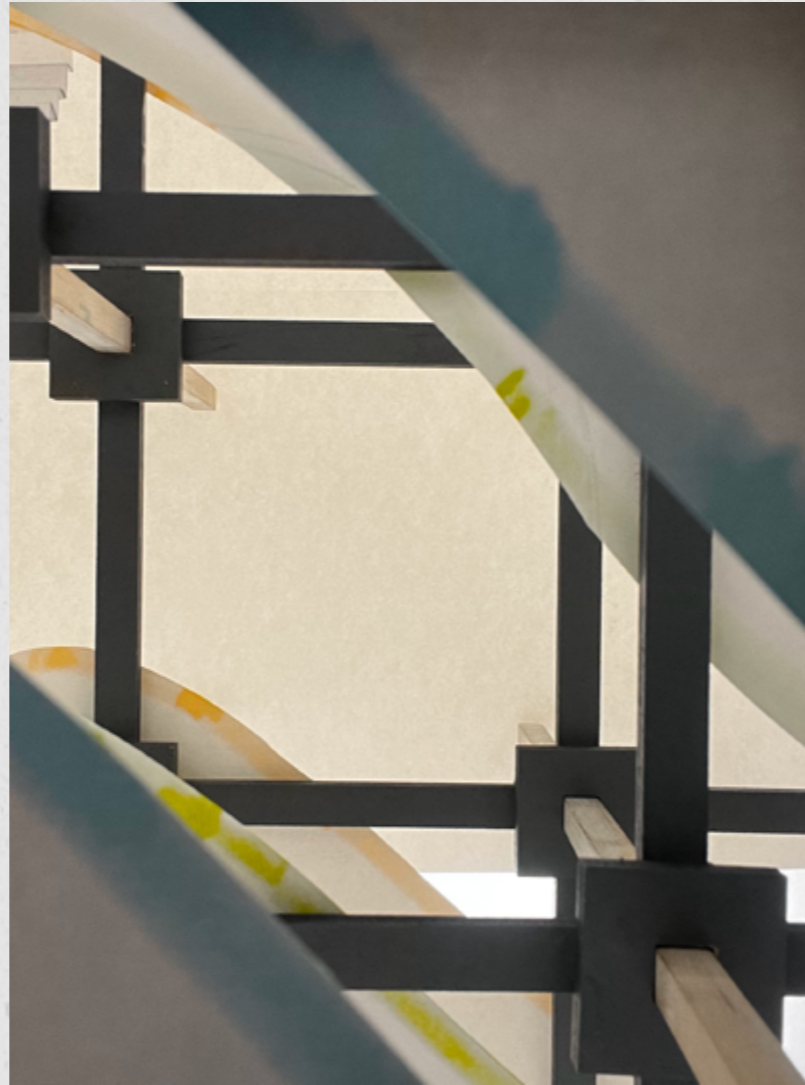


Void Analysis-1

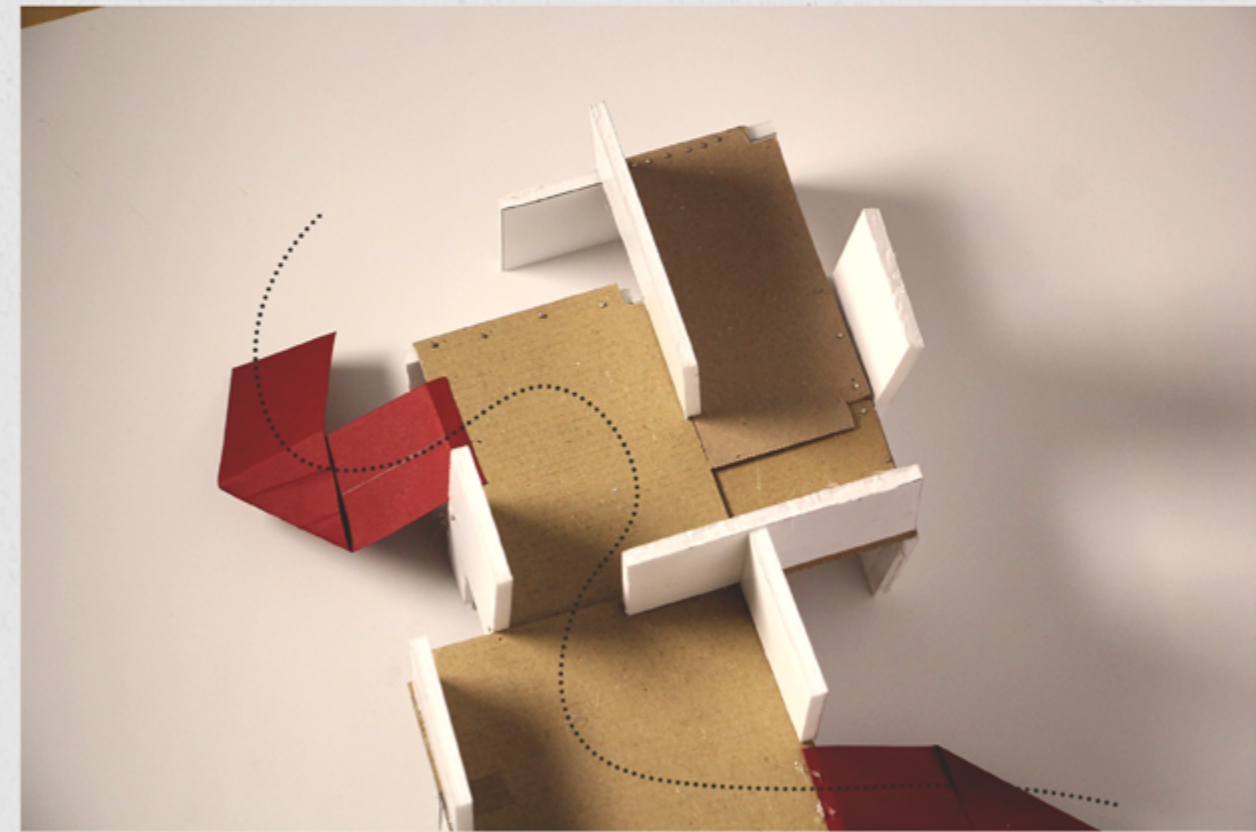
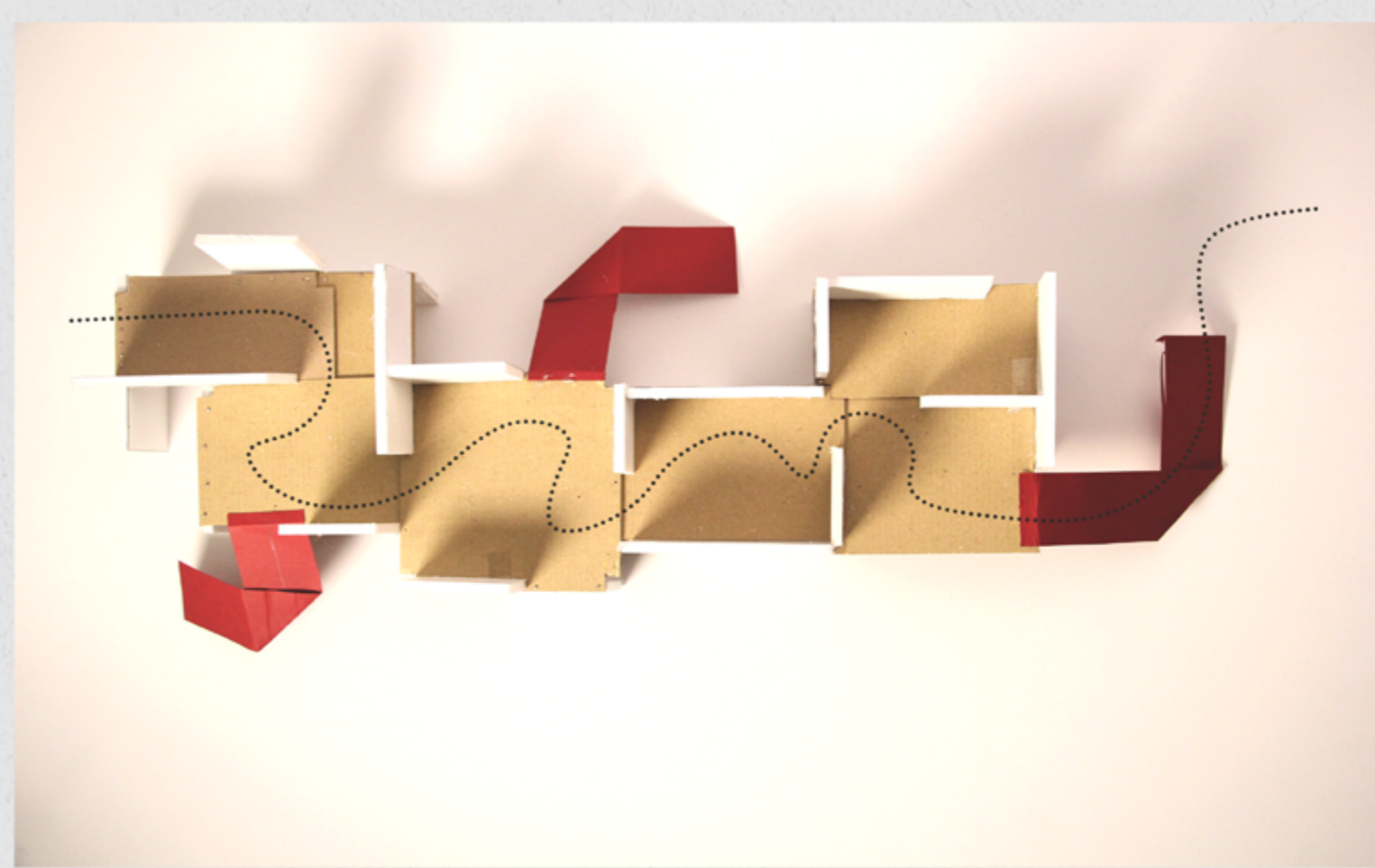


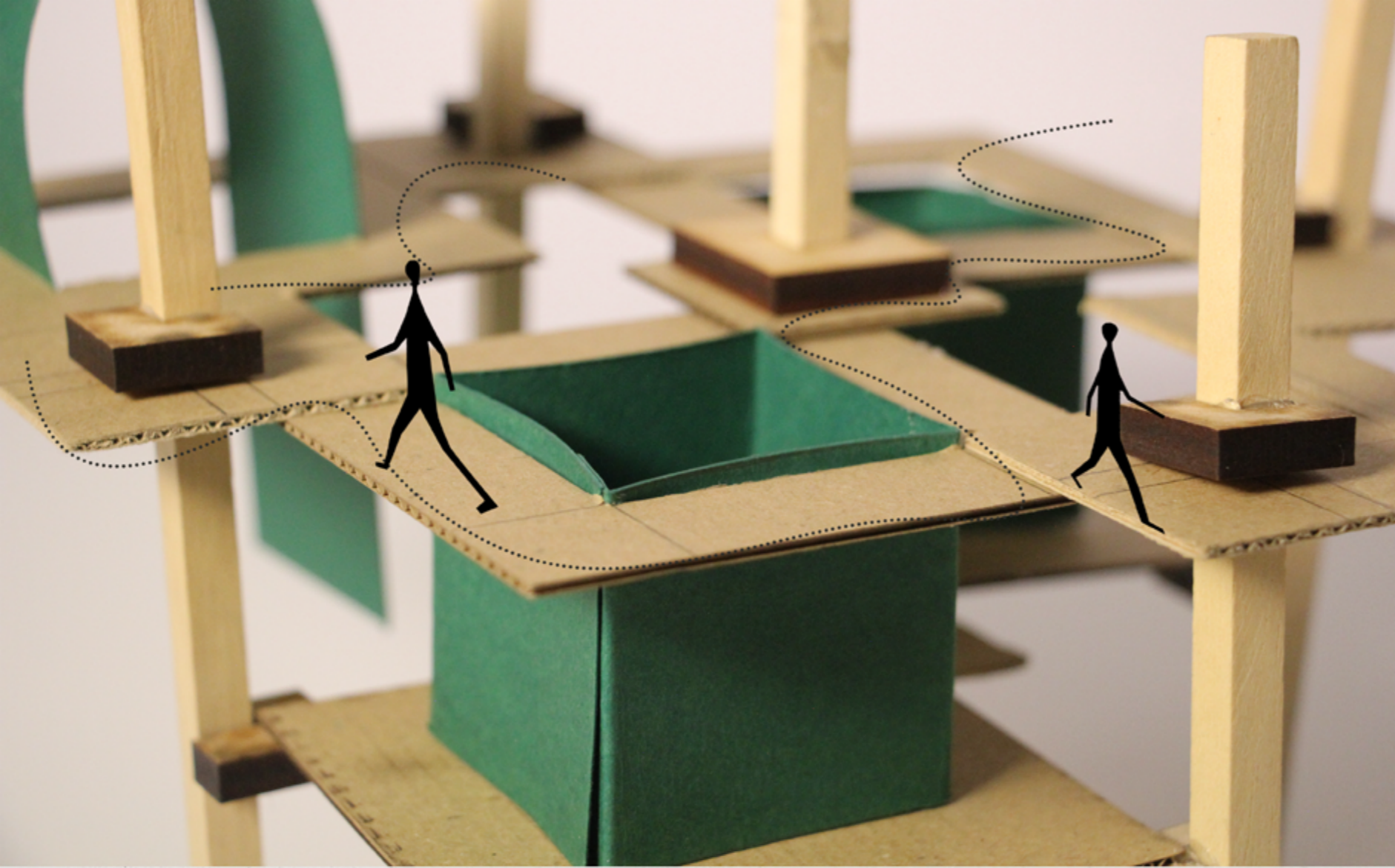


Void Analysis-2

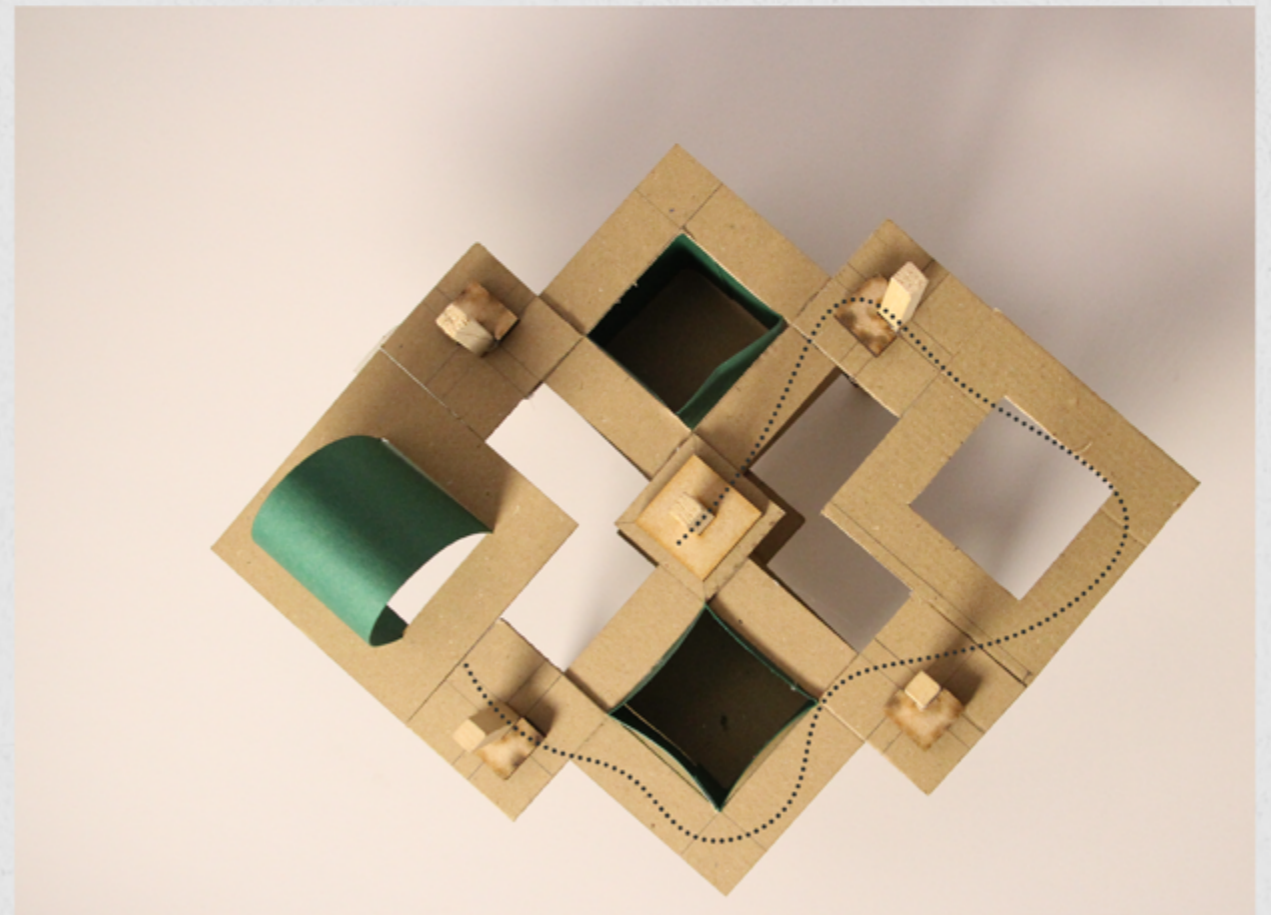
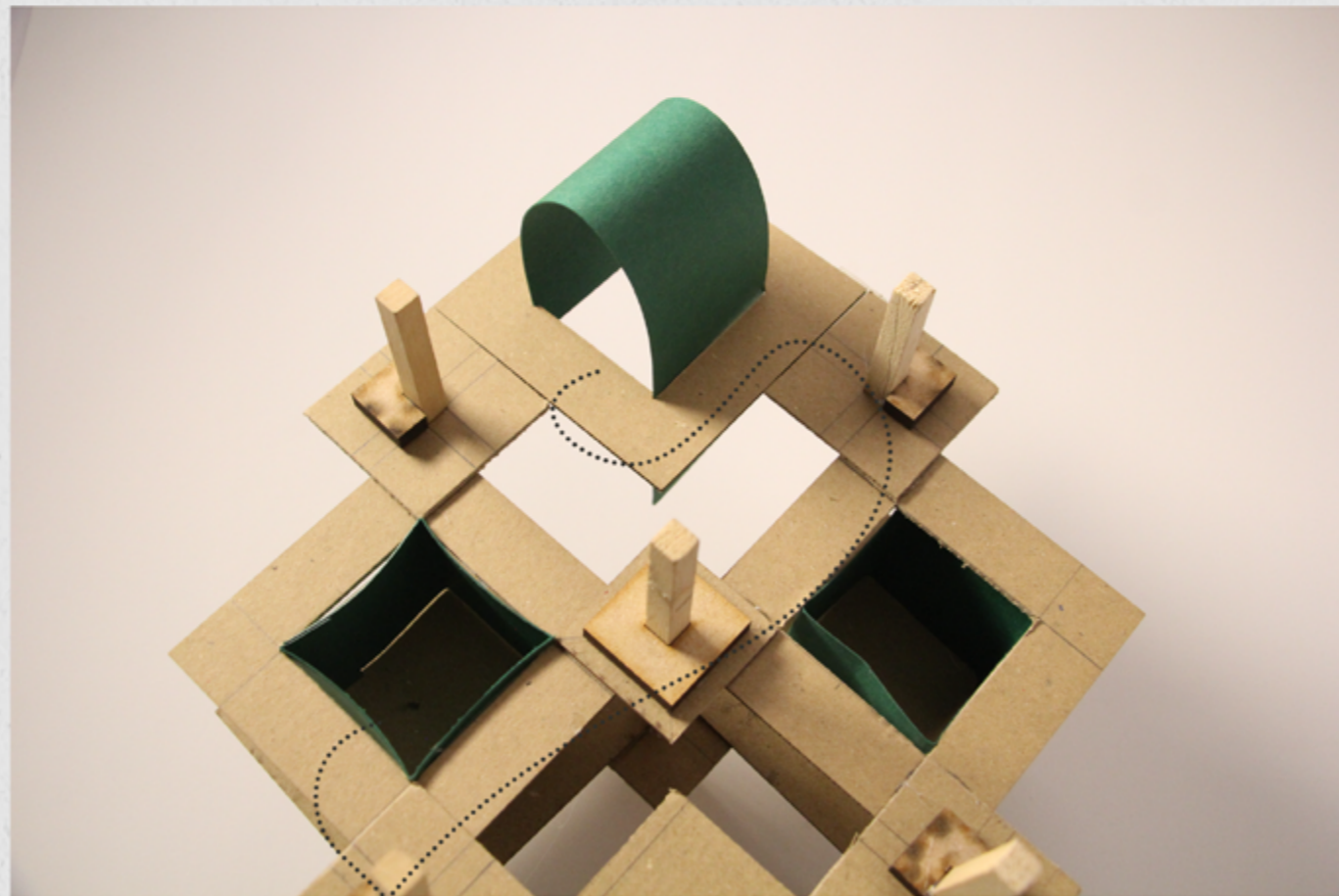
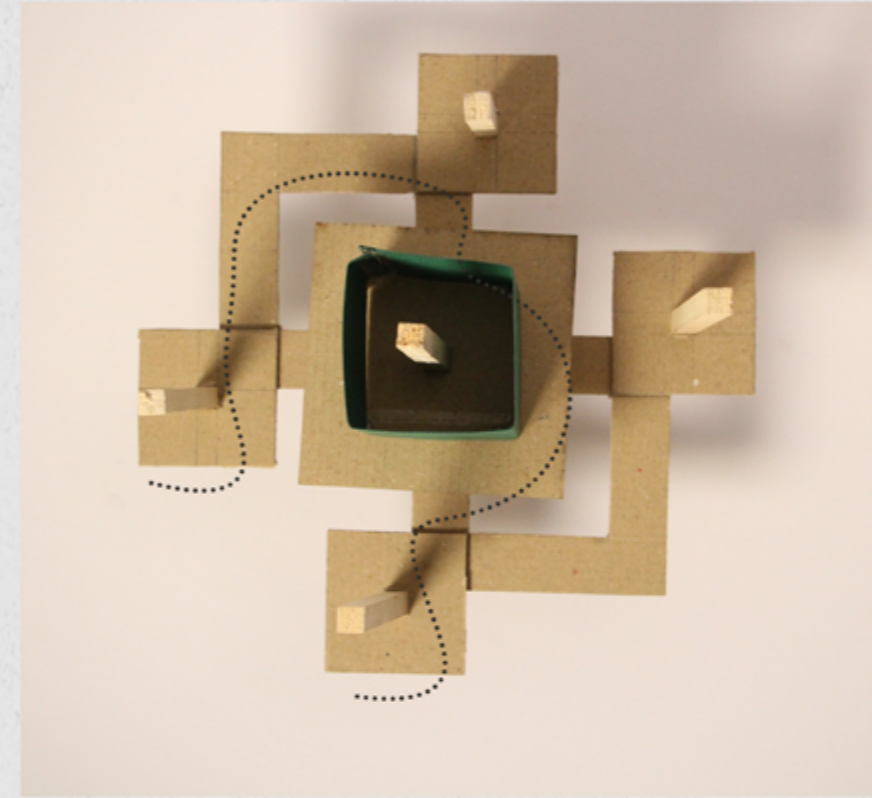


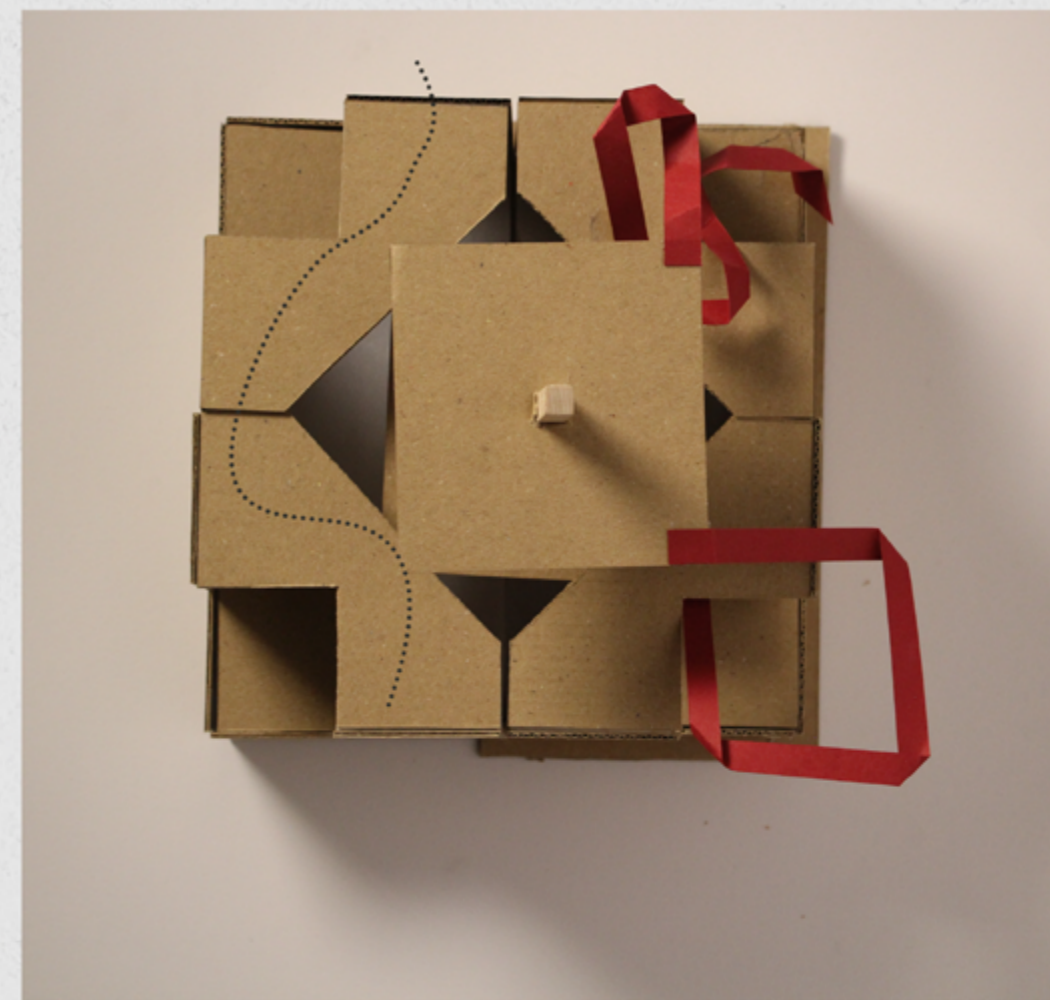
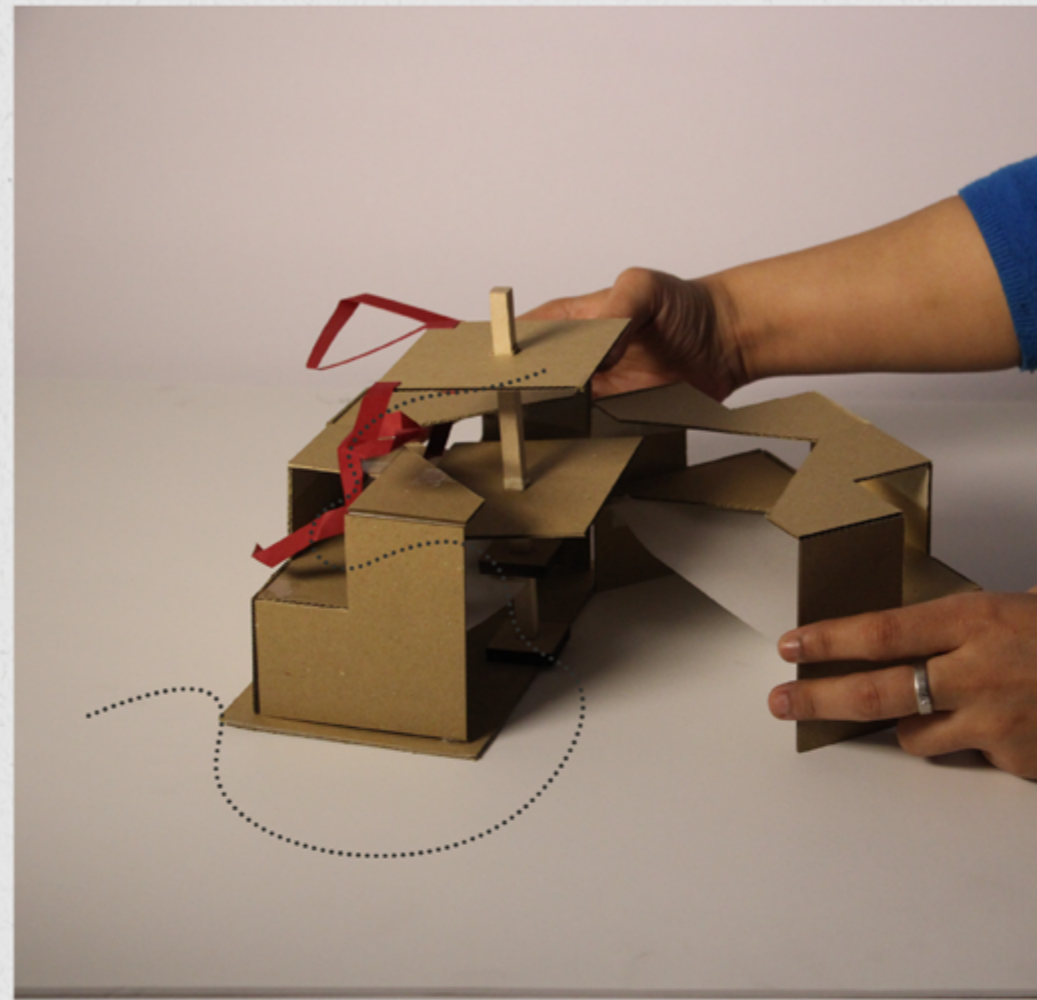
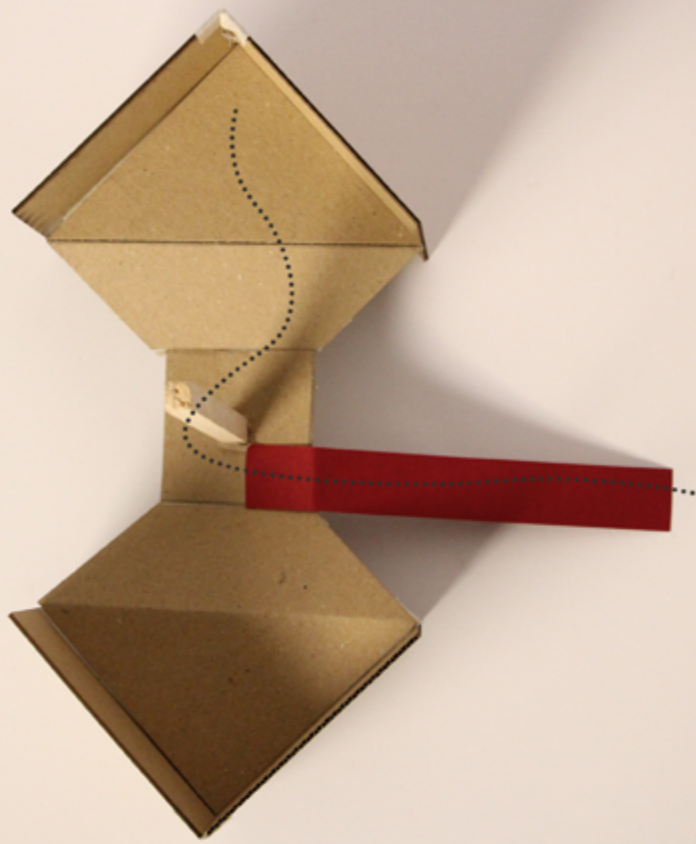
Floor explorations



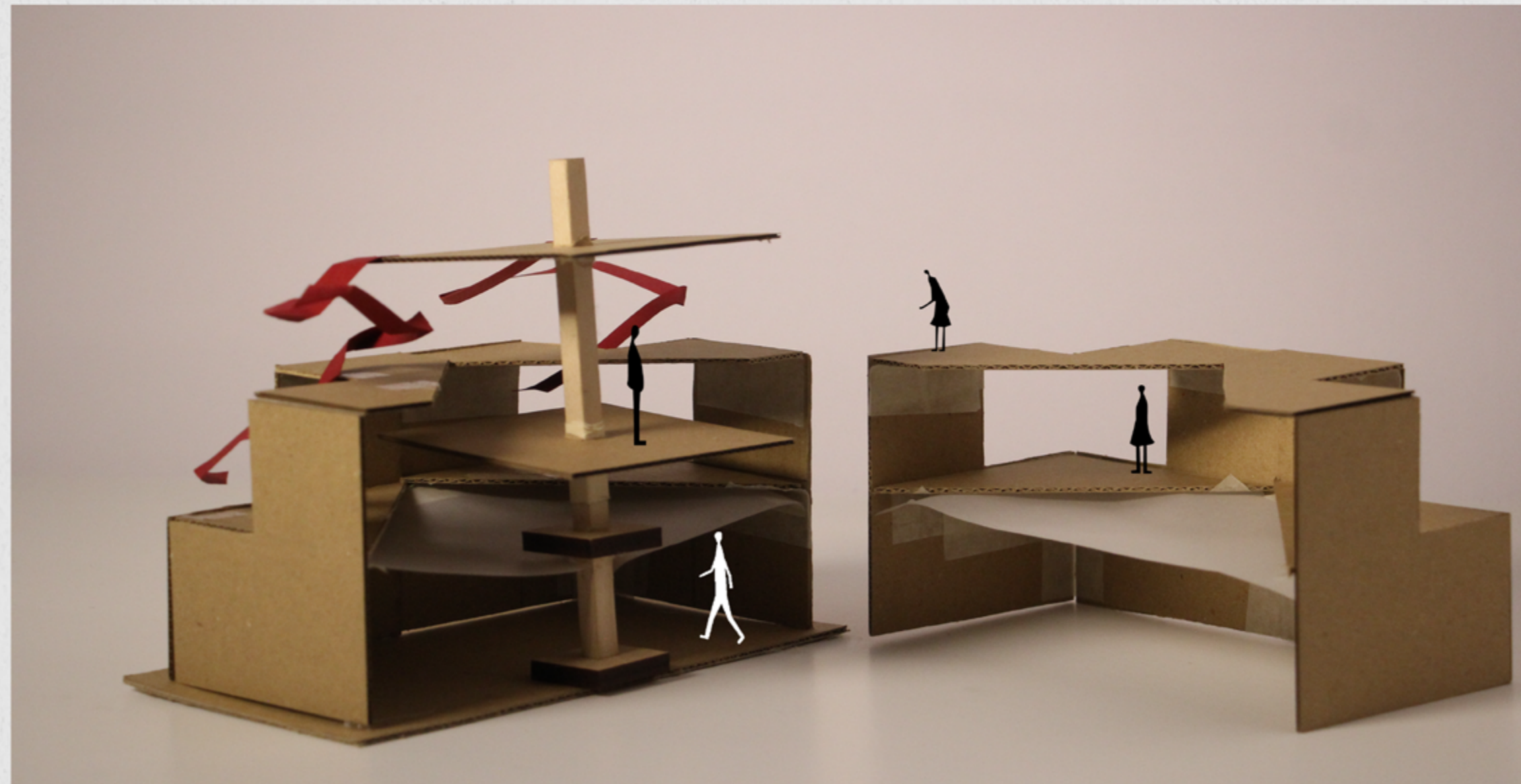


## Floor explorations





Floor explorations







*Library*

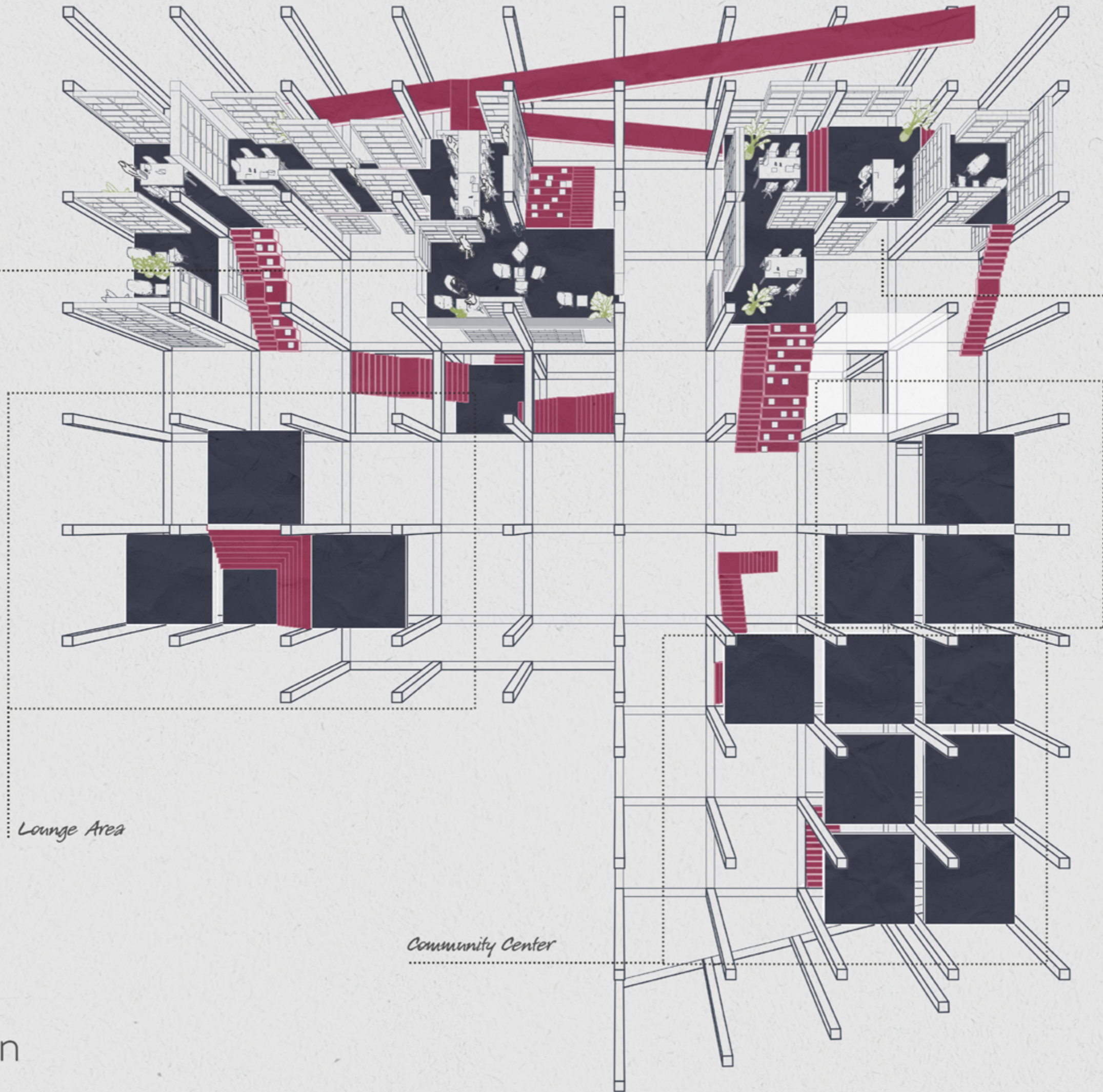
*Artist Studios*

*Library Offices*

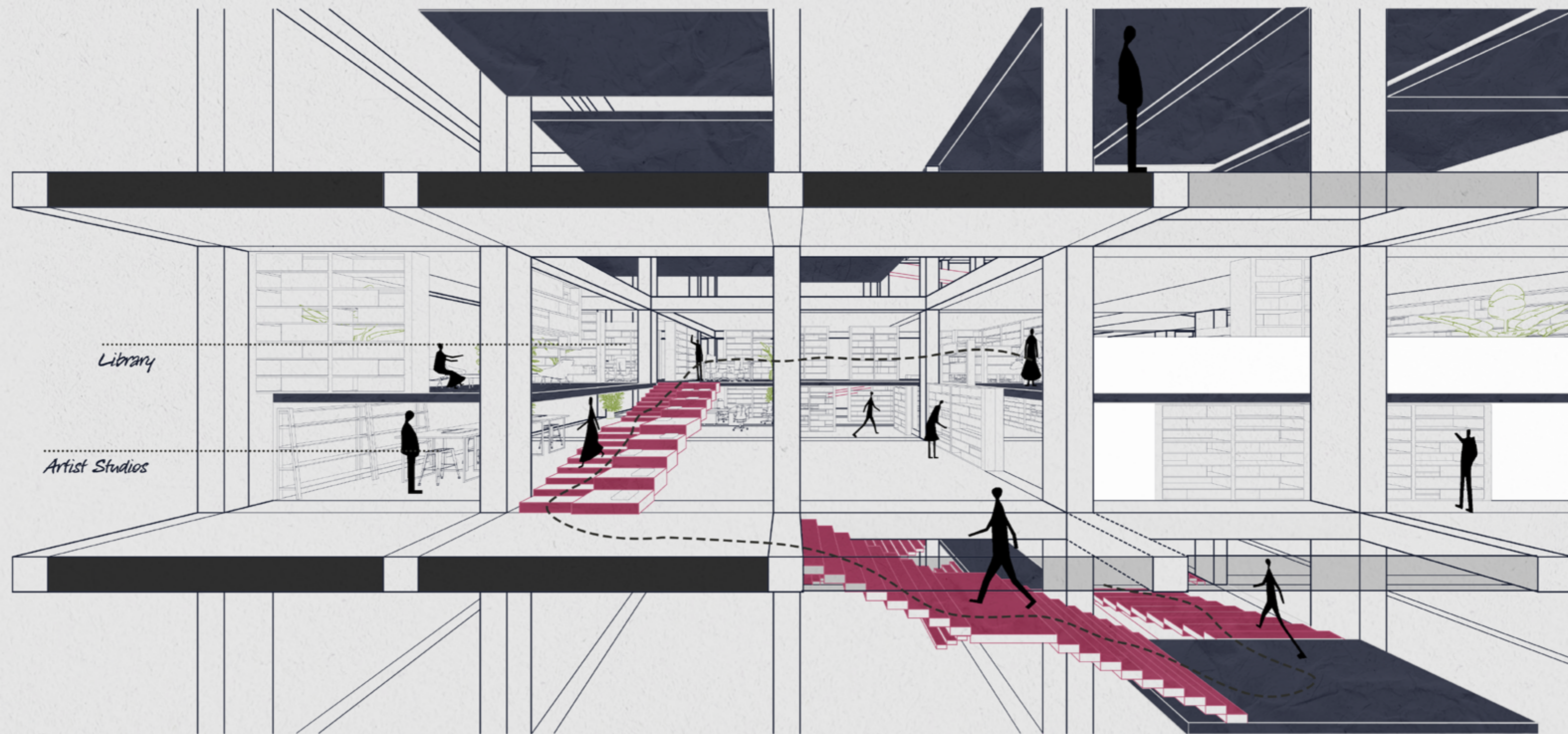
*Lounge Area*

*Community Center*

# Floor Plan



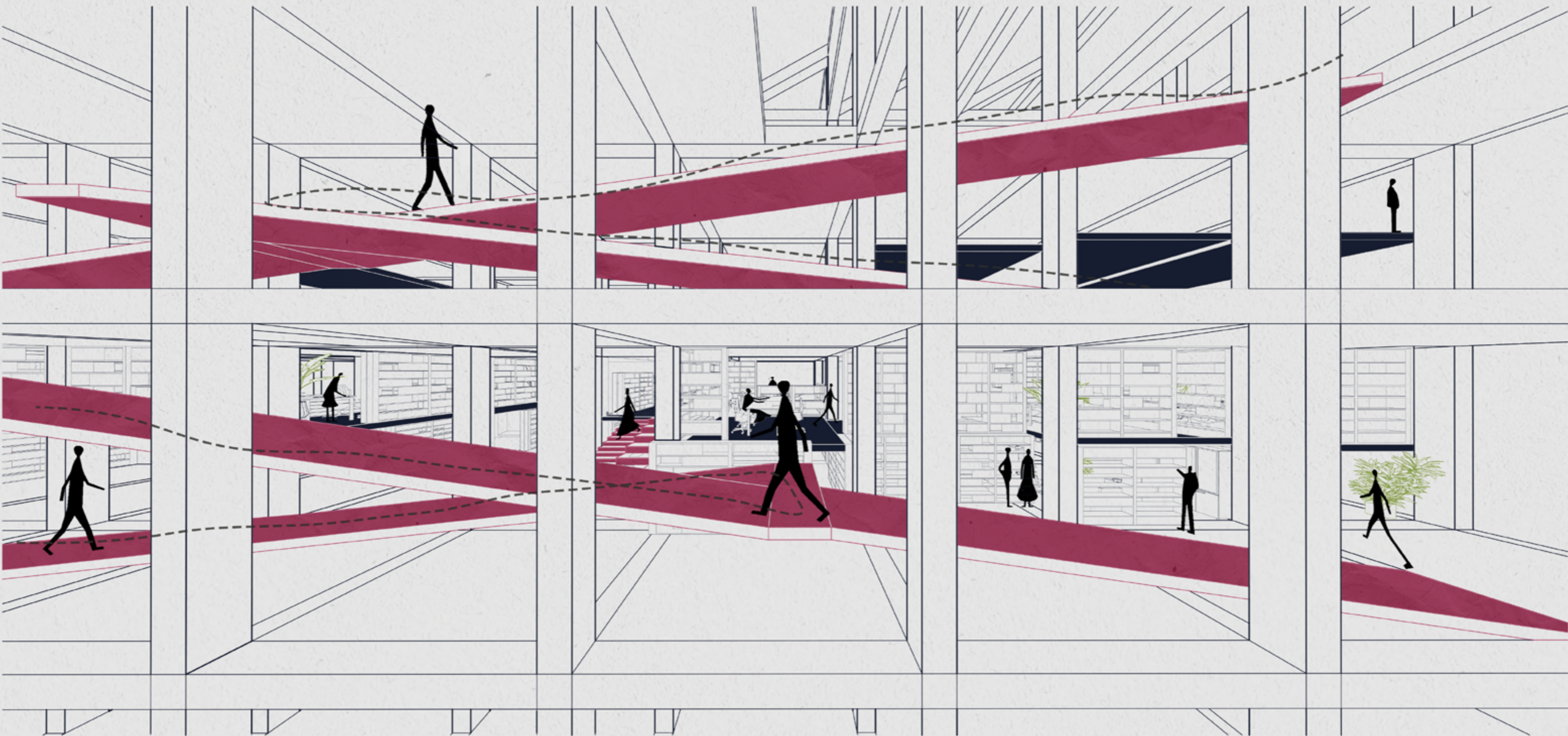
# Section



*Library*

*Artist Studios*





Elevation

Concept Model-1

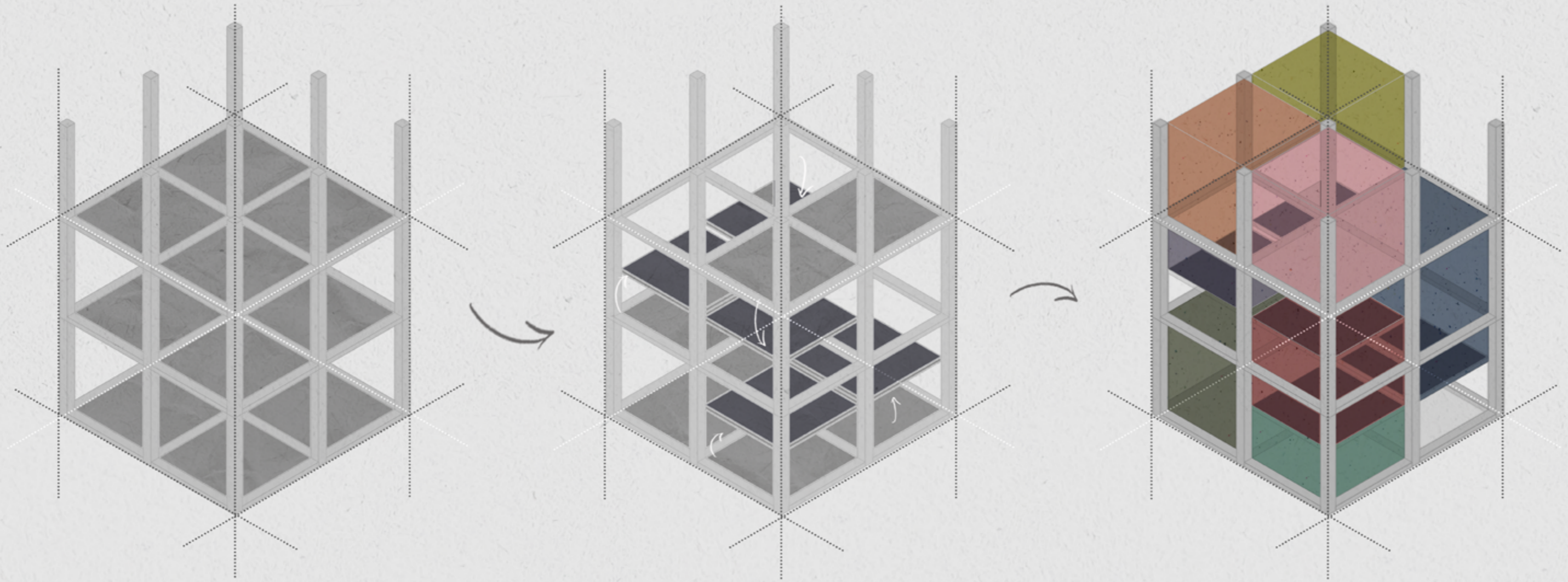


# Concept Model-2



# Design Strategy

# Design Strategy



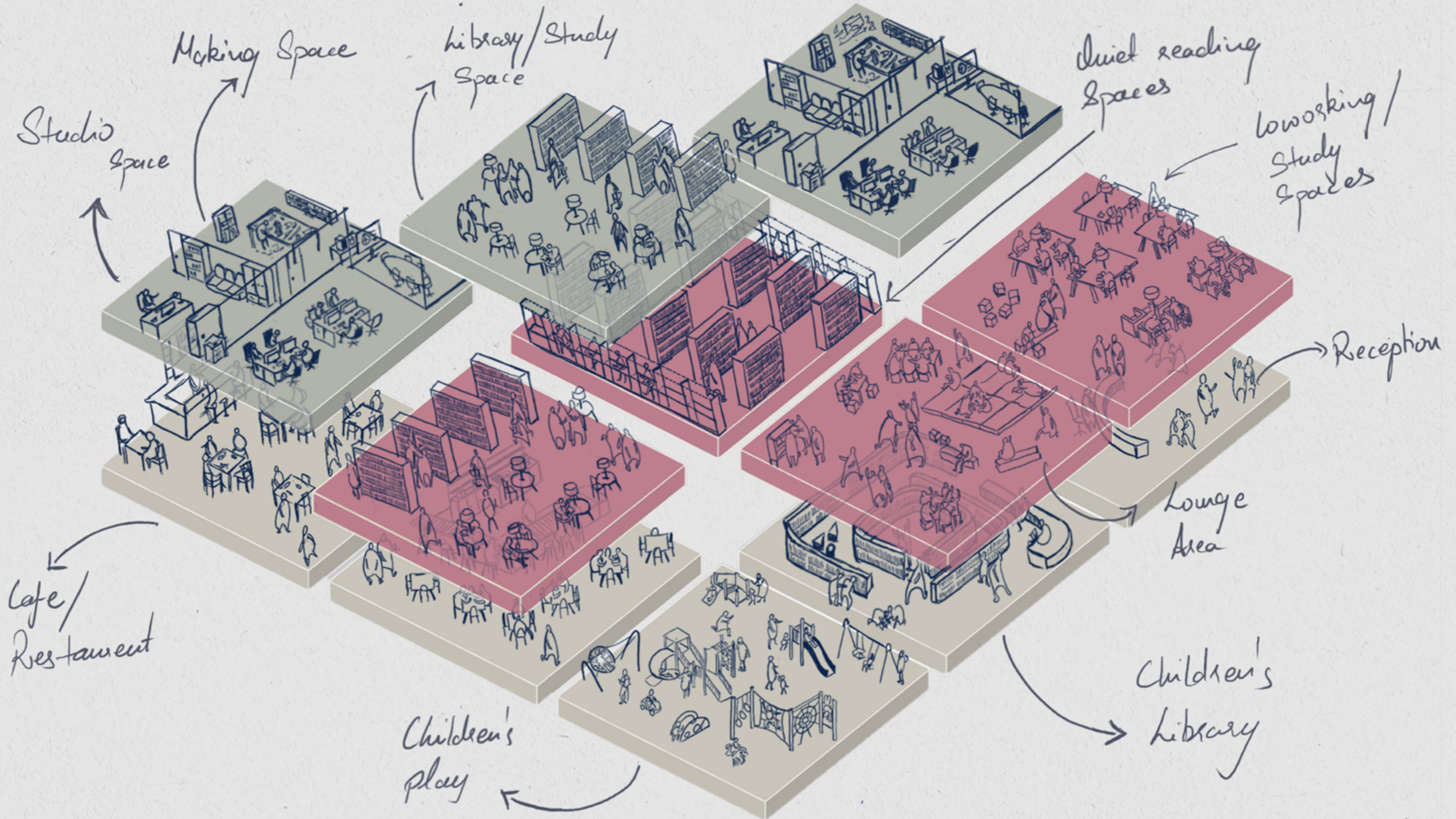
1. Understanding the grid system

2. Selecting the units and shifting the floor plates up/down

3. Creating different volumes

# Programme

To foster serendipitous connections, the library will have a unique set of programme consisting of both academic and social spaces. Social spaces such as cafe, amphitheater and Events room can create chance encounters whereas academic spaces such as reading areas and artist studios allow contemplative learning.



# Zone Diagram

3F  
 Common reading space  
 Healing spaces  
 Amphitheatre  
 Cafe  
 Lounge

2F  
 Library  
 Meeting rooms  
 Game area  
 Audio/ Visual Library

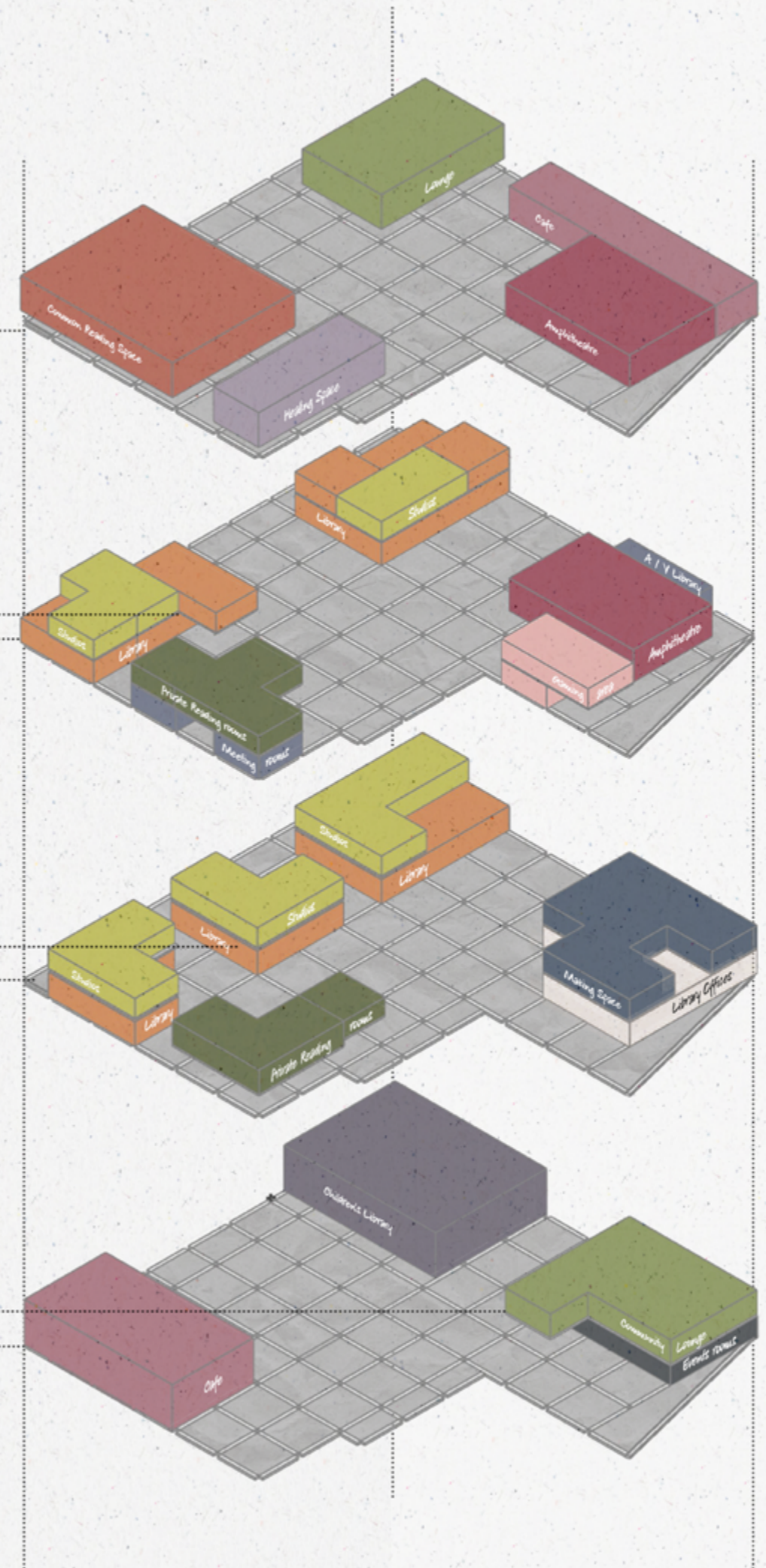
2F - M  
 Artist studios  
 Private reading rooms  
 Game area  
 Amphitheatre

1F  
 Library  
 Library offices

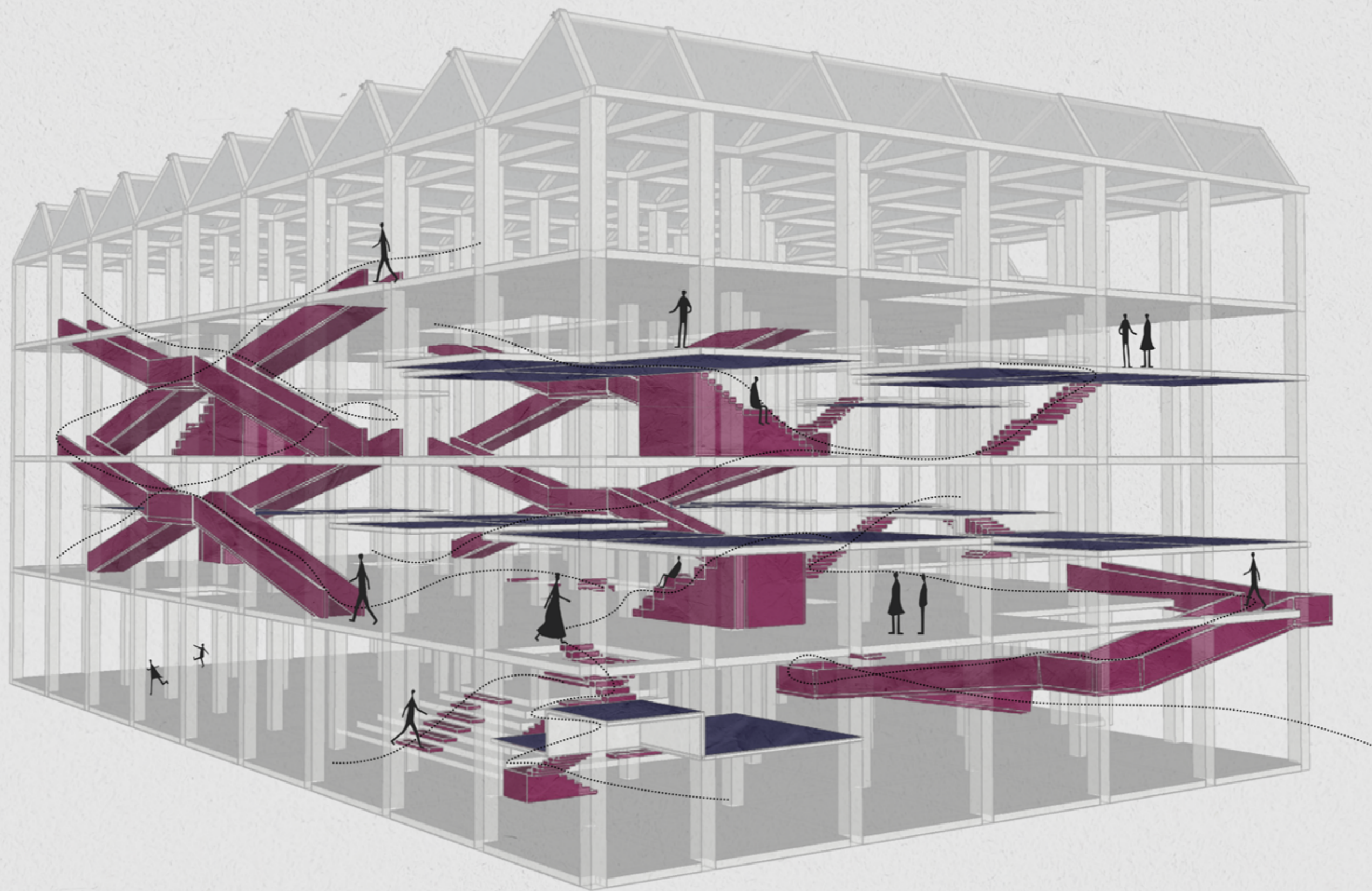
1F - M  
 Artist studios  
 Private reading rooms  
 Making area/ Workshops

GF  
 Cafe  
 Children's Library  
 Events rooms

GF - M  
 Community Lounge



# Circulation



# Design Proposal





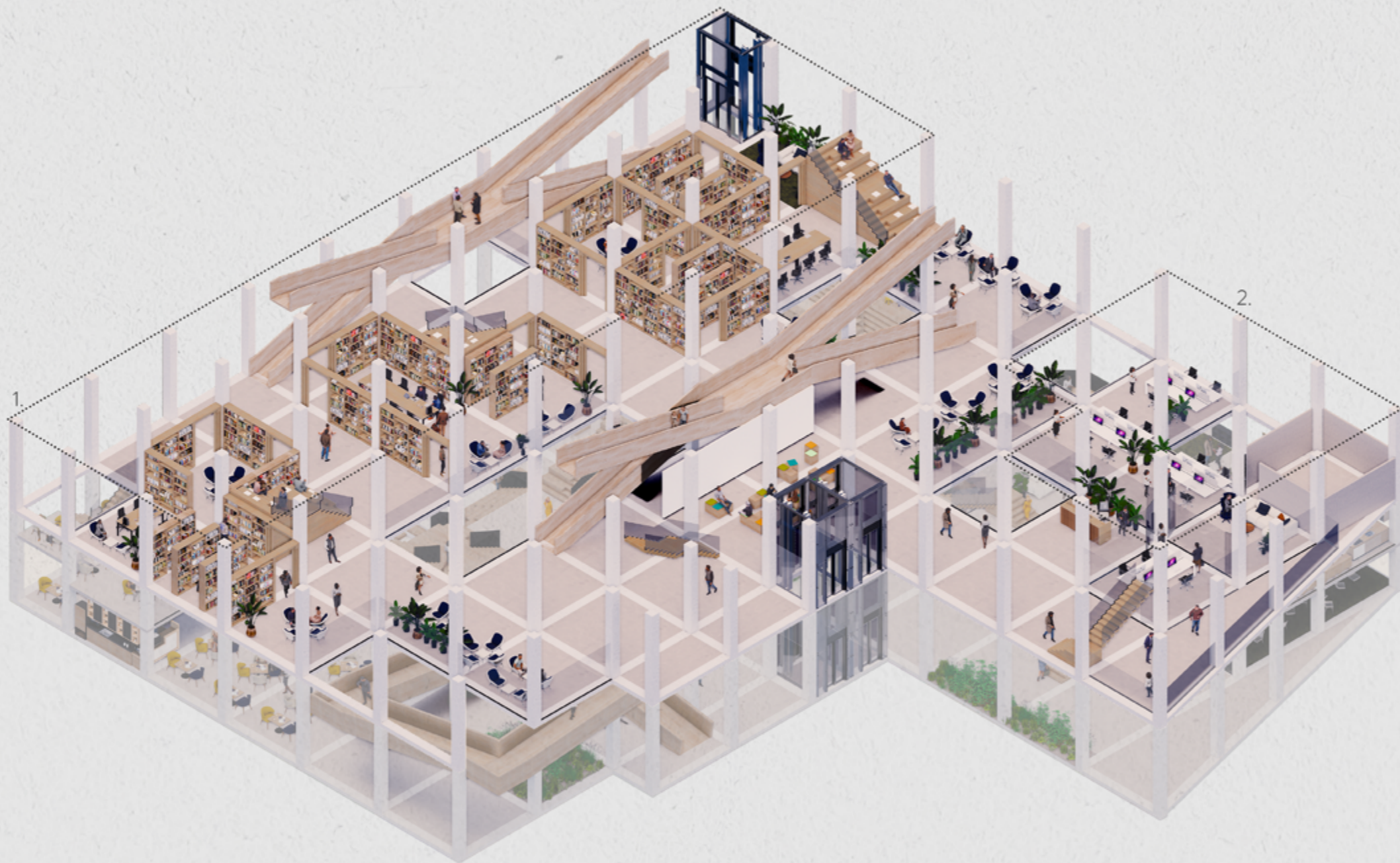
- 1.Cafe
- 2.Children's Library
- 3.Events rooms

Floor Plan - GF



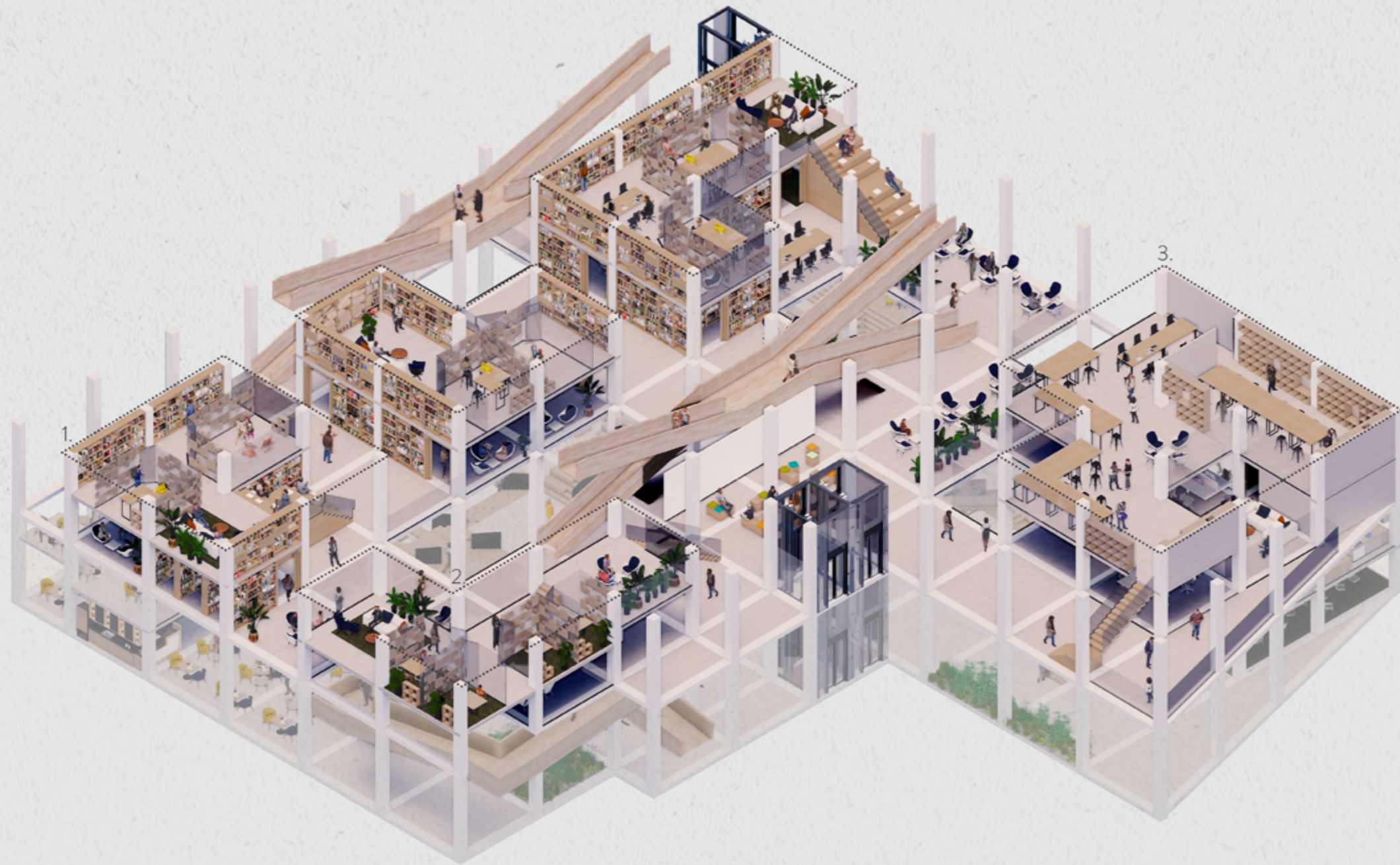
1.Cafe  
2.Community Lounge

Floor Plan - GF M



1. Library  
2. Library Offices

Floor Plan - 1F



- 1. Artist Studios
- 2. Private reading rooms
- 3. Making area/ Workshops

Floor Plan - 1F M



Interior View

Floor Plan - 1F M



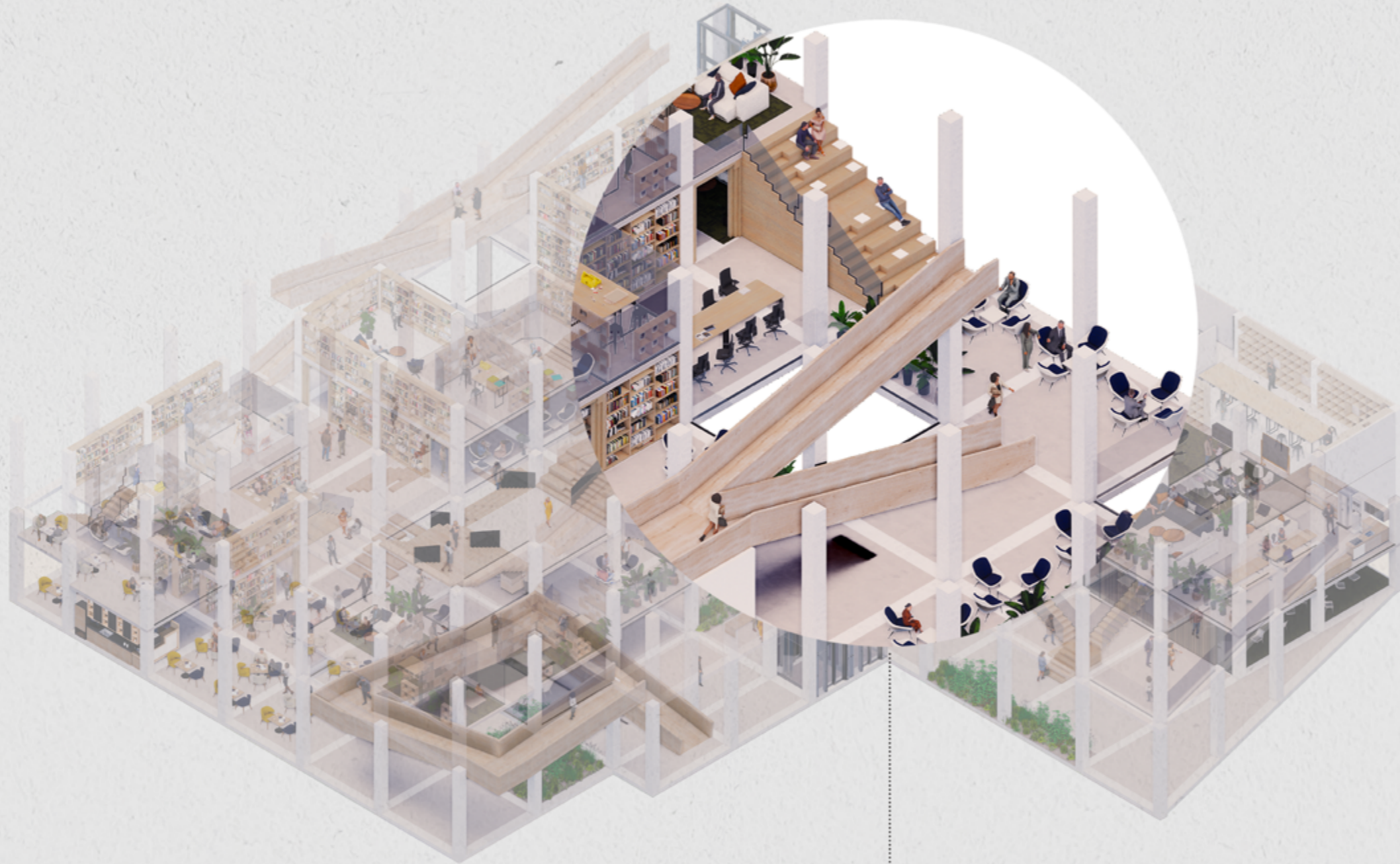




Interior View

Floor Plan - 1F M

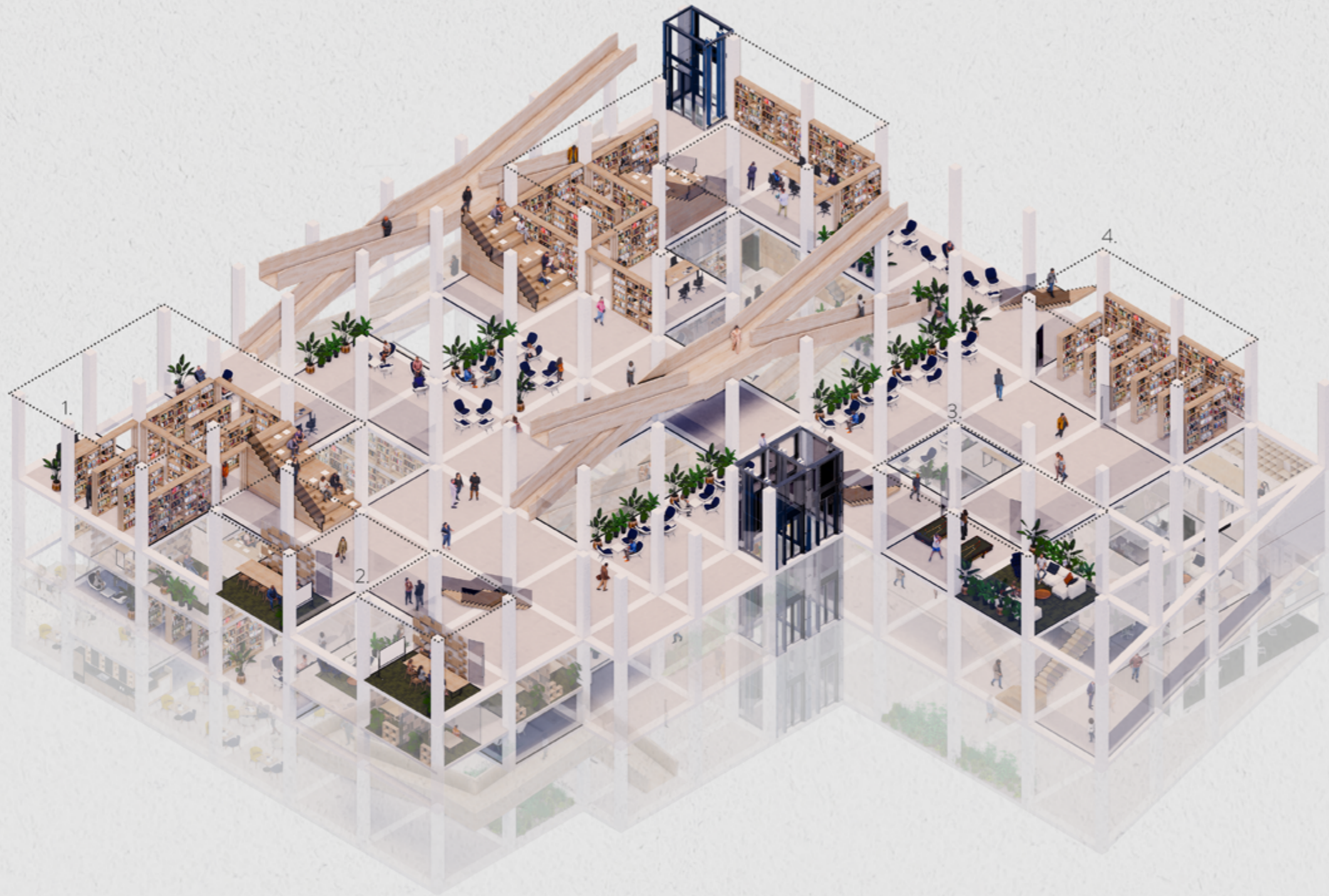




Interior View

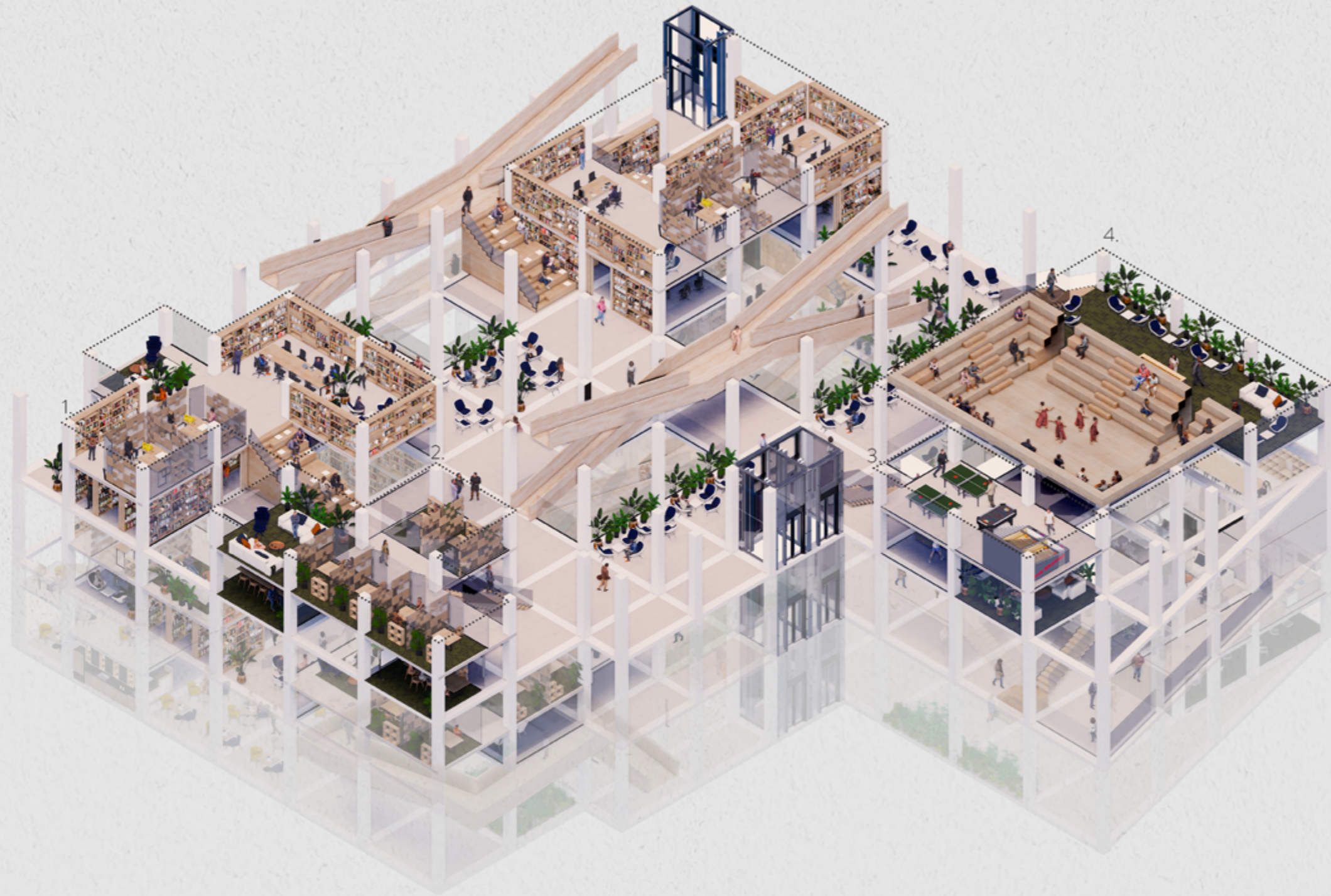
Floor Plan - 1F M





- 1. Library
- 2. Meeting rooms
- 3. Game area
- 4. Audio/ Visual Library

Floor Plan - 2F



- 1. Artist Studios/ Library
- 2. Private Reading rooms
- 3. Game area
- 4. Amphitheatre

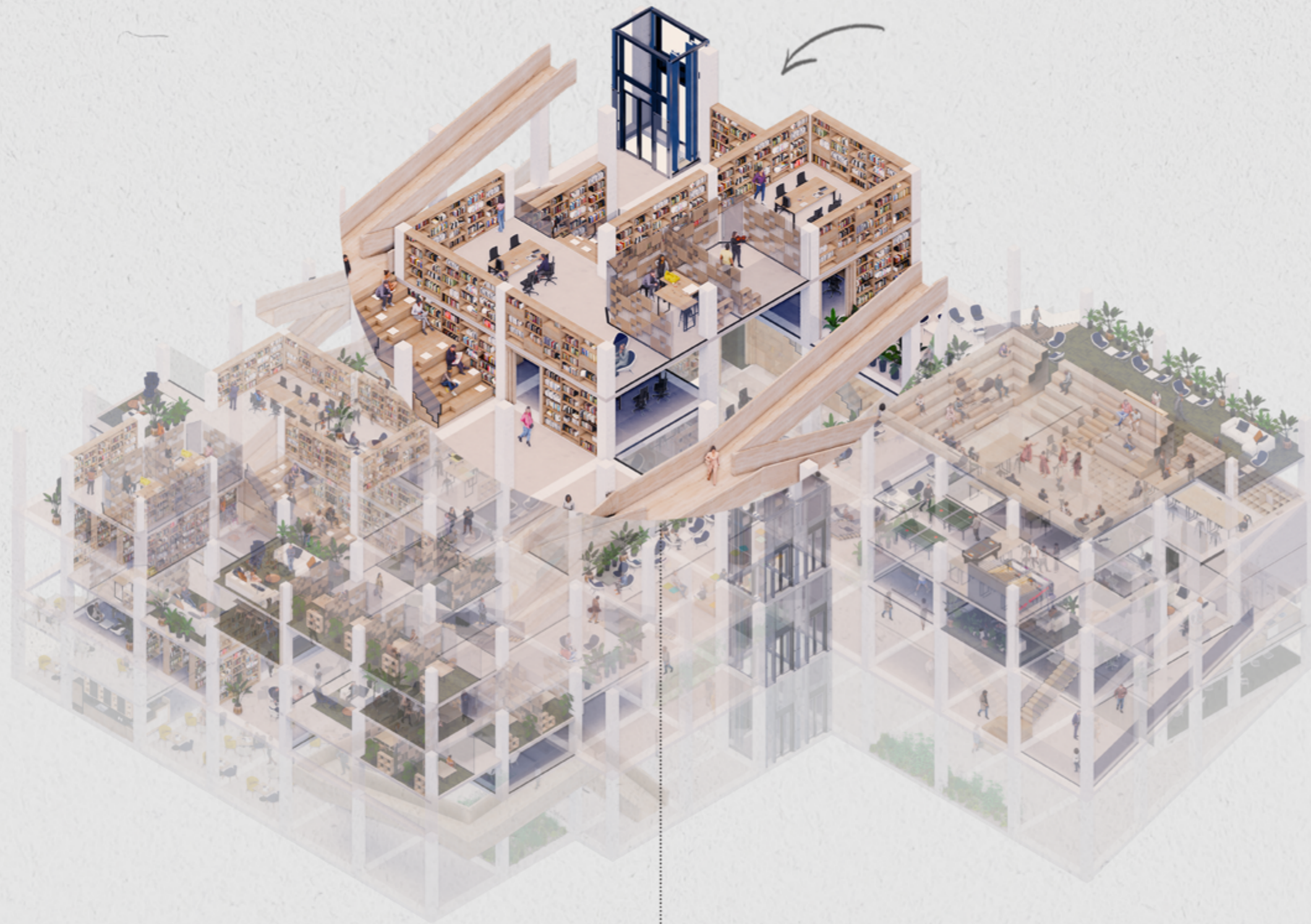
Floor Plan - 2F M



Interior Space

Floor Plan - 2F M



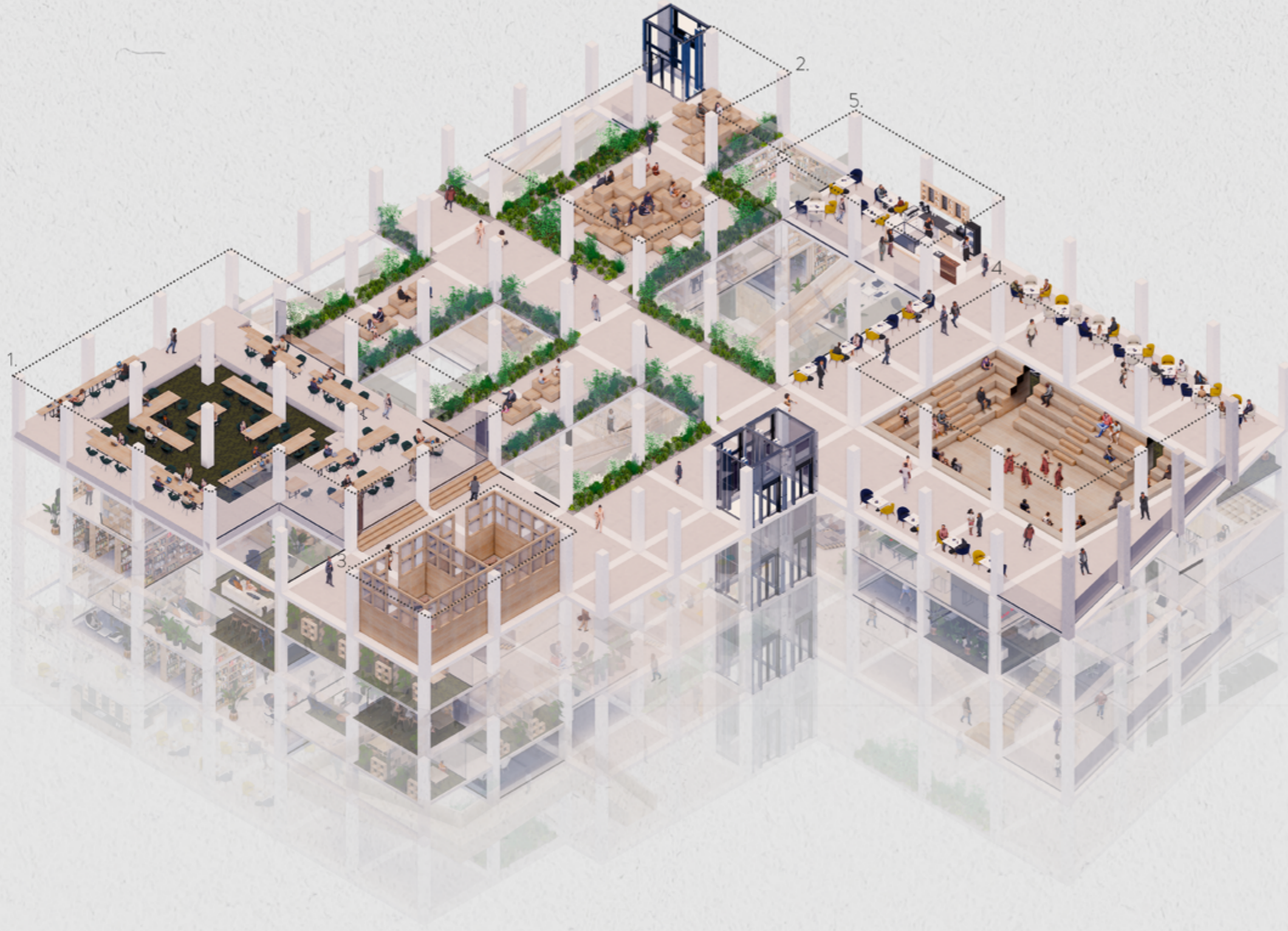


Interior Space

Floor Plan - 2F M

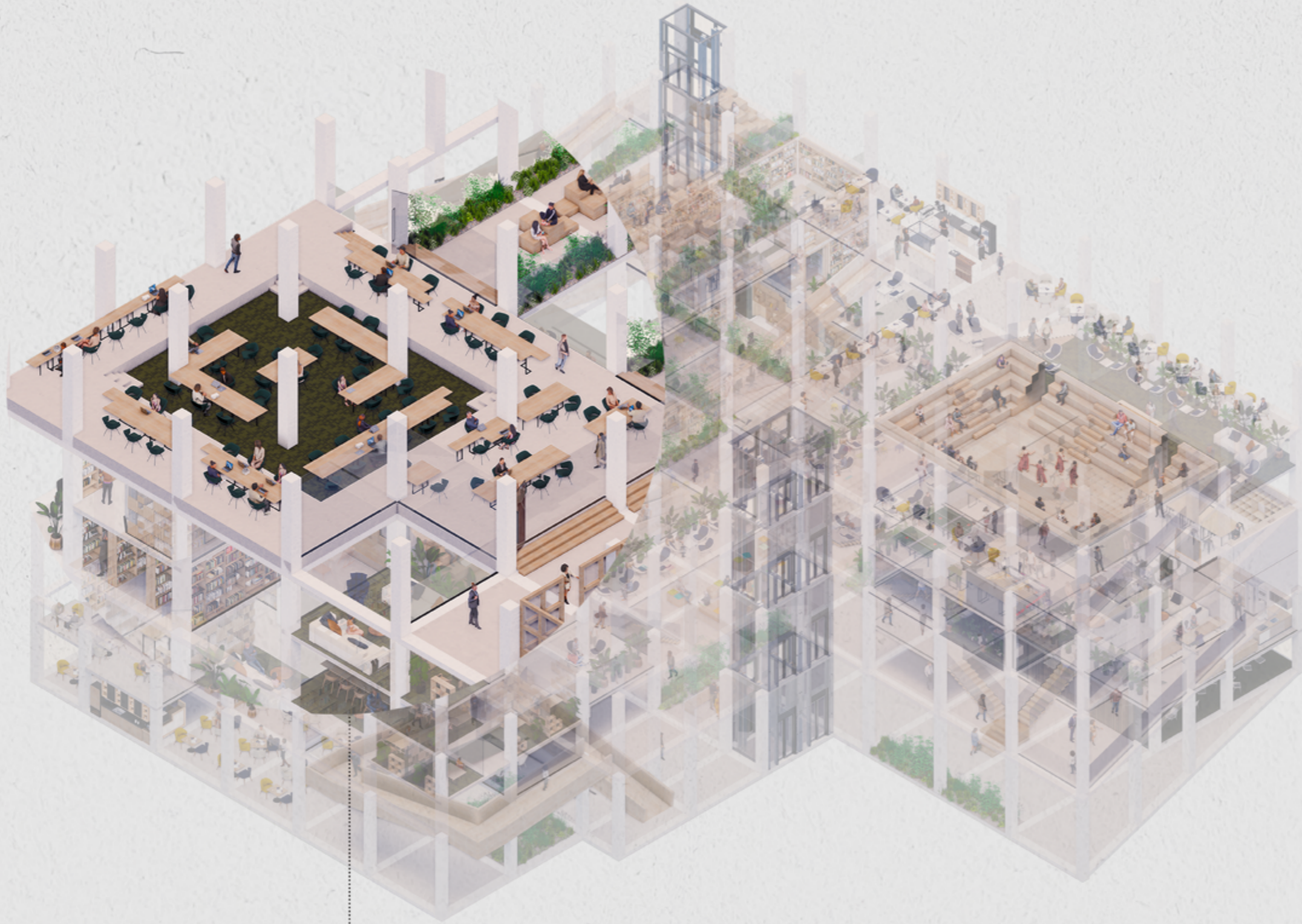






- 1.Common reading space
- 2.Lounge
- 3.Healing spaces
- 4.Amphitheatre
- 5.Cafe

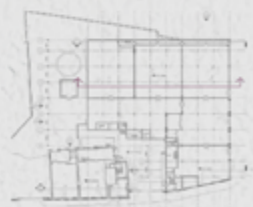
Floor Plan - 3F



Interior View

Floor Plan - 3F





SECTION

3D Model











