

SADIQ
K.LUQMAN

microSPACE
home grown grace



RCA

2024 - 2025

K.LUQMAN SADIQ
THESIS DESIGN JOURNEY

2024 - 2025
RCA INTERIOR DESIGN

CONTENTS

5—

10—

20—

44—

INTRO.

MICROSPACE.

PROCESS.

DRAWINGS AND VISUALS.

01.

INTRO.

I love adventures, long walks, cycling, balconies, climbing hill tops and searching for liminal spaces.

I am Luqman.

Luqman is a Karachi based creative practitioner with a profound understanding of spatial identities paired with a growing interest in nature. An adventurer at heart, he often explores lakes, forests and valleys that heightens his sensory experiences and synonymously curates his designs that are often inspired from re-engineering or transcribing notions of the natural environment around him. His methods of communicating aims to celebrate nature's design by having it crossover with the human experience. He often relies greatly on the sensory aspect of a space to make it feel more human which he reflects and observes in his work to exhibit a deeper sense of connection between the space and the user.

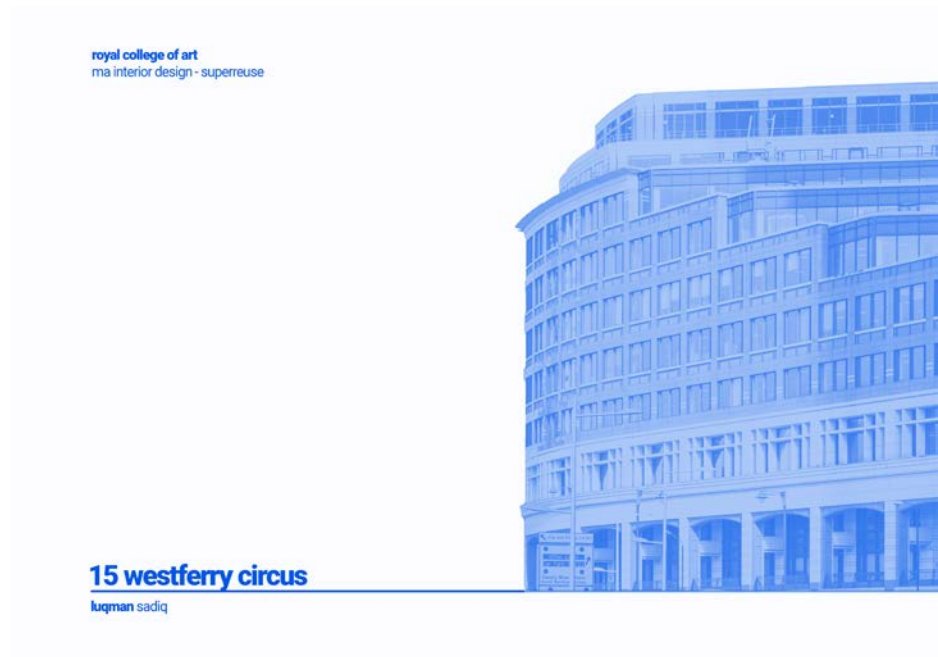
1

02.

microSPACE

home grown grace

Re-imagined student shared living

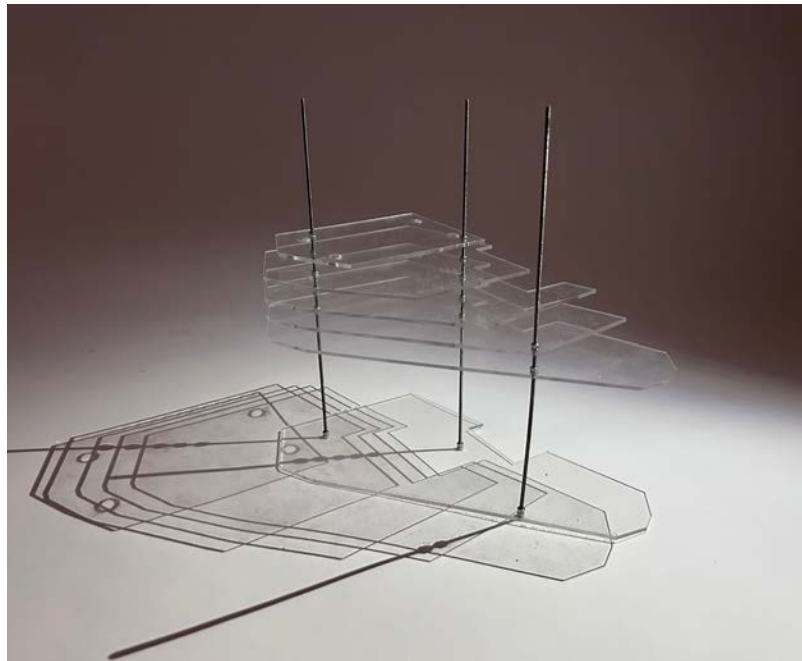
**Context:**

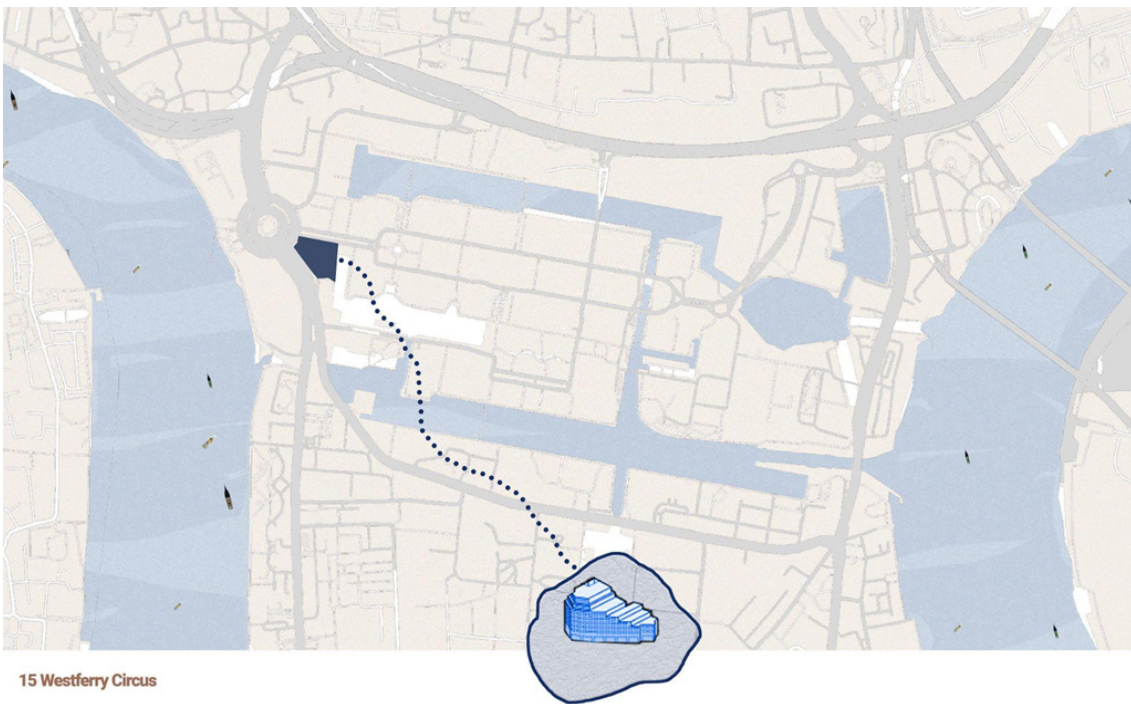
London is currently home to over 500,000 university students, with around a third coming from overseas—mostly from outside the EU. With demand for higher education on the rise, especially in London and the South East, it's expected that this region will need to accommodate a significant portion of England's projected 360,000 new university places by 2030. This growing demand makes it clear that there's an urgent need for more purpose-built student accommodation (PBSA). In areas like Canary Wharf, where maintaining strong financial returns is essential, student halls have proven to be one of the most reliable sources of revenue.

But what about it's experience?

Site:

15, Westferry Circus, London.

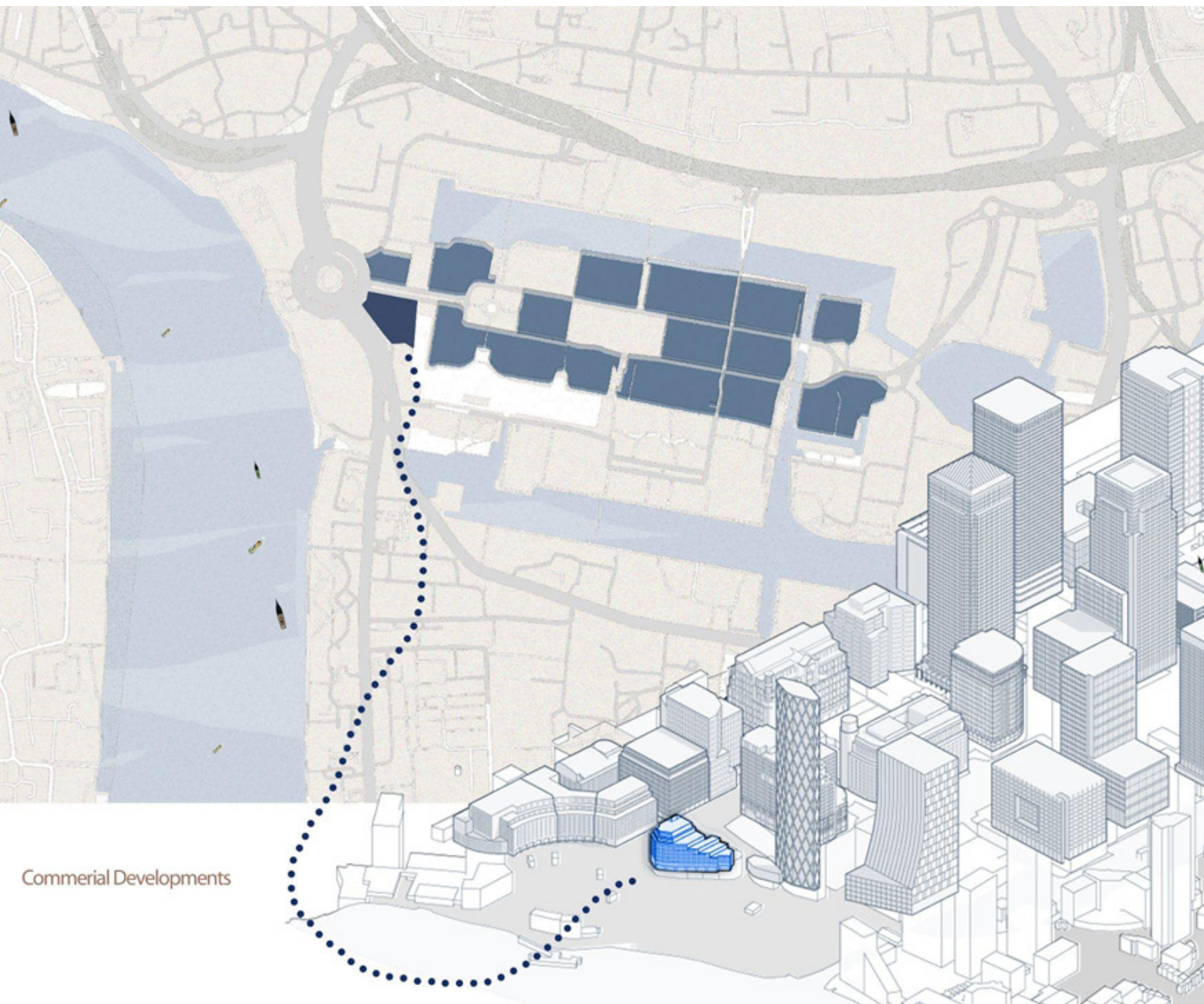




15 Westferry Circus

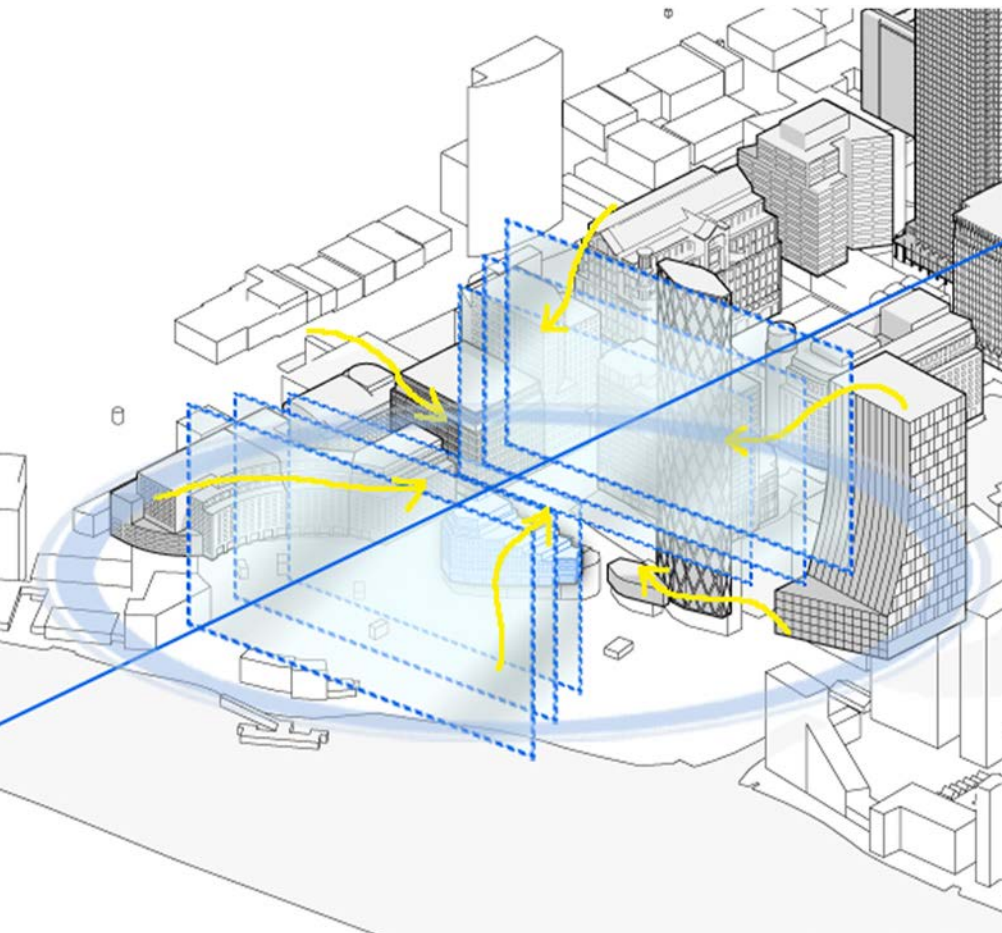
Use: Office building.

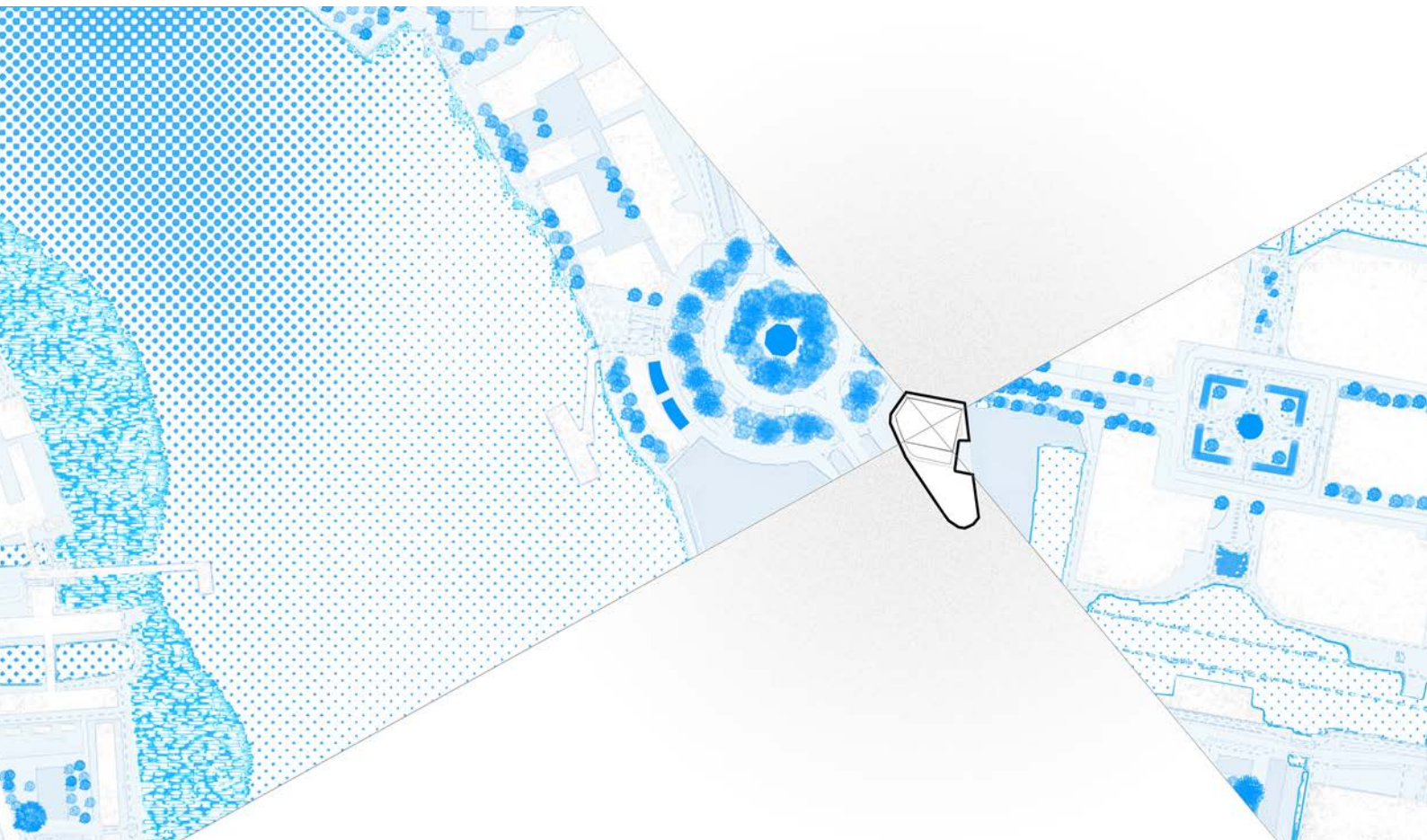
Details: 16,255 square meters of office space. Over the years, it has housed tenants such as Morgan Stanley Dean Witter, Tube Lines, and London Underground. As of 2018, Morgan Stanley reoccupied two floors, with another floor sublet to a different tenant.



Commercial Developments

Surrounded by a financial district, the 15 West Ferry was designed as an office building. Commercial developments around it over the past decades show similar typologies.





Amid Canary Wharf's growing mixed-use landscape, this project reimagines shared living through a personal, human-centric lens. Addressing students' struggles with identity, belonging, and the lack of homeliness in communal spaces; exploring a deeper sense of domesticity within collective living environments.

Through a rigorous interrogation of space planning and context, the design envisions a new typology for cohabitation—one in which programmatic elements are not merely adjacent but interwoven. Compact spaces are reimagined within a dynamic, interactive ecosystem, where spatial relationships and communal programs are curated to foster connection, autonomy, and emotional resonance.

Identifying the missing link:

The Purpose Built Student Housing (PBSH) in the UK offers typical living units separate from social spaces in most cases. The nodes of interaction of the average user suggest that there is a disconnect between spaces, showing two different patterns of movement, which in turn minimizes interactivity and heightens privacy and isolation.

**Reference:**

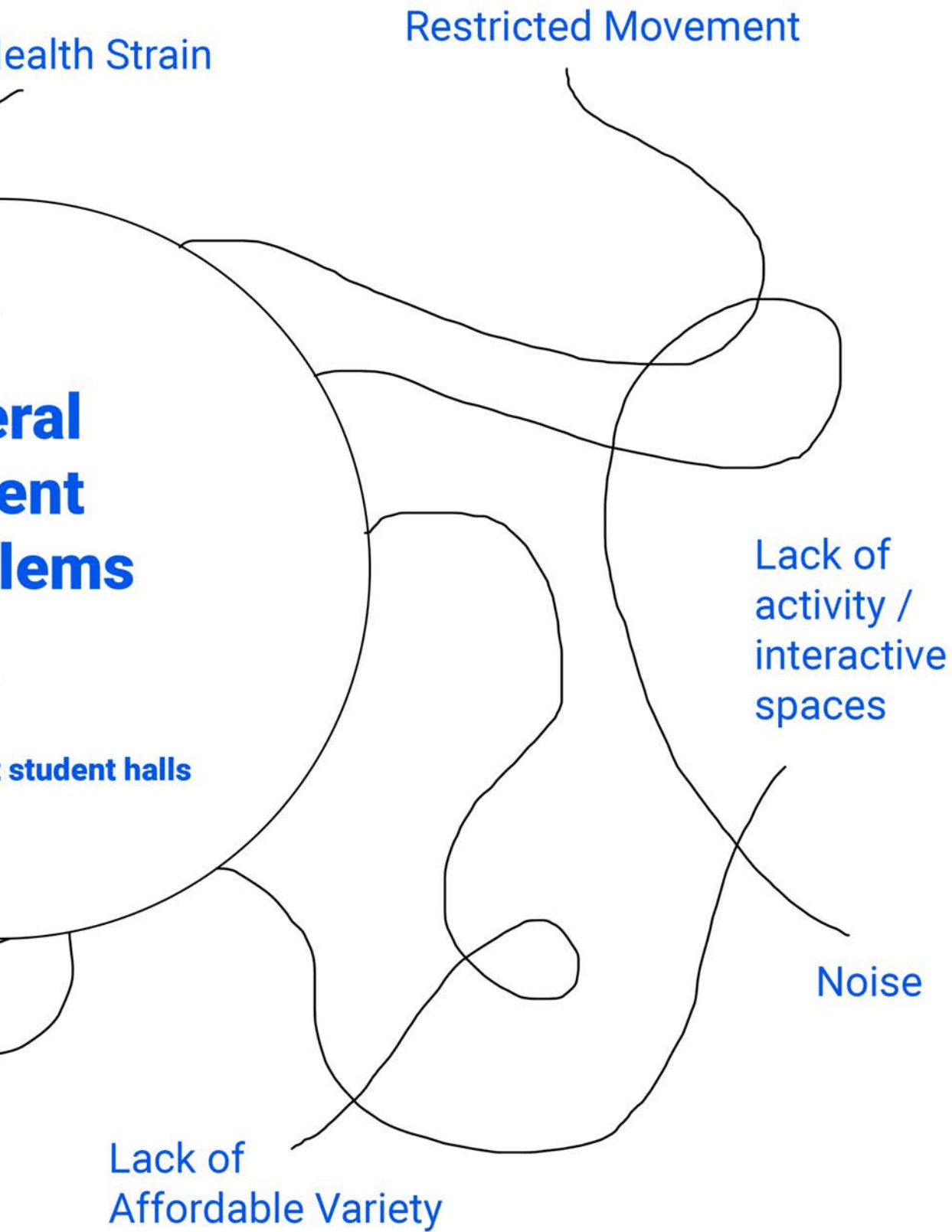
Scape - Shoreditch, London.



03.

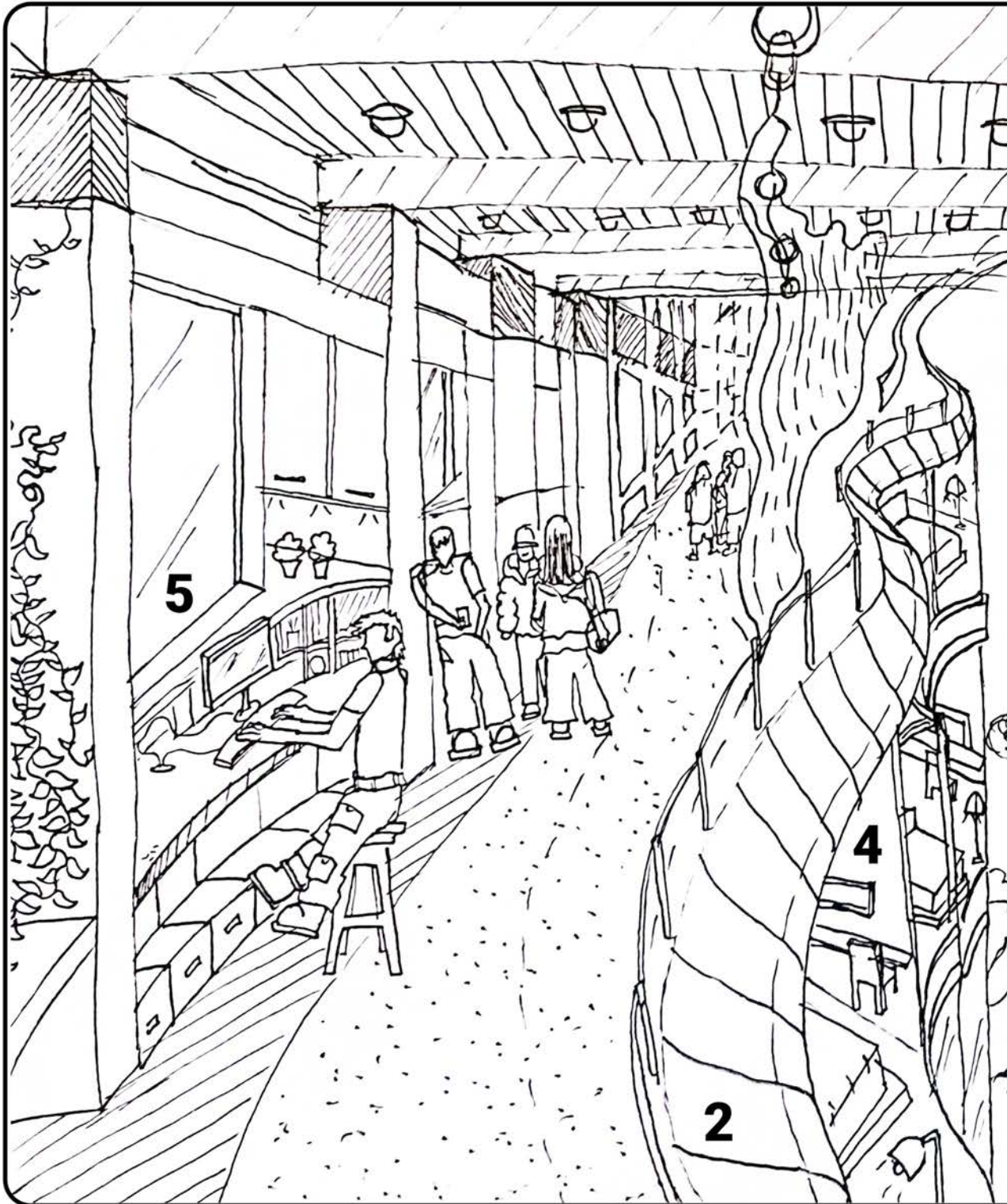
Process





every student should experience...

- 1 a breath of fre
- 2 movement and
- 3 spaces to dine
- 4 personal spac



fresh air and closeness to nature

5

spaces to study

easy accessibility across levels

6

huddle zones to gather and socialize

stand and sit together

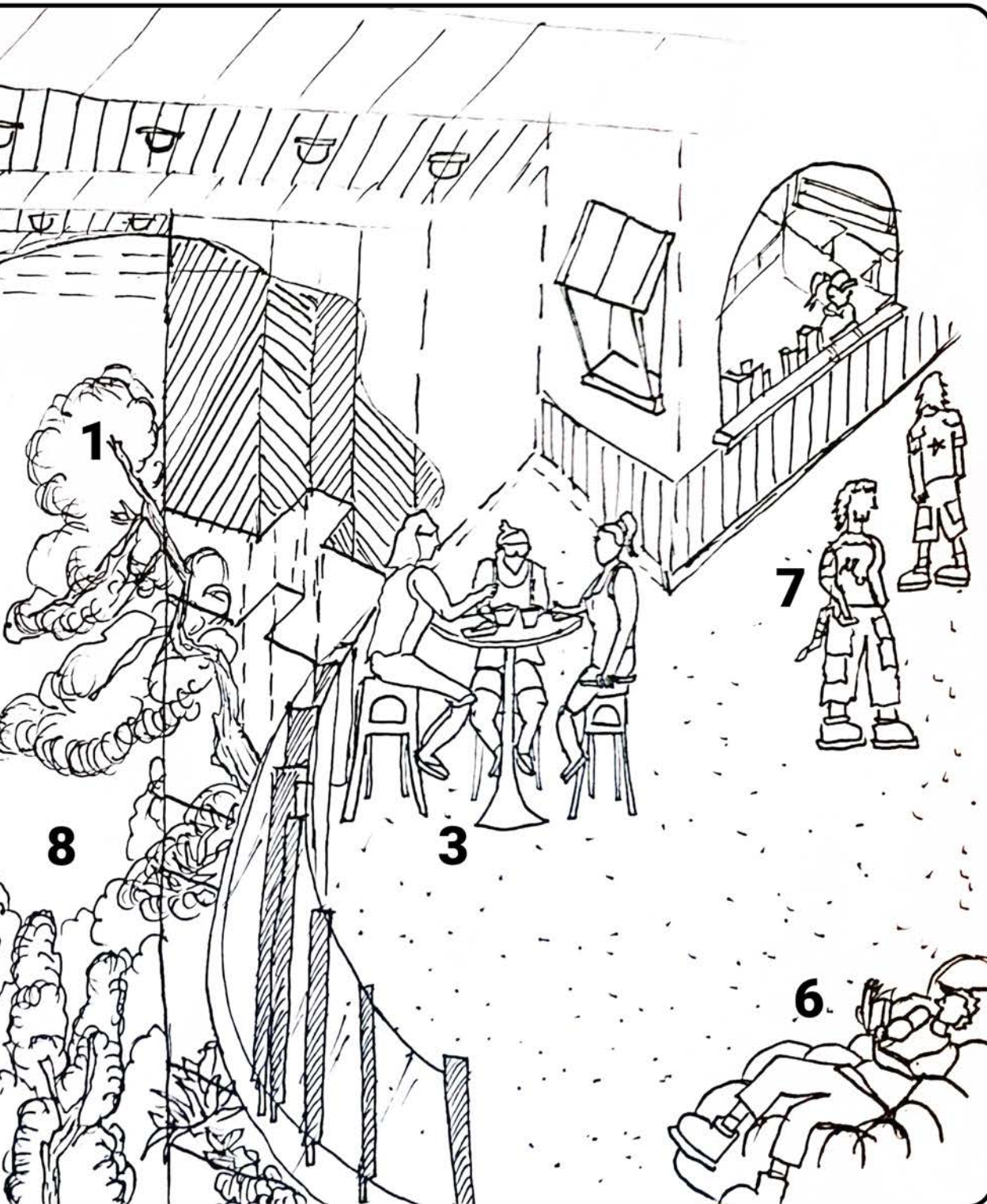
7

shared kitchen spaces

open with access to sunlight

8

centralized interactivity and views



Experimenting with space planning based on HMO standards of minimum student room sizes and larger standard room sizes to first observe how a typical floor plan might work using the existing 15 Westferry building floor plate.

Strategy:

Future building trends in Canary Wharf dictate how construction leans towards space that returns high yields on rent when it comes to student halls vs apartments. At the same time, we need to make student living relatively affordable but also transform the living experience.

How can we optimize compact living experience with the economics of pbsh?

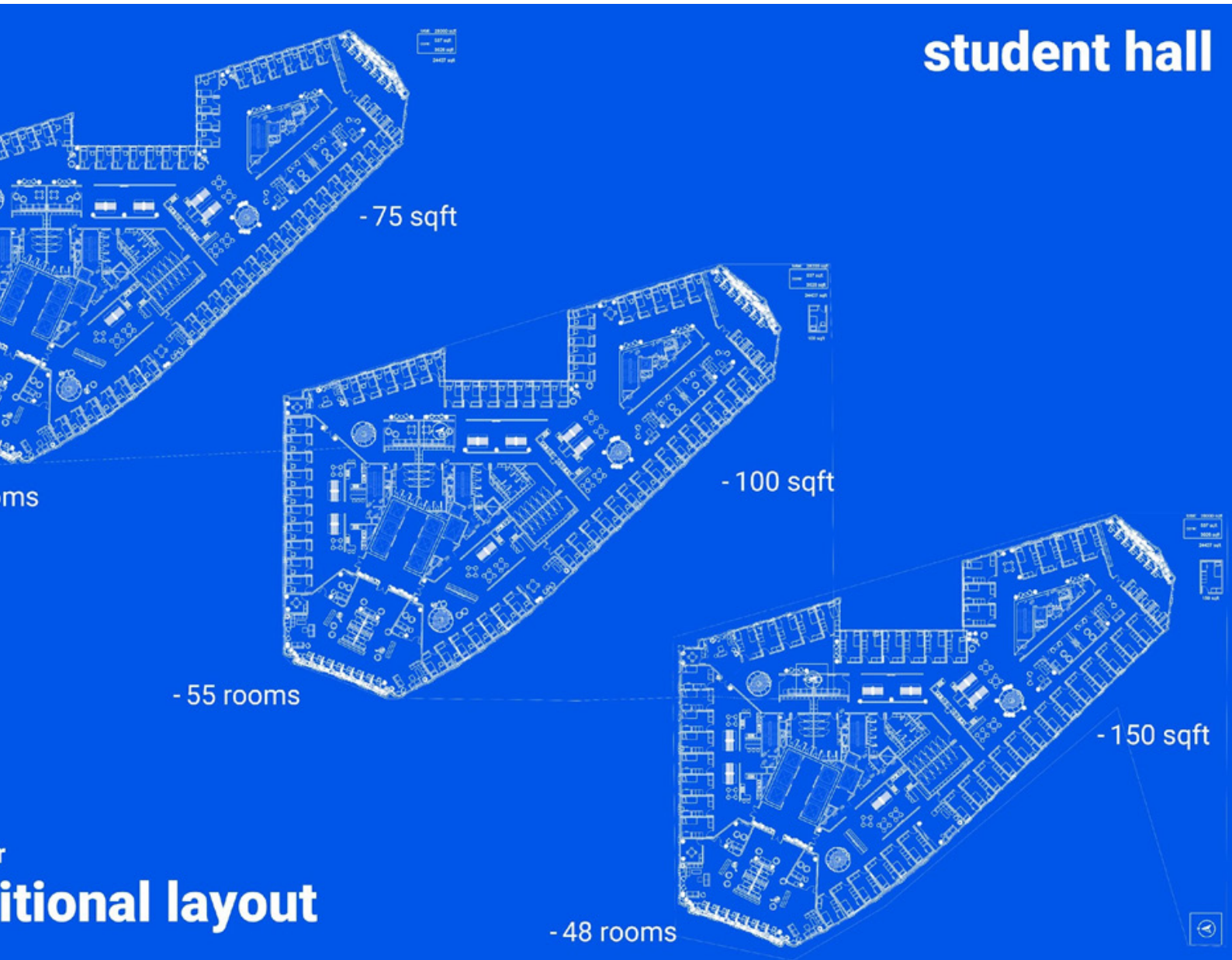
Approach: Maximise number of rooms with compact designs

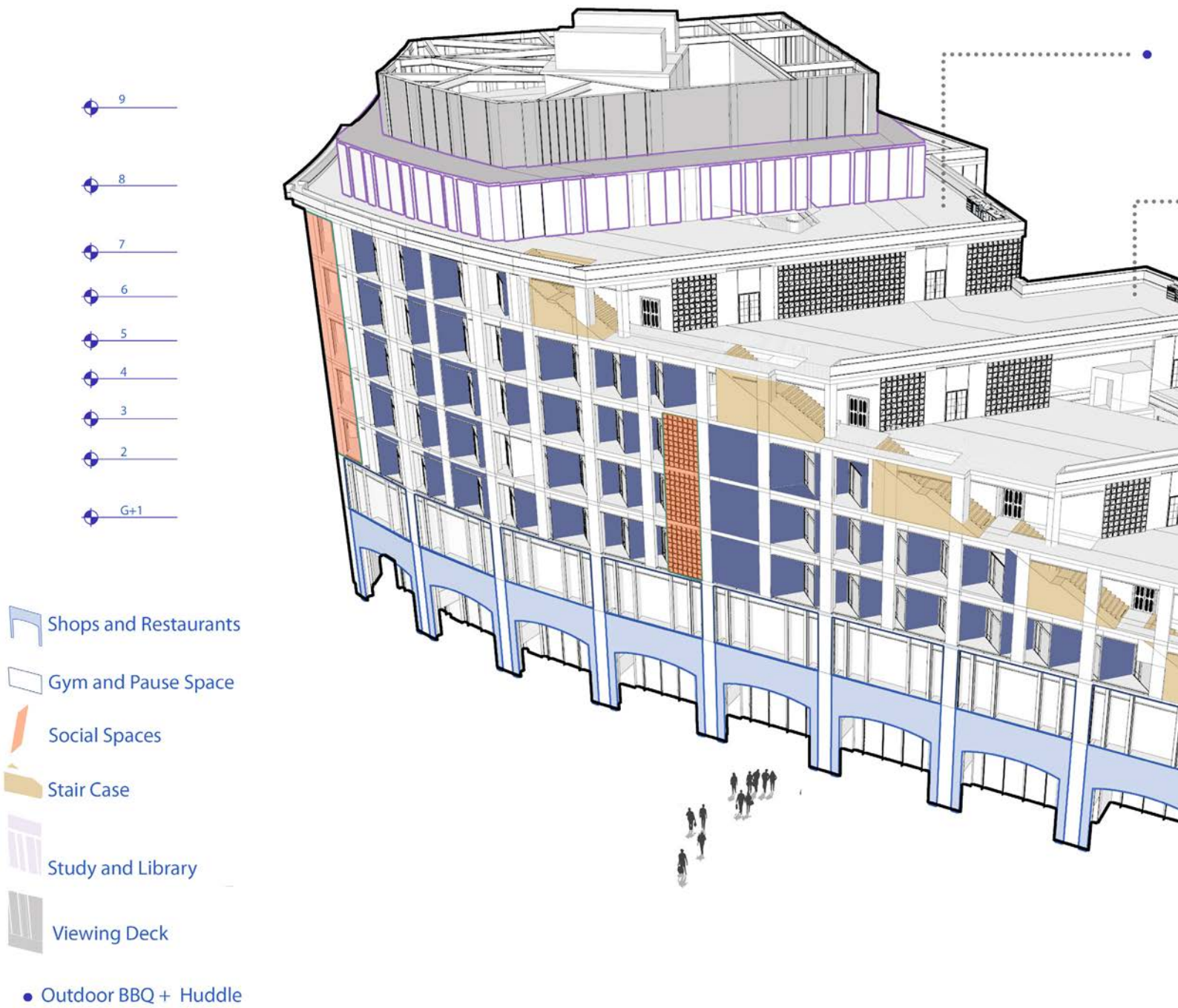


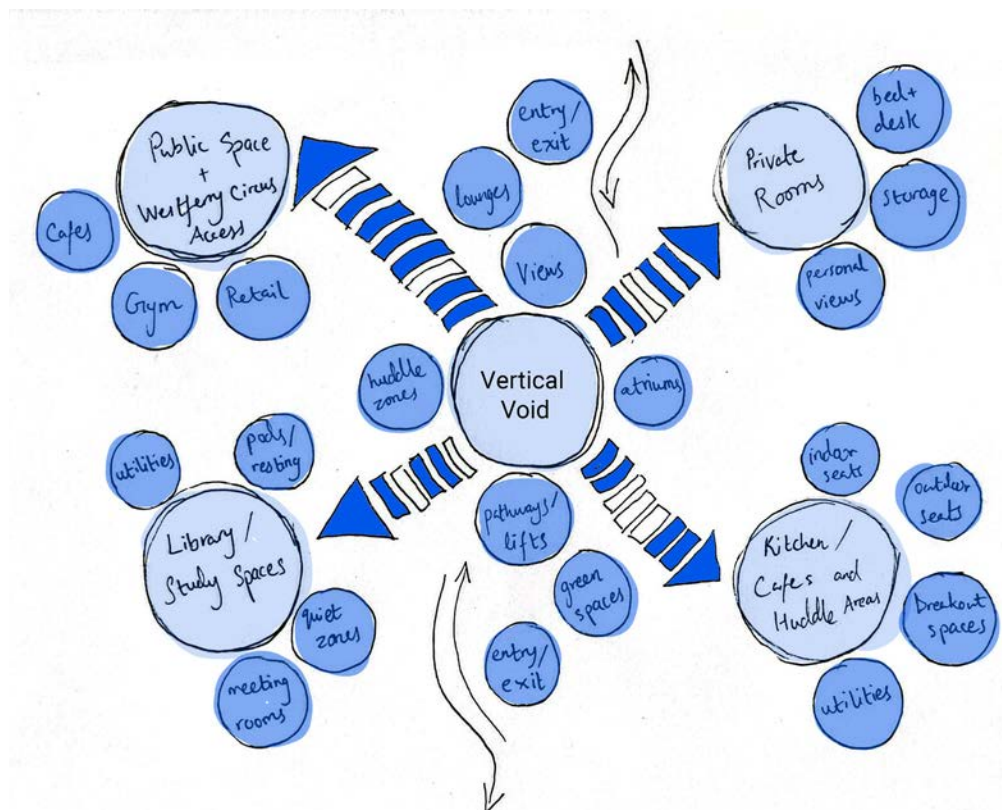
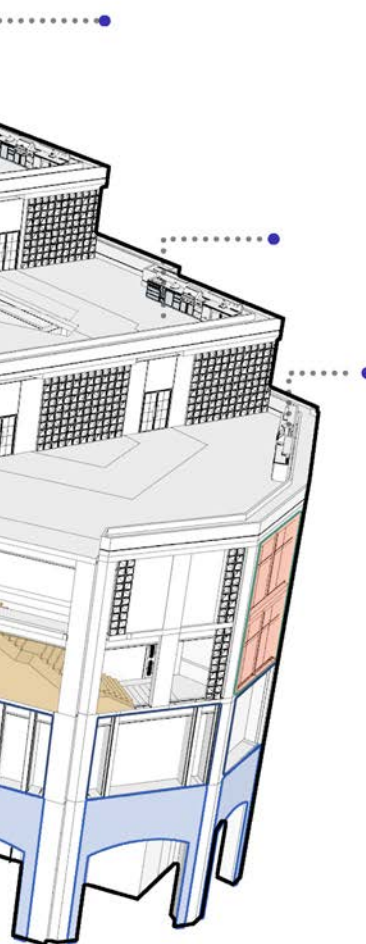
- 60 roo

3rd floor
trad

student hall



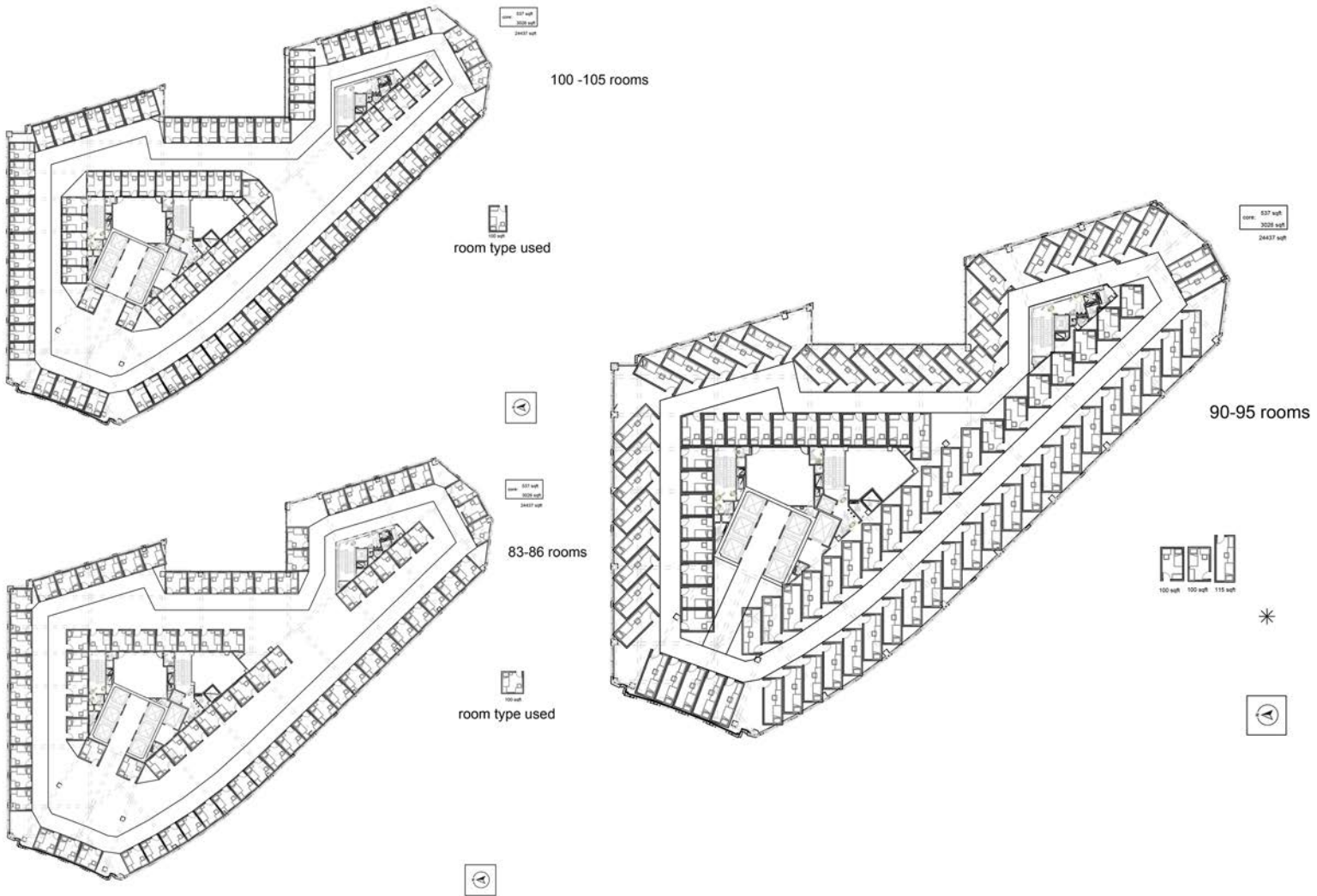




The Challenge lies in the floor plate, since this building was designed as an office.

How can we efficiently compose the optimum number of rooms vs also optimizing the living experience?

In order for a space to be liveable, we need to make each room have access to sunlight.



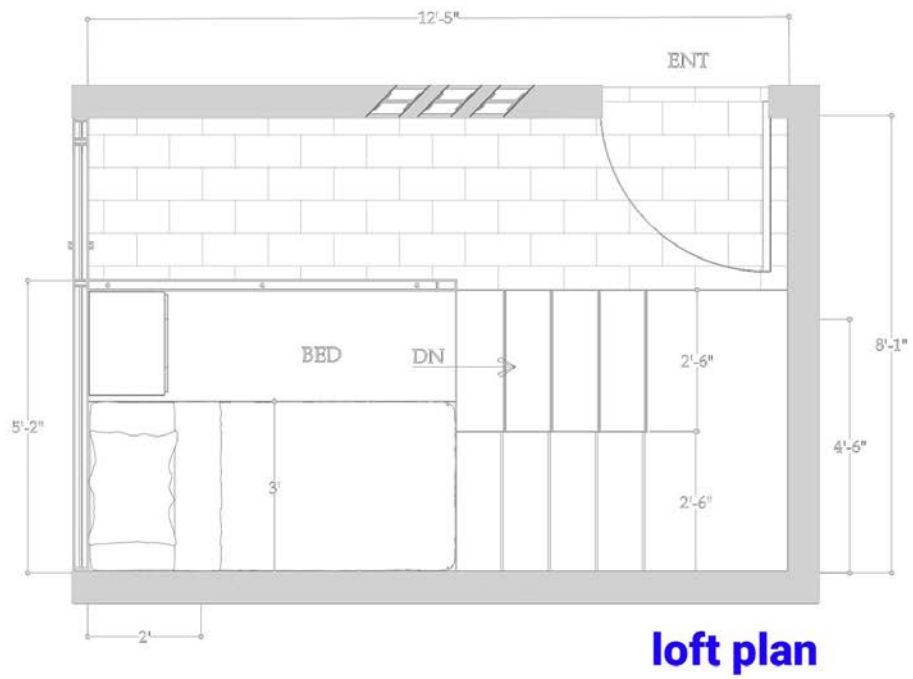
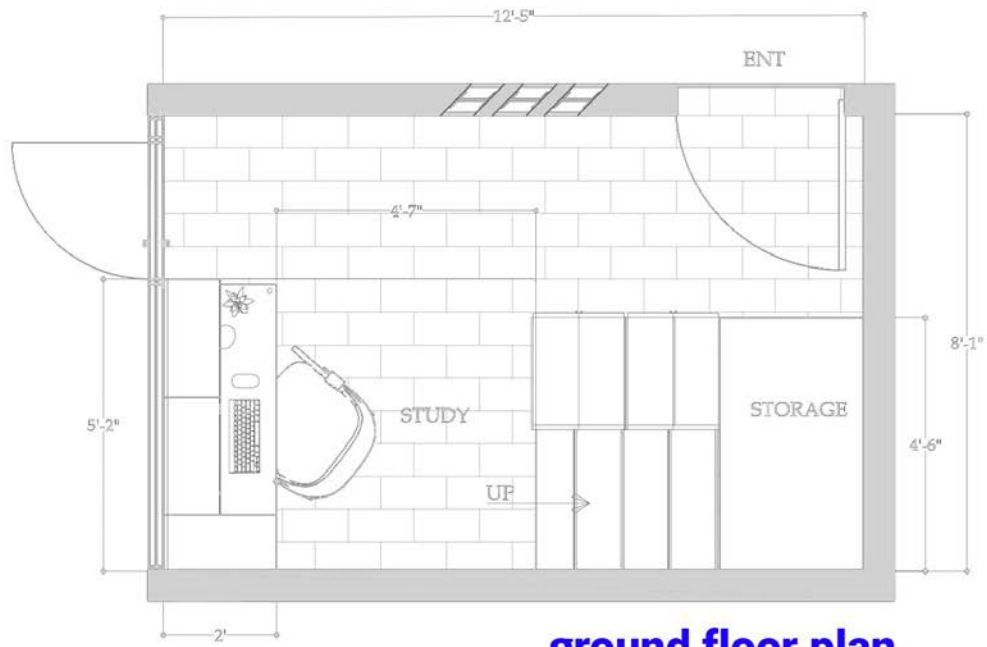
Iterations for function

Upon playing with several room typologies, 2 room sizes were ultimately identified that maximized the floor plate space while also allowing personal views to every room.

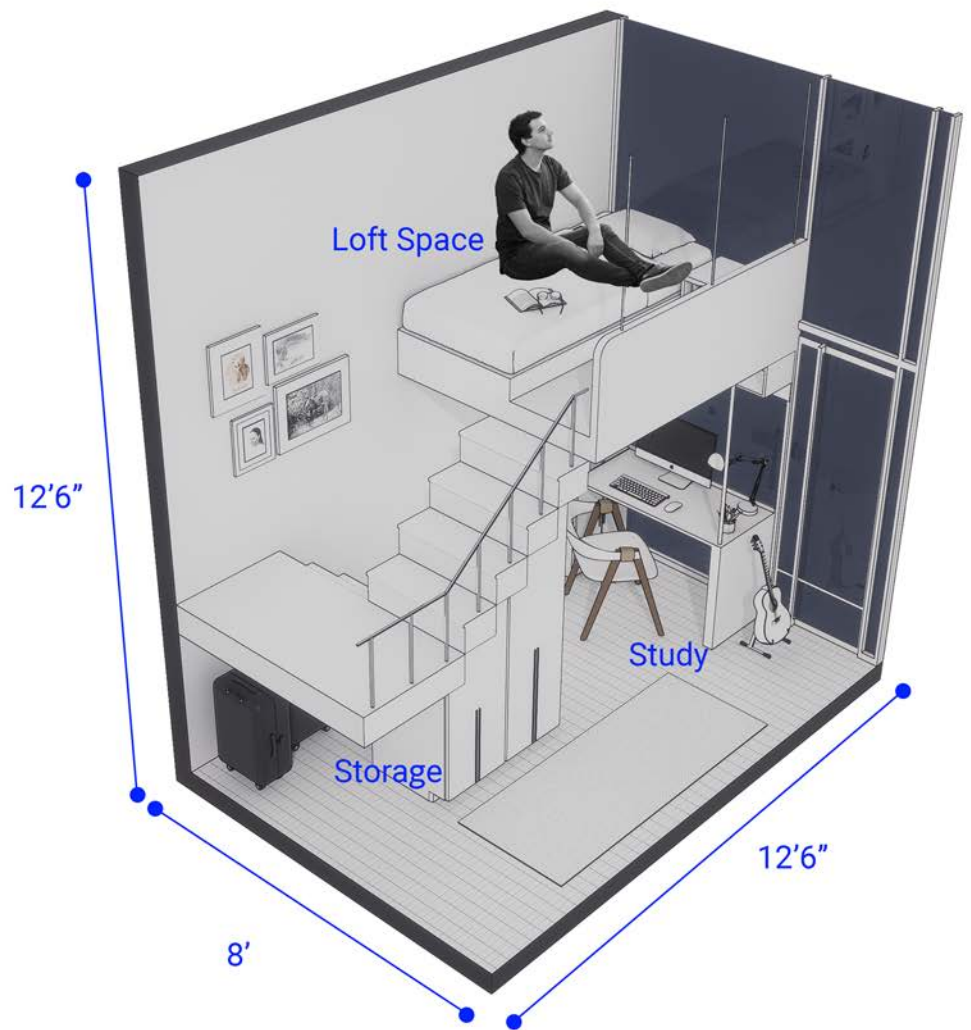
The next phase was subtraction to use nooks and central spaces for interactivity and utilities.

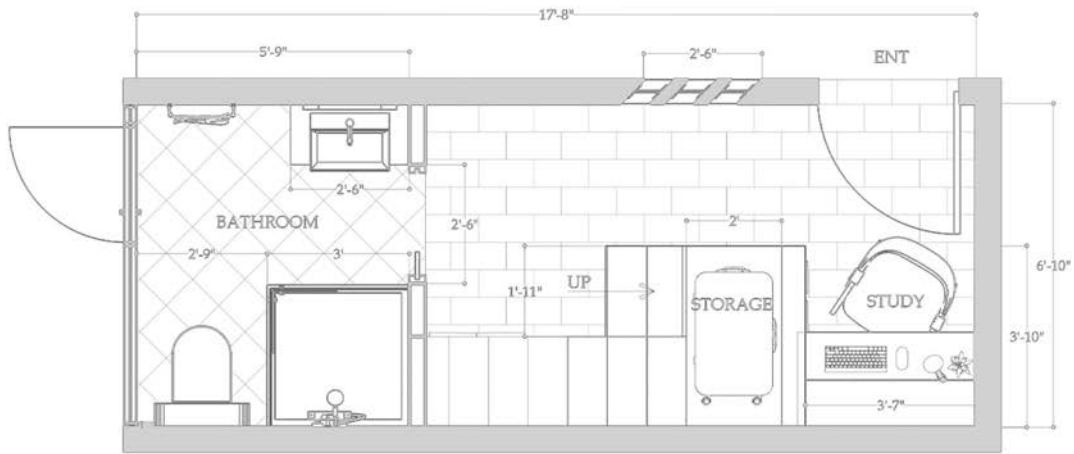




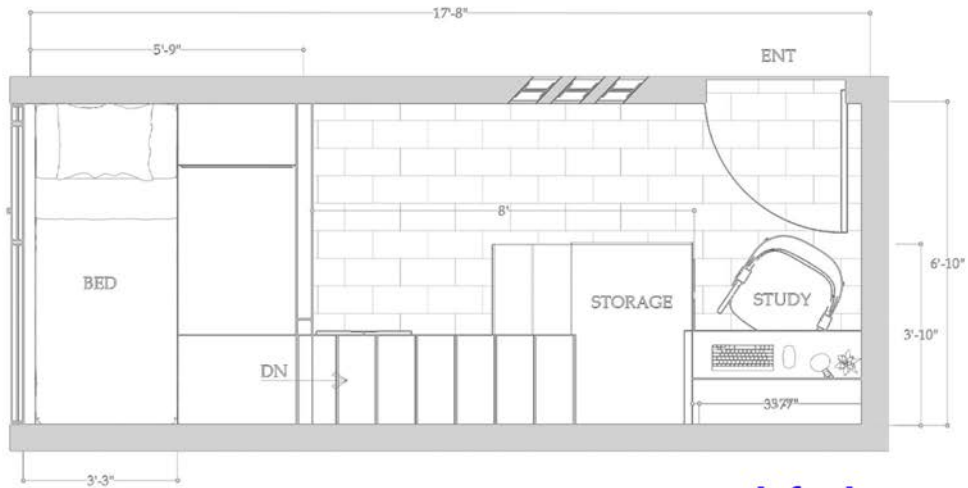


100sft Room



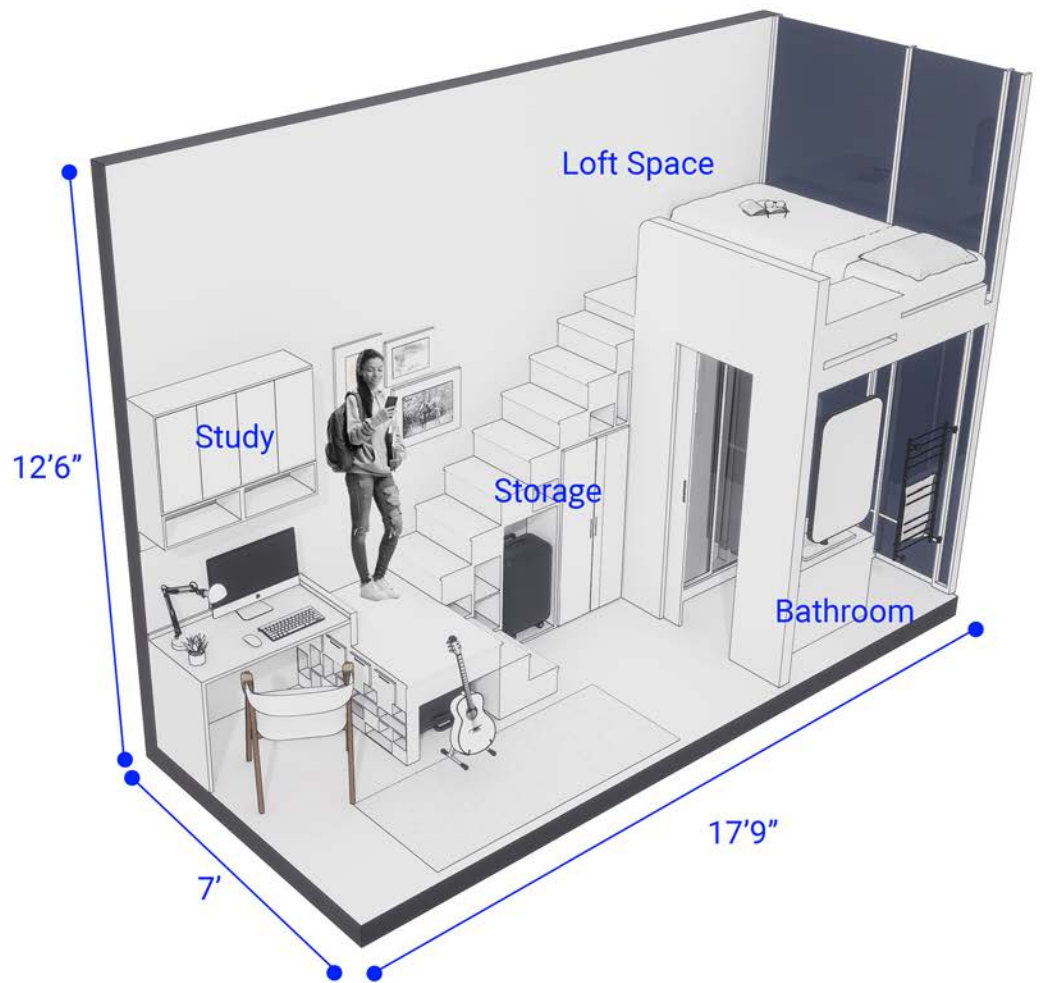


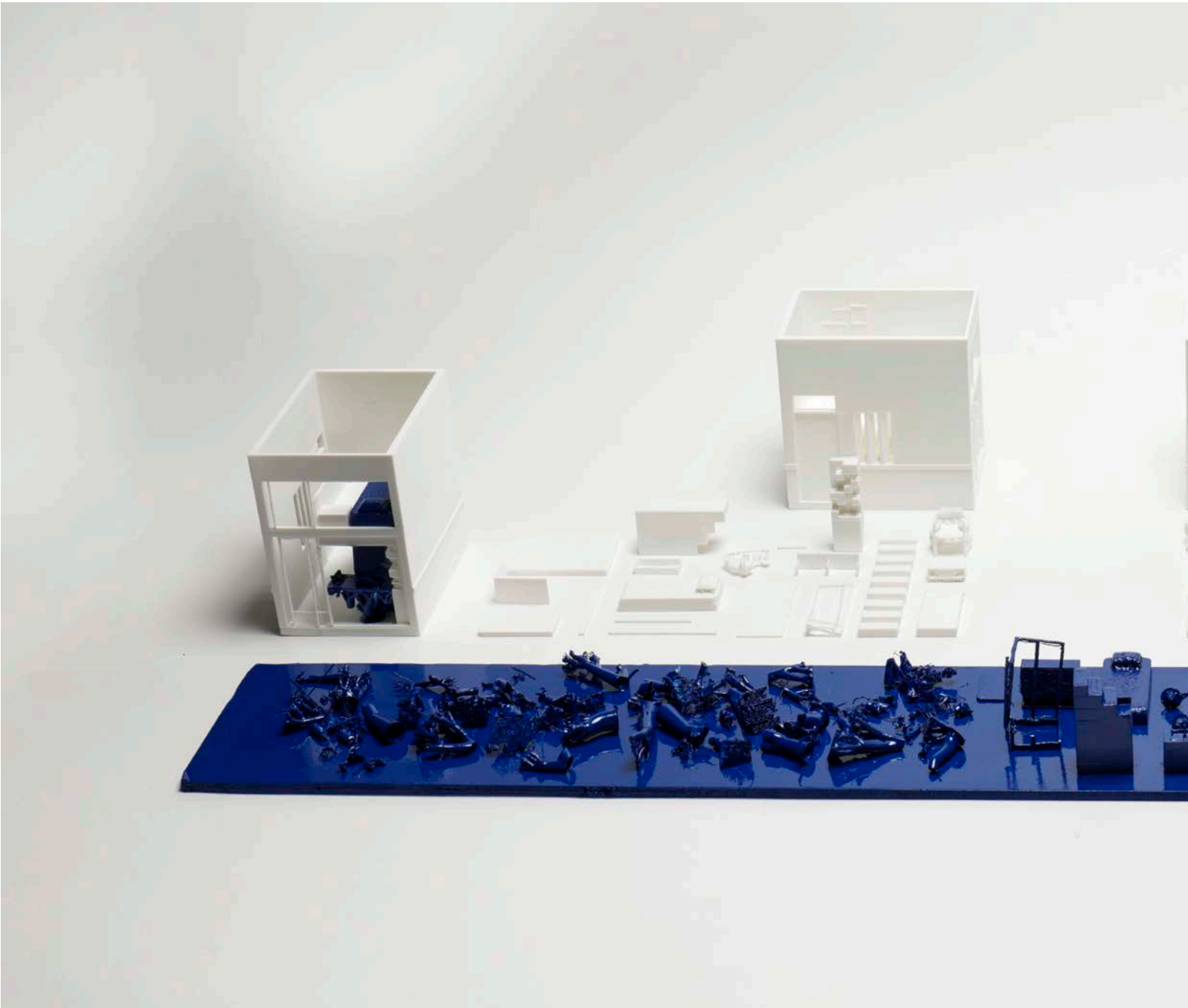
ground floor plan

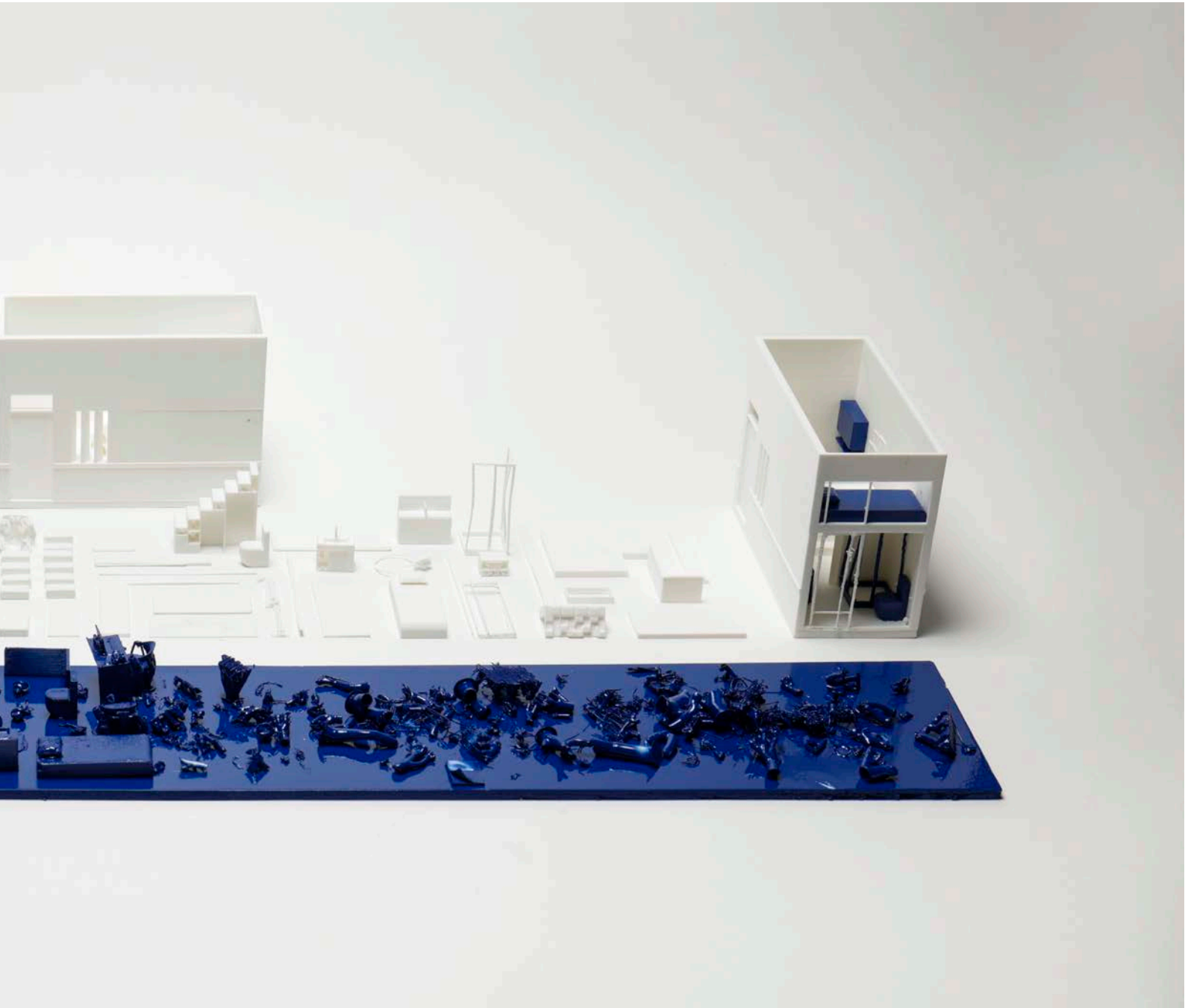


loft plan

115sft Room









115 sft room

A well lit compact living space housing a humble resting space above and a toilet + shower below that comes with a view!

100 sft room

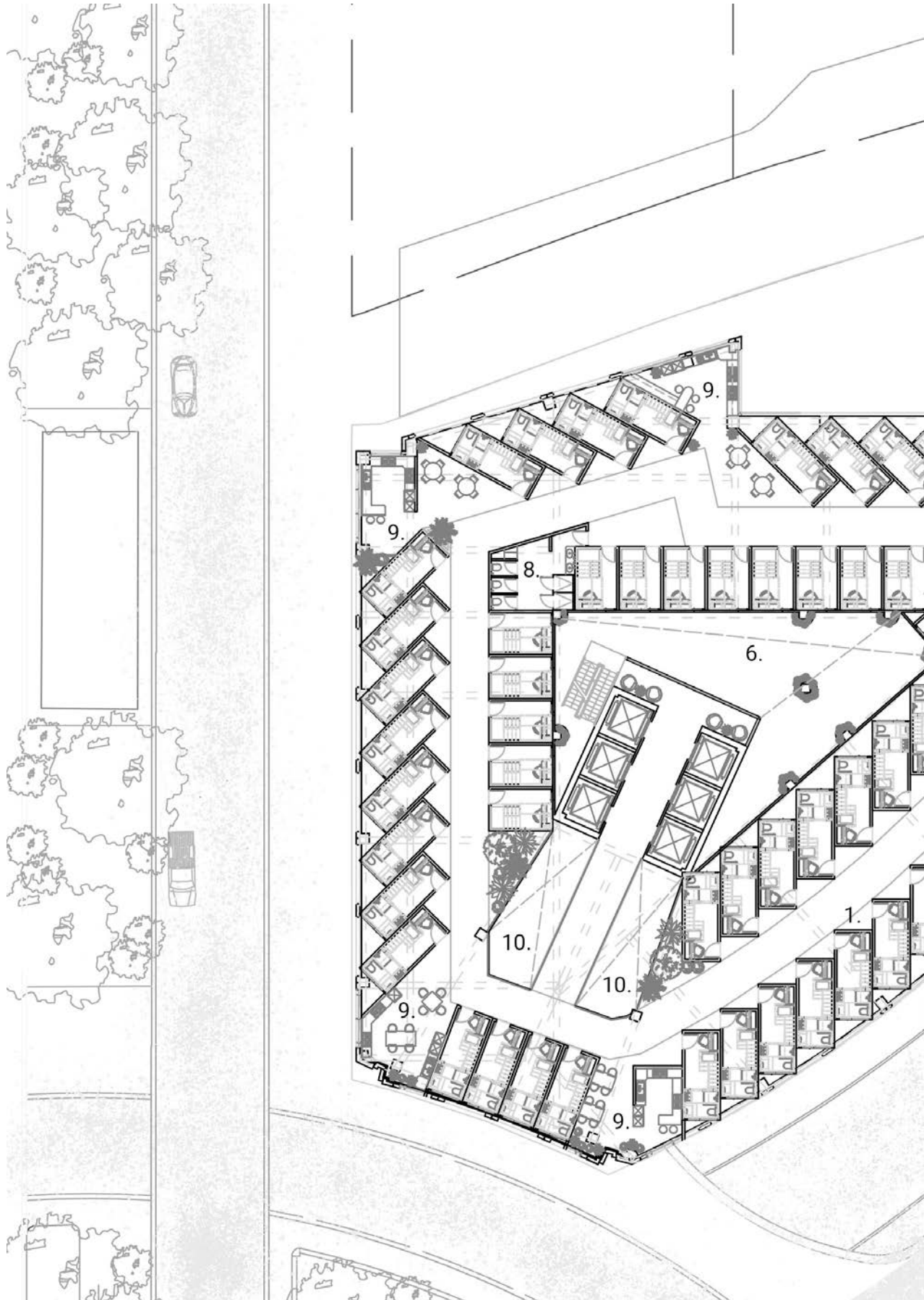
A room that boasts a generous workstation facing the balcony view while housing a space for rest just above!



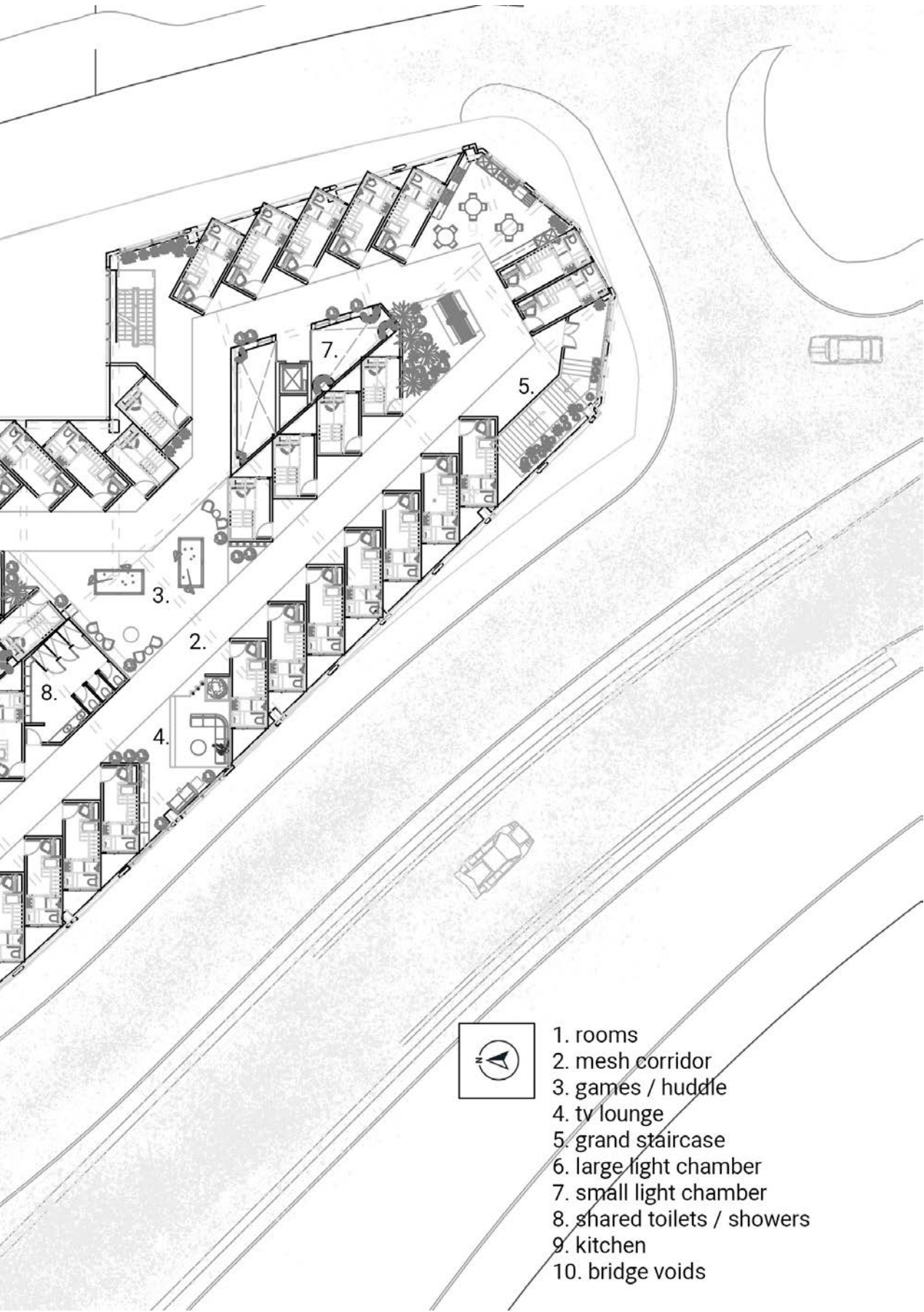


04.

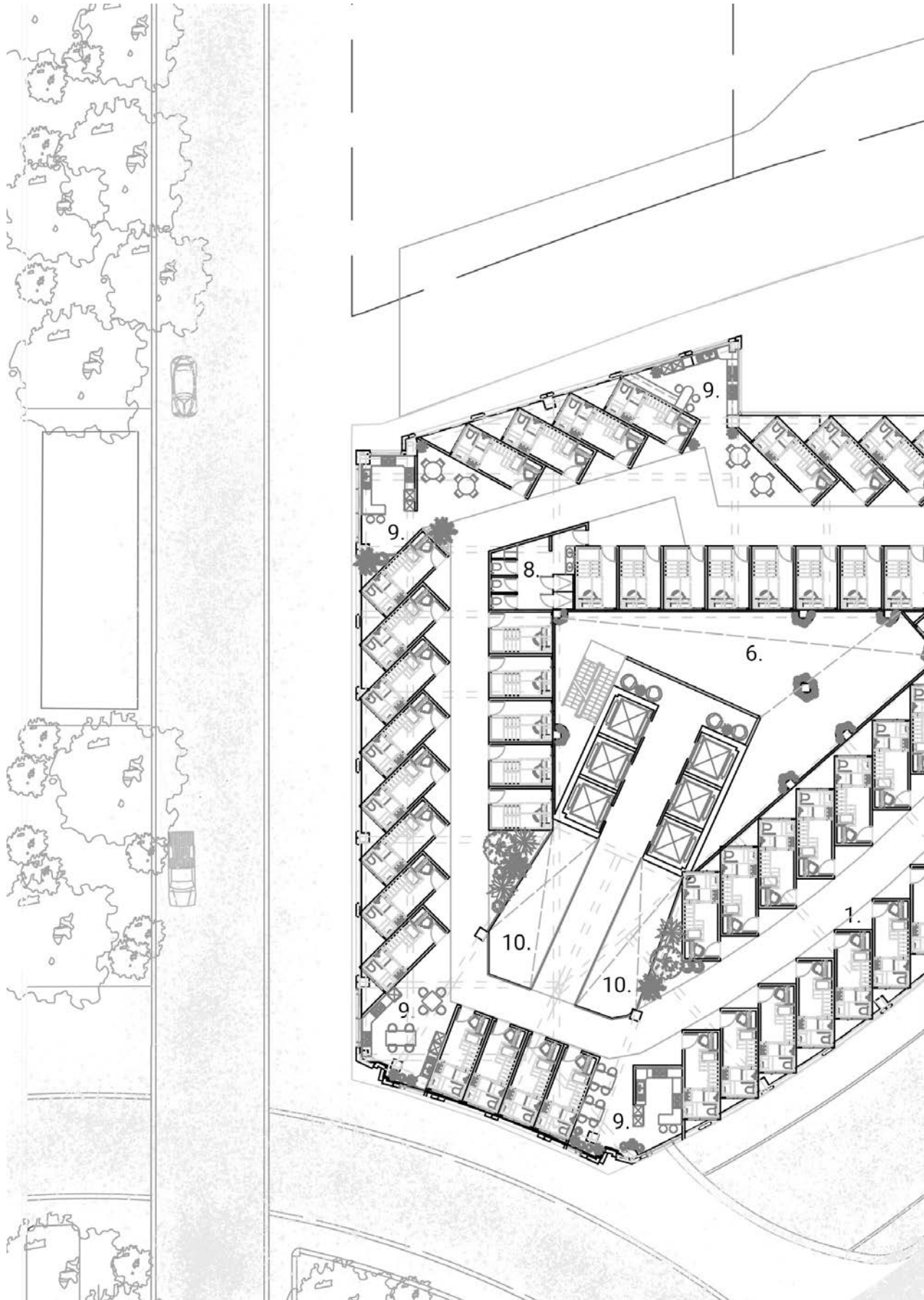
Drawings and Visuals



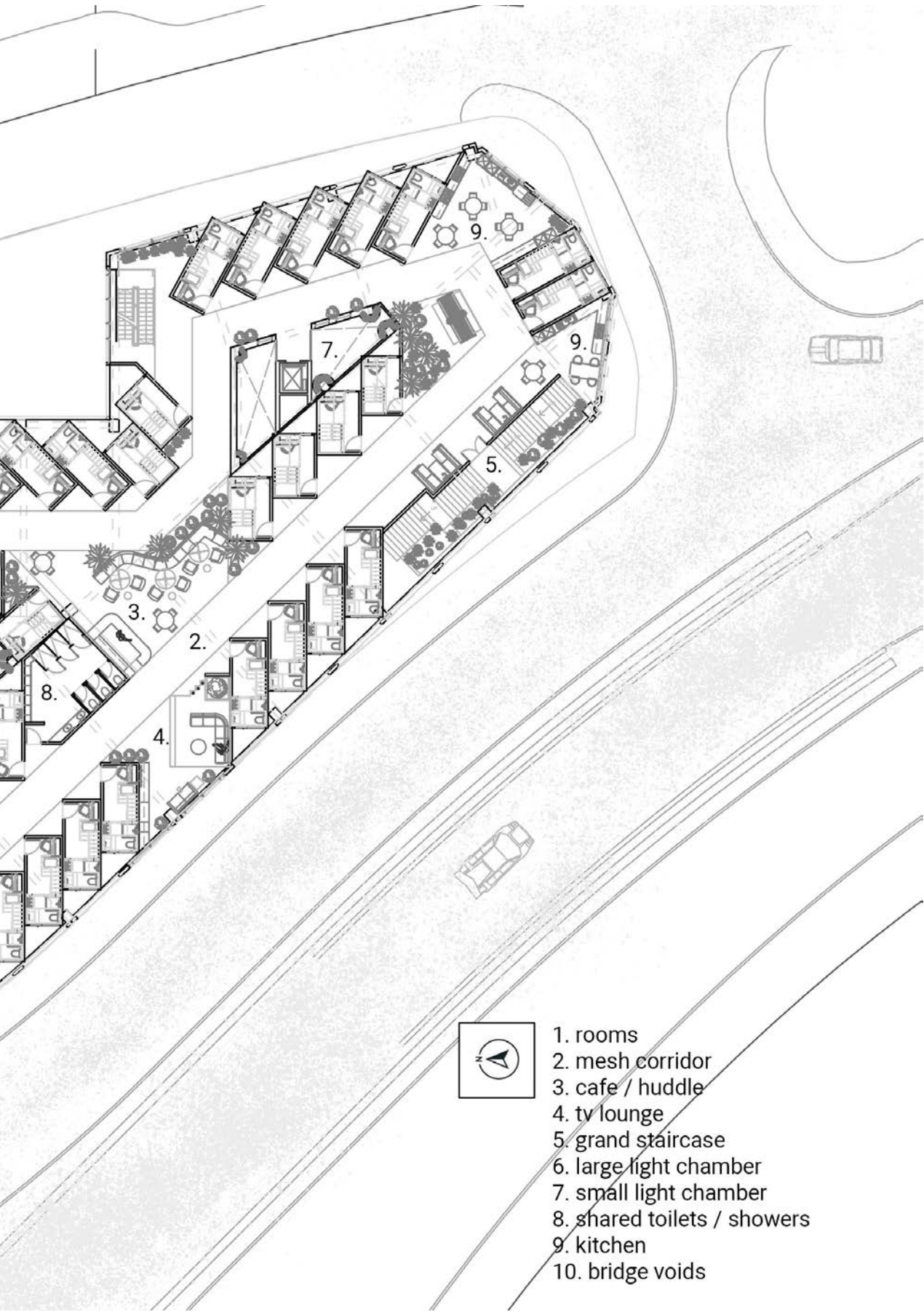
3rd floor plan



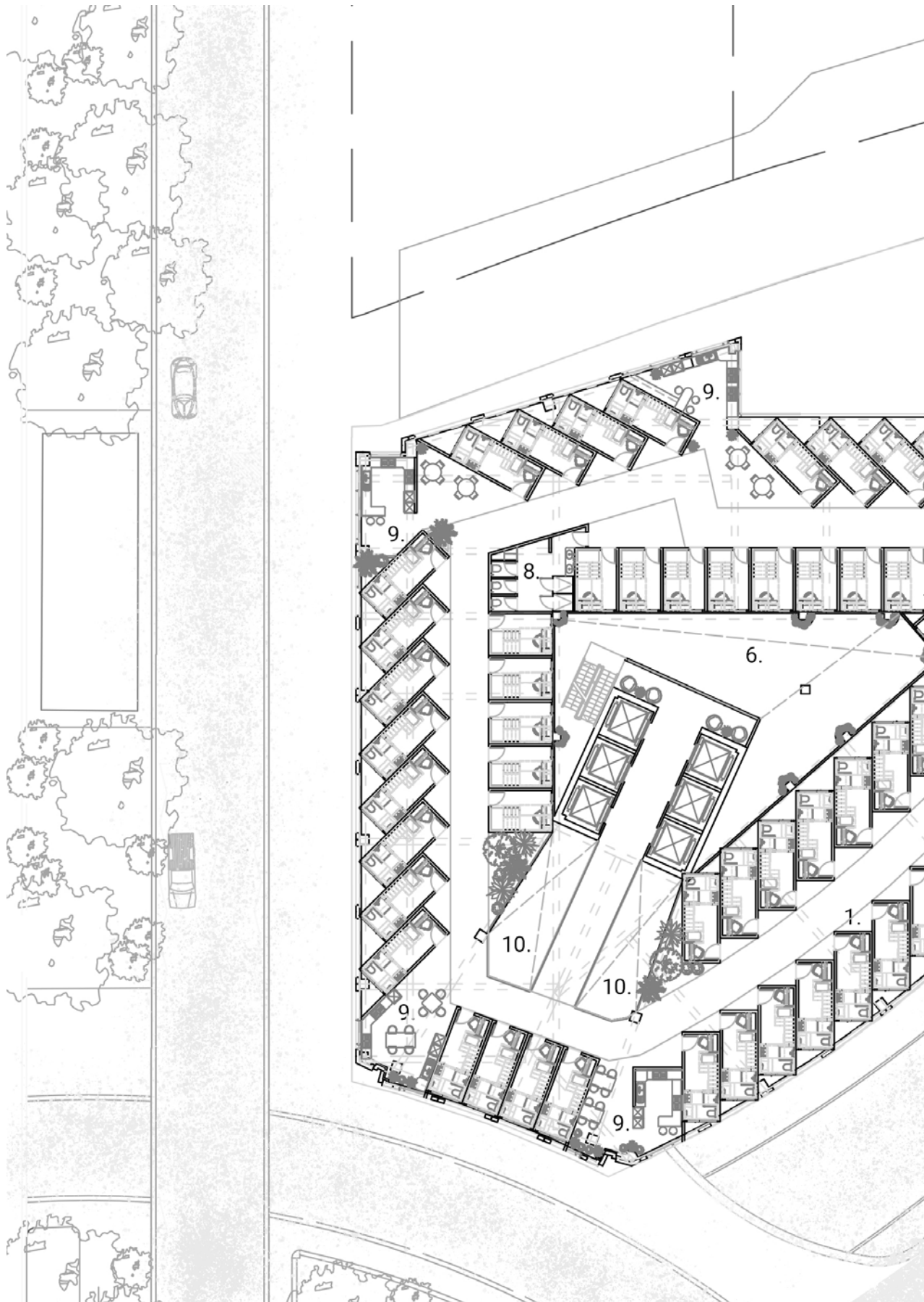
- 1. rooms
- 2. mesh corridor
- 3. games / huddle
- 4. tv lounge
- 5. grand staircase
- 6. large light chamber
- 7. small light chamber
- 8. shared toilets / showers
- 9. kitchen
- 10. bridge voids



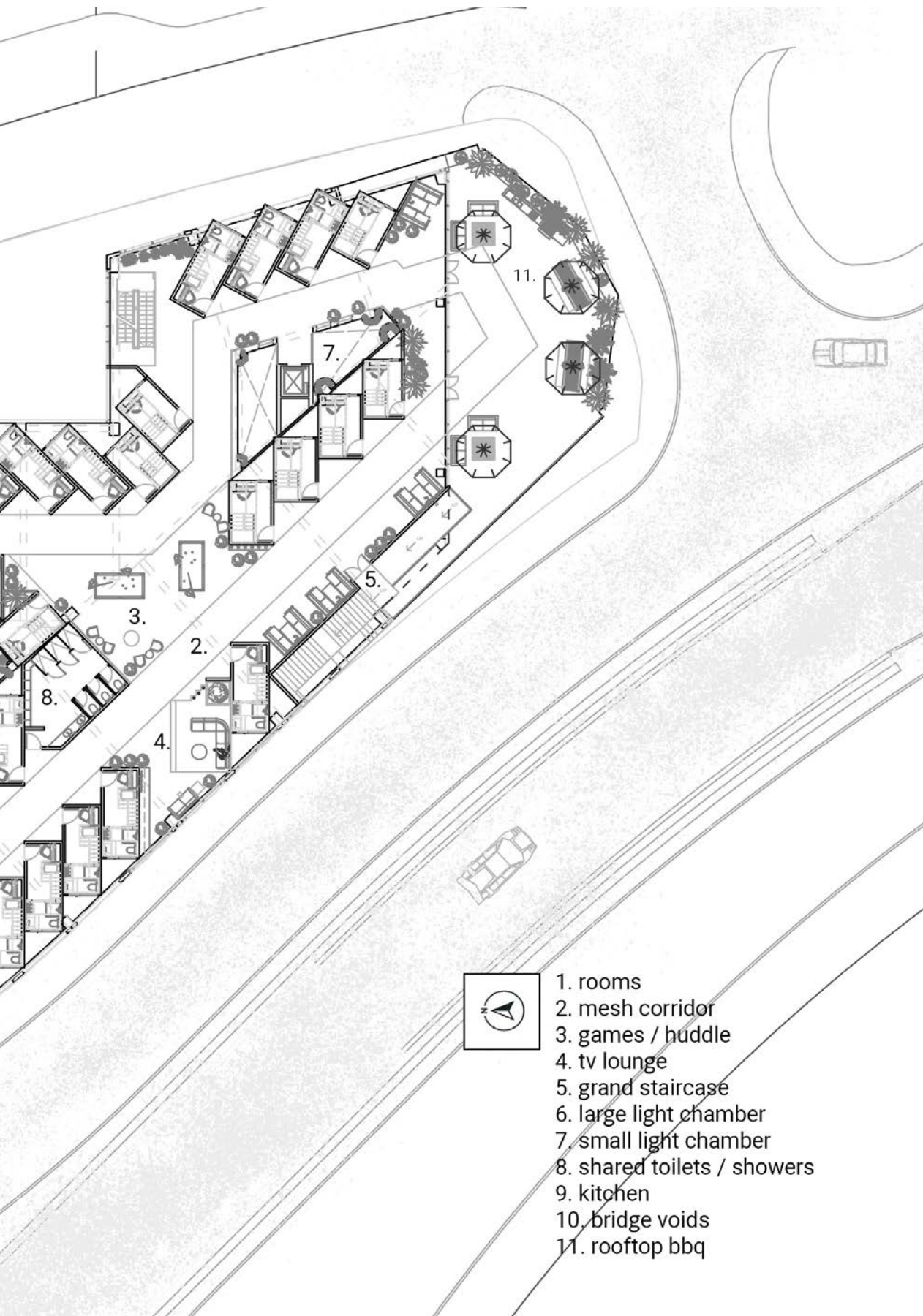
4th floor plan

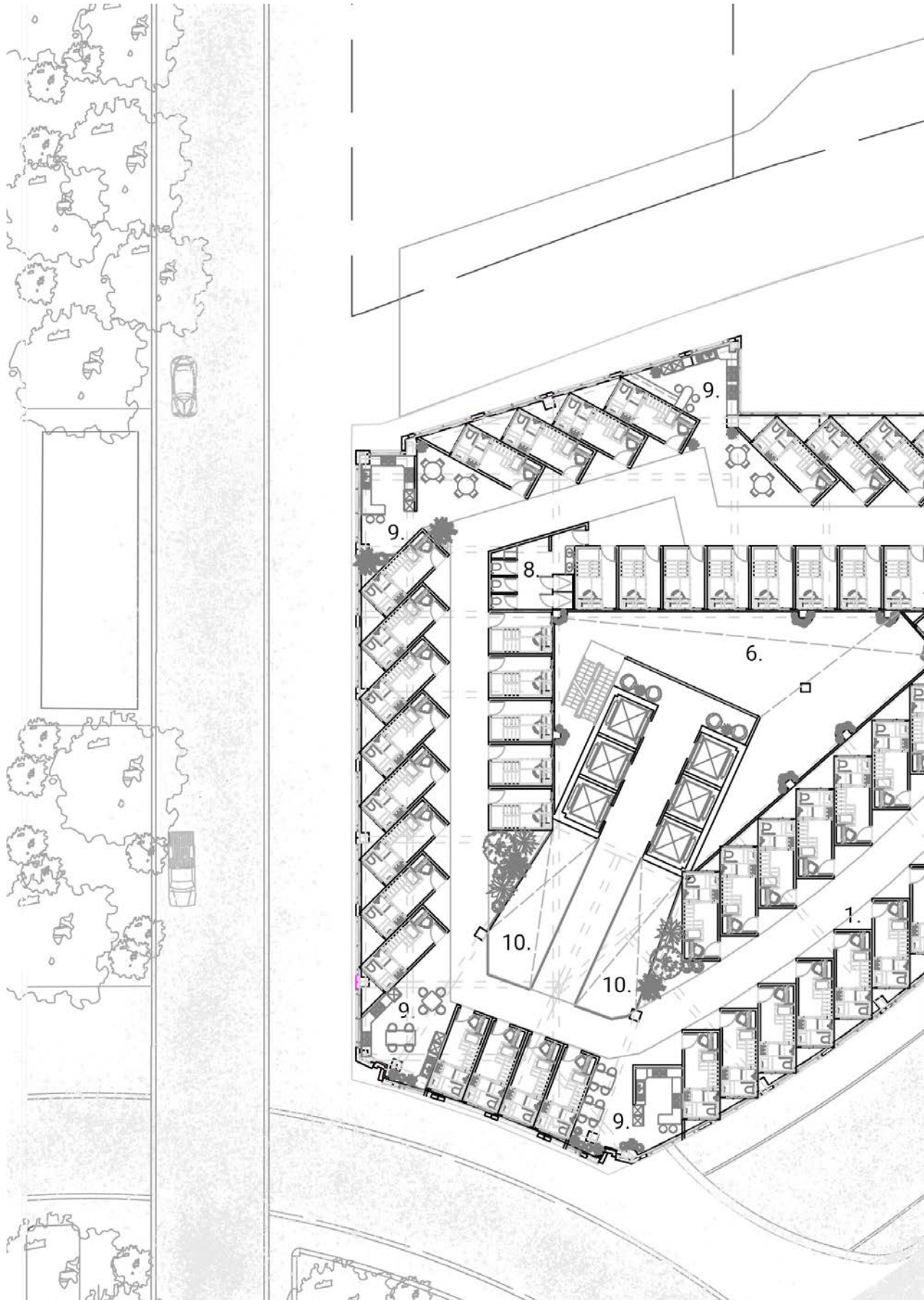


- 1. rooms
- 2. mesh corridor
- 3. cafe / huddle
- 4. tv lounge
- 5. grand staircase
- 6. large light chamber
- 7. small light chamber
- 8. shared toilets / showers
- 9. kitchen
- 10. bridge voids

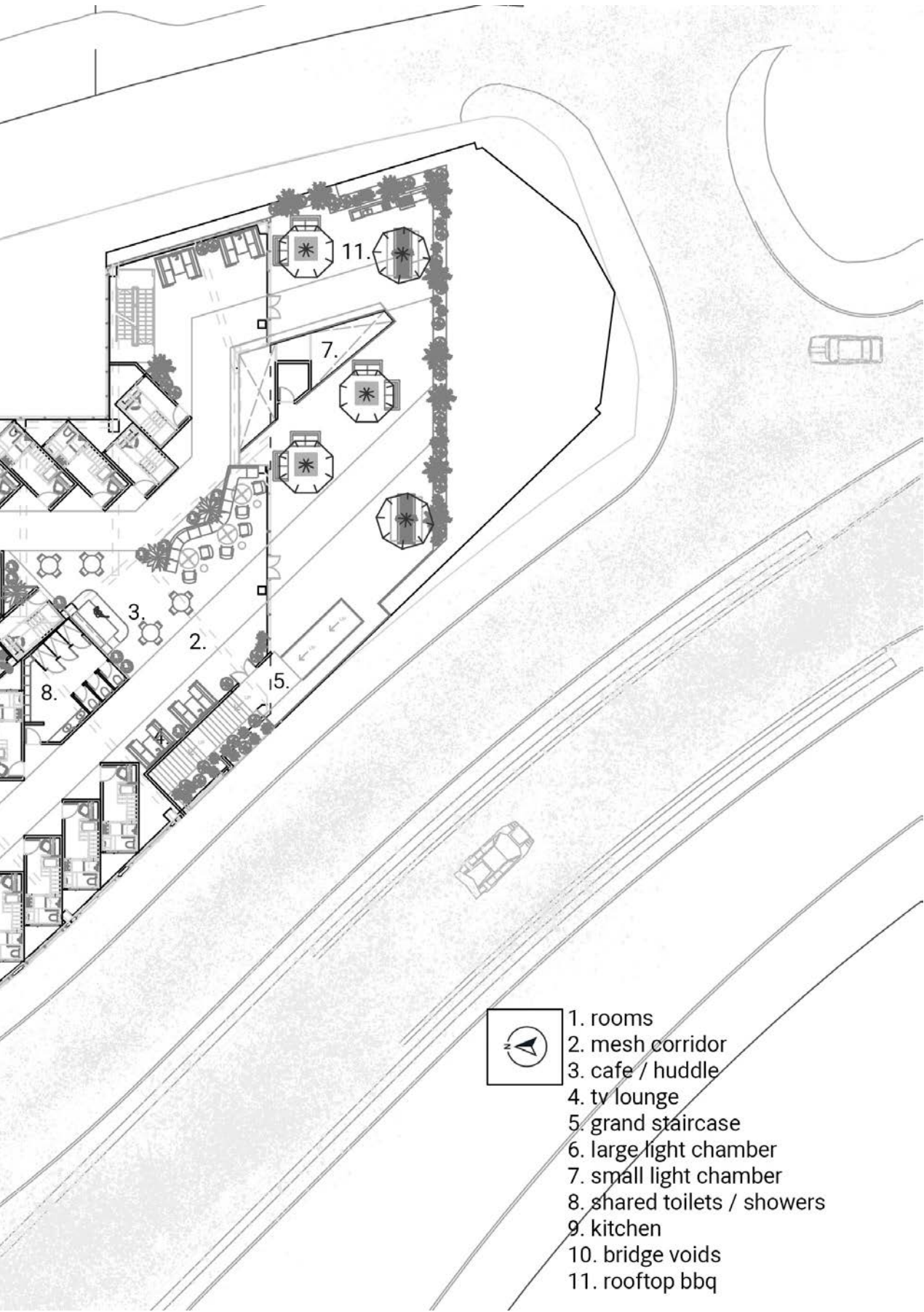


5th floor plan

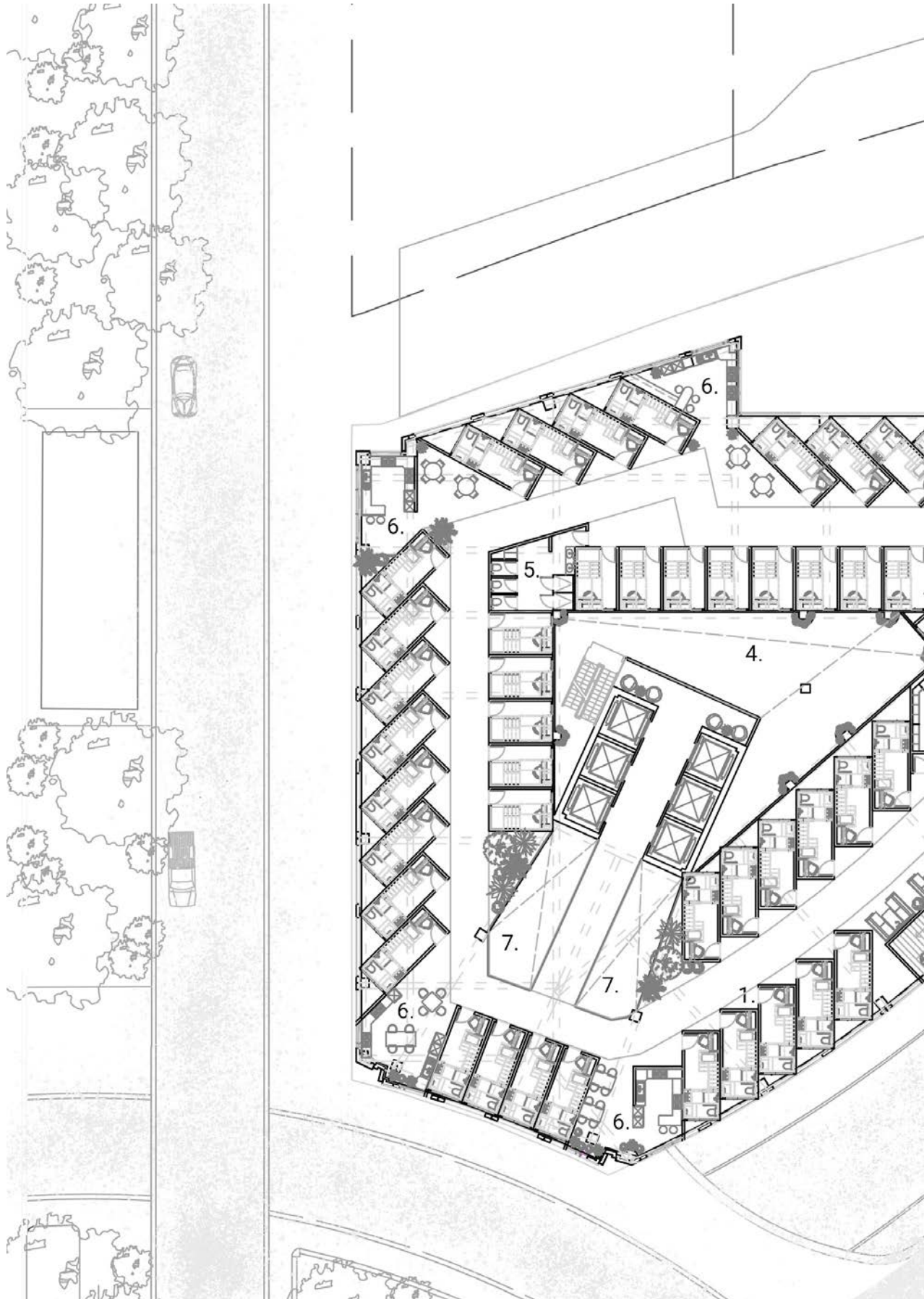




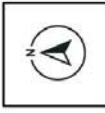
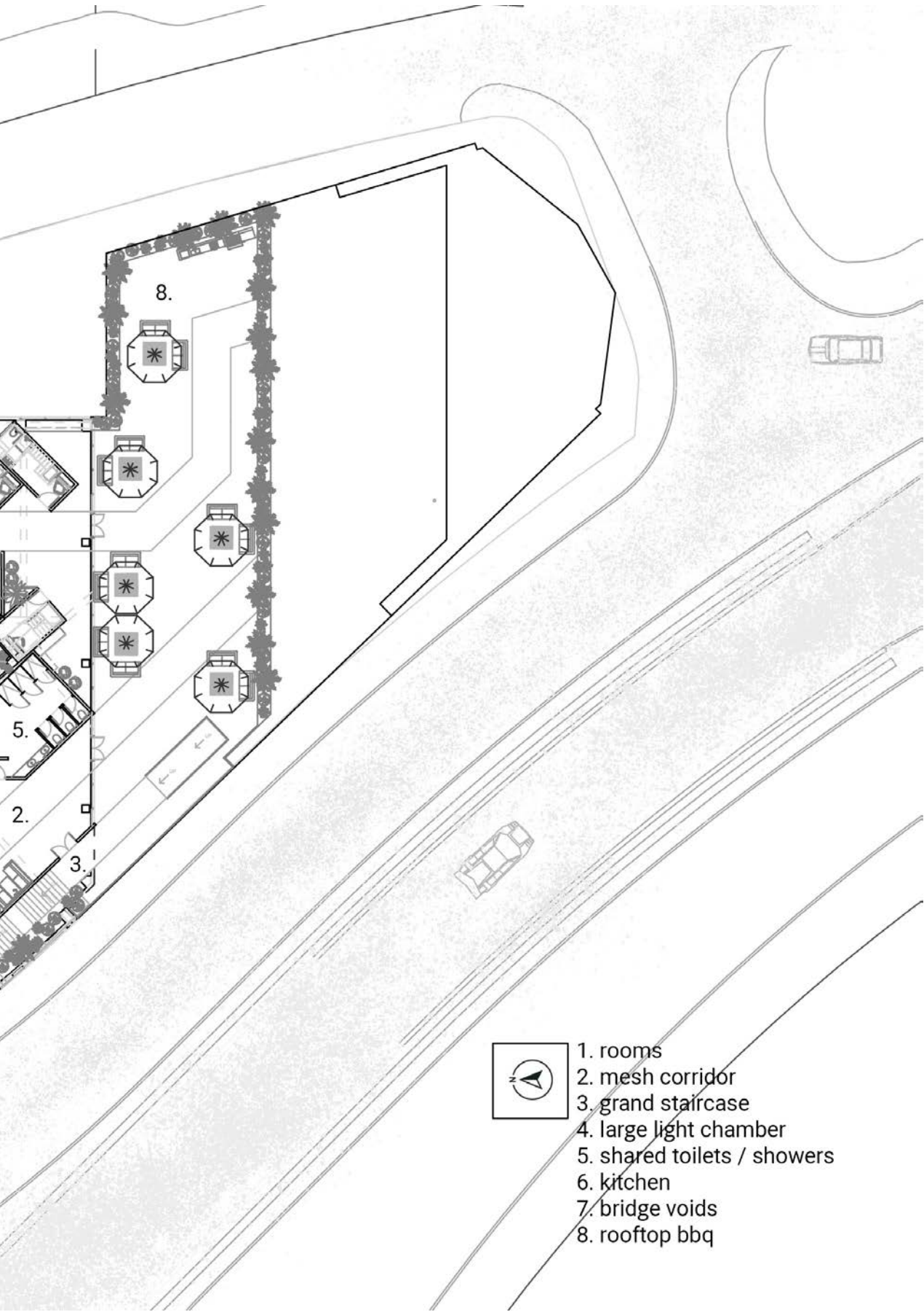
6th floor plan



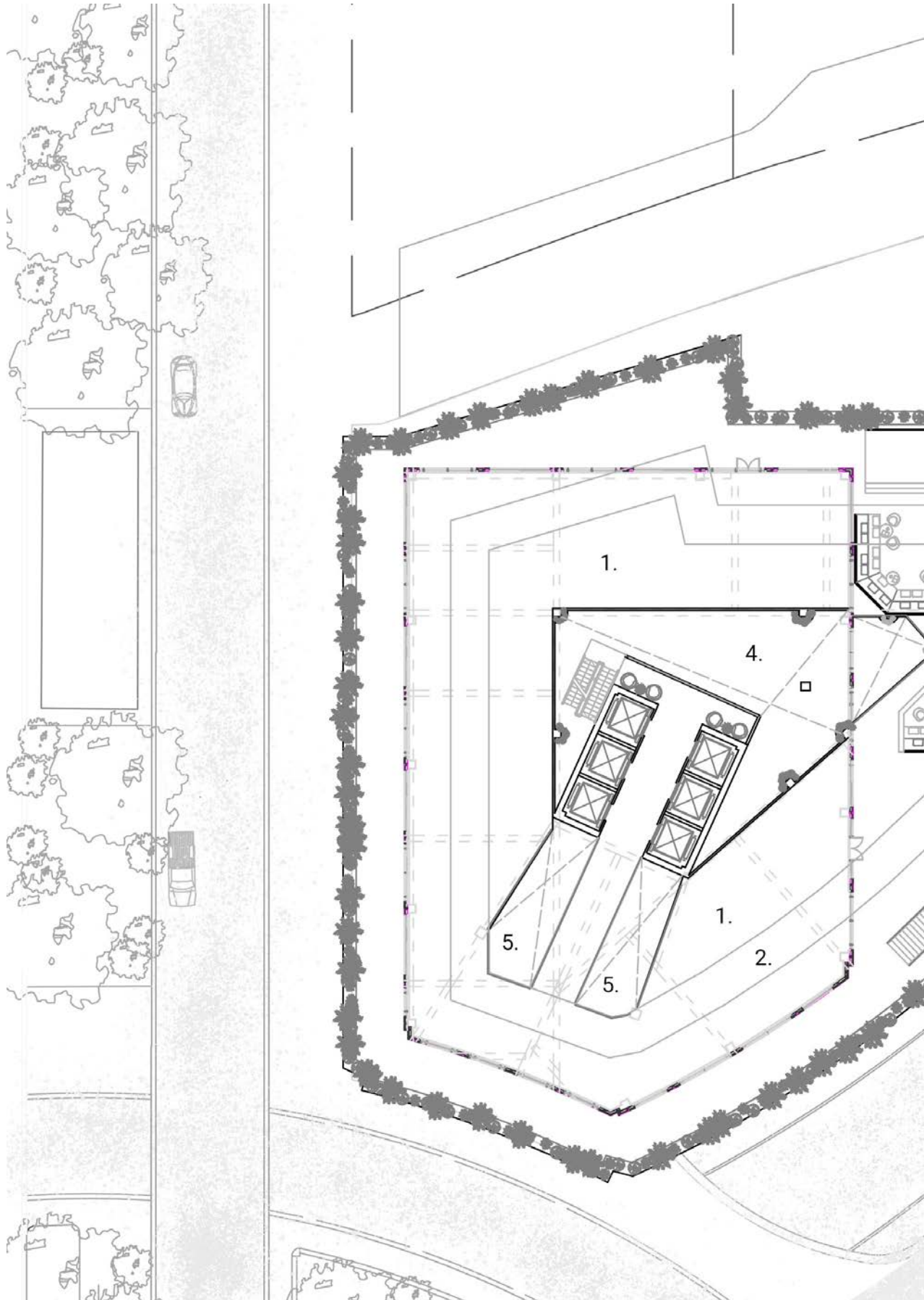
- 1. rooms
- 2. mesh corridor
- 3. cafe / huddle
- 4. tv lounge
- 5. grand staircase
- 6. large light chamber
- 7. small light chamber
- 8. shared toilets / showers
- 9. kitchen
- 10. bridge voids
- 11. rooftop bbq



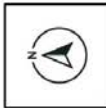
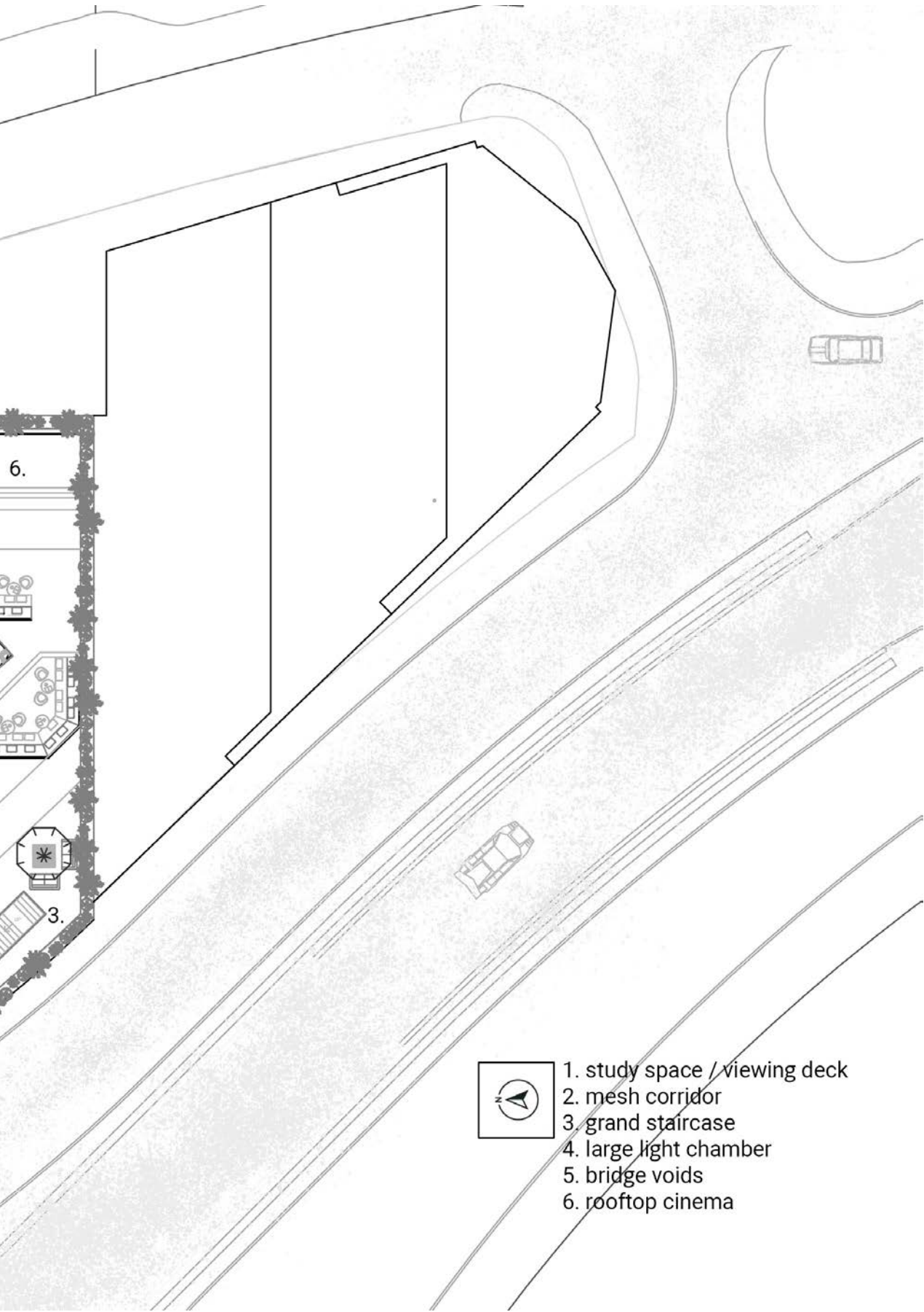
7th floor plan



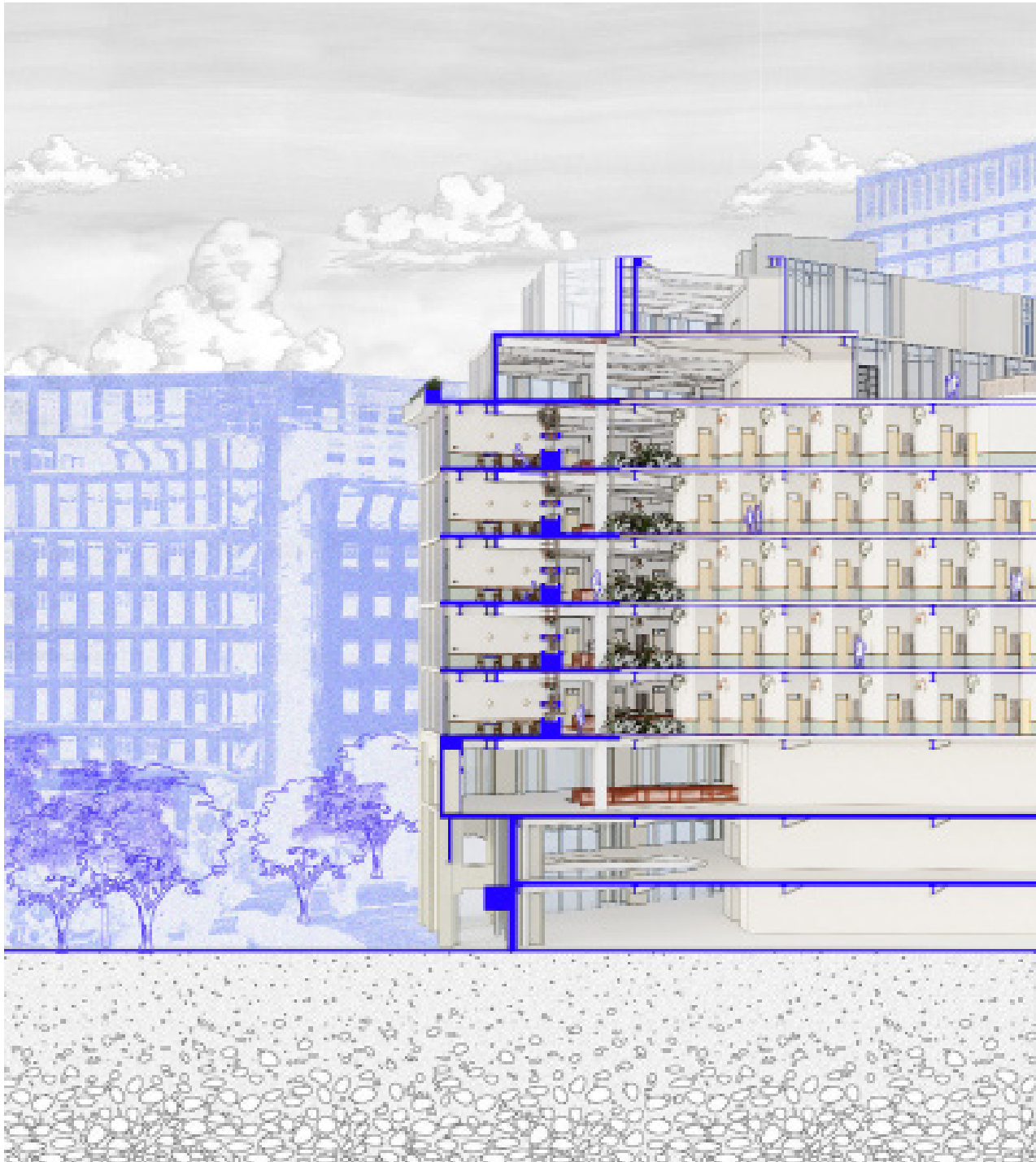
- 1. rooms
- 2. mesh corridor
- 3. grand staircase
- 4. large light chamber
- 5. shared toilets / showers
- 6. kitchen
- 7. bridge voids
- 8. rooftop bbq



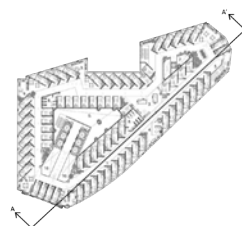
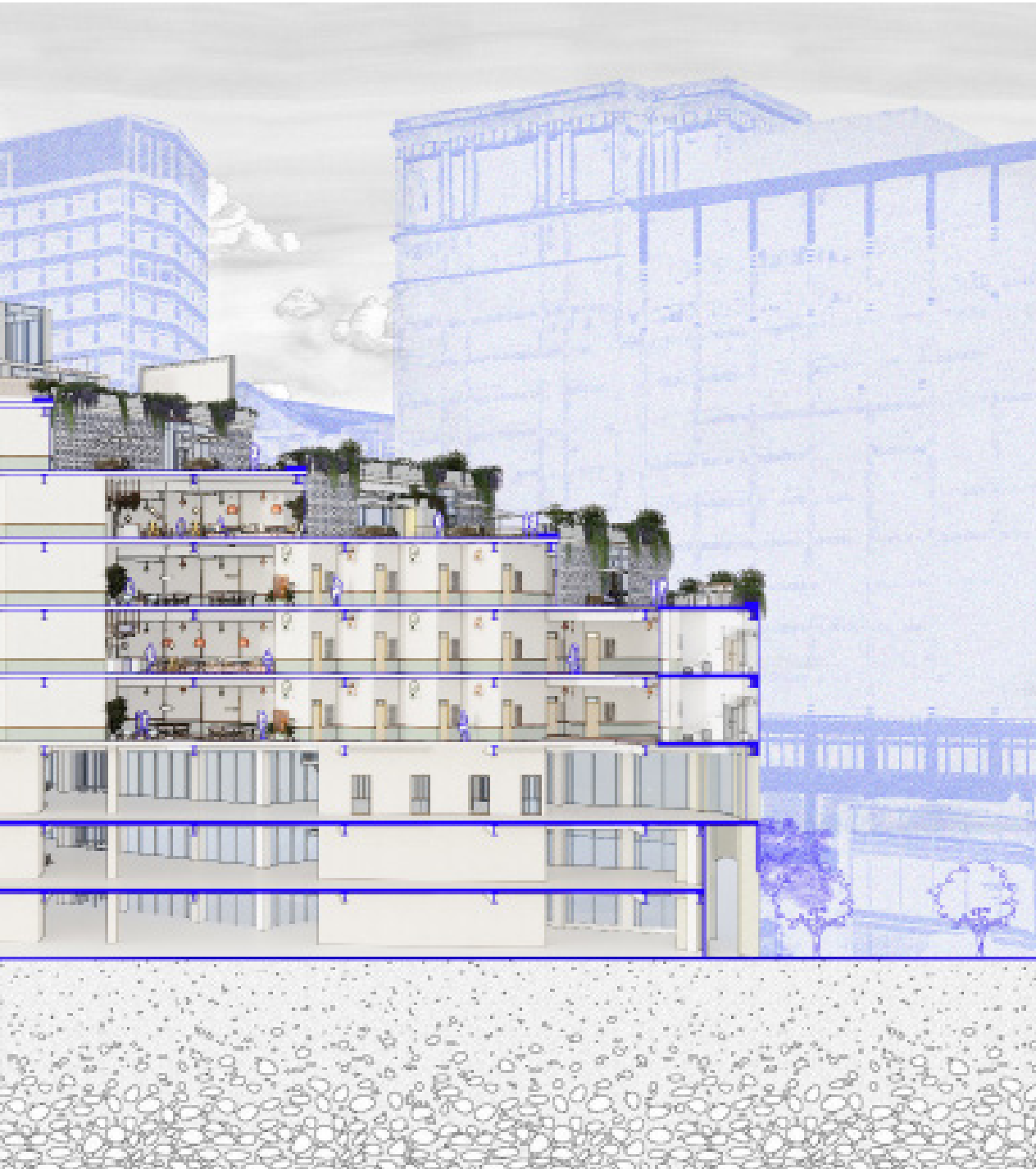
8th floor plan

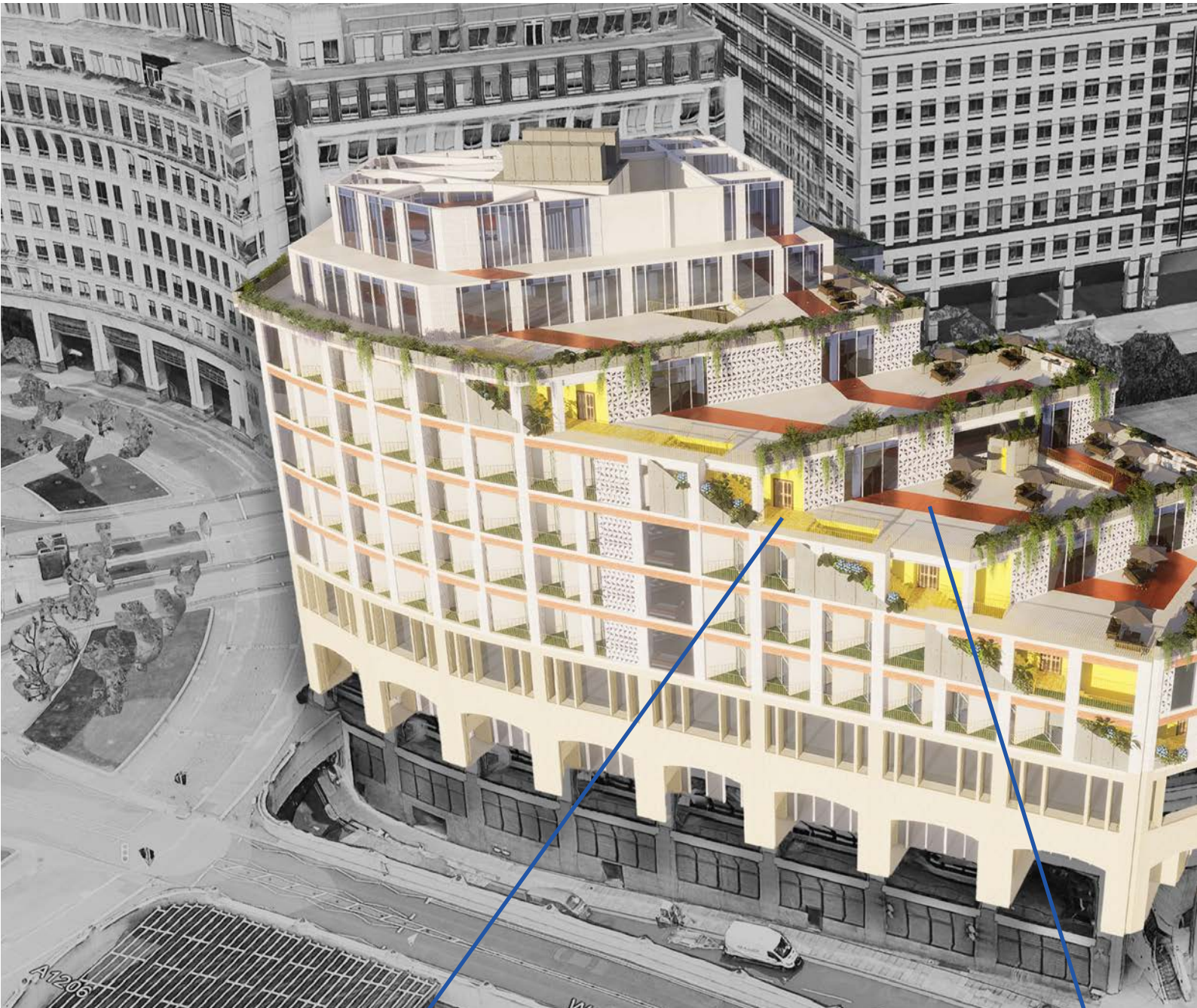


- 1. study space / viewing deck
- 2. mesh corridor
- 3. grand staircase
- 4. large light chamber
- 5. bridge voids
- 6. rooftop cinema



section A-A'





External Stairway 3rd - 7th floor

A bright yellow external staircase built to add movement across all student hall floors to celebrate places of transition with the outdoors. Hallways and staircases are crucial areas where people meet frequently.

Perforated Bridge 3rd - 7th floor

A perforated walkway extends across all hallways to allow fabrics of sunlight to shower the interior spaces as well as merge the idea of the exterior with the interior + ventilate spaces.



Programs of living and communal areas are experienced together

The living units connectively break into shared space, whether into kitchens, tv lounges, dining areas, game rooms and stepped terraces; facilitating a holistic experience for every student across every floor.

BBQ patios and outdoor cinemas around biophilia

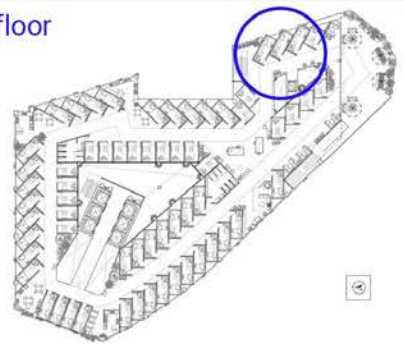
Stepped patios ornamented with english ivy and wysteria plants, celebrating local growth with spaces of community and culture.



Perforated Corridors



5th floor

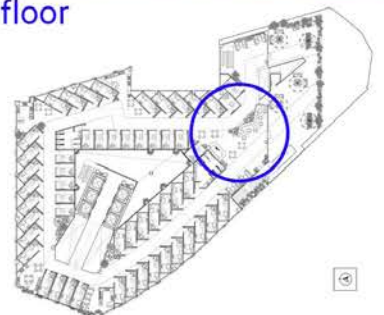


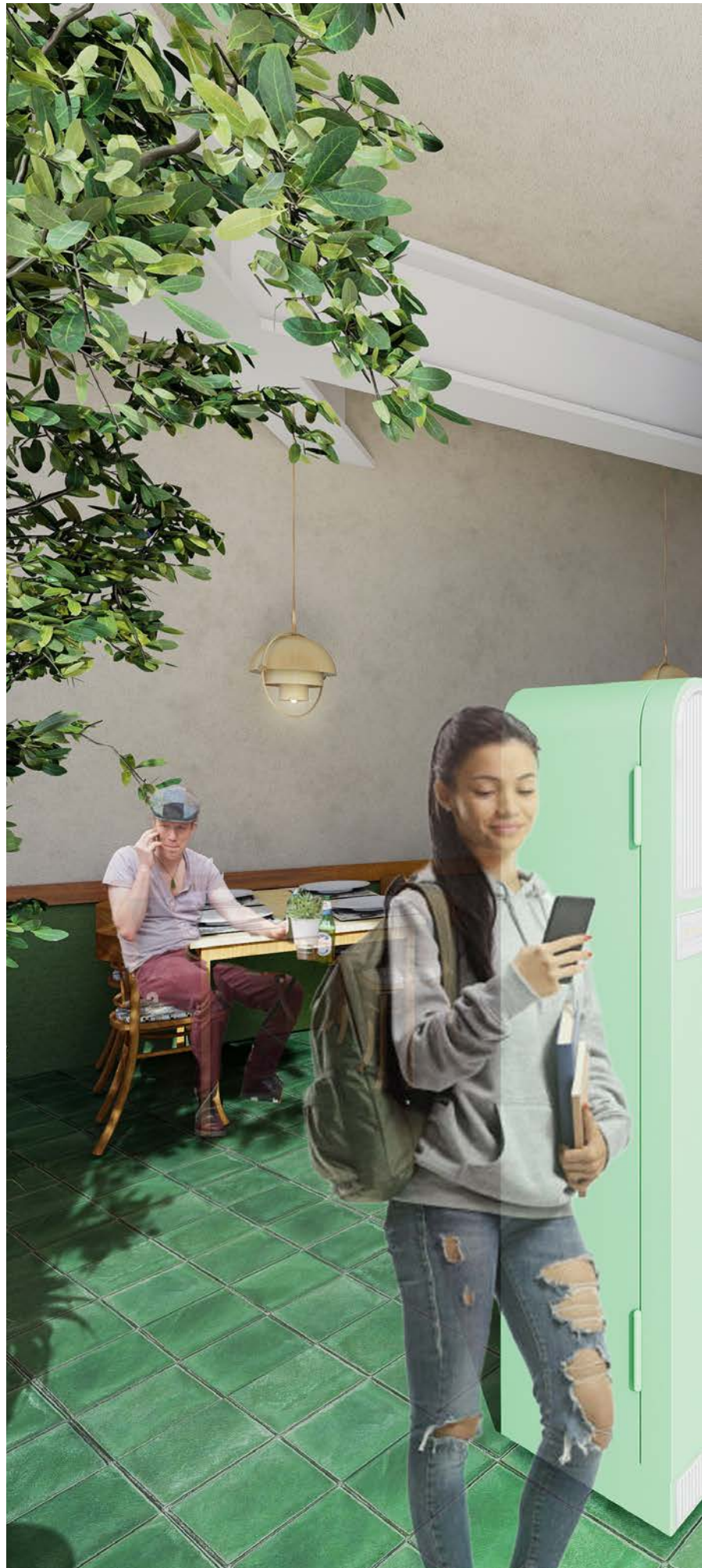


Communal Huddle + Dining



6th floor

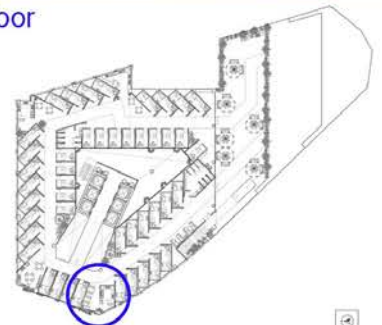




Communal Kitchen Space



7th floor



Top View



K.Luqman Sadiq

Thesis Design Journey

Thanks for your interest!

2024 - 2025

Find me on: Behance [kluqmansadiq](#)
Instagram [@luketastic_](#)
Mail kluqmansadiq@gmail.com
Mobile [+44 7879311775](tel:+447879311775)

K.LUQMAN
SADIQ

THEIS DESIGN
JOURNEY

2024 - 2025