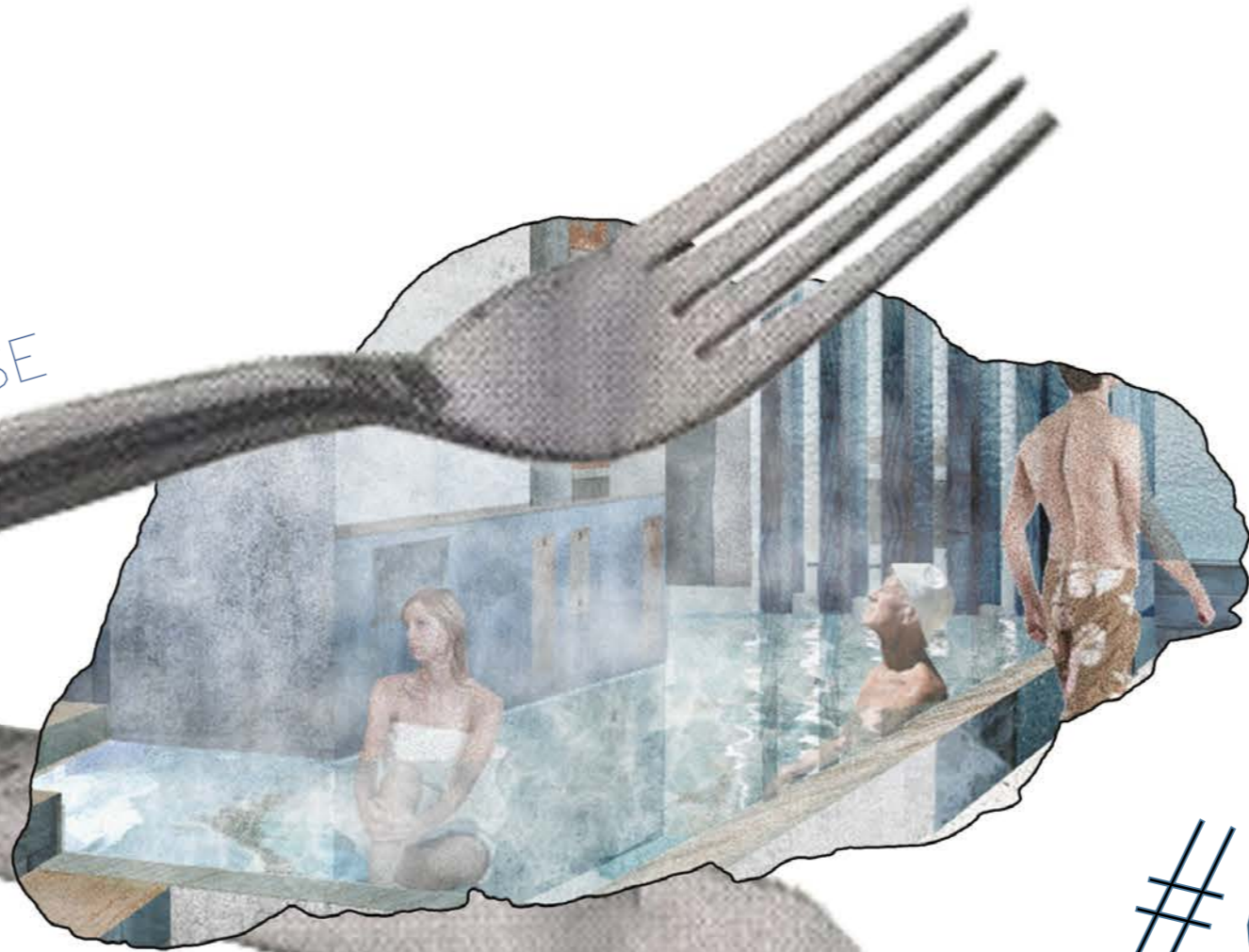


BAKERY & BATHHOUSE



#OVERLAP

02
SITE
ANALYSIS

03
BACKGROUND
RESEARCH

06
CASE
STUDY

07
DESIGN
PROCESS

#SITE ANALYSIS

– According Combined Homelessness and Information Network research, the number of people sleeping rough in London between January and March 2024 was 37% higher than it was in the same period the year before.

– In August 2023 London Councils estimated that one in 50 people in Londoners are homeless.

– Cases of homelessness in London rose by 54% between 2013 and 2023.

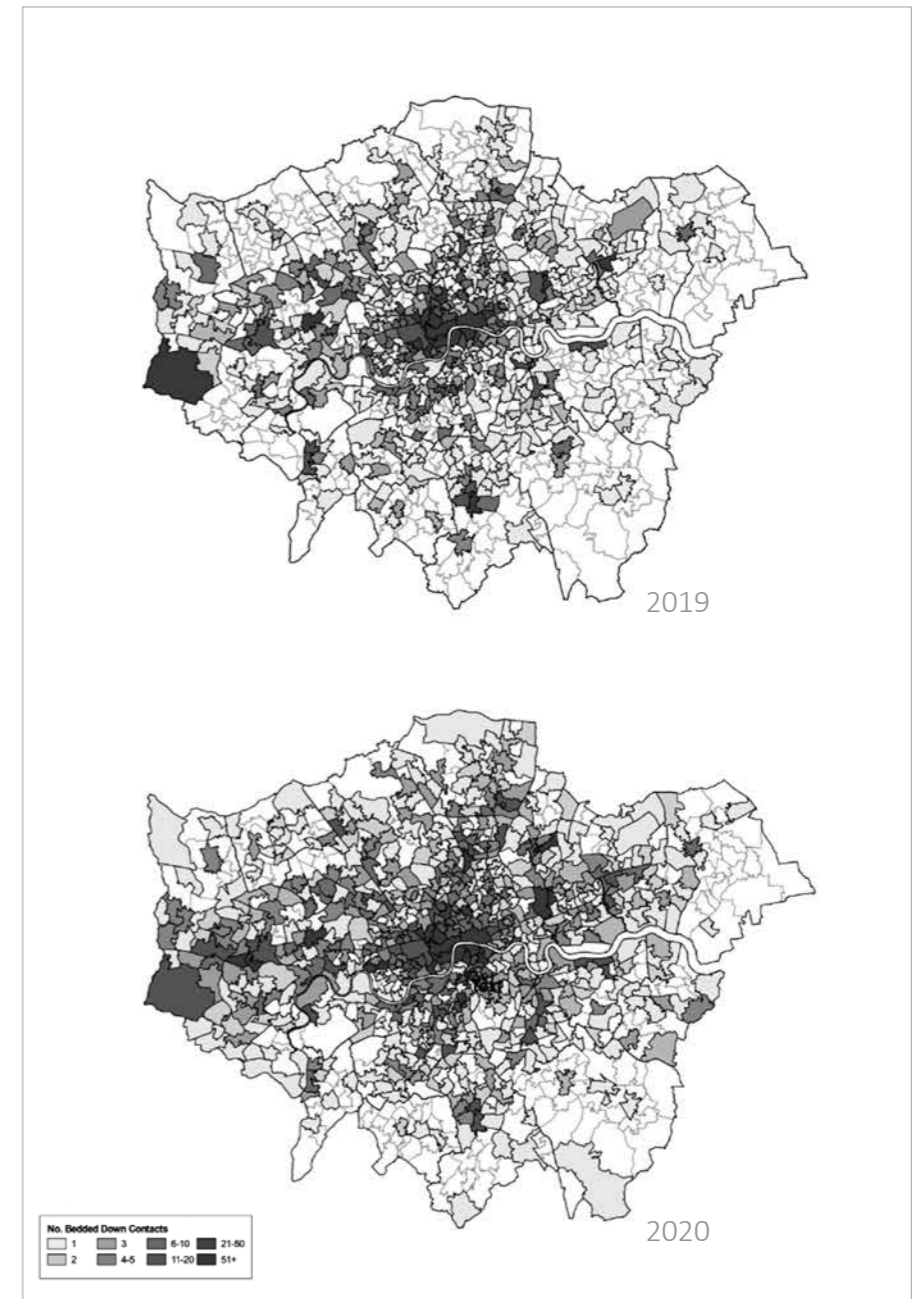
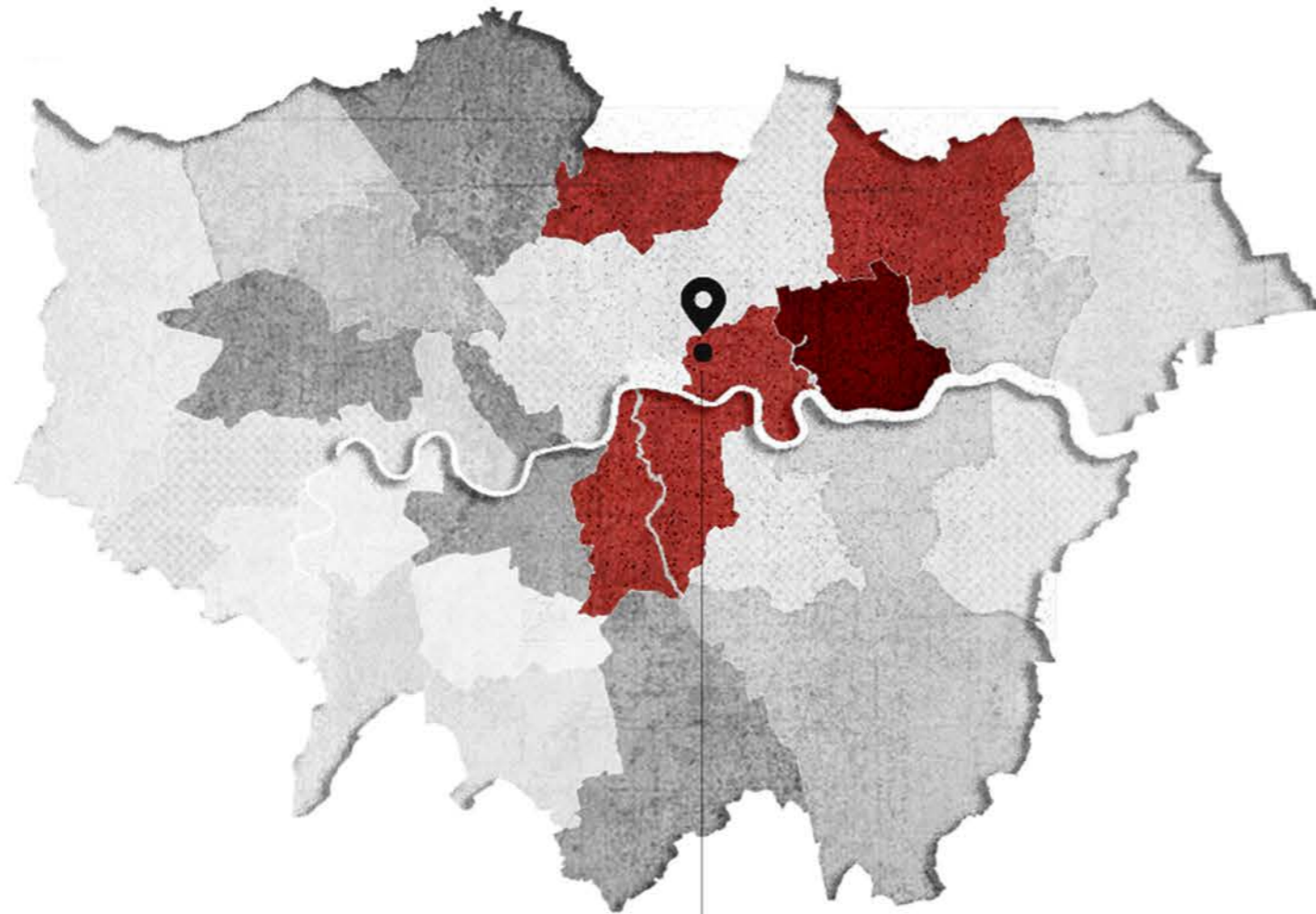


Homeless people I
photographed near Blossom
Street



* London homelessness levels (October to December 2020)

10  5664



The map below shows the number of bedded down street contacts.



Why do people become homeless?

- While each of our client's stories are unique, there can be common factors that contribute to individuals becoming homeless. These include personal issues, such as mental or physical health problems, issues around drug and alcohol use and traumatic experiences in childhood. Social issues, such as housing costs, availability of supported and social housing and changes to welfare reforms can also contribute to people becoming homeless.

* The current situation of homeless in UK

976

976 people died while homeless in the UK in 2020, a 37% increase from 2019.

4 IN 5

Four in five homeless people suffer from a mental health problem

17

Rough sleepers are 17 times more likely than the general public to experience abuse

1 IN 4

Nearly 1 in 4 females sleeping rough have been sexually assaulted

43-45

The average age of death was just 45 for men and 43 for women who were homeless

9

Someone sleeping rough is 9 times more likely to die by suicide than a member of the general public



What are different types of homelessness?

Rough sleeping: This is the most visible form of homelessness and describes someone who is sleeping rough on the streets. Many people sleeping rough suffer from physical and mental health conditions and are at risk of suffering violence and abuse.

Hidden homelessness: The majority of people who are homeless are hidden from official statistics. They may not approach councils for help, but instead may be sofa surfing, sleeping in unsuitable housing such as squats, or staying in hostels. The majority of people who are hidden and homeless have slept rough at some point.

In temporary accommodation: A person may stay in temporary accommodation for just one night or for an indefinite amount of time. Types of temporary accommodation include night shelters, hostels, B&Bs, women's refuges and private housing.

* One day of Stephen

"I sat down again, exhausted. The plastic bottle of water I drink has been refilled for weeks." (f)

— 5:00 PM



"I was waiting for dark so I could roll out my sleeping bag and sleep at the top of the steps." (a)

— 8:00 PM



"Once in my sleeping bag, I had a hard time getting comfortable on the stone floor because my hip bones were in almost direct contact with the ground." (b)

— 9:40 PM



"A nice lady wanted to order food for me, I thanked her but declined because I was ashamed of myself for being in this situation." (c)

4:55 AM



"I saw people eating, desperate for food, but not enough money to buy anything." (e)

"The wind is cold but also dries out my sleeping bag." (d)

0:00 AM



5:05 AM



"I went to line up at The Connection where I could have a shower, a shave, free tea and toast." (g)

7:30 AM

I wandered back to the steps of St. Martin's Church and once again waited for nightfall so I could go to sleep. I was cold and depressed." (h)

9:00 AM

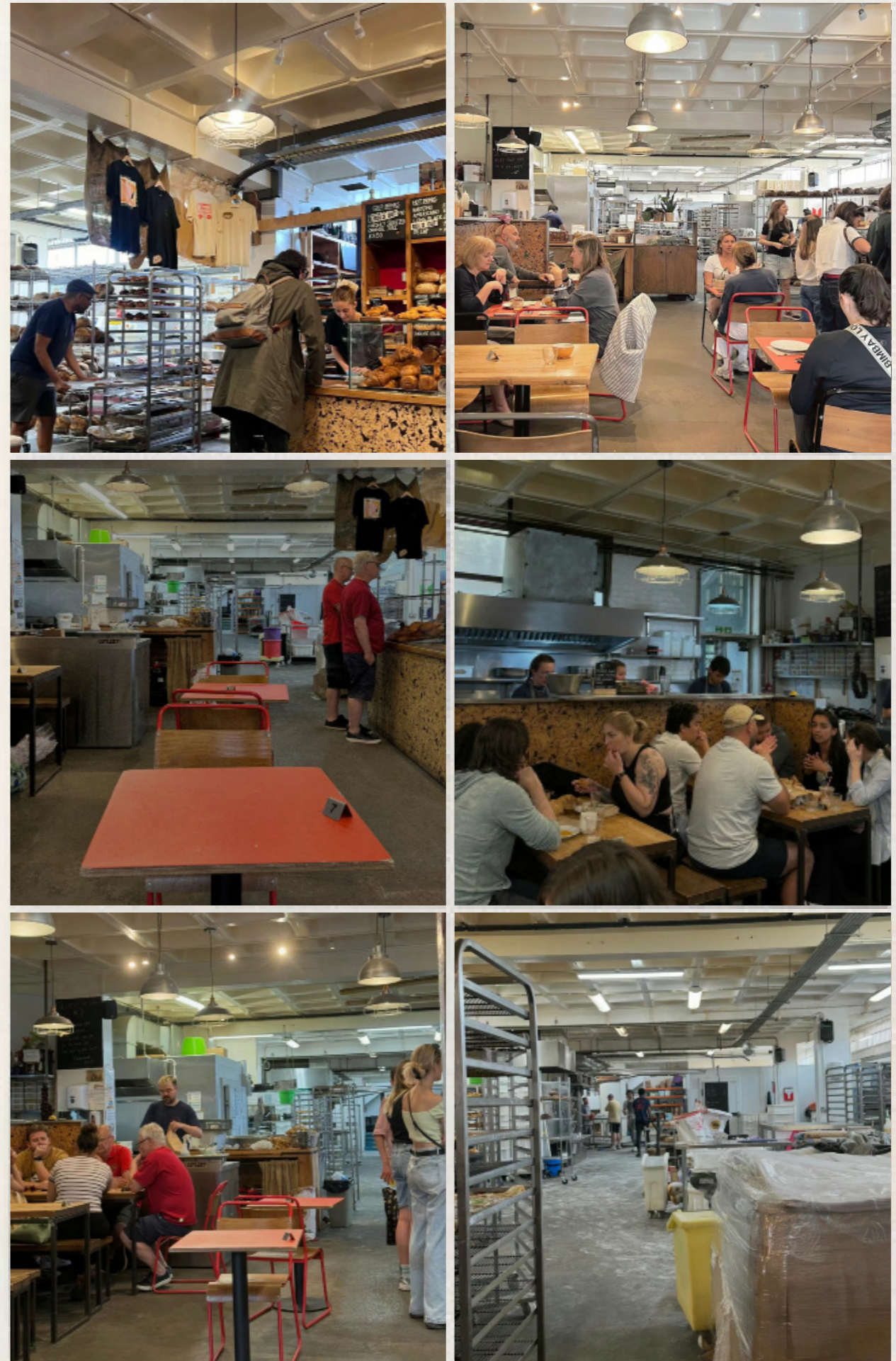


1:00 AM

THE DUSTY KNUCKLE BAKERY



They specialize in recruiting young offenders, young people leaving the care system, young people with housing insecurity and other problem youth who are excluded from society, helping them to smoothly transition into normal society and become independent.



#DESIGN PROGRESS

> INSPIRATION



Bakery

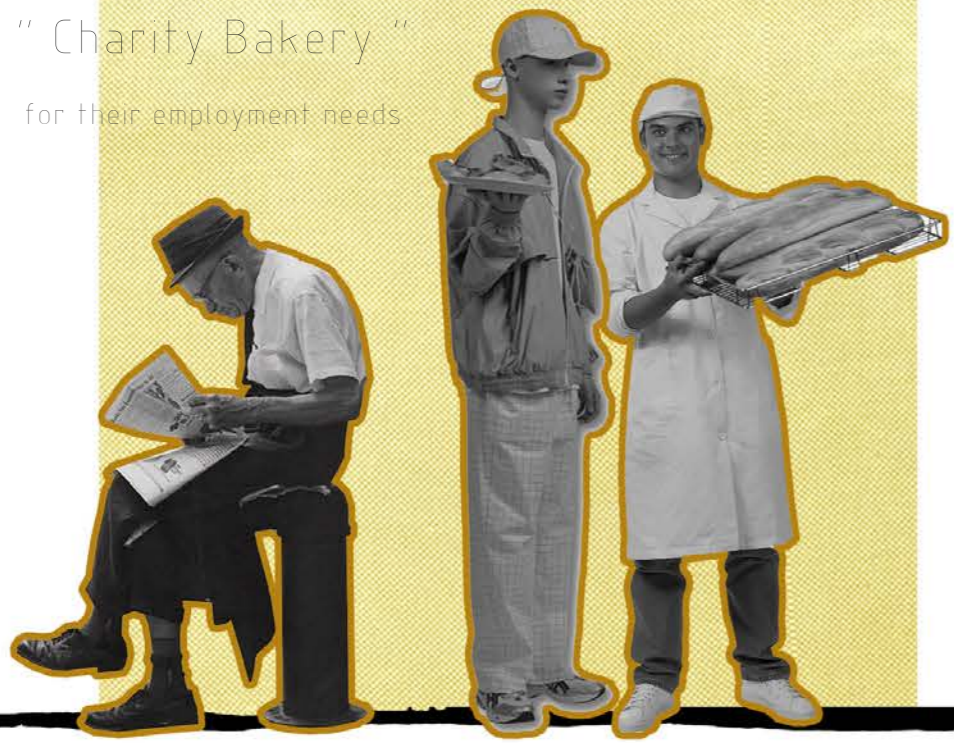
&



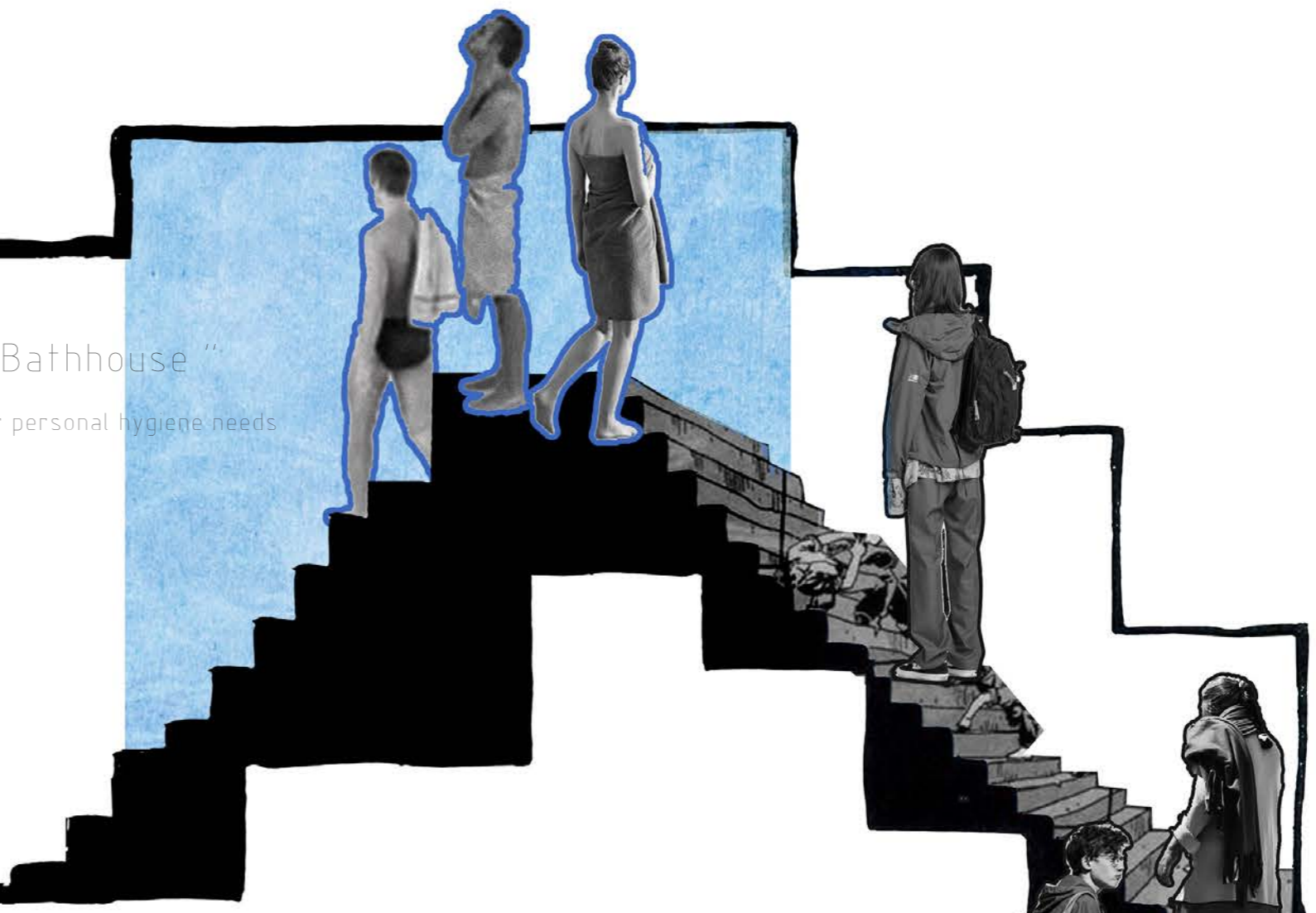
Hot shower

* Storyline

" Charity Bakery "
for their employment needs



" Bathhouse "
for personal hygiene needs



" Reception "
for their psychological needs



> MATERIAL

* AI iteration

1/upload image:



2/imagine prompt:

an abstract sculpture made from steel beams and flat rectangular panels painted in olive green,
 # featuring architectural elements such as columns with vases filled with moss or foliage on the sides,
 # set against a white background,
 # the composition includes two large metal bars slightly angled towards each other to create space for text or graphics,
 # creates a sense of balance between formative structures like beams and organic textures like plants,
 # adding depth and dimensionality in the style of architectural elements --s 750--v 6.0-

3/AI output:



a).



b).

c).



d).



A).



B).



4/add prompt:

bar,

bakery,

open kitchen,

green and blue,

wood texture,

shelf,

#strong architectural elements and
organic textures,

...

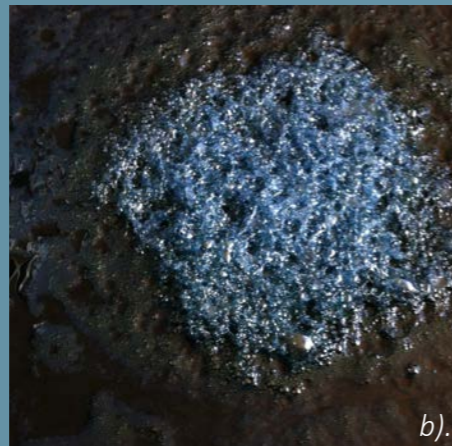
FROM waste white painted wood



TO Indigo dye wood



a).



b).



c).



d).





* indigo dye to wood features

Advantage:

1. Long history: Indigo is one of the oldest dyes, with records of use in Asia, Europe, Central America and other places.
2. Unique Hue: Indigo is easy to color, has a dark blue or bluish-violet hue, and is widely used in textiles.
3. Natural Source: Indigo dye is extracted from the indigo plant and is sustainable.
4. Cultural and historical value: Indigo is considered a precious dye in many cultures and is closely associated with history, tradition and nature.

Shortage:

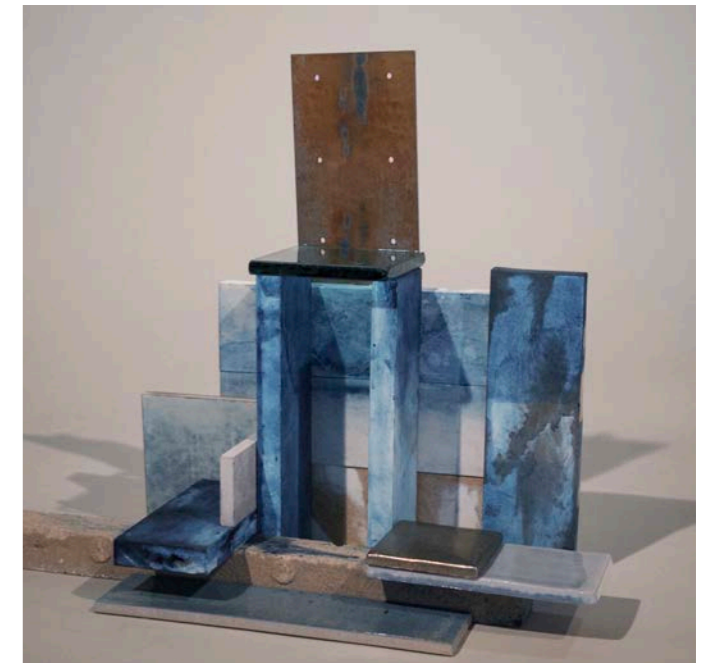
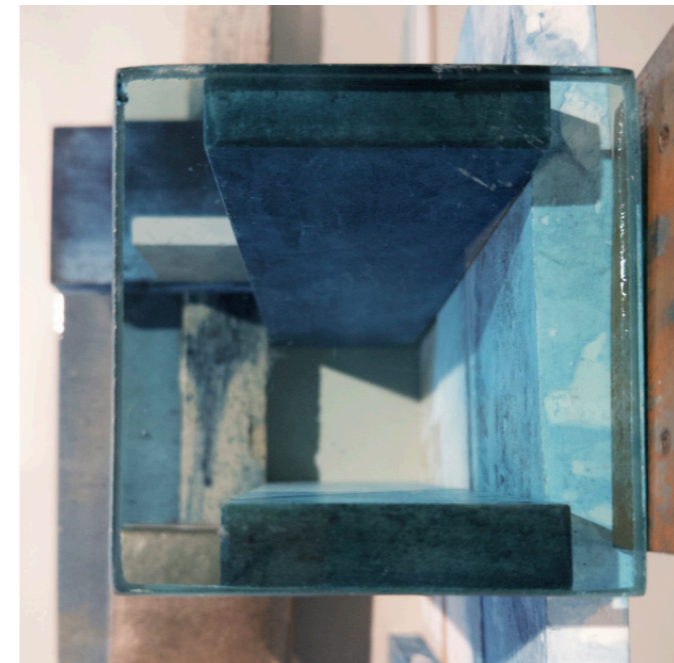
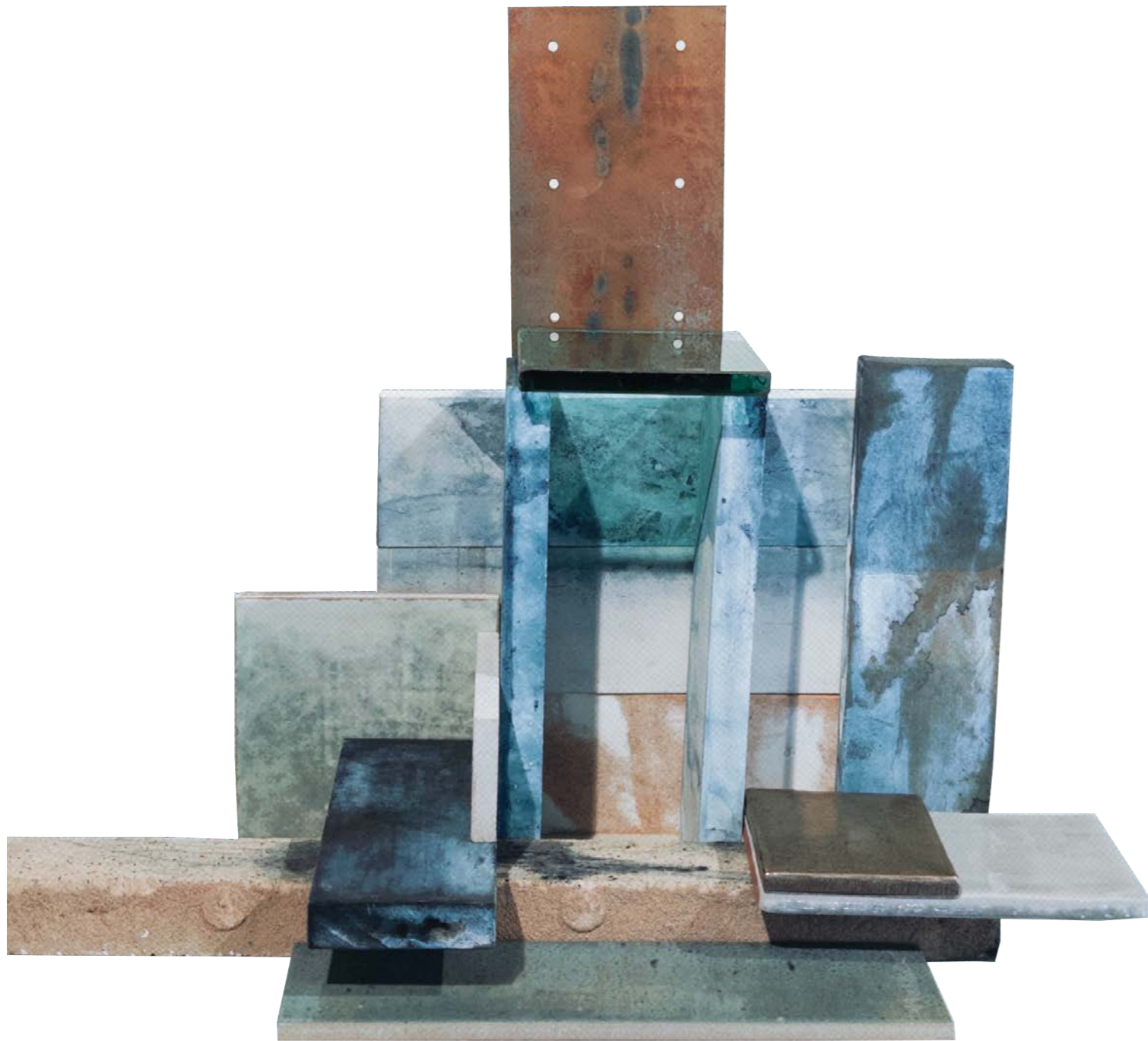
Vat dyeing wood can be risky. It will raise the grain, may cause warping on thin pieces and the pigment does not penetrate very deeply, so machining and sanding after dyeing can be difficult or off limits. Soft hardwoods, such as poplar and English sycamore, work best. Denser hardwoods, such as ash and maple, do not absorb the dye as readily.



* Material palette

#A small blue and gray metal sculpture of building blocks was placed on the table in a watercolor style with a light background and some pieces scattered around it, #The sculpture is made from copper sheet material and features an abstract style, #It has an overall dark color scheme

- describe by AI





add prompt:

#strong architectural elements and organic textures,

#interior space

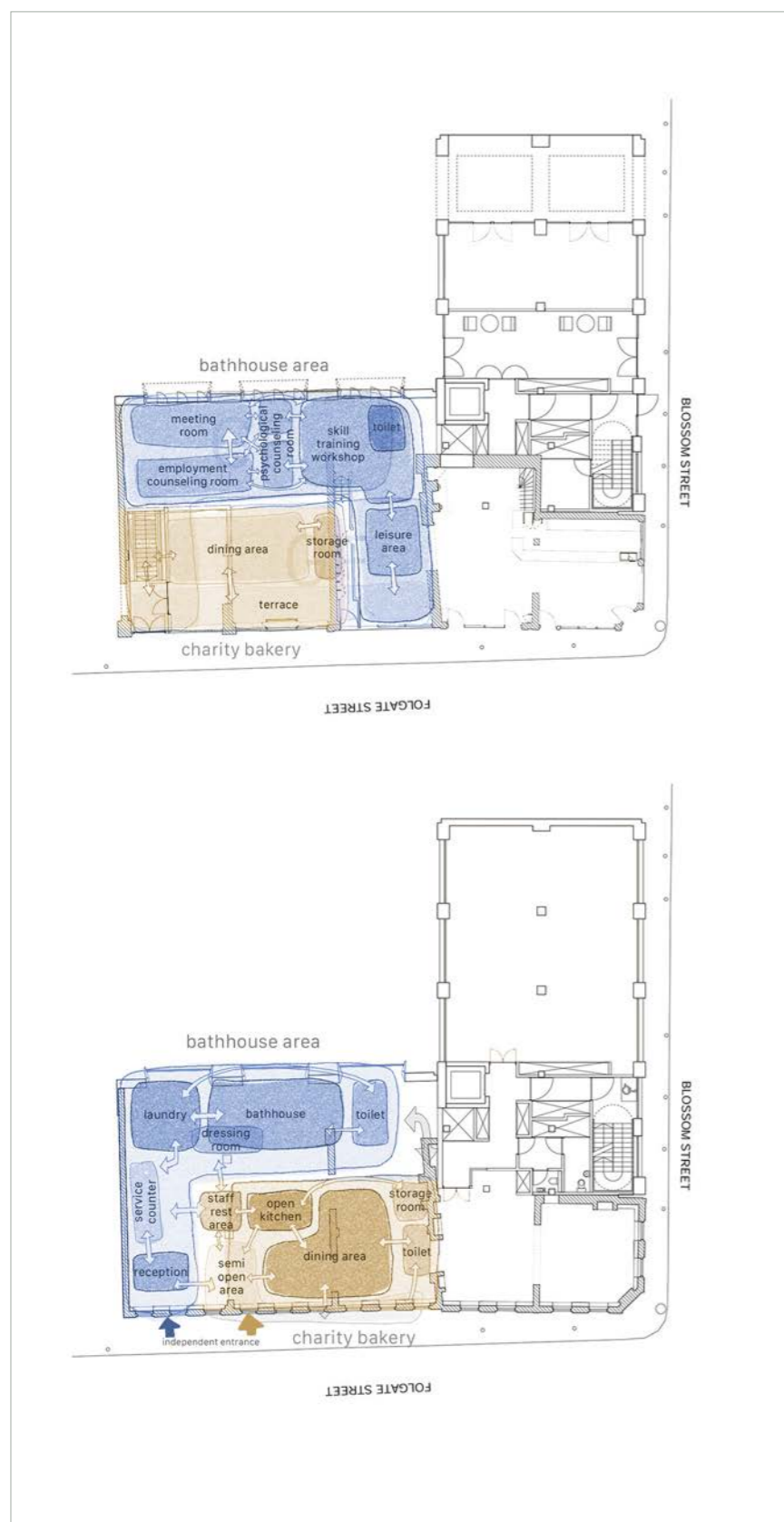
#wood

#tile

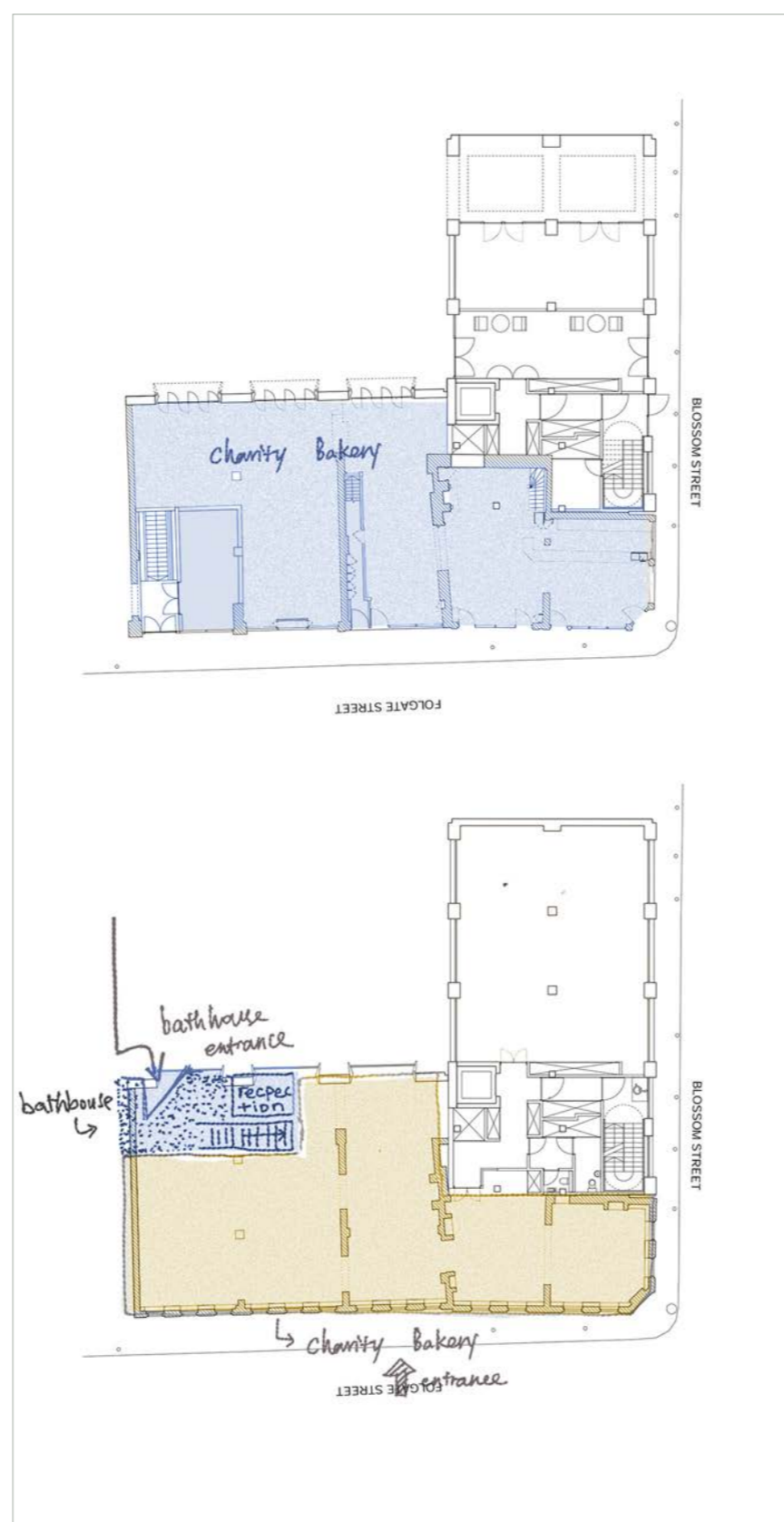
* AI iteration



* Deformation of space



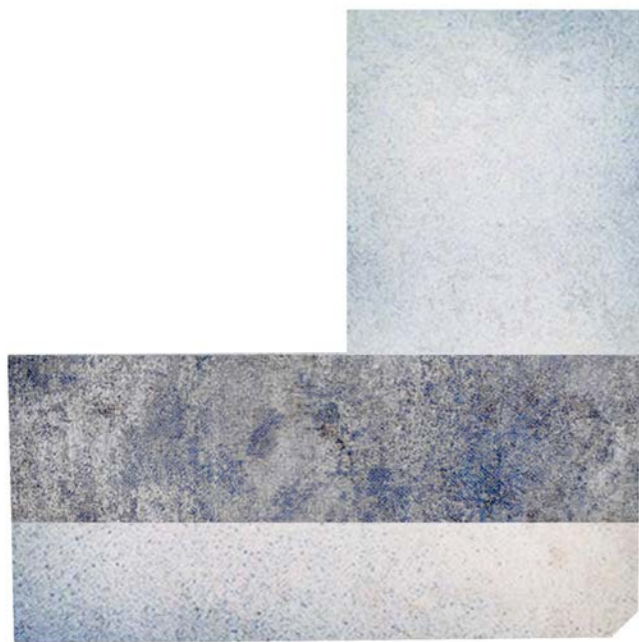
1.



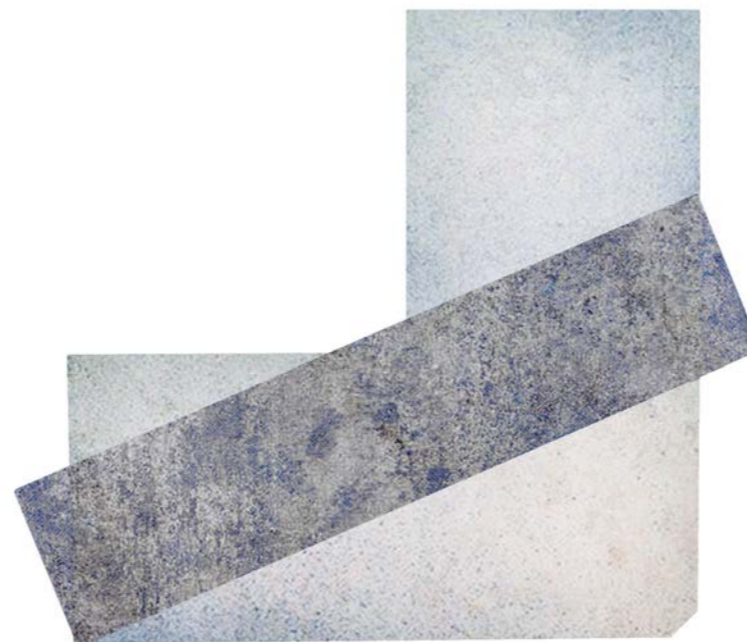
2.



3.



1.

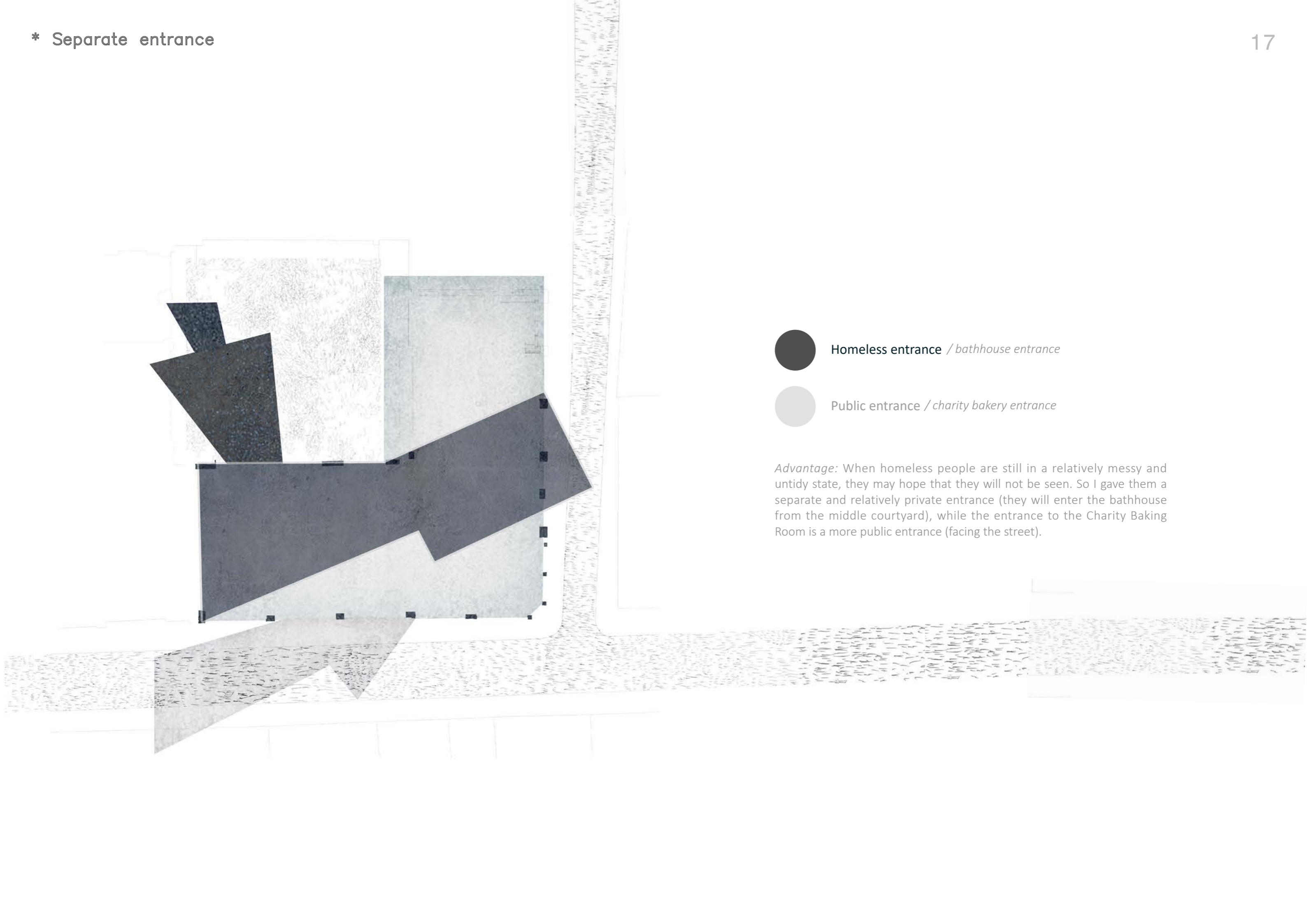


2.



3.

The bakery and the bathroom are two spaces with completely different attributes. In order to make the two spaces better integrated, the main people who use these two spaces (homeless and public) can have better communication and weaken the relationship between them. of spacing, I used "overlap" as the central concept of my design.



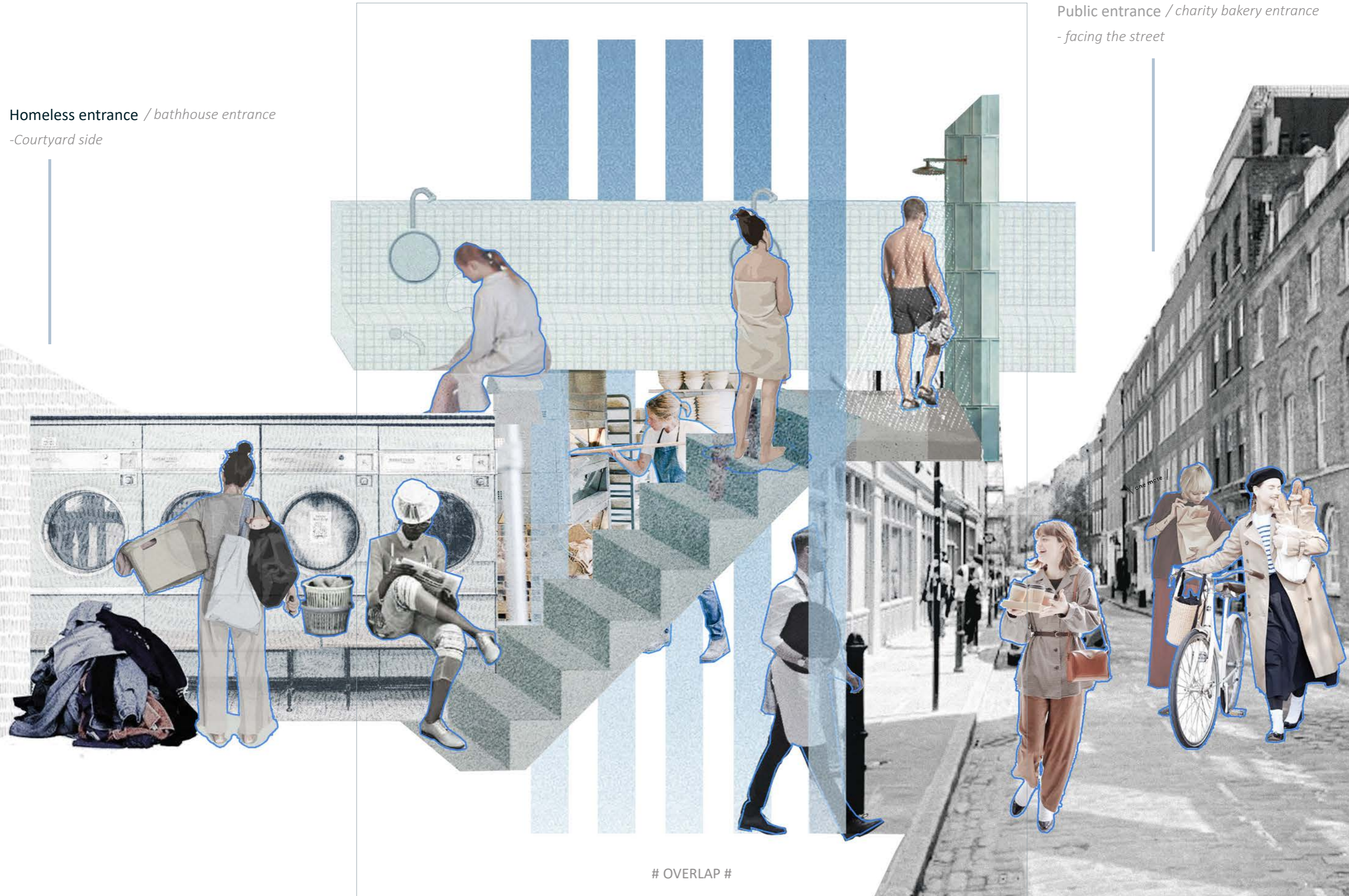
● Homeless entrance / bathhouse entrance

● Public entrance / charity bakery entrance

Advantage: When homeless people are still in a relatively messy and untidy state, they may hope that they will not be seen. So I gave them a separate and relatively private entrance (they will enter the bathhouse from the middle courtyard), while the entrance to the Charity Baking Room is a more public entrance (facing the street).

Homeless entrance / bathhouse entrance
-Courtyard side

Public entrance / charity bakery entrance
- facing the street



OVERLAP



BLOSSOM STREET

FOLGATE STREET

Ground Floor

- 1. Entrance for bathhouse
- 2. Laundry room
- 3. Bakery staff changing room
- 4. Bakery factory
- 5. Fermentation box
- 6. Heat box
- 7. Oven
- 8. Oven
- 9. Freezer
- 10. Storage room
- 11. Delivery room
- 12. Laundry entrance
- 13. Restroom
- 14. Dining area
- 15. Stairs to the bathhouse
- 16. Stairs to the dining area

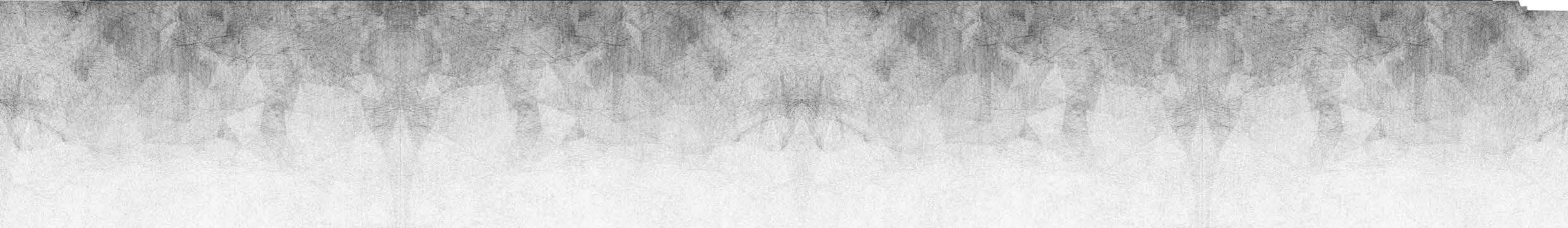
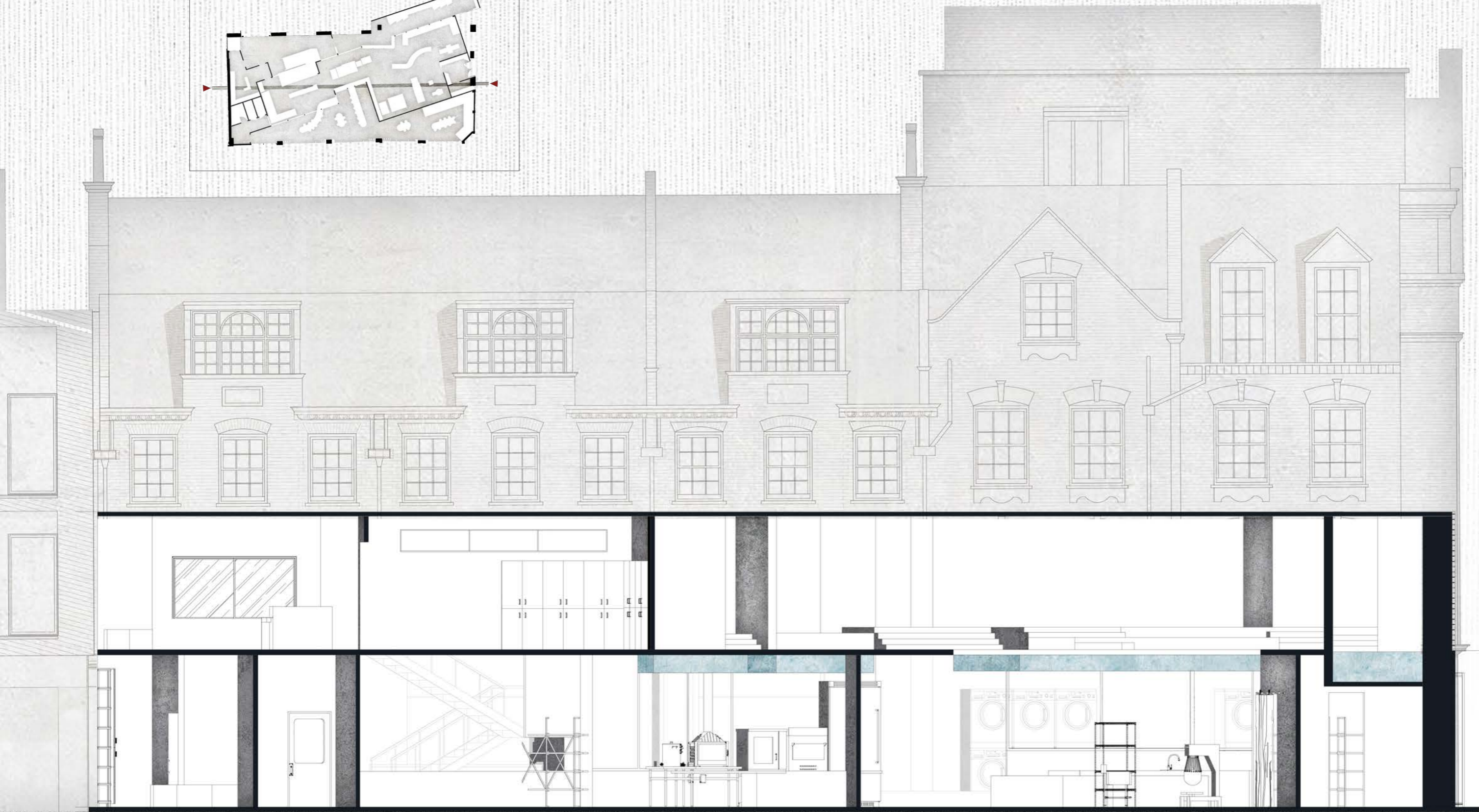
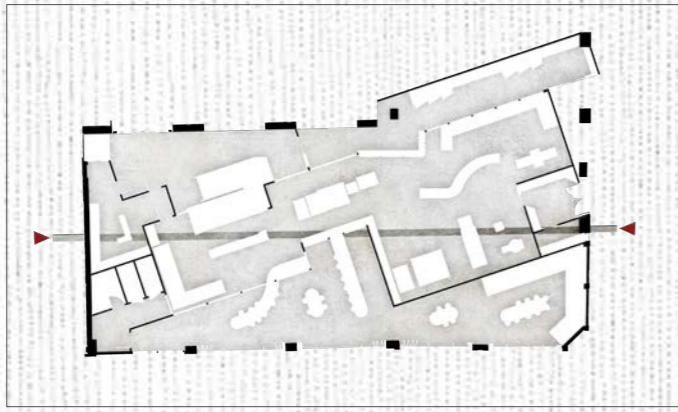
First Floor

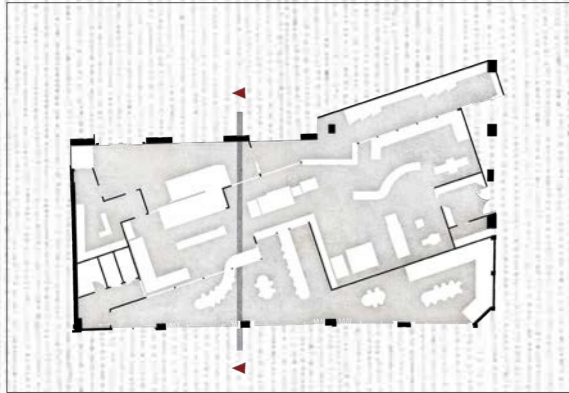


BLOSSOM STREET

FOLGATE STREET

- 17. Front desk
- 18. Lift
- 19. Male locker room
- 20. Female locker room
- 21. Dining area (bakery)
- 22. Bathhouse & SPA
- 23. Shower area
- 24(1~3). Private pools
- 25. Main public pool
- 26(1~2). public pools

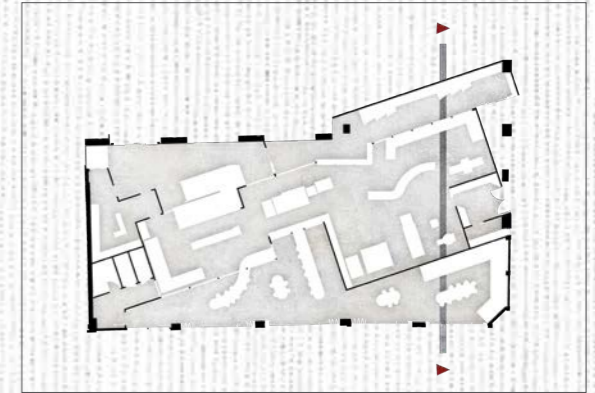
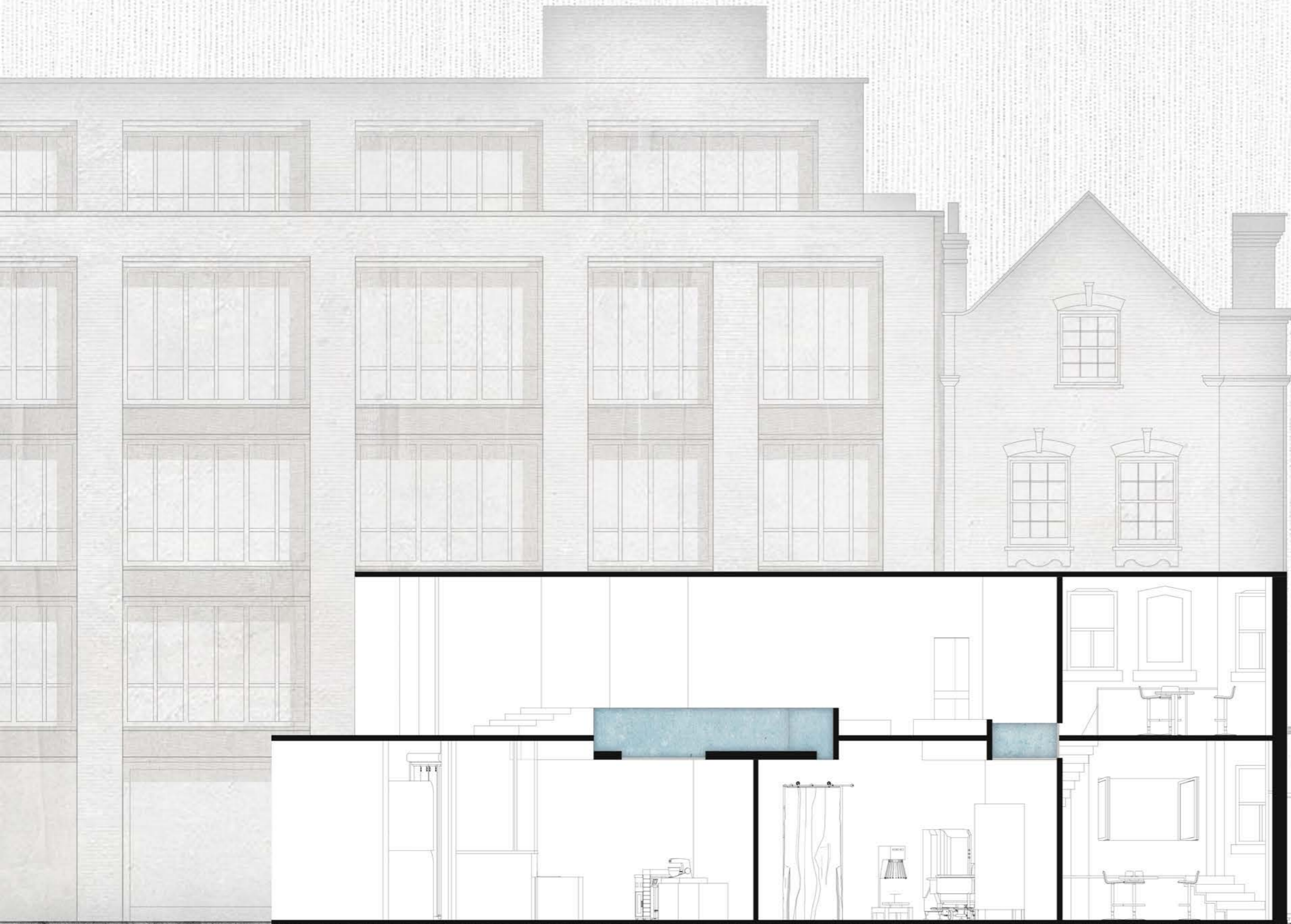




Folgate Street

5-11a Folgate Street

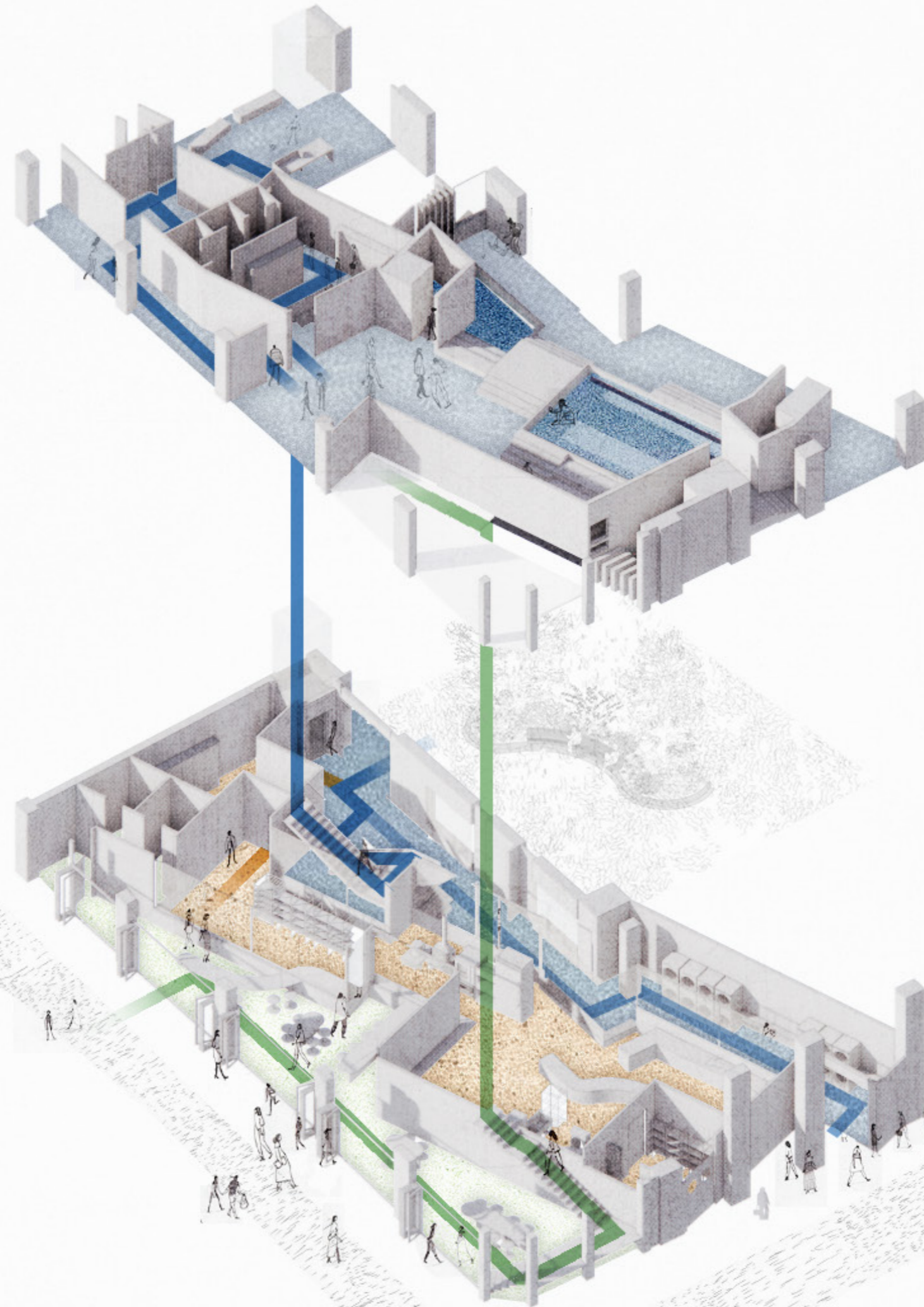
16-17 Blossom Street



Folgate Street

16-17 Blossom Street -øf

5-11a Folgate Street

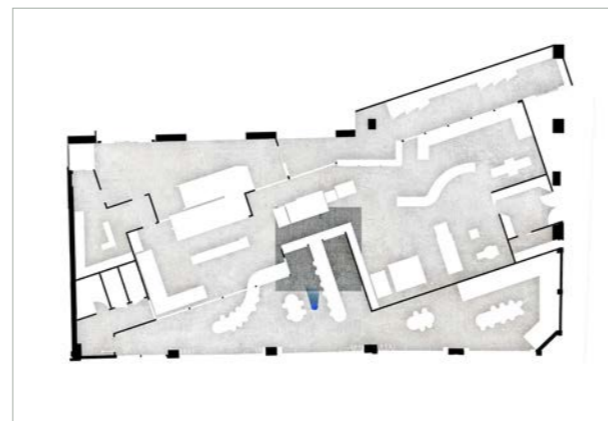


Bakery workers' Perspective: bakery factory area & bathhouse





Public Perspective: dining area to bakery factory area





AI output



Public Perspective: dining area to bathhouse



AI output

