

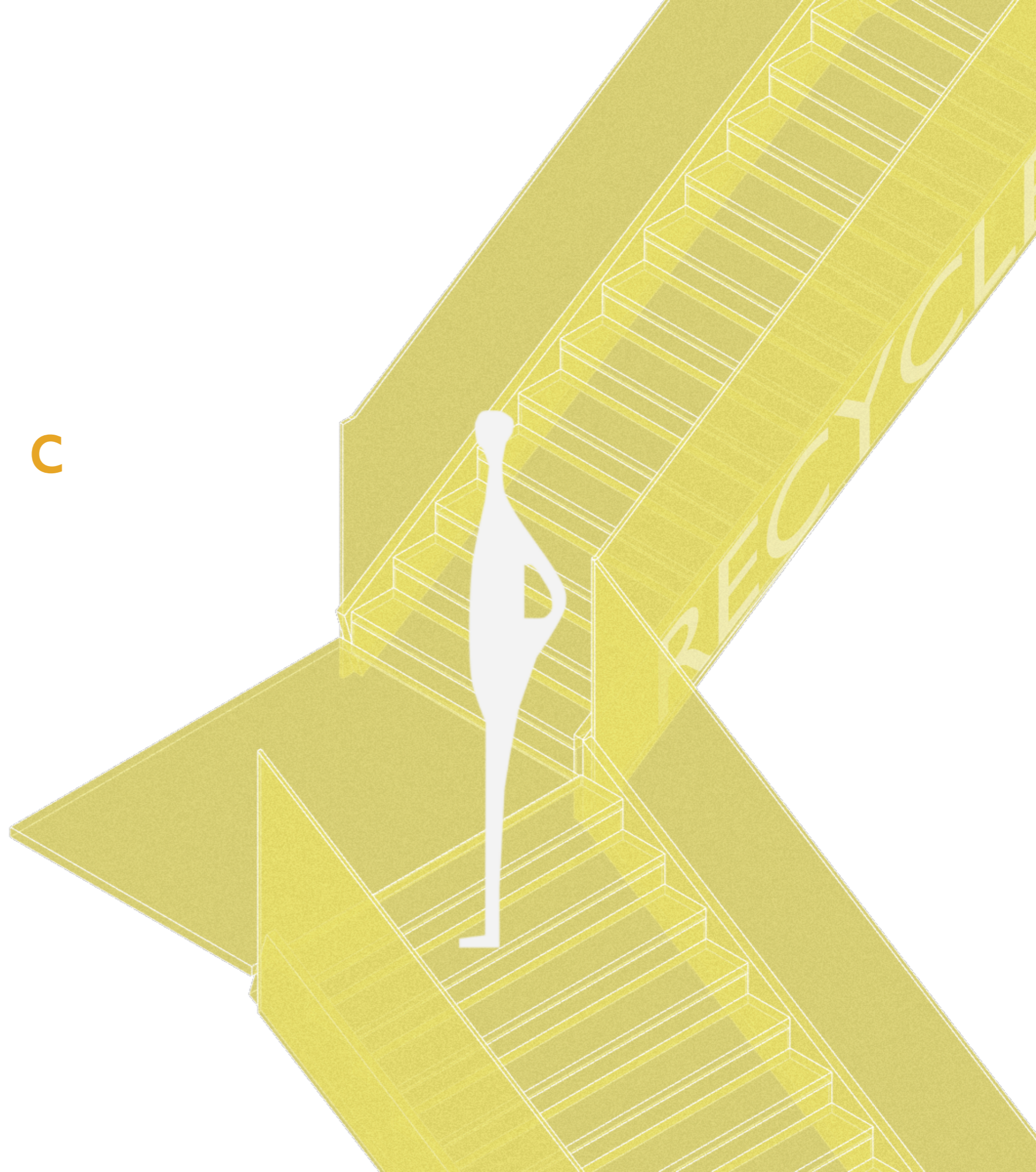
P O R T F O L I O

superREUSE

|

JIAYI TANG

ReFabric





CONTENT

ARTEFACTS

05

BACKGROUND

08

PROGRAMME

11

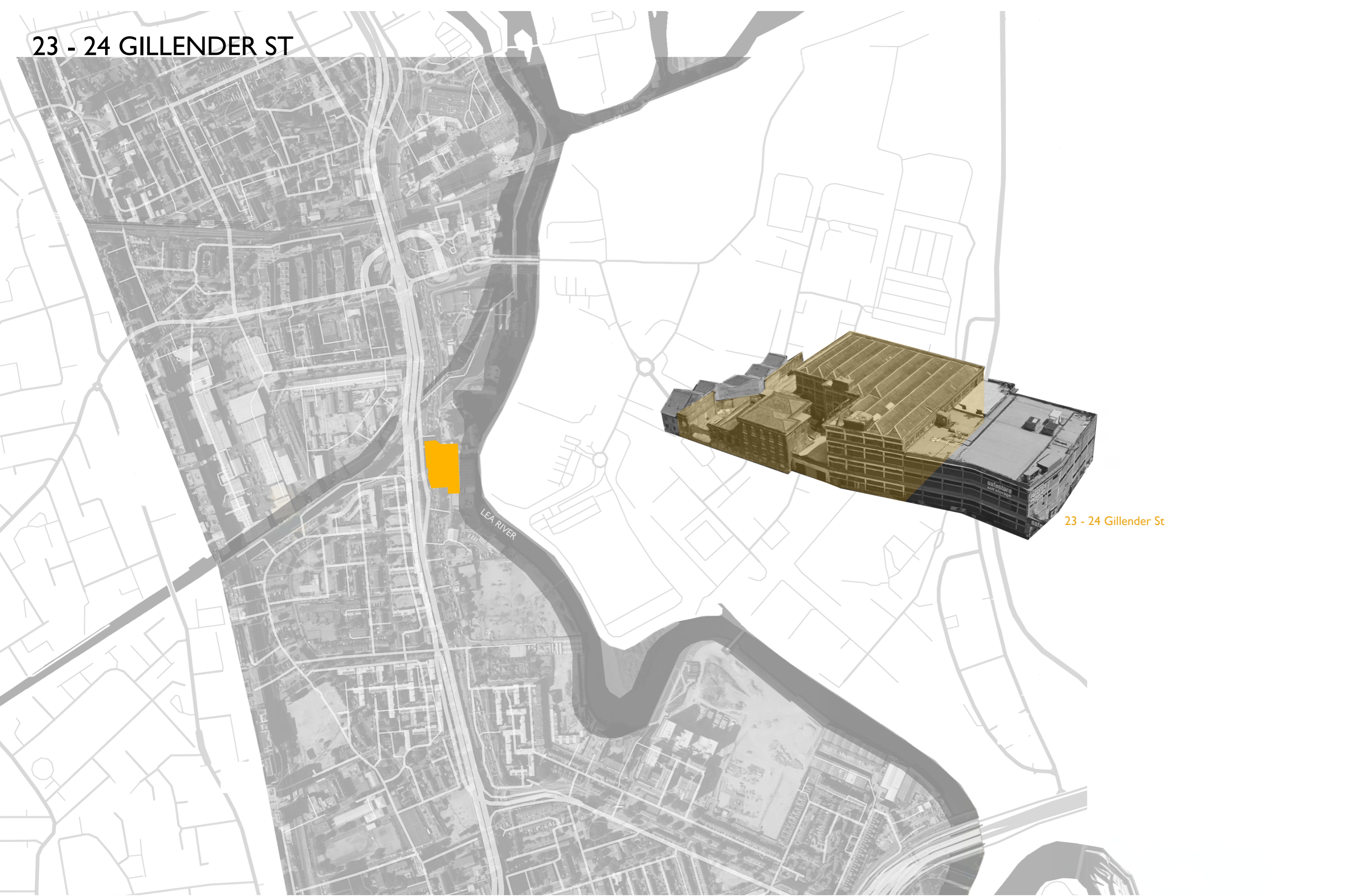
PROCESS

12

DESIGN

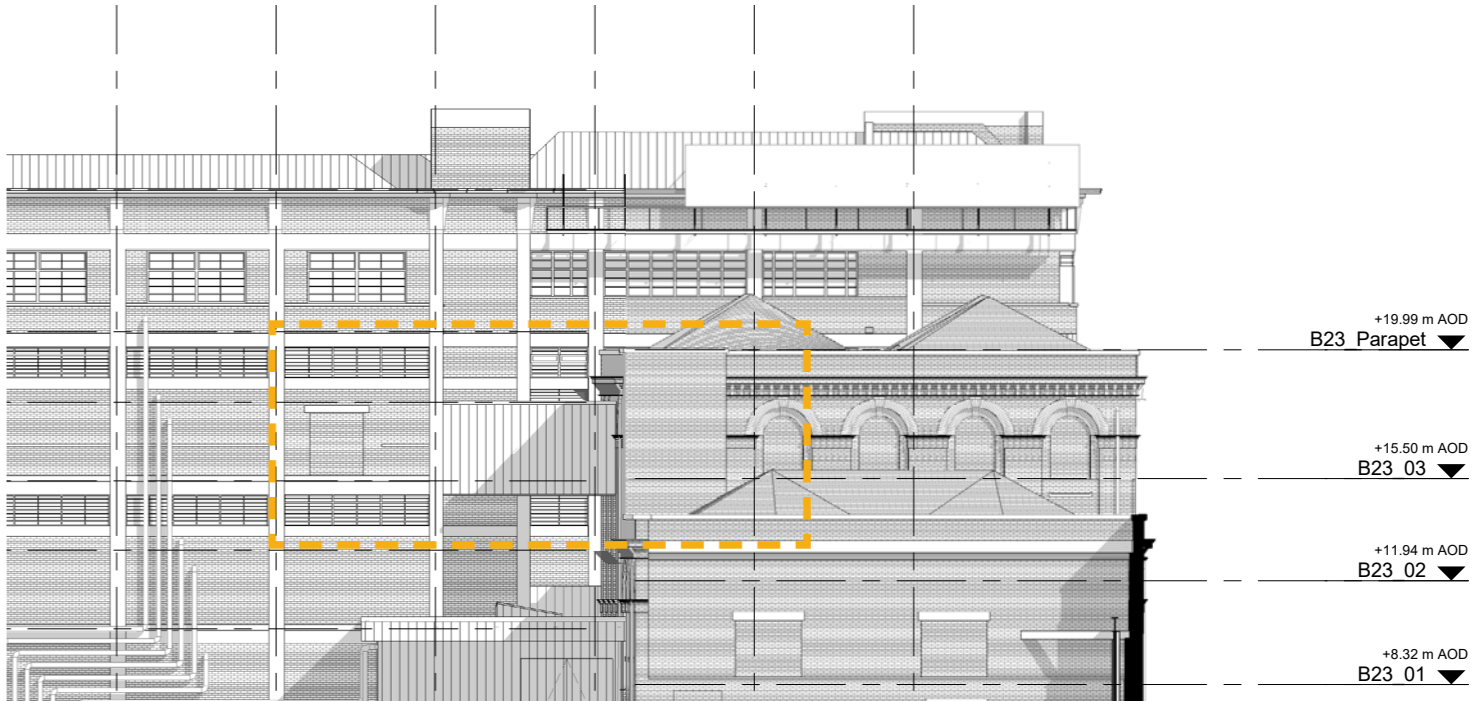
22

23 - 24 GILLENDER ST



23 - 24 Gillender St

COMPRESSION ARTEFACTS : Bridge



COMPRESSION ARTEFACT



This bridge could be separate apart and also, they can connect together as a whole.

Keywords : Connect, bridge, Separation

HISTORY OF GARMENT INDUSTRY

Deindustrialisation in the 1970s led to the closure of a few cotton, textile.

Rag Trade, 1800



Spitalfields Silk, 1700s



In the 1950s and 1960s, Bengalis constituted a significant portion of the low-cost labor

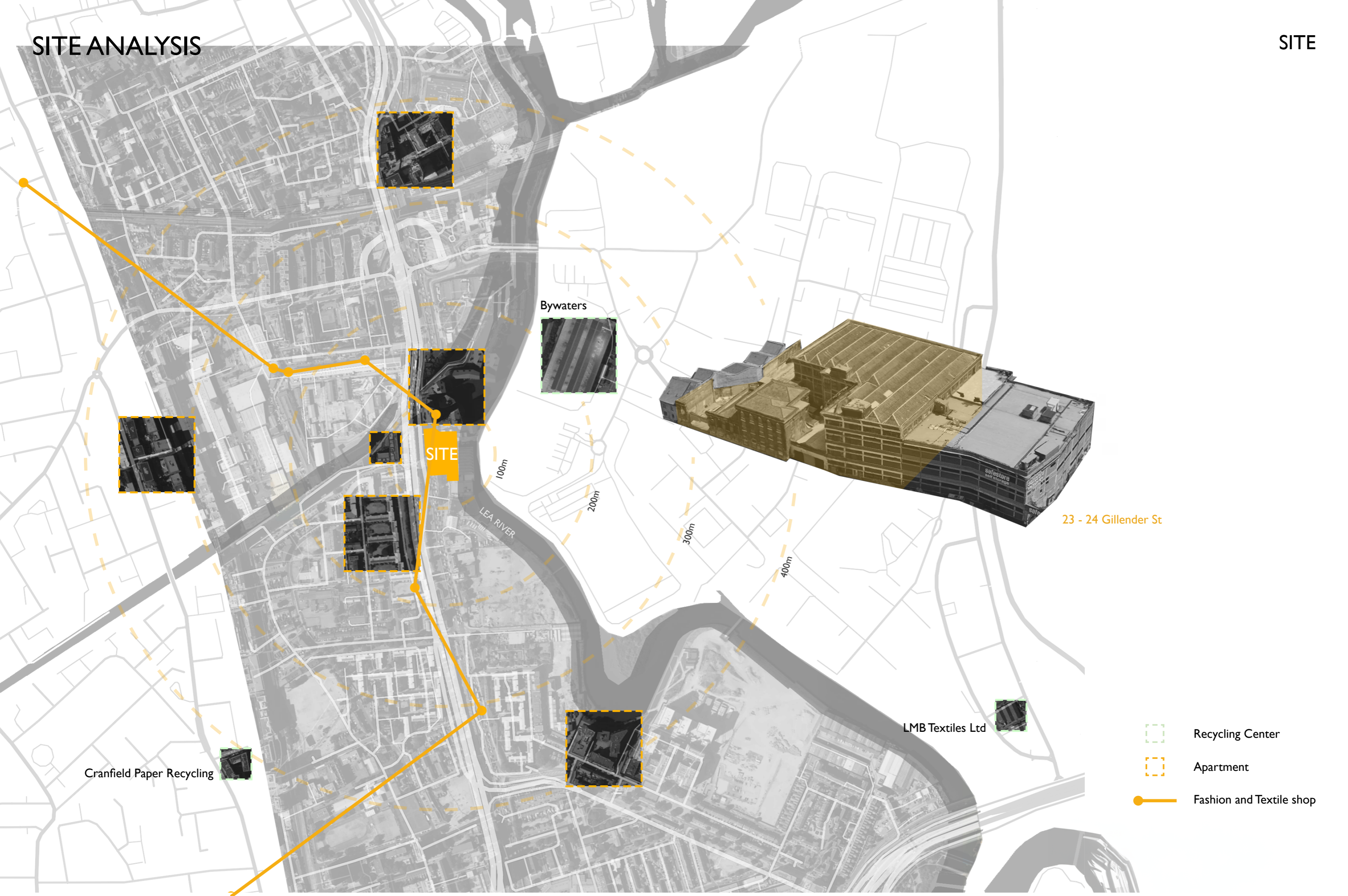
In the 1980s, the garment industry in the East End began to decline.

FAST FASHION

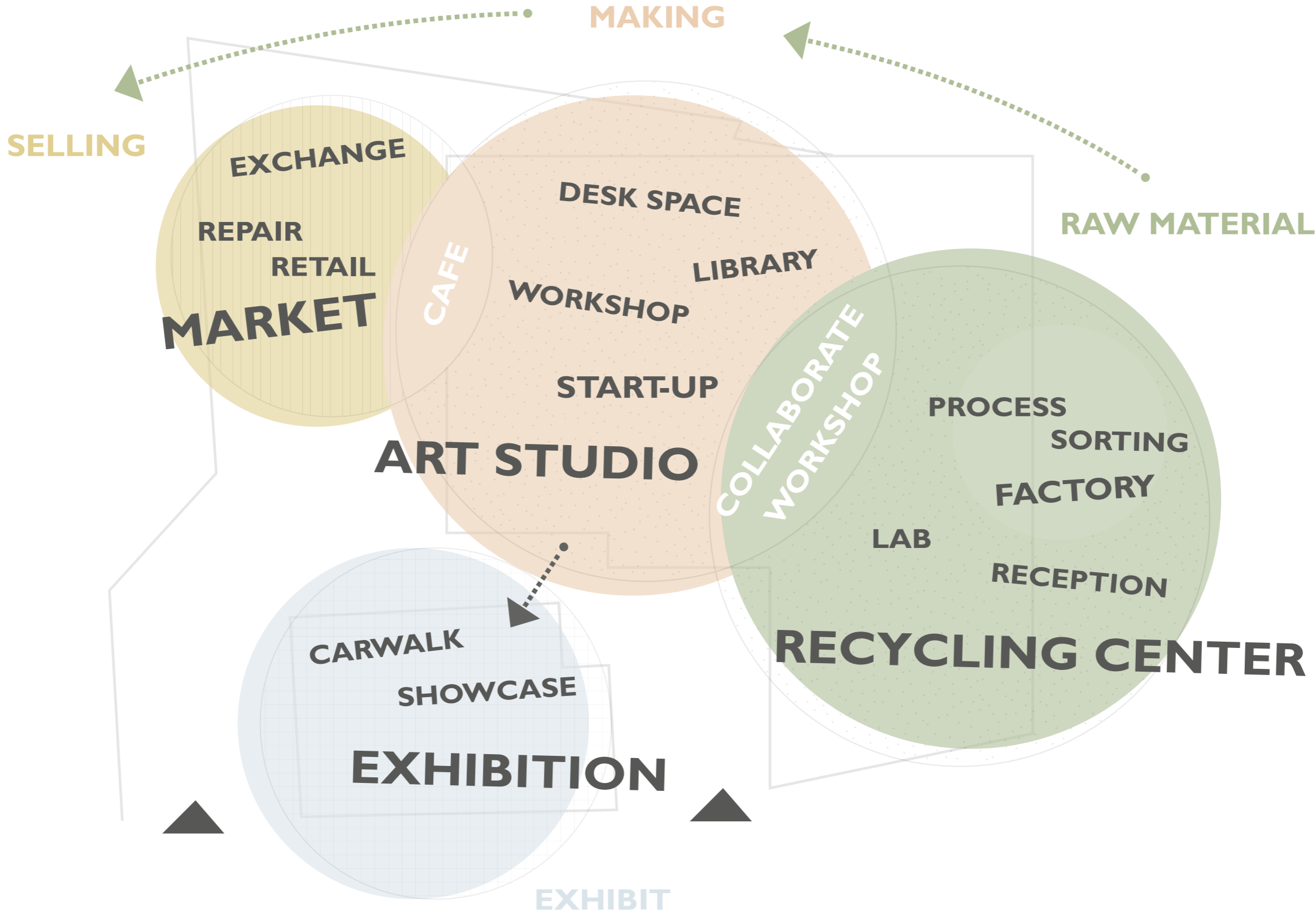
" Londoners also get rid of **44** items of clothes every year – **40%** of which end up going to landfill or incineration. "

" **92%** of London's clothes are imported from elsewhere, in a global supply chain which is on track to use over **a quarter** of the world's carbon budget by 2050. "

" The Mayor has set the ambitious target of making London **net-zero carbon by 2030**, which requires transitioning to a low-carbon circular economy. " - Shirley Rodrigues



PROGRAMME



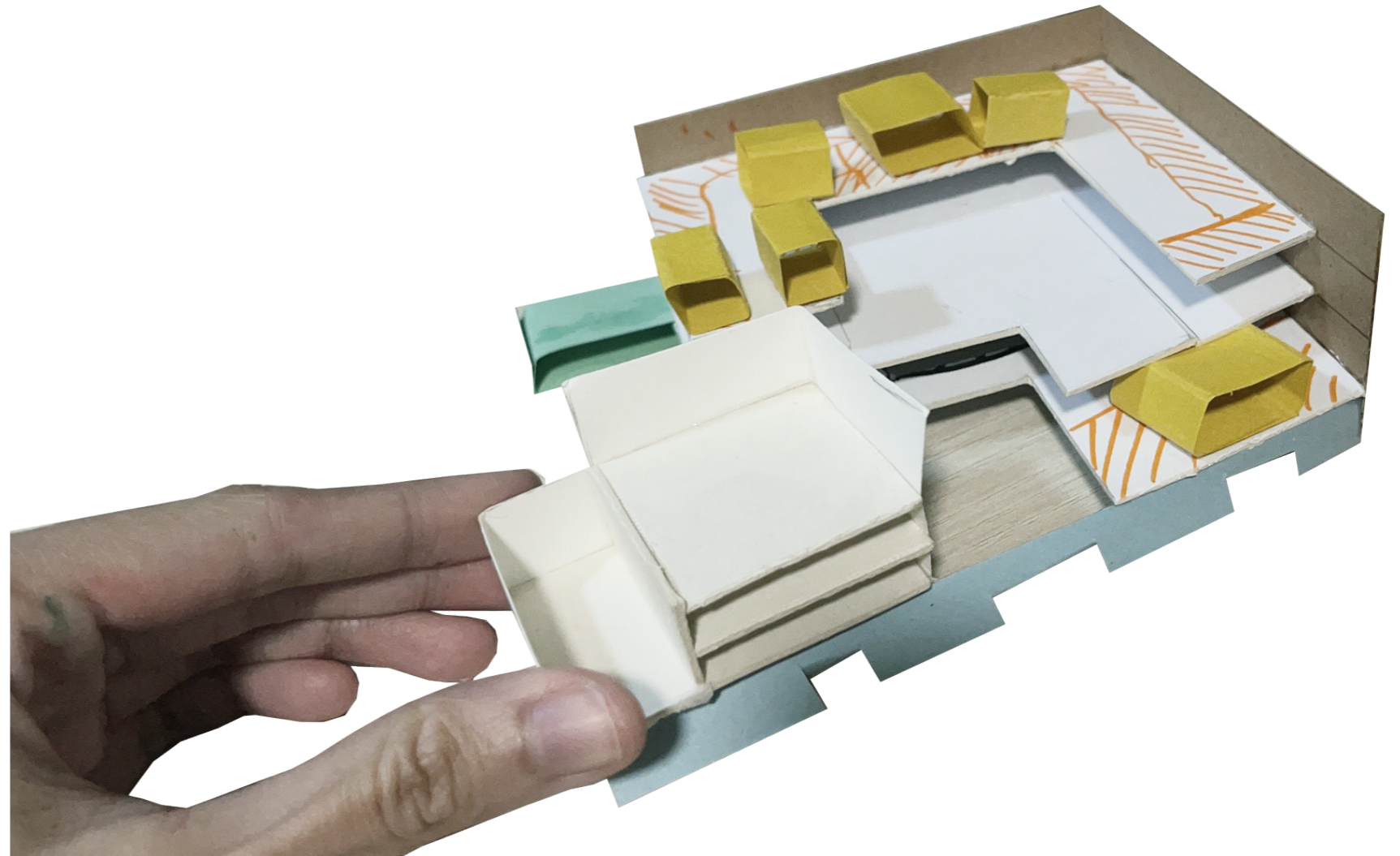
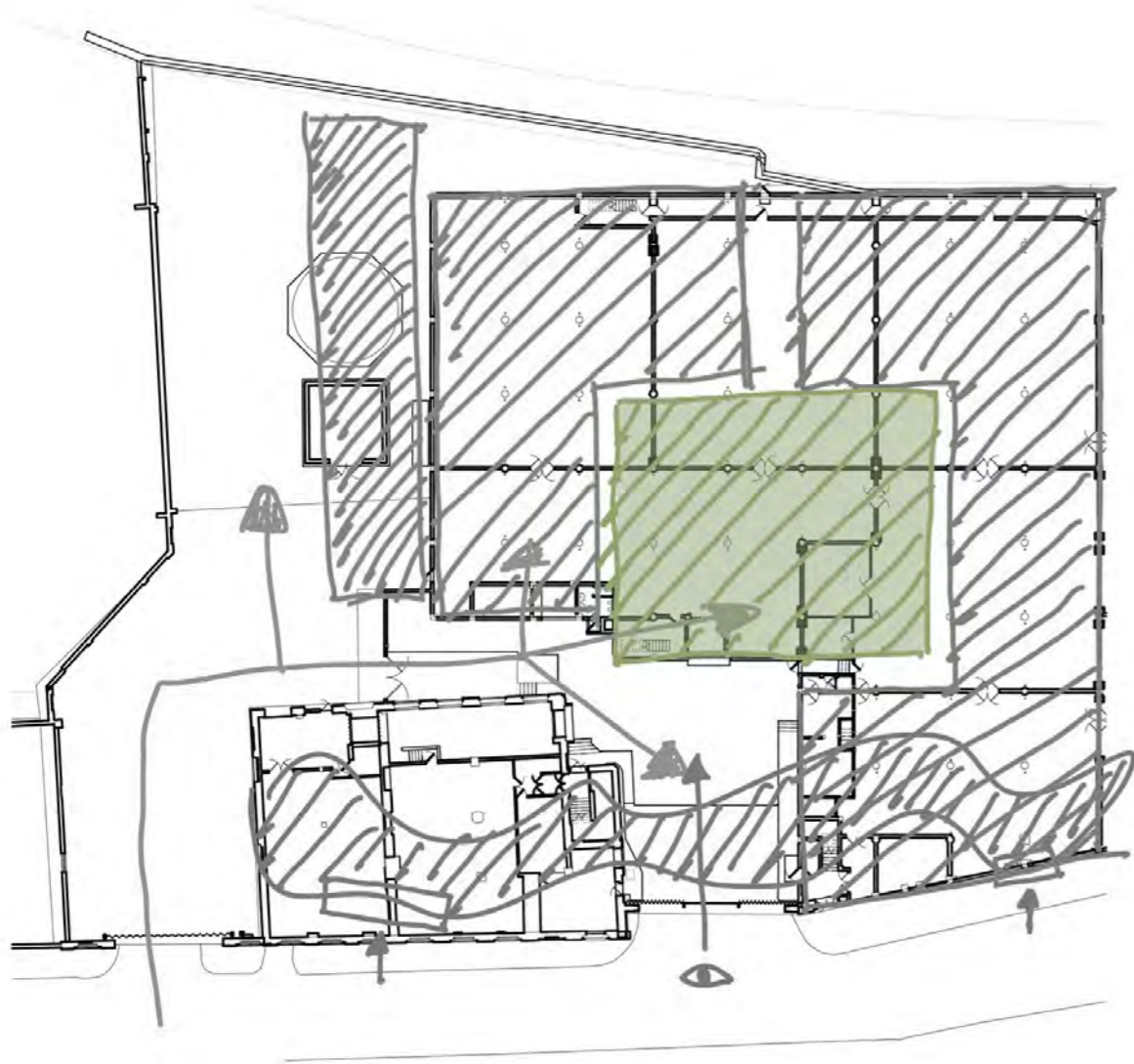
PROCESS

SPATIAL STRATEGIES ITERATIONS

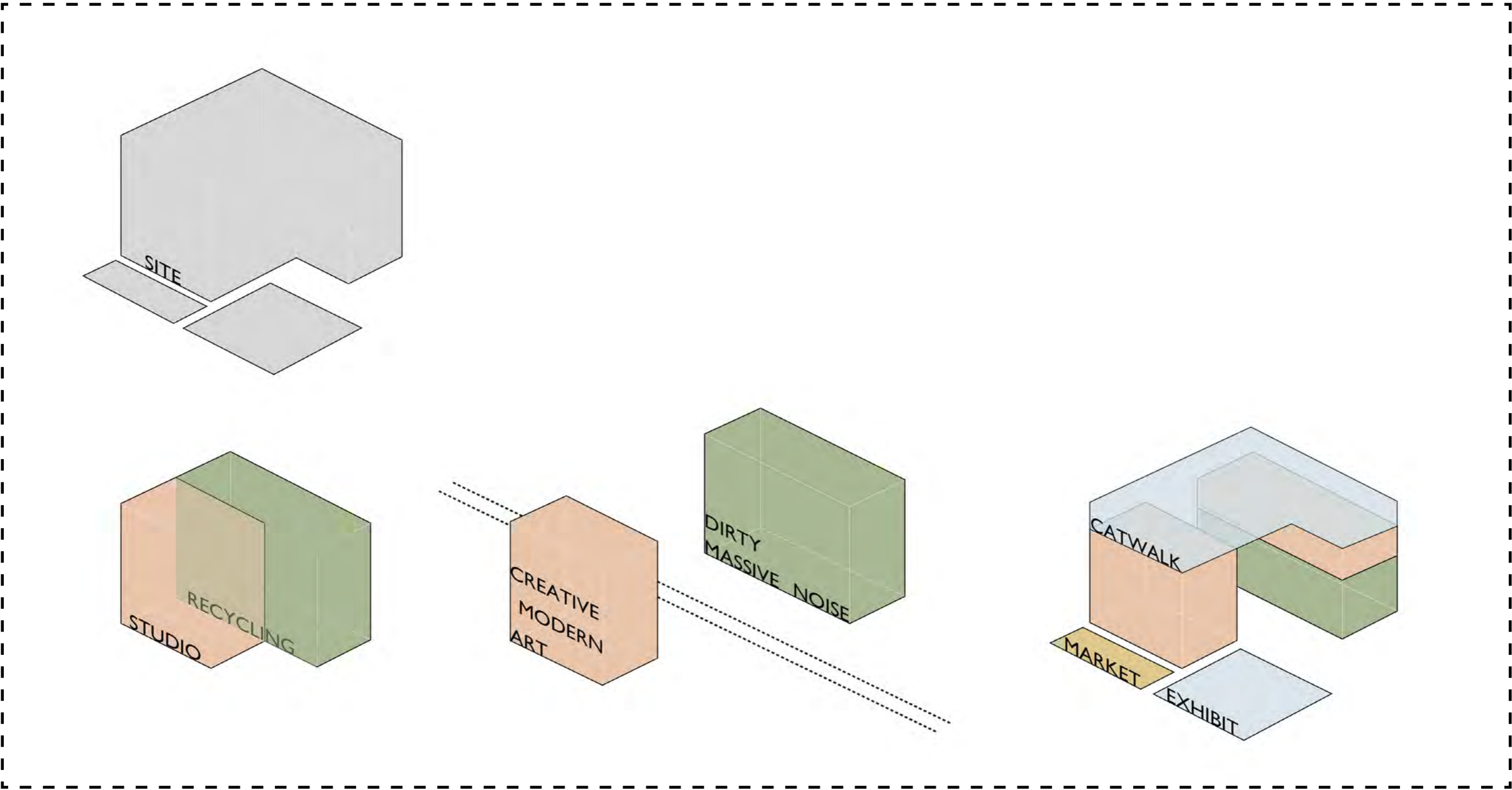
Recycling center and Art Studio are the two main parts in this center

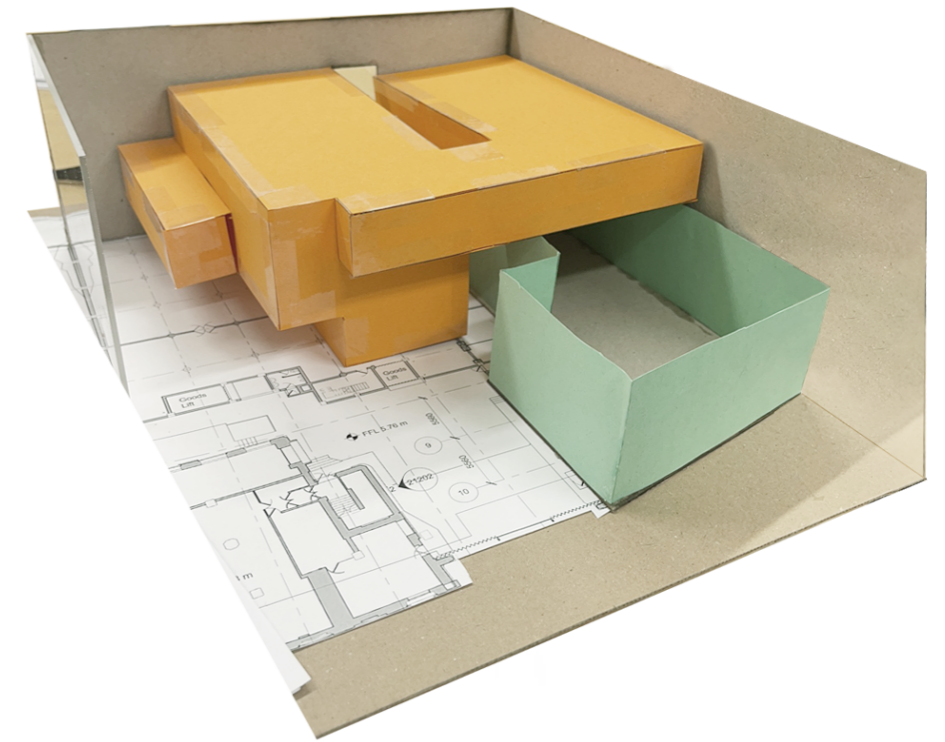
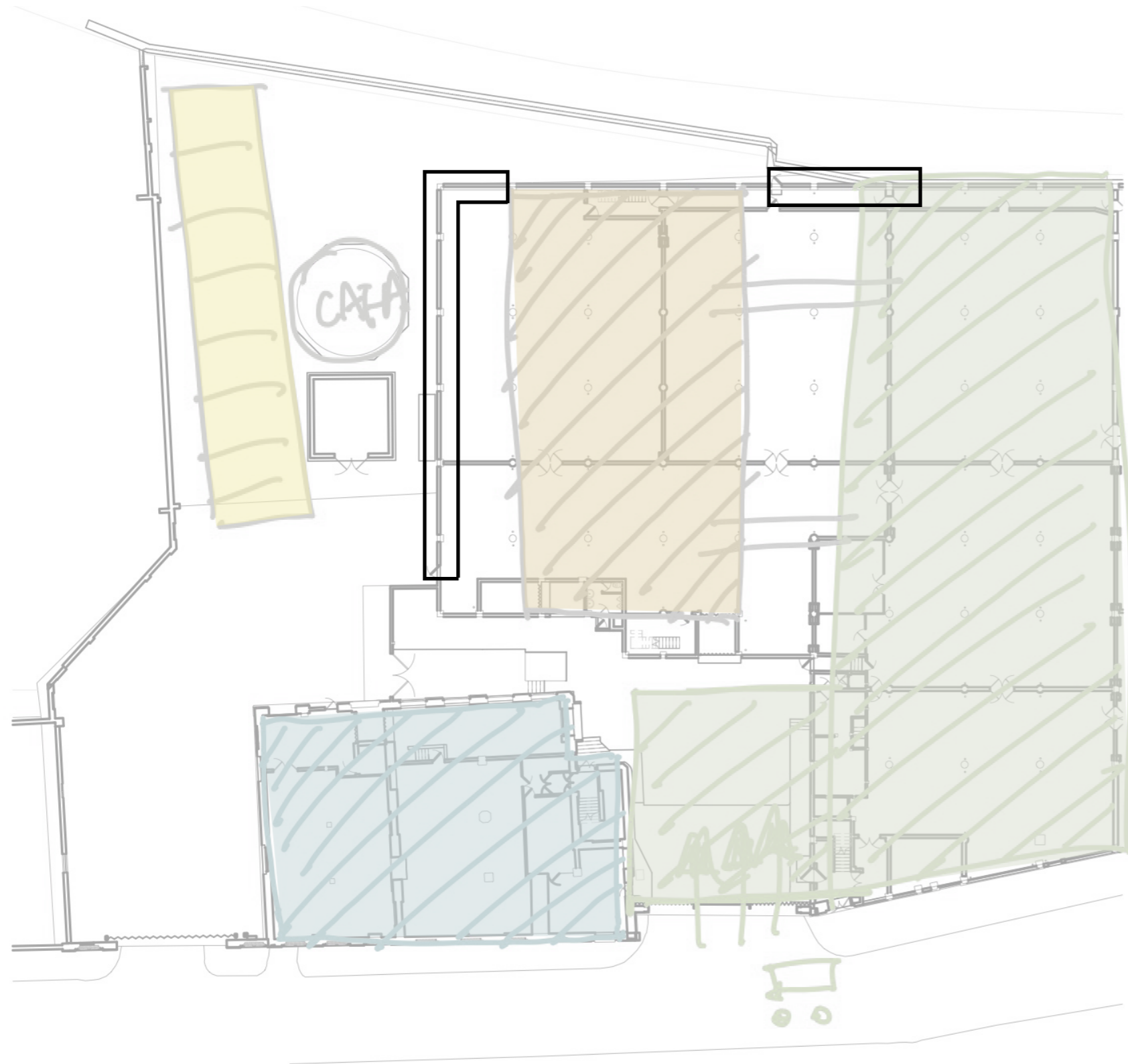


Recycling is a process, people and car can see the process when they go through this center



Fancy exhibition attract people to this center, vertical recycling center collaborate with maker in each level





 Demolish existing wall and glazing in order to get more sunlight into the center

TYPES OF GARMENT WASTE



Leather



Denims



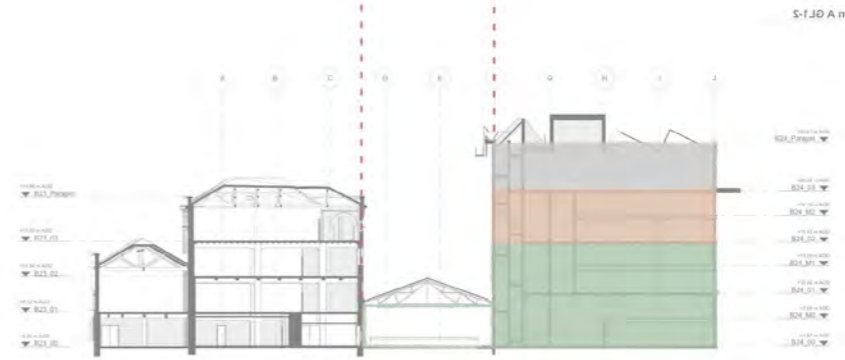
Cotton

PLAN DEVELOPMENT 2

Bridge with Collabrate workshop



First Floor



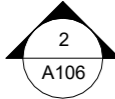
Section




Ground Floor

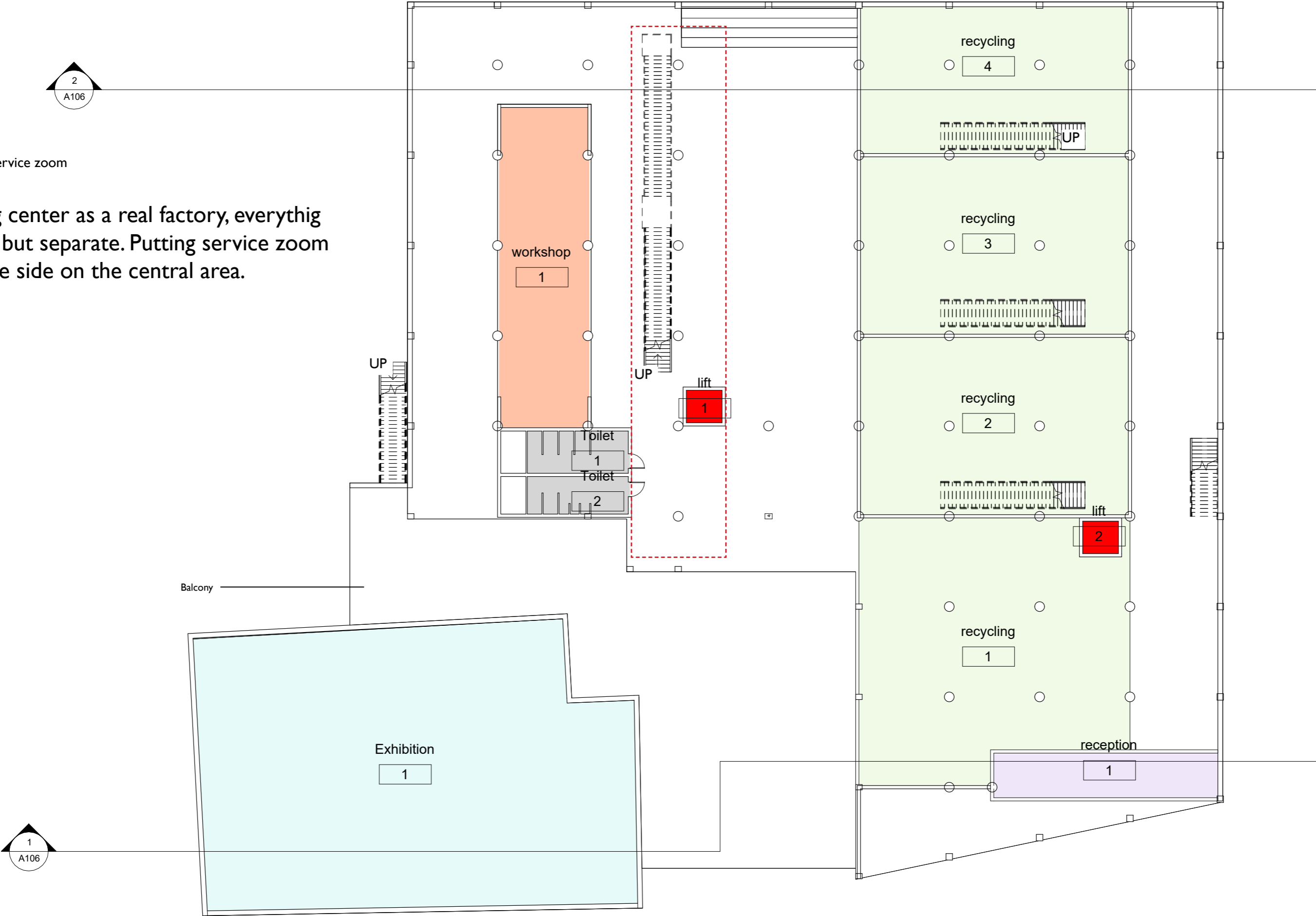
Expanding the area of loading area, put the street inside the hub. Spatial division on the Recycling center in the second floor base on the types of textile waste.

PLAN DEVELOPMENT 3

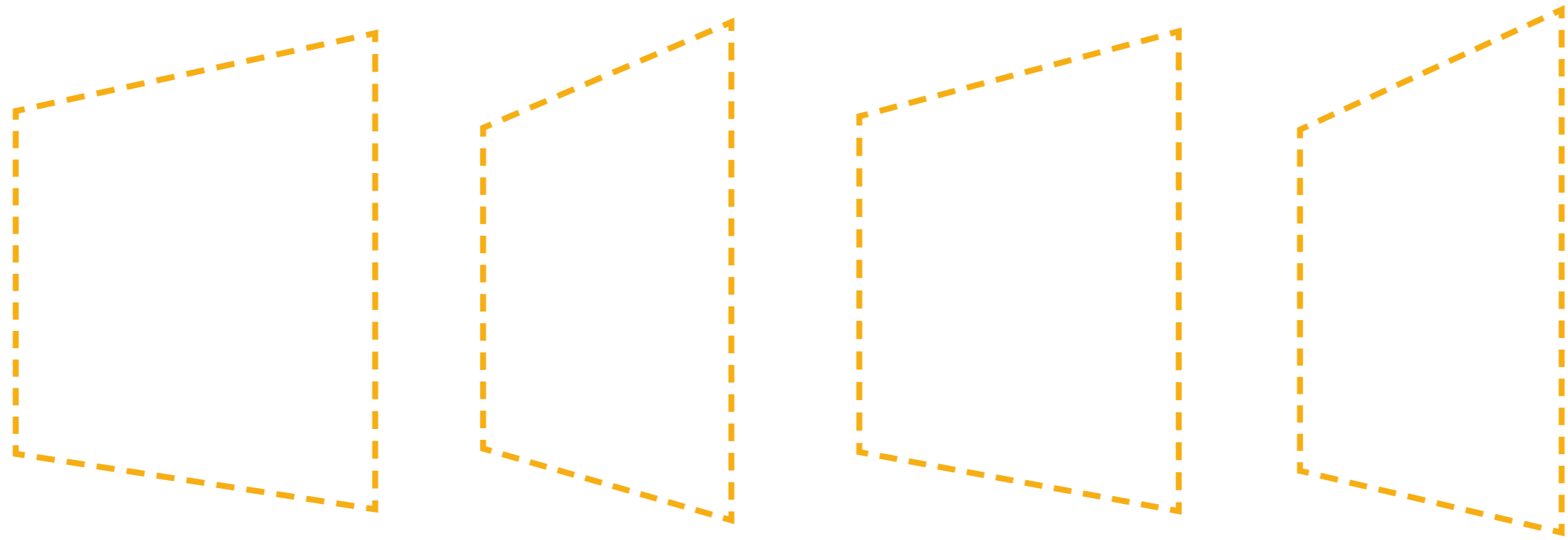


 Service zoom

Recycling center as a real factory, everythig together but separate. Putting service zoom in the one side on the central area.

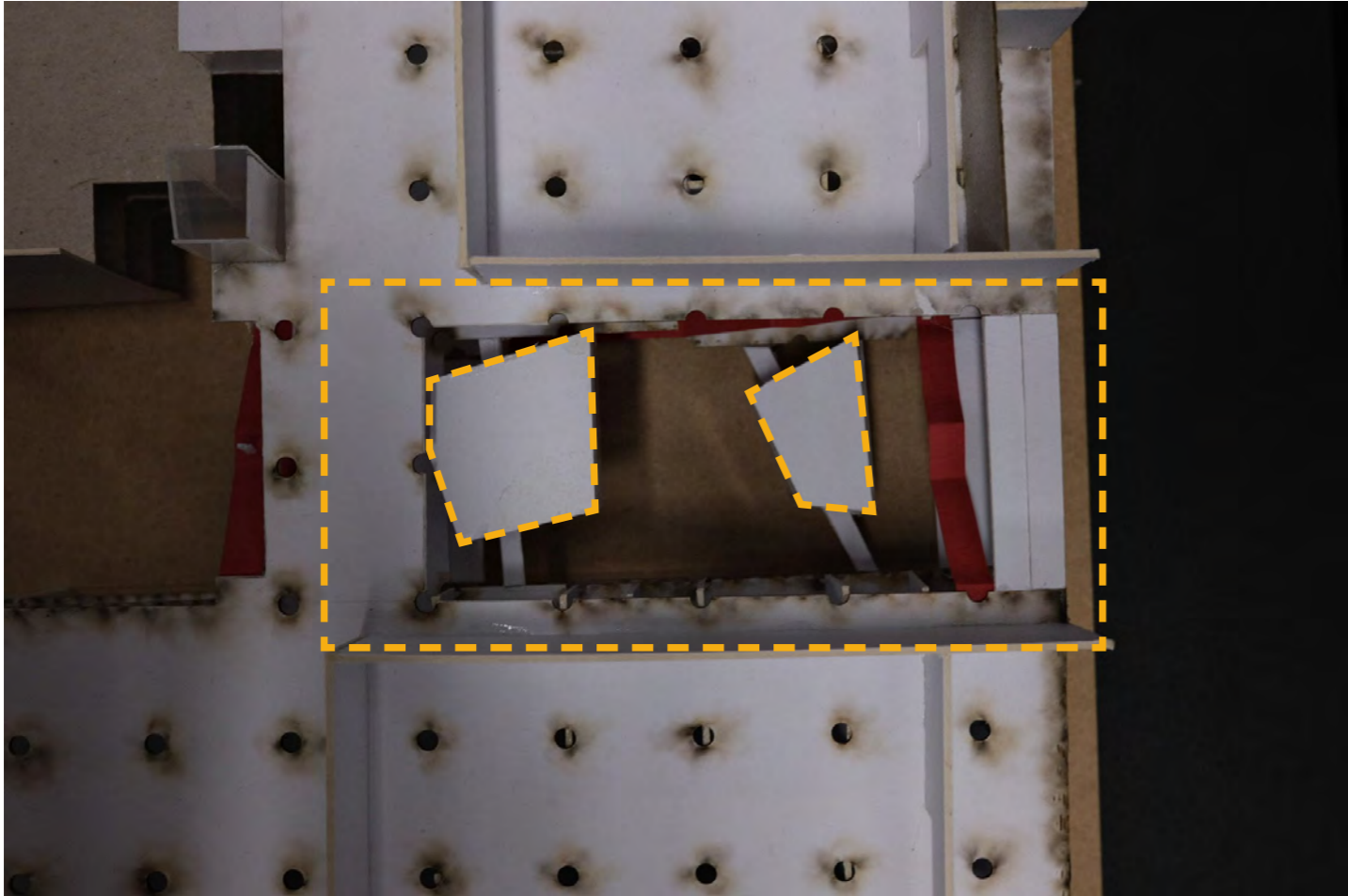


ABSTRACTION

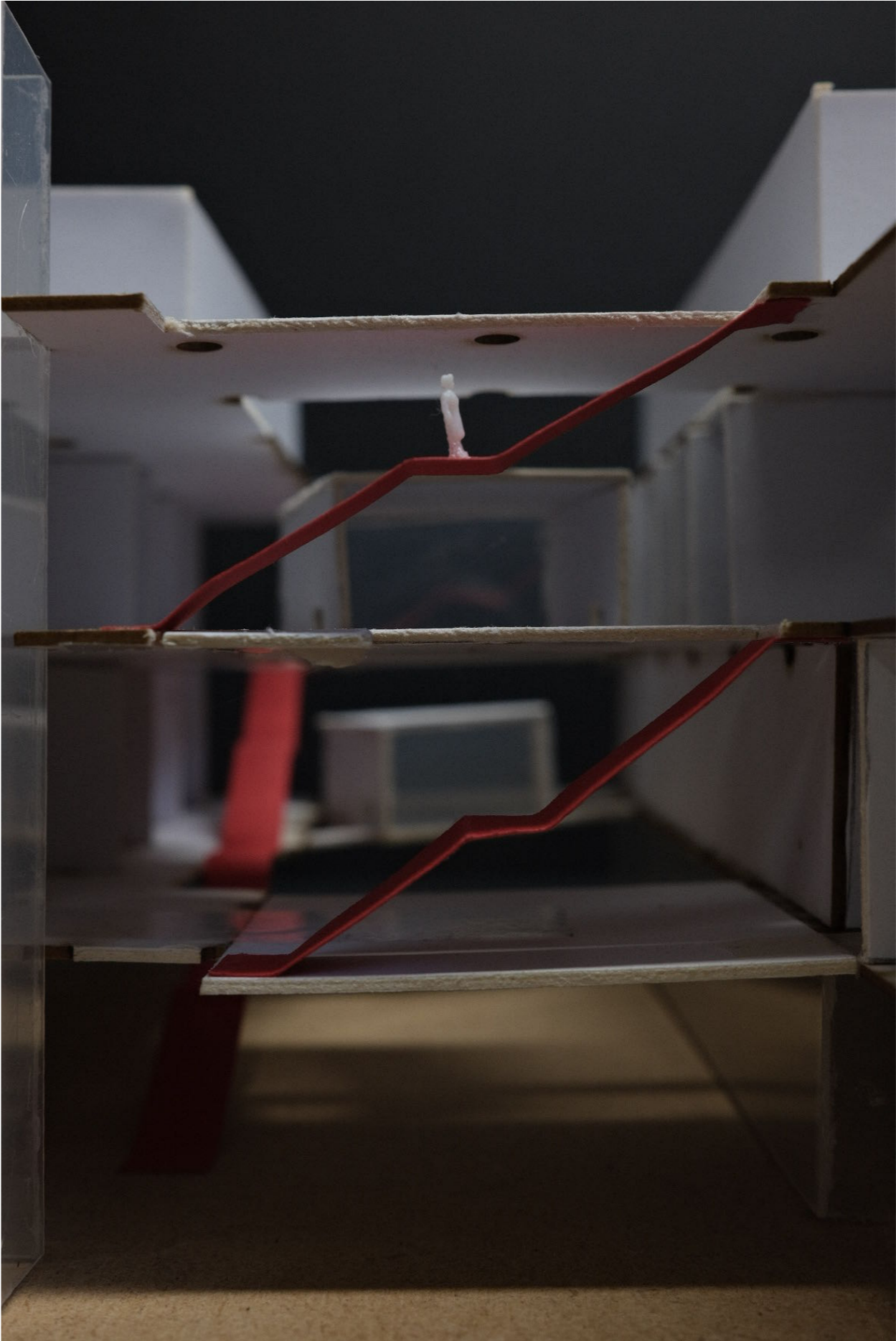


COLLABORATION WORKSHOP

A melting space between recycler (Recycling center) and maker (Art Studio)



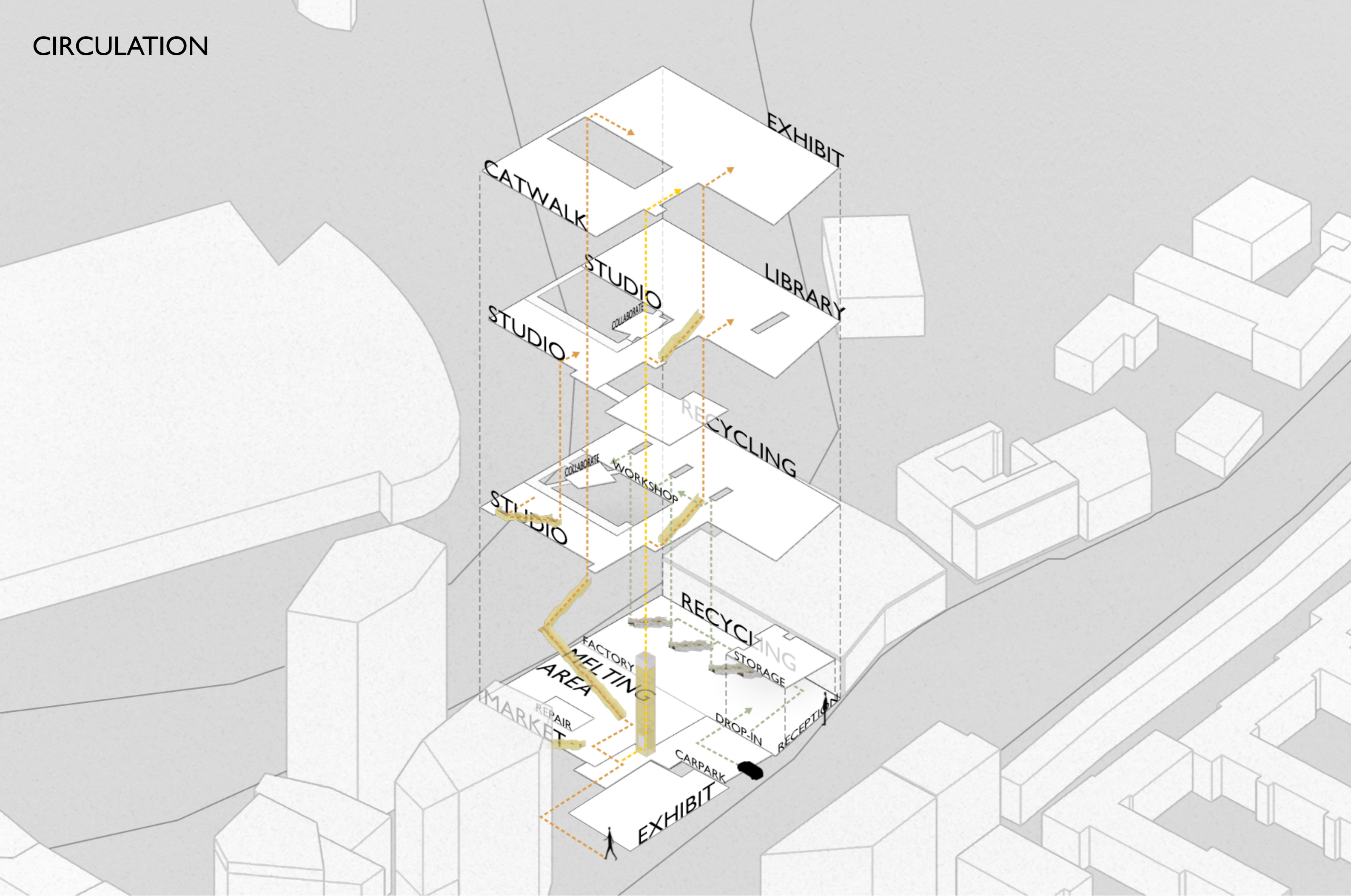
Collaboration space



Circulation

DESIGN

CIRCULATION



ELEVATION

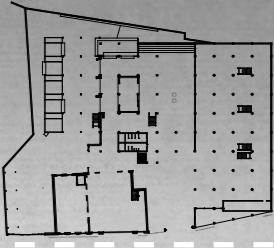
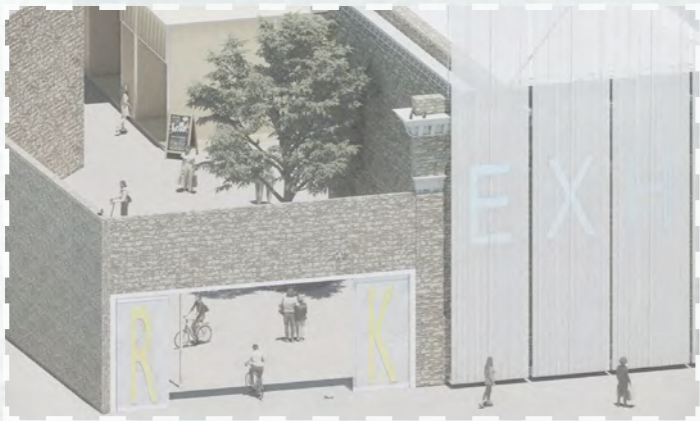


Elevation - North

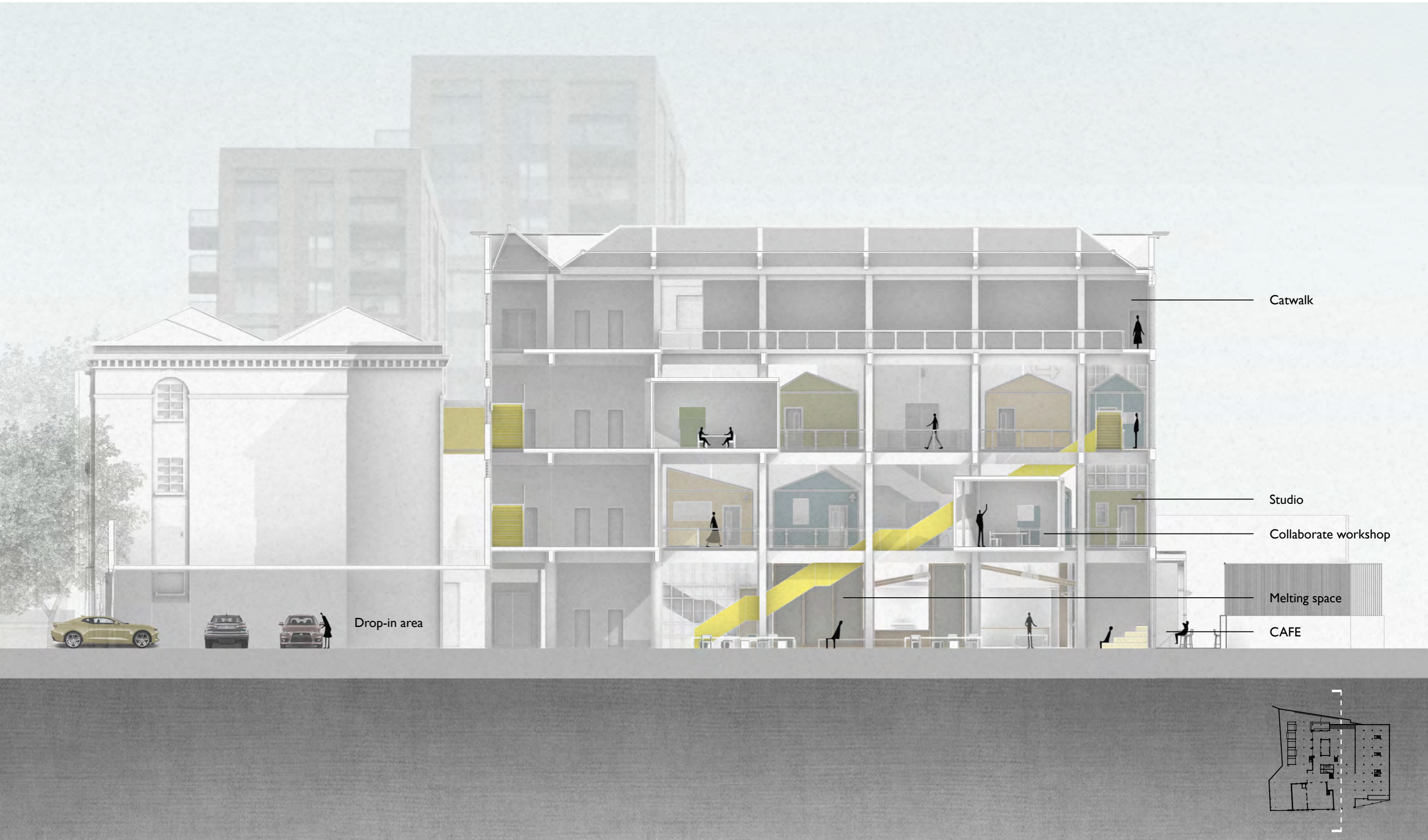


Elevation - East

ENTRANCE :West

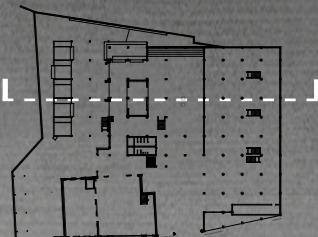


ACROSS SECTION



LONG SECTION

Market CAFE Repair workshop Catwalk Melting space Collaborate workshop Recycling center Catwalk Workshop



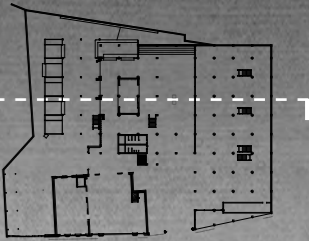
SECTIONAL PERSPECTIVE



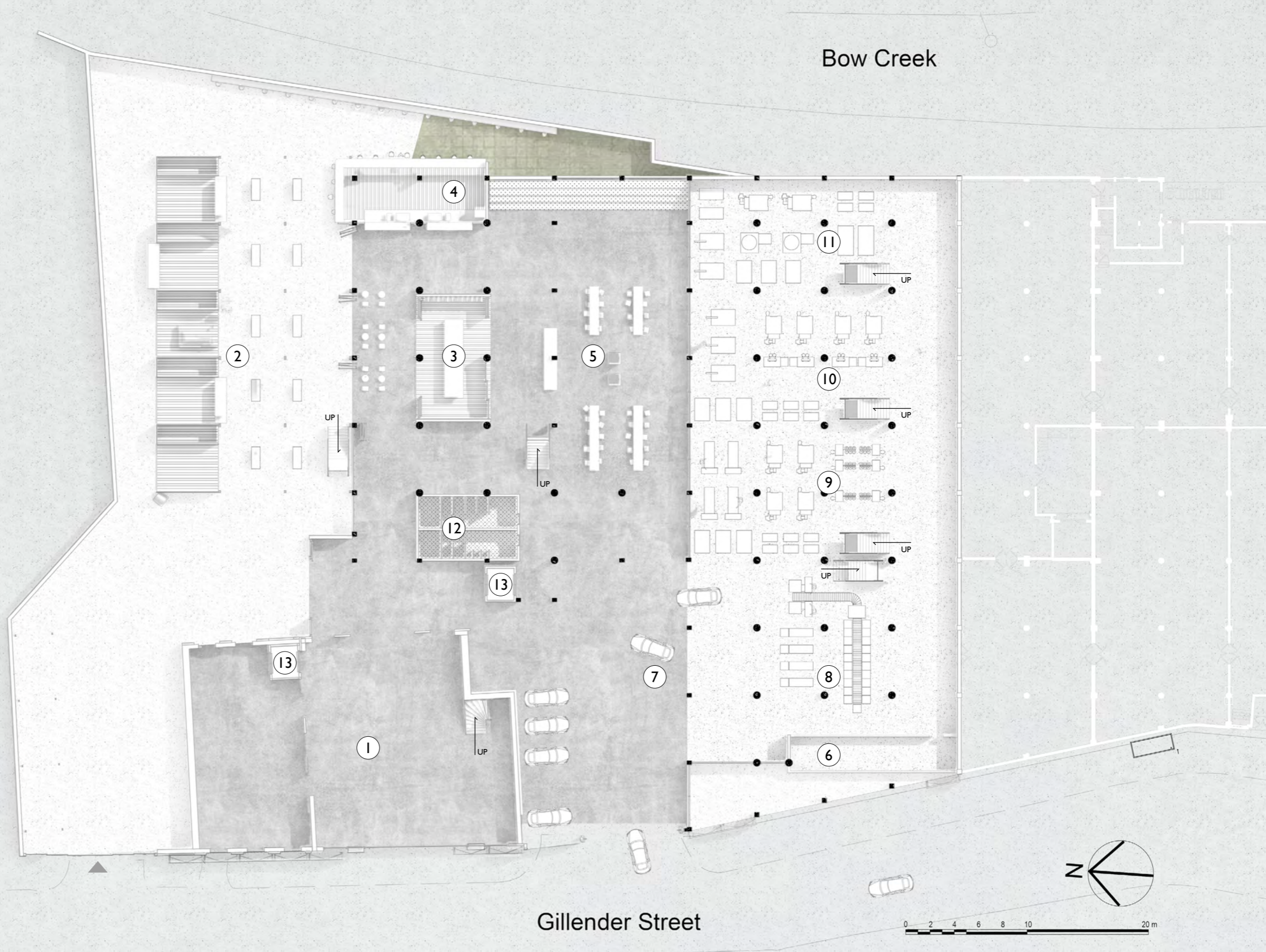
RAW MATERIAL

MAKING

SELLING



- ① Exhibition
- ② Market
- ③ Repair workshop
- ④ CAFE
- ⑤ Melting Area
- ⑥ Reception
- ⑦ Loading area
- ⑧ Sorting area
- ⑨ Recycling - Cotton
- ⑩ Recycling - Denims
- ⑪ Recycling - Leather
- ⑫ Toilet
- ⑬ Lift



Ground Floor

Gillender Street

0 2 4 6 8 10 20 m

ENTRANCE









MELTING SPACE

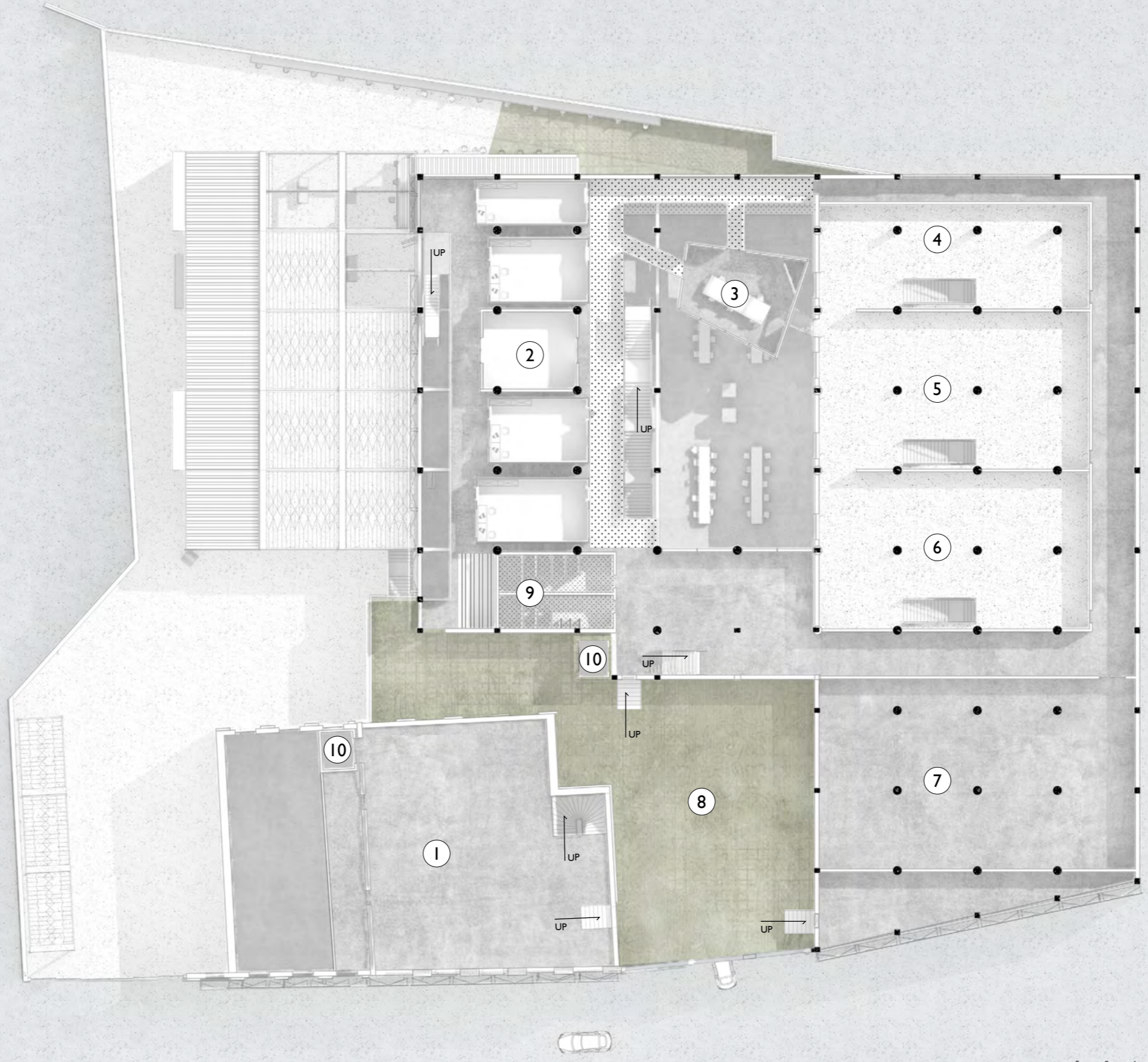




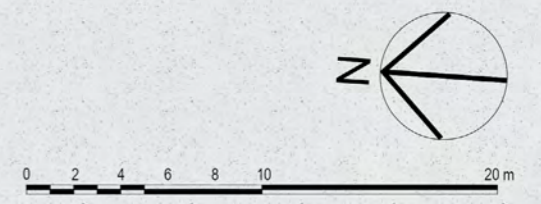
SORTING AREA

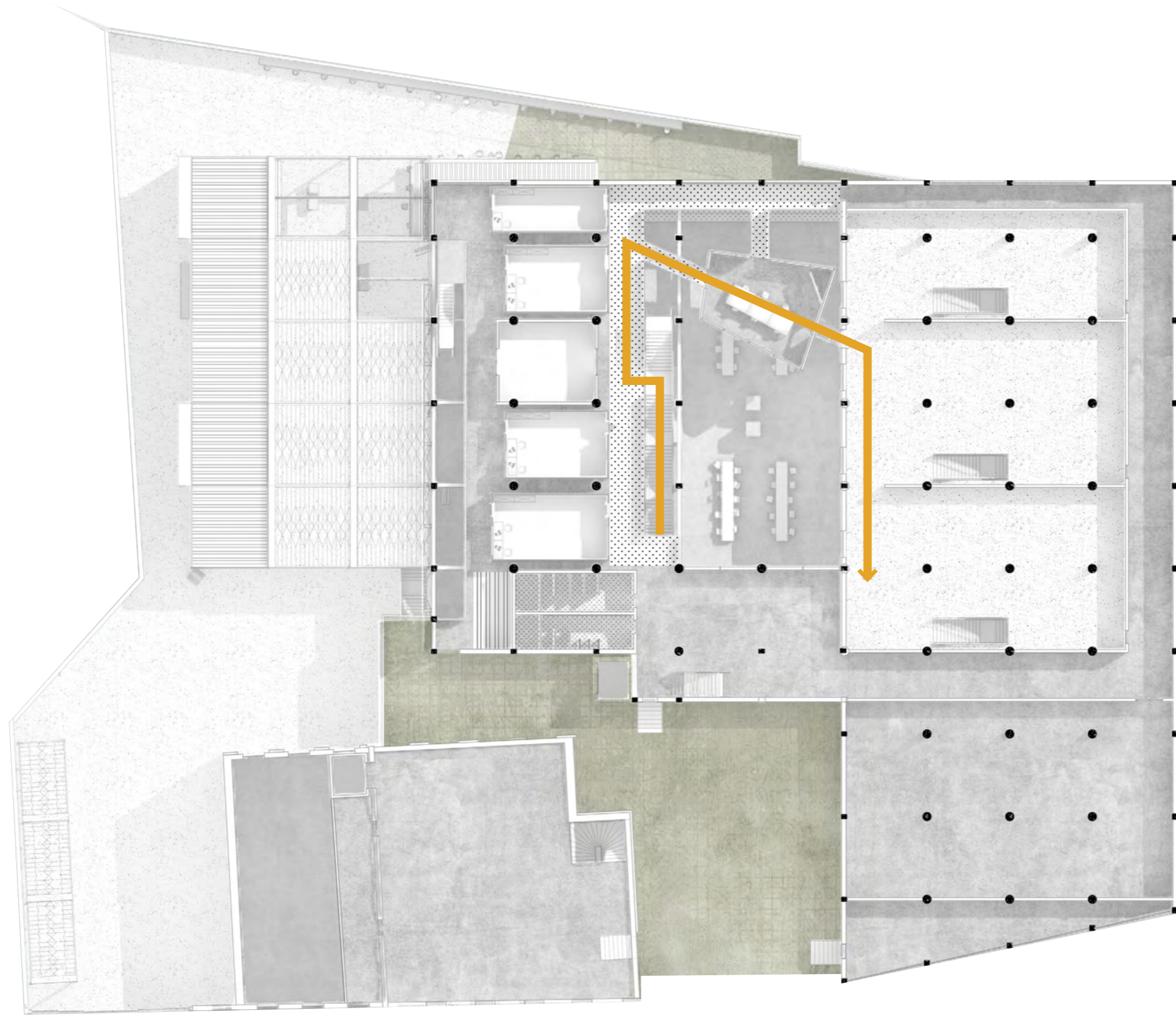


- ① Exhibition
- ② Studio
- ③ Collaboration workshop
- ④ Recycling - Leather
- ⑤ Recycling - Denims
- ⑥ Recycling - Cotton
- ⑦ Recycle LAB
- ⑧ Balcony
- ⑨ Toilet
- ⑩ Lift



First Floor

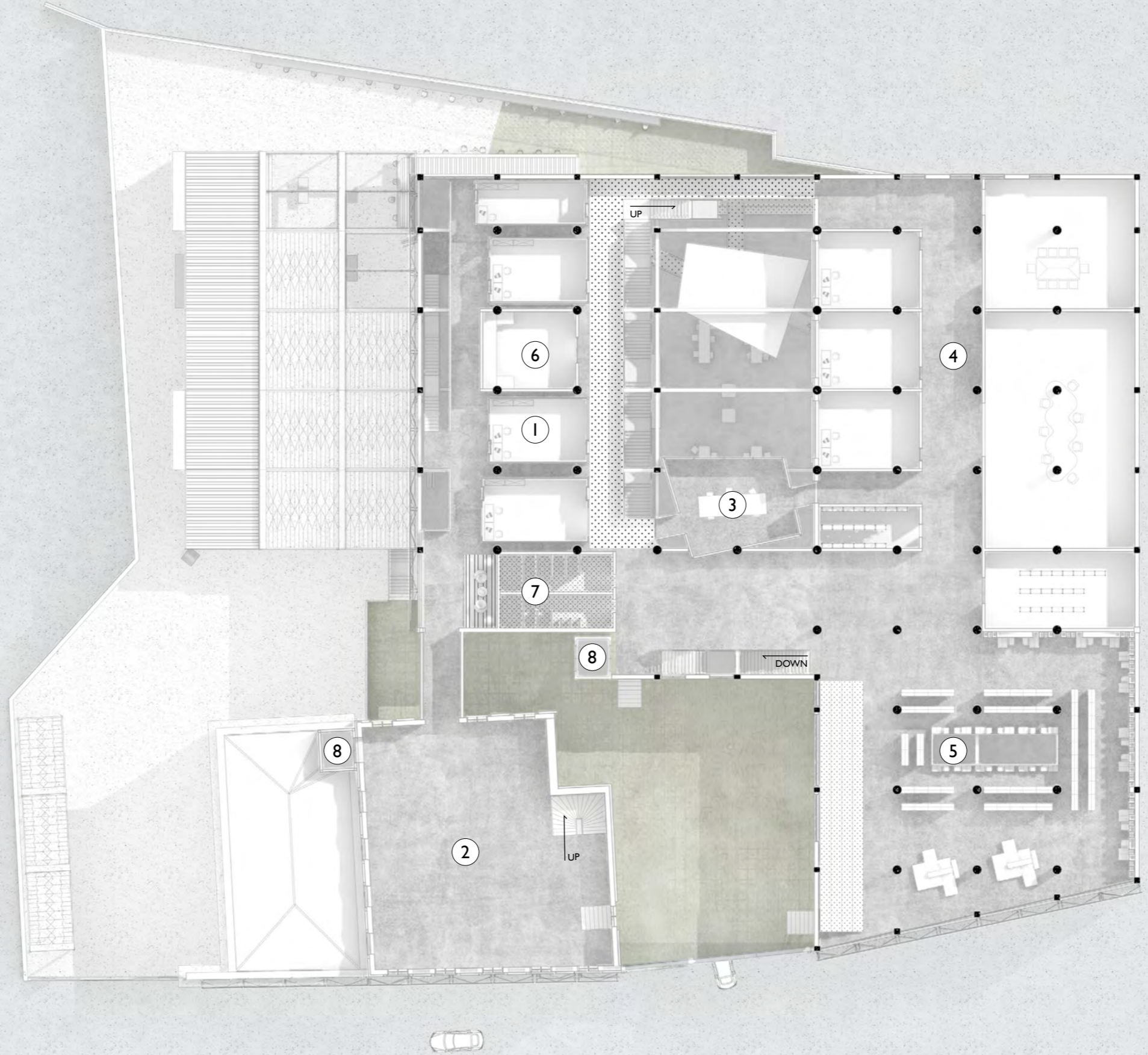




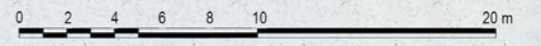


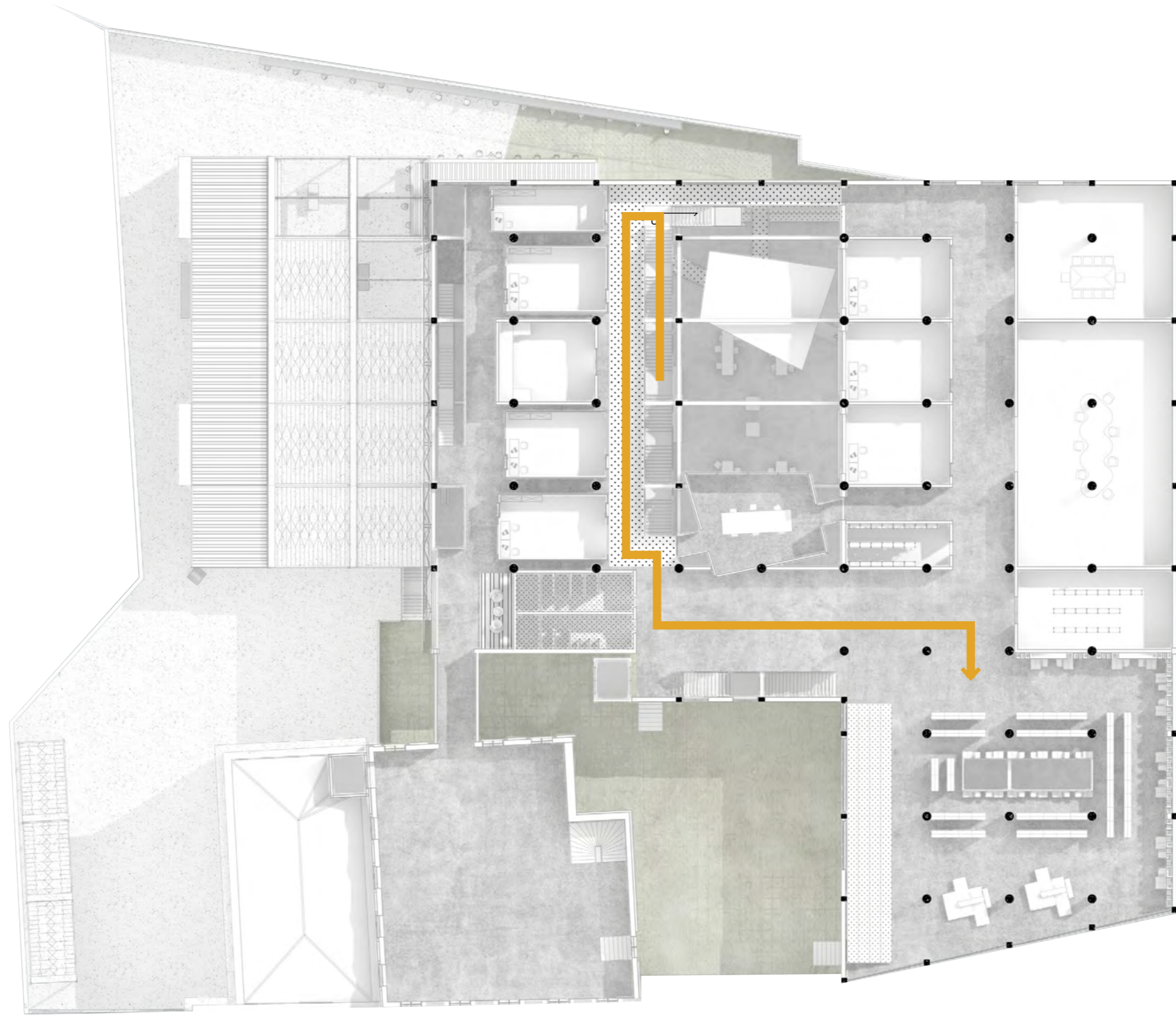


- ① Studios
- ② Table space
- ③ Collaboration workshop
- ④ Workshop
- ⑤ Library
- ⑥ Tea point
- ⑦ Toilet
- ⑧ Lift



Second Floor

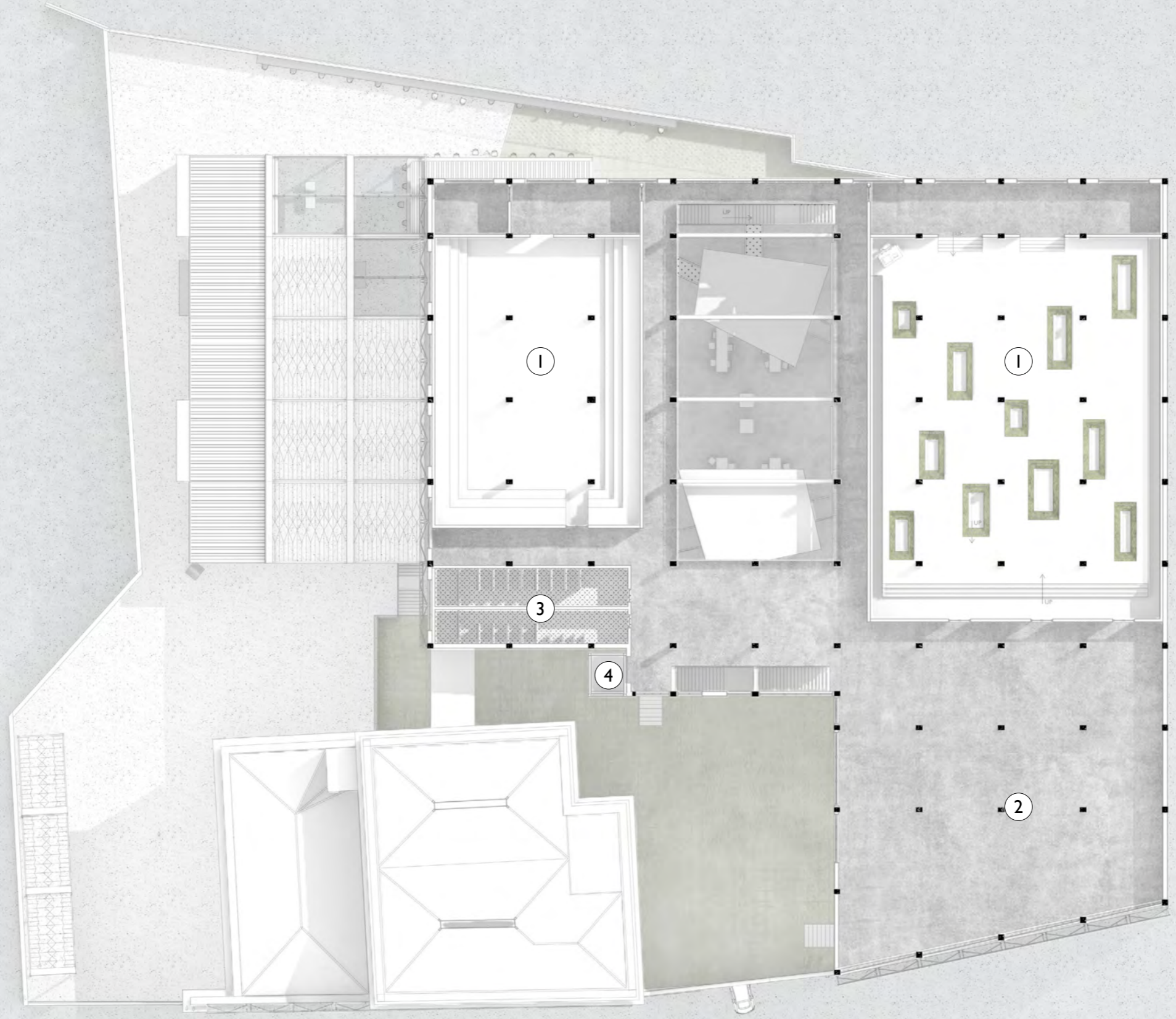




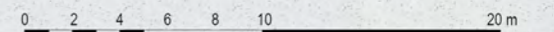
LIBRARY

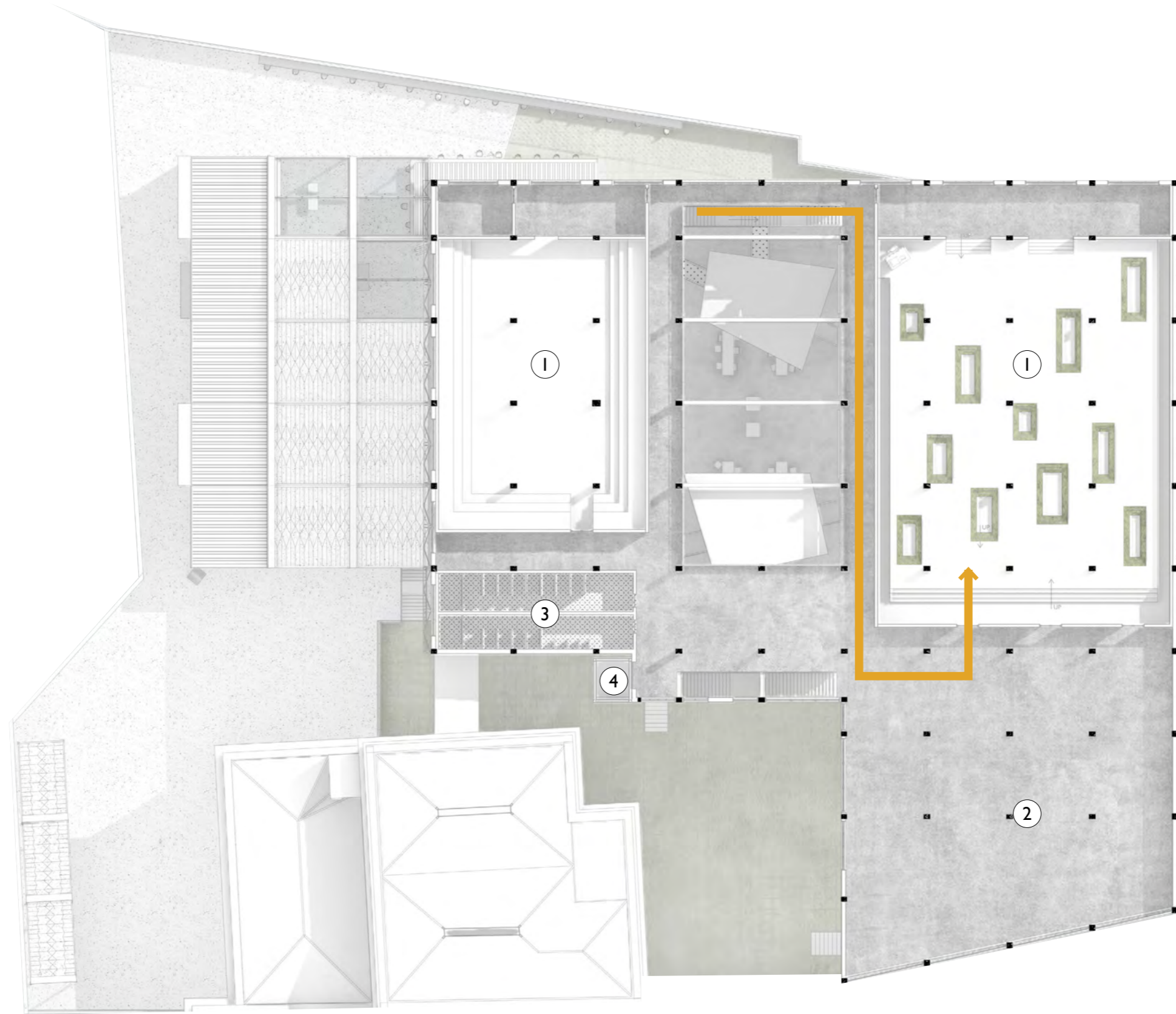


- ① Catwalk
- ② Exhibition
- ③ Toilet
- ④ Lift



Third Floor







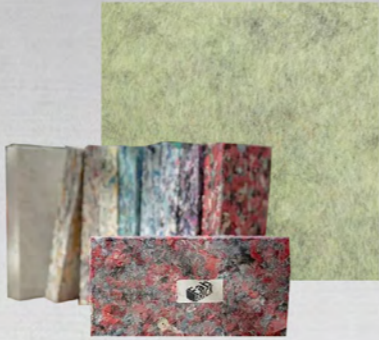
MATERIALITY



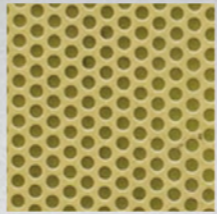
Solar panel glass



Recycled plastic



FabBrick



Metal mesh



Recycled cotton fabric



Timber



T h a n k y o u
