

KARMA!

KARMA!

KARMA!

SUPERFUTURES
JIARU LI

In the year 2147, the world is ruled by the Law of Karma — where good and ill are reckoned in the instant, and destiny is borne upon the skin in living script.

Dr. Wang, a man of science and solemn mind, sought to flee this eternal tally. From his hands was born the Void — a sanctuary where karma's reach doth falter.

Yet in unbinding himself, he beheld a deeper curse:

His voice faded like morning fog,

his memories dissolved like ink in rain,

his very being slipped away, grain by grain, through the glass of time.

And thus emerges the final paradox:

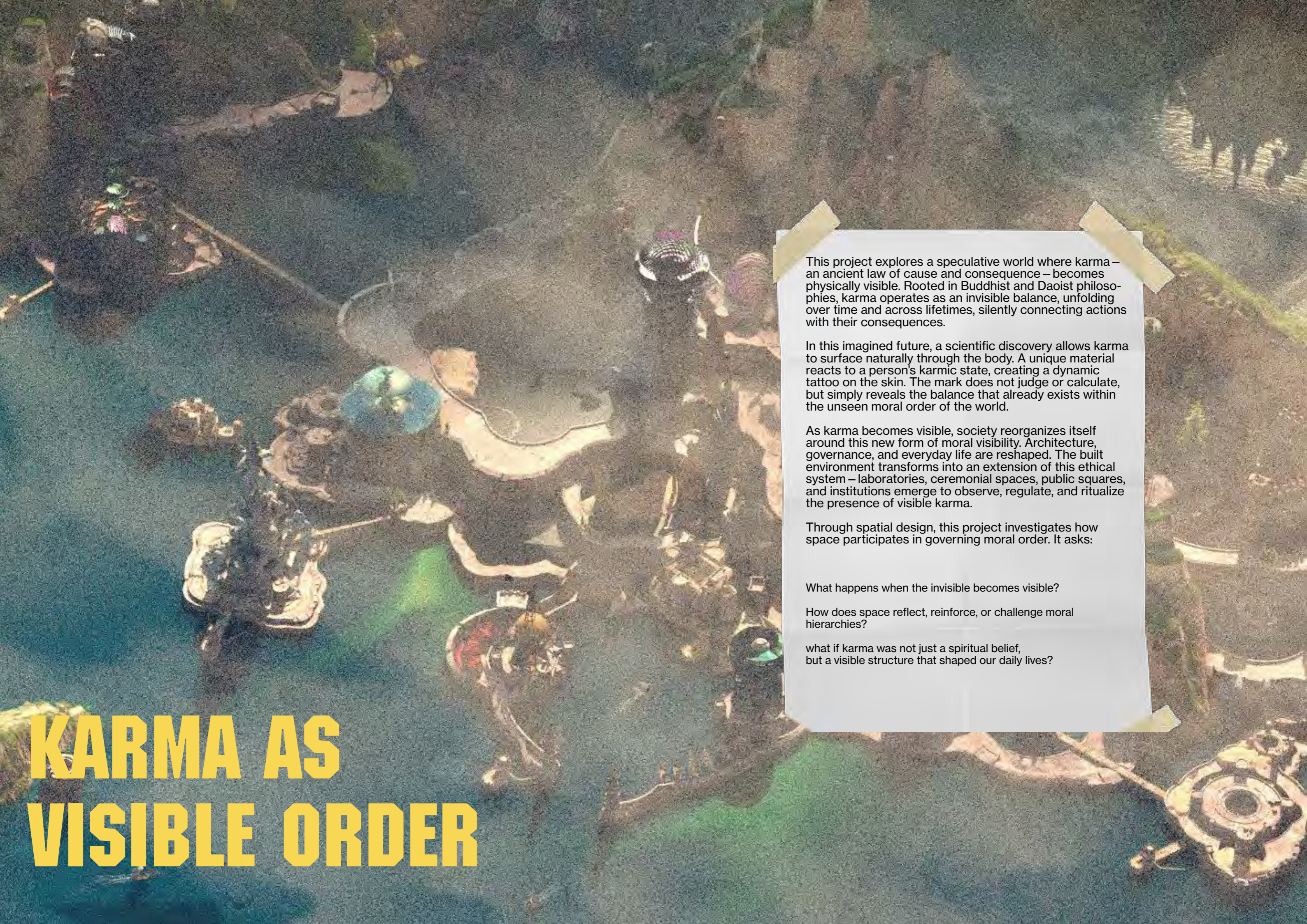
Can one escape the yoke of fate without losing the self entire?

To be free — must one vanish?

To be unbound — must one be undone?

KARMA!

KARMA!



This project explores a speculative world where karma – an ancient law of cause and consequence – becomes physically visible. Rooted in Buddhist and Daoist philosophies, karma operates as an invisible balance, unfolding over time and across lifetimes, silently connecting actions with their consequences.

In this imagined future, a scientific discovery allows karma to surface naturally through the body. A unique material reacts to a person's karmic state, creating a dynamic tattoo on the skin. The mark does not judge or calculate, but simply reveals the balance that already exists within the unseen moral order of the world.

As karma becomes visible, society reorganizes itself around this new form of moral visibility. Architecture, governance, and everyday life are reshaped. The built environment transforms into an extension of this ethical system – laboratories, ceremonial spaces, public squares, and institutions emerge to observe, regulate, and ritualize the presence of visible karma.

Through spatial design, this project investigates how space participates in governing moral order. It asks:

What happens when the invisible becomes visible?

How does space reflect, reinforce, or challenge moral hierarchies?

what if karma was not just a spiritual belief, but a visible structure that shaped our daily lives?

KARMA AS VISIBLE ORDER

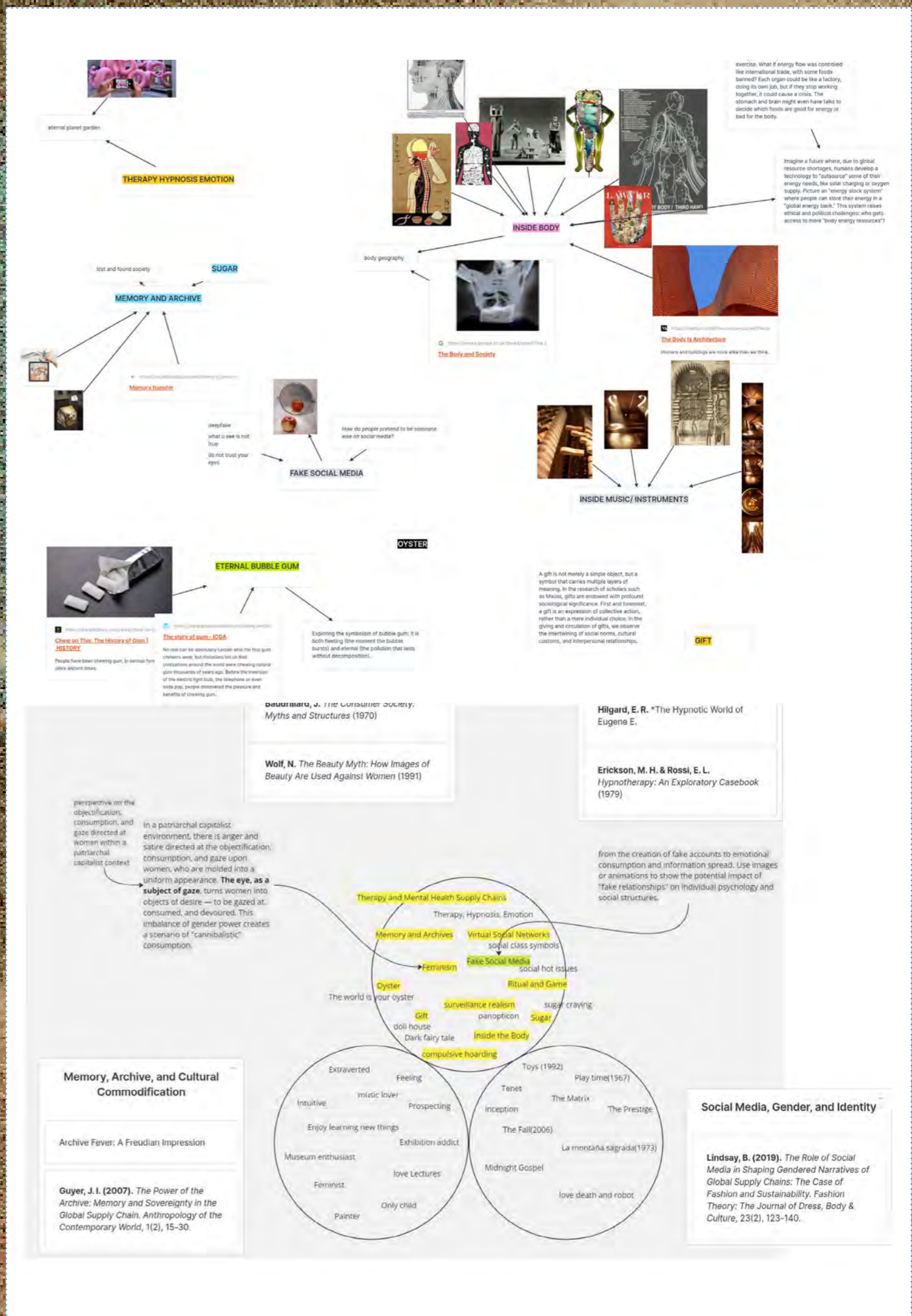
In the real world, karma exists as an invisible force — deeply rooted in Buddhist and Daoist philosophy — quietly linking actions to consequences across lifetimes. It operates beyond human measurement, resisting the immediacy of judgment, transaction, or external control.

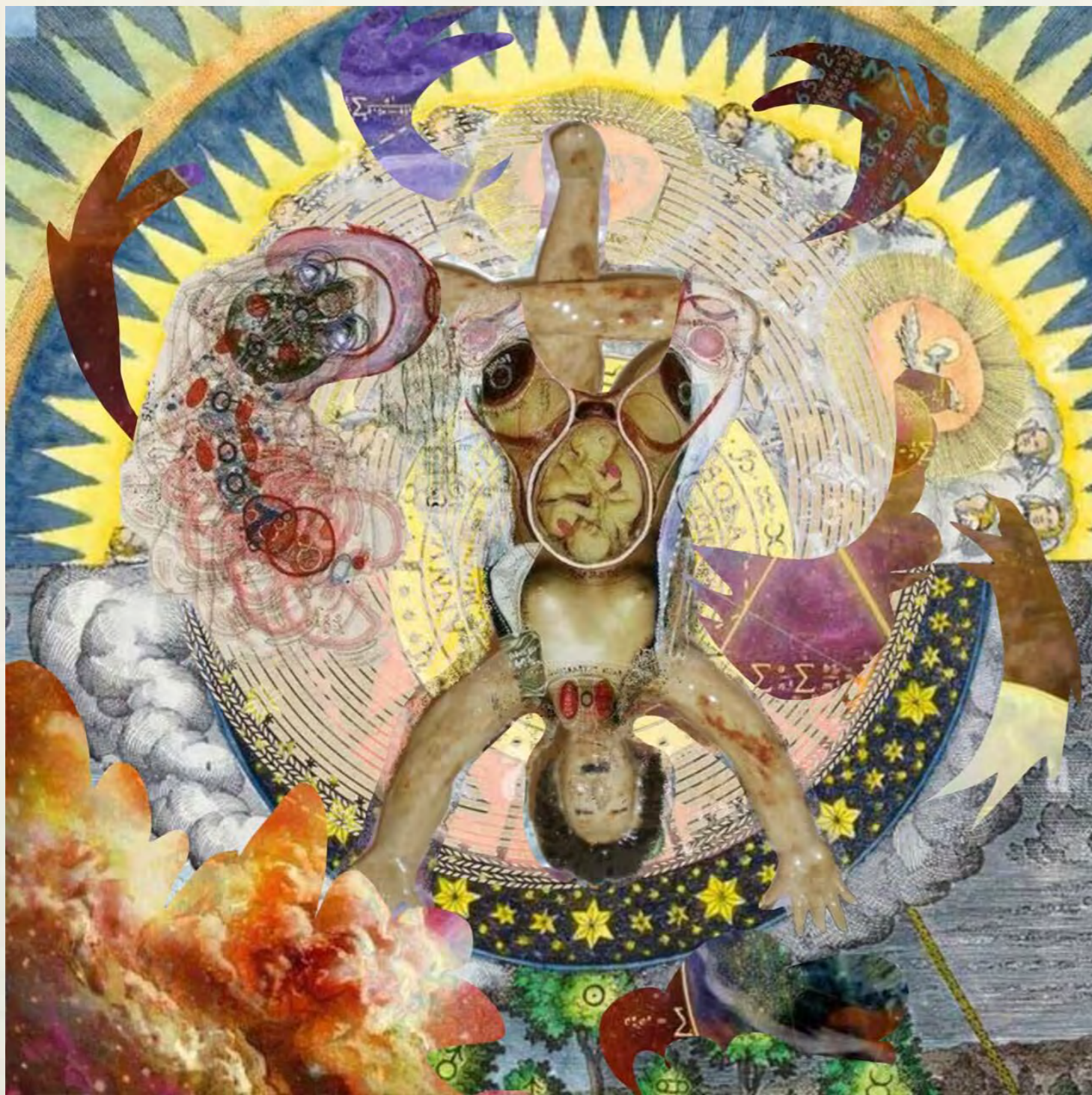
Yet I wondered: what would happen if this inner ethical balance was no longer hidden? What if karma naturally manifested itself in physical form, allowing society to witness, respond to, and organize itself around this visibility?

By choosing karma as the entry point, I was drawn to its profound tension between interior belief and exterior perception. In its traditional form, karma requires self-awareness, patience, and personal responsibility. But once made visible, the meaning of karma shifts. It becomes part of governance, architecture, and public life — introducing new forms of hierarchy, ritual, and surveillance.

This project does not imagine a world where karma is calculated or controlled by machines. Instead, it speculates on a reality where karma is revealed as a natural, ever-present law, made visible through a mysterious scientific discovery that allows its presence to materialize on the body as a living tattoo. The consequences of this visibility — socially, politically, and spatially — form the core inquiry of this design research.

BIRTH OF THE IDEA





SUPPLY CHAIN RESEARCH

Karma embodies an invisible supply chain where actions:

moral or destructive – circulate through interconnected systems, binding intention to consequence.

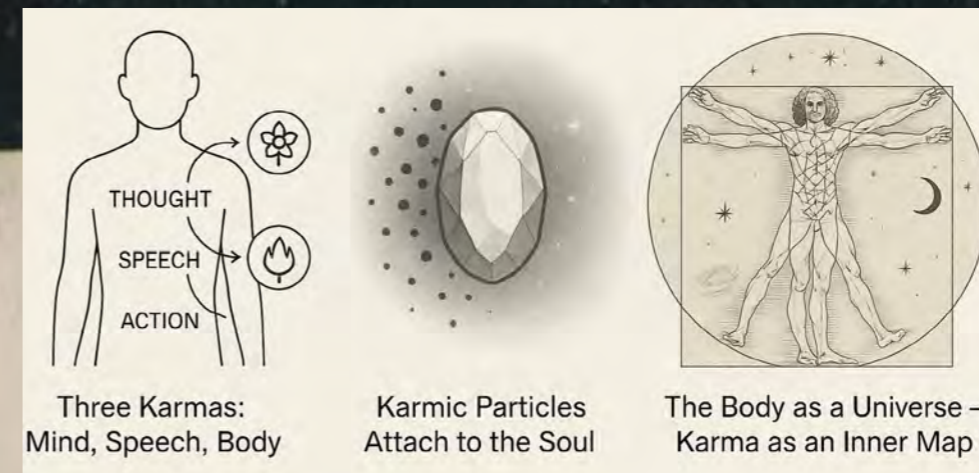
Like raw materials processed into deliverables, human choices flow through ethical “production lines,” accumulating as karmic inventory (delayed impacts) or triggering feedback loops that reshape ecosystems, societies, and even biological states.

This framework redefines karma not as abstract destiny, but as a dynamic network of cause-and-effect logistics, where accountability transcends individuals to entangle species and environments.

Karma is rooted in multiple Eastern philosophical and religious traditions, most notably Hinduism, Buddhism, Jainism, and Daoism. At its core, karma refers to the law of cause and effect, where actions generate consequences that shape future experiences. Rather than functioning as an external system of judgment, karma traditionally operates as an internal, self-regulating principle tied to intention, ethical behavior, and spiritual growth across lifetimes.

In Buddhism, karma is closely linked to the cycle of rebirth (samsara) and the pursuit of liberation (nirvana), emphasizing that wholesome actions lead to favorable outcomes while unwholesome actions reinforce suffering. Daoist interpretations also engage with natural balance and the interconnectedness of all things, where actions disturb or maintain harmony within the cosmos.


While karma remains an abstract, metaphysical concept in its traditional forms, contemporary global discourse increasingly misinterprets karma as a simplified transactional system – often reduced to immediate rewards and punishments. This research examines these complexities, recognizing that karma, as originally conceived, resists quantification, external control, or instant moral accounting. It is precisely this tension – between internal belief and external measurement – that becomes the conceptual foundation for speculating on karma’s translation into visible, state-governed systems.



Three Karmas:
Mind, Speech, Body

Karmic Particles
Attach to the Soul

The Body as a Universe –
Karma as an Inner Map

An abstract painting with layered, textured brushstrokes in shades of blue, purple, and brown. A white, elongated, bird-like shape is positioned horizontally across the middle of the composition. The overall effect is one of depth and movement.

In a world increasingly governed by data, metrics, and algorithmic judgments, I was drawn to karma as a framework that operates on a fundamentally different logic — one rooted in intention, not calculation. Unlike modern systems of surveillance and evaluation, karma traditionally resists immediate visibility. Its consequences unfold over time, often beyond the scope of a single lifetime, guided by inner ethics rather than external enforcement.

The idea of transforming karma into a visible, measurable system offers both fascination and danger. What happens when an internal, spiritual concept becomes externalized into public governance? Can morality truly be made visible — or does visibility distort its essence?

This project uses karma as both subject and lens: a way to reflect on emerging tensions between privacy and transparency, faith and control, spiritual belief and technological intervention. Through this exploration, karma becomes not only a topic of research, but a critical metaphor for the ethical complexities of our data-driven futures.

WHY KARMA?

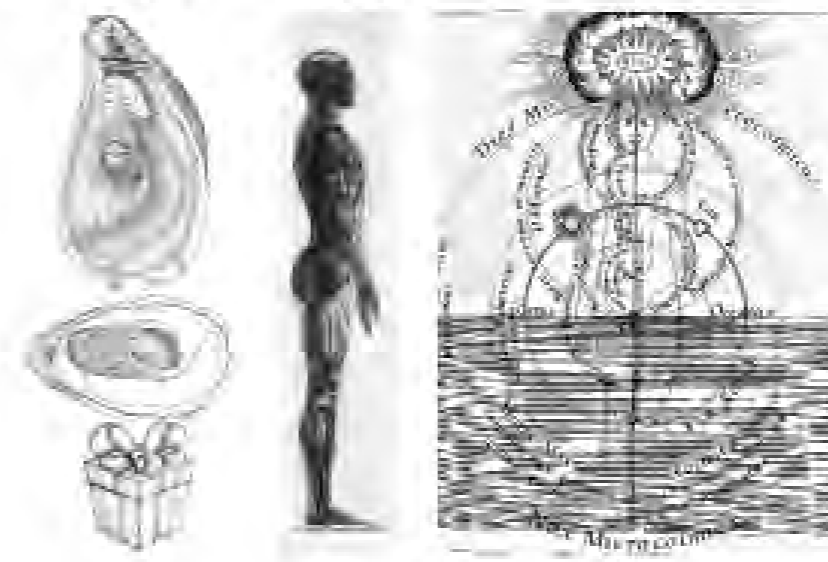
START WITH THE SOUL, THE OYSTER AND THE GIFT AS PART OF A CYCLE OF DESIRE, THEN UNPACK THEM, SHOW CONNECTION AND CHAINS.

THREADS OF KARMA

The Silent Cycle of Giving and Receiving

INTRODUCTION

Karma, the force linking actions to their consequences, governs the relationship between humanity and nature. Microplastics, remnants of human excess, flow through oceans, into oysters, and back to human tables. Leonardo da Vinci's macrocosm-microcosm theory suggests the body reflects the world it inhabits, making this cycle a still metaphor. Even joyful acts like gift-giving leave hidden traces—synthetic wrappings degraded, utilitarian conveniences and so. The oyster, the body, and the gift-giver (karma's central thread), where every action returns to its source.



Karma, the universal law of cause and effect, connects human actions to their consequences, weaving through every aspect of life. This article explores the karmic cycle linking oysters, the human body, and the culture of gift-giving, framed by Leonardo da Vinci's macrocosm-microcosm theory. Microplastics, remnants of human excess, traverse oceans, are filtered by oysters, and ultimately infiltrate human tissues. The transient joy of unwrapping gifts masks this karmic return—waste that loops back into our lives.

KEY WORDS

Microplastics Oyster Symbolism
 Macrocosm and Microcosm Theory
 Sustainable Gift-Giving
 Environmental Impact

THE OYSTER FEELS METAPHORICAL RATHER THAN THE CENTRE OF YOUR SUPPLY CHAIN? WHICH COULD BE INTERESTING BUT NEED TO SEE MORE OF STUDY ON THEM, — WHERE, WHO, WHEN, — STEEP NAW!

Not sure I understand the link between microplastics/karma
 yes please ↓

Please explain the relevance of the 'gift giving' here - it's not so clear yet

Refine Macrocosm / microcosm.

I'm unsure of what specifically the supply chain is. it is beautifully poetic but would benefit from a clear definition?

I can see your supply chain is about human. It's abstract supply chain, right? I really like your pictures but the words are really difficult to read, so I think it can be arranged more neat!

The Oyster: A Reflection of Class and Consequence

The world is my oyster, which I will open

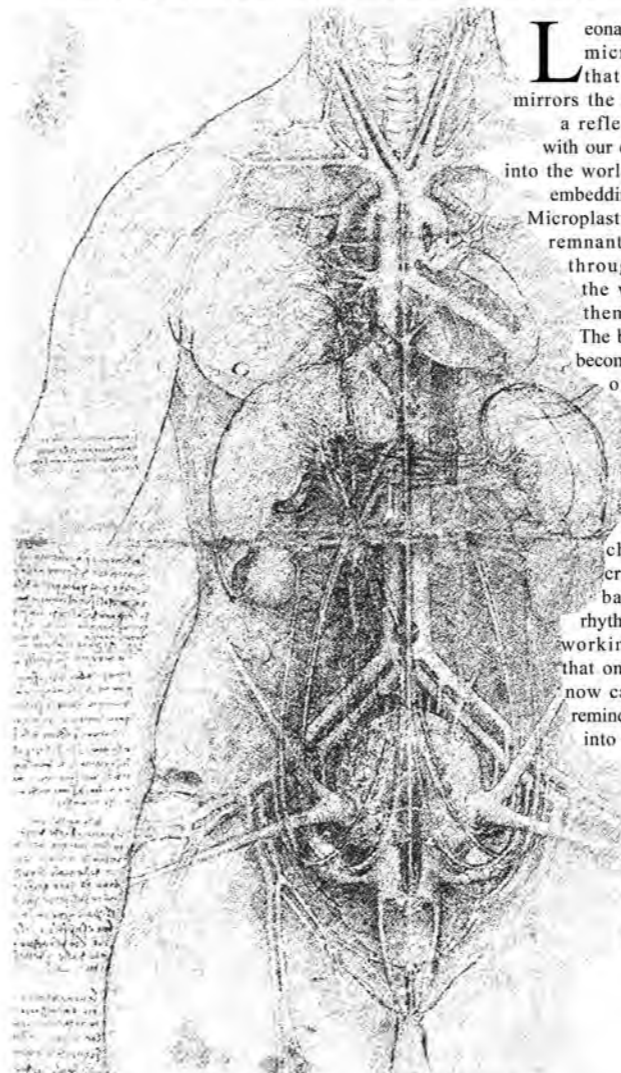
“The world is my oyster,” as beloved Shakespeare once said, opportunities are there for the taking, a symbol of abundance and power. For centuries, the oyster has embodied luxury and status, captured in the rich, opulent hues of classical oil paintings such as Jean-François de Troy’s *The Oyster Lunch*. In these works, the oyster is more than food; it is a testament to privilege, gracing the tables of those fortunate enough to savor its treasures.

The oyster, tirelessly filtering the sea, absorbs not only nutrients but also the trash of human excess, such as microplastics. Capable of filtering up to **50 gallons of water daily**, oysters also trap tiny fragments of plastic, with studies finding up to **0.47 microplastic particles per gram of oyster meat** (Journal of Hazardous Materials, 2022). How ironic that the wealthy, seeking to consume oysters as symbols of status and wealth, unknowingly ingest plastic, much like the pursuit of beauty that leads to over **13 million cosmetic procedures using synthetic fillers globally in 2022** (ISAPS), transforming people into perfect dolls.

The story does not end with the sea. Just as the oyster absorbs impurities, our own bodies absorb what the world offers. Microplastics have been detected in **human blood, with an average of 1.6 particles per milliliter** (Environment International, 2022). The veins that carry life now carry the echoes of our choices—karma—turning us into living records of the environment we shape. The journey of the oyster leads us directly to our own skin, connecting the fragility of nature with the essence of who we are.



The Body: A Vessel of Choices and Consequences



Leonardo da Vinci’s macrocosm-microcosm theory suggests that the vast world outside mirrors the one within our bodies—a reflection of how we engage with our environment. What we cast into the world returns to us as karma, embedding itself in our very being. Microplastics, those nearly invisible remnants of modern life, travel through the food we eat and the water we drink, weaving themselves into our tissues. The body, once a temple of life, becomes a vessel that holds traces of the world’s excesses, turning us into living records of human actions.

Their journey is part of a greater cycle, a supply chain that stretches from creation to consumption and back, connecting the outer rhythms of the earth to the inner workings of our bodies. Veins that once pulsed purely with life now carry these unseen threads, reminding us that what we send out into the world returns to us. In this shared cycle of giving and receiving, where

even the simplest acts like gift-giving play a part, the body becomes a testament to the world’s choices and their quiet return.

Good research & interesting supply chain, ~~also~~ maybe visuals could be more direct?

Microplastics + its consumption is a cool concept but could expand on its relation to the global supply chain specifically

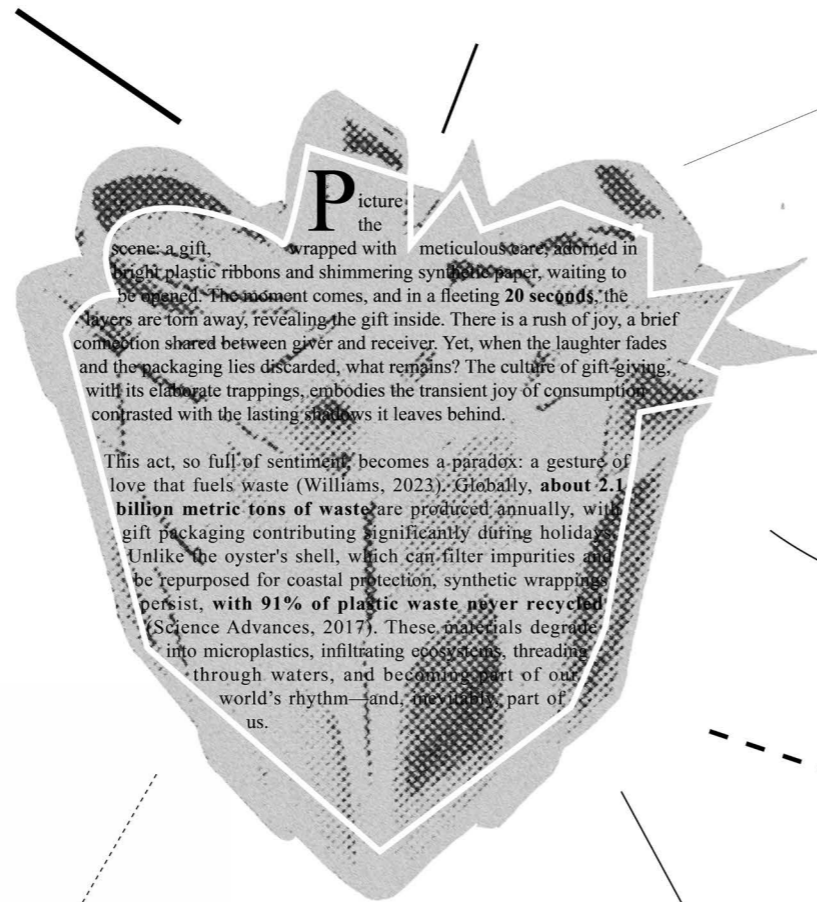
Is there any source / references can support this argument?

Microplastic in oyster - oyster symbolism - microplastic in bodies ALL NEED TO HAVE SOME SCIENTIFIC REFERENCE OR DATA → AFTER THIS, THEY CAN BECOME PHYSICIST

FIND AND FOLLOW A LEFT MOTIV - LIKE PAINTINGS FROM/AT THE SAME TIME OF LEONARDO AND CONNECT THEM TO TODAY USE OUR PERCEPTION OF BODY-OYSTER GIFT-DESIRE

Lots of different fonts, sizes and placement of text make this quite hard to read!

The Gift of Waste: A Metaphor for Consumption Culture

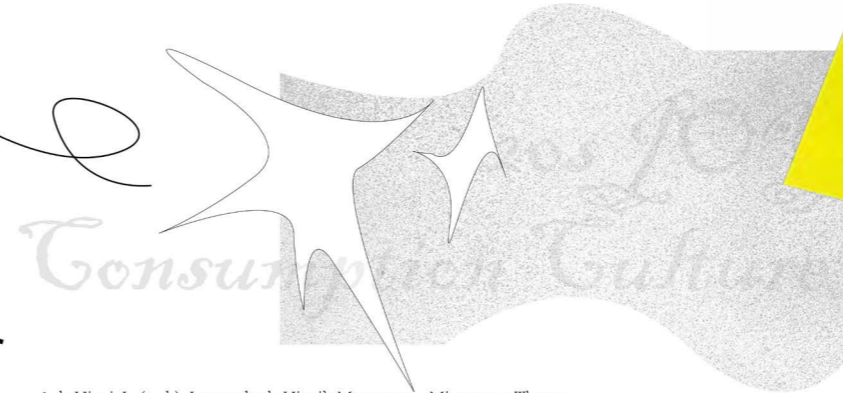


Picture the scene: a gift, wrapped with meticulous care, adorned in bright plastic ribbons and shimmering synthetic paper, waiting to be opened. The moment comes, and in a fleeting 20 seconds, the layers are torn away, revealing the gift inside. There is a rush of joy, a brief connection shared between giver and receiver. Yet, when the laughter fades and the packaging lies discarded, what remains? The culture of gift-giving, with its elaborate trappings, embodies the transient joy of consumption contrasted with the lasting shadows it leaves behind.

This act, so full of sentiment, becomes a paradox: a gesture of love that fuels waste (Williams, 2023). Globally, about 2.1 billion metric tons of waste are produced annually, with gift packaging contributing significantly during holidays. Unlike the oyster's shell, which can filter impurities and be repurposed for coastal protection, synthetic wrappings persist, with 91% of plastic waste never recycled (Science Advances, 2017). These materials degrade into microplastics, infiltrating ecosystems, threading through waters, and becoming part of our world's rhythm—and, inevitably, part of us.

CONCLUSION

And so, the story never truly ends. The oyster, embodying both beauty and burden. The body, mirroring the world it inhabits, absorbs these silent traces, becoming a testament to the interconnected cycles we create. The gift, wrapped in fleeting joy, becomes part of this chain, its synthetic wrappings traversing the pathways of the global supply chain—from creation to disposal. Through this cycle, karma weaves its thread, connecting every act to its consequence. What we release into the world—whether in celebration or neglect—finds its way back to us, flowing through our veins and shaping who we are.



1. da Vinci, L. (n.d.). Leonardo da Vinci's Macrocosm-Microcosm Theory. https://nah.sen.es/vmfiles/vol7/NAHV7N42019146_162EN.pdf
2. World of Fine Wine. (n.d.-a). Le Dejeuner Huitres: Sparkling Champagne and the Oysters. <https://worldoffinewine.com/homepage-featured-articles/le-dejeuner-huitres-sparkling-champagne-painting>
3. Shakespeare, W. (n.d.). "The world is my oyster".
4. Château de Chantilly. (n.d.). The Oyster Lunch. <https://chateauchantilly.fr/en/collection/the-oyster-lunch/>
5. Williams, A. (2023). The paradox of gift-giving and waste.
6. da Vinci, L. (n.d.). Leonardo da Vinci's Macrocosm-Microcosm Theory. https://nah.sen.es/vmfiles/vol7/NAHV7N42019146_162EN.pdf
7. Williams, A. (2023). The paradox of gift-giving and waste.

Want some data + statistics!

Lovely and abstract topic, expect some data and details of the body.

Love your references!
Is there documentaries or movies related to this theme?

Karma weaves a thread unseen,
Through oceans vast and fields serene.
From human hands, the waste is hurled,
Karma's echo shapes the world.
The oyster drinks what human spilled,
Its fragile shell with poison filled.
A pearl is born—a gift or curse?
Karma whispers:
Deeds disperse.
From waste to ocean,
From ocean to feast,
The poison travels,
Though unseen at least.
Through oysters consumed,
Plastics hide,
Transforming the body to worlds inside.
Karma's law is simple and clear:
What you give to the world,
It brings back near.



**POEM OF
KARMA**

MICROPLASTIC KARMA: THE INNER LANDSCAPE OF CIRCULATION

shows as zine

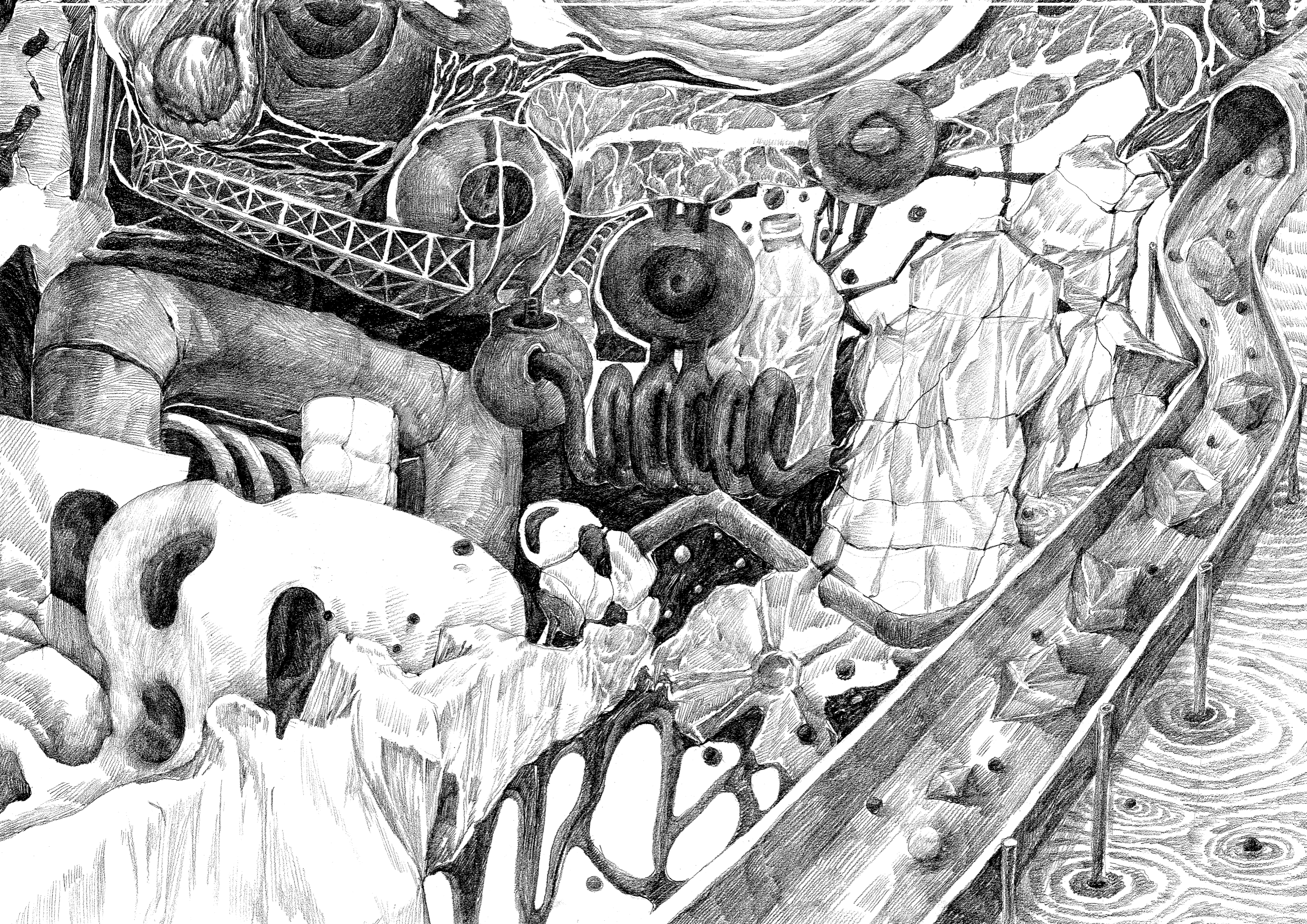
This visual narrative explores an invisible landscape where the global supply chain dissolves into the human body. Discarded packaging drifts into the ocean, breaking down into microplastics that are absorbed by filtering organisms like oysters – functioning as living purifiers within the ecosystem. Yet, these same oysters re-enter the human supply chain as food, returning microplastics back into the human body, where they infiltrate organs, restructure tissues, and quietly reshape inner anatomies.

Inspired by Leonardo da Vinci's philosophy of the body as a microcosm of the world, this landscape drawing merges interior and exterior terrains, revealing a cyclical exchange between consumption, contamination, and transformation. Here, the boundaries between nature, industry, and the body collapse into a single, self-feeding system. The human becomes both consumer and site of accumulation – a biological archive of the very materials it produces and discards.

This landscape exposes not only the hidden flows of supply chains, but also questions the long-term implications of invisible pollutants as they inscribe themselves into the flesh of both ecosystems and individuals.







WHAT IF? -THE RISE OF THE KARMA SYSTEM

This speculative timeline charts the emergence and evolution of the Karma Island system across three key phases. Through a series of projected events, it explores how a seemingly utopian policy aimed at visualizing morality gradually transforms into a complex and contested structure of power. Each stage reflects the unfolding consequences of making the invisible visible, revealing the unpredictable dynamics of control, belief, and resistance over time.

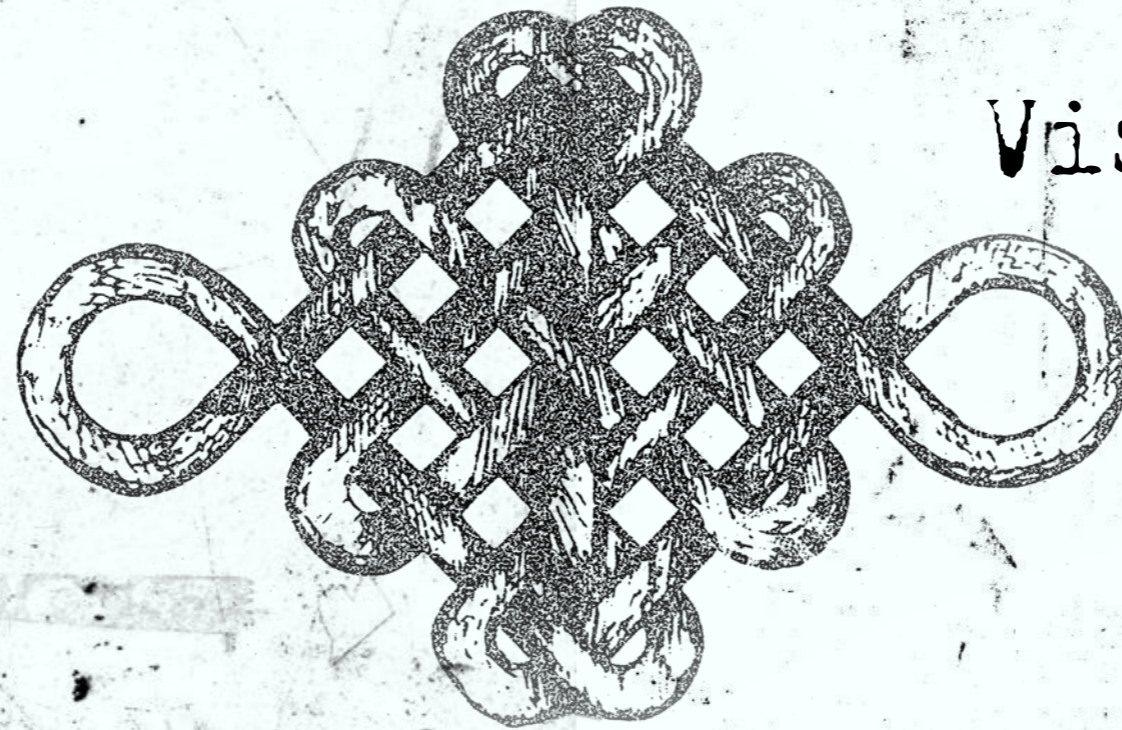
	The United Nations Sustainable Development Goals (SDGs) were adopted, highlighting the role of Sustainable Development and Production. This led to a significant global commitment to ethical and sustainable practices across industries.	The Responsible Jewelry Council (RJC) established ethical codes in the field and across industries.	The issue of responsible practices across global extraction resources from the industry of Platinum remained. The extraction had contaminated part of the world's water supply, severely impacting future generations.	During an interim period, RJC members began engaging members outside the jewelry industry. They observed that people were increasingly motivated by a sense of ethics and social justice, leading to an inevitable decline for jewelry.	Revealing impacts by major brands justified jewelry as the engine of ethical sourcing. This created a cycle where consumer demand drove environmental production, prioritizing profit over environmental and social responsibility.
Reports from past years in Japan and China suggested the incorporation of natural beauty and harvesting forest biodiversity. RJC acknowledged environmental as its "invisible threat" to both the environment and the jewelry industry.	RJC recognized that the jewelry industry, including gold mining, contributed to environmental issues by polluting ecosystems, consuming scarce resources, and disrupting environmental balance. This highlighted jewelry's impact on the natural resources.	A report by the International Union for Conservation of Nature (IUCN) revealed that jewelry was negatively impacting resources faster than the planet could regenerate them, drawing attention to environmental issues.	The United Nations Sustainable Development Goals (SDGs) were adopted, highlighting the role of Sustainable Development and Production. This led to a significant global commitment to ethical and sustainable practices across industries.	The London Bullion Market Association (LBMA) published an update on their responsible sourcing standards, emphasizing the need for ethical practices across the supply chain, including mining, refining, and casting.	A major oil spill near a pearl farming region in the South China Sea devastated marine ecosystems and disrupted pearl production. This incident further highlighted the vulnerability of natural resources to human impact and consequences. The council issued its first-ever public acknowledgment of the environmental consequences of the jewelry industry.
A media exposé revealed exploitative labor practices in Southeast Asian pearl farms. Workers faced unsafe conditions, minimal pay, and long hours.	RJC acknowledged that the industry's pursuit of natural beauty led to labor exploitation across the supply chain. This recognition spurred internal dialogue about the need for better labor standards and ethical accountability.	2025 A significant global event in a natural resource sector, such as a major environmental disaster or a breakthrough in sustainable technology, highlighted the need for responsible practices across all industries.	The Responsible Jewelry Council (RJC) finalized the report identifying the top global mining environmental and social issues. The report and jewelry industry leaders, including RJC members, began discussions on labor regulations, labor regulations, and better practices.	RJC proposed the Karma Framework, calling for accountability in supply chains, ethical labor practices, and environmental stewardship. This framework laid the groundwork for Karma actions.	Consumer demand for ethical sourcing practices grew rapidly, pushing brands to adopt more responsible practices. However, the lack of standardized metrics and enforcement led to inconsistent outcomes across the industry.
An industry leader's initiative demonstrated the potential of blockchain in supply chain transparency, aiming to trace ethical decisions back to environmental impacts, labor practices, and resource usage.	Some brands announced plans to establish an independent Karma Council to investigate and address these issues.	Blockchain developed a specific feature tracking the good practices of a person or company's "karma balance." This technology used real-time data to track ethical decisions back to environmental impacts, labor practices, and resource usage, displaying the information visually on the chain.	The Karma Council, formed by some RJC and supported by ethical brands, NGOs, and environmental advocates, became a global institution to track and rate Karma Policy.		
		2030 The Karma Policy was widely adopted by global governments and industries.			The Karma Council proposed the concept of Karma Actions, which would visualize an individual's inherited "Karma Impact" based on the environmental, social, and ethical actions of their parents and community.
		2035 The Karma Policy became widely adopted in various industries, including retail and consumer goods, leading to a more ethical marketplace.			
		2040 Social Stratification and Resistance	Artificially created the Karma System, emphasizing transparency and personal accountability in ethical sourcing.	"Karma Balance" took root. Brands adopted their declared Karma Policy, and jewelry industry members began to differentiate and act on Karma.	
	Global Stratification grew as it became clear that Karma Actions reinforced systemic inequality, creating a path to Karma.	2045 The Karma System became a catalyst for a global stratification of wealth, where Karma Actions became a key to resources, power, and opportunities.	Karma emerged as a leader from the high-stratified population. Through innovative blockchain-based Karma Actions, it showcased Karma Actions and gave affordable Karma Actions to a lower-stratified population, inspiring people and brands.	"Karma Balance" took root. Brands adopted their declared Karma Policy, and jewelry industry members began to differentiate and act on Karma.	Artificial established the Karma Balance, using RJC's Karma Policy to measure Karma and without fairness. It applied algorithms to measure the Karma Balance, used to the Karma Council.
		2050 Global Karma System	Global Karma System (GKS) led to a deep, vibrant green, a level of prosperity nearly equal. Karma became a visible sign of his moral achievements, inspiring people across all regions. In a global referendum, Alexander was elected as the Supreme Leader of the Global Karma System (GKS).		

K

arma

Accountability
and
Visibility

Act



Preamble

Whereas humanity's unchecked greed--manifested in desires for excess, status, denial of responsibility, and exploitation--has resulted in environmental degradation, resource depletion, and growing social inequality;

Whereas the principle of karma teaches that actions carry consequences that shape the harmony of the world, demanding accountability and ethical conduct from individuals and societies alike;

This Act establishes a system of dynamic Karmic Tattoos, represented by a Chinese knot design, to make the balance of one's karma visible and tangible. These tattoos naturally emerge at birth and evolve over time, with their depth and color intensity reflecting the cumulative impact of an individual's actions. By tying visible markers of accountability to behavior, this Act aims to foster self-awareness, ethical decision-making, and collective responsibility for a sustainable and equitable future.

Article 1:

The Dynamic Karmic Tattoo

Every individual is born with a faint Karmic Tattoo, represented as a subtle Chinese knot design on the skin.

The tattoo dynamically evolves throughout life:

Positive Karma: The tattoo becomes deeper, more vibrant, and intricately detailed, symbolizing actions that contribute to harmony, sustainability, and justice.

Negative Karma: The tattoo fades, becomes lighter, or fractures in its patterns, reflecting harm, imbalance, or exploitation caused by one's actions.

Article 2:

The System of Karma Assessment

Biometric and AI Integration:

The tattoo is linked to a global system using advanced biometric sensors and ethical AI, which evaluate individual actions based on societal, environmental, and ethical impacts.

Karma Scoring:

Positive actions (e.g., reducing waste, aiding others, supporting sustainability) increase the tattoo's depth and brilliance. Negative actions (e.g., resource exploitation, pollution, social harm) reduce the tattoo's intensity and disrupt its symmetry.

Article 3:

Incentives for Positive Karma

Individuals whose tattoos display vibrant, deep, and harmonious patterns are recognized for their positive contributions and may receive:

Access to community benefits, such as educational opportunities, sustainable resources, or leadership roles.

Public acknowledgment as "Karmic Ambassadors," promoting harmony and ethical behavior in their communities.

Individuals with lighter, fragmented tattoos are provided opportunities for improvement through programs such as environmental restoration projects, social service initiatives, and ethical education.

Article 4:

Transparency, Safeguards, and Equity

The tattoo system shall not be used as a tool for discrimination in employment, education, or access to public services.

Safeguards will be established to protect the privacy and dignity of individuals, ensuring the tattoos function solely as a reflection of karmic balance and personal accountability.

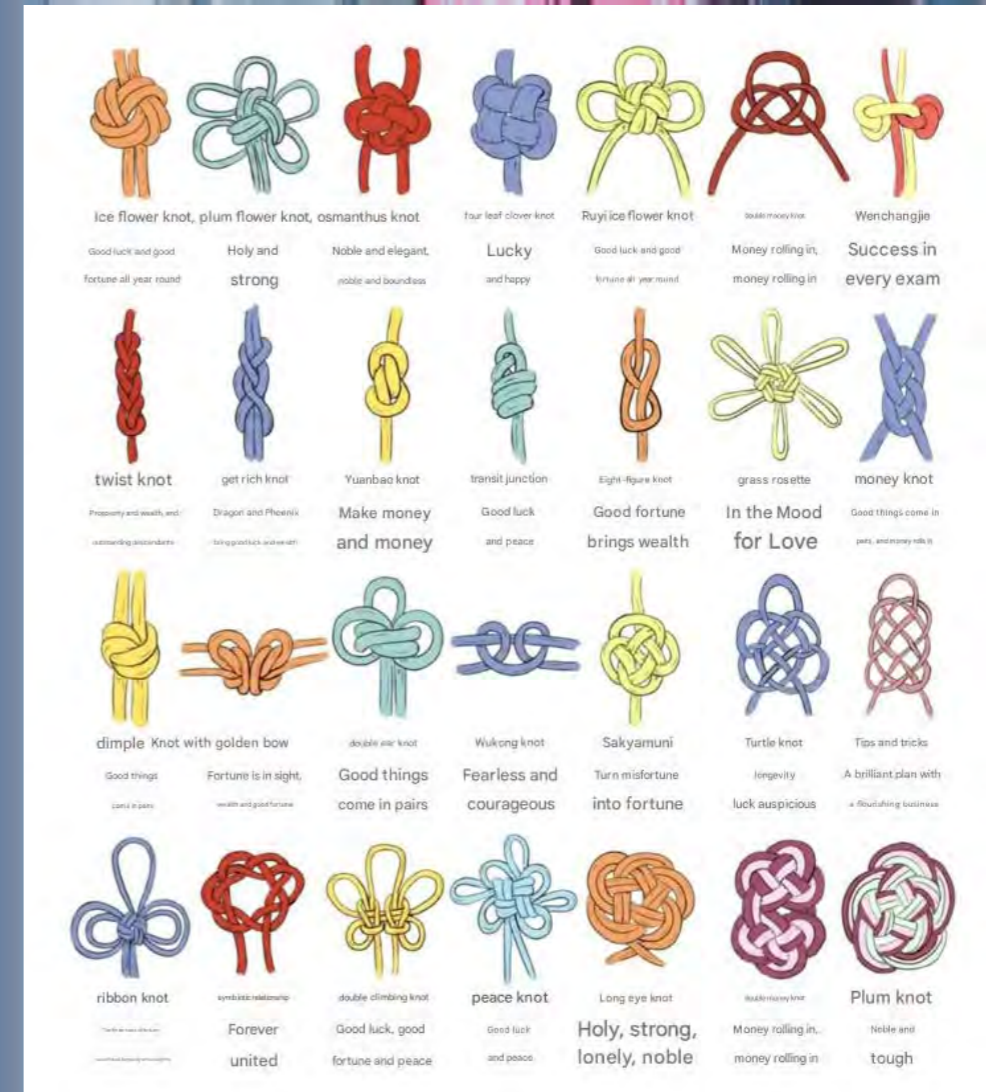
A restorative pathway is guaranteed for individuals with diminished tattoos, emphasizing growth and rehabilitation rather than punishment.

Article 5:

Oversight and Global Responsibility

The **Global Karma Responsibility Council (GKRC)** shall oversee the implementation of the tattoo system, ensuring fairness, transparency, and alignment with cultural values worldwide.

Annual **Global Karma Reports** will evaluate collective progress and propose refinements to the tattoo system to ensure it continues to foster harmony, sustainability, and fairness.



The Chinese knot is a traditional symbol representing eternity, entanglement, and fate. Its intricate, looping structure mirrors the cyclical nature of karma – beautiful yet difficult to unravel.



Left Image:
Leonardo da Vinci, The Last Supper, 1495–1498,
fresco, Santa Maria delle Grazie, Milan, Italy.




Center Image:
Guido Reni, The Chariot of the Sun (Apollo's
Chariot), 1614, fresco, Palazzo Pallavicini-
Rospigliosi, Rome, Italy.

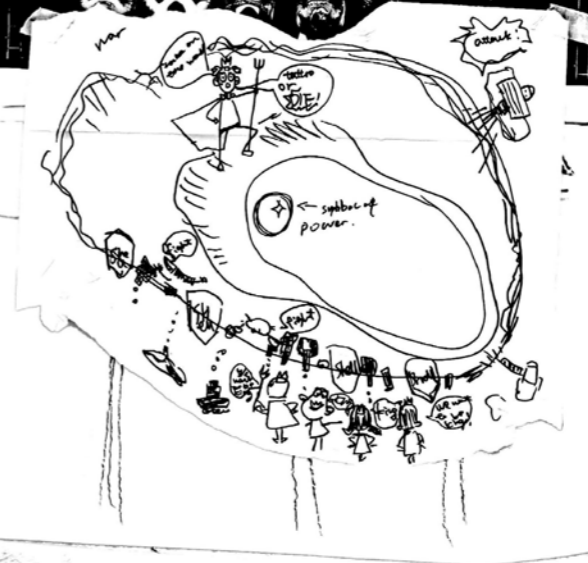
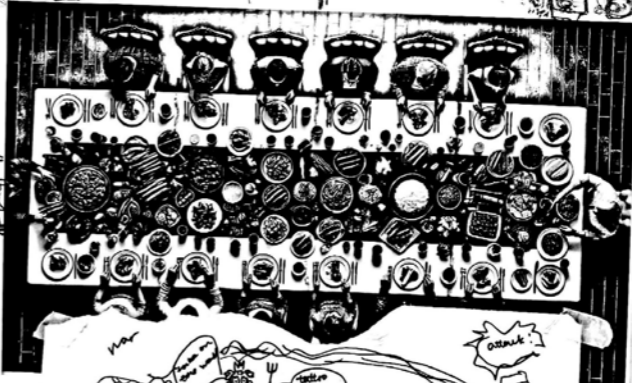


Top Right Image:
Michelangelo, The Creation of Adam, 1508–
1512, fresco, Sistine Chapel Ceiling, Vatican
City.

Bottom Right Image:
Jiaru Li's collage based on Michelangelo's
The Creation of Adam.



My inspiration comes from classical oil paintings, such as *The Last Supper* by Leonardo da Vinci. I expand the concept of worldbuilding through "thinking through drawing." This approach uses drawing as a tool to explore and develop ideas, allowing me to dive deeper into my vision and create a more immersive and intricate world. By interpreting and reflecting on the details of these classical artworks, I can build a rich narrative and visual environment that pushes the boundaries of traditional design thinking.



These three cinematic frames capture the atmospheric layers of Karma Island's evolving governance, where policy has transformed karma from a private belief into a public system of control.

VISUAL NARRATIVE: RITUALS OF POWER IN KARMA ISLAND



The first scene depicts the island itself—a constructed utopia where natural and artificial elements intertwine. The island functions as a closed ecosystem, both physically and ideologically isolated, governed by the law of visible karma.



The second scene focuses on the divine elevation of the island's supreme ruler. Through symbolic iconography, the leader is mythologized as the ultimate mediator between fate and governance. This spiritualized authority reflects the society's fusion of technological surveillance with ritualized moral hierarchy.



The third scene draws viewers into an uncanny ceremonial gathering of the island's governing council – a reimagining of The Last Supper, where administrators of karma convene in an orchestrated performance of order, balance, and concealed tension. This tableau reveals the paradox of the system: while projecting harmony, the underlying structures of control remain fragile and contested.



The Tattoo Scientist
Ink that whispers,
skin that knows,
A truth he seeks,
yet fear he sows.



King Arthur
The lightest mark,
the chosen fate,
A purest soul,
yet doomed too late.



The Hoarder
He stacks, he saves,
yet starves inside,
A castle full,
a hollow pride.



The Peacock
Gold and mirrors,
masks and fame,
A fleeting crown,
in a burning flame.



The Dreamweaver
Eyes wide shut,
a world so bright,
Truth fades beneath
the painted light.



The Conqueror
Steel and smoke,
the earth he breaks,
All he claims,
yet nothing takes.

COLLAGE



The collage visually embodies the concept of karma, focusing on the cyclical nature of cause and effect. In the center, a figure is entangled with organic shapes, symbolizing the way our actions, past and present, can shape and sometimes trap us in their consequences. The intertwining vines and leaves represent how each action, whether good or bad, creates a web of interconnected results, often beyond our immediate control.

KARMA



The collage visually embodies the concept of karma, focusing on the cyclical nature of cause and effect. In the center, a figure is entangled with organic shapes, symbolizing the way our actions, past and present, can shape and sometimes trap us in their consequences. The intertwining vines and leaves represent how each action, whether good or bad, creates a web of interconnected results, often beyond our immediate control.



STORYBOARD

The storyboard visualizes key narrative moments from *The Karma Void* – a speculative film that explores the psychological and spatial consequences of escaping karma's visible order.

Set within the world governed by the visible karma system, the film follows Dr. Wang, the scientist who first discovered the material that allows karma to appear on the skin. Confronted by the unintended consequences of his discovery, Dr. Wang creates *The Karma Void* – an experimental space where the laws of cause and consequence no longer apply.

As he steps into the void, the narrative shifts from structured governance into an existential space of emptiness, where actions lose meaning and selfhood begins to dissolve. The storyboard traces this journey from the ordered world of visible karma into the disorienting depths of nothingness, where the absence of consequence becomes a new form of terror.

PRODUCTION

STORYBOARD - ASPECT RATIO 1:85 PAGE#



Scene # Shot #

(Wide shot) A futuristic city skyline. Giant holographic billboards flash government slogans: "Karma governs all. Fate is measurable."



Scene # Shot #

(Tracking shot) A wealthy merchant walks past, his golden Karma Tattoo allowing access to an exclusive area.



Scene # Shot #

(Push-in shot) Inside his lab, walls covered in Karma diagrams and shifting data projections.



Scene # Shot #

(Extreme close-up) His reflected eyes in the screen, determination in his gaze.



Scene # Shot #

(Medium shot) A busy marketplace, people walk with their Karma Tattoos visible under their eyes, shifting in color.



Scene # Shot #

PRODUCTION

STORYBOARD - ASPECT RATIO 1:85 PAGE#



Scene # Shot #

(Close-up) A beggar reaches out for food, his deep black Karma Tattoo makes people ignore him.



Scene # Shot #

(Low-angle shot) A massive government building, banners hanging with the phrase: "Balance your Karma, secure your future."



Scene # Shot #

(Close-up) Dr. Shen holds blueprints, labeled "Karma Void Project."



Scene # Shot #



Scene # Shot #



Scene # Shot #

(Close-up) Dr. Shen stands in the crowd, observing with an unreadable expression.



Scene # Shot #

(Medium shot) In the lab, a large metallic chamber labeled "Karma Void" hums with energy.

PRODUCTION

STORYBOARD - ASPECT RATIO 1:85 PAGE#



Scene # Shot #
(Medium shot) In the lab, a large metallic chamber labeled "Karma Void" hums with energy.



Scene # Shot #
(Low-angle shot) The control panel flickers, data scrolling as calculations are executed.

PRODUCTION

STORYBOARD - ASPECT RATIO 1:85 PAGE#



Scene # Shot #
(Close-up) Dr. Shen's hands enter a final command.



Scene # Shot #
(POV shot - screen interface) "Karma Syncing... Isolating... Initializing Void."



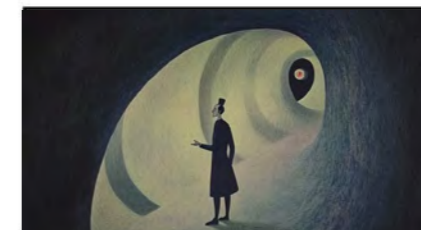
Scene # Shot #
storyboard, Slow motion shot, His Karma Tattoo begins flickering, the colors momentarily distorting.



Scene # Shot #



Scene # Shot #
(Close-up) The Karma Void chamber door slowly opens, revealing absolute darkness inside.



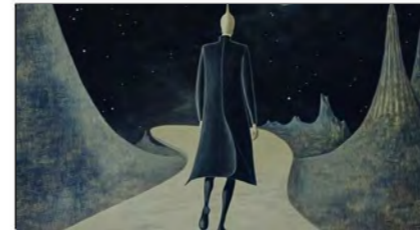
Scene # Shot #
(Low-angle shot) Dr. Shen steps forward, a silhouette against the black void.



Scene # Shot #



Scene # Shot #



Scene # Shot #
storyboard, Low-angle shot, feet, Dr. Shen steps forward, a silhouette against the black void.



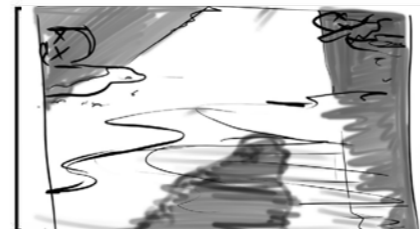
Scene # Shot #
(Wide shot) Dr. Shen stands in an infinite dark space, no floor, no sky, just void.



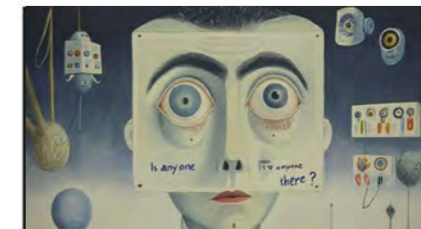
Scene # Shot #
(Extreme wide shot) His shadow stretches infinitely, flickering as if barely existing.



Scene # Shot #
storyboard, Wide shot, Dr. Shen stands in an infinite dark space, no floor, no sky, just void.



Scene # Shot #
storyboard, Extreme wide shot, His shadow stretches infinitely, flickering as if barely existing.



Scene # Shot #
(Close-up) He speaks: "Is anyone there?" But there is no sound, no echo.

PRODUCTION

STORYBOARD - ASPECT RATIO 1:85 PAGE#



Scene # Shot #

storyboard, Extreme close-up - Shen's final moment, His face dissolves into the void, expression frozen in horror.



Scene # Shot #

storyboard, Black screen - complete silence for five seconds) Nothing remains.



Scene # Shot #

storyboard, Wide shot - screaming into the void, He shouts-but no sound exists in a space without consequence



Scene # Shot #

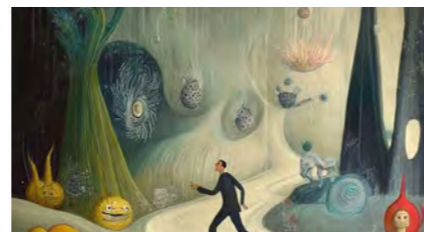


Scene # Shot #



Scene # Shot #

storyboard, POV shot - control interface glitching, A faint screen projection blinks: "No Karma Detected: Subject Unregistered."



Scene # Shot #

storyboard, Tracking shot - frantic movement, Running through the void, but his steps leave no trace.



Scene # Shot #

storyboard, POV shot - last attempt at control, He tries activating the control system, but the interface no longer recognizes him as a person.

PRODUCTION

STORYBOARD - ASPECT RATIO 1:85 PAGE#



Scene # Shot #

(Close-up - breath trembling) "If cause and effect don't exist here... what am I?"



Scene # Shot #

storyboard, Close-up, His fingers start phasing through his own body, like he is losing solidity.



Scene # Shot #

storyboard, Extreme close-up - desperation, His mouth moves, but no words form.



Scene # Shot #

storyboard, Medium shot - King watching the monitors, "He wanted to break the law of Karma. Now, he is outside of it."



Scene # Shot #



Scene # Shot #



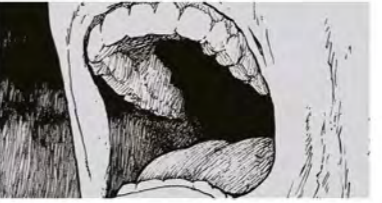
Scene # Shot #

(Wide shot - existential horror setting in) His form subtly distorts, flickering like he is not fully there.



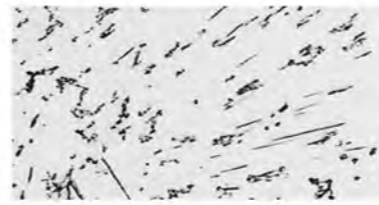
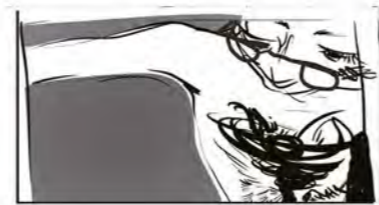
Scene # Shot #

storyboard, Extreme wide shot - perspective shift, King and the four Governors stand outside the Karma Void, observing the event.





voice of running, breathing



He wanted to break law of Karma.

..... Now , of Karma. He outside it.



Title: The Karma Void

A film exploring the struggle of breaking free from the chains of Karma—only to realize that true freedom means complete erasure.

Logline:

A brilliant scientist, **Dr. Shen**, creates an experimental space known as **The Karma Void**, where cause and effect no longer apply. But when he steps into the void himself, he makes a chilling discovery—**without Karma, actions have no meaning, consequences cease to exist, and reality itself begins to unravel.**

Synopsis

In the year **2147**, human society is governed by **Karma Law**—an absolute system where every action has a measurable consequence. People are born with **Karma Tattoos**, shifting marks beneath their eyes that track their deeds. On **Karma Island**, a controlled experimental state, Karma dictates status, freedom, and survival.

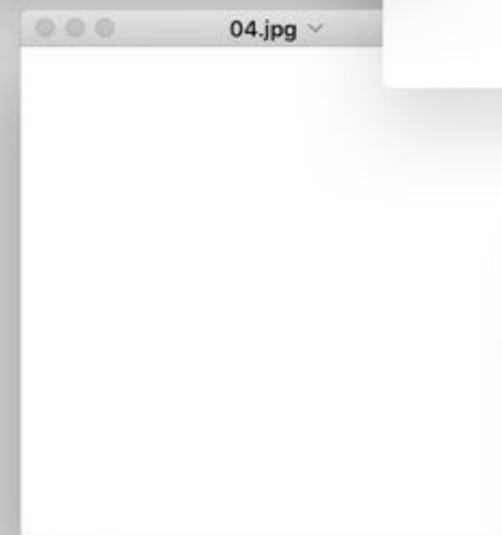
Dr. Shen, one of the system's leading architects, has spent years refining its calculations. But over time, he begins to see its flaws—**Karma is not a natural law, but a construct, a cage disguised as justice.** Determined to break free, he designs **The Karma Void**—a machine that isolates a person from Karma, removing all connections to cause and effect.

When he enters, **his Karma Tattoo fades**, and for the first time, he feels unbound. But soon, he notices the horrifying truth—**his voice makes no sound, his footsteps leave no mark, his presence has no weight.** Without Karma, he has no existence. His body begins to dissolve.

He tries to escape, but the world no longer recognizes him. **To be truly free, he must disappear completely.**

As life on Karma Island continues, a holographic ad flickers:

"Balance your Karma. Secure your future."





Nom WANG
Prénom Liang
Profession CHINOISE
Date 14 Avril 1911
De Changsha (Chine)

SIGNALEMENT

Taille 1m 71 noirs

Domicile 187 rue de l'Université

Adresse 1à73 rue de l'Université, Marseille

Taille 1m 71

Cheveux ovale

Sourcils noirs

Yeux clair

Front bridés

Teint clair



IMPREINTE DIGITALE

Le Titulaire

Liang Wang

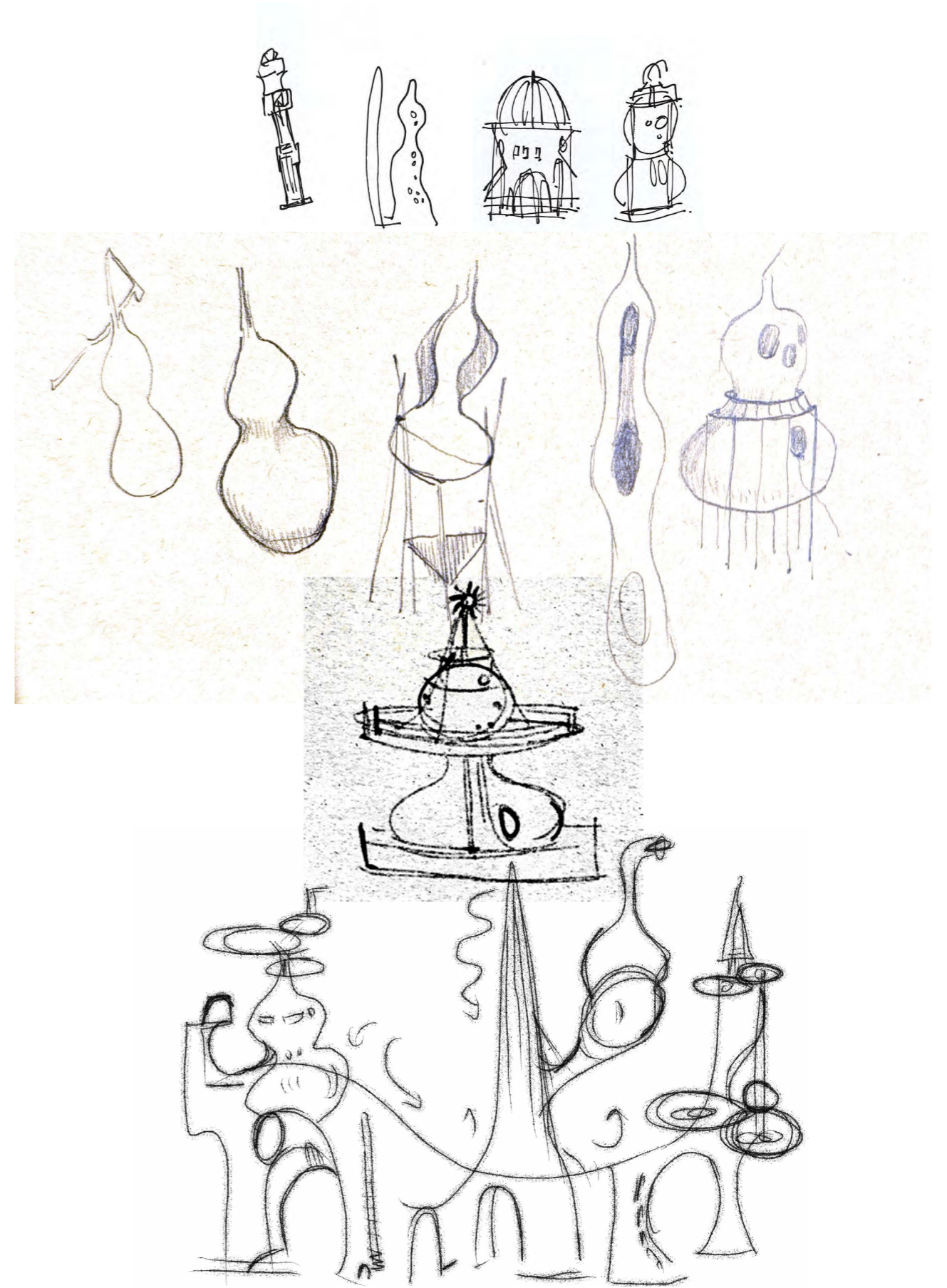
CANNES

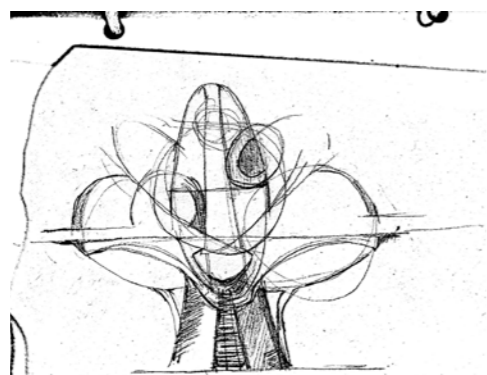
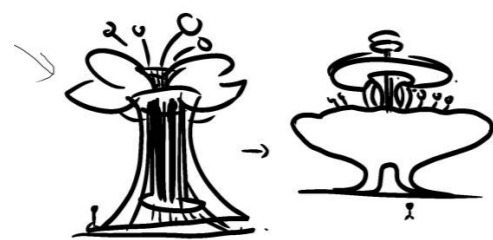


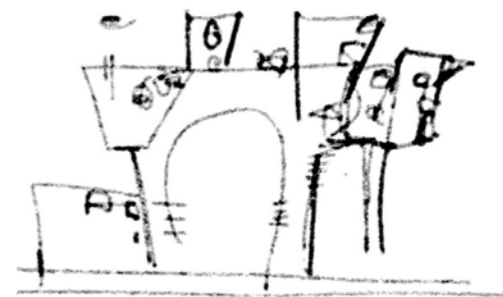
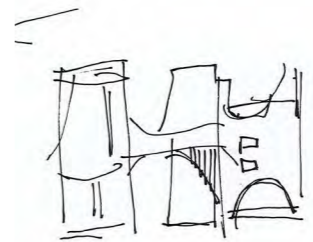
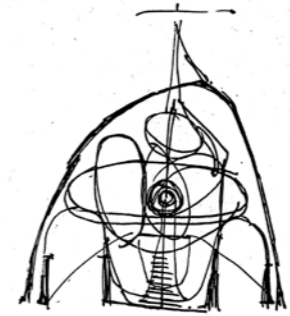
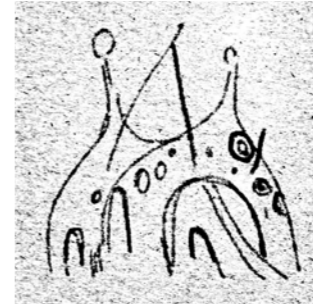
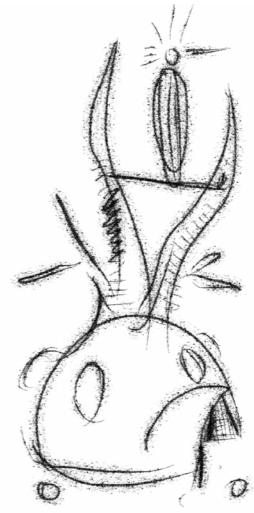
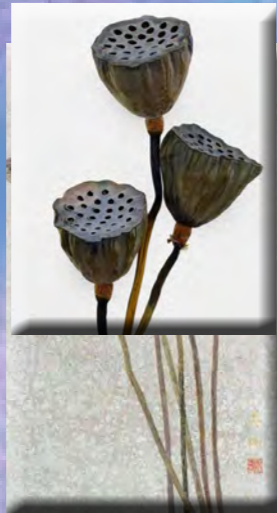
le 10 Oct 1944

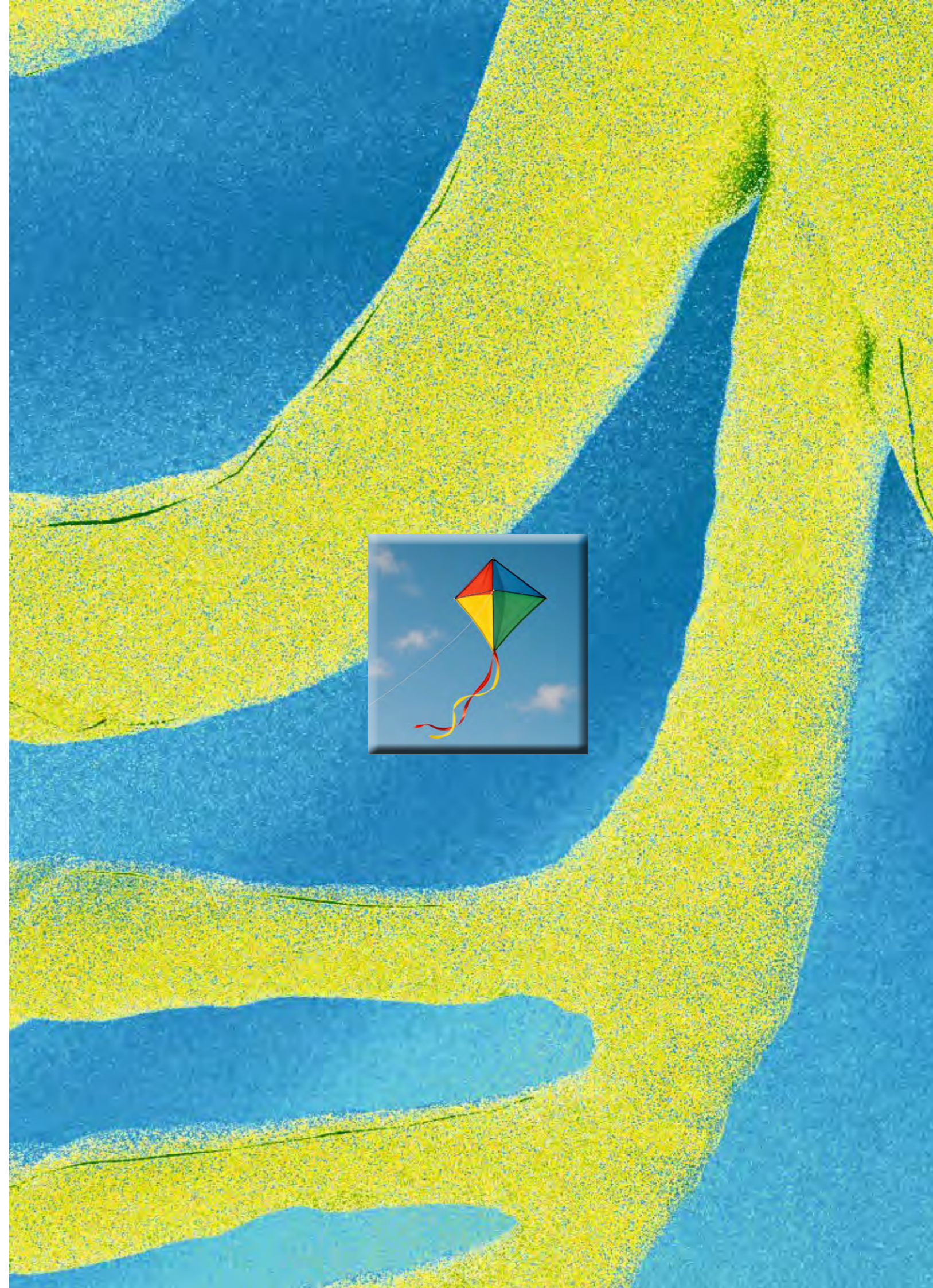
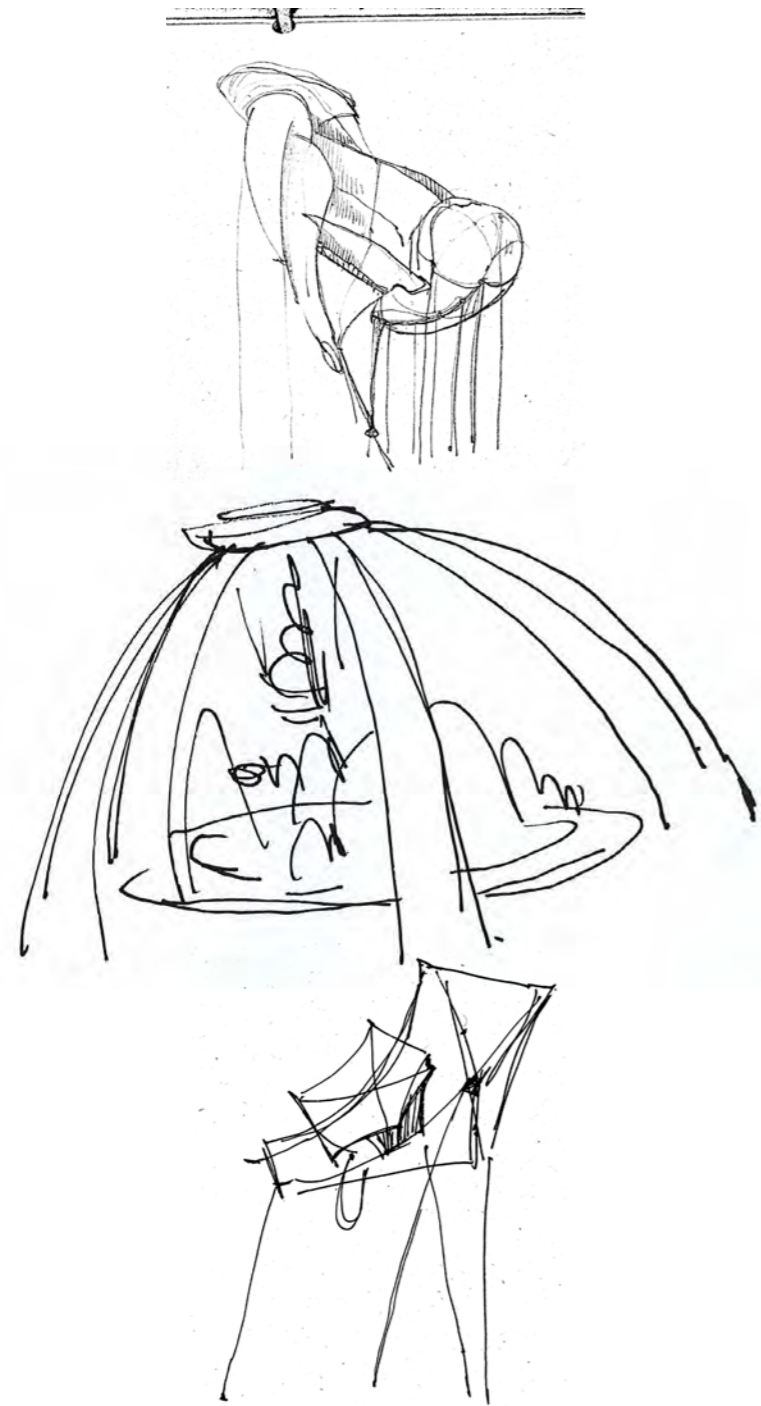
DEVELOPPEMENT
OF SCIENTIST

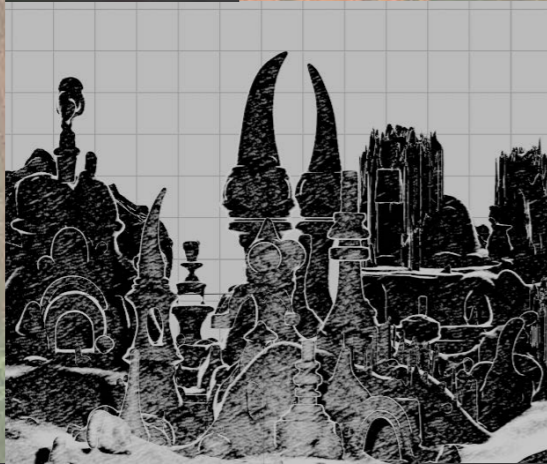
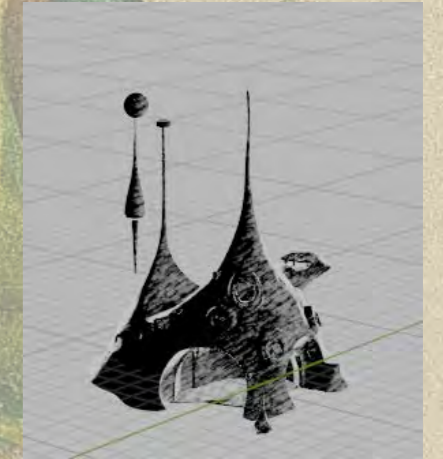
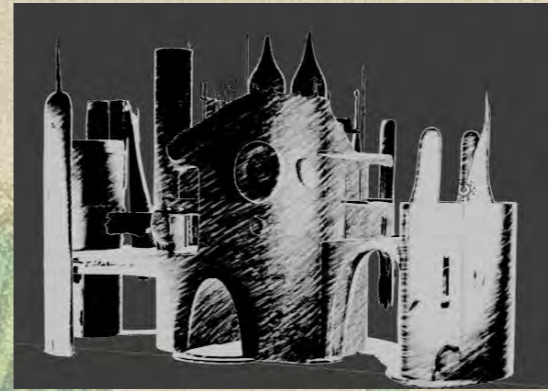






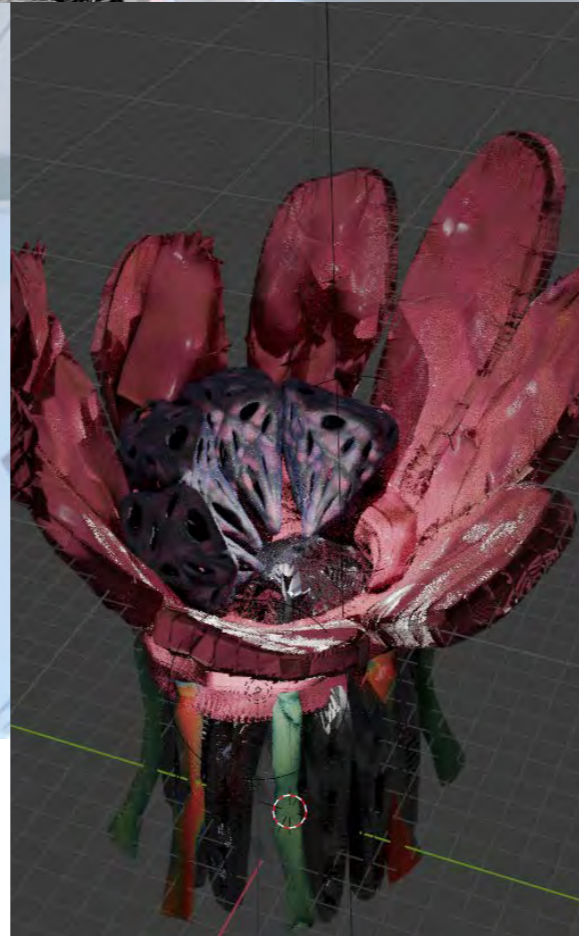
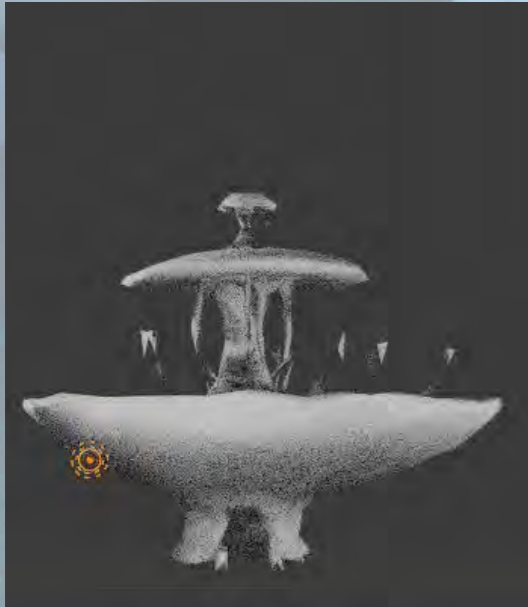
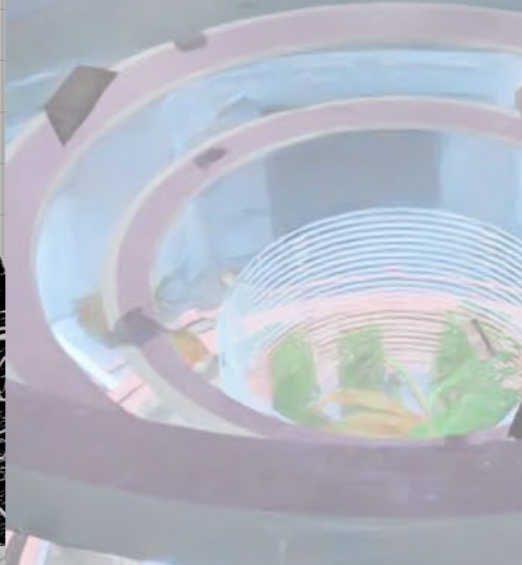
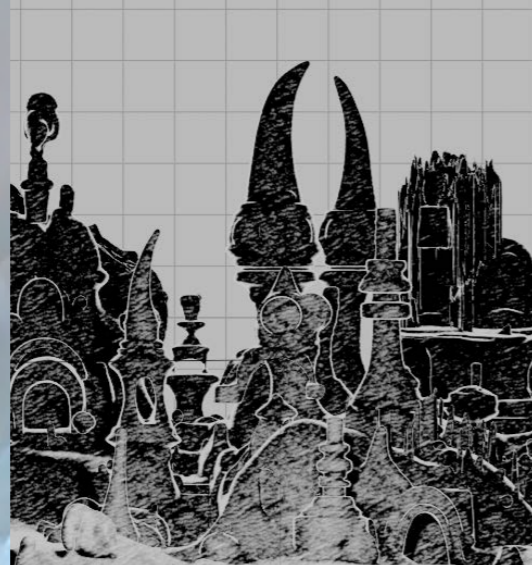
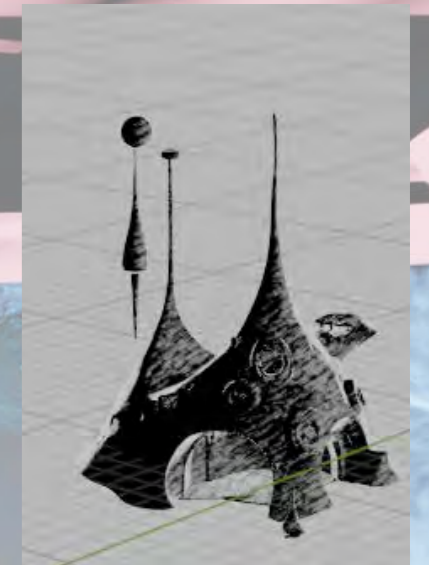
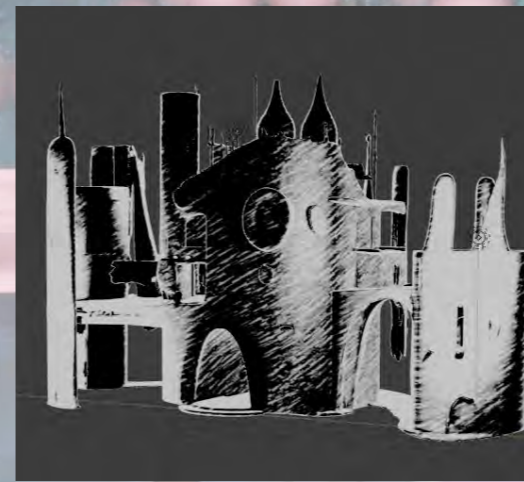
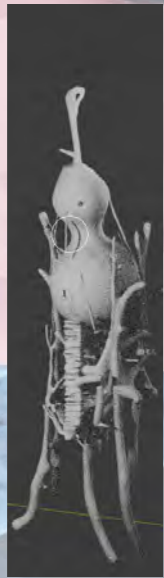






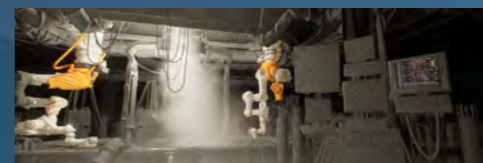
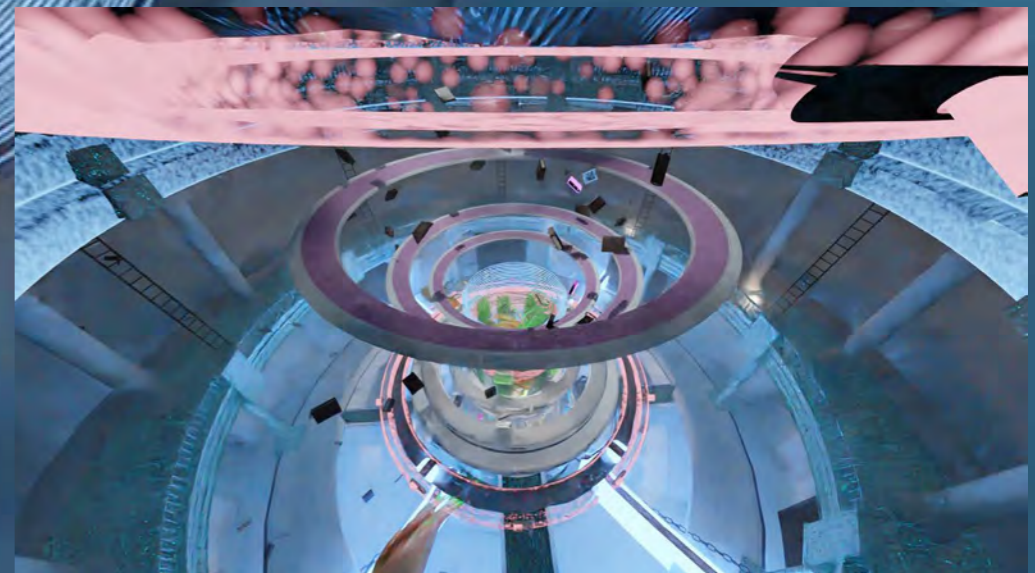
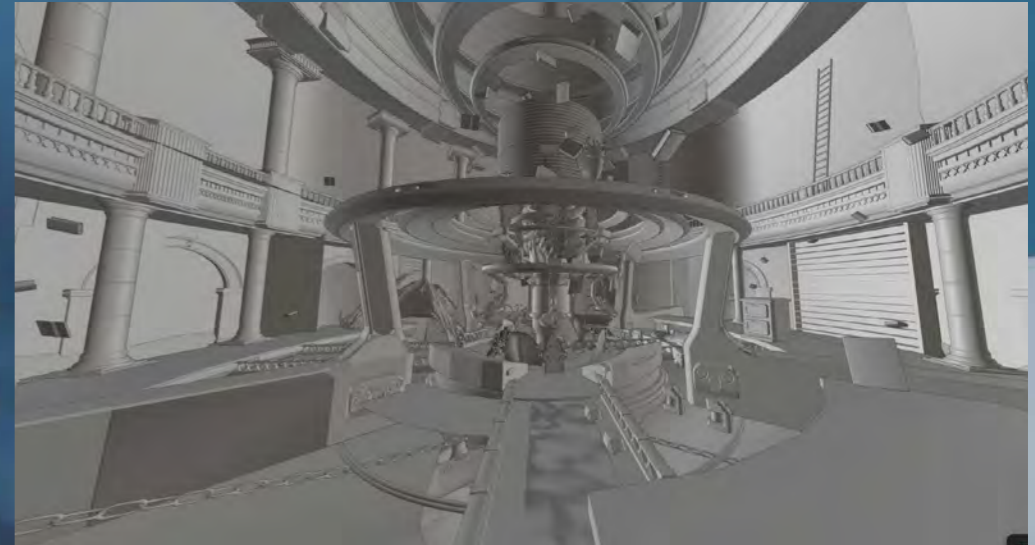
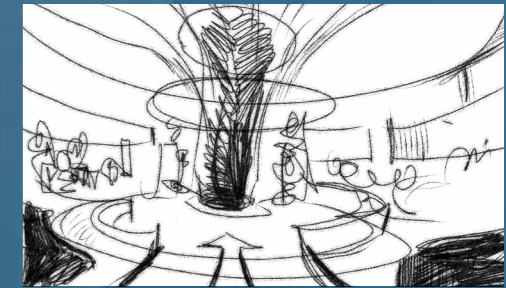
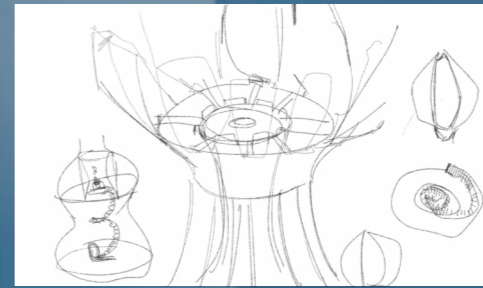
This architectural design draws inspiration from symbolic elements tied to the concept of karma – such as the gourd (hulu), lotus and lotus root, and the kite. The structure embodies the cyclical nature of cause and effect through organic, interconnected forms. The gourd shape, often associated with protection and the containment of energy, forms the core volume of the space. Lotus motifs emerge in layered roof structures, representing purity born from mud, while hidden circulation paths reference the intricate network of lotus roots beneath the surface. Delicate kite-like extensions rise into the air, suggesting the invisible threads of fate, choice, and consequence. Together, these forms create a space that feels spiritual, suspended between the earthly and the ethereal

CITY / ISLAND DESIGN



This architectural design draws inspiration from symbolic elements tied to the concept of karma—such as the gourd (hulu), lotus and lotus root, and the kite. The structure embodies the cyclical nature of cause and effect through organic, interconnected forms. The gourd shape, often associated with protection and the containment of energy, forms the core volume of the space. Lotus motifs emerge in layered roof structures, representing purity born from mud, while hidden circulation paths reference the intricate network of lotus roots beneath the surface. Delicate kite-like extensions rise into the air, suggesting the invisible threads of fate, choice, and consequence. Together, these forms create a space that feels spiritual, suspended between the earthly and the ethereal.

The laboratory's lotus-inspired architecture embodies the philosophical core of the Karma Island system. As a sacred symbol of purity emerging from impurity, the lotus reflects Dr. Wang's pursuit of clarity within the complex moral framework of karma. The opening petals serve as a powerful visual metaphor for the system's act of making karma visible — unfolding hidden causes into public observation. This cyclical opening ritual echoes the perpetual flow of cause and consequence, while also evoking a sense of reverence, authority, and transparency. The building thus becomes not only a space of scientific experimentation, but also a ceremonial stage where karma is continuously revealed, observed, and recalibrated.

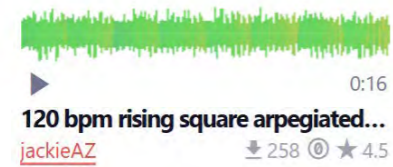


LAB DESIGN

The soundtrack for The Karma Void is composed using rearranged elements of traditional Chinese instruments. The choice of Chinese folk instrumentation reflects the philosophical origins of the project, drawing directly from Eastern beliefs surrounding karma, balance, and cyclical existence.

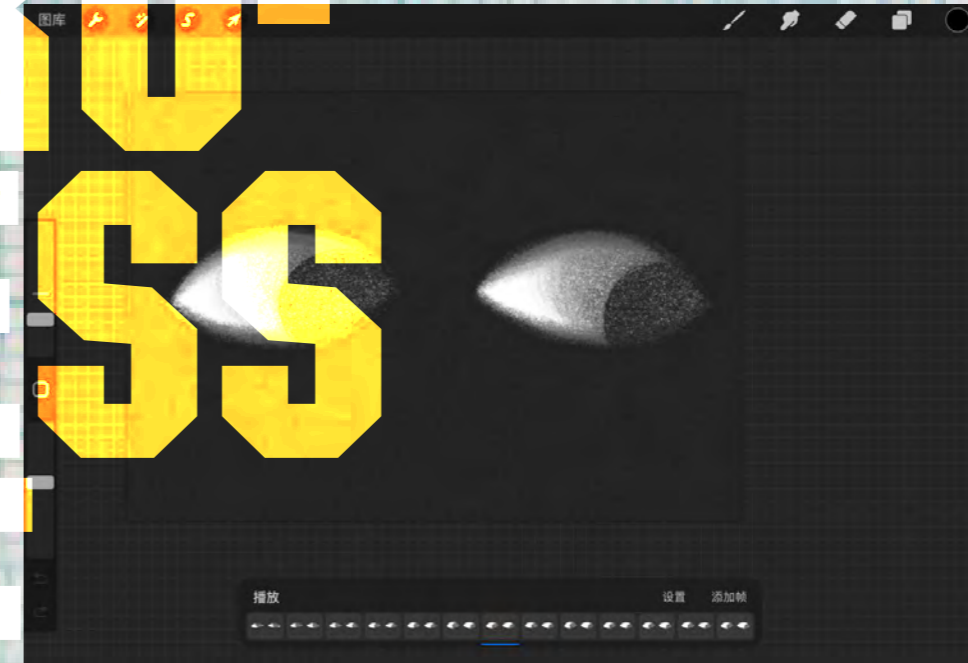


music: doudou- tongtong



The film's music combines haunting, atmospheric sounds with traditional instruments from ethnic minorities. It blends eerie tonalities with ritualistic and spiritual elements, creating a soundscape that feels both sacred and unsettling. The use of unfamiliar textures and ceremonial rhythms evokes a sense of mystery, enhancing the film's themes of belief, power, and transformation.

PRO- CESS OF



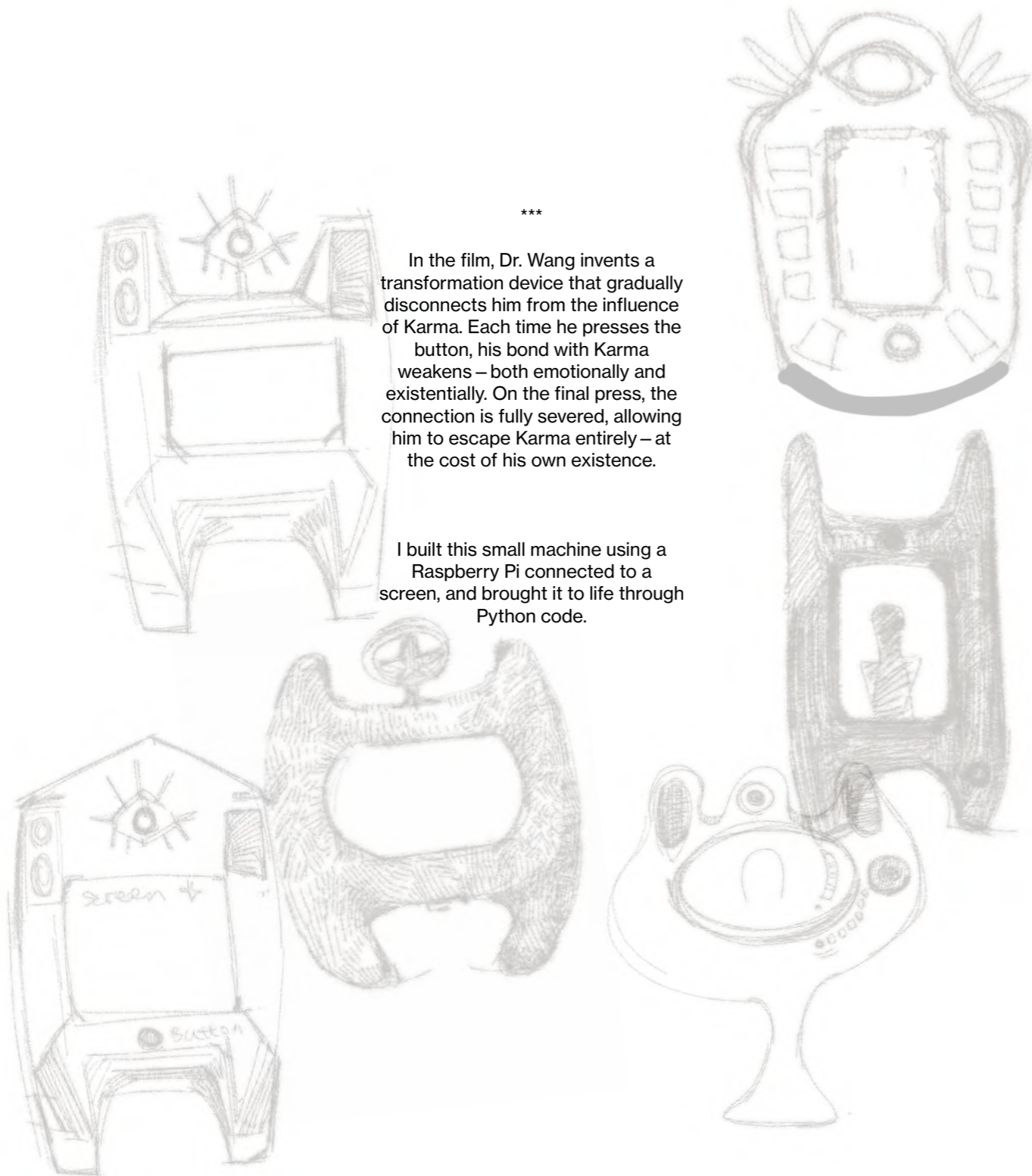
As Dr. Wang crosses into The Karma Void, the film shifts from the structured, 3D physical world into a hand-drawn 2D space – a symbolic rupture from the world governed by visible karma. In this realm, cause and consequence dissolve; spatial depth collapses; moral weight becomes weightless.

The 2D aesthetic reflects the conceptual emptiness of the void: no longer subject to physical laws or societal judgment, but suspended in a timeless, floating state. The hand-drawn lines emphasize the fragile, unstable nature of existence without karmic balance – where selfhood blurs and reality becomes uncertain.

PROP

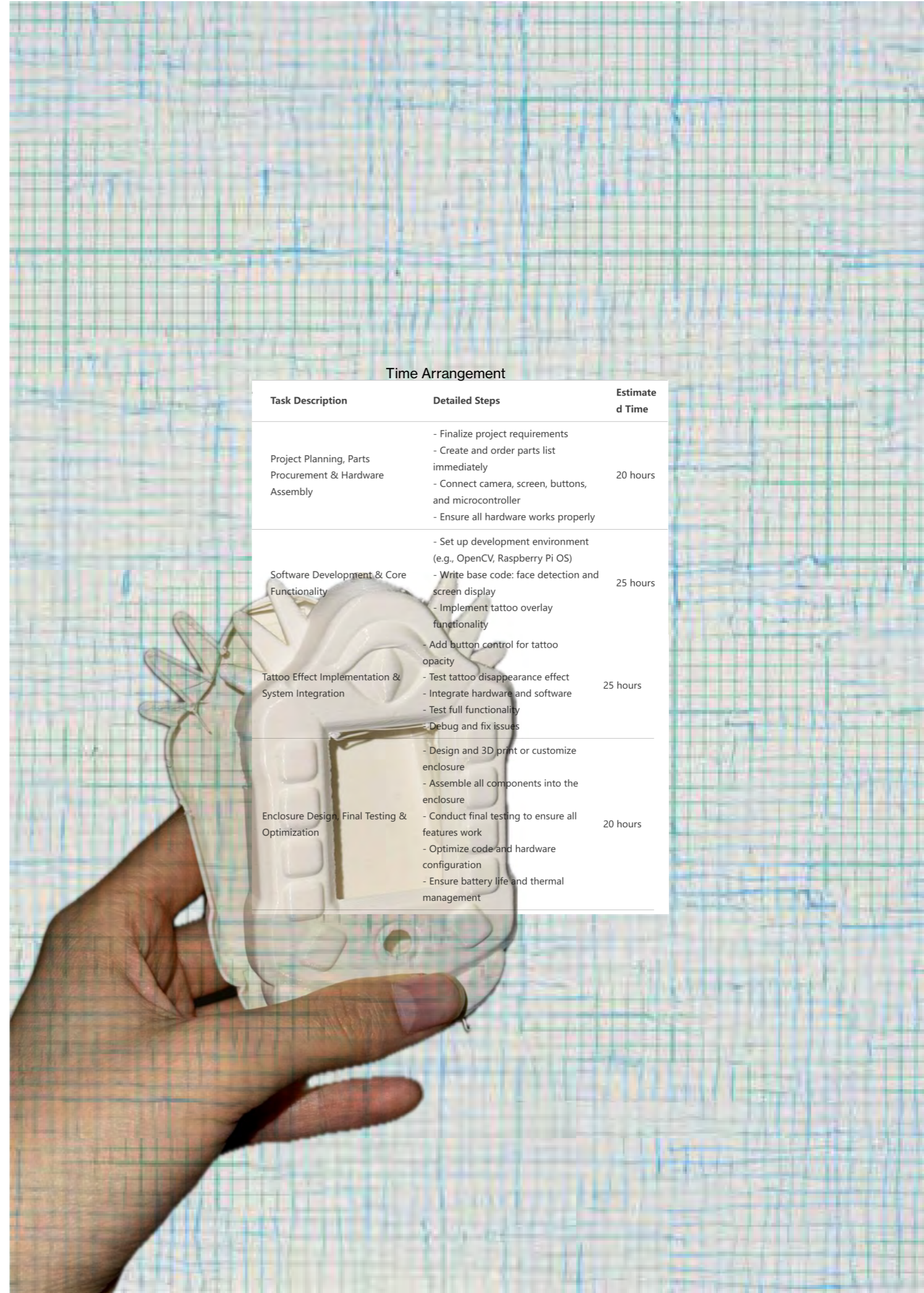
In the film, Dr. Wang invents a transformation device that gradually disconnects him from the influence of Karma. Each time he presses the button, his bond with Karma weakens – both emotionally and existentially. On the final press, the connection is fully severed, allowing him to escape Karma entirely – at the cost of his own existence.

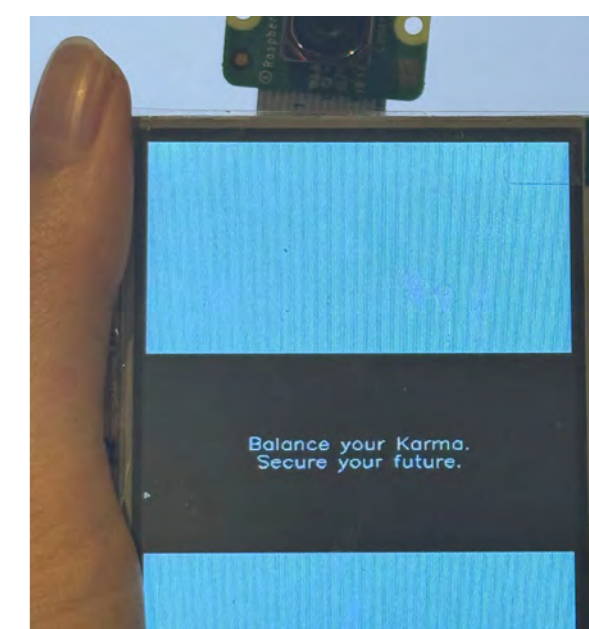
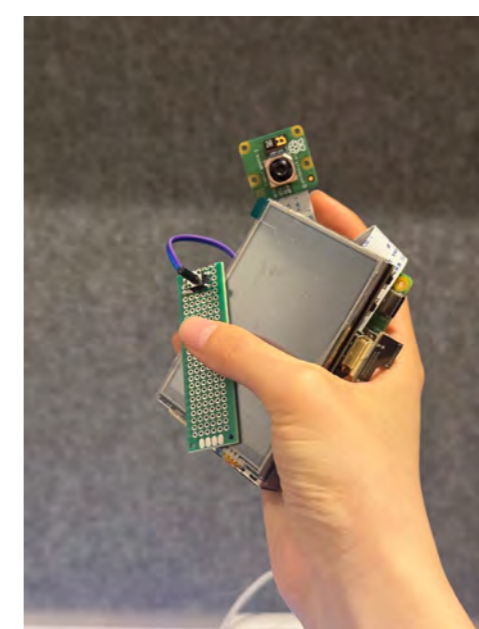
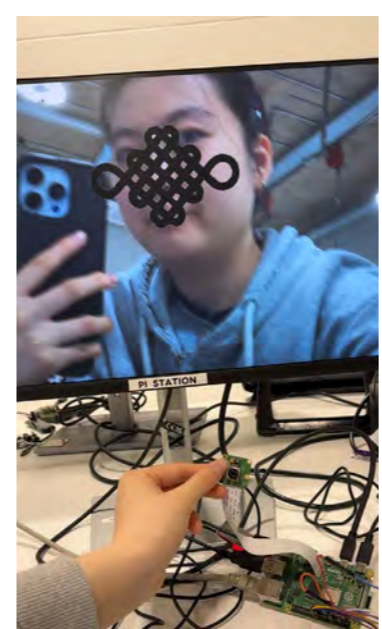
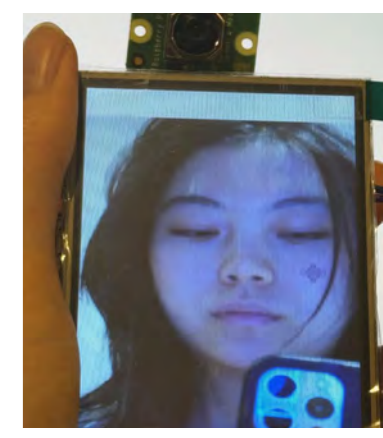
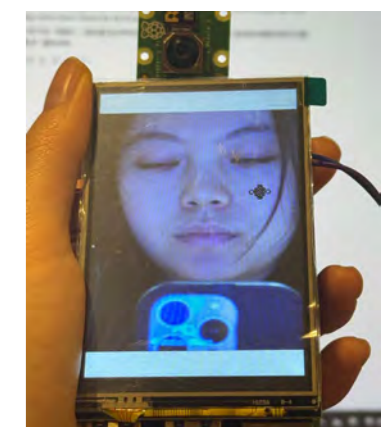
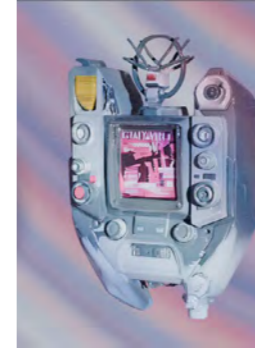
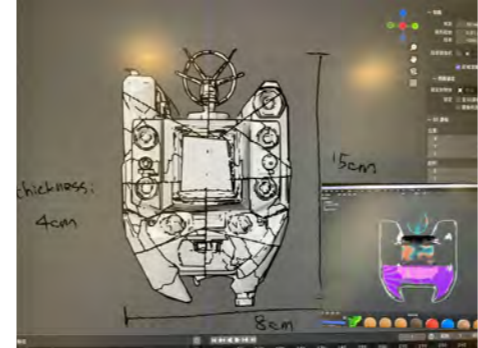
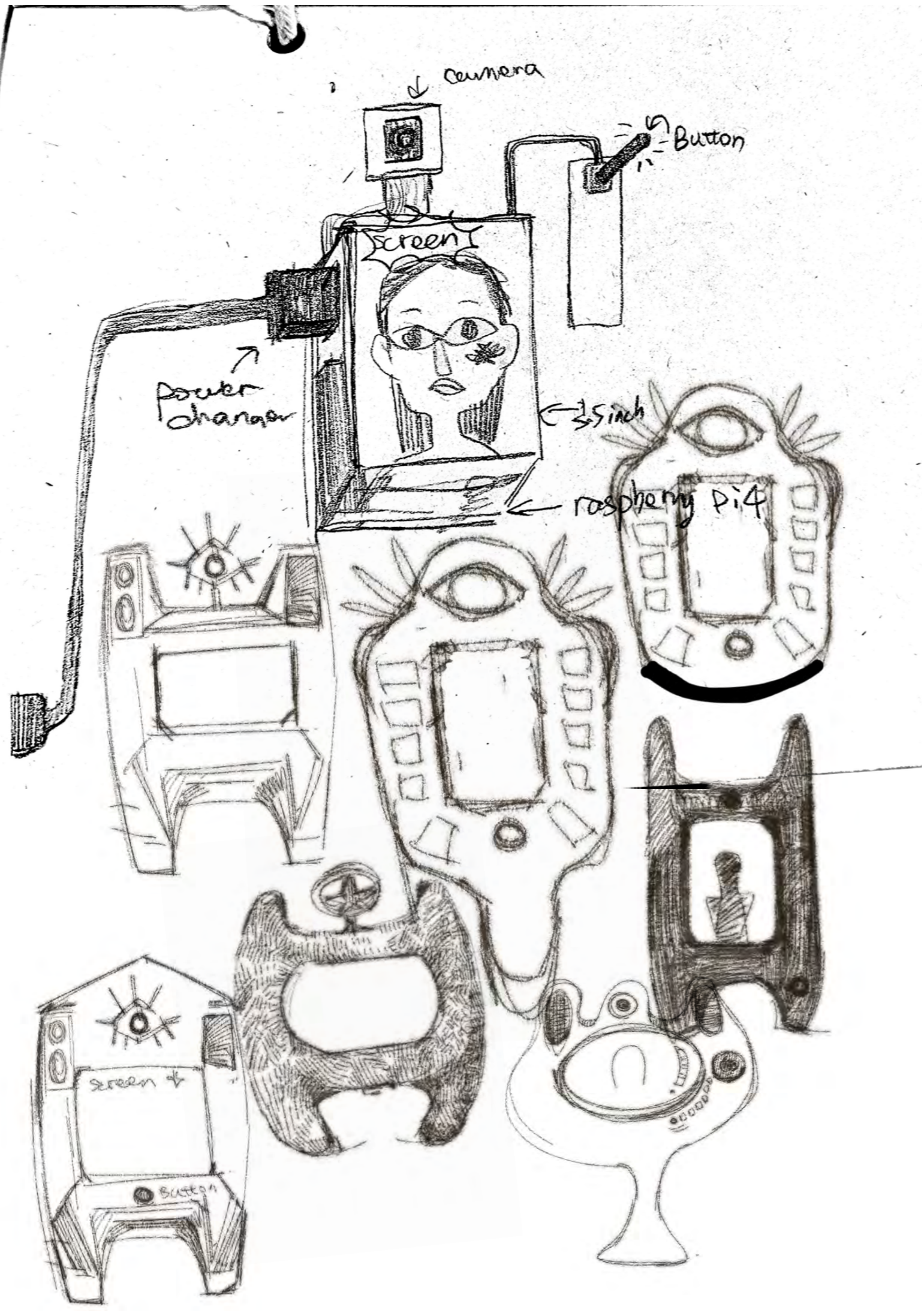
I built this small machine using a Raspberry Pi connected to a screen, and brought it to life through Python code.




Time Arrangement

Task Description	Detailed Steps	Estimated Time
Project Planning, Parts Procurement & Hardware Assembly	<ul style="list-style-type: none"> - Finalize project requirements - Create and order parts list immediately - Connect camera, screen, buttons, and microcontroller - Ensure all hardware works properly 	20 hours
Software Development & Core Functionality	<ul style="list-style-type: none"> - Set up development environment (e.g., OpenCV, Raspberry Pi OS) - Write base code: face detection and screen display - Implement tattoo overlay functionality 	25 hours
Tattoo Effect Implementation & System Integration	<ul style="list-style-type: none"> - Add button control for tattoo opacity - Test tattoo disappearance effect - Integrate hardware and software - Test full functionality - Debug and fix issues 	25 hours
Enclosure Design, Final Testing & Optimization	<ul style="list-style-type: none"> - Design and 3D print or customize enclosure - Assemble all components into the enclosure - Conduct final testing to ensure all features work - Optimize code and hardware configuration - Ensure battery life and thermal management 	20 hours





A man in a white lab coat and glasses is the central focus, looking down at a newspaper he is holding. He is surrounded by a crowd of people, some of whom are also looking down, suggesting a public gathering or a moment of shared activity. The lighting is dramatic, with the man in the lab coat being the brightest element against a darker background.

As karma becomes visible, it risks losing its essence. The act of quantifying morality – turning invisible intentions into measurable marks – inevitably invites new forms of power, control, and judgment. While the system promises fairness through transparency, it silently creates new hierarchies: who defines virtue? Who calibrates the darkness of each tattoo? In attempting to externalize the internal, the island drifts toward a fragile balance between order and oppression.

Dr. Wang's invention, born from a desire to reveal truth, stands as both a technological marvel and a cautionary emblem. The more karma is exposed, the more its purity dissolves into governance, surveillance, and societal anxiety. The laboratory's opening petals mirror this paradox: every unveiling is a revelation, but also a risk – a reminder that some forces, once made visible, can no longer be contained.

THE FRAGILITY OF VISIBLE KARMA