

RCA MA Interior Design SuperMatter Term 3 Jianan Wang RCA MA Interior Design SuperMatter Term 3 Jianan Wang

COMMUNITY THREAD

By recycling discarded fast fashion garments and adopting **sewing as an architectural language**, they are pieced together into **fabric structures** that form **movable spatial components**—transformed into **fabric doors, fabric walls, and fabric curtains**.

This is both a physical act and a metaphor: we are reopening the **forgotten labor** behind construction, and stitching together the **severed ties** within our communities.

Fabric is not merely a material—it is a vessel.
Stitching is not merely a technique—it is emotion.

Community Thread is a soft yet powerful line that weaves together **space, people, and memory**.



boohoo

ASOS

UNI
QLO

RIVER ISLAND

MISSGUIDED



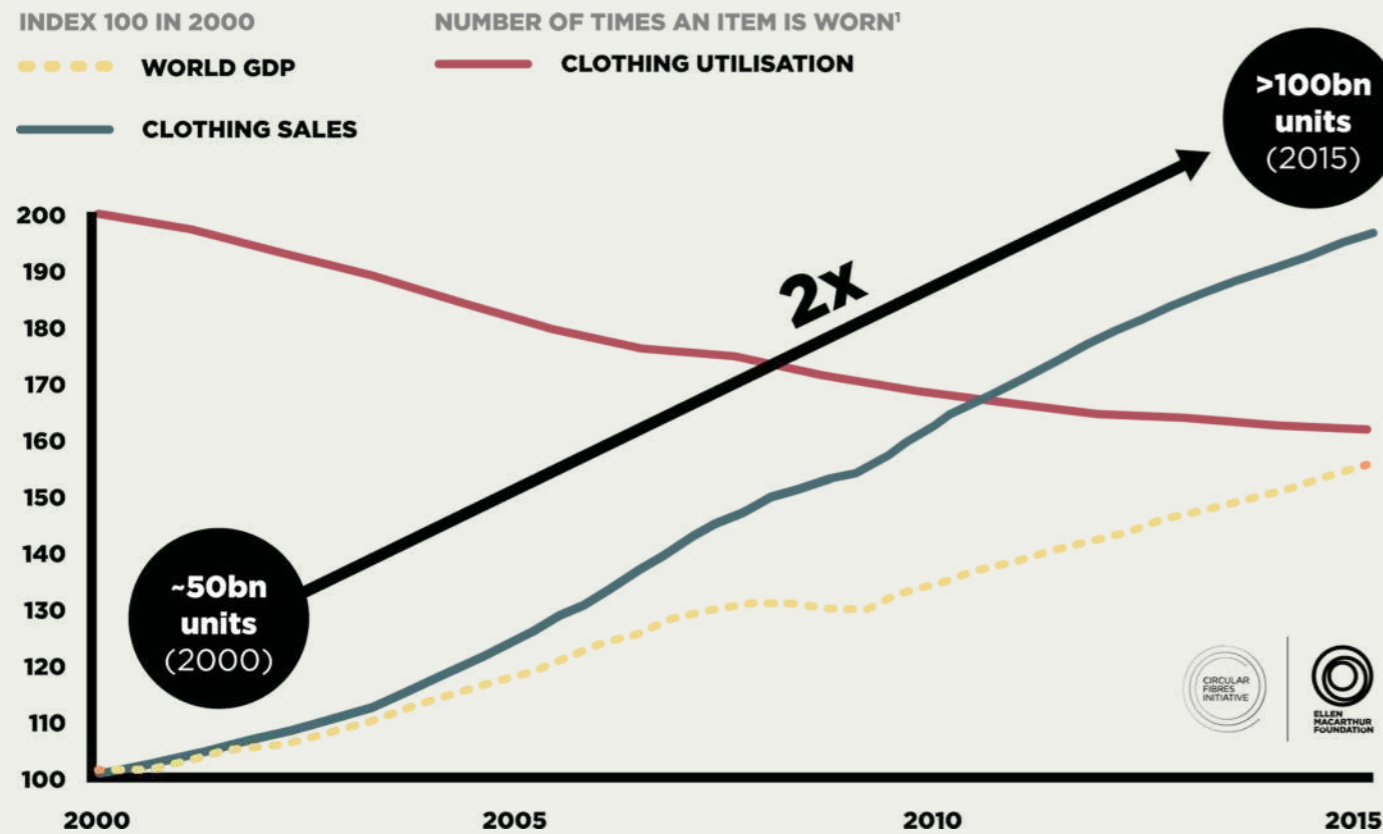
**FAST
FASHION**

PRIMARK

ZARA

H&M

Clothing sales revenue and clothing utilization rate



CLOTHING WASTE

Take a second to visualise your wardrobe.

How many items do you own, and how many do you actually wear?

How often have you stood in frustration gazing at that heap of clothes and said, "I have nothing to wear"?

Shopping today has never been easier. Simply going online means being ambushed by endless targeted ads and emails, telling you to buy now or risk missing out. You step outside and last week's collection has already been refreshed. When you check your phone, you can't avoid the army of influencers showing-off the latest Insta-trends.

The fashion industry makes clothes that no one wants to keep, to support a culture that trashes what is no longer in trend.

Source: Euromonitor International Apparel & Footwear 2016 Edition (volume sales trends 2005-2015); World Bank, World development indicators - GD (2017)

CONCERTED EFFORTS

1. Government and policy level



2. Brand Action



3. social organization

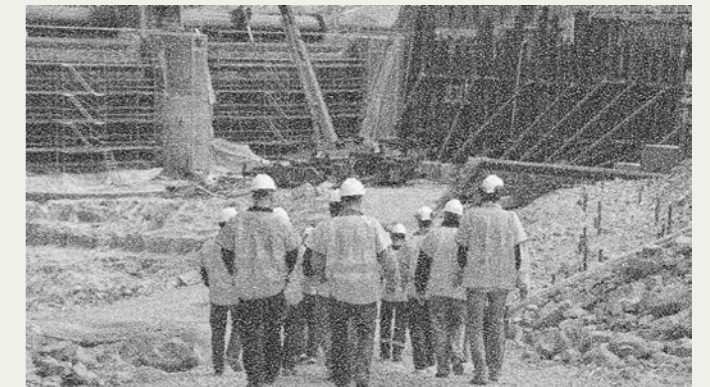


4. Community Level



The issue lies not with the recycling system itself, but rather with people ignoring the value behind the 'labor' involved...

THE FORGOTTEN WORKER

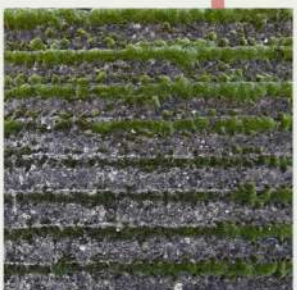


The labor of workers brings new spaces to the community; they are the original shapers of the place. Yet despite their temporary presence, the community rarely acknowledges their existence. Their presence fades the moment construction is completed, as if they were merely a fleeting interlude.



WHEN WAS THE LAST TIME YOU COMMUNICATED?

INTERTWINE



Workers and communities can weave together like threads in a fabric, forming a tight web that makes their relationships even closer and more harmonious.

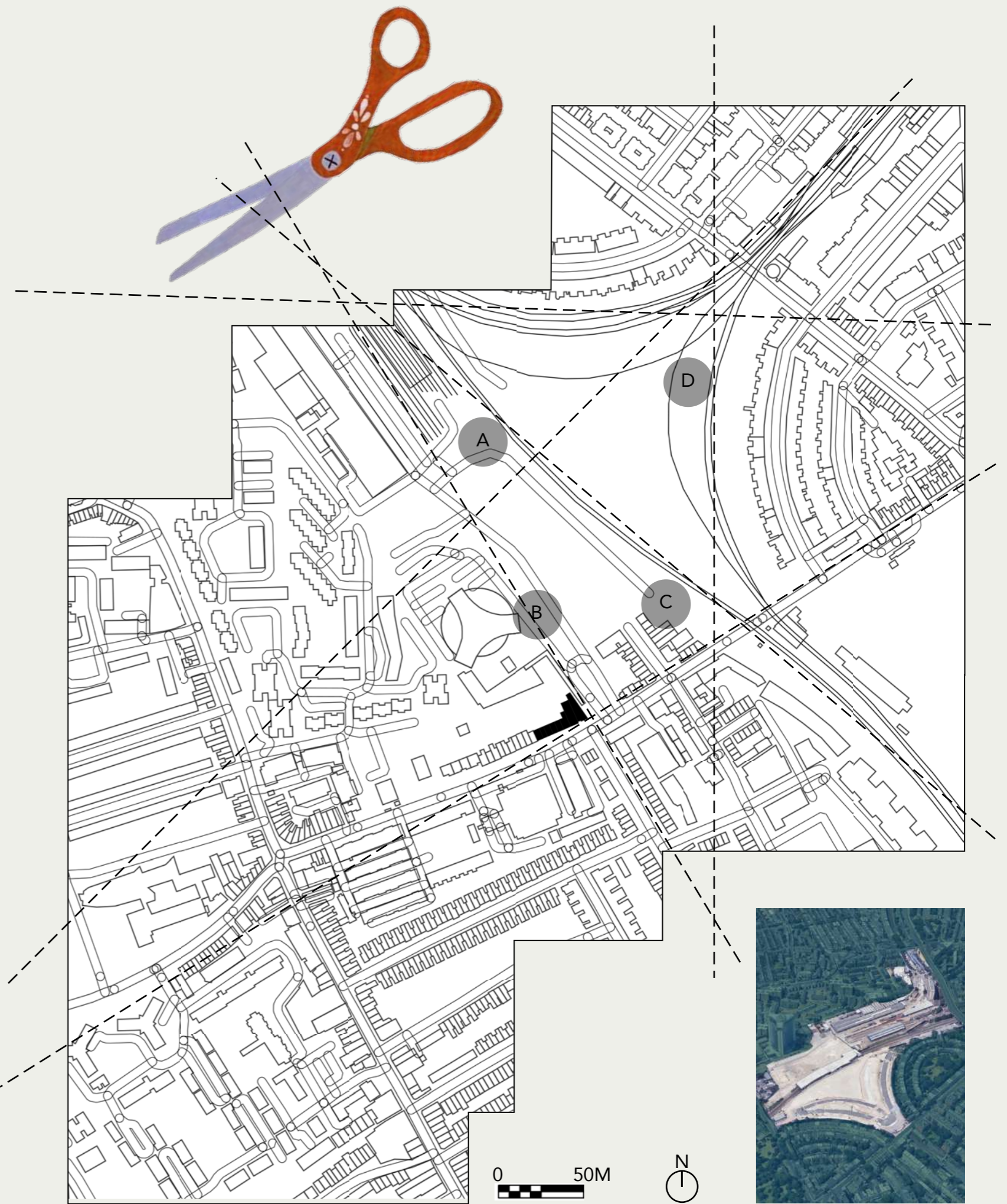




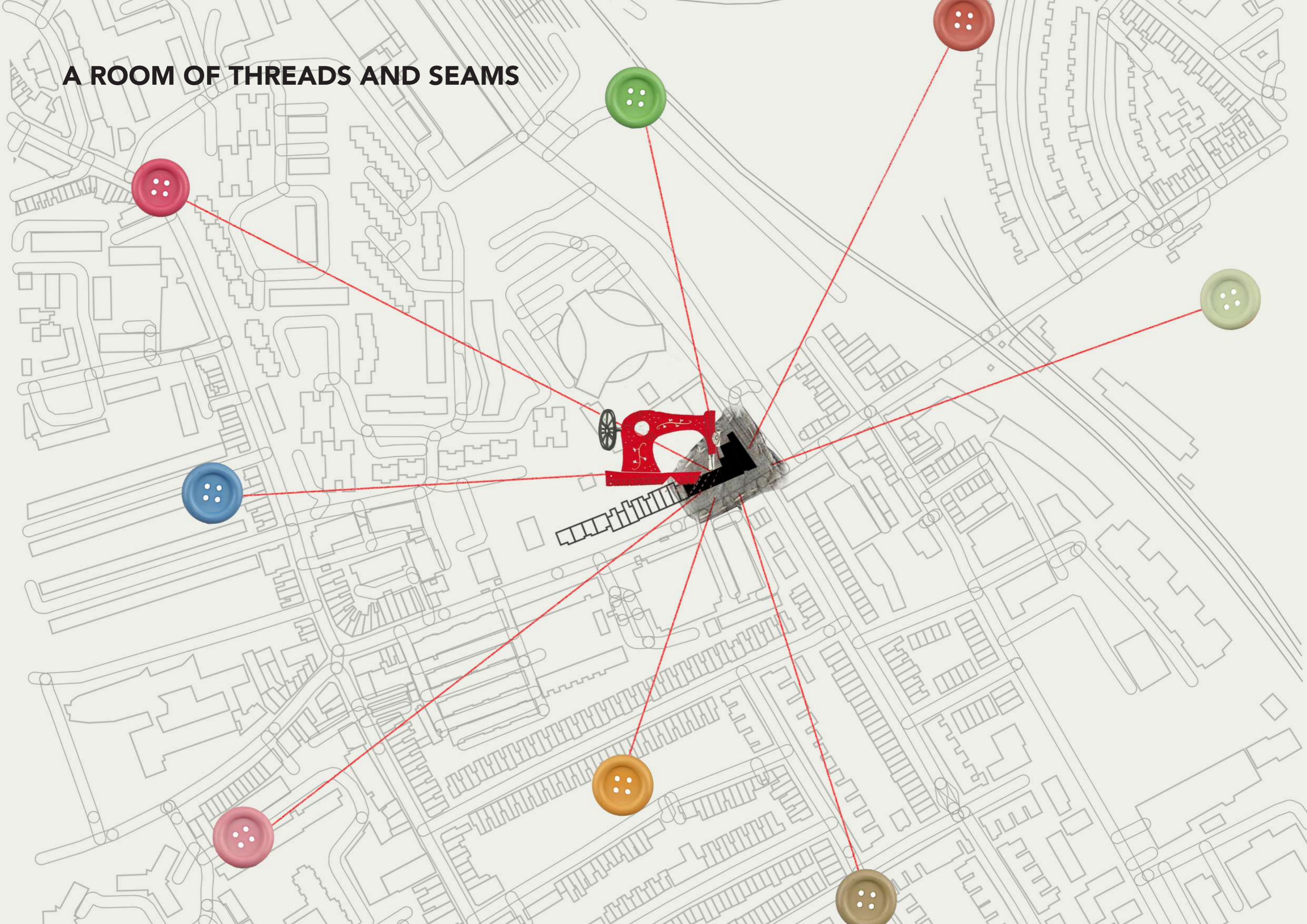
Project site — Lillie Road in Earl's Court, London. There, another piece of torn fabric.

THE UNSTITCHED COMMUNITY

This street is fractured by construction sites. On one side is a developing community; on the other, old neighborhoods and residential areas.



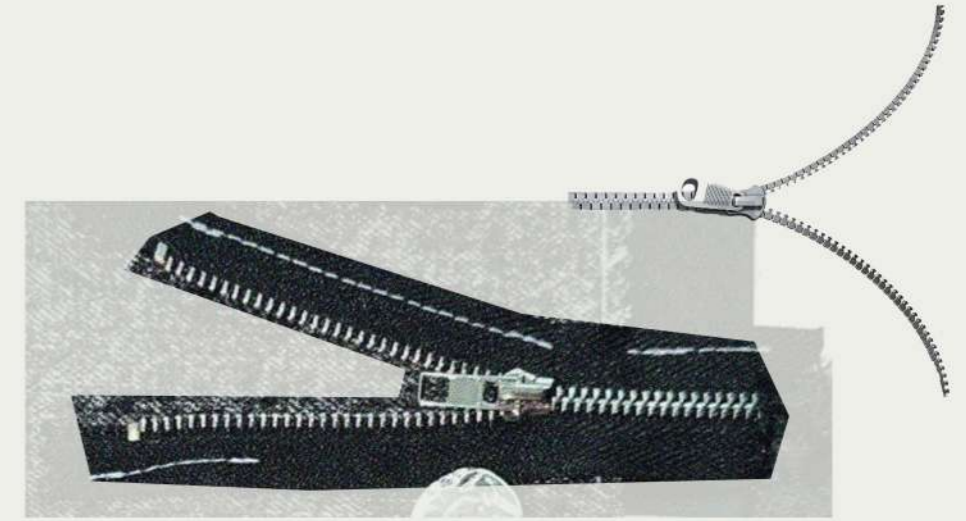
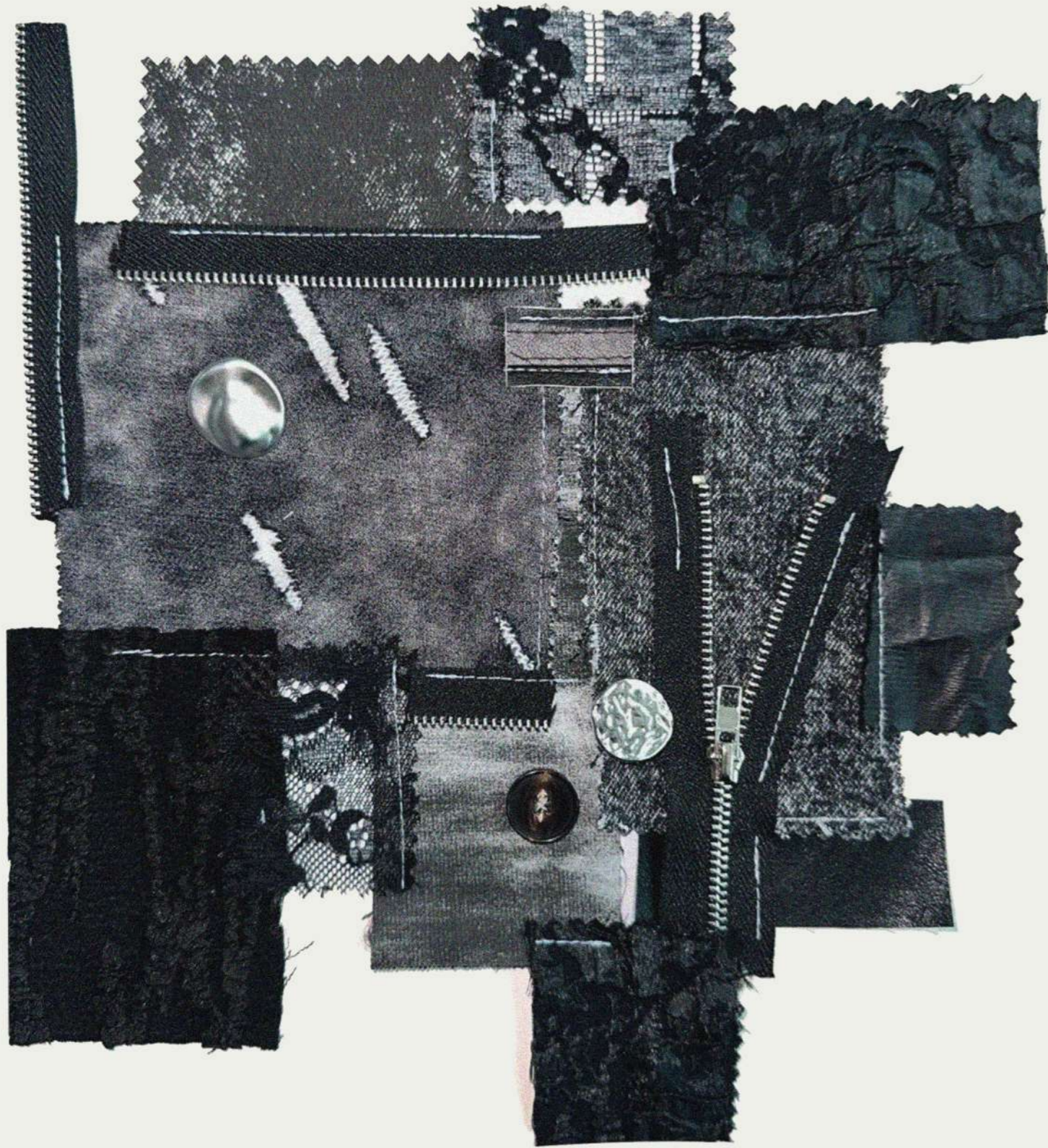
A ROOM OF THREADS AND SEAMS



CONCEPT



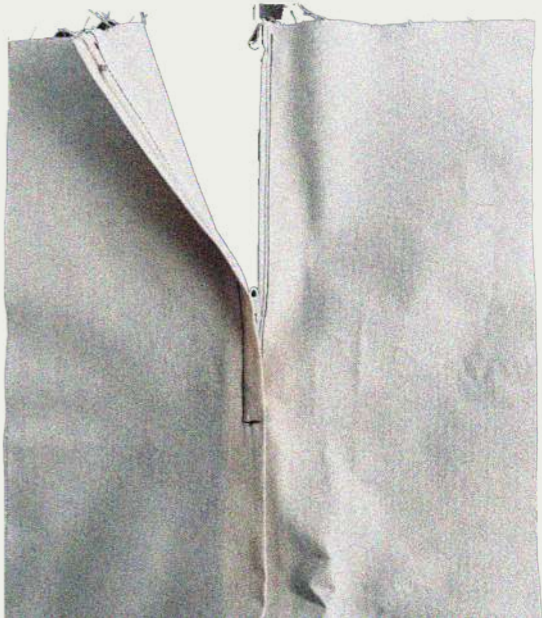
TEXTILE TECHNIQUES



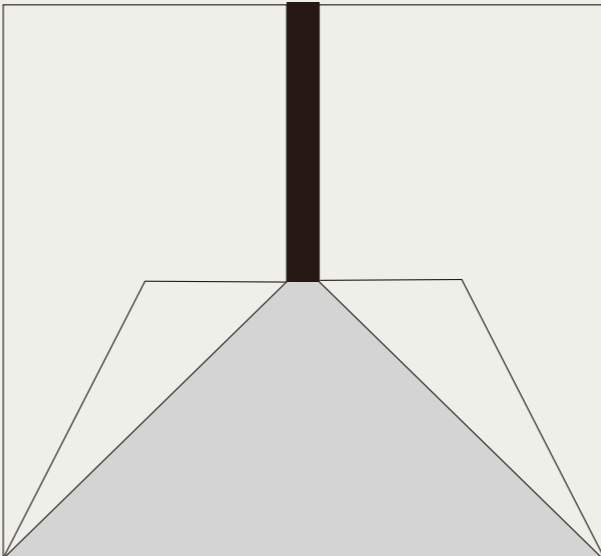
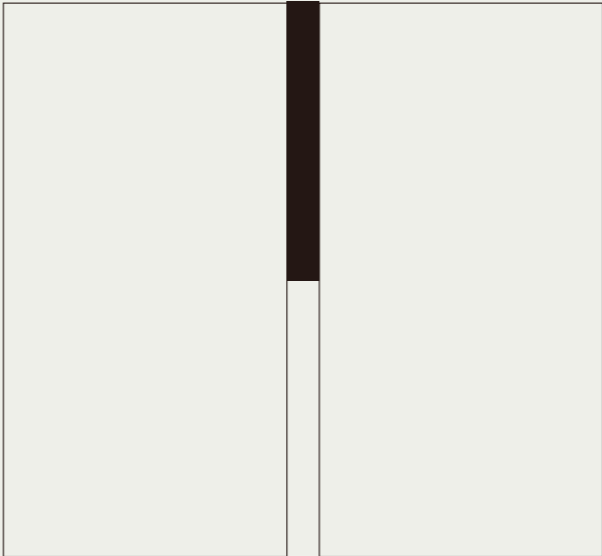
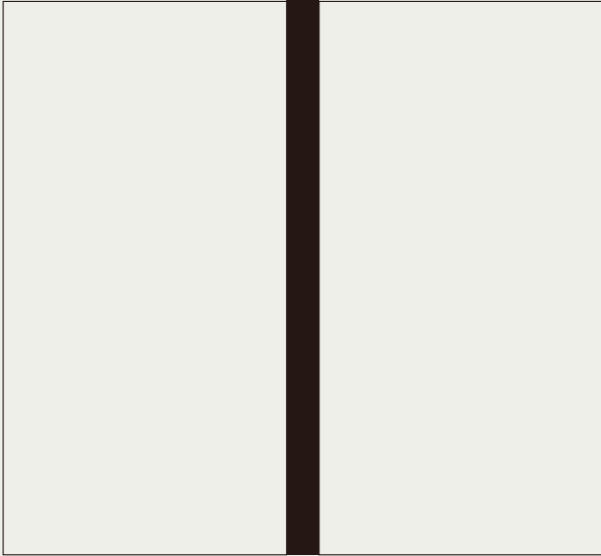
ZIPPER



Movable+Controllable

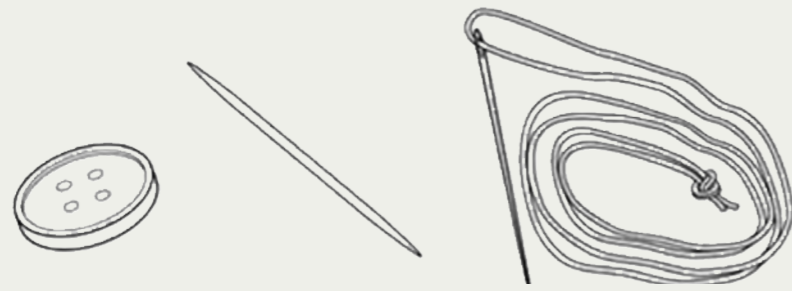


Spatial translation

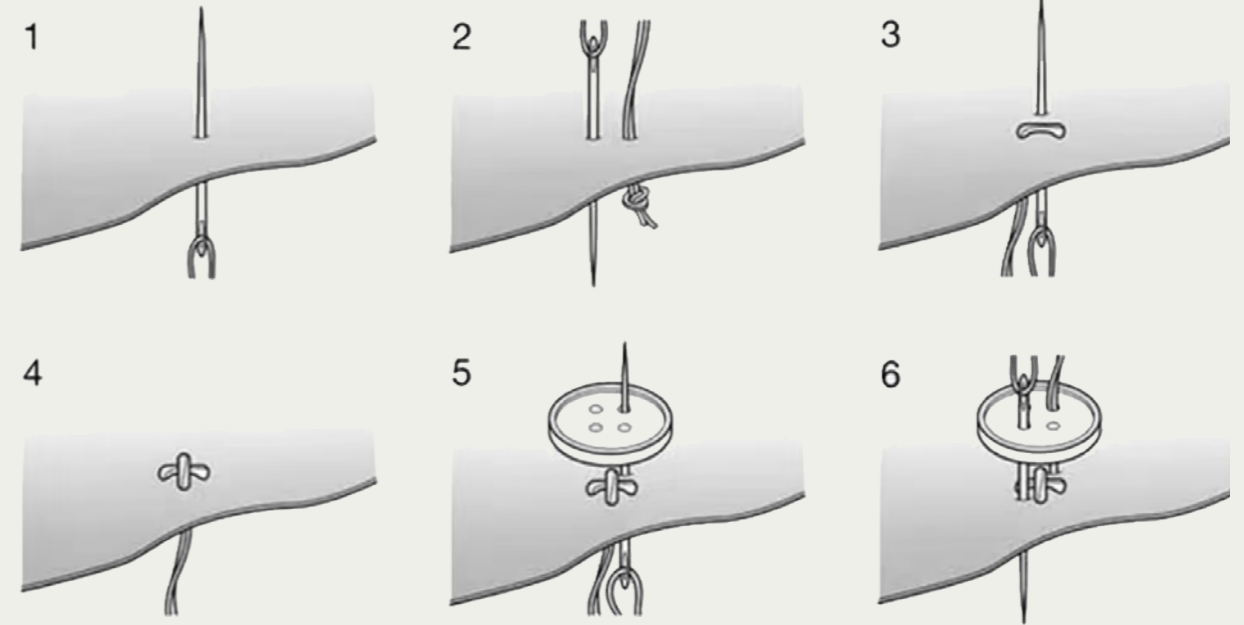


The 'switching language' of space is not static, but is manipulated by humans to stitch together states.

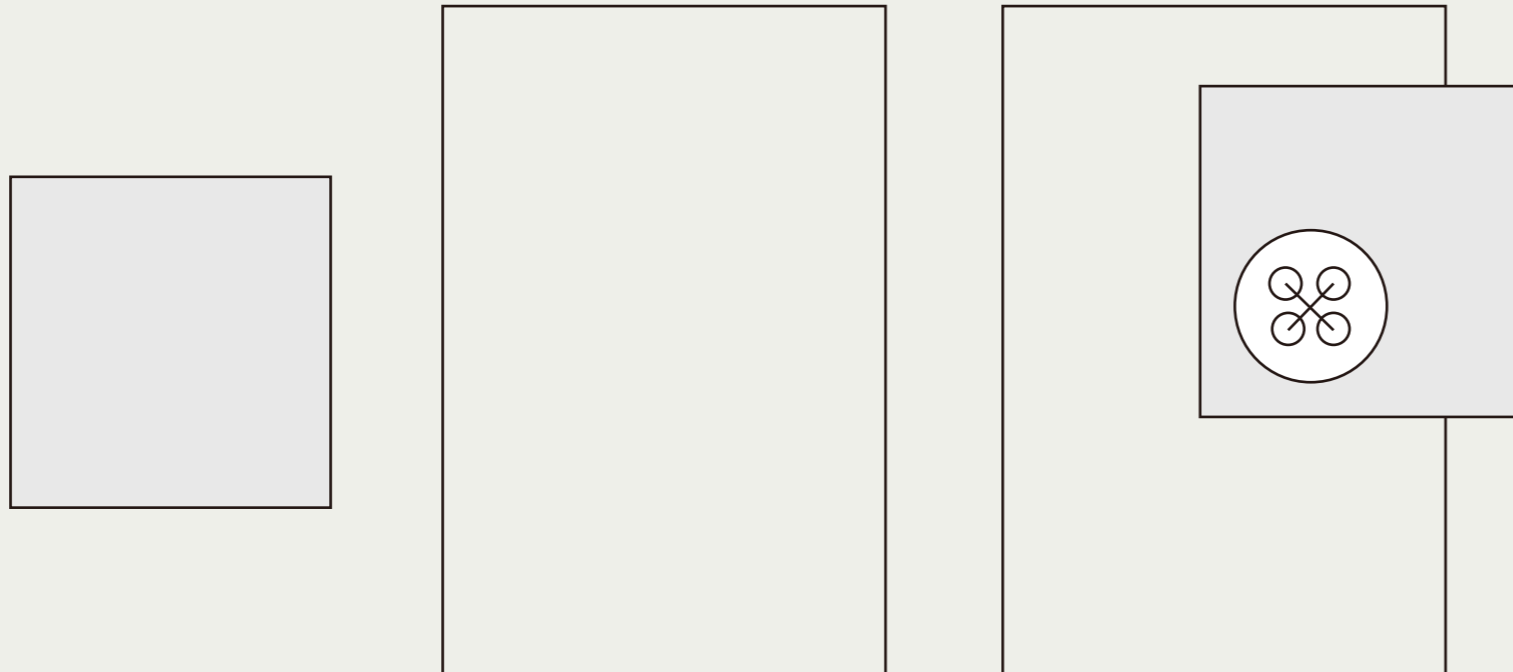
BUTTON



Structure+Assembly



Spatial translation

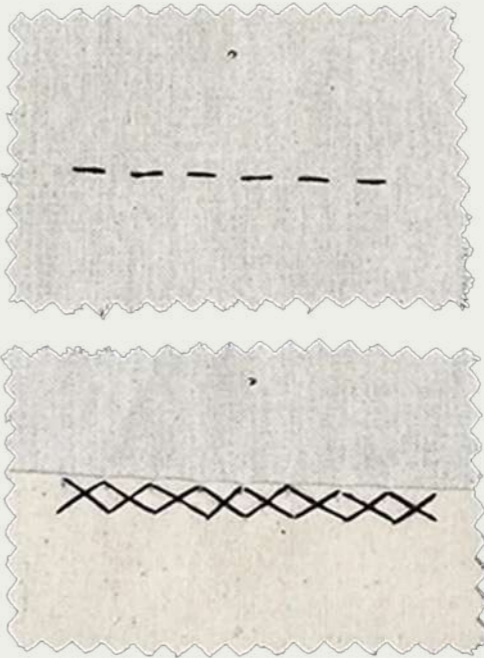


The fabric modules are connected by buttons to form a detachable skin or structure.

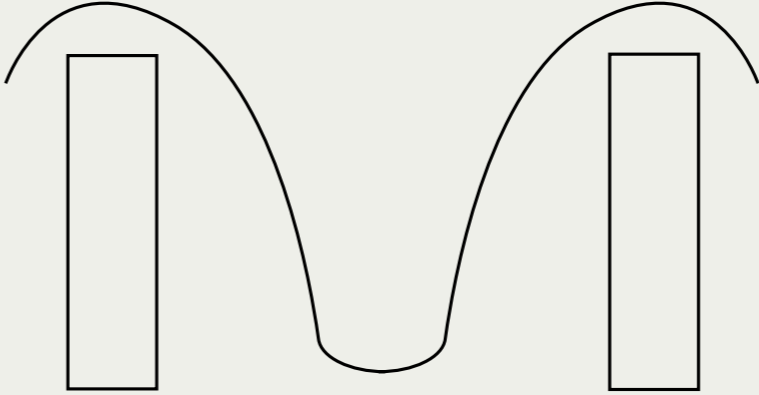
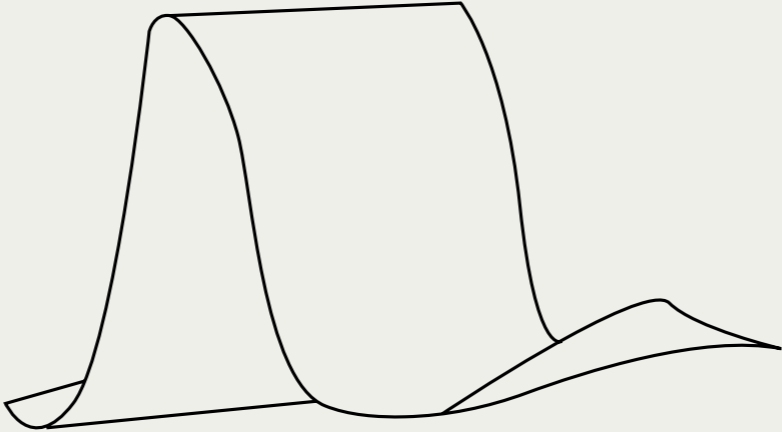
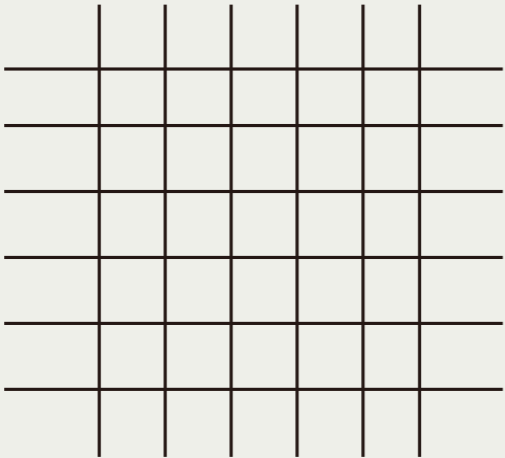
STITCH



Soft+Repair



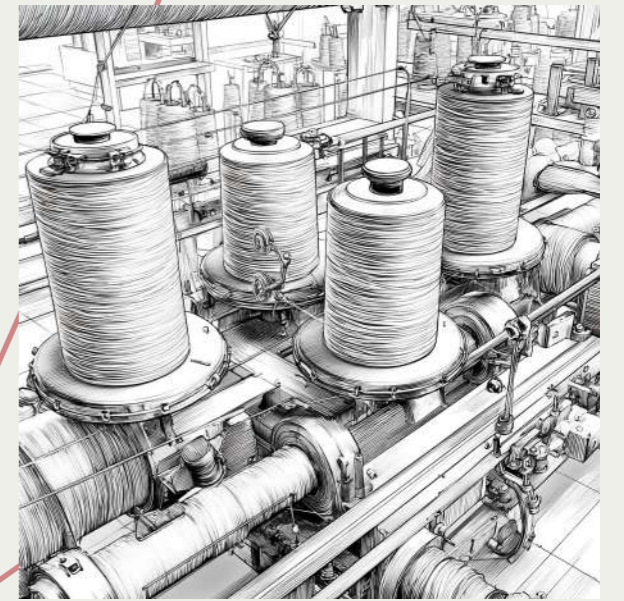
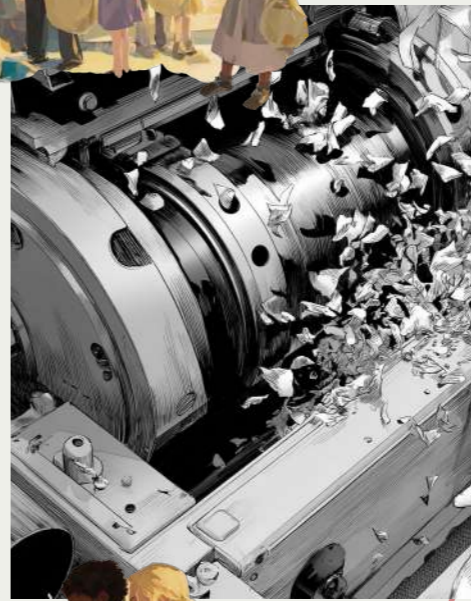
Spatial translation



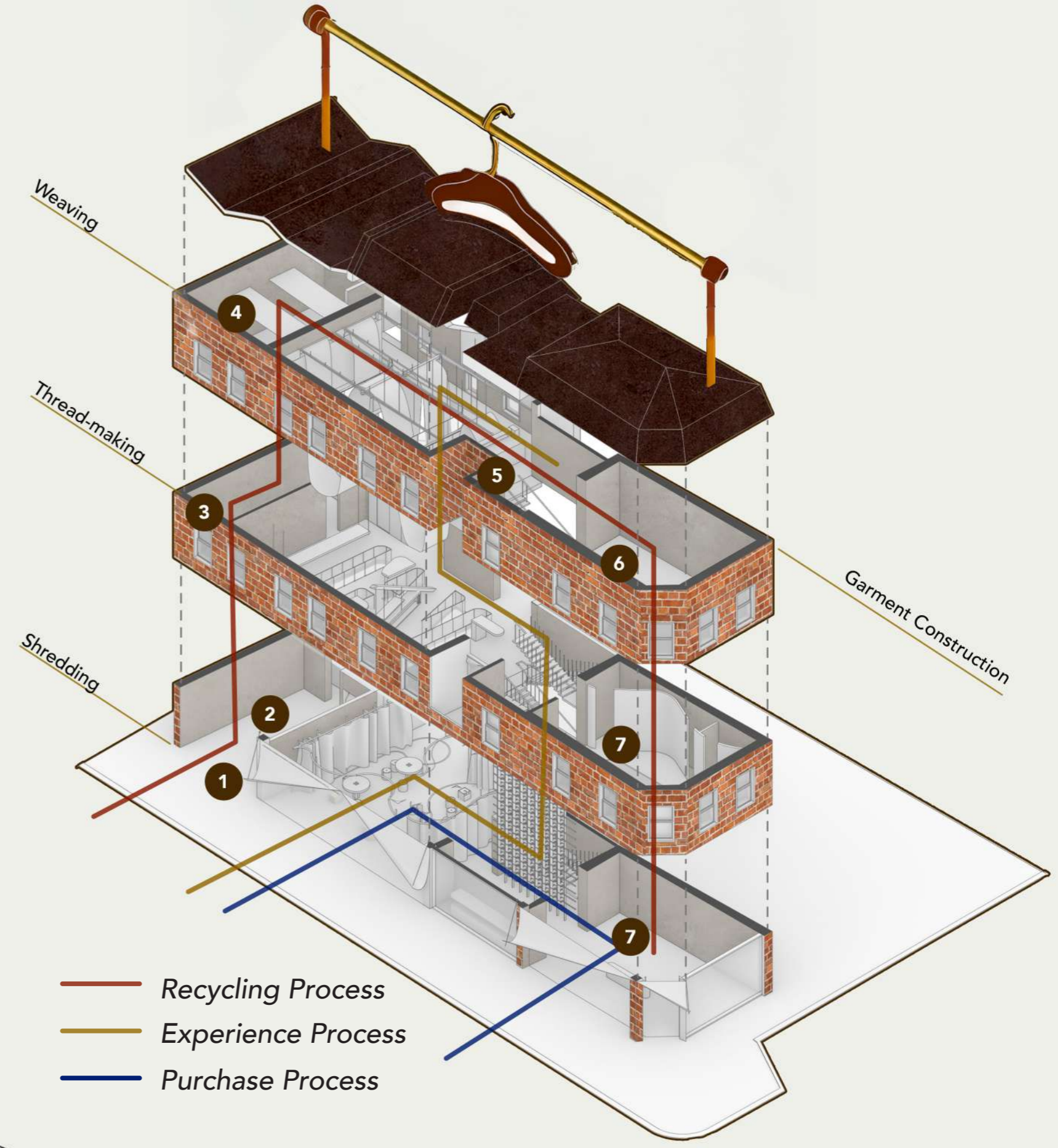
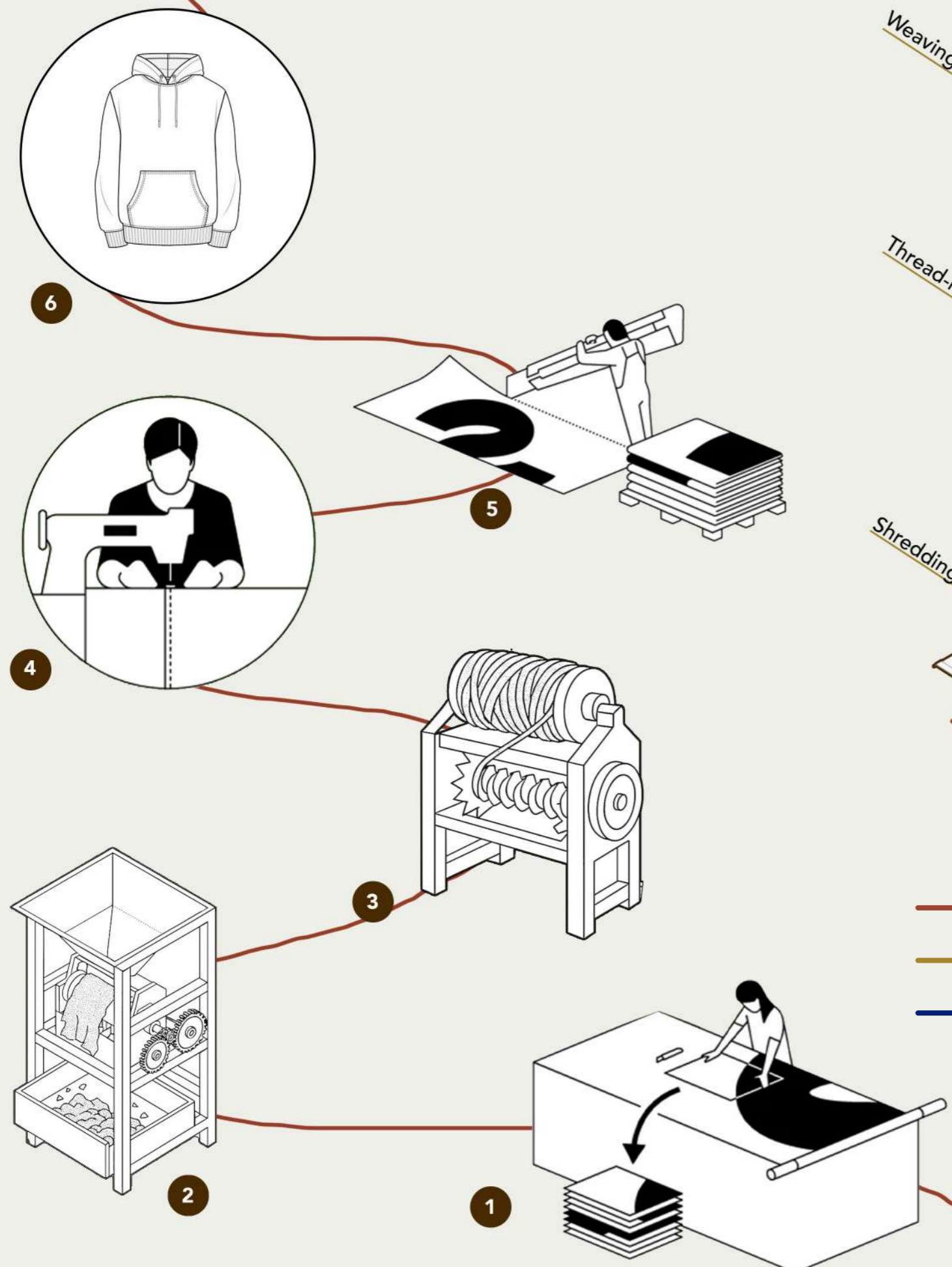
Space is no longer defined by 'walls', but by the stitched relationship between fabrics'.



TEXTILE RECYCLE



SPACE FLOW



— Recycling Process
— Experience Process
— Purchase Process

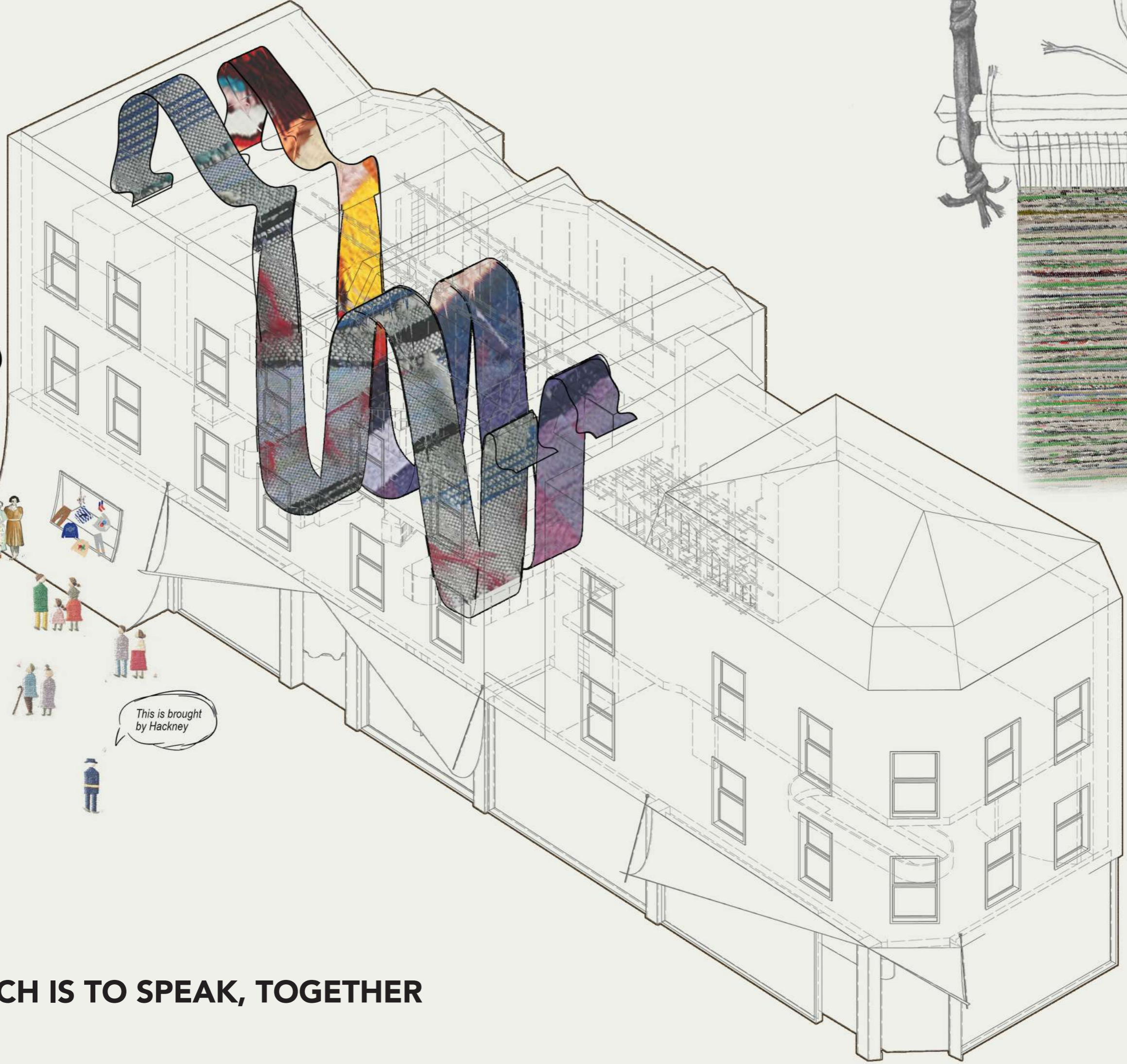
This is my grandmother's 1900 outfit



This is my childhood outfit



This is brought by Hackney

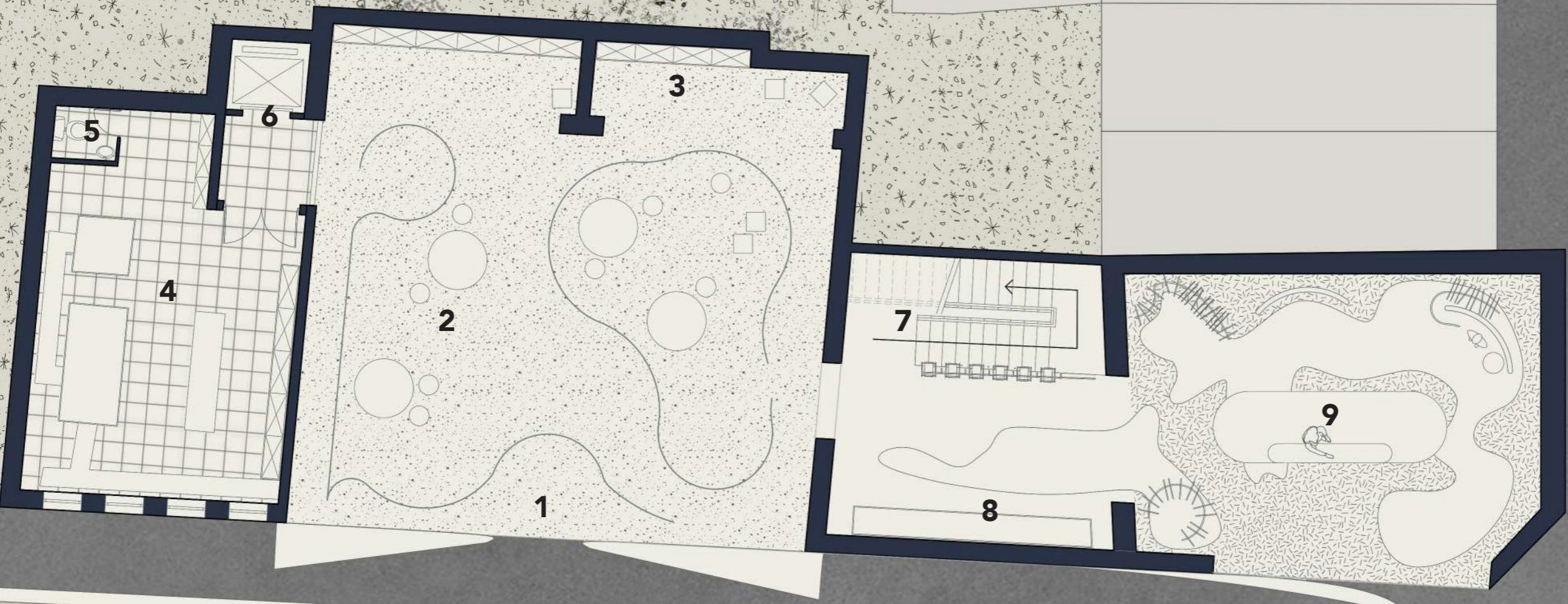


TO STITCH IS TO SPEAK, TOGETHER

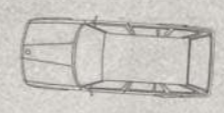
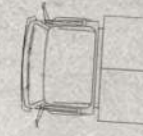
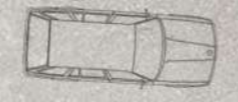
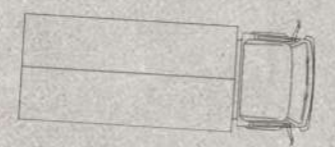
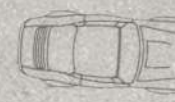
GROUND FLOOR

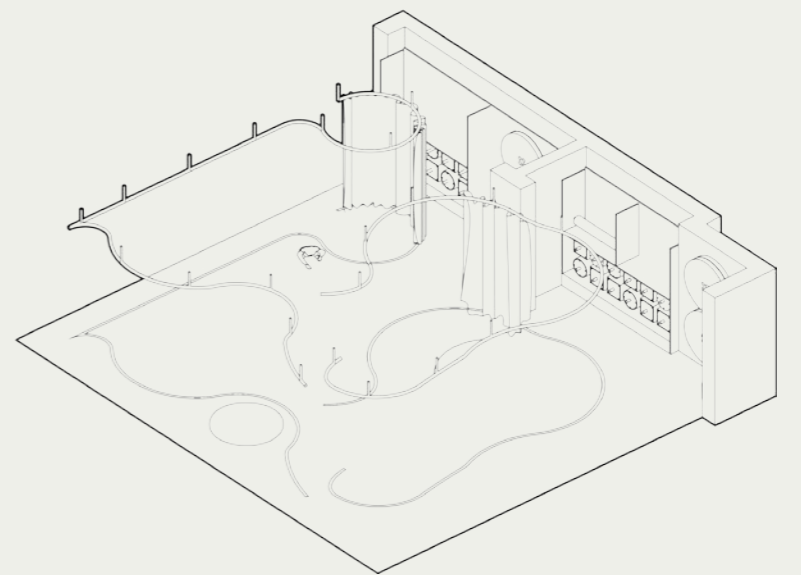


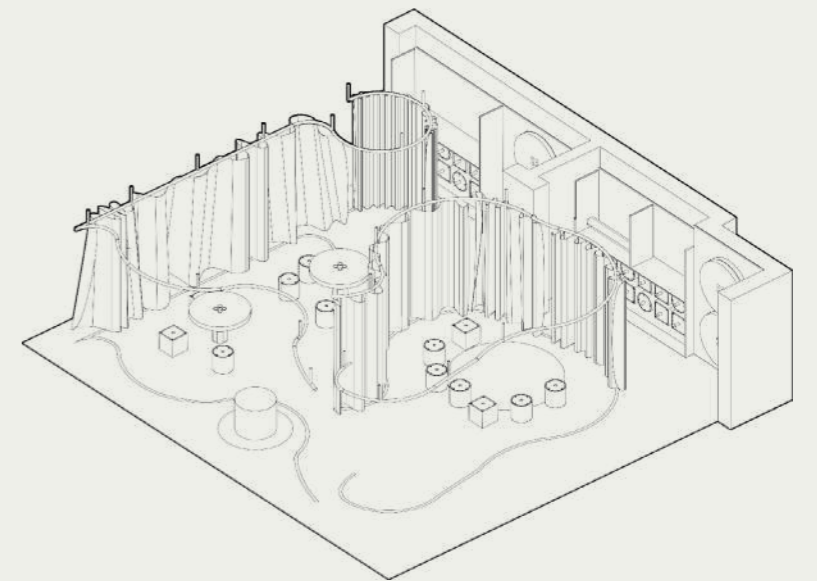
SCALE 1:100 0 1 2 3 4 5 10m



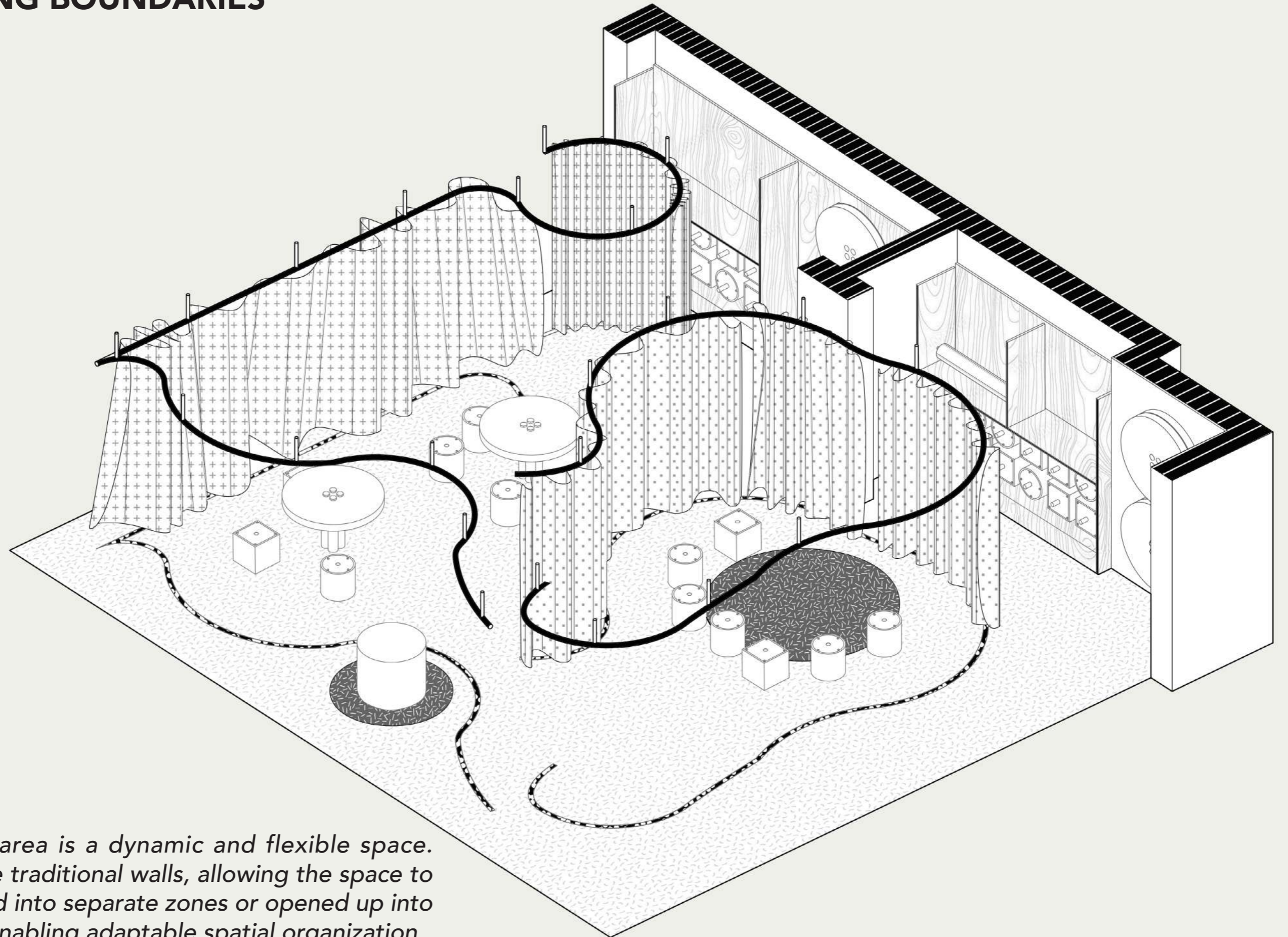
- 1. Entrance
- 2. Workshop
- 3. Storage area
- 4. Sorting table
- 5. Toilet
- 6. Elevator
- 7. Exhibition staircase
- 8. Coffee
- 9. Clothing sales





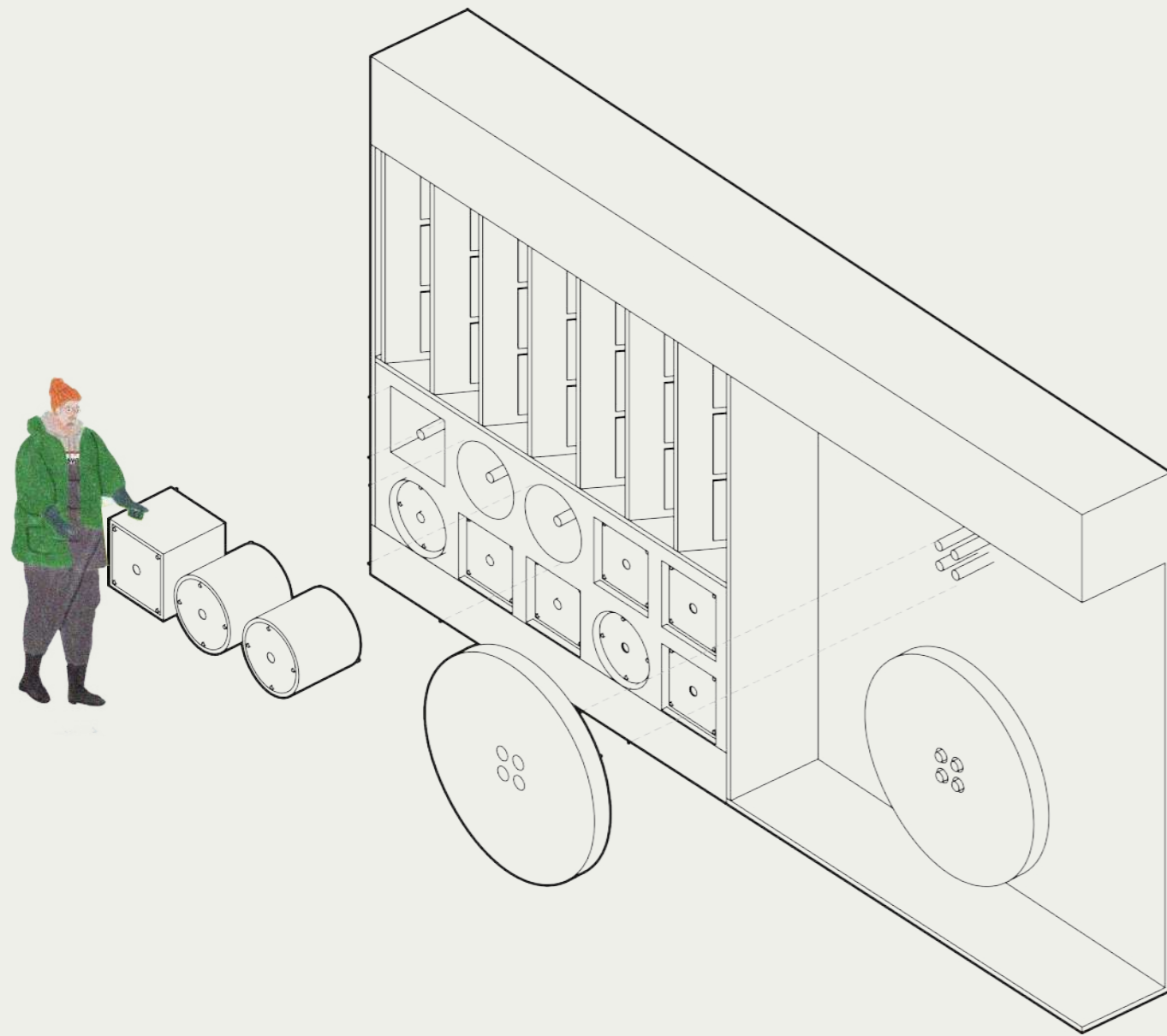


FABRICATING BOUNDARIES

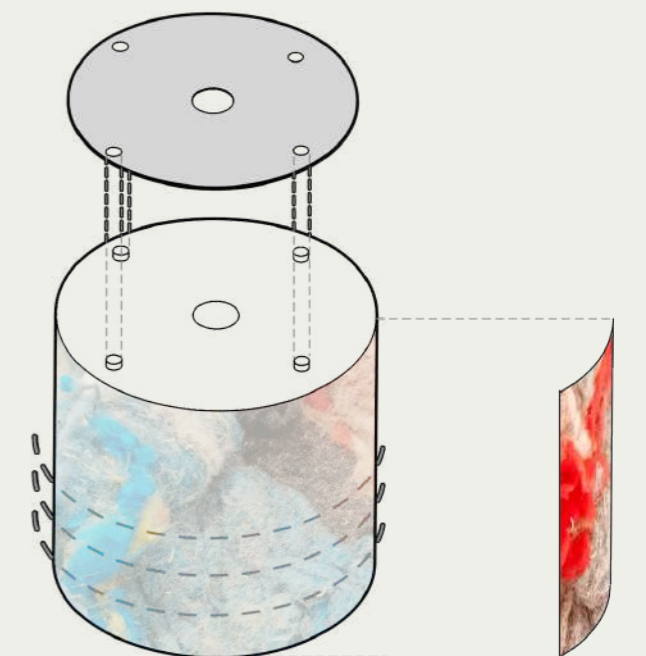
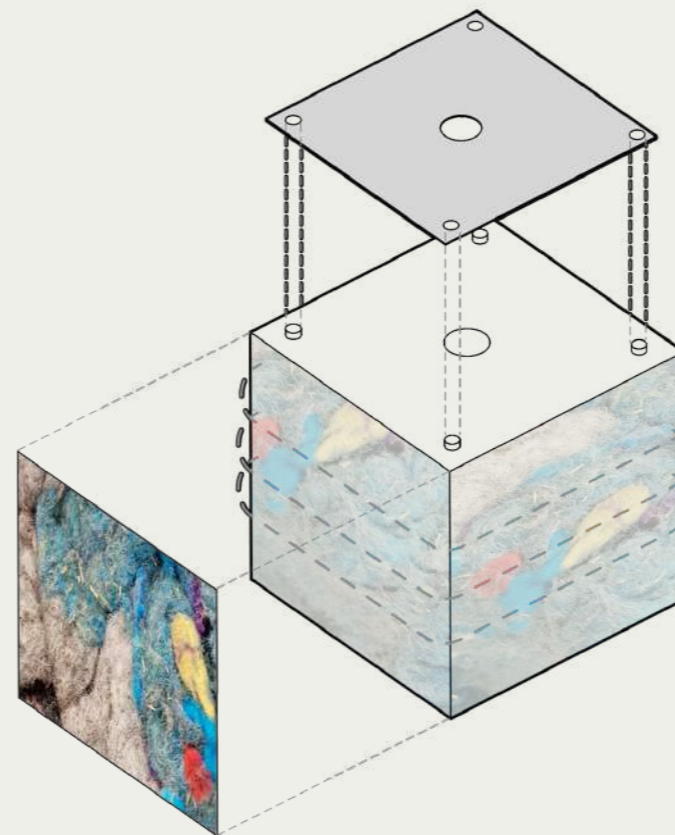


The workshop area is a dynamic and flexible space. Curtains replace traditional walls, allowing the space to be easily divided into separate zones or opened up into a shared area, enabling adaptable spatial organization.

BUTTONED FURNITURE



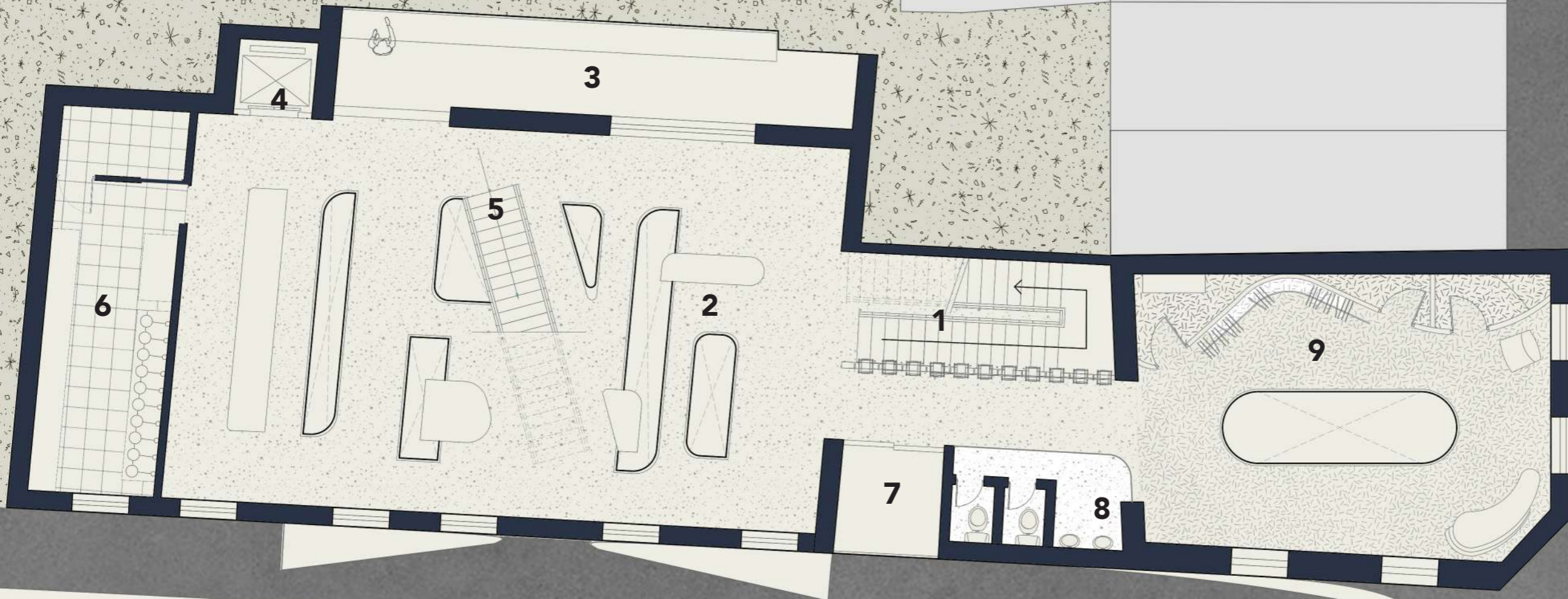
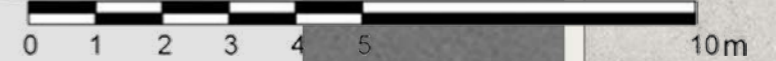
Furniture is attached to the wall like buttons—easily detached when needed and reattached when not in use, keeping the space both flexible and tidy.



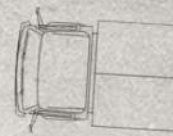
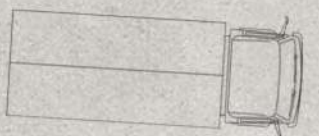
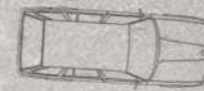
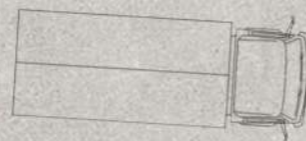
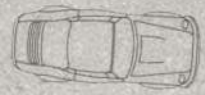
FIRST FLOOR



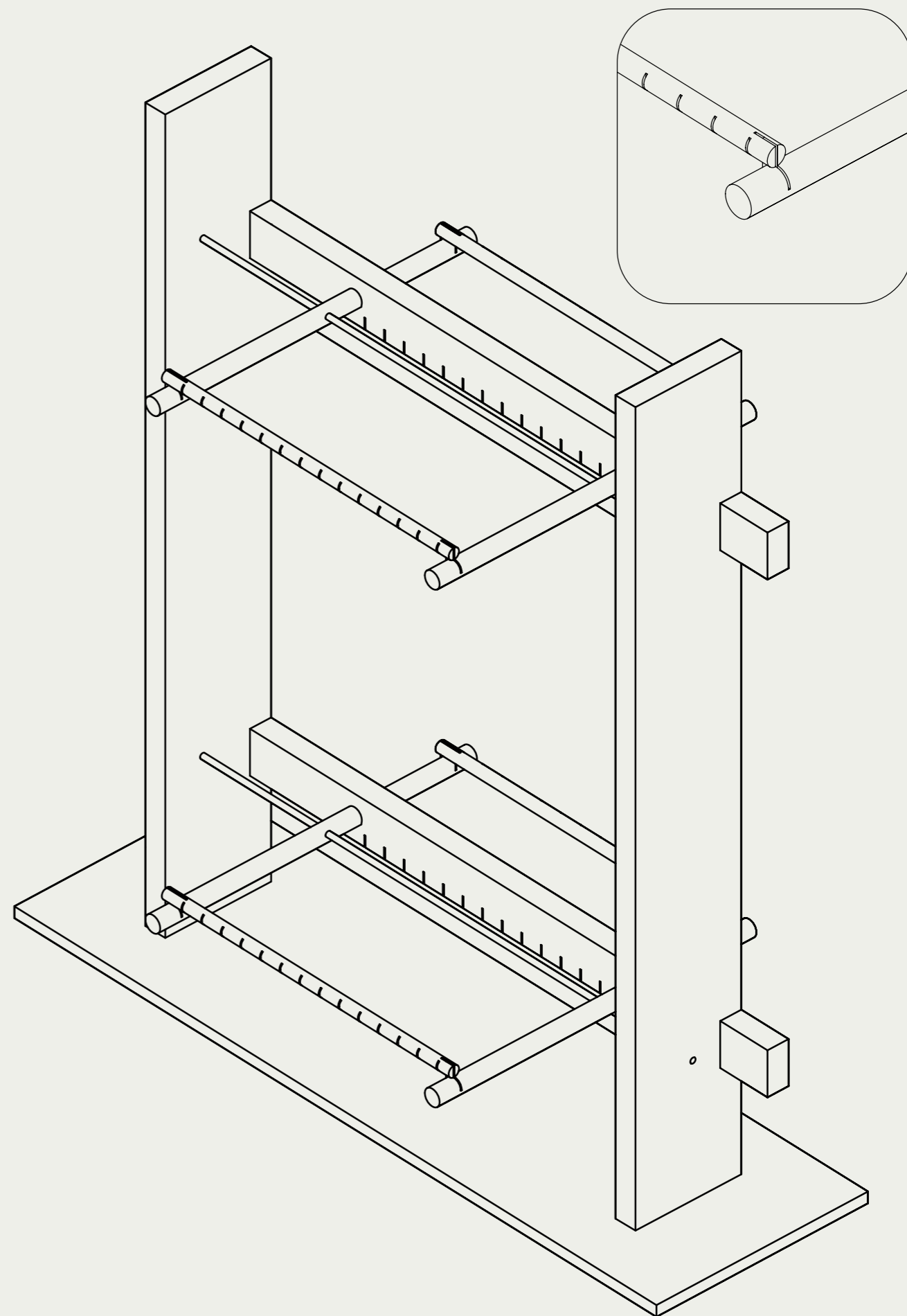
SCALE 1:100

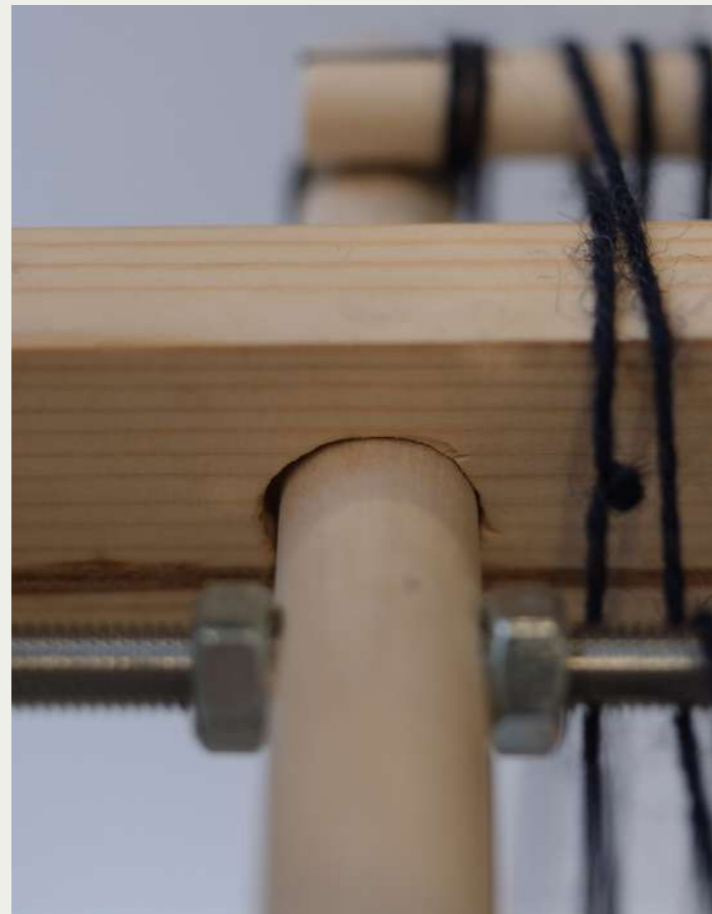


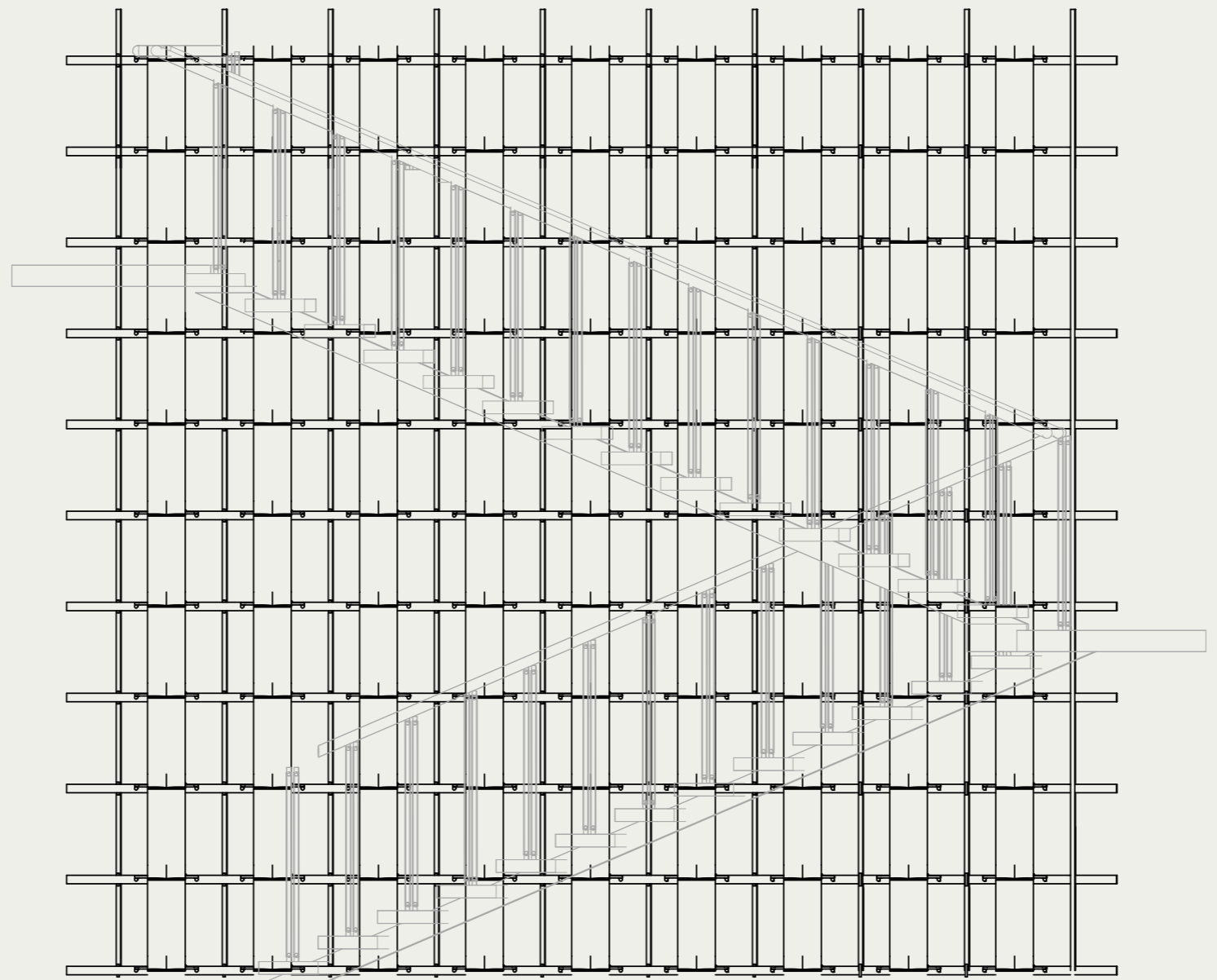
- 1. Exhibition staircase
- 2. Exhibition Area
- 3. Balcony bar
- 4. Elevator
- 5. Experience the staircase
- 6. Between winding lines
- 7. Balcony
- 8. Toilet
- 9. Clothing sales



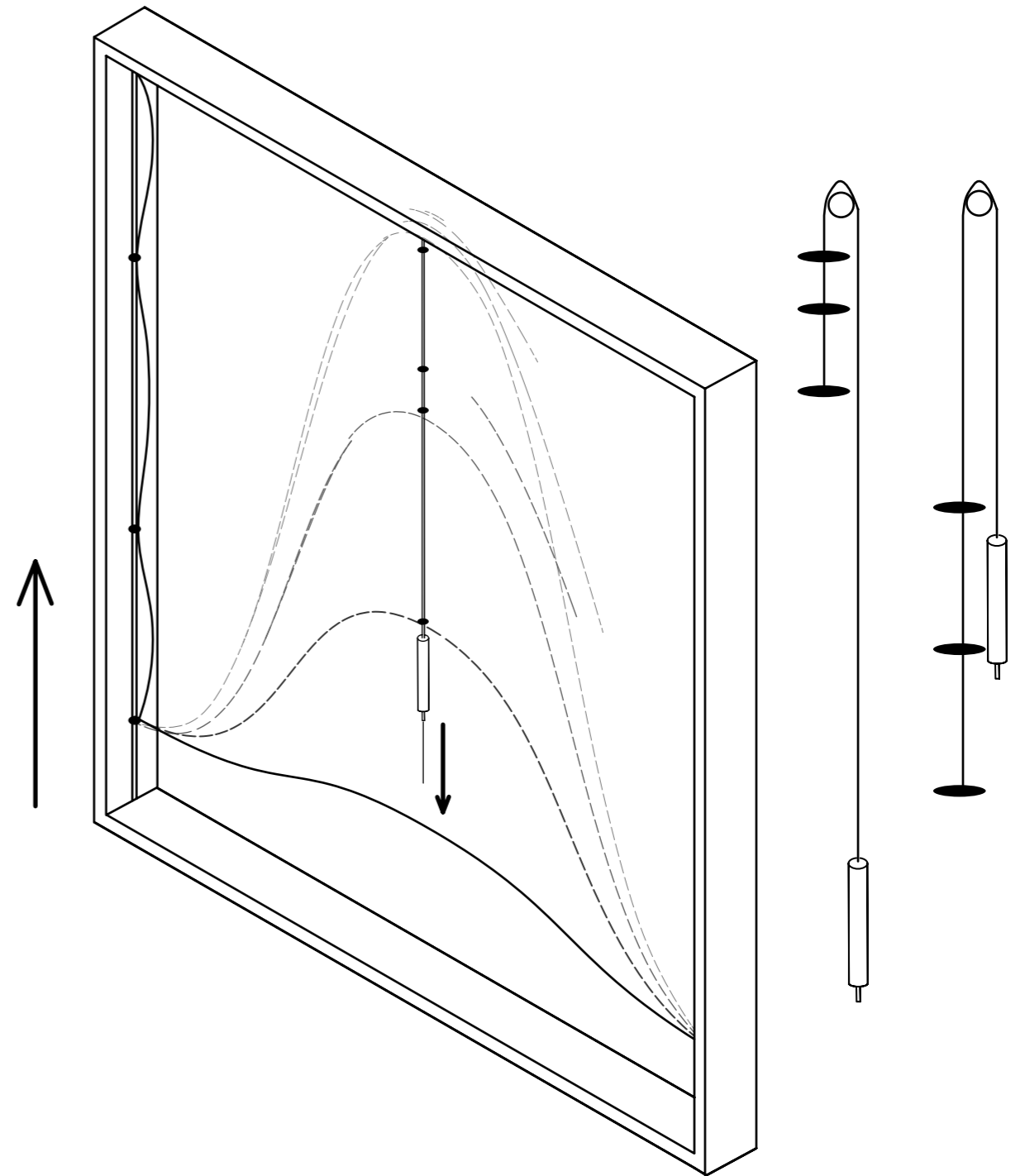










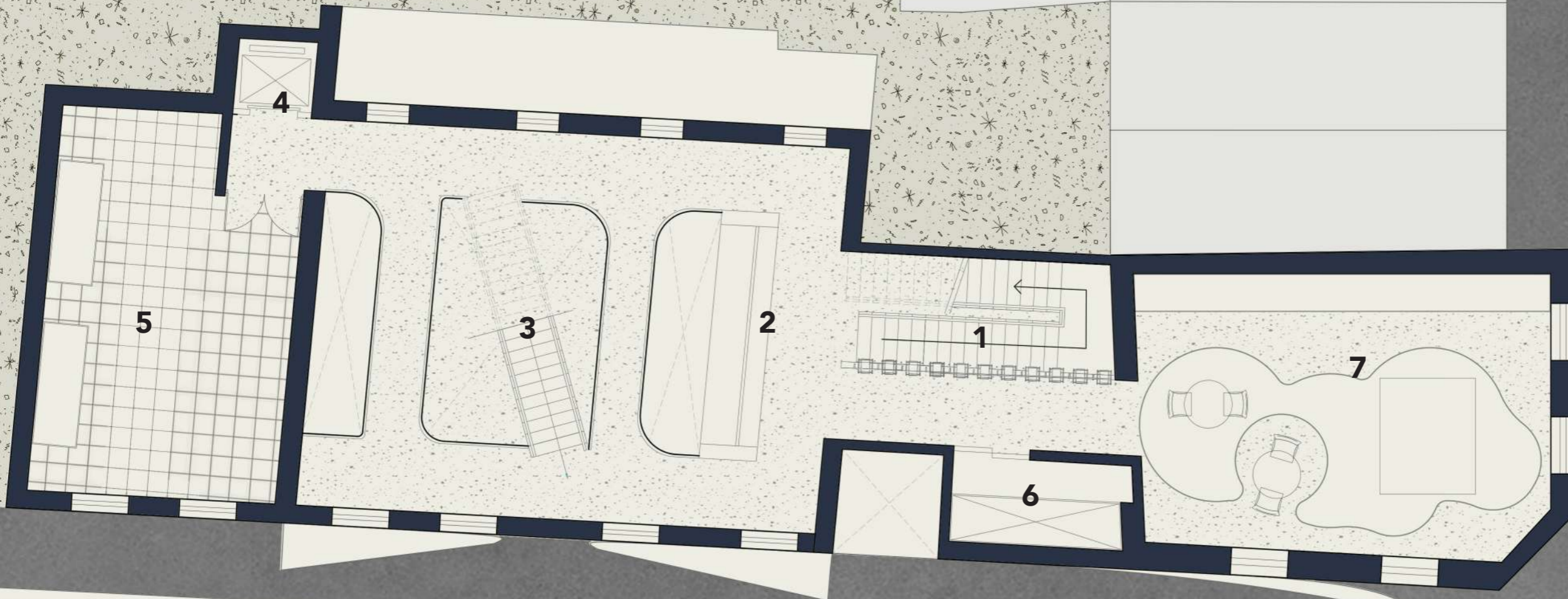
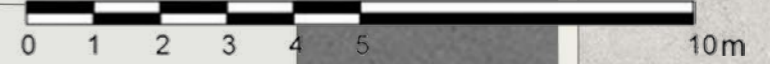




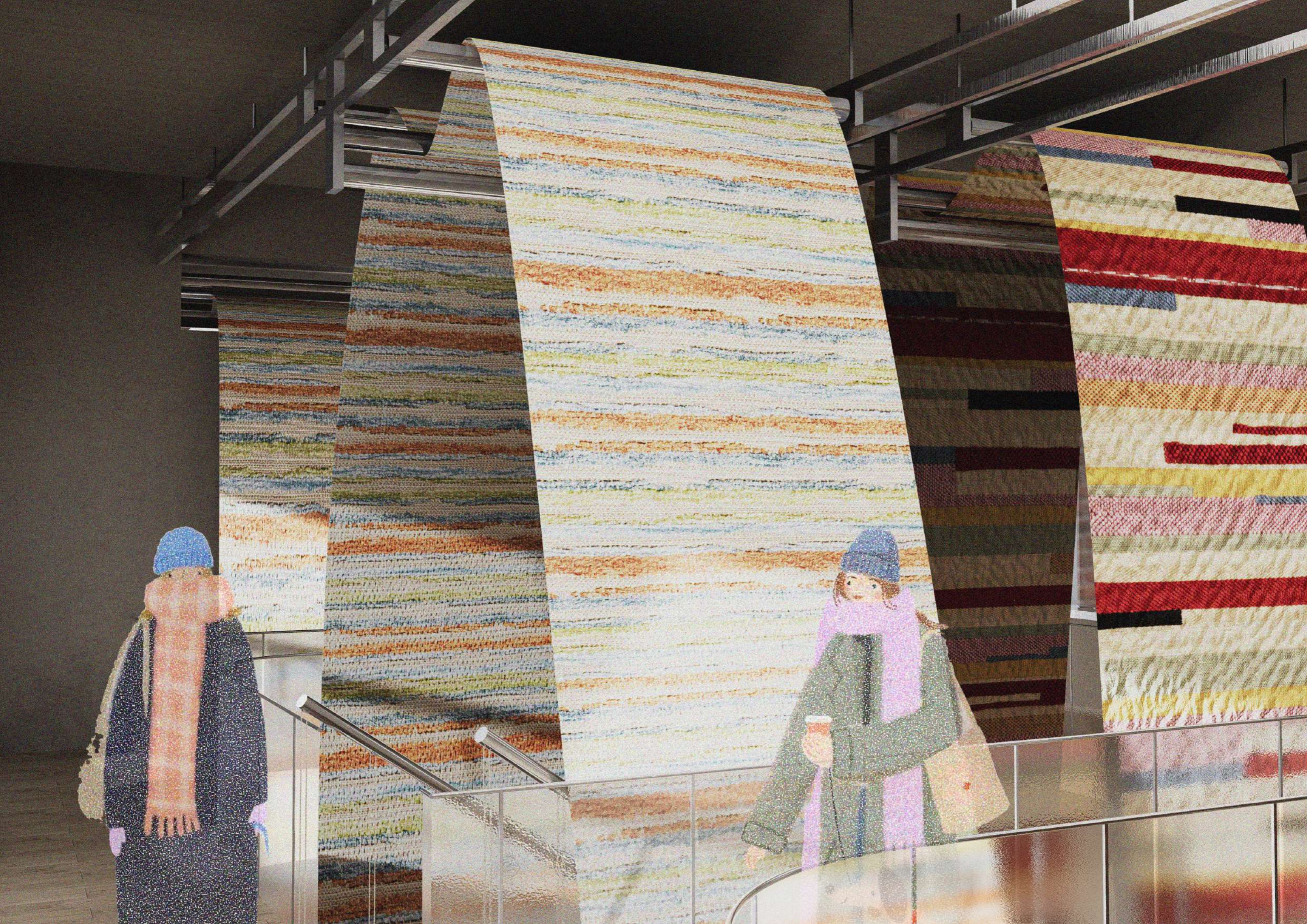
SECOND FLOOR

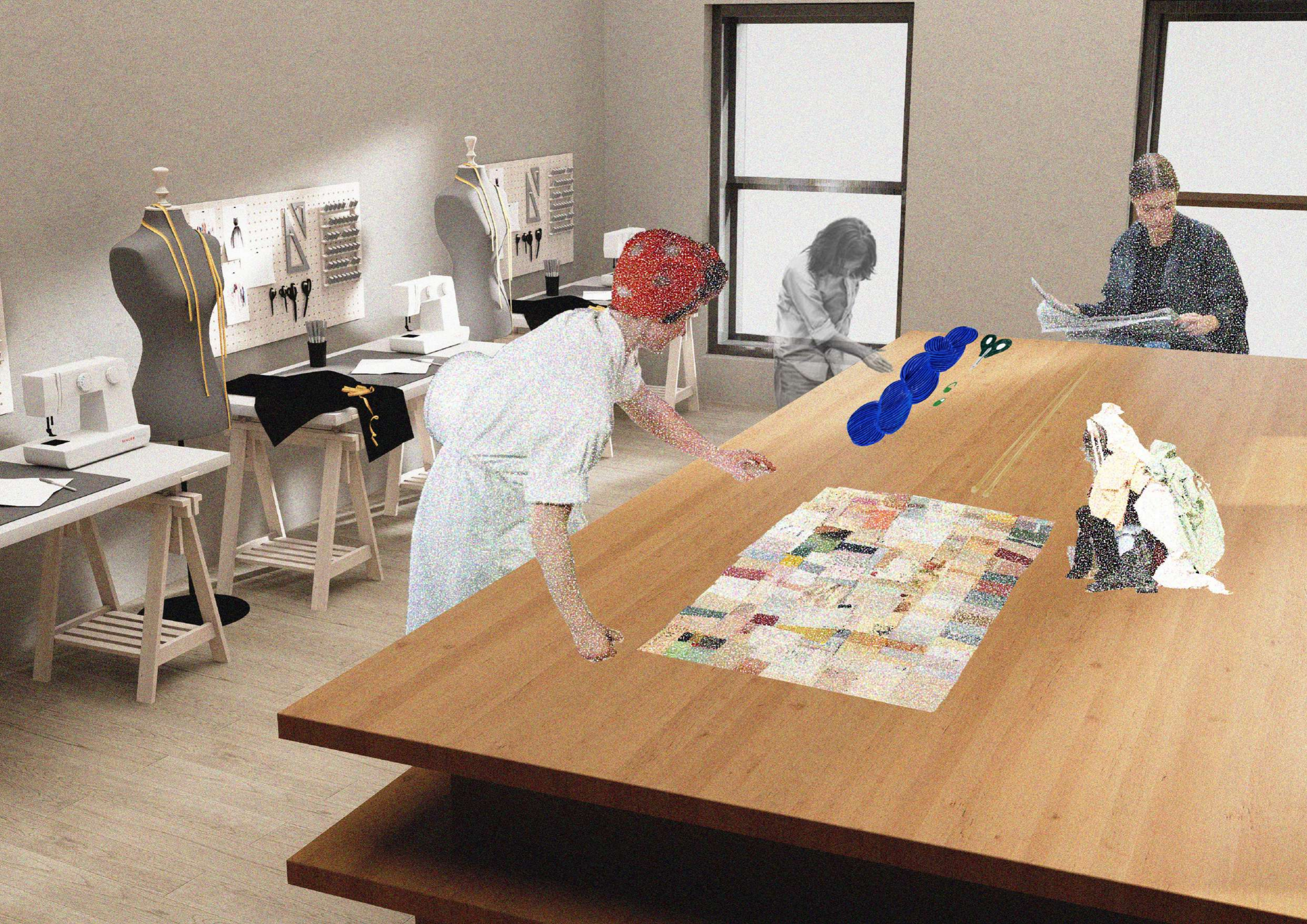


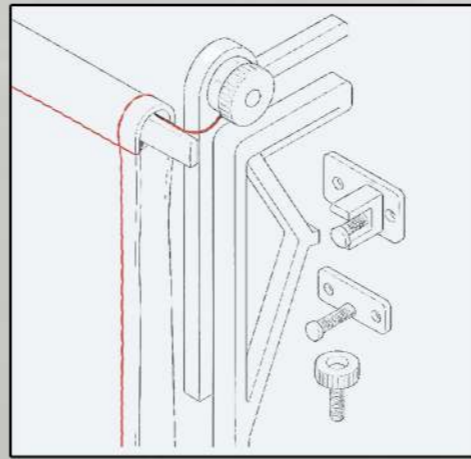
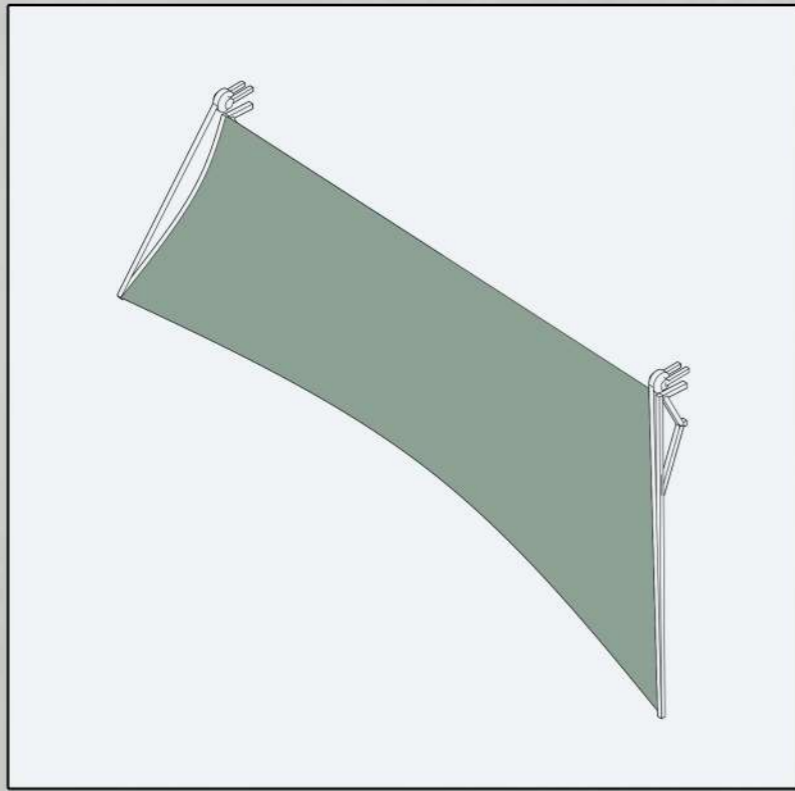
SCALE 1:100



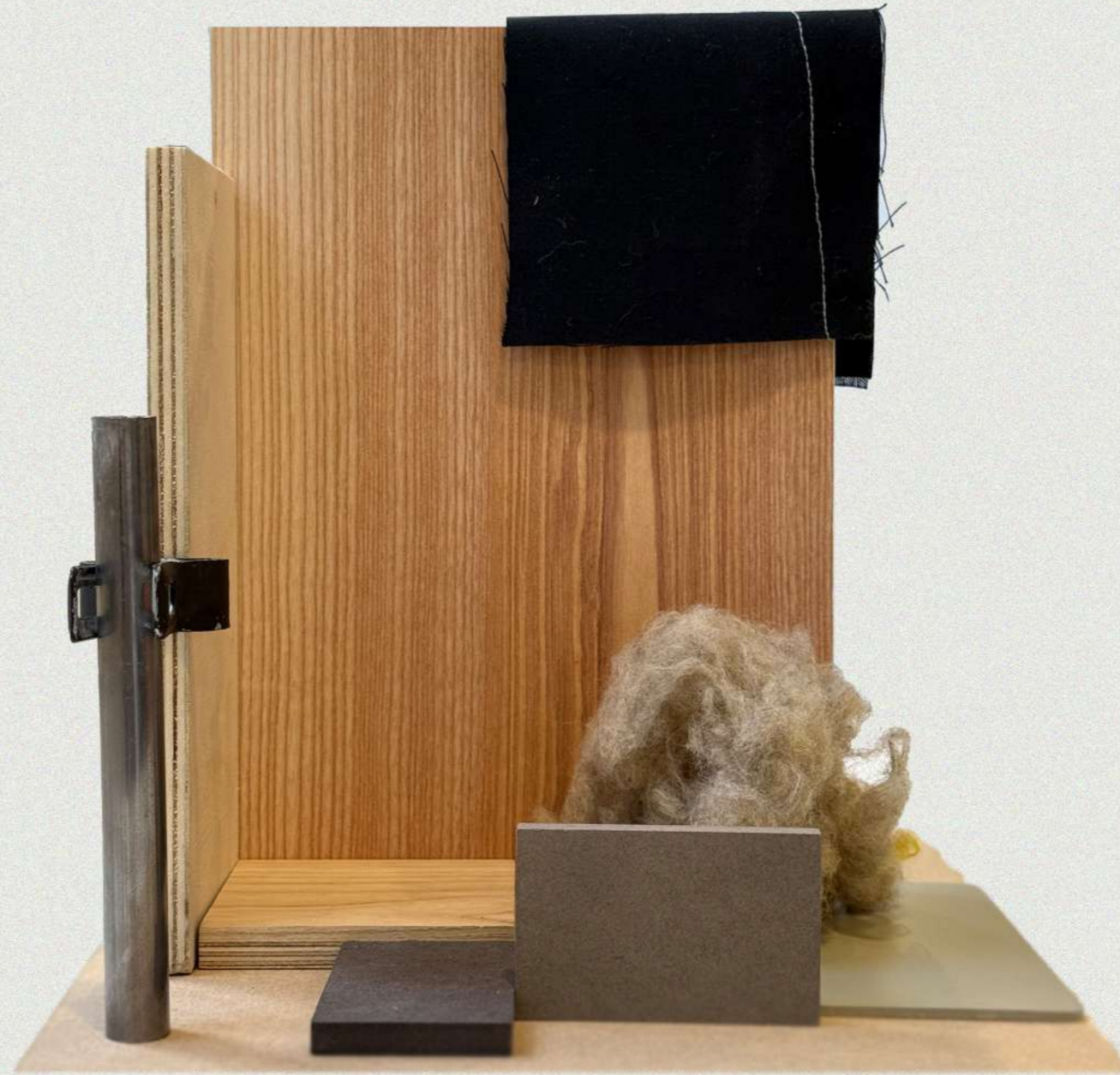
- 1. Exhibition staircase
- 2. Cutting area
- 3. Experience the staircase
- 4. Elevator
- 5. Weaving room
- 6. Storage room
- 7. Textile area







MATERIAL PLATE





Now, the thread is in your hands...