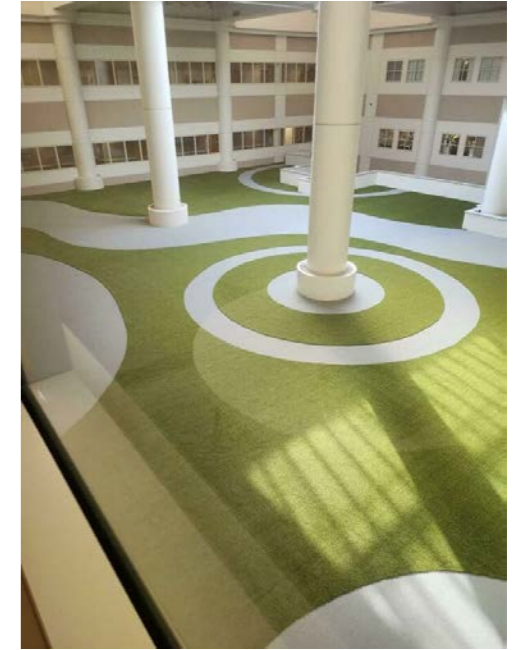
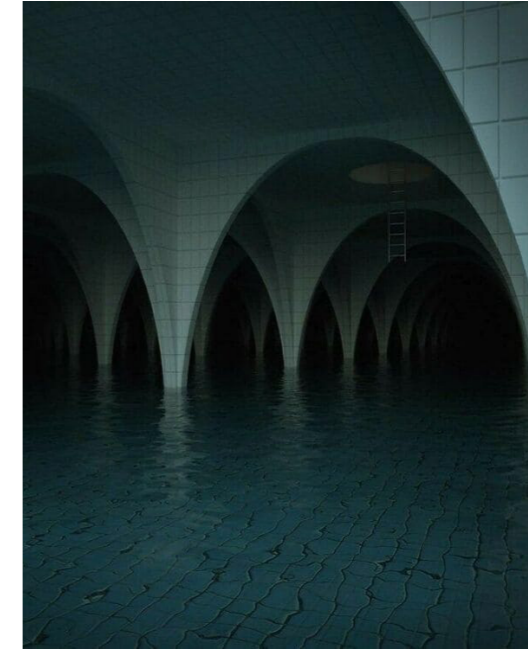


After Hour — Renovation Project of the 15 Westferry Circus Building

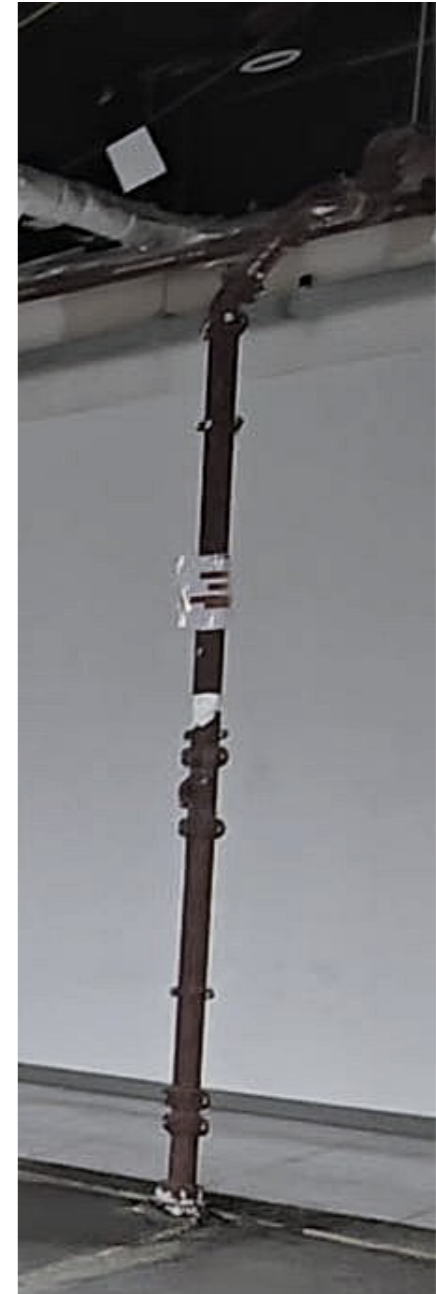
**A Sports Complex for Community Vitality
Super Reuse — Jiale Liu**

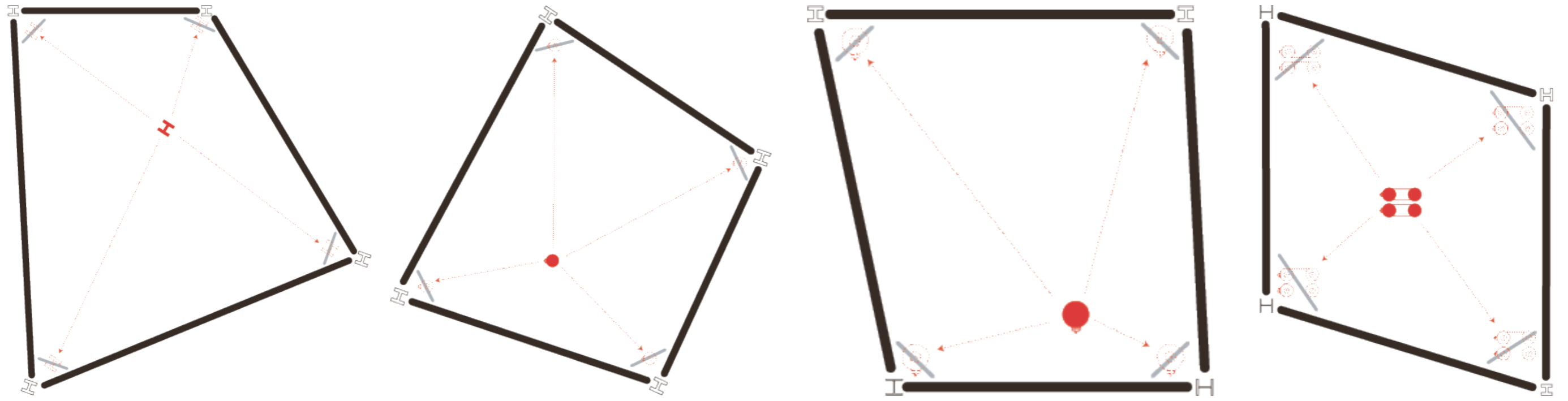
The conceptual origin of the Artefact—Liminal Space





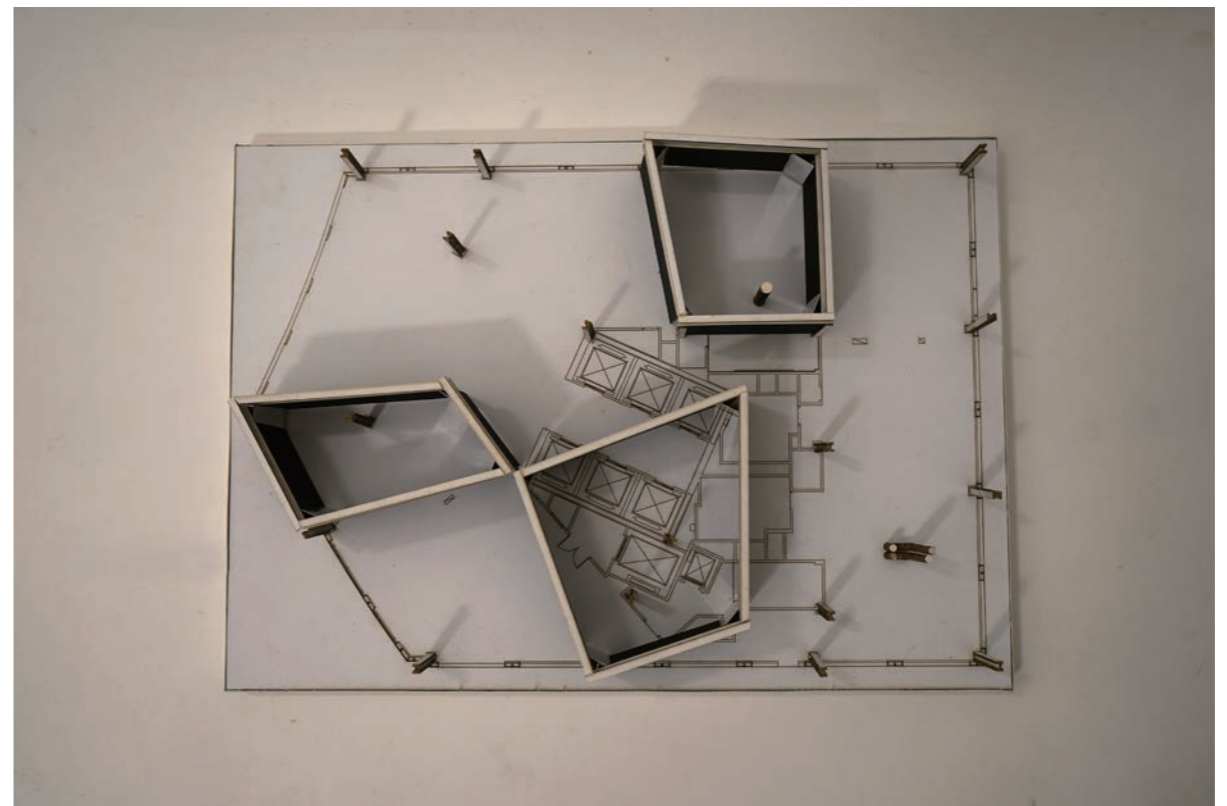
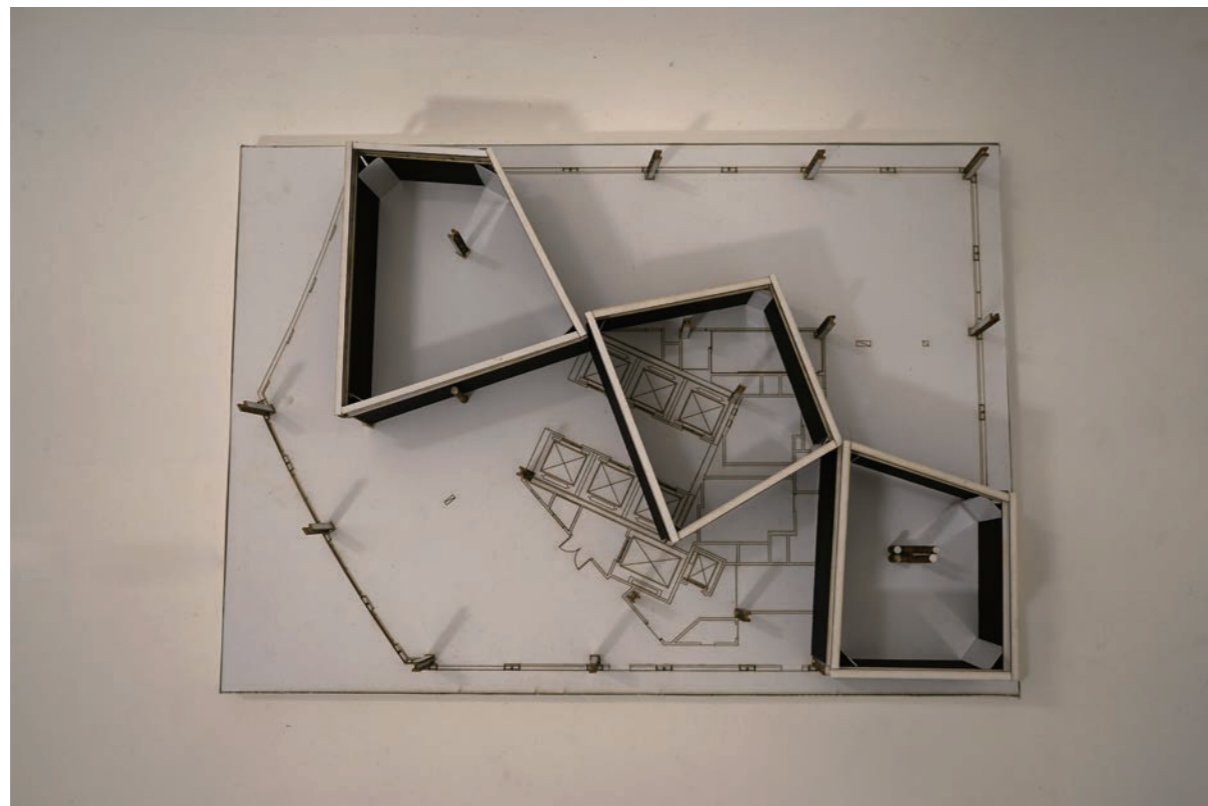
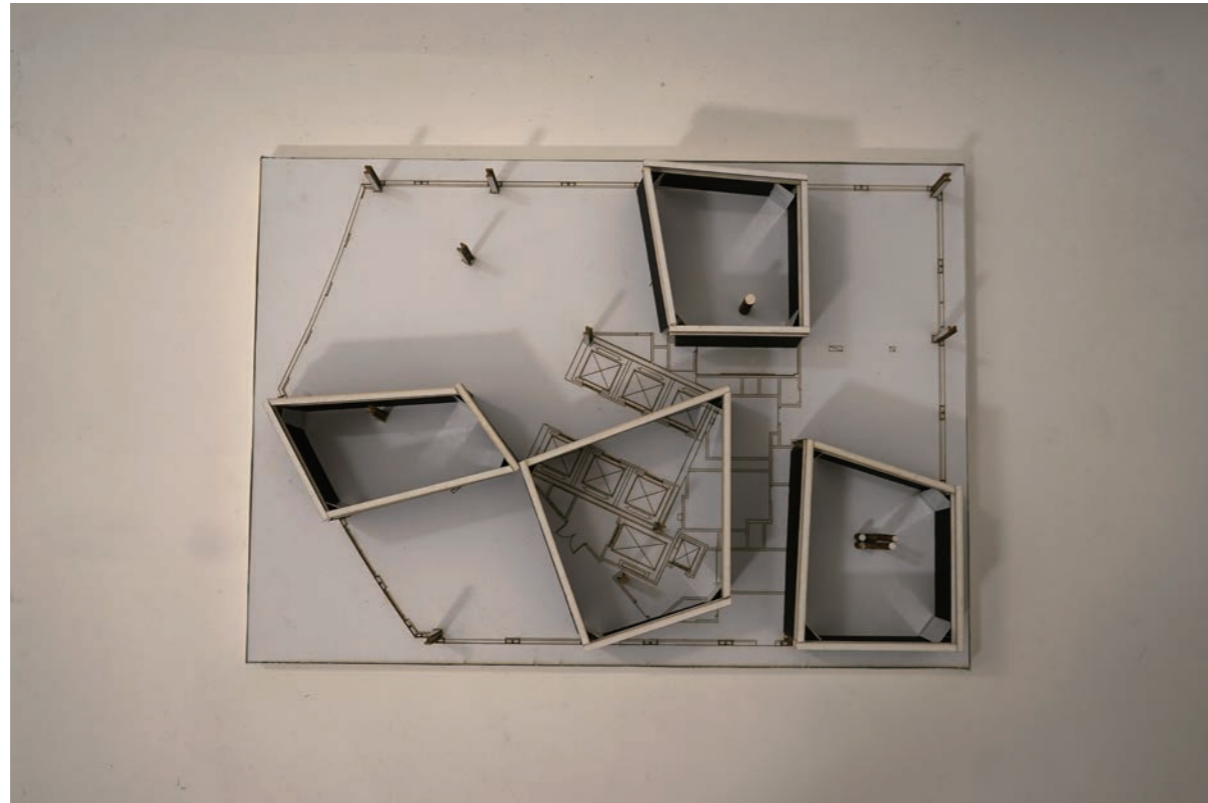
Activating Elements

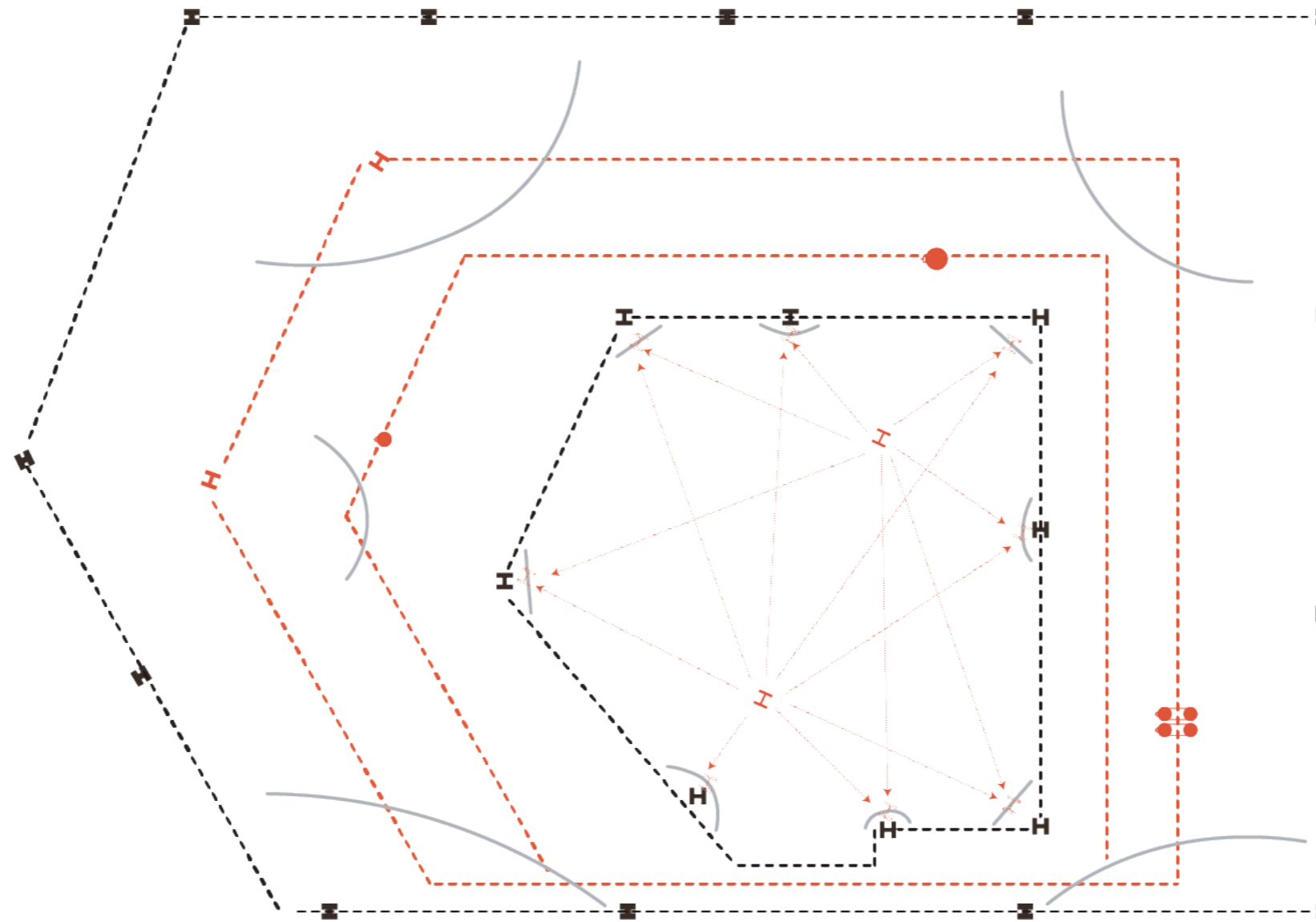




Using mirrored reflections, a visual intervention is created in which the exposed central elements appear to “control” or “awaken” the hidden structures. This subtle yet continuous perceptual connection reactivates the relationship between the viewer and the architecture.

The red solid represents the central element; black lines indicate enclosed space, grey lines denote mirrors, and dashed forms show mirror reflections.



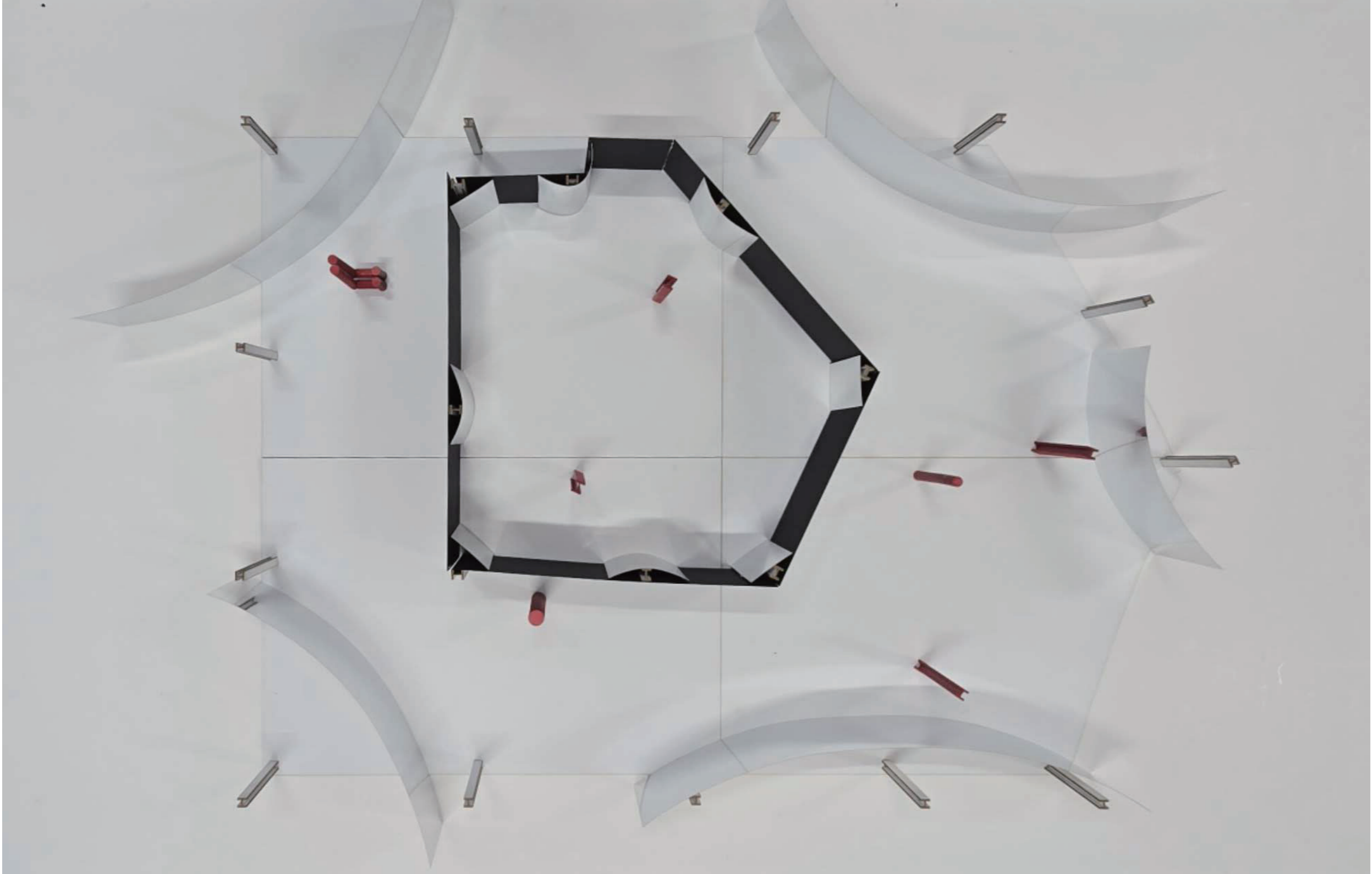


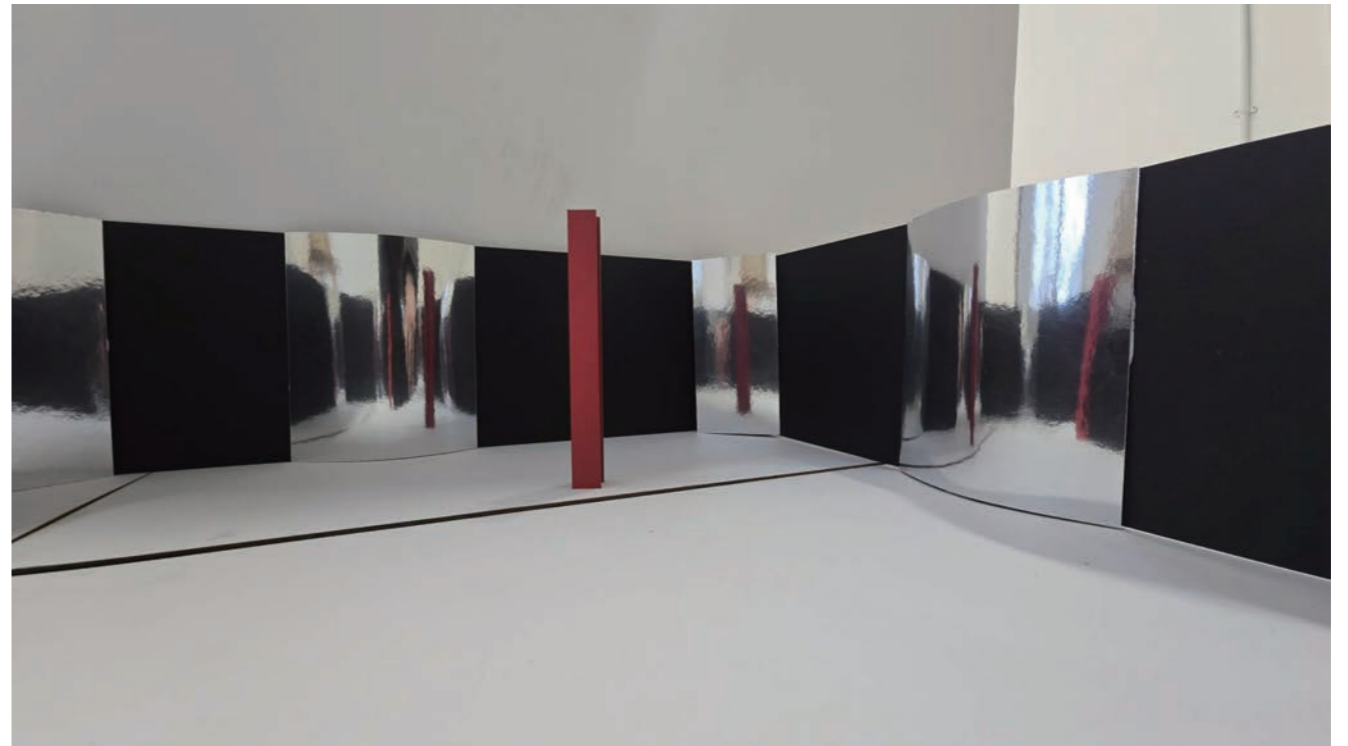
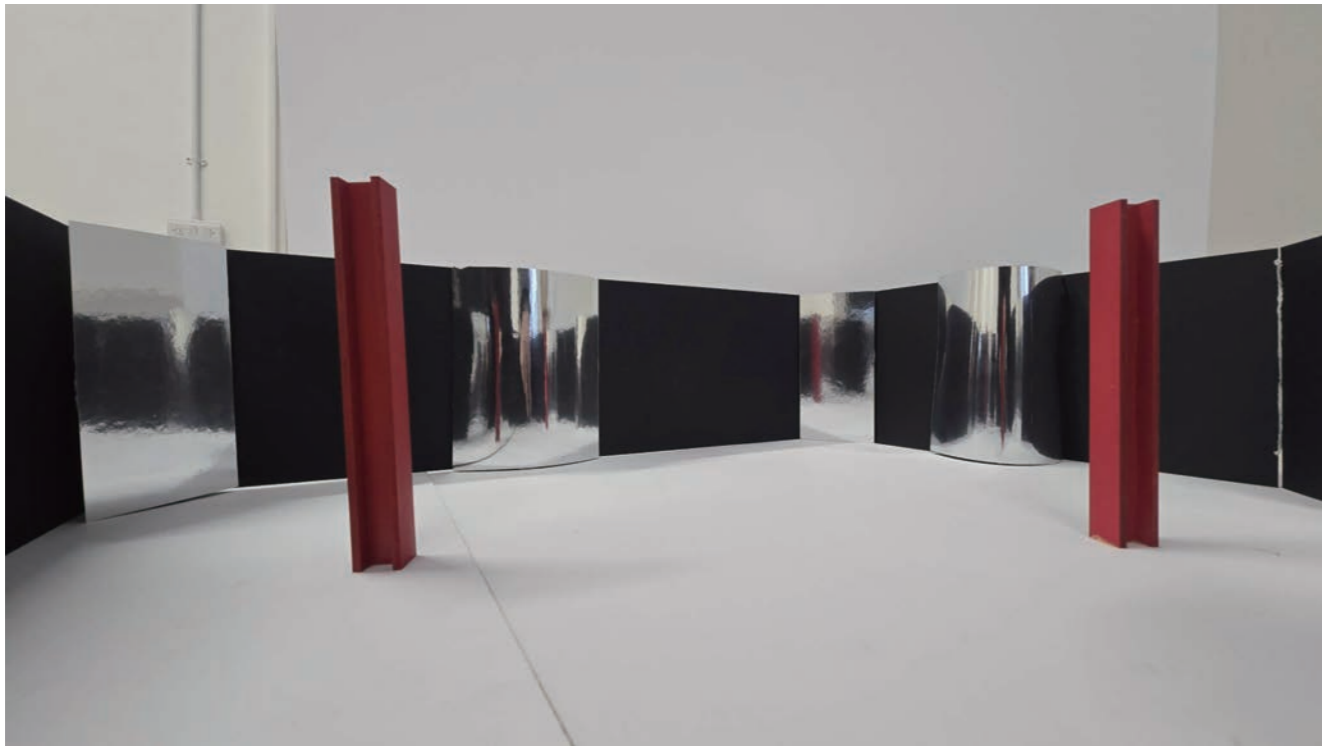
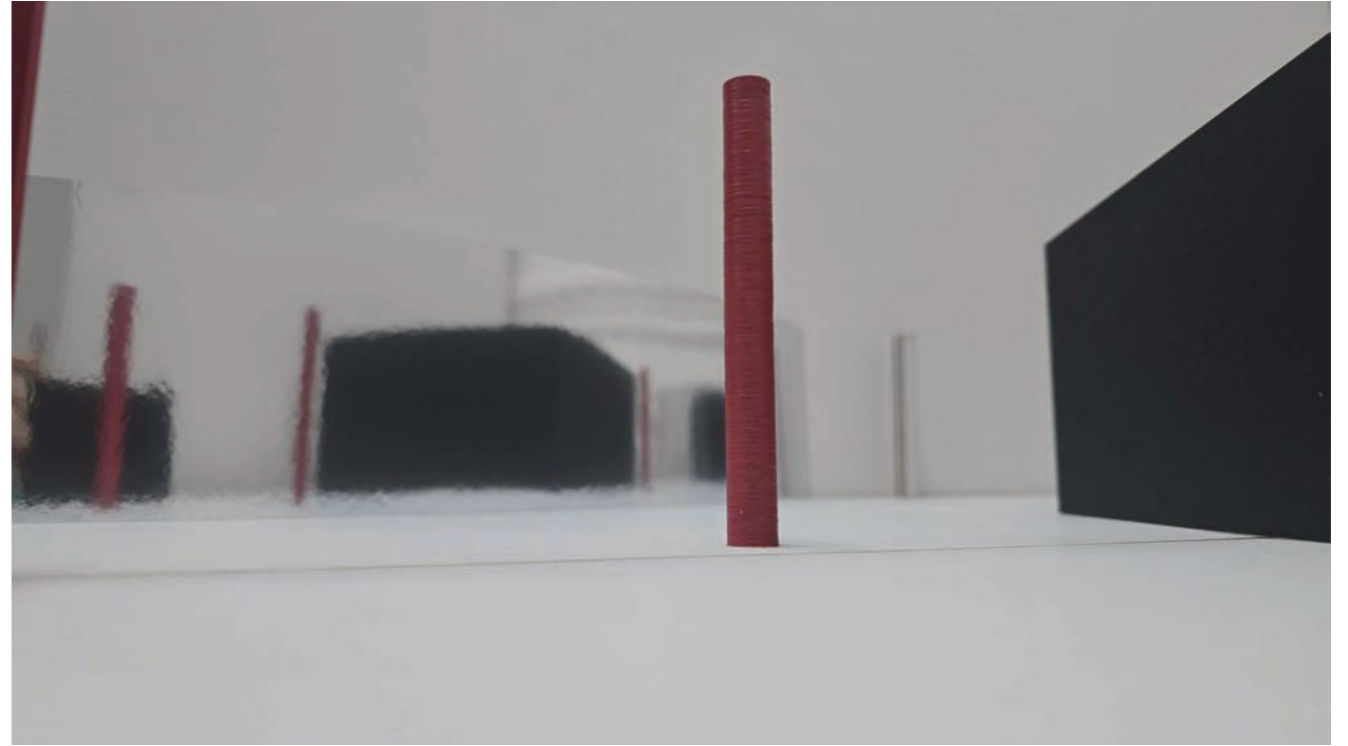
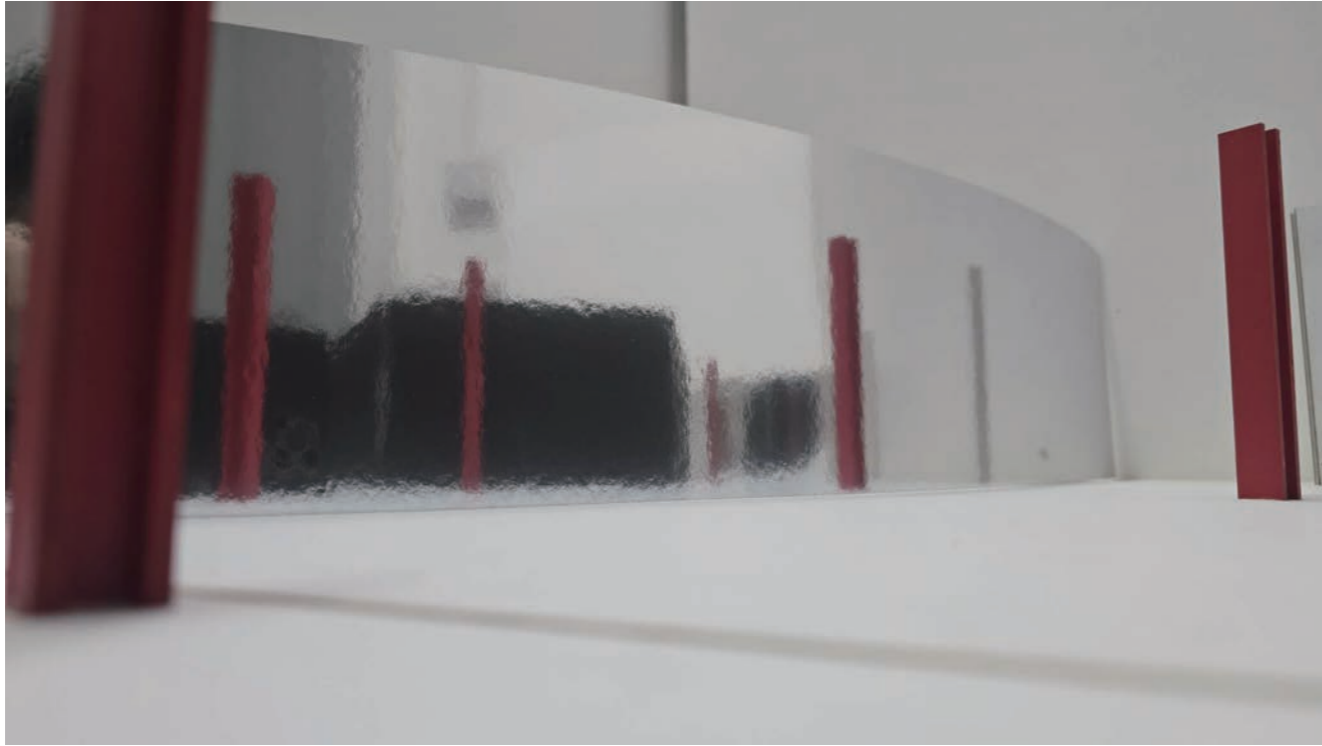
A visual intervention is constructed through mirror reflections to address the absence of structural repetition in the space. The black dashed lines in the plan indicate the positions of existing core and peripheral columns, with two reflective strategies applied to the inner and outer zones.

Inside the core, mirrored column surfaces generate layered reflections that resonate with the central exposed elements, creating a sense of depth through repetition and overlap.

Outside the core, mirrors are oriented according to specific reflective targets. The alignment of mirror, object, and reflection simulates the rhythm of the peripheral columns, reconstructing spatial order and continuity through positional imitation.

Through this approach, the intervention not only introduces a layered visual logic but also serves as a means to articulate and define the boundaries of this "unfinished" space. While the mirrored system brings a sense of order to the environment, it simultaneously reinforces its ambiguity and transitional quality, allowing the condition of the bounded liminal space to be more clearly perceived and experienced.





An architectural model of a building facade, likely for the renovation project mentioned in the text. The model is composed of a series of horizontal layers, each featuring a screen of vertical, light-colored slats. The slats are closely spaced and create a rhythmic, textured appearance. The building's form is somewhat irregular, with a curved top and a base that appears to be supported by a series of vertical posts. The overall aesthetic is modern and minimalist, emphasizing light and shadow.

After Hour — Renovation Project of the 15 Westferry Circus Building
A Catalyst Sports Complex for Community Vitality

The conceptual origin of the project—After hours





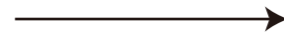
Functional Positioning



Canary Wharf, as a major financial and business centre in London, has developed into a multifunctional area that integrates work, life, and leisure. Its commercial and recreational facilities are already well established.



Functional Positioning



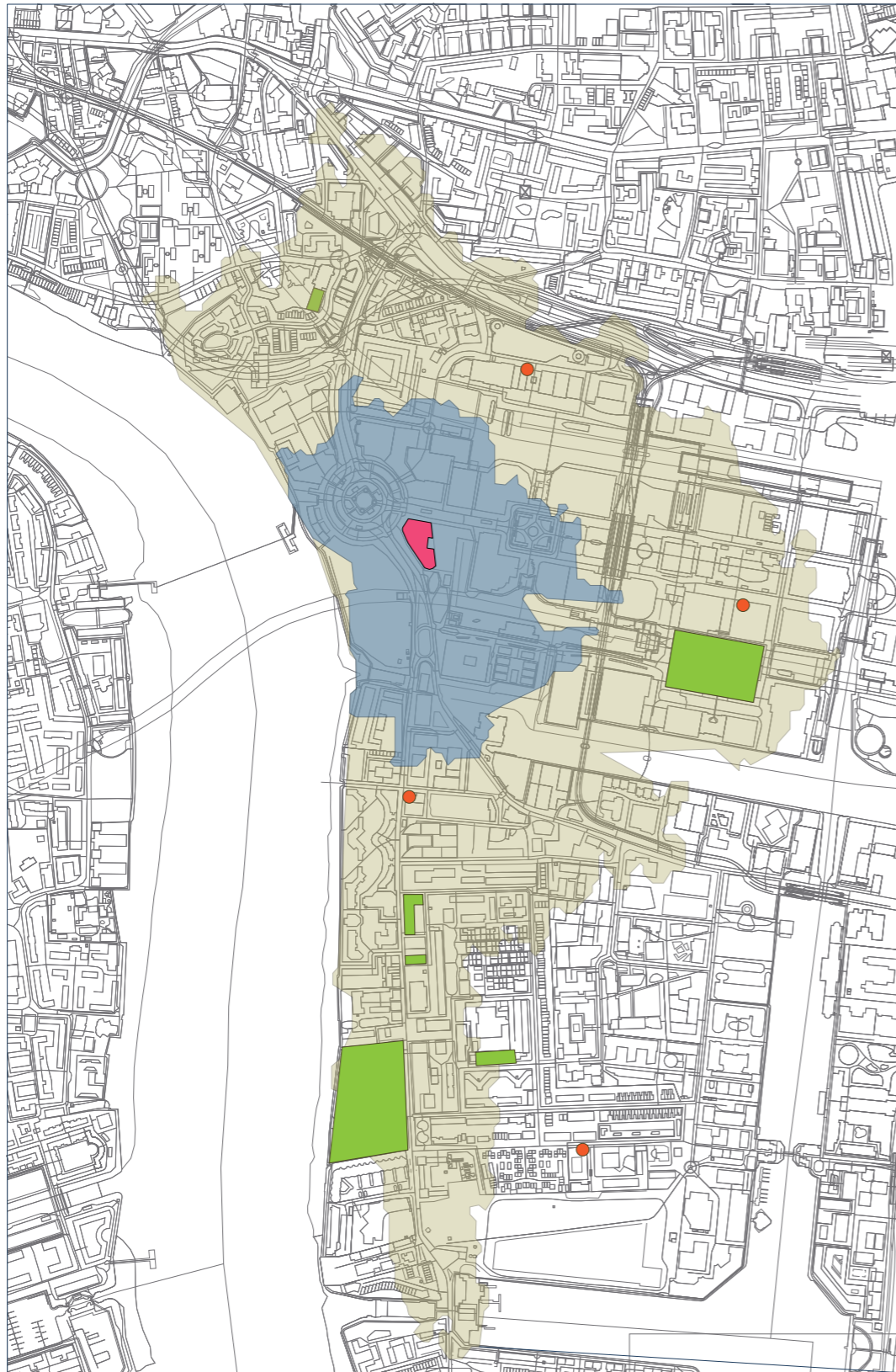
Canary Wharf is a high-density development area. Due to its commercial orientation and limitations in land and space, the existing public facilities mainly cater to residents' daily leisure and basic exercise needs, consisting mostly of simple outdoor spaces such as riverside walks, parks, and community gyms. While practical, these facilities are insufficient to support professional or high-intensity sports activities. Against this background, converting the 15 Westferry Circus Building into a sports complex is a forward-looking solution.

Functional Positioning



The construction of the sports complex can provide a scientific, convenient, and sustainable solution for the office population of Canary Wharf, directly addressing the health crisis caused by prolonged sedentary behavior.

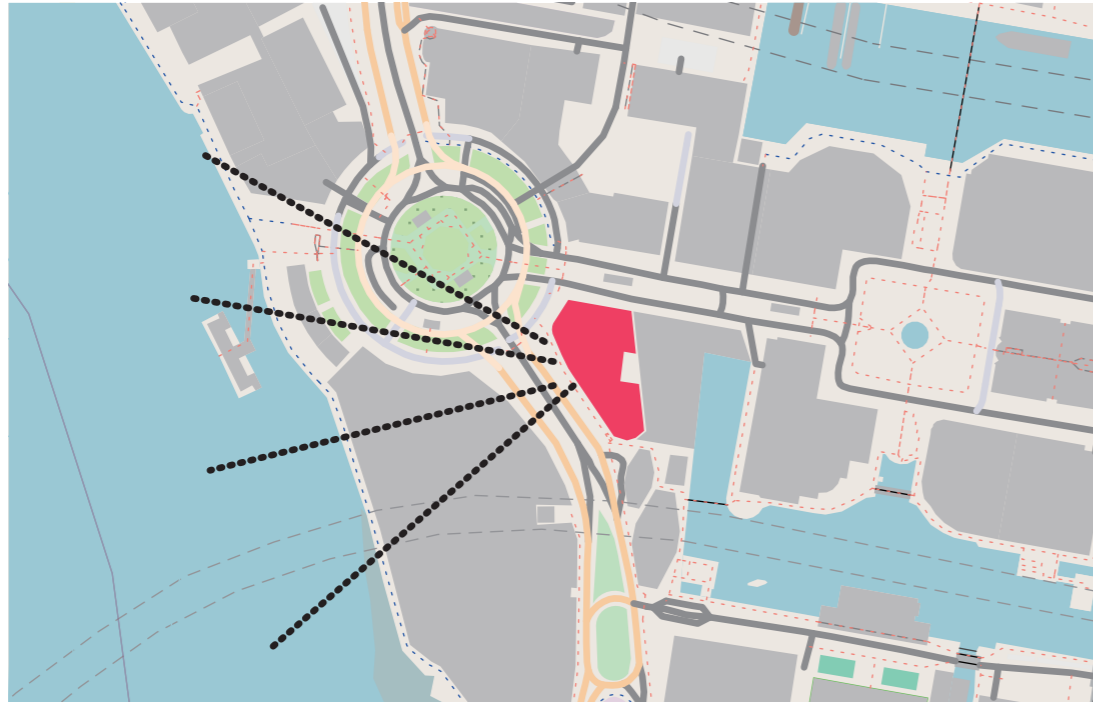
Site Analysis



15 Westferry Circus Building is located on the west side of London's Canary Wharf, and although there are a number of high end gyms (e.g. PureGym, Third Space) and a scattering of waterfront green spaces (e.g. Thames Path, Middle Dock) within a 10-minute walk, there is a lack of free, open, integrated movement and green space. Converting the building into a groundscape sports complex (e.g. incorporating vertical greenery, a sky track, climbing wall and stadium) can effectively fill the gap in the area.

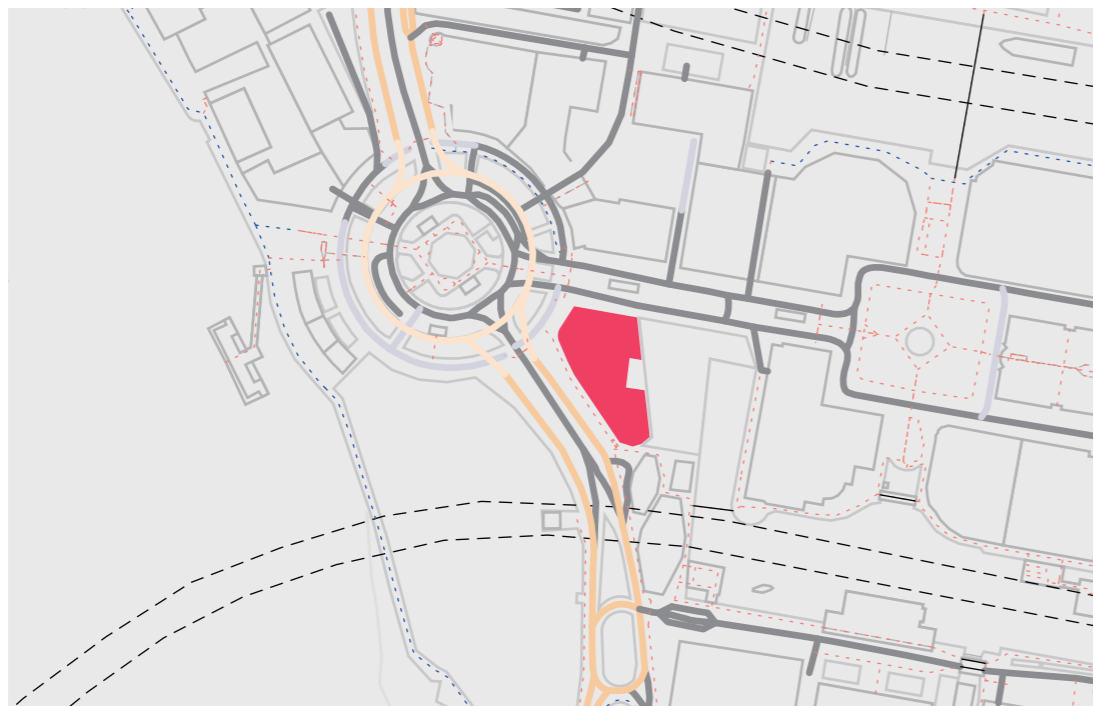
- Site
- Ten-minute walk coverage
- Ten-minute public transport coverage
- Green space
- Gyms

Site Analysis



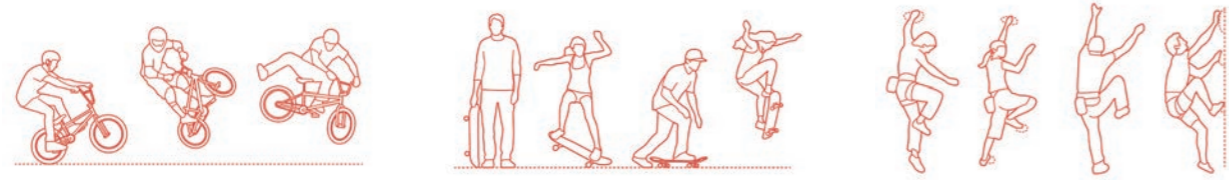
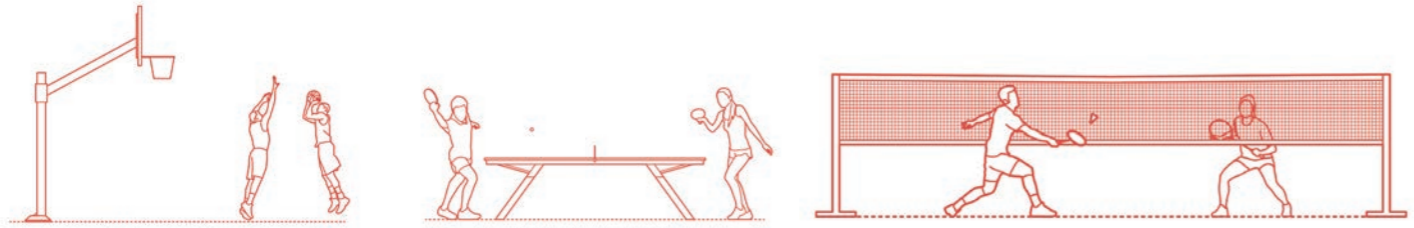
15 Westferry Circus is located at the western end of London's Canary Wharf, close to the River Thames, so some floors may have views of the Thames, particularly those facing the south or west. Due to the building's height of 44.5 metres (10 storeys)¹, views may be obstructed by neighbouring high-rise buildings (e.g. One Canada Square, Newfoundland, etc.), but some river and wharf views may still be available. Transportation is primarily dependent on the DLR (Light Rail Transit), underground (Jubilee Line) and buses.

The south or west side of the building can be designed with floor-to-ceiling glass curtain walls and viewing terraces to enhance the visual penetration of the Thames and marina views and to improve the spatial quality. Open plan spaces on the lower floors are designed to enhance the connection between the two sides of the building with footpaths of different heights.



- Walking path
- Main road
- Main road
- Main road
- Metro

Design Development

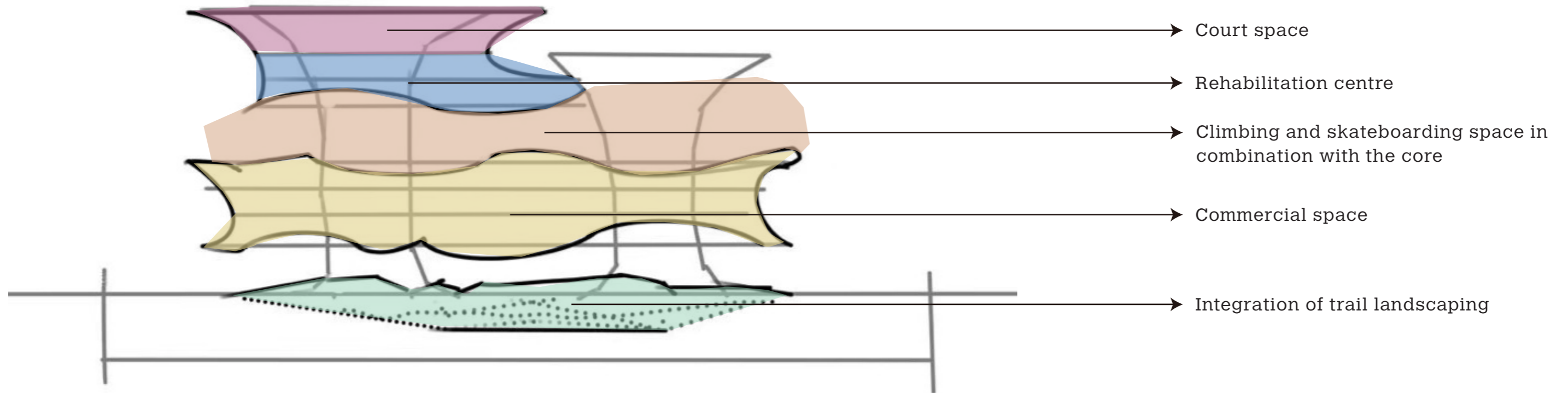


Design Development



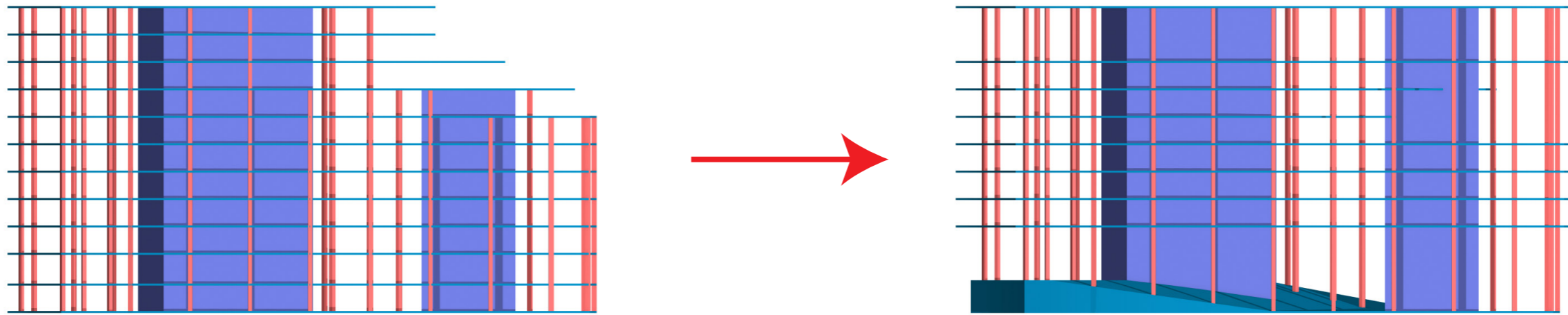
Integrating commercial spaces helps enhance user engagement, extend visitor dwell time, and improve the overall service ecosystem. At the same time, these spaces can also serve the surrounding residents and office workers.

Design Development



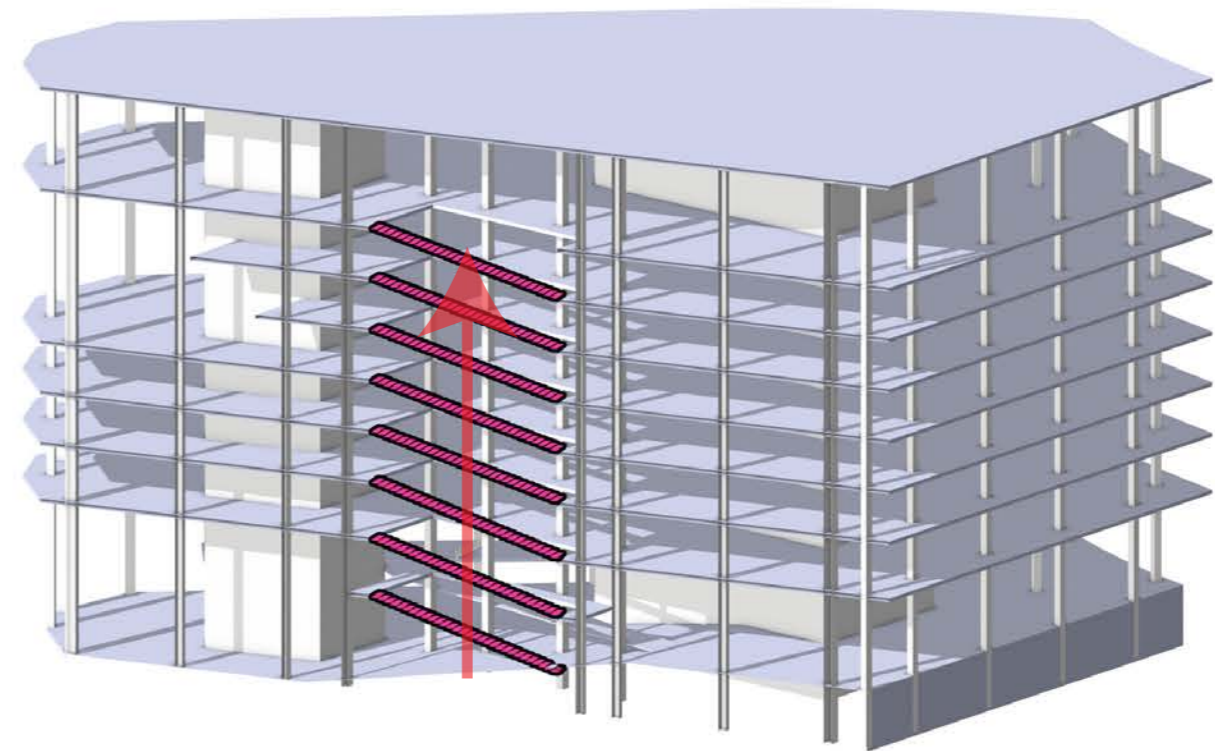
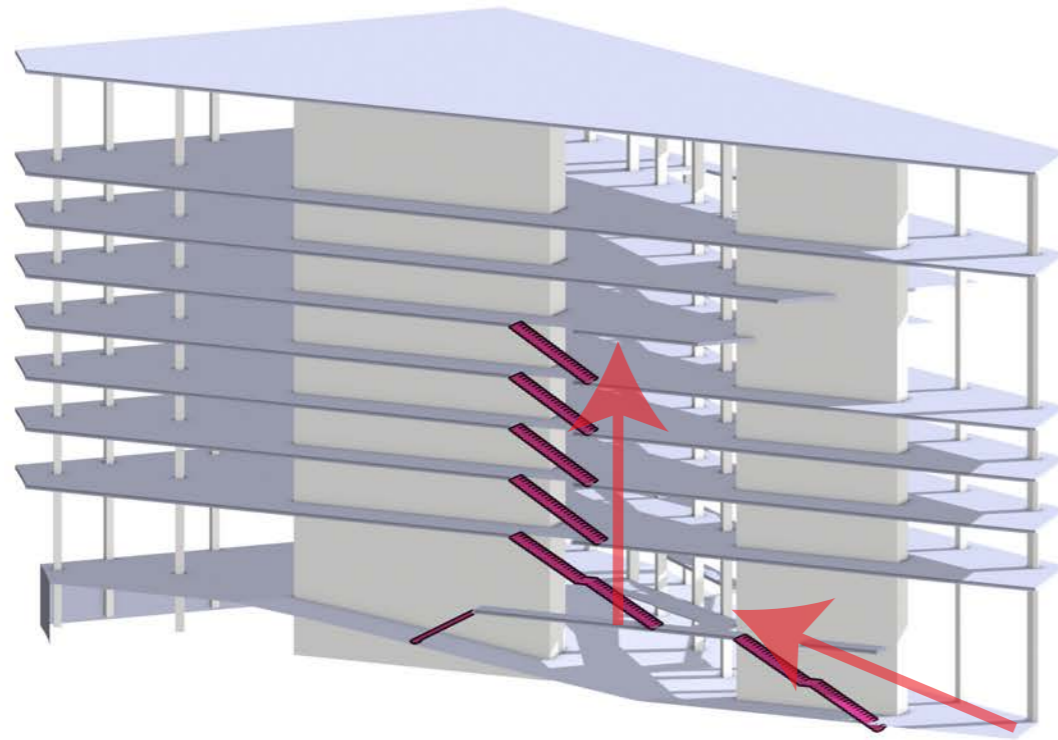
Through the arrangement of different spaces, the building is given a more dynamic form. Relatively static commercial areas are interwoven with vibrant sports spaces, creating a spatial rhythm of movement–stillness–movement. At the same time, visual permeability is enhanced, establishing a rhythm of openness and enclosure throughout the building.

Design Development

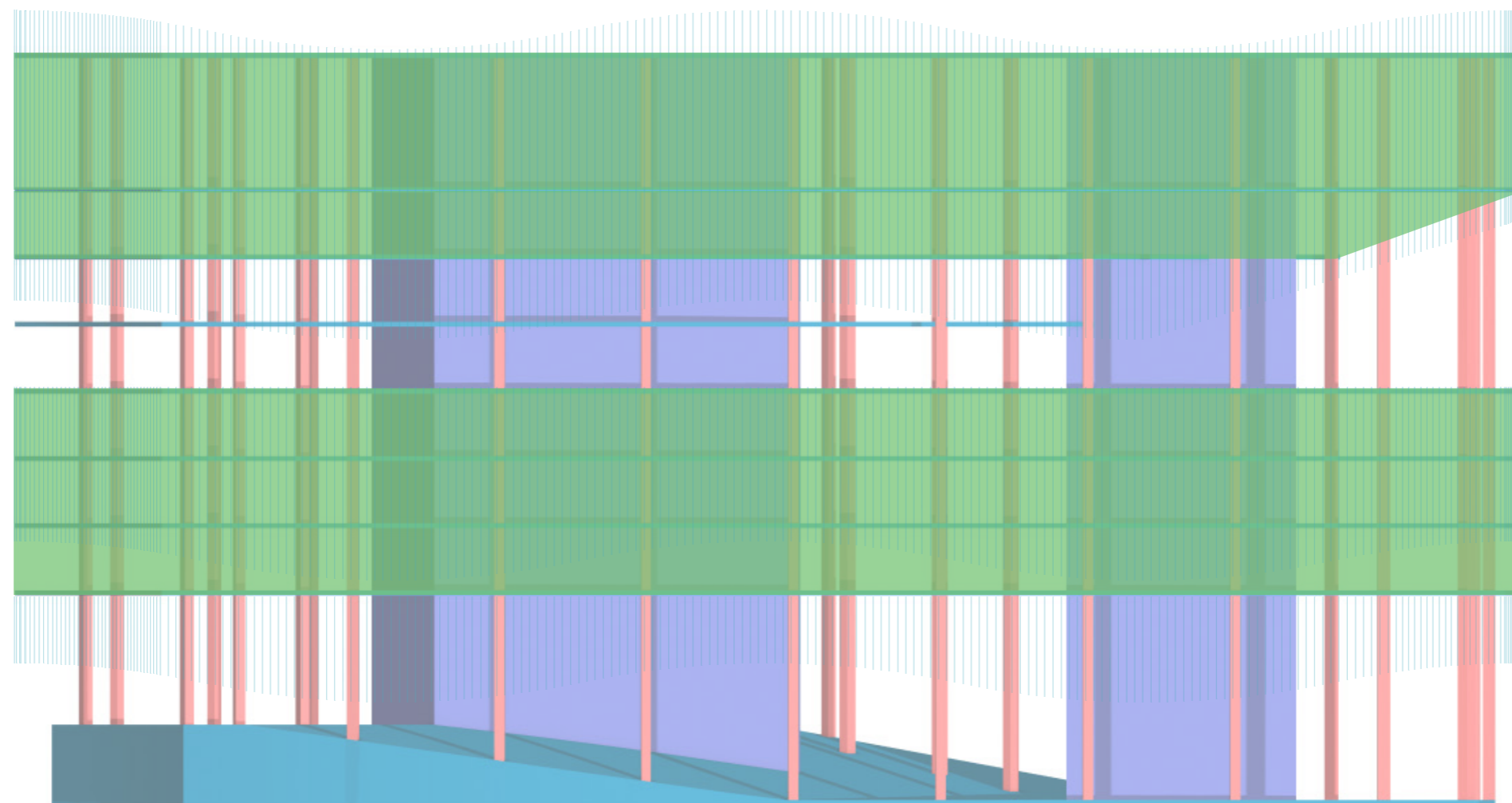




Floor slabs are deformed by removing two ground floors to create outdoor open space and connect pedestrian streets at different heights; the middle slab is retained for commercial use. The upper slab is opened as a semi-open space for skateboarding and climbing, inverted to meet climbing height requirements with a physiotherapy center arranged there. Additional floors are added on top, and part of the core is removed to achieve a more open, high-ceilinged space.

Design Development



The spaces on each floor are connected vertically by the original core elevator, the staircase at the rear of the building, and a spiral staircase. The ground-level landscape forms a ramp running from west to east, connecting pedestrian paths of different heights on both sides of the building.



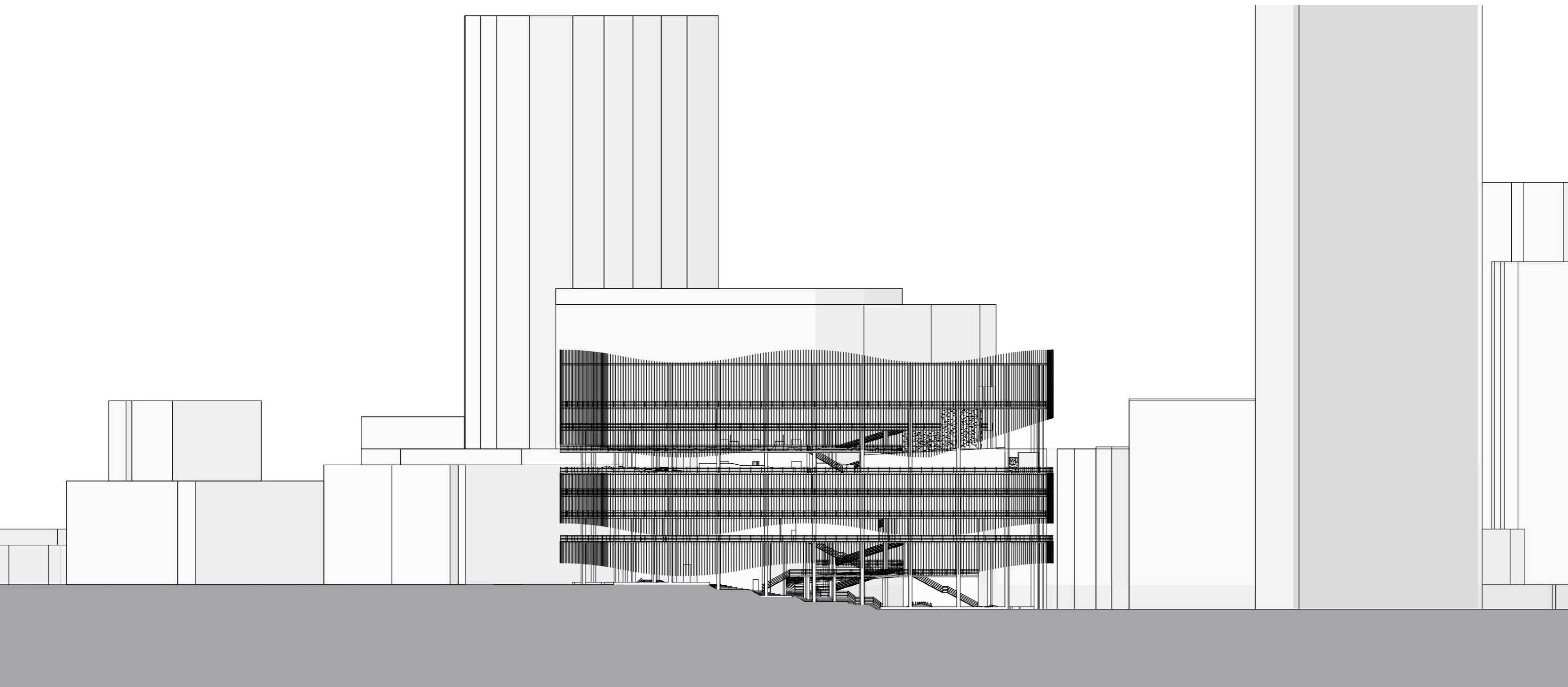
-  Enclosed spaces meet the needs of some indoor sports and commercial areas
-  Climbing and skateboarding, along with the landscape pathways, can be placed outdoors

Spaces are interspersed according to different needs for activity levels and usage, creating a rhythm of open and enclosed areas.

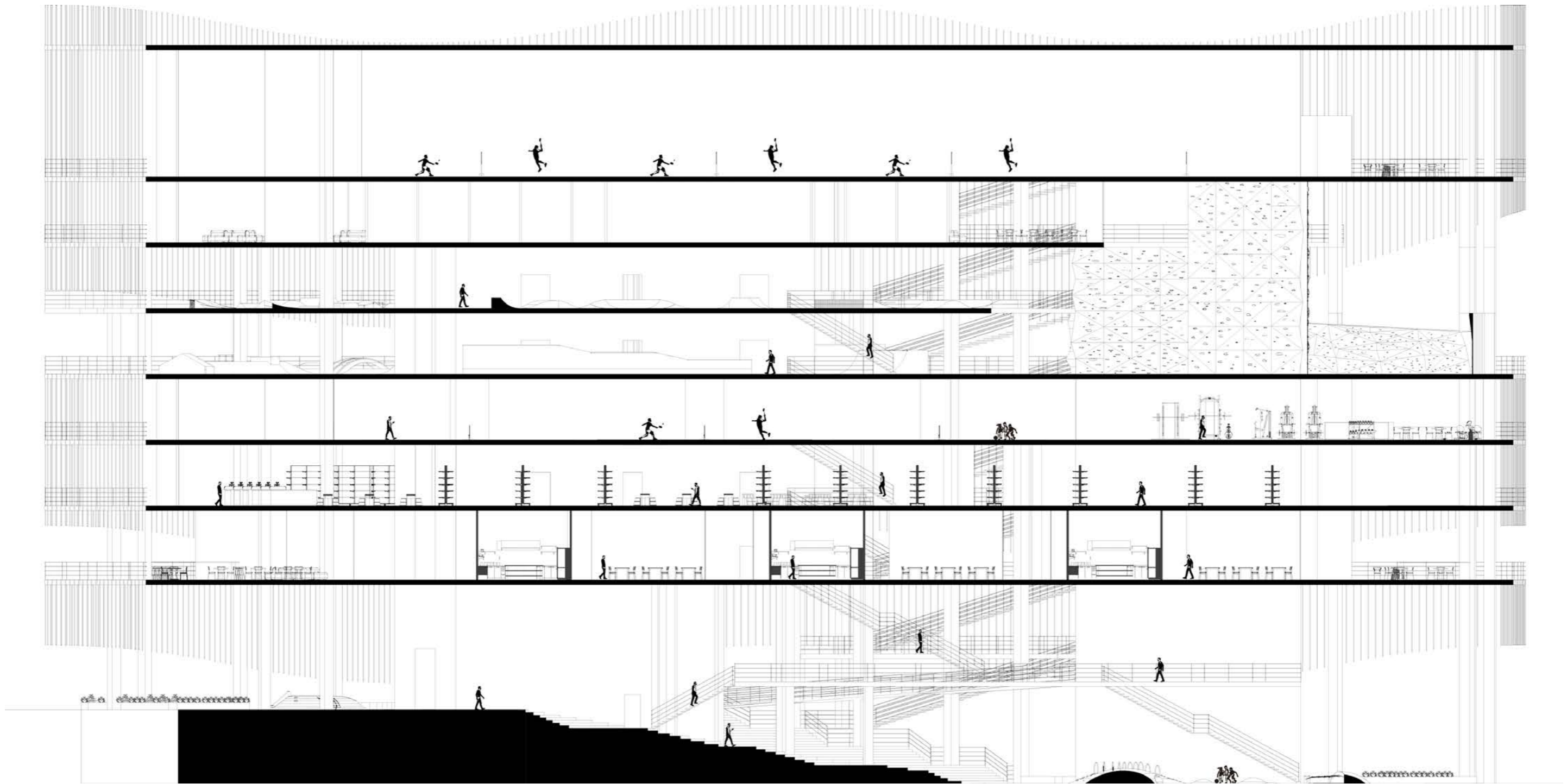
Building and surrounding environment



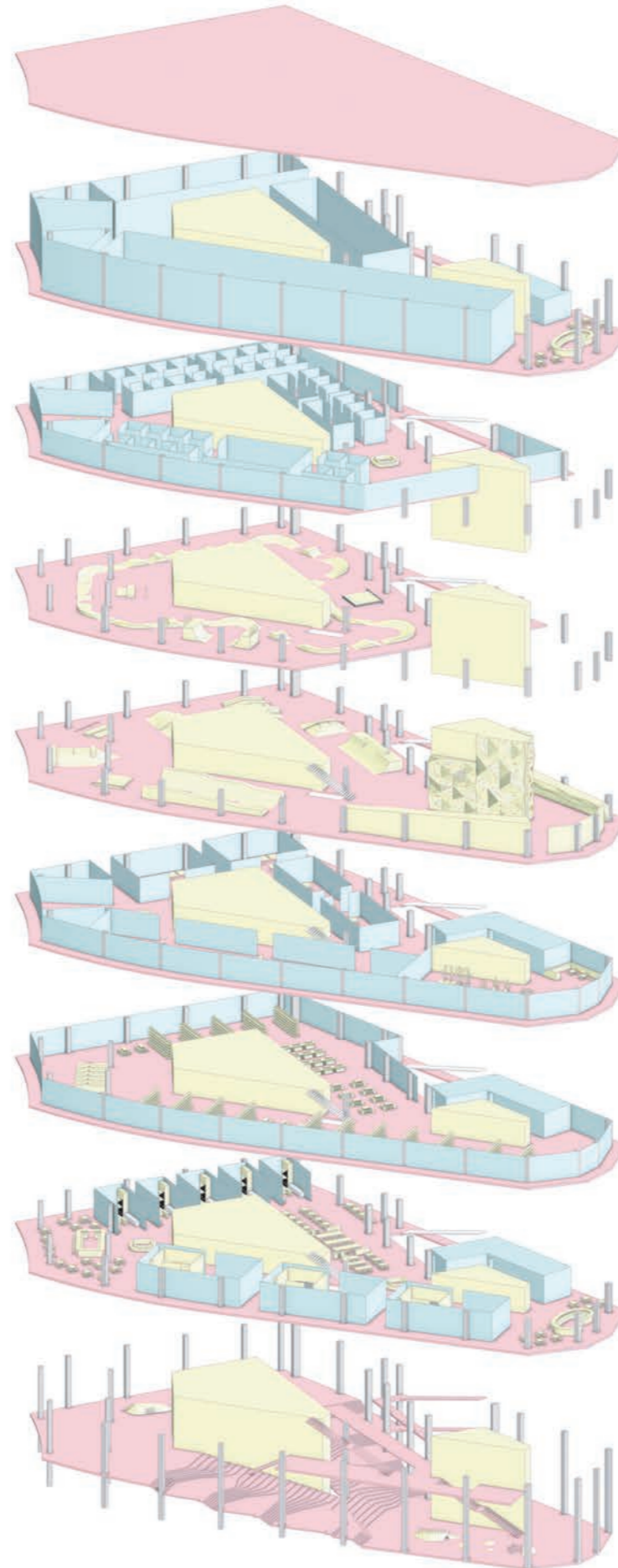
Elevation of the Building



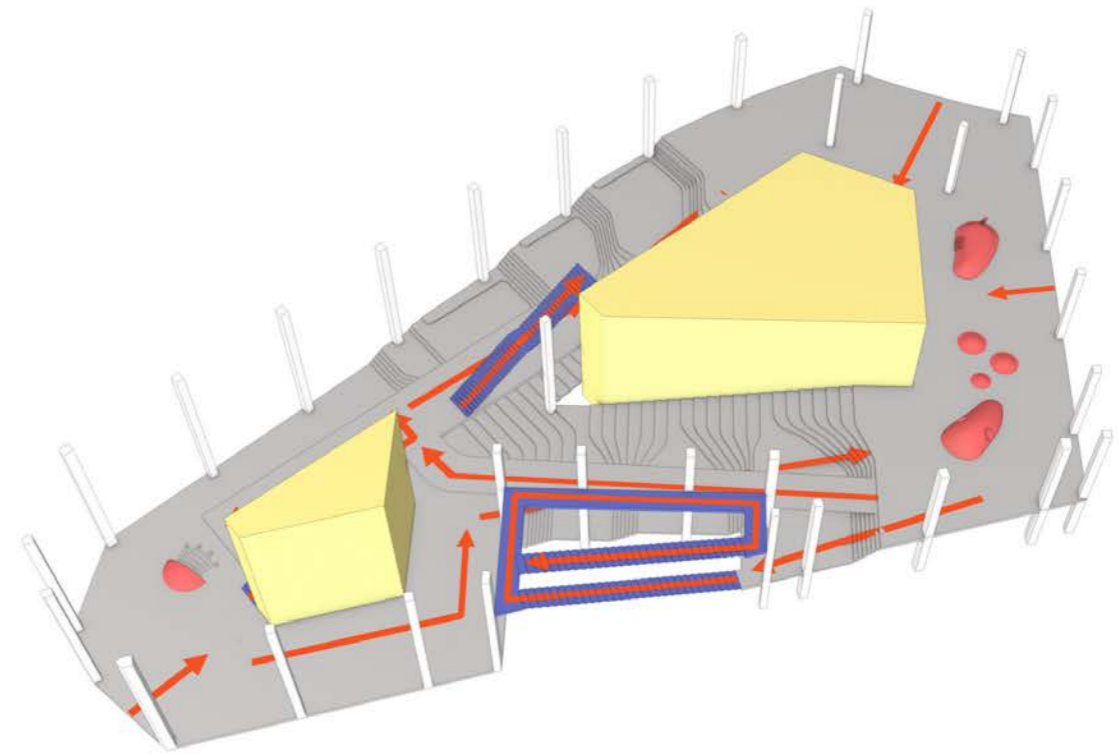
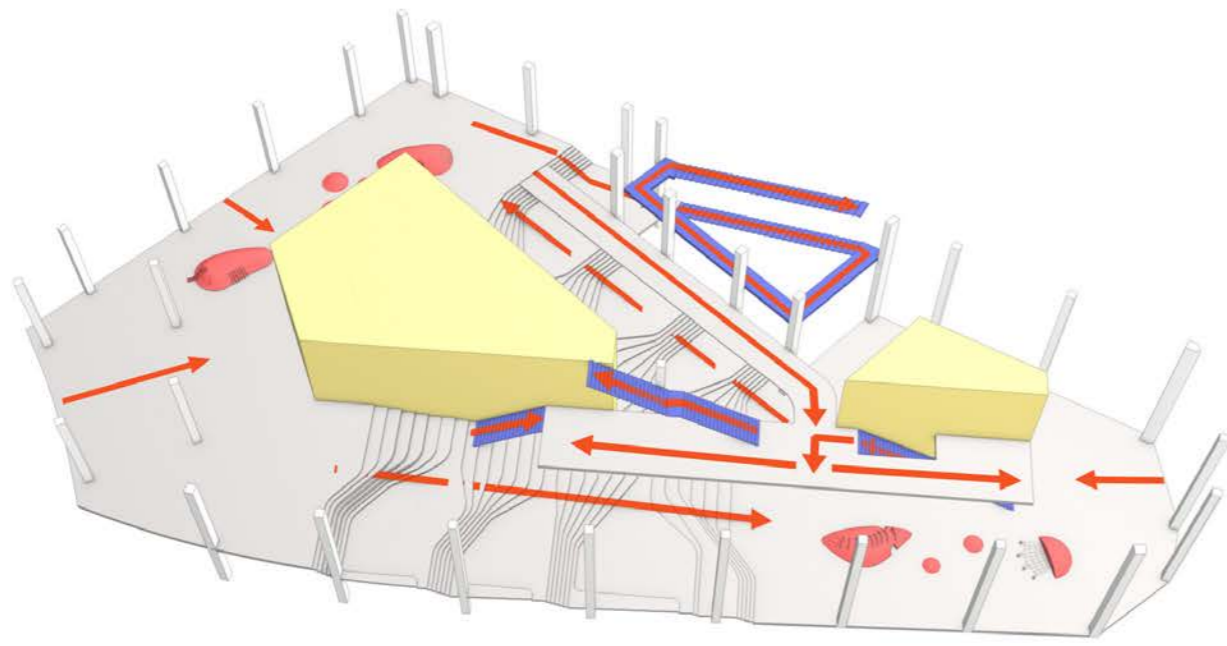
Section of the Building



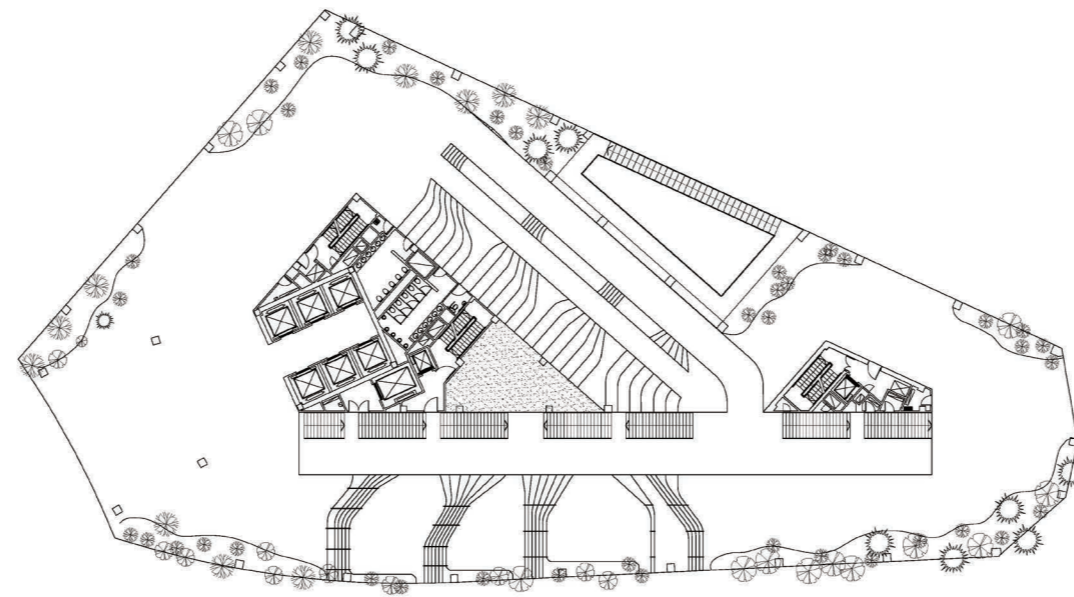
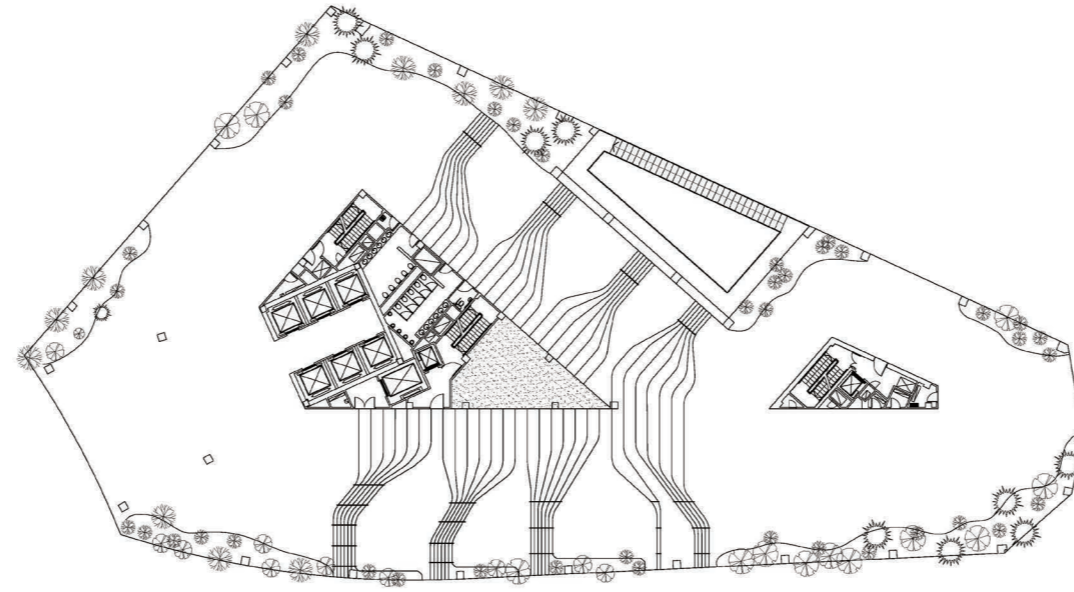
Functions of each floor



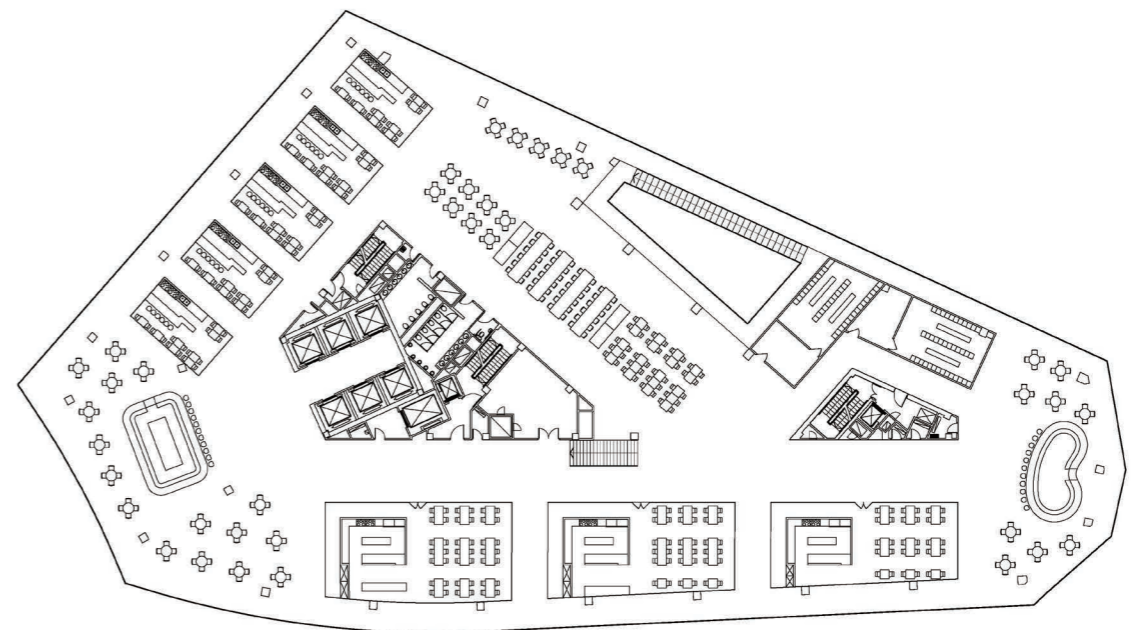
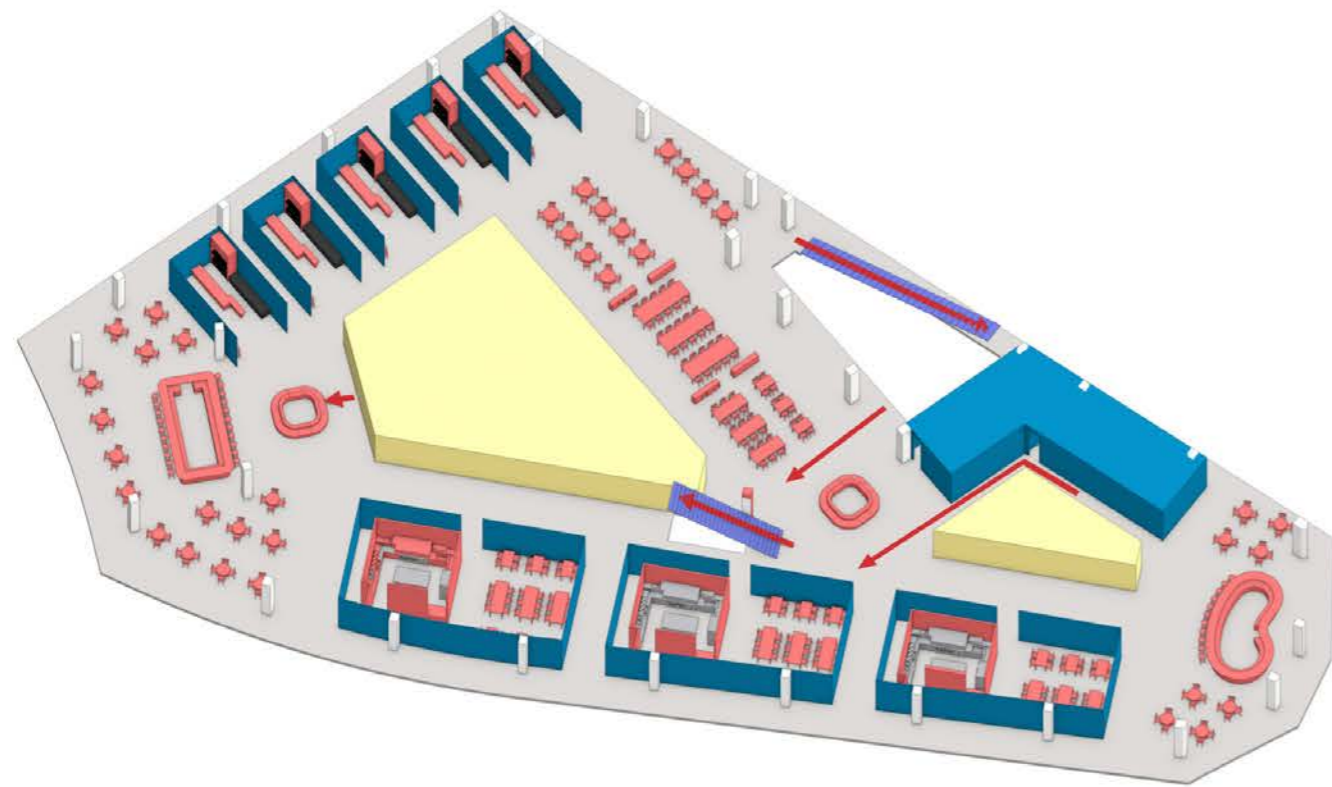
Ground Floor



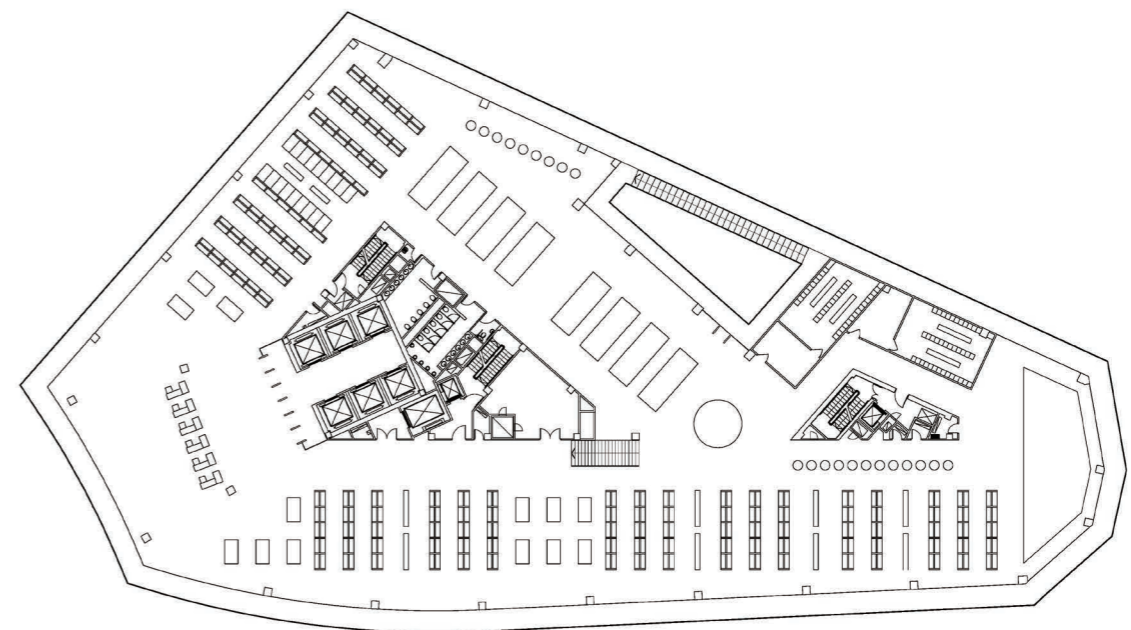
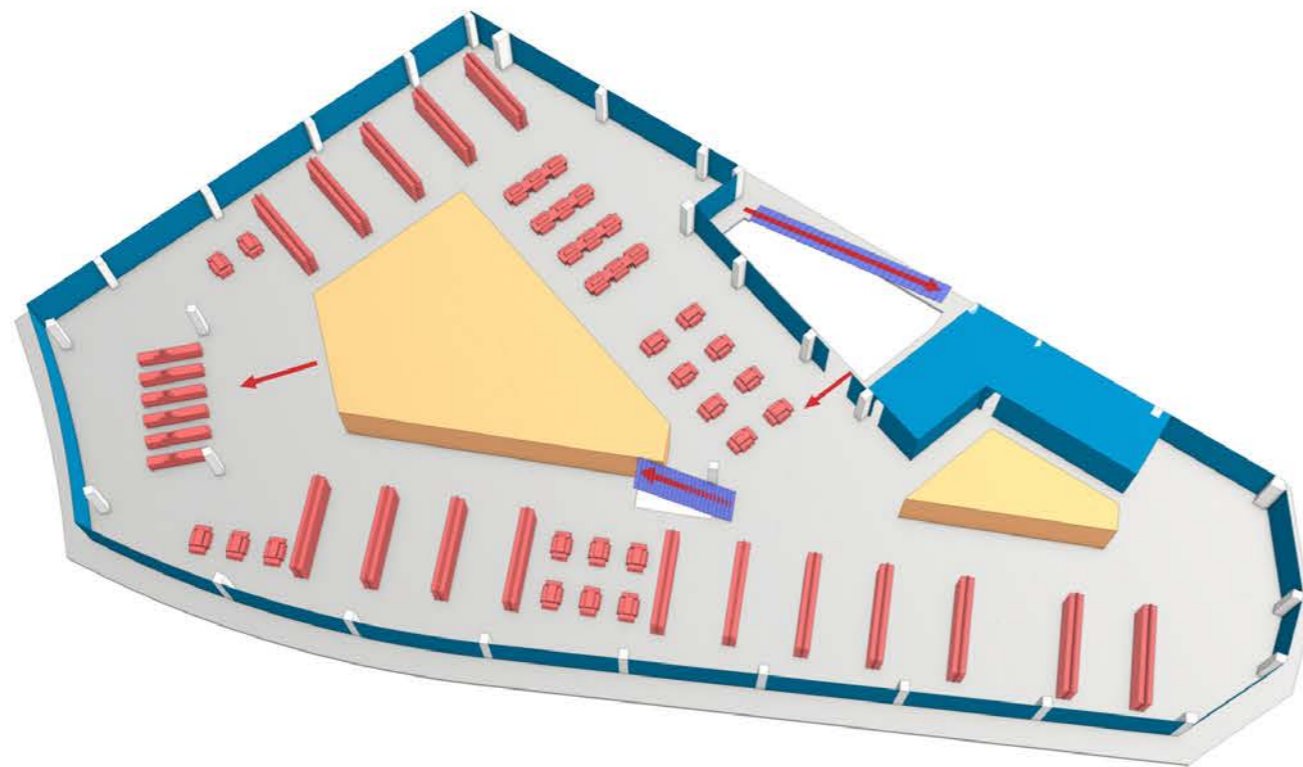
Ground Floor Plan



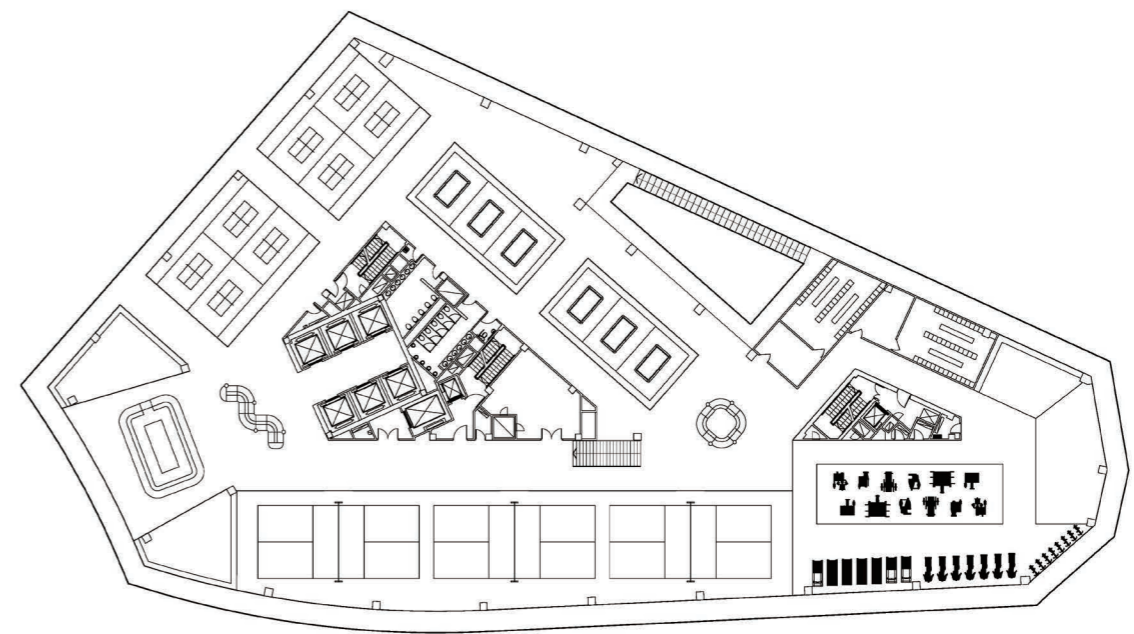
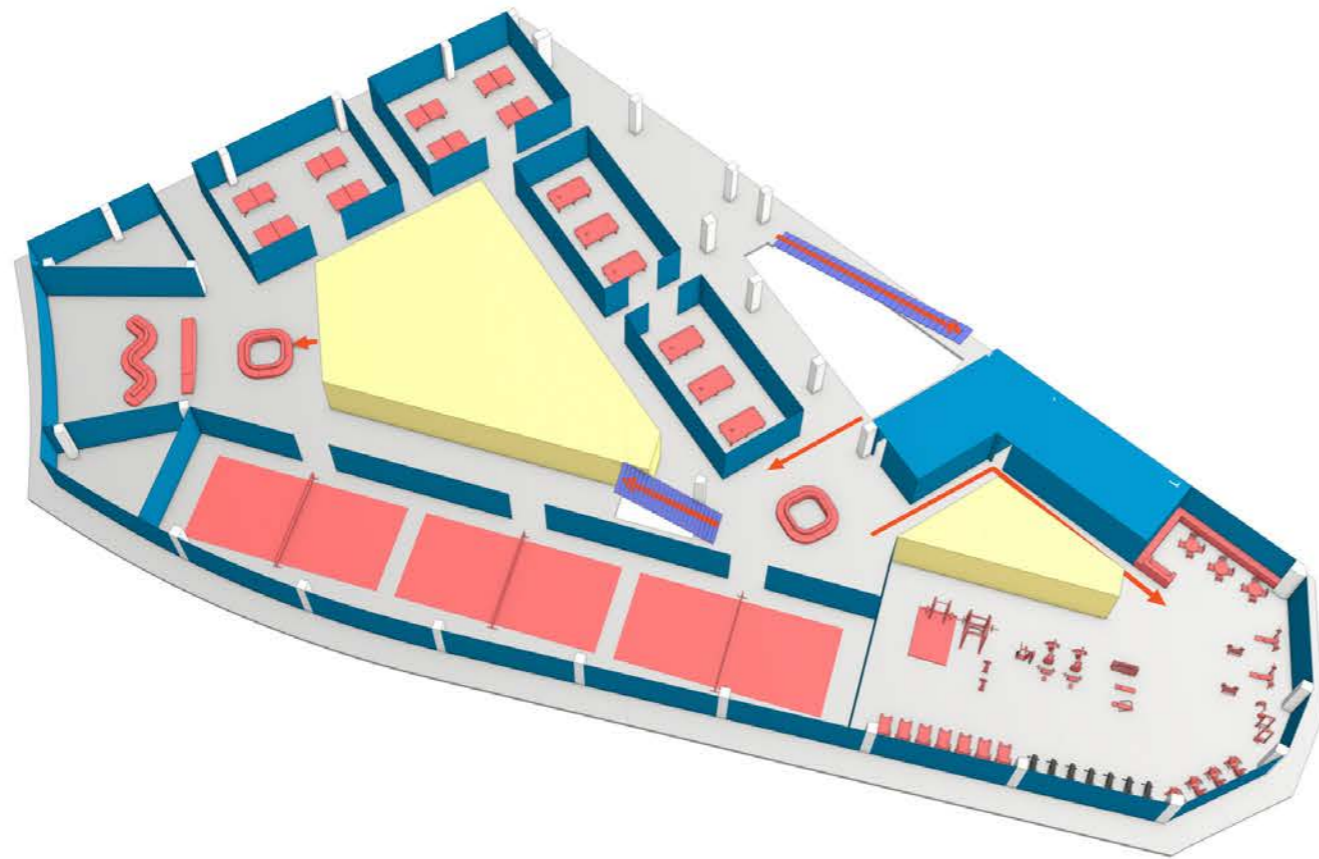
First Floor Plan



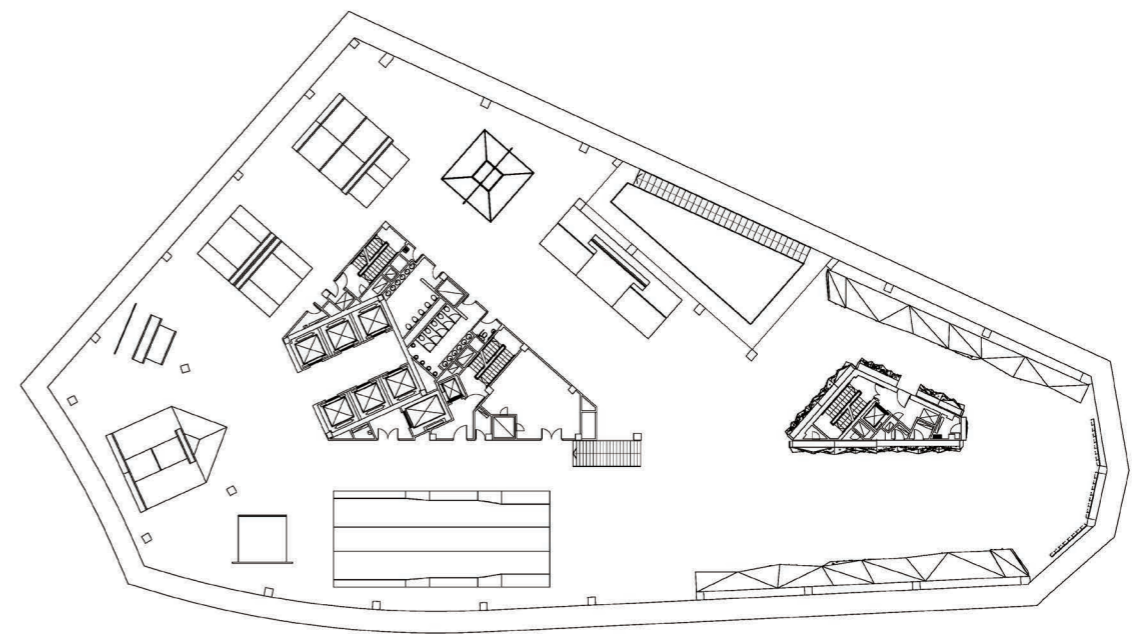
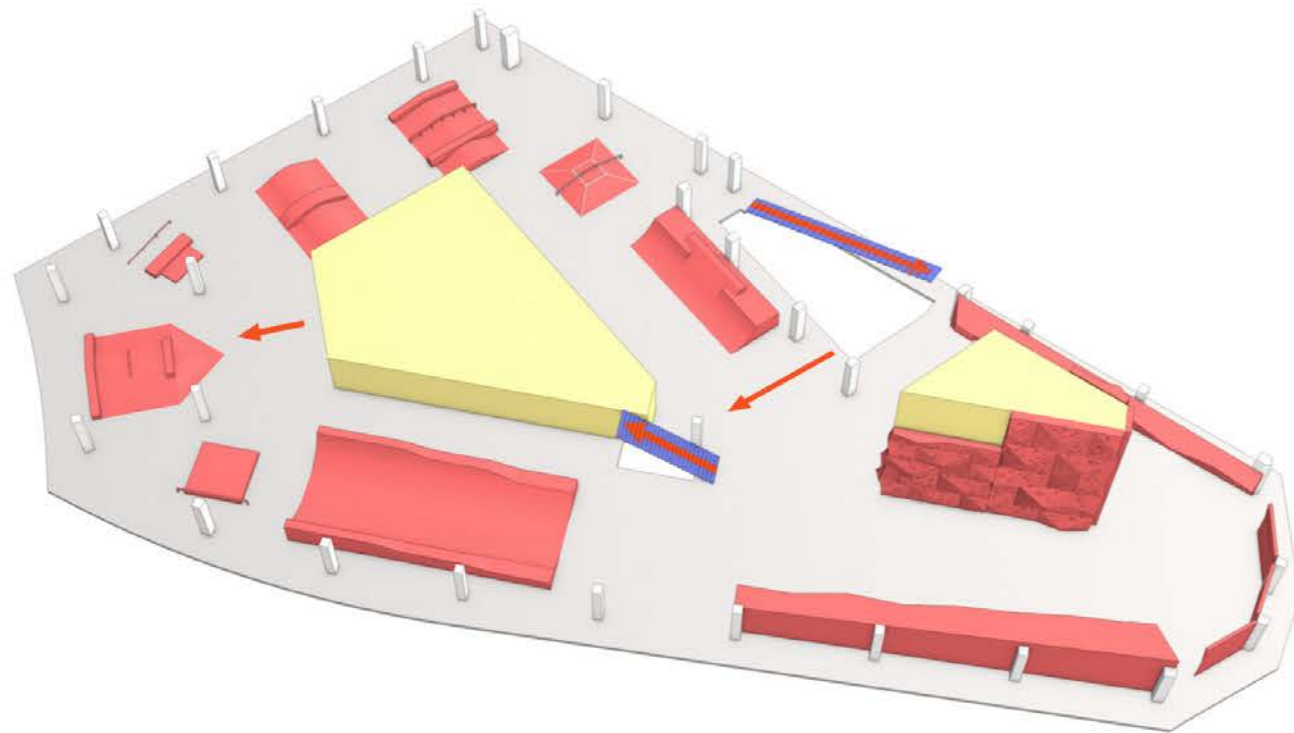
Second Floor Plan



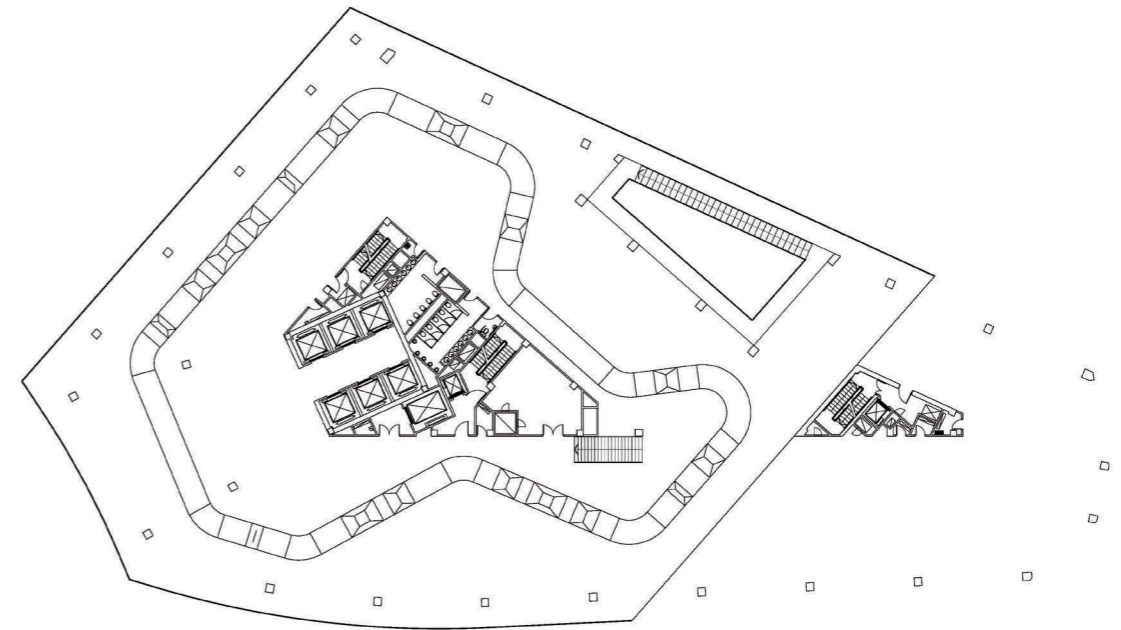
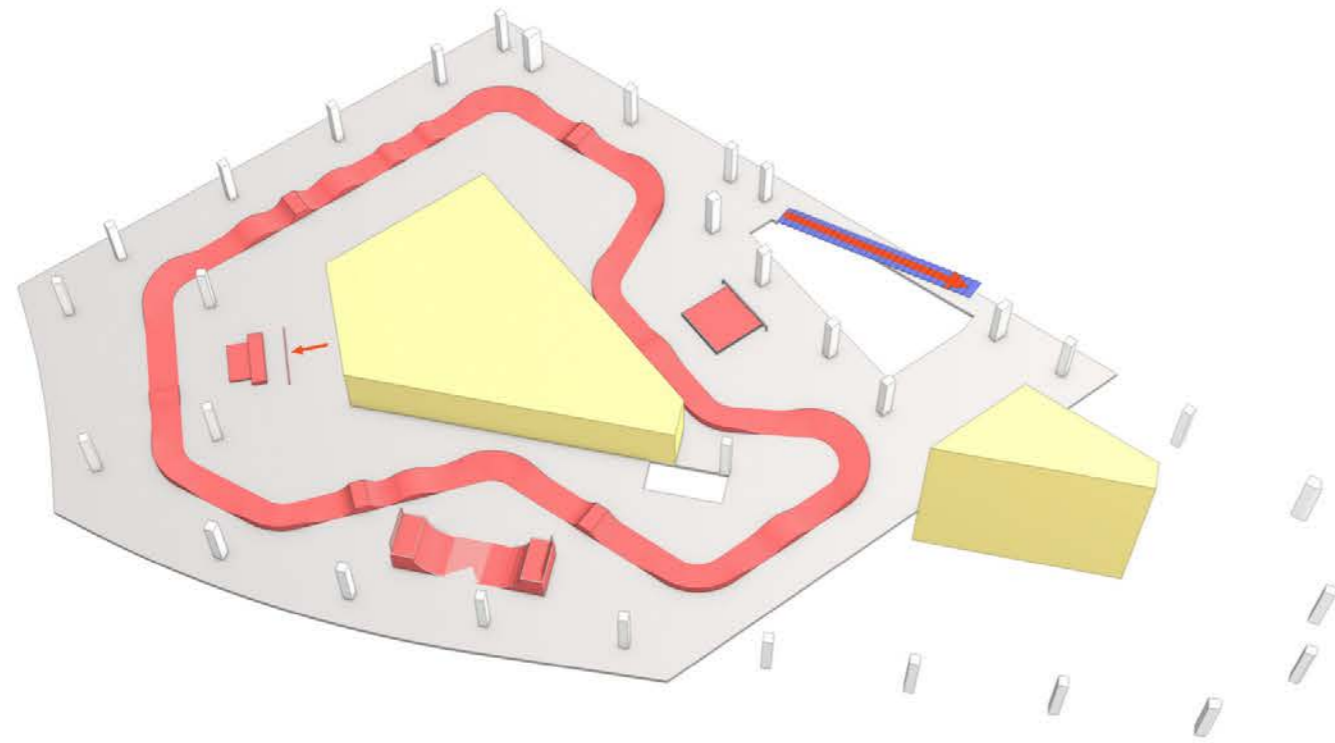
Third Floor Plan



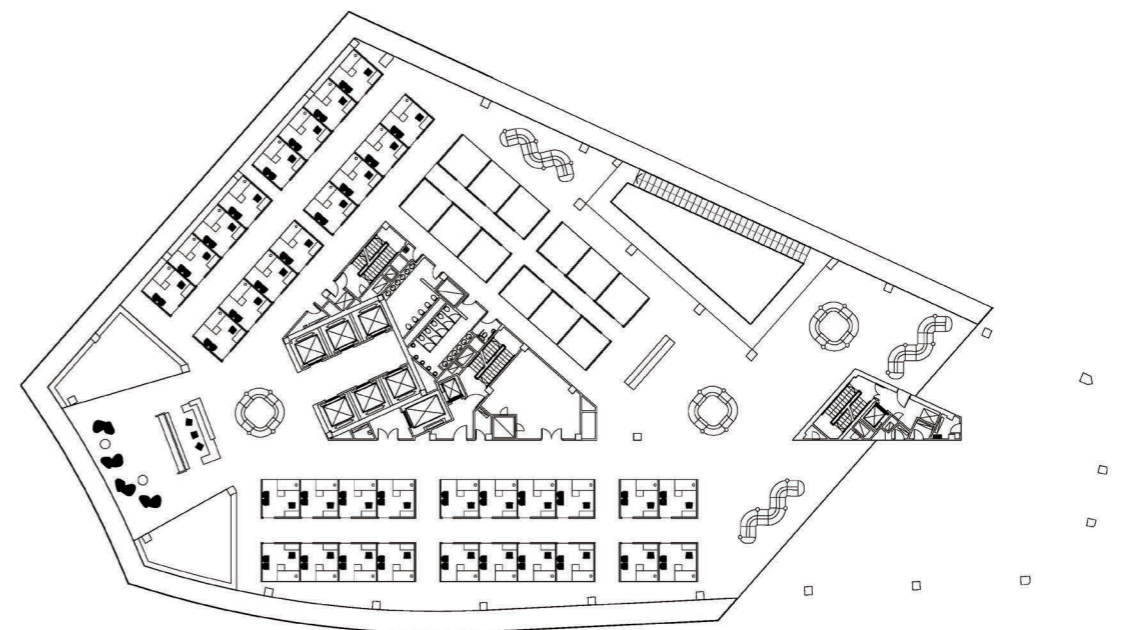
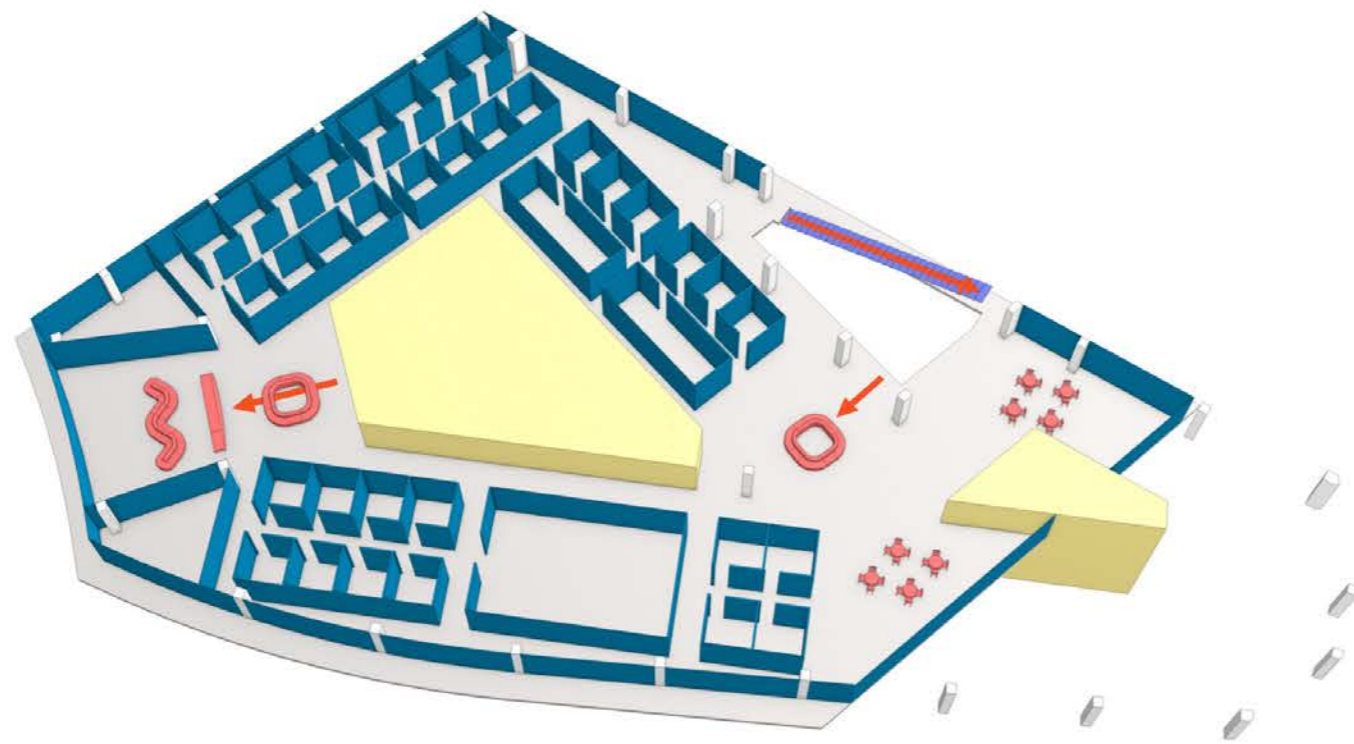
Fourth Floor Plan



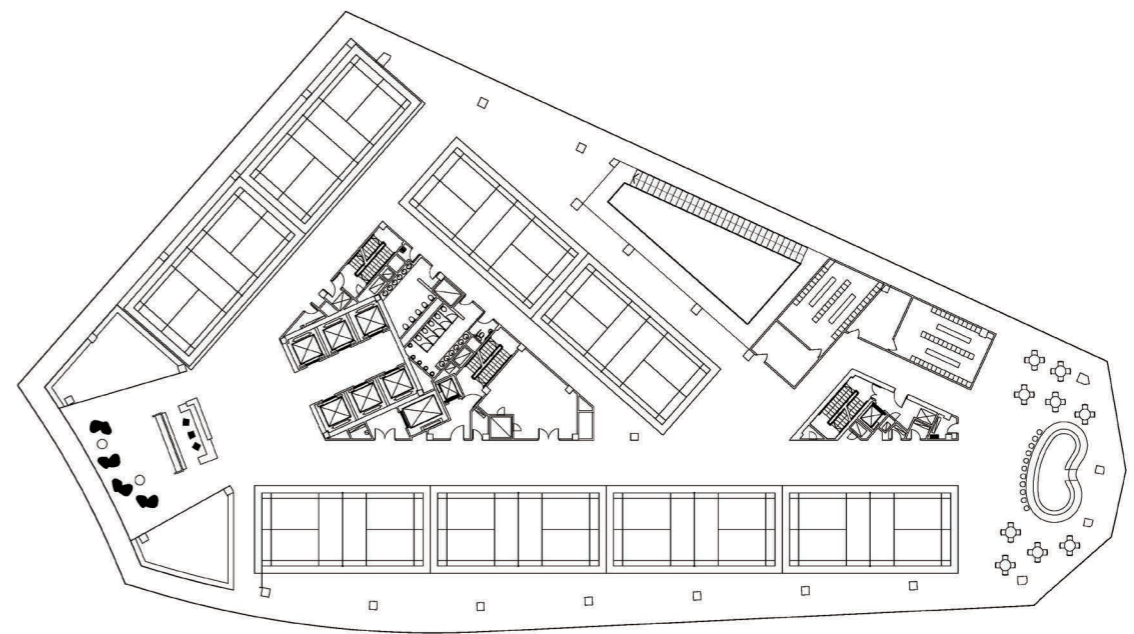
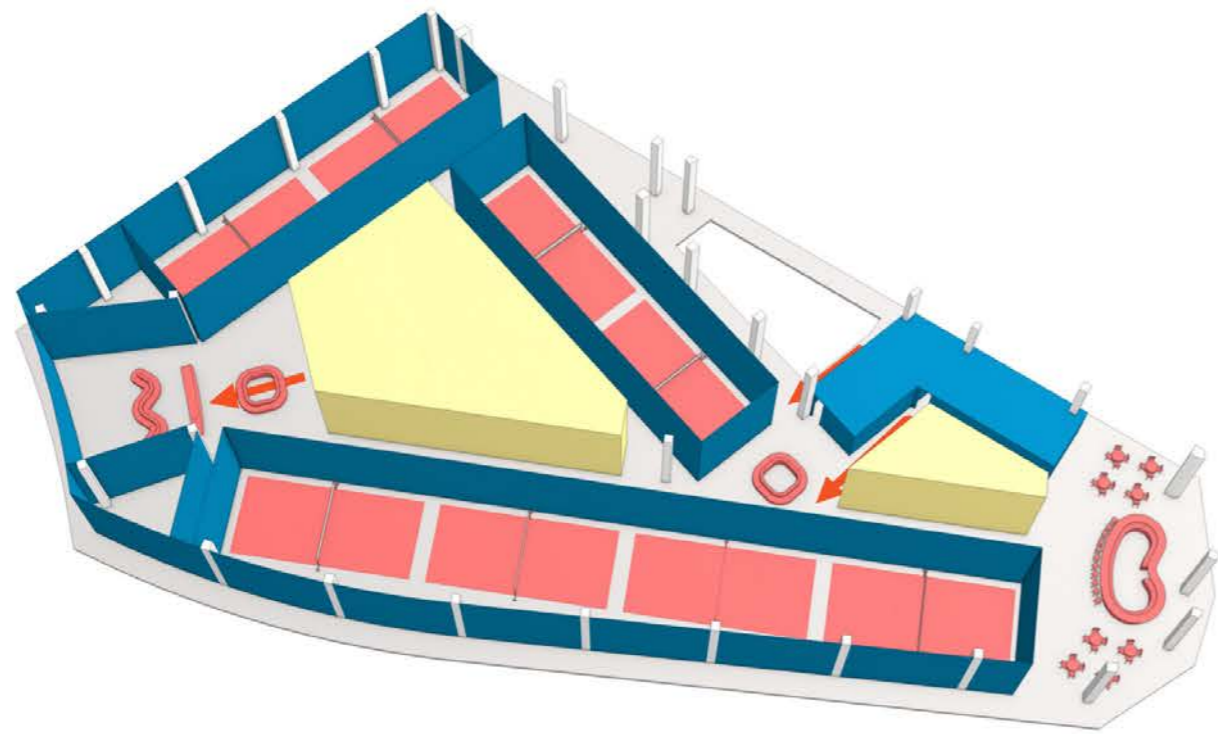
Fifth Floor Plan

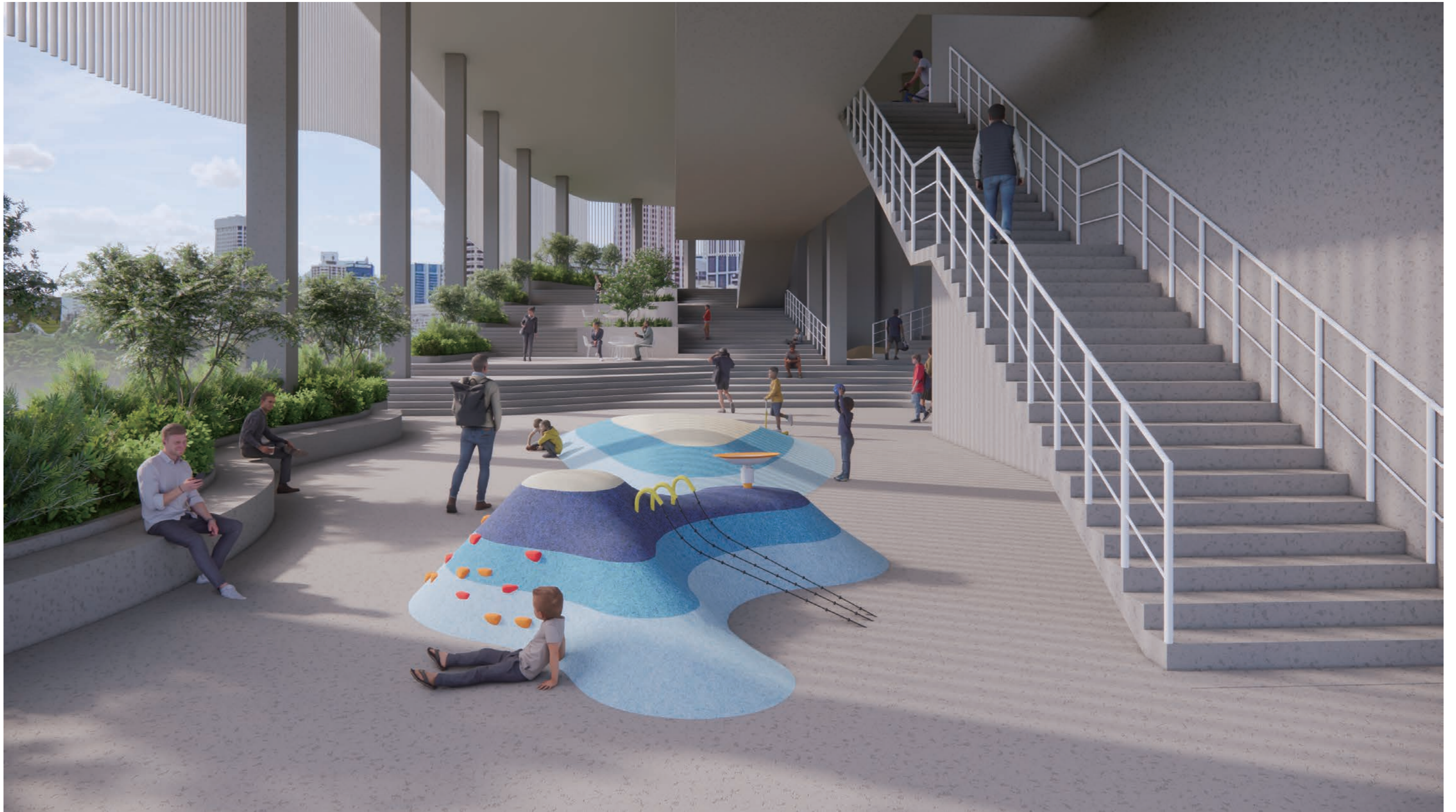


Sixth Floor Plan



Seventh Floor Plan





Landscape



Bicycle ramp



Ground Floor



Food Court



Food Court



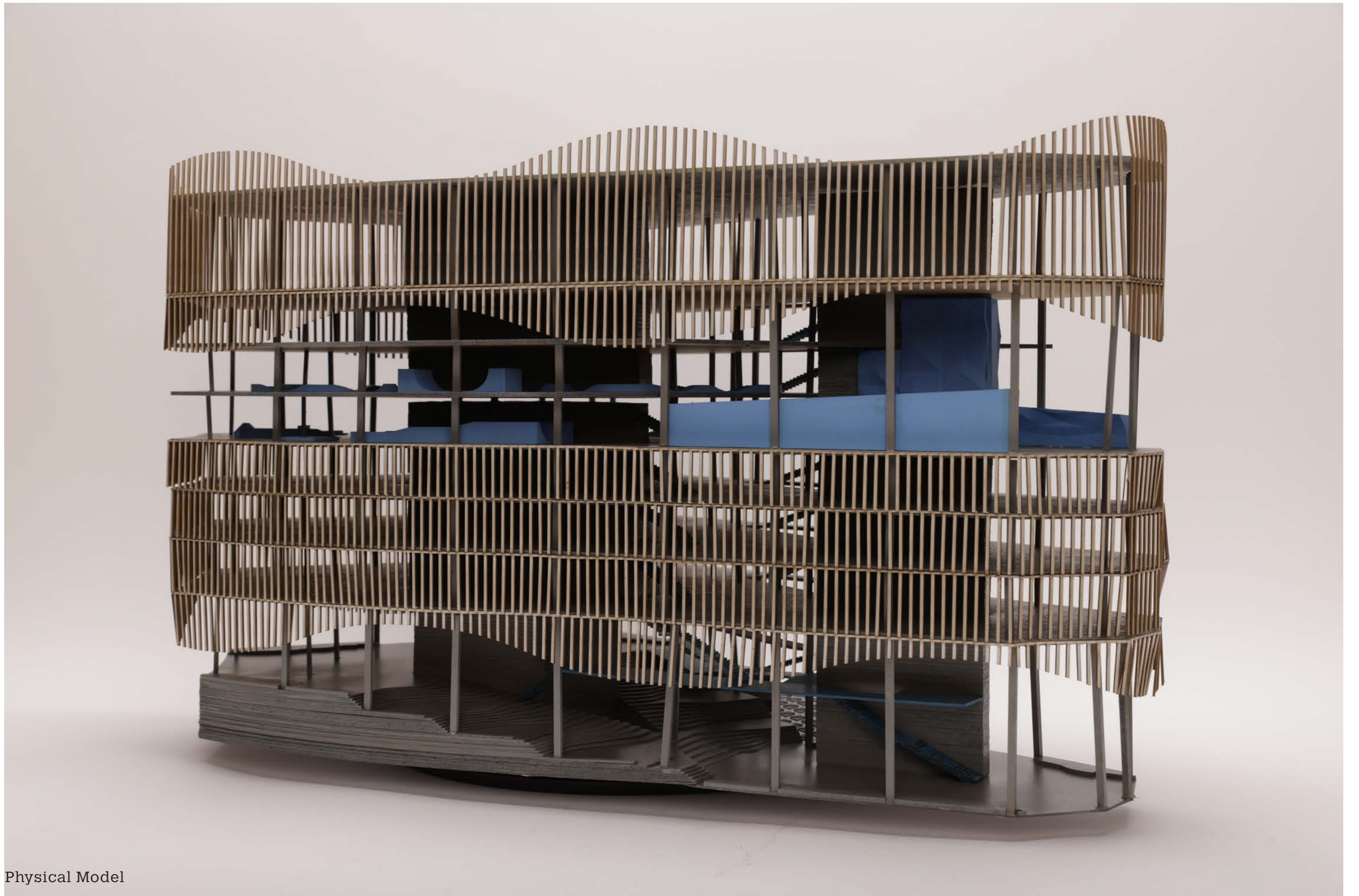
Climbing Space



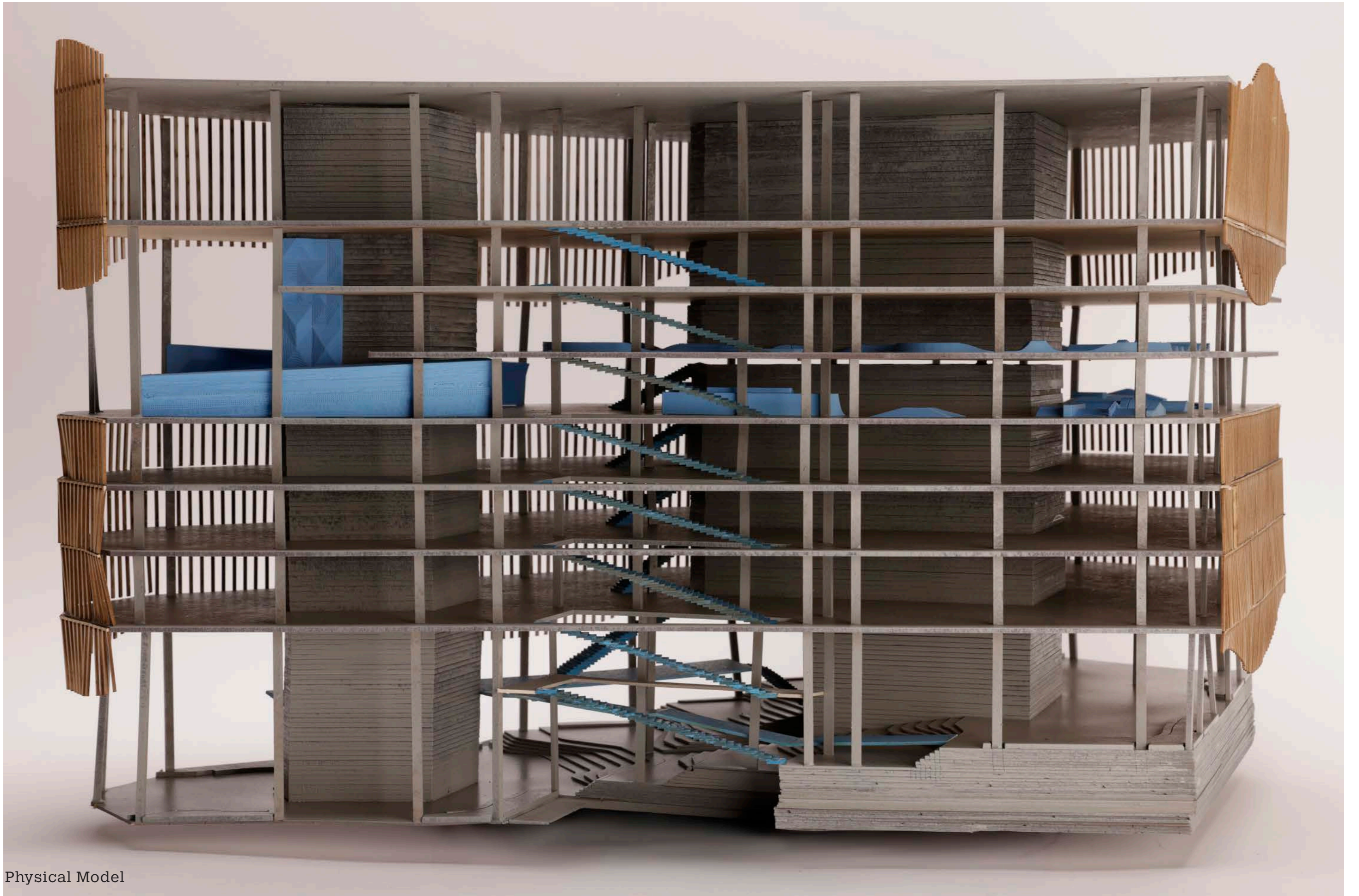
Skateboarding Track



Court Space



Physical Model



Physical Model