

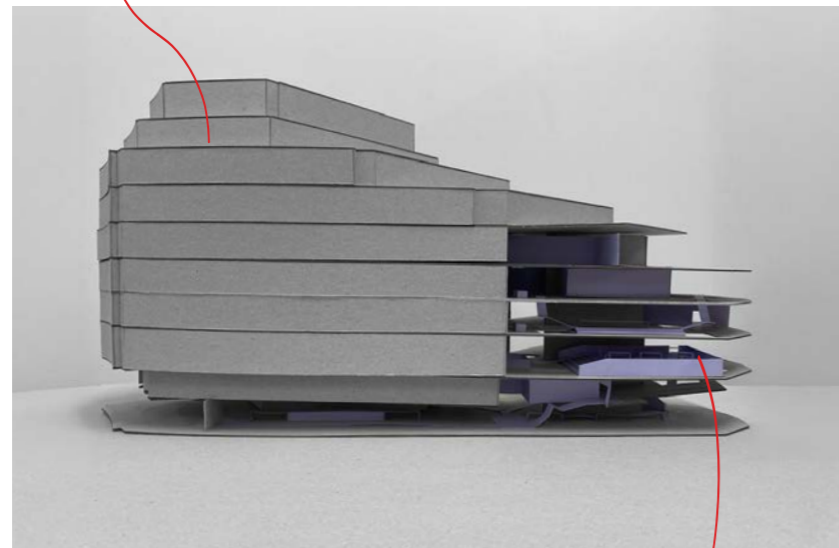
# THE FO|ND

**CONNECTION AND OPENNESS NOT ONLY AS A THEME FOR  
THE BUILDING'S NEW USE BUT ALSO AS A CONCEPTUAL AND  
ARCHITECTURAL STRATEGY.**

## TESTING OUT IDEAS

1:150 model - testing out the structure

VERTICAL FARM



THE FOUND



## MATERIAL STRATEGY

Defining materials and repeating them throughout the space

CONCRETE

existing material  
(stripped back version of the building)

POWDER COATED STEEL

for structural elements (incl. the structure of fixed furniture), balustrades and paths (wayfinding system)

NATURALLY DYED WOOD

for table tops and surfaces of stairs that are designed to be sat on – providing a warmer and more comfortable material

as well as for smaller elements such as (exhibition) frames that display information etc.

COLOURED CONCRETE

for counters, display and worktop surfaces

TERRAZZO

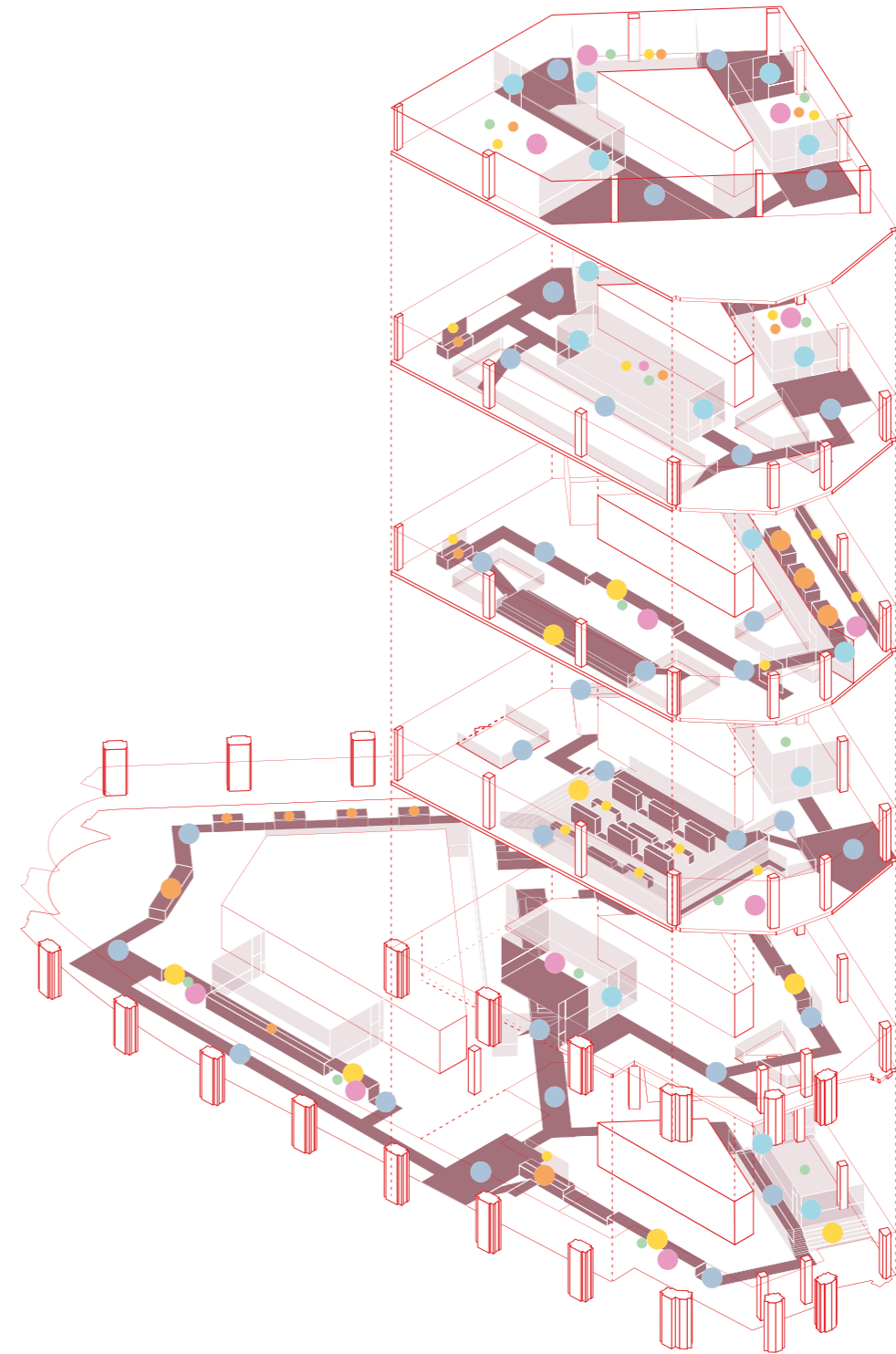
for certain floor areas – highlighting where people would spend more time or are specifically invited to do so

OAK WOOD AND FABRIC

for loose furniture pieces (mainly chairs – dining chairs, lounge chairs and chairs in library and event spaces)

(ACOUSTIC) GLASS

for partitions that create/separate individual spaces



5

4

3

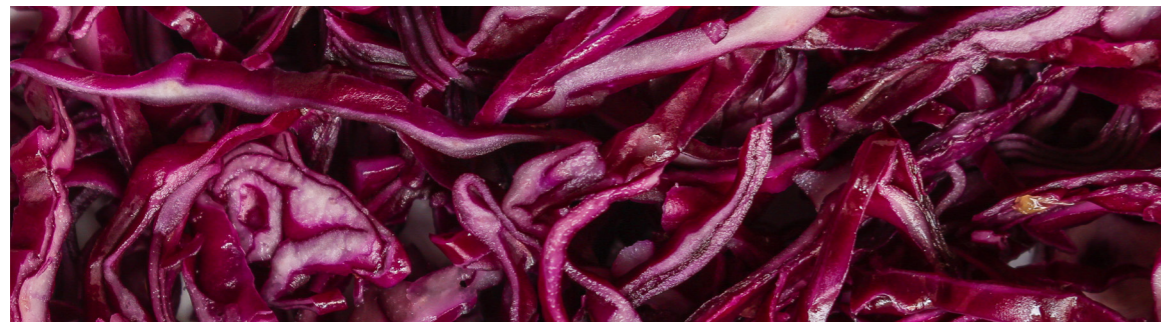
2

1

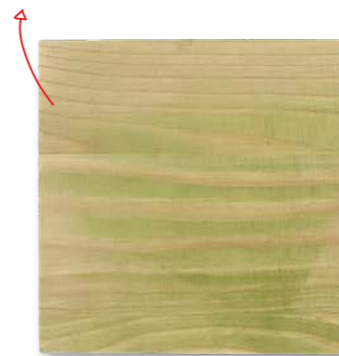
0

## COLOUR CONCEPT

Choosing two colour themes allow for the public and more private spaces to be visibly differentiated



stained using spinach  
1 to 5 coats - gradient  
(top to bottom)



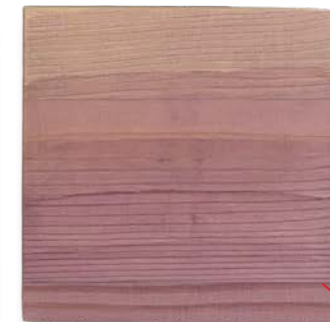
stained using spinach  
mixed with soda crystals  
2 to 10 coats - gradient  
(top to bottom)



stained using red cabbage  
1 to 5 coats - gradient  
(top to bottom)



stained using red cabbage  
mixed with vinegar  
2 to 10 coats - gradient  
(top to bottom)



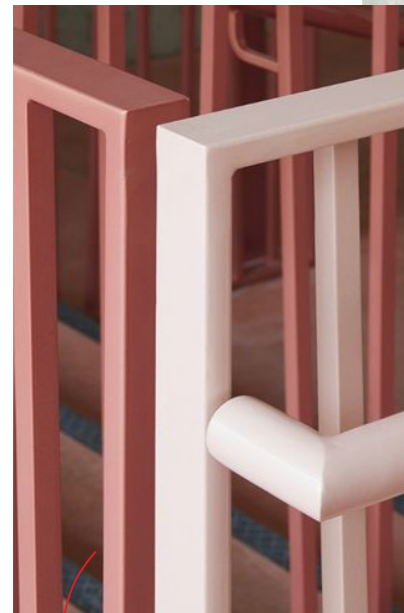
The choice of colours is influenced by vegetables that can be grown in vertical farms and ones that are suitable for staining/dyeing wood.

The idea of wanting to incorporate wood, which is dyed/stained using natural ingredients, into my project, was inspired by "fifty shades of rotkohl" a project by Anna Herrmann (designer and former fellow undergraduate student at the Academy of Fine Arts, Munich).

## PUBLIC | MATERIAL COLLAGE

café, shop, event spaces and library

stripping the building  
back to concrete

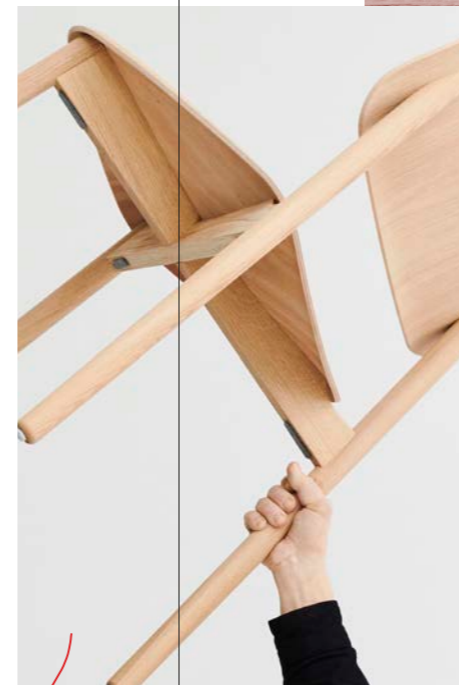


creating a (powder coated)  
steel structure running  
through the building

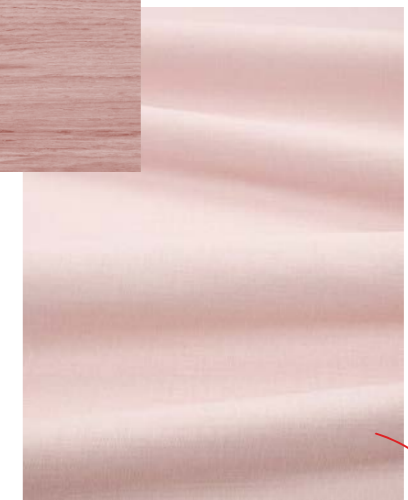


bringing in warmth and a  
more neutral colour tone

dyeing wood using natural dye derived  
from vegetables which are grown in the  
vertical farm



bringing together the two  
colour themes in the form of  
terrazzo flooring and  
highlighting the areas where  
people are invited to spend  
more time

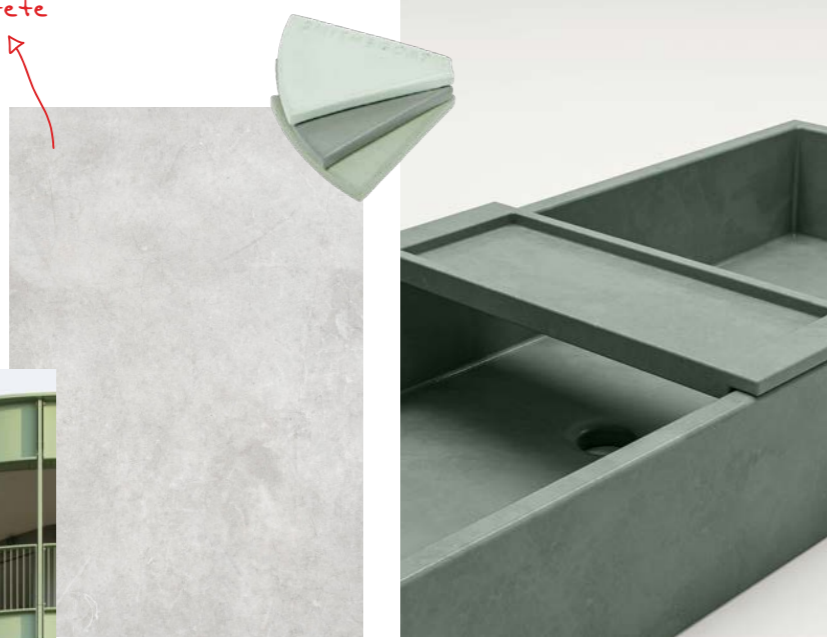


bringing in some softer  
and warmer materials as  
a contrast to the steel  
structure and concrete  
elements

## PRIVATE | MATERIAL COLLAGE

culinary courses, herb garden and private kitchen/dining booths

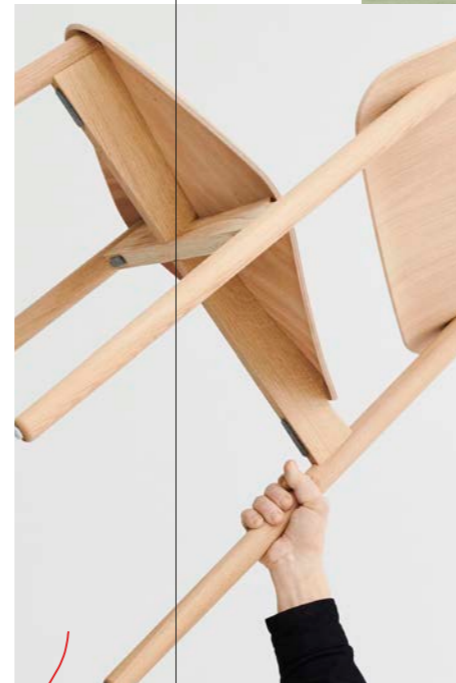
stripping the building  
back to concrete



creating a (powder coated)  
steel structure running  
through the building



bringing in warmth and a  
more neutral colour tone



dyeing wood using natural dye derived  
from vegetables which are grown in the  
vertical farm



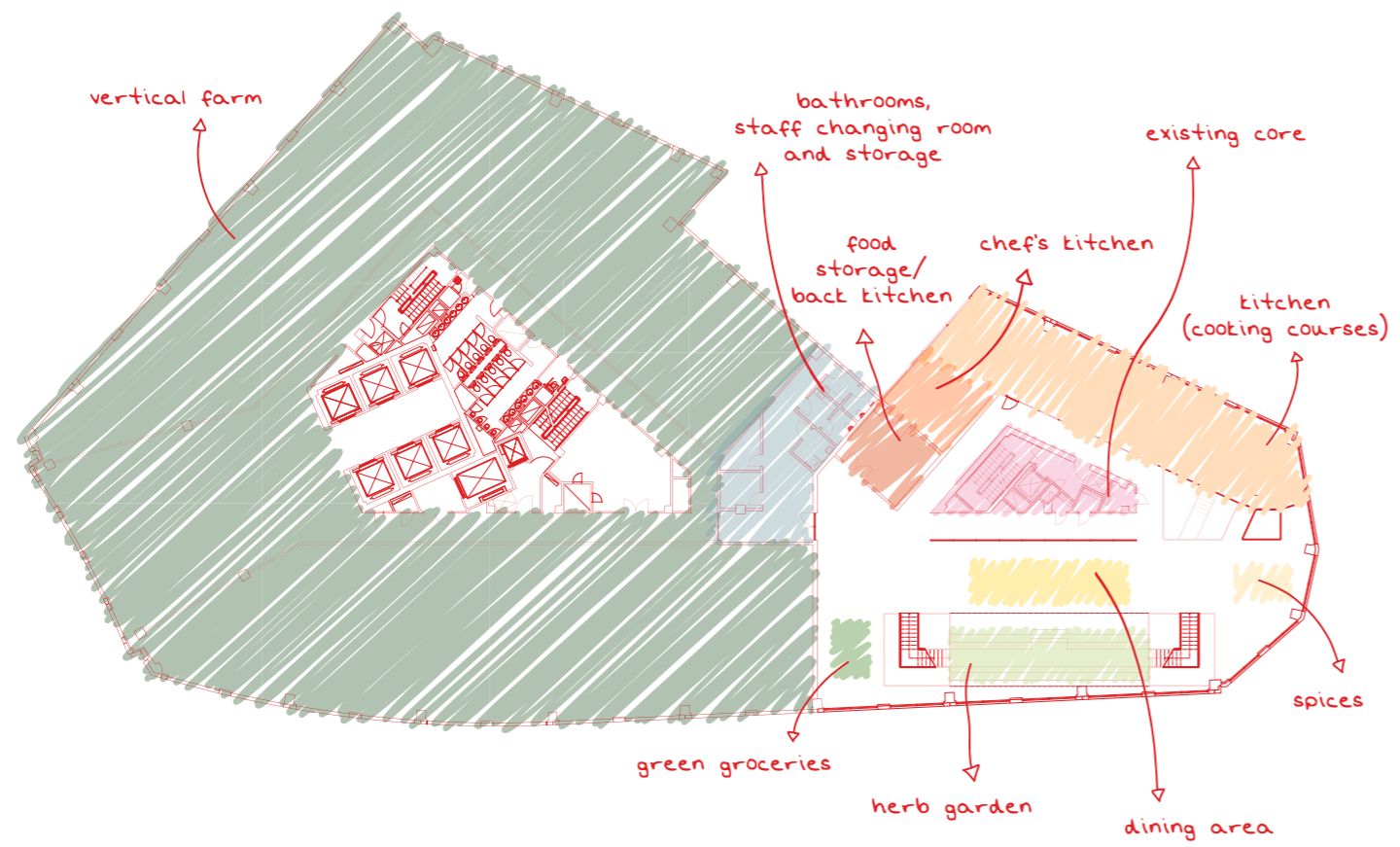
bringing together the two  
colour themes in the form of  
terrazzo flooring and  
highlighting the areas where  
people are invited to spend  
more time



bringing in some softer  
and warmer materials as  
a contrast to the steel  
structure and concrete  
elements

## GF +3 | ZONING

culinary courses



**BRINGING PEOPLE TOGETHER THROUGH FOOD**

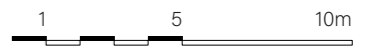
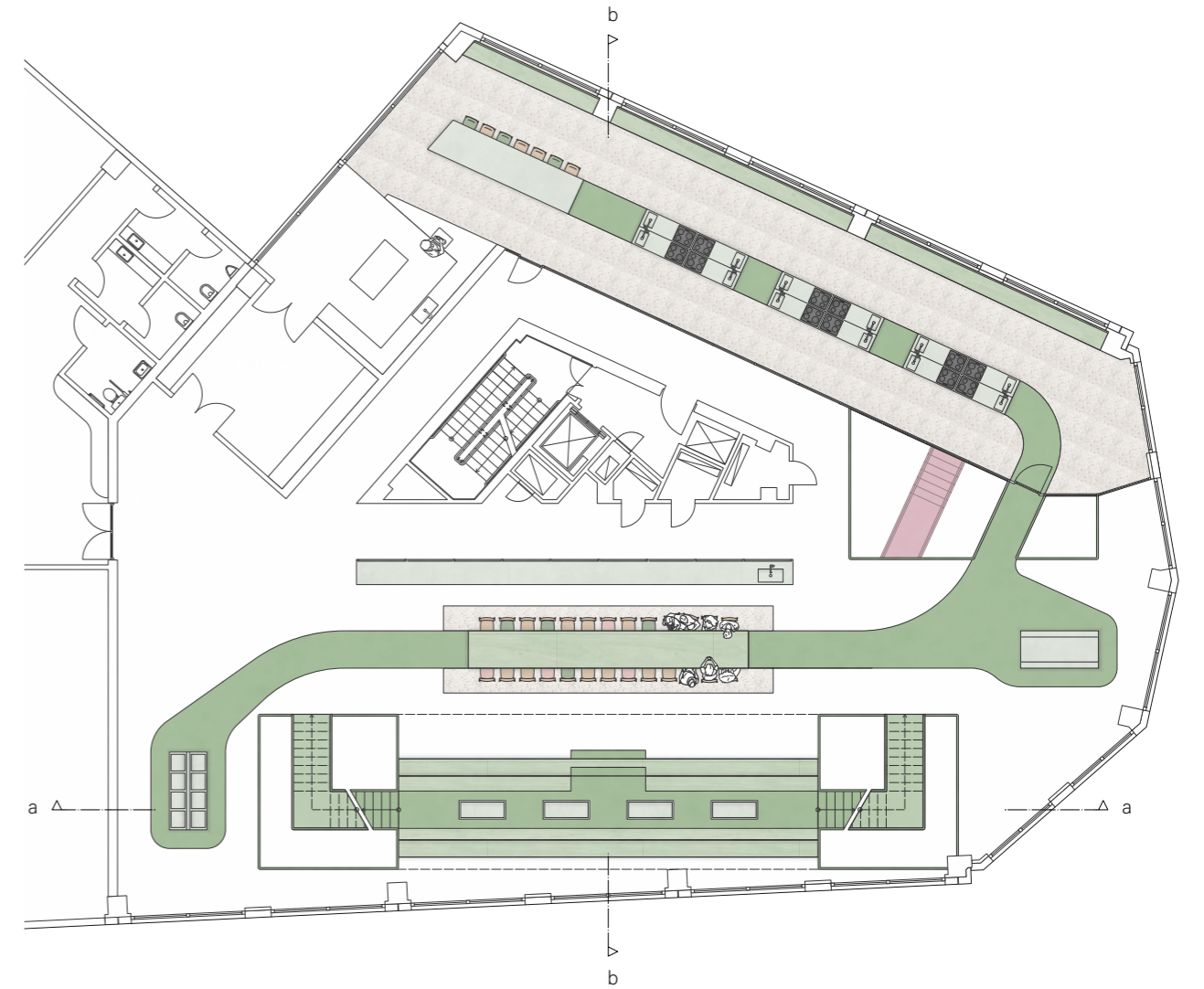
### FLOORPLAN GF +3

drawn in scale 1:100 (reduced to 20% in portfolio)



### FLOORPLAN GF +3 | CULINARY COURSES

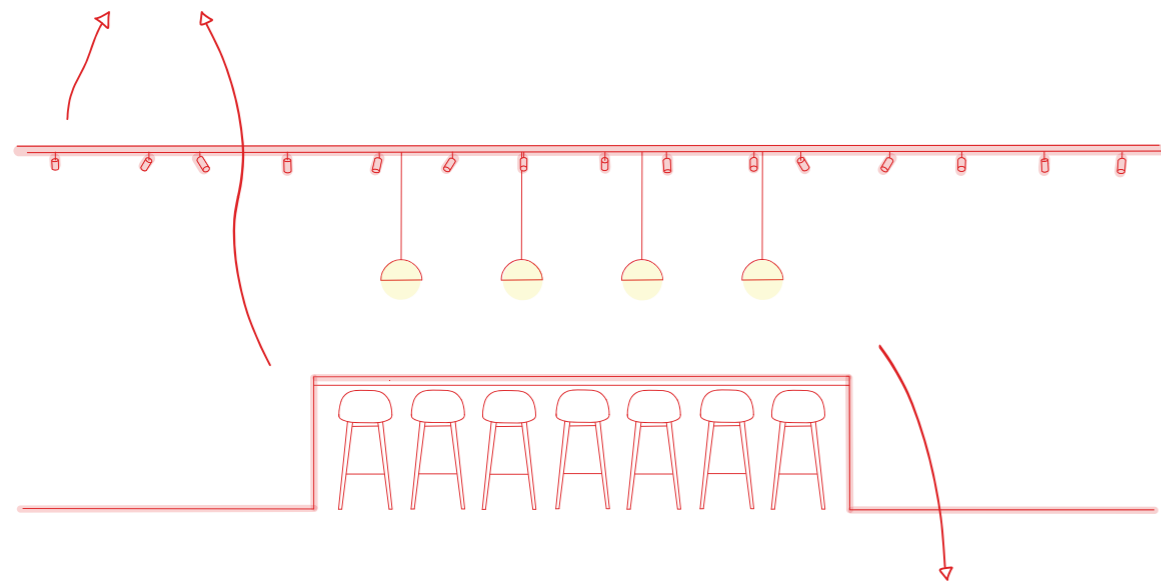
drawn in scale 1:100 (reduced to 45% in portfolio)



## LIGHTING CONCEPT

### General Lighting

Track lighting following the curvature of the structure set within the existing building.



### Additional Lighting

setting the atmosphere where necessary (in the form of pendant lights - hanging from the track light system - as well as floor and/or table lamps)



## EXPLORING ATMOSPHERIC LIGHTING

"3D printed



on demand."

When speaking about additional lighting possibilities in a tutorial, I mentioned having found lamps made with food waste, which could be a nice addition to the project, furthering the idea of not only having a conceptual approach to food in terms of the new use of the building but also bringing it into more elements of the design itself.

When Rachel mentioned mycelium, I realised I had a brochure on my desk about lamps made from mycelium, which I had picked up at Material Matters 2024 – one of the first exhibitions/fairs I went to when I moved to London. --> next page :)

### Model No | furniture and lighting brand

(<https://www.model-no.com>)

(<https://design-milk.com/these-sustainable-lights-are-made-from-food-waste-wood-dust/>)

"We make our 3D printed objects with proprietary plant-based resins. These bio-resins are 100% regenerative and replace petroleum-based materials with durable, customizable, reuseable, sustainable, and highly biodegradable materials."

--> the resin is created using plant waste recovered from agriculture

--> 100% biodegradable and compostable

--> in an optimal composting environment the material can break down in one year

--> the method of 3D printing (furniture) helps cut production-related waste – reducing it by 90% in comparison to traditional furniture manufacturing

--> it also enables for carbon emissions to be more than halved

- the designs aim to counter waste streams, stating that "most commercial enterprises change interiors every 5 years", by using regenerative materials which are recyclable and reusable without qualitative loss

- Model No's products range from the exterior to the interior, offering a large portfolio of tables and seating for indoor and outdoor use as well as a lighting collection comprising 15 pieces

## EXPLORING ATMOSPHERIC LIGHTING

### MushLume Lighting | biofabricated lighting collection

(<https://www.mushlumelighting.uk>)

"The lampshades are grown utilizing a sustainable crop – hemp – that is combined with a rapidly renewable living organism – mycelium".

- the lampshades can be grown within custom moulds in just a few days

--> the fast-growing mycelium (mushroom roots) cultivates a dense network of hyphae which together with the hemp substrate form a solid structure

--> once the mycelium has fully matured, the shades are removed from the moulds and then dried and heated to create a stable product

- the lampshades comprise only natural materials and are 100% biodegradable

--> the mycelium itself is lab-grown rather than being taken from nature

--> the substrate used is a byproduct of the hemp industry

--> both, the water and energy consumption, and the carbon emissions are a lot lower than what they are for typical materials

- MushLume lamps have featured in numerous projects ranging across many sectors – residential, retail, commercial, hospitality, etc.

"We grow lampshades from mycelium,  
the roots of mushrooms."

"grown,

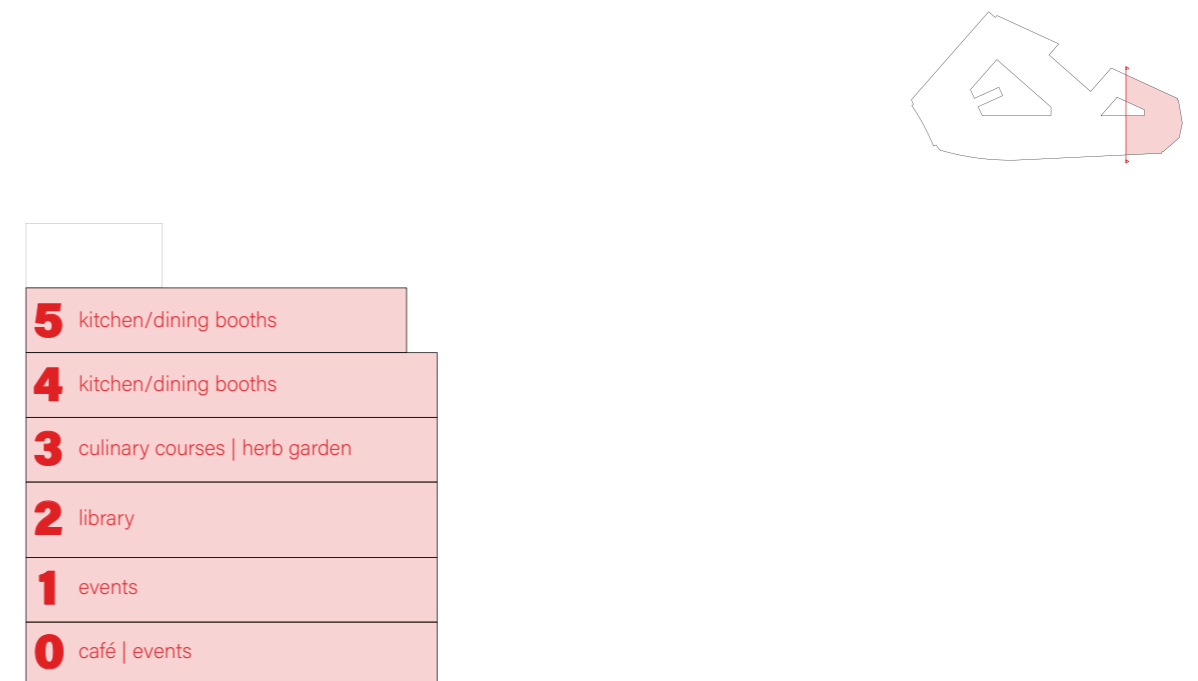


not manufactured."

## SECTION a-a | OVERVIEW

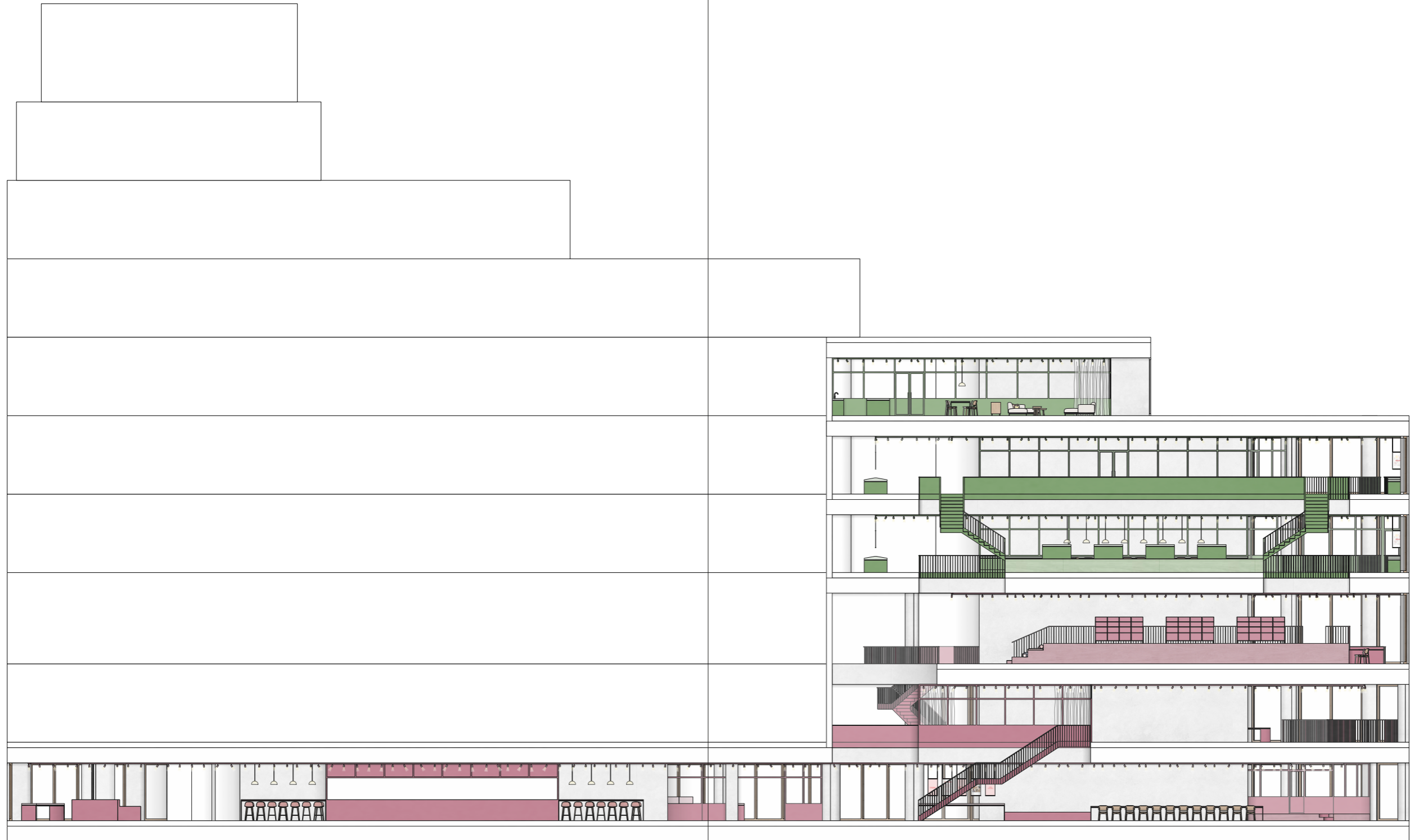


## SECTION b-b | OVERVIEW



**SECTION a-a**

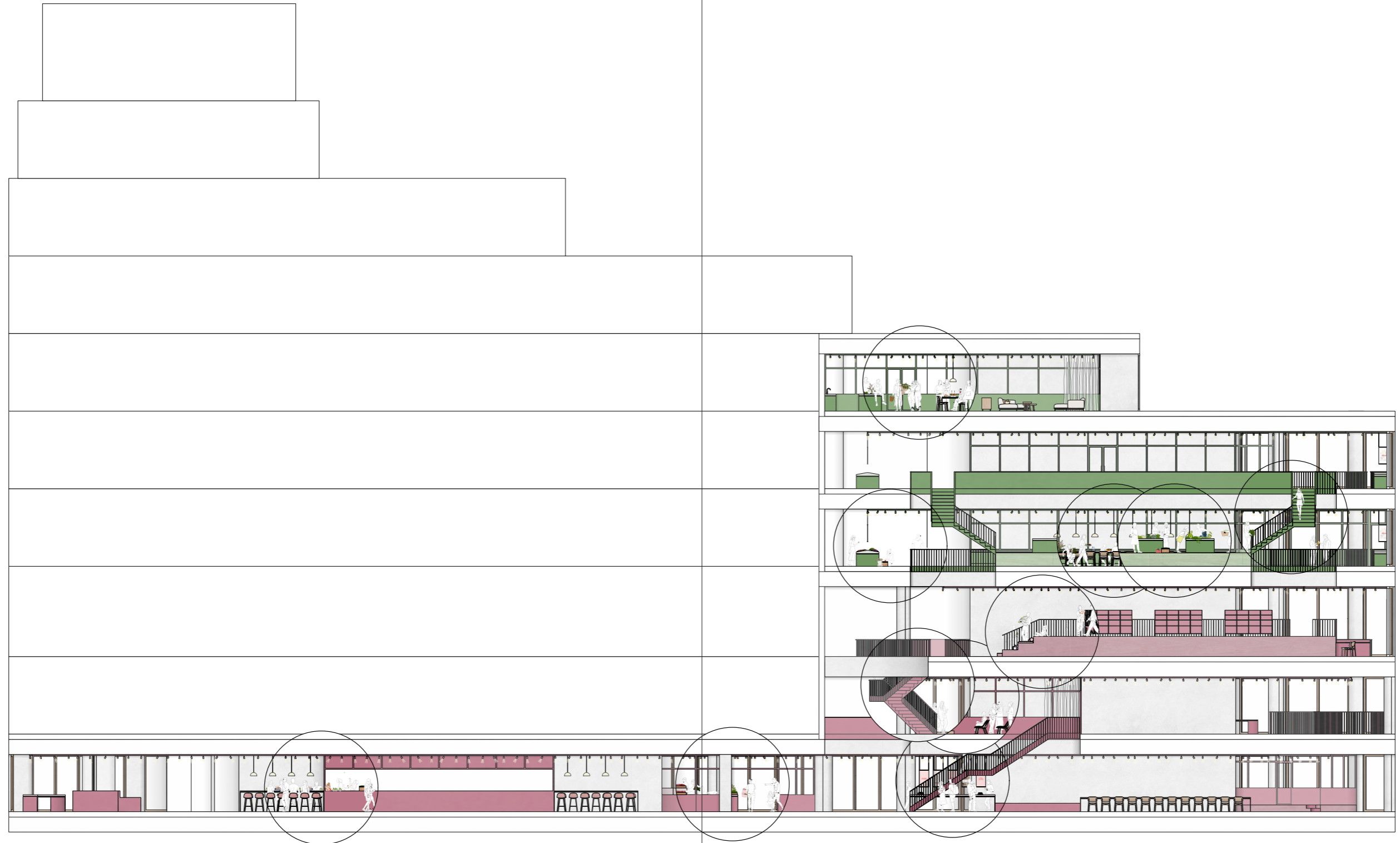
drawn in scale 1:100 (reduced to 45% in portfolio)



1 5 10m

**SECTION a-a | IN USE**

drawn in scale 1:100 (reduced to 45% in portfolio)



1 5 10m

**SECTION b-b**

drawn in scale 1:100 (reduced to 45% in portfolio)



1 5 10m

**SECTION b-b | IN USE**

drawn in scale 1:100 (reduced to 45% in portfolio)



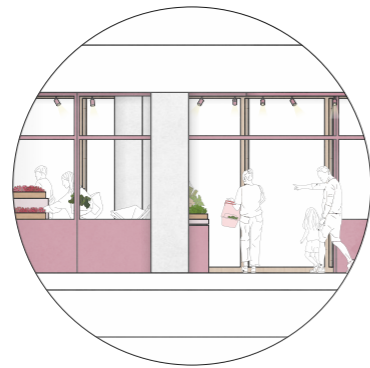
1 5 10m

## OVERVIEW | PUBLIC

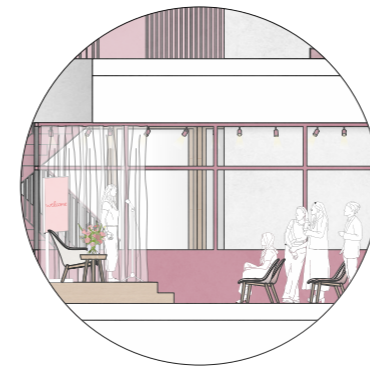
A walk through the public areas of the building  
(Individual steps on the following pages)



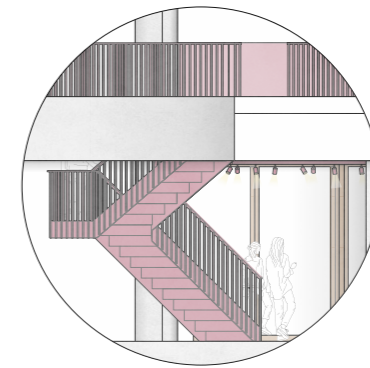
GF



GF TO GF+1



GF+1

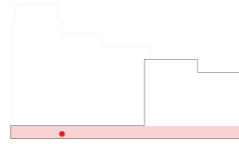


GF+1 TO GF+2

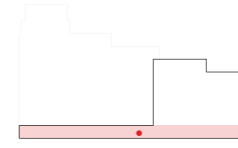


GF+2

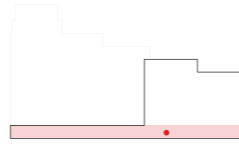
**CAFE**



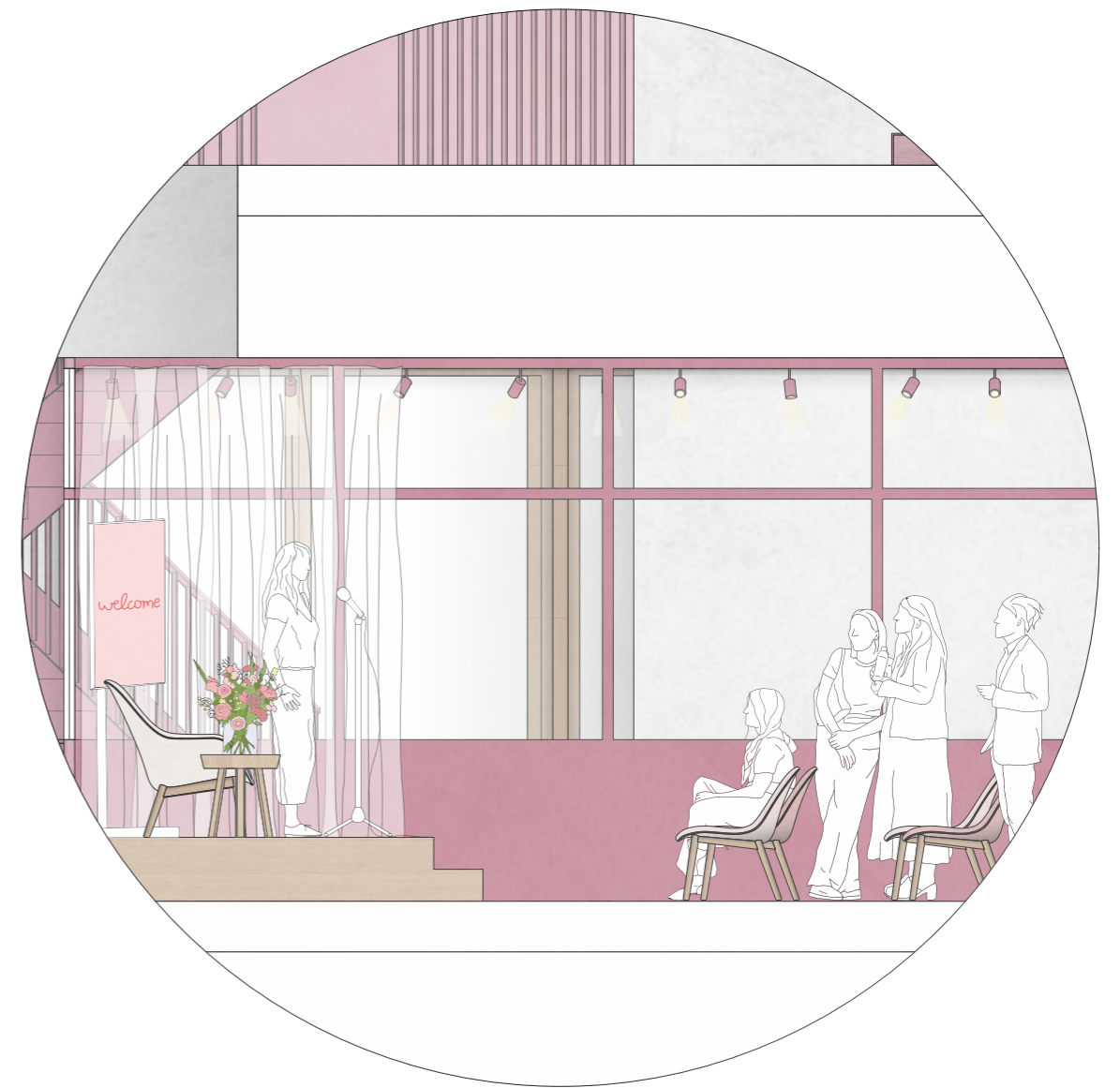
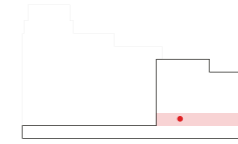
**SHOP**



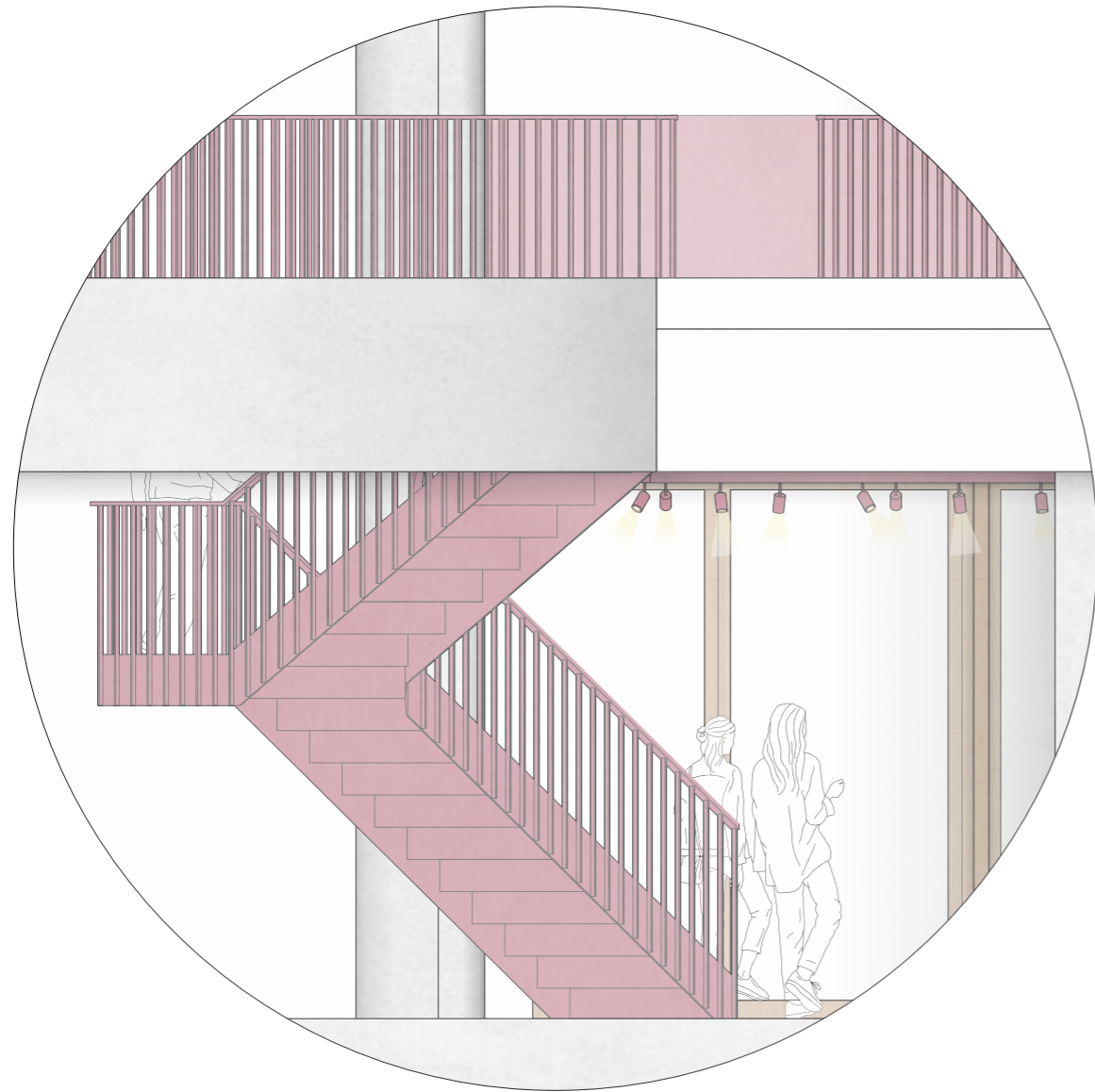
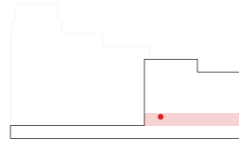
## TRANSITION FROM GF TO GF+1



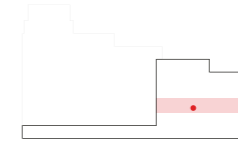
## EVENTS



**TRANSITION FROM GF+1 TO GF+2**

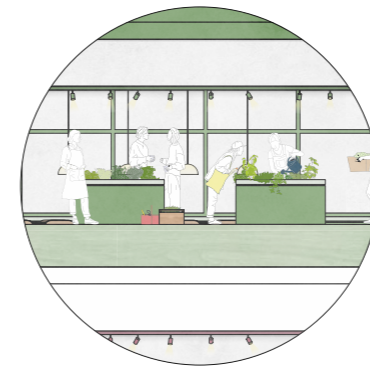
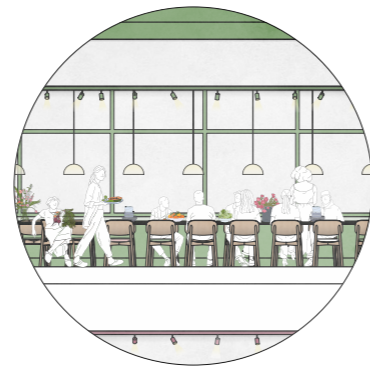
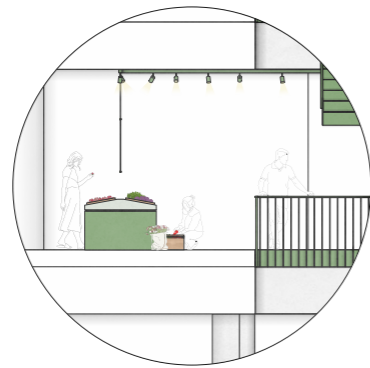
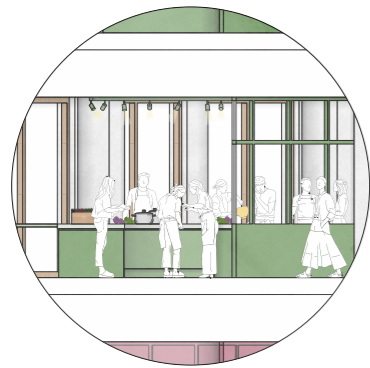


**LIBRARY**



## OVERVIEW | PRIVATE

A walk through the more private areas of the building  
(Individual steps on the following pages)



GF +3

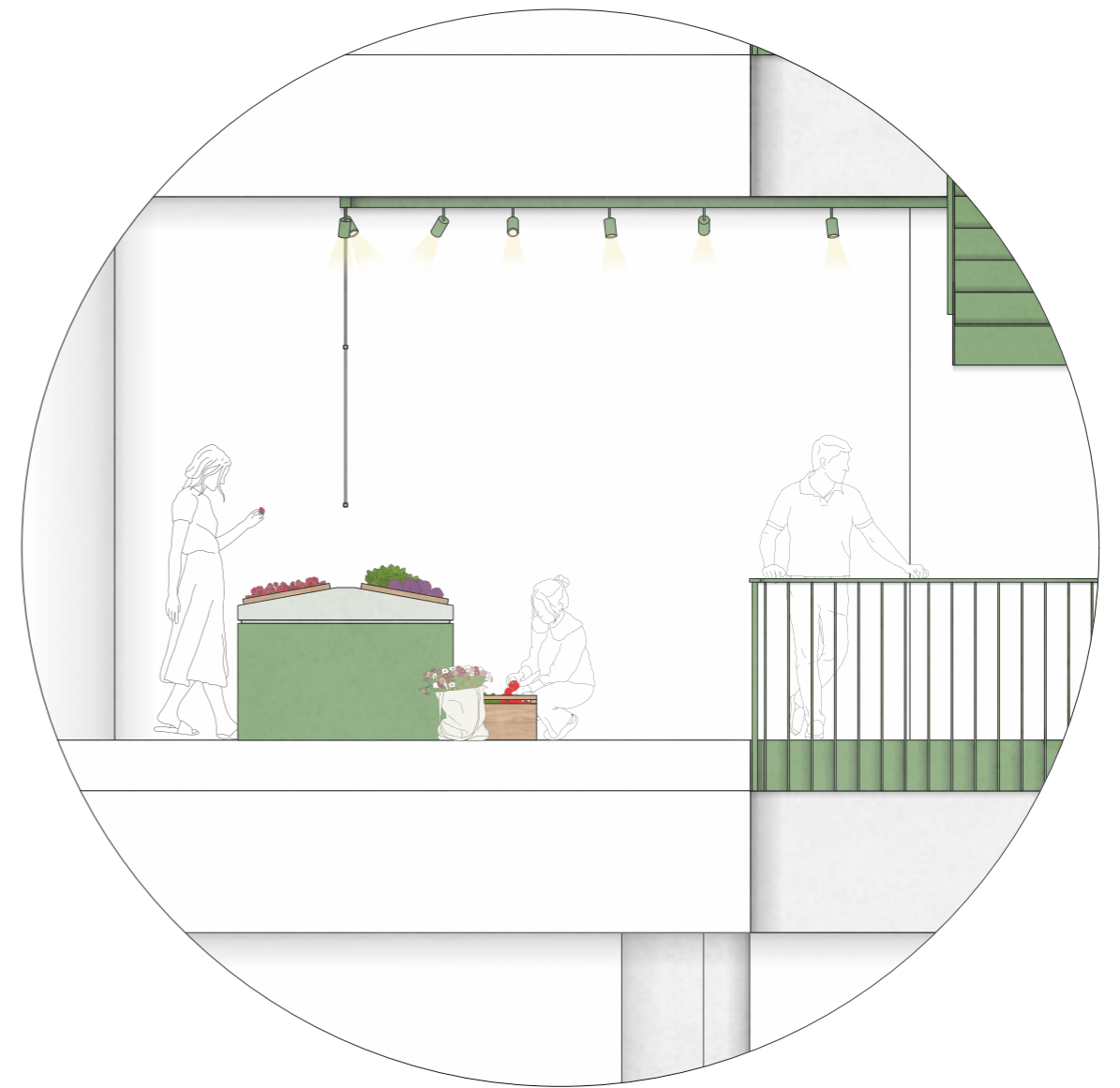
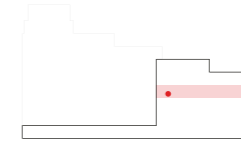
GF+3 TO GF+4

GF+4|5

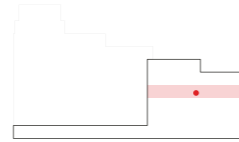
## COOKING CLASSES



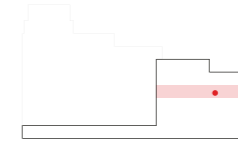
## GREEN GROCERIES



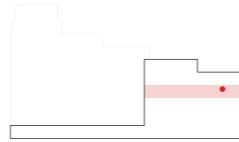
**DINING TABLE**



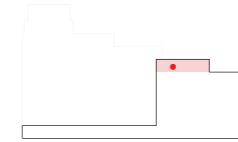
**HERB GARDEN**



**TRANSITION FROM GF+3 TO GF+4**



**PRIVATE KITCHEN/DINING BOOTHS**



inspired by

# CONNECTION

## **SPATIAL**

Focussed on linking individual parts of the building to create an enhanced physical connection between the floors – bringing the different uses/components of THE FO|ND together



## **VISUAL**

Focussed on creating sightlines between individual parts of THE FO|ND to build a connection between the different uses/components.



## **EMOTIONAL**

Focussed on creating spaces that can bring people together and help foster human interaction/connection.

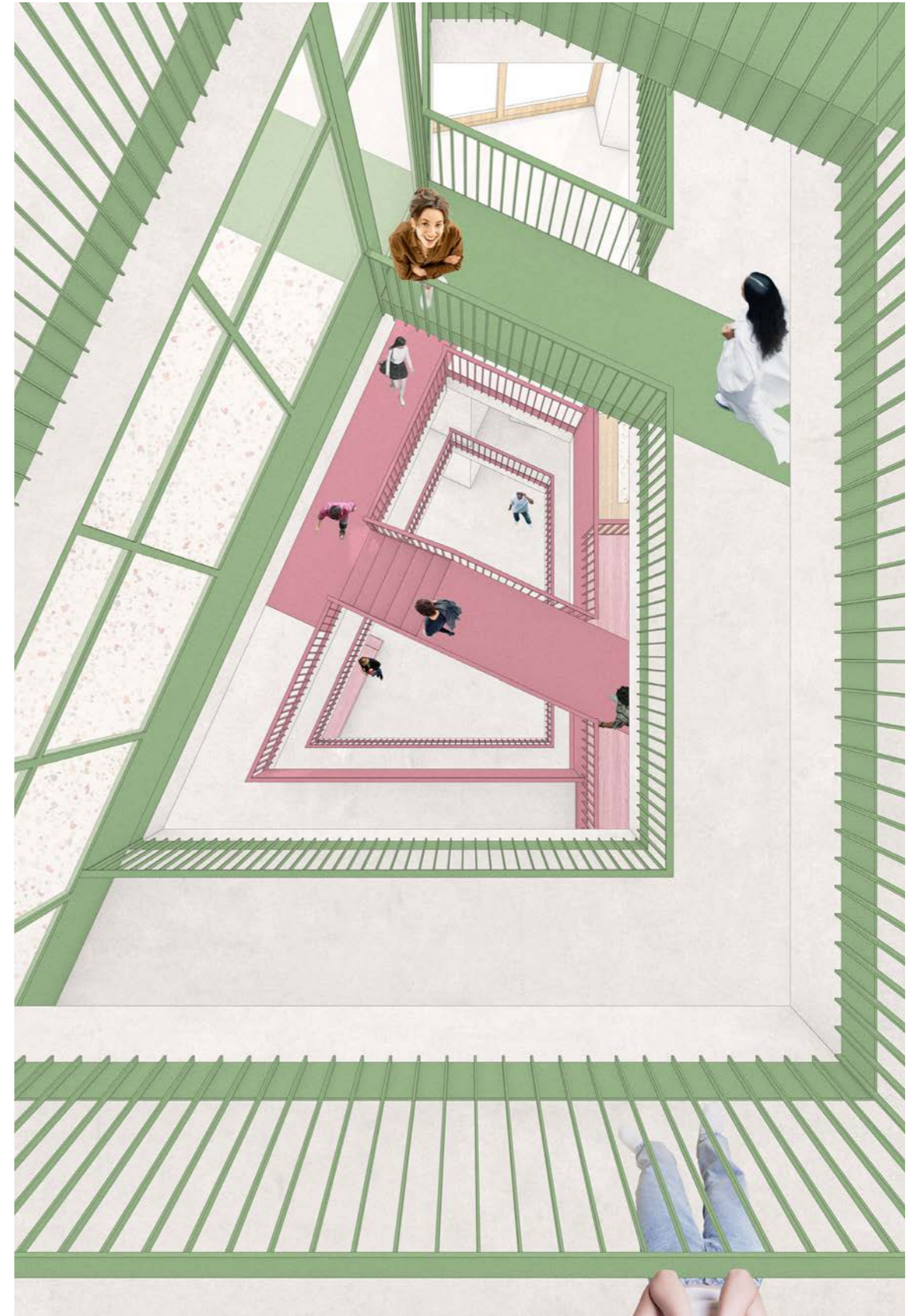
spatial

# CONNECTION

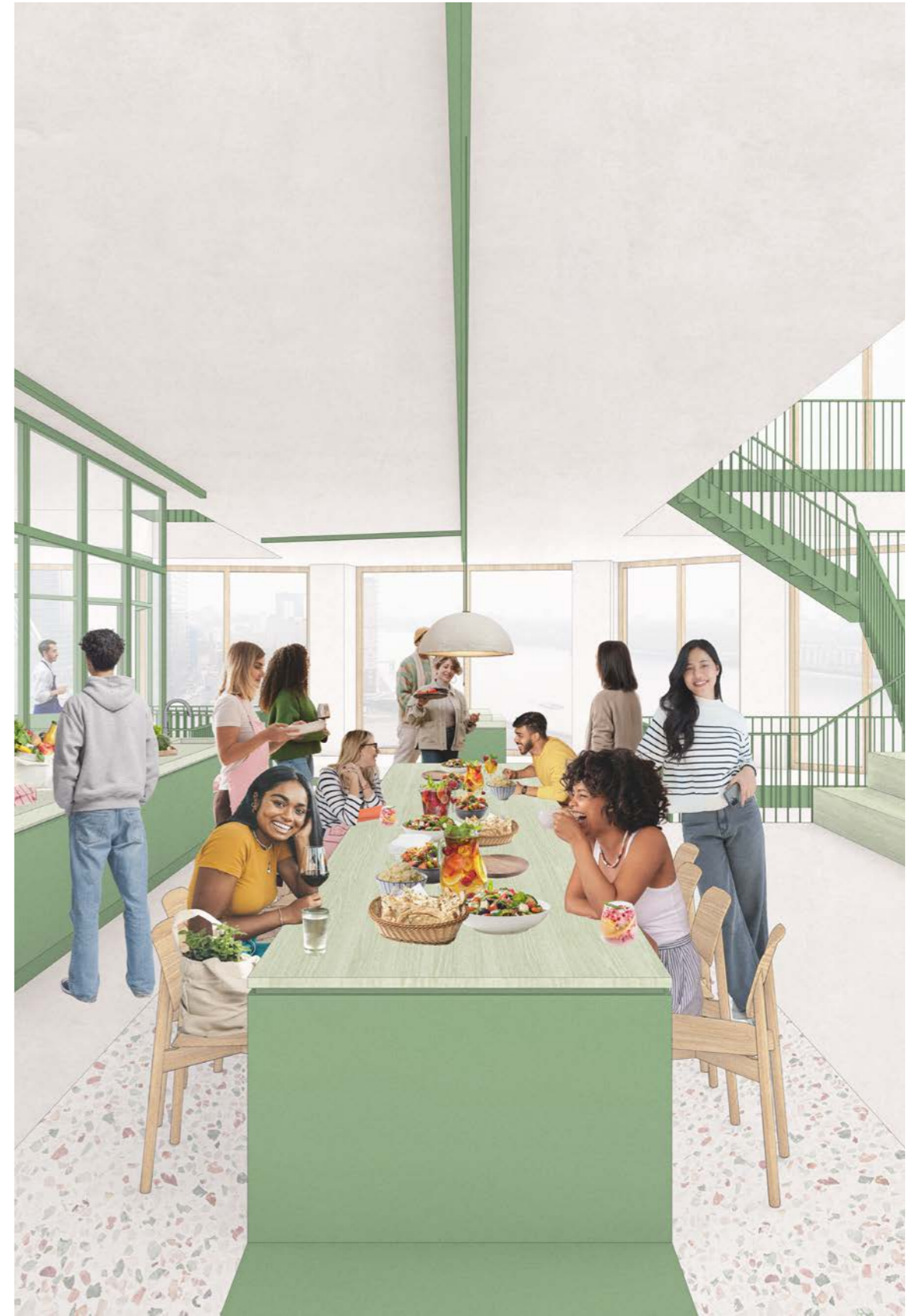


visual

# CONNECTION

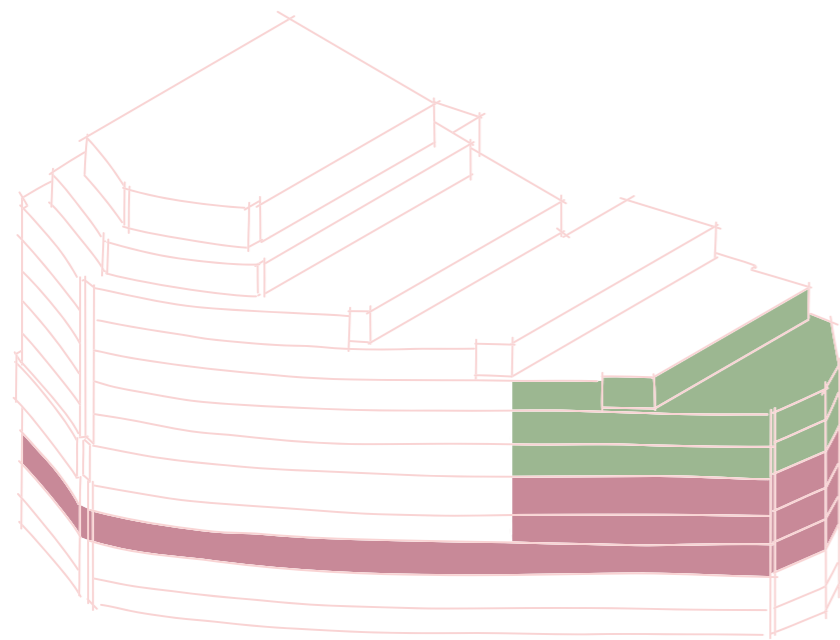


emotional  
**CONNECTION**



## CONNECTING INTERIOR AND EXTERIOR

How can the inside become visible from the outside?  
And how can the idea of (spatial) connection inform the facade?



GF

## VERTICAL/HORIZONTAL LINES

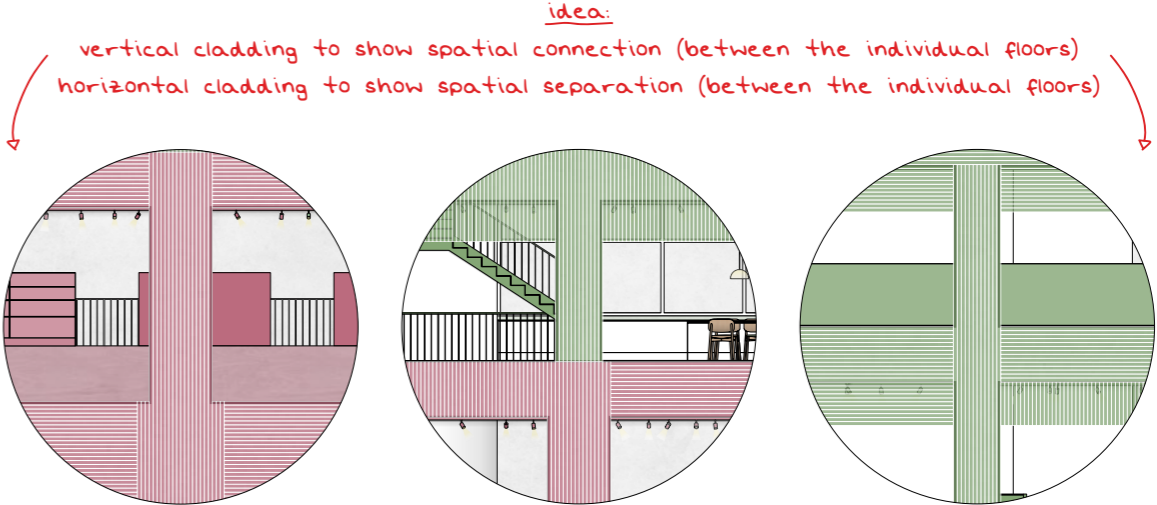
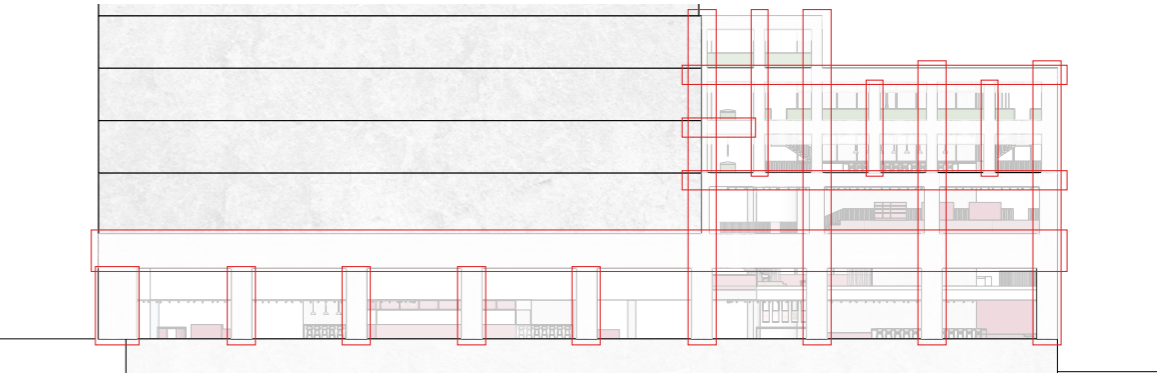
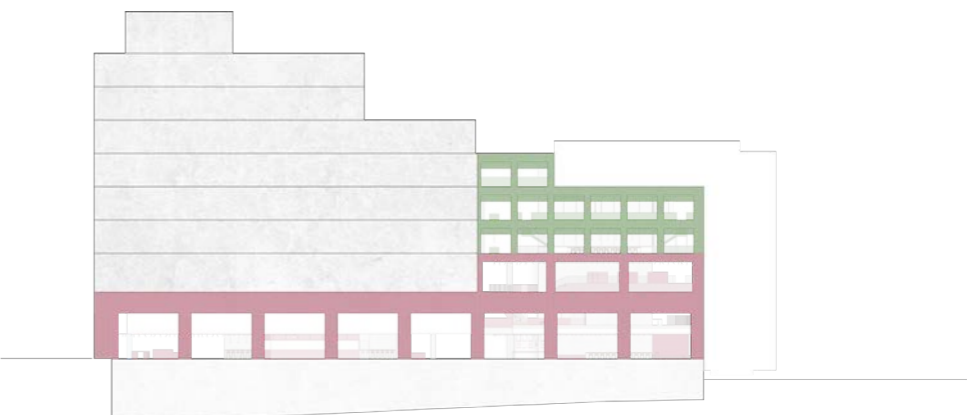
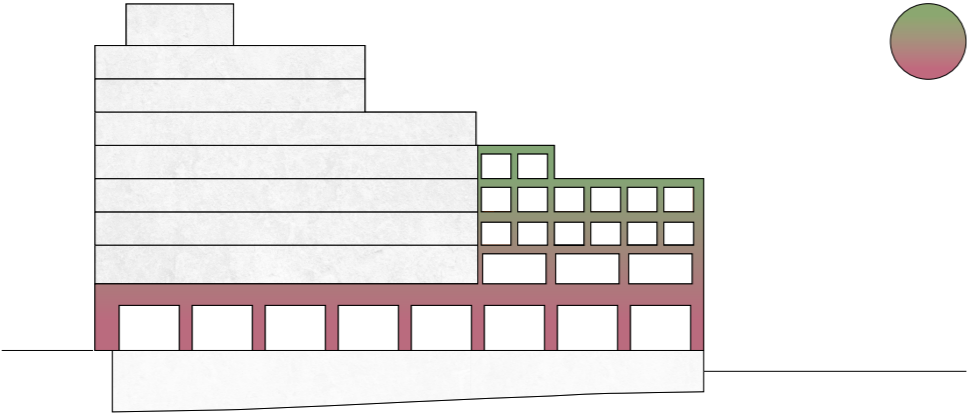
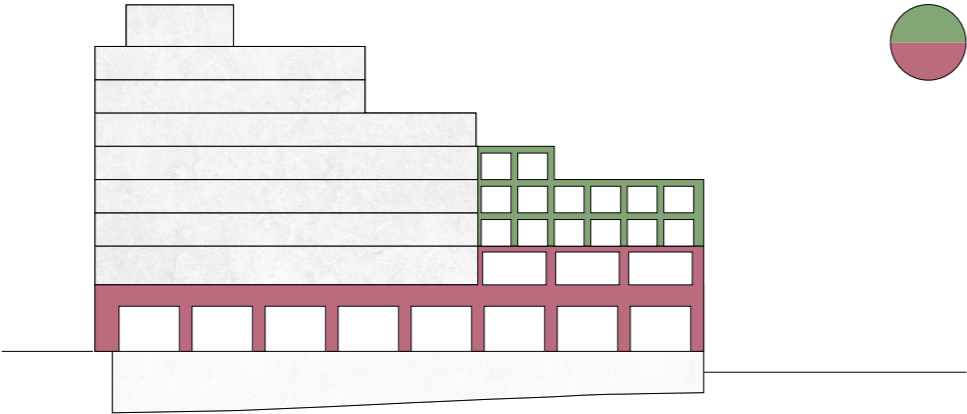
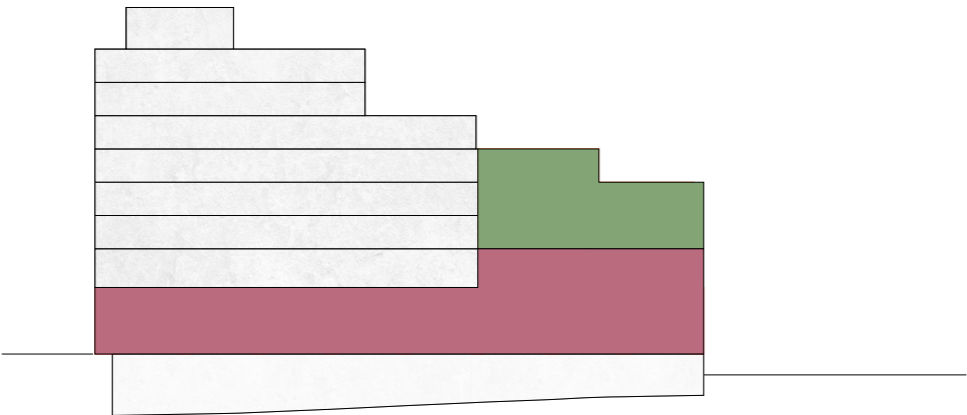
--> can the spatial connections (between the individual floors)  
from the inside be made visible from the outside through the  
use of vertical/horizontal cladding?



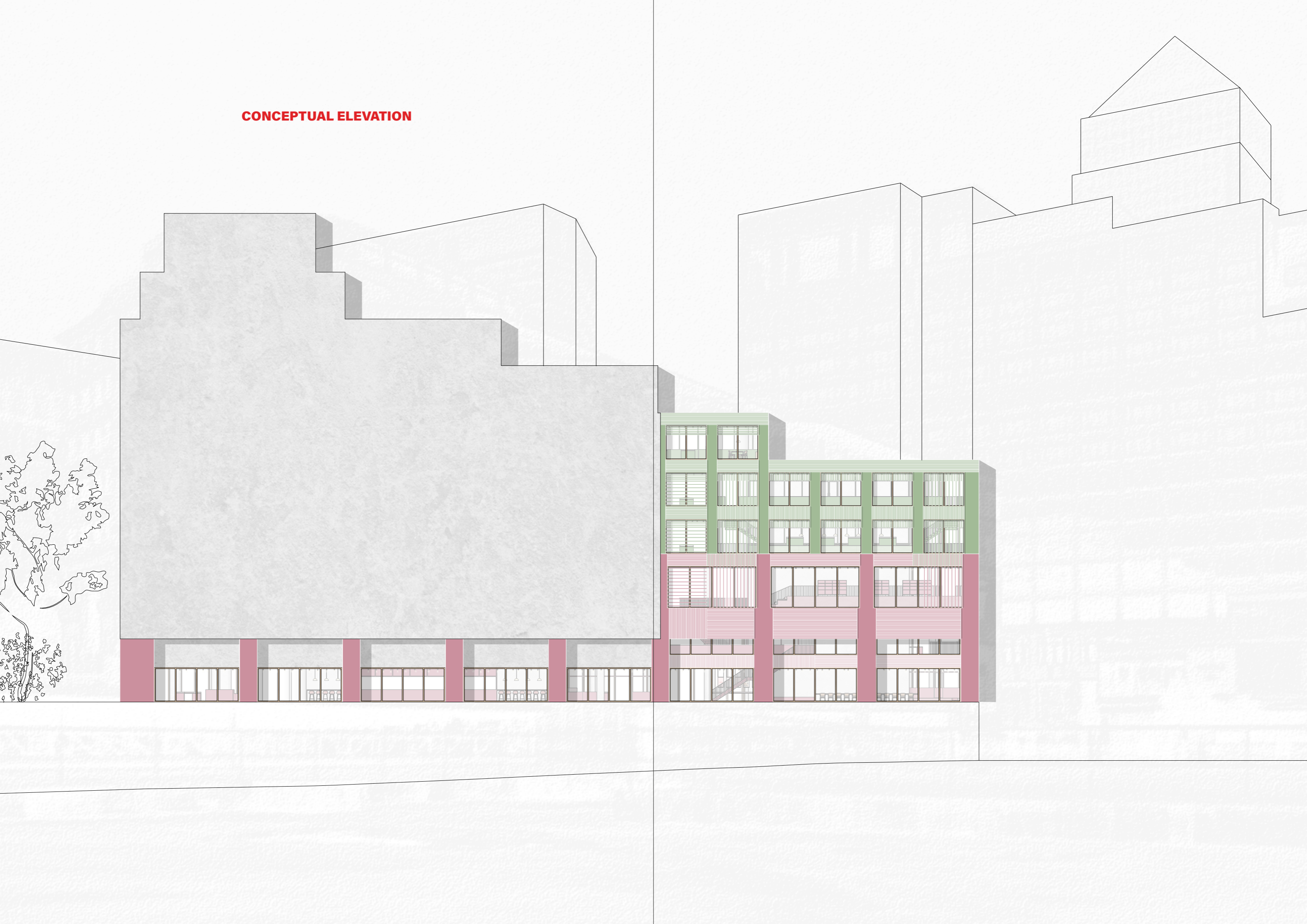
## MATERIALS

--> which materials (and forms) can help highlight certain aspects?

**EXPLORING FACADE IDEAS THROUGH CONCEPTUAL ELEVATIONS**



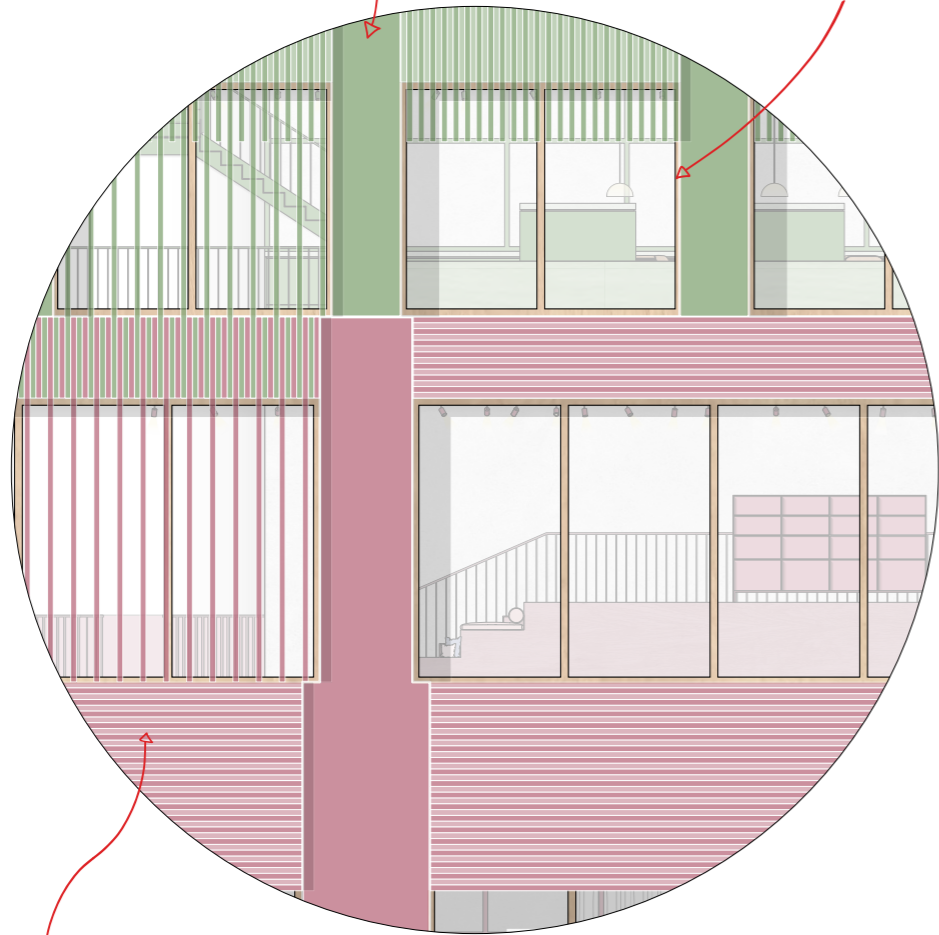
**CONCEPTUAL ELEVATION**



## FACADE | MATERIALS

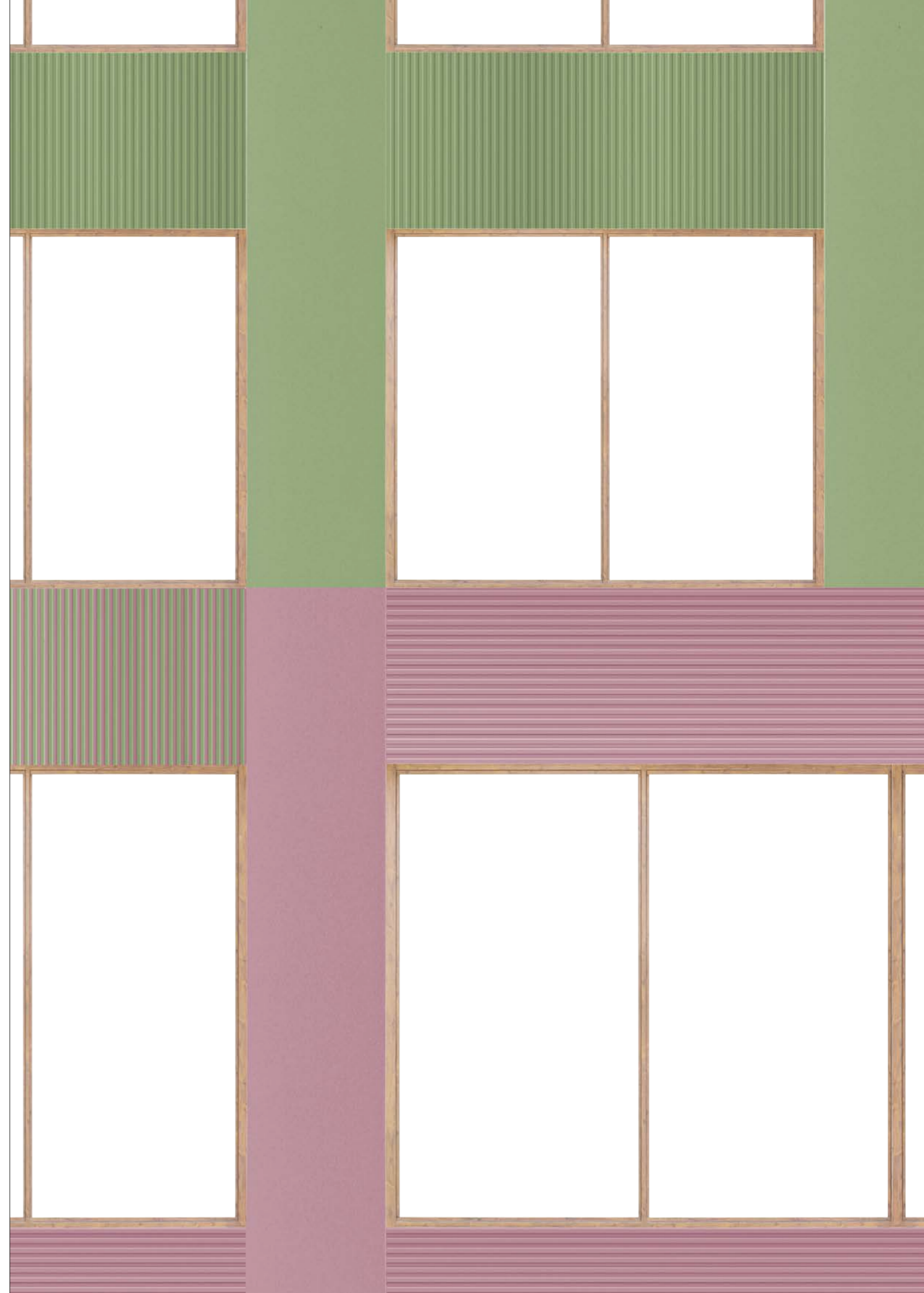
anodised aluminium sheet cladding  
highlighting the columns/vertical structural  
elements of the building

timber windows framing/highlighting  
the spaces where people would  
spend more time



vertically or horizontally installed anodised aluminium panels  
- orientation is depending on the spatial connections of  
the interior --> exterior hints how the interior works

elevation collage (on right) is not to scale



## SOURCES

### References

<https://www.herrmann-anna.com/50shadesofrotkohl>

<https://www.mushlumelighting.uk>

<https://www.model-no.com>

<https://design-milk.com/these-sustainable-lights-are-made-from-food-waste-wood-dust/>

<https://postdigitalarchitecture.com/a/downloads/-/3ec59bd02d8672c8/9b695b510f90fa07>

### Image references

#### Colour concept

<https://stock.adobe.com/hu/images/red-cabbage-raw-vegetables-healthy-salad-coleslaw-delicious-snack-or-blue-cabbage-menu-concept-food-background-copy-space-top-view/299787005>

<https://stock.adobe.com/hu/images/green-spinach-leaves-close-up-on-white-background-copy-space/558601329>

#### Material collages

<https://www.azuremagazine.com/spec-sheets/dolci-terrazzo-tile-cle/>

<https://www.nordicnew.nl/en/hay-soft-edge-90-bar-stool-black.html#gallery-9>

<https://www.wunderwallmural.com/polished-concrete-sample-kit.html>

<https://stock.adobe.com/hu/images/green-spinach-leaves-close-up-on-white-background-copy-space/558601329>

<https://stock.adobe.com/hu/images/red-cabbage-raw-vegetables-healthy-salad-coleslaw-delicious-snack-or-blue-cabbage-menu-concept-food-background-copy-space-top-view/299787005>

<https://www.smithandgoat.co.uk/collections/concrete-samples/products/concrete-samples-green-colour-set>

<https://www.smithandgoat.co.uk/products/medium-cylinder-concrete-pot>

<https://www.smithandgoat.co.uk/products/concrete-sink-the-round>

<https://www.smithandgoat.co.uk/products/concrete-pot-set-small-medium-and-large>

<https://noah-living.com/en/products/stoffbezug-ruckenlehne-70?variant=31881769517123&view=ds>

<https://www.romo.com/collections/plains/linara/linara/chalk-rose>

<https://www.maximevermeulen.com/fr/portfolio/02>

<https://archinect.com/firms/project/59631615/r7-kings-cross/150035768>

### Lighting concept

<https://www.supermodular.com/en-us/track-lighting/>

<https://de.pinterest.com/pin/635711303674050048/>

<https://www.azuremagazine.com/spec-sheets/multiverse-lighting-system-extensions-juniper-design/>

<https://www.supermodular.com/en/product-stories/pista-track-48v/>

### Exploring atmospheric lighting

<https://design-milk.com/these-sustainable-lights-are-made-from-food-waste-wood-dust/>

<https://mushlumelighting.com>

<https://www.yankodesign.com/2024/07/17/concrete-like-lampshades-are-actually-made-from-mushroom-mycelium/>

[https://de.linkedin.com/posts/grown-bio\\_circular-mushlume-circulareconomy-activity-6976165852345688064-IM7E?trk=public\\_profile\\_like\\_view](https://de.linkedin.com/posts/grown-bio_circular-mushlume-circulareconomy-activity-6976165852345688064-IM7E?trk=public_profile_like_view)

<https://www.mushlumelighting.uk/about>

### Spatial connection

<https://ccstrendz.com.au/products/apron-grapefruit-stripes>

<https://profartic.com/en/products/aventail-chicago-camel-escuro>

<https://www.cargocrew.com.au/product/ryan-bib-apron-tobacco-brown/?category=aprons/neck-strap>

<https://au.pinterest.com/pin/978829300245675876/>

<https://thekosmickitchen.com/about-sarah-kate>

<https://id.pinterest.com/pin/440367669835020674/>

<https://es.pinterest.com/pin/796644621629225158/>

<https://www.bustle.com/p/the-9-best-printed-midi-skirts-available-in-the-uk-because-this-is-the-statement-piece-of-summer-2019-17950998>

<https://www.mynta.com/dresses/hm/hm-women-black-v-neck-jersey-dress/11415106/buy>

<https://www.rawpixel.com/image/13715744/png-footwear-standing-walking-sleeve>

<https://architextures.org/textures/1700>

## SOURCES

### further image references

#### Visual connection

<https://www.azuremagazine.com/spec-sheets/dolci-terrazzo-tile-cle/>

<https://stock.adobe.com/hu/images/portrait-of-a-young-and-cheerful-woman-with-healthy-food-ingredients-on-the-kitchen-at-home-view-from-above/332939142>

<https://unsplash.com/photos/a-group-of-people-sitting-on-top-of-a-wooden-bench-Onl821fgQcl>

<https://www.therow.com/en-gb/collections/summer-2022>

<https://in.pinterest.com/pin/584342120436790082/>

<https://stock.adobe.com/hu/images/group-of-people-viewed-from-above/172833230>

<https://stock.adobe.com/hu/images/full-body-image-of-beautiful-asian-girl-top-view/543780358>

#### Emotional connection

<https://stock.adobe.com/uk/images/paper-napkins/56551230>

<https://stock.adobe.com/hu/images/a-woman-sits-at-a-table-and-mixes-food-in-a-bowl-while-a-group-of-three-friends-stand-next-to-her-holding-a-glass-and-a-plate-outdoors-during-dinner/1366453364>

<https://stock.adobe.com/hu/images/festive-drinks-citrus-pomegranate-cocktail-selective-focus-space-for-text/226519897>

<https://stock.adobe.com/hu/images/cooked-brown-rice-in-a-japanese-style-bowl/240109487>

<https://stock.adobe.com/hu/images/natural-water-in-a-glass/283189272>

<https://stock.adobe.com/hu/images/closed-new-orange-leather-eyeglasses-case/376294399>

<https://stock.adobe.com/hu/images/seamless-concrete-wall/426561532>

<https://stock.adobe.com/hu/images/adorable-young-woman-in-chef-s-apron-puts-apple-pie-in-the-oven/519503488>

<https://stock.adobe.com/hu/images/tablecloth-on-transparent-background-png-file/947681208>

<https://stock.adobe.com/hu/images/wooden-plate/114881258>

<https://stock.adobe.com/hu/images/diverse-group-of-friends-enjoying-coffee-together/154773857>

<https://stock.adobe.com/hu/images/homemade-lemonade-or-sangria/217770642>

<https://stock.adobe.com/hu/images/homemade-lemonade-or-sangria/209594159>

<https://stock.adobe.com/hu/images/homemade-lemonade-or-sangria/209104661>

<https://stock.adobe.com/hu/images/seamless-nice-beautiful-wood-texture-background/223945718>

<https://stock.adobe.com/hu/images/people-eating-and-drinking-at-the-table/380506084>

<https://architectures.org/textures/1700>

<https://stock.adobe.com/hu/images/two-multi-ethnic-girl-friends-enjoying-coffee-together-in-a-coffee-shop-sitting-at-a-table-chatting-and-gossiping/314352028>

<https://stock.adobe.com/hu/images/baby-plant-against-white-marble-wall-in-tote-bag-home-decor-zero-waste-eco-friendly-sustainable-life-style-concept/390461222>

<https://stock.adobe.com/hu/images/tray-with-vegetables-on-table-in-modern-kitchen/414352179>

<https://stock.adobe.com/hu/images/indian-bread-basket/433450809>

<https://stock.adobe.com/hu/images/chilli-paneer-starter-food-from-india/475979547>

<https://stock.adobe.com/hu/images/happy-friends-drinking-red-wine-sitting-at-restaurant-table-multiracial-young-people-enjoying-rooftop-dinner-party-together-food-and-beverage-concept-black-girl-holding-wineglass-smiling-at-camera/702339435>

<https://stock.adobe.com/hu/images/mature-woman-in-casual-clothes-on-white-background-back-view/919035226>

<https://stock.adobe.com/hu/images/teenager-standing-back-view-and-looking-away/1264796463>

<https://stock.adobe.com/hu/images/enjoying-an-outdoor-gathering-a-group-of-diverse-friends-wearing-warm-clothes-are-conversing-around-a-picnic-table-with-drinks-and-snacks-in-a-sunny-yard-they-are-drinking-wine-and-eating-snacks/1356190979>

<https://stock.adobe.com/hu/images/greek-salad-of-veggies-olives-cheese-in-bowl/1406970616>

<https://stock.adobe.com/hu/images/young-woman-with-long-black-hair-wearing-a-striped-sweater-and-gray-jeans-leaning-on-a-railling-while-holding-a-smartphone-in-a-modern-minimalist-interior/1442070748>

<https://www.hay.com/hay/furniture/seating/chair/soft-edge-chair/soft-edge-60>

<https://travelfoodpeople.com/bordeaux-fresh-and-elegant-food-at-lauza/>

<https://mushlumelighting.com/shop/p/mushlume-hemi-pendant-large>

<https://www.azuremagazine.com/spec-sheets/dolci-terrazzo-tile-cle/>

<https://stock.adobe.com/hu/images/cloth-bag-with-vegetables-and-bottle-of-juice-on-table-against-grey-background-space-for-text/269570515>

#### Elevation collage

[https://unsplash.com/photos/black-flood-lamp-hanged-on-gray-wall-aol\\_kKXLZTG8](https://unsplash.com/photos/black-flood-lamp-hanged-on-gray-wall-aol_kKXLZTG8)

<https://unsplash.com/photos/gray-galvanized-iron-sheet-krFZulhKQnc>

<https://stock.adobe.com/uk/images/japanese-house-wooden-door-window-frame-isolated-on-white-background/533849080>

