

PORTFOLIO: EAST PALACE

TERM 3

Huanhuan Duan



EAST PALACE

The project is situated in East London, a place that has transformed from poverty and decay to literature, youth, and sports - all representing the change and vitality of the area. I aim to infuse this energy into architecture by utilizing the consistent columns of the original building as moving tracks and axes to transform the overall space. Let's turn this building into a factory of vitality.

At the same time, change means not being bound to break the tradition, and the architecture itself challenges the definition of traditional architecture, just like the attitude of life in East London, which is anti-traditional and free from bondage.

SITE ANALYSIS

Most of the surrounding areas are residential areas, and more residential areas will be built in the future development. More and more residents live here, but the surrounding area is mostly factory buildings, and there is no entertainment area.



The vast space and courtyard provide this building with greater flexibility.



HERITAGE

1930s modernist warehouse on the former site of the Four Mills Distillery



LANDMARK

Iconic multi-level warehouse with 53m road frontage and river frontage



SIZE

20,000 sq ft adaptable floor plates



VOLUME

5m clear height



YARD

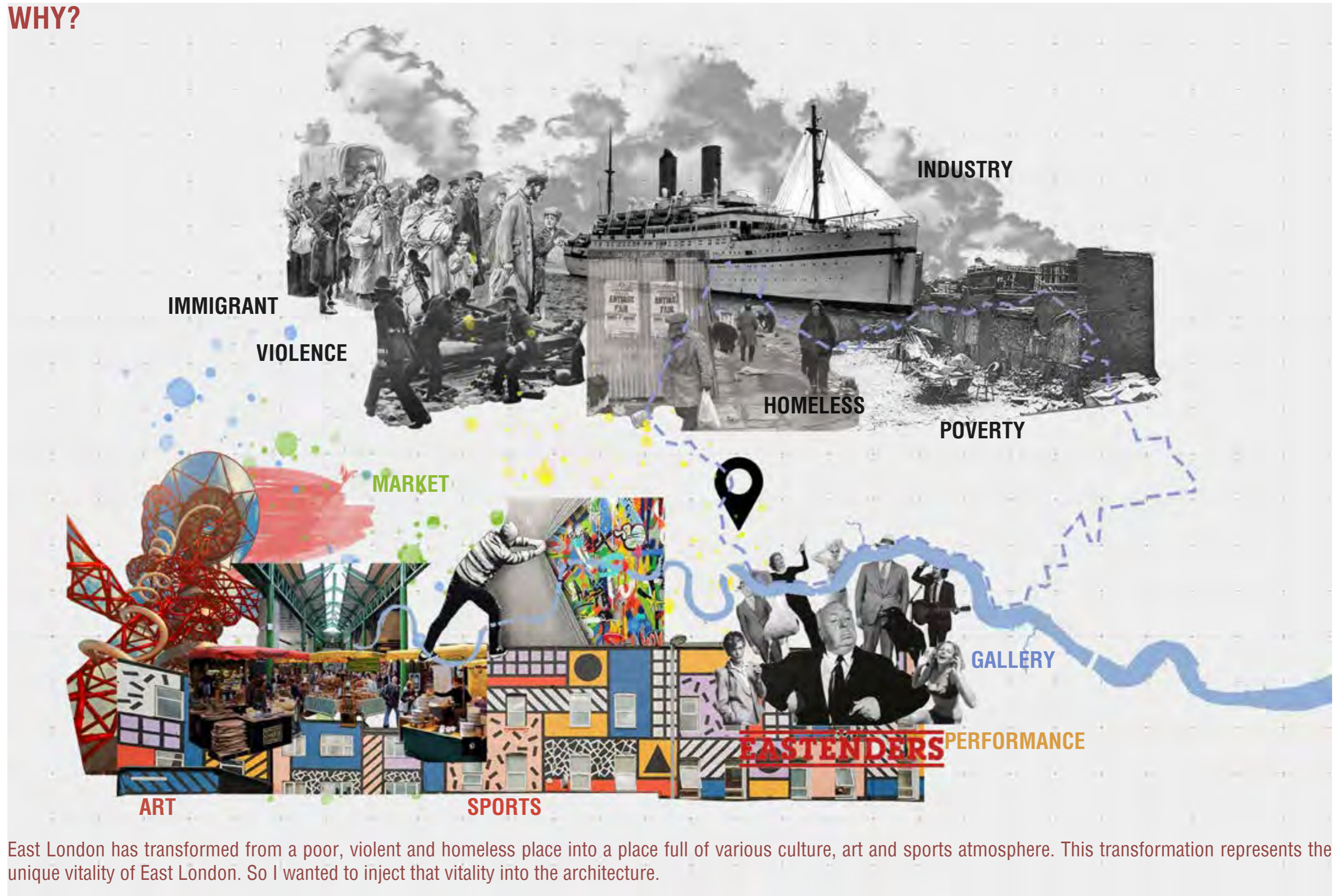
Self-contained secured yard space



Discover

There are many columns inside the building, and the spacing between the columns is the same

WHY?

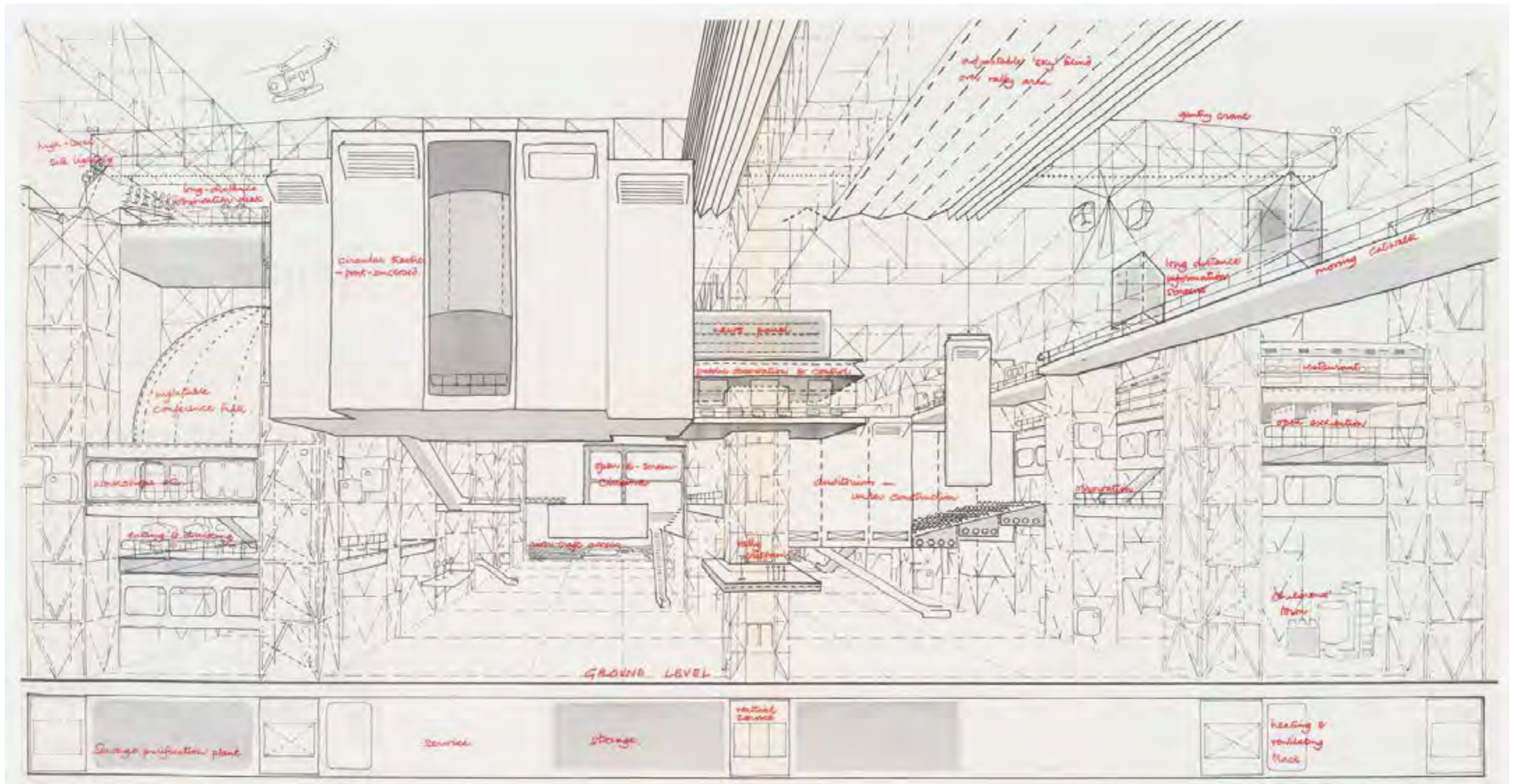


East London has transformed from a poor, violent and homeless place into a place full of various culture, art and sports atmosphere. This transformation represents the unique vitality of East London. So I wanted to inject that vitality into the architecture.

BROCHURE

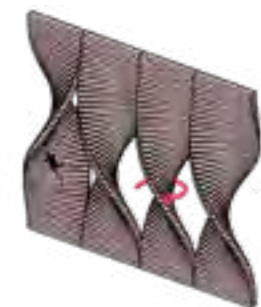
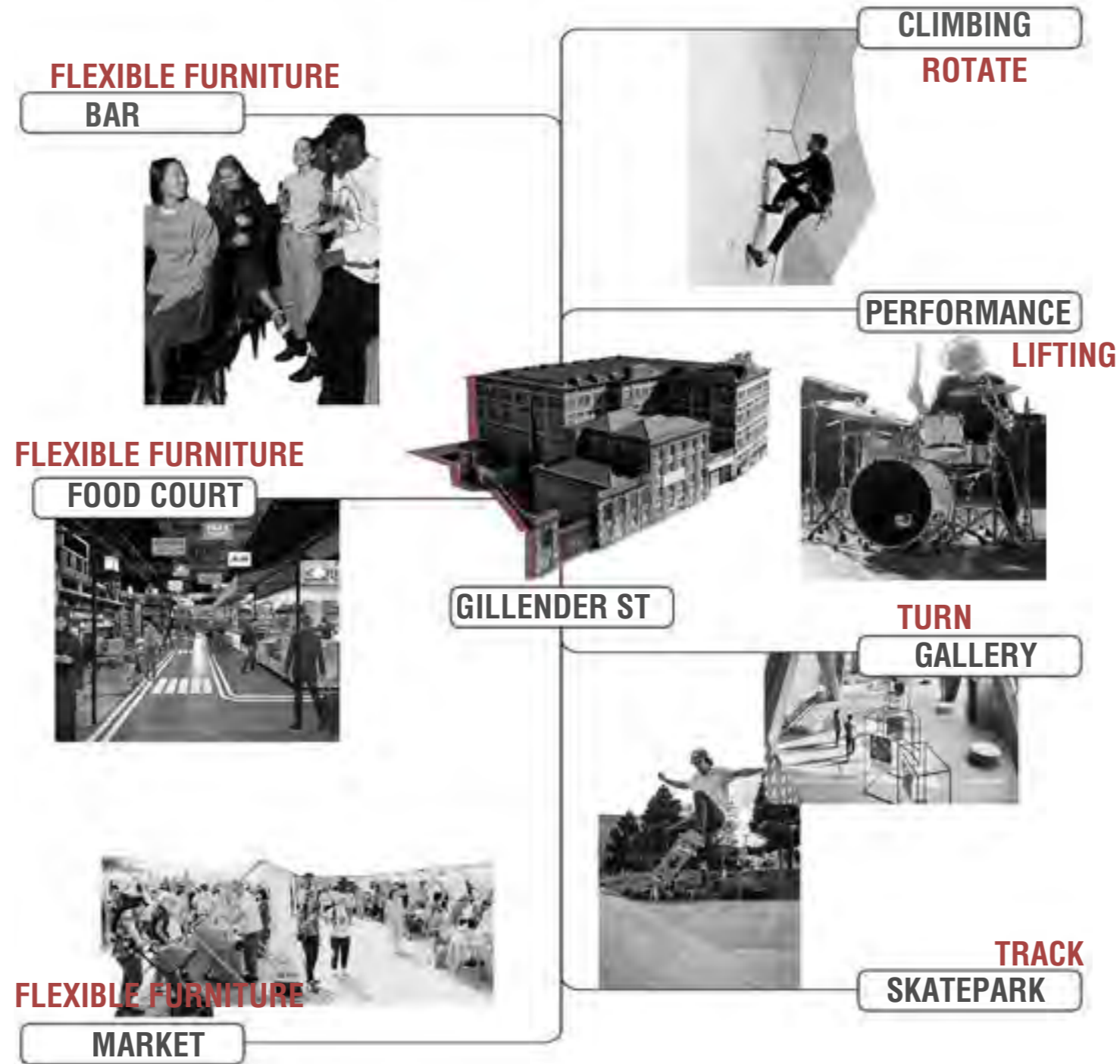


INSPIRATION

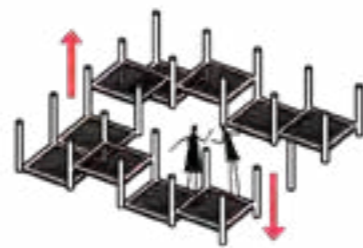


"Fun Palace" is an avant-garde architectural project by British architect Cedric Price. Fun Palace was designed as a highly flexible and changeable space, with movable walls and floors, using a high-tech modular design. The flexibility of Fun Palace's interior is similar to the lively atmosphere of East London. So, I also used this flexible design in East Palace project.

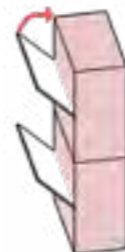
CONCEPT



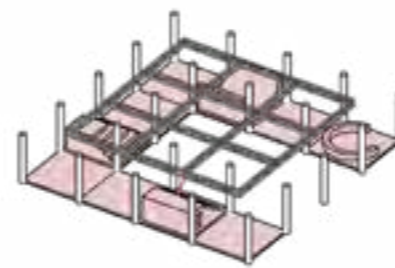
ROTATE



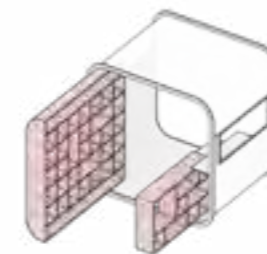
LIFTING



TURN



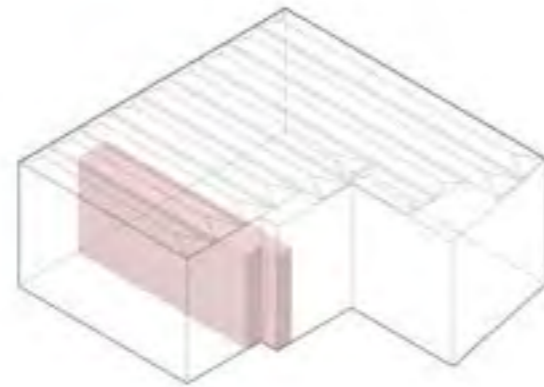
TRACK



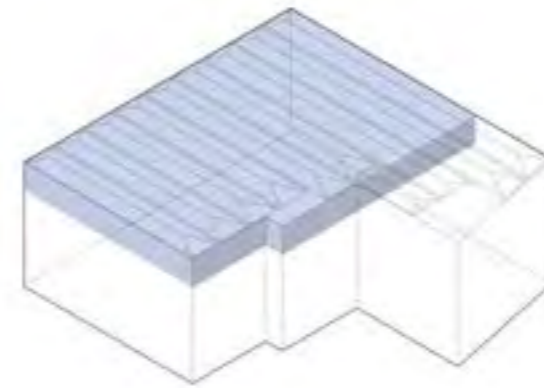
FLEXIBLE FURNITURE



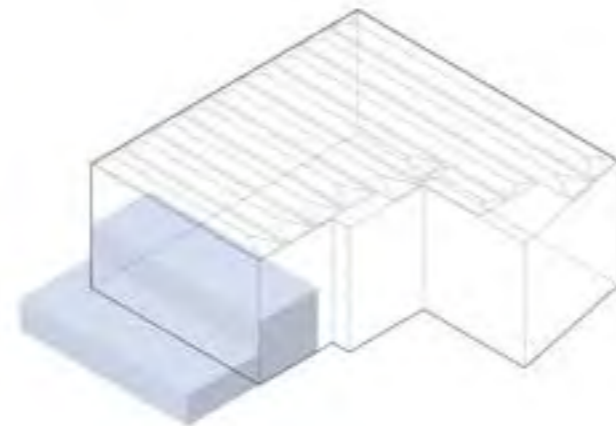
SPATIAL DISTRIBUTION



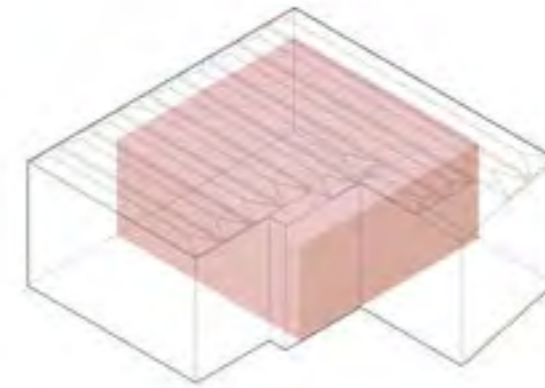
CLIMBING



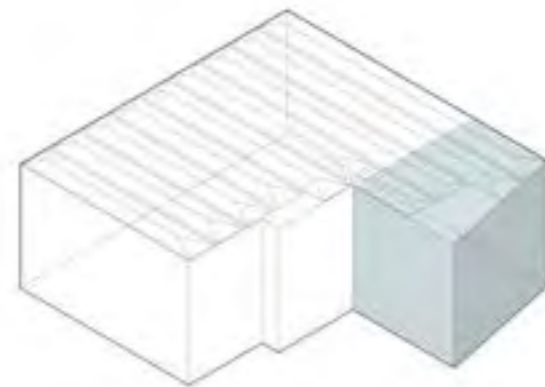
SKATEBOARDING PLATFORM



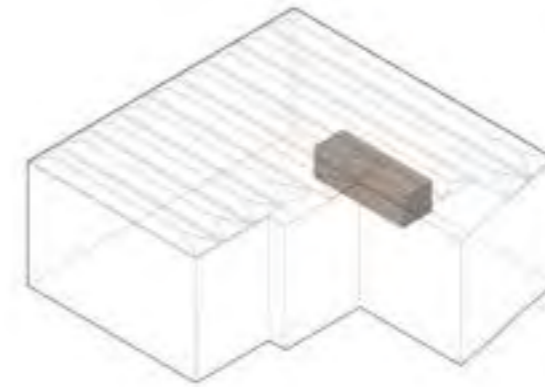
SKATEPARK



PERFORMANCE SPACE

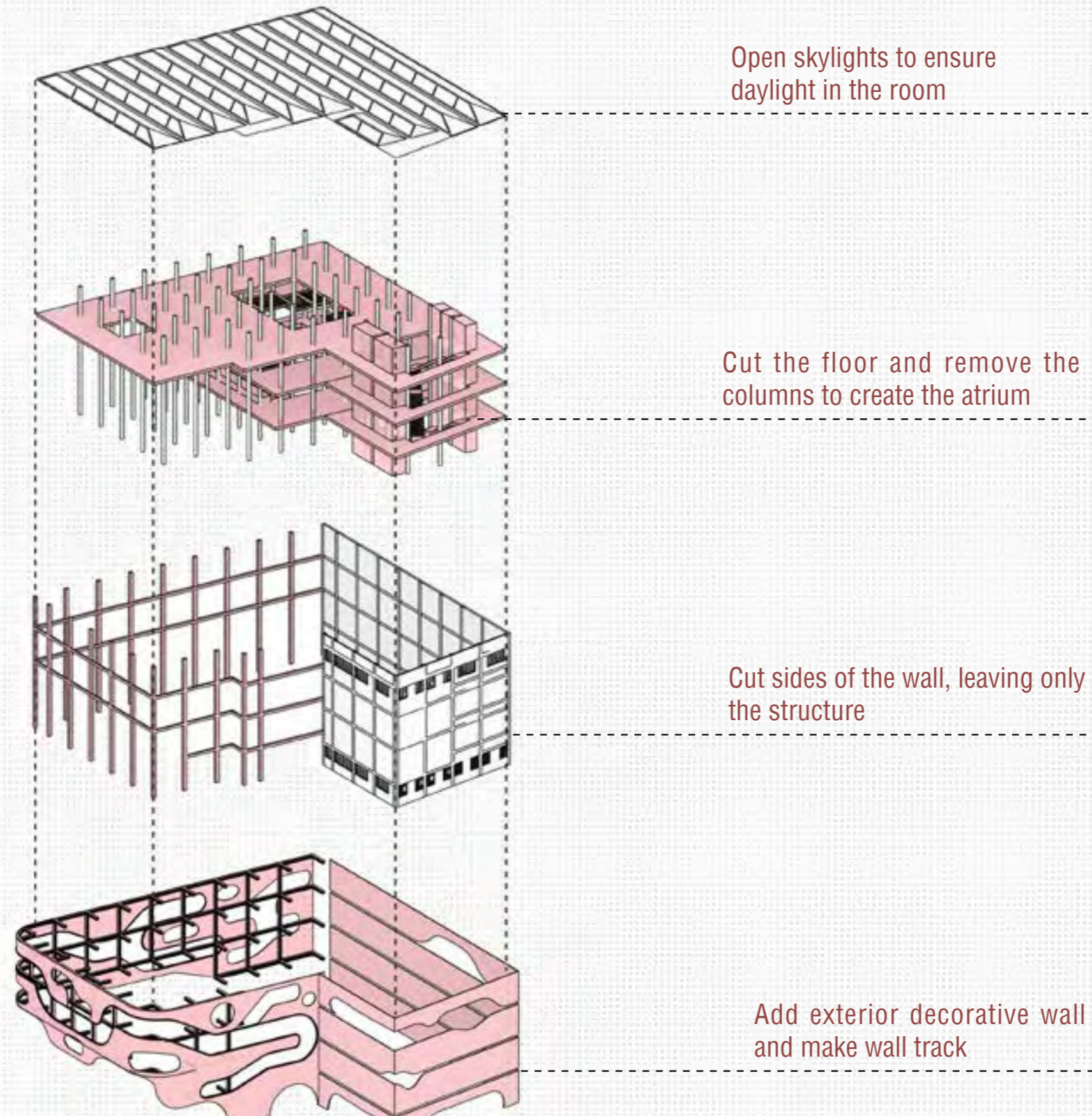


GALLERY

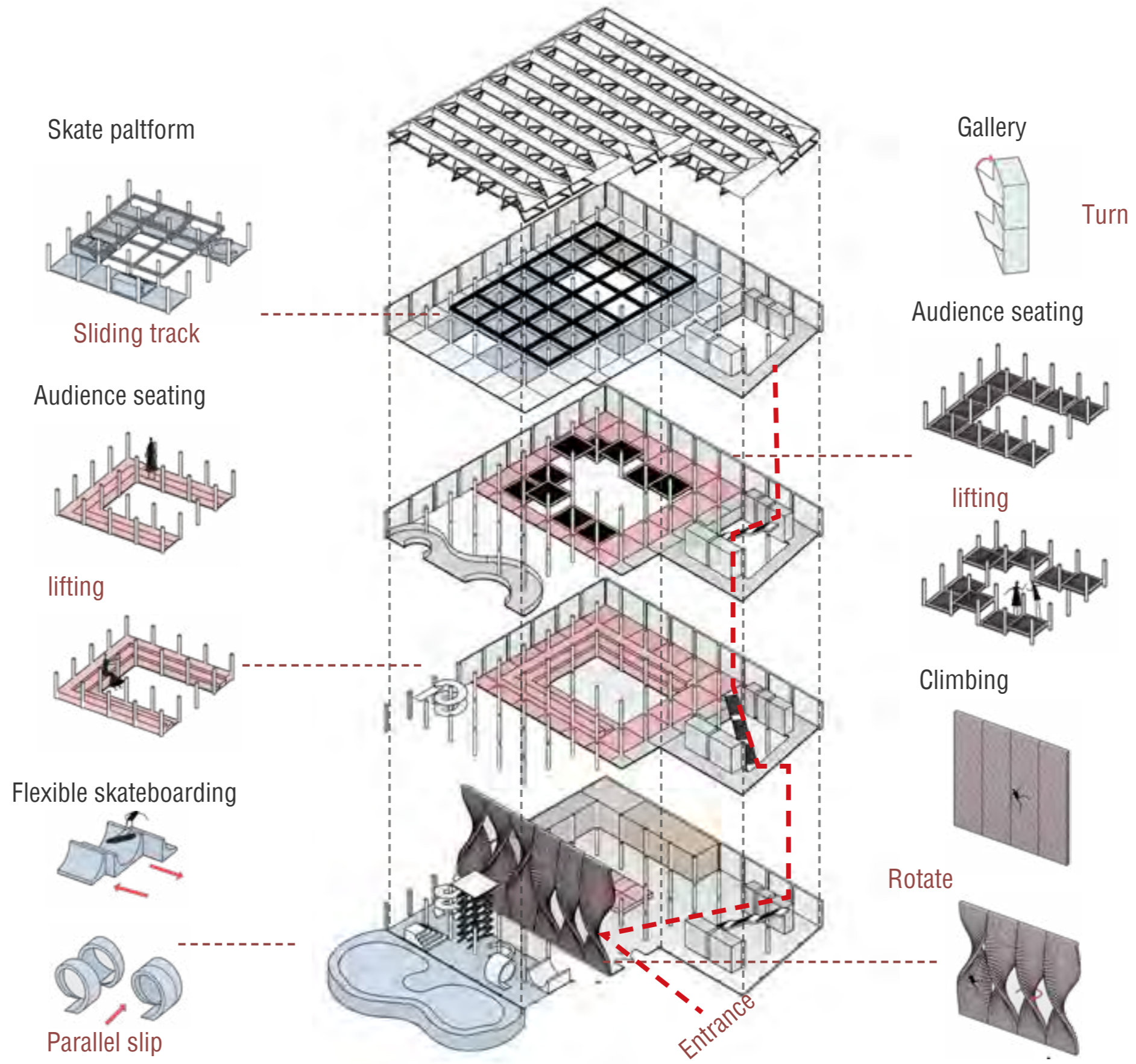


BAR

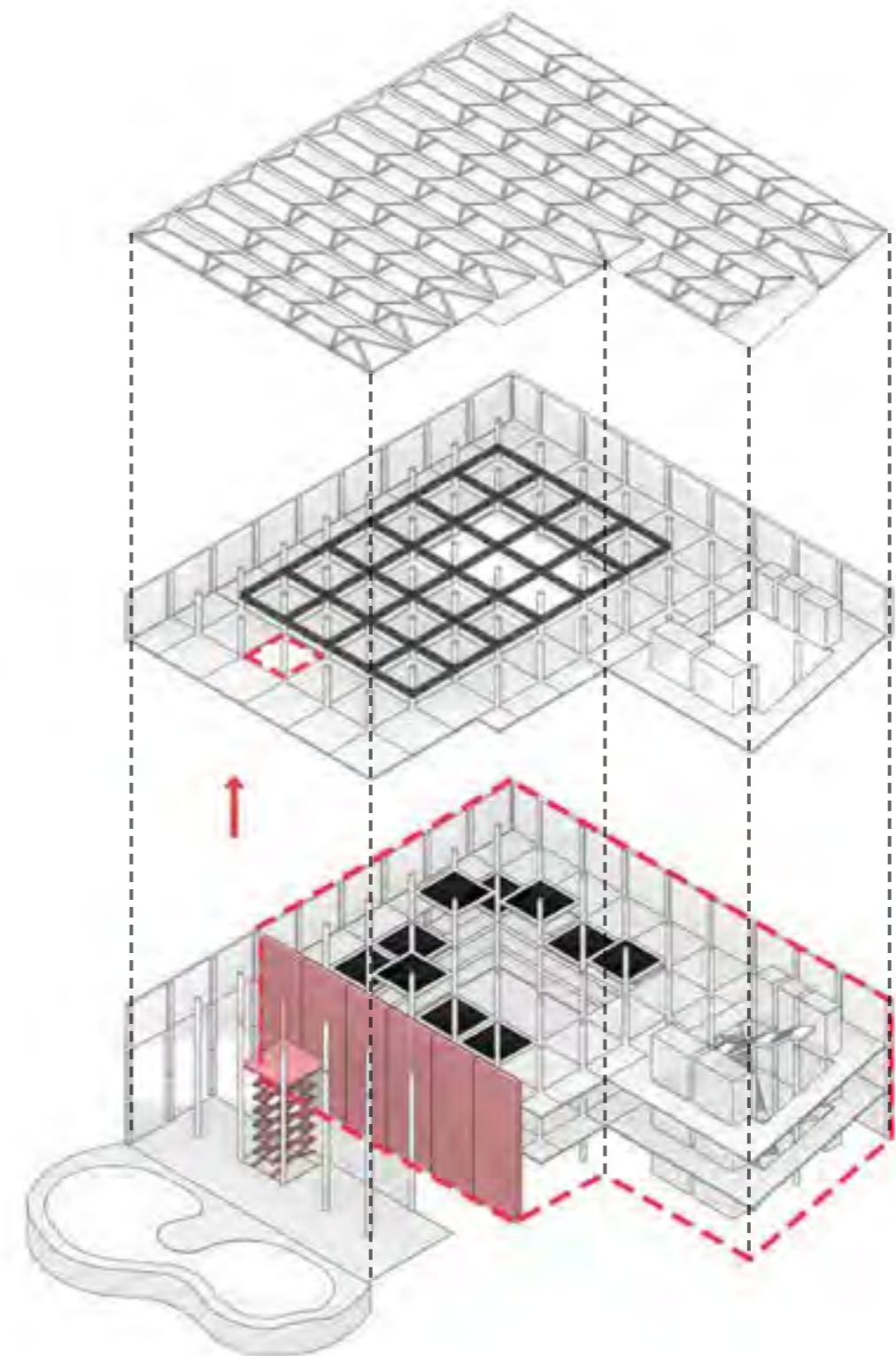
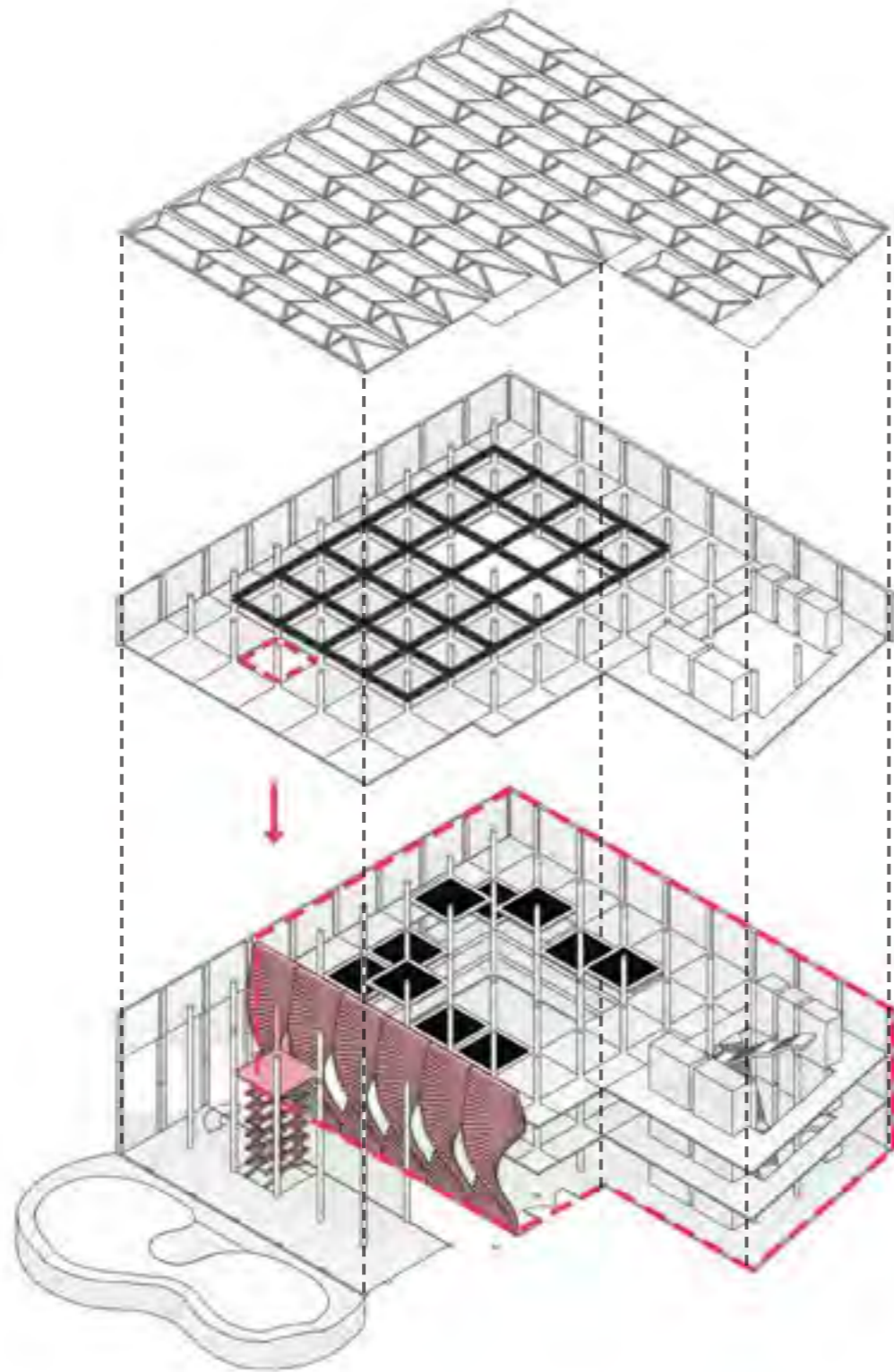
STRATEGY



INTERIOR STRATEGY



EAST PALACE IS NOT AN ABSOLUTELY ENCLOSED OR OPEN SPACE



In the space, the use of elevators on the ground floor and a climbing wall controls the enclosure and openness of the area. When the elevator rises to the top level opening and the climbing wall rotates to a vertical position, the red-framed area becomes an enclosed space.

MATERIAL

Explosion of colors

Climbing walls and skateboarding areas



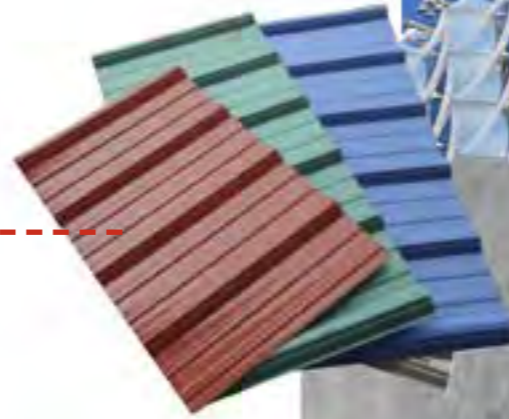
ETFE

Architectural surface
Transparent and Lightweight
Recyclable



Color steel plate

Bar



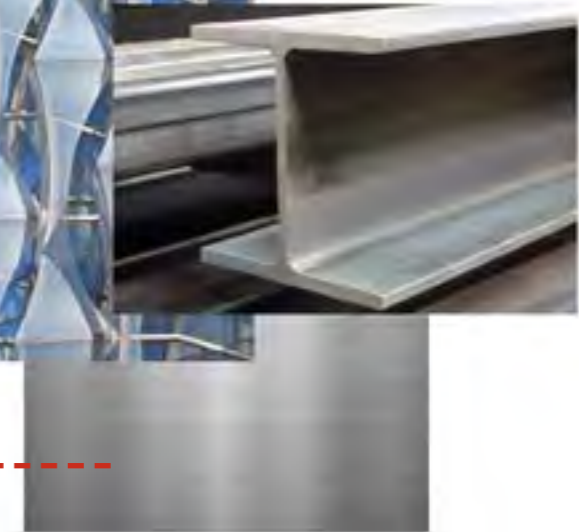
Concrete

Floor

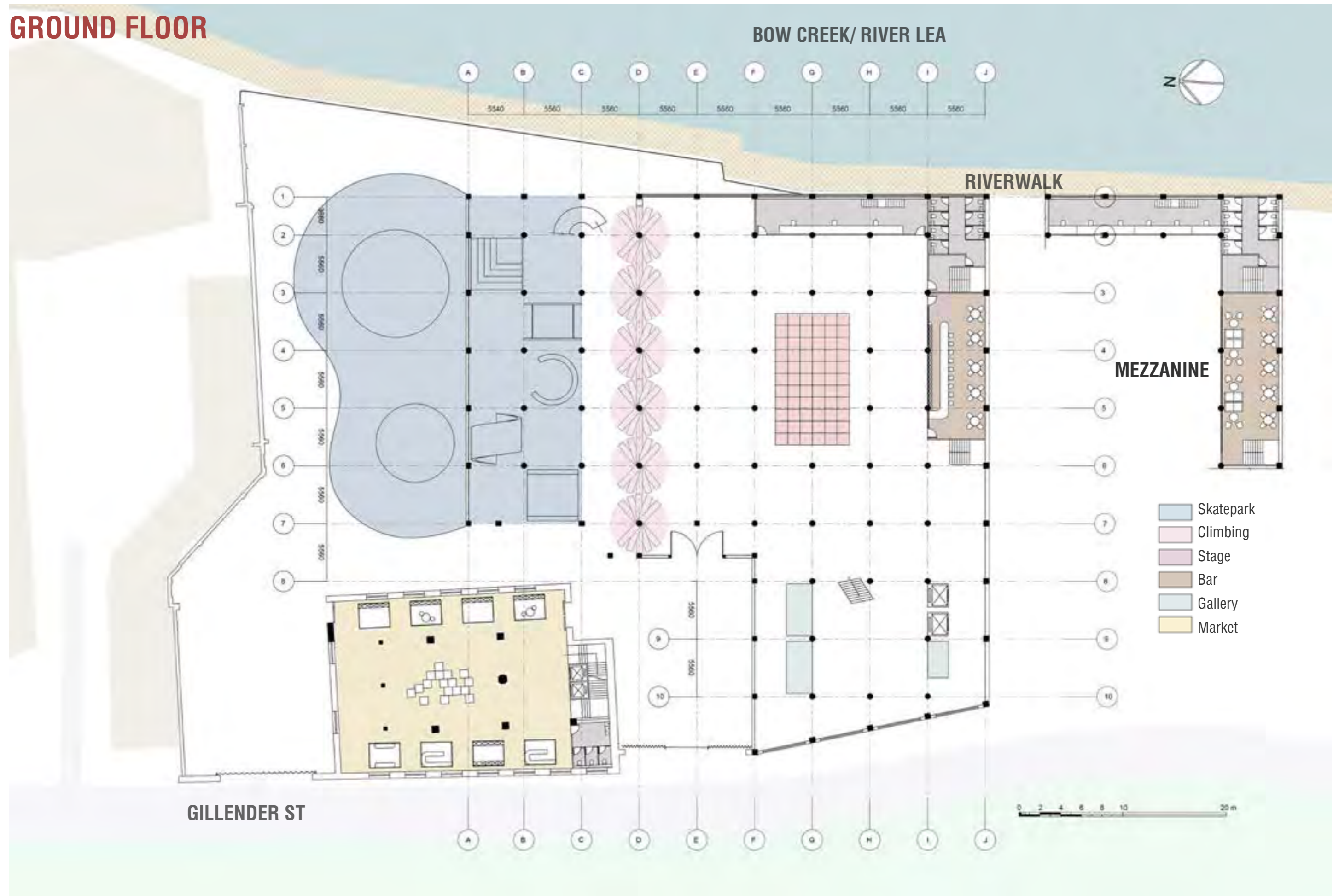


Steel

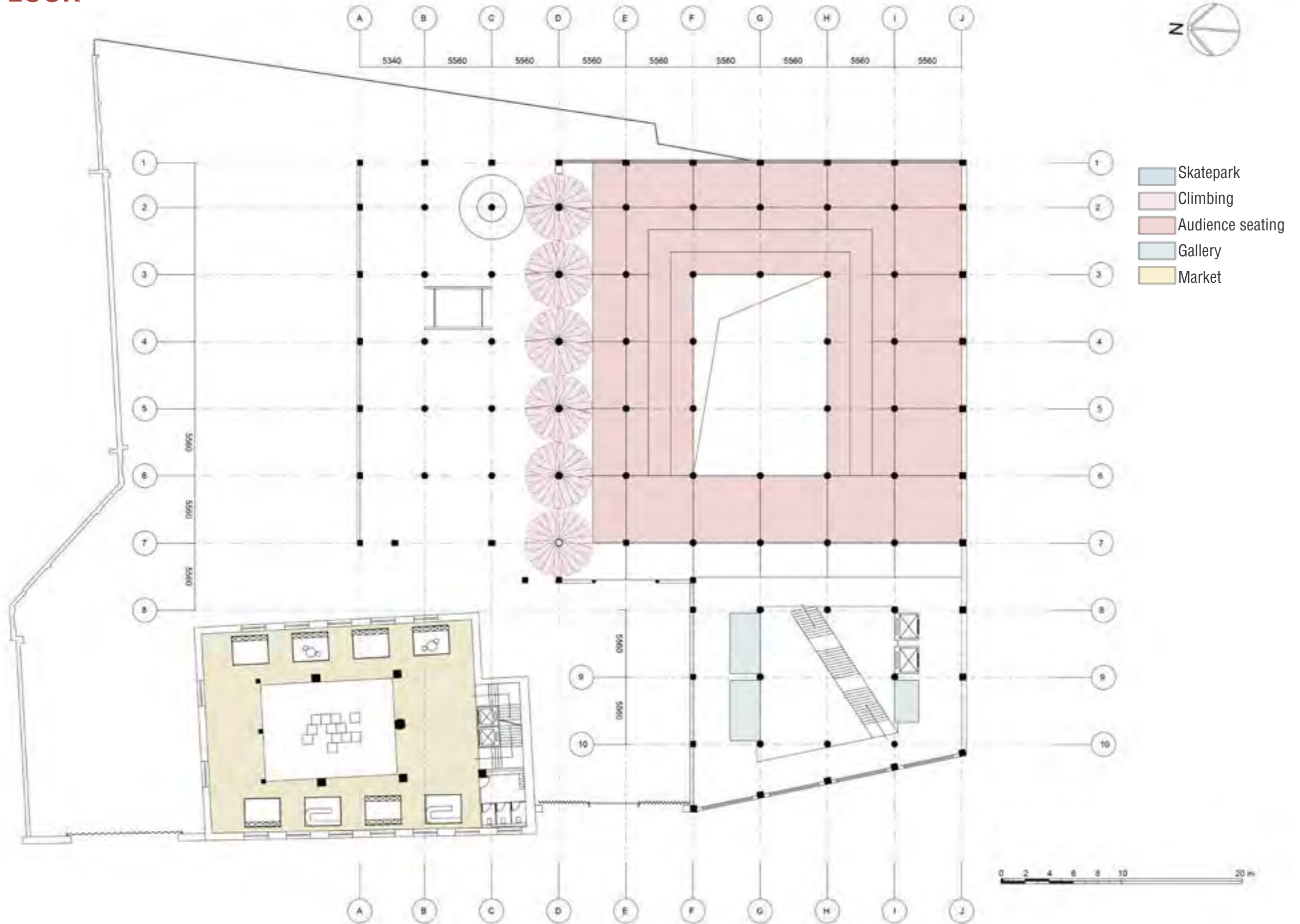
Tracks and reinforcement of columns



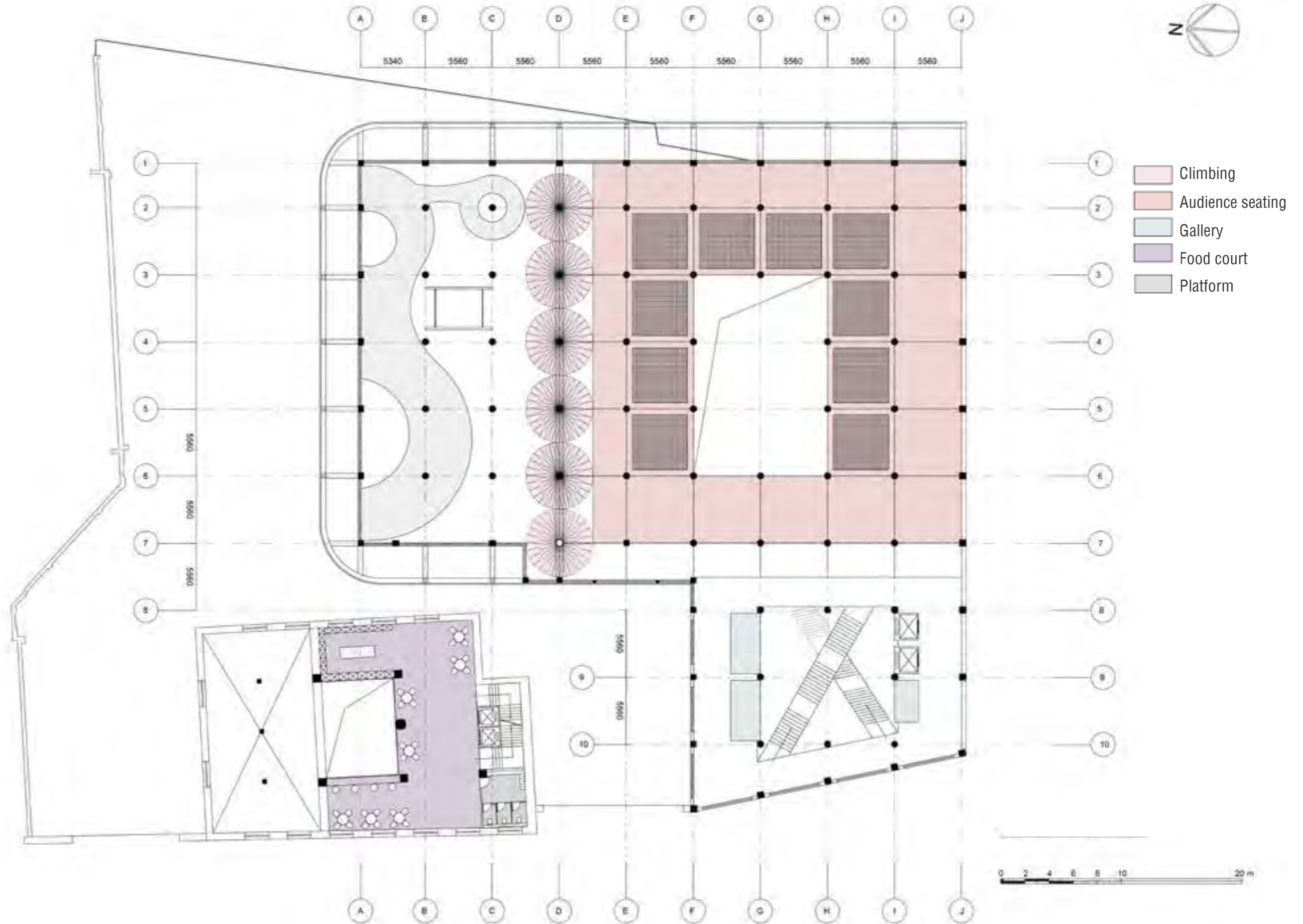
GROUND FLOOR



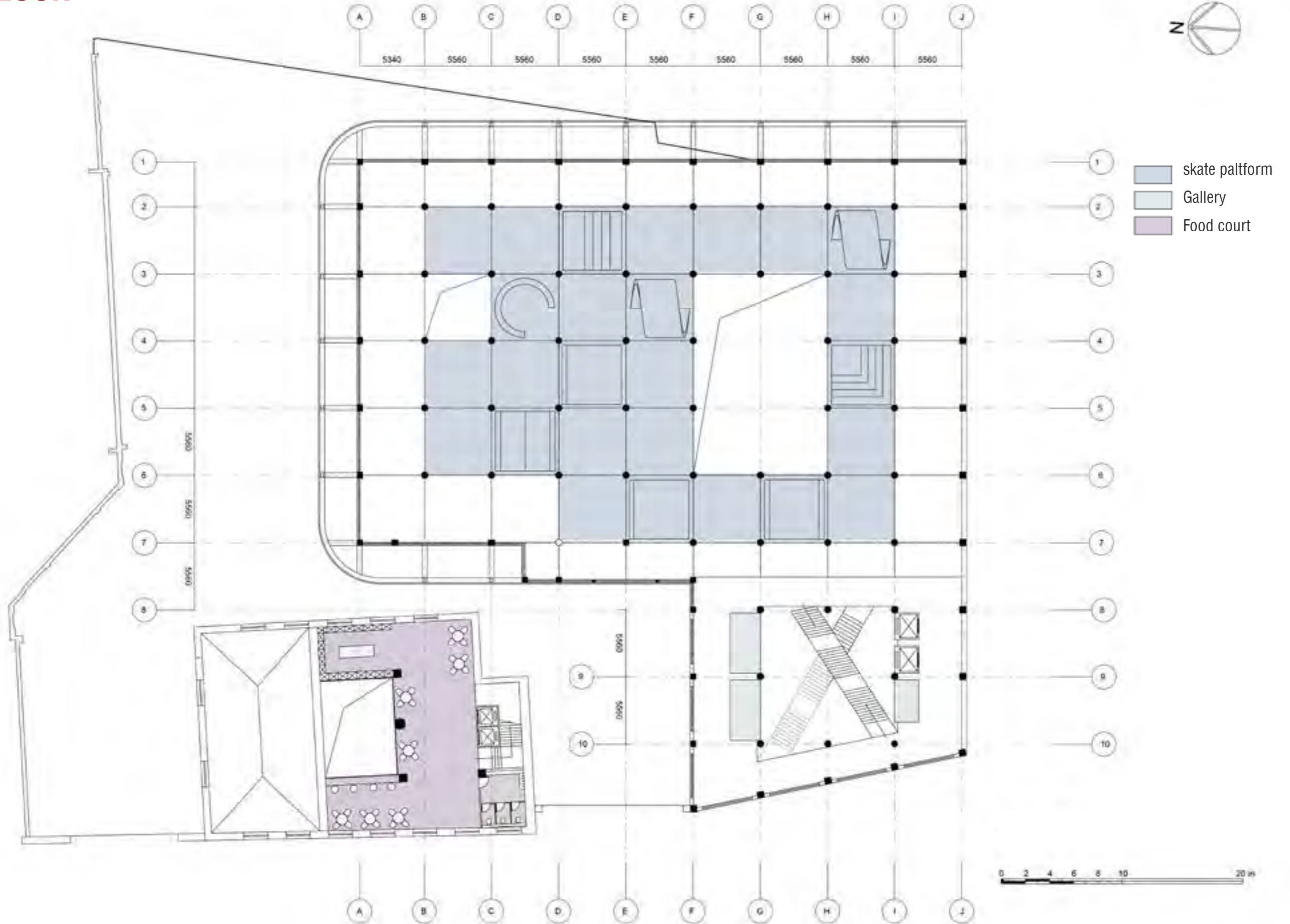
FIRST FLOOR



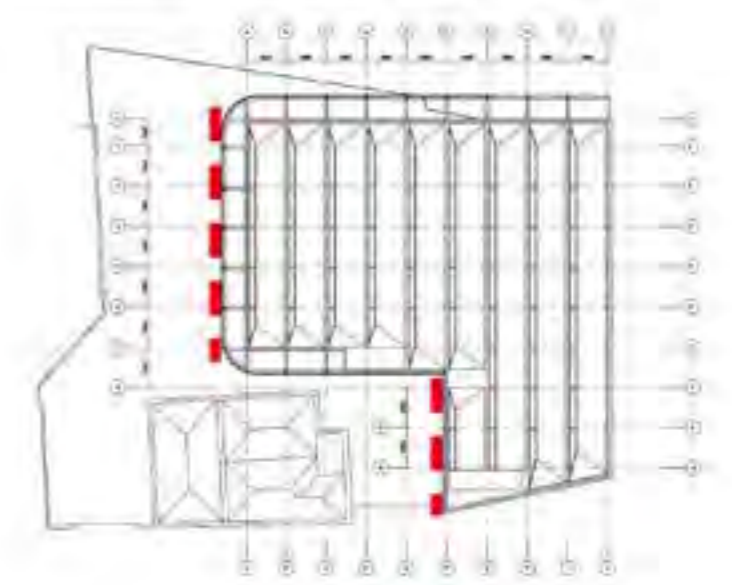
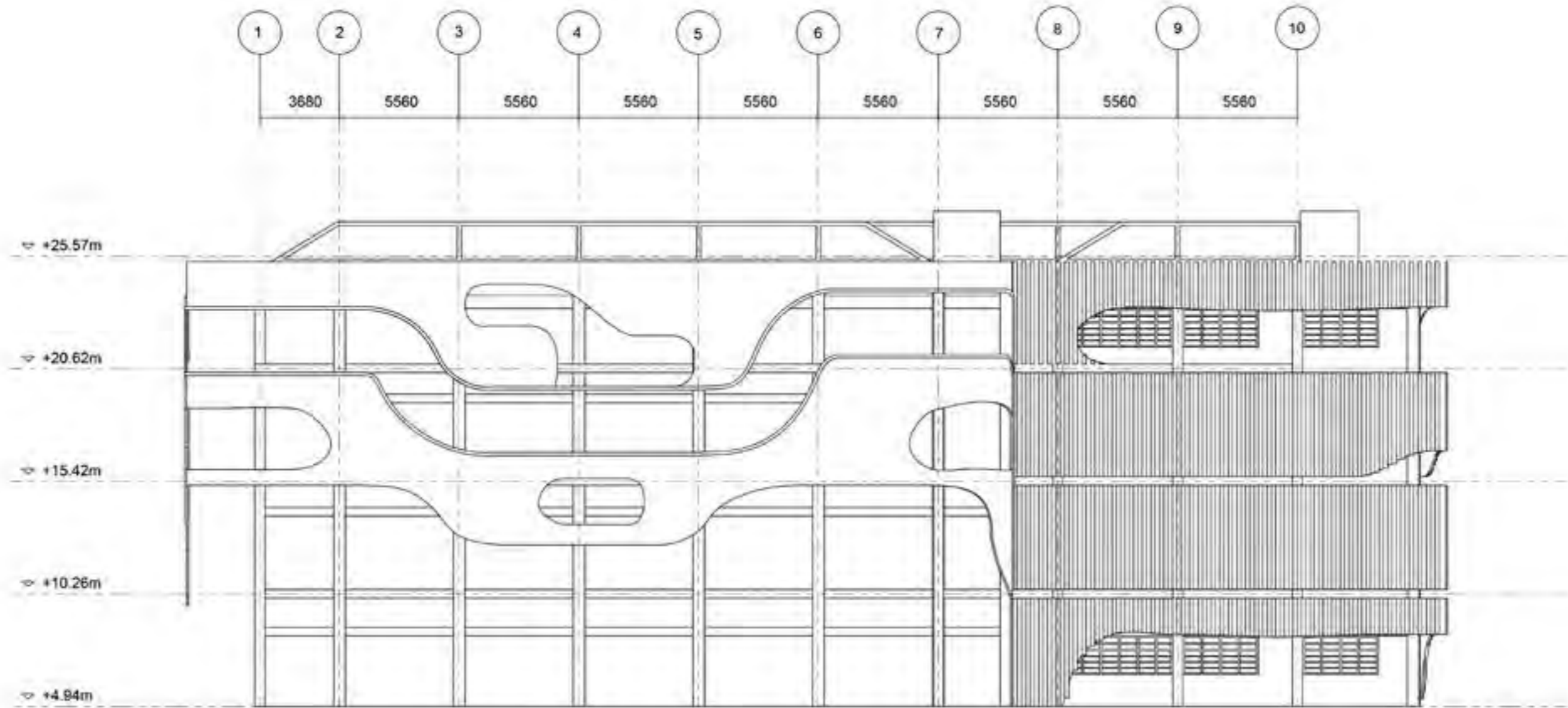
SECOND FLOOR



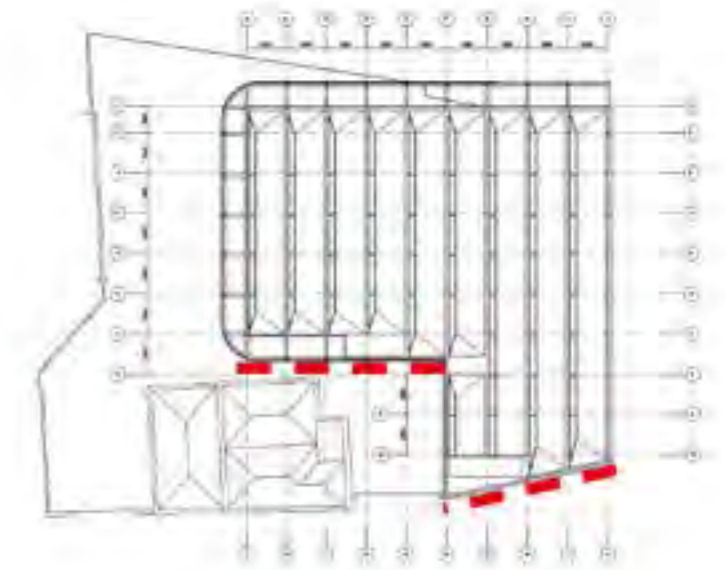
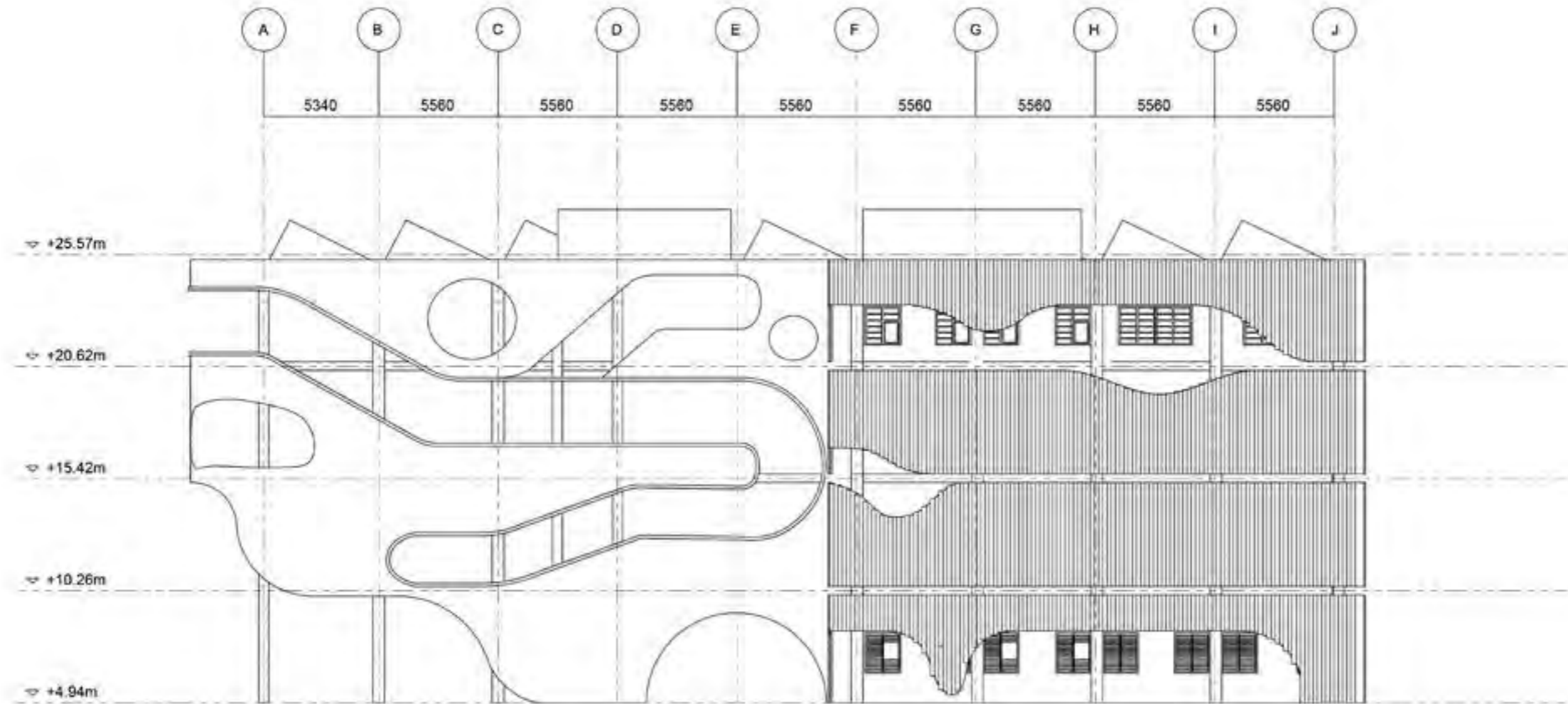
THIRD FLOOR



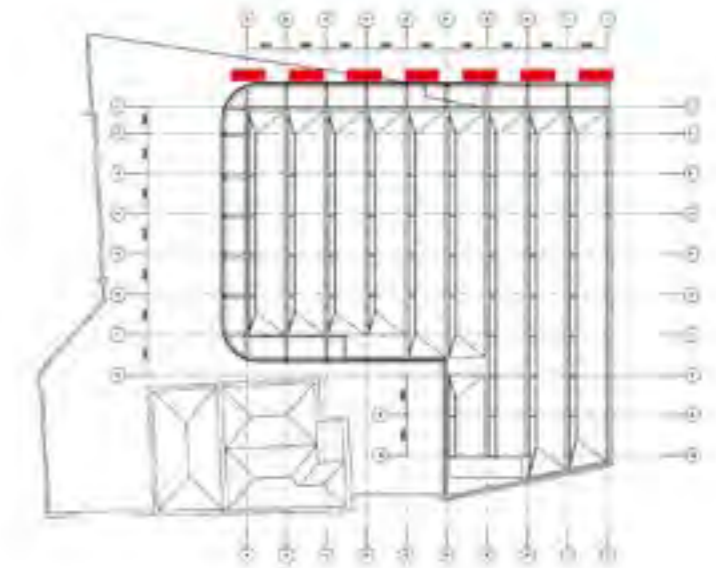
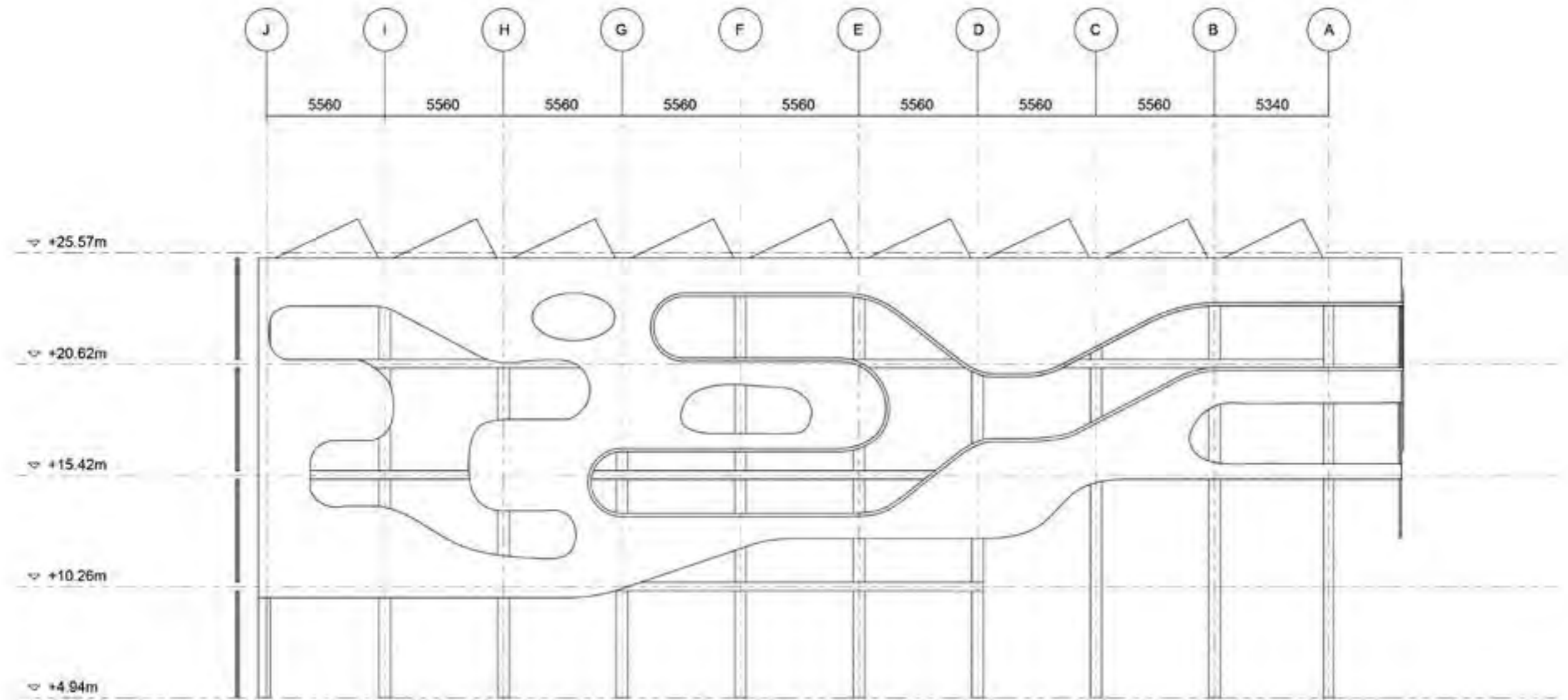
EXTERNAL FACADE



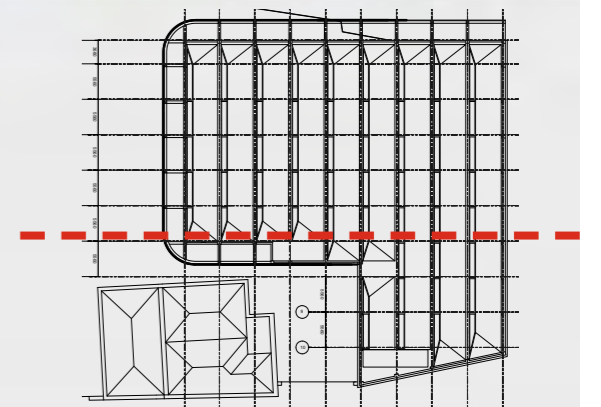
EXTERNAL FACADE



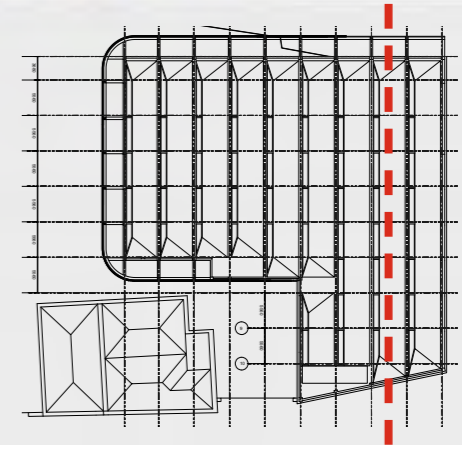
EXTERNAL FACADE



SECTION

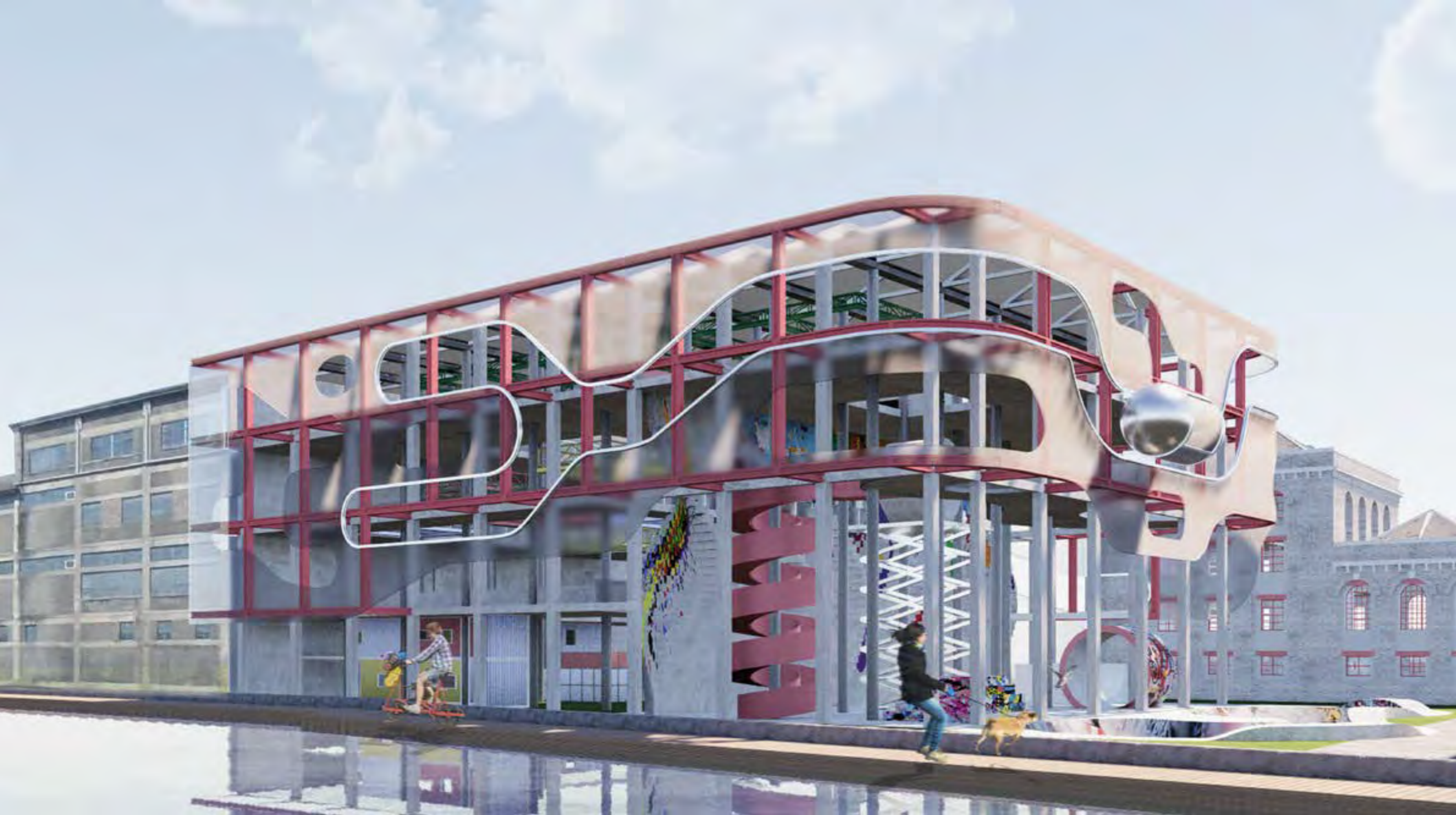


SECTION



FRONT FACADE













On the building's façade, I have installed tracks and added a sliding capsule where people can sit and enjoy the riverside view. I think the most interesting thing is that people are not only confined to the inside and the platform, but also can be active in the outside, which is the embodiment of vitality and breaks the constraints of traditional architecture, and it is also the embodiment of freedom without restraint. like the attitude of life in East London, unconstrained, unfettered.





