

PORTFOLIO TERM3

くにとも はるか
Haruka Kunitomo

AJAR social housing to bridge residents with the wider community

At a time when technological advances often isolate individuals, the issue of loneliness has emerged as a social concern.

About 3 million people experience feelings of isolation and disconnection in England.

Comprising of over 14,000 Sq M, this prominent abandoned factory was built with an industrial module.

To convert it into a housing complex,
it is necessary to design human-scale accommodation to create a space where people can feel safe.

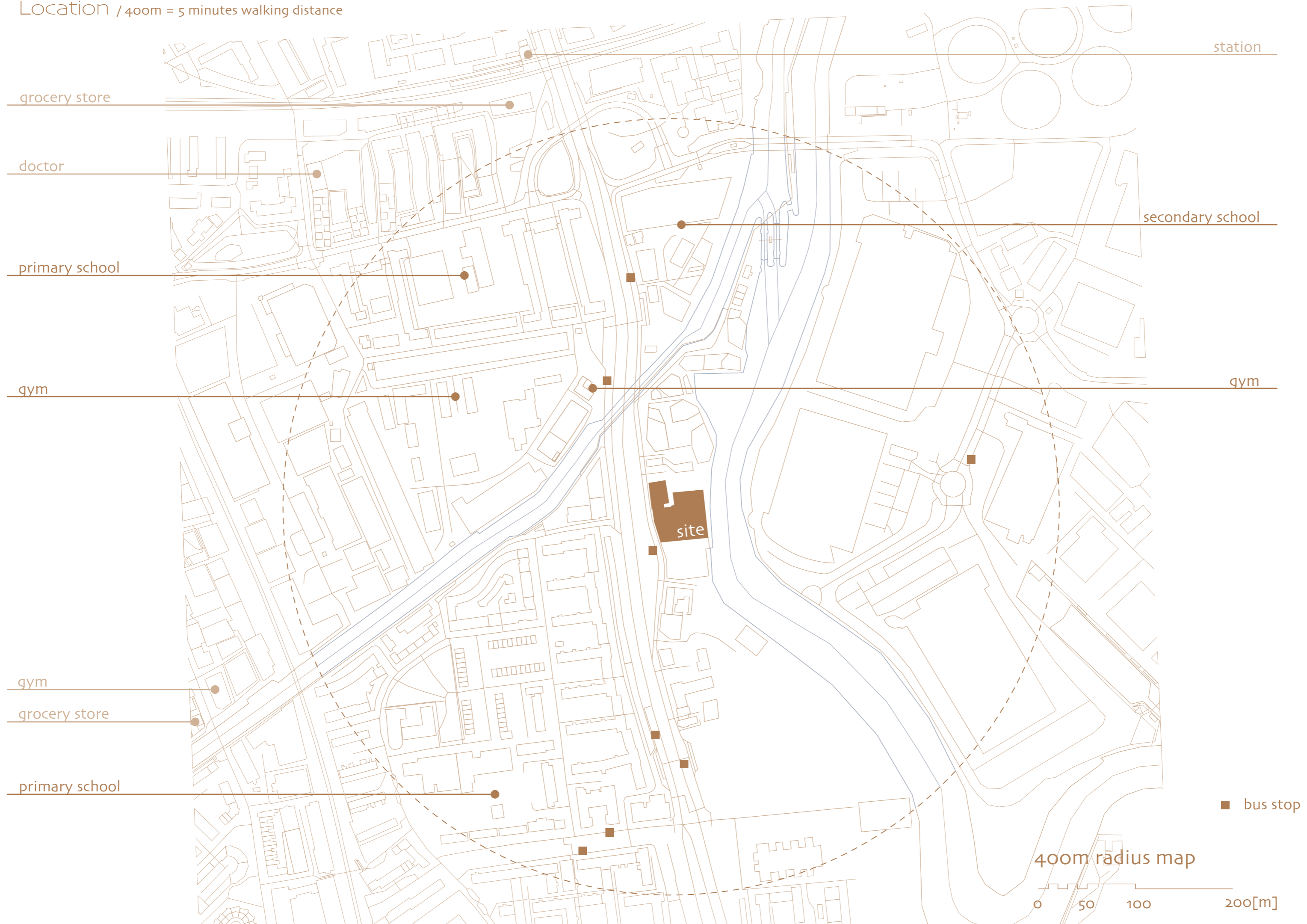
The project aims to emphasise the intrinsic value of existing structures by exploiting grid line distinctions while integrating adaptable modules for new functionalities.

It also advocates a design ethos centred on the promotion of communication,
achieved through the strategic implementation of intermediate spaces.

These transitional zones facilitate gradual integration,
bridging residents with the wider community and breaking down barriers to meaningful interaction.

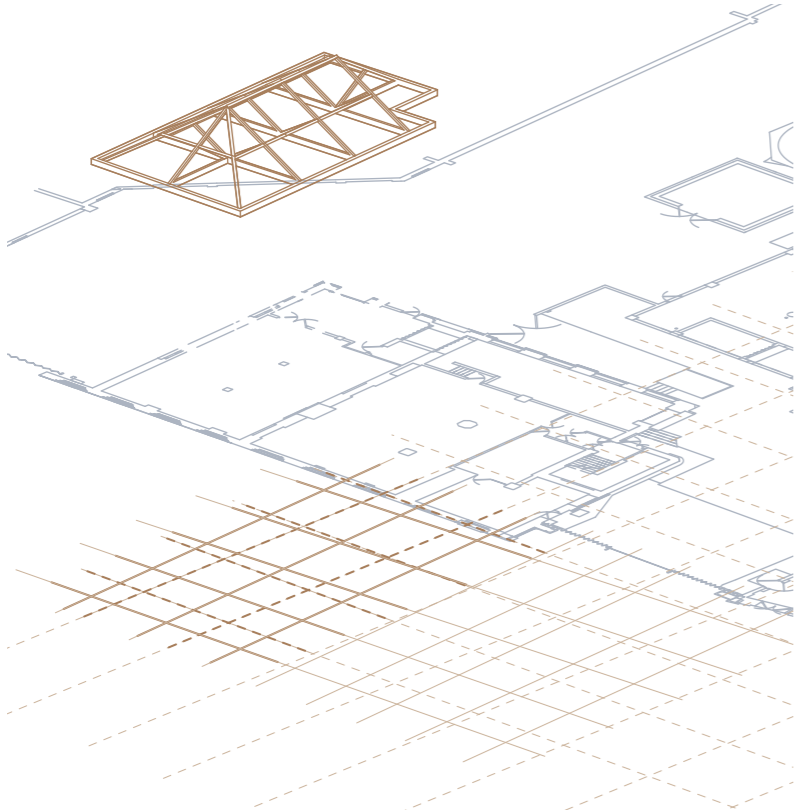
The aim of the project is to provide an environment that significantly improves the mental health of residents through promoting integration into the local community.

Location / 400m = 5 minutes walking distance



Artefact / term1

- module
- gaps : grid lines of the new building (24 Gillender Street) / old building (23 Gillender Street)
- ignored human-scale



Pictures from the site



Roof structure of old building

Gaps of grid lines

Artefact

Introducing human scale

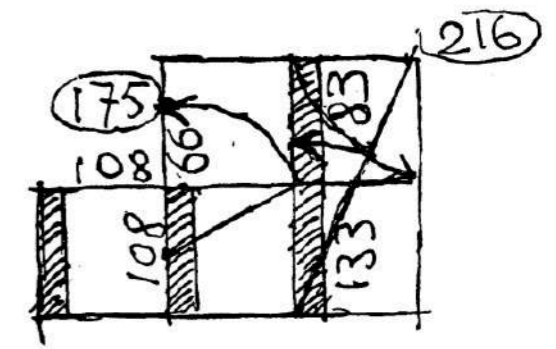
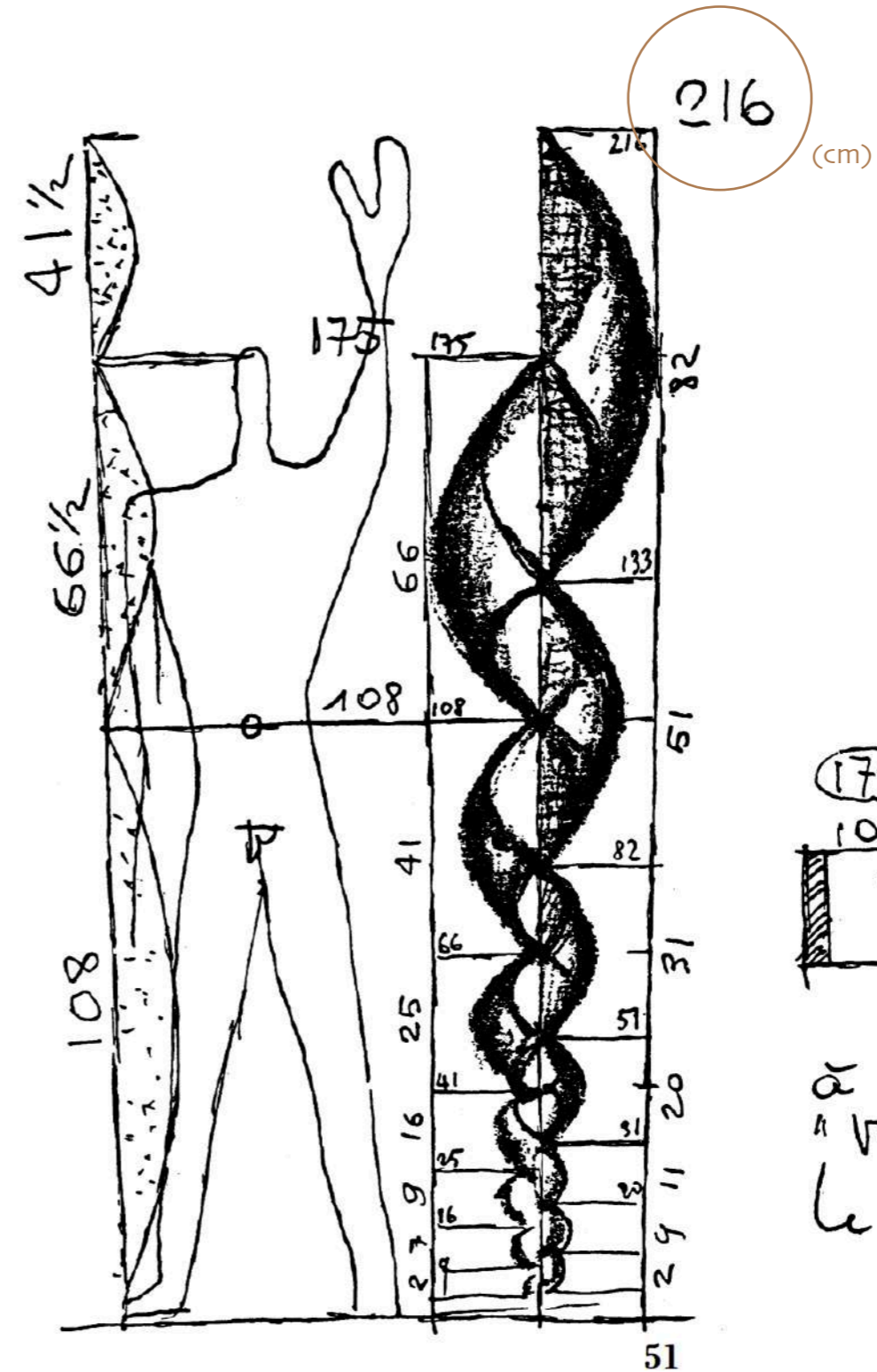
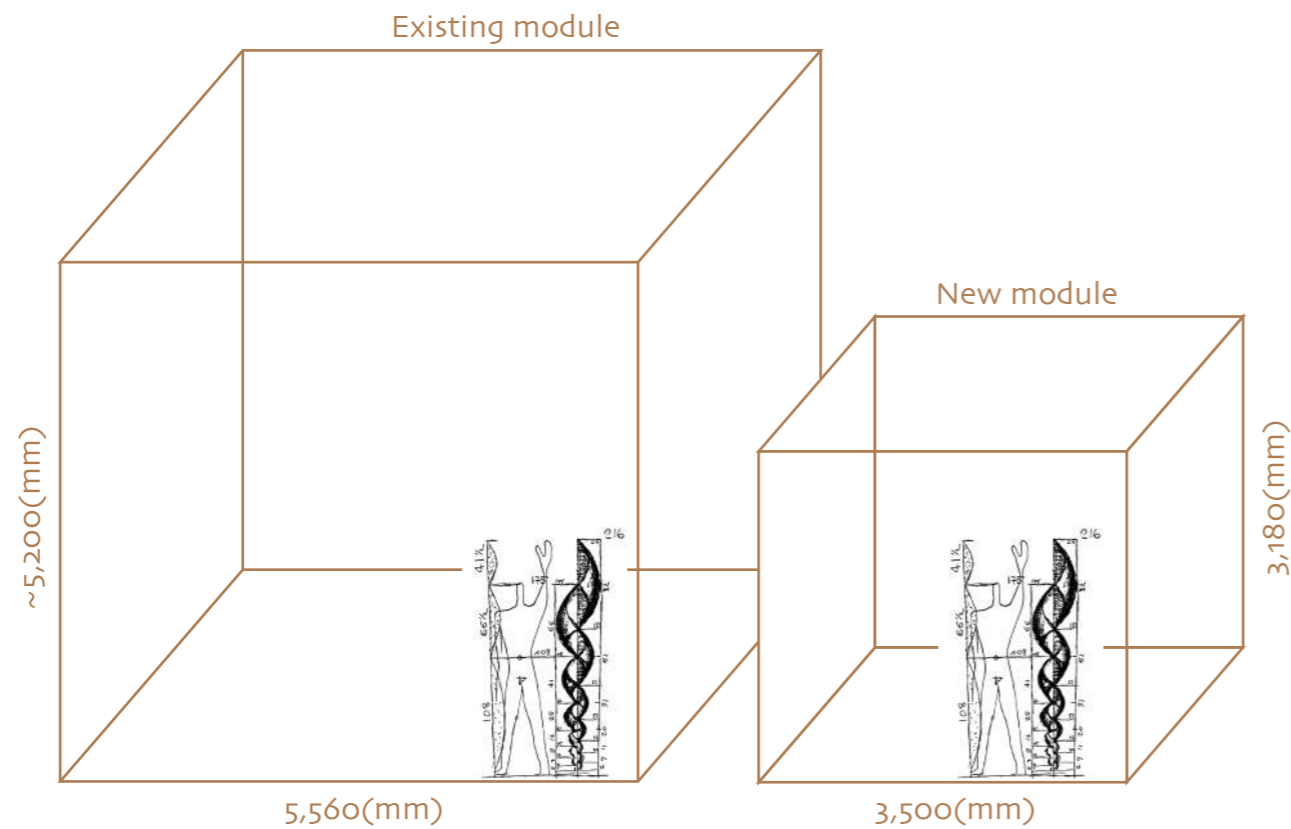
Introduce a new module of human scale into the existing industrial building for a new purpose
 Combination of original module and human scale module emphasize
 the perception of the existing architectural value + create sense of 'Home'

THE MODULOR

By Le Corbusier

Faber and Faber, 1954. 244 pages.

The term was coined by the architect Le Corbusier and is thought to have been inspired by the concept of the golden ratio. Le Corbusier, who calculated the 'ideal height' of an adult male to be 182.9 cm and the basic dimensions of a house to be 2.16 m, was pleased to refer to this concept as 'the first proportion system since the Renaissance'.

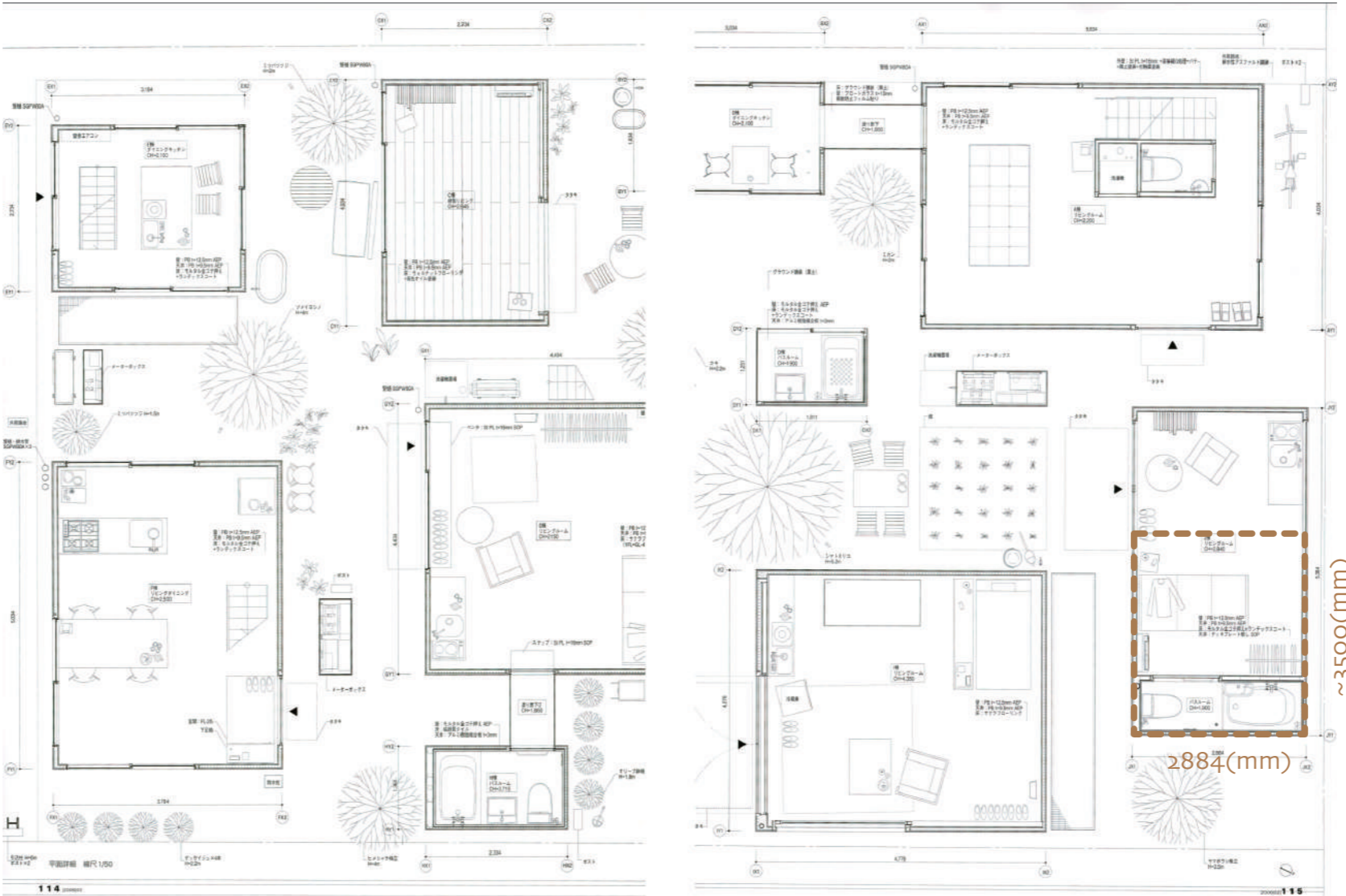


à bord du Cargo
 "Vernon S. Hood"
 Le 6 janvier 1946
 LC

FIG. 18

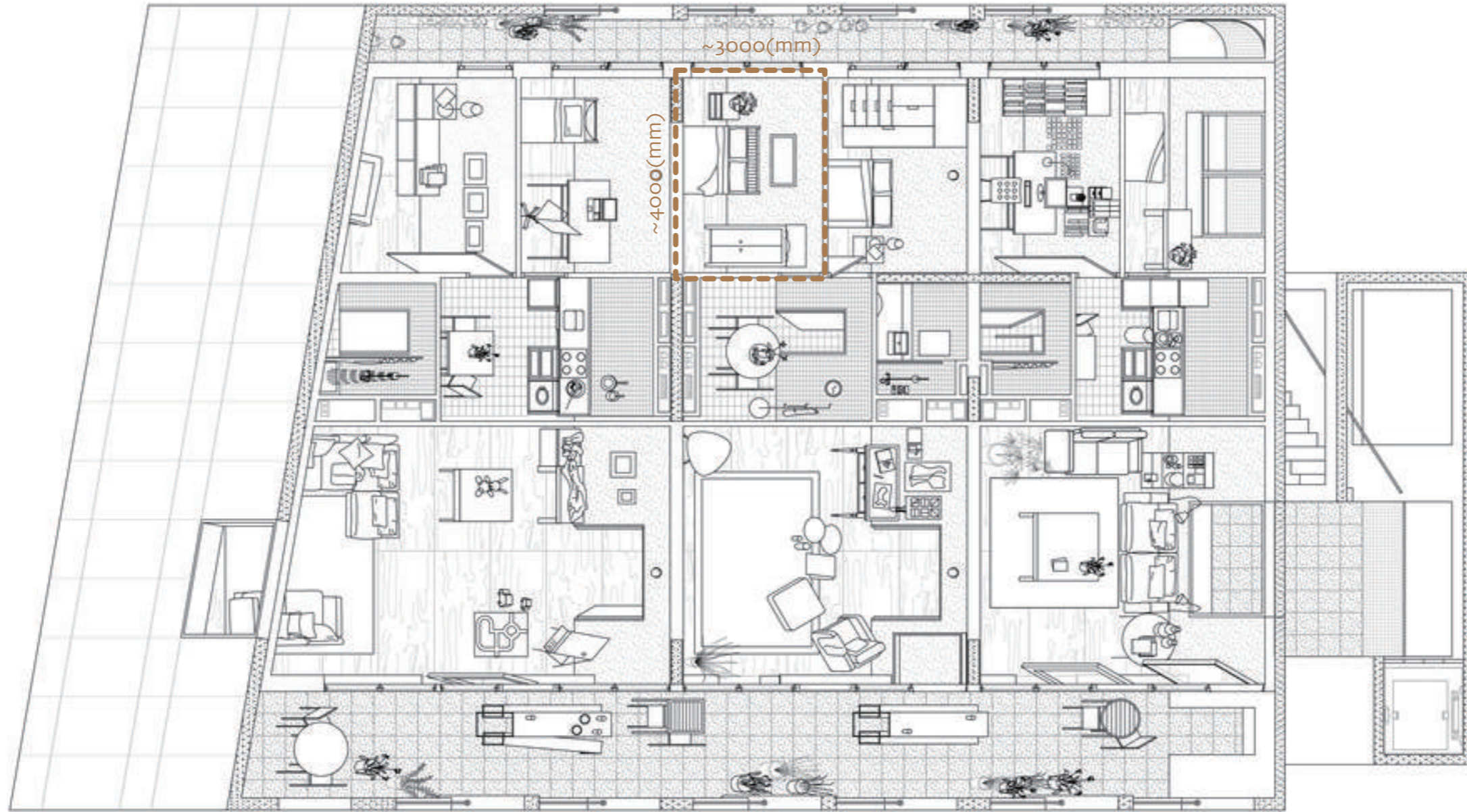
Case studies - why 3,500mm x 3,500mm?

1 - Moriyama House



2 - House for Artists

Double bed closet

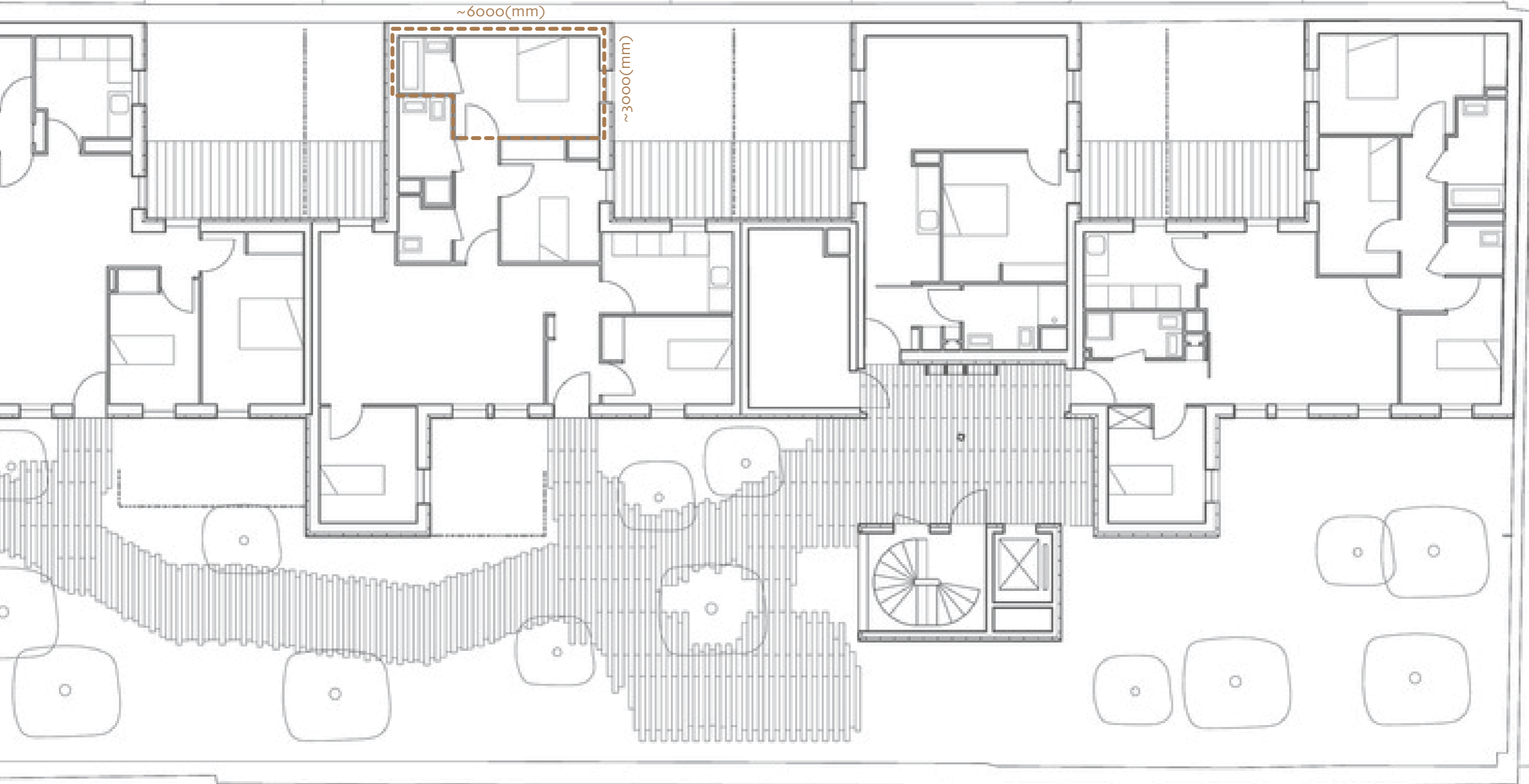


3 - Tete in L'air

Double bed
Sink
Bathtub

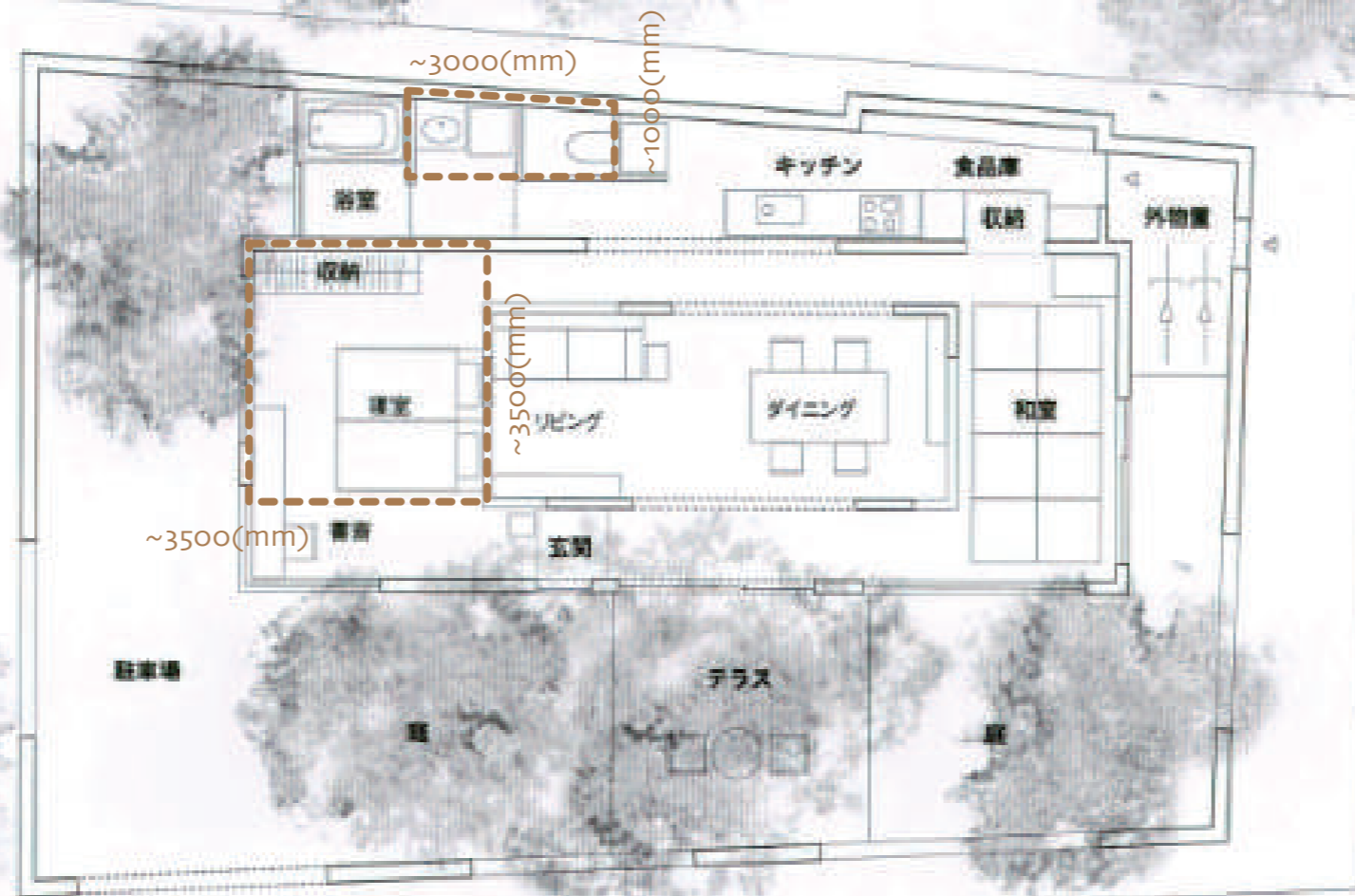
~6000(mm)

~3000(mm)



4 - N House

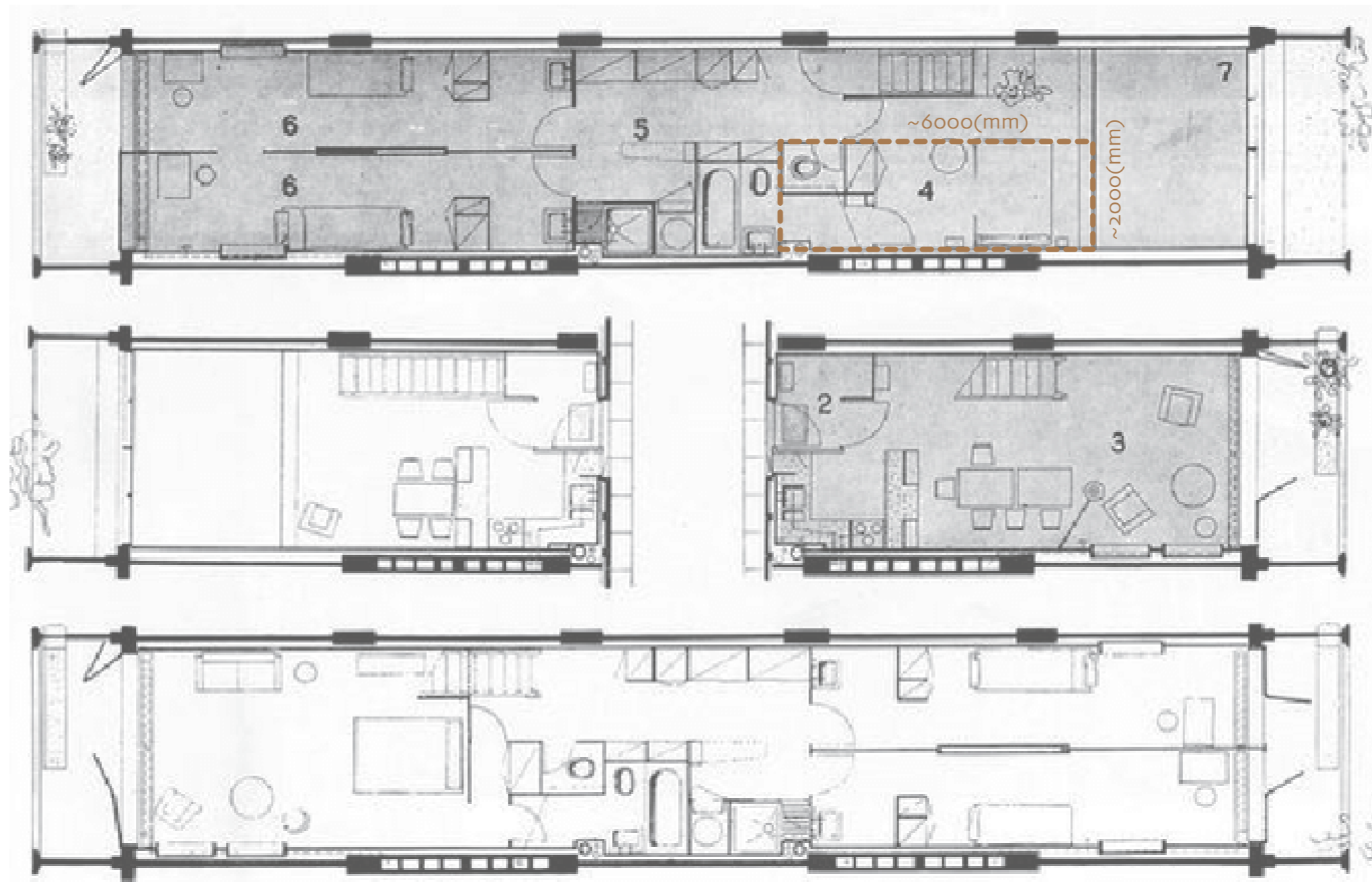
Single bed x2
Toilet
Sink
Open closet



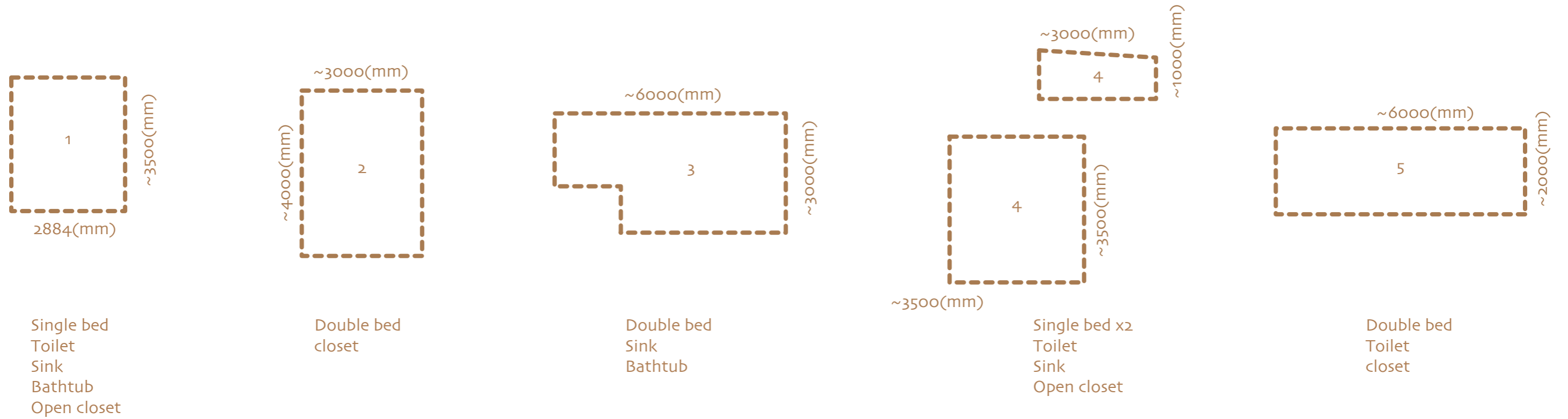
0 5 10(m)

5 - Unité d'Habitation

Double bed
Toilet
closet

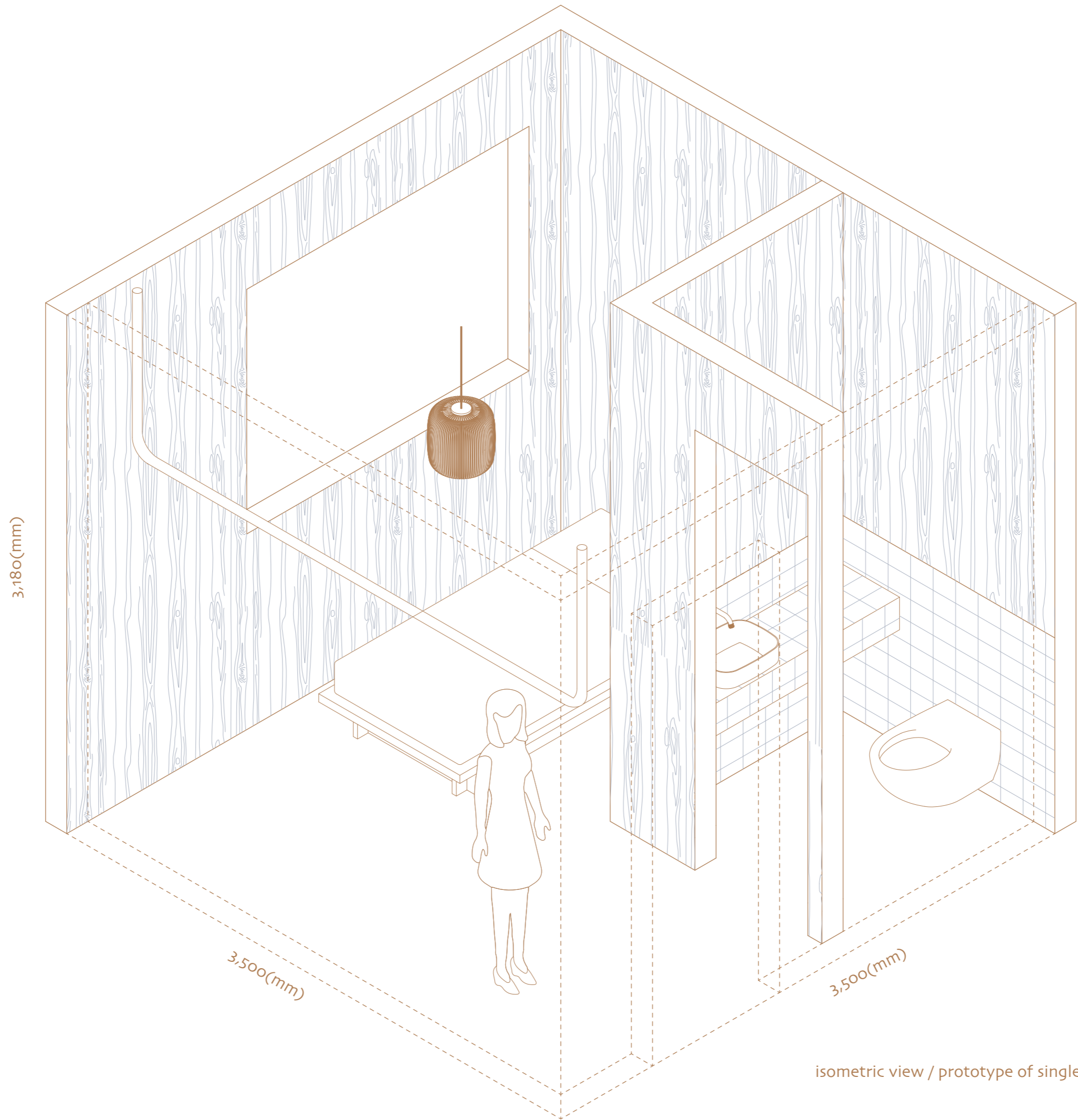


bedroom size in case studies / Average size for single bedroom

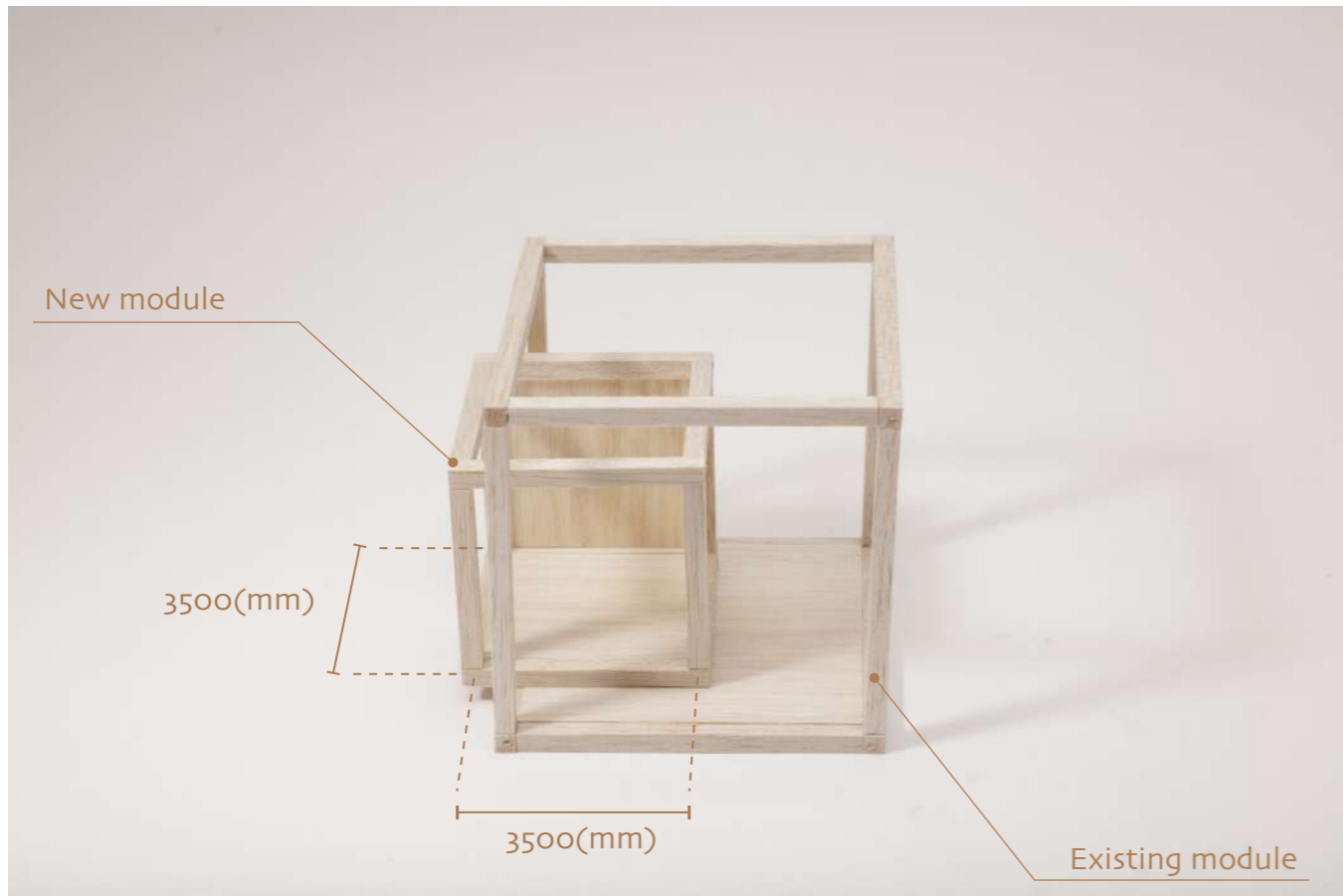


minimum size for each elements for room





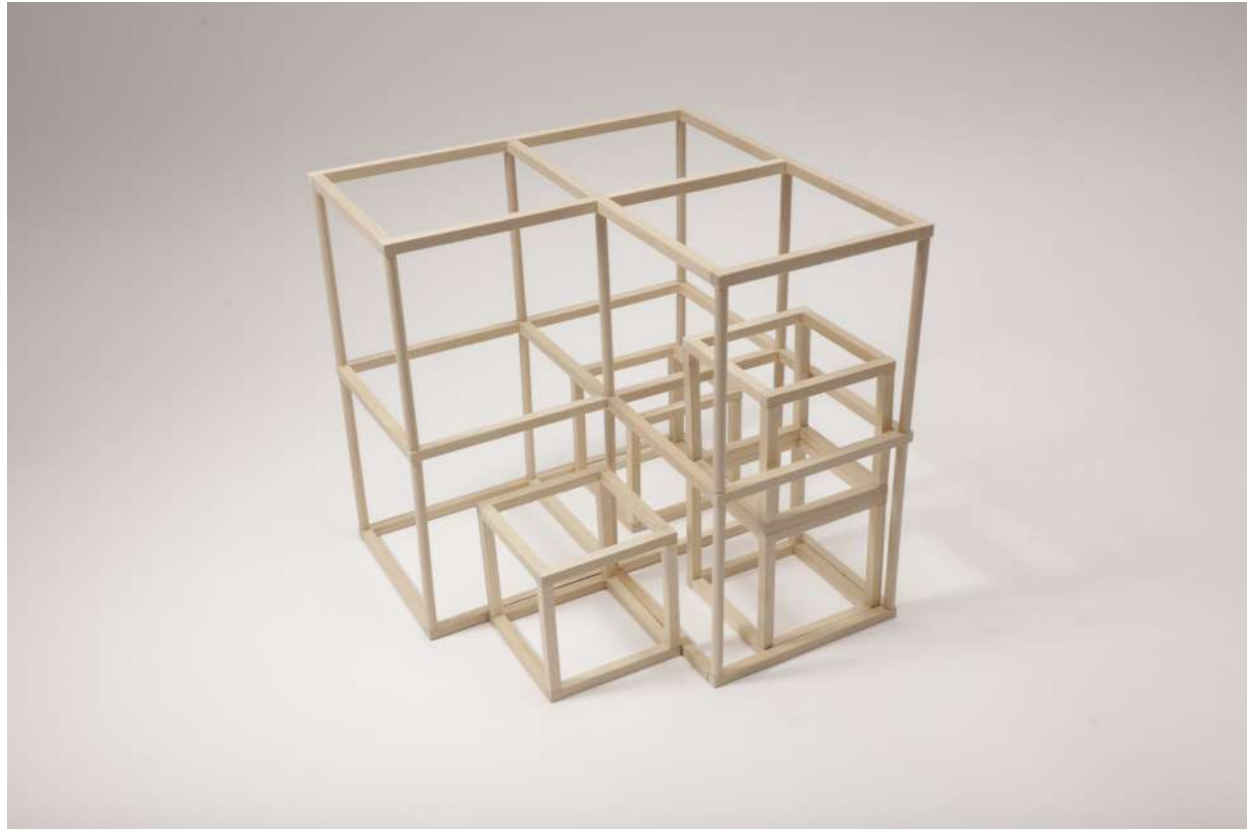
isometric view / prototype of single room



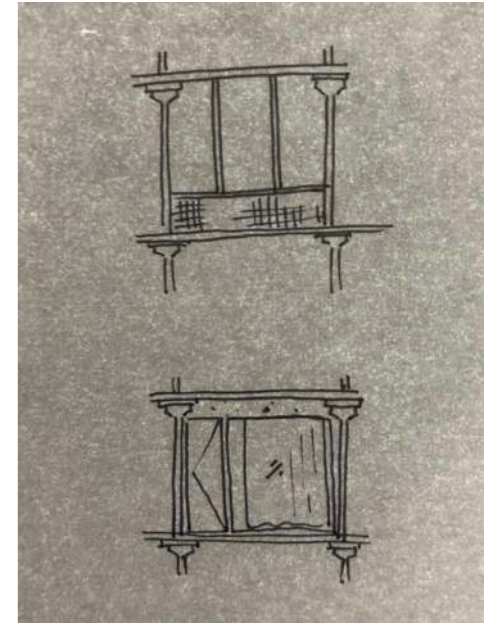
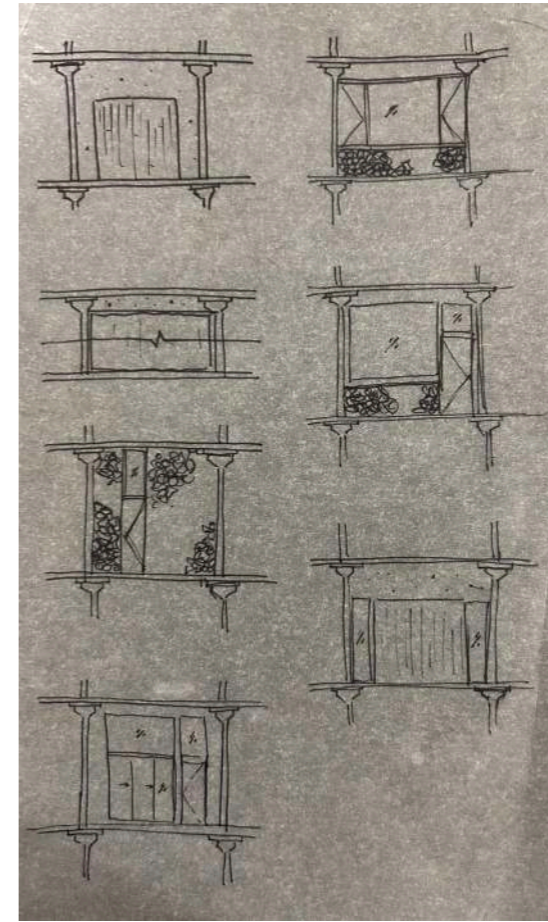
Comparing existing / new module



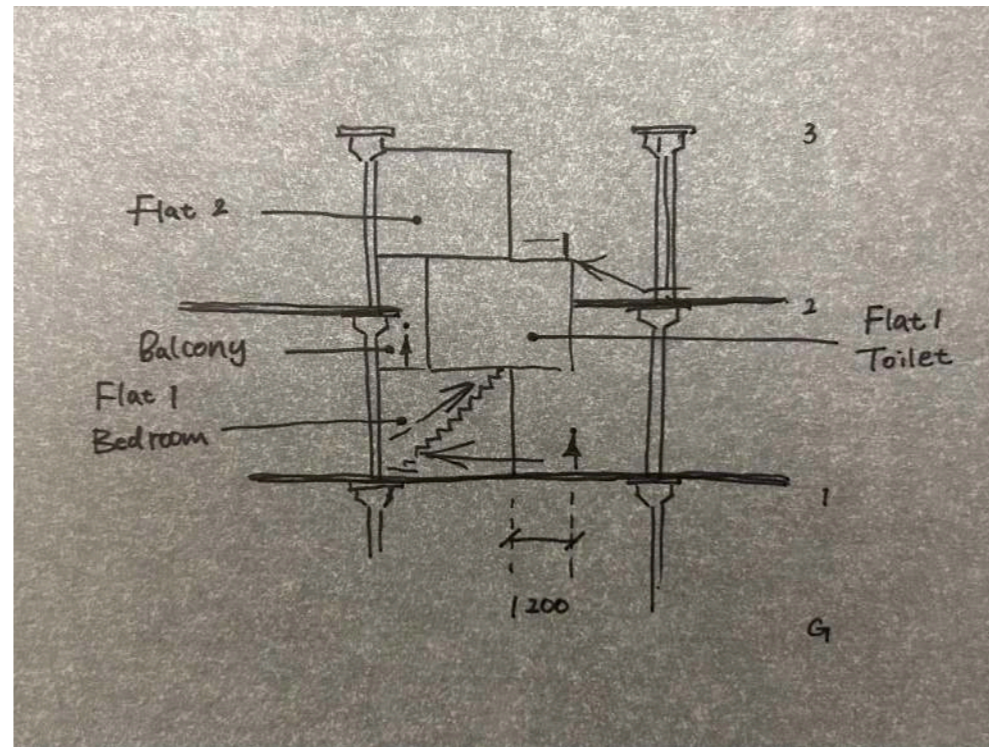
Study model of room



model to test the variation of placement of rooms

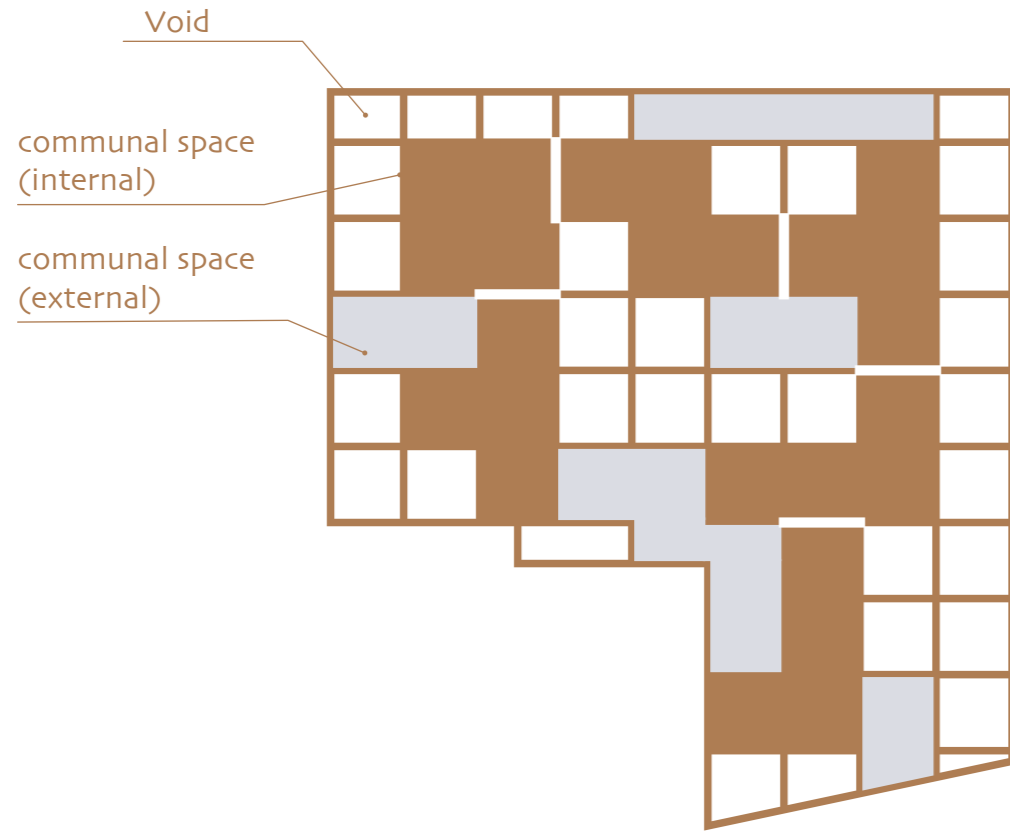


Sketch of facade design

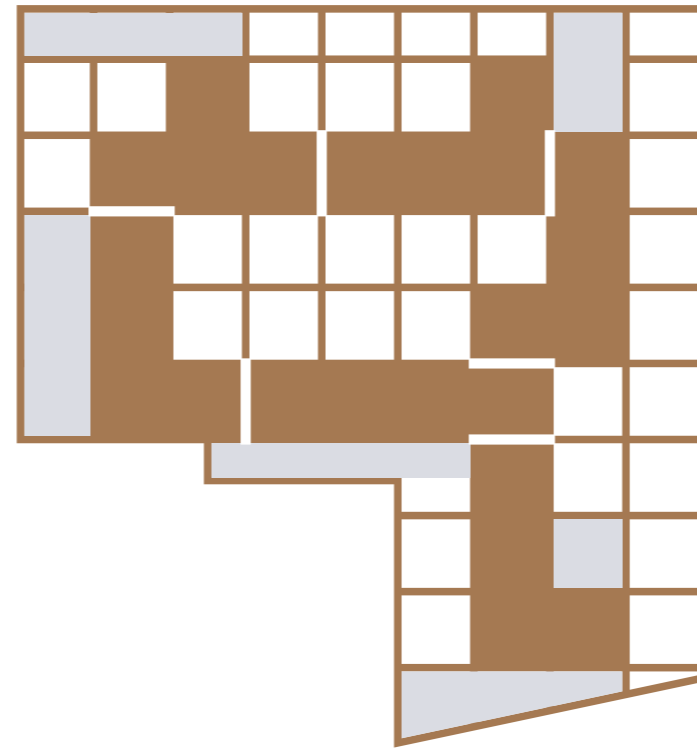


sketch / section

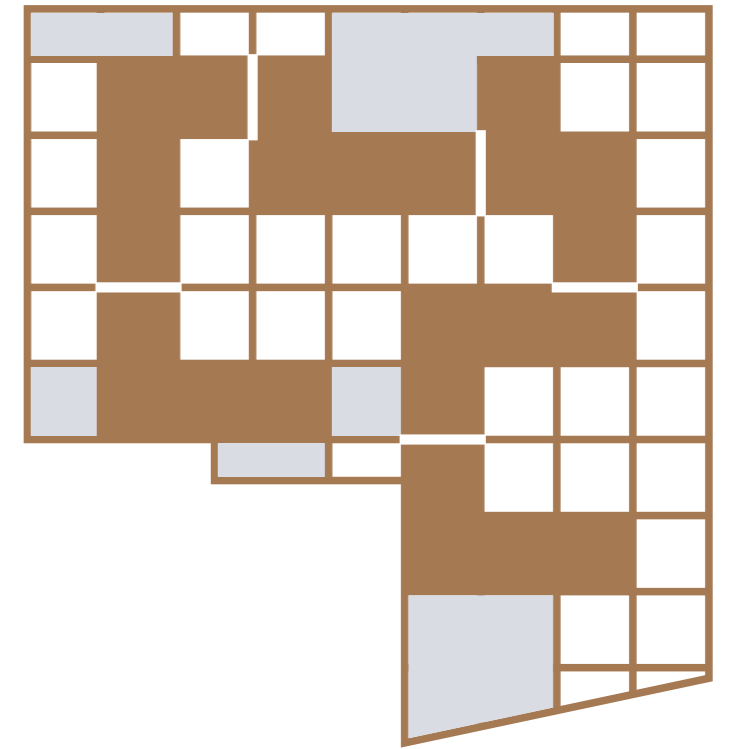
Exploring the variation of footprint



idea - 1

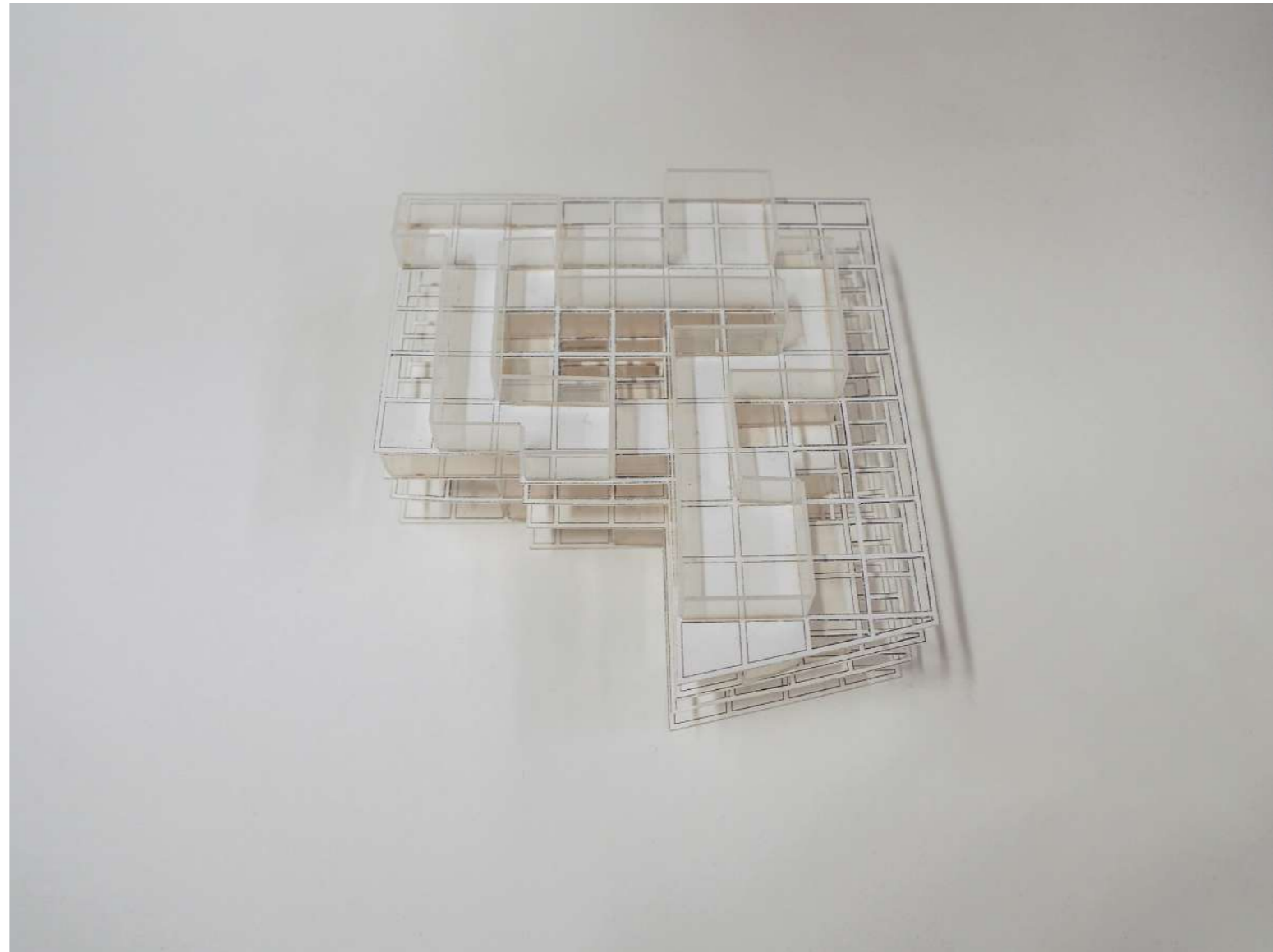


idea - 2



idea - 3

- Direct connections between other groups
- External space for each groups
- Light and air
- Circulation



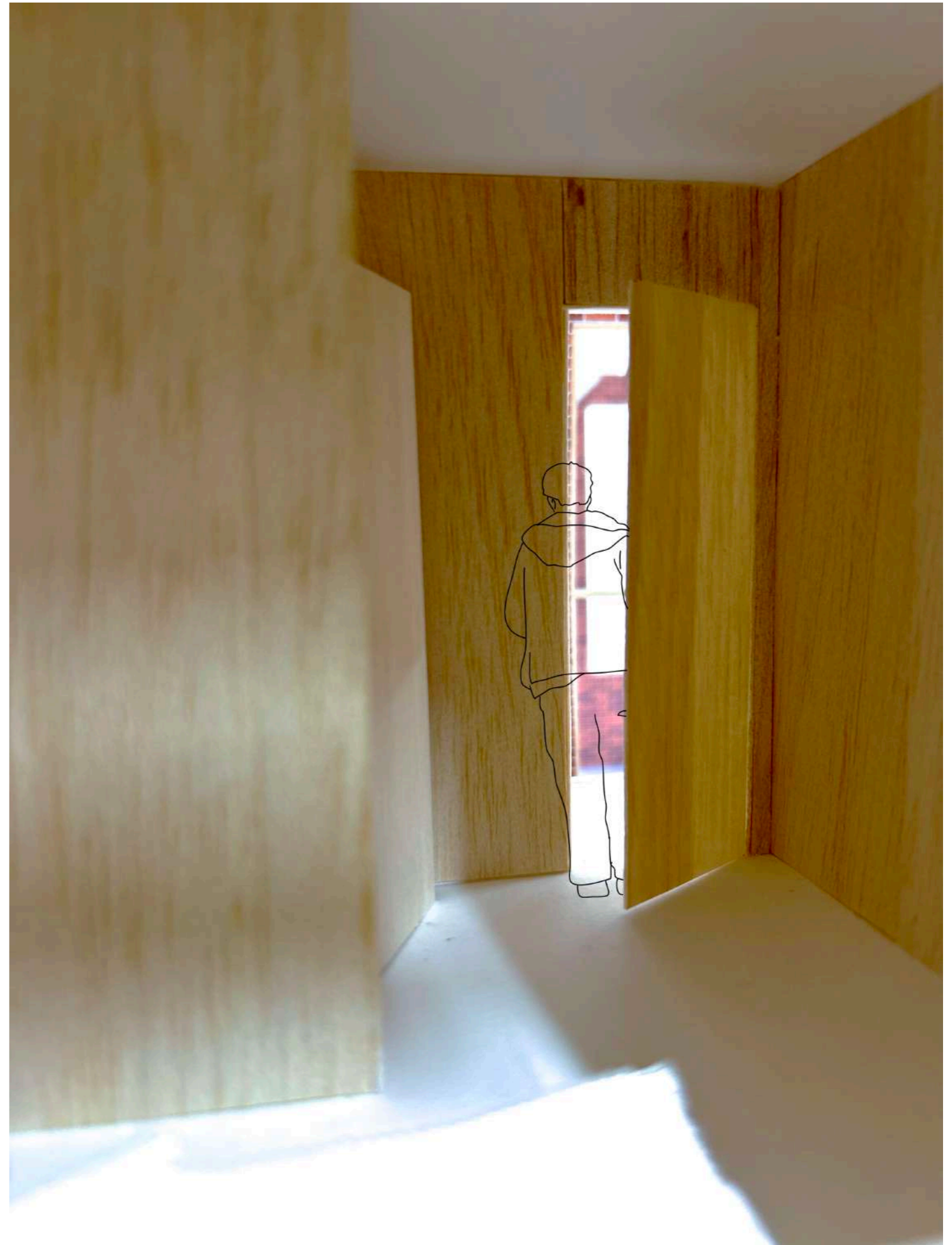
Model - Shift of solid and void

Inspiration - Ajar

personal experience
flatmate keep the door slightly open
→leak of light & noise
→feeling of safety

Glimpse of the others life between walls/doors/windows

Shift of the grid lines/facade



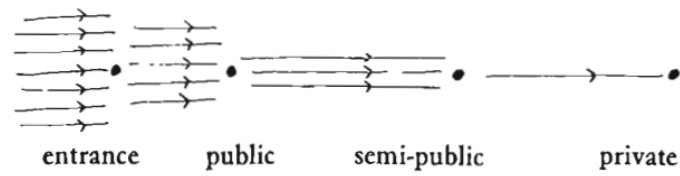
Gradual connection to wider communities and Designing territories

A PATTERN LANGUAGE

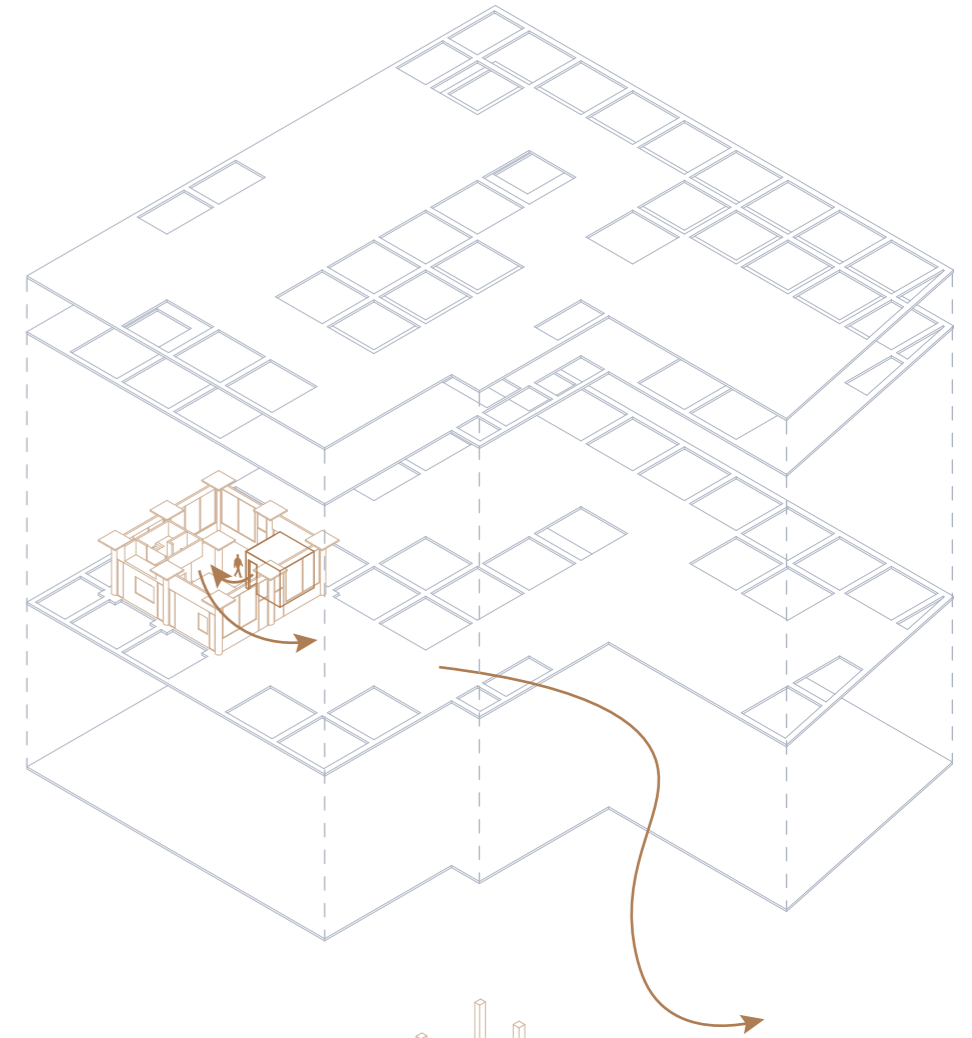
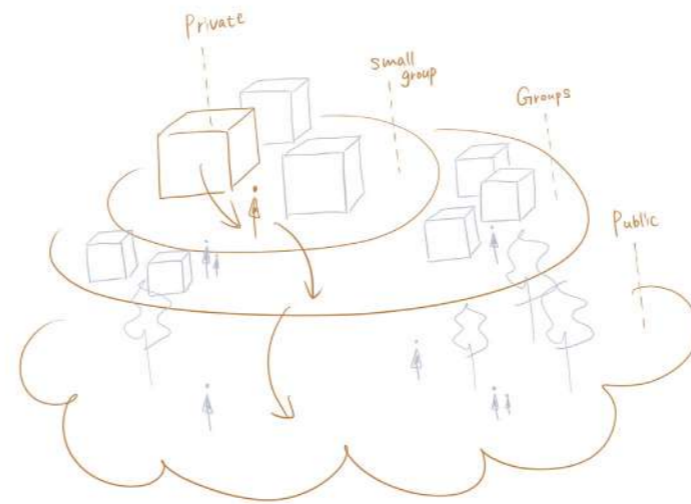
Towns, Buildings, Construction

By Christopher Alexander, Sara Ishikawa and Murray Silverstein
with Max Jacobson, Ingrid Fiksdahl-King and Shlomo Angel
Oxford University Press, 1977. 1141 pages.

Lay out the spaces of a building so that they create a sequence which begins with the entrance and the most public parts of the building, then leads into the slightly more private areas, and finally to the most private domains.



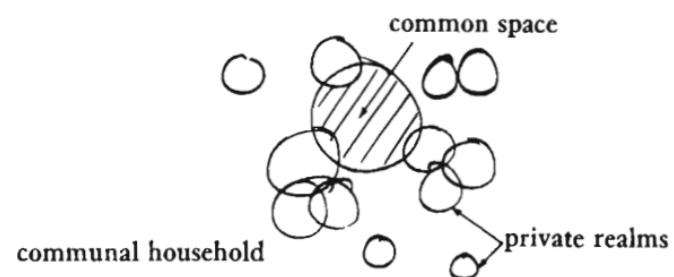
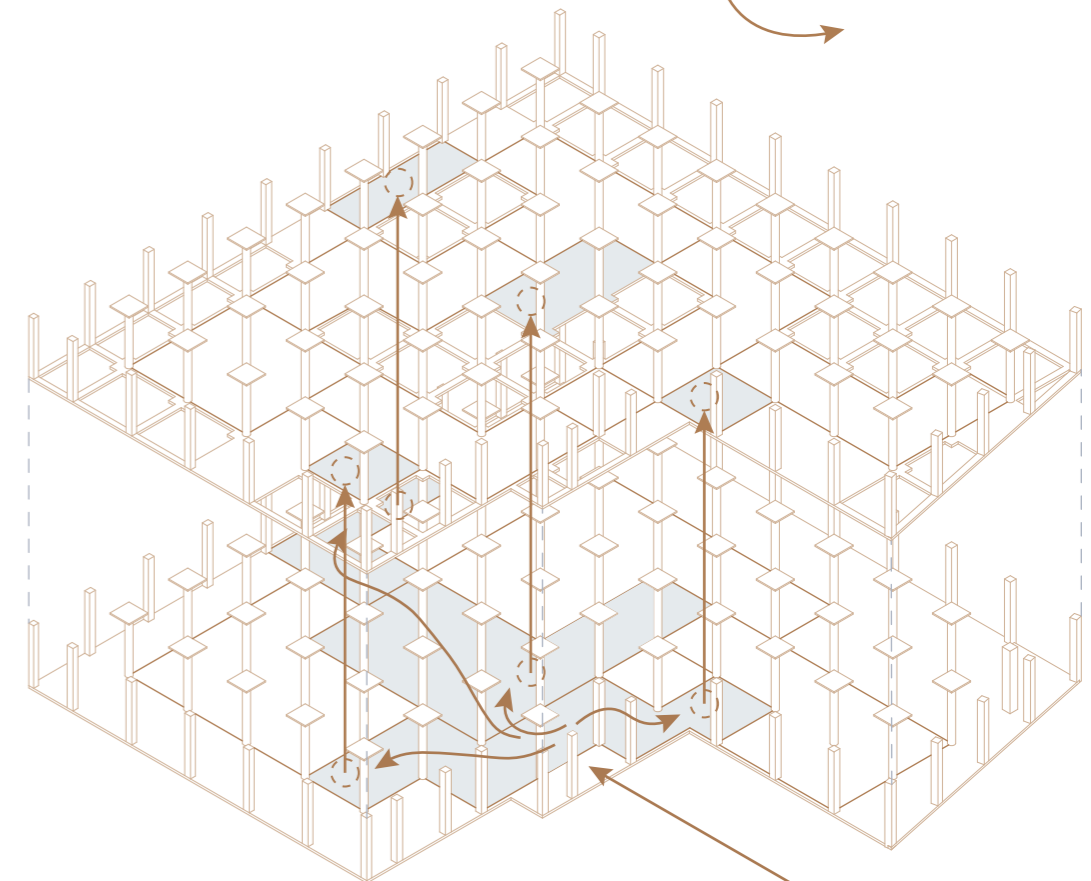
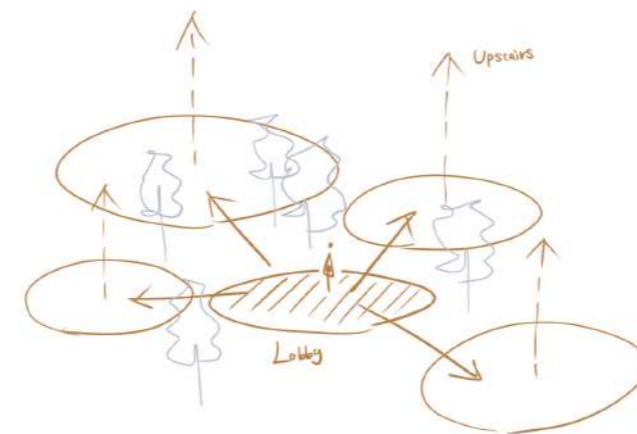
gradual connection to wider communities



Set up processes which encourage groups of 8 to 12 people to come together and establish communal households. Morphologically, the important things are:

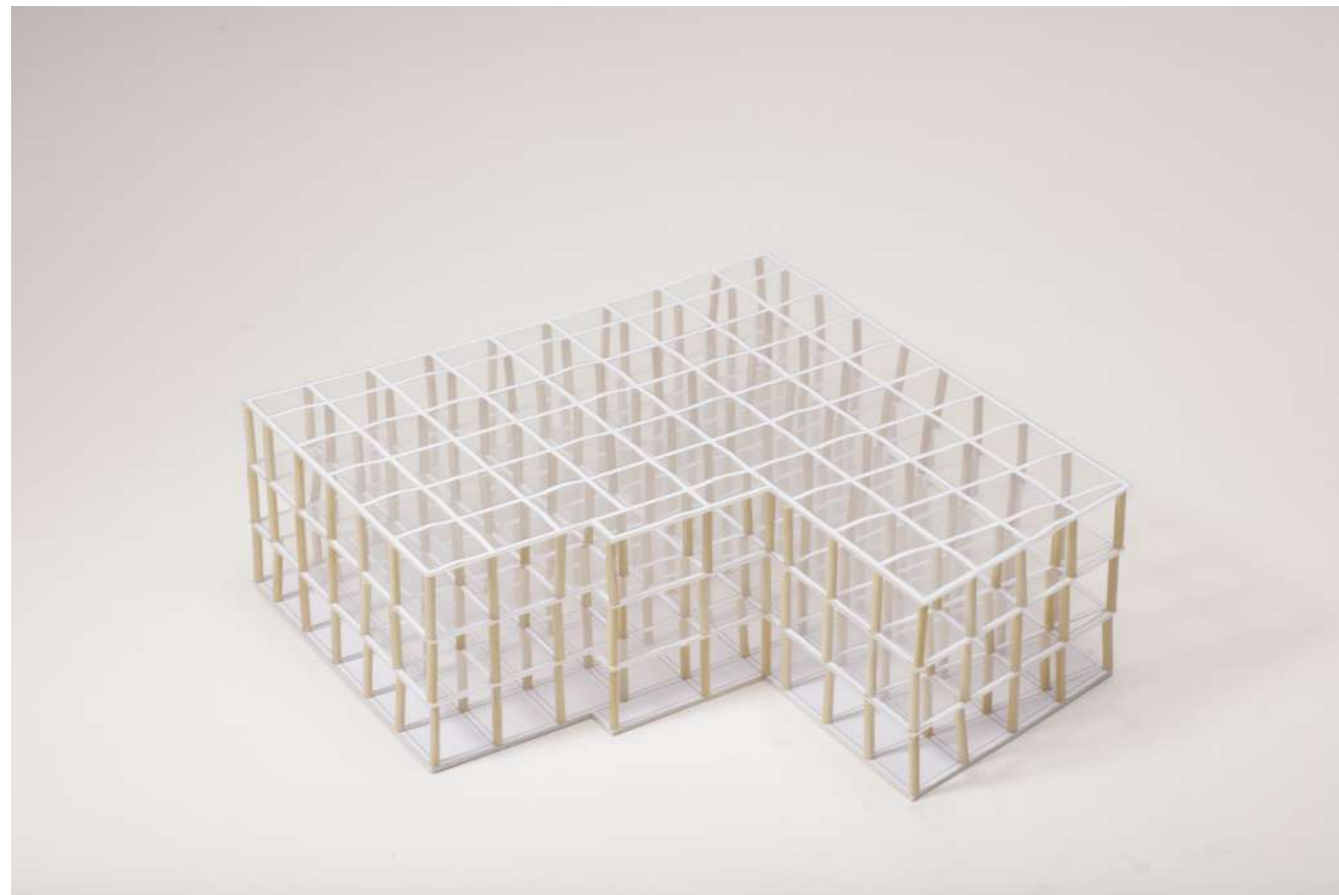
1. Private realms for the groups and individuals that make up the extended family: couple's realms, private rooms, sub-households for small families.
2. Common space for shared functions: cooking, working, gardening, child care.
3. At the important crossroads of the site, a place where the entire group can meet and sit together.

designing territories

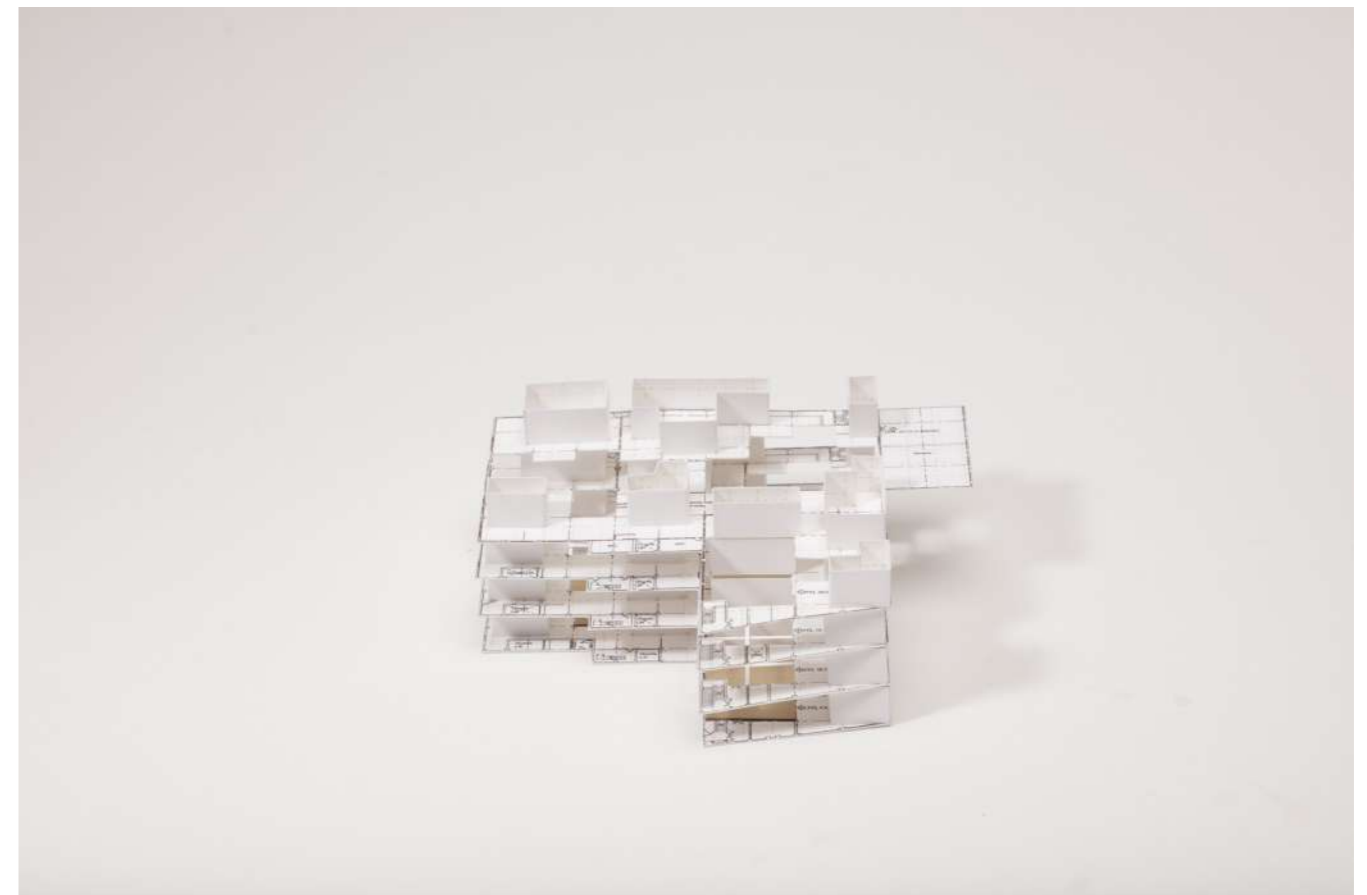


Structure representation
Make the original structure visible

Void
Allow light and air into the centre
Facilitate vertical communication



Structure model

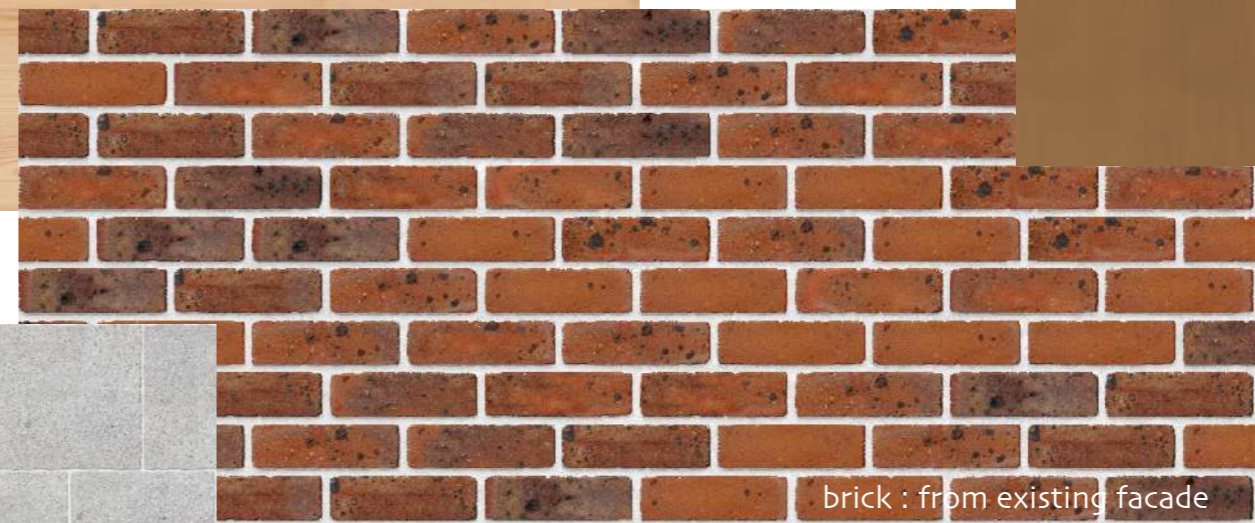
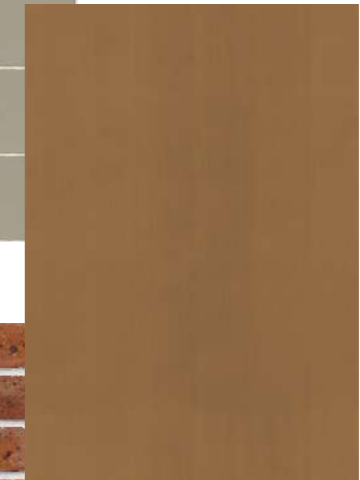


Model with voids

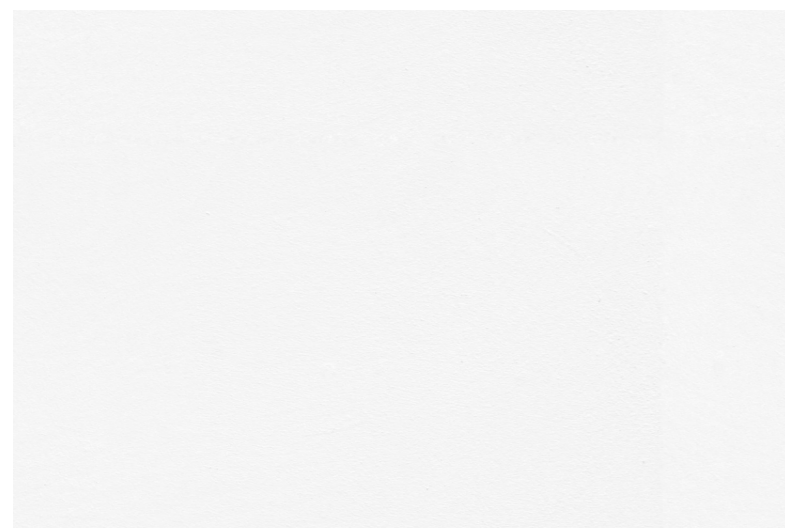
Reuse of Materials & Colours



CLT : from demolished properties



brick : from existing facade



#B78047



#B9BoA1

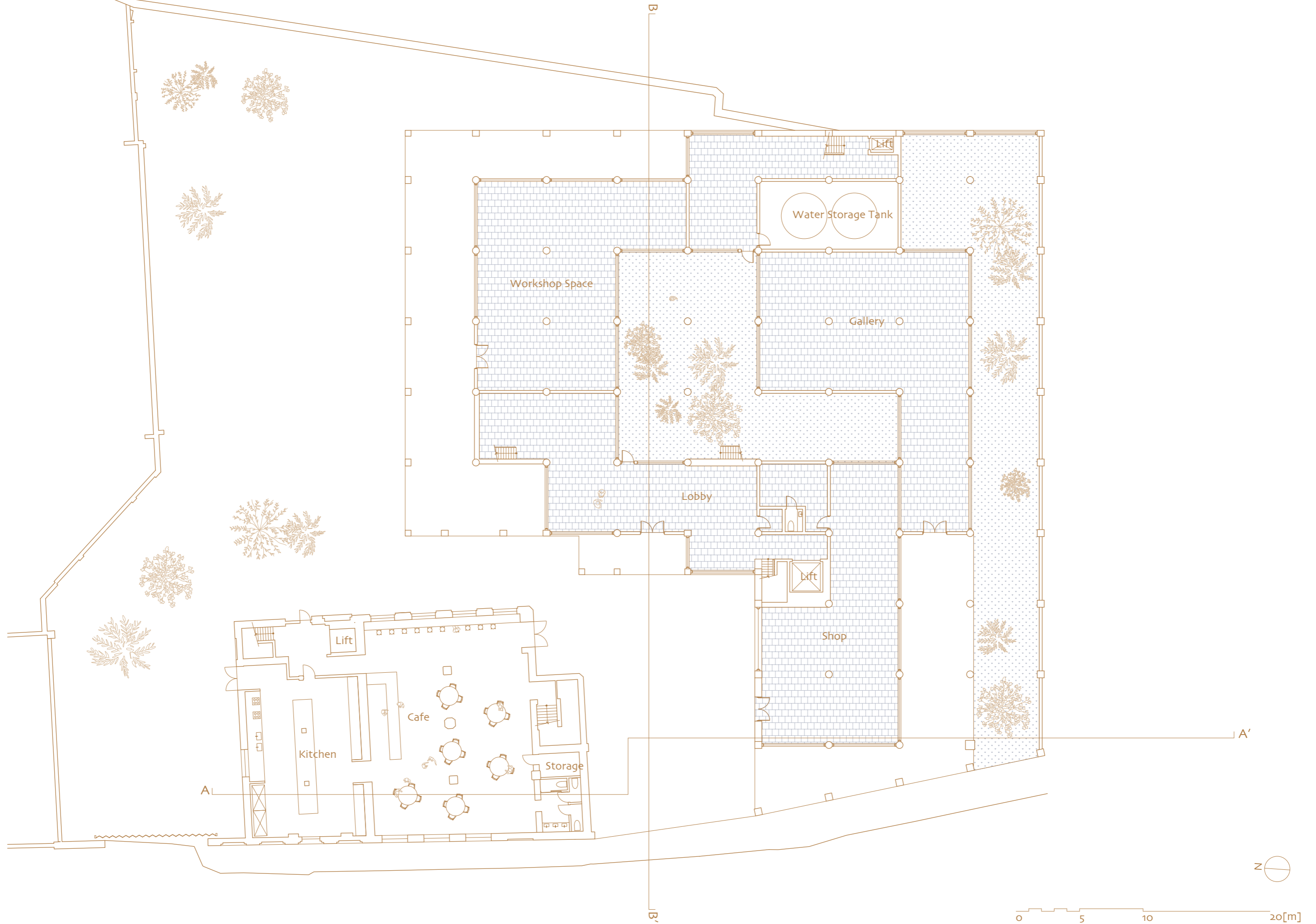


#ECEDF1



Picking colours from the site

Ground Floor Plan



1st Floor Plan



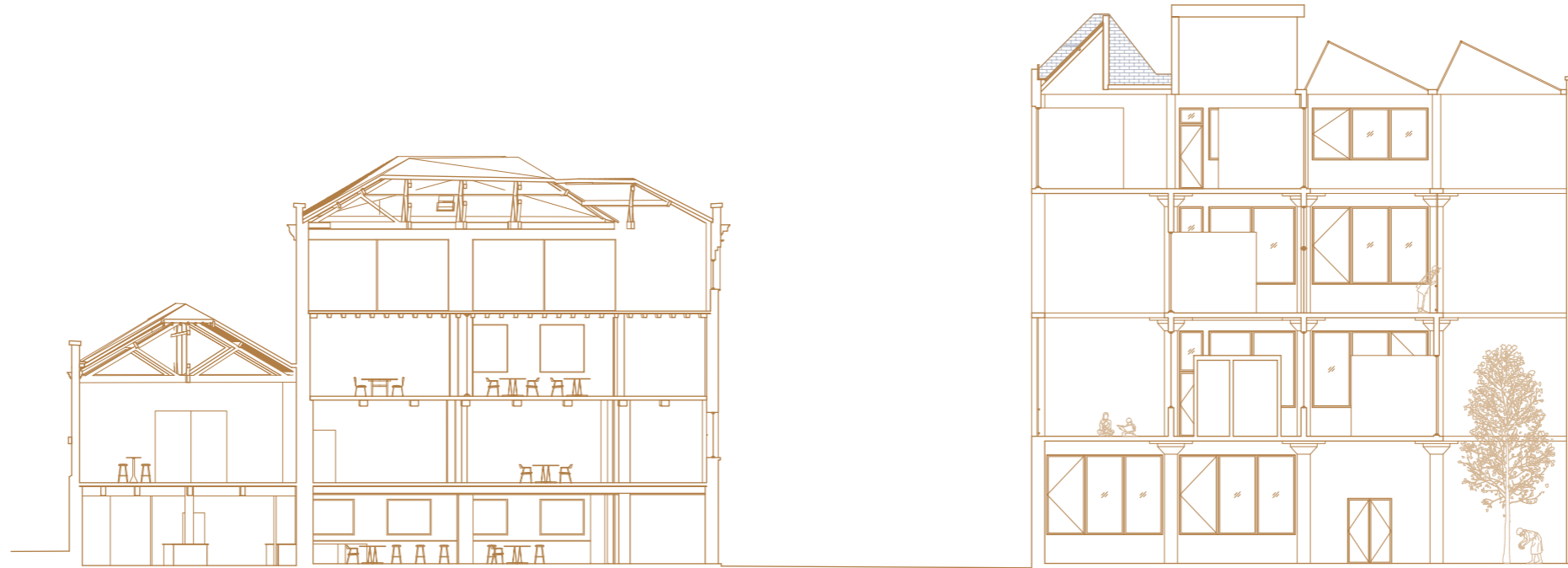
2nd Floor Plan



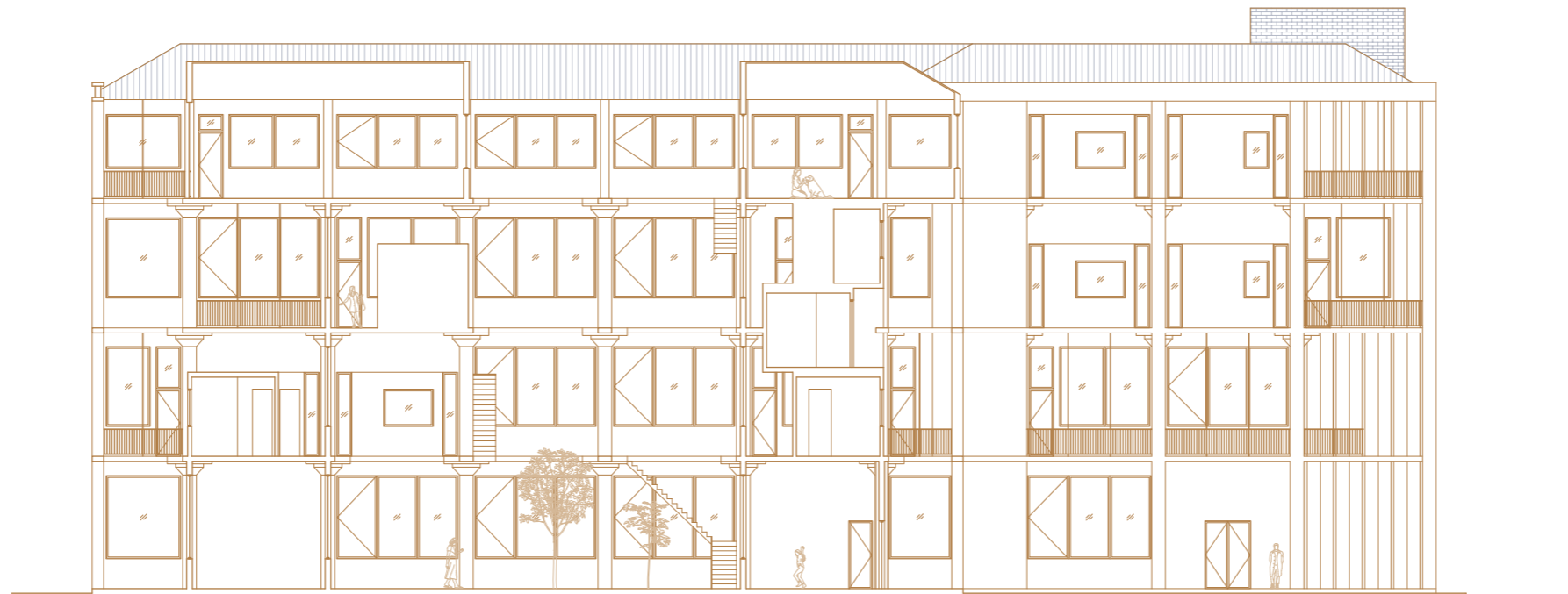
3rd Floor Plan



Section

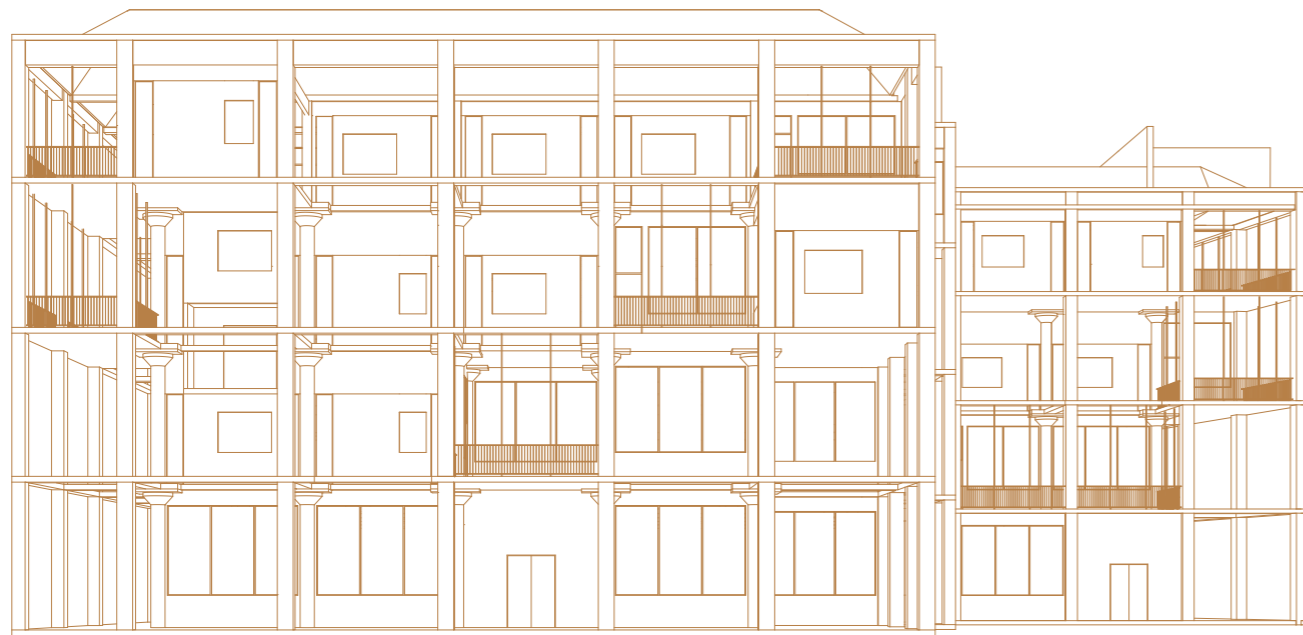


A-A' Section



B-B' Section

0 5 10 20[m]



North Elevation

