

URBAN OASIS

CONTENTS

01. Research question

02. Research question development and history analysis

04. Site analysis and research

05. How to design a stress relief space

06. Concept model

12. Walking experience

09. Material palette

10. Floor plan and key moments

13. The circulation

14. Sections

15. Detail drawings

19. Ai assisted with design

18. Visualisation

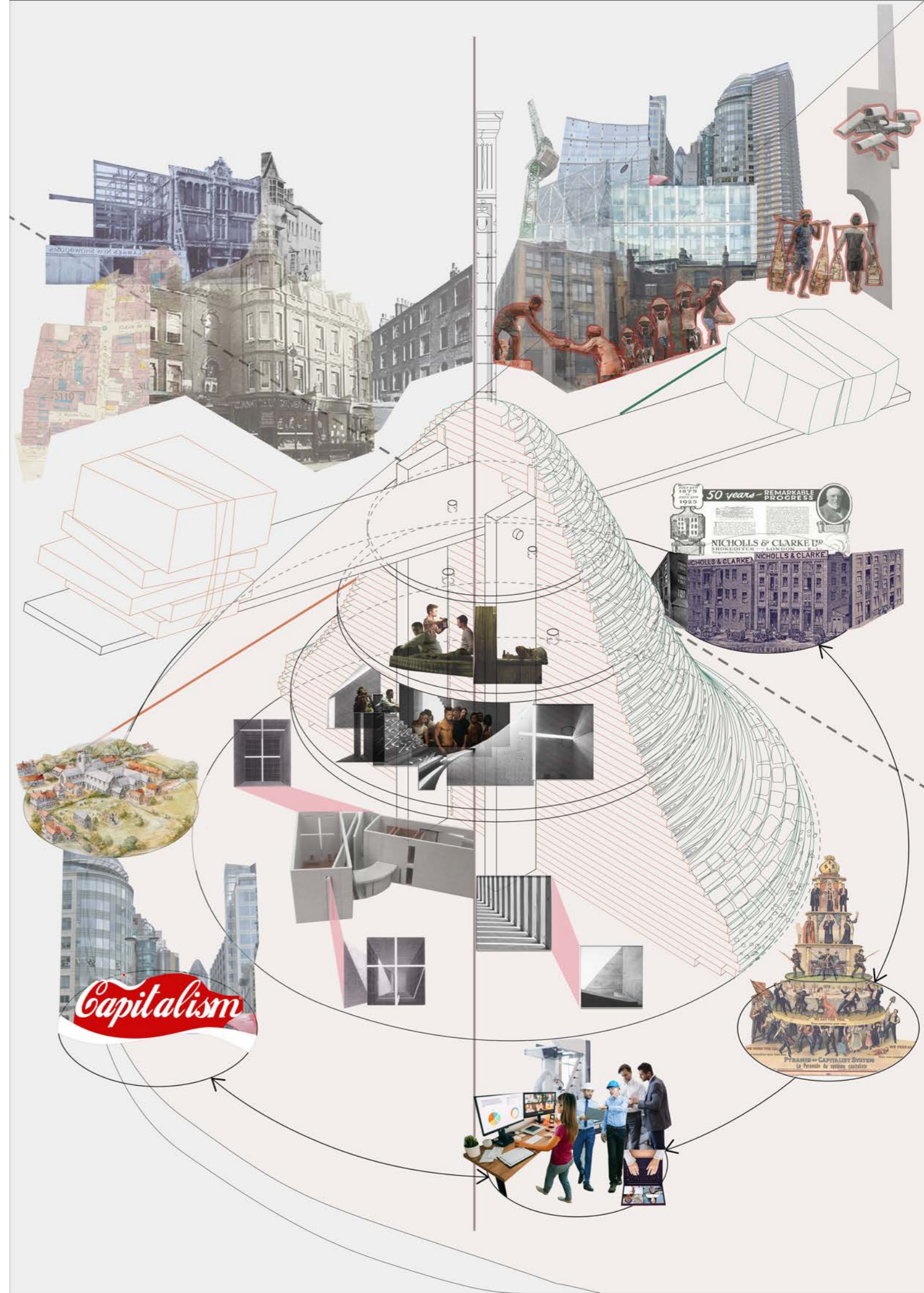
19. Physical model

RESEARCH QUESTION

What's beneath the visualization of 16 Blossom Street? Does it represent conflict or compromise? There is a coexistence of modern and historical buildings on the site. Whether the development of NC's company is a new conflict of St Mary in the early 19th century before the Second World War. Whether the factory workers as proletariat and the rise of the NC's company turn into a new conflict? In the modern day will the office worker in a fancy complex represent a new "factory labor"?



What's beneath the visualization of 16 Blossom Street? Does it represent conflict or compromise?



RESEARCH QUESTION DEVELOPMENT

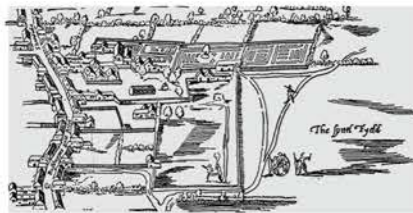


An interior view A bathroom display

Sanitary ware and sinks displayed Fireplaces displayed

LATE 19TH

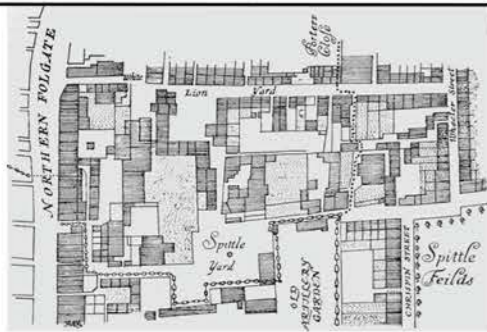
NICHOLLS AND CLARKE'S COMPANY



Agas's map showing site of St. Mary Spital and the Old Artillery Ground, c. 1560-70



Section of Goad Fire Insurance plan, Vol. 11, sheet 314 © and database right Crown Copyright and Landmark Information Group Ltd.



Extract from Ogilby and Morgan's map showing Spital Yard area, 1677

1197

PRIORY OF ST MARY SPITAL



Goad Insurance Map - 1890



Goad Insurance Map - 1944



Goad Insurance Map - 1959

PROLETARIAN LABOUR

Power To The

WORKER



THE CONDITION OF THE LABOURING MAN AT PULLMAN

after World war II, the Rise of the New Complex... THE NEW AGE WORKER



African American women working as mechanics during World War II, 1940-45, via History



American women working in an airplane factory during World War II, 1942, via Monovisions



Black Trainees in the Metal Trades

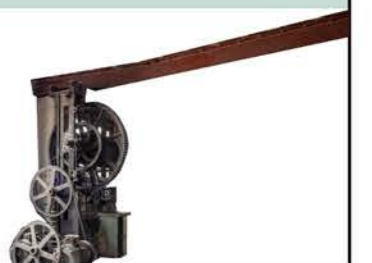


T.A. Morgan, Sayde R. Carter, Learner Turret Lathe, 4555

NEW CAPITAL (LARGE COMPANIES)



THE CONFLICT ...



RESEARCH QUESTION INVESTIGATION

STAGE I— Church dominated productive life VS The rise and growth of private enterprise

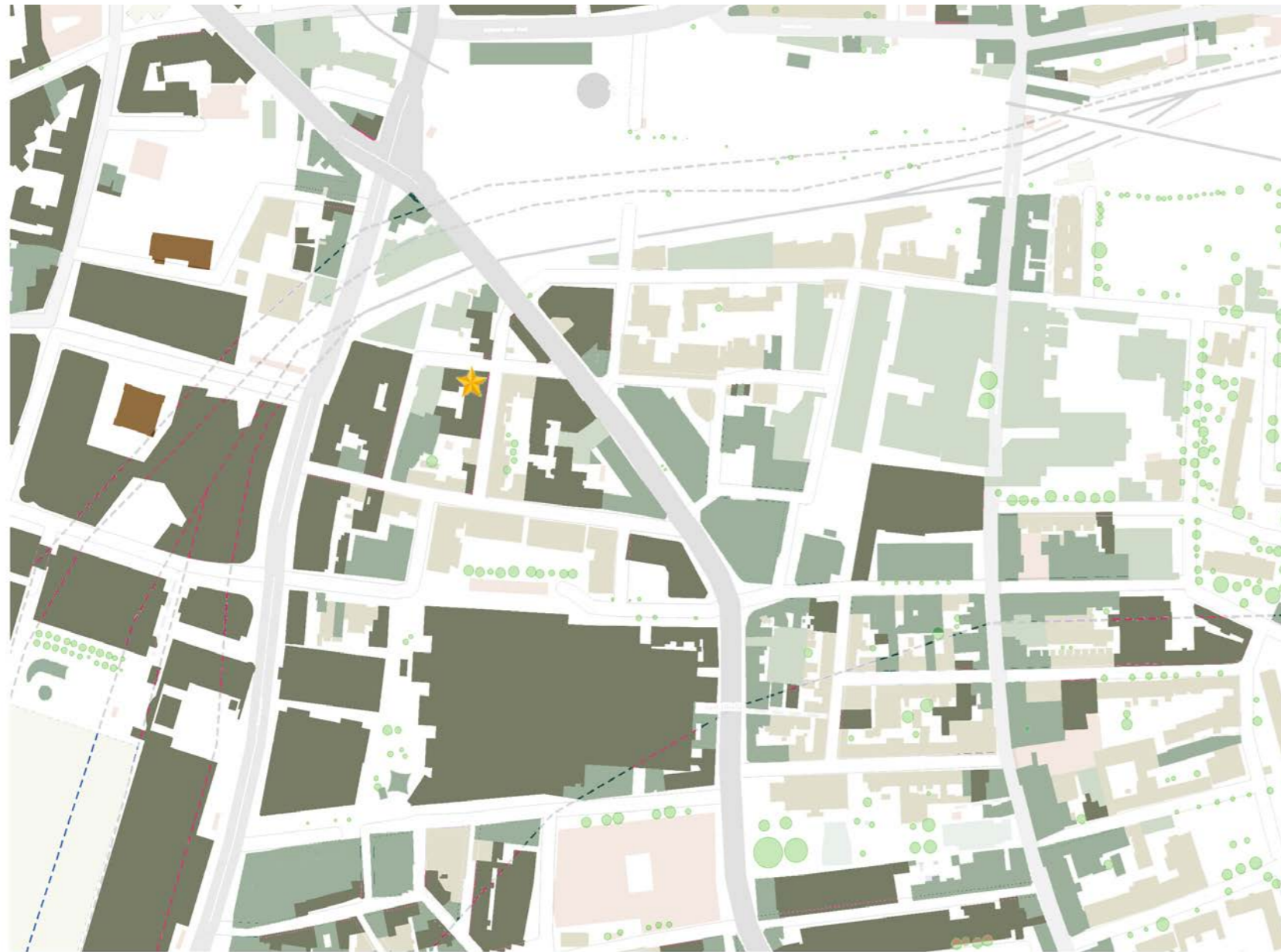
In the context of site, the historical evolution of the area's economic landscape likely referred to local religious activities.
The historical balance between the church-led production and the rise of private enterprises. The church and nuns historically played a dominant role in local production, while private businesses emerged and thrived alongside them, shaping the area's economic landscape.

STAGE II— Private enterprise (big factories) VS Proletariat

The conflict between large factories like Nicholls and Clarke's and the proletariat stemmed from labor exploitation, class struggle, and demands for worker rights. Factory owners prioritized profit, often at the expense of fair wages and safe working conditions, leading to tension and resistance from workers. This conflict also revolved around technological displacement, social inequality, and struggles for unionization, reflecting broader tensions within capitalist industrial societies.



SITE ANALYSIS

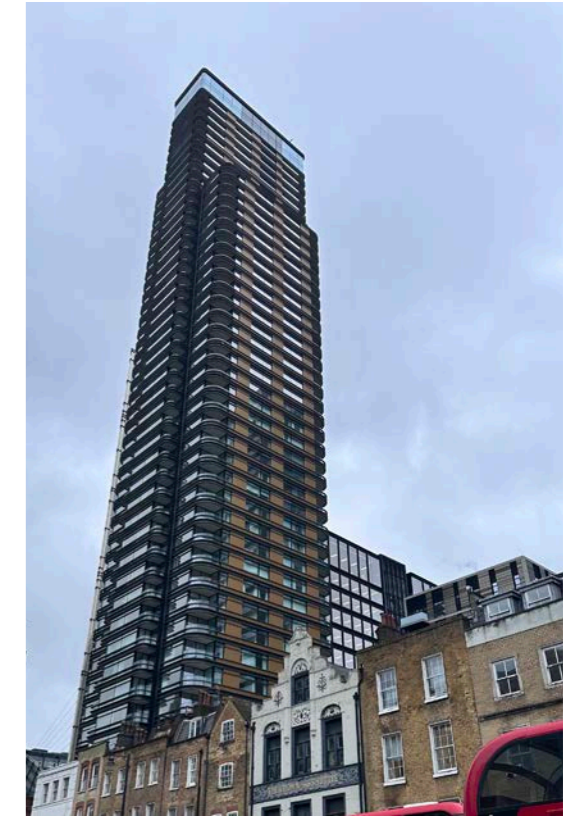
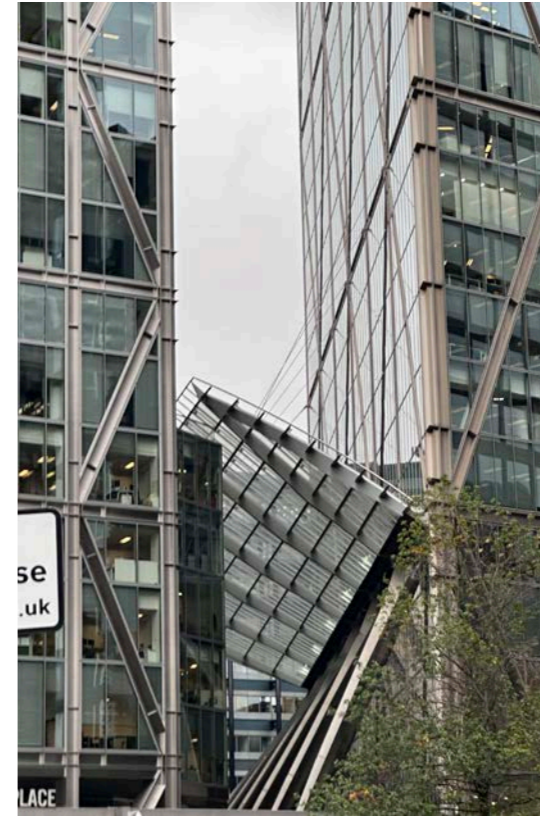


- OFFICE
- TRANSPORT
- RETAIL
- RESIDENTIAL
- COMERCIAL

MENTAL HEALTH STATUS



The 16 Blossom St set as a background for how the places history and heritage, and in particular traces of which that are still visible today, have helped inform the character and interventions. This section also sets the local public realm within the bigger picture of this part of London, within the context of future developments, and current and projected movement through and to the Blossom Street area.



HOW TO DESIGN A SPACE TO RELEASE THE STRESS

FIVE SENSE



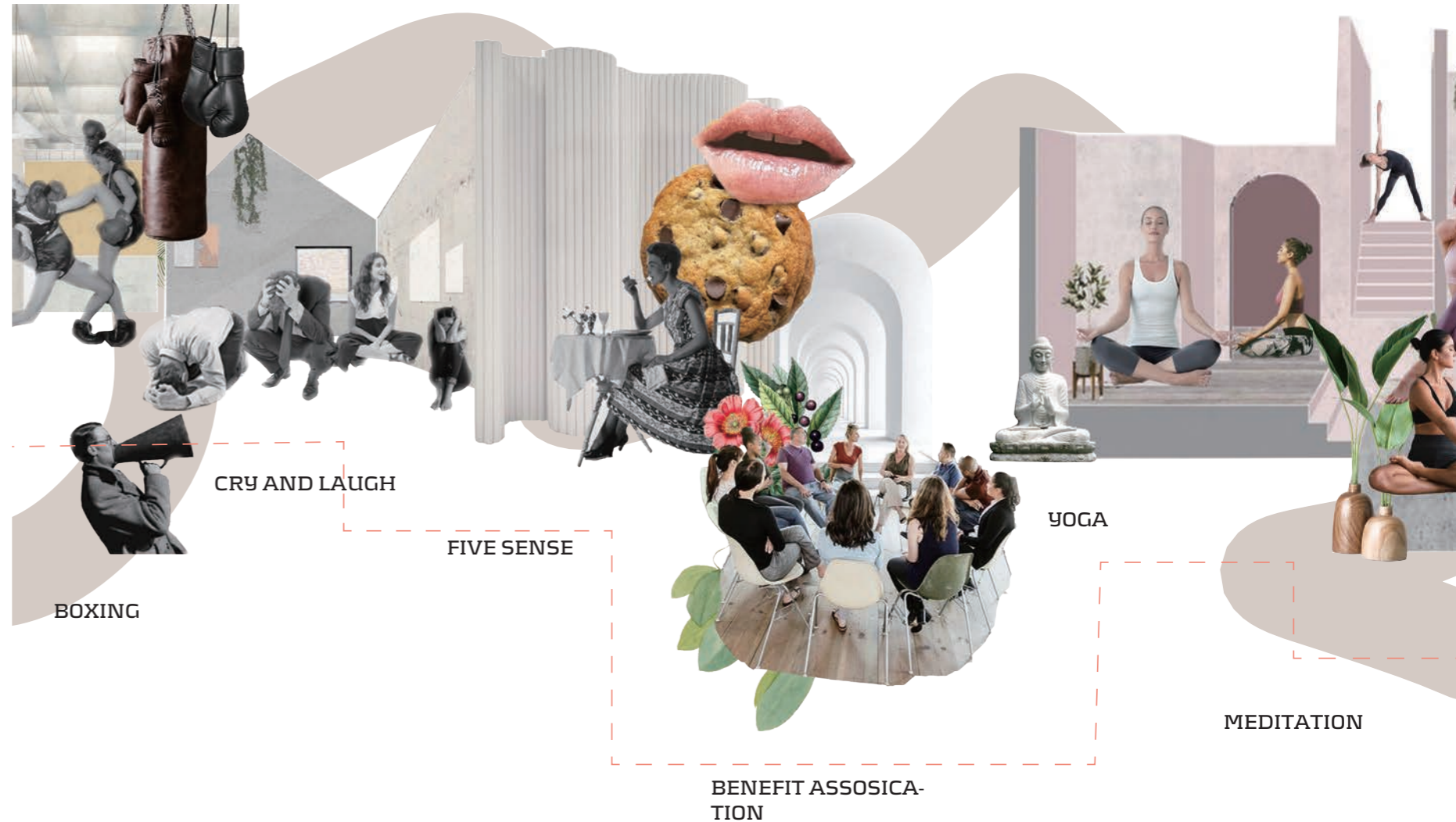
vision:
 1. Enjoy the beauty of nature
 2. Watch relaxing videos or videos
 3. Good decoration environment
 4. Enjoy soothing colors and shadows

Touch:
 1. Touch soft material
 2. Warm objects

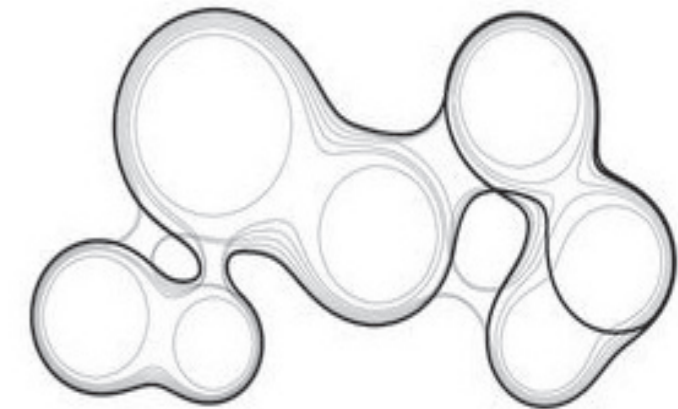
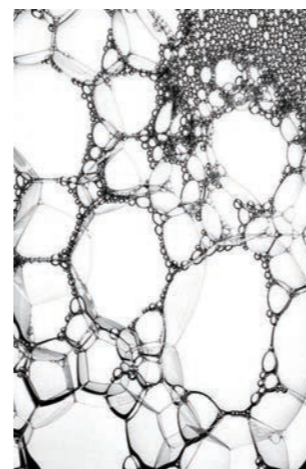
Taste:
 1. Enjoy delicious foods
 2. Eat something spicy

Auditory sense:
 1. Relaxation music
 2. Natural sounds
 3. Guided Meditation voice
 4. White noise

Smell:
 1. Aromatherapy
 2. Floral
 3. Nature



Office- design concept highlighted
 - A typical office consists of straight lines, which creates a confined space with small compartments and well-defined action routes



Organic line

Curve

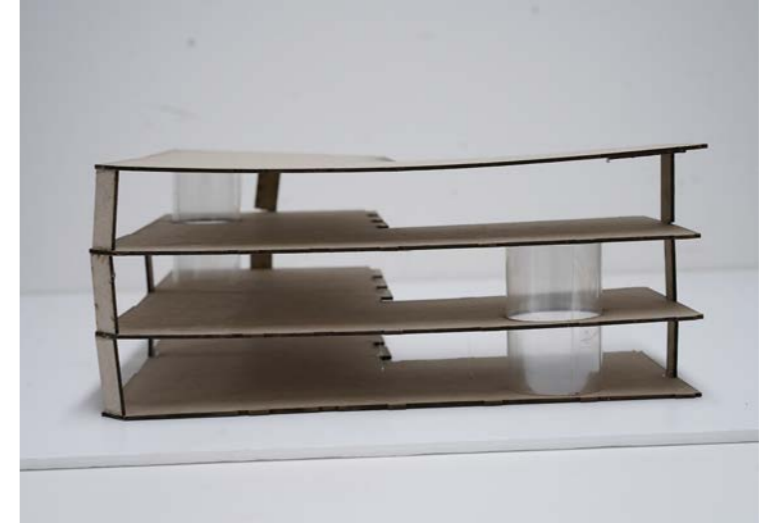
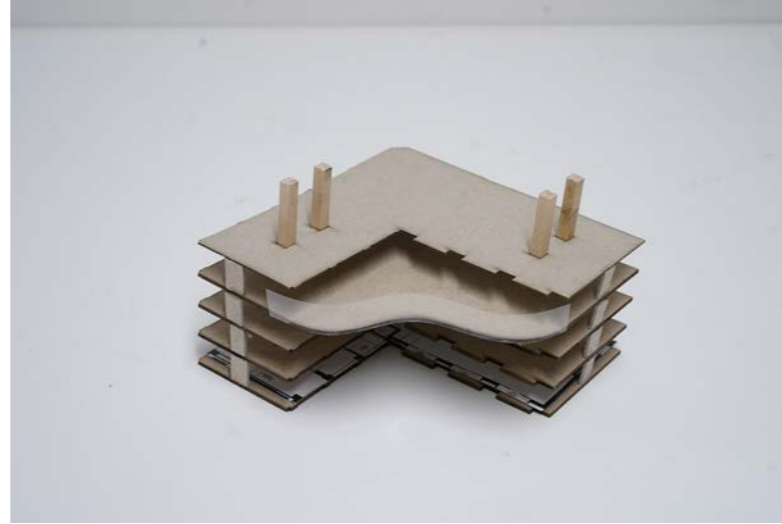
Circular

Circular

overlapping combination

Curve lines bring people the feeling of softness, with the characteristics of change, and flow.

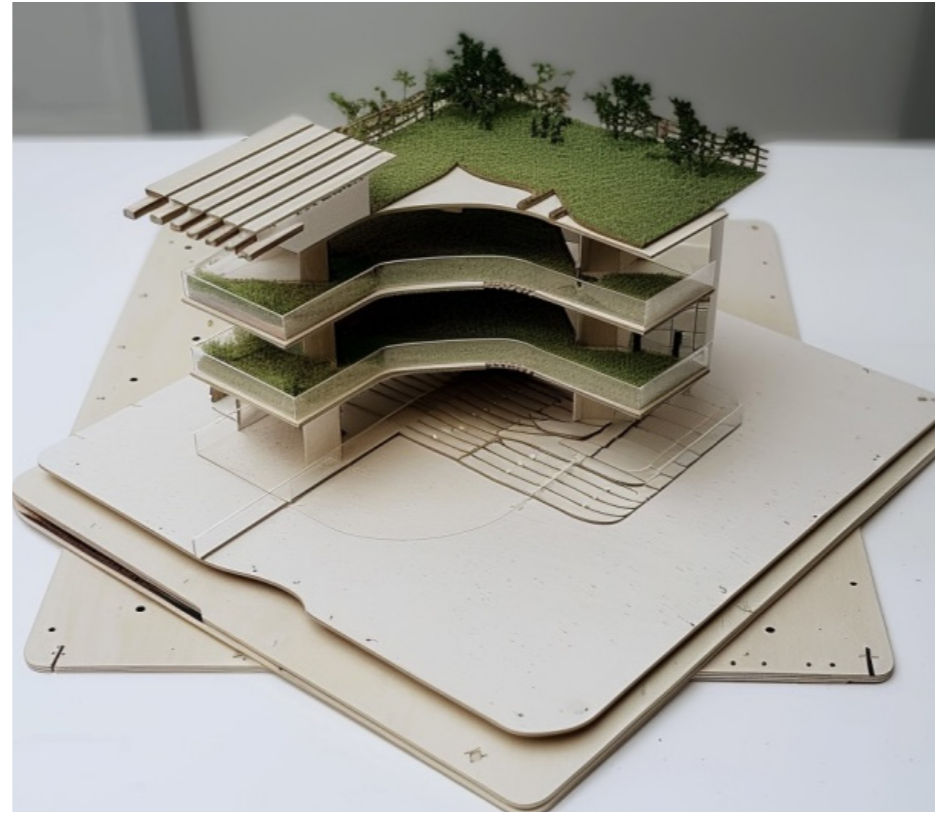
CONCEPT MODEL

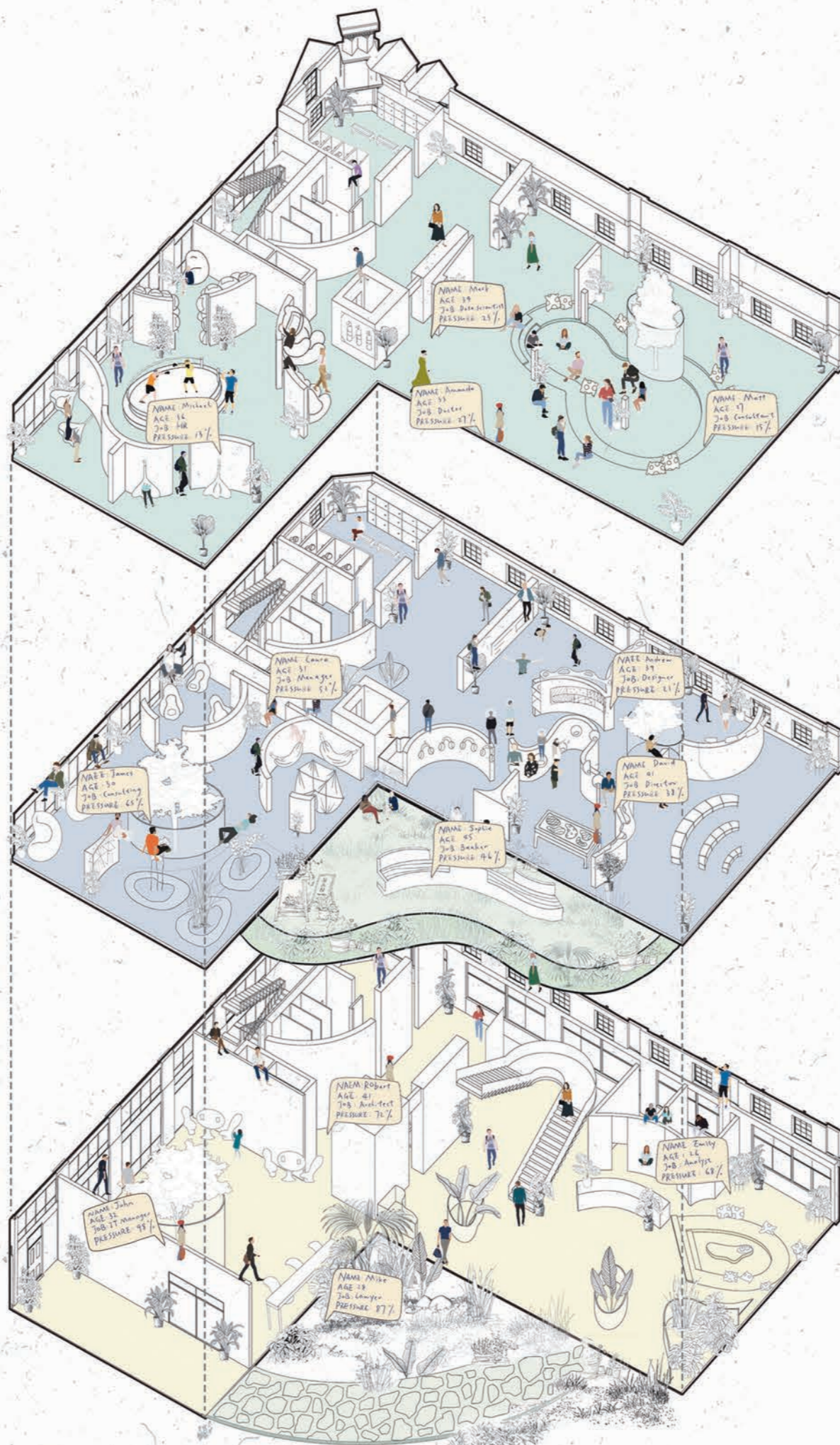


USING AI-ASSISTED DESIGN

PROMPT

A contemporary museum building with a green roof made of wood and concrete sits on top of an open space with plants. An isometric architecture model made of paper sits on a white table top with a light background. The view shows three pages placed next to each other in the style of minimal editing of the original text.





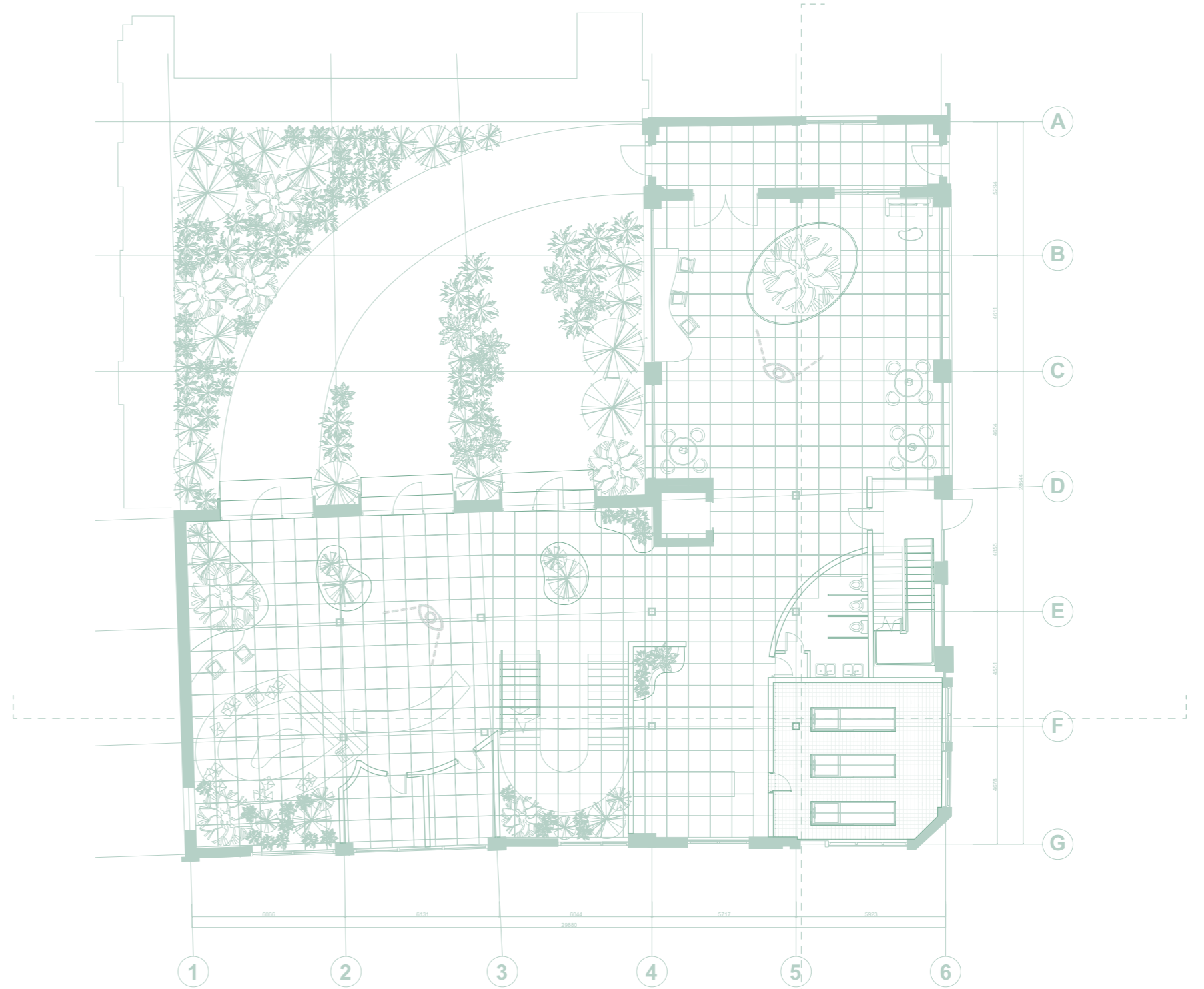
THE GROUND FLOOR PLAN AND KEY MOMENT



RECEPTION



RESTING AREA



Ground Floor 1:200

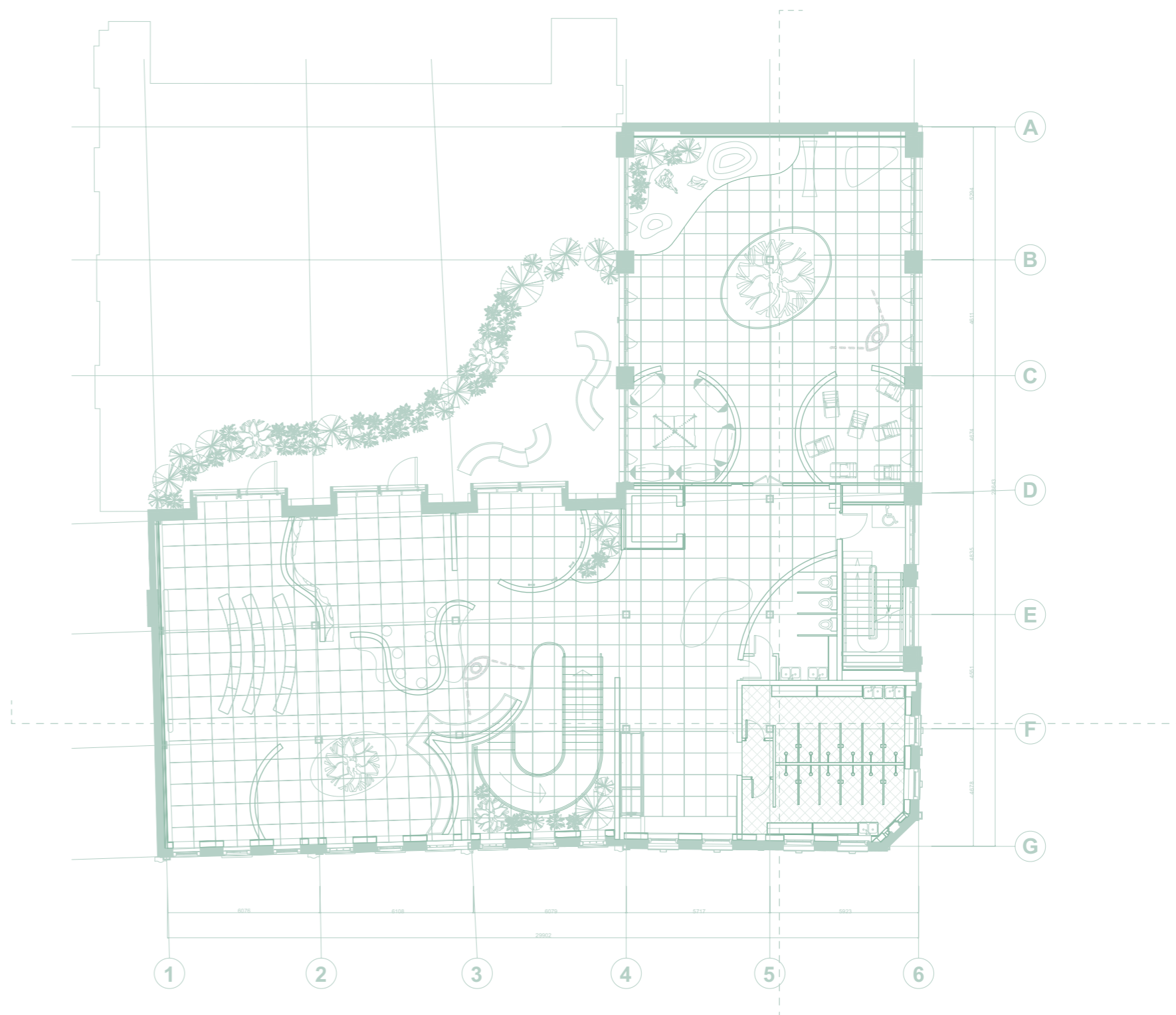
THE FIRST FLOOR PLAN AND KEY MOMENT



TESTING TABLE



RELAXING LOUNGE SPACE

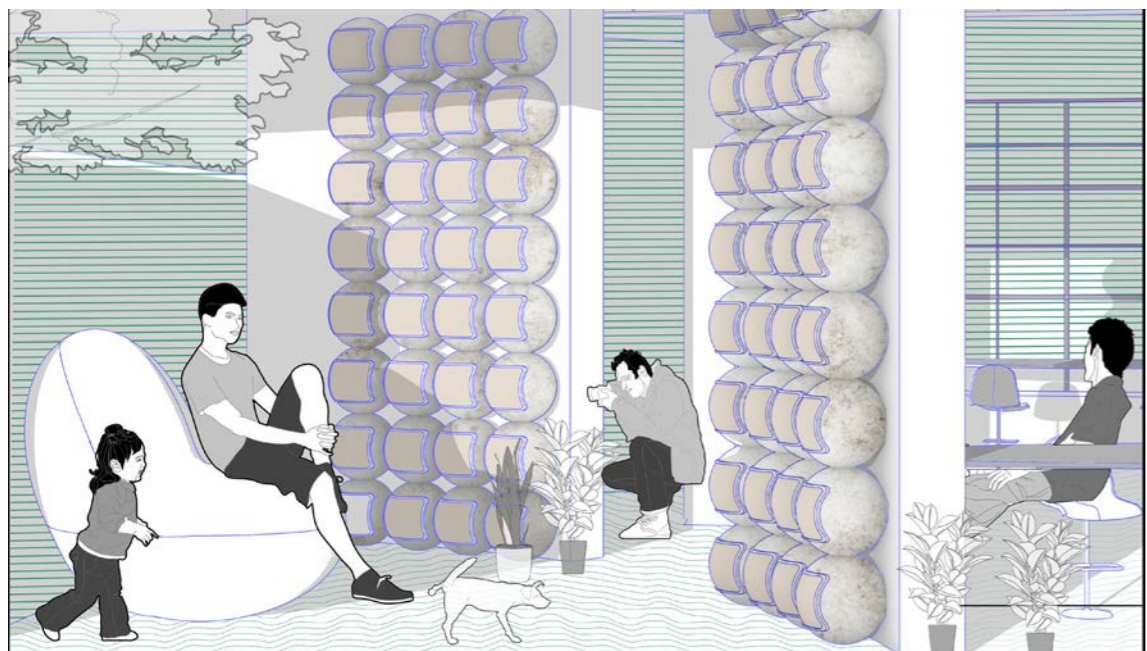


First Floor 1:200

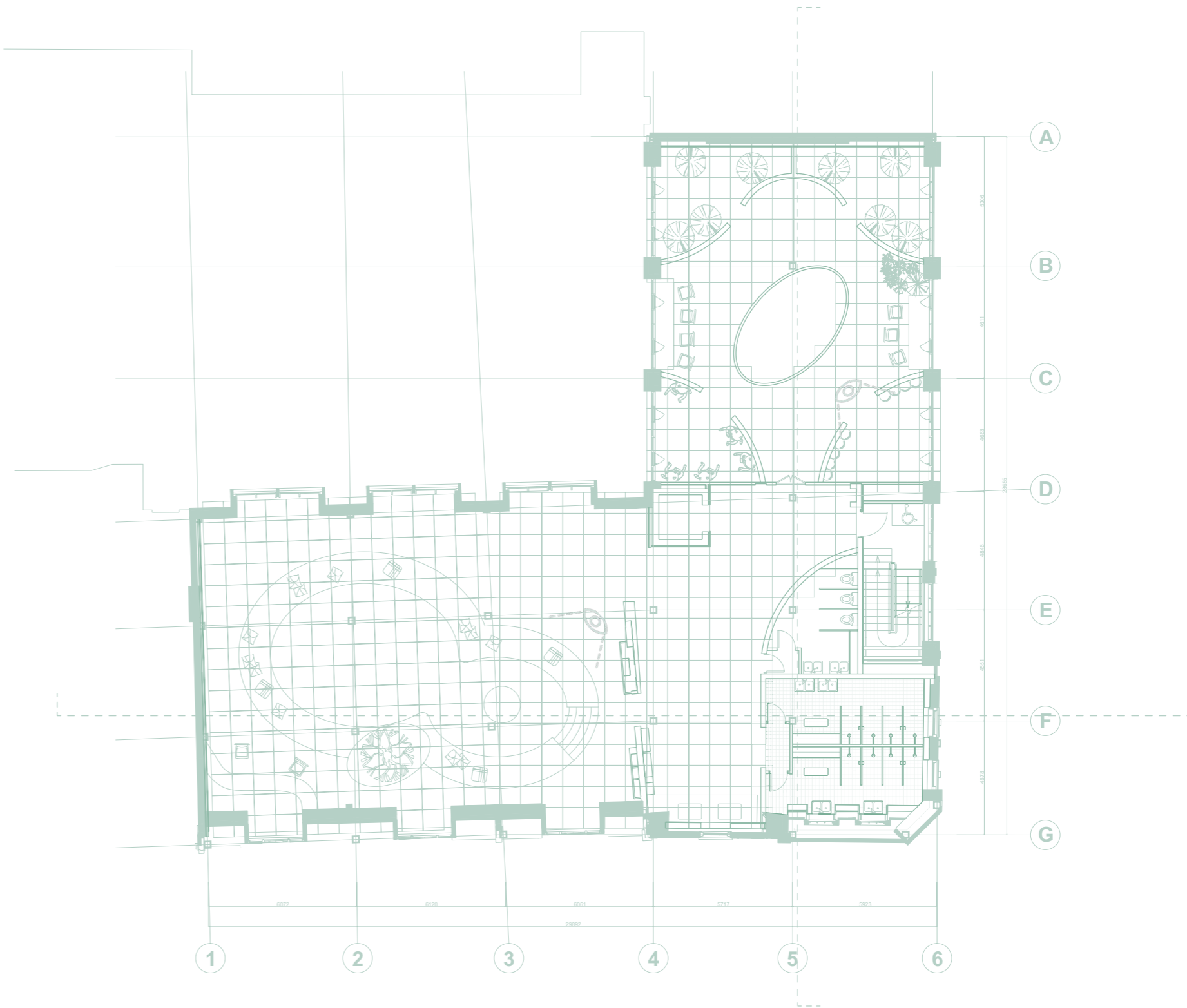
THE SECOND FLOOR PLAN AND KEY MOMENT



MUTUAL AID SOCIETY

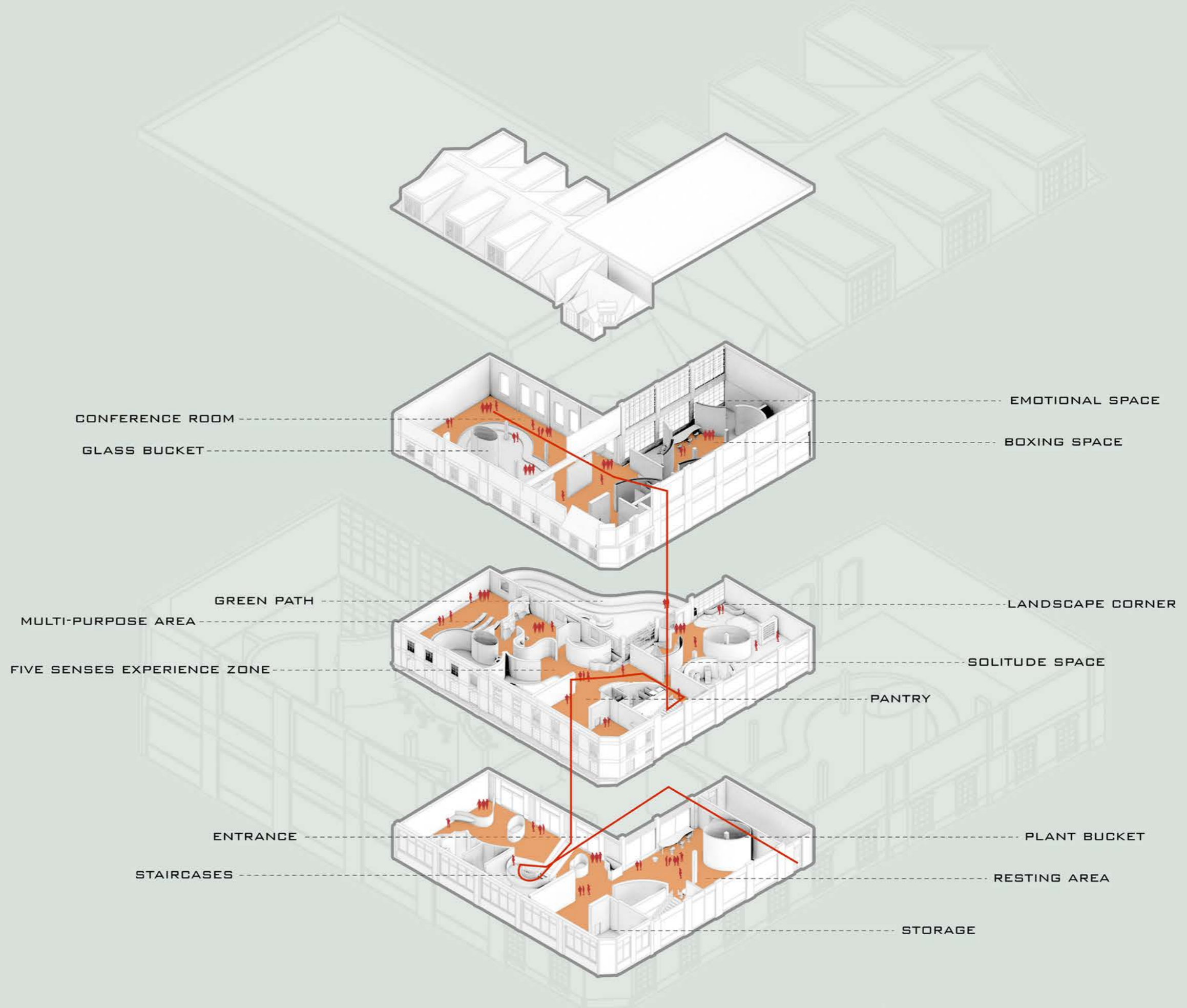


LAUGHING SPACE

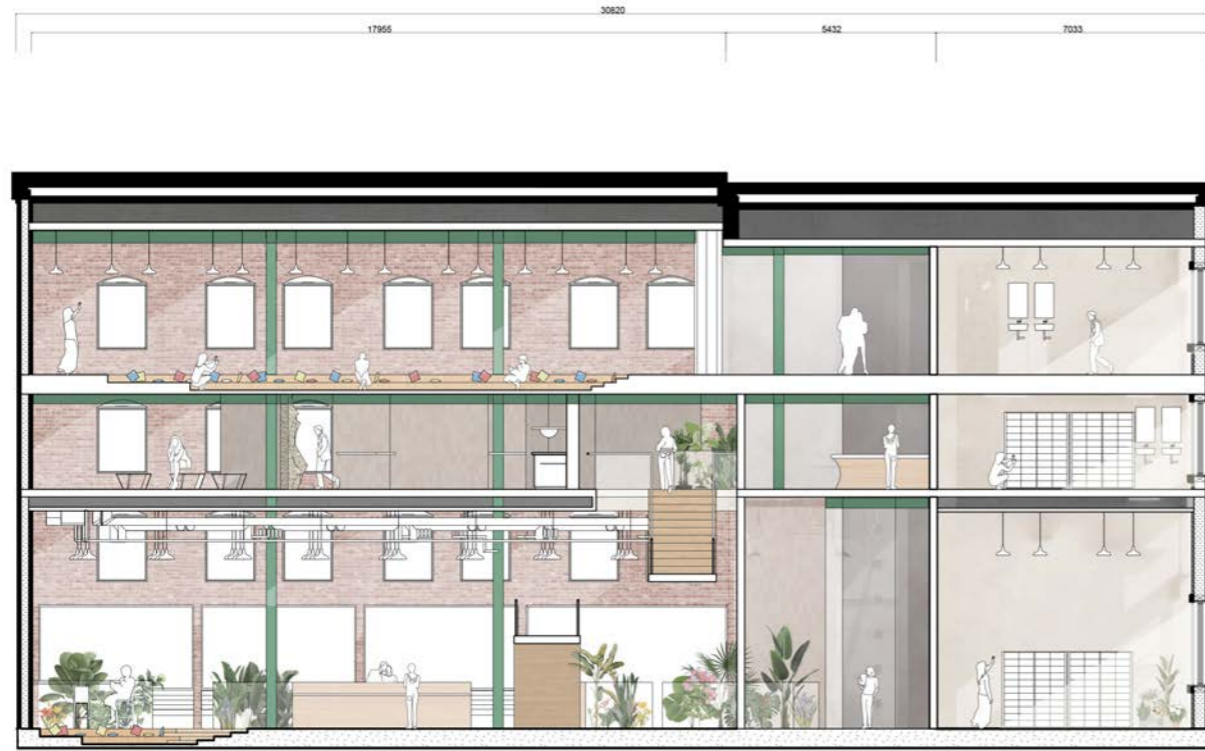


Second Floor 1:200

THE CIRCULATION



SECTION 1:200

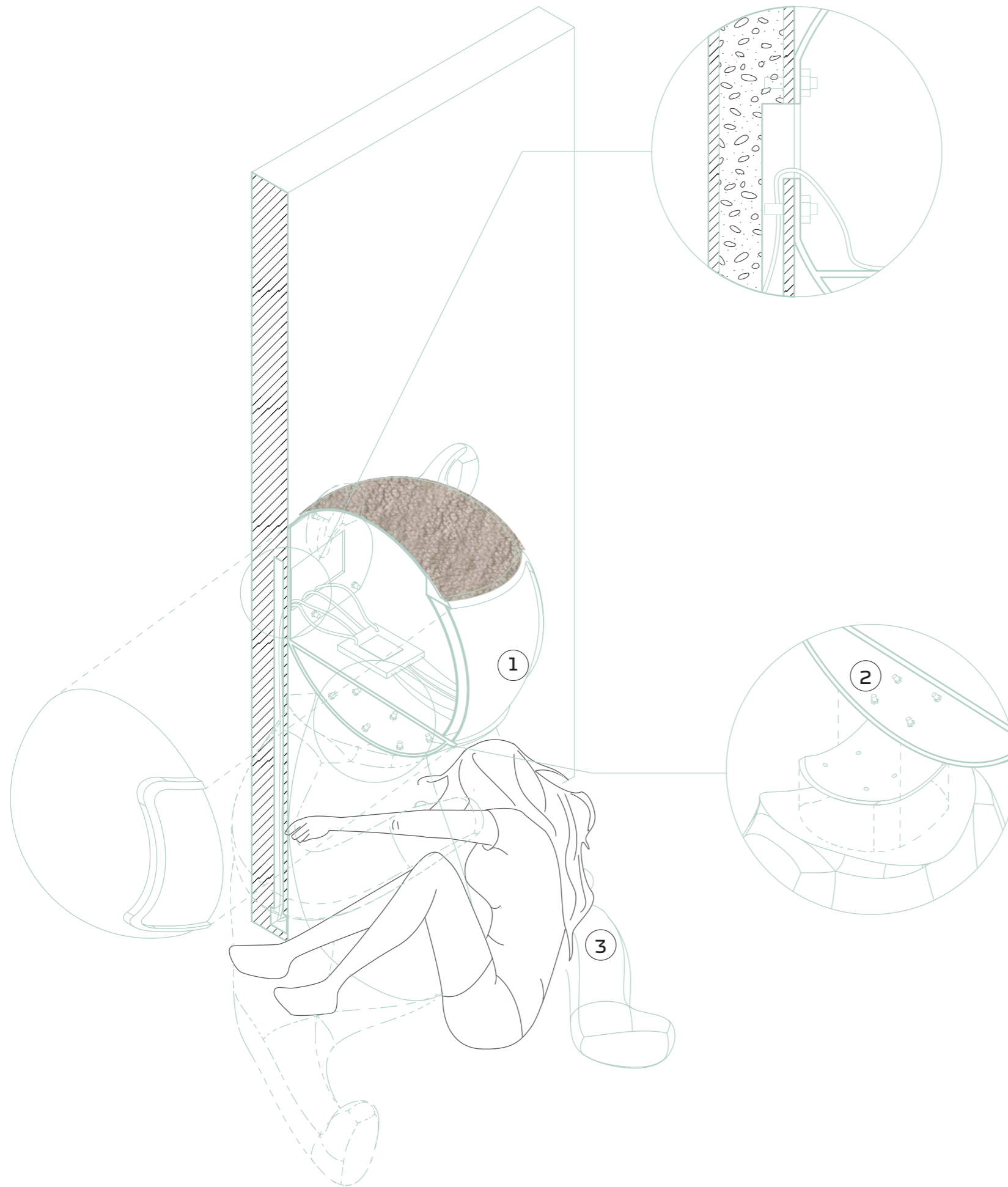


SECTION A



SECTION B

DETAIL DRAWING 1:10 CRYING BEAR



①



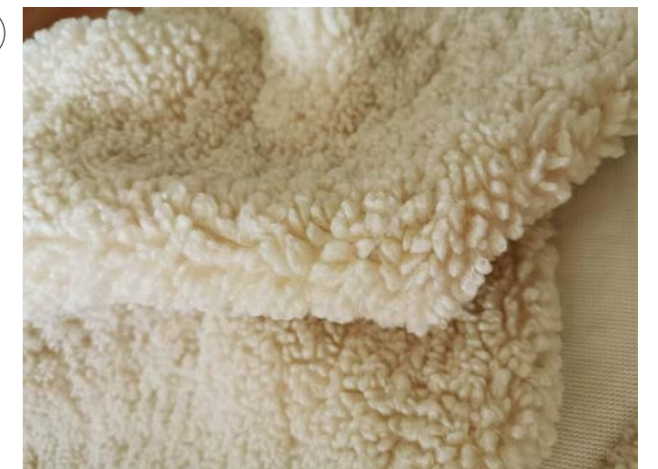
The main material for projector is black plastic. Similar to our daily televisions.

②



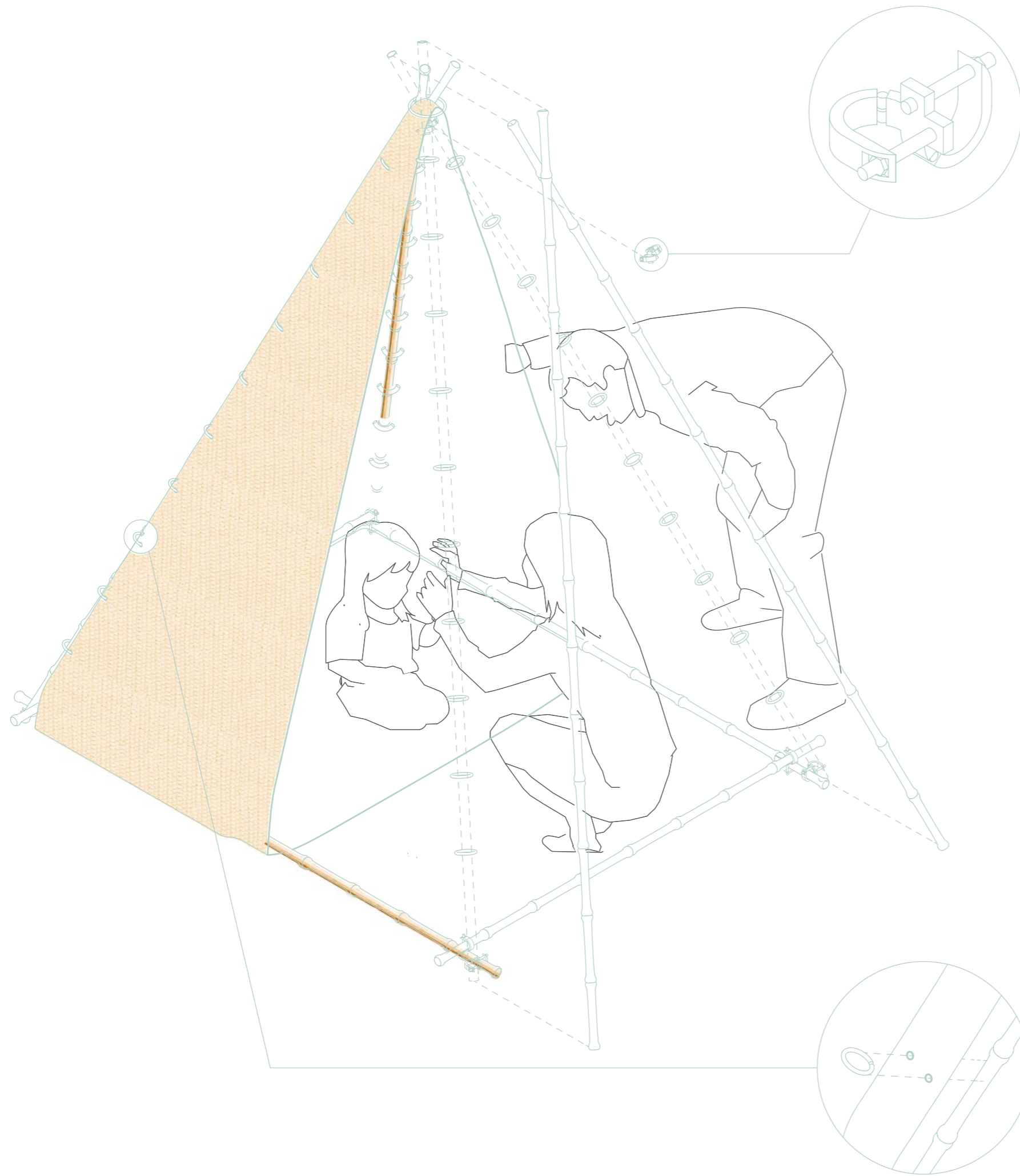
Projector has been installed on the wall by screws. Projector replaces furry bear's head, and connects to its body by screws.

③



Furry bear is soft enough for people to sit and hug it. Furry bear is filled with cotton. It provides a soft, warm and cozy place for people.

DETAIL DRAWING 1:10 TENTS



1



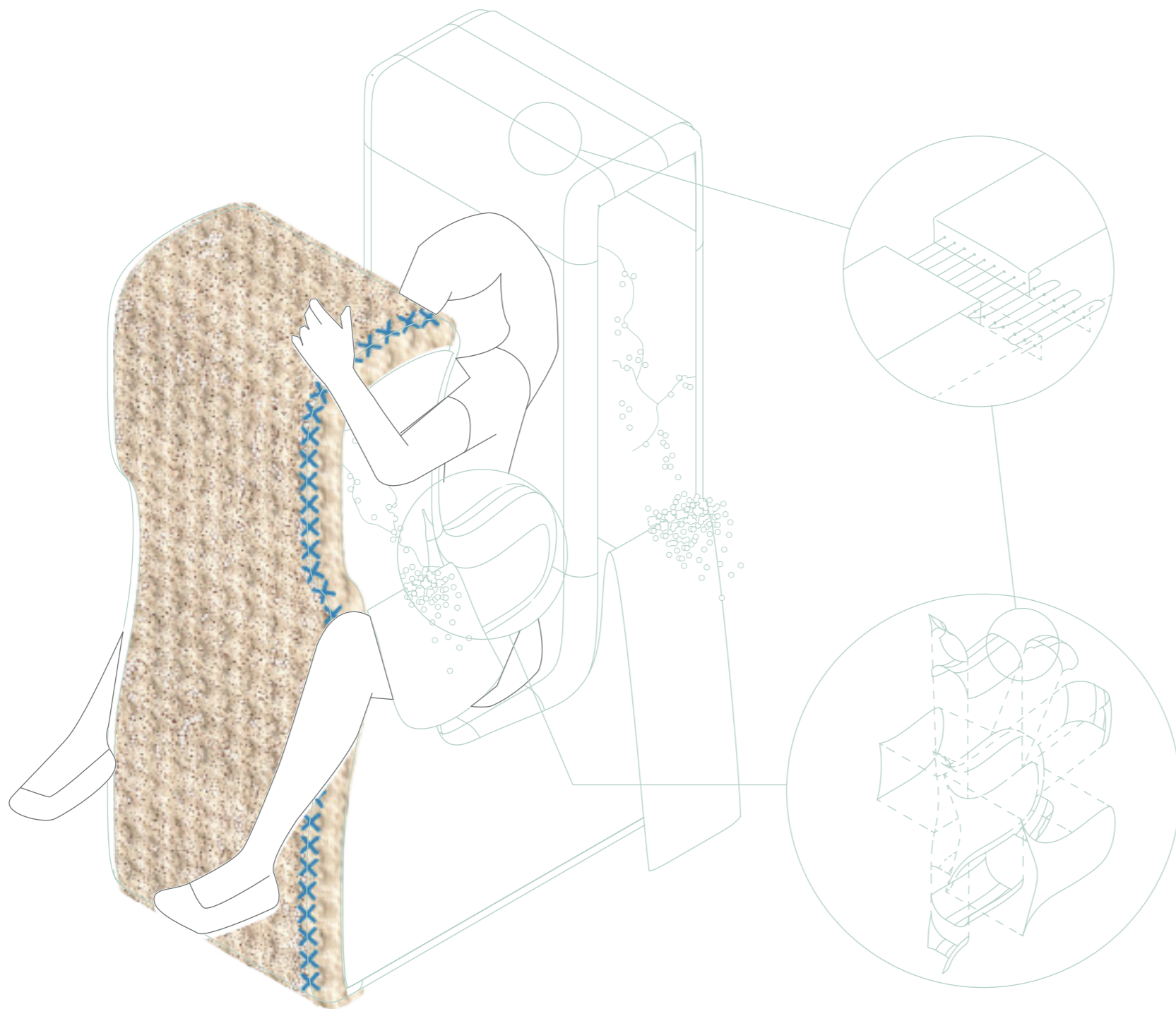
A bamboo structure supports the fabric. It makes space for people to stay inside. Bamboos have been held by steel locks.

2

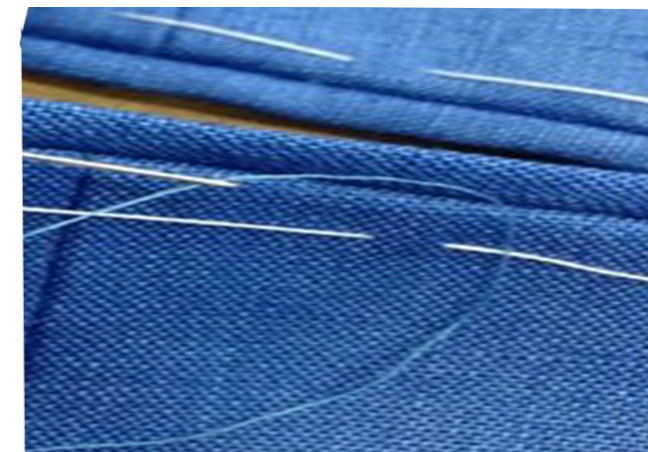


Fabric covers the Bamboos, and its held on bamboos by steel rings. It allows people to move inside while keep their privacy.

DETAIL DRAWING 1:10 HUGING SOFA



①



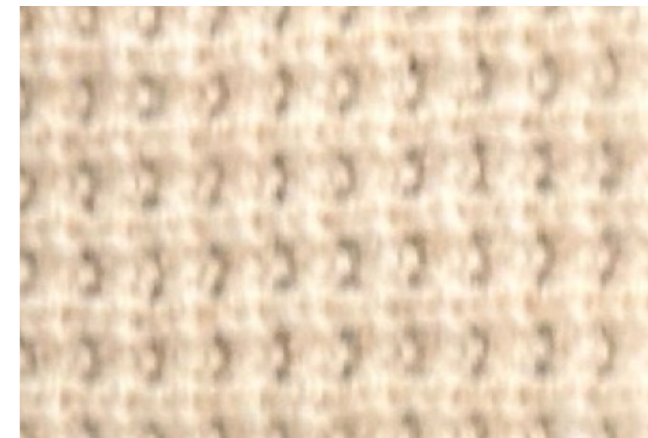
Fabric is sewing together to contain beans inside.

②



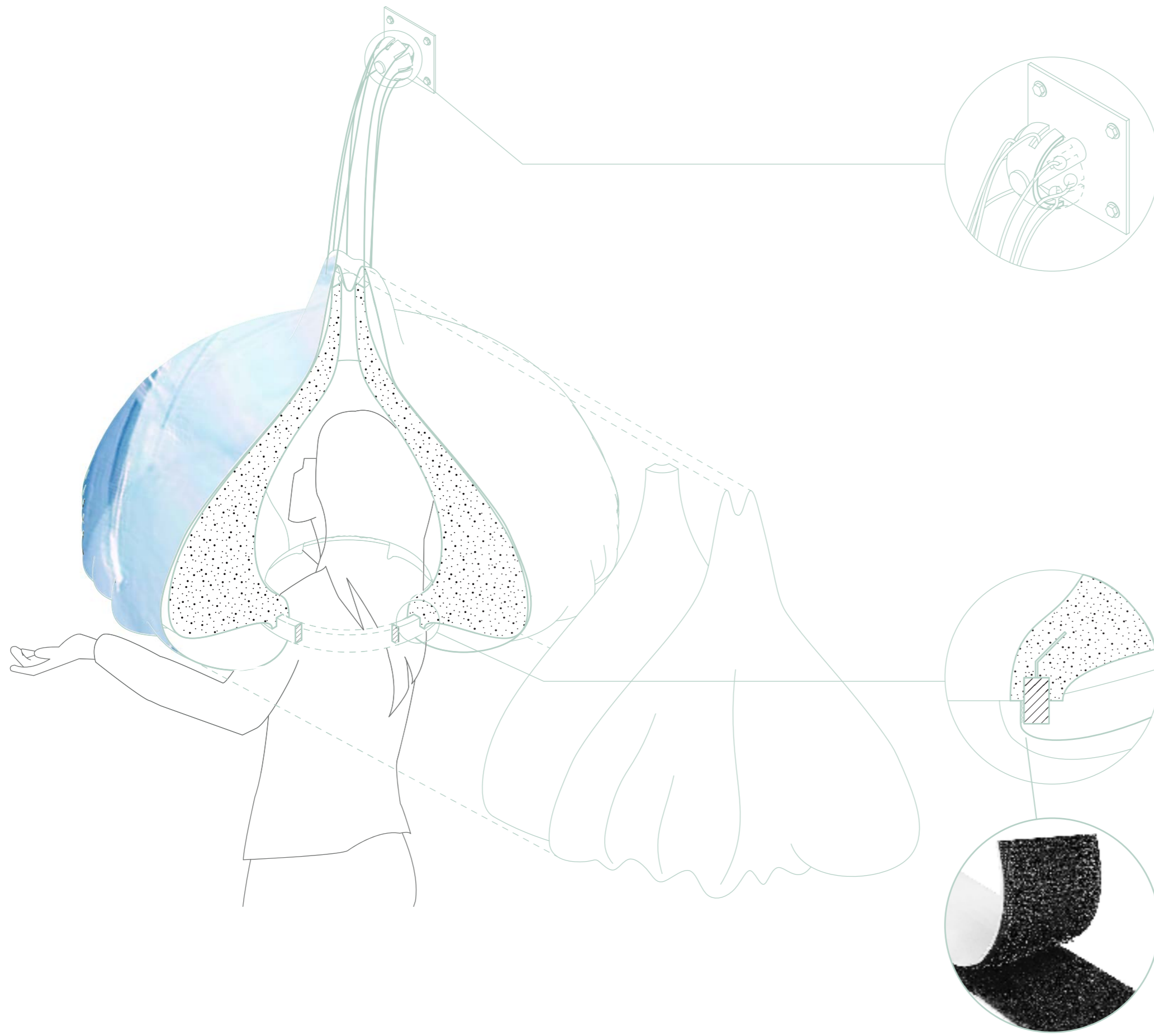
Plastic beans are inside of bag. It makes the hugging chair soft, flexible and comfortable. People feel like hugging a real person.

③

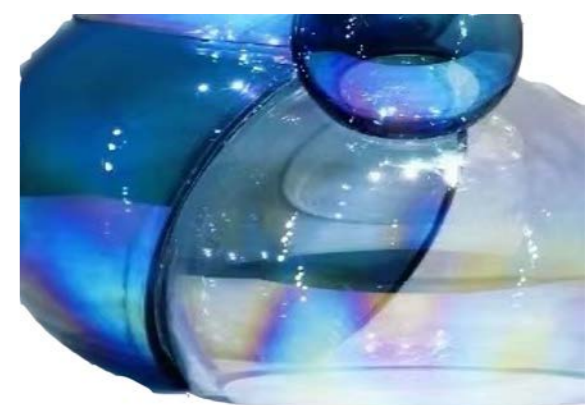


Fabric containing beans is furry and warm. It makes the chair have a cozy texture to people.

DETAIL DRAWING 1:10 SHOUTING INSITALATION



1



Fabric is sewing together to contain beans inside.

2



Fabric is sewing together to contain beans inside.

3



Fabric is sewing together to contain beans inside.

USING AI-ASSISTED DESIGN

Asking Chatgpt

What materials are used in interior design to make people feel comfortable and relaxed

Natural Wood: Wood materials evoke a sense of warmth and nature, contributing to a cozy and inviting atmosphere. Wood can be used for flooring, wall paneling, furniture, and decorative

Soft Fabrics: Fabrics such as cotton, linen, wool, and velvet are known for their softness and comfort. They can be used for upholstery, curtains, cushions, and rugs, providing tactile comfort and enhancing relaxation.

Natural Stone: Materials like marble, granite, and limestone offer a sense of solidity and elegance while connecting interiors to the natural world. Stone can be used for flooring, countertops, walls, and fireplace surrounds.

Cork: Cork is a lightweight and resilient material with natural insulating properties. It can be used for flooring, wall coverings, and decorative accessories, providing both comfort and sound absorption.

Soft Lighting: Soft and diffused lighting sources, such as lamps with warm-toned bulbs or recessed lighting with dimmers, help create a cozy and relaxed ambiance. Avoid harsh overhead lighting as it can feel too bright and sterile.

Plush Carpets: Soft and plush carpeting adds a layer of comfort underfoot and helps to absorb sound, making spaces feel quieter and more inviting. Consider carpets made from natural fibers like wool for added sustainability.

Natural Elements: Incorporating natural elements such as indoor plants, water features, and natural art pieces can help bring the outdoors in and promote a sense of serenity and relaxation.

Neutral Colors: Neutral color palettes, including shades of beige, taupe, gray, and soft pastels, create a calming and harmonious environment. These colors serve as a versatile backdrop for other design elements and promote a sense of balance and tranquility.

Using ChatGPT's answer to generate a prompt put into mid journey

Prompt: creates an interior design of a space in the style of modernism, with sustainable architecture featuring wooden walls and windows overlooking greenery. Includes a lot of plants, curved wood seating walls, and beige colour concrete floors allowing natural light. The design should have a hyper-realistic style



VISUALISATION GARDEN















VISUALISATION CONVERSATION AREA



HOW TO MAKE HARD MATREIAL TO BEND? 1:10 MODEL



Using MDF to represent the wood



Cut the MDF through lines and live tiny gap to connect the MDF





