

S(KIP) HOTEL



PREPOSTEROUS APPARATUS

Between Ground and Sky: A Moment of Relief



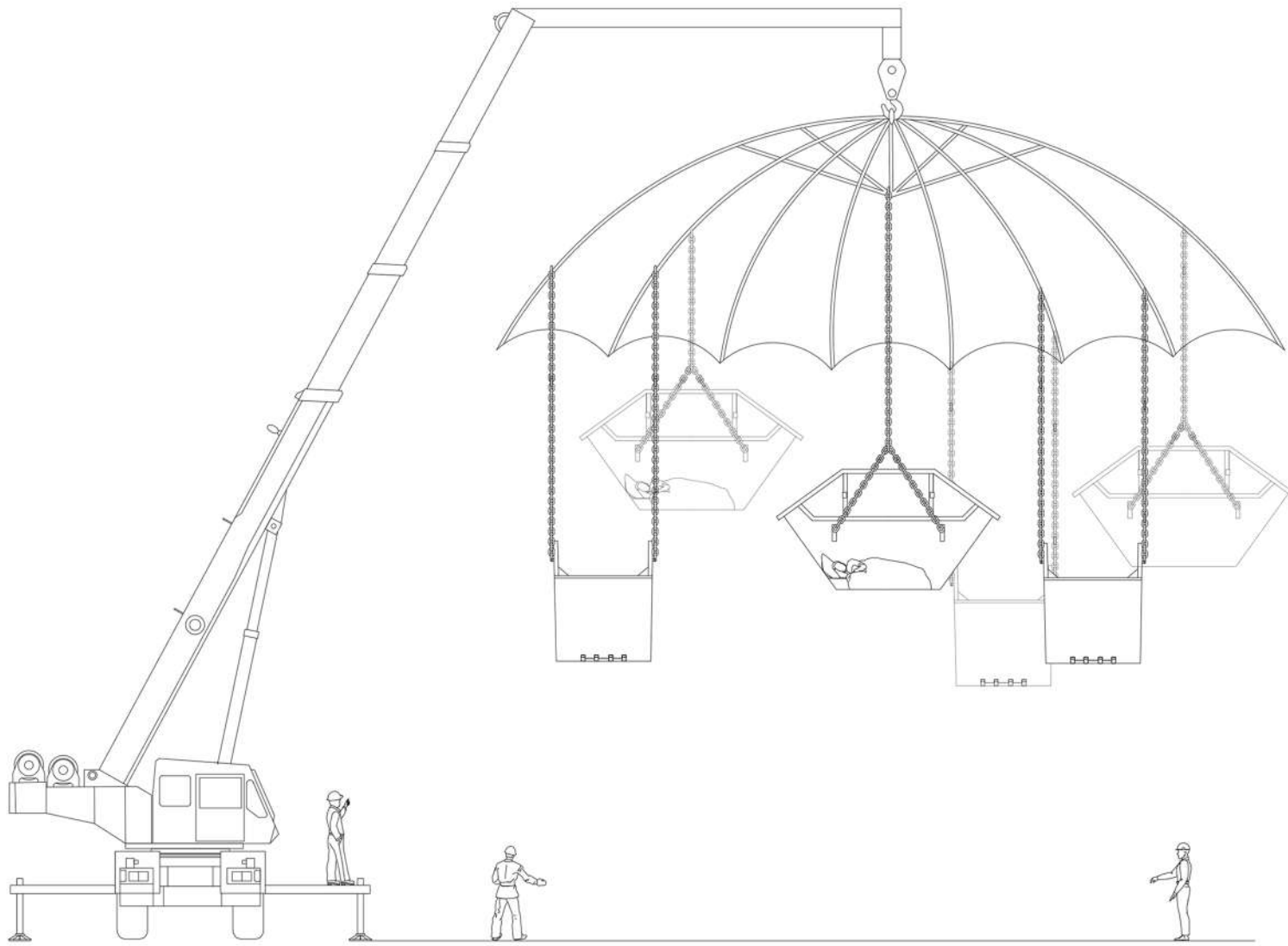
AI Relations with the site



On Cloud Nine

"A playful tool designed for construction workers – offering them a way to rest, recharge, or enjoy a light moment during their short breaks on site."

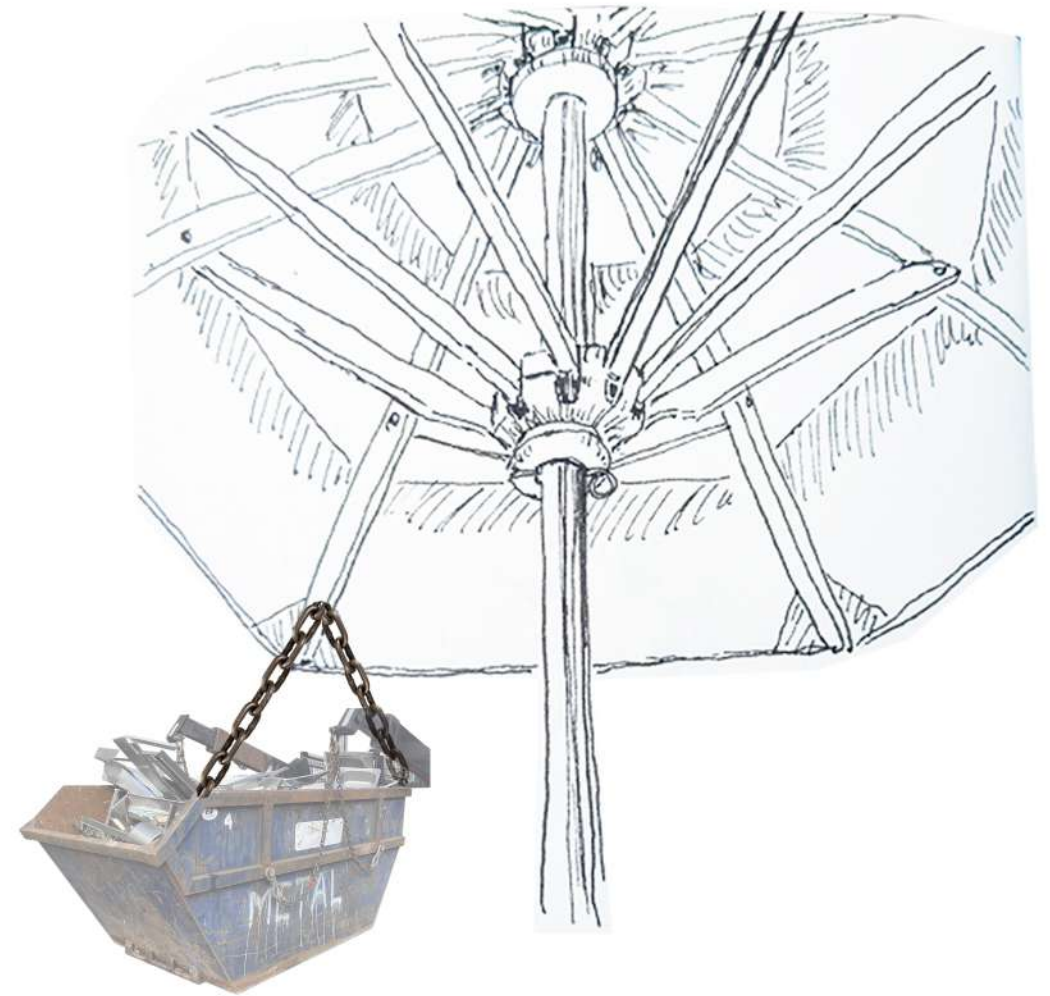
PREPOSTEROUS APPARATUS



designing something that gently rock (baby) - helping you to sleep

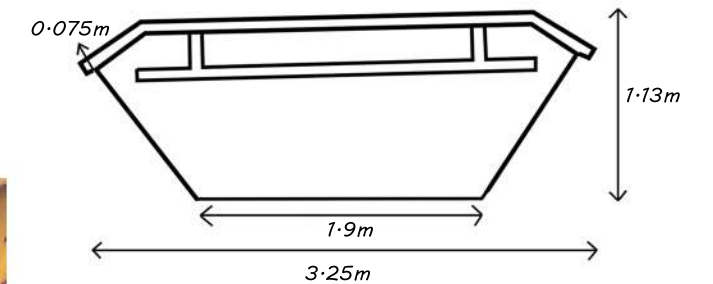
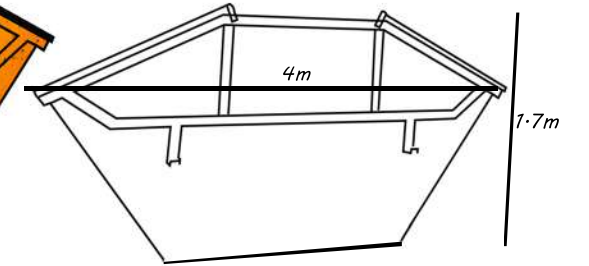
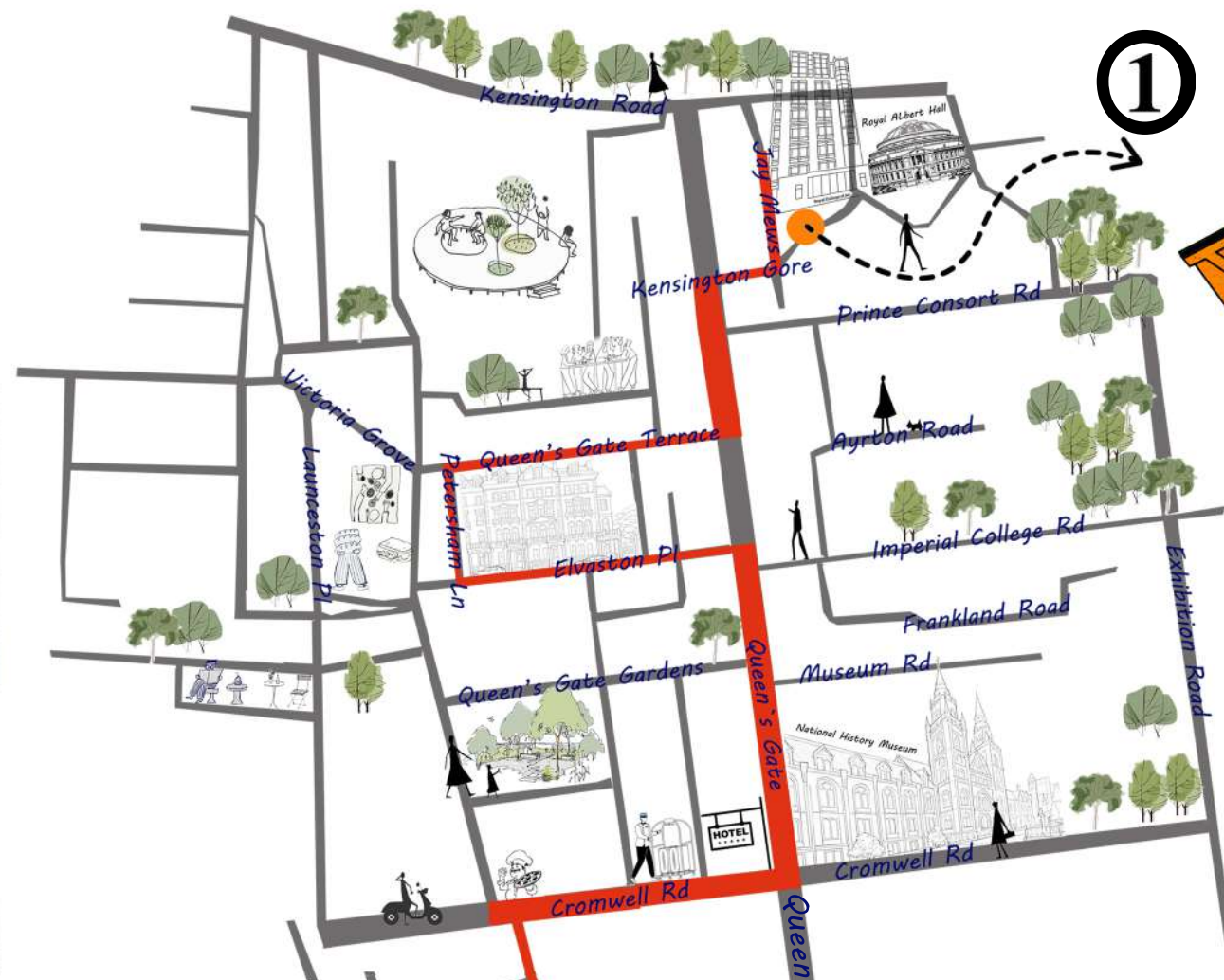
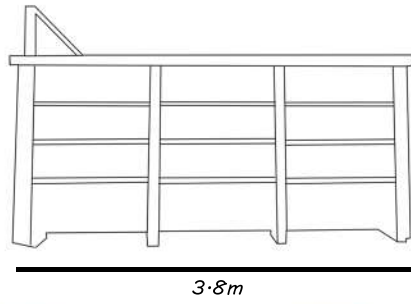


hanging to the mechanism inside of the umbrella



SKIP MAP

Observations Along The Route



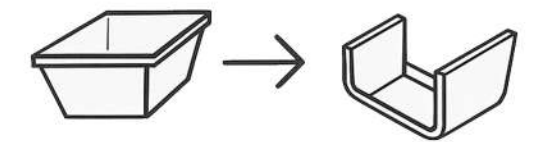
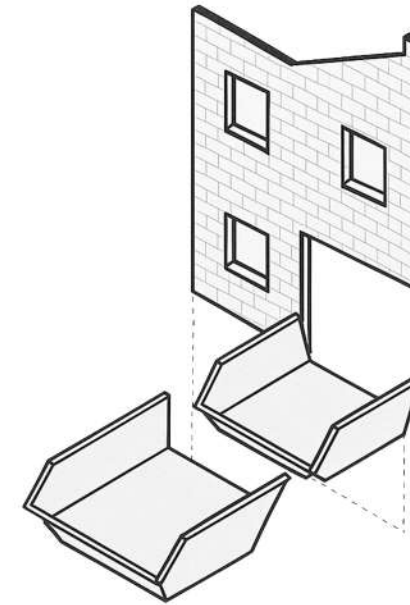
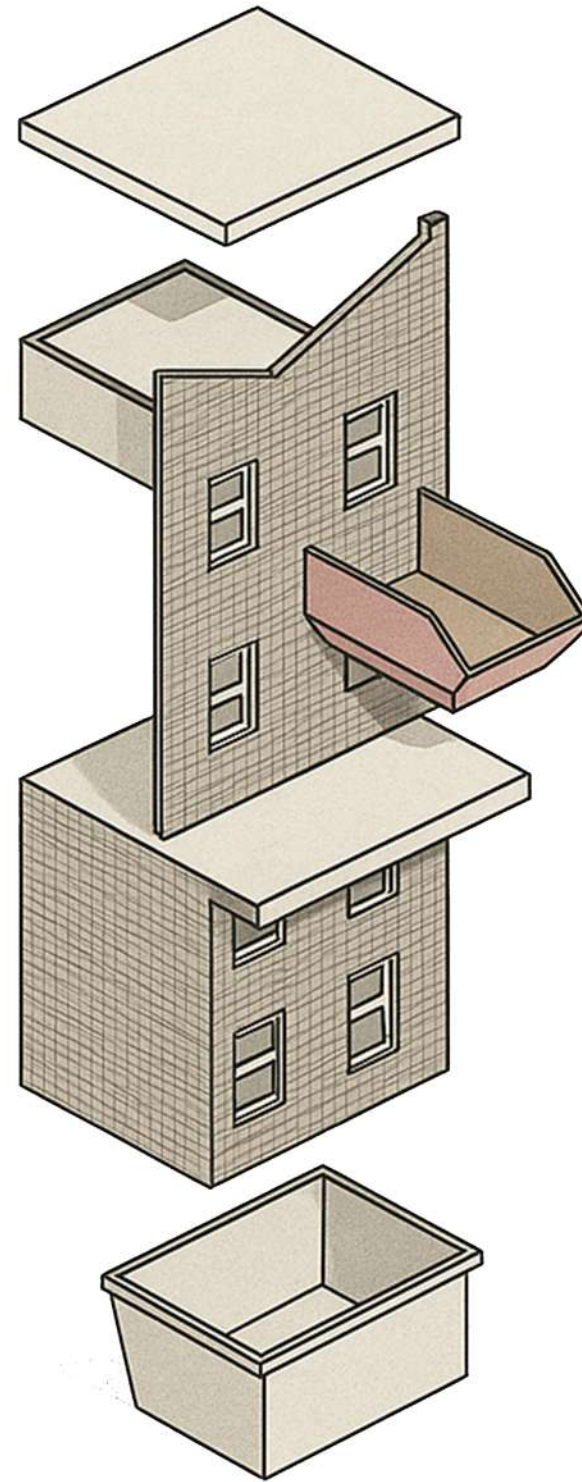
SITE

Lillie Road



FROM SKIP TO SPACE

Paper Model Experiments



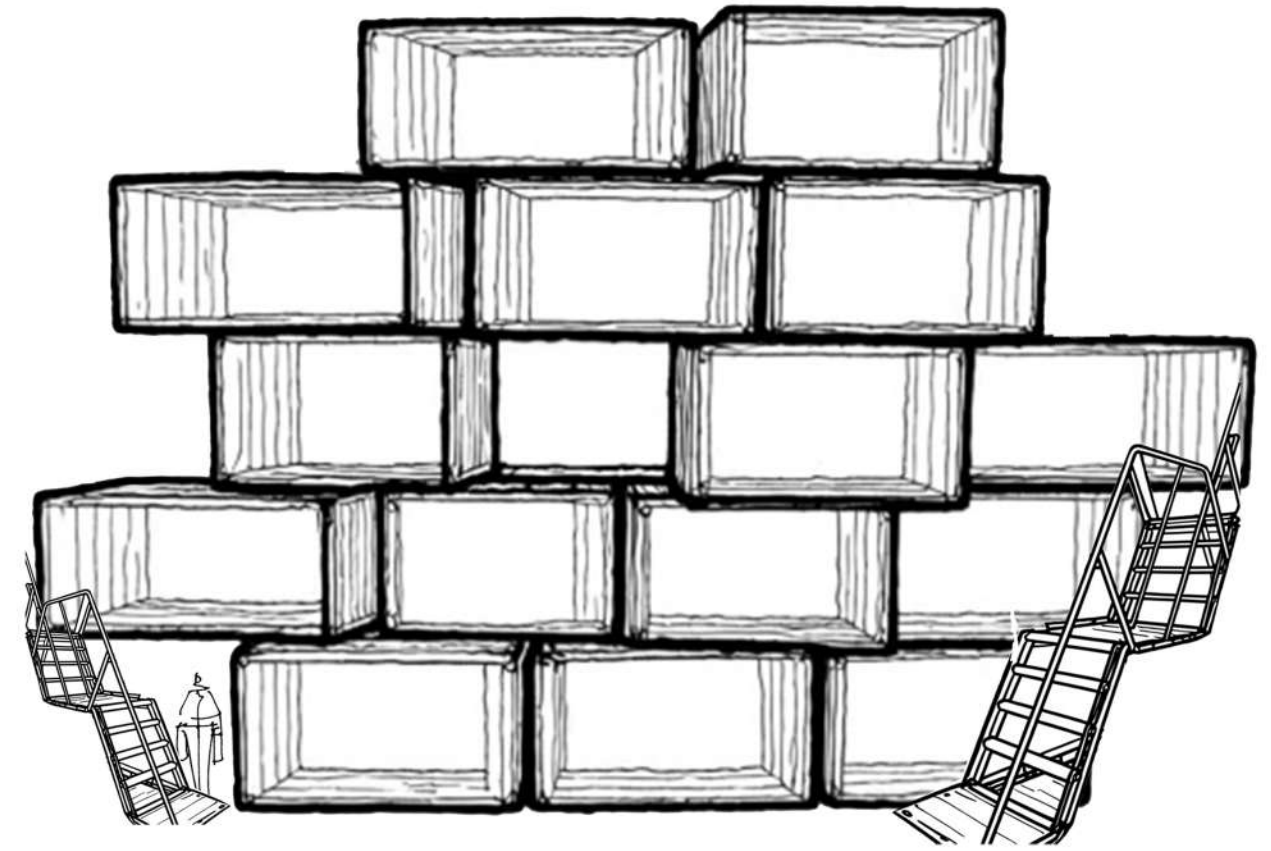
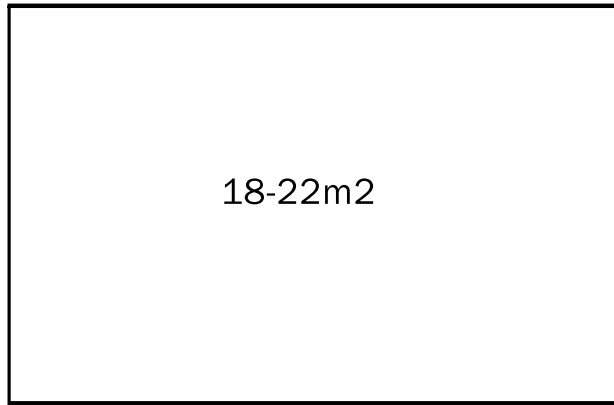
Skips as balconies

How industrial skips, typically used for waste, can be reimaged as modular balconies.

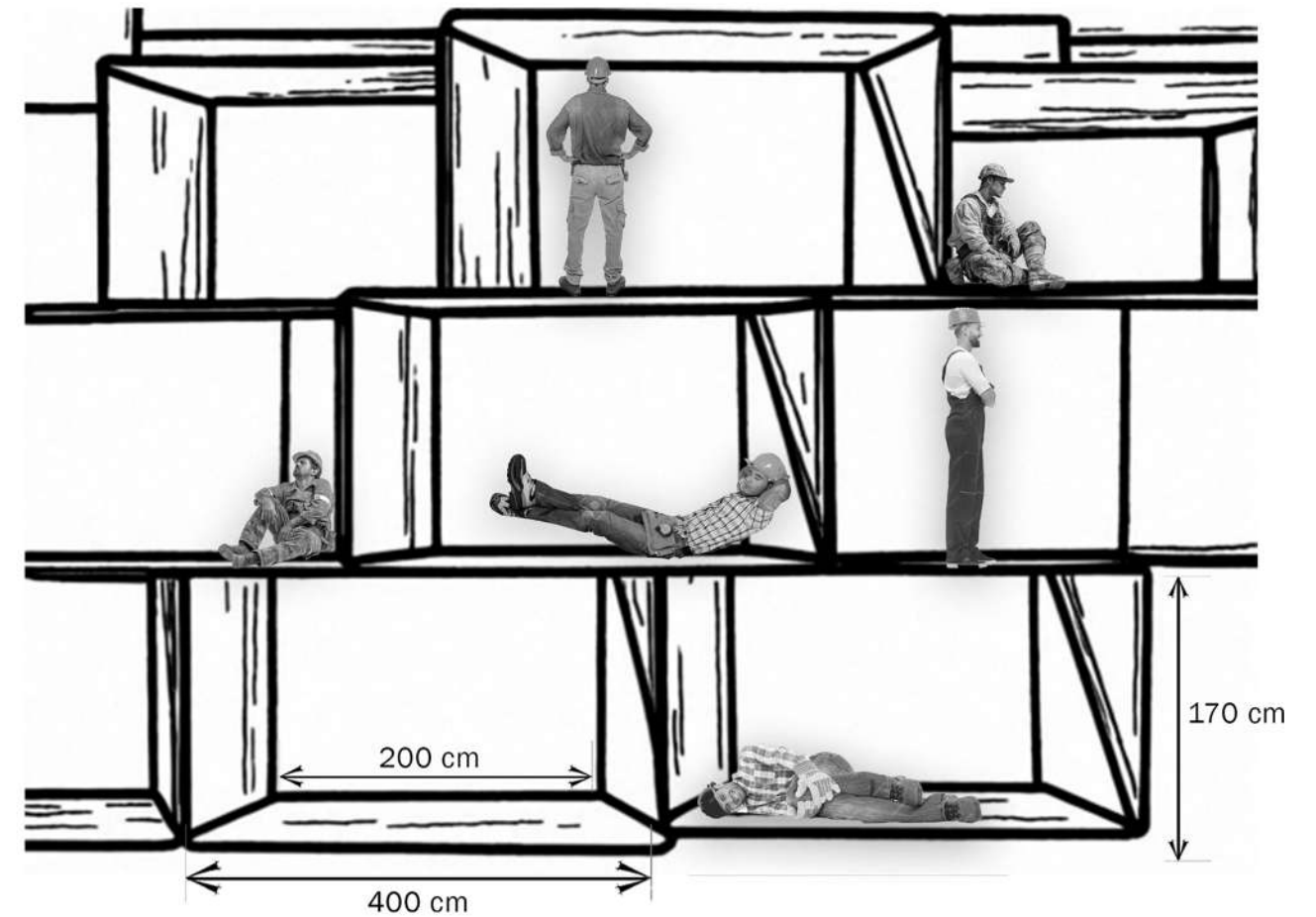
S(KIP) HOTEL

“From Facade Play to Interior Atmosphere”

standart hotel room



I initially placed skips along the façade, but the gaps felt too tight at human scale. To create more open, comfortable spaces, I began merging, shifting, and pulling the skips in various directions.

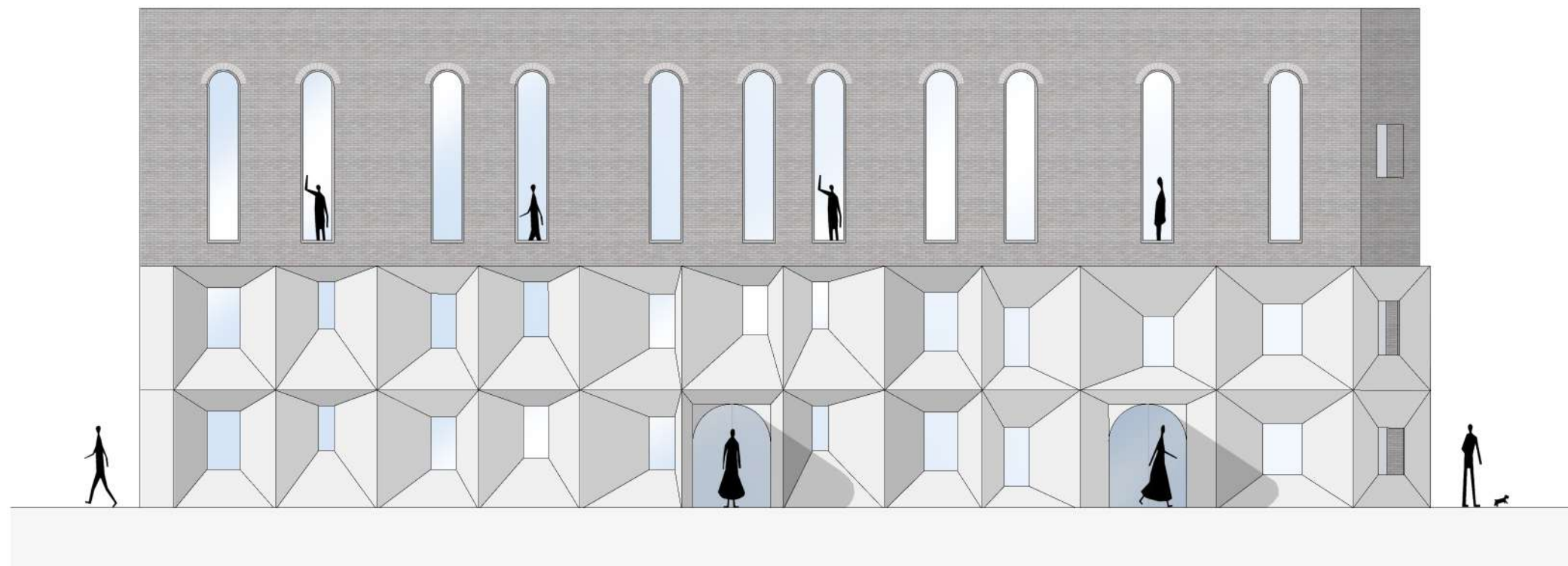


FROM SKIP TO SURFACE

Spatial Translation



Credit: Burntwood School - Allford Hall Monaghan Morris



FRONT ELEVATION

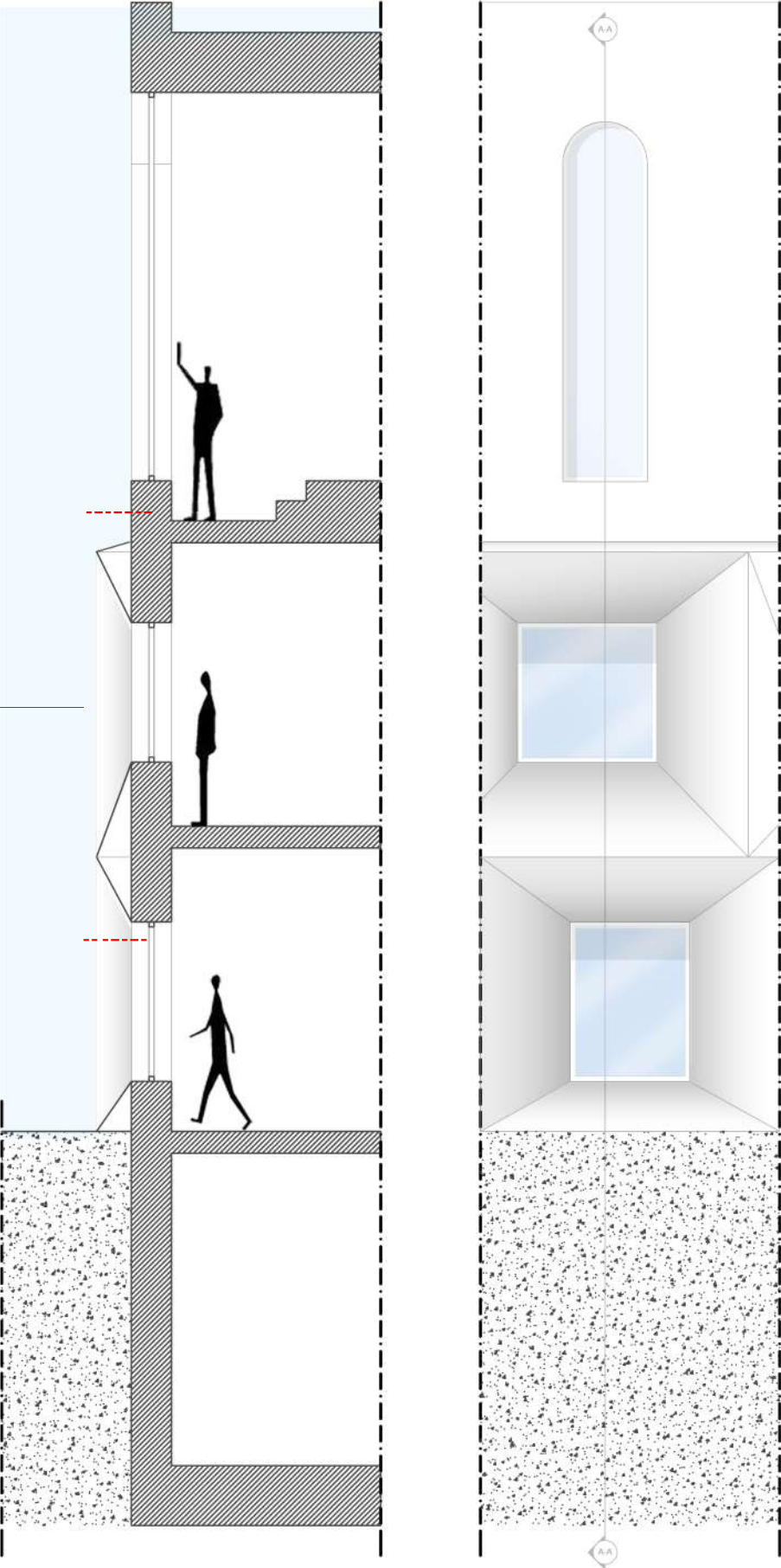
By shifting skip volumes, depth and rhythm began to emerge across the façade.

Windows became spatial tools, adjusted by light, privacy, and interior function, turning the exterior into a direct reflection of the inside.

WINDOW INSERTIONS

Window Detail Section

FROM RIGHT TO LEFT:
BRICK WALL
SUSPENSION SYSTEM FROM TUBULAR STEELS
BOARDS MADE FROM RECYCLED SKIP

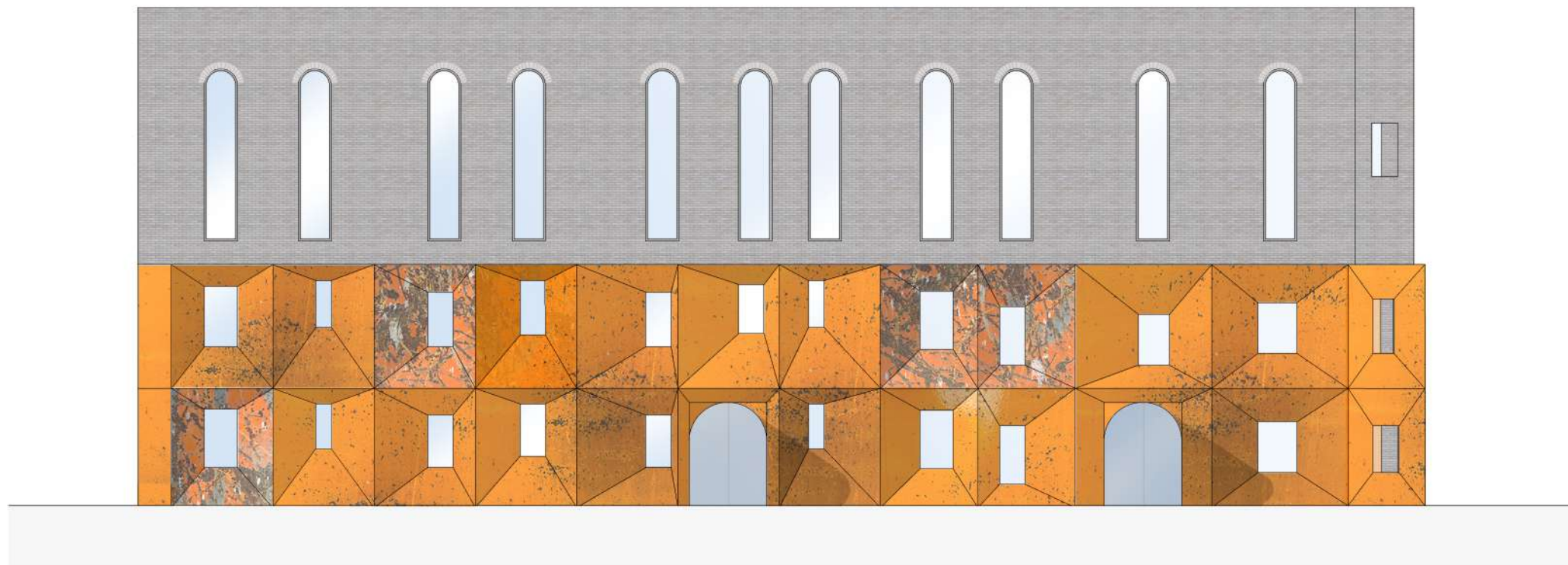


FROM SKIP TO SURFACE

Rust, Reuse, and Reveal



weathered steel texture



FRONT ELEVATION

The skip is no longer just a spatial reference, but also a material one.

By applying its weathered steel texture to the façade, I shaped deep window reveals, allowing the raw surface to express the building's identity.

MEMORY AND TRANSFORMATION

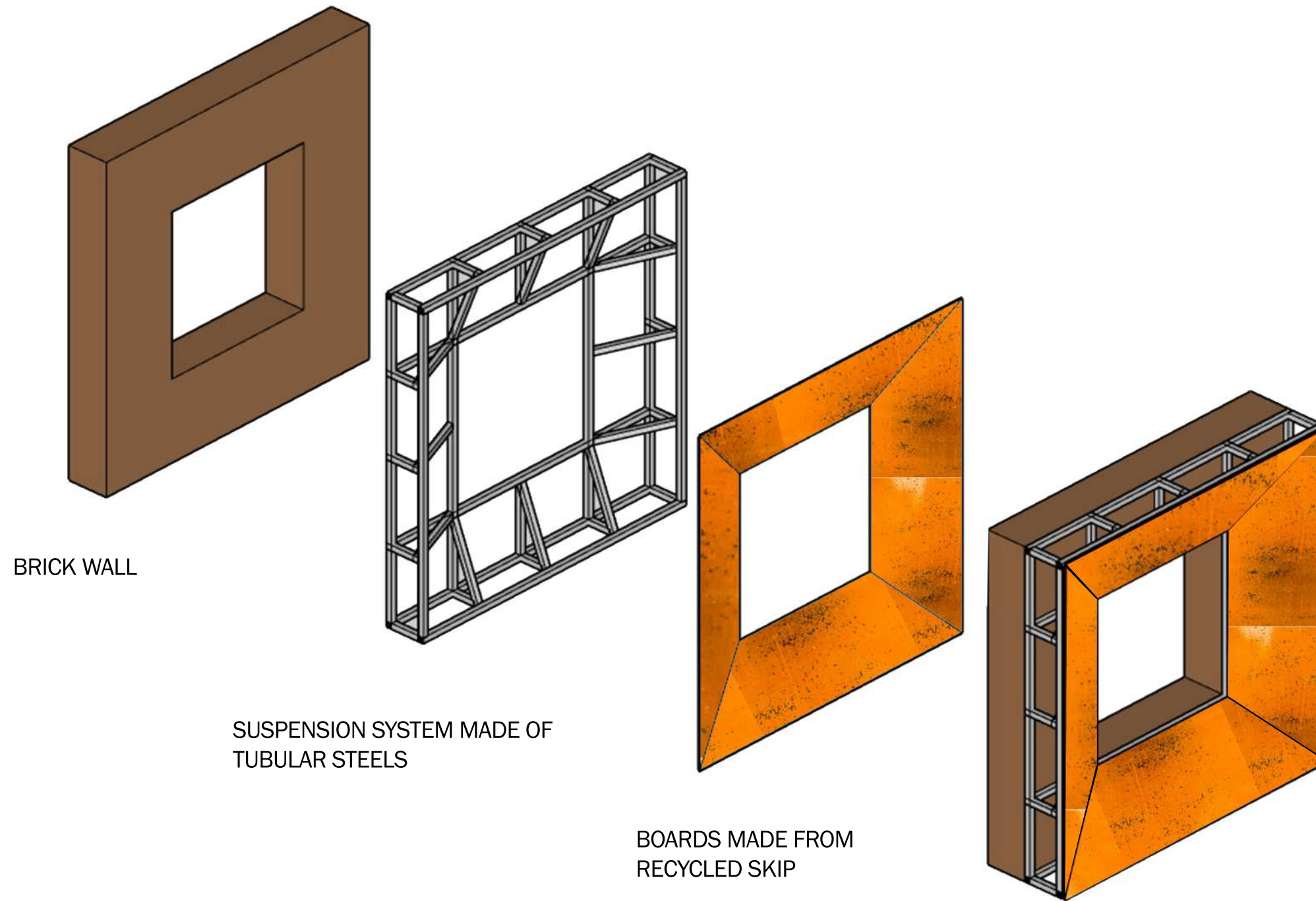
A Dialogue Between the Existing and the New



This page presents a comparative study between the existing street facade and the proposed intervention. The aim is to reflect on how architectural memory is respected and reinterpreted in the new design.

WINDOW INSERTIONS

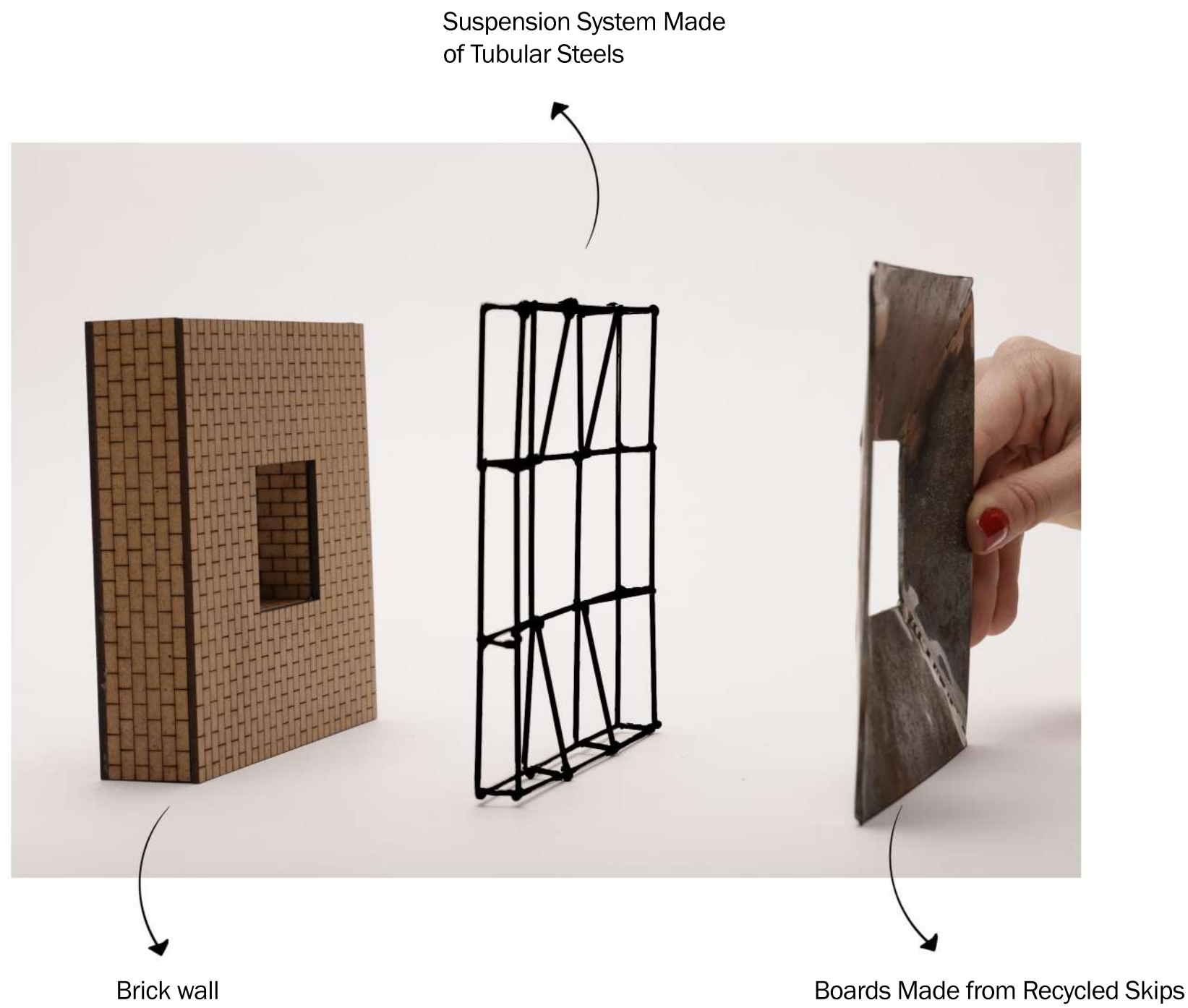
Structural Strategy of the Window Element



Exploded axonometric view of the window unit, showing structural logic and material reuse.

WINDOW INSERTIONS

1:20 Physical Model – Material Assembly and Structural Integration



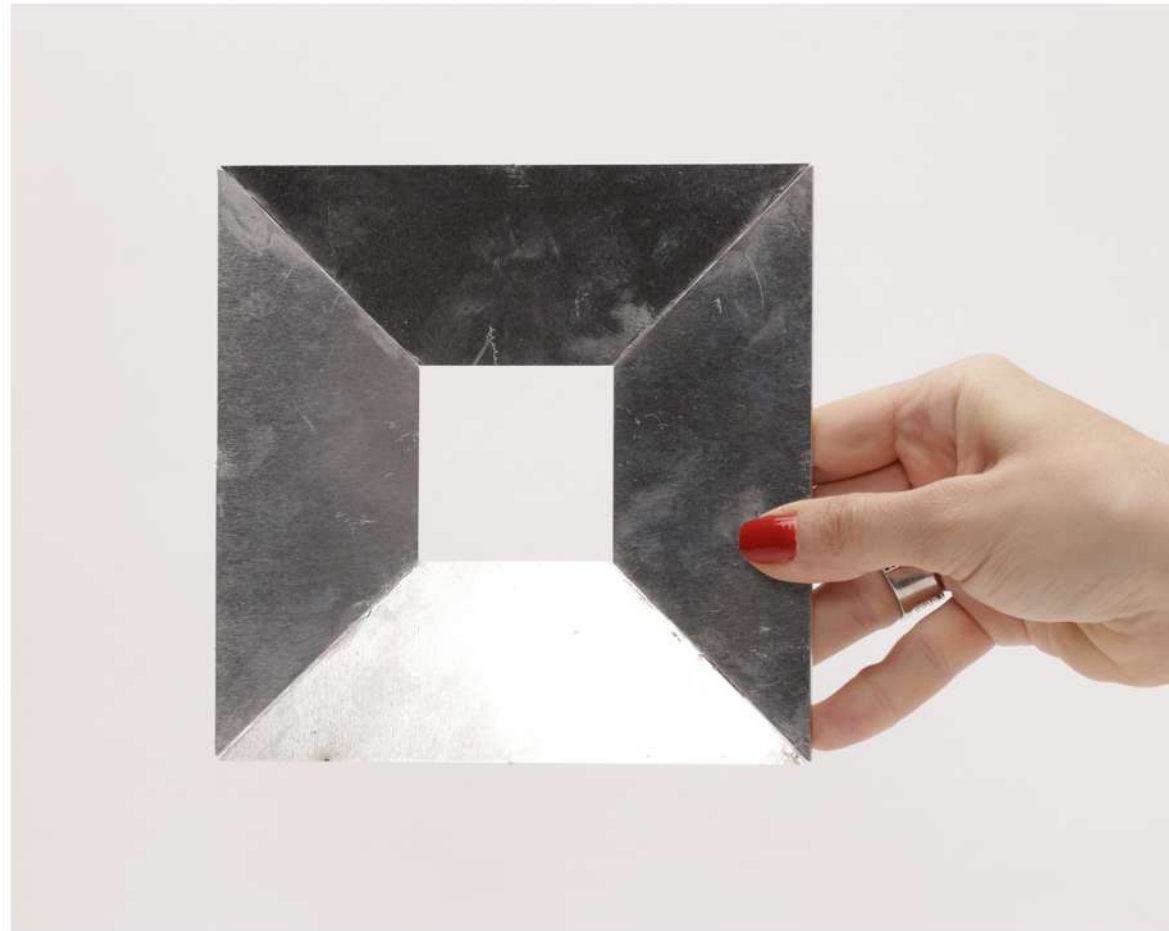
1:20 model reveals the window's structure and material reuse through skip steel and tubular framing.

WINDOW INSERTIONS

Material Tests for Windows

1/20 Model

Exploring façade treatments with aluminum and sheet steel helped test material behavior and visual character.



A window constructed using extruded aluminium profiles

Lightweight

Smooth / Sleek finish

Reflective / Subtle shine

Neutral / silvery tone



A window with a frame made from fabricated sheet steel elements

Heavy / Solid

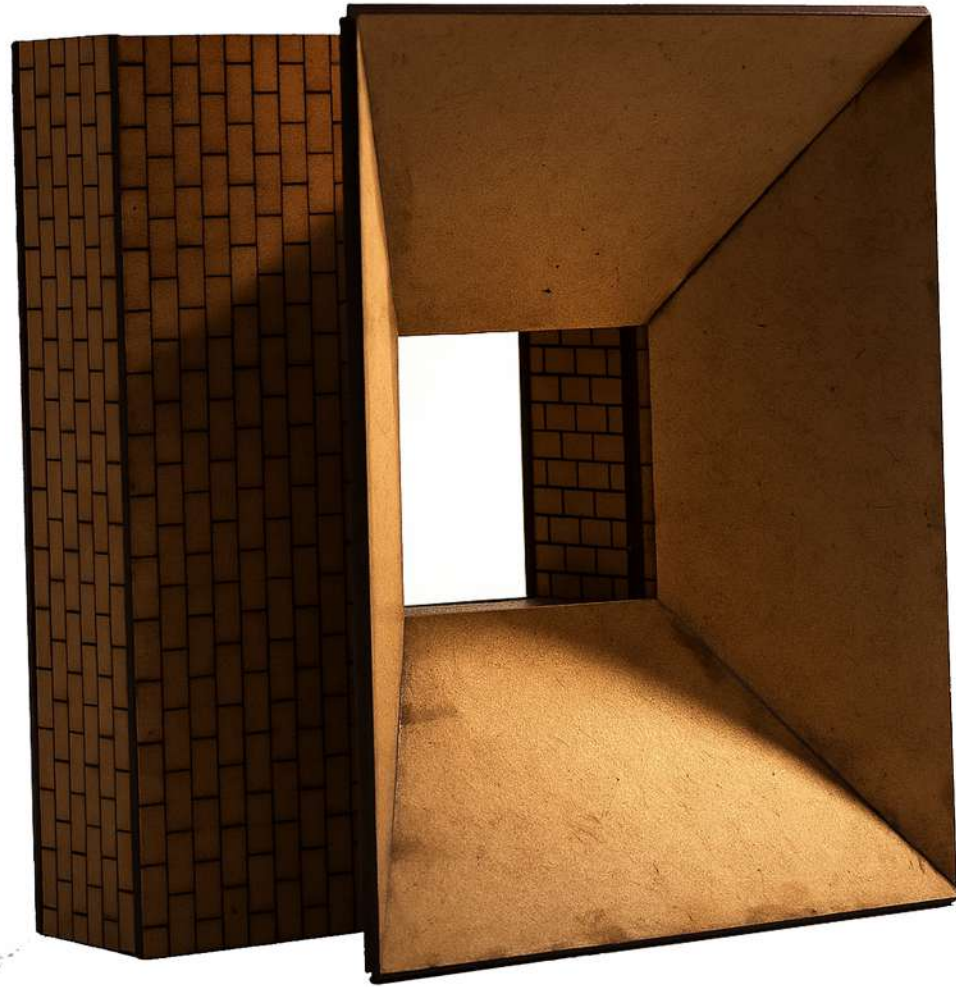
Industrial / Raw aesthetics

Textured surface (oxidized / rusty)

Matte / non-reflective

WINDOW INSERTIONS

Window Detail 1/20 Model



The spatial dimensions, such as depth, height, and width, are adjusted in response to the specific lighting needs of each zone within the project. By shaping volumes according to natural light flow, the design creates a dynamic interplay between light and form.

PEOPLE ACTIVITY STRATEGY

WHO?

overnight stays - private zone

24h +

hotel room



Construction workers needing extended rest

People arriving from other cities

WHO?

short stays

1h + 2h + 3h +

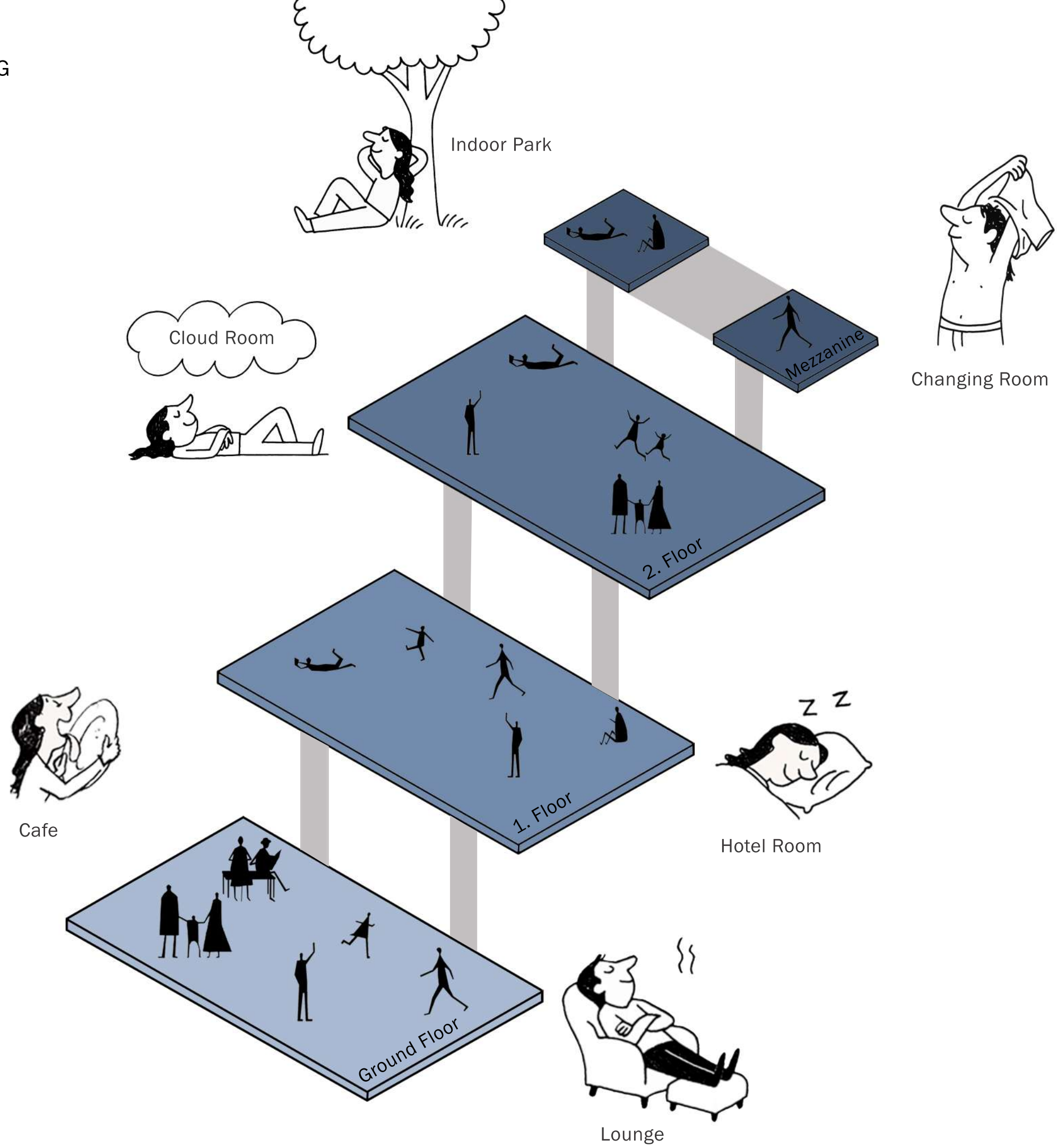
cloud room



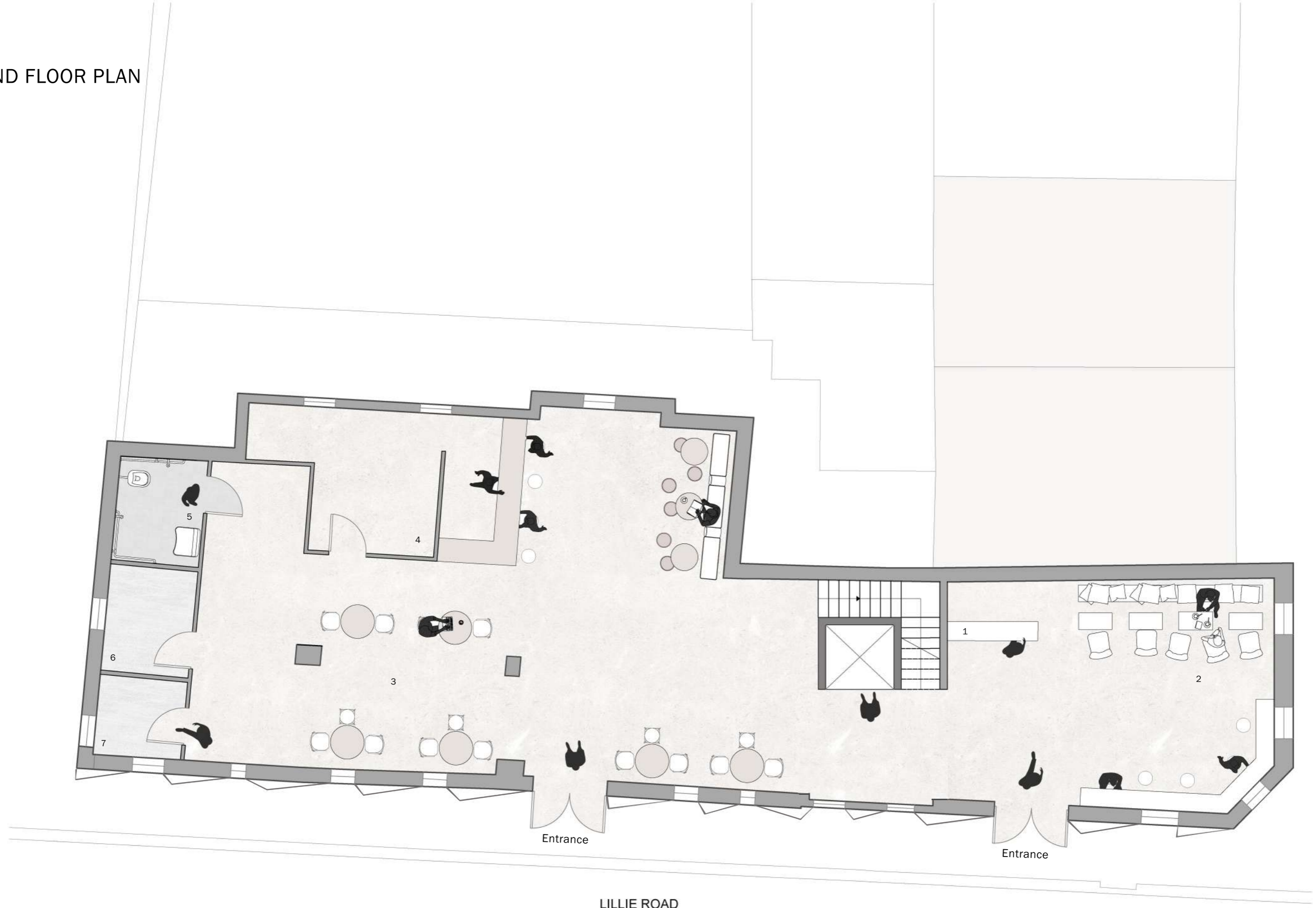
Spontaneous drop-ins from the street

For anyone needing a short mental break

SYSTEM PROGRAMMING



GROUND FLOOR PLAN

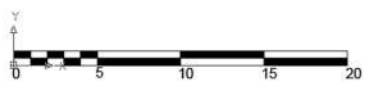


Entrance

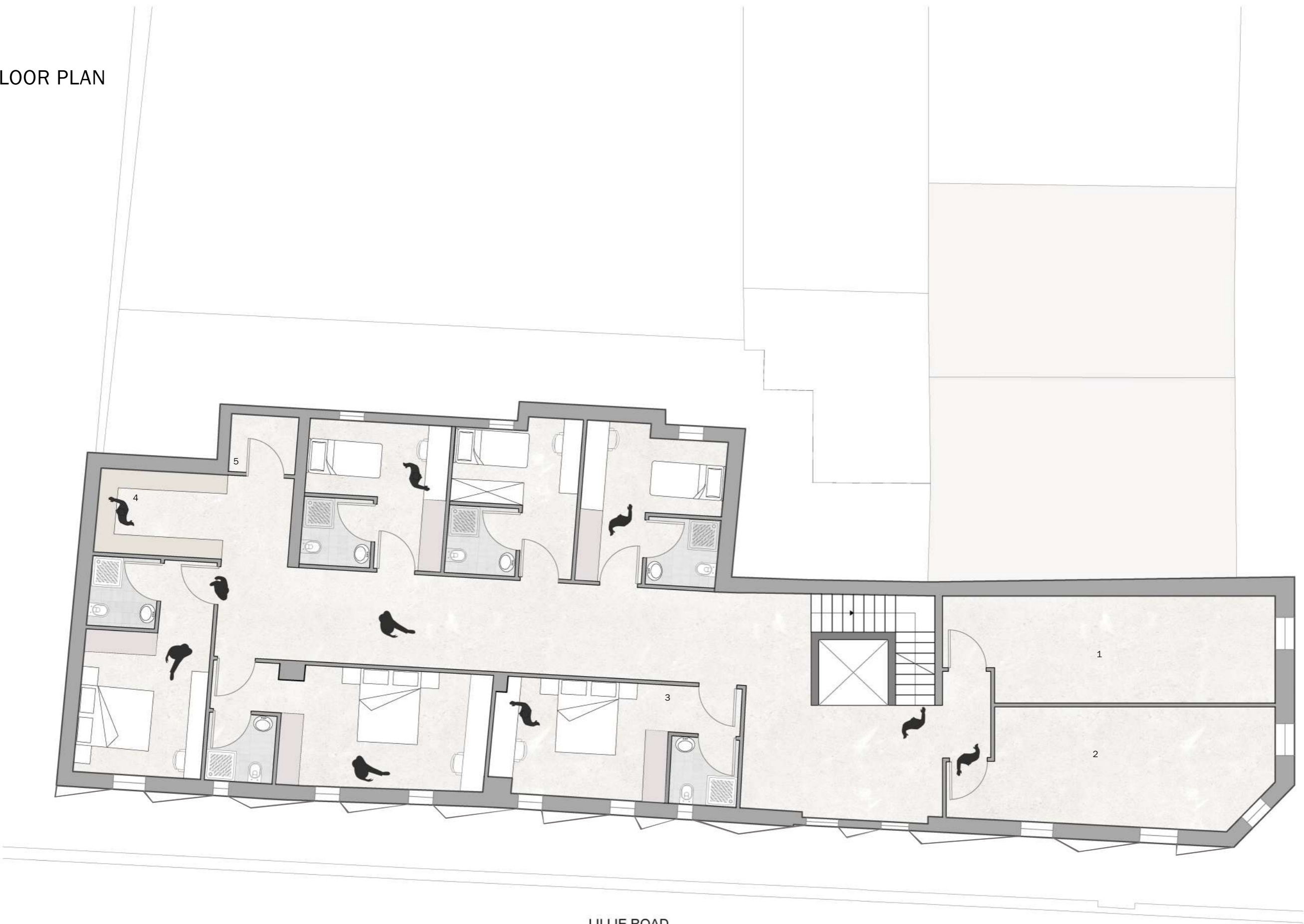
Entrance

LILLIE ROAD

- 1 Reception
- 2 Lounge
- 3 Cafe
- 4 Kitchen
- 5 Disabled Toilet
- 6 Staff Room
- 7 Staff Room



FIRST FLOOR PLAN



LILLIE ROAD



- 1 Hotel Room
- 2 Hotel Room
- 3 Hotel Room
- 4 Midnight Snack Bar
- 5 Cleaning Room

SECOND FLOOR PLAN



LILLIE ROAD

- 1 Reception
- 2 Lounge
- 3 Cloud Room



SECOND FLOOR MATERIAL PALETTE



Ribbed Travertine Stone



Limestone



Linen Fabric



Glazed Ceramic Tile

ARRIVAL POINT

Cloud Room



The wall curves into sky - quiet, calm, and surreal.

RESTING AND RECHARGING AREA



RESTING AND RECHARGING AREA



RESTING AND RECHARGING AREA



MATERIAL EXPLORATION FOR CLOUD ROOM

Washi Paper as a Light Diffusing Element

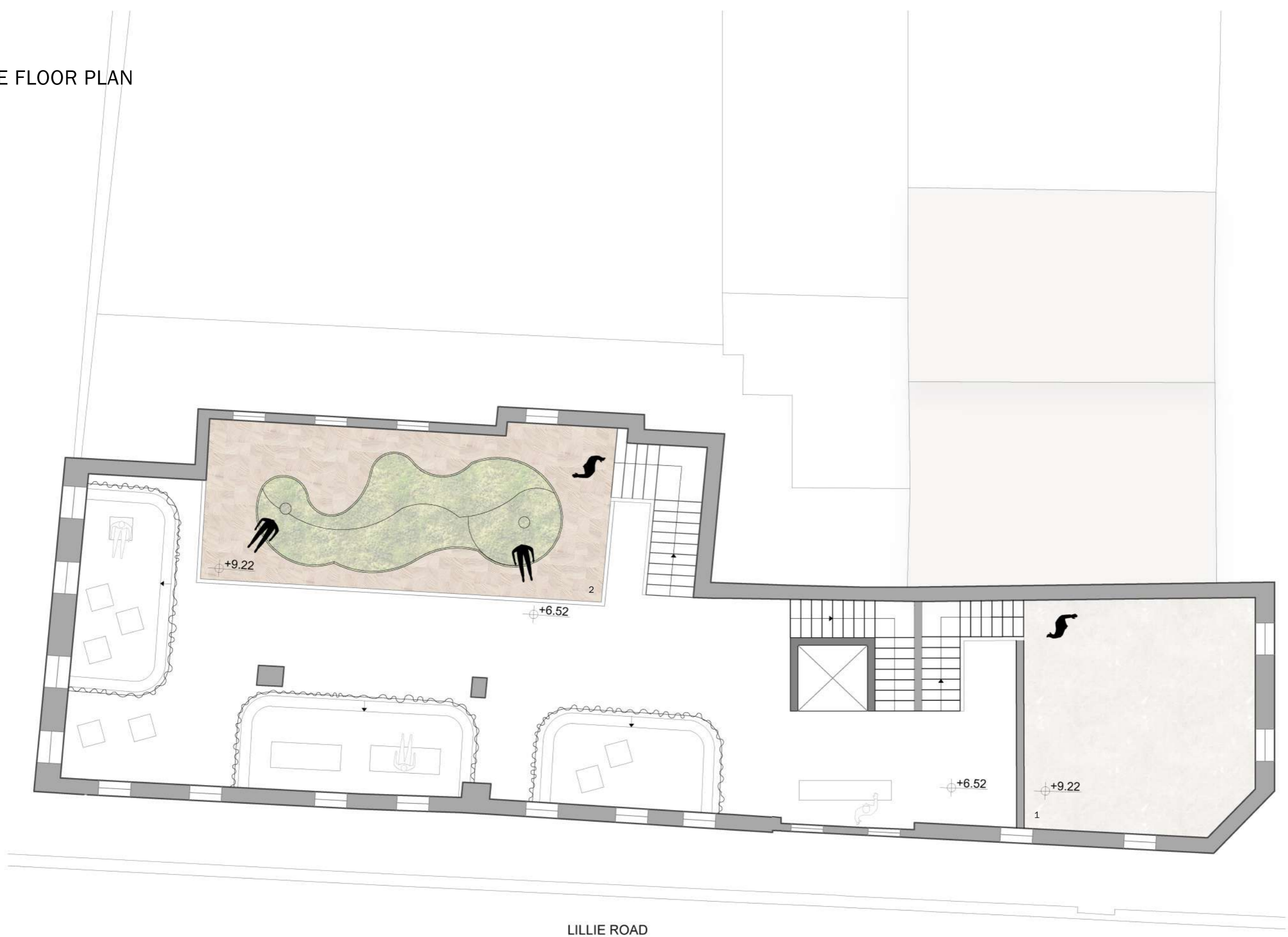


To achieve a soft, cloud-like visual effect for the ceiling installations, I tested handmade textures using washi paper. The material's translucent and fibrous quality mimics the lightness and diffusion of real clouds.

CLOUD PROTOTYPE

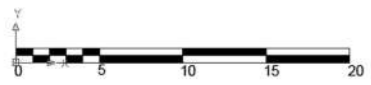


MEZZANINE FLOOR PLAN



LILLIE ROAD

1 Changing Room + WC
2 Indoor Park



MEZZANINE FLOOR MATERIAL PALETTE



Ribbed Travertine Stone



Black Sheet Steel

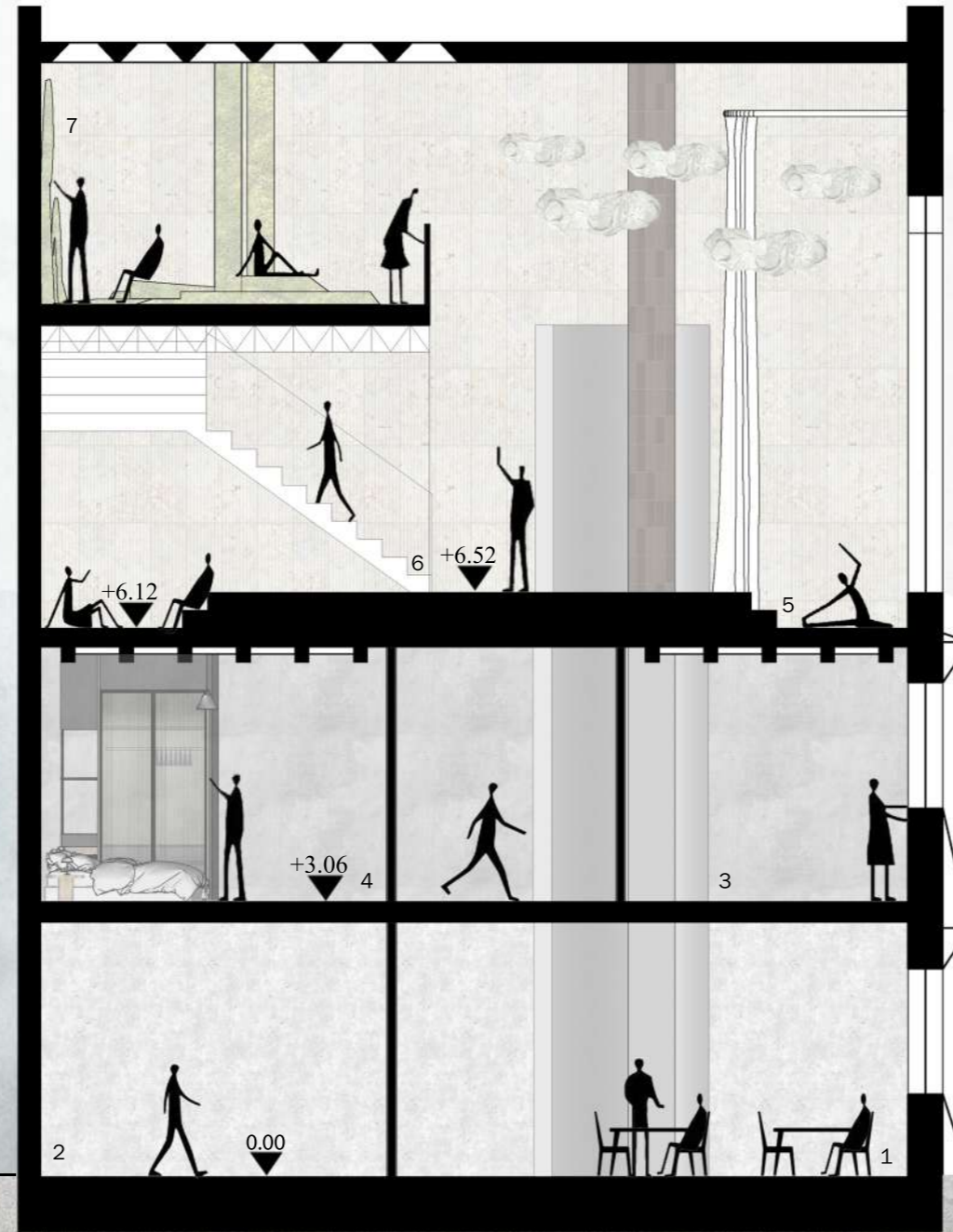
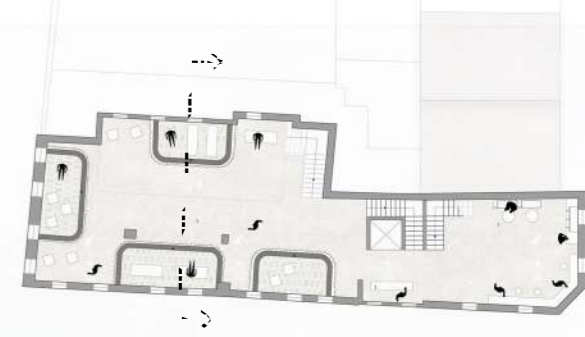


Bamboo Viscose Rug



End Grain Wood

SECTION



- 1 Cafe
- 2 Kitchen
- 3 Hotel Room
- 4 Hotel Room
- 5 Lower Floors
- 6 Stairs
- 7 Indoor Park

STAIR DETAIL

Mezzanine Access



"Interior echoes the industrial skin."

INDOOR PARK



MATERIAL PALETTE



RESTING LEVEL
Cloud Room Interior





APPENDIX

Spatial Evolution: Existing & Proposed

 Demolish



 Keep
 New Interventions

